

Sea-level rise in Venice: historic and future trends (Review article)

Davide Zanchettin<sup>1</sup>, Sara Bruni<sup>2\*</sup>, Fabio Raicich<sup>3</sup>, Piero Lionello<sup>4</sup>, Fanny Adloff<sup>5</sup>, Alexey Androsov<sup>6,7</sup>, Fabrizio Antonioli<sup>8</sup>, Vincenzo Artale<sup>9</sup>, Eugenio Carminati<sup>10</sup>, Christian Ferrarin<sup>11</sup>, Vera Fofonova<sup>6</sup>, Robert J. Nicholls<sup>12</sup>, Sara Rubinetti<sup>1</sup>, Angelo Rubino<sup>1</sup>, Gianmaria Sannino<sup>13</sup>, Giorgio Spada<sup>2</sup>, Rémi Thiéblemont<sup>14</sup>, Michael Tsimplis<sup>15</sup>, Georg Umgiesser<sup>11</sup>, Stefano Vignudelli<sup>16</sup>, Guy Wöppelmann<sup>17</sup>, Susanna Zerbini<sup>2</sup>

<sup>1</sup>University Ca' Foscari of Venice, Dept. of Environmental Sciences, Informatics and Statistics, Via Torino 155, 30172 Mestre, Italy

<sup>2</sup>University of Bologna, Department of Physics and Astronomy, Viale Berti Pichat 8, 40127, Bologna, Italy

<sup>3</sup>CNR, Institute of Marine Sciences, AREA Science Park Q2 bldg., SS14 km 163.5, Basovizza, 34149 Trieste, Italy

<sup>4</sup>Università del Salento, Dept. of Biological and Environmental Sciences and Technologies, Centro Ecotekne Pal. M - S.P. 6, Lecce Monteroni, Italy

<sup>5</sup>National Centre for Atmospheric Science, University of Reading, Reading, UK

<sup>6</sup>Alfred Wegener Institute Helmholtz Centre for Polar and Marine Research, Postfach 12-01-61, 27515, Bremerhaven, Germany

<sup>7</sup>Shirshov Institute of Oceanology, Moscow, 117997, Russia

<sup>8</sup>Istituto Nazionale di Geofisica e Vulcanologia, via di Vigna Murata 605, 00143 Rome, Italy

<sup>9</sup>ENEA C.R. Frascati, SSPT-MET, Via Enrico Fermi 45, 00044 Frascati, Italy

<sup>10</sup>University of Rome La Sapienza, Dept. of Earth Sciences, Piazzale Aldo Moro 5, 00185 Roma, Italy

<sup>11</sup>CNR - National Research Council of Italy, ISMAR - Marine Sciences Institute, Castello 2737/F, 30122 Venezia, Italy

<sup>12</sup>Tyndall Centre for Climate Change Research, University of East Anglia. Norwich NR4 7TJ, United Kingdom

<sup>13</sup>ENEA Casaccia, Climate and Impact Modeling Lab, SSPT-MET-CLIM, Via Anguillarese 301, 00123 Roma, Italy

<sup>14</sup>Bureau de Recherches Géologiques et Minières "BRGM", French Geological Survey, 3 Avenue, Claude Guillemin, CEDEX, 45060 Orléans, France

<sup>15</sup>City University of Hong Kong, School of Law, Tat Chee Avenue, Kowloon, Hong Kong

<sup>16</sup>CNR, Institute of Biophysics, AREA Ricerca, Via Moruzzi 1, 56127 Pisa, Italy

<sup>17</sup>LIENSs, CNRS - La Rochelle University, 2 rue Olympe de Gouges, 17000 La Rochelle, France

\*now at: PosiTIm UG, Seeheim-Jugenheim, Germany.

Correspondence to: Davide Zanchettin (davidoff@unive.it)

ha eliminato: Review article:

ha eliminato: Sannino<sup>8</sup>

ha eliminato: Thiéblemont<sup>13</sup>

ha eliminato: Tsimplis<sup>14</sup>

ha eliminato: Vignudelli<sup>15</sup>

ha eliminato: Wöppelmann<sup>16</sup>

ha eliminato: ENEA Casaccia, Climate and Impact Modeling Lab, SSPT-MET-CLIM, Via Anguillarese 301, 00123 Roma, Italy

ha formattato: Italiano (Italia), Non Apice / Pedice

ha formattato: Italiano (Italia)

ha formattato: Italiano (Italia), Non Apice / Pedice

ha formattato: Italiano (Italia)

ha formattato: Italiano (Italia), Non Apice / Pedice

ha formattato: Italiano (Italia)

ha formattato: Italiano (Italia)

ha formattato: Italiano (Italia), Non Apice / Pedice

ha formattato: Italiano (Italia), Non Apice / Pedice

ha formattato: Italiano (Italia)

ha formattato: Inglese (Stati Uniti)

ha formattato: Apice

ha eliminato: <sup>14</sup>City

ha eliminato: <sup>15</sup>CNR

ha eliminato: <sup>16</sup>LIENSs

**Abstract.** The City of Venice and the surrounding lagoon ecosystem are highly vulnerable to variations in relative sea level. In the past ~150 years, this was characterized by an average rate of relative sea-level rise of about 2.5 mm/year resulting from the combined contributions of vertical land movement and sea-level rise. This literature review reassesses and synthesizes the progress achieved in quantification understanding and prediction of the individual contributions to local relative sea level, with focus on the most recent studies. Subsidence contributed to about half of the historical relative sea-level rise in Venice. The current best estimate of the average rate of sea-level rise, during the observational period from 1872 to 2019 based on tide-gauge data after removal of subsidence effects, is  $1.23 \pm 0.13$  mm/year. A higher - but more uncertain - rate of sea-level rise is observed for more recent years. Between 1993 and 2019, an average change of about  $2.76 \pm 1.75$  mm/year is estimated from tide-gauge data after removal of subsidence. Unfortunately, satellite altimetry does not provide reliable sea-level data within the Venice Lagoon. Local sea-level changes in Venice closely depend on sea-level variations in the Adriatic Sea, which in turn are linked to sea-level variations in the Mediterranean Sea. Water mass exchange through the Strait of Gibraltar and its drivers currently constitute a source of substantial uncertainty for estimating future deviations of the Mediterranean mean sea-level trend from the global-mean value. Regional atmospheric and oceanic processes will likely contribute significant interannual and interdecadal future variability of Venetian sea level with a magnitude comparable to that observed in the past. On the basis of regional projections of sea-level rise and an understanding of the local and regional processes affecting relative sea-level trends in Venice, the likely range of atmospherically-corrected relative sea-level rise in Venice by 2100 ranges between 32 and 62 centimetres for the RCP2.6 scenario and between 58 and 110 centimetres for the RCP8.5 scenario, respectively. A plausible but unlikely high-end scenario linked to strong ice-sheet melting yields about 180 centimetres of relative sea-level rise in Venice by 2100. Projections of human-induced vertical land motions are currently not available, but historical evidence demonstrates that they have the potential to produce a significant contribution to the relative sea-level rise in Venice, exacerbating the hazard posed by climatically-induced sea-level changes.

## 1 Introduction

This paper reviews the current knowledge about mean Relative Sea Level (RSL) changes in the Venice Lagoon on time scales from interannual to centennial and the associated contribution from oceanic, land and atmospheric processes. The assessment includes a paleo perspective, considering the Quaternary period. It encompasses an overview of available observed estimates of historical RSL changes in Venice (Sect. 2) and quantification of the individual contributions by the major underlying processes, including vertical land motions (Sect. 3) and climatic changes (Sect. 4). Estimates are supported by a review of downscaling mechanisms of global and large-scale oceanic and atmospheric signals to the Venice Lagoon (Sect. 5), with special focus on processes in the Atlantic and Euro-Mediterranean regions. Estimates of projected long-term future RSL changes based on state-of-the-art models of vertical land motions and of sea-level rise under different scenarios of

ha eliminato:	al
ha eliminato:	secular linear
ha eliminato:	trend
ha eliminato:	,
ha eliminato:	estimating
ha eliminato:	predicting
ha eliminato:	publications
ha eliminato:	T
ha eliminato:	historical
ha eliminato:	in Venice,
ha eliminato:	,
ha eliminato:	(period from 1872 to 2019)
ha eliminato:	Subsidence thus contributed to about half of the observed relative sea-level rise over the same period.
ha eliminato:	yet
ha eliminato:	during recent decades
ha eliminato:	to be about $2.76 \pm 1.75$ mm/year in the period 1993 to 2019
ha eliminato:	An unresolved issue is the contrast between the tide-gauge data and satellite altimetry
ha eliminato:	, with the latter tool
ha eliminato:	covering
ha eliminato:	
ha eliminato:	s
ha eliminato:	Strait
ha eliminato:	Subsidence and regional atmospheric and oceanic processes
ha eliminato:	in due to determine
ha eliminato:	
ha eliminato:	, as well as non-negligible differential trends
ha eliminato:	Our estimate of t
ha eliminato:	mean
ha eliminato:	due to climate changes is presently estimated
ha eliminato:	11 and 110 centimetres
ha eliminato:	n improbable yet possible
ha eliminato:	170
ha eliminato:	mean
ha eliminato:	natural and
ha eliminato:	
ha eliminato:	can produce
ha eliminato:	future increases
ha formattato	
ha eliminato:	critically

120 anthropogenic greenhouse gas emission are discussed, with emphasis on the associated major sources of uncertainty (Sect. 6).  
The review primarily focuses on papers published in the past decade and also aims ~~to define~~ the overarching open research questions and possible approaches for progress (Sect. 7).

Given the multidisciplinary of this review, it is useful to specify the meaning of terms and concepts associated with sea-level changes that are recurrent in this paper and often used inconsistently by different scientific communities (see also Gregory et al., 2019, for a broader discussion). Unless otherwise specified in the text, the following definitions apply:

- ~~Relative Sea Level (RSL) change: change in local sea level relative to the local solid surface (Gregory et al., 2019). The acronym RSL is therefore used for tide-gauge data;~~
- ~~Geocentric Sea Level (GSL) change: change in local sea level with respect to a geocentric reference, namely a Terrestrial Reference Frame or, equivalently, a reference ellipsoid (Gregory et al., 2019). The acronym GSL is therefore used for satellite altimetry sea-level data;~~
- ~~Subsidence: land surface sinking (UNESCO, 2020; see also: Gregory et al., 2019);~~
- ~~VLM-corrected RSL: local sea level derived from tide-gauge RSL data corrected for vertical land movements;~~
- ~~Global-mean sea level (GMSL): spatially averaged sea level over the World Ocean.~~

A list of acronyms recurrently used in the paper is provided in Table 1.

135 The Reader is referred to Lionello et al. (2020a) and Umgiesser et al. (2020) in this special issue for details about the geographical and historical setting of the Venice Lagoon, the linkage between RSL changes and the phenomenology of surges and extreme water levels affecting the lagoon, about their prediction and about broader implications for the ecosystems and the historical city.

## 2 Monitoring sea-level changes

140 The monitoring of sea-level changes in Venice relies on both in-situ data acquired by tide gauges (sect 2.1) and remote sensing observations provided by satellite radar altimetry (sect. 2.2). Tide gauges record sea-level heights with reference to a permanent benchmark on land. ~~Therefore~~, they provide measurements of RSL embedding the effects of vertical land motion (Sect. 3). Tide gauge data sets consist of local, long-term measurements acquired at high frequency and accuracy (Zerbini et al., 2017). Satellite radar altimetry, ~~on the contrary~~, measures geocentric sea-level changes (Fu and Cazenave, 2001; Stammer and Cazenave, 2017). ~~These are independent of variations of the local land levels (Gregory et al., 2019), hence unaffected by~~ potentially key component of RSL (Wöppelmann and Marcos, 2016; Gregory et al., 2019). These measurements have a lower sampling rate (several days) and a lower accuracy than those provided by tide gauges, but they are representative of wider oceanic areas and have the potential to characterize the evolution of sea-level variability ~~with an almost global coverage~~.

ha eliminato: a  
ha eliminato: defining  
Formattato: Nessun elenco puntato o numerato

ha eliminato: ¶  
Mean Seal Level (MSL): time-mean state whose precise definition should be specified when the term is used, and which is understood to refer to a period long enough to eliminate the effect of meteorological variations at least (Gregory et al., 2019). More precise definitions exist of MSL, e.g., the average value of levels observed each hour over a period of at least a year, and preferably over about 19 years, to average out cycles of 18.6 years in the tidal amplitudes and phases, and to average out effects on the sea levels due to weather (Pugh, 1987), that however are not strictly and consistently applied in the literature reviewed here;  
ha eliminato: <#>¶  
ha eliminato: <#>MSL  
ha eliminato: Absolute/g  
ha eliminato: sea  
ha eliminato: -l  
ha eliminato: MSL  
ha eliminato: <#>¶  
ha eliminato: <#>).

ha eliminato: As a consequence

ha eliminato: that  
ha eliminato: therefore  
ha eliminato: changes  
ha eliminato: missing a  
ha eliminato:  
ha eliminato: from the open ocean to the coastal zone

2.1 Tide Gauges

Tide gauges have been providing sea-level data in Venice for about 150 years. Historically, the establishment of tide gauges was primarily dictated by navigational needs and tidal measurements, with an operational accuracy of a few centimeters. The first self-recording tide gauge in Venice was installed at Palazzo Loredan, Campo Santo Stefano, in Rio San Vidal at a distance of about 100 m from the Grand Canal (Fig. 1). Systematic measurements began on 27<sup>th</sup> November 1871. The observations were performed under the responsibility of the Civil Engineering Office (Ufficio del Genio Civile) until 27 July 1896, when the management was taken over by the Italian Military Geographic Institute (Istituto Geografico Militare), which was also in charge of land levelling. Two additional tide gauges became operational in 1888 and 1906. The first one, owned and managed by the Royal Italian Navy, was installed in the Venice Arsenal; the second one was installed in the Grand Canal, near Punta della Salute. The tide gauges at Santo Stefano and in the Arsenal were decommissioned in 1911 and 1917, respectively. In 1923, the gauge on the Grand Canal was moved to the Giudecca Canal side of Punta della Salute. This gauge is still active under the management of the “Istituto Superiore per la Protezione e la Ricerca Ambientale” (ISPRA, Venice branch, [www.venezia.isprambiente.it](http://www.venezia.isprambiente.it)). Since 2002, a gauge on the Grand Canal side is again operational on the site of the previous installation, thanks to the Venice municipality (“Centro Previsione e Segnalazione Maree”, [www.comune.venezia.it/content/centro-previsione-e-segnalazione.maree](http://www.comune.venezia.it/content/centro-previsione-e-segnalazione.maree)).

Further details on the tide gauges installed in the Venice Lagoon up to the early 20<sup>th</sup> century are reported by Magrini et al. (1908). Dorigo (1961) reviews the sea-level observations in Venice and summarizes the main development stages of the observational network in the Venice Lagoon, including lists of active and decommissioned tide-gauge stations. Battistin and Canestrelli (2006) provide the most recent review of tide-gauge data for Venice and collect quality-checked published and unpublished records of high and low waters since 1872.

Linking the data from the various tide gauges to provide one continuous dataset of long-term sea-level change requires an accurate knowledge of the corresponding reference levels (or datums) on land. Before the 1910s, the most common vertical reference level in Venice was the so-called ‘comune alta marea’ or ‘comune marino’ (CM). The CM represents the upper edge of the green belt formed by algae on quays and walls and corresponds to mean high water. It was often indicated by an engraved horizontal segment and/or a ‘C’ (Rusconi, 1983; Camuffo and Sturaro, 2004). According to Dorigo (1961), Mati established the tide gauge datum at Santo Stefano at 1.50 m below the CM of 1825. In 1910, a new datum was adopted, namely the mean tide level (MTL) of 1884-1909 (central year 1897), computed from the high and low waters measured at Santo Stefano. According to Dorigo (1961), it turned out to be 1.2754 m above the tide gauge datum and 0.2246 m below the CM of the year 1825. This new reference was named the “Zero Mareografico Punta Salute” (ZMPS). Since 1910, the ZMPS has been the standard reference for RSL observations in Venice. The benchmarks of the two tide gauges at Punta della Salute were also connected to the levelling network in 1910 and 1923, respectively. The heights of the various benchmarks and vertical reference levels are shown in the inset of Figure 2. The record of high and low waters since 1872 allowed a composite 148-year RSL time series to be developed from 1872 to 2019, with very few gaps (Fig. 2). Note that these data consist of MTL

ha eliminato: the reference for sea-level data was changed to

ha eliminato: The new reference, that corresponds to the “Zero Mareografico Punta Salute” (ZMPS), was

ha eliminato: MTL

ha eliminato: ,

215 ~~which, in principle, differ from the MSL, computed from, e.g., hourly data,~~ because MTL does not ~~account for~~ shallow water  
tidal effects. ~~However, the~~ difference is negligible in Venice. ~~In fact, from~~ observations covering the period 1940-2012, Zerbini  
et al. (2017) obtained MTL-MSL =  $-0.1 \pm 0.1$  cm, ~~and the~~ Permanent Service for Mean Sea Level provides a value of 0.0 cm,  
estimated according to Woodworth (2017) ([www.psmsl.org/data/obtaining/stations/168.php](http://www.psmsl.org/data/obtaining/stations/168.php)).

220 Estimates of ~~centennial rates of~~ Venetian RSL and VLM-corrected RSL rise ~~based on tide-gauge data~~ are summarized in  
Sect. 4.1.

2.2 Altimetric data

225 ~~Since the first satellite altimetry missions in the mid-1970s, the accuracy of sea-surface height estimates has increased~~  
~~considerably until high-precision and routinely measured~~ altimetric data ~~were made~~ available ~~in~~ the early 1990s ~~with~~ the launch  
of the TOPEX/Poseidon mission. Since then, satellite radar altimeters have been providing an operational global monitoring  
230 of the geocentric sea level (Cazenave et al., 2019). The spatial resolution of these data is controlled by the orbital parameters  
selected for each mission, as the radar altimeters acquire narrow threads of measurements along those portions of the ocean  
surface that are directly overflowed by the satellite (along-track data). Depending on the orbital period, these tracks can be  
separated by hundreds of km, limiting the actual spatial coverage provided. For example, the Jason-3 mission that continues  
the climatic sea-level record started in 1993 with TOPEX/Poseidon has only four tracks crossing the Adriatic Sea and does not  
235 cover the Venice area. In order to improve the monitoring, it is possible to take advantage of the data collected by various  
radar altimeters flying at the same time. However, this requires a characterization of the inter-mission biases and the  
development of suitable interpolation schemes of the independent ground tracks. Multimission datasets are typically distributed  
over regular grids.

An additional potential limiting factor for the Venice area is the degradation of the technique performance towards the coast  
240 resulting from the contaminating presence of land in the satellite footprint and from the enhanced inhomogeneity of the local  
ocean surface. Limitations and possible perspectives of coastal altimetry in the Adriatic Sea have been discussed in several  
studies since the late 1990s (Cipollini et al., 2008; Fenoglio-Marc et al., 2012; Vignudelli, 1997; Vignudelli et al., 2011, 2019a).  
This has motivated further investigations (Cipollini et al., 2013; Passaro et al., 2014) based on the latest coastal altimetry  
datasets (e.g., CTOH, see Birol et al., 2017) and/or reprocessing initiatives (e.g., ALES, see Passaro et al., 2014). In the  
245 Northern Adriatic, these studies analyzed data around Venice and Trieste, including their validation against tide-gauge  
measurements. The results show that a reasonable increase in quantity and quality of data can be achieved compared to standard  
products up to a few kilometers from the coastline. ~~Figure 3 illustrates the example of the Gulf of Trieste, where three missions~~  
~~cross the area and a data gap exists with standard products. In this case, the number of outliers along the Jason-1 and Jason-2~~  
~~tracks is almost always less than the standard product and the improvement is clearly evident until 6 km from the coast. The~~  
comparative assessments with tide gauges confirm that ~~the~~ correlation of coastal altimetry products is always higher than ~~that~~  
250 ~~of~~ standard products and that the difference in sea-level estimates provided by the two techniques is typically below 10 cm in  
proximity of the point of closest approach to the tide gauge. Among the most relevant reprocessing efforts of the last years,

- ha eliminato: whereas MTL and MSL are
- ha eliminato: ent
- ha eliminato: consider
- ha eliminato: ,
- ha eliminato: this
- ha eliminato: From
- ha eliminato: . T
- ha eliminato: secular
- ha eliminato: trends
- ha eliminato: and MSL
- ha eliminato: tide
- ha eliminato: Reliable
- ha eliminato: are
- ha eliminato: since
- ha eliminato: when
- ha eliminato: marked the beginning of the so-called 'satellite altimetry era'

265 we should mention the Sea Level Climate Change Initiative (SLCCI) of the European Space Agency, that encompassed nine satellite radar-altimetry missions over the period 1993-2015 (Legeais et al., 2018). The SLCCI product, distributed over a homogenous grid of 0.25°, contains data close to the coast, e.g., 10 km near Trieste, and was used for the assessment of coastal sea-level trends (Rocco, 2015; Vignudelli et al., 2019b).

270 The sufficient maturity of the algorithms and processing in coastal altimetry offered the opportunity to extend the SLCCI product to the coastal zone. During the bridging phase in 2018 a new product with an along-track spacing of about 350 m for estimating sea-level trends has been developed in selected regions, including the Adriatic Sea. The experimental dataset only covered the period from July 2002 to June 2016 and the Jason-1 and Jason-2 missions. It combines the post-processing strategy of X-TRACK (Birol et al., 2017) and the advantage of the ALES re-tracker (Passaro et al., 2014). The product was tested along track 196 in the Gulf of Trieste. The improvement is particularly good in the entire Gulf of Trieste (ESA CCI, 2019), confirming 275 what was found by Passaro et al. (2014).

Altimetry-based assessments of multidecadal trends of Venetian GSL are summarized in Sect. 4.2.

ha eliminato: MSL

3 Vertical land movement

280 Vertical land movement is a critical component of Venetian RSL variability. Therefore, the phenomena that control the vertical land movement are presented in the following together with their relevant time scales and estimated trends. This section includes a paleo perspective on vertical land movements and considers processes whose characteristic time scales extend in some cases largely beyond the observational RSL period. We consider information on such time scales essential in the context of this review to understand ongoing processes and frame them within the correct time scale. The aim is therefore to provide the reader with an overview of the main characteristics of the local vertical land movement, of the methods that allow quantifying it over different time intervals and of the resulting uncertainties. The joint consideration of all these elements 285 determines the constraints on our current ability to make predictions on the future evolution of the local vertical land movement.

ha eliminato: The characterization of the RSL cannot be separated from an understanding of the phenomena that control the vertical

ha eliminato: these

The vertical velocity of a given area results from the sum of different velocity components due to tectonics, sediment loading, sediment compaction, Glacial Isostatic Adjustment (GIA), and anthropic activities (Carminati and Di Donato, 1999; Pirazzoli, 1996).

290 In the Venice area, all the components listed above induce non-negligible displacements, even though their magnitude and relative importance have changed over time. The net result is a time-dependent land lowering (subsidence) that enhances RSL. Natural and anthropogenic components are assumed to act on different time scales: millions to thousands of years and hundreds to tens of years, respectively. This assumption allows a separation of the factors controlling sea-level changes, if the estimates of vertical land movements over different time spans are available (Carminati and Di Donato, 1999).

### 3.1 Natural land movements

The Venice area is naturally subsiding. This process is characterized by a long-term component controlled by tectonics/geodynamics and sedimentation, active on time spans of about  $10^6$ - $10^4$  yr, and a short-term component controlled by glaciation cycles and due to GIA processes acting on periods of  $10^3$ - $10^4$  yr (Antonioli et al., 2017; Cuffaro et al., 2010; Stocchi et al., 2005).

Depending on the time interval considered, different datasets are available for investigating the rate of vertical land movement.

Subsidence rates up to 2 Myr ago can be inferred from the thickness of the different layers of Quaternary sediments. Over this time frame, sedimentation rates are equivalent to subsidence rates, since the entire sedimentary sequence was deposited in shallow marine to continental environments (Massari et al., 2004). Investigation further in the past is made through seismic lines, which indicate buried interfaces between materials of different acoustic impedances, and drilled cores. Deposition rates can be computed using sedimentological indicators (Antonioli et al., 2009 and references therein; Carminati and Di Donato, 1999; Favero et al., 1973), nannofossil biostratigraphy, paleomagnetic polarity and magnetic susceptibility (Kent et al., 2002). Additional techniques are available for more recent epochs. Radiocarbon dating allows investigating organic sediments, mainly peats, up to ~50,000 years ago (Bortolami et al., 1985), while the depth of archaeological remains and historical data provide information for the last few thousand years (Flemming, 1992). Finally, information on the natural component of the contemporary land subsidence is provided by tide-gauge and leveling measurements made before the 1930s, when human activities impacting land subsidence started to develop (Gatto and Carbognin, 1981). The following sections illustrate the evolution of the natural component of subsidence using the Marine Isotope Stage (MIS) 5.5 event (~130-120 kyr ago) as a reference to separate geologically older and newer RSL changes. Due to its relevance within geophysical studies on sea-level variations, a dedicated section on GIA is also provided.

#### 3.1.1 Pleistocene up to MIS 5.5

The natural subsidence of Venice on timescales from tens of millennia to millions of years is controlled by sedimentary and tectonic/geodynamic processes. Venice is located at the northeastern border of the Po plain (Figs. 1 and 4), which is the foreland basin of two fold-and-thrust belts: the N-NE vergent Northern Apennines and the S vergent Southern Alps (Carminati et al., 2003). Figure 4 shows the geometry of the foreland regional monocline related to the subduction of the Adriatic plate (that includes the Po plain) below the Northern Apennines from the southern Po plain to the Friuli Region, as reconstructed from seismic reflection profiles. The dip of the regional monocline gradually decreases from about  $22^\circ$  to close to  $0^\circ$ . This geometry is consistent with the southward increasing thickness of Quaternary sediments, found in borehole stratigraphies (Carminati and Di Donato, 1999). These data imply that the long-term component of subsidence in the Po Plain and in Venice is almost entirely controlled by the retreat and flexure of the Adriatic plate subducting underneath the Apennines (Carminati et al., 2003; Cuffaro et al., 2010).

330 Kent et al. (2002) derive a more complex evolution for the Venice area from integrated magneto-bio-cyclo-stratigraphy and  
palynofloral analyses on the VENEZIA-1 borehole, drilled in 1971 by the Consiglio Nazionale delle Ricerche (CNR, 1971)  
down to a total depth of 950 m. They concluded that the region collapsed at about 1.8 Myr ago and was characterized by slow  
marine sediment accumulation until around 0.8 Myr ago, shoaling rapidly in subsequent times. The initial transition to  
continental sediments occurred during a glacioeustatic low-stand dated at 0.43 Myr or 0.25 Myr. From the VENEZIA-1 record,  
335 Kent et al. (2002) calculated a total long-term subsidence rate of less than 0.5 mm/year, about half of that proposed earlier on  
less refined data, and a mean subsidence rate of 0.36 mm/year for the last 600 kyr. The latter value is considerably lower when  
compared with rates obtained for the Holocene and the upper MIS 5.5. The most reasonable interpretation is that the mid-  
Pleistocene rates are unavoidably averaged over many cycles of quiescence and rapid motion, thus they cannot be readily  
compared to shorter periods, which could experience phases of rapid change induced by both natural and anthropogenic factors.  
340 Concerning natural variations acting on shorter time scales ( $10^3$ - $10^4$  yr), several transgressive/regressive Pleistocene cycles are  
recorded in well-core stratigraphies consisting of alternating shallow marine and continental deposits. In the Late Quaternary,  
the evolution of the Venetian–Friulian plain was strongly influenced by glacial cycles and a general regressive trend is apparent  
(Massari et al., 2004). The coastal to shallow-marine deposits assigned to MIS 5.5 can be tracked in borehole logs up to 30 km  
west of the present shoreline. South of the Po Delta, the base of the Tyrrhenian coastal deposits lies at about 125 m below sea  
345 level, but its depth rapidly increases toward the south along the Romagna coastal plain (Amorosi et al., 2004; Bondesan et al.,  
2006). This pattern may reflect the northeasterly retreat of the Adriatic slab (Cuffaro et al., 2010; Ferranti et al., 2006).  
The MIS 5.5 markers allow calculating reliable rates because compaction is negligible, the basal MIS 5.5 unconformity is  
widely distributed and the overlying lagoonal paralic sediments in cores are fairly easy to recognize. Several sites related to  
sea-level position during MIS 5.5 are considered in Antonioli et al. (2009) and Lambeck et al. (2011). These have a fairly good  
350 W–E distribution along the distal sector of the Venetian plain. The stratigraphic data were obtained from boreholes mainly  
drilled for the Geological Map of Italy (CARG-Veneto Region) and for the mobile barriers-based protective system (so-called  
“MODULO Sperimentale Elettromeccanico” or MOSE, see Lionello et al., 2020a) project by the Venice Water Authority. An  
error bar of  $\pm 2$  m was assigned because the sediments are lagoonal. The northwestern Adriatic coast (Friulian and Venetian  
plain) shows homogeneous subsidence, with rates ranging between 0.58 and 0.69 mm/year. The MIS 5.5 data from the  
355 VENEZIA-1 core provides a rate of 0.69 mm/year (Ferranti et al., 2006).

ha eliminato: .

ha eliminato: .

ha eliminato: ..

ha eliminato: so

3.1.2 Late Pleistocene and Holocene

After the Last Glacial Maximum several lagoons developed along the Adriatic Sea, formed by the rivers flowing into the sea.  
Only two of them, the Grado and Venice lagoons, still exist today, while the rest have been infilled by sedimentation (Tambroni  
and Seminara, 2006). Recent stratigraphic information about Holocene sea levels (2-6 kyr Cal BP) were obtained from lagoonal  
360 deposits found in boreholes between the Tagliamento River and the city of Venice. Other data were derived from  
archaeological markers reported in the abundant literature available for the Venice Lagoon and its mainland (Antonioli et al.,  
2009; Fontana et al., 2017; Lambeck et al., 2011). The shell base of the lagoon indicates a subsidence rate over the last 7.3 kyr

of 1.6±0.3 mm/year (Antonioli et al., 2009, their Tab. 1 average of H/G values for sites 26 and 28). The higher Holocene subsidence with respect to the MIS 5.5 is possibly due to sediment compaction, which does not contribute to the long-term rate (Gatto and Carbognin, 1981; Tosi et al., 2009).

370 Subsidence rates up to 1.2-1.3 mm/year were calculated by radiocarbon dating on late Pleistocene and Holocene deposits of the Venice Lagoon (e.g., Bortolami et al., 1985; Gatto and Carbognin, 1981). This estimate is interpreted as the average of a time-varying trend related to periods of excess sedimentation alternating with periods without deposition or even with erosion (Bortolami et al., 1985). Indeed, over relatively short periods, different rates can be observed. For instance, the largest rate, ~5 mm/year, occurred during the Last Glacial Maximum which induced the maximum effect of isostatic lowering.

375 Finally, it is generally assumed that natural subsidence of Venice is continuous in time. However, abrupt catastrophic pulses of subsidence cannot be ruled out as suggested by the sudden disappearance of the island of Malamocco at the beginning of the XII century. Carminati et al. (2007) investigated the potential effects of earthquakes on the subsidence of Venice by means of numerical models. The authors concluded that, while the coseismic effects of a single event are unlikely to be detectable, *a priori* they cannot be considered as negligible given the number of seismogenic sources within a 100 km distance from the

380 town. These authors, however, suggest that earthquake-induced liquefaction may cause or have caused local acceleration of subsidence in Venice. For example, the destruction and sinking of ancient Malamocco is roughly coincident with a strong earthquake cycle that was associated with phenomena possibly explained by liquefaction of sandy layers.

A summary of the rates of natural subsidence discussed in this and in the previous sections is presented in Table 2. The values reported in the literature are often presented without indicating the corresponding uncertainty level. In some cases, it is even

385 explicitly stated that the data available to the study did not allow for a quantification of uncertainty (e.g., Carminati and Di Donato, 1999). Uncertainty estimation is further complicated by the fact that subsidence does not only vary with time, but also in space, depending on the local conditions of the subsoil (Brambati et al., 2003). For what concerns uncertainties of geomorphological and historical markers, Antonioli et al. (2009, 2017) proposed a strategy based on archaeological metadata and on standard bathymetric corrections for the Holocene and late Pleistocene (Ferranti et al., 2006; Lambeck et al., 2004).

390 The resulting median uncertainty for the Venice area is 0.2 mm/year (markers 24-30 in Antonioli et al., 2009, their Table 1).

**3.1.3 Glacial Isostatic Adjustment**

GIA describes the response of the solid Earth to the growth and decay of continental ice sheets as a consequence of climate variations (for recent reviews, see: Spada, 2017; Whitehouse, 2018). GIA stems from interactions between the cryosphere, the solid Earth and the oceans, involving sluggish deformations of the crust driven by surface mass redistribution, mutual

395 gravitational attraction and rotational variations (Melini and Spada, 2019; Spada and Melini, 2019). The GIA-induced RSL variations are characterized by a strong regional imprint reflecting such interactions. They can be modeled by means of the Sea Level Equation first introduced by Farrell and Clark (1976), which is an implicit equation that accounts for variations of the Earth's topography in response to sea-level change, consistently with changes in the gravity field (Peltier, 2004). Among the processes contributing to present-day RSL change (e.g., Milne et al., 2009), GIA is the only one that is sensitive to the

ha eliminato: System

ha eliminato: past, present or future

solid Earth rheology. Because changes in the Earth system observed by geodetic methods would be unfeasible without taking GIA properly into account (e.g., King et al., 2010), GIA modeling plays an important role in the study of the impacts of contemporary and future climate change.

Due to the widespread evidence of past RSL variations since the late Holocene across the Mediterranean Sea, much work has been done to reconcile field observations of past RSL variations with GIA modeling predictions (Antonoli et al., 2009, 2017 and references therein). In two recent contributions, attention has been paid to the history of sea level in the Northern Adriatic, also providing GIA modeling predictions for the city of Venice. The first one (Lambeck et al., 2011) is based on the ice-sheets history “K33\_j1b\_WS9\_6”; it assumes a 65-km thick elastic lithosphere and one order of magnitude viscosity increase across the 670 km depth seismic discontinuity. The second one, proposed by Roy and Peltier (2018) and named “ICE-7G\_NA(VM7)”, is characterized by a 90-km thick lithosphere and by a comparatively milder viscosity increase (by a factor of  $\sim 3$ ). The two models predict distinctly different histories for the GIA-induced RSL variations during the Holocene: the first shows  $\sim 2.2$  m of RSL rise in the last 5,000 years, whereas the second indicates essentially unvaried RSL during the same period. Note that in previous work (Lambeck et al., 2004), the GIA predictions for the Northern Adriatic had a larger uncertainty, with a range of RSL rise between  $\sim 5$  and  $\sim 2$  m in the last 5,000 years. This shows that GIA models are constantly being updated due to improvements in the constraining RSL datasets and of modeling techniques.

Based on the work quoted above, the rate of long-term RSL change in Venice due to the melting of the late-Pleistocene ice sheets does not appear to be tightly constrained (Tosi et al., 2013). Further uncertainties arise from the effects of the melting of the Würm Alpine ice sheet, whose chronology remains uncertain regarding several aspects (Spada et al., 2009). Nonetheless, the long-term rate of Venetian RSL change due to GIA can be assessed in the range between  $-0.2$  and  $+0.5$  mm/year based on the published works cited above. Estimates by Carminati and Di Donato, (1999) and Stocchi and Spada, (2009) broadly fall within this range, although these works are more pertinent to the Po Plain scale. Note that since the GIA acts on timescales of millennia, these natural contributions to total RSL change will remain constant over the 21<sup>st</sup> century.

### 3.2 Anthropogenic subsidence

Anthropogenic land subsidence mainly occurs due to extraction of subsurface fluids causing compaction of unconsolidated sediments. This is a process that is widespread in susceptible areas (e.g., Gambolati et al., 2006; Galloway and Riley, 1999; Erkens et al., 2015; Galloway et al., 2016). Measurements of piezometric level and of vertical land movements are fundamental to constrain quantitatively these processes. Numerical modeling is often used to link the flow of subsurface fluids to the corresponding geomechanical response of the porous medium, although caution is needed. In fact, the paucity of geological data, the imperfect knowledge of forcing processes and the geomechanical and hydraulic properties generally require significant modeling assumptions and approximations. These techniques have been used to analyze and control the effects of human activities on subsidence in the Venice area.

435 Prior to 1930, subsidence rates in the Venice region were similar to Holocene rates, suggesting limited anthropogenic contribution. This is confirmed by both leveling measurements (Dorigo, 1961; ISPRA, 2012; Wöppelmann et al., 2006) and differences in RSL trends between Venice and Trieste. The post-1930 period is now considered in more detail.

**3.2.1 The 1930-1970 period**

440 In the Po and Veneto Plains, anthropogenic activities affecting natural land subsidence mainly began in the 1930s due to the overpumping of groundwater and natural gas to support intense civil and industrial development, as shown by geodetic data and reproduced by numerical models (Gambolati et al., 1974; Gambolati and Gatto, 1975; Carbognin et al., 1976). Between World War II and 1970, anthropogenic subsidence was a problem common to the whole Northern Adriatic coastline (Tosi et al., 2010). However, the nature of the withdrawn fluids varied: artesian water in the Venice area, gas-bearing water in the Po Delta and both groundwater and gas in the Ravenna region. Anthropogenically driven subsidence rates of 10 to 20 mm/year and even higher occurred in certain locations (Carminati and Di Donato, 1999; Teatini et al., 2005), dominating there the RSL change.

445 In the Venice area, large quantities of groundwater were pumped to develop the industrial zone of Marghera after 1930. Groundwater pumping was most intensive after World War II during the period of greatest industrial growth. The six aquifers found in the upper 350 m were progressively exploited (Fig. 5a); the most intensively used aquifer was between 200 and 250 m depth due to its productive character (Carbognin et al., 1976). Between 1950 and 1970, human-induced subsidence reached 14 cm at Marghera and averaged 10 cm at Venice (Fig. 5d). The dramatic effects of this loss of elevation became apparent in the exceptional flood (“acqua alta”) of November 1966. The ground beneath Venice is more sensitive to changes in the hydraulic head because of the occurrence of a larger amount of clay in the subsurface (Zezza, 2010): the ratio between subsidence and piezometric decline was 1/100 at Marghera and 1/50 at Venice (Gatto and Carbognin, 1981).

**3.2.2 The post-1970 period**

455 After the 1966 flood, the problem of subsidence in Venice received more attention and drastic measures were taken after 1970 to reduce both industrial and other groundwater extraction. Groundwater consumption in the Marghera area decreased from 500 l/s in 1969 to 170 l/s in 1975 (Gatto and Carbognin, 1981). A corresponding rapid piezometric rise occurred (Fig. 5a): in 1978 the hydraulic head rose to ground level, re-establishing the levels existing in 1950 (Gatto and Carbognin, 1981). Land subsidence slowed concurrently and stopped; by 1975, a surface rebound of about 2 cm was recorded (Fig. 5d), equal to 15% of the total anthropogenic subsidence experienced. This result is consistent with mathematical model results and was interpreted as the elastic response of cohesive soils after recovery.

460 In recent years, Global Navigation Satellite System (GNSS) and Synthetic Aperture Radar (SAR) measurements confirm that the city of Venice is no longer sinking due to groundwater pumping (Tosi et al., 2013). However, at the local scale, ground movements are still impacted by anthropogenic activities such as new construction and conservation works dedicated to

465 preserve the Venetian architectural heritage. Tosi et al. (2018) estimated that about 25% of the city experienced movements attributable to anthropogenic causes. In most cases (15%) these displacements induced an increase in local subsidence, but in some areas (10%) the short-term sinking rate was found to be smaller than the natural one. The measured displacement rates range between -10 and 2 mm/year.

**3.3 Monitoring land subsidence**

470 Over the 20<sup>th</sup> Century, high-accuracy geodetic techniques became available for monitoring land subsidence with unprecedented temporal and spatial resolution. These new data were key to reveal the increasing impact of human activities on the subsidence rate.

The first direct measurements of changes in land elevation were obtained through leveling campaigns based on both local and national networks (Salvioni, 1957; Gambolati et al., 1974; Gatto and Carbognin, 1981; Arca and Beretta, 1985; Carbognin et al., 1995a, 1995b). Additional information was derived by comparing the tide-gauge records acquired in Venice with those available in neighboring areas subjected to the same absolute sea-level changes (Carbognin et al., 2004; Zerbini et al., 2017). These techniques allowed an unambiguous detection of the impact of anthropic activities on land lowering. It was possible to identify the increase in subsidence between the 1950s and the 1970s caused by severe groundwater extraction (Gambolati et al., 1974). The maximum rate was observed in Mestre in 1968-69 when the local subsidence reached 17 mm/year (Brambati et al., 2003). Leveling lines also provided information on the spatial variability of subsidence over a few tens of kilometers. The cone of land depression was found to spread from Marghera, where most of the pumping occurred, towards the Venice area (Fig. 5).

During the following decades, leveling measurements performed in 1973 and 1993 recorded the slowdown in subsidence rates, and even a small uplift, which followed the dismissal of artesian wells and the diversification of water supply (Carbognin et al., 1995b, 1995a).

The monitoring capabilities further improved during the 1990s with the development of space techniques such as GNSS and SAR (Teatini et al., 2012; Tosi et al., 2013, 2018; Zerbini et al., 2017). The latest measurements provided by the integrated use of these techniques confirmed that, in Venice, the anthropogenic subsidence due to activities characterized by large-scale and long-term effects ended a few decades ago. However, relevant trends are still observed locally. Subsidence up to 70 and 20 mm/year is found around the inlets where the MOSE is being constructed and in artificial salt marshes, respectively (Tosi et al., 2018). In addition, spatial patterns in subsidence have been identified at different scales. The average ranges of subsidence rates observed over the lagoon are 3-4, 1-2 and 2-3 mm/year for the northern, central and southern parts respectively (Tosi et al., 2018). This reflects both the increase in the thickness of Holocene deposits from the Venice mainland to the lagoon extremes and residual groundwater pumping in the northeastern sector (Tosi et al., 2013). In the historic center of Venice, the ancient areas are more stable than those urbanized over the last centuries. This is consistent with the older settlements being developed on well-consolidated sand layers, while recent land claims occurred over areas where consolidation processes are still ongoing. Thanks to the high spatial resolution of SAR images, Tosi et al. (2018) were able to detect the impact of

ha eliminato: 3

restoration work and new construction down to the single-building scale. This variability in displacement correlates with the nature of the shallow subsoil, the different phases of growth of the city, and the load and foundation depth of the buildings. Table 3 presents the evolution of subsidence rates in the historical center of Venice, as measured by geodetic instruments over the last century. The estimates refer to different periods of time as well as different locations, and they result from different techniques, for each of which associated uncertainty is available in the literature. Precise leveling allows measuring height differences with a mean error ranging from 0.3 to 1 mm in a line of 1 km (Torge and Müller, 1980). The average uncertainty for the vertical component of the GNSS trends is in the order of 0.3 mm/year for time series spanning a decade or more (Santamaría-Gómez et al., 2017). This estimate increases to 0.4 mm/year when reference frame uncertainties are considered in the error budget (Santamaría-Gómez et al., 2017). Finally, Tosi et al. (2013) propose to present the results of the SAR technique over a selected area in terms of average rate and standard deviation of the spatial variability. By doing so, the technique provides insights on the representativeness of the estimated trend at the investigated spatial scale. Therefore, the two GPS-based trend estimates reported in Table 3 are both consistent with the average value obtained by the SAR technique over the whole city.

ha eliminato: Assessments of  
ha eliminato: associated with the estimates of each technique are

4 Estimation of sea-level changes

This section reviews the estimates of centennial average rates of sea level rise, and recent multidecadal trends, and interannual-to-interdecadal variations identified in historical sea-level records for the Venice lagoon and its surroundings and puts them in the context of observed sea-level changes in the Mediterranean Sea and the global ocean. Average rates of sea-level rise are often calculated using some linear fit to the available data. However, given the variety and non-linearity of the processes known to contribute to sea-level trends on the considered time scales, such estimates should not be intended as necessarily representing a linear process (see Section 6).

ha eliminato: secular

4.1 Average rates of sea-level rise over centennial periods

One of the first estimates of the long-term RSL trend at Venice Punta della Salute was made by Polli (1953), who obtained  $2.3 \pm 0.2$  mm/year performing a least-square fit of the annual means from 1872 to 1941. Since then, several authors have proposed updated estimates by progressively considering newly acquired data and different approaches. A summary of the long-term RSL trends from tide-gauge data proposed during the last 15 years is presented in Table 4; estimates derived from data collected over the considered altimetric period (i.e., since 1993) are pointed out. Analogous VLM-corrected RSL estimates are presented in Table 5. Marcos and Tsimplis (2008), Wöppelmann and Marcos, (2012) and Vecchio et al. (2019) used a linear fit to analyze the RSL data from about 1910 to 2000, obtaining trends between 2.4 and 2.5 mm/year. Vecchio et al. (2019) also modelled the time series by means of the superposition of a straight line and three Empirical Mode Decomposition components, suggesting a slightly larger trend of 2.78 mm/year. Zerbinì et al. (2017) isolated the effect of subsidence on the Venetian RSL time series by deriving an empirical curve from levelling data of benchmarks close to the tide gauge, GPS and

ha eliminato: Secular  
ha eliminato: trend  
ha eliminato: relative M

ha eliminato:  
ha eliminato: a  
ha eliminato: MSL  
ha eliminato: The available estimates can be distinguished depending on whether the analyzed period starts before or in 1993, when satellite altimetry became available.

InSAR heights (Fig. 5c). After removing the estimated subsidence from the tide-gauge data, the centennial average rate of sea-level rise of the corrected time series was  $1.23 \pm 0.15$  mm/year for the period 1872-2012 (see Table 5). It should be stressed that the trend analysis has little meaning without the correction of subsidence effects because the linear model is otherwise inadequate to represent the Venice time series. In Zerbini et al. (2017), the application of the same procedure to the neighboring tide gauge of Marina di Ravenna, also located in a rapidly subsiding area, provided a consistent estimate of  $1.22 \pm 0.32$  mm/year (period 1896-2012).

These corrections allow for a proper comparison with other tide-gauge records in the Mediterranean Sea that span the whole 20<sup>th</sup> century and are not affected by significant vertical land motions, namely Trieste in the Adriatic and Marseille and Genoa in the northwestern Mediterranean (Carbognin et al., 2009; Wöppelmann et al., 2014; Zerbini et al., 2017; Sánchez et al., 2018) (Fig. 1). The RSL time series of Trieste, Marseille and Genoa exhibit centennial trends between 1.2 and 1.3 mm/year (Marcos and Tsimplis, 2008; Wöppelmann and Marcos, 2012; Zerbini et al., 2017). The estimates agree with the 20<sup>th</sup> century trend of sea-level rise of  $1.2 \pm 0.1$  mm/year reported for the same stations by Marcos et al. (2016). The 1-sigma errors are around 0.1 mm/year according to Marcos and Tsimplis, (2008) and Wöppelmann and Marcos, (2012), and between 0.10 and 0.24 mm/year (90% confidence) in Vecchio et al. (2019). Zerbini et al. (2017) obtained uncertainty values between 0.13 and 0.22 mm/year at 95% confidence level considering a reduced number of degrees of freedom due to time autocorrelation. Therefore, the 20<sup>th</sup> century average rate of sea-level rise in Venice is consistent within uncertainty with those of Marseille, Genoa and Trieste. Accordingly, EOF analysis on annual means from 1901 to 2012 of the corrected time series of Venice and Marina di Ravenna, and those of Marseille, Genoa and Trieste yields a leading mode explaining 62% of variance and corresponding to coherent sea-level variability of the long time series from Mediterranean tide gauges (Zerbini et al., 2017). Scarascia and Lionello (2013) estimated a trend of 1.3 mm/year for the period 1905-2005 for the Adriatic Sea using a combination of Adriatic tide gauges and manually removing the land subsidence in Venice.

Tables 4 and 5 include an update on the RSL trend calculation to the period 1872-2019 including a comparison between estimates with and without the subsidence contribution following Zerbini et al. (2017). The subsidence curve by Zerbini et al. (2017) was updated to 2019 by applying a 1 mm/year trend since 2013 based on the SAR estimate by Tosi et al. (2013) and on the trend exhibited by the PSAL GPS from 2014 onward (Table 3). Our updated estimates agree with previous results concerning the magnitude of the full-period average rates of sea-level rise in RSL ( $2.53 \pm 0.14$  mm/year) and VLM-corrected RSL ( $1.23 \pm 0.13$  mm/year). Subsidence therefore contributed to about half of the total RSL rise in the period 1872-2019 and explains discrepancies between published Venetian RSL trends.

As illustrated in Sections 5 and 6, Mediterranean sea level, hence Venetian sea-level variations are tightly connected to sea-level variations in the midlatitude eastern North Atlantic, whose underlying processes differ from those in other oceanic basins. Therefore, any statistical consistency between historical Venetian RSL/VLM-corrected RSL and GMSL rise should not give the false impression that both variables are interchangeable and that any consistency in the historical period necessarily holds in the future. Still, it is instructive to compare estimates of Venetian RSL/VLM-corrected RSL and GMSL rise during the 20<sup>th</sup> Century to put local changes in the context of global mean changes. Venetian sea-level trends are smaller than GMSL trends

ha eliminato: secular  
ha eliminato: trend

ha eliminato: The

ha eliminato: secular  
ha formattato: Apice

ha eliminato: secular  
ha eliminato: trends  
ha eliminato: are

ha eliminato: confirm  
ha eliminato: trends  
ha eliminato: both,  
ha eliminato: MSL

ha eliminato: These regionally coherent  
ha eliminato: are lower than those for the global-mean sea-level (  
ha eliminato: )

590 reported in the fifth assessment report of the Intergovernmental Panel on Climate Change (IPCC-AR5), quantified as 1.7 [1.5 to 1.9] mm/year (likelihood >90%, period from 1901 to 2010, see: Church et al., 2013). They are, however, consistent with revisited estimates of historical GMSL rise that include significantly slower rates than reported by the IPCC-AR5 for the pre-  
altimetry period, e.g., 1.2±0.2 mm/year (90% confidence interval, Hay et al., 2015), 1.1 ± 0.3 mm/year (99% confidence interval, Dangendorf et al., 2017) and 1.56 ± 0.33 mm/year (90% confidence interval, Frederikse et al., 2020). Figure 6 revisits  
595 the connection between Venetian RSL/VLM-corrected RSL and GMSL trends on time scales ranging from interannual to centennial. Clearly, the significant difference between centennial trends in Venetian RSL and GMSL is strongly damped when the contribution of subsidence is removed, confirming the critical role of vertical land motions in determining local RSL variations. Nonetheless, the Venetian VLM-corrected RSL appears to rise at a lower rate than the GMSL over the second half of the 20<sup>th</sup> century (Fig. 6a). The GMSL-Venetian sea-level discrepancy observed in the first portion of the record is resolved  
600 when uncertainty in GMSL estimate is considered (not shown).

4.2 Rates of sea-level rise during the satellite altimetry era

Sea level measurements acquired with satellite radar altimetry are available since 1993, allowing, together with tide gauges, to estimate recent multidecadal trends from two independent sources. An overall GMSL trend of about 3 mm/year during the satellite altimetry period is consistently reported by several studies (Hay et al., 2015; Chen et al., 2016; Dangendorf et al.,  
605 2017; Quartly et al., 2017). Regional trends can deviate considerably from the global mean (e.g., Scharroo et al., 2013; Legeais et al., 2018; Cazenave et al., 2019). This is also the case of the Mediterranean Sea that is subject to pronounced spatial and temporal variability (Figure 7a), with the entire area of the Adriatic Sea exhibiting positive GSL trends that peak in the northern part of the basin.

Several altimetric datasets have been used to estimate sea-level trends in the Venice area. Fenoglio-Marc et al. (2012a) estimated a trend of 5.9±1.4 mm/year over the period 1993-2008 for an along-track point about 80 km away from Venice (see their Table 2). Rocco (2015) obtained trends of 4.18±0.92 mm/year (period 1993-2014) and 3.40±0.99 mm/year (period 1993-2013) for the closest grid point to the Venice tide gauge in the AVISO and SLCCI V1 products, respectively, with both estimates consistent with each other within errors. A reprocessing of the SLCCI V2 data set over the period 1993-2015 yielded a trend of 4.25±1.25 mm/year (Vignudelli et al., 2019b), further reduced to 4.03±1.27 mm/year after removing the seasonal  
615 signal (ESA CCI 2019). Explanations for the differences between trend estimates in these studies include the different time spans, especially for Fenoglio-Marc et al. (2012), different methodological aspects in the spatial characterization of the study area (e.g., closest point vs. area with a certain radius), and the recurrent reprocessing and continuous improvement of the satellite radar altimetry products.

The altimetric trends derived for Venice are typically consistent with those estimated around Trieste over corresponding time spans (Fenoglio-Marc et al., 2012). This evidence is supportive of a rather uniform sea-level trend in the Northern Adriatic (Fig. 7a, see also Bonaduce et al., 2016).

- ha eliminato: ¶
- ha eliminato: secular
- ha eliminato: the Venetian
- ha eliminato: MSL
- ha eliminato:
- ha eliminato: considered
- ha eliminato: subsidence
- ha eliminato: MSL
- ha eliminato: ,
- ha eliminato: in particular over
- ha eliminato: This is consistent with the lesser contributions of glaciers and Greenland ice-sheet melting in the Subpolar North Atlantic basin - to which the Mediterranean Sea is connected – as reported in Frederikse et al. (2020). Note that t
- ha eliminato: MSL
- ha eliminato: taken into account
- ha formattato: Colore carattere: Grigio scuro
- ha eliminato: ecent multidecadal trends
- ha eliminato: While a
- ha eliminato: ,
- ha eliminato: the regional departures from this GMSL are more poorly described and explained (
- ha eliminato: MSL

645 A thorough comparison between tide-gauge and altimetric data in Venice is made possible by the availability of independent  
information on the evolution of the vertical land motion (Fenoglio-Marc et al., 2012; Wöppelmann and Marcos, 2016). For  
consistency with post-processed altimetry data (Carrère and Lyard, 2003), the tide-gauge time series need to be preprocessed  
for removal of the local effect of atmospheric forcing (see Sect. 5.1.1). The most recent trend estimates by Vignudelli et al.  
(2019b) provide values of  $6.17 \pm 1.50$  mm/year from in situ data at the Acqua Alta Platform (AAPTF), 14 km offshore the  
Venice coast, and  $+5.81 \pm 1.47$  mm/year at Punta della Salute (inside the city center) during the overlapping altimetry period.  
650 After subtracting altimetry and AAPTF tide-gauge time series, the residual time series shows a trend of  $-2.14 \pm 0.65$  mm/year.  
This estimate agrees with the trend of 2.17 mm/year extrapolated from Figure 3 in Zerbini et al. (2017) that represents a best  
fitting of the benchmarks, GPS and PS InSAR normalized heights.  
Table 4 and Figure 6 also provide updated RSL trend estimates for the period 1993-2019 based on the Punta della Salute tide-  
gauge data. Our estimates confirm that for the satellite altimetry period the total RSL trend from the tide gauge ( $5.01 \pm 1.75$   
655 mm/year, including subsidence) is consistent with uncertainties with some satellite estimates and the tide-gauge estimate by  
Vignudelli et al. (2019b) over similar periods. Our estimate for the VLM-corrected RSL trend for the same period is  $2.76 \pm 1.75$   
mm/year, again confirming the results by Vignudelli et al. (2019b).

ha eliminato: corrected

ha eliminato: seasonality and

ha eliminato: MSL

### 4.3 Interannual-to-interdecadal variability

In addition to long-term changes, the tide-gauge time series of Venetian RSL is characterized by variability on several  
660 interannual-to-interdecadal periods. Significance of observed fluctuations was tested against a red-noise hypothesis, namely a  
lag-1 autoregressive model characterized by high power spectral density at lower frequencies. It is the most widely used model  
for geophysical purposes since a large class of geophysical processes produce output statistically compatible with red noise  
hypothesis (Allen and Smith, 1996, and references therein). According to Grinsted et al. (2004), significance is computed  
through the distribution of an ensemble of surrogate series describing a red noise process with the lag-1 parameter and variance  
665 estimated from the analysed time series. Hereafter, we indicate detection of a statistically significant spectral component  
around a period of XX years with  $O_{XX\text{years}}$ , where O means order of magnitude. Based on detrended seasonal Venetian RSL  
for the period 1872-2003, Zanchettin et al. (2009) report spectral peaks in the autumn time series at  $O_{22\text{years}}$  and at larger  
multidecadal time scales, at around  $O_{2.4\text{years}}$  and at around  $O_{3.4\text{years}}$ , with secondary peaks at around  $O_{5\text{years}}$  and  $O_{8\text{years}}$ . In the  
winter time series, they report significant multidecadal variability at  $O_{50\text{years}}$  and larger, at  $O_{3.4\text{years}}$ ,  $O_{8\text{years}}$  and, less apparent,  
670  $O_{5\text{years}}$ . Carbognin et al. (2010) also identify an  $O_{8\text{years}}$  component in Venetian RSL variability. An updated spectral analysis  
based on the Fourier transform applied on autumn (OND) and winter (JFM) raw detrended (second order polynomial fit)  
Venetian RSL indicates that the dominant variability modes contained in the Venetian RSL time series over the time interval  
1872-2019 are the interannual components at  $O_{2.4\text{years}}$  and  $O_{5\text{years}}$ , for both autumn and winter series (95% confidence level) and  
they account for about 20% of the total variance of the records. Moreover, the winter time series features the  $O_{8\text{years}}$  (~6% of  
675 the total variance) and  $O_{50\text{years}}$  (~9% of the total variance) spectral peaks as highly significant. A secondary peak at  $O_{16\text{years}}$  is  
detected at 90% confidence level in the autumn series (~7% of the total variance). Removal of subsidence does not change the

Formattato: SpazioPrima: 0 pt, Motivo: Trasparente

ha eliminato: the

ha eliminato: trend

ha eliminato: a number of

ha eliminato: significant

ha eliminato: periodicities

ha eliminato: periodicities

ha eliminato: as

ha eliminato: and the pedix indicates the period in years

ha eliminato: periodicities

ha eliminato: periodicities

ha eliminato: periodicities

ha eliminato: periodicities

spectral features of the series, except for the  $O_{50\text{years}}$  component in the winter series, whose significance then only reaches the 90% confidence level. Lionello (2005), Barriopedro et al. (2010), Troccoli et al. (2012) and Martínez-Asensio et al. (2016) consistently identify significant decadal variability, in the time series of autumn Venetian surge events for the period 1948-2008 (for an updated analysis see Lionello et al., 2020b, in this special issue).

Continuous wavelet transform analysis on updated and detrended seasonal time series of the Punta della Salute tide-gauge record confirms the presence of statistically significant interdecadal fluctuations in autumn ( $O_{20\text{years}}$ , period 1960-2000) and interannual ( $O_{5\text{years}}$  and  $O_{8\text{years}}$ , periods 1930-1950 and 1970-1990, respectively) and multidecadal ( $O_{50\text{years}}$ , since 1950) fluctuations in winter (Figure 8). Such fluctuations, however, appear only over limited periods, typically for a few decades or even less. This intermittent recurrent interdecadal variability can significantly impact on sub-centennial trend estimates and contribute to explaining associated spatial features. For instance, in the period between the mid-1960s and the early 1990s, the RSL time series of Venice and Trieste appear almost stationary (Figs. 2 and 6). Marcos and Tsimplis (2008) estimated RSL trends to be zero (within the errors) in the 1960-2000 period at the tide-gauge stations of Trieste, Genoa and Marseille. So, stationary sea level characterized the whole Mediterranean Sea during this period but not the Atlantic Ocean, and proposed explanations include an atmospheric contribution mainly consisting of persistent high pressure and an oceanic contribution due to steric changes in deep water masses (Tsimplis and Baker, 2000; Tsimplis et al., 2005; Gomis et al., 2008). Scarascia and Lionello (2013) conclude that the mean sea-level rise of 1.3 mm/year in the Northern Adriatic in the period 1940-2005 is primarily due to ice cap melting, with no trends in atmospheric drivers, upper ocean temperature and surface layer salinity. The different estimates and attribution of multidecadal trends by Marcos and Tsimplis (2008) and Scarascia and Lionello (2013) reflect the strong interdecadal variability of Mediterranean sea level and the variety of its driving mechanisms. The former study computes the expansion of the water column missing the contribution of the redistribution of mass and produces negligible values of sea-level rise in shallow water areas, while the latter accounts for it and explicitly considers the Adriatic Sea. Figure 6c confirms that often bidecadal trends, but occasionally also longer ones, in annual-mean Venetian VLM-corrected RSL are negative and can differ in sign from the GMSL trend. Accordingly, the linear trend can yield a local sea-level anomaly in Venice from the GMSL of about 10 cm (but up to about 20 cm occasionally) over bidecadal and shorter periods, and a rather small anomaly (generally <5 cm) over interdecadal and longer periods (not shown).

5 Climatic drivers of Venetian sea-level variations

Variations of Venetian RSL closely depend on sea-level variations in the Adriatic Sea, which in turn are linked to sea-level variations in the Mediterranean Sea. It is well established that basin-wide sea-level fluctuations in the Mediterranean Sea are associated with sea-level variations in the eastern boundary of the North Atlantic Ocean on a broad range of time scales (e.g., Fukumori et al., 2007; Calafat et al., 2012; Landrerer and Volkov, 2013; Marcos et al., 2016; Volkov et al., 2019). Such linkage is largely determined by the water-mass exchange between Atlantic Ocean and Mediterranean Sea through the Strait of

ha eliminato: ¶  
Focusing on autumn Venetian surge events for the period 1948-2008,

ha eliminato: , in good correspondence with the 11-year sunspot cycle of solar activity. However,

ha eliminato: (

ha eliminato: suggests that this correlation is not stable in time

ha eliminato:

ha eliminato: MSL

ha eliminato: the

ha eliminato: integral of the absolute trend differences for bidecadal and shorter periods often yields values

ha eliminato: for

ha eliminato: Climate forcing

ha eliminato: 5.1 Mechanisms of Venetian RSL variability¶

ha eliminato: closely depend on

ha eliminato: sea

Gibraltar (e.g., Brandt et al., 2004; Fukumori et al., 2007; Menemenlis et al., 2007; Gomis et al., 2008; Calafat et al., 2012; Landerer and Volkov, 2013; Tsimplis et al., 2013; Adloff et al., 2018; Volkov et al., 2019). Section 5.1 provides further details on the lateral boundary forcing at the Strait of Gibraltar and its drivers. The water-mass signal at Gibraltar then propagates within the Mediterranean Sea almost uniformly, yielding basin-wide sea-level variations (e.g., Fukumori et al., 2007; Calafat et al., 2012) and overwhelms steric changes as far as basin-average sea-level trends are concerned (Jordà and Gomis, 2013). Spatial heterogeneity in Mediterranean sea-level variations is determined by a combination of local steric and ocean circulation changes as well as local atmospheric mechanical forcing, which are described in Section 5.2. Another potential contributor to local sea-level changes is freshwater horizontal advection (Jordà and Gomis, 2013), primarily linked to river runoff. At the basin scale, riverine input to the Mediterranean Sea and other freshwater fluxes resulting in net loss of freshwater are regarded as negligible for sea-level variability, as they are quickly compensated by changes in the mass transport through the Strait of Gibraltar (Adloff et al., 2018). However, the conspicuous and noticeably time-varying inflow of freshwaters from the Italian Po River, whose delta is located only 90 km south of the Venice Lagoon (Fig. 1), contributes shaping haline properties in the Adriatic Sea (Taricco et al., 2015) with detectable imprint on Venetian sea levels (Zanchettin et al., 2009). Venetian RSL variability has been investigated in relation to modes of large-scale climate variability, especially concerning teleconnections during wintertime and with the dominant mode of atmospheric variability over the North Atlantic on interannual timescales known as North Atlantic Oscillation or NAO. The geostrophic winds caused by the large-scale atmospheric pressure anomalies linked to the NAO drive a barotropic sea-level response in Venice, especially in winter. Given its relevance in the scientific literature, the connection between NAO and Venetian as well as Mediterranean sea level is reviewed in detail in Section 5.2. In addition to the NAO, statistical connections identified in the literature between Venetian RSL and climatic modes include the atmospheric patterns known as Scandinavian and East Atlantic Western Russia (Zanchettin et al., 2009), showing prominent variability at interannual-to-decadal time scales in the autumn and winter seasons, and the Atlantic Multidecadal Oscillation or AMO (Scafetta (2014), describing multidecadal fluctuations in North Atlantic sea-surface temperature and influencing atmospheric variability over the Euro-Mediterranean region (e.g., Mariotti and Dell'Aquila, 2012; Maslova et al., 2017).

5.1 Lateral boundary forcing at the Strait of Gibraltar

Water mass exchange through the Strait of Gibraltar constitutes the critical lateral boundary forcing to determining how sea-level signal propagates from the midlatitude eastern North Atlantic into the Mediterranean basin. The exchange at Gibraltar consists of a strong surface current of relatively fresh and warm water from the ocean and a deep-water current of salt and cold Mediterranean water, outflowing into the ocean and sinking in the North Atlantic in the form of gravity current. The two-way water exchange regime within the Strait critically depends on the number and location of its hydraulic controls, being sub-maximal if subject to only one control in the western part, or maximal if the flow is also controlled in the eastern part, with different implications for the characteristics of the circulation. Local dynamics are strongly influenced by tides, which are

ha eliminato: The latter can be summarized as being driven by three major processes: steric effects, which can affect both basin-average and local variability; water-mass exchange with the Atlantic, whose sea-level signal propagates from the midlatitude eastern North Atlantic into the Mediterranean as a basin-scale barotropic signal, and other ocean circulation processes; atmospheric forcing, which provides s

ha eliminato: to

ha eliminato: Mediterranean s

ha eliminato: and is therefore critical to determine

Formattato: Motivo: Trasparente (Bianco)

ha eliminato: .

ha eliminato: Attribution of Mediterranean sea-level variability is often separated on the basis of the timescale: intraseasonal and interannual variability is associated to atmospheric mechanical forcing (e.g., Jordà et al., 2012a, 2012b), whereas multidecadal and longer time-scale variability is associated with oceanic lateral forcing from the eastern North Atlantic (e.g., Marcos et al., 2016).¶

5.1.1 Atmospheric forcing¶

The paradigm of modes of large-scale atmospheric and oceanic variability is widely used to characterize internal climate variability, to describe responses to natural forcing and to assess the skills of decadal forecast systems Zanchettin (2017). Han et al. (2019) provide a recent review on the connection between variability of dominant climate modes and coastal sea level in the three major ocean basins. Statistical analysis of atmospheric pressure demonstrates coherent large-scale patterns covering the North Atlantic, Europe and the Mediterranean Sea, which explain significant parts of the atmospheric signal variability at interannual and interdecadal scales, particularly during winter. The large-scale coherency of the atmospheric pressure fields means that several of the local atmospheric parameters as well as the oceanic circulation driven by this forcing becomes correlated. Such linkage drives coherent sea-level changes within the whole Mediterranean basin and, ultimately, in the Venice Lagoon. Despite being studied so far mainly within the framework of interannual to multidecadal climate variability, the same connections can be relevant for longer-term trends as well, and we therefore include them in this review.¶

Formattato

ha eliminato: .1

ha eliminato: 2

ha eliminato: Ocean processes

ha eliminato: ¶

ha eliminato: The Mediterranean basin circulation is driven by an excess evaporation which is balanced by net inflow of Atlantic W¶

ha eliminato: ly contributes

ha eliminato: changes

ha eliminato: in the World Ocean

ha eliminato: propagate within

ha eliminato: (Brandt et al., 2004).

ha eliminato: ¶

responsible for the modulation of the water transport and the hydraulic control (Armi and Farmer, 1988) as well as for the substantial vertical mixing that has been observed (Garcia-Lafuente et al., 2013).

Nonseasonal mass exchanges through the Strait up to the decadal time scale are modulated by fluctuations in the winds over and near the Strait (Fukumori et al., 2007; Landerer and Volkov, 2013; Volkov et al., 2019). On longer time scales, oceanic contributions mainly including steric changes and mass addition/removal as well as geological processes such as GIA become predominant. These contributions are specific for each basin of the World Ocean and especially so for the subpolar and eastern North Atlantic due to the presence of an active thermohaline circulation and to its proximity to the Greenland ice sheet. There, over the 20<sup>th</sup> Century, the ocean-mass contribution is negligible while the upward sea-level trend was caused by GIA strengthened by steric changes since the late 1950s (Frederikse et al., 2020). Steric changes particularly contribute to multidecadal sea-level variability in the different ocean basins (Frederikse et al., 2020), with the Atlantic Ocean accumulating heat at a higher rate than the Pacific and Indian Oceans (e.g. Zanna et al. 2019). So, despite the overall sea-level trend for the subpolar and eastern North Atlantic over the 20th Century is comparable to GMSL trend, primarily driven by changes in the ocean mass, it is caused by a different combination of processes (Frederikse et al., 2020).

Recent progress on the simulation of water mass exchange through the Strait of Gibraltar led to a major improvement in the simulation of Mediterranean circulation. Sannino et al. (2015) demonstrated that the inclusion of explicit tidal forcing in an eddy resolving Mediterranean model has important effects on the simulated circulation, in addition to the expected intensification of local mixing processes. Marcos et al. (2016) decompose the Mediterranean sea-level signal into two components: first, variations in the eastern North Atlantic sea level, estimated through global coupled climate models, second, relative variations in the Mediterranean sea level with respect to the eastern North Atlantic, estimated through regional climate models. More recently, Adloff et al. (2018) provide an overview of current methods to implement Atlantic sea-level forcing at the lateral boundary of state-of-the-art regional ocean models for the Mediterranean Sea, concluding that the quality of such forcing is essential for appropriate modelling of Mediterranean sea level.

### 5.2 Air-sea interaction within the Mediterranean basin

Local atmospheric mechanical forcing is primarily exerted through local pressure anomalies, associated with the so-called Inverse Barometer Effect (IBE), and wind anomalies, the latter exerting a dominant effect on Mediterranean coastal sea levels especially by inducing a barotropic oceanic response (e.g., Calafat et al., 2012; Jordà et al., 2012a, 2012b). The IBE is quantified by the hydrostatic equation in about 1 cm of sea-level rise per 1 hPa of sea-level pressure drop. Calafat et al. (2012) quantify in 25% the IBE contribution to decadal winter sea-level variability in Trieste for the period 1950-2009. The highest IBE contributions to seasonal Venetian sea-level variability over the period 1872-2003 in autumn (about 32%) and winter (41.5%) estimated by Zanchettin et al. (2009) can be accounted for by the regression model between local sea-level and local sea-level pressure which could embed also other contributions than IBE alone (e.g., Woodworth et al., 2010).

As far as wind forcing is concerned, the morphology of the Adriatic basin displaying a NW-SE elongation and a shallow northern portion (Figure 1) enhances the effect of the remarkably strong and frequent meridional Sirocco wind: Prevailing

ha eliminato: amplitude

ha eliminato: , as well as for the migration of the eastern hydraulic control (Armi and Farmer, 1988)

ha formattato: Apice

ha formattato: Inglese (Stati Uniti)

930 Sirocco-favorable conditions are associated to a strengthened northeastward flow over the Central Mediterranean, which then  
favors the piling of Ionian surface waters toward the northern Adriatic, resulting in an increase of Venetian RSL. This Sirocco  
situation is illustrated for autumn and summer by maps of seasonal anomalies of near-surface wind and sea-level pressure over  
the Euro-Mediterranean region obtained by compositing the detrended Venetian VLM-corrected RSL series around years  
characterized by high and low values (Figure 8a,b). The analysis is performed on data from the version 3 of the NOAA-CIRES-  
935 DO Twentieth Century Reanalysis, which contains objectively-analyzed 4-dimensional weather maps and their uncertainty  
from the early 19th century to the 21st century (Silvinski et al., 2019). For each considered season, the years were identified  
using the 10th and 90th percentiles of the seasonal sea-level time series as thresholds. Results indicate that in both autumn and  
winter relatively high sea level in Venice is associated with anomalously low sea-level pressure over the Mediterranean region  
which intensifies over the northern portion of the basin, and with extensively significant north-eastward wind anomalies over  
the Ionian Sea – corresponding to blowing meridional Sirocco wind - as well as with an eastward wind anomaly over the Strait  
940 of Gibraltar. The morphology of the Adriatic basin displaying a NW–SE elongation and a shallow northern portion (Figure 1)  
enhances the effect of the Sirocco, as prevailing Sirocco-favorable conditions favors the piling of Ionian surface waters toward  
the northern Adriatic, resulting in an increase of Venetian RSL. The anomalous wind patterns agree with those identified by  
Zanchettin et al. (2009) obtained with a different set of data.  
Fluctuations of surface heat and freshwater fluxes are important drivers of steric changes, through variations in thermal and  
945 haline oceanic properties, as well as of ocean circulation changes by affecting processes such as the intermediate or deep water  
formation and transformation (e.g., Calafat et al., 2012; Jordà and Gomis, 2013; Cusinato et al., 2018). An example of ocean  
circulation changes on local sea level variability are the negative trends observed in the Ionian Sea and south-east of Crete  
shown in Fig. 7a (Bonaduce et al., 2016).

950 **5.2 Linkage with the NAO and other teleconnection patterns**

The NAO is the dominant mode of large-scale interannual-to-decadal atmospheric variability over the North Atlantic. It is  
commonly characterized by a teleconnection between tropospheric pressure anomalies over the subpolar Arctic and over the  
subtropical North Atlantic (e.g., Marshall et al., 2001). Despite the NAO can be identified throughout the year, its anomalies  
are more stable in winter. The pressure dipole associated to the NAO is tied to changes in the Euro-Mediterranean weather  
955 since it produces a meridional displacement of the primary trajectories of the perturbations originating over the Atlantic and  
affects the frequency and intensity of blocked regimes in the Euro-Atlantic region (e.g., Cusinato et al., 2018). Statistical  
analysis of atmospheric pressure demonstrates coherent large-scale patterns covering the North Atlantic, Europe and the  
Mediterranean Sea, which explain significant parts of the atmospheric signal variability at interannual and interdecadal scales,  
particularly during winter. The large-scale coherency of the atmospheric pressure fields means that several of the local  
960 atmospheric parameters as well as the oceanic circulation driven by this forcing becomes correlated. Such linkage drives  
coherent sea-level changes within the whole Mediterranean basin and, ultimately, in the Venice Lagoon. Despite being studied

ha eliminato: ¶  
ha formattato: Tipo di carattere: Grassetto

so far mainly within the framework of interannual to multidecadal climate variability (e.g., Zanchettin, 2017; Han et al. 2019), the same connections can be relevant for longer-term trends as well, and we therefore include them in this review.

Numerous studies attribute a significant fraction of interannual-to-decadal winter sea-level variability in the Mediterranean Sea to the NAO (e.g., Tsimplis et al., 2006; Gomis et al., 2008; Tsimplis and Shaw, 2008; Calafat et al., 2012; Tsimplis et al., 2013; Martínez-Asensio et al., 2014; Ezer et al., 2016; Rubino et al., 2018). The NAO exerts its influence on Mediterranean sea level in multiple ways. First, the larger-scale circulation changes associated to the NAO contribute to set the wind forcing over and near the Strait of Otranto, thereby influencing the Atlantic-Mediterranean water-mass exchange on decadal time scales (Fukumori et al., 2007; Landerer and Volkov, 2013; Volkov et al., 2019). Then, the NAO modulates sea-level pressure, freshwater and buoyancy fluxes and riverine inputs within the Mediterranean Sea and, in particular, the Adriatic Sea (e.g., Zanchettin et al., 2008; Josey et al., 2011; Tsimplis et al., 2013; Criado-Aldeanueva et al., 2014; Cusinato et al., 2018). More specifically for Venetian sea level, Zanchettin et al. (2009) estimate that about half of the variability of detrended winter Venetian RSL can be explained linearly by the NAO. An updated analysis between seasonal time series of NAO (Jones et al., 1997) and detrended (second order polynomial fit) raw Venetian RSL for the period 1872-2019 confirms large values of the correlation statistics ( $r_{\text{FM}}=-0.68$ ,  $p\sim 0$  accounting for autocorrelation in the series;  $r_{\text{ND}}=-0.50$ ,  $p<0.0001$ ). Results on VLM-corrected RSL confirm the strong connection between NAO and detrended Venetian RSL during the cold semester, particularly in winter.

We update previous results about the statistical connection between NAO and Venetian RSL by performing also a wavelet analysis on the 1872-2019 autumn and winter time series of the NAO index and Venetian sea level. The NAO signal is most stable and yields the clearest teleconnections in winter; the autumn season is considered here due to its importance for the occurrence of surges in Venice (Lionello et al., 2020a,b). The wavelet coherence spectra (Grinsted et al., 2004) in Figure 9 illustrates the link between NAO and Venetian VLM-corrected RSL fluctuations over a broad range of timescales in the decadal to multidecadal range, when both variables are robustly in rough antiphase in both seasons. In autumn inclusion of subsidence in the RSL series disturbs the multidecadal coherent signal (see the red contours in bottom panels of Figure 8), confirming the importance to account for it in studies on the climatic component of local sea-level variability based on tide-gauge data. Temporal variations in amplitude and phase of wavelet coherence and cross-wavelet spectra have been proposed as evidence of lacking robust connection between geophysical series (e.g., Zanchettin et al., 2016; Peicuch et al., 2019). For instance, both characteristics are evident in the wavelet coherence spectrum of the autumn series at the interannual time scales, posing caveats on the truthfulness of the connection. Similarly, in winter coherent interannual variations in ant-phase is only observed intermittently.

We therefore complement the statistical connection between NAO and Venetian sea-level time series with maps of seasonal anomalies of near-surface wind and sea-level pressure over the Euro-Mediterranean region obtained by compositing the data around years characterized by positive and negative values of the NAO index (Figure 8c,d). As for compositing around Venetian sea level, for each season, the years were identified using the 10<sup>th</sup> and 90<sup>th</sup> percentiles of the seasonal time series of the NAO as thresholds. To ease the comparison with the anomalous patterns around sea level, the maps show differences

ha formattato: Pedice

ha formattato: Pedice

ha formattato: Apice

ha formattato: Apice

between values under negative NAO minus values under positive NAO. In both autumn and winter, the patterns of sea-level pressure and wind anomalies under different NAO states superpose well on those that correspond to variations in Venetian sea level, including large-scale low pressures enhanced over the northern Mediterranean Sea and Sirocco-like northeastward wind anomalies over the Ionian Sea. However, amplitude and spatial extent of the significant anomalies in the atmospheric forcing fields are larger in winter compared to autumn, confirming the weak imprint of the NAO on Venetian sea level in the latter season.

Overall, the seasonal difference in the strength of the NAO imprint on Venetian sea level confirms previous results (Zanchettin et al., 2009) and supports the investigation of other large-scale precursors of atmospheric forcing of Venetian sea level in autumn. For instance, Zanchettin et al. (2009) identify the SCA and EAWR to be related with the interannual-to-decadal variability of meridional atmospheric flow over the Adriatic Sea in autumn (Zanchettin et al., 2009).

6 Projections

Estimates of the future RSL change at Venice require that all the different components described in the previous sections are considered over the coming decades and combined (Nicholls et al., 2021). It is useful to distinguish GMSL changes which can be derived from the SROCC (“Special Report on Ocean and Cryosphere in a changing climate”, Oppenheimer et al., 2019), regional deviations from GMSL in the Mediterranean and Northern Adriatic, and local vertical land movement contributions.

6.1 Vertical land movements

Projections of future contribution of vertical land motion are available only for the GIA (see section 6.2 for a quantification). For the other components of vertical land movements, it is only possible to consider their historical variations in order to contemplate their potential to affect future RSL changes. Estimates of subsidence at sub-regional scale can be constrained based on observations of past evolution. The sum of sediment compaction, tectonics and GIA is estimated to be about 1.0 mm/year (Antonioli et al., 2017; Tosi et al., 2013) with a constant rate on centennial time scale. At a local scale, subsidence trends of a few cm/year are still observed in restricted areas such as at the lagoon inlets interested in the construction of mobile barriers against high tides (Tosi et al., 2018). Controls on groundwater extraction should prevent a return to the large subsidence rates that occurred between 1930 and 1970, but shallow natural processes, notably consolidation, and anthropogenic activities are observed to continue contributing at rates spatially varying from 10 to -2 mm/year (Tosi et al., 2013). Hence, human activities can contribute significantly to RSL rise, but detailed scenarios are currently not available in the literature and this is a generic problem (Nicholls et al., 2014). All these natural and anthropogenic contributions have the potential to increase RSL in Venice, exacerbating the negative impact of local sea-level rise, with contribution of order of ten centimeters per decade at sub-regional scale, and potentially much larger locally.

**ha eliminato:** Sea-level variability in the eastern North Atlantic is among the dominant drivers of interannual-to-interdecadal Mediterranean variability (e.g., Adloff et al., 2018). Fluctuations of surface fluxes linked to the large-scale atmospheric forcing drive variations in thermal and haline oceanic properties, ultimately affect processes such as the intermediate or deep water formation and transformation (e.g., Calafat et al., 2012; Cusinato et al., 2018). Hence the large-scale atmospheric forcing has a pronounced effect on sea-level variability. Associated ocean circulation changes lead to the negative MSL trends observed in the Ionian Sea and south-east of Crete shown in Fig. 7a (Bonaduce et al., 2016).

5.2 Numerical modelling of Mediterranean and coastal sea level changes

Over recent years, considerable efforts have been invested into developing and applying regional climate and ocean circulation models approaching the issue of dynamical downscaling from different perspectives (e.g., Somot et al., 2008; Sannino et al., 2009; Artale et al., 2010; Naranjo et al., 2014; Sein et al., 2015; Turuncoglu and Sannino, 2017; Androsov et al., 2019; Palma et al., 2020). Sannino et al. (2015) demonstrated that the inclusion of explicit tidal forcing in an eddy resolving Mediterranean model has important effects on the simulated circulation, in addition to the expected intensification of local mixing processes. The signal induced in the Atlantic water crossing the Strait in fact propagates into the basin interior and concurs to determine the dispersal paths of the main water masses, with consequences on critical processes such as deep water formation in the Gulf of Lion and Levantine intermediate water recirculation. Since the Mediterranean ocean state and variability critically depend on the lateral boundary forcing from the eastern North Atlantic, recent progress on the simulation of water mass exchange through the Strait of Gibraltar led to a major improvement in the simulation of Mediterranean circulation. Marcos et al. (2016) decompose the Mediterranean sea-level signal into two components: first, variations in the eastern North Atlantic sea level, estimated

**ha eliminato: rediction and p**

**ha eliminato: Projections**

**ha eliminato: Nicholls et al., 2020**

**ha eliminato: sea-level changes**

**Formattato: Motivo: Trasparente (Bianco)**

**ha eliminato:** component, which, in the Mediterranean Sea, is expected to provide a small (order of 5-10 cm/century) and spatial

**ha eliminato: ¶**

**ha eliminato: on the basis of**

**ha eliminato: 0.6 and**

**ha eliminato: -**

**ha eliminato: ing**

**ha eliminato: relevant**

**ha eliminato: further worsen**

**ha eliminato: MSL**

**ha eliminato: 10**

**ha eliminato: ¶**  
Melting of ice sheets and glaciers induced can affect vertical land motions. Adopting the “mid range” and “high end” climate change

6.2 Sea-level projections for the Northern Adriatic and Venice

Sea-level anomalies linked to GMSL rise propagate from the mid-latitudes of the eastern North Atlantic to the Venice Lagoon through the Gibraltar and Otranto straits. Sea-level variations along this path is further determined by the mechanical action of the atmosphere and by steric effects associated with changes of temperature and salinity of the water masses. Therefore, beyond local effects on RSL, the projection of sea-level evolution in the Venice Lagoon depends crucially on processes acting on GMSL, sea-level variations across the World Ocean and regional patterns of sea-level change inside the Mediterranean basin.

The recent SROCC report summarizes projected GMSL rise estimates suggesting a likely range from +29 cm to +110 cm for the year 2100 with respect to the 1986-2005 average depending on the future emission scenarios, with the low RCP2.6 and the high RCP8.5 providing the lower and the upper limit, respectively. Here “likely” corresponds to the IPCC uncertainty language, meaning that the probability of future sea-level change within this range is estimated from ≥66% to 100%, and therefore does not exclude values outside this range. The contribution of ice sheets, especially Antarctica, and the underlying dynamical processes that have been intensively debated recently (e.g., Kopp et al., 2014; DeConto and Pollard, 2016; Edwards et al., 2019), provide the main source of uncertainty - or deep uncertainty - in future sea-level change projections (Bakker et al., 2017; Oppenheimer et al., 2019). Therefore, while high-end GMSL rises (up to 2 m at the end of the 21st century) are unlikely, they cannot be excluded (e.g., Nicholls et al., 2014; Kopp et al., 2017) and are particularly important for decision-making applications and adaptation planning, especially in decision contexts with low tolerance to uncertainty (Hinkel et al., 2019). Slangen et al. (2017) suggests that sea-level rise at the subtropical and mid-latitudes of the eastern North Atlantic (and the Mediterranean Sea itself) will only have small deviations (less than 10%) from the global-mean change.

Analysis of the possible deviations of future mean sea level in the Mediterranean basin from the GMSL has been attempted using dynamical and statistical models. Pioneering work in this regard is Slangen et al. (2012). Dynamical models of the circulation inside the Mediterranean Sea allow direct estimates of the mechanical effect of the atmosphere on the circulation (wind stress and IBE). There is consensus that this is a small contribution with changes generally less than 10 cm (Tsimplis and Shaw, 2008; Tsimplis et al., 2008; Jordà et al., 2012b; Jordà, 2014; Adloff et al., 2018). The steric effects are computed from temperature and salinity changes using a diagnostic offline computation. This computation obviously depends on the water depth and tends to zero at the coastline. Therefore, for producing a realistic estimate of the actual sea level change, they should be integrated with the computation of the associated water mass redistribution. In fact, the spatial variations of the resulting sea-level change follow the bathymetry of the Mediterranean Sea and are rather small (< 5 cm) over shallow water areas such as the northern Adriatic Sea (e.g., Tsimplis et al., 2008). The overall steric sea-level change is the consequence of two contrasting effects: thermosteric expansion (associated to warming of water masses) and halosteric contraction (associated to increasing salinity of water masses). Most studies agree that the former is larger, and there is also a freshening effect of the Atlantic inflow across the Strait of Gibraltar, whose magnitude is poorly constrained. Several studies contributed to an assessment of the overall steric effects at the Mediterranean scale, with differences depending on periods, models, scenarios

ha eliminato: Sea

ha eliminato: MSL

ha eliminato: MSL

ha eliminato: climate

ha eliminato: actually

ha eliminato: ing

ha eliminato: in particular the

ha eliminato: one

ha eliminato: discussed

ha eliminato: lately

ha eliminato:

ha eliminato: although

ha eliminato: ruled out

ha eliminato: useful

ha eliminato: Results in

ha eliminato: value

ha eliminato: to

ha eliminato: directly

ha eliminato: a general consensus

ha eliminato: vanishes

ha eliminato: the

ha eliminato: also because of

ha eliminato: the

ha eliminato: strait

195 and the representation of water exchange between Mediterranean Sea and Atlantic Ocean (Adloff et al., 2018). There are various basin-wide Mediterranean steric sea-level projections. For instance, a range of 2 to 7 cm for the mid-century sea-level anomaly (2050 with respect to 2001) under the SRES-A1B scenario was reported (Carillo et al., 2012). By the end of the 21<sup>st</sup> century (i.e. 2070-2099), for the steric component alone, Tsimplis et al. (2008) found a 13 cm sea-level anomaly (with respect to 1960-1990) under the A2 scenario, while Adloff et al. (2015) reported sea-level anomalies over the same periods that range between 34 cm and 49 cm considering a 6-member ensemble and the A1, A1B and B1 scenarios (see Fig. 7b). The magnitude of the steric sea-level rise for the Mediterranean Sea is consistent with estimates of the steric GMSL rise, e.g., 29-45 cm (67% confidence interval) for the RCP8.5 scenario between 2100 and 2000 by Kopp et al. (2014).

200 Estimates of future sea-level rise in the Northern Adriatic Sea from a statistical model are provided by Scarascia and Lionello (2013). The computation is based on a linear regression linking the deviation of the sub-regional sea level to changes of mean sea-level, pressure, water temperature and salinity, meant to represent the mechanical atmospheric forcing, steric effects and the redistribution of mass inside the basin (Jordà and Gomis, 2013), which is ignored in computation of the pure steric effect. Scarascia and Lionello (2013) concluded that regional effects, at the end of the 21<sup>st</sup> century for the A1B scenario, result in a deviation in the range from 2 to 14 cm from the sea level of the Eastern Atlantic outside the Strait of Gibraltar; they also concluded that the main contribution to local sea-level rise is caused by remote effects, such as mass inflow across the Strait of Gibraltar, which, was conservatively estimated without considering a likely future acceleration and information from climate projections.

205 Adopting the “mid range” and “high end” climate change scenarios defined by Spada et al. (2013), Galassi and Spada (2014) have evaluated the effect of contemporary and future terrestrial ice melting on future regional RSL evolution across the Mediterranean Sea by solving the Sea Level Equation including the contribution of glaciers, ice caps and of the Greenland and Antarctic ice sheets. They found that terrestrial ice melting will be responsible for a sea-level rise in the Northern Adriatic of ~8 and ~17 cm to 2040–2050 relative to 1990–2000, in the two considered scenarios, respectively. Since the sources of terrestrial ice melting are mostly located in the far-field of the Mediterranean Sea, these contributions shall be largely uniform across the whole Adriatic Sea.

210 Northern Adriatic RSL projections informed by climate projections can be obtained by summing up the future regional contributions of stericodynamic effects - which corresponds to changes in ocean density and circulation corrected from the IBE -, melting of mountain glaciers and ice sheets, land water and vertical land motions (e.g., Slangen et al., 2012, 2014; Kopp et al., 2014; Gregory et al., 2019). In particular, Kopp et al. (2014) provide probabilistic sea-level projections for Venice as part of a global set of local sea-level projections for three different representative concentration pathways. Their projections build on the decomposition of the recorded historical sea level into a number of processes, including the “background non-climatic local sea-level change” corresponding to GIA, tectonics, and other non-climatic local effects. This background linear estimate and its uncertainty (0.72±0.33 mm/year for Venice, see supplementary material, Table 8 in Kopp et al., 2014) is then included in the projections, together with the other components. The 5<sup>th</sup>-95<sup>th</sup> percentile range of the resulting sea-level change projections at year 2100 is 29-79 cm for RCP2.6 and 41-107 cm for RCP8.5.

215

220

225

ha eliminato: V  
 ha eliminato: MSL  
 ha eliminato: are found in the literature

ha eliminato:

ha eliminato: MSL  
 ha eliminato: and also  
 ha formattato: Apice

ha eliminato: and concluded that  
 ha eliminato: strait caused by polar ice melting. The melting  
 ha eliminato: accounting for

Formattato: SpazioDopo: 0 pt

ha formattato: Apice  
 ha formattato: Apice

However, two critical aspects are needed to obtain reliable sea-level projections for Venice. First, a full characterization of the vertical land motions in Venice requires an explicit local focus beyond what is provided by a mere extrapolation on the site from regional patterns of GIA, tectonics, and other non-climatic contribution alone. In fact, the subsidence estimate by Kopp et al. (2014) lies in the lower range of the available instrumental estimates, especially as far as the most recent period is considered (see Table 4). Then, the stericodynamic component is derived from the outputs of the coupled climate-model simulations performed within the 5<sup>th</sup> phase of the Coupled Model Intercomparison Project. The rather coarse resolution of coupled climate models prevents an accurate representation of small-scale processes (e.g., water exchange at Gibraltar), which in turn affects regional sea-level estimates (Marcos and Tsimplis, 2008; Slangen et al., 2017). Both aspects are taken into consideration to build probabilistic projections of Northern Adriatic RSL for two climate scenarios (RCP2.6 and RCP8.5) and one high-end scenario following Thiéblemont et al. (2019). The Mediterranean stericodynamic sea-level projections are estimated by relying on those of the Atlantic area near Gibraltar. Other mass contributions to sea level (i.e., glaciers, ice sheets, land water) have a global effect due to the addition of water mass to the ocean (barystatic sea-level rise) and a regional effect through instantaneous changes in the Earth gravity, Earth rotation and solid-Earth deformation (GRD-induced RSL change). Both contributions are combined into a geographical pattern called barystatic-GRD fingerprint (Mitrovica et al., 2009; Gregory et al., 2019) and are proportional to the land water mass change. For each scenario, uncertainties correspond to the combined uncertainty of each sea-level component calculated as the square root of the sum of the squares of each component uncertainty. Note, however, that contributions that correlate with global-mean air temperature, namely the stericodynamic and ice-sheet surface mass balance components, have correlated uncertainties and are therefore added linearly (see Church et al., 2013, for more details). The projections do not include expert elicitation and rely only on IPCC-like assessments, so the RCP2.6 is rather symmetric and RCP8.5 slightly asymmetric. Considering an annual subsidence rate of 1 mm/year, Northern Adriatic RSL is projected to rise by 47 centimeters (likely range 32-62 cm) for the RCP2.6 scenario and by 81 centimeters (likely range 58 cm-110 cm) for the RCP8.5 scenario by the end of the 21<sup>st</sup> century with respect to the reference period 1986-2005. These projections start to diverge after 2050 and, excluding the contribution of subsidence of 10.5 cm, yield a total range of local sea-level rise by 2100 between 21 and 100 centimeters, i.e., ~10% lower than GMSL rise (Figure 7c). The high-end scenario – obtained by selecting, for each sea-level component, the highest physical-based estimate found in the literature (see Thiéblemont et al., 2019 for details) – shows that, by 2100, Northern Adriatic sea level could unlikely but possibly rise by more than 1.8 m. Note that for this high-end scenario, the Antarctic component contributes nearly half of the sea-level change in 2100. This estimate agrees with the analysis by Scarascia and Lionello (2013). Our projections largely overlap with those provided by Kopp et al. (2014) for both scenarios, indicating that they are broadly consistent with each other. Differences are likely due to differences in the methods, models and assumptions employed by both studies, which requires a dedicated investigation to be fully understood.

In conclusion, while our understanding of past RSL change in Venice has improved, the large uncertainty in the magnitude of future GMSL rise remains a major scientific challenge (Oppenheimer et al., 2019). Hence, public policy needs to recognize this uncertainty and monitor sea-level change as part of the management of this uncertainty, including drawing on relevant

**ha eliminato:** Figure 7c shows probabilistic projections of Northern Adriatic RSL for two climate scenarios (RCP2.6 and RCP8.5) and one high-end scenario (Thiéblemont et al., 2019).

**ha eliminato:** The

**ha eliminato:** therefore

**ha eliminato:** geoid

**ha eliminato:**

**ha eliminato:**

**ha eliminato:** MSL

**ha eliminato:** MSL

**ha eliminato:** to

**ha eliminato:** MSL

**ha eliminato:** value

**ha eliminato:** science and

experience from elsewhere (e.g., Ranger et al., 2013; [Environmental Agency, 2021](#)). Regional effects can determine differences in the order of 10 cm between the mean Mediterranean sea level and the GMSL and within different parts of the Mediterranean basin itself [as seen in the historical record](#). Changes over interdecadal periods can also distort the detection of forced trends over rather long periods of time (e.g., Jordà, 2014). However, [scientific literature provides no evidence for a future deviation, on a centennial timescale, of the local sea level at the Venetian coastline](#) from the GMSL that is larger than the abovementioned order of magnitude. RSL can differ by more as land movements and regional atmospheric patterns could provide additional and important contributions.

- ha eliminato: no
- ha eliminato: regional mechanism has been identified that can sustain ...
- ha eliminato: rise of the future, atmospherically corrected MSL at the Venetian coastline

## 7 Gaps of knowledge and opportunities for progress

This literature review [identified](#) several issues [where progress is needed](#), including: (1) improving satellite observations of sea-level change [and integrating them](#) with tide-gauge measurements, (2) improving monitoring and prediction of vertical land motions, (3) determining the shape of the historical RSL [and VLM-corrected RSL trends](#), (4) improving the simulation of Mediterranean oceanic circulation, and (5) reducing uncertainty on estimates of regional effects on future climate-induced sea-level rise.

- ha eliminato: brings
- ha eliminato: outstanding
- ha eliminato: into light
- ha eliminato: and integrating
- ha eliminato: , i.e., best statistical model to estimate it

Concerning observations, satellite [GSL data](#) [measure](#) the open sea and therefore do not capture coastal variations. [In addition](#), [they are insensitive to](#) the vertical land-movement component of RSL. Altimeter data are nonetheless fundamental for providing a regional perspective and reaching robust conclusions on observed [local sea-level rise](#), as they provide an independent source of information from the local tide-gauge data. The contribution of coastal altimetry is considered essential to within 0–10 km to link the sea-level changes derived from satellites with those measured at tide-gauge locations (Ponte et al., 2019). The extension of the satellite-based sea-level record toward the coast with measurement quality comparable to the

- ha eliminato: refer to
- ha eliminato: ,
- ha eliminato: especially
- ha eliminato: MSL
- ha eliminato: and RSL

open ocean [allows detection of differences in the rate of coastal sea-level rise from the open ocean \(e.g., Marti et al., 2019\)](#) [and their implications for coastal hazards](#) (Ablain et al., 2016; Benveniste et al., 2019). It has been shown that by improving processing, it is possible to make more accurate sea-level measurements in coastal zones (Cipollini et al., 2017). Progress has been made in fitting the radar signal (the so-called re-tracking) [to extract a robust estimate of the distance between satellite and sea surface](#). The ALES retracker, with a proper threshold on error, recovers significantly more data in the 10 km near the coast (Passaro et al., 2014). [There are a number of satellite radar altimetry operational products \(along-track and gridded\) dedicated to the monitoring of open-ocean sea level, whose quality is constantly improving](#). Various experimental coastal altimetry products are also now available and validated in some regions, [allowing sea-level research in the coastal zone](#) (Gómez-Enri et al., 2019). An updated table is accessible at [www.coastalt.eu/datasets](#). Importantly, merging altimeter data from different missions requires homogenous re-processing and minimization of drifts and systematic biases between missions.

- ha eliminato: is
- ha eliminato: also important to assess
- ha eliminato: impacts due to
- ha eliminato: in order

[Overall, progress is expected in terms of improving the altimetry estimates closer to the coast, perhaps with different instruments, and understanding the relationship between the coastal and close-to-the coast sea-level changes in a complex environment \(De Biasio et al., 2020\).](#)

- ha eliminato: A
- ha eliminato: exists
- ha eliminato: improved
- ha eliminato: thus being used
- ha eliminato: for

For the Northern Adriatic, an opportunity for progress is provided by the ESA SLCCI extension (CCI+), which will process along-track data from additional satellite missions using re-tracked data, dedicated coastal geophysical corrections and improved editing that will then be combined in a global grid with higher resolution near the coast (Anny Cazenave, personal communication). Also, the novel GNSS-derived Path Delay Plus (GPD+) correction now provides accurate wet tropospheric delays (Fernandes and Lázaro, 2016). The Wide-swath interferometry will be deployed for the first time on the Surface Water Ocean Topography mission to provide for the first time sea-level imaging that will solve the limitation of existing satellite sea-level measurements being available only along tracks (Vignudelli et al., 2019a).

Concerning the monitoring of vertical land motions, integrated systems have been shown to offer the best approach to the study of subsidence (Wöppelmann and Marcos, 2016; Zerbini et al., 2017; Tosi et al., 2009): GNSS provides point-wise continuous positioning with respect to a global reference frame; SAR offers spatially dense measurements of surface displacements relative to a ground target selected as reference point. However, while these techniques can support the investigation of present subsidence patterns with unprecedented detail (i.e., at the scale of individual buildings), future scenarios remain difficult to construct, with the anthropogenic component of vertical land movements being the most difficult to assess (Nicholls et al., 2021). Historical observations showing the potential of anthropogenic subsidence in Venice to be of order of tens of cm per decade demonstrate the need of continued careful regulation of land and groundwater use, and monitoring of local subsidence. Together with subsidence process understanding and simulation, this might be used to develop high and low subsidence scenarios, respectively.

Concerning the simulation of Mediterranean oceanic circulation, considerable efforts have been invested over recent years into developing and applying regional climate and ocean circulation models approaching the issue of dynamical downscaling from different perspectives (e.g., Somot et al., 2008; Sannino et al., 2009; Artale et al., 2010; Naranjo et al., 2014; Sein et al., 2015; Turuncoglu and Sannino, 2017; Androsov et al., 2019; Palma et al., 2020). This included coordinated international regional climate modeling activities (e.g., MedCORDEX) and regional reanalysis for the Mediterranean Sea obtained through numerical simulations with data assimilation (Simoncelli et al., 2014). However, despite recent progress in the representation of lateral boundary forcing at the Strait of Gibraltar, there are several aspects that remain poorly understood or worth deeper investigation. For example, small changes in the salinity difference between Mediterranean and Atlantic waters around a threshold of 2 psu can determine shifts in the simulated hydraulic regime within the Strait of Gibraltar, from sub-maximal to maximal (e.g., Artale et al., 2006). Accordingly, a scenario involving a positive trend in the salinity difference can result in a partial isolation of the Mediterranean Sea from the rest of the World Ocean (Tsimplis and Baker, 2000). How non-linear interaction between large-scale ocean variations and local strait phenomena may sustain an abrupt change in the salt/freshwater transport between the Mediterranean and the Atlantic, and a shift in the Mediterranean mean circulation, remains to be investigated within a comprehensive modelling framework. It is also possible that the large-scale ocean circulation in the North Atlantic can impact the Mediterranean Sea level through ocean-atmosphere feedbacks (e.g., Marshall et al. 2001; Volkov et al., 2019), but this requires further investigation (Piecuch et al., 2019). Other exchanges are also relevant: for instance, water-mass exchanges with the Black Sea through the Turkish Straits remain idealized in current simulations, and their effect

ha eliminato: boarded

ha eliminato: if

ha eliminato: single

ha eliminato:

ha eliminato: cale

ha eliminato: are still

ha eliminato: in the

ha eliminato: despite

ha eliminato: Strait

ha eliminato: climate change

ha eliminato: Mediterranean Straits

underrepresented in future projections. Water mass exchange between shelf and ocean is performed through cascading processes, which are hardly reproduced by both regional and global solutions (e.g., Polyakov et al., 2012; Holt et al., 2017). In this context, the unstructured approach adopted by Ferrarin et al. (2018) is promising, where the system of inter-connected basins formed by the Mediterranean, the Marmara, the Black and the Azov seas was numerically investigated through the use of a unique computational mesh allowing for a seamless transition between different spatial scales, from narrow straits to open sea (see also Umgiesser et al., 2020, in this special issue).

Poorly simulated internal ocean variability also provides potential weakness to projected circulation changes in the Mediterranean Sea, which calls for a stronger focus on the validation of regional ocean models regarding interior and abyssal dynamics linked to fundamental oceanographic processes. The Adriatic Sea is the only Mediterranean sub-basin in which the evaporation-precipitation-runoff budget is negative: the buoyancy flow at the Otranto Strait is either positive or negative depending from the predominance of production of dense water within the Adriatic or of the inflow of the Levantine Intermediate Water, respectively. Numerical simulations indicate that a nonlinear convection-mixing feedback can favor hysteresis in the Adriatic Sea with multiple equilibria encompassing estuarine and anti-estuarine circulation (Pisacane et al., 2006; Amitai et al., 2017). Such behavior could have important implications for future sea-level variability in the Venice Lagoon. Overall, even under accurate representation of global steric and mass addition from the Atlantic, projections of Mediterranean sea-level change from current regional ocean models would be reliable only in the basin mean tendencies. Further, comparison of the regional simulations with satellite-derived data highlights local biases in the historical sea-surface height patterns and trends, as well as large inter-model heterogeneity in projected changes at the local scale driven by differences in simulated circulation changes. Improved assessment and progress is hoped in this direction as well. Simulation-data comparison using updated hydrographic observations, such as EN4 (Good et al., 2013) or Ishii et al. (2017), could be extremely valuable.

The higher rate of RSL rise observed in recent decades compared to the longer-term estimate (Table 4) raises the practical question of how different statistical models used to extract the trend for time series analysis affect the results. Here, trends refer to the long-term movement in a time series, which may be regarded, together with the oscillation and random component, as generating the observed values (ISI, 2003). We have evaluated the performance of a linear and a quadratic regression model on the RSL times series, including the raw series and the climatic component alone, and for the periods 1872–2019 and 1993–2019. According to several skill metrics including  $R^2$ , AIC and FPE (Alessio, 2016 and references therein) (Table 6) the quadratic model only slightly outperforms the linear model for both periods and both series. Further research (e.g., exploiting techniques such as empirical mode decomposition and singular spectrum analysis) is therefore needed to determine the shape of the local sea-level trend in Venice and to capture the higher rates of RSL rise observed in recent decades, as the simple acceleration expressed statistically in terms of quadratic fitting seems to be insufficient. The presence of substantial variations in multidecadal trends of sea level in Venice, together with methodological differences, explains the wide range of estimates of average sea-level rise obtained by different authors considering different periods. Still, certain aspects of the forcing of

ha eliminato: promising is

ha eliminato: , in which

ha eliminato: In fact, t

ha eliminato: brings

ha eliminato: the most appropriate

ha eliminato: a number of

ha eliminato: 2015

ha eliminato: RSL rise

ha eliminato: trends

1430 Venetian sea-level variability requires improved quantifications and characterization (for instance regarding the atmospheric forcing of local sea-level variability), and this will better constrain the range of projected future changes.

Concerning understanding the future evolution of Venetian RSL, we identify two critical gaps of knowledge. First, the significant interannual to multidecadal variability observed in Venetian sea level requires new studies to address their implications for near- and mid-term sea-level prediction. A possible focus could be, for instance, the impact on Venetian sea level of a multiannual period of positive phase of the NAO as observed in the early 1990s. Second, on the long term, there is no consideration of the implications of high-end GMSL rise for RSL in Venice. Research on both aspects would contribute to improved understanding of forcing mechanisms of Venetian sea-level changes, risk assessment and management, and to more effective scientific communication.

Finally, this literature review builds on recent studies on local and regional sea-level change projections (e.g., Slangen et al., 2012; Kopp et al., 2014; Oppenheimer et al., 2019; Thiéblemont et al., 2019) to develop explicit local RSL change scenarios for Venice by combining the uncertainty ranges of future projections for the individual contributing processes. Understanding the causes of the differences between the projections obtained in this study and those obtained by Kopp et al. (2014) can help clarifying the possible implications in the choice of methods, models and assumptions to build future scenarios of Venetian sea level and by implication for any site. Further approaches to objectively combine such uncertain estimates are hoped to be tested, based on qualitative criteria (e.g., considered process, statistical and numerical framework) or quantitative metrics, such as relative or absolute model skills in representing relevant physical features (e.g., boundary forcing at the Strait of Gibraltar). It will be also important to compare our estimates with updated scenarios of Venetian sea-level future change that are expected from the 6<sup>th</sup> phase of the Coupled Model Intercomparison Project (Eyring et al., 2016).

## 8 Conclusions

1450 The City of Venice and the surrounding lagoon ecosystem are critically affected by variations in RSL height driven by a host of diverse processes. These encompass oceanic processes driving sea-level variations from diurnal astronomical oscillations to climatic interannual-to-multi-centennial fluctuations, and vertical land movements causing RSL variations on time scales ranging from a few decades due to, e.g., anthropic activities, to multi-millennial trends due to tectonic activity. This review has summarized and reassessed recent progress in the estimation, understanding and prediction of the individual contributions to RSL by exploiting new observational datasets, improved statistical methods and more realistic numerical simulations of ocean and Earth system components achieved in the past decade.

1455 Our estimate of the historical long-term linear trend of Venetian VLM-corrected RSL is 1.23±0.13 mm/year (from 1872 to 2019). Inclusion of subsidence gives a centennial RSL rise of about 2.5 mm/year. Looking to the future, the effects of both subsidence and climate-induced sea-level rise will have profound implications for Venice. By 2100, natural local subsidence is expected to result in a RSL rise of about 10 cm relative to the late 20<sup>th</sup> century. Projected climatically-induced Venetian sea-

- ha eliminato: the exploration
- ha eliminato: of
- ha eliminato: energetic variability
- ha eliminato: MSL
- ha eliminato: on timescales from interannual to multidecadal
- ha eliminato: (presently missing)
- ha eliminato: ing
- ha eliminato: viability
- ha eliminato: of its
- ha eliminato:
- ha eliminato: Then
- ha eliminato: has been
- ha eliminato: explo
- ha eliminato: , which has been only outlined here for the first time
- ha eliminato: could
- ha eliminato: represents a first attempt to
- ha eliminato: combine
- ha eliminato: contributing to Venetian RSL change
- ha eliminato:
- ha eliminato: Strait
- ha formattato: Apice
- ha formattato: Colore carattere: Automatico

- ha eliminato: RSL

- ha eliminato: MSL
- ha eliminato: , with subsidence removed
- ha eliminato: , making this scientific evidence even more relevant
- ha eliminato: the end of the 21<sup>st</sup> century
- ha eliminato: from 6 to
- ha eliminato: present
- ha formattato: Apice
- ha eliminato: MSL

level rise from estimates for the GMSL corrected for the regional redistribution of mass contribution components such as glacier, ice-sheet and groundwater is in the range from 21 to 52 (from 48 to 100) centimeters by 2100 for the RCP2.6 (RCP8.5) socio-economic scenario. Ice-sheet melting provides a highly uncertain contribution. A RSL rise in Venice exceeding 180 cm by 2100 is an unlikely but plausible high-end change under strong melting of Greenland and Antarctica. These estimates neglect the effect of atmospheric forcing of local sea level, which potentially contributes additional uncertainty, estimated here in the range of about ten centimeters. The uncertainty range of the RSL rise by 2100 in Venice across all emission scenarios obtained here is thus very large: a minimum low-end scenario is about 10 centimeters, corresponding to unlikely combinations such as either low emission scenario with no subsidence and regional atmospheric interaction producing a negative effect or subsidence continuing at an historical rate and all other effects compensating each other; the upper limit of the likely range considering RCP8.5 projections is about 120 centimeters. Including unlikely high-end scenarios would rise this limit to 180 centimeters, which could approach two meters under adverse regional atmospheric forcing. An additional contribution could be produced by anthropogenically-driven subsidence. While, in general, the resulting effect of regional climatic processes could either attenuate or increase regional RSL with respect to GMSL, local subsidence will necessarily exacerbate it. Further, because of the differential rates of subsidence observed across the Venice area, the land movement estimates at the tide gauges may underestimate the risk for other parts of the city.

Among the important advances highlighted in the review are: Centennial RSL variations are now known to be spatially heterogeneous within the lagoon and the city due to differential vertical ground movements, hence local trend estimates are not expected to be representative for the city or lagoon as a whole; due to the non-linear variations caused by ground subsidence, a linear detrending of Venetian RSL time series is unsuitable unless data are preliminarily corrected for the effect of vertical land motion; remote climate forcing from the Atlantic sector via atmospheric and oceanic processes critically contributes to interannual-to-multidecadal Venetian RSL variability; Atlantic hydrographic boundary conditions are a major source of uncertainty for future projection of Mediterranean sea levels; uncertainty in water mass flows at the Strait of Gibraltar yields an ensemble spread between simulations comparable to that determined by uncertainty in greenhouse gas emissions. We confirm the existence of a strong link between interannual and interdecadal variability observed in Venetian sea levels and in the large-scale atmospheric circulation over the North Atlantic during the cold semester, particularly with the North Atlantic Oscillation (about 46% of shared variability for the winter average time series in the period 1872-2019).

The review has highlighted a number of major gaps of knowledge as well. Among these: altimetry data are recorded rather far from Venice and may not represent the lagoon RSL variability; uncertainties in geologic trends remain difficult to assess; a reliable framework is lacking to combine uncertain future estimates of RSL change due to individual contributions, which provides for a major opportunity for progress to better constrained ranges of future projections; and historical evidence demonstrates that subsidence can be temporarily dominated by the anthropic component. This last point shows the importance of sustaining the management regime that brought this anthropogenic component under control across the lagoon, and possibly

ha eliminato: further uncertainty associated with

ha eliminato: different

ha eliminato: 100

ha eliminato: This

ha eliminato: s

ha eliminato: MSL

ha eliminato: to

ha eliminato: 10

ha eliminato: total

ha eliminato: by combining the estimates above

ha eliminato: from

ha eliminato: +17

ha eliminato: to +120

ha eliminato: by 2100

ha eliminato: aggravate

ha eliminato: in

ha eliminato: Ice-sheet melting provides a highly uncertain contribution: no mechanism has been identified capable of contrasting the impact on Venetian MSL of a large GMSL rise caused by the melting of Greenland and Antarctica; therefore, a high-end change, with RSL rise possibly exceeding 180 cm by 2100 is an unlikely but potential high-end change.

ha formattato: Colore carattere: Automatico

ha eliminato: Sea

ha eliminato: -

ha eliminato: rise

ha eliminato: winter

ha eliminato: January-March

strengthen it to bring the small-scale ongoing anthropic subsidence under control. Finally, whereas several studies explored scenarios of RSL changes in Venice at the end of the 21<sup>st</sup> century under global climate change, near-term and transient predictions have not been attempted yet, and high-end scenarios have not been a subject of explicit focus.

**Acknowledgments**

The authors want to thank the European Space Agency (ESA) that funded the Climate Change Initiative to produce a climate quality record of sea level from satellite altimetry. This work is partially funded by ESA under Phase 2 Bridging Phase to CCI (cont. 4000109872/13/I-NB – Contract Change Notice 6). The Centro Previsioni e Segnalazioni Maree of the Venice Municipality is acknowledged for providing the tide gauge data. Thanks are due to Francesco De Biasio (CNR-ISP) for the joint work during the CCI project. Wavelet coherence spectra are calculated using the cross wavelet and wavelet coherence package by Aslak Grinsted, John Moore and Svetlana Jevrejeva. Linear regressions are performed with the “regress” function of Matlab. The code to compute regional sea-level projections was formerly developed by Gonéri Le Cozannet. 20th Century Reanalysis V3 data provided by the NOAA/OAR/ESRL PSL, Boulder, Colorado, USA, from their Web site at <https://psl.noaa.gov/>. Scientific activity by DZ, AR and SR performed in the Research Programme Venezia2021, with the contribution of the Provveditorato for the Public Works of Veneto, Trentino Alto Adige and Friuli Venezia Giulia, provided through the concessionary of State Consorzio Venezia Nuova and coordinated by CORILA. GS is funded by a FFABR (Finanziamento delle Attività Base di Ricerca) grant of MIUR (Ministero dell’ Istruzione, dell’Università e della Ricerca)

**Author contribution**

DZ and SB coordinated the paper with help from FR. Specific contributions to the sections are as follows (LA = leading author, CA = contributing author). Section 1: LA: DZ; CA: SB. Section 2: LA: FR; CA: MT, SV, GW, SZ. Subsect. 2.1: LA: FR; CA: GW, SZ. Subsect. 2.2: LA: SV. Subsect. 2.3: LA: SZ; CA: FR, MT, SV, GW. Section 3: LA: SB; CA: FA, EC, GS, GW, SZ. Section 4: LA: DZ, FR. CA: PL. Section 5: LA: DZ, PL; CA: MT, GS, FA, AA, VF, AR, CF. Section 6: LA: DZ, PL; CA: RT, FR, SB, RJN. Section 7: LA: DZ; CA: SB, PL, RJN, CF. Section 8: LA: DZ, PL, RJN; CA: all authors. SR created figure 1, 8. DZ created figures 2,4,6,7, 9. SB created figure 5. SV created figure 3.

**Competing Interest**

The authors declare that they have no conflict of interest.

**References**

Ablain, M., Becker, M., Benveniste, J., Cazenave, A., Champollion, N., Ciccarelli, S., Jevrejeva, S., Le Cozannet, G., Nicoletta, L., Loisel, H. and others: White paper: Monitoring the evolution of coastal zones under various forcing factors using space-based observing systems, International Space Science Institute (ISS), Bern, Switzerland. [online] Available from: <https://hal-brgm.archives-ouvertes.fr/hal-01413107>, 2016.

ha eliminato: MSL

ha eliminato: 8

1580 Adloff, F., Somot, S., Sevault, F., Jordà, G., Aznar, R., Déqué, M., Herrmann, M., Marcos, M., Dubois, C., Padorno, E. and others: Mediterranean Sea response to climate change in an ensemble of twenty first century scenarios, *Climate Dynamics*, 45(9–10), 2775–2802, doi:10.1007/s00382-015-2507-3, 2015.

Adloff, F., Jordà, G., Somot, S., Sevault, F., Arsouze, T., Meyssignac, B., Li, L. and Planton, S.: Improving sea level simulation in Mediterranean regional climate models, *Climate dynamics*, 51(3), 1167–1178, doi:10.1007/s00382-017-3842-3, 2018.

1585 Alessio, S. M.: Digital signal processing and spectral analysis for scientists: concepts and applications, Springer., 2016.

Allen M. and Smith L.: Monte Carlo SSA: Detecting irregular oscillations in the presence of colored noise. *Journal of Climate*, 9(12): 3373–3404, 1996.

Amitai, Y., Ashkenazy, Y. and Gildor, H.: Multiple equilibria and overturning variability of the Aegean-Adriatic Seas, *Global and Planetary Change*, 151, 49–59, doi:10.1016/j.gloplacha.2016.05.004, 2017.

1590 Amorosi, A., Colalongo, M., Fiorini, F., Fusco, F., Pasini, G., Vaiani, S. and Sarti, G.: Palaeogeographic and palaeoclimatic evolution of the Po Plain from 150-ky core records, *Global and planetary Change*, 40(1–2), 55–78, doi:10.1016/S0921-8181(03)00098-5, 2004.

Androsov, A., Fofonova, V., Kuznetsov, I., Danilov, S., Rakowsky, N., Harig, S., Brix, H. and Wiltshire, K. H.: FESOM-C v. 2: coastal dynamics on hybrid unstructured meshes, *Geosci. Model Dev*, 12, 1009–1028, doi:10.5194/gmd-12-1009-2019, 2019.

1595 Antonioli, F., Ferranti, L., Fontana, A., Amorosi, A., Bondesan, A., Braitenberg, C., Dutton, A., Fontolan, G., Furlani, S., Lambeck, K. and others: Holocene relative sea-level changes and vertical movements along the Italian and Istrian coastlines, *Quaternary International*, 206(1–2), 102–133, doi:10.1016/j.quaint.2008.11.008, 2009.

Antonioli, F., Anzidei, M., Amorosi, A., Presti, V. L., Mastronuzzi, G., Deiana, G., De Falco, G., Fontana, A., Fontolan, G., Lisso, S. and others: Sea-level rise and potential drowning of the Italian coastal plains: Flooding risk scenarios for 2100, *Quaternary Science Reviews*, 158, 29–43, doi:10.1016/j.quascirev.2016.12.021, 2017.

Arca, S. and Beretta, G.: Prima sintesi geodetico-geologica sui movimenti verticali del suolo nell'Italia Settentrionale (1897-1957), *Bollettino di Geodesia e scienze affini*, 44(2), 125–156, 1985.

Armi, L. and Farmer, D. M.: The flow of Mediterranean water through the strait of Gibraltar. The flow of Atlantic water through the Strait of Gibraltar, *Progress in Oceanography*, 21(1), 1–105, 1988.

Artale, V., Calmanti, S., Malanotte-Rizzoli, P., Pisacane, G., Rupolo, V. and Tsimplis, M.: The Atlantic and Mediterranean Sea as connected systems, in P. Lionello, P., Malanotte-Rizzoli & R. Boscolo, *Mediterranean Climate Variability*, pp. 283–323, Elsevier, Amsterdam., 2006.

Artale, V., Calmanti, S., Carillo, A., Dell'Aquila, A., Herrmann, M., Pisacane, G., Ruti, P. M., Sannino, G., Struglia, M. V., Giorgi, F. and others: An atmosphere–ocean regional climate model for the Mediterranean area: assessment of a present climate simulation, *Climate Dynamics*, 35(5), 721–740, doi:10.1007/s00382-009-0691-8, 2010.

Bakker, A. M., Wong, T. E., Ruckert, K. L. and Keller, K.: Sea-level projections representing the deeply uncertain contribution of the West Antarctic ice sheet, *Scientific Reports*, 7(1), 3880, doi:10.1038/s41598-017-04134-5, 2017.

Barriopedro, D., García-Herrera, R., Lionello, P. and Pino, C.: A discussion of the links between solar variability and high-storm-surge events in Venice, *Journal of Geophysical Research: Atmospheres*, 115(D13), doi:10.1029/2009JD013114, 2010.

ha eliminato: 2015

Battistin, D. and Canestrelli, P.: 1872-2004: la serie storica delle maree a Venezia, [online] Available from: <https://www.comune.venezia.it/content/download-pubblicazioni> (Accessed 14 August 2019), 2006.

Benveniste, J., Cazenave, A., Vignudelli, S., Fenoglio-Marc, L., Shah, R., Almar, R., Andersen, O. B., Birol, F., Bonnefond, P., Bouffard, J. and others: Requirements for a coastal hazards observing system, *Frontiers in Marine Science*, 6, 348, doi:10.3389/fmars.2019.00348, 2019.

Birol, F., Fuller, N., Lyard, F., Cancet, M., Nino, F., Delebecque, C., Fleury, S., Toubanc, F., Melet, A., Saraceno, M. and others: Coastal applications from nadir altimetry: Example of the X-TRACK regional products, *Advances in Space Research*, 59(4), 936–953, doi:10.1016/j.asr.2016.11.005, 2017.

Blewitt, G., Hammond, W. C. and Kreemer, C.: Harnessing the GPS data explosion for interdisciplinary science, *Eos*, 99, 1–2, doi:10.1029/2018EO104623, 2018.

Bonaduce, A., Pinardi, N., Oddo, P., Spada, G. and Larnicol, G.: Sea-level variability in the Mediterranean Sea from altimetry and tide gauges, *Climate Dynamics*, 47(9–10), 2851–2866, doi:10.1007/s00382-016-3001-2, 2016.

Bondesan, M., Cibir, U., Colalongo, M., Pugliese, N., Stefani, M., Tsakiridis, E., Vaiani, S. and Vincenzi, S.: Benthic communities and sedimentary facies recording late Quaternary environmental fluctuations in a Po Delta subsurface succession (Northern Italy), in *Proceedings of the Second and Third Italian Meeting of Environmental Micropaleontology*, vol. 11, pp. 21–31, edited by: Coccioni, R., Lirer, F., Marsili, A., The Grzybowski Foundation Special Publication., 2006.

Bortolami, G., Carbognin, L. and Gatto, P.: The natural subsidence in the Lagoon of Venice, Italy, in *Proc. 3rd International Symp. on Land Subsidence*, IAHS Publ. vol. 151, pp. 777–784, edited by: Johnson, A.I., Carbognin, L., and Ubertini, L., Venice, Italy., 1985.

Brambati, A., Carbognin, L., Quaia, T., Teatini, P. and Tosi, L.: The Lagoon of Venice: geological setting, evolution and land subsidence, *Episodes*, 26(3), 264–268, doi:10.18814/epiugs/2003/v26i3/020, 2003.

Brandt, P., Rubino, A., Sein, D. V., Baschek, B., Izquierdo, A. and Backhaus, J. O.: Sea level variations in the western Mediterranean studied by a numerical tidal model of the Strait of Gibraltar, *Journal of physical oceanography*, 34(2), 433–443, doi:10.1175/1520-0485(2004)034<0433:SLVITW>2.0.CO;2, 2004.

Calafat, F. M., Chambers, D. P. and Tsimplis, M. N.: Mechanisms of decadal sea level variability in the eastern North Atlantic and the Mediterranean Sea, *Journal of Geophysical Research: Oceans*, 117(C9), doi:10.1029/2012JC008285, 2012.

Calafat, F. M., Avgoustoglou, E., Jordá, G., Flocas, H., Zodiatis, G., Tsimplis, M. and Kouroutzoglou, J.: The ability of a barotropic model to simulate sea level extremes of meteorological origin in the Mediterranean Sea, including those caused by explosive cyclones, *Journal of Geophysical Research*, 119(11), 7840–7853, doi:10.1002/2014JC010360, 2014.

Camuffo, D. and Sturaro, G.: Use of proxy-documentary and instrumental data to assess the risk factors leading to sea flooding in Venice, *Global and Planetary Change*, 40(1–2), 93–103, doi:10.1016/S0921-8181(03)00100-0, 2004.

Carbognin, L., Gatto, P., Mozzi, G., Gambolati, G. and Ricceri, G.: New trend in the subsidence of Venice, in *Proceedings of the Anaheim Symposium*, IAHS Publ. vol. 121, pp. 65–81, edited by: Rodda, J.C., 1976.

Carbognin, L., Tosi, L. and Teatini, P.: Analysis of actual land subsidence in Venice and its hinterland (Italy), in *Land Subsidence*, pp. 129–137, edited by Barends, F.B.J., Brouwer, F.J.J., and Schröder, F.H., Balkema, Rotterdam., 1995a.

ha eliminato:

ha eliminato:

- Carbognin, L., Marabini, F. and Tosi, L.: Land subsidence and degradation of the Venice littoral zone, Italy, in Proceedings of Fifth International Symposium on Land Subsidence-FISOLS, Hague., 1995b.
- Carbognin, L., Teatini, P. and Tosi, L.: Eustacy and land subsidence in the Venice Lagoon at the beginning of the new millennium, *Journal of Marine Systems*, 51(1–4), 345–353, doi:10.1016/j.jmarsys.2004.05.021, 2004.
- Carbognin, L., Teatini, P. and Tosi, L.: The impact of relative sea level rise on the Northern Adriatic Sea coast, Italy, *WIT Transactions on Ecology and the Environment*, 127(Brebbia, C.A., Jovanović, N., and Tiezzi, E. (Eds.), *Management of Natural Resources, Sustainable Development and Ecological Hazards II*), 137–148, doi:10.2495/RAV090121, 2009.
- Carbognin, L., Teatini, P., Tomasin, A. and Tosi, L.: Global change and relative sea level rise at Venice: what impact in term of flooding, *Climate Dynamics*, 35(6), 1039–1047, doi:10.1007/s00382-009-0617-5, 2010.
- Carillo, A., Sannino, G., Artale, V., Ruti, P., Calmanti, S. and Dell'Aquila, A.: Steric sea level rise over the Mediterranean Sea: present climate and scenario simulations, *Climate dynamics*, 39(9–10), 2167–2184, doi:10.1007/s00382-012-1369-1, 2012.
- Carminati, E. and Di Donato, G.: Separating natural and anthropogenic vertical movements in fast subsiding areas: the Po plain (N. Italy) case, *Geophysical Research Letters*, 26(15), 2291–2294, doi:10.1029/1999GL900518, 1999.
- Carminati, E., Doglioni, C. and Scrocca, D.: Apennines subduction-related subsidence of Venice (Italy), *Geophysical Research Letters*, 30(13), doi:10.1029/2003GL017001, 2003.
- Carminati, E., Enzi, S. and Camuffo, D.: A study on the effects of seismicity on subsidence in foreland basins: An application to the Venice area, *Global and Planetary Change*, 55(4), 237–250, doi:10.1016/j.gloplacha.2006.03.003, 2007.
- Cazenave, A., Hamlington, B., Horwath, M., Barletta, V. R., Benveniste, J., Chambers, D., Döll, P., Hogg, A. E., Legeais, J. F., Merrifield, M. and others: Observational requirements for long-term monitoring of the global mean sea level and its components over the altimetry era, *Frontiers in Marine Science*, 6(SEP), doi:10.3389/fmars.2019.00582, 2019.
- Carrère L., and Lyard F.: [Modeling the barotropic response of the global ocean to atmospheric wind and pressure forcing – comparisons with observations. \*Geophys Res Lett\* 30\(6\):1275.doi:10.1029/2002.003.](https://doi.org/10.1029/2002.003)
- Chen, C., Gao, G., Zhang, Y., Beardsley, R. C., Lai, Z., Qi, J. and Lin, H.: Circulation in the Arctic Ocean: Results from a high-resolution coupled ice-sea nested Global-FVCOM and Arctic-FVCOM system, *Progress in Oceanography*, 141, 60–80, doi:10.1016/j.pocean.2015.12.002, 2016.
- Church, J. A., Clark, P. U., Cazenave, A., Gregory, J. M., Jevrejeva, S., Levermann, A., Merrifield, M. A., Milne, G. A., Nerem, R. S., Nunn, P. D. and others: Sea level change, in *Climate Change 2013: The Physical Science Basis. Contribution of Working Group I to the Fifth Assessment Report of the Intergovernmental Panel on Climate Change* [Stocker, T.F., D. Qin, G.-K. Plattner, M. Tignor, S.K. Allen, J. Boschung, A. Nauels, Y. Xia, V. Bex and P.M. Midgley (eds.)], Cambridge University Press, Cambridge, United Kingdom and New York, NY, USA. [online] Available from: <http://drs.nio.org/drs/handle/2264/4605> (Accessed 13 October 2020), 2013.
- Cipollini, P., Vignudelli, S., Lyard, F. and Roblou, L.: 15 years of altimetry at various scales over the Mediterranean, in *Remote sensing of the European seas*, Barale, V., and Gade, M. (Eds.), pp. 295–306, Springer Netherlands, Dordrecht, doi: 10.1007/978-1-4020-6772-3\_22., 2008.

1690 Cipollini, P., Passaro, M. and Vignudelli, S.: Validation of Total Water Level Envelope data from the eSurge processor for  
Envisat in the North Adriatic Sea: Validation report, eSurge and eSurge Venice projects. [online] Available from:  
http://www.storm-surge.info/project-docs (Accessed 13 October 2020), 2013.

1695 Cipollini, P., Benveniste, J., Birol, F., Fernandes, M., Obligis, E., Passaro, M., Strub, P., Valladeau, G., Vignudelli, S. and  
Wlikin, J.: Satellite altimetry in coastal regions, in Satellite altimetry over oceans and land surfaces, Stammer, D., and  
Cazenave, A. (Eds.), Earth observation of global changes book series, p. 670, CRC Press Taylor & Francis, London, UK,  
doi:10.1201/9781315151779., 2017.

CNR: Relazione sul pozzo Venezia 1-CNR. 1a fase: Operazioni di cantiere e analisi delle carote. Laboratorio Dinamica Grandi  
Masse, Consiglio Nazionale delle Ricerche, Venice., 1971.

1700 Criado-Aldeanueva, F., Soto-Navarro, J., and Garcia-Lafuente, J.: Large-scale atmospheric forcing influencing the long-term  
variability of Mediterranean heat and freshwater budgets: Climatic Indices. Journal of Hydrometeorology, 15, 650–663,  
https://doi.org/10.1175/JHM-D-13-04.1, 2014.

Cuffaro, M., Riguzzi, F., Scrocca, D., Antonioli, F., Carminati, E., Livani, M. and Doglioni, C.: On the geodynamics of the  
northern Adriatic plate, Rendiconti Lincei, 21(1), 253–279, doi:10.1007/s12210-010-0098-9, 2010.

1705 Cusinato, E., Zanchettin, D., Sannino, G. and Rubino, A.: Mediterranean Thermohaline Response to Large-Scale Winter  
Atmospheric Forcing in a High-Resolution Ocean Model Simulation, PApGe, 175(11), 4083–4110, doi:10.1007/s00024-018-  
1859-0, 2018.

Dangendorf, S., Marcos, M., Wöppelmann, G., Conrad, C. P., Frederikse, T. and Riva, R.: Reassessment of 20th century global  
mean sea level rise, Proceedings of the National Academy of Sciences, 114(23), 5946–5951, doi:10.1073/pnas.1616007114,  
2017.

1710 DeConato, R. M. and Pollard, D.: Contribution of Antarctica to past and future sea-level rise, Nature, 531(7596), 591–597,  
doi:10.1038/nature17145, 2016.

De Biasio, F., Baldin, G., and Vignudelli, S.: Revisiting Vertical Land Motion and Sea Level Trends in the Northeastern  
Adriatic Sea Using Satellite Altimetry and Tide Gauge Data. Journal of Marine Science and Engineering, 8(11), 949, 2020.

1715 Dorigo, L.: Le osservazioni mareografiche in Laguna di Venezia, Ist. Veneto Sc., Lett. Arti, Commissione di studio dei  
provvedimenti per la conservazione e difesa della Laguna e della città di Venezia, Rapporti preliminari. [online] Available  
from: https://www.beic.it (Accessed 18 October 2019), 1961.

Edwards, T. L., Brandon, M. A., Durand, G., Edwards, N. R., Gollledge, N. R., Holden, P. B., Nias, I. J., Payne, A. J., Ritz, C.  
and Wernecke, A.: Revisiting Antarctic ice loss due to marine ice-cliff instability, Nature, 566(7742), 58–64,  
doi:10.1038/s41586-019-0901-4, 2019.

1720 Environment Agency: Policy paper: Thames Estuary 2100: 10-Year Review monitoring key findings. Environment Agency,  
UK. Downloadable at https://www.gov.uk/government/publications/thames-estuary-2100-te2100/thames-estuary\_2100-key-  
findings-from-the-monitoring-review (Accessed 23 March 2021). 2021.

Erkens, G., Bucx, T., Dam, R., De Lange, G. and Lambert, J.: Sinking coastal cities, Proceedings of the International  
Association of Hydrological Sciences, 372, 189, doi:10.5194/piahs-372-189-2015, 2015.

1725 ESA CCI: Sea Level Bridging Phase PART 2: VALIDATION. Technical Deliverable v 2.0 2017. [online] Available from:  
www.esa-sealevel-cci.org/webfm\_send/588 (Accessed 1 October 2019), 2019.

ha formattato: Inglese (Stati Uniti)

ha formattato: Inglese (Stati Uniti)

ha formattato: Inglese (Stati Uniti)

ha formattato: Inglese (Stati Uniti)

ha formattato: Inglese (Stati Uniti)

ha formattato: Inglese (Stati Uniti)

ha formattato: Inglese (Stati Uniti)

ha formattato: Inglese (Stati Uniti)

Codice campo modificato

ha formattato: Collegamento ipertestuale, Inglese (Regno Unito)

ha formattato: Inglese (Stati Uniti)

ha formattato: Inglese (Stati Uniti)

ha formattato: Italiano (Italia)

ha formattato: Inglese (Stati Uniti)

[Eyring, V., Bony, S., Meehl, G. A., Senior, C. A., Stevens, B., Stouffer, R. J., and Taylor, K. E.: Overview of the Coupled Model Intercomparison Project Phase 6 \(CMIP6\) experimental design and organization, \*Geosci. Model Dev.\*, 9, 1937–1958, doi:10.5194/gmd-9-1937-2016, 2016.](#)

Ezer, T., Haigh, I. D. and Woodworth, P. L.: Nonlinear sea-level trends and long-term variability on western European coasts, *Journal of Coastal Research*, 32(4), 744–755, doi:10.2112/JCOASTRES-D-15-00165.1, 2016.

Farrell, W. and Clark, J. A.: On postglacial sea level, *Geophysical Journal International*, 46(3), 647–667, doi:https://doi.org/10.1111/j.1365-246X.1976.tb01252.x, 1976.

Favero, V., Alberotanza, L. and Serandrei Barbero, R.: Aspetti paleoecologici, sedimentologici e geochimici dei sedimenti attraversati dal pozzo VE 1 bis CNR Laboratorio per lo Studio della Dinamica delle Grandi Masse, CNR Technical Report 63, Venice., 1973.

Fenoglio-Marc, L., Braitenberg, C. and Tunini, L.: Sea level variability and trends in the Adriatic Sea in 1993–2008 from tide gauges and satellite altimetry, *Physics and Chemistry of the Earth, Parts A/B/C*, 40, 47–58, doi:10.1016/j.pce.2011.05.014, 2012.

Fernandes, M. J. and Lázaro, C.: GPD+ wet tropospheric corrections for CryoSat-2 and GFO altimetry missions, *Remote Sensing*, 8(10), 851, doi:10.3390/rs8100851, 2016.

Ferranti, L., Antonioli, F., Mauz, B., Amorosi, A., Dai Pra, G., Mastronuzzi, G., Monaco, C., Orrù, P., Pappalardo, M., Radtke, U. and others: Markers of the last interglacial sea-level high stand along the coast of Italy: tectonic implications, *Quaternary international*, 145, 30–54, doi:10.1016/j.quaint.2005.07.009, 2006.

Ferrarin, C., Bellafore, D., Sannino, G., Bajo, M. and Umgiesser, G.: Tidal dynamics in the inter-connected Mediterranean, Marmara, Black and Azov seas, *Progress in Oceanography*, 161, 102–115, doi:10.1016/j.pcean.2018.02.006, 2018.

Flemming, N. C.: Predictions of relative coastal sea-level change in the Mediterranean based on archaeological, historical and tide-gauge data, in *Climate Change and the Mediterranean*, pp. 247–281, Edward Arnold, London., 1992.

Fontana, A., Vinci, G., Tasca, G., Mozzi, P., Vacchi, M., Bivi, G., Salvador, S., Rossato, S., Antonioli, F., Ascoli, A. and others: Lagoonal settlements and relative sea level during Bronze Age in Northern Adriatic: Geoarchaeological evidence and paleogeographic constraints, *Quaternary International*, 439, 17–36, doi:10.1016/j.quaint.2016.12.038, 2017.

Frederikse, T., Landerer, F., Caron, L., Adhikari, S., Parkes, D., Humphrey, V. W., Dangendorf, S., Hogarth, P., Zanna, L., Cheng, L. and others: The causes of sea-level rise since 1900, *Nature*, 584(7821), 393–397, doi:10.1038/s41586-020-2591-3, 2020.

Fu, L. L. and Cazenave, A. (eds): *Satellite altimetry and earth sciences: a handbook of techniques and applications*, Academic Press, London., 2001.

Fukumori, I., Menemenlis, D. and Lee, T.: A near-uniform basin-wide sea level fluctuation of the Mediterranean Sea, *Journal of Physical Oceanography*, 37(2), 338–358, doi:10.1175/JPO3016.1, 2007.

Galassi, G. and Spada, G.: Sea-level rise in the Mediterranean Sea by 2050: Roles of terrestrial ice melt, steric effects and glacial isostatic adjustment, *Global and Planetary Change*, 123, 55–66, doi:10.1016/j.gloplacha.2014.10.007, 2014.

Galloway, D. and Riley, F. S.: San Joaquin Valley, California, Land subsidence in the United States: US Geological Survey Circular, 1182, 23–34, 1999.

- Galloway, D. L., Erkens, G., Kuniansky, E. L. and Rowland, J. C.: Preface: Land subsidence processes, *Hydrogeology Journal*, 24(3), 547–550, doi:10.1007/s10040-016-1386-y, 2016.
- Gambolati, G. and Gatto, P.: Simulazione della subsidenza di Venezia, Venezia ei problemi dell’ambiente, 299–360, 1975.
- 1765 Gambolati, G., Gatto, P. and Freeze, R. A.: Mathematical simulation of the subsidence of Venice: 2. Results, *Water Resources Research*, 10(3), 563–577, doi:10.1029/WR010i003p00563, 1974.
- Gambolati, G., Teatini, P. and Ferronato, M.: Anthropogenic land subsidence, *Encyclopedia of Hydrological Sciences*, doi:10.1002/0470848944.hsa164b, 2006.
- 1770 García-Lafuente, J., Pozas, E. B., Garrido, J. C. S., Sannino, G. and Sammartino, S.: The interface mixing layer and the tidal dynamics at the eastern part of the Strait of Gibraltar, *Journal of Marine Systems*, 117, 31–42, doi:10.1016/j.jmarsys.2013.02.014, 2013.
- Gatto, P. and Carbognin, L.: The Lagoon of Venice: natural environmental trend and man-induced modification/La Lagune de Venise: l’évolution naturelle et les modifications humaines, *Hydrological Sciences Journal*, 26(4), 379–391, doi:10.1080/02626668109490902, 1981.
- 1775 Gómez-Enri, J., González, C., Passaro, M., Vignudelli, S., Álvarez, O., Cipollini, P., Mañanes, R., Bruno, M., López-Carmona, M. and Izquierdo, A.: Wind-induced cross-strait sea level variability in the Strait of Gibraltar from coastal altimetry and in-situ measurements, *Remote Sensing of Environment*, 221, 596–608, doi:10.1016/j.rse.2018.11.042, 2019.
- Gomis, D., Ruiz, S., Sotillo, M. G., Álvarez-Fanjul, E. and Terradas, J.: Low frequency Mediterranean sea level variability: the contribution of atmospheric pressure and wind, *Global and Planetary Change*, 63(2–3), 215–229, doi:10.1016/j.gloplacha.2008.06.005, 2008.
- 1780 [Good, S. A., Martin, M. J., and Rayner, N. A.: EN4: Quality controlled ocean temperature and salinity profiles and monthly objective analyses with uncertainty estimates. \*Journal of Geophysical Research: Oceans\*, 118\(12\), 6704–6716. <https://doi.org/10.1002/2013JC009067>, 2013](https://doi.org/10.1002/2013JC009067)
- Gregory, J. M., Griffies, S. M., Hughes, C. W., Lowe, J. A., Church, J. A., Fukimori, I., Gomez, N., Kopp, R. E., Landerer, F., Le Cozannet, G. and others: Concepts and terminology for sea level: mean, variability and change, both local and global, *Surveys in Geophysics*, 40(6), 1251–1289, doi:10.1007/s10712-019-09525-, 2019.
- 1785 Grinsted, A., Moore, J. C. and Jevrejeva, S.: Application of the cross wavelet transform and wavelet coherence to geophysical time series, *Nonlinear processes in geophysics*, 11(5/6), 561–566, doi:10.5194/npg-11-561-2004, 2004.
- Han, W., Stammer, D., Thompson, P., Ezer, T., Palanisamy, H., Zhang, X., Domingues, C. M., Zhang, L. and Yuan, D.: Impacts of basin-scale climate modes on coastal sea level: a review, *Surveys in geophysics*, 40(6), 1493–1541, doi:10.1007/s10712-019-09562-8, 2019.
- 1790 Hay, C. C., Morrow, E., Kopp, R. E. and Mitrovica, J. X.: Probabilistic reanalysis of twentieth-century sea-level rise, *Nature*, 517(7535), 481–484, doi:10.1038/nature14093, 2015.
- Hinkel, J., Church, J. A., Gregory, J. M., Lambert, E., Le Cozannet, G., Lowe, J., McInnes, K. L., Nicholls, R. J., van der Pol, T. D. and van de Wal, R.: Meeting user needs for sea level rise information: A decision analysis perspective, *Earth’s Future*, 7(3), 320–337, doi:10.1029/2018EF001071, 2019.
- 1795

Holt, J., Hyder, P., Ashworth, M., Harle, J., Hewitt, H. T., Liu, H., New, A. L., Pickles, S., Porter, A., Popova, E. and others: Prospects for improving the representation of coastal and shelf seas in global ocean models, *Geoscientific Model Development*, 10, 499–523, doi:10.5194/gmd-10-499-2017, 2017.

Ishii, M., Fukuda, Y., Hirahara, S., Yasui, S., Suzuki, T., and Sato, K.: Accuracy of Global Upper Ocean Heat Content Estimation Expected from Present Observational Data Sets. *SOLA*, 13(0), 163–167. <https://doi.org/10.2151/sola.2017-030>, 2017.

ISI (The International Statistical Institute): *The Oxford Dictionary of Statistical Terms*. Yadolah Dodge (ed.), Oxford University Press, Oxford, 506 pp, ISBN 0-19-850994-4, 2003.

JSPRA: Manuale di mareografia e linee guida per i processi di validazione dei dati mareografici, Manuali e linee guida 77/2012, ISBN 978-88-448-0532-6., 2012.

Jones, P., Jonsson, T. and Wheeler, D.: Extension to the North Atlantic Oscillation using early instrumental pressure observations from Gibraltar and South-West Iceland, *International Journal of climatology*, 17(13), 1433–1450, doi:10.1002/(SICI)1097-0088(19971115)17:13<1433::AID-JOC203>3.0.CO;2-P, 1997.

Jordà, G.: Detection time for global and regional sea level trends and accelerations, *Journal of Geophysical Research: Oceans*, 119(10), 7164–7174, doi:10.1002/2014JC010005, 2014.

Jordà, G. and Gomis, D.: On the interpretation of the steric and mass components of sea level variability: The case of the Mediterranean basin, *Journal of Geophysical Research: Oceans*, 118(2), 953–963, doi:10.1002/jgrc.20060, 2013.

Jordà, G., Gomis, D., Álvarez-Fanjul, E. and Somot, S.: Atmospheric contribution to Mediterranean and nearby Atlantic sea level variability under different climate change scenarios, *Global and Planetary Change*, 80, 198–214, doi:10.1016/j.gloplacha.2011.10.013, 2012a.

Jordà, G., Gomis, D. and Álvarez-Fanjul, E.: The VANI2-ERA hindcast of sea-level residuals: atmospheric forcing of sea-level variability in the Mediterranean Sea (1958-2008), *Scientia Marina*, 76(S1), 133–146, doi:10.3989/scimar.03612.19C, 2012b.

Josey, S. A., Somot, S., and Tsimplis, M.: Impacts of atmospheric modes of variability on Mediterranean Sea heat surface exchange. *Journal of Geophysical Research*, 116, C02032, <https://doi.org/10.1029/2010JC006685>, 2011.

Kent, D. V., Rio, D., Massari, F., Kukla, G. and Lanci, L.: Emergence of Venice during the Pleistocene, *Quaternary Science Reviews*, 21(14–15), 1719–1727, doi:10.1016/S0277-3791(01)00153-6, 2002.

King, M. A., Altamimi, Z., Boehm, J., Bos, M., Dach, R., Elosegui, P., Fund, F., Hernández-Pajares, M., Lavallee, D., Cerveira, P. J. M. and others: Improved constraints on models of glacial isostatic adjustment: a review of the contribution of ground-based geodetic observations, *Surveys in geophysics*, 31(5), 465–507, doi:10.1007/s10712-010-9100-4, 2010.

Kopp, R. E., Horton, R. M., Little, C. M., Mitrovica, J. X., Oppenheimer, M., Rasmussen, D. J., Strauss, B. H., and Tebaldi, C.: Probabilistic 21st and 22nd century sea level projections at a global network of tide-gauge sites. *Earth's Future*, 2(8), 383–406, <https://doi.org/10.1002/2014EF000239>, 2014.

Kopp, R. E., DeConto, R. M., Bader, D. A., Hay, C. C., Horton, R. M., Kulp, S., Oppenheimer, M., Pollard, D. and Strauss, B. H.: Evolving understanding of Antarctic ice-sheet physics and ambiguity in probabilistic sea-level projections, *Earth's Future*, 5(12), 1217–1233, doi:10.1002/2017EF000663, 2017.

Formattato: Bibliografia

ha eliminato: ¶

Codice campo modificato

Formattato: Normale

ha eliminato: ¶

1835

Lambeck, K., Antonioli, F., Purcell, A. and Silenzi, S.: Sea-level change along the Italian coast for the past 10,000 yr, *Quaternary Science Reviews*, 23(14–15), 1567–1598, doi:10.1016/j.quascirev.2004.02.009, 2004.

Lambeck, K., Antonioli, F., Anzidei, M., Ferranti, L., Leoni, G., Scicchitano, G. and Silenzi, S.: Sea level change along the Italian coast during the Holocene and projections for the future, *Quaternary International*, 232(1–2), 250–257, doi:10.1016/j.quaint.2010.04.026, 2011.

1840

Landerer, F. W. and Volkov, D. L.: The anatomy of recent large sea level fluctuations in the Mediterranean Sea, *Geophysical Research Letters*, 40(3), 553–557, doi:10.1002/grl.50140, 2013.

Legeais, J.-F., Ablain, M., Zawadzki, L., Zuo, H., Johannessen, J. A., Scharffenberg, M. G., Fenoglio-Marc, L., Fernandes, M. J., Andersen, O. B., Rudenko, S. and others: An improved and homogeneous altimeter sea level record from the ESA Climate Change Initiative, *Earth System Science Data*, 10(1), 281–301, doi:10.5194/essd-10-281-2018, 2018.

1845

Lezziero, A.: Indagini paleoambientali nel sottosuolo dell’isola di Burano, *Quaderni di Insula*, 10, Venezia63-70, 2002.

Lionello, P.: Extreme storm surges in the gulf of venice: Present and future climate, edited by C. A. Fletcher and T. Spencer, *Flooding and Environmental Challenges for Venice and its Lagoon: State of Knowledge.*, 59–69, 2005.

Lionello, P., Barriopedro, D., Ferrarin, C., Orlic, M., Raichich, F., Reale, M., Umgiesser, G., Voudoukas, M. I. and Zanchettin, D.: Extremes floods of Venice: characteristics, dynamics, past and future evolution, *Nat. Haz. Eart. Sys. Sc.*, (this issue), 2020b.

Lionello, P., Nicholls, R. J., Umgiessere, G. and Zanchettin, D.: Venice flooding and sea level: past evolution, present issues and future projections. *Nat. Haz. Eart. Sys. Sc.*, (this issue), 2020a.

Magrini, G. P., De Marchi, L. and Gnesotto, T.: Impianti mareografici eseguiti, *Ricerche Lagunari*, Ferrari, Venezia. [online] Available from: <https://www.beic.it> (Accessed 14 August 2019), 1908.

1855

Marcos, M. and Tsimplis, M. N.: Coastal sea level trends in Southern Europe, *Geophysical Journal International*, 175(1), 70–82, doi:10.1111/j.1365-246X.2008.03892.x, 2008.

Marcos, M., Jordà, G. and Le Cozannet, G.: Sea level rise and its impacts on the Mediterranean, in *The Mediterranean Region Under Climate Change*, Eds: J.-P. Moatti, S. Thiébaud, IRD Edition, pp. 265–275, doi:10.4000/books.irdeditions.22908., 2016.

1860

Mariotti, A. and Dell’Aquila, A.: Decadal climate variability in the Mediterranean region: roles of large-scale forcings and regional processes, *Climate Dynamics*, 38(5–6), 1129–1145, doi:10.1007/s00382-011-1056-7, 2012.

[Marshall, J., Y. Kushnir, D. Battisti, P. Chang, A. Czaja, R. Dickson, J. Hurrell, M. McCartney, R. Saravanan, and M. Visbeck: North Atlantic climate variability: Phenomena, impacts and mechanisms, \*International J. Climatology\*, 21, 1863–1898, doi:10.1002/joc.693, 2001.](#)

1865

[Marti, F., et al.: Altimetry-based sea level trends along the coasts of western Africa. \*Advances in Space Research\*, doi: 10.1016/j.asr.2019.05.033, 2019.](#)

Martínez-Asensio, A., Marcos, M., Tsimplis, M. N., Gomis, D., Josey, S. and Jordà, G.: Impact of the atmospheric climate modes on Mediterranean sea level variability, *Global and Planetary Change*, 118, 1–15, doi:10.1016/j.gloplacha.2014.03.007, 2014.

ha formattato: Inglese (Stati Uniti)

ha formattato: Inglese (Stati Uniti)

1870 Martínez-Asensio, A., Tsimplis, M. N. and Calafat, F. M.: Decadal variability of European sea level extremes in relation to the solar activity, *Geophysical Research Letters*, 43(22), 11–744, doi:10.1002/2016GL071355, 2016.

Maslova, V. N., Voskresenskaya, E. N. and Lubkov, A. S.: Multidecadal change of winter cyclonic activity in the Mediterranean associated with AMO and PDO., *Terrestrial, Atmospheric & Oceanic Sciences*, 28(6), doi:10.3319/TAO.2017.04.23.01, 2017.

1875 Massari, F., Rio, D., Barbero, R. S., Asioli, A., Capraro, L., Fornaciari, E. and Vergerio, P.: The environment of Venice area in the past two million years, *Palaeogeography, Palaeoclimatology, Palaeoecology*, 202(3–4), 273–308, doi:10.1016/S0031-0182(03)00640-0, 2004.

Melini, D. and Spada, G.: Some remarks on Glacial Isostatic Adjustment modelling uncertainties, *Geophysical Journal International*, 218(1), 401–413, doi:10.1093/gji/ggz158, 2019.

1880 Menemenlis, D., Fukumori, I. and Lee, T.: Atlantic to Mediterranean sea level difference driven by winds near Gibraltar Strait, *Journal of physical oceanography*, 37(2), 359–376, doi:10.1175/JPO3015.1, 2007.

Milne, G. A., Gehrels, W. R., Hughes, C. W. and Tamisiea, M. E.: Identifying the causes of sea-level change, *Nature Geoscience*, 2(7), 471–478, doi:10.1038/ngeo544, 2009.

Mitrovica, J. X., Gomez, N. and Clark, P. U.: The sea-level fingerprint of West Antarctic collapse, *Science*, 323(5915), 753–753, doi:10.1126/science.1166510, 2009.

1885 Naranjo, C., Garcia-Lafuente, J., Sannino, G. and Sanchez-Garrido, J.: How much do tides affect the circulation of the Mediterranean Sea? From local processes in the Strait of Gibraltar to basin-scale effects, *Progress in Oceanography*, 127, 108–116, doi:10.1016/j.pocean.2014.06.005, 2014.

Nicholls, R. J., Hanson, S. E., Lowe, J. A., Warrick, R. A., Lu, X. and Long, A. J.: Sea-level scenarios for evaluating coastal impacts, *Wiley Interdisciplinary Reviews: Climate Change*, 5(1), 129–150, doi:10.1002/wcc.253, 2014.

1890 Nicholls, R. J., Hanson, S. E., Lowe, A. B. A., J. A. Slangen, Wahl, T., Hinkel, J. and Long, A. J.: Integrating new sea-level scenarios into coastal risk and adaptation assessments: an on-going process, *WIREs Clim Change*, <https://doi.org/10.1002/wcc.706>, 2021.

1895 Oppenheimer, M., Glavovic, B., Hinkel, J., van de Wal, R., Magnan, A. K., Abd-Elgawad, A., Cai, R., Cifuentes-Jara, M., Deconto, R. M., Ghosh, T. and others: Sea level rise and implications for low lying islands, coasts and communities, in Pörtner, H.-O. et al. (eds), *IPCC Special Report on the Ocean and Cryosphere in a Changing Climate*, Cambridge University Press, Cambridge, UK., 2019.

1900 Palma, M., Iacono, R., Sannino, G., Bargagli, A., Carillo, A., Fekete, B. M., Lombardi, E., Napolitano, E., Pisacane, G. and Struglia, M. V.: Short-term, linear, and non-linear local effects of the tides on the surface dynamics in a new, high-resolution model of the Mediterranean Sea circulation, *Ocean Dynamics*, doi:10.1007/s10236-020-01364-6, 2020.

Passaro, M., Cipollini, P., Vignudelli, S., Quartly, G. D. and Snaith, H. M.: ALES: A multi-mission adaptive subwaveform retracker for coastal and open ocean altimetry, *Remote Sensing of Environment*, 145, 173–189, doi:10.1016/j.rse.2014.02.008, 2014.

Peltier, W. R.: Global glacial isostasy and the surface of the ice-age Earth: the ICE-5G (VM2) model and GRACE, *Annu. Rev. Earth Planet. Sci.*, 32, 111–149, doi:10.1146/annurev.earth.32.082503.144359, 2004.

ha eliminato: 2020.

Formattato: Normale

ha eliminato: ¶

- Piecuch, C. G., Dangendorf, S., Gawarkiewicz, G. G., Little, C. M., Ponte, R. M., and Yang, J.: How is New England coastal sea level related to the Atlantic meridional overturning circulation at 26 N? *Geophysical Research Letters*, 2019GL083073, <https://doi.org/10.1029/2019GL083073>, 2019.
- Pirazzoli, P. A.: Sea level changes. The last 2000 years, John Wiley & Sons, Chichester., 1996.
- Pisacane, G., Artale, V., Calmanti, S. and Rupolo, V.: Decadal oscillations in the Mediterranean Sea: a result of the overturning circulation variability in the eastern basin?, *Climate Research*, 31(2–3), 257–271, doi:10.3354/cr031257, 2006.
- Polli, S.: Il graduale aumento del livello del mare lungo le coste italiane, *Geofisica pura e applicata*, 25(1), 123–129, doi:10.1007/BF02014061, 1953.
- Polyakov, I. V., Pnyushkov, A. V. and Timokhov, L. A.: Warming of the Intermediate Atlantic Water of the Arctic Ocean in the 2000s, *Journal of Climate*, 25(23), 8362–8370, doi:10.1175/JCLI-D-12-00266.1, 2012.
- Ponte, Rui M., Carson, Mark, Cirano, Mauro, Domingues, Catia M., Jevrejeva, Svetlana, Marcos, Marta, Mitchum, Gary, van de Wal, R. S.W., Woodworth, Philip L., Ablain, Michaël, Arduin, Fabrice, Ballu, Valérie, Becker, Mélanie, Benveniste, Jérôme, Birol, Florence, Bradshaw, Elizabeth, Cazenave, Anny, De Mey-Frémaux, P., Durand, Fabien, Ezer, Tal, Fu, Lee Lueng, Fukumori, Ichiro, Gordon, Kathy, Gravelle, Médéric, Griffies, Stephen M., Han, Weiqing, Hibbert, Angela, Hughes, Chris W., Idier, Déborah, Kourafalou, Villy H., Little, Christopher M., Matthews, Andrew, Melet, Angélique, Merrifield, Mark, Meyssignac, Benoit, Minobe, Shoshiro, Penduff, Thierry, Picot, Nicolas, Piecuch, Christopher, Ray, Richard D., Rickards, Lesley, Santamaría-Gómez, Alvaro, Stammer, Detlef, Staneva, Joanna, Testut, Laurent, Thompson, Keith, Thompson, Philip, Vignudelli, Stefano, Williams, Joanne, Simon, Simon D., Wöppelmann, Guy, Zanna, Laure and Zhang, Xuebin: Towards comprehensive observing and modeling systems for monitoring and predicting regional to coastal sea level, *Frontiers in Marine Science*, 6(OceanObs'19 Community White Paper, *Frontiers in Marine Science Journal*, Specialty Section 'Coastal Ocean Processes'), 2019.
- Pugh, D. T.: Tides, surges and mean sea level, p. 472, John Wiley & Sons., 1987.
- Quartly, G. D., Legeais, J.-F., Ablain, M., Zawadzki, L., Fernandes, M. J., Rudenko, S., Carrère, L., García, P. N., Cipollini, P., Andersen, O. B. and others: A new phase in the production of quality-controlled sea level data, *Earth System Science Data*, 9, 557–572, doi:10.5194/essd-9-557-2017, 2017.
- Ranger, N., Reeder, T. and Lowe, J.: Addressing “deep” uncertainty over long-term climate in major infrastructure projects: four innovations of the Thames Estuary 2100 Project, *EURO Journal on Decision Processes*, 1(3–4), 233–262, doi:10.1007/s40070-013-0014-5, 2013.
- Rocco, F. V.: Sea level trends in the Mediterranean from tide gauges and satellite altimetry, Doctoral dissertation, Alma Mater Studiorum, University of Bologna., 2015.
- Roy, K. and Peltier, W. R.: Relative sea level in the Western Mediterranean basin: a regional test of the ICE-7G\_NA (VM7) model and a constraint on late Holocene Antarctic deglaciation, *Quaternary Science Reviews*, 183, 76–87, doi:10.1016/j.quascirev.2017.12.021, 2018.
- Rubino, A., Zanchettin, D., Androsov, A. and Voltzinger, N. E.: Tidal Records as Liquid Climate Archives for Large-Scale Interior Mediterranean Variability, *Scientific reports*, 8(1), 1–8, doi:10.1038/s41598-018-30930-8, 2018.
- Rusconi, A.: Il Comune Marino a Venezia: ricerche e ipotesi sulle sue variazioni altimetriche e sui fenomeni naturali che le determinano, in *Venice, Uff. Idrografico Magistrato Acque, Pubbl.*, vol. 157, p. 39, Venice, Italy., 1983.

1945 Salvioni, G.: I movimenti del suolo nell'Italia centro-settentrionale, *Bollettino di geodesia e scienze affini*, 16(3), 325–366, 1957.

Sánchez, L., Völksen, C., Sokolov, A., Arenz, H. and Seitz, F.: Present-day surface deformation of the Alpine region inferred from geodetic techniques, *Earth System Science Data*, 10(3), 1503–1526, doi:10.5194/essd-10-1503-2018, 2018.

1950 Sannino, G., Pratt, L. and Carillo, A.: Hydraulic criticality of the exchange flow through the Strait of Gibraltar, *Journal of Physical Oceanography*, 39(11), 2779–2799, doi:10.1175/2009JPO4075.1, 2009.

Sannino, G., Carillo, A., Pisacane, G. and Naranjo, C.: On the relevance of tidal forcing in modelling the Mediterranean thermohaline circulation, *Progress in Oceanography*, 134, 304–329, doi:10.1016/j.pocean.2015.03.002, 2015.

1955 Santamaría-Gómez, A., Gravelle, M., Dangendorf, S., Marcos, M., Spada, G. and Wöppelmann, G.: Uncertainty of the 20th century sea-level rise due to vertical land motion errors, *Earth and Planetary Science Letters*, 473, 24–32, doi:10.1016/j.epsl.2017.05.038, 2017.

Scafetta, N.: Multi-scale dynamical analysis (MSDA) of sea level records versus PDO, AMO, and NAO indexes, *Climate dynamics*, 43(1–2), 175–192, doi:10.1007/s00382-013-1771-3, 2014.

Scarascia, L. and Lionello, P.: Global and regional factors contributing to the past and future sea level rise in the Northern Adriatic Sea, *Global and planetary change*, 106, 51–63, doi:10.1016/j.gloplacha.2013.03.004, 2013.

1960 Scharroo, R., Leuliette, E., Lillibridge, J., Byrne, D., Naeije, M. and Mitchum, G.: RADS: Consistent Multi-Mission Products, in *Proceedings of the Symposium on 20 Years of Progress in Radar Altimetry*, 24–29 September 2012, vol. Special Publication SP-710, p. 69, European Space Agency, Venice, Italy., 2013.

Sein, D. V., Mikolajewicz, U., Gröger, M., Fast, I., Cabos, W., Pinto, J. G., Hagemann, S., Semmler, T., Izquierdo, A. and Jacob, D.: Regionally coupled atmosphere-ocean-sea ice-marine biogeochemistry model ROM: 1. Description and validation, *Journal of Advances in Modeling Earth Systems*, 7(1), 268–304, doi:10.1002/2014MS000357, 2015.

1965 Serandrei Barbero, R., Lezziero, A., Albani, A. and Zoppi, U.: Depositi tardo-pleistocenici ed olocenici nel sottosuolo veneziano: paleoambienti e cronologia, *Il Quaternario*, 14(1), 9–22, 2001.

1970 [Simoncelli, S., Fratianni, C., Pinardi, N., Grandi, A., Drudi, M., Oddo, P., and Dobricic, S.: Mediterranean Sea physical reanalysis \(MEDREA 1987-2015\) \(Version 1\). Copernicus Monitoring Environment Marine Service \(CMEMS\), doi: https://doi.org/10.25423/medsea\\_reanalysis\\_phys\\_006\\_004\\_2014.](#)

[Slangen, A. B. A., Katsman, C. A., van de Wal, R. S. W., Vermeersen, L. L. A., and Riva, R. E. M.: Towards regional projections of twenty-first century sea-level change based on IPCC SRES scenarios. \*Climate Dynamics\*, 38\(5–6\), 1191–1209. https://doi.org/10.1007/s00382-011-1057-6, 2012.](#)

1975 Slangen, A., Carson, M., Katsman, C., Van de Wal, R., Köhl, A., Vermeersen, L. and Stammer, D.: Projecting twenty-first century regional sea-level changes, *Climatic Change*, 124(1–2), 317–332, doi:10.1007/s10584-014-1080-9, 2014.

Slangen, A., Adloff, F., Jevrejeva, S., Leclercq, P., Marzeion, B., Wada, Y. and Winkelman, R.: A review of recent updates of sea-level projections at global and regional scales, *Surveys in Geophysics*, 38(1), 385–406, doi:10.1007/s10712-016-9374-2, 2017.

1980 Slangen, A. B., Church, J. A., Agosta, C., Fettweis, X., Marzeion, B. and Richter, K.: Anthropogenic forcing dominates global mean sea-level rise since 1970, *Nature Climate Change*, 6(7), 701–705, doi:10.1038/nclimate2991, 2016.

ha formattato: Italiano (Italia)

ha formattato: Inglese (Stati Uniti)

ha formattato: Inglese (Stati Uniti)

ha formattato: Inglese (Stati Uniti)

Codice campo modificato

ha formattato: Inglese (Stati Uniti)

ha formattato: Inglese (Stati Uniti)

ha formattato: Inglese (Stati Uniti)

- 1985 [Slivinski, L. C., Compo, G. P., Whitaker, J. S., Sardeshmukh, P. D., Giese, B. S., McColl, C., Allan, R., Yin, X., Vose, R., Titchner, H., Kennedy, J., Spencer, L. J., Ashcroft, L., Brönnimann, S., Brunet, M., Camuffo, D., Cornes, R., Cram, T. A., Crouthamel, R., Domínguez-Castro, F., Freeman, J. E., Gergis, J., Hawkins, E., Jones, P. D., Jourdain, S., Kaplan, A., Kubota, H., Le Blancq, F., Lee, T., Lorrey, A., Luterbacher, J., Maugeri, M., Mock, C. J., Moore, G. K., Przybylak, R., Pudmenzky, C., Reason, C., Slonosky, V. C., Smith, C., Tinz, B., Trewin, B., Valente, M. A., Wang, X. L., Wilkinson, C., Wood, K. and Wyszyński, P.: Towards a more reliable historical reanalysis: Improvements for version 3 of the Twentieth Century Reanalysis system. \*Q J R Meteorological Society\*, doi:10.1002/qj.3598, 2019.](#)
- 1990 Somot, S., Sevault, F., Déqué, M. and Crépon, M.: 21st century climate change scenario for the Mediterranean using a coupled atmosphere–ocean regional climate model, *Global and Planetary Change*, 63(2–3), 112–126, doi:10.1016/j.gloplacha.2007.10.003, 2008.
- Spada, G.: Glacial isostatic adjustment and contemporary sea level rise: An overview, *Surveys in Geophysics*, 38(1), 153–185, doi:10.1007/s10712-016-9379-x, 2017.
- Spada, G. and Melini, D.: On Some Properties of the Glacial Isostatic Adjustment Fingerprints, *Water*, 11(9), 1844, doi:10.3390/w11091844, 2019.
- 1995 Spada, G., Stocchi, P. and Colleoni, F.: Glacio–isostatic adjustment in the po plain and in the northern adriatic region, *Pure and Applied Geophysics*, 166(8–9), 1303–1318, doi:10.1007/s00024-004-0498-9, 2009.
- Spada, G., Bamber, J. and Hurkmans, R.: The gravitationally consistent sea-level fingerprint of future terrestrial ice loss, *Geophysical Research Letters*, 40(3), 482–486, doi:10.1029/2012GL053000, 2013.
- Stammer, D. and Cazenave, A.: *Satellite altimetry over oceans and land surfaces*, CRC Press., 2017.
- 2000 Stocchi, P. and Spada, G.: Influence of glacial isostatic adjustment upon current sea level variations in the Mediterranean, *Tectonophysics*, 474(1–2), 56–68, doi:10.1016/j.tecto.2009.01.003, 2009.
- Stocchi, P., Spada, G. and Cianetti, S.: Isostatic rebound following the Alpine deglaciation: impact on the sea level variations and vertical movements in the Mediterranean region, *Geophysical Journal International*, 162(1), 137–147, doi:10.1111/j.1365-246X.2005.02653.x, 2005.
- 2005 Tambroni, N. and Seminara, G.: Are inlets responsible for the morphological degradation of Venice Lagoon?, *Journal of Geophysical Research: Earth Surface*, 111(F3), doi:10.1029/2005JF000334, 2006.
- Teatini, P., Ferronato, M., Gambolati, G., Bertoni, W. and Gonella, M.: A century of land subsidence in Ravenna, Italy, *Environmental Geology*, 47(6), 831–846, doi:10.1007/s00254-004-1215-9, 2005.
- 2010 Teatini, P., Tosi, L., Strozzi, T., Carbognin, L., Cecconi, G., Rosselli, R. and Libardo, S.: Resolving land subsidence within the Venice Lagoon by persistent scatterer SAR interferometry, *Physics and Chemistry of the Earth, Parts A/B/C*, 40, 72–79, doi:10.1016/j.pce.2010.01.002, 2012.
- Thiéblemont, R., Le Cozannet, G., Toimil, A., Meyssignac, B. and Losada, I. J.: Likely and High-End Impacts of Regional Sea-Level Rise on the Shoreline Change of European Sandy Coasts Under a High Greenhouse Gas Emissions Scenario, *Water*, 11(12), 2607, doi:10.3390/w11122607, 2019.
- 2015 Torge, W. and Müller, J.: *Geodesy*, Walter de Gruyter, Berlin, Germany., 1980.

- Tosi, L., Teatini, P., Carbognin, L. and Brancolini, G.: Using high resolution data to reveal depth-dependent mechanisms that drive land subsidence: The Venice coast, Italy, *Tectonophysics*, 1(474), 271–284, doi:10.1016/j.tecto.2009.02.026, 2009.
- Tosi, L., Teatini, P., Strozzi, T., Carbognin, L., Brancolini, G. and Rizzetto, F.: Ground surface dynamics in the northern Adriatic coastland over the last two decades, *Rendiconti Lincei*, 21(1), 115–129, doi:10.1007/s12210-010-0084-2, 2010.
- 2020 Tosi, L., Teatini, P. and Strozzi, T.: Natural versus anthropogenic subsidence of Venice, *Scientific reports*, 3, 2710, doi:10.1038/srep02710, 2013.
- Tosi, L., Lio, C. D., Teatini, P. and Strozzi, T.: Land subsidence in coastal environments: knowledge advance in the Venice Coastland by TerraSAR-X PSI, *Remote Sensing*, 10(8), 1191, doi:10.3390/rs10081191, 2018.
- 2025 Troccoli, A., Zambon, F., Hodges, K. I. and Marani, M.: Storm surge frequency reduction in Venice under climate change, *Climatic change*, 113(3–4), 1065–1079, doi:10.1007/s10584-011-0093-x, 2012.
- Tsimplis, M., Álvarez-Fanjul, E., Gomis, D., Fenoglio-Marc, L. and Pérez, B.: Mediterranean sea level trends: atmospheric pressure and wind contribution, *Geophysical Research Letters*, 32(20), doi:10.1029/2005GL023867, 2005.
- Tsimplis, M., Shaw, A., Flather, R. and Woolf, D.: The influence of the North Atlantic Oscillation on the sea-level around the northern European coasts reconsidered: the thermosteric effects, *Philosophical Transactions of the Royal Society A: Mathematical, Physical and Engineering Sciences*, 364(1841), 845–856, doi:10.1098/rsta.2006.1740, 2006.
- 2030 Tsimplis, M., Calafat, F. M., Marcos, M., Jordá, G., Gomis, D., Fenoglio-Marc, L., Struglia, M., Josey, S. A. and Chambers, D.: The effect of the NAO on sea level and on mass changes in the Mediterranean Sea, *Journal of Geophysical Research: Oceans*, 118(2), 944–952, doi:10.1002/jgrc.20078, 2013.
- 2035 Tsimplis, M. N. and Baker, T. F.: Sea level drop in the Mediterranean Sea: an indicator of deep water salinity and temperature changes?, *Geophysical Research Letters*, 27(12), 1731–1734, doi:10.1029/1999GL007004, 2000.
- Tsimplis, M. N. and Shaw, A. G.: The forcing of mean sea level variability around Europe, *Global and Planetary Change*, 63(2–3), 196–202, doi:10.1016/j.gloplacha.2007.08.018, 2008.
- Tsimplis, M. N., Marcos, M. and Somot, S.: 21st century Mediterranean sea level rise: steric and atmospheric pressure contributions from a regional model, *Global and Planetary Change*, 63(2–3), 105–111, doi:10.1016/j.gloplacha.2007.09.006, 2008.
- 2040 Turuncoglu, U. U. and Sannino, G.: Validation of newly designed regional earth system model (RegESM) for Mediterranean Basin, *Climate dynamics*, 48(9–10), 2919–2947, doi:10.1007/s00382-016-3241-1, 2017.
- 2045 Umgiesser, G., Bajo, M., Ferrarin, C., Cucco, A., Lionello, P., Zanchettin, D., Papa, A., Tosoni, A., Ferla, M., Coraci, E., Morucci, S., Bonometto, A., Valentini, A., Orlic, M., Haigh, I. D., Nielsen, J. W., Bertin, X., Bustorff Fortunato, A., Fanjul, E. A., Pérez Gómez, B., Paradis, D., Jourdan, D., Pasquet, A., Baptiste Mourre, B. and Tintoré, J.: The prediction of floods in Venice: methods, models and uncertainty. *Nat. Haz. Eart. Sys. Sc.*, this issue, 2020
- UNESCO 2020: General Concepts, UNESCO Land Subsidence International Initiative. [online] Available from: <https://www.landsubsidence-unesco.org/general-concepts/> (Accessed 27 July 2020), 2020.
- 2050 Vecchio, A., Anzidei, M., Serpelloni, E. and Florindo, F.: Natural Variability and Vertical Land Motion Contributions in the Mediterranean Sea-Level Records over the Last Two Centuries and Projections for 2100, *Water*, 11(7), 1480, doi:10.3390/w11071480, 2019.

Vignudelli, S.: Analysis of ERS-1 altimeter collinear passes in the Mediterranean Sea during 1992-1993, *International Journal of Remote Sensing*, 18(3), 573–601, doi:10.1080/014311697218953, 1997.

2055 Vignudelli, S., Kostianoy, A. G., Cipollini, P. and Benveniste, J. (Eds.): Coastal altimetry, Springer Science & Business Media, Springer-Verlag Berlin Heidelberg, doi:10.1007/978-3-642-12796-0., 2011.

Vignudelli, S., Birol, F., Benveniste, J., Fu, L.-L., Picot, N., Raynal, M. and Roinard, H.: Satellite altimetry measurements of sea level in the coastal zone, *Surveys in Geophysics*, 40(6), 1319–1349, doi:10.1007/s10712-019-09569-1, 2019a.

Vignudelli, S., De Biasio, F., Scozzari, A., Zecchetto, S. and Papa, A.: Sea level trends and variability in the Adriatic Sea and around Venice, in *Fiducial Reference Measurements for Altimetry*, pp. 65–74, Springer., 2019b.

2060 Volkov, D. L., Baringer, M., Smeed, D., Johns, W. and Landerer, F. W.: Teleconnection between the Atlantic meridional overturning circulation and sea level in the Mediterranean Sea, *Journal of Climate*, 32(3), 935–955, doi:10.1175/JCLI-D-18-0474.1, 2019.

Whitehouse, P. L.: Glacial isostatic adjustment modelling: historical perspectives, recent advances, and future directions., *Earth surface dynamics.*, 6(2), 401–429, doi:10.5194/esurf-6-401-2018, 2018.

2065 Williams, S. D.: CATS: GPS coordinate time series analysis software, *GPS solutions*, 12(2), 147–153, doi:10.1007/s10291-007-0086-4, 2008.

Woodworth, P. L.: Differences between mean tide level and mean sea level, *Journal of Geodesy*, 91(1), 69–90, doi:10.1007/s00190-016-0938-1, 2017.

2070 Woodworth, P. L., Pouvreau, N., and Wöppelmann, G.: The gyre-scale circulation of the North Atlantic and sea level at Brest. *Ocean Science*, 6(1), 185–190, <https://doi.org/10.5194/os-6-185-2010>, 2010.

Wöppelmann, G. and Marcos, M.: Coastal sea level rise in southern Europe and the nonclimate contribution of vertical land motion, *Journal of Geophysical Research: Oceans*, 117(C1), doi:10.1029/2011JC007469, 2012.

Wöppelmann, G. and Marcos, M.: Vertical land motion as a key to understanding sea level change and variability, *Reviews of Geophysics*, 54(1), 64–92, doi:10.1002/2015RG000502, 2016.

2075 Wöppelmann, G., Zerbini, S. and Marcos, M.: Tide gauges and Geodesy: a secular synergy illustrated by three present-day case studies, *Comptes Rendus Geoscience*, 338(14–15), 980–991, doi:10.1016/j.crte.2006.07.006, 2006.

Wöppelmann, G., Marcos, M., Coulomb, A., Míguez, B. M., Bonnetain, P., Boucher, C., Gravelle, M., Simon, B. and Tiphaneau, P.: Rescue of the historical sea level record of Marseille (France) from 1885 to 1988 and its extension back to 1849–1851, *Journal of Geodesy*, 88(9), 869–885, doi:10.1007/s00190-014-0728-6, 2014.

2080 Zanchettin, D.: Aerosol and solar irradiance effects on decadal climate variability and predictability, *Current Climate Change Reports*, 3(2), 150–162, doi:10.1007/s40641-017-0065-y, 2017.

Zanchettin, D., Bothe, O., Rubino, A., and Jungclaus, J. H.: Multi-model ensemble analysis of Pacific and Atlantic SST variability in unperturbed climate simulations. *Clim. Dyn.*, 47(3), 1073–1090, doi:10.1007/s00382-015-2889-2, 2016.

Zanchettin, D., Rubino, A., Traverso, P., and Tomasino, M.: Impact of variations in solar activity on hydrological decadal patterns in northern Italy, *J. Geophys. Res.*, 113, D12102, doi:10.1029/2007JD009157, 2008.

2085

ha eliminato: ¶

Formattato: Normale

ha eliminato: ¶

ha formattato: Inglese (Regno Unito)

ha formattato: Inglese (Stati Uniti)

ha formattato: Inglese (Stati Uniti)

2090 Zanchettin, D., Rubino, A., Traverso, P. and Tomasino, M.: Teleconnections force interannual-to-decadal tidal variability in the Lagoon of Venice (northern Adriatic), *Journal of Geophysical Research: Atmospheres*, 114(D7), doi:10.1029/2008JD011485, 2009.

| [Zanna, L., Khatiwala, S., Gregory, J. M., Ison, J., and Heimbach, P.: Global reconstruction of historical ocean heat storage and transport. \*Proceedings of the National Academy of Sciences\*, 201808838, <https://doi.org/10.1073/pnas.1808838115>, 2019](https://doi.org/10.1073/pnas.1808838115)

2095 Zerbini, S., Raicich, F., Prati, C. M., Bruni, S., Del Conte, S., Errico, M. and Santi, E.: Sea-level change in the Northern Mediterranean Sea from long-period tide gauge time series, *Earth-Science Reviews*, 167, 72–87, doi:10.1016/j.earscirev.2017.02.009, 2017.

Zeza, F.: The sedimentary structure of Upper Pleistocene–Holocene deposits in Venice and its effects on the stability of the historic centre, *Rendiconti Lincei*, 21(1), 211–227, doi:10.1007/s12210-010-0089-x, 2010.

2100

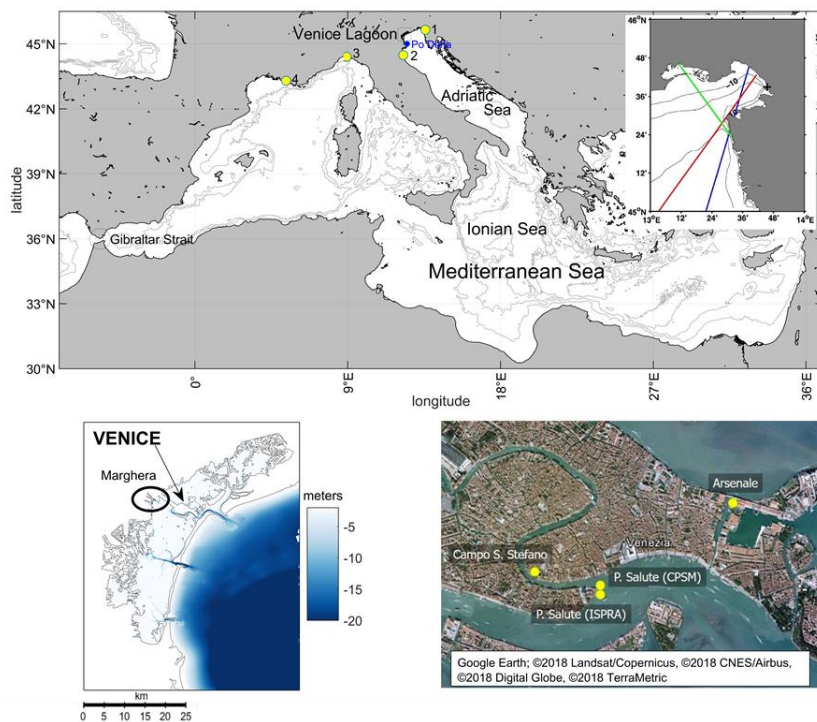
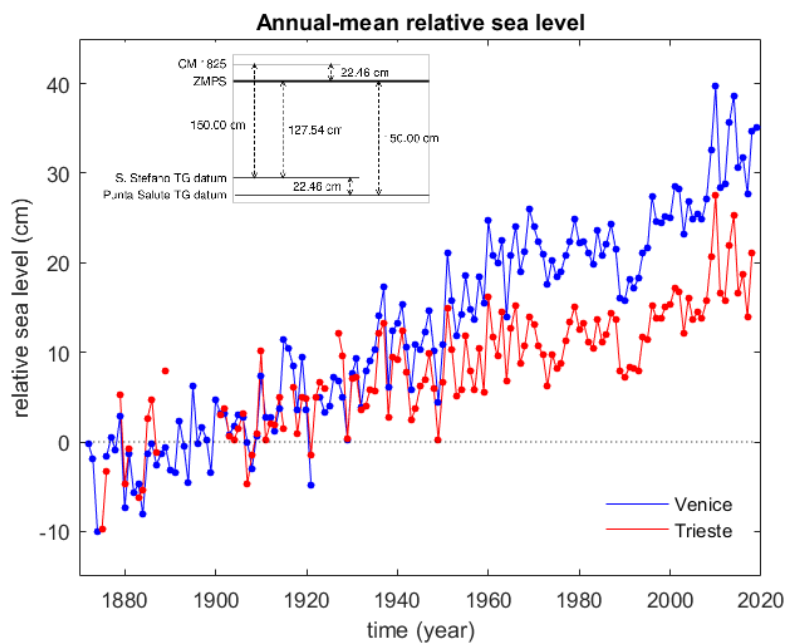


Figure 1: Maps of the study area and major locations and geographical features mentioned in the paper. Top: the Mediterranean Sea (main panel) and satellite altimetry tracks over the northern Adriatic Sea (blue: Envisat 416; red: Jason1-151; green: Jason2-196) (inset); bottom left: the Venice Lagoon; bottom right: the historical city of Venice. Tide gauge stations are indicated with yellow dots (1-Trieste, 2-Marina di Ravenna, 3-Genoa, 4-Marseille). The map for bottom right panel is extracted from Google Earth; ©2018 Landsat/Copernicus, ©2018 CNES/Airbus, ©2018 Digital Globe, ©2018 TerraMetric.

ha eliminato: Map



2115 **Figure 2:** Time series of annual-mean RSL measured by tide gauges in Venice and Trieste. Venice data are referred to ZMPS, Trieste data are offset for illustrative purposes. The top-left inset defines the reference planes of the tide gauges at Santo Stefano and Punta della Salute (redrawn from Battistin and Canestrelli, 2006).

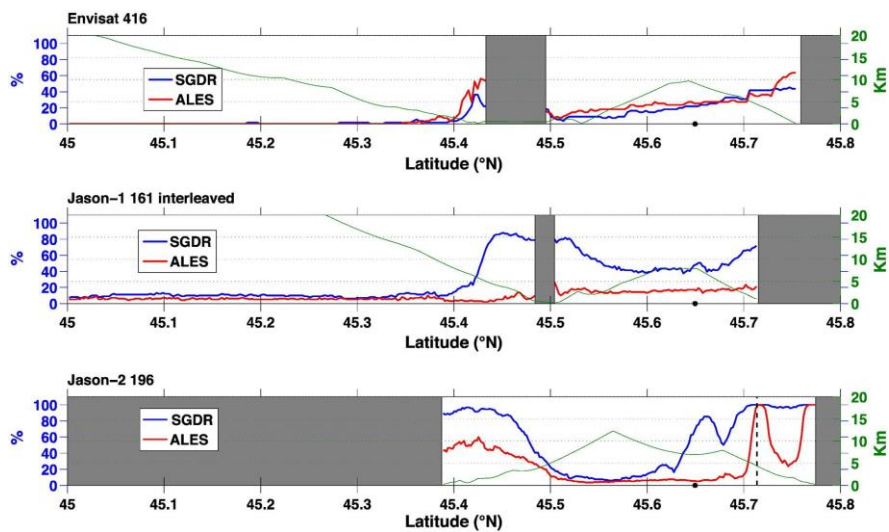


Figure 3: Percentage of outliers along track for Envisat track 416 (top right panel), Jason-1 track 161 (mid right panel) and Jason-2 track 196 (bottom right panel) from SGDR (blue line) and ALES (red line) products. Land is shaded in grey. The green line represents the distance from the closest coast (adapted from Passaro et al., 2014).

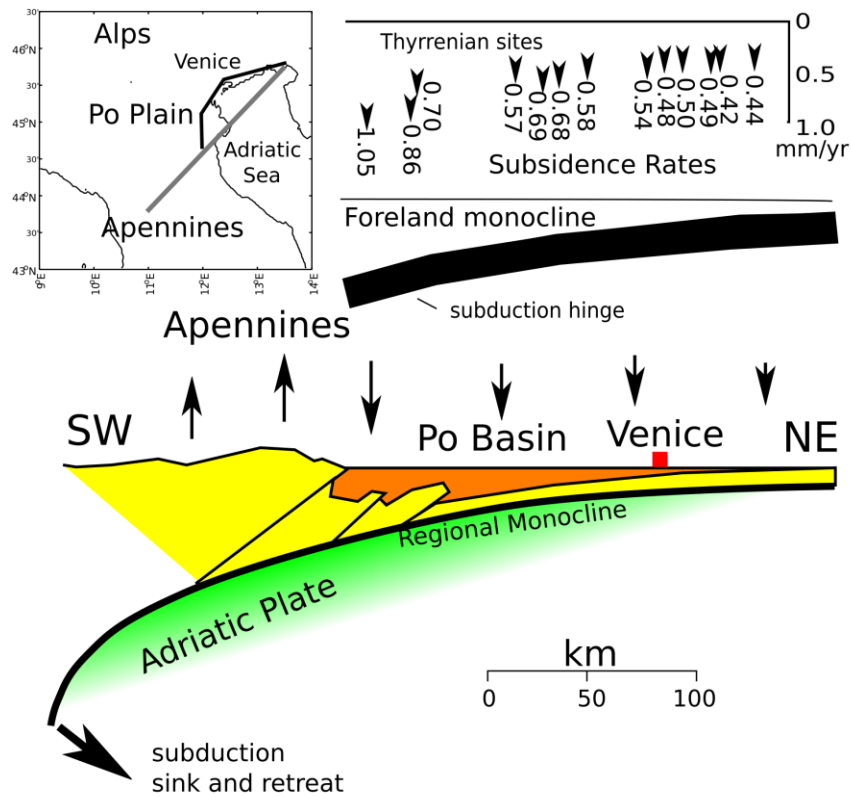
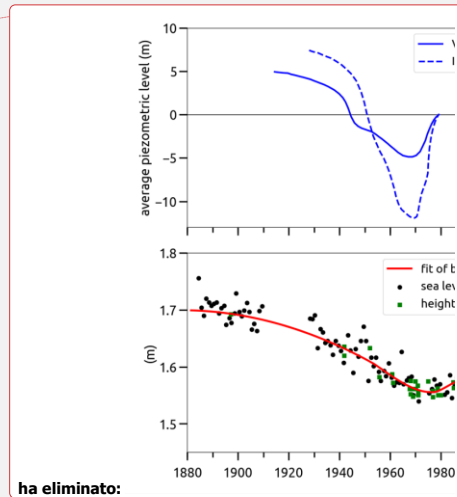
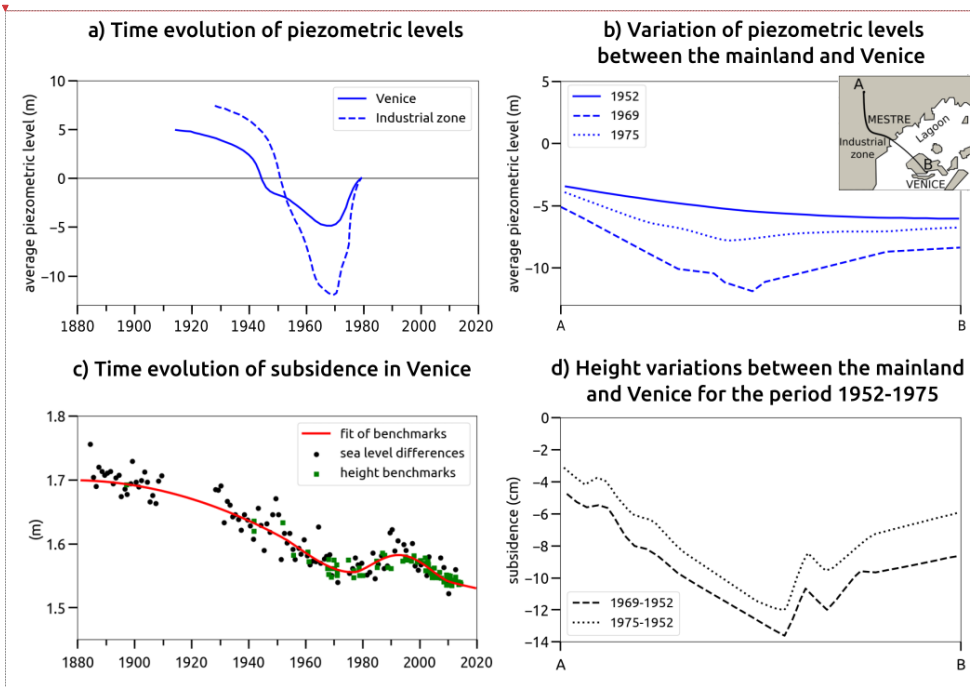


Figure 4: Geological setting of the Po plain area with dominant tectonic features (adapted from Cuffaro et al., 2010).



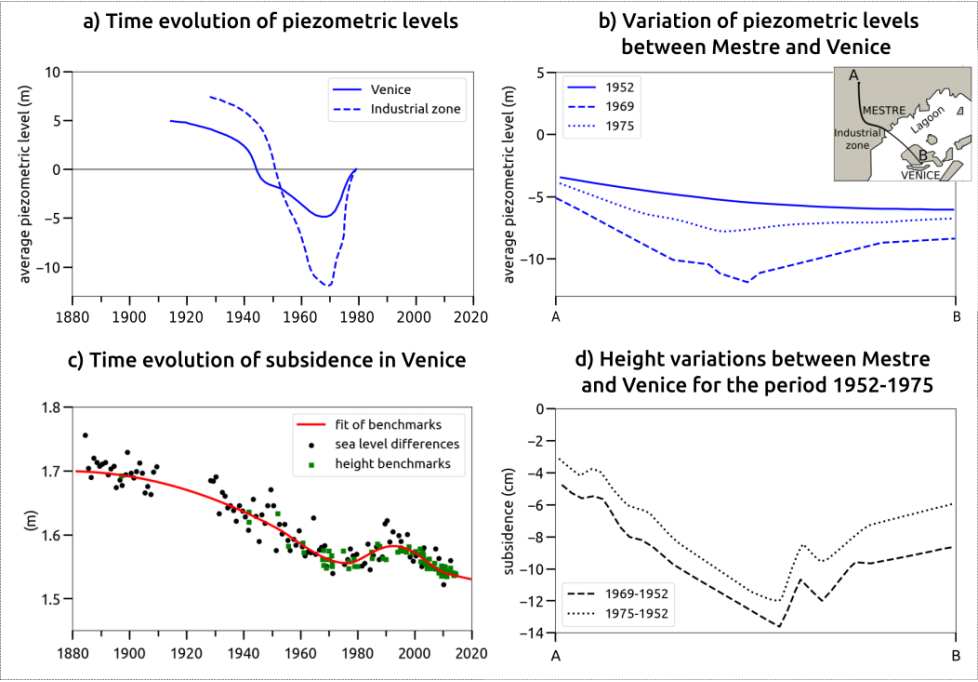


Figure 5: (a) Comparison of the piezometric level in the Marghera industrial area and in Venice from 1910 to 1980, (redrawn after Gatto and Carbognin, 1981); (b) Average piezometric level between 1952 and 1975 along a levelling line from the mainland to Venice, (redrawn after Carbognin et al., 1976). (c) Empirical curve (red line) accounting for subsidence in Venice (updated from Zerbini et al., 2017; from 2013 onward, the subsidence trend shown in the figure is the one derived from the GPS data of the station PSAL, see Table 3). Black dots represent the annual sea level difference between Genoa and Venice. Green dots represent the height of various benchmarks; (d) same as (b) but for land subsidence. Height differences were estimated by means of 3 levelling campaigns performed in 1952, 1969 and 1975, respectively. Note the rebound observed in the early 1970s, in correspondence with the partial recovery of the aquifer.

- ha eliminato: .
- ha eliminato: R
- ha eliminato: (
- ha eliminato: :
- ha eliminato: recovery and rebound
- ha eliminato: Other symbols

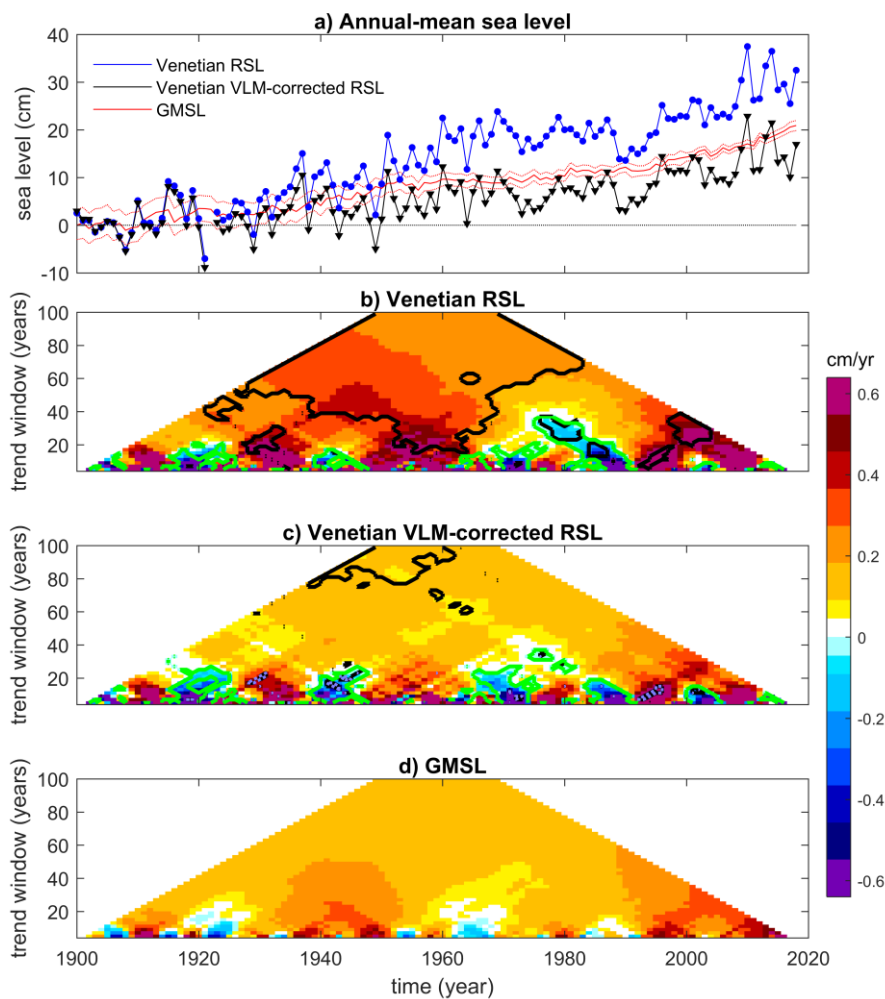
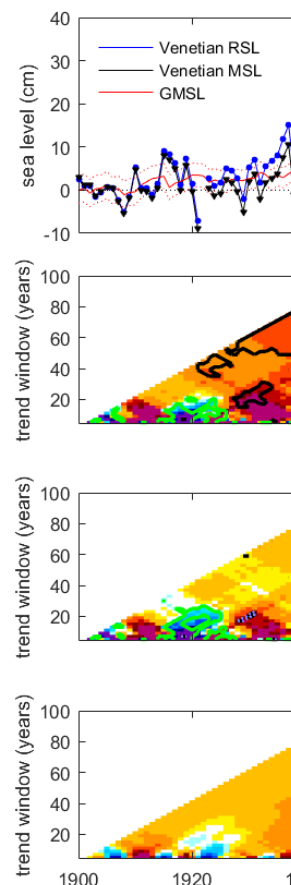


Figure 6: Comparison between trend estimates of GMSL and Venetian sea levels (RSL and VLM-corrected RSL). (a) Temporal evolution of annual-mean sea levels, including GMSL (from Frederikse et al., 2020; dashed lines are upper and lower estimates) and



ha eliminato:

ha eliminato: MSL

Venetian RSL and **VLM-corrected RSL**. All anomalies with respect to the 1900-1910 mean. (b-d) Maps illustrating linear sea-level trends, estimated via linear regression, for running windows of variable width along the observation period. In panels b and c, **black** contours illustrate where the GMSL and Venetian **sea-level** trend estimates do not overlap within 95% confidence intervals **obtained from the linear regression**, while green contours indicate where they differ in the sign.

- ha eliminato: MSL (i.e.,
- ha eliminato: with subsidence removed)
- ha eliminato: Black
- ha eliminato: RSL/MSL

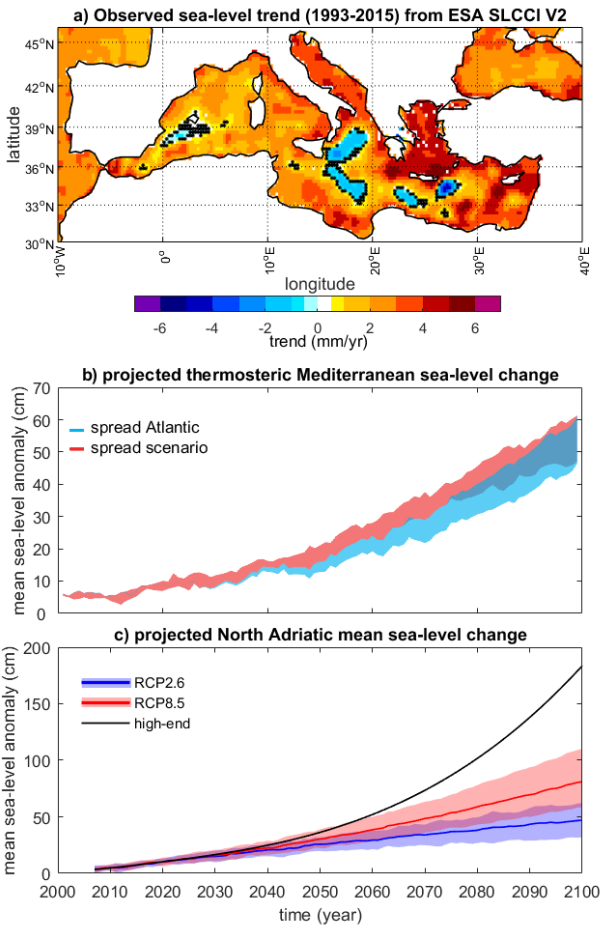


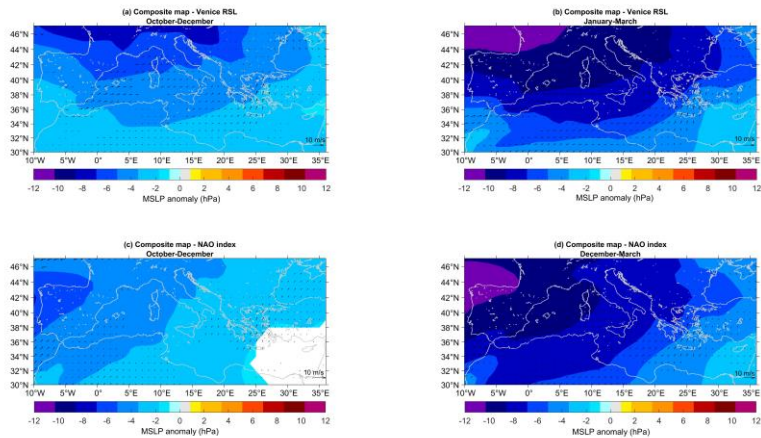
Figure 7: Observed and projected trends of Mediterranean ~~sea~~-level variations. (a) Sea-level trends in the Mediterranean Sea obtained using the ESA SLCCI V2 product over the period 1993-2015. Dots indicate grid points where the trend is not different from zero within the associated error range, **estimated as the 90% confidence interval from linear least-squares regression analysis**.

- ha eliminato: sea

2160

2165

(b) Projected thermosteric basin-average sea-level anomalies for the Mediterranean Sea and associated uncertainties related to the Atlantic hydrographic boundary conditions (blue) and to the socio-economic scenarios based on the Special Report on Emissions Scenarios (red) with the regional ocean model NEMOMED8, for the 2000-2100 period (vs. 1961-1990). Uncertainties are the spread among the simulations with only differing Atlantic boundary conditions (blue) and the spread among the simulations with differing socio-economic scenarios (red). Adapted from Slangen et al., (2016). (c) Projected Northern Adriatic RSL anomalies and associated uncertainties related to socio-economic scenarios (shading: 5-95 percentile range, line: median). See main text for details on the calculation of uncertainties. Adapted from Thiéblemont et al. (2019).



**Figure 8:** Composite analyses of autumn (OND, panels a,c) and winter (JFM, panels b,d) reanalysed sea-level pressure (shading) and 10-meter wind (arrows) around Venetian sea-level (a,b) and NAO anomalies (c,d). Composite years are determined based on detrended seasonal values of Venetian VLM-corrected RSL (second order polynomial trend) and of the Jones' NAO index (linear trend) below the 10<sup>th</sup> percentile and above the 90<sup>th</sup> percentile. Shown differences are for high minus low sea level (a,b) and for negative minus positive NAO (c,d). Analysis is for the period 1872-2015 and for linearly detrended sea-level pressure and wind data. Only grid points where differences are significant at 90% confidence according to the Wilcoxon rank test are shown.

2170

ha eliminato: (

ha eliminato: ,

Formattato: Didascalia

ha formattato: Apice

ha formattato: Apice

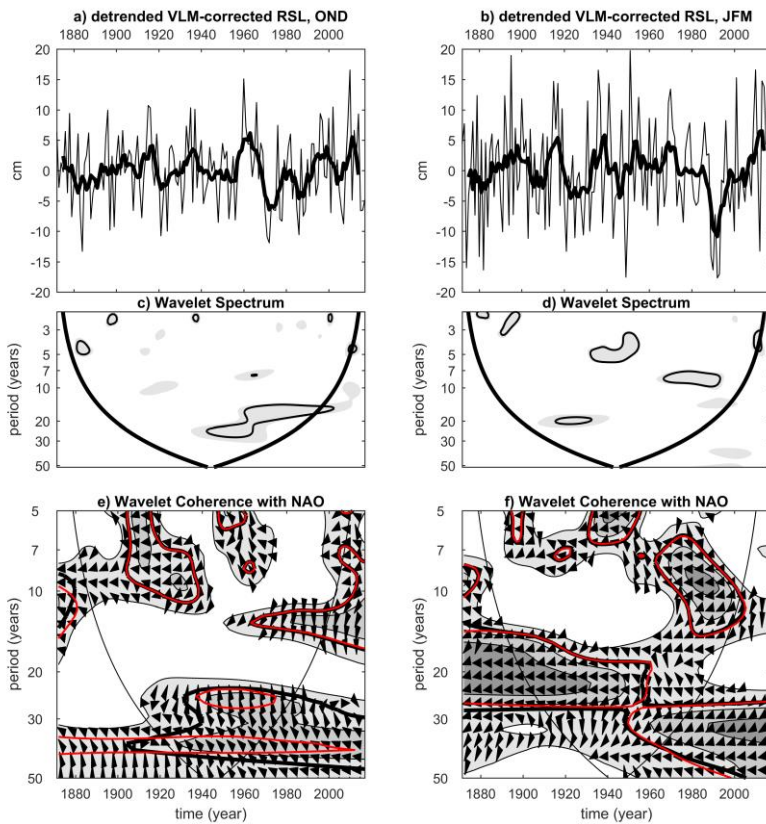
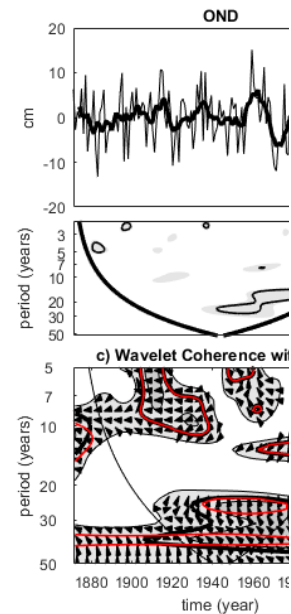


Figure 2: Interannual to interdecadal autumn (left) and winter (right) Venetian sea-level variability since 1872 and its link with the NAO. a,b: detrended (second order polynomial fit) autumn and winter time series of the VLM-corrected RSL from the Punta della Salute gauge record (VLM estimated from Zerbini et al., 2017); c,d: Continuous Wavelet Spectra. Shading (thick black contour) is the portion of the wavelet spectrum exceeding 90% (95%) confidence against red noise (lag-1 autoregressive model) hypothesis (see Grinsted et al., 2004, for details); black lines: cone of influence where edge effects occur; e,f: wavelet coherence spectra between Punta della Salute data and the Jones NAO index (arrows indicate the phase, with co-phase pointing to the right; thick black contour: 95% confidence, in red for Punta della Salute RSL data without removal of VLM and detrended as in the main analysis; black lines: cone of influence).



ha eliminato:

ha eliminato: 8...: Interannual to interdecadal winter ...utumn (left) and autumn ...inter (right) Venetian sea-level relative sea level... variability since 1872 and its link with the NAO. Top...: b: detrended (second order polynomial fit) autumn and winter time series of the VLM-corrected RSL from the Punta della Salute gauge record, after removal of subsidence... (VLM estimated Zerbini et al., (...017); Mid...: d: Continuous Wavelet Spectrum... spectra. (...hading (thick black contour) is the portion of the wavelet spectrum exceeding 90% (95%) confidence against red noise (lag-1 autoregressive model) hypothesis (see Grinsted et al., 2004, for details) shading: 90% confidence; black contour 95% confidence... black lines: cone of influence where edge effects occur)... Bottom...: f: wavelet coherence spectrum between Punta della Salute data and the Jones NAO index (arrows indicate the phase, with co-phase pointing to the right; thick black contour: 95% confidence, in red for Punta della Salute RSL data without removal of subsidence... LM and... detrended as in the main analysis;

2230

2235

Table 1 - List of acronyms used in the paper.

BP	Before Present
O	Order of
NAO	North Atlantic Oscillation
RSL	Relative Sea Level
EAWR	East Atlantic Western Russia pattern
SCA	Scandinavian pattern
GIA	Glacial Isostatic Adjustment
<u>GSL</u>	<u>Geocentric Sea Level</u>
CM	Comune Marino/Comune Alta Marea
MTL	Mean Tide Level
<u>GMSL</u>	<u>Global-Mean Sea Level</u>
ZMPS	Zero Mareografico Punta Salute
ALES	Adaptive Leading Edge Subwaveform
RMS	Root Mean Square
RADS	Radar Altimeter Database System
ESA - SLCCI	European Space Agency - Sea Level Climate Change Initiative

ha eliminato: /MSL

ha eliminato: /Mean

CTOH	Centre of Topography of the Oceans and the Hydrosphere
SHYFEM	Shallow water HYdrodynamic Finite Element Model
AIC	Akaike Information Criterion
FPE	Final Prediction Error

Table 2 Time evolution of the natural component of land subsidence in the Venetian region over geological time scales

Period	Subsidence rate [mm/yr]	Data source	Reference(s)
Last 2 Myr	~0.5	Nannofossil biostratigraphy, paleomagnetic polarity, magnetic susceptibility and sedimentologic facies of a drilled core	Kent et al., 2002
Last 1.43 Myr	0.7-1.0	Thickness of Pleistocene sediments from seismic lines and boreholes	Carminati et al., 2003
Last 125 kyr	0.58-0.69	MIS 5.5 paralic deposits in drilled cores	Antonioli et al., 2009
Last 40 kyr	1.2-1.3	Radiocarbon dating on organic remains, mainly peats and shells	Bortolami et al., 1985
4-5 kyr	1	Same as previous line	Bortolami et al., 1985

2245

1.1±0.3	Geomorphological and archaeological markers	Antonioli et al., 2009 (From their Table 1: average of H/G values for sites 17, 27 and 30 ). Original data from Antonioli et al. (2009); Lezziero (2002); Serandrei Barbero et al. (2001);
---------	---------------------------------------------	--------------------------------------------------------------------------------------------------------------------------------------------------------------------------------------------

2250

Table 3 - Recent evolution of land subsidence in the historical city center of Venice as measured using geodetic techniques. Tosi et al. (2013) point out that the uncertainties associated with their SAR estimates represent the ground motion variability at the city scale and are not related to the measurement accuracy.

Period	Subsidence rate [mm/year]	Data source	Reference(s)
At the turn of the 19 <sup>th</sup> and 20 <sup>th</sup> Century	0.9	Long-term interpolation of height benchmarks	Zerbini et al., 2017
1931-1970	2.3	Difference of tide gauge records (with reference to Trieste)	Carbognin et al., 2004
	2.3	Long-term interpolation of height benchmarks	Zerbini et al., 2017
1953-1973	5	leveling	Gatto and Carbognin, 1981
1973-1993	-0.02 (uplift)	leveling	Carbognin et al., 1995a, 1995b
1992-2002	0.8±0.7	SAR	Tosi et al., 2013

2003-2010	1.0±0.7	SAR	Tosi et al., 2013
2008-2020	1.7±0.5	GPS station VEN1 (Riva dei Sette Martiri)	daily solutions provided by NGL (Blewitt et al., 2018); velocity estimated assuming a white + power- law noise model of a priori unknown spectral index (CATS Software, Williams, 2008) (consistent with Santamaría-Gómez et al., 2017)
2014-2020	0.9±0.6	GPS station PSAL (Punta della Salute)	daily solutions provided by NGL (Blewitt et al., 2018); velocity estimated assuming a white + power- law noise model of a priori unknown spectral index (CATS Software, Williams, 2008)

2255

Table 4 - Linear trends of Venice RSL from tide gauge measurements estimated by various authors in the last 15 years. Errors are STD (68% confidence) except where noted in the Confidence column. The linear fit of observed sea level is used except where annotated. Estimates are grouped based on the period of analysis: long-term and satellite altimetry period.

Period	Source	Trend (mm yr <sup>-1</sup> )	Confidence	Notes
Long-term				
1909-2000	Marcos and Tsimplis, (2008)	2.5±0.1		
	Wöppelmann and Marcos, (2012)	2.45±0.09		
1914-2000	Vecchio et al., 2019	2.43±0.23	90%	
		2.78±0.04		trend derived from fit using straight line plus Empirical Mode Decomposition components
1872-2019	this study	2.53 ± 0.14	95%	deseasoned data
Altimetry period				
1993-2015	Vignudelli et al. (2019b)	6.29±1.53	99%	Punta della Salute tide-gauge data
		5.29±1.27	99%	Punta della Salute tide-gauge data with IBE correction
1993-2019	this study	5.01±1.75	95%	deseasoned data

ha eliminato: tide

ha eliminato:

Table 5 - Linear trends of Venetian sea level from tide gauge data (VLM-corrected RSL) and from satellite altimetry (GSL) estimated by various authors in the last 15 years. Errors are STD (68% confidence) except where noted in the Confidence column. The linear fit of observed sea level is used except.

Period	Source	Trend (mm/year)	Confidence	Notes
Long-term				
1890-2007	Carbognin et al. (2010)	1.20 ± 0.01		deseasoned data
1872-2012	Zerbini et al. (2017)	1.23±0.15	95%	deseasoned data
1934-2012		1.20±0.35	95%	deseasoned data
1905-2005	Scarascia and Lionello (2013)	1.3	N.A.	comparison among adriatic tide gauges
1872-2019	this study: <del>VLM-corrected tide-gauge data; subsidence estimated after Zerbini et al. (2017), updated to 2019</del>	1.23 ± 0.13	95%	deseasoned data
Altimetry period				
1993-2008	Fenoglio-Marc et al., 2012a	5.9±1.4	95%	altimetry data with dynamic atmospheric correction
		5.6±1.6	95%	<del>tide-gauge</del> data with dynamic atmospheric correction
1993-2015	Vignudelli et al. (2019b)	4.25±1.25	99%	altimetry point near Venice, IBE removal
1993-2019	this study	2.76 ± 1.75	95%	<del>VLM-corrected</del> deseasoned <del>tide-gauge</del> data

ha eliminato: ic

ha eliminato: MSL

ha eliminato: after removal of subsidence

ha eliminato: (raw data, subsidence removed

ha eliminato: -

ha eliminato: estimate updated

ha eliminato: tide

2275 | Table 6 - Performance of the linear and quadratic regression models applied on the raw annual time series of Venetian RSL and the corresponding climatic component alone (i.e., **VLM-corrected RSL**) for the periods 1872-2019 and 1993-2019. R<sup>2</sup> is the coefficient of determination, AIC is the Akaike Information Criterion, and FPE is the Final Prediction Error.

	<b>RSL</b>		<b>VLM-corrected RSL</b>	
	Linear	Quadratic	Linear	Quadratic
1872-2019				
R <sup>2</sup>	0.89	0.89	0.67	0.69
AIC	400	398	570	570
FPE	15	15	48	47
1993-2019				
R <sup>2</sup>	0.58	0.59	0.30	0.30
AIC	70	69	76	76
FPE	14	14	18	18

ha eliminato: subsidence removed

ha eliminato: aw series

ha eliminato: Climatic component