

# A sanity check for earthquake recurrence models used in PSHA of slow deforming regions: the case of SW Iberia

Margarida Ramalho<sup>1</sup>, Luis Matias<sup>2</sup>, Marta Neres<sup>3</sup>, Michele M. C. Carafa<sup>4</sup>, Alexandra Carvalho<sup>5</sup>, and Paula Teves-Costa<sup>2</sup>

5 <sup>1</sup>Faculdade de Ciências da Universidade de Lisboa, Campo Grande, 1749-016 Lisbon, Portugal

<sup>2</sup>Instituto Dom Luiz (IDL), Faculdade de Ciências da Universidade de Lisboa, Campo Grande, 1749-016 Lisbon, Portugal

<sup>3</sup>Instituto Português do Mar e da Atmosfera, Lisbon, Portugal

<sup>4</sup>Istituto Nazionale di Geofisica e Vulcanologia, Sezione di Tettonofisica e Sismologia, L'Aquila, Italy

<sup>5</sup>LNEC, Avenida do Brasil 101, 1700-066 Lisbon, Portugal

10 *Correspondence to:* M. Ramalho (margarida\_ramalho@hotmail.com)

**Abstract.** Probabilistic Seismic Hazard Assessment (PSHA), despite its deep criticism, is still the most common tool used to decide on the acceptable seismic risk and corresponding mitigation measures. We propose two consistency tests to address the variability of earthquake generation models found in PSHA studies: i) one rule-of-thumb test where the seismic moment release from the model is converted to an average slip on a typical fault and compared with known plate kinematics or GNSS deformation field; ii) using a neotectonic model, the computed deformation is converted into seismic moment release and to a synthetic earthquake catalogue. We apply these tests to the W and SW Iberia slow deforming region, where two earthquake source areas are investigated: 1) the Lower Tagus Valley, one of the largest seismic risk zones of Portugal; and 2) the offshore SW Iberia area, considered to be the source for the 1<sup>st</sup> November 1755 event (M~8.7). Results show that some of the earthquake source models should be considered as suspicious, given their high/low moment release when compared to the expected values from GNSS observations or neotectonic modelling. This analysis allowed for a downgrade of the weight of poorly compliant models in the PSHA analysis, thus for a more realistic hazard assessment, and can be integrated in other studies of similar settings.

15  
20

## 1. Introduction

25 In earthquake-prone areas modern societies with limited available resources must decide on the level of acceptable risk to  
define the appropriate mitigation measures. Probabilistic Seismic Hazard Assessment (PSHA) is the most common tool used  
by decision-makers to attain this equilibrium between risk and protection. Many PSHA studies have been conducted for  
emergency planning, land use management or to help establishing or revising building codes. Engineers use PSHA to help  
defining the ground motion levels in building codes that will avoid failure or collapse of constructions in the case of some  
30 expected earthquake occurs. PSHA was established by Cornell (1968) and since then has seen a large evolution and wide-  
spread application. PSHA is a technical methodology in seismology, but its use has political and economic constraints that  
must be addressed by society as a whole.

PSHA, in its simpler description, provides the probability that a given level of ground motion,  $U_0$ , may be exceeded at a given  
location in a specific time period  $T$ , usually taken as the life-time of the structures concerned. For a single site with a single  
35 earthquake source at a fixed distance, the result of PSHA is the product of two probabilities (e.g. Frankel, 2004),

$$P(U \geq U_0|T) = P(E|T) \times P(U \geq U_0|E), \quad (1)$$

Here  $P(E|T)$  is the probability that the earthquake occurs during the time period  $T$ , and  $P(U \geq U_0|E)$  is the probability of  
ground shaking exceeding the reference value  $U_0$  if the earthquake occurs. This simple description is useful since it splits the  
PSHA work in two different problems. The first factor is controlled by our knowledge of earthquake generation, while the  
40 second factor is addressed by the choice of Ground Motion Prediction Equations (GMPEs) and its associated uncertainties.  
One full PSHA study must consider all the possible earthquake sources affecting each site and Eq. (1) becomes an integral of  
all possible contributions.

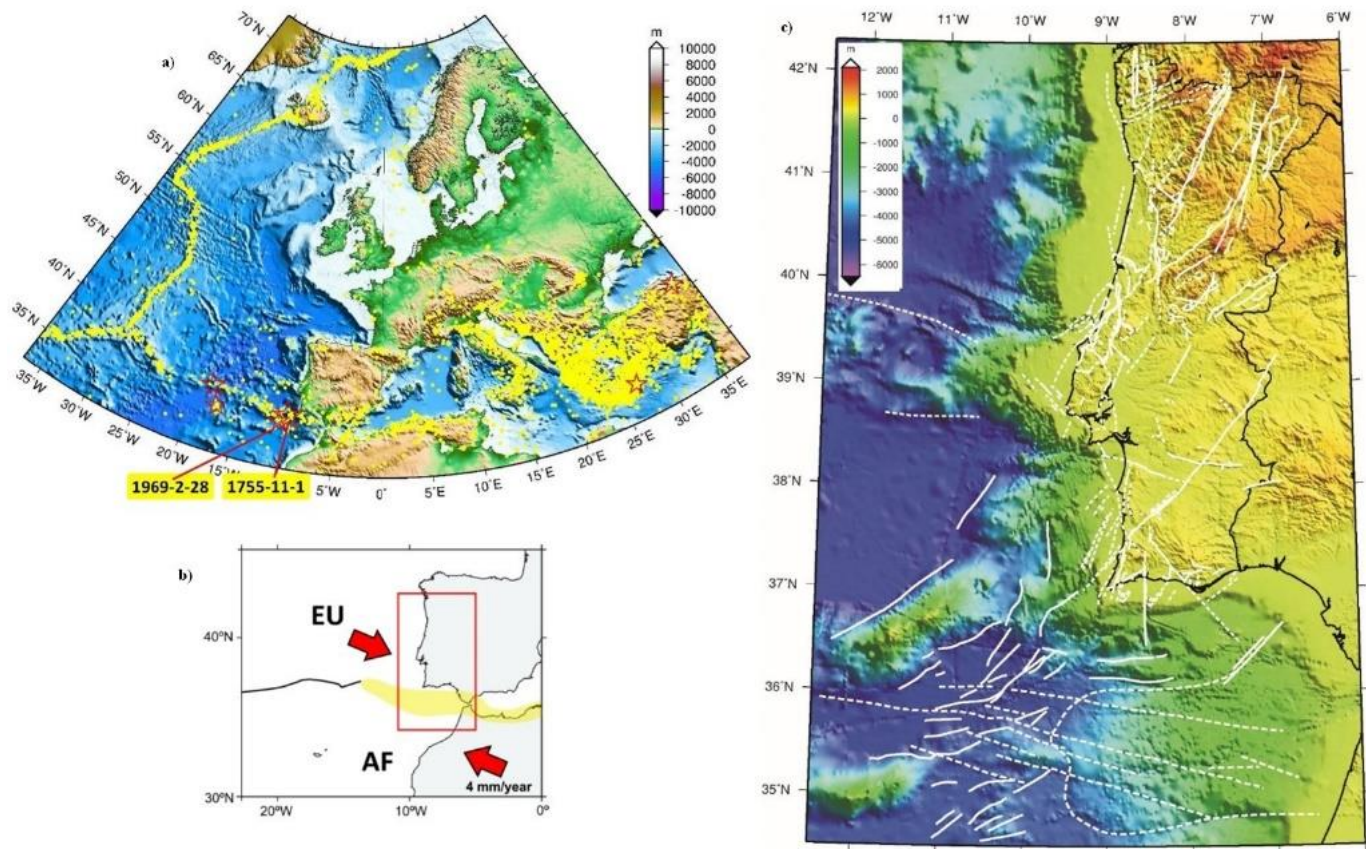
Despite PSHA limitations and flaws (e.g. Stein et al., 2012, Mulargia et al., 2017) it is the still most used method by society  
and scientific community, and this work intends to be a contribution to its improvement. One of the evolutions suffered by  
45 PSHA studies and now recognized as essential, is the evaluation of the uncertainties on the results (e.g. Stein and Stein, 2012).  
One contribution to the uncertainty of PSHA outputs results from our incomplete knowledge of the earthquake generation and  
propagation mechanisms. This lack of knowledge can be classified as aleatory, the uncertainty in random effects, and  
epistemic, the uncertainty in knowledge (uncertainty about the best model to use in PSHA computations when several models  
are possible). Uncertainties are already included in standard PSHA where GMPEs are defined as statistical laws and the  
50 standard deviation of the logarithm of the predicted parameter is usually computed. Aleatory uncertainties in other parameters  
can be included by Monte-Carlo simulations and epistemic uncertainty is depicted through a logic tree, where each alternative  
model is ascribed some weight for PSHA computation. It is important to say that the weighting factors are usually assigned  
subjectively, often using expert opinion.

As pointed out by several authors (e.g. Stein et al., 2012, Mulargia et al., 2017) recent large earthquakes have occurred in areas  
55 where the seismic hazard was considered low or they caused ground shaking much greater than the one expected by PSHA

studies. These events have demonstrated the weaknesses of PSHA and a deficit in the evaluation of its uncertainties. Mulargia et al. (2017) point out that PSHA assumes that frequencies of past earthquakes can be conflated with probabilities of future earthquakes, but that this assumption appears to be incorrect. All researchers should be aware of this issue. While Mulargia et al. (2017) advocates the complete abandon of PSHA, Stein et al. (2012), while questioning the foundations of PSHA, suggested two changes to PSHA to improve its practice. The work presented in this paper is a contribution to the improvement of PSHA studies particularly suited for Slow Deforming Regions that we consider to follow one of Stein et al. (2012) suggestions: “objective testing to compare their predictions to those of null hypotheses”.

The results of the PSHA studies are expressed as a statistical parameter on the exceedance probability for the ground motion parameter chosen. Results from different studies can only be compared if the final parameters to express PSHA are the same (e.g. peak ground motion with 10% probability of being exceed in 50 years). When comparable, the differences among different studies’ results can be huge. This brings confusion and uncertainty to the users of these studies, who use results for emergency management or land use planning and question the foundations for establishing or revising building codes. This large diversity is usually ascribed to the large uncertainty on the 2<sup>nd</sup> term of Eq. (1), the uncertainty and differences in the Ground Motion Prediction Equations (GMPEs) used in the studies. However, there is also a large diversity on the earthquake generation models (first term of Eq. (1)) and on the ways that the related uncertainties are assessed, but its consequences on the final PSHA results are difficult to assess and usually overlooked.

In this paper, we address the first factor of Eq. (1), the earthquake generation process, and propose a methodology to evaluate and validate earthquake generation models that are used for PSHA studies. This methodology is applied to the western Iberia (Fig. 1), which is the source area of the largest earthquakes felt in Europe since year 1000. This area can be considered a typical example of Slow Deforming Regions (SDR) where the instrumental and historical catalogues are incomplete when compared to the large (and uncertain) return periods of the large earthquakes, and where active faults are challenging to identify since erosional processes exceed the tectonic activity. Furthermore, reverse faults may develop as splays or blind thrusts that rarely reach the surface. Therefore, SDR are the most challenging domains to make PSHA studies and where they are more likely to fail. However, if it is possible to measure or estimate the rate of strain accumulation, then the earthquake generation models used in PSHA that exceed that rate or that are far below, should be considered as suspicious and its likelihood degraded accordingly.



**Figure 1:** Geodynamic setting of the investigated area. a) Seismicity in and around Europe. Yellow dots show earthquake epicentres with  $M \geq 5.0$  from ISC (2018) for the period 1900-2018. Red stars show epicentres of events with  $M \geq 8.0$  according to the European instrumental (Grünthal and Wahlström, 2012) and historical catalogues (Stucchi et al., 2013). b) The plate boundary setting of the studied area. The light-yellow domain indicates a diffuse plate boundary. c) Active and probable active faults identified in Western Iberia mainland and offshore (modified from Cabral, 2012 and Duarte et al., 2013).

Despite the recent failures and criticisms on PSHA and its foundations, we consider that the earthquake generation models used in PSHA studies can be evaluated using the elastic rebound principles, i.e., earthquakes are generated by accumulated strain in the lithosphere. We understand that even this basic postulate can be criticized, but global studies (Bird and Kagan, 2004) demonstrated that coupling coefficients can be reliably compute for plate boundaries, from the comparison of relative plate velocity and seismic moment release.

In more active areas, like subduction zones, a more complex interplay between seismicity and strain is possible. Carafa et al. (2018) investigating the Calabrian Arc proposed that the low strain rates observed by GPS together with large seismic moment

release may be explained by a model with high interseismic coupling and low seismic coupling of the subduction interface. Meaning that some of the regional seismic strain is released by slow earthquakes that could induce clustered normal fault events on the upper plate.

100 Strain rates can result from tectonic stresses due to plate motions (near or far from plate boundaries), can result from glacial isostatic adjustment (GIA, Peltier et al., 2015) or may be due to gravity potential energy (GPE) differences. GPE contribution to the state of stress in Iberia was evaluated by Neres et al. (2018) and they conclude that GPE is a second order effect that is mostly identified in high relief areas, like the Pyrenees and Cantabria mountain ranges. In this work, we consider that in the investigated domains of W and SW Iberia, earthquakes are generated only by tectonic stresses controlled by the horizontal strain rate. If the strain rate is estimated, it can be used as a ruler to compare with the earthquake generation models that are  
105 proposed in PSHA studies, thus providing a geodynamic constraint. We argue that the proposed methodology should be implemented in PSHA studies as a sanity test for competing earthquake generation models, in particular for other areas of the globe characterized by slow and/or diffuse deformation.

In the paper the term “sanity check” is used with the same meaning that was used, for example, for probabilistic tsunami hazard assessment in Basili et al. (2021). It means that the model predictions are tested (validated) against observations and/or  
110 independent parameter estimates.

## 2. Geodynamic setting

The tectonic activity affecting the Western and Southwestern Iberia is mainly caused by the slow convergence between Eurasia and Africa (Nubia) plates at a rate  $\sim 4$  mm/year (e.g. Fernandes et al., 2003, Fig. 1a; Neres et al., 2016). The relative plate  
115 movement is accommodated by several tectonic features in what can be considered as a diffuse plate boundary (e.g. Duarte et al., 2013, Neres et al., 2016, Fig. 1c). Despite the slow convergence rate, the SW Iberia has been the locus of the largest magnitude earthquakes that destroyed Europe, like the 28th February 1969 ( $M_w=8.0$ , Grünthal and Wahlström, 2012) and the 1st November 1755 Lisbon earthquake with magnitude of 8.7 (Stucchi et al., 2013, Fig. 1a). The tectonic complexity of the area is compounded by another stress engine that has been invoked to affect SW Iberia, namely the westward movement of  
120 the Alboran domain, driven by subduction roll-back in the Gulf of Cadiz (e.g. Neres et al., 2016 and references therein). The tectonic stresses generated by the plate convergence and slab roll-back propagate inland generating also some significant earthquakes, like the 23rd April 1909  $M\sim 6.1$  (e.g. Teves-Costa et al., 2019).

The Western and Southwestern Iberia are usually considered as one Stable Continental Region (SCR) onshore domain (Johnston, 1989) in the sense that the most recent active tectonic event, the Alpine orogeny that led to the formation of the  
125 Pyrenees and the Betics in Iberia, attained its activity peak in Eocene and Miocene times (e.g. Terrinha et al., 2019). In W and SW Iberia, the Alpine orogeny resulted in the inversion of meso-cenozoic basins in central Portugal (the Lusitanian basin) and

in southern Portugal (the Algarve basin) with a geographically limited expression (ibid.). The current tectonic activity observed inland is thus typical of Slow Deforming Regions (Custódio et al., 2015) with fault slip rates smaller than 1 mm/year.

130 Geologists consider as active faults the structures that show evidence of recent displacement (geological, geophysical, historical) so that new displacements may be expected in the future. In W and SW Iberia, the slip rate measurements in the identified active faults are small, from 0.005 mm/year to a maximum of 0.2 mm/year (Cabral, 1995, 2012). This implies that the classification of tectonic features as active is very conservative. Any structure showing activity since the upper Pliocene or Quaternary is considered as active (roughly since the last 3 Ma, Fig. 1c). In the offshore domain, closer to the plate boundary between Eurasia and Africa (Nubia) the identified active or probable faults (Duarte et al., 2013, Fig. 1c) display evidence of  
135 more recent activity, probably since the Holocene (last 10 ky).

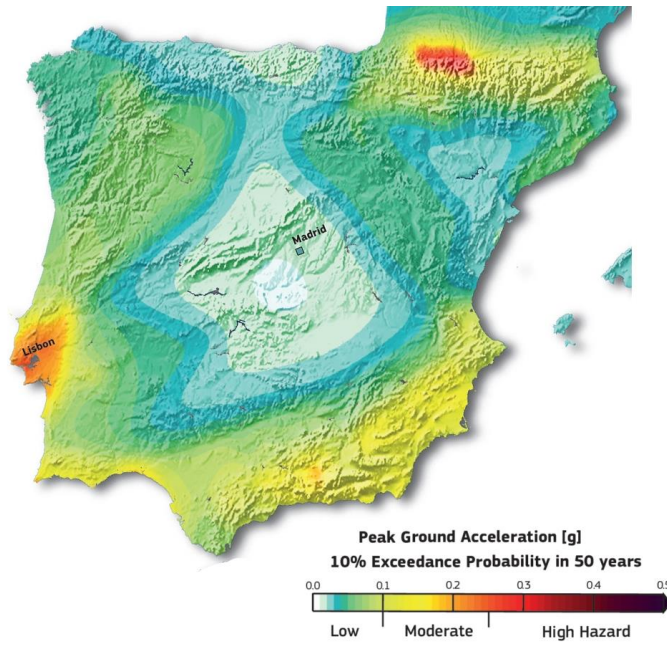
The last decade has seen a considerable improvement in the seismic monitoring network allowing for a very detailed location of earthquakes to magnitudes down to 1 (Custódio et al., 2015). The seismicity pattern that emerged from the more recent and best-located events shows that most of the earthquakes occur in clusters and seismic belts roughly oriented NNE-SSW and WNW-ESE. However, the relationship between these events and geologically mapped faults remain elusive (ibid.) in most  
140 cases, even after a 3D relocation using a regional tomographic model (Veludo et al., 2017). In offshore SW Iberia, the source area for the large 1755 and 1969 magnitude earthquakes (Fig. 1a), seismicity relocated by Ocean Bottom Seismometers (OBS) has shown that most of the small magnitude events are occurring at mantle depths, down to 50 km focal depths, again without a clear relationship with the known active tectonic features identified by geological and geophysical surveys (Geissler et al., 2010, Grevemeyer et al., 2016, Silva et al., 2017).

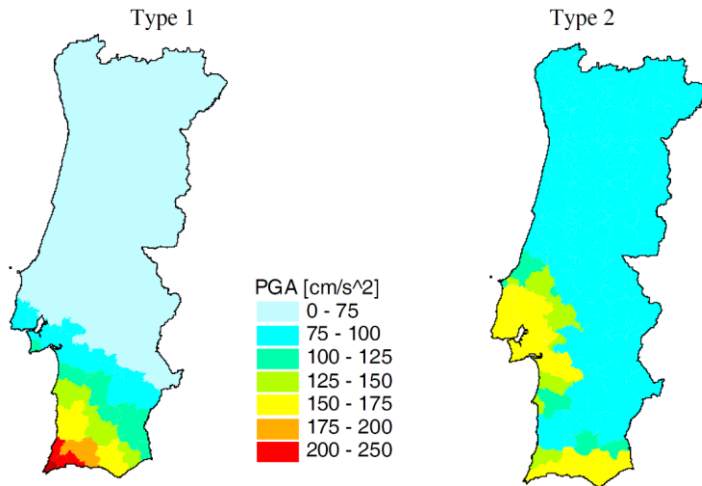
145 Despite the high detail of the tectonic map in the Gulf of Cadiz, SW Iberia, that resulted from the extensive investigation by geological and geophysical surveys (e.g. Duarte et al., 2013, Fig. 1c) the origin of the 1<sup>st</sup> November 1755 destructive earthquake and tsunami remains uncertain with several proposals made by different authors (see Ribeiro et al., 2006, for a revision). The other large earthquake originated in the region, the 28<sup>th</sup> February 1969 (Mw=8.0), despite the well-constrained epicentre, focal depth and source mechanism (Fukao, 1973), could not be ascribed to any active fault identified in the area (Martínez-Loriente  
150 et al., 2013).

### **3. Earthquake generation models used in PSHA studies for W and SW Iberia**

Probabilistic Seismic Hazard Assessment studies have been used in the last decades in W and SW Iberia as a tool for emergency planning, land use management and as an input to be considered in the elaboration of building codes (e.g. Vilanova and  
155 Fonseca, 2007, Campos Costa et al., 2008, Mezcua et al., 2011, IGN-UPM, 2013, Woessner et al., 2015). Some of these studies had a global scope, like the GSHAP (Giardini, 1999) or the 2013 European Seismic Hazard Model (ESHM13, Woessner et al., 2015, Fig. 2a), others were conducted to support the elaboration or revision of national building codes (Campos Costa et

al., 2008, IGN-UPM, 2013, Fig. 2b). For land use management and emergency planning, more local and regional studies have been conducted (e.g. for Portugal, Carrilho et al., 2010, Matias and Teves-Costa, 2011a, b, for SE Spain, Rivas-Medina et al., 2018). All the above mentioned PSHA studies use different earthquake generation models with a common feature, time independence. In active seismic zones, such as those associated with subduction, or in areas where there is almost complete knowledge of the active structures, it is possible to carry out PSHA studies in which the earthquake recurrence is a function of time. This is not true for the slow deforming region of W and SW Iberia.





165

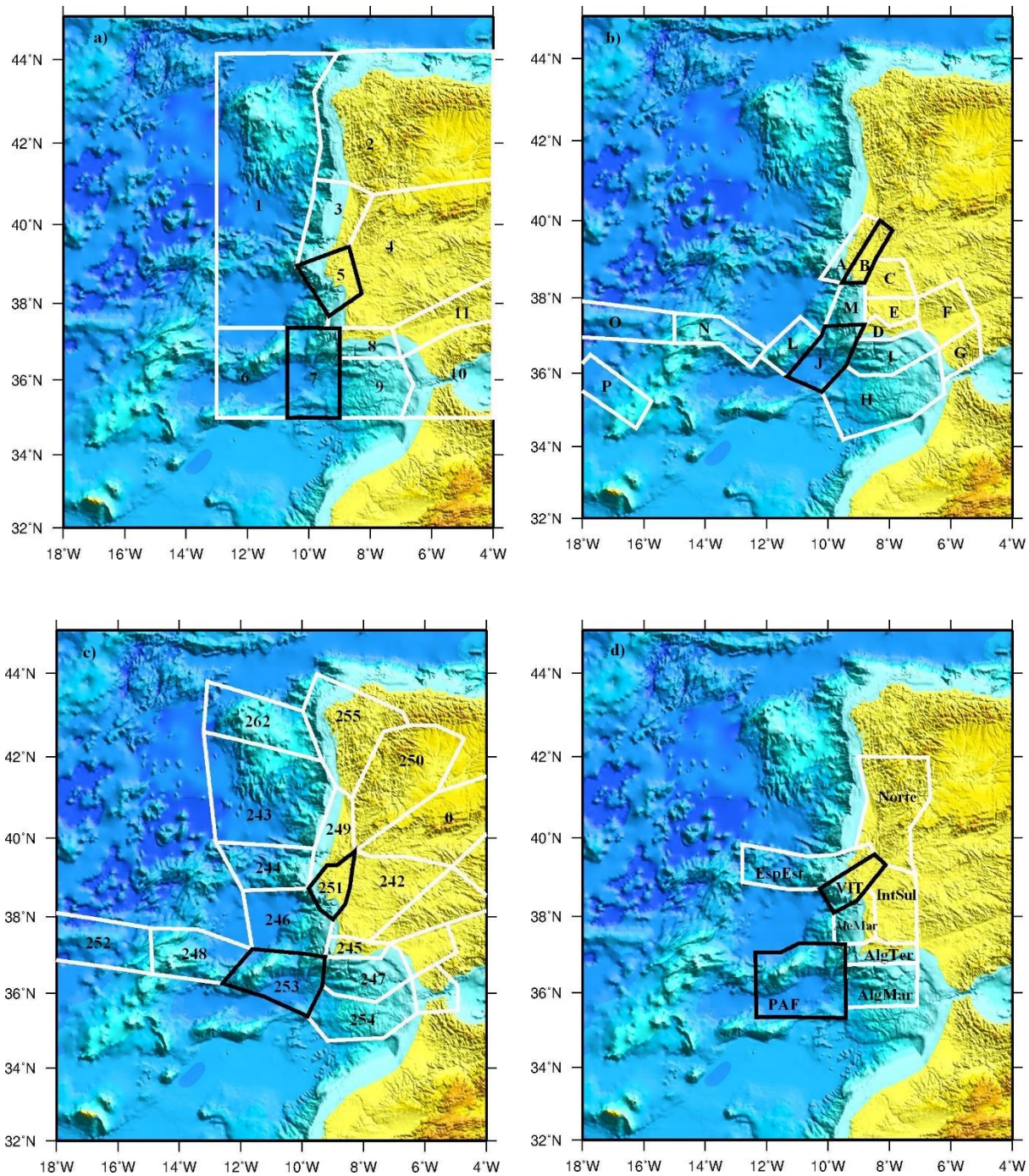
170

**Figure 2:** Seismic hazard maps expressed as Peak Ground Acceleration (PGA) expected to be exceeded in 50 years with 10% probability. (a) From the ESHM13 model by Woessner et al. (2015), units in g; (b) From the PSHA study used in Portugal for the revision of the building codes according to EC8 guidelines (Campos Costa et al., 2008), units in  $\text{cm/s}^2$ . Type 1 refers to a “far” (offshore) source while type 2 refers to a “near” source. These maps show the inconsistency of PSHA models, as two options for the chosen models.

Another consequence of the geodynamic setting of the study area is that the preferred earthquake source model is the zone source where earthquakes are assumed to occur with a uniform probability anywhere inside the area considered. This approach is justified for the onshore where the known fault slip rates is very low (see section 2). On the offshore the plate boundary is complex without a clear relationship between current seismicity and the tectonic faults identified by geological and geophysical campaigns (e.g. Zitellini et al., 2009; Custódio et al., 2015; Neres et al., 2016), as detailed in section 2. Recently, in smaller domains where the fault geometry and activity are considered to be well known, like in SE Spain, a mixed source model has been proposed (Rivas-Medina et al., 2018) where the earthquake potential is distributed between the faults and the zone. This is an exceptional case that cannot be extended to the whole W and SW Iberia.

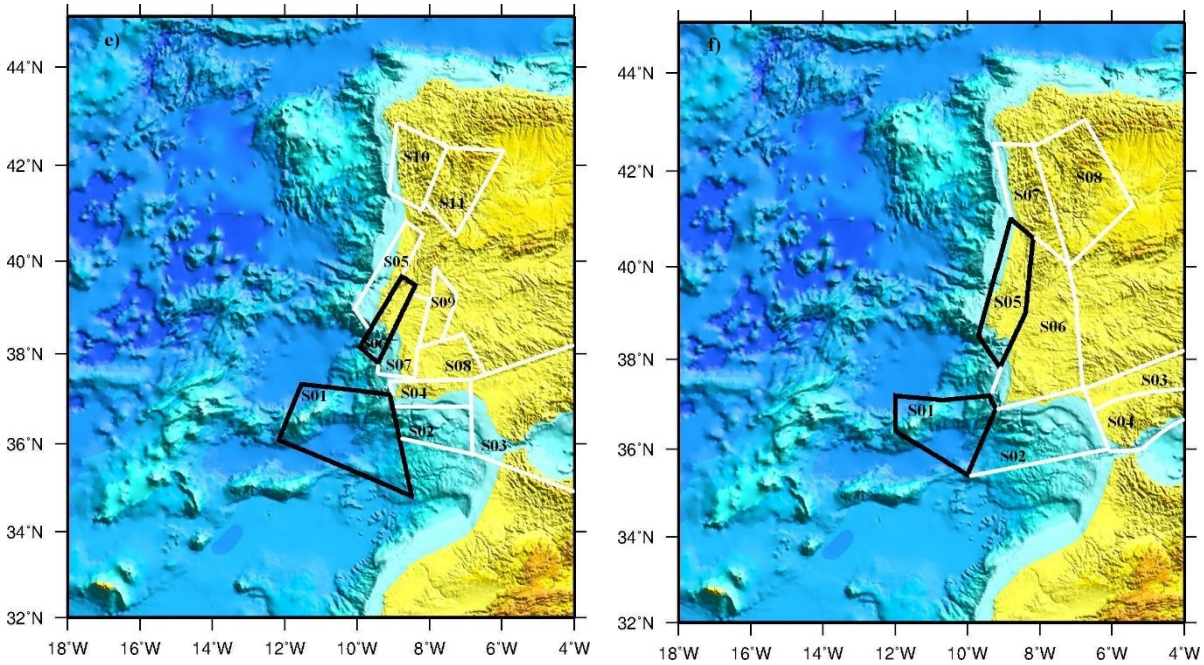
The choice of the source generation zones for PSHA is done using geological criteria, distribution of active faults, nature and thickness of the crust, and geophysical criteria, such as earthquake epicentre distribution, location and macroseismic fields of historical earthquakes. However, there is no common agreement on the geological and geophysical information to be used, nor on the weight that is applied to each of the criteria, resulting in a wide diversity of source zones for the W and SW Iberia (Fig. 3).





**Figure 3:** Seismogenic zones proposed for the 5 PSHA studies analysed in this work. The zones corresponding to Lower Tagus Valley (LTV) sources and 1755 earthquake selected for sanity check are outlined in black. a) the National Annexes of Eurocode 8 (EC8), adapted from Campos Costa et al. (2008). b) the ERSTA study, adapted from Carrilho et al. (2010). c) the SHARE study, adapted from Woessner et

al. (2015). d) the QREN study, adapted from Matias and Teves-Costa (2011a, b). e) and f) adapted from Vilanova and Fonseca (2007) study. e) is seismic zonation SA and f) is seismic zonation SB.



200 **Figure 3 (continued):** Seismogenic zones proposed for the 5 PSHA studies analysed in this work.

On each source zone, the earthquake recurrence is expressed by the double truncated Gutenberg-Richter law (DTGR)

$$\dot{N}(m) = \lambda \frac{e^{-\beta(m-m_{min})} - e^{-\beta(m_{max}-m_{min})}}{1 - e^{-\beta(m_{max}-m_{min})}} \quad (2)$$

Where,

205  $\dot{N}(m) = \lambda_m$  Number of earthquakes with magnitude  $\geq m$  per year

$m_{min}$  Minimum magnitude to be considered

$\lambda$  Number of earthquakes per year with magnitude  $\geq m_{min}$

a, b Usual parameters for the Gutenberg-Richter law,  $\log(\dot{N}(m)) = a - bm$

a can be referred to  $m = m_{min}$  or to  $m = 0$ . On the first case we have

210  $\lambda = 10^{a-bm_{min}}$  On the second case we have  $\lambda = 10^a = e^\alpha$ , with

$$\alpha = a \ln(10)$$

$m_{max}$  Maximum magnitude considered for the source zone



215 The definition of earthquake recurrence on each source zone requires the definition of the set of parameters ( $m_{min}, m_{max}, \alpha, \beta$ )  
or ( $m_{min}, m_{max}, a, b$ ). These parameters are estimated by criteria defined on each PSHA study and may vary considerably  
depending on the choice of the earthquake catalogues to use (instrumental and historical, declustered or not and declustering  
methods), the methods used to obtain the ( $a, b$ ) from an incomplete seismic catalogue (least squares, maximum likelihood,  
etc.), and the approach used to define the maximum magnitude to be considered.

220 Some of the PSHA studies mentioned above do not consider the uncertainty in the definition of the earthquake generation  
model (zoning and earthquake recurrence), others consider that different models can be accepted with some weights, with  
uncertainty assessed by the logic tree method (e.g. Vilanova and Fonseca, 2007, Woessner et al., 2015), while others also  
consider that the DTGR parameters have a statistical uncertainty that is assessed by Monte-Carlo simulations (e.g. IGN-UPM,  
2013, Gaspar-Escribano et al., 2015).

225 In this paper we will not discuss or compare the methodologies used in defining the earthquake generation models that have  
been published for W and SW Iberia. Instead, we will use the published parameters to make a sanity check by comparing the  
seismic moment release that results from them with the presumed tectonic deformation. For this investigation we consider 5  
different PSHA studies: i) the study used in Portugal for the revision of the building codes according to EC8 guidelines  
(Campos Costa et al., 2008; hereafter referred as EC8); ii) the regional study by Carrilho et al. (2010) used for emergency  
management in Southern Portugal (hereafter referred as ERSTA); iii) the European scale ESHM13 model by Woessner et al.  
230 (2015) (hereafter referred as SHARE); iv) the local study by Matias and Teves-Costa (2011a,b) used for emergency  
management in Lisbon and Cascais (hereafter referred as QREN), and; v) the Vilanova and Fonseca (2007) study used for the  
evaluation of seismic risk in Portugal mainland by Silva et al. (2015) (hereafter referred as VF2007). We will concentrate our  
efforts only on two earthquake generation zones: the one that affects Lisbon, for the high risk implied and because it is the  
area where large differences in PSHA are evident (Fig. 2); and the offshore domain in the Gulf of Cadiz that is considered by  
235 different studies as the source area for the M~8.7 1<sup>st</sup> November 1755 earthquake.

### **3.1 The EC8 model**

240 In 2006, for the preparation of the National Annex of Eurocode 8 (project regulation for the construction of structures for  
earthquake resistance), the seismic hazard was assessed considering eleven seismogenic zones for Portugal Mainland (Fig. 3a)  
and the PSHA results for Portugal Mainland, Azores and Madeira Archipelagos are presented in Campos Costa et al. (2008).  
For Portugal Mainland the main criteria used for the definition of seismic source areas was the distribution of historical and  
instrumental seismicity, with seismotectonic considerations as secondary criteria.

The details of the seismogenic zoning can be found in Sousa (1996) but in general, the outlined zones fall into two wide categories: interplate zones (zones 6, 7 and 9 of Fig. 3a), which originate earthquakes with an epicentre mainly located on the plate, and the intraplate zones, which originate earthquakes with an epicentre located predominantly inside the Eurasian plate (zones 1, 2, 3, 4, 5, 8, 10 and 11 of Fig. 3a). The parameters that characterize these zones were obtained after studying the exhaustiveness of the catalogue (where the minimum magnitude or exhaustiveness magnitude is defined), considering earthquakes with a magnitude equal to or greater than 3.5.

### 250 **3.2 The ERSTA model**

For the project ERSTA, “*Estudo do Risco sísmico e de Tsunamis do Algarve*”, financed by the Portuguese Civil Protection Authority (ANEPC), a concerted work was carried out by several national entities that, after reviewing the seismic, tectonic and geological information of the Algarve region, allowed to redesign the seismogenic zones (15 zones in total) that potentially affect the region (Carrilho et al., 2010). These zones are shown on Fig. 3b. With the idea of considering seismic hazard for the entire continental territory, and in the scope of other local studies (Jeremias et al., 2012), 4 more seismogenic zones were defined, modelled by large areas due to the difficulty in connecting the epicentres to the mapped faults in the neotectonic map.

An exhaustiveness study was carried out (Rodrigues et al., 2009) for the new seismic catalogue, reviewed by the IPMA (*Instituto Português do Mar e da Atmosfera*), and the parameters that characterize these areas were determined (Rodrigues et al., 2009; Jeremias et al., 2012; Carvalho and Campos Costa, 2015). In this model of seismic sources, area B (Fig. 3b) is part of the Cenozoic Basin of the Lower Tagus Valley, and zone J comprises the Horseshoe Fault, the Marquês de Pombal Fault, and the São Vicente Fault. In the area J some of the most important earthquakes were generated, such as the one on February 28, 1969, and, most likely, the one on November 1, 1755.

### 260 **3.3 The SHARE models**

265 In 2013, the European Seismic Hazard Model (ESHM13), resulted from a probabilistic hazard assessment supported by the EU-FP7 project SHARE (2009-2013). The ESHM13 is a consistent seismic hazard model for Europe and Turkey that overcomes the limitation of national borders and includes a complete quantification of uncertainties. It is the first complete contribution to the initiative called “Global Earthquake Model”. And it can serve as a reference model for various applications, from preparing for an earthquake to strategies to mitigate seismic risk (Woessner et al., 2015) and, according to Carvalho and Malfeito (2016), to serve as the basis to the review of the National Annexes of Eurocode 8. Figure 3c shows the source areas defined for W and SW Iberia by the SHARE project.

The earthquake recurrence laws used by SHARE, namely the a and b parameters of the Gutenberg-Richter law and the maximum magnitude for each zone, were proposed with an integrated and homogenization perspective of the model across

Europe. In this project, the epistemic uncertainties of the model components and the hazard results were accounted using a  
275 Logic Tree (Woessner et al., 2015). On each zone three values for the maximum magnitudes were considered, minimum, mean  
and maximum, that we incorporate in our sanity check evaluation as SHAREmin, SHAREmed, and SHAREmax, respectively.

### **3.4 - QREN model**

The seismic zonation referred to this model was established in the study carried out for the Assessment of Natural and  
280 Technological Risks in the City of Lisbon, named as QREN (*Quadro de Referência Estratégico Nacional*). In that work (Matias  
and Teves-Costa, 2011a,b), the determination of the earthquake recurrence parameters was obtained considering the working  
earthquake catalogue declustered decomposed into one historical catalogue and 3 instrumental catalogues, selected according  
to the completeness magnitude estimated. The definition of the source areas took into consideration both the seismic activity  
and the distribution of the main active tectonic structures identified in the mainland territory of Portugal (Teves-Costa et al.,  
285 2001). Thus, it was proposed to distinguish 8 seismogenic zones (Matias and Teves-Costa, 2011a, b) shown on Fig. 3d.

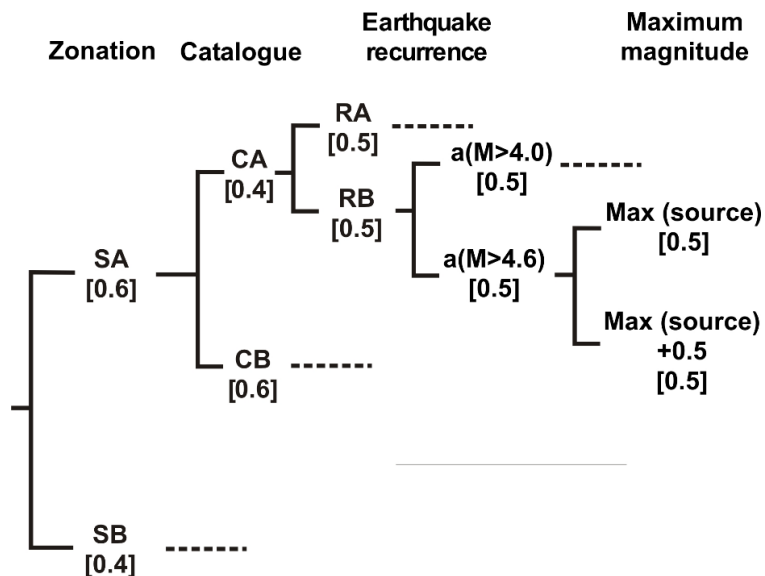
In this model, the earthquake recurrence model was obtained using the HA2 application developed in MATLAB by Andrezej  
Kijko (Kijko and Sellevoll, 1992; Kijko, 2004). The HA2 combines information from several catalogues, using a Bayesian  
model, applying a Poisson-Gamma distribution for the occurrence of earthquakes in time and an Exponential-Gamma  
distribution for the magnitude distribution. The determination of  $m_{max}$  magnitude is obtained by an iterative process, with the  
290 parameters  $\lambda$  and  $\beta$  obtained by maximum likelihood. The HA2 algorithm results in a probability distribution that does not  
follow exactly the DTGR and so, to make it comparable with the others, a fit to DTGR had to be made.

### **3.5 The Vilanova and Fonseca (2007) models**

Vilanova and Fonseca (2007) presented two proposals for dividing the territory into seismogenic zones: SA and SB (Fig. 3e,  
295 3f). SA encompasses eleven seismogenic zones chosen based on seismicity criteria: in regions with moderate to large local  
historical earthquakes, the boundaries of the seismogenic areas follow the VII (MMI scale) isoseismal considering that the  
area delimited by this relatively higher damage distribution includes most probably its geological source. In all other regions  
the source zones encompass areas of diffuse seismicity. The SB proposal consists in eight seismogenic zones adapted from  
Peláez and López Casado (2002).

300 Vilanova and Fonseca (2007) used a logic tree scheme to deal with epistemic uncertainties on ground motion prediction  
equations, source areas, the catalogue used, the type or earthquake recurrence and the maximum magnitude. For the sanity  
check we deal only with the parameters that influence the earthquake recurrence, which are the ones presented in Fig. 4.  
Considering all possible branches, we will test 32 zoning and earthquake recurrence combinations. Each branch will be

identified by its components, SA or SB, RA or RB, a1 (M>4.0) or a2 (M>4.6), max0 or max+. When referred collectively,  
 305 these models will be identified as VF2007.



**Figure 4:** Logic tree used for hazard calculation. The weight of each branch is shown in straight parentheses (modified from Vilanova and Fonseca, 2007).

310

### **3.6 – Synthesis of earthquake recurrence models to be tested**

For the five analysed PSHA studies we selected from each one the source zones that correspond to the LTV and 1755 areas to be investigated (outlined in black in Fig. 3). The respective recurrence model parameters are summarized in Tables 1 to 4.

315

320

**Table 1:** Earthquake recurrence parameters ( $a$ ,  $b$ ,  $m_{\max}$ ) for the Lower Tagus Valley (LTV) source zone from 4 of the models investigated.  $a$  and  $b$  are constants and  $m_{\max}$  represents the maximum magnitude.

Lower Tagus Valley (LTV)			
Model	$a$	$b$	$m_{\max}$
EC8	2.41	0.71	7.2
ERSTA	3.03	0.79	7.1
SHAREmin	3.4	0.9	7.1
SHAREmed	3.4	0.9	7.4
SHAREmax	3.4	0.9	7.6
QREN*	2.46	0.88	6.87

\* Best fit to DTGR law

325

330

335

**Table 2:** Earthquake recurrence parameters ( $a$ ,  $b$ ,  $m_{max}$ ) for the Lower Tagus Valley (LTV) source zone for the 16 combinations (column “Sub-models”) in the logic tree proposed by Vilanova and Fonseca (2007). Each combination has, in addition, two possible maximum magnitudes, resulting in 32 possible recurrence models. Note that  $a$  and  $b$  are constants and  $m_{max}$  represents the maximum magnitude.

Lower Tagus Valley (LTV)					
Model	Sub-models	$a$	$b$	$m_{max}$	$m_{max}+0.5$
Vilanova SA	(1) SA-CA-RA-a1	2.88	0.94	6.9	7.4
	(2) SA-CA-RA-a2	3.03			
	(3) SA-CB-RA-a1	2.74	0.89		
	(4) SA-CB-RA-a2	2.92			
	(5) SA-CA-RB-a1	3.31	1.02		
	(6) SA-CA-RB-a2	3.42			
	(7) SA-CB-RB-a1	3.24	0.99		
	(8) SA-CB-RB-a2	3.40			
Vilanova SB	(9) SB-CA-RA-a1	2.79	0.91	7.1	7.6
	(10) SB-CA-RA-a2	2.57			
	(11) SB-CB-RA-a1	2.79	0.91		
	(12) SB-CB-RA-a2	2.57			
	(13) SB-CA-RB-a1	3.53	1.00		
	(14) SB-CA-RB-a2	3.67			
	(15) SB-CB-RB-a1	3.58	1.02		
	(16) SB-CB-RB-a2	3.70			

SA/SB – relative to the zonation used; CA/CB – relative to the catalogue used; RA/RB – recurrence model used; the a1 values were calculated for  $m \geq 4.0$  and the a2 for  $m \geq 4.6$ ; considering two values of maximum magnitude.



**Table 3:** Earthquake recurrence parameters ( $a$ ,  $b$ ,  $m_{\max}$ ) for the 1755 source zone from 4 of the models investigated. Note that  $a$  and  $b$  are constants and  $m_{\max}$  represents the maximum magnitude.

1755 Source zone			
Model	$a$	$b$	$m_{\max}$
EC8	2.70	0.72	8.8
ERSTA	2.44	0.62	8.7
SHAREmin	4.0	0.9	8.5
SHAREmed	4.0	0.9	8.7
SHAREmax	4.0	0.9	8.8
QREN*	3.13	0.92	8.9

\* Best fit to DTGR law

350

355

360

**Table 4:** Earthquake recurrence parameters ( $a$ ,  $b$ ,  $m_{max}$ ) for the 1755 source zone for the 16 combinations (column “Sub-models”) in the logic tree proposed by Vilanova and Fonseca (2007). Each combination has, in addition, two possible maximum magnitudes, resulting in 32 possible recurrence models. Note that  $a$  and  $b$  are constants and  $m_{max}$  represents the maximum magnitude.

1755 Source zone					
Model	Sub-models	$a$	$b$	$m_{max}$	$m_{max}+0.5$
Vilanova SA	(1) SA-CA-RA-a1	4.14	1.03	8.5	9.0
	(2) SA-CA-RA-a2	4.12			
	(3) SA-CB-RA-a1	3.77	0.94		
	(4) SA-CB-RA-a2	3.72			
	(5) SA-CA-RB-a1	4.55	1.13		
	(6) SA-CA-RB-a2	4.63			
	(7) SA-CB-RB-a1	4.46	1.10		
	(8) SA-CB-RB-a2	4.53			
Vilanova SB	(9) SB-CA-RA-a1	3.78	0.94	8.5	9.0
	(10) SB-CA-RA-a2	3.72			
	(11) SB-CB-RA-a1	3.77	0.94		
	(12) SB-CB-RA-a2	3.70			
	(13) SB-CA-RB-a1	4.35	1.09		
	(14) SB-CA-RB-a2	4.34			
	(15) SB-CB-RB-a1	4.45	1.12		
	(16) SB-CB-RB-a2	4.45			

SA/SB – relative to the zonation used; CA/CB – relative to the catalogue used; RA/RB – recurrence model used; the a1 values were calculated for  $m \geq 4.0$  and the a2 for  $m \geq 4.6$ ; considering two values of maximum magnitude.

#### 370 4. Methodologies to evaluate the consistency between tectonic and seismic deformation

There are two main ways of modeling lithospheric deformation: the kinematic approach and the dynamic approach. In kinematic modeling long-term horizontal velocity field is constrained by simultaneously inverting all available geophysical information, such as GPS-derived velocities and stress data records. Models of this type rarely explain the fundamental tectonic

mechanisms and leave no independent data sets available for postprocessing testing. Because it emphasizes the role of geodetic data, it is often the preferred method for modeling on-land deformation (Bird, 2009; Carafa et al., 2020). However, it does not allow consistent estimation of the offshore long-term deformation, where the subjective choice of the active faults to insert into the model strongly determines the localization of deformation, with negligible influence left to other geophysical data. On the other hand, in the dynamic modeling approach the stress equilibrium equation is solved using estimated rock rheologies, layer thicknesses, and boundary conditions, i.e., the velocity field is calculated from the known structure and physics of the Earth. In this case, several data sets, e.g. geodetic velocities, fault slip rates, seismic activity, and stress directions, can be used to assess the accuracy of the model predictions (Neres et al., 2016).

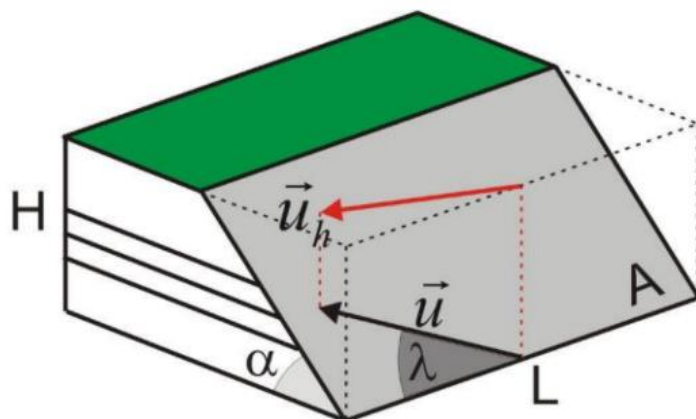
In this work, we propose two tests on the earthquake recurrence models used to make PSHA studies, one simple, rule-of-thumb type, and the other based on numerical modeling. Both relate the seismic moment release predicted by the models and the knowledge of lithospheric deformation inferred from dynamic modeling and geological and geodetic observations.

385

#### **4.1 Simple consistency test**

For the application of the simple consistency test, the double truncated Gutenberg-Richter law is used, and the seismic strain is converted into a relative velocity between blocks, in mm/year, as in Bird and Kagan (2004) and Mazzotti et al. (2008). The obtained values should be compared with the convergence rate between the Nubia and Eurasia plates, with a relative velocity of  $\sim 4$  mm/year (Fernandes et al., 2003). For this purpose, a simplified seismic generation model is used, with seismic strain concentrated on a single fault, representative of the zone under study, as shown in Fig. 5.

390



**Figure 5:** Simple earthquake generation model used to calculate the seismic strain rate. Being, A the area of the fault; L the length of the fault; H the thickness of the seismogenic layer and  $\alpha$  the dip of fault (Matias and Teves-Costa, 2011 a, b).

395

Considering that all earthquakes occur on a single fault plane with the same mechanism, then the relative velocity between blocks is given by

$$\Delta \dot{u}_s = \frac{\sum M_i}{\mu AT} \quad (3)$$

400 Here  $M_i$  is the seismic moment of a single earthquake,  $T$  is the period considered and  $\mu$  the mean shear modulus for the seismogenic layer.

Equation (S4) is valid for a perfect seismic coupling, the fraction of frictional sliding that occurs as earthquakes. If the seismic coupling,  $c$ , is not perfect ( $c < 1$ ), then the slip rate between the blocks should be corrected by this factor,

$$\Delta \dot{u}_s \approx \frac{1}{c} \frac{\sum M_i}{2 \mu LHT} \quad (4)$$

405 The values obtained by the Eq. (4) (for  $c = 1$ ) must, therefore, be considered as the lower limits of the tectonic deformation inferred by the earthquake generation models. In Bird and Kagan (2004) the seismic coupling is very variable for the different plate boundaries investigated, it varies from 0.05, in oceanic rifts in strike-slip faults, to 1.0 in continental convergence regions.

To apply the simplified consistency test to the earthquake generation models presented earlier, it is necessary to assign for each generation zone the following parameters ( $\mu$ ,  $L$ ,  $H$ ). While  $L$  is taken from the geometry of each source zone, the values  
410 of  $\mu$ , the mean shear modulus for the seismogenic layer, and the thickness of the seismogenic layer,  $H$ , must be inferred from our best knowledge on the source areas. For the LTV we consider that it comprises typical continental crust and we used  $\mu = 4.0 \times 10^{10} Pa$  (e.g. Sørensen et al., 2012). For the 1755 earthquake source zone, we used a typical value for oceanic lithosphere (e.g. Johnston, 1996 and Matias et al., 2013),  $\mu = 6.5 \times 10^{10} Pa$ .

For the value of the brittle thickness of the lithosphere,  $H$ , we assume that it is 20 km in the LTV where it includes only the  
415 upper and middle continental crust. For the 1755 zone we used  $H=60$  km from Matias et al., 2013. A summary of the parameters used in the application of the simple consistency test is presented in Table 5. The cumulative seismic moment to be used in Eq. (4) is computed from the seismic hazard model investigated.

420

**Table 5:** Source zone parameters for the simplified sanity check.  $L$  stands for the source zone geometry,  $H$  and  $\mu$  are the thickness and the mean shear modulus for the seismogenic layer, respectively.  $\alpha$  is the dip of the fault.

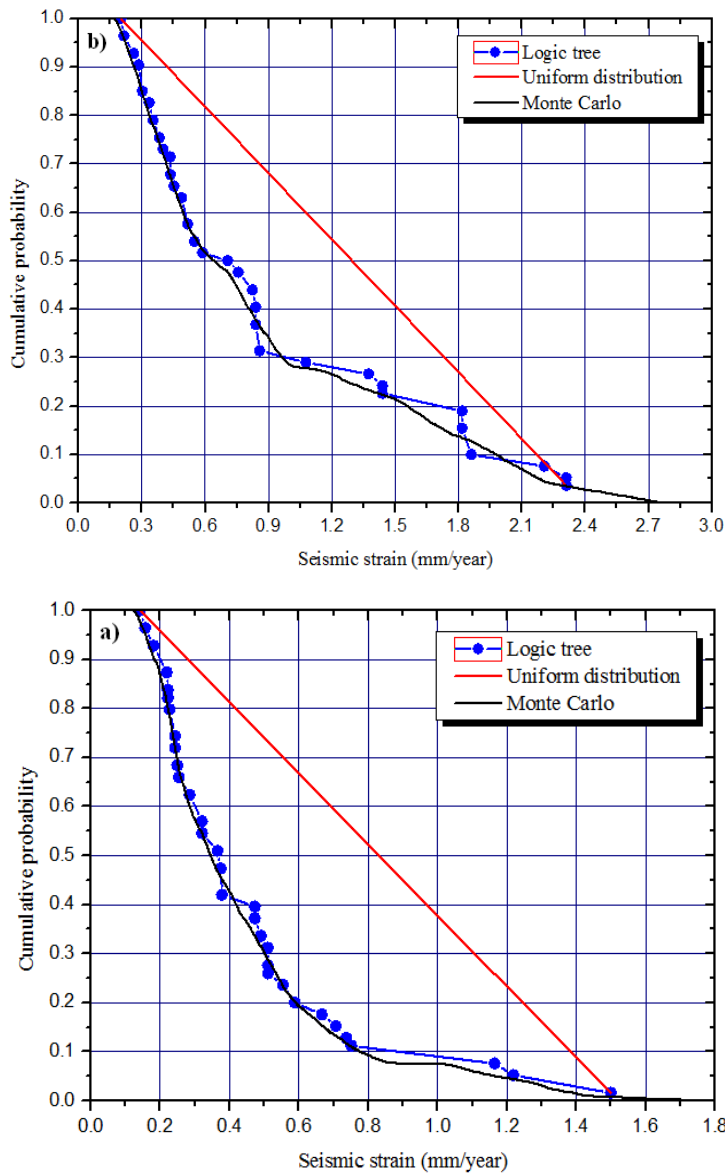
Lower Tagus Valley source zone $\mu = 4.0 \times 10^{10} Pa$				1755 source zone $\mu = 6.5 \times 10^{10} Pa$		
Model	$L$ (km)	$H$ (km)	$\alpha$ (°)	$L$ (km)	$H$ (km)	$\alpha$ (°)
EC8	201	20	55	260	60	35
ERSTA	188	20	55	210	60	35
SHARE	129	20	55	260	60	35
QREN	188	20	55	263	60	35
SA	196	20	55	253	60	35
SB	270	20	55	209	60	35

To have a perception of the sensitivity of the results to the simple model parameters proposed, which are inversely related, observing Eq. (4), we see that an increase in the length of the zone ( $L$ ) or the thickness of the layer ( $H$ ), would imply a proportional decrease of the seismic tectonic velocity ( $\Delta\dot{u}_s$ ), and a decrease in these parameters would imply a corresponding increase. The values chosen for each PSHA model, together with  $c=1$ , are conservative and so the results obtained should be considered as the lower limits for the tectonic deformation inferred by the earthquake recurrence models.

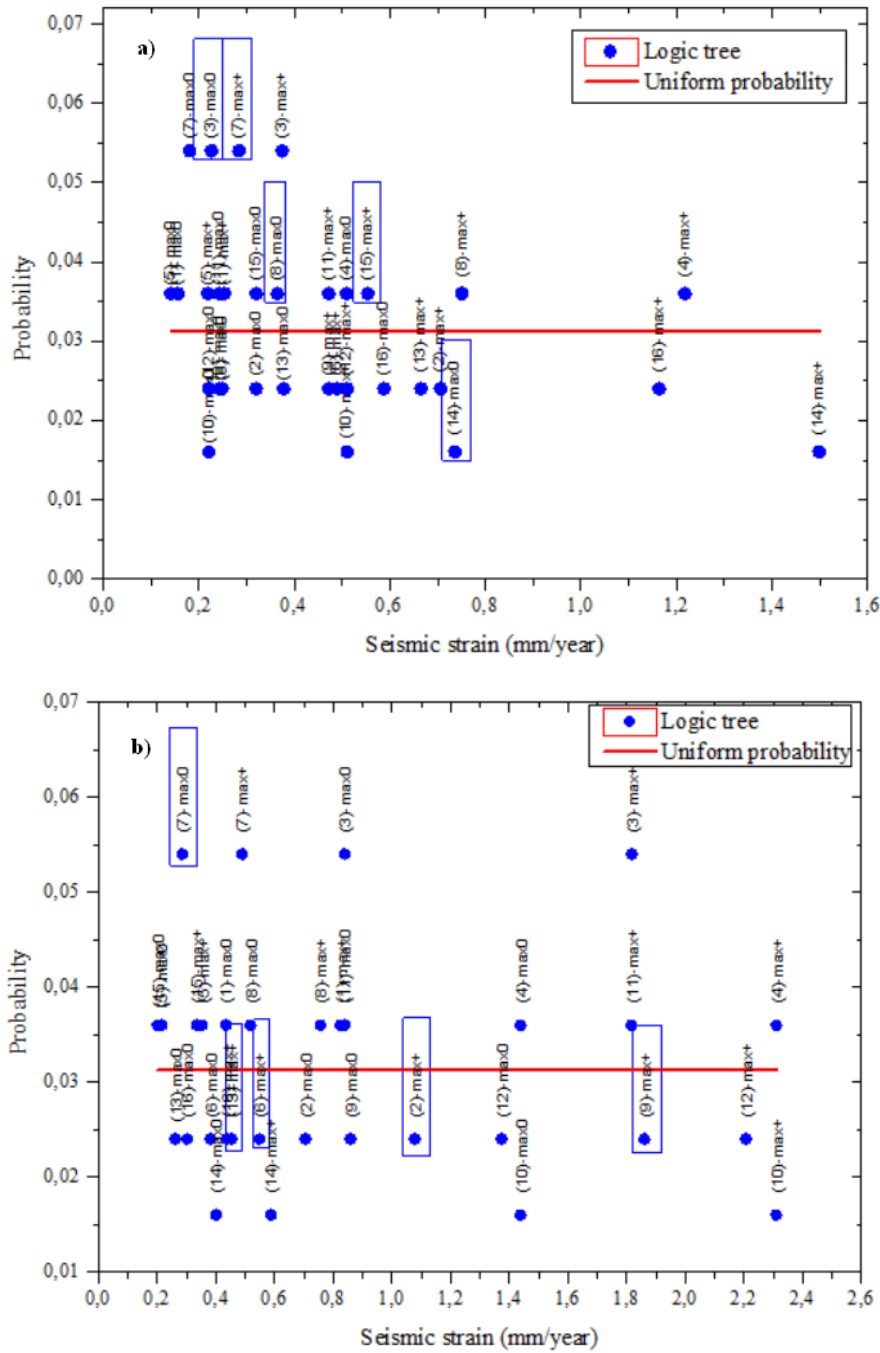
#### **4.2 Uncertainties: Logic Tree and Monte-Carlo simulation**

Among the five PSHA models investigated, the Vilanova and Fonseca (2007) is the only one that addresses epistemic uncertainties on the source definition and earthquake recurrence laws using a logic tree (Fig. 4). This results in 32 possible earthquake generation scenarios, each with a fixed probability given by the sequence of branches in the logic tree. We will expand the resulting discrete probability distribution into a continuous probability distribution through a Monte-Carlo simulation (Fig. 6), considering a probability distribution for parameters  $a$  and  $b$  of the Gutenberg-Richter law. The Monte-Carlo simulation is implemented to address aleatory uncertainties, to evaluate the variability of the composed set of parameters for which the different characteristics of each scenario are selected stochastically according to its uncertainty distribution (Gaspar-Escribano et al., 2015). This simulation will allow to illustrate how the simplified, and complex, sanity checks can be applied to models where the uncertainty in the DTGR laws is provided. Furthermore, it will help us to choose from the 32

possible scenarios 5 that are representative of 5 classes to be defined by 20% probability intervals on the continuous probability distribution of seismic velocity (Fig. 7). These 5 scenarios will be also investigated by the complex sanity test described below.



**Figure 6:** Monte-Carlo method applies to Vilanova and Fonseca (2007) Logic Tree models, compared with a uniform probability distribution. a) the LTV source zone. b) the 1755 source zone.



**Figure 7:** Seismic strain and probability for each of the 32 models that result from the logic tree proposal of Vilanova and Fonseca (2007). The scenarios outlined are the ones chosen to be tested with neotectonics modelling. a) the LTV source zone. b) the 1755 source zone.

445 **4.3 Complex sanity test: Seismicity Rates with “Long Term Seismicity”**

In slow deforming areas where significant seismic hazard is generated offshore, neotectonic modelling is a very useful tool to infer the long-term deformation rates of the brittle lithosphere. That work was performed for the Africa-Eurasia plate boundary extending from the Gloria Fault to the northern Algerian margin by Neres et al. (2016). These authors improved the broader Mediterranean model (Carafa et al., 2015) compiling an up-to-date simplified tectonic map of the Africa-Iberia plate boundary and used the code SHELLS (Bird, 1999; Bird et al., 2008), that solves the stress equilibrium equation for a finite element grid, based on vertically integrated and laterally varying lithospheric data, estimated rock strengths and densities, and lateral, basal, and/or internal boundary conditions. SHELLS determines the long-term averages of tectonic strain and motion over many earthquake cycles and outputs results such as horizontal surface velocities, slip rates on faults, strain rates in the continuum elements, and stress orientation. The finite element grid used for the study of Neres et al. (2016) comprised almost equilateral spherical triangles with about 27 km of side length. More details on the modelling can be found in Neres et al. (2016).

In the present work, the inferred lithospheric deformation, diffuse and concentrated along fault planes, is converted to earthquake generation rates by a modified version of the code “Long Term Seismicity” (Bird and Liu, 2007, Bird et al., 2010) (cf. Supplementary Material).

In its original form the “Long Term Seismicity” algorithm applies the two hypotheses of the SHIFT model (Seismic Hazard Inferred From Tectonics) proposed by Bird and Liu (2007) and Bird et al. (2010): (a) the calculation of the long-term seismic moment rate in a deformed volume uses the coupled seismogenic thickness defined by the plate boundary closest to the zone; (b) calculating the earthquake frequency, as well as their magnitude distribution, follows the recurrence law of the closest and most comparable type of plate boundary. For this purpose, the code uses the plate boundary classification proposed by Bird and Kagan (2004) that considered 7 different types of plate boundary: CRB, Continental Rift Boundary; CTF, Continental Transform Fault; CCB, Continental Convergent Boundary; OSR, Oceanic Spreading Ridge; OTF, Oceanic Transform Fault; OCB, Oceanic Convergent Boundary; SUB, Subduction zone. Using the global CMT catalogue, Bird and Kagan in 2004, estimated the seismicity parameters for each plate boundary type. Instead of using the DTGR recurrence law described above, these authors used the “Tapered Gutenberg-Richter” law (TGR) which is expressed in terms of seismic moment, not magnitude,

$$\dot{N}(m_T) = \dot{N}^{Comp} \left( \frac{M_T}{M_C} \right)^{-\beta_{tGR}} e^{\left( \frac{M^{Comp} - M_T}{M_C} \right)} \quad (5)$$

470  $\dot{N}(m_T)$  is the earthquake rate of events with magnitude greater than or equal to the magnitude of interest,  $m_T$ , with seismic moment  $M_T$ .  $M_C$  is the seismic moment corresponding to the corner magnitude,  $m_c$ , which is a magnitude close but not equal to the maximum magnitude of the DTRG law. The  $\beta_{tGR}$  is the asymptotic spectral slope in the low magnitudes of the Tapered Gutenberg-Richter law and should not be confused with the  $\beta$  of the DTRG, the relation between the two is given by



$$\beta = \frac{3}{2}\beta_{tGR}\ln(10) \quad (6)$$

475  $M^{Comp}$  is the seismic moment corresponding to the magnitude of completeness,  $m_{Comp}$ , equivalent to the minimum magnitude defined earlier for the DTGR.  $\dot{N}^{Comp}$  is the earthquake rate for events with magnitude greater than or equal to the magnitude of completeness.

Once the long-term seismic moment rate ( $\dot{M}$ ) of a grid cell is determined, its expected long-term shallow seismicity rate is obtained in two steps. First the long-term moment rate is divided by the model moment rate (integral of best-fitting ‘‘Tapered’’  
 480 Gutenberg-Richter distribution,  $\dot{M}^{CMT}$ ) of the appropriate Bird and Kagan (2004) CMT subcatalogue and then it is multiplied by the number of events in that subcatalogue,  $\dot{N}^{CMT}$ , to determine the rate of earthquakes at the grid cell that will exceed the threshold magnitude of that subcatalogue,

$$\dot{N}(m > m_T^{CMT}) = \left(\frac{\dot{M}}{\dot{M}^{CMT}}\right) \dot{N}^{CMT} \quad (7)$$

Then the forecasted earthquake rate adjusted to any desired threshold magnitude ( $m_T$ ) using the TGR law is given by,

$$485 \quad \dot{N}(m > m_T) = \dot{N}(m > m_T^{CMT}) \left(\frac{M(m_T)}{M(m_T^{CMT})}\right)^{-\beta} \exp\left(\frac{M(m_T^{CMT}) - M(m_T)}{M(m_c)}\right) \quad (8)$$

The main parameters required to use the ‘‘Long Term Seismicity’’ code to estimate seismic moment release for a particular zone are: the coupled thickness of seismogenic lithosphere,  $\langle cz \rangle$ , the shear modulus,  $\mu$ , the corner magnitude,  $m_c$ , and the asymptotic spectral slope,  $\beta_{tGR}$ , of the TGR law, the number of shallow earthquakes in the catalogue,  $N^{Comp}$  and the threshold magnitude,  $m_T$ , used in counting those events.

490 To establish a sanity check on the earthquake source models used for PSHA in W and SW Iberia, a complex tectonic domain with slow deformation, several modifications had to be done to the main algorithm of ‘‘Long Term Seismicity’’. Firstly, we introduced the parametrization of zones, instead of plate boundaries. Each finite element cell was identified as belonging to one source zone. Secondly, instead of using the default plate boundary parameters defined by Bird and Kagan (2004) we introduced the recurrence parameters of the PSHA models to be investigated. These parameters are given for the source zones,

495 LTV and 1755, respectively, in Tables 6 and 7.

**Table 6:** Earthquake recurrence parameters for the Lower Tagus Valley source zones expressed as DTGR ( $\lambda$ ,  $\beta$ ,  $m_{max}$ ) and TGR ( $\dot{N}^{Comp}$ ,  $\beta_{tGR}$ ,  $m_c$ ) laws, for the minimum magnitude of 5.0.  $\dot{M}_0$  as the seismic moment rate.

<b>Lower Tagus Valley (LTV) source zone</b>							
<b>Double truncated G-R law</b>				<b>Tapered G-R law</b>			$\dot{M}_0$ (Nm/year)
<b>Model</b>	$\lambda$ ( $m=5.0$ )	$\beta$	$m_{max}$	$\dot{N}^{Comp}$ (EQs/year)	$\beta_{tGR}$	$m_c$	
EC8	0.07	1.63	7.2	0.086	0.472	6.78	$1.52 \times 10^{17}$
ERSTA	0.12	1.82	7.1	0.149	0.527	6.69	$1.72 \times 10^{17}$
SHARE <sub>min</sub>	0.08	2.07	7.1	0.099	0.599	6.71	$8.69 \times 10^{16}$
SHARE <sub>med</sub>	0.08	2.07	7.4	0.098	0.599	7.00	$1.33 \times 10^{17}$
SHARE <sub>max</sub>	0.08	2.07	7.6	0.098	0.599	7.20	$1.77 \times 10^{17}$
QREN	0.01	2.03	6.87	0.012	0.588	6.47	$9.12 \times 10^{15}$
(3) SA-CB-RA-a1-max0	0.02	2.05	6.9	0.022	0.594	6.57	$1.63 \times 10^{16}$
(7) SA-CB-RB-a1-max+	0.02	2.28	7.4	0.022	0.660	7.09	$2.49 \times 10^{16}$
(8) SA-CB-RB-a2-max0	0.03	2.28	6.9	0.034	0.660	6.58	$1.92 \times 10^{16}$
(14) SB-CA-RB-a2-max0	0.05	2.30	7.1	0.056	0.666	6.79	$4.02 \times 10^{16}$
(15) SB-CB-RB-a1-max+	0.03	2.35	7.6	0.033	0.680	7.29	$4.46 \times 10^{16}$

500

505

**Table 7:** Earthquake recurrence parameters for the 1755 source zones expressed as DTGR ( $\lambda$ ,  $\beta$ ,  $m_{max}$ ) and TGR ( $\dot{N}^{Comp}$ ,  $\beta_{tGR}$ ,  $m_c$ ) laws, for the minimum magnitude of 5.0.  $\dot{M}_0$  as the seismic moment rate.

1755 Source zone							
Double truncated G-R law				Tapered G-R law			$\dot{M}_0$ (Nm/year)
Model	$\lambda$ ( $m=5.0$ )	$\beta$	$m_{max}$	$\dot{N}^{Comp}$ (EQs/year)	$\beta_{tGR}$	$m_c$	
EC8	0.13	1.66	8.8	0.157	0.481	8.38	$4.51 \times 10^{18}$
ERSTA	0.22	1.43	8.7	0.262	0.414	8.26	$1.18 \times 10^{19}$
SHARE <sub>min</sub>	0.32	2.07	8.5	0.388	0.599	8.10	$2.47 \times 10^{18}$
SHARE <sub>med</sub>	0.32	2.07	8.7	0.388	0.599	8.30	$3.27 \times 10^{18}$
SHARE <sub>max</sub>	0.32	2.07	8.8	0.388	0.599	8.40	$3.75 \times 10^{18}$
QREN	0.03	2.12	8.9	0.036	0.614	8.51	$4.07 \times 10^{17}$
(2) SA-CA-RA-a2-max+	0.09	2.37	9.0	0.099	0.686	8.69	$6.34 \times 10^{17}$
(6) SA-CA-RB-a2-max+	0.10	2.60	9.0	0.109	0.753	8.70	$3.51 \times 10^{17}$
(7) SA-CB-RB-a1-max0	0.09	2.53	8.5	0.099	0.733	8.20	$2.50 \times 10^{17}$
(9) SB-CA-RA-a1-max+	0.12	2.16	9.0	0.133	0.625	8.68	$1.45 \times 10^{18}$
(13) SB-CA-RB-a1-max+	0.08	2.51	9.0	0.088	0.727	8.70	$3.72 \times 10^{17}$

510 However, some preliminary work had to be done to translate the published DTGR law parameters into the TGR law parameters that are used by “Long Term Seismicity”. This task was performed by a non-linear fit, adjusting the corner magnitude and the completeness earthquake rate  $\dot{N}^{Comp}$ , fixing the asymptotic spectral slope  $\beta_{tGR}$  to its theoretical value given by Eq. (6). The quality of the fit was assessed by comparing the total seismic moment release computed for both models, DTGR and fitted TGR. The details of this computation are shown as a supplement (S3).

515 To facilitate the interpretation of results, all recurrence parameters are scaled to an observation period of 100 years. As regards the coupled thickness, we consider that seismic coupling was perfect and used 20 and 60 km as seismogenic thickness for LTV and 1755 zones, respectively. The output tectonic seismicity rates are finally compared to observations to check the consistency of the proposed source zones and earthquake recurrence models.

520 **5. Seismic deformation consistency tests: results and discussion**

**5.1 Simplified test**

This test consisted in computing the fault slip rate that would explain the seismicity from the earthquake recurrence models proposed for PSHA, as described in section 4.1. The slip rates and moment release rates for EC8, ERSTA, SHARE and QREN models considered on the LTV and 1755 source zones are shown on Table 8, and due to the use of a logic tree, as well to

525 simplify, the VF2007 model is shown on Table 9.

**Table 8:** Simple test: seismic deformation rates ( $\Delta\dot{u}_s$ ) in mm/year for the LTV and 1755 source zones considering four earthquake recurrence models.  $\dot{M}$  as the long-term seismic moment rate.

Lower Tagus Valley (LTV)			1755 Source zone	
Model	$\dot{M}$ (Nm/year)	$\Delta\dot{u}_s$ (mm/year)	$\dot{M}$ (Nm/year)	$\Delta\dot{u}_s$ (mm/year)
EC8	$1.52 \times 10^{17}$	0.943	$4.51 \times 10^{18}$	4.448
ERSTA	$1.72 \times 10^{17}$	1.146	$1.18 \times 10^{19}$	14.408
SHARE <sub>min</sub>	$8.69 \times 10^{16}$	0.842	$2.47 \times 10^{18}$	2.436
SHARE <sub>med</sub>	$1.33 \times 10^{17}$	1.289	$3.27 \times 10^{18}$	3.225
SHARE <sub>max</sub>	$1.77 \times 10^{17}$	1.715	$3.75 \times 10^{18}$	3.698
QREN	$9.12 \times 10^{15}$	0.061	$4.07 \times 10^{17}$	0.397

530

535

**Table 9:** Simple test: seismic deformation rates ( $\Delta\dot{u}_s$ ) in mm/year for the LTV and 1755 source zones, considering Vilanova and Fonseca (2007) 32 models resulting from the logic tree proposal. In bold we identify the recurrence models, and values, that will be checked by the complex sanity test.  $\dot{M}_0$  as the long-term seismic moment rate.

Model	Lower Tagus Valley (LTV)				1755 Source zone			
	$m_{max}$		$m_{max}+0.5$		$m_{max}$		$m_{max}+0.5$	
	$\dot{M}_0$ (Nm/year)	$\Delta\dot{u}_s$ (mm/year)	$\dot{M}_0$ (Nm/year)	$\Delta\dot{u}_s$ (mm/year)	$\dot{M}_0$ (Nm/year)	$\Delta\dot{u}_s$ (mm/year)	$\dot{M}_0$ (Nm/year)	$\Delta\dot{u}_s$ (mm/year)
SA-CA-RA-a1	$1.42 \times 10^{16}$	0.120	$2.28 \times 10^{16}$	0.194	$3.95 \times 10^{17}$	0.412	$7.50 \times 10^{17}$	0.782
<b>SA-CA-RA-a2</b>	$2.88 \times 10^{16}$	0.245	$6.37 \times 10^{16}$	0.541	$6.42 \times 10^{17}$	0.670	$9.81 \times 10^{17}$	<b>0.643</b>
<b>SA-CB-RA-a1</b>	$2.04 \times 10^{16}$	<b>0.104</b>	$3.38 \times 10^{16}$	0.287	$7.63 \times 10^{17}$	0.796	$1.65 \times 10^{18}$	1.724
SA-CB-RA-a2	$4.59 \times 10^{16}$	0.390	$1.10 \times 10^{17}$	0.932	$1.31 \times 10^{18}$	1.365	$2.10 \times 10^{18}$	2.192
SA-CA-RB-a1	$1.27 \times 10^{16}$	0.109	$1.97 \times 10^{16}$	0.168	$1.95 \times 10^{17}$	0.204	$3.21 \times 10^{17}$	0.335
<b>SA-CA-RB-a2</b>	$2.24 \times 10^{16}$	0.191	$4.41 \times 10^{16}$	0.375	$3.49 \times 10^{17}$	0.363	$5.00 \times 10^{17}$	<b>0.356</b>
<b>SA-CB-RB-a1</b>	$1.63 \times 10^{16}$	0.139	$2.57 \times 10^{16}$	<b>0.159</b>	$2.59 \times 10^{17}$	<b>0.253</b>	$4.45 \times 10^{17}$	0.464
<b>SA-CB-RB-a2</b>	$3.29 \times 10^{16}$	<b>0.123</b>	$6.76 \times 10^{16}$	0.575	$4.71 \times 10^{17}$	0.491	$6.89 \times 10^{17}$	0.718
<b>SB-CA-RA-a1</b>	$2.18 \times 10^{16}$	0.135	$4.26 \times 10^{16}$	0.263	$7.81 \times 10^{17}$	0.985	$1.69 \times 10^{18}$	<b>1.781</b>
SB-CA-RA-a2	$2.00 \times 10^{16}$	0.123	$4.60 \times 10^{16}$	0.284	$1.31 \times 10^{18}$	1.652	$2.10 \times 10^{18}$	2.654
SB-CB-RA-a1	$2.18 \times 10^{16}$	0.135	$4.26 \times 10^{16}$	0.263	$7.63 \times 10^{17}$	0.963	$1.65 \times 10^{18}$	2.087
SB-CB-RA-a2	$2.00 \times 10^{16}$	0.123	$4.60 \times 10^{16}$	0.284	$1.25 \times 10^{18}$	1.578	$2.01 \times 10^{18}$	2.534
<b>SB-CA-RB-a1</b>	$3.40 \times 10^{16}$	0.210	$6.00 \times 10^{16}$	0.370	$2.37 \times 10^{17}$	0.300	$4.13 \times 10^{17}$	<b>0.456</b>
<b>SB-CA-RB-a2</b>	$6.64 \times 10^{16}$	<b>0.186</b>	$1.35 \times 10^{17}$	0.833	$3.64 \times 10^{17}$	0.459	$5.35 \times 10^{17}$	0.675
<b>SB-CB-RB-a1</b>	$2.89 \times 10^{16}$	0.178	$4.99 \times 10^{16}$	<b>0.207</b>	$1.83 \times 10^{17}$	0.231	$3.04 \times 10^{17}$	0.385
SB-CB-RB-a2	$5.30 \times 10^{16}$	0.327	$1.05 \times 10^{17}$	0.647	$2.75 \times 10^{17}$	0.347	$3.97 \times 10^{17}$	0.501

As already mentioned, the logic tree proposed by Vilanova and Fonseca (2007) generates 32 possible source zone and recurrence models, which define a discrete probability distribution. This can be converted into a continuous probability distribution considering that the a and b parameters from the proposed recurrence models are affected by uncertainty. Using Monte-Carlo simulation, the seismic slip rate probability distribution obtained are shown in Fig. 6 for the LTV and 1755 source zones. Splitting the continuous probability distribution in 5 sections 20% wide, then it is possible to select from each section one representative model to be tested against neotectonic modelling. These selected models are graphically displayed in Fig. 7.

The consistency tests provide geodynamic constraints for evaluating PSHA models, allowing to identify suspect models, either for generating too much or too less earthquakes than predicted. The slip rate on an idealized fault that accumulates all the seismic strain released on that zone generated by the simple test must now be compared with our knowledge of lithospheric deformation and fault slip rates.

The geodynamic setting of W and SW Iberia is dominated by the WNW-ESE oblique dextral convergence between Nubia and Eurasia plates at ~ 4mm/year (Fernandes et al., 2003). Spatial geodesy provides information on how this convergence is propagated on land causing distributed deformation. Palano et al. (2015) analysis of GNSS (Global Navigation Satellite System) data showed in SW Iberia a gradient in the measured velocities relative to fixed Eurasia, from ~ 2 mm/year in the SE to ~ 0.5 mm/year in the NW. The authors interpreted these results as evidence for a rigid rotation of the Iberian Peninsula around a pole located north of Madrid. Once this rotation is removed, the intraplate deformation is less than 1 mm/year everywhere (ibid.).

Cabral et al. (2017) made a detailed analysis of spatial geodesy data in South Portugal Mainland. These authors identified a shear zone that separates a faster SW domain from a slower NE domain. This shear zone would accommodate part of the velocity gradient already mentioned by Palano et al. (2015) with a relative velocity change of less than 1 mm/year.

Cabral (2012) investigated the intraplate deformation using geological criteria. His synthesis recognizes the existence of several active faults in Portugal Mainland (active in the sense that they show movement evidence in the last 3 Ma) however with very low slip rates, less than 0.1 mm/year. The most active faults can reach slip rates of 0.5 mm/year. Neotectonic modelling works (Cunha et al., 2012; Neres et al., 2016) confirm these results, as they point to slip rates in intraplate faults less than 0.1 mm/year.

Both space geodesy data and neotectonic modeling results show that the convergence between the African and Eurasian plates, at ~ 4 mm/year, localizes mainly in the ocean domain and must be accommodated there by active faults, some of them already identified through geological and geophysical studies.

Taking all this information into consideration, we assume 1 mm/year as a reasonable kinematic reference value for the simple sanity check (Tables 8 and 9) for the intraplate Lower Tagus Valley source zone (LTV). For the interplate region where the 1755 earthquake might have been generated, the reference value should be 4 mm/year. Both these values represent upper

570 limits. Seismic slip rates smaller than 0.1 mm/year or 0.5 mm/year for LTV and 1755 zones, respectively, should also be  
considered suspect for they would represent too few seismic deformation. The evaluation of recurrence models from both  
sanity tests is deferred to the discussion section.

## **5.2 Seismicity rates compared with “Long Term Seismicity”**

575 According to section 4.3, in slow deforming areas and earthquake offshore domains, neotectonic modelling constrained by  
geology, seismicity and geodesy, is a very useful tool to infer lithospheric deformation, as it was done by Neres et al. (2016)  
for the W and SW Iberia. Then, lithospheric deformation can be converted to earthquake rates on the source zones used for  
PSHA using a modified version of the “Long Term Seismicity” code of Bird and Liu (2007) and Bird et al. (2010). The  
earthquake rates computed assuming a perfect coupling can then be compared to observations, either by the number of  
580 earthquakes generated by magnitude classes or by the total moment rate released. This comparison is shown on Tables 10 and  
11 for the LTV and 1755 source zones, respectively. It is expressed by the ratio of PSHA recurrence models parameters over  
the “Long Term Seismicity” estimate. Keeping all other modelling parameters, this ratio can be interpreted as the seismic  
coupling required to fit PSHA recurrence models with neotectonics modelling. These ratios should be considered suspect if  
they are close to 1 or greater than 1, meaning that the recurrence models predict more earthquakes and seismic strain than what  
585 would be expected from the neotectonic modelling. On the other hand, very small values of the ratio (smaller than 0.1) should  
also be considered suspect because they might indicate a very small and unrealistic seismic coupling.

590

595

**Table 10:** Complex test: activity rates in EQs/century for the LTV source zone. Two sets of seismicity parameters were  
used: 1) LTS obtained with the “Long Term Seismicity” program and 2) PSHA models expressed as Tapered Gutenberg-

---

Richter laws (TGR). Ratio represents the ratio between TGR and LTS. The number of earthquakes consider a catalogue period of 100 years. Ratios suspected to be too high are in bold, and too low in italic. Acceptable ratios are in bold and italic.  $\dot{M}_0$  as the long-term seismic moment rate.

Lower Tagus Valley (LTV)								
Model		Magnitude					Mean Ratio	$\dot{M}_0$ Nm/century
		5.0	5.5	6.0	6.5	7.0		
EC8	LTS	6.85	3.00	1.26	0.407	0.031		$1.03 \times 10^{19}$
	TGR	8.6	3.77	1.58	0.511	0.039		$1.29 \times 10^{19}$
	ratio	<b>1.255</b>	<b>1.257</b>	<b>1.254</b>	<b>1.256</b>	<b>1.258</b>	<b>1.256</b>	<b>1.248</b>
ERSTA	LTS	5.22	2.07	0.773	0.203	0.007		$5.31 \times 10^{18}$
	TGR	14.9	5.92	2.21	0.580	0.021		$1.50 \times 10^{19}$
	ratio	<b>2.854</b>	<b>2.856</b>	<b>2.859</b>	<b>2.857</b>	<b>2.826</b>	<b>2.856</b>	<b>2.825</b>
SHARE <sub>min</sub>	LTS	9.45	3.32	1.09	0.261	0.010		$7.45 \times 10^{18}$
	TGR	9.8	3.47	1.15	0.274	0.010		$7.65 \times 10^{18}$
	ratio	<b>1.037</b>	<b>1.046</b>	<b>1.052</b>	<b>1.048</b>	<b>1.000</b>	<b>1.046</b>	<b>1.027</b>
SHARE <sub>med</sub>	LTS	6.16	2.18	0.753	0.231	0.036		$7.45 \times 10^{18}$
	TGR	9.8	3.47	1.20	0.368	0.057		$1.17 \times 10^{19}$
	ratio	<b>1.592</b>	<b>1.593</b>	<b>1.593</b>	<b>1.591</b>	<b>1.583</b>	<b>1.592</b>	<b>1.570</b>
SHARE <sub>max</sub>	LTS	4.65	1.65	0.577	0.191	0.045		$7.45 \times 10^{18}$
	TGR	9.8	3.47	1.22	0.402	0.095		$1.56 \times 10^{19}$
	ratio	<b>2.108</b>	<b>2.106</b>	<b>2.116</b>	<b>2.108</b>	<b>2.127</b>	<b>2.108</b>	<b>2.094</b>
QREN	LTS	9.51	3.35	1.03	0.150	$4.81 \times 10^{-4}$		$5.44 \times 10^{18}$
	TGR	1.2	0.42	0.13	0.019	---		$6.91 \times 10^{17}$
	ratio	<i>0.126</i>	<i>0.125</i>	<i>0.126</i>	<i>0.127</i>	---	<i>0.126</i>	<i>0.127</i>
SA-CB-RA-a1-max0	LTS	7.28	2.55	0.807	0.151	$2.61 \times 10^{-3}$		$4.77 \times 10^{18}$
	TGR	2.2	0.77	0.25	0.047	---		$1.46 \times 10^{18}$
	ratio	<b>0.302</b>	<b>0.301</b>	<b>0.310</b>	<b>0.311</b>	---	<b>0.306</b>	<b>0.306</b>
SA-CB-RB-a1-max+	LTS	4.73	1.51	0.467	0.134	0.023		$4.77 \times 10^{18}$
	TGR	2.2	0.70	0.22	0.063	0.011		$2.23 \times 10^{18}$
	ratio	<b>0.465</b>	<b>0.464</b>	<b>0.471</b>	<b>0.470</b>	<b>0.471</b>	<b>0.470</b>	<b>0.468</b>
SA-CB-RB-a2-max0	LTS	8.92	2.80	0.793	0.139	$2.25 \times 10^{-3}$		$4.77 \times 10^{18}$
	TGR	3.4	1.07	0.31	0.052	---		$1.79 \times 10^{18}$
	ratio	<b>0.381</b>	<b>0.382</b>	<b>0.391</b>	<b>0.375</b>	---	<b>0.382</b>	<b>0.375</b>
SB-CA-RB-a2-max0	LTS	9.23	2.85	0.873	0.255	0.058		$1.08 \times 10^{19}$
	TGR	5.6	1.76	0.53	0.12	0.007		$3.86 \times 10^{18}$
	ratio	<b>0.358</b>	<b>0.358</b>	<b>0.355</b>	<b>0.357</b>	<b>0.362</b>	<b>0.358</b>	<b>0.357</b>
SB-CB-RB-a1-max+	LTS	16.01	5.02	1.51	0.352	0.021		$1.08 \times 10^{19}$
	TGR	3.3	1.02	0.31	0.091	0.021		$3.76 \times 10^{18}$
	ratio	<b>0.350</b>	<b>0.351</b>	<b>0.352</b>	<b>0.341</b>	<b>0.339</b>	<b>0.350</b>	<b>0.348</b>



**Table 11:** Complex test: activity rates in EQs/century for the 1755 source zone. Two sets of seismicity parameters were used: 1) LTS obtained with the “Long Term Seismicity” program and 2) PSHA models expressed as Tapered Gutenberg-Richter laws (TGR). Ratio represents the ratio between TGR and LTS. The number of earthquakes consider a catalogue period of 100 years. Ratios suspected to be too high are in bold, and too low in italic. Acceptable ratios are in bold and italic.  $\dot{M}_0$  as the long-term seismic moment rate.

1755 Source zone											
Model		Magnitude								Mean Ratio	$\dot{M}_0$ Nm/century
		5.0	5.5	6.0	6.5	7.0	7.5	8.0	8.5		
EC8	LTS	13.6	5.91	2.58	1.12	0.485	0.203	0.071	8.9×10 <sup>-3</sup>		3.52×10 <sup>20</sup>
	TGR	15.7	6.85	2.98	1.30	0.563	0.236	0.082	0.010		4.04×10 <sup>20</sup>
	ratio	<b>1.154</b>	<b>1.159</b>	<b>1.155</b>	<b>1.161</b>	<b>1.161</b>	<b>1.163</b>	<b>1.155</b>	<b>1.124</b>	<b>1.157</b>	<b>1.148</b>
ERSTA	LTS	6.69	3.27	1.60	0.782	0.378	0.174	0.061	4.5×10 <sup>-3</sup>		2.66×10 <sup>20</sup>
	TGR	26.2	12.8	6.27	3.06	1.48	0.683	0.239	0.018		1.03×10 <sup>21</sup>
	ratio	<b>3.916</b>	<b>3.914</b>	<b>3.919</b>	<b>3.913</b>	<b>3.915</b>	<b>3.925</b>	<b>3.918</b>	<b>4.00</b>	<b>3.917</b>	<b>3.872</b>
SHARE <sub>min</sub>	LTS	59.7	21.2	7.53	2.67	0.931	0.298	0.059	8.0×10 <sup>-4</sup>		3.41×10 <sup>20</sup>
	TGR	38.8	13.8	4.89	1.732	0.604	0.194	0.038	5.2×10 <sup>-4</sup>		2.20×10 <sup>20</sup>
	ratio	<b>0.650</b>	<b>0.651</b>	<b>0.649</b>	<b>0.649</b>	<b>0.649</b>	<b>0.651</b>	<b>0.644</b>	<b>0.650</b>	<b>0.650</b>	<b>0.645</b>
SHARE <sub>med</sub>	LTS	45.2	16.1	5.71	2.03	0.713	0.241	0.064	4.4×10 <sup>-3</sup>		3.41×10 <sup>20</sup>
	TGR	38.8	13.8	4.89	1.736	0.611	0.206	0.055	0.004		2.90×10 <sup>20</sup>
	ratio	<b>0.858</b>	<b>0.857</b>	<b>0.856</b>	<b>0.855</b>	<b>0.857</b>	<b>0.855</b>	<b>0.859</b>	<b>0.909</b>	<b>0.857</b>	<b>0.850</b>
SHARE <sub>max</sub>	LTS	39.2	13.9	4.95	1.76	0.621	0.213	0.061	6.8×10 <sup>-3</sup>		3.41×10 <sup>20</sup>
	TGR	38.8	13.8	4.89	1.737	0.613	0.230	0.061	0.007		3.33×10 <sup>20</sup>
	ratio	<b>0.990</b>	<b>0.993</b>	<b>0.988</b>	<b>0.987</b>	<b>0.987</b>	<b>1.080</b>	<b>1.00</b>	<b>1.029</b>	<b>0.991</b>	<b>0.977</b>
QREN	LTS	59.7	20.7	7.16	2.48	0.854	0.288	0.087	0.014		5.19×10 <sup>20</sup>
	TGR	3.6	1.25	0.43	0.15	0.052	0.017	0.005	8.2×10 <sup>-4</sup>		3.13×10 <sup>19</sup>
	ratio	<i>0.060</i>	<i>0.060</i>	<i>0.060</i>	<i>0.060</i>	<i>0.061</i>	<i>0.059</i>	<i>0.057</i>	<i>0.059</i>	<i>0.060</i>	<i>0.060</i>
SA-CA-RA-a2-max+	LTS	86.5	26.5	8.09	2.47	0.755	0.228	0.065	0.013		4.73×10 <sup>20</sup>
	TGR	9.9	3.03	0.93	0.283	0.086	0.026	0.007	1.47×10 <sup>-3</sup>		5.36×10 <sup>19</sup>
	ratio	<b>0.114</b>	<b>0.114</b>	<b>0.115</b>	<b>0.115</b>	<b>0.114</b>	<b>0.114</b>	<b>0.108</b>	<b>0.113</b>	<b>0.114</b>	<b>0.113</b>
SA-CA-RB-a2-max+	LTS	158.7	43.2	11.8	3.21	0.872	0.234	0.059	0.011		4.73×10 <sup>20</sup>
	TGR	10.9	3.0	0.810	0.221	0.060	0.016	0.004	7.4×10 <sup>-4</sup>		3.22×10 <sup>19</sup>
	ratio	<i>0.069</i>	<i>0.069</i>	<i>0.069</i>	<i>0.069</i>	<i>0.069</i>	<i>0.068</i>	<i>0.068</i>	<i>0.067</i>	<i>0.069</i>	<i>0.068</i>
SA-CB-RB-a1-max0	LTS	214.1	60.4	17.0	4.79	1.33	0.349	0.065	1.8×10 <sup>-3</sup>		4.73×10 <sup>20</sup>
	TGR	9.9	2.79	0.79	0.22	0.062	0.016	0.003	8.0×10 <sup>-5</sup>		2.17×10 <sup>19</sup>
	ratio	<i>0.046</i>	<i>0.046</i>	<i>0.046</i>	<i>0.046</i>	<i>0.047</i>	<i>0.046</i>	<i>0.046</i>	<i>0.044</i>	<i>0.046</i>	<i>0.046</i>
SB-CA-RA-a1-max+	LTS	26.6	9.05	3.08	1.04	0.354	0.119	0.037	8.15×10 <sup>-3</sup>		2.59×10 <sup>20</sup>
	TGR	13.3	4.52	1.534	0.521	0.176	0.059	0.019	4.05×10 <sup>-3</sup>		1.28×10 <sup>20</sup>
	ratio	<b>0.500</b>	<b>0.499</b>	<b>0.498</b>	<b>0.501</b>	<b>0.497</b>	<b>0.496</b>	<b>0.514</b>	<b>0.497</b>	<b>0.499</b>	<b>0.494</b>
SB-CA-RB-a1-max+	LTS	68.7	19.6	5.58	1.59	0.451	0.127	0.034	6.3×10 <sup>-3</sup>		2.59×10 <sup>20</sup>
	TGR	8.8	2.51	0.72	0.204	0.058	0.016	0.004	8.2×10 <sup>-4</sup>		3.27×10 <sup>19</sup>
	ratio	<b>0.128</b>	<b>0.128</b>	<b>0.129</b>	<b>0.128</b>	<b>0.129</b>	<b>0.126</b>	<b>0.118</b>	<b>0.130</b>	<b>0.128</b>	<b>0.126</b>

We present in Table 12 a summary of the sanity tests (simple and complex) performed on the 11 PSHA earthquake generation models, expressed as seismic slip rates ( $\Delta\dot{u}_s$ ) on a single fault and average ratios between earthquake generation (**Mean Ratio LTS**) and seismic moment release ratios (**Ratio  $\dot{M}_o$** ) computed by neotectonic modelling with the “Long Term Seismicity” algorithm.

**Table 12:** Summary of the simple ( $\Delta\dot{u}_s$ ) and complex (Ratio  $\dot{M}_o$ ) sanity tests applied to PSHA earthquake generation models. Bold indicates that PSHA model generates too much earthquakes, while italic shows that the model generates too little earthquakes, according to criteria defined in the text. In bold and italic, we show acceptable values. Average ratios between earthquake generation are shown in Mean Ratio LTS column.

Lower Tagus Valley (LTV)				1755 Source Zone			
Model	$\Delta\dot{u}_s$ mm/year	Mean Ratio LTS	Ratio $\dot{M}_o$	Model	$\Delta\dot{u}_s$ mm/year	Mean Ratio LTS	Ratio $\dot{M}_o$
EC8	<i>0.943</i>	<b>1.256</b>	<b>1.248</b>	EC8	<i>4.448</i>	<b>1.157</b>	<b>1.148</b>
ERSTA	<b>1.146</b>	<b>2.856</b>	<b>2.825</b>	ERSTA	<b>14.408</b>	<b>3.917</b>	<b>3.872</b>
SHARE <sub>min</sub>	<i>0.842</i>	<b>1.046</b>	<b>1.027</b>	SHARE <sub>min</sub>	<i>2.436</i>	<i>0.650</i>	<i>0.645</i>
SHARE <sub>med</sub>	<b>1.289</b>	<b>1.592</b>	<b>1.570</b>	SHARE <sub>med</sub>	<i>3.225</i>	<i>0.857</i>	<i>0.850</i>
SHARE <sub>max</sub>	<b>1.715</b>	<b>2.108</b>	<b>2.094</b>	SHARE <sub>max</sub>	<i>3.698</i>	<b>0.991</b>	<b>0.977</b>
QREN	<i>0.061</i>	<i>0.126</i>	<i>0.127</i>	QREN	<i>0.397</i>	<i>0.060</i>	<i>0.060</i>
SA-CB-RA-a1-max0	<i>0.104</i>	<i>0.306</i>	<i>0.306</i>	SA-CA-RA-a2-max+	<i>0.643</i>	<i>0.114</i>	<i>0.113</i>
SA-CB-RB-a1-max+	<i>0.159</i>	<i>0.470</i>	<i>0.468</i>	SA-CA-RB-a2-max+	<i>0.356</i>	<i>0.069</i>	<i>0.068</i>
SA-CB-RB-a2-max0	<i>0.123</i>	<i>0.382</i>	<i>0.375</i>	SA-CB-RB-a1-max0	<i>0.253</i>	<i>0.046</i>	<i>0.046</i>
SB-CA-RB-a2-max0	<i>0.186</i>	<i>0.358</i>	<i>0.357</i>	SB-CA-RA-a1-max+	<i>1.781</i>	<b>0.499</b>	<b>0.494</b>
SB-CB-RB-a1-max+	<i>0.207</i>	<i>0.350</i>	<i>0.348</i>	SB-CA-RB-a1-max+	<i>0.456</i>	<i>0.128</i>	<i>0.126</i>

605

### 5.3 Joint evaluation of earthquake generation models

The most realistic test, the comparison between PSHA earthquake generation models and neotectonic modelling for the LTV source zone, clearly identifies three models with excessive earthquake generation, EC8, ERSTA and SHARE<sub>min</sub>, SHARE<sub>max</sub>

and one suspect,  $SHARE_{med}$ . These three models were also considered suspect by the simplified consistency test. The QREN  
610 model shows too little earthquake generation, confirmed by both sanity checks, simple and complex. All 5 VF2007 earthquake  
generation models studied satisfy both consistency tests.

Considering the 1755 source zone, only 3 PSHA scenarios pass both sanity tests,  $SHARE_{min}$ ,  $SHARE_{med}$  and one of VF2002  
models. The complex consistency test identifies scenarios EC8 and ERSTA as being clearly excessive in earthquake  
generation, while  $SHARE_{max}$  may be considered suspect. Models that generate too few seismic activity, or being suspect for  
615 that, are QREN and 4 of the 5 VF2007 models investigated. In this source zone, the simplified test confirms 9 of the 11  
evaluations done by the complex test, disagreeing the diagnostic on one of VF2007 models and  $SHARE_{max}$ .

All considered, despite its simplicity, we remark that the simplified consistency check evaluation agrees with the more  
elaborate one on 20 out of the 22 PSHA earthquake generation models. While in the LTV source zone, an intraplate domain,  
6/11 PSHA models fail the tests or are considered suspect, in the 1755 source zone, an interplate domain, the score is lower,  
620 only 4/11 models pass the complex sanity check. The poor performance of PSHA models in the source areas that include the  
large 1755 earthquake may be explained by the poor geological control used on its definition, a diffuse plate boundary with  
large identified geological faults with mostly unknown activity.

Revisiting Fig. 6 and 7 where all 32 VF2007 models are analysed by the simple sanity test, we see that for the LTV source  
zone, three models exceed 1 mm/year seismic slip rates and must be considered suspect. Using Monte-Carlo simulation to  
625 account for uncertainties in the DTGR law parameters, 10 % of those models generated earthquakes in excess. Differently, for  
the 1755 source zone, 40 % of the investigated models should be considered suspect for generating too little earthquakes.

It may be argued that the reference values used to identify PSHA models as suspect or unrealistic depend on a few critical  
parameters that were subjectively defined in this work, like the thickness of the brittle lithosphere, the seismic coupling, the  
dip and length of the typical fault. The seismic moment release and earthquake generation rates are linear functions of these  
630 parameters, directly or inversely related, and it will be a simple algebraic exercise to compute other reference values suiting  
the researcher preferences.

Earthquake catalogues in Slow Deforming Regions are mostly incomplete, have large return periods and the maximum  
magnitude is usually determined by subjective and/or geological criteria with large uncertainties. Taking into consideration  
the space geodetic information, the New Madrid seismic zone also classifies as a Slow Deforming Region (e.g. Newman et  
635 al., 1999). Inferred tectonic strain imply that the 1811, 1812, if  $M=8$ , have very low probability of occurrence (ibid.). The  
interpretation of this earthquake sequence generated a long-standing debate (e.g. Frankel, 2004, Stein, 2005, Frankel, 2005).  
The New Madrid events show that time ergodicity, a common assumption for earthquake generation in Slow Deforming  
Regions, can fail dramatically. Instead, the consistency between earthquake generation models from PSHA and tectonic  
deformation converted into seismic moment release rates with the “Long Term Seismicity” algorithm was expressed in two  
640 ways: i) by the ratio of seismic activity for different magnitude classes and; ii) by the ratio between seismic moment release

rates, which can be interpreted as the mean seismic coupling coefficient needed for perfect consistency. The results obtained show that both indicators result in the same classification of the PSHA models.

## 6. Conclusions

645 In areas of slow deformation and/or where the seismogenic structures cannot be clearly related to instrumental and historical seismicity (e.g. in offshore domains), researchers use the concept of area source to characterize the earthquake generation process. Given the several subjective judgements that are needed to establish these zones and to define the earthquake recurrence laws, it is common that different authors reach different PSHA results, which cannot be ascribed only to the choice of the ground motion prediction equations. We proposed a methodology to objectively evaluate the chosen earthquake  
650 generation models, by comparing the seismic moment release with the knowledge on tectonic deformation, by space geodesy and geology or by neotectonic modelling.

One of the areas investigated in W and SW Iberia, a typical slow deforming region, was the Lower Tagus Valley, an area with very high seismic risk since it includes Lisbon and has a large concentration of population, services, and industry. This is an intraplate domain where space geodesy hints at a strain rate smaller than 1 mm/year. The other source area chosen is offshore  
655 SW Iberia, an interplate setting, where several studies locate the source of the 1<sup>st</sup> November 1755 destructive earthquake.

The basis for the first sanity check proposed, the simple one, where seismic slip rate is compared to kinematic knowledge from space geodesy and geology. In the absence of space geodetic and reliable geological observations, as in offshore domains, lithospheric deformation can be modelled by numerical methods, with results validated by comparison with geological, geodetic, and seismic observations. The inferred lithospheric strain can be converted to earthquake and seismic moment release  
660 rates using the “Long Term Seismicity” algorithm. The second sanity test proposed compares the PSHA earthquake generation models with the ones from neotectonic modelling. Both tests can be used to assess the consistency of PSHA models. The simple test provided the same classification as the complex test on 20 of the 22 scrutinized models.

We suggest that the consistency tests proposed in this work should be part of the PSHA studies in regions of slow deformation and/or with offshore complex earthquake generation mechanisms. In the examples investigated only area earthquake source  
665 zones were tested but the methodology can be easily extended to PSHA studies that use more detailed source parametrization (e.g. Rivas-Medina et al., 2018). When logic tree and/or Monte-Carlo methods are used to characterize the epistemic and aleatoric uncertainties in PSHA, it is recommended that the outcome of the sanity tests should be used on a weighing scheme, as it is already used in probabilistic tsunami hazard assessment (Davies et al., 2017, Basili et al., 2019).

670

## 7. Discussion

675 “Society's goal is to choose a level of safety that makes economic sense, because such mitigation diverts resources from other  
uses. Ideally mitigation should not be too weak, permitting undue risks, or too strong, imposing unneeded costs” (in Stein et  
al., 2012). This means that at the end of the day some decision must be made on the level of ground motion that buildings must  
be built or renewed. We do not follow Mulargia et al. (2017) proposal to completely abandon PSHA due to its faulty  
assumptions at odds with earthquake physics. Even if PSHA will not be the single tool to make the required for land use  
management and for the establishment of building codes, it will still remain has one of the tools to be used. As regards  
earthquake physics, scientific literature is full of contradictory results. For example, the claim made by Corral (2004) that the  
680 earthquake recurrence measured by the waiting time between events follows a universal distribution with naturally occurring  
clusters of main shocks was disputed by Hainzl et al. (2006) that showed that the earthquake catalogue in California can be  
explained by a Poisson distribution for main shocks and a Omori law for aftershocks.

It is an undisputable fact that the occurrence of too many large earthquakes (and associated ground motion) in areas of low  
hazard, as pointed out by Stein et al. (2012) questions the validity of the PSHA used to establish it. We may split the anomalies  
685 as resulting from two main causes: i) the event magnitude is larger than the maximum earthquake used in the model; ii) the  
estimated frequency for the large magnitude (ground motion) observed was under-estimated.

Given that for common buildings the Poissonian distribution used for PSHA requires the integration of earthquakes with  
recurrence intervals several times larger than 500 years (~10% exceedance probability in 50 years) or 2500 years (2%  
exceedance probability in 50 years) it is recognized (e.g. Stein et al., 2012) that the human observation period is too short to  
690 assess the correctness of such models. In fact, for short periods of time, the absence of a large earthquake or its occurrence can  
always be considered a failure of the model. One possible hope for objectively evaluating the results of PSHA would be  
aggregating results globally, as was done by Rong et al. (2003) to evaluate the seismic gap model and show that its predictions  
were not statistically significant. In any case, policy makers and stakeholders should be aware that although PSHA is widely  
used, it has not yet been validated by objective testing. Thus PSHA should not be relied on as a “black box”.

695 Incidentally, these anomalies result from smoothed-catalog methods and for this reason, in recent years, as the unexpected by  
PSHA events (ground motion) accumulated, and as a response to the acknowledgment of the earthquake generation  
complexities and our incomplete knowledge, uncertainty has been more and more incorporated in PSHA studies. These  
uncertainties may lack its fully exploitation in decision making (e.g. building codes) but should help us assessing if the PSHA  
study fails. The PSHA map provides one simple figure to be used by the Engineers but many examples of failure may well fall  
700 inside the large uncertainty that is associated to that number, if properly computed. This is particularly so if the failure is due  
to cause (ii) mentioned above, recurrence model underestimation. The current work pretends to be a contribution to PSHA in  
Slow Deforming Regions by incorporating physical constrains related to plate tectonics.

705 The need for additional physical control on PSHA studies can be compared to an analogous problem in Hydrology, as pointed  
out by Klemes (1986). In hydrology researchers are expected to forecast large flood events with recurrence periods of 100  
years or more based on short-term observations. The statistical models used fail completely to account for the high variability  
of physical conditions that concur to generate a large flood (Klemes (1986). Even if the shortcoming of small observation  
periods (that can be extended by paleo geological studies) is common to smoothed-catalog methods, we must mention a crucial  
710 difference between hydrology and seismology that is at the hearth of the paper: in our work, the seismic moment release is  
ultimately constrained by plate tectonics or long term plate deformation. The global studies made by Bird and Kagan (2004)  
showed that seismic coupling coefficients can be reliably computed for all plate boundaries using the seismic moment  
conservation principle.

### **8. Data availability**

This work used only published or public domain data sets.

715

### **9. Author contribution**

LM provided the initial concept. MR, LM developed the methodology with contributions from MC and MN. MN provided the  
neotectonic modelling. AC and PTC provided the PSHA input. The manuscript was prepared by MR with supervision and  
contribution from all authors.

720

### **10. Competing interests**

The authors declare that they have no conflict of interest.

### **11. Acknowledgements**

725 This publication was supported by FCT project No. UIDB/50019/2020 - IDL.

We address a special thanks to the journal Handling Editor Oded Katz and the reviewers Roberto Cabieces and Robert J. Geller  
for their constructive reviews.

This study was developed for the MSc thesis of Margarida Ramalho.

730 **References**

- Basili, R., Brizuela, B., Herrero, A., Iqbal, S., Lorito, S., Maesano, F.E., Murphy, S., Perfetti, P., Romano, F., Scala, A., Selva, J., Taroni, M., Thio, H.K., Tiberti, M.M., Tonini, R., Volpe, M., Glimsdal, S., Harbitz, C.B., Løvholt, F., Baptista, M.A., Carrilho, F., Matias, L.M., Omira, R., Babeyko, A., Hoechner, A., Gurbuz, M., Pekcan, O., Yalçiner, A., Canals, M., Lastras, G., Agalos, A., Papadopoulos, G., Triantafyllou, I., Benchekroun, S., Agrebi Jaouadi, H., Attafi, K., Ben Abdallah, S.,
- 735 Bouallegue, A., Hamdi, H. and Oueslati, F.: NEAMTHM18 Documentation: the making of the TSUMAPS-NEAM Tsunami Hazard Model 2018. Istituto Nazionale di Geofisica e Vulcanologia (INGV); DOI: <http://doi.org/10.5281/zenodo.3406625>, 2019.
- Basili, R., Brizuela, B., Herrero, A., Iqbal, S., Lorito, S., Maesano, F. E., ... and Zaytsev, A.: The making of the NEAM tsunami hazard model 2018 (NEAMTHM18). *Frontiers in Earth Science*, 8, 753, 2021.
- 740 Bird, P.: Thin-plate and thin-shell finite-element programs for forward dynamic modelling of plate deformation and faulting. *Comput. Geosci.*, 25(4), 383-394, doi:10.1016/s0098-3004(98)00142-3, 1999.
- Bird, P.: Long-term fault slip rates, distributed deformation rates, and forecast of seismicity in the western United States from joint fitting of community geologic, geodetic, and stress direction data sets. *Journal of Geophysical Research: Solid Earth*, 114(B11), 2009.
- 745 Bird, P., and Kagan, Y. Y.: Plate-tectonic analysis of shallow seismicity: Apparent boundary width, beta, corner magnitude, coupled lithosphere thickness, and coupling in seven tectonic settings. *Bulletin of the Seismological Society of America*, 94(6), 2380-2399, 2004.
- Bird, P., Kreemer, C., and Holt, W.E.: A long-term forecast of shallow seismicity based on the Global Strain Rate Map, *Seismology Research Letters*, 81, 184-194, 2010.
- 750 Bird, P., and Liu, Z.: Seismic hazard inferred from tectonics: California, *Seismol. Res. Lett.*, 78(1), 37-48, 2007.
- Bird, P., Liu, Z., and Rucker, W. K.: Stresses that drive the plates from below: Definitions, computational path, model optimization, and error analysis. *Journal of Geophysical Research: Solid Earth*, 113(B11), 2008.
- Cabral, J.: Neotectónica em Portugal Continental. *Memórias do Instituto Geológico e Mineiro*, 31, Lisboa: 265 p, 1995.
- Cabral, J.: Neotectonics of mainland Portugal: state of the art and future perspectives. *Journal of Iberian Geology*, 38(1), 71-755 84, 2012.
- Cabral, J., Mendes, V. B., Figueiredo, P., da Silveira, A. B., Pagarete, J., Ribeiro, A., Dias, R., and Ressurreição, R.: Active tectonics in Southern Portugal (SW Iberia) inferred from GPS data. Implications on the regional geodynamics. *Journal of Geodynamics*, 112, 1-11, 2017.
- Carafa, M. M., Barba, S., and Bird, P.: Neotectonics and long-term seismicity in Europe and the Mediterranean region. *Journal of Geophysical Research: Solid Earth*, 120(7), 5311-5342, 2015.
- 760

- Carafa, M. M. C., Galvani, A., Di Naccio, D., Kastelic, V., Di Lorenzo, C., Miccolis, S., Sepe, V., Pietrantonio, G., Gizzi, C., Massucci, A., Valensise, G., and Bird, P.: Partitioning the ongoing extension of the central Apennines (Italy): Fault slip rates and bulk deformation rates from geodetic and stress data. *Journal of Geophysical Research: Solid Earth*, 125(7), e2019JB018956, 2020.
- 765 Carafa, M. M. C., Kastelic, V., Bird, P., Maesano, F. E., and Valensise, G.: A “Geodetic Gap” in the Calabrian Arc: Evidence for a locked subduction megathrust?. *Geophysical Research Letters*, 45(4), 1794-1804, 2018.
- Carafa, M. M., Valensise, G., and Bird, P.: Assessing the seismic coupling of shallow continental faults and its impact on seismic hazard estimates: a case-study from Italy. *Geophysical Journal International*, 209(1), 32-47, 2017.
- Carrilho, F., Pena, J. A., Nunes, J. C.: *Sismicidade in Estudo do Risco Sísmico e de tsunamis no Algarve*, Edição: Autoridade Nacional de Protecção Civil (ANPC), pp. 28-43, 2010.
- 770 Carvalho, A., and Campos Costa, A.: Impact of seismicity assumptions on seismic hazard for Portugal mainland. Report LNEC 20/2015, 2015.
- Carvalho, A., and Malfeito, N.: Zonas sísmicas e respectivos parâmetros para Portugal continental: comparação de várias propostas e análise de implicações nos estudos de perigosidade sísmica, 10º Congresso Nacional de Sismologia e Engenharia Sísmica, 2016.
- 775 Sismica, 2016.
- Cornell, C. A.: Engineering seismic risk analysis. *Bulletin of the seismological society of America*, 58(5), 1583-1606, 1968.
- Campos Costa, A. C., Sousa, M. L., and Carvalho, A.: Seismic zonation for Portuguese national annex of Eurocode 8. In *Proceedings of the 14th World Conference on Earthquake Engineering*, China, 2008.
- Corral, A.: Long-term clustering, scaling, and universality in the temporal occurrence of earthquakes. *Physical Review Letters*, 780 92(10), 108501, 2004.
- Cunha, T. A., Matias, L. M., Terrinha, P., Negredo, A. M., Rosas, F., Fernandes, R. M. S., and Pinheiro, L. M.: Neotectonics of the SW Iberia margin, Gulf of Cadiz and Alboran Sea: a reassessment including recent structural, seismic and geodetic data. *Geophysical Journal International*, 188(3), 850-872, 2012.
- Custódio, S., Dias, N. A., Carrilho, F., Góngora, E., Rio, I., Marreiros, C., Morais, I., Alves, P., and Matias, L.: Earthquakes 785 in western Iberia: Improving the understanding of lithospheric deformation in a slowly deforming region. *Geophysical Journal International*, 203(1), 127-145, 2015.
- Davies, G., Griffin, J., Løvholt, F., Glimsdal, S., Harbitz, C., Thio, H. K., Lorito, S., Basili, R., Selva, S.J., Geist, E. and Baptista, M. A.: A global probabilistic tsunami hazard assessment from earthquake sources. *Geological Society, London, Special Publications*, 456(1), 219-244, 2017.



- 790 Duarte, J. C., Rosas, F. M., Terrinha, P., Schellart, W. P., Boutelier, D., Gutscher, M. A., and Ribeiro, A.: Are subduction zones invading the Atlantic? Evidence from the southwest Iberia margin. *Geology*, 41(8), 839-842, 2013.
- Fernandes, R. M. S., Ambrosius, B. A. C., Noomen, R., Bastos, L., Wortel, M. J. R., Spakman, W., and Govers, R.: The relative motion between Africa and Eurasia as derived from ITRF2000 and GPS data, *Geophys. Res. Lett.*, 30(16), 1828, doi:10.1029/2003GL017089, 2003.
- 795 Frankel, A.: How can seismic hazard around the New Madrid seismic zone be similar to that in California?. *Seismological Research Letters*, 75(5), 575-586, 2004.
- Frankel, A.: Reply to “Comment on How Can Seismic Hazard in the New Madrid Seismic Zone Be Similar to That in California?” by Arthur Frankel”. *Seismological Research Letters*, 76(3), 366-367, 2005.
- Fukao, Y.: Thrust faulting at a lithospheric plate boundary the Portugal earthquake of 1969. *Earth and Planetary Science Letters*, 18(2), 205-216, 1973.
- 800 Gaspar-Escribano, J. M., Rivas-Medina, A., Parra, H., Cabañas, L., Benito, B., Barajas, S. R., and Solares, J. M.: Uncertainty assessment for the seismic hazard map of Spain. *Engineering geology*, 199, 62-73, 2015.
- Geissler, W. H., Matias, L., Stich, D., Carrilho, F., Jokat, W., Monna, S., IbenBrahim, A., Mancilla, F., Gutscher, M.-A., Sallarès, V., Zitellini, N.: Focal mechanisms for sub-crustal earthquakes in the Gulf of Cadiz from a dense OBS deployment.
- 805 *Geophysical Research Letters*, 37(18), 2010.
- Giardini, D.: The global seismic hazard assessment program (GSHAP)-1992/1999. *Annals of Geophysics*, 42(6), 1999.
- Grevemeyer, I., Matias, L., Silva, S.: Mantle earthquakes beneath the South Iberia continental margin and Gulf of Cadiz—constraints from an onshore-offshore seismological network. *Journal of Geodynamics*, 99, 39-50, 2016.
- Grünthal, G., and Wahlström, R.: The European-Mediterranean earthquake catalogue (EMEC) for the last millennium. *Journal of seismology*, 16(3), 535-570, 2012.
- 810 Hanks, T. C., and Kanamori, H.: A moment magnitude scale, *J. Geophys. Res.* 84, 2348–2350, 1979.
- Hainzl, S., Scherbaum, F., and Beauval, C.: Estimating background activity based on interevent-time distribution. *Bulletin of the Seismological Society of America*, 96(1), 313-320, 2006.
- ISC.: International Seismological Centre, On-line Bulletin, <http://www.isc.ac.uk>, Internatl. Seismol. Cent., Thatcham, United Kingdom, <http://doi.org/10.31905/D808B830>, 2018.
- 815 IGN-UPM.: Actualización de Mapas de Peligrosidad Sísmica de España 2012. Editorial Centro Nacional de Información Geográfica, Madrid. ISBN: 978-84-416-2685-0, 267 pp, 2013.

- Jeremias, F. T., Carvalho, A., Coelho, A. G., and Campos Costa, A.: Estudos sismológicos para definição das ações sísmicas para o local de implantação do aproveitamento hidroelétrico de Foz Tua. XIII Congresso Nacional de Geotecnia, 16 p, 2012.
- 820 Johnston, A. C.: The Seismicity of ‘Stable Continental Interiors’. In: Earthquakes at North-Atlantic Passive Margins: Neotectonics and Postglacial Rebound. NATO ASI Series (Series C: Mathematical and Physical Sciences), vol 266. Springer, Dordrecht, [https://doi.org/10.1007/978-94-009-2311-9\\_18](https://doi.org/10.1007/978-94-009-2311-9_18), 1989.
- Johnston, A. C.: Seismic moment assessment of earthquakes in stable continental regions—III. New Madrid 1811–1812, Charleston 1886 and Lisbon 1755. *Geophysical Journal International*, 126(2), 314-344, 1996.
- 825 Kijko, A., and Sellevoll, M. A.: Estimation of Earthquake Hazard Parameters from Incomplete Data Files. Part II. Incorporation of Magnitude Heterogeneity, *Bull. Seismol. Soc. Am.* 82, 120–134, 1992.
- Kijko, A.: Estimation of maximum earthquake magnitude  $M_{max}$ , *Pure and Applied Geophysics*, vol.161, p.1655-1681, 2004.
- Klemeš, V.: Dilettantism in Hydrology: Transition or Destiny? *Water Resources Research*, 22, 177S-188S, 1986.
- Klemeš, V.: The improbable probabilities of extreme floods and droughts. In: Starosolszky, O., Medler, O.M. (Eds.),  
830 *Hydrology of Disasters*. James and James, London, pp. 43–51, 1989.
- Martínez-Loriente, S., Gracia, E., Bartolome, R., Sallarès, V., Connors, C., Perea, H., Lo Iacono, C., Klaeschen, D., Terrinha, P., Dañobeitia, J.J., and Zitellini, N.: Active deformation in old oceanic lithosphere and significance for earthquake hazard: Seismic imaging of the Coral Patch Ridge area and neighboring abyssal plains (SW Iberian Margin). *Geochemistry, Geophysics, Geosystems*, 14(7), 2206-2231, 2013.
- 835 Matias, L.M and Teves-Costa, P.: Mapa de perigosidade sísmica. Avaliação de Riscos Naturais e Tecnológicos na Cidade de Lisboa, Relatório IE16, Faculdade de Ciências da Universidade de Lisboa, 26 de Julho de 2011, 2011a.
- Matias, L.M and Teves-Costa, P.: Relatório de perigosidade sísmica. Avaliação de Riscos Naturais e Tecnológicos na Cidade de Lisboa, Relatório IE17, Faculdade de Ciências da Universidade de Lisboa, 26 de Julho de 2011, 2011b.
- Matias, L.M., Cunha, T., Annunziato, A., Baptista, M. A., and Carrilho, F.: Tsunamigenic earthquakes in the Gulf of Cadiz:  
840 fault model and recurrence. *Natural hazards and earth system sciences*, 13(1), 1-13, 2013.
- Mazzotti, S.: Geodynamic models for earthquake studies in intraplate North America. *SPECIAL PAPERS-GEOLOGICAL SOCIETY OF AMERICA*, 425, 17, 2007.
- Mazzotti, S., and Adams, J.: Rates and uncertainties on seismic moment and deformation in eastern Canada. *Journal of Geophysical Research: Solid Earth*, 110(B9), doi: 10.1029/2004JB003510, 2005.
- 845 Mazzotti, S., Leonard, L. J., Hyndman, R. D., and Cassidy, J. F.: Tectonics, dynamics, and seismic hazard in the Canada-Alaska Cordillera. *Active tectonics and seismic potential of Alaska*, 179, 297-319, 2008.

- Mezcua, J., Rueda, J., and Blanco, R. M. G.: A new probabilistic seismic hazard study of Spain. *Natural hazards*, 59(2), 1087-1108, 2011.
- 850 Mulargia, F., Stark, P. B., and Geller, R. J.: Why is probabilistic seismic hazard analysis (PSHA) still used?. *Physics of the Earth and Planetary Interiors*, 264, 63-75, 2017.
- Neres, M., Carafa, M. M. C., Fernandes, R. M. S., Matias, L., Duarte, J. C., Barba, S., and Terrinha, P.: Lithospheric deformation in the Africa-Iberia plate boundary: Improved neotectonic modeling testing a basal-driven Alboran plate. *Journal of Geophysical Research: Solid Earth*, 121(9), 6566-6596, 2016.
- 855 Neres, M., Neves, M. C., Custódio, S., Palano, M., Fernandes, R., Matias, L., Carafa, M. and Terrinha, P.: Gravitational Potential Energy in Iberia: A Driver of Active Deformation in High-Topography Regions. *Journal of Geophysical Research: Solid Earth*, 123(11), 10-277, 2018.
- Palano, M., González, P. J., and Fernández, J.: The Diffuse Plate boundary of Nubia and Iberia in the Western Mediterranean: Crustal deformation evidence for viscous coupling and fragmented lithosphere. *Earth and Planetary science letters*, 430, 439-447, 2015.
- 860 Peláez, J., and López Casado, C.: Seismic hazard estimate at the Iberian Peninsula, *Pure Appl. Geophys.* 159, 2699-2713, 2002.
- Peltier, W.R., Argus, D.F. and Drummond, R.: Space geodesy constrains ice-age terminal deglaciation: The global ICE-6G\_C (VM5a) model. *J. Geophys. Res. Solid Earth*, 120, 450-487, doi:10.1002/2014JB011176, 2015.
- 865 Ribeiro, A., Mendes-Victor, L., Cabral, J. M. L. C., Matias, L., and Terrinha, P.: The 1755 Lisbon earthquake and the beginning of closure of the Atlantic. *European Review*, 14(2), 193-205, 2006.
- Rivas-Medina, A., Benito, B., and Gaspar-Escribano, J. M.: Approach for combining fault and area sources in seismic hazard assessment: application in south-eastern Spain. *Natural Hazards and Earth System Sciences*, 18(11), 2809-2823, 2018.
- 870 Rodrigues, I., Sousa, M. L., Carvalho, A., and Carrilho, F.: Parâmetros das leis de frequência-magnitude para as novas zonas de sismogénese delineadas para a região do Algarve. *APMG 2009, 6º Simpósio de Meteorologia e Geofísica / 10º Encontro Luso-Espanhol de Meteorologia*, Costa da Caparica, Portugal, 2009.
- Rong, Y.-F., Jackson, D. D., and Kagan, Y. Y.: Seismic gaps and earthquakes. *J. Geophys. Res.* 108, no. 2471, 14, doi: 10.1029/2002JB002334, 2003.
- Schorlemmer, D., Gerstenberger, M. C., Wiemer, S., Jackson, D. D., and Rhoades, D. A.: Earthquake likelihood model testing. *Seismological Research Letters*, 78(1), 17-29, 2007.
- 875 Silva, V., Crowley, H., Varum, H., and Pinho, R.: Seismic risk assessment for mainland Portugal. *Bulletin of Earthquake Engineering*, 13(2), 429-457, 2015.

- Silva, S., Terrinha, P., Matias, L., Duarte, J. C., Roque, C., Ranero, C. R., Geissler, W.H., and Zitellini, N.: Micro-seismicity in the Gulf of Cadiz: Is there a link between micro-seismicity, high magnitude earthquakes and active faults?. *Tectonophysics*, 717, 226-241, 2017.
- 880 Sousa, M. L.: Modelos probabilistas para avaliação da casualidade sísmica em Portugal Continental. Tese de Doutoramento, Universidade Técnica de Lisboa, Instituto Superior Técnico, 1996.
- Sørensen, M. B., Spada, M., Babeyko, A., Wiemer, S., and Grünthal, G.: Probabilistic tsunami hazard in the Mediterranean Sea. *Journal of Geophysical Research: Solid Earth*, 117(B1), 2012.
- Stein, S.: Comment on “How can seismic hazard in the New Madrid Seismic Zone be similar to that in California?” by Arthur Frankel. *Seismological Research Letters*, 76(3), 364-365, 2005.
- 885 Stein, S., Geller, R. J., and Liu, M.: Why earthquake hazard maps often fail and what to do about it. *Tectonophysics*, 562, 1-25, 2012.
- Stein, J., and Stein, S.: Rebuilding Tohoku: A joint geophysical and economic framework for hazard mitigation. *GSA Today*, 22(10), 42-44, 2012.
- 890 Stucchi, M., Rovida, A., Capera, A. G., Alexandre, P., Camelbeeck, T., Demircioglu, M. B., Gasperini, P., Kouskouna, V., Musson, R.M.W., Radulian, M., Sesetyan, K., Vilanova, S., Baumont, D., Bungum, H., Fäh, D., Lenhardt, W., Makropoulos, K., Martinez Solares, J.M., Scotti, O., Živčić, M., Albini, P., Batllo, J., Papaioannou, C., Tatevossian, R., Locati, M., Meletti, C., Viganò, D., and Giardini, D.: The SHARE European earthquake catalogue (SHEEC) 1000–1899. *Journal of Seismology*, 17(2), 523-544, 2013.
- 895 Terrinha, P., Ramos, A., Neres, M., Valadares, V., Duarte, J., Martínez-Loriente, S., Silva, S., Mata, J., Kullberg, J.C., Casas-Sainz, A., Matias, L., Fernández, O., Muñoz, J.A., Ribeiro, C., Font, E., Neves, C., Roque, C., Rosas, F., Pinheiro, L., Bartolomé, R., Sallarès, V., Magalhães, V., Medialdea, T., Somoza, L., Gràcia, E., Hensen, C., Gutscher, M.-A., Ribeiro, A., and Zitellini, N.: The Alpine Orogeny in the West and Southwest Iberia Margins. In: Quesada C., Oliveira J. (eds) *The Geology of Iberia: A Geodynamic Approach*. Regional Geology Reviews. Springer, 2019.
- 900 Teves-Costa, P., Batlló, J., Matias, L., Catita, C., Jiménez, M. J., and García-Fernández, M.: Maximum intensity maps (MIM) for Portugal mainland. *J Seismol* 23, 417–440. <https://doi.org/10.1007/s10950-019-09814-5>, 2019.
- Teves-Costa, P., Ribeiro, A., Cabral, J., Ribeiro, P., Moniz, C., Matias, L., Carvalho, A., Silva, P., Moitinho, I., Marques, FMSF., Carneiro, AL., and Caetano, H.: Estudo de Risco Sísmico da Área Metropolitana de Lisboa e Concelhos Limítrofes. Relatório Final (Vol. I e Vol. II, Anexos), Instituto de Ciências da Terra e do Espaço, July 2001, 190pp, 2001.

- 905 Veludo, I., Dias, N. A., Fonseca, P. E., Matias, L., Carrilho, F., Haberland, C., and Villaseñor, A.: Crustal seismic structure beneath Portugal and southern Galicia (western Iberia) and the role of Variscan inheritance. *Tectonophysics*, 717, 645-664, 2017.
- Vilanova, S. P., and Fonseca, J. F.: Probabilistic seismic-hazard assessment for Portugal. *Bulletin of the Seismological Society of America*, 97(5), 1702-1717, 2007.
- 910 Woessner, J., Laurentiu, D., Giardini, D., Crowley, H., Cotton, F., Grünthal, G., Valensise, G., Arvidsson, R., Basili, R., Demircioglu, M.B., Hiemer, S., Meletti, C., Musson, R.W., Rovida, A.N., Sesetyan, K., and Stucchi, M., The SHARE Consortium.: The 2013 European seismic hazard model: key components and results. *Bulletin of Earthquake Engineering*, 13(12), 3553-3596, 2015.
- Zitellini, N., Gràcia, E., Matias, L., Terrinha, P., Abreu, MA., DeAlteriis, G., Henriot, JP., Dañobeitia, JJ., Masson, DG.,
- 915 Mulder, T., Ramella, R., Somoza, L., and Diez, S.: The quest for the Africa-Eurasia plate boundary west of the Strait of Gibraltar, *Earth Plan. Sci. Lett.*, 280 (1-4), p13-50, 2009.