

Author comments on “A sanity check for earthquake recurrence models used in PSHA of slow deforming regions: the case of SW Iberia” by Margarida Ramalho et al.

Title: A sanity check for earthquake recurrence models used in PSHA of slow deforming regions: the case of SW Iberia
Author(s): Margarida Ramalho, Luis Matias, Marta Neres, Michele M. C. Carafa, Alexandra Carvalho, and Paula Teves-Costa

Interactive comment by Roberto Cabieces (Referee)

rcabdia@gmail.com

Received and published: 17 March 2021

General comments:

The authors show very promising results in the evaluation of earthquake generation models using two different methods. The methodologies have been applied and compared in SW Iberia which is one of the most seismic risk zones.

The manuscript is readable and well structured. I just have two main concerns. The first one is that the methodology section can be corrected to boost the focus of the authors specific contributions (see details below). My second remark is about the conclusions section. Please rewrite this section, it is needed to summarize the most important results of your paper. From my point of view is still difficult to rapidly retrieve the main contributions of your work in the actual conclusion section.

R: We thank the reviewer for his constructive comments. We modified the methodology section following the detailed comments and suggestions. We also rewrote the conclusions focusing on the most important results, namely:

- 1. That we proposed a methodology to objectively evaluate the chosen earthquake generation models, by comparing the seismic moment release with the knowledge on tectonic deformation, by space geodesy and geology or by neotectonic modelling.*
- 2. The basis for the first sanity check proposed, the simple one, where seismic slip rate is compared to kinematic knowledge from space geodesy and geology. In the absence of space geodetic and reliable geological observations, as in offshore domains, lithospheric deformation can be modelled by numerical methods, with results validated by comparison with geological, geodetic, and seismic observations. The inferred lithospheric strain can be converted to earthquake and seismic moment release rates using the “Long Term Seismicity” algorithm. The second sanity test proposed compares the PSHA earthquake generation models with the ones from neotectonic modelling. Both tests can be used to assess the consistency of PSHA models. The simple test provided the same classification as the complex test on 20 of the 22 scrutinized models.*
- 3. We suggest that the consistency tests proposed in this work should be part of the PSHA studies in regions of slow deformation and/or with offshore complex earthquake generation mechanisms. In the examples investigated only area earthquake source zones were tested but the methodology can be easily extended to PSHA studies that use more detailed source parametrization (e.g. Rivas-Medina et al., 2018). When logic tree and/or Monte-Carlo methods are used to characterize the epistemic and aleatoric uncertainties in PSHA, it is recommended that the outcome of the sanity tests should be used on a weighing scheme, as it is already used in probabilistic tsunami hazard assessment (Davies et al., 2017, Basili et al., 2019).*

Specific Comments

1. In the abstract, please remove the last sentence. It is better not to include in this section a conclusion, just leave some remarkable results.

R: We reformulated the last sentence in order to integrate it as a result from this study:

“Results show that some of the earthquake source models should be considered as suspicious, given their high/low moment release when compared to the expected values from GNSS observations or neotectonic modelling. This analysis allowed for a downgrade of the weight of poorly compliant models in the PSHA analysis, thus for a more realistic hazard assessment, and can be integrated in other studies of similar settings.”

2. Line 203 “mentioned above do not consider any uncertainty”. Please rewrite this sentence being more precise in “any uncertainty”. It could be better to explain what uncertainties you are referring to. To me this sentence is too general and/or strong.

R: We follow the reviewer’s suggestion and changed “any uncertainty” to “the uncertainty”, obtaining a more precise sentence.

*“Some of the PSHA studies mentioned above do not consider **the** uncertainty in the definition of the earthquake generation model (zoning and earthquake recurrence), others consider that different models can be accepted with some weights, with uncertainty assessed by the logic tree method (e.g. Vilanova and Fonseca, 2007, Woessner et al., 2015), while others also consider that the DTGR parameters have a statistical uncertainty that is assessed by Monte-Carlo simulations (e.g. IGN-UPM, 2013, Gaspar-Escribano et al., 2015).”*

3. Simple consistency test:

It is needed to reduce this section, some content are trivial and can be moved to the supplementary material.

a. Please, remove the content from line 382 (The area. . .) to line 396 and move it to the supplementary material.

R: We agree that this suggestion will result in a clearer version of the manuscript and proceeded accordingly.

b. Line 400, Eq 7 >> Eq 8

R: Corrected according to the resulting numeration in the revised version.

4. Uncertainties: Logic Tree and Monte-Carlo simulation

a. It is necessary to include a reference or some brief explanation about how you have implemented the Monte-Carlo simulation (i.e. parametrization).

R: We acknowledge that further information could be given on the applied method and add in the revised version a sentence to clarify it:

*Among the five PSHA models investigated, the Vilanova and Fonseca (2007) is the only one that addresses epistemic uncertainties on the source definition and earthquake recurrence laws using a logic tree (Fig. 4). This results in 32 possible earthquake generation scenarios, each with a fixed probability given by the sequence of branches in the logic tree. Here, we expand the resulting discrete probability distribution into a continuous probability distribution through a Monte-Carlo simulation (Fig. 6), considering a probability distribution for parameters a and b of the Gutenberg-Richter law. **The Monte-Carlo simulation is implemented to address aleatory uncertainties, to evaluate the variability of the compose set of parameters for which the different characteristics of each scenario is selected stochastically according to its uncertainty distribution (Gaspar-Escribano et al., 2015).** This exercise will allow to illustrate how the simplified, and complex, sanity checks can be applied to models where the uncertainty in the DTGR laws is provided. Furthermore, it will help us to choose from the 32 possible scenarios 5 that are representative of 5 classes to be defined by 20% probability intervals on the continuous probability distribution of seismic velocity (Fig. 7). These 5 scenarios will be also investigated by the complex sanity test described below.*

b. Line 425 (This exercise → This simulation)

R: Agree. Changed.

5. Complex sanity test_ Seismicity Rates with “Long Term Seismicity”

a. Line 448 (are revised below → see Supplementary Material) b. Please move from line 449 to 481 to the supplementary material. This will help that the reader focus on your actual work and the section be more organized separating “your work” and “the fundamental basis”.

R: We agree that this suggestion will result in a clearer version of the manuscript and proceeded accordingly.

c. Line 482, replace code by algorithm

R: Changed.

6. Seismicity rates compared with “Long Term Seismicity”

a. No necessary to include the sentence from line 652 to 653. It doesn't add significant information.

R: We agree to remove this sentence.

Technical corrections

Figure 1.

a) I suggest that the maps have colorbars. b) Might be you can change the color pallet to highlight the faults. Now, the faults are in white and is difficult to distinguish it. c) I don't think you need an Europe map. You can integrate the rest of the figures in just one figures.

R: a) We add a colorbar as shown in the new figure below. b) At this stage we are not able to change the color of the faults. c) We prefer to leave the different parts of the figure, to better illustrate the different aspects and scales of the geodynamic setting.

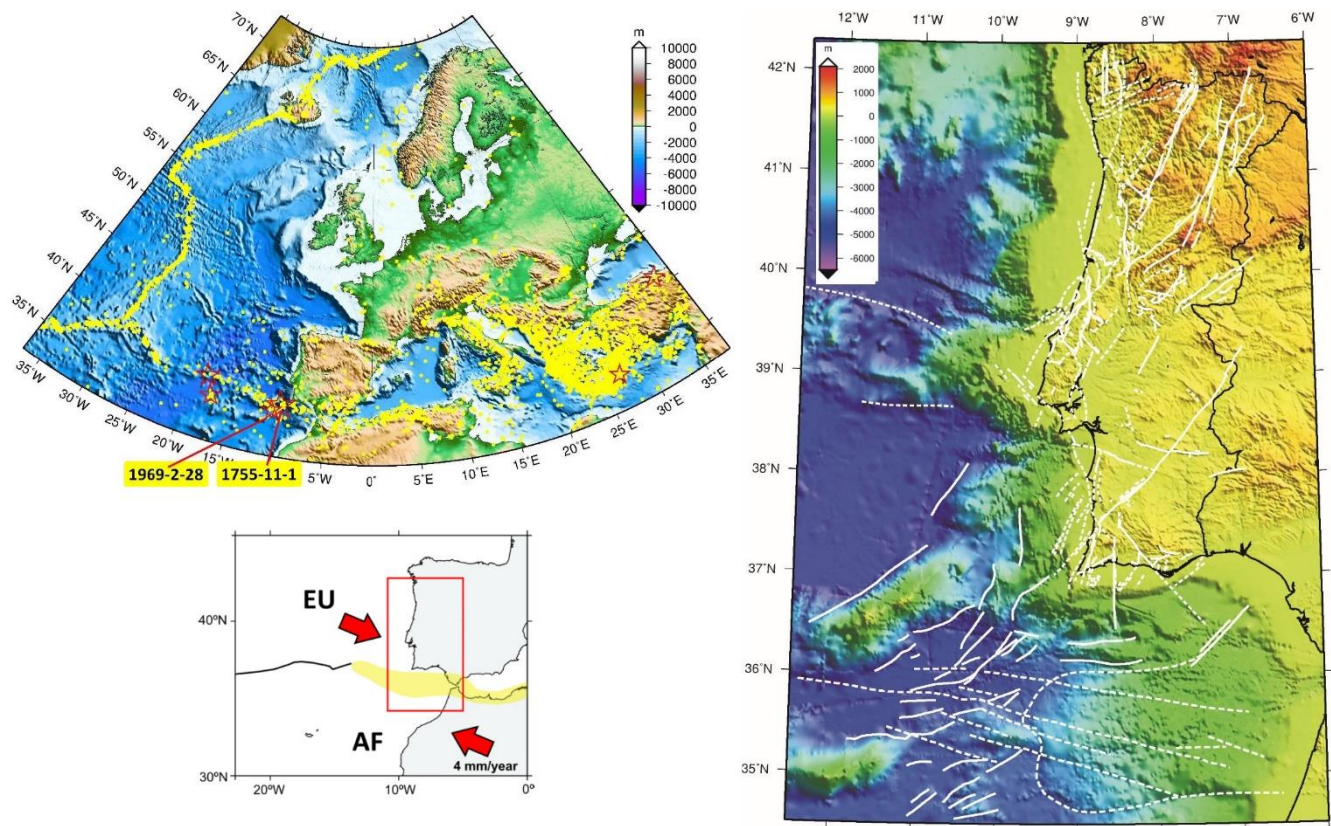


Figure 7.

I suggest that you place a legend with the name of the models and each model be a coloured dot, instead of set the name in the figure.

R: We agree that this will improve the readability of the figure. We are implementing these changes, which will be included in the new version of the manuscript.

Tables.

In general, please explain what each column stands for, even though you have already written in the main text.

R: We will implement that, in agreement with this comment, because it is essential that the tables legends contain all the information in it.

We agree and will proceed accordingly for the new version of the manuscript.