

Reviewer #1

Dear Reviewer,

We appreciate the time and effort that you dedicated to read our manuscript and for the valuable comments, you have provided. We answer your comments, suggestions and questions below and have incorporated them into the manuscript. Your constructive comments have significantly improved the quality and clarity of our manuscript.

Please find below our point by point response to each of the comments.

Best regards,

Buruk Kitachew Wossenyeleh
On behalf of all authors

Part I: General Comments:

Point 1: Dear authors, the paper is very interesting, and it is appreciated that in general is well-structured and written. I enjoy reading it! However, there is still room for improvement in the language and some typos. Please be careful in how the type of drought and its impacts is written through the text. Since sometimes these concepts are mixed up. The methodology applied is well explained. Even though the results and discussion chapter should include more balanced discussions with other authors, concepts and related/similar work. Please add it.

Response 1: Thank you for the positive feedback of the paper and your recommendation. We agree discussing the results of other authors would add value to the manuscript and have added some discussion about the suggested point. We also encourage similar studies to be done in other regions. We included the following discussion in the result and discussion part of the revised manuscript.

Line [386-398] During drought propagation in the hydrological cycle, the multi-year meteorological droughts of 1981 – 2013 propagate to groundwater recharge drought. This propagation continues to the groundwater system. The groundwater drought propagation analysis showed that even though the number and severity of drought events observed in discharge to the wetland is lower than for recharge, , the wetland is still vulnerable to groundwater drought. This is also reflected in the lower groundwater level measurements between 2006 and 2008. This

vulnerability could be because of the shallow water table and limited thickness of the aquifer in the study area, resulting in a quick response to changes in hydrological stresses such as droughts. The drought propagation towards a wetland studied by Fang and Pomeroy (2008) also showed much lower discharge to the wetland from the basin groundwater and snowmelt runoff developed in drought years. Moreover, Drexler and Ewel (2001) performed a field experiment during the 1997–1998 ENSO-related drought and found that the mean water table level in the wetlands lowered by 12 to 54 cm. This could also be explained by drought propagation from the meteorological to the groundwater system.

Part II: Specific comments:

Point 1: P1, L14- 16. Please rewrite the sentence; it is hard to read.

Response 1: Agree and changes made in the revised manuscript.

Line [15-17] Furthermore, meteorological drought and groundwater drought on recharge were compared to investigate drought propagation in the hydrological cycle.

Point 2: P1, L20. Change or delete the word drought after the groundwater recharge

Response 2: Agree and changes made. We included the following rewritten sentence in the revised manuscript.

Line [19-20] The number and severity of drought events on groundwater discharge events were smaller than for groundwater recharge.

Point 3: P2, L28-29 and L32. Add references

Response 3: Agree and changes made. We included the references in the revised manuscript.

Line [29-32] Drought can be described as a temporary decrease in water availability over a significant period and caused by deficient precipitation. Droughts propagate through the hydrological cycle and affect both surface and groundwater resources (Bloomfield and Marchant, 2013; Calow et al., 1997; Mishra and Singh, 2010; Wilhite, 2000).

Point 4: P2, 41. Please specify for which type(s) of drought(s) the author made the assessment

Response 4: Agree and changes made. We included the type of drought in the revised manuscript.

Line [41-42] The meteorological drought periods were defined as the number of consecutive days without significant precipitation (less than 0.5 mm) for the six hottest months of the year.

Point 5: P3, 53. Add reference, for the readers would be interesting to know more about the 2018 drought and its implications.

Response 5: Agree and changes made. We included the references in the revised manuscript.

Line [55-57] Droughts such as the one experienced in the summer of 2018 may have a significant impact on the groundwater discharge that is feeding such vulnerable systems (Ridder et al., 2020).

Point 6: P3, L69-73 It should be stated here that also meteorological indicators are part of the assessment

Response 6: Agree and we revised the aim of the paper. We included the meteorological drought in the aim of the paper as follows:

Line [75-77] This paper aims to investigate drought propagation in the hydrological cycle by developing and applying a method for simulating meteorological drought, groundwater drought, and its propagation in the aquifer, particularly focusing on assessing its impact on groundwater-fed wetland ecosystem.

Point 7: Please introduce the acronym GroWaDRISK and the other acronyms.

Response 7: Agree and changes made.

Line [104-106] Spatially distributed groundwater recharge generated in the GroWaDRISK (Drought-related vulnerability and risk assessment of groundwater resources in Belgium) project funded by Belgian Federal Science Policy Office (BELSPO) was used.

Point 8 P7, L137. Why are you using SPI 1 if you are only focusing in long term meteorological drought? Please clarify.

Response 8: In our study, meteorological drought was analyzed using SPI 1 and SPI 12. Moreover, the study also investigates drought propagation from meteorological drought to groundwater

drought. Because of the hydrological response of the study area, SPI-1 is more convenient for the study of drought propagation. It helps to see the short term drought propagation in hydrological cycle.

This explanation was stated in the manuscript as:

Line [247-248] Therefore, SPI-1 is more convenient for the study of drought propagation in a quickly responding hydrological system, like in the Doode Bemde nature reserve.

Point 9: P10, L172. Why did you choose an “initial value of hydraulic conductivity of 7 m/d for the Brussels sand formation” despite the wide range? Please also clarify on the text.

Response 9: Agree and changes made. This initial hydraulic conductivity is selected from the hydraulic conductivity ranges found by different researchers. This value is optimized during the calibration of the model. The optimized parameter value is stated in the results part of the manuscript. We included these explanations in the revised as follows:

Line [176-180] Therefore, from these ranges, an initial value of hydraulic conductivity of 7 m/d for the Brussels sand formation (HK1) was used in this study. Similarly, the hydraulic conductivity range for the Quaternary formation was found to be 1 m/d to 10 m/d (Vandersteen et al., 2014). An initial hydraulic conductivity of 1 m/d was adopted. These initial values of hydraulic conductivities are optimized during the calibration of the model.

Point 10: P11, L202. Specific yield needs to be introduced as the other parameters before.

Response 10: Agree. It is already introduced in the model as well as in the manuscript.

Line [205-207] Relative sensitivities of the model parameters: hydraulic conductivity, drain conductance (Cdrn), **specific yield (Sy)**, and river conductance (Criv) were executed for the Brussels sand formation and Quaternary loam formation to select parameters for calibration.

Point 11: P11, L211. Specify the year period you used.

Response 11: Agree and changes made.

Line [215-217] A groundwater drought analysis was performed on the groundwater recharge (R(t)) and the groundwater discharge (Q(t)) time series of 34 years (1980-2013) to investigate the propagation of groundwater drought in the aquifer and its effect on the wetland.

Point 12: P12, L221. The sentence is missing

Response 12: Agree and changes made.

Line [226] For each month, the 80th percentile of recharge and discharge were calculated.

Point 13: P13, L230. Is missing the discussion with other authors about the differences when using SPI-1 or 12 for drought assessments.

Response 13: Agree and changes made. Our aim in this part of the analysis is to choose convenient SPI accumulation period for drought propagation from meteorological to groundwater. Based on your recommendation we include the following sentence in the revised manuscript.

Line [248 - 250] Cammalleri and Barbosa (2019) also showed a short period SIP calculation is suitable for a quickly responding hydrological system.

Point 14: P16, L297. In the chapter Groundwater drought. Why did you exclude minor drought events in each of the subchapter analysis? How do you select the threshold to ignore those minor drought events for each subchapter?

Response 14: Agree and changes made. All drought events are included in the analysis of the subchapter. The sentence is rewritten in the revised manuscript as follows:

Line [303-305] Groundwater recharge deviation from the threshold and groundwater recharge drought events from 2003 to 2013 are shown in Fig. 12. Within this analysis period, seven drought events with a severity higher than 5 mm of cumulative deficit recharge were observed.

Point 15: P19, L331-332. Please, reconsider changing this sentence to “drought events on groundwater recharge were more severe than groundwater discharge”. As you are talking about drought impacts on groundwater discharge and recharge.

Response 15: Agree and changes made.

Line [335-336]: drought events on recharge were more severe than groundwater discharge.

Point 16: P20, L341. Why are you showing results here until 2010, if your assessment was performed until 2011?

Response 16: Agree and changes made. We change 2010 to 2011 in the revised manuscript.

Point 17: P23, L402-408. This paragraph fits better on the discussion.

Response 17: Agree and changes made. This conclusion part moved to the discussion part in the revised manuscript.

Part III: Technical corrections:

Response Part III: Agree and all corrections are made.

Reviewer #2

Dear Ana Iglesias,

We appreciate the time and effort that you dedicated to read our manuscript and for the valuable comments, you have provided. We answer your comments, suggestions and questions below and have incorporated them into the manuscript. Your constructive comments have significantly improved the quality and clarity of our manuscript.

Please find below our point by point response to each of the comments.

Best regards,

Buruk Kitachew Wossenyeleh
On behalf of all authors

Part I: General Comments:

Point 1: The manuscript is very interesting and well written, proposing a method to analyses the propagation of meteorological drought to groundwater recharge, groundwater levels, and groundwater discharge to a wetland. Some changes could make the manuscript clearer and more focused, especially in the Methods section.

Response 1: Thank you for the positive feedback of the paper and your recommendation.

Part II: Specific comments:

Point 1: Title. Since the study focuses in a case study with very particular hydro-geological conditions, the name of the case study may be included in the title.

Response 1: Agree and changes made. We included the case study are in the title as follows:

Title: Drought propagation and its impact on groundwater hydrology of wetlands: A case study on the Doode Bemde nature reserve (Belgium).

Point 2: Abstract: The last paragraph of the abstract is confusing and seems contradictory.

Response 2: In the abstract, we want to show how the drought changes during the propagation in the groundwater system. The drought is attenuated (reduced its severity and event number) when it propagates through the hydrological cycle. We rewrote the paragraph in the revised manuscript to make it more clear.

Line [19-23] The results of this research show that droughts are attenuated in the groundwater system. The number and severity of drought events on groundwater discharge were smaller than for groundwater recharge. However, the onset of both drought events occurred at the same time, indicating a quick response of the groundwater system to hydrological stresses. In addition, drought propagation in the hydrological cycle indicated that not all meteorological droughts result in groundwater drought.

Point 3: paragraph 30. Please revise to include meteorological drought.

Response 3: Agree and changes made in the revised manuscript.

Line [29-32] Drought can be described as a temporary decrease in water availability over a significant period and caused by deficient precipitation. Droughts propagate through the hydrological cycle and affect both surface and groundwater resources (Bloomfield and Marchant, 2013; Calow et al., 1997; Mishra and Singh, 2010; Wilhite, 2000).

Point 4: paragraph 40. First line, what type of droughts? The results in Figure 5 disagree with this statement. This result should be highlighted.

Response 4: Agree and changes made. We included the type of drought in the revised manuscript.

The result in Figure 5 shows the time series distribution of a monthly average groundwater recharge. The statement by Tricot et al. (2015) was about meteorological drought while the figure shows recharge, which might explain the confusion. We added the following explanation to clarify this:

Line [41-42] The meteorological drought periods were defined as the number of consecutive days without significant precipitation (less than 0.5 mm) for the six hottest months of the year.

Point 5: Methods: Add a section on validation of the simulation model with empirical data, and an example by using the time series of Figure 5 (200 Average monthly groundwater recharge).

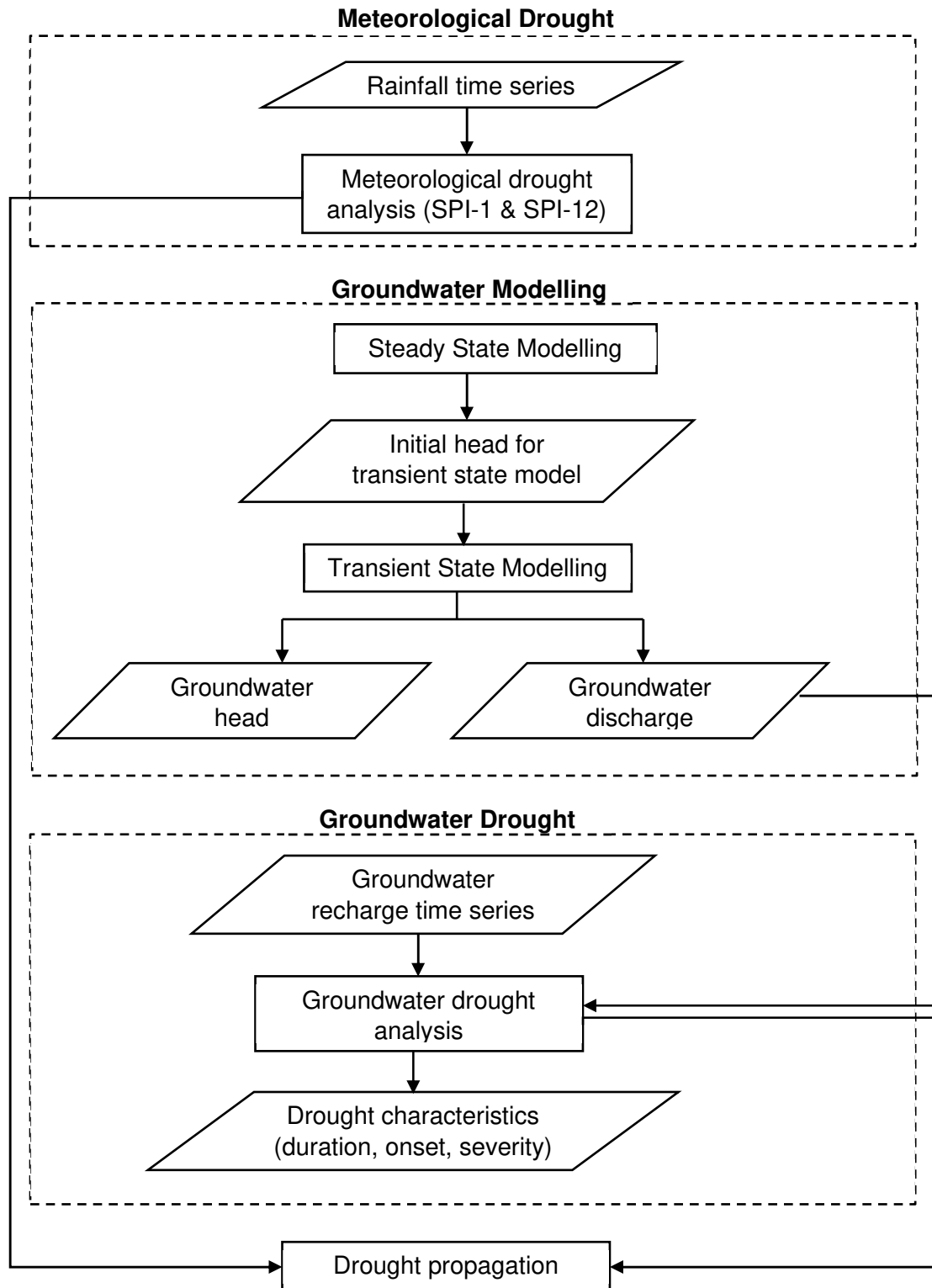
Response 5: No change made because we believe this is already discussed in the current form of the manuscript.

Explanation:

How the model performed during the validation period was shown in the Figures 9, 10, and 11 (Figures 8, 9, and 10 in the old version). These figures include both the calibration period (2006 – 2008) and the validation period (2011- 2013) stated in the manuscript. Therefore, the model simulation result was compared with the empirical data (observed groundwater head and groundwater recharge) during the validation period.

Point 6: Methods: Add a framework figure, linking the modelling components.

Response 6: Agree and changes made. We include the following conceptual framework of the study in the revised manuscript.



Line [129] Figure 4: Conceptual framework of the study

Point 7: Results and discussion: As written now, it is a summary of individual results of the different modelling components. The manuscript will benefit from a more comprehensive text that links the results to the final goal of analysis.

Response 7: Agree and we included the following discussion in the result and discussion part of the revised manuscript.

Line [386-398] During drought propagation in the hydrological cycle, the multi-year meteorological droughts of 1981 – 2013 propagate to groundwater recharge drought. This propagation continues to the groundwater system. The groundwater drought propagation analysis showed that even though the number and severity of drought events observed in discharge to the wetland is lower than for recharge, , the wetland is still vulnerable to groundwater drought. This is also reflected in the lower groundwater level measurements between 2006 and 2008. This vulnerability could be because of the shallow water table and limited thickness of the aquifer in the study area, resulting in a quick response to changes in hydrological stresses such as droughts. The drought propagation towards a wetland studied by Fang and Pomeroy (2008) also showed much lower discharge to the wetland from the basin groundwater and snowmelt runoff developed in drought years. Moreover, Drexler and Ewel (2001) performed a field experiment during the 1997–1998 ENSO-related drought and found that the mean water table level in the wetlands lowered by 12 to 54 cm. This could also be explained by drought propagation from the meteorological to the groundwater system.

Drought propagation and its impact on groundwater hydrology of wetlands: A case study on the Doode Bemde nature reserve (Belgium).

Abstract

Drought can be described as a temporary decrease in water availability over a significant period and affects both surface and groundwater resources. Droughts propagate through the hydrological cycle and may impact vulnerable ecosystems. This paper investigates drought propagation in the hydrological cycle, focusing on assessing its impact on a groundwater-fed wetland ecosystem. Meteorological drought indices were used to analyze meteorological drought severity. Besides, a method for assessing groundwater drought and its propagation in the aquifer was developed and applied. Groundwater drought was analyzed using the variable threshold method. Furthermore, meteorological drought and groundwater drought on recharge were compared to investigate drought propagation in the hydrological cycle. This research is carried out in the Doode Bemde wetland in central Belgium.

The results of this research show that droughts are attenuated in the groundwater system. The number and severity of drought events on groundwater discharge were smaller than for groundwater recharge. However, the onset of both drought events occurred at the same time, indicating a quick response of the groundwater system to hydrological stresses. In addition, drought propagation in the hydrological cycle indicated that not all meteorological droughts result in groundwater drought. Furthermore, this drought propagation effect was observed in the wetland.

Keywords: Groundwater drought, Numerical modelling, Meteorological drought, Variable threshold method, Wetland

1 Introduction

Drought can be described as a temporary decrease in water availability over a significant period and caused by deficient precipitation. Droughts propagate through the hydrological cycle and affect both surface and groundwater resources (Bloomfield and Marchant, 2013; Calow et al., 1997; Mishra and Singh, 2010; Wilhite, 2000).

If drought concerns groundwater, it is called groundwater drought. Groundwater drought can be defined as a temporary decrease in groundwater availability over a significant period of time (Peters and van Lanen, 2003). Groundwater drought results in decreased groundwater levels and discharges to surface water bodies (Peters, 2003). As groundwater systems are often slowly responding to drought, groundwater drought is often characterized by long recovery periods (Calow et al., 1997). Groundwater drought and its impacts have been less studied than other aspects of drought (Verbeiren et al., 2013; Wilhite and Glantz, 1985).

In the context of Belgium, Tricot et al. (2015) have shown that drought periods have not intensified during the last century. The meteorological drought periods were defined as the number of consecutive days without significant precipitation (less than 0.5 mm) for the six hottest months of the year. However, the authors suggest that their findings do not apply to all forms of drought. For instance, when investigating groundwater drought, precipitation deficits over longer periods (seasons to years) need to be investigated (Tricot et al., 2015). Furthermore, climate change projections for Belgium for the coming century predict drier summers, causing drought conditions (Hoyaux et al., 2016; Tabari et al., 2015).

Groundwater droughts can have severe socio-economic and environmental impacts (Verbeiren et al., 2013). Streams that are fed by groundwater may run dry if the groundwater system that is feeding them is affected by drought. These droughts may have significant implications on water supply, agriculture, and ecology.

Ecosystems such as wetlands that are fed directly by groundwater discharge are also vulnerable to groundwater drought. Therefore, investigating groundwater drought is especially crucial in nature reserves such as groundwater-fed wetlands. Wetlands are primarily fed by groundwater and are an ecologically valuable part of the ecosystem. Droughts such as the one experienced in the summer of 2018 may have a significant impact on the groundwater discharge that is feeding such vulnerable systems (Ridder et al., 2020). A decrease in groundwater discharge to the

wetland may result in a loss of biodiversity. Hence, a thorough investigation of how groundwater discharge is affected by drought is needed.

Groundwater drought can be assessed by investigating groundwater recharge, groundwater level, and groundwater discharge with a high spatial and temporal resolution (Van Lanen and Peters, 2002). Although data on the groundwater levels (H) are typically available with a high temporal resolution, this is usually not the case for groundwater recharge (R) and groundwater discharge (Q) data. Therefore, numerical models are used to simulate these hydrological variables with high temporal and spatial resolution.

Numerical groundwater models are useful to simulating groundwater head and discharge if the necessary data are available and if proper boundary conditions are defined and implemented. Temporal and spatial variations of these variables can be obtained so that further analyses could be performed to identify drought periods. The effect of groundwater abstraction on the occurrence of groundwater drought can also be assessed by incorporating it into the models. Some previous studies (Peters, 2003; Peters et al., 2006) have used groundwater models to simulate groundwater level and discharge in spatial and temporal scale and investigate groundwater drought using constant threshold value method. In this study, variable threshold value methods and groundwater modelling were combined to investigate groundwater drought in the aquifer.

This paper aims to investigate drought propagation in the hydrological cycle by developing and applying a method for simulating meteorological drought, groundwater drought, and its propagation in the aquifer, particularly focusing on assessing its impact on groundwater-fed wetland ecosystem. The method combines a water balance model and a groundwater flow model with a threshold method to determine groundwater drought and its effect on groundwater discharge.

2 Study site and data

The study area is located in Flanders in Belgium. It is found 8 km to the south of Leuven in the middle course of the Dijle River (*Fig. 1*). The area contains the nature reserve 'Doode Bemde.' This nature reserve is an ecologically important wetland. The wetland is primarily fed by groundwater (Verbeiren et al., 2004).

In the study area, the Dijle river has cut through the surrounding hills to form a 1 km wide and 40 m deep valley (De Becker et al., 1999). The hills are situated in the western and eastern parts of

the study area while the valley extends from north to south occupying the middle part of the study area.

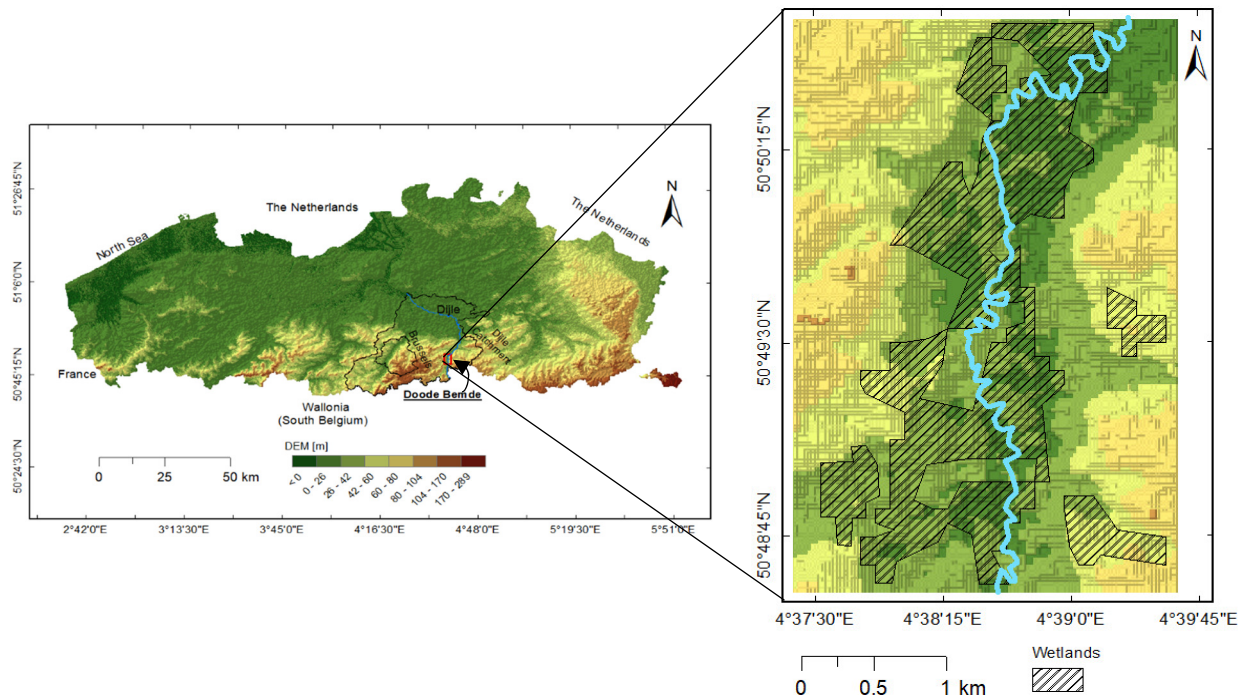


Figure 1: Map of Flanders (Belgium) indicating the location of the Doode Bemde nature reserve (Background: relief of Belgium – NGI)

The land cover in the area is predominantly grassland (showing a clear wet-dry gradient) with some reeds and forest, while few ponds, houses, and streets are also found in the western part of the study area (Verbeiren et al., 2004). Moreover, around 60 % soil in the study area is silty loam and the area has a gentle slope vary between 0.02° to 11.50° .

Hydrogeological studies on the Dijle catchment show that the top aquifers are unconfined with the thickness ranging from 0 to 50 m. The Dijle river has cut into the sandy tertiary formations of Lede (Ld), Brussel (Br) and the clayey formation of Kortrijk (Ko). During the Quaternary, a relatively thick layer of loam was deposited in the central valley. A successive deposition of Quaternary deposits near the river further shaped the valley as a result of repetitive inundations (Fig. 2).

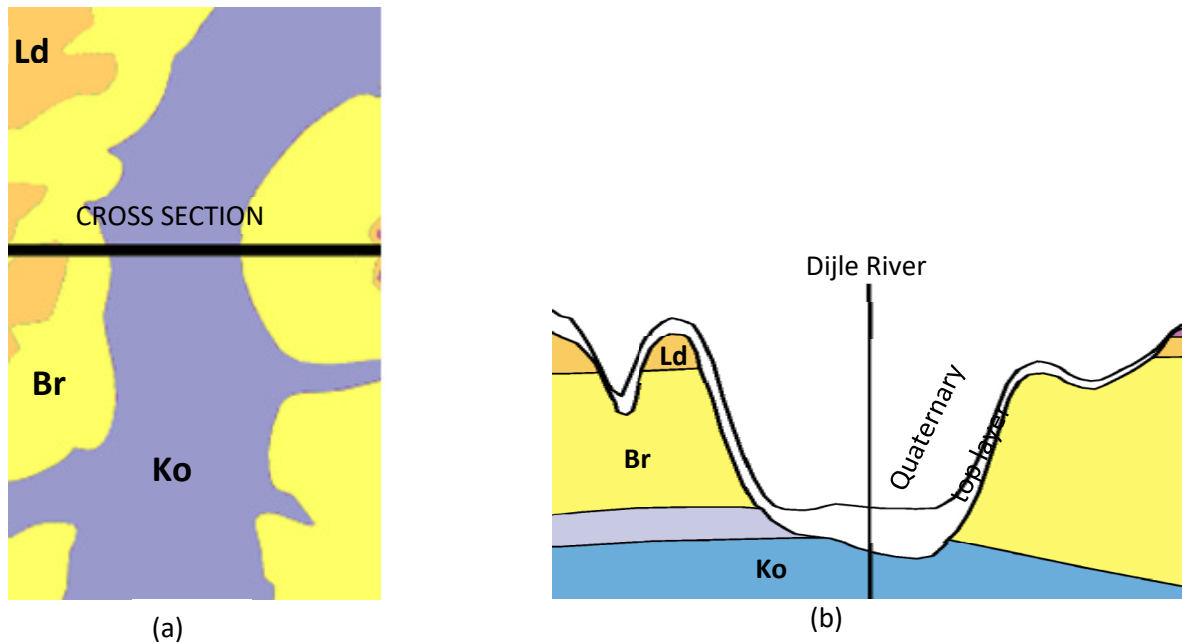


Figure 2: (a) Hydrogeology of Dijle valley around Doode Bemde nature reserve, showing the formations of Brussel (Ld & Br) and Kortrijk (Ko). (b) A cross section of the shallow hydrogeology (Source: Databank Ondergrond Vlaanderen).

Spatially distributed groundwater recharge generated in the **GroWaDRISK (Drought-related vulnerability and risk assessment of groundwater resources in Belgium)** project funded by **Belgian Federal Science Policy Office (BELSPO)** was used. This project was aiming for the development of a drought-related vulnerability and risk assessment strategy for sustainable management of groundwater resources under temperate conditions (Verbeiren et al., 2013). In this project, a monthly averaged spatially distributed groundwater recharge was estimated using the WetSpaSS model from 1980 to 2013. WetSpaSS is a physically-based model for the estimation of spatially distributed surface runoff, actual evapotranspiration, and groundwater recharge (Batelaan and De Smedt, 2001). This model accounts for spatially distributed landuse, soil type, slope, elevation, monthly average groundwater depth, and meteorological conditions as an input (Abdollahi et al., 2017; Batelaan and De Smedt, 2007). However, the recharge obtained from WetSpaSS was the infiltration at the end of the root zone and did not take in to account the delay of recharge in the unsaturated zone in between the root zone and the groundwater table. Therefore, a delay was implemented on the recharge extracted from the model to account for the time it takes for water to reach the groundwater table from the root zone (Wossenyeleh et al., 2020). The estimated groundwater recharge is larger than 10 mm/month in most of the study area and spatial average of 22 mm/month (Fig. 3). The zones indicated in red have very shallow groundwater levels

(abundant water availability) and dense wetland vegetation, resulting in high evapotranspiration rates exceeding infiltration and leading to a “negative” net recharge.

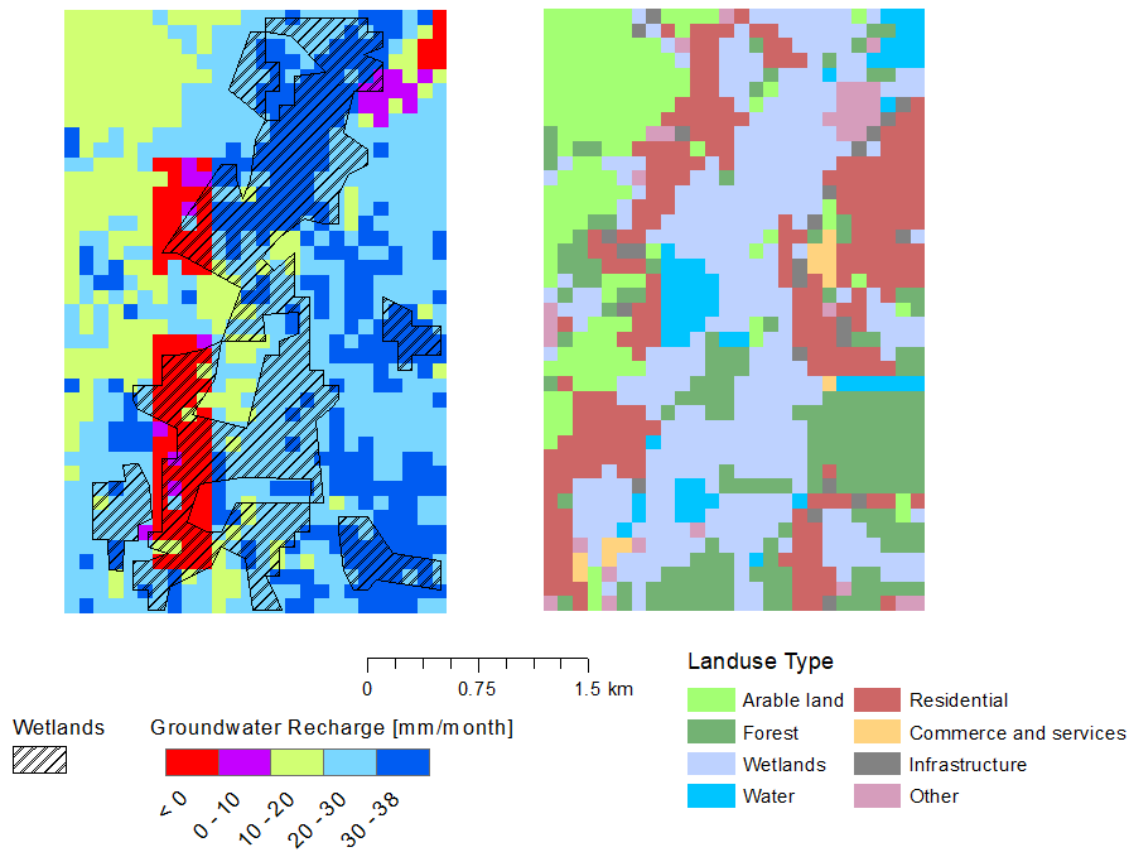


Figure 3: Monthly averaged delayed groundwater recharge from 1980 to 2013, estimated using WetSpaSS (right) and land cover class (left)

3 Methodology

The study was divided into three parts; meteorological drought analysis, groundwater modelling and groundwater drought analysis (Fig. 4).

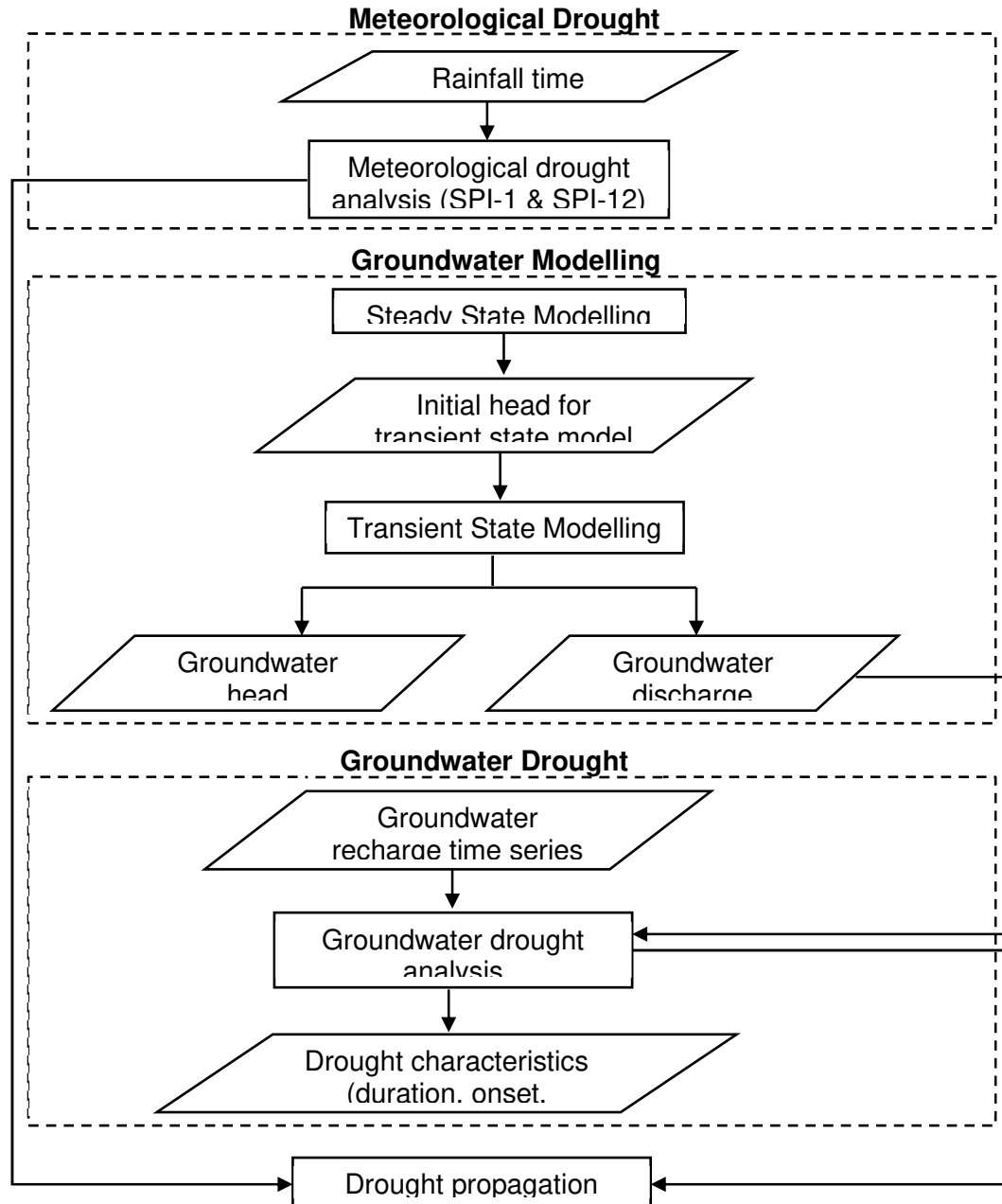


Figure 4: Conceptual framework of the study

First, meteorological drought analysis was conducted to investigate drought on the precipitation. Then, a transient state groundwater model was built to acquire a temporally and spatially distributed simulated groundwater head and discharge. Groundwater drought analysis was performed on simulated groundwater discharge and monthly groundwater recharge time series. Finally, drought analysis was conducted to investigate drought propagation in the hydrological cycle. This was done by comparing groundwater drought to meteorological drought.

3.1 Meteorological drought analysis

The meteorological drought severity and spatial and temporal extent of the drought were determined using the standardized precipitation index (SPI; McKee et al., 1993). Thirty-one years of monthly averaged precipitation were obtained from the Royal Meteorological Institute (RMI) of Belgium at the Uccle station for the period 1981 to 2011, which was used to calculate SPI and identify meteorological drought events and severity.

As stated in McKee et al. (1993), SPI is based on the probability distribution of long-term rainfall on different time scales. In this study, the SPI value for 1 month and 12 months were calculated to investigate the long-term meteorological drought severity. Moreover, this drought index was used to analyze the propagation of drought from meteorological to groundwater drought.

The long-term rainfall is fitted to a probability distribution, which is then transformed into a normal distribution so that the mean SPI for the location and desired period is zero (Edward and McKee, 1997). The gamma distribution is used to normalize the rainfall time series (Thom, 1958). Positive SPI values indicate greater than median precipitation, and negative values indicate less than median rainfall. Accordingly, a moderate drought event occurs when the index reaches an intensity of -1.0 or less (*Table 1*). The event ends when the SPI becomes positive.

According to McKee et al. (1993), drought intensity categories based on the SPI value are defined as shown in *Table 1*.

Table 1: Drought intensity categories based on SPI values (McKee et al., 1993)

SPI Values	Drought category
0.0 and more	No
0.0 to -0.99	Mild
-1.0 to -1.49	Moderate
-1.5 to -1.99	Severe
-2.00 and less	Extreme

3.2 Groundwater modelling

Groundwater modelling was performed using the groundwater modelling software MODFLOW-2000 (Harbaugh et al., 2000). A steady state groundwater model for the study area was setup and ran to obtain initial heads for the transient state model, which was built subsequently.

3.2.1 Conceptual model setup

The conceptual model shown in Fig. 5 was developed based on information about geology, hydrogeology, and hydrology. The area of interest has an area of 10 km² and includes most of the Doode Bemde nature reserve and the drinking extraction well operating in the study area.

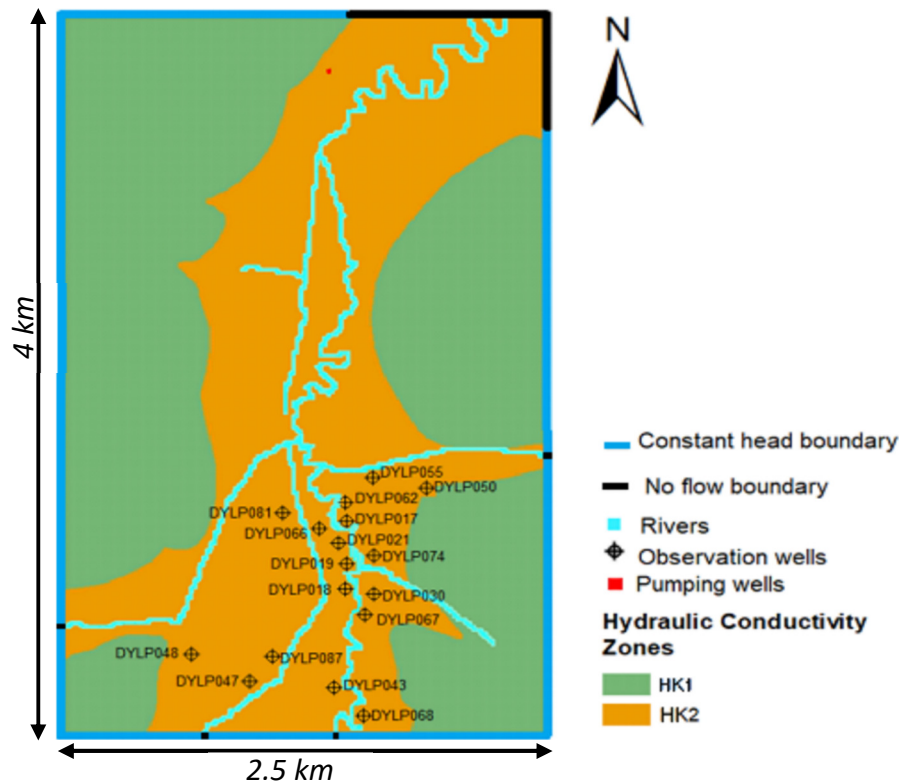


Figure 5: Conceptual model setup, showing the specified boundary conditions and hydraulic conductivity zones with two distinct hydraulic conductivities HK1 (Brussels Sand formation) and HK2 (Quaternary loam formation)

The clayey formation of Kortrijk shown in Fig. 2 was taken as the impervious model bottom due to its much lower hydraulic conductivity compared to the Brussels sand formation and Quaternary loam. Huysmans and Dassargues (2006) reported that the average vertical hydraulic conductivity of the Eocene Ypresian clays, which includes the Kortrijk formation, is $2.1 \text{ E-}8 \text{ m/d}$ (with a standard deviation of $4 \text{ E-}8 \text{ m}^2/\text{d}^2$). The Brussels sand formation and Quaternary loam were represented as a one-layer phreatic aquifer system with two hydraulic conductivity zones representing the hilltops and the valley.

The Brussels sand formation's hydraulic conductivity ranges from 0.864 m/d to 43.2 m/d based on the literature review conducted by Vandersteen et al. (2014). Possemiers et al. (2012) also found that the hydraulic conductivity of the Brussels sand is high and has a wide range of reported

values between 2.16 m/d and 63 m/d. Therefore, from these ranges, an initial value of hydraulic conductivity of 7 m/d for Brussels sand formation (HK1) was used in this study. Similarly, the hydraulic conductivity range for the Quaternary formation was found to be 1 m/d to 10 m/d (Vandersteen et al., 2014). An initial hydraulic conductivity of 1 m/d was adopted. These initial values of hydraulic conductivities are optimized during the calibration of the model.

Due to scarcely observed groundwater levels in the vicinity of the study area and no clear natural boundaries (Batelaan et al., 2003), a constant head boundary condition, in which the specified heads were extracted from a regional groundwater model for the Bruland-Krijt groundwater system (VMM, 2008), was implemented for most of the boundary. Moreover, from this regional groundwater model, the groundwater flow direction is perpendicular to the places where a river enters or exits the study area, and where the valley exits the study area. Therefore, no flow boundaries were used for every cell in these places.

For this study, the average river stage and river bottom elevation were interpolated from measurement data obtained at a few locations within the study area (Flemish Water Authorities, 2019). According to Peeters (2010), most riverbed sediments in the study area consist of Pleistocene sands and gravels. Hence, a high riverbed conductance of 20 m²/d was assumed. Moreover, for every cell that was not modelled as a river within the boundary of the study area, a drain condition was specified. This was done to model the wetland in the study area, which is fed by groundwater adjacent to it and to quantify this groundwater discharge to the wetland from the aquifer. From the study of groundwater flow modelling of three wetland ecosystems in the river valleys in Flanders by Batelaan et al. (2003) the average drain elevation 0.2 m below topography and a drain conductance of 20 m²/d was assumed in the present study. A groundwater extraction well with an average pumping rate of 900 m³/d is also present in the study area and the model.

To setup and run the model in the transient state, 132 stress periods with monthly time steps from 2003 till 2013 were utilized. Calculated spatially distributed monthly recharge values were used as input for each stress period. Figure 6 shows the seasonal dynamics of groundwater recharge in the study area.

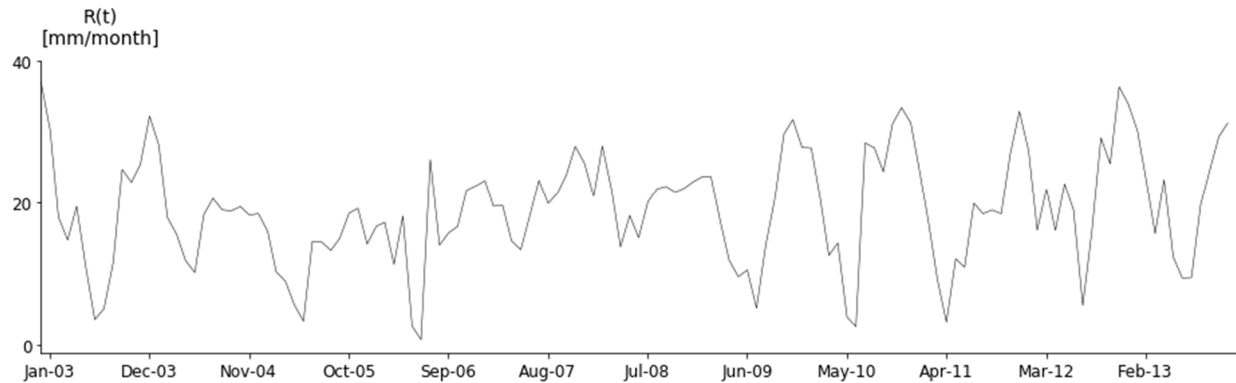


Figure 6: Average monthly groundwater recharge

Relative sensitivities of the model parameters: hydraulic conductivity, drain conductance (C_{drn}), specific yield (S_y), and river conductance (C_{riv}) were executed for the Brussels sand formation and Quaternary loam formation to select parameters for calibration. Average observed hydraulic heads between 2003 and 2013 from 17 observation wells in the study area were used for calibration of the steady state model. Two-weekly observed hydraulic heads from 14 observation wells between 2006 and 2008 were used to calibrate the transient state model. Afterward, the model was validated using observed hydraulic heads between 2011 and 2013. The variance of the differences between observed and simulated heads was used as a quantitative measure of the “success” of the calibration and validation.

3.3 Groundwater drought analysis

A groundwater drought analysis was performed on the groundwater recharge ($R(t)$) and the groundwater discharge ($Q(t)$) time series of 34 years (1980-2013) to investigate the propagation of groundwater drought in the aquifer and its effect on the wetland. The threshold level method introduced by Yevjevich (1967), with a variable threshold value (Beyene and Van Loon, 2014), was used for hydrological drought in different geoclimatic conditions. In this study, variable threshold value was used to determine the occurrence of groundwater drought events for both variables.

To do so, first, a separate frequency analysis was conducted for each of the 12 months. The threshold level for each month was determined as the 80th percentile of the probability of exceedance of monthly recharge in that month in the 34-year series (1980-2013). This threshold level is within the 70th-95th percentile of the probability of exceedance range used for most drought studies (Van Loon, 2013). For each month of the year, the monthly recharge and discharge values

in the time series were ranked from highest to lowest. For each month, the 80th percentile of recharge and discharge were calculated.

After the separate analysis of drought on groundwater recharge and discharge, the two analyses were combined to characterize groundwater drought events, gain insight into the propagation of drought in the aquifer and assess the response of the groundwater system to drought for the wetland. The groundwater drought events were investigated in terms of the number of droughts, duration of droughts, and severity (cumulative volume deficit from the threshold level) (Peters, 2003).

4 Result and discussion

4.1 Meteorological drought

The meteorological drought severity based on monthly SPI (SPI-1) and annual SPI (SPI-12) in the Doode Bemde nature reserve between 1980 and 2011 is shown in Fig. 7. As can be seen, there is a difference in severity and frequency between them. Based on SPI-1 value (Fig. 7A), the drought categories vary from extreme to no drought. Whereas SPI-12 value (Fig. 7B) shows less drought severity categories, which varies from severe to no drought.

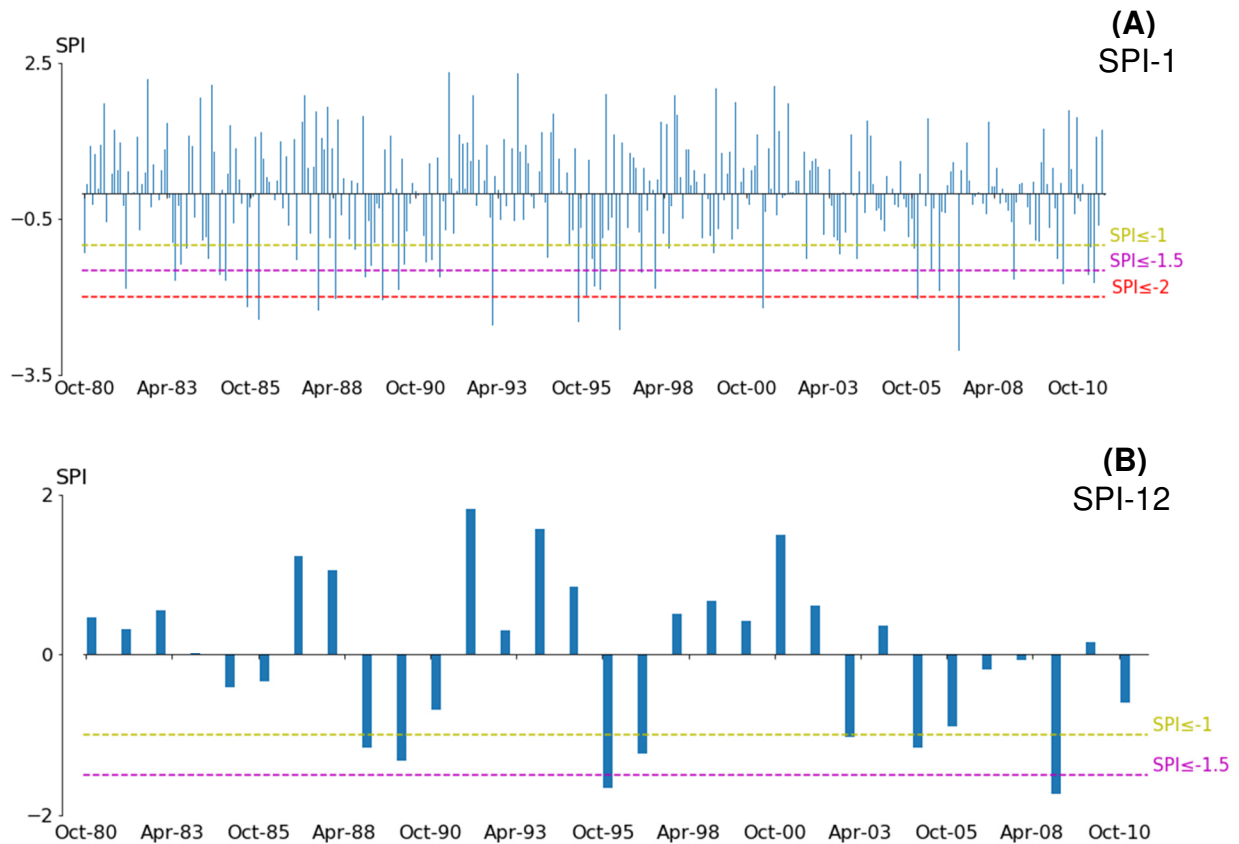


Figure 7: Meteorological drought severity for Doode Bemde nature reserve based on (A) SPI-1 value and (B) SPI-12 value between hydrological year of 1980 and 2011

Within the analysis period, eleven extreme meteorological droughts at monthly scale are identified using SPI-1. However, two severe meteorological droughts are identified using SPI-12; these occur in 1995-96 and 2008-09. From this result, in a short period SPI calculation, the meteorological drought is frequent but short, and as the period of SPI calculation increases, the duration of drought increase with less frequency. Therefore, SPI-1 is more convenient for the study of drought propagation in a quickly responding hydrological system, like in the Doode

Bemde nature reserve. Cammalleri and Barbosa, (2019) also showed a short period SIP calculation is suitable for a quickly responding hydrological system.

Groundwater modelling

Relative sensitivities of model parameters at the sand formation show that hydraulic conductivity of the Brussels sand formation (HK1) was the most sensitive parameter (relative sensitivity of 0.023) followed by drain conductance (C_{dm}) (relative sensitivity of 0.009). Specific yield and river conductance had little effect on simulated heads. For the location within the Quaternary loam formation, the river conductance was the most sensitive parameter (0.013) followed by hydraulic conductivity HK2 (0.002) and drain conductance (0.001). Storage parameters had little effect on calculated heads.

Generally, the relative sensitivities of the model parameters were small, indicating that the uncertainties of the model parameters have limited influence on the simulated heads.

Hydraulic conductivities of the two geologic settings, HK1 for the Brussels sand formation in the hill tops and HK2 for the Quaternary loam in the valley, were optimized during calibration of the steady state model. After calibration, the variance amounts 0.11 m². The mean absolute error of the simulated heads was 0.23 m.

The resulting spatial groundwater depth distribution is shown in Fig. 8 indicated that groundwater went as deep as 44 m in the hills. In the valley, groundwater depths are less than 1 m for the majority of the area but reaches up to 6 m at the western and eastern edges of the valley. Generally, the area has deep groundwater depths around the hills and shallow groundwater depths around the valley.

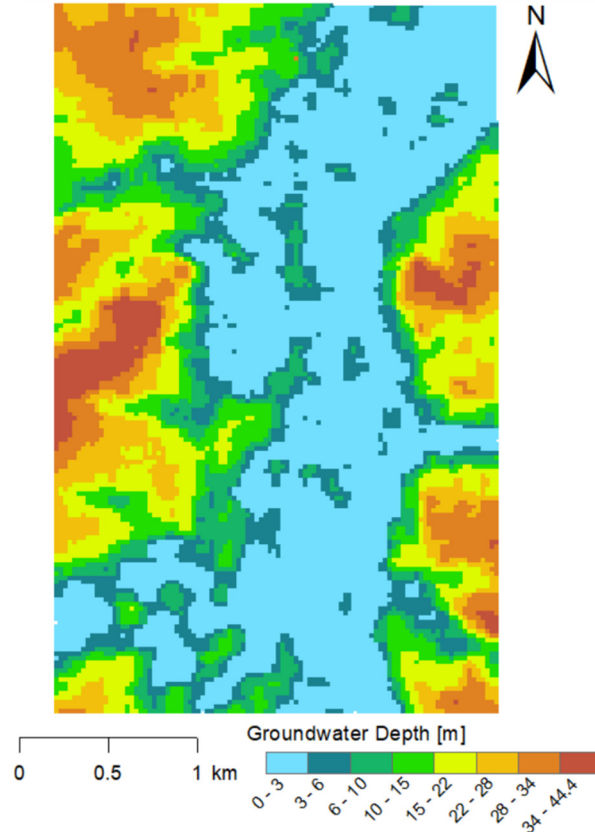


Figure 8: Groundwater depth distribution after steady state groundwater model calibration

The steady state groundwater balance was calculated to obtain average fluxes in the study area. Flux across boundaries constituted around 59 % of the input into the groundwater system. The remaining input was from recharge. The largest outflow was groundwater discharge to the wetland, represented by drain outflow, which was around 58 % of the total output from the aquifer. The aquifer feeds the rivers, and this represents on average around 31 % of the total outflow out of the aquifer. The water balance error was 0.01 %.

During calibration of the transient model, specific yield was optimized for the two geological settings. The final stage calibration yielded a variance of 0.23 m² and mean absolute error of 0.39 m between the simulated and observed head. Moreover, the model was validated with observed hydraulic head from a different time period and this yielded a variance of 0.22 m². The final calibrated values are summarized in Table 2.

Table 2: Hydraulic conductivity and Storage parameter value of the two geological settings after calibration

Parameter	Brussels Sand	Quaternary Loam
Specific Yield [-]	0.15	0.03
HK [m/d]	8	3

Time-series of observed and simulated head at the observation wells (2-weekly interval) showed that the model captures the dynamics of groundwater head in the study area reasonably. As example, Figure 9 shows the temporal variation of observed and simulated groundwater head at observation well DYLP081.

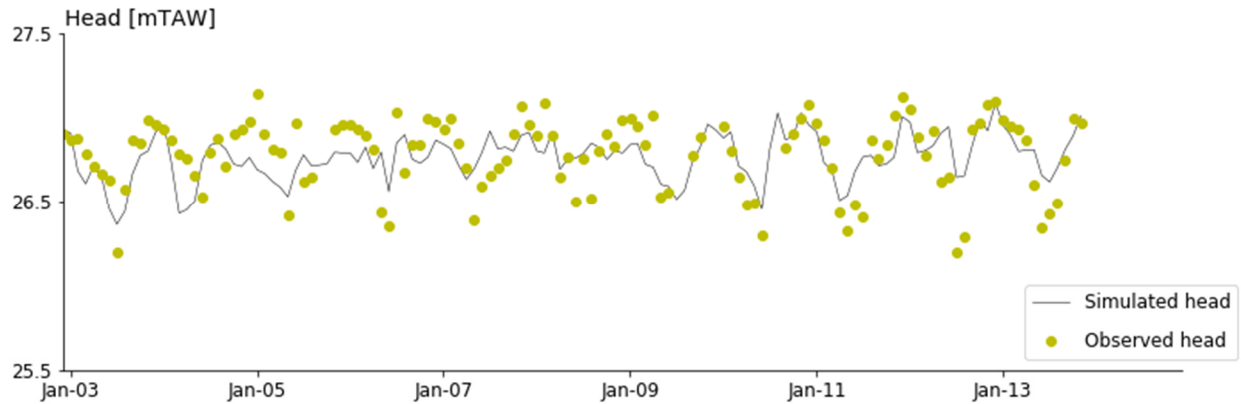


Figure 9: Temporarily vary observed and simulated groundwater head at observation well DYLP081 between 2003 and 2013

The simulated hydraulic head dynamics between 2003 and 2013 in comparison to groundwater recharge is shown in Fig. 10. The model captured the seasonality of the recharge well. Groundwater head is high in winter (Dec-Feb) and low in summer (Jun-Aug). There is also no systematic delay in the timing of the peaks and lows of the hydraulic head and recharge. This could be attributed to shallow groundwater depths in the study area resulting a fast response to changes in recharge.

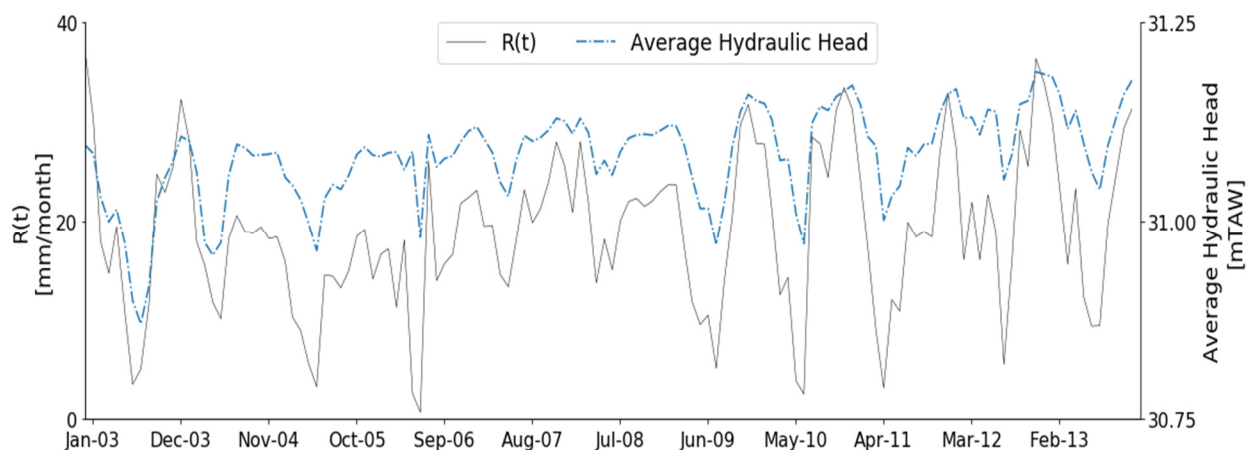


Figure 10: Average simulated groundwater head time series and groundwater recharge time series

Simulated total groundwater discharge to the wetland (Fig. 11) also shows clear seasonality; high groundwater discharge in winter (Dec- Feb) and low groundwater discharge in summer (Jun-Aug).

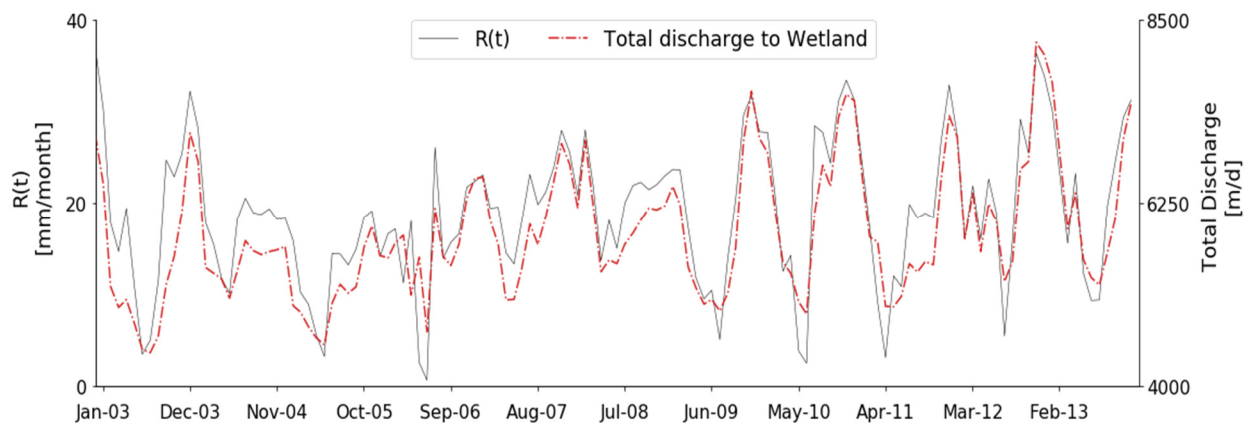


Figure 11: Simulated total groundwater discharge and monthly average groundwater recharge

4.2 Groundwater drought

4.2.1 Groundwater drought on recharge

Groundwater recharge deviation from the threshold and groundwater recharge drought events from 2003 to 2013 are shown in Fig. 12. Within this analysis period, seven drought events with a severity higher than 5 mm of cumulative deficit recharge were observed. In terms of duration, the drought events had a mean duration of 5 months. The drought with the longest duration was from Oct-04 to Jun-05, which lasted for nine months, closely followed by drought from Sep-05 to Apr-06, which lasted for eight months. Droughts with shorter durations were observed between Jun-06 and Jul-06 (2 months), between Jun-10 and Jul-10 (2 months) and between Mar-11 and Mar-12 (3 months). The severity of the drought events was assessed based on cumulative deficit recharge from the threshold. The most severe drought was from Oct-04 to Jun-05 with a cumulative deficit recharge of 48 mm, followed by the drought from Sep-05 till Apr-06 with a cumulative deficit recharge of 33 mm. These severe droughts have drought volume higher than the average estimated recharge, which is 22 mm/month.

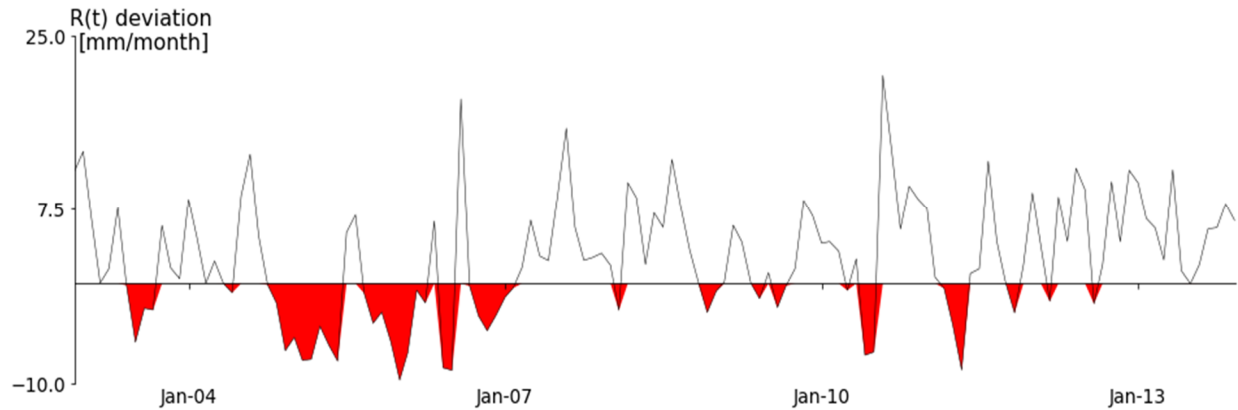


Figure 12: Deviation from the threshold value of monthly groundwater recharge. The red color represents groundwater drought events on recharge.

4.2.2 Groundwater drought on discharge

Deviations of groundwater discharge from the threshold and discharge drought events are shown in Fig. 13.

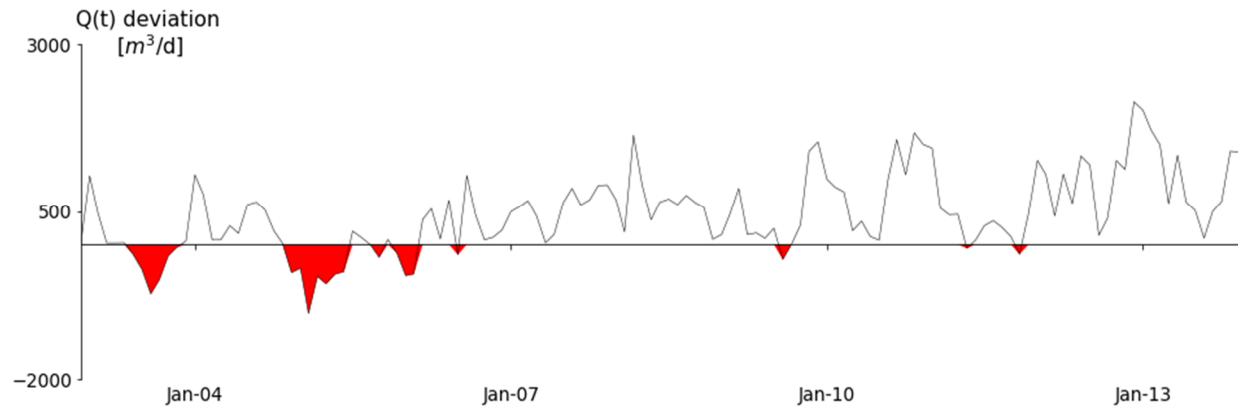


Figure 13: Deviation from the threshold value of monthly groundwater discharge to wetland. The red color represents groundwater drought events on discharge.

Three groundwater discharge drought events occurred between 2003 and 2013. The first one was from Jun-03 till Nov-03. The second drought event occurred from Dec-04 to Jun-05. The last one was from Dec-05 till Feb-06. Minor drought events with cumulative deficit volume less than 300 m³ were excluded. The drought events lasted for six months, seven months, and three months respectively, with a mean duration of 5.3 months. The second drought event from Dec-04 to Jun-05 was the most severe with a cumulative deficit volume of 3698 m³. The first drought had a cumulative volume deficit of 1969 m³ and the third 1025 m³.

The average duration of droughts on discharge (5.3 months) showed a slight increase compared to the mean duration of droughts on recharge (5 months). However, the number of droughts

events on discharge (3) decrease compared to the number of droughts events on recharge (7). This decrement was expected as the propagation of recharge drought through an aquifer usually results in a lower number of hydrological droughts (Van Lanen, 2006). Also, **drought events on recharge were more severe than groundwater discharge** (Fig. 14). This decrease in severity could be caused by attenuation in discharge through the groundwater system (Peters, 2003). Another important observation was the absence of any significant shift in drought events. Approximately, the drought events of recharge and discharge seem to occur at the same time. This could be attributed to the limited thickness of the aquifer and shallow groundwater levels in most parts of the study area, which results in a quick response to hydrologic stresses.

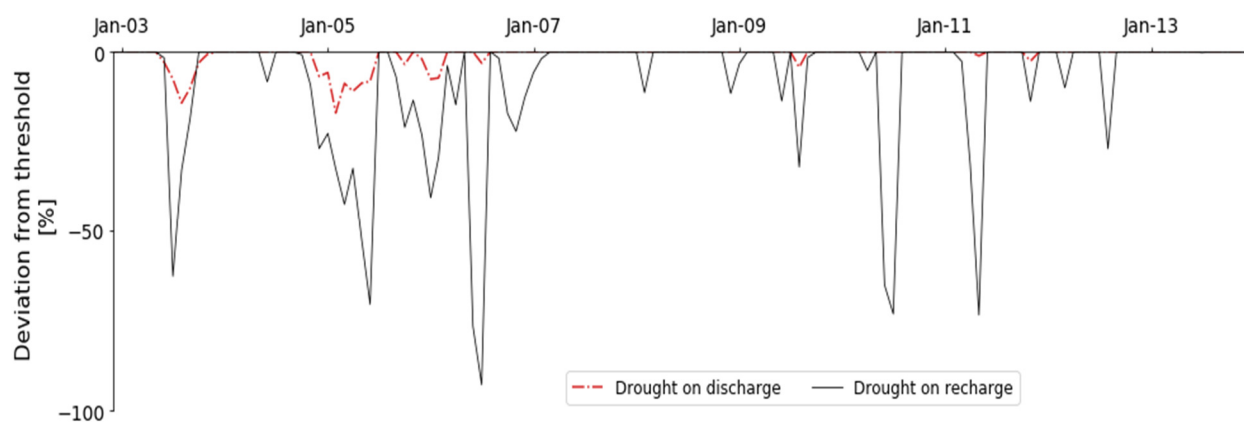


Figure 14: Comparison of drought events on groundwater recharge and groundwater discharge using the percent deviation from the threshold

4.3 Drought propagation from meteorological to groundwater recharge

The propagation of drought from meteorological to groundwater was analyzed by using SPI-1 and groundwater recharge. Table 3 indicates some of the groundwater drought characteristics between 1981 to 2010 hydrological year. Before every groundwater drought, meteorological drought was observed in different severity range. Moreover, the severity of the meteorological drought had an impact on the deficit volume and duration of groundwater drought; for example, the groundwater droughts occurred after May-89. In this study area, moderate meteorological drought also propagate to the groundwater, i.e., minor groundwater drought starts at Aug-84. Besides, the lag time between the start of the meteorological drought and the start of the groundwater drought event was calculated. The lag in Table 3 is the average of the lag of each ground drought events within the major groundwater drought.

Furthermore, by comparing Fig. 15 (A) and (B), the propagation of drought from meteorological to groundwater recharge can be evaluated. Within the analysis period, meteorological drought is

more frequent and observed first than groundwater drought on recharge. In addition, most of the meteorological droughts propagated to the groundwater recharge with average lag of 9 months, which is attributed to the shallow groundwater depth in most parts of the study area.

Table 3: Groundwater drought on recharge characteristics (onset, number events, duration and deficit volume) between 1981 and 2010 and number of meteorological drought (SPI-1) range from moderate to extreme severity before the onset of groundwater drought on recharge with lag time.

Onset	Duration [month]	Number of drought events	Deficit [mm]	Number of meteorological drought (SPI-1) before onset of groundwater drought on Recharge and lag time [month]
Dec-83	1	1	4.95	4 (2S, 2Mo) , 14
Aug-84	1	1	2.52	1 (1Mo) ,1
Oct-85	3	2	2.18	4 (1E,2S,1Mo), 9
May-89	28	10	32.97	8 (3E,2S, 3Mo),10
Apr-96	24	6	28.63	13 (3E,4S,6Mo),11
Jun-03	45	6	123.26	9 (2E,3S,4Mo) ,18
Feb-08	66	8	45.35	8 (2E,1S,4Mo), 6

*E: extreme; S: severe; Mo: moderate

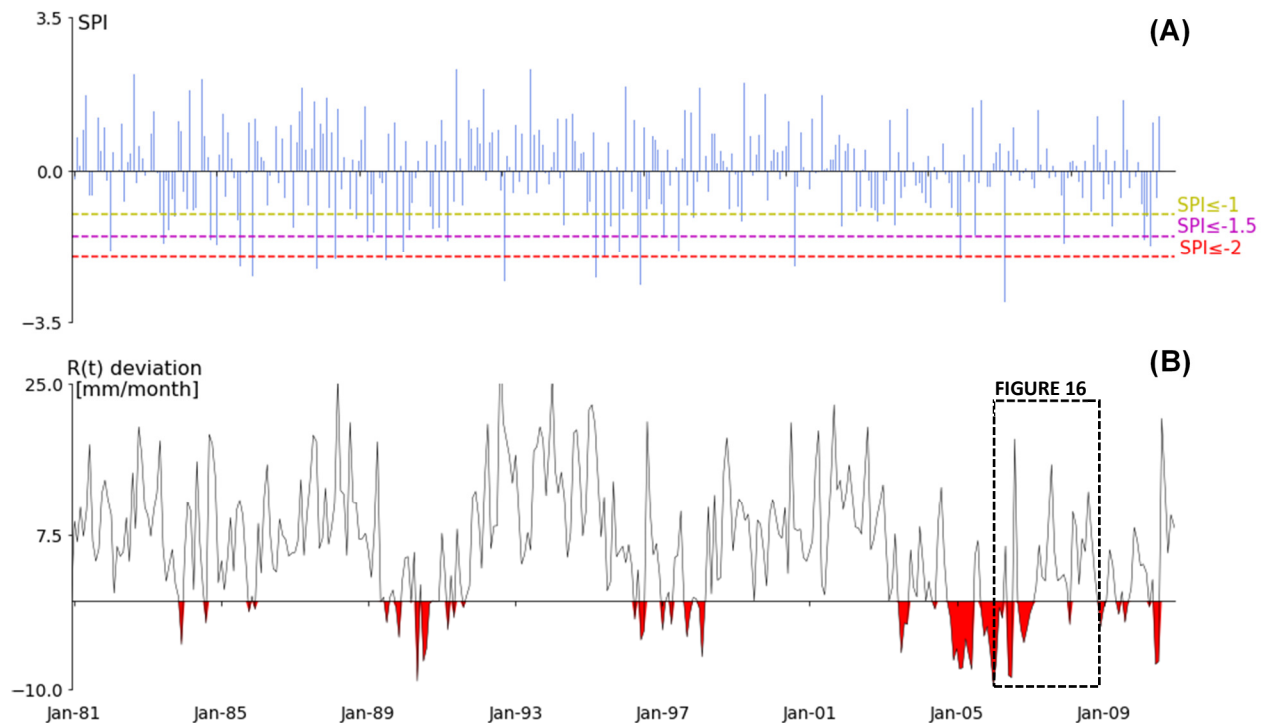


Figure 15: Comparison of meteorological drought severity and groundwater recharge drought **(A)** Monthly SPI value and **(B)** Groundwater recharge deviation from the threshold. The red color represents recharge drought events.

This propagation of drought had an impact on the hydrological functioning of the groundwater-fed wetland of Doode Bemde. The monthly box plots in Fig. 16 show observed groundwater head

distribution measured using 14 observation wells mostly found on the delineated wetland. Long-term average groundwater heads (green) show clear seasonal dynamics: highest level in January, lowest in June. The mean observed groundwater heads (yellow) are deviating from long term average. The identified groundwater recharge drought (blue) seem to explain the majority of the observed deviation in the period between 2006 to 2008. The lower than long-term average groundwater levels measured in winter (Jan, Feb) and summer (Jun, Jul) of 2006 and winter (Jan, Feb) of 2008 could be the effect of the groundwater droughts that occurred in 2006 and 2008 respectively (Fig. 16). However, the impact of the groundwater drought between fall 2006 and winter 2007 was delayed, which is visible in the groundwater level measurement of the spring of 2007. This delay could be because of the upland recharge from the Dijle valley.

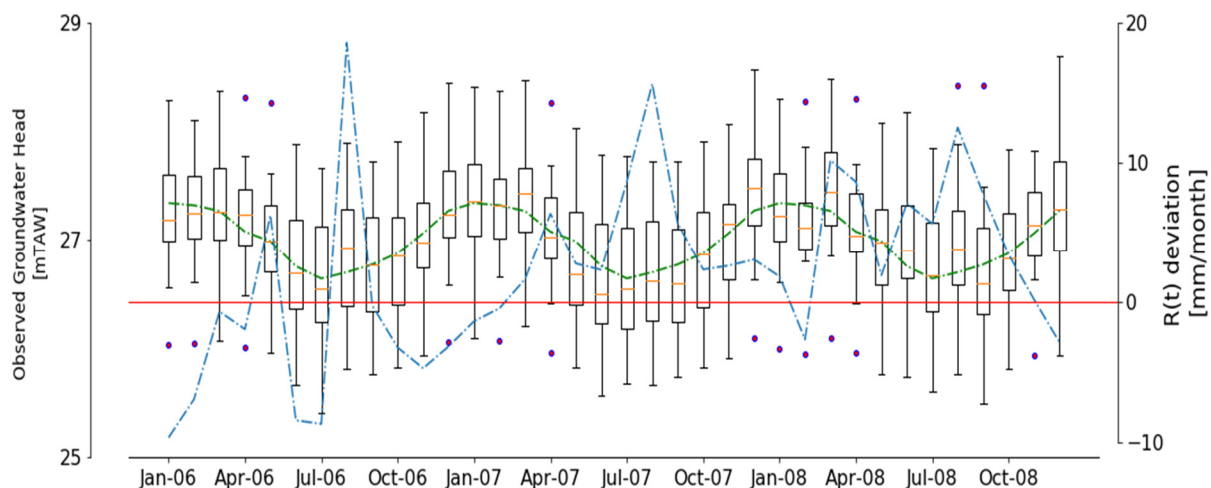


Figure 16: Observed groundwater head distribution collected from 14 observation wells (boxplot with monthly timestep), long-term (2003-2013) average monthly observed groundwater head (dotted-green line) and groundwater recharge deviation from threshold value (dotted-blue line) between 2006 and 2008. These observation wells are mainly found on the delineated wetland area (Figure 5).

During drought propagation in the hydrological cycle, the multi-year meteorological droughts of 1981 – 2013 propagate to groundwater recharge drought. This propagation continues to the groundwater system. The groundwater drought propagation analysis showed that even though the number and severity of drought events observed in discharge to the wetland is lower than for recharge, , the wetland is still vulnerable to groundwater drought. This is also reflected in the lower groundwater level measurements between 2006 and 2008. This vulnerability could be because of the shallow water table and limited thickness of the aquifer in the study area, resulting in a quick response to changes in hydrological stresses such as droughts. The drought propagation towards a wetland studied by Fang and Pomeroy (2008) also showed much lower

discharge to the wetland from the basin groundwater and snowmelt runoff developed in drought years. Moreover, Drexler and Ewel (2001) performed a field experiment during the 1997–1998 ENSO-related drought and found that the mean water table level in the wetlands lowered by 12 to 54 cm. This could also be explained by drought propagation from the meteorological to the groundwater system.

5 Conclusion

In this study, a method is proposed to investigate the propagation of meteorological drought to groundwater recharge, groundwater levels, and groundwater discharge to a wetland. The method combines a water balance model, a transient groundwater flow model, threshold methods, and drought indices. The method is applied to analyze drought propagation in the hydrological cycle, with a focus on groundwater recharge and discharge drought, in the Doode Bemde wetland nature reserve in central Belgium.

Combining water balance model (WetSpass) and groundwater model (MODFLOW) was used to simulate groundwater recharge and groundwater discharge with high temporal and spatial resolution. Moreover, variable threshold value method was implemented for groundwater drought analysis.

Groundwater drought analysis on groundwater recharge and discharge to the wetland showed that the number of groundwater discharge drought events was smaller than the number of recharge drought events. As a result, not all recharge drought events resulted in discharge drought. This was expected as the number of hydrological droughts normally decreases as the groundwater recharge droughts propagate through the aquifer. When it comes to the onset of the drought events, not much difference was observed between droughts on recharge and discharge to the wetland. The drought events appeared to have occurred around the same time. In terms of severity, the drought events on recharge were more severe than the drought events on discharge to the wetland. Attenuation in discharge by the groundwater system could have played a role here.

From this study, it is concluded that not all meteorological droughts result in groundwater drought. However, a combination of different severity range of meteorological drought causes groundwater drought. Furthermore, the characteristics of drought, like duration, onset, and deficit, changed during drought propagation in the aquifer and its impact was also detected on Doode Bemde wetland water level.

References

- Abdollahi, K., Bashir, I., Verbeiren, B., Harouna, M., van Griensven, A., Huysmans, M. and Batelaan, O.: A distributed monthly water balance model : formulation and application on Black Volta Basin, *Environ. Earth Sci.*, 76(5), 1–18, doi:10.1007/s12665-017-6512-1, 2017.
- Batelaan, O. and De Smedt, F.: WetSpa: a flexible, GIS based, distributed recharge methodology for regional groundwater modelling, in: Proceedings of a symposium held during the Sixth IAHS Scientific Assembly, Maastricht, The Netherlands, July 2001, 269, 11–17, 2001.
- Batelaan, O. and De Smedt, F.: GIS-based recharge estimation by coupling surface-subsurface water balances, *J. Hydrol.*, 337(3–4), 337–355, doi:10.1016/j.jhydrol.2007.02.001, 2007.
- Batelaan, O., Asefa, T., van Rossum, P. and De Smedt, F.: Groundwater flow modelling of three wetland ecosystems in river valleys in Flanders, Belgium, in: Proceedings of 8th Conference of the European Network of Experimental and Representative Basins (ERB), Ghent, Belgium, 27- 29 September 2000, 1–7, 2003.
- De Becker, P., Hermy, M. and Butaye, J.: Ecohydrological characterization of a groundwater-fed alluvial floodplain mire, *Appl. Veg. Sci.*, 2(2), 215–228, doi:10.2307/1478985, 1999.
- Beyene, B. S. and Van Loon, A. F.: Investigation of variable threshold level approaches for hydrological drought identification, *Hydrol. Earth Syst. Sci. Discuss.*, 12765–12797, doi:10.5194/hessd-11-12765-2014, 2014.
- Bloomfield, J.P., Marchant, B.P.: Analysis of groundwater drought building on the standardised precipitation index approach. *Hydrol. Earth Syst. Sci.*, 17, 4769–4787, doi:10.5194/hess-17-4769-2013, 2013
- Calow, R. C., Robins, N. S., MacDonald, A. M., Macdonald, D. M. J., Gibbs, B. R., Orpen, W. R., Mtembezeka, P., Andrews, A. J. and Appiah, S. O.: Groundwater management in drought prone areas of Africa, *Int. J. Water Resour. Dev.*, 13(2), 241–262, doi:10.1080/07900629749863, 1997.
- Edward, D. C. and McKee, T. B.: Characteristics of 20th century drought in the United States at multiple time scales, Colorado State University, Fort Collins, Colorado, Climatology Reports, 172 pp., 1997.
- Flemish Water Authorities: <https://www.waterinfo.be/>, last access: 20 April 2019.
- Harbaugh, A. W., Banta, E. R., Hill, M. C. and McDonald, M. G.: MODFLOW-2000, The U.S. Geological Survey Modular Ground-Water Model - User Guide to Modularization Concepts and the Ground-Water Flow Process, Reston, Virginia, Open-File Report 2000-92, 130pp., 2000.
- Hoyaux, J., Verheyden, S., Bogaert, J., Ghelen, Y., Van Leest, M., Annemarie, V. der A. and Squilbin, M.: Belgian National Adaptation Plan (2017-2020), B-1000 Brussels, Belgium, 40pp., 2016.

- Huysmans, M. and Dassargues, A.: Hydrogeological modeling of radionuclide transport in low permeability media: A comparison between Boom Clay and Ypresian Clay, *Environ. Geol.*, 50(1), 122–131, doi:10.1007/s00254-006-0191-7, 2006.
- Van Lanen, H. A. J.: Drought propagation through the hydrological cycle, in: *Proceedings of the Fifth FRIEND World Conference about Climate Variability and Change—Hydrological Impacts*, Havana, Cuba, November 2006, 308, 122–127, 2006.
- Van Lanen, H. A. J. and Peters, E.: Temporal variability of recharge as an indicator for natural groundwater droughts in two climatically contrasting basins, in: *Proceedings of Fourth International Conference on FRIEND 2002 - regional hydrology: bridging the gap between research and practice*, Cape Town, South Africa, 101–106, 2002.
- Van Loon, A. F. Van: On the propagation of drought How climate and catchment characteristics influence hydrological drought development and recovery, Ph.D. thesis, Wageningen University, The Netherlands, 195 pp., 2013.
- McKee, T. B., Doesken, N. J. and Kleist, J.: A drought climatology for Europe, in: *Proceedings of the 8th Conference on Applied Climatology*, Anaheim, California, 17-22 January 1993, 179– 183, 1993.
- Mishra, A.K., Singh, V.P.: A review of drought concepts. *J. Hydrol.* 391, 202–216, doi:10.1016/j.jhydrol.2010.07.012, 2010
- Peeters, L.: Groundwater and geochemical modelling of the unconfined Brussels aquifer, Ph.D. thesis, KU Leuven, Belgium, 128 pp., 2010.
- Peters, E.: Propagation of drought through groundwater systems, Ph.D. thesis, Wageningen University, The Netherlands, 221 pp., 2003.
- Peters, E., Bier, G., van Lanen, H. A. J. and Torfs, P. J. J. F.: Propagation and spatial distribution of drought in a groundwater catchment, *J. Hydrol.*, 321(1–4), 257–275, doi:10.1016/j.jhydrol.2005.08.004, 2006.
- Peters, E., Van Lanen, H.A.J.: Propagation of drought in groundwater in semi-arid and sub-humid climatic regimes, In: *Proceedings of the International Symposium of Hydrology of the Mediterranean and Semi-Arid Regions*, Montpellier, France, 1–4 April, 278, pp. 312–317, 2003.
- Possemiers, M., Huysmans, M., Peeters, L., Batelaan, O. and Dassargues, A.: Relationship between sedimentary features and permeability at different scales in the Brussels Sands, *Geol. Belgica*, 15, 156–164, 2012.
- Ridder, K. De, Couderé, K., Depoorter, M., Liekens, I., Pourria, X., Steinmetz, D., Vanuytrecht, E., Verhaegen, K., Wouters, H., *Evaluation of the Socio-Economic Impact of Climate Change in Belgium*, 2020.
- Tabari, H., Taye, M. T. and Willems, P.: Water availability change in central Belgium for the late 21st century, *Glob. Planet. Change*, 131, 115–123, doi:10.1016/j.gloplacha.2015.05.012, 2015.
- Thom, H. C. S.: A Note on the Gamma Distribution, *Mon. Weather Rev.*, 86(4), 117–122, doi:10.1175/1520-0493(1958)086<0117:anotgd>2.0.co;2, 1958.

- Tricot, C., Debontridder, L., Van de Vyver, H., Vandiepenbeek, M., Dewitte, S., De Backer, H., Malderen, R., Vannitsem, S. and Roulin, E.: Oog voor het Klimaatt/Vigilance climatique, KML, Bruxelles, Belgium, 87 pp., 2015.
- Vandersteen, K., Gedeon, M. and Beerten, K.: A synthesis of hydraulic conductivity measurements of the subsurface in Northeastern Belgium, *Geol. Belgica*, 17(3–4), 196–210, 2014.
- Verbeiren, B., Batelaan, O., Hung, L. Q. and De Smedt, F.: Doode Bemde CASI-SWIR 2002: Hyperspectral sensing of moisture gradients--set-up and first results of a combined field and airborne campaign, in: *Proceedings of SPIE about Remote Sensing for Agriculture, Ecosystems, and Hydrology V*, edited by M. Owe, G. D'Urso, J. F. Moreno, and A. Calera, Bellingham, WA., 500 5232, 399–407, doi:10.1117/12.511651, 2004.
- Verbeiren, B., Huysmans, M., Tychon, B., Jacquemin, I., Canters, F., Vanderhaegen, S., Engelen, G., Poelmans, L., De Becker, P., Tsakiris, G., Vangelis, H. and Batelaan, O.: Drought-related vulnerability and risk assessment of groundwater resources under temperate conditions, in: *13th International Conference on Environmental Science and Technology*, Athens, Greece, 5–7 September 2013, 10 pp., 2013.
- VMM: Grondwater in Vlaanderen: Het Brulandkrijtsysteem., Aalst, Belgium, 2008.
- Wilhite, D.A.: Chapter1 Drought as a Natural Hazard: Concepts and Definitions, *Drought A Glob. Assess.* 1, 3–18, 2000.
- Wilhite, D. A. and Glantz, M. H.: Understanding the drought phenomenon: The role of definitions, *Water Int.*, 10, 111–120, doi:10.4324/9780429301735-2, 1985.
- Wossenyeleh, B.K., Verbeiren, B., Diels, J., Huysmans, M.: Vadose zone lag time effect on groundwater drought in a temperate climate. *Water* 12, 2123, doi:10.3390/w12082123, 2020.
- Yevjevich, V.: An objective approach to definitions and investigations of continental hydrologic droughts, *Hydrol. Pap. Color. State Univ. Fort Collins CO*, 23, 25 pp., 1967.