

Dear Antonio Montuori, Mehdi Darvishi and the anonymous referee,

We gratefully thank you for your constructive remarks and useful suggestion, which has enable us to improve the manuscript. Based on the instructions provided in your letter, we uploaded the file of the revised manuscript. Appended to this letter is our point-by-point response to the comments, followed by a list of all relevant changes made in the manuscript and the marked-up manuscript version.

Part I: Comments from Editor Antonio Montuori

1- Introduction: provide a brief description of DInSAR techniques cited within the text, along with their rationale and scope.

Response: Thanks a lot. These suggests are very helpful. Relevant information (shown below) has been supplemented in Sect .1 (page 2, line 13-22).

“Utilizing the conjugate product (i.e., interferogram) of two co-registered SAR images, Interferometric Synthetic Aperture Radar (InSAR) can remotely map the ground deformation over a large area (Gabriel et al., 1989; Massonnet and Feigl 1998). However, several factors such as atmospheric effect, orbit and topography error and other noise, limit the accuracy of InSAR. Multi-temporal InSAR (MT-InSAR), such as Persistent Scatter Interferometry (PSI) (Ferretti et al., 2000, 2001; Hooper et al., 2007; Kampes, 2006) and Small Baseline Subset (SBAS) algorithm (Berardino et al., 2002; Hooper 2008; Mora et al., 2003), is introduced to overcome these limitations by utilizing the pixels that contain coherent information in a time-series co-registered SAR images. In recent years, MT-InSAR play an important role in mapping ground deformation with high precision and spatial resolution over a large area (André 2016; Du et al., 2018; Haghighi et al., 2019; Miller and Shirzaei 2019; Motagh et al., 2017; Zhang et al, 2019).”

2- Study area and SAR data: provide a sub-section "SAR data" where describe the dataset used with a table resuming all the main technical features of Sentinel dataset.

Response: Thanks a lot. Relevant information (Table 1) has been supplemented in Sect .2.2.

Table 1. Metadata about the Sentinel-1 data used in the study.

Parameters	Description	
Dataset	Sentinel-1A	Sentinel-1A
Track	40	142
Subswath	IW3	IW1
Time span	Jul 2015–Nov 2019	Jul 2015–Nov 2019
Numer	63	61
Orbit mode	Ascending	Ascending
Incidence angle (degree)	43.8	33.8
Heading (degree)	347	347

3- Methodology: Provide a brief description of ESD approach. Moreover, please provide some details about the values adopted for the rectangular window of SHP technique (values chosen empirically or from reference studies?).

Response: Thanks a lot. Relevant information (shown below) has been supplemented in Sect .3 (page 5, line 21-23; page 6, 1-3 and page 7, line 5-7)

“Let Δy be the coregistration error of pixel p . According to the rationale of ESD, Δy can be estimated by (Yague-Martinez et al., 2016):

$$\Delta \hat{y} = \arg \min_{\Delta y} \left\{ \arg \sum_{p \in \Omega} \exp \left(j \left(\phi_{ESD,p} - 2\pi \cdot \Delta f_{DC,p}^{ovl} \cdot \frac{\Delta y}{f_{az}} \right) \right) \right\} \quad (1)$$

where Ω denotes the overlap area between adjacent bursts. $\phi_{ESD,p}$ is the double differential phase between adjacent bursts. $\Delta f_{DC,p}^{ovl}$ and f_{az} are the Doppler centroid frequency difference and the azimuth sampling frequency, respectively.”

“In this paper, the Kolmogorov-Smirnov (KS) test is used to identify the SHP in a rectangular window with a dimensions of 19×13 (azimuth \times range). The adaptive spatial filtering will be carried only if the number of SHP is more than 18 by which to preserve PS information.”

4- Cross validation of the displacement: please provide the RMSE between Sentinel results.

Response: Thanks a lot. These suggests are very helpful. Relevant information (shown below) has been supplemented in Sect .4.1 (page 8, line 23; page 9, line 1 and Fig. 4).

“We also calculate the root mean square error (RMSE) of the two InSAR results, get a RMSE of 0.5 cm/yr. The low RMSE and high correlation demonstrates the consistency of the InSAR results.”

Part II: Comments from Mehdi Darvishi

1-In the first paragraph of page 2, the following corrections should be performed: time-consuming” and “advanced methods”.

Response: Thanks a lot. The manuscript has been revised carefully according to the comments.

2-Which strategy has been taken to mitigate the atmospheric artifacts in the ifgs?

Response: Thanks a lot.

Generally, atmospheric signal is assumed uncorrelated in time and correlated in space. Based on the assumption, atmospheric artifacts can be separated from deformation using a combination of temporal and spatial filtering.

In fact, the vertical stratification component of atmospheric effect shows some degree of seasonal and topographic correlation. Some algorithms have been proposed to estimate this component using DEM and numerical weather model.

However, the vertical component of atmospheric effect is ignored in this paper as the study area has a relatively flat landform with altitude varying from 37 to 68 m.

3-As the multi-looking and spectral filtering have not been applied, how did you get a coarse spacing of 50m for the final result?

Response: Thanks a lot. In fact, all the results, shown in all figures except Fig. 4, are with an original spatial resolution (i.e., single-look). We just coarse the results in Sect. 4.2 in order to identify the common MPs to assess the consistency and precision (shown in Fig. 4) of InSAR results.

Each MP has its own longitude and latitude. The script ‘llh2local.m’ in StaMPS software can convert the longitude and latitude to local coordinate. According the local coordinate, we can resample the results from S1-40 and S1-142 with a spacing of 50 m. The displacement rates will be averaged if multiple MPs are located in the same grid.

4-The function of adaptive filter along with the selected parameters should be more elaborated for readers.

Response: Thanks a lot. Relevant information (shown below) has been supplemented in Sect .3 (page 6, line 29-33 and page 7, line 1-7).

“The key element of adaptive spatial filtering is the identification of statistically homogenous pixels (SHP). Let A_p be the amplitudes of pixel p :

$$A_p = [A_1(p), A_2(p), \dots, A_M(p)] \quad (2)$$

where M is the number of SAR images. Let A_q be the amplitudes of pixel q located in the estimation window centered on p , and $A_q = [A_1(q), A_2(q), \dots, A_M(q)]$. We can use statistical hypothesis testing to evaluate whether p and q are SHP (Samiei-Esfahany 2017):

$$H_0 : F_{A_p} = F_{A_q}, \quad H_1 : F_{A_p} \neq F_{A_q} \quad (3)$$

where F_{A_p} and F_{A_q} are the cumulative distribution function of amplitudes of p and q , respectively. In this paper, the Kolmogorov-Smirnov (KS) test is used to identify the SHP in a rectangular window with a dimensions of 19×13 (azimuth \times range). The adaptive spatial filtering will be carried only if the number of SHP is more than 18 by which to preserve PS information.”

Part III: Comments from Anonymous Referee #1

1-Some of the figures need to be fixed through not good visibility and some algorithms used need references.

Response: Thanks a lot. These suggests are very helpful. We have updated the Fig. 9 and Fig. 10, and supplemented some essential references according to the direct notes on the manuscript (page 7, line 21 and 23).

2-Maybe it's quite interesting to show results from a GNSS Time-series compared to InSAR results to validate the findings.

Response: Thanks a lot.

It's exactly as you said that *in-situ* measurements (collected from GNSS or precise leveling) are generally used to evaluate the accuracy and precise of InSAR results.

Unfortunately, no *in-situ* data is publicly available in the study area until now.

Therefore, we assessed the consistency and precision of InSAR results by a cross comparison of displacement rates derived from different datasets (i.e., S1-40 and S1-142). 232, 984 common MPs are finally identified. Based on so many common MPs, we calculated the Pearson correlation and the differences (i.e., the mean and standard deviation) of the two measurements. The statistical calculation shows that the two measurements agree well with each, which suggest the availability and reliability of InSAR results.

3-The hypothesis that the ground subsidence is caused by both the hydraulic head change and the seasonal groundwater variations and also that the time lag is induced by the groundwater level increases arising from the seasonal precipitation needs more data to be clear and a graph of temperature and humidity along with the other three graphs is missing.

Response: This is a very good and professional suggest. We have supplemented the time series of the groundwater level (page 11, line 24-25 and 30-32; page 13, line 2; Fig. 7a and 7b).

However, the aquifer's detailed information is not public, we only have access to shallow groundwater data collected from July 2016 to July 2017 and deep groundwater data collected from July 2015 to October 2017. Nevertheless, the limited groundwater information confirms our hypothesis.

We acknowledge that the temperature and humidity is related to the precipitation. However, we have obtained the detailed time series precipitation, which is enough to investigate the relationship between the subsidence and the groundwater and precipitation. So we don't perform the analysis of the temperature and humidity. We look forward to hearing from you regarding our submission. We would be glad to respond to any further questions and comments that you may have.

List of all relevant changes made in the manuscript.

P: page.

L: line.

1. P1L14: The word “normal” has been replaced by “regular”.
2. P1L19: The words “coal field” have been replaced by “coalfield”.
3. P1L20: The word “are” has been replaced by “is”.
4. P1L32: The words “the extraction of groundwater” have been replaced by “groundwater extraction”.

5. P2L6: The words “in future” have been replaced by “in the future”.
6. P2L7: The word “are” has been replaced by “is”.
7. P2L10: The words “timing consuming” have been replaced by “time-consuming”.
8. P2L11: The word “advance” has been replaced by “advanced”.
9. P2L13-22: Supplement of the description of InSAR and MT-InSAR.
10. P2L23: The word “man-made” has been replaced by “human-made”.
11. P2L28: The word “which” has been replaced by “that”.

12. P3L14: The words “have a better understanding of” have been replaced by “better understand”.
13. P3L22: The word “semi-humid” has been replaced by “a semi-humid”.
14. P3L24: The words “a large seasonal variations” have been replaced by “large seasonal variations”.
15. P3L27: The word “is” has been replaced by “are”.
16. P3L32: The word “serious” has been replaced by “severe”.

17. P4L9-10: The sentence “The details of the Sentinel-1A datasets are summarized in Table 1.” has been added.
18. P4L15: The Table 1 has been supplemented.

19. P5L13: The words “difference of Doppler” have been replaced by “the difference of Doppler”.
20. P5L16: The word “special” has been replaced by “unique”.
21. P5L19: The words “pixel spacing of three arc second” have been replaced by “three arc second pixel spacing”.

22. P5L21-P6L3: Supplement of the description of ESD approach.
23. P6L11: The words “There are some gaps being” have been replaced by “Some gaps are being”.
24. P6L19: The word “multilooking” has been replaced by “multi-looking”.
25. P6L29-P7L7: Supplement of the description of adaptive filtering method.
26. P7L21: Supplement of reference.
27. P7L23: Supplement of reference.
28. P8L16: The words “Although the physical parameters of sensor is same with each other” have been replaced by “Although the sensor’s physical parameters are the same”.
29. P8L23-P9L1: Supplement of the RMSE between two InSAR results.
30. P9L16: The word “characteristic” has been replaced by “characteristics”.
31. P9L17: The word “sparse” has been replaced by “sparsely”.
32. P11L16: The word “brings” has been replaced by “bring”.
33. P11L18: The word “of” has been replaced by “for”.
34. P11L24: Supplement information about the Fig. 7.
35. P11L25: The words “over extracted” have been replaced by “over-extracted”.
36. P11L30-32: Supplement information about groundwater level in Fig. 7.
37. P11L33: The words “over extracted” have been replaced by “over-extracted”.
38. P12L6: The sentence “As the detailed information of aquifer are not public” has been replaced by “As the aquifer’s detailed information is not public”.
39. P12L7: The word “mainly” has been replaced by “main”.
40. P12L16: The words “extraction of groundwater” have been replaced by “groundwater extraction”.
41. P12L21: The word “whilst” has been replaced by “while”.
42. P12L24: The word “significantly” has been replaced by “significant”.
43. P13L2: The words “We hypothesize that” have been replaced by “According to the Fig. 7a, 7c and 7d, we can hypothesize that”.
44. P13L7: The words “owing to” have been replaced by “due to”.

45. P13L11: Supplement information in Fig. 7.
46. P13L16: The words “coal field” have been replaced by “coalfield”.
47. P13L17: The word “during” has been replaced by “for”.
48. P13L19: The word “e.g.” has been replaced by “e.g.”.

49. P14L2: The word “large” has been replaced by “vast”.
50. P14L4: The words “In addition” have been replaced by “Also”.
51. P14L14: The words “there is” have been deleted.
52. P14L18: The word “along” has been replaced by “along with”.
53. P14: The clarity of Fig. 9 has been improved.

54. P15: The clarity of Fig. 10 has been improved.
55. P15L19: The words “the period of” have been deleted.
56. P15L26: The words “coal filed” have been replaced by “coalfield”.

57. P16L26: The sentence “Combining the known previous” has been replaced by “By combining the known previous”.
58. P16L14: The sentence “It will be interesting to further investigate the cause of secondary subsidence” has been replaced by “It will be interesting to investigate the cause of secondary subsidence further”.
59. P16L16: The word “seriously” has been replaced by “severely”.
60. P16L18: The words “In addition” have been deleted.

61. P17L28-29: Supplement of reference.

62. P18L26-27: Supplement of reference.

Assessments of land subsidence along Rizhao-Lankao High-speed Railway at Heze, China between 2015 and 2019 with Sentinel-1 data

Chuanguang Zhu¹, Wenhao Wu¹, Mahdi Motagh^{2,3}, Liya Zhang¹, Zongli Jiang¹, and Sichun Long¹

¹Key Laboratory of Coal Resources Clean-utilization & Mine Environment Protection of Hunan Province, Hunan university of Science & Technology, Xiangtan 411201, China

²Section of Remote Sensing and Geoinformatics at GFZ German Research Centre for Geosciences in Potsdam, Germany

³Institute of Photogrammetry and Geoinformation at Leibniz University Hannover (LUH) in Hannover, Germany

Correspondence to: Chuanguang Zhu (zhucg@hnust.edu.cn)

Abstract. The Heze section of Rizhao-Lankao High-speed Railway (RLHR-HZ) has been under construction since 2018 and will be operative by the end of 2021. However, there is a concern that land subsidence in Heze region may affect the **regular** operation of RLHR-HZ. In this study, we investigate the contemporary ground deformation in the region between 2015 and 2019 by using more than 350 C-band interferograms constructed from two tracks of Sentinel-1 data over the region. The Small Baselines Subset (SBAS) technique is adopted to compile the time series displacement. We find that the RLHR-HZ runs through two main subsidence areas: **One** is located east of Heze region with rates ranging from -4 cm/yr to -1 cm/yr, and another one is located in the **coalfield** with rates ranging from -8 cm/yr to -2 cm/yr. A total length of 35 km of RLHR-HZ **is** affected by the two subsidence basins. Considering the previous investigation and the monthly precipitation, we infer that the subsidence bowl east of Heze region is due to massive extraction of deep groundwater. Close inspections of the relative locations between the second subsidence area and the underground mining reveals that the subsidence there is probably caused by the groundwater outflow and fault instability due to mining, rather than being directly caused by mining. The InSAR-derived ground subsidence implies that it's necessary to continue monitoring the ground deformation along RLHR-HZ.

1 Introduction

The Heze region, lying in the North China Plain, has been adversely affected for decades by ground subsidence, mainly caused by the soil compaction and consolidation due to the excessive exploitation of aquifer (Cui 2018; Hu et al., 2004; Guo et al., 2019; Xue et al., 2005). To slow down the subsidence, the local governments have proposed new regulations on exploitation of groundwater. However, **groundwater extraction** is still greater than recharge due to the urban sprawl and industrial development, which results in continuous ground subsidence. In addition, underground mining activities have also exacerbated the problems of subsidence in recent years (Wang 2014; Yang et al., 2010). The resulting subsidence has

1 already caused some environment hazards, e.g., collapse of roads, buildings and other infrastructures (Yue
2 2020).

3 The RLSR-HZ, with a length of 150 km and a speed of 300 kph, has been under construction since
4 December 2018 and will be operative by the end of 2021. The ground subsidence may menace the
5 RLSR-HZ and therefore currently is a matter of major safety concern. It is crucial to monitor ground
6 deformation along the RLSR-HZ to avoid potential hazards **in the future**.

7 Field-survey based on a few sparse points, such as spirit leveling and global position system (GPS) **is** the
8 main methods for measuring ground deformation in Heze region. However, it is difficult to obtain detailed
9 and comprehensive deformation based on these sparse points. Moreover, these geodetic measurements are
10 very **time-consuming** and highly labor intensive, especially for the RLSR-HZ extending over a large region.
11 More **advanced** methods are required to retrieve the latest temporal and spatial evolution of ground
12 deformation along the RLSR-HZ.

13 Utilizing the conjugate product (i.e., interferogram) of two co-registered SAR images, Interferometric
14 Synthetic Aperture Radar (InSAR) can remotely map the ground deformation over a large area (Gabriel et
15 al., 1989; Massonnet and Feigl 1998). However, several factors such as atmospheric effect, orbit and
16 topography error and other noise, limit the accuracy of InSAR. Multi-temporal InSAR (MT-InSAR), such
17 as Persistent Scatter Interferometry (PSI) (Ferretti et al., 2000, 2001; Hooper et al., 2007; Kampes, 2006)
18 and Small Baseline Subset (SBAS) algorithm (Berardino et al., 2002; Hooper 2008; Mora et al., 2003), is
19 introduced to overcome these limitations by utilizing the pixels that contain coherent information in a
20 time-series co-registered SAR images. In recent years, MT-InSAR **play** an important role in mapping
21 ground deformation with high precision and spatial resolution over a large area (André 2016; Du et al.,
22 2018; Haghighi et al., 2019; Miller and Shirzaei 2019; Motagh et al., 2017; Zhang et al, 2019).

23 Generally, PSI is suitable in urban areas where many **human-made** structures provide the vast majority of
24 PSs. However, most of the area, running through by RLSR-HZ, is covered by farmlands, which leads to a
25 low density of PSs. Distributed scatterers (DSs), also referred as Gaussian scatterers with random scattering
26 mechanism (Bamler and Hart, 1998; Goodman, 1976), are widespread in natural scene and can be used in
27 SBAS method to increase the density of measurement points (Hooper 2008; Samiei-Esfahany 2017).
28 SqueeSAR (Ferretti et al., 2011) is another advanced approach, **that** allows us to extract the signal from
29 both PS and DS. SqueeSAR extracts information by exploiting all the possible interferograms rather than a
30 set of SBAS interferograms (Ferretti et al., 2011; Samiei-Esfahany 2017; Shamshiri et al., 2018; Wang et
31 al., 2012). This may lead to an underestimation of deformation due to large temporal baseline.

32 In this manuscript, SBAS method implemented in the Stanford method for persistent scatter (referred to
33 as StaMPS-SB for simplicity) (Hooper 2008) is adopted and improved. StaMPS-SB has some advantages
34 as follows. First, it has the potential for limiting the effects of topographic errors and the decorrelation by
35 concentrating only on these interferograms with small geometric and temporal baselines (Chen et al., 2012;

1 Goel and Adam, 2012). This contributes to the reduction of phase aliasing and thereby increasing the
2 chances of successful phase unwrapping (Hooper 2008). Second, StaMPS-SB can operate on single look
3 images (Hooper 2008), by which we can avoid smoothing any change in deformation and retain the
4 deformation in the highest spatial resolution offered by the satellite. Finally, StaMPS-SB can produce the
5 temporal evolution of deformation without any prior information about its temporal evolution (Hooper et
6 al., 2007; Hooper 2008; Sousa et al., 2011). This is very useful as there is no prior knowledge about the
7 variations of deformation over the study region. However, standard StaMPS-SB adopts spectral filtering to
8 discard the non-overlapping Doppler spectrum in azimuth and to reduce the geometric decorrelation in
9 range (Hooper 2008), which leads to a coarsening of resolution and some loss of ~~deformation~~ information.
10 Thus, an adaptive spatial filtering algorithm (Ferretti et al., 2011; Goel and Adam, 2011; Parizzi and Brcic,
11 2011) is introduced ~~to replace~~ the spectral filtering to improve the interferometric coherence while
12 maintaining the spatial resolution. We utilize the improved StaMPS-SB to investigate the ground
13 deformation along RLSR-HZ using 124 C-band Sentinel-1 SAR images acquired from two tracks between
14 July 2015 and November 2019. Having retrieved the pattern of ground deformation, the potential causes for
15 instability along RLSR-HZ are discussed to better understand the deriving forces contributing to subsidence
16 process. Such information is the key for the safety operation and maintenance of RLSR-HZ.

17

18 **2 Study area and SAR data**

19 2.1 Study area

20 Heze region, an important part of the North China subsidence basin, is located in the lower reaches of the
21 Yellow River. This area has a relatively flat landform with altitude varying from 37 to 68 m and is covered
22 by vast areas of farmland. It is characterized by a semi-humid monsoon climate with a mean annual
23 precipitation of approximately 663 mm, which is the main recharge source of groundwater. The monsoon
24 climate makes large seasonal variations of precipitation, i.e., most of precipitation (approximately 391 mm)
25 is concentrated in the summer (Shandong Provincial Bureau of Statistics).

26 Groundwater has been a key resource for development of agriculture and industry in Heze. More than 1
27 billion tons of groundwater ~~are~~ exploited every year in the region by more than 110 deep wells in urban
28 area and more than 137000 wells in rural area (Xu et al., 2017). Due to the abundant extraction of
29 groundwater, the level of shallow and deep groundwater declined by more than 8 and 80 m between 1980
30 and 2013, with an average rate of 0.5m/yr and 5 m/yr respectively (Feng et al., 2015). Besides, Heze region
31 is rich in coal resources with a cumulative reserve of about 10.2 billion tons spreading over an area of 2700
32 km². Due to underground mining, an area more than 40 km² has suffered from ~~severe~~ subsidence.

33 RLSR-HZ, with a length of about 150 km running through Heze region from southwest to northeast
34 (shown in Fig. 1), has been under construction since December 2018 and will be operative by the end of
35 2021. Taking advantage of ballastless track, the speed reaches up to 300 Km/h. This means that a very high

1 stability of foundation is required for safety. It's crucial to accurately and continuously monitor the ground
 2 subsidence along RLSR-HZ to assess the risk.

3

4 2.2 SAR data

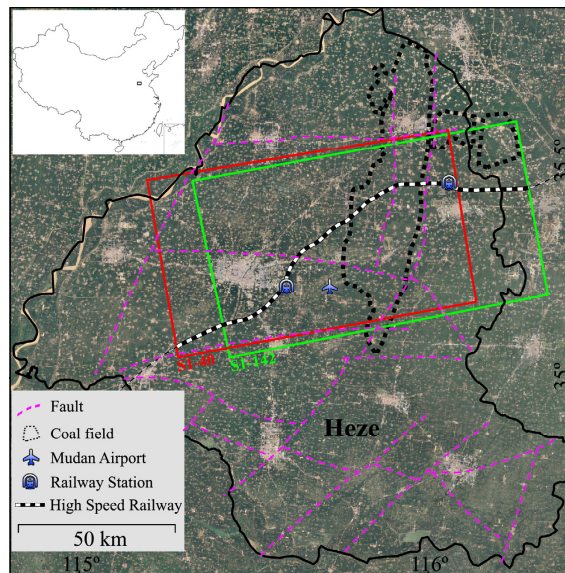
5 Our dataset includes 124 C-band Sentinel-1A SAR images in TOPS mode covering more than four years
 6 between July 2015 and November 2019. 63 of these images were collected from track 40 (referred as
 7 S1-40), and 61 from track 142 (referred as S1-142). There is no descending SAR data over this region, all
 8 these images are acquired in an ascending orbit. The ground resolution of these images is approximately 20
 9 m in azimuth and 5 m in range (Geudtner et al., 2014). **The details of the Sentinel-1A datasets are**
 10 **summarized in Table 1.** Fig. 2 shows the temporal and spatial baselines of 192 interferograms generated
 11 from S1-40 dataset and 171 interferograms generated from S1-142 dataset. It can be seen that the
 12 perpendicular baselines vary between -150 m and 150 m. External DEM data acquired from TanDEM-X
 13 with a pixel spacing of three arc second is used for removal of topographic phase component (Wessel et al.,
 14 2018) and for geometrical coregistration of TOPS data (Yague-Martinez et al., 2016).

15

Table 1. Metadata about the Sentinel-1 data used in the study.

Parameters	Description	
Dataset	Sentinel-1A	Sentinel-1A
Track	40	142
Subswath	IW3	IW1
Time span	Jul 2015–Nov 2019	Jul 2015–Nov 2019
Numer	63	61
Orbit mode	Ascending	Ascending
Incidence angle (degree)	43.8	33.8
Heading (degree)	347	347

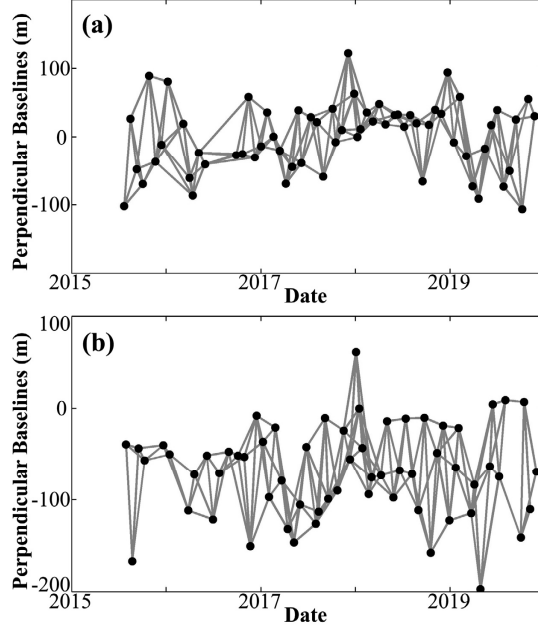
16



17

18 Fig. 1. Study area and outline of Sentinel-1 acquisitions superimposed on Google Earth optical image (© Google Maps).

19 Black polygon represents the boundary of Heze region.



1
2 Fig. 2. Connected network of interferograms for (a) S1-40 and (b) S1-142 datasets. Black dots and grey lines denote the
3 Sentinel-1 acquisitions and interferograms, respectively.
4

5 3 Methodology

6 In this study, StaMPS-SB is improved and conducted to derive the time-series displacement from
7 multi-temporal Sentinel-1 acquisitions. Compared with single master approach (e.g, PSI), StaMPS-SB can
8 minimize the decorrelation effects caused by long interval of SAR acquisitions and dense farmlands over
9 this study area (Hopper 2008).

10 First, the S1-40 dataset and S1-142 dataset are coregistered and resampled with respect to the reference
11 images acquired on 8 January 2018 and 15 January 2018, respectively. The reference image should have the
12 capability to maximize the quality index in coregistration strategy, which is dependent on the temporal and
13 spatial baselines, the difference of Doppler centroid and thermal noise (Hopper et al., 2007). Here, we
14 assume the thermal noise as constant for simplicity (Hopper et al., 2007).

15 Note that higher accuracy is required for the azimuth coregistration due to the significant Doppler
16 frequency variation which can result in failure for traditional methods. A unique strategy combining
17 geometric coregistration and enhanced spectral diversity (ESD) (Prats-Iraola et al., 2012) technique is used
18 in this paper. We first perform the geometric coregistration using the precise orbit with an accuracy of 5 cm
19 and the TanDEM-X DEM with a three arc second pixel spacing. Then, the azimuth coregistration accuracy
20 is refined using ESD technique which exploits the differential phase in the overlap areas of consecutive
21 bursts (Prats-Iraola et al., 2012; Yague-Martinez et al., 2016). Let Δy be the coregistration error of pixel
22 p . According to the rationale of ESD, Δy can be estimated by (Yague-Martinez et al., 2016):

$$23 \quad \hat{\Delta y} = \underset{\Delta y}{\operatorname{argmin}} \left\{ \operatorname{arg} \sum_{p \in \Omega} \exp \left(j \left(\phi_{ESD,p} - 2\pi \cdot \Delta f_{DC,p}^{covl} \cdot \frac{\Delta y}{f_{az}} \right) \right) \right\} \quad (1)$$

1 where Ω denotes the overlap area between adjacent bursts. $\phi_{ESD,p}$ is the double differential phase
 2 between adjacent bursts. $\Delta f_{DC,p}^{covl}$ and f_{az} are the Doppler centroid frequency difference and the azimuth
 3 sampling frequency, respectively.

4 After that, all the images (i.e., the resampled images and the reference image) are recombined with each
 5 other to generate interferograms as long as the geometric and temporal baselines are less than a predefined
 6 threshold. A small orbital separation (i.e., 150 m) is specified as the geometric baseline threshold in order to
 7 restrain the effect of spatial decorrelation noise and topographic errors. Meanwhile, a short interval (i.e., 84
 8 days) is specified as the temporal baseline threshold in order to restrain the effect of temporal decorrelation
 9 noise and accumulative deformation on wrapped phase. Then, all the interferograms are inspected to
 10 distinguish the noisy interferograms which will be excluded from the network. In addition, the temporal
 11 intervals of interferograms are not very uniform. Some gaps are being more than 84 days, which results in a
 12 disconnected network for the auto-generated interferograms. Therefore, some interferograms with high
 13 coherence are manually appended to the original stacks to form a connected network which is essential for
 14 StaMPS-SB. Finally, two connected networks containing 192 interferograms for S1-40 and 171
 15 interferograms for S1-142 are generated (shown in Fig. 2). In these networks, each image is connected to at
 16 least two other images, by which the temporal sampling rate is increased by an average factor of 2.9.
 17 Taking advantage of the adequate interferograms, the model parameters such as deformation, topographic
 18 errors and atmospheric artifacts can be estimated more accurately comparing with single master approach.

19 Generally, **multi-looking** (Berardino et al., 2002) and spectral filtering (Hooper 2008) are the common
 20 approaches to improving interferometric coherence and reducing noise. Standard StaMPS-SB adopts
 21 spectral filtering to discard the non-overlapping Doppler spectrum in azimuth and to reduce the geometric
 22 decorrelation in range. However, the spectral filtering operation leads to a coarsening of resolution (Hooper
 23 2008), which therefore may cause some loss of deformation information. In fact, the differences in Doppler
 24 frequency of Sentinel-1 data are only a few Hz (Yague-Martinez et al., 2016) and the common Doppler
 25 bandwidth is more than 95% in most cases. Additionally, the range bandwidth is larger than 40 MHz and
 26 almost all of the geometric baselines are shorter than 150 m. As a result no spectral filtering is applied to
 27 avoid coarsening the resolution. In contrast, an adaptive spatial filtering algorithm (Ferretti et al., 2011;
 28 Goel and Adam, 2011; Parizzi and Brcic, 2011) is introduced and implemented to improve the
 29 interferometric phase and coherence while preserving the image details. **The key element of adaptive**
 30 **spatial filtering is the identification of statistically homogenous pixels (SHP).** Let A_p be the amplitudes of
 31 pixel p :

$$A_p = [A_1(p), A_2(p), \dots, A_M(p)] \quad (2)$$

33 where M is the number of SAR images. Let A_q be the amplitudes of pixel q located in the estimation

1 window centered on p , and $A_q = [A_1(q), A_2(q), \dots, A_M(q)]$. We can use statistical hypothesis testing to
 2 evaluate whether p and q are SHP (Samiei-Esfahany 2017):

$$3 \quad H_0 : F_{A_p} = F_{A_q}, \quad H_1 : F_{A_p} \neq F_{A_q} \quad (3)$$

4 where F_{A_p} and F_{A_q} are the cumulative distribution function of amplitudes of p and q , respectively.

5 In this paper, the Kolmogorov-Smirnov (KS) test is used to identify the SHP in a rectangular window with
 6 a dimensions of 19×13 (azimuth \times range). The adaptive spatial filtering will be carried only if the number
 7 of SHP is more than 18 by which to preserve PS information.

8 StaMPS-SB selects coherent targets based on the phase characteristics (Hooper 2008),

$$9 \quad \gamma_x = \frac{1}{N} \left| \sum_{i=1}^N \exp \left\{ \sqrt{-1} (\varphi_{x,i} - \tilde{\varphi}_{x,i} - \Delta\phi_{\theta,x,i}^{\mu}) \right\} \right| \quad (4)$$

10 where $\varphi_{x,i}$ is the wrapped phase of candidate pixel x in the i th filtered interferogram. $\tilde{\varphi}_{x,i}$ is the
 11 estimated spatially correlated terms. $\Delta\phi_{\theta,x,i}^{\mu}$ is the spatially uncorrelated terms due to look angler error
 12 which is correlated with the perpendicular baseline. N is the number of interferograms. Candidate pixels
 13 are firstly selected using the amplitude difference dispersion specifying (a threshold of 0.6 is adopted).
 14 Then, these candidates will be filtered in small patches, such as $50 \text{ m} \times 50 \text{ m}$, to estimate $\tilde{\varphi}_{x,i}$. Finally,
 15 coherent targets will be determined though an iterative procedure estimating the noise (γ_x) of each
 16 candidate by implementing the inversion of $\Delta\phi_{\theta,x,i}^{\mu}$ as a search of parameters space. Further details on the
 17 selection method can be found in Hooper et al., (2007) and Hooper (2008).

18 Once the coherent targets have been determined, the differential interferometric phase of each coherent
 19 target is corrected using the estimated spatially uncorrelated terms (i.e. $\Delta\phi_{\theta,x,i}^{\mu}$) in Eq. (4). After removal of
 20 $\Delta\phi_{\theta,x,i}^{\mu}$, the residual phase mainly consisted of ground deformation, atmospheric artifacts and orbit error,
 21 can then be unwrapped using the three-dimensional (3-D) algorithm (Hooper and Zebker, 2007). Firstly, the
 22 difference phase between neighboring coherent targets is preliminarily unwrapped in time under the
 23 Nyquist assumption (Hooper 2010). A priori probability density function (PDF) can be built in each
 24 interferogram based on the unwrapped difference phase in time dimension. These PDFs are then used to
 25 search for the optimization routines of unwrapping in space to achieve the final unwrapped results (Hooper
 26 2010). Subsequently, the time series deformation of each coherent target can be extracted by temporal and
 27 spatial filtering based on the characteristics of each phase terms.

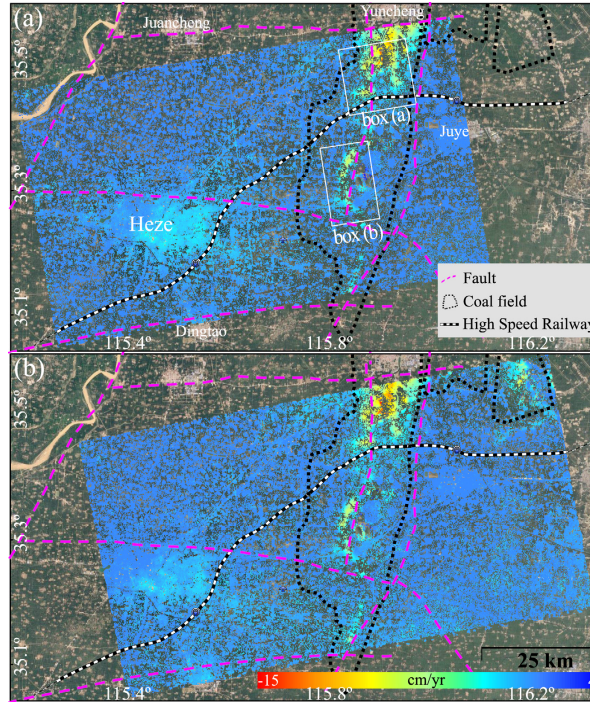
28 Note that InSAR is a relative measure to reference point. In order to derive the absolute results, the
 29 deformation of reference point should be known. However, there is no available prior information about the

1 deformation in Heze region. In contrast to the standard procedure in StaMPS-SB which only select one
2 reference area, we identify some possible areas not affected by deformation based on the differential phase
3 in time series. By using multiple reference areas, we can minimize the error of the InSAR-derived
4 deformation due to misplaced of single area (Fiaschiet al., 2017).

5

6 4 Results

7 4.1 Cross validation of the displacement



8

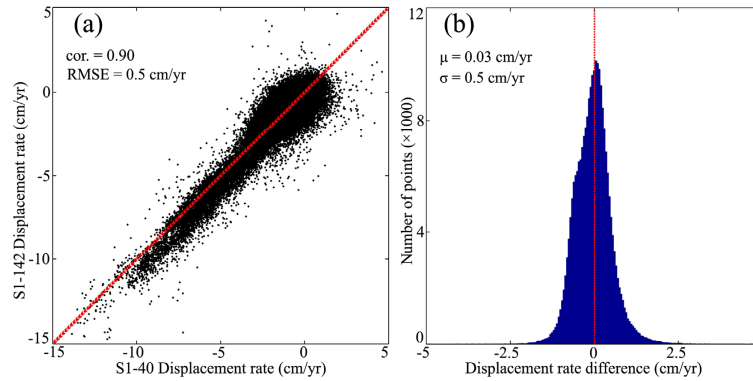
9 Fig. 3. The average rates of land displacement results from (a) S1-40 and (b) S1-142, superimposed on Google Earth optical
10 image (© Google Maps). The two white boxes (indicated by a and b) indicate the locations of subsidence area related to
11 underground mining shown in Fig. 9-10 and analyze in Sec. 5.2.

12 Fig. 3 shows the displacement rates derived from S1-40 and S1-142. The negative displacement indicates
13 that the ground was subjected to subsidence during this period.

14 As no *in-situ* data is publicly available, we assess the consistency and precision of InSAR results by a
15 cross comparison (shown in Fig. 4) of the displacement rates derived from the S1-40 and S1-142. Although
16 **the sensor's physical parameters are the same**, the location of two sets of measurement points (MPs,
17 consisting of PS and DS pixels) is slightly different due to the different geometric parameters. In order to
18 identify the common MPs, both results from S1-40 and S1-142 are resampled to a grid with a spacing of 50
19 m. The displacement rates are averaged if multiple MPs are located in the same grid. Besides, the
20 displacements are converted to vertical direction ~~on the assumption~~ that the horizontal displacements are
21 negligible. 232,984 common MPs are finally identified after the above procedure. Based on these common
22 MPs, we estimate the Pearson correlation of the two measurements ~~and get~~ a correlation of 0.9 (shown in
23 Fig. 4a). **We also calculate the root mean square error (RMSE) of the two InSAR results, get a RMSE of**

1 0.5 cm/yr. The low RMSE and high correlation demonstrates the consistency of the InSAR results.

2 The variation of the difference between the two measurements illustrated in Fig. 4b provides an
3 estimation of the precision of the InSAR results. We calculate the mean (μ) and standard deviation (σ) of
4 the difference of displacement rates. The μ and σ of the difference are 0.03 cm/yr and 0.5 cm/yr,
5 respectively. Therefore, we conclude that the two InSAR results agree well with each other and the
6 precision (i.e., $1-\sigma$ uncertainty) of the two measurements is about 0.5 cm/yr.



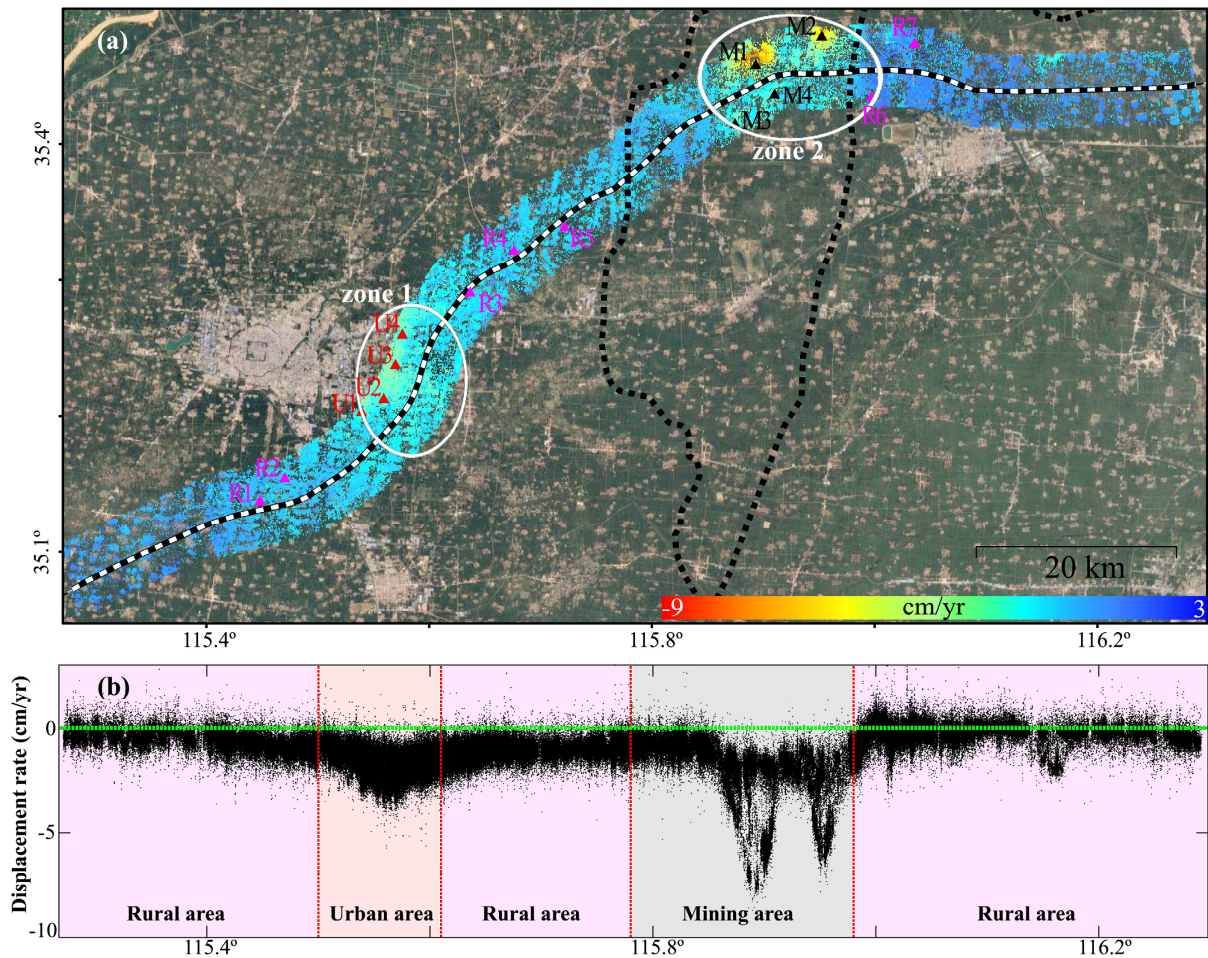
7
8 Fig. 4. The cross-validation of InSAR results from S1-40 and S1-142. The correlation and the difference between the two
9 measurements are shown in (a) and (b), respectively.

10

11 4.2 Land displacement along the RLSR-HZ

12 The displacement rates within a radius of 3 km along the RLSR-HZ are illustrated in Fig. 5. The total
13 numbers of MPs from the two sets of data are up to 312,702 and 261,397, resulting in an average density of
14 approximately 473 and 375 MPs/km², respectively. With the advantage of dense MPs, ground deformation
15 along the RLSR-HZ can be represented in detail compared to conventional methods. Note that the spatial
16 density of MPs is not homogeneous due to different ground scatterer characteristics. The MPs are evenly
17 distributed in urban area because of dense hard objects while sparsely distributed in rural area due to the
18 vegetation cover. To increase the density of MPs, the two measurements derived from S1-40 and S1-142
19 are both shown in Fig. 5. Thus, there are more MPs in the overlapping area.

20 Fig.5a shows the displacement rates along the designed RLSR-HZ. It can be seen that the RLSR-HZ runs
21 through two subsidence zones (two black ellipses in Fig.5a), one of which (zone 1) is located in the east of
22 the Heze city and another one (zone 2) in the mining area. In zone 1, the displacement rates range from -4
23 cm/yr to -1 cm/yr. The subsidence pattern is smooth and homogeneous in space. A length of approximately
24 20 km of RLSR-HZ will be affected by the subsidence. In contrast, the ground suffered a stronger
25 subsidence in zone 2, and a length of approximately 15 km of RLSR-HZ will be affected. The displacement
26 rates detected by InSAR range from -8 cm/yr to -2 cm/yr.



1
2 Fig. 5. (a) The spatial distribution and (b) the profile of average displacement rates along RLSR-HZ. Both the results from
3 S1-40 and S1-142 are shown, which leads to a denser MPs in the overlapping area. Two ellipses show the major subsidence
4 area. The triangles (i.e., pink triangles named as R1-R7, red triangles named as U1-U4 and black triangle named as M1-M4)
5 delineate the displacement features in rural area, urban area and mining area discussed in detail in Fig. 6-8, respectively. The
6 base map in (a) is from Google Earth optical image (© Google Maps).

7 To make further investigation on the ongoing settlement, we estimate the displacement profile along the
8 RLSR-HZ and show the results in Fig.5b. It can be seen that the deformation pattern is not homogenous
9 along the RLSR-HZ. The ground experiences strongest subsidence in the underground mining area,
10 followed by the urban area. We also observe slightly deformation in rural area, where the displacement
11 rates ~~primarily are in the range of -2 cm/yr to 1 cm/yr~~. However, another subsidence areas with the
12 maximum rates up to -3 cm/yr ~~appear~~ near the 116.16°. This area is offset from the coalfield by 3.5 km, so
13 the subsidence phenomenon there might be related to the underground mining.

15 4.3 Heze Mudan Airport

16 Another remarkable subsidence feature is a localized area around the Heze Mudan Airport (HMA)
17 (shown in Fig. 3). HMA has been under construction since 2017 and will open and serve Shandong with
18 domestic flights in 2020 according to the schedule. InSAR deformation maps (Fig. 3) show a subsidence
19 feature near the airport with a maximal displacement rate of approximately -3 cm/yr. The ancillary facilities

1 of the airport, such as the runway and terminal buildings, are also affected by nonuniform subsidence ~~range~~
2 from -3 cm/yr to -0.5 cm/yr.

4 5 Discussion

5 Several possible causes, including natural factors and anthropogenic activities, could be related to ~~this~~
6 ~~deformation~~ observed in Heze. Tectonic movement and underground caves can cause ground deformation.
7 However, the high displacement rates, which exceed 5 cm/yr at many locations, are not in agreement with
8 the tectonic movement rates which are estimated to be less than 0.5 cm/yr (Guo et al., 2019). In addition,
9 there are no known underground caves associated with sinkholes or karst landforms in this region. In
10 contrast, ~~close inspections of the location of subsidence area~~ and considering the underground mining
11 coupled with the decreasing hydraulic heads in this region, we infer that this deformation is mainly caused
12 by extensive extraction of groundwater and coal mine. This will be elaborated more in the following.

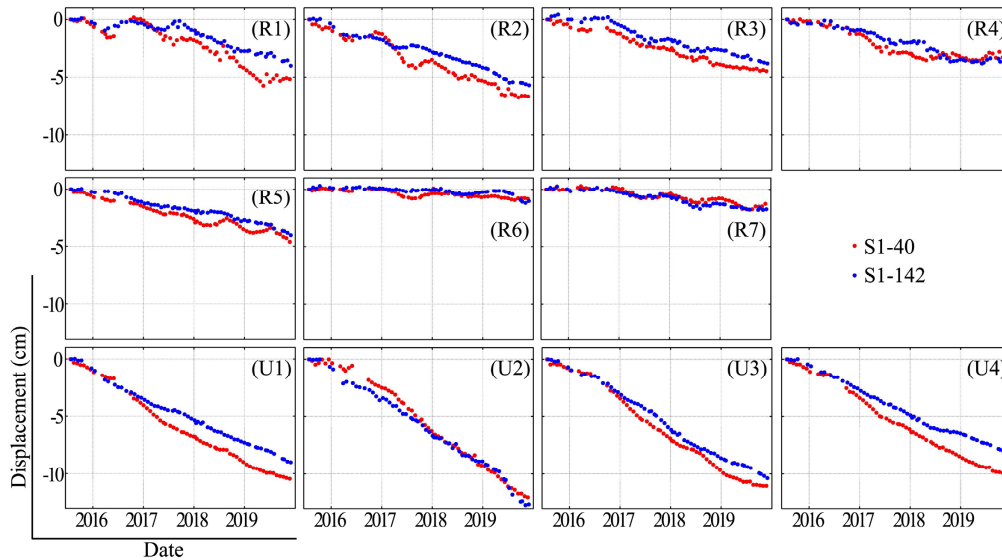
14 5.1 Correlation between ground deformation and groundwater withdraw

15 Groundwater has been exploited for agricultural irrigation, industrial and residential use in Heze region
16 since the early 1970s. Long-term exploitation of groundwater ~~will bring~~ about a compaction of the fine
17 clay layer, and finally results in the ground subsidence. Previous researches indicate that the excessive
18 groundwater withdrawal is one of the main reasons ~~for~~ ground deformation in this area (Hu et al., 2004;
19 Guo et al., 2019; Xue et al., 2005).

20 To better understand the ground motion, the time series displacements of MPs located within a 50 m
21 radius around 11 points (marked by red and pink triangles in Fig .5) are shown in Fig .6. It can be seen that
22 most of these locations suffer from ground subsidence ~~during~~ the period from July 2015 to November 2019.
23 It suggests that the groundwater is still excessively exploited and the groundwater recharge is insufficient to
24 supply the exploitation. ~~Fig. 7a and 7b show that both the shallow and deep groundwater level declined in~~
25 ~~recent years.~~ Xu et al., (2017) pointed out that more than 1 billion tons of groundwater is ~~over-extracted~~
26 annually by more than 137000 wells in Heze region.

27 Besides, Fig .6 shows that the behavior of the time series displacement significantly differs in rural area
28 and urban area. Comparing with rural area, the ground experiences more serious subsidence in urban area.
29 One reason for the large settlement in urban area is that the deep groundwater (over 200 m depth) is
30 massively extracted to meet the ~~industrial~~, except for shallow groundwater to domestic use. ~~It can be seen~~
31 ~~from Fig. 7a and 7b that the shallow groundwater level declined 0.5 m from July 2016 to July 2017, while~~
32 ~~the deep groundwater level declined approximately 6 m from July 2015 to October 2017.~~ Approximately
33 0.16 billion tons of groundwater is ~~over-extracted~~ annually by more than 110 deep wells in urban area of
34 Heze (Xu et al., 2017; Shandong Provincial Bureau of Statistics). The level of deep groundwater declined
35 by more than 100 m between 1980 and 2018 (Feng et al., 2015; Yue 2020). However, many thick clay

1 layers over the confined aquifer restrict the flow for aquifer recharging from precipitation in vertical
 2 direction. Meanwhile, the recharge rates of deep groundwater in the horizontal direction, i.e., running off
 3 along the topography from west to east, is very slow (Qiao and Lin 2006; Zhang 2013).



4
 5 Fig. 6. Time series displacement of MPs located in rural area (R1-R7) and urban area (U1-U4) shown in Fig. 5.

6 **As the aquifer's detailed information is not public, we cannot obtain enough information to investigate**
 7 **the detailed relationship between the subsidence and the groundwater level.** However, the precipitation is
 8 the **main** recharge source of shallow groundwater (accounting for 85% of the total supply) in this region
 9 and directly **determine** the level of shallow groundwater (Jia 2015; Ma and Feng, 2014; Yu et al., 2001).
 10 Therefore, we switch to investigate the relationship between the subsidence and the precipitation.

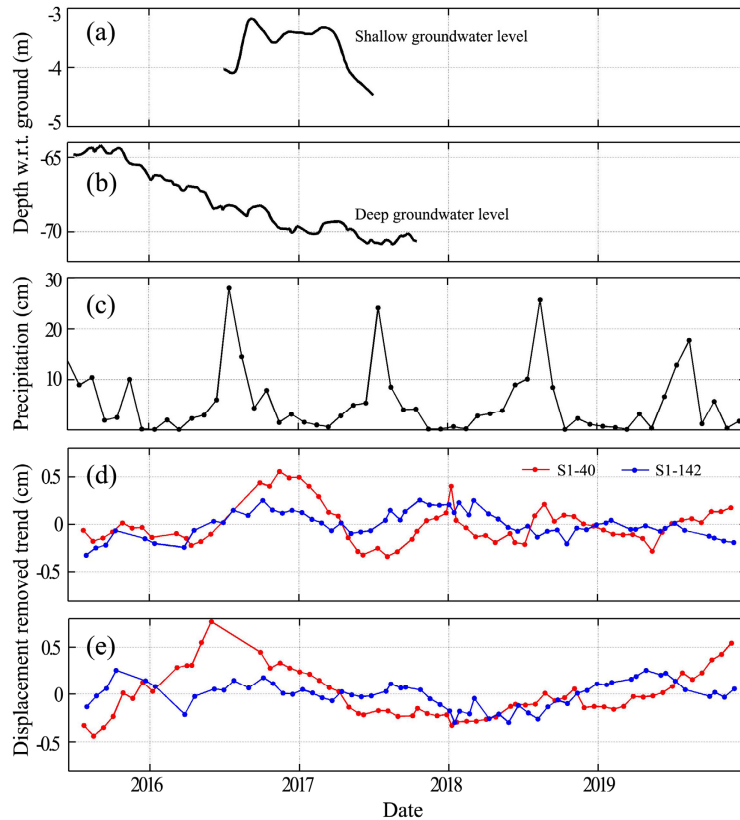
11 The precipitation from July 2015 to December 2019 is presented in Fig. 7c. We can infer the variation of
 12 shallow groundwater according to the precipitation. Generally, the precipitation, exploitation and
 13 evaporation of groundwater are little from January to February in Heze region. During this period, the
 14 groundwater level is relatively stable and rises slowly until the beginning of March. In addition, the freeze
 15 of water contained in the soil due to the low temperature, can also increase the volume and **result**
 16 in an inflation. From March to June, the little precipitation and massive **groundwater extraction** to irrigate crops
 17 result in a continuous decline of groundwater level until the beginning of the rainy season. The water level
 18 rebounds from July to September due to lots of precipitation (seen Fig. 7a), and maintains a relatively
 19 **stable** due to the decreasing of extraction from October to December (Jia 2015).

20 The average time series displacement, ~~after removing its trend~~, of all points located in rural area **is used**
 21 as an average representation of the variations of rural area and shown in Fig. 7d, **while** the average
 22 variations of urban area **shown** in Fig. 7e.

23 The deviation in rural area (Fig. 7d) indicates that the ground fluctuates by approximately ± 0.5 cm with a
 24 **significant** seasonal variation. The **seasonal variation** may be related to the seasonal variation of aquifer
 25 water level which is determined by the seasonal precipitation (seen Fig. 7a and 7c). In addition, as shown in

1 Fig. 7d, the variations of displacement in rural areas have a significant correlation with precipitation with a
 2 time lag of approximately two months. According to the Fig.7a, 7c and 7d, we can hypothesize that the
 3 ground subsidence is caused by both the hydraulic head change and the seasonal groundwater variations.
 4 And the time lag is induced by the groundwater level increases arising from the seasonal precipitation.

5 In contrast, Fig. 7e shows that there is no straightforward relationship between the precipitation and the
 6 variations of displacement in urban area. It may be due to the extraction of deep rather than shallow
 7 groundwater as the deep groundwater is difficult to recharge due to the complicated geological conditions
 8 in this region (Qiao and Lin 2006; Zhang 2013). Zhang et al., (2018) found that the subsidence has a
 9 significant correlation (up to 0.96) with the declining of deep groundwater level in another city near Heze.



10
 11 Fig. 7.(a) Shallow and (b) deep ground level with respect to the ground. (c) Monthly precipitation for the Heze region during
 12 July 2015 and December 2019. After removing the linear trend, the average of residual time series displacement of (d) R1-R7
 13 in rural area and (e) U1-U4 in urban area.

14

15 5.2 Correlation between ground deformation and underground mining

16 In Fig. 8, the time series displacements at four locations (M1~M4 in Fig. 5) above coalfield are shown.
 17 Fig. 5 and Fig. 8 show that the accumulative subsidence above coal does not exceed 50 cm for more than
 18 four years. In addition, Fig. 8 reveals a significant linear displacement trend. In fact, the mining-induced
 19 subsidence is generally nonlinear with high rates, which can reach up to several meters in a short time (e.g.
 20 several months). These characteristics indicate that the subsidence near M1~M4 may not be directly
 21 induced by underground mining.

Note that the underground mining inevitably produces many fracture fields which may be interconnected with the faults, forming a vast interconnected network. The groundwater will flow into the working planes through fractures and be drained out (Rapantova et al., 2007; Xu et al., 2018), which finally results in the ground subsidence. Also, underground mining may destroy the stability of faults and induce faults slipping (Islam and Shinjo, 2009; Wang et al., 2016; Zhang et al., 2018), which can also lead to ground subsidence.

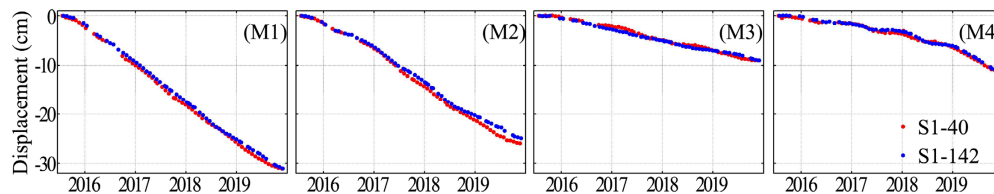


Fig. 8. Time series displacement of MPs located in mining area (M1-M4) shown in Fig. 5.

In Fig. 9, six interferograms of box (a) in Fig. 3a are shown. It is observed that there are several active subsidence areas, represented by dense fringes (ellipses in Fig. 9), located in 5~8 km north of M1 and M2. The loss of signal in the central of these subsidence areas is probably due to the displacement being too large to be detected by MT-InSAR with the C-band Sentinel-1 data. This conforms to the mining-induced displacement field which presents a bowl-shaped subsidence pattern, as observed in other studies (He et al., 1994; Litwiniszyn 1956; Zhu et al., 2020). The dense fringes, i.e., strong deformation, suggests active underground mining just below this subsidence basin (referred to as primary subsidence basin and denoted by ellipses in Fig. 9). In contrast, all the six interferograms and the corresponding displacement rates shown in Fig. 3 reveal a relatively slight subsidence near M1 and M2 (referred as secondary subsidence basin) in comparison to the primary subsidence basin. Close inspections of the distribution of fringes in Fig. 9, the ground deformation seems to progress to M1 and M2 area along with two ‘galleries’ (dashed line in Fig. 9). A plausible explanation of this deformation near M1 and M2 could be the groundwater outflow to working panels and is drained out, which finally triggers the ground subsidence.

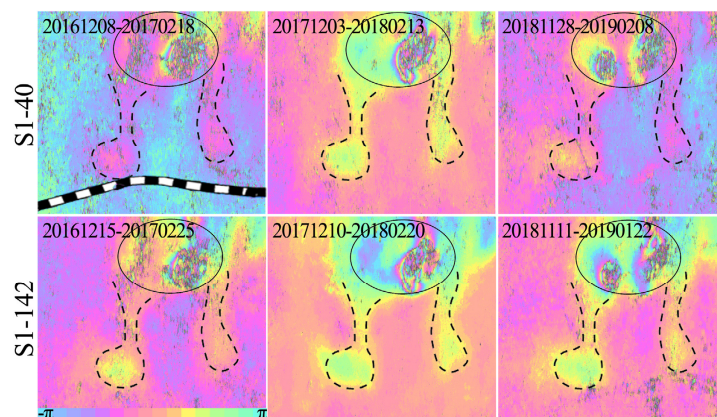
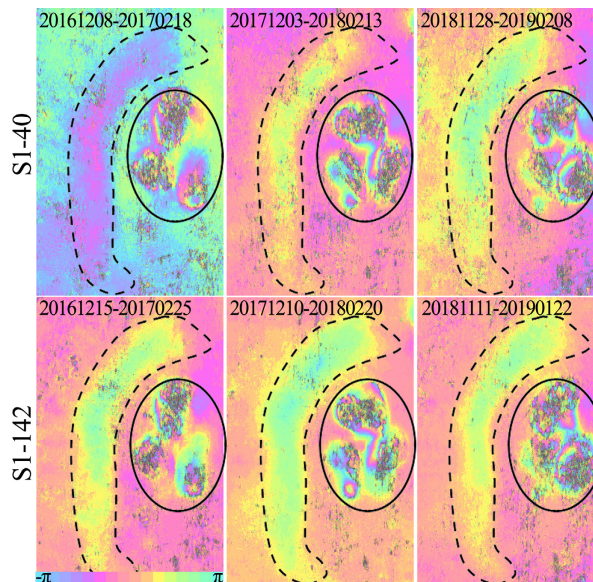


Fig. 9. Example of interferograms produced from S1-40 and S1-142 of box (a) in Fig. 3. The ellipses show the primary subsidence area induced by underground mining. One color fringe stands for approximately 2.8 cm displacement in the LOS. The dashed lines show the secondary subsidence area caused by complicated factors, e.g., groundwater drain out and/or fault activation due to underground mining.

In addition, a similar phenomenon is observed in an area (box (b) in Fig. 3a) 5-11 km south of RLSR-HZ.

1 Fig. 10 shows six interferograms of this area. In the right (ellipses in Fig. 10), the dense fringes in this
 2 primary subsidence area imply active underground mining. However, an arc-shape secondary subsidence
 3 area (dashed line in Fig. 11) with a length of about 14 km presents in 3 km to the left of the primary
 4 subsidence area. The arc-shape subsidence does not agree with the law of the ground movement induced by
 5 underground mining. Fig.3 shows the arc-shape subsidence is consistent with the fault, which implies that
 6 the underground mining causes the fault activation and results in ground deformation. Unfortunately, it
 7 difficult to investigate the interactions between the underground mining, fault activation and ground
 8 deformation, as we do not have detailed information, such as the distribution of unknown faults and
 9 abandoned mines, the relative position of the faults and mining sites. Nevertheless, the concomitant ground
 10 deformation (i.e., secondary subsidence basin) induced by underground mining reminds us that it must very
 11 careful to extract coal, especially when there are widespread faults.



12
 13 Fig. 10 . Example of interferograms produced from S1-40 and S1-142 of box (b) in Fig. 3. The ellipses show the primary
 14 subsidence area induced by underground mining. One color fringe stands for approximately 2.8 cm displacement in the LOS.
 15 The dashed lines show the secondary subsidence area caused by complicated factors, e.g, groundwater drain out and/or fault
 16 activation due to underground mining.

17
 18 **6 Conclusion**

19 This study investigates the time series displacement for 2015-2019 using MT-InSAR based on two sets
 20 of Sentinel-1A datasets over Heze region. The two independent MT-InSAR results agree well with each
 21 other with 1- σ uncertainty of approximately ± 0.5 cm/yr. Focus on the ground displacement along
 22 RLSR-HZ, we find that there are two main ground subsidence zones:

- 23 - One subsidence zone is located in the east of Heze city (115.5°E ~ 115.6°E) with a displacement
 24 rates ranging from -4 cm/yr to -1 cm/yr. A length of approximately 20 km of RLSR-HZ will be
 25 affected by this subsidence.
- 26 - One subsidence zone is located in the coalfield (115.8°E ~ 116.0°E) with a displacement rates

1 ranging from -8 cm/yr to -2 cm/yr. A length of approximately 15 km of RLSR-HZ will be affected
2 by this subsidence.

3 Considering the previous investigation coupled with information of human activities, we conclude that
4 the subsidence is mainly caused by extraction of groundwater and underground mining:

- 5 - **By** combining the known previous investigations and the monthly precipitation, we find two patterns
6 of subsidence: a long-term subsidence due to the extraction of deep groundwater mainly in the urban
7 area, and ~~a~~ short-term variations related to the seasonal precipitation in the rural area.
- 8 - Underground mining is another cause of ground subsidence, which can reach up to several meters.
9 However, we found an interesting phenomenon ~~that~~ a secondary subsidence basin ~~presents farther~~
10 away (about 3-7 km) from the primary subsidence basin (Fig. 9 and 10). Considering the known
11 faults and the unknown mining-induced fracture fields, we infer that the secondary subsidence is
12 very probably caused by the groundwater outflow and fault instability due to mining, rather than
13 being directly caused by mining. It will be interesting to ~~investigate~~ investigate the cause of secondary
14 subsidence ~~further~~ when more data become available.

15 It is very difficult to restore the surface elevation and the foundation stability after extracting deep
16 groundwater and coal mine. The ongoing subsidence will **severely** damage the infrastructures of RLSR-HZ,
17 particularly when the RLSR-HZ will be operational by the end of 2021. Effective management in
18 groundwater and coal mine is ~~in~~ urgent need to implement. ~~It~~ is very meaningful to continue ~~the~~ monitoring
19 ground deformation along RLSR-HZ using multiple SAR data.

20
21 **Data availability.** Sentinel-1A/B data are available at <https://scihub.copernicus.eu/>. TanDEM-X are freely downloaded from
22 <https://sso.eoc.dlr.de/eoc/auth/login?service=https://download.geoservice.dlr.de/TDM90/files/>. The monthly precipitation are
23 available at <http://data.cma.cn/>. The information about the annual exploitation of groundwater is provided by Shandong
24 Provincial Bureau of Statistics from <http://www.stats-sd.gov.cn/col/col6279/index.html?uid=29225&pageNum=1>.

25
26 **Author contributions.** CZ initiated the study and wrote the manuscript. WW provided python scripts for analysis. CZ and
27 MM analyzed the data. MM, LZ, ZJ and SL provided advice and reviewed the manuscript.

28
29 **Competing interests.** The authors declare that they have no conflict of interest.

30
31 **Acknowledgements.** Thanks go to the StaMPS software that can be downloaded from
32 <http://homepages.see.leeds.ac.uk/~earahoo/stamps/index.html>. The authors would also like to thank the reviewers for their
33 careful work.

34
35 **Financial support.** This research was supported by the National Natural Science Foundation of China (41901373 and
36 41877283), the Natural Science Foundation of Hunan Province (2019JJ50190). The authors would also like to thank the

1 reviewers for their careful work. Thanks go to the StaMPS software that can be downloaded from
2 <http://homepages.see.leeds.ac.uk/~earahoo/stamps/index.html>.

3

4 **References**

- 5 André Vervoort.: Surface movement above an underground coal longwall mine after closure. *Natural Hazards and Earth*
6 *System Sciences*,16(9): 2107-2121, 2016.
- 7 Berardino, P., Fornaro, G., Lanari, R., and Sansosti, E.: A New Algorithm for Surface Deformation Monitoring Based on
8 Small Baseline Differential SAR Interferograms, *IEEE Transactions on Geoscience and Remote Sensing*, 40: 2375-2383,
9 2002. doi:10.1109/TGRS.2002.803792.
- 10 Bamler, R., and Hartl, P.: Synthetic aperture radar interferometry. *Inverse Problems*, 14, R1-R54, 1998.
- 11 Chen, F. L., Lin, H., Li, Z., Chen, Q., and Zhou, J.M., Interaction between permafrost and infrastructure along the
12 Qinghai-Tibet Railway detected via jointly analysis of C- and L-band small baseline SAR interferometry, *Remote Sensing*
13 *of Environment*, 123: 532-540, 2012. doi:10.1016/j.rse.2012.04.020
- 14 Cui, Z. D.: *Land Subsidence Induced by the Engineering-Environmental Effect*. Springer, 2018.
- 15 Du, Z. Y., Ge, L. L., Ng, H. M. , and Li, X. J.: Investigation on mining subsidence over Appin-West Cliff colliery using
16 time-series SAR interferometry. *International Journal of Remote Sensing*,39(5): 1528-1547, 2018.
- 17 Feng, C. C., Ma, X. F., and Huang, W. F.: Analysis on land subsidence survey and trend in Heze city[C], 13th Geoscience and
18 Technology Forum of East China, Nanchang, Jiangxi, 1 November 2015, 383-387, 2015.
- 19 Ferretti, A., Fumagalli, A., Novali, F., Prati, C., Rucci, A., and Rucci, A.: A new algorithm for processing interferometric
20 data-stacks: squeeSAR. *IEEE Transactions on Geoscience and Remote Sensing*, 49(9), 3460-3470, 2011.
- 21 Ferretti, A., Prati, C., and Rocca, F.: Non-linear Subsidence Rate Estimation Using Permanent Scatterers in Differential SAR
22 Interferometry, *IEEE Transactions on Geoscience and Remote Sensing*, 38: 2202-2212, 2000. doi:10.1109/36.868878.
- 23 Ferretti, A., Prati, C., and Rocca, F.: Permanent Scatterers in SAR Interferometry, *IEEE Transactions on Geoscience and*
24 *Remote Sensing*, 39: 8-20, 2001. doi:10.1109/36.898661.
- 25 Fiaschi, S., Closson, D., Karaki, N. A., Pasquali, P., Riccardi, P., and Floris, M.: The complex karst dynamics of the Lisan
26 Peninsula revealed by 25 years of DInSAR observations. *Dead Sea, Jordan. ISPRS Journal of Photogrammetry and*
27 *Remote Sensing*, 130, 358-369, 2017. doi.org/10.1016/j.isprsjprs.2017.06.008
- 28 Gabriel, A. K., Goldstein, R. M., Zebker, H. A.: **Mapping Small Elevation Changes over Large Areas: Differential Radar**
29 **Interferometry. *Journal of Geophysical Research*, 94, 9183-9191, 1989. doi.org/10.1029/JB094iB07p09183.**
- 30 Geudtner, D., Torres, R., Snoeij, P., Davidson, M., and Rommen, B.: Sentinel-1 System capabilities and applications. In:
31 *Proceedings of IEEE International Conference on Geoscience and Remote Sensing Symposium, IGARSS 2014, Quebec,*
32 *Canada, 13-18 July, pp. 1457-1460, 2014.*
- 33 Goel, K., and Adam, N.: High resolution differential interferometric stacking via adaptive spatial phase filtering. In:
34 *Proceedings of IEEE International Conference on Geoscience and Remote Sensing Symposium, IGARSS 2011, Vancouver,*
35 *Canada, 24-29 July, pp. 1341-1344, 2011.*
- 36 Goel, K., and Adam, N.: An advanced algorithm for deformation estimation in non-urban areas. *ISPRS Journal of*
37 *Photogrammetry and Remote Sensing*, 73, 100-110, 2012. doi.org/10.1016/j.isprsjprs.2012.06.001
- 38 Goodman, J. W.: Some fundamental properties of speckle, *Journal of the Optical Society of America*, 66, 1145-1150, 1976.
- 39 Guo, C. X., Nie, J. L., Tian, J., Wang, W. L., Cheng, C. L., Wang, B., Yin, H. F., and Zhang, H. P.: Vertical ground
40 displacements in the Shandong Province derived from long-term GNSS and leveling surveying, *Advances in Space*
41 *Research*, 64, 1388-1397, 2019.
- 42 Haghghi, M.H., and Motagh, M.: Ground surface response to continuous compaction of aquifer system in Tehran, Iran:
43 Results from a long-term multi-sensor InSAR analysis. *Remote Sensing of Environment*, 221: 534-550, 2019.

1 He, G. Q., Yang, L., Lin, G. D., Jia, F. C., and Hong, D.: Mining Subsidence Engineering, Xuzhou, China: Press China Univ.
2 Mining Technol., 1994.

3 Hooper, A.: A Multi-Temporal InSAR Method Incorporating Both Persistent Scatterer and Small Baseline Approaches,
4 Geophysical Research Letters, 35: L16302, 2008. doi:10.1029/2008GL034654.

5 Hooper, A.: A statistical-cost approach to unwrapping the phase of InSAR time series. Proc. Fringe 2009 Workshop, Frascati,
6 Italy, 30 November-4 December. 5 p, 2010.

7 Hooper, A., and Zebker, H.: Phase unwrapping in three dimensions with application to InSAR time series. Journal of Optical
8 Society of America, 24(9): 2737-2747, 2007.

9 Hooper, A., Segall, P., and Zebker, H.: Persistent Scatterer Interferometric Synthetic Aperture Radar for Crustal Deformation
10 Analysis, with Application to Volcán Alcedo, Galápagos, Journal of Geophysical Research, 112: B07407, 2007.
11 doi:10.1029/2006JB004763.

12 Hu, R. L., Yue, Z. Q., Wang, L. C., and Wang, S. J.: Review on current status and challenging issues of land subsidence in
13 China. *Engineering Geology*, 76, 65-77, 2004.

14 Hung, W. C., Hwang, C., Chen, Y. A., Chang, C. P., Yen, J. Y., Hooper, A., and Yang, C. Y.: Surface deformation from
15 persistent scatterer interferometry and fusion with leveling data: a case study over the choushui river alluvial fan,
16 taiwan. *Remote Sensing of Environment*, 115(4): 957-967, 2011.

17 Islam, M. R., and Shinjo, R.: Mining-induced fault reactivation associated with the main conveyor belt roadway and safety of
18 the Barapukuria Coal Mine in Bangladesh: Constraints from BEM simulations, *International Journal of Coal Geology*,
19 79(4): 115-130, 2009. doi.org/10.1016/j.coal.2009.06.007

20 Jia, P. Y.: Investigation and evaluation of groundwater environment in Heze City, *Zhihuai*, (1): 83-84, 2015.

21 Kampes, B.: *Radar Interferometry: Persistent Scatterer Technique*, Springer, 2006.

22 Litwiniszyn, J.: Application of the equation of stochastic processes to mechanics of loose bodies, *Archives Mechanics*, 8(4):
23 393-411, 1956.

24 Ma, L., and Feng, C. C.: Analysis on sustainable utilization and exploitation potentiality of shallow groundwater resources in
25 Heze Yellow River flood plain areas, *Shandong Land and Resources*, 30(2): 43-45, 2014.

26 **Massonnet, D., Feigl, K.: Radar interferometry and its application to changes in the Earth surface. *Reviews of Geophysics*,**
27 **36(4), 441-5000, 1998.**

28 Miller, M. M., and Shirzaei, M.: Land subsidence in Houston correlated with flooding from Hurricane Harvey. *Remote*
29 *Sensing of Environment*, 225, 368-378, 2019.

30 Mora, O., Mallorqui, J.J., and Broquetas, A.: Linear and nonlinear terrain deformation maps from a reduced set of
31 interferometric SAR images, *IEEE Transactions on Geoscience and Remote Sensing*, 41(10): 2243-2253, 2003.

32 Motagh, M., Shamshiri, R., Haghghi, M. H., Wetzel, H. U., Akbari, B., Nahavandchi, H., Roessner, S. and Arabi, S.:
33 Quantifying groundwater exploitation induced subsidence in the Rafsanjan plain, southeastern Iran, using InSAR
34 time-series and in situ measurements. *Engineering geology*, 218, 134-151, 2017.

35 Parizzi, A., and Brcic, R. . (2011). Adaptive InSAR Stack Multilooking Exploiting Amplitude Statistics: A Comparison
36 Between Different Techniques and Practical Results. *IEEE Geoscience and Remote Sensing Letters*, 8(3): 441-445, 2011.

37 Prats-Iraola, P., Scheiber, R., Marotti, L., Wollstadt, S., and Reigber, A.: TOPS Interferometry With TerraSAR-X, *IEEE*
38 *Transactions on Geoscience and Remote Sensing*, 50(8), 3179-3188, 2012.

39 Qiao, G., and Lin, H. J.: Evaluation and analysis of deep groundwater in Heze City, *Shandong Water Resources*, (8): 99-100,
40 2006.

41 Rapantova, N., Grmela, A., Vojtek, D., Halir, J., and Michalek, B.: GROUNDWATER FLOW MODELLING
42 APPLICATIONS IN MINING HYDROGEOLOGY, IMWA Symposium 2007: Water in Mining Environments, 27-31 May
43 2007, Cagilari, Italy, 2007.

44 Samiei-Esfahany, S.: Exploitation of distributed scatterers in synthetic aperture radar interferometry. PhD thesis, Delft

1 University of Technology, 2017.

2 Shamshiri, R., Nahavandchi, H., Motagh, M., and Hooper, A.: Efficient ground surface displacement monitoring using
3 sentinel-1 data: integrating distributed scatterers (DS) identified using two-sample t-test with persistent scatterers (PS).
4 Remote Sensing, 10(5), p.794, 2018. doi.org/10.3390/rs10050794

5 Shandong Provincial Bureau of Statistics.: Shandong Statistical Yearbook, Beijing, China Statistics Press, 2010-2019.

6 Sousa, J. J., Hooper, A. J., Hanssen, R. F., Bastos, L. C., and Ruiz, A. M.: Persistent Scatterer InSAR: A comparison of
7 methodologies based on a model of temporal deformation vs. spatial correlation selection criteria. Remote Sensing of
8 Environment, 115, 2652-2663, 2011.doi:10.1016/j.rse.2011.05.021

9 Wang, H. Q.: Mining subsidence monitoring around Longgu coal mine based on remote sensing, Advanced Materials
10 Research, 1010-1012: 489-495, 2014.

11 Wang, H. W., Jiang, Y. D., Xue, S., Mao, L. T., Lin, Z. N., Deng, D. X., and Zhang, D. Q.: Influence of fault slip on
12 mining-induced pressure and optimization of roadway support design in fault-influenced zone, Journal of Rock mechanics
13 and Geotechnical Engineering, 8(5): 660-671, 2016. doi.org/10.1016/j.jrmge.2016.03.005

14 Wang, Y., Zhu, X.X., and Bamler, R.: Retrieval of phase history parameters from distributed scatterers in urban areas using
15 very high resolution SAR data. ISPRS J. Photogramm. Remote Sensing, 73, 89–99, 2012.

16 Wessel, B., Huber, M., Wohlfart, C., Marschalk, U., Kosmann, D., and Roth, A.: Accuracy assessment of the global
17 TanDEM-X Digital Elevation Model with GPS data. ISPRS Journal of Photogrammetry and Remote Sensing, 139,
18 171-182, 2018.doi.org/10.1016/j.isprsjprs.2018.02.017

19 Xu, J. Y., Mao, L., Zhang, T., and Wang, Z. S.: The development and utilization of water resources and security assurance
20 planning study in Heze City, China Population, Resources and Environment, 27(11): 200-203, 2017.

21 Xu, S. Y., Zhang, Y. B., Shi, H., Wang, K., Geng, Y. P., and Chen, J. F.: Physical Simulation of Strata Failure and Its Impact on
22 Overlying Unconsolidated Aquifer at Various Mining Depths, Water, 10(5): 650-667, 2018. doi:10.3390/w10050650

23 Xue, Y. Q., Zhang, Y., Ye, S. J., Wu, J. C., and Li, Q. F.: Land subsidence in china. *Environmental Geology*,48(6), 713-720,
24 2005.

25 Yague-Martinez, N., Prats-Iraola, P., Rodriguez, G. F., Brcic, R., Shau, R., Geudtner, D., Eineder, M., and Bamler, R.:
26 Interferometric Processing of Sentinel-1 TOPS Data. IEEE Transactions on Geoscience and Remote Sensing, 54(4),
27 2220-2234, 2016.

28 Yang, S. Y., Yang, H. C., Jing, C. Q., Yue, X. L., and Jie, J.: Comprehensive Control of the Coal Mine Subsidence Area: A
29 Case of the Subsidence Area of Chenman Village in Heze of Shandong Province, China Population, Resources and
30 Environment, 20(5): 194-196, 2010.

31 Yu, C. J., Jia, P. Y., Lv, S. G., Yuan, X. A., and Zang, X. L.: Analysis of shallow groundwater in Heze city, Shandong Water
32 Resources, (4): 14-15, 2001.

33 Yue, J. G.: Analysis on the current situation and causes of land subsidence along the Lunan high speed railway, Railway
34 Investigation and Surveying, (2): 60-65, 2020.

35 Zhang, H., Dong, M., Ma, J., Liu, Y. H., and Liu, K.: Relationship between the deep groundwater exploitation and land
36 subsidence in Changyi district of Shandong province, China Earthquake Engineering Journal, 40, 214-218, 2018.
37 doi:10.3969/j.issn1000-0844.2018.Supp.214

38 Zhang, L. L.: Study on land subsidence prevention and control along the Jingjiu Railway (Shandong Section) [D], Beijing,
39 China University of Geosciences (Beijing), 2013.

40 Zhang, Q. Y., Li, Y. S., Zhang, J. F., and Luo, Y.: InSAR Technique Applied to the Monitoring of the Qinghai-Tibet Railway,
41 *Natural Hazards and Earth System Sciences*, 19, 2229–2240, 2019. doi.org/10.5194/nhess-19-2229-2019.

42 Zhang, Y. H., Unterschultz, J., Langhi, L., Mallants, D., and Strand, J.: Numerical modelling of coal seam depressurization
43 during coal seam gas production and its effect on the geomechanical stability of faults and coal beds, International Journal
44 of Coal Geology, 195, 1-13, 2018. doi.org/10.1016/j.coal.2018.05.008

1 Zhu, C. G., Wang, Z. S., Li, P. X., Motagh, M., Zhang, L. Y., Jiang, Z. L., and Long, S. C.: Retrieval and Prediction of
2 Three-Dimensional Displacements by Combining the DInSAR and Probability Integral Method in a Mining Area, IEEE
3 Journal Of Selected Topics In Applied Earth Observations And Remote Sensing, 2020.
4 doi.org/10.1109/JSTARS.2020.2978288
5