

Interactive comment on “Deformation characteristics and exploratory data analysis of rainfall-induced rotational landslide: A case study of the Zhutoushan landslide in Nanjing, China” by Weiguo Li et al.

Weiguo Li et al.

21019350@qq.com

Received and published: 15 July 2020

Thanks for your comment. Yes, I found most figures were too unclear when I downloaded our manuscript at the beginning of the interactive discussion. But our manuscript had been submitted and reviewed at that time. This is the problem of format conversion, we have changed it now, please see the attachment. We are very sorry for the inconvenience that most figures are unclear. Please trust us, most figures in the new version will be clear.

[Printer-friendly version](#)

[Discussion paper](#)



Please also note the supplement to this comment:

<https://www.nat-hazards-earth-syst-sci-discuss.net/nhess-2020-175/nhess-2020-175-AC3-supplement.pdf>

Interactive comment on Nat. Hazards Earth Syst. Sci. Discuss., <https://doi.org/10.5194/nhess-2020-175>, 2020.

NHESSD

[Interactive
comment](#)

[Printer-friendly version](#)

[Discussion paper](#)



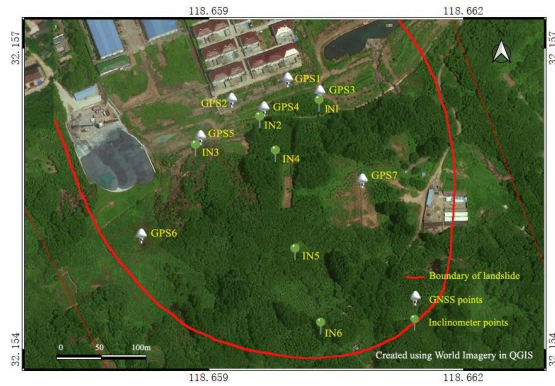


Figure 1 Location of the studied landslide site

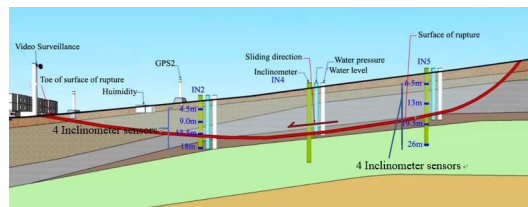


Figure 2 Positions of the monitoring instruments

Fig. 1.