

## ***Interactive comment on “A Systematic Exploration of Satellite Radar Coherence Methods for Rapid Landslide Detection” by Katy Burrows et al.***

**Katy Burrows et al.**

katy.a.burrows@durham.ac.uk

Received and published: 23 September 2020

We thank the reviewer for their helpful comments. Our response is attached to this review as a supplement to preserve the formatting.

Please also note the supplement to this comment:

<https://nhess.copernicus.org/preprints/nhess-2020-168/nhess-2020-168-AC2-supplement.pdf>

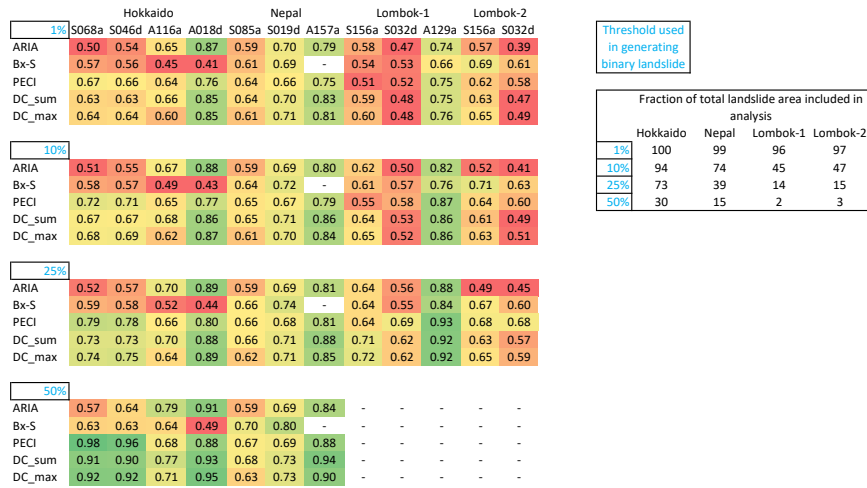
Interactive comment on Nat. Hazards Earth Syst. Sci. Discuss., <https://doi.org/10.5194/nhess-2020-168, 2020>.

C1

		<i>Event</i>		Hokkaido		Nepal		Lombok		Lombok 2			
		<i>Satellite</i>		S-1	A-2	S-1	A-2	S-1	A-2	S-1			
		<i>Track number</i>		068a	046d	116a	018d	085a	019d	157a	156a	032d	129a
1 post-event image	ARIA	0.103	0.099	0.179	0.296	0.005	0.002	0.045	0.002	0.001	0.009	0.002	0.004
	Bx-S	0.120	0.116	0.103	0.084	0.008	0.009	-	0.002	0.001	0.009	0.010	0.004
	Waiting time (days)	8	0	1	1	8	4	7	3	0	13	1	4
2 post-event images	PECI	0.271	0.273	0.143	0.195	0.009	0.005	0.022	0.015	0.003	0.018	0.005	0.005
	$\Delta C_{sum}$	0.180	0.191	0.179	0.257	0.006	0.002	0.057	0.003	0.002	0.016	0.004	0.005
	$\Delta C_{max}$	0.206	0.211	0.143	0.295	0.007	0.002	0.051	0.014	0.002	0.014	0.004	0.005
	Waiting time (days)	20	12	15	15	20	16	91	9	6	153	7	10
	Landslide fraction	0.106	0.116	0.111	0.104	0.004	0.001	0.006	0.001	0.001	0.002	0.002	0.003

**Fig. 1.** Precision-recall AUC values equivalent to the ROC AUC values presented in Figure 2 of the main manuscript.

C2



**Fig. 2.** ROC AUC values at a 200 x 220 m resolution with varying threshold between 'landslide' and 'non-landslide' pixels. (inset) the percentage of the total landslide area that is classed as 'landslide'.