

Dear Editors and Reviewers,

Thank you very much for the review of our manuscript entitled: “Assessing and zoning of typhoon storm surge risk with GIS technique: A case study of the coastal area of Huizhou”.

We sincerely appreciate all the comments and suggestions made by the editors and reviewers. These comments and suggestions are all constructive and valuable, which helped us to improve the quality of the article. We have carefully discussed the comments, performed additional experiments, analyzed these experiments, and made corrections according to comments from the editors and the reviewers. The appropriated changes suggested by the reviewers have been introduced to the revised manuscript.

The introduced major changes with section, page, and line in marked-up manuscript are listed below. Minor changes are marked in the marked-up manuscript. We hope that these revisions are clear enough to follow.

The list of changes:

- 1). Co-author and affiliation. Professor Wang provided some detailed skills and approaches in the experiment to improve the quality of our manuscript during the revision stage. Thus, we added him as a co-author in the revised manuscript.
- 2). Abstract. (page 3, line 82). The sentence that a panel of Chinese ocean disaster prevention and reduction researchers updated and published the latest standard Technical guideline for risk assessment and zoning of marine disaster (Part 1: storm surge) has been reconstructed in the revised manuscript, as pointed out by Reviewer 2.
- 3). Section 2.1. (page 6). 'Daya Bay' has been marked in Figure 1, as pointed out by Reviewer 1 and Reviewer 2.
- 4). Section 2.1. (page 7, lines 145-146). The source links related to Huizhou City have been added in the revised manuscript, as recommended by Reviewer 2.
- 5). Section 2.2. (page 7, line 156). The reference for the dataset has been added to the revised manuscript, as recommended by Reviewer 2.
- 6). Section 2.2. (page 8). The DEM map of the study area including rivers and the elevation value that point covers, which is shown as Figure 3, has been added to the revised manuscript, as recommended by Reviewer 1.
- 7). Section 2.2. (page 10). Figure 2 and Figure 3 in the previous manuscript have been merged into Figure 3 in the revised manuscript, as recommended by Reviewer 1 and Reviewer 2.
- 8). Section 2.2. (page 10, lines 185-200). The information related to the Gangkou gauging station on the eastern side of the study area has been added to the revised manuscript.
- 9). Section 3.1. (page 11, line 217). The references about the hydrology model applied to the regions have been added to the revised manuscript, as pointed out by Reviewer 2.

- 10). Section 3.1. (pages 11-12, lines 217-224). The bottom friction in the ADCIRC model has been added to the revised manuscript, as pointed out by Reviewer 2.
- 11). Section 3.1. (page 12, line 235). The details about the 11 astronomical tidal components have been added to the revised manuscript, as pointed out by Reviewer 2.
- 12). Section 3.1. (page 13). Figure 5 (a) has been remade, red rectangular spanning from 113°W to 116°W longitude has been replaced with the rectangular spanning from 114°W to 116°W longitude in the revised manuscript.
- 13). Section 3.1. (pages 16-20). The Relative Error (RE) and the Absolute Error (AE) were calculated between observed data and the simulated data obtained from the Gangkou gauging station on the eastern side of the study area, as shown in Table 3. The result can make the performance of the coupled model more convincing over the study area, which has been added to the revised manuscript, as recommended by Reviewer 1.
- 14). Section 3.1. (page 19, lines 285-287). The sentence that the Absolute Error (AE) is computed when the highest measured water level is below 100 cm and the Relative Error (RE) is calculated as the measured observed water level is above 100 cm has been rewritten, which has been added to the revised manuscript, as pointed out by Reviewer 2.
- 15). Section 3.2.2. (page 22). The unit in Figure 7 has been corrected, as pointed out by Reviewer 1.
- 16). Section 3.2.4. (page 25). The abbreviations are explained in detail in Figure 9 caption, as pointed out by Reviewer 2.
- 17). Section 3.2.4. (page 26). Figure 10 has been remade, which contains legend to convey the meaning of dots, as pointed out by Reviewer 2.
- 18). Section 4.1. (page 36). Figure 14 has been remade. The transparency of the terrain base map layer has been set to 50% to avoid blending with colors in the other layers, which makes the figure clear, as pointed out by Reviewer 2.

19). Section 4.1. (page 37, lines 502-516). Figure 15, which shows the simulated inundated areas with different hazard levels for each of the scenarios, has been made and added to the revised manuscript, as pointed out by Reviewer 1.

20). Section 4.2. (pages 38-41). Figure 16, Figure 17, and Figure 18 have been made. The legend in Figure 16 has been moved and the bars in Figure 17 are labeled with different colors according to the vulnerability levels of land cover types, as recommended by the Reviewer 1.

21). Section 4.3. (pages 43-47). Figure 19 and Figure 20 have been remade and Figure 21 has been made, as recommended by the Reviewer 1.

22). Section 4.3. (page 47, lines 631-637). The statistical analysis of the relationship between hazard assessment and risk assessment over the study area has been added to the revised manuscript.

Response to the Reviewer 1:

We thank Reviewer 1 for the careful reading and reviewing our manuscript entitled: “Assessing and zoning of typhoon storm surge risk with GIS technique: A case study of the coastal area of Huizhou”. We sincerely appreciate these constructive comments and valuable suggestions for improving our manuscript. In the following, responses to the reviewer’s comment are described in a point-to-point manner. The reviewer’s comments are displayed in the grey background and the responses are displayed in blue.

Major comments:

(1) In the study, the performance of the coupled model for storm surge modeling has already been validated by comparing the simulated data and the water level records obtained from the Huizhou gauging station. However, the performance assessment of the coupled model was not done properly because the Huizhou gauging station was on the left of the study area. I encourage the authors to make another comparison between simulated data and recorded water levels that were obtained from one gauging station on the right of the study area. The validated results from these two gauging stations can make the performance of the coupled model more convincing over the study area.

Response: Thanks for your valuable suggestion. Figure 2 and Figure 3 in the original manuscript were merged into the new Figure 3 in the revised manuscript. The Gangkou gauging station on the eastern side of the study area has been added to the map, as shown in Figure 1.

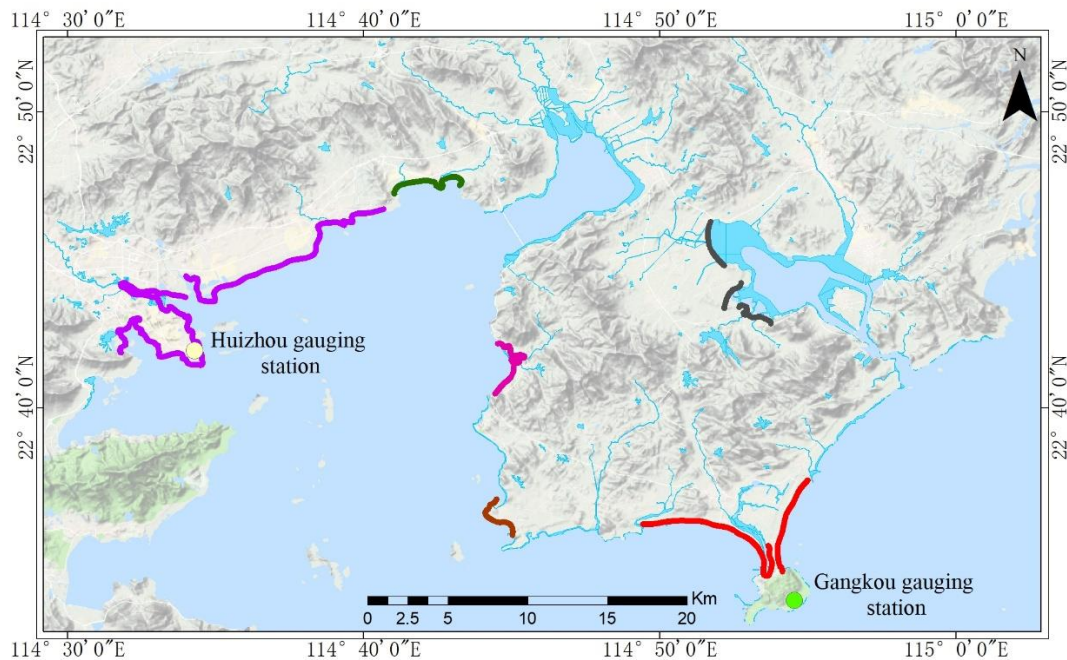
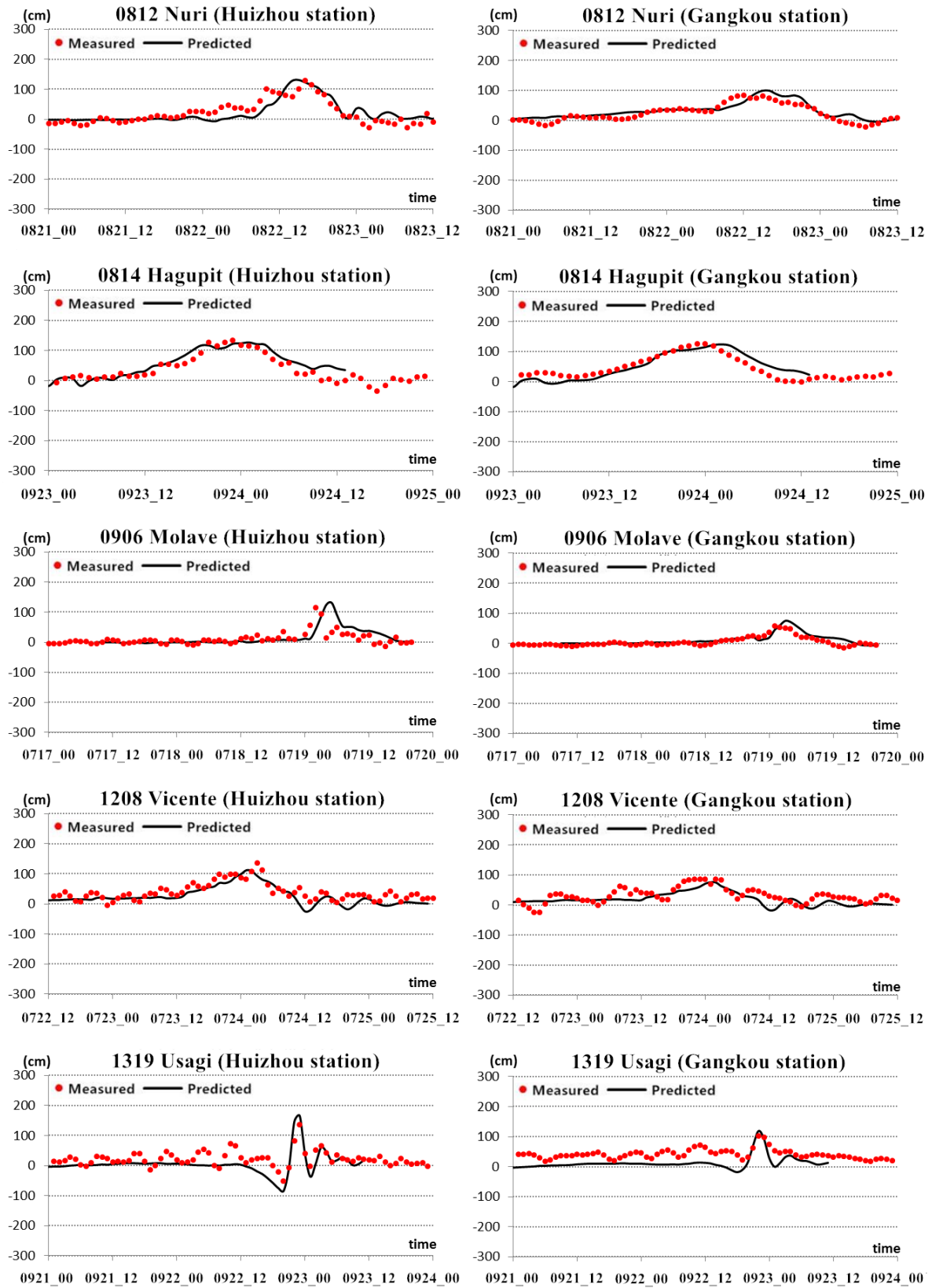


Figure 1. The two stations including Huizhou gauging station and Gangkou gauging station measure the water levels in the study area.

Moreover, the measured water levels from the two gauging stations including Huizhou gauging station and Gangkou gauging station were compared with the simulated water levels during ten storm events have been added to the revised manuscript, as shown in Figure 2.



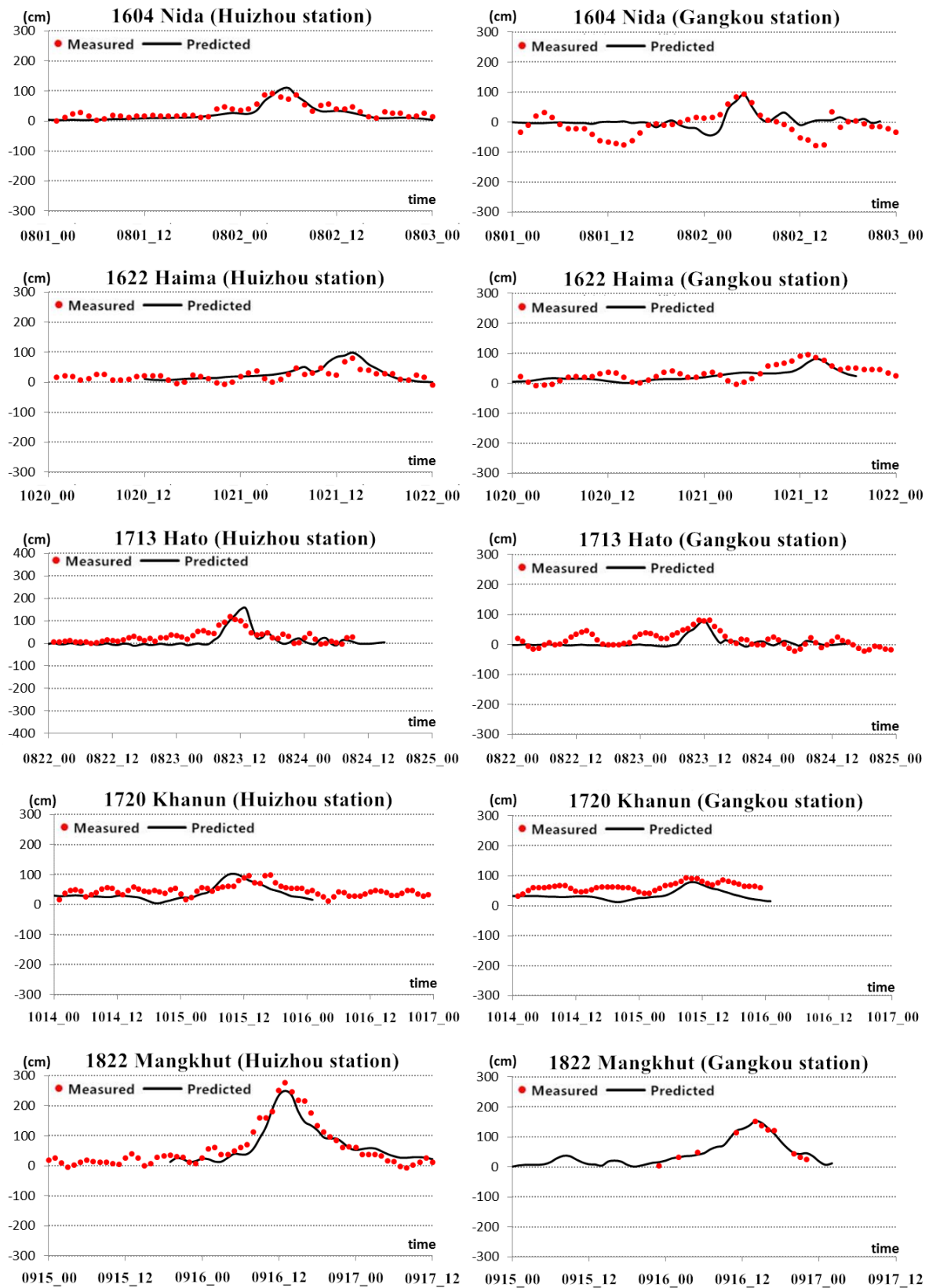


Figure 2. The predicted water levels (in black line) and highest measured water levels (in red dots) recorded by the Huizhou station and Gangkou station during the typhoon events.

In addition, the Relative Error (RE) is calculated as the measured observed water level is above 100 cm. The Absolute Error (AE) is computed when the highest measured water level is below 100 cm. The statistical results from two stations have been summarized in Table 1. It displays that the data with $RE \leq 20\%$

or $AE \leq 20$ cm account for 90% of all simulated data, which satisfies the criterion in the guideline.

Table 1. Summary of error statistics (AE and RE) between maximum predicted water levels and highest measured water levels from Huizhou station and Gangkou station during the typhoon events.

Typhoon Name	Measured Data (cm)		Relative Error (%)		Absolute Error (cm)	
	Huizhou	Gangkou	Huizhou	Gangkou	Huizhou	Gangkou
Nuri (0812)	129	84	2	/	/	15
Hagupit (0814)	135	126	6	2	/	/
Molave (0906)	116	58	13	/	/	17
Vicente (1208)	136	87	18	/	/	11
Usagi (1319)	137	102	21	17	/	/
Nida (1604)	92	94	/	/	18	2
Haima (1622)	81	94	/	/	18	12
Hato (1713)	120	81	30	/	/	0
Khanun (1720)	98	93	/	/	5	14
Mangkhut (1822)	278	151	10	1	/	/

(2) The storm surge modeling with the coupled model is an important step for this research and the modeling section requires more clarifying. For the ADCIRC model, I suggest authors give more description including what the discrete method was used and which coordinate system was chosen in the ADCIRC model, and how do you consider the bottom friction in the ADCIRC model because the different land types have various frictional values during the storm surge modeling.

Response: Thanks for your suggestion. We highly appreciate the reviewer’s comment. The ADCIRC model uses the finite element method allowing the utilizing of flexible and unstructured grids. The ADCIRC model can be applied in modeling tides, wind-driven circulation, and typhoon-generated storm surge. The ADCIRC-2D in this study was run using a spherical coordinate system. It can provide both water surface elevation and the depth-averaged velocity fields with employing continuity equation and momentum equations.

For the friction coefficient, the ADCIRC model in this study utilized Manning’s n values derived from the dataset of land cover types. The dataset contains information about the types of land-cover associating with Manning’s values over the study area. The land types over the study area were associated with Manning’s values, and then average the Manning’s n values for the ADCIRC mesh, as shown in Table 2.

Table 2. The land-cover associating with Manning's values

Land types	Settlements	Forest	Dryland	Paddy field	Road	Riverway	Open spaces
Manning's values	0.07	0.065	0.06	0.05	0.035	0.025-0.035	0.035

(3) The data analysis of storm surge risks on different towns in the study area and the relation between hazard assessment and risk assessment can be added to the research paper, which is helpful to readers, especially to decision-makers, to better understand the impact from the storm surge.

Response: Thanks for your suggestion. The total area in hazard and that in risk under different typhoon intensities were shown in Figure 3. It indicates that the area in high hazard level cannot represent that in high-risk level and the area in high hazard level could be turned into the area in moderate or low-risk level due to different vulnerabilities of land type covers. The Figure 3 has been added to the revised manuscript

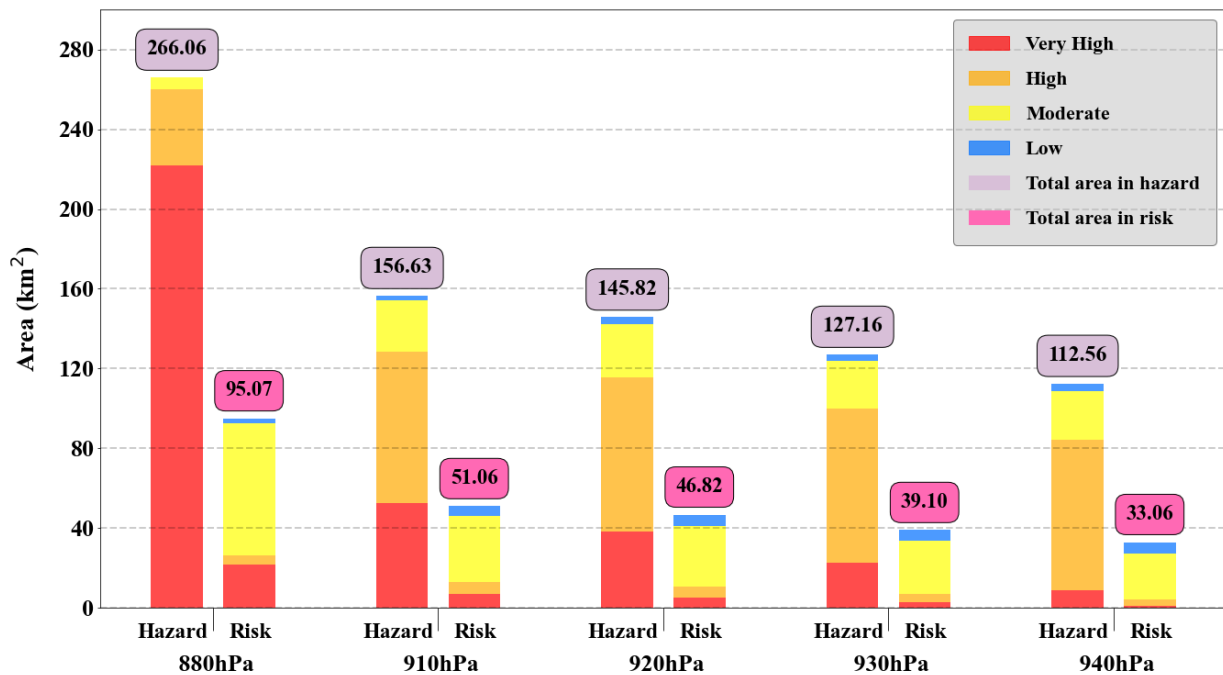


Figure 3. The total area of hazard and risk of storm surge for each of the designed typhoon scenarios (880 hPa, 910 hPa, 920 hPa, 930 hPa, and 940 hPa).

(4). The authors conducted the risk assessment of storm surge for Huizhou city and we can identify the risk zones on different intensity scenarios from the results (analysis and maps). I strongly encourage the authors to demonstrate how the results are useful for developing risk response plans and evacuation strategies for storm surge risk in Huizhou. It is a crucial aspect that can strengthen the study and the manuscript.

Response: Thanks for your suggestion. The risk assessment, risk maps, and risk analysis for the study area were made in 2019 and have been used in practice. With these escape routes on the risk maps and risk suggestions, the decision-makers can prioritize development strategies and make evacuation plans in the risk areas of Huizhou city. However, limited by paper length, these dozens of storm surge escape route maps for the study area were provided from the source link (https://figshare.com/articles/figure/escape_routine/12647105).

(5) I suggest the authors improve the presentation of figures 14, 15, 17, and 18: The terrain base map layer can be transparent to avoid blending with the colors on the assessment map layer. The font size of texts on the assessment map layers should be increased. The legends in figures can be removed because they are repeated many times in figures 14 and 18 (b), (c), (d), and (e). The data analysis figure about vulnerability assessment can be added after figure 17 in the paper. The administrative boundaries might be displayed in the figures.

Response: Thanks for your suggestion. According to the comments about the presented figures, many figures have been remade, which can be seen in the revised manuscript. The Figures 14, 15, 17, and 18 in the original manuscript were remade and figure depicts the total areas of inundated areas with different hazard levels has been made, as shown in Figure 4. Based on the comments from the referees, the transparency of the terrain base map layer has been set to 50% to avoid blending with colors in the other layers. Moreover, the font size of texts has been increased and the repeated legends were removed. In addition, administrative boundaries have been added to figures.

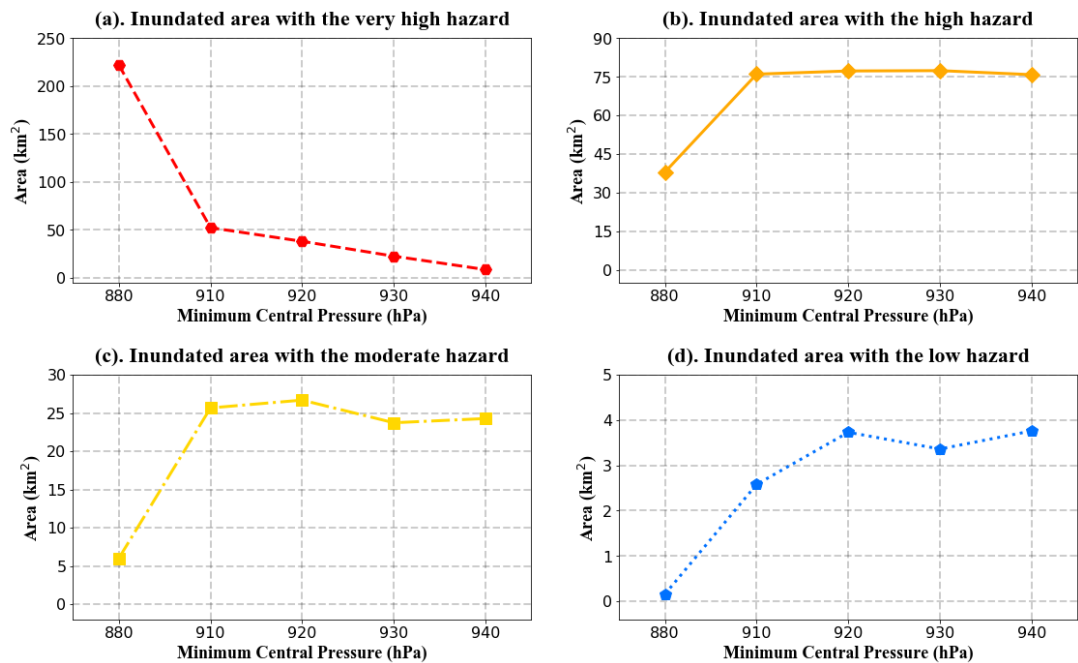


Figure 4. The total areas of inundated areas with different hazard levels under five storm scenarios.

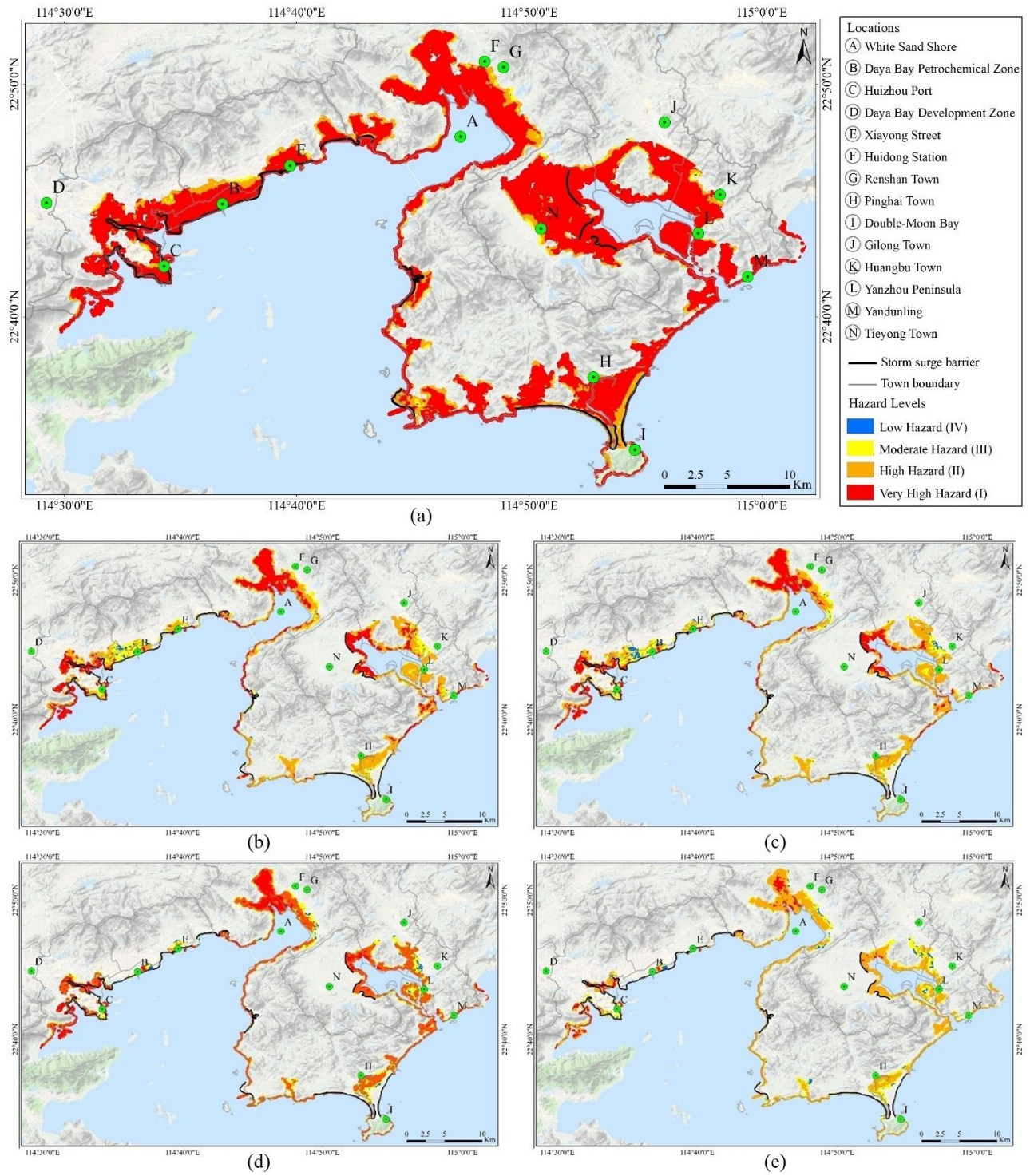


Figure 5. The hazard assessment maps represent the inundation extents and depths for five storm scenarios ((a):880 hPa/1000-year, (b):910 hPa/100-year, (c):920 hPa/50-year, (d):930 hPa/20-year, (e):940 hPa/10-year).

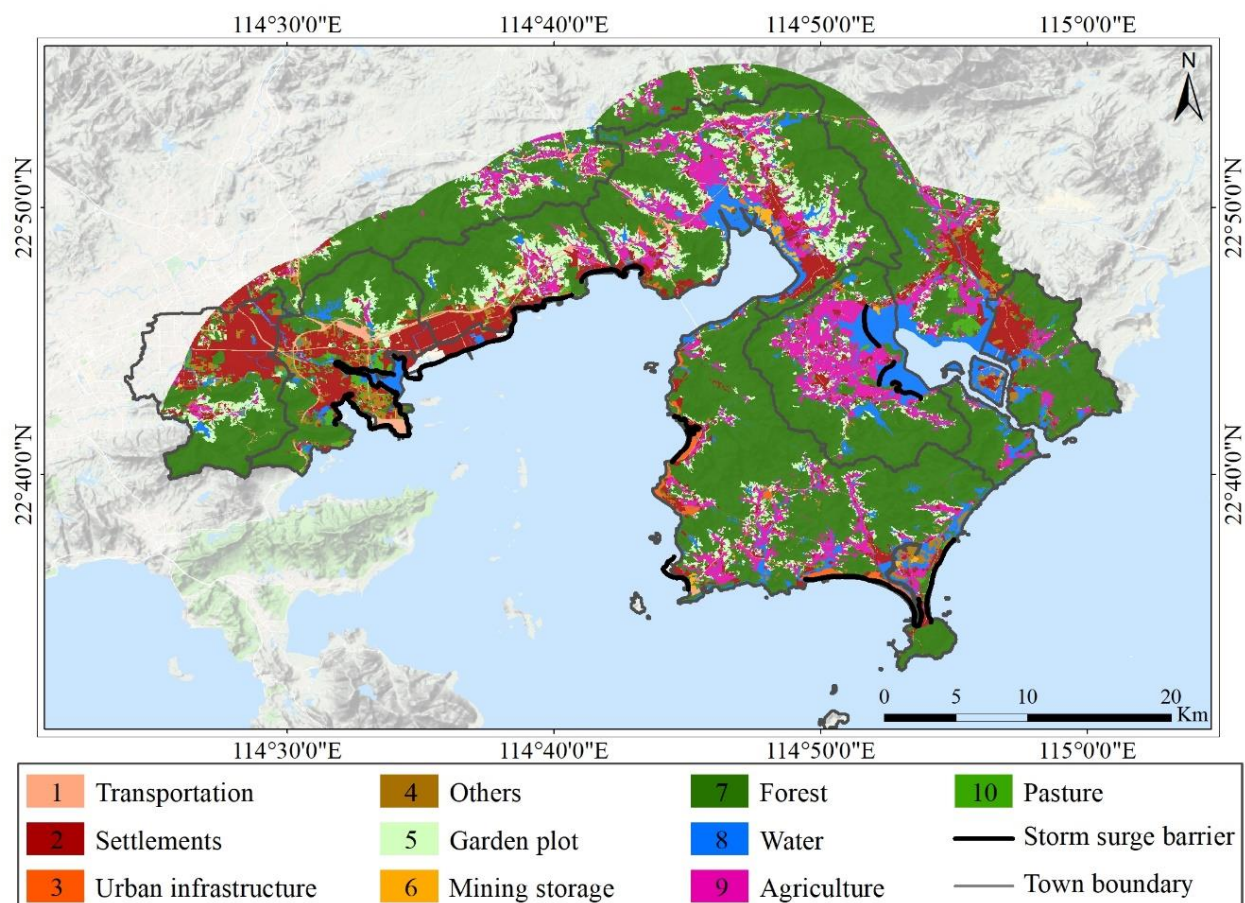


Figure 6. The exposure map of different land cover types over the study area.

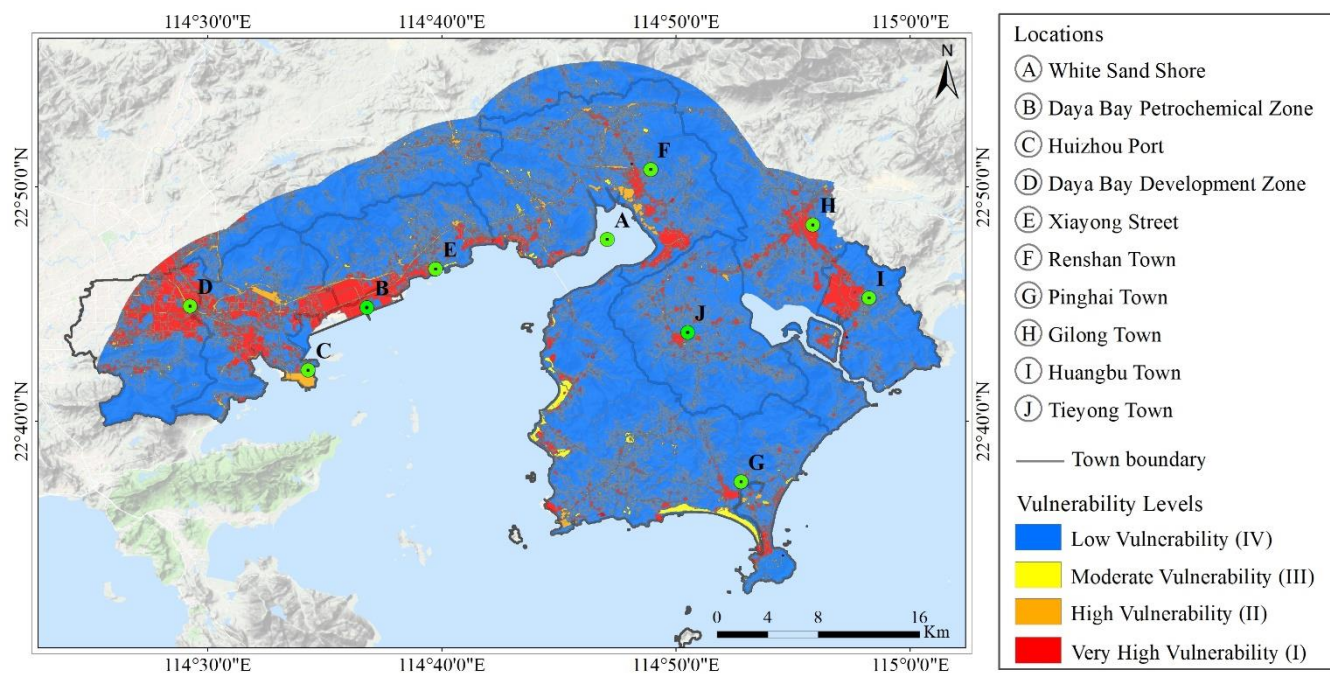


Figure 7. The map of vulnerability zones in the study area. The red means the highest vulnerability level (I) and the blue stands for the lowest vulnerability level (IV) on the map.

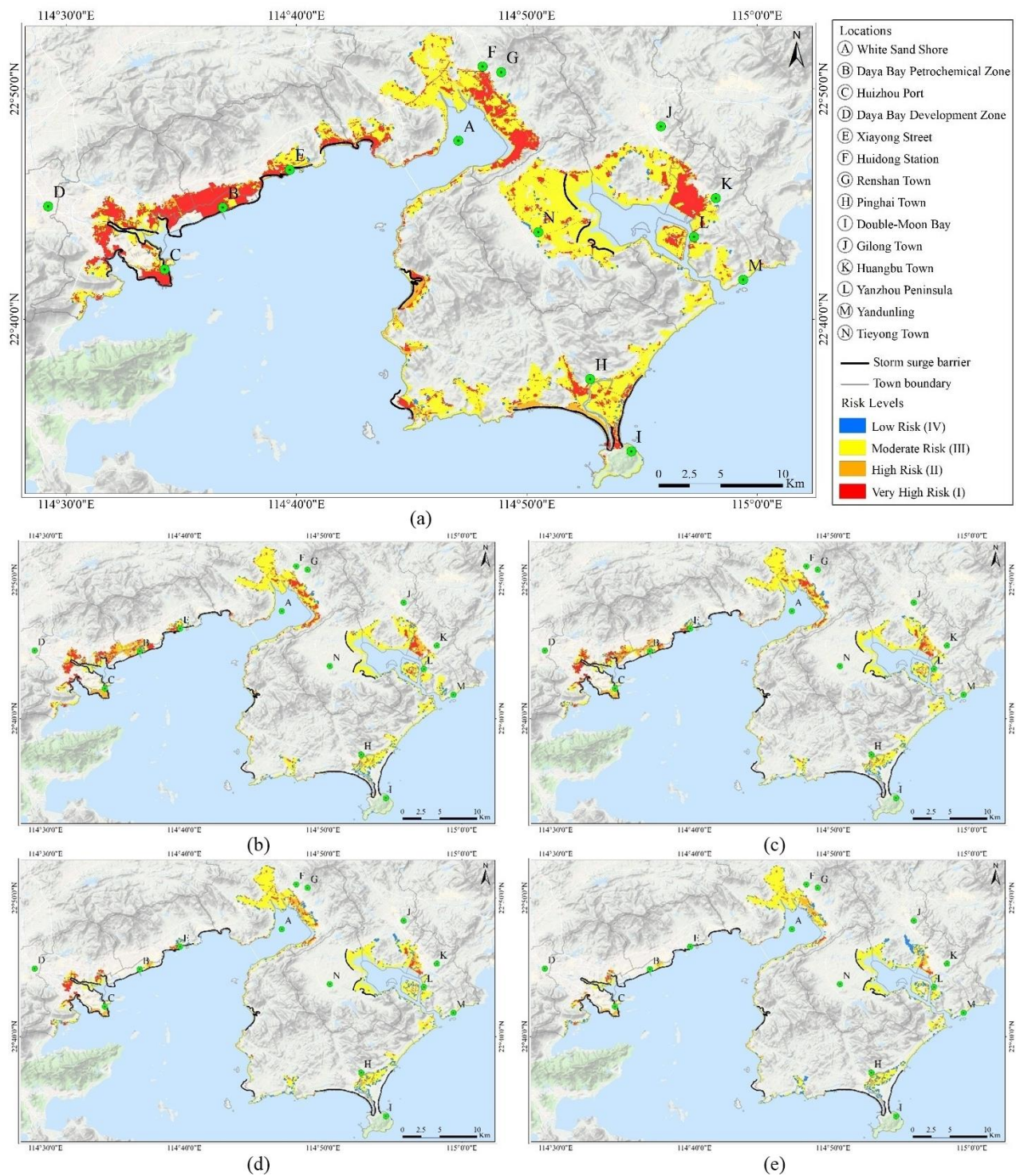


Figure 8. The risk assessments maps represent the potential risk of storm surge for five designed storm scenarios

Minor comments:

2.1 Study area

1) Figure 1: It is not clear to me where the Daya Bay Petrochemical Zone is located. It is important to add a visualization of the Daya Bay Petrochemical Zone in Figure 1 because the Petrochemical Zone with a high concentration of petroleum facilities is the reason to conduct the hazard and risk assessment of storm surge in the study.

Response: Thanks for your correction. Figure 1 in the original manuscript has been removed, and the remade Figure 1 in which the ‘Daya Bay Petrochemical Zone’ and the ‘petrochemical building distribution in the Zone’ were added to the revised manuscript.

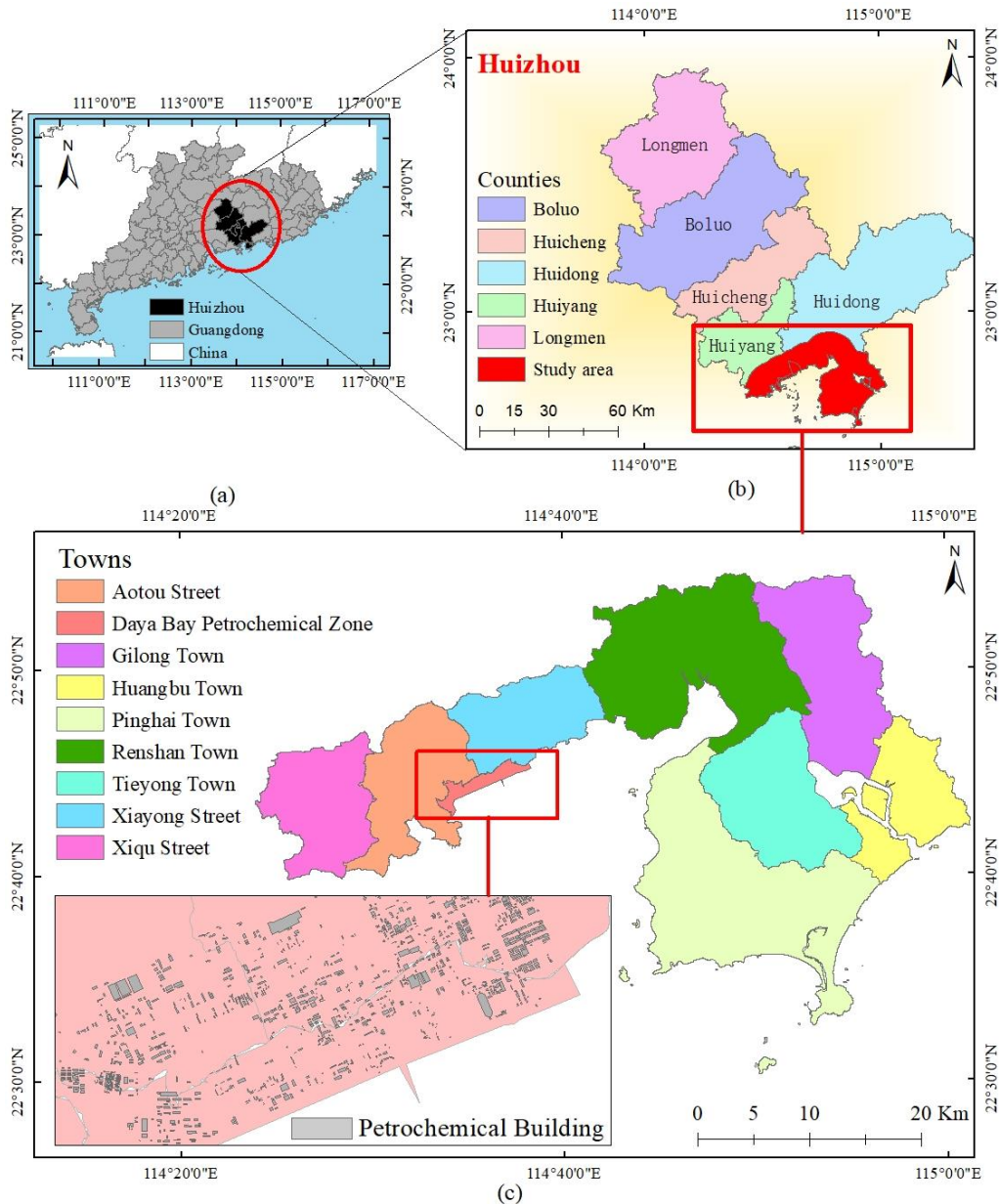


Figure 9. The maps of observation locations used in the study: (a) The map of Guangdong Province in the southern area of China (b) The map of Huizhou city and the study area; (c) The map of towns and their boundaries in the study area and the petrochemical buildings are distributed in the Data Bay Petrochemical Zone.

2) L130- L145: Some information about the study area is not necessary and can be removed.

Response: Thanks for your suggestion.

3) L160: The elevation map of the study area which is a crucial factor for the storm surge modeling in the paper should be displayed.

Response: Thanks for your correction. The DEM map of the study area including rivers and the elevation value that point covers, which is shown as Figure 10, has been added to the revised manuscript

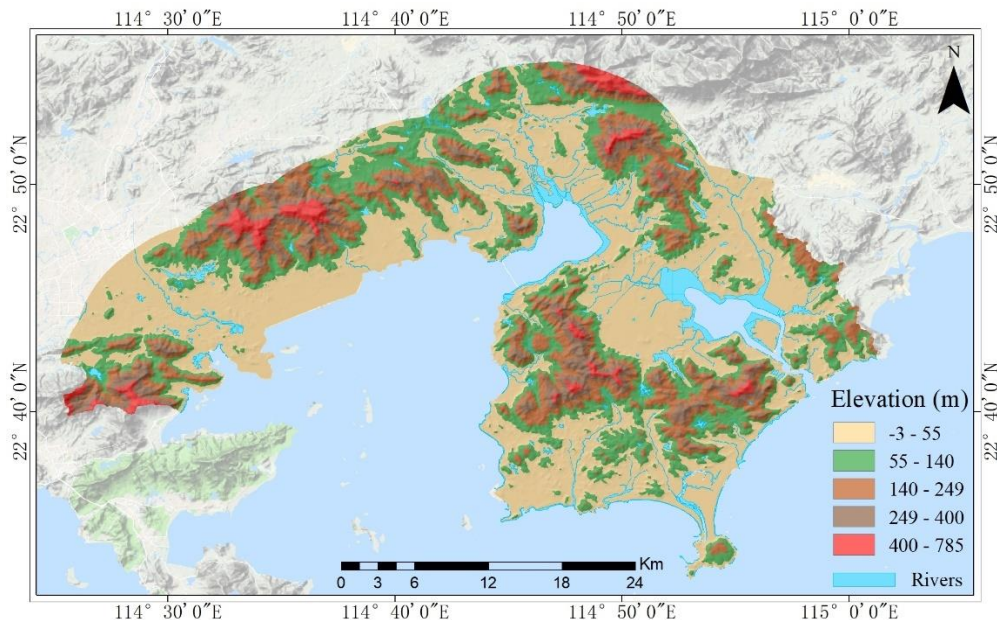


Figure 10. The DEM map of the study area including rivers and the elevation value that point covers.

4) Figure 2: The more visualization about the barrier that is an important aspect might be given.

Response: Thanks for your suggestion. These storm surge barriers have been added to the figure in the revised manuscript.

5) L178: Administrative boundaries at the township level should be displayed in the figure.

Response: Thanks for your correction. Administrative boundaries at the township level have been added to the figures in the revised manuscript.

6) Figure 2 and Figure 3: North arrow in these Figures are not clear.

Response: Thanks for your correction. The North arrow in Figure 2 and Figure 3 have been remade.

3.1 Model description and validation

1) L274: The unit of the radius of maximum wind (R_{max}) on the Y-axis should be 'm' in Figure 7.

Response: Thanks for your correction. The unit in Figure 7 has been replaced with 'm' in the revised manuscript.

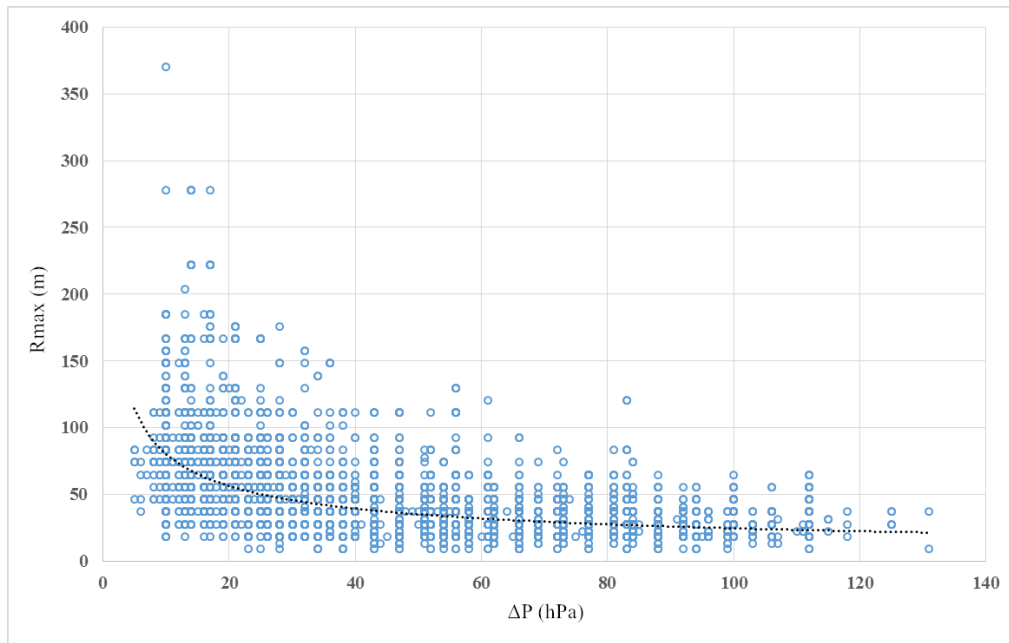


Figure 11. The relation between the pressure difference (ΔP) and the radius of maximum wind (R_{max}).

4 Results and discussion

1) Figure 13: The legends are not clear.

Response: Thanks for your correction. The legends have been remade in the revised manuscript.

2) Figure 16: The colors of different bars can be set to the same value

Response: Thanks for your correction. Figure 16 has been remade. The bars are labeled with different colors according to the vulnerability levels of land cover types, as shown in Figure 12.

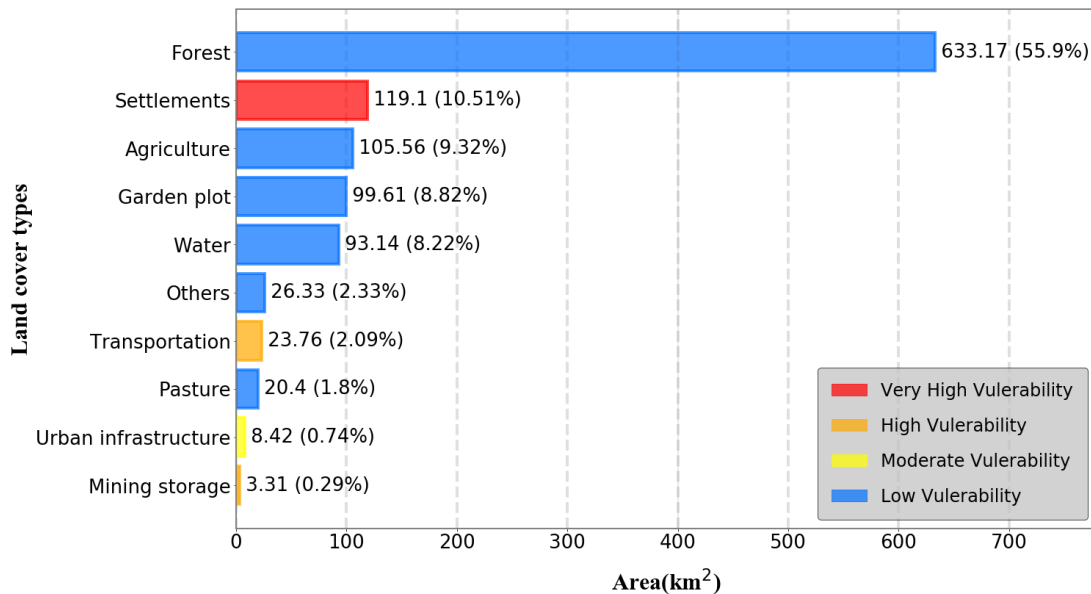


Figure 12. The land areas and proportions of different land cover types in the study area.

Response to the Reviewer 2:

We would like to thank Reviewer 2 for reviewing our manuscript and giving constructive comments and suggestions, which substantially helped us improve the quality of the paper. Appropriated changes have been introduced to the revised manuscript according to the reviewer's comments and suggestions. In the following, responses to the reviewer's comment are described in a point-to-point manner. The reviewer's comments are displayed in the grey background and the responses are displayed in blue.

Major comments:

(1) Line 84: The 'Standard Technical Guideline' is made on Year 2019, how does it use for Year 2016? If such rules have been tested or used before the publication of Guideline, please reconstruct this sentence for proper statement.

Response: Thanks for your valuable suggestion. The trial version of the *technical directives for risk assessment and zoning of marine disaster-Part 1: storm surge* was published in 2012. In this paper, the risk assessment of storm surge was conducted with the latest version (2019). This sentence has been reconstructed in the revised manuscript.

(2) In Figure 1, to add a mark for 'Daya Bay'.

Response: Thanks for your valuable suggestion. Figure 1 in the original manuscript has been removed. The remade figure, as shown in Figure 1, in which the 'Daya Bay Petrochemical Zone' and the 'petrochemical building distribution in the Zone' were marked, has been added to the revised manuscript. as can be seen in the revised manuscript.

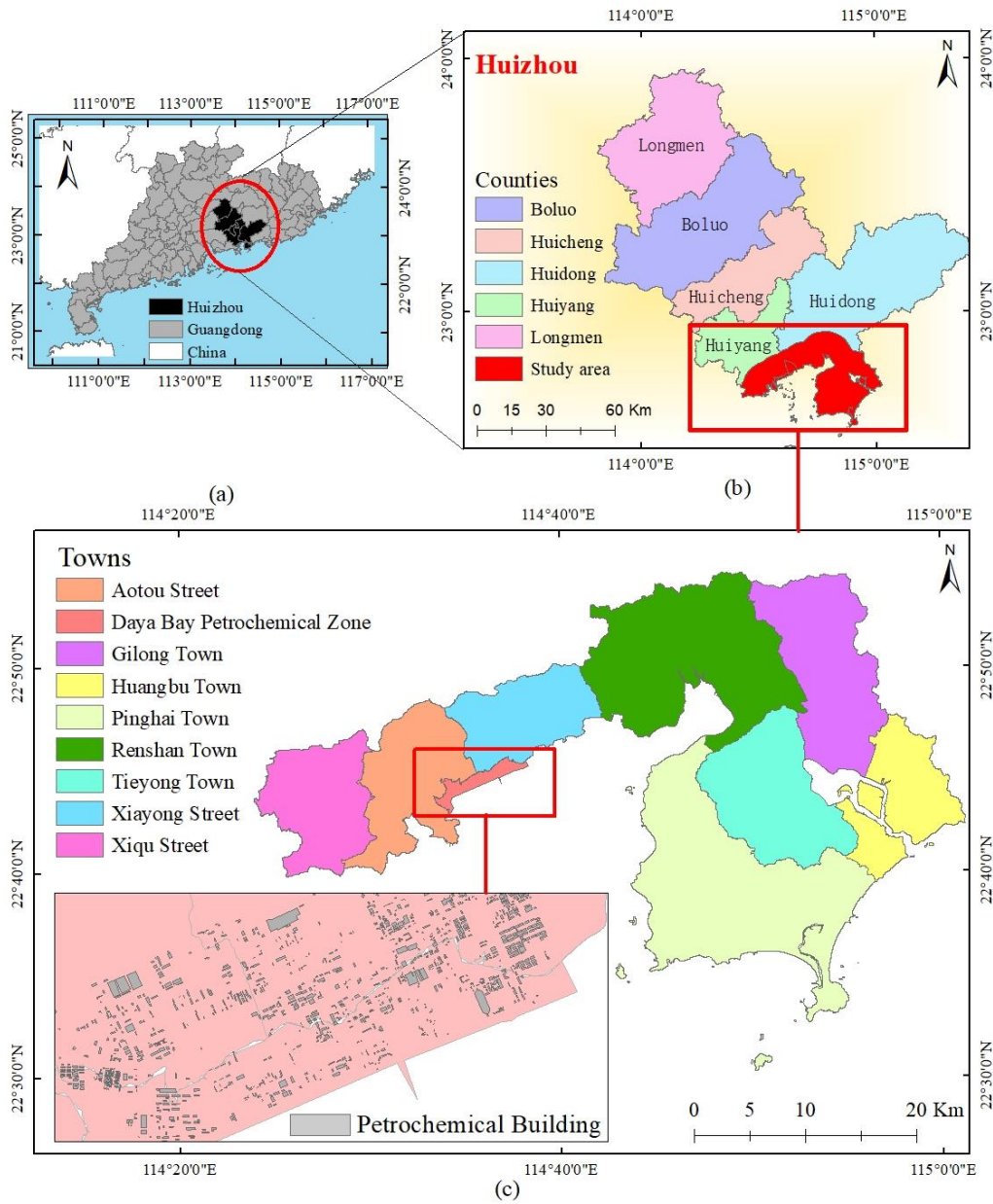


Figure 1. The maps of observation locations used in the study: (a) The map of Guangdong Province in the southern area of China (b) The map of Huizhou city and the study area; (c) The map of towns and their boundaries in the study area and the petrochemical buildings are distributed in the Daya Bay Petrochemical Zone.

(3) Line 130-145 presents the status of Huizhou City, please provide reference or source link.

Response: Thanks for your valuable suggestion. The source links (Huizhou Guangdong province, 2019; Huizhou, 2018) which provide a detailed introduction of Huizhou City and study area in Line 130-145 have been added in the revised manuscript.

(4) In 2.2 Dataset requirement, please provide reference for each dataset.

Response: Thanks for your valuable suggestion. The reference for the dataset in section 2.2 has been added in the revised manuscript and the datasets can be downloaded from the link (nhess-datasets-2020-130, 2020).

(5) Would it be possible to merge Figure 2 and 3 to one figure?

Response: Thanks for your valuable suggestion. Figure 2 and Figure 3 in the original manuscript were merged into one figure, as shown in Figure 2. The different sections of storm surge barriers along the coastline of the study area and two gauging stations including Huizhou gauging station and Gangkou gauging station were marked. The lines and dots represent the storm surge barriers and gauging stations, respectively. It has been added in the revised manuscript.

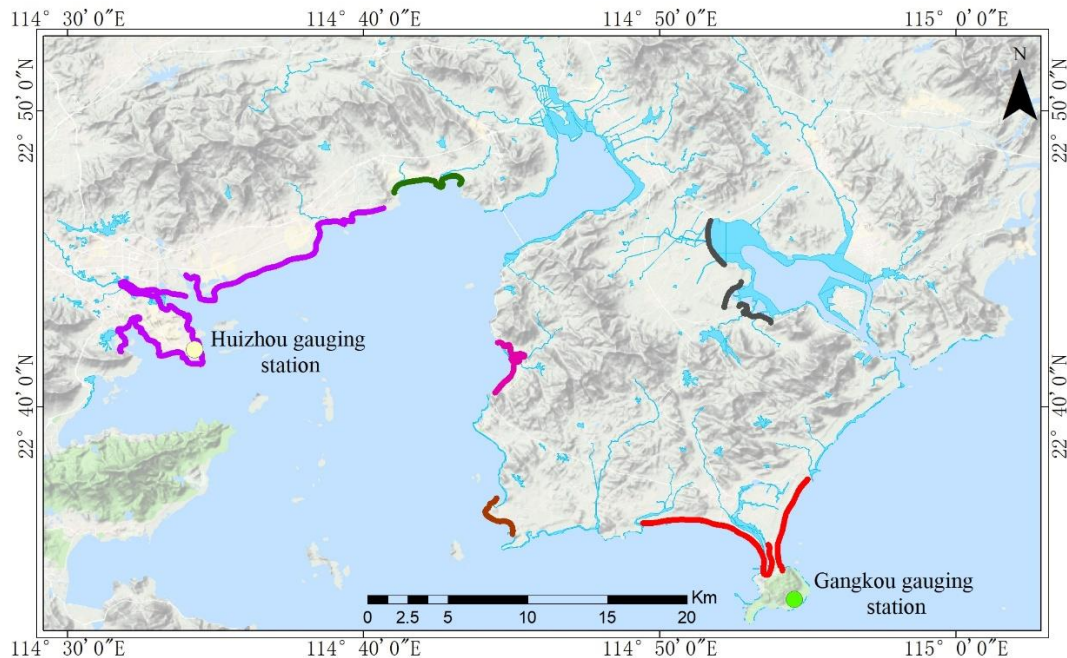


Figure 2. The two stations including Huizhou gauging station and Gangkou gauging station measure the water levels in the study area.

(6) Line 195, please provide references for these existing studies.

Response: Thanks for your valuable suggestion. The references (Kerr et al., 2013; Orlić et al., 2010; Li et al., 2020) about the hydrology model applied to the regions have been added to the revised manuscript.

(7) Line 204-205, could you provide further details about the 11 astronomical tidal components? And only tidal components?

Response: Thanks for your valuable suggestion. The open boundary of the model water level is controlled by the total water level, which is obtained by the superposition of 11 astronomical tidal components. These 11 astronomical tidal components are M2, N2, S2, K2, K1, O1, P1, Q1, MS4, M4, M6. The details have been added to the revised manuscript.

(8) Figure 4, the red rectangular in Panel a is different from the region of Panel b and c.

Response: Thanks for your valuable suggestion. The red rectangular spanning from 113°W to 116°W

longitude in the original Figure 4 was replaced with the rectangular spanning from 114°W to 116°W longitude in the revised manuscript, which is exactly corresponded to the region in the Panel b and c. The remade figure is shown in Figure 3.

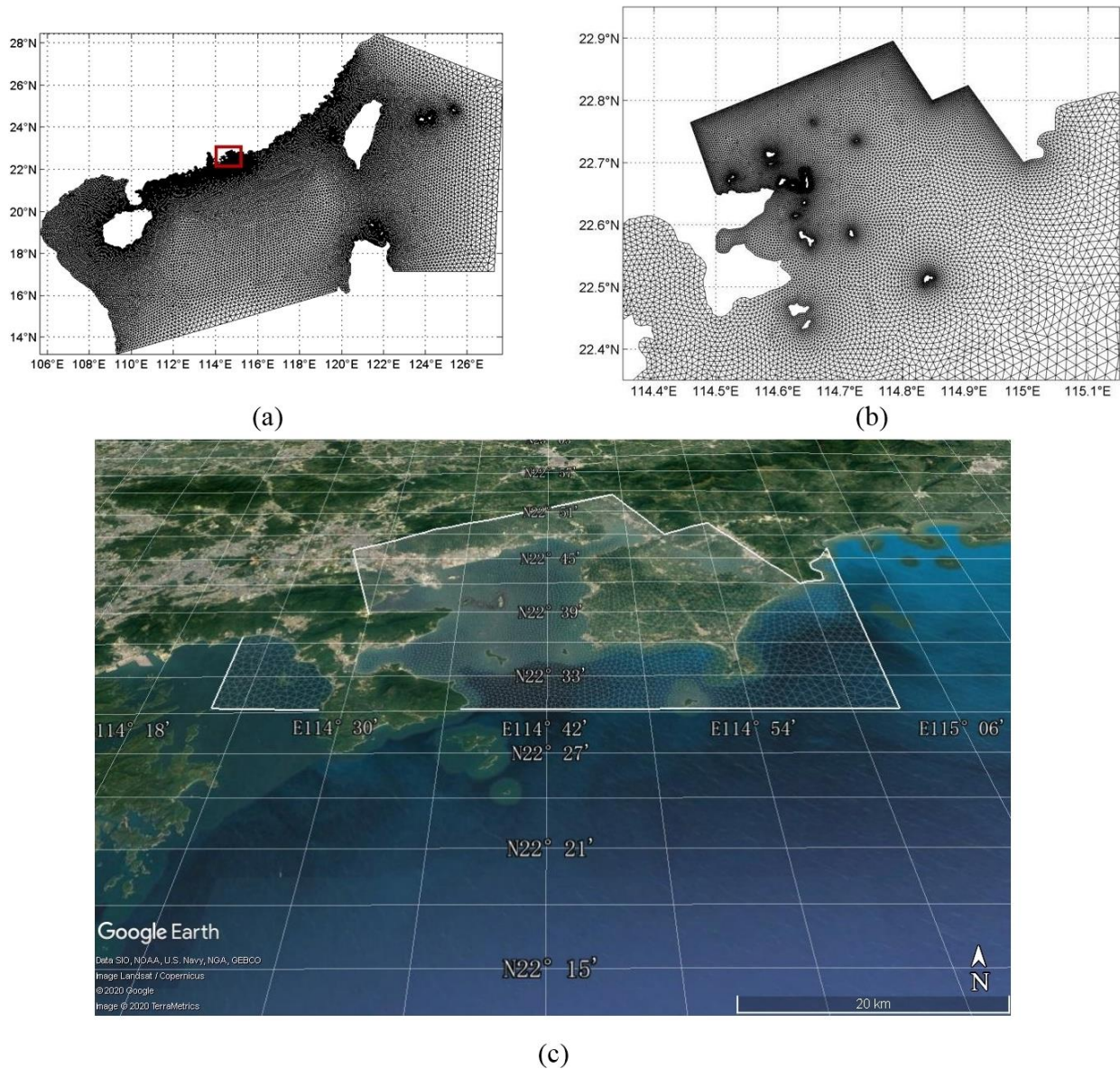


Figure 3. A computational domain (a) and the domain over the study area (b) (c).

(9) In Lines 238-240: ‘The Absolute Error (AE) is computed when the highest measured water level is above 100 cm. The Relative Error (RE) is calculated as the measured observed water level is below 100 cm.’ Is it consistent with that in Table 2?

Response: Thanks for your valuable suggestion. The sentence was written wrong in Lines 238-240. The rewritten text was added in the revised manuscript that the Absolute Error (AE) is computed when the highest measured water level is below 100 cm and the Relative Error (RE) is calculated as the measured observed water level is above 100 cm, which is consistent with statistics in Table 2

(10) Please provide references to Equations in 3.2.2

Response: Thanks for your valuable suggestion. The references (Vickery et al., 2000; Cheung et al., 2007) on the Equations in 3.2.2 have been added in the revised manuscript.

(11) What meaning are the colors of the curves in Figure 9?

Response: Thanks for your valuable suggestion. Abbreviations that Tropical Depression (TD), Tropical Storm (TS), Severe Tropical Storm (STS), Typhoon (TY), Severe Typhoon Super (STY), and Super Typhoon (Super TY) are explained in detail in the Figure 9 caption. The rewritten Figure 9 caption has been added in the revised manuscript.

(12) What the meaning of the green and red dots in Figure 10?

Response: Thanks for your valuable suggestion. The remade Figure containing figure legend in which the different colors represent wind speeds has been added in the revised manuscript. The remade Figure is as follows.

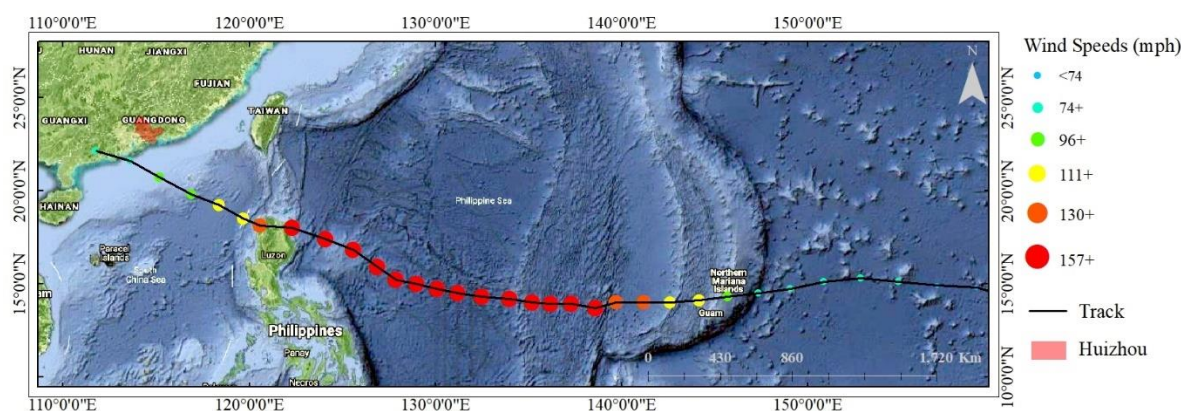


Figure 4. The track of super typhoon Mangkhut over the western North Pacific and the South China Sea. The six categories of wind speeds are represented by the different colored dots.

(13) The ‘Value’ in Table 6 is a try of set up via this work, or refers to some references?

Response: Thanks for your valuable suggestion. The vulnerability values of land types to storm surge are provided by the guideline, which can be downloaded from the link (Ministry of Natural Resources of the People’s Republic of China, 2019).

Minor comments:

(1) Line 6: to use ‘concentrations’.

Response: Thanks for your correction.

(2) Line 39: should it be the word 'severe'?

Response: Thanks for your correction. The 'Server' has been rewritten with 'severe'.

(3) Line 44: Please use 'RMB' instead of 'Yuan' throughout the manuscript.

Response: Thanks for your correction. The 'Yuan' has been replaced with 'RMB'.

(4) Line 48: Please use a proper reference for IPCC report.

Response: Thanks for your suggestion.

(5) Line 63: impact 'on', not 'to'.

Response: Thanks for your correction. The 'to' has been replaced with 'on'.

(6) Line 79: Is there a reference for the 'Standard Technical Guideline'? or webpage?

Response: Thanks for your correction. The reference was added in the revised manuscript.

(7) Line 101: Use 'depicts' instead of 'details'.

Response: Thanks for your correction. The 'details' has been replaced with 'depicts'.

(8) Line 237: Use 'are' instead of 'were'.

Response: Thanks for your correction. The 'were' has been replaced with 'are'.

(9) In Table 5 column 1st, the bracket is not paired in format.

Response: Thanks for your correction.

(10) Line 527: replace 'increasing' by 'lowering'.

Response: Thanks for your correction. The 'increasing' has been replaced with 'lowering'.

(11) Line 577: Use increased instead of heightened.

Response: Thanks for your correction. The 'heightened' has been replaced with 'increased'.

References

- (1) Huizhou Guangdong province, 2019, available online at: <http://govt.chinadaily.com.cn/s/201907/08/WS5d145d96498e5314096b63f5/huizhou-guangdong-province.html>.
- (2) Huizhou, 2018, available online at: <https://www.bayarea.gov.hk/en/about/huizhou.html>.
- (3) nhess-datasets-2020-130, 2020, available online at: <https://doi.org/10.6084/m9.figshare.12459794.v1>.
- (4) Kerr, P. C., Donahue, A. S., Westerink, J. J., Luettich Jr, R. A., Zheng, L. Y., Weisberg, R. H., ... & Roland, A. (2013). US IOOS coastal and ocean modeling testbed: Inter-model evaluation of tides, waves, and hurricane surge in the Gulf of Mexico. *Journal of Geophysical Research: Oceans*, 118(10), 5129-5172.
- (5) Orlić, M., Belušić, D., Janeković, I., & Pasarić, M. (2010). Fresh evidence relating the great Adriatic surge of 21 June 1978 to mesoscale atmospheric forcing. *Journal of Geophysical Research: Oceans*, 115(C6).
- (6) Li, A., Guan, S., Mo, D., Hou, Y., Hong, X., & Liu, Z. (2020). Modeling wave effects on storm surge from different typhoon intensities and sizes in the South China Sea. *Estuarine, Coastal and Shelf Science*, 235, 106551.
- (7) Vickery, P. J., Skerlj, P. F., & Twisdale, L. A. (2000). Simulation of hurricane risk in the US using empirical track model. *Journal of structural engineering*, 126(10), 1222-1237.
- (8) Cheung, K. F., Tang, L., Donnelly, J. P., Scileppi, E. M., Liu, K. B., Mao, X. Z., ... & Murnane, R. J. (2007). Numerical modeling and field evidence of coastal overwash in southern New England from Hurricane Bob and implications for paleotempestology. *Journal of Geophysical Research: Earth Surface*, 112(F3).
- (9) Ministry of Natural Resources of the People's Republic of China, Technical guidance for risk assessment and zonation of storm surge disaster, 2019, available online at: <https://www.renr.gov.cn/p-82139795.html> (in Chinese).

Assessing and zoning of typhoon storm surge risk with GIS technique: A case study of the coastal area of Huizhou

Si Wang¹, Lin Mu^{1 2,3}, Zhenfeng Yao³, Jia Gao¹, Enjin Zhao¹, Lizhe Wang⁵

¹College of Marine Science and Technology, China University of Geosciences, Wuhan, 430074, China

²Shenzhen Research Institute, China University of Geosciences, Shenzhen, 518057, China

³Department of Southern Marine Science and Engineering Guangdong Laboratory (Guangzhou), Guangzhou, 511458, China

⁴Department of Natural Resources of Huizhou Bureau, Huizhou, 516001, China

⁵College of Computer Science, China University of Geosciences, Wuhan, 430074, China

Correspondence to: Lin Mu (e-mail: moulin1977@hotmail.com).

Abstract. Storm surge is one of the most destructive marine disasters to life and property for Chinese coastal regions, especially for Guangdong province. In Huizhou city, Guangdong province, due to the high ~~concentration~~concentrations of chemical and petroleum industries and the high population density, the low-lying coastal area is susceptible to the storm surge. Therefore, a comprehensive risk assessment of storm surge over the coastal area of Huizhou can delimit zones that could be affected to reduce disaster losses. In this paper, typhoon intensity for the minimum central pressure of 880 hPa, 910 hPa, 920 hPa, 930 hPa, and 940 hPa (corresponding to 1000-year, 100-year, 50-year, 20-year, and 10-year return period) scenarios were designed to cover possible situations. The Jelesnianski method and the Advanced Circulation (ADCIRC) model coupled with the Simulating Waves Nearshore (SWAN) model were utilized to simulate inundation extents and depths of storm surge over the computational domain under these representative scenarios. Subsequently, the output data from the coupled simulation model (ADCIRC–SWAN) were imported to the Geographical Information System (GIS) software to conduct the hazard assessment for each of the designed scenarios. Then, the vulnerability assessment was made based on the dataset of land cover types in the coastal region. Consequently, the potential storm surge risk maps for the designed scenarios were produced by combining hazard assessment and vulnerability assessment with the risk matrix approach. The risk maps indicate that due to the protection given by storm surge barriers, only a small proportion of the petrochemical industrial zone and the densely populated communities in the coastal areas were at risk of storm surge for the scenarios of 10-year and 20-year return period typhoon intensity. Moreover, some parts of the exposed zone and densely populated communities were subject to high and very high risk when typhoon intensities were set to a 50-year or a 100-year return period. Besides, the scenario with the most intense typhoon (1000-year return period) induced thea very high risk to the coastal area of Huizhou. Accordingly, the risk maps can help decision-makers to develop risk response plans and evacuation strategies in coastal communities with thea high population density to minimize civilian casualties. The risk analysis can also be utilized to identify the risk zones with the high concentration of chemical and petroleum industries to reduce economic losses and prevent environmental damage caused by the chemical pollutants and oil spills from petroleum facilities and infrastructures that could be affected by storm surge.

1 Introduction

Storm surge is the abnormal rise in sea level during tropical cyclones, and the surge is primarily produced by strong storm winds pushing water into shore. When a tropical cyclone makes landfall, the accompanying storm surge will lead to significant flooding in the surrounding coastal area. Therefore, storm surge associated with tropical cyclones is a devastating hazard and frequently causes considerable deaths and property damage in many coastal regions of the world. For example, in August 2005, Hurricane Katrina struck the United States, and the storm surge from Katrina along the Gulf coastal area was ranging from 10 to 28 feet high. It caused 108 billion dollars in property damages and resulted in a death toll of 1833 persons (National Oceanic and Atmospheric Administration, 2016). In 2019, typhoon Hagibis caused ~~server~~severe storm surge flooding that inundated southern areas of Honshu and killed at least 99 people in Japan (Asian Disaster Reduction Center, 2019).

In China, storm surge is regarded as one of the most seriously marine disasters, which inflicts tremendous losses to people's life and property. Every year, about 27 tropical cyclones are formed over the western North Pacific Ocean and the South China Sea, and one-fourth of them strike directly coastal regions of China. The tropical cyclone storm surge, from 2000 to 2018, caused a direct economic loss of 10.82 billion ~~yuan~~RMB and left a death toll of 46 on average annually in China (Ministry of Natural Resources of the People's Republic of China, 2018). These economic damages and casualties will be further increased because of the explosive population growth and the rapid development of society in the coastal area of China (Seto et al., 2013; Lichter et al., 2011; McGranahan et al., 2007). Moreover, with considerably rising sea levels caused by continued global warming, tropical cyclone-induced storm surge will be more destructive in the future (Intergovernmental Panel on Climate Change, 2018). Therefore, it is important to establish storm surge preparedness plans in advance to reduce economic losses and casualties for coastal cities.

Huizhou is the eastern city in the Pearl River Delta region in Guangdong province, China. In Huizhou, the petrochemicals and electronic information have developed into the dominant industries, with an annual production value of more than one trillion ~~yuan~~RMB. The Daya Bay Petrochemical Zone, located in the coastal area of Huizhou, is currently ranked the first in China in terms of the scale of integrating refinery and petrochemical production. The high ~~concentration~~concentrations of petroleum refining facilities and energy infrastructures in the Petrochemical Zone and the high density of population in low-lying coastal communities make the coastal area of Huizhou especially vulnerable to storm surges. ~~Moreover,~~The storm surge risk that the coastal area of Huizhou faces could be increased with sea-level rise, population growth, and further petrochemical industry development. ~~Therefore~~Thus, it is necessary to assess the potential risk of typhoon storm surge in advance in Huizhou to help decision-makers understand the affected regions and allow them to develop mitigation strategies and future land use planning.

The terminologies and methods for coastal risk assessment vary in different scholars and organizations. In most case, the risk assessment of storm surge flooding is determined by the combination of hazard, exposure, and vulnerability (Chrichton, 1999; Kaźmierczak and Cavan, 2011; Koks et al., 2015):

65 (1). The hazard is defined as a natural event that causes impacts ~~to~~on people and infrastructures. The hydrodynamic models ~~and~~, wave models ~~with, and the~~ statistical methods are applied to the qualitative evaluation of storm surge hazard. With the statistical methods, the relation between minimum central pressure and return period of typhoons can be constructed through historical storm records at specific zones. Then, the hydrodynamic models and the wave models are utilized to simulate potential inundation extents and depths under different typhoon intensity scenarios.

70 (2). The exposure means the elements at risk to a given hazard event. The exposure assessment of storm surge is performed by measuring the counts of affected elements in the inundated region.

(3). The vulnerability refers to the degree to which a natural element is susceptible to sustaining damage from a hazard event. ~~The~~

~~An~~ empirical stage-damage curve is a common ~~method~~tool for ~~assessing~~ vulnerability ~~assessments~~. In order to develop stage-damage curves for elements, researchers need to observe and analyze the damage of elements in the disaster-affected area and assign the percentage damage to different types of elements according to the scale of damage and disaster degree.

The quantitative stage-damage curve method for ~~the~~ vulnerability assessment (Middelmann, 2010; de Moel et al., 2014; McGrath, 2015) is common in developed countries. However, because of lacking adequate damage-cost data collected through post-disaster surveys, constructing ~~a~~ stage-damage ~~curve~~curves is difficult in developing countries. Thus, the stage-damage curve method for ~~assessing~~ vulnerability ~~assessment~~ is not appropriate for Chinese coastal regions. This limited data availability has led to other data utilized to assess vulnerability in China. In 2019, a panel of Chinese ocean disaster prevention and reduction researchers ~~updated and~~ published the latest *standard Technical guideline for risk assessment and zoning of marine disaster (Part 1: storm surge)* (Ministry of Natural Resources of the People's Republic of China, 2019). The standard *guideline* provides the procedures and approaches for hazard, vulnerability, and risk assessment of storm surge (Section 3).
85 According to the standard *guideline*, the land cover types and ~~their~~ corresponding vulnerability values rather than the stage-damage curve ~~method~~ are recommended to conduct ~~at~~he vulnerability assessment in China.

In the past few years, the standard *guideline* has been taken and put into operation of storm surge risk assessment in the coastal areas of China (Fang et al., 2016; Zhang et al., 2016). However, few studies have made a risk assessment of storm surge in Huizhou city. This paper attempts to conduct a comprehensive assessment and zonation of storm surge risk in the coastal area of Huizhou city with the latest standard *guideline*. First, the relation between minimum central pressure and return period was constructed from historical tropical cyclone records with statistical approaches in Huizhou. Then, the typhoon intensities for the minimum central pressure of 880 hPa, 910 hPa, 920 hPa, 930 hPa, and 940 hPa (corresponding to 1000-year, 100-year, 50-year, 20-year, and 10-year return period) scenarios were designed. Subsequently, the Jelesnianski method was utilized to generate wind field and the Advanced Circulation (ADCIRC) hydrodynamic model coupled with the Simulating Waves Nearshore (SWAN) wave model were employed to simulate the storm surge for each of the designed typhoon intensity scenarios. The data of simulated storm surge over the computational domain under different typhoon intensity scenarios were generated from the coupled ADCIRC+ SWAN model. Afterward, the inundation extents and depths of storm surge maps can be created from the ~~simulated~~ data in Geography Information System (GIS) integrated software to visualize and assess storm

100 surge hazard levels. Eventually, combining hazard assessment with vulnerability assessment, the risk ~~maps~~map during a specific typhoon intensity in the study area ~~were~~was obtained. The risk maps can help decision-makers to develop evacuation plans for the densely populated communities in the coastal area. The risk analysis can be utilized to identify the risk zones with the high ~~concentration~~concentrations of chemical and petroleum industries to prevent environmental damage caused by the chemical pollutants and oil spills from affected petroleum industries.

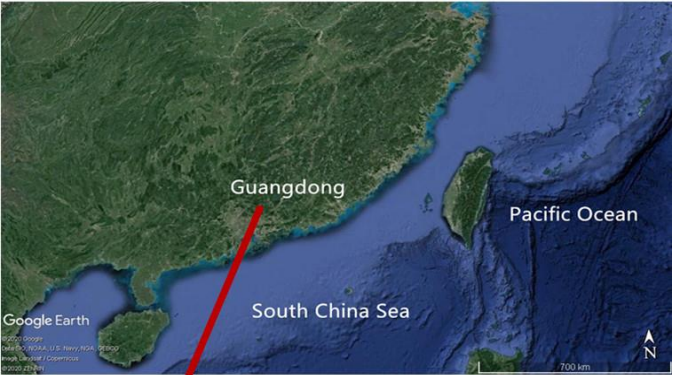
105 The rest of the paper is organized as follow: the study area and datasets are described in section 2; section 3 ~~details~~depicts the methodology and procedure including the model description and validation, storm parameters and scenarios design, and the procedure for ~~conducting the~~ risk assessment; results and discussion are stated in section 4; the conclusion of the study is drawn and future research is provided in section 5.

2 Study area and datasets

2.1 Study area

110 Guangdong is a coastal province, located in the southernmost part of China, and has a long coastline along the South China Sea, as shown in Figure 1 (a) ~~and Figure 1 (b)~~. Guangdong is one of the most prosperous provinces in China with the highest GDP of 9.73 trillion ~~yuan~~RMB and a population of 113.46 million in 2018. However, due to the geographical position, Guangdong is the most frequently affected province by tropical cyclones in China. The storm surge is regarded as the most seriously marine disaster for the Guangdong province. During the period from 1949 to 2017, 263 tropical cyclones landed in
115 Guangdong province (Ying et al., 2014). In 2018, 3 different typhoons ~~(including~~ Ewiniar, Bebinca, and Mangkhut) made landfall on Guangdong province, which left 4 people dead and caused a direct economic loss of 2.37 billion ~~yuan~~RMB.

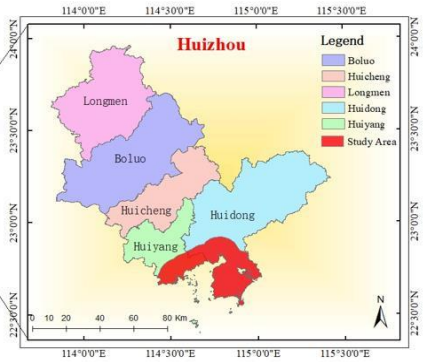
The Huizhou city is located in the southeastern area of Guangdong province, and it occupies part of the Pearl River Delta megalopolis to the northeast of Hong Kong and Shenzhen. It, spanning from 22°4'N to 23°57'N latitude and 113°51'W to 115°28'W longitude, covers a land area of about 11347 km² and sea area of approximately 4520 km². There are two districts
120 (Huicheng and Huiyang) and three counties (Boluo, Huidong, and Longmen) in Huizhou, as shown in Figure 1 (eb). The coastal region of Huiyang district and Huidong county have been affected by the tropical cyclones during the season running from April to November.



(a)



(b)



(c)

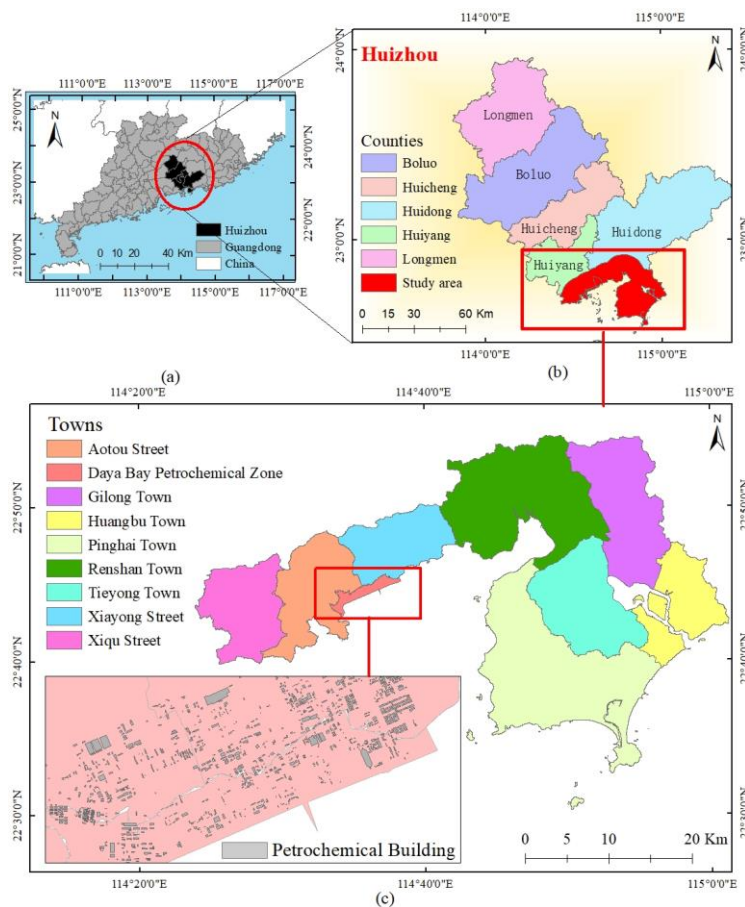


Figure 1. The maps of observation locations used in the study: (a) The satellite image displays the map of Guangdong province in the southern area of China, which was obtained from the Google Earth (Map data ©2020 Google, © 2020 ZENRIN); (b) The map of Guangdong Province, where the shapefile of administrative boundaries was obtained from the GADM database under ©2018 GADM license (<https://gadm.org/data.html>), with academic publishing permission from Global Administrative Areas (<https://gadm.org/license.html>); (c) The map of Huizhou city and the study area, which was made with using the ArcGIS 10.5; (d) The map of towns and their boundaries in the study area and the petrochemical buildings are distributed in the Daya Bay Petrochemical Zone, which was made using the ArcGIS 10.5. The

maps and satellite images obtained from ~~the~~ Google Earth or ~~the~~ Google Maps can be used and printed in the research papers with permission from ~~google~~Google's website (<https://www.google.com/permissions/geoguidelines/>).

In this paper, the region within a distance of 10 kilometers from the coastline in Huiyang district and Huidong county is chosen as a study area to understand the potential risk of storm surge in this region, as shown in Figure 1 (b) and Figure 1 (c). In addition to high population density in coastal communities, the main reason for choosing this region is that high ~~concentration~~concentrations of petroleum facilities and infrastructures in the Daya Bay Petrochemical Zone make the study area vulnerable to storm surges. The Daya Bay Petrochemical Zone has an area of about 27.8 km², ~~as shown in Figure 1 (c)~~, and is currently taking the first spot at the scale of petrochemical-refining integration in China. By the end of 2018, the Petrochemical Zone has been commenced business by many world's top 500 companies and industry-leading enterprises. These world chemical and industrial giants including Exxon Mobil, Shell, and Clariant have invested 131.6 billion ~~yuan~~RMB to shape up the industrial chains of the oil refinery, ethylene, propylene, and butylene in Daya Bay Petrochemical Zone. In 2018, the oil refining capacity and the ethylene production capacity have been enhanced to 22 million tons/year and 2.2 million tons/year, respectively, and the petrochemical industrial output value reached 270 billion ~~yuan~~RMB (Huizhou Guangdong province, 2019; Huizhou, 2018). Now, the Daya Bay Petrochemical Zone is striving to develop into the world-class petrochemical base and planning to be one of the world's top ten petrochemical industrial zones in the subsequent few years. Therefore, with the growing population density and particularly the rapid development of petroleum and chemical industries, ~~the risks and vulnerability in storm surge risk over~~ the study area ~~to storm surge will increase~~be increased. The risk assessment and risk analysis are considered to be important strategies to identify the risk regions in the Daya Bay Petrochemical Zone, which can minimize the loss of life and property and prevent environmental damage caused by affected coastal petroleum facilities and infrastructures.

2.2 Datasets requirement

The datasets used in the ~~paper~~study contain observed data and survey data obtained from various sources. The datasets can be employed to conduct the hazard assessment, vulnerability assessment, and risk assessment of storm surge in the study area for each of the different typhoon intensity scenarios. The datasets, ~~which can be downloaded from the dataset~~ (Si, 2020), are listed in Table 1 and described below.

Table 1. Summary of the datasets ~~used in for conducting the~~ risk assessment of storm surge.

Dataset Name	Source	Time
Historical Tropical Cyclone	China Meteorological Administration	1949-2017
Digital Elevation Model (DEM)	Huizhou Land and Resources Bureau	2015
Storm Surge Barriers	Huizhou Oceanic Administration	2018

Land Cover Types	Huizhou Land and Resources Bureau	2016
District Boundaries	Huizhou Land and Resources Bureau	2017
Water Level Records	Huizhou tidal gauge station	2006-2018

1) The dataset of Historical Tropical Cyclone. It contains information on name, time, track, minimum central pressure, and maximum wind velocity of tropical cyclones that made landfall in the coastal area of Huizhou during the period from 1949 to 2017. It was obtained from the China Meteorological Administration. The historical data can be analysed to construct representative typhoon scenarios over the study area. The input parameters of each of the typhoon scenarios are used to generate wind field with the Jelesnianski method, which is the requirement for modelling storm surge.

2). The dataset of Digital Elevation Models (DEM). The dataset of DEM with a scale of 1:2000 was constructed in 2015 and is available from Huizhou Land and Resources Bureau. It is a raster dataset that depicts land heights in Huizhou's solid surface. The point in the dataset contains the elevation value for the region that point covers. The DEM dataset can be used for modelling storm surge. The DEM map of the study area is shown in Figure 2.

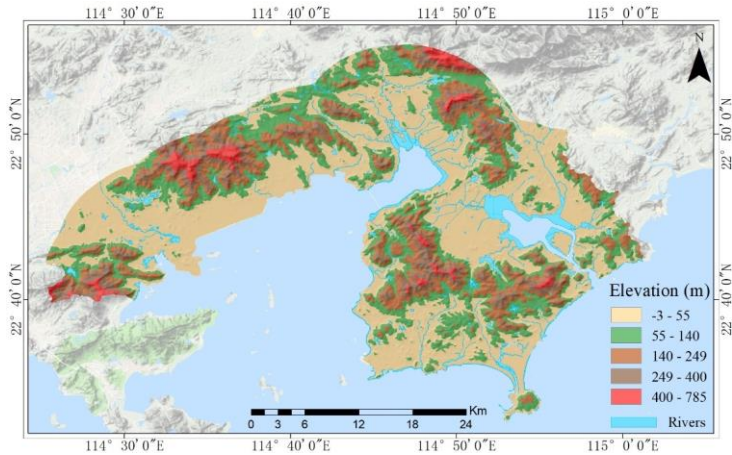
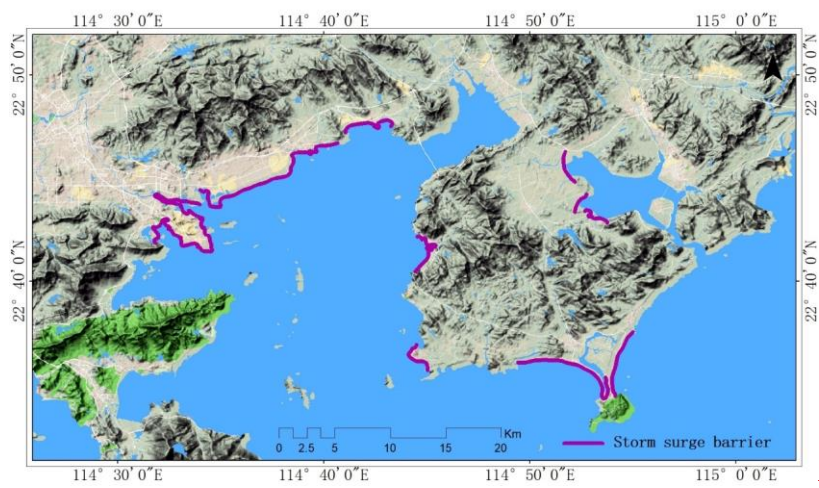


Figure 2. The DEM map of the study area including rivers and the elevation value that point covers. The map was made using the ArcGIS 10.5 software based on the terrain base map layer, which was obtained from Google Maps (Map data ©2019 Google).

3). The dataset of Storm Surge Barriers. The dataset includes information on storm surge barriers including such as dikes and levees constructed in the study area, as shown in Figure 23. The information such as including name, height, slope, location,

material, latitude, and longitude, which have been surveyed ~~in~~^{for} the project named marine disaster prevention and reduction of Huizhou in 2018. The dataset ~~can be~~^{are} utilized to accurately simulate the inundation extent and depth of storm surge.



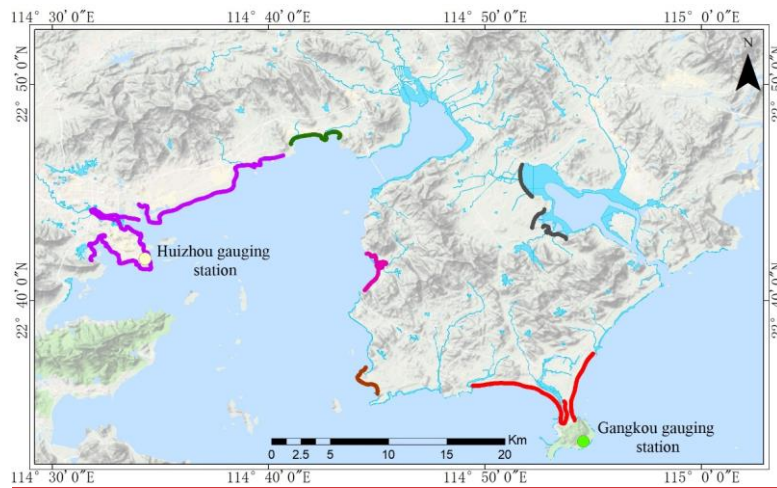


Figure 23. The map of the study area including the Storm Surge Barriers such as dikes and levees along the coastline of Huizhou over the study area, which are marked by the colored lines. The two stations including Huizhou gauging station and Gangkou gauging station measure the water levels in the study area, which are indicated by the violet dot and the green dot, respectively. The map was made with using the ArcGIS 10.5 software based on the terrain base map layer, which was obtained from Google Maps (Map data ©2019 Google).

4). The dataset of Land Cover Types. The dataset contains current physical material including water, agriculture, tree, and wetlands over the study area. It was obtained from the Huizhou Land and Resources Bureau, which was created by analyzing remotely sensed imagery of Huizhou in 2016. Because each physical material has its bottom friction, the potential simulated inundated areas of modelling storm surge cannot be the same on the different combinations of land covers. The dataset can be applied to modelling storm surge and conducting the vulnerability assessment.

5). The dataset of Administrative Boundary. The dataset contains administrative boundaries at the township level of Huizhou in 2017 and there are 12 towns in the study area. It was obtained from Huizhou Land and Resources Bureau.

6). The dataset of Water Level Records. The Huizhou Oceanic Administration deployed the Huizhou water level gauging station, which is located in the Quenwan port, in 2006 and Gangkou gauging station, as shown in Figure 3. The coastal water level around the Quenwan port stations is automatically measured and recorded with a gauge at fixed intervals of time. The dataset contains the height of hourly water level records during the period from 2006 to 2018. The dataset can be used for validating the coupled model (ADCIRC-SWAN) over the study area by comparing simulated water levels and measured water levels.

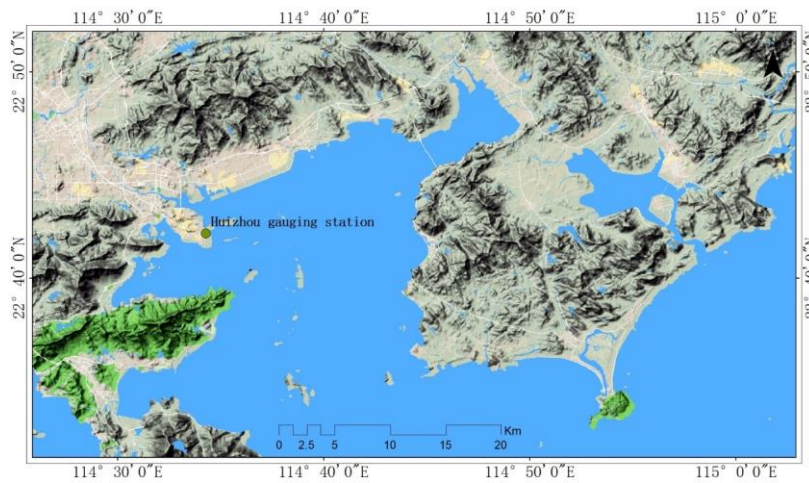


Figure 3. The map of the study area including the Huizhou gauging station in the Quenwan port, which is indicated by the green dot. The map was made with ArcGIS 10.5 software based on the terrain base map layer, which was obtained from Google Maps (Map data ©2019 Google).

3 Methodology and procedure

3.1 Model description and validation

In this study, the Jelesnianski numerical method (Jelesnianski and Taylor, 1973), the well-established Advanced Circulation (ADCIRC) model (Luettich et al., 1992; Westerink et al., 1994) and Simulating Waves Nearshore (SWAN) model (Booij et al., 1999) are employed to simulate tropical typhoon storm surge. The ADCIRC model is a two- and three-dimensional hydrodynamic circulation model, which can be utilized to simulate model tides, wind-driven circulation, and provides water elevation and velocity of the current in coastal seas storm surge. The model solves the continuity and the momentum equations for moving fluid and water elevation. It ADCIRC model has been applied to simulate the hydrology in regions including the Gulf of Mexico, the Mediterranean Sea, and the South China Sea (Kerr et al., 2013; Orlic et al., 2010; Li et al., 2020). The ADCIRC-2D in the study was run using a spherical coordinate system. It can provide both water surface elevation and the depth-averaged velocity of the current in coastal seas by solving continuity equation and momentum equations. As for the friction coefficient, Manning's n values derived from the dataset of land cover types are utilized. The dataset contains

information about the types of land-cover related to Manning’s values over the study area, which are listed in Table 2. These land types were first associated with Manning’s values, and then average the Manning's n values for the ADCIRC mesh.

Table 2. The Manning’s values related to the land cover types over the study area.

Land types	Manning’s values
Settlements	0.07
Forest	0.065
Dryland	0.06
Paddy field	0.05
Road	0.035
Riverway	0.025-0.035
Open spaces	0.035

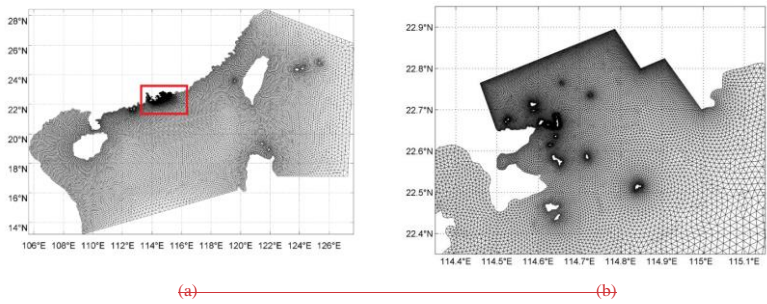
The SWAN model is a third-generation numerical wave model, which is used to simulate wind-generated wave propagation in coastal regions. The model computes the wave action density spectrum by solving the wave action balance equation. It can be coupled to the ADCIRC model to simulate the storm surge on the same unstructured grid (Dietrich et al., 2011; Dietrich et al., 2012).

The computational domain in this study covered the coastal region of Huizhou, as shown in Figure 45, with progressively higher resolution approaching the coastal area of Huizhou. In the region areas along the coastline of Huizhou, the high grid resolution of 100-200 m is provided to improve the simulation accuracy, and simultaneously unstructured grids contain a coarse resolution of 30 km along the open ocean boundary for decreasing computational cost. There are 38407 nodes and 74328 grids over the computational domain, as shown in Figure 45 (a). The open boundary of the model water level is controlled by the total water level, which is obtained by the superposition of 11 astronomical tidal components. These 11 astronomical tidal components are M2, N2, S2, K2, K1, O1, P1, Q1, MS4, M4, M6. The wave open boundary is controlled by a two-dimensional wave spectrum.

245 simulated round. Thus, the modelling typhoon event can be converted by the wave-current coupled model (ADCIRC-SWAN)
into a storm surge event, outputting the data of water height corresponding to every grid node over the computational domain.

250

255



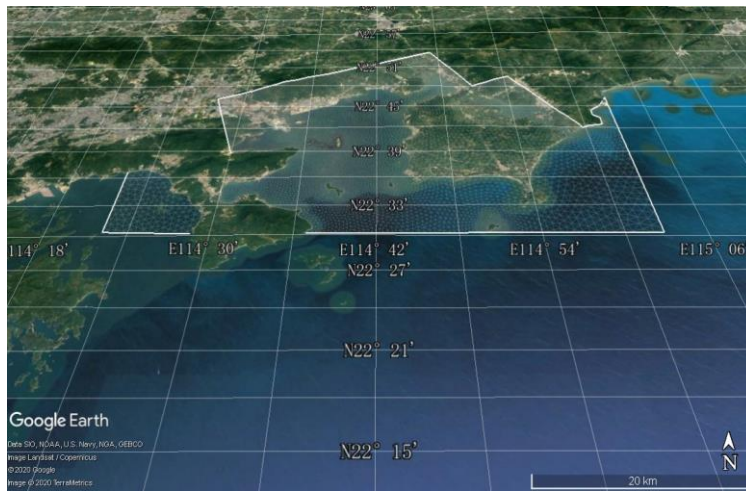
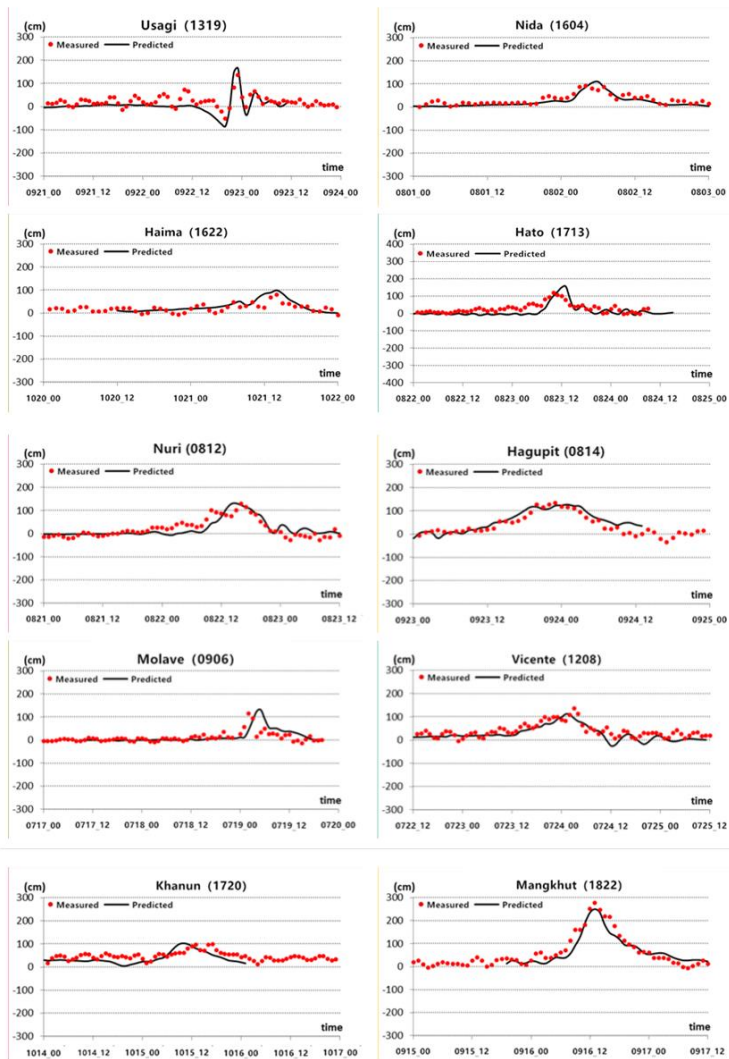
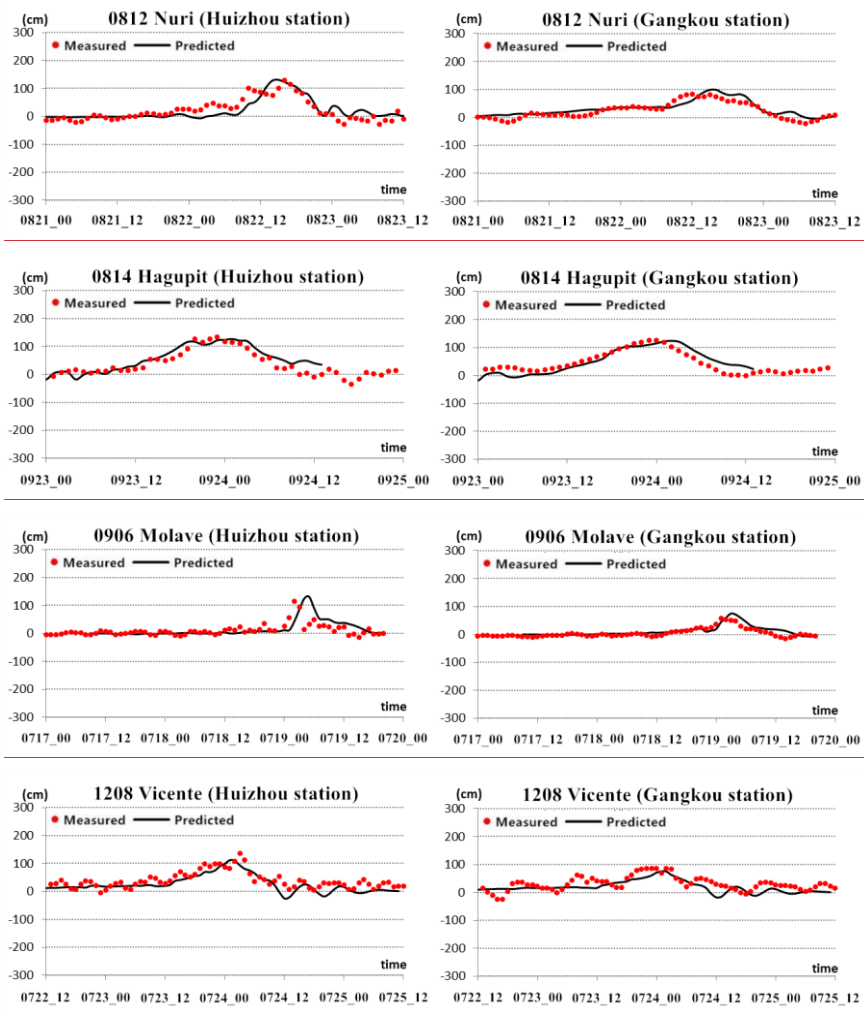
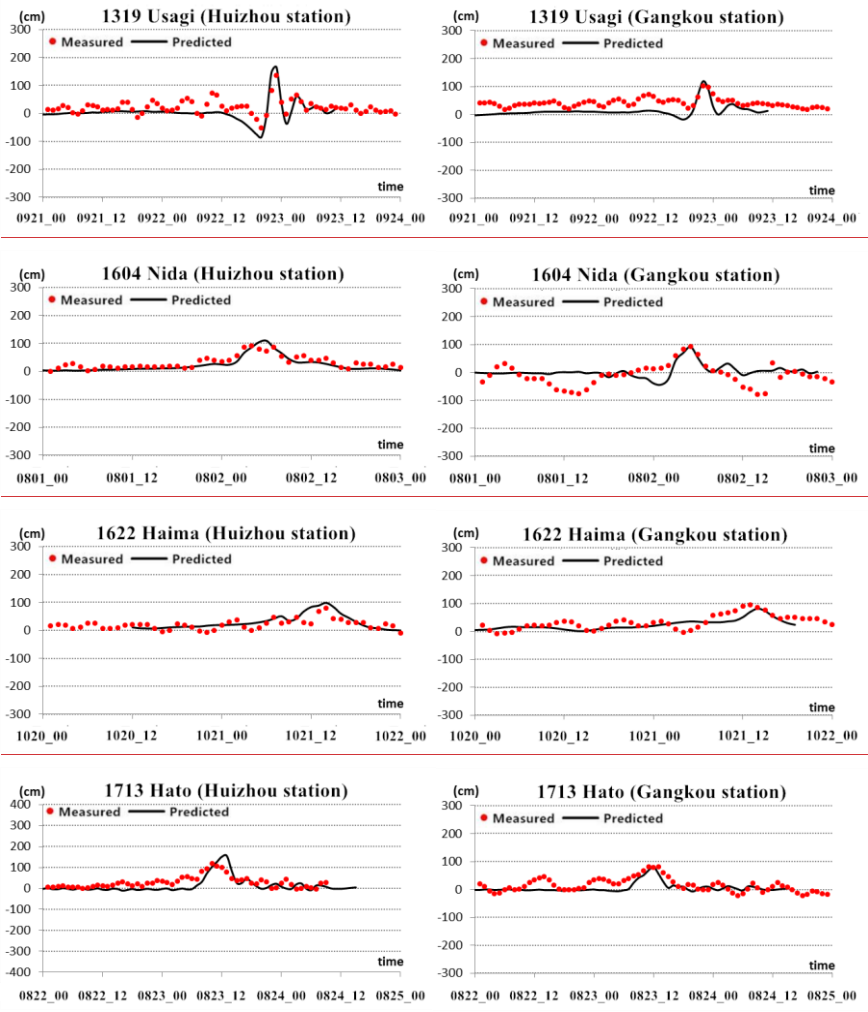


Figure 4. A computational domain (a) and the domain over the study area (b) (c). The satellite image (c) was obtained from the Google Earth (Map data ©2020 Google, © 2020 ZENRIN).

As the Jelesnianski method and the coupled model (ADCIRC-SWAN) have never been used in modelingsimulating typhoon storm surges forsurge over the coastal areas of Huizhou, the simulated performance of the coupled model is needed to be evaluated. The 10 representative typhoons (0812、0814、0906、1208、1319、1604、1622、1713、1720、1822), which caused higherhigh water levels in Huizhou gauging station and Gangkou gauging station (Figure 3), were4, are selected to validate the coupled model (ADCIRC-SWAN) for the study area. Figure 56 shows all maximum simulated water levels, the highest observed water levels from the 10 representative typhoons, and the timing of these peaks for these 10 representative typhoons.







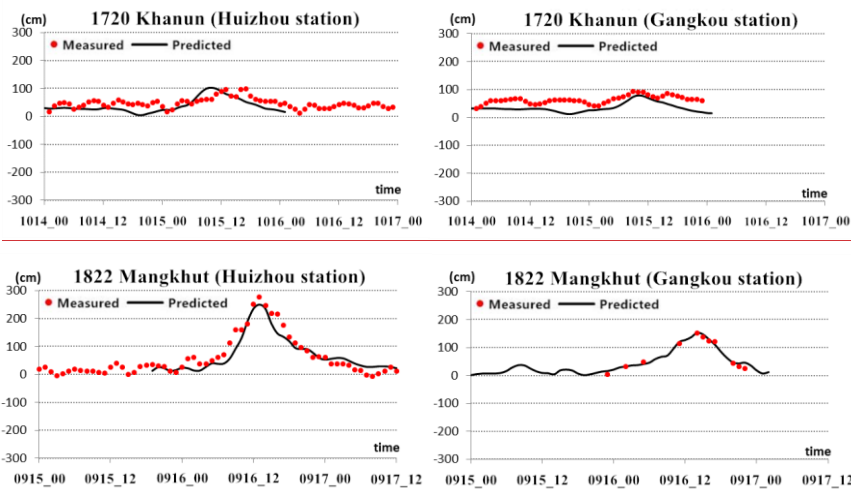


Figure 56. The predicted water levels (in black line) and highest measured water levels (in red dots) recorded by the Huizhou gauging station in the Quenwan port and Gangkou station during the typhoon periods.

Two error statistic approaches were utilized to evaluate the performance of the coupled model with a comparison between maximum predicted water levels and the highest measured water levels. The Absolute Error (AE) is computed when the highest measured water level is above 100 cm. The Relative Error (RE) is calculated as the measured observed water level is above 100 cm. The Absolute Error (AE) is computed when the highest measured water level is below 100 cm. The statistical result, as results from the two stations have been summarized in Table 2, indicates. It displays that the data with $RE \leq 20\%$ or $AE \leq 20$ cm account for 80.90% of all simulated data, which satisfies the criterion in the guideline. Therefore, the predicted performance of the coupled model is considered to be reliable regarding its ability to simulate storm surges in the study area.

Table 23. Summary of error statistics (AE and RE) between maximum predicted water levels and highest measured water levels from Huizhou station and Gangkou station during the typhoon events.

Typhoon Name	Date	Measured Data (cm)		Relative Error (%)		Absolute Error (cm)	
		Huizhou	Gangkou	Huizhou	Gangkou	Huizhou	Gangkou

删除的单元格

295

Nuri (0812)	21 August 2008	129	84	2	/	/	15
Hagupit (0814)	23 September 2008	135	126	6	/2	/	/
Molave (0906)	17 July 2009	116	58	13	/	/	17
Vicente (1208)	22 July 2012	136	87	18	/	/	11
Usagi (1319)	21 September 2012	137	102	21	/17	/	/
Nida (1604)	01 August 2016	92	/94	/	/	18	2
Haima (1622)	20 October 2016	81	/94	/	/	18	12
Hato (1713)	22 August 2017	120	81	30	/	/	0
Khanun (1720)	14 October 2017	98	/93	/	/	5	14
Mangkut (1822)	15 September 2018	278	151	10	/1	/	/

删除的单元格

插入的单元格

插入的单元格

插入的单元格

插入的单元格

插入的单元格

插入的单元格

插入的单元格

插入的单元格

插入的单元格

插入的单元格

插入的单元格

3.2 Storm parameters

After validating the performance of the coupled ADCIRC-SWAN model, the input storm parameters ~~are needed to~~ must be set for designing the typhoon scenarios, which can be used to create the wind field with the Jelesnianski method to drive the storm surge in the coupled model. The storm parameters include the minimum central pressure, the radius of maximum winds, the maximum wind velocity, and the storm track.

300

3.2.1 Return period and minimum central pressure

The typhoon return period is the average time between typhoons with a certain intensity at a specific location. The typhoon return periods for Huizhou can be ~~measured through the dataset of Historical Tropical Cyclone. After analyzing the minimum central pressure records from the historical dataset~~ determined by making statistics of historical typhoon records in Huizhou. Based on the historical typhoon records, the minimum central pressures-return period relation for the study area was constructed with extreme value distribution Type-I, as shown in Figure 6. Thus, the minimum central pressure associated with a given return period can be calculated. For example, ~~it can be observed~~ from Figure 6, ~~that~~ the minimum central pressure of typhoons ~~eonsisted with~~corresponding to the return period of 1000-year was estimated at 880 hPa.

305

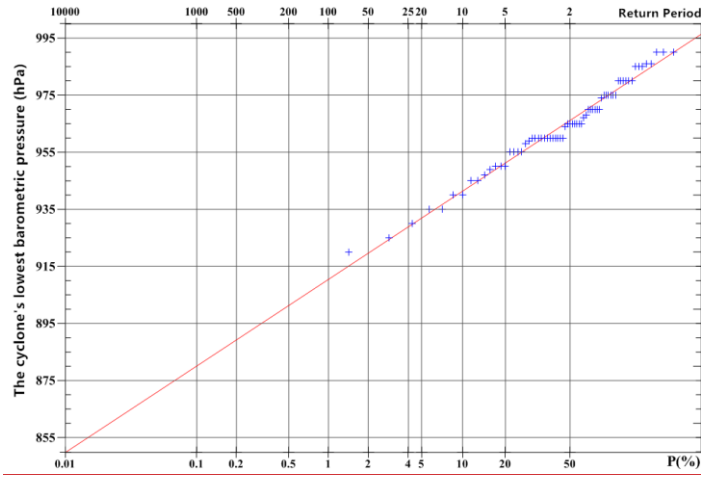


Figure 6. The relation between the return period and the central pressure of typhoons on extreme value distribution Type-I, which struck coastal areas of Huizhou city from 1949-2017.

3.2.2 Radius of maximum wind

The radius of maximum wind (R_{max}) has a strong connection to the maximum wind velocity and the minimum central pressure of the typhoon (P_0). The researchers have(Vickery et al., 2000; Cheung et al., 2007) developed empirical formulas to calculate the radius of maximum wind based on the R_{max} - P_0 relationship, as shown in Eq. from (1) to (3), where ϕ represents the latitude of the typhoon's center, ΔP indicates the pressure difference between central pressure and ambient pressure, R_k is empirical constant with the value of 50.

$$R_{max} = \exp(2.635 - 0.00005086\Delta P^2 + 0.0394899\phi) \quad (1)$$

$$R_{max} = 1119.0 \times (1010 - P_0)^{-0.806} \quad (2)$$

$$R_{max} = R_k - 0.4 \times (P_0 - 900) + 0.01 \times (P_0 - 900)^2 \quad (3)$$

CollectingAnalyzing the historical radius of maximum wind data measured in the northwest Pacific hurricane records (2001-2016) from the Joint Typhoon Warning Center, the empirical Eq. (4) of the R_{max} - ΔP relation can be constructed based on Eq. (2) with regression statistics, as shown in Figure 7.

$$R_{max} = 260.93 \times (1010 - P_0)^{-0.512} \quad (4)$$

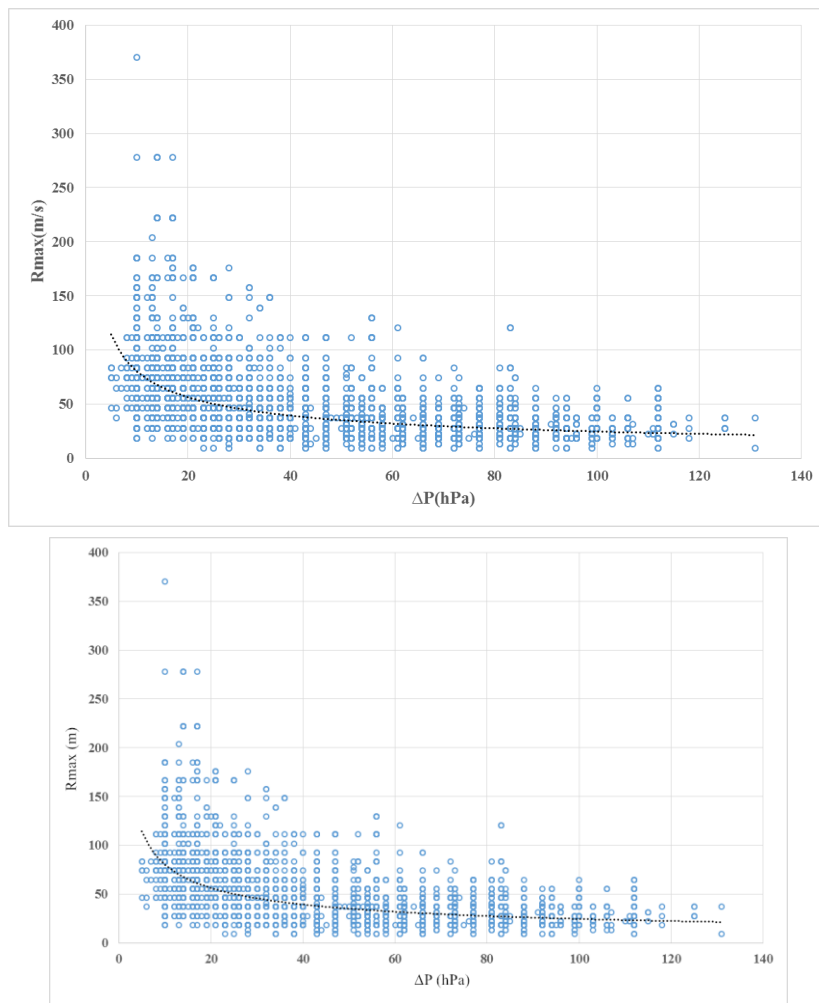


Figure 7. The relation between the pressure difference (ΔP) and the radius of maximum wind (R_{max})

Therefore, according to the above empirical equations and historical observations, the radius of maximum wind ~~consisted~~
~~with corresponding to~~ the minimum central pressure can be calculated. As shown in Table 3, averaging the empirical values
from Eq. (1) to (4) and observed values, the radius of maximum wind with respect to the minimum central pressure at 880 hPa
was estimated at 30 km.

Table 3. The estimated value of the radius of maximum wind when P_0 is 880 hPa

	Empirical Eq.				Observed	Averaged
	(1)	(2)	(3)	(4)	JTWC	
Radius (km)	15	22	62	22	[9,37]	30

3.2.3 Maximum wind velocity

~~According to~~Based on the records from the dataset of Historical Tropical Cyclones, the regression ~~statistics-method~~statistic
is ~~applied to processing~~made on the observed data ~~including~~containing maximum wind velocity (V_{max}) and the minimum
central pressure (P_0) with the wind-pressure empirical equation (Atkinson and Holliday, 1977), as shown in Figure 8.

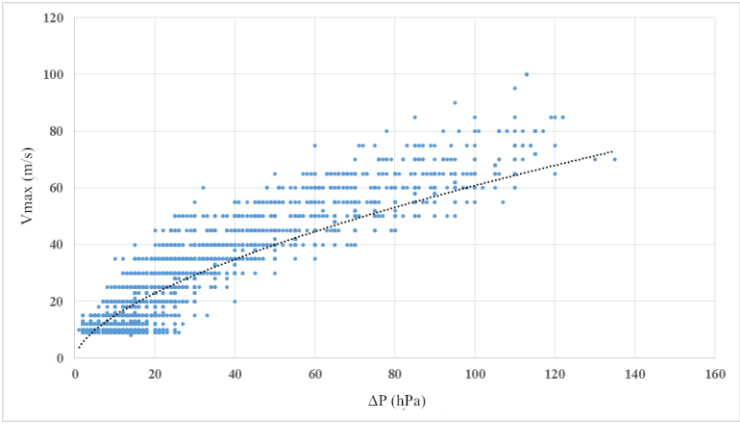


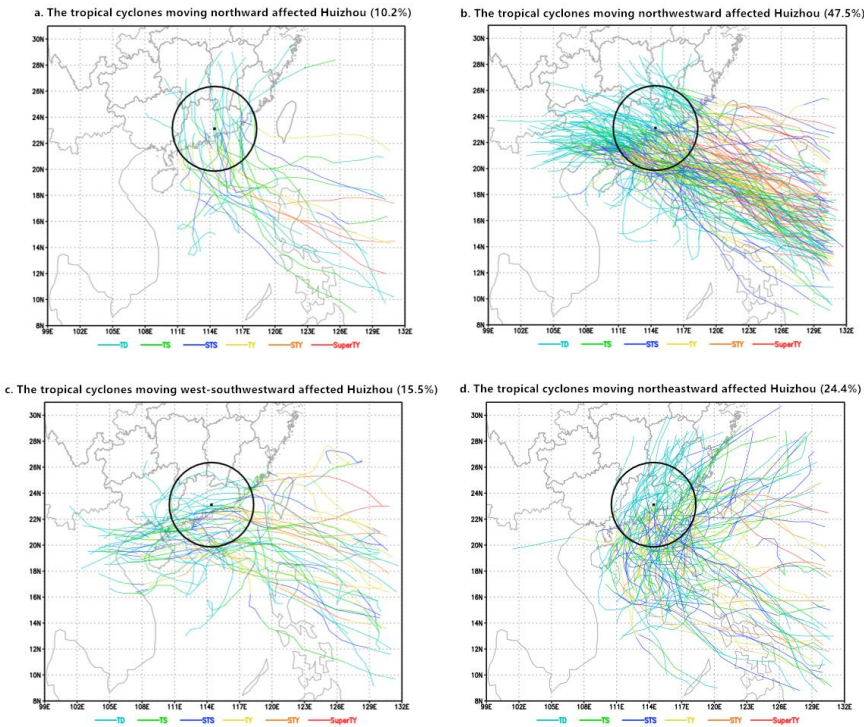
Figure 8. The relation between the pressure difference (ΔP) and the maximum wind velocity (V_{max})

Then, the empirical equation of the $V_{max}-P_0$ over the study area can be established, as shown in Eq. from (5).

$$V_{max} = 3.7237 \times (1010 - P_0)^{0.6065} \tag{5}$$

3.2.4 Tropical storm track

The tracks of tropical cyclones, which ~~that~~ affected the coastal area of Huizhou during the period from 1949 to 2017, can be divided into four categories: moving northward (10.2% of total), moving northwestward (47.5% of total), moving west-southwestward (15.5% of total), and moving northeastward (24.4% of total), as shown in Figure 9.



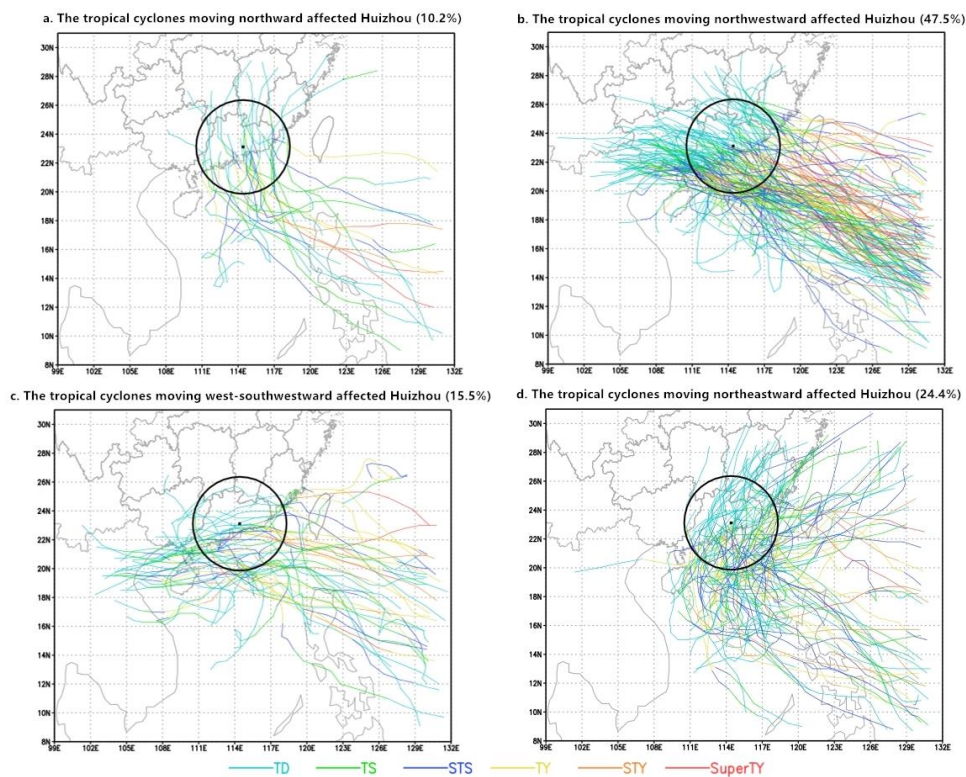


Figure 9. The tracks of tropical cyclones affected Huizhou from 1949 to 2017. There are six categories of tropical cyclones which are Tropical Depression (TD), Tropical Storm (TS), Severe Tropical Storm (STS), Typhoon (TY), Severe Typhoon Super (STY), and Super Typhoon (Super TY).

Figure 9 indicates that tropical cyclones approached the coast areas of Huizhou on the northwest (47.5%) are the most common. The northwestward track is perpendicular to the coastline of Huizhou, which can increase the maximum storm surge for the study area. Analyzing the dataset of Historical Tropical Cyclones and dataset of Water Level Records, the five typhoons (7908、0906、1319、1713、1822) that caused the higher water level ~~in~~over the study area were moved on the northwestward track. Especially, the recent super typhoon Mangkhut (1822), which struck southern China in September 2018, led to the highest water level in Huizhou history. The tract of super typhoon Mangkhut is shown in Figure 10.

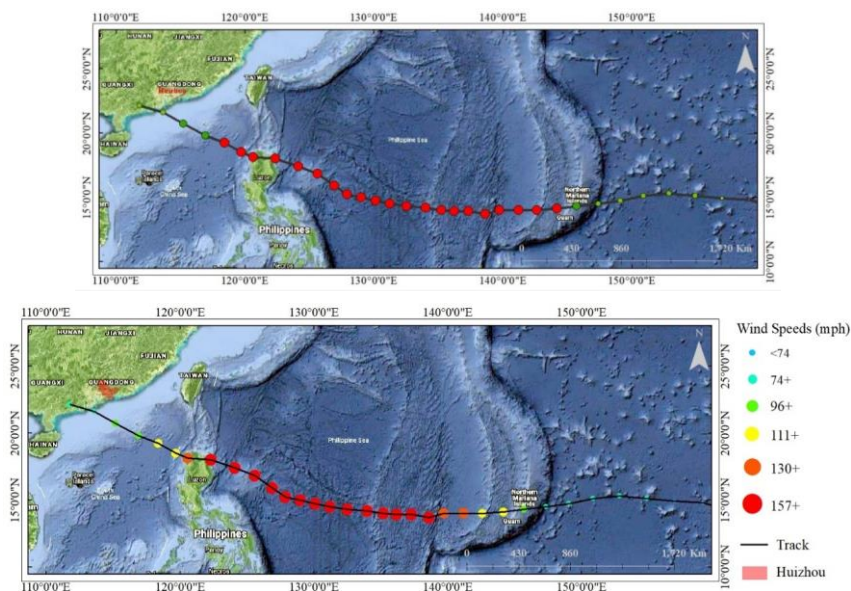


Figure 10. The track of super typhoon Mangkhut over the western North Pacific and the South China Sea. The six categories of wind speeds are represented by the different colored dots. The track map was made withusing the ArcGIS 10.5 software based on the satellite base map layer, which was obtained from Google Maps (Map data ©2019 Google).

Figure 10 depicts that the super typhoon Mangkhut moving northwestward into the South China Sea toward southern China. It has been the costliest and devastating marine disaster in the history of Huizhou. During the super typhoon Mangkhut period, the maximum water level at Huizhou gauging station reached up to 349 cm at 13:00, September 16, 2018. The direct economic losses caused by super typhoon Mangkhut to Huizhou was estimated at 577.39 million RMB, and 0.236 million people were affected. Therefore, the Mangkhut track was chosen to model the worst-case scenario of storm surge under different representative typhoon intensities in this study.

In order to provide complete geographical coverage for the study area, a set of deviated typhoon tracks were produced. The 33 typhoon tracks deviating from the original Typhoon Mangkhut track were generated, as shown in Figure 11. These 34 tracks are spaced 5 km apart and represent the typhoon activity near Huizhou. In this paper, the tracks were used to simulate the storm surgessurge in the coastal area of Huizhou with the Jelesnianski method and the coupled model (ADCIRC-SWAN).

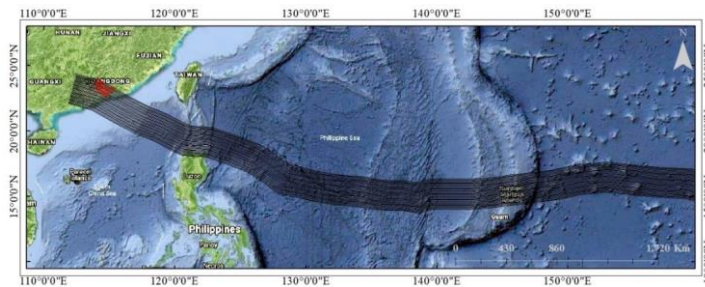


Figure 11. The 34 typhoon tracks (16 left-side shifting and 17 right-side shifting from the Mangkhut track) over the western North Pacific and the South China Sea. The track map was made ~~with~~using the ArcGIS 10.5 software based on the satellite base map layer, which was obtained from Google Maps (Map data ©2019 Google).

3.3 Procedure for ~~assessing risk~~assessment

The ~~standard operating~~ procedure for ~~conducting the~~ risk assessment of storm surge in China is derived from the *standard Technical guideline for risk assessment and zoning of marine disaster (Part 1: storm surge)*. The risk ~~assessment~~ is regarded as a ~~function- combination~~ of hazard ~~assessment~~ and ~~vulnerability~~. ~~Thus, the assessment. The~~ procedure ~~includes five~~involves ~~four~~ steps: ~~-data collection-~~ typhoon scenarios design, hazard assessment, vulnerability assessment, and risk assessment as shown in Figure 12.

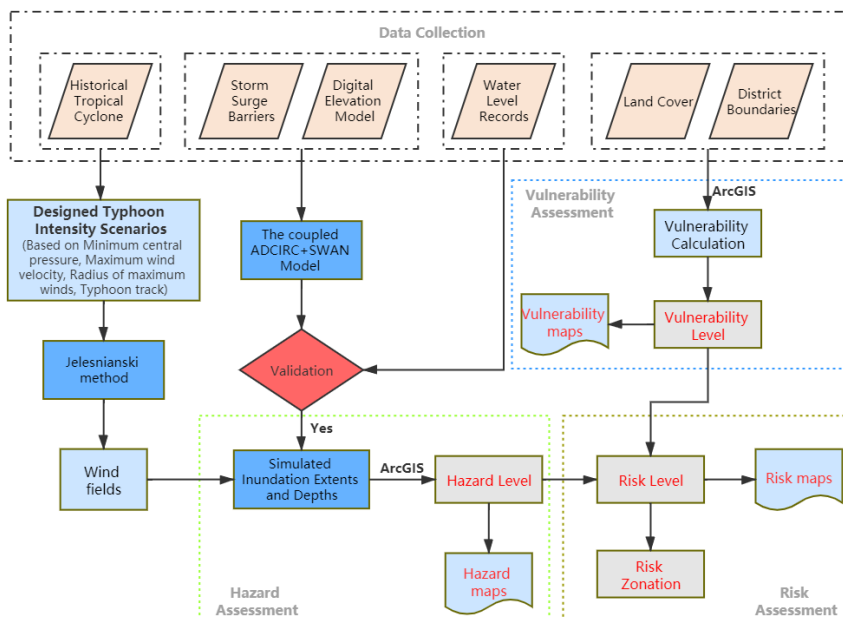


Figure 12. The procedure for conducting the risk assessment of storm surge over the study area.

As seen in Figure 12, the input data includes datasets used in the study are Land Cover, DEM, Historical Tropical Cyclones, Historical Sea Level, Storm Surge Barriers, and District Boundaries. The wind field created with the Jelesnianski method is provided to the coupled (SWAN+ADCIRC) model, which simulates the storm surge for each of the design typhoon intensity scenarios. Subsequently, the 12-hour time series data of simulated surge documented the temporal variation of inundation depth over the computational domain are generated. Then, these output data from the coupled (SWAN+ADCIRC) model for each of the scenarios scenario are converted to the ArcGIS 10.5 software. Eventually, the hazard maps, vulnerability maps, and risk maps for these representative scenarios are made using the ArcGIS 10.5 software.

3.3.1 Typhoon scenario design

The typhoon scenario is parametrized by intensity, maximum wind velocity, radius of maximum winds, and track. The lower the central pressure or the longer the year return period, the more intense the storm. Thus, the minimum central pressure or the year return period can be regarded as an indicator for the typhoon intensity. The comprehensive and

representative typhoon intensity for the minimum central pressure of 880 hPa, 910 hPa, 920 hPa, 930 hPa, and 940 hPa (corresponding to 1000-year, 100-year, 50-year, 20-year, and 10-year return period) scenarios were designed. The corresponding maximum wind velocity and radius of maximum winds were calculated for each of the designed scenarios according to the analysis in section 3.2.1- section 3.2.3, as shown in Table 4. The 34 constructed tracks discussed in section 3.2.4 were used as input data to create the wind field.

Table 4. Constructed storm scenarios with different intensities.

Grade	I	II	III	IV	V
Minimum central pressure (hPa)	880	910	920	930	940
Return period (year)	1000	100	50	20	10
Maximum wind velocity (m/s)	61	57	53	49	45
Radius of maximum winds (km)	30	31	33	35	38
The number of typhoon track	34	34	34	34	34

3.3.2 Hazard assessment

The hazard assessment is to identify the potential inundation extent and depth of storm surge caused by ~~each of the designed typhoon~~typhoon for the study area. The ADCIRC+SWAN model integrated with the Jelesnianski method was run on the datasets for scenarios with an increasing minimum central pressure from 880 hPa up to 940 hPa. Then, the outputs of the coupled model (ADCIRC–SWAN) were imported to the GIS software.

The spatial extents of surge area and heights of surge water in given scenarios were displayed in the ArcGIS 10.5 software. The inundation depth was calculated by subtracting DEM from the height of simulated surge water at each grid. The storm surge hazard for the study area was assessed based on the classifications of inundation depths as summarized in Table 5. Accordingly, the different hazard levels ~~was~~were assigned to the inundation zones.

Table 5. Hazard zone classification according to the inundation depth.

Inundation Depth (cm)	Hazard
[15, 50)	Low (IV)

[50, 120)	Moderate (III)
[120, 300)	High (II)
[300, +∞)	Very High (I)

430

3.3.3 Vulnerability assessment

The exposure assessment aims at identifying elements affected by storm surge. The land cover can be ~~seen as~~considered as the representation of affected elements. The land cover type is regarded as an indicator to assess the vulnerability in the study area to storm surge.

435

The vulnerability values ranging from 0 to 1 are assigned to different land cover types, which were defined in the *guideline* according to their properties of susceptibility and resilience to storm surge. The value of 0 indicates no vulnerability and the value of 1 represents the highest vulnerability. The four levels of vulnerability were defined in the *guideline* (I, II, III, and IV) from very high vulnerability (I) to low vulnerability (IV). The Land Cover dataset was categorized into 12 first classifications according to the *guideline*, as summarized in Table 6. Based on the vulnerability value corresponding to land cover type in

440

Table 6, the vulnerability level over the study area was evaluated.

Table 6. The vulnerability value and vulnerability level for different land cover types.

The first classification of land cover			The second classification of land cover			
Number	Name	Value	Number	Name	Value	Level
01	Agriculture	0.1~0.2	011	Paddy field	0.1	IV
			012	Irrigable land	0.2	IV
			013	Dry land	0.2	IV
02	Garden plot	0.1~0.3	021	Orchard	0.3	IV
			023	Other filed	0.1	IV
			031	Forest land	0.1	IV
03	Forest	0.1	032	Shrubland	0.1	IV
			033	Other woodland	0.1	IV
			043	Other Grassland	0.1	IV
04	Pasture	0.1				
06	Mining storage	0.6~1	062	Land for mining	0.6~0.9	II~I
07	Settlements	1	071	Urban residential land	1	I
			072	Rural residence land	1	I

08	Urban infrastructure	0.4~1	088	Scenic area	0.5	III
10	Transportation	0.6~1	101	Land for railway	0.6~0.9	II~I
			102	Land for highways	0.6~0.8	II
			104	Country road	0.6	II
			105	Land for airport	0.8~1	II~I
			106	Land for harbour	0.6~1	II~I
			107	Land for pipeline transportation	0.6~1	II~I
11	Water	0.1~0.8	111	River	0.1	IV
			113	Reservoir	0.2	IV
			114	Pond	0.3	IV
			115	Coastal beach	0.1	IV
			116	Inland beach	0.1	IV
			117	Ditch	0.1	IV
12	Others	0.1~0.5	118	Hydraulic construction land	0.5~0.8	III~II
			122	Facility agriculture land	0.2~0.5	IV~III
			124	Saline-alkali land	0.1	IV
			125	Wetland	0.1	IV
			126	Sand land	0.1	IV
			127	Bare land	0.1	IV

3.3.4 Risk assessment

In the process of As for the risk assessment, the inundated region is divided into several storm surge risk districts by integrating the inundation hazard assessment and vulnerability of affected elements in over the study area. The quantitative risk assessment and the risk matrix are the primary methods in for evaluating risk assessment. However, the quantitative risk assessment method is data demanding; and it is difficult to quantify all population populations and property properties at risk. The risk matrix, a typical semi-quantitative approach, is utilized to solve these problems. The risk matrix is made of classes of hazard level on one axis and the vulnerability level on the other axis, as shown in two-dimensional Table 7.

Table 7. Risk matrix method for assessing storm surge risk.

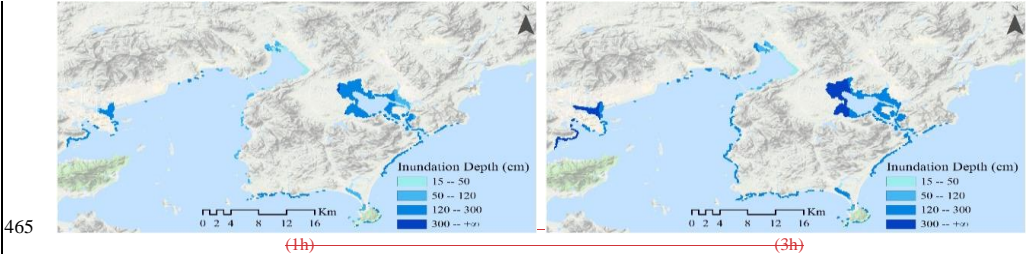
		Vulnerability			
		Low (IV) [0.1,0.3]	Moderate (III) (0.3,0.5]	High (II) (0.5,0.8]	Very High (I) (0.8,1]
Hazard	Low (IV)	Low Risk (IV)	Low Risk (IV)	Moderate Risk (III)	Moderate Risk (III)
	Moderate (III)	Low Risk (IV)	Moderate Risk (III)	High Risk (II)	Very High Risk (I)
	High (II)	Moderate Risk (III)	High Risk (II)	High Risk (II)	Very High Risk (I)
	Very High (I)	Moderate Risk (III)	High Risk (II)	Very High Risk (I)	Very High Risk (I)

With the risk matrix approach, the degree of risk can be determined based on limited quantitative data. The degree of risk is evaluated by four levels (I, II, III, and IV) from very high risk (I) to low risk (IV). For example, low vulnerability combined with low hazard can lead to a low risk, or the combination of very high vulnerability and low hazard can lead to result in moderate risk in the area.

4 Results and discussion

4.1 Hazard assessment

The coupled model (ADCIRC–SWAN) model and the Jelesnianski method were utilized to simulate the inundation extents and depths for each of the designed typhoon scenarios (Table 4). The 12-hour simulation of storm surge flooding over the study area for each of typhoon scenarios can be displayed in the ArcGIS 10.5 software. For example, for the typhoon intensity with the 880 hPa (1000-year return period), the simulated inundation depths and extents of storm surge at time intervals of 2 hours during the 12-hour period are shown in Figure 13. The inundation depth over the study area was divided into four categories according to the criterion in the guideline.



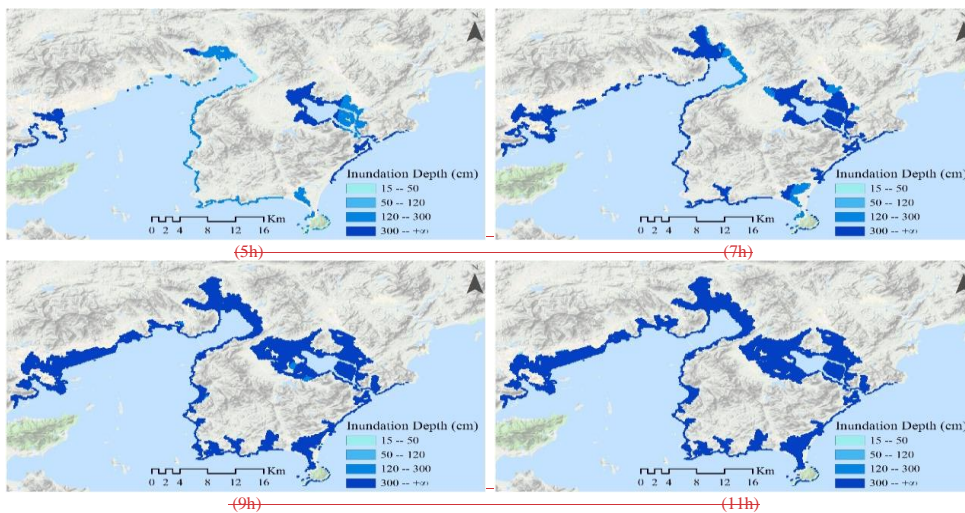


Figure 13. The maps display that the simulated inundation extents of storm surge over the study area during 12-hour simulation for the 880 hPa (1000-year return period) scenario. These maps were made with ArcGIS 10.5 software based on the terrain base map layer, which was obtained from Google Maps (Map data ©2019 Google).

As shown in Figure 13, the inundation area progressively expanded from the coastline to the mainland and reached a maximum at approximately the 11th hour. Moreover, the maximum distance that storm surge flooding penetrates inland from the coastline is approximately 6 km and the inundation distances in other regions are less than 4 km. Furthermore, the predicted simulated inundation depths over most of the many coastal areas are more than 300 cm at the 11th hour.

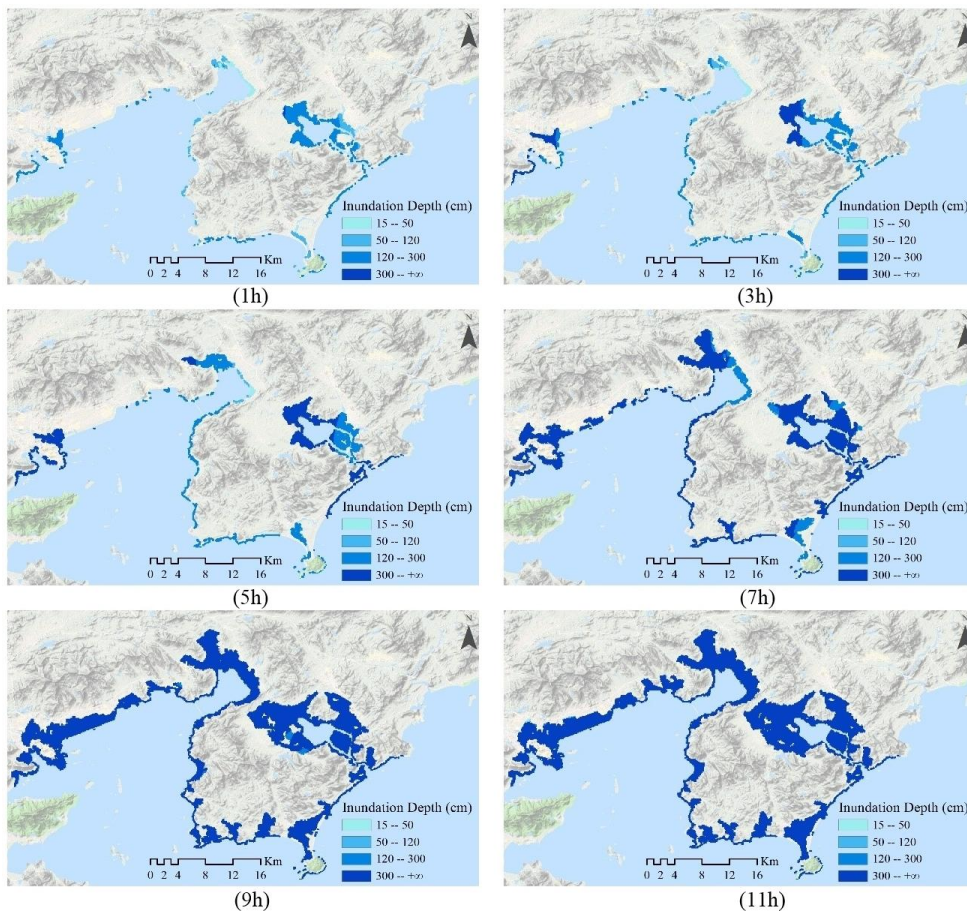
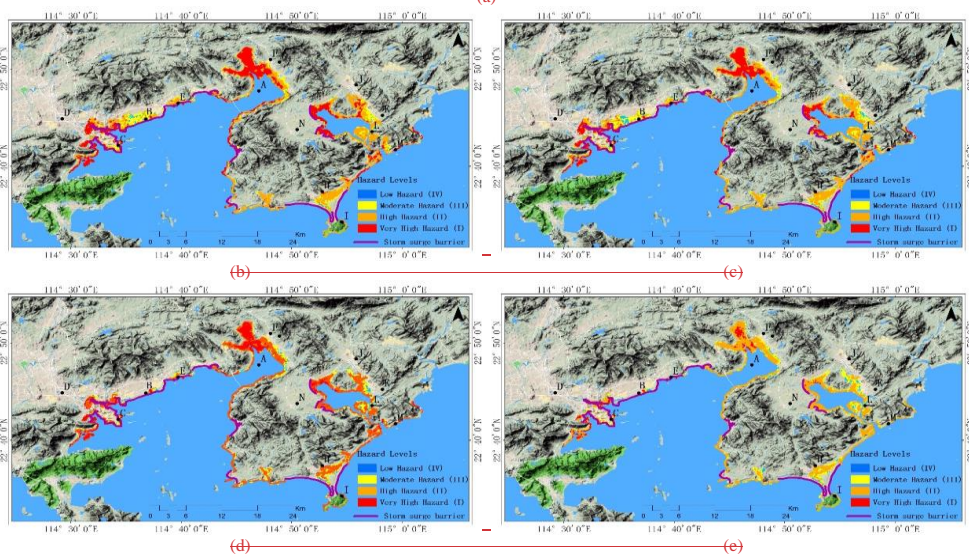
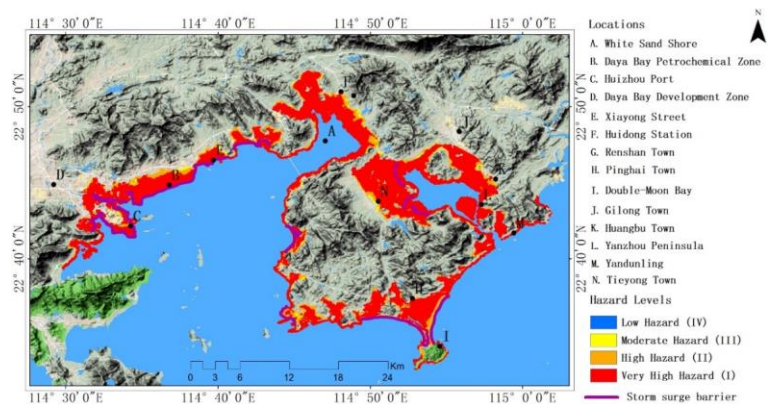


Figure 13. The maps display that the simulated inundation extents of storm surge over the study area during 12-hour simulation for the 880 hPa (1000-year return period) scenario. These maps were made using the ArcGIS 10.5 software based on the terrain base map layer, which was obtained from Google Maps (Map data ©2019 Google).

With the output data of simulated storm surge elevations at the 12th hour, the hazard map where regions are in different colors based on the inundation depths (Table 5) was made for each of the designed scenarios ~~in~~using the ArcGIS 10.5 software. The higher the inundation depth reach, the higher the risk is. These maps of hazard assessment over the study area for the representative scenarios are shown in Figure 14 ~~and the inundated areas for each scenario are shown in Figure 15.~~



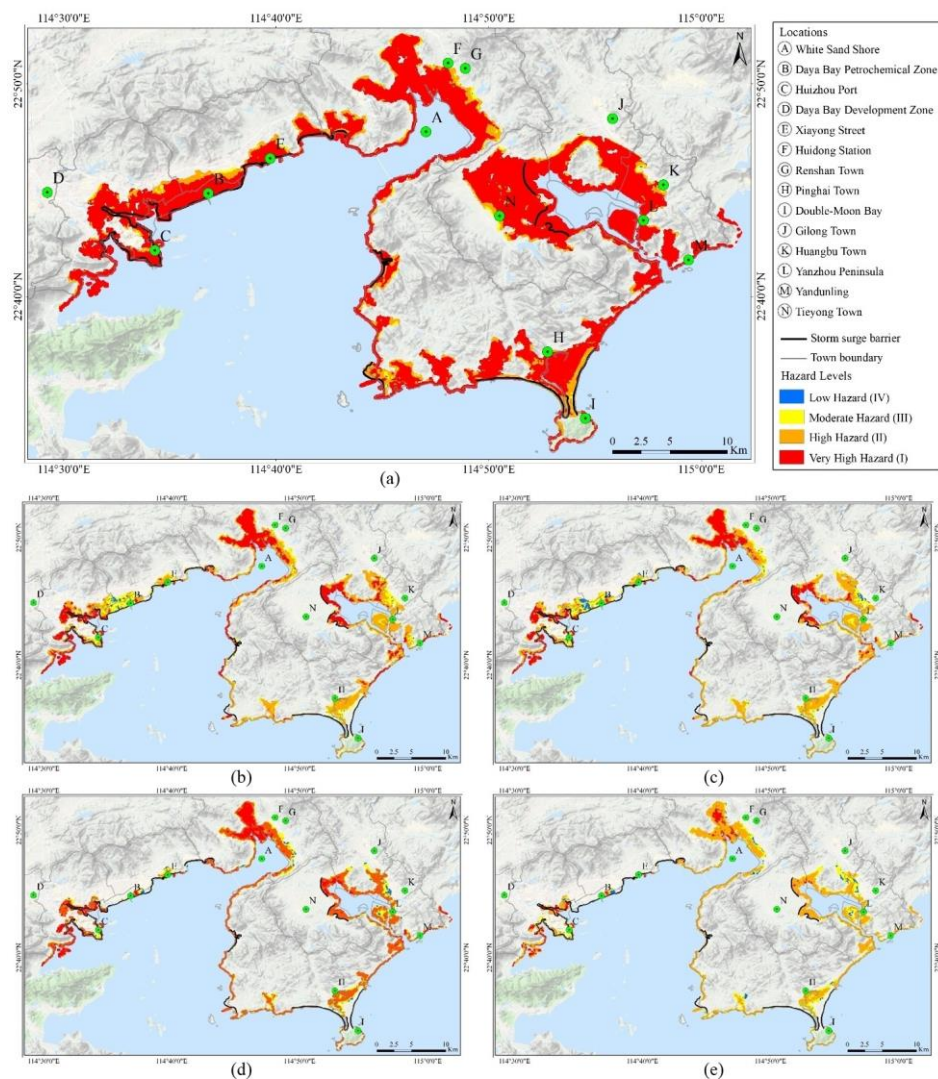


Figure 14. The hazard assessment maps represent the inundation extents and depths for five storm scenarios ((a):880 hPa/1000-year, (b):910 hPa/100-year, (c):920 hPa/50-year, (d):930 hPa/20-year, (e):940 hPa/10-year). Different colors represent different hazard levels. The red

means the highest water level and very high storm surge hazard, orange stands for high hazard, yellow represents moderate hazard, and blue indicates low hazard on the map. The important locations in the study area are labeled with letters and the violet lines refer to the storm surge barriers along the coastline of Huizhou. These maps were made withusing the ArcGIS 10.5 software based on the terrain base map layer, which was obtained from Google Maps (Map data ©2019 Google).

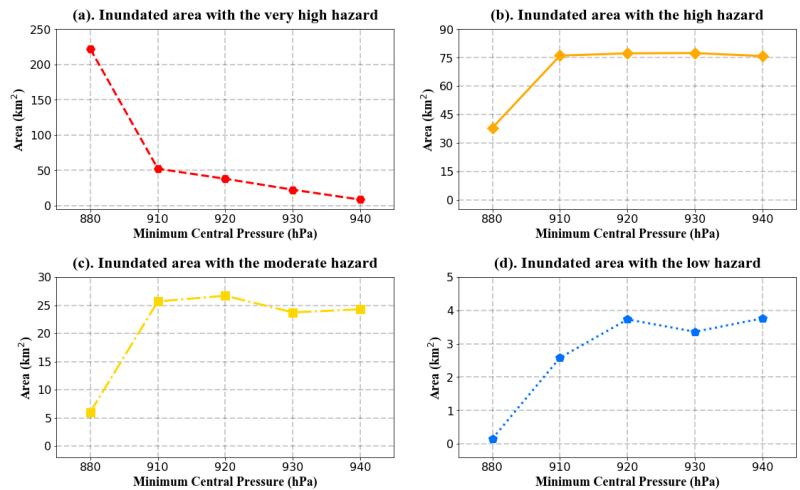


Figure 15. The simulated inundated areas with different hazard levels for each of scenarios.

Figure 14 shows the ultimate simulated inundation extents and corresponding hazard assessment under each of the designed scenarios. First of all, the maximum inundation depths and extents decrease with increasing typhoon intensity. Second, in terms of the Daya Bay Petrochemical Zone (B), the hazard is in high or very high level to storm surges when the minimum central pressure of typhoon is 880 hPa. Moreover, Daya Bay Petrochemical Zone (B) has moderate and high hazard levels to storm surge as the minimum central pressure of typhoon is 910 hPa or 920 hPa. Furthermore, the Daya Bay Petrochemical Zone (B) is hardly affected by the storm surge from the typhoon with a minimum central pressure at 930 hPa or 940 hPa due to the protection given by storm surge barriers.

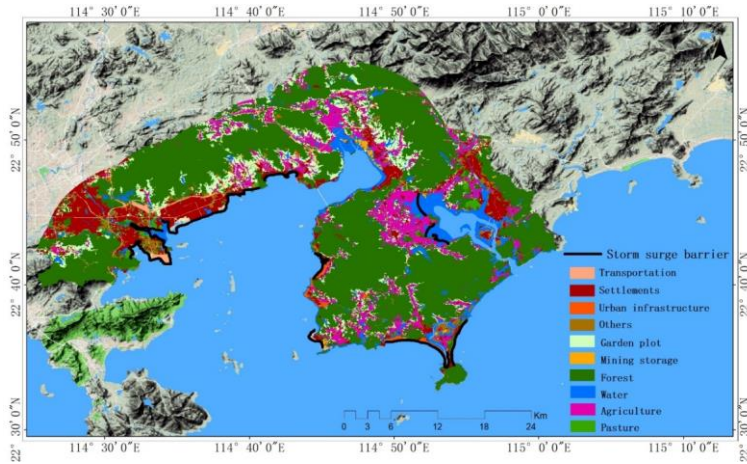
The Moreover, it can be observed from Figure 15, that the inundated area assigned to a very high hazard level decreases with increasing value of the minimum central pressure. The inundated land area belonged to the high level of hazard changes from 221.88 km² to 52.39 km² when the minimum central pressure is 880 hPa. As the value of the minimum central pressure varied from 880 hPa to 910 hPa, the inundated area classified as the high, moderate, or low hazard level increases rapidly, and these curves then remain nearly constant across other scenarios (910 hPa, 920 hPa, 930 hPa, and 940 hPa).

Figure 14 (a) demonstrates that the very high hazard zones are mainly located in the southeast of the Daya Bay Development Zone (D), the Huizhou Port (C), the region to the north of the White Sand Shore (A), the field close to the Huidong Station (F) in Renshan Town (G), the coastal place from the Double-Moon Bay (I) to the Pinghai Town (H), the Tiejong Town (N), the land from the Huangbu Town (K) to Yandunling (M), and Yanzhou Peninsula (L). The construction of storm surge barriers along the coastline of Huizhou cannot prevent storm surge caused by typhoon with a minimum central pressure at 880 hPa.

Figure 14 (b)-(e) ~~indicate~~indicates that the typhoons with minimum central pressure are at 910 hPa, 920 hPa, 930 hPa, and 940 hPa, most areas of the inundated region are under moderate level or high hazard level. The storm surge barriers can effectively protect coastal urban settlements and industrial facilities from storm surge generated by these designed typhoon scenarios. However, the Huizhou Port (C) and the southeast of the Daya Bay Development Zone (D) are under a very high hazard level caused by storm surge as they lie along the low elevation coastal area. In addition, the region to the north of the White Sand Shore (A), the southwest of the Gilong town (J), and the Yanzhou Peninsula (L) are in very high hazard to the storm surge because of relatively flat without protection from barriers.

4.2 Vulnerability assessment

The vulnerability assessment can be used to identify different vulnerable regions in the study area. Making an exposure map is an important step before the vulnerability assessment. The Land Cover dataset obtained from Huizhou Land and Resources Bureau in 2016 can be categorized into 10 different land cover types and the exposure map over the study area ~~was~~is illustrated in Figure ~~45~~16. In addition, the land areas and percentages of different land cover types ~~were~~are presented in Figure ~~46~~17.



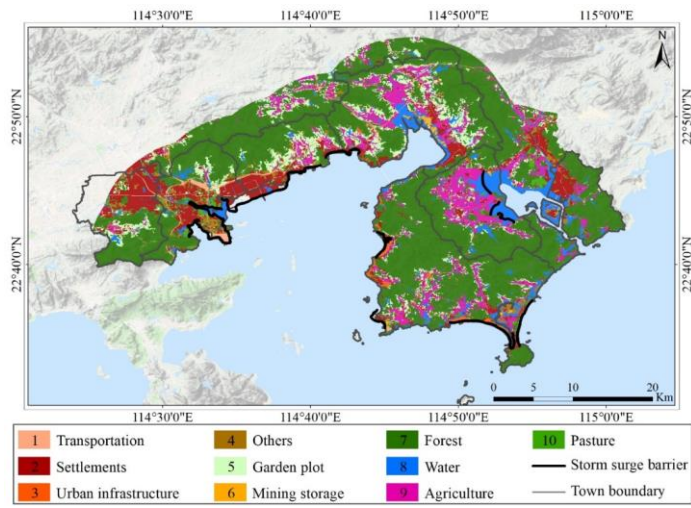
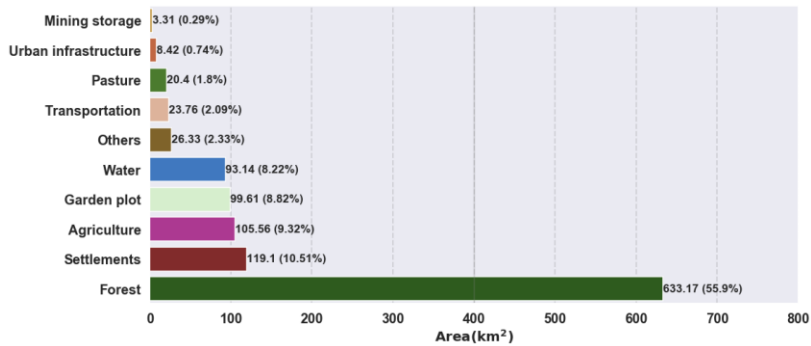


Figure 1516. The exposure map of different land cover types overin the study area. The map was made withusing the ArcGIS 10.5 software based on the terrain base map layer, which was obtained from Google Maps (Map data ©2019 Google).

540 Figure 1516 shows the distribution of different land cover types overwithin the study area, which provides an overall view of the region where the forest is concentrated, the zone of settlements, or the location of urban infrastructure.



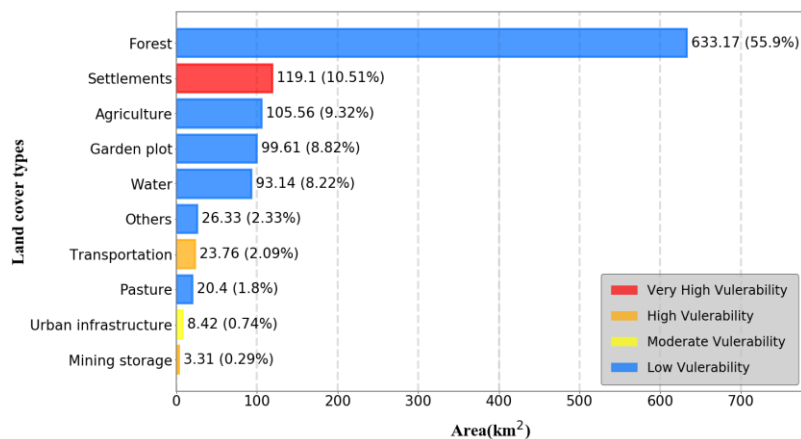


Figure 1617. The land areas and proportions of different land cover types in the study area.

As seen in Figure 1617, the forest land occupies most of the land surface of the study area (55.9%, approximately 633.17 km²). The second-largest land cover type is settlements land, which occupies approximately 10.51% (119.1 km²) of the study area's surface. The agricultural land, the garden plot land, and the water land have a large surface area, while mining storage land, the urban infrastructure land, the pasture land, the transportation land, and other lands have a low surface area.

According to the relation between the exposure of land cover types and their corresponding vulnerability values described in Table 6, the four vulnerability levels with each covered zone to storm surge in the study area can be determined, as displayed in Figure 1718. Moreover, the land area and percentage of each vulnerability zone to the study area were summarized in Table 8.

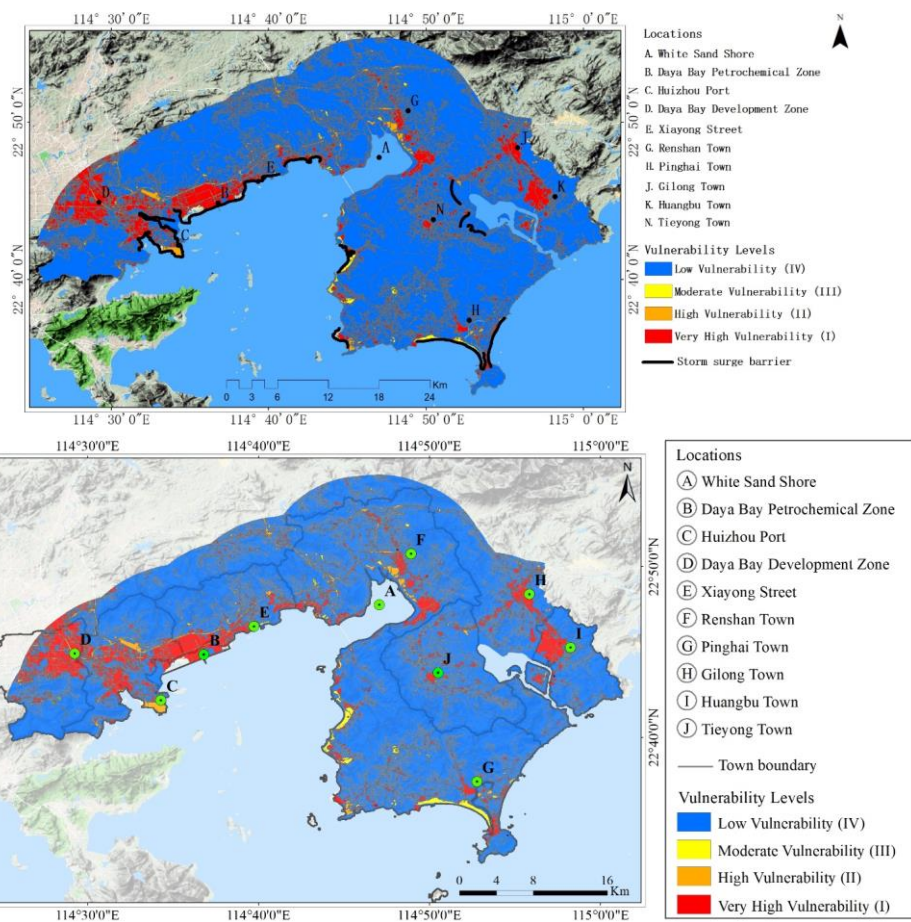


Figure 17-18. The map of vulnerability zones in the study area. The red means the highest vulnerability level (I) and the blue stands for the lowest vulnerability level (IV) on the map. The map was made withusing the ArcGIS 10.5 software based on the terrain base map layer, which was obtained from Google Maps (Map data ©2019 Google).

Table 8. The vulnerability level, area, and proportion for each vulnerability zone.

Vulnerability	Vulnerability	Color	Area (km ²)	Proportion (%)
---------------	---------------	-------	-------------------------	----------------

Very High (I)	Red	119.10	10.51
High (II)	Orange	27.07	2.38
Moderate (III)	Yellow	8.42	0.74
Low (IV)	Blue	978.21	86.37

Table 8 shows that the total area is 1132.8 km². The zone marked by low vulnerability level (IV) covers an area of 978.21 km². The zone is mainly present in the forest, agriculture, garden plot, and water, and accounts for the greatest proportion of the study area. The zone assigned as the highest vulnerability level (I) is covered with settlements and its geographical area is 119.1 km². The vulnerability level in the land area, which is covered by mining storage and transportation, is high level (II) and it makes up 2.38% of the study area. The moderate vulnerability (III) zone is mainly under the urban infrastructure class with a total area of 8.42 km².

Figure 4718 is shown that the zones marked by a very high vulnerability (level I) are mainly distributed in the center of the Daya Bay Petrochemical Zone (B) and the Daya Bay Development Zone (D), the residential areas including the Renshan Town (G), the Gilong Town (J), and the Huangbu Town (K) (1). The high-density human settlements and the high concentrated petroleum and chemical industries make the Daya Bay Petrochemical Zone (B) highly susceptible to the effects of surge disaster, and thus the property and human loss caused by the storm surge are significant. (2). The center of the Daya Bay Development Zone (D) could suffer potential human casualties during storm surge events due to the higher density of the population. (3). The residential areas including the Renshan Town (G), the Gilong Town (J), Pinghai Town (H), and the Huangbu Town (K), which lie along the coastline, are more vulnerable to the storm surge without the protection from barriers. Therefore, these zones would most likely suffer significant losses from storm surge.

Furthermore, the Huizhou port (C) is located on the coast, playing a critical role in global trading, which could leave residents and assets with greater exposures to the storm surge than these located on the further inland. Accordingly, the vulnerability level in the Huizhou port (C) is high (level II).

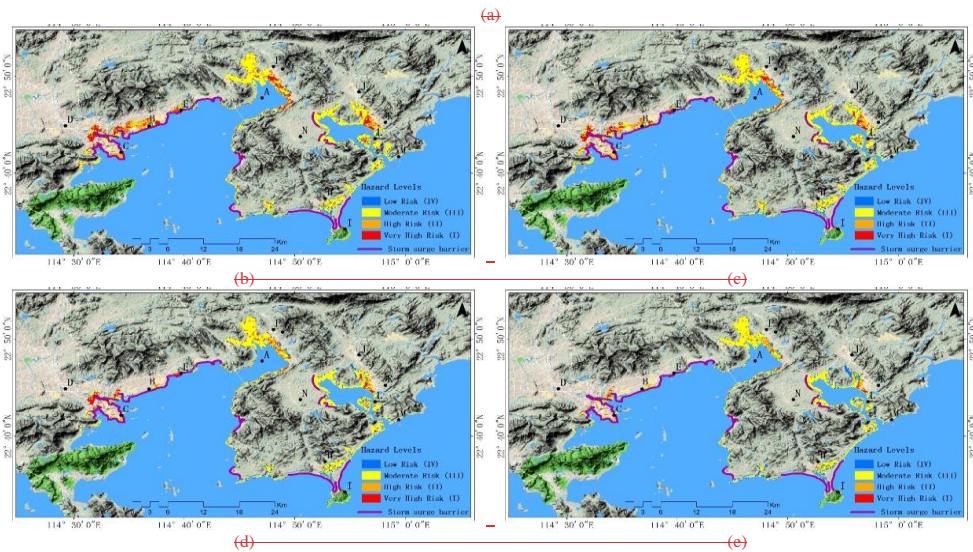
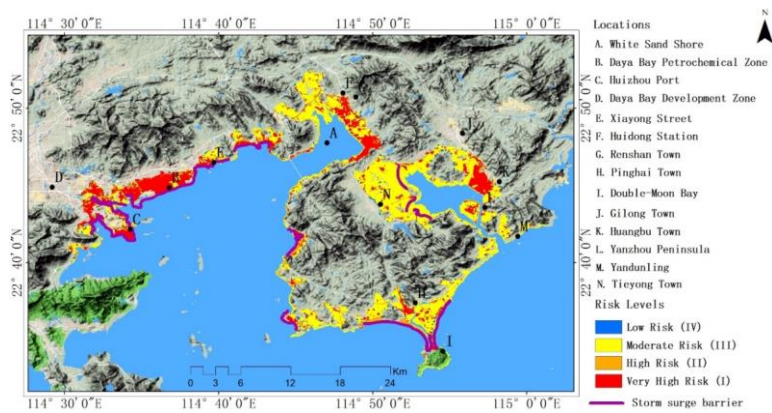
Moreover, some urban infrastructures, transportations, and mining storages that are situated along the coastline of Huizhou are sensitive to the storm surge, and the vulnerability level for these coastal zones is moderate (III) or high (II).

In addition, the most common land cover types over the study area are forest land, agriculture land, the garden plot land, and the water land. These land cover types are hardly affected by natural disasters. Thus, most regions in the study area colored by blue are under the low vulnerability level (IV).

4.3 Risk assessment

With the risk matrix approach (Table 7), the risk map in the study area can be made by the combination of the hazard map and the vulnerability map. The risk region was categorized into four dangerous zones represented by different colors, as shown in

Figure 4819. The statistics of the areas of different risk level zones for each of the design scenarios were summarized in Figure 4920.



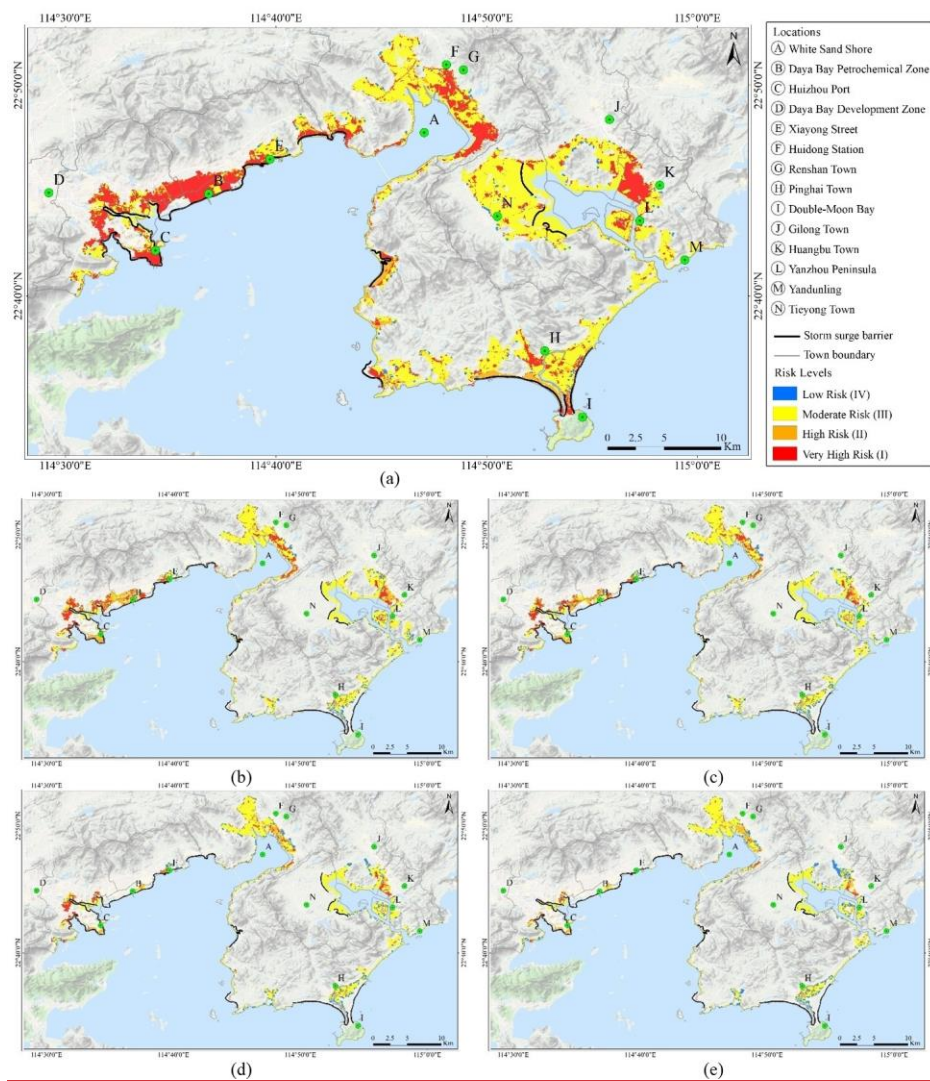
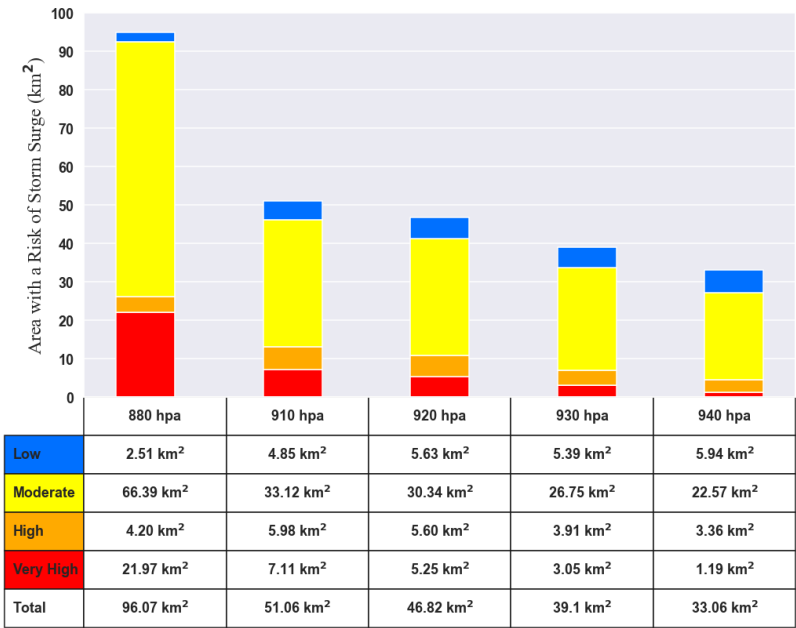


Figure 1819. The risk assessments maps represent the potential risk of storm surge for five designed storm scenarios ((a):880 hPa/1000-year, (b):910 hPa/100-year, (c):920 hPa/50-year, (d):930 hPa/20-year, (e):940 hPa/10-year). Different colors represent different risk levels.

600 The red means the very high risk, orange stands for high risk, yellow represents moderate risk, and blue indicates low risk on the map. The important locations in the study area are labeled with letters and the violet lines refer to the storm surge barriers along the coastline of Huizhou. These maps were made ~~with~~using the ArcGIS 10.5 software based on the terrain base map layer, which was obtained from Google Maps (Map data ©2019 Google).



605

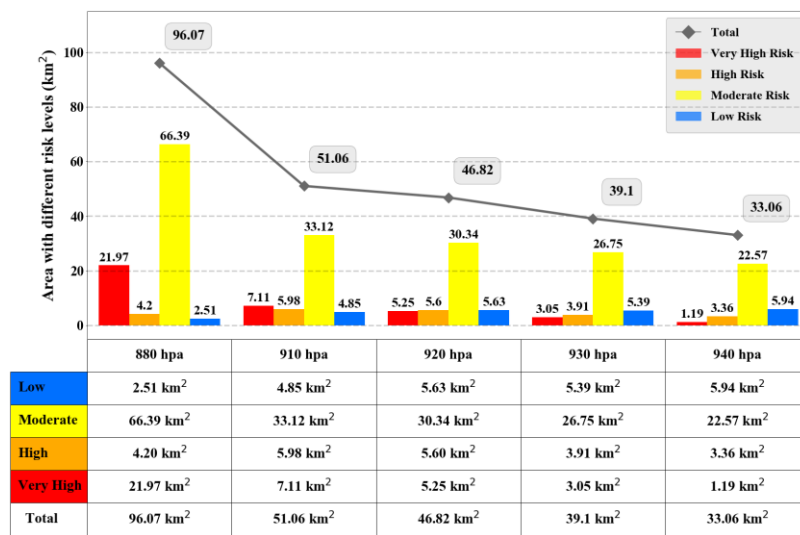


Figure 1920. The areas of different risk level zones for each of the designed typhoon scenarios (880 hPa, 910 hPa, 920 hPa, 930 hPa, 940 hPa).

The statistics data in Figure 1920 indicates that the total area at risk level and the land area labeled with a very high-level decrease with the increasing minimum central pressure of typhoon. The regions under the moderate risk level take the largest portion of the total area at risk level for each of the typhoon scenarios. For example, approximately 66.39 km² area is exposed to the moderate risk as the minimum central pressure is the 880 hPa, and an area of about 22.57 km² would be at moderate risk when the minimum central pressure is the 940 hPa.

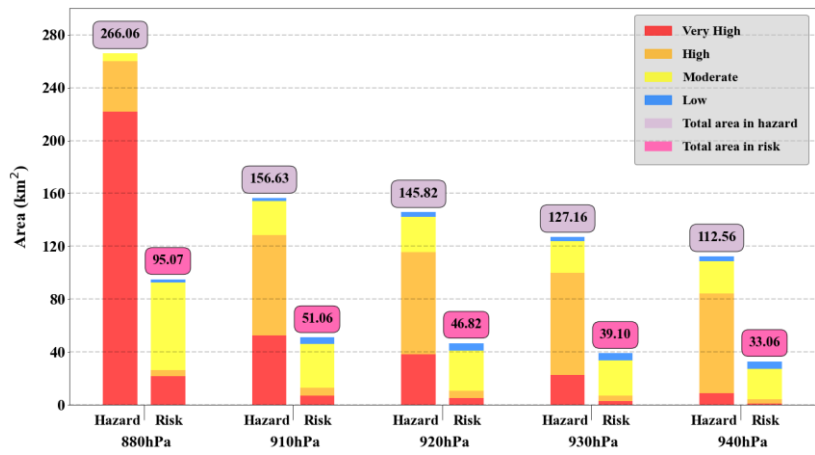
Figure 1819 shows that the high concentrations of petroleum industries and the high density of the population in the Daya Bay Petrochemical Zone (B) make its vulnerability very high. When the minimum central pressure is 880 hPa, the Daya Bay Petrochemical Zone (B) is in deep inundation status (level I). Thus, the risk level in this zone is at a very high (level I). As the minimum central pressure is 910 hPa or 920 hPa, the risk levels over a wide area of the Daya Bay Petrochemical Zone (B) are high and moderate. However, the Daya Bay Petrochemical Zone (B) is largely free from risk due to the protection provided by the storm surge barriers along the coastline when the minimum central pressure is 930 hPa or 940 hPa.

Moreover, the Huizhou Port (C) and the southeast of the Daya Bay Development Zone (D) are classified as very high or high-risk regions because the regions occupied by transportation land or human settlements (Figure 1718) are combined with high or very high hazard levels to storm surge (Figure 14).

625 In addition, the regions featuring very high or high-risk levels are the area to the north of the White Sand Shore (A), the Renshan Town (G), Pinghai Town (H), and the Huangbu Town (K). Without the protection from the barrier system, these regions mainly occupied by humans are under the moderate risk level even as the minimum central pressure is 940 hPa.

630 Although the vulnerability level is high in the Gilong Town(J) and the Tieyong Town (N), there is no sign of the risk of storm surge due to their locations far from the coastline when the minimum central pressure is 910 hPa, 920 hPa, 930 hPa, or 940 hPa.

635 The total area of hazard and risk of storm surge under different typhoon intensities are shown in Figure 21. It can be observed from Figure 21, that although the 83.4% (227 km²) of the total inundated area is a very high hazard zone to storm surge as the minimum central pressure is the 880 hPa, only 8% (21.97 km²) of the total inundated area is belonged to the very high risk zone to storm surge and 25% (66.39 km²) of the entire inundated area falls on moderate risk category due to their moderate or high vulnerability level. For other typhoon scenarios, many inundated areas are at a high hazard level for storm surge but most of them change to moderate risk zones, which indicates that the area at a high hazard level cannot represent that area at a high-risk level.



640 **Figure 21.** The total area of hazard and risk of storm surge for each of the designed typhoon scenarios (880 hPa, 910 hPa, 920 hPa, 930 hPa, and 940 hPa).

5 Conclusions

In this paper, the application of the coupled model (ADCIRC–SWAN) and the Jelesnianski method for semi-quantifying potential risk assessment of storm surge under different typhoon intensity scenarios in the coastal area of Huizhou. The typhoon

intensity scenarios were designed to the minimum central pressure of 880 hPa, 910 hPa, 920 hPa, 930 hPa, and 940 hPa (corresponding to 1000-year, 100-year, 50-year, 20-year, and 10-year return period). The coastal dikes and levees, which are supposed not damaged during the modelling period, were included in the ADCIRC+SWAN model and Jelesnianski method to simulate the storm surge. The possible inundation extents and depths of storm surge under five different typhoon intensities were computed and the risk assessments were performed based on coastal storm surge maps by using the ArcGIS 10.5 software.

The results indicate that the whole Daya Bay Petrochemical Zone and most of the coastal area of Huizhou are not at risk to the storm surge generated by low recurrence interval typhoon (20-year, and 10-year return period) due to the protection provided by coastal dikes and levees. The maximum inundation extents and depths increase with increasing return periods. Significant losses and damages might occur in some parts of the Daya Bay Petrochemical Zone and many coastal communities for the return periods of 50-year and 100-year scenarios. Moreover, the regions extending from 4 km to 6 km offshore, particularly in the Daya Bay Petrochemical Zone, are under high or very high-risk level to a 1000-year return period typhoon-induced storm surge.

The study provides a comprehensive assessment and zonation of hazard, vulnerability, and risk of storm surge to reduce disaster losses, which caused by designed typhoon scenarios (1000-year, 100-year, 50-year, 20-year, and 10-year return period) in the coastal area of Huizhou. The risk maps and [escape route maps, which can be downloaded from the risk analysis dataset \(si, 2020\)](#), have been used in practice in Huizhou city, China. ~~The risk~~These maps can help decision-makers in Huizhou recognize the densely populated communities under risk levels and allow them to develop evacuation strategies to minimize civilian casualties. Moreover, the study analyses the storm surge risk especially for the Daya Bay Petrochemical Zone, which is occupied by the high ~~concentration~~concentrations of petroleum industries. ~~The~~This risk analysis ~~can provide~~provides a better understanding of the risk regions in the Daya Bay Petrochemical Zone. ~~It, which~~ can both reduce economic losses and prevent environmental damage caused by the massive chemical pollutants and oil spills from coastal petroleum industries that are affected by storm surge. ~~Besides~~Finally, the proposed methodology and procedure can be applied to any coastal cities in China for conducting risk assessments of storm surge.

In further research, the risk assessment should be undertaken in the following aspects:

- (1). The evaluation method based on the different land cover classes is simple. The stage-damage function is regarded as one of the most effective solutions to storm surge damage assessment. Therefore, the vulnerability curve rather than the land cover types should be utilized to conduct quantitatively vulnerability assessment in the study area.
- (2). Because of increasing typhoon intensity and rising sea levels caused by climate change in the future, the ~~heightened~~increased storm surge will be taken into consideration when assessing future risk and making hazard mitigation plans in the study area.
- (3). When the maximum inundated depths and extents are calculated under different intensity typhoons, the levee breach along the coastline will be included in the modelling process to improve simulation precision.

Data availability. The typhoon record was obtained from the China Meteorological Administration. The dataset of Storm Surge Barriers was acquired from the Huizhou Oceanic Administration. The dataset of Water Level Records was obtained from the Huizhou Oceanic Administration. Other datasets (DEM, Land Cover Types, District Boundaries) were available from the Huizhou Land and Resources Bureau. The datasets used in the study can be obtained from <https://doi.org/10.6084/m9.figshare.12459794.v1>.

Competing interests. The authors declare that they have no conflict of interest.

Author contributions. Lin Mu designed the concept; Zhenfeng Yao and Si Wang collected the data in this study; [Lizhe Wang provided some detailed skills and approaches in the experiment](#); Si Wang and Jia Gao completed the coding and carried out experiments; Lin Mu and Si Wang analyzed experimental results; Si Wang, Lin Mu, and Enjing Zhao wrote the manuscript.

Financial support. This work was supported by ~~the Disaster Prevention and Reduction Project for Huizhou Fishery and Aquaculture Industry (Grant No. 2018HZBXSZ04027)~~, the National Key Area Research and Development Program of China (Grant No. 2017YFC1404700) and the Discipline Layout Project for Basic Guangdong Province (No. 2020B1111020005), ~~Shenzhen Fundamental Research of Shenzhen Science and Technology Innovation Committee Program~~ (Grant No. JCYJ20170810103011913), ~~Key Special Project for Introduced Talents Team of Southern Marine Science and Engineering Guangdong Laboratory (Guangzhou)~~ (Grant No. GML2019ZD0604).

Acknowledgements. Thanks to the South China Sea Marine Prediction Center whose researchers helped to evaluate the performance of the coupled model (ADCIRC-SWAN) by comparing the predicted water levels and the observed water levels in the study area and simulate the possible inundation depths and extents of typhoon surge with the coupled model for the designed typhoon scenarios.

Reference

Asian Disaster Reduction Center. Japan: Typhoon: 2019/10/12, available online at: https://www.adrc.asia/view_disaster_en.php?NationCode=392&Lang=en&Key=235

Atkinson GD, Holliday CR. Tropical cyclone minimum sea level pressure/maximum sustained wind relationship for the western North Pacific. *Monthly Weather Review*. 1977 Apr;105(4):421-7.

Booij N, Ris R C, Holthuijsen L H. A third-generation wave model for coastal regions: 1. Model description and validation[J]. *Journal of geophysical research: Oceans*, 1999, 104(C4): 7649-7666.

710 [Cheung, K. F., Tang, L., Donnelly, J. P., Scileppi, E. M., Liu, K. B., Mao, X. Z., ... & Murnane, R. J. \(2007\). Numerical modeling and field evidence of coastal overwash in southern New England from Hurricane Bob and implications for paleotempestology. *Journal of Geophysical Research: Earth Surface*, 112\(F3\).](#)

Chrichton D. The risk triangle. In: Ingleton J (ed) Natural disaster management. Tudor Rose, London, 1999, pp 102–103

715 de Moel H, van Vliet M, Aerts J C J H. Evaluating the effect of flood damage-reducing measures: a case study of the unembanked area of Rotterdam, the Netherlands[J]. *Regional environmental change*, 2014, 14(3): 895-908.

Dietrich J C, Tanaka S, Westerink J J, et al. Performance of the unstructured-mesh, SWAN+ ADCIRC model in computing

720 hurricane waves and surge[J]. *Journal of Scientific Computing*, 2012, 52(2): 468-497.

Dietrich J C, Zijlema M, Westerink J J, et al. Modeling hurricane waves and storm surge using integrally-coupled, scalable computations[J]. *Coastal Engineering*, 2011, 58(1): 45-65.

725 Fang Y, Yin J, Wu B. Flooding risk assessment of coastal tourist attractions affected by sea level rise and storm surge: a case study in Zhejiang Province, China[J]. *Natural Hazards*, 2016, 84(1): 611-624.

[Huizhou Guangdong province, 2019, available online at: http://govt.chinadaily.com.cn/s/201907/08/WS5d145d96498e5314096b63f5/huizhou-guangdong-province.html.](#)

730 [Huizhou, 2018, available online at: https://www.bayarea.gov.hk/en/about/huizhou.html.](#)

Intergovernmental Panel on Climate Change, Global Warming of 1.5 °C, An IPCC special report on the impacts of global warming of 1.5 °C above pre-industrial levels and related global greenhouse gas emission pathways, in the context of

735 strengthening the global response to the threat of climate change, sustainable development, and efforts to eradicate poverty, available online at: <https://www.ipcc.ch/sr15/>

Jelesnianski, C. P., and A. D. Taylor. "NOAA Technical Memorandum, ERL WMPO-3." NOAA, Washington, DC, 1973.

740 Kaźmierczak A, Cavan G. Surface water flooding risk to urban communities: Analysis of vulnerability, hazard and exposure[J]. *Landscape and Urban Planning*, 2011, 103(2): 185-197.

745

[Kerr, P. C., Donahue, A. S., Westerink, J. J., Luettich Jr, R. A., Zheng, L. Y., Weisberg, R. H., ... & Roland, A. \(2013\). US IOOS coastal and ocean modeling testbed: Inter-model evaluation of tides, waves, and hurricane surge in the Gulf of Mexico. *Journal of Geophysical Research: Oceans*, 118\(10\), 5129-5172.](#)

Koks E E, Jongman B, Husby T G, et al. Combining hazard, exposure and social vulnerability to provide lessons for flood risk management[J]. *Environmental science & policy*, 2015, 47: 42-52.

750

Luettich Jr R A, Westerink J J, Scheffner N W. ADCIRC: An Advanced Three-Dimensional Circulation Model for Shelves, Coasts, and Estuaries. Report 1. Theory and Methodology of ADCIRC-2DDI and ADCIRC-3DL[R]. Coastal engineering research center vicksburg MS, 1992.

755

[Li, A., Guan, S., Mo, D., Hou, Y., Hong, X., & Liu, Z. \(2020\). Modeling wave effects on storm surge from different typhoon intensities and sizes in the South China Sea. *Estuarine, Coastal and Shelf Science*, 235, 106551.](#)

Lichter M, Vafeidis AT, Nicholls RJ, Kaiser G. Exploring Data-Related Uncertainties in Analyses of Land Area and Population in the "Low-Elevation Coastal Zone" (LECZ). *Journal of Coastal Research* 2011; 27: 757–768.

760

McGranahan G, Balk D, Anderson B. The rising tide: assessing the risks of climate change and human settlements in low elevation coastal zones. *Environment and Urbanization*, 2007; 19: 17–37.

McGrath H, Stefanakis E, Nastev M. Sensitivity analysis of flood damage estimates: A case study in Fredericton, New Brunswick[J]. *International Journal of Disaster Risk Reduction*, 2015, 14: 379-387.

765

Middelmann-Fernandes M H. Flood damage estimation beyond stage–damage functions: an Australian example[J]. *Journal of Flood Risk Management*, 2010, 3(1): 88-96.

Ministry of Natural Resources of the People’s Republic of China, China Marine disaster bulletin (in Chinese), 2018, available online at: <http://www.mnr.gov.cn/sj/sjfw/hy/gbgb/zghyzhgb/>

770

Ministry of Natural Resources of the People’s Republic of China, Technical ~~guidance~~[guideline](#) for risk assessment and zonati on of storm surge disaster, 2019, available online at: <https://www.renrendoc.com/p-82139795.html> (in Chinese) and http://g i.mnr.gov.cn/201912/t20191225_2491758.html (in Chinese)).

775

National Oceanic and Atmospheric Administration, National Weather Service, available online at: <https://www.weather.gov/mob/katrina>

Orlić, M., Belušić, D., Janeković, I., & Pasarić, M. (2010). Fresh evidence relating the great Adriatic surge of 21 June 1978 to mesoscale atmospheric forcing. *Journal of Geophysical Research: Oceans*, 115(C6).

Seto KC, Fragkias M, Güneralp B, Reilly MK. A Meta-Analysis of Global Urban Land Expansion. *PLoS ONE* 2011; 6: e23777. pmid:21876770

Vickery, P. J., Skerlj, P. F., & Twisdale, L. A. (2000). Simulation of hurricane risk in the US using empirical track model. *Journal of structural engineering*, 126(10), 1222-1237.

Westerink JJ, Luettich Jr RA, Blain CA, et al. ADCIRC: an advanced three-dimensional circulation model for shelves, coasts, and estuaries. Report 2. User's manual for ADCIRC-2DDI[R]. ARMY ENGINEER WATERWAYS EXPERIMENT STATION VICKSBURG MS, 1994.

Ying, M., W. Zhang, H. Yu, X. Lu, J. Feng, Y. Fan, Y. Zhu, and D. Chen: An overview of the China Meteorological Administration tropical cyclone database. *J. Atmos. Oceanic Technol.*, 31, 287-301. doi: 10.1175/JTECH-D-12-00119.1, 2014

Zhang Y, Li T, Wang H, et al. Storm surge risk assessment for Yuhuan County in Taizhou City[J]. *Natural Hazards*, 2016, 84(1): 1-16.

[dataset] si, wang (2020): nhess-datasets-2020-130. figshare. Dataset. <https://doi.org/10.6084/m9.figshare.12459794.v1>

[dataset] si, wang (2020): escape routine. figshare. Figure. <https://doi.org/10.6084/m9.figshare.12647105.v1>