

Interactive comment on “Assessment of probability distributions and minimum storage draft-rate analysis in the equatorial region” by Hasrul Hazman Hasan et al.

Hasrul Hazman Hasan et al.

p99749@siswa.ukm.edu.my

Received and published: 24 June 2020

Dear Referee #1,

We would like to thank you for your constructive comments. We agree with most of the suggestions and, therefore, we will modify the manuscript to take on board your comments and recommendations. In the document (supplement to this post), we recall these comments and we reply to each of the comments. The document (supplement to this post) provides full details on how we improve the original manuscript.

Please also note the supplement to this comment:

C1

[Printer-friendly version](#)

[Discussion paper](#)



<https://www.nat-hazards-earth-syst-sci-discuss.net/nhess-2020-105/nhess-2020-105-AC1-supplement.pdf>

Interactive comment on Nat. Hazards Earth Syst. Sci. Discuss., <https://doi.org/10.5194/nhess-2020-105>, 2020.

NHESSD

[Interactive
comment](#)

[Printer-friendly version](#)

[Discussion paper](#)



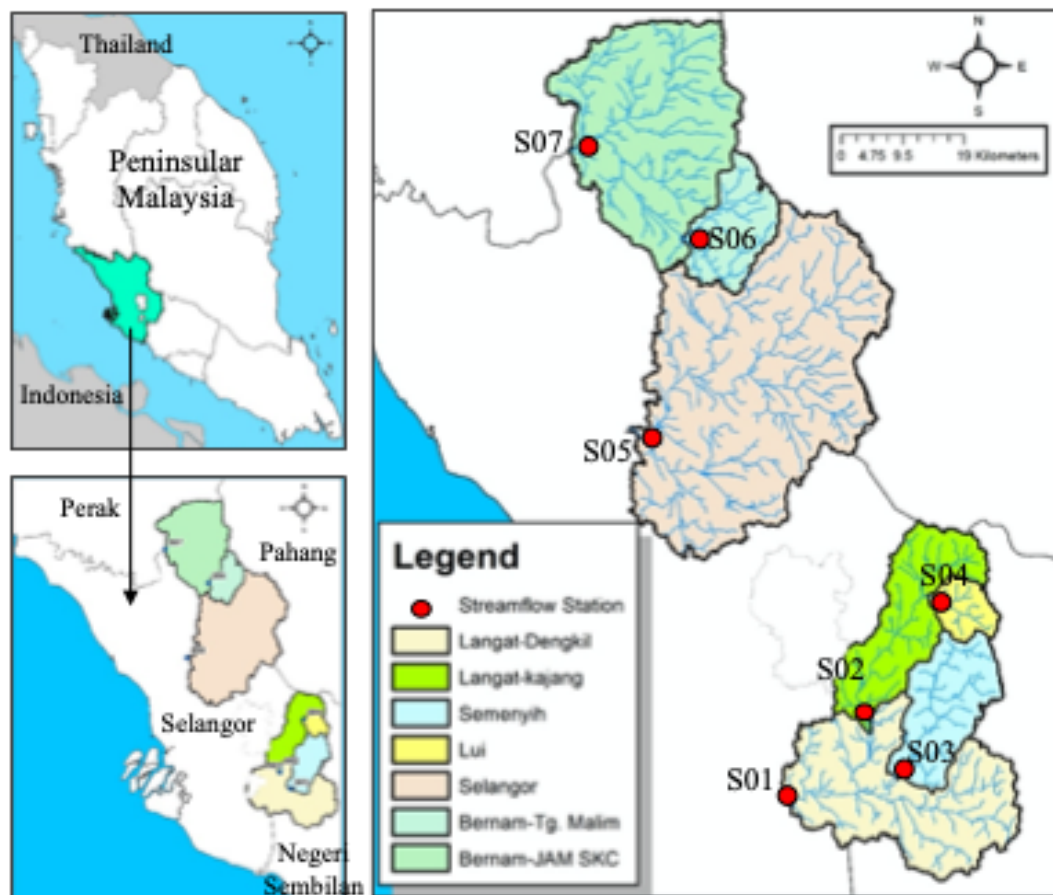


Fig. 1. Figure 1: River basin and streamflow station in Selangor.

[Printer-friendly version](#)[Discussion paper](#)

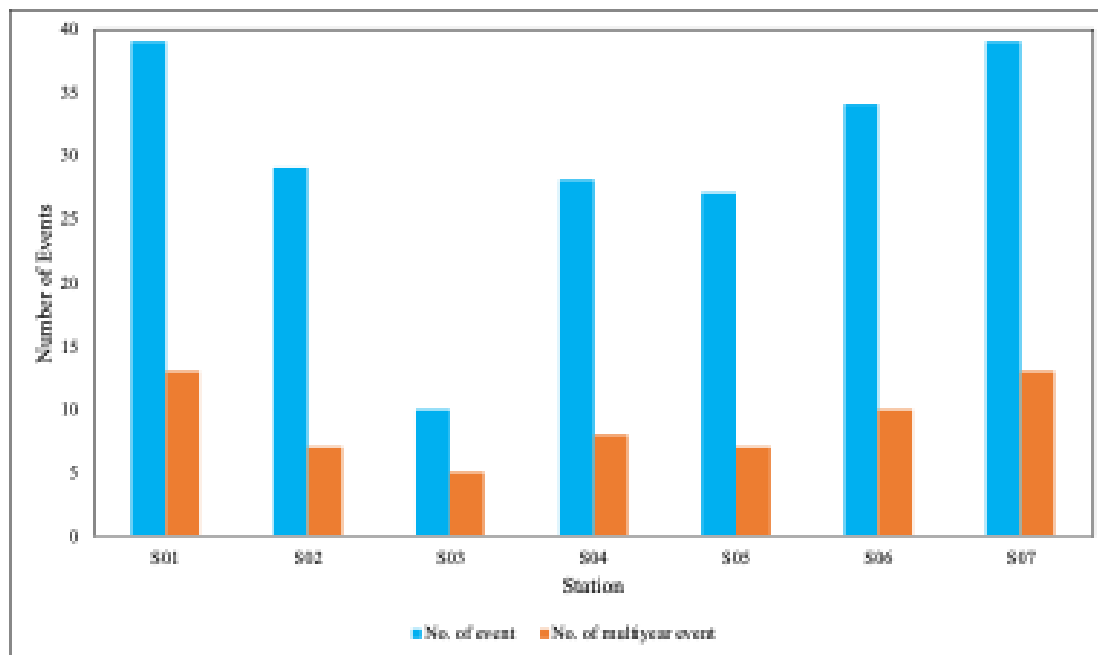


Fig. 2. Figure 4: Number of drought events.

[Printer-friendly version](#)[Discussion paper](#)

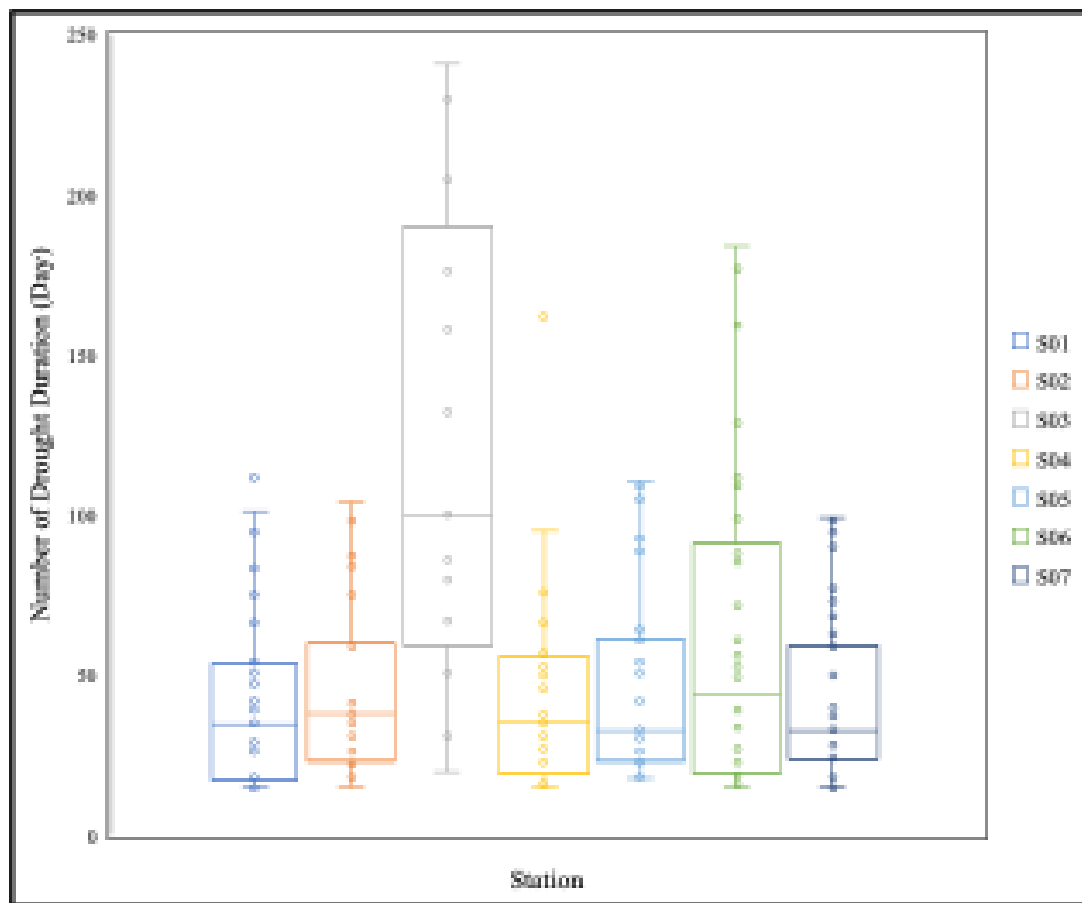


Fig. 3. Figure 5: The number of drought duration (days).

[Printer-friendly version](#)[Discussion paper](#)

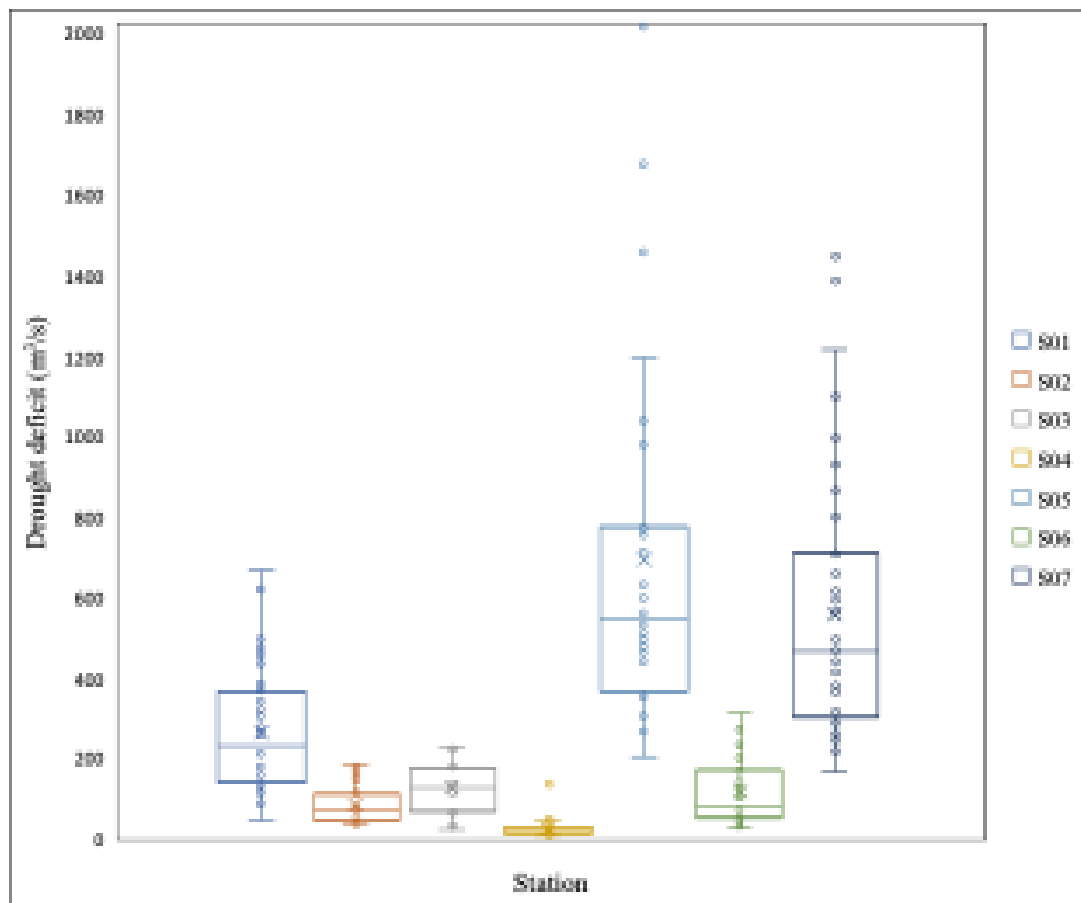


Fig. 4. Figure 6: The drought deficit for all station.

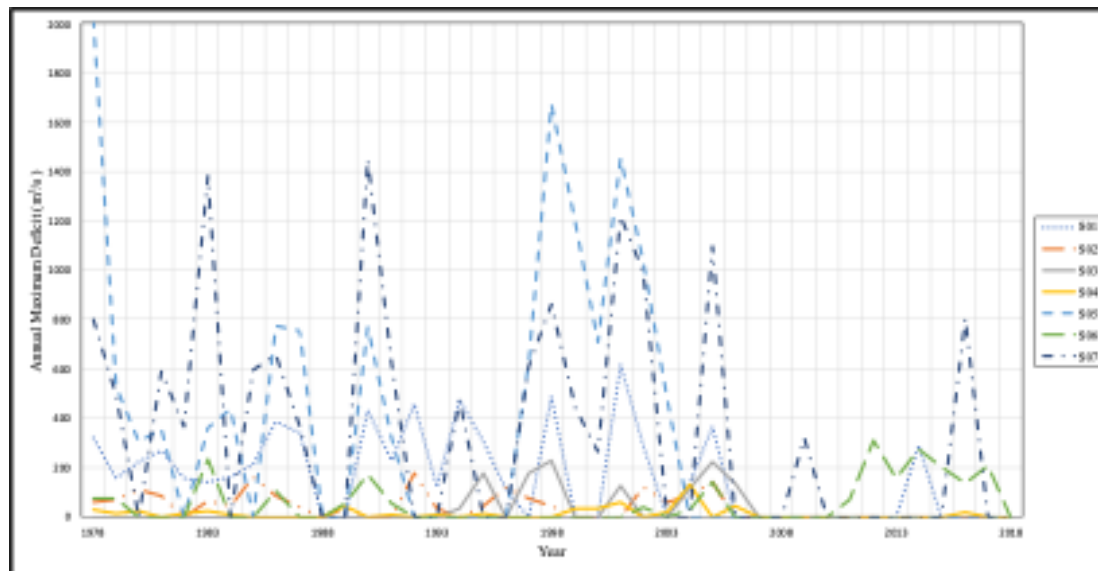


Fig. 5. Figure 7: Time series of annual maximum deficit (m³/s).

[Printer-friendly version](#)

[Discussion paper](#)



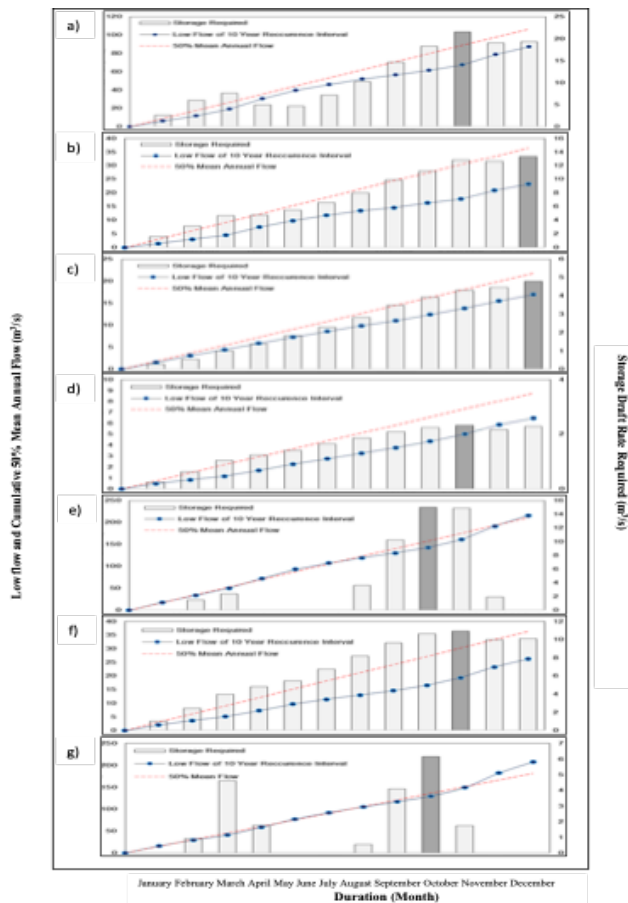


Fig. 6. Figure 8: Minimum storage draft rate with cumulative 50% mean flow (a) S01 (b) S02 (c) S03 (d) S04 (e) S05 (f) S06 (g) S07.