

Supporting Information for

Speeding up and boosting tsunami warning alert in Chile

Fuentes, M⁽¹⁾., Arriola S⁽²⁾., Riquelme, S⁽²⁾., and Delouis, B⁽³⁾.

- (1) Department of Geophysics, Faculty of Physical and Mathematical Sciences, University of Chile
(2) National Seismological Center, Faculty of Physical and Mathematical Sciences, University of Chile
(3) Géoazur, Université de Nice Sophia Antipolis, Observatoire de la Côte d'Azur

Contents of this file

Figures S1 to S24.

S.1 Introduction

This file provides 48 figures that resume the tsunami simulation of each event ($\times 12$) with an elliptic patch and a finite fault model ($\times 2$) for both, JAGURS code and the simple linear method presented in this work ($\times 2$).

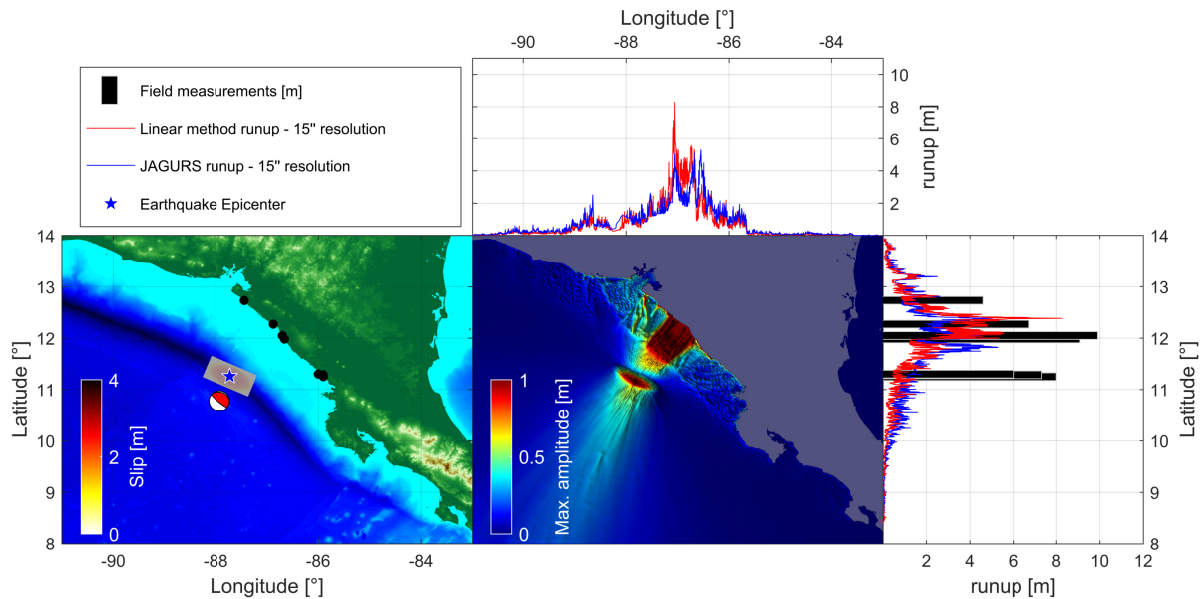


Fig. S1: Summary of the tsunami simulation for The 1992 Nicaragua Earthquake with an elliptic source.

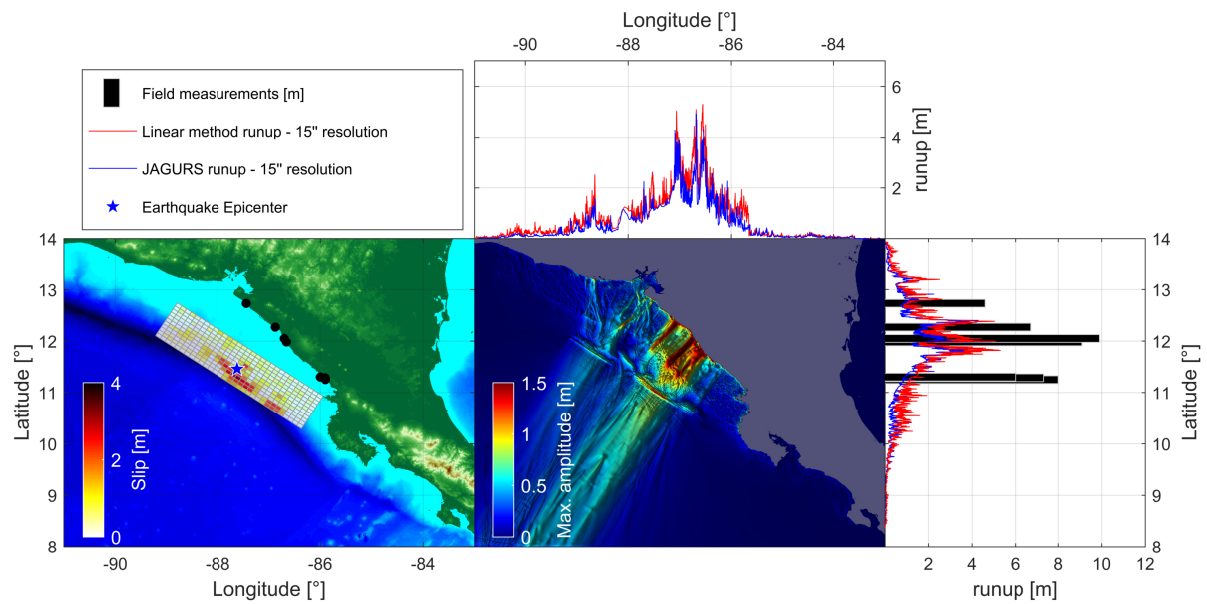


Fig. S2: Summary of the tsunami simulation for The 1992 Nicaragua Earthquake with a finite fault model.

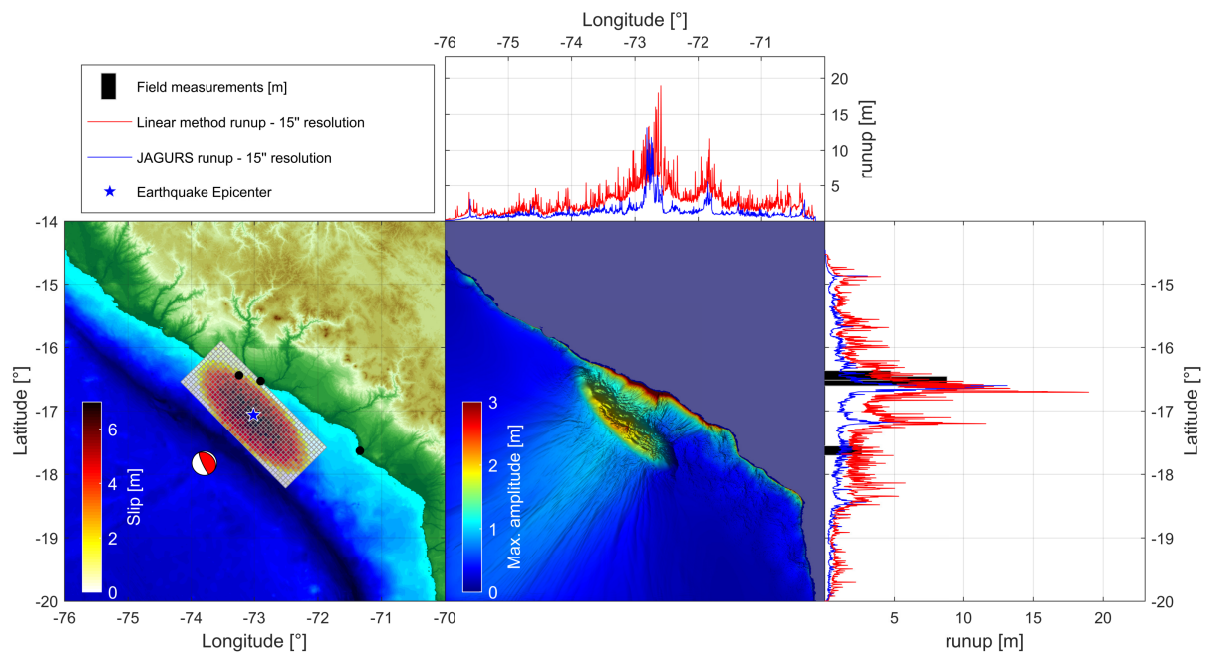


Fig. S3: Summary of the tsunami simulation for The 2001 Southern Perú Earthquake with an elliptic source.

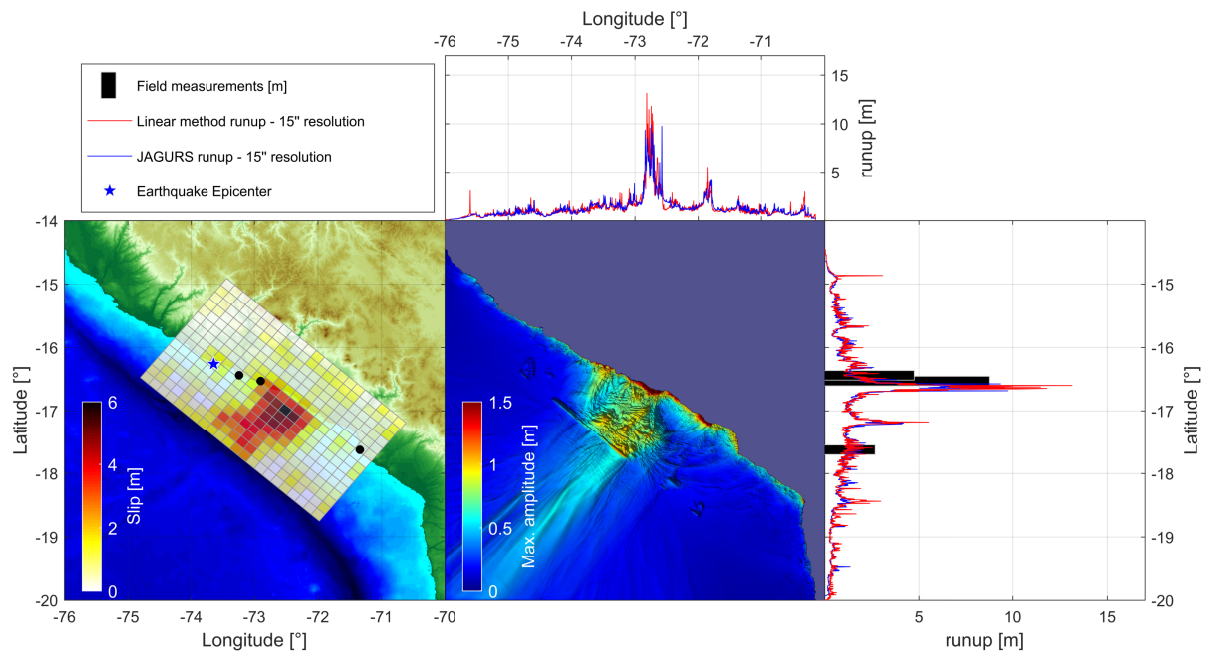


Fig. S4: Summary of the tsunami simulation for The 2001 Southern Perú Earthquake with a finite fault model.

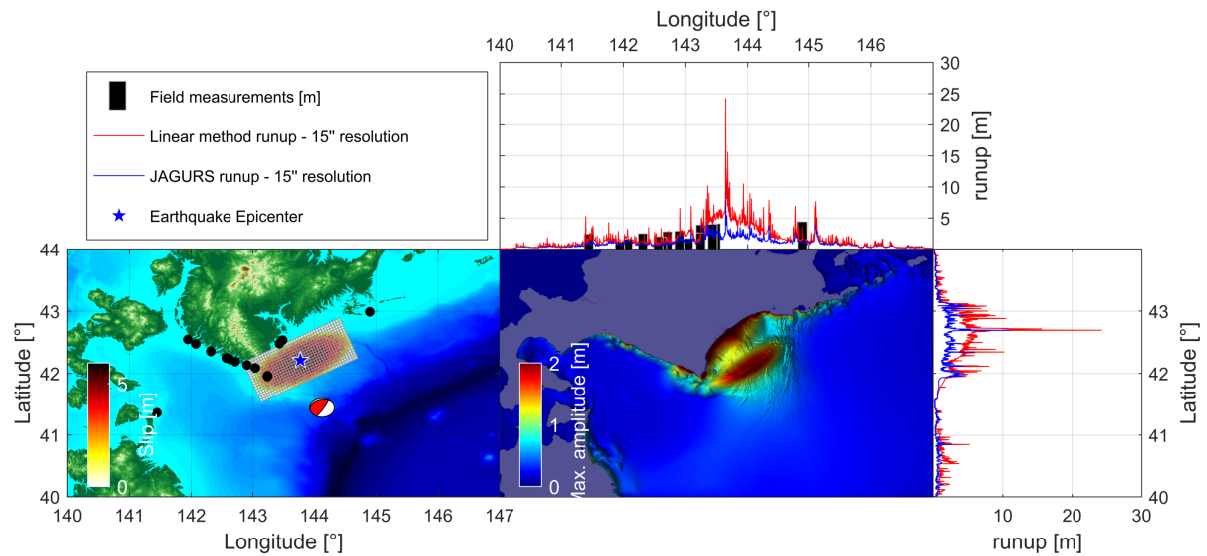


Fig. S5: Summary of the tsunami simulation for The 2003 Japan Earthquake with an elliptic source.

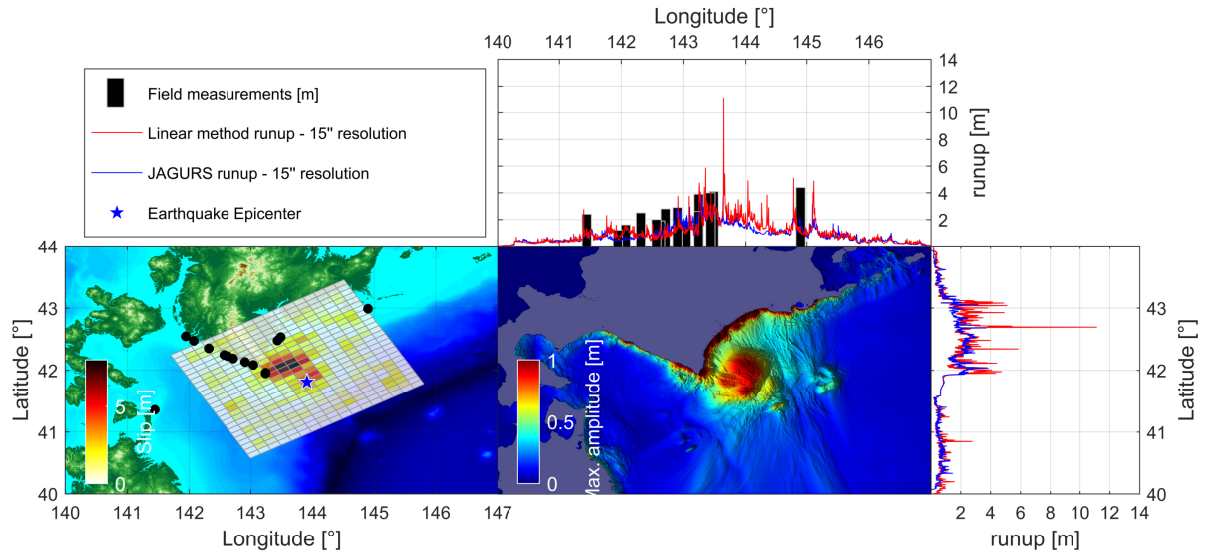


Fig. S6: Summary of the tsunami simulation for The 2003 Japan Earthquake with a finite fault model.

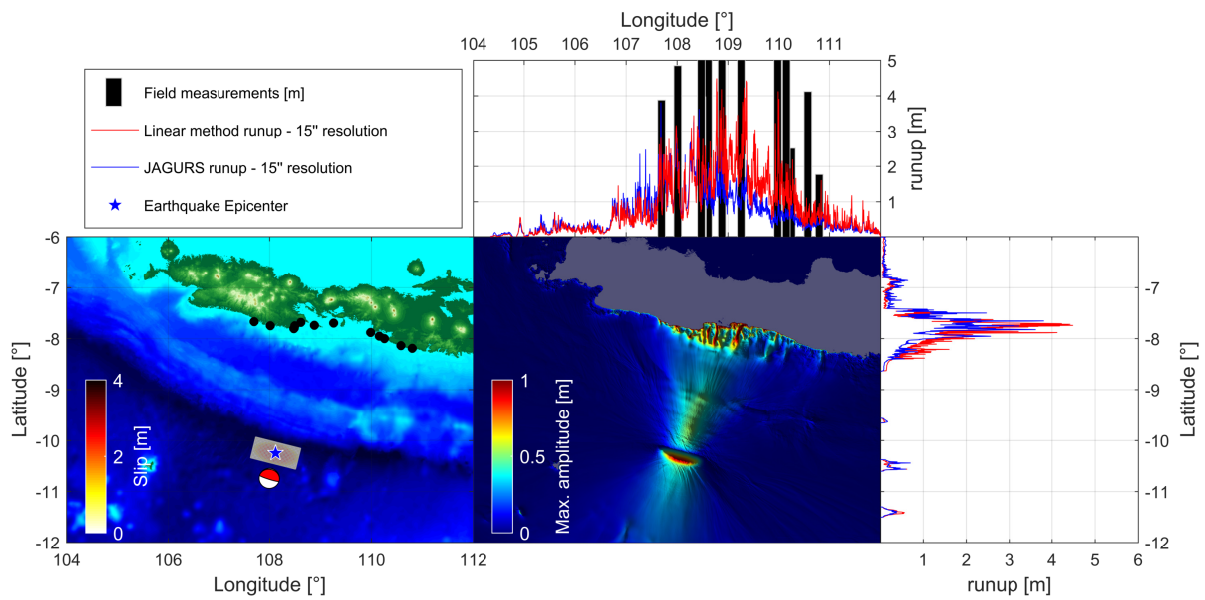


Fig. S7: Summary of the tsunami simulation for The 2006 Indonesia Earthquake with an elliptic source.

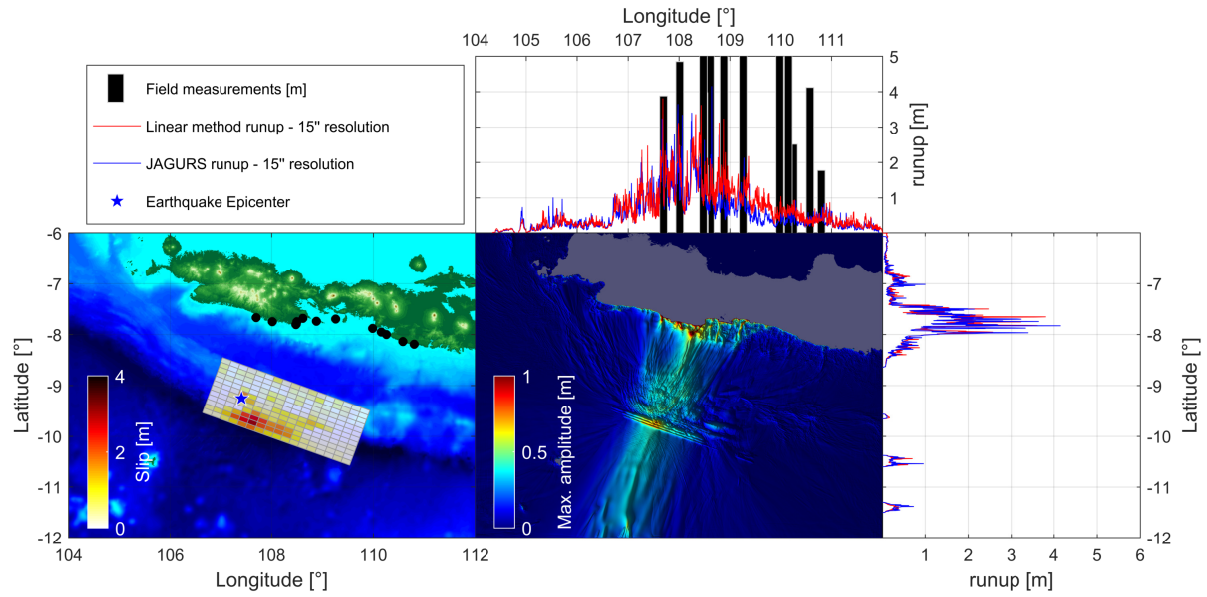


Fig. S8: Summary of the tsunami simulation for The 2006 Indonesia Earthquake with a finite fault model.

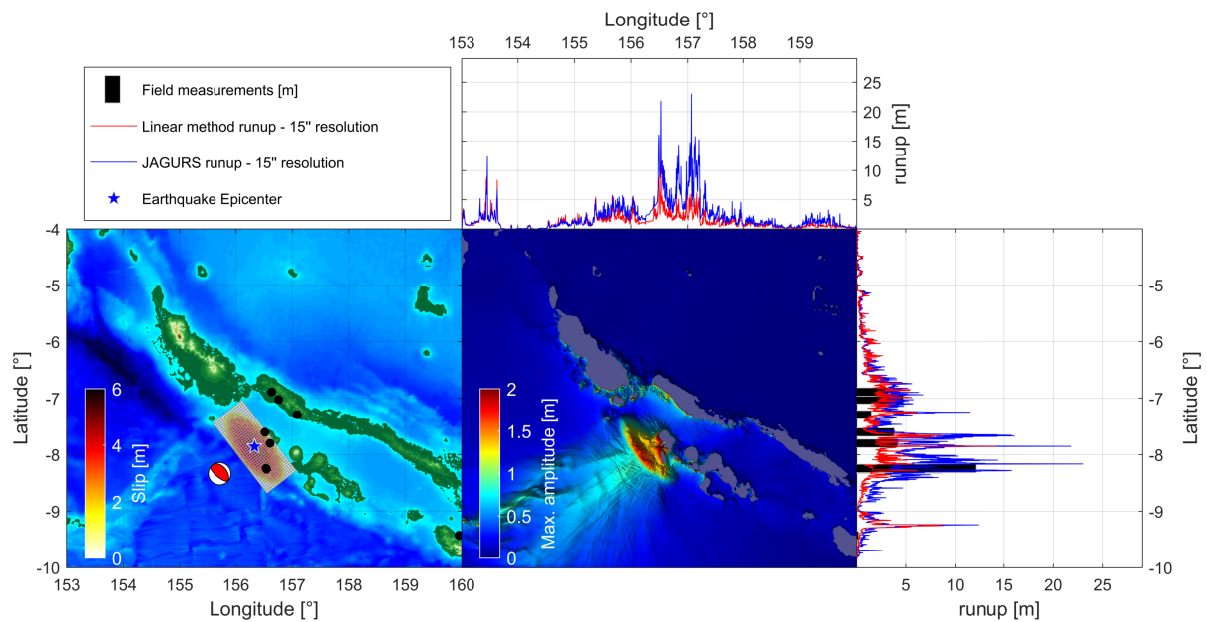


Fig. S9: Summary of the tsunami simulation for The 2007 Solomon Isl. Earthquake with an elliptic source.

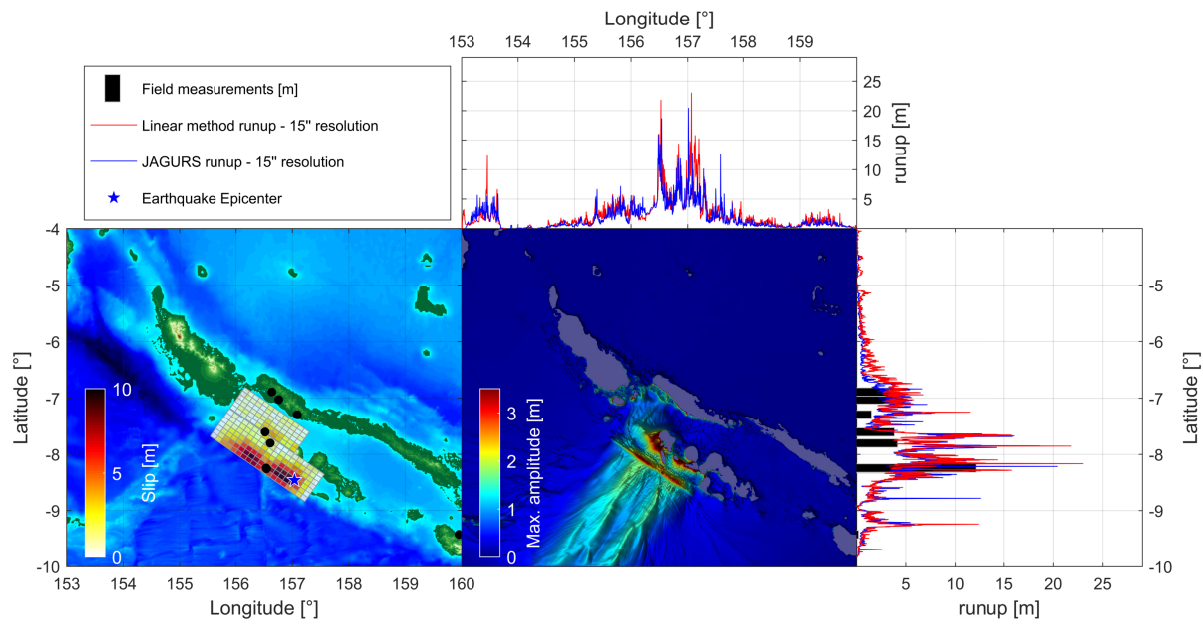


Fig. S10: Summary of the tsunami simulation for The 2007 Solomon Isl. Earthquake with a finite fault model.

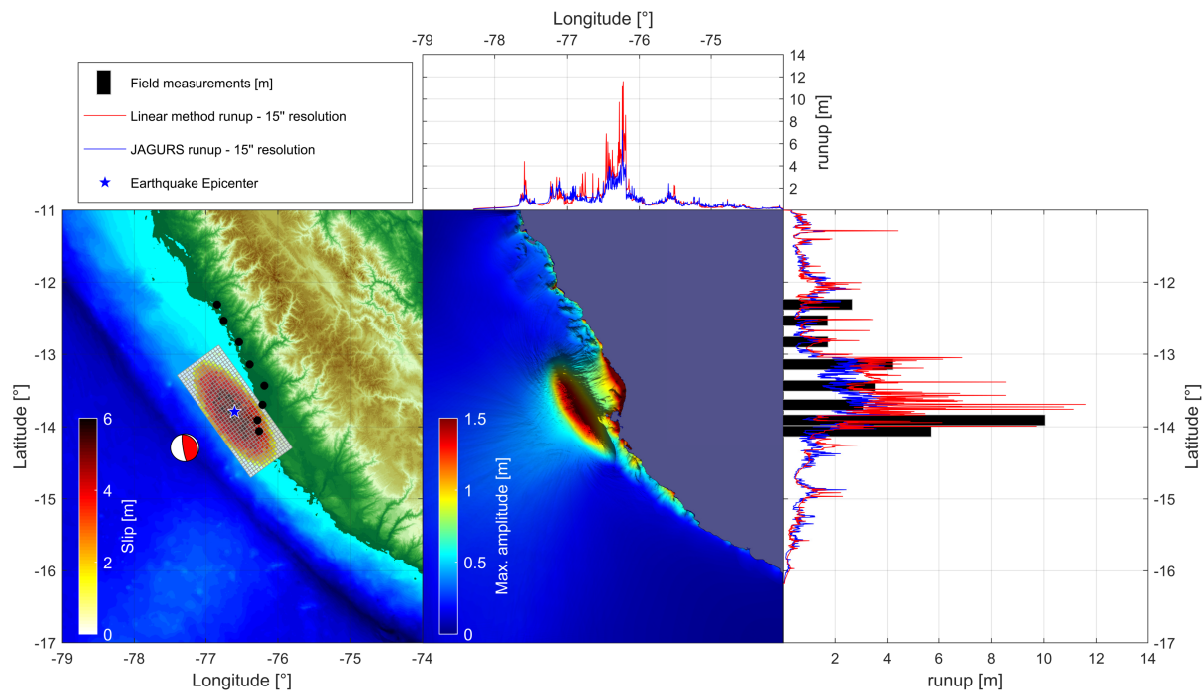


Fig. S11: Summary of the tsunami simulation for The 2007 Perú Earthquake with an elliptic source.

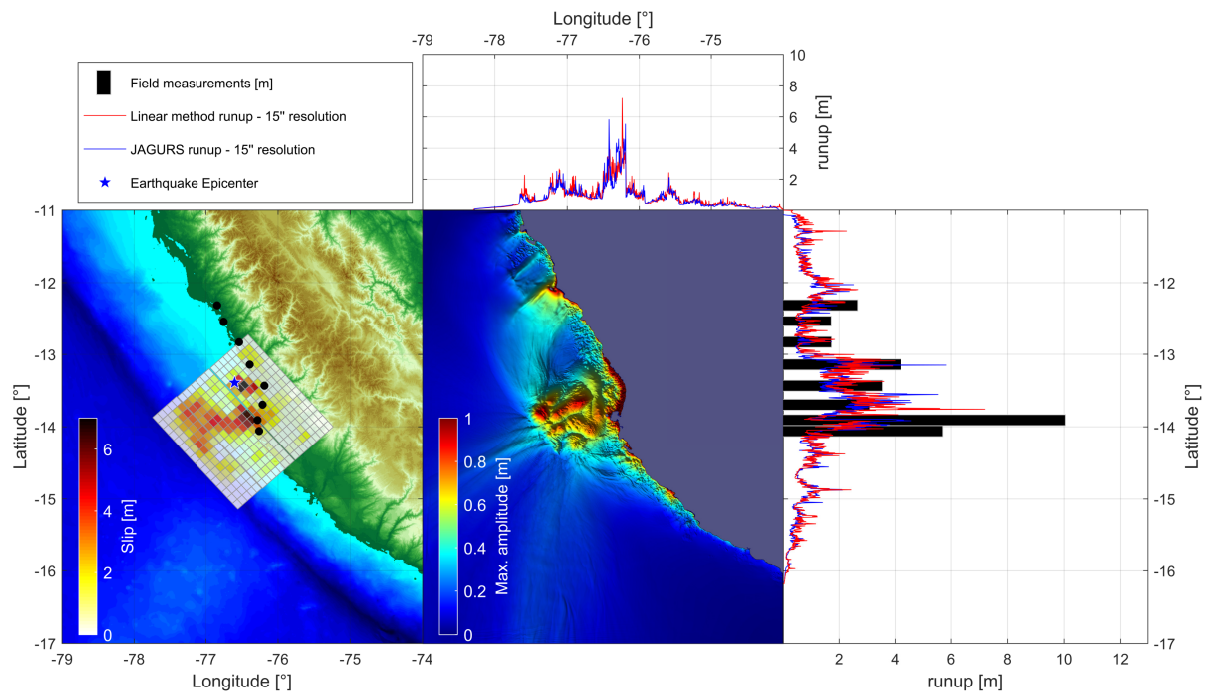


Fig. S12: Summary of the tsunami simulation for The 2007 Perú Earthquake with a finite fault model.

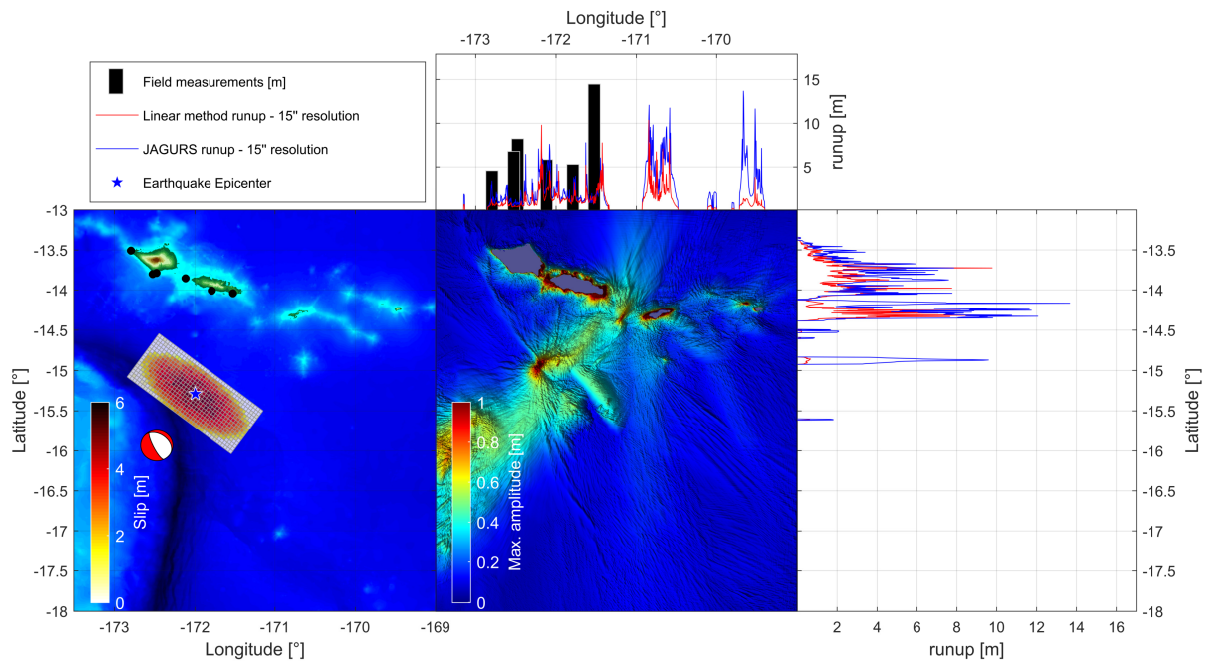


Fig. S13: Summary of the tsunami simulation for The 2009 Samoa Earthquake with an elliptic source.

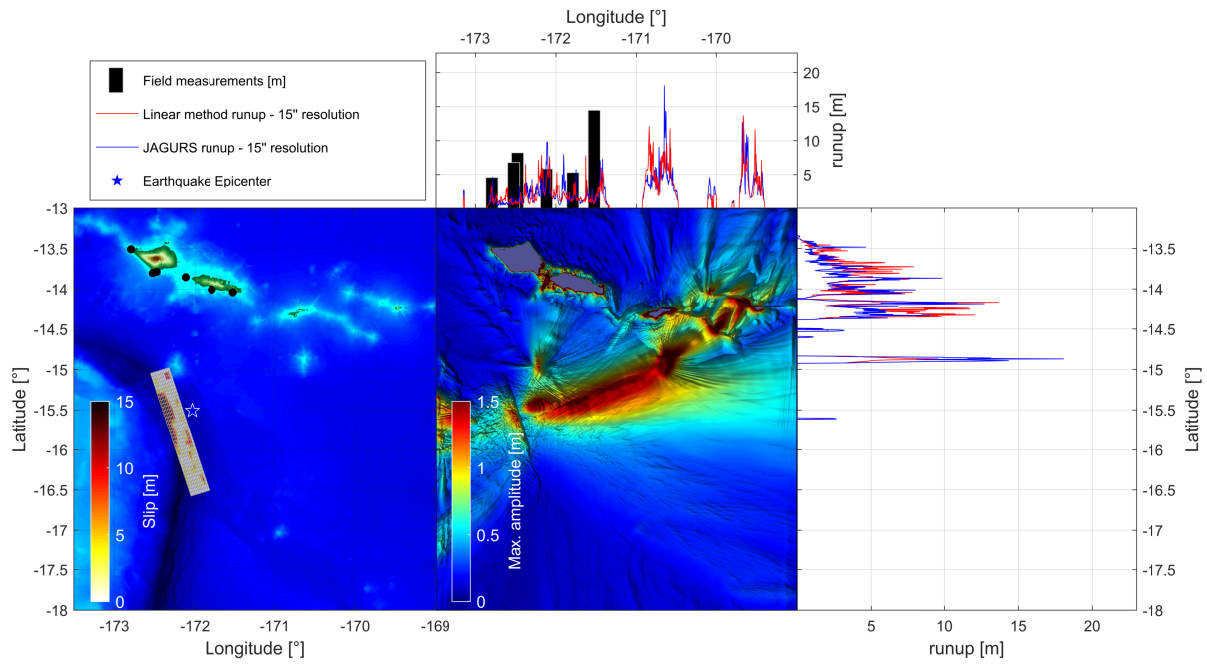


Fig. S14: Summary of the tsunami simulation for The 2009 Samoa Earthquake with a finite fault model.

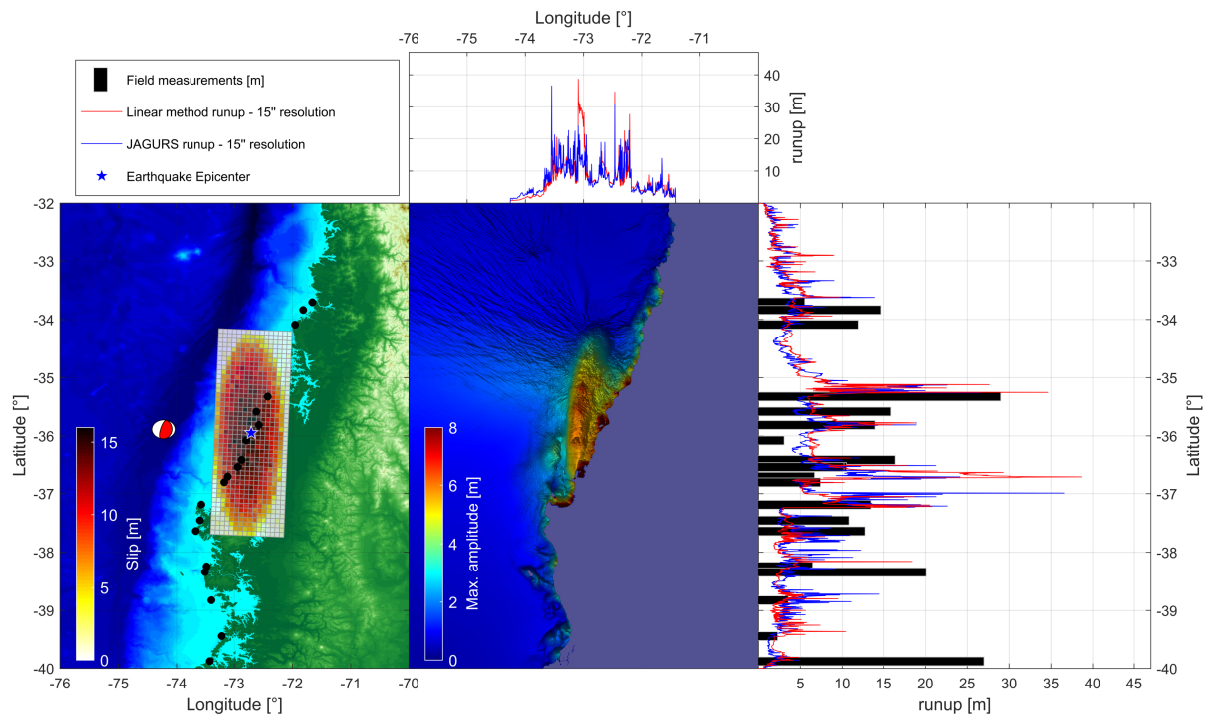


Fig. S15: Summary of the tsunami simulation for The 2010 Chile Earthquake with an elliptic source.

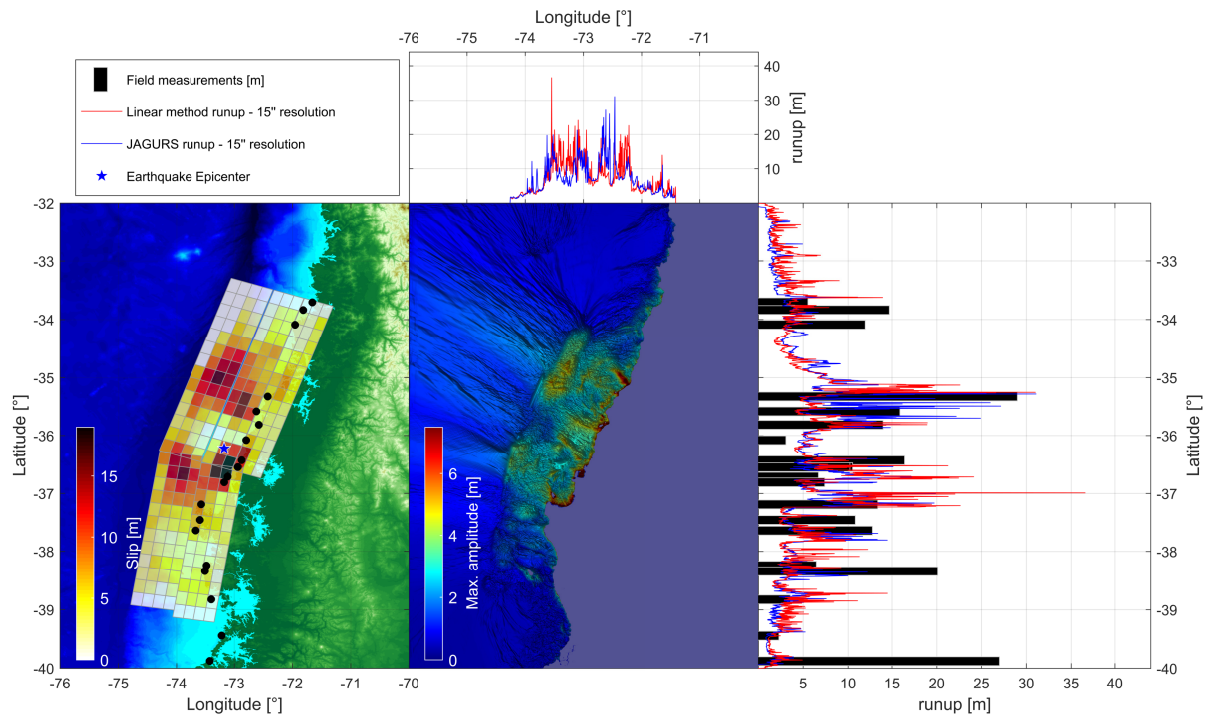


Fig. S16: Summary of the tsunami simulation for The 2010 Chile Earthquake with a finite fault model.

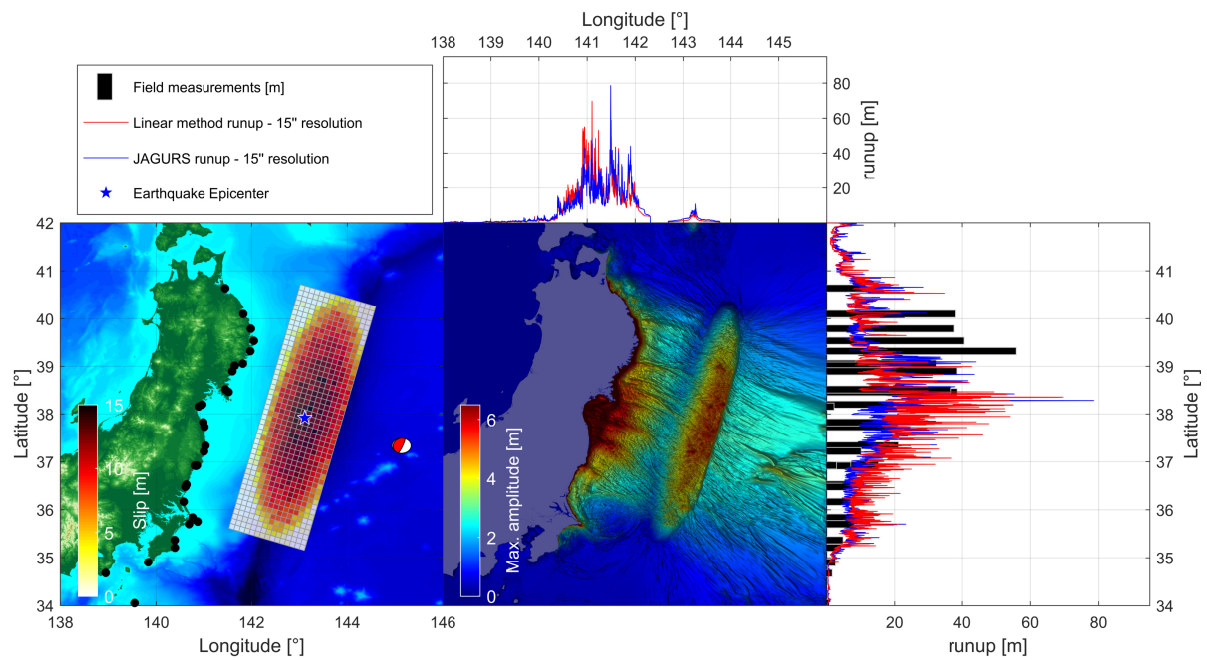


Fig. S17: Summary of the tsunami simulation for The 2011 Japan Earthquake with an elliptic source.

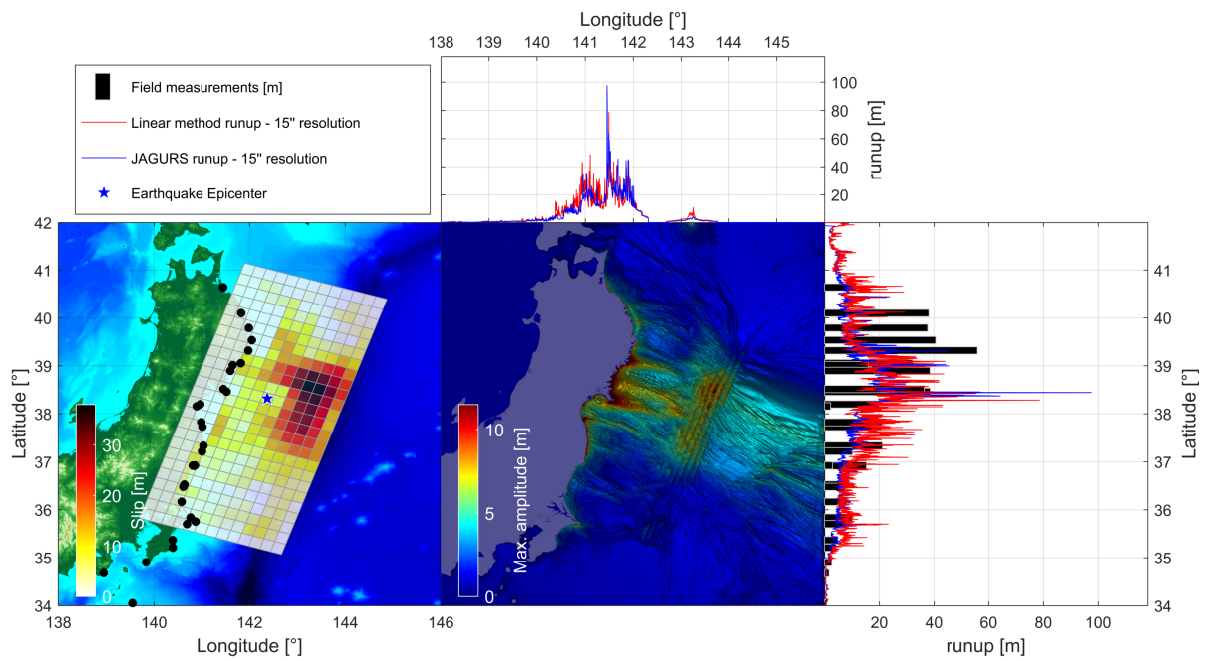


Fig. S18: Summary of the tsunami simulation for The 2011 Japan Earthquake with a finite fault model.

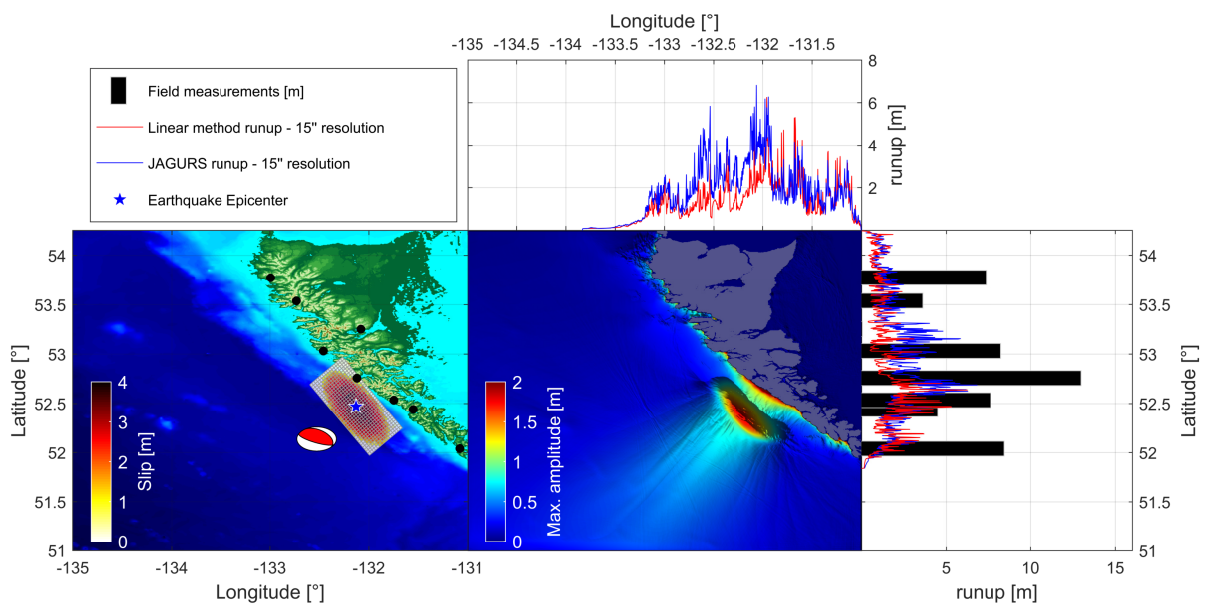


Fig. S19: Summary of the tsunami simulation for The 2012 Canada Earthquake with an elliptic source.

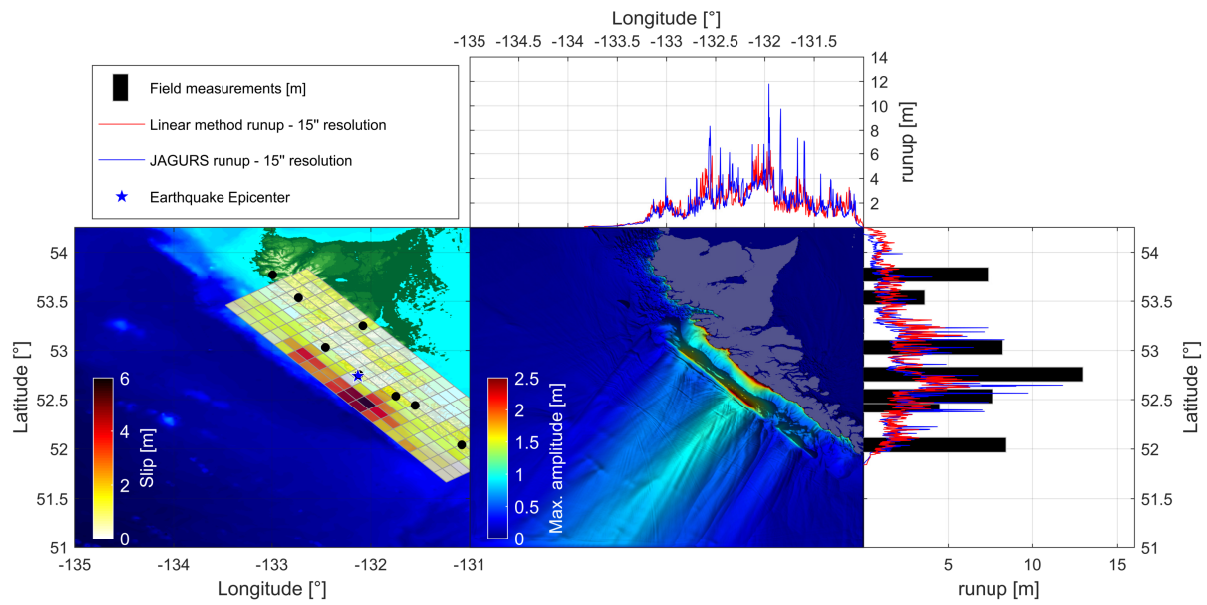


Fig. S20: Summary of the tsunami simulation for The 2012 Canada Earthquake with a finite fault model.

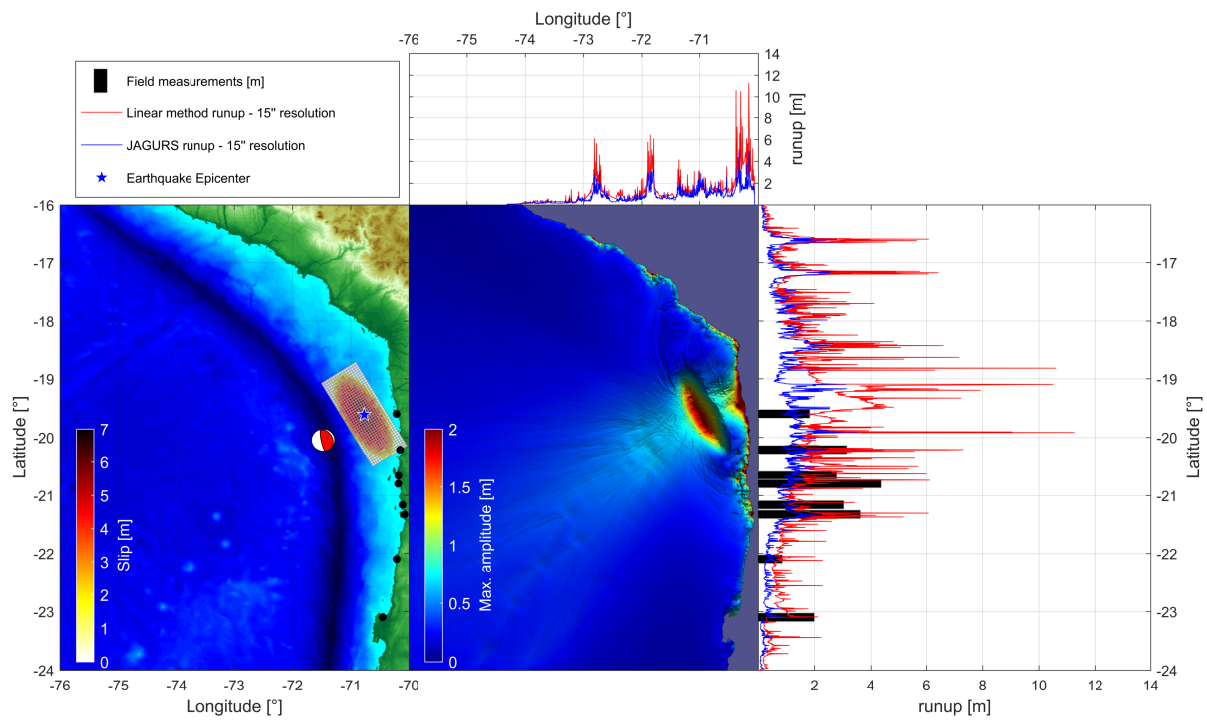


Fig. S21: Summary of the tsunami simulation for The 2014 Chile Earthquake with an elliptic source.

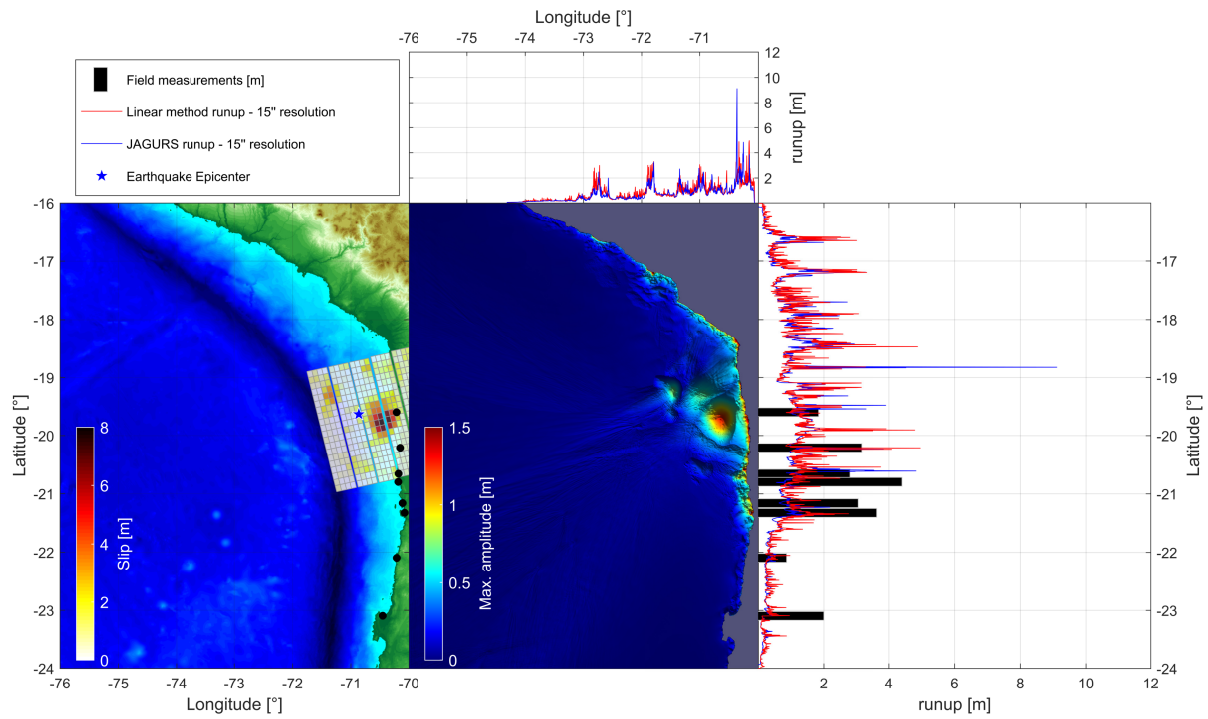


Fig. S22: Summary of the tsunami simulation for The 2014 Chile Earthquake with a finite fault model.

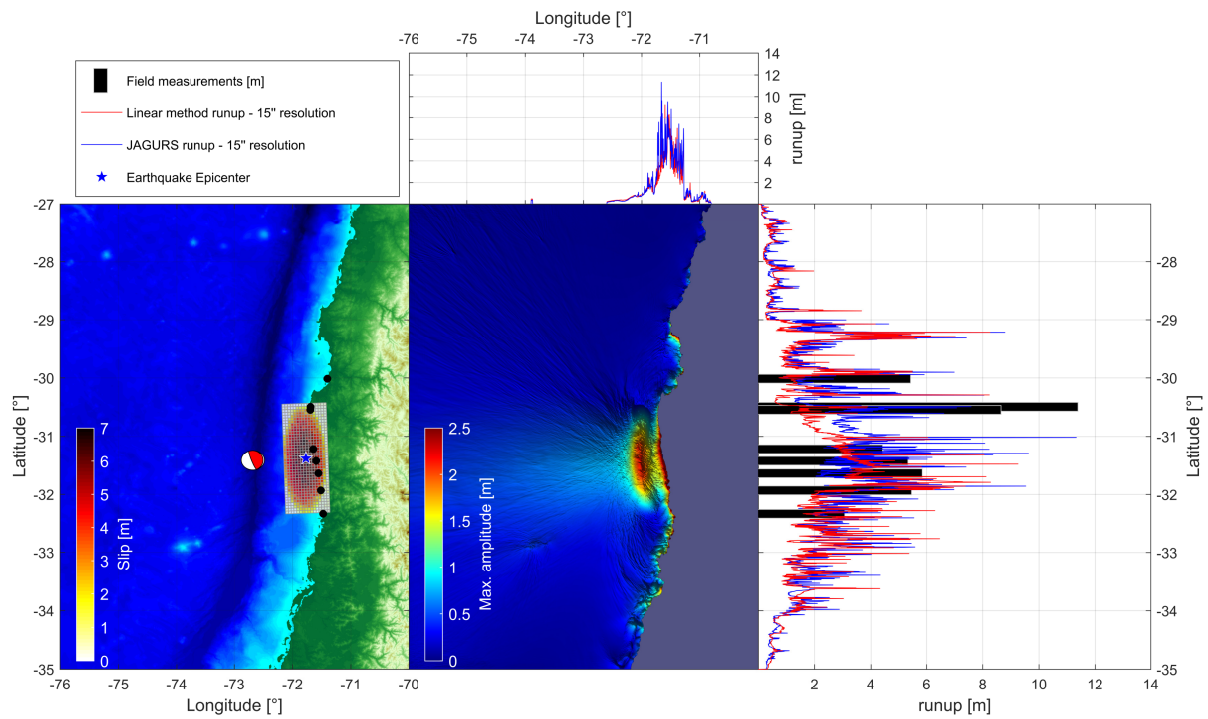


Fig. S23: Summary of the tsunami simulation for The 2015 Chile Earthquake with an elliptic source.

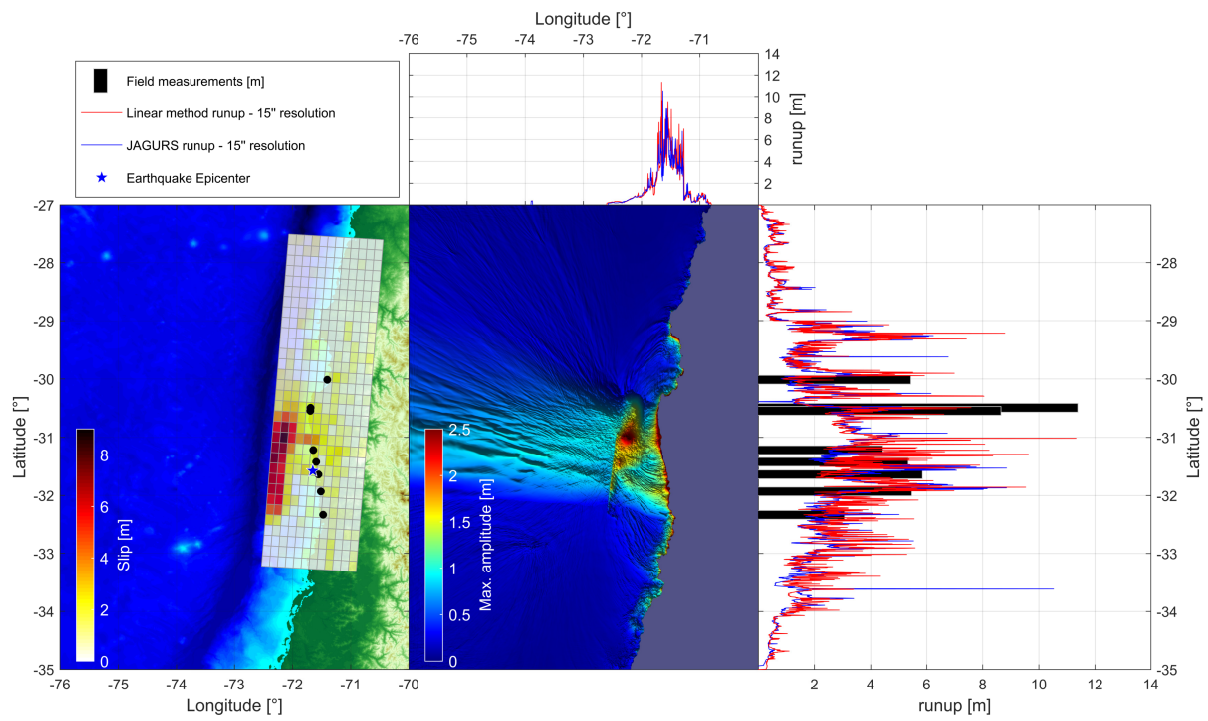


Fig. S24: Summary of the tsunami simulation for The 2015 Chile Earthquake with a finite fault model.