

Interactive comment on “Load-resistance analysis: An alternative approach to tsunami damage assessment applied to the 2011 Great East Japan tsunami” by Anawat Suppasri et al.

Anawat Suppasri et al.

suppasri@irides.tohoku.ac.jp

Received and published: 21 June 2019

Please see our replies and corrections in detail in the supplement file.

Please also note the supplement to this comment:

<https://www.nat-hazards-earth-syst-sci-discuss.net/nhess-2019-71/nhess-2019-71-AC1-supplement.pdf>

Interactive comment on Nat. Hazards Earth Syst. Sci. Discuss., <https://doi.org/10.5194/nhess-2019-71>, 2019.

[Printer-friendly version](#)

[Discussion paper](#)



Interactive
comment

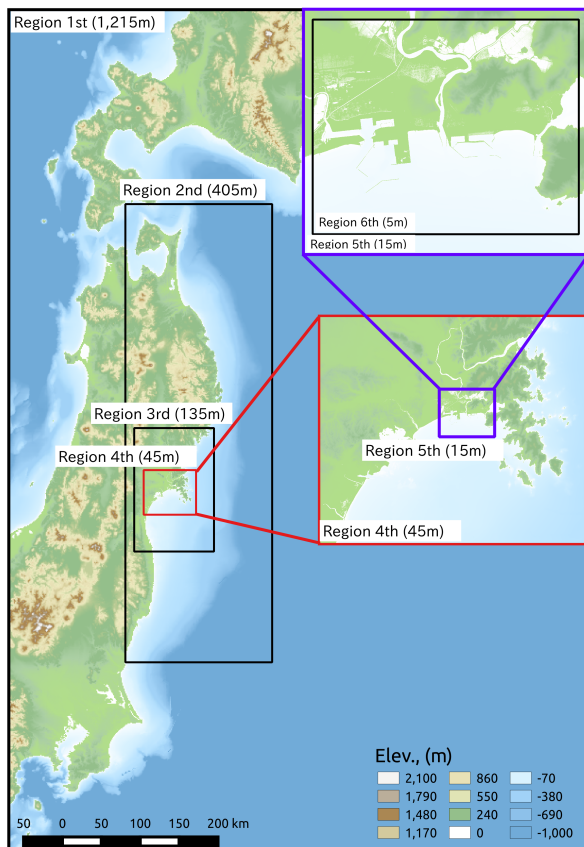


Fig. 1. Fig 4

Printer-friendly version

Discussion paper



Interactive
comment

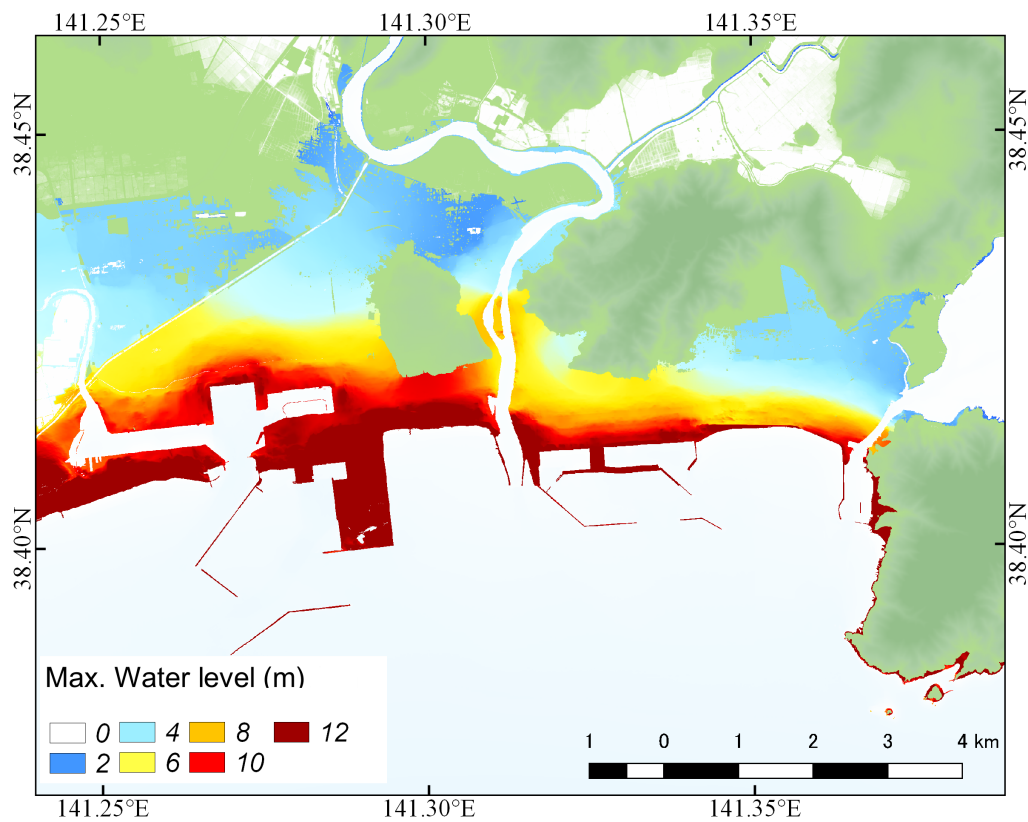


Fig. 2. Fig 5a

Printer-friendly version

Discussion paper



Interactive
comment

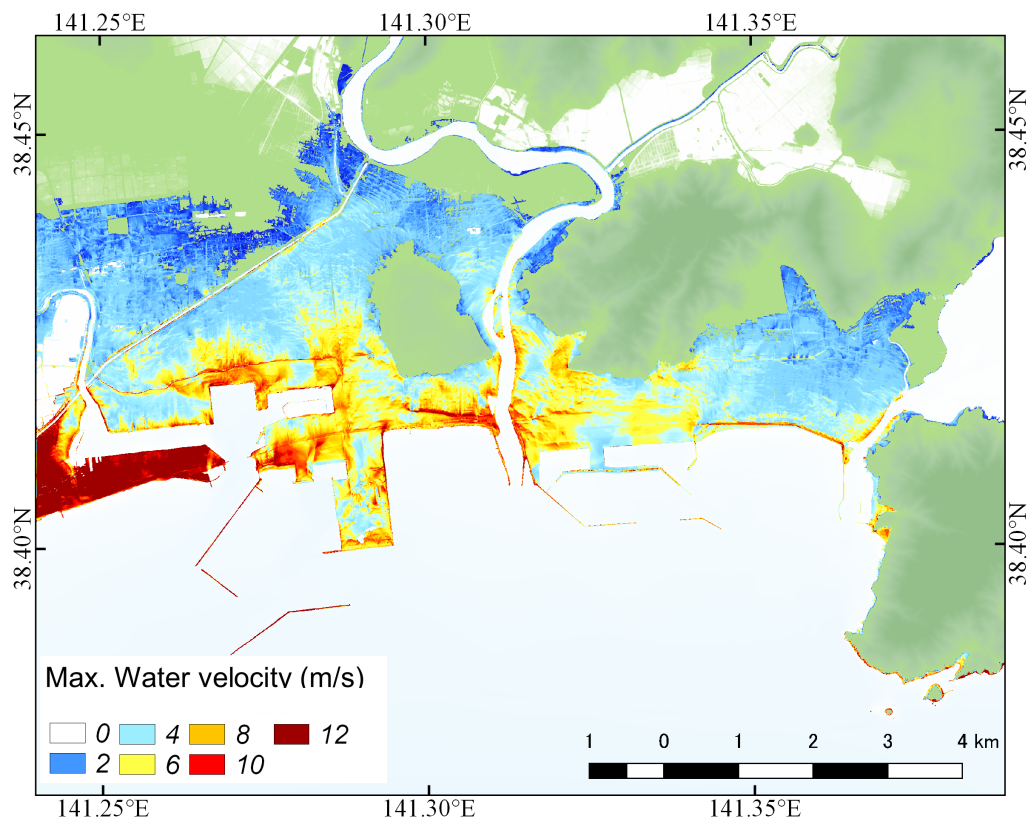


Fig. 3. Fig 5b

Printer-friendly version

Discussion paper



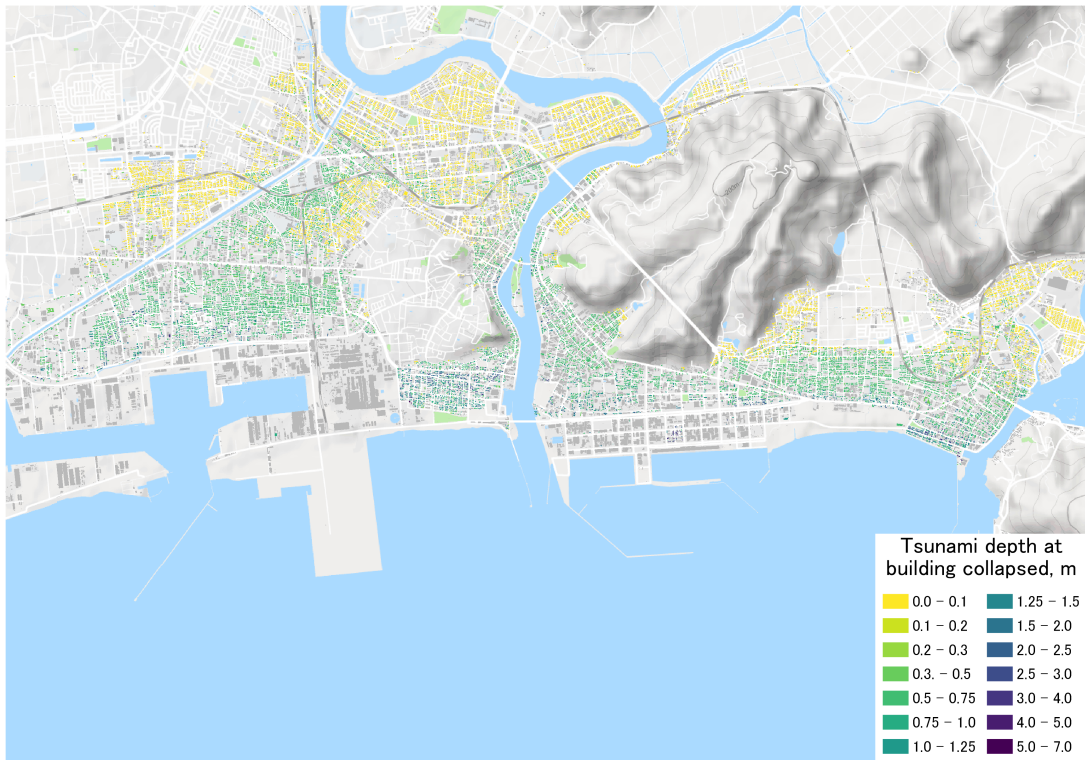


Fig. 4. Fig 10a

[Printer-friendly version](#)

[Discussion paper](#)



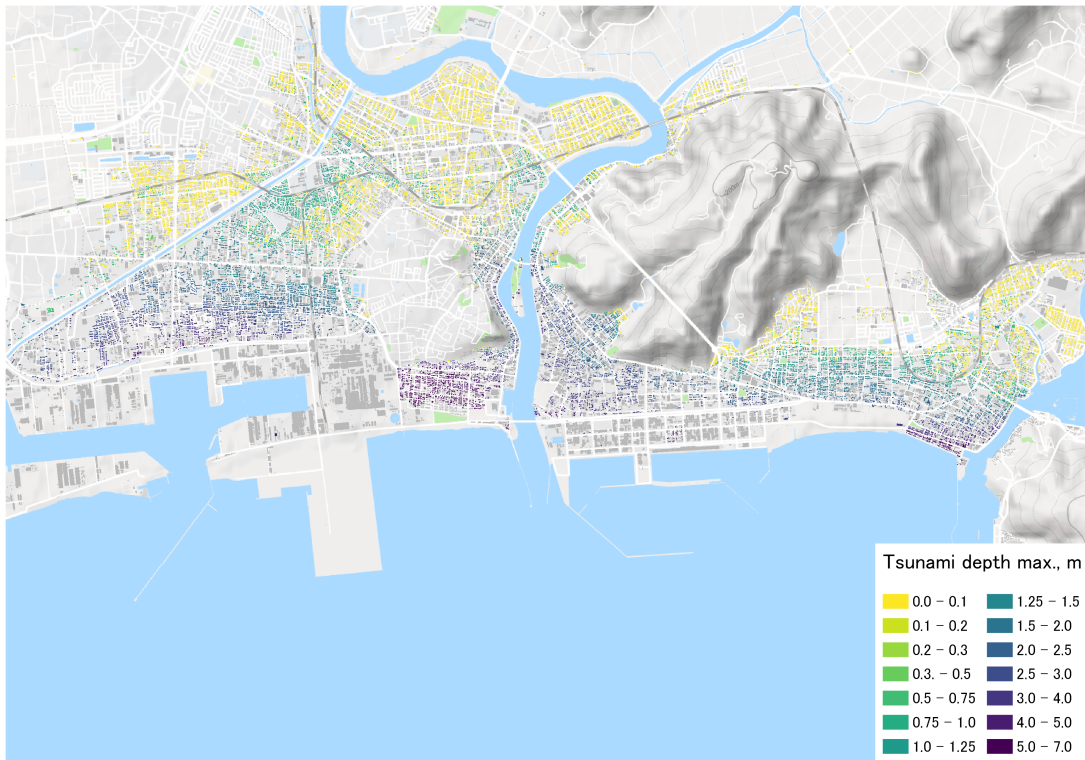


Fig. 5. Fig 10b

[Printer-friendly version](#)

[Discussion paper](#)



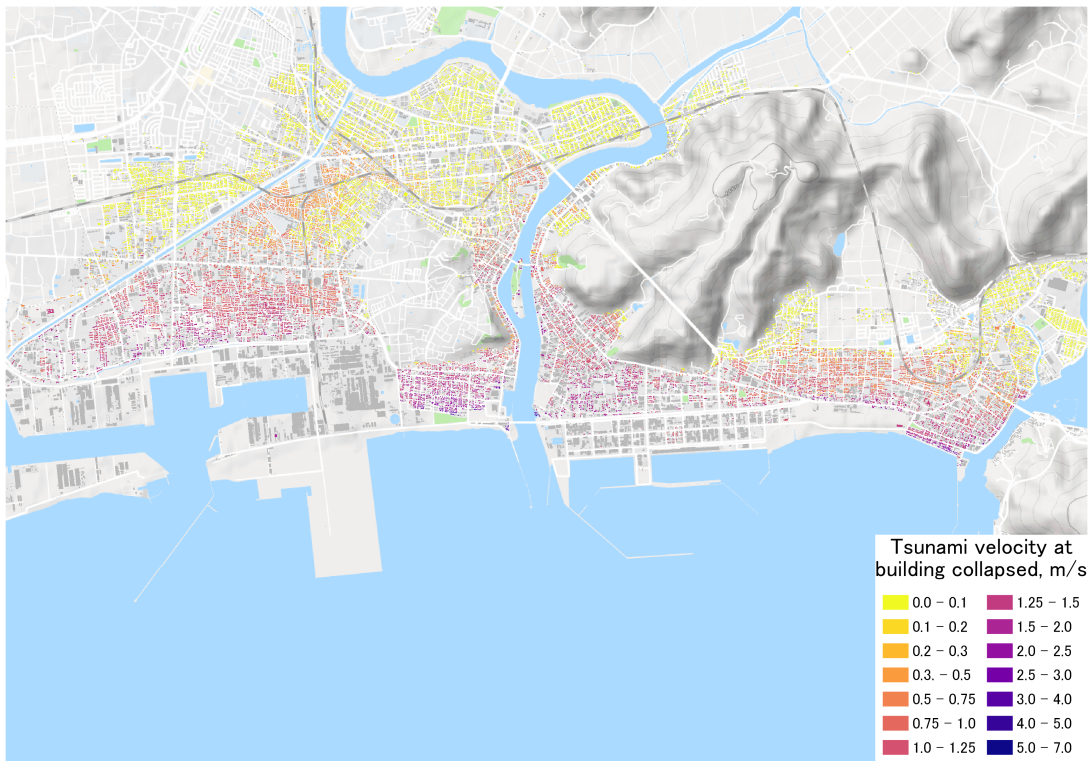


Fig. 6. Fig 11a

[Printer-friendly version](#)

[Discussion paper](#)



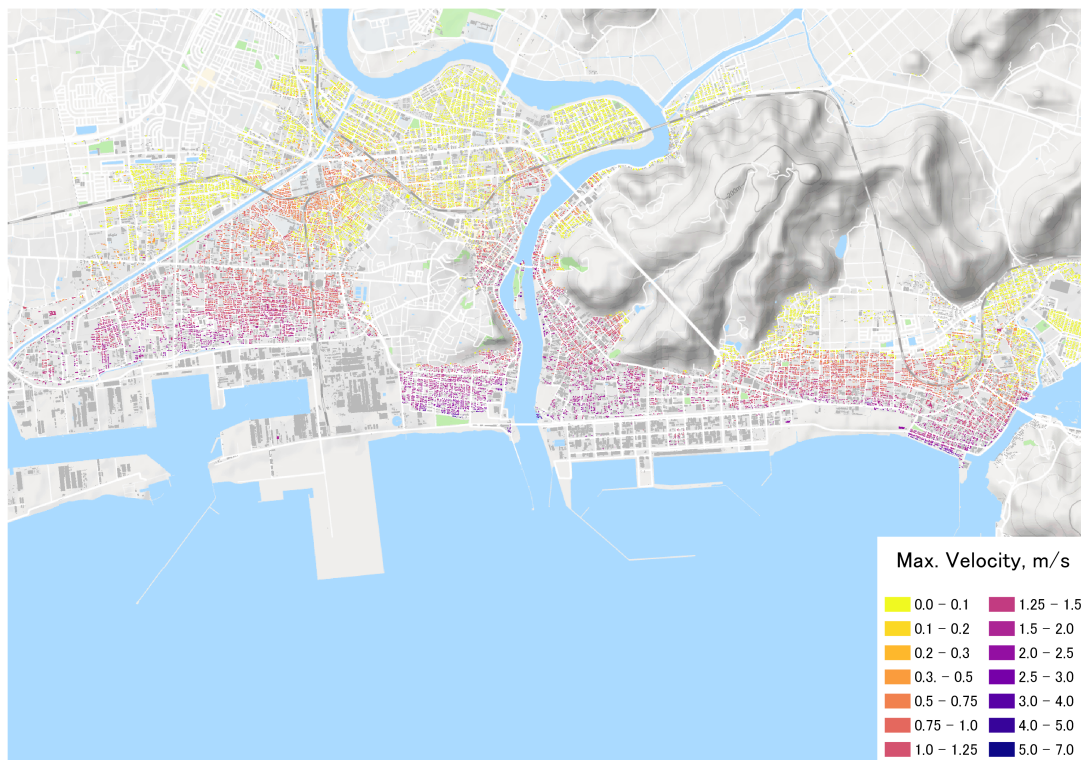


Fig. 7. Fig 11b

[Printer-friendly version](#)

[Discussion paper](#)



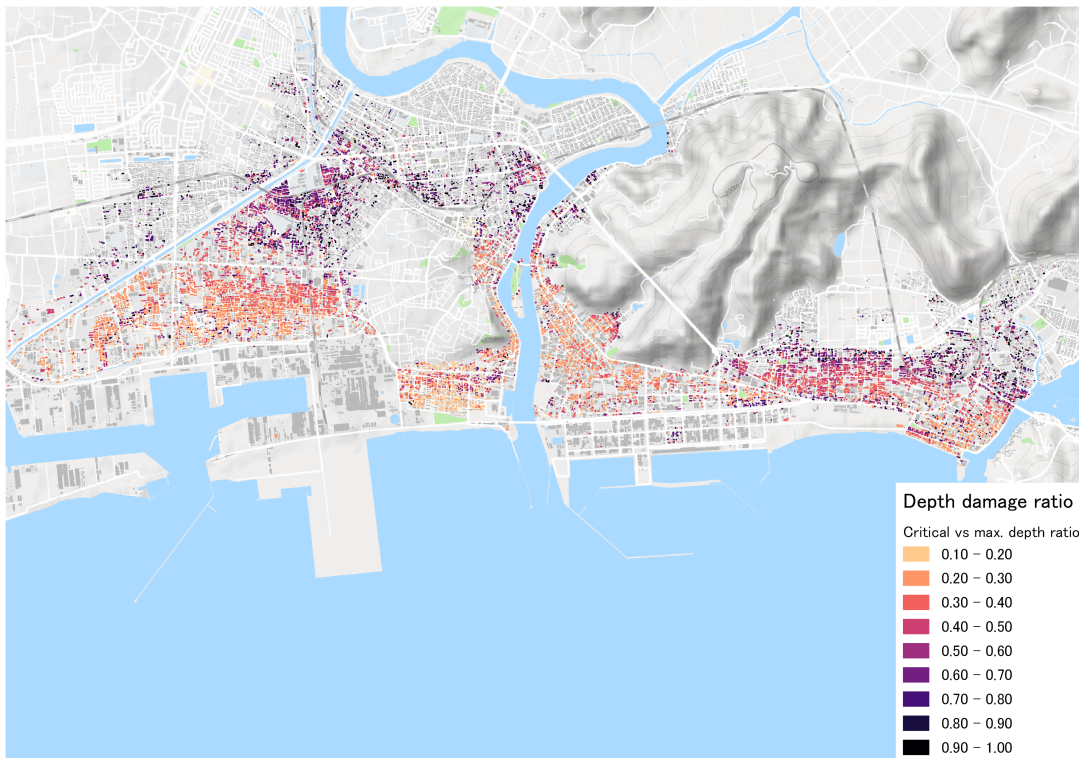


Fig. 8. Fig 13a

[Printer-friendly version](#)

[Discussion paper](#)



Interactive
comment

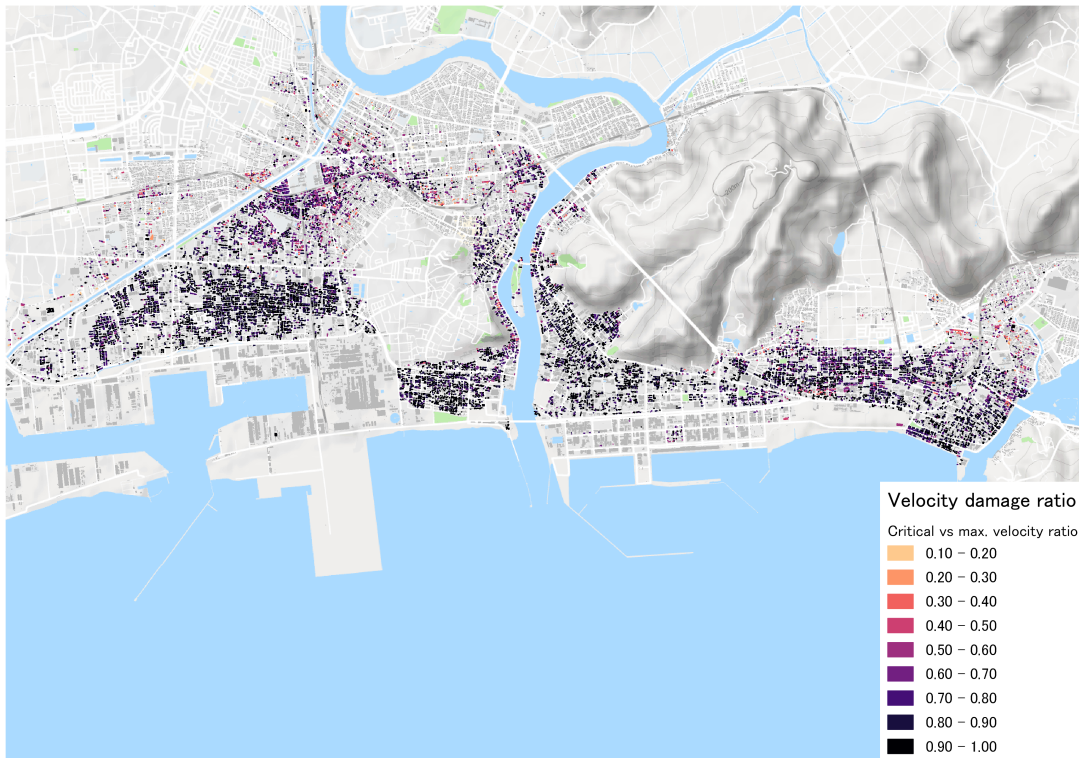


Fig. 9. Fig 13b

[Printer-friendly version](#)

[Discussion paper](#)



Interactive
comment

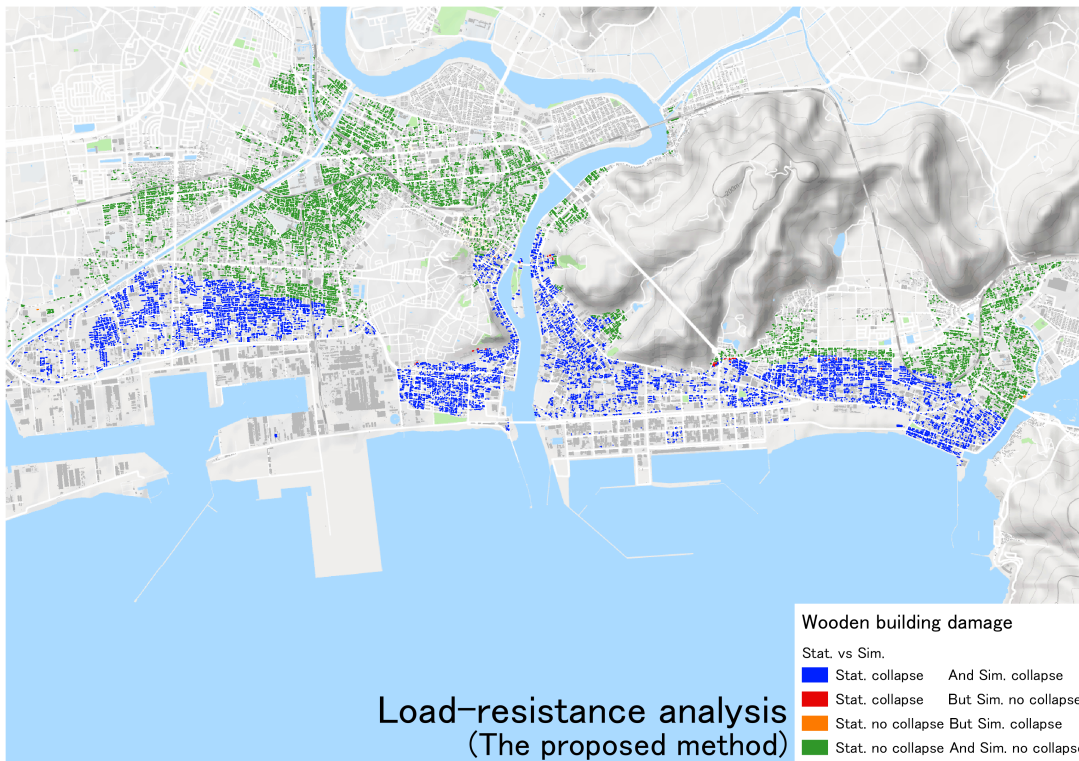


Fig. 10. Fig 14a

[Printer-friendly version](#)

[Discussion paper](#)



Interactive
comment

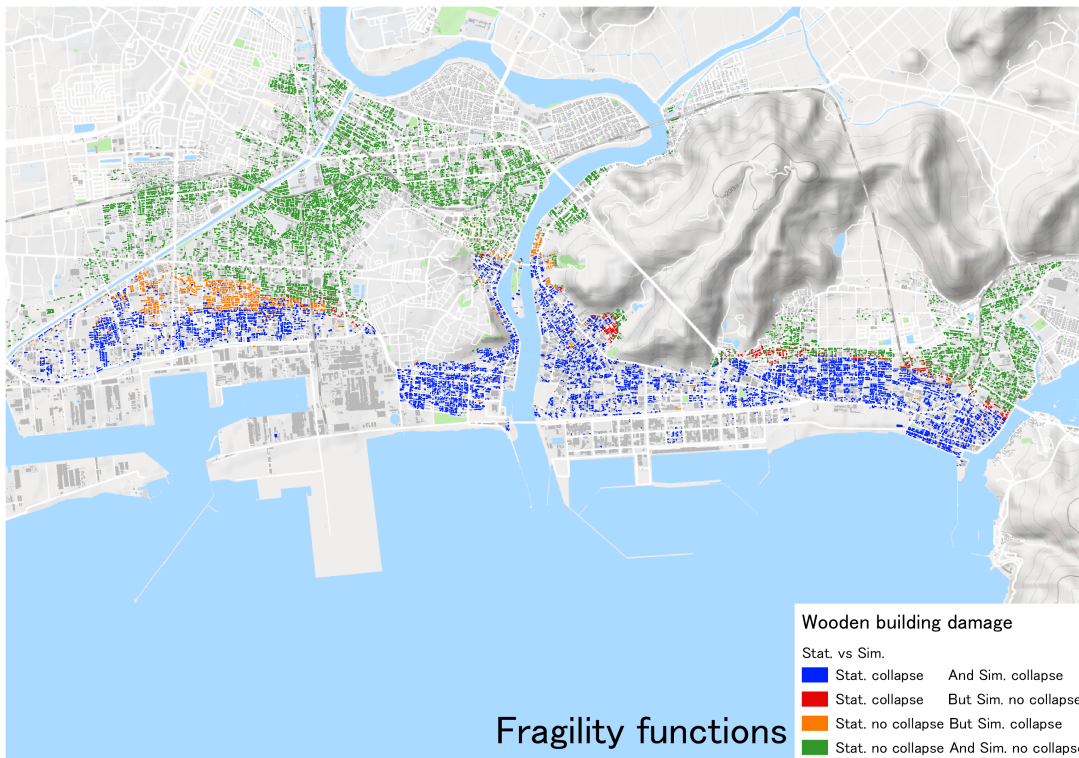


Fig. 11. Fig 14b

[Printer-friendly version](#)

[Discussion paper](#)

