

Interactive comment on “Load-resistance analysis: An alternative approach to tsunami damage assessment applied to the 2011 Great East Japan tsunami” by Anawat Suppasri et al.

Anawat Suppasri et al.

suppasri@irides.tohoku.ac.jp

Received and published: 21 June 2019

Please see our replies and corrections in detail in the supplement file.

Please also note the supplement to this comment:

<https://www.nat-hazards-earth-syst-sci-discuss.net/nhess-2019-71/nhess-2019-71-AC1-supplement.pdf>

Interactive comment on Nat. Hazards Earth Syst. Sci. Discuss., <https://doi.org/10.5194/nhess-2019-71>, 2019.

C1

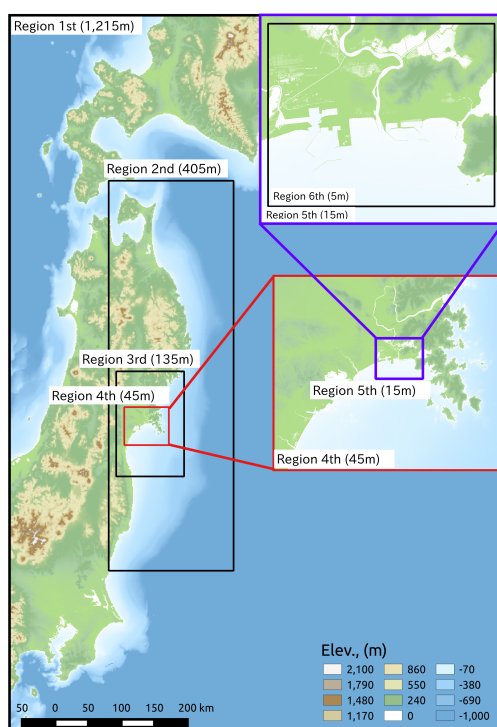


Fig. 1. Fig 4

C2

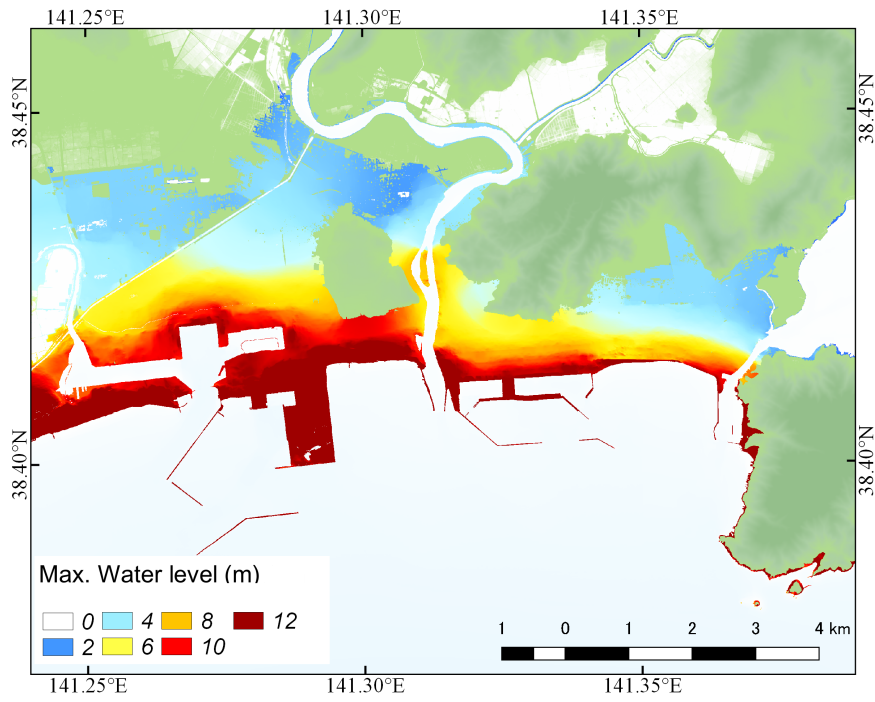


Fig. 2. Fig 5a

C3

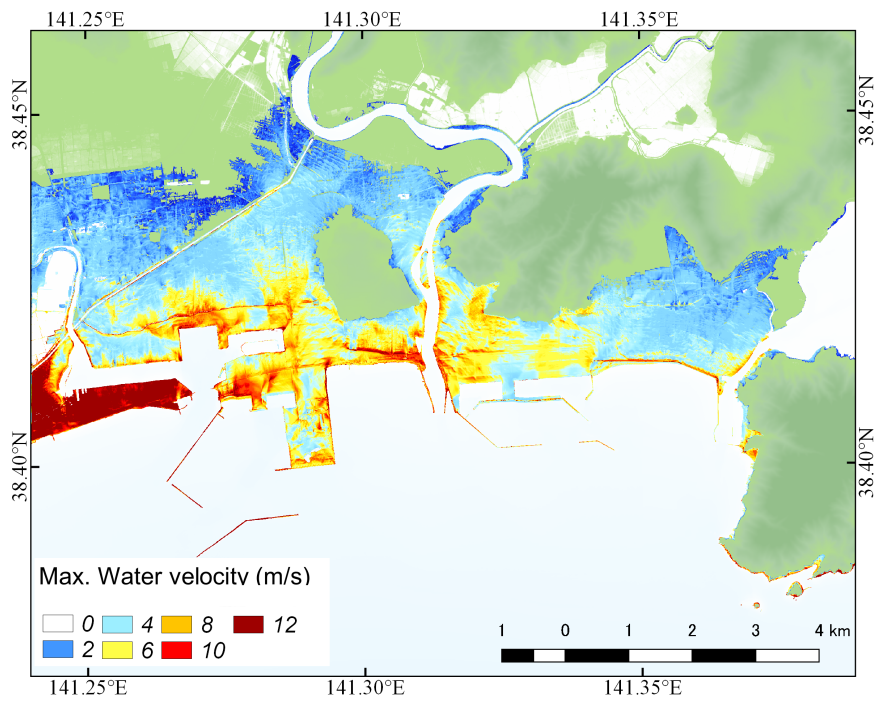


Fig. 3. Fig 5b

C4

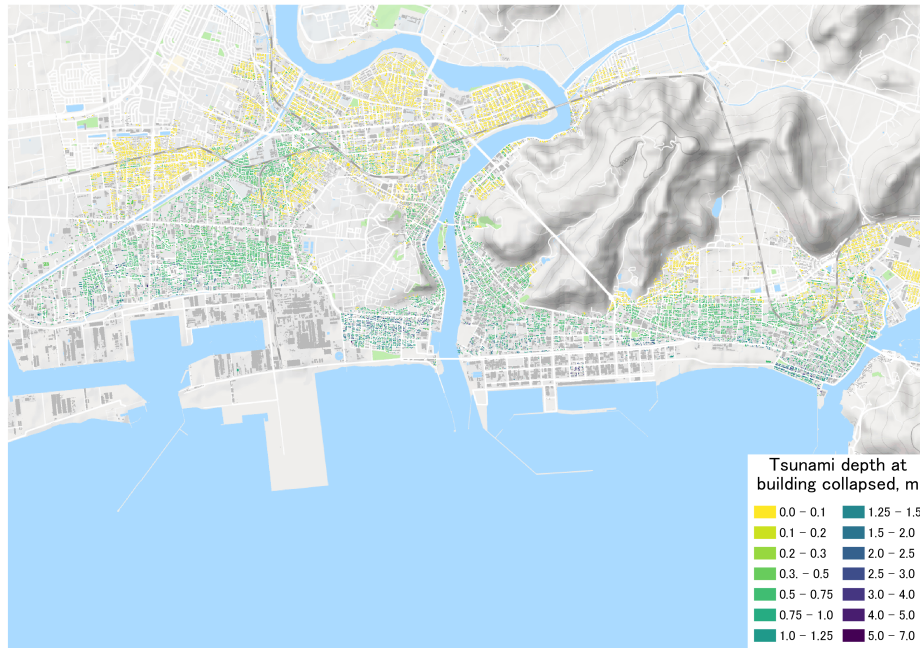


Fig. 4. Fig 10a

C5

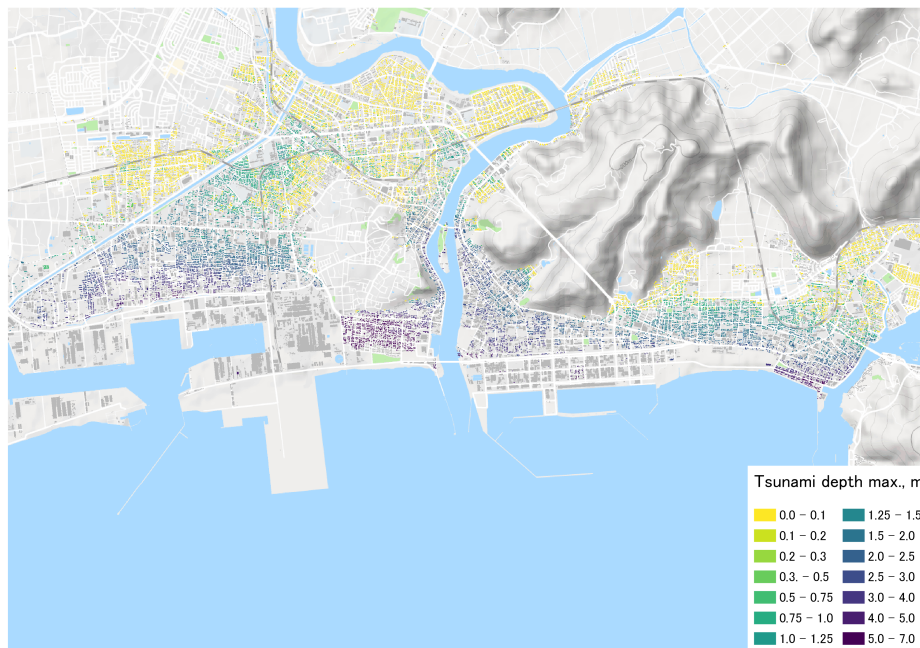


Fig. 5. Fig 10b

C6

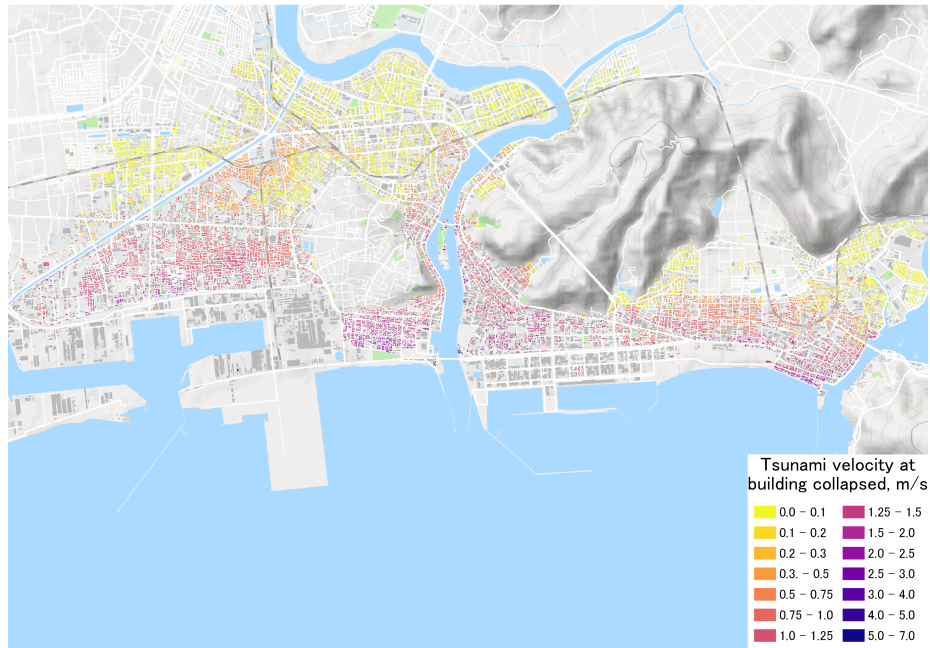


Fig. 6. Fig 11a

C7

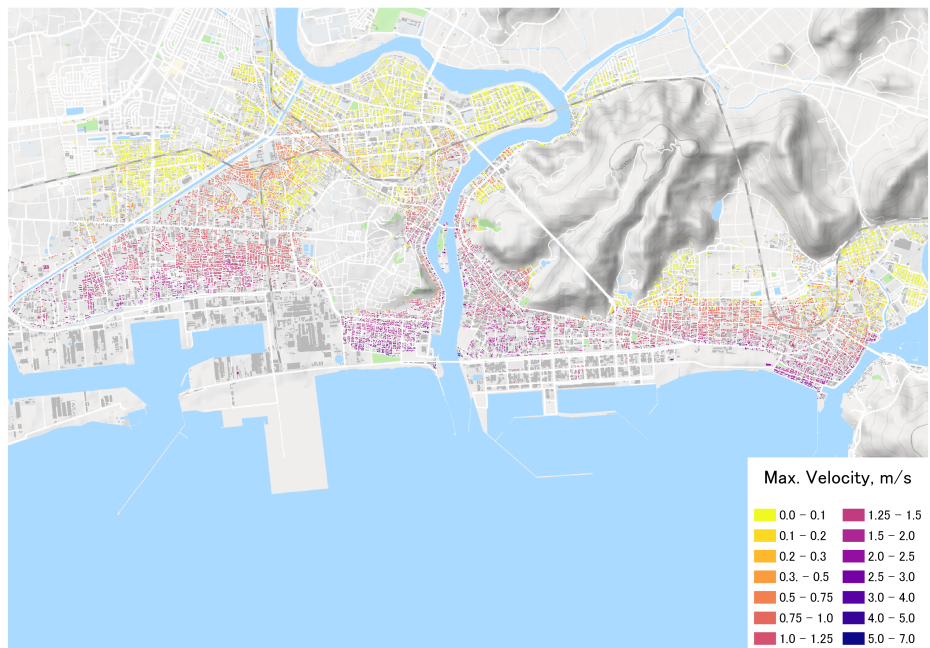


Fig. 7. Fig 11b

C8

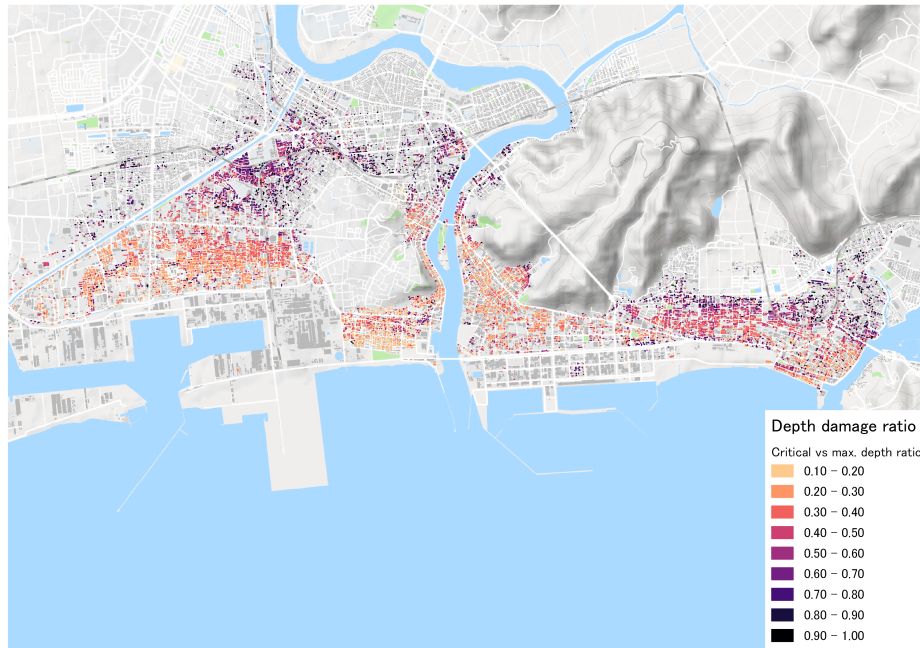


Fig. 8. Fig 13a

C9

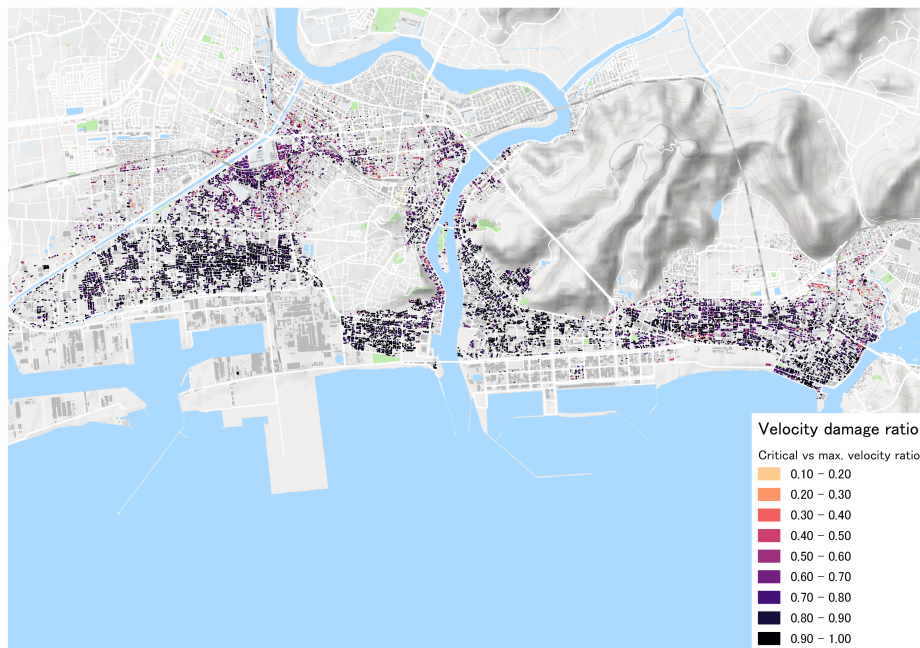


Fig. 9. Fig 13b

C10

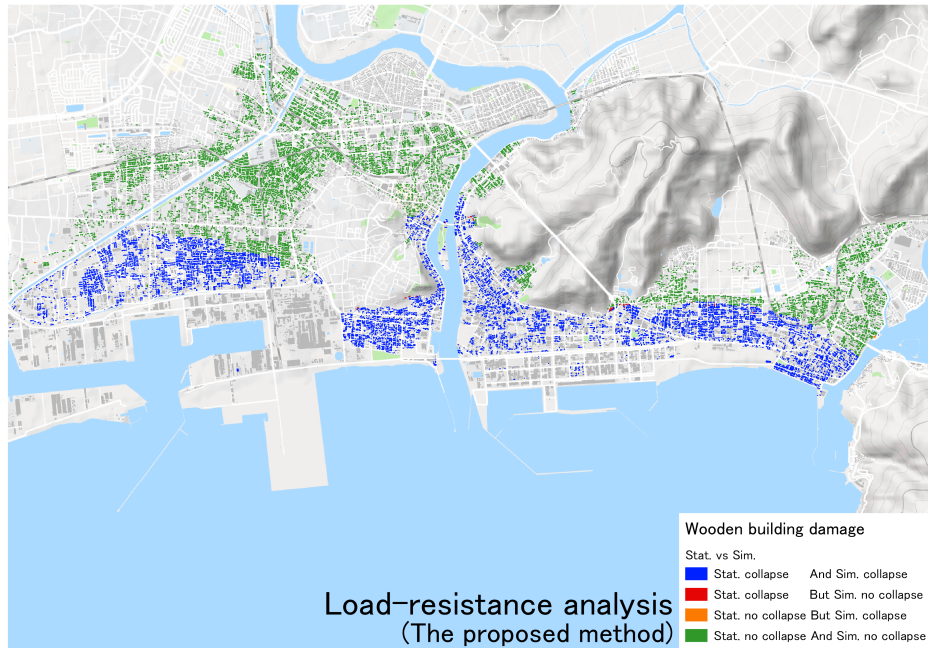


Fig. 10. Fig 14a

C11

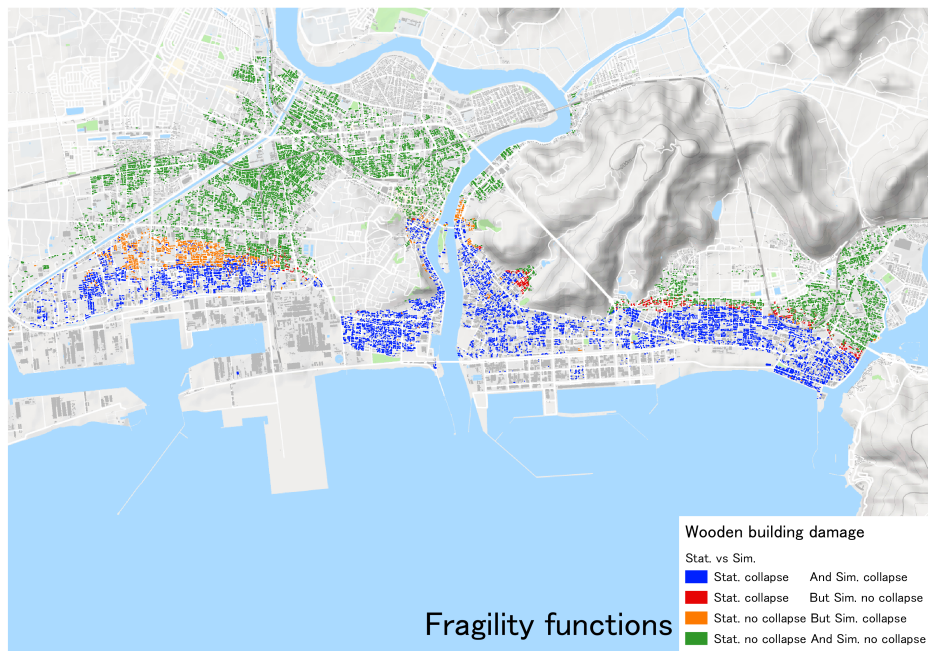


Fig. 11. Fig 14b

C12