

From:

Aynalem T. Tsegaw (Tel.: [+47] 47173764)

Knut Alfredsen, Tone M. Muthanna and Erle Kristvik

Department of Civil and Environmental Engineering, Norwegian University of Science and Technology (NTNU), S.P. Andersensvei 5, N-7491, Trondheim, Norway. E-mail addresses:

[aynalemtassachew1982@gmail.com](mailto:aynalemtassachew1982@gmail.com), [knut.alfredsen@ntnu.no](mailto:knut.alfredsen@ntnu.no), [erle.kristvik@ntnu.no](mailto:erle.kristvik@ntnu.no)

[tone.muthanna@ntnu.no](mailto:tone.muthanna@ntnu.no)

and

Marie Pontoppidan

NORCE Norwegian Research Centre, Bjerknes Centre for Climate Research, Bergen, Norway. E-mail address: [mapo@norce-research.no](mailto:mapo@norce-research.no)

**Subject: Cover letter accompanying resubmission of Research article (MS No.: nhess-2019-359)**

Dear Editor,

We hereby submit a revised manuscript for review for Natural Hazards and Earth System Sciences (NHESS). The paper was previously reviewed (nhess-2019-359) with a decision of minor revision.

We have now revised the paper in accordance with the comments from the editor. We have included all the suggestions of the editor in the revised manuscript. The details of the changes are outlined in the responses to the editor included with the submission.

We hope the revisions done in the paper could be suitable for NHESS.

Best Regards,

Aynalem T.Tsegaw

Marie Pontoppidan

Knut Alfredsen

Tone M. Muthanna

Erle Kristvik

# **Hydrological impacts of climate change on small ungauged catchments-results from a GCM-RCM-hydrological model chain**

We would like to thank the editor for comments and efforts towards improving our manuscript. In the following, we give responses to the comments/concerns the editor raised.

## **Editor comments and answers**

### **1) Introduction**

**1.1)** p3 l58: Adverse effects ... this sentence is still strange as “effects” is plural and the related verb “calls” is singular. Furthermore, the “,” doesn’t seem to be right.

*Answer*

*We have revised the sentence on page 3, line 58 to make the sentence grammatically correct and the “,” has been removed. The revised sentence is found on page 3, lines 58-59 in the revised manuscript.*

**1.2)** p3 l61: “The projected increase ...” is still not a correct sentence. The subject “projected increase” uses the verb “increases”. That sounds strange. Suggestion: “An increase in heavy localized precipitation events as projected suggests an increase in precipitation generated local flooding”.

*Answer*

*We have revised the sentence on page 3, line 61 to make the sentence correct as suggested by the editor. The revised sentence is found on page 3, lines 62-63 in the revised manuscript.*

**1.3)** p5 l110ff: I have the same question as the reviewer. Even if you add a reference,

it seems odd that you quantify model performance for an ungauged catchment as by definition of “ungauged”, there is no data to quantify the performance. I think this needs to be stated somewhat differently.

*Answer*

*Thank you. We have re-stated the sentences differently on page 5, line 110 to make the sentences correct. The revision is found on page 5 lines 109-113 in the revised manuscript.*

## **2) Data and Methods**

The description of the bias correction method on page 12/13 is still strange. I give you an example for a way of writing this, starting at your 1.213.

*Answer*

*Thank you. We have revised the paragraphs on pages 12 and 13 as suggested by the editor and the revision is found on pages 12 and 13, lines 206-224 in the revised manuscript.*

### 3 Miscellaneous

- write  $\sum_{i=1}^N$  instead of  $\sum_{i=1}^{i=N}$
- Until the late 80ties, the “\*” was used on typewriters as a symbol for multiplication as there was no dedicated symbol on the typerwriters. With modern computer typesetting systems, this is not needed anymore. For denoting  $a$  times  $b$  either use the convention that no sign means multiplication ( $ab$ ) or, if needed, write  $a \cdot b$ . Your Eq. 6, using the above notation, should look like

$$\Delta Y = \frac{Y_{\text{fut}} - Y_{\text{ref}}}{Y_{\text{ref}}} 100. \quad (5)$$

#### *Answer*

*Thank you. We have revised the summation, equation 6 and 7 as the editor suggested. The revisions are found on page 12 line 210; page 18, lines 324-327 (equation 6) and page 20, line 352 (equation 7).*

# Hydrological impacts of climate change on small ungauged catchments- results from a GCM-RCM-hydrologic model chain

Aynalem T. Tsegaw<sup>1</sup>, Marie Pontoppidan<sup>2</sup>, Erle Kristvik<sup>1</sup>, Knut Alfredsen<sup>1</sup>, Tone M. Muthanna<sup>1</sup>

<sup>1</sup> Department of Civil and Environmental Engineering, Norwegian University of Science and Technology (NTNU), S.P. Andersensvei 5, N-7491, Trondheim, Norway.

<sup>2</sup> NORCE Norwegian Research Centre, Bjerknes Centre for Climate Research, Bergen, Norway.

Correspondence to: Aynalem T. Tsegaw ([aynalemtassachew1982@gmail.com](mailto:aynalemtassachew1982@gmail.com))

**Abstract.** Climate change is one of the greatest threats currently facing the World's environment.

In Norway, a change in climate will strongly affect the pattern, frequency and magnitudes of stream flows. However, it is challenging to quantify to what extent the change will affect the flow patterns, and floods from small rural catchments due to the unavailability or inadequacy of hydro-

meteorological data for the calibration of hydrological models, and tailoring methods to a small-scale level. To provide meaningful climate impact studies at the level of small catchments, it is therefore beneficial to use a high spatial and temporal resolution climate projections as input to a high-resolution hydrological model. In this study, we used such a model chain to assess the impacts of climate change on the flow patterns, and frequency of floods in small ungauged rural catchments

in Western Norway. We used a new high-resolution regional climate projection, with improved performance regarding to the precipitation distribution, and a regionalized hydrological model (Distance Distribution Dynamics) between a reference period (1981-2011) and a future period (2070-2100). The flow-duration curves for all study catchments show more wet periods in the future than during the reference period. The results also show that in the future period, the mean annual flow increases by 16% to 33%. The mean annual maximum floods increase by 29% to 38%,

and floods of 2 to 200-year return periods increase by 16% to 43%. The results are based on the RCP8.5 scenario from a single climate model simulation tailored to the Bergen region in Western Norway, and the results should be interpreted in this context. The results should therefore be seen in consideration of other scenarios for the region to address the uncertainty. Nevertheless, the study increases our knowledge and understanding of the hydrological impacts of climate change on small catchments in the Bergen area in the Western part of Norway.

## 1. Introduction

Climate change is one of the greatest threats to human existence, economic activity, ecosystems and civil infrastructures (Kim and Choi, 2012). The climate change risks depend on: the magnitude of warming, rate of warming, geographic location, levels of development, vulnerability, and on the choices and implementation of adaptation and mitigation options (IPCC, 2018). The trends of changes vary considerably in different parts of Europe because of changes in large-scale atmospheric circulation or local orographic circulation (Eisenreich et al., 2005, Hattermann et al., 2007).

Changes in temperature and precipitation, and the shift in winter precipitation from snow to rain play an important role in studying impacts of climate change on the hydrology of a catchment. These changes influence the hydrological regime of a stream, and the most serious and widespread potential impact of the changes is flooding (Baltas, 2007, Richardson, 2002, Thornes, 2001). The Blöschl et al. (2019) study shows that increasing autumn and winter rainfall results in increasing mean annual floods in Northern Europe. In Norway, the average annual temperature and

precipitation are expected to increase by 3.8 °C to 6.2 °C and 7% to 27% respectively by the end of the century using RCP8.5 scenario (Hanssen-Bauer et al., 2015). The largest increase in precipitation is mostly expected during the autumn and winter months, which will in turn impact the magnitude and in some cases the seasonality of flood peaks. A climate impact study in Sogn and Fjordane county of Norway showed that flood peaks shift from summer to autumn in the future scenario (2071-2100) (Chernet et al., 2014). Donnelly et al. (2017) studied climate change impacts on European hydrology and found that climate change will strongly affect the hydrological cycle in the regions of Europe where Norway is in the future period. Outside Norway, authors have reported that the frequency and magnitude of flows are being affected by the changes in climatic conditions (Alfieri et al., 2015; Blöschl et al., 2019; Madsen et al., 2014; Mallakpour & Villarini, 2015; Rojas et al., 2013). Adverse effects of climate change on river regimes worldwide (Pumo et al., 2016) call attention to the hydrological impact of climate change study at a local scale.

An increase in heavy localized precipitation events as projected suggests an increase in precipitation generated local flooding. An increase in local flash floods can cause significant danger, and loss of life and property (Borga et al., 2011, Kundzewicz et al., 2014). Local flash floods usually occur in small catchments (e.g., area less than 50 km<sup>2</sup>). These type of flood events are usually short in duration, but they are usually connected with severe damages (Menzel et al., 2006). Studies show that the probability and magnitude of hazardous heavy precipitation events have been increasing in several European regions e.g., (Golz et al., 2016). Heavy localized precipitation could be caused by low pressure systems (e.g., Western Norway (Azad and Sorteberg, 2017)) or by prevailing convective precipitation at hilly or mountainous areas.



A quantitative analysis of the impacts of climate change on the stream flow requires simulations in a hydro-meteorological system. The models on which the simulations are based should adequately represent the system dynamics relevant for different types of flow (e.g. floods) generation (Menzel et al., 2006). Hydrological models provide the means to conceptualize and  
75 investigate the relationship between climate (e.g. precipitation and temperature) and water resources (e.g. low flows and floods) of a region. These models are needed in order to assess the likely effects of climate change, and to propose appropriate adaptation strategies (Baltas, 2007). The results of regional climate impact studies aid in proposing adaptation measures adapted to local climatic, geographic, economic and social conditions (Hattermann, 2009, Krysanova et al.,  
80 2008). Investigating the hydrological impact of climate change is generally performed by following a sequence of steps from global and regional climate modelling, through data tailoring (downscaling and bias-adjustment) and hydrological modelling (Olsson et al., 2016).

Assessing the impacts of climate change on hydrology of small ungauged catchments is  
85 challenging for the following reasons: unavailability or inadequacy of hydro-meteorological data for calibration of hydrological models, the short response time of the catchments, difficulty in describing local hydrological processes and coarse resolution of climate models. Inadequate process representation in climate models, with coarse spatial resolution (e.g. grid spacing of 9km), results in poor representation of the observed precipitation in small catchments (e.g. area less than  
90 50km<sup>2</sup>) which is inadequate for the assessment of impacts in small catchments (Quintero et al., 2018). For example, Pontoppidan et al. (2017) showed that during a flooding event in Western Norway, the regional model simulated observed rainfall considerably better with a grid spacing of 3 km compared to a grid spacing of 9 km due to the complex terrain in the area. Therefore,

to provide meaningful climate impact results for small catchments, it is necessary to use high spatial  
95 and temporal resolutions of projected climate data as forcing in high resolution hydrological  
models (Lespinas et al., 2014; López-Moreno et al., 2013; Reynolds et al., 2015; Tofiq & Guven,  
2014). Current efforts of coordinated regional downscaling in Europe (EURO-CORDEX e.g.  
(Jacob et al., 2014; Kotlarski et al., 2014)) are performed on a  $0.11^\circ$  grid, however a new high-  
resolution regional downscaling with improved representation of local precipitation distribution  
100 for southern Norway is available (Pontoppidan et al., 2018), but has yet to be included in a full  
hydrological model chain.

To solve the challenge related to lack of availability of a properly calibrated high-resolution  
hydrological model at ungauged small rural catchments in Norway, a predictive tool has been  
105 developed and tested. Tsegaw et al. (2019a) calibrated and validated the Distance Distribution  
Dynamics (DDD) hydrological model for forty-one gauged small rural catchments in Norway with  
hourly temporal resolution. For predicting flow in the ungauged catchments, the DDD model  
parameters were regionalized using three different methods of regionalization (multiple regression,  
physical similarity and combined method). To evaluate the model, a number of gauged catchments  
110 were selected and treated as ungauged during evaluation. The findings show that the combined  
method performs the best of all the methods in predicting flow. Even if the DDD model predicts  
flow at the test catchments satisfactory ( $0.5 \leq \text{Kling-Gupta Efficiency} < 0.75$ ), the model  
underestimates most of the observed flood peaks (Tsegaw et al., 2019a). To improve the prediction  
of observed floods, a dynamic river network method has been introduced and implemented in  
115 DDD (Tsegaw et al., 2019b). It is this improved setup that has been used in this study where the  
general objective was to assess the hydrological impacts of climate change on small ungauged

catchments using a novel model chain consisting of a high resolution, bias corrected dynamical downscaled climate scenario, and the improved DDD model. More specifically:

- i. Assessing the impacts of climate change on the changes of flow patterns at ungauged small rural catchments around Bergen city, Norway.
- ii. Assessing impacts of climate change on the pattern and frequency of floods in ungauged small rural catchments around Bergen city, Norway.

## **2. Data and methods**

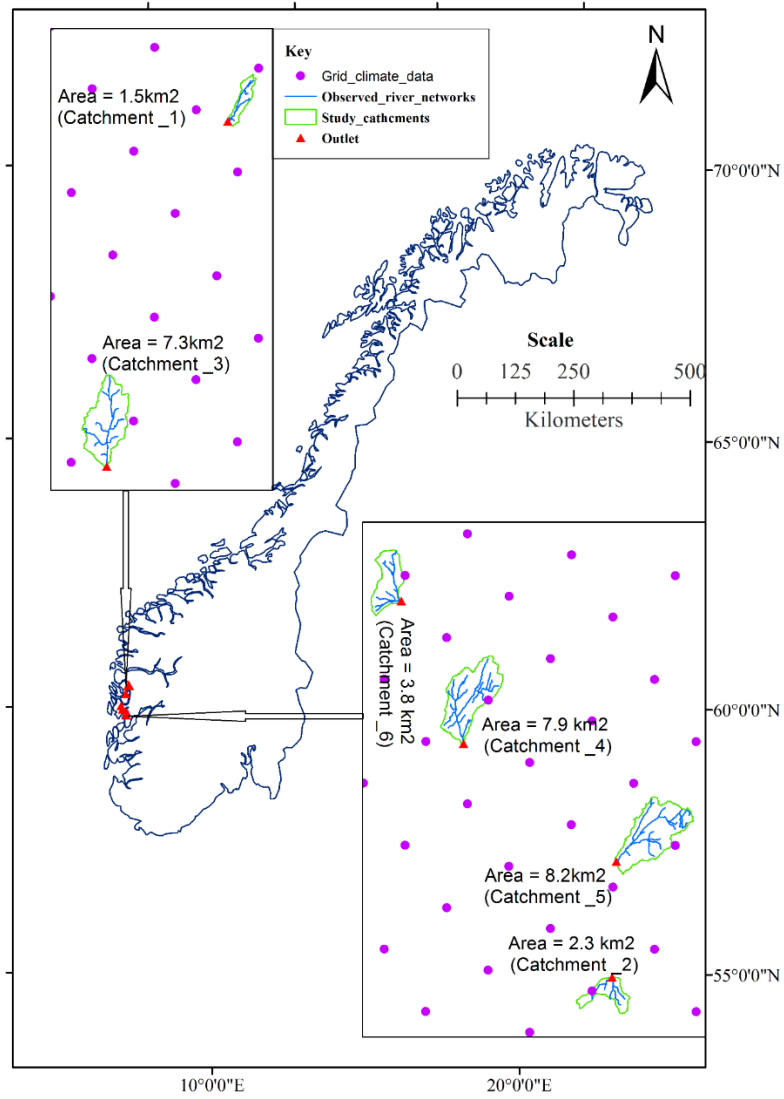
### **2.1 Study area**

The Bergen area is known for its wet climate. The location is in Western Norway (60N, 5E) with a coastal climate, and a pronounced topography. The annual precipitation for the normal period 1961-1990 was of 2250 mm at the Florida weather station, with precipitation typically occurring 243 days of the year every year (i.e. days with 0.1 mm or more precipitation) (Kristvik and Riisnes, 2015). The region is mostly affected by orographic precipitation, which is produced when humid air from the Northern Sea is lifted as it moves over the mountain range. The air rises and cools, forming clouds that typically precipitates upwind of the mountain ridge. Particularly, prominent mountains oriented across the wind gradient receive the heaviest precipitation. This causes major variations in precipitation loads, even within small distances (Kristvik and Riisnes, 2015).

Floods in the Western part of Norway (where Bergen is located) are mainly caused by heavy rainfall during the autumn season (Roald, 2008). The Norwegian Center for Climate Services report pointed out that a rainfall-dominated floods are projected to increase by almost 60% (with

RCP8.5 scenario ) towards the end of the century, and more frequent and stronger intense rainfall events may in the future give special challenges in small, steep rivers being fed by small upland catchments (Hanssen-Bauer et al., 2015). Vormoor et al (2015) found that autumn/winter events will become more frequent by 2099, which will lead to an intensification of the current autumn/winter flood regime for the coastal catchments in Norway. Blöschl et al. (2017) studied the impacts of climate change on shifting the timing of European floods using observed floods and found that in Western Norway, 50% of the stations show a shift towards occurring floods later in the year by more than +8 days per 50 years.

Six ungauged small rural catchments, located in Western Norway around Bergen city, were used in this study. The catchment descriptors data are taken from <http://nevina.nve.no/> and <http://www.statenskartverk.no/>. The definition of small rural catchments is based on the report by Fleig and Wilson (2013) applying an upper area limit of 50km<sup>2</sup>. The catchments were selected for this impact study because there are critical infrastructures (e.g. culverts, bridges and buildings) at the outlet of the catchments which could be damaged by floods in the future period (2070-2100). We selected three catchments with bare mountain dominated (>50%) and three catchments with forest dominated (>50%) land uses to include a diverse type of land uses in the study. The locations of the catchments and stream network for each of the catchments are depicted in Fig. 1. The catchment descriptors (CDs) and outlet coordinates are presented in Table 1.



**Figure 1.** Locations of study catchments in Norway

**Table 1:** Catchment descriptors of the study catchments

Catchments Descriptors	Unit	Symbol	Catchments					
			Cat_1	Cat_2	Cat_3	Cat_4	Cat_5	Cat_6
Mean of distance distributions of soils in the catchment to the nearest river reach	<i>m</i>	D <sub>m</sub>	103.0	169.1	204.3	137.0	174.9	171.7
Mean of distance distributions of marsh land in the catchment to the nearest river reach	<i>m</i>	D <sub>mr</sub>	0.0	261.0	220.7	109.9	107.2	154.3
Mean of distance distribution of points in the river to the outlet	<i>m</i>	D <sub>r</sub>	1513.2	960.5	2671.2	3061.1	3402.8	1733.3
Catchment area	<i>km</i> <sup>2</sup>	A	1.5	2.3	7.3	7.9	8.2	3.8
Effective lake	%	L <sub>e</sub>	0.2	0.0	0.0	0.7	0.0	0.0
Forest	%	F	18.5	65.3	75.8	22.5	69.7	25.4
Bare mountain	%	B	79.6	27.6	14.8	66.0	18.9	65.3
Urban	%	U	0.0	0.1	0.0	0.0	0.0	0.0
Mean elevation	<i>m</i>	M <sub>e</sub>	684.6	322.1	314.7	461.5	402.1	466.7
Mean annual precipitation	<i>mm</i>	M <sub>p</sub>	3268.0	2243.0	2500.0	2781.0	2543.0	2644.0
Specific discharge	<i>l s</i> <sup>-1</sup> <i>km</i> <sup>-2</sup>	S <sub>q</sub>	141.0	115.7	91.8	125.6	134.2	110.7
Mean river slope	<i>m km</i> <sup>-1</sup>	R <sub>s</sub>	162.6	266.2	88.4	106.4	118.6	154.9
<b>Outlet location</b>								
ETRS_1989_UTM_Zone_33N coordinate system (m)	Longitude		-9376.0	-14513.6	-15886.7	-22440.2	-14280.8	-25871.8
	Latitude		6777231.6	6712810.0	6758694.5	6725236.5	6719015.4	6732970.8

## 2.2 Climate, topography and land use data

### 2.2.1 Climate data and bias correction

The precipitation and temperature data used to drive the hydrological model were obtained from a simulation performed by the Weather Research and Forecasting model (WRF) version 3.8.1 (Skamarock et al., 2008). The model is non-hydrostatic and widely used for weather forecasting and research purposes. This RCP8.5 scenario climate projection is unique because of its high spatial grid resolution of 4 x 4 km. To our knowledge, no other convective permitting, century-long, dynamically downscaled climate projection is available for Norway. Precipitation and temperature data are available with a 3 hours resolution. However, regional models, such as WRF, inherit biases from the boundary conditions used to drive the model. These biases may lead to a misrepresentation of important features in the models, e.g. the known bias of the North Atlantic storm track (Zappa et al., 2013) leads individual storms into central Europe instead of on a more northern path along the Norwegian coast as the observations suggest. Therefore, the global climate model NorESM1-M (r1i1p1), used as forcing data at the boundaries in WRF, was bias corrected before the regional downscaling.

Bias correction is a commonly used method to address systematic model errors. Many studies apply a correction on variables such as temperature and precipitation via a choice of distribution mapping towards observations. Normally this is performed on the regional climate model output (e.g. Muerth et al., 2013; Trambly et al., 2013). Such posterior bias correction highly constrains the model output, and the use of such has therefore been questioned (Maraun, 2016; Maraun et al., 2017). Correcting variables individually may violate physical consistency because it tampers

with known physical dependencies. Alternatively, bias correction can be applied upstream, i.e. on the global climate model before it is used as driving data for a regional model. In principle, this will allow the interior of the regional model to adjust to any physical inconsistencies applied at the boundaries and develop a physical consistent climate within the model domain. Such an approach is widely used in a “storyline” approach where one add a climate change signal to reanalysis data before the downscaling (e.g. Rasmussen et al., 2011; Schär et al., 1996). However this pseudo global warming method also have caveats; it assumes that the climate variability is stationary in time, an assumption which have been widely questioned (Christensen et al., 2008; Maraun, 2012; Vannitsem, 2011). Instead we use a method that corrects the global climate model’s monthly mean towards the reanalysis monthly mean. By doing so we overcome the stationary assumption because we retain the variability from the global model instead of limiting the variability to the reanalysis.

Bias-correction of the global climate model driving data prior to the dynamical downscaling, lead to physical consistency in the interior domain, and a potential gain from the increased horizontal resolution. This particular approach showed improved precipitation representation in an Australian (Rocheta et al., 2017), and in a North American climate (Wang & Kotamarthi, 2015; Xu & Yang, 2012, 2015) as well as in a hurricane representation along the US east coast (Bruyère et al., 2014). In Norway the upstream bias correction led to a better represented North Atlantic storm track and an improved spatial precipitation distribution (Pontoppidan et al., 2018).

The bias correction was performed following the anomaly approach, available for downloading and thoroughly described in Bruyère et al., (2015). A reference period of 30-years (*ref*, from 1981



to 2010) was selected for which we calculated mean values for the month  $m = 1, \dots, 12$  of a variable  $Y_{ref}^{ERA}$  (e.g. temperature) from ERA-Interim as shown by Eq. 1.

$$\overline{Y_{ref,m}^{ERA}} = \frac{1}{N_m} \sum_{i=1}^{N_m} Y_{ref,i}^{ERA} \quad (1)$$

Analogously, we calculated monthly means for variables  $Y_{ref}^{Nor}$  from the NorESM1-M simulations, denoted as  $\overline{Y_{ref,m}^{Nor}}$ . For NorESM1-M simulations  $Y_{ref,i}^{Nor}$  (six hourly time resolution) in the reference period, we define six-hourly anomalies (Eq 2) for a data point  $i$  as

$$Y'_{ref,i}^{Nor} = Y_{ref,i}^{Nor} - \overline{Y_{ref,m}^{Nor}} \quad (2)$$

as deviations from the monthly means of the reference period. For simulations  $Y_{fut}^{Nor}$  for the future period, anomalies are also taken as deviations from monthly means of the reference period as shown by Eq.3.

$$Y'_{fut,i}^{Nor} = Y_{fut,i}^{Nor} - \overline{Y_{ref,m}^{Nor}} \quad (3)$$

The six-hourly bias corrected data point  $i$  is now defined as shown by Eq.4.

$$Y_{per,i}^{NorBC} = Y_{per,i}^{Nor} - \overline{Y_{ref,m}^{Nor}} + \overline{Y_{ref,m}^{ERA}} \quad (4)$$

where the index *per* denotes the reference (*ref*) or future (*fut*) period and *NorBC* denotes the bias corrected NorESM1-M. As opposed to the pseudo global warming method, this approach ensured that the forcing files of our experiment retained the sub-monthly variability from the climate model but with an adjusted climatological mean for longer time scales.

Bruyere et al. (2014) investigated the effect of bias correcting single and multiple variables. The conclusion was that the best results were obtained when a multivariate bias correction was performed. Based on this finding, we bias corrected the three-dimensional wind components, the

temperature, the relative humidity, and the pressure fields in addition to the two-dimensional sea  
230 surface temperature fields in our driving data.

### **2.2.2 Topographical and land use data**

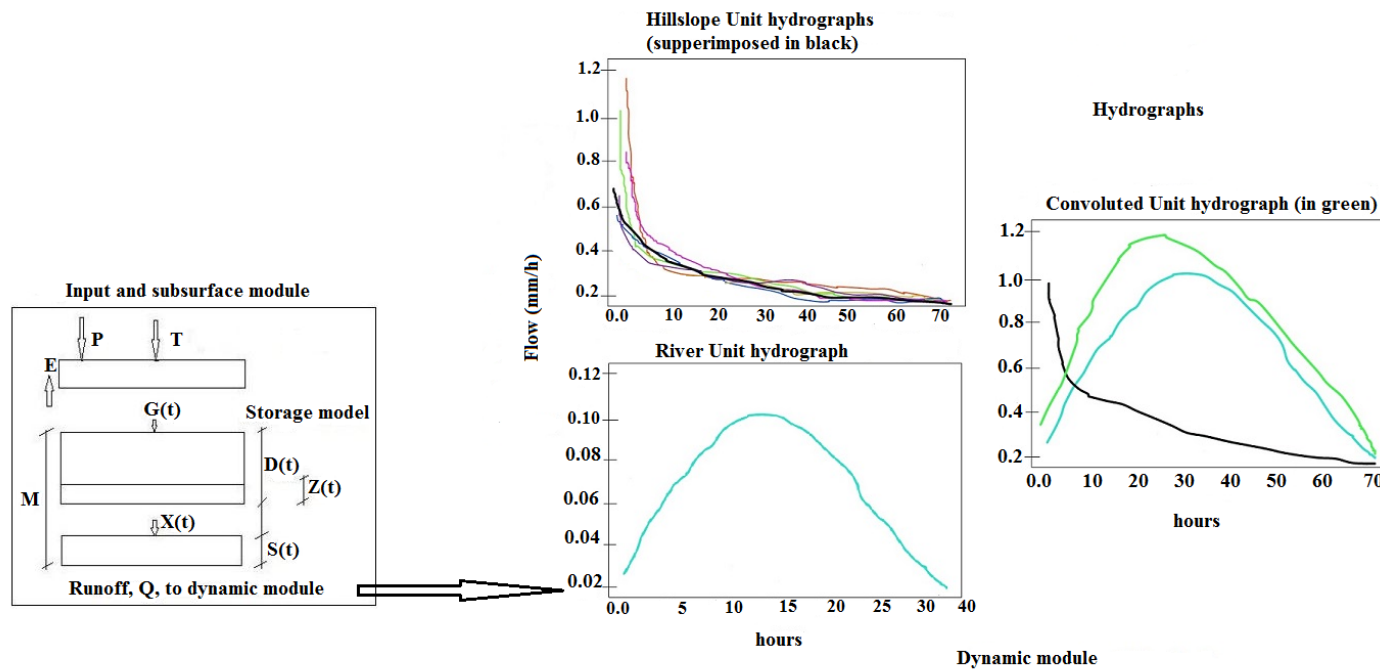
The DDD model parameters, which do not need regionalization, were derived from analysis of  
topographical and land use data of the catchment using GIS. The source of the topography and land use  
235 data was the Norwegian Mapping Authority (<http://www.statenskartverk.no/>). The 10 x 10 m DEM, the  
river network and the 1: 50 000 scale land use data were retrieved and used in this study. The DEM  
was re-conditioned to the naturally occurring river network using the Arc-hydro tool to create a  
hydrologically correct terrain model that can improve the accuracy of watershed modeling (Li,  
2014). The re-conditioned DEM was further used to determine the distance distributions of hill  
240 slopes and river networks as needed by DDD.

## **2.3 DDD hydrological model**

### **2.3.1 General description of the model**

The Distance Distribution Dynamics (DDD) hydrological model was developed by Skaugen and  
245 Onof (2014) and currently runs operationally with daily and 3-hourly time steps at the Norwegian  
flood forecasting service. The model is a semi-distributed conceptual model and it is applicable  
for catchments ranging from small (e.g. 1km<sup>2</sup>) to large (e.g. 5000km<sup>2</sup>), and temporal resolutions  
ranging from low (e.g. daily time step) to high (e.g. hourly time step). It has two main modules:  
the subsurface and the dynamics of runoff. The volume capacity of the subsurface water reservoir  
250 is shared between a saturated zone and an unsaturated zone. The volume of the saturated zone and  
the unsaturated zone are inversely related i.e. the higher the unsaturated zone volume, the lower

the saturated zone (Skaugen and Mengistu, 2016, Skaugen and Onof, 2014). The dynamics of runoff in DDD has been derived from the catchment topography using a GIS combined with a runoff recession analysis. The DDD model applies the distribution of distances between points in  
255 the catchment and their nearest river reach (distance distributions of a hillslope) as the basis for describing the flow dynamics of the hillslope. The distribution of distances between points in the river network and the outlet forms the basis for describing the flow dynamics of the river network. The hillslope and river flow dynamics of DDD are described by unit hydrographs (UHs) which are derived from distance distributions and celerity using GIS and recession analysis respectively  
260 (Skaugen and Mengistu, 2016, Skaugen and Onof, 2014). Figure 2 shows the structure of the DDD model.



265 **Figure 2.** Structure of the Distance Distributions Dynamics model adapted from Skaugen and Onof (2014). Left panel: the storage model and right panel: hydrographs of hillslope and river. P is precipitation, T is temperature, E is actual evapotranspiration, G(t) is input from snowmelt and rain, Z(t) is soil moisture in unsaturated zone, X(t) is excess water, M is total volume of subsurface water reservoir, S(t) a saturated zone volume and D (t) is unsaturated zone volume.

### 2.3.2 Dynamic river network method in DDD

Stream networks in a catchment expand and contract as the catchment wets and dries, both seasonally, and in response to individual precipitation events. This dynamic of stream networks gives important information to the pattern, and process of runoff generation in the catchment.

Dynamic river networks, and hence dynamic overland unit hydrographs has been introduced and implemented in the DDD model in order to improve the simulation of floods (Tsegaw et al., 2019b). The mean of the distribution of distances from a point in the catchment to the nearest river reach ( $D_m$ ) becomes dynamic in the dynamic river network method. Therefore, we need to estimate the dynamic  $D_m$  from the relation between the upstream critical supporting area ( $A_c$ ) i.e. the area needed to initiate and maintain streams and  $D_m$  using GIS and python script as shown in Eq.(5). The coefficients (a and b) are estimated for the study catchments and presented in Table 2. The calibration parameter of the dynamic river network routine in DDD is the critical flux ( $F_c$ ) and is estimated by regional regression in this study.

$$D_m = aA_c^b \quad (5)$$

**Table 2:** Coefficients of the power relation between  $D_m$  and  $A_c$ , and the coefficients of determination (R-squared).

Catchment	a	b	R-squared
Cat_1	1.42	0.41	0.97
Cat_2	0.87	0.45	0.99
Cat_3	0.87	0.46	1
Cat_4	1.2	0.44	0.99
Cat_5	0.99	0.45	1
Cat_6	0.87	0.46	1

### 2.3.3 Model parameters and regionalization

The DDD model parameters are divided into three main groups. The first group contains the parameters estimated by recession analysis from observed flow data (for gauged catchments) or through regionalization for ungauged catchments (appendix 1). The second group contains the parameters estimated by model calibration (for gauged catchments) against observed discharge or by regionalization (for ungauged catchments) (appendix 2). The third group contains the parameters estimated from digitized geographic maps using GIS (appendix 3). In addition, the snow routine in DDD has two parameters estimated from the spatial distribution of observed precipitation data (Skaugen and Weltzien, 2016). The shape parameter ( $a_0$ ) and the decorrelation length ( $d$ ) of the gamma distribution of the snow and the snow water equivalent (SWE) are estimated from a previous calibration using 84 catchments in Norway (Skaugen et al., 2015). As this study focuses on ungauged catchments, it was not possible to conduct calibration and recession analysis. The model parameters in need of calibration and recession analysis were therefore derived through a combined method of regionalization using 41 gauged small rural catchments in Norway as a base (Tsegaw et al., 2019a). To estimate the regionalized parameters for this study (3 hourly time step), regionalized DDD model parameters with hourly resolution was used (Tsegaw et al., 2019a). In the combined method of regionalization, the recession parameters and critical flux were estimated using multiple regression between model parameters and CDs, and the parameters in need of calibration (all in appendix 2) were estimated using the physical similarity method. The parameters of the model needing regionalization are shown in appendix 1 and 2 (the bottom 5 in appendix 1, and all in appendix 2). The CDs of the study catchments, used to get the DDD model parameters through regionalization, are presented in Table 1.

## 310 2.4 Impact study

The precipitation and temperature data were extracted from the 4 x 4 km and 3 hourly resolution climate model. The climate data were then used to force the DDD model to simulate flow, actual evapotranspiration, and snow water equivalent (SWE) both for the reference and the future periods. A total of 30 hydrological years (1<sup>st</sup> of September to 31<sup>st</sup> of August) were used for both periods in  
315 the impact study. We have analyzed changes in the following indicators used to describe the climate change impacts.

- i) The mean annual changes of precipitation, temperature, flow, snow water equivalent (SWE) and actual evapotranspiration.
- ii) The mean annual and mean seasonal changes of flow.
- 320 iii) The annual flow duration curves (FDCs).
- iv) The timing of annual winter/spring and fall stream flow.
- v) The mean annual and seasonal maximum flows.
- vi) Floods with return periods of 2 to 200-year

Changes are computed by Eq. (6) using the magnitude of a hydroclimatic variable ( $Y$ ) for the  
325 reference ( $Y_{ref}$ ) and the future ( $Y_{fut}$ ) periods.

$$\Delta Y(\%) = \frac{Y_{fut} - Y_{ref}}{Y_{ref}} 100 \quad (6)$$

where  $\Delta Y$  is a change in the hydroclimatic variable.

#### **2.4.1 Changes of hydroclimatic variables**

The 3-hourly precipitation and temperature data, extracted from the climate model, were analyzed using an R-script to quantify the changes in the mean annual values between the reference and future period. The 3-hourly time series precipitation, temperature and discharge data were converted to annual series which was further analyzed in order to obtain the mean annual values.

Seasonal mean flow data was also estimated for the reference and the future periods i.e. winter, spring, summer, and autumn in order to assess the changes in the seasonal mean flows. The annual maximum SWE was selected from each hydrological year and averaged for the reference and the future periods to get the mean annual maximum SWE for the two periods. The annual actual evapotranspiration was estimated by aggregating the actual evapotranspiration from the 3-hour simulation results, and then averaged over 30 years to get the mean annual actual evapotranspiration.

#### **2.4.2 Changes in flow duration curves**

A flow duration curve is a cumulative curve that shows the percent of time a specified flow is equaled or exceeded during a given period. It shows the flow characteristic of a stream throughout a range of flow, without regard to the sequence of occurrence (Searcy, 1959). The changes in stream flow variability over a hydrologic year between the reference and the future periods was analyzed. The changes of floods (between 0% and 5% exceedance) and the median flows (flows which are exceeded by 50% of the time) were analyzed in this study. The formula to calculate the probability of exceedance is given by Eq. (7).



$$p = \frac{K}{n + 1} 100 \quad (7)$$

$p$  = the probability that a given flow will be equaled or exceeded (% of time).

$K$  = the ranked position on the listing (dimensionless).

355  $n$  = the number of events for period of record, and it is dimensionless.

### 2.4.3 Changes in timing of annual winter/spring and fall stream flow

The annual timing of river flows is a good indicator of climate-related changes. Changes in timing of annual winter/spring (WS), and fall stream flow were analyzed using the center of volume (CV) date (Hodgkins et al., 2003). The center of volume date is the date by which half of the total volume of water for a given period flows by a river section. The center of volume date is expected to be a more robust indicator of the timing of the bulk of high flows in a season than the peak flows, as the peak flow may happen before or after the bulk of seasonal flows (Hodgkins et al., 2003). From the 3-hour flow data (simulated for the reference and future periods), the mean 3-hour flow value for the 30 years in both periods was calculated. Using the mean 3-hour flow value, the seasonal center of volume dates for the winter/spring (1 January to 31 May) and fall (1 October to 31 December) was calculated.

### 2.4.4 Changes in the maximum flows and flood frequency

370 The annual and seasonal maximum flows (floods) were selected from the 30 years of the reference and the future periods for the analysis. The changes in the mean and median of the annual and seasonal maximum flows were analyzed.

The number of 3-hour floods above a certain threshold gives a general overview on the impacts of climate change on the flood risk in small catchments. Accordingly, we have analyzed the changes in the number of 3-hour floods between the reference and future periods with a flow higher than the minimum of the 30 years annual maximum flow of the reference period.

To assess the magnitude of a flood with a given probability, the flood frequency methods must be applied. A flood frequency analysis is important for flood hazard mapping, for which a flood of a certain return period (e.g. 200-year in Norway) is used for the flood zone mapping (Groen et al., 2012). To analyse changes in the magnitudes of a flood with a given return period (e.g. 200-year flood), flood frequency analysis is applied to the annual maximum series of the reference (1981 – 2011) and future period (2070 – 2100). In this study, the Gumbel distribution (Bhagat, 2017, Shaw, 1983) was used to model the annual maximum series. The Gumbel distribution was selected because it has been widely applied in studies of climate change impacts on floods in Europe (Dankers and Feyen, 2008, Veijalainen et al., 2010).

### **3. Results**

#### **3.1 Regionalized DDD model parameters**

The results of the model parameters obtained after the regionalization are presented in Table 3 for all study catchments. The parameters and possible ranges of values are presented in appendix 4.

**Table 3:** Values of DDD model parameters estimated from regionalization for the study catchments.

Model parameters needing regionalization	Catchments					
	Cat_1	Cat_2	Cat_3	Cat_4	Cat_5	Cat_6
Gshape	2.32	1.83	1.98	2.087	1.961	2.032
Gscale	0.04	0.036	0.034	0.033	0.038	0.037
GshInt	4.085	3.083	3.39	3.615	3.356	3.502
GscInt	0.018	0.016	0.015	0.015	0.017	0.017
fc	49.3	122.1	140.00	68.30	134.2	69.00
Pro	0.1	0.087	0.082	0.100	0.095	0.096
Cx	0.155	0.129	0.108	0.137	0.159	0.147
CFR	0.004	0.006	0.007	0.004	0.003	0.004
Cea	0.033	0.025	0.016	0.032	0.028	0.031
rv	1.22	1.240	1.17	1.200	1.260	1.190

### 3.2 Changes in hydroclimatic variables

The simulation results of the climate and hydrological models were further analyzed to quantify the changes in the hydroclimatic variables. The mean annual precipitation, temperature, evapotranspiration, flow, and the mean autumn and winter flows increase for all the study catchments in the future period, compared to the reference period. The mean spring flow increases in five of the catchments and decreases in one of the study catchments. The mean summer flow decreases for five of the catchments. The mean annual maximum SWE decreases for all the study catchments. In the future period, the mean annual precipitation increases by 20% to 24 %, and the mean annual temperature rises by 3 °C to 3.3°C. The mean annual flow increases by 17% to 33%. The decrease in the mean summer flow ranges between 7% to 35% and the increase was 4% in only one of the study catchments. The mean winter flow increases by an average of 127% (ranging between 41% to 256%). The mean spring flow increases by

4% to 100% for five of the catchments and a 1% decrease in one catchment. The mean autumn flow increases by an average of 37% (ranging from 21% to 43%). The results of changes of in the mean annual temperature, precipitation, maximum SWE, and actual evapotranspiration are presented in Table 4. Table 5 presents changes in the mean annual and seasonal flows for the catchments. Mean 3-hourly flow of the study catchments are shown in Fig. 3 for the reference and the future periods.

**Table 4:** Changes in mean annual temperature, precipitation, maximum snow water equivalent (SWE) and evapotranspiration for all the study catchments using bias corrected NorESM1-M (r1i1p1) global climate model, WRF regional climate model and RCP8.5, and DDD model.

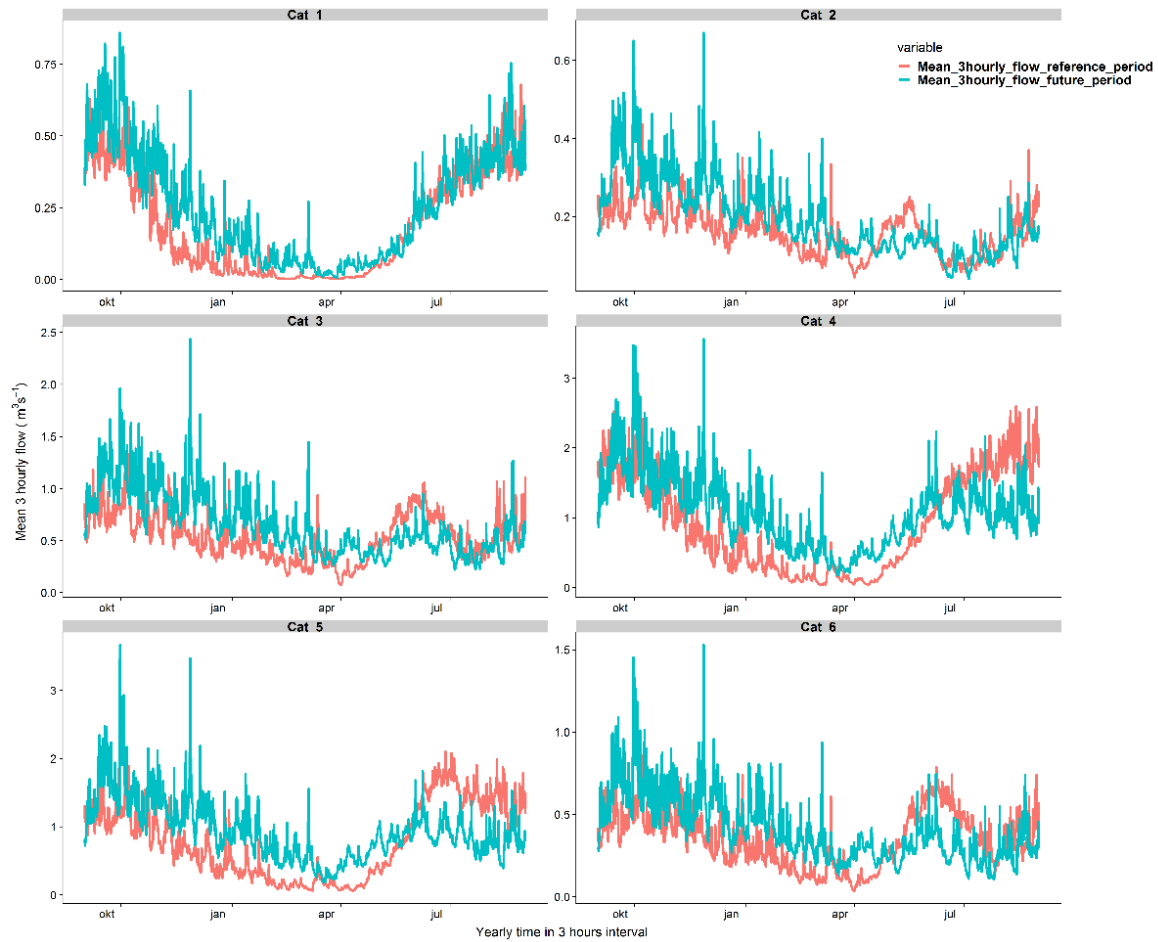
Hydro-meteorological indicator	Unit	Change in indicator
<b>Cat_1</b>		
Mean annual precipitation	mm	22 %
Mean annual temperature	°C	3.3 °C
Mean annual maximum SWE	mm	-78 %
Mean annual evapotranspiration	mm	63 %
<b>Cat_2</b>		
Mean annual precipitation	mm	24 %
Mean annual temperature	°C	3.1 °C
Mean annual maximum SWE	mm	-48 %
Mean annual evapotranspiration	mm	67 %
<b>Cat_3</b>		
Mean annual precipitation	mm	24 %
Mean annual temperature	°C	3.2 °C
Mean annual maximum SWE	mm	-50 %
Mean annual evapotranspiration	mm	43 %
<b>Cat_4</b>		
Mean annual precipitation	mm	20%
Mean annual temperature	°C	3.2 °C
Mean annual maximum SWE	mm	-56 %
Mean annual evapotranspiration	mm	132 %
<b>Cat_5</b>		
Mean annual precipitation	mm	22 %
Mean annual temperature	°C	3.2 °C
Mean annual maximum SWE	mm	-49 %
Mean annual evapotranspiration	mm	81 %

**Cat\_6**

Mean annual precipitation	mm	20.0 %
Mean annual temperature	°C	3.0 °C
Mean annual maximum SWE	mm	-63.0 %
Mean annual evapotranspiration	mm	92 %

420 **Table 5:** Changes in percentage of mean annual flow, and seasonal flows for the study catchments.

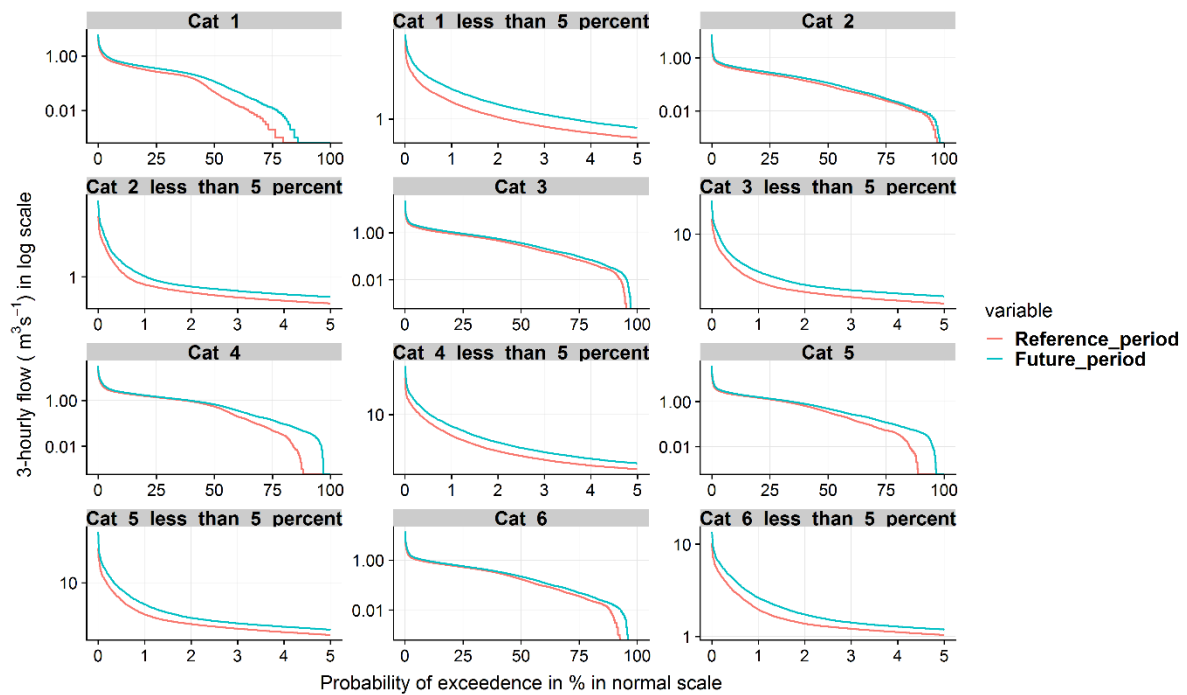
Hydrologic indicator (flow)	Change in indicator (%)	Hydrologic indicator (flow)	Change in indicator (%)
<b>Cat_1</b>		<b>Cat_4</b>	
Mean annual flow	33	Mean annual flow	17
Mean winter flow	256	Mean winter flow	168
Mean spring flow	49	Mean spring flow	100
Mean summer flow	4	Mean summer flow	-33
Mean Autumn flow	44	Mean Autumn flow	21
<b>Cat_2</b>		<b>Cat_5</b>	
Mean annual flow	22	Mean annual flow	19
Mean winter flow	41	Mean winter flow	147
Mean spring flow	-1	Mean spring flow	76
Mean summer flow	-7	Mean summer flow	-41
Mean Autumn flow	38	Mean Autumn flow	43
<b>Cat_3</b>		<b>Cat_6</b>	
Mean annual flow	22	Mean annual flow	17
Mean winter flow	68	Mean winter flow	81
Mean spring flow	4	Mean spring flow	10
Mean summer flow	-21	Mean summer flow	-35
Mean Autumn flow	41	Mean Autumn flow	35



425 **Figure 3.** Yearly mean 3 hourly hydrographs of the study catchments for the reference and future periods.

### 3.3 Changes in flow duration curves

430 The results of the study show that changes in the flow duration curves (FDCs) values are positive for all the flow conditions in all the study catchments. For all catchments, the top 5% of flows in the future period were higher than the flows in the reference period by 8% to 62%. In the future period, the median flows increase by 24% to 140% (the highest value is for catchment 1 and the lowest value was for catchment 4). Figure 4 shows the FDCs for both periods for the probability of exceedance less than 5% and 100% for all the study catchments.



**Figure 4:** Flow duration curves (FDCs) of the 3-hourly flow for the six study catchments for the reference and the future periods with the probability of exceedance less than 5% and 100%.

### 3.4 Changes in timing of annual winter/spring (WS) and fall stream flow

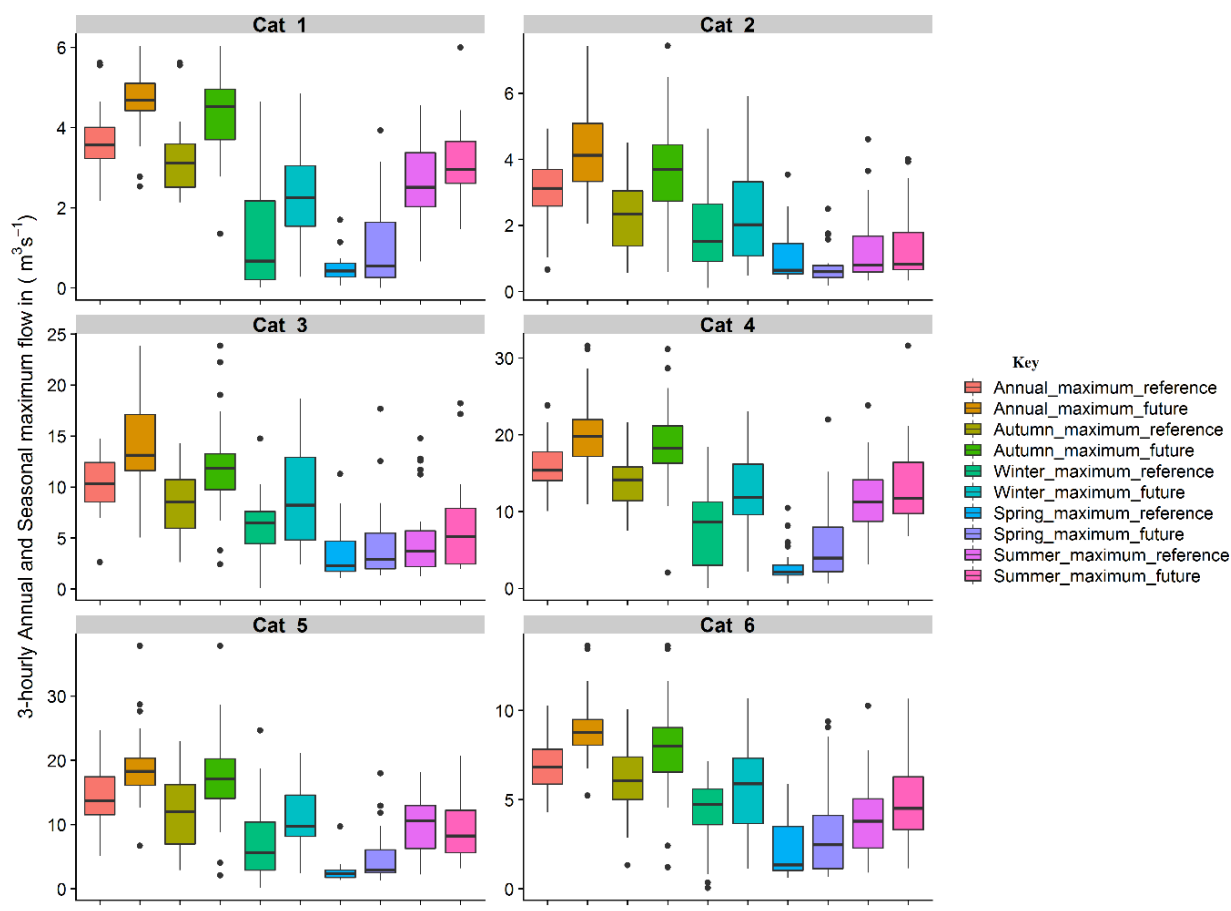
For all the study catchments, the mean WS center of volume dates occurred earlier in the future period (16 - 68 days) than the reference period. The fall CV date occurs later for all the study catchments in the future period and a shift of 1 – 16 days is expected. Table 6 presents the mean WSCV dates and mean fall CV dates for all the study catchments.

### 3.5 Changes in the maximum flows and flood frequency

#### 3.5.1 Changes in the annual and seasonal maximum flows

The annual and seasonal maximum flows increase in the future period compared to the reference period. The mean annual maximum flows increase by 29% to 38% across all the study catchments. The mean seasonal maximum flows also show an increase in all seasons

450 (1 % to 118%), and all catchments except for the spring season of catchment 2 (reduction of  
 29%) as shown in Table 7. The median of the annual and seasonal maximum flows increases  
 for all catchments except for the spring season of catchment 2 as shown in Fig.5. Table 7  
 presents the results of changes in the mean annual and seasonal maximum flows in future  
 period compared to the reference period. Figure 5 shows the distributions of the 30 years annual  
 455 and seasonal maximum flows both for the reference and future periods.



**Figure 5.** Distributions of the annual and seasonal maximum flow values of the 30 years  
 period.



**Table 7:** Changes in percentage of the mean annual and seasonal maximum flows in the future period compared to the reference period.

Annual and Seasonal maximum flows	Change in indicator (%)	Annual and Seasonal maximum flows	Change in indicator (%)
<b>Cat_1</b>		<b>Cat_4</b>	
Mean autumn maximum flow	38	Mean autumn maximum flow	33
Mean winter maximum flow	82	Mean winter maximum flow	60
Mean spring maximum flow	118	Mean spring maximum flow	106
Mean summer maximum flow	17	Mean summer maximum flow	18
Mean annual maximum flow	28	Mean annual maximum flow	29
<b>Cat_2</b>		<b>Cat_5</b>	
Mean autumn maximum flow	60	Mean autumn maximum flow	48
Mean winter maximum flow	32	Mean winter maximum flow	49
Mean spring maximum flow	-29	Mean spring maximum flow	86
Mean summer maximum flow	7	Mean summer maximum flow	1
Mean annual maximum flow	38	Mean annual maximum flow	31
<b>Cat_3</b>		<b>Cat_6</b>	
Mean autumn maximum flow	43	Mean autumn maximum flow	28
Mean winter maximum flow	46	Mean winter maximum flow	29
Mean spring maximum flow	25	Mean spring maximum flow	41
Mean summer maximum flow	21	Mean summer maximum flow	27
Mean annual maximum flow	37	Mean annual maximum flow	29

The number of 3-hours floods, exceeding the minimum annual maximum floods in the 30 years of the reference period, increases in the future period significantly (Table 8). This result shows that flooding will occur more often in the future period. In the future period, the yearly average number of such floods increase by 62% to 133% across all study catchments.

470 **Table 8:** Changes in the number of 3-hour floods which are greater than the minimum annual maximum flood in the reference period for all the study catchments.

Catchment	Mean annual number of 3-hours floods greater than the minimum annual maximum flood in the reference period		Changes in number (%)
	Reference period (1981-2011)	Future period (2070-2100)	
<i>Cat_1</i>	9	21	133
<i>Cat_2</i>	58	99	71
<i>Cat_3</i>	38	64	70
<i>Cat_4</i>	9	15	71
<i>Cat_5</i>	22	36	62
<i>Cat_6</i>	7	13	90

### 3.5.2 Changes in flood frequency

475 The study results, from the six ungauged small rural catchments, show that there will be an increase in floods with a return periods of 2 to 200-year in the future period. The floods are expected to increase by 16% to 43%. Table 9 shows the changes of 2 to 200-year floods for all the study catchments.

**Table 9:** Changes of floods with return periods of 2 to 200 year between the future and reference periods using Gumbel's Extreme Value Distribution for all study catchments.

Return period (years)	Change (%)					
	Cat_1	Cat_2	Cat_3	Cat_4	Cat_5	Cat_6
2	29	37	36	28	31	30
5	24	36	38	33	31	27
10	22	36	39	36	31	26
20	20	35	40	38	31	25
25	20	35	40	39	31	25
50	18	35	41	40	31	24
100	17	35	41	42	31	23
200	16	35	41	43	31	23

## 4. Discussion

### 4.1 Regionalized DDD model parameters

The physical similarity assessment result, between the study and gauged catchments in the west climate region of Norway, shows that the most similar gauged catchments are located close to the study catchments. This result is an evidence that the regionalization method used in this study is plausible.

### 4.2 Hydrological impacts of climate change

#### 4.2.1 Changes of hydroclimatic variables

Generally, the findings of the increase in precipitation and temperature for the study catchments are in the ranges of the increases predicted by the Norwegian Center for Climate Services (NCCS)

under the report Climate in Norway 2100 (Hanssen-Bauer et al., 2015) ; however, the results from some of the catchments were above or below the prediction interval of the report. This differences  
495 for some catchments was not unexpected since the comparison is between catchments specific values on a small scale and the regional values from the report. The NCCS report is based upon ten climate models with RCP8.5 and RCP4.5 using daily temporal resolution for the reference period (1971-2000) and future period (2071-2100).

500 The NCCS report shows that the median projections for changes in the annual mean precipitation are 17% and 8% for RCP8.5 and RCP4.5 respectively, and projected increases in the mean annual temperature are 3.7°C and 2.3°C for RCP8.5 and RCP4.5 respectively by 2100 for the south western part of Norway (where our study catchments are located). Our GCM-RCM-RCP8.5 result shows that the projected increase in the mean annual temperature is 3.3°C and the mean annual  
505 precipitation change is 22% between 1981-2011 and 2070-2100 periods at the Bergen area of Norway. The comparison shows that the GCM-RCM-RCP8.5 climate model, used in this study, predicts slightly more precipitation than the NCCS report for RCP8.5 and colder than the NCCS report with RCP8.5.

510 In the future period, all the study catchments show an increase in the mean annual flow compared to the reference period. The minimum and maximum increases are 17% and 33% respectively. Alcamo et al. (2007) found that the mean annual river flow is projected to increase in northern Europe approximately by 9% to 22% up to 2070s. This result can be comparable with our findings i.e. the increment could increase by 17% to 33 % between 2070 - 2100. The increase in mean

515 annual flow is the result of an increase in the mean annual precipitation and temperature (Table 4).  
The increase in the mean annual temperature results in an increase of water loss by  
evapotranspiration. However, the mean annual increase in precipitation exceeds the mean annual  
increase in the actual evapotranspiration computed in the model and these conditions contributed  
to increase of mean annual flow in general. The Hanssen-Bauer et al. (2015) report shows that the  
520 mean annual flow could decrease up to 1% and increase up to 17% for western Norway (where  
the study catchments are located) by 2100, and our result shows that the increase is higher than  
the increase in the report for four of the study catchments. This may very well be related to the  
higher resolution of our regional climate model. The higher resolution enables, at least in theory,  
a better local representation of precipitation and temperature, and the averaging issue in estimating  
525 the regional values in the report may lead to differences.

Unlike the changes in the mean annual flow, changes in the temporal distribution of flows (e.g.  
seasonal) can be important because changes are rarely identical throughout the year (Olsson et al.,  
2016). The mean winter and autumn flows increase for all study catchments. The main causes for  
530 the increase are projected increase in the precipitation and temperature during the autumn and  
winter seasons. The increase in the mean annual flows is mainly the result of an increase in mean  
winter flows for all catchments (Table 5 and Fig.3). The main cause of increase in the mean winter  
flow is increased winter temperatures. Increased winter temperatures result in a higher proportion  
of winter precipitation to fall as rain which then results in a higher proportion of winter flow. The  
535 mean spring flows show an increase for the five catchments and a decrease for one of the  
catchments while the mean summer flows show a decrease for the five catchments and an increase  
for one of the catchments. The increase in mean summer flow happened at a catchment which has

the highest mean elevation (catchment 1 in table 1), and this result shows that the future increase in temperature may not result in high evapotranspiration to reduce the mean summer flow at the high-elevation catchment.

Similar results are found in other hydrological assessments of the Bergen region. Previous studies of the water resources under climate change project higher temperatures and increased annual precipitation in the Bergen region for the 2071-2100 future period under the RCP8.5 scenario (Kristvik et al., 2018, Kristvik and Riisnes, 2015). Kristvik et al. (2018) based their assessment on statistical downscaling of an ensemble of RCPs and GCMs, followed by simulations of the hydrological response in term of inflow to surface water reservoirs. Due to higher temperatures and more rainfall precipitation, strong increases in winter flow was found, while a decrease was projected in spring/summer months due to less snowmelt (Kristvik et al. 2018).

The Hanssen-Bauer et al. (2015) report for Western Norway shows that the mean winter and autumn flows increase by 15% to 42% and by 5% to 36% respectively by 2100. The report also predicts that the mean spring flow will decrease up to 9% and will increase up to 17%, and the mean summer flow will decrease by 13% to 28% by 2100. The findings of our study show that the increase in mean winter flow is higher than the maximum prediction reported by Hanssen-Bauer et al. (2015) for four catchments and to the higher end of the prediction in the report for the remaining two catchments. In our study, a reduction in mean summer flows was higher than the reduction in the report in four catchments. The findings of this study show that the increase in the mean spring flow is within the prediction interval of the report for three catchments and higher

560 than the maximum prediction values of the report for the remaining three catchments. Wong et al.  
(2011) studied the differences in hydrological drought characteristics in summer season of Norway  
between the periods 1961-1990 and 2071-2100 using the HBV hydrological model with daily  
temporal resolution and found that substantial increases in hydrological drought duration and  
drought affected areas are expected in Norway which aligns with our findings. The Ministry of the  
565 Environment of Norway (2009) pointed out that the summer flow in Norway is projected to be  
reduced and supports the findings of our study.

Climate change affects the snowpack and the amount of water stored in the snowpack (SWE).  
Increased winter temperature will generally lead to a reduction in snow storage and hence the mean  
570 maximum SWE will also be reduced in the future. The results of this study show that there will be  
a reduction in the mean maximum SWE at all the catchments in the future period. The reduction  
ranges from 48% to 78%. The largest reduction is found to be at the catchment with the highest  
mean elevation value (catchment 1). Snow accumulation and its characteristics are the results of  
air temperature, precipitation, wind and the amount of moisture in the atmosphere. Therefore,  
575 changes in these and other climatic properties can affect snowpack and hence maximum SWE. In  
our study, there is an increase in temperature for all study catchments in the future period, and the  
increase resulted in rain to take the snow share which gives rise to the reduction of mean annual  
maximum SWE at all the study catchments.

580

#### **4.2.2 Changes in flow duration curves (FDCs)**

The results of this study show that climate change affects the FDCs of the study catchments. The future FDCs are higher than the FDCs of the reference period at all catchments for all probability of exceedances (Fig.4). The FDCs of all the study catchment show that the low flows increase in the future, and there will be longer periods with higher flows in the future period than in the reference period.

#### **4.2.3 Changes in WSCV and fall CV dates**

The results for the mean winter/spring center of volume date (WSCV) showed that WSCV will occur earlier. While the mean fall CV date came to be later for all the study catchments. The change in WSCV dates is related to the amount and timing of spring snowmelt and warmer winter temperature. The earlier mean WSCV date in the future period is the result of increased precipitation falling during a warmer winter, reduced snow storage, early snow melt and warmer spring temperature. The late occurrence of fall CV dates is related to the higher precipitation and temperature projected in fall in the future period. The warmer temperature in the future period makes the major proportion of future precipitation to happen as rain especially in the months of November and December. This condition makes the future bulk of high flows to occur towards the end of a year which will result in the fall CV dates to occur later. The finding in our study is supported by the finding of Blöschl; G. et al (2017) i.e. in the southwestern part of Norway, there is a shift towards later floods due to climate change in the same period at the end of a year (October - December).



## **4.3 Changes in the maximum flows and flood frequency**

### **4.3.1 Annual and seasonal maximum flows**

In the future period (2070 – 2100), the results of this study show that there will be an increase in the mean and median of the annual and the seasonal maximum flows (Table 7 and 8, and Fig.5) for all the study catchments except for the spring season for catchment 2. Most (15 – 23 of the 30 annual maximum floods) of the maximum annual flows occur during the autumn period (1<sup>st</sup> September to 30<sup>th</sup> of November) and therefore much of the contribution for the increment of the mean and median annual maximum flows stems from the autumn season (Fig.5). The second largest contributor to the increment of the mean and median annual maximum flows is winter season (Fig.5). In the future period, the winter maximum flows will increase in magnitude and frequencies as a substantial amount of precipitation falls as rain in a warmer climate. The mean summer maximum flows show the least increment in the future period (1% to 21%). The finding that the mean annual maximum flows (floods) show an increase of 29% to 38% is supported by the study of Lawrence and Hisdal (2011). Lawrence and Hisdal (2011) have done ensemble modelling based on locally adjusted precipitation and temperature data from thirteen regional climate scenarios in order to assess the likely changes in hydrological floods between a reference period (1960 – 1990) and two future periods (2021-2050) and (2071 - 2100), in 115 catchments distributed throughout Norway. Their results showed that western regions of Norway are associated with the largest percentage increases in the magnitude of the mean annual floods (greater than 20%). Lawrence and Hisdal (2011) also pointed out that the increase in autumn and winter rainfall increases the magnitude of peak flows (floods) during these seasons throughout Norway. For areas already dominated by autumn and winter floods, the projected increases in flood

magnitude are large. Lawrence and Hisdal (2011) findings support the findings in this study i.e. the maximum increases in floods magnitude are expected to happen in autumn and winter seasons (Table 7 and Fig.5).

630

The yearly average number of 3-hour floods values, which are greater than the minimum of the annual maximum floods in the 30 years of the reference period, increases. The yearly average number of such floods increase between 62% and 133% across all study catchments as presented in Table 8. The results show that there will be a greater number of 3-hour floods in the future  
635 period than the reference period and this could increase flood risks at the infrastructure constructed downstream of small ungauged rural catchments in Bergen region of west Norway. European Environmental Agency(2004b), in: Alcamo et al. (2007) found that the risk of floods will increase in northern Europe (e.g. Norway) which supports our finding of increase in the risk of floods. The center for International Climate Research (<https://cicero.oslo.no>) predicts that Western Norway  
640 will experience more heavy rain and flooding in the future. Our finding confirms their predictions.

#### **4.3.2 Changes in flood frequency**

For all return periods, the mean increases of floods were between 31 % and 32% while the median increases were between 30% and 34%. The increase in the 2 to 10-year floods is more than 20%  
645 for all study catchments, and the 20 to 200-year floods increase is greater than 20% for five of the study catchments. The 50-year flood will increase by 18% to 40 % in the future periods. The results also show that the increase in the 200-year floods is greater than 30% for four of the six

study catchments (1 catchment between 10% -20%, 1 catchment between 20% -30%, 2 catchments between 30% - 40% and 2 catchments between 40% and 50%).

650

Beldring et al. (2006) studied the percentage change in the mean annual floods and the 50-year floods in four catchments in Norway between 1961-1990 and 2070-2100 and found that moderate to large increases are expected (one of the study catchments is in Western Norway (Viksvatn in Gaular)). Beldring et al. (2006) finding supports the findings in this study. Lawrence and Hisdal  
655 (2011) have found that the projected increase of the 200-year floods exceeds 40% for some of the catchments in western Norway between the 1961-1990 reference period and the 2071- 2100 future period which is in agreement with our findings. Lawrence (2016) used ensembles of EURO-CORDEX regional climate projections data to force HBV hydrological model for assessing possible effects of climate change on floods in 115 catchments in Norway for two future periods  
660 (2031-2060 and 2071-2100). The assessment result shows that the minimum increase in the 200-year flood, for catchments less than 100km<sup>2</sup> at Hordaland county (where study catchments are located), is 20% which is generally in agreement with our findings i.e. five of the six catchments show greater than 20% increase for 200-year floods.

665 Lawrence (2016) showed that the increase in the 200-year flood is higher for RCP8.5 than RCP 4.5 in Hordaland county. Not surprising that the choice of RCP has significant effect on the results of the 200-year flood frequency. Of the 115 catchments used in the study for the whole Norway, 10 of them are in the Hordaland county. With RCP4.5 scenario, eight of the ten catchments showed less than 20 % increase ( 1 catchment a decrease, 2 catchments an increase between 1% - 10%, 5

670 catchments an increase between 11% - 20%), and two catchments show an increase greater than  
20% (1 catchment an increase between 21% - 30% and 1 catchment an increase between 31% -  
40%). With RCP8.5 scenario, seven of the ten catchments show greater than 20 % increase (3  
catchments an increase between 21% - 30% and 4 catchments an increase between 31% - 40%),  
and 3 catchments show an increase of less than 20% (1 catchment a change of less than 0% and 2  
675 catchments an increase between 11% - 20%). Generally, our finding with RCP8.5 is similar to the  
Lawrence (2016) finding with RCP8.5 except that our finding shows an increase higher than 40%  
for two of the study catchments.

The main differences between this present study and Lawrence (2016) study are: the number and  
680 types of climate models, RCPs, the catchment sizes and temporal resolution. The comparisons of  
the increase in floods are mainly done in the same county (Hordaland county where Bergen area  
is located) and the area is mainly dominated by floods generated by rain in autumn season.  
However, in the Lawrence (2016) study, the catchment sizes were ranging from 6km<sup>2</sup> to 15449km<sup>2</sup>  
and used 10 global-regional models with RCP8.5 and RCP4.5. The temporal resolution, used in  
685 the Lawrence (2016) study, was daily and this daily data has been bias corrected after the GCM-  
RCM chain. Changes in floods, higher than 40% for some catchments in our findings, are related  
with the differences in the climate models, in the bias correction method, in the temporal  
resolutions used, in the hydrological models used, in the sizes of the catchments and capability of  
the DDD model in predicting 3 hourly floods in small catchments. Our findings are based on  
690 RCP8.5 scenario which can be used as a worst-case scenario at the Bergen area in the south western  
part of Norway.

#### 4.4 Limitations

There are limitations in this study which are related to DDD model and the climate model. A first  
695 limitation is related to the DDD model parameters. In this study, we have used the regionalization  
method developed for 1 hour (Tsegaw et al., 2019a) to estimate the DDD model parameters for  
the 3-hours simulation. DDD model parameters like degree hour factor for evapotranspiration  
(Cea) and degree hour factors for snow melt (Cx) are sensitive to the temporal resolution.  
However, the same uncertainty is present both in the reference and future periods. The second  
700 limitation is related to the simple degree evaporation model used in the DDD model. Table 4 shows  
large changes in actual evapotranspiration. The large change in actual evapotranspiration tells us  
that in the future period there will be more water available (to evaporate) and higher temperature  
(to cause evaporation) than the reference period; however, there is a limitation with the simple  
evaporation model since actual evaporation is not only affected by temperature but by additional  
705 climatological factors like wind speed, humidity, cloudiness etc. This limitation could also be the  
reason for a large change of actual evapotranspiration between the reference (1981-2011) and the  
future period (1970-2100). A third possible limitation is that the DDD model parameters are  
assumed to be constant under changing climatic conditions, and the same parameter sets are used  
for the reference and future period simulations. However, studies show that using the same  
710 parameter sets for the reference and future periods under climate impact studies can have  
significant impact on the simulation results (Merz et al., 2011). A fourth limitation is that the  
modelled changes in the hydroclimatic variables and flood frequency are derived from a single  
GCM-RCM model chain using only RCP8.5 scenario. Thereby, we are not able to capture the  
GCM-RCM uncertainties usually found by handling model ensembles. However, this simulation  
715 has the benefit of a high spatial resolution for a better representation of small-scale features and

additionally a novel bias correction method has been applied prior to the downscaling to ensure physical consistency between temperature and precipitation variables used as input to the hydrological model.

720 This paper represents one realization of a climate scenario, and that we recommend applying the method of Pontoppidan (2018) to other GCMs to capture model uncertainties. Further, the comparison done between our study and other studies shows that our findings are supported by the results of other studies except for a few differences. Therefore, our findings can give a useful addition to the current understandings of the effects of changing climate on the west coast of  
725 Norway. Other combinations of GCMs-RCMs-RCPs predict varieties of future climate change signals which could potentially result in different hydroclimatic and flood predictions for the same study catchments. Therefore, the results of this study alone should not be taken as a conclusive of what will be seen in the future but could be of practical use to regional decision-makers if considered alongside other previous and future findings.

730

## 5. Conclusion

In this study a newly developed bias corrected dynamical downscaling product as input for the improved DDD model to investigate the impact of climate change in small ungauged catchments in Western Norway. The results show that there will be an increase in the mean annual flow for  
735 the future period (2070-2100). The increase in the mean annual flow is due to the increase in the mean autumn, winter and spring flows in the future period (2070-2100) compared to the reference period (1981 - 2011). In the future period, the mean summer flow decreases for all the study

catchments except one. The future flow duration curves are higher than the flow duration curves of the reference period for all study catchments for all probability of exceedances. The median  
740 flow (flows which are exceeded 50% of the time) increased by 24% to 140%. The FDCs of all study catchment show that the low flows increase in the future, and there will be more wetter periods in the future than in the reference period.

There will be an increase in the mean annual floods, and floods of 2 to 200-year return period in  
745 the future period. The mean annual maximum floods increase by 29% to 38%. This study gives clear indication that the projected increase in flood frequencies is high (e.g. 200-year floods greater than 40%) in small catchments around Berge area in Western Norway. Such catchments will be more vulnerable to flood risk under the projected future climate. The high-resolution regional climate model with a novel bias correction method improves the knowledge and understanding of  
750 climate change impacts on a hydrology of small catchments in Western Norway. However, it is important to conduct further research to address the limitations of this study prior to conducting flood risk assessment, and planning flood risk management strategies as a national strategy for climate change adaptation.

755 These simulations are based on high resolution regional climate model projection with a novel bias correction method and address limitations in previous impact studies where such projections have not yet been available and enabling in-depth analysis of the impacts of climate change on rapid hydrological processes. An ensemble of GCM-RCM runs building on the results of this paper is suggested as a venue for further work in order to account for uncertainties in the RCP scenarios

760 and climate projections and thus provide more reliable recommendations for infrastructure design  
and adaptation.

## Acknowledgments

The authors would like to acknowledge Norwegian Climate Service Centre for providing  
765 information on how to access and process the 3 x 3 km spatial and 3-hours temporal resolution  
gridded precipitation and temperature climate data for Western Norway. The authors also would  
like to acknowledge Thomas Skaugen of the Norwegian Water Resources and Energy Directorate  
(NVE) for providing the source code of the Distance Distribution Dynamics hydrological model.  
Finally, the authors gratefully acknowledge the financial support by Bingo and ExtndBingo project  
770 (EU Horizon 2020, grant agreement 641739), and the Research Council of Norway (RCN)  
through R3 (grant 255397) and through the Centre for Research-based Innovation “Klima 2050”  
(see [www.klima2050.no](http://www.klima2050.no)). We also would like to thank UNINETT Sigma2 because the regional  
downscaling was performed on resources provided by UNINETT Sigma2 - the National  
Infrastructure for High Performance Computing and Data Storage in Norway.



## 775    **References**

- Alcamo, J., Flörke, M., and Märker, M.: Future long-term changes in global water resources driven by socio-economic and climatic changes, *Hydrological Sciences Journal*, 52, 247-275, <https://doi.org/210.1623/hysj.1652.1622.1247>, 2007.
- 780    Alfieri, L., Burek, P., Feyen, L., and Forzieri, G.: Global warming increases the frequency of river floods in Europe, *Hydrol. Earth Syst. Sci.*, 19, 2247-2260, <https://doi.org/2210.5194/hess-2219-2247-2015>, 2015.
- 785    Azad, R. and Sorteberg, A.: Extreme daily precipitation in coastal western Norway and the link to atmospheric rivers, *Journal of Geophysical Research: Atmospheres*, 122, 2080-2095, <https://doi.org/2010.1002/2016JD025615>, 2017.
- 790    Baltas, E. A.: Impact of Climate Change on the Hydrological Regime and Water Resources in the Basin of Siatista, *International Journal of Water Resources Development*, 23, 501-518, <https://doi.org/510.1080/07900620701485980>, 2007.
- 795    Beldring, S., Roald, L. A., Engen-Skaugen, T., and Førland, E. J.: Climate Change Impacts on Hydrological Processes in Norway 2071-2100. Based on RegClim HIRHAM and Rossby Centre RCAO Regional Climate Model Results. Norwegian Water Resources and Energy Directorate, Oslo, Norway, 2006.
- 800    Bhagat, N.: Flood Frequency Analysis Using Gumbel's Distribution Method: A Case Study of Lower Mahi Basin, India, *Ocean Development and International Law*, 6, 51-54, <https://doi.org/10.11648/j.wros.20170604.20170611>, 2017.
- 805    Blöschl, G. et al. Changing climate shifts timing of European floods. *Science*, 357, 588-590, <https://doi.org/10.1126/science.aan2506>, 2017.
- 810    Blöschl, G., Hall, J., Viglione, A. et al. Changing climate both increases and decreases European river floods. *Nature* **573**, 108–111, <https://doi.org/10.1038/s41586-019-1495-6>, 2019.
- 815    Borga, M., Anagnostou, E. N., Blöschl, G., and Creutin, J. D.: Flash flood forecasting, warning and risk management: the HYDRATE project, *Environmental Science and Policy*, 14, 834-844, <https://doi.org/810.1016/j.envsci.2011.1005.1017>, 2011.
- 810    Bras, R. L.: *Hydrology: An Introduction to Hydrologic Science*, Addison-Wesley, 1990.
- 815    Bruyère, C. L., Monaghan, A. J., Steinhoff, D. F., and Yates, D. *Bias-Corrected CMIP5 CESM Data in WRF / MPAS Intermediate File Format*. NCAR Technical Note NCAR/TN-515+STR, 2015.
- 815    Chernet, H. H., Alfredsen, K., and Midttømme, G. H.: Safety of Hydropower Dams in a Changing Climate, *Journal of Hydrologic Engineering*, 19, 569-582, [https://doi.org/510.1061/\(ASCE\)HE.1943-5584.0000836](https://doi.org/510.1061/(ASCE)HE.1943-5584.0000836), 2014.

- Christensen, J. H., Boberg, F., Christensen, O. B., and Lucas-Picher, P., On the need for bias  
820 correction of regional climate change projections of temperature and precipitation, *Geophys. Res. Lett.*, 35, L20709, doi:[10.1029/2008GL035694](https://doi.org/10.1029/2008GL035694). 2008.
- Dankers, R. and Feyen, L.: Climate Change Impact on Flood Hazard in Europe: An Assessment  
Based on High-Resolution Climate Simulations, *Journal of Geophysical Research*, 113, D19105,  
825 <https://doi.org/19110.11029/12007JD009719>, 2008.
- Donnelly, C., Greuell, W., Andersson, J., Gerten, D., Pisacane, G., Roudier, P., and Ludwig, F.:  
Impacts of climate change on European hydrology at 1.5, 2 and 3 degrees mean global warming  
830 above preindustrial level, *Climatic Change*, 143, 13-26, <http://dx.doi.org/10.1007/s10584-10017-12022-10580>., 2017.
- Eisenreich, S., Bernasconi, C., and Campostrini, P.: Climate change and the European water  
dimension, 2005.  
835
- Fleig, A. K. and Wilson, D.: Flood estimation in small catchments : literature study. In:  
Naturfareprosjektet,, Rapport (Norges vassdrags- og energidirektorat : online), Norwegian Water  
Resources and Energy Directorate, Oslo, 2013.
- Golz, S., Naumann, T., Neubert, M., and Günther, B.: Heavy rainfall: An underestimated  
840 environmental risk for buildings?, *E3S Web of Conferences*, 7, 08001,  
<https://doi.org/08010.01051/e08003sconf/20160708001>, 2016.
- Groen, R., M. Jespersen, K. de Jong, and Olsson, J.: Climate change impacts and uncertainties in  
845 flood risk management: Examples from the North Sea Region. Norwegian Water Resources and  
Energy Directorate Oslo, 2012.
- Hanssen-Bauer, I., E.J. Førland, I. Haddeland, H. Hisdal, S. Mayer, A. Nesje, J.E.Ø. Nilsen, S.  
Sandven, A.B. Sandø, and Ådlandsvik, A. S. o. B.: KLIMA I NORGE 2100. Miljø  
850 Direktoratet,Oslo, 2015.
- Hattermann, F., Kundzewicz, Z., Becker, C., Castelletti, A., Gooch, G., Kaden, S., de Lange, W.,  
Laurans, Y., Muhar, S., Pahl-Wostl, C., Soncini-Sessa, R., Stålnacke, P., and Willems, P.: Water  
Framework Directive: Model supported Implementation. A Water Manager's Guide, 2009.
- Hodgkins, G. A., Dudley, R., and Huntington, T.: Changes in the Timing of High River Flows in  
855 New England Over the 20th Century, 2003.
- IPCC: Summary for Policymakers. In: Global Warming of 1.5°C. An IPCC Special Report on the  
impacts of global warming of 1.5°C above pre-industrial levels and related global greenhouse gas  
860 emission pathways, in the context of strengthening the global response to the threat of climate  
change, sustainable development, and efforts to eradicate poverty [Masson-Delmotte, V., P. Zhai,  
H.-O. Pörtner, D. Roberts, J. Skea, P.R. Shukla, A. Pirani, W. Moufouma-Okia, C. Péan, R.  
Pidcock, S. Connors, J.B.R. Matthews, Y. Chen, X. Zhou, M.I. Gomis, E. Lonnoy, T. Maycock,

- 865 M. Tignor, and T. Waterfield (eds.)] World Meteorological Organization, Geneva, Switzerland, 32 pp., **2018**.
- Jacob, D., Petersen, J., Eggert, B., Alias, A., Christensen, O. B., Bouwer, L. M., Braun, A., Colette, A., Déqué, M., Georgievski, G., Georgopoulou, E., Gobiet, A., Menut, L., Nikulin, G., Haensler, A., Hempelmann, N., Jones, C., Keuler, K., Kovats, S., Kröner, N., Kotlarski, S., Kriegsmann, A., Martin, E., van Meijgaard, E., Moseley, C., Pfeifer, S., Preuschmann, S., Radermacher, C., Radtke, 870 K., Rechid, D., Rounsevell, M., Samuelsson, P., Somot, S., Soussana, J.-F., Teichmann, C., Valentini, R., Vautard, R., Weber, B., and Yiou, P.: EURO-CORDEX: new high-resolution climate change projections for European impact research, *Regional Environmental Change*, 14, 563-578, <http://dx.doi.org/510.1007/s10113-10014-10587-y>, 2014.
- 875 Kim, E. S. and Choi, H. I.: Estimation of the relative severity of floods in small ungauged catchments for preliminary observations on flash flood preparedness: a case study in Korea, *Int J Environ Res Public Health*, 9, 1507-1522, <https://doi.org/1510.3390/ijerph9041507>, 2012.
- 880 Kotlarski, S., Keuler, K., Christensen, O. B., Colette, A., Déqué, M., Gobiet, A., Goergen, K., Jacob, D., Lüthi, D., van Meijgaard, E., Nikulin, G., Schär, C., Teichmann, C., Vautard, R., Warrach-Sagi, K., and Wulfmeyer, V.: Regional climate modeling on European scales: a joint standard evaluation of the EURO-CORDEX RCM ensemble, *Geosci. Model Dev.*, 7, 1297-1333, <https://doi.org/1210.5194/gmd-1297-1297-2014>, 2014.
- 885 Kristvik, E., Muthanna, T. M., and Alfredsen, K.: Assessment of future water availability under climate change, considering scenarios for population growth and ageing infrastructure, *Journal of Water and Climate Change*, 10, 1-12, <https://doi.org/10.2166/wcc.2018.2096>, 2018.
- 890 Kristvik, E., & Riisnes, B., *Hydrological Assessment of Water Resources in Bergen*. Masters thesis, Norwegian University of Science and Technology, Trondheim, Norway, 2015
- Krysanova, V., Vetter, T., and Hattermann, F.: Detection of change in drought frequency in the Elbe basin: comparison of three methods, *Hydrological Sciences Journal*, 53, 519-537, 895 <https://doi.org/510.1623/hysj.1653.1623.1519>, 2008.
- Kundzewicz, Z. W., Kanae, S., Seneviratne, S. I., Handmer, J., Nicholls, N., Peduzzi, P., Mechler, R., Bouwer, L. M., Arnell, N., Mach, K., Muir-Wood, R., Brakenridge, G. R., Kron, W., Benito, G., Honda, Y., Takahashi, K., and Sherstyukov, B.: Flood risk and climate change: global and 900 regional perspectives, *Hydrological Sciences Journal*, 59, 1-28, <https://doi.org/10.1080/02626667.02622013.02857411>, 2014.
- Lawrence, D.: Klimaendring og framtidige flommer i Norge. avdeling, H. (Ed.), *Norges vassdrags- og energidirektorat*, Oslo, 2016.
- 905 Lawrence, D. and Hisdal, H.: Hydrological projections for floods in Norway under a future climate, *Norwegian Water Resources and Energy Directorate*, Oslo, 2011.

- 910 Lespinas, F., Ludwig, W., and Heussner, S.: Hydrological and climatic uncertainties associated  
with modeling the impact of climate change on water resources of small Mediterranean coastal  
rivers, *Journal of Hydrology*, 511, 403–422, <https://doi.org/410.1016/j.jhydrol.2014.1001.1033>,  
2014.
- 915 Li, Z.: Watershed modeling using arc hydro based on DEMs: a case study in Jackpine watershed,  
*Environmental Systems Research*, 3, 1-11, <https://doi.org/10.1186/2193-2697-1183-1111>, 2014.
- López-Moreno, J. I., Pomeroy, J. W., Revuelto, J., and Vicente-Serrano, S. M.: Response of snow  
processes to climate change: spatial variability in a small basin in the Spanish Pyrenees,  
*Hydrological Processes*, 27, 2637-2650, <https://doi.org/2610.1002/hyp.9408>, 2013.
- 920 Madsen, H., Lawrence, D., Lang, M., Martinkova, M., and Kjeldsen, T. R.: Review of trend  
analysis and climate change projections of extreme precipitation and floods in Europe, *Journal of  
Hydrology*, 519, 3634-3650, <https://doi.org/3610.1016/j.jhydrol.2014.3611.3003>, 2014.
- 925 Mallakpour, I. and Villarini, G.: The changing nature of flooding across the central United States,  
*Nature Climate Change*, 5, 250-254, <https://doi.org/210.1038/nclimate2516>, 2015.
- Maraun, D. Bias Correcting Climate Change Simulations - a Critical Review. *Curr Clim Change  
Rep* 2, 211–220. <https://doi.org/10.1007/s40641-016-0050-x>, 2016.
- 930 Maraun, D., Shepherd, T., Widmann, M. *et al.* Towards process-informed bias correction of  
climate change simulations. *Nature Clim Change* 7, 764–773  
<https://doi.org/10.1038/nclimate3418>, 2017.
- 935 Menzel, L., Niehoff, D., Bürger, G., and Bronstert, A.: Climate change impacts on river flooding:  
A modelling study of three meso-scale catchments, *Climatic Change: Implications for the  
Hydrological Cycle and for Water Management*, 10, 249-269, [https://doi.org/210.1007/1000-  
1306-47983-47984\\_47914](https://doi.org/210.1007/1000-1306-47983-47984_47914) 2006.
- 940 Merz, R., Parajka, J., and Blöschl, G.: Time stability of catchment model parameters: Implications  
for climate impact analyses, *Water Resources Research - WATER RESOUR RES*, 47, W02531,  
<https://doi.org/02510.01029/02010WR009505>, 2011.
- 945 Ministry of the Environment of Norway: Norway's Fifth National Report under the United Nation's  
Framework Convention on Climate Change. 2009.
- Muerth, M. J., Gauvin St-Denis, B., Ricard, S., Velázquez, J. A., Schmid, J., Minville, M., Caya,  
D., Chaumont, D., Ludwig, R., and Turcotte, R.: On the need for bias correction in regional  
climate scenarios to assess climate change impacts on river runoff, *Hydrol. Earth Syst. Sci.*, 17,  
950 1189–1204, <https://doi.org/10.5194/hess-17-1189-2013>, 2013.
- Olsson, J., Arheimer, B., Borris, M., Donnelly, C., Foster, K., Nikulin, G., Persson, M., Perttu, A.-  
M., Uvo, C. B., Viklander, M., and Yang, W.: Hydrological Climate Change Impact Assessment

- at Small and Large Scales: Key Messages from Recent Progress in Sweden, *Climate*, 4, 39,  
955 <https://doi.org/10.3390/cli4030039>, 2016.
- Pontoppidan, M., Kolstad, E. W., Sobolowski, S., and King, M. P.: Improving the Reliability and  
Added Value of Dynamical Downscaling via Correction of Large-Scale Errors: A Norwegian  
Perspective, *Journal of Geophysical Research: Atmospheres*, 123, 11,875-811, 888,  
960 <https://doi.org/810.1029/2018JD028372>, 2018.
- Pontoppidan, M., Reuder, J., Mayer, S., and Kolstad, E. W.: Downscaling an intense precipitation  
event in complex terrain: the importance of high grid resolution, *Tellus A: Dynamic Meteorology  
and Oceanography*, 69, 1271561,  
965 <https://doi.org/1271510.1271080/16000870.16002016.11271561>, 2017.
- Pumo, D., Caracciolo, D., Viola, F., and Noto, L. V.: Climate change effects on the hydrological  
regime of small non-perennial river basins, *Science of The Total Environment*, 542, 76-92,  
<https://doi.org/10.1016/j.scitotenv.2015.1010.1109>, 2016.  
970
- Quintero, F., Mantilla, R., Anderson, C., Claman, D., and Krajewski, W.: Assessment of Changes  
in Flood Frequency Due to the Effects of Climate Change: Implications for Engineering Design,  
*Hydrology*, 5, 1-19, <https://doi.org/10.3390/hydrology5010019>, 2018.
- 975 Rasmussen, R., C. Liu, K. Ikeda, D. Gochis, D. Yates, F. Chen, M. Tewari, M. Barlage, J. Dudhia,  
W. Yu, K. Miller, K. Arsenault, V. Grubišić, G. Thompson, and E. Gutmann.: High-Resolution  
Coupled Climate Runoff Simulations of Seasonal Snowfall over Colorado: A Process Study of  
Current and Warmer Climate. *J. Climate*, 24, 3015–  
3048, <https://doi.org/10.1175/2010JCLI3985.1>, 2011.  
980
- Richardson, D.: Flood risk—the impact of climate change, *Proceedings of the Institution of Civil  
Engineers - Civil Engineering*, 150, 22-24, <https://doi.org/10.1680/cien.2002.1150.1685.1622>,  
2002.  
985
- Roald, L.A., Rainfall floods and weather patterns. Report, Norwegian Water Resources and  
Energy Directorate, Oslo, Norway, 2008.
- Rocheta, E., J.P. Evans, and Sharma, A., Can Bias Correction of Regional Climate Model Lateral  
Boundary Conditions Improve Low-Frequency Rainfall Variability?. *J. Climate*, 30, 9785–  
9806, <https://doi.org/10.1175/JCLI-D-16-0654.1>, 2017.  
990
- Rojas, R., Feyen, L., and Watkiss, P.: Climate change and river floods in the European Union:  
Socio-economic consequences and the costs and benefits of adaptation, *Global Environmental  
Change*, 23, 1737-1751, <https://doi.org/1710.1016/j.gloenvcha.2013.1708.1006>, 2013.
- 995 Schär, C., Frei, C., Lüthi, D., and Davies, C., Surrogate climate-change scenarios for regional  
climate models. *Geophysical Research Letters*, 23(6), 669 - 672.  
<https://doi.org/10.1029/96GL00265>, 1996.

Searcy, J.: Flow-Duration Curves, 1959.

- 1000 Skamarock, W. C., Klemp, J., Dudhia, J., Gill, D. O., Barker, D., and Wang, W.: A Description of the Advanced Research WRF Version 3, University Corporation for Atmospheric Research. , 27, 3-27, <https://doi.org/10.5065/D5068S5064MVH>, 2008.
- 1005 Skaugen, T. and Mengistu, Z.: Estimating catchment-scale groundwater dynamics from recession analysis – enhanced constraining of hydrological models, *Hydrol. Earth Syst. Sci.*, 20, 4963-4981, <https://doi.org/4910.5194/hess-4920-4963-2016>, 2016.
- 1010 Skaugen, T. and Onof, C.: A rainfall-runoff model parameterized from GIS and runoff data, *Hydrological Processes*, 28, 4529-4542, <https://doi.org/4510.1002/hyp.9968>, 2014.
- 1015 Skaugen, T., Peerebom, I. O., and Nilsson, A.: Use of a parsimonious rainfall–run-off model for predicting hydrological response in ungauged basins, *Hydrological Processes*, 29, 1999-2013, <https://doi.org/1910.1002/hyp.10315>, 2015.
- 1020 Skaugen, T. and Weltzien, I. H.: A model for the spatial distribution of snow water equivalent parameterized from the spatial variability of precipitation, *The Cryosphere*, 10, 1947-1963, <https://doi.org/1910.5194/tc-1910-1947-2016>, 2016.
- 1025 Thornes, J. E.: IPCC, 2001: Climate change 2001: impacts, adaptation and vulnerability, Contribution of Working Group II to the Third Assessment Report of the Intergovernmental Panel on Climate Change, edited by J. J. McCarthy, O. F. Canziani, N. A. Leary, D. J. Dokken and K. S. White (eds). Cambridge University Press, Cambridge, UK, and New York, USA, 2001, ISBN 0-521-01500-6 (paperback), ISBN 0-521-80768-9 (hardback), *International Journal of Climatology*, 22, 1285-1286, <https://doi.org/1210.1002/joc.1775>, 2002.
- 1030 Tofiq, F. A. and Guven, A.: Prediction of design flood discharge by statistical downscaling and General Circulation Models, *Journal of Hydrology*, 517, 1145-1153, <https://doi.org/1110.1016/j.jhydrol.2014.1106.1028> 2014.
- 1035 Trambly, Y., Ruelland, D., Somot, S., Bouaicha, R., and Servat, E.: High-resolution Med-CORDEX regional climate model simulations for hydrological impact studies: a first evaluation of the ALADIN-Climate model in Morocco, *Hydrol. Earth Syst. Sci.*, 17, 3721–3739, <https://doi.org/10.5194/hess-17-3721-2013>, 2013
- 1040 Tsegaw, A. T., Alfredsen, K., Skaugen, T., and Muthanna, T. M.: Predicting hourly flows at ungauged small rural catchments using a parsimonious hydrological model, *Journal of Hydrology*, 573, 855-871, <https://doi.org/810.1016/j.jhydrol.2019.1003.1090>, 2019a.
- 1040 Tsegaw, A. T., Skaugen, T., Alfredsen, K., and Muthanna, T. M.: A dynamic river network method for the prediction of floods using a parsimonious rainfall-runoff model, *Hydrology Research*, 2019b. <https://doi.org/10.2166/nh.2019.2003>, 2019b.



Vannitsem, S.: Bias correction and post-processing under climate change, *Nonlin. Processes Geophys.*, 18, 911–924, <https://doi.org/10.5194/npg-18-911-2011>, 2011.

1045 Veijalainen, N., Lotsari, E., Alho, P., Vehviläinen, B., and Käyhkö, J.: National Scale Assessment of Climate Change Impacts on Flooding in Finland, *Journal of Hydrology*, 391, 333–350, <https://doi.org/310.1016/j.jhydrol.2010.1007.1035>, 2010.

1050 Vormoor, K., Lawrence, D., Heistermann, M., and Bronstert, A.: Climate change impacts on the seasonality and generation processes of floods – projections and uncertainties for catchments with mixed snowmelt/rainfall regimes, *Hydrology and earth System Sciences*, 19, 913–931, <https://www.doi:10.5194/hess-19-913-2015>, 2015.

Wang, J. and Kotamarthi, V.R., High-resolution dynamically downscaled projections of precipitation in the mid and late 21st century over North America. *Earth's Future*, 3: 268–288. doi:[10.1002/2015EF000304](https://doi.org/10.1002/2015EF000304), 2015.

1055 Wong, W. K., Beldring, S., Engen-Skaugen, T., Haddeland, I., and Hisdal, H.: Climate Change Effects on Spatiotemporal Patterns of Hydroclimatological Summer Droughts in Norway, *Journal of Hydrometeorology*, 12, 1205–1220, <https://www.jstor.org/stable/24912722>, 2011.

1060 Xu, Z. and Yang Z., : An Improved Dynamical Downscaling Method with GCM Bias Corrections and Its Validation with 30 Years of Climate Simulations. *J. Climate*, **25**, 6271–6286, <https://doi.org/10.1175/JCLI-D-12-00005.1>, 2012.

Xu, Z, and Yang, Z-L, A new dynamical downscaling approach with GCM bias corrections and spectral nudging. *J. Geophys. Res. Atmos.*, 120, 3063– 3084. doi: [10.1002/2014JD022958](https://doi.org/10.1002/2014JD022958), 2015.

1065 Zappa, G., Shaffrey, L., and Hodges, K.: The Ability of CMIP5 Models to Simulate North Atlantic Extratropical Cyclones\*, *Journal of Climate*, 26, 5379–5396, <https://doi.org/5310.1175/JCLI-D-5312-00501.00501>, 2013.

1070

## Appendixes

**Appendix 1.** List of DDD model parameters estimated from observed precipitation data and those estimated from regionalization (multiple regression) for the study catchments.

Parameters	Description of the parameter	Method of estimation	Unit
d	Parameter for spatial distribution of SWE, decorrelation length	From spatial distribution of observed precipitation	Positive real number
a0	Parameter for spatial distribution of SWE, shape parameter	From spatial distribution of observed precipitation	Positive real number
MAD	Long term mean annual discharge	Specific runoff map of Norway	m <sup>3</sup> sec <sup>-1</sup>
Gshape	Shape parameter of $\lambda$	Regression	Positive real number
Gscale	Scale parameter of $\lambda$	Regression	Positive real number
GshInt	Shape parameter of $\Lambda$	Regression	Positive real number
GscInt	Scale parameter of $\Lambda$	Regression	Positive real number
Fc	Critical flux	Regression	m <sup>3</sup> /hour



**Appendix 2.** List of DDD rainfall-runoff model parameters estimated from pooling group of physical similarity method of regionalizations.

Parameters	Description of the parameter	Method of estimation	Unit
Pro	Liquid water in snow	Regionalization (poolig group)	fraction
Cx	Degree hour factor for snow melt	Regionalization (poolig group)	mm °C <sup>-1</sup> hour <sup>-1</sup>
CFR	Degree hour factor for refreezing	Regionalization (poolig group)	mm °C <sup>-1</sup> hour <sup>-1</sup>
Cea	Degree hour factor for evapotranspiration	Regionalization (poolig group)	mm °C <sup>-1</sup> hour <sup>-1</sup>
rv	Celerity for river flow	Regionalization (poolig group)	m/s

**Appendix 3.** List of DDD rainfall-runoff model parameters estimated from geographical data using GIS.

Symbol of parameters	Description of the Parameter
area	Catchment area
maxLbog	Maximum distance of marsh land portion of hillslope
midLbog	Mean distance of marsh land portion of hillslope
bogfrac	Areal fraction of marsh land from the total land uses
zsoil	Areal fraction of DD for soils (what area with distance zero to the river)
zbog	Areal fraction of distance distribution for marsh land (what area with distance zero to the river)
midFl	Mean distance (from distance distribution) for river network
stdFL	Standard deviation of distance (from distance distribution) for river network
maxFL	Maximum distance (from distance distribution) for river network
maxDI	Maximum distance (from distance distribution) of non-marsh land (soils) of hill slope
midDL	Mean distance (from distance distribution) of non-marsh land (soils) of hill slope
midGI	Mean distance (from distance distribution) for Glacial
stdGI	Standard deviation of distance (from distance distribution) for Glacial
maxGI	Maximum distance (from distance distribution) for Glacial
Hypsographic curve	11 values describing the quantiles 0, 10, 20, 30, 40, 50, 60,70,80,90,100

**Appendix 4.** Possible ranges of regionalized DDD model parameters

<b>Model parameters needing regionalization</b>	<b>Method of regionalization</b>	<b>Possible ranges of values</b>
Gshape	Multiple regression	Positive real number
Gscale	Multiple regression	Positive real number
GshInt	Multiple regression	Positive real number
GscInt	Multiple regression	Positive real number
fc	Multiple regression	Positive real number
Pro	Pooling group type of physical similarity	0.03 - 0.1
Cx	Pooling group type of physical similarity	0.05 - 1.0
CFR	Pooling group type of physical similarity	0.001 - 0.01
Cea	Pooling group type of physical similarity	0.01 - 0.1
rv	Pooling group type of physical similarity	0.5 - 1.5

1100