

We would like to thank Referee#2 for the constructive comments, these comments are valuable and very helpful for improving our paper. In the following, we respond point by point to the comments. The referee comments appear in black and the answers appear in blue.

Answers to Anonymous Referee #2 comments

Report #1

Dear authors,

I would like to acknowledge your great response in revising the manuscript, and that you have provided the comparison showcase between your DBCM and the other bidirectional coupling such as MIKE SHE-11 coupled model.

Meanwhile as a minor addition to the conclusion section, is there any notes/ limitations/ challenges for the scientific community to consider if they want to utilize your DBCM coupling schemes? For example, the discussion on computational cost?

In the era of reproducible open science and knowledge for the benefit of scientific community at large, would you be able to include the code access as well, e.g. via your GIT repository?

Nevertheless, I wish you all the best for the publication and the continuation of DBCM research endeavor.

Dear Referee:

Thanks for your agreement with the manuscript revision.

The DBCM developed in present study only accounts for precipitation and infiltration, and lots of other hydrological processes, such as evaporation, groundwater interaction, are under development. Besides, a uniform rainfall station data limits its application to relatively small-scale catchment. Further study involving other physical processes, such as evapotranspiration, interception and snowmelt .etc. as well as distributed rainfall datasets processing will be conducted to improve the proposed model and make it suitable for more general application.

The codes will be committed to GIT repository in the near future, and we'll make it open sourced once the model is optimized. Before that, anyone interesting in our model can contact us with the e-mails provided in the authors' information section of the manuscript. For this issue, we've add an instruction in the Code and Data availability section, and this can be found in the latest modified manuscript.

List of changes of the manuscript

Based on the comments of the referees, most parts of the sections of the manuscript have been rephrased and rewritten.

The major changes in the manuscript list as following.

(Changes are based on the last manuscript version: nhess-2019-355-manuscript-version3.pdf)

The conclusions section has been rewritten, and some minor corrections were made in the other parts of the manuscript as follow.

Minor corrections:

1. Line 19: "It is reported that" instead of "As an example,"
2. Line 44: "datasets" instead of "data"
3. Line 49: delete "for the momentum equations"
4. Line 50: "...are coupled via the balance of water volume..." instead of "...are linked via the calculation of flow discharge.."
5. Line 54: "existing" instead of "current"
6. Line 57: add "and momentum"
7. Line 59: delete "."
8. Line 60: "coupling boundary" instead of "interfaces"
9. Line 64: add "of the proposed DBCM"
10. Line 68: "precipitation" instead of "rainfall"
11. Line 75: "while" instead of "and"
12. Line 85: delete ", a different grid is needed for the hydrodynamic models"
13. Line 93: "surface" instead of "level"
14. Line 96: "surface" instead of "level"
15. Line 104: "surface" instead of "level"
16. Line 138: "under the" instead of "by"
17. Line 145: "local" instead of "own"
18. Line 150: "rainfall" instead of "rain"
19. Line 156: "For the case in Fig.3a, the..." instead of "Fig.3a shows the case of the flow on a slope. The..."
20. Line 161: "using the flow information" instead of "by the flow"
21. Line 167: delete "still"
22. Line 202: the caption of Figure 5 was revised
23. Line 205: "high" instead of "small"
24. Line 247: "adjusted" instead of "adjustment"
25. Line 259: "experimental" instead of "measured"
26. Line 310: add "termed by river links"
27. Line 311~315: the sentences were rewritten
28. Line 327: "of the centre channel" instead of "along the channel centerline"
29. Line 343: deleted "The DBCM hydrological model and the hydrodynamic mode are solved simultaneously.", "For the DBCM, the main difference..." instead of "The Main difference..."
30. Line 351~355: sentences were revised
31. Line 365: sentence revised
32. Line 377: "It is about 221km long with a catchment area about 3280km²" instead of "The main

channel length is about 221km and the basin area is about 3180km²”

33. Line 386: “relatively” instead of “open”, “and farmlands widely distribute around the main stream,” instead of “ and the farmland is widely distributed.”
34. Line 394~396: some minor corrections
35. Line 402: delete “the result”
36. Line 407: “However” instead of “Then”
37. Line 409: “by the combination of precipitation process and infiltration” instead of “by the combined action of rainfall and infiltration”
38. Line 422: “obtained in” instead of “from”
39. Line 423: delete “in Case A and Case B”
40. Line 427: Several problems involved in the current river topographic conditions:” instead of “The current river bed conditions are as follows:”
41. Line 429: delete “in this catchment”
42. Line 431: “a flash flood that make the local streets and ...” instead of “a flood that local streets and ...”
43. Line 443~451: the sentences were re-organized
44. Line 455: “receding” instead of “decreasing”
45. Line 465~487: the conclusions section were re-written, especially for the second paragraph, and a new paragraph was added to the end of this section for the limitations and further study of the present DBCM model.
46. Line 488: “Code and Data availability” instead of “Data availability”
47. Line 489: add “as well as codes”

Compare Results

Old File:

nhess-2019-355-manuscript-version3.pdf

32 pages (3.55 MB)

2020/9/9 2:46:36

versus

New File:

nhess-2019-355--2020.10.29-2.pdf

31 pages (3.05 MB)

2020/10/29 23:24:39

Total Changes

384

Content

161 Replacements

110 Insertions

104 Deletions

Styling and Annotations

9 Styling

0 Annotations

[Go to First Change \(page 1\)](#)

A Dynamic Bidirectional Coupled Surface Flow Model for Flood Inundation Simulation

Chunbo Jiang¹, Qi Zhou¹, Wangyang Yu^{1,2}, Chen Yang³ and Binliang Lin¹

¹State Key Laboratory of Hydrosience and Engineering, Department of Hydraulic Engineering, Tsinghua University, Beijing, 100084, China

²China Institute of Water Resources and Hydropower Research, Beijing, 100038, China

³School of Water Conservancy, North China University of Water Resources and Electric Power, Zhengzhou, 450046, China

Correspondence to: Wangyang Yu (sea198719@126.com)

Abstract. Flood disasters are frequently threatening people and properties all over the world. Therefore, an effective numerical model is required to predict the impacts of floods. In this study, a dynamic bidirectional coupled hydrologic-hydrodynamic model (DBCM) is developed with the implementation of characteristic wave theory, in which the boundary between these two models can dynamically adapt according to local flow condition. The proposed model accounts both mass and momentum transfer on the coupling boundary and was validated via several benchmark tests. The results show that the DBCM can effectively reproduce the process of flood propagation and also account for surface flow interaction between non-inundation and inundation regions. The DBCM was implemented to the floods simulation occurred at Helin Town located in Chongqing, China, which shows the capability of the model for flood risk early warning and future management.

1 Introduction

Over the past decades, flood events frequently occurred threatening millions of people all over the world, which are driven by global warming, population growth, rapid urbanization and climate change (Zhu et al., 2016). It is reported that the economic loss caused by the floods reaches billions of yuan in China during the period between 1998 and 2016 (Osti, 2017). The capability of predicting and warning of flood events thus plays a significant role in the flood risk assessment and policy-making.

Numerous hydrologic and hydrodynamic models have been proposed to simulate the hydrologic processes and flood propagation (Leandro et al., 2014; Li et al., 2013; Li et al., 2016; Singh et al., 2015; Yu and Duan, 2014; Yu and Duan, 2014). Specifically, the hydrologic models focus on the water cycle between atmosphere, surface water and soil in a wide range of space and time scales and therefore involve the hydrological processes, such as, precipitation, evaporation, infiltration, etc. On the other hand, the hydrodynamic models solve the mass and momentum equations with a full description of water flow in the study domain, considering water depth, flow velocity, flow duration, etc (Patro et al., 2009; Singh et al., 2015; Yu and Duan, 2014). It is worthy of noting that the initial conditions and boundary conditions are significant for the hydrodynamic simulations.

30 Recently, several coupled models have been proposed to combined the advantages of these two types of models and the coupled models can be classified into: the unidirectional coupling model (UCM) (Choi and Mantilla, 2015; Montanari et al., 2009) and the bidirectional coupling model(BCM) (Thompson, 2004; Yu and Duan, 2014; Yu and Duan, 2017; Zhu et al., 2016). For the UCM, the hydrologic model is conducted in the first stage and the obtained results are then employed as boundary conditions for the hydrodynamic model simulations. Since the flow information is transferred in one-way from the hydrologic model to the hydrodynamic model, the UCM is much easier to use than the BCM. McMillan and Brasington(2008) developed a coupled precipitation-runoff hydrological model, and the authors used a 1D dynamic wave equation to assess the flood inundation under several flood return periods. Some other similar models(either open-source or commercial) for the UCM can be found(Hdeib et al., 2018; Liu et al., 2015; Choi and Mantilla, 2015; Grimaldi et al., 2013; Montanari et al., 2009; Rayburg and Thoms, 2009).

40 Apparently, the UCM cannot fully capture the interaction between the two types of models due to the one-way coupling mechanism. The flood risk may be underestimated if flow information from the hydrodynamic model affects the surface runoff yield by the hydrologic model(Lerat et al., 2012). BCM is one possible solution for this problem, which couple the hydrologic model with the hydrodynamic model and can use rainfall, climate condition, soil distribution and other GIS information as input datasets. In line with this objective, various techniques have been proposed, ranging from simple approach through 45 changing boundary conditions, such as point source or lateral flow conditions (Bouilloud et al., 2010), to relatively complicate models, such as using the simplified 2-D shallow water equations to simulate overland flow instead of traditional hydrologic model (Viero et al., 2014). The coupled MIKE SHE/MIKE 11 modelling system considers the discharge exchange between the hydrologic and hydrodynamic models using river links (Thompson, 2004; Thompson et al., 2004). The flow velocity is proportional to the water surface gradient and the flow is treated as lateral flow for the hydrodynamic model. Thus, the hydrologic model and hydrodynamic model are coupled via the balance of water volume (Bravo et al., 2012; Laganier et al., 2014).

The two types of models, either the UCM or the BCM, still have limitations for the flood simulation and prediction. First, the location of the coupling boundary need to be predefined before conducting the simulation. Though the predefined coupling boundary can improve the computational efficiency, the non-inundation and inundation regions are time-dependent. Second, 55 the flow information transfer is not fully considered in the existing models. The UCM does not consider the feedback from the hydrodynamic model to the hydrologic model and the BCM only consider the water volume exchange between the two models without local velocity and momentum information. For instance, the MIKE SHE/MIKE 11 coupling model computes the velocity at the coupling boundary according to the difference of water depths rather than the velocities obtained in different models, which limits the model only suits for a 1D flow. Therefore, a fully-coupled model considering the velocities computed at different models and the evolutions of coupling boundary is required for more physical and precise simulations.

In this study, a dynamic bidirectional coupling hydrologic-hydrodynamic model (DBCMM) has been developed based on the characteristic wave theory. As far as the authors' knowledge, this is the first time the characteristic wave theory is employed to connect hydrologic and hydrodynamic models. The model can automatically evolve the surface flow and fully consider the

flow states with both mass and momentum transfer. Section 2 presents the methodology of the proposed DBCM. In Section 3, the model is verified by comparisons between simulations results and analytical results or experimental data. Section 4 shows an application of the model to a real engineering project. Section 5 concludes the paper with remarks.

2 Methodology

The DBCM model combines a hydrologic model including three sub-models i.e. precipitation, infiltration and runoff routing, and a hydrodynamic model involving the 2D shallow water equations for the simulations of channel and overland flows. Both models are solved simultaneously within each time step, and the mass and momentum transfer on the coupling boundary are determined based on the characteristic wave propagation theory which is commonly employed in solving Riemann problems (Toro, 2001).

2.1 Runoff generation

The hydrologic model used in this study is a raster-based distributed model. The runoff yield of a catchment involves precipitation and infiltration while the overland flow is modelled using the 2D diffusion wave equations. The precipitation is interpolated from rainfall stations data and infiltration is computed by solving the Green-Ampt equation. The Green-Ampt equation is shown as follows.

$$f_p = K_s \left(1 + \frac{(\theta_s - \theta_i) S_a}{F_c} \right), \quad (1)$$

where f_p is the infiltration rate (mm h^{-1}), K_s is the hydraulic conductivity (mm h^{-1}), S_a is the average effective suction of the wetting front (mm), θ_s and θ_i are the saturated and initial soil moisture content respectively (%) respectively, and F_c is the cumulative infiltration (mm). This equation is well-known and widely used since it can reflect the runoff yield conditions for both saturated storage and excess infiltration (Rawls et al., 1983).

2.2 Diffusion wave approach

Since the conceptual models for the surface flow cannot provide detailed information about the water movement over the entire basin (Rallison and Miller, 1982), the diffusion wave equations (Bates and De Roo, 2000) are used to determine the runoff routing, which are composed of mass conservation equation and momentum equations:

$$\frac{\partial h}{\partial t} + \frac{\partial q_x}{\partial x} + \frac{\partial q_y}{\partial y} = Q_m, \quad (2)$$

$$Q_x = \frac{A_x R_x^{0.67} S_x^{0.5}}{n}, \quad (3)$$

$$Q_y = \frac{A_y R_y^{0.67} S_y^{0.5}}{n}, \quad (4)$$

90 where q_x, q_y are the unit discharges along the x and y directions ($\text{m}^2 \text{s}^{-1}$), respectively, h is the water depth (m), Q_m equals to the rainfall rate minus the infiltration rate (m s^{-1}), Q_x, Q_y are the flow rate in the directions of x and y ($\text{m}^3 \text{s}^{-1}$), respectively, A is the flow area (m^2), R is the hydraulic radius (m), S is the water surface gradient, and n is the roughness coefficient.

Compared to gravitational and frictional effects, the influence of acceleration and inertial terms of overland flow is negligible (Chen et al., 2012; Hsu et al., 2000). The full shallow water equations are reduced to the diffusive wave equations by omitting the time dependent terms. The flow velocity only depends on the local water surface gradient and roughness, and the water depth determines by water volume balance and discharge from the neighbour grids. As shown in Fig. 1a, the possible flow at one cell is linked to two adjacent cells at each time step.

$$Q_i = \frac{wh^{5/3}S_i}{n(S_i^2+S_j^2)^{1/4}}, Q_j = \frac{wh^{5/3}S_j}{n(S_i^2+S_j^2)^{1/4}}, \quad (5)$$

where

$$100 \quad S_i = \frac{\eta_{i,j} - \eta_{i\pm 1,j}}{w}, S_j = \frac{\eta_{i,j} - \eta_{i,j\pm 1}}{w},$$

$$h_i = \eta_{i,j} - \max(z_{i,j}, z_{i\pm 1,j}), h_j = \eta_{i,j} - \max(z_{i,j}, z_{i,j\pm 1}),$$

$$h = \frac{h_i S_i^2 + h_j S_j^2}{S_i^2}, \quad (6)$$

where w is the width of the cell (m), S_i, S_j are the water surface slopes in the orthogonal direction of i and j , respectively, h_i, h_j are the effective depths in orthogonal direction of i and j , respectively, $\eta_{i,j}$ and $z_{i,j}$ are the water surface level and the ground elevation (m), respectively, and h is the effective depth. The depth is defined as shown in Fig.1(b). The change of water depth in each of cell is then calculated using the following equation:

$$\Delta h = \frac{(\sum Q_{in\ i,j} - \sum Q_{out\ i,j} - Q_m)\Delta t}{w}, \quad (7)$$

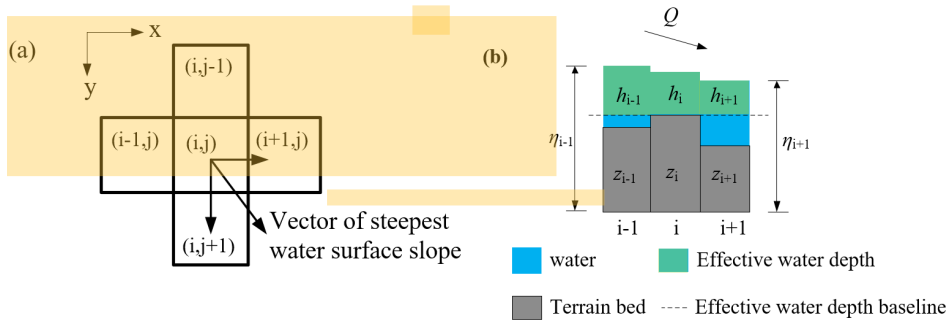


Figure 1 typical grid and water depth definition

110 2.3 Hydrodynamic model

The 2D shallow water equations are the most widely used in the hydrodynamic models for the inundation simulations (Bradbrook, 2006; Yu and Duan, 2014; Yu and Duan, 2017). Neglecting the Coriolis force, wind resistance and viscosity, the equations are composed of the continuity equation

$$\frac{\partial h}{\partial t} + \frac{\partial hu}{\partial x} + \frac{\partial hv}{\partial y} = Q_m, \quad (8)$$

115 and the momentum equations

$$\frac{\partial hu}{\partial t} + \frac{\partial}{\partial x} \left(hu^2 + \frac{1}{2} gh^2 \right) + \frac{\partial}{\partial y} (huv) = -gh \frac{\partial z}{\partial x} - C^2 u \sqrt{u^2 + v^2}, \quad (9)$$

$$\frac{\partial hv}{\partial t} + \frac{\partial}{\partial x} (huv) + \frac{\partial}{\partial y} \left(hv^2 + \frac{1}{2} gh^2 \right) = -gh \frac{\partial z}{\partial y} - C^2 v \sqrt{u^2 + v^2}, \quad (10)$$

where u, v are velocities along the x and y direction (m s^{-1}), respectively, h is water depth (m), g is gravity acceleration (m s^{-2}), z is bottom elevation (m), C is Chezy coefficient representing roughness, Q_m is the source term which equals to

120 rainfall rate minus infiltration rate (m s^{-1}).

These equations are solved using the finite volume method similar to TELEMAC (Ata et al., 2013), and the convection flux is calculated using the HLL scheme with WAF approach (Toro, 2001).

$$\begin{cases} F^{hll} = F_L & S_L \geq 0 \\ F^{hll} = \frac{S_R F_L - S_L F_R + S_L S_R (U_R - U_L)}{S_R - S_L} & S_L \leq 0 \leq S_R, \\ F^{hll} = F_R & S_R \leq 0 \end{cases} \quad (11)$$

$$S_L = U_L - \sqrt{gh_L}, S_R = U_R + \sqrt{gh_R},$$

125 where U_L, U_R, h_L, h_R are the components of the left and right Riemann states, respectively for a local Riemann problem, and S_L, S_R are estimations of the speeds of the left and right waves, respectively, and F^{hll} is the flux in the middle region. Using this flux, the WAF method of a second-order accuracy in time and space is achieved:

$$F_{i+\frac{1}{2}} = \sum_{k=1}^{N+1} \beta_k F_{i+\frac{1}{2}}^{(k)}$$

$$\beta_k = \frac{1}{2} (c_k - c_{k-1}), c_k = \frac{\Delta t S_k}{\Delta x}, c_0 = -1 \text{ and } c_{N+1} = 1, \quad (12)$$

130 where $F_{i+\frac{1}{2}}^{(k)} = F(U^{(k)})$, N is the number of waves in solving the Riemann problem, and β corresponds to the differences between the Courant numbers c_k of successive wave speeds S_k .

The topography terms on the right hand side of equation (9) and (10) are calculated by the hydrostatic reconstruction scheme:

$$-gh \frac{\partial z}{\partial x} = \nabla \frac{gh^2}{2} = \frac{g}{2} \frac{\Delta x}{\Delta x} [(h_i^R)^2 - (h_i^L)^2], \quad (13)$$

$$\begin{cases} h_i^R = \max[0.0, h_i + z_i - \max(z_i, z_{i+1})] \\ h_i^L = \max[0.0, h_i + z_i - \max(z_{i-1}, z_i)] \end{cases}$$

135 The friction term is computed by a semi-implicit scheme to ensure numerical stability (Liang et al., 2007):

$$(hu)^{n+1} = \frac{(hu)^n}{1 + \Delta t \left(\frac{g \sqrt{(hu)^2 + (hv)^2}}{h^2 c^2} \right)^n}, \quad (14)$$

The time step is determined under the CFL condition as follows.

$$\Delta t = C_r \min \left(\frac{\Delta x_i}{|u_i| + \sqrt{gh_i}}, \frac{\Delta y_i}{|v_i| + \sqrt{gh_i}} \right), \quad (15)$$

where C_r is Courant number, limited by $0 < C_r \leq 1$ for simulation stability, and a typical value of 0.9 is used for the following simulation cases. More details of the numerical schemes can be found in (Ata et al., 2013).

2.4 Coupling approach

The computation domain in the DBCM is divided into non-inundation and inundation regions, and the diffusion wave equation (DWE) is solved in the non-inundation regions with small water depth while the hydrodynamic model (SWE) is applied in the inundation regions with high water depths. The model for a specific grid is determined based on its local and neighbouring flow states. The boundary between the non-inundation regions and inundation regions forms a dynamic coupling boundary which is time dependent. Besides, special treatment on discharge through the coupling boundary need to be taken based on the local flow state using the characteristic theory.

The adopted models for different regions are based on the temporally evolving flow statuses. They leads to the change in coupling boundary positions. As shown in Fig.2, when the rainfall intensity increases, the inundation region expands as a consequence of the gradually accumulating of surface water volume from upstream regions. The position of the in-flow boundary, flow path and discharge change subsequently. The coupling models proposed by other researchers, either UCM or BCM, did not fully consider this phenomenon.

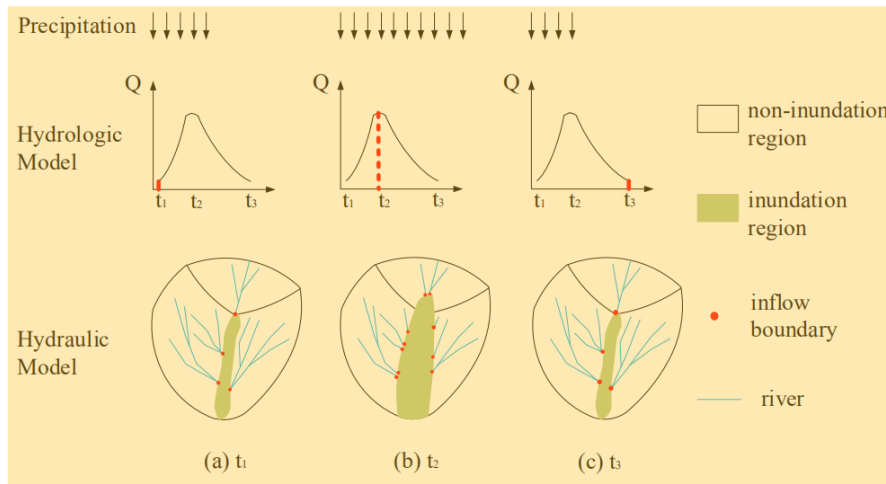


Figure 2. Schematic diagram of DBCM

Figure 3 shows a detailed process of flow state change on both sides of the coupling boundary. For the case in Fig.3a, the discharge on the coupling boundary equals to the upstream discharge and not affected by the downstream flow, which means that the local discharge is completely determined by the DWE. After the water depth is updated, the location of the coupling boundary point O moves to point A according to the comparison of its water depth to the water depth threshold. Moreover, the flow in the inundation region may move from downstream to upstream, as shown in Fig.3b. The discharge and water depth on the coupling boundary should be determined using the flow information on both sides. In this case, the coupling boundary moves to point B due to inundation area expanding.

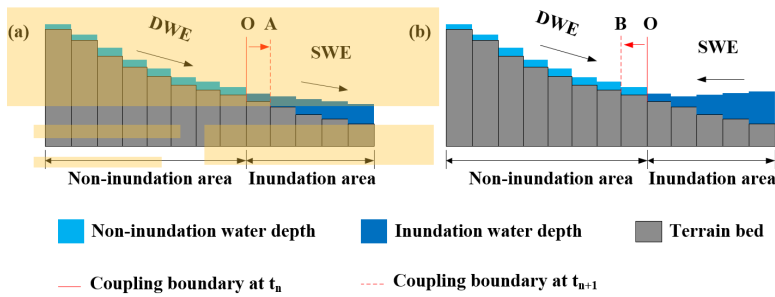


Figure 3. Flow state change and position of the coupling boundary

✘ In previous studies, the discharge on the coupling boundary may be computed directly through the hydrologic model, using empirical formulae, or by interpolation approaches according to the water level or velocity gradient on both sides. Such methods may fail to provide an overall understanding of the flow regime status of the combined hydrologic and hydrodynamic model. In using the DBCM, the following procedures is conducted at the coupling boundary: the flow state is obtained by both the hydrologic and hydrodynamic models in their local grids, then the discharge through the coupling boundary is computed and the entire water depth is updated according to the water volume variation. After that, the location of the coupling boundary is updated and the area of the non-inundation region and inundation region are remapped. The key issue using the DBCM is to establish a reasonable approach to determine the discharge on the coupling boundary, which should integrate the effect of current flow state obtained by the two models on both sides of the coupling boundary.

✘ According to Godunov theory (Godunov, 1959), the solution of convective flux implementing the finite volume method can be considered as a local Riemann problem. The discontinuity characteristics speed between each grid represents the propagation of local fluid variables in time and space, as shown in Fig.4. When the characteristic speeds are all positive, the flux depends entirely on the left-side flow state, and vice versa. However, when the characteristic speeds have a negative value and a positive value, both the current flow state in the two grids must be taken into consideration. Applying this approach to DBCM, the computational scheme at the boundary can be specified. It is known that the hydrologic model only transfers water mass, while the hydrodynamic model transfers both water mass and momentum. More details of the different coupling cases are shown Fig.5.

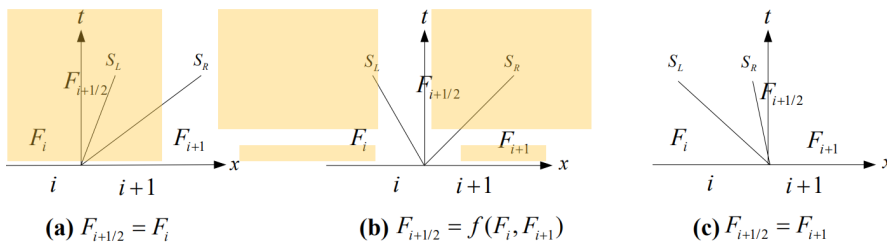


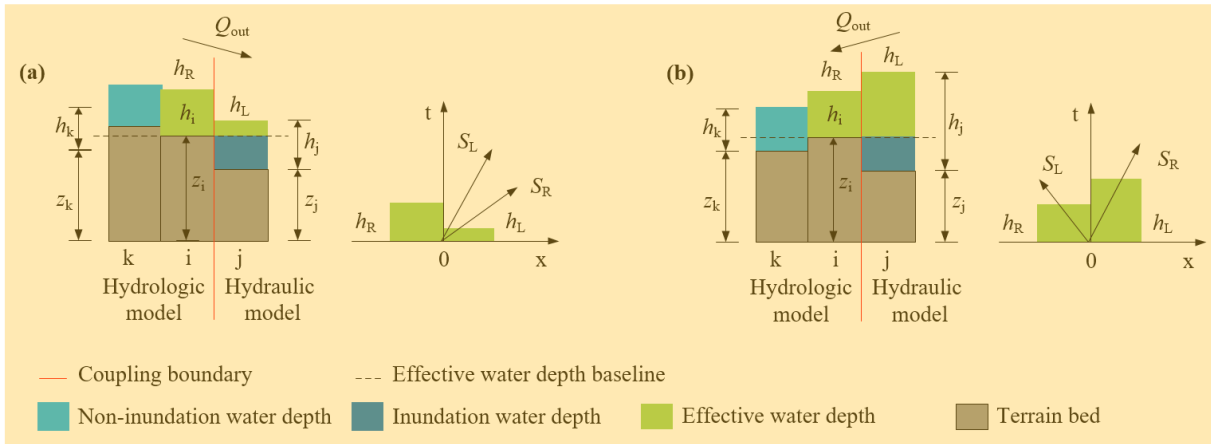
Figure 4. Direction of Characteristic wave

✘ For the first case in Fig.5a, the hydrologic and hydrodynamic models are calculated independently, corresponding to the situation that positive bed slopes inducing confluence flows into the river, thus only the discharge calculated by the

185 hydrological model passes through the coupling boundary (Fig. 3a). The flow information in grids k and i is calculated using DWE and grid j using SWE, see Fig. 5a. Firstly, a slope analysis of DWE is conducted uniformly. Obviously the water level gradient between k and i is smaller than that between grid i and grid j . According to the calculation results from the DWE, the velocity points to the maximum water level slope (in Fig. 1a, flow directs to right). Therefore, the change of water depth in grid k has nothing to do with the flow state at grid i , and the velocity change at grid k is analysed by the other grids on the left of grid k . The flow information at grid i and j forms a local Riemann problem and then the characteristic speed is analysed. The velocity at grid i is obtained from the above analysis, and the velocity at grid j is the velocity at the current moment. The water depths at discontinuity interface are calculated as: $h_i^r = h_i + z_i - \max(z_i, z_j)$, $h_i^l = h_j + z_j - \max(z_i, z_j)$. Thus a pair of the characteristic wave at the interface are obtained:

$$S_L = u_i - \sqrt{gh_i^r}, S_R = u_j + \sqrt{gh_i^l}, \quad (16)$$

195 When the characteristic speeds $S_R \geq S_L > 0$, the flux calculation only depends on the flow information at grid i , independent of grid j . The velocity at grid i is calculated using the diffusion wave equation and only outflow is allowed. In addition to the water depth change calculated according to the hydrodynamic model at grid j , the water volume transferred from grid i should also be added. No convection term in the momentum equation of DWE indicates no momentum transfer between grid i and grid j , and thus the velocity values of the two grids do not interact with each other.



200 **Figure 5. Coupling conditions, discharge on coupling boundary depends on (a) hydrologic model and (b) both hydrologic and hydrodynamic models**

For the second case in Fig. 5b, the hydrological model and hydrodynamic model are both used, corresponding to the situation when the inundation area expands (Fig. 3b). As shown in Fig. 5b, the water depth in grid k and grid i are small, thus the hydrologic model is applied. While grid j has a deep water depth and high water elevation, the hydrodynamic model is applied. In this case, the velocity direction is from grid i to grid k . The characteristic wave analysis at the interface of grid i and grid j reveals that $S_R > 0 > S_L$, which means that the momentum at grid j can be transferred to grid i . Grid i is involved in the computational domain of the hydrodynamic model. The water depth increment at grid i needs to deduct the current discharge

output to grid k and the flow rate obtained by solving the hydrodynamic equation with the flow state at grid j . The velocity
210 increment at grid i is obtained by solving the hydrodynamic equation with the flow state at grid j based on current velocity.
Then the flow state at grid i is updated and the coupling boundary position may change when the depth varies.

The slope gradient analysis and characteristic wave analysis are key issues of the computational theory for solving DWE
and SWE respectively. The aim to couple these two approaches is to successfully address the connection on the coupling
boundary. As discussed earlier, in existing studies only one governing equation is solved throughout the computational domain,
215 but cannot to consider the interaction between the two kinds of governing equations and to resize the area of a different
computational domain. A reasonable and implementable approach in coupling the solution procedure of DWE and SWE is the
precondition for establishing DBCM. In this study, the slope gradient analysis is performed to determine the current velocity
together with the current water depth, and the characteristic wave analysis is conducted on coupling boundary as long as flow
velocity and depth have been provided, no matter it is calculated from the hydrologic or hydrodynamic model. Then, the flow
220 information exchange on the coupling boundary is determined according to the characteristic speed which reflect the
propagation of flow state in time and space. This method integrates the hydrologic model and hydrodynamic model into a
comprehensive system by means of joining the two steps of slope gradient analysis and characteristic wave analysis.

In the proposed DBCM, the coupling boundary position will not keep fixed in advance throughout the calculation process.
The location where the runoff enters the inundation region varies dynamically, and the flood level can also submerge the
225 original inflow points and regenerate new coupling boundaries. Such alternation mechanism is close to natural flow processes.
The characteristic wave theory is used to determine the mass and momentum exchange through the coupling boundary.
Compared to the "cascade" operation in UCM, the present DBCM solves DWE and SWE simultaneously. When non-
inundation regions get larger, the flow movement is mainly obtained by utilizing DWE. Whereas, when the inundation regions
extend, the computational domain is given priority to SWE.

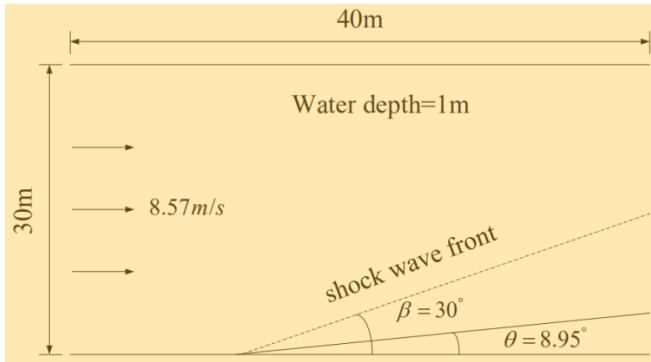
230 **3 Model validation**

The numerical model results from DBCM are compared with analytical solutions, experimental data, and results obtained from
existing numerical models. Considering the complexity of the numerical model schemes used in the hydrologic and
hydrodynamic models, the hydrodynamic model performance will be validated in the first stage, and then the performance of
DBCM will be verified using a V shaped catchment. As described in 2.2, the numerical schemes of the hydrodynamic model
235 (referred to HM2D in the following section) used in this study have second-order accuracy in both time and space.

3.1 Oblique hydraulic jump

The oblique hydraulic jump example is a special flow pattern, with an analytical solution being available in open channel flows,
which is often used to verify the capability of the numerical scheme in simulating shock wave formation. When a supercritical
flow is deflected by a converging wall at an angle θ , the resulting shockwave forms an oblique hydraulic jump at an angle β ,

240 as depicted in Fig. 6. Both the angles of water surface lines behind the shock wave-front can be obtained by analytical solution. In this study, the upstream water depth and velocity are set as 1m and 8.57m s^{-1} , and the oblique angle $\theta = 8.95^\circ$. The width and length of the channel are 30m and 40m respectively. In these conditions, the exact analytical solutions are downstream water depth $D_A = 1.49984\text{m}$, downstream velocity $V_A = 7.95308\text{ m s}^{-1}$, and angle $\beta = 30^\circ$ (Rogers et al., 2001) when the flow reaches a steady state.



245

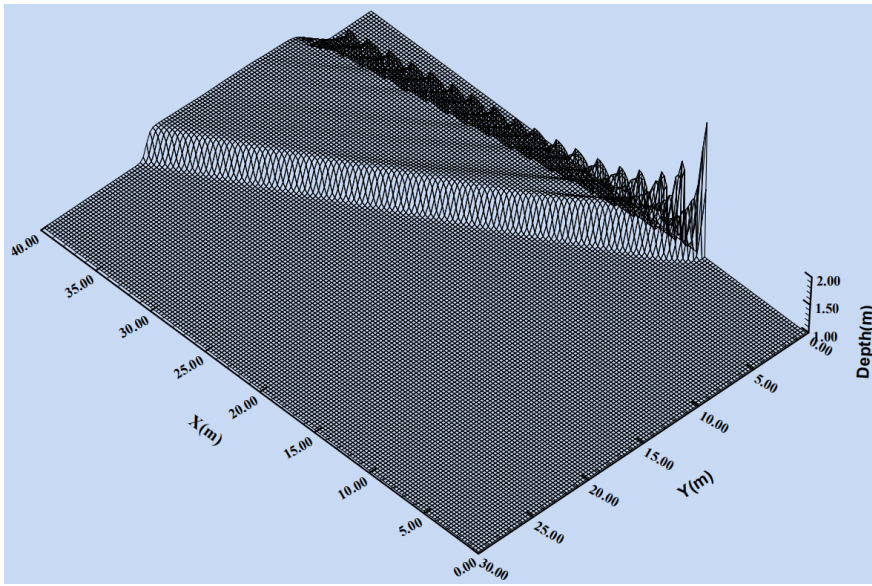
Figure 6. Oblique hydraulic jump: definition sketch

The spatial step size is set as $\Delta x = \Delta y = 0.33\text{m}$. The time step is dynamic adjusted and the total calculation time is 90s. Figure 7 shows a 3-D view of the water depth results predicted by our model. The oblique jump is sharply captured, and has an angle $\beta \approx 32^\circ$. The average water depth downstream behind the shock front is 1.532m, and the average velocity is 7.86m s^{-1} . The numerical solution is close to the analytical solution, as shown in Table 1. The output of HM2D and the references, either the water depth or velocity, show good agreement (see Table 1).

250

Table 1. Comparison between analytical solution and calculation result for oblique jump case

	Angle β	Water Depth(m)	Velocity(m s^{-1})	Depth Error(%)	Velocity Error(%)
Analytical solution	30°	1.49984	7.95308	-	-
HM2D results	32°	1.532	7.86	2.1	1.2
Reference results	30°	1.53	7.9	2.0	0.6



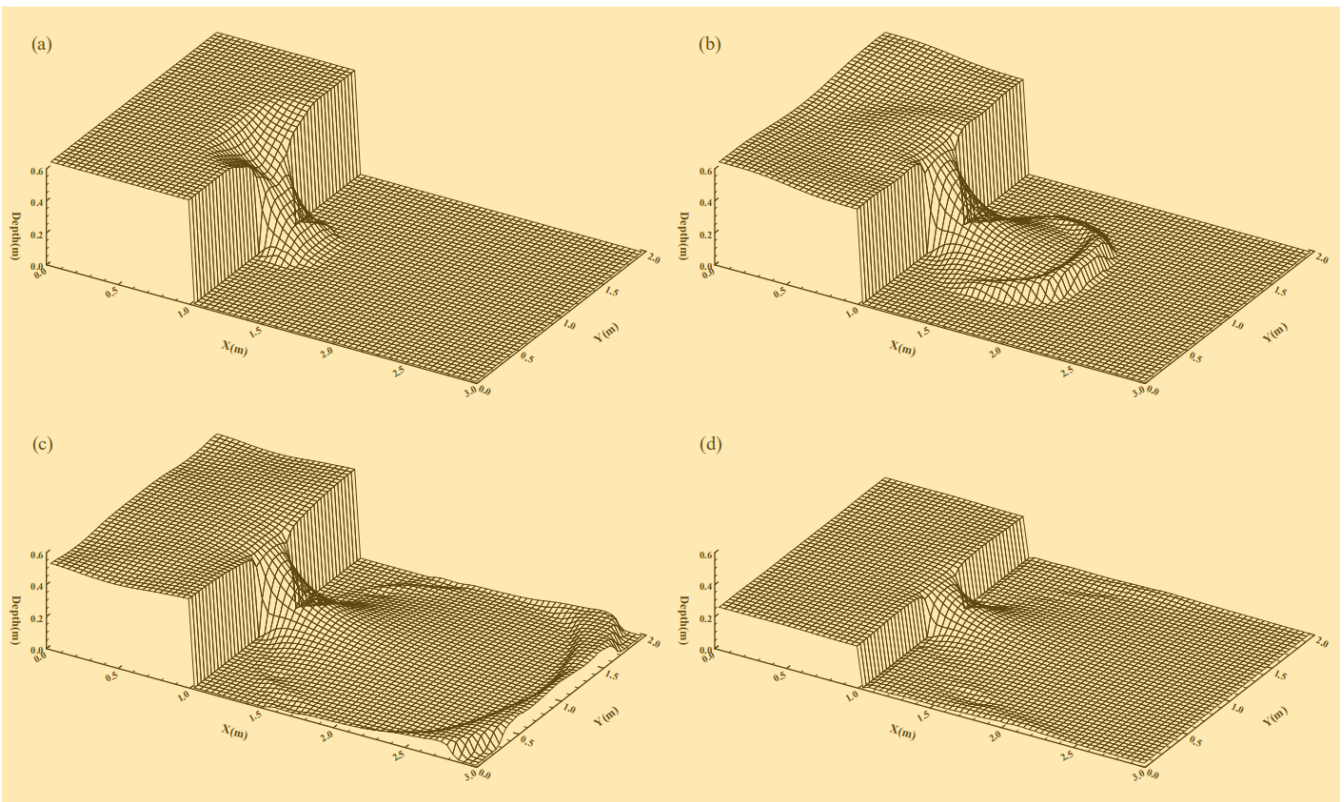
255

Figure 7. Steady state of water depth of oblique hydraulic jump

3.2 Dam-break over a dry of flood plain

Dam-break is a classic benchmark problem, which is often used to verify the capability of a numerical scheme in dealing with the dry-wet boundary, and the physical experimental model is easy to conduct. Thus, it is convenient to collect experimental data for comparison with numerical results. The experiment performed by (Fraccarollo and Toro, 1995) was used to validate the DBCM developed in this study. The model domain is $3\text{m} \times 2\text{m}$, which is separated into two areas by a dam at $X=1\text{m}$. Initially, the still water with a depth of 0.64m in the reservoir is surrounded by solid walls, while the downstream area is initially dry. The boundaries of the downstream floodplain were all open. A 0.4m wide section in the middle of the dam was breached instantaneously. The numerical model spatial step is $\Delta x = \Delta y = 0.04\text{m}$, and roughness coefficient is $n = 0.01$.

265 Figure 8 shows the water surface elevation at different times. It can be clearly seen that the bore wave propagate towards downstream initially. A depression wave travels upstream, which is reflected back by the walls surrounding the reservoir, causing the water surface elevation in the reservoir to oscillate. In Fig.9, a comparison between the measured and computed water level data is made, which shows a good agreement. The results are encouraging and the overall trend is well captured.



270

Figure 8. Snapshot of the water elevation for dam-break simulation: a. $t=0.1s$; b. $t=0.5s$; c. $t=1.1s$; d. $t=5.0s$

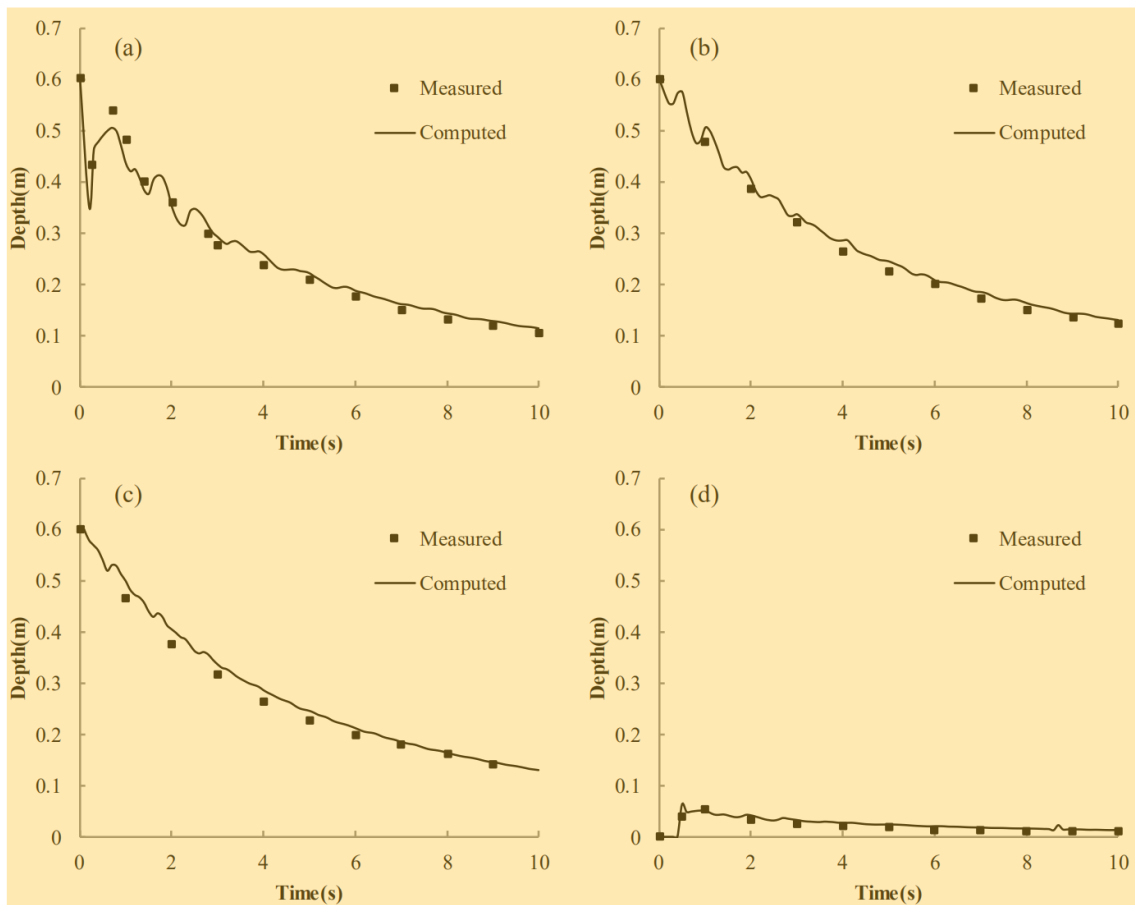
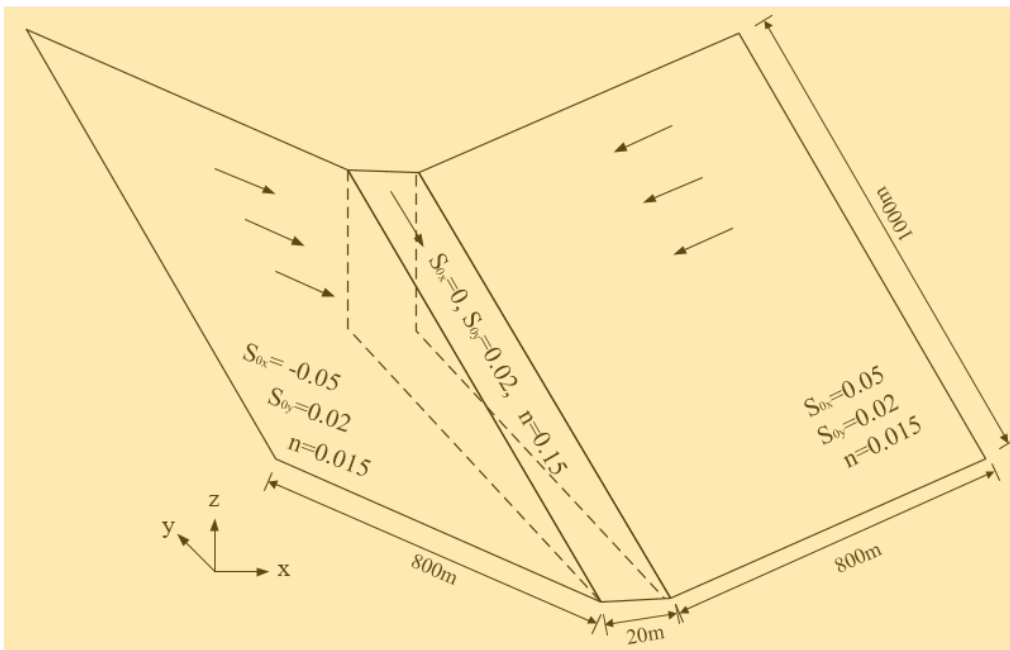


Figure 9. Comparison of water depth variation at four positions: a. $x=1\text{m}$, $y=1\text{m}$; b. $x=0.18\text{m}$, $y=1\text{m}$; c. $x=0.48\text{m}$, $y=0.4\text{m}$; d. $x=1.802\text{m}$, $y=1.45\text{m}$

275 3.3 Two-Dimensional surface flow over a tilted V-shaped catchment

A two-dimensional surface flow over a tilted V-shaped catchment is simulated (Di Baldassarre et al., 1996; Panday and Huyakorn, 2004). We aim to verify whether the computational domains of the hydrologic and hydrodynamic models can dynamically switch and compare the difference between the DBCM, UCM and BCM. As shown in Fig.10, the topography of the example is depicted.

280 The computational domain is symmetrically V-shaped, with a pair of symmetrical hillslopes forming a channel at the central region. The bed slopes are ± 0.05 spanwise, and 0.02 streamwise parallel to the channel. The manning coefficient on the hillslope is 0.015 while it is 0.15 in the main channel. The total simulation time is 180min and the constant rainfall intensity is 10.8 mm h^{-1} for 90 min . Fig.10 shows the detailed dimension and related information of the V-shaped catchment.



285 **Figure 10. Diagram and dimension of the tilted V-shaped catchment**

Considering the hydrodynamic model provides more details to describe the overland flow than the hydrologic model, the HM2D and DBCM under the same rainfall conditions were adopted. When water depth is less than 0.005m, the grid is calculated using the hydrological model, and when water depth is greater than 0.005m the grid is applicable to the hydrodynamic model. Results are compared with numerical models developed by (Di Baldassarre et al., 1996; Panday and
 290 Huyakorn, 2004).

As shown in Fig.11, the discharge hydrographs obtained by the HM2D and DBCM are compared with other existing models. The discharge hydrographs show good agreement for the peak discharge. The start periods of discharge rising and receding limbs simulated by the HM2D and DBCM are consistent with those predicted by others. However, discrepancies gradually grow, and both the HM2D and DBCM slightly under-predict the discharge. Despite this disparity, the overall trend of the
 295 hydrographs indicates that the accuracy of the proposed models are satisfactory.

Comparing the hydrographs between the HM2D and DBCM, it can be seen that their rising limb and peak discharges agree very well. Consequently, both these hydrodynamic models are used to simulate the overland flows. The difference between the HM2D and DBCM gradually emerges at the receding limb. The HM2D simulates water movement using the hydrodynamic model (SWE) throughout the computation process, while the DBCM switches from the hydrodynamic model to the hydrologic model (DWE) when the upstream water depth falls below the threshold. Since no time partial derivative terms in the hydrologic
 300 model, the velocity at the present is a function of the current water level gradient, and is not equal to the velocity at the previous moment plus the flux term. For this reason, when the DBCM switches from the hydrodynamic model to the hydrologic model, and the velocity calculation approach changes accordingly, then the discharge difference between the HM2D and DBCM

emerges. Therefore, the outlet flow is slightly larger, but later slightly smaller, in the DBCM, assuring overall the mass is conserved.

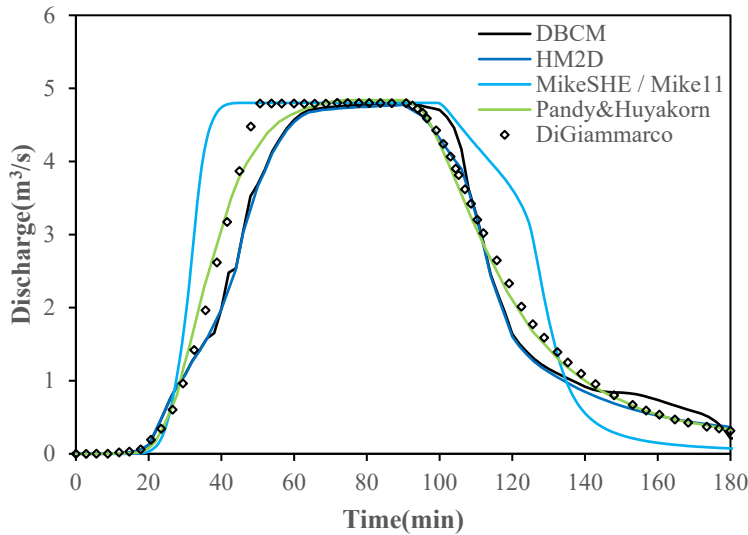


Figure 11. Comparison of discharge hydrographs of the V-shaped catchment

In order to make a detail performance between DBCM and BCM, the coupling model of MIKE SHE and MIKE 11 was used to conduct the comparison with the proposed DBCM. The coupling between MIKE SHE and MIKE 11 is achieved using the line segments termed by river links (Thompson and Sørensen et al., 2004). Water can exchange between MIKE 11 H-points and adjacent MIKE SHE river links and in this way the bidirectional coupling between the two models is realized. The coupling use the overbank spilling option, when water level is over the river bank top elevation, then the overland flow to the river is added to MIKE 11 as lateral inflow. One the contrary, when the water level in the river is higher than that of overland flow, the water from the main river will spill into the MIKE SHE cell and become part of the overland flow. However, the MIKE SHE river links and MIKE 11 H-points are pre-processed before the simulation starting which means they are determined automatically and keep fixed during the simulation, and the flow information between them using the method of interpolation. Besides, MIKE SHE only exchange water volume with the coupled reaches and keep water balance in river links, which is not the case in actual rainfall events for the water exchange should always be dynamical and successive.

Figure 12 shows the comparison of water depth profile($y=500\text{m}$) between DBCM and MIKE SHE/ MIKE 11. It can be found that water depth show small difference on the overland slope. Flood propagation is a phenomenon of high-speed movement resulting a drastic change of water depth and velocity. The hydrologic model (DWE, omitting convection term) is insufficient to describe this movement. However, the water depth near the outlet presents difference of the two models. In the early 30min, the water depth from DBCM was lower than the water depth form MIKE SHE/MIKE11 model. After that till to the end of the simulation, the water depth from DBCM was higher that the water depth from MIKE SHE/MIKE 11 model. The increasing of water depth around the channel leads to strong convective flow, thus the momentum transfer needs to be taken

into consideration in order to get reasonable simulation results. However, the momentum transfer is not taken into account in the MIKE SHE/MIKE 11 coupling model.

Flow discharge of the centre channel is shown in Fig 13. It can be found that discharge in the channel obtained by DBCM is much lower than that obtained by MIKE SHE/MIKE 11 coupling model. This is due to the difference of coupling mechanism and flow information exchange. Flow can be only exchange between the finite river links and H-points, and flow from overland can accumulate around the river links which leads to relative increasing of flow discharge. In terms of the DBCM, the flow can exchange water information including both mass and momentum with the dynamical coupling boundary. The coupling mechanism of DBCM shows accordance with natural physical process of flood formation and propagation.

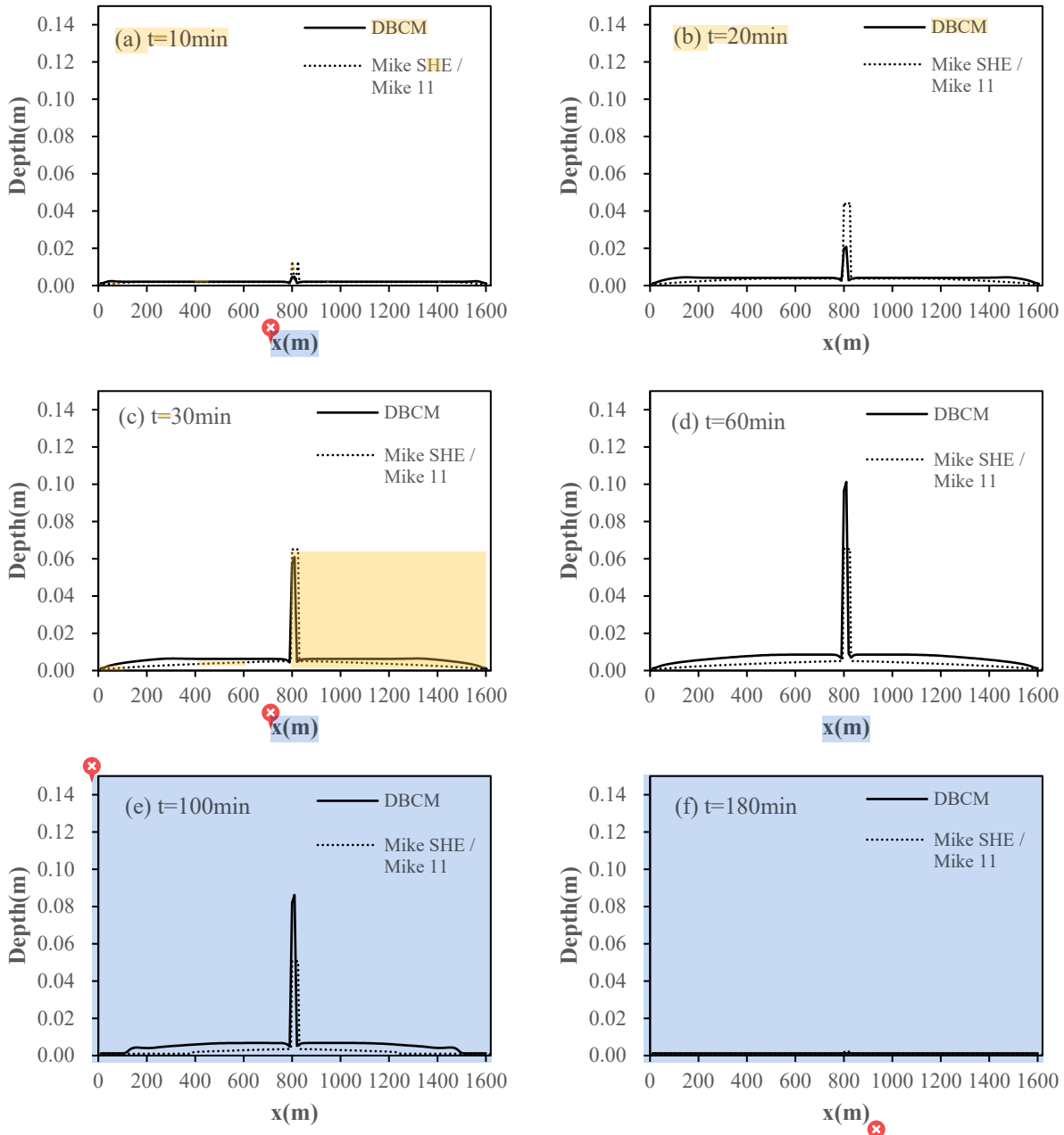
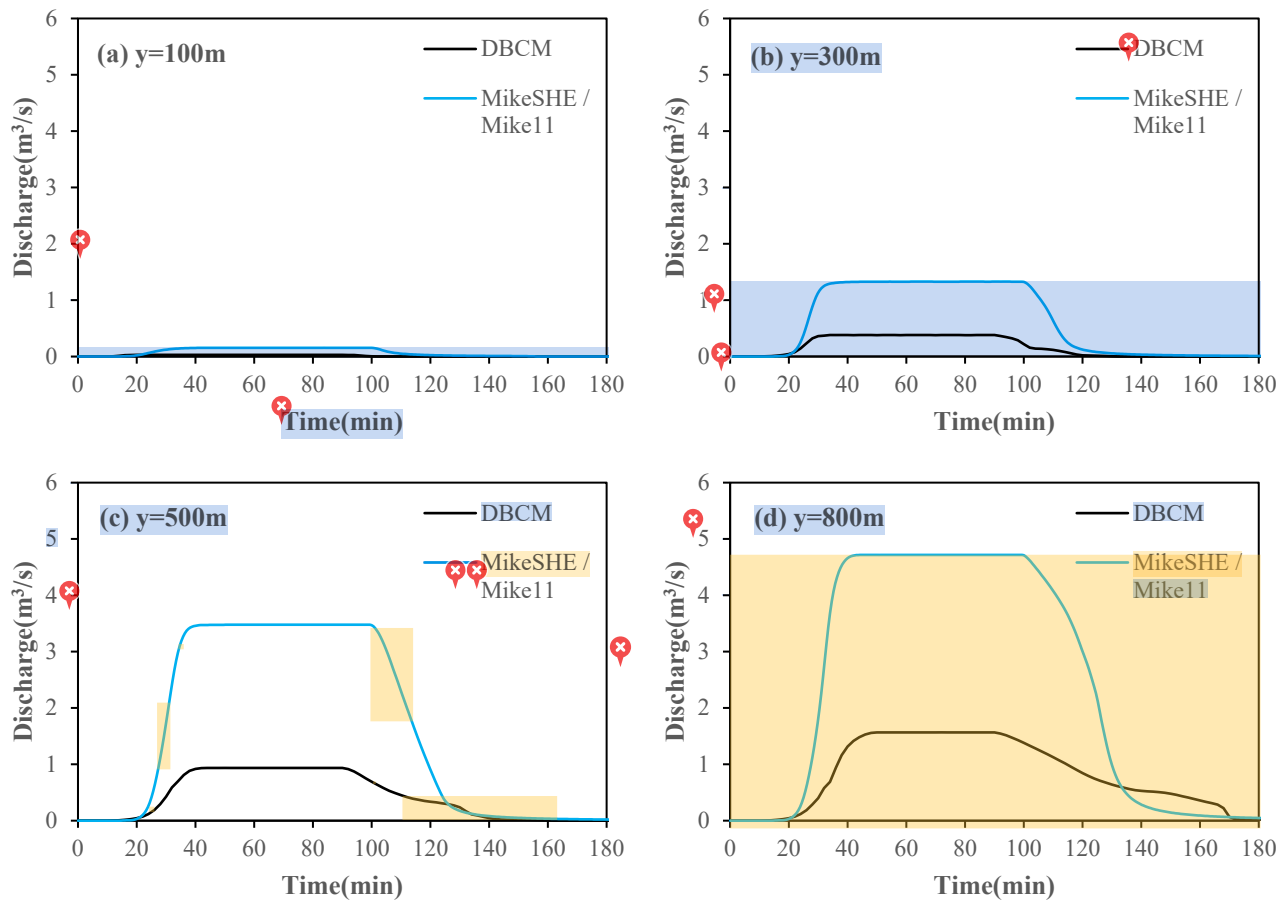


Figure 12. Comparison of water depth profile between DBCM and MIKE SHE/MIKE 11 at the downstream catchment ($y=500\text{m}$)



340

Figure 13 Discharge processes at different locations along the channel centre line(x=810m)

The spatial variability of the flow depth, velocity and flux in x and y direction at 90 min and 120min are shown in Fig.14 and Fig.15. For the DBCM, the main difference between the governing equations used by the hydrologic model and hydrodynamic model is that the flux term is not calculated in the former, meanwhile the latter needs to calculate the convection term. The non-inundation region and inundation region can be determined by whether the flux term is generated during the calculation process. When $t=90\text{min}$, the rain stops, the water depth reaches its peak value and the flow information is determined by the hydrodynamic model over the whole domain. At $t=120\text{min}$, the water continues to flow to the outlet and the water volume near the upstream region decreases, but a small amount of water still exists. No flux is calculated while velocity computation continues. Obviously, a sharp division line separating the domain arises at this moment.

For the DBCM, the coupling boundary between DWE and SWE is time-dependent. Fig.16 shows the evolution of the coupling boundary. During the first 90min, rainfall keeps constant over the whole catchment and water depth arises in a short period. As a result, the water depth in most part of the domain is above the depth threshold and SWE was implemented in these

regions. However, 90min later, the rainfall stops and no extra water flow into the domain. Then, the water depth begins to decrease. Once the depth is lower than the depth threshold, the grid cell use DWE to determine the discharge as well as water depth and the coupling boundary shrinks (see Fig.16). The evolution of coupling boundary is consistent with the flux analysis stated above.

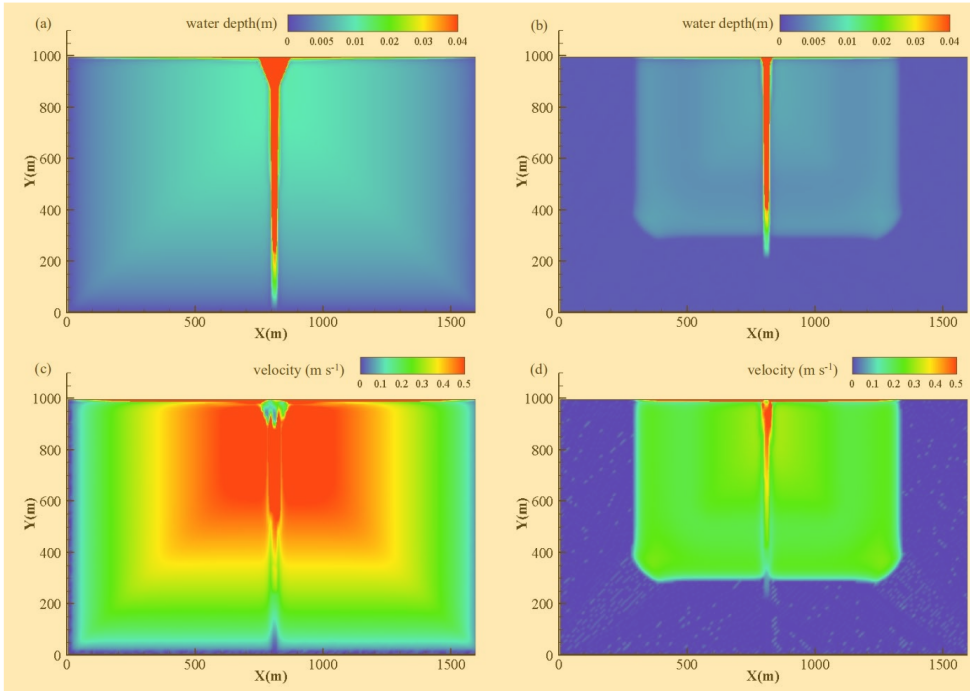


Figure 14. Water depth and velocity distribution at 90min(a and c) and 120min(b and d)

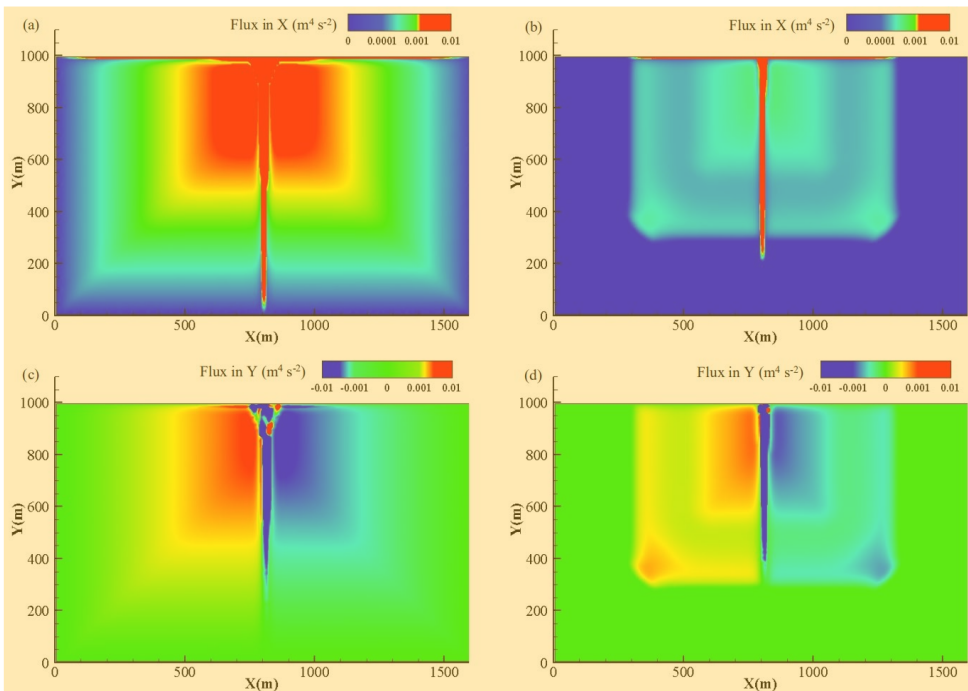


Figure 15. Flux distributions of in X and Y direction at 90min(a and c) and 120min(b and d)

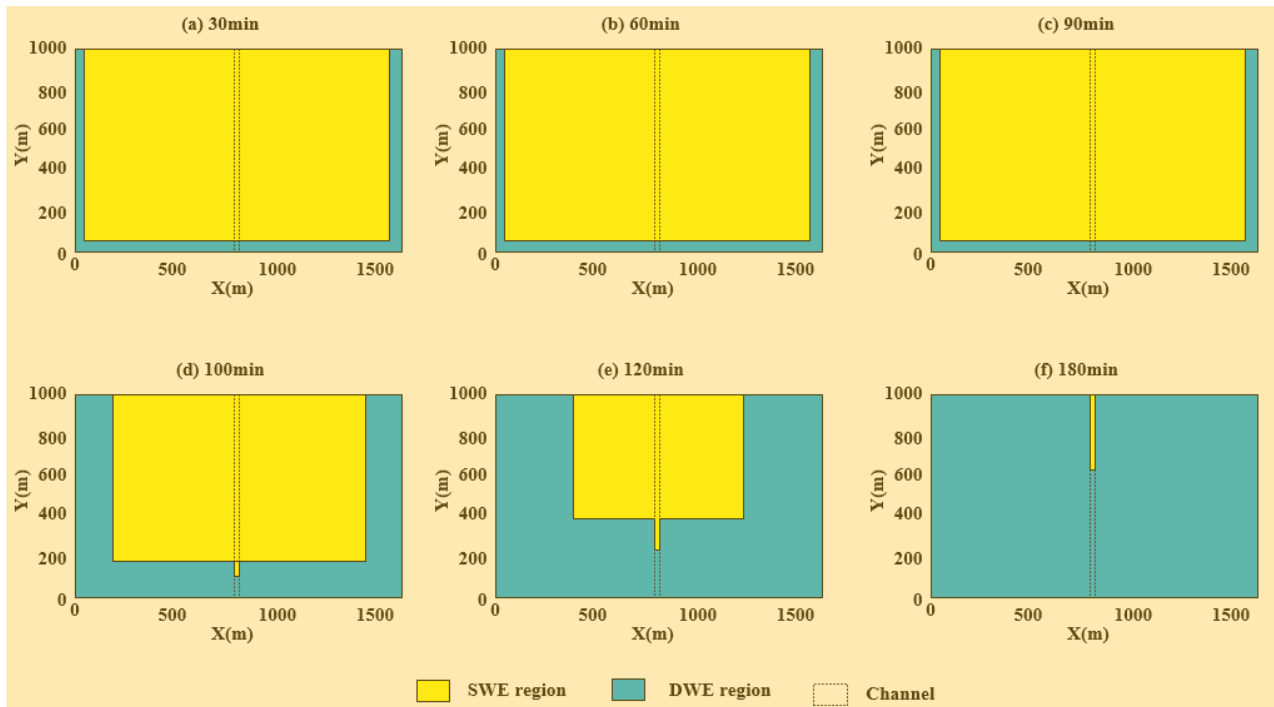


Figure 16. Evolution of coupling boundary

365 It is well known that solving the SWE costs numerous computational resources and time, which limits its application, especially for large scale simulation. In terms of this small scale V-shaped catchment, the simulation performance between the SWE, DBCM and DWE was conducted. Fig.17 shows the result and the simulation time was used by the SWE(100%). It can be seen that both the DBCM and DWE need less simulation time compared to SWE, for DWE nearly 15% simulation time saved. Whereas, the DBCM alters the SWE and DWE according to the local flow information. Compared with SWE, the simulation time of DBCM was only slightly lower than the SWE due to that in the early half simulation time in this V-shaped catchment most of the flow information is calculated by the SWE as discussed in the above section (Fig.16).
370

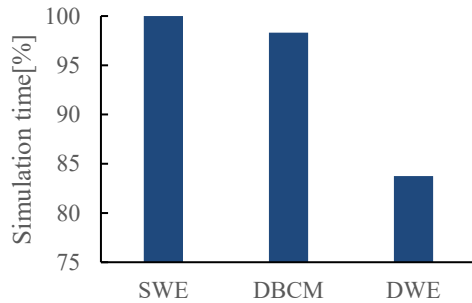
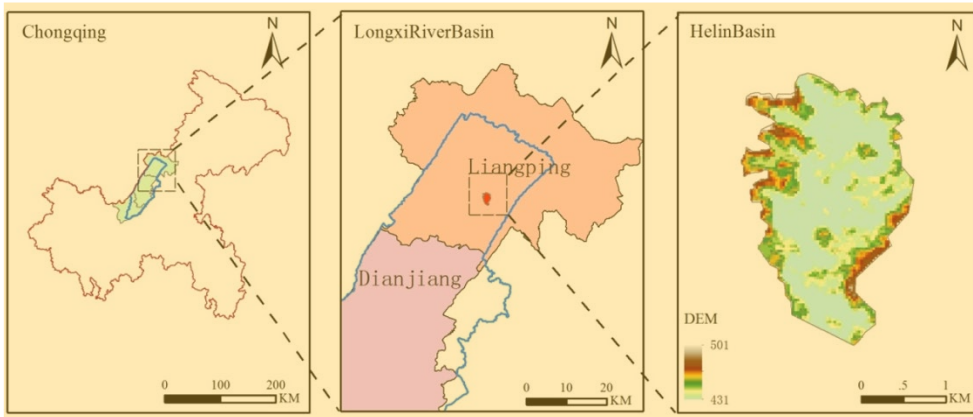


Figure 17. Relative simulation time of different models

4 DBCM implemented to a natural watershed

375 The proposed DBCM was implemented to a natural watershed for flood risk assessment, that is, Helin town of the Longxi River in Chongqing City, China. The Longxi river basin is located in the eastern region of Chongqing (see Fig.18), which is a first-class tributary of the Yangtze River. It is about 221km long with a catchment area about 3280km². The overall terrain gradually goes down from northeast to southwest, consistent with the trend of the main channel. Most of the central and southwest areas are relatively flat, and the east and west areas are mountainous, a typical topography of a trough sandwiched
380 by two mountains. The average annual rainfall in the basin is 1192.4mm, which is prone to heavy rain in summer, and the flood spreads rapidly to the central district due to the topographic feature. The selected catchment, Helin town, located in the northeast of the Longxi river basin, was chosen as a case study for investigating the surface flow phenomena using the DBCM. The administrative location and DEM information of Helin town is shown in Fig.18.



385 **Figure 18. Location of Helin town. Chongqing City(left), Longxi river basin (middle), Helin basin(right)**

The river section in Helin basin is a typical mountainous river. The upper part of the river has a steep slope, while the middle and lower reaches are relatively gentle. At present, no flood protection works exist on the river banks along the main channel. The terrain along the river is relatively plain, and farmlands widely distribute around the main stream, resulting in the poor ability to resist flood disasters. Once heavy rainfall occurs and flow overtops the river banks, the residential area and farmland along the river will be inundated. Floods in Helin town are always caused by heavy rainstorms, and the flood season is consistent with the rainstorm season which lasts from April to September. Heavy rainstorms and flood often occur during this period.

The input datasets for the DBCM include the DEM, the LULC(land use and land cover) and soil type as shown in Fig.18 and Fig.19. DEM data were obtained from the GDEMv2 database with a spatial resolution of 30m. The DEM was resampled according to field survey datasets of the channel section in order to obtain fine resolution topography. Four main kinds of land use types involves in the Helin basin: urban, forest, farmland and water. Besides, several soil types with small proportion have been consolidated into the categories with large proportion. Soil properties determine the infiltration rate, which further affects the surface runoff. The parameters, such as roughness and soil moisture content, are extracted from the data provided by local administrative sectors. The LULC data are processed by remote sensing interpretation tools using the satellite image. The soil data are processed by SWAT, Soil-Plant-Air-Water (SPAW) model using the Harmonized World Soil Database (HWSD).

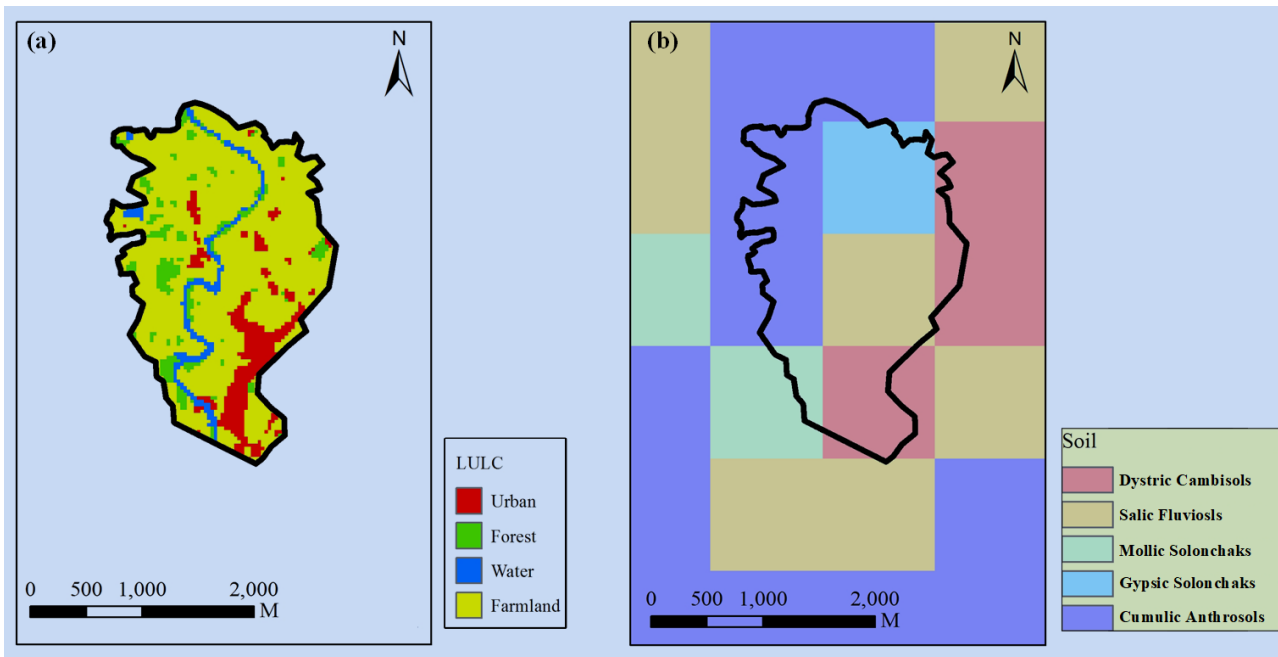


Figure 19. LULC and Soil of Helin basin

The DBCM was applied to simulate the rainfall runoff process in the Helin town and was compared with a UCM composed of SWAT (as the hydrologic model). The SWAT was calibrated by the design storm and hydrographs (flood return period of 1%) in the Helin town outlet. The selected coefficients and parameters of rainfall and flood event are listed in Table 3 and Table 4. The calibration results are shown in Fig. 20. It can be seen clearly that the flooding process calculated by the SWAT model is very similar to the design flood, with similar flood peak flow and fluctuation process. At the beginning of the simulation, because of the soil infiltration, no surface runoff although the rainfall exists for a short time. However, when the soil saturated, the discharge curve climbs rapidly which is consistent with the rainfall intensity. The simulation result reflects the storm runoff production process affected by the combination of precipitation process and infiltration process. The hydrographs show good agreement with the design flood, demonstrating that results from the SWAT are reliable for the hydrodynamic model. Once being calibrated, the hydrographs generated by the SWAT at different locations were extracted and applied as inflow boundary conditions for hydrodynamic models. Two simulation scenarios were designed, as shown in Table 2.

Table 2. Simulation scenarios

Case	Model	Boundary condition	Descriptions
A	HM2D	Helin outflow as inflow BC	SWE
B	DBCM	Helin inlet flow	Coupling DWE and SWE

Table 3. Rainfall parameters (Cs: coefficient of skewness Cv: coefficient of variation P: flood recurrence period)

Duration (h)	Mean value (mm)	Cv	Cs/Cv	P(%)			
				1	2	5	10
6	81.7	0.5	3.5	224	197	162	137
24	112	0.48	3.5	297	263	218	183

420 Table 4. Peak discharge at Helin outlet for different flood frequency

P(%)	1	2	5	10	20	50
Discharge ($m^3 s^{-1}$)	2280	1920	1470	1150	831	433

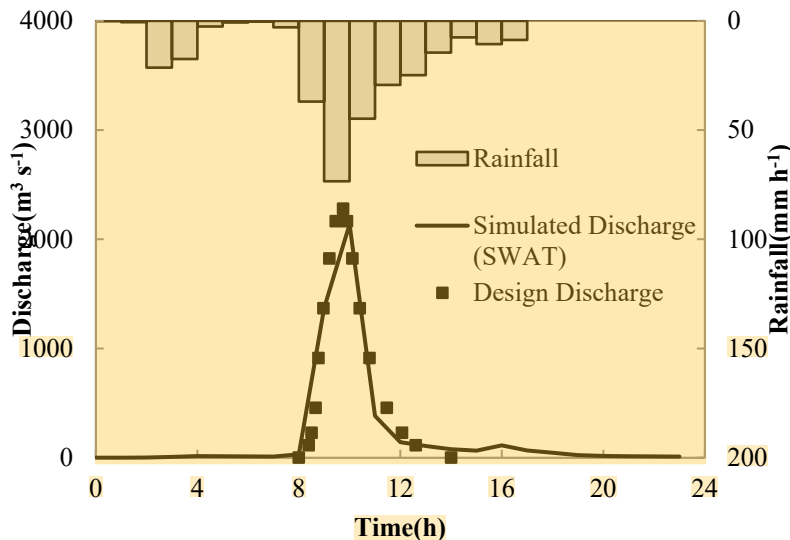


Figure 20. Design rainfall and discharge with simulated flow in Helin basin outlet(1%)

The results obtained in Case A and Case B are compared to investigate the capability of the DBCM. Fig.21 depicts the maximum water depth distribution. The inundation region has expanded significantly in Case B. Not only the lowland areas, but the hillsides also have been inundated. Even though Case A adopted the simulated outlet hydrographs larger than that Case B, the runoff failed to inundate the hillside because of the topographic feature. The red cycle in Fig.21 indicates the urban area. Water depth was extracted for each case. Due to the lack of measured data, field survey and historical records have to be used as reference data to verify the model outputs. Several problems involved in the current river topographic conditions: both sides of the river are flat, with a lot of farmland and some villages distributed along the main river. No embankments or bank protection works have been built along the river. All of these problems lead to a low flood control capacity. As local residents recall, in 2017, the flood covered the middle of the trees along the river bank, equivalent to at least 3m water depth. In terms of the urban area, according to the historic record, the rainstorm in 12 August 1998 caused a flash flood that made the local

streets and airports inundated with a water depth of 1.0m and 1.4m respectively. All villages and towns around Helin town catchment were submerged with water depth exceeding 0.5m on average. In Case B, this phenomenon was simulated and it was found that the maximum water depth in urban areas was more than 0.6m, in accord with the historic data. But no water emerged in Case A, although the Helin outlet flow is utilized as inflow discharge, greater than that of Case B, as shown in Fig.22. Referring to local topography, the main reason for this issue is that the urban areas locate in a higher position, between riverbed and hillside, hence the upwelling movement of water in rivers is easily blocked due to local terrain. Nevertheless, the urban area will be submerged by uphill surface flow, even though the river flow has been obstructed. It can be seen that the computed results of Case B by the DBCM are closer to the practical situation.

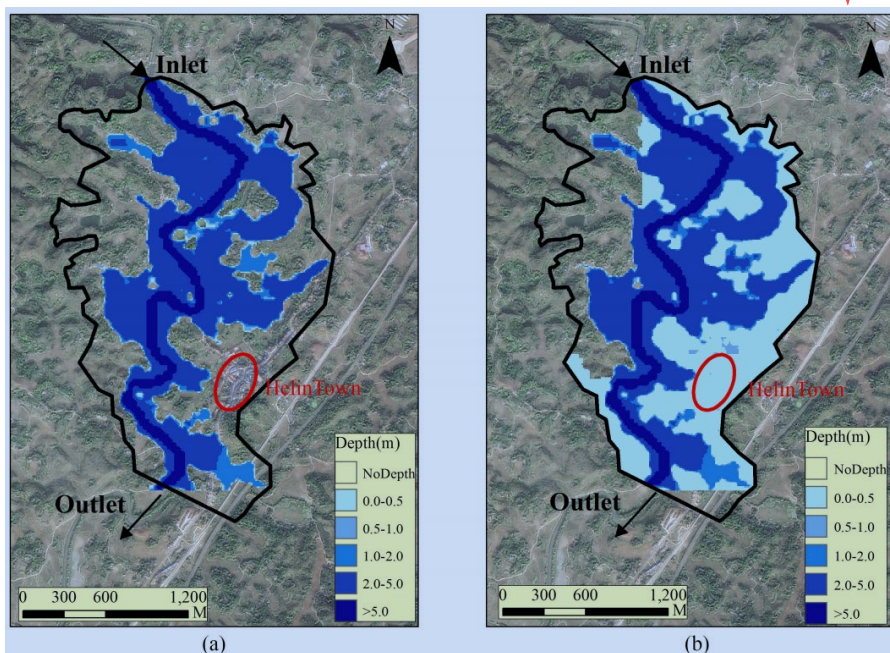


Figure 21. Comparison of maximum depth, (a)case A, (b)case B. Red circle denotes location of Helin town(Satellite imagery base map was obtain from Google Earth)

In DBCM, the coupling boundary is time-dependent, and the grid cells on each side solve different model (whether DWE or SWE). The water depth threshold (0.01m) is used to distinguish the two models in this case. Flux calculation was only conducted within SWE cells, since there is no need of flux information for DWE cells. As shown in Fig.24, the rainfall stopped 17h later, and then the surface flow on the slope gradually decreased. However, a small amount of water is still left within the sloping area where the grid cells information was solved by DWE. Thus, even though the flux calculation has stopped, flow velocity still exists in most part of the slope areas. The low-lying area on the northeast corner, due to the obstruction of the terrain, cannot be flooded in Case A. However, using the DBCM, the confluence of the surrounding slope accumulated to the local area and form a small range of flooded area.

Fig.23 shows the evolvement of coupling boundary of the DBCM in Case B. In the early 8h, rainfall intensity was small (see Fig.19), and most amount of the runoff were infiltrated to underground. Thus, the surface flow were determined by SWE

455 with the upstream inflow. After that, rainfall began to increase, and runoff started to generate surface flow using the DWE. The region of SWE continued to extend until the inundation area reached a maximum value. And then, the area began to shrink with the receding of rainfall.

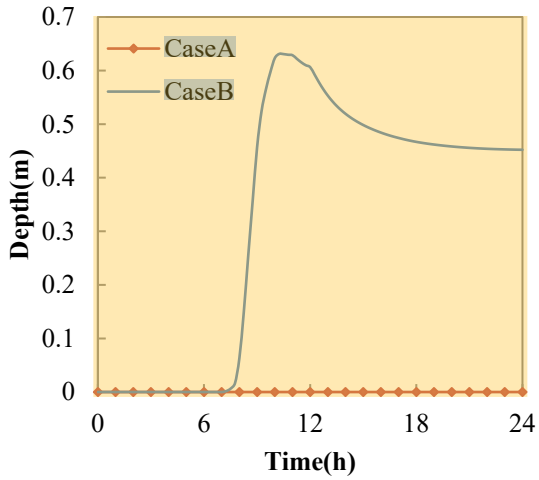


Figure 22. Comparison of water depth variation

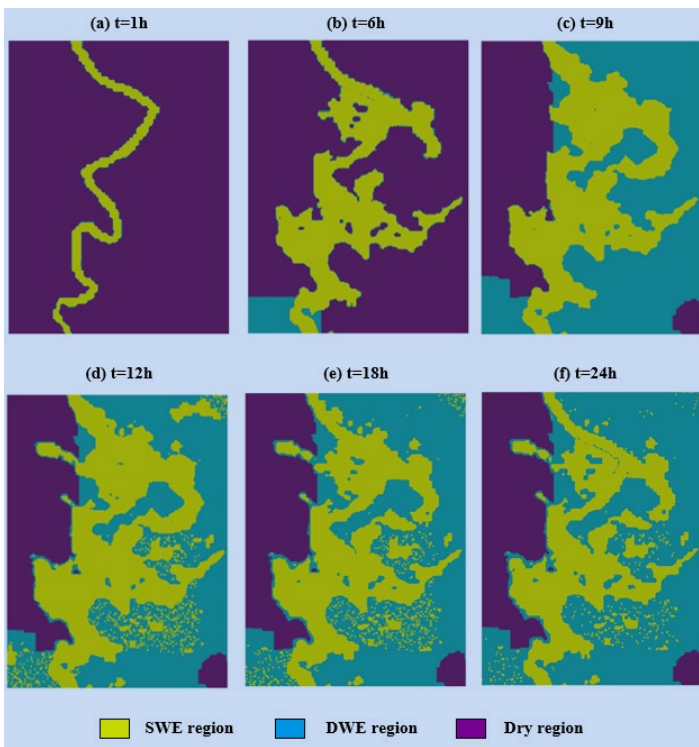


Figure 23 Evolution of coupling boundary

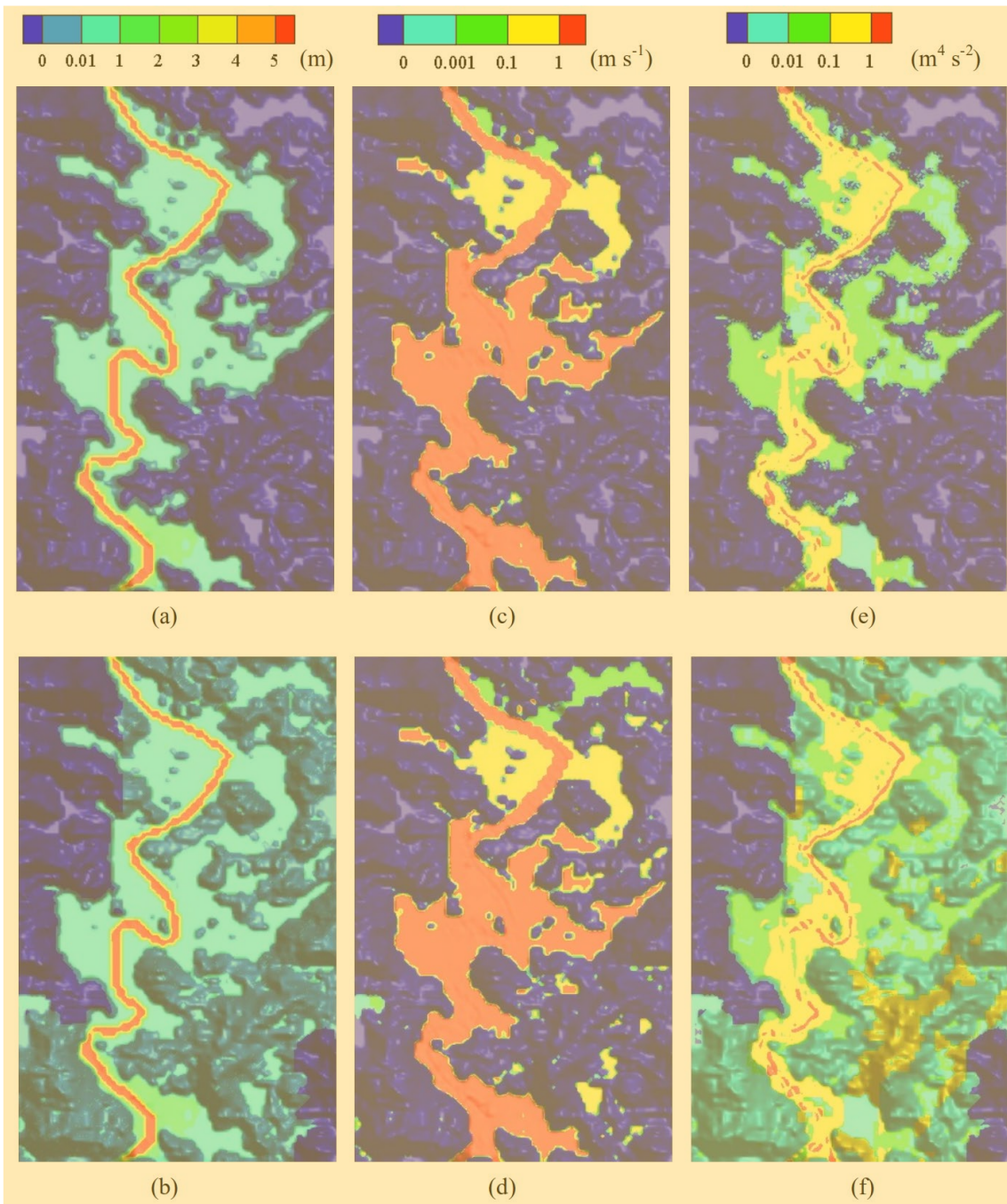


Figure 24. Simulation results at $t=17\text{h}$, (a) and (b) are water depth(m) for case A and case B,(c) and (d) are velocity(m s^{-1}) for case A and case B, (e) and (f) are flux term($\text{m}^4 \text{s}^{-2}$) for case A and case B

465 5 Conclusions

465 A dynamic bidirectional coupling model (DBCM) for surface flow inundation simulation has been developed. In DBCM, the runoff production is depicted by the hydrologic model through the rainfall-runoff process, while the hydrodynamic model is used to simulate the flood propagation processes. The characteristic wave theory is applied to determine the coupling boundary between the hydrologic and hydrodynamic computational domains.

470 The DBCM can dynamically alter the coupling boundary position to determine the non-inundation and inundation regions, which takes into account both of mass and momentum exchange on the coupling boundary. The hydrologic and hydrodynamic models are solved simultaneously. The coupling approach in DBCM shows more approximation to the natural physical process of flood formation and propagation, which has the potential to improve the accuracy of flood prediction.

The main advantages of the proposed DBCM are three folds:(1) flow discharge at the coupling boundary is determined based on the characteristic wave theory. Solution of hydrologic model and hydrodynamic model on each side of the coupling boundary are solved according to characteristic wave analysis and slope gradient analysis, respectively. (2) The discharge obtained on the coupling boundary takes into account both of mass and momentum transfer between the hydrologic model and hydrodynamic model, and flow information on both sides of the coupling boundary can be reflected.(3) the coupling boundary is time-dependent, and the computational domain of inundation and non-inundation regions varies according to the flow state throughout the calculation process, which is more aligned with natural rainfall and flood propagation conditions.

480 The benchmark tests show that the DBCM is capable of accurately simulating the hydrologic and hydrodynamic response to rainfall events in various catchments. The DBCM gains a good agreement with the analytical solution, and realizes the dynamic switching between the hydrologic and hydrodynamic models in simulating surface flows, which is hardly achieved by former methods. The DBCM also succeeds in predicting the inundation regions in real flood events with more reasonable results when compared to the BCM.

485 However, the DBCM in present study only accounts for precipitation and infiltration among the various physical processes of the hydrological cycle. Besides, a uniform rainfall station data were adopted in the present DBCM, which limits its application to relatively small-scale catchment simulation. Thus, further study involving other physical processes, such as evapotranspiration, interception, and snow melt .etc. as well as distributed rainfall datasets processing, need to be implemented to the DBCM in order to make it suitable for more general application and complicate case study or practice.

Code and Data availability

Model simulation and calibration data as well as codes are available upon request from the corresponding author. Digital elevation model data are provided by the Geospatial Data Cloud at <http://www.gscloud.cn>. The data sets of Soil Properties and Land cover are provided by Cold and Arid Regions Sciences Data Center at Lanzhou (<http://westdc.westgis.ac.cn>). The Satellite imagery base map of Helin town was obtained from Google earth Pro.

Author contributions

YWY designed the methodology and carried out the investigation with cooperation from all co-authors. QZ provided the original model input data. The study was supervised by CBJ. YWY prepared the first draft of the manuscript, which was then revised and improved by the co-authors.

500 Competing interests

The authors declare that they have no conflict of interest.

Acknowledgements

This study was supported by the National Science Foundation of China (No. 51679121) and National Key Research and Development Program of China (NO. 2016YFC0502204).

505 References

References:

- Ata, R., Pavan, S., Khelladi, S. and Toro, E.F.: A Weighted Average Flux (WAF) scheme applied to shallow water equations for real-life applications, *Advances in Water Resources*, 62, 155-172, 10.1016/j.advwatres.2013.09.019, 2013.
- 510 Bates, P.D. and De Roo, A.P.J.: A simple raster-based model for flood inundation simulation, *Journal of Hydrology*, 236, 54-77, [https://doi.org/10.1016/S0022-1694\(00\)00278-X](https://doi.org/10.1016/S0022-1694(00)00278-X), 2000.
- Beuilloud, L. et al.: Coupling the ISBA Land Surface Model and the TOPMODEL Hydrological Model for Mediterranean Flash-Flood Forecasting: Description, Calibration, and Validation, *Journal of Hydrometeorology*, 11, 315-333, 10.1175/2009JHM1163.1, 2010.
- 515 Bradbrook, K.: JFLOW: a multiscale two-dimensional dynamic flood model, *Water and Environment Journal*, 20, 79-86, 10.1111/j.1747-6593.2005.00011.x, 2006.
- Bravo, J.M., Allasia, D., Paz, A.R., Collischonn, W. and Tucci, C.E.M.: Coupled Hydrologic-Hydraulic Modeling of the Upper Paraguay River Basin, *Journal of Hydrologic Engineering*, 17, 635-646, 10.1061/(ASCE)HE.1943-5584.0000494, 2012.
- 520 Chen, A.S., Evans, B., Djordjević, S. and Savić, D.A.: A coarse-grid approach to representing building blockage effects in 2D urban flood modelling, *Journal of Hydrology*, 426-427, 1-16, <https://doi.org/10.1016/j.jhydrol.2012.01.007>, 2012.
- Choi, C.C. and Mantilla, R.: Development and Analysis of GIS Tools for the Automatic Implementation of 1D Hydraulic Models Coupled with Distributed Hydrological Models, *Journal of Hydrologic Engineering*, 20, 06015005, 10.1061/(ASCE)HE.1943-5584.0001202, 2015.
- Di Baldassarre, G., Giammarco, P., Todini, E. and Lamberti, P.: A conservative finite elements approach to overland flow: the control volume finite element formulation, *Journal of Hydrology*, 175, 267-291, 10.1016/S0022-1694(96)80014-X, 1996.
- 525 Fraccarollo, L. and Toro, E.F.: Experimental and numerical assessment of the shallow water model for two-dimensional dam-break type problems, *Journal of hydraulic research*, 33, 843-864, 10.1080/00221689509498555, 1995.
- Godunov, S.K.: A finite difference method for the computation of discontinuous solutions of the equations of fluid dynamics, *Sbornik: Mathematics*, 47, 357-393, 1959.
- 530 Grimaldi, S., Petroselli, A., Arcangeletti, E. and Nardi, F.: Flood mapping in ungauged basins using fully continuous hydrologic - hydraulic modeling, *Journal of Hydrology*, 487, 39-47, 10.1016/j.jhydrol.2013.02.023, 2013.

- Hdeib, R., Abdallah, C., Colin, F., Brocca, L. and Moussa, R.: Constraining coupled hydrological-hydraulic flood model by past storm events and post-event measurements in data-sparse regions, *Journal of Hydrology*, 565, 160-176, 10.1016/j.jhydrol.2018.08.008, 2018.
- 535 Hsu, M.H., Chen, S.H. and Chang, T.J.: Inundation simulation for urban drainage basin with storm sewer system, *Journal of Hydrology*, 234, 21-37, [https://doi.org/10.1016/S0022-1694\(00\)00237-7](https://doi.org/10.1016/S0022-1694(00)00237-7), 2000.
- Laganier, O., Ayrat, P.A., Salze, D. and Sauvagnargues, S.: A coupling of hydrologic and hydraulic models appropriate for the fast floods of the Gardon River basin (France), *Natural Hazards and Earth System Sciences*, 14, 2899-2920, 10.5194/nhess-14-2899-2014, 2014.
- 540 Leandro, J., Chen, A.S. and Schumann, A.: A 2D parallel diffusive wave model for floodplain inundation with variable time step (P-DWave), *Journal of Hydrology*, 517, 250-259, 10.1016/j.jhydrol.2014.05.020, 2014.
- Lerat, J., Perrin, C., Andréassian, V., Loumagne, C. and Ribstein, P.: Towards robust methods to couple lumped rainfall-runoff models and hydraulic models: A sensitivity analysis on the Illinois River, *Journal of Hydrology*, 123-135, 10.1016/j.jhydrol.2009.09.019, 2012.
- 545 Li, D., Bou-Zeid, E., Baeck, M.L., Jessup, S. and Smith, J.A.: Modeling Land Surface Processes and Heavy Rainfall in Urban Environments: Sensitivity to Urban Surface Representations, *Journal of Hydrometeorology*, 14, 1098-1118, 10.1175/JHM-D-12-0154.1, 2013.
- Li, D., Malyshev, S. and Shevliakova, E.: Exploring historical and future urban climate in the Earth System Modeling framework: 1. Model development and evaluation, *Journal of Advances in Modeling Earth Systems*, 8, 917-935, 10.1002/2015MS000578, 2016.
- 550 Liang, D., Lin, B. and Falconer, R.A.: Simulation of rapidly varying flow using an efficient TVD - MacCormack scheme, *International journal for numerical methods in fluids*, 53, 811-826, 2007.
- Liu, G., Schwartz, F.W., Tseng, K. and Shum, C.K.: Discharge and water-depth estimates for ungauged rivers: Combining hydrologic, hydraulic, and inverse modeling with stage and water-area measurements from satellites, *Water Resources Research*, 51, 6017-6035, 10.1002/2015WR016971, 2015.
- 555 McMillan, H.K. and Brasington, J.: End-to-end flood risk assessment: A coupled model cascade with uncertainty estimation, *Water Resources Research*, 44, 10.1029/2007WR005995, 2008.
- Montanari, M. et al.: Calibration and sequential updating of a coupled hydrologic-hydraulic model using remote sensing-derived water stages, *Hydrology and Earth System Sciences*, 13, 367-380, 10.5194/hess-13-367-2009, 2009.
- 560 Osti, R.P.: Strengthening Flood Risk Management Policy and Practice in the People's Republic of China: Lessons Learned from the 2016 Yangtze River Floods, 2017.
- Panday, S. and Huyakorn, P.S.: A fully coupled physically-based spatially-distributed model for evaluating surface/subsurface flow, *Advances in Water Resources*, 27, 361-382, 10.1016/j.advwatres.2004.02.016, 2004.
- 565 Patro, S., Chatterjee, C., Mohanty, S., Singh, R. and Raghuvanshi, N.S.: Flood inundation modeling using MIKE FLOOD and remote sensing data, *Journal of the Indian Society of Remote Sensing*, 37, 107-118, 10.1007/s12524-009-0002-1, 2009.
- Rallison, R.E. and Miller, N.: Past, present, and future SCS runoff procedure, Rainfall-runoff relationship/proceedings, International Symposium on Rainfall-Runoff Modeling held May 18-21, 1981 at Mississippi State University, Mississippi State, Mississippi, USA/edited by VP Singh, Littleton, Colo.: Water Resources Publications, c1982., 1982.
- 570 Rawls, W.J., Brakensiek, D.L. and Miller, N.: Green - ampt Infiltration Parameters from Soils Data, *Journal of Hydraulic Engineering*, 109, 62-70, 10.1061/(ASCE)0733-9429(1983)109:1(62), 1983.
- Rayburg, S. and Thoms, M.: A coupled hydraulic - hydrologic modelling approach to deriving a water balance model for a complex floodplain wetland system, *Hydrology Research*, 40, 364-379, 10.2166/nh.2009.110, 2009.
- 575 Rogers, B., Fujihara, M. and Borthwick, A.G.: Adaptive Q - tree Godunov - type scheme for shallow water equations, *International Journal for Numerical Methods in Fluids*, 35, 247-280, 10.1002/1097-0363(20010215)35:3<247::AID-FLD89>3.0.CO;2-E, 2001.
- Singh, J., Altinakar, M.S. and Ding, Y.: Numerical Modeling of Rainfall-Generated Overland Flow Using Nonlinear Shallow-Water Equations, *Journal of Hydrologic Engineering*, 20, 04014089, 10.1061/(ASCE)HE.1943-5584.0001124, 2015.
- 580 Thompson, J.R.: Simulation of Wetland Water-Level Manipulation Using Coupled Hydrological/Hydraulic Modeling, *Physical Geography*, 25, 39-67, 10.2747/0272-3646.25.1.39, 2004.
- Thompson, J.R., Sørensen, H.R., Gavin, H. and Refsgaard, A.: Application of the coupled MIKE SHE/MIKE 11 modelling system to a lowland wet grassland in southeast England, *Journal of Hydrology*, 293, 151-179, 2004.

- Toro, E.F., Shock-capturing methods for free-surface shallow flows, John Wiley, 2001.
- Viero, D.P., Peruzzo, P., Carniello, L. and Defina, A.: Integrated mathematical modeling of hydrological and hydrodynamic response to rainfall events in rural lowland catchments, *Water Resources Research*, 50, 5941-5957, 10.1002/2013WR014293, 2014.
- 585 Yu, C. and Duan, J.: Two-Dimensional Hydrodynamic Model for Surface-Flow Routing, *Journal of Hydraulic Engineering*, 140, 04014045, 10.1061/(ASCE)HY.1943-7900.0000913, 2014.
- Yu, C. and Duan, J.: Simulation of Surface Runoff Using Hydrodynamic Model, *Journal of Hydrologic Engineering*, 22, 04017006, 10.1061/(ASCE)HE.1943-5584.0001497, 2017.
- 590 Yu, C. and Duan, J.G.: High resolution numerical schemes for solving kinematic wave equation, *Journal of Hydrology*, 519, 823-832, 10.1016/j.jhydrol.2014.08.003, 2014.
- Zhu, Z. et al.: Integrated urban hydrologic and hydraulic modelling in Chicago, Illinois, *Environmental Modelling & Software*, 77, 63-70, 10.1016/j.envsoft.2015.11.014, 2016.