

We would like to thank Referee #1 and Referee#2 for the constructive comments, these comments are valuable and very helpful for improving our paper. We appreciate that we have a chance to revise the manuscript as you recommend and to resubmit our manuscript will meet your approval. In the following, we respond point by point to the comments. The referee comments appear in black and the answers appear in blue.

Answers to Anonymous Referee #1 comments

Report #2

Suggestions for revision or reasons for rejection (will be published if the paper is accepted for final publication)

line 380 the sentence on "when implemented in a large catchment..." is in my opinion too much speculative, and should be therefore removed.

Thanks for your suggestion. The sentence has been removed in the latest manuscript.

Answers to Anonymous Referee #2 comments

Report #1

Dear authors,

I really find your manuscript topic and scientific endeavor for a new type of DBCM scheme worthy of attention and that upon revision, the quality of the manuscript presentation has improved as well.

However, my concern remains that you have not really compared your DBCM scheme with other similar dynamic (D) and bi-directional (B) schemes, and I think that should be the focus of your evaluation and big selling point, instead of inadequately comparing it with other UCM and standalone hydrologic and hydrodynamic models. In the revision process, you responded this with the addition of MIKE SHE only in the simplistic V catchment test. However this MIKE SHE only is just another distributed hydrological model without bidirectional hydrodynamics representation, unless this MIKE SHE is coupled with MIKE 11 hydrodynamic model (which is commonly done) and therefore could represent another DBCM scheme for your proper comparison.

Therefore, I would encourage you to revisit the above mentioned issue for a solid revision to present better and emphasize the selling point of your DBCM coupling scheme in contrast to others.

I wish you best of luck.

We have done a comparison between DBCM and Mike SHE/Mike 11 coupling model. See Section 3.3 in the latest modified manuscript, discharge processes and water depth profiles were obtained to show the performance of the two coupling models. The results show good performance of the proposed DBCM.

List of changes of the manuscript

Based on the comments of the referees, most parts of the sections of the manuscript have been rephrased and rewritten.

The major changes in the manuscript list as following.

(Changes are based on the last manuscript version: nhess-2019-355-manuscript-version2.pdf)

1. Abstract and Introduction section have been rewritten, and lots of minor corrections were made to the other sections.
2. Section 3.3, comparison between DBCM and Mike SHE/Mike11 coupling model was made based on the suggestion of the second referee.

Compare Results

Old File:

nhess-2019-355-manuscript-version2.pdf

29 pages (2.58 MB)

2020/5/14 22:14:36

versus

New File:

nhess-2019-355--2020.09.08-2.pdf

32 pages (3.55 MB)

2020/9/9 2:46:36

Total Changes

673

Content

217 Replacements

290 Insertions

155 Deletions

Styling and Annotations

11 Styling

0 Annotations

[Go to First Change \(page 1\)](#)

A Dynamic Bidirectional Coupled Surface Flow Model for Flood Inundation Simulation

Chunbo Jiang¹, Qi Zhou¹, Wangyang Yu^{1,2}, Chen Yang³ and Binliang Lin¹

¹State Key Laboratory of Hydrosience and Engineering, Department of Hydraulic Engineering, Tsinghua University, Beijing, 100084, China

²China Institute of Water Resources and Hydropower Research, Beijing, 100038, China

³School of Water Conservancy, North China University of Water Resources and Electric Power, Zhengzhou, 450046, China

Correspondence to: Wangyang Yu (sea198719@126.com)

Abstract. Flood disasters are frequently threatening people and properties all over the world. Therefore, an effective numerical model is required to predict the impacts of floods. In this study, a dynamic bidirectional coupled hydrologic-hydrodynamic model (DBCM) is developed with the implementation of characteristic wave theory, in which the boundary between these two models can dynamically adapt according to local flow condition. The proposed model accounts both mass and momentum transfer on the coupling boundary and was validated via several benchmark tests. The results show that the DBCM can effectively reproduce the process of flood propagation and also account for surface flow interaction between non-inundation and inundation regions. The DBCM was implemented to the floods simulation occurred at Helin Town located in Chongqing, China, which shows the capability of the model for flood risk early warning and future management.

1 Introduction

Over the past decades, flood events frequently occurred threatening millions of people all over the world, which are driven by global warming, population growth, rapid urbanization and climate change (Zhu et al., 2016). As an example, the economic loss caused by the floods reaches billions of yuan in China during the period between 1998 and 2016 (Osti, 2017). The capability of predicting and warning of flood events thus plays a significant role in the flood risk assessment and policy-making.

Numerous hydrologic and hydrodynamic models have been proposed to simulate the hydrologic processes and flood propagation (Leandro et al., 2014; Li et al., 2013; Li et al., 2016; Singh et al., 2015; Yu and Duan, 2014; Yu and Duan, 2014). Specifically, the hydrologic models focus on the water cycle between atmosphere, surface water and soil in a wide range of space and time scales and therefore involve the hydrological processes, such as, precipitation, evaporation, infiltration, etc. On the other hand, the hydrodynamic models solve the mass and momentum equations with a full description of water flow in the study domain, considering water depth, flow velocity, flow duration, etc (Patro et al., 2009; Singh et al., 2015; Yu and Duan, 2014). It is worthy of noting that the initial conditions and boundary conditions are significant for the hydrodynamic simulations.

30 Recently, several coupled models have been proposed to combined the advantages of these two types of models and the coupled models can be classified into: the unidirectional coupling model (UCM) (Choi and Mantilla, 2015; Montanari et al., 2009) and the bidirectional coupling model(BCM) (Thompson, 2004; Yu and Duan, 2014; Yu and Duan, 2017; Zhu et al., 2016). For the UCM, the hydrologic model is conducted in the first stage and the obtained results are then employed as boundary conditions for the hydrodynamic model simulations. Since the flow information is transferred in one-way from the hydrologic model to the hydrodynamic model, the UCM is much easier to use than the BCM. McMillan and Brasington(2008) developed a coupled precipitation-runoff hydrological model, and the authors used a 1D dynamic wave equation to assess the flood inundation under several flood return periods. Some other similar models(either open-source or commercial) for the UCM can be found(Hdeib et al., 2018; Liu et al., 2015; Choi and Mantilla, 2015; Grimaldi et al., 2013; Montanari et al., 2009; Rayburg and Thoms, 2009).

40 Apparently, the UCM cannot fully capture the interaction between the two types of models due to the one-way coupling mechanism. The flood risk may be underestimated if flow information from the hydrodynamic model affects the surface runoff yield by the hydrologic model(Lerat et al., 2012). BCM is one possible solution for this problem, which couple the hydrologic model with the hydrodynamic model and can use rainfall, climate condition, soil distribution and other GIS information as input data. In line with this objective, various techniques have been proposed, ranging from simple approach through changing boundary conditions, such as point source or lateral flow conditions (Bouilloud et al., 2010), to relatively complicate models, such as using the simplified 2-D shallow water equations to simulate overland flow instead of traditional hydrologic model (Viero et al., 2014). The coupled MIKE SHE/MIKE 11 modelling system considers the discharge exchange between the hydrologic and hydrodynamic models using river links (Thompson, 2004; Thompson et al., 2004). The flow velocity is proportional to the water level gradient and the flow is treated as lateral flow for the momentum equations in the hydrodynamic model. Thus, the hydrologic model and hydrodynamic model are linked via the calculation of flow discharge (Bravo et al., 2012; Laganier et al., 2014).

The two types of models, either the UCM or the BCM, still have limitations for the flood simulation and prediction. First, the location of the coupling boundary need to be predefined before conducting the simulation. Though the predefined coupling boundary can improve the computational efficiency, the non-inundation and inundation regions are time-dependent. Second, the flow information transfer is not fully considered in the current models. The UCM does not consider the feedback from the hydrodynamic model to the hydrologic model and the BCM only consider the water volume exchange between the two models without local velocity information. For instance, the MIKE SHE/MIKE 11 coupling model computes the velocity at the coupling boundary according to the difference of water depths rather than the velocities obtained in different models, which limits the model only suits for a 1D flow. Therefore, a fully-coupled model considering the velocities computed at different models and the evolutions of interfaces is required for more precise simulations.

In this study, a dynamic bidirectional coupling hydrologic-hydrodynamic model (DBCM) has been developed based on the characteristic wave theory. As far as the authors' knowledge, this is the first time the characteristic wave theory is employed to connect hydrologic and hydrodynamic models. The model can automatically evolve the surface flow and fully consider the

flow states with both mass and momentum transfer. Section 2 presents the methodology. In Section 3, the model is verified by
 65 comparisons between simulations results and analytical results or experimental data. Section 4 shows an application of the
 model to a real engineering project. Section 5 concludes the paper with remarks.

2 Methodology

The DBCM model combines a hydrologic model including three sub-models i.e. rainfall, infiltration and runoff routing, and a
 hydrodynamic model involving the 2D shallow water equations for the simulations of channel and overland flows. Both models
 70 are solved simultaneously within each time step, and the mass and momentum transfer on the coupling boundary are
 determined based on the characteristic wave propagation theory which is commonly employed in solving Riemann problems
 (Toro, 2001).

2.1 Runoff generation

The hydrologic model used in this study is a raster-based distributed model. The runoff yield of a catchment involves
 75 precipitation and infiltration and the overland flow is modelled using the 2D diffusion wave equations.

The precipitation is interpolated from rainfall stations data and infiltration is computed by solving the Green-Ampt equation.
 The Green-Ampt equation is shown as follows.

$$f_p = K_s \left(1 + \frac{(\theta_s - \theta_i) S_a}{F_c} \right), \quad (1)$$

where f_p is the infiltration rate (mm h^{-1}), K_s is the hydraulic conductivity (mm h^{-1}), S_a is the average effective suction of the
 80 wetting front (mm), θ_s and θ_i are the saturated and initial soil moisture content respectively (%) respectively, and F_c is the
 cumulative infiltration (mm). This equation is well-known and widely used since it can reflect the runoff yield conditions for
 both saturated storage and excess infiltration (Rawls et al., 1983).

2.2 Diffusion wave approach

Since the conceptual models for the surface flow cannot provide detailed information about the water movement over the
 85 entire basin, a different grid is needed for the hydrodynamic models (Rallison and Miller, 1982). The diffusion wave equations
 (Bates and De Roo, 2000) are used to determine the runoff routing, which are composed of mass conservation equation and
 momentum equations:

$$\frac{\partial Q}{\partial t} + \frac{\partial q_x}{\partial x} + \frac{\partial q_y}{\partial y} = Q_m, \quad (2)$$

$$Q_x = \frac{A_x R_x^{0.67} S_x^{0.5}}{n}, \quad (3)$$

$$90 \quad Q_y = \frac{A_y R_y^{0.67} S_y^{0.5}}{n}, \quad (4)$$

where q_x, q_y are the unit discharges along the x and y directions ($\text{m}^2 \text{s}^{-1}$), respectively, h is the water depth (m), Q_m equals to the rainfall rate minus the infiltration rate (m s^{-1}), Q_x, Q_y are the flow rate in the directions of x and y ($\text{m}^3 \text{s}^{-1}$), respectively, A is the flow area (m^2), R is the hydraulic radius (m), S is the water level gradient, and n is the roughness coefficient.

Compared to gravitational and frictional effects, the influence of acceleration and inertial terms of overland flow is negligible (Chen et al., 2012; Hsu et al., 2000). The full shallow water equations are reduced to the diffusive wave equations by omitting the time dependent terms. The flow velocity only depends on the local water level gradient and roughness, and the water depth determines by water volume balance and discharge from the neighbour grids. As shown in Fig. 1a, the possible flow at one cell is linked to two adjacent cells at each time step.

$$Q_i = \frac{wh^{5/3}}{n(s_i^2 + s_j^2)^{1/4}}, Q_j = \frac{wh^{5/3}s_j}{n(s_i^2 + s_j^2)^{1/4}} \quad (5)$$

100 where

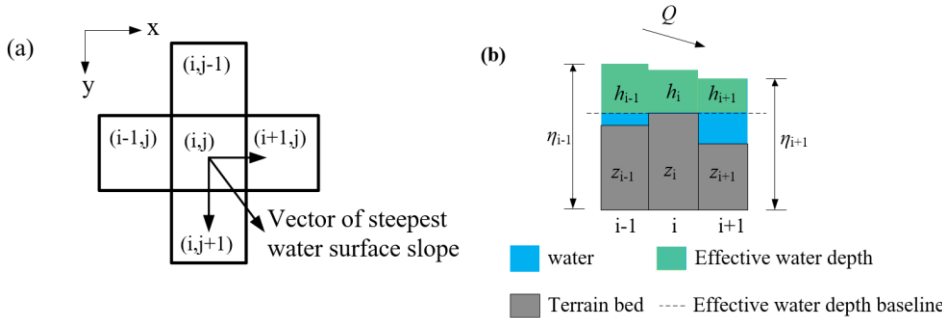
$$S_i = \frac{\eta_{i,j} - \eta_{i\pm 1,j}}{w}, S_j = \frac{\eta_{i,j} - \eta_{i,j\pm 1}}{w},$$

$$h_i = \eta_{i,j} - \max(z_{i,j}, z_{i\pm 1,j}), h_j = \eta_{i,j} - \max(z_{i,j}, z_{i,j\pm 1}),$$

$$n = \frac{h_i s_i^2 + h_j s_j^2}{s_i^2 + s_j^2} \quad (6)$$

where w is the width of the cell (m), S_i, S_j are the water level slopes in the orthogonal direction of i and j , respectively, h_i, h_j are the effective depths in orthogonal direction of i and j , respectively, $\eta_{i,j}$ and $z_{i,j}$ are the water surface level and the ground elevation (m), respectively, and h is the effective depth. The depth is defined as shown in Fig.1(b). The change of water depth in each of cell is then calculated using the following equation:

$$\Delta h = \frac{(\sum Q_{in\ i,j} - \sum Q_{out\ i,j} - Q_m)\Delta t}{w} \quad (7)$$



110 **Figure 1 typical grid and water depth definition**

2.3 Hydrodynamic model

The 2D shallow water equations are the most widely used in the hydrodynamic models for the inundation simulations (Bradbrook, 2006; Yu and Duan, 2014; Yu and Duan, 2017). Neglecting the Coriolis force, wind resistance and viscosity, the equations are composed of the continuity equation

$$115 \quad \frac{\partial h}{\partial t} + \frac{\partial hu}{\partial x} + \frac{\partial hv}{\partial y} = Q_m, \quad (8)$$

and the momentum equations

$$\frac{\partial hu}{\partial t} + \frac{\partial}{\partial x} \left(hu^2 + \frac{1}{2} gh^2 \right) + \frac{\partial}{\partial y} (huv) = -gh \frac{\partial z}{\partial x} - C^2 u \sqrt{u^2 + v^2}, \quad (9)$$

$$\frac{\partial hv}{\partial t} + \frac{\partial}{\partial x} (huv) + \frac{\partial}{\partial y} \left(hv^2 + \frac{1}{2} gh^2 \right) = -gh \frac{\partial z}{\partial y} - C^2 v \sqrt{u^2 + v^2}, \quad (10)$$

where u, v are velocities along the x and y direction (m s^{-1}), respectively, h is water depth (m), g is gravity acceleration (m s^{-2}), z is bottom elevation (m), C is Chezy coefficient representing roughness, Q_m is the source term which equals to rainfall rate minus infiltration rate (m s^{-1}).

These equations are solved using the finite volume method similar to TELEMAC (Ata et al., 2013), and the convection flux is calculated using the HLL scheme with WAF approach (Toro, 2001).

$$\begin{cases} F^{hll} = F_L & S_L \geq 0 \\ F^{hll} = \frac{S_R F_L - S_L F_R + S_L S_R (U_R - U_L)}{S_R - S_L} & S_L \leq 0 \leq S_R, \\ F^{hll} = F_R & S_R \leq 0 \end{cases} \quad (11)$$

$$125 \quad S_L = U_L - \sqrt{gh_L}, S_R = U_R + \sqrt{gh_R},$$

where U_L, U_R, h_L, h_R are the components of the left and right Riemann states, respectively for a local Riemann problem, and S_L, S_R are estimations of the speeds of the left and right waves, respectively, and F^{hll} is the flux in the middle region. Using this flux, the WAF method of a second-order accuracy in time and space is achieved:

$$F_{i+\frac{1}{2}} = \sum_{k=1}^{N+1} \beta_k F_{i+\frac{1}{2}}^{(k)}$$

$$130 \quad \beta_k = \frac{1}{2} (c_k - c_{k-1}), c_k = \frac{\Delta t S_k}{\Delta x}, c_0 = -1 \text{ and } c_{N+1} = 1, \quad (12)$$

where $F_{i+\frac{1}{2}}^{(k)} = F(U^{(k)})$, N is the number of waves in solving the Riemann problem, and β corresponds to the differences

between the Courant numbers c_k of successive wave speeds S_k .

The topography terms on the right hand side of equation (9) and (10) are calculated by the hydrostatic reconstruction scheme:

$$-gh \frac{\partial z}{\partial x} = \nabla \frac{gh^2}{2} = \frac{g}{2} \frac{\Delta t}{\Delta x} [(h_i^R)^2 - (h_i^L)^2], \quad (13)$$

$$135 \quad \begin{cases} h_i^R = \max[0.0, h_i + z_i - \max(z_i, z_{i+1})] \\ h_i^L = \max[0.0, h_i + z_i - \max(z_{i-1}, z_i)] \end{cases}$$

The friction term is computed by a semi-implicit scheme to ensure numerical stability (Liang et al., 2007):

$$(hu)^{n+1} = \frac{(hu)^n}{1 + \Delta t \left(\frac{g \sqrt{(hu)^2 + (hv)^2}}{h^2 C^2} \right)^n}, \quad (14)$$

The time step is determined by CFL condition as follows:

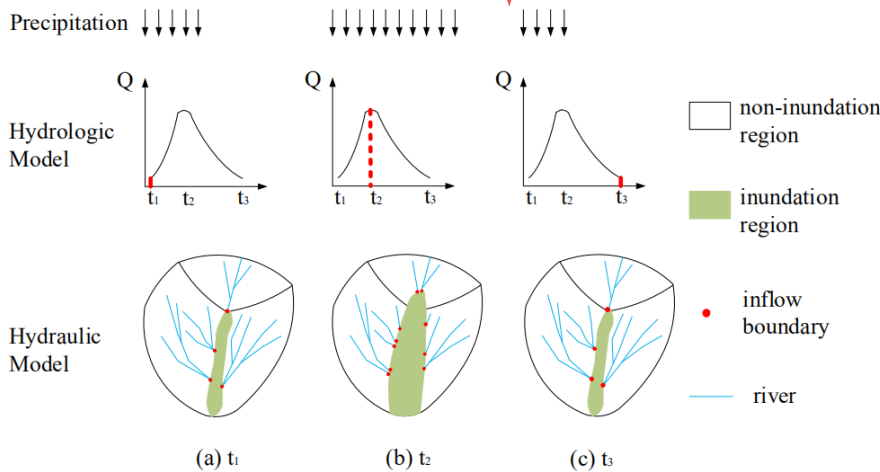
$$\Delta t = C_r \min \left(\frac{\Delta x_i}{|u_i| + \sqrt{gh_i}}, \frac{\Delta y_i}{|v_i| + \sqrt{gh_i}} \right), \quad (15)$$

140 where C_r is Courant number, limited by $0 < C_r \leq 1$ for simulation stability, and a typical value of 0.9 is used for the following simulation cases. More details of the numerical schemes can be found in (Ata et al., 2013).

2.4 Coupling approach

145 The computation domain in the DBCM is divided into non-inundation and inundation regions, and the diffusion wave equation (DWE) is solved in the non-inundation regions with small water depth while the hydrodynamic model (SWE) is applied in the inundation regions with high water depths. The model for a specific grid is determined based on its own and neighbouring flow states. The boundary between the non-inundation regions and inundation regions forms a dynamic coupling boundary which is time dependent. Besides, special treatment on discharge through the coupling boundary need to be taken based on the local flow state using the characteristic theory.

The adopted models for different regions are based on the temporally evolving flow statuses. They leads to the change in 150 coupling boundary positions. As shown in Fig.2, when the rain intensity increases, the inundation region expands as a consequence of the gradually accumulating of surface water volume from upstream regions. The position of the in-flow boundary, flow path and discharge change subsequently. The coupling models proposed by other researchers, either UCM or BCM, did not fully consider this phenomenon.



155 **Figure 2. Schematic diagram of DBCM**

Figure 3 shows a detailed process of flow state change on both sides of the coupling boundary. Fig.3a shows the case of the flow on a slope. The discharge on the coupling boundary equals to the upstream discharge and not affected by the downstream flow, which means that the local discharge is completely determined by the DWE. After the water depth is updated, the location of the coupling boundary point O moves to point A according to the comparison of its water depth to the water depth threshold. 160 Moreover, the flow in the inundation region may move from downstream to upstream, as shown in Fig.3b. The discharge and water depth on the coupling boundary should be determined by the flow on both sides. In this case, the coupling boundary moves to point B due to inundation area expanding.

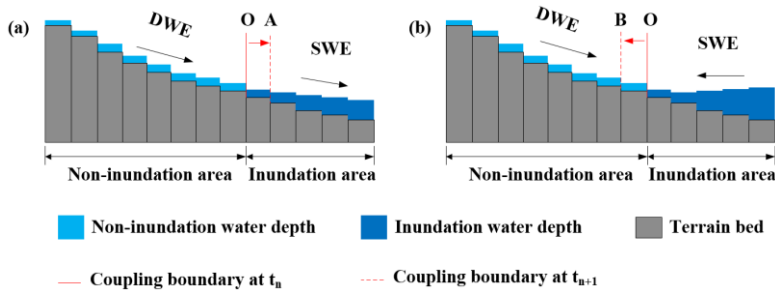


Figure 3. Flow state change and position of the coupling boundary

165 In previous studies, the discharge on the coupling boundary may be computed directly through the hydrologic model, using empirical formulae, or by interpolation approaches according to the water level or velocity gradient on both sides. Such methods may still fail to provide an overall understanding of the flow regime status of the combined hydrologic and hydrodynamic model. In using the DBCM, the following procedures is conducted at the coupling boundary: the flow state is obtained by both the hydrologic and hydrodynamic models in their local grids, then the discharge through the coupling boundary is computed and the entire water depth is updated according to the water volume variation. After that, the location of the coupling boundary is updated and the area of the non-inundation region and inundation region are remapped. The key issue using the DBCM is to establish a reasonable approach to determine the discharge on the coupling boundary, which should integrate the effect of current flow state obtained by the two models on both sides of the coupling boundary.

175 According to Godunov theory (Godunov, 1959), the solution of convective flux implementing the finite volume method can be considered as a local Riemann problem. The discontinuity characteristics speed between each grid represents the propagation of local fluid variables in time and space, as shown in Fig.4. When the characteristic speeds are all positive, the flux depends entirely on the left-side flow state, and vice versa. However, when the characteristic speeds have a negative value and a positive value, both the current flow state in the two grids must be taken into consideration. Applying this approach to DBCM, the computational scheme at the boundary can be specified. It is known that the hydrologic model only transfers water mass, while the hydrodynamic model transfers both water mass and momentum. More details of the different coupling cases are shown Fig.5.

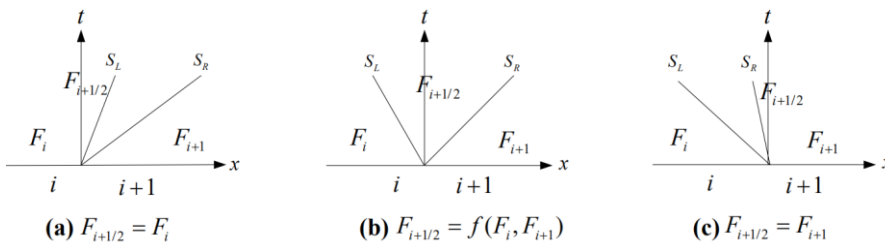


Figure 4. Direction of Characteristic wave

185 For the first case in Fig.5a, the hydrologic and hydrodynamic models are calculated independently, corresponding to the situation that positive bed slopes inducing confluence flows into the river, thus only the discharge calculated by the

hydrological model passes through the coupling boundary (Fig. 3a). The flow information in grids k and i is calculated using DWE and grid j using SWE, see Fig. 5a. Firstly, a slope analysis of DWE is conducted uniformly. Obviously the water level gradient between k and i is smaller than that between grid i and grid j . According to the calculation results from the DWE, the velocity points to the maximum water level slope (in Fig. 1a, flow directs to right). Therefore, the change of water depth in grid k has nothing to do with the flow state at grid i , and the velocity change at grid k is analysed by the other grids on the left of grid k . The flow information at grid i and j forms a local Riemann problem and then the characteristic speed is analysed. The velocity at grid i is obtained from the above analysis, and the velocity at grid j is the velocity at the current moment. The water depths at discontinuity interface are calculated as: $h_i^r = h_i + z_i - \max(z_i, z_j)$, $h_i^l = h_j + z_j - \max(z_i, z_j)$. Thus a pair of the characteristic wave at the interface are obtained:

$$S_L = u_i - \sqrt{gh_i^r}, S_R = u_j + \sqrt{gh_j^l}, \quad (16)$$

When the characteristic speeds $S_R \geq S_L > 0$, the flux calculation only depends on the flow information at grid i , independent of grid j . The velocity at grid i is calculated using the diffusion wave equation and only outflow is allowed. In addition to the water depth change calculated according to the hydrodynamic model at grid j , the water volume transferred from grid i should also be added. No convection term in the momentum equation of DWE indicates no momentum transfer between grid i and grid j , and thus the velocity values of the two grids do not interact with each other.

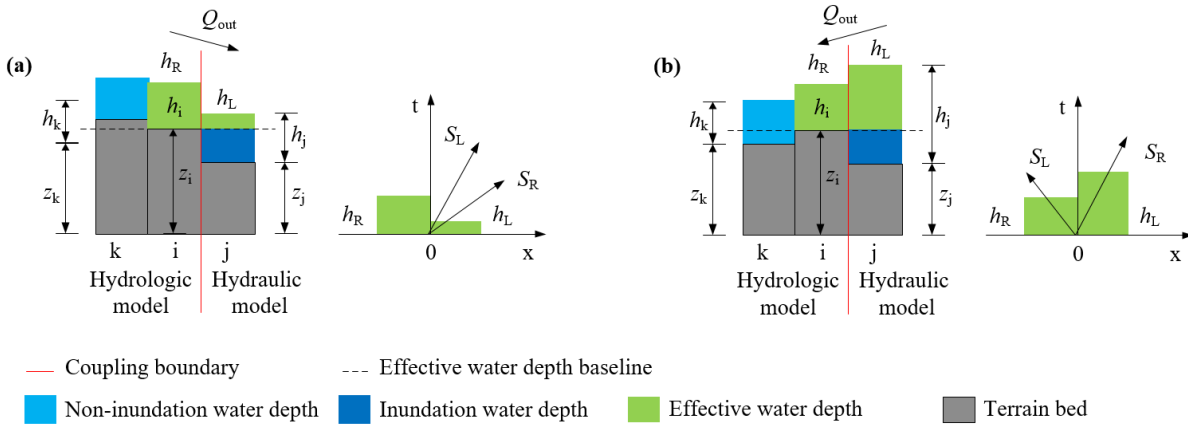


Figure 5. Coupling condition A: discharge on coupling boundary depends on hydrologic model

For the second case in Fig. 5b, the hydrological model and hydrodynamic model are both used, corresponding to the situation when the inundation area expands (Fig. 3b). As shown in Fig. 5b, the water depth in grid k and grid i are small, thus the hydrologic model is applied. While grid j has a deep water depth and small water elevation, the hydrodynamic model is applied. In this case, the velocity direction is from grid i to grid k . The characteristic wave analysis at the interface of grid i and grid j reveals that $S_R > 0 > S_L$, which means that the momentum at grid j can be transferred to grid i . Grid i is involved in the computational domain of the hydrodynamic model. The water depth increment at grid i needs to deduct the current discharge output to grid k and the flow rate obtained by solving the hydrodynamic equation with the flow state at grid j . The velocity

210 increment at grid i is obtained by solving the hydrodynamic equation with the flow state at grid j based on current velocity. Then the flow state at grid i is updated and the coupling boundary position may change when the depth varies.

The slope gradient analysis and characteristic wave analysis are key issues of the computational theory for solving DWE and SWE respectively. The aim to couple these two approaches is to successfully address the connection on the coupling boundary. As discussed earlier, in existing studies only one governing equation is solved throughout the computational domain, but cannot to consider the interaction between the two kinds of governing equations and to resize the area of a different computational domain. A reasonable and implementable approach in coupling the solution procedure of DWE and SWE is the precondition for establishing DBCM. In this study, the slope gradient analysis is performed to determine the current velocity together with the current water depth, and the characteristic wave analysis is conducted on coupling boundary as long as flow velocity and depth have been provided, no matter it is calculated from the hydrologic or hydrodynamic model. Then, the flow information exchange on the coupling boundary is determined according to the characteristic speed which reflect the propagation of flow state in time and space. This method integrates the hydrologic model and hydrodynamic model into a comprehensive system by means of joining the two steps of slope gradient analysis and characteristic wave analysis.

220 In the proposed DBCM, the coupling boundary position will not keep fixed in advance throughout the calculation process. The location where the runoff enters the inundation region varies dynamically, and the flood level can also submerge the original inflow points and regenerate new coupling boundaries. Such alternation mechanism is close to natural flow processes. The characteristic wave theory is used to determine the mass and momentum exchange through the coupling boundary. Compared to the "cascade" operation in UCM, the present DBCM solves DWE and SWE simultaneously. When non-inundation regions get larger, the flow movement is mainly obtained by utilizing DWE. Whereas, when the inundation regions extend, the computational domain is given priority to SWE.

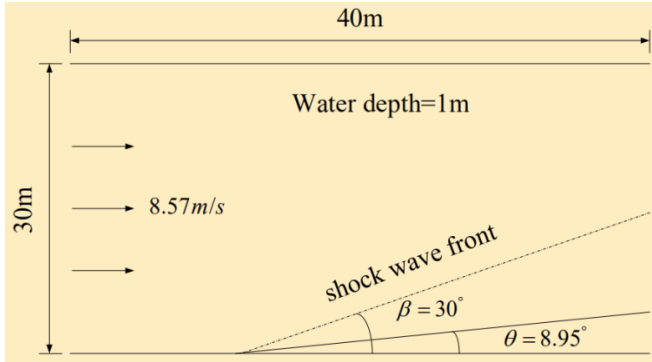
230 3 Model validation

The numerical model results from DBCM are compared with analytical solutions, experimental data, and results obtained from existing numerical models. Considering the complexity of the numerical model schemes used in the hydrologic and hydrodynamic models, the hydrodynamic model performance will be validated in the first stage, and then the performance of DBCM will be verified using a V shaped catchment. As described in 2.2, the numerical schemes of the hydrodynamic model (referred to HM2D in the following section) used in this study have second-order accuracy in both time and space.

3.1 Oblique hydraulic jump

The oblique hydraulic jump example is a special flow pattern, with an analytical solution being available in open channel flows, which is often used to verify the capability of the numerical scheme in simulating shock wave formation. When a supercritical flow is deflected by a converging wall at an angle θ , the resulting shockwave forms an oblique hydraulic jump at an angle β , as depicted in Fig. 6. Both the angles of water surface lines behind the shock wave-front can be obtained by analytical solution.

In this study, the upstream water depth and velocity are set as 1m and 8.57 m s^{-1} , and the oblique angle $\theta = 8.95^\circ$. The width and length of the channel are 30m and 40m respectively. In these conditions, the exact analytical solutions are downstream water depth $D_A = 1.49984\text{m}$, downstream velocity $V_A = 7.95308\text{ m s}^{-1}$, and angle $\beta = 30^\circ$ (Rogers et al., 2001) when the flow reaches a steady state.



245

Figure 6. Oblique hydraulic jump: definition sketch

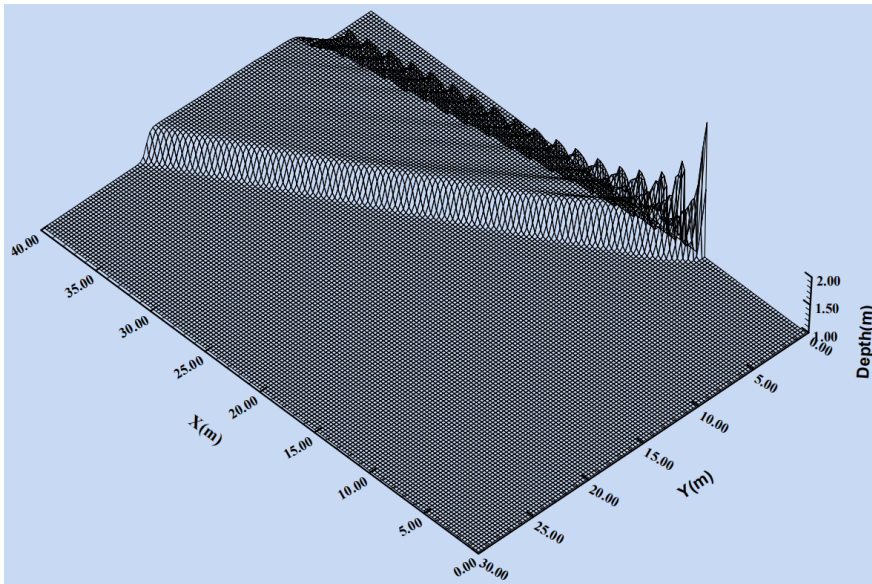
The spatial step size is set as $\Delta x = \Delta y = 0.33\text{m}$. The time step is dynamic adjustment and the total calculation time is 90s.

Figure 7 shows a 3-D view of the water depth results predicted by our model. The oblique jump is sharply captured, and has an angle $\beta \approx 32^\circ$. The average water depth downstream behind the shock front is 1.532m, and the average velocity is 7.86 m s^{-1} . The numerical solution is close to the analytical solution, as shown in Table 1. The output of HM2D and the references, either the water depth or velocity, show good agreement (see Table 1).

250

Table 1. Comparison between analytical solution and calculation result for oblique jump case

	Angle β	Water Depth(m)	Velocity(m s^{-1})	Depth Error(%)	Velocity Error(%)
Analytical solution	30°	1.49984	7.95308	-	-
HM2D results	32°	1.532	7.86	2.1	1.2
Reference results	30°	1.53	7.9	2.0	0.6



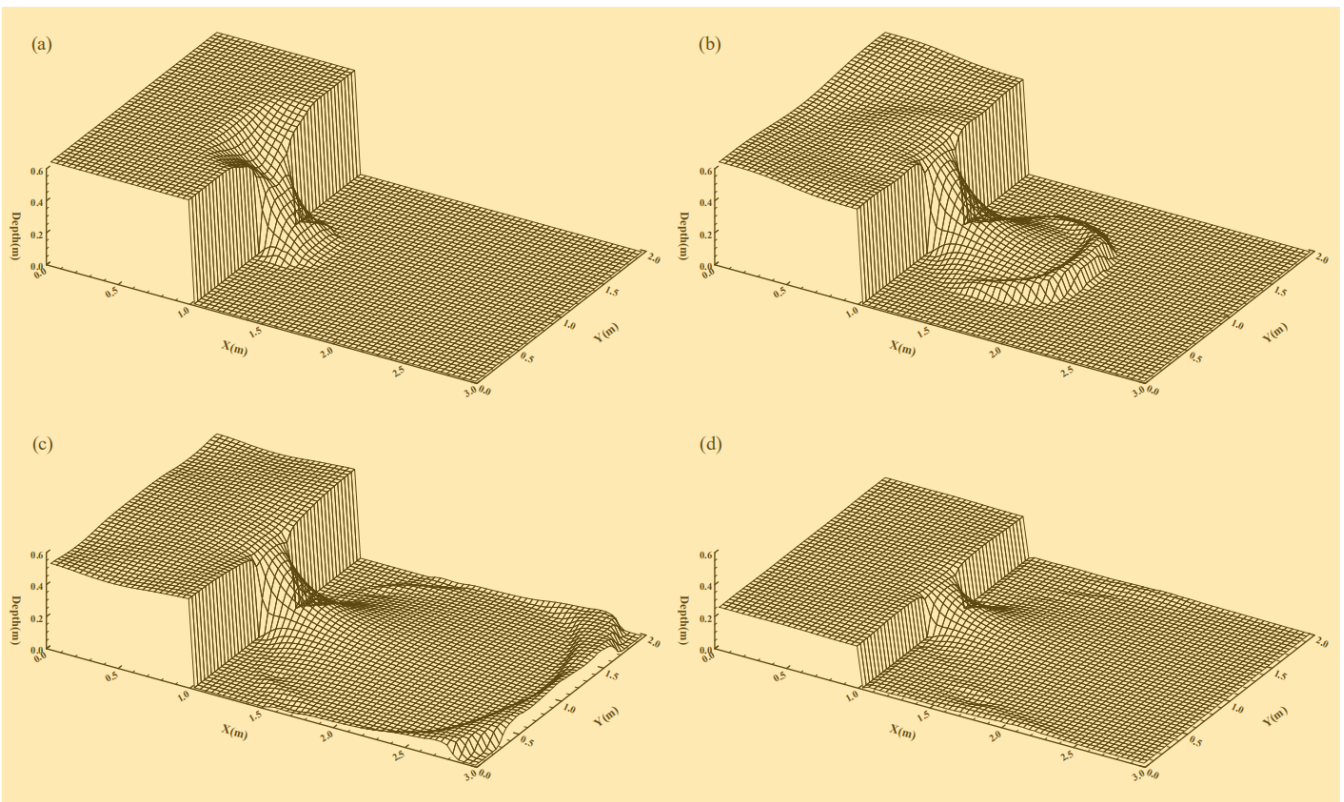
255

Figure 7. Steady state of water depth of oblique hydraulic jump

3.2 Dam-break over a dry of flood plain

✘ Dam-break is a classic benchmark problem, which is often used to verify the capability of a numerical scheme in dealing with the dry-wet boundary, and the physical experimental model is easy to conduct. Thus, it is convenient to collect measured data for comparison with numerical results. An experiment performed by (Fraccarollo and Toro, 1995) was used to validate the DBCM developed in this study. The ✘ model domain is $3\text{m} \times 2\text{m}$, which is separated into two areas by a dam at $X=1\text{m}$. Initially, the still water with a depth of 0.64m in the reservoir is surrounded by solid walls, while the downstream area is initially dry. The boundaries of the downstream floodplain were all ✘ open. A 0.4m wide section in the middle of the dam was breached instantaneously. The numerical model spatial step is $\Delta x = \Delta y = 0.04\text{m}$, and roughness coefficient is $n = 0.01$.

265 Figure 8 shows the water surface elevation at different times. It can be clearly seen that ✘ the bore wave propagate towards downstream initially. A depression wave travels upstream, which is reflected back by the walls surrounding the reservoir, causing the water surface elevation in the reservoir to oscillate. In Fig.9, a comparison between the measured and computed ✘ water level data is made, which shows a good agreement. The results are encouraging and the overall trend is well captured.



270

Figure 8. Snapshot of the water elevation for dam-break simulation: a. $t=0.1s$; b. $t=0.5s$; c. $t=1.1s$; d. $t=5.0s$

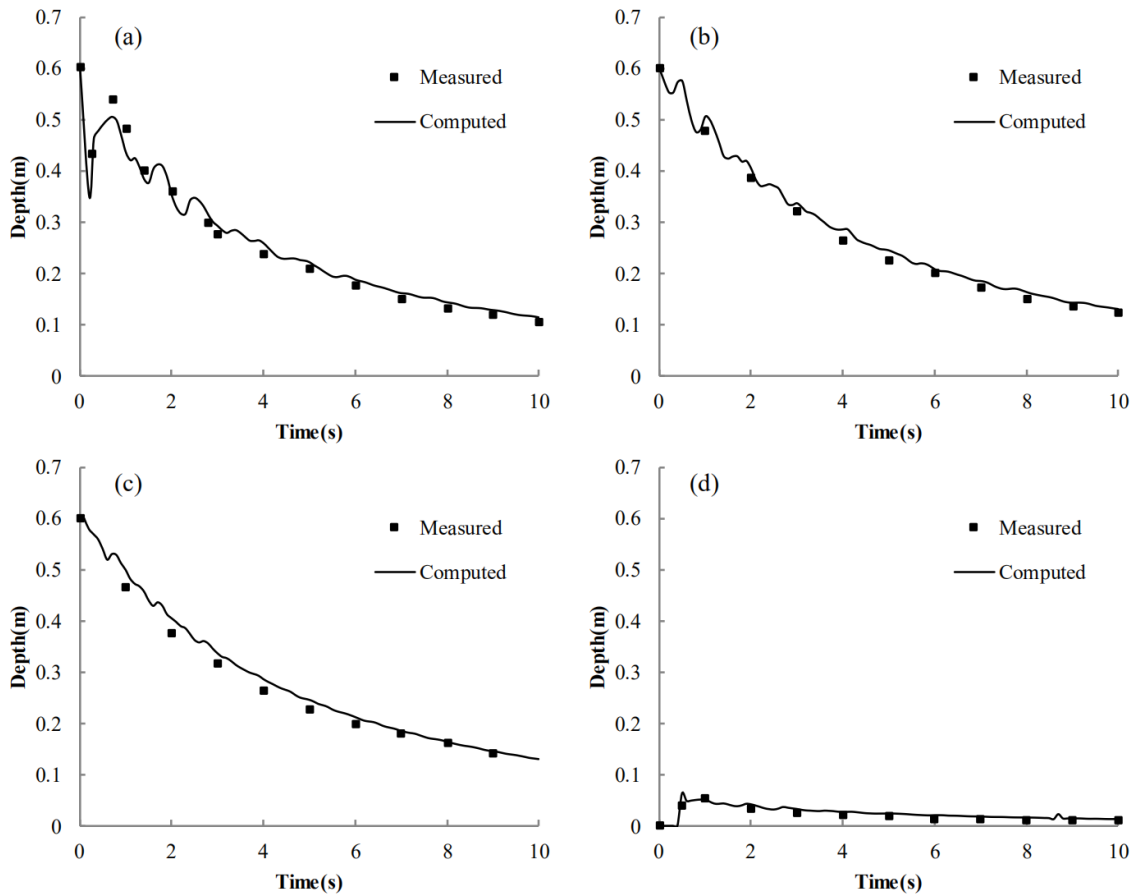
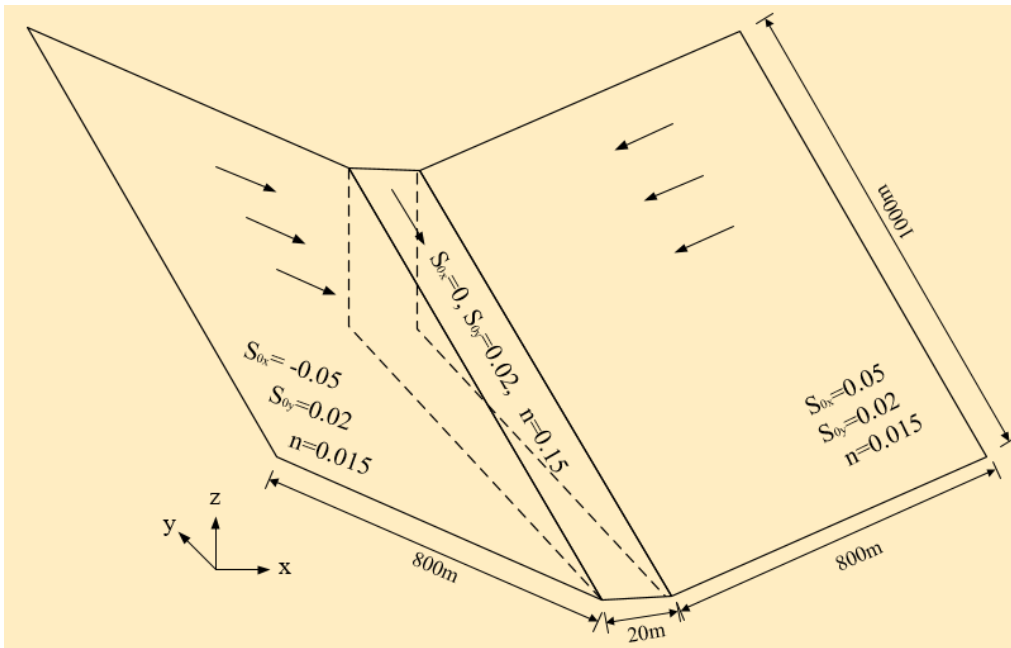


Figure 9. Comparison of water depth variation at four positions: a. $x=1\text{m}$, $y=1\text{m}$; b. $x=0.18\text{m}$, $y=1\text{m}$; c. $x=0.48\text{m}$, $y=0.4\text{m}$; d. $x=1.802\text{m}$, $y=1.45\text{m}$

275 3.3 Two-Dimensional surface flow over a tilted V-shaped catchment

A two-dimensional surface flow over a tilted V-shaped catchment is simulated (Di Baldassarre et al., 1996; Panday and Huyakorn, 2004). We aim to verify whether the computational domains of the hydrologic and hydrodynamic models can dynamically switch and compare the difference between the DBCM, UCM and BCM. As shown in Fig.10, the topography of the example is depicted.

280 The computational domain is symmetrically V-shaped, with a pair of symmetrical hillslopes forming a channel at the central region. The bed slopes are ± 0.05 spanwise, and 0.02 streamwise parallel to the channel. The manning coefficient on the hillslope is 0.015 while it is 0.15 in the main channel. The total simulation time is 180min and the constant rainfall intensity is 10.8 mm h^{-1} for 90 min . Fig.10 shows the detailed dimension and related information of the V-shaped catchment.



285 **Figure 10. Diagram and dimension of the tilted V-shaped catchment**

Considering the hydrodynamic model provides more details to describe the overland flow than the hydrologic model, the HM2D and DBCM under the same rainfall conditions were adopted. When water depth is less than 0.005m, the grid is calculated using the hydrological model, and when water depth is greater than 0.005m the grid is applicable to the hydrodynamic model. Results are compared with numerical models developed by (Di Baldassarre et al., 1996; Panday and Huyakorn, 2004).

As shown in Fig.11, the discharge hydrographs obtained by the HM2D and DBCM are compared with other existing models. The discharge hydrographs show good agreement for the peak discharge. The start periods of discharge rising and receding limbs simulated by the HM2D and DBCM are consistent with those predicted by others. However, discrepancies gradually grow, and both the HM2D and DBCM slightly under-predict the discharge. Despite this disparity, the overall trend of the hydrographs indicates that the accuracy of the proposed models are satisfactory.

Comparing the hydrographs between the HM2D and DBCM, it can be seen that their rising limb and peak discharges agree very well. Consequently, both these hydrodynamic models are used to simulate the overland flows. The difference between the HM2D and DBCM gradually emerges at the receding limb. The HM2D simulates water movement using the hydrodynamic model (SWE) throughout the computation process, while the DBCM switches from the hydrodynamic model to the hydrologic model (DWE) when the upstream water depth falls below the threshold. Since no time partial derivative terms in the hydrologic model, the velocity at the present is a function of the current water level gradient, and is not equal to the velocity at the previous moment plus the flux term. For this reason, when the DBCM switches from the hydrodynamic model to the hydrologic model, and the velocity calculation approach changes accordingly, then the discharge difference between the HM2D and DBCM

emerges. Therefore, the outlet flow is slightly larger, but later slightly smaller, in the DBCM, assuring overall the mass is conserved.

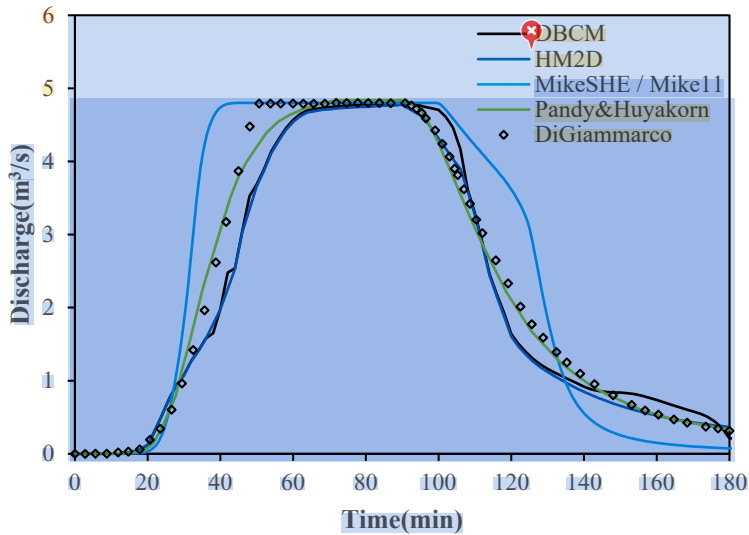


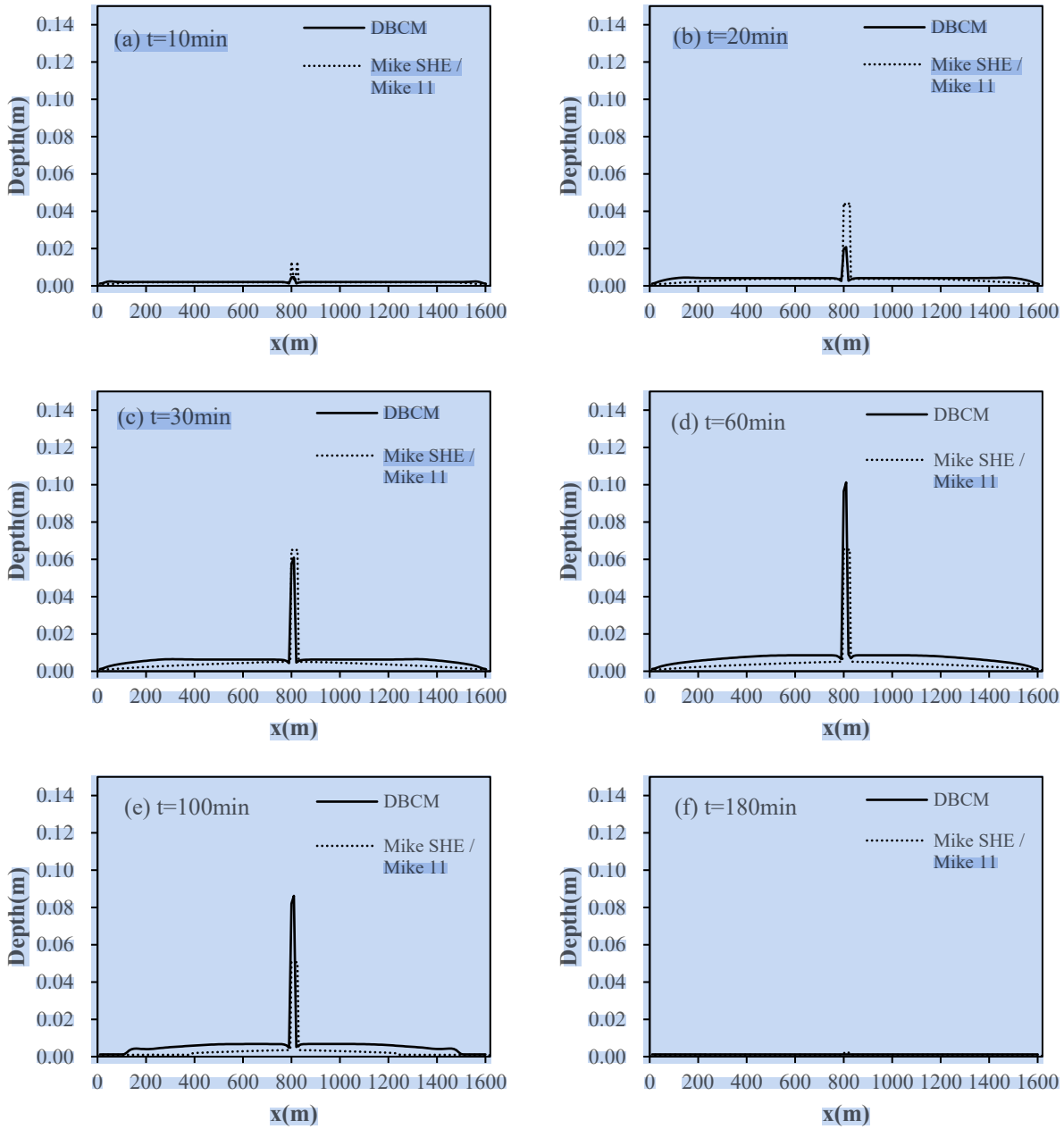
Figure 11. Comparison of discharge hydrographs of the V-shaped catchment

In order to make a detail performance between DBCM and BCM, the coupling model of MIKE SHE and MIKE 11 was used to conduct the comparison with the proposed DBCM. The coupling between MIKE SHE and MIKE 11 is achieved using the line segments (Thompson and Sørensen et al., 2004). Water can exchange between MIKE 11 H-points and adjacent MIKE SHE river links and in this way the bidirectional coupling between the two models is realized. The coupling use the overbank spilling option, when water is flowing to the river, then the overland flow to the river is added to MIKE 11 as lateral inflow. While the water level in the river is higher than the level of ponded water, then the river water will spill onto the MIKE SHE cell and become part of the overland flow. However, the MIKE SHE river links and MIKE 11 H-points are pre-processed before the simulation starting which means they are determined automatically and keep fixed during the simulation. Besides, MIKE SHE only exchange water with the coupled reaches which is not the case in actual rainfall events for the water exchange should always be dynamical and successive.

Figure 12 shows the comparison of water depth profile ($y=500\text{m}$) between DBCM and MIKE SHE/ MIKE 11. It can be found that water depth show small difference on the overland slope. Flood propagation is a phenomenon of high-speed movement resulting a drastic change of water depth and velocity. The hydrologic model (DWE, omitting convection term) is insufficient to describe this movement. However, the water depth near the outlet presents difference of the two models. In the early 30min, the water depth from DBCM was lower than the water depth form MIKE SHE/MIKE11 model. After that till to the end of the simulation, the water depth from DBCM was higher that the water depth from MIKE SHE/MIKE 11 model. The increasing of water depth around the channel leads to strong convective flow, thus the momentum transfer needs to be taken

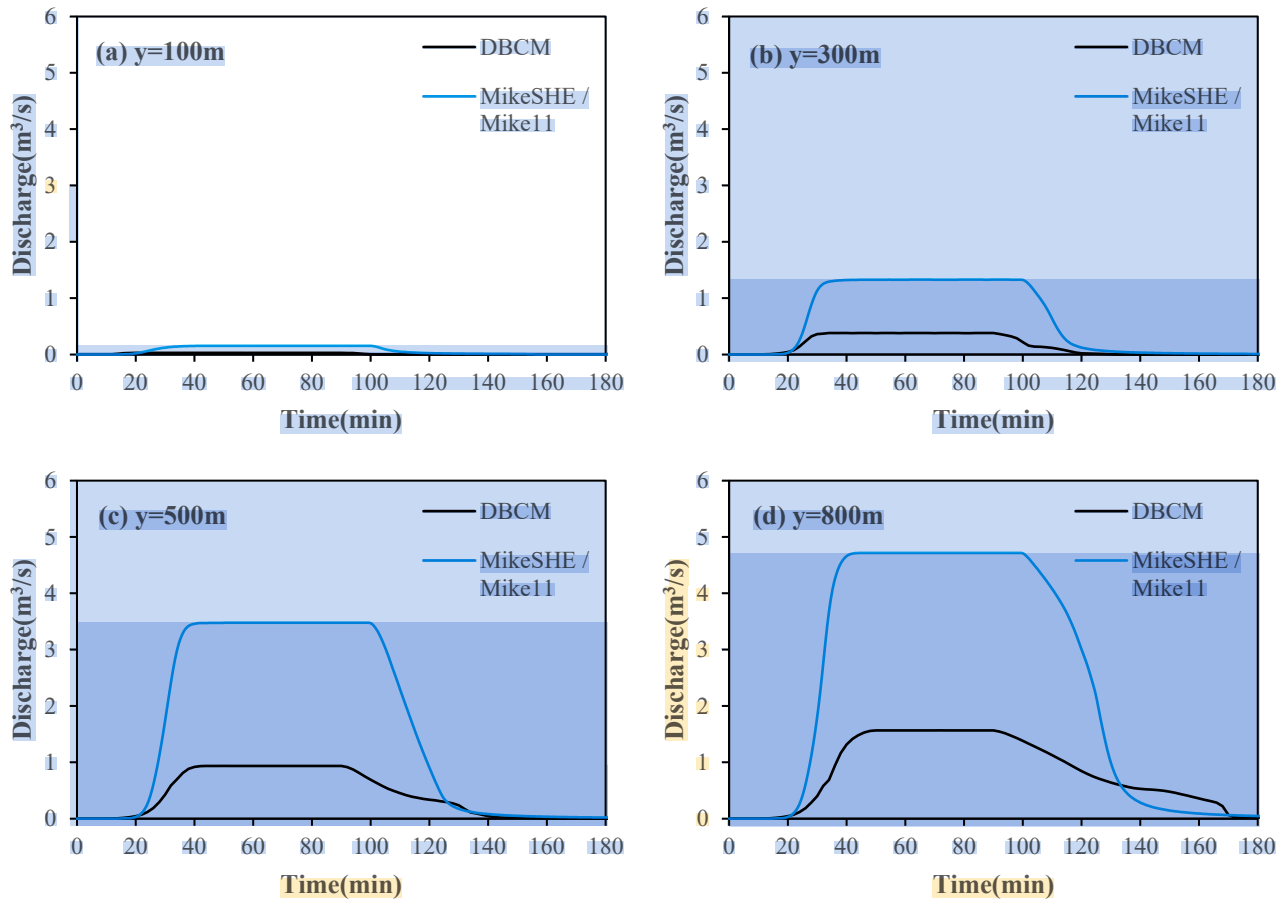
325 into consideration in order to get reasonable simulation results. However, the momentum transfer is not taken into account in the MIKE SHE/MIKE 11 coupling model.

Flow discharge along the channel centreline is shown in Fig 13. It can be found that discharge in the channel obtained by DBCM is much lower than that obtained by MIKE SHE/MIKE 11 coupling model. This is due to the difference of coupling mechanism and flow information exchange. Flow can be only exchange between the finite river links and H-points, and flow 330 from overland can accumulate around the river links which leads to relative increasing of flow discharge. In terms of the DBCM, the flow can exchange water information including both mass and momentum with the dynamical coupling boundary. The coupling mechanism of DBCM shows accordance with natural physical process of flood formation and propagation.



335

Figure 12. Comparison of water depth profile between DBCM and MIKE SHE/MIKE 11 at the downstream catchment (y=500m)



340 **Figure 13 Discharge processes at different locations along the channel centre line($x=810m$)**

The spatial variability of the flow depth, velocity and flux in x and y direction at 90 min and 120min are shown in Fig.14 and Fig.15. The DBCM hydrological model and the hydrodynamic model are solved simultaneously. The main difference between the governing equations used by the hydrologic model and hydrodynamic model is that the flux term is not calculated in the former, meanwhile the latter needs to calculate the convection term. The non-inundation region and inundation region can be determined by whether the flux term is generated during the calculation process. When $t=90min$, the rain stops, the water depth reaches its peak value and the flow information is determined by the hydrodynamic model over the whole domain. At $t=120min$, the water continues to flow to the outlet and the water volume near the upstream region decreases, but a small amount of water still exists. No flux is calculated while velocity computation continues. Obviously, a sharp division line separating the domain arises at this moment.

345
350

For the DBCM, the coupling boundary between DWE and SWE is time dependent. Fig.16 shows the evolvement of the coupling boundary. During the first 90min, rainfall keeps constant over the whole catchment and water depth arises in a short

time. As a result, almost all of the region the water depth is larger than the depth threshold and SWE was implemented to most of the simulation domain. However, 90min later, the rainfall stops and no extra water flow into the domain. Then, the water depth begins to decrease. Once the depth is lower than the depth threshold, the grid cell use DWE to determine the discharge and depth and the coupling boundary shrinks (see Fig.16). The evolution of coupling boundary is consistent with the flux analysis stated above.

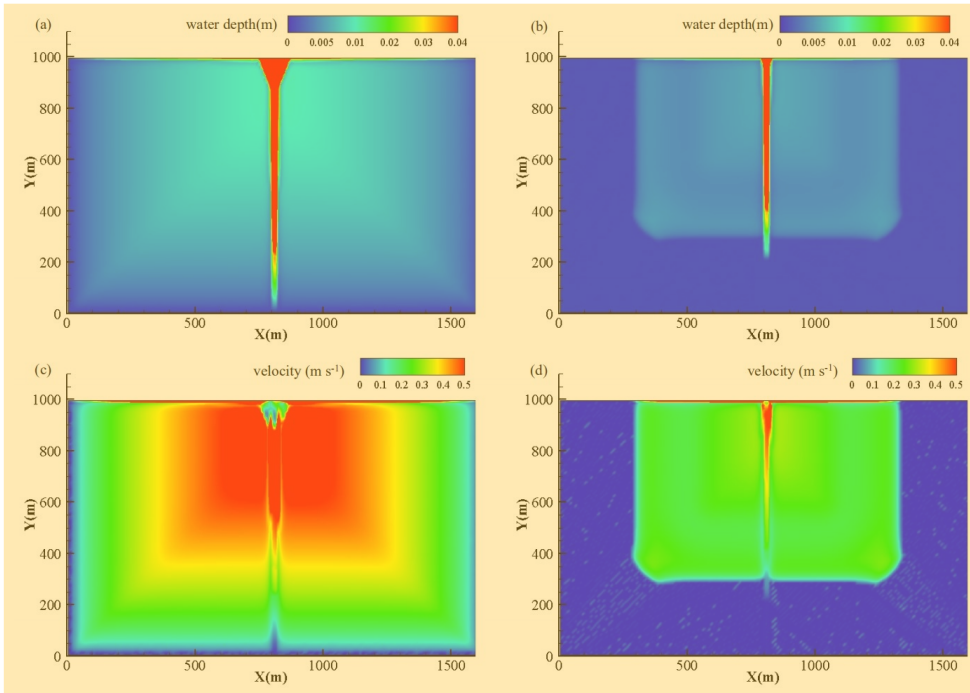
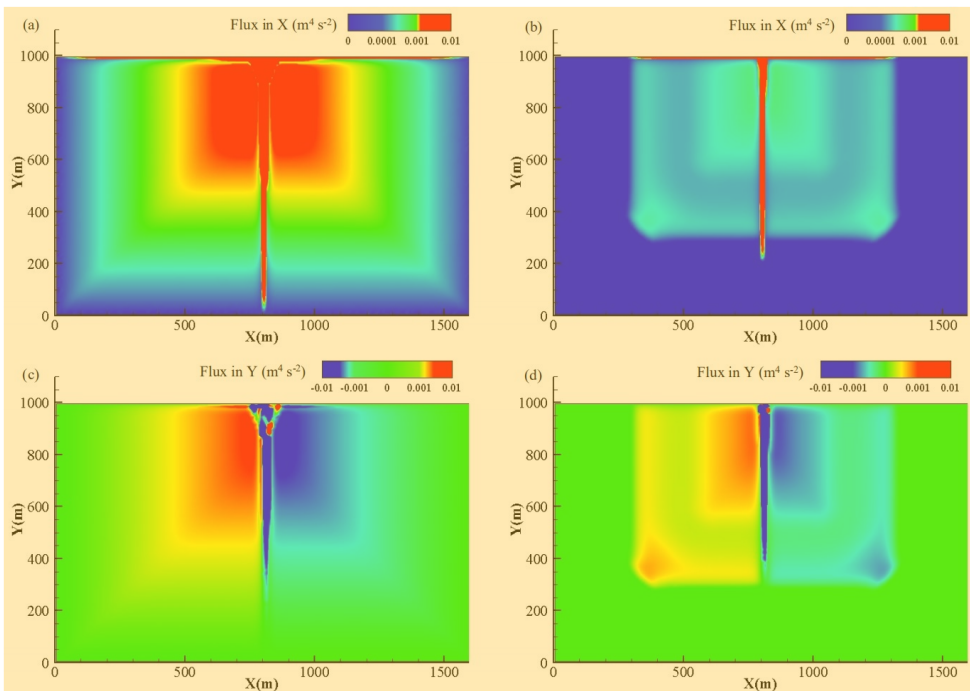


Figure 14. Water depth and velocity distribution at 90min(a and c) and 120min(b and d)



360

Figure 15. Flux distributions of in X and Y direction at 90min(a and c) and 120min(b and d)

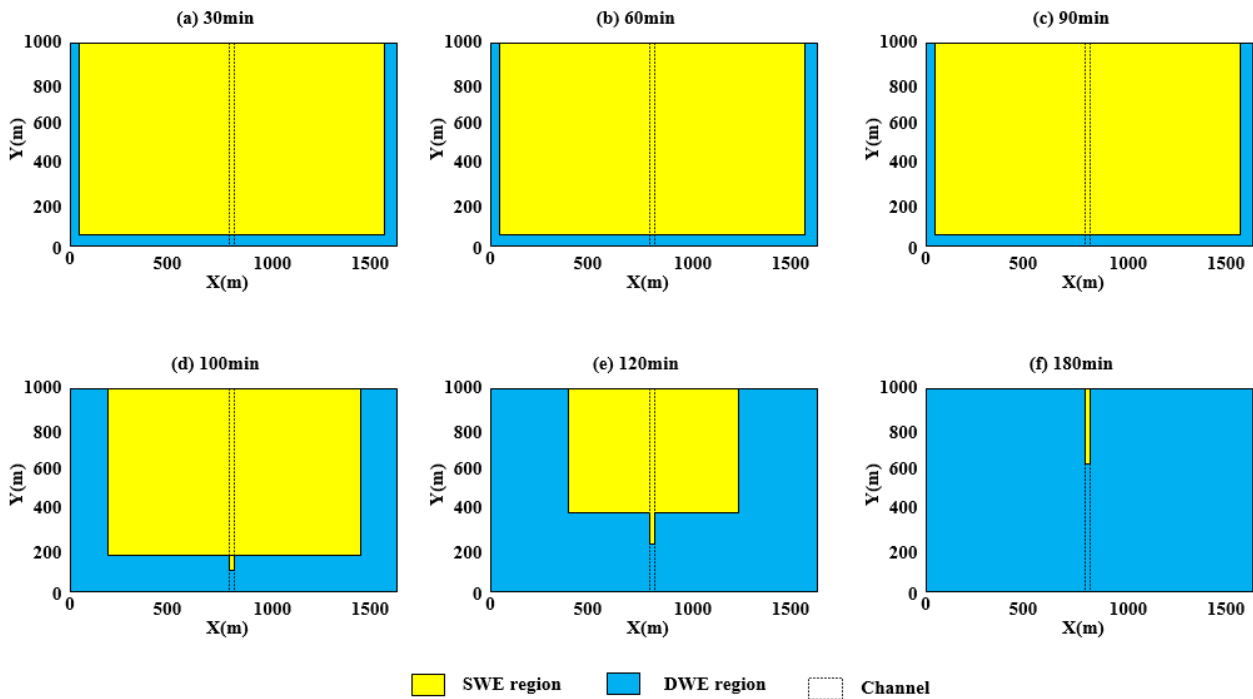


Figure 16. Evolution of coupling boundary

365 It is well known that solving the SWE needs a large volume of computational resources and time. This limits its application, especially for large scale simulation. In terms of this small scale V-shaped catchment, the simulation performance between the SWE, DBCM and DWE was conducted. Fig.17 shows the result and the simulation time was used by the SWE(100%). It can be seen that both the DBCM and DWE need less simulation time compared to SWE, for DWE nearly 15% simulation time saved. Whereas, the DBCM alters the SWE and DWE according to the local flow information. Compared with SWE, the simulation time of DBCM was only slightly lower than the SWE due to that in the early half simulation time in this V-shaped catchment most of the flow information is calculated by the SWE as discussed in the above section (Fig.16).

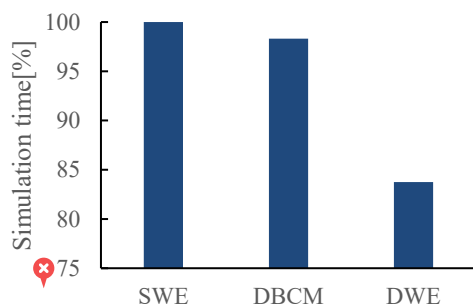
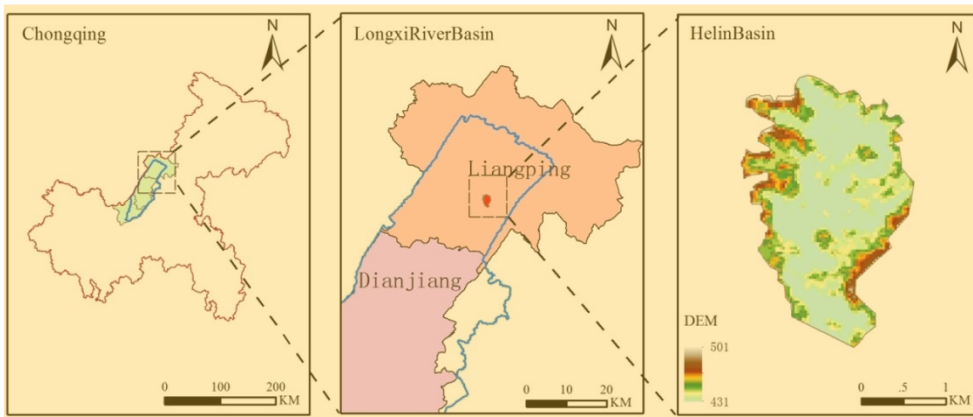


Figure 17. Relative simulation time of different models

4 DBCM implemented to a natural watershed

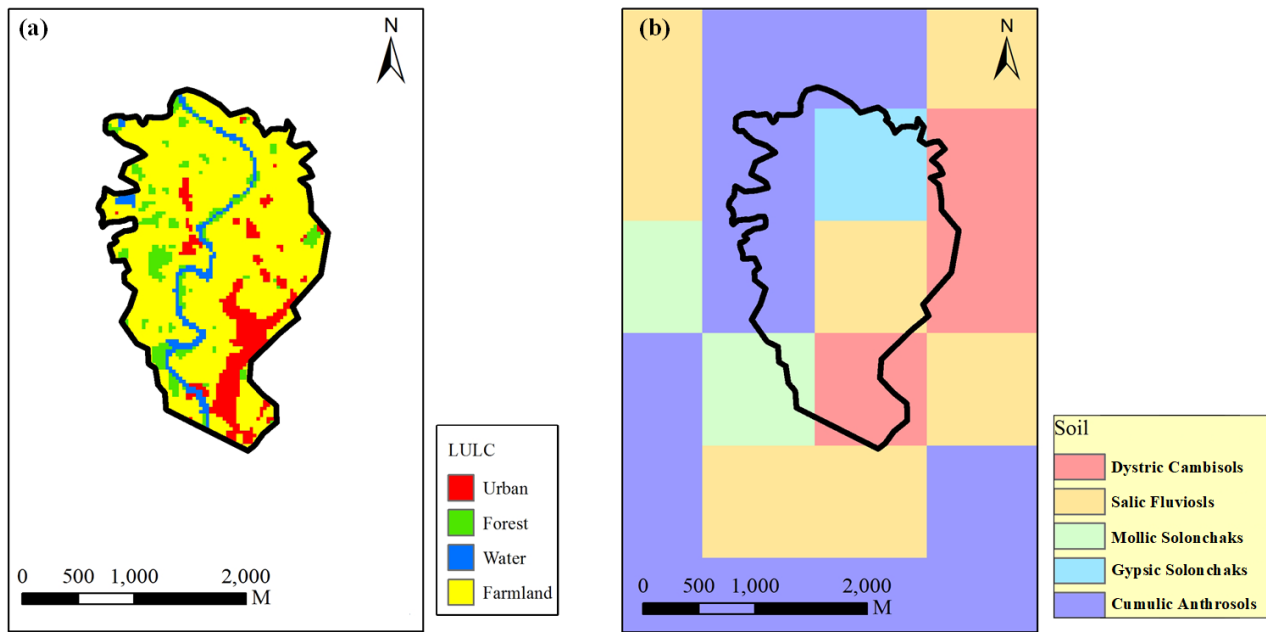
375 The proposed DBCM was implemented to a natural watershed for flood risk assessment, that is, Helin town of the Longxi River in Chongqing City, China. The Longxi river basin is located in the eastern region of Chongqing (see Fig.18), which is a first-class tributary of the Yangtze River. The main channel length is about 221km and the basin area is about 3280km². The overall terrain gradually goes down from northeast to southwest, consistent with the trend of the main channel. Most of the central and southwest areas are relatively flat, and the east and west areas are mountainous, a typical topography of a trough sandwiched by two mountains. The average annual rainfall in the basin is 1192.4mm, which is prone to heavy rain in summer, and the flood spreads rapidly to the central district due to the topographic feature. The selected catchment, Helin town, located in the northeast of the Longxi river basin, was chosen as a case study for investigating the surface flow phenomena using the DBCM. The administrative location and DEM information of Helin town is shown in Fig.18.



385 **Figure 18. Location of Helin town. Chongqing City(left), Longxi river basin (middle), Helin basin(right)**

The river section in Helin basin is a typical mountainous river. The upper part of the river has a steep slope, while the middle and lower reaches are relatively gentle. At present, no flood protection works exist on the river banks along the main channel. The terrain along the river is open plain, and the farmland is widely distributed, resulting in the poor ability to resist flood disasters. Once heavy rainfall occurs and flow overtops the river banks, the residential area and farmland along the river will be inundated. Floods in Helin town are always caused by heavy rainstorms, and the flood season is consistent with the rainstorm season which lasts from April to September. Heavy rainstorms and flood often occur during this period.

The input datasets for the DBCM include the DEM, the LULC(land use and land cover) and soil type as shown in Fig.18 and Fig.19. DEM data were obtained from the GDEM V2 database with a spatial resolution of 30m. The DEM was resampled according to some field survey data of channel section to get a fine resolution. There are four main kinds of land use in the Helin basin: urban, forest, farmland and water. Besides, several soil types with little proportion have been consolidated into the categories with a large ratio. Soil properties determine the infiltration rate, which further affects the surface runoff. The parameters, such as roughness and soil moisture content, are extracted from the data provided by local administrative sectors. The LULC data are processed by remote sensing interpretation tools using the satellite image. The soil data are processed by SWAT, Soil-Plant-Air-Water (SPAW) model using the Harmonized World Soil Database (HWSD).



400

Figure 19. LULC and Soil of Helin basin

The DBCM was applied to simulate the rainfall runoff process in the Helin town and the result was compared with a UCM composed of SWAT (as the hydrologic model). The SWAT was calibrated by the design storm and hydrographs (flood return period of 1%) in the Helin town outlet. The selected coefficients and parameters of rainfall and flood event are listed in Table 3 and Table 4. The calibration results are shown in Fig.20. It can be seen clearly that the flooding process calculated by the SWAT model is very similar to the design flood, with similar flood peak flow and fluctuation process. At the beginning of the simulation, because of the soil infiltration, no surface runoff although the rainfall exists for a short time. Then, when the soil saturated, the discharge curve climbs rapidly which is consistent with the rainfall intensity. The simulation result reflects the storm runoff production process affected by the combined action of rainfall and infiltration. The hydrographs show good agreement with the design flood, demonstrating that results from the SWAT are reliable for the hydrodynamic model. Once being calibrated, the hydrographs generated by the SWAT at different locations were extracted and applied as inflow boundary conditions for hydrodynamic models. Two simulation scenarios were designed, as shown in Table 2.

405

410

Table 2. Simulation scenarios

Case	Model	Boundary condition	Descriptions
A	HM2D	Helin outflow as inflow BC	SWE
B	DBCM	Helin inlet flow	Coupling DWE and SWE

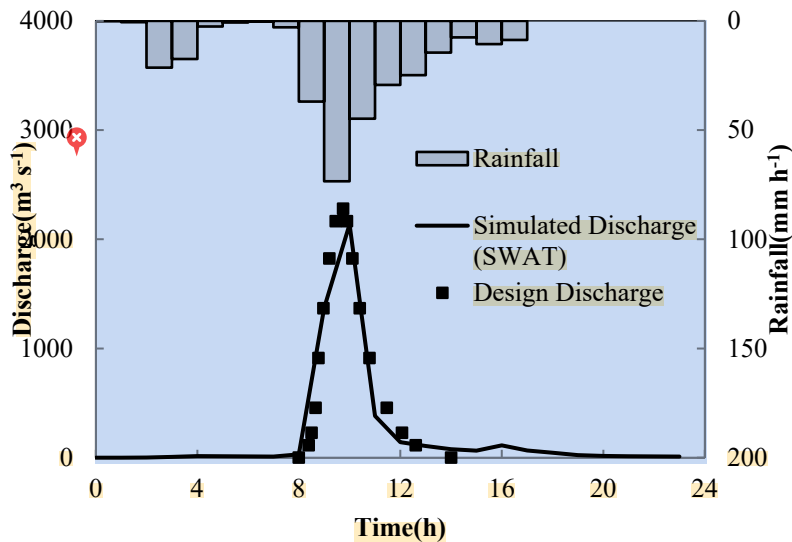
415

Table 3. Rainfall parameters (Cs: coefficient of skewness Cv: coefficient of variation P: flood recurrence period)

Duration (h)	Mean value (mm)	Cv	Cs/Cv	P(%)			
				1	2	5	10
6	81.7	0.5	3.5	224	197	162	137
24	112	0.48	3.5	297	263	218	183

Table 4. Peak discharge at Helin outlet for different flood frequency

P(%)	1	2	5	10	20	50
Discharge ($\text{m}^3 \text{s}^{-1}$)	2280	1920	1470	1150	831	433



420

Figure 20. Design rainfall and discharge with simulated flow in Helin basin outlet(1%)

The results from Case A and Case B are compared to investigate the capability of the DBCM. Fig.21 depicts the maximum water depth distribution in Case A and Case B. The inundation region has expanded significantly in Case B. Not only the lowland areas, but the hillsides also have been inundated. Even though Case A adopted the simulated outlet hydrographs larger than than Case B, the runoff failed to inundate the hillside because of the topographic feature. The red cycle in Fig.21 indicates the urban area. Water depth was extracted for each case. Due to the lack of measured data, field survey and historical records have to be used as reference data to verify the model outputs. The current river bed conditions are as follows: both sides of the river are flat, with a lot of farmland and some villages distributed along the main river. No embankments or bank protection works have been built along the river. All of these problems lead to a low flood control capacity in this catchment. As local residents recall, in 2017, the flood covered the middle of the trees along the river bank, equivalent to at least 3m water depth. In terms of the urban area, according to the historic record, the rainstorm in 12 August 1998 caused a flood that local streets

430

and airports were inundated with a water depth of 1.0m and 1.4m respectively. All villages and towns on the Helin town catchment were submerged with water depth exceeding 0.5m on average. In Case B, this phenomenon was simulated and it was found that the maximum water depth in urban areas was more than 0.6m, in accord with the historic data. But no water emerged in Case A, although the Helin outlet flow is utilized as inflow discharge, greater than that of Case B, as shown in Fig.22. Referring to local topography, the main reason for this problem is that the urban areas locate in a higher position, between riverbed and hillside, hence the upwelling movement of water in rivers is easily blocked due to local terrain. Nevertheless, the urban area will be submerged by uphill surface flow, even though the river flow has been obstructed. It can be seen that the computed results of Case B by the DBCM are closer to the practical situation.

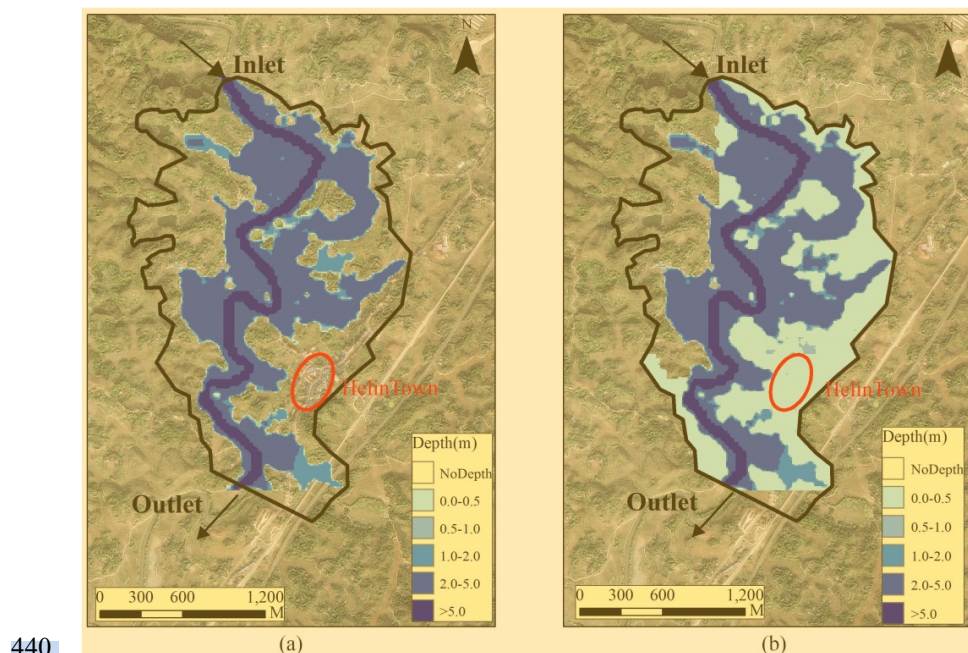


Figure 21. Comparison of maximum depth, (a)case A, (b)case B. Red circle denotes location of Helin town(Satellite imagery base map was obtain from Google Earth)

The capability of the DBCM for switching models dynamically during the computational process is tested, and the parameters of water depth, velocity and flux are selected to conduct this assessment. The water depth threshold (0.01m) is used to distinguish the two models. Velocity is calculated in all of the inundation region, while the water flux is computed only in the region where hydrodynamic model is used, not the hydrologic model region. As shown in Fig.24, the rainfall stopped after 17h since the simulation started, and the surface flow on the slope gradually decreased. However, a small amount of water is still left on the sloping area, and the flow in the confluence area is calculated by the hydrologic model (DWE). Thus, even though the flux calculation has stopped, flow velocity still exists in most of the slope areas. The low-lying area at the northeast corner, due to the obstruction of the terrain, cannot be flooded in Case A. However, using the DBCM, the confluence of the surrounding slope accumulated to the local area and form a small range of flooded area.

Fig.23 shows the evolution of coupling boundary of the DBCM in Case B. In the early 8h, rainfall intensity was small (see Fig.19), and most of the runoff were infiltrated. Thus, the surface flow were determined by the SWE with the upstream inflow. After that, rainfall began to increase, and runoff started to generate surface flow using the DWE. The region of SWE continued to extend until the inundation area reached a maximum value. And then, the area began to shrink with the decreasing of rainfall.

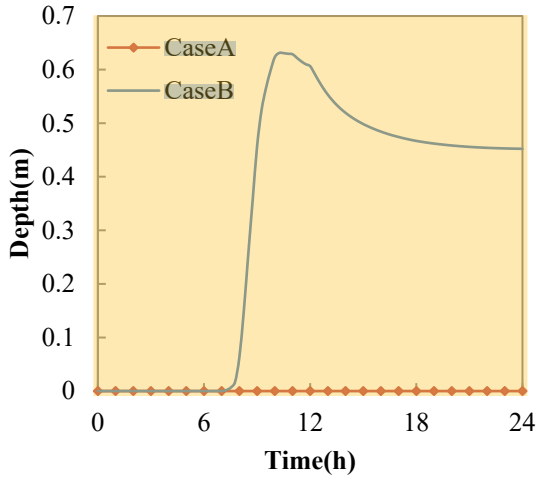
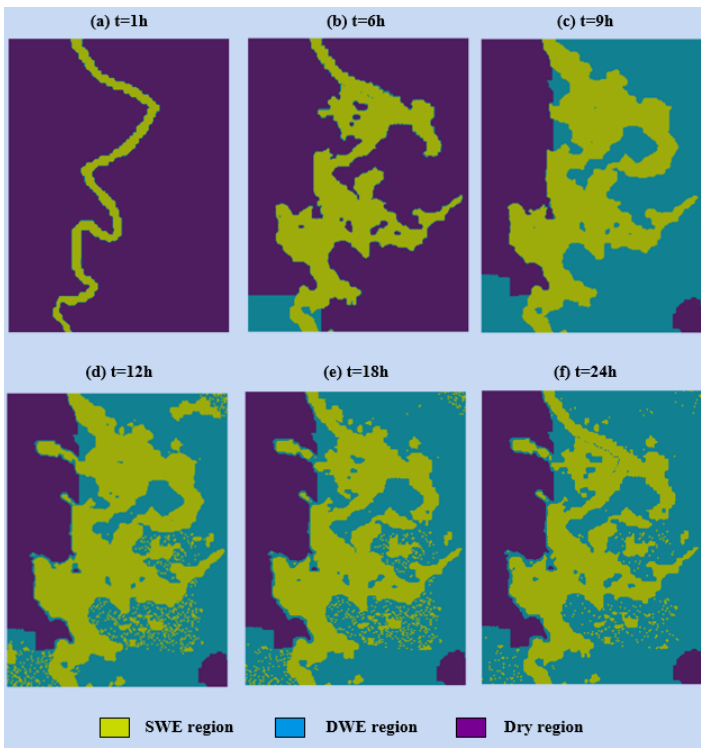


Figure 22. Comparison of water depth variation



460 Figure 23 Evolution of coupling boundary

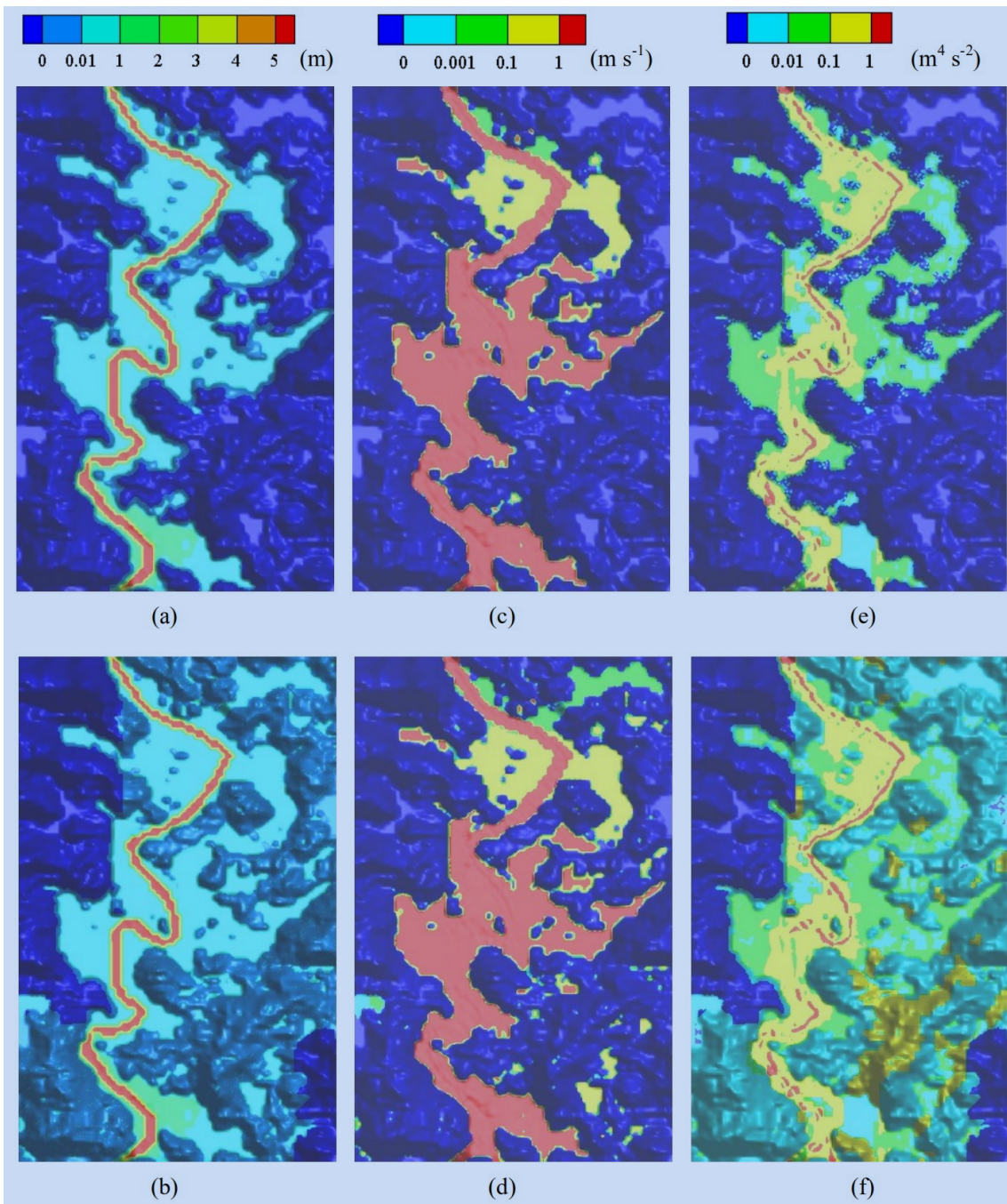


Figure 24. Simulation results at $t=17h$, (a) and (b) are water depth(m) for case A and case B,(c) and (d) are velocity($m s^{-1}$) for case A and case B, (e) and (f) are flux term($m^4 s^{-2}$) for case A and case B.

5 Conclusions

465 A dynamic bidirectional coupling model (DBCM) for surface flow inundation simulation has been developed. The mathematical formulations and solution scheme of the DBCM are realized. In the DBCM, the runoff production is depicted by the hydrologic model through the rainfall-runoff process, while the hydrodynamic model is used to simulate the flood propagation processes. The characteristic wave theory is applied to determine the coupling boundary between the hydrologic and hydrodynamic computational domains.

470 Using the proposed DBCM, a dynamic alteration of the boundary position is realized for determining the non-inundation and inundation regions, which accounts for the mass and momentum exchange and interaction between the two regions. The hydrologic and hydrodynamic models are used simultaneously. The DBCM prediction is more in line with the natural physical process of flood formation and propagation, which has the potential to improve the accuracy of flood prediction.

The main advantages of the proposed DBCM are three folds:(1) the flow propagation is based on the characteristic wave theory, the DBCM realizes the discharge calculation at the coupling boundary by coupling slope gradient analysis and characteristic wave analysis, which are the foundations for solving the hydrologic model and hydrodynamic model, respectively. (2) The discharge on the coupling boundary is used to update conservation variables of the hydrologic model and hydrodynamic model with explicit physical meaning based on the consideration of the flow information on both sides of the coupling boundary.(3) Contrast with the UCM and BCM, where the computational domains for the hydrologic and hydrodynamic models are independent of each other and remain fixed, the DBCM can resize the computational domains of inundation and non-inundation regions according to the flow state throughout the calculation process, which is more aligned with natural rainfall and flood propagation conditions.

The benchmark tests show that the DBCM is capable of accurately simulating the hydrologic and hydrodynamic response to rainfall events in various catchments. The DBCM gains a good agreement with the analytical solution, and realizes the dynamic switching between the hydrologic and hydrodynamic models in simulating surface flows, which is hardly achieved by former methods. The DBCM also succeeds in predicting the inundation regions in real flood events with more reasonable results when compared with the BCM.

Data availability

Model simulation and calibration data are available upon request from the corresponding author. Digital elevation model data are provided by the Geospatial Data Cloud at <http://www.gscloud.cn>. The data sets of Soil Properties and Land cover are provided by Cold and Arid Regions Sciences Data Center at Lanzhou (<http://westdc.westgis.ac.cn>). The Satellite imagery base map of Helin town was obtained from Google earth Pro.

Author contributions

YWY designed the methodology and carried out the investigation with cooperation from all co-authors. QZ provided the
495 original model input data. The study was supervised by CBJ. YWY prepared the first draft of the manuscript, which was then revised and improved by the co-authors.

Competing interests

The authors declare that they have no conflict of interest.

Acknowledgements



500 This study was supported by the National Science Foundation of China (No. 51679121) and National Key Research and Development Program of China(NO. 2016YFC0502204).

References

References:

- 505 Ata, R., Pavan, S., Khelladi, S. and Toro, E.F.: A Weighted Average Flux (WAF) scheme applied to shallow water equations for real-life applications, *Advances in Water Resources*, 62, 155-172, 10.1016/j.advwatres.2013.09.019, 2013.
- Bates, P.D. and De Roo, A.P.J.: A simple raster-based model for flood inundation simulation, *Journal of Hydrology*, 236, 54-77, [https://doi.org/10.1016/S0022-1694\(00\)00278-X](https://doi.org/10.1016/S0022-1694(00)00278-X), 2000.
- Bouiloud, L. et al.: Coupling the ISBA Land Surface Model and the TOPMODEL Hydrological Model for Mediterranean
510 Flash-Flood Forecasting: Description, Calibration, and Validation, *Journal of Hydrometeorology*, 11, 315-333, 10.1175/2009JHM1163.1, 2010.
- Bradbrook, K.: JFLOW: a multiscale two-dimensional dynamic flood model, *Water and Environment Journal*, 20, 79-86, 10.1111/j.1747-6593.2005.00011.x, 2006.
- Bravo, J.M., Allasia, D., Paz, A.R., Collischonn, W. and Tucci, C.E.M.: Coupled Hydrologic-Hydraulic Modeling of the Upper
515 Paraguay River Basin, *Journal of Hydrologic Engineering*, 17, 635-646, 10.1061/(ASCE)HE.1943-5584.0000494, 2012.
- Chen, A.S., Evans, B., Djordjević, S. and Savić, D.A.: A coarse-grid approach to representing building blockage effects in 2D urban flood modelling, *Journal of Hydrology*, 426-427, 1-16, <https://doi.org/10.1016/j.jhydrol.2012.01.007>, 2012.
- Choi, C.C. and Mantilla, R.: Development and Analysis of GIS Tools for the Automatic Implementation of 1D Hydraulic Models Coupled with Distributed Hydrological Models, *Journal of Hydrologic Engineering*, 20, 06015005,
520 10.1061/(ASCE)HE.1943-5584.0001202, 2015.
- Di Baldassarre, G., Giammarco, P., Todini, E. and Lamberti, P.: A conservative finite elements approach to overland flow: the control volume finite element formulation, *Journal of Hydrology*, 175, 267-291, 10.1016/S0022-1694(96)80014-X, 1996.
- Fraccarollo, L. and Toro, E.F.: Experimental and numerical assessment of the shallow water model for two-dimensional dam-break type problems, *Journal of hydraulic research*, 33, 843-864, 10.1080/00221689509498555, 1995.
- 525 Godunov, S.K.: A finite difference method for the computation of discontinuous solutions of the equations of fluid dynamics, *Sbornik: Mathematics*, 47, 357-393, 1959.
- Grimaldi, S., Petroselli, A., Arcangeletti, E. and Nardi, F.: Flood mapping in ungauged basins using fully continuous hydrologic - hydraulic modeling, *Journal of Hydrology*, 487, 39-47, 10.1016/j.jhydrol.2013.02.023, 2013.

- 530 Hdeib, R., Abdallah, C., Colin, F., Brocca, L. and Moussa, R.: Constraining coupled hydrological-hydraulic flood model by past storm events and post-event measurements in data-sparse regions, *Journal of Hydrology*, 565, 160-176, 10.1016/j.jhydrol.2018.08.008, 2018.
- Hsu, M.H., Chen, S.H. and Chang, T.J.: Inundation simulation for urban drainage basin with storm sewer system, *Journal of Hydrology*, 234, 21-37, [https://doi.org/10.1016/S0022-1694\(00\)00237-7](https://doi.org/10.1016/S0022-1694(00)00237-7), 2000.
- 535 Laganier, O., Ayrat, P.A., Salze, D. and Sauvagnargues, S.: A coupling of hydrologic and hydraulic models appropriate for the fast floods of the Gardon River basin (France), *Natural Hazards and Earth System Sciences*, 14, 2899-2920, 10.5194/nhess-14-2899-2014, 2014.
- Leandro, J., Chen, A.S. and Schumann, A.: A 2D parallel diffusive wave model for floodplain inundation with variable time step (P-DWave), *Journal of Hydrology*, 517, 250-259, 10.1016/j.jhydrol.2014.05.020, 2014.
- 540 Lerat, J., Perrin, C., Andréassian, V., Loumagne, C. and Ribstein, P.: Towards robust methods to couple lumped rainfall-runoff models and hydraulic models: A sensitivity analysis on the Illinois River, *Journal of Hydrology*, 123-135, 10.1016/j.jhydrol.2009.09.019, 2012.
- Li, D., Bou-Zeid, E., Baeck, M.L., Jessup, S. and Smith, J.A.: Modeling Land Surface Processes and Heavy Rainfall in Urban Environments: Sensitivity to Urban Surface Representations, *Journal of Hydrometeorology*, 14, 1098-1118, 10.1175/JHM-D-12-0154.1, 2013.
- 545 Li, D., Malyshev, S. and Shevliakova, E.: Exploring historical and future urban climate in the Earth System Modeling framework: 1. Model development and evaluation, *Journal of Advances in Modeling Earth Systems*, 8, 917-935, 10.1002/2015MS000578, 2016.
- Liang, D., Lin, B. and Falconer, R.A.: Simulation of rapidly varying flow using an efficient TVD - MacCormack scheme, *International journal for numerical methods in fluids*, 53, 811-826, 2007.
- 550 Liu, G., Schwartz, F.W., Tseng, K. and Shum, C.K.: Discharge and water-depth estimates for ungauged rivers: Combining hydrologic, hydraulic, and inverse modeling with stage and water-area measurements from satellites, *Water Resources Research*, 51, 6017-6035, 10.1002/2015WR016971, 2015.
- McMillan, H.K. and Brasington, J.: End-to-end flood risk assessment: A coupled model cascade with uncertainty estimation, *Water Resources Research*, 44, 10.1029/2007WR005995, 2008.
- 555 Montanari, M. et al.: Calibration and sequential updating of a coupled hydrologic-hydraulic model using remote sensing-derived water stages, *Hydrology and Earth System Sciences*, 13, 367-380, 10.5194/hess-13-367-2009, 2009.
- Osti, R.P.: Strengthening Flood Risk Management Policy and Practice in the People's Republic of China: Lessons Learned from the 2016 Yangtze River Floods, 2017.
- Panday, S. and Huyakorn, P.S.: A fully coupled physically-based spatially-distributed model for evaluating surface/subsurface flow, *Advances in Water Resources*, 27, 361-382, 10.1016/j.advwatres.2004.02.016, 2004.
- 560 Patro, S., Chatterjee, C., Mohanty, S., Singh, R. and Raghuvanshi, N.S.: Flood inundation modeling using MIKE FLOOD and remote sensing data, *Journal of the Indian Society of Remote Sensing*, 37, 107-118, 10.1007/s12524-009-0002-1, 2009.
- Rallison, R.E. and Miller, N.: Past, present, and future SCS runoff procedure, Rainfall-runoff relationship/proceedings, International Symposium on Rainfall-Runoff Modeling held May 18-21, 1981 at Mississippi State University, Mississippi State, Mississippi, USA/edited by VP Singh, Littleton, Colo.: Water Resources Publications, c1982., 1982.
- 565 Rawls, W.J., Brakensiek, D.L. and Miller, N.: Green - ampt Infiltration Parameters from Soils Data, *Journal of Hydraulic Engineering*, 109, 62-70, 10.1061/(ASCE)0733-9429(1983)109:1(62), 1983.
- Rayburg, S. and Thoms, M.: A coupled hydraulic - hydrologic modelling approach to deriving a water balance model for a complex floodplain wetland system, *Hydrology Research*, 40, 364-379, 10.2166/nh.2009.110, 2009.
- 570 Rogers, B., Fujihara, M. and Borthwick, A.G.: Adaptive Q - tree Godunov - type scheme for shallow water equations, *International Journal for Numerical Methods in Fluids*, 35, 247-280, 10.1002/1097-0363(20010215)35:3<247::AID-FLD89>3.0.CO;2-E, 2001.
- Singh, J., Altinakar, M.S. and Ding, Y.: Numerical Modeling of Rainfall-Generated Overland Flow Using Nonlinear Shallow-Water Equations, *Journal of Hydrologic Engineering*, 20, 04014089, 10.1061/(ASCE)HE.1943-5584.0001124, 2015.
- 575 Thompson, J.R.: Simulation of Wetland Water-Level Manipulation Using Coupled Hydrological/Hydraulic Modeling, *Physical Geography*, 25, 39-67, 10.2747/0272-3646.25.1.39, 2004.
- Thompson, J.R., Sørensen, H.R., Gavin, H. and Refsgaard, A.: Application of the coupled MIKE SHE/MIKE 11 modelling system to a lowland wet grassland in southeast England, *Journal of Hydrology*, 293, 151-179, 2004.

-  Toro, E.F., Shock-capturing methods for free-surface shallow flows, John Wiley, 2001.
- 580 Viero, D.P., Peruzzo, P., Carniello, L. and Defina, A.: Integrated mathematical modeling of hydrological and hydrodynamic response to rainfall events in rural lowland catchments, *Water Resources Research*, 50, 5941-5957, 10.1002/2013WR014293, 2014.
-  Yu, C. and Duan, J.: Two-Dimensional Hydrodynamic Model for Surface-Flow Routing, *Journal of Hydraulic Engineering*, 140, 04014045, 10.1061/(ASCE)HY.1943-7900.0000913, 2014.
- 585 Yu, C. and Duan, J.: Simulation of Surface Runoff Using Hydrodynamic Model, *Journal of Hydrologic Engineering*, 22, 04017006, 10.1061/(ASCE)HE.1943-5584.0001497, 2017.
- Yu, C. and Duan, J.G.: High resolution numerical schemes for solving kinematic wave equation, *Journal of Hydrology*, 519, 823-832, 10.1016/j.jhydrol.2014.08.003, 2014.
- Zhu, Z. et al.: Integrated urban hydrologic and hydraulic modelling in Chicago, Illinois, *Environmental Modelling & Software*, 590, 77, 63-70, 10.1016/j.envsoft.2015.11.014, 2016.