

# 1 **Linking drought indices to impacts to support drought risk** 2 **assessment in Liaoning province, China**

3 Yaxu Wang<sup>1,2,3</sup>, Juan Lv<sup>1,2</sup>, Jamie Hannaford<sup>3,4</sup>, Yicheng Wang<sup>1,2</sup>, Hongquan Sun<sup>1,2</sup>, Lucy J. Barker<sup>3</sup>,  
4 Miaomiao Ma<sup>1,2</sup>, Zhicheng Su<sup>1,2</sup>, Michael Eastman<sup>3</sup>

5 <sup>1</sup>China Institute of Water Resources and Hydropower Research, Beijing 100038, China

6 <sup>2</sup>Research Center on Flood and Drought Disaster Reduction of the Ministry of Water Resources, Beijing 100038, China

7 <sup>3</sup>The UK Centre for Ecology & Hydrology, Oxfordshire, OX10 8BB, UK

8 <sup>4</sup>Irish Climate Analysis and Research UnitS (ICARUS), Maynooth University, Dublin, W23 F2K8, Ireland

9 *Correspondence to:* Juan Lv (lujuan@iwhr.com)

10 **Abstract.** Drought is a ubiquitous and recurring hazard that has wide ranging impacts on society, agriculture and the  
11 environment. Drought indices are vital for characterising the nature and severity of drought hazards, and there have been  
12 extensive efforts to identify the most suitable drought indices for drought monitoring and risk assessment. However, to date,  
13 little effort has been made to explore which index(s) best represents drought impacts for various sectors in China. This is a  
14 critical knowledge gap, as impacts provide important ‘ground truth’ information for indices used in monitoring activities. The  
15 aim of this study is to explore the link between drought indices and drought impacts, using Liaoning province (northeast China)  
16 as a case study due to its history of drought occurrence. To achieve this we use independent, but complementary, methods  
17 (correlation and random forest analysis) to identify which indices link best to drought impacts for prefectural-level cities in  
18 Liaoning province, using a comprehensive database of reported drought impacts whereby impacts are classified into a range  
19 of categories. The results show that Standardised Precipitation Evapotranspiration Index with a 6-month accumulation (SPEI6)  
20 had a strong correlation with all categories of drought impacts, while Standardised Precipitation Index with a 12-month  
21 accumulation (SPI12) had a weak correlation with drought impacts. Of the impact datasets, ‘drought suffering area’ and  
22 ‘drought impact area’ had a strong relationship with all drought indices in Liaoning province, while ‘population and number  
23 of livestock with difficulty in accessing drinking water’ had weak correlations with the indices. The results of this study can  
24 support drought planning efforts in the region and provide context for the indices used in drought monitoring applications, and  
25 so enabling improved preparedness for drought impacts. The study also demonstrates the potential benefits of routine collection  
26 of drought impact information on a local scale.

## 27 **1 Introduction**

28 Drought is one of the most pervasive natural hazards, and can cause numerous and severe societal impacts. Drought impacts  
29 are mainly non-structural, widespread over large areas, and are often have a delayed onset in relation to the start of the drought  
30 event; therefore, it is challenging to properly define, quantify and manage drought (Mishra and Singh, 2010). There are a

31 number of 'types' of drought (Wilhite and Glantz, 1985), such as meteorological, agricultural, hydrological, social and  
32 ecological drought. Meteorological drought is defined as a deficit of rainfall for a period in respect to the long term mean  
33 (Houérou, 1996). As these rainfall deficits propagate through the hydrological cycle, the other drought types occur as deficits  
34 occur in river flows, soil moisture and groundwater. Eventually impacts become manifest on the environment and society.  
35 China has experienced numerous droughts, which have caused great impact in many sectors since the 1950s, especially in  
36 Liaoning province in the dry northeast of the country (Zhang, 2004). Liaoning province experienced a severe drought from  
37 spring 2000 to autumn 2001 which captured a large amount of attention from stakeholders and caused serious impacts as a  
38 result of the consecutive years of drought (Chen et al., 2016).

39 The costly nature of droughts means it is essential to plan and prepare for droughts proactively. Drought risk assessment is an  
40 essential prerequisite of this proactive approach (Wilhite, 2000; Wilhite and Buchanan, 2005), and provides the methods to  
41 predict the potential drought risk to society and the environment. Some risk assessment efforts focus primarily on the  
42 meteorological indices of drought, e.g. assessing the risk of a given severity of meteorological drought using historical  
43 precipitation data (Potopová et al., 2015). However, to adequately assess drought risk it is also necessary to characterise the  
44 consequences of drought occurrence, i.e. the impacts of drought on society, the economy and the environment (United Nations  
45 International Strategy for Disaster Reduction (UNISDR), 2009).

46 There are a wealth of drought indices in the literature (Lloyd-Hughes, 2014), however they have predominantly used for  
47 drought monitoring and early warning (e.g. Bachmair et al. 2016b) rather than drought risk assessment applications. The range  
48 of drought indices reflects the different types of drought which can be monitored, e.g., meteorological, hydrological and  
49 agricultural (Erhardt and Czado, 2017). Many indices, such as the Standardised Precipitation Index (SPI), can be calculated  
50 over different time scales. This enables deficits to be assessed over different periods, and can help monitor different types of  
51 drought. For example, shorter time scales, such as the SPI for three or six months are used for agricultural drought monitoring  
52 while SPI accumulations for 12 or 24 months are often applied to monitor hydrological droughts (Hong et al., 2001; Seiler et  
53 al., 2002). In China, many indices are used for drought monitoring, such as Palmer Drought Severity Index (PDSI), SPEI, SPI,  
54 China-Z index, relative soil moisture and remote sensing indices (Hong et al., 2001; Wang and Chen, 2014; Wu et al.,  
55 2012; Yanping et al., 2018). Li et al. (2015) found that serious drought events occurred in 1999, 2000, 2001, 2007 and 2009 in  
56 China using SPEI. Zhao et al. (2015) compared drought monitoring results between self-calibrating PDSI and SPEI in China  
57 with emphasis on difference of timescales. Wu et al. (2013) developed an Integrated Surface Drought Index for agricultural  
58 drought monitoring in mid-eastern China. Drought monitoring efforts in China tend to focus on meteorological and agricultural  
59 drought monitoring. Based on this and previous drought studies, the SPI, SPEI, soil moisture and NDVI were selected in this  
60 research to characterise meteorological and agricultural drought. The relationship between drought indices and drought impacts,  
61 established by statistical methods (e.g. Bachmair et al. (2016a)), can be used for drought risk assessment and appraisal of

62 vulnerability. Vulnerability is by its nature difficult to define and measure, but in effect, drought impacts are ‘symptoms’ of  
63 drought vulnerability and provide a proxy for vulnerability appraisal by demonstrating adverse consequences of a given  
64 drought severity (Blauhut et al., 2015a).

65 There are many different types of drought impacts affecting many aspects of society and the environment, but drought impacts  
66 are rarely systematically recorded (Bachmair et al., 2016b). Some countries and regions have established drought impact  
67 recording systems to analyse historical drought impacts. A leading example of this is the US Drought Impacts Reporter  
68 (Svoboda and Hayes, 2011) which was launched as a web-based system in July 2005. More recently, the European Drought  
69 Impact report Inventory (EDII) has been established (Stahl et al., 2016). Such databases are an important step forward, but the  
70 information in them is necessarily partial and biased, as a result of being effectively crowd-sourced text-based information  
71 based on ‘reported’ impacts from a range of sources (the media, grey literature, etc.). In contrast to many other countries, China  
72 has a relatively complete and systematically assembled, quantitative drought impact information collection system. Data are  
73 collected and checked at the county level by the Drought Resistance Department via a formalised network of reporters, who  
74 collect information on drought impacts on agriculture, industrial economy, and water supply in every village. These data then  
75 are fed up to the national government and held by the State Flood Control and Drought Relief Headquarters (SFDH). This  
76 consistent collection of impact reporting provides a rich resource for drought risk assessment. However, impacts by themselves  
77 are not fully instructive and to help inform risk assessment there is a need to understand their relationship with quantitative  
78 drought indices.

79 Understanding the relationship between drought indices and drought impacts, and drought vulnerability, is a vital step to  
80 improve drought risk management (Hong and Wilhite, 2004). However, whilst there have been many studies developing,  
81 applying and validating drought indices, relatively few studies have assessed the link between indices and observed impacts.  
82 Bachmair et al. (2016b) noted that this literature tended to be dominated by studies focused on agricultural drought, generally  
83 linking indices like the SPI/SPEI and crop yield. Examples appraising multi-sectoral impacts are much sparser – there are  
84 several recent studies in Europe, utilising impact reports from the EDII. Stagge et al. (2014) and Bachmair (2016b) used  
85 drought impacts from the EDII, and various time scales of SPI, SPEI and streamflow percentiles. They found that the  
86 relationships between indices and impacts varied significantly by region, season, impact types, etc. whilst Blauhut et al. (2015a)  
87 and Blauhut et al. (2015b) developed a quantitative relationship between drought impact occurrence and SPEI using logistic  
88 regression in four European regions. However, all four studies assumed drought impacts were only measured by the drought  
89 impact occurrence (i.e. whether there was, or was not, an impact in a given month), the number of impacts or a combination  
90 of both. This means that all drought impacts had an equal weight without considering the duration, intensity or spatial extent  
91 of the individual impacts. In contrast, Karavitis et al. (2014) analysed drought impacts transformed into monetary losses to  
92 measure drought impacts in Greece; however, it is challenging to transform all drought impacts into monetary units – especially

93 the indirect impacts of droughts.

94 In China, previous studies have also focused on agricultural drought risk assessment. Hao et al. (2011) applied the information  
95 diffusion theory to develop a drought risk analysis model which used affected crop area to measure the drought disaster. Zhao  
96 et al. (2011) established the relationship between drought frequency and simulated crop yield data in Henan Plain, and Jia et  
97 al. (2011) used the water stress coefficient and duration to establish a drought index. Li et al. (2009) analysed the links between  
98 historical crop yield and meteorological drought and established a meteorological drought risk index by combining the drought  
99 frequency, intensity, yield loss and extent of irrigation. The drought index was found to explain 60-75% of the major crop yield  
100 reduction. In drought impacts studies, Xiao-jun et al. (2012) collected annual drought affected area, damaged area, and annual  
101 losses in food yield in nation level from China Water Resources Bulletins to explore the water management strategies during  
102 droughts. In Hao et al. (2011), drought impacts were only measured by the affected crop area at the 10-day time step at the  
103 county level. In our research, eight types of drought impacts are collected to measure drought impacts in at the city unit (i.e.  
104 prefectural) level in Liaoning province, including the drought affected area, damaged area and yield loss, but also drought  
105 impacts on humans, livestock and the agricultural economy.

106 In summary, previous studies have focused on linking impacts to only one characteristic of drought (such as intensity or  
107 duration of occurrence) with most focusing on meteorological drought and agricultural impacts with little application of the  
108 results to drought vulnerability assessments, with the exception of Blauhut et al. (2015a), Blauhut et al. (2016) and Hagenlocher  
109 et al. (2019), for example. Here we link drought indices to drought impacts in 14 cities in Liaoning province, northeast China,  
110 showcasing the use of the Chinese drought impact data from the SFDH. Using the drought impact-index linkage, we evaluate  
111 drought vulnerability in Liaoning province and assess what factors affect drought vulnerability. A drought vulnerability  
112 evaluation method that can be extended to other areas is then developed. The objectives of this paper are:

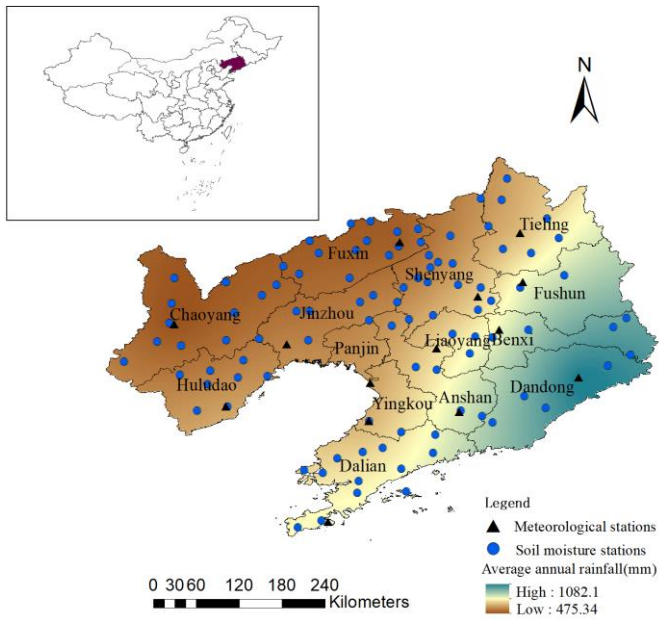
- 113 1. To identify when and where the most severe droughts occurred between 1990 and 2013 in Liaoning province;
- 114 2. To identify which drought indices best link to drought impacts in Liaoning province;
- 115 3. To determine which city or area has higher drought vulnerability in Liaoning province; and,
- 116 4. To ascertain which vulnerability factor or set of vulnerability factors have a higher contribution to drought  
117 vulnerability, as quantified in objective 3.

## 118 **2 Materials**

### 119 **2.1 Study area**

120 Located in the northeastern of China, Liaoning province, comprised of 14 prefectural cities, has a temperate continental  
121 monsoon climate with an annual average precipitation of 686.4mm, which is unevenly distributed both temporally and spatially  
122 (Cai et al., 2015). Figure 1 shows the annual average rainfall across Liaoning, the south-east receiving on average more than

123 1000mm a year, whilst the north-west receives less than 500mm per year.



124

125 **Figure 1: Map showing the 14 prefectural cities, the distribution of meteorological and soil moisture stations and the average annual**  
126 **precipitation in Liaoning province.**

127 The annual average volume of freshwater resources in Liaoning province is 34.179 billion m<sup>3</sup>, and the annual average per  
128 capita water resources is 769 m<sup>3</sup> – about one-third of the per capita water resources for the whole of China. Freshwater  
129 resources are unevenly distributed within Liaoning province, with more freshwater resources in the south-east than the north-  
130 west (Liu and Guo, 2009;Cao et al., 2012). Thus, Liaoning province is one of the provinces with severe water-shortages in  
131 northern China. Liaoning province is also a highly productive area for agriculture; spring maize is the dominant crop in  
132 agriculture production which makes it an important high-quality maize production area (Liu et al., 2013;Ren and Zhou, 2009).  
133 Due to these characteristics, when drought occurs, as has frequently been the case in Liaoning province, it causes a significant  
134 reduction in agricultural production (Yan et al., 2012). According to the SFDH, between 2000 and 2016 the average annual  
135 yield loss due to drought was 1.89 million tons in Liaoning province, with an average annual direct agricultural economic loss  
136 of 1.87 billion yuan.

## 137 2.2 Data

### 138 2.2.1 Meteorological data

139 Daily precipitation and temperature data for each city in Liaoning province for the period 1990-2013 were obtained from the  
140 China Meteorological Administration (<http://data.cma.cn/>). Although there are 52 meteorological stations in Liaoning province,  
141 due to the quality and length of the records, and location of the stations, one meteorological site in each city (shown in Figure  
142 1) was selected to represent the meteorological condition for the whole city in order to derive drought indices.

### 143 2.2.2 Soil moisture data

144 Daily soil moisture data for 96 soil moisture stations in Liaoning province (shown in Figure 1) from 1990 to 2006 were obtained  
 145 from Liaoning Provincial Department of Water Resources. Daily soil moisture was measured at three different depths: 10cm,  
 146 20cm and 30cm using frequency domain reflectometry soil moisture sensors Soil moisture data were not available at most  
 147 stations between November and February due to freezing conditions.

### 148 2.2.3 Normalised Difference Vegetation Index (NDVI) data

149 Monthly MODIS Normalised Difference Vegetation Index (NDVI) data from 2000 to 2013 was collected in Liaoning province  
 150 from the Geospatial Data Cloud (<http://www.gscloud.cn/>); the daily maximum data were used to derive the monthly average  
 151 NDVI.

### 152 2.2.4 Impact data

153 In contrast to many other countries, China has a systematic, centralised drought impact information collection system. Drought  
 154 statistics include drought impacts, drought mitigation actions and benefits of action to agriculture, hydrology and civil affairs.  
 155 During a drought event, impact statistics are collected from every day to every three weeks, according to the drought warning  
 156 level (Wang, 2014). When a drought warning is not triggered, drought impact data are collected after an event has ended which  
 157 could be several months afterwards; and no data are collected when there is no drought event. Statistics for eight drought  
 158 impact types were collected from the SFDH between 1990 and 2016, and aggregated to annual totals. The impact types used  
 159 are listed in Table 1.

160 **Table 1: The eight drought impact categories for Liaoning province used in this study collected by the SFDH.**

Impact	Abbreviation	Description	Unit
Drought suffering area	DSA	The area that was officially declared in drought	kha
Drought impacted area	DIA	The area that suffered crop yield loss by 10% or more	kha
Disaster area	DA	The area that suffered crop yield loss by 30% or more	kha
Recessed area	RA	The area that suffered crop yield loss by 80% or more	kha
Population with difficulty in accessing drinking water	PHD	Rural populations that cannot access normally to drinking water	10k
Number of livestock with difficulty in accessing drinking water	NLH	Number of livestock that cannot access normally to drinking water	10k
Yield loss due to drought	YLD	The amount of yield losses due to drought	10k ton
Direct economic loss in agriculture	DELA	Direct losses of agricultural economy caused by drought	0.1b yuan

### 161 5) Vulnerability factors

162 The drought impacts described in Section 2.2.4 are mainly focused on agriculture sector. As a result of this, the availability of

163 data and the findings of Junling et al. (2015) and Kang et al. (2014), vulnerability factors relevant to these impacts were  
 164 selected. Vulnerability factors were collected from the 2017 Liaoning Province Statistical Yearbook to assess their contribution  
 165 to the drought vulnerability (Liaoning Province Bureau of Statistics, 2017), and are shown in Table 2 for each city unit.

166 **Table 2: Vulnerability factors for each city in Liaoning province collected from the 2017 Liaoning Statistical Yearbook (Liaoning**  
 167 **Province Bureau of Statistics, 2017)**

City	Per capita gross domestic product (k yuan)	Population (10k)	Crop cultivated area (kha)	Annual per capita water supply ( m <sup>3</sup> )	Per unit area of Fertiliser application (kg/ha)	Effective irrigation rate (%)	Number of electromechanical wells (k)	Reservoir total storage capacity (m m <sup>3</sup> )	Per unit area of major agricultural products (kg/ha)	Livestock production (10k ton)
Shenyang	755.8	733.9	656.0	91.5	1000.4	40.0	27.6	686.6	7090.5	64.5
Dalian	1143.4	595.6	327.0	73.4	1437.2	22.8	19.0	2523.0	4914.3	70.8
Anshan	422.9	345.7	247.7	42.3	1031.8	30.1	4.1	91.9	6641.6	36.7
Fushun	402.7	214.8	116.1	94.7	776.9	37.4	1.8	2575.5	6342.9	10.4
Benxi	511.1	150.0	58.0	167.9	756.3	29.9	0.4	6078.8	6606.3	9.3
Dandong	315.8	237.9	190.4	28.0	1049.7	41.7	1.4	16202.8	6056.9	20.2
Jinzhou	341.8	302.2	457.2	46.6	915.4	41.3	18.7	977.9	6825.7	64.0
Yingkou	496.7	232.8	109.4	42.4	1564.6	67.7	12.3	269.6	7325.0	13.5
Fuxin	215.9	188.9	479.4	39.7	881.9	30.1	26.6	545.0	5243.6	49.6
Liaoyang	373.4	178.6	162.8	42.4	1002.6	44.8	4.0	1418.8	7202.2	11.0
Panjin	778.3	130.1	143.0	70.2	937.0	68.7	1.0	141.5	8918.3	23.8
Tieling	196.5	299.9	548.5	12.2	960.2	32.0	18.1	2174.5	8397.1	46.0
Chaoyang	210.1	341.1	464.5	15.8	874.7	42.0	17.4	2085.6	6292.0	63.6
Huludao	230.8	280.5	249.7	18.7	976.8	28.9	14.0	892.7	4852.3	35.4

## 168 2.3 Methods

### 169 2.3.1 Drought indices

170 Two meteorological indices were selected, the Standardised Precipitation Index (SPI; McKee et al., 1993) and the Standardised  
 171 Precipitation Evapotranspiration Index (SPEI; Vicente-Serrano et al., 2010). These standardised indices are widely used in  
 172 drought monitoring applications around the world, and the SPI is recommended by World Meteorological Organisation to  
 173 monitor meteorological drought (Hayes et al., 2011). This is due to the flexibility of being able to derive SPI over different  
 174 time scales and that it can be compared across time and space.

175 The SPI, in its default formulation, assumes that precipitation obeys the Gamma ( $\Gamma$ ) skewed distribution, which is used to  
 176 transform the precipitation time series into a normal distribution. After normalisation, classes of drought can be defined with  
 177 the cumulative precipitation frequency distribution (Botterill and Hayes, 2012; Hayes et al., 1999). The SPEI uses the same  
 178 standardisation concept using the climatic water balance (that is, precipitation minus potential evapotranspiration; PET) instead  
 179 of precipitation. In this study PET is calculated by the Thornthwaite method (Thornthwaite, 1948), using observed temperature

180 and sunlight hours (estimated from latitude) as inputs. The SPEI is calculated by normalising the climatic water balance using  
 181 a log-logistic probability distribution (Vicente-Serrano et al., 2010).

182 SPI and SPEI are easily calculated and can fit a wide range of accumulation periods of interest (e.g. 1, 3, 12, 24, 72 months)  
 183 (Edwards, 1997). The SPEI has the added advantages of characterising the effects of temperature and evapotranspiration on  
 184 drought. In this study, SPI and SPEI were calculated for five accumulation periods, 6, 12, 15, 18 and 24-months, from 1990 to  
 185 2013 for 14 meteorological stations (i.e. one in each city – as shown in Figure 1). Generally, precipitation in Liaoning province  
 186 is concentrated between April and September which corresponds to the growing stage of spring maize. Considering the  
 187 climatology and crop growth period, SPI6 and SPEI6 ending in September were selected for this study, i.e. calculated using  
 188 precipitation during April to September. The 12, 15, 18 and 24 months SPI and SPEI in ending December were also analysed  
 189 with the annual drought impacts during 1990 to 2013.

190 Using the daily soil moisture of 10 cm, 20 cm and 30 cm depths, the daily average soil moisture for each station was calculated  
 191 using Eq. (1) and Eq. (2) (Lin et al., 2016).

$$192 \quad \theta_1 = \theta_{10} \quad \theta_2 = \frac{\theta_{10} + \theta_{20}}{2} \quad \theta_3 = \frac{\theta_{20} + \theta_{30}}{2} \quad (1)$$

$$193 \quad \bar{\theta} = \frac{\sum_{i=1}^3 (\theta_i \times h_i)}{H} \quad (2)$$

194 Where  $\theta_i$  is the soil moisture of the  $i$ -th layer ( $i=1, 2, 3$ ).  $\theta_{10}$ ,  $\theta_{20}$  and  $\theta_{30}$  are the measured value at different depths  
 195 (10cm, 20cm and 30cm),  $\bar{\theta}$  is the average soil moisture,  $h_i$  is the thickness of the  $i$ -th layer of soil, and  $H$  is the total  
 196 thickness of the measured soil.

197 Some of the daily soil moisture data were missing, however this was limited to 17% of the total soil moisture data. In some  
 198 cases there were missing data for one depth of soil moisture measurement. In these cases, the average soil moisture of the other  
 199 two layers was calculated, and where there was only one layer of soil moisture available it was used to represent the average  
 200 soil moisture. The annual average soil moisture was calculated based on the available daily soil moisture (March to October)  
 201 and was analysed with the annual drought impact data during 1990 to 2006. As each city has more than one soil moisture  
 202 station, the annual soil moisture of each station was calculated and then averaged to one value for each city.

203 The area-averaged NDVI at the city unit was calculated using the monthly NDVI. The critical stages of the spring maize growth  
 204 in Liaoning is in July, so the area-averaged NDVI in July was selected for the analysis with the annual drought impacts from  
 205 2000 to 2013.

### 206 2.3.2 Correlation analysis

207 The Pearson correlation method was used to characterise the correlation between indices and the selected drought impacts  
 208 (Özger et al., 2009). Due to the limited availability of soil moisture data, correlation analysis of soil moisture and drought



209 impact data was only carried out in 9 cities. The linkage between drought indices and impacts was used to assess the drought  
210 vulnerability in Liaoning province. It can be inferred that the greater the impact caused by droughts at a specific severity  
211 (measured according to SPI/SPEI), the higher the drought vulnerability of the city.

### 212 2.3.3 Random forest modeling

213 Decision trees are regularly implemented for machine learning tasks. They resemble flowcharts, consisting of a series of  
214 branches, internal nodes, and leaf nodes. Internal nodes typically represent binary conditions of the explanatory variables.  
215 These nodes are connected to other internal nodes by branches, which represent the outcome of the previous internal node.  
216 Leaf nodes represent the outcome classes. Internal nodes are eventually connected to leaf nodes, which represent the outcome  
217 classes of the classification task. Whilst quick to train and interpretable, decision trees are limited by overfitting to the training  
218 set. Random forests (RFs) reduce overfitting by fitting an ensemble of uncorrelated decision trees. This is achieved using  
219 bootstrap aggregation with replacement (bagging) and only considering a random subset of features for splitting at each internal  
220 node (Breiman and Leo, 2001). As well as the reduction in overfitting compared to decision trees, the advantages of RF include:  
221 its fast training speed, good accuracy and relative efficiency (Mutanga et al., 2012). Additionally, once RF models are  
222 established, the values of the predictor that correspond to the first split in the decision tree can be extracted as thresholds  
223 corresponding to impact occurrence (Bachmair et al., 2016a).

224 In this analysis random forests were built for regression. This is achieved by assigning categorical outcomes at each leaf node,  
225 and using the mean prediction as the outcome. The R package ‘randomForest’ was employed to identify the relationship of  
226 drought indices to drought impacts (Kursa, 2017; Liaw and Wiener, 2002) using 5000 decision trees for each RF model. The  
227 variance explained was used to determine the goodness of fit of random forest model (Fukuda et al., 2013). The mean squared  
228 error (MSE), Eq. (3), was used to evaluate the importance of each index:

$$229 \quad MSE = \frac{1}{n} \sum_{i=1}^{i=n} (y_i - \hat{y}_i)^2 \quad (3)$$

230 Where  $y_i$  and  $\hat{y}_i$  are the observed drought impacts and the estimated drought impacts of each city,  $i$ , respectively;  $n$  is the  
231 length of time series.

232 The percent change of MSE (MSE%) is the difference in accuracy when the effect of the variable is excluded (i.e. if the SPEI6  
233 is excluded from the model, the MSE% of the model may increase). Higher MSE% represents higher the index importance .

234 The first splitting values of each decision tree was also extracted.

235 Soil moisture and NDVI were not analysed using the random forest approach due to their short time series and prevalence of  
236 missing data.

### 237 2.3.4 Standardisation of drought impacts and vulnerability factors

238 To ensure comparability and to facilitate the visualisation of the drought impacts and vulnerability factors they were  
 239 standardised to a value from 0 to 1 using Eq. (4) and Eq. (5) (Below et al., 2007).

$$240 \quad SDI_i = \frac{DI_i - \min DI}{\max DI - \min DI} \quad (4)$$

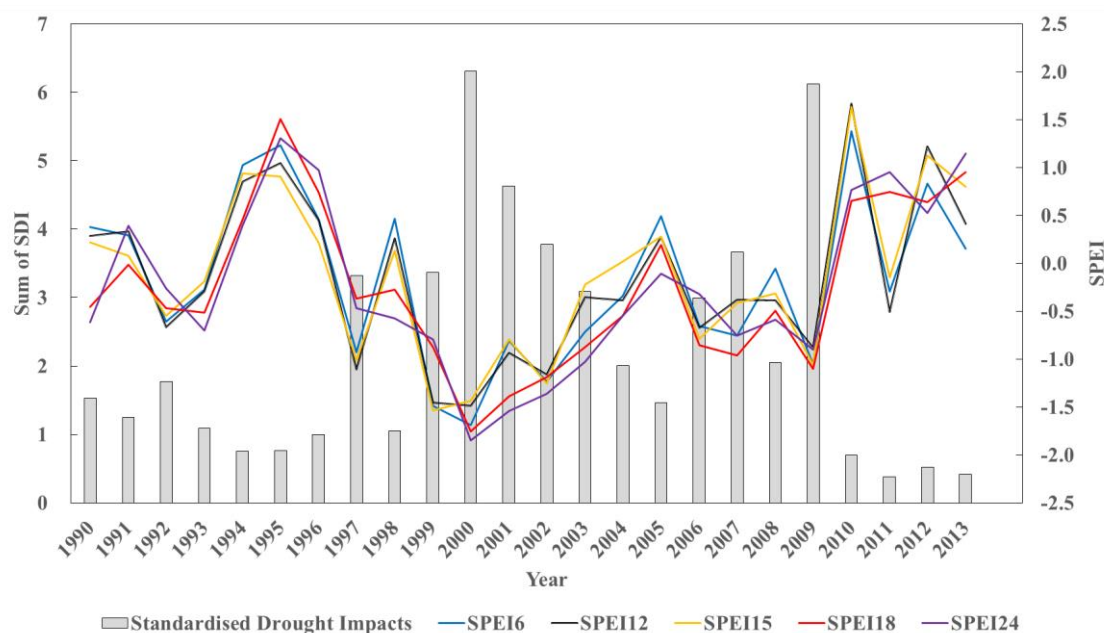
$$241 \quad SVF_j = \frac{VF_j - \min VF}{\max VF - \min VF} \quad (5)$$

242 Where  $SDI_i$  and  $DI_i$  are the Standardised Drought Impacts and the drought impacts of year  $i$  in Liaoning province, respectively;  
 243  $\max DI$  and  $\min DI$  are the maximum and minimum values of drought impacts in all year for the given impact type;  $SVF_j$  and  
 244  $VF_j$  is the Standard Vulnerability Factors and vulnerability factors of city  $j$  in Liaoning province; and  $\max VF$  and  $\min VF$  are  
 245 the maximum and minimum values of each category of vulnerability factors in all cities.

### 246 3. Results

#### 247 3.1 Drought monitoring and drought impacts

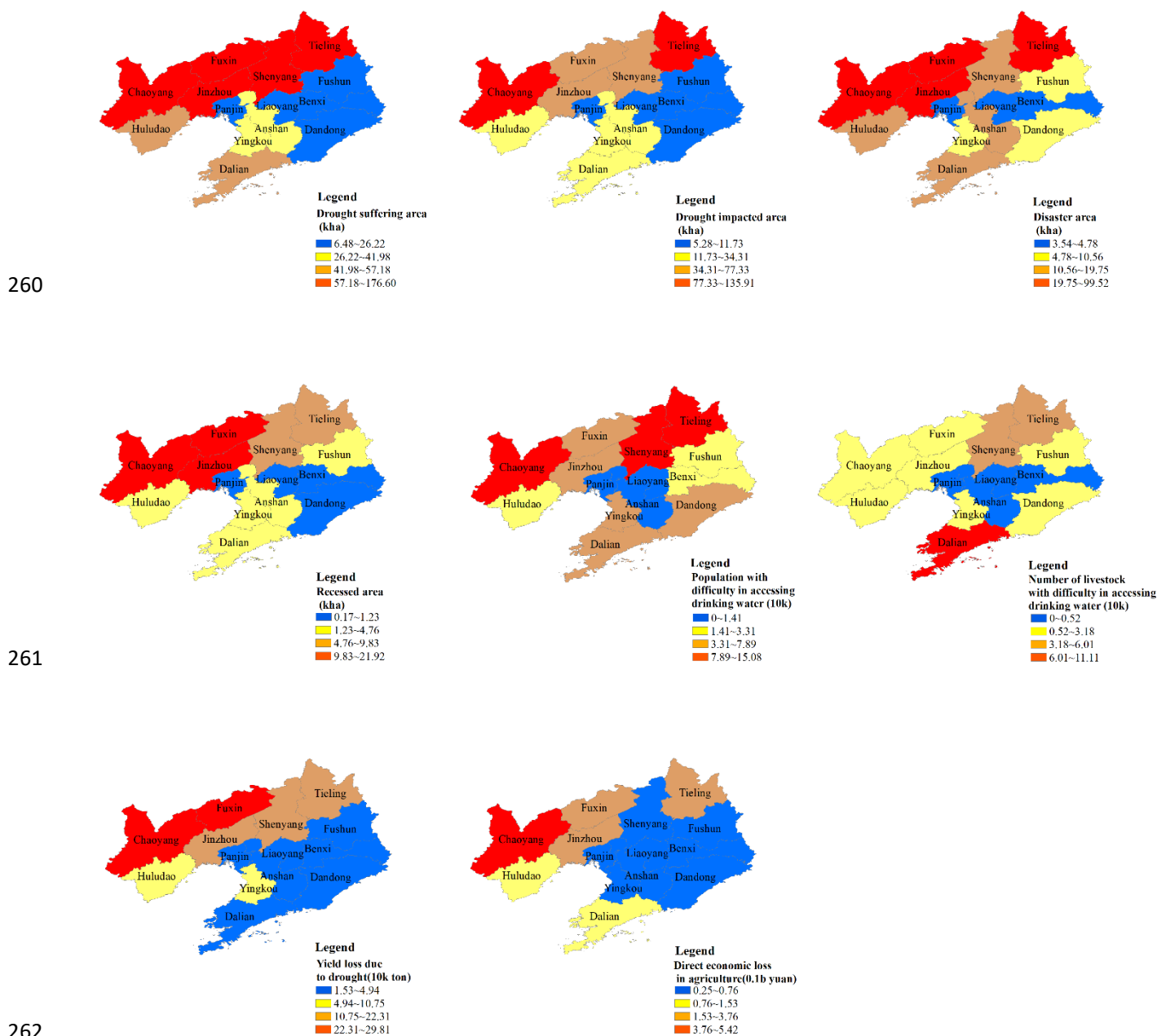
248 Figure 2 shows the SPEI and the drought impact data for Liaoning province from 1990 to 2013; the *Sum of SDI* is the sum of  
 249 all types of Standardised Drought Impacts in the 14 cities for each year.



250  
 251 **Figure 2: Standardised Precipitation Evapotranspiration Index (SPEI) for 6-, 12-, 15-, 18- and 24-month accumulation periods and**  
 252 **the sum of the Standardised Drought Impacts (SDI) for each impact type listed in Table 1 for Liaoning province from 1990 to 2013.**

253 Figure 2 shows that the most severe droughts occurred in 2000, 2001, and 2009, whilst in 1994, 1995, 2012 and 2013 there  
 254 was above normal precipitation. From a visual inspection, the largest impacts are generally associated with the lowest index  
 255 values. This suggests that there is a relationship between the drought indices and drought impacts. This relationship is explored  
 256 quantitatively in the next sections.

257 Figure 3 shows the spatial distribution of the average of each drought impact type collected between 1990 and 2016. It shows  
 258 that more severe drought impacts were recorded in the drier northwestern part of Liaoning province than in eastern parts of  
 259 the province; the NLH was highest in Dalian, whilst Shenyang had the biggest PHD.

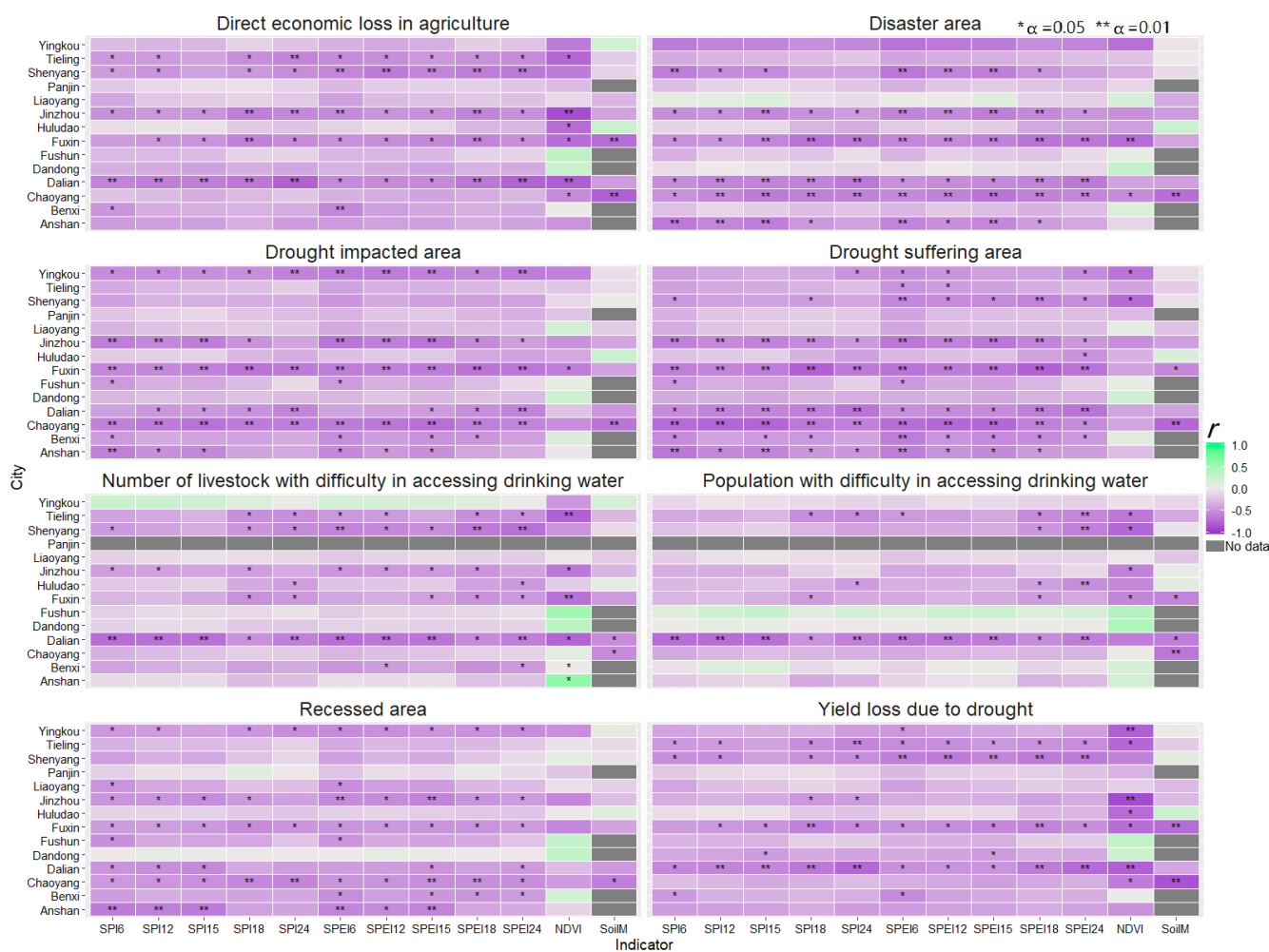


263 **Figure 3: Distribution of average drought impacts for each impact type, identified by the codes in Table 1) for the period 1990-2016**  
 264 **in Liaoning province.**

265 **3.3 Correlation of indices with impacts**

266 The Pearson correlation coefficient ( $r$ ) for each city and drought impacts is shown in Figure 4. In most cases the drought index  
 267 is negatively correlated with the drought impacts, suggesting that the lower (and more severe) the drought index, the greater  
 268 drought impact. However, correlation strength, and direction, varied between the cities and impact types, ranging between -

269 0.890 to 0.621. In most cities of Liaoning province, NDVI and SoilM have a weak correlation with most of types of drought  
 270 impacts. In Dalian, Chaoyang and Fuxin, all drought indices had a strong correlation with DA, whilst there was a significant  
 271 correlation for drought impacts area in Jinzhou, Fuxin and Dalian, where most of the correlations were significant ( $p < 0.01$ ).  
 272 The strongest correlation was found between indices and PHD in Dalian, while it was the weakest in Dandong. There is a  
 273 positive correlation between PHD and NDVI in Fushun, whilst NLH has a positive correlation with NDVI in Anshan. Generally,  
 274 SPEI6 had the strongest correlation with all types of drought impacts, whilst SPI12 had the weakest correlation. SPEI typically  
 275 exhibited stronger correlations with drought impacts than SPI with the same accumulation period.



276  
 277 **Figure 4: Correlation coefficient ( $r$ ) between drought indices (SPI, SPEI, NDVI and SoilM) and drought impacts for different impact**  
 278 **types (identified by the codes in Table 1) in Liaoning province. The significance level of the correlation is indicated using asterisks.**

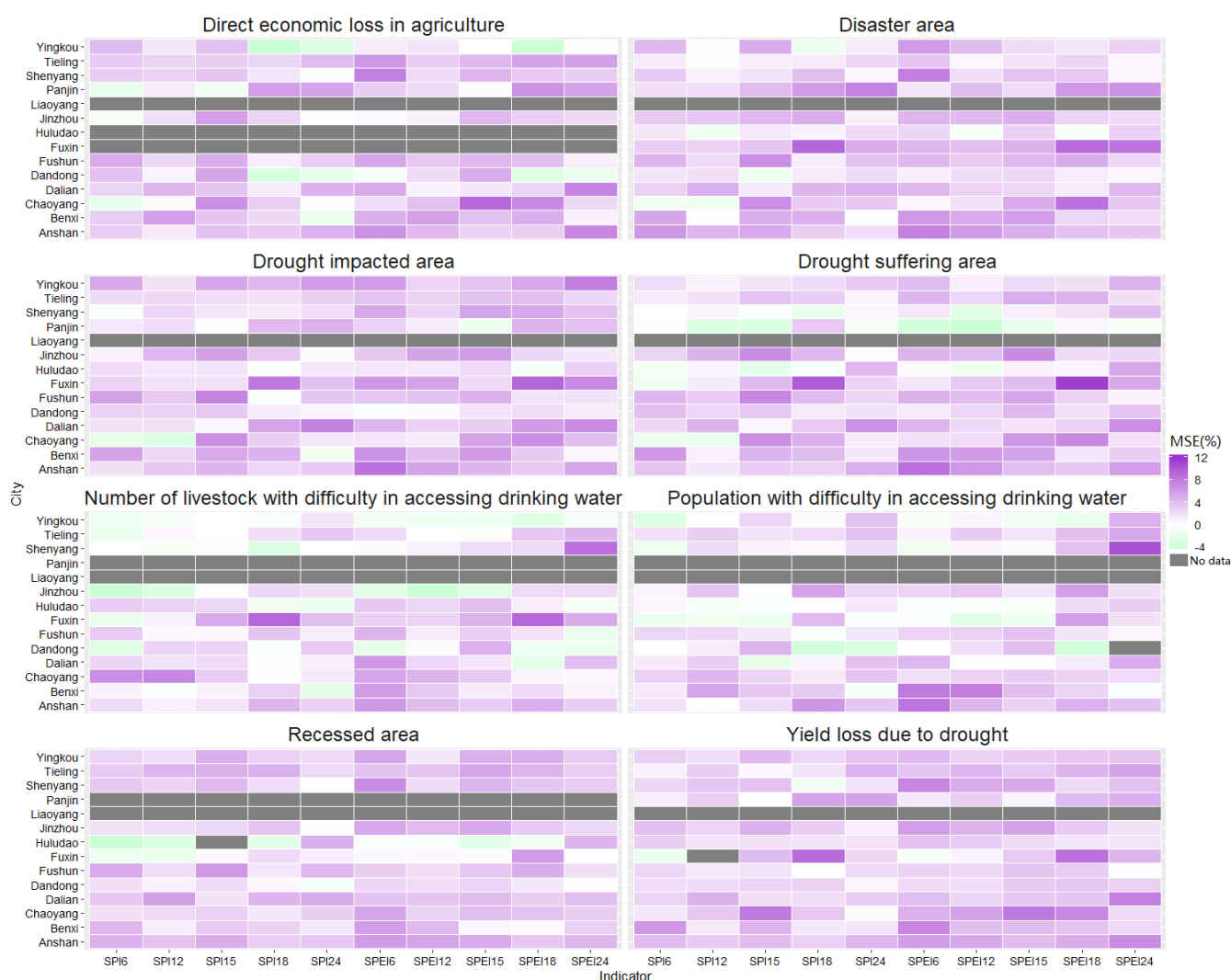
279 DSA and DIA had a strong correlation with all drought indices in Liaoning province, while PHD and NLH had a weak  
 280 correlation. The average correlation coefficient across all drought indices and DSA in Liaoning was -0.43, while the average  
 281 correlation coefficient with PHD and NLH was -0.22 and -0.27, respectively. Drought indices showed a moderate correlation  
 282 with RA and YLD with average correlation coefficients of -0.32 and -0.37, respectively.

283 The performance of soil moisture varied significantly between cities and impact types (Figure 4); it had a strong correlation  
 284 with the impacts in Chaoyang, and a weak correlation in Huludao. In Chaoyang, the correlation between soil moisture and

285 drought impacts was significant ( $\alpha=0.01$ ), whilst other cities were not significantly correlated.

### 286 3.4 Drought index importance in random forest models

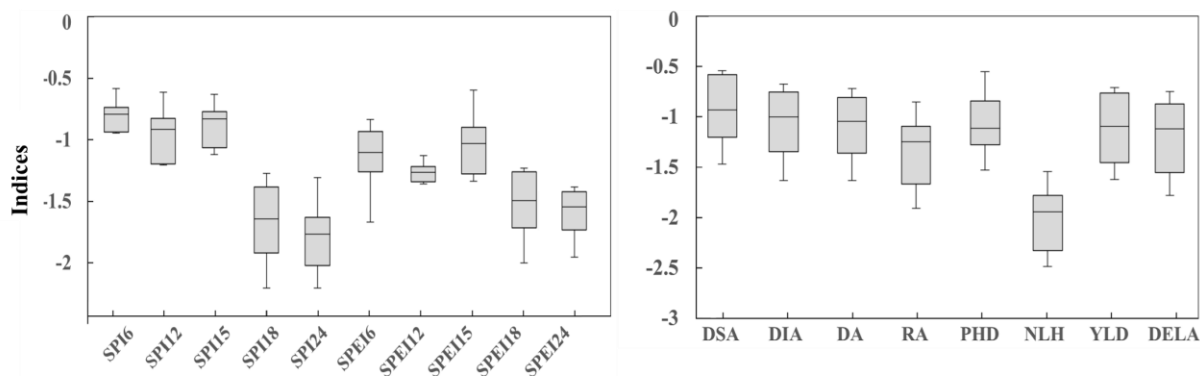
287 Each drought impact type was selected as the response variable in the random forest. On average the random forests explained  
 288 41% of the variance observed within the drought impacts. The MSE% for each city and impact type is shown in Figure 5. The  
 289 MSE% can be seen to vary between different impact types. DIA and YLD have higher MSE% than other impact types, with  
 290 average MSE% is 3.02 and 3.01, respectively. The PHD and NLH had lower MSE%, with average of MSE% of 1.58 and 1.39,  
 291 respectively. DSA and RA had a moderate relationship with drought indices. SPEI performed better than SPI with same  
 292 durations; SPEI6 had the highest importance with drought impacts. SPI12 was the least important index in terms of drought  
 293 impacts. Indices had a higher importance with impacts in Anshan and Dalian and lower importance in Yingkou and Dandong.



294  
 295 **Figure 5: The MSE% of drought indices (SPI and SPEI) with drought impacts (identified by the codes in Table 1) in Liaoning**  
 296 **province using random forest.**

297 The variables identified MSE% from the random forest analysis generally match those with strong negative correlations. This  
 298 supports the statement that indices are negatively related to impacts. The threshold of impact occurrence based on the indices  
 299 was also identified in the RF analysis using the first splitting value. Figure 6 shows the distribution of first splitting values of

300 each decision tree within the RF. The average first splitting values for SPI18 and SPI24 were higher than those of SPI6, SPI12  
 301 and SPI15 (i.e. a more negative index value and more severe meteorological drought state) for all categories of drought impacts.  
 302 For SPEI, the results were similar (i.e. long-term deficits must be more severe to result in equivalent impacts compared to short-  
 303 term deficits) but there was more variability between accumulations. When viewed in terms of impact types, DSA had a low  
 304 threshold, indicating that DSA impacts occur more readily than DA or RA, as may be expected. The impact occurrence of  
 305 index values increase for DSA, DIA, DA and RA; and YLD and DELA tended to occur for more severe water deficits, with  
 306 the highest severity threshold being for NLH, indicating that only very severe drought conditions triggered impacts on livestock.



307 **Figure 6:**

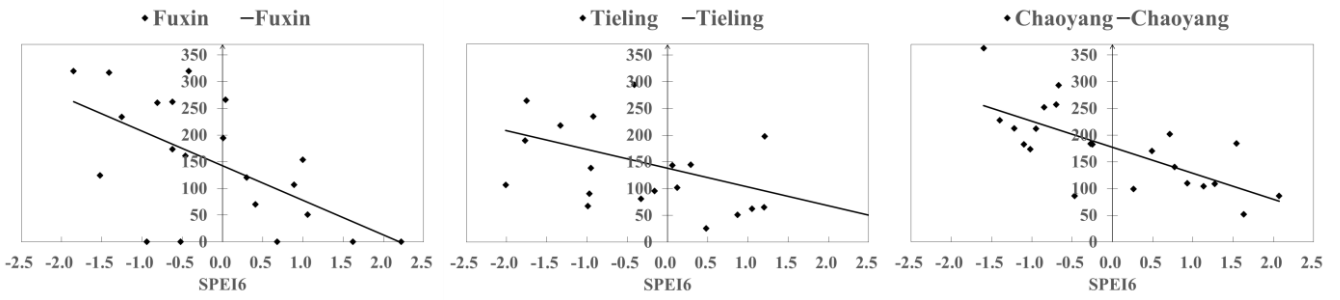
308 **Box plots showing the splitting value (i.e. the thresholds of impacts) in the random forest construction across all impact types for**  
 309 **each index (left), and across all indices for each impact type (right) in Liaoning province.**

### 310 3.5 Drought vulnerability evaluation

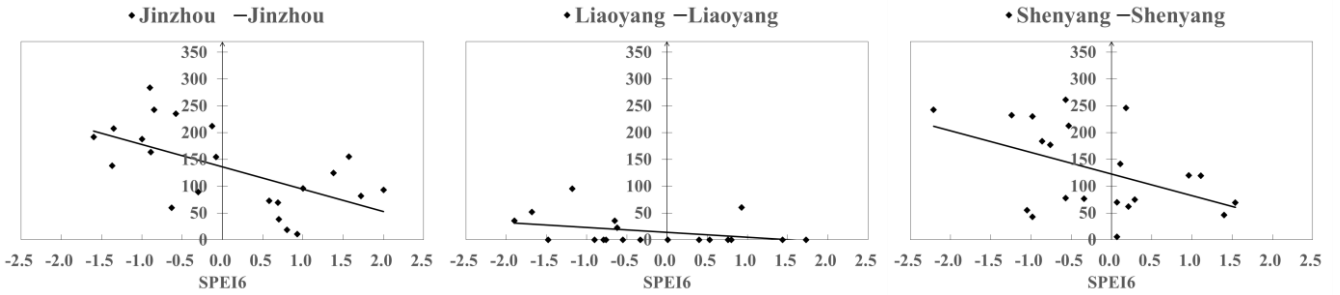
311 The results of correlation analysis and random forest suggest that in most parts of Liaoning province, SPEI at 6-month  
 312 accumulation period has the strongest relationship with drought impacts. SPEI6 was therefore selected to assess the drought  
 313 vulnerability of the 14 cities. Regression analysis was performed on the SPEI6 for each category of drought impact, and an  
 314 example is given in Figure 7 which shows the linear regression of DSA with SPEI6 in the 14 cities. It can be surmised that the  
 315 more serious the drought impacts for a specific drought severity (as defined by SPEI6), the higher the drought vulnerability.  
 316 Fuxin, Tieling, Chaoyang, Jinzhou and Shenyang have a higher vulnerability to DSA compared to the other cities.

317 Similar analyses were performed for all impact types, and Figure 8 displays the drought impacts each city in Liaoning province  
 318 is most vulnerable to. It can be seen from Figure 8 that there is little difference between cities in terms of sensitivity to various  
 319 categories of drought impacts. Considering the various impacts, Chaoyang, Jinzhou, Tieling, Fuxin and Shenyang had the  
 320 highest drought vulnerability - these cities are all located in the northwest part of Liaoning province. Dalian was most  
 321 vulnerable to NLH.

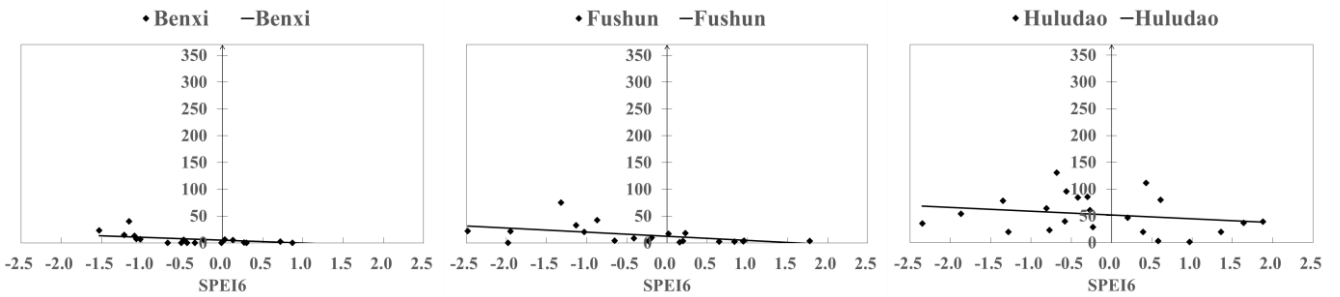
322



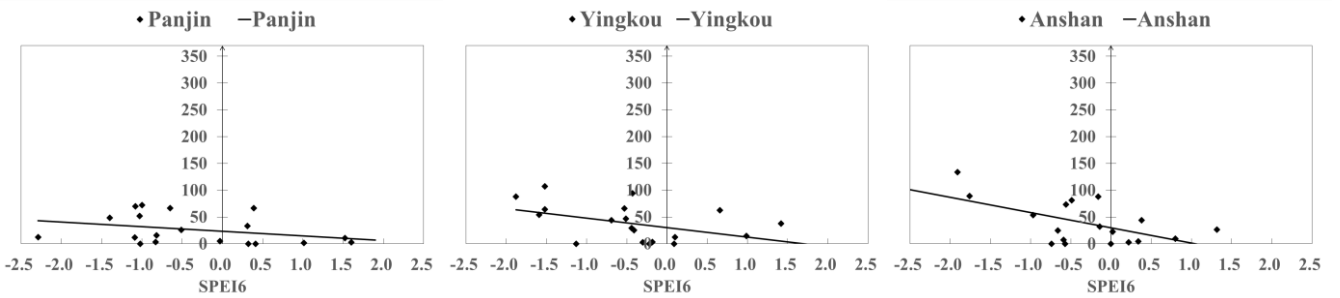
323



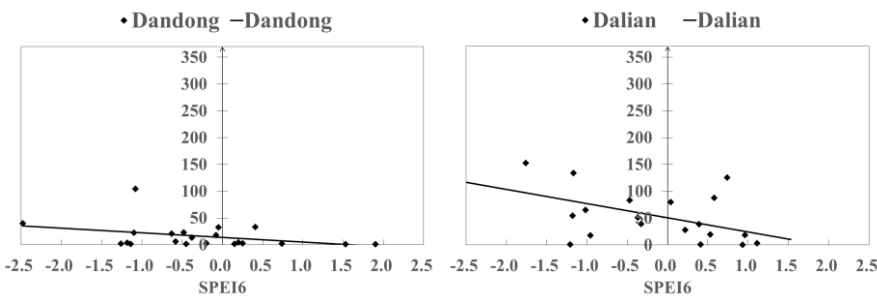
324



325

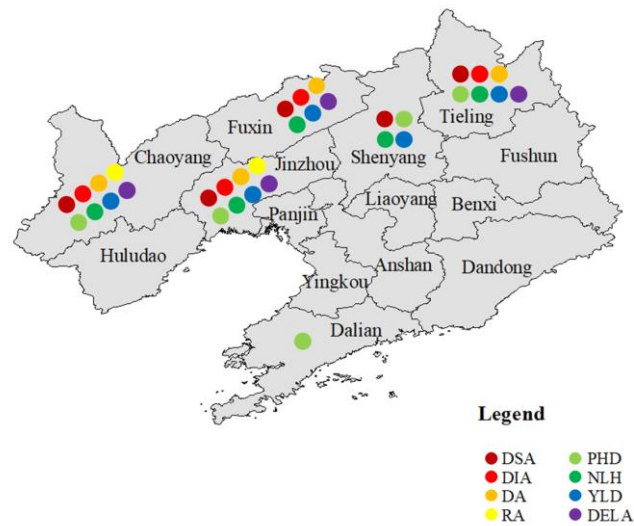


326



327

Figure 7: Linear regression results of drought suffering area (DSA) with SPEI6 in each of the 14 cities in Liaoning Province.



328  
 329 **Figure 8: Map showing the drought impacts each city in Liaoning province is most vulnerable to, based on the results of the linear**  
 330 **regression.**

331 **3.6 Vulnerability analysis**

332 A stepwise regression model was built to explain the variation in each type of Standardised Drought Impact using vulnerability  
 333 factors (listed in Table 2) as predictors. Drought impacts are symptoms of vulnerability and so can be used to estimate  
 334 vulnerability to drought (Blauhut et al., 2015a). The vulnerability to drought can be assessed by maintaining a constant severity  
 335 of drought (i.e. particular drought index values), and comparing the resultant impacts. More serious impacts correspond to  
 336 higher vulnerability. Thus, the Standardised Drought Impacts corresponding to a severe meteorological drought (SPEI6 equal  
 337 to -1.5), were regressed on the standardised drought vulnerability factors for 2017 to assess drought vulnerability for each  
 338 drought impact type. Table 3 shows the results of stepwise regression model, demonstrating the contribution of vulnerability  
 339 factors to each category of drought impact; the results varied for each impact type.

340 The relatively high  $R^2$  values demonstrate the ability of the vulnerability factors to explain the variability exhibited by each  
 341 drought impact. This is particularly the case for DSA, drought suffering area, and PHD, population with difficulty in accessing  
 342 drinking water, which had associated  $R^2$  values of 0.894 and 0.805, respectively. Population, crop cultivated area, and livestock  
 343 production explained 89.4% of the variation in DSA. Population, in combination with per unit area of fertiliser application,  
 344 and reservoir total storage capacity, also contributed to the DA model, explaining 80.5% of DA variation.

345 Population, crop cultivated area, and livestock production were identified as significant predictors in four, five, and three  
 346 models, respectively, more than other vulnerability factors. Crop cultivated area, the most frequently significant predictor of  
 347 drought impacts, also exhibited relatively high regression coefficients, demonstrating the strong relationship between the areas  
 348 cultivated for crops, and the vulnerability to drought impacts. These results are paralleled in a composite drought vulnerability  
 349 tool, which assigns relatively high weighting to area of land irrigated (Quinn, et al. 2014).



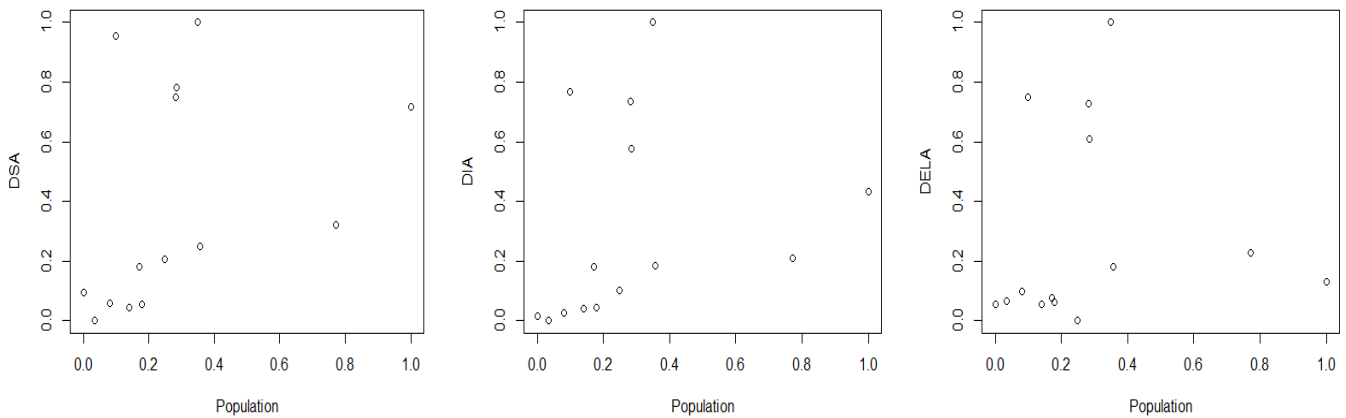
350 Population exhibited negative regression coefficients for three of four drought impacts, suggesting that as the population  
351 increased, the vulnerability to drought impacts decreased. However, population exhibits correlation with crop cultivated area,  
352 and livestock production. This, paired with potential unaccounted interactions between population and other predictors, may  
353 have resulted in inaccurate population coefficient estimation. This is supported by a positive population coefficient for  
354 predicting NLH. Population was used exclusively to predict NLH, thus correlation with other predictors, and interaction effects  
355 were unable to influence the coefficient. Furthermore, Figure 9 demonstrates that as population increases, DSA, DIA, and  
356 DELA increase. The composite drought vulnerability tool of Quinn et al. (2014) does not explicitly account for population,  
357 making a direct comparison not possible. However, it does assign a positive relationship between the ratio of rural population  
358 and drought vulnerability, which may explain the unexpected negative coefficients presented here. The number of  
359 electromechanical wells also exhibited a positive coefficient, suggesting that as the number of wells increases, drought impacts  
360 increase. However, it's possible that electromechanical wells are more prevalent in more drought prone areas, thus, the positive  
361 coefficient may simply demonstrate an association between electromechanical wells and RA.

362 Whilst drought vulnerability factors were able to explain 47.4-89.4% of the variability in drought impacts, annual per capita  
363 water supply, effective irrigation rate, and per unit area of major agricultural products were not identified as significant  
364 predictors of any drought impact type. It is important to consider, however, that correlation between these other vulnerability  
365 factors could result in them not being identified as significant, as the information is already contained within other  
366 vulnerability factors. This is supported by drought impact correlations with per capita water supply, and effective irrigation  
367 rate. However, minimal correlations between drought impacts and unit area of major agricultural products were observed,  
368 suggesting that the absence of a detected relationship may be a true reflection.

369 **Table 3: The vulnerability factors selected for the stepwise regression model and the R<sup>2</sup> of the resulting model for each impact type**  
370 **(identified by the codes in Table 1).**

Drought Impacts	Predictors vulnerability factors)	Standardised Coefficients	R <sup>2</sup>
DSA	Crop cultivated area	0.814	0.894
	Population	-0.476	
	Livestock production	0.451	
DIA	Crop cultivated area	1.098	0.743
	Population	-0.451	
DA	Livestock production	0.691	0.731
	Per capita gross domestic product	-0.436	
RA	Number of electromechanical wells	0.629	0.541
	Per capita gross domestic product	-0.452	
PHD	Crop cultivated area	0.949	0.805
	Reservoir total storage	0.472	
	Per unit area of Fertiliser application	0.352	
NLH	Population	0.720	0.474

YLD	Crop cultivated area	0.798	0.606
DELA	Crop cultivated area	0.556	
	Population	-0.879	0.786
	Livestock production	0.793	



371

372 **Figure 9: Scatterplots demonstrating the association between population and drought impact in Liaoning province.**

373 **4 Discussion**

374 The methodology in this research has a number of distinctive characteristics in relation to previous drought impact and  
375 vulnerability assessments. The method takes many drought impacts, across a range of sectors, into consideration. The extensive  
376 drought impact data were systematically collected at county level, which is a consistent and reliable data source enabling  
377 regional comparisons. The drought impact data used here included impact variables that are rarely available in other settings:  
378 e.g. population with difficulty in accessing drinking water, number of livestock with difficulty in accessing drinking water,  
379 yield loss due to drought and direct economic losses in agriculture. In addition, we not only considered the occurrence of  
380 drought impacts, but also the severity of impacts and their spatial variation between regions. Finally, the relationship between  
381 drought indices and drought impacts was explored using different statistical approaches, and this linkage was used to assess  
382 drought vulnerability in Liaoning province using a range of vulnerability factors.

383 The study has some important limitations which must be considered in interpreting the outcomes. The biggest challenge was  
384 the spatial and temporal matching between the drought impacts and indices. The regularity with which impact data are collected  
385 is determined by the drought warning level and as such they are not evenly spaced in time; as a result of this, the data were  
386 aggregated to annual totals. It was important to match the accumulation period and timing of the selected drought indices to  
387 the timescales critical for the drought impacts; for example SPEI6 in September covers the critical maize growth period and is  
388 when the majority of precipitation falls. However, the results may change if we used multi-year drought impacts, as longer  
389 index accumulation periods may have a stronger correlation with multi-year drought impacts than single year drought impacts.  
390 Soil moisture data were collected at a daily resolution, in order to match up soil moisture and impact data, the March to October

391 average soil moisture was used in the correlation analysis. However, short term soil moisture deficits can have serious impacts  
392 on crops which are sometimes unrecoverable. The average soil moisture may not have captured these short-term deficits,  
393 particularly if soil moisture was, in general, sufficient the rest of the year. Also in some cities, the lack of soil moisture data  
394 means that the annual average soil moisture does not reflect the occurrence of typical agricultural drought during the year. For  
395 this reason, soil moisture data can be used for real-time drought monitoring applications, but may not appropriate to present  
396 drought impacts on an annual scale for risk assessment, as applied here. NDVI data for the critical growth period of spring  
397 maize was used in the analysis with annual drought impacts (i.e. July-month), but again this does not take all drought events  
398 during crop growing period into account. The correlation coefficients characterising the relationship between NDVI and  
399 drought impacts are both positive and negative; this is likely due to the complexity of NDVI drivers (e.g. diversity of land  
400 cover, crop types and growth stages etc.). For this reason, some studies have used the NDVI to identify the impact of drought  
401 on vegetation (Miao et al., 2018;Rajpoot and Kumar, 2018;Trigo et al., 2015;Wang et al., 2015).

402 The results from the correlation analysis were consistent with the results from the RF analysis. Drought suffering area (DSA)  
403 and drought impact area (DIA) had strong correlations with all drought indices in Liaoning province, while PHD and NLH  
404 have a weak correlation with indices. This was because DSA and DIA are direct impacts of agricultural drought, whilst PHD  
405 and NLH are related to many additional factors, such as drinking water source location and the quality of water resources; for  
406 example, livestock can drink water from the river directly, but the quality of the river water means it is not suitable for humans  
407 – for this reason, NLH showed least sensitivity to water deficits.

408 The random forest algorithms presented in this paper explained an average of 41% of the variance observed within the drought  
409 impact data. This is relatively modest, and may be partially due to limitation associated with the impacts data. The collinearity  
410 of the drought indices (e.g. SPI6 is correlated with SPEI6) is also a potential cause of the low MSE%. The correlation  
411 coefficients calculated for drought indices and NLH in Yingkou, and PHD in Fushun were positive. This was unexpected given  
412 the interpretation of these indices as estimations of the drought severity, and the majority of reported correlation coefficients  
413 being negative. Therefore, it seems likely this result is not representative of the true relationships between these indices and  
414 impacts, and instead is an artifact of imperfect impact data. To explore this, years with the highest numbers of impacts were  
415 removed before the correlation coefficients were estimated. This resulted in a negative correlation coefficient, providing further  
416 evidence for the positive correlation coefficients not being representative of the true relationships in these cities. The  
417 availability of more data would enable a better approximation of the true relationships between indices and impacts.

418 For all the drought impacts, Dalian and Fuxin showed the highest correlation coefficients among drought impacts and drought  
419 indices in all cases. The most vulnerable cities were Fuxin, Tieling, Chaoyang, Jinzhou and Shenyang, which are all located  
420 in the northwestern part of Liaoning province indicating there is a high drought vulnerability and drought risk in northwestern  
421 Liaoning. This is consistent with existing research by Yan et al. (2012) and Zhang et al. (2012), which established a drought

422 risk assessment index system to assess drought risk in northwestern Liaoning. Zhang et al. (2012) used indicators such as  
423 precipitation, water resources, crop area, irrigation capacity and drought resistance cost to measure drought risk and found that  
424 Fuxin, Chaoyang and Shenyang had a high drought risk.

425 The above results are also in general agreement with Hao et al. (2011), who used 10-day affected crop area data as the drought  
426 impacts to assess drought risk in China at the county unit. Their result showed that the West Liaohe Plain had a high risk. The  
427 results presented in our paper identify Chaoyang and Fuxin as having the highest drought vulnerability – the majority of these  
428 two cities are located on the West Liaohe Plain.

429 As the accumulation period increased, the first splitting value extracted from the random forest model tended to decrease,  
430 suggesting that at longer accumulation periods, larger water deficits are required for equivalent impacts to occur. There is a  
431 severe water deficits of RA occurrence since it caused more yield loss compared to DIA and DA. Drinking water for livestock  
432 requires lower water quality compared to that for humans, for example, livestock can drink water from the river directly, but  
433 the water quality of the river cannot meet the human drinking needs. For this reason, NLH showed least sensitivity to water  
434 deficits.

435 The relationships analysed in this research support the use of drought indices as a predictor of drought impacts and the impact  
436 thresholds identified can also support improved drought warning and planning. The drought vulnerability map (Figure 8) can  
437 be used to support drought risk planning, helping decision-makers to implement appropriate drought mitigation activities  
438 through an improved understanding of the drivers of drought vulnerability – for example, by sinking more wells to enhance  
439 resilience to drought (noting of course, that this measure has potential longer-term implications, for example, on groundwater  
440 exploitation e.g. Changming et al. (2001)).

441 The methods used here can be applied in other areas to better understand drought impacts and drought vulnerability, where  
442 similar data (e.g. drought impacts, meteorological data) are collected. While systematic, statistical archives of drought impact  
443 are comparatively rare, globally, there are numerous other potential sources of impact data that could be used (e.g. see Bachmair  
444 et al. 2016b).

## 445 **5 Conclusion**

446 This study used correlation analysis and random forest methods to explore the relationship between drought indices and  
447 drought impacts. It assessed drought risk in Liaoning province, and proposes a drought vulnerability assessment method which  
448 is applied to study the contribution of various socioeconomic factors to drought vulnerability. Here, we return to the original  
449 objectives of the study to summarise the key findings.

450 1. When and where the most severe droughts occurred between 1990 and 2013 in Liaoning province?

451 Based on the drought monitoring results of SPI, severe droughts occurred in 2000, 2001, and 2009. In 2000-2001,

452 drought resulted in many impacts in Liaoning province, particularly in the northwestern part of Liaoning province.

453 The drought monitoring data showed corresponded well with the recorded drought impacts.

454 2. Which drought indices best link to drought impacts in Liaoning province?

455 The results showed that the indices varied in their capacity to identify the different type of drought and impacts. The  
456 strongest correlation was found for SPEI at 6 months, whilst SPI12 had a weak correlation with drought impacts.  
457 SPEI was found to better link to drought impacts than SPI of the same accumulation period. NDVI and soil moisture  
458 showed some links with impacts in some cities, but the results were generally weaker and less consistent than for  
459 either SPI/SPEI – primarily reflecting the limitations in the soil moisture and NDVI datasets

460 3. Which city or areas has a higher drought vulnerability in Liaoning province?

461 Chaoyang, Jinzhou, Fuxin, Shenyang and Tieling had higher drought vulnerability, all of which are located in the  
462 northwestern part of Liaoning province, indicating that drought vulnerability is higher in these regions than in other  
463 parts, which is consistent with previous research. However, in contrast with past work, the present research provides  
464 a much more comprehensive assessment based on the occurrence of observed impact data.

465 4. Which vulnerability factor or set of vulnerability factors have a higher contribution to drought vulnerability?

466 Population and crop cultivated area were strongly associated with drought vulnerability, suggesting these factors are  
467 good indicators of drought vulnerability. However, the complexities of these relationships with drought vulnerability  
468 require further investigation.

469 The results shown here give a clearer understanding about drought conditions in Liaoning province. The linkage developed  
470 can be used to assess drought risk and to map vulnerability. It can also be used to help develop early warning systems and  
471 predict drought impacts, which are vital tools for drought management. The results of the vulnerability analysis can guide  
472 management measures to mitigate drought impacts – an important step to shift from post-disaster recovery to proactive pre-  
473 disaster prevention.

474 **Data availability**

475 Some data, used during the study are proprietary or confidential in nature and may only be provided with restrictions (e.g.  
476 drought impacts data, soil moisture). Daily meteorological data can be explored at <http://data.cma.cn/> but access to data is  
477 restricted. NDVI data can be obtained from the Geospatial Data Cloud (<http://www.gscloud.cn/>). Vulnerability data were  
478 from the Liaoning Statistical Yearbook which can be obtained from Liaoning Province Bureau of Statistics  
479 (<http://www.ln.stats.gov.cn/>).

480 **Author Contributions**

481 Yaxu Wang, Juan Lv, Jamie Hannaford, Yicheng Wang and Lucy Barker discussed and developed the aims of the paper. Yaxu  
482 Wang was responsible for the data analysis, visualisation and prepared the original manuscript, with contributions from  
483 Hongquan Sun, Lucy Barker, Jamie Hannaford, Miaomiao Ma, Zhicheng Su and Michael Eastman.

484 **Competing interests**

485 The authors declare they have no conflict of interest.

486 **Acknowledgements**

487 The authors gratefully acknowledge funding support for these researches provided by the National Key Research and  
488 Development Project (No. 2017YFC1502402), and Fund of China Institute of Water Resources and Hydropower Research  
489 (JZ0145B592016, JZ0145B582017) and China Scholarship Council. Jamie Hannaford, Lucy Barker and Michael Eastman  
490 were supported by the NERC National Capability Official Development Assistance project SUNRISE (“Sustainable Use of  
491 Natural Resources to Improve Human Health and Support Economic Development”) [NE/R000131/1].

492 **References**

- 493 Bachmair, S., C., S., J., H., J., B. L., and K., S.: A quantitative analysis to objectively appraise drought indicators and model,  
494 *Hydrology and Earth System Sciences*, 20, 2589-2609, 2016a.
- 495 Bachmair, S., Stahl, K., Collins, K., Hannaford, J., Acreman, M., Svoboda, M., Knutson, C., Smith, K. H., Wall, N., and Fuchs,  
496 B.: Drought indicators revisited: the need for a wider consideration of environment and society, *Wiley Interdisciplinary*  
497 *Reviews: Water*, 3, 516-536, 2016b.
- 498 Below, R., Grover-Kopec, E., and Dilley, M.: Documenting Drought-Related Disasters: A Global Reassessment, *Journal of*  
499 *Environment & Development*, 16, 328-344, 2007.
- 500 Blauhut, V., Gudmundsson, L., and Stahl, K.: Towards pan-European drought risk maps: quantifying the link between drought  
501 indices and reported drought impacts, *Environmental Research Letters*, 10, 014008, 2015a.
- 502 Blauhut, V., Stahl, K., and Vogt, J.: Assessing risk by impacts: a probabilistic approach for drought assessment in Europe, *EGU*  
503 *General Assembly 2015*, 2015b,
- 504 Blauhut, V., Stahl, K., Stagge, J. H., Tallaksen, L. M., De Stefano, L., and Vogt, J.: Estimating drought risk across Europe from  
505 reported drought impacts, hazard indicators and vulnerability factors, *Hydrology and Earth System Sciences*, 20, 2779-2800,  
506 2016.
- 507 Botterill, L. C., and Hayes, M. J.: Drought triggers and declarations: science and policy considerations for drought risk  
508 management, *Natural hazards*, 64, 139-151, 2012.
- 509 Breiman, and Leo: Bagging predictors, *Machine Learning*, 24, 123-140, 2001.
- 510 Cai, F., Zhang, S. J., Ji, R. P., Mi, N., Wu, J. W., and Zhang, Y. S.: [Spatiotemporal dynamics of maize water suitability and  
511 assessment of agricultural drought in Liaoning Province, China from 1981 to 2010], *Chinese Journal of Applied Ecology*, 26,  
512 233, 2015.
- 513 Cao, Y., Zhang, L., and Zhang, Y.: Analysis of Meteorological Drought Characteristics in Liaoning Province Based on CI  
514 Index, *Resources Science*, 34, 265-272, 2012.

515 Changming, L., Jingjie, Y., and Kendy, E.: Groundwater Exploitation and Its Impact on the Environment in the North China  
516 Plain, *Water International*, 26, 265-272, 2001.

517 Chen, T., Xia, G., Liu, T., Chen, W., and Chi, D.: Assessment of drought impact on main cereal crops using a standardized  
518 precipitation evapotranspiration index in Liaoning Province, *Sustainability*, 8, 1-16, 2016.

519 Edwards, D. C.: Characteristics of 20th century drought in the United States at multiple time scales, AIR FORCE INST OF  
520 TECH WRIGHT-PATTERSON AFB OH, 1997.

521 Erhardt, T. M., and Czado, C.: Standardized drought indices: A novel uni- and multivariate approach, *Journal of the Royal*  
522 *Statistical Society*, 2017.

523 Fukuda, S., Spreer, W., Yasunaga, E., Yuge, K., Sardud, V., and Müller, J.: Random Forests modelling for the estimation of  
524 mango (*Mangifera indica* L. cv. Chok Anan) fruit yields under different irrigation regimes, *Agricultural Water Management*,  
525 116, 142-150, 2013.

526 Hao, L., Zhang, X., and Liu, S.: Risk assessment to China's agricultural drought disaster in county unit, *Natural Hazards*, 61,  
527 785-801, 2011.

528 Hayes, M., Svoboda, M., Wall, N., and Widhalm, M.: The Lincoln declaration on drought indices: universal meteorological  
529 drought index recommended, *Bulletin of the American Meteorological Society*, 92, 485-488, 2011.

530 Hayes, M. J., Svoboda, M. D., Wihite, D. A., and Vanyarkho, O. V.: Monitoring the 1996 drought using the standardized  
531 precipitation index, *Bulletin of the American meteorological society*, 80, 429-438, 1999.

532 Hong, W., Hayes, M. J., Weiss, A., and Qi, H.: An Evaluation the Standardized Precipitation Index, the China-Z Index and the  
533 Statistical Z-Score, *International Journal of Climatology*, 21, 745-758, 2001.

534 Hong, W., and Wilhite, D. A.: An Operational Agricultural Drought Risk Assessment Model for Nebraska, USA, *Natural*  
535 *Hazards*, 33, 1-21, 2004.

536 Houérou, H. N. L.: Climate change, drought and desertification, *Journal of Arid Environments*, 34, 0-185, 1996.

537 Jia, H., Wang, J., Pan, D., and Cao, C.: Maize Drought Disaster Risk Assessment Based on EPIC Model: A Case Study of  
538 Maize Region in Northern China, *Acta Geographica Sinica*, 66, 643-652, 2011.

539 Junling, L. I., Zhang, H., and Cao, S.: Assessment and Zonation of Late Frost Injury of Winter Wheat in He'nan Province  
540 Based on GIS, *Journal of Arid Meteorology*, 2015.

541 Kang, Y., Xie, J., Huang, W., and Zhou, Z.: Fuzzy comprehensive evaluation of agricultural drought vulnerability, 12, 113-120,  
542 2014.

543 Karavitis, C. A., Tsemelis, D. E., Skondras, N. A., Stamatakos, D., Alexandris, S., Fassouli, V., Vasilakou, C. G., Oikonomou,  
544 P. D., Gregorič, G., and Grigg, N. S.: Linking drought characteristics to impacts on a spatial and temporal scale, *Water Policy*,  
545 16, 1172-1197, 2014.

546 Kursá, M. B.: Efficient All Relevant Feature Selection with Random Ferns, 2017.

547 Li, Y. P., Wei, Y., Meng, W., and Yan, X. D.: Climate change and drought: a risk assessment of crop-yield impacts, *Climate*  
548 *Research*, 39, 31-46, 2009.

549 Li, Z., Tao, Z., Xiang, Z., Kaicheng, H., Shan, G., Hao, W., and Hui, L.: Assessments of Drought Impacts on Vegetation in  
550 China with the Optimal Time Scales of the Climatic Drought Index, *International Journal of Environmental Research & Public*  
551 *Health*, 12, 7615-7634, 2015.

552 Liaoning Province Bureau of Statistics: Liaoning Statistical Yearbook 2016, China Statistics Press, 2017.

553 Liaw, A., and Wiener, M.: Classification and regression by randomForest, *R news*, 2, 18-22, 2002.

554 Lin, P., Youhua, M. A., Jiang, Z., Wang, Q., Wang, J., Huang, H., and Jiang, H.: Research Progress of Evaluation Index of Soil  
555 Moisture, *Agricultural Science & Technology*, 2016.

556 Liu, G., and Guo, C.: Status and distribution of water resources in Liaoning Province, *Water Resources & Hydropower of*  
557 *Northeast China*, 32-33+49, 2009.

558 Liu, X., Zhang, J., Ma, D., Bao, Y., Tong, Z., and Liu, X.: Dynamic risk assessment of drought disaster for maize based on  
559 integrating multi-sources data in the region of the northwest of Liaoning Province, China, *Natural Hazards*, 65, 1393-1409,  
560 2013.

561 Lloyd-Hughes, B.: The impracticality of a universal drought definition, *Theoretical and Applied Climatology*, 117, 607-611,

562 2014.

563 McKee, T. B., Doesken, N. J., and Kleist, J.: The relationship of drought frequency and duration to time scales, Proceedings  
564 of the 8th Conference on Applied Climatology, 1993, 179-183,

565 Miao, B., Li, Z., Liang, C., Wang, L., and Chao, J.: Temporal and spatial heterogeneity of drought impact on vegetation growth  
566 on the Inner Mongolian Plateau, *Rangeland Journal*, 40, 2018.

567 Mishra, A. K., and Singh, V. P.: A review of drought concepts, *Journal of Hydrology*, 391, 202-216, 2010.

568 Mutanga, Onesimo, ADAM, Elhadi, Cho, A., and Moses: High density biomass estimation for wetland vegetation using  
569 WorldView-2 imagery and random forest regression algorithm, *International Journal of Applied Earth Observations &  
570 Geoinformation*, 18, 399-406, 2012.

571 Özger, M., Mishra, A. K., and Singh, V. P.: Low frequency drought variability associated with climate indices, *Journal of  
572 Hydrology*, 364, 152-162, 2009.

573 Potopová, V., Štěpánek, P., Možný, M., Türkott, L., and Soukup, J.: Performance of the standardised precipitation  
574 evapotranspiration index at various lags for agricultural drought risk assessment in the Czech Republic, *Agricultural & Forest  
575 Meteorology*, 202, 26-38, 2015.

576 Rajpoot, P. S., and Kumar, A.: Impact assessment of meteorological drought on rainfed agriculture using drought index and  
577 NDVI modeling: a case study of Tikamgarh district, M. P., India, *Applied Geomatics*, 1-9, 2018.

578 Ren, Y. D., and Zhou, J.: Research on the Status of Corn Industry Development in Liaoning Province, *Agricultural Economy*,  
579 37-38, 2009.

580 Seiler, R. A., Hayes, M., and Bressan, L.: Using the standardized precipitation index for flood risk monitoring, *International  
581 Journal of Climatology*, 22, 1365-1376, 2002.

582 Stage, J. H., Kohn, I., Tallaksen, L. M., and Stahl, K.: Modeling drought impact occurrence based on climatological drought  
583 indices for four European countries, *Egu General Assembly Conference*, 2014.

584 Stahl, K., Kohn, I., Blauhut, V., and Urquijo, J.: Impacts of European drought events: Insights from an international database  
585 of text-based reports, *Natural Hazards and Earth System Sciences*, 3, 5453-5492, 2016.

586 Svoboda, M. D., and Hayes, M. J.: Enhancing Drought Risk Management: Tools and Services for Decision Support, 2011.

587 Thornthwaite, C. W.: An approach toward a rational classification of climate, 1, *LWW*, 1948.

588 Trigo, R., Gouveia, C. M., Beguería, S., and Vicenteserrano, S.: Drought impacts on vegetation dynamics in the Mediterranean  
589 based on remote sensing and multi-scale drought indices, *Egu General Assembly Conference*, 2015,

590 United Nations International Strategy for Disaster Reduction (UNISDR): 2009 UNISDR Terminology on Disaster Risk  
591 Reduction, UNISDR, Geneva, 2009.

592 Vicente-Serrano, S. M., Beguería, S., and Lópezmoreno, J. I.: A multiscalar drought index sensitive to global warming: the  
593 standardized precipitation evapotranspiration index, *Journal of Climate*, 23, 1696-1718, 2010.

594 Wang, H., Chen, A., Wang, Q., and He, B.: Drought dynamics and impacts on vegetation in China from 1982 to 2011,  
595 *Ecological Engineering*, 75, 303-307, 2015.

596 Wang, L., and Chen, W.: Applicability Analysis of Standardized Precipitation Evapotranspiration Index in Drought Monitoring  
597 in China, *Plateau Meteorology*, 33, 423-431, 2014.

598 Wang, S. H.: Analysis of Logical Relationship in the Report of National Drought Relief Statistics Management System, Henan  
599 *Water Resources & South-to-North Water Diversion*, 46-47, 2014.

600 Wilhite, D. A., and Glantz, M. H.: Understanding the drought phenomenon: the role of definitions, *Water International*, 10,  
601 111-120, 1985.

602 Wilhite, D. A.: Chapter 35 Preparing for Drought: A Methodology, *Drought Mitigation Center Faculty Publications*, Drought  
603 *Mitigation Center Faculty Publications*, Lincoln, 2000.

604 Wilhite, D. A., and Buchanan, S.: Drought as hazard: understanding the natural and social context, *Drought and water crises:  
605 science, technology, and management issues*, New York & London, 2005.

606 Wu, J., Zhou, L., Liu, M., Zhang, J., Leng, S., and Diao, C.: Establishing and assessing the Integrated Surface Drought Index  
607 (ISDI) for agricultural drought monitoring in mid-eastern China, *International Journal of Applied Earth Observation &  
608 Geoinformation*, 23, 397-410, 2013.



609 Wu, Z. Y., Lu, G. H., Guo, H. L., and Kuang, Y. H.: Drought monitoring technology based on simulation of soil moisture,  
610 Journal of Hohai University (Natural Sciences ), 40, 28-32, 2012.

611 Xiao-jun, W., Jian-yun, Z., Shahid, S., ElMahdi, A., Rui-min, H., Zhen-xin, B., and Ali, M.: Water resources management  
612 strategy for adaptation to droughts in China, Mitigation and Adaptation Strategies for Global Change, 17, 2012.

613 Yan, L., Zhang, J., Wang, C., Yan, D., Liu, X., and Tong, Z.: Vulnerability evaluation and regionalization of drought disaster  
614 risk of maize in Northwestern Liaoning Province, Chinese Journal of Eco-Agriculture, 20, 788-794, 2012.

615 Yanping, Q., Juan, L., Zhicheng, S., Hongquan, S., and Miaomiao, M.: Research review and perspective of drought mitigation,  
616 Journal of Hydraulic Engineering, 2018.

617 Zhang, J.: Risk assessment of drought disaster in the maize-growing region of Songliao Plain, China, Agriculture Ecosystems  
618 & Environment, 102, 133-153, 2004.

619 Zhang, J. Q., Yan, D. H., Wang, C. Y., Liu, X. P., and Tong, Z. J.: A Study on Risk Assessment and Risk Regionalization of  
620 Agricultural Drought Disaster in Northwestern Regions of Liaoning Province, Journal of Disaster Prevention & Mitigation  
621 Engineering, 2012.

622 Zhao, H., Gao, G., Yan, X., Zhang, Q., Hou, M., Zhu, Y., and Tian, Z.: Risk assessment of agricultural drought using the  
623 CERES-Wheat model: A case study of Henan Plain, China, Climate Research, 50, 247-256, 2011.

624 Zhao, H., Gao, G., An, W., Zou, X., Li, H., and Hou, M.: Timescale differences between SC-PDSI and SPEI for drought  
625 monitoring in China, Physics & Chemistry of the Earth, S1474706515001576, 2015.

626