

Answers to reviewers

1
2
3
4

Reviewer 1 :

Remarks	Answers
The author present the 100 RC Framework. . Why only this frame. This gives the impression of justifying the choice of authors' framework (Serre 2016).	<p>We had already presented another model for analysing resilience (the DS3 Model), but we have now added another comparative study, the Cutter et al. (2014) methodology.</p> <p>"A third study conducted by Cutter identified six indicators to measure resilience - social, economic, community, institutional, infrastructural and environmental. Each indicator is divided into sub-variables such as education, age, language proficiency, employment rate, immigration rate, access to food, disaster training, social stability, access to health, access to energy, and so on. Each variable has a positive or negative effect on community resilience. Calculated using quantitative data, this method makes it possible to quantify and map resilience at the national level and more specifically at the county level in the United States. While this method greatly facilitates comparison across a large number of variables, the disadvantage is that the final score is not an absolute measure of community resilience for a single location, but rather a relative value against which multiple locations can be compared. For this reason, the proposed work is done at the US scale and not at a finer scale or for a single year, not being a comparative work over several years."</p>
Line 150: The authors write: lead to decision-making that integrates resilience in risk management strategies It seems to me that it would be quite the opposite because it seems to me that resilience includes risk management	It depends on whether we are talking about the general concept or the strategies for applying the concept. We have added the precision "resilience strategies".
Section 2.2 Figure 3 does not add anything to the text.	We have deleted figure 3.

<p>Figure 4 is not explained and this is an example</p>	<p>We added an explanation : « Geovisualisation techniques make it possible to aggregate different types of raw data (e.g. underground dynamics, urban structure, building vulnerability), transform them by joining these data (Fig.4), calculating the damage rate based on these raw data, and then producing a final result, translated into a dynamic, understandable and accessible map. »</p>
<p>Section 2.3 In the title of this section, the authors refer to resilience, but the whole text refers to notions of vulnerabilities.</p>	<p>We added a precision “In addition, this research focuses on the "vulnerability" prism of risk management. While we defend the fact that these two concepts are linked and inseparable (Provitolo, 2012) in the apprehension of climate disruption (Heinzlef, 2019), the difficult definition of resilience and its operationalisation is noteworthy. When vulnerability is defined as the propensity of a territory and a population to suffer damage, resilience focuses on the strategies and means to prepare territories and populations for the increase in risks and their damage, in order to limit the negative impacts. Resilience is therefore more complex to quantify, operationalize and visualize”</p>
<p>Table 1 : How has the impact on resilience been determined? Is it based on references or it is the authors who made this evaluation and in this case we should say how it was done</p>	<p>These indications come from the references given in Table 1</p>
<p>What is the link between this table and Figure 6?</p>	<p>Table 1 and Figure 6 are linked, with Figure 6 being the conceptual circle of the three indicators of resilience defined in this study, technical, social and urban resilience.</p>
<p>Section 3 and following Lines 275-277: Where do these questions come from? These are the link of these issues with decision making since resilience is presented as a decision support tool.</p>	<p>We added a precision: “Therefore, several questions must be asked to support the understanding of the concept of resilience and decision making: Who is vulnerable/resilient? What? When? What elements could limit the impacts of a crisis</p>

	like a flood event? Are they efficient before, during and after a flood? »
The numbers in equations lines 345 and 248 are not correct	The changes have been made.
. Figure 9 is illegible, especially the legends	We made modifications
The results are the result of a lot of work and the authors should discuss and the real implementation of such tools in municipalities or regions	We added this paragraph: “Following theoretical modeling and visual, cartographic and geovisualized production work, further development included the organization of workshops to question users on their understanding and use of the tool and the results (Heinzlef, 2019). These workshops took place with critical infrastructure managers and made it possible to (re)launch the debate around the issue of resilience and thus to build knowledge without hypothesis a priori (Maceachren and Kraak, 1997) around a tool for visualizing a concept that is difficult to put into practice. This methodology made it possible to launch a longer-term reflection with local actors to reflect on a resilience strategy and integrate the concept into risk management. In particular, the results made it possible to consider a strategy for managing the risk of flooding in the Rhone. »

9
10 **A spatial decision support system for enhancing resilience to floods.**
11 **Bridging resilience modeling and geovisualization techniques**
12

13 Charlotte Heinzlef¹, Vincent Becue², Damien Serre¹
14

15 ¹UMR 241 EIO – French Polynesia University - B.P. 6570 - 98702 Faa'a - Tahiti – French Polynesia,
16 charlotte.heinzlef@upf.pf, damien.serre@upf.pf
17

18 ²University of Mons, Faculty of Architecture and Urban Planning Rue d'Havr  88, 7000, Mons, Belgium,
19 Vincent.becue@umons.ac.be
20

21 **Abstract**

22
23 In the context of climate change and increasing urbanization, floods are considerably affecting urban areas. The
24 concept of urban resilience may be an interesting means of responding to urban flood issues. The objective of this
25 research is to propose a spatial decision support tool based on geovisualization techniques and a resilience
26 assessment method. The goal is to localize the level of resilience modeled in different territories. The methodology
27 proposed consists in integrating three resilience indicators applied to a case study in Avignon (Provence Alpes
28 C te d'Azur Region, France) and the use of geovisualization techniques: using GIS for data processing and
29 analysis, visualization, mapping and model processing. The methodology integrates decision-making by
30 identifying characteristics capable of improving urban resilience and facilitating its understanding using a visual
31 tool. The results demonstrate the usefulness of modeling resilience using geovisualization techniques to identify
32 the potential for local resilience, integrate local stakeholders into a process of clarifying the concept through the
33 contribution of visualization, and consider easier access to this concept based on data analysis, processing and
34 visualization through the design of maps.
35

36 **Key words:** Geovisualization, Urban resilience modeling and mapping, flood risks

37
38 **1- Introduction**

39
40 *1.1 Issues and background*
41

42 The context of climate change has led to an increase in disasters, among which urban floods are
43 considered the most damaging, accounting for 43.4% of climate-related disasters over the period 1998-2017
44 (Wallemacq and House, 2018). At present, the European Environment Agency ranks France third among European
45 countries affected by natural hazards over the period 1980-2017 (European Environment Agency, 2019), as 33%
46 of its municipalities were affected with "*an estimated annual cost of around 250 million euros*" (Lhomme, 2012).
47 The Mediterranean region is among the most vulnerable in France, with an average of 10 deaths per year caused
48 by floods. 42% of the population of the Vaucluse Department live in areas at risk from floods and it ranks first
49 among departments exposed to flood risk, in comparison to the national average of 11% of the population living
50 in flood risk areas in 2009. With 147/151 municipalities in the department affected by floods, Vaucluse is
51 extremely vulnerable to this growing risk.

52 To address this growing risk, the concept of resilience has been included step by step into risk
53 management strategies, worldwide, as it offers a systemic approach to and analysis of risks, their issues, territories,
54 populations and management services (Bakkensen et al., 20). The concept of resilience can be defined as “*the*
55 *ability of a system, community or society exposed to hazards to resist, absorb, accommodate to and recover from*
56 *the effects of a hazard*” (UNISDR-United Nations International Strategy for Disaster Reduction, 2009). Although
57 and despite a significant increase in the use of the concept and its positive opportunities for risk strategies, concrete
58 progress towards operationalization is still needed (Klein et al., 2003). The objective of this research is therefore
59 to propose an approach to address this lack of operationality. While some studies have been carried out in Europe
60 to operationalize the concept of vulnerability through indicators (Opach and Rød, 2013), few of them mention
61 resilience. When such is the case (Lhomme et al., 2013; Suárez et al., 2016), it is essentially from a technical and
62 organizational angle, but without considering the social and therefore systemic dimensions of the territory
63 concerned.

64 This research therefore aims at using the concept of resilience in a practical and understandable manner
65 at the city level, with the design of a spatial decision support system. The originality of the methodology is justified
66 by the collaborative approach taken, characterized by a socio-economic partnership with the City of Avignon and
67 its urban services. By combining the experiences of managers and politicians with scientific advances, the
68 approach aims at addressing the challenges and limitations of the concept of urban resilience in the face of flood
69 risk. The result of joint design, the spatial decision support system is being tested in the Avignon area in response
70 to more risky situations. Spatial decision makes it possible to establish a link between scientific advances and local
71 knowledge and practices. This spatial decision support system involves redefining the criteria for resilience and
72 measuring the potential for resilience (Frazier et al., 2013). It aims at overcoming:

- 73 - theoretical obstacles, by designing indicators to assess resilience;
- 74 - methodological issues by representing the potential for resilience through mapping tools used to
75 provide stakeholders with a medium capable of making them aware of the concept, integrate it into
76 their risk management strategies and transform it into concrete and applicable actions.

77 Meeting the challenges of operationalizing resilience therefore involves rethinking modeling and mapping
78 practices as well as focusing on understanding the concept, adopting it and integrating stakeholders into the
79 resilience process.

80

81 *1.2 Research Focus*

82

83 We adopt the viewpoint that promoting techniques to make resilience operational can be achieved by
84 collaboration and visualization methods. Getting people from different backgrounds to interact (Callon et al.,
85 2001), enriches discussions, encourages the expression of opposing viewpoints on the same subject, and makes it
86 possible to be both more measured and more incisive in a specific field. Resilience is therefore a subject that
87 requires the confrontation of views, and scientific and local knowledge (Radhakrishnan et al., 2017). We therefore
88 propose to develop strategies to operationalize resilience so that they are constructed jointly with the city's actors,
89 allowing their direct investment. Rather than taking a top-down approach, our goal is to create a common
90 discussion around resilience issues to initiate constructive dialogues to overcome the biases of each group of
91 stakeholders (Jacobs et al., 2005; Moser, 2005; Næss et al., 2006; Patt and Dessai, 2005). In addition, we consider

92 that techniques translating a fuzzy concept into a practical spatial decision support system - such as
93 geovisualization and modelling - would promote stakeholder involvement and understanding of the related issues
94 and thus lead to adapted decision-making. The motivation of the article is to demonstrate that combining certain
95 geovisualization techniques with resilience modeling will contribute to better understanding of the concept, and
96 lead to its operationalization and translation into tangible strategies at the local level.

97 We defend the hypothesis that defining resilience criteria and translating them visually for implementation in
98 an easy-to-use tool will promote and better integrate resilience techniques in view to managing urban floods. By
99 carrying out a municipality scale study and combining a collaborative methodology and GIS resilience modeling
100 to develop a geovisualization tool, we hope to clarify the concept, and ensure its understanding and adoption by
101 urban planners in their approaches to urban dynamics. In the first section we present a state of the art of resilience
102 modeling and geovisualization techniques in the field of climate risk management, and then the methodologies
103 chosen for this research. Finally, we present the first application of this research and its results in Avignon (France).
104 Finally, we discuss these initial results.

106 2. Resilience modelling and geovisualization techniques for risk management: a state of the art

107 *2.1 The resilience concept and modeling approaches*

108
109 As the concept of resilience is multidisciplinary, its definition and application as a risk management
110 strategy is extremely complex. In order to move towards its operationalization, it is necessary to build an analysis
111 model to address the concept. Several studies have attempted to build analysis models to define indicators or a
112 specific baseline (Bakkensen et al., 2017; Fox-Lent et al., 2015).

113 The 100 Resilient Cities (100RC) consortium was launched by the Rockefeller Foundation in 2013. The
114 purpose of the 100 Resilient Cities consortium is to help cities around the world become more resilient to the
115 physical, social and economic challenges of the 21st century. 100RC supports the adoption and integration of a
116 vision of resilience that includes not only disasters - earthquakes, fires, floods, etc. - but also the tensions that
117 weaken the urban area on a daily or cyclical basis. Resilience is defined as the ability of individuals, communities,
118 institutions, businesses and urban systems to survive, adapt and evolve, regardless of the types of chronic stresses
119 or shocks they may encounter. A holistic approach is advocated. 100RC has built a framework defining the
120 characteristics of urban resilience (Fig.1).

121

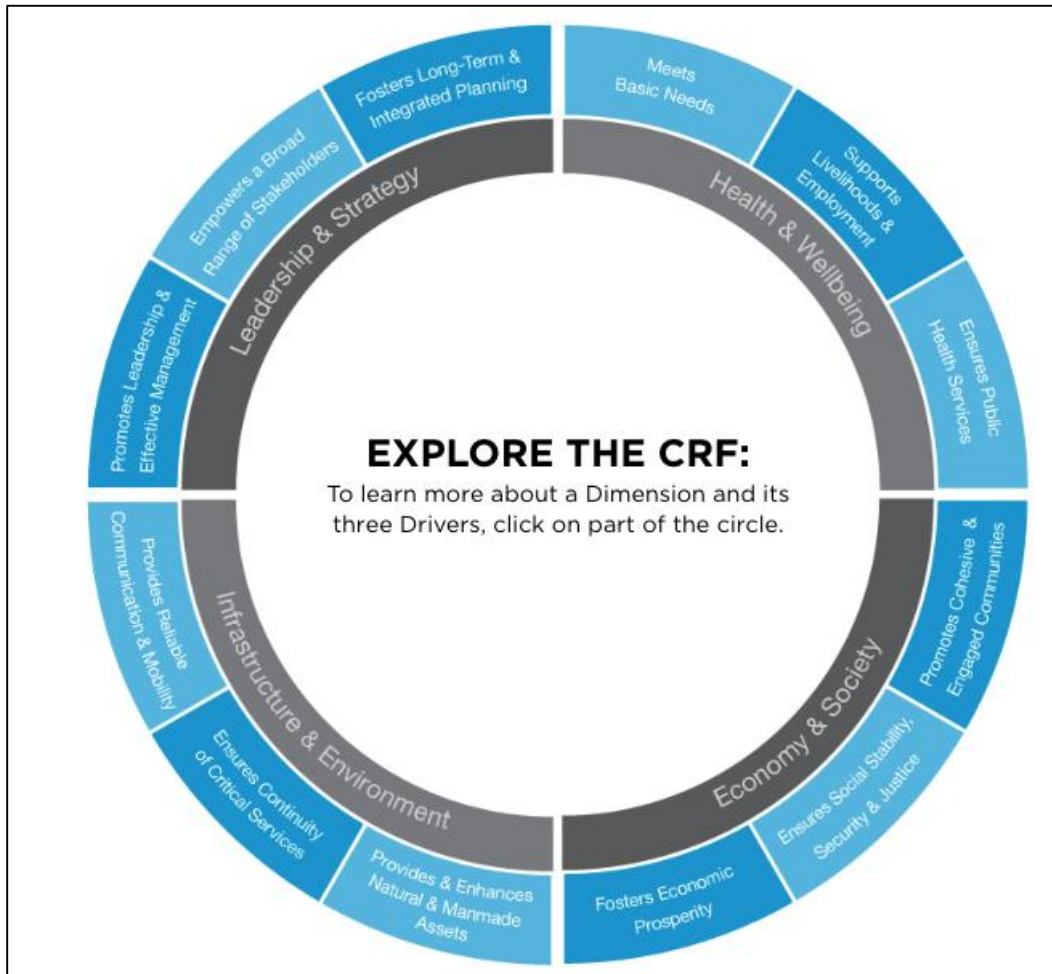


Figure 1: 100 Resilient Cities Framework, (100 Resilient Cities, s. d.)

122

123

124

125 The definition of resilience via these indicators allows identifying criteria for resilience in a territory or within a
 126 population. It allows launching discussion around an initially fuzzy concept. However, it does not allow visualizing
 127 criteria or resilience potentials at the local level (100 Resilient Cities, n.d.). Mapping is non-existent and the
 128 absence of tangible data makes it difficult for local populations and actors to appropriate the concept, understand
 129 it, and reproduce it.

130 Another study focused on identifying resilience capacities applied to urban networks. It led to the creation
 131 of the DS3 (Spatial Decision Support System) model (Serre, 2018). Three resilience capacities were defined to
 132 study resilience (Serre, 2018)), namely resistance, absorption, and recovery (Fig.2).

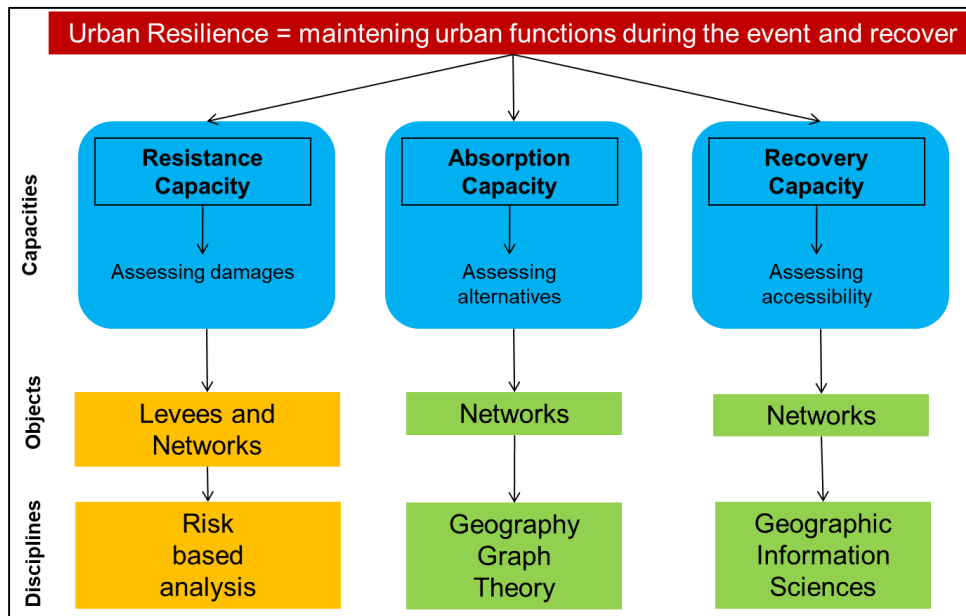


Figure 2: DS3 Model (Serre, 2016)

133

134

135 The resistance capacity is necessary to determine the material damage of the networks. It is a given that
 136 the more damaged a network is, the slower and more difficult it will be to return it to effective service. The results
 137 of the damage analysis make it possible to measure this damage, and determine the interdependencies between the
 138 various components of the networks.

139 Absorption capacity represents the alternatives available to the network following a failure. The idea is
 140 to highlight solutions to maintain service continuity despite floods, operating in degraded mode.

141 Finally, the recovery capacity represents the time required to retrofit the networks until reaching a full
 142 level of service.

143

144 The DS3 model can be used to identify factors that would lead to increased urban resilience, highlighting
 145 the importance of urban networks and critical infrastructures. This technical approach focuses mainly on urban
 146 networks. However, cities comprise many factors, such as social dynamics, urban interactions and technical
 147 components, leading to additional indicators that must be monitored (Serre and Heinzlef, 2018).

148

149 A third study conducted by Cutter (Cutter et al., 2010) identified six indicators to measure resilience -
 150 social, economic, community, institutional, infrastructural and environmental. Each indicator is divided into sub-
 151 variables such as education, age, language proficiency, employment rate, immigration rate, access to food, disaster
 152 training, social stability, access to health, access to energy, and so on. Each variable has a positive or negative
 153 effect on community resilience. Calculated using quantitative data, this method makes it possible to quantify and
 154 map resilience at the national level and more specifically at the county level in the United States. While this method
 155 greatly facilitates comparison across a large number of variables, the disadvantage is that the final score is not an
 156 absolute measure of community resilience for a single location, but rather a relative value against which multiple
 157 locations can be compared. For this reason, the proposed work is done at the US scale (Fig.3) and not at a finer
 158 scale or for a single year, not being a comparative work over several years.

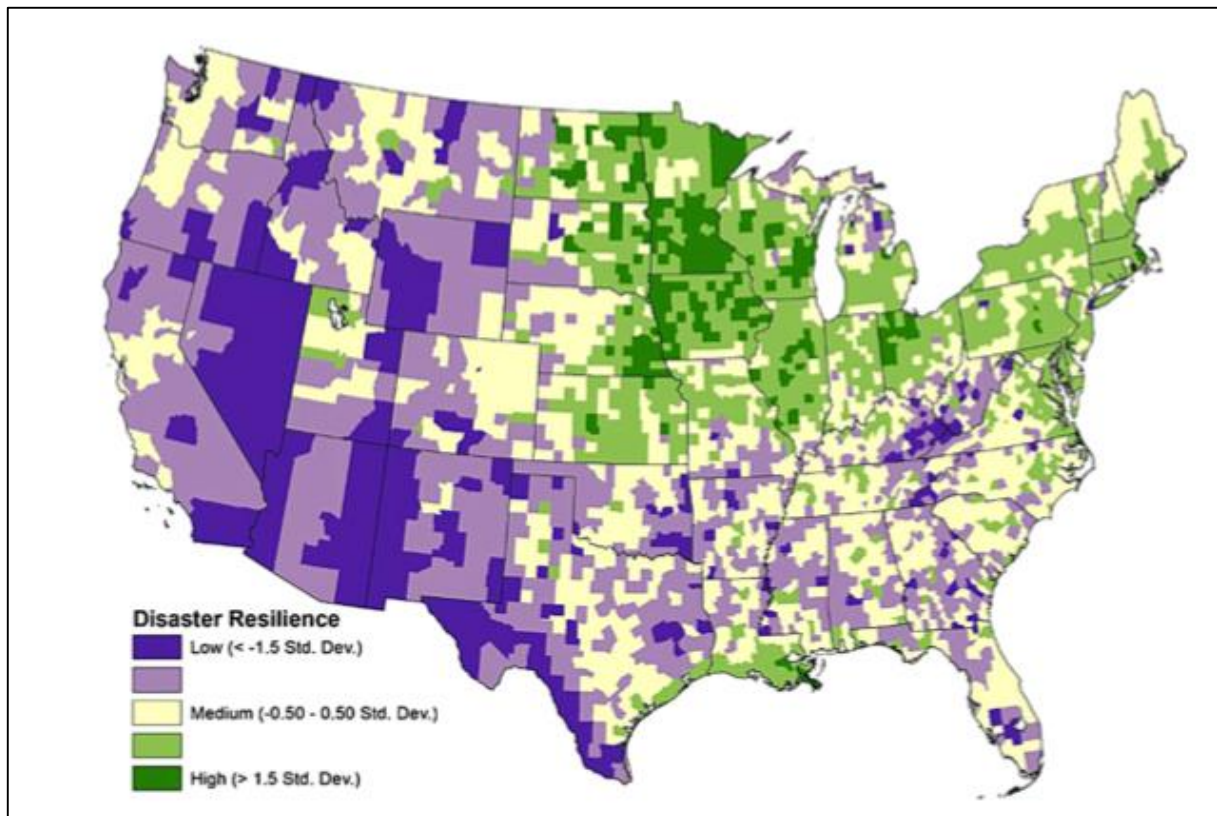


Figure 3: Disaster resilience value in USA (Cutter et al., 2014)

159
160

161

162 These three approaches attempt to address the biases of conceptualization and modeling resilience. But,
163 in the first approach of the concept and data visualization, there is nothing evident about how the results should be
164 processed and explored. In the second approach, the exploration of the results is visible through the application of
165 the methodology, notably in a case study on Hamburg (Serre et al., 2016). Nonetheless, the exploration and
166 analysis of the data is not accessible to the public concerned, limiting their understanding and appropriation of the
167 method. Moreover, this approach analyzes the territory only through urban networks and not with the other
168 components that shape it. The third approach proposes a measurement and mapping of resilience, but the scale of
169 analysis selected does not allow for decision-making by local stakeholders.

170 The objective of this work is therefore to model and operationalize resilience as comprehensively and
171 exhaustively as possible. The aim is to analyze it at the local level in order to advise stakeholders and lead to
172 decision-making that integrates resilience strategies in risk management.

173

174 2.2 Geovisualization techniques: added values in risk management processes

175 For many years, risk mapping was one of the main methods used to analyze, represent, and examine the
176 multiple characteristics of risks and risk management strategies (Barroca and Serre, 2018). However, new methods
177 have been introduced such as Geographic Information Systems (GIS), and scientific information visualization
178 (Kraak, 2003). GIS gives access to voluminous and heterogeneous tools like databases and graphic applications to
179 establish interactions between data and maps. These interactions can be visualized through an interface used to
180 explore the characteristics of data. The adaptation of scientific visualization to mapping was initially called
181 "geographic visualization" and then "geovisualization" (Maceachren and Kraak, 1997). Geovisualization is
182 defined as "the set of visualization tools that allow interactive exploration of geolocated data in order to build

183 *knowledge without assumptions a priori*" (Maceachren and Kraak, 1997). Geovisualization includes fields such as
184 scientific visualization, mapping, image processing, knowledge extraction, and GIS.

185 Therefore, geovisualization is a synthesis approach applied to GIS techniques that integrates practices
186 such as mapping, visualization, data and image analysis, by analyzing geospatial data (MacEachren and Kraak,
187 2001). This methodology offers the possibility of representing multidimensional, voluminous and heterogeneous
188 data. More specifically, geovisualization is mainly adapted to the representation and analysis of georeferenced
189 data. The mapping exercise is divided into several objectives: explore, analyze, synthesize and present. Geovisual
190 tools must be adapted to these different uses. The different tools currently available can be differentiated by three
191 criteria. The first is the audience, which can range from the "general public" with little knowledge of
192 geovisualization issues to experts with good knowledge of the subject. The second is the degree of interactivity
193 offered by the geovisualization tool. The last criterion is knowledge of the data, which varies from the domain of
194 the known to the domain of the unknown (MacEachren and Kraak, 1997). The 4 uses of geovisualization can
195 therefore be placed inside a cube. Each axis of this cube (x,y,z) represents one of the 3 criteria previously
196 mentioned (audience, interactivity, data relations).

197 This data representation (Donolo, 2014) – also called “virtual science” - allows constructing,
198 reconstructing, representing and interpreting scientific issues (Yasobant et al., 2015). The fact of representing
199 spatiotemporal data in different forms provides better understanding of the different phenomena involved,
200 resulting in either better dissemination of the information or better decision-making. This methodology allows
201 exploring hypotheses, sharing arguments, developing solutions and, most importantly, building common
202 knowledge around the same issue (MacEachren, 1997).

203 Consequently, these characteristics and advantages make geovisualization an interesting methodology for
204 studying risk management. Crisis management is, indeed, a concrete example where it is useful to use visual, map-
205 based tools to integrate, assess and apply multisource geospatial information and data (MacEachren et al., 2004).
206 Indeed, in a context of climate change and related uncertainties, modeling or simulating disasters such as floods is
207 becoming increasingly complex. Current techniques are limited in the face of the complexity of floods, particularly
208 because of the multiple reasons, sources and causes of disasters (Leskens et al., 2014; Löwe et al., 2018), as they
209 are essentially used to model urban planning projects or response strategies to cope with the increase in the
210 occurrence of such events. Many studies have used geovisualization to analyze the complexity of flood risks,
211 whether to analyze flooding from the perspective of risk, for instance expected damage (Meyer et al., 2009; Ward
212 et al., 2011), hazard, such as duration, velocity, water depth, etc. (Schumann et al., 2009), management strategy
213 (de Moel et al., 2015), at the national (Burby, 2001), regional (Elmer et al., 2012; Gaslikova et al., 2011;
214 Vorogushyn et al., 2012), and local (Aerts et al., 2013; Apel et al., 2009; Gerl et al., 2014) levels, and even on the
215 built scale (Fig.4), with, for example, FReT (Flood Resilience Technologies) (Schinke et al., 2016; Golz et al.,
216 2015). Geovisualisation techniques make it possible to aggregate different types of raw data (e.g. underground
217 dynamics, urban structure, building vulnerability), transform them by joining these data (Fig.4), calculating the
218 damage rate based on these raw data, and then producing a final result, translated into a dynamic, understandable
219 and accessible map.

220

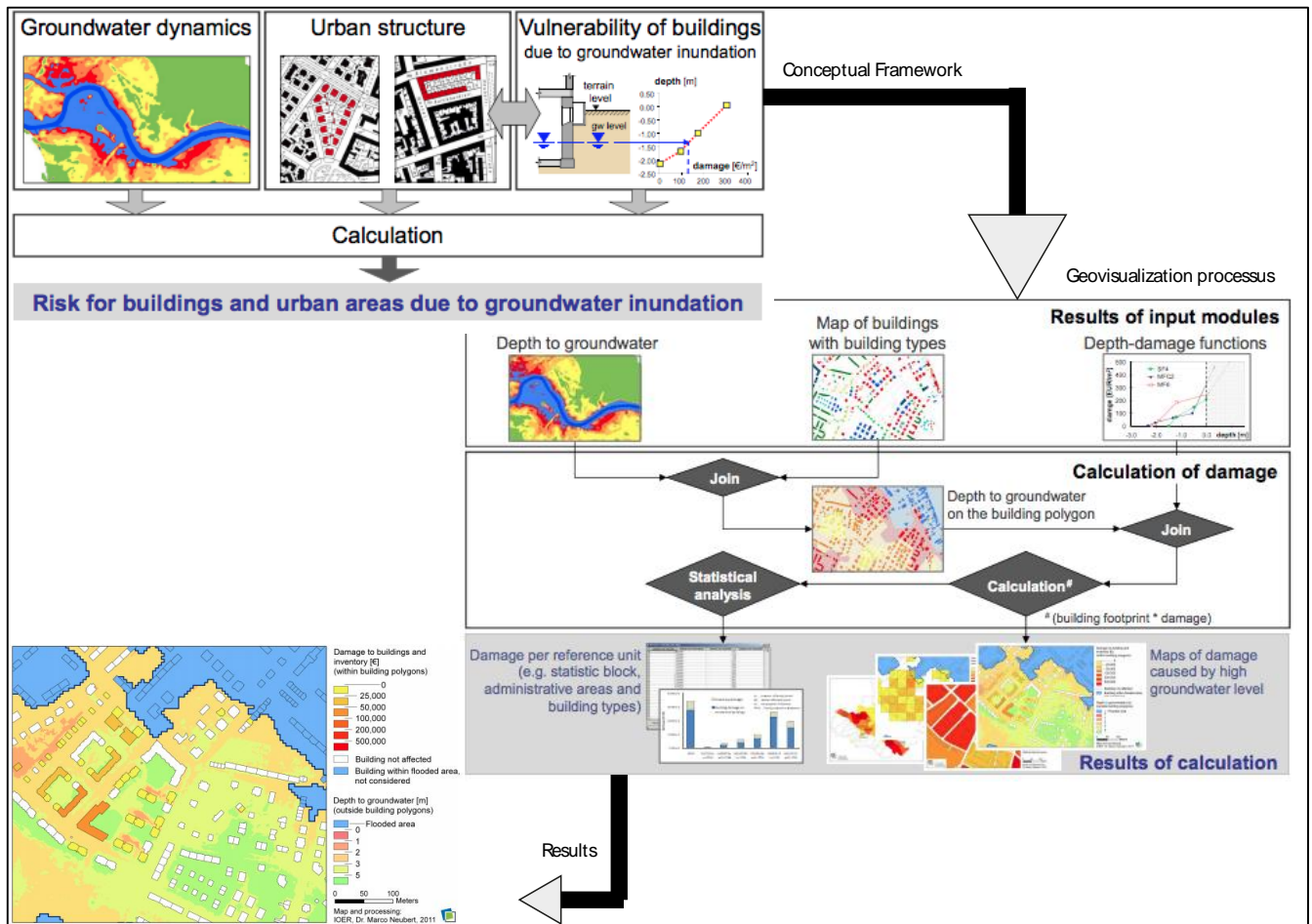


Figure 3: Links between resilience modeling and geovisualization techniques – at the building scale (Schinke et al., 2012)

To summarize, geovisualization helps to explore data using visual geospatial representations to imagine hypotheses, solve problems and co-construct scientific knowledge (Kraak, 2003). Therefore, geovisualization methodology improves territorial knowledge and leads to tools such as decision support systems, by making possible dialogues between users and stakeholders and promoting collaborative approaches. In the field of risk management, it is essential to defuse subjects of tension, in order to present a risky situation objectively.

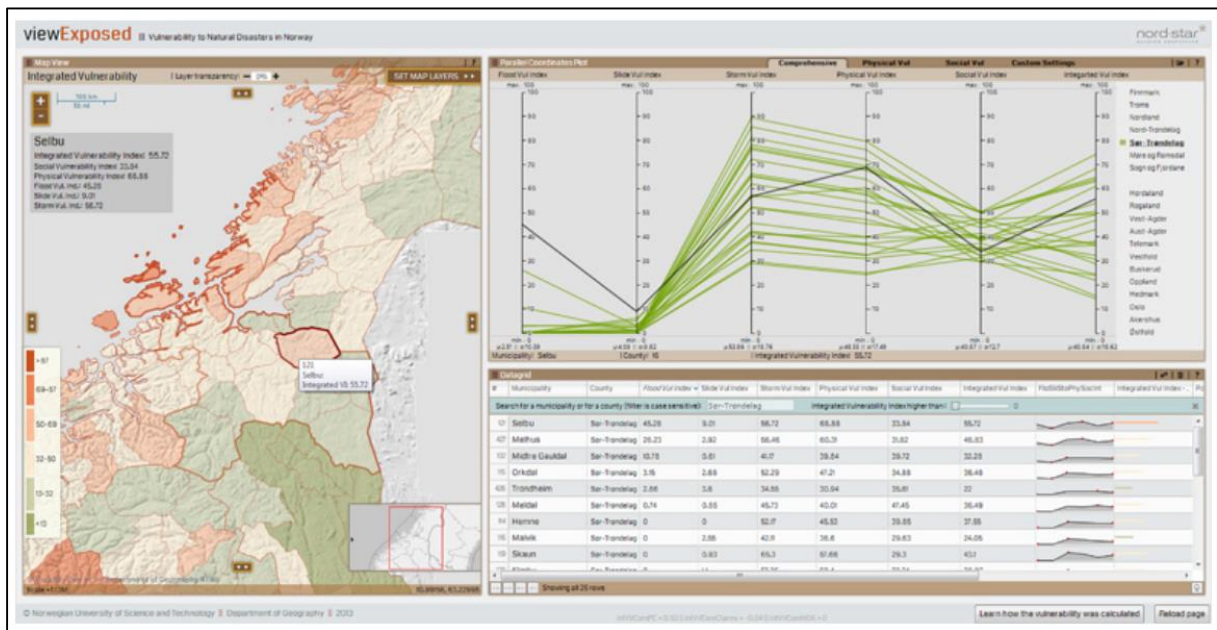
2.3 Making urban resilience operational through geovisualization techniques

Although several methods can be used to model risk characteristics, such as hydraulic modeling (Ernst et al., 2010) and geomorphological parameters (Bathrellos et al., 2012), it is quite difficult to model such fuzzy concepts like resilience and vulnerability, despite the common use of the latter in risk management. While the implementation of resilience policies and the design of resilient cities is desirable, assessing resilience and implementing it is complex. Several researchers have examined the difficulty of defining, implementing and evaluating urban resilience, usually through a geovisualization approach.

Cutter and Finch (2008) presented SoVI, a tool providing a county-level (USA scale) comparative metric of social vulnerability to natural hazards, based on socioeconomic and demographic profiles. The aim of SoVI is to illustrate the geographic patterns of the USA, by defining social vulnerability as the sensitivity of a population to natural hazards and its ability to respond to and recover from them. Using several maps and in view to improving

242 emergency management, SoVI identifies which areas of the American territory are more or less vulnerable and
243 why. Geovisualization techniques improve understanding of the concept of vulnerability and help urban managers
244 to localize vulnerable areas and variables.

245 Based on SoVI, a Norwegian study examined the vulnerability of territories to climate change
246 (Opach and Rød, 2013). To avoid an increase in local and national vulnerability, the researchers built a
247 ViewExposed tool (Fig.5) whose objective was to inform local authorities about the most vulnerable areas of
248 Norwegian territory and the causes of this vulnerability.



249
250 *Figure 4: The ViewExposed Interface (Opach and Rød, 2013)*

251 The ViewExposed tool focuses on Norwegian municipalities' exposure to natural hazards and the
252 capacity of local populations to resist them. This interface tool was designed for professionals, local elected
253 officials and local residents. It is the result of collaboration between scientists and local experts via workshops.
254 Although focused on the concept of vulnerability, this tool also integrates the response of local managers and
255 actors to natural disasters, corresponding to the first step in resilience integration.

256 Another team of researchers and insurers developed a tool to help people in the Nordic countries to protect
257 themselves and prepare for climate risks. The main target users are private landowners, but this tool can also be
258 used by land-use planners and property managers. The tool, VisAdapt (Johansson et al., 2016) is intended as a
259 guide on how to prepare for climate events liable to affect individual homes. It is very simple to use, so every
260 citizen can employ it. The obvious interest of this tool is that it allows addressing local inhabitants directly by
261 proposing solutions to adapt to natural risks linked to climate change.

262
263 These tools have the merit of proposing operational instruments to obtain a clearer idea of the vulnerability
264 concept involved. The main scale is above all the national scale which, despite major advances in the visualization
265 and knowledge of vulnerable zones, does not always lead to decision-making by local actors and managers, since
266 the scale is sometimes too broad for actions. Beyond the spatial scale, the choice of data and tools for processing,
267 analysis and visualization have not been designed for non-expert audiences. Data is not always freely accessible,

268 nor are the processing and representation tools. Some tools are intended only for professionals while others point
269 to the need to open the results to a wider audience. In addition, the data are not accessible and downloadable,
270 which makes the methodology difficult to adopt and reapply in other territories outside the scope of expertise of
271 the research team. The limits are therefore divided between the choice of spatial scale, the free and accessible
272 nature of data and tools, and the non-integration of local actors, and thus the assurance of their understanding of
273 the tools and concepts used. In addition, this research focuses on the "vulnerability" prism of risk management.
274 While we defend the fact that these two concepts are linked and inseparable (Provitolo, 2012) in the apprehension
275 of climate disruption (Heinzlef, 2019), the difficult definition of resilience and its operationalisation is noteworthy.
276 When vulnerability is defined as the propensity of a territory and a population to suffer damage, resilience focuses
277 on the strategies and means to prepare territories and populations for the increase in risks and their damage, in
278 order to limit the negative impacts. Resilience is therefore more complex to quantify, operationalize and visualize.
279 Here, we intend to overcome these limitations by proposing the approach we have developed.

280

281 3. Methods: linking resilience modeling and geovisualization techniques

282

283 The objective of this research consists in:

- 284 - making the concept of resilience more understandable through the construction of 3 indicators to
285 define and measure resilience;
- 286 - producing mapping results to quantify and visualize the results obtained;
- 287 - designing a comprehensive method including choice of data, processing and analyses for local actors,
288 by mobilizing geovisualization techniques;
- 289 - mapping the results to support decisions in favor of resilience to floods.

290

291 *3.1 A framework for defining resilience data?*

292

293 To analyze urban territories including their complexity through the prism of resilience, it was necessary
294 to define their issues and challenges, their dynamics, material and immaterial interactions, and their structures that
295 impact on the functioning of urban space. It is essential to understand the city as a system (Gardner, 2016). These
296 urban systems, like any living organism, are complex and hierarchical. Some studies have explored the impact of
297 rapid urbanization, leading to complex territorial responses and the lack of suitable reactions. In parallel,
298 challenges can increase when the country's gross domestic product (GDP) decreases. Nevertheless, in some case
299 studies, urbanization has been shown to have other results and is one of main elements to be taken into account
300 when building response capacity to risks (Garschagen and Romero-Lankao, 2015). This response capacity can be
301 determined by flood preparedness (Chinh et al., 2016), government implication and risk governance (Garschagen,
302 2015). Studying the city in the face of risks and its resilience capacity requires considering different spatial scales
303 of interactions and challenges. Therefore, several questions must be asked to support the understanding of the
304 concept of resilience and decision making: Who is vulnerable/resilient? What? When? What elements could limit
305 the impacts of a crisis like a flood event? Are they efficient before, during and after a flood?

306 These questions allowed us to establish three resilience indicators to study technical, urban and social
307 resilience (Heinzlef et al., 2019). The methodological choice of using indicators was based on several arguments.

308 The first one is that by defining and characterizing an abstract concept, indicators allow sensitizing both the
309 scientific community and the public to complex subjects (Prior and Hagmann, 2014). In addition, resilience
310 indicators can make an important contribution to assess a community's needs and goals while helping it to develop
311 resilience strategies (Cutter, 2016). These indicators, useful when creating a strategy, are also important for
312 monitoring the decision-making process. Finally, an essential benefit of using such indicators is that they can act
313 as driving factors for risk management, by including the concept of resilience clearly and more holistically (Linkov
314 et al., 2014). The objective is to analyze the different social, urban and technical components (Serre and Heinzlef,
315 2018) of the area concerned (Tab.1). The indicators were designed after adapting the Baseline Resilience Indicators
316 for Communities (BRIC) methodology (Cutter et al., 2008; Patil et al., 2008; Singh-Peterson et al., 2014).

<i>Resilience indicators</i>	<i>Variables</i>	<i>Sources</i>	<i>Impact on resilience</i>	<i>References</i>
Social resilience indicator	<i>Population Structure</i>			
	00-02 years old	INSEE	Negative	(Morrow, 2008); (Cutter, 2010); (Opach et Rod, 2016)
	25-39 years old	INSEE	Positive	(Morrow, 2008); (Cutter, 2010); (Opach et Rod, 2016)
	more than 80 years old	INSEE	Negative	(Morrow, 2008); (Cutter, 2010); (Opach et Rod, 2016)
	<i>Professional situation</i>			
	Active 15-64 years old	INSEE	Positive	(Tierney et al., 2001)
	Unemployed 15-64 years old	INSEE	Negative	(Tierney et al., 2001; Tierney, 2014)
	<i>Habits</i>			
	Active people 15 years or older not using transport	INSEE	Positive	
	Active people 15 years or older, using public transport	INSEE	Positive	
	<i>Insurances</i>			
	Health insurance beneficiaries	INSEE	Positive	(Heinz Center 2002)
	Beneficiaries of CAF allocations	INSEE	Positive	(Heinz Center 2002)
	<i>Education</i>			
Exit before the 3 rd grade	INSEE	Negative	(Norris et al. 2008), (Morrow 2008)	
Bac +2 and better	INSEE	Positive	(Norris et al. 2008), (Morrow 2008)	
Urban resilience indicator	<i>Buildings</i>			
	Number of main residences built before 1919	INSEE	Positive	(Mileti, 1999); (Cutter, 2010), (Opach et Rod, 2016)
	Number of main residences built from 1919 to 1945	INSEE	Negative	(Mileti, 1999); (Cutter, 2010), (Opach et Rod, 2016)
	Number of main residences built from 1946 to 1970	INSEE	Negative	(Mileti, 1999); (Cutter, 2010), (Opach et Rod, 2016)
	Number of main residences built from 1971 to 1990	INSEE	Negative	(Mileti, 1999); (Cutter, 2010), (Opach et Rod, 2016)
	Number of main residences built from 1991 to 2005	INSEE	Negative	(Mileti, 1999); (Cutter, 2010), (Opach et Rod, 2016)
Number of main residences built from 2006 to 2010	INSEE	Positive	(Mileti, 1999); (Cutter, 2010), (Opach et Rod, 2016)	

	<i>Critical Infrastructures</i>			
	Defense	SIRENE	Positive	(Sylves, 2007); (Cutter, 2010)
	Fire and rescue services	SIRENE	Positive	(Sylves, 2007); (Cutter, 2010)
	Hospital activities	SIRENE	Positive	(Opach et Rod, 2016)
	<i>Economic dynamics</i>			
	Tourist and other short-term accommodation	SIRENE	Positive	(Tierney, 2009)
	Creation of new companies	SIRENE	Positive	
	Removal of companies	SIRENE	Negative	
Technical resilience indicator	<i>Diversity of networks</i>	Municipality data	Positive	(Bambara, 2014); (Balsells et al, 2015)
	<i>Network accessibility</i>			
	Accessibility of networks by public road within a 100m radius	Municipality data	Positive	(Cutter, 2010); (Opach et Rod, 2016) ; (Lhomme et al., 2013)

Table 1: Example of data selection, sources and references

317

318

319 3.2 Resilience processing

320 The advantages of using geovisualization techniques to remove barriers to resilience are:

321 - analyzing heterogeneous and geolocated data;

322 - supplying a visualization based on the most recent scientific advances;

323 - extracting, producing and sharing data with innovative layouts.

324 To address these three pillars, we propose to clarify some of the resilience criteria defined above (Fig.6)
325 around three resilience indicators, social, technical and urban.



326 *Figure 5: Resilience characteristics (Serre & Heinzlief, 2018)*

327 We argue that analysis of resilience at the local level is facilitated by using open access data. On the other
328 hand, data processing and analysis become more understandable for local actors when tools are chosen that
329 highlight the visualization.

330 3.2.1 Data used for resilience assessment

331 We chose to use mainly open data which we acquired via the INSEE service of the French Ministry of
332 the Economy and Finance (National Institute of Statistics and Economic Studies), whose function is to collect,
333 analyze and disseminate data. Since we wanted to analyze urban resilience at the community scale as finely as
334 possible, we chose to analyze the IRIS (Islets Grouped for Statistical Information) scale which constitutes the basic
335 building block for the dissemination of infra-communal data.

336 The concept of "open" and accessible science has been developed to strengthen dialogue and commitment
337 among scientists and the local population around common issues and problems, by creating a language and
338 vocabulary understandable to everyone. While there are obvious limitations to Open Data - security, privacy and
339 property protection - it is nonetheless accepted that using ideas and knowledge freely is a universal right. This is
340 why we chose to use a data source whose access, use and downloading are free, to ensure not only the
341 reproducibility (Jovanovic et al., 2018) of the methodology, but also to participate in the education and
342 communication of the concept of resilience.

343 In addition to the INSEE INSPIRE database, we used the data from the SIRENE database (INSEE) in
344 Open Source. The SIRENE database is an INSEE service used to identify all the characteristics of companies and
345 establishments. The information provided gives a precise idea of the company's activity, its date of creation, etc.
346 These data were used for the urban and technical resilience indicators to demonstrate economic, urban and
347 technical dynamism.

348 Data from the city cadaster (MAJIC) were also used to complete the Open Data database. These data are
349 considered sensitive and owned exclusively by municipalities. It is therefore essential to create a partnership with
350 a city and its GIS services.

351 3.2.2 Method and tools for resilience assessment

352 After selecting the raw data, data were transformed and normalized with a theoretical orientation. In order
353 to understand the frequency of each variable, each item of raw data has been transformed into percentages
354 (Equation (1), Equation (2) and Equation (3)).

$$355 \quad \textit{Social Resilience} = \frac{\textit{Variable}}{\textit{IRIS Population}} \quad (1)$$

$$356 \quad \textit{Urban resilience} = \frac{\textit{Variable}}{\textit{IRIS AREA}} \quad (2)$$

$$357 \quad \textit{Technical resilience} = \frac{\textit{Variable}}{\textit{IRIS AREA}} \quad (3)$$

360 Nevertheless the weighting is 1 for all the variables (Holand et al., 2011). This single weighting is explained by
361 the willingness to avoid disparities between the variables (Fekete, 2009), since some of them are sensitive and
362 subjective. Indeed, we have no theoretical references (Esty et al., 2005) and there is no practical experience
363 (Fekete, 2009) on which to determine weights that are mostly subjective. Besides, to apply such weights does not
364 necessarily reflect decision makers' and urban planners' priorities and realities (Cutter et al., 2010). Nonetheless,
365 since this approach puts forward a participatory and collaborative methodology, readjusting the weight of these
366 variables with regard to managers' perceptions is entirely justified and in line with the current approach.

367 Following this process, it was necessary to determine a normalization. Normalization allows adjusting a
368 series of values (typically representing a set of measurements) according to a transformation function to make
369 them comparable with certain specific reference points. We proceeded with a Min-Max standardization (Casadio
370 Tarabusi and Guarini, 2013) to obtain a positive resilience impact variable, Equation (4), and a negative resilience
371 impact variable, Equation (5), where each variable is decomposed into an identical range between zero (worst
372 rank) and one (best rank), to create indicators with similar measurement scales, and to compare them.

$$373 \quad \frac{x - \min(x)}{\max(x) - \min(x)} \quad (4)$$

374
375
376

377

$$1 - \frac{x - \min(x)}{\max(x) - \min(x)} \quad (5)$$

378

379

The choice of processing tools was influenced by the availability of Open Source tools in order to uphold transparency and collaborative approaches as well as the availability of such tools to all stakeholders. To create the computer script, we used a tool, the Feature Manipulation Engine (FME) to extract, transform and load raw data (Extraction Transformation Loading). Its interface allows visualizing each step of the processing, from loading raw data (INSEE files) to choosing variables, while integrating the resilience formula to finally obtain the results. Although this tool has a cost, it is nevertheless used by GIS practitioners on a large scale, nationally and internationally.

386

Several steps (Fig.7) were necessary to set up the computer script, integrate the input data, create a geometry, generate the processing and forecast an overall resilience value. The output data is in SpatiaLite format (sl3 format), which is a spatial extension of SQLite and provides vector geodatabase capacity. This format can be understood by many processing, visualization and mapping software applications including QGIS.

387

388

389

390

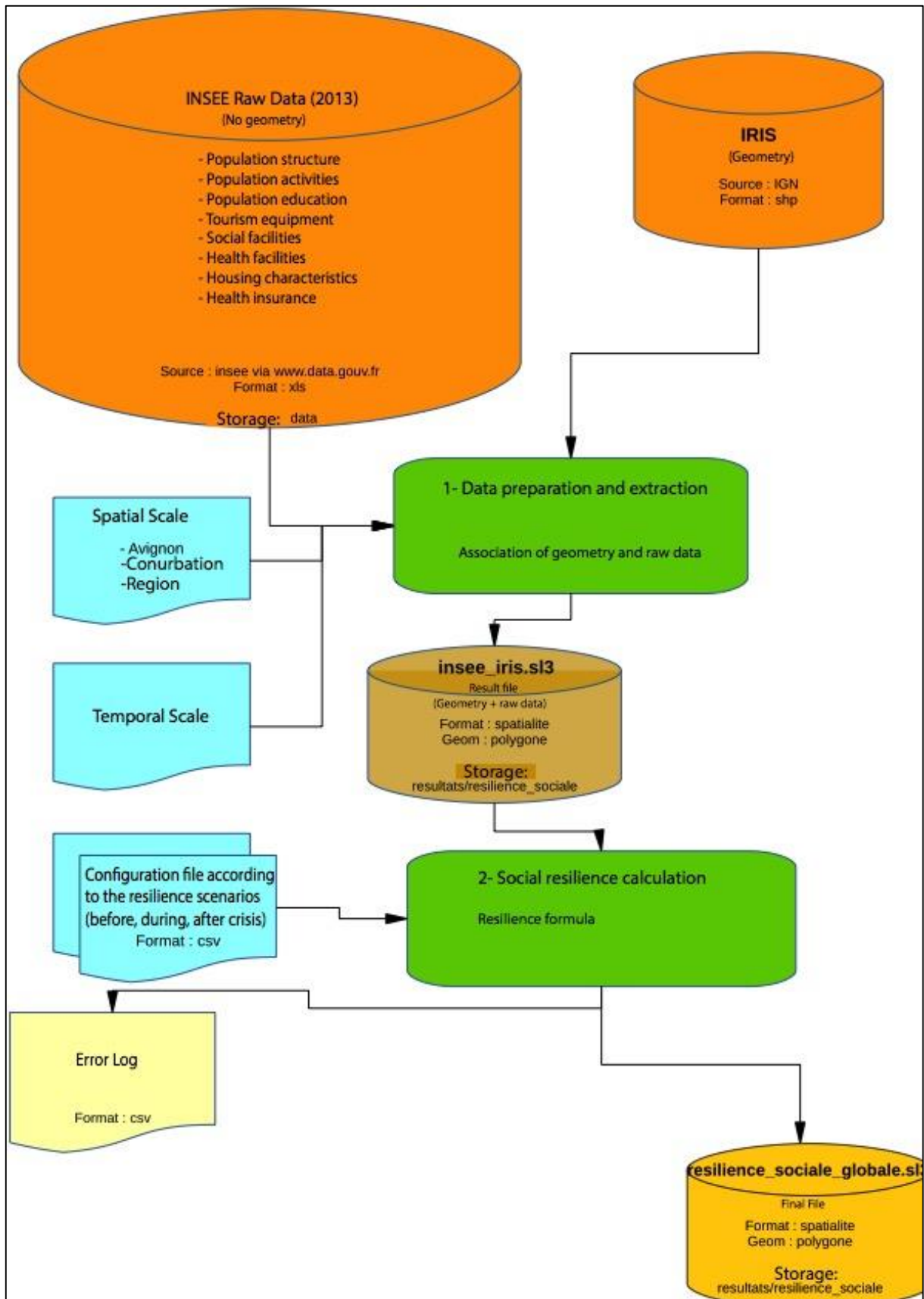
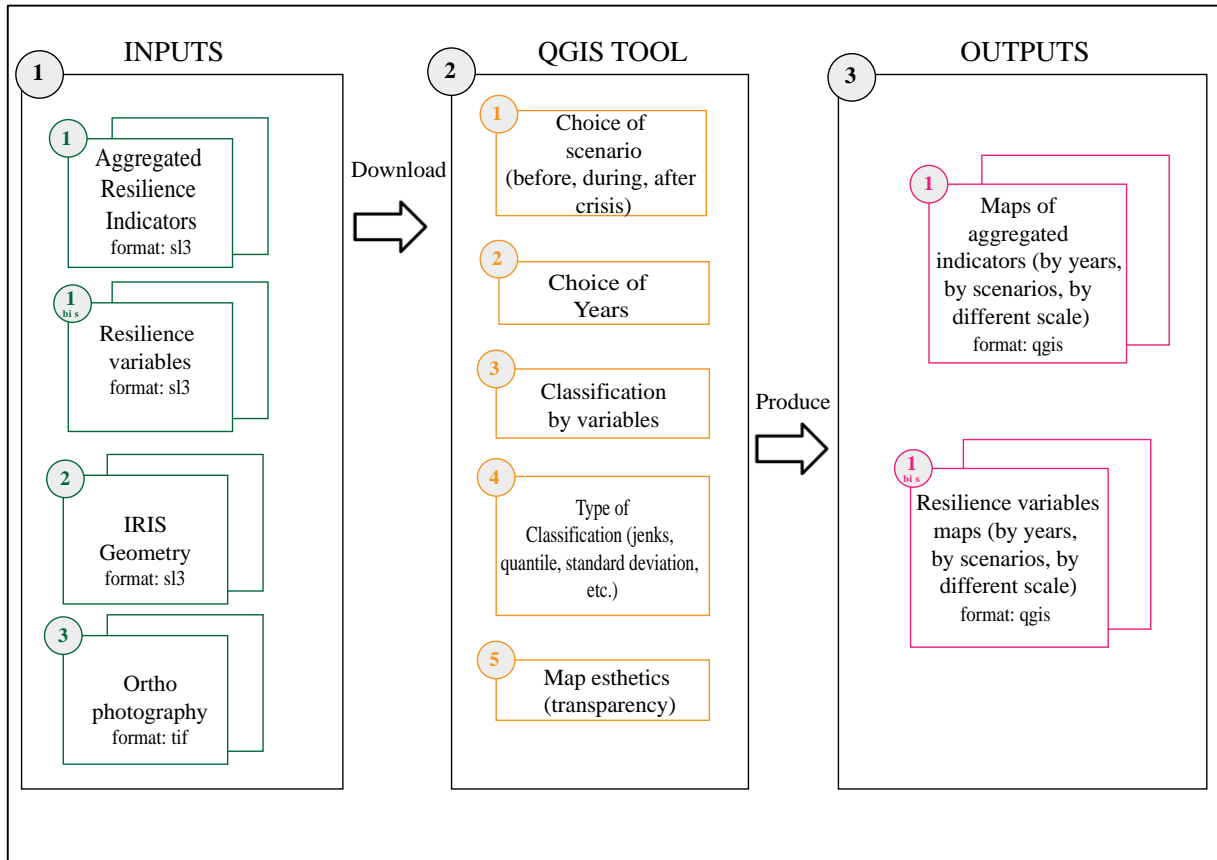


Figure 7: Details of the social resilience assessment process

391
392

393 Once the computer processing was completed, the visualization and analysis work was done via a GIS, namely
394 the QGIS software (Fig.8). It allows the automatic spatialization of data according to data variables or variables

395 resulting from relationships between objects, and finally the use of graphical tools to visualize and differentiate
 396 data (sizes, colors, distances).



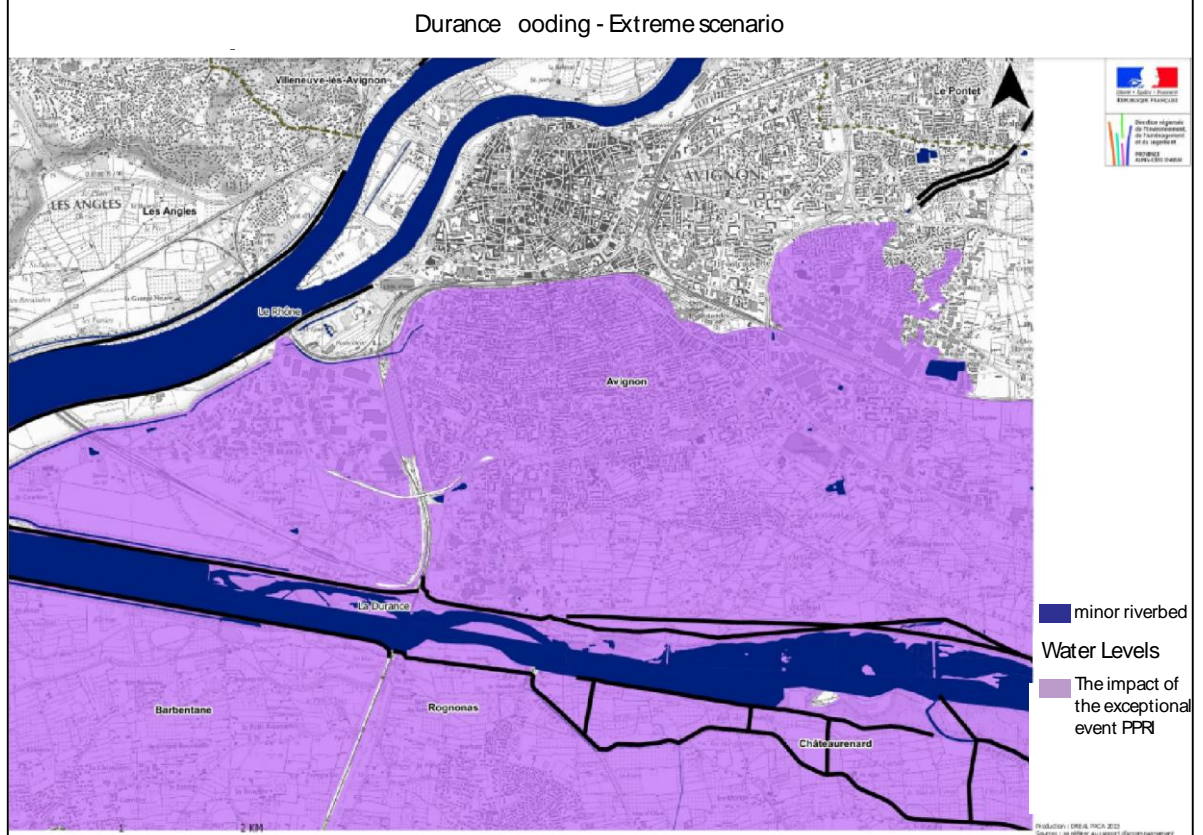
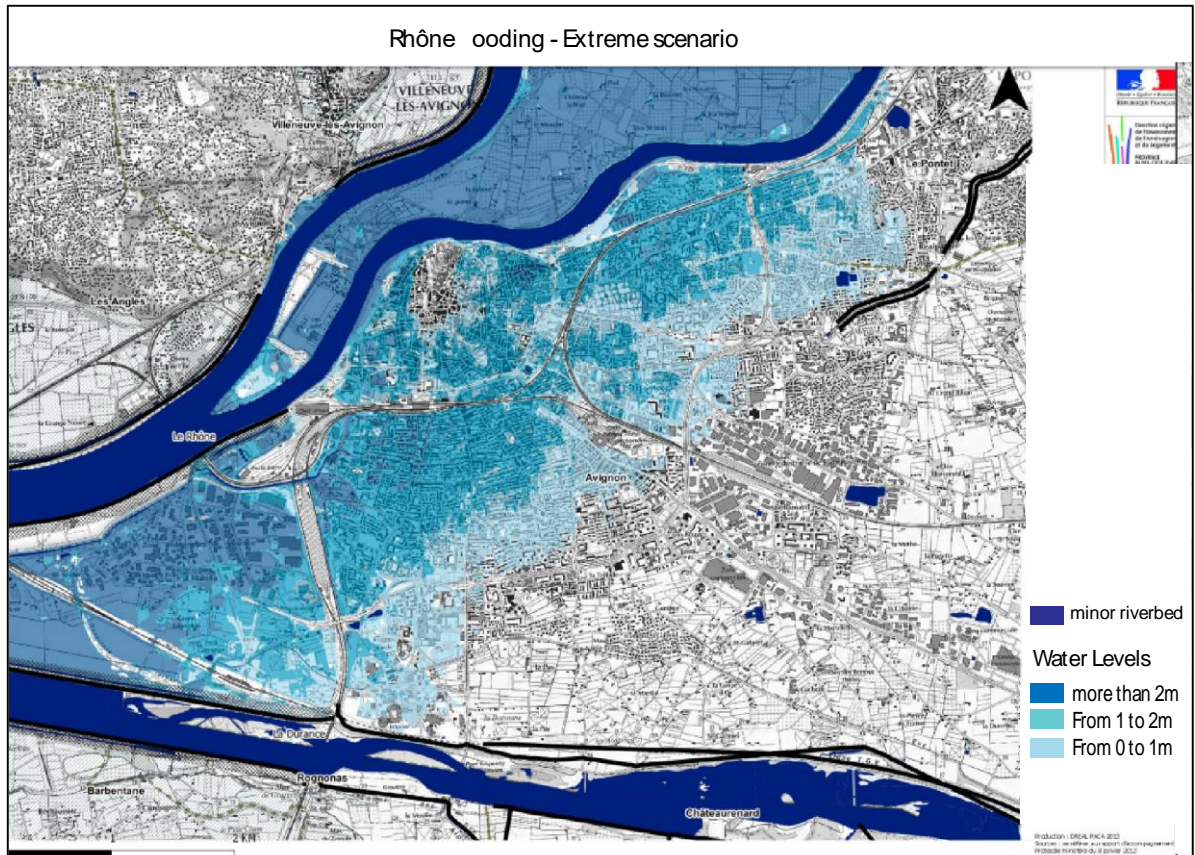
397
 398 *Figure 8: QGIS interaction architecture for resilience assessment.*
 399

400 The map is therefore a decision-making tool in the sense that it represents and filters a mass of data and makes
 401 them accessible and comprehensible. But the production of a map cannot in itself be considered a spatial decision
 402 support system: its value first depends on the consistency and reliability of the information collected upstream,
 403 then on its structuring and effective readability.

404
 405
 406 **4- Testing the resilience model and geovisualization process in Avignon**

407
 408 *4.1 Avignon flood issues*

409
 410 Avignon, the chief administrative center of Vaucluse, is faced with flood risks due to its proximity to the
 411 confluence of the Rhône and Durance rivers (Fig.9). The island of Barthelasse, the largest river island in Europe,
 412 is the area of Avignon most affected by the Rhône's floods. It serves as a buffer between the city and the Rhône,
 413 and serves to absorb floods. The few existing dikes protect the island from low floods, but it is still floodable, as
 414 shown by the 2-meter floods in 1993, 1994, 2002 and 2003.



415
416

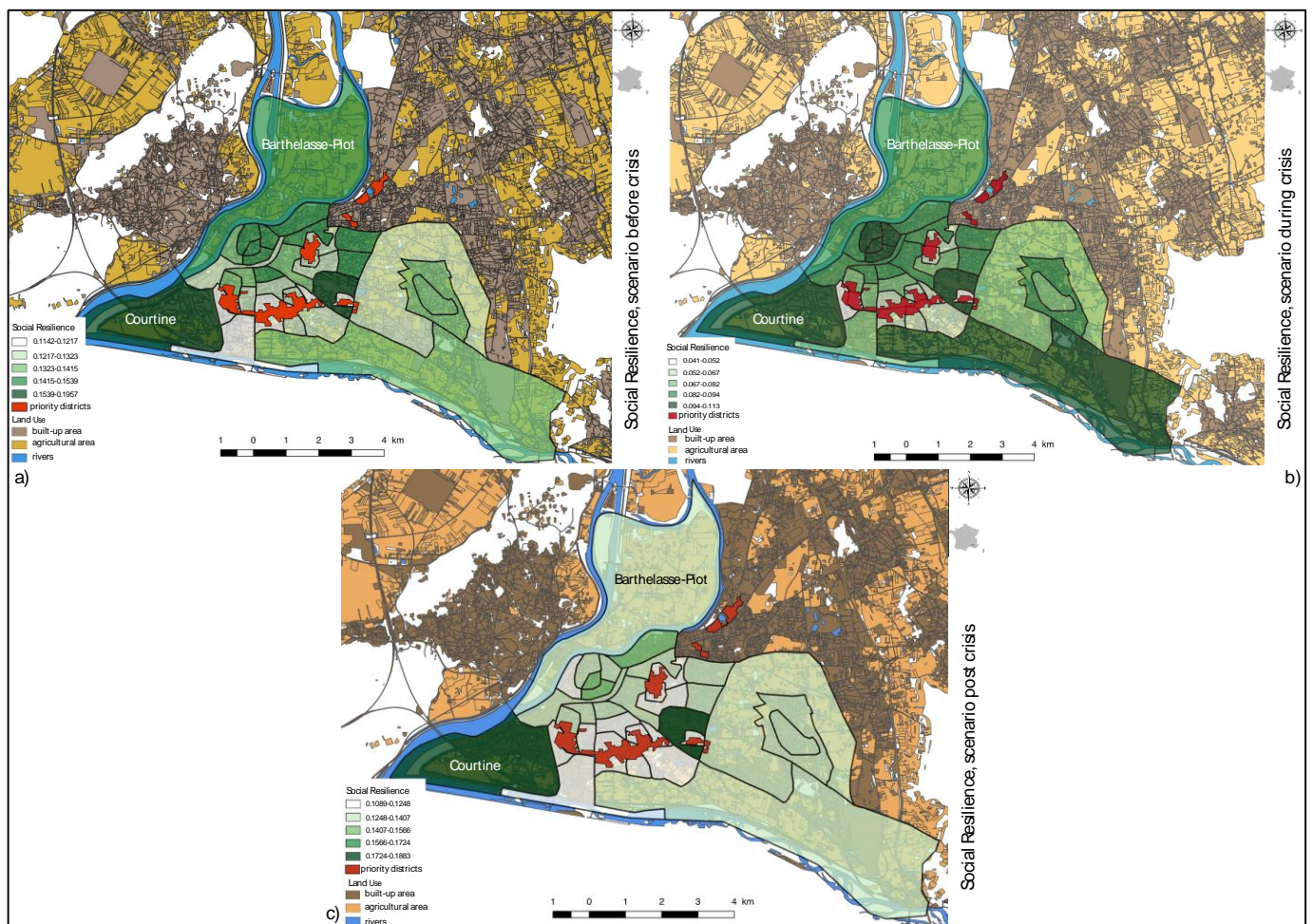
Figure 9: Extreme flood scenario in Avignon, (Heinzle et al., 2019) inspired by @ DREAL PACA

417 Therefore, a spatial decision-support system that integrates resilience in practice would be helpful for a flood-
418 prone community. It was developed in partnership with the Avignon city council GIS Department. This

419 collaboration took place at several levels, both in the involvement of local actors in the study, in the data exchange
 420 process, and in the choice of processing tools, to ensure and improve the re-usability of the methodology once the
 421 study has been completed. The final choice of resilience variables, data processing, and their final visualization
 422 was made in constant collaboration with the city's technical services, to ensure that data and their analyses were
 423 shared and understood.

424 *4.2 Resilience to flood assessment in Avignon: a few results*

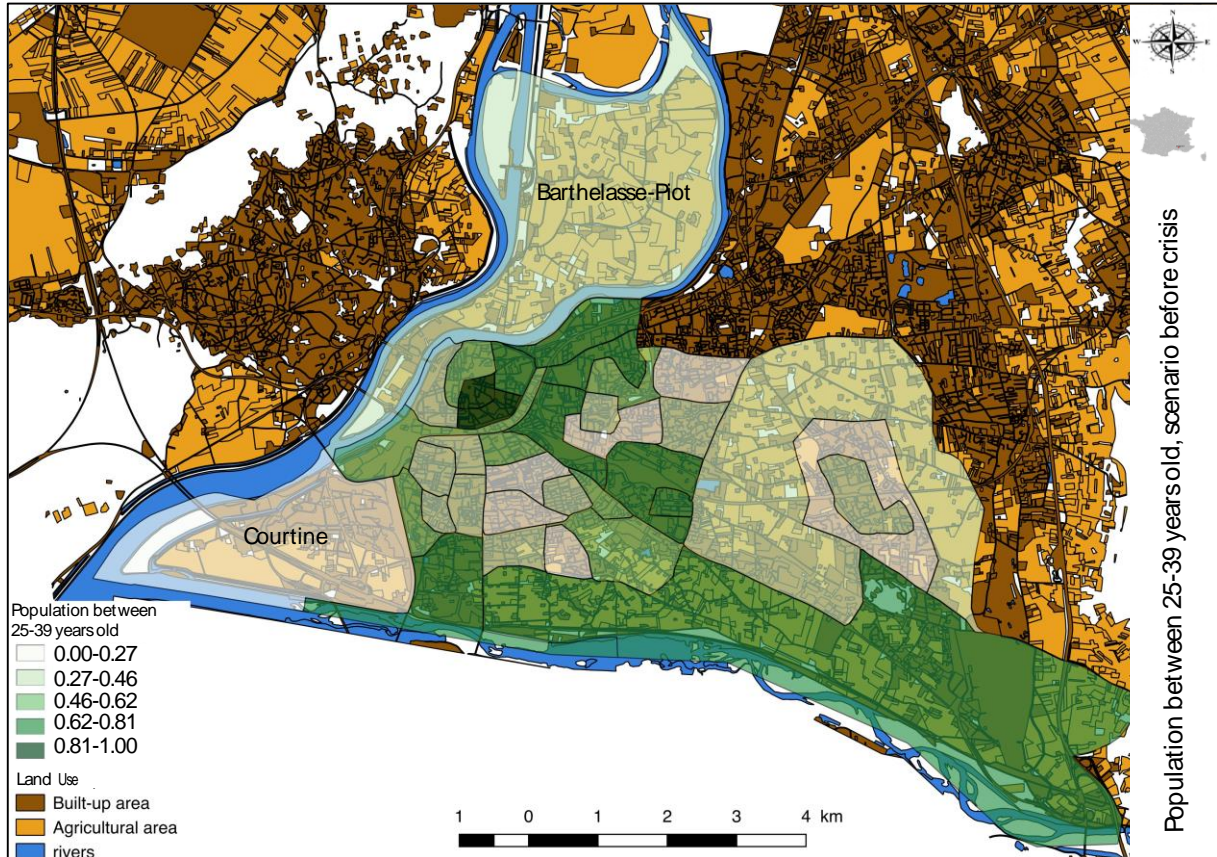
425 The city was divided into a local scale – IRIS scale – to visualize which areas are resilient or not. The indicators
 426 - social (Fig.10), urban and technical- and each variable (Fig.11) included in the model can be visualized.
 427 Therefore, it is easier to perceive which variables improve resilient capacities, and which areas have developed
 428 these variables or not. As each indicator is independent from each other, it is easier for politicians and managers
 429 to work on variables with low levels of resilience and identify areas to be redeveloped and / or reintegrated in
 430 urban dynamics.



431
 432 *Figure 10: Social Resilience Indicator-Multi scenario, Avignon scale (IRIS scale analysis). The left-hand map identifies the*
 433 *most resilient areas (greener) according to the social resilience characteristics before a crisis; the right-hand map identifies*
 434 *the most resilient areas according to the social characteristics during a crisis; the map below identifies the most resilient*
 435 *areas according to the social characteristics after a crisis - Open Database License, "ODbL" 1.0.*

436

437 The difference between the three maps in Figure 10 is explained by the different scenarios considered before,
 438 during and after a crisis. Not every variable is included in every scenario. For example, age variables are important
 439 both before (preparation, knowledge of risk, etc.), during (understanding of the situation, ability to move, etc.),
 440 and after the reconstruction process. On the contrary, whether or not individuals have a job does not play a role
 441 during the crisis but is decisive afterwards, in order to rebuild and relaunch an activity.



442 *Figure 11: Population between 25 and 39 years old-scenario before crisis, Avignon scale (IRIS scale analysis). The map*
 443 *above identifies the value of the population variable 25-39 years old according to the total IRIS population before a crisis -*
 444 *Open Database License, "ODbL" 1.0.*
 445

446

447 *Figure 11 shows the location of individuals aged 25 to 39 years, with a segment of the population*
 448 *potentially more resilient, before, during and after. Indeed, they can have a risk culture beforehand, act and*
 449 *survive during, and restart an activity after the disruptive event. They are more prevalent in the city center and in*
 450 *the South and South East. This is mainly due to the location of the two universities, in the city center and outside*
 451 *the city walls, which favors student accommodation and low-cost housing.*

452

Resilience indicators/ IRIS	Variables	Impact on resilience	Barthelasse	Courtine
Social resilience indicator	<i>Population Structure</i>			
	00-02 years old	Negative	0.08	0.28
	25-39 years old	Positive	0.35	0.23
	more than 80 years old	Negative	0.67	1
	<i>Professional situation</i>			
	Active 15-64 years old	Positive	0.69	1
	Unemployed 15-64 years old	Negative	0.40	0.38
	<i>Habits</i>			
	Active people 15 years or older not using transport	Positive	0.59	1
	Active people 15 years or older, using public transport	Positive	0.24	0.08
	<i>Insurances</i>			
	Health insurance beneficiaries	Positive	0.50	0.92
	Beneficiaries of CAF allocations	Positive	0.19	0.93
	<i>Education</i>			
	Exit before the 3 rd grade	Negative	0.89	0.02
	Bac +2 and better	Positive	0.55	NULL
Urban resilience indicator	<i>Buildings</i>			
	Number of main residences built before 1919	Positive	0.05	0
	Number of main residences built from 1919 to 1945	Negative	0.89	0.99
	Number of main residences built from 1946 to 1970	Negative	0.95	1
	Number of main residences	Negative	0.92	0.97

453
454
455
456
457
458
459
460
461
462
463
464
465
466
467
468
469
470
471
472
473
474
475
476
477
478
479
480
481

	built from 1971 to 1990			
	Number of main residences built from 1991 to 2005	Negative	0.02	0.02
	Number of main residences built from 2006 to 2010	Positive	0.01	0.26
<i>Critical Infrastructures</i>				
	Defense	Positive	NULL	NULL
	Fire and rescue services	Positive	0.12	0.34
	Hospital activities	Positive	0	0.75
<i>Economic dynamics</i>				
	Tourist and other short-term accommodation	Positive	0.43	0.51
	Creation of new companies	Positive	0.05	0.29
	Removal of companies	Negative	0.93	0.64
Technical resilience indicator	<i>Diversity of networks</i>	Positive	0	0.85
	<i>Network accessibility</i>	Positive		
	Accessibility of networks by public road within a 100m radius		0	0.17

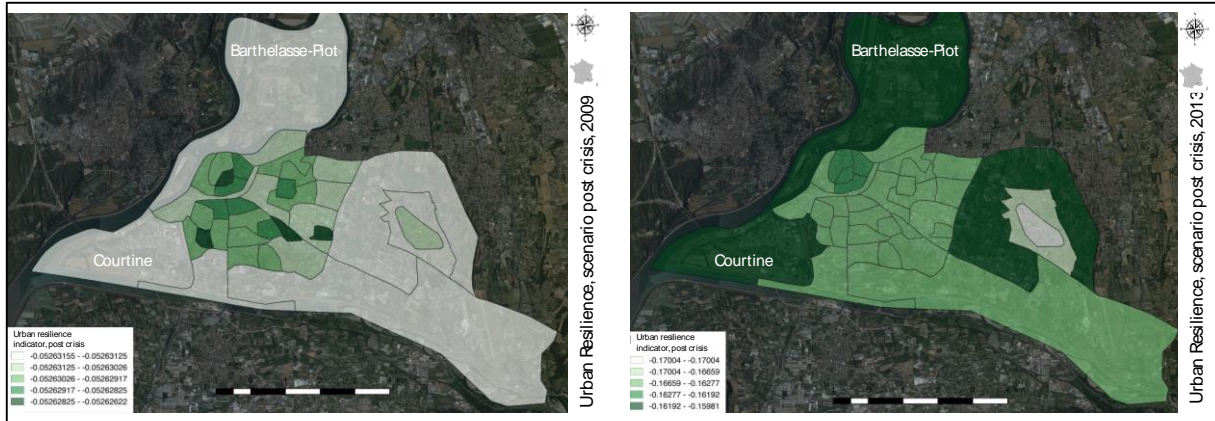
482

Table 2: Variable values - scenario before crisis

483 Table 2 presents the value of each variable according to the pre-crisis scenario for the IRIS of Barthelasse and
484 Courtine (Tab.2) after Min-Max standardization. These values illustrate the representativeness of each variable in
485 the territory, and make it possible to understand the social and spatial dynamics at the IRIS scale for Barthelasse
486 and Courtine. This detailed analysis, carried out on a variable-by-variable basis, allows engaging in a discussion
487 with local actors in an attempt to reintegrate neighborhoods at the margins of territorial functioning, in order to
488 work on the integration of urban resilience in the face of daily territorial stresses and when confronted by a more
489 exceptional event such as a flood.

490

491 Regarding the urban resilience indicator, INSEE data are available from 2009 to 2013, thus making it
492 possible to perform a multi-date analysis over several years (Fig.12) and gain understanding of urban evolutions
493 and resilience trends. For instance, certain elements have evolved, such as the proportion of tourist
494 accommodation, and surgical and hospital activities, thereby increasing resilience capacities. Moreover, the
495 advantage of using open data allows temporal as well as spatial scales to evolve, and the indicators can therefore
496 be tested on other municipalities on the national territory.

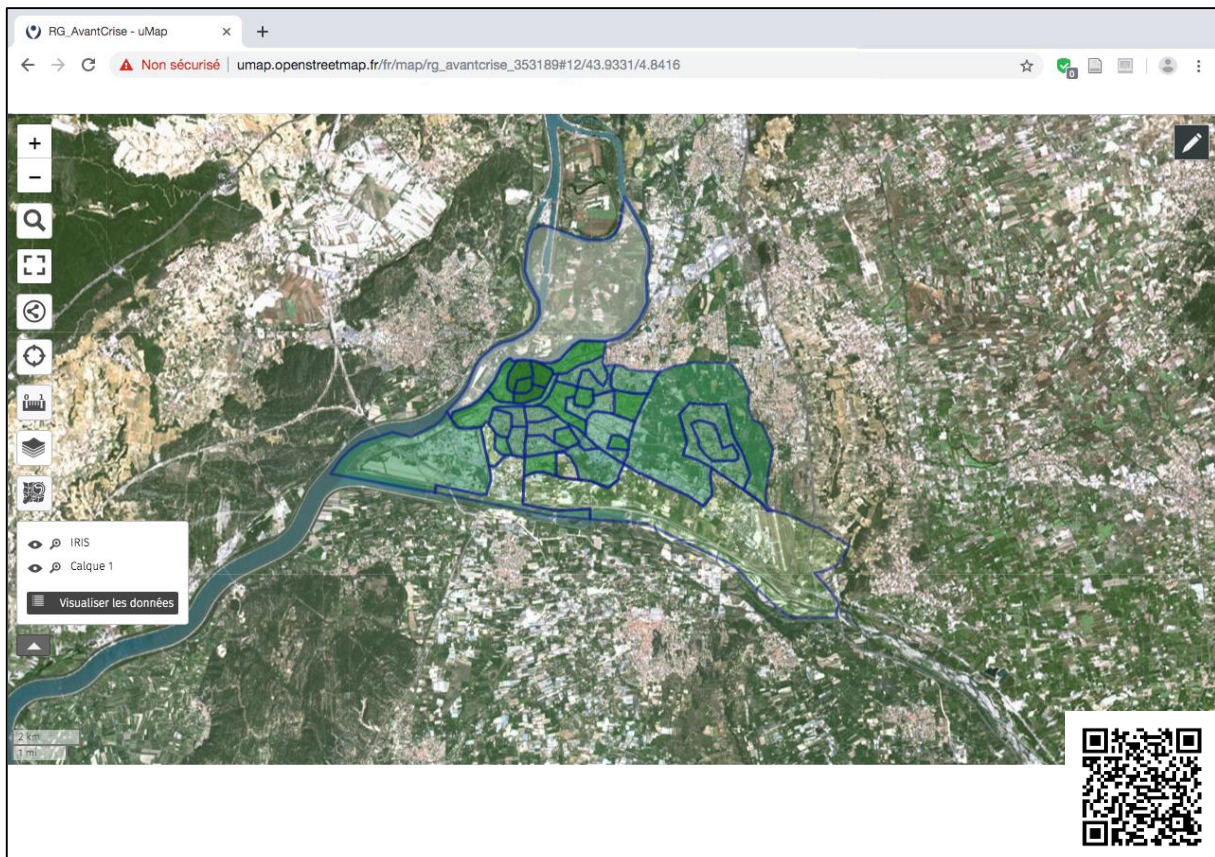


497
498
499
500
501

Figure 12: Comparative analysis between 2009 and 2013 for the Urban indicator, post crisis scenario, Avignon scale (IRIS scale analysis). The map on the left identifies the most resilient areas according to the urban characteristics after a crisis in 2009; the map on the right identifies the most resilient areas according to the urban characteristics after a crisis in 2013 - Open Database License, "ODbL" 1.0.

502
503
504
505
506
507
508

After reflection on the visibility of the results, information sharing, and a neutral and collaborative approach, we are considering making our work accessible to inhabitants by developing a website to continue the risk communication process on flood risks and strengthen the geovisualization process. This website, which is currently subject to reflection, developed with the creation of interactive maps accessible via a web link (<http://u.osmfr.org/m/353189/>) and a QR code (Fig.13).



509
510
511

Figure 13: Web link Global Resilience - Before Crisis Scenario Map - QR code - Open Database License, "ODbL" 1.0.

512 Concerning the contribution of geovisualization used to promoter dialogue on the issue of territorial
513 resilience, workshops were organized to develop interaction around the maps produced and the database provided
514 and accessible to stakeholders. These workshops provided an opportunity for scientific experts and critical
515 infrastructure managers as well as decision-makers in risk management strategies to exchange views in order to
516 support the reflection process and foster long-term collaboration. These maps and this new database allowed the
517 actors to extract new knowledge from the decision support tool, especially theoretical knowledge provided by the
518 maps and consistent with the database. This knowledge is both current but also part of a long-term construction,
519 since the data evolve as a function of INSEE production.

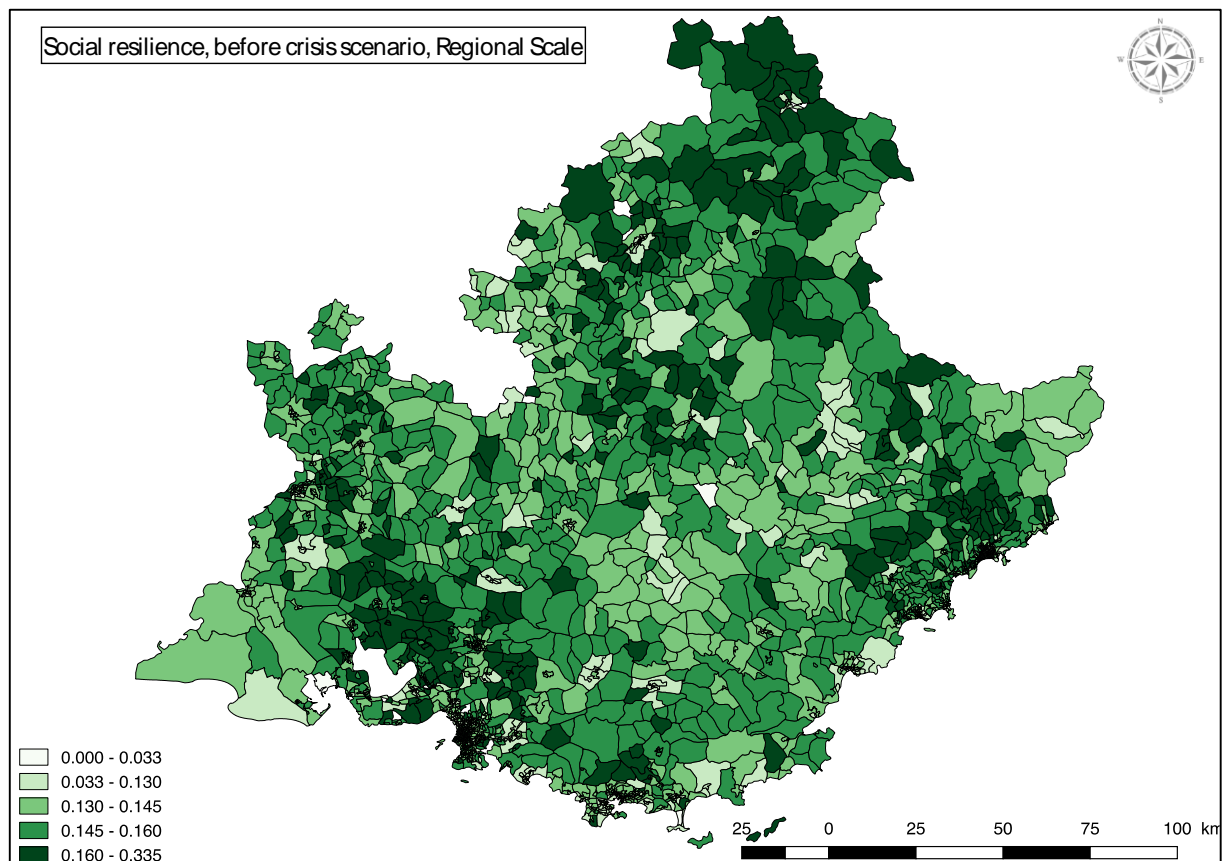
520 521 5- Discussion

522 This research is at the crossroads of resilience modeling and geovisualization practices based on visualization,
523 data processing, mapping and also the decision support process. Rather than focusing on technological
524 developments, this work attempted to reflect on the accessibility of the methodology and its appropriation by local
525 stakeholders. The results are expressed through maps illustrating the potential for social, urban and technical
526 resilience at the community level. It therefore takes into account a large number of dimensions in making the
527 concept of resilience operational.

528
529 Several improvements are already being considered to overcome the limitations of this work. Concerning the
530 question of tools, willingness to switch entirely to free tools led to reflection on abandoning the FME tool. The
531 project to build a QGIS plugin is under study in view to increasing accessibility. The advantage of the plugin
532 would be to make the computer script behind the methodology completely free, accessible and downloadable.

533 Another improvement to consider would be to test the approach in other territories, either by developing a
534 partnership of the same scope or by switching the entire process to open data. At present, this analysis can be
535 performed at the scale of the Sud Provence-Alpes Côte d'Azur region (Fig. 14) and at the scale of France, but only
536 for the social resilience indicator.

537



538
539 *Figure 14: Social resilience, before crisis scenario, Provence-Alpes-Côte d'Azur regional scale - Open*
540 *Database License, "ODbL" 1.0.*

541
542 Following theoretical modeling and visual, cartographic and geovisualized production work, further development
543 included the organization of workshops to question users on their understanding and use of the tool and the results
544 (Heinzlef, 2019). These workshops took place with critical infrastructure managers and made it possible to
545 (re)launch the debate around the issue of resilience and thus to build knowledge without hypothesis a priori
546 (Maceachren and Kraak, 1997) around a tool for visualizing a concept that is difficult to put into practice. This
547 methodology made it possible to launch a longer-term reflection with local actors to reflect on a resilience strategy
548 and integrate the concept into risk management. In particular, the results made it possible to consider a strategy
549 for managing the risk of flooding in the Rhone.

550
551 This modeling and cartographic production work based on geovisualization has made it possible to rethink
552 the issue of urban resilience. The mapping results led to workshops to review and compare the methodology with
553 the reality of the territory and risk management practices. This work is part of a broader dynamic and reflection
554 on the question of operationalizing resilience. Based on the results of this decision-making tool designed to
555 operationalize urban resilience, a more global project is now under construction. It is thus planned to use these
556 results to build an urban resilience observatory that will be tested on the island territories of French Polynesia.
557 This will provide an opportunity to merge representations of risks, territories and techniques for data processing,
558 production and analysis, visualization, and collaboration with local actors.

559

6- Conclusion

This article proposed a methodology intended to clarify the concept of resilience in the context of increasing urban flooding. This methodology is divided into two stages. First, the modeling and analysis of the concept of resilience through the formulation of three definitions and measurement indicators in order to approach resilience in an exhaustive way on the basis of social, technical and urban criteria. Secondly, we used geovisualization techniques (mapping practices, visualization, data processing and analysis, map processing) to build a spatial decision support system accessible and understandable to local stakeholders in the Avignon community. This spatial decision support system sought to provide a simple and accessible methodology to quickly verify and analyze information for decision-making. The aim is to use the principles of visualization of geovisualization to widely disseminate map results in order to improve resilience culture. The contributions and innovations of this work are therefore of several kinds:

- the design of a spatial decision support system with and for local actors;
- the design of a resilience model;
- the use of open access data to enhance INSEE data and match the knowledge of local actors;
- the use of tools to highlight the visualization of data processing: FME and QGIS;
- the use of free and easy to use tools to perform advanced mapping processing;
- the implementation of dialogue between local experts and actors through visual and understandable cartographic production.

The advances achieved have made it possible to map resilience at the local level, ensure that local actors are understood, and that the methodology is accessible to non-experts and reproducible. The method therefore focuses on the accessibility promoted by geovisualization techniques rather than on technicality.

While some limitations have been observed - in particular regarding the non-exhaustiveness of open access tools, the need to include local actors from the outset and changes of scale - many perspectives are already being considered for the future. The first step has been taken to switch all the tools to open access via the development of a QGIS plugin. In addition to the response to the tools, this plugin will also integrate the reflections of different actors in order to develop the tool using the feedback expressed. Regarding the issue of scale, the need to go beyond the national framework was expressed through reflection on the use of Open Street Map data. Finally, regarding the form of this spatial decision-making tool itself, work is in progress to develop it by setting up a Resilience Observatory for the island territories of French Polynesia. Studies and analyses are being carried out to this end.

References

- 100 Resilient Cities, n.d. The City Resilience Framework.
- Aerts, J.C.J.H., Lin, N., Botzen, W., Emanuel, K., de Moel, H.. Low-Probability Flood Risk Modeling for New York City: Low-Probability Flood Risk Modeling for New York City. Risk Anal. 33, 772–788, <https://doi.org/10.1111/risa.12008>, 2013.

603 Apel, H., Aronica, G.T., Kreibich, H., Thielen, A.H. Flood risk analyses—how detailed do we need to be?
604 Nat. Hazards 49, 79–98., <https://doi.org/10.1007/s11069-008-9277-8>, 2009
605

606 Bakkensen, L.A., Fox-Lent, C., Read, L.K., Linkov, I. Validating Resilience and Vulnerability Indices in
607 the Context of Natural Disasters: Validating Resilience and Vulnerability Indices. Risk Anal. 37, 982–
608 1004, <https://doi.org/10.1111/risa.12677>, 2017.
609

610 Barroca, B., Serre, D. Risks revealed by cartography – cartography renewed by the geovisualization of
611 risks. Int. J. Cartogr. 4, 1–3, <https://doi.org/10.1080/23729333.2018.1444376>, 2018.
612

613 Bathrellos, G.D., Gaki-Papanastassiou, K., Skilodimou, H.D., Papanastassiou, D., Chousianitis, K.G.
614 Potential suitability for urban planning and industry development using natural hazard maps and
615 geological–geomorphological parameters. Environ. Earth Sci. 66, 537–548,
616 <https://doi.org/10.1007/s12665-011-1263-x>, 2012.
617

618 Burby, R. Flood insurance and floodplain management: the US experience. Glob. Environ. Change Part B
619 Environ. Hazards 3, 111–122, [https://doi.org/10.1016/S1464-2867\(02\)00003-7](https://doi.org/10.1016/S1464-2867(02)00003-7), 2001.
620

621 Callon, M., Lascoumes, P., Barthe, Y. Agir dans un monde incertain : essai sur la démocratie technique, La
622 couleur des idées. Editions du Seuil, Paris, 2001.
623

624 Casadio Tarabusi, E., Guarini, G. An Unbalance Adjustment Method for Development Indicators. Soc.
625 Indic. Res. 112, 19–45, <https://doi.org/10.1007/s11205-012-0070-4>, 2013.
626

627 Chinh, D.T., Bubeck, P., Dung, N.V., Kreibich, H. The 2011 flood event in the Mekong Delta: preparedness,
628 response, damage and recovery of private households and small businesses. Disasters 40, 753–778,
629 <https://doi.org/10.1111/disa.12171>, 2016.
630

631 Cutter, S.L. The landscape of disaster resilience indicators in the USA. Nat. Hazards 80, 741–758,
632 <https://doi.org/10.1007/s11069-015-1993-2>, 2016.
633

634 Cutter, S.L., Ash, K.D., Emrich, C.T. The geographies of community disaster resilience. Glob. Environ.
635 Change 29, 65–77. <https://doi.org/10.1016/j.gloenvcha.2014.08.005> , 2014.
636

637 Cutter, S.L., Barnes, L., Berry, M., Burton, C., Evans, E., Tate, E., Webb, J. A place-based model for
638 understanding community resilience to natural disasters. Glob. Environ. Change 18, 598–606,
639 <https://doi.org/10.1016/j.gloenvcha.2008.07.013>, 2008.
640

641 Cutter, S.L., Burton, C.G., Emrich, C.T. Disaster Resilience Indicators for Benchmarking Baseline
642 Conditions. J. Homel. Secur. Emerg. Manag. 7, <https://doi.org/10.2202/1547-7355.1732>, 2010.
643

644 Cutter, S.L., Finch, C. Temporal and spatial changes in social vulnerability to natural hazards. Proc. Natl.
645 Acad. Sci. 105, 2301–2306, 2008.
646

647 de Moel, H., Jongman, B., Kreibich, H., Merz, B., Penning-Rowsell, E., Ward, P.J. Flood risk assessments
648 at different spatial scales. Mitig. Adapt. Strateg. Glob. Change 20, 865–890,
649 <https://doi.org/10.1007/s11027-015-9654-z>, 2015.
650

651 Donolo, R.M. Contributions to geovisualization for territorial intelligence. Institut National des Sciences
652 Appliquées de Lyon/ Università degli studi di Roma tor Vergata, 2014.
653

654 Elmer, F., Hoymann, J., Dütthmann, D., Vorogushyn, S., Kreibich, H. Drivers of flood risk change in
655 residential areas. Nat. Hazards Earth Syst. Sci. 12, 1641–1657, [https://doi.org/10.5194/nhess-12-1641-](https://doi.org/10.5194/nhess-12-1641-2012)
656 [2012](https://doi.org/10.5194/nhess-12-1641-2012), 2012.
657

658 Ernst, J., Dewals, B.J., Detrembleur, S., Archambeau, P., Erpicum, S., Piroton, M. Micro-scale flood risk
659 analysis based on detailed 2D hydraulic modelling and high resolution geographic data. Nat. Hazards 55,
660 181–209, <https://doi.org/10.1007/s11069-010-9520-y>, 2010.
661

662 Esty, D.C., Levy, M., Srebotnjak, T., de Sherbinin, A. 2005 Environmental Sustainability Index:

663 Benchmarking National Environmental Stewardship. Yale Center for Environmental Law and Policy,
664 New Haven, 2005.
665
666 European Environment Agency. Economic losses from climate-related extremes in Europe. European
667 Environment Agency, Copenhagen, 2019.
668
669 Fekete, A. Validation of a social vulnerability index in context to river-floods in Germany. *Nat. Hazards*
670 *Earth Syst. Sci.* 9, 393–403, <https://doi.org/10.5194/nhess-9-393-2009>, 2009.
671
672 Fox-Lent, C., Bates, M.E., Linkov, I. A matrix approach to community resilience assessment: an illustrative
673 case at Rockaway Peninsula. *Environ. Syst. Decis.* 35, 209–218, [https://doi.org/10.1007/s10669-015-](https://doi.org/10.1007/s10669-015-9555-4)
674 [9555-4](https://doi.org/10.1007/s10669-015-9555-4), 2015.
675
676 Frazier, T.G., Thompson, C.M., Dezzani, R.J., Butsick, D. Spatial and temporal quantification of resilience
677 at the community scale. *Appl. Geogr.* 42, 95–107, <https://doi.org/10.1016/j.apgeog.2013.05.004>, 2013.
678
679 Gardner, G. The City: A System of Systems, in: *State of the World*. Island Press/Center for Resource
680 Economics, Washington, DC, pp. 27–44, https://doi.org/10.5822/978-1-61091-756-8_3, 2016.
681
682 Garschagen, M. Risky Change? Vietnam’s Urban Flood Risk Governance between Climate Dynamics and
683 Transformation. *Pac. Aff.* 88, 599–621, <https://doi.org/10.5509/2015883599>, 2015.
684
685 Garschagen, M., Romero-Lankao, P. Exploring the relationships between urbanization trends and climate
686 change vulnerability. *Clim. Change* 133, 37–52, <https://doi.org/10.1007/s10584-013-0812-6>, 2015.
687
688 Gaslikova, L., Schwerzmann, A., Raible, C.C., Stocker, T.F. Future storm surge impacts on insurable losses
689 for the North Sea region. *Nat. Hazards Earth Syst. Sci.* 11, 1205–1216, [https://doi.org/10.5194/nhess-](https://doi.org/10.5194/nhess-11-1205-2011)
690 [11-1205-2011](https://doi.org/10.5194/nhess-11-1205-2011), 2011.
691
692 Gerl, T., Bochow, M., Kreibich, H. Flood Damage Modeling on the Basis of Urban Structure Mapping
693 Using High-Resolution Remote Sensing Data. *Water* 6, 2367–2393, <https://doi.org/10.3390/w6082367>,
694 2014.
695
696 Golz, S., Schinke, R., Naumann, T. Assessing the effects of flood resilience technologies on building scale.
697 *Urban Water J.* 12, 30–43, <https://doi.org/10.1080/1573062X.2014.939090>, 2015.
698
699 Heinzlief, C. Modélisation d’indicateurs de résilience urbaine face au risque d’inondation. Co-construction d’un
700 système spatial d’aide à la décision pour contribuer à l’opérationnalisation du concept de résilience.
701 Avignon Université, 2019.
702
703 Heinzlief, C., Becue, V., Serre, D. Operationalizing urban resilience to floods in embanked territories –
704 Application in Avignon, Provence Alpes Côte d’azur region. *Saf. Sci.* 118, 181–193,
705 <https://doi.org/10.1016/j.ssci.2019.05.003>, 2019.
706
707 Holand, I.S., Lujala, P., Rød, J.K. Social vulnerability assessment for Norway: A quantitative approach.
708 *Nor. Geogr. Tidsskr. - Nor. J. Geogr.* 65, 1–17, <https://doi.org/10.1080/00291951.2010.550167>, 2011.
709
710 Jacobs, K., Garfin, G., Lenart, M. More than Just Talk: Connecting Science and Decisionmaking. *Environ.*
711 *Sci. Policy Sustain. Dev.* 47, 6–21, <https://doi.org/10.3200/ENVT.47.9.6-21>, 2005.
712
713 Johansson, J., Opach, T., Glaas, E., Naset, T., Navarra, C., Linner, B.-O., Rod, J.K. VisAdapt: A
714 visualization tool to support climate change adaptation. *IEEE Comput. Graph. Appl.* 1–1,
715 <https://doi.org/10.1109/MCG.2016.49>, 2016.
716
717 Jovanovic, A., Øien, K., Choudhary, A. An Indicator-Based Approach to Assessing Resilience of Smart
718 Critical Infrastructures, in: *Urban Disaster Resilience and Security*. Springer, p. p.285-311, 2018.
719
720 Klein, R.J.T., Nicholls, R.J., Thomalla, F. Resilience to natural hazards: How useful is this concept?
721 *Environ. Hazards* 5, 35–45, <https://doi.org/10.1016/j.hazards.2004.02.001>, 2003.

722
723 Kraak, M.-J. Geovisualization illustrated. *ISPRS J. Photogramm. Remote Sens.* 57, 390–399,
724 [https://doi.org/10.1016/S0924-2716\(02\)00167-3](https://doi.org/10.1016/S0924-2716(02)00167-3), 2003.
725
726 Leskens, J.G., Brugnach, M., Hoekstra, A.Y., Schuurmans, W. Why are decisions in flood disaster
727 management so poorly supported by information from flood models? *Environ. Model. Softw.* 53, 53–61,
728 <https://doi.org/10.1016/j.envsoft.2013.11.003>, 2014.
729
730 Lhomme, S. Les réseaux techniques comme vecteur de propagation des risques en milieu urbain. Une
731 contribution théorique et pratique à l’analyse de la résilience urbaine, Université Paris Diderot, Paris,
732 2014.
733
734 Lhomme, S., Serre, D., Diab, Y., Laganier, R. Analyzing resilience of urban networks: a preliminary step
735 towards more flood resilient cities. *Nat. Hazards Earth Syst. Sci.* 13, 221–230,
736 <https://doi.org/10.5194/nhess-13-221-2013>, 2013.
737
738 Linkov, I., Bridges, T., Creutzig, F., Decker, J., Fox-Lent, C., Kröger, W., Lambert, J.H., Levermann, A.,
739 Montreuil, B., Nathwani, J., Nyer, R., Renn, O., Scharte, B., Scheffler, A., Schreurs, M., Thiel-Clemen,
740 T. Changing the resilience paradigm. *Nat. Clim. Change* 4, 407, 2014.
741
742 Löwe, R., Urich, C., Kulahci, M., Radhakrishnan, M., Deletic, A., Arnbjerg-Nielsen, K. Simulating flood
743 risk under non-stationary climate and urban development conditions – Experimental setup for multiple
744 hazards and a variety of scenarios. *Environ. Model. Softw.* 102, 155–171.
745 <https://doi.org/10.1016/j.envsoft.2018.01.008>, 2018.
746
747 MacEachren, A.M., Gahegan, M., Pike, W., Brewer, I., Cai, G., Lengerich, E., Hardisty, F. Geovisualization
748 for Knowledge Construction and Decision Support. *IEEE Comput. Graph. Appl.* 24, 13–17, 2004.
749
750 MacEachren, A.M., Kraak, M.-J. Research Challenges in Geovisualization. *Cartogr. Geogr. Inf. Sci.* 28, 3–
751 12, <https://doi.org/10.1559/152304001782173970>, 2001.
752
753 Maceachren, A.M., Kraak, M.-J. Exploratory cartographic visualization: Advancing the agenda. *Comput.*
754 *Geosci.* 23, 335–343, [https://doi.org/10.1016/S0098-3004\(97\)00018-6](https://doi.org/10.1016/S0098-3004(97)00018-6), 1997.
755
756 Meyer, V., Scheuer, S., Haase, D. A multicriteria approach for flood risk mapping exemplified at the Mulde
757 river, Germany. *Nat. Hazards* 48, 17–39, <https://doi.org/10.1007/s11069-008-9244-4>, 2009.
758
759 Moser, S.C. Impact assessments and policy responses to sea-level rise in three US states: An exploration of
760 human-dimension uncertainties. *Glob. Environ. Change* 15, 353–369,
761 <https://doi.org/10.1016/j.gloenvcha.2005.08.002>, 2005.
762
763 Næss, L.O., Norland, I.T., Lafferty, W.M., Aall, C. Data and processes linking vulnerability assessment to
764 adaptation decision-making on climate change in Norway. *Glob. Environ. Change* 16, 221–233,
765 <https://doi.org/10.1016/j.gloenvcha.2006.01.007>, 2006.
766
767 Opach, T., Rød, J.K. Cartographic Visualization of Vulnerability to Natural Hazards. *Cartogr. Int. J. Geogr.*
768 *Inf. Geovisualization* 48, 113–125, <https://doi.org/10.3138/cart0.48.2.1840>, 2013.
769
770 Patil, V.H., Singh, S.N., Mishra, S., Todd Donovan, D. Efficient theory development and factor retention
771 criteria: Abandon the “eigenvalue greater than one” criterion. *J. Bus. Res.* 61, 162–170,
772 <https://doi.org/10.1016/j.jbusres.2007.05.008>, 2008.
773
774 Patt, A., Dessai, S. Communicating uncertainty: lessons learned and suggestions for climate change
775 assessment. *Comptes Rendus Geosci.* 337, 425–441, <https://doi.org/10.1016/j.crte.2004.10.004>, 2005.
776
777 Prior, T., Hagmann, J. Measuring resilience: methodological and political challenges of a trend security
778 concept. *J. Risk Res.* 17, 281–298, <https://doi.org/10.1080/13669877.2013.808686>, 2014.
779
780 Provitolo, D. Resiliency vulnerability notion-looking in another direction in order to study risks and disasters, in:
781 *Resilience and Urban Risk Management*. CRC Press, p. 192, 2012

782
783
784 Radhakrishnan, M., Pathirana, A., Ashley, R., Zevenbergen, C. Structuring Climate Adaptation through
785 Multiple Perspectives: Framework and Case Study on Flood Risk Management. *Water* 9, 129,
786 <https://doi.org/10.3390/w9020129>, 2017.
787
788 Schinke, R., Kaidel, A., Golz, S., Naumann, T., López-Gutiérrez, J., Garvin, S. Analysing the Effects of
789 Flood-Resilience Technologies in Urban Areas Using a Synthetic Model Approach. *ISPRS Int. J. Geo-*
790 *Inf.* 5, 202, <https://doi.org/10.3390/ijgi5110202>, 2016.
791
792 Schinke, R., Neubert, M., Hennersdorf, J., Stodolny, U., Sommer, T., Naumann, T. Damage estimation of
793 subterranean building constructions due to groundwater inundation – the GIS-based model approach
794 GRUWAD. *Nat. Hazards Earth Syst. Sci.* 12, 2865–2877, <https://doi.org/10.5194/nhess-12-2865-2012>,
795 2012.
796
797 Schumann, G., Di Baldassarre, G., Bates, P.D. The Utility of Spaceborne Radar to Render Flood Inundation
798 Maps Based on Multialgorithm Ensembles. *IEEE Trans. Geosci. Remote Sens.* 47, 2801–2807,
799 <https://doi.org/10.1109/TGRS.2009.2017937>, 2009.
800
801 Serre, D. DS3 Model Testing: Assessing Critical Infrastructure Network Flood Resilience at the
802 Neighbourhood Scale, in: Fekete, A., Fiedrich, F. (Eds.), *Urban Disaster Resilience and Security*. Springer
803 International Publishing, Cham, pp. 207–220, https://doi.org/10.1007/978-3-319-68606-6_13, 2018.
804
805 Serre, D. Advanced methodology for risk and vulnerability assessment of interdependency of critical
806 infrastructure in respect to urban floods. *E3S Web Conf.* 7, 7002,
807 <https://doi.org/10.1051/e3sconf/20160707002>, 2016.
808
809 Serre, D., Barroca, B., Balsells, M., Becue, V. Contributing to urban resilience to floods with neighbourhood
810 design: the case of Am Sandtorkai/Dalmanckai in Hamburg. *J. Flood Risk Manag.*
811 <https://doi.org/10.1111/jfr3.12253>, 2016.
812
813 Serre, D., Barroca, B., Diab, Y. Urban flood mitigation: sustainable options. Presented at the THE
814 SUSTAINABLE CITY 2010, La Coruna, Spain, pp. 299–309, <https://doi.org/10.2495/SC100261>, 2010.
815
816 Serre, D., Heinzlef, C. Assessing and mapping urban resilience to floods with respect to cascading effects
817 through critical infrastructure networks. *Int. J. Disaster Risk Reduct.*
818 <https://doi.org/10.1016/j.ijdrr.2018.02.018>, 2018.
819
820 Singh-Peterson, L., Salmon, P., Goode, N., Gallina, J. Translation and evaluation of the Baseline Resilience
821 Indicators for Communities on the Sunshine Coast, Queensland Australia. *Int. J. Disaster Risk Reduct.*
822 10, 116–126, <https://doi.org/10.1016/j.ijdrr.2014.07.004>, 2014.
823
824 Suárez, M., Gómez-Baggethun, E., Benayas, J., Tilbury, D. Towards an Urban Resilience Index: A Case
825 Study in 50 Spanish Cities. *Sustainability* 8, 774, <https://doi.org/10.3390/su8080774>, 2016.
826
827 Tierney, K.J. *The social roots of risk: producing disasters, promoting resilience, High reliability and crisis*
828 *management*. Stanford Business Books, an imprint of Stanford University Press, Stanford, California,
829 2014.
830
831 Tierney, K.J., Lindell, M.K., Perry, R.W. *Facing the unexpected: disaster preparedness and response in the*
832 *United States*. Joseph Henry Press, Washington, D.C, 2001.
833
834 UNISDR-United Nations International Strategy for Disaster Reduction. *Terminology on disaster risk*
835 *reduction*. Geneva, 2009.
836
837 Vorogushyn, S., Lindenschmidt, K.-E., Kreibich, H., Apel, H., Merz, B. Analysis of a detention basin
838 impact on dike failure probabilities and flood risk for a channel-dike-floodplain system along the river
839 Elbe, Germany. *J. Hydrol.* 436–437, 120–131, <https://doi.org/10.1016/j.jhydrol.2012.03.006>, 2012.
840
841 Wallemacq, P., House, R. *Economic losses, poverty and disasters: 1998-2017*. Center for Research on the

842 Epidemiology of Disaster (CRED), UNISDR, 2018.
843
844 Ward, P.J., de Moel, H., Aerts, J.C.J.H. How are flood risk estimates affected by the choice of return-
845 periods? Nat. Hazards Earth Syst. Sci. 11, 3181–3195, <https://doi.org/10.5194/nhess-11-3181-2011>,
846 2011.
847
848 Yasobant, S., Vora, K.S., Hughes, C., Upadhyay, A., Mavalankar, D.V. Geovisualization: A Newer GIS
849 Technology for Implementation Research in Health. J. Geogr. Inf. Syst. 7, 20–28,
850 <https://doi.org/10.4236/jgis.2015.71002>, 2015.
851
852