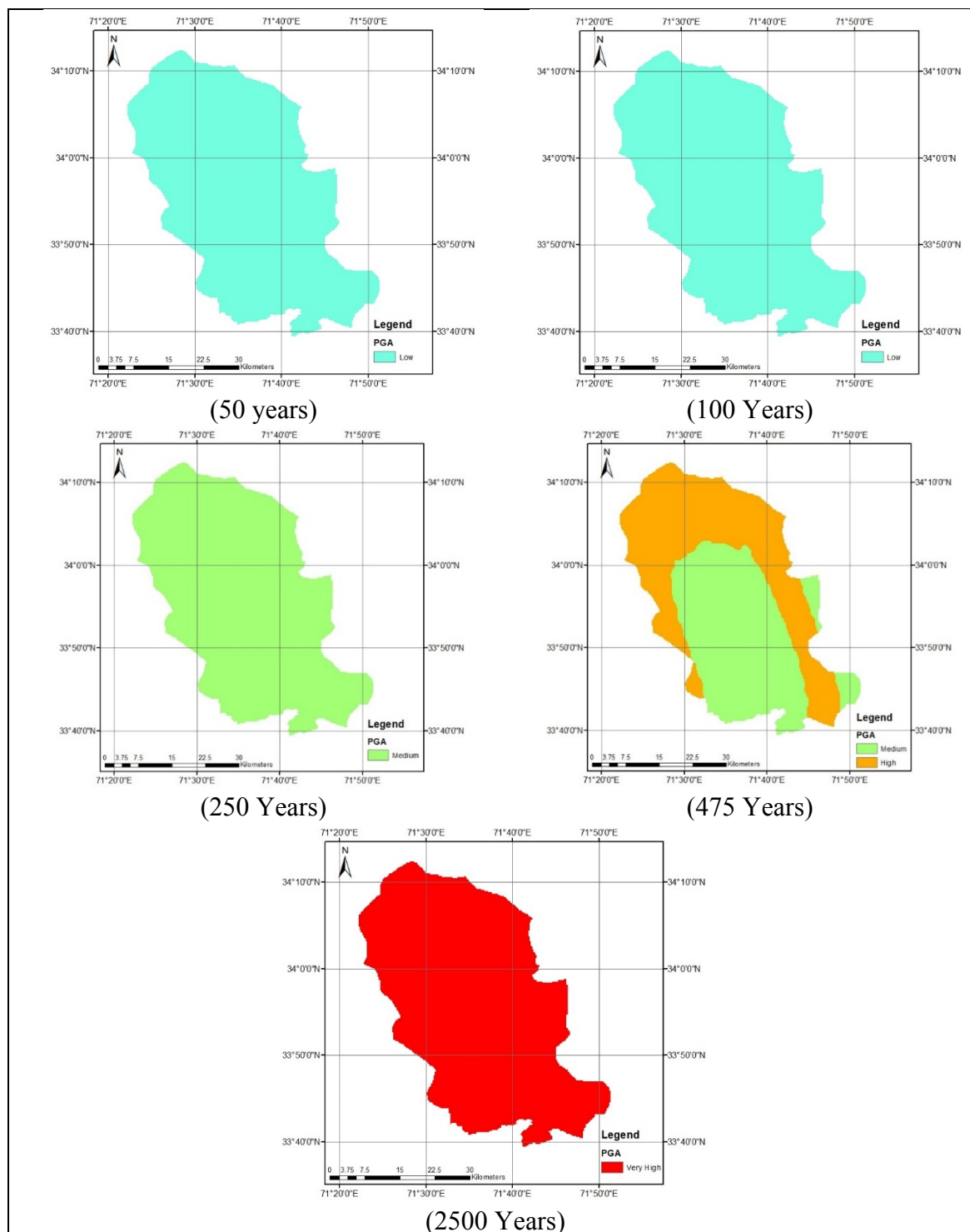
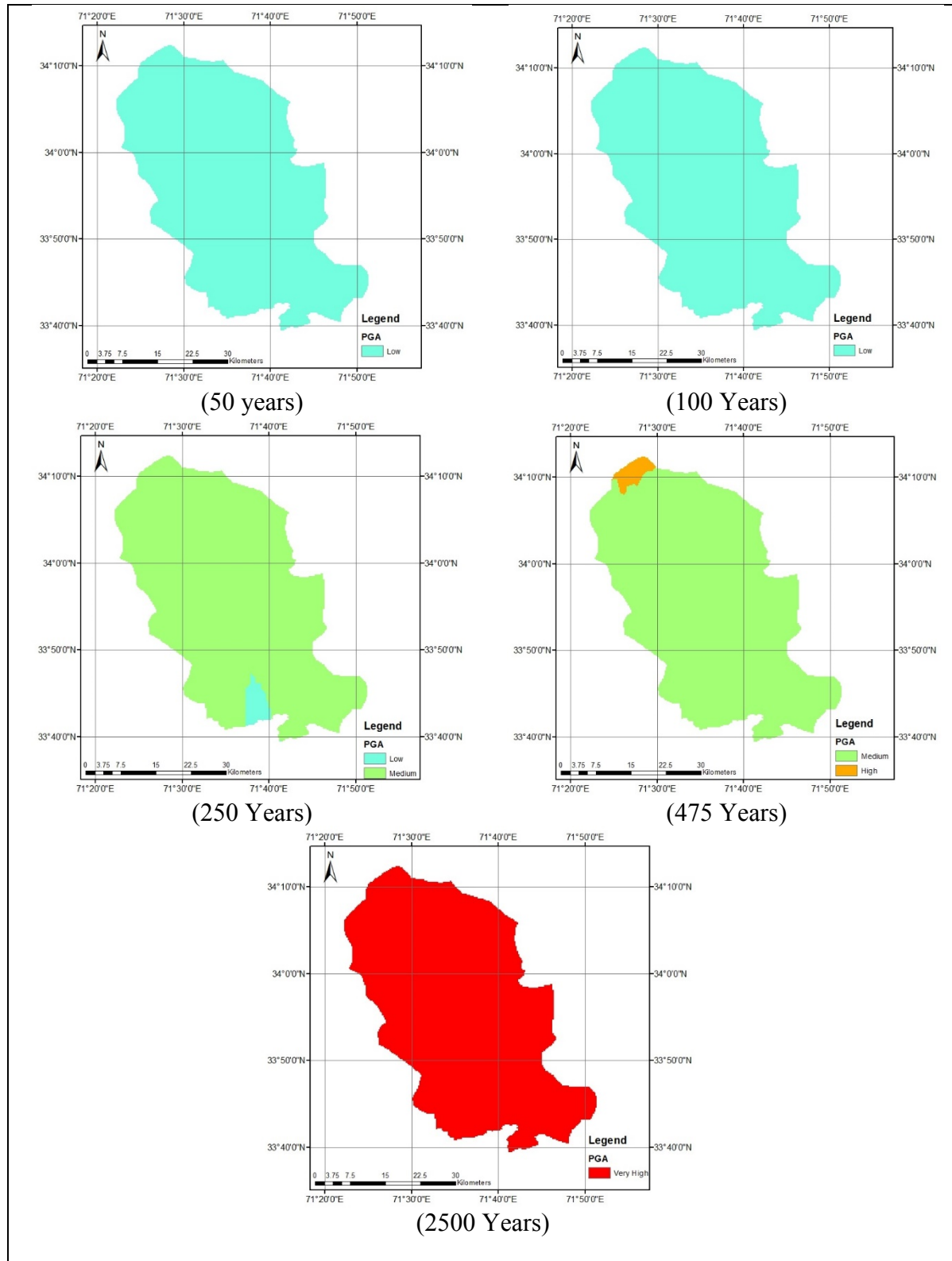


**Supplements:** Hazard maps for various return periods using different GMPEs and seismic sources

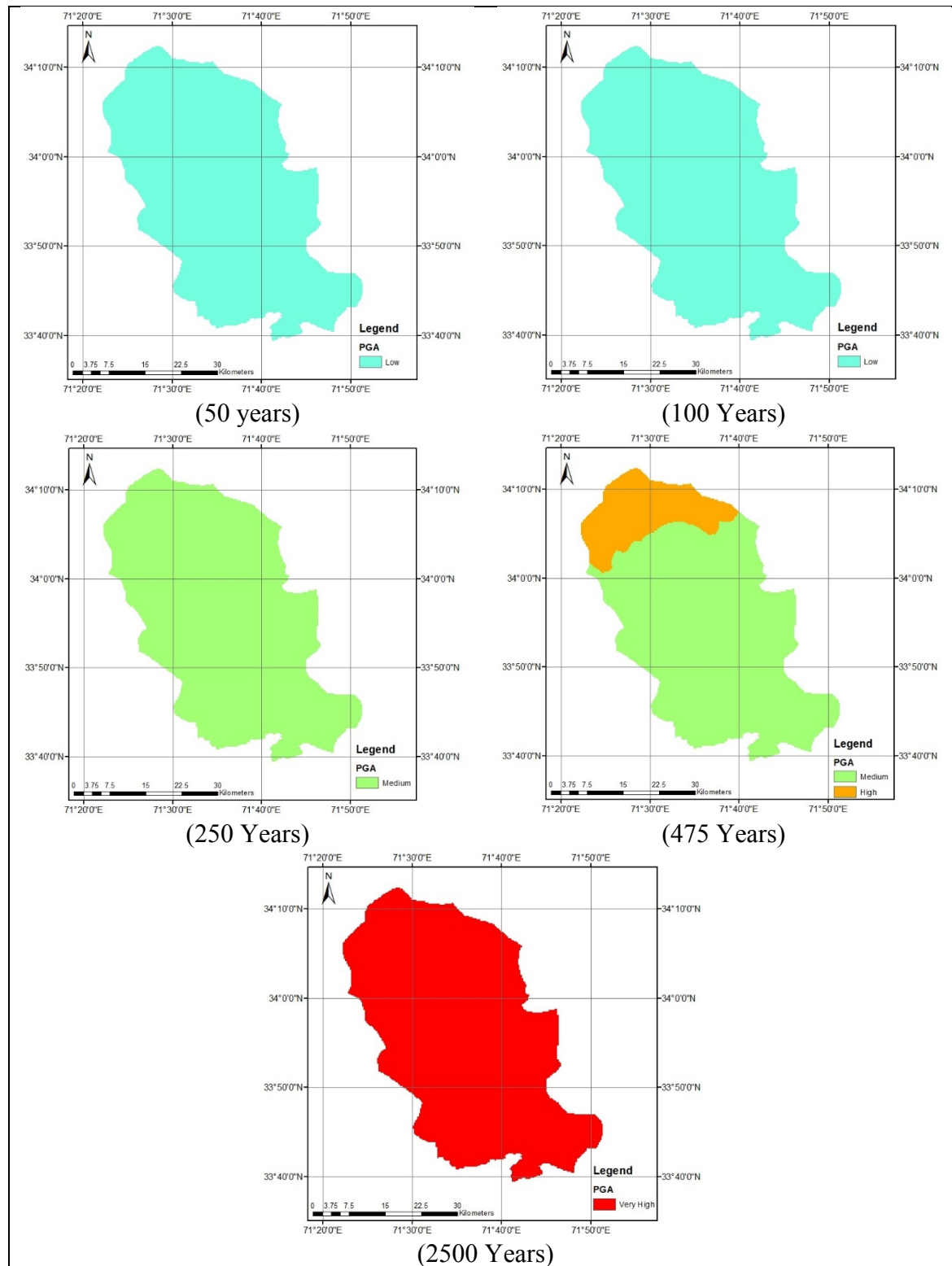
**Calculated seismic hazard map using Akkar and Boomer, 2010 GMPE for shallow earthquakes**



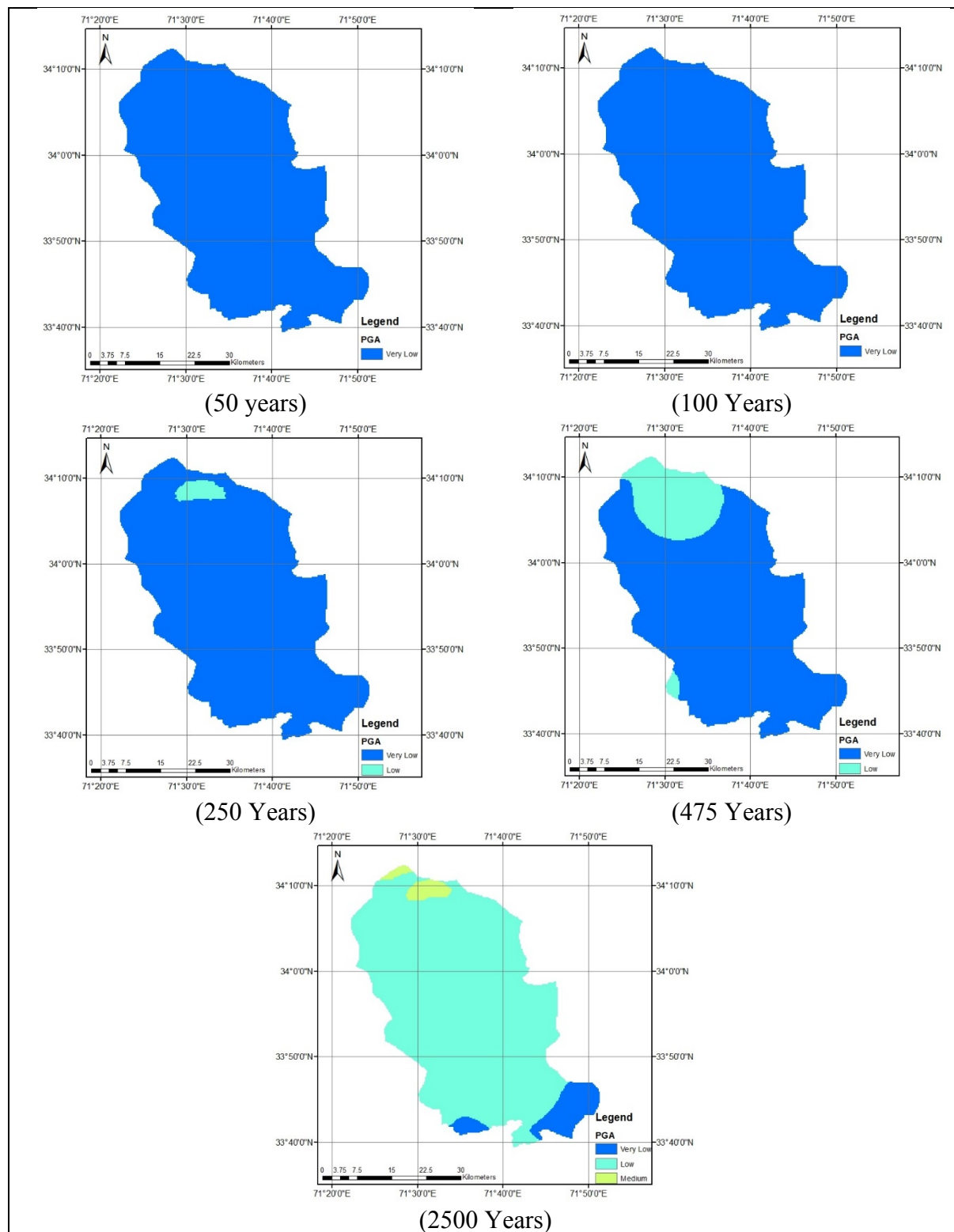
Calculated seismic hazard map using Bore and Atkinson, NGA 2008 GMPE for shallow earthquakes



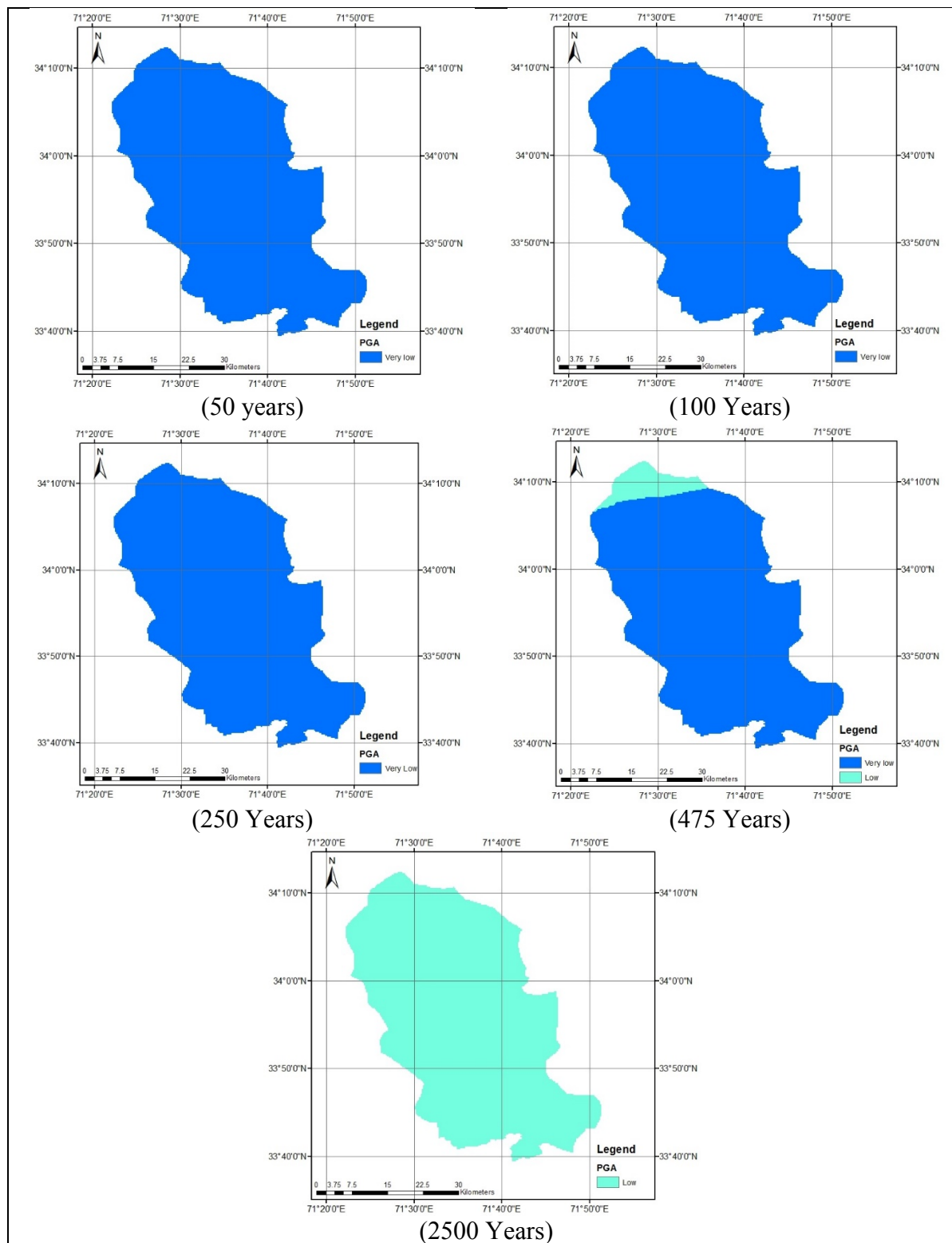
## Calculated seismic hazard map using Average of GMPEs used for shallow earthquakes



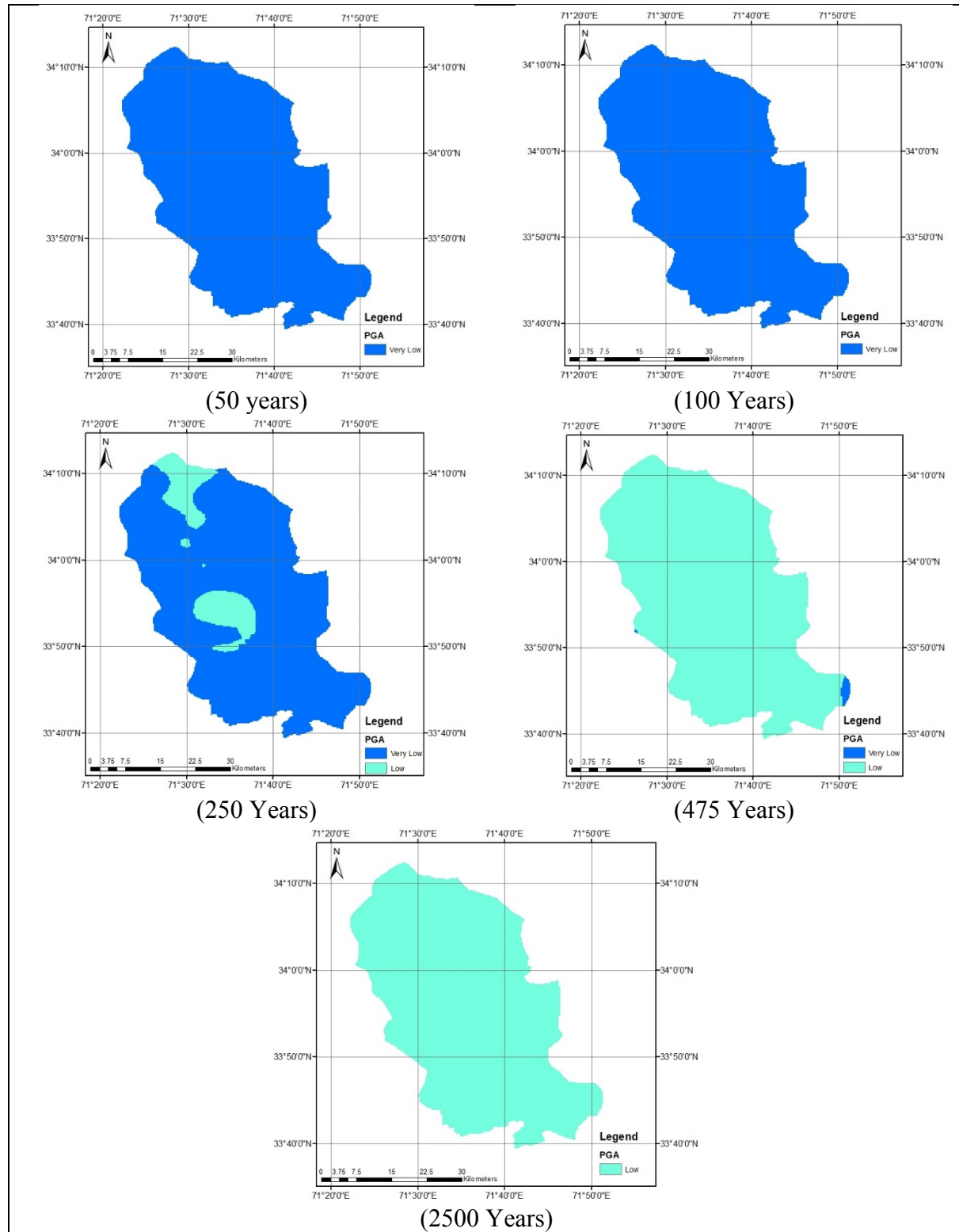
### Calculated seismic hazard map using Kanno et al, 2006 GMPE for Deep earthquakes



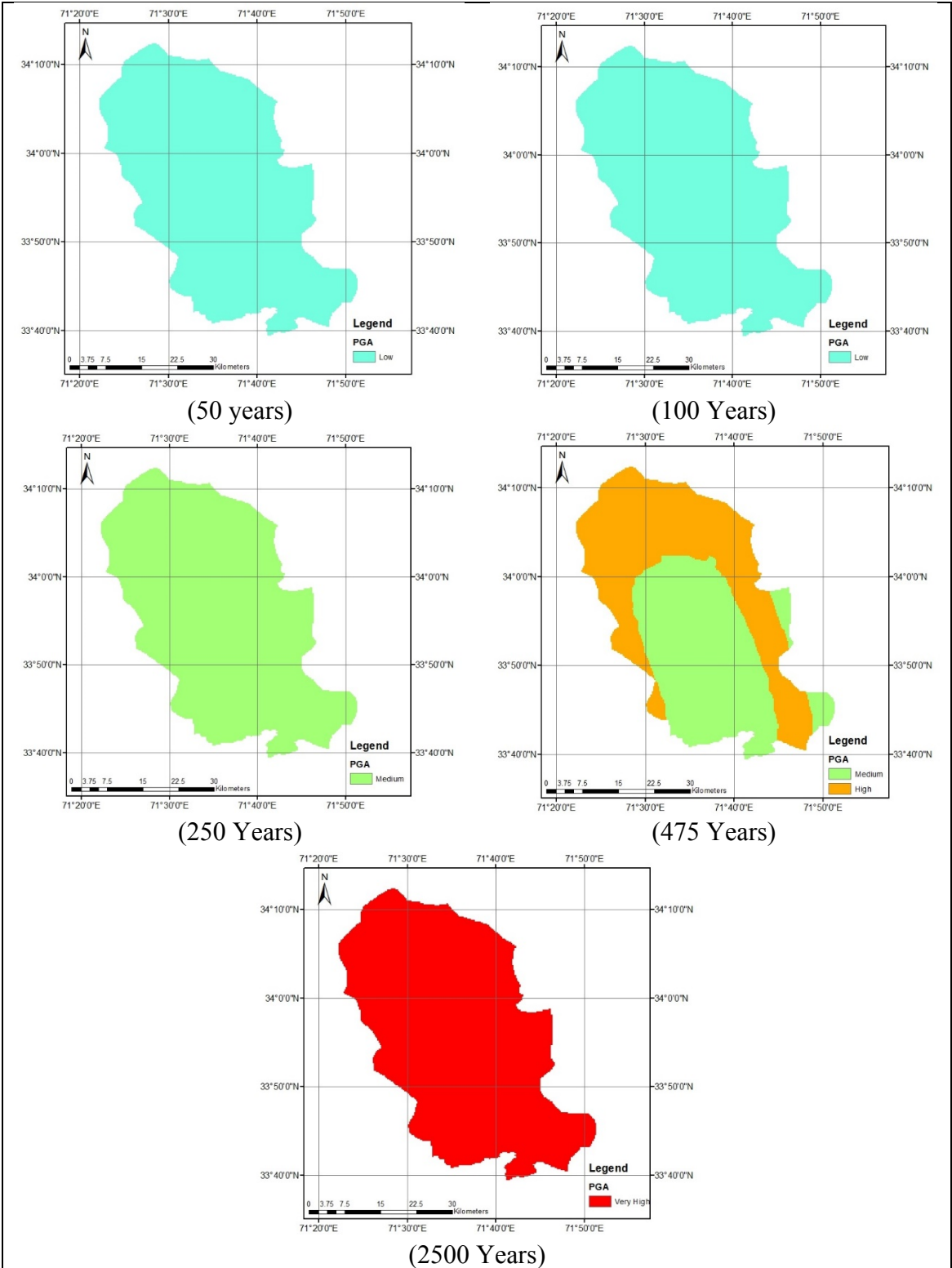
## Calculated seismic hazard map Lin and Lee, 2008 GMPE for Deep earthquakes



### Calculated seismic hazard map using average of GMPEs used for Deep earthquakes

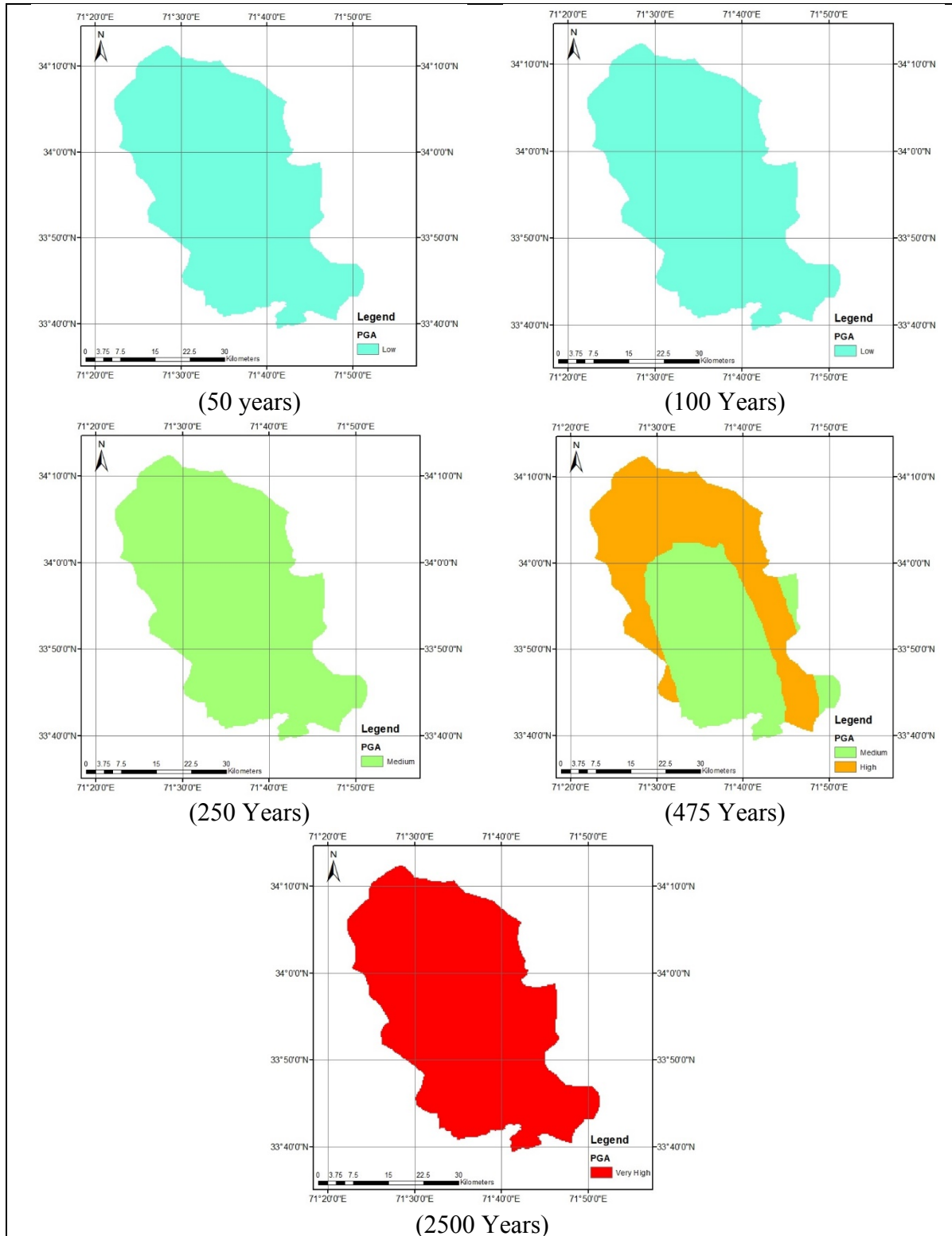


Calculated seismic hazard map considering Akkar and Boomer, 2010 for shallow earthquakes and Kanno et al, 2006 for Deep earthquakes



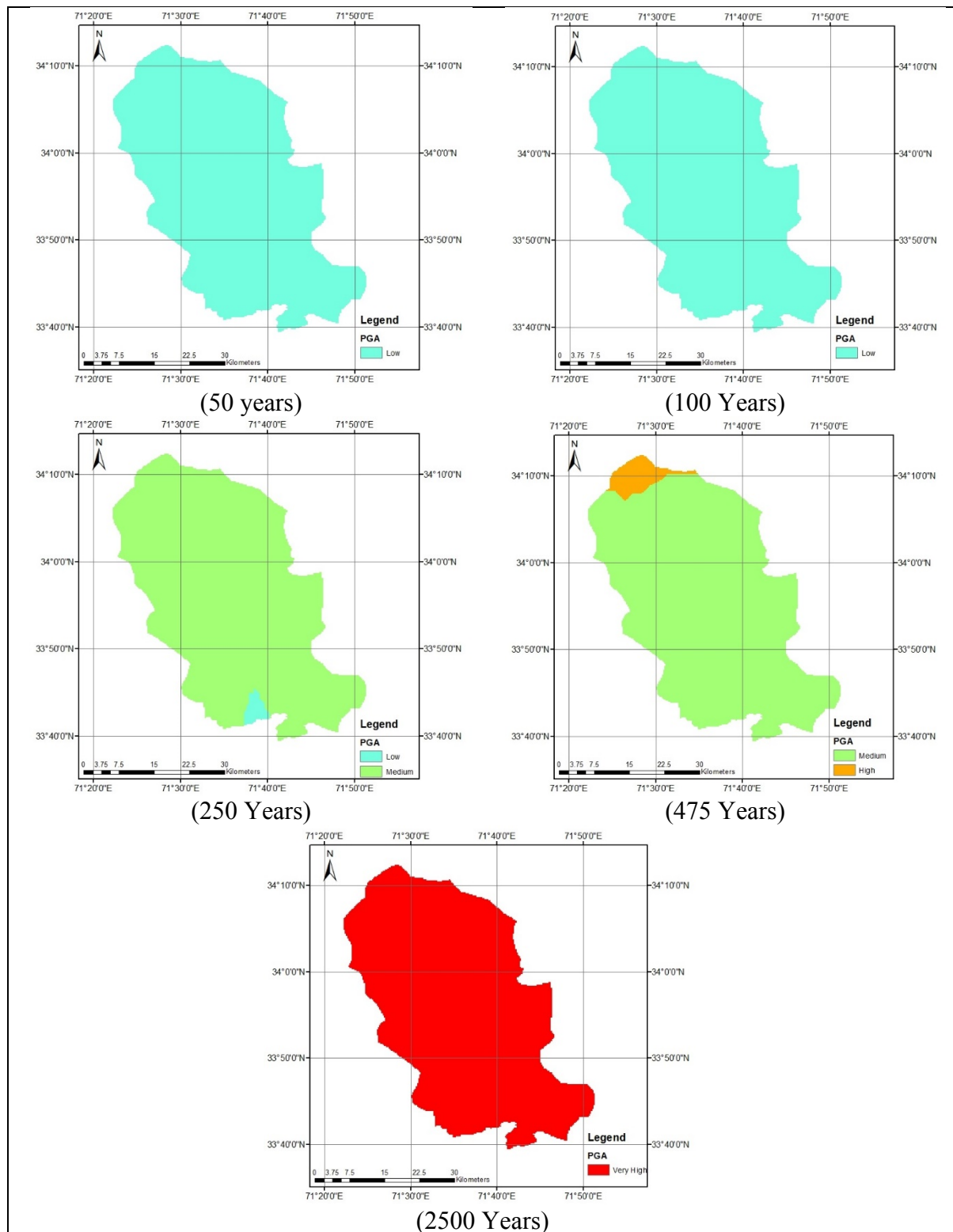


**Calculated seismic hazard map considering Akkar and Boomer, 2010 for shallow earthquakes and Lin and Lee, 2008 for Deep earthquakes**

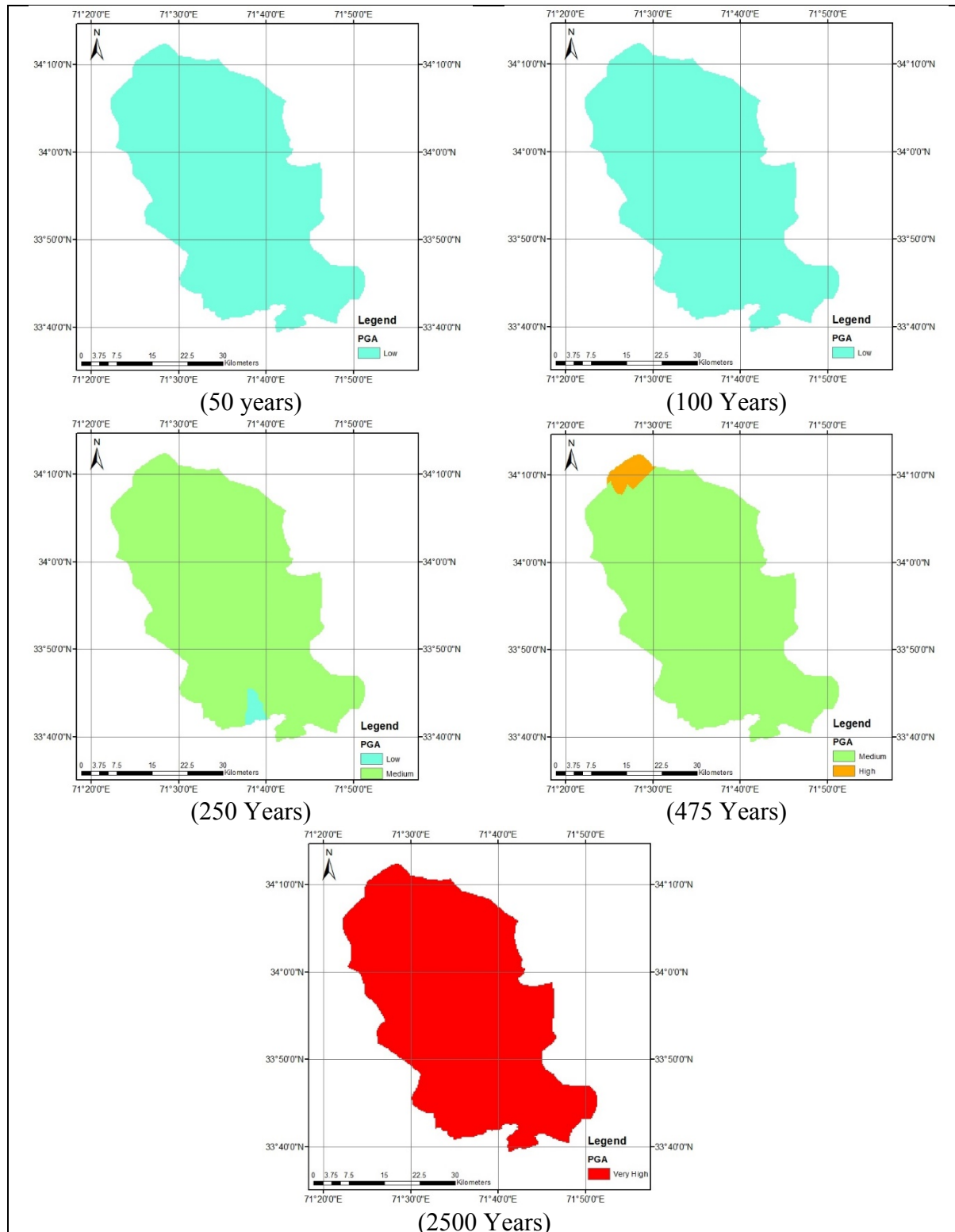




**Calculated seismic hazard map considering Bore and Atkinson, NGA 2008 for shallow earthquakes and Kanno et al, 2006 for Deep earthquakes**



**Calculated seismic hazard map considering Bore and Atkinson, NGA 2008 for shallow earthquakes and Lin and Lee, 2008 for Deep earthquakes**



### Calculated seismic hazard map considering GMPEs used for both shallow and deep earthquakes

