

## Comments on second round of review

The authors have attempted to address the comments provided in the first round of review. However, there are some issues identified in the paper. In this paper, there is enough technical information about web-based Nepalese landslide information system. However, it need proof reading and heavy editing.

### **Specific comments**

#### Abstract

Line 8 “**a lot** of organisations” use appropriate word

Line 9 sentence starting from: Next to the lack of.. not clear, consider revising.

#### Introduction section

Line 26 wrong references, please cite correct reference

Line 30 missing reference

Line 34-36 not clear so please consider revising sentences

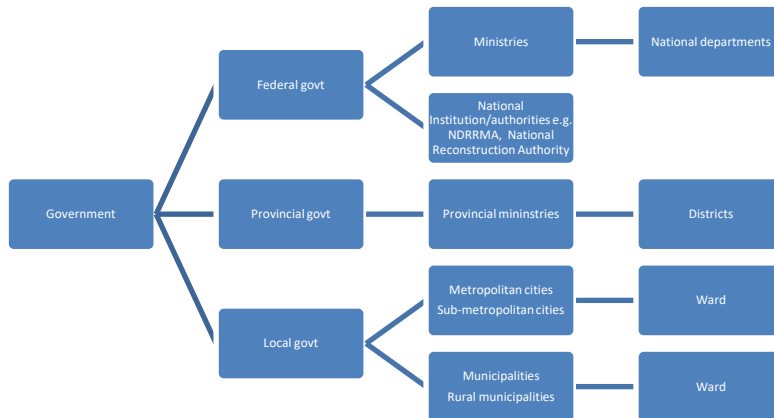
Line 37-45 references missing

.Line 61 “there are not enough efforts to involve people in landslide management”  
.....explain why? An include evidence.

Line 62 Explain why there is little collaboration between stakeholders for managing  
landslides risk in Nepal?

#### Result and discussions

In Figure 2: At the provincial level, only district offices are shown and provincial ministries are missing. Similarly, the bottom box includes community level and VDC. According to Constitution of Nepal, 2015 Nepal is administratively divided into federal government, provincial government and local government. It follows the structure given in the Figure below. Please include reference to the information, references are missing.



Line number 210 VDC is mentioned as the smallest administrative unit at community level. VDC is no longer an administrative unit in Nepal. Metro/sub metro cities, Municipalities/Rural Municipalities are the administrative units at the local level and each of Municipality or Rural Municipality is composed of different wards. So, ward is the smallest unit. Please include sources/references. Information source/references are missing.

Line 213-224 reference missing

Line 226-233 references missing, include references.

Line 226 authors mentioned landslide mapping efforts in Nepal after the Gorkha earthquake. Please include the landslide mapping efforts prior to Gorkha earthquake as well.

Line 246 Table 1 includes landslide inventories of Nepal. Are these landslide inventoried post-Gorkha earthquake? If yes, please include some of the inventories that were taken prior to Gorkha earthquake. Please consider DRR portal, Ministry of Home Affairs, Nepal.