

Interactive comment on “Probabilistic landslide susceptibility analysis in tropical mountainous terrain using the physically based r.slope.stability model” by Johnnatan Palacio Cordoba et al.

Johnnatan Palacio Cordoba et al.

japalacioc@unal.edu.co

Received and published: 17 January 2020

Please see supplement.

Please also note the supplement to this comment:

<https://www.nat-hazards-earth-syst-sci-discuss.net/nhess-2019-223/nhess-2019-223-AC2-supplement.pdf>

Interactive comment on Nat. Hazards Earth Syst. Sci. Discuss., <https://doi.org/10.5194/nhess-2019-223>, 2019.

C1

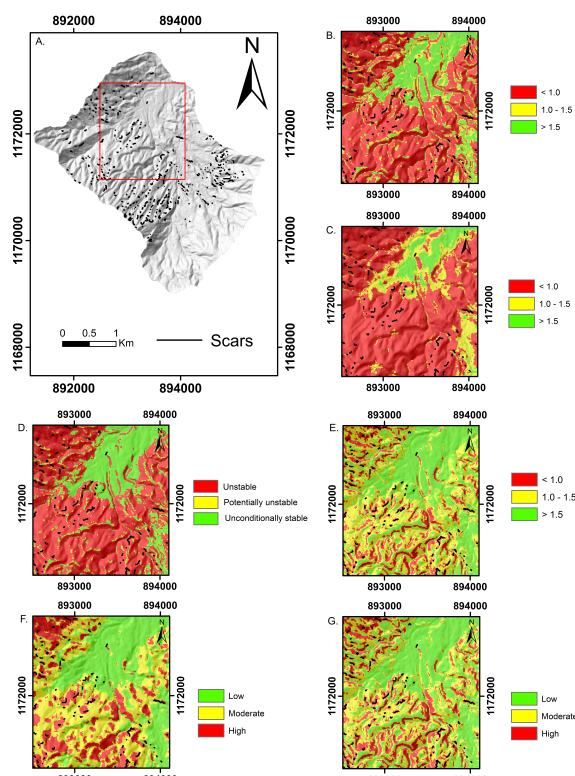


Fig. 1. FIG. 6

C2