

Interactive comment on “Hydrometeorological Conditions Leading to the 2015 Salgar Flash Flood: Lessons for Vulnerable Regions in Tropical Complex Terrain” by Carlos D. Hoyos et al.

Carlos D. Hoyos et al.

cdhoyos0@unal.edu.co

Received and published: 18 September 2019

We sincerely thank you for the insightful suggestions to improve the manuscript as well as for your kind comments. We are in the process of addressing each of the points made by both reviewers. Regarding the figures, we made the modifications suggested by reviewer one and also modified new Figures 11 and 15 following your suggestions.

In new Figures 11 and 15: The gray shadow corresponds to the approximate timing of the flash flood event in different parts of the basin according to local authorities and the community (from 02:10 to 02:40 LT) - As reported by the media and the national government:

[Printer-friendly version](#)

[Discussion paper](#)



<http://www.elcolombiano.com/antioquia/tragedia-en-antioquia-salgar-un-ano-despues-XX4145514>

https://caracol.com.co/emisora/2015/12/25/medellin/1451076926_92470.html

<http://portal.gestiondelriesgo.gov.co/Paginas/Noticias/2015/Antecion-Emergencia-Salgar-Antioquia.aspx>

Interactive comment on Nat. Hazards Earth Syst. Discuss., <https://doi.org/10.5194/nhess-2019-171>, 2019.

[Printer-friendly version](#)

[Discussion paper](#)



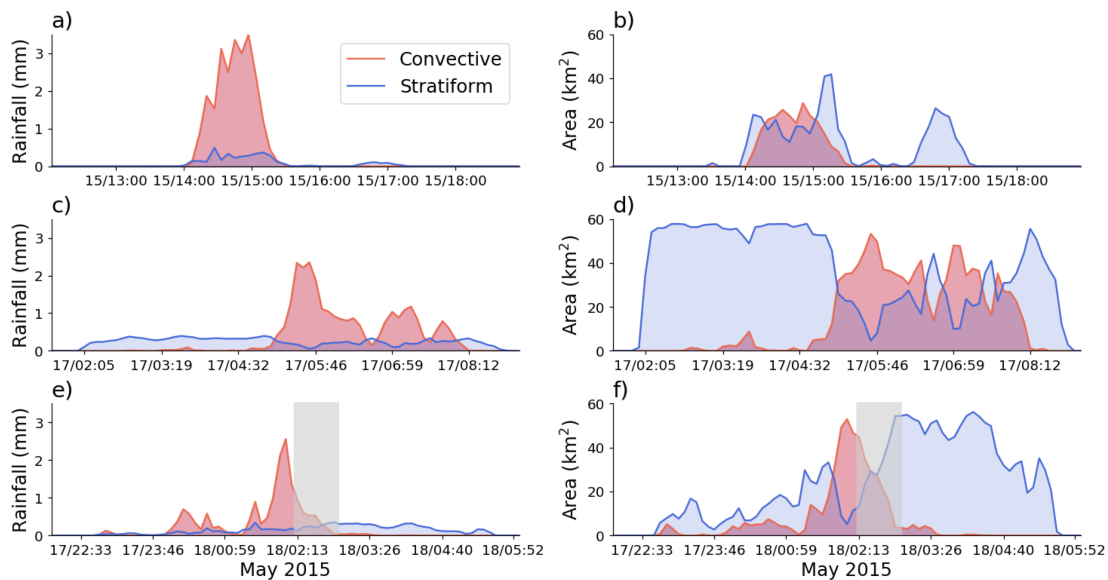


Fig. 1. New Figure 11

[Printer-friendly version](#)

[Discussion paper](#)



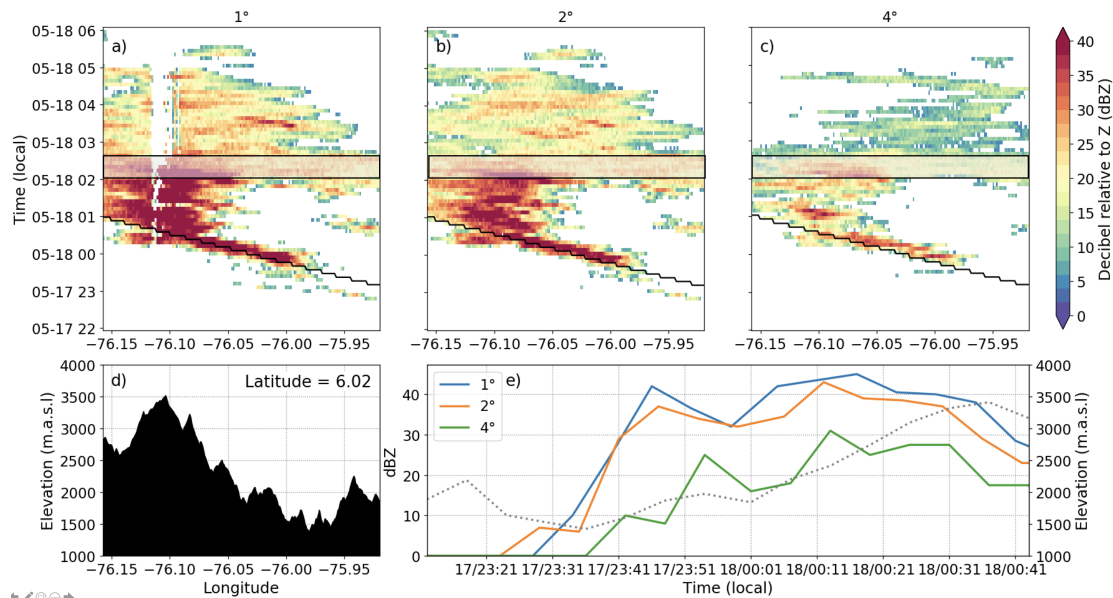


Fig. 2. New Figure 15

[Printer-friendly version](#)

[Discussion paper](#)

