

## A) Comments from referees/public

### I/ Referee 1

#### Major comments:

- 1) “Point out even better what is new and innovative compared to earlier studies. This should become clear from the abstract and the introduction and maybe even the title.”
- 2) “I don’t like the word “computer modelling” in the title. Almost everything is computer modelling nowadays. Can you find another word to describe what makes this article new compared to earlier studies?”
- 3) “You look at a maximum duration of 144 hours. Some floods can last many months, could you discuss this choice and give an estimate of how the conclusions would differ for longer flood durations?”

#### Minor comments:

- 1) “Page 1, line 17: You talk about 2 components (hazard and vulnerability) but exposure is a third component (even though irrelevant when looking at only an individual building).”
- 2) “Page 5, line 16: “model of dwelling” should I think be “model of a dwelling”.”
- 3) “Page 6, line 12: You look at a maximum duration of 144 hours. Some floods can last many months.”
- 4) “Page 6, from line 25: Not entirely sure what you mean by perimeter.”
- 5) “Page 9, formula 5, 6 and 7: Could you use a comma between sd, now it looks like an undefined variable rather than s and d.”
- 6) “Page 9: Can you provide an intuitive explanation of maximum cost-efficiency?”
- 7) “Page 13, line 18: “flood barriers must be completed by other measures”, I think you mean complemented instead of completed.”
- 8) “Throughout the paper: Can you provide price levels whenever a monetary value is mentioned?”

### II/ Referee 2

#### Major comments:

- 1) “Cost-benefit analyses are one of the fundamental reasons for performing risk assessment studies, and have been carried out for years by all types of stakeholders involved in disaster risk reduction (e.g. governmental bodies, industry, academia). I do not see anything particularly innovative from a scientific viewpoint in Section 3.5. As such, the novelty of the article and the approach is assumed to relate to the application of a new synthetic loss model called floodam to support such analyses.”
- 2) “It should be noted that the scientific field of flood loss modelling has received increasing attention in the last couple of decades, and the body of literature has become vast. The introduction

of this article, which attempts to explain why it is relevant, does not engage with much of the relevant literature on this topic. There are both empirical and synthetic models which use precautionary measures or other building properties to explain flood loss, and can therefore be used to make similar analyses. See for example Gerl et al., 2016; Sairam et al., 2019. This does not mean that there is no scope to propose new flood loss models – on the contrary. Flood loss modelling remains an open field where more research is certainly warranted. However, the reader should be able to understand what is the novelty of this research, which is currently not the case. This is the main shortcoming of your article.”

3) “Since the model is based on a synthetic approach, this modelling approach should be given particular attention in your literature review and in positioning your new model among it. I can think of at least three articles proposing synthetic flood loss models comparable to this one, i.e. where losses are obtained based on losses to individual building components: Custer and Nishijima, 2015; Dottori et al., 2016; Nadal et al., 2010. The general description presented in Section 3.3. of your article could apply almost word by word to any of these models. In light of this, I would suggest you restructure the article such that much more emphasis is given to the new flood loss model, and that you then illustrate its application through the economic analyses performed here. From the user manual of floodam, it appears to be a well-structured model that deserves to be presented to the scientific community following peer-review.”

#### Minor comments:

1) “In P2-L8 the authors correctly state the AAE can be obtained through a probability weighted average of the values of efficacy for different flood intensities. However, it is not clear in the article how the authors have actually calculated this. The probability of exceeding certain flood intensity measures such as water depth depends on the asset location, and as such, the average annual losses are site-dependent. Therefore, the cost-efficiency of precautionary measure is necessarily also site-dependent. What was considered here? This should be clarified in a new version of the manuscript.”

2) “I assume these are meant to apply to France, but no explicit reference is made to this aspect in the article. In the abstract you also mention some findings (e.g. “according to our results, dry-proofing and elevating a dwelling are unlikely to be cost-efficient for dwellings that are not exposed to floods with a return period lower than 100 and 30 years, respectively”) but a reference to where they are assumed to be valid is missing.”

#### **III/ Additional comment of the editor**

1) “Also the applicability of the scientific findings needs to be emphasized and demonstrated more in depth.”

## **B) Authors' response**

### **I/ Response to referee 1**

#### Response to the major comments

1) In order to point out what is new in our study, we provided the following changes:

- We changed the title to: “Economic assessment of precautionary measures against floods: insights from a non contextual approach”. Indeed, the main novelty of our study lies in the fact that we examined the cost, efficacy, and cost-efficacy of precautionary measures in a non contextual setting. This enabled us to explore the influence of several building characteristics and flood parameters on the cost and efficacy of the measures.
- In the abstract, we replaced these 2 sentences: “In particular, a better understanding of the influence of buildings characteristics and floods parameters on these variables would help identify the measures that are relevant to implement in specific contexts. We examined this topic for three groups of measures taken on existing dwellings: [...]” by: “In particular, the influence of building and flood characteristics on these variables has not been thoroughly studied. A better understanding of this topic would help identify the measures that are relevant to implement in specific contexts. To address this gap, we examined the effect of building and flood characteristics on the cost, efficacy, and cost-efficiency of three groups of measures taken on existing dwellings: [...]” (page 1, lines 3-6)
- In the introduction, we modified the paragraph on page 3, lines 14-20 by: “In brief, the existing literature focuses on assessing the efficacy or cost-efficiency of precautionary measures, rather than on explaining their variability. The aim of our study was to address this gap. We combined data based on expert judgement and computer modelling to analyse three types of measures (elevation, dry-proofing, and components adaptations) for a wide range of flood intensities and dwellings characteristics, including the material used for their components. More specifically, we assessed ranges of cost and efficacy of the measures and examined the influence of building and flood characteristics on these variables. For each type of measures, we also found a range of exposure level for which it is unlikely that the measure could be cost-efficient, independently of the buildings characteristics.”

2) We changed the title to: “Economic assessment of precautionary measures against floods: insights from a non contextual approach”

3) In the new version of the manuscript, we discuss our choice to look at a maximum flood duration of 144 hours in Section “5.4 Limits”, page 15, lines 21-28: “We only studied the efficacy and cost-efficiency of the strategies for dwellings that are exposed to floods that do not last more than 144 hours because the experts interviewed to develop the elementary damage functions did not have information about the consequences of longer floods. The efficacy of dry-proofing for such floods is null because it is recommended to let the water enter the building after 48 hours. As for the elevation strategy, its efficacy in case of floods that last more than 144 hours depends on the propensity of such floods to generate foundations failure. If the foundations fail, the fact that the building is elevated does not reduce the damage. The efficacy of the component adaptations strategy for floods longer than 144 hours depends on the vulnerability of the recommended components when they are in contact with water for more than 144 hours.”

#### Response to the minor comments:

- 1) We changed the two first sentences of the introduction (page 1, lines 18-19) to: “A flood risk can be defined as the combination of a hazard, an exposed population, and its vulnerability to the hazard.”
- 2) We wrote “model of a dwelling” instead of “model of dwelling” for each occurrence of these terms.
- 3) We added the following footnote on page 6, line 12: “Some floods can last more than 144 hours. The experts interviewed did not provide data regarding the vulnerability of the elementary components to such floods. Thus, we did not study the efficacy of precautionary measures for floods longer than 144 hours.”
- 4) By perimeter, we mean: the length of the boundary of the building. Maybe “circumference” is more appropriate? Since we are not sure, we did not change this term.
- 5) We used a comma between s and d in the equations 5, 6, and 7, pages 9 and 10.
- 6) On page 9, lines 2-6, we added the following explanation of the maximum cost-efficiency: “It is thus a supremum of the cost-efficiency for the type of dwelling considered. In other words, for a given strategy and a given type of dwelling, the cost-efficiency of the strategy is always lower than the maximum cost-efficiency, regardless of the building materials or the relationship between the flood intensity and frequency.”
- 7) On page 14, line 2, we replaced “completed” by “complemented”.
- 8) We apologize but we did not understand this comment. Could you give us an example of what you mean by “price levels”?

## **II/ Response to referee 2**

### Response to the major comments:

- 1) We think that the novelty of our article lies both in our research question and in our results.

The purpose of the other articles that deal with the assessment of precautionary measures is mainly to examine their mean efficacy (or cost-efficiency) in specific contexts. By contrast, we aim to present in-depth analyses of how these efficacy and cost-efficiency vary depending on the buildings characteristics and exposure to floods. Such analyses are useful in order to better target the dwellings for which precautionary measures could be advantageous.

We also think that we provide new and useful results. Mainly, we present a systematic methodology to identify the conditions (in terms of exposure to riverine floods) in which the measures cannot be cost-efficient, no matter the building materials. We apply this methodology to identify these conditions for the whole France. This result can be used by decision-makers to recommend precautionary measures only to inhabitants that live in dwellings for which precautionary measures could be advantageous.

We modified the manuscript in order to emphasize the novelty of our study:

- In the abstract, we replaced these 2 sentences: “In particular, a better understanding of the influence of buildings characteristics and floods parameters on these variables would help identify the measures that are relevant to implement in specific contexts. We examined this topic for three groups of measures taken on existing dwellings: [...]” by: “In particular, the

influence of building and flood characteristics on these variables has not been thoroughly studied. A better understanding of this topic would help identify the measures that are relevant to implement in specific contexts. To address this gap, we examined the effect of building and flood characteristics on the cost, efficacy, and cost-efficiency of three groups of measures taken on existing dwellings: [...]” (page 1, lines 3-6)

- In the introduction, we modified the paragraph on page 3, lines 14-20 by: “In brief, the existing literature focuses on assessing the efficacy or cost-efficiency of precautionary measures, rather than on explaining their variability. The aim of our study was to address this gap. We combined data based on expert judgement and computer modelling to analyse three types of measures (elevation, dry-proofing, and components adaptations) for a wide range of flood intensities and dwellings characteristics, including the material used for their components. More specifically, we assessed ranges of cost and efficacy of the measures and examined the influence of building and flood characteristics on these variables. For each type of measures, we also found a range of exposure level for which it is unlikely that the measure could be cost-efficient, independently of the buildings characteristics.”
- In the conclusion, we replaced the first sentence by: “We analysed three types of precautionary measures in a non contextualized setting. This novel approach enabled us to explore the influence of several building and flood characteristics on the cost and efficacy of the precautionary measures and to find ranges of exposure for which they are unlikely to be cost-efficient.” (Page 15, lines 30-32).

2) We compared floodam to existing flood loss models in order to explain why it seems to be the most relevant to conduct our analyses in a new section, from page 6, line 22 to page 7 line 3:

“3.4 Suitability of floodam to assess the precautionary measures

Numerous empirical and synthetic flood loss models exist. Floodam belongs to the latter category. Empirical models are based on observed flood loss data, whereas synthetic models rely on a description of flood damage mechanisms (Gerl et al., 2016).

Some empirical flood damage models include precautionary measures as explanatory variables (see for example Kreibich et al. (2017)) and can be used to estimate their mean efficacy (Sairam et al., 2019). These models account for the mean effect on flood damage of all the measures observed in the case studies used to produce them. Thus, they cannot be used to estimate the efficacy of specific precautionary measures. Moreover, the influence of the flood parameters and building characteristics on the efficacy of precautionary measures cannot be deduced from these models.

The damage mechanisms are more explicit in synthetic models (see for example Custer and Nishijima (2015), Dottori et al. (2016), Nadal et al. (2010), and Zevenbergen et al. (2007)). They can be altered to depict the effect of specific precautionary measures. Floodam has one main advantage over the other existing synthetic models to assess the efficacy of precautionary measures. To our knowledge, no other model is based on such detailed database of elementary damage functions. This enables us to examine the influence of a wide variety of building materials on the efficacy of specific precautionary measures.”

3) In our view, floodam is only a tool to analyse the cost-efficiency of some precautionary measures. The aim of the paper (that we tried to state more clearly in the abstract, introduction, and conclusion) is really 1) to examine how the building characteristics and flood parameters influence the efficacy and cost of the measures and 2) to identify exposure levels for which the measures

cannot be cost-efficient. Floodam is thoroughly described in its manual, which is free, publicly available, and written in English.

However, in the new version of the manuscript, we explained why floodam is more suitable than the other flood loss models to examine the cost-efficiency of precautionary measures in the new section “3.4. Suitability of floodam to assess the precautionary measures”.

Response to the minor comments:

1) The maximum cost-efficiency is a supremum of the cost-efficiency for a given strategy and a given type of building (single storey house, double storey house, apartment). This supremum is not site-dependent because it is not calculated with the Annual Expected Efficacy, but with a supremum of the Annual Expected Efficacy. This supremum is the ratio between 1) the maximum efficacy of the measure over all possible combinations of water depth and submersion duration, and over all combinations of building materials, and 2) the return period of the flood that affects the dwelling the most often. The first term is constant and thus, not site-dependent. The second term is not fixed. It is the one we are interested in: we explored its influence on the maximum cost-efficiency to find exposure levels for which the maximum cost-efficiency is negative. In these cases, according to our results, the measure will always be cost-inefficient, regardless of the building materials and the relationship between the flood intensity and flood frequency, since the maximum cost-efficiency is already negative.

In order to better explain this point:

- On page 9, lines 2-6, we added: “It is thus a supremum of the cost-efficiency for the type of dwelling considered. In other words, for a given strategy and a given type of dwelling, the cost-efficiency of the strategy is always lower than the maximum cost-efficiency, regardless of the building materials or the relationship between the flood intensity and frequency.”
- At the end of Section “3.6.3 Assessment of the maximum cost-efficiency”, we added: “Indeed, unlike the cost-efficiency, the maximum cost-efficiency for a given type of dwelling does not depend on the building materials and on the relationship between the flood intensity (immersion depth and duration) and frequency. It only depends on the time horizon and return period. Thus, for the combinations of time horizon and return period associated to a negative maximum cost-efficiency, the strategy will always be cost-inefficient, regardless of the building materials and on the relationship between the flood intensity and frequency.” (page 10, lines 12-16)
- We made it explicit in equation 4 that the Annual Expected Efficacy depends on the relationship between the flood intensity and frequency through the efficacy term, so that it is clearer in equation 5 and 6 that the maximum cost efficiency does not depend on this relationship (because the efficacy term is fixed).

2) To make it explicit that our results apply to France:

- We added the following sentence at the end of the abstract: “Our results apply to France because the damage and the installation costs of the measures are specific to France and the geometry of the dwellings considered to perform our analyses is based on French dwellings.” (Page 1, lines 15-16)
- We added the following paragraph in Section “5.4 Limits” (page 15, lines 18-20): “Our results apply to France. To conduct our study in another country, we should adapt the cost of the measures, the cost of the actions needed after a flood to go back to the initial state (which are used to estimate the damage), and the geometry of the dwellings.”

### **III/ Response to the additional comment of the editor**

1) In order to emphasize the applicability of our findings:

- We added a sentence in Section “5.3 Recommendations based on our results” (page 15, lines 4-5): “Moreover, policy-makers should not promote the installation of dry-proofing measures in dwellings that are not exposed to floods with a return period lower than 100 years.”
- We added the following sentence in the conclusion (page 16, lines 3-4: “Decision-makers could rely on [our results] to recommend precautionary measures inly to inhabitants that live in dwellings for which they could be advantageous.”

### **C) Authors' changes in manuscript**



# Economic assessment of precautionary measures aimed at reducing flood damage to buildings using computer modelling and expert judgement against floods: insights from a non contextual approach

Richert, Claire <sup>1</sup>, Boisgontier, H  l  ne <sup>1</sup>, and Grelot, Fr  d  ric <sup>1</sup>

<sup>1</sup>UMR G-EAU, Irstea, Universit   de Montpellier

**Correspondence:** Claire Richert (claire.richert@irstea.fr)

**Abstract.** To limit the losses due to floods, public authorities can try to foster the adoption of private measures aimed at reducing the vulnerability of ~~the~~ dwellings. However, the efficacy and cost-efficiency of such measures to reduce material losses ~~of such measures~~ are not well-known. In particular, ~~a better understanding of~~ the influence of buildings characteristics and flood parameters ~~building and flood characteristics~~ on these variables has not been thoroughly studied. A better understanding of this  
5 topic would help identify the measures that are relevant to implement in specific contexts. ~~We examined this topic for~~ To address this gap, we examined the effect of building and flood characteristics on the cost, efficacy, and cost-efficiency of three groups of measures taken on existing dwellings: one consists in elevating the dwelling, one in dry-proofing it, and one in using construction materials that are resistant to water or cheap to replace. We combined expert judgement and computer modelling to assess their cost, efficacy, and cost-efficiency for a wide range of flood depth and duration, building characteristics, and  
10 level of exposure. We found that the value of the building components has a positive effect on the efficacy of dry-proofing and elevating a dwelling. Both the efficacy and cost of these two groups of measures increase with the size of the dwelling. Moreover, according to our results, dry-proofing and elevating a dwelling are unlikely to be cost-efficient for dwellings that are not exposed to floods with a return period lower than 100 and 30 years, respectively. Our findings also highlight that it is often less expensive to use the adapted than the original materials when rebuilding a damaged dwelling. Moreover, adapting the  
15 materials of an intact dwelling is unlikely to be cost-efficient for dwellings that are not exposed to floods with a return period lower than 20 years. Our results apply to France because the damage and the installation costs of the measures are specific to France and the geometry of the dwellings considered to perform our analyses is based on French dwellings.

## 1 Introduction

A flood risk can be defined as the combination of a hazard ~~and the vulnerability of the people who are exposed to it~~, an exposed  
20 population, and its vulnerability to the hazard (e.g. Apel et al. (2009)). Thus, mitigating such a phenomenon boils down to reducing ~~one or both of these two~~ at least one of these three components. Throughout the twentieth century, it was largely preferred in several countries to only target the hazard component of flood risks through the building of physical defences (e.g. in the Netherlands (Vis et al., 2003), in the United Kingdom (Werritty, 2006), or in the United States (Tobin, 1995)). Nowadays, several authors report that flood risk management policies are increasingly combining flood defences with measures aimed at

reducing people's vulnerability (Klijn and Samuels, 2008; Merz et al., 2010). This tendency is driven by the awareness that physical defences can harm ecosystems and that levee failures can have catastrophic consequences (Klijn and Samuels, 2008), and by the increasing uncertainty regarding the risks of floods due to climate change (Merz et al., 2010). Thus, in countries such as England, France, Hungary, or Germany, recent policies were designed to limit development in flood prone areas, provide more efficient insurance schemes, raise people's awareness of the risk, or foster the adoption of measures aimed at reducing the vulnerability of dwellings (Klijn and Samuels, 2008). Policy-makers need to be able to compare these different means of reducing the vulnerability to floods in order to efficiently allocate public funds among them, in terms of subsidies and communication.

We focused on measures aimed at reducing the vulnerability of existing dwellings to floods, which we call "precautionary measures", and analysed their efficacy, cost, and cost-efficiency. We define the cost-efficiency of a measure as the discounted sum of the difference between its annual expected efficacy and its annual cost over its lifespan. The efficacy of a precautionary measure indicates the extent to which it reduces the level of damage to ~~dwellings~~a dwelling. It depends on the flood intensity. The annual expected efficacy is thus the probability-weighted average of the values of efficacy computed for all possible flood intensities.

So far, the efficacy of precautionary measures has been examined at the household level using mainly empirical approaches and expert judgement (see Kreibich et al. (2015) for a review). For instance, the International Commission for the Protection of the Rhine relied on expert judgement to assess the efficacy of flood proofing measures (International Commission for the Protection of the Rhine (ICPR), 2002). On the other hand, Kreibich et al. (2005) surveyed people who were affected by the flood that took place in 2002 in the Elbe river basin. They compared the damage to the building and contents of dwellings with and without different types of precautionary measures. Their results suggest that installing flood barriers and adapting the building structure, use and layout to floods were effective measures to reduce material damage in their case study. The same conclusion was reached by Kreibich and Thieken (2009) after comparing the levels of damage due to different floods that occurred in a given area in Germany and between which the proportion of inhabitants who took measures had increased. Using a similar approach on another case study in Germany, Bubeck et al. (2012) also suggest that ~~implementing~~ precautionary measures significantly ~~reduces~~reduced material damage.

All these studies assessed the efficacy of precautionary measures for particular flood events. However, the comparison of the cost and efficacy of a measure requires to estimate its annual expected efficacy. Kreibich et al. (2011); Poussin et al. (2015); Xian et al. (2017) proposed various methods to assess the annual expected efficacy of some measures. Kreibich et al. (2011) surveyed people who were affected by floods in Germany. They assumed that the mean efficacy of a measure ~~was~~is the difference between the mean amount of damage suffered by those who lived in houses where the measure was not implemented and the mean amount of damage suffered by the others. They multiplied the estimated mean efficacies by several frequencies to obtain annual expected efficacies that relate to various flood return periods. Poussin et al. (2015) conducted a survey in France to assess the cost-efficiency of some precautionary measures. They used ordinary least square regression models to explain the relationship between the amount of damage and several independent variables, such as the presence of some precautionary measures and the flood depth. They ~~then~~ assumed that the mean efficacy of a measure is the difference between the estimated

levels of damage suffered by an average home without and with this measure. To assess the annual expected efficacy, they proceeded in the same way as Kreibich et al. (2011). Xian et al. (2017), assumed that the annual expected efficacy of elevating a dwelling is the reduction in risk-based annual insurance premium due to this measure, which they computed following the guidelines of the Federal Emergency Management Agency (FEMA, 2014, 2018). As explained in a report of the National Research Council (2015), the risk-based annual insurance premium takes into account the average annual expected damage, which is averaged across classes of buildings which are in the same flood zone and share some characteristics, including their elevation. The values of average annual expected damage are computed using two types of depth-damage functions: some were obtained by using claims data and others come from the U.S. Army Corps of Engineers but the method used to obtain them is not well-documented, according to the National Research Council (2015). Thus, Xian et al. (2017) ultimately relied partly on empirical data and partly on data of unknown nature to assess the annual expected efficacy of elevating a dwelling.

While empirical studies analyse precautionary measures in realistic settings, the results they provide are largely context-dependent, as reported by Poussin et al. (2015) and Kreibich et al. (2015). Moreover, since they do not control for all the parameters that influence the amount of damage, they cannot be used to anticipate the efficacy or cost-efficiency of precautionary measures in other contexts. In particular, they do not take into account the relationship between the material used for the components of the buildings and the vulnerability to floods of these latter, which could partly explain the variance in the amount of damage (National Research Council, 2015). As for the reports based on expert judgement, since they contain little methodological information, it is difficult to evaluate their reliability in specific contexts.

~~To gain insights regarding the variability of the~~ In brief, the existing literature focuses on assessing the efficacy or cost-efficiency of precautionary measures, we rather than on explaining their variability. The aim of our study was to address this gap. We combined data based on expert judgement and computer modelling to analyse three types of measures (elevation, dry-proofing, and component adaptations) for a wide range of flood intensities and dwellings' characteristics, including the material used for their components. ~~The aim of our study was then to assess~~ More specifically, we assessed ranges of cost and efficacy of the measures and ~~to provide~~ examined the influence of building and flood characteristics on these variables. For each type of measures, we also found a range of exposure ~~levels~~ level for which it is unlikely that the ~~precautionary measures~~ measure could be cost-efficient, independently of the ~~dwelling's building~~ characteristics.

In the following section, we present the measures that we focus on. We describe the method used to assess their efficacy, cost, and cost-efficiency in Sect. 3. Then, we present the results in Sect. 4. We discuss them in Sect. 5 and conclude in Sect. 6.

## 2 Precautionary measures studied

We reviewed the measures recommended to reduce the vulnerability of dwellings to floods in a joint report of the French ministries in charge of environment and housing (Ministère de l'égalité des Territoires et du Logement - Ministère de l'écologie, du Développement durable, et de l'énergie, 2012), a report of the European Center for Flood Risk Prevention (CEPRI, 2010), and a report of the Doubs and Saône catchment management agency (EPTB Saône et Doubs, 2015).

The measures described in these reports can be classified into three categories: some aim at avoiding damage by elevating the house, storing valuables upstairs, or elevating heating and electrical utilities for example, some at preventing the water from entering into the dwelling, and some at limiting the costs of repair and replacement of ~~the components of the building~~ building components.

We analysed the measure that consists in elevating the house, and those that aim at preventing the water from entering into the dwelling or at limiting the costs of repair and replacement of the building components. We refer to the first measure as the elevation strategy, to the second group of measures as the dry-proofing strategy, and to the third group of measures as the component adaptations strategy.

## 2.1 Elevation

To avoid damage up to a given flood depth, the dwellings can sometimes be elevated. According to a report of the FEMA (2009), if the dwelling is built on a basement, a crawlspace, or on open foundations, the first step to elevate it consists generally in separating it from its foundations and raising it on hydraulic jacks while it is held by a temporary support. Then, the existing foundations can be extended or new ones can be built. ~~However, if~~ If the dwelling has slab-on-grade foundations, they are lifted together and new foundations are constructed below the slab.<sup>1</sup> In both cases, an external staircase must be built to access the dwelling and utility lines must be extended.

We analysed the efficacy, cost, and cost-efficiency of elevating dwellings by 50 cm, 100 cm, and 250 cm. We assumed that only single storey houses can be elevated because other types of dwellings are too large.

## 2.2 Dry-proofing

Measures can be taken to prevent the water from entering into a dwelling if the flood depth stays below 1 m and the flood lasts less than 48 hours. For higher flood depths or longer flood durations, the pressure on the vertical elements of the building structure can cause severe damage.

For a dwelling without basement, the following measures must be taken together and dimensioned consistently to prevent the water from entering up to a chosen threshold: installing flood barriers, repairing faulty seals in the external walls, waterproofing the external walls, treating cracks in the external walls, installing removable covers on small openings that are below the chosen threshold, installing anti-backflow valves, ensuring that the electrical cable sleeves are watertight, and buying a pumping device.<sup>2</sup> Following Poussin et al. (2012), we call "dry-proofing" the combination of these measures. We assessed the efficacy, cost, and cost-efficiency of dry-proofing a dwelling without basement in the cases where it prevents the water from entering up to flood depths of 50 cm and 1 m.

---

<sup>1</sup> ~~Note that it~~ It is also possible to leave the slab on the ground and to construct a new floor after lifting the house.

<sup>2</sup> For ~~dwelling~~ dwellings with a basement, additional measures must be taken. We only analysed the measures which aim to prevent the water from entering into a dwelling without basement.

## 2.3 Component adaptations

We call "component adaptation" a measure which consists in using building materials that are resistant to water or cheap to repair. Component adaptations aim to limit the costs of repair and replacement of building materials after a flood. We studied together component adaptations which pertain to the ceilings, the walls, the floors, and the openings. We detail in Table 1 the component adaptations that pertain to each of these building components.

## 3 Method

### 3.1 Overview

We used a computer tool called *floodam* (Grelot and Richert, 2019) and developed in R language (R Core Team, 2017) to assess the efficacy of the strategies aimed at reducing the vulnerability of existing dwellings. *floodam* requires as input a numerical model of a building and produces a function which associates a level of damage to several combinations of flood depth and duration. We call damage function this type of outputs.

The efficacy and the cost of the strategies aimed at reducing the vulnerability of existing dwellings were assessed for several numerical models of dwellings. The cost of each strategy depends on the geometry of the dwellings and, in some cases, on whether the strategy is taken on an intact or damaged building and on the building materials. Its efficacy is assessed by comparing the damage functions of the dwellings obtained with and without the strategy. It depends on the flood depth and duration, on the geometry of the dwellings, and on the building materials.

In this section, we describe the numerical models used as inputs, we provide an overview of how *floodam* works, ~~and we explain we present the advantages of *floodam* to assess the strategies compared to other flood damage models, and we describe~~ how we modelled the strategies. We then explain how we assessed the cost, the efficacy, and the cost-efficiency of each strategy.

### 3.2 Numerical models of dwellings

~~Each~~ The numerical model of a dwelling is made up of an xml file and a csv file. The former indicates the ground floor height above ground level, the layout and size of the rooms, and the construction materials used for the building. Figure 1 provides a graphical interpretation of the xml file of a numerical model of a dwelling. The csv file indicates the pieces of furniture that are present in each room and their height above the floor. For instance, Table 2 shows the information that pertains to a bedroom contained in the csv file of a numerical model of a dwelling ~~that pertains to a bedroom~~.

Originally, we had three numerical models which represent real dwellings: we visited an apartment to establish its plan and make an inventory of its furniture, the European Center for Flood Risk Prevention did the same with a single storey house (CEPRI, 2013) and gave us access to their data, and we used the architectural plan of a double storey house. Since we have no real data regarding the furniture of the double storey house, we first allocated the pieces of furniture of the single storey house in the corresponding rooms of the double storey house. Then, we added pieces of furniture in one room which had no correspondence in the single storey house (a home office) and in two dressing rooms. More specifically, we assumed that the

home office contained a desk, a chair, and a cupboard in chipboard and that the dressing rooms each contained a variety of small items.

In order to be able to generalize our results, we developed several versions of these three numerical models of dwelling by modifying the combination of the ~~components of the building~~ building components listed in Table 3. These components were chosen because they are widely used in French buildings according to a report of the agency of building quality (Agence Qualité Construction, 2009). Each version contains only one variant of each component listed in Table 3. Since there are 1 728 possible combinations of all components, we developed the same number of versions for each of the three original numerical models of dwellings. In total, we thus have 5 184 numerical models of dwellings.

### 3.3 Overview of *floodam*

We define the damage suffered by a good as the expected cost of the actions that must be performed after a flood in order to bring it back to its pre-flood state. Using this definition, *floodam* relies on two main assumptions: 1) the damage suffered by a building is the sum of the levels of damage suffered by its components, and 2) the levels of damage of the components are independent.

*floodam* relies on a database of 431 elementary damage ~~function~~ functions. An elementary damage function associates a level of damage suffered by an elementary component to several combinations of flood depth and duration. A partition wall in plaster or a washing machine are examples of elementary components. The elementary damage functions come from interviews with insurance and construction experts. We used elementary damage functions with data points at immersion depth values from 0 to 500 cm (included) in 10 cm increment, and immersion duration values from 0 to 144 hours (included)<sup>3</sup> in 12 hours increment.

For ~~each numerical model of dwelling~~ a given numerical model, *floodam* computes the height above the ground of all elementary components and the size or quantity of the elementary components of the building. Then, for each combination of depth and duration of immersion ~~of the dwelling~~, it 1) computes the depth of immersion of each elementary component, 2) retrieves the corresponding levels of damage by measurement unit for the duration of immersion considered, 3) multiplies each level of damage by the size/quantity of the corresponding elementary component, 4) sums the obtained values to obtain the level of damage at the scale of the dwelling. The damage function of the numerical model ~~of dwelling~~ considered is made up of the levels of damage computed for each combination of immersion depth and duration.

*floodam* is used to estimate the damage due to floods that do not cause failure of walls and that do not involve salt water.

A more detailed description of *floodam* can be found in Grelot and Richert (2019).

### 3.4 Suitability of *floodam* to assess the precautionary measures

Numerous empirical and synthetic flood loss models exist. *floodam* belongs to the latter category. Empirical models are based on observed flood loss data, whereas synthetic models rely on a description of flood damage mechanisms (Gerl et al., 2016).

---

<sup>3</sup>Some floods can last more than 144 hours. The experts interviewed did not provide data regarding the vulnerability of the elementary components to such floods. Thus, we did not study the efficacy of precautionary measures for floods longer than 144 hours.

Some empirical flood damage models include precautionary measures as explanatory variables (see for example Kreibich et al. (2017)) and can be used to estimate their mean efficacy (Sairam et al., 2019). These models account for the mean effect on flood damage of all the measures observed in the case studies used to produce them. Thus, they cannot be used to estimate the efficacy of specific precautionary measures. Moreover, the influence of the flood parameters and building characteristics on the efficacy of precautionary measures cannot be deduced from these models.

The damage mechanisms are more explicit in synthetic models (see for example Custer and Nishijima (2015); Dottori et al. (2016); Nadeau et al. (2017)). They can be altered to depict the effect of specific precautionary measures. *floodam* has one main advantage over the other existing synthetic models to assess the efficacy of precautionary measures: to our knowledge, no other model is based on such detailed database of elementary damage functions. This enables us to examine the influence of a wide variety of building materials on the efficacy of specific precautionary measures.

### 3.5 Modelling of the strategies

#### 3.5.1 Elevation

Modelling the elevation of a ~~numerical model of~~ dwelling consists in choosing a threshold of flood depth below which damage should be avoided. The cost and efficacy of the strategy are deduced from this threshold.

#### 3.5.2 Dry-proofing

To model the dry-proofing of a dwelling, a threshold below which the water should be prevented from entering must first be chosen. The number of openings that are below the threshold is the number of flood barriers that must be installed. Then, the perimeter of the dwelling, from which the quantity of removable covers that must be installed is deduced, is computed. The perimeter is multiplied by the threshold to obtain the ~~surface area~~ on which faulty seals and cracks in the external walls must be repaired, and on which the external walls must be waterproofed.

#### 3.5.3 Component adaptations

Adapting a given component of ~~a the~~ numerical model of ~~a~~ dwelling boils down to replacing its original variant by the recommended one (cf Table 1) if the latter is different from the former.

### 3.6 Analysis

#### 3.6.1 Assessment of the cost

##### Elevation

To assess the cost of elevating a dwelling, we relied on the estimates provided by the FEMA (2009) and reported in Table 4. We first converted each of these estimates in 2017 Euros by square foot. To do so, we multiplied them by the ratio between the construction prices in France and the United States (0.97, cf <https://www.fgould.com>), the exchange rate between the US

dollar and the euro in 2009 (0.72), and an index that gives the construction price development in France between 2009 and December 2017  $(1670 \sqrt[4]{(1507 + 1502 + 1498 + 1503)})$ , cf <https://www.insee.fr>.

Once the costs were in Euros by square foot, we converted them in Euros by square meter by dividing them by  $0.3048^2 \text{ ft}^2/\text{m}^2$  ( $1 \text{ ft} = 0.3048 \text{ m}$ ). After that, we computed the cost for ~~heights-of-elevation~~elevations of 50 cm, 100 cm, and 250 cm by assuming that the cost increases linearly between 50 cm and 250 cm. Finally, we used the costs indicated in Table 5.

### Dry-proofing

- 5 The cost of each measure that must be implemented to dry-proof a dwelling was assessed by a construction expert for the single storey house. Knowing the characteristics of this dwelling, we estimated the cost of each measure by measurement unit. For each numerical model of a dwelling, they were multiplied by the quantities on which the measures must be applied. Table 6 indicates the cost of each measure and ~~their-measurement-units~~its measurement unit.

### Component adaptations

- 10 A given component can be destroyed or intact when the adaptation takes place. At the level of a dwelling, we consider 2 situations: either all the components are destroyed or they are all intact when the adaptation takes place. In the first case, which we call the repair context, the adaptation cost is the difference between the costs of installing the recommended and the original variants of the components. In the second case, which we call the prevention context, the adaptation cost is the sum of the costs of installing the recommended variant of the components (if they are different from the original ones) and of reinstalling the  
15 original coatings (of the walls, floors, and ceilings).

## 3.6.2 Assessment of the efficacy

We define the efficacy of a strategy for a given numerical model of a dwelling as the difference between the damage functions computed without and with the strategy.

### Elevation

- 20 When a dwelling is elevated of  $x$  centimetres, its damage function ( $f$ ), which depends on the flood depth ( $de$ ) and duration ( $du$ ), becomes  $g(de, du)$  such as :

$$g(de, du) = \begin{cases} f(de - x, du), & \text{if } de - x \geq 0 \\ 0, & \text{otherwise} \end{cases} \quad (1)$$

- Therefore, the efficacy of elevating a given numerical model ~~of-dwelling~~ depends on the immersion depth and duration. For example, elevating the original version of the single storey house by 1 m can reduce the damage by up to €30 000  
25 approximately, as shown in Fig. 2.

### Dry-proofing

The damage function of a-the numerical model of a dwelling where the dry-proofing strategy is installed is equal to zero for combinations of immersion depths below or equal to the threshold and immersion durations ~~less-below~~ or equal to 48 hours. For greater immersion depths, dry-proofing has no effect on the damage function. For example, Fig. 2 shows the damage functions



30 of the original version of the single storey house without and with the dry-proofing strategy with a threshold of 1 m, and the resulting efficacy. For this dwelling, the maximum avoided damage due to dry-proofing is approximately €25 000.

### Component adaptations

The efficacy of a component adaptation to reduce the vulnerability of a ~~numerical model of~~ dwelling is the difference between the damage functions computed with the original and recommended variants of the component. Hence, the efficacy depends on  
 5 the immersion depth and duration. For instance, Fig. 2 shows that the maximum avoided damage due to the ~~adaptation of the walls of~~ component adaptations strategy in the original single storey house ~~reaches approximately~~ is lower than €25 500 000.

### 3.6.3 Assessment of the maximum cost-efficiency

The maximum cost-efficiency of a strategy for a given type of dwelling (single-storey house, double-storey house, apartment) is defined as ~~the maximum a supremum of the~~ cost-efficiency computed for the version for which the strategy is the most cost-  
 10 efficient. It is thus a supremum of the cost-efficiency for the type of dwelling considered. In other words, for a given strategy and a given type of dwelling, the cost-efficiency of the strategy is always lower than the maximum cost-efficiency, regardless of the building materials or the relationship between the flood intensity and frequency.

In this section, we mathematically define the cost-efficiency and maximum cost-efficiency of a strategy ~~for a given numerical model of dwelling~~.

15 The cost-efficiency ( $CE$ ) of a strategy ~~can be defined as is defined for a contextualized dwelling~~. It is the discounted sum of the differences between the annual expected efficacy ( $AEE$ ) and the cost of the strategy over a defined time horizon ( $H$ ):

$$CE(H) = \sum_{1 \leq i \leq H} \frac{AEE - AEC}{(1+r)^i} - IC \quad (2)$$

where  $r$  is the discount rate,  $AEC$  the annual expected maintenance cost of the strategy, and  $IC$  its installation cost. A strategy is cost-efficient for a given contextualized dwelling if  $CE > 0$ , that-is-to-say if :

$$20 \frac{IC}{AEE - AEC} < \sum_{1 \leq i \leq H} \frac{1}{(1+r)^i} \quad (3)$$

Moreover, the annual expected efficiency of a strategy for a given dwelling is equal to:

$$AEE = \int_0^1 f \times E(\underline{de(f)}, \underline{du(f)}) df \quad (4)$$

with  $f$  the flood frequency, de the immersion depth, du the immersion duration, and  $E$  the efficacy.

What we call maximum cost-efficiency is in fact an upper boundary of the cost-efficiency. We first computed it for each  
 25 version of a given type of dwelling.

To compute the maximum cost-efficiency of a strategy  $s$  for a given ~~numerical-model-of~~ dwelling  $d$ , we ~~used~~use a lower boundary of the cost by taking only the installation cost into account.

~~To compute the maximum cost-efficiency of  $s$  for  $d$ , we used~~We also define the following upper boundary of annual expected efficiency:

$$5 \quad AEE_{max}^{sd,d}(f_{max}) = f_{max} \times E_{max}^{sd,d} \quad (5)$$

$$= \frac{E_{max}^{sd}}{T_{min}} \frac{E_{max}^{s,d}}{T_{min}} \quad (6)$$

with  $f_{max}$  the frequency of the flood that affects  $d$  the most often,  $T_{min}$  the return period of the flood that affects  $d$  the most often, and  $\frac{E_{max}^{sd}}{T_{min}} \frac{E_{max}^{s,d}}{T_{min}}$  the highest value of efficacy of  $s$  for  $d$  over all possible combinations of immersion depth and duration.

Thus, we define the maximum cost-efficiency of  $s$  for  $d$  as follows:

$$10 \quad CE_{max}^{sd,d}(T_{min}, H) = \frac{E_{max}^{sd}}{T_{min}} \frac{E_{max}^{s,d}}{T_{min}} \sum_{1 \leq i \leq H} \frac{1}{(1+r)^i} - IC_{max}^{sd,d} \quad (7)$$

The maximum cost-efficiency of a strategy  $s$  for a given type of dwelling is then the cost-efficiency computed for the version of the dwelling for which the ratio  $\frac{IC_{max}^{sd}}{AEE_{max}^{sd}} \frac{IC_{max}^{s,d}}{AEE_{max}^{s,d}}$  is the lowest.

We used a discount rate of 2.5%, which is the value recommended to assess public investments in France (Commissariat général à la stratégie et à la prospective, 2013).

15 For each type of dwelling, we computed the maximum cost-efficiency for values of  $H$  from 1 to 50 (for dry-proofing and component adaptations) or 100 years (for elevation) in 1 year increment and  $T$  from 1 to 120 years in 1 year increment.  $H$  can be considered as the lifespan of the strategy.

For each strategy and type of dwelling, we searched for the combinations of time horizon and return period for which the maximum cost-efficiency is negative. In these contexts, our results suggest that the strategy is unlikely to be cost-efficient.

20 Indeed, unlike the cost-efficiency, the maximum cost-efficiency for a given type of dwelling does not depend on the building materials and on the relationship between the flood intensity (immersion depth and duration) and frequency. It only depends on the time horizon and return period. Thus, for the combinations of time horizon and return period associated to a negative maximum cost-efficiency, the strategy will always be cost-inefficient, regardless of the building materials and on the relationship between the flood intensity and frequency.

## 25 4 Results

We present the ranges of ~~efficacies and costs~~efficacy and cost and the maximum cost-efficiency of the elevation, dry-proofingand of the combination of all component adaptations, and component adaptations strategies.

## 4.1 Range of efficacy

Figure 3 shows the ranges-range of efficacy obtained for each strategy. The efficacy of a strategy depends on the type and components of the dwelling, on the immersion depth and duration, and sometimes on some characteristics of the strategy.

More specifically, the efficacy of elevating a dwelling increases with the height-value of elevation and with the value of the components of the dwelling. For this strategy, the highest efficacy is obtained for numerical models of dwellings which contain a lot of wooden components (joist boards, parquet, and opening frames and shutters in wood). The highest efficacy is observed for an immersion depth equal to the elevation heightvalue.

As for dry-proofing, its efficacy increases with the threshold, the value of the components of the dwelling, and the floor area. The highest maximum efficacies relate to the single storey house and the lowest to the double storey house because the former has the largest floor area (133.5 m<sup>2</sup>) and the latter the smallest (98 m<sup>2</sup>). For a given numerical model of a dwelling, the efficacy of dry-proofing increases up to an immersion depth equal to the threshold and an immersion duration of 48 hours. In keeping with the assumptions used when modelling dry-proofing, the efficacy is equal to zero for higher immersion depths and longer immersion durations.

Adapting all components can sometimes generate the same or a higher level of damage than keeping all the original components. This is the case for the 576 versions of each type of dwelling which originally have masonry internal walls and tiles or textile as coatings of floors. There is indeed a probability greater than zero that the adapted walls in plaster must be replaced for depths-of-immersion-immersion depths greater than or equal to 30 cm, no matter the immersion duration. On the contrary, the probability that masonry walls must be replaced for immersion durations lower than 72 hours is equal to zero. This type of walls needs only to be repaired in such cases. As a consequence, for some immersion depths, the elementary damage function of an internal wall in plaster is above the one of a masonry internal wall for immersion durations lower than 72 hours. Negative levels of efficacy are observed only for dwellings which originally have tiles or textile as coatings of floors because the high efficacy of replacing parquet floors by sealed tiling floors compensates the negative efficacy of replacing masonry walls by walls in plaster. The efficacy of adapting all components is always positive for immersion durations higher than or equal to 72 hours. The variance of the efficacy increases with the quantity of building components to adapt.

Table 7 shows the distribution of the efficacy of each measurestrategy. The efficacy of elevating a dwelling lies between €0 and k€65. Dry-proofing a dwelling leads to a reduction of damage comprised between €0 and k€36 and the efficacy of adapting all the components of the building is between k€-14 and k€54. These results highlight the high variability of the efficacy of each strategy.

## 4.2 Range of cost

As shown in Table 8, the cost of a given strategy does not depend on the immersion depth and duration. It always varies with the type of dwelling and the characteristic of the strategy (the height of elevation, the threshold, or the adaptation context). In the specific case of the component adaptations strategy, it also depends on the original variant used for the building components.

30 The cost of elevating a single storey house lies between k€66 and k€109. Thus, it is always higher than the highest value of efficacy for this strategy. It increases with the ~~height-of~~ elevation and is always the highest for dwellings that have slab-on-grade foundations.

The cost of dry-proofing a dwelling ranges from k€6 to k€10. For a given threshold, the cost of dry-proofing is always maximum for the single storey house and minimum for the double storey house. This is due to the fact that the single storey house has the greatest perimeter (54 m) and the double storey house the smallest (40 m). The ~~surface-area~~ on which some measures must be applied increases with the threshold. Thus, the cost of dry-proofing is greater when the threshold is 100 cm than when it is 50 cm.

Regarding the adaptation of all building components, if it takes place on a damaged building (repair context), it is often  
5 less expensive to adapt the dwelling than to install again the original variants of the components. More precisely, it is the case for 91% of the 5 184 numerical models of dwellings. On the opposite, if the dwelling is intact when the adaptation takes place (prevention context), the mean cost of adapting all components is approximately four times higher than the cost of dry-proofing. In the prevention context, the minimum costs relate to versions of the dwellings for which the original variants of the components are highly similar to the recommended ones. Note that we did not compute numerical models of dwellings that  
10 were made up of all the recommended variants of the components. The cost and efficacy of adapting all building components of such dwellings would be null. The highest adaptation costs relate to versions of the dwellings for which almost all components must be adapted.

### 4.3 Maximum cost-efficiency

Figure 4 indicates the maximum cost-efficiency of each strategy, depending on the type of dwelling and on some characteristics  
15 of the strategy (the ~~height-of~~ elevation, the threshold, or the adaptation context), and for several combinations of time horizon and return period.

For the analysed values of time horizon, it is never cost-efficient to elevate a single storey house which is only exposed to floods with a return period higher than 30 years. If the dwelling has slab-on-grade foundations, the minimum return period for which it could be cost-efficient to elevate a dwelling is 20 years approximately.

20 Similarly, according to our results, adapting all building components is never cost-efficient for intact dwellings that are not exposed to floods that have a return period of less than 20 years. However, when component adaptations take place on a damaged dwelling, our results do not indicate ranges of time ~~horizons and return periods~~ horizon and return period for which this strategy is never cost-efficient.

Regarding dry-proofing, the results are similar for the three types of dwellings and are not affected by the threshold. They  
25 suggest that dry-proofing is never cost-efficient for dwellings that are not exposed to floods with a return period of a hundred years or less.

Except in the case of adapting all the building components of a damaged building, we observe that the maximum return period for which a strategy is cost-efficient increases with the time horizon. For instance, for a dwelling that must be entirely

dry-proofed again after twenty years and that is not exposed to floods with a return period of less than 60 years, this strategy will never be cost-efficient.

## 5 Discussion

We assessed the efficacy and cost of some precautionary measures by taking into account some characteristics of the dwellings (their building components and size) ~~and~~ parameters of the measures, grouped in strategies (their dimension or implementation context), and flood characteristics (immersion depth and duration). Then, we computed the maximum cost-efficiency of each strategy for several combinations of time horizon and return period. We could thus identify exposure levels for which it is unlikely that the strategies could be cost-efficient.

### 5.1 Main results

The value of the building components by square meter has a positive effect on the efficacy of dry-proofing and elevating a dwelling while it does not affect the cost of these strategies. Hence, the more expensive the components of a dwelling, the more relevant it can be to elevate or dry-proof it. By contrast, both the efficacy and the cost of dry-proofing and elevation increase with the flood depth below which damage must be avoided and with the size of the dwelling. Consequently, these parameters do not affect the maximum cost-efficiency of dry-proofing and elevation. According to our results, these strategies are unlikely to be cost-efficient for dwellings only exposed to floods with a return period higher than 100 and 30 years, respectively.

The efficacy of adapting the building components strongly depends on their original materials. It can even be negative for floods that last less than 72 hours if the internal walls are originally in masonry. The cost of adapting the building components is influenced by the adaptation context and by the original materials. If the adaptation takes place on an already damaged building, it is most of the time less expensive to adapt it than to reinstall the original variants of the components. However, it costs approximately €40 000 on average to adapt an intact building. Since the cost and efficacy both increase with the quantity of components to adapt, the maximum cost-efficiency does not depend on the size of the dwelling. It is unlikely that adapting an intact dwelling could be cost-efficient if this latter is not exposed to floods with a return period lower than 20 years. In a repair context, we could not identify exposure levels for which it is never cost-efficient to adapt all building components.

Note that the cost-efficiency of all strategies increases with their lifespan and with the level of exposure in terms of frequency of floods.

### 5.2 Comparison with previous studies

#### 5.2.1 Elevation

According to Poussin et al. (2015), the mean efficacy of elevating the ground floor is €8 000 approximately and the cost of this strategy for existing ~~building~~ buildings lies between €25 000 and €69 000. The range of cost comes from an article written by Aerts et al. (2013). These authors also used the data from the report of the FEMA (2009) to estimate the costs of elevating

30 dwellings. Thus, our estimates of the cost of elevation are of the same order of magnitude as those reported by Poussin et al. (2015), even if they are higher on average (€87 000). Moreover, the mean efficacy estimated by these authors lies in the range of efficacy that we found (between €0 and €65 000). Poussin et al. (2015) also found that elevating an existing building is only cost-efficient for dwellings exposed to floods with a return period lower than 10 years. This result is compatible with our study.

Similarly to our results, those of Xian et al. (2017) indicate that the cost-efficiency of elevating a dwelling is positively  
5 affected by the value by square meter of this latter, the frequency of floods, and the lifespan of the strategy.

### 5.2.2 Dry-proofing

~~To our knowledge, there is no empirical study that analyses the combination of all the measures required to dry-proof a dwelling. However, Poussin et al. (2015) and Kreibich et al. (2011) Zevenbergen et al. (2007) investigated the cost-efficiency of dry-proofing a dwelling until 0.9 meter. They found that it would cost €8 000 to implement this strategy on a typical Dutch single-family dwelling. This result lies within the range of cost we found for this strategy. In the two case studies examined by Zevenbergen et al. (2007), dry-proofing was cost-efficient until a return period of 30 years. This is in line with our results.~~

~~Kreibich et al. (2011) and Poussin et al. (2015) studied the efficacy, cost, and cost-efficiency of installing flood barriers. The average efficacy of flood barriers estimated by Kreibich et al. (2011) is €23 491 and the estimated cost of this measure is €6 100 for an average house. As explained in Sect. 3, flood barriers must be completed-complemented by other measures to dry-proof a dwelling. Since Kreibich et al. (2011) only asked whether flood barriers were installed, it is likely that the average efficacy they found is lower than the one that would have been observed for completely dry-proofed dwellings. Moreover, since the flood depth which affected the dwellings of the respondents is not known, we cannot precisely compare our results with this average efficacy. However, it lies in the range of efficacy that we found for the measure that consists in dry-proofing the dwellings~~the dry-proofing strategy. Moreover, we found an average cost for the installation of flood barriers only of €3 100,  
15 which is two times lower than the one used by Kreibich et al. (2011) but stays in the same order of magnitude. According to the results of Kreibich et al. (2011), flood barriers are only cost-efficient for dwellings affected by floods with a return period lower than 40 years approximately. This result is compatible with ours since we found that it is unlikely that dry-proofing could be cost-efficient for dwellings only exposed to floods with a return period higher than 100 years.

Poussin et al. (2015) found that flood barriers did not significantly reduce material damage in their whole sample. However,  
25 they highlight that this result may not be reliable because of multi-collinearity issues.

### 5.2.3 Component adaptations

We did not find studies which analyse specifically the efficacy, cost, or cost-efficiency of adapting all the building components. However, Kreibich et al. (2005) studied the efficacy of the combination of using waterproof building materials and having mostly movable pieces of furniture on the ground floor. They found that this strategy reduced the total damage by €39 000  
30 on average. In line with this result, our estimates of the efficacy of adapting all building components are comprised between €-14 000 and €54 000.

According to Poussin et al. (2015), adapting the walls and equipment increases the damage by €2 000 on average. This result is compatible with our finding that adapting the walls can lead to negative levels of efficacy. These authors did not estimate the cost of this measure. They also found that adapting the floors could reduce the damage by €400 to €10 000. They used a cost for this measure that lies between €800 and €7 250. They do not specify the adaptation context for which this cost was estimated, but given that it is always positive, we assume that it was assessed for an intact building. To adapt only the floors, we found costs in a prevention context comprised between €10 000 and €23 000. These values are higher than those used by Poussin et al. (2015) but stay in the same order of magnitude. As for the efficacy of adapting only the ~~floor~~ floors, we estimate that it lies between €0 and €16 000 depending on the flood depth and duration. These values are in line with those found by Poussin et al. (2015).

### 5.3 Recommendations based on our results

Our results seem reliable since they are in line with previous studies. They suggest that elevating or adapting the building components of intact dwellings that are not exposed to frequent floods (i.e. with a return period lower than 30 years) should not be fostered by policy-makers who wish to limit material damage due to floods. However, after a flood, it could be efficient to take advantage of the reconstruction phase to adapt the building components, since it is often less expensive to install the recommended components than to rebuild dwellings as they were before the event. Given that the post-disaster recovery often occurs in a climate of urgency, it could be useful to design in advance policy tools to help people adapt their dwelling during this phase.

Moreover, ~~besides~~ policy-makers should not promote the installation of dry-proofing measures in dwellings that are not exposed to floods with a return period lower than 100 years.

Besides the level of exposure, the building components should be taken into account to assess the vulnerability of the dwellings, and thus the relevance of implementing precautionary measures that sometimes generate higher costs than benefits.

### 20 5.4 Limits

Decisions regarding the allocation of public funds to communicate about the strategies considered here or to subsidize their installation cannot be based solely on the present study. Indeed, we only took into account the damage in terms of monetary losses and did not consider the impact of the strategies on the damage related to human health. While this latter is unlikely to be influenced by component adaptations, it could be reduced by dry-proofing and even more by elevating the dwelling.

Moreover, our results cannot be used to identify a range of exposure for which it is likely that the studied precautionary measures would efficiently reduce monetary losses. Contextualised studies are required to finely relate the efficiency of precautionary measures to the characteristics of a dwelling and its level of exposure to floods.

Also, our results are mainly relevant for relatively slow riverine ~~flood~~ floods. Indeed, to compute the damage functions, we assumed that the pieces of furniture are never moved by the water during a flood and that the salinity level of the water is negligible.

Our results apply to France. To conduct our study in another country, we should adapt the cost of the measures, the cost of the actions needed after a flood to go back to the initial state (which are used to estimate the damage), and the geometry of the dwellings.

We only studied the efficacy and cost-efficiency of the strategies for dwellings that are exposed to floods that do not last more than 144 hours because the experts interviewed to develop the elementary damage functions did not have information about the consequences of longer floods. The efficacy of dry-proofing for such floods is null because it is recommended to let the water enter the building after 48 hours. As for the elevation strategy, its efficacy in case of floods that last more than 144 hours depends on the propensity of such floods to generate foundations failure. If the foundations fail, the fact that the building is elevated does not reduce the damage. The efficacy of the component adaptations strategy for floods longer than 144 hours depends on the vulnerability of the recommended components when they are in contact with water for more than 144 hours.

Finally, note that dry-proofing was only analysed for dwellings that do not contain a basement.

## 10 6 Conclusions

~~By using a novel approach that combines expert judgement and computer modelling, we were able to analyse~~ We analysed three types of precautionary measures ~~for a wide range of flood intensities and frequencies and characteristics of dwellings~~ in a non contextualized setting. This novel approach enabled us to explore the influence of several building and flood characteristics on the cost and efficacy of the precautionary measures and to find ranges of exposure for which they are unlikely to be cost-efficient. In particular, we found that adapting all the building components or elevating an existing dwelling are unlikely to be cost-efficient if the probability of occurrence of floods is lower than 1/30 per year. As for dry-proofing, this measure is unlikely to be cost-efficient for dwellings exposed only to floods with a return period higher than a hundred years. Our results apply to the whole France. Decision-makers could rely on them to recommend precautionary measures only to inhabitants that live in dwellings for which they could be advantageous.

*Code availability.* *floodam* is developed as a R library. It is available upon request through a git repository maintained by Irstea, and under certain conditions.

*Data availability.* Data at building levels used within *floodam* are available upon request through a git repository maintained by Irstea, and under certain conditions.

*Author contributions.* Claire Richert modelled the elevation strategy, analysed the data, and wrote the article. H el ene Boisgontier modelled the other strategies. Fr ed eric Grelot developed *floodam*, supervised the project, and proofread the article.



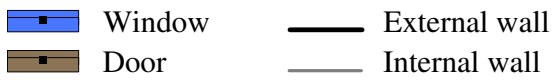
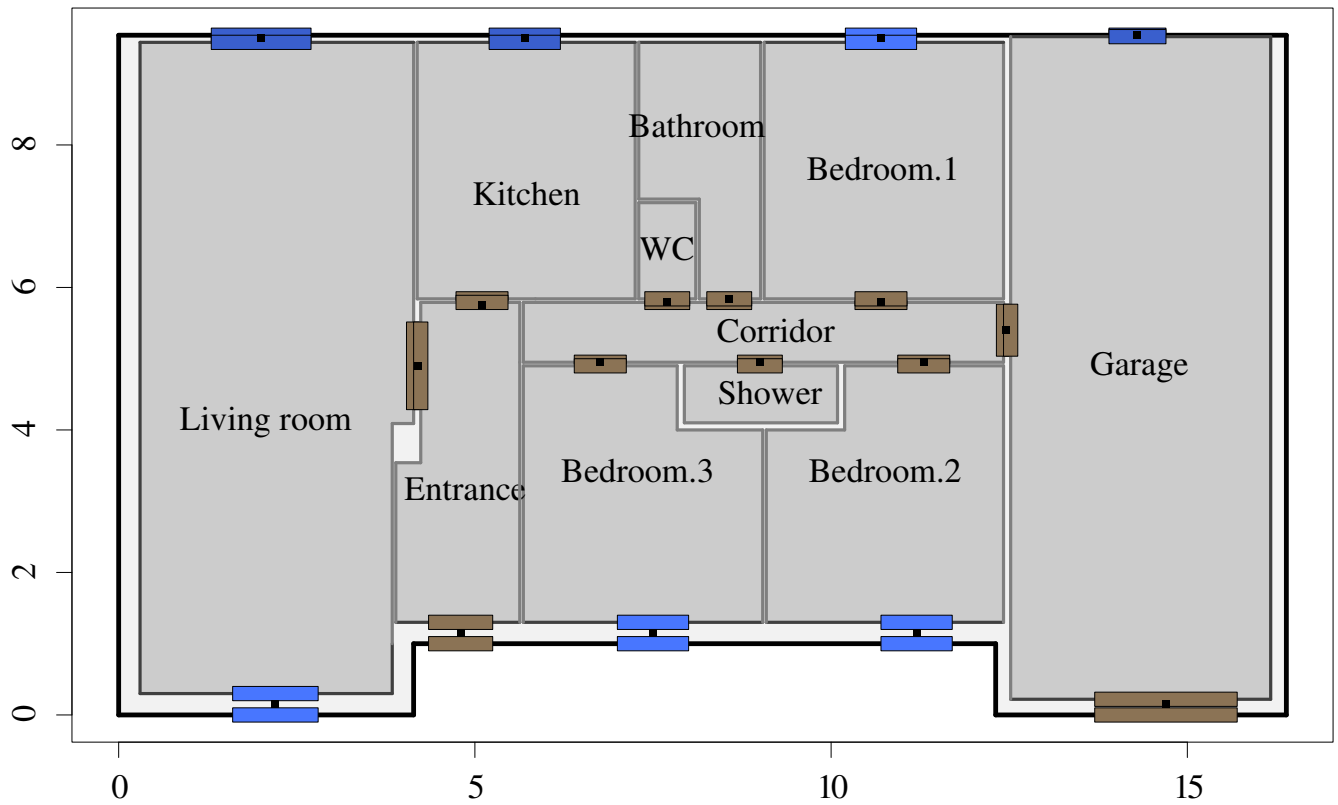
*Competing interests.* The authors declare that they have no conflict of interest.

*Acknowledgements.* This work benefited from the support of the French Ministry of Environment, through the DGPR program "Knowledge  
10 and prevention of natural and hydraulic hazards" (funding decision number 2102049246).

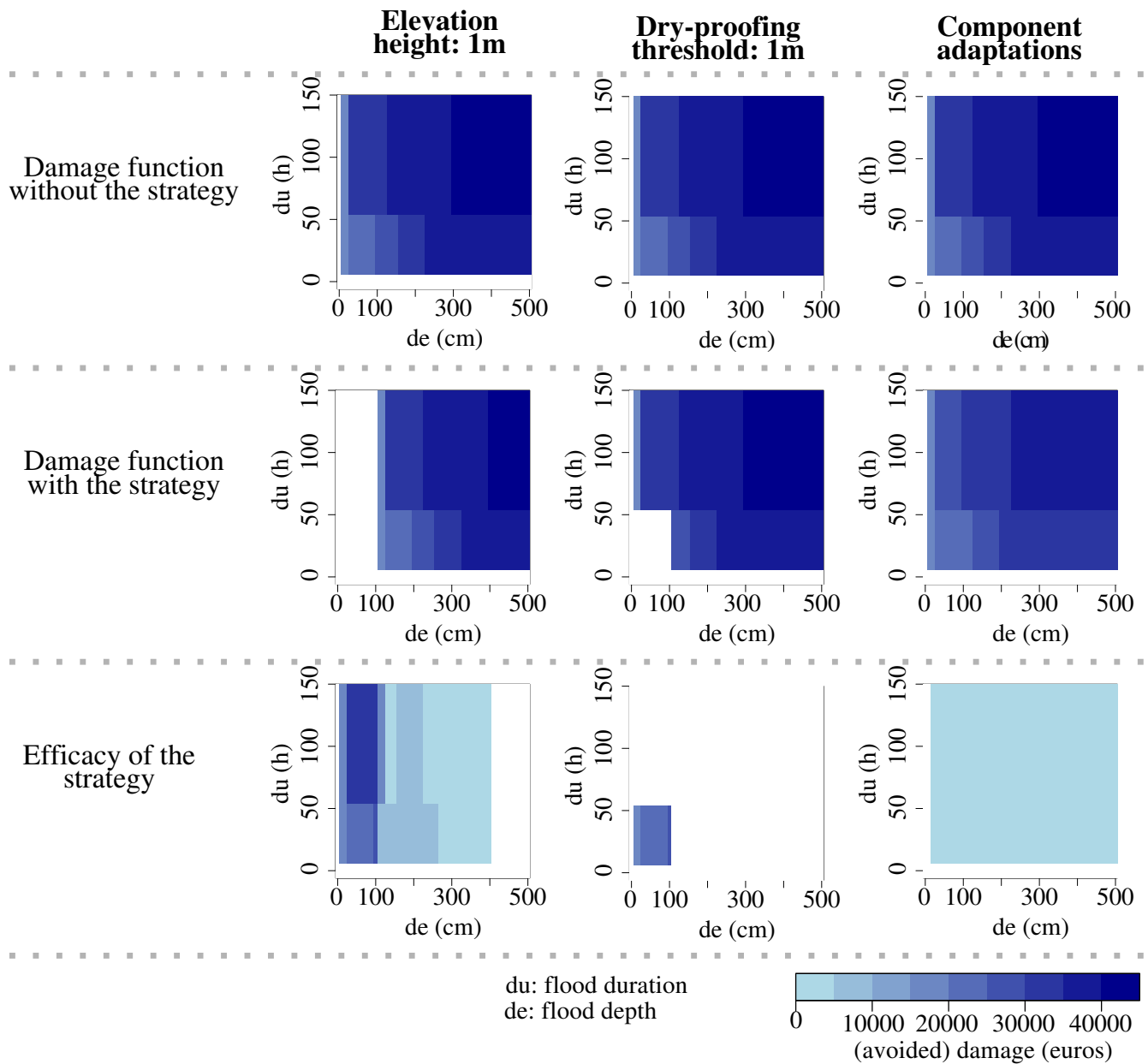
## References

- Aerts, J. C., Botzen, W. W., de Moel, H., and Bowman, M.: Cost estimates for flood resilience and protection strategies in New York City, *Annals of the New York Academy of Sciences*, 1294, 1–104, <https://doi.org/10.1111/nyas.12200>, <http://doi.wiley.com/10.1111/nyas.12200>, 2013.
- 15 Agence Qualité Construction: Résidentiel neuf, l'évolution des parts de marché des produits et matériaux de la construction, Tech. rep., Paris, 2009.
- Apel, H., Aronica, G. T., Kreibich, H., and Thielen, A. H.: Flood risk analyses — how detailed do we need to be ?, *Natural Hazards*, 49, 79–98, <https://doi.org/10.1007/s11069-008-9277-8>, 2009.
- Bubeck, P., Botzen, W. J. W., Kreibich, H., and Aerts, J. C. J.: Long-term development and effectiveness of private flood mitigation measures: An analysis for the German part of the river Rhine, *Natural Hazards and Earth System Sciences*, 12, 3507–3518, <https://doi.org/10.5194/nhess-12-3507-2012>, 2012.
- 20 CEPRI: Le bâtiment face à l'inondation, diagnostiquer et réduire sa vulnérabilité, Tech. rep., <http://www.cepri.net/tl{ }files/pdf/guidevulnerabilite.pdf>, 2010.
- CEPRI: Evaluation des dommages liés aux inondations sur les logements, Tech. rep., 2013.
- 25 Commissariat général à la stratégie et à la prospective: L'évaluation socioéconomique des investissements publics, Tech. rep., 2013.
- Custer, R. and Nishijima, K.: Flood vulnerability assessment of residential buildings by explicit damage process modelling, *Natural Hazards*, 78, 461–496, <https://doi.org/10.1007/s11069-015-1725-7>, 2015.
- Dottori, F., Figueiredo, R., Martina, M. L. V., Molinari, D., Scorzini, A. R., Civile, I., and Milano, P.: INSYDE : a synthetic , probabilistic flood damage model based on explicit cost analysis, pp. 2577–2591, <https://doi.org/10.5194/nhess-16-2577-2016>, 2016.
- 30 EPTB Saône et Doubs: Réduction de la vulnérabilité - Préconisation d'aménagement de l'habitat face aux inondations, Tech. rep., <http://fr.wikipedia.org/wiki/{É}tablissement{ }public{ }territorial{ }de{ }bassin>, 2015.
- FEMA: Homeowner's Guide to Retrofitting, <http://www.fema.gov/floodproofing>, 2009.
- FEMA: Flood Insurance Manual - Section 5: Rating, Tech. rep., 2014.
- FEMA: NFIP rating and the community rating system, <https://www.fema.gov/national-flood-insurance-program-community-rating-system>, 2018.
- 35 Gerl, T., Kreibich, H., Franco, G., Marechal, D., and Schröter, K.: A Review of Flood Loss Models as Basis for Harmonization and Benchmarking, *PLoS ONE*, 11, 1–22, <https://doi.org/10.1371/journal.pone.0159791>, 2016.
- Grelot, F. and Richert, C.: floodam - Modelling Flood Damage functions of buildings - Manual for floodam v1.0.0, Tech. rep., IRSTEA, <https://irsteadoc.irstea.fr/cemoa/PUB00061355>, 2019.
- 5 International Commission for the Protection of the Rhine (ICPR): Non Structural Flood Plain Management: Measures and Their Effectiveness, Tech. rep., Koblenz, 2002.
- Klijn, F. and Samuels, P. G.: Towards flood risk management in the EU: State of affairs with examples from various European countries, *International Journal of River Basin Management*, 6, 307–321, <https://doi.org/10.1080/15715124.2008.9635358>, 2008.
- Kreibich, H. and Thielen, A. H.: Coping with floods in the city of Dresden, Germany, *Natural Hazards*, 51, 423–436, <https://doi.org/10.1007/s11069-007-9200-8>, 2009.
- 10

- Kreibich, H., Thieken, A. H., Petrow, T., Müller, M., and Merz, B.: Flood loss reduction of private households due to building precautionary measures – lessons learned from the Elbe flood in August 2002, *Natural Hazards and Earth System Science*, 5, 117–126, <https://doi.org/10.5194/nhess-5-117-2005>, 2005.
- 15 Kreibich, H., Christenberger, S., and Schwarze, R.: Economic motivation of households to undertake private precautionary measures against floods, *Natural Hazards and Earth System Science*, 11, 309–321, <https://doi.org/10.5194/nhess-11-309-2011>, 2011.
- Kreibich, H., Bubeck, P., Van Vliet, M., and De Moel, H.: A review of damage-reducing measures to manage fluvial flood risks in a changing climate, *Mitigation and Adaptation Strategies for Global Change*, 20, 967–989, <https://doi.org/10.1007/s11027-014-9629-5>, 2015.
- Kreibich, H., Botto, A., Merz, B., and Schr, K.: Probabilistic , Multivariable Flood Loss Modeling on the Mesoscale with BT-FLEMO, *Risk Analysis*, 37, 774–787, <https://doi.org/10.1111/risa.12650>, 2017.
- 20 Merz, B., Hall, J., Disse, M., and Schumann, A.: Fluvial flood risk management in a changing world, *Natural Hazards and Earth System Sciences*, 10, 509–527, 2010.
- Ministère de l'égalité des Territoires et du Logement - Ministère de l'écologie, du Développement durable, et de l'énergie: Référentiel de travaux de prévention du risque d'inondation dans l'habitat existant, Tech. rep., <http://www.developpement-durable.gouv.fr/IMG/referentielInondation-texteint{é}gral-.pdf>, 2012.
- 25 Nadal, N. C., Zapata, R. E., Pagán, I., López, R., and Agudelo, J.: Building Damage due to Riverine and Coastal Floods, *Journal of Water Resources Planning and Management*, 136, 327–336, [https://doi.org/10.1061/\(ASCE\)WR.1943-5452.0000036](https://doi.org/10.1061/(ASCE)WR.1943-5452.0000036), 2010.
- National Research Council: Tying Flood Insurance to Flood Risk for Low-Lying Structures in the Floodplain, Washington, <https://doi.org/10.17226/21720>, <http://www.nap.edu/catalog/21720>, 2015.
- Poussin, J. K., Bubeck, P., H. Aerts, J. C., and Ward, P. J.: Potential of semi-structural and non-structural adaptation strategies to reduce future flood risk: Case study for the Meuse, *Natural Hazards and Earth System Sciences*, 12, 3455–3471, <https://doi.org/10.5194/nhess-12-3455-2012>, 2012.
- 30 Poussin, J. K., Botzen, W. J. W., and Aerts, J. C. J. H.: Effectiveness of flood damage mitigation measures: Empirical evidence from French flood disasters, *Global Environmental Change*, 31, 74–84, <https://doi.org/10.1016/j.gloenvcha.2014.12.007>, <http://dx.doi.org/10.1016/j.gloenvcha.2014.12.007>, 2015.
- 35 R Core Team: R: A Language en Environment for Statistical Computing, Tech. rep., R Foundation for Statistical Computing, Vienna, Austria, <https://www.r-project.org/>, 2017.
- Sairam, N., Schröter, K., Lüdtke, S., Merz, B., and Kreibich, H.: Quantifying Flood Vulnerability Reduction via Private Precaution, *Earth's Future*, 7, 235–249, <https://doi.org/10.1029/2018EF000994>, 2019.
- Tobin, G. A.: The levee love affaire: a stormy relationship?, *Journal of the American Water Resources Association*, 31, 359–367, 1995.
- Vis, M., Klijn, F., Bruijn, K. M., and Buuren, M. V.: Resilience strategies for flood risk management in the Netherlands, *International Journal of River Basin Management*, 1, 33–40, <https://doi.org/10.1080/15715124.2003.9635190>, 2003.
- 550 Werritty, A.: Sustainable flood management: oxymoron or new paradigm?, *Area*, 38, 16–23, <https://doi.org/10.1111/j.1475-4762.2006.00658.x>, <http://doi.wiley.com/10.1111/j.1475-4762.2006.00658.x>, 2006.
- Xian, S., Lin, N., and Kunreuther, H.: Optimal house elevation for reducing flood-related losses, *Journal of Hydrology*, 548, 63–74, <https://doi.org/10.1016/j.jhydrol.2017.02.057>, <http://dx.doi.org/10.1016/j.jhydrol.2017.02.057>, 2017.
- Zevenbergen, C., Gersonius, B., Puyan, N., and Van Herk, S.: Economic Feasibility Study of Flood Proofing Domestic Dwellings, in: *Advances in urban flood management*, edited by Ashley, Richard and Garvin, Stephen L. and Pasche, Erik and Vassipoulos, Andreas and Zevenbergen, C., chap. 13, pp. 299—319, CRC Press, <https://doi.org/10.1201/9780203945988>, 2007.
- 555



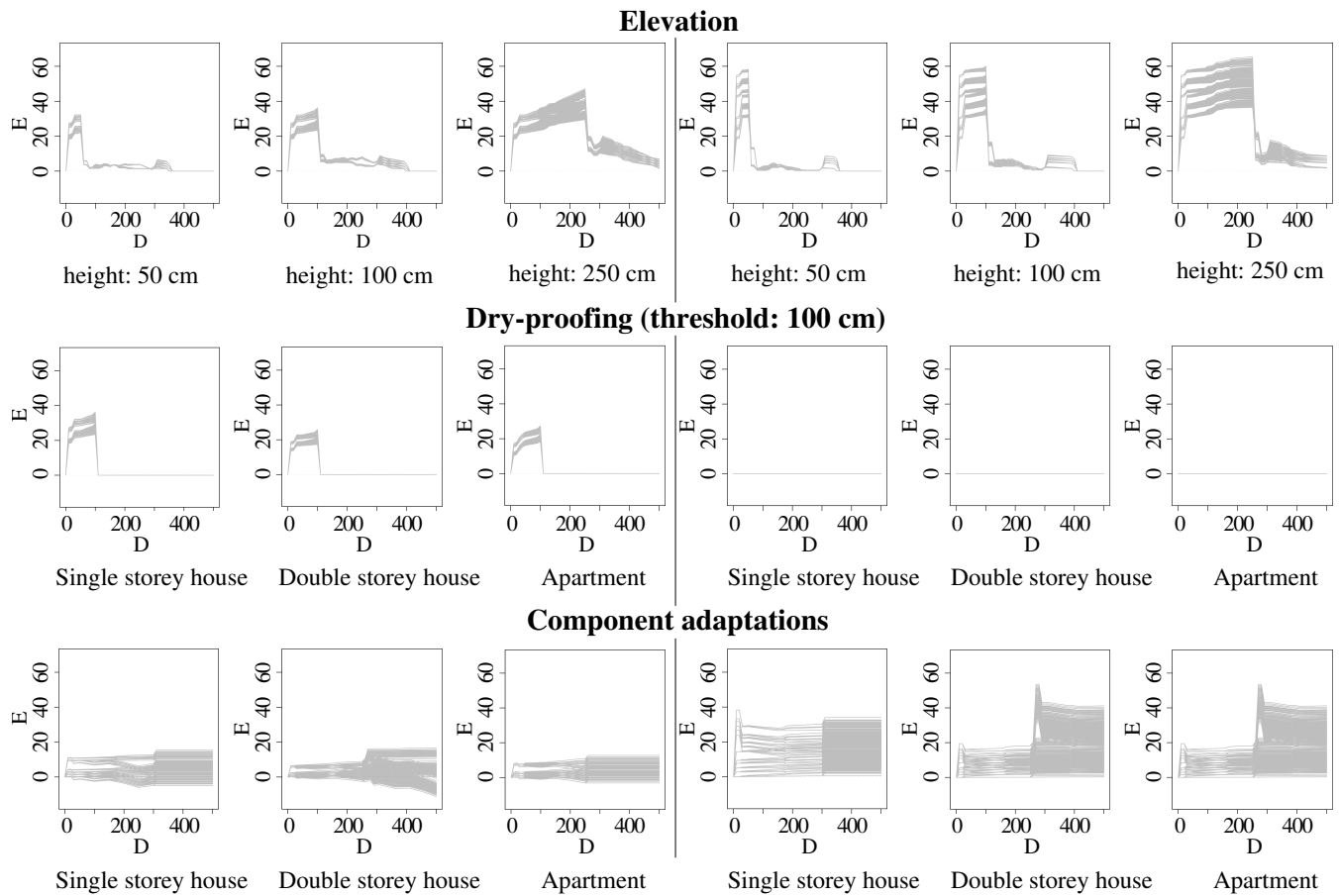
**Figure 1.** Top view of the single storey house. The external walls are in black, the internal walls in grey, the doors in brown, and the windows in blue.



**Figure 2.** Efficacy of the elevation, dry-proofing and component adaptations strategies implemented on the original version of the single storey house. The two top panels show damage in euros while the lower panel shows avoided damage in euros.

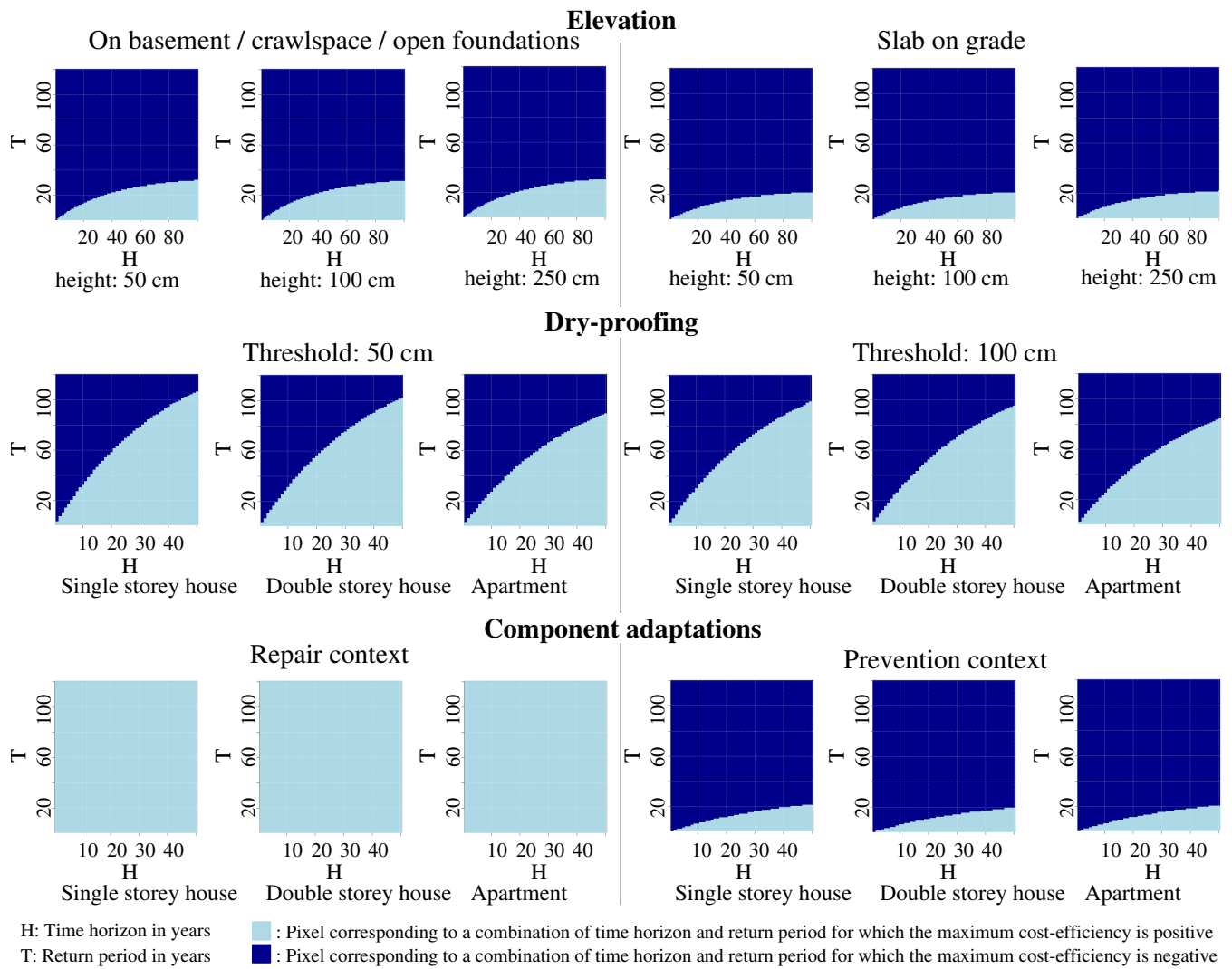
**DURATION OF IMMERSION: 24H**

**DURATION OF IMMERSION: 72H**



D: immersion depth in cm    — : Efficacy of the strategy considered for one version of the dwelling considered  
 E: efficacy in k€

**Figure 3.** Efficacy of the three strategies for a duration of immersion of 24 or 72 hours



**Figure 4.** Sign of the maximum cost-efficiency of each strategy

**Table 1.** Materials that limit the costs of repair or replacement after a flood

<b>Component</b>	<b>Material</b>
Ceilings	Plaster boards and metal frame
Insulation of ceilings	Cellular plastic
Internal walls	Plaster boards and metal frame
Insulation of walls	Cellular plastic
Floors	Concrete
Coatings of floors	Sealed tiling
Internal door frames	Metal
External door frames	PVC or metal
Window frames	PVC
Shutters	PVC



**Table 2.** Pieces of furniture contained in Bedroom.1 of the single storey house (see Fig. 1)

Item	Height above the floor (cm)	Quantity
Single bed in solid wood	0	1
Stock of linen (value: €2675)	0	1
Various furniture in chipboard	0	3
Small items (value: €1500)	0	0.3
Small items (value: €1500)	120	0.7
Stock of toys (value: €900)	120	1

**Table 3.** Components of the building used to develop the versions of the numerical models of dwellings

Component	Number of variants	variant
External walls	3	brick, reinforced concrete, concrete blocks
External walls render	1	Cement
Internal walls	2	plaster boards/metal frame, masonry
Insulation	2	mineral wool, plastic
Coatings of walls	2	paint, paper
Ceilings	3	wood planks and frame, plaster boards/metal frame, concrete
Coatings of ceilings	1	paint
Floors	2	concrete, joist board
Coatings of floors	3	tiles, parquet, textile
Opening frames	2	PVC, wood
Shutters	2	PVC, wood

**Table 4.** Costs of elevating a masonry dwelling as reported by FEMA (2009)

Type of foundations	Height (feet)	Cost (US\$/foot <sup>2</sup> )
Basement / crawlspace / open	2	60
Basement / crawlspace / open	4	63
Slab on grade	2	88
Slab on grade	4	91

The costs by square foot are in 2009 US\$

**Table 5.** Costs of elevating a masonry dwelling used in our study

Type of foundations	Height (cm)	Cost (€/m <sup>2</sup> )
Basement / crawlspace / open	50	497
Basement / crawlspace / open	100	517
Basement / crawlspace / open	250	579
Slab on grade	50	731
Slab on grade	100	751
Slab on grade	250	813

The costs by square meter are in 2017 €

**Table 6.** Costs of the dry-proofing measures

Measure	Cost by measurement unit	Quantity
Flood barriers	775 €/unit	N of O
Removable covers	15.5 €/m	P
Repair of faulty seals	35 €/m <sup>2</sup>	P × T
Treatment of cracks	3 €/m <sup>2</sup>	P × T
Waterproofing of the walls	30 €/m <sup>2</sup>	P × T
Watertight electrical sleeves	€550	NA
Pumping device	€820	NA
Anti-backflow valves	€650	NA

N of O: Number of openings; P: Perimeter; T: threshold; NA: we assume that the cost of the measure is fixed.

**Table 7.** Distribution of efficacy in k€ across all numerical models of dwellings and all combinations of immersion depth and duration

<b>Strategy</b>	<b>Case</b>	<b>Minimum</b>	<b>Mean</b>	<b>Maximum</b>	<b>Standard deviation</b>
Elevation	50 cm	0.0	4.5	58.3	10.1
	100 cm	0.0	9.0	60.1	13.8
	250 cm	0.0	22.1	65.4	18.2
Dry-proofing (Threshold: 50 cm)	Single storey house	0.0	0.7	32.3	4.2
	Double storey house	0.0	0.5	22.9	3.1
	Apartment	0.0	0.5	23.9	2.8
Dry-proofing (Threshold: 100 cm)	Single storey house	0.0	1.6	36.3	6.2
	Double storey house	0.0	1.1	25.9	4.5
	Apartment	0.0	1.1	27.4	4.5
Component adaptations	Single storey house	-8.9	9.5	38.3	8.9
	Double storey house	-13.3	8.8	53.6	10.0
	Apartment	-5.6	7.6	26.7	6.5

**Table 8.** Distribution of the cost in k€ across all numerical models of dwellings

<b>Strategy</b>	<b>Case</b>	<b>Minimum</b>	<b>Mean</b>	<b>Maximum</b>	<b>Standard deviation</b>
Elevation (On basement / crawlspace / open foundations)	50 cm	66.3	66.3	66.3	0.0
	100 cm	69.1	69.1	69.1	0.0
	250 cm	77.3	77.3	77.3	0.0
Elevation (Slab on grade)	50 cm	97.5	97.5	97.5	0.0
	100 cm	100.3	100.3	100.3	0.0
	250 cm	108.5	108.5	108.5	0.0
Dry-proofing (Threshold: 50 cm)	Single storey house	8.6	8.6	8.6	0.0
	Double storey house	6.3	6.3	6.3	0.0
	Apartment	7.6	7.6	7.6	0.0
Dry-proofing (Threshold: 100 cm)	Single storey house	10.4	10.4	10.4	0.0
	Double storey house	7.7	7.7	7.7	0.0
	Apartment	9.2	9.2	9.2	0.0
Component adaptations (Repair context)	Single storey house	-33.2	-12.6	8	9.9
	Double storey house	-45.5	-18.2	8.9	13.1
	Apartment	-28.4	-11.4	5.5	7.7
Component adaptations (Prevention context)	Single storey house	2.6	40.2	74.0	17.2
	Double storey house	1.8	53.9	102.2	24.9
	Apartment	0.3	30.0	57.1	13.4