

The impact of topography on seismic amplification during the 2005 Kashmir Earthquake

Saad Khan^{*1,2}, Mark van der Meijde², Harald van der Werff², Muhammad Shafique³

¹Department of Geology, Bacha Khan University Charsadda

²Faculty of Geo-information and Earth Observation (ITC), University of Twente

³National Center of Excellence in Geology (NCEG), University of Peshawar

*Correspondence email: saadkhan@bkuc.edu.pk

We are thankful for the reviewer's comments and have taken care of addressing all of them. Below you will find replies to each comment individually, and references to the location in the manuscript where the suggestions have been incorporated (underlined where changes/improvements are made).

Reviewer 1		
Comment	Reply	Manuscript Reference
<p>The approach chosen to evaluate the effect of regional topography to run scenarios with and without topography, to separate low and high frequency accelerations as described on page 4 top seems a valid approach. On page 4 line 14 is mentioned that a 'homogenous halfspace model is used. This might need some clarification what that means in the model and what the implication are for the outcome of the model and accuracies.</p>	<p>A halfspace is a simplified mathematical model used to approximate the earth when performing seismological calculations. In a homogeneous halfspace, material/velocity properties are kept constant throughout the model. There are mainly two reasons behind adopting homogeneous halfspace instead of a heterogeneous halfspace (where the material/velocity properties changes).</p> <ol style="list-style-type: none">1. Non-availability of the tomographic velocity model.2. To avoid any effect of heterogeneity on amplification. <p>Non-availability of the tomographic velocity model, especially at the resolution adopted in this study. This may change the absolute ground motion values but not the amplification due to topography (except when there are sediments, which we have explicitly excluded in our modeling due to large uncertainties in the sediment thickness in the area and the overprint on a possible topographic seismic amplification effect). It might have a slight effect on the spatial amplification pattern; an incoming wavefield can come in under a different angle if a layered velocity model will be used, but we have estimated that the effect of making a guess for the correct global velocity model for an intra-crustal earthquake is</p>	<p>Lines 19-35 on page 4. Lines 1-2 on page 5.</p>

	<p>as uncertain as the choice for a homogeneous upper crustal velocity model.</p> <p>This is discussed in the last paragraph of the methodology section. Based on this comment, we decided to revise the manuscript to make this explanation clearer.</p>	
<p>A mesh size of 270 m was chosen and used. Not sure what the motivation for this meshsize is. Please add a few words on your considerations.</p>	<p>The motivation behind this choice was briefly discussed in the Methodology section and is based on previous research (Khan et al., 2017). In this earlier paper we have tested several mesh resolutions to find the best approach in a trade-off between accurate results and computing time. It was shown that for the geomorphological geometry for Pakistan a 270 m mesh resolution gives accurate results and a significant decrease in accuracy is observed for coarser models. Based on the question, we decided to revise the text for better clarity.</p>	<p>Lines 17-23 on page 3.</p>
<p>Sections 3 and 4 are both titled 'Methodology' in my version of the paper. Section 4 must read Results I suppose.</p>	<p>Thank you; we changed that.</p>	<p>Line 3 on page 5.</p>

The impact of topography on seismic amplification during the 2005 Kashmir Earthquake

Saad Khan^{*1,2}, Mark van der Meijde², Harald van der Werff², Muhammad Shafique³

¹Department of Geology, Bacha Khan University Charsadda

²Faculty of Geo-information and Earth Observation (ITC), University of Twente

³National Center of Excellence in Geology (NCEG), University of Peshawar

*Correspondence email: saadkhan@bkuc.edu.pk

We are thankful for the reviewer's comments and have taken care of addressing all of them. Below you will find replies to each comment individually, and references to the locations in the manuscript where the suggestions have been incorporated (underlined where changes/improvements are made).

Reviewer 2		
Comment (Major)	Reply	Manuscript Reference
Authors calculated the topographic effect using 3-D model once with topographic effect and once without topographic effect. The topographic effect should include the effects due to the present valleys on the ground motion, thus the selected plain surface should be free of the valleys' effects. Authors should provide the characteristics of their selected datum.	<p>We consider the zero elevation surface to be the datum. It is sampled with a 270 m mesh resolution and DEM resolution. This zero elevation surface removes any impact of valleys.</p> <p>It should be noted that a choice for any other datum (e.g. the valley bottom) would actually give the same output, as long as that the reference datum is below the (deepest) valley floor to ensure that all topography and geomorphological characteristics are included in the model with topography and excluded in the model without.</p> <p>This additional information about the datum has been added to the manuscript for clarification.</p>	Line 34 on page 3. Lines 1-3 on page 4.
The paper lacks the description of both depth of the earthquake and depth of the valleys to be sure that these valleys are really shadow zones preventing seismic waves from reaching high areas on the other sides. Detailed description of low areas is required.	We agree that this can be explained in more detail, the present description can possibly lead to confusion. Information about the depth of earthquake and deep valleys causing shadow effects is now provided in the manuscript.	Lines 31 on page 2. Lines 31-32 on page 5. Lines 1-2 on page 6. Lines 27-31 on page 8.
Many factors can amplify ground motion. To have accurate correlation between the topography and the observed damage in the	We agree with this comment; it is now better clarified in the manuscript.	We added an explanation to lines 25-32 on page 6 and lines 1-2 on page 7.

<p>region, all other factors should be neutralized in advance to be sure about the effectiveness of topographical contribution. This is not clear in the current manuscript.</p>		
<p>It seems that authors modeled the seismic source as a point, which is totally unreliable, as the rupture direction could be an effective parameter at short distances. Details on the fault rupture direction, rupture length, and observed surface displacement should be provided.</p>	<p>Details on the fault rupture direction, rupture length, and observed surface displacement has been provided along with justification for using a point source in the manuscript. Previous studies (e.g. Raghukanth, 2008) have shown that there is a strong correlation with the CMT location (i.e. point of maximum energy release) and damage patterns. We also believe that this maximum energy release, and thereby the max PGA/PGV/PGD will be the dominant trigger for the occurrence of landslides, so amplification in relation to CMT location is assumed to be the most dominant direction for amplification related damage and secondary hazards. We have added text on this issue in the discussion session of the paper.</p>	<p>Lines 4-9 on page 4. Lines 30-32 on page 6.</p>
<p>As the earthquake is relatively recent, field observations of such earthquake should be available. Therefore, verification of the calculated values with the recorded observation should be provided to be sure about the accuracy of the used model (including input uncertainty) and the results. Numerical modelling alone is not enough.</p>	<p>Unfortunately, the region has a poorly developed seismic network and therefore we do not have any recorded seismic data to compare with. The only verifiable data from the field we could access is the damage data (Shafique 2012) and landslide data (Shafique 2008) collected right after the event (E.g. Figure 1 and Figure 2 here in this document); Apart from this, there are some COSI-Corr (Leprince et al., 2008; Avouac et al., 2006) and InSAR based studies (Pathier et al., 2006; Wang et al., 2007) to compare with. COSI-Corr can only measure horizontal component while InSAR only vertical component of displacement. All these comparisons have been discussed and cited in the manuscript, and we have found that our amplitudes are of the same order as theirs.</p> <p>Any limitations resulting from this drawback are, however, clearly discussed in detail in discussion section. We realize that this leaves maybe some discussion on the final interpretation, which we extensively describe in the discussion section. But on the other</p>	<p>Lines 20-35 on page 4. Lines 1-2 on page 5. Lines 7-20 on page 7. Lines 27-35 on page 7. Lines 1-22 on page 8.</p>

	hand, this is the only possible way to understand better the effects of earthquakes in remote areas.	
Comment (Minor)		
Use the past tense in the abstract section.	Done	Abstract
Rewrite line No. 10 in page 1, modifying the position of the word "and" and removing the word regolith as it is a part of the site specific geology.	Done	Line 10 on page 1.
Line 20 page 1. Seismic risk cannot be mitigated. Use risk instead.	You are right, we changed the phrasing to: <i>Incorporating the topographic impact on seismic response is thus important for seismic shaking prediction, seismic hazard assessment and risk mitigation.</i>	Changed in line 19-20 on page 1.
Page 3, line 9, elastic waves.	Done	Line 8 on page 3.
Page 3, lines 30 and 31, use velocity instead of speed.	Done	Lines 29-30 on page 3.
Title of section 4 should be Results.	Done	Line 3 on page 5.
Page 5, lines 12 and 13, give possible reasons.	Done	Line 25 on page 7.
Page 6, line 18, found instead of find.	Done	Line 5 on page 7.



Figure 1: Impact of topography on building damages during 2005 Kashmir earthquake in Balakot (Pakistan). It can be observed that the building on ridge are completely destroyed while those at the ridge toe are still intact, despite the fact that building material and construction was similar.



Figure 2: Impact of topography on building damages during 2005 Kashmir earthquake in Muzaffarabad (Pakistan). Same observation as in Figure 1.

The impact of topography on seismic amplification during the 2005 Kashmir Earthquake

Saad Khan^{1,2}, Mark van der Meijde², Harald van der Werff², and Muhammad Shafique³

¹Department of Geology, Bacha Khan University Charsadda

²Faculty of Geo-information and Earth Observation (ITC), University of Twente

³National Center of Excellence in Geology (NCEG), University of Peshawar

Correspondence: Saad Khan (saadkhan@geologist.com)

Abstract. Ground surface topography influences the spatial distribution of earthquake induced ground shaking. This study shows the influence of topography on seismic amplification during the 2005 Kashmir earthquake. Earth surface topography scatters and reflects seismic waves, which causes spatial variation in seismic response. We performed a 3D simulation of the 2005 Kashmir earthquake in Muzaffarabad with spectral finite element method. The moment tensor solution of the 2005 Kashmir earthquake was used as the seismic source. Our results showed amplification of seismic response on ridges and de-amplification in valleys. It was found that slopes facing away from the source received an amplified seismic response, and that 98% of the highly damaged areas were located in the topographically amplified seismic response zone.

1 Introduction

Intensity and duration of seismic-induced ground shaking is mainly determined by earthquake magnitude, depth of hypocenter, distance from the epicenter, medium of the seismic waves, topography and site specific geology (Kramer, 1996; Wills and Clahan, 2006; Shafique and van der Meijde, 2015; Khan et al., 2017). The influence of earth topography on seismic response has been observed and proven numerically and experimentally (Athanasopoulos et al., 1999; Sepúlveda et al., 2005; Lee et al., 2009a). The earth's topography acts as a reflecting surface for upcoming seismic energy and produces surface waves (Lee et al., 2009a, b). The undulating nature of surface topography leads to scattering or focusing of propagating waves (Lee et al., 2009a, b). Previous studies found that topography amplifies the ground shaking at mountain tops and ridges, while it de-amplifies in valleys; for example Hartzell et al. (1994); Spudich et al. (1996) in California; Lee et al. (2009a, b) in Taiwan; Hough et al. (2010) in Haiti, Kumagai et al. (2011) in Ecuador, and Restrepo et al. (2016) in Colombia. Most seismic active areas are rugged in nature, which makes these regions prone to topographic (de-)amplification (Lee et al., 2009a; Hough et al., 2010; Shafique and van der Meijde, 2015). Incorporating the topographic impact on seismic response is thus important for seismic shaking prediction, seismic hazard assessment and risk mitigation. (Bauer et al., 2001; Wu et al., 2008; Shafique et al., 2011a).

During the 2005 Kashmir earthquake, in northern Pakistan, the city of Muzaffarabad and its surroundings were severely damaged. The earthquake has been studied on various aspects. Ali et al. (2009) studied the impact of surface faults on infrastructure and environment; primarily based on field surveys done immediately after the earthquake. Several satellite based studies primarily focused on field displacement and slip distribution, such as Parsons et al. (2006); Avouac et al. (2006); Pathier

et al. (2006); Wang et al. (2007); Leprince et al. (2008). Others addressed relationships between co-seismic displacement and landslides (e.g. Kamp et al., 2010; Dunning et al., 2007; Saba et al., 2010). Kashmir earthquake induced topographic amplification of seismic responses was first evaluated by Shafique et al. (2008) using the topographic aggravation factor (TAF) after Bouckovalas and Papadimitriou (2005). Their method involved the use of topography-derived parameters such as terrain slope and relative height as a proxy for terrain characteristics in a homogeneous halfspace. One of the major simplifications in their work was the use of these pixel-wise proxies instead of a full 3D topographic model. In this paper, we use a 3D spectral element method (SEM) modelling approach that incorporates an elevation model and full elastic waveform simulations, including all possible waves, based on the source characteristics of the earthquake in a homogeneous halfspace.

The SEM was developed by Patera (1984) for computational fluid dynamics, and was introduced for 3D seismic wave propagation by (Komatitsch and Vilotte, 1998; Komatitsch and Tromp, 1999). The method is adopted in several studies afterwards; Komatitsch et al. (2004) simulated ground motion in the Los Angeles Basin for the 2001 Mw 4.2 Hollywood earthquake and the 2002 Mw 4.2 Yorba Linda earthquake. Pilz et al. (2011) modeled basin effects on earthquake ground motion in the Santiago de Chile basin using scenario earthquake of Mw 6.0. Magnoni et al. (2014) simulated the 2009 Mw 6.3 L'Aquila Earthquake, considering topographic and basinal features in central Italy. Lee et al. (2008, 2009a, b, 2013, 2014b) developed a real-time online earthquake simulation system based on SEM in Taiwan. Liu et al. (2015) simulated scenario earthquake strong ground motion in the Shidian basin to study basinal influence on seismic amplification and distribution of strong ground motion. Evangelista et al. (2016) studied site response at the Aterno basin (Italy). Paolucci et al. (2016) estimated ground motion for the historical 1915 Marsica earthquake in the Facino basin incorporating topography and bedrock morphology. Restrepo et al. (2016) simulated 4 scenario earthquakes of Mw 5 along the Romeral fault for the metropolitan area of Medellín (Colombia) demonstrating how topography affects ground response. Smerzini et al. (2017) studied site effects by taking the historical Mw 6.5 1978 Volvi earthquake in the Thessaloniki urban area (Greece).

In this study we exclusively study the role of topography on ground motion for the area of Muzaffarabad and surrounding areas during the 2005 Kashmir earthquake.

2 Study Area

Within the area affected by the 2005 Kashmir earthquake, we selected an area of approximately 40 x 40 km around the city of Muzaffarabad (Fig 1). Being part of the western Himalayas, its position on a converging plate boundary makes this region particularly prone to earthquakes. Its rugged terrain makes it sensitive to topographic (de-)amplification (Lee et al., 2009a; Hough et al., 2010; Shafique and van der Meijde, 2015). The earthquake was caused by reactivation of the Muzaffarabad fault (also known as the Balakot-Bagh fault) (Hussain et al., 2009) shown in (Fig 1). The Centroid Moment Tensor (CMT) of the (Mw 7.6) 8 October 2005 Kashmir earthquake (Dziewonski et al., 1981; Ekström et al., 2012), retrieved from (<http://www.globalcmt.org/>) was used for the simulation and lies in the center of the study area at depth of 12 km (Fig 1). The USGS (<https://earthquake.usgs.gov/earthquakes/>) reported, after comparing waveform fits based on the two planes of the input moment tensor (Fig 1), that the nodal plane (strike= 320.0 deg., dip= 29.0 deg.) fits the data better. The seismic moment release

based upon this plane is $3.0e+27$ dyne.cm and was calculated using a 1D crustal model interpolated from CRUST2.0 (Bassin et al., 2000). Several studies (e.g. Avouac et al. (2006); Pathier et al. (2006); Wang et al. (2007)) provide detailed information about the fault dynamics, including moment tensor solutions and finite fault models.

3 Methodology

5 We based our analysis on modelling with the spectral element method (SEM) for simulating 3D seismic wave propagation. The software package SPECFEM3D (Computational Infrastructure for Geodynamics, 2016), is used for SEM simulations. SPECFEM3D can simulate global, regional and local seismic wave propagation. It uses the continuous Galerkin spectral-element method to simulate elastic waves propagation caused by earthquakes (Komatitsch and Tromp, 1999).

SEM based modelling relies on meshed objects or volumes. A high-quality 3D mesh is a key factor for a successful applica-
10 tion of SEM (Casarotti et al., 2008). A mesh is composed of hexahedra elements that are isomorphous to a cube (Komatitsch et al., 2002). It is defined with material and structural properties that define how it will react to applied conditions (e.g. an earthquake). We used the Cubit v.13.0 software (Sandia National Laboratories, 2011) for generation of the meshes. Surface topography is based on the ASTER Global DEM, a product of National Aeronautics and Space Administration (NASA) and Japan Ministry of Economy, Trade and Industry (METI). It was retrieved from the Global Data Explorer, courtesy of the NASA
15 Land Processes Distributed Active Archive Center (LP DAAC), USGS/Earth Resources Observation and Science (EROS) Center, Sioux Falls, South Dakota, <http://gdex.cr.usgs.gov/gdex/>.

Previous study has explored at which resolution you can best model the topography in relation to mesh resolution (Khan et al., 2017). They analyzed the impact of data resolution (mesh and DEM) on seismic response using SPECFEM3D. Different combinations of mesh and DEM resolutions were modelled to find the optimal mesh and DEM resolution for getting accurate
20 results while keeping computational resources to the minimum. Their conclusion was that a mesh and topography of 270 m resolution was optimal for the topography around Muzaffarabad. It is therefore that we adopt this resolution in our models; thereby allowing seismic wave simulations with frequencies up to ~ 5.5 Hz. We use a polynomial degree $N = 4$ to sample the wave field; therefore, each spectral element contains $(N + 1)^3 = 125$ Gauss-Lobatto-Legendre (GLL) points, which is 5 GLL points per wavelength. In order to correctly sample the wave field, one needs to use roughly five GLL points per wavelength
25 (Komatitsch et al., 2004). The mesh extends to a depth of 40 km, and contains two tripling layers. Tripling is a refinement technique in meshing for subdividing hexahedral elements in a conforming fashion (Peter et al., 2011). Tripling layers increase the spatial resolution of the mesh to 270 m at the surface from 2430 m at the bottom of the model (at a depth of 40 km). This is done in order to reduce the computational time and cost by reducing the total number of mesh elements following the approach as proposed in several other studies (e.g. Lee et al. (2008)). Due to the unavailability of a seismic velocity model for
30 the area, we assigned constant seismic velocities ($V_p=2800$ m/s, $V_s=1500$ m/s) and density ($\rho=2300$ kg/m³) in the modelling, representative for upper crustal conditions (Taborda and Roten, 2015; Wang et al., 2016; Makra and Raptakis, 2016).

To investigate the effect of regional topography on seismic amplification, we ran the 3D model once with a topographic surface and once without topography (having a plain surface instead, with constant elevation of 0 m). It should be noted that a

choice for any other datum (e.g. the valley bottom) would actually give the same output, as long as that the reference datum is below the (deepest) valley floor to ensure that all topography and geomorphological characteristics are included in the model with topography, and excluded in the model without. As source for the simulation we used the 3D wave field as described in the CMT solution of 2005 Kashmir earthquake. The point source (CMT) possesses rupture characteristics and release of energy. The rupture of this earthquake had a strike of 338° , dip of 50° N-NE, observed surface displacement of around 5 m and a modeled dimensions of about 70×35 km (Hussain et al., 2006; Pathier et al., 2006; Hayes et al., 2017), which is almost double the length of the study area. To include a much longer fault in our models would significantly increase the calculation time with no added value for the area that we studied. The CMT location as point source is therefore a realistic simplification that has a good correlation with damage (Raghukanth, 2008). Since SEM is efficient in simulating low frequency ground displacement and has limited capability in simulation of high frequency accelerations (Dhanya et al., 2016) we present our results in peak ground displacement (PGD) maps based on models with and without topography. Based on these PGD maps we created an amplification map. In order to evaluate the impact of topography, the pattern of amplification was compared with the topography of the area. The impact of topography on seismic response was also evaluated by correlating the amplification pattern with the earthquake induced buildings damage and co-seismic landslide data. The damage data (Fig 2) is taken from Shafique et al. (2012), who categorized damage to infrastructure as high, moderate and less. The landslide data (Fig 3) is taken from Humanitarian Information Center Pakistan (HIC-Pakistan), first published by Shafique et al. (2008). Based on the orientation of slopes relative to the CMT location, the aspects of slopes were categorized into away (facing away from the CMT), towards (facing towards the CMT), and other (facing in directions other than towards and away). The categorization is based on 60° set of aspect with respect to its angle towards the CMT location.

This study has been carried out in data sparse environment and therefore we opted to use a homogeneous halfspace (with constant material/velocities) model. There is not a single tomographic velocity model available in a relevant resolution. All tomographic velocity models are too coarse; the best resolution is 1 degree spatially with the crust poorly resolved (Johnson and Vincent, 2002). Seismic lines are not available for the region, and nearby seismic lines (Bhukta and Tewari, 2007) cannot provide sufficient detail on the Muzaffarabad region. However, to overcome this simplification, we have tried to establish the velocities as accurate as possible by comparing our results with observed displacements by Pathier et al. (2006); Avouac et al. (2006); Wang et al. (2007) and Leprince et al. (2008). Our displacement values, based on the homogeneous velocity model, are fairly comparable with their results and our velocities are comparable to upper crustal velocities in coarse tomographic models for the region (Johnson and Vincent, 2002; Bhukta and Tewari, 2007). Furthermore, with changing velocities, the absolute values will change but the amplification pattern will still remain the same; for events at the same location the effect of amplification is largely magnitude and velocity independent. Since our model would be, based on previous studies, homogeneous for the upper crust anyway, with no sediments inclusion, the effect of a full homogeneous model is limited. Because of the depth of the earthquake in relation to the limited size of the area the amount of energy that might have been deflected back up is very limited and considered negligible in this study. We are aware that the phenomena exists and is ignored, but any assumption on the velocity model will carry similar uncertainties as to this simplification. In a heterogeneous model, there are chances that

the heterogeneity may affect amplification; therefore, to avoid any uncertainty of whether the amplification is because of the heterogeneity or topography, we have chosen to avoid any heterogeneity and adopt homogeneous model instead.

4 Results

The modelling results show that seismic response is sensitive to slope angle, aspect, geometry, and height of the terrain features.

5 The modelled PGD amplitudes differ for a homogeneous halfspace without topography (Fig 4a) and with topography (Fig 4b). The higher amplitudes coincide with mountain ridges, as shown in the DEM (Fig 4c). Without topography, the PGD falls within the range of 0.23-5.8 m (Fig 4a), but increases to a range of 0.36-7.85 m (Fig 4b) when topography is taken into account. The difference between the PGDs of the two models (Δ PGD) is shown in Fig 4(d). The difference in PGD between a model with topography versus the same model without topography is represented in terms of amplification. For positive values we use term
10 amplification, meaning the seismic signal has become stronger due to topography compared to simulation without topography. Whereas, for negative values we use de-amplification, meaning the seismic signal has become weaker due to topography compared to the simulation without topography. The topographic (de-)amplification causes local changes of approximately -2.50 to +3.00 m (Fig 4d).

For a detailed analysis of the effect of topography we compare topography, PGD (with and without topography) and Δ PGD
15 along profile lines. A comparison (Fig 5a, b and c) is made along the white profile lines shown in Fig 4 (AA', BB' and CC', respectively). The profile line AA' is approximately 47.5 km long, and passes over the CMT location in the center of the profile (marked with a dotted arrow). We observe, in general, amplification at ridges and de-amplification in valleys. The amplification and de-amplification related to ridges and valleys, respectively, has a shift toward the ridge slope facing away from the CMT location (Fig 5a). We find that slopes facing away from the epicenter have an amplified seismic response. Similarly, slopes
20 facing towards the CMT have a de-amplified seismic response. The most clear and prominent example of this amplification is at location (a) in Fig 5(a). The slope facing away from the CMT location is experiencing amplified PGD amplitudes. The maximum amplitudes occur at the top and near the top on the slope facing away from the CMT location. On the slope side facing towards the CMT location, we see a rapid decrease in amplification, turning into de-amplification for the lower part of the slope. This pattern of decay with elevation we also see for the amplified side but the decay there is much slower and the
25 model shows amplified signals till much further down the slope. Similar patterns can be observed for the ridges at locations (b) and (c) we find that the slope facing towards the source has experienced de-amplification, while the slope facing away is showing amplification. The same phenomena of amplification and de-amplification can also be observed on slope along profiles BB' and CC' (at locations a, b & c) in Fig 5(b and c) for profile lines BB' and CC', respectively. The trapping of energy due to the shape of the mountain is observed and reflection of energy towards the top of the mountain leads to increased
30 amplification effects with increase in elevation from the base of the mountain, particularly on the side of the mountain that is directly exposed to the incoming seismic waves. A clear shadow effects due to terrain features can be seen at some locations. At locations (d) and (e) (Fig 5a) we observe that a deep valley blocks the continuation of seismic wave energy into the next

topographic high, thereby leading to de-amplification. Similarly, at location (d) in Fig 5(b and c), we observe a similar shadow effect, and resulting de-amplification, due to blocking of seismic waves by deep valleys between the ridge and the CMT.

The Δ PGD shown in Fig 4(d) is compared with damage data (Fig 2) of the 2005 Kashmir earthquake in Fig 6. Shafique et al. (2012) reported damage into three categories; high (red), moderate (yellow) and low (green). The high damage zone constitutes 11% of the damaged part of the Muzaffarabad area, while moderate and low damage respectively cover 51% and 38% of the damaged area. There is clear correlation between (de-)amplification and damage level. For the highest class of damage, 98% of the damaged buildings are found in the amplified zone (positive Δ PGD, Fig 4(d)). On the other hand, 80% of the least damaged buildings lies within the de-amplified zone. Overall the distribution of damage is equally distributed over amplified and de-amplified zones, but amplification does have an impact on the level of damage.

Following the hypothesis that the direction of slopes has an impact on the amplification we would expect that the away facing slopes show a relatively higher Δ PGD than slopes facing toward or any other direction. Analysis of the terrain shows that 30% of the slopes face away from the CMT location, 35% face towards the CMT location, and 35% face another direction (Fig 7). On average we observe that around 2/3 of the area (63%) experiences a de-amplification, and around 1/3 (37%) shows amplification. When comparing these statistics with the statistics for the different aspect classes a relative increase is observed for slopes that face away from the CMT location to 47%. Contrary, a decrease is observed, to 25%, for slopes facing towards the CMT location. So, the effect of slope direction on the amplification is significant. In line with these observations, there have been studies (e.g. Ashford and Sitar (1997); Ashford et al. (1997)) that suggested a correlation between landslide occurrence and earthquake location as a possible result of amplification (Shafique et al., 2008; Meunier et al., 2008; Qi et al., 2010; Xu et al., 2013). For the Muzaffarabad area, the Δ PGD was compared with landslide data (Fig 3) collected shortly after the earthquake by HIC-Pakistan Shafique et al. (2008) (Fig 8). This shows a similar pattern as for the previous analysis. On slopes facing away from the CMT location we observe 53% of the landslides in the amplified zone, whereas on slopes facing towards the CMT this is only 16%.

5 Discussion

This study used the spectral element modelling numerical modelling to evaluate the impact of topography on 2005 Kashmir earthquake induced ground shaking. There are several factors that amplify ground shaking at the earth's surface, such as earthquake magnitude, depth of hypocenter, distance from the epicenter, medium of the seismic waves, topography and site specific geology (Kramer, 1996; Wills and Clahan, 2006; Shafique and van der Meijde, 2015; Khan et al., 2017). Thus, to ensure that only topographic amplification is isolated, we have two models with exactly the same characteristics and simulation parameters: All factors are kept constant except for topography. Therefore, the resulting amplification is only due to topography, as it is the only variable. Using the CMT location (the point of maximum release of energy) of the 2005 Kashmir earthquake resulted in obtaining the required peak amplitudes as output. Instead of using the CMT point in lieu of full finite fault solution in the simulations, subsources along the fault rupture could have been used (e.g. Lee et al. (2014a, 2016); Zhang and Xu (2017)).

This might have influenced the analysis but we have opted to focus on maximum release point since that has been shown to have a strong relation with damage patterns (Raghukanth, 2008).

Our results show that, by incorporating topography in spectral element modelling, the minimum and maximum amplitude of the peak ground displacement changes. The results show manifestations of topographic influence on building damage during the 2005 Kashmir earthquake. We found that the majority (98%) of the high damaged area lies in the topographically amplified response region. Conversely, the majority (80%) of the area with less damage lies in the topographically de-amplified response region. The relation between damage and amplification indicates that the topography was a contributing factor to the building damages during the 2005 Kashmir earthquake. It is also important to consider other factors that could play role in damage to infrastructure. Shafique et al. (2011b) has shown that regolith thickness had an influence on damages during the 2005 Kashmir earthquake. Actual damage is also dependent on building quality. Although Asian Development Bank and World Bank (2005) reported that building material and poor construction was homogeneous in the area, Shafique et al. (2011b) observed differences between different sectors in the area. Poor construction practices such as connected buildings and poor reinforcements, are also considered as contributing factor for damage in the area in response to the 2005 Kashmir earthquake Shafique et al. (2011b) and might have influenced, in a positive or negative sense, the comparison between amplification and damage.

Most of the structures in the area are low-to medium-high, which are normally most sensitive to high-frequency amplification effects. However, considering such high PGDs in this area, combined with building style not earthquake proof, the relation between PGD and damage might not be optimal but is thought to show a strong correlation. Furthermore, during this study, PGD, peak ground velocity (PGV) and peak ground acceleration (PGA) have been found spatially very strongly correlated, with only some minor amplitude deviations at specific topographic features. So the overall pattern in a comparison would still look very similar to the damage vs Δ PGD comparison we show in the paper.

The directions of incident seismic waves have a significant impact on distribution of seismic-induced landslides (Ashford and Sitar, 1997; Shafique et al., 2008; Meunier et al., 2008; Qi et al., 2010; Xu et al., 2013). In our results this effect is not directly clear. For example, only 37% of the landslides fall within the amplified zone, the other 63% fall within the de-amplified zone (Fig 8). However, when the relative distribution of landslides is compared to slopes facing away (prone to amplification due to focusing of seismic waves directly compared to slope facing towards) versus slopes facing towards the CMT location, a correlation is observed. The majority of the landslides on slopes facing away from the CMT location are in the amplified zone (53%) while for slopes facing towards the CMT location this is only 16%. These figures are much lower than Shafique et al. (2008) results for the same area and the same landslide catalogue. The main difference between their study and ours is the location to which the slope direction is compared. While Shafique et al. (2008) used the onset of the earthquake (the Epicenter location, Fig 1), we used in our modelling the CMT location (the location of maximum energy release, Fig 1). It was assumed that the maximum seismic amplitudes and corresponding amplification will lead to the occurrence of landslides but apparently this is not true. Based on the comparison of the two results it is very likely that a much lower displacement value may have already triggered the landslides. The threshold at which the landslides will occur cannot be derived from this study but it is evident that already at much earlier stage in the earthquake propagation enough energy is created to activate landslides. The maximum energy release related to the CMT location occurs only later in the earthquake process and clearly has less control

since the critical ground displacement required for activating a landslide might have already been exceeded. This can explain the abundance of landslides in the de-amplified zone based on modelling from the CMT location.

The aforementioned evidence of amplified seismic response on slopes facing away from the source could be a possible reason behind triggering landslides. However, it is important to consider complications associated with landslides. The 2005 Kashmir earthquake induced landslides have been addressed in several studies, from different perspectives. Owen et al. (2008) reported that more than half of the landslides were in some way associated with road construction and other human activity. According to Kamp et al. (2008), bedrock lithology (comprising highly fractured slate, shale, dolomite, limestone and clastic sediments) was the most important landslide controlling parameter during the 2005 Kashmir earthquake. Dellow et al. (2007) reported a highly asymmetric size and distribution of 2005 Kashmir earthquake induced landslides. According to this last paper, the landslides can be classified into the following three types: (1) landslides formed over/adjacent to the fault rupture, (2) landslides which extend about 10–20 km from the fault trace on the hanging side of the fault and (3) landslides on the footwall side which are generally rare except within 2–3 km of the fault trace. And as mentioned earlier, Shafique et al. (2008) compared the aspect of landslides relative to the initial rupture point and found that about 80% of the landslides had an aspect facing away from the rupture point. In summary, the major controlling factors for 2005 Kashmir earthquake induced landslides were (1) human activity (Owen et al., 2008), (2) bedrock lithology (Kamp et al., 2008), (3) proximity with reference to fault trace (Dellow et al., 2007) and (4) slope direction with respect to source (Shafique et al., 2008). In our study, we analyzed landslide aspects with respect to the point of maximum release of energy (CMT solution). The percentage of landslides facing away was found to be 25%, facing towards 33% and facing other directions 42%. Keeping in mind factors such as human activity and bedrock lithology beside the relation of landslides with the fault trace, it is uncertain at which stage of the rupture the landslides have been triggered. It could be because of the initial rupture (used by Shafique et al. (2008), the fault trace (Owen et al., 2008), the moment of maximum release of energy (the CMT solution location used in this study), or somewhere in between.

The 2005 Kashmir earthquake was a shallow earthquake. In such case a seismic wave field will reach the surface at an angle, rather than vertical when originating at a larger distance away. This can lead to the creation of a so-called shadow zone effect due to deep valley blocking the propagation of a seismic wave field into a topographic feature. This phenomenon has also been observed in this study. Because of this shadow effect, ridges which are expected to show amplification, show de-amplification (location (d) & (e) in Fig 5(a), location (d) in Fig 5(a and b). The detailed topography of low areas can be found in Fig 4c with blue colors indicating deep valleys. Also shown with the blue profile line in Fig 5; for example, around distance 32,500 m and 40,000 m in Fig 5a; 42,500 m in Fig 5b; and 31,000 m in Fig 5c. These valleys have restricted the impact of seismic waves on the next ridge(s) away from the CMT. Thus the ridges, which are normally supposed to show amplification because of trapping, shows de-amplification instead. This effect however, may not be visible for deep seated seismic sources or sources at a larger epicentral distance. The deeper or further away the source of the earthquake the more vertical will be the incoming seismic wave field. A similar effect is possible if we have significantly reduced seismic velocities close to the surface, due to e.g. sediments, that will also turn the wave field towards the vertical. The results of the study can be used as an important parameter for the seismic microzonation for the study area to mitigate the negative impacts of earthquake.

6 Conclusions

Topography affects the diffraction and reflection of incident seismic waves, thereby amplifying or de-amplifying the seismic response. The impact of topography on seismic induced ground shaking was evaluated for the 2005 Kashmir earthquake in Muzaffarabad (Pakistan) using a spectral element method, SPECFEM3D. An ASTER Global DEM, re-sampled to 270 m spatial resolution, was used for representing topography of the study area. A mesh of 270 m spatial resolution was used to model the topography and geometry of the topography and subsurface conditions in the Muzaffarabad region. Overall, topography induced amplification of seismic response is found on ridges and slopes facing away from the CMT location and de-amplification is found in valleys and at the bottom of slopes facing towards the CMT location, which is consistent with previous studies. The study demonstrates that topography changed the PGD values from approximately -2.5 m to +3 m when compared to a plain mesh surface.

It is shown that topography played a significant role in earthquake induced damage during the 2005 Kashmir earthquake: 98% of the highly damaged area lies within the topographically amplified seismic response area.

Competing interests. No competing interests are present.

Acknowledgements. The damage data was obtained from Shafique et al. (2012) and is based on a post-earthquake SPOT5-image combined with field observations. The landslide inventory was developed by the Humanitarian Information Center (HIC), a subsidiary organization of the United Nations Office for the Coordination of Humanitarian Affairs (OCHA).

Funding: The research budget was provided by ITC, University of Twente via OFI No. 93003030.

References

- Ali, Z., Qaisar, M., Mahmood, T., Shah, M. A., Iqbal, T., Serva, L., Michetti, A. M., and Burton, P. W.: The Muzaffarabad, Pakistan, earthquake of 8 October 2005: surface faulting, environmental effects and macroseismic intensity, Geological Society, London, Special Publications, 316, 155–172, 2009.
- 5 Ashford, S. A. and Sitar, N.: Analysis of topographic amplification of inclined shear waves in a steep coastal bluff, Bulletin of the Seismological Society of America, 87, 692–700, 1997.
- Ashford, S. A., Sitar, N., Lysmer, J., and Deng, N.: Topographic effects on the seismic response of steep slopes, Bulletin of the Seismological Society of America, 87, 701–709, 1997.
- Asian Development Bank and World Bank: Preliminary Damage and Needs Assessment-Pakistan 2005 Earthquake, 2005.
- 10 Athanasopoulos, G., Pelekis, P., and Leonidou, E.: Effects of surface topography on seismic ground response in the Egion (Greece) 15 June 1995 earthquake, Soil dynamics and earthquake engineering, 18, 135–149, 1999.
- Avouac, J.-P., Ayoub, F., Leprince, S., Konca, O., and Helmberger, D. V.: The 2005, M w 7.6 Kashmir earthquake: sub-pixel correlation of ASTER images and seismic waveforms analysis, Earth and Planetary Science Letters, 249, 514–528, 2006.
- Bassin, C., Laske, G., and Masters, G.: The current limits of resolution for surface wave tomography in North America, in: EOS Trans AGU, 15 vol. 81, 2000.
- Bauer, R. A., Kiefer, J., and Hester, N.: Soil amplification maps for estimating earthquake ground motions in the Central US, Engineering Geology, 62, 7–17, 2001.
- Bhukta, S. K. and Tewari, H.: Crustal Seismic Structure in Jammu and Kashmir Region, India, Geological Society of India, 69, 755–764, 2007.
- 20 Bouckovalas, G. D. and Papadimitriou, A. G.: Numerical evaluation of slope topography effects on seismic ground motion, Soil Dynamics and Earthquake Engineering, 25, 547–558, 2005.
- Casarotti, E., Stupazzini, M., Lee, S. J., Komatitsch, D., Piersanti, A., and Tromp, J.: CUBIT and seismic wave propagation based upon the spectral-element method: An advanced unstructured mesher for complex 3D geological media, in: Proceedings of the 16th International Meshing Roundtable, pp. 579–597, Springer, 2008.
- 25 Computational Infrastructure for Geodynamics: SPECfEM3D Cartesian, <https://geodynamics.org/cig/software/specfem3d/>, 2016.
- Dellow, G., Ali, Q., Ali, S., Hussain, S., Khazai, B., and Nisar, A.: Preliminary reconnaissance report for the Kashmir earthquake of 8 October 2005, Bulletin of the New Zealand Society for Earthquake Engineering, 40, 2007.
- Dhanya, J., Gade, M., and Raghukanth, S.: Ground motion estimation during 25th April 2015 Nepal earthquake, Acta Geodaetica et Geophysica, 52, 69–93, 2016.
- 30 Dunning, S., Mitchell, W., Rosser, N., and Petley, D.: The Hattian Bala rock avalanche and associated landslides triggered by the Kashmir Earthquake of 8 October 2005, Engineering Geology, 93, 130–144, 2007.
- Dziewonski, A., Chou, T.-A., and Woodhouse, J.: Determination of earthquake source parameters from waveform data for studies of global and regional seismicity, Journal of Geophysical Research: Solid Earth, 86, 2825–2852, 1981.
- Ekström, G., Nettles, M., and Dziewoński, A.: The global CMT project 2004–2010: Centroid-moment tensors for 13,017 earthquakes, 35 Physics of the Earth and Planetary Interiors, 200, 1–9, 2012.
- Evangelista, L., del Gaudio, S., d’Onofrio, A., Festa, G., Santo, A., Iervolino, I., and Silvestri, F.: 3D Spectral Element Model for Numerical Simulation of the Seismic Ground Motion in the Aterno Valley (Italy), in: High Performance Scientific Computing Using Distributed

- Infrastructures: Results and Scientific Applications Derived from the Italian Pon Recas Project, edited by Andronico, G., Bellotti, R., De Nardo, G., Laccetti, G., Maggi, G., Merola, L., Russo, G., Silvestris, L., Tangaro, S., and Tassi, E., chap. 10, p. 363, World Scientific, 2016.
- 5 Hartzell, S. H., Carver, D. L., and King, K. W.: Initial investigation of site and topographic effects at Robinwood Ridge, California, *Bulletin of the Seismological Society of America*, 84, 1336–1349, 1994.
- Hayes, G. P., Meyers, E. K., Dewey, J. W., Briggs, R. W., Earle, P. S., Benz, H. M., Smoczyk, G. M., Flamme, H. E., Barnhart, W. D., Gold, R. D., et al.: Tectonic summaries of magnitude 7 and greater earthquakes from 2000 to 2015, Tech. rep., US Geological Survey, 2017.
- Hough, S. E., Altidor, J. R., Anglade, D., Given, D., Janvier, M. G., Maharrey, J. Z., Meremonte, M., Mildor, B. S.-L., Prepetit, C., and Yong, A.: Localized damage caused by topographic amplification during the 2010 M [thinsp] 7.0 Haiti earthquake, *Nat. Geosci.*, 3, 778–782, 10 2010.
- Hussain, A., Yeats, R. S., and MonaLisa: Geological setting of the 8 October 2005 Kashmir earthquake, *Journal of Seismology*, 13, 315–325, 2009.
- Hussain, S., Nisar, A., Khazai, B., and Dellow, G.: The Kashmir earthquake of October 8, 2005: impacts in Pakistan, *Earthquake Engineering Research Institute Special Paper*, 8, 2006.
- 15 Johnson, M. and Vincent, C.: Development and testing of a 3D velocity model for improved event location: a case study for the India-Pakistan region, *Bulletin of the Seismological Society of America*, 92, 2893–2910, 2002.
- Kamp, U., Growley, B. J., Khattak, G. A., and Owen, L. A.: GIS-based landslide susceptibility mapping for the 2005 Kashmir earthquake region, *Geomorphology*, 101, 631–642, 2008.
- Kamp, U., Owen, L. A., Growley, B. J., and Khattak, G. A.: Back analysis of landslide susceptibility zonation mapping for the 2005 Kashmir 20 earthquake: an assessment of the reliability of susceptibility zoning maps, *Natural Hazards*, 54, 1–25, 2010.
- Khan, S., van der Meijde, M., van der Werff, H., and Shafique, M.: Impact of mesh and DEM Resolutions in SEM Simulation of 3D Seismic Response, *Bulletin of the Seismological Society of America*, 107, <https://doi.org/10.1785/0120160213>, 2017.
- Komatitsch, D. and Tromp, J.: Introduction to the spectral element method for three-dimensional seismic wave propagation, *Geophysical Journal International*, 139, 806–822, 1999.
- 25 Komatitsch, D. and Vilotte, J.-P.: The spectral element method: An efficient tool to simulate the seismic response of 2D and 3D geological structures, *Bulletin of the Seismological Society of America*, 88, 368–392, 1998.
- Komatitsch, D., Ritsema, J., and Tromp, J.: The spectral-element method, Beowulf computing, and global seismology, *Science*, 298, 1737–1742, 2002.
- Komatitsch, D., Liu, Q., Tromp, J., Süss, P., Stidham, C., and Shaw, J. H.: Simulations of ground motion in the Los Angeles basin based 30 upon the spectral-element method, *Bulletin of the Seismological Society of America*, 94, 187–206, 2004.
- Kramer, S.: *Geotechnical Earthquake Engineering*, Pearson Education, 1996.
- Kumagai, H., Saito, T., O’Brien, G., and Yamashina, T.: Characterization of scattered seismic wavefields simulated in heterogeneous media with topography, *Journal of Geophysical Research: Solid Earth*, 116, 2011.
- Lee, S.-J., Chen, H.-W., Liu, Q., Komatitsch, D., Huang, B.-S., and Tromp, J.: Three-dimensional simulations of seismic-wave propagation 35 in the Taipei basin with realistic topography based upon the spectral-element method, *Bulletin of the Seismological Society of America*, 98, 253–264, 2008.

- Lee, S.-J., Chan, Y.-C., Komatitsch, D., Huang, B.-S., and Tromp, J.: Effects of realistic surface topography on seismic ground motion in the Yangminshan region of Taiwan based upon the spectral-element method and LiDAR DTM, *Bulletin of the Seismological Society of America*, 99, 681–693, 2009a.
- Lee, S.-J., Komatitsch, D., Huang, B.-S., and Tromp, J.: Effects of topography on seismic-wave propagation: An example from northern Taiwan, *Bulletin of the Seismological Society of America*, 99, 314–325, 2009b.
- Lee, S.-J., Liang, W.-T., Cheng, H.-W., Tu, F.-S., Ma, K.-F., Tsuruoka, H., Kawakatsu, H., Huang, B.-S., and Liu, C.-C.: Towards real-time regional earthquake simulation I: Real-time moment tensor monitoring (RMT) for regional events in Taiwan, *Geophysical Journal International*, p. ggt371, 2013.
- Lee, S.-J., Huang, H.-H., Shyu, J. B. H., Yeh, T.-Y., and Lin, T.-C.: Numerical earthquake model of the 31 October 2013 Ruisui, Taiwan, earthquake: Source rupture process and seismic wave propagation, *Journal of Asian Earth Sciences*, 96, 374–385, 2014a.
- Lee, S.-J., Liu, Q., Tromp, J., Komatitsch, D., Liang, W.-T., and Huang, B.-S.: Toward real-time regional earthquake simulation II: Real-time Online earthquake Simulation (ROS) of Taiwan earthquakes, *Journal of Asian Earth Sciences*, 87, 56–68, 2014b.
- Lee, S.-J., Yeh, T.-Y., and Lin, Y.-Y.: Anomalous large ground motion in the 2016 ML 6.6 Meinong, Taiwan, earthquake: A synergy effect of source rupture and site amplification, *Seismological Research Letters*, 87, 1319–1326, 2016.
- Leprince, S., Berthier, E., Ayoub, F., Delacourt, C., and Avouac, J.-P.: Monitoring earth surface dynamics with optical imagery, *Eos, Transactions American Geophysical Union*, 89, 1–2, 2008.
- Liu, Q., Yu, Y., and Zhang, X.: Three-dimensional simulations of strong ground motion in the Shidian basin based upon the spectral-element method, *Earthquake Engineering and Engineering Vibration*, 14, 385–398, <https://doi.org/10.1007/s11803-015-0031-4>, <https://doi.org/10.1007/s11803-015-0031-4>, 2015.
- Magnoni, F., Casarotti, E., Michelini, A., Piersanti, A., Komatitsch, D., Peter, D., and Tromp, J.: Spectral-element simulations of seismic waves generated by the 2009 L'Aquila earthquake, *Bulletin of the Seismological Society of America*, 104, 73–94, 2014.
- Makra, K. and Raptakis, D.: Uncertainties on Vs profiles and site response at a vertical strong motion array, *Bulletin of the Geological Society of Greece*, 50, 2016.
- Meunier, P., Hovius, N., and Haines, J. A.: Topographic site effects and the location of earthquake induced landslides, *Earth and Planetary Science Letters*, 275, 221–232, 2008.
- Owen, L. A., Kamp, U., Khattak, G. A., Harp, E. L., Keefer, D. K., and Bauer, M. A.: Landslides triggered by the 8 October 2005 Kashmir earthquake, *Geomorphology*, 94, 1–9, 2008.
- Paolucci, R., Evangelista, L., Mazzi, I., and Schiappapietra, E.: The 3D numerical simulation of near-source ground motion during the Marsica earthquake, central Italy, 100years later, *Soil Dynamics and Earthquake Engineering*, 91, 39–52, 2016.
- Parsons, T., Yeats, R. S., Yagi, Y., and Hussain, A.: Static stress change from the 8 October, 2005 M= 7.6 Kashmir earthquake, *Geophysical Research Letters*, 33, 2006.
- Patera, A. T.: A spectral element method for fluid dynamics: laminar flow in a channel expansion, *Journal of Computational Physics*, 54, 468–488, 1984.
- Pathier, E., Fielding, E., Wright, T., Walker, R., Parsons, B., and Hensley, S.: Displacement field and slip distribution of the 2005 Kashmir earthquake from SAR imagery, *Geophysical Research Letters*, 33, 2006.
- Peter, D., Komatitsch, D., Luo, Y., Martin, R., Le Goff, N., Casarotti, E., Le Loher, P., Magnoni, F., Liu, Q., and Blitz, C.: Forward and adjoint simulations of seismic wave propagation on fully unstructured hexahedral meshes, *Geophysical Journal International*, 186, 721–739, 2011.

- Pilz, M., Parolai, S., Stupazzini, M., Paolucci, R., and Zschau, J.: Modelling basin effects on earthquake ground motion in the Santiago de Chile basin by a spectral element code, *Geophysical Journal International*, 187, 929–945, 2011.
- Qi, S., Xu, Q., Lan, H., Zhang, B., and Liu, J.: Spatial distribution analysis of landslides triggered by 2008.5. 12 Wenchuan Earthquake, China, *Engineering Geology*, 116, 95–108, 2010.
- 5 Raghukanth, S.: Ground motion estimation during the Kashmir earthquake of 8th October 2005, *Natural Hazards*, 46, 1–13, 2008.
- Restrepo, D., Bielak, J., Serrano, R., Gómez, J., and Jaramillo, J.: Effects of realistic topography on the ground motion of the Colombian Andes - A case study at the Aburrá Valley, Antioquia, *Geophysical Journal International*, 204, 1801–1816, <https://doi.org/10.1093/gji/ggv556>, +<http://dx.doi.org/10.1093/gji/ggv556>, 2016.
- Saba, S. B., van der Meijde, M., and van der Werff, H.: Spatiotemporal landslide detection for the 2005 Kashmir earthquake region, *Geomorphology*, 124, 17–25, 2010.
- 10 Sandia National Laboratories: CUBIT 13.0, <https://cubit.sandia.gov/>, 2011.
- Sepúlveda, S. A., Murphy, W., Jibson, R. W., and Petley, D. N.: Seismically induced rock slope failures resulting from topographic amplification of strong ground motions: The case of Pacoima Canyon, California, *Engineering geology*, 80, 336–348, 2005.
- Shafique, M. and van der Meijde, M.: Impact of uncertainty in remote sensing DEMs on topographic amplification of seismic response and
15 Vs 30, *Arabian Journal of Geosciences*, 8, 2237–2245, 2015.
- Shafique, M., van der Meijde, M., Kerle, N., van der Meer, F., and Khan, M. A.: Predicting topographic aggravation of seismic ground shaking by applying geospatial tools, *Journal of Himalayan Earth Sciences*, 41, 33–43, 2008.
- Shafique, M., van der Meijde, M., Kerle, N., and van der Meer, F.: Impact of DEM source and resolution on topographic seismic amplification, *International Journal of Applied Earth Observation and Geoinformation*, 13, 420–427, 2011a.
- 20 Shafique, M., van der Meijde, M., and Rossiter, D. G.: Geophysical and remote sensing-based approach to model regolith thickness in a data-sparse environment, *Catena*, 87, 11–19, 2011b.
- Shafique, M., van der Meijde, M., and van der Werff, H.: Evaluation of remote sensing-based seismic site characterization using earthquake damage data, *Terra Nova*, 24, 123–129, 2012.
- Smerzini, C., Pitilakis, K., and Hashemi, K.: Evaluation of earthquake ground motion and site effects in the Thessaloniki urban area by 3D
25 finite-fault numerical simulations, *Bulletin of Earthquake Engineering*, 15, 787–812, <https://doi.org/10.1007/s10518-016-9977-5>, <https://doi.org/10.1007/s10518-016-9977-5>, 2017.
- Spudich, P., Hellweg, M., and Lee, W.: Directional topographic site response at Tarzana observed in aftershocks of the 1994 Northridge, California, earthquake: implications for mainshock motions, *Bulletin of the Seismological Society of America*, 86, S193–S208, 1996.
- Taborda, R. and Roten, D.: Physics-Based Ground-Motion Simulation, pp. 1–33, Springer Berlin Heidelberg, Berlin, Heidelberg,
30 https://doi.org/10.1007/978-3-642-36197-5_240-1, https://doi.org/10.1007/978-3-642-36197-5_240-1, 2015.
- Wang, F., Miyajima, M., Dahal, R., Timilsina, M., Li, T., Fujiu, M., Kuwada, Y., and Zhao, Q.: Effects of topographic and geological features on building damage caused by 2015.4.25 Mw7.8 Gorkha earthquake in Nepal: a preliminary investigation report, *Geoenvironmental Disasters*, 3, 7, <https://doi.org/10.1186/s40677-016-0040-2>, <http://dx.doi.org/10.1186/s40677-016-0040-2>, 2016.
- Wang, H., Ge, L., Xu, C., and Du, Z.: 3-D coseismic displacement field of the 2005 Kashmir earthquake inferred from satellite radar imagery,
35 *Earth, Planets and Space*, 59, 343–349, 2007.
- Wills, C. and Clahan, K.: Developing a Map of Geologically Defined Site-Condition Categories for California, *Seismological Research Letters*, 77, 491, 2006.

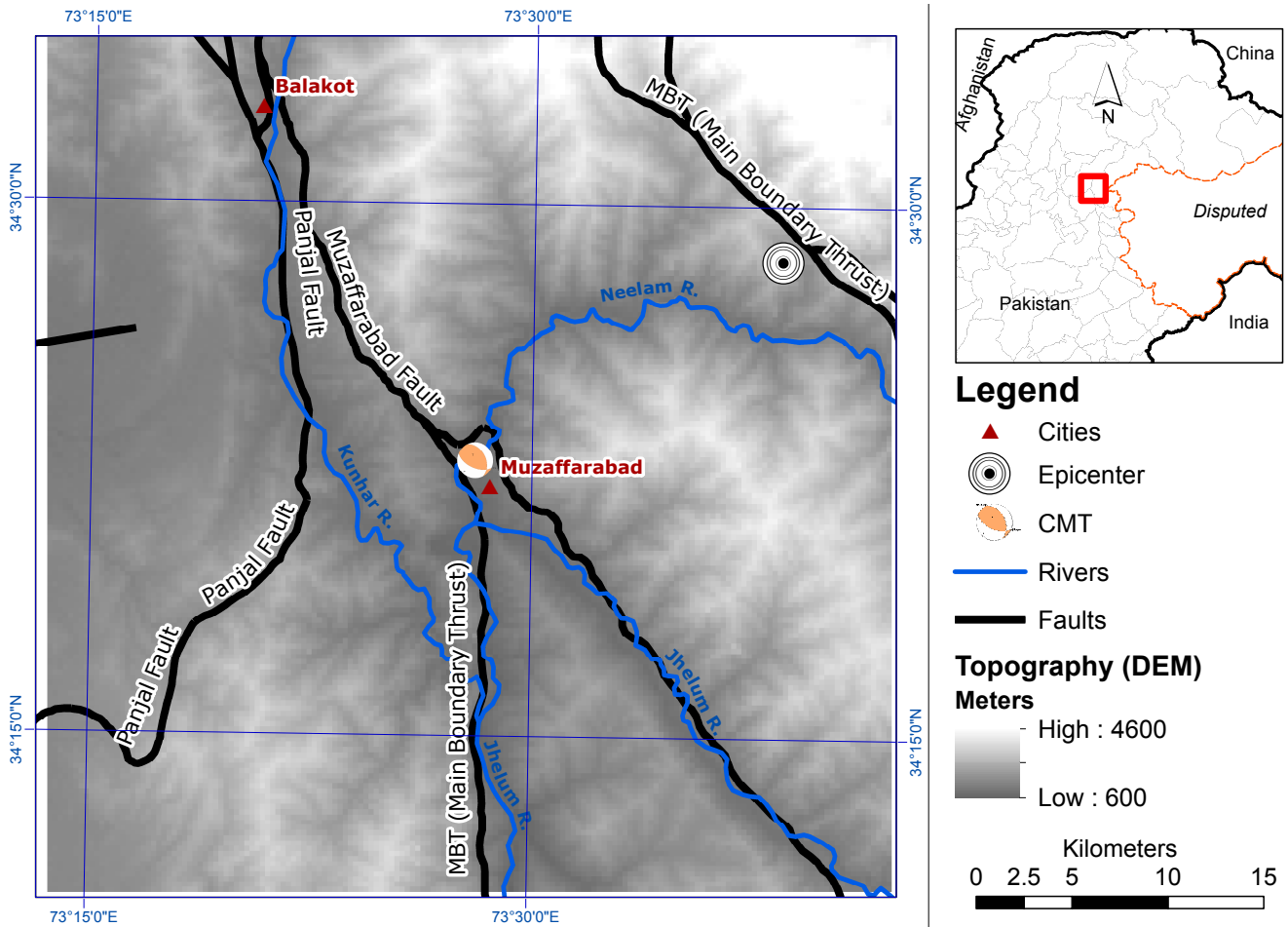


Figure 1. Digital Elevation Model (DEM) of the study area of Muzaffarabad (Pakistan). The Main Boundary Thrust (MBT) and its segments (after Hussain et al. (2009)) are shown along with Centroid Moment Tensor (CMT) solution.

Wu, S., Li, J., and Huang, G.: A study on DEM-derived primary topographic attributes for hydrologic applications: Sensitivity to elevation data resolution, *Applied Geography*, 28, 210–223, 2008.

Xu, C., Xu, X., and Yu, G.: Landslides triggered by slipping-fault-generated earthquake on a plateau: an example of the 14 April 2010, Ms 7.1, Yushu, China earthquake, *Landslides*, 10, 421–431, 2013.

5 Zhang, L. and Xu, Y.: 3-D simulation of hanging wall effect at dam site, in: *AGU Fall Meeting Abstracts*, 2017.

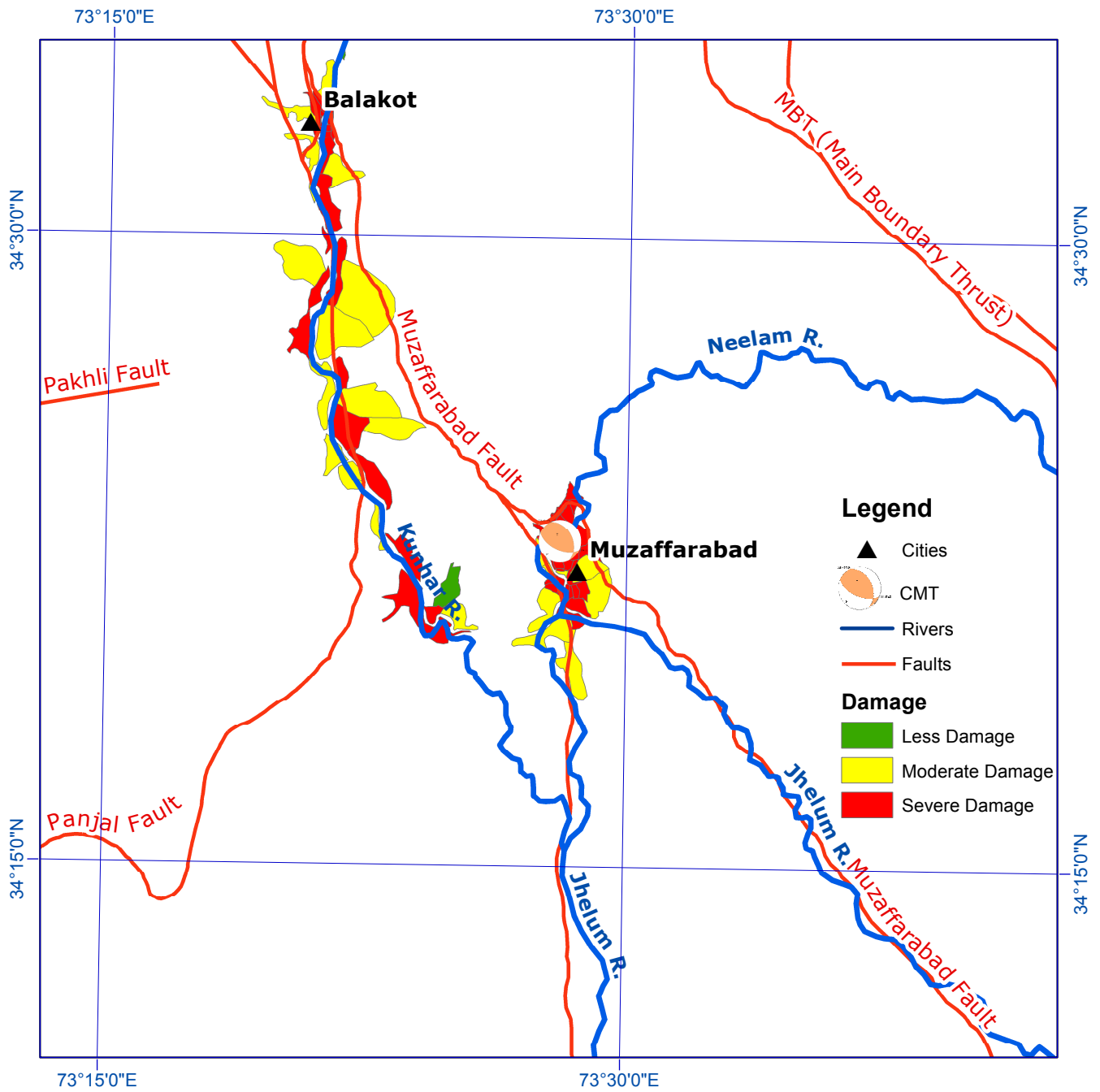


Figure 2. 2005 Kashmir earthquake induced damage data after Shafique et al. (2012).

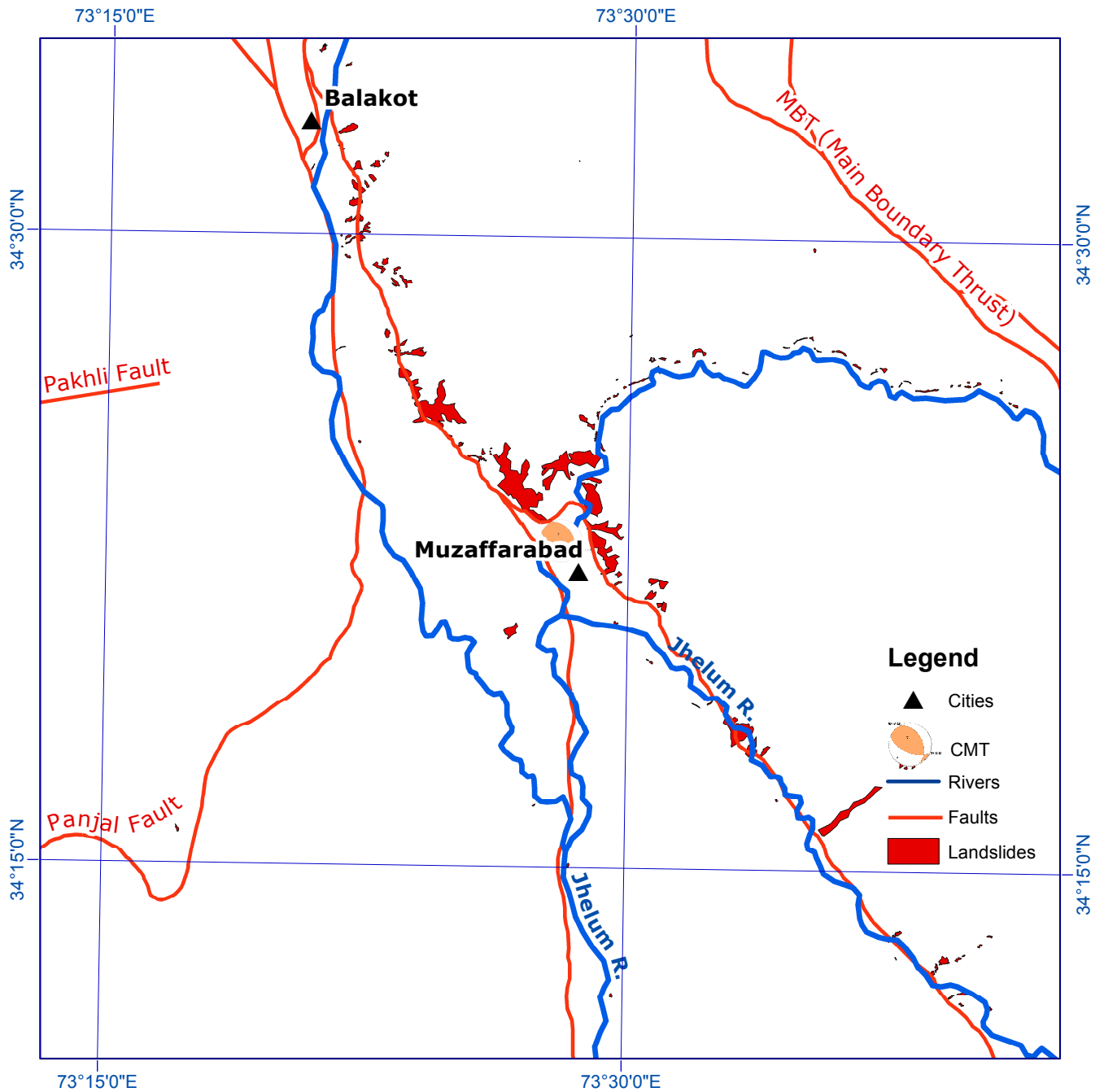


Figure 3. Co-seismic landslides inventory was developed by the Humanitarian Information Center (HIC), a subsidiary organization of the United Nations Office for Coordination of Humanitarian Affairs (OCHA), which was reported by Shafique et al. (2008).

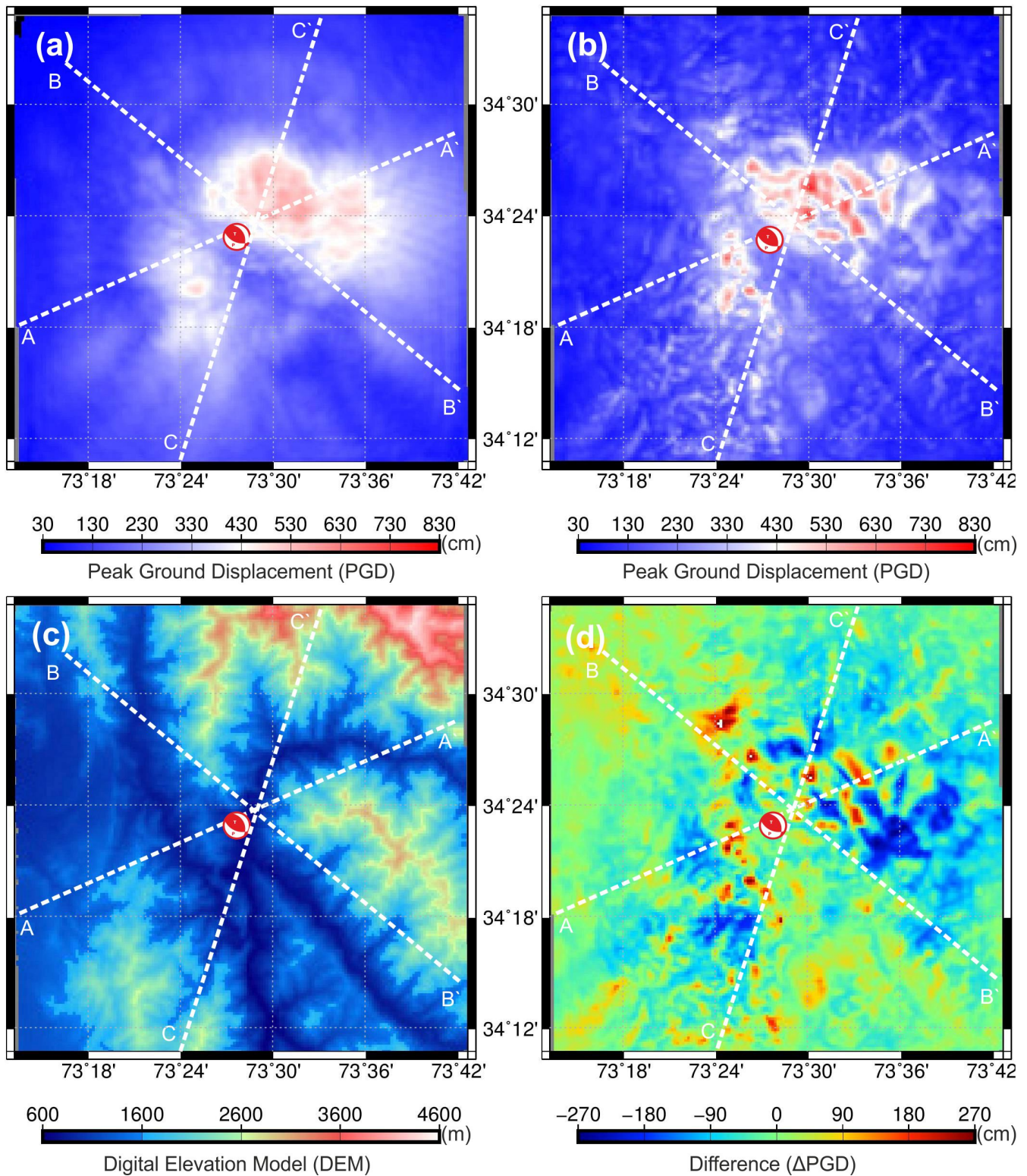


Figure 4. (a) Peak Ground Displacement (PGD) for model without topography, (b) PGD for model with topography, (c) topography (ASTER Global DEM at 270 m), (d) difference between (a) and (b) (Δ PGD). The red tones (positive values) indicate amplification, blue tones (negative values) indicate de-amplification, while the green represents zero difference. The CMT location is represented by a red beachball.

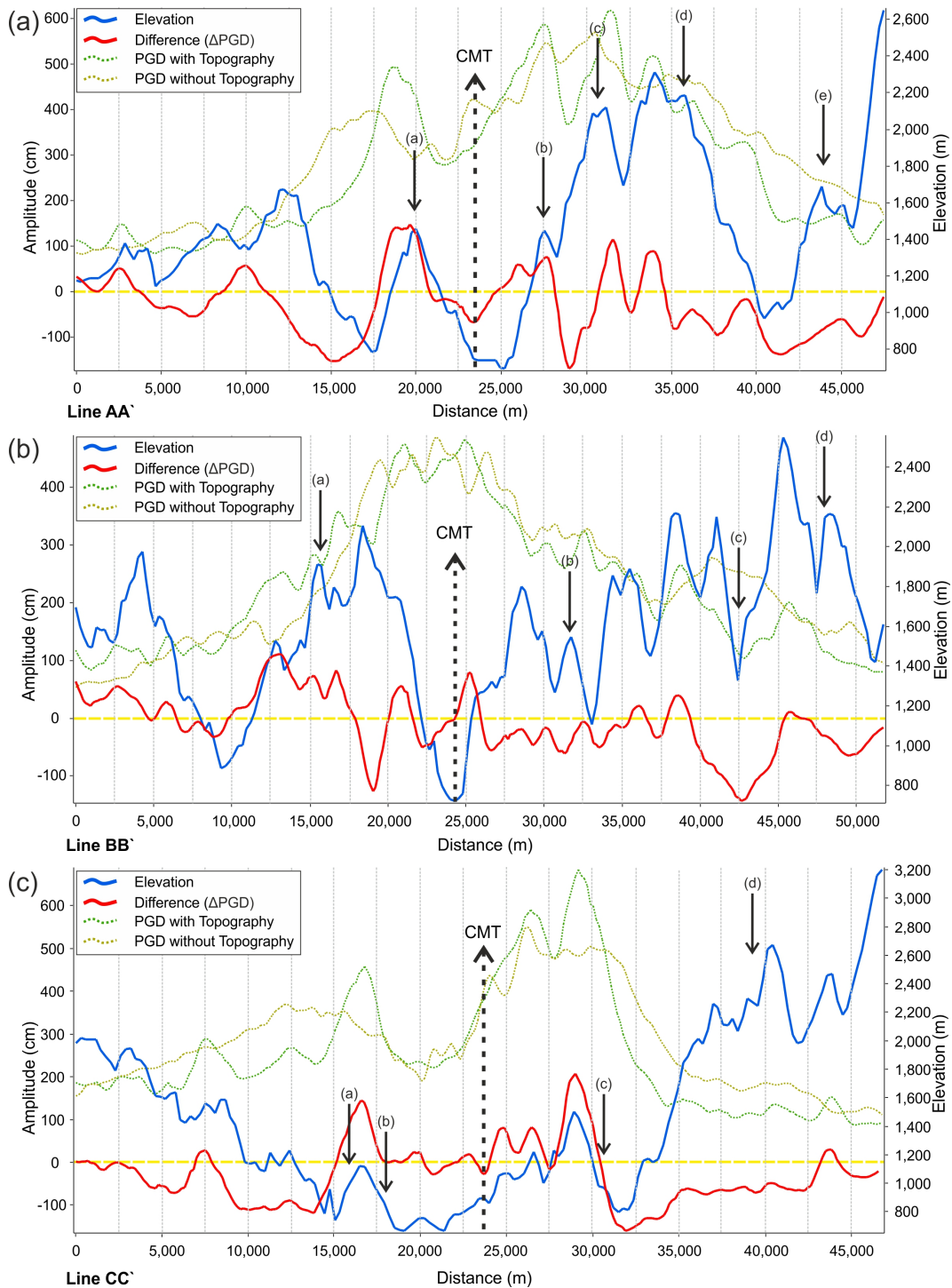


Figure 5. Profile along line (a) AA', (b) BB' and (c) CC' (Fig 4) of PGD with topography (dotted green) and without topography (dotted olive), their difference (Δ PGD, solid red) and elevation (solid blue). PGD are scaled on the left y-axis along line, elevation is shown on the right y-axis. The profile line passes over the CMT location which is located approximately in the center of the profile, marked with a dotted arrow line.

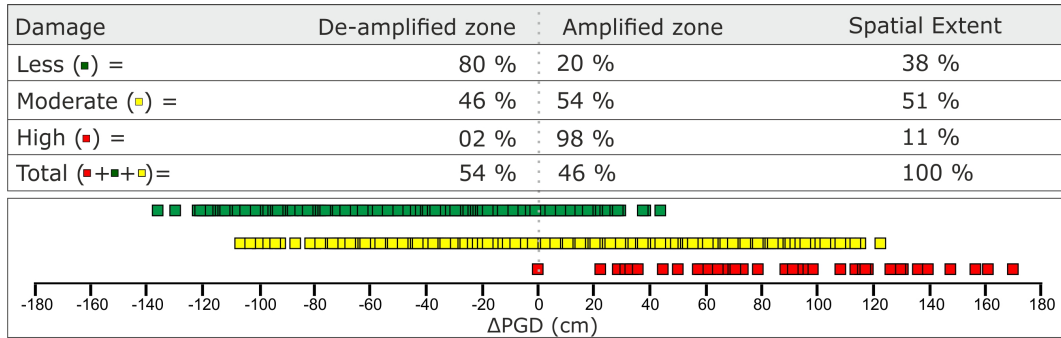


Figure 6. The difference in peak ground displacement (Δ PGD) between models with and without topography (Fig 4d) compared with damage data of Shafique et al. (2012). The top part shows the relation between damaged areas with (de-)amplification in table form. The bottom part shows the distribution of damage with Δ PGD graphically. The high damage zone constitutes 11% of the Muzaffarabad damaged area, while moderate and low damage respectively cover 51% and 38% of the damaged area.

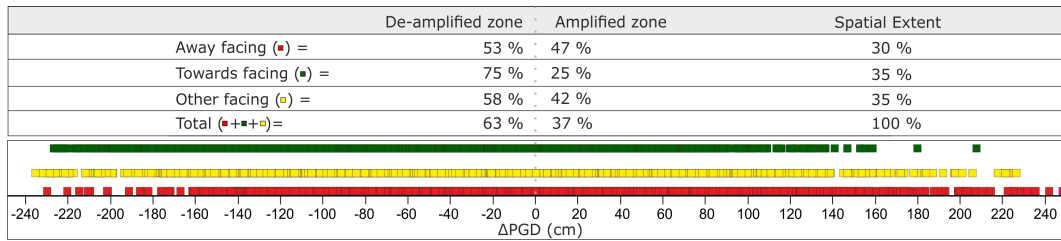


Figure 7. The difference in peak ground displacement (Δ PGD) between model with and without topography (Fig 4d) is compared with the aspects of the study area. The aspects are categorized into away (facing away from epicenter), towards (facing epicenter), and other (facing a direction other than towards and away). The categorization is based on 60° offset of aspect with respect to its angle towards the CMT.

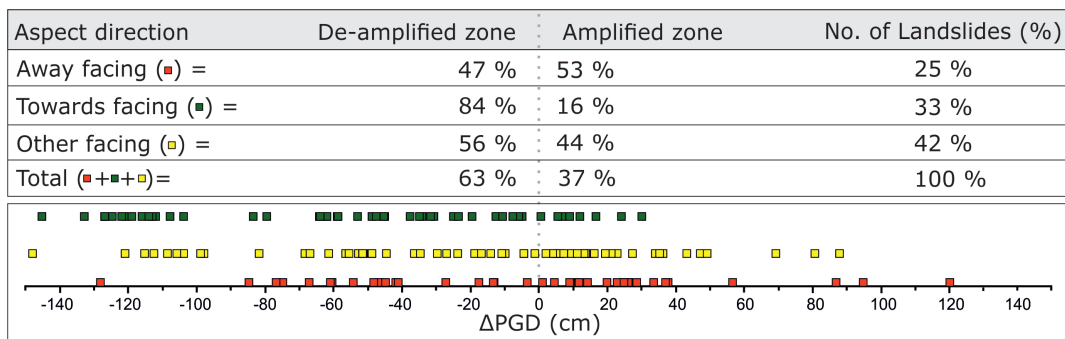


Figure 8. The difference in peak ground displacement (Δ PGD) between the models with and without topography (Fig 4d) is compared with the aspects of earthquake induced landslides (Source: Humanitarian Information Center Pakistan (HIC-Pakistan), by courtesy of Shafique et al. (2008). The aspects are categorized into away (facing away from epicenter), towards (facing epicenter), and other (facing a direction other than towards and away). The categorization is based on 60° offset of aspect with respect to its angle towards the CMT.