

## Referee #1

**This manuscript aims to assess the sensitivity of vegetation types to drought across Spain, using a high-resolution (1.1 km) spatial dataset of the Normalized Difference Vegetation Index (NDVI) and the Standardized Precipitation Evapotranspiration Index (SPEI) for Spain for the period from 1981 to 2015. In particular, an analysis of the drought time scales at which vegetation activity aims to show the highest response to drought severity at different moments of the year. The study is exhaustive, taking advantage of the two high resolution datasets computed by the authors, the methods are adequate and the results are in accordance with previous works and are discussed in a detailed way. The overall context of the subject is very important in Mediterranean and Iberian context, taking in account the importance of drought subject for the region within the context of warming tendency. Therefore, the work seems to be appropriate for this journal. However, some aspects could be improved in order to increase the intelligibility and readability of the paper.**

We strongly appreciate the positive comment on the manuscript by the reviewer#1. Really she/he has appreciated that this study contains a considerable amount of work, including the use of high resolution datasets and different spatial-temporal analysis.

**MAJOR As I said the subject and results of this manuscript are of great interest for a wide range of readers. However, the reading of the paper is very tiring, the number of figures in the manuscript and supplementary information is 'astronomic', the figures are really small, the axis information and titles are unreadable and the results and discussion is really hard to follow. Nevertheless, I recognize that present these results is a very hard task. Therefore, my next comments are suggestion that may increase the readability and increase the number or interested readers that should be attracted to the important results of the manuscript.**

We have reduced some parts of the results section and removed around ½ of the supplementary figures that were not very informative.

**The semi-monthly analysis is interesting and aimed to take advantage of the higher temporal resolution of the datasets. However, the temporal changes in correlation are slow and I do not see the add-value of presenting 24 graphs instead of 12. As a matter of fact, the graphs for each month are very similar and if you increase the size of the figures (taking in account that you may present only one figure for each month, e.g., 2nd January, 2nd Feb,. . .) the analysis will be much more easy.**

We understand this comment but given the high temporal resolution of both climate and NDVI datasets, it would be a pity to reduce the temporal resolution of the data. Usually these analysis are done at monthly resolution, but really the motivation of this choice is usually the availability of the data, which is usually available at the monthly resolution. Nevertheless, here we had access to a high temporal resolution data, which allows identifying very interesting patterns, difficult to be observed with data at the monthly resolution. An excellent example is the seasonal transitions in the relationships between the spatial patterns of aridity (and temperature) and the correlations between the SPEI and the sNDVI. These plots clearly show that the changes in the role of drought on the vegetation activity show a seasonal transition, which is clearly appreciated using a detailed temporal resolution (semi-monthly). For this

reason we prefer to maintain the analysis at the original temporal resolution better than focusing on specific semi-monthly periods.

**Another issue related with the 12 new bigger figures is the possibility of presenting all the land cover inside each graph, maybe with different colours. This allows a better comparison between land covers and reduce drastically the number of figures in supplementary information.**

Really we understand that we are including a high amount of figures in our ms. But we are mostly making use of supplementary information. Of course, in the main manuscript we do not describe in depth these figures but we provide the main results. Moreover, we do not think possible to include in a single figure the information corresponding to the different land cover scatter plots since they are already containing different colors. In any case, we have reduced the number of supplementary figures in ½.

**The result section is very exhaustive and hard to follow. Please consider to resume.**

We have removed some sections of the text but also some figures from the supplementary information that were not very informative.

**The discussion and conclusions section is very long and also hard to follow, although with a huge amount of very interesting points. I would suggest to separate discussion from conclusion and introduce sub sections in discussion in order to organized the main findings.**

We appreciate this comment. We have including different sub-headings in the discussion section but also developed a new section that states the main conclusions of the manuscript.

**I also would suggest to add in conclusion section some paragraphs highlighting the new insights of this work in comparison with previous ones and the usefulness and need of this type of analysis.**

We have included an independent conclusions section in which the different main findings obtained in the manuscript are clearly stated.

**Furthermore, some methodological issues are not very clear. 1) (Lines 189-193) The authors said “computed the atmospheric evaporative demand (AED), reference evapotranspiration (ET<sub>0</sub>), and the Standardized Precipitation Evapotranspiration Index (SPEI).” Please explain the advantage of using AED AND ET<sub>0</sub>. Which is used to computed SPEI? SPEI in Vicente-Serrano eta al., 2010 is computed using PET. What is the difference between AED and ET<sub>0</sub>? Which method is used to compute AED? Maybe the readers of the journal are not very familiarized with these differences and should understand the biophysical add value of using AED. Please clarify the innovation of this new approach and the need of this innovation. Additionally, in several figures (e.g. Figure 8) the author mentioned AED in figure caption and ET<sub>0</sub> is written in axis. Please try make it more consistent.**

The ET<sub>0</sub> is one of the forms in which we can express the AED. The potential evaporation is a form of the AED. The pan evaporation is also a form of the AED (which can be estimated using the PenPan model or measured by means of evaporation pans). But the ET<sub>0</sub> is also a form of

the AED since it includes a constant surface resistance. The ETo can be compared spatially and temporally and it only depends of meteorological factors. To avoid any possible misleading by the readers we have clarified this issue in the revised manuscript:

*“Based on this gridded dataset, we computed the atmospheric evaporative demand (AED) and the Standardized Precipitation Evapotranspiration Index (SPEI). We used the reference evapotranspiration (ETo) as the most reliable way of estimating the AED. ETo was calculated using the physically based FAO-56 Penman-Monteith equation (Allen et al., 1998).”*

In addition, we have removed the term AED in different parts of the manuscript and replaced by ETo.

**2) (Lines 170-172): Please clarify which variable is really used for the correlation assessment: is it the standardized NDVI (sNDVI) or NDVI magnitude with residuals? Figure captions mentioned sNDVI. I am confused with these definitions. Please clarify and justify those options with more clarity and detail.**

This has been justified in the revised manuscript:

*“Correlations with the drought dataset were based on the sNDVI.”*

**3) (Lines 220-223): Why CLC2000 and not the most recent version? The land cover is not static, are always changing. The classification of 2000 does not represent the average state of land cover during the period, Please, justify this choice taking in account this changeable character of land cover. As the authors have removed the pixels that they say are corresponding to land cover change, I would suggest to use the versions of CLC for 1990, 2000, 2006 and 2012 and considered only the pixels that are corresponding to unchangeable land covers, as coded using CLC.**

As we justified in the manuscript, we have chosen the CLC2000 because it is the most representative over the entire study period. The suggestion by the reviewer of using different land cover maps do not solve the problem of having a baseline for the beginning of the study period (1981). Moreover the selection of the pixels that have not showed a land cover change would strongly reduce the analysed surface area since in a period of 30 years the land cover change processes that are recorded in Mediterranean areas may affect large regions (see e.g. Lasanta and Vicente-Serrano, 2012).

There are several land cover changes processes which are not characterized by an abrupt change in the land cover type. Of course, we are aware that possible abrupt modifications of the land cover type could affect the relationship between the SPEI and the sNDVI. For this reason we removed those pixels characterized by abrupt changes (quantified by means of the selection of a high value in the magnitude of change of the sNDVI, e.g. non-irrigated arable lands transformed to irrigated lands, urbanization, etc.) ,but we maintained those that showed more gradual changes. In any case this did not affect the quality of our analysis since before the temporal correlations were calculated for each time series we removed the trend of the series (both for SPEI and sNDVI).

**4) (Lines 159- 166): What means strong changes in NDVI? The author said “the annual NDVI higher than 0.05 units or an increase higher than 0.15 units between 1981 and 2015”, but what does it means in terms of variability (in terms of std). Why do you choose this value? Please fundament the choice.**

This was explained in more depth in the manuscript. As indicated, these thresholds were defined after an exploratory analysis and in areas in which we have strong knowledge in relation to the occurrence of abrupt changes in the land cover, such as the creation of new irrigated lands:

*“In order to limit the possible impact of changes in land cover on the dependency between drought and vegetation cover, we assumed that strong changes in NDVI can be seen as an indicator of changes in land cover. As such, those pixels with strong changes in NDVI during the study period were excluded from the analysis. These pixels were defined after an exploratory analysis in which we tested different thresholds. In specific, we excluded those pixels, which exhibited a decrease in the annual NDVI higher than 0.05 units or an increase higher than 0.15 units between 1981 and 2015. The spatial distribution of these pixels (not shown here) concurs well with the areas identified in earlier studies over Spain in which it was an abrupt modification of the land cover type (e.g. creation of new irrigated lands) (Lasanta and Vicente-Serrano, 2012; Vicente-Serrano et al., 2018).”*

**5) Please clarify what means the time-scales between 1- and 48-semi-months? Did you compute SPEI with a bi-monthly accumulation? In line 202 you said that "the SPEI was calculated for the common 1- to 24-month time scales". please explain the difference between both computation approaches and the advantage of the last one (bi-monthly accumulation). What is the advantage of doing this instead of computing the monthly mean of NDVI? I do not see the add value of this approach**

In the revised manuscript we have clarified that the 1- to 24-month time scales correspond to 1- to 48- semi-monthly periods:

*“In this work, the SPEI was calculated for the common 1- to 24-month time scales but here given the semi-monthly availability of the data, we calculated the corresponding 1- to 48- semi-monthly time-scales.”*

**6) Figures: For the majority of the figures in the manuscript and supplementary information is not possible to read the axis of the figures. The axis number, the axis titles and the titles of figures are not readable at all. Please increase the font size (probably only for the bottom and left figures in order to save space). Supp Figure 5: provide a title for each graph Figure 12: the tile of previous figures should be like the ones in this figure (e.g., 1st Jan, 2nd Jan,...). This will increase significantly the readability of figures.**

We have increased the size of the fonts for the different figures and added axis labels in all of the cases.

**7) (Lines 454-458): Difficult to follow. Please consider to rephrase.**

The sentences have been rephrased.

**8) (Lines 505-507): Difficult to follow. Please consider to rephrase.**

Rephrased.

**9) (Lines 555): When? in spring and autumn. Please consider to rephrase, clarifying and detailing.**

We have detailed that the comments refer to the cold season.

**10) (Lines 585-589): Very good point!**

Thanks a lot for your comment.

**11) (Lines 607-609): Another important finding of this work!**

Thanks again.

**MINOR 1) (Line 22): rephrase 'a another newly developed. . '**

Rephrased

**2) (Line 57): move the data of access to the reference list**

Data access moved to references.

**3) (Line 157): rephrase 'In out attemp'**

Replaced: "in order to..."

**4) (Line 158): NDVI or sNDVI**

NDVI is correct in this case.

**5) (Line 353): make the sentence consistent with the figure caption. Is it P-AED or P-ET0**

AED has been replaced by ETo throughout the manuscript.

**6) (Line 359): "July to August" or July to September???**

Replaced

**7) (Line 388): "March to April" or March to May???**

Replaced.

## Reviewer 2

The authors present a very detailed, innovative analysis (fine-scale spatial resolution) of the relationships between SPEI and NDVI measurements in the Iberian Peninsula. A large number of interesting figures, tables and supplementary figures are presented. I think that this data paper is very informative and the methods are robust. I would suggest to the authors to address the following points, if possible and easily achievable:

We would like to appreciate the positive assessment of our manuscript by the reviewer#2. We have followed most of his/her recommendations in order to improve our manuscript.

**Major comments - The manuscript is very interesting but lacks a clear focus.**

We do not exactly agree with this comment since we think our manuscript has a clear focus, which was detailed in the objectives stated in the introduction:

*“The overriding objectives of this study are: i) to determine the possible differences in the response of vegetation activity to drought over Spain, as a function of the different land cover types and climatic conditions; and ii) to explore the drought time scales at which vegetation activity highly responds to drought severity. An innovate aspect of this study is that it provides –for the first time– a comprehensive assessment of the response of vegetation activity to drought using a multidecadal (1981-2015) high spatial resolution (1.1 km) NDVI dataset over the study region.”*

**A very large number of results, hypotheses and figures are described and commented. Please consider somehow reducing the number of main figures and tables in the main manuscript, providing more focus, and shortening the manuscript. Please focus on the more interesting results and move some of the non central figures and the associated text to the supplementary materials.**

According to the comments by the reviewers 1 and 2, we have reduced the number of figures but also the length of the manuscript.

**- Please clarify in all the figures which SPEI temporal scale/s are considered. for example, in Fig 8 it not clear to me which SPEI time scale are considered. –**

The reviewer is right. This was not detailed in the original manuscript and it can be a source of confusion for the readers. We have clarified this point in the methods section:

*“Given that it is not possible to know a priori the best cumulative period to explain the response of the vegetation activity to drought variability, we retained for further analysis the maximum correlation, independently of the time scale at which this is obtained.”*

**Pleae define sNDVI on line 217. –**

This was described previously in line 150, in which it is indicated that the sNDVI corresponds to the standardized NDVI:

*“Herein, it is noteworthy indicating that the data from the Sp\_1Km\_NDVI dataset was standardized (sNDVI),”*

**Please clarify this sentence. Line 163. "The spatial distribution (not shown here) of these pixels concurs well with the areas identified in earlier studies over Spain (e.g. Lasanta and Vicente-Serrano, 2012; Vicente-Serrano et al., 2018)."**

This has been rewritten and detailed in the revised manuscript:

*"The spatial distribution of these pixels (not shown here) concurs well with the areas identified in earlier studies over Spain in which it was an abrupt modification of the land cover type (e.g. creation of new irrigated lands) (Lasanta and Vicente-Serrano, 2012; Vicente-Serrano et al., 2018)."*

**Minor comments: - Figure 10. if easily achievable, using a unique name for the response variable would clarify the figure (increasing at the same time the font size). This may apply to many other figures in the suppl. mat and the main manuscript. –**

We have improved the figures of the manuscript including Figure caption in the cases in which this was not available and increasing the font size of some of the figures.

**Figure 10. There is a typographic error in the legend. Please check this detail. –**

Corrected in the revised manuscript.

**Please simplify/clarify the following sentence: On line 290: "This pattern is mostly recorded in the period between May and July (Supplementary Figure 5), in which the sNDVI variability is more sensitive to drought. Nevertheless, there are no general spatial patterns in the response of the NDVI to SPEI, indicating that there is a dominance of the maximum correlations associated with a certain SPEI time scale (Supplementary Figure 6). Interestingly, this , this pattern is not driven by the presence of different land cover types, given that the correlation coefficients between the sNDVI and SPEI are quite similar, irrespective of the land cover type (Supplementary Figures 7 to 17)"**

This section has been removed from the revised manuscript in order to improve readability.

**Line- 204. please correct the following typographic error. "... to drought It is well recognized that natural systems can show different responses to the time scales of drought (Vicente-Serrano et al., 2011, 2013)."**

Corrected.

**Line 295. Please correct the following typographic error: "Interestingly, this , this pattern is not driven by the presence of different land cover types,"**

This paragraph has been removed in the revised manuscript.

**Line 61. Check the following sentence. "Several space-based products allow for quantifying vegetation conditions, given that both health and dry vegetation biomass respond dissimilarly to the electromagnetic radiation received in the visible and near-infrared parts of the vegetation spectrum (Knipling, 1970)"**

Rephrased.

**A high-resolution spatial assessment of the impacts of drought variability on vegetation activity in Spain from 1981 to 2015**

Sergio M. Vicente-Serrano<sup>1,\*</sup>, Cesar Azorin-Molina<sup>2</sup>, Marina Peña-Gallardo<sup>1</sup>, Miquel Tomas-Burguera<sup>3</sup>, Fernando Domínguez-Castro<sup>1</sup>, Natalia Martín-Hernández<sup>1</sup>, Santiago Beguiría<sup>3</sup>, Ahmed El Kenawy<sup>4</sup>, Iván Noguera<sup>1</sup>, Mónica García<sup>5</sup>

Family names (or surnames) are underlined

<sup>1</sup>Instituto Pirenaico de Ecología, Spanish National Research Council (IPE-CSIC), Campus de Aula Dei, P.O. Box 13034, E-50059 Zaragoza, Spain; <sup>2</sup>Regional Climate Group, Department of Earth Sciences, University of Gothenburg, Gothenburg, Sweden; <sup>3</sup>Estación Experimental de Aula Dei, Spanish National Research Council (EEAD-CSIC), Zaragoza, Spain; <sup>4</sup>Department of Geography, Mansoura University, 35516, Mansoura, Egypt; <sup>5</sup>Department of Environmental Engineering, Technical University of Denmark, Lyngby, Denmark.

\* Corresponding author: Sergio M. Vicente-Serrano (e-mail: svicen@ipe.csic.es)

**Abstract:** Drought is a major driver of vegetation activity in Spain, with significant impacts on crop yield, forest growth, and the occurrence of forest fires. Nonetheless, the sensitivity of vegetation to drought conditions differs largely amongst vegetation types and climates. We used a high-resolution (1.1 km) spatial dataset of the Normalized Difference Vegetation Index (NDVI) for the whole Spain spanning the period from 1981 to 2015, combined with a ~~another newly developed~~ dataset of the Standardized Precipitation Evapotranspiration Index (SPEI) to assess the sensitivity of vegetation types to drought across Spain. In specific, this study explores the drought time scales at which vegetation activity shows its highest response to drought severity at different moments of the year. Results demonstrate that –over large areas of Spain– vegetation activity is controlled largely by the interannual variability of drought. More than 90% of the land areas exhibited statistically significant positive correlations between the NDVI and the SPEI during dry summers (JJA). Nevertheless, there are some considerable spatio-temporal variations, which can be linked to differences in land cover and aridity conditions. In comparison to other climatic regions across Spain, results indicate that



vegetation types located in arid regions showed the strongest response to drought. Importantly, this study stresses that the time scale at which drought is assessed is a dominant factor in understanding the different responses of vegetation activity to drought.

**Key-words:** Drought, NDVI, Vegetation activity, Climatic change, Spain.

## 1. Introduction

Drought is one of the major hydroclimatic hazards impacting land surface fluxes (Baldocchi et al., 2004; Fischer et al., 2007; Hirschi et al., 2011), vegetation respiration (Ciais et al., 2005), net primary production (Reichstein et al., 2007; Zhao and Running, 2010), primary and secondary forest growth (Allen et al., 2015), and crop yield (Lobell et al., 2015; Asseng et al., 2015). Recently, numerous studies suggested an accelerated impact of drought on vegetation activity and forest mortality under different environmental conditions (Allen et al., 2010, 2015; Breshears et al., 2005) with a reduction in vegetation activity and higher rates of tree decay (e.g. Carnicer et al., 2011; Restaino et al., 2016). Nevertheless, a comprehensive assessment of the impacts of drought on vegetation activity is a challenging task. This is particularly because data on forest conditions and growth are partial, spatially sparse, and restricted to a small number of sampled forests (Grissino-Mayer and Fritts, 1997). Furthermore, the temporal resolution of forest data is insufficient to provide deep insights into the impacts of drought on vegetation activity [e.g. the official forest inventories (Jenkins et al., 2003)]. In addition to these challenges, the spatial and temporal data on crops are often limited, as they are mostly aggregated to administrative levels and provided at the annual scale, with minor information on vegetation activity across the different periods of the year (e.g. <http://faostat.fao.org>; <https://quickstats.nass.usda.gov/#AF9A0104-19EF-3BFE-90D2-C67700892F3E>; last access on 1st October 2018). (FAO, 2018). To

handle these limitations, numerous studies have alternatively employed the available remotely sensed data to assess the impacts of drought on vegetation activity (e.g. Ji and Peters, 2003; Wan et al., 2004; Rhee et al., 2010; Zhao et al., 2017).

Several space-based products allow for quantifying vegetation conditions, given that ~~both—health—and—dry~~active vegetation—~~biomass~~ respond dissimilarly to the electromagnetic radiation received in the visible and near-infrared parts of the vegetation spectrum (Knippling, 1970). As such, with the available spectral information recorded by sensors on board of satellite platforms, it is possible to calculate vegetation indices and accordingly assess vegetation activity (Tucker, 1979). In this context, several studies have already employed vegetation indices not only to develop drought-related metrics (e.g. Kogan, 1997; Mu et al., 2013), but to determine the impacts of drought on vegetation conditions as well (García et al., 2010; Vicente-Serrano et al., 2013; Zhang et al., 2017). An inspection of these studies reveals that drought impacts can be characterized using vegetation indices, albeit with a different response of vegetation dynamics as a function of a wide-range of factors, including –among others– vegetation type, bioclimatic conditions, and drought severity (Bhuiyan et al., 2006; Vicente-Serrano, 2007; Quiring and Ganesh, 2010; Ivits et al., 2014).

Given high interannual variability of precipitation, combined with the prevailing semi-arid conditions across vast areas of the territory, Spain has suffered from frequent, intense and severe drought episodes during the past decades (Vicente-Serrano, 2006). Nonetheless, in the era of temperature rise, the observed increase in atmospheric evaporative demand (AED) during the last decades has accelerated the severity of droughts (Vicente-Serrano et al., 2014c), in comparison to the severity caused only by precipitation deficits (Vicente-Serrano et al., 2014a; González-Hidalgo et al., 2018). Over Spain, the hydrological and socioeconomic impacts of droughts are well-

documented. Hydrologically, droughts are often associated with a decrease in streamflow and reservoir storages (Lorenzo-Lacruz et al., 2010; Lorenzo-Lacruz et al., 2013). The impacts of drought can extend further to crops, leading to crop failure due to deficit in irrigation water (Iglesias et al., 2003), and even in arable non-irrigated lands (Austin et al., 1998; Páscoa et al., 2017). Over Spain, numerous investigations also highlighted the adverse impacts of drought on forest growth (e.g. Camarero et al., 2015; Gazol et al., 2018; Peña-Gallardo et al., 2018) and forest fires (Hill et al., 2008; Lasanta et al., 2017; Pausas, 2004; Pausas and Fernández-Muñoz, 2012).

Albeit with these adverse drought-driven impacts, there is a lack of comprehensive studies that assess the impacts of drought on vegetation activity over the entire Spanish territory, with a satisfactorily temporal coverage. While numerous studies employed remotely sensed imagery and vegetation indices to analyze spatial and temporal variability and trends in vegetation activity over Spain (e.g. del Barrio et al., 2010; Julien et al., 2011; Stellmes et al., 2013), few attempts have been made to link the temporal dynamics of satellite-derived vegetation activity with climate variability and drought evolution (e.g. Vicente-Serrano et al., 2006; Udelhoven et al., 2009; Gouveia et al., 2012; Mühlbauer et al., 2016). An example is González-Alonso and Casanova (1997) who analyzed the spatial distribution of droughts in 1994 and 1995 over Spain, concluding that the most affected areas are semiarid regions. In their comparison of the MODIS Normalized Difference Vegetation Index (NDVI) data and the Standardized Precipitation Index (SPI) over Spain, García-Haro et al. (2014) indicated that the response of vegetation dynamics to climate variability is highly variable, according to the regional climate conditions, vegetation community, and growth stages. A similar finding was also confirmed by Vicente-Serrano (2007) and Contreras and Hunink (2015) in their assessment of the response of NDVI to drought in semiarid regions of

northeast and southeast Spain, respectively. Albeit with these comprehensive efforts, a detailed spatial assessment of the links between droughts and vegetation activity, which covers a long time period (decades), is highly desired for Spain to explore the differences in the response of vegetation activity to drought under different environments with various land cover and vegetation types.

The overriding objectives of this study are: i) to determine the possible differences in the response of vegetation activity to drought over Spain, as a function of the different land cover types and climatic conditions; and ii) to explore the drought time scales at which vegetation activity highly responds to drought severity. An innovative aspect of this study is that it provides –for the first time– a comprehensive assessment of the response of vegetation activity to drought using a multidecadal (1981-2015) high spatial resolution (1.1 km) NDVI dataset over the study region.

## **2. Data and methods**

### ***2.1. Datasets***

#### ***2.1.1. NDVI data***

Globally, there are several NDVI datasets, which have been widely used to analyze NDVI variability and trends (e.g. Slayback et al., 2003; Herrmann et al., 2005; Anyamba and Tucker, 2005) and to assess the links between NDVI and climate variability and drought (e.g. Dardel et al., 2014; Vicente-Serrano et al., 2015; Gouveia et al., 2016). Amongst these global datasets, the most widely used are those derived from the Advanced Very High Resolution Radiometer (AVHRR) sensor on board of the NOAA satellites and those retrieved from the Moderate Resolution Imaging Spectroradiometer (MODIS) data. Both products have been widely employed to evaluate the possible influence of drought on vegetation dynamics in different regions

worldwide (e.g. Tucker et al., 2005; Gu et al., 2007; Sona et al., 2012; Pinzon and Tucker, 2014; Ma et al., 2015). While the Global Inventory Modeling and Mapping Studies (GIMMS) dataset from NOAA-AVHRR is available at a semi-monthly temporal resolution for the period from 1981 onwards (Tucker et al., 2005; Pinzon and Tucker, 2014), its spatial resolution is quite low ( $64 \text{ km}^2$ ), which makes it difficult to capture the high spatial variability of vegetation cover over Spain. On the other hand, the NDVI dataset derived from MODIS dates back only to 2001 (Huete et al., 2002), which is insufficient to give insights into the long-term response of vegetation activity to drought. To overcome these spatial and temporal limitations, our decision was made to employ a recently developed high-resolution spatial NDVI dataset (Sp\_1Km\_NDVI), which is available at grid interval of 1.1 km, spanning the period from 1981 onwards. In accordance with GIMMS dataset, Sp\_1Km\_NDVI is available at a semi-monthly temporal resolution. This dataset has already been validated (Vicente-Serrano et al., 2018), showing high performance in comparison to other available NDVI datasets. As such, it can be used -with confidence- to provide a multidecadal assessment of NDVI variability at high-spatial resolution, especially in areas of highly variable vegetation. Herein, it is noteworthy indicating that the data from the Sp\_1Km\_NDVI dataset was standardized (sNDVI), so that each series has an average equal to zero and a standard deviation equal to one. This procedure is motivated by the strong seasonality and spatial differences of vegetation activity over Spain. Following this procedure, the magnitudes of all NDVI time series are comparable over space and time. To accomplish this task, the data were fitted to a log-logistic distribution, which shows better skill in standardizing environmental variables, in comparison to other statistical distributions (Vicente-Serrano and Beguería, 2016).

In ~~out-attempt~~order to limit the possible impact of changes in land cover on the dependency between drought and vegetation cover, we assumed that strong changes in NDVI can be seen as an indicator of changes in land cover. As such, those pixels with strong changes in NDVI during the study period were excluded from the analysis. These pixels were defined after an exploratory analysis in which we tested different thresholds. In specific, we excluded those pixels, which exhibited a decrease in the annual NDVI higher than 0.05 units or an increase higher than 0.15 units between 1981 and 2015. The spatial distribution of these pixels (not shown here) ~~of these pixels~~ concurs well with the areas identified in earlier studies over Spain in which it was an abrupt modification of the land cover type (e.g. creation of new irrigated lands) (Lasanta and Vicente-Serrano, 2012; ~~Vicente-Serrano et al., 2018~~Vicente-Serrano et al., 2018). Furthermore, to avoid the possible influence of spatial autocorrelation, which can occur in areas with dominant positive changes in NDVI due to excessive rural exodus and natural revegetation processes (Hill et al., 2008; ~~Vicente-Serrano et al., 2018~~Vicente-Serrano et al., 2018), we detrended the standardized NDVI series by means of a linear model. We then add the residuals of the linear trend to the average of NDVI magnitude over the study period. A similar approach has been adopted in several environmental studies (Olsen et al., 2013; Xulu et al., 2018; Zhang et al., 2016). Correlations with the drought dataset were based on the sNDVI.

### **2.1.2. Drought dataset**

Due to its complicated physiological strategies to cope with water stress, vegetation can show specific and even individual resistance and vulnerability to drought (Chaves et al., 2003; Gazol et al., 2017; Gazol et al., 2018). As such, it is quite difficult to directly assess the impacts of drought on vegetation activity and forest growth. Alternatively,

drought indices can be an appropriate tool to make this assessment, particularly with their calculation at multiple time scales. These time scales summarize the accumulated climatic conditions over different periods, which make drought indices closely related to impact studies. Overall, to calculate drought indices, we employed data for a set of meteorological variables (i.e. precipitation, maximum and minimum air temperature, relative humidity, sunshine duration, and wind speed) from a recently developed gridded climatic dataset (Vicente-Serrano et al., 2017). This gridded dataset was developed using a dense network of quality-controlled and homogenized meteorological records. Data are available for the whole Spanish territory at a spatial resolution of 1.1 km, which is consistent with the resolution of the NDVI dataset (section 2.1.1). Based on this gridded dataset, we computed the atmospheric evaporative demand (AED), ~~reference evapotranspiration (ET<sub>0</sub>)~~ and the Standardized Precipitation Evapotranspiration Index (SPEI). We used the reference evapotranspiration (ET<sub>0</sub>) as the most reliable way of estimating the AED. ET<sub>0</sub> was calculated using the physically based FAO-56 Penman-Monteith equation (Allen et al., 1998). On the other hand, the SPEI was computed using precipitation and ~~AED~~ET<sub>0</sub> data (Vicente-Serrano et al., 2010). The SPEI is one of the most widely used drought indices and has thus been employed to quantify drought in a number of agricultural (e.g. Peña-Gallardo et al., 2018b), environmental (e.g. Vicente-Serrano et al., 2012; Bachmair et al., 2018), and socioeconomic applications (e.g. Bachmair et al., 2015; Stagge et al., 2015). The SPEI is advantageous compared to the Palmer Drought Severity Index (PDSI), as it is calculated at different time scales. In comparison to the Standardized Precipitation Index (SPI) (McKee et al., 1993), the SPEI does not account only for precipitation, but it also considers the contribution of ~~AED~~ET<sub>0</sub> in drought evolution.

In this work, the SPEI was calculated for the common 1- to 24-month time scales. but here given the semi-monthly availability of the data, we calculated the corresponding 1- to 48- semi-monthly time-scales. The preference to use various time scales is motivated by our intention to characterize the response of different hydrological and environmental systems to drought. It is well-recognized that natural systems can show different responses to the time scales of drought (Vicente-Serrano et al., 2011, 2013). The time scale refers to the period in which antecedent climate conditions are accumulated and it allows ~~to adapt~~adapting the drought index to the drought impacts since different hydrological and environmental systems show different responses sensitivities to the time scales of climate variability. This has been shown for hydrological systems (López-Moreno et al., 2013; Barker et al., 2016), but also ecological and agricultural systems show strong differences in the response to different time scales of climatic droughts (Pasho et al., 2011; Peña-Gallardo et al., 2018b) given different biophysical conditions, but also the different strategies of vegetation types to cope with water stress (Chaves et al., 2003; McDowell et al., 2008), which are strongly variable in complex Mediterranean ecosystems. For instance, drought indices can be calculated on flexible time scales since it is not known a priori the most suitable period at which the NDVI is responding. Herein, we also detrended and standardized the semi-monthly SPEI data to be comparable with the de-trended sNDVI. Finally, we used the CORINE Land Cover for 2000 (<https://land.copernicus.eu/pan-european/corine-land-cover>) to determine how land cover can impact the response of NDVI to drought severity. This map is representative of the main classes of land cover in the study domain over the period of investigation.

## **2.2. Statistical analysis**



We used the Pearson's  $r$  correlation coefficient to assess the relationship between the interannual variability of the sNDVI and SPEI. This association was evaluated independently for each semi-monthly period of the year. In specific, we calculated the correlation between the sNDVI for each semi-monthly period and SPEI recorded in the same period, at time-scales between 1- and 48-semi-months. Significant correlations were set at  $p < 0.05$ . Importantly, as the data of the sNDVI and SPEI were de-trended, the possible impact of serial correlation on the correlation between sNDVI and SPEI is minimized, with no spurious correlation effects that can be expected from the co-occurrence of the trends. Similarly, as the data were analyzed for each semi-monthly period independently, our results are free from any seasonality effect. Given that it is not possible to know a priori the best cumulative period to explain the response of the vegetation activity to drought variability, we retained for further analysis the maximum correlation, independently of the time scale at which this is obtained.

Based on the correlation coefficients between the sNDVI and SPEI in the study domain, we determined the semi-monthly period of the year and the SPEI time scale at which the maximum correlation is found. This information was then used to determine the spatial and seasonal variations according to the different land cover categories. Finally, the average climate conditions over the study domain, including aridity (precipitation minus AEDETO) and average temperature, were related to the time-scales at which the maximum correlation between the sNDVI and SPEI was found.

### 3. Results

#### 3.1. General influence of drought on the sNDVI

Figure 1 shows an example of the spatial distribution of the Pearson's  $r$  correlation coefficients calculated between the sNDVI and the SPEI at the time-scales of 1-, 3-, 6-

and 12-months (2-, 6-, 12- and 24-semi-monthly periods). Results are shown only for the second semi-monthly period of each month between April and July. The differential response of the NDVI to the different time scales of the SPEI is illustrated. As depicted, the 6-month time scale was more relevant to vegetation activity in large areas of Southwestern and Southeastern Spain during the second half of April. On the other hand, vegetation activity was more determined by the 12-month SPEI across the Ebro basin in northeastern Spain. This stresses the need of considering different drought time scales to know the climate cumulative period that mostly affects vegetation activity. The 6-month and 12-month SPEI produced similar results during the second period of May, while the 12-month time scale is more related to vegetation activity in June and July.

~~The density plots (supplementary Figures 1 to 4) summarize the magnitude of correlations between the SPEI and sNDVI for Spain, as a function of the semi-monthly period as well as the SPEI time scale. It can be seen that correlations tend to be higher during the warm season (May to August), and at time scales between 6 and 24 months.~~

Figure 2 summarizes the maximum correlation between the sNDVI and the SPEI, providing insights into the differential response of the NDVI to drought. It can be noted that there are clear seasonal and spatial differences in the response of sNDVI to the SPEI. The sNDVI is more related to the SPEI during the warm season (MJJA). In contrast, the response of the sNDVI to drought is less pronounced from September to April, albeit with some exceptions. One example is the response of vegetation to drought alongside the southeastern Mediterranean coastland, where the correlation between sNDVI and SPEI is almost high all the year around. Table 1 summarizes the percentage of the total area exhibiting significant or non-significant correlations over Spain during the different semi-monthly periods. Positive (lower sNDVI with drought) and statistically significant correlations are dominant across the entire territory, but with

a seasonal component. In particular, a higher percentage of the territory shows positive and significant correlations during the warm season (MJJA). From mid of May to mid of September, more than 80% of the study domain show positive and significant correlations between the sNDVI and the SPEI. A similar finding is also found between the mid of June and the beginning of August. Figure 3 summarizes the average correlations between the SPEI and sNDVI. As illustrated, there is a gradual increase in the response of the sNDVI to the SPEI from the beginning of May to the end of July, when the maximum average correlation is recorded. In contrast, the correlations between the SPEI and sNDVI decrease progressively from August to December.

The response of the sNDVI to different times scales of the SPEI and seasons is quite complex. Figure 4 shows the spatial distribution of the SPEI time scale at which the maximum correlation was found for each one of the 24 semi-monthly periods of the year. It can be noted that there are considerable seasonal and spatial differences. Nonetheless, these differences are masked with the estimated average values of the SPEI time scale recorded for the semi-monthly periods (Figure 5) which are less variable (oscillating between 18 and 22 semi-monthly periods -9 to 11 months-) throughout the year. In general, the areas and periods with higher correlations are

recorded at the time scales between 7 and 24 semi-months (3-12 months). ~~This pattern is mostly recorded in the period between May and July (Supplementary Figure 5), in which the sNDVI variability is more sensitive to drought. Nevertheless, there are no general spatial patterns in the response of the NDVI to SPEI, indicating that there is a dominance of the maximum correlations associated with a certain SPEI time scale (Supplementary Figure 6). Interestingly, this , this pattern is not driven by the presence of different land cover types, given that the correlation coefficients between the sNDVI~~

and SPEI are quite similar, irrespective of the land cover type (Supplementary Figures 7 to 17).

### 3.2. Land cover differences

There are differences in the magnitude and seasonality of the Pearson's  $r$  correlation coefficients among all land cover types. Figure 6 shows the average and standard error of the mean of the maximum Pearson's  $r$  coefficients between the sNDVI and SPEI for the different land cover types and the 24 semi-monthly periods. The magnitudes of correlation vary considerably, as a function of land cover type, as well as the period of the year in which the highest correlations are recorded. The non-irrigated arable lands show a peak of significant correlation between April and June. However, this correlation decreases towards the end of the year. The majority of the surface dominated by this land cover shows positive and significant correlations between May and September (Supplementary Table 1), with percentages almost close to 100%. On the contrary, irrigated lands do not show such a strong response to drought during the warm season. Even with the presence of a seasonal pattern, it is less pronounced than the one observed for non-irrigated arable lands. Overall, irrigated areas are characterized by positive and significant correlations between sNDVI and SPEI during summertime (Supplementary Table 2). Similarly, vineyards show a clear seasonal pattern, albeit with a peak of maximum correlations during the late summer (July-August) and early autumn (September-October) (Supplementary Table 3). On the other hand, olive groves show of the highest correlation between the sNDVI and SPEI during the second half of May and in October, suggesting a quasi bi-modal response of the NDVI to drought. This pattern is also revealed in the percentage of the surface area with significant correlations (Supplementary Table 4). In the same context, the areas of natural

vegetation exhibit their maximum correlation between the sNDVI and SPEI during summer months. The highest correlations are found in July and August for the forest types, compared to earlier June for the natural grasslands and the areas of sclerophillous vegetation. On the other hand, the mixed forests tend to show lower correlations than broad-leaved and coniferous forests. A quick inspection of all these types of land cover indicates that the correlations between the sNDVI and SPEI are generally positive and significant during summer months (Supplementary Tables 5 to 11).

Large differences across vegetation types were found for the SPEI time scales at which maximum correlations between sNDVI and the SPEI are found (Figure 7). For example, for non-irrigated arable lands, the maximum correlation between SPEI and sNDVI is found for time scales between 11 and 21 semi-monthly periods. This indicates that crops in May-June (the period in which higher correlations are recorded) respond mostly to the climate conditions recorded between June and December of the preceding year. Irrigated lands show a clear seasonal pattern, as maximum correlations are recorded at time scales between 12 and 18 semi-monthly periods (i.e. 6 to 9 months), mainly between November and May. On the other hand, the maximum correlations between sNDVI and SPEI during summer are found for time scales between 25 and 28 semi-monthly periods. Similar to irrigated lands, vineyards show a strong seasonality, responding to longer time-scales at the end of summertime. In contrast, natural vegetation areas show less seasonality to SPEI time scales, which mostly impact the interannual variability of sNDVI. The SPEI time scales, at which the maximum correlation is found between sNDVI and SPEI, vary from 20 semi-monthly periods during the warm season (MJJAS) to 30 semi-monthly periods during the cold season (ONDJFMA). This finding is evident for all forest types and areas of sclerophillous vegetation and mixed wood-scrub. The only exception corresponds to natural

grasslands, which show a response to shorter SPEI time scales (i.e. 20 semi-monthly periods in winter and 15 in spring and early summer).

### ***3.3. Influence of average climatic conditions***

In addition to the impact of the time scale at which drought is quantified, the response of vegetation activity to drought can also be closely related to the prevailing climatic conditions. Figure 8 summarizes the spatial correlation between aridity (P-AET<sub>ETo</sub>) and the maximum correlation between the sNDVI and SPEI. For most of the semi-monthly periods of the year aridity is negatively correlated with the maximum correlation between sNDVI and SPEI, indicating that vegetation activity in arid sites is more responsive to drought variability. This correlation is more pronounced for the period between December and June. In contrast, this negative association becomes weaker and statistically non-significant during warmer months (e.g. July and to August). Figure 9 illustrates the spatial correlation between mean air temperature and the maximum correlation between the sNDVI and SPEI. Results demonstrate similar results to those found for aridity, with a general positive and significant correlation from March to June, followed by a non-significant and weak correlation during summer months.

Nonetheless, these general patterns vary largely as a function of land cover type (Supplementary Figures 481 to 2811). For example, in non-irrigated arable lands, there is strong negative correlation between aridity and the sNDVI/SPEI maximum correlation from March to May: a period that witnesses the peak of vegetation activity in this land cover type. This also coincides with the period of the highest average correlations between the sNDVI and SPEI. Taken together, this demonstrates that non-irrigated arable lands located in the most arid areas are more sensitive to drought variability than those located in humid regions. As opposed to non-irrigated arable

lands, the correlations with aridity are found statistically non-significant in all periods of the year for irrigated lands, vineyards and olive groves. Nevertheless, for the different natural vegetation categories, the correlations are negative and statistically significant during large periods. The mixed agricultural/natural vegetation areas show a significant correlation between October and July, with stronger association at the beginning of summer season. Broadleaved and coniferous forests, scrubs, and pasture lands also show a negative relationship between the spatial patterns of the sNDVI/SPEI correlations and aridity.

As depicted in Figure 9, the relationship between the sNDVI/SPEI correlation and air temperature shows that the response of vegetation activity to drought is modulated by air temperature during springtime. This implies that warmer areas are those in which the sNDVI is more controlled by drought. A contradictory pattern is found during warmer months, in which the role of air temperature in modulating the impact of drought on vegetation activity is minimized. The relationships between air temperature and the NDVI-SPEI correlation vary among the different land cover types (Supplementary Figures 2912 to 3922). For example, in non-irrigated arable lands, the positive and statistically significant correlation is found in the period from March to AprilMay, indicating that the response of the sNDVI to SPEI tends to coincide spatially with areas of warmer conditions. As observed for aridity, the relationship between the sNDVI and SPEI in irrigated lands is less associated with the spatial patterns of air temperature. A similar pattern is recorded for vineyards and olive groves. Nevertheless, the areas of natural vegetation show a clear relationship between air temperature and the sNDVI/SPEI correlations. In the mixed agriculture and natural vegetation areas, we found a statistically significant positive association between the sNDVI and SPEI from October to May. On the contrary, this association is less evident during summer months.

This general association during springtime, combined with the lack of association during summertime, can also be seen for other natural vegetation types such as broad-leaved and coniferous forests, natural grasslands, sclerophyllous vegetation and mixed wood-scrubs.

We also analyzed the dependency between climatic conditions (i.e. aridity and air temperature) and the SPEI time scale(s) at which the maximum correlation between the sNDVI and SPEI is recorded. Figure 10 shows the values of aridity corresponding to SPEI time scales at which the maximum correlation between the sNDVI and SPEI is found for each semi-monthly period. The different box-plots indicate complex patterns, which are quite difficult to interpret. Overall, less arid areas show stronger correlations at longer time-scales (25-42 semi-monthly periods) during springtime. In the same context, the regions with maximum correlations at short time scales (1-6 months) tend to be located in less arid regions that record their maximum correlations at time scales between 7 and 24 semi-monthly periods. This suggests that the most arid areas mostly respond to the SPEI time scales between 6 and 12 months, compared to short (1-3 months) or long ( $> 12$  months) SPEI time-scales in more humid regions. In contrast, during summer season, the interannual variability of the sNDVI in the arid areas is mostly determined by the SPEI recorded at time scales higher than 6 months (12 semi-monthly periods), while responding to short SPEI time scales ( $< 3$  months) over the most humid regions.

~~Again, this general pattern is highly dependent on the land cover type (Supplementary Figures 40 to 50). In the non-irrigated arable lands, there are no noticeable differences in aridity in response to the SPEI time scale that recorded the maximum correlation with the sNDVI. A similar finding is also found irrespective of the considered semi-monthly period. In the vineyards, we noted that the sNDVI responds to short SPEI time scales in~~



430 ~~areas characterized by lower aridity conditions during summer months. This pattern is~~  
431 ~~less evident for olive groves. In contrast, we observed clear patterns for natural~~  
432 ~~vegetation. In particular, those areas characterized by mixed agriculture and vegetation~~  
433 ~~show high complexity during winter and spring, with no specific patterns in relation to~~  
434 ~~the SPEI time scales with maximum correlations with the sNDVI. In contrast, we found~~  
435 ~~a clear pattern during warmer months (June to September), with stronger correlations at~~  
436 ~~shorter time scales in the most humid areas and at longer SPEI time scales (> 12~~  
437 ~~months) over the most arid regions. The pattern is less pronounced in broad leaved~~  
438 ~~forests, although the response to short SPEI time scales seems to be more frequent in~~  
439 ~~the less arid broad leaved forests. On the other hand, in coniferous forests,~~  
440 ~~sclerophyllous vegetation, and the transition wood scrub, we noted a relationship~~  
441 ~~between the aridity and the SPEI time scales with maximum correlation with the~~  
442 ~~sNDVI during summer months. Natural grassland areas show clear seasonal differences.~~  
443 ~~In spring, the grasslands located in the most arid sites show higher correlation at short~~  
444 ~~SPEI time scales, while they exhibit similar patterns (i.e. maximum correlations at short~~  
445 ~~SPEI time scales under less arid conditions) to those of other natural vegetation areas~~  
446 ~~during summer.~~

447 Also, we found links between the spatial distribution of air temperature and the SPEI  
448 time scales at which maximum correlation between the sNDVI and SPEI is recorded  
449 (Figure 11). In early spring, short SPEI time scales dominate in warmer areas, compared  
450 to long SPEI time scales in colder regions. A contradictory pattern is observed from  
451 June to September, with a dominance of shorter SPEI time scales in colder areas and  
452 longer SPEI time scales in warmer regions. ~~In terms of vegetation types, natural~~  
453 ~~vegetation areas tend generally to reproduce similar pattern in comparison to cultivation~~  
454 ~~types (Supplementary Figures 51 to 61).~~

The spatial distribution of all land cover types, after excluding irrigated lands in which the anthropogenic factors dominate, is illustrated in Figure 12. Mixed forests are located in the most humid areas, while vineyards, olive groves, non-irrigated arable lands and the sclerophyllous natural vegetation are distributed in the most arid sites. Nevertheless, there is a gradient of these land cover types in terms of their response to drought, as those types located under more arid conditions show a stronger response of vegetation activity to drought than those located in humid environments. For example, the mixed forests show lower correlations than crop types and other vegetation areas. ~~This may suggest that there is a linear relationship between climate aridity corresponding to each land cover and how vegetation activity will respond to drought.~~ This pattern is more evident during the different semi-monthly periods ~~of the year~~, albeit with more differences during spring and autumn. In summer, these differences are much smaller between land cover categories, irrespective of aridity conditions.

There are also differences in the average SPEI time scale at which the maximum sNDVI/SPEI correlation is obtained (Figure 13). However, these differences are complex, with noticeable seasonal differences in terms of the relationship between climate aridity and land cover types. In spring and late autumn, land cover types located in more arid conditions tend to respond to shorter SPEI time scales than those located in more humid areas. This pattern can be seen in late summer and early autumn, in which the most arid land cover types (e.g. vineyards and olive groves) tend to respond at longer SPEI time scales, compared to forest types (mostly the mixed forests), which are usually located under more humid conditions.

#### 4. Discussion ~~and conclusions~~

This study assesses the response of vegetation activity to drought in Spain using a high-resolution (1.1 km) spatial NDVI dataset that dates back to 1981 (~~Vicente-Serrano et al., 2018~~)(Vicente-Serrano et al., 2018). Based on another high-resolution semi-monthly gridded climatic dataset, drought was quantified using the Standardized Precipitation Evapotranspiration Index (SPEI) at different time scales (Vicente-Serrano et al., 2017). Results demonstrate that vegetation activity over large parts of Spain is closely related to the interannual variability of drought. In summer more than 90% of the study domain ~~show~~shows statistically significant positive correlations between the NDVI and SPEI. A similar response of the NDVI to drought is confirmed in earlier studies in different semi-arid and sub-humid regions worldwide, including Northeastern Brazil (e.g. Barbosa et al., 2006), the Sahel (e.g. Herrmann et al., 2005), Central Asia (e.g. Gessner et al., 2013), Australia (e.g. De Keersmaecker et al., 2017) and California (e.g. Okin et al., 2018). Albeit with this generalized response, our results also show noticeable spatial and seasonal differences in this response. These differences can be linked to the time scale at which the drought is quantified, besides the impact of other dominant climatic conditions (e.g. air temperature and aridity).

#### 4.1. The response of vegetation activity to drought variability

This study stresses that the response of vegetation activity to drought is more pronounced during the warm season (MJJAS), in which vast areas of the Spanish territory show statistically significant positive correlation between the sNDVI and SPEI. This seasonal pattern can be attributed to the phenology of vegetation under different land cover types. In the cold season, some areas, such as pastures and non-permanent broad leaf forests, do not have any vegetation activity. Other areas, with coniferous forests, shrubs and cereal crops, show a low vegetation activity. As such, irrespective of

the recorded drought conditions, the response of vegetation to drought would be low during wintertime. This behaviour is also enhanced by the atmospheric evaporative demand (AED), which is generally low in winter in Spain (Vicente-Serrano et al., 2014d), with a lower water demand of vegetation and accordingly low sensitivity to soil water availability. Austin et al. (1998) indicated that soil water recharge occurs mostly during winter months, given the low water consumption by vegetation. However, in spring, vegetation becomes more sensitive to drought due to temperature rise. Accordingly, the photosynthetic activity, which determines NDVI, is highly controlled by soil water availability (Myneni et al., 1995). In this study, the positive spatial relationship found between air temperature and the sNDVI/SPEI correlation reinforces this explanation. In spring, we found low correlations between the NDVI and SPEI, even in cold areas. In contrast, ~~warmer air~~summer warm temperatures ~~during summer~~months reinforce vegetation activity, but with some exceptions such as cereal cultivations, dry pastures and shrubs, ~~which record their maximum vegetation activity during spring.~~ This would explain why the response of vegetation activity to the SPEI is stronger during summer in vast areas of Spain.

Also, this study suggests clear seasonal differences in the response of the NDVI to drought, and in the magnitude of the correlation between the NDVI and the SPEI, as a function of the dominant land cover. These differences are confirmed at different spatial scales, ranging from regional and local (e.g. Ivits et al., 2014; Zhao et al., 2015; Gouveia et al., 2017; Yang et al., 2018) to global (e.g. Vicente-Serrano et al., 2013). Over Spain, the non-irrigated arable lands, natural grasslands and sclerophyllous vegetation show an earlier response to drought, mainly in late spring and early summer. This response is mainly linked to the vegetation phenology dominating in these land covers, which usually reach their maximum activity in late spring to avoid dryness and

temperature rise during summer months. The root systems of herbaceous species are not very deep, so they depend on the water storage in the most superficial soil layers (Milich and Weiss, 1997), and they could not survive during the long and dry summer in which the surface soil layers are mostly depleted (Martínez-Fernández and Ceballos, 2003). This would explain an earlier and stronger sensitivity to drought also showed in other world semiarid regions (Liu et al., 2017; Yang et al., 2018; Bailing et al., 2018). On the contrary, maximum correlations between the NDVI and the SPEI are recorded during summer months in the forests but also in wood cultivations like vineyards and olive groves. In this case, the maximum sensitivity to drought coincides with the maximum air temperature and atmospheric evaporative demand (Vicente-Serrano et al., 2014d). This pattern would be indicative of a different adaptation strategy of trees in comparison to herbaceous vegetation, since whilst herbaceous cover would adapt to the summer dryness generating the seed bank before the summer (Peco et al., 1998; Russi et al., 1992), the trees and shrubs would base their adaptation on deeper root systems, translating the drought sensitivity to the period of highest water demand and water limitation.

In addition to the seasonal differences among land cover types, we have shown that in Spain herbaceous crops show a higher correlation between the NDVI and the SPEI than most of natural vegetation types (with the exception of the sclerophyllous vegetation). This behaviour could be explained by three different factors: i) a higher adaptation of natural vegetation to the characteristic climate of the region where drought is a frequent phenomenon (Vicente-Serrano, 2006); ii) the deeper root systems that allow shrubs and trees to obtain water from the deep soil; and iii) cultivated lands tend to be typically located in drier areas than natural vegetation. Different studies showed that the vegetation of dry environments tends to have a more intense response to drought than

sub-humid and humid vegetation (Schultz and Halpert, 1995; Abrams et al., 1990; Nicholson et al., 1990; Herrmann et al., 2016). Vicente-Serrano et al. (2013) analysed the sensitivity of the NDVI in the different biomes at a global scale and found a spatial gradient in the sensitivity to drought, which was more important in arid and semiarid regions.

#### 4.2. Response to the average climatology

In this study we have shown a control in the response of the NDVI to drought severity by the climatic aridity. Thus, there is a significant correlation between the spatial distribution of the climatic aridity and the sensitivity of the NDVI to drought, mostly in spring and autumn. This could be explained because in more humid environments the main limitation to vegetation growth is temperature and radiation rather than water, so not all the water available would be used by vegetation reflected in a water surplus as surface runoff. This characteristic would make the vegetation less sensitive to drought in the cold season. Drought indices are relative metrics in comparison to the long term climate with the purpose of making drought severity conditions comparable between areas of very different climate characteristics (Mukherjee et al., 2018). This means that in humid areas the corresponding absolute precipitation can be sufficient to cover the vegetation water needs although drought indices inform on below-of-the-average conditions. On the contrary, in arid regions a low value of a drought index is always representative of limited water availability, which would explain the closer relationship between the NDVI and the SPEI.

Here we also explored if the general pattern observed in humid and semi-arid regions is also affected by the land cover, and found that the behaviour in the non-irrigated arable lands is the main reason to explain the global pattern. Herbaceous crops show that

aridity levels have a clear control of the response of the NDVI to drought during the period of vegetation activity. Nevertheless, after the common harvest period (June) this control by aridity mostly disappears. This is also observed in the grasslands and in the sclerophyllous vegetation, and it could be explained by the low vegetation activity of the herbaceous and shrub species during the summer, given the phenological strategies to cope with water stress with the formation of the seeds before the period of dryness (Chaves et al., 2003). The limiting aridity conditions that characterises the regions in which these vegetation types grow would also contribute to explain this phenomenon. On the contrary, the forests, both broad-leaved and coniferous, also show a control by aridity in the relationship between the NDVI and the SPEI during the summer months since these land cover types show the peak of the vegetation activity during this season. In any case, it is also remarkable that the spatial pattern of the NDVI sensitivity to drought in forests is less controlled by aridity during the summer season, curiously the season in which there are more limiting conditions. This could be explained by the NDVI saturation under high levels of leaf area index (Carlson and Ripley, 1997), since once the tree tops are completely foliated the electromagnetic signal is not sensitive to additional leaf growth. This could explain the less sensitive response of the forests to drought in comparison to land cover types characterised by lower leaf area (e.g. shrubs or grasslands). Nevertheless, we do not think that this phenomenon can explain totally the decreased sensitivity to drought with aridity in summer since the dominant coniferous and broad-leaved forests in Spain are usually not characterised by a 100% leaf coverage (Castro-Díez et al., 1997; Molina and del Campo, 2012), so large signal saturation problems are not expected. On the other hand, the ecophysiological strategies of forests to cope with drought may help explain the observed lower relationship between aridity during the summer months. Experimental studies suggested that the

interannual variability of the secondary growth could be more sensitive to drought than the sensitivity observed by the photosynthetic activity and the leaf area (Newberry, 2010). This could be a strategy to optimize the storage of carbohydrates, suggesting that forests in dry years would prioritize the development of an adequate foliar area in relation to the wood formation in order to maintain respiration and photosynthetic processes. Recent studies by Gazol et al. (2018) and Peña-Gallardo et al. (2018b) confirmed that, irrespective of forest species, there is a higher sensitivity of tree-ring growth to drought, as compared to the sensitivity of the NDVI. The different spatial and seasonal responses of vegetation activity to drought in our study domain can also be linked to the dominant forest species and species richness, which has been evident in numerous studies (e.g. Lloret et al., 2007). Moreover, this might also be attributed to the ecosystem physiological processes, given that vegetation tends to maintain the same water use efficiency under water stress conditions, regardless of vegetation types and environmental conditions (Huxman et al., 2004). This would explain that - independently of the aridity conditions- the response of the NDVI to drought would be similar. Here, we demonstrated that the response of the NDVI to drought is similar during summer months, even with the different land cover types and environmental conditions.

#### 4.3. The importance of drought time scales

A relevant finding of this study is that the response of the NDVI is highly dependent on the time scale at which drought is quantified. Numerous studies indicated that the accumulation of precipitation deficits during different time periods is essential to determine the influence of drought on the NDVI (e.g. Malo and Nicholson, 1990; Liu and Kogan, 1996; Lotsch et al., 2003; Ji and Peters, 2003; Wang et al., 2003). This is



simply because soil moisture is impacted largely by precipitation and the atmospheric evaporative demand over previous cumulative periods (Scaini et al., 2015). Moreover, the different morphological, physiological and phenological strategies would also explain the varying response of vegetation types to different drought time scales. This finding is confirmed in previous works using NDVI and different time scales of a drought index (e.g. Ji and Peters, 2003; Vicente-Serrano, 2007), but also using other variables like tree-ring growth (e.g. Pasho et al., 2011; Arzac et al., 2016; Vicente-Serrano et al., 2014a). This study confirms this finding, given that there is a high spatial diversity in the SPEI time scale at which vegetation has its maximum correlation with the NDVI. These spatial variations, combined with strong seasonal differences, are mainly controlled by the dominant land cover types and aridity conditions. In their global assessment, Vicente-Serrano et al. (2013) found gradients in the response of the world biomes to drought, which are driven mainly by the time scale at which the biome responds to drought in a gradient of aridity. Again, the response to these different time scales implies not only different vulnerabilities of vegetation to water deficits, but also various strategies from plants to cope with drought. In Spain, we showed that the NDVI responds mostly to the SPEI at time scales around 20 semi-monthly periods (10 months), but with some few seasonal differences (i.e. shorter time scales in spring and early autumn than in late summer and autumn). Herein, it is also noteworthy indicating that there are differences in this response, as a function of land cover types. Overall, during the periods of highest vegetation activity, the herbaceous land covers (e.g. non-irrigated arable lands and grasslands) respond to shorter SPEI time-scales than other forest types. This pattern can be seen in the context that herbaceous covers are more dependent on the weather conditions recorded during short periods. These vegetation types could not reach deep soil levels, which are driven by climatic conditions during

longer periods (Changnon and Easterling, 1989; Berg et al., 2017). In contrast, the tree root systems would access to these deeper levels, having the capacity of buffering the effect of short term droughts, albeit with more vulnerability to long droughts that ultimately would affect deep soil moisture levels. This pattern has been recently observed in southeastern Spain when comparing herbaceous crops and vineyards (Contreras and Hunink, 2015). Recently, Okin et al. (2018) linked the different responses to drought time scales between scrubs and chaparral herbaceous vegetation in California to soil water depletion at different levels.

Albeit with these general patterns, we also found some relevant seasonal patterns. For example, irrigated lands responded to long SPEI time scales ( $> 15$  months) during summer months, whilst they responded to shorter time scales ( $< 7$  months) during spring and autumn. This behaviour can be linked to water management in these areas. In specific, during spring months, these areas do not receive irrigation and accordingly vegetation activity is determined by water stored in the soil. On the contrary, summer irrigation depends on the water stored in the dense net of reservoirs existing in Spain; some of them have a multiannual capacity. Water availability in the reservoirs usually depends on the climate conditions recorded during long periods (one or two years) (López-Moreno et al., 2004; Lorenzo-Lacruz et al., 2010), which determine water availability for irrigation. This explains why vegetation activity in irrigated lands depends on long time scales of drought. Similarly, vineyards and olive groves respond to long SPEI time-scales during summer. These cultivations are highly resistant to drought stress (Quiroga and Iglesias, 2009). However, these adapted cultivations can be sensitive to severe droughts under extreme summer dryness. In comparison to other natural vegetation, mixed forests show response to shorter SPEI time scales. This could be explained by the low resistance of these forest species to water deficits [e.g. the

different fir species located in humid mountain areas, (Camarero et al., 2011; Camarero et al., 2018)].

Here, we also showed that climate aridity can partially explain the response of the NDVI to the different SPEI time scales. In Spain, the range of the mean aridity recorded by the mean land cover types is much lower than that observed at the global scale for the world biomes (Vicente-Serrano et al., 2013). This might explain why there are no clear patterns in the response of the land cover types to the aridity gradients and the SPEI time scales at which the maximum correlation between the NDVI and SPEI is found. Nevertheless, we found some seasonal differences between the cold and warm seasons. In summer, the NDVI responds to longer SPEI time scales, as opposed to the most humid forests that respond to shorter time scales. This stresses that – in addition to aridity- the degree of vulnerability to different duration water deficits, which are well-quantified using the drought time scales, may contribute to explaining the spatial distribution of the main land cover types across Spain given different biophysical conditions, but also the different strategies of vegetation types to cope with water stress (Chaves et al., 2003; McDowell et al., 2008), which are strongly variable in complex Mediterranean ecosystems.

## **5. Conclusions**

The main conclusions of this study are:

- Vegetation activity over large parts of Spain is closely related to the interannual variability of drought.
- The response of vegetation activity to drought is more pronounced during the warm season, which is attributed to the phenology of vegetation under different land cover types.
- There are clear seasonal differences in the response of the NDVI to drought.
- Natural grasslands and sclerophyllous vegetation show an earlier response to drought.

- There is a control in the response of the NDVI to drought severity by the climatic aridity, which is partially controlled by the land cover.
- The response of the NDVI is highly dependent on the time scale at which drought is quantified although there are differences in this response, as a function of land cover types.

## Acknowledgements

This work was supported by the research projects PCIN-2015-220, CGL2014-52135-C03-01 and CGL2017-82216-R financed by the Spanish Commission of Science and Technology and FEDER. IMDROFLOOD financed by the Water Works 2014 co-funded all of the European Commission and INDECIS, which is part of ERA4CS, an ERA-NET initiated by JPI Climate, and funded by FORMAS (Sweden), DLR (Germany), BMWFW(Austria), IFD (Denmark), MINECO(Spain) and ANR (France), with co-funding by the European Union (Grant 690462), FORWARD financed under the ERA-NET Cofund WaterWorks2015 Call EU and Innovation Fund Denmark (IFD). This ERA-NET is an integral part of the 2016 Joint Activities developed by the Water Challenges for a Changing World Joint Programme Initiative (Water JPI). Marina Peña-Gallardo was supported by the Spanish Ministry of Economy and Competitiveness

## References

- Abrams, M. D., Schultz, J. C. and Kleiner, K. W.: Ecophysiological responses in mesic versus xeric hardwood species to an early-season drought in central Pennsylvania, *For. Sci.*, 36(4), 970–981, 1990.
- Allen, C. D., Macalady, A. K., Chenchouni, H., Bachelet, D., McDowell, N., Vennetier, M., Kitzberger, T., Rigling, A., Breshears, D. D., Hogg, E. H. (T. ., Gonzalez, P., Fensham, R., Zhang, Z., Castro, J., Demidova, N., Lim, J.-H., Allard, G., Running, S. W., Semerci, A. and Cobb, N.: A global overview of drought and heat-induced tree mortality reveals emerging climate change risks for forests, *For. Ecol. Manage.*, 259(4), 660–684, doi:10.1016/j.foreco.2009.09.001, 2010.
- Allen, C. D., Breshears, D. D. and McDowell, N. G.: On underestimation of global vulnerability to tree mortality and forest die-off from hotter drought in the Anthropocene, *Ecosphere*, 6(8), doi:10.1890/ES15-00203.1, 2015.
- Allen, R. G., Pereira, L. S., Raes, D. and Smith, M.: No Title, *Crop Evapotranspiration Guidel. Comput. Crop Water Requir.*, 1998.
- Anyamba, A. and Tucker, C. J.: Analysis of Sahelian vegetation dynamics using NOAA-AVHRR NDVI data from 1981-2003, *J. Arid Environ.*, 63(3), 596–614, doi:10.1016/j.jaridenv.2005.03.007, 2005.
- Arzac, A., García-Cervigón, A. I., Vicente-Serrano, S. M., Loidi, J. and Olano, J. M.: Phenological shifts in climatic response of secondary growth allow *Juniperus sabina* L. to cope with altitudinal and temporal climate variability, *Agric. For. Meteorol.*, 217, doi:10.1016/j.agrformet.2015.11.011, 2016.
- Asseng, S., Ewert, F., Martre, P., Rötter, R. P., Lobell, D. B., Cammarano, D., Kimball, B. A., Ottman, M. J., Wall, G. W., White, J. W., Reynolds, M. P., Alderman, P. D., Prasad, P. V. V., Aggarwal, P. K., Anothai, J., Basso, B., Biernath, C., Challinor, A. J.,

750 De Sanctis, G., Doltra, J., Fereres, E., Garcia-Vila, M., Gayler, S., Hoogenboom, G.,  
751 Hunt, L. A., Izaurralde, R. C., Jabloun, M., Jones, C. D., Kersebaum, K. C., Koehler,  
752 A.-K., Müller, C., Naresh Kumar, S., Nendel, C., O'leary, G., Olesen, J. E., Palosuo, T.,  
753 Priesack, E., Eyshi Rezaei, E., Ruane, A. C., Semenov, M. A., Shcherbak, I., Stöckle,  
754 C., Stratonovitch, P., Streck, T., Supit, I., Tao, F., Thorburn, P. J., Waha, K., Wang, E.,  
755 Wallach, D., Wolf, J., Zhao, Z. and Zhu, Y.: Rising temperatures reduce global wheat  
756 production, *Nat. Clim. Chang.*, 5(2), 143–147, doi:10.1038/nclimate2470, 2015.

757 Austin, R. B., Cantero-Martínez, C., Arrúe, J. L., Playán, E. and Cano-Marcellán, P.:  
758 Yield-rainfall relationships in cereal cropping systems in the Ebro river valley of Spain,  
759 *Eur. J. Agron.*, 8(3–4), 239–248, doi:10.1016/S1161-0301(97)00063-4, 1998.

760 Bachmair, S., Kohn, I. and Stahl, K.: Exploring the link between drought indicators and  
761 impacts, *Nat. Hazards Earth Syst. Sci.*, 15(6), 1381–1397, doi:10.5194/nhess-15-1381-  
762 2015, 2015.

763 Bachmair, S., Tanguy, M., Hannaford, J. and Stahl, K.: How well do meteorological  
764 indicators represent agricultural and forest drought across Europe?, *Environ. Res. Lett.*,  
765 13(3), doi:10.1088/1748-9326/aaafda, 2018.

766 Bailing, M., Zhiyong, L., Cunzhu, L., Lixin, W., Chengzhen, J., Fuxiang, B. and Chao,  
767 J.: Temporal and spatial heterogeneity of drought impact on vegetation growth on the  
768 Inner Mongolian Plateau, *Rangel. J.*, 40(2), 113–128, doi:10.1071/RJ16097, 2018.

769 Baldocchi, D. D., Xu, L. and Kiang, N.: How plant functional-type, weather, seasonal  
770 drought, and soil physical properties alter water and energy fluxes of an oak-grass  
771 savanna and an annual grassland, *Agric. For. Meteorol.*, 123(1–2), 13–39,  
772 doi:10.1016/j.agrformet.2003.11.006, 2004.

773 Barbosa, H. A., Huete, A. R. and Baethgen, W. E.: A 20-year study of NDVI variability  
774 over the Northeast Region of Brazil, *J. Arid Environ.*, 67(2), 288–307,  
775 doi:10.1016/j.jaridenv.2006.02.022, 2006.

776 Barker, L. J., Hannaford, J., Chiverton, A. and Svensson, C.: From meteorological to  
777 hydrological drought using standardised indicators, *Hydrol. Earth Syst. Sci.*, 20(6),  
778 2483–2505, doi:10.5194/hess-20-2483-2016, 2016.

779 del Barrio, G., Puigdefabregas, J., Sanjuan, M. E., Stellmes, M. and Ruiz, A.:  
780 Assessment and monitoring of land condition in the Iberian Peninsula, 1989–2000,  
781 *Remote Sens. Environ.*, 114(8), 1817–1832, doi:10.1016/j.rse.2010.03.009, 2010.

782 Berg, A., Sheffield, J. and Milly, P. C. D.: Divergent surface and total soil moisture  
783 projections under global warming, *Geophys. Res. Lett.*, 44(1), 236–244,  
784 doi:10.1002/2016GL071921, 2017.

785 Bhuiyan, C., Singh, R. P. and Kogan, F. N.: Monitoring drought dynamics in the  
786 Aravalli region (India) using different indices based on ground and remote sensing data,  
787 *Int. J. Appl. Earth Obs. Geoinf.*, 8(4), 289–302, doi:10.1016/j.jag.2006.03.002, 2006.

788 Breshears, D. D., Cobb, N. S., Rich, P. M., Price, K. P., Allen, C. D., Balice, R. G.,  
789 Romme, W. H., Kastens, J. H., Floyd, M. L., Belnap, J., Anderson, J. J., Myers, O. B.  
790 and Meyer, C. W.: Regional vegetation die-off in response to global-change-type  
791 drought, *Proc. Natl. Acad. Sci. U. S. A.*, 102(42), 15144–15148,  
792 doi:10.1073/pnas.0505734102, 2005.

793 Camarero, J. J., Bigler, C., Linares, J. C. and Gil-Pelegrín, E.: Synergistic effects of past  
794 historical logging and drought on the decline of Pyrenean silver fir forests, *For. Ecol.*

795 Manage., 262(5), 759–769, doi:10.1016/j.foreco.2011.05.009, 2011.

796 Camarero, J. J., Gazol, A., Sangüesa-Barreda, G., Oliva, J. and Vicente-Serrano, S. M.:  
 797 To die or not to die: Early warnings of tree dieback in response to a severe drought, J.  
 798 Ecol., 103(1), doi:10.1111/1365-2745.12295, 2015.

799 Camarero, J. J., Gazol, A., Sangüesa-Barreda, G., Cantero, A., Sánchez-Salguero, R.,  
 800 Sánchez-Miranda, A., Granda, E., Serra-Maluquer, X. and Ibáñez, R.: Forest growth  
 801 responses to drought at short- and long-term scales in Spain: Squeezing the stress  
 802 memory from tree rings, Front. Ecol. Evol., 6(FEB), doi:10.3389/fevo.2018.00009,  
 803 2018.

804 Carlson, T. N. and Ripley, D. A.: On the relation between NDVI, fractional vegetation  
 805 cover, and leaf area index, Remote Sens. Environ., 62(3), 241–252, doi:10.1016/S0034-  
 806 4257(97)00104-1, 1997.

807 Carnicer, J., Coll, M., Ninyerola, M., Pons, X., Sánchez, G. and Peñuelas, J.:  
 808 Widespread crown condition decline, food web disruption, and amplified tree mortality  
 809 with increased climate change-type drought, Proc. Natl. Acad. Sci. U. S. A., 108(4),  
 810 1474–1478, doi:10.1073/pnas.1010070108, 2011.

811 Castro-Díez, P., Villar-Salvador, P., Pérez-Rontomé, C., Maestro-Martínez, M. and  
 812 Montserrat-Martí, G.: Leaf morphology and leaf chemical composition in three Quercus  
 813 (Fagaceae) species along a rainfall gradient in NE Spain, Trees - Struct. Funct., 11(3),  
 814 127–134, doi:10.1007/s004680050068, 1997.

815 Changnon, S. A. and Easterling, W. E.: MEASURING DROUGHT IMPACTS: THE  
 816 ILLINOIS CASE, JAWRA J. Am. Water Resour. Assoc., 25(1), 27–42,  
 817 doi:10.1111/j.1752-1688.1989.tb05663.x, 1989.

818 Chaves, M. M., Maroco, J. P. and Pereira, J. S.: Understanding plant responses to  
 819 drought - From genes to the whole plant, Funct. Plant Biol., 30(3), 239–264,  
 820 doi:10.1071/FP02076, 2003.

821 Ciais, P., Reichstein, M., Viovy, N., Granier, A., Ogée, J., Allard, V., Aubinet, M.,  
 822 Buchmann, N., Bernhofer, C., Carrara, A., Chevallier, F., De Noblet, N., Friend, A. D.,  
 823 Friedlingstein, P., Grünwald, T., Heinesch, B., Keronen, P., Knohl, A., Krinner, G.,  
 824 Loustau, D., Manca, G., Matteucci, G., Miglietta, F., Ourcival, J. M., Papale, D.,  
 825 Pilegaard, K., Rambal, S., Seufert, G., Soussana, J. F., Sanz, M. J., Schulze, E. D.,  
 826 Vesala, T. and Valentini, R.: Europe-wide reduction in primary productivity caused by  
 827 the heat and drought in 2003, Nature, 437(7058), 529–533, doi:10.1038/nature03972,  
 828 2005.

829 Contreras, S. and Hunink, J. E.: Drought effects on rainfed agriculture using  
 830 standardized indices: A case study in SE Spain, in Drought: Research and Science-  
 831 Policy Interfacing - Proceedings of the International Conference on Drought: Research  
 832 and Science-Policy Interfacing, pp. 65–70., 2015.

833 Dardel, C., Kergoat, L., Hiernaux, P., Mougin, E., Grippa, M. and Tucker, C. J.: Re-  
 834 greening Sahel: 30 years of remote sensing data and field observations (Mali, Niger),  
 835 Remote Sens. Environ., 140, 350–364, doi:10.1016/j.rse.2013.09.011, 2014.

836 | [FAO: Food and Agricultural Organization, \[online\] Available from: http://www.fao.org](http://www.fao.org)  
 837 |  [\(Accessed 1 October 2018\), 2018.](http://www.fao.org)

838 Fischer, E. M., Seneviratne, S. I., Vidale, P. L., Lüthi, D. and Schär, C.: Soil moisture-  
 839 atmosphere interactions during the 2003 European summer heat wave, J. Clim., 20(20),

840 5081–5099, doi:10.1175/JCLI4288.1, 2007.

841 García-Haro, F. J., Campos-Taberner, M., Sabater, N., Belda, F., Moreno, A., Gilabert,  
842 M. A., Martínez, B., Pérez-Hoyos, A. and Meliá, J.: Vegetation vulnerability to drought  
843 in Spain | Vulnerabilidad de la vegetación a la sequía en España, *Rev. Teledetec.*, (42),  
844 29–37, doi:10.4995/raet.2014.2283, 2014.

845 García, M., Litago, J., Palacios-Orueta, A., Pinzón, J. E. and Ustin Susan, L.: Short-term  
846 propagation of rainfall perturbations on terrestrial ecosystems in central California,  
847 *Appl. Veg. Sci.*, 13(2), 146–162, doi:10.1111/j.1654-109X.2009.01057.x, 2010.

848 Gazol, A., Camarero, J. J., Anderegg, W. R. L. and Vicente-Serrano, S. M.: Impacts of  
849 droughts on the growth resilience of Northern Hemisphere forests, *Glob. Ecol.*  
850 *Biogeogr.*, 26(2), doi:10.1111/geb.12526, 2017.

851 Gazol, A., Camarero, J. J., Vicente-Serrano, S. M., Sánchez-Salguero, R., Gutiérrez, E.,  
852 de Luis, M., Sangüesa-Barreda, G., Novak, K., Rozas, V., Tíscar, P. A., Linares, J. C.,  
853 Martín-Hernández, N., Martínez del Castillo, E., Ribas, M., García-González, I., Silla,  
854 F., Camisón, A., Génova, M., Olano, J. M., Longares, L. A., Hevia, A., Tomás-  
855 Burguera, M. and Galván, J. D.: Forest resilience to drought varies across biomes, *Glob.*  
856 *Chang. Biol.*, 24(5), doi:10.1111/gcb.14082, 2018.

857 Gessner, U., Naeimi, V., Klein, I., Kuenzer, C., Klein, D. and Dech, S.: The relationship  
858 between precipitation anomalies and satellite-derived vegetation activity in Central  
859 Asia, *Glob. Planet. Change*, 110, 74–87, doi:10.1016/j.gloplacha.2012.09.007, 2013.

860 González-Alonso, F. and Casanova, J. L.: Application of NOAA-AVHRR images for  
861 the validation and risk assessment of natural disasters in Spain, in *Remote Sensing '96*,  
862 pp. 227–233, Balkema, Rotterdam., 1997.

863 González-Hidalgo, J. C., Vicente-Serrano, S. M., Peña-Angulo, D., Salinas, C., Tomas-  
864 Burguera, M. and Beguería, S.: High-resolution spatio-temporal analyses of drought  
865 episodes in the western Mediterranean basin (Spanish mainland, Iberian Peninsula),  
866 *Acta Geophys.*, 66(3), doi:10.1007/s11600-018-0138-x, 2018.

867 Gouveia, C. M., Bastos, A., Trigo, R. M. and Dacamara, C. C.: Drought impacts on  
868 vegetation in the pre- and post-fire events over Iberian Peninsula, *Nat. Hazards Earth*  
869 *Syst. Sci.*, 12(10), 3123–3137, doi:10.5194/nhess-12-3123-2012, 2012.

870 Gouveia, C. M., Páscoa, P., Russo, A. and Trigo, R. M.: Land degradation trend  
871 assessment over iberia during 1982-2012 | Evaluación de la tendencia a la degradación  
872 del suelo en Iberia durante 1982-2012, *Cuad. Investig. Geogr.*, 42(1), 89–112,  
873 doi:10.18172/cig.2808, 2016.

874 Gouveia, C. M., Trigo, R. M., Beguería, S. and Vicente-Serrano, S. M.: Drought  
875 impacts on vegetation activity in the Mediterranean region: An assessment using remote  
876 sensing data and multi-scale drought indicators, *Glob. Planet. Change*, 151,  
877 doi:10.1016/j.gloplacha.2016.06.011, 2017.

878 Grissino-Mayer, H. D. and Fritts, H. C.: The International Tree-Ring Data Bank: An  
879 enhanced global database serving the global scientific community, *Holocene*, 7(2), 235–  
880 238, doi:10.1177/095968369700700212, 1997.

881 Gu, Y., Brown, J. F., Verdin, J. P. and Wardlow, B.: A five-year analysis of MODIS  
882 NDVI and NDWI for grassland drought assessment over the central Great Plains of the  
883 United States, *Geophys. Res. Lett.*, 34(6), doi:10.1029/2006GL029127, 2007.

884 Herrmann, S. M., Anyamba, A. and Tucker, C. J.: Recent trends in vegetation dynamics

885 in the African Sahel and their relationship to climate, *Glob. Environ. Chang.*, 15(4),  
886 394–404, doi:10.1016/j.gloenvcha.2005.08.004, 2005.

887 Herrmann, S. M., Didan, K., Barreto-Munoz, A. and Crimmins, M. A.: Divergent  
888 responses of vegetation cover in Southwestern US ecosystems to dry and wet years at  
889 different elevations, *Environ. Res. Lett.*, 11(12), doi:10.1088/1748-9326/11/12/124005,  
890 2016.

891 Hill, J., Stellmes, M., Udelhoven, T., Röder, A. and Sommer, S.: Mediterranean  
892 desertification and land degradation. Mapping related land use change syndromes based  
893 on satellite observations, *Glob. Planet. Change*, 64(3–4), 146–157,  
894 doi:10.1016/j.gloplacha.2008.10.005, 2008.

895 Hirschi, M., Seneviratne, S. I., Alexandrov, V., Boberg, F., Boroneant, C., Christensen,  
896 O. B., Formayer, H., Orłowsky, B. and Stepanek, P.: Observational evidence for soil-  
897 moisture impact on hot extremes in southeastern Europe, *Nat. Geosci.*, 4(1), 17–21,  
898 doi:10.1038/ngeo1032, 2011.

899 Huete, A., Didan, K., Miura, T., Rodriguez, E. P., Gao, X. and Ferreira, L. G.:  
900 Overview of the radiometric and biophysical performance of the MODIS vegetation  
901 indices, *Remote Sens. Environ.*, 83(1–2), 195–213, doi:10.1016/S0034-4257(02)00096-  
902 2, 2002.

903 Huxman, T. E., Smith, M. D., Fay, P. A., Knapp, A. K., Shaw, M. R., Lolk, M. E.,  
904 Smith, S. D., Tissue, D. T., Zak, J. C., Weltzin, J. F., Pockman, W. T., Sala, O. E.,  
905 Haddad, B. M., Harte, J., Koch, G. W., Schwinning, S., Small, E. E. and Williams, D.  
906 G.: Convergence across biomes to a common rain-use efficiency, *Nature*, 429(6992),  
907 651–654, doi:10.1038/nature02561, 2004.

908 Iglesias, E., Garrido, A. and Gómez-Ramos, A.: Evaluation of drought management in  
909 irrigated areas, *Agric. Econ.*, 29(2), 211–229, doi:10.1016/S0169-5150(03)00084-7,  
910 2003.

911 Ivits, E., Horion, S., Fensholt, R. and Cherlet, M.: Drought footprint on European  
912 ecosystems between 1999 and 2010 assessed by remotely sensed vegetation phenology  
913 and productivity, *Glob. Chang. Biol.*, 20(2), 581–593, doi:10.1111/gcb.12393, 2014.

914 Jenkins, J. C., Chojnacky, D. C., Heath, L. S. and Birdsey, R. A.: National-scale  
915 biomass estimators for United States tree species, *For. Sci.*, 49(1), 12–35, 2003.

916 Ji, L. and Peters, A. J.: Assessing vegetation response to drought in the northern Great  
917 Plains using vegetation and drought indices, *Remote Sens. Environ.*, 87(1), 85–98,  
918 doi:10.1016/S0034-4257(03)00174-3, 2003.

919 Julien, Y., Sobrino, J. A., Mattar, C., Ruescas, A. B., Jiménez-Muñoz, J. C., Sòria, G.,  
920 Hidalgo, V., Atitar, M., Franch, B. and Cuenca, J.: Temporal analysis of normalized  
921 difference vegetation index (NDVI) and land surface temperature (LST) parameters to  
922 detect changes in the Iberian land cover between 1981 and 2001, *Int. J. Remote Sens.*,  
923 32(7), 2057–2068, doi:10.1080/01431161003762363, 2011.

924 De Keersmaecker, W., Lhermitte, S., Hill, M. J., Tits, L., Coppin, P. and Somers, B.:  
925 Assessment of regional vegetation response to climate anomalies: A case study for  
926 australia using GIMMS NDVI time series between 1982 and 2006, *Remote Sens.*, 9(1),  
927 doi:10.3390/rs9010034, 2017.

928 Knipling, E. B.: Physical and physiological basis for the reflectance of visible and near-  
929 infrared radiation from vegetation, *Remote Sens. Environ.*, 1(3), 155–159,



doi:10.1016/S0034-4257(70)80021-9, 1970.

Kogan, F. N.: Global Drought Watch from Space, *Bull. Am. Meteorol. Soc.*, 78(4), 621–636, doi:10.1175/1520-0477(1997)078<0621:GDWFS>2.0.CO;2, 1997.

Lasanta, T. and Vicente-Serrano, S. M.: Complex land cover change processes in semiarid Mediterranean regions: An approach using Landsat images in northeast Spain, *Remote Sens. Environ.*, 124, doi:10.1016/j.rse.2012.04.023, 2012.

Lasanta, T., Arnáez, J., Pascual, N., Ruiz-Flaño, P., Errea, M. P. and Lana-Renault, N.: Space–time process and drivers of land abandonment in Europe, *Catena*, 149, 810–823, doi:10.1016/j.catena.2016.02.024, 2017.

Liu, N., Harper, R. J., Dell, B., Liu, S. and Yu, Z.: Vegetation dynamics and rainfall sensitivity for different vegetation types of the Australian continent in the dry period 2002–2010, *Ecohydrology*, 10(2), doi:10.1002/eco.1811, 2017.

Liu, W. T. and Kogan, F. N.: Monitoring regional drought using the vegetation condition index, *Int. J. Remote Sens.*, 17(14), 2761–2782, doi:10.1080/01431169608949106, 1996.

Lloret, F., Lobo, A., Estevan, H., Maisongrande, P., Vayreda, J. and Terradas, J.: Woody plant richness and NDVI response to drought events in Catalanian (northeastern Spain) forests, *Ecology*, 88(9), 2270–2279, doi:10.1890/06-1195.1, 2007.

Lobell, D. B., Hammer, G. L., Chenu, K., Zheng, B., Mclean, G. and Chapman, S. C.: The shifting influence of drought and heat stress for crops in northeast Australia, *Glob. Chang. Biol.*, 21(11), 4115–4127, doi:10.1111/gcb.13022, 2015.

López-Moreno, J. I., Beguería, S. and García-Ruiz, J. M.: The management of a large Mediterranean reservoir: Storage regimens of the Yesa Reservoir, Upper Aragon River basin, Central Spanish Pyrenees, *Environ. Manage.*, 34(4), 508–515, doi:10.1007/s00267-003-0249-1, 2004.

López-Moreno, J. I., Vicente-Serrano, S. M., Zabalza, J., Beguería, S., Lorenzo-Lacruz, J., Azorin-Molina, C. and Morán-Tejeda, E.: Hydrological response to climate variability at different time scales: A study in the Ebro basin, *J. Hydrol.*, 477, 175–188, doi:10.1016/j.jhydrol.2012.11.028, 2013.

Lorenzo-Lacruz, J., Vicente-Serrano, S. M., López-Moreno, J. I., Beguería, S., García-Ruiz, J. M. and Cuadrat, J. M.: The impact of droughts and water management on various hydrological systems in the headwaters of the Tagus River (central Spain), *J. Hydrol.*, 386(1–4), doi:10.1016/j.jhydrol.2010.01.001, 2010.

Lorenzo-Lacruz, J., Morán-Tejeda, E., Vicente-Serrano, S. M. and López-Moreno, J. I.: Streamflow droughts in the Iberian Peninsula between 1945 and 2005: Spatial and temporal patterns, *Hydrol. Earth Syst. Sci.*, 17(1), doi:10.5194/hess-17-119-2013, 2013.

Lotsch, A., Friedl, M. A., Anderson, B. T. and Tucker, C. J.: Coupled vegetation–precipitation variability observed from satellite and climate records, *Geophys. Res. Lett.*, 30(14), doi:10.1029/2003GL017506, 2003.

Ma, X., Huete, A., Moran, S., Ponce-Campos, G. and Eamus, D.: Abrupt shifts in phenology and vegetation productivity under climate extremes, *J. Geophys. Res. Biogeosciences*, 120(10), 2036–2052, doi:10.1002/2015JG003144, 2015.

Malo, A. R. and Nicholson, S. E.: A study of rainfall and vegetation dynamics in the African Sahel using normalized difference vegetation index, *J. Arid Environ.*, 19(1), 1–

974 24, 1990.

975 Martínez-Fernández, J. and Ceballos, A.: Temporal Stability of Soil Moisture in a  
976 Large-Field Experiment in Spain, *Soil Sci. Soc. Am. J.*, 67(6), 1647–1656, 2003.

977 McDowell, N., Pockman, W. T., Allen, C. D., Breshears, D. D., Cobb, N., Kolb, T.,  
978 Plaut, J., Sperry, J., West, A., Williams, D. G. and Yepez, E. A.: Mechanisms of plant  
979 survival and mortality during drought: Why do some plants survive while others  
980 succumb to drought?, *New Phytol.*, 178(4), 719–739, doi:10.1111/j.1469-  
981 8137.2008.02436.x, 2008.

982 McKee, T. B., Doesken, N. J. and Kleist, J.: The relationship of drought frequency and  
983 duration to time scales, *Eighth Conf. Appl. Climatol.*, 179–184, 1993.

984 Milich, L. and Weiss, E.: Characterization of the sahel: Implications of correctly  
985 calculating interannual coefficients of variation (CoVs) from GAC NDVI values, *Int. J.*  
986 *Remote Sens.*, 18(18), 3749–3759, doi:10.1080/014311697216603, 1997.

987 Molina, A. J. and del Campo, A. D.: The effects of experimental thinning on throughfall  
988 and stemflow: A contribution towards hydrology-oriented silviculture in Aleppo pine  
989 plantations, *For. Ecol. Manage.*, 269, 206–213, doi:10.1016/j.foreco.2011.12.037, 2012.

990 Mu, Q., Zhao, M., Kimball, J. S., McDowell, N. G. and Running, S. W.: A remotely  
991 sensed global terrestrial drought severity index, *Bull. Am. Meteorol. Soc.*, 94(1), 83–98,  
992 doi:10.1175/BAMS-D-11-00213.1, 2013.

993 Mühlbauer, S., Costa, A. C. and Caetano, M.: A spatiotemporal analysis of droughts and  
994 the influence of North Atlantic Oscillation in the Iberian Peninsula based on MODIS  
995 imagery, *Theor. Appl. Climatol.*, 124(3–4), 703–721, doi:10.1007/s00704-015-1451-9,  
996 2016.

997 Mukherjee, S., Mishra, A. and Trenberth, K. E.: Climate Change and Drought: a  
998 Perspective on Drought Indices, *Curr. Clim. Chang. Reports*, 4(2), 145–163,  
999 doi:10.1007/s40641-018-0098-x, 2018.

1000 Myneni, R. B., Hall, F. G., Sellers, P. J. and Marshak, A. L.: Interpretation of spectral  
1001 vegetation indexes, *IEEE Trans. Geosci. Remote Sens.*, 33(2), 481–486,  
1002 doi:10.1109/36.377948, 1995.

1003 Newberry, T. L.: Effect of climatic variability on  $\delta^{13}\text{C}$  and tree-ring growth in piñon  
1004 pine (*Pinus edulis*), *Trees - Struct. Funct.*, 24(3), 551–559, doi:10.1007/s00468-010-  
1005 0426-9, 2010.

1006 Nicholson, S. E., Davenport, M. L. and Malo, A. R.: A comparison of the vegetation  
1007 response to rainfall in the Sahel and East Africa, using normalized difference vegetation  
1008 index from NOAA AVHRR, *Clim. Change*, 17(2–3), 209–241,  
1009 doi:10.1007/BF00138369, 1990.

1010 Okin, G. S., Dong, C., Willis, K. S., Gillespie, T. W. and MacDonald, G. M.: The  
1011 Impact of Drought on Native Southern California Vegetation: Remote Sensing Analysis  
1012 Using MODIS-Derived Time Series, *J. Geophys. Res. Biogeosciences*, 123(6), 1927–  
1013 1939, doi:10.1029/2018JG004485, 2018.

1014 Olsen, J. L., Ceccato, P., Proud, S. R., Fensholt, R., Grippa, M., Mougin, B., Ardö, J.  
1015 and Sandholt, I.: Relation between seasonally detrended shortwave infrared reflectance  
1016 data and land surface moisture in semi-arid Sahel, *Remote Sens.*, 5(6), 2898–2927,  
1017 doi:10.3390/rs5062898, 2013.

- 1018 Páscoa, P., Gouveia, C. M., Russo, A. and Trigo, R. M.: The role of drought on wheat  
1019 yield interannual variability in the Iberian Peninsula from 1929 to 2012, *Int. J.*  
1020 *Biometeorol.*, 61(3), 439–451, doi:10.1007/s00484-016-1224-x, 2017.
- 1021 Pasho, E., Camarero, J. J., de Luis, M. and Vicente-Serrano, S. M.: Impacts of drought  
1022 at different time scales on forest growth across a wide climatic gradient in north-eastern  
1023 Spain, *Agric. For. Meteorol.*, 151(12), doi:10.1016/j.agrformet.2011.07.018, 2011.
- 1024 Pausas, J. G.: Changes in fire and climate in the eastern Iberian Peninsula  
1025 (Mediterranean Basin), *Clim. Change*, 63(3), 337–350,  
1026 doi:10.1023/B:CLIM.0000018508.94901.9c, 2004.
- 1027 Pausas, J. G. and Fernández-Muñoz, S.: Fire regime changes in the Western  
1028 Mediterranean Basin: From fuel-limited to drought-driven fire regime, *Clim. Change*,  
1029 110(1–2), 215–226, doi:10.1007/s10584-011-0060-6, 2012.
- 1030 Peco, B., Ortega, M. and Levassor, C.: Similarity between seed bank and vegetation in  
1031 Mediterranean grassland: A predictive model, *J. Veg. Sci.*, 9(6), 815–828,  
1032 doi:10.2307/3237047, 1998.
- 1033 Peña-Gallardo, M., Vicente-Serrano, S. M., Camarero, J. J., Gazol, A., Sánchez-  
1034 Salguero, R., Domínguez-Castro, F., El Kenawy, A., Beguería-Portugés, S., Gutiérrez,  
1035 E., de Luis, M., Sangüesa-Barreda, G., Novak, K., Rozas, V., Tíscar, P. A., Linares, J.  
1036 C., del Castillo, E., Ribas Matamoros, M., García-González, I., Silla, F., Camisón, Á.,  
1037 Génova, M., Olano, J. M., Longares, L. A., Hevia, A. and Galván, J. D.: Drought  
1038 Sensitiveness on Forest Growth in Peninsular Spain and the Balearic Islands, *Forests*,  
1039 9(9), 2018a.
- 1040 Peña-Gallardo, M., SM, V.-S., Domínguez-Castro, F., Quiring, S., Svoboda, M.,  
1041 Beguería, S. and Hannaford, J.: Effectiveness of drought indices in identifying impacts  
1042 on major crops across the USA , *Clim. Res.*, 75(3), 221–240 [online] Available from:  
1043 <https://www.int-res.com/abstracts/cr/v75/n3/p221-240/>, 2018b.
- 1044 Pinzon, J. E. and Tucker, C. J.: A non-stationary 1981-2012 AVHRR  
1045 NDVI<inf>3g</inf>time series, *Remote Sens.*, 6(8), 6929–6960,  
1046 doi:10.3390/rs6086929, 2014.
- 1047 Quiring, S. M. and Ganesh, S.: Evaluating the utility of the Vegetation Condition Index  
1048 (VCI) for monitoring meteorological drought in Texas, *Agric. For. Meteorol.*, 150(3),  
1049 330–339, doi:10.1016/j.agrformet.2009.11.015, 2010.
- 1050 Quiroga, S. and Iglesias, A.: A comparison of the climate risks of cereal, citrus,  
1051 grapevine and olive production in Spain, *Agric. Syst.*, 101(1–2), 91–100,  
1052 doi:10.1016/j.agsy.2009.03.006, 2009.
- 1053 Reichstein, M., Ciais, P., Papale, D., Valentini, R., Running, S., Viovy, N., Cramer, W.,  
1054 Granier, A., Ogée, J., Allard, V., Aubinet, M., Bernhofer, C., Buchmann, N., Carrara,  
1055 A., Grünwald, T., Heimann, M., Heinesch, B., Knohl, A., Kutsch, W., Loustau, D.,  
1056 Manca, G., Matteucci, G., Miglietta, F., Ourcival, J. M., Pilegaard, K., Pumpanen, J.,  
1057 Rambal, S., Schaphoff, S., Seufert, G., Soussana, J.-F., Sanz, M.-J., Vesala, T. and  
1058 Zhao, M.: Reduction of ecosystem productivity and respiration during the European  
1059 summer 2003 climate anomaly: A joint flux tower, remote sensing and modelling  
1060 analysis, *Glob. Chang. Biol.*, 13(3), 634–651, doi:10.1111/j.1365-2486.2006.01224.x,  
1061 2007.
- 1062 Restaino, C. M., Peterson, D. L. and Littell, J.: Increased water deficit decreases

1063 Douglas fir growth throughout western US forests, *Proc. Natl. Acad. Sci. U. S. A.*,  
1064 113(34), 9557–9562, doi:10.1073/pnas.1602384113, 2016.

1065 Rhee, J., Im, J. and Carbone, G. J.: Monitoring agricultural drought for arid and humid  
1066 regions using multi-sensor remote sensing data, *Remote Sens. Environ.*, 114(12), 2875–  
1067 2887, doi:10.1016/j.rse.2010.07.005, 2010.

1068 Russi, L., Cocks, P. S. and Roberts, E. H.: Seed bank dynamics in a Mediterranean  
1069 grassland, *J. Appl. Ecol.*, 29(3), 763–771, doi:10.2307/2404486, 1992.

1070 Scaini, A., Sánchez, N., Vicente-Serrano, S. M. and Martínez-Fernández, J.: SMOS-  
1071 derived soil moisture anomalies and drought indices: A comparative analysis using in  
1072 situ measurements, *Hydrol. Process.*, 29(3), doi:10.1002/hyp.10150, 2015.

1073 Schultz, P. A. and Halpert, M. S.: Global analysis of the relationships among a  
1074 vegetation index, precipitation and land surface temperature, *Int. J. Remote Sens.*,  
1075 16(15), 2755–2777, doi:10.1080/01431169508954590, 1995.

1076 Slayback, D. A., Pinzon, J. E., Los, S. O. and Tucker, C. J.: Northern hemisphere  
1077 photosynthetic trends 1982-99, *Glob. Chang. Biol.*, 9(1), 1–15, doi:10.1046/j.1365-  
1078 2486.2003.00507.x, 2003.

1079 Sona, N. T., Chen, C. F., Chen, C. R., Chang, L. Y. and Minh, V. Q.: Monitoring  
1080 agricultural drought in the lower mekong basin using MODIS NDVI and land surface  
1081 temperature data, *Int. J. Appl. Earth Obs. Geoinf.*, 18(1), 417–427,  
1082 doi:10.1016/j.jag.2012.03.014, 2012.

1083 Stagge, J. H., Kohn, I., Tallaksen, L. M. and Stahl, K.: Modeling drought impact  
1084 occurrence based on meteorological drought indices in Europe, *J. Hydrol.*, 530, 37–50,  
1085 doi:10.1016/j.jhydrol.2015.09.039, 2015.

1086 Stellmes, M., Röder, A., Udelhoven, T. and Hill, J.: Mapping syndromes of land change  
1087 in Spain with remote sensing time series, demographic and climatic data, *Land use*  
1088 *policy*, 30(1), 685–702, doi:10.1016/j.landusepol.2012.05.007, 2013.

1089 Tucker, C. J.: Red and photographic infrared linear combinations for monitoring  
1090 vegetation, *Remote Sens. Environ.*, 8(2), 127–150, doi:10.1016/0034-4257(79)90013-0,  
1091 1979.

1092 Tucker, C. J., Pinzon, J. E., Brown, M. E., Slayback, D. A., Pak, E. W., Mahoney, R.,  
1093 Vermote, E. F. and El Saleous, N.: An extended AVHRR 8-km NDVI dataset  
1094 compatible with MODIS and SPOT vegetation NDVI data, *Int. J. Remote Sens.*, 26(20),  
1095 4485–4498, doi:10.1080/01431160500168686, 2005.

1096 Udelhoven, T., Stellmes, M., del Barrio, G. and Hill, J.: Assessment of rainfall and  
1097 NDVI anomalies in Spain (1989-1999) using distributed lag models, *Int. J. Remote*  
1098 *Sens.*, 30(8), 1961–1976, doi:10.1080/01431160802546829, 2009.

1099 Vicente-Serrano, S. M.: Spatial and temporal analysis of droughts in the Iberian  
1100 Peninsula (1910-2000), *Hydrol. Sci. J.*, 51(1), doi:10.1623/hysj.51.1.83, 2006.

1101 Vicente-Serrano, S. M.: Evaluating the impact of drought using remote sensing in a  
1102 Mediterranean, Semi-arid Region, *Nat. Hazards*, 40(1), doi:10.1007/s11069-006-0009-  
1103 7, 2007.

1104 Vicente-Serrano, S. M. and Beguería, S.: Comment on “Candidate distributions for  
1105 climatological drought indices (SPI and SPEI)” by James H. Stagge et al., *Int. J.*  
1106 *Climatol.*, 36(4), doi:10.1002/joc.4474, 2016.

1107 Vicente-Serrano, S. M., Cuadrat-Prats, J. M. and Romo, A.: Aridity influence on  
 1108 vegetation patterns in the middle Ebro Valley (Spain): Evaluation by means of AVHRR  
 1109 images and climate interpolation techniques, *J. Arid Environ.*, 66(2),  
 1110 doi:10.1016/j.jaridenv.2005.10.021, 2006.

1111 Vicente-Serrano, S. M., Beguería, S. and López-Moreno, J. I.: A multiscalar drought  
 1112 index sensitive to global warming: The standardized precipitation evapotranspiration  
 1113 index, *J. Clim.*, 23(7), doi:10.1175/2009JCLI2909.1, 2010.

1114 Vicente-Serrano, S. M., Beguería, S. and López-Moreno, J. I.: Comment on  
 1115 Characteristics and trends in various forms of the Palmer Drought Severity Index  
 1116 (PDSI) during 1900-2008 by Aiguo Dai, *J. Geophys. Res. Atmos.*, 116(19), 2011.

1117 Vicente-Serrano, S. M., Beguería, S., Lorenzo-Lacruz, J., Camarero, J. J., López-  
 1118 Moreno, J. I., Azorin-Molina, C., Revuelto, J., Morán-Tejeda, E. and Sanchez-Lorenzo,  
 1119 A.: Performance of drought indices for ecological, agricultural, and hydrological  
 1120 applications, *Earth Interact.*, 16(10), doi:10.1175/2012EI000434.1, 2012.

1121 Vicente-Serrano, S. M., Gouveia, C., Camarero, J. J., Beguería, S., Trigo, R., López-  
 1122 Moreno, J. I., Azorín-Molina, C., Pasho, E., Lorenzo-Lacruz, J., Revuelto, J., Morán-  
 1123 Tejeda, E. and Sanchez-Lorenzo, A.: Response of vegetation to drought time-scales  
 1124 across global land biomes, *Proc. Natl. Acad. Sci. U. S. A.*, 110(1),  
 1125 doi:10.1073/pnas.1207068110, 2013.

1126 Vicente-Serrano, S. M., Camarero, J. J. and Azorin-Molina, C.: Diverse responses of  
 1127 forest growth to drought time-scales in the Northern Hemisphere, *Glob. Ecol.*  
 1128 *Biogeogr.*, 23(9), doi:10.1111/geb.12183, 2014a.

1129 Vicente-Serrano, S. M., Lopez-Moreno, J.-I., Beguería, S., Lorenzo-Lacruz, J.,  
 1130 Sanchez-Lorenzo, A., García-Ruiz, J. M., Azorin-Molina, C., Morán-Tejeda, E.,  
 1131 Revuelto, J., Trigo, R., Coelho, F. and Espejo, F.: Evidence of increasing drought  
 1132 severity caused by temperature rise in southern Europe, *Environ. Res. Lett.*, 9(4),  
 1133 doi:10.1088/1748-9326/9/4/044001, 2014b.

1134 Vicente-Serrano, S. M., Azorin-Molina, C., Sanchez-Lorenzo, A., Revuelto, J., López-  
 1135 Moreno, J. I., González-Hidalgo, J. C., Moran-Tejeda, E. and Espejo, F.: Reference  
 1136 evapotranspiration variability and trends in Spain, 1961-2011, *Glob. Planet. Change*,  
 1137 121, doi:10.1016/j.gloplacha.2014.06.005, 2014c.

1138 Vicente-Serrano, S. M., Azorin-Molina, C., Sanchez-Lorenzo, A., Revuelto, J., Morán-  
 1139 Tejeda, E., López-Moreno, J. I. and Espejo, F.: Sensitivity of reference  
 1140 evapotranspiration to changes in meteorological parameters in Spain (1961-2011),  
 1141 *Water Resour. Res.*, 50(11), doi:10.1002/2014WR015427, 2014d.

1142 Vicente-Serrano, S. M., Cabello, D., Tomás-Burguera, M., Martín-Hernández, N.,  
 1143 Beguería, S., Azorin-Molina, C. and Kenawy, A. E.: Drought variability and land  
 1144 degradation in semiarid regions: Assessment using remote sensing data and drought  
 1145 indices (1982-2011), *Remote Sens.*, 7(4), doi:10.3390/rs70404391, 2015.

1146 Vicente-Serrano, S. M., Tomas-Burguera, M., Beguería, S., Reig, F., Latorre, B., Peña-  
 1147 Gallardo, M., Luna, M. Y., Morata, A. and González-Hidalgo, J. C.: A High Resolution  
 1148 Dataset of Drought Indices for Spain, *Data*, 2(3), 2017.

1149 Vicente-Serrano, S. M., Martín-Hernández, N., Reig, F., Azorin-Molina, C., Zabalza, J.,  
 1150 Beguería, S., Domínguez-Castro, F., El Kenawy, A., Peña-Gallardo, M., Noguera, I. and  
 1151 | García, M.: Vegetation greening in Spain detected from long term **and high-spatial**

1152 | ~~resolution~~-data (1981-2015), Submitt. to ~~Glob. Planet. Chang~~Int. J. Remote Sens., 2018.

1153 Wan, Z., Wang, P. and Li, X.: Using MODIS Land Surface Temperature and  
1154 Normalized Difference Vegetation Index products for monitoring drought in the  
1155 southern Great Plains, USA, *Int. J. Remote Sens.*, 25(1), 61–72,  
1156 doi:10.1080/0143116031000115328, 2004.

1157 Wang, J., Rich, P. M. and Price, K. P.: Temporal responses of NDVI to precipitation  
1158 and temperature in the central Great Plains, USA, *Int. J. Remote Sens.*, 24(11), 2345–  
1159 2364, doi:10.1080/01431160210154812, 2003.

1160 Xulu, S., Peerbhay, K., Gebreslasie, M. and Ismail, R.: Drought influence on forest  
1161 plantations in Zululand, South Africa, using MODIS time series and climate data,  
1162 *Forests*, 9(9), doi:10.3390/f9090528, 2018.

1163 Yang, S., Meng, D., Li, X. and Wu, X.: Multi-scale responses of vegetation changes  
1164 relative to the SPEI meteorological drought index in North China in 2001-2014,  
1165 *Shengtai Xuebao/ Acta Ecol. Sin.*, 38(3), 1028–1039, doi:10.5846/stxb201611242398,  
1166 2018.

1167 Zhang, L., Xiao, J., Zhou, Y., Zheng, Y., Li, J. and Xiao, H.: Drought events and their  
1168 effects on vegetation productivity in China, *Ecosphere*, 7(12), doi:10.1002/ecs2.1591,  
1169 2016.

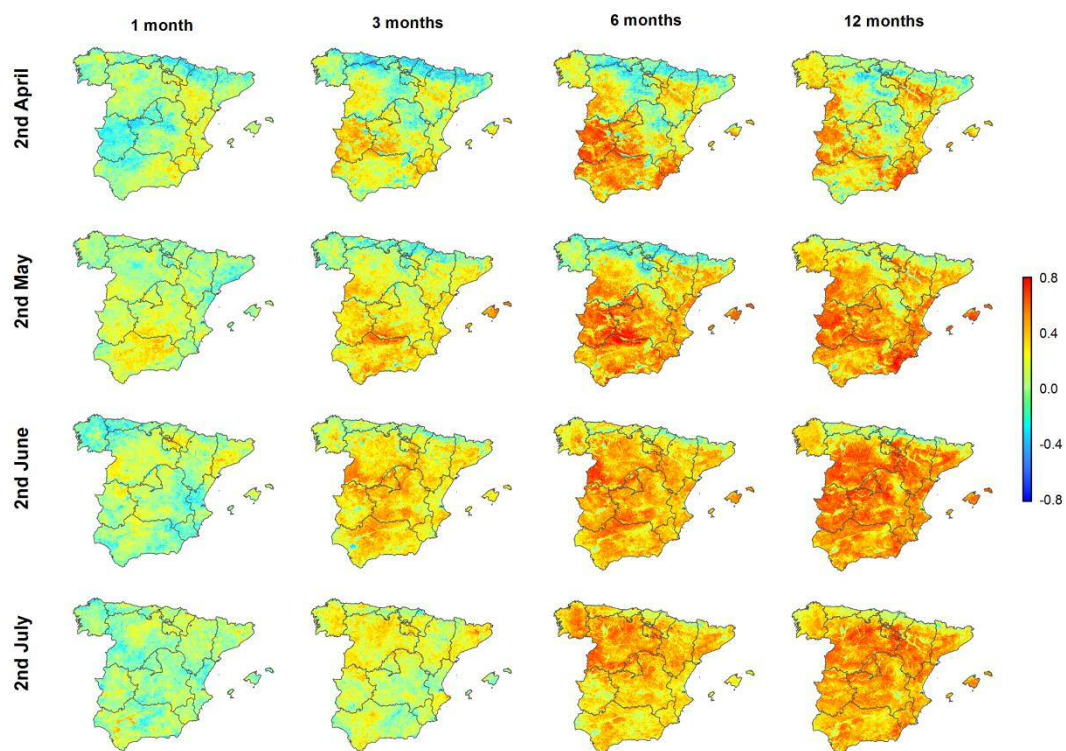
1170 Zhang, Q., Kong, D., Singh, V. P. and Shi, P.: Response of vegetation to different time-  
1171 scales drought across China: Spatiotemporal patterns, causes and implications, *Glob.*  
1172 *Planet. Change*, 152, 1–11, doi:10.1016/j.gloplacha.2017.02.008, 2017.

1173 Zhao, M. and Running, S. W.: Drought-induced reduction in global terrestrial net  
1174 primary production from 2000 through 2009, *Science* (80-. ), 329(5994), 940–943,  
1175 doi:10.1126/science.1192666, 2010.

1176 Zhao, M., Geruo, A., Velicogna, I. and Kimball, J. S.: Satellite observations of regional  
1177 drought severity in the continental United States using GRACE-based terrestrial water  
1178 storage changes, *J. Clim.*, 30(16), 6297–6308, doi:10.1175/JCLI-D-16-0458.1, 2017.

1179 Zhao, X., Wei, H., Liang, S., Zhou, T., He, B., Tang, B. and Wu, D.: Responses of  
1180 natural vegetation to different stages of extreme drought during 2009-2010 in  
1181 Southwestern China, *Remote Sens.*, 7(10), 14039–14054, doi:10.3390/rs71014039,  
1182 2015.

1183





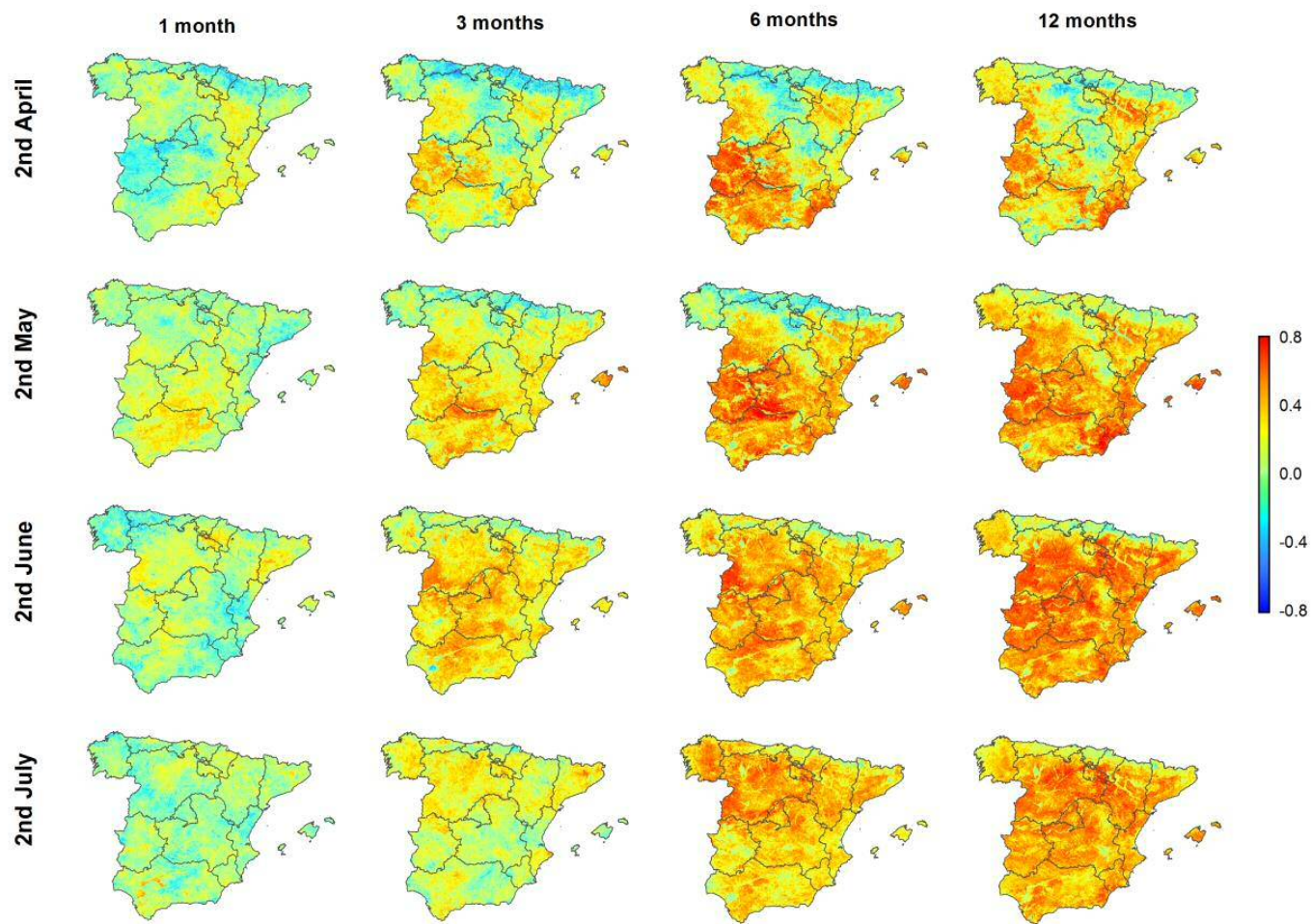
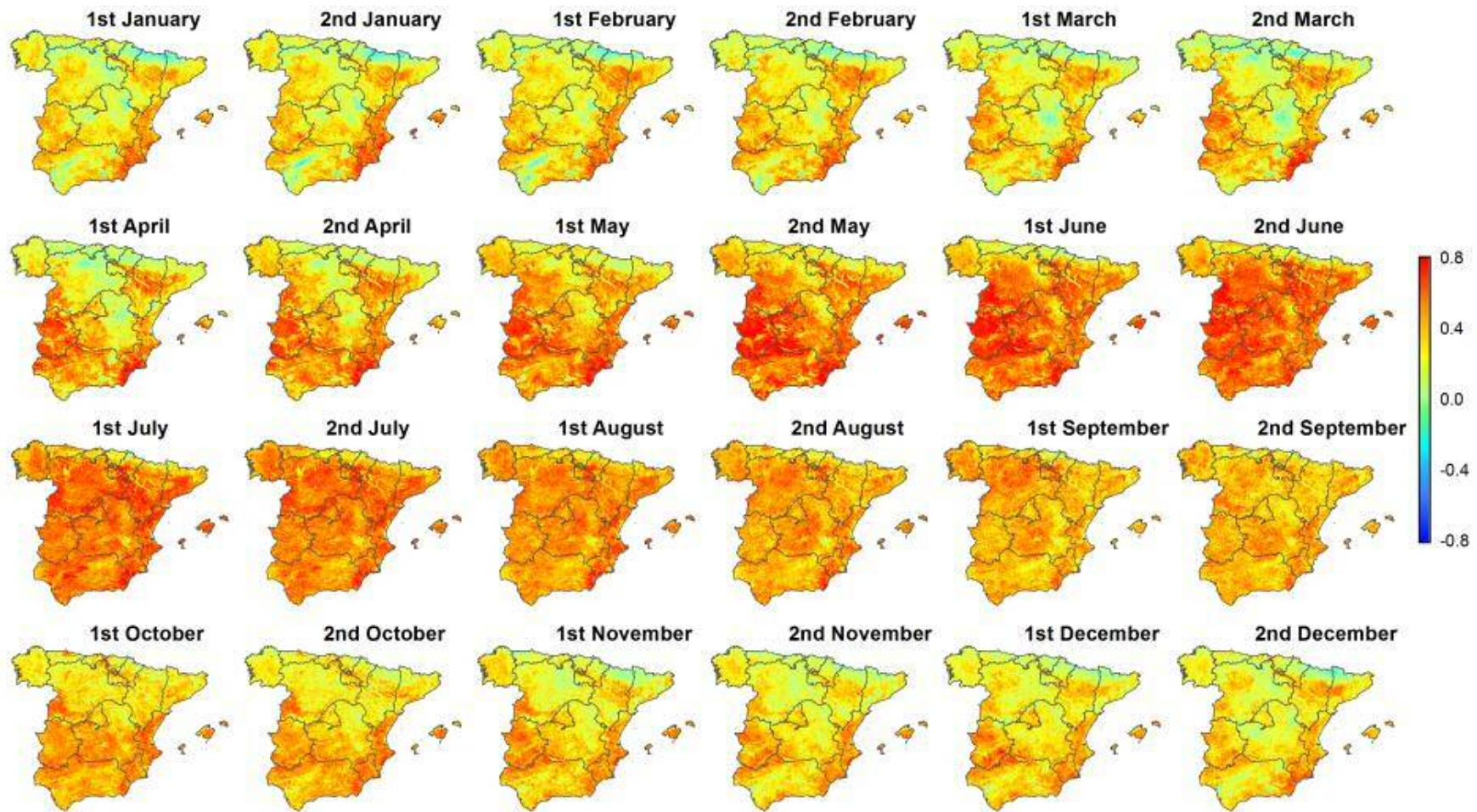


Figure 1: Spatial distribution of the Pearson's  $r$  correlation coefficient calculated between the sNDVI and different SPEI time scales for different semi-monthly periods.





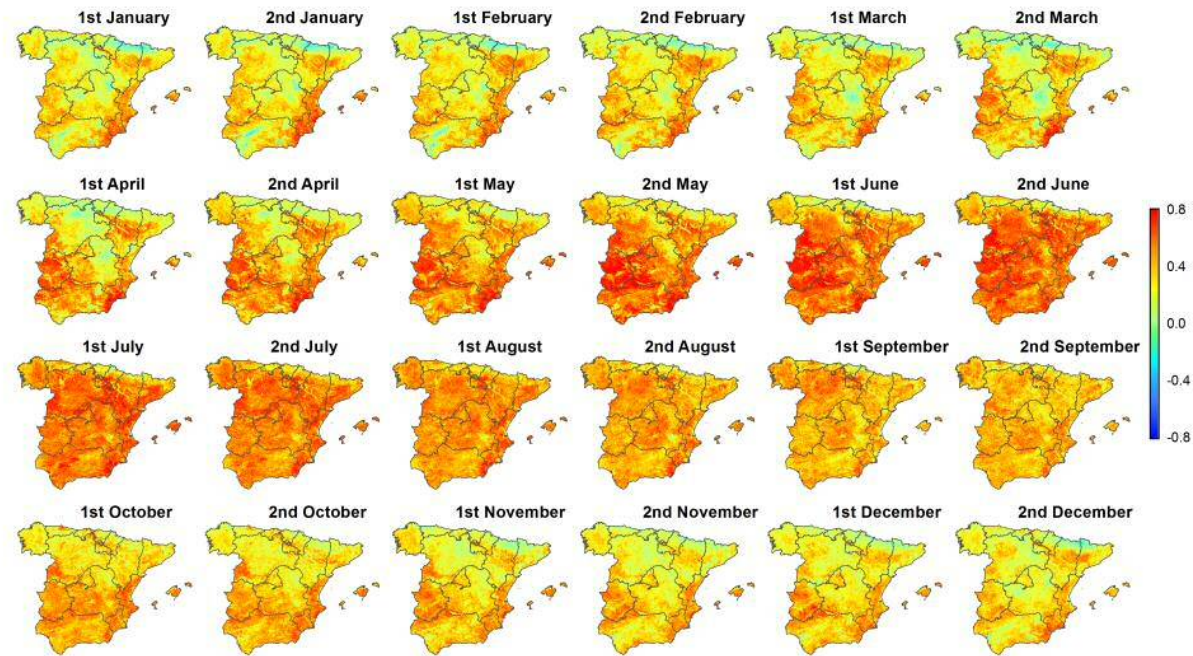


Figure 2: Spatial distribution of the maximum correlation between the sNDVI and the SPEI during the different semi-monthly periods.

1193  
1194

Table 1: Percentage of the total surface area according to the different significance categories of Pearson's r correlations between the sNDVI and SPEI.

	Negative (p < 0.05)	Negative (p > 0.05)	Positive (p > 0.05)	Positive (p < 0.05)
1st Jan	0.3	9.8	41.3	48.6
2nd Jan	0.4	8.7	40.2	50.7
1st Feb	0.3	7.5	39.9	52.3
2nd Feb	0.1	7.5	39.0	53.4
1st Mar	0.2	8.9	41.6	49.4
2nd Mar	0.2	11.3	38.2	50.3
1st Apr	0.0	7.6	34.9	57.5
2nd Apr	0.0	3.4	27.0	69.7
1st May	0.0	1.6	19.0	79.4
2nd May	0.0	0.9	14.2	84.9
1st Jun	0.0	1.2	10.8	88.0
2nd Jun	0.0	0.5	7.4	92.0
1st Jul	0.0	0.3	5.3	94.4
2nd Jul	0.0	0.1	4.5	95.4
1st Aug	0.0	0.1	5.9	94.1
2nd Aug	0.0	0.2	10.6	89.2
1st Sep	0.0	0.6	14.0	85.4
2nd Sep	0.0	0.4	16.9	82.6
1st Oct	0.0	1.5	24.5	74.0
2nd Oct	0.0	1.9	31.1	67.0
1st Nov	0.0	4.5	35.6	59.8
2nd Nov	0.0	4.8	41.8	53.4
1st Dec	0.0	4.4	38.9	56.7
2nd Dec	0.2	5.9	43.1	50.8

1195  
1196

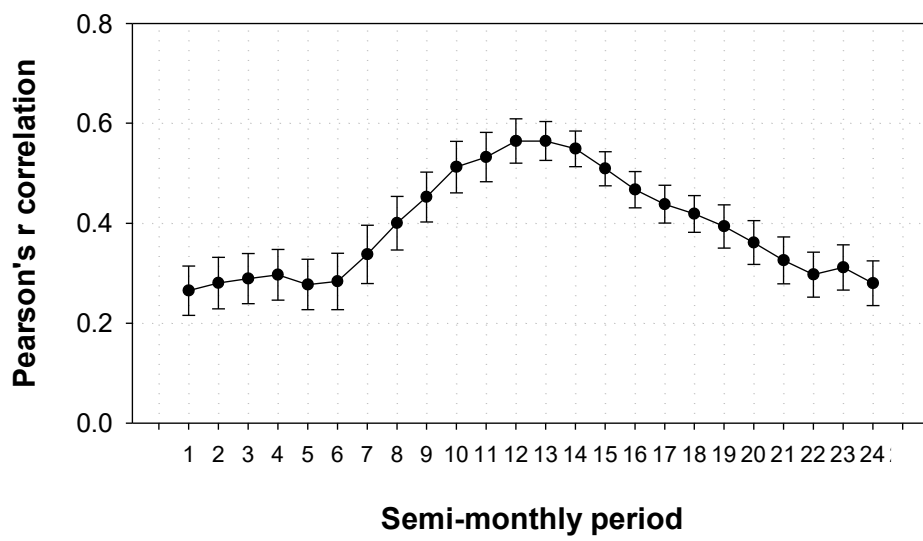
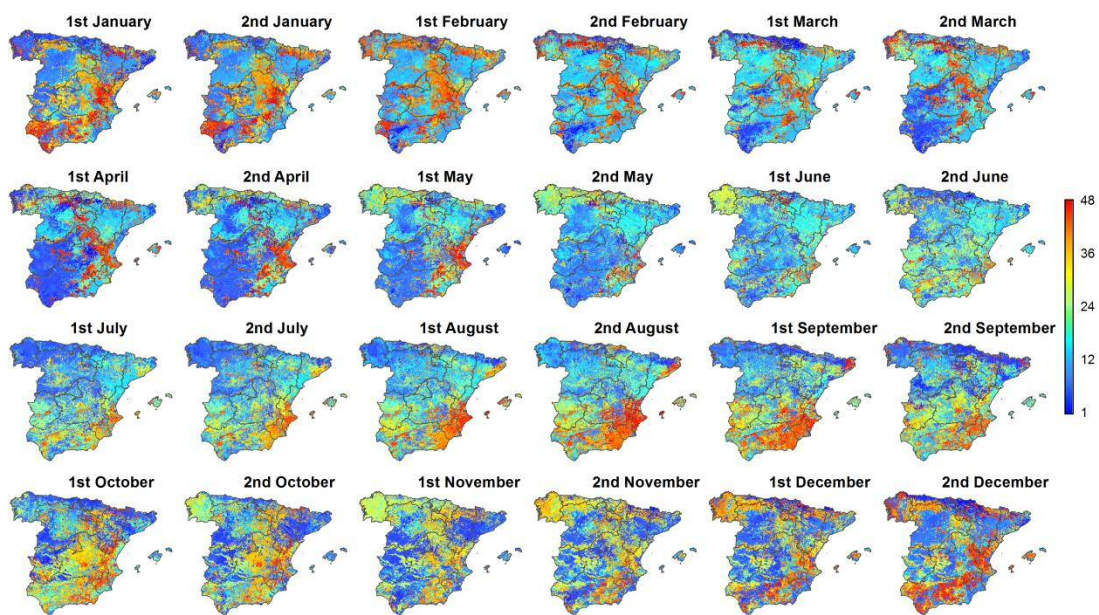


Figure 3: Spatial Average and standard error of the Pearson's r correlation coefficient between the sNDVI and SPEI time series.





1201

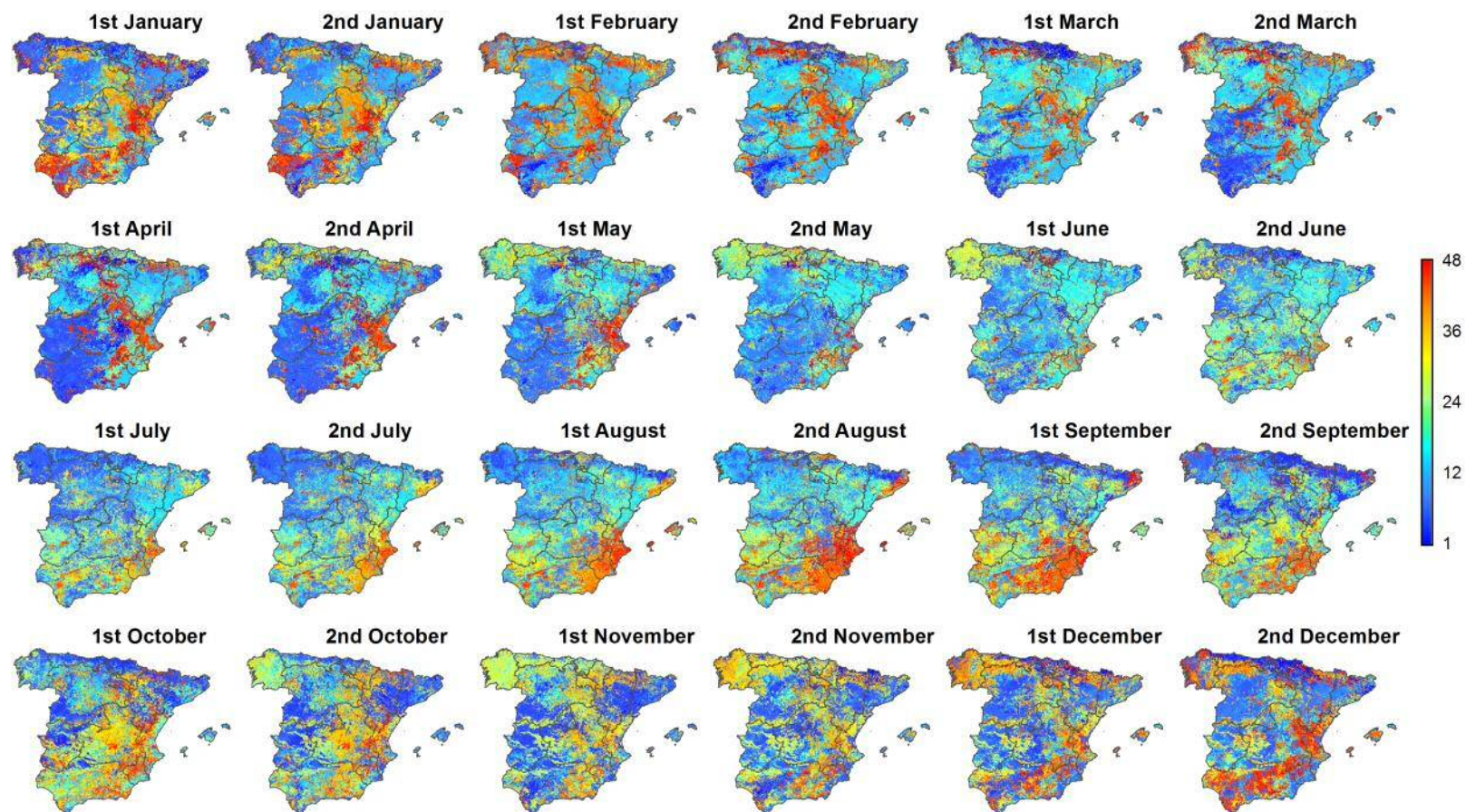


Figure 4: Spatial distribution of the SPEI time scales at which the maximum correlation between the sNDVI and SPEI is found for each one of the semi-monthly periods.

1205

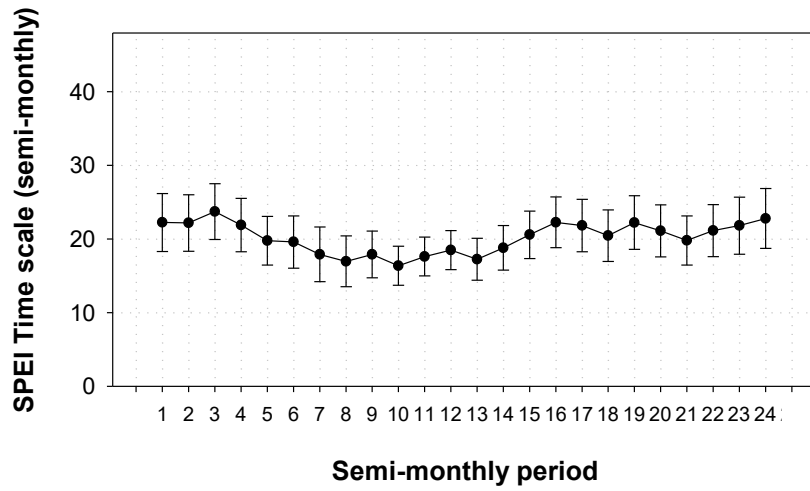
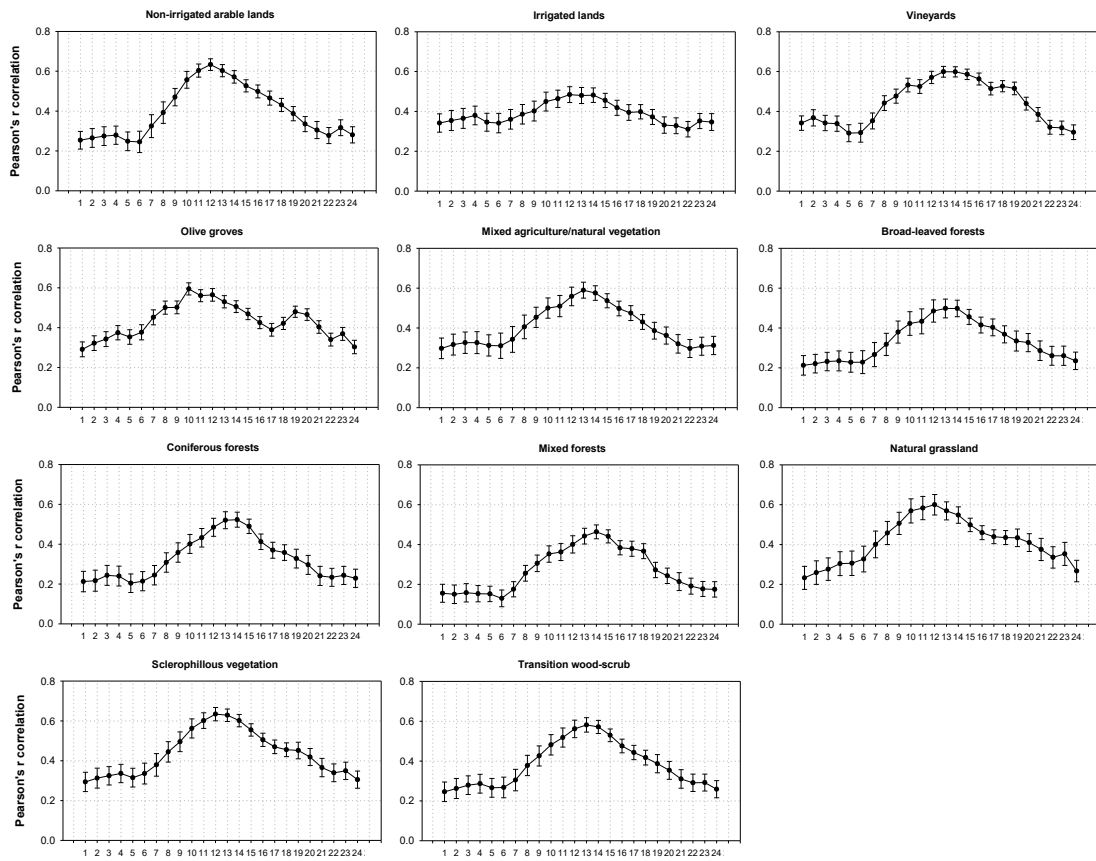
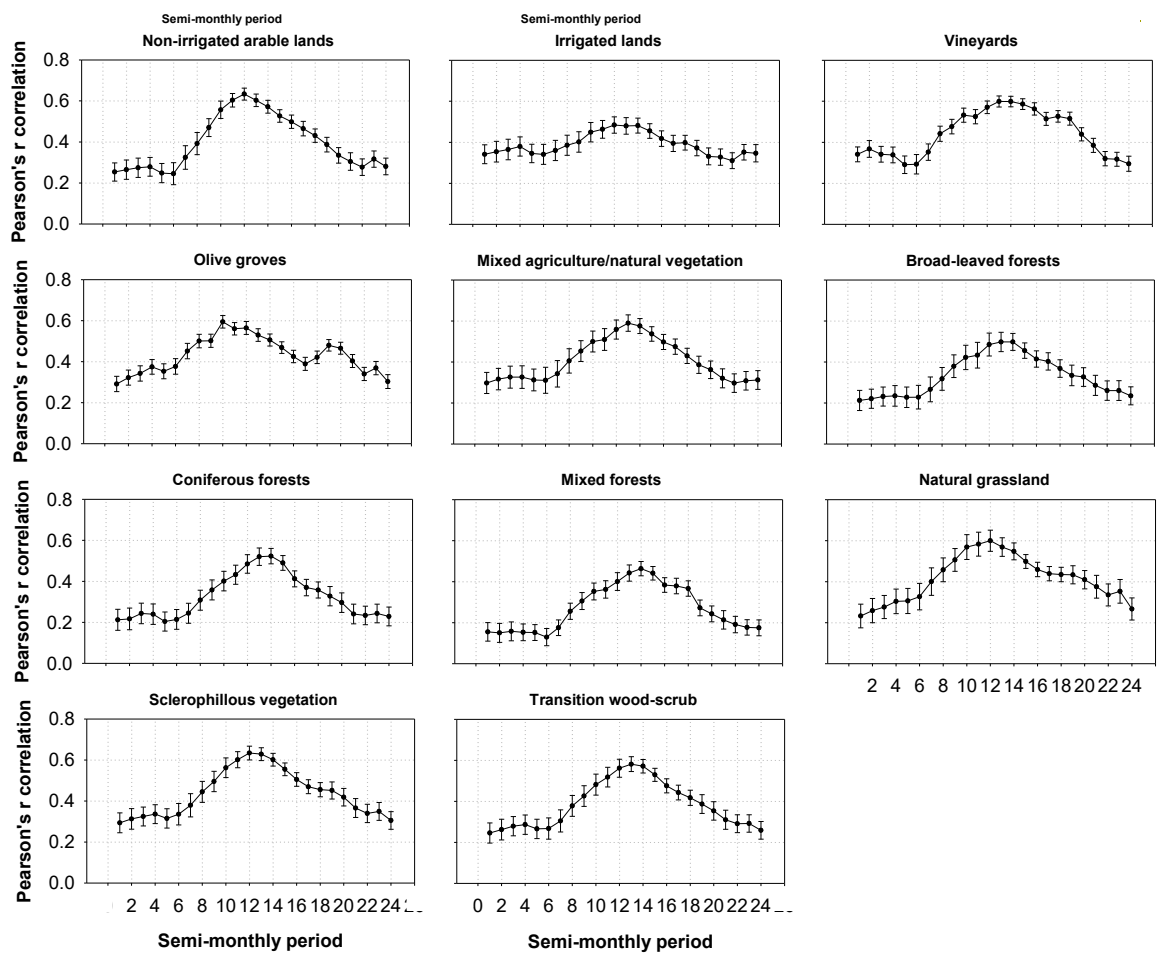


Figure 5: Average and standard error of the SPEI time scale at which the maximum Pearson's  $r$  correlation coefficient between the sNDVI and SPEI is found.





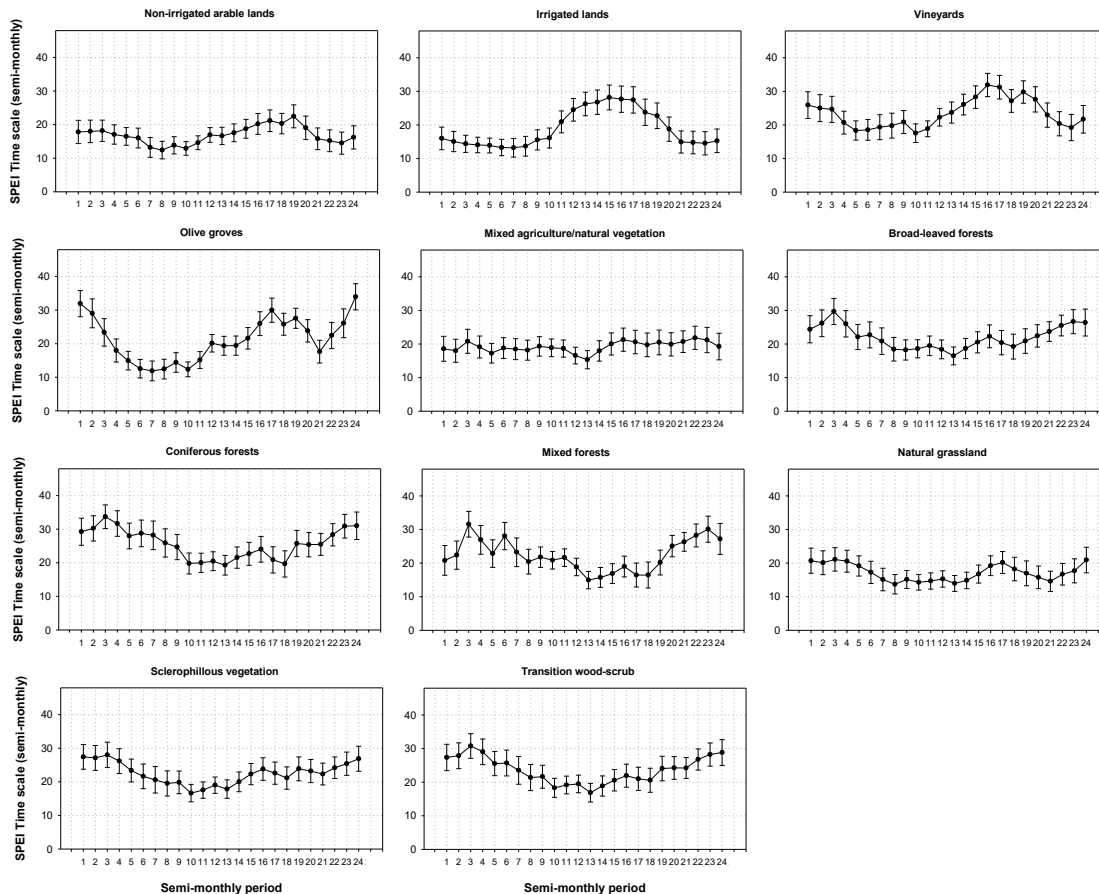
1211



1212

1213 Figure 6: Average and standard error of the Pearson's  $r$  correlation coefficient between  
1214 the sNDVI and SPEI for the different land cover types.

1215



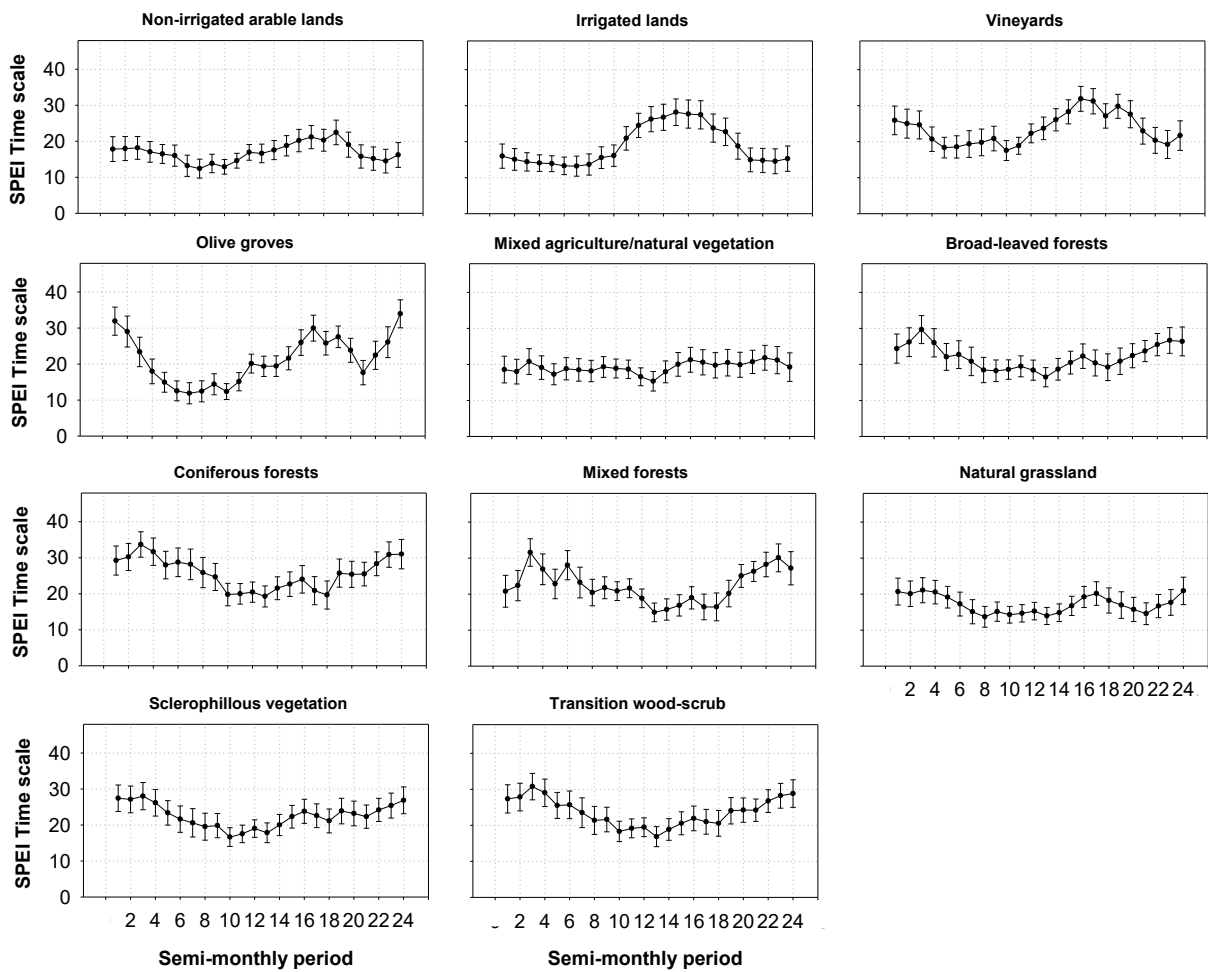
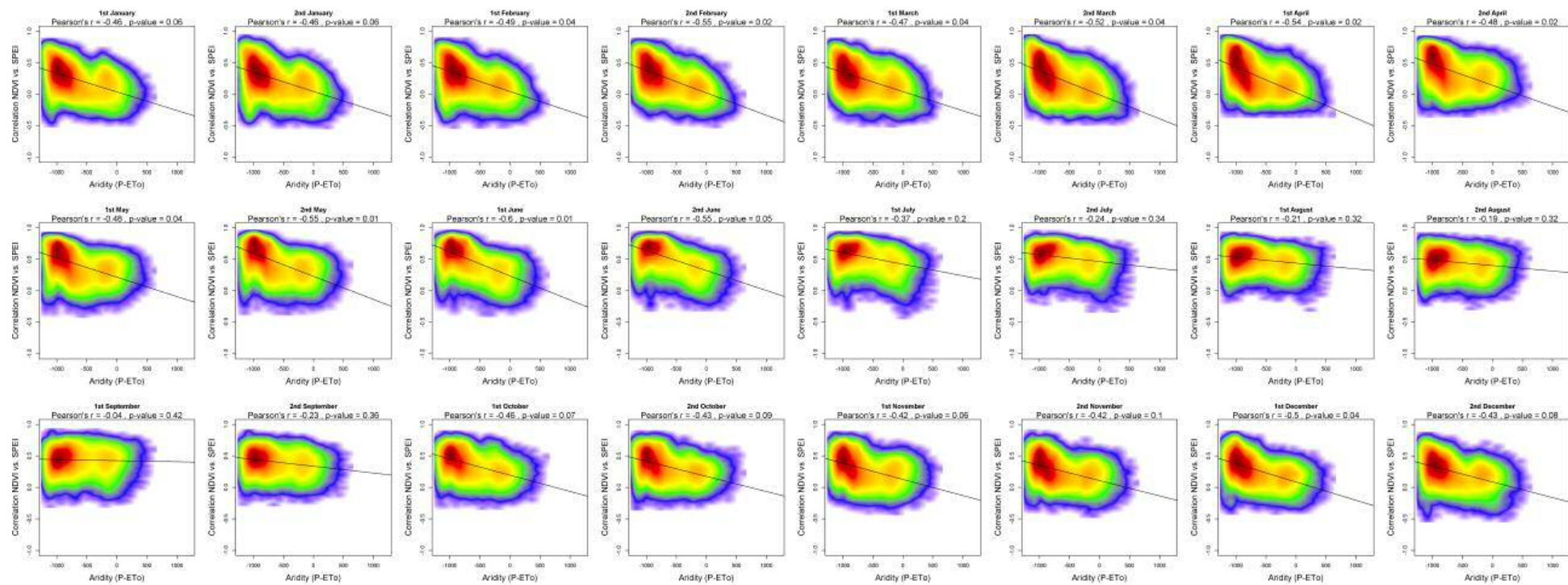


Figure 7: Average and standard error of the SPEI time scale at which the maximum Pearson's  $r$  correlation coefficient was found between the sNDVI and SPEI for the different land cover types.



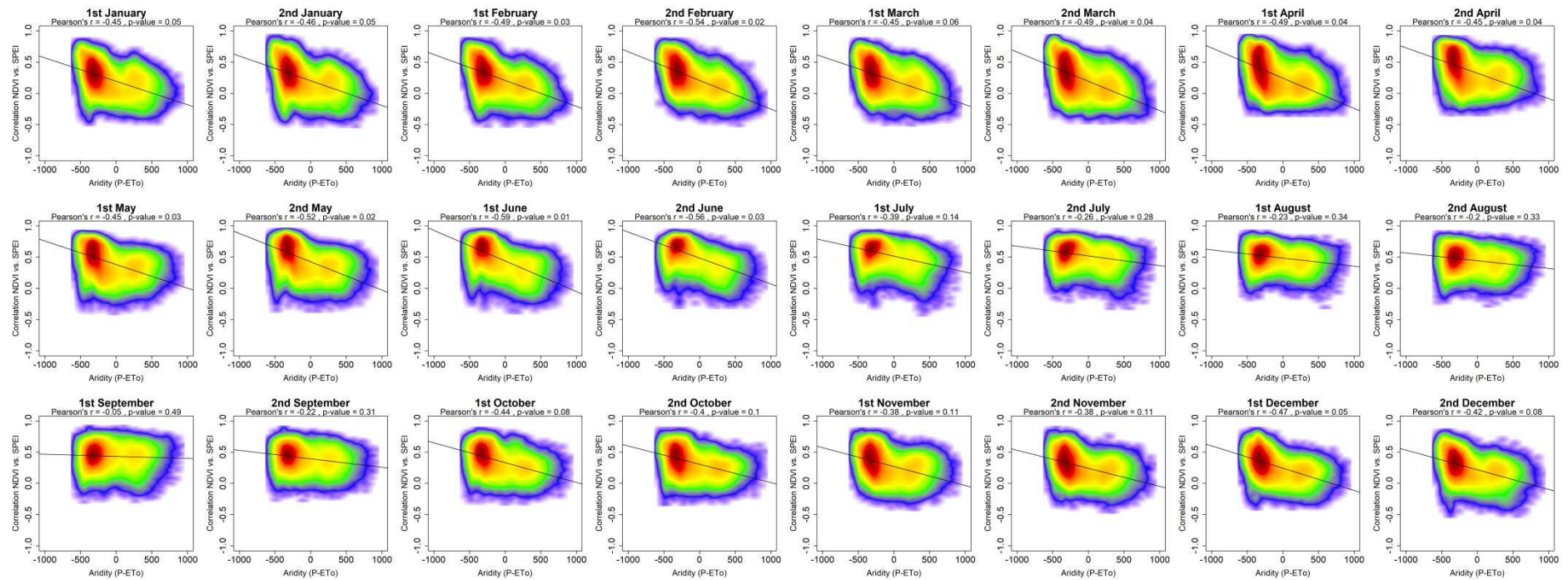
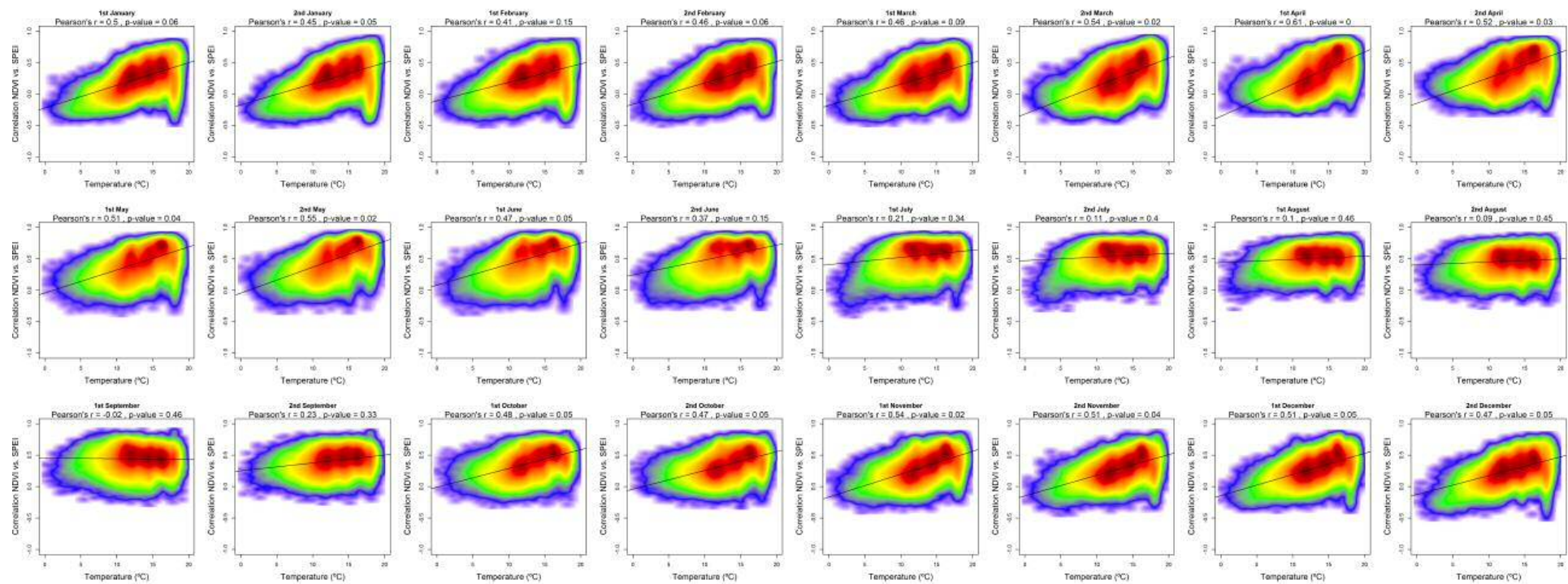


Figure 8. Scatterplots showing the relationships between the maximum correlation obtained between the sNDVI and the SPEI and the climate aridity (Precipitation minus **Atmospheric Evaporative Demand**).ETo). Given the high number of data, the signification of the correlation was obtained by a bootstrap method. 1000 random samples were extracted of 30 data points each, from which correlations and p-values were obtained. The final signification was assessed by means of the average of the obtained correlation coefficients and p-values, which are indicated in the figure.





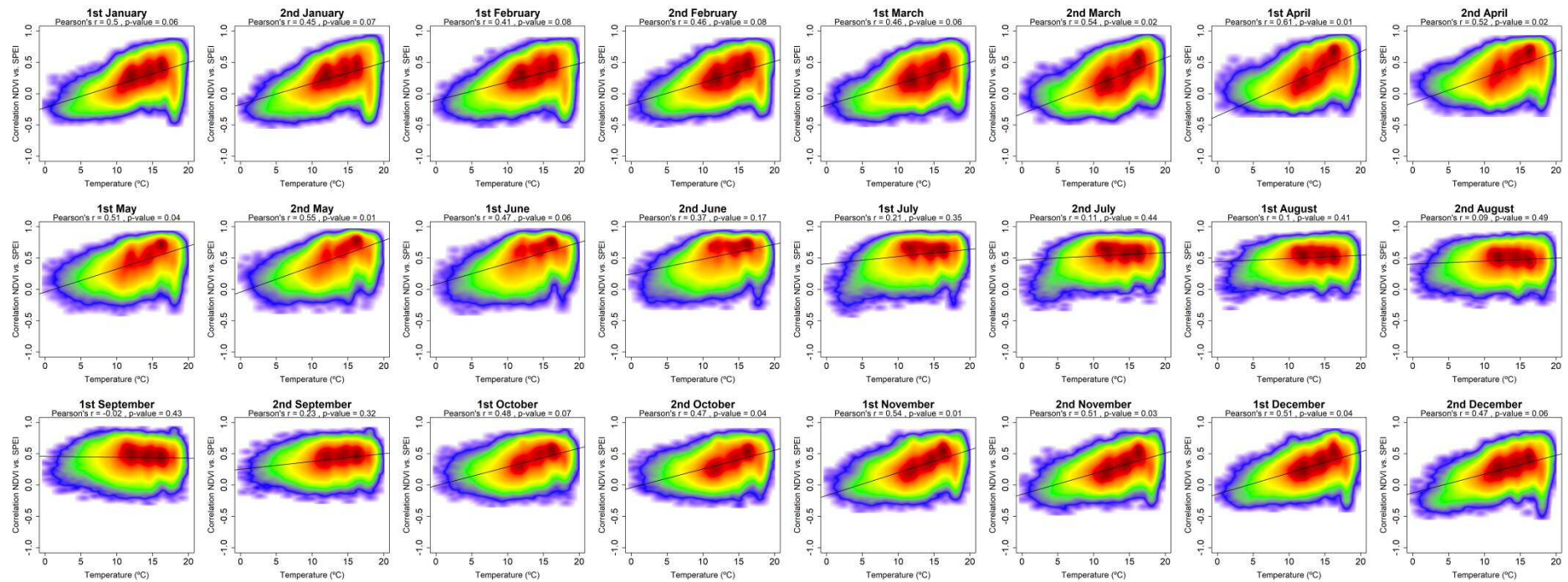


Figure 9. Scatterplots showing the relationships between the maximum correlation obtained between the sNDVI and the SPEI and the average air temperature. Given the high number of points the signification of correlation was obtained by means of 1000 random samples of 30 cases from which correlations and p-values were obtained. The final signification was assessed by means of the average of the obtained p-values.



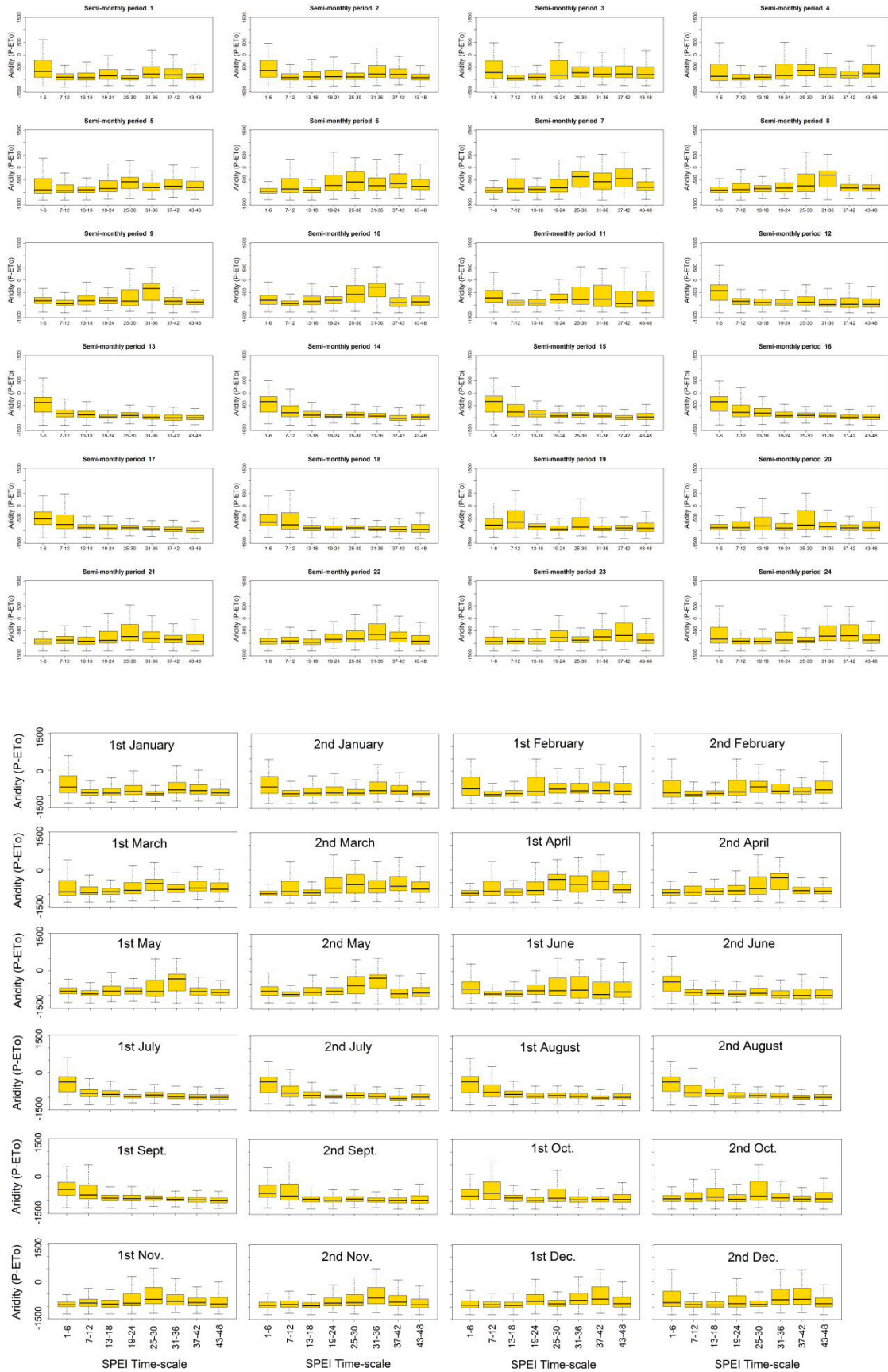


Figure 10: Box plots showing the climate aridity values-, as a function of the SPEI time scales at which the maximum correlation between the sNDVI and SPEI is recorded



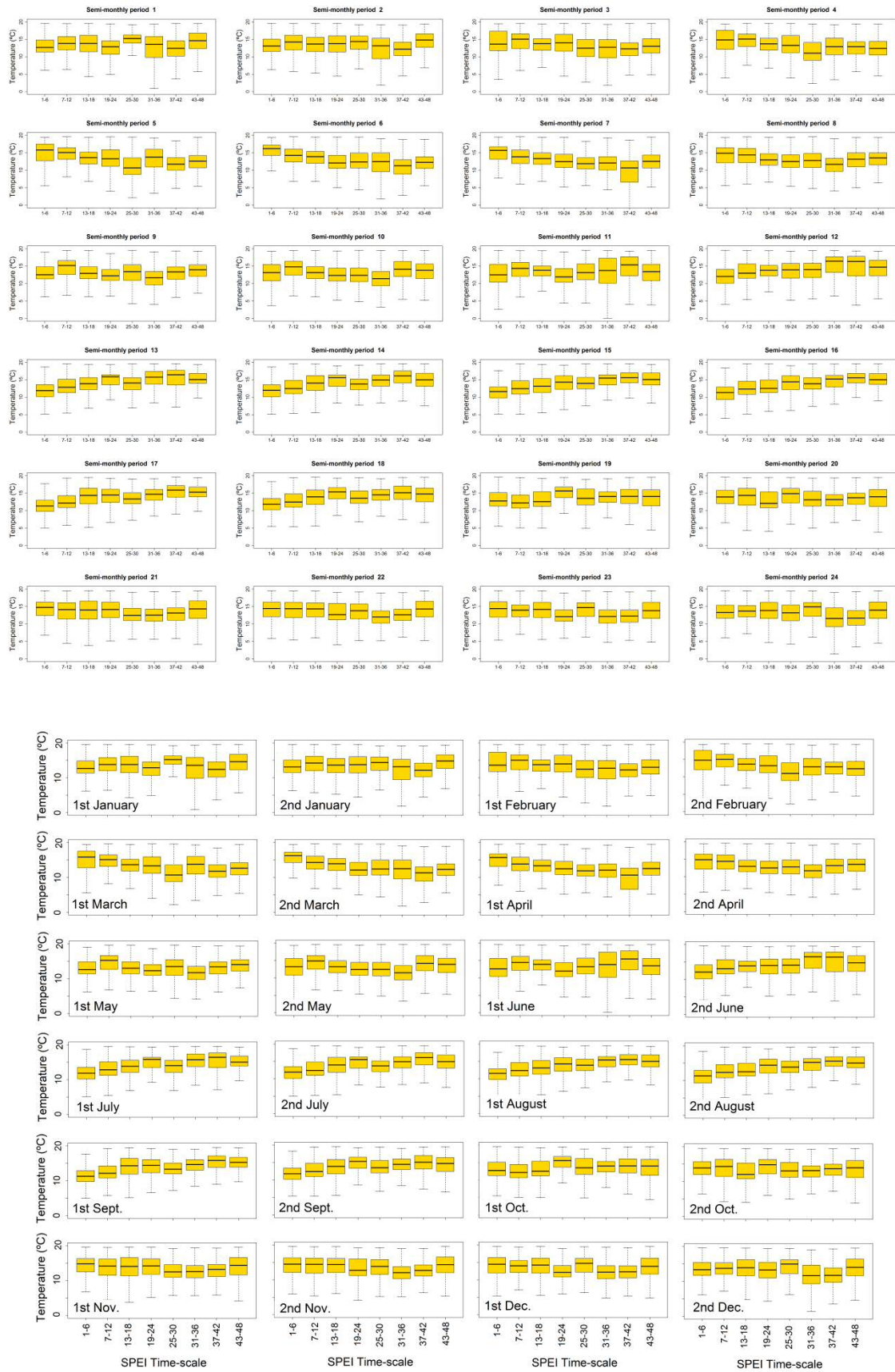


Figure 11: Box plots showing air temperature values, as a function of the SPEI time scales at which the maximum correlation between the sNDVI and SPEI is recorded.



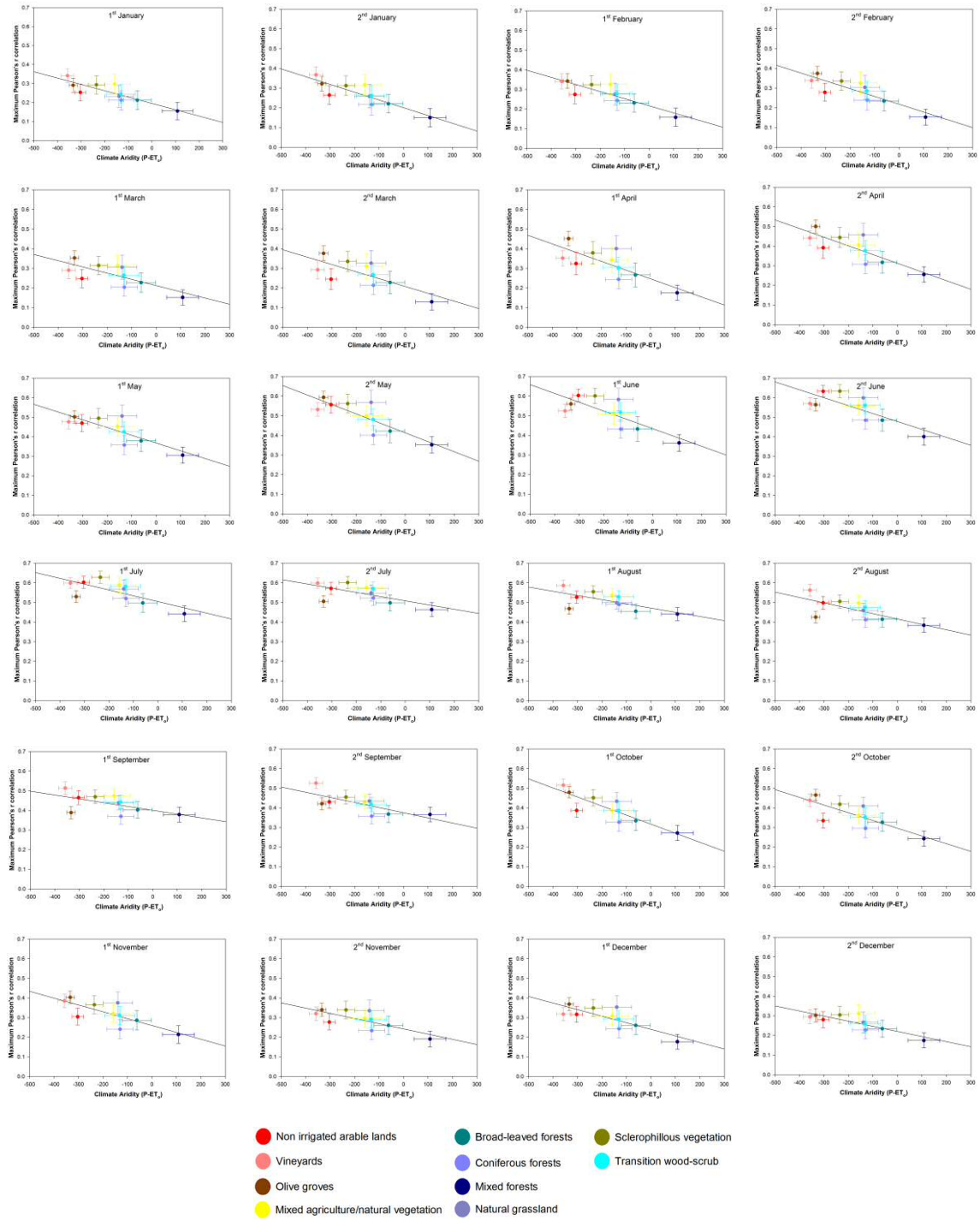


Figure 12: Scatterplots showing the relationship between the mean annual aridity and the maximum correlation found between the sNDVI and the SPEI in the different land cover types analysed in this study. Vertical and horizontal bars represent  $\frac{1}{4}$  of standard deviation around the mean values.

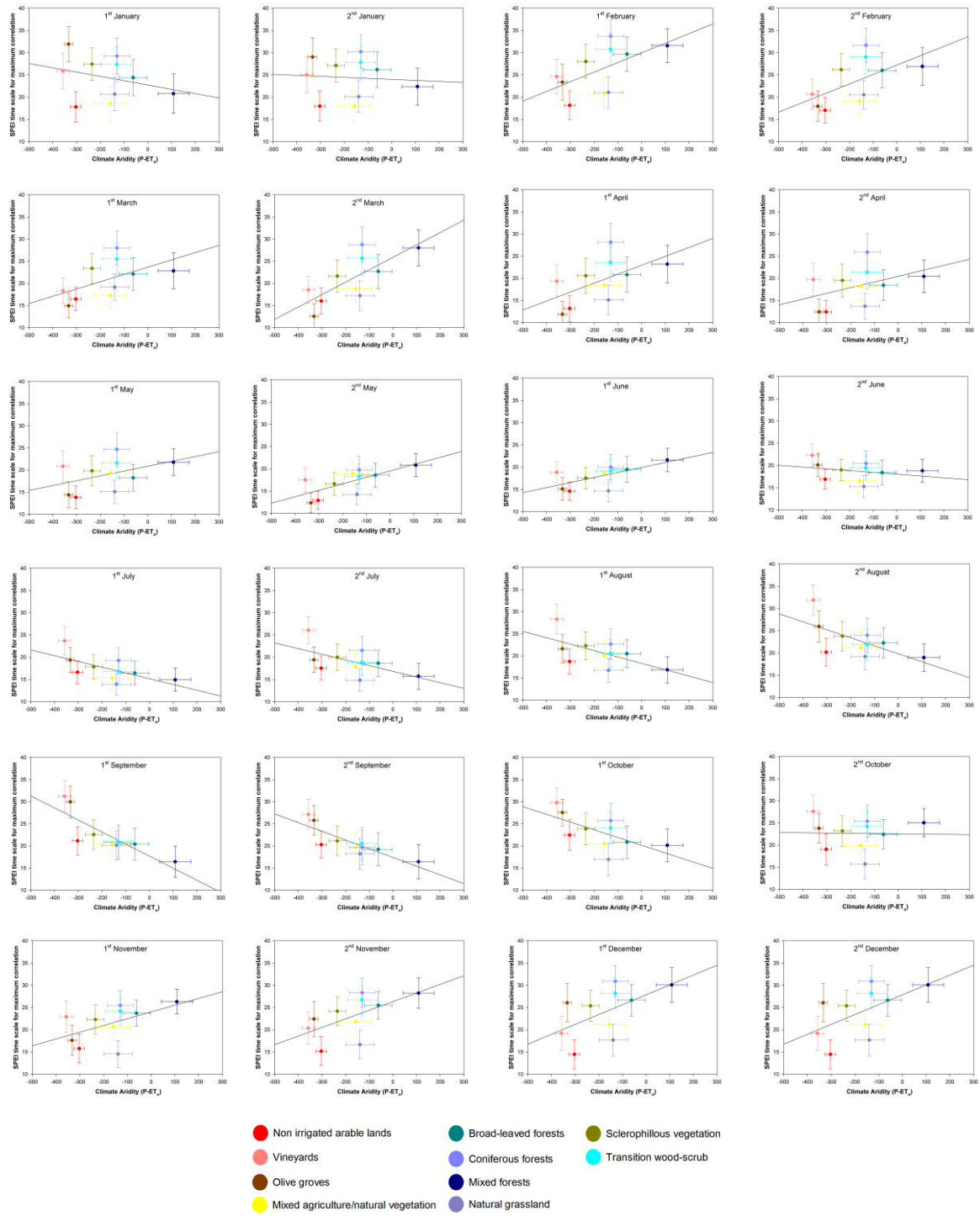


Figure 13: Scatterplots showing the relationship between the mean annual aridity and the SPEI time scale at which the maximum correlation is found between the sNDVI and SPEI for the different land cover types. Vertical and horizontal bars represent  $\frac{1}{4}$  of standard deviation around the mean values.