

Effects of Horizontal Resolution and Air–Sea Flux Parameterization on the Intensity and Structure of simulated Typhoon Haiyan (2013)

Mien-Tze Kueh, Wen-Mei Chen, Yang-Fan Sheng, Simon C. Lin, Tso-Ren Wu, Eric Yen, Yu-Lin Tsai, Chuan-Yao Lin

Response to referee 1

Dear Referee,

We thank the referee for the comments and suggestions to our manuscript. Please find our responses to your comments and questions below. The comments and questions are given in italics, and our responses are in blue.

GENERAL COMMENTS:

Through numerical simulation experiments and analysis, the authors present a study aimed at evaluating the influence of horizontal resolution and surface flux formulas on the development of Typhoon. The results show the increase of resolution and more reasonable surface flux formulas leads to an improvement of the typhoon intensity simulation. Although the innovation of the paper is not strong, the relevant conclusions of the paper have a positive impact on typhoon forecast.

It is clear a lot of effort has gone into this research. However, I question the design of the sensitivity experiments. As such, the recommendation is for major revisions, and this reviewer feels this manuscript will be improved by addressing the comments below.

We thank the referee's positive comments to our manuscript. We have carried out the numerical experiment of 1 km F2 in response to your specific comment 1. The revised manuscript has been edited by *Wallace Academic Editing* and is considered to be improved in grammar, punctuation, general readability, and native English usage. In addition, we followed the suggestion of *Wallace Academic Editing* and reworded the “impacts” to “effects” in our title, which is now:

Effects of Horizontal Resolution and Air–Sea Flux Parameterization on
the Intensity and Structure of simulated Typhoon Haiyan (2013)

Below are our point-by-point replies to your comments.

SPECIFIC COMMENTS

1. *On P8 line 5-9, “Because the simulation result of F2 is somewhat between those of F0 and F1 for other resolutions, we omitted the F2 test at 1-km resolution.” However, judging from the time evolution of typhoon intensity, the observed typhoon intensity is located between 1km F0 and 1km F1 experiments. Is there a better coincidence between 1km F2 and observation?
On P7 line 20-25, the author also mentioned that “F1 predicts larger CH and CQ at all wind speeds than F2 does, implying that F1 has a potentiality to gain larger enthalpy fluxes”, This may also be the reason why the simulated typhoon intensity of 1km F1 is higher than that observed.
Overall, I think the numerical test of 1 km F2 is very critical and cannot be omitted.*

We have carried out the experiment of 1 km F2 as suggested. This added experiment was also suggested in comment 4 by referee 2. Accordingly, we have modified the following figures for adding the experiments with flux option F2: Figs. 4, 6, 8, 9, 10, 11, 12, 13, 14, and 15. We have also modified some related sentences in the revised manuscript. The majority of them can be found in sub-section 2.3 (P8, Experimental designs), section 4 (P12, P14, P15, P16), section 5 (P18). Please find the respective changes in the revised manuscript.

With the new added 1 km F2, the observed typhoon intensity is now located between 1 km F2 and 1 km F1 experiments. The simulated typhoon intensity in 1 km F2 is relatively closer to that in 1 km F0, not 1km F1. We can't say there is a better coincidence between 1 km F2 and observation. Although the experiment 1 km F1 overpredicts the typhoon intensity, overall it still produces the best solution among others.

Regarding the statement quoted here, “F1 predicts larger CH and CQ at all wind speeds than F2 does, implying that F1 has a potentiality to gain larger enthalpy fluxes”, yes, we consider this to be the reason for the most intense typhoon found in 1 km F1 among others in the 1 km group.

2. *On P4 line 5, the horizontal grid spacing is 1, 3 and 6 km. So why do the authors still use the updated Kain-Fritsch convective scheme? If the convective scheme is not used, do the simulation results change?*

The convection parameterization (K-F cumulus scheme) was used for all resolutions. This is because we intend to keep consistency among all cases. The convective treatment was also mentioned in the comment 1 by referee 2. For typhoon Haiyan, we have carried out several tests with and without cumulus parameterization on the 3 km resolution grid. The 3 km resolution grid is for our control experiment in this study. The tests revealed that, simulations with and without cumulus parameterization produced overall similar simulated storm intensity. We did not perform any

convection parameterization test on the 1 km resolution grid, because of our limited computational resource.

Numerous studies have suggested that 3-4 km resolutions without any cumulus parameterization is sufficient to represent mesoscale convections (e.g., Weisman et al. 1997; Davis et al. 2008; Gentry and Lackmann, 2010). However, such a grid resolution is still insufficient for representing individual convective cells (e.g., Bryan et al. 2003; Miyamoto et al. 2013). The use of cumulus parameterization with the grid spacing below 3-4 km has been investigated by a number of recent studies. Some studies suggested to activate the cumulus parameterization for simulation of moist convective event with a grid resolution of 4 km (Deng and Stauffer 2006), 3 km (Lee et al 2011) and 2 km (Kotroni and Lagouvardos 2004). Some others, however, revealed that the activation of cumulus parameterization for simulation with grid spacings of 2-3 km produced overall similar simulated storm as in the simulation with explicit convection (e.g., Yu et al. 2011; Li et al. 2018; On et al. 2018). Sun et al. (2013) studied the appropriateness of a variety of cumulus parameterization schemes used in high-resolution simulations. They assumed that the cumulus scheme is closely related to the model convergence in simulating TC intensity. Here, a convergence of model solution in terms of TC intensity is that the simulated TC intensity would remain similar irrespective of any further reduction of the grid spacing. They found a weak convergence in fine resolution (from 3 to 1 km) simulations with most of the schemes, whereas the convergence is relatively strong in the simulations with a scale-aware scheme designed for any resolution. Accordingly, cumulus parameterization may still play a role in the fine resolution (3 to 1 km) simulations. The question then arises as to what is the appropriate design of cumulus parameterization for very high resolution. However, this is far beyond the scope of our present study.

3. *On P8 line 10, the general simulation usually chooses to gradually increase the resolution through nesting, while all resolution simulations in this paper do not use nesting. Why?*

Our large single domain was chosen to cover the majority of simulated Haiyan (2013)'s convection during the period of sensitivity simulation, and to make a cleaner comparison among those experiments running at different resolutions.

Higher-resolution nested model configuration are widely used in numerical weather prediction and regional climate modelling. The main reason for this is because large area of high-resolution model simulation is computationally too expensive. However, consistency between nested grids is also important. With lateral boundaries on multiple grids, model solutions may not be smooth across nested-domain boundaries. In a nested WRF simulation, a discontinuity in precipitation and moisture fields (i.e., a sharp gradient) across the inner domain boundaries has long been recognized by the WRF community. Uncertainty related to the use of multiple nested grids can result from mismatched model physics across nested-domain boundaries. For example, Warner and Hsu (2000) revealed that the treatment of convection on the outer grid can affect the explicit convection on the inner grid. Their

result indicated that the simulation biases related to the parameterized convection (e.g., errors in precipitation timing, precipitation intensity, and the vertical distribution of latent heating) can greatly modulate the explicit convection on the inner grid through the induced subsidence from the outer grid.

4. *Section 2 should be divided into subsections, such as 2.1 moisture roughness length, 2.2 momentum roughness length, 2.3 bulk transfer coefficients, 2.4 experimental designs.*

We have followed the suggestion of the referee. In the revised manuscript, section 2 has been divided into 3 subsections:

2.1 Flux parameterizations in WRF-ARW (page 4)

2.1.1 Momentum and moisture roughness length for flux option F0 (page 4)

2.1.2 Momentum and moisture roughness length for flux option F1 (page 5)

2.1.3 Momentum and moisture roughness length for flux option F2 (page 6)

2.2 Comparison between modelled and observational bulk transfer coefficients (page 7)

2.3 Experimental designs (page 8)

Please find the respective changes in the revised manuscript.

5. *On P8 line16-17, please show the original resolution of GFS data used.*

The GFS data has a horizontal resolution of 0.5 degree. We have added this information to the revised manuscript (P8, lines 25-26).

6. *From Fig. 4a, it is difficult to distinguish the track difference between different sensitivity tests, and it is suggested to modify this figure.*

We have decided to not modify the plot, because it is still hard to distinguish the track difference between different sensitivity tests even when different symbols were used to denote them. We changed the layout of Fig. 4 instead, so as to make the track plot larger. In addition, we added 2 supplemental figures (Figs. S1 and S2) to show the tracks and central positions of the simulated storms during the mature stage. We prefer to put the detailed information of tracks/positions in a supplement of the manuscript, because we feel that this is not absolutely necessary in the context of our present study. In the revised manuscript, we mentioned the 2 supplemental figures in the figure caption of Fig.4.

The figures are also shown below for your reference:

In Fig. S1, we show the central positions of simulated Haiyan during the time period from 1200UTC 7 November 2013 to 0000UTC 8 November 2013. The simulated tracks and central positions within a 5-hour time slot are shown in Fig. S2. For each experiment, the central time of the 5-hour time slot for

picking the hourly positions is taken as the simulated typhoon centered at its nearest location upon the best-track location at 1800UTC 7 November 2013.

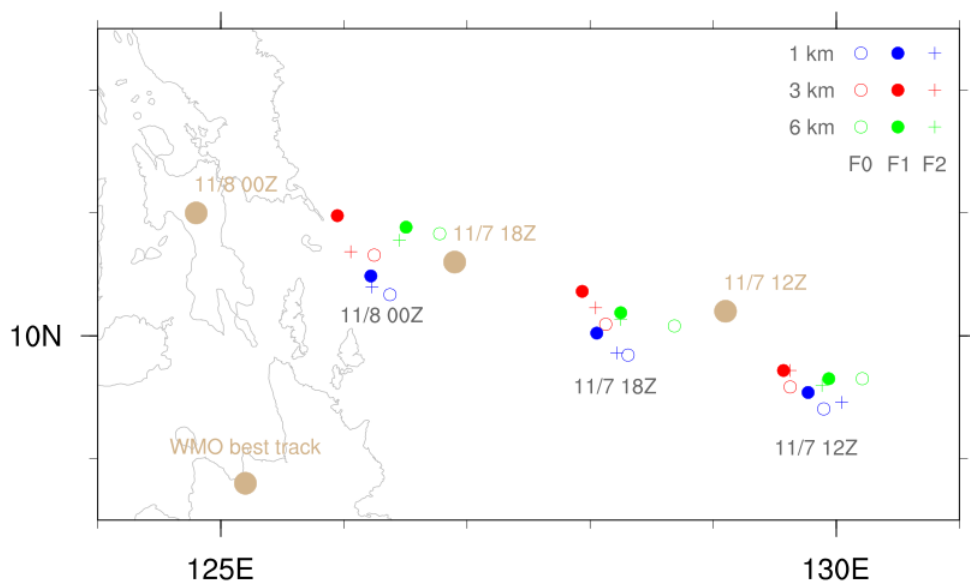
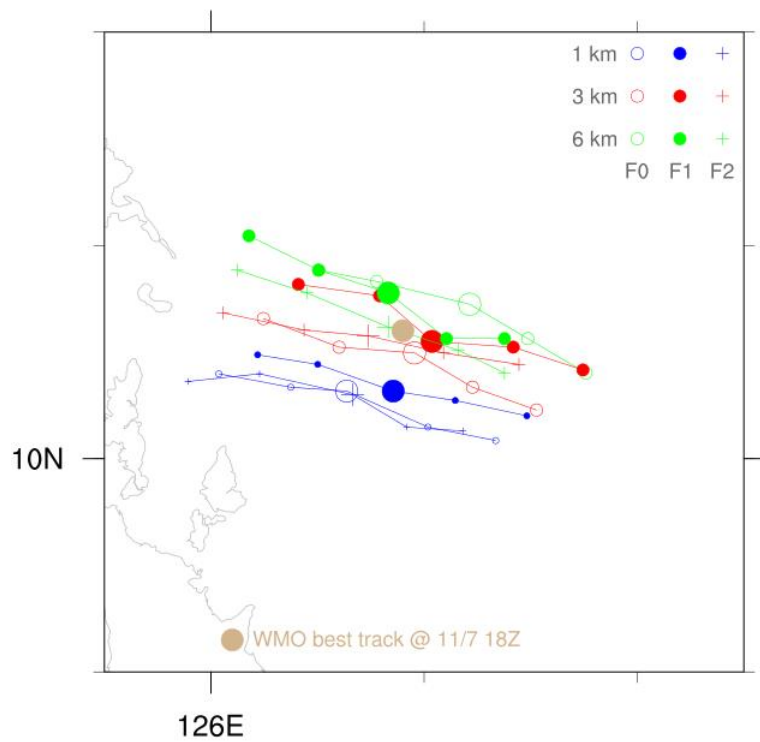


Fig. S1



7. *On P9 Line 6, “The intensity is not very sensitive to the resolutions of 3 and 6 km...”, while I think it is sensitive enough.*

We agree. In the revised manuscript, this sentence has been modified (P9, lines 11-13):
‘The intensity is sensitive to model resolution. Overall, the intensity increases as the resolution is changed from 6 to 3 km, but it significantly increases as grid spacing is reduced to 1 km.’

8. *There is no observed typhoon structure in this article as a comparison, and it is suggested to add corresponding figures.*

We do not have observations for the structure of typhoon Haiyan. In the former manuscript, we have provided a reference (Shimada et al. 2018) which revealed the observational information for the structure of Haiyan (2013). Please find the information on page 11 (lines 30-34) and page 12 (lines 1-5).

9. *The authors can introduce the use of contoured frequency by altitude diagrams. Maybe some readers are not familiar to those figures.*

We have added a paragraph to briefly introduce the use of CFADs. In the revised manuscript, these sentences have been added (from P16 lines 27-32 to P17 lines 1-7):

The CFADs is a statistical method for summarizing the vertical distributions of meteorological fields. A CFAD is constructed by collecting frequency distributions of a particular variable at evenly spaced altitudes within an area, compiling them into a two-dimensional (data bin and altitude) data set, and portraying the data on a single contour plot. The ordinate in the plot represents the altitude variation, and the abscissa the frequency bin. For each altitude on a CFAD, the frequencies should add up to 100 %. For a given CFAD, each point depicts the frequency of occurrence of the data in that bin at a specific altitude. Accordingly, the CFADs ignore horizontal variability and provide a bulk statistical measure for comparing the vertical structure of evolving fields of cumulonimbus clouds or any convective systems. Here, we take Fig. 13a as an example. On this CFAD, there are higher percentages (e.g., bounded by 20 %) found in the higher reflectivity bins at lower altitudes and found in the lower reflectivity bins at higher altitudes. The former can indicate convective cells or precipitations, whereas the latter can indicate snow or stratiform precipitation. Therefore, consider a set of CFADs for an evolving cumulonimbus clouds, say from the initiation to the mature stage, the maximum percentage at each altitude would change from vertically oriented to negatively tilted toward lower reflectivity values. More detailed interpretations of the use of CFADs can be found in the work by Yuter and Houze (1995).

10. *In general, this quality of this paper is a little difficult to be understood by readers. I hope the authors can carefully revise some long sentences to make it easy to understand.*

The revised manuscript has been edited by *Wallace Academic Editing* and is considered to be improved in grammar, punctuation, general readability, and native English usage.

11. *Why doesn't the positive effect of reasonable surface flux formulas be enhanced efficiently if the grid spacing is relatively large? It should explain more clearly in the paper.*

The surface fields and vertical structures between different resolution groups are more significant than that between flux options (cf. Figs. 6,8,9,10, and 11). The analyses indicate that the typhoon intensity is mainly controlled by the model resolution. Therefore, there are higher frequency of occurrences for extremely high wind speeds found in the experiments with higher resolution. From the description of the flux options given in section 2, we understand that near-surface wind speed is an influential factor for the calculation of bulk transfer coefficients. Accordingly, it is because of the low frequency of occurrences for extremely high wind speeds, the positive effect of the more reasonable surface option (F1) cannot be enhanced efficiently with a relatively large grid spacing of 6 km.

We have added several sentences to explain the above concept in the revised manuscript. The referee can find them on pages 13 (lines 29-32), 16 (lines 10-17), and 20 (lines 3-6).

TECHNICAL CORRECTIONS

We are very grateful for your careful corrections. In the revised manuscript, we have amended these sentences as suggested.

1. Page 3, Line 27, change “reaches” to “reached” Done. Now on page 3, line 24.

2. Page 7, Line 29, change “were” to “was”

Now on page 8, line 4. This should be a plural verb.

3. Page 7, Line 31, change “level-off” to “level-offs” Done. Now on page 8, line 5.

4. Page 8, Line 3, change “between” to “among” Done. Now on page 8, line 10.

5. Page 8, Line 4, this sentence is incomplete.

We have amended this sentence: “Accordingly, F1 is expected to have the highest potential to achieve the most intense storm among the three options because it has the highest values of C_K/C_D almost at all wind speeds.” Now on page 8, line 9-10.

6. Page 9, Line 30, change “agree” to “agrees” Done. Now on page 10, line 5.

- | | |
|--|--------------------------------|
| 7. Page 11, Line 18, change “enhanced” to “enhancement” | Done. Now on page 11, line 24. |
| 8. Page 12, Line 29, change “increases” to “increase” | Done. Now on page 13, line 1. |
| 9. Page 13, Line 22, change “detail” to “detailed” | Done. Now on page 13, line 33. |
| 10. Page 13, Line 23, change “increase” to “increases” | Done. Now on page 13, line 34. |
| 11. Page 15, Line 5, change “between” to “among” | Done. Now on page 15, line 16. |
| 12. Page 15, Line 13, change “consider” to “considering” | Done. Now on page 15, line 25. |
| 13. Page 15, Line 24, change “that” to “than” | Done. Now on page 16, line 1. |
| 14. Page 17, Line 26, change “represent” to “represents” | Done. Now on page 18, line 21. |
| 15. Page 18, Line 21, change “fluxes” to “flux” | Done. Now on page 19, line 16. |
| 16. Page 18, Line 32, change “later” to “layer” | Done. Now on page 19, line 27. |
| 17. Page 19, Line 19, change “as” to “for” | Done. Now on page 20, line 16. |

References

Bryan G. H., Wyngaard, J. C., and Fritsch, J. M.: Resolution requirements for the simulation of deep moist convection, *Mon. Wea. Rev.*, 131, 2394–2416, 2003.

Davis C., and Coauthors: Prediction of landfalling hurricanes with the Advanced Hurricane WRF model, *Mon. Wea. Rev.*, 136, 1990–2005, doi:10.1175/2007MWR2085.1, 2008.

Deng, A. and Stauffer, D. R.: On improving 4-km mesoscale model simulations, *J. Appl. Meteor.*, 45, 361-381, 2006.

Gentry M. S. and Lackmann, G. M.: Sensitivity of simulated tropical cyclone structure and intensity to horizontal resolution, *Mon. Wea. Rev.*, 138, 688–704, doi:10.1175/2009MWR2976.1, 2010.

Kotroni, V. and Lagouvardos, K.: Evaluation of MM5 High-Resolution Real-Time Forecasts over the Urban Area of Athens, Greece, *Journal of Applied Meteorology*, 43, 1666-1678, doi:10.1175/JAM2170.1, 2004.

Lee, S.-W., Lee, D.-K., and Chang, D.-E.: Impact of horizontal resolution and cumulus parameterization scheme on the simulation of heavy rainfall events over the Korean Peninsula, *Advances in Atmospheric Sciences* 28, 1-15, doi:10.1007/s00376-010-9217-x, 2011.

Li, F., Song, J., and Li, X.: A preliminary evaluation of the necessity of using a cumulus parameterization scheme in high-resolution simulations of Typhoon Haiyan (2013), *Natural Hazards*, 92, 647-671, doi:10.1007/s11069-018-3218-y, 2018.

Miyamoto Y., Kajikawa, Y., Yoshida, R., Yamaura, T., Yashiro, H., and Tomita, H.: Deep moist atmospheric convection in a subkilometer global simulation, *Geophys. Res. Lett.*, 40, 4922–4926, doi:10.1002/grl.50944, 2013.

On, N., Kim, H. M., and Kim, S.: Effects of Resolution, Cumulus Parameterization Scheme, and Probability Forecasting on Precipitation Forecasts in a High-Resolution Limited-Area Ensemble Prediction System, *Asia-Pacific Journal of Atmospheric Sciences* 54, 623-637, doi:10.1007/s13143-018-0081-4, 2018.

Shimada U., Kubota, H., Yamada, H., Cayan, E.O., and Hilario, F. D.: Intensity and Inner-Core Structure 5 of Typhoon Haiyan (2013) near Landfall: Doppler Radar Analysis, *Mon. Wea. Rev.*, 146, 583–597, doi:10.1175/MWR-D-17-0120.1, 2018.

Warner, T. T. and Hsu, H. M.: Nested-model simulation of moist convection: the impact of coarse-grid parameterized convection on fine-grid resolved convection, *Mon. Wea. Rev.*, 128, 2211–2231, 2000.

Weisman, M. L., Skamarock, W. C., and Klemp, J. B.: The resolution dependence of explicitly modeled convective systems, *Mon. Wea. Rev.*, 125, 527–548, 1997.

Yu, X. and Lee, T.-Y.: Role of convective parameterization in simulations of heavy precipitation systems at grey-zone resolutions — case studies, *Asia-Pacific Journal of Atmospheric Sciences* 47, 99-112, doi:10.1007/s13143-011-0001-3, 2011.

Effects of Horizontal Resolution and Air–Sea Flux Parameterization on the Intensity and Structure of simulated Typhoon Haiyan (2013)

Mien-Tze Kueh, Wen-Mei Chen, Yang-Fan Sheng, Simon C. Lin, Tso-Ren Wu, Eric Yen, Yu-Lin Tsai, Chuan-Yao Lin

Response to referee 2

Dear Referee,

We thank the referee for the comments and suggestions to our manuscript. Please find our responses to your comments and questions below. The comments and questions are given in italics, and our responses are in blue.

This contribution aims at investigating the impacts of model horizontal resolution and surface flux formulas on structure and intensity of tropical cyclones. The authors intend to study the sensitivity of the intensity of tropical cyclones to surface fluxes parameterizations of the Weather Research and Forecasting Model (WRF) at very high resolutions (1, 3 and 6 km, when model resolution approaches the convective scale).

The paper is in general structured and scientifically sound. English should be revised by a native speaker in order to correct some typos, but also to rephrase long sentences that make the manuscript hard to read. Scientifically, there are several limitations, especially regarding the design of the simulations, that require major revisions of the submitted version.

We thank the referee's positive comments to our manuscript. We have carried out the numerical experiment of 1 km F2 in response to your comment 4. The revised manuscript has been edited by *Wallace Academic Editing* and is considered to be improved in grammar, punctuation, general readability, and native English usage. In addition, we followed the suggestion of *Wallace Academic Editing* and reworded the “impacts” to “effects” in our title, which is now:

Effects of Horizontal Resolution and Air–Sea Flux Parameterization on the Intensity and Structure of simulated Typhoon Haiyan (2013)

Below are our point-by-point replies to your comments.

1. *Is convection parameterized (K-F cumulus scheme) for all resolutions? 6 km simulations are in the grey-zone, but cumulus should be explicitly resolved when working at resolutions below 3-4 km. How this parameterization impacts the results?*

Yes, the convection parameterization (K-F cumulus scheme) was used for all resolutions. This is because we intend to keep consistency among all cases. The convective treatment was also mentioned in the comment 2 by referee 1. For typhoon Haiyan, we have carried out several tests with and without cumulus parameterization on the 3 km resolution grid. The 3 km resolution grid is for our control experiment in this study. The tests revealed that, simulations with and without cumulus parameterization produced overall similar simulated storm intensity. We did not perform any convection parameterization test on the 1-km resolution grid, because of our limited computational resource.

Numerous studies have suggested that 3-4 km resolutions without any cumulus parameterization is sufficient to represent mesoscale convections (e.g., Weisman et al. 1997; Davis et al. 2008; Gentry and Lackmann, 2010). However, such a grid resolution is still insufficient for representing individual convective cells (e.g., Bryan et al. 2003; Miyamoto et al. 2013). The use of cumulus parameterization with the grid spacing below 3-4 km has been investigated by a number of recent studies. Some studies suggested to activate the cumulus parameterization for simulation of moist convective event with a grid resolution of 4 km (Deng and Stauffer 2006), 3 km (Lee et al 2011) and 2 km (Kotroni and Lagouvardos 2004). Some others, however, revealed that the activation of cumulus parameterization for simulation with grid spacings of 2-3 km produced overall similar simulated storm as in the simulation with explicit convection (e.g., Yu et al. 2011; Li et al. 2018; On et al. 2018). Sun et al. (2013) studied the appropriateness of a variety of cumulus parameterization schemes used in high-resolution simulations. They assumed that the cumulus scheme is closely related to the model convergence in simulating TC intensity. Here, a convergence of model solution in terms of TC intensity is that the simulated TC intensity would remain similar irrespective of any further reduction of the grid spacing. They found a weak convergence in fine resolution (from 3 to 1 km) simulations with most of the schemes, whereas the convergence is relatively strong in the simulations with a scale-aware scheme designed for any resolution. Accordingly, cumulus parameterization may still play a role in the fine resolution (3 to 1 km) simulations. The question then arises as to what is the appropriate design of cumulus parameterization for very high resolution. However, this is far beyond the scope of our present study.

2. *P. 4: What is the nesting approach followed in the simulations? Is it a one way or a two way nesting?*

No nesting approach was used for our simulations in this study. Our large single domain was chosen to cover the majority of simulated Haiyan (2013)'s convection during the period of sensitivity simulation, and to make a cleaner comparison among those experiments running at different resolutions.

Higher-resolution nested model configuration are widely used in numerical weather prediction and regional climate modelling. The main reason for this is because large area of high-resolution model simulation is computationally too expensive. However, consistency between nested grids is also important. With lateral boundaries on multiple grids, model solutions may not be smooth across nested-domain boundaries. In a nested WRF simulation, a discontinuity in precipitation and moisture fields (i.e., a sharp gradient) across the inner domain boundaries has long been recognized by the WRF community. Uncertainty related to the use of multiple nested grids can result from mismatched model physics across nested-domain boundaries. For example, Warner and Hsu (2000) revealed that the treatment of convection on the outer grid can affect the explicit convection on the inner grid. Their result indicated that the simulation biases related to the parameterized convection (e.g., errors in precipitation timing, precipitation intensity, and the vertical distribution of latent heating) can greatly modulate the explicit convection on the inner grid through the induced subsidence from the outer grid. The nesting issue was also mentioned in the comment 3 by referee 1.

3. *Nudging is critical for correctly representing the TC structures, their paths and intensities. So, ideally, some sensitivity runs should take nudging options into account. If not possible, further details about nudging approach followed and its impacts on the results should be elaborated.*

In this study, the simulations were performed with two stages. The nudging stage is a 24-hour period before the 78 hours sensitivity stage. No analysis nudging was applied to the model grid during the entire period of sensitivity experiment.

In this study, the analysis nudging was applied to the horizontal wind components, potential temperature, and water vapor mixing ratio. The nudging coefficients for all variables were set at 0.0003 s^{-1} . The nudging was only applied at all levels above the planetary boundary layer. We have added the information in the revised manuscript. (page 8, lines 21-23)

For typhoon Haiyan, we have carried out several tests with and without the nudging options on the 3 km resolution grid. The 3 km resolution grid is for our control experiment in this study. The tests revealed that, simulations without nudging during the '24-h pre-sensitivity stage' produced larger typhoon track errors than that with a nudging stage. Regarding the TC structure and intensity, we did not find significant differences in the Haiyan case between the experiments with and without the nudging

treatment. We did not perform any nudging test on the 1 km resolution grid, because of our limited computational resource.

4. *P. 8, lines 5-10: It is not clear to the reader why 1 km F2 test is omitted. The authors indicate that the "the simulation result of F2 is somewhat between those of F0 and F1 for other resolutions, we omitted the F2 test at 1-km resolution". Can you extrapolate that for the 1 km resolution? I think the authors should elaborate on F2 at 1 km.*

We have carried out the experiment of 1 km F2 as suggested. This added experiment was also suggested in comment 1 by referee 1. Accordingly, we have modified the following figures for adding the experiments with flux option F2: Figs. 4, 6, 8, 9, 10, 11, 12, 13, 14, and 15. We have also modified some related sentences in the revised manuscript. The majority of them can be found in sub-section 2.3 (P8, Experimental designs), section 4 (P12, P14, P15, P16), section 5 (P18). Please find the respective changes in the revised manuscript.

With the new added 1 km F2, the observed typhoon intensity is located between 1 km F2 and 1 km F1 experiments. Overall, the simulated typhoon intensity (and other features presented) of F2 is again somewhat between those of F0 and F1 at the resolution of 1 km.

5. *I cannot find the observed structure of the TC in the manuscript, which would be very important for building confidence on the modelling results.*

We do not have observations for the structure of typhoon Haiyan. In the former manuscript, we have provided a reference (Shimada et al. 2018) which revealed the observational information for the structure of Haiyan (2013). Please find the information on page 11 (lines 30-34) and page 12 (lines 1-5).

References

Bryan G. H., Wyngaard, J. C., and Fritsch, J. M.: Resolution requirements for the simulation of deep moist convection, *Mon. Wea. Rev.*, 131, 2394–2416, 2003.

Davis C., and Coauthors: Prediction of landfalling hurricanes with the Advanced Hurricane WRF model, *Mon. Wea. Rev.*, 136, 1990–2005, doi:10.1175/2007MWR2085.1, 2008.

- Deng, A. and Stauffer, D. R.: On improving 4-km mesoscale model simulations, *J. Appl. Meteor.*, 45, 361-381, 2006.
- Gentry M. S. and Lackmann, G. M.: Sensitivity of simulated tropical cyclone structure and intensity to horizontal resolution, *Mon. Wea. Rev.*, 138, 688–704, doi:10.1175/2009MWR2976.1, 2010.
- Kotroni, V. and Lagouvardos, K.: Evaluation of MM5 High-Resolution Real-Time Forecasts over the Urban Area of Athens, Greece, *Journal of Applied Meteorology*, 43, 1666-1678, doi:10.1175/JAM2170.1, 2004.
- Lee, S.-W., Lee, D.-K., and Chang, D.-E.: Impact of horizontal resolution and cumulus parameterization scheme on the simulation of heavy rainfall events over the Korean Peninsula, *Advances in Atmospheric Sciences* 28, 1-15, doi:10.1007/s00376-010-9217-x, 2011.
- Li, F., Song, J., and Li, X.: A preliminary evaluation of the necessity of using a cumulus parameterization scheme in high-resolution simulations of Typhoon Haiyan (2013), *Natural Hazards*, 92, 647-671, doi:10.1007/s11069-018-3218-y, 2018.
- Miyamoto Y., Kajikawa, Y., Yoshida, R., Yamaura, T., Yashiro, H., and Tomita, H.: Deep moist atmospheric convection in a subkilometer global simulation, *Geophys. Res. Lett.*, 40, 4922–4926, doi:10.1002/grl.50944, 2013.
- On, N., Kim, H. M., and Kim, S.: Effects of Resolution, Cumulus Parameterization Scheme, and Probability Forecasting on Precipitation Forecasts in a High-Resolution Limited-Area Ensemble Prediction System, *Asia-Pacific Journal of Atmospheric Sciences* 54, 623-637, doi:10.1007/s13143-018-0081-4, 2018.
- Shimada U., Kubota, H., Yamada, H., Cayan, E.O., and Hilario, F. D.: Intensity and Inner-Core Structure 5 of Typhoon Haiyan (2013) near Landfall: Doppler Radar Analysis, *Mon. Wea. Rev.*, 146, 583–597, doi:10.1175/MWR-D-17-0120.1, 2018.
- Sun, Y., Yi, L., Zhong, Z., Hu, Y., and Ha, Y.: Dependence of model convergence on horizontal resolution and convective parameterization in simulations of a tropical cyclone at gray-zone resolutions, *J. Geophys. Res. Atmos.*, 118, 7715–7732, doi:10.1002/jgrd.50606, 2013.
- Warner, T. T. and Hsu, H. M.: Nested-model simulation of moist convection: the impact of coarse-grid parameterized convection on fine-grid resolved convection, *Mon. Wea. Rev.*, 128, 2211–2231, 2000.
- Weisman, M. L., Skamarock, W. C., and Klemp, J. B.: The resolution dependence of explicitly modeled convective systems, *Mon. Wea. Rev.*, 125, 527–548, 1997.

Yu, X. and Lee, T.-Y.: Role of convective parameterization in simulations of heavy precipitation systems at grey-zone resolutions — case studies, *Asia-Pacific Journal of Atmospheric Sciences* 47, 99-112, doi:10.1007/s13143-011-0001-3, 2011.

Effects of Horizontal Resolution and Air–Sea Flux Parameterization on the Intensity and Structure of simulated Typhoon Haiyan (2013)

Mien-Tze Kueh¹, Wen-Mei Chen¹, Yang-Fan Sheng¹, Simon C. Lin², Tso-Ren Wu³, Eric Yen⁴, Yu-Lin Tsai³, Chuan-Yao Lin¹

¹Research Center for Environmental Changes, Academia Sinica, Taipei, Taiwan

²Academia Sinica Grid Computing Centre, Institute of Physics, Academia Sinica, Taipei, Taiwan

³Institute of Hydrological and Oceanic Sciences, National Central University, Taiwan

⁴Academia Sinica Grid Computing Centre, Academia Sinica, Taipei, Taiwan

10

Correspondence to: Chuan-Yao Lin (yao435@rcec.sinica.edu.tw)

Abstract. This study investigates the effects of horizontal resolution and surface flux formulas on typhoon intensity and structure simulations through the case study of Super Typhoon Haiyan (2013). Three sets of surface flux formulas in the Weather Research and Forecasting Model were tested using grid spacings of 1, 3, and 6 km. Increased resolution and more reasonable surface flux formulas can both improve typhoon intensity simulation, but their effects on storm structures differ. A combination of a decrease in momentum transfer coefficient and an increase in enthalpy transfer coefficients has greater potential to yield a stronger storm. This positive effect of more reasonable surface flux formulas can be efficiently enhanced when the grid spacing is appropriately reduced to yield an intense and contracted eyewall structure. As the resolution increases, the eyewall becomes more upright and contracts inward. The size of updraft cores in the eyewall shrinks, and the region of downdraft increases; both updraft and downdraft become more intense. As a result, the enhanced convective cores within the eyewall are driven by more intense updrafts within a rather small fraction of the spatial area. This contraction of the eyewall is associated with an upper-level warming process, which may be partly attributed to air detrained from the intense convective cores. This resolution dependence of spatial scale of updrafts is related to the model effective resolution as determined by grid spacing.

25

1 Introduction

Intensity forecasting of tropical cyclones (TCs) remains a major challenge to numerical weather prediction. Numerous small-scale processes are involved in TC development, most of which are parameterized in numerical weather models. Therefore, the accuracy of physical representations in numerical models is crucial to TC intensity prediction (e.g., Bao et al., 2012). By contrast, several studies have shown that increasing the horizontal resolution has a positive effect on TC intensity and structure simulation (e.g., Davis et al., 2008; Fierro et al., 2009; Nolan et al., 2009; Gentry and Lackmann, 2010; Kanada and Wada,

30



已删除: Impacts

已删除: impacts

已删除: the

已删除: different

已删除: Both i

已删除: ed

2016). Of these, most have recognized that sufficiently high resolution is responsible for development of deep and intense eyewall updraft and thus a more organized inner-core structure of TCs (Fierro et al., 2009; Nolan et al., 2009; Gentry and Lackmann, 2010; Gopalakrishnan et al., 2011; Kanada and Wada, 2016). However, even with a very high model resolution, physical processes remain a source of uncertainty in numerical weather prediction of TC intensity (e.g., Fierro et al., 2009; Gentry and Lackmann, 2010). For instance, the predictions of TC intensity and structure are sensitive to the model representation of physical processes involving planetary boundary layer evolutions (Braun and Tao, 2000; Hill and Lackmann, 2009; Bao et al., 2012; Nolan et al., 2009; Kanada et al., 2012; Coronel et al., 2016) and surface exchange fluxes (Braun and Tao, 2000; Davis et al., 2008; Hill and Lackmann, 2009; Bao et al., 2012; Nolan et al., 2009; Chen et al., 2010; Green and Zhang, 2013; Zhao et al., 2017).

已删除: the majority

Gopalakrishnan et al. (2011) noted that at higher resolutions, larger moisture fluxes (resulting from strong convergence in the boundary layer) can lead to stronger storms. Kanada et al. (2012) indicated that large heat and water vapor transfers, essential for producing intense TCs, are attributable to the large vertical eddy diffusivities in lower boundary layers. Nolan et al. (2009) studied the sensitivity of TC inner-core structures to planetary boundary layer (PBL) parameterizations. They found that improvement of the representation of surface fluxes in association with these PBL schemes could improve their respective simulations of the TC boundary layer structure; however, discrepancies between the PBL schemes remained. By conducting 2 km resolution experiments, Coronel et al. (2016) found that both surface drag and vertical mixing in the boundary layer were capable of substantially changing low-level wind structures. The authors further revealed that the mechanisms underlying the two effects differed. Braun and Tao (2000) studied the sensitivity of TC intensity to PBL schemes and surface flux representations using a set of 4 km resolution experiments. They concluded that representation of surface heat fluxes was the most determinative factor in TC intensity simulation. Bao et al. (2012) indicated that different PBL schemes lead to differences in the structure of simulated TC, whereas the near-surface drag coefficient controls the relationship between the maximum wind speed and minimum central pressure.

已删除: s

已删除: —

已删除: very

已删除: with an upright and contracted eyewall structure—can be attributed

The air–sea surface flux exchanges of moist enthalpy (through surface latent heat and sensible heat fluxes) acts as the primary energy source, whereas the surface momentum flux (the surface drag) is the sink of TC development. The potential intensity for a steady-state (or mature) tropical cyclone has long been hypothesized to be proportional to the ratio of surface bulk transfer coefficients for enthalpy and momentum, C_k/C_D (Emanuel, 1986, 1995). The importance of surface flux formulas to TC intensity and structure simulations has also been recognized by numerous studies (e.g., Braun and Tao 2000; Davis et al., 2008; Hill and Lackmann, 2009; Bao et al., 2012; Nolan et al., 2009; Chen et al., 2010; Green and Zhang, 2013). In recent years, observational estimates of surface fluxes revealed that the momentum transfer coefficient exhibits a steady increase to wind speed of approximately 30 m s^{-1} but then levels off for higher wind speeds (e.g., Powell et al., 2003; Jarosz et al., 2007; French et al., 2007). For extremely high wind speeds (e.g., exceeds 50 m s^{-1}), observational estimates for the momentum transfer coefficient are rather scattered (Bell et al., 2012; Richter et al., 2016). Both near-surface wind speed and surface sea state are the contributing factors in the formulation of bulk transfer coefficient for surface fluxes (e.g., Geernaert et al., 1987;

已删除: the

已删除: behind

已删除: were different

已删除: via

已删除: the

已删除: the

已删除: near surface

Smith, 1988; Fairall et al., 2003; Zweers et al., 2010). Some studies have introduced wind wave information into the momentum flux parameterization (e.g., Fairall et al., 2003; Zweers et al., 2010; Zhao et al., 2017). Zweers et al. (2010) shown that their sea spray-dependent surface drag coefficient is in good agreement with observational estimates reported by Powell et al. (2003), and leads to improvement in TC intensity forecasts. However, there remains considerable uncertainty in the estimates of these parameters. For example, Green and Zhang (2013) performed the intensity simulation for Hurricane Katrina (2005) by using wind-dependent fluxes exchange coefficients and all their experiments overestimated the storm intensity. They attributed this to the lack of ocean cooling effect in their atmosphere-alone model simulations. Zhao et al. (2017) considered three physical processes, namely breaking wave-induced sea spray, nonbreaking-induced vertical mixing, and rainfall-induced sea surface cooling, using a fully coupled atmosphere–ocean–wave model to improve the tropical cyclone intensity simulation. Compared with the observations, their simulations produced a comparable intensity for Super Typhoon Haiyan (2013), but severely overestimated the intensity of another weaker typhoon. It appears that there is still a lack of a surface flux parameterization appropriate for the full spectrum of TC intensity. There is also need to have further study of the inter-relationship between surface fluxes and other model configuration, including cloud microphysics as well as grid spacing. For example, the effect of grid spacing on surface flux parameterization regarding TC structure and intensity simulation has not yet been explored.

In this paper, we investigate the effects of model horizontal resolution and surface flux formulas on TC structure and intensity simulations. We intend to study the sensitivity of TC intensity simulations to surface flux parameterizations when model resolution approaches the convective scale. The sensitivity experiments are performed on Super Typhoon Haiyan (2013) with various resolutions and surface flux formulas. Typhoon Haiyan, the strongest TC in 2013, was a category 5-equivalent super typhoon on the Saffir–Simpson hurricane wind scale. Because of its minimum central pressure of 895 hPa, Haiyan became the strongest TC at landfall to date in the western North Pacific Ocean (Schiermeier, 2013; Lander et al., 2014). Lin et al. (2014) suggested that Haiyan’s intensity can be considered “a league” higher than the majority of existing category 5 typhoons on the Saffir–Simpson wind scale. Such super typhoons are expected to increase both in number and intensity under climate change (e.g., Bender et al., 2010; Schiermeier, 2010; Kanada et al., 2012; Lin et al., 2014), which brings even more challenges to TC prediction. Super Typhoon Haiyan (2013) moved west-northwestward over the warm ocean and reached its central pressure of 895 hPa several hours before it made its first landfall. The nonrecurved track tendency allows us to focus on the intensity simulation. Section 2 describes the experimental setup, including the description of the surface flux formulas and experimental designs. Sections 3 and 4 present the results in terms of temporal evolution and radius–height structure, respectively. Section 5 provides statistical and energy spectral analyses, followed by conclusions in Section 6.

2 Flux parameterization and experimental designs

In this study, the Weather Research and Forecasting (WRF)—The Advanced Research WRF modeling system (version 3.8.1; hereafter, WRF-ARW) was used (Skamarock et al., 2008). In all simulations, all physics options other than the surface flux

已删除: the

已删除: spray

已删除: is still a large degree of

已删除: -

已删除: As c

已删除: the

已删除: es

已删除: impacts

已删除: es

已删除: The

已删除: reaches

options (described below) were identical, including the WRF single-moment three-class microphysics scheme (Hong et al., 2004), updated Kain–Fritsch scheme (Kain and Fritsch, 1990; Kain, 2004) with a moisture-advection-based trigger function (Ma and Tan, 2009), Rapid Radiation Transfer Model for Global Circulation Models (RRTMG) shortwave and longwave schemes (Iacono et al., 2008), Yonsei University boundary layer scheme (Hong et al., 2006) used with the revised fifth-generation Pennsylvania State University–National Center for Atmospheric Research Mesoscale Model (MM5) similarity surface layer scheme (Jiménez et al., 2012), and the unified Noah land surface model (Tewari et al., 2004) over land. In WRF, the bulk transfer coefficients as well as all surface fluxes (momentum, sensible heat, and latent heat) are parameterized in a surface layer scheme. A brief description of the surface flux parameterization in WRF is provided in Appendix A for reference.

2.1 Flux parameterization in WRF-ARW

The behaviors of bulk transfer coefficients are strongly dependent on the momentum and scalar (heat and moisture) roughness lengths [cf. Eqs (A7), (A8), and (A9)]. Over the ocean, roughness length depends on the varying surface sea state, which is considerably ascribed by wind waves (e.g., Geernaert et al., 1987; Smith, 1988; Fairall et al., 2003). Under high wind conditions, wave breaking and wind tearing the breaking wave chest generate sea foam and sea spray, thereby leading to significant regime change in the surface sea state, which in turn affects the specification of the roughness length (e.g., Powell et al., 2003; Donelan et al., 2004; Zweers et al., 2010). For the surface layer physics over the ocean, WRF-ARW provides alternative formulations aerodynamic roughness lengths of the surface momentum and scalar fields for tropical storm application, which can be set through the namelist variable isftcflx. There are three isftcflx options available in WRF-ARW. Here, we study the resolution dependence of all three. Each flux option is referred to by its corresponding number (0, 1, and 2) in the WRF namelist file.

Subsequently, we describe the three sets of formulas of roughness lengths for momentum, sensible heat, and latent heat that have been implemented in the revised MM5 scheme in WRF-ARW. For clarity, we calculated the bulk transfer coefficients and the momentum scaling parameter (friction velocity) with respect to the three sets of implemented roughness length formulas in the case of neutral stability and a reference height of 10 m, using a set of pseudo wind speeds. Under neutral condition, the stability parameters $(z + z_0)/L$ and $(z + z_h)/L$ are zero [cf. Eqs (A7), (A8), and (A9)]; therefore, all terms that involving stability function can be dropped. The results are depicted in Figs. 1 and 2.

2.1.1 Momentum and moisture roughness length for flux option F0

For the default flux option (F0), the momentum roughness length is given as Charnock’s (1955) expression plus a viscous term, following Smith (1988):

$$z_0 = \alpha \frac{u^2}{g} + \frac{0.11\nu}{u_*}, \quad (1)$$

已删除: /or

已删除: , to a large degree,

已删除: effect

已删除: the version 3.8.1 of

已删除: in

已删除: Below

已删除: version 3.8.1

已删除: the sake of

已删除: ,

已删除: ed

where α is the Charnock coefficient and ν the kinematic viscosity of dry air, for which a constant value of $1.5 \times 10^{-5} \text{ m}^2\text{s}^{-1}$ is used. The Charnock's expression relates the aerodynamic roughness length to friction velocity for describing the gross effect of wavy sea surface, which is generated and supported by wind stress; the viscous term describes roughness behavior under smooth flow condition. The use of this roughness length formula yields a monotonic increase in the momentum transfer coefficient, as well as roughness length, with wind speed exceeds approximately 3.0 m s^{-1} (Fig. 1; black thick solid curve). A constant value of $\alpha = 0.0185$ is used for F0.

The moisture roughness length is adapted from COARE 3.0 (Fairall et al., 2003) and expressed as a function of the roughness Reynolds number, with an additional lower limit of 2.0×10^{-9} used in this option:

$$z_q = \max[2.0 \times 10^{-9}, \min(1.0 \times 10^{-4}, 5.5 \times 10^{-5} R_*^{-0.6})], \quad (2)$$

where $R_* = z_0 u_* / \nu$ is the roughness Reynolds number and ν the kinematic viscosity of dry air and a function of air temperature for the R_* calculation. The temperature roughness length z_h is set to equal to z_q . The upper limit of 1.0×10^{-4} keeps the scalar roughness length invariant at extremely wind speeds (below approximately 4.0 m s^{-1}), whereas the lower limit of 2.0×10^{-9} is implemented to prevent the model from blowing up. Below this high wind speed, the heat and moisture transfer coefficients increase monotonically with wind speed (Fig. 1; gray thin solid and black dashed curves). For this option, the formulas of roughness lengths are different from that used by Green and Zhang (2013), where the viscous term for z_0 was given as a constant value of 1.59×10^{-5} , z_h is set equal to z_0 , and z_q is set to a somewhat different functional form of z_0 and u_* .

2.1.2 Momentum and moisture roughness length for flux option F1

For the flux option 1 (F1), the momentum roughness length is expressed as a blend of two roughness length formulas (Green and Zhang, 2013):

$$z_0 = \max[1.27 \times 10^{-7}, \min(z_w z_2 + (1 - z_w) z_1, 2.85 \times 10^{-3})], \quad (3a)$$

$$z_w = \min\left(1, \left[\frac{u_*}{1.06}\right]^{0.3}\right), \quad (3b)$$

$$z_1 = 0.011 \frac{u_*^2}{g} + 1.59 \times 10^{-5}, \quad (3c)$$

$$z_2 = \frac{10}{\exp(9.5 u_*^{-1/3})} + \frac{0.11 \nu}{\max(u_*, 0.01)}, \quad (3d)$$

where the first roughness length formula (z_1) is again the Charnock's (1955) expression plus a constant value of viscous term, with $\alpha = 0.011$, as suggested by Smith (1988). The second formula (z_2) is the exponential expression from Davis et al

已删除: ;
已删除: is

已删除: ~

已删除: ,

已删除: ;
已删除: is

已删除: is

已删除: acts to

已删除: very low

已删除: ~

已删除: /

已删除: s

已删除: Note that f

(2008) plus a viscous term, here a constant kinematic viscosity $\nu = 1.5 \times 10^{-5} \text{ m}^2 \text{ s}^{-1}$ is used. The two roughness length formulas are combined using a weight function (Z_w), with a lower and upper limit on z_0 of $1.27 \times 10^{-7} \text{ m}$ and $2.85 \times 10^{-3} \text{ m}$, respectively. The lower and upper limits on z_0 are adapted from Davis et al (2008), with a slightly different value of the lower limit. The upper limit used here acts to prevent a monotonic increase in the momentum roughness length, as well as the momentum transfer coefficient, under high wind conditions. The resulting curves present an increase with wind speed below 33.0 m s^{-1} , but exhibit a leveling-off behavior starting at the wind speed of 33.0 m s^{-1} (Fig. 1; red thick solid curves). The wind speed of 33 m s^{-1} is extremely close to the lower limit of maximum wind speed for a typhoon. The use of this Z_0 formula results in apparently smaller momentum roughness length and transfer coefficient at all wind speeds than that in F0. This level-off in C_D with wind speed suggests a decline in the efficiency of the exchange of momentum across the air-sea interface [cf. Eq. (A1)]. Considering that the drag effect acts as a momentum sink in the surface layer, it is expected that an atmospheric simulation using the Z_0 formula of F1 shall retain a larger portion of the total amount of near-surface momentum at all wind speeds than that using the F0 formula, and such a difference in the transfer efficiency becomes increasingly significant with higher wind speeds because of the leveling-off behavior seen in F1.

F1 sets $Z_h = Z_q = 10^{-4} \text{ m}$ for all wind speeds. Large and Pond (1982) suggested constant values for Z_h and Z_q under different conditions of stability, ranging from 10^{-9} m (stable) to 10^{-4} m (unstable). The constant value of 10^{-4} m used here corresponds roughly to the unstable condition in Large and Pond (1982). While using an invariant scalar roughness length, the heat and moisture transfer coefficients can still vary with wind speed (Fig. 1; pink thin solid and red dashed curves) because of the drag-dependent effect [cf. Eqs. (A7), (A8) and (A9)]. Consequently, the heat and moisture transfer coefficients are also beginning to level-off at the wind speed of 33.0 m s^{-1} .

2.1.3 Momentum and moisture roughness length for flux option F2

For the flux option 2 (F2), the momentum roughness length is the same as that for F1. The temperature and moisture roughness lengths are expressed based on the formula proposed by Brutsaert (1975):

$$Z_h = z_0 \exp[-\kappa(7.3R_*^{1/4}P_r^{1/2} - 5)], \quad (4)$$

$$Z_q = z_0 \exp[-\kappa(7.3R_*^{1/4}S_c^{1/2} - 5)], \quad (5)$$

where R_* is the roughness Reynolds number, κ is the von Karman constant, P_r and S_c are the Prandtl and Schmidt numbers, and 7.3 and 5 are experimental constants (Brutsaert, 1975b). As in F0, a temperature-dependent ν is also used for R_* calculation. The values of κ , P_r , and S_c are set to 0.40, 0.71, and 0.60, respectively, as suggested by Brutsaert (1979). This set of formulas relates the heat and moisture roughness length to a scaling of Z_0 by exponential expression, where the exponent

已删除: by

已删除: ,

已删除: , whereas

已删除: very

已删除: will

已删除: more and more

已删除: /

已删除: As a result

contains information about the near-surface flow regime as characterized by the roughness Reynolds number and Prandtl and Schmidt numbers. The resulting Z_h and Z_q is practically an exponential decay of Z_0 with wind speed (Fig. 1; green thin solid and green dashed curves). The scalar roughness lengths in F0 and F2 both decrease with wind speed, and their decreasing rates as well as magnitudes are similar at higher wind speeds. However, their resulting scalar transfer coefficients are apparently different. Unlike the monotonic increasing behavior found in F0, for F2 the heat and moisture transfer coefficients show an upward trend with wind speeds below 33.0 m s^{-1} and then start decreasing at this wind speed. Such a discrepancy between F2 and F0 results from the drag-dependent effect in the scalar transfer coefficients [cf. Eqs. (A7), (A8) and (A9)].

2.2 Comparison between modeled and observational bulk transfer coefficients

Figure 2 presents the bulk transfer coefficients and friction velocity obtained from existing observational estimates as found in the literature. A brief description of these observational estimates is provided in Appendix B. Overall, the behavior of C_D in F1 and F2 as a function of wind speed is more consistent with recent observations than that in F0 (Fig. 2 a). Under the low-to moderate-wind conditions, all the flux options generally predict similar behaviors as observed in the observational estimates, and their values are within the observed data range. For the higher wind conditions, F1, as well as F2, predict a level-off in C_D values with wind speed such that it is significantly differ from F0 starting at 33 m s^{-1} . Considering the large discrepancy as well as the large spread of data found in the observational estimates that beyond the wind speeds of approximately 55 m s^{-1} , the leveling-off behavior of C_D values in F1 (and thus F2) is more reasonable than the monotonic increasing C_D values in F0 (Fig. 2a). This is also supported by the comparison of the variations in friction velocity (Fig. 2b).

In Fig. 2 c, we plotted all observational estimates of scalar transfer coefficients (C_H , C_Q , and C_K) on the availability in the literature that we referred to for this study (Table B1). Visually, we see an upward trend between the data samples from Geernaert et al. (1987) and French et al. (2007), but no significant trend between French et al. (2007) and the rest of two with higher wind conditions (Bell et al., 2012; Richter et al., 2016). However, Geernaert et al. (1987) reported that their data were mostly collected under stable conditions. Studies have revealed a stability dependence of C_H , on which values of C_H under stable conditions are lower than those under unstable conditions (Large and Pond, 1982; Smith, 1988). Accordingly, the applicability of the increases in C_H and C_Q with wind speed remains elusive. Compare with F0, both F1 and F2 give relatively reasonable pattern of C_H and C_Q , with F2 fitting the observational estimates better than F1 does.

In the context of the leveling-off behavior of C_D at high wind speeds as well as the absence of a monotonic increase in C_H and C_Q with wind speed, both F1 and F2 provide more reasonable formulas for parameterizing the surface fluxes than F0. Furthermore, F1 predicts larger C_H and C_Q at all wind speeds than F2 does, implying that F1 could gain larger enthalpy fluxes.

Because the formula of z_0 (and thus C_D) is identical in F1 and F2 while their respective formulas for z_h and z_q are different and because the behaviors of transfer coefficients in F0 are quite distinct from those in F1 and F2, we use the C_K/C_D ratio to

已删除: shows

已删除: s

已删除: ~

已删除: as shown in

已删除: up

已删除: as listed in

已删除: and

已删除: have

已删除: Previous s

已删除: up

已删除: that

已删除: As c

已删除: s

已删除: well

已删除: ,

已删除: does

已删除: has a potentiality to

已删除: whereas

已删除: ,

已删除: ratio of

compare between the three flux options. By assuming that $C_H \sim C_Q \sim C_K$ here, we plot the ratios C_H/C_D and C_Q/C_D in Fig. 2d. All the flux options present a decrease in the ratio with wind speed, except that for F1 an upward trend and level-off pattern are found under extremely low-wind and high-wind conditions, respectively. The C_K/C_D derived from the available observational estimates were also imposed for reference. We noted that for moderate to high wind speeds, the values of C_K/C_D are all below the lower limit, namely 0.75, for mature hurricanes as suggested by Emanuel (1995). Even for F1, the ratio level-offs at a value of 0.7. Relatively small value of C_K/C_D , compared with the lower limit of 0.75, is indeed not uncommon and has been reported by numerous studies based on observational measurements (e.g., Drennan et al., 2007; Zhang et al., 2008; Bell et al. 2012) and numerical simulations (e.g., Hill and Lackmann, 2009; Green and Zhang, 2013). Nonetheless, we still can qualitatively relate the tropical cyclone intensity to the ratio of C_K/C_D . Accordingly, F1 is expected to have the highest potential to achieve the most intense storm among the three options because it has the highest values of C_K/C_D almost at all wind speeds. F0 has the lowest values of C_K/C_D owing to its largest values of C_D , thereby having the lowest potential to produce a comparable storm intensity to F1.

2.3 Experimental designs

Table 1 summarizes the experiments designed for this study. There were three resolution groups, with horizontal grid spacing of 1, 3, and 6 km. All three isfctlx surface flux options were tested for these three resolution groups. We considered 3kmF0 as the control experiment. All experiments used a single domain and 45 vertical levels. The model domain covered a spatial region bounded by 0°N–19.62°N latitudes and 117.88°E–147.12°E longitudes (Fig. 3; red box). The experiment procedure included a nudging and a sensitivity stage. For the nudging stage, the grid nudging (Staufer and Seaman, 1994) implemented in WRF was applied to each resolution group using the default flux option (F0). The numerical solutions were nudging toward the gridded reanalysis for 24 h starting at 0000UTC 4 November 2013 (Fig. 3; tan dots). In this study, the analysis nudging was applied to the horizontal wind components, potential temperature, and water vapor mixing ratio. The nudging coefficients for all variables were set at 0.0003 s^{-1} . Nudging was only applied at all levels above the PBL to allow for the development of mesoscale processes near the surface. The National Centers for Environmental Prediction Global Forecast System (GFS) operational global analysis dataset was used to provide the initial and boundary conditions. The GFS global analysis has a horizontal resolution of 0.5° , and it is also used as data for the grid nudging. The model sea surface temperatures (SSTs) were taken from the RTG-SST data set (Gemmill et al., 2007), with daily time resolution; there was no ocean feedback in this study. The SSTs varied during the nudging stage up until 0000 UTC 5 November 2013 and thereafter remained fixed throughout the sensitivity simulation such that the differences in underlying SSTs between the flux options became negligible. Consequently, sensitivity of typhoon intensity and structure to the flux options (thus the surface flux formulas) can be determined to a large extent. All the sensitivity experiments started at 0000 UTC 5 November 2013 and ended at 0600 UTC 8 November 2013 (Fig. 3; red dots). All results are from within the 78 h that the experiments ran.

Typhoon Haiyan formed in the western North Pacific on 3 November 2013 and underwent a rapid intensification a few days later. Haiyan reached peak intensity of 895 hPa before it made a cataclysmic landfall near Guiuan, Eastern Samar, Philippines

已删除: as a metric for a comparison

已删除: very

已删除: were

已删除: level-off

已删除: as

已删除: previous

已删除: between

已删除: as in

已删除: gives a

已删除: y

已删除: of

已删除: using

已删除: s of 3 and 6 km. Only F0 and F1 were tested in the 1-km group... The CPU time increased more than 20-fold from 3 km to 1 km. The CPU time increased more than 20-fold from 3 km to 1 km. Because the simulation result of F2 is somewhat between those of F0 and F1 for other resolutions, we omitted the F2 test at 1-km resolution....

已删除: The CPU time increased more than 20-fold from 3 km to 1 km. Because the simulation result of F2 is somewhat between those of F0 and F1 for other resolutions, we omitted the F2 test at 1-km resolution.

已删除: every 6 hours at all levels above the PBL

已删除: This nudging setting enables

已删除: as well

on 8 November 2013 at about 0440 PHT (UTC + 8). The storm then crossed the Philippines, migrated west-northwestward, and made its final landfall in Vietnam. Our simulation period for the sensitivity experiments covers the stages of Haiyan's peak intensity and landfall. We focus on the mature stage of Haiyan before its landfall near Guiuan, Eastern Samar.

3 Temporal evolutions of track and intensity

5 All simulations show a similar west-northwestward movement toward land and appropriately follow the observed best track, but with slower translation speeds (Fig. 4a). The typhoon landfall at Samar Island is delayed between 3 and 5 h in these sensitivity simulations. Because of the delayed landfall, we compare the evolution of the typhoon related to its longitudinal position (Fig. 4b). In general, the simulations continue to intensify and reach their peak right after 1800 UTC 7 November 2013 and before landfall. We refer to the timespan, from 1800 UTC 7 November 2013 to 0000 UTC 8 November 2013, as the
10 mature stage of the simulated typhoon. For each resolution group, F1 is the most intense in terms of minimum central pressure, whereas the intensity of F2 is somewhat between that of F0 and of F1. The intensity is sensitive to model resolution. Overall, the intensity increases as the resolution is changed from 6 to 3 km, but it significantly increases as grid spacing is reduced to 1 km. The experiment 3kmF1 yields an intensity level comparable with that of 1kmF0, demonstrating the benefit of using a more reasonable flux option in improving intensity simulation. Accordingly, the combination of decrease in momentum
15 transfer coefficient (generally tends to reduce the energy loss) and increase in enthalpy transfer coefficients (thus more energy gain) has greater potential to yield stronger storm. Finally, a higher resolution is more conducive to the intensification due to change in flux formulas.

The comparison between the simulated maximum winds near the typhoon center and the best-track wind information is somewhat complicated owing to the wind speed averaging period (Kueh, 2012; Knapp et al., 2013). We use the International
20 Best Track Archive for Climate Stewardship (IBTrACS) dataset for comparison, which compiles best-track information from various agencies worldwide (Knapp et al., 2010). The best-track information in Figs. 3 and 4a is taken from the WMO subset of the IBTrACS (IBTrACS-WMO, v03r09). The WMO best track for Haiyan is taken from the best-track data provided by the Japan Meteorological Agency, which relies on a wind pressure relationship (WPR) where the maximum wind is given in terms of 10 min sustained winds (Koba et al., 1991). However, simulated maximum winds near typhoon center were derived from
25 WRF hourly output instantaneous maximum 10 m wind speeds at the beginning of each hour. Figure 4c presents the scatterplot of maximum wind speed versus minimum central pressure. The discrepancy found between the simulations and the best-track data may be partially due to different wind speed averaging periods. The WMO best-track wind pressure distribution appropriately follows the operational WPR, namely the reference curve Koba. We use a factor of 0.88, which is used operationally at the Joint Typhoon Warning Center (JTWC), to convert the 10 min sustained wind in Koba's WPR to an
30 equivalent 1 min sustained wind. The modified Koba curve Koba_1min now agrees with the operational WPR used at the JTWC. The JTWC's WPR uses 1 min sustained winds (Atkinson and Holliday, 1977; Knaff and Zehr, 2007). In practice, operational PWRs were derived statistically to best fit a set of observed parameters (pressures and winds) by using the gradient

已删除: The intensity is not very sensitive to the resolutions of 3 and 6 km, but it significantly increases as grid spacing is reduced to 1 km

wind approximation as a fundamental guide. In the context of statistical regression and use of observed parameters, other information, such as the vortex size, ambient conditions, and geographical location, would be incorporated into these reference curves (Knaff and Zehr, 2007). The operational WPR may somewhat be considered the best fit to the actual mass–wind relation of TCs. The winds and pressures of Haiyan from the JTWC best-track data have been plotted upon Fig. 4c, and the distribution well agrees with the JTWC operational WPR; we thereby omitted them from the plot then. All our simulated wind pressure distributions present similar slopes as the two reference curves of 1 min averaged winds, indicating that these simulations are valid for further investigation of the typhoon structures.

Bao et al (2012) reported that the simulated WPR would be controlled by the formulation of drag coefficient. From a set of simulations for North Atlantic TCs between 2008 and 2011, Green and Zhang (2013) found that different C_D formulas affect wind pressure distribution (see Fig. 9 in Green and Zhang, 2013). We found insufficient evidence supporting any apparent slope change in wind pressure distributions of different flux options. This discrepancy may be partially due to the use of the square of maximum 10 m wind speed in their wind pressure distribution plot. By comparing the respective linear regression curves between all experiments, we did find that both the differences in flux options and resolution result in slight change in the slope (data not shown). However, no distinct dependence of the slopes on the choice of flux option and resolution could be identified. In our study, the differences in wind pressure distribution between these sensitivity simulations are demonstrated by their magnitudes. For each resolution group, F1 is the most intense in terms of both minimum central pressures and maximum winds, whereas the intensity of F2 is somewhat between that of F0 and F1. A comparison of resolution groups used in F0 reveals a significant increase in intensity at higher resolutions during the mature stage (where the storm has a higher strength), with 1kmF0 receiving larger increments. The set of experiments using F1 presents a similar pattern, with the larger increments in 1kmF1 being much more marked.

In brief, increased resolution and more reasonable flux parameterization (e.g., F1 in this case) can both improve typhoon intensity simulation to a certain extent. However, a sufficiently high resolution is more conducive to the benefit from improved flux formulas. The implication is 2-fold. First, the use of reasonable flux formulas to improve intensity simulation is perhaps more efficient than using an extremely high resolution when computational resources are limited. Second, higher model resolution is conducive to improving surface flux representation in strong typhoon intensity simulations. The mechanisms underlying these two issues are notable. We address the issue of higher model resolution and its effect to surface flux representation in the following sections.

4 Storm structure at the mature stage

The sensitivity of simulated typhoon intensity to various resolutions and flux options is also associated with changes in the simulated typhoon structure. To isolate differences between simulations of different grid spacing, the hourly outputs on the WRF native grid were transformed to the cylindrical (polar-height) coordinate system centered at the simulated typhoon at each time point. To avoid spatial sampling issues in the comparison of mass and wind fields, all model outputs were

已删除: To a certain degree, t

已删除: agree

已删除: .

已删除: have

已删除: wind pressure relationship

已删除: figures

已删除: is at

已删除: both

已删除: two

已删除: very

transformed to an identical resolution setting. We used a 3 km horizontal resolution and an uneven vertical resolution with smaller spacing in the boundary layer for the cylindrical transformation. Specifically, the cylindrical coordinate used in this study has an azimuthal resolution of 2° , a radial resolution of 3 km, and an uneven vertical resolution within the radius and

5 cylindrical coordinate using bilinear interpolation. The zonal and meridional components of horizontal wind fields are transformed to tangential and radial wind components using their standard formulas. The (height-invariant) typhoon center is defined as minimum central pressure using the surface pressure field. We also examined the geometric center for the local minimum pressure and found that the distances between the center at grid point and geometric center are less than the half of the grid spacing, for the simulation period after 24 h (valid at 0000 UTC 6 November, 2013). The magnitudes of the vertical
10 tilt of the center (in term of the WRF output perturbation pressure field) are also small, about the size of one grid box. In this study, radial variations of model fields were all derived from these transformed subsets

Figure 5 shows the horizontal distributions of wind speed at 10 m height, total rainfall, and surface enthalpy fluxes for F0 with 3 km resolution after the cylindrical transformation. The wind speed distribution shows a ring of higher wind speed (exceeding, approximately 42 m s^{-1}), with wider regions of high wind speed over the right side (northern semicircle) of the track, with a
15 partial ring of the maximum wind speed ($\sim 50 \text{ m s}^{-1}$), open to the west, at the range of radii 40–50 km. A region of intense rainfall is located on the left-rear side of the track. Regions of larger amount of surface fluxes are located nearby the local maximum wind speeds; however, they are not necessarily co-located. This is because the near-surface enthalpy vertical gradient, other than wind speed, also influences flux calculation. The discrepancies in the horizontal distributions of surface fields between different resolution groups are more significant than those between flux options (Fig. 6). The 1 km resolution
20 group yields a significant eyewall (in term of these surface fields) contraction compared with the other two groups. The 3 km resolution group exhibits a relatively larger eye region, less contracted radius of the maximum wind speed, as well as total rainfall and surface fluxes. The 6 km resolution group does not present a well-defined eyewall structure in terms of these surface fields. Therefore, the increase in resolution from 6 to 3 km yields a better representation of the concentric pattern of the near-surface fields related to the typhoon center. In general, the use of different flux options result in the enhancement of
25 these surface fields, and thus, the intensity in terms of the minimum central pressure and maximum wind speed, in the order $F1 > F2 > F0$.

We have examined these surface fields over the period from 1200 UTC 7 November to 0000 UTC 8 November and found similar features as in Fig. 6, indicating that this period can be seen as the mature stage of the simulated typhoon. Overall, the horizontal distributions of the wind speed at 10 m height and total rainfall reveal a region of higher wind speed on the right
30 (northern) side of the track, and a region of intense rainfall to the left side of the rear side of the track. This result agrees with the study of Shimada et al. (2018) for Haiyan Typhoon. Based on the radar reflectivity measured several hours before the first landfall of Haiyan, they found that the region of the larger maximum wind speed was located on the right side of the track, and the region of stronger retrieved rainfall was located on the downshear-left side. During their analysis period (approximately 2.5 h immediately before Haiyan's first landfall), the 850–200 hPa vertical wind shear was north-northeasterly at about 4 m s^{-1} .

已删除: degree

已删除: ,

已删除: s

已删除: ~

已删除: is

已删除: an

已删除: tial component in

已删除: that

已删除: as

已删除: enhanced

已删除: ,

已删除: of

已删除: consists

已删除: about

Therefore, the downshear-left side is approximately the left-rear side of the track. They found a slight southward vertical tilt (approximately 1 km from 1 to 7 km altitude) of the center of Haiyan, almost the same as the direction of the vertical tilt. We also found similar vertical wind shear of approximately 5 m s⁻¹ at a direction of northeasterly, as well as a small vertical tilt (about 1 grid box) of the storm center, during the 12 h period starting at 1200UTC 7 November 2013 (data not shown).

已删除: about

已删除: about

已删除: figures

5 Accordingly, our simulations are in reasonable agreement with observations of Haiyan studied by Shimada et al. (2018). The next step is to examine the azimuthal averages of the radius distribution for surface fields as well as the vertical structure of the simulated typhoon. For the radius distributions shown later in Figs. 7, 8, 10, and 11, the track lines over a 3-h window (the two segments centered at that particular hour, as shown in Fig. 5) were used to identify the semicircles on both sides. Because a small deflection of the track tendency is generally found in the 3 h window, the areas of the right (northern) and left (southern) semicircles are not necessarily the same.

已删除: -hour

已删除: are

10 Figure 7 provides Hovmöller diagrams of the 10 m winds, total rainfall rate, and surface enthalpy (latent and sensible heat) fluxes for 3kmF0. Most noteworthy is the asymmetric structure found in the wind and rainfall fields. The stronger winds over the right (northern) side occurred in association with a larger rainfall rate over the left (southern) side of the typhoon center throughout the integration period. The asymmetric structure can also be found in the surface latent heat flux, whereas it is less evident in the surface sensible heat flux. Similar asymmetric patterns are found in all other simulations (data not shown).

已删除: figures

15 Figure 8 illustrates the composite of radial distributions of the selected surface fields for the mature stage, namely between 1800 UTC 7 November 2013 and 0000 UTC 8 November 2013, for the sensitivity experiments of F0, F1, and F2. The patterns of F2 experiments are generally somewhat in between those of F0 and F1, with their wind fields (enthalpy fluxes) patterns following those of F1 (F0) more closely. This is expected because F1 and F2 use identical momentum transfer coefficient, and F0 and F2 possess similar behavior of the enthalpy transfer coefficients in terms of their magnitudes and wind dependent variations.

已删除: 1

已删除: ,

20 We begin with the composite of 3 km resolution (Fig. 8b). During the mature stage, the radial patterns of mean sea level pressure (SLP) and 10 m winds reveal the typical structure of a tropical cyclone. The difference between the radii of maximum 10 m winds (RMWs) of 3kmF0 and 3kmF1 is insignificant. The tangential wind components dominate the 10 m wind fields.

已删除: We thereby omitted this subset of experiments in this plot as well as in the rest of this article, for brevity.

25 In both experiments, the radii of the maximum radial wind component are slightly larger than those of their respective tangential winds. In the context of azimuthal averages, the radial distributions of surface enthalpy fluxes are fundamentally constrained by the 10 m wind speed intensity. The aforementioned asymmetric pattern is again evident in the rainfall distribution and even in the wind fields. The 3kmF1 experiment yields a deeper storm central pressure and stronger wind speeds and enthalpy fluxes that the 3kmF0 experiment does. The 3kmF2 experiment produces similar patterns as the 3kmF0

30 experiment does. The majority of these increments occur around the eyewall (in terms of the maximum winds). Increasing the grid spacing to 6 km yields a composite radial structure highly similar to the 3 km group, thus indicating the relationship among these near-surface fields (Fig. 8c). The major difference between the groups (6 and 3 km) is the size of the inner core with respect to the eyewall radius (measured in RMWs) and the sharpness of peaks in the near-surface fields. This is consistent with the aforementioned horizontal distributions of these surface fields shown in Fig. 6. As grid spacing decreases, RMWs

已删除: also

已删除: ,

已删除: ing

decrease and the peak sharpness in winds and enthalpy fluxes increase. A much more marked decrease in RMWs and increase in peak sharpness are found in the 1 km resolution group than in the other groups (Fig. 8a). The SLPs, wind fields, and enthalpy fluxes in the 1 km group have narrow but sharp peaks, along, with larger peak values compared with the other resolution groups. The asymmetric pattern of the wind fields is less evident but still can be seen. The 1kmF1 experiment yields a much stronger storm than the 1kmF0 experiment. The asymmetry of the rainfall pattern, however, decreases by using F1. At this point, whether the reduction of grid spacing or the use of more realistic flux formulas leads to a more symmetric (and thus more intense) tropical cyclone remains unclear.

In brief, both the increased resolution and more reasonable flux formulas enhance storm strength. Storm size (in terms of RMWs) is apparently sensitive to the changes in grid spacing but less sensitive to the choice of flux options. A reduction of storm size with smaller grid spacing has been noted by numerous studies (e.g., Davis et al., 2008; Fierro et al., 2009; Gentry and Lackmann, 2010; Kanada and Wada, 2016). As the strength of a storm increases, the eyewall contracts, indicating a higher efficiency of storm intensification with smaller grid spacing. In our work, the effect of different flux formulas on Typhoon Haiyan simulation is revealed by the changes in storm central pressure and the intensity of maximum winds and enthalpy fluxes around the eyewall. This implies that the underlying mechanisms (i.e., surface flux exchange processes) of various flux options account for storm intensity, whereas the reduction of grid spacing leads to more intense storm structures providing more conducive conditions for enhancing a positive flux effect.

Figure 9 shows the statistics for data points collected within a circle of radius 100 km during a sampling period of 7 h. From the percentages of binned wind speeds, the major pattern of the differences in flux options is revealed by a rightward shift of the curves in the order of F0, F2, and F1. For each resolution group, a reduction of the higher percentages of moderate to high wind speeds and the emergence of higher wind speeds are observed as comparing the F2/F1 with F0. This feature is more evident in the distributions of 1 and 3 km resolution groups, in particular for the pattern shift of F1. This is to say, experiments with F1 can produce extremely high wind speeds (exceeds approximately 55 m s^{-1}) as the resolution increase to 3 km as well as 1 km. For the 6 km resolution, less grid points (< 5%) with wind speed of approximately 55 m s^{-1} are found even with flux option F1. This can also explain the comparable maximum wind speeds found in the F1 experiments with 3 km and 6 km resolution (cf. Fig. 3c). The comparable storm intensities, in term of minimum central pressure, found in 3 km and 6 km resolutions (cf. Fig. 3b) are indeed in association with different near-surface wind speed distribution (also see Fig. 6). In 3 km as well as 1 km resolution, more extended and organized areas of extremely high wind speeds are found. Whereas for 6 km resolution, broader areas of high wind speeds with small amount of extremely high wind speed patches are found. The previous analyses indicate that the typhoon intensity is mainly controlled by the model resolution. The near-surface wind speed is an influential factor for the calculation of bulk transfer coefficients. Considering the low frequency of occurrences for extremely high wind speeds, the positive effect of the more reasonable surface option (F1) cannot be enhanced efficiently with a relatively large grid spacing of 6 km.

Altogether, the wind speed statistics presented here suggest that more detailed structures over the full wind speed spectrum can only be resolved as the model resolution, increases to up to 3 km or higher. This is consistent with the findings of Davis et

已删除: increases

已删除: as compared with

已删除:

已删除: ~

已删除: ~

已删除: herefore t

已删除: detail

已删除: increase

已删除: s

al. (2008) and Gentry and Lackmann (2010) that a resolution of approximately 3 km or higher is required for significant improvement of intensity simulation of intense hurricanes (the Hurricane Katrina, in their case). With a lower resolution, 6 km in our case, we speculate that the momentum energy is diluted over the nearby grid points such that limited magnitude (higher, but not extreme) of wind speeds would become evenly distributed over a broader area. This idea is specifically inspired by the studies of Bryan et al. (2003) and Miyamoto et al. (2013). We further discussion of the energy distribution of these simulations in the next section.

The behaviors of C_K/C_D show that the patterns almost strictly follow their respective curves as predicted by the calculation of neutral condition using the pseudo wind data (cf. Fig. 2d). The spread of data, as represented by the range, is rather small and is approximately 10–12 % of the magnitude of their respective binned averages. However, the resulting latent heat and sensible heat fluxes present much larger spread of data on the wind speed bins. For lower wind speeds (and thus smaller mean values of fluxes), the range of data is approximately 90 % (150 %) of the magnitude of the binned mean. For high to extremely high wind speeds (and thus large mean values of fluxes), the range of data is comes close to or less than 50 % (90 %) of the magnitude of binned mean. A further inspection of the data reveals that the spread in binned data arises from the discrepancy in stability conditions near the ocean surface. This is expected as referring to Eqns. (A2) and (A3). For moderate to high wind speeds, given a value of latent heat or sensible heat flux, the corresponding wind speeds range are considerably large. Therefore, the structure of near-surface moist-air enthalpy is also important for typhoon development. Furthermore, F1 can produce the largest latent and sensible heat fluxes between the three flux options, and the magnitude of the inter-option differences increases as the resolution increases. This is obviously because of the larger percentage of extremely high wind speeds that F1 can achieve. Although the extremely high wind speeds comprise a small percentage of the eyewall circulation of a mature cyclone, they have a crucial role in enhancing surface fluxes that supply enthalpy to the eyewall.

As the resolution increases, the vertical distribution of tangential winds reveals a significant increase in the vertical extent of stronger wind speed, a reduction of the outward slope of the maximum wind axis, and thus, a contraction of the eyewall (Fig. 10). With the change from F0 to F1, tangential wind speeds increase, with an outward and upward expansion of the region of stronger wind speed. No apparent changes are noted in the vertical slope and radius of the eyewall owing to the change in flux options. Both the composite inflow and outflow weaken as the resolution increases but enhance as the flux option changes from F0 to F1. Here, the maximum value of inflow (outflow) is 28.3 (–38.8) m s^{-1} in 1kmF0 but is 33.6 (–44.5) m s^{-1} in 1kmF1. Moreover, the maximum cores of tangential winds descend and the depth of inflow decreases as the resolution increases. Overall, the patterns of F2 are somewhat between those of F0 and F1. In addition, we can see that the upper-level radial inflows are evident in the 1 km resolution group. The upper-level radial inflows are apparently weaker in the 3 km resolution group and are hardly found in the 6 km resolution group. The upper-level radial inflow above the upper outflow layer is related to the development of upper-level warming in the eye; this will be addressed later in Fig 12.

The contraction of the eyewall with reduction of grid spacing is also revealed by a more upright eyewall updraft (Fig. 11). We start with the major eyewall updrafts and downdrafts as denoted by red and blue contours, respectively, in Fig. 11. The reduction of grid spacing also results in stronger updrafts and downdrafts, where the enhanced eyewall downdrafts may be a

已删除: needed

已删除: have

已删除: are

已删除: are

已删除: up

已删除: about

已删除: becoming near

已删除: t

已删除: We further examined the binned samples and confirmed

已删除: is

已删除: ing

已删除: e

已删除: In short,

已删除: but

cause of the decrease in the depth of inflow. The convections outside of the eyewall (weaker upward velocity denoted by the pink hatched area) are apparent in the 1 km resolution group. For this resolution group, the outside convection in F1 is stronger than that in F0. The outside convection is a result of the azimuthally averaged of the outer rainband. In the 3 km resolution group, the outside convections are weaker, but still apparently shown. No outside convection can be clearly distinguished from the eyewall in the 6 km resolution group. As the resolution decreases, the model may not be able to resolve intense updraft cores in the eyewall as well as the outer rainband nearby the eyewall. The larger grid spacing can only resolve a broader area of weaker updraft instead. We further discuss this in the next section. Stronger inflow and outflow as well as broader eyewall updraft are found at the 6 km resolution, suggesting that secondary circulation is stronger at lower resolutions, similar to the finding of Fierro et al. (2009). We further examined the horizontal flow patterns nearby the altitudes of the upper outflow layer, both on model native grids and cylindrical grids, and confirmed that the upper-level flow patterns in the 6 km resolution group are more radially outward than the rotational component. As the resolution increases, the upper-level flow pattern becomes more rotational, and the radially outward component is suppressed. Because of such discrepancy in the upper-level flow pattern, the azimuthally averaged upper outflows (upper-level radial winds) in the 6 km resolution group are the strongest between the resolution groups.

The time evolution of the core temperature is represented by the temperature anomaly with respect to a reference mean temperature (Fig. 12). Here we term the positive temperature anomaly as warming. The distinct difference found among the resolution groups is the development of the upper-level warming layer within the eye. For the 1 km resolution group, there are apparent upper level warming layer appears above approximately 10 km within a deep warming column in the eye. The upper-level warming layers occur earlier in the experiments F1 and F2 (Fig. 12 a,d,g). The warming layer in experiment 1 km F1 is the most intense among all the others. The timings of the upper layer warming are associated with their respective upper-level radial inflows. The upper-level warming layer has long been recognized by observational studies (e.g., Hawkins and Imbembo, 1976) and numerical simulations (e.g., Zhang and Chen, 2012, Chen and Zhang, 2013, Wang and Wang, 2014). In recent years, the formation of the upper-level warming layer has been related to the rapid intensification of tropical cyclone (e.g., Zhang and Chen, 2012, Chen and Zhang, 2013, Wang and Wang, 2014). This upper-level warming layer, under hydrostatic balance and considering the enhanced effect due to the upper-level dryer and thinner conditions of air, can produce much greater effect on the surface pressure falls than the lower-level warming (e.g., Zhang and Chen, 2012). Regarding the formation as well as the maintenance of the upper-level warming layer, Zhang and Chen (2012) emphasized the contribution from the high potential temperature air detrained from the lower stratosphere, whereas Chen and Zhang (2013) introduced the contribution from the air detrained from the convective bursts (anomalous intense updrafts) in the eyewall. Both studies revealed the importance of the upper-level radial inflow on the warm air detrainment onto the eye region. Wang and Wang (2014) reported that in an environment with decreasing vertical wind shear, air detrained from the lower stratosphere as well as from the convective bursts could result from the development of convective bursts within the inner-core region.

From experiment F0 to F1, the upper-level warming layer enhances significantly (Fig. 12 a,d). Although both F0 and F1 with 1 km resolution can produce extremely intense updraft cores, the experiment F1 provides a larger energy source through

已删除: ,

已删除: for which this

已删除: This is to say, a

已删除: ,

已删除: therefore resulting in

已删除: shall

已删除: .

已删除: also found a stronger secondary circulation at lower resolution...

已删除: is becoming

已删除: ;

已删除: between

已删除: ~

已删除: ,

已删除: starting at about 0600 UTC and 0000 UTC on 7 November, respectively for experiments with F0 and F1

已删除: (Fig. 12 a,d)

已删除: consider

已删除: impact

已删除: very

已删除: via

surface enthalpy fluxes) to the simulated typhoon Jhan experiment F0 does. Therefore, the significantly enhanced upper-level warming layer found in the experiment 1kmF1 could result from the warm detrainment from the intense updrafts (may be seen as convective burst) in the eyewall. The pattern of the experiment F2 is again somewhat between those of F0 and F1. A similar development of the upper-level warming layer can also be found in the 3 km resolution group, but apparently weaker than that in the 1 km group. However, the development of upper-level radial inflow appears to precede the main warming for nearly 24–36 h. This may be partly attributed to the weaker contraction of the eyewall in 3 km resolution group. The weaker upper-level radial inflow is perhaps another reason for this inconsistency y in the time evolution. The 6 km resolution group does not present comparable development of this upper-level warming layer as in the 3 km group, again indicating that a resolution of 6 km is inadequate to resolve the details of structure and development of a strong typhoon as Haiyan (2013).

When the resolution increases, more intense convection core can be resolved, leading to rapid pressure decrease near the typhoon and pressure gradient increase in the area. This change in the pressure field is presumably due to the enhanced diabatic heating near the typhoon eyewall. The larger pressure gradient force would reduce the RMW according to the gradient wind balance equation. The reduced RMW would then accompany an area of diabatic heating closer to the typhoon center. This contraction of the eyewall keeps decreasing the central pressure of the typhoon, yielding positive feedback for typhoon development. The enhancement of these processes is mainly related to the model grid spacings. Near-surface wind speed affects the calculation of bulk transfer coefficients. The positive effect of the more reasonable surface option (F1) cannot be enhanced efficiently unless an extremely large wind speed is generated through the reduction of grid spacing.

5 Statistical and energy spectral analyses

Several studies have reported that the reduction of grid spacing yielded deeper, stronger, and more upright and contracted eyewall (e.g., Fierro et al., 2009; Gentry and Lackmann, 2010; Kanada and Wada, 2016). We also demonstrated that the size of updraft cores in the eyewall shrank and the region of downdraft increases s as the resolution is increased. Furthermore, both updraft and downdraft become more intense with the reduction of grid spacing. These features have also been recognized in many studies (e.g., Fierro et al., 2009; Gentry and Lackmann, 2010; Gopalakrishnan et al., 2011; Kanada et al., 2012). In addition, large vertical transport of heat and moisture can result in stronger storms given that the model resolution is sufficiently high (e.g., Gopalakrishnan et al., 2011; Kanada et al., 2012).

We used contoured frequency by altitude diagrams (CFADs; Yuter and Houze, 1995) to examine the variability of convective cores over the region shown in Fig. 3 (the blue box). The CFADs is a statistical method for summarizing the vertical distributions of meteorological fields. A CFAD is constructed by collecting frequency distributions of a particular variable at evenly spaced altitudes within an area, compiling them into a two-dimensional (data bin and altitude) data set, and portraying the data on a single contour plot. The ordinate in the plot represents the altitude variation, and the abscissa the frequency bin. For each altitude on a CFAD, the frequencies should add up to 100 %. For a given CFAD, each point depicts the frequency of occurrence of the data in that bin at a specific altitude. Accordingly, the CFADs ignore horizontal variability and provide a

已删除: that

已删除: e

已删除: . This result

已删除: es

已删除: have

已删除: d

已删除: some studies have indicated that

已删除: utilized

bulk statistical measure for comparing the vertical structure of evolving fields of cumulonimbus clouds or any convective systems. Here, we take Fig. 13a as an example. On this CFAD, there are higher percentages (e.g., bounded by 20 %) found in the higher reflectivity bins at lower altitudes and found in the lower reflectivity bins at higher altitudes. The former can indicate convective cells or precipitations, whereas the latter can indicate snow or stratiform precipitation. Therefore, consider a set of

5 CFADs for an evolving cumulonimbus clouds, say from the initiation to the mature stage, the maximum percentage at each altitude would change from vertically oriented to negatively tilted toward lower reflectivity values. More detailed interpretations of the use of CFADs can be found in the work by Yuter and Houze (1995).

CFADs of simulated reflectivity were conducted separately for updrafts and downdrafts (Figs. 13 and 14). In general, the CFADs of reflectivity derived from both updrafts and downdrafts present similar patterns. In these plots, a region bounded by

10 a specific value, say 20 %, signifies that 80 % of the sampled data points are within this region. Taking the region bounded by the value of 20 % as a reference, these plots reveal that approximately 80 % of the sampled data points in all the simulations present an increase in reflectivity with height above approximately 4 km; at heights lower than 4 km, reflectivity demonstrates little change. Similar patterns can be found in studies of CFADs of reflectivity for strong TCs in numerical simulations (Fierro et al., 2009) and for Florida cumulonimbi revealed by observational radar data (Yuter and Houze, 1995). Most noteworthy

15 about our CFADs of reflectivity for both updrafts and downdrafts is the shrinking region bounded by contour of 20 % as the resolution increases. This indicates that at higher resolutions, the range of reflectivity magnitudes presents a relatively broader distribution, which implies an increased occurrence of higher reflectivity. A descending of the core region of higher frequencies (as bounded by contour of 20 %) is found in the CFADs of the downdraft compared with those of the updraft. According to the findings of Yuter and Houze (1995), this implies that the larger reflectivity at lower levels may be associated with the

20 downdraft and thus can be interpreted as heavy precipitation, whereas higher reflectivity at approximately 4–5 km is mostly associated with updraft and, thus, may be seen as a convective cell. However, interpretations are different for reflectivity associated with updraft and downdraft here.

We further conducted CFADs of vertical motions to address this issue (Fig. 15). Most vertical velocities, carried by approximately 95 % of the data points as indicated by the region within the 1 % contour, are apparently less than 5 m s^{-1} in all

25 simulations. Similar pattern of CFADs of vertical velocity, revealing that most common values of vertical velocity are substantially low, can be found in numerical simulations for TCs (Fierro et al., 2009; Gentry and Lackmann, 2010; Wang and Wang 2014) and observational data for cumulonimbi (Yuter and Houze, 1995). Furthermore, the region of upward motion is larger than that of downward motion in general. A similar asymmetry of the distributions of upward and downward motion was evident in simulations in previous studies (Fierro et al., 2009; Gentry and Lackmann, 2010; Wang and Wang, 2014). In

30 Fig. 15, the most significant differences in the CFADs of vertical velocity are revealed by the lower frequencies, namely the values of 1 % and 0.1 %. As the resolution increases here, both upward and downward motion present an expansion of the distribution of the frequency of 1 %. However, the extents of the changes in upward and downward motions with resolution are different. In all simulations, the changes in the downward motion with an increased resolution are more significant than those in the upward motion. Therefore, the region (occurrence) of the downward motion increases as the resolution increases.

已删除: higher

已删除: Following

已删除: around

已删除: also

已删除: by

已删除: :

已删除: i

已删除: of

The results also indicate the presence of less downdrafts in lower-resolution simulations (i.e., 3 and 6 km), and the degradation of available data points can result in large biases in the CFADs of reflectivity in association with the downdraft.

Finally, the 1 km simulations produce stronger updrafts and downdrafts than the 3 and 6 km simulations. Therefore, the higher reflectivity (indicated by the 0.1 % contour) in 1 km simulations may be associated with much more intense updrafts compared

5 with those in the 6 km simulations. This is consistent with the discrepancy between the secondary circulations of different resolutions in the previous section, where 6 km simulations presented relatively wider and weaker updrafts among the different resolutions. As previously mentioned, the CFADs of reflectivity in the 6 km simulations presented a relatively concentrated range of reflectivity magnitudes compared with the 1 km simulations, implying that the convective cells associated with the eyewalls may be broader in spatial scale. This is confirmed by an examination of horizontal distributions of the reflectivity of

10 of the 6 km resolution of simulations (data not shown). This can be interpreted as follows. As the resolution is insufficient to resolve the typical cumulonimbus size (~10 km), a number of convective cells (e.g., cumulonimbus clouds) would be interpreted as a broader and perhaps stronger convective plume as discussed by Bryan et al. (2003) and Miyamoto et al. (2013).

Bryan et al. (2003) attributed this broader convective plume to the diffusion due to subgrid-scale processes. In short, the intense reflectivity (convective) cores of the 1 km simulations are driven by extreme updrafts occurring within a rather small fraction

15 of the CFAD's computational domain whereas the 6 km simulations are driven by relatively weaker updrafts spread over a much broader spatial distribution.

In general, this resolution dependence of the spatial scale of updrafts may be attributed to the model effective resolution, namely the minimum scale resolved by the discretized model, as discussed by Skamarock (2004). By locating where the simulated energy slope drops below the expected slope, Skamarock (2004) found that the effective resolution of the WRF

20 model at a grid spacing of 4–22 km is generally nearly 7-fold of the model grid spacing (DX), and thus indicated that only information at scales greater than approximately 7 DX in energy spectra represents a physical solution for the WRF model. To examine the effective model resolution in our experiments, we adopted the algorithm of spectral computation introduced by Denis et al. (2002) for the calculation of kinetic energy (KE) spectra. Denis et al. (2002) introduced a two-dimensional discrete cosine transform to convert the limited domain of gridpoint atmospheric fields into spectral space. In this study, the spectral

25 decompositions of velocities (u, v, and w) were first computed for each hourly model output and for each height level, and the KE spectra were then calculated from these velocity spectra. Finally, the KE spectra were averaged over selected periods and layers for Fig. 16. Because the results of different flux options are similar, only the experiments with F0 and F1 were plotted on Fig. 16. In all simulations, for the KE spectra derived from the horizontal velocity components, we find a model effective resolution of approximately 7 DX where the values of KE spectra drop significantly, as indicated by Skamarock (2004).

30 Although the vertical velocity spectra exhibit a flatter slope than the horizontal KE spectra, they also present apparent energy drops at wavelengths of approximately 6–7 DX. Our vertical velocity spectra show a pattern (i.e., the slopes) that is somewhat different from that of Bryan et al. (2003) with respect to the absence of peak values around the respective model effective resolutions. Bryan et al. (2003) conducted simulations with horizontal resolutions much higher than 1 km; 500, 250, and 125 m. With their extremely high resolutions, more intense convections could be resolved. They indicated that a model resolution

已删除: for both F0 and F1

已删除: the

已删除: st

已删除: compared with

已删除: figures

已删除: in

已删除: and stronger

已删除: dilution

已删除: the

已删除: mixing

已删除: To a large degree

已删除: . Skamarock (2004)

已删除: around

已删除: represent

已删除: here

已删除: about

已删除: compared with

已删除: , namely

已删除: very

已删除: However, Bryan et al. (2003) have

of 1 km remains insufficient for explicitly resolving convective clouds. Here, we speculate that insufficient intense convection cores in our simulations may result in the absence of peak values around the respective model effective resolutions.

Finally, the slope of the physical portion of the spectra (for the horizontal and vertical components, respectively) remains essentially unchanged as the model resolution is varied. In general, the higher the resolution, the further is the downscale extent, the smaller are the scales represented, and the smaller are model effective resolutions reached. The aforementioned descriptions remain true for all flux options and averaging layers in our work. The key point is that the effective resolution is determined by grid spacing, not the flux options. We noted some subtle differences between the F0 and F1 experiments at smaller wavelengths at nearly 2 DX in the KE spectra, but in only a few hours of the entire simulation period. In short, although the use of more reasonable flux formulas can increase simulated storm intensity to some extent, the positive effect of the flux formulas cannot be efficiently enhanced unless the grid spacing is appropriately reduced to yield intense and contracted eyewall structure.

6 Conclusions

This study investigated the effects of resolution and surface flux formulas on typhoon intensity and structure simulations through the case study of Super Typhoon Haiyan (2013). The effect could be separated between horizontal resolution and air-sea flux parameterization through the inner-core structure and spectral analyses. Specifically, we found significantly increased sensitivity of TC intensity simulations to surface flux parameterizations when model resolution approached the convective scale (~ 1 km).

Three sets of surface flux formulas in the WRF model were tested using grid spacings of 1, 3, and 6 km. Increased resolution and more reasonable flux parameterization could both improve typhoon intensity simulation to a certain extent, but their effects on storm structures differed. A combination of decreasing momentum transfer coefficient and increasing enthalpy transfer coefficients tends to yield stronger storm. The storm size (in terms of the radius of maximum winds) is apparently sensitive to the changes in grid spacing. The choice of flux formulas had little effect on storm size. Sufficiently high resolution was more conducive to the positive effect of flux formulas on simulated typhoon intensity.

Reducing the grid spacing to 1 km yielded a deeper, stronger, and more upright and contracted eyewall. Stronger inflow and outflow as well as relatively wider and weaker eyewall updraft were found in the lower resolutions, indicating a stronger secondary circulation. As strength increased, the eyewall contracted, indicating higher efficiency of storm intensification in smaller grid spacing. This contraction of eyewall is associated with an upper-level warming layer, which signifies an intense development of the simulated typhoon. The upper-level warming process can be attributed to the air detrained from the intense updraft cores in the eyewall, which can only be resolved by higher resolutions, such as 1 or 3 km.

The analysis of the CFADs revealed that the size of updraft cores in the eyewall shrinks and the region of downdraft increases, and both updraft and downdraft become more intense as the resolution increases. Therefore, the intense reflectivity (convective) cores of the higher resolution simulations are driven by more intense updrafts within a rather small fraction of the spatial area.

已删除: Therefore

已删除: we suggest that

已删除:

已删除: impacts

已删除: the

已删除: In this study, the

已删除: fluxes

已删除: s

已删除: different

已删除: Both i

已删除: impacts

已删除: were different

已删除: impact

已删除: later

已删除: is increased

whereas lower **resolution** simulations are driven by relatively weaker updrafts spread over a much broader spatial distribution. This resolution dependence of the spatial scale of updrafts is attributable to the model effective resolution based on **the** analysis of KE spectra. The effective resolution is determined by grid spacing, not the flux options. **The analyses indicate that typhoon intensity is mainly controlled by the model resolution. Higher frequency of occurrences for extremely high wind speeds can**

5 **be found in experiments with higher resolution. The near-surface wind speed is an influential factor for the calculation of bulk transfer coefficients.** Although the use of more reasonable flux formulas can increase **the** simulated storm intensity to some extent, the positive effect of surface flux formulas cannot be efficiently enhanced unless the grid spacing is properly reduced to yield intense and contracted eyewall structure.

Although both updraft and downdraft cores within the eyewall can be partially resolved at 1 km grid spacing, model convergence does not emerge here (e.g., Bryan et al., 2003; Gentry and Lackmann, 2010; Miyamoto et al., 2013). Conductive effect for grid spacing well below 1 km to the contribution of flux parameterization **needs to be further explored.** Finally, the typhoon intensity in the experiment 1kmF1 is apparently overestimated. Green and Zhang (2013) suggested that the overestimation of their simulated TC intensity, **compared with the observed best track, may be partially attributed to the neglect of ocean feedback in the model.** This is also true in our case. Other components of the numerical model such as boundary layer

15 mixing and the inclusion of wind wave coupling as well as ocean coupling are related to air–sea flux estimates, which is important **for** ocean feedback (e.g., Davis et al., 2008; Chen et al., 2007; Chen et al., 2010; Zhao et al., 2017). This is beyond the scope of this paper; **however, further relevant research and** additional simulation comparisons to other storms for generalizing our results **are warranted.**

已删除: Despite

已删除: needed

已删除: as

已删除: as

已删除: ,

已删除: but this should be done as well as

20 Appendix A

(a) Fluxes in **the** atmospheric surface layer

In the surface layer, the vertical fluxes of horizontal momentum τ , sensible heat H , and latent heat LH near the surface are generally parameterized using bulk flux formulations:

$$\tau = \rho u_*^2 = \rho C_D (U_a - U_s)^2 = \rho C_D (U)^2, \quad (\text{A1})$$

25 $H = -\rho c_p u_* \theta_s = -\rho c_p C_H U (\theta_a - \theta_s), \quad (\text{A2})$

$$LH = -\rho L_v u_* q_s = -\rho L_v C_Q U (q_a - q_s), \quad (\text{A3})$$

where ρ is the air density; C_D **the** specific heat capacity of air at constant pressure; L_v **the** latent heat of vaporization; u_* **the** friction velocity, a velocity scale for the turbulent flow; θ_* and q_* **the** scaling parameters for potential temperature θ and specific humidity q , respectively; and C_D , C_H , and C_Q **the** dimensionless bulk transfer coefficients for momentum, sensible, and latent heat, respectively. The vertical differences in horizontal velocity, temperature, and specific humidity are enclosed in the parentheses in their respective bulk formulas, where the subscripts $_a$ and $_s$ denote the variable **at a reference**

30

已删除: is

已删除: is

已删除: is

已删除: are

已删除: are

已删除: 'at a reference

height” and “on the ground or water surface,” respectively. Moreover, 10 m is frequently assumed as the reference height. The three bulk transfer coefficients should all correspond to the same reference height above the surface. Because the wind speed just on the ground surface is zero, and the surface current over water may be set to zero for sake of simplicity, the bulk formula for the vertical flux of the horizontal momentum can be reduced to $\rho C_D (U_a)^2$; thereafter, we omit the subscript U_a for brevity.

(b) Surface layer scheme in WRF

In WRF, the scaling parameters and bulk transfer coefficients and all surface fluxes (momentum, sensible heat, and latent heat) are parameterized in a surface layer scheme. There are eight surface layer schemes available in the WRF-ARW, and seven of them are constructed based on the Monin–Obukhov similarity theory with somewhat different formulations, including those of the roughness lengths, bulk transfer coefficients, and the nondimensional stability functions defined for wind and potential temperature profiles. Among these available schemes, the surface layer scheme based on MM5 parameterization (Grell et al., 1994) has been widely used for a broad range of atmospheric research. In this study, we used the revised version of the MM5 surface layer scheme that has been implemented in the WRF model before version 3.2 (Jiménez et al., 2012). Considering that some details of the scheme can change over time, we compared the corresponding routines in WRF-ARW to the formulations in Jiménez et al (2012) and found some discrepancies. During the time of writing this article, we referred to the WRF routines wherever there is a discrepancy found. Below, we briefly describe the most relevant features of the revised MM5 scheme for our work. Because our focus is on the TC intensity over the ocean, we only document the bulk transfer coefficients over the water surface.

(c) Flux parameterization used in this study

Based on the Monin–Obukhov flux-profile relationship, the scaling parameters u_* and θ_* are given as follows:

$$u_* = \frac{\kappa U}{\ln\left(\frac{z+z_0}{z_0}\right) - \psi_m\left(\frac{z+z_0}{L}\right) + \psi_m\left(\frac{z_0}{L}\right)}, \quad (\text{A4})$$

$$\theta_* = \frac{\kappa(\theta_a - \theta_s)}{\ln\left(\frac{z+z_0}{z_0}\right) - \psi_h\left(\frac{z+z_0}{L}\right) + \psi_h\left(\frac{z_0}{L}\right)}, \quad (\text{A5})$$

where κ is the von Karman constant; L the Obukhov length; Z is a specific height level; and Z_0 and Z_h the roughness lengths for momentum and sensible heat, respectively. All roughness lengths are in meters. The Obukhov length L can be calculated from the relation:

$$L = \frac{u_*^2 \theta_a}{\kappa g \theta_*}, \quad (\text{A6})$$

where g is the gravitational acceleration. The Monin–Obukhov stability functions for momentum (ψ_m) and heat (ψ_h) are calculated according to variant stability regimes defined in terms of the bulk Richardson number. The details of the stability functions can be found in Jiménez et al (2012). The scaling parameter, as well as the stability function for moisture is assumed to be the same as that for the sensible heat.

已删除: ‘

已删除: ‘

已删除: ‘;

已删除: Often

已删除: eters

已删除: .

已删除: as well as

已删除: version 3.8.1 of

已删除: .

已删除: S

已删除: out

已删除: eight schemes

已删除: the fifth generation Pennsylvania State University–National Center for Atmospheric Research Mesoscale Model (

已删除:)

已删除: prior to

已删除: have

已删除: the 3.8.1 version of

已删除: our

已删除: of the

已删除: up

已删除: is

已删除: are

The bulk transfer coefficients for momentum and sensible heat are given as follows:

$$C_D = \frac{\kappa^2}{\left[\ln\left(\frac{z+z_0}{z_0}\right) - \psi_m\left(\frac{z+z_0}{L}\right) + \psi_m\left(\frac{z_0}{L}\right) \right]^2}, \quad (\text{A7})$$

$$C_H = \frac{\kappa^2}{\left[\ln\left(\frac{z+z_0}{z_0}\right) - \psi_m\left(\frac{z+z_0}{L}\right) + \psi_m\left(\frac{z_0}{L}\right) \right] \left[\ln\left(\frac{z+z_h}{z_h}\right) - \psi_h\left(\frac{z+z_h}{L}\right) + \psi_h\left(\frac{z_h}{L}\right) \right]}, \quad (\text{A8})$$

The bulk transfer coefficient for latent heat over water surface is given as follows:

$$C_Q = \frac{\kappa^2}{\left[\ln\left(\frac{z+z_0}{z_0}\right) - \psi_m\left(\frac{z+z_0}{L}\right) + \psi_m\left(\frac{z_0}{L}\right) \right] \left[\ln\left(\frac{z+z_q}{z_q}\right) - \psi_h\left(\frac{z+z_q}{L}\right) + \psi_h\left(\frac{z_q}{L}\right) \right]}, \quad (\text{A9})$$

where Z_q is the roughness lengths for latent heat. Jiménez et al (2012) expressed the stability parameter as $(z + z_0)/L$ in their formulas of C_H and C_Q [cf. their Eqs. (21) and (22)]. In this version of [the](#) revised MM5 scheme, $(z + z_h)/L$ and $(z + z_q)/L$ are however used for C_H and C_Q , respectively. Furthermore, the first term enclosed in the second bracket on the right side of the C_Q formula is mainly valid for land surface as presented in Jiménez et al (2012; cf. their Eq. (22)). In our Eq.

(A9), the corresponding term is expressed as $\ln(z + z_q/z_q)$ for water surface according to the WRF routines.

According to the formulations of C_D , C_H , and C_Q , the behaviors of these bulk transfer coefficients are strongly dependent on the momentum and scalar (heat and moisture) roughness lengths [cf. Eqs (A7), (A8), and (A9)]. The contribution of momentum roughness length Z_0 is perhaps more significant than the rest of two. On the right side of the C_D formula, the three terms inside the bracket [in the denominator](#) are expressed in term of Z_0 . Here, we term the whole expression with bracket [in the denominator](#) [in Eq. \(A7\)](#) as a drag-dependent effect. A comparison of these formulas indicates that the expression inside the first bracket on the right side of C_H and C_Q formulas are both identical to the expression of drag-dependent effect [in Eq. \(A7\)](#). In this context, C_H and C_Q shall vary with wind speed due to the drag-dependent effect even with an invariant scalar roughness length.

Appendix B

Table B1 provides brief information of the observational estimates shown in Fig 2. For low wind [speed](#) conditions (wind speed roughly less than 5 m s^{-1}), Vickers et al. (2013) indicated a decrease of C_D with wind speed, in agreement with that observed in COARE 3.0 (Fairall et al., 2003; their Fig. 5), whereas Geernaert et al. (1987) and Large and Pond (1981) suggested a nearly constant (no trend) C_D . For moderate-wind conditions (approximate range of $5\text{--}20 \text{ m s}^{-1}$), Large and Pond (1981) and Vickers et al. (2013) indicated that momentum transfer coefficient C_D monotonically increases with wind speed (cf. Fig. 2 a). An upward trend of C_D has also been reported in Geernaert et al. (1987) and French et al. (2007), although the spreads of their

已删除: /or

已删除: both

已删除: both

respective data are large. This is because shown in Fig. 2 are their data points rather than binned averages or fitted curves. Three sets of available estimates (Jarosz et al., 2007; Powell et al., 2003; Richter et al., 2016) revealed that the upward trend in C_D would cease under high wind conditions (approximate range of 25–55 m s^{-1}), where a level-off or even a downward trend would occur instead. According to these observational estimates, the turning points of the wind speed-dependent C_D variations were varied and found within a range of 30 to 40 m s^{-1} . Under the much stronger wind conditions (exceeding 55 m s^{-1}), the behavior of C_D again differ considerably from the relatively lower range of wind speeds. Bell et al. (2012) and Richter et al. (2016) suggested a rebound of C_D values with wind speeds up to approximately 70 m s^{-1} . However, there are also larger spreads of the C_D values found.

There are fewer observational estimates of heat and moisture transfer coefficient reported in literature, compared with the momentum transfer coefficient. Practically, the transfer coefficient for moist-air enthalpy surface flux (C_K) were estimated in a number of studies (e.g., Zhang et al., 2008; Bell et al., 2012; Richter et al., 2016). A similar expression as the Eqs. (A2) and (A3) can be derived for the moist-air specific enthalpy flux, where the specific enthalpy is given as $e = c_p T + L_v q$ (Emanuel, 1995). Most studies suggested that the bulk transfer coefficients for scalar fields (i.e., sensible heat and moisture as well as enthalpy) are nearly independent of wind speed, with their respective mean values being 0.7 to 1.5×10^{-3} (e.g., Geernaert, 1987; Smith, 1988; Drennan et al., 2007; Zhang et al., 2008; Bell et al., 2012; Richter et al., 2016). However, Fairall et al. (2003) reported a steady increase in C_Q with wind speed based on COARE dataset. Within the range of uncertainty, it is plausible to assume $C_Q = C_K$ (e.g., Richter et al., 2016) or even $C_H = C_Q = C_K$ (e.g., Emanuel, 1995; Zhang et al., 2008).

已删除: wind speeds of

已删除: wind speed roughly

已删除: s

已删除: Both

已删除: ~

已删除: s

已删除: as

已删除: literatures

已删除: From a list of literatures that we have referred to, m

已删除: over a range of

Table B1 Summary of the previous studies for the observational estimates used in Figure 2. The first column identifies the studies collected for the data extraction, and the source (equation/figure/table) in the corresponding literature. The second column gives the approximate range of the wind speed over which the bulk parameters were estimated; these are not the binned range in some of the literatures. The third column describes the method of flux estimation and the observational data source (field experiments) used in these studies. Abbreviations: ADCP= Acoustic Doppler current profiler, CBLAST=Coupled Boundary Layer Air-Sea Transfer, GPS= Global Positioning System.

Author (Source in literature)	Wind speed range (Parameter used)	Method of flux estimation (Observational data source)
Bell et al. (2012) (Figures 14, 19 and 20)	52-72 m s ⁻¹ (C_D , C_K , u_*)	Absolute angular momentum and total energy budgets (CBLAST experiment; 2003 campaign)
French et al. (2007) (Table1)*	17-40 m s ⁻¹ (C_D , C_Q , u_*)	Eddy covariance method (CBLAST experiment; 2003 campaign)
Geernaert et al. (1987) (Table2)	3-25 m s ⁻¹ (C_D , C_H)	Eddy covariance method (Measurements from Sonic anemometer on North Sea platform)
Jarosz et al. (2007) (Fitted equation given in the supplementary)	20-48 m s ⁻¹ (C_D)	Oceanic momentum budget (ADCP moorings in the northeastern Gulf of Mexico; Hurricane Ivan (2004))
Large and Pond (1981) (Fitted equation given in the abstract)	4-25 m s ⁻¹ (C_D)	Eddy covariance method and inertial dissipation method (Nova Scotia floating tower and ocean weather station PAPA)
Powell et al. (2003) (Figure 3)	27-51 m s ⁻¹ (C_D , u_*)	Flux profile method (GPS dropsonde; 331 wind profiles in the vicinity of 15 hurricane eyewalls)
Richter et al. (2016) (Figure 3)	20-61 m s ⁻¹ (C_D , C_K , u_*)	Flux profile method (GPS dropsonde; 2425 wind profiles from 37 tropical cyclones)
Vickers et al. (2013) (Table 2)	2-24 m s ⁻¹ (C_D)	Eddy covariance method (Measurements from 11 aircraft datasets; their Table 1)

* The values of C_Q were obtained from Table 1 of French et al. (2007), whereas the corresponding data analysis were reported by Drennan et al. (2007).

Author contribution

MTK designed the experiments, analyzed and prepared the manuscript with contributions from all co-authors. WMC, YFS, SCL, and EY performed the simulations, processed and analyzed the model output. TRW, YLT, and CYL joined the discussions of the study. All authors contributed to the preparation of this paper.

Competing interests

The authors declare that they have no conflict of interest.

10 Acknowledgments

This work was financially supported by the Ministry of Science and Technology, Taiwan, under grants 105-2111-M-001-003, 106-2111-M-001-009. [We thank the two anonymous reviewers for their constructive comments and suggestions. This manuscript was edited by Wallace Academic Editing.](#)

15 References

- Atkinson, G. D. and Holliday, C. R.: Tropical cyclone minimum sea level pressure/maximum sustained wind relationship for the western North Pacific, *Mon. Wea. Rev.*, 105, 421–427, 1977.
- Bao, J.-W., Gopalakrishnan, S. G., Michelson, S. A., Marks, F. D., and Montgomery, M. T.: Impact of physics representations in the HWRF model on simulated hurricane structure and wind–pressure relationships, *Mon. Wea. Rev.*, 140, 3278–3299, doi:10.1175/MWR-D-11-00332.1, 2012.
- Bell M. M., Montgomery, M. T., and Emanuel, K. A.: Air–sea enthalpy and momentum exchange at major hurricane wind speeds observed during CBLAST, *J. Atmos. Sci.*, 69, 3197– 3222, doi:10.1175/JAS-D-11-0276.1, 2012.
- Bender M. A., Knutson, T. R., Tuleya, R. E., Sirutis, J. J., Vecchi, G. A., Garner, S. T., and Held, I. M.: Modeled impact of anthropogenic warming on the frequency of intense Atlantic hurricanes, *Science*, 327, 454–458, doi:10.1126/science.1180568, 2010.
- Braun S. A. and Tao, W.-K.: Sensitivity of high-resolution simulations of Hurricane Bob (1991) to planetary boundary layer parameterizations, *Mon. Wea. Rev.*, 128, 3941-3961, 2000.
- Brutsaert, W.: A theory for local evaporation (or heat transfer) from rough and smooth surfaces at ground level, *Water Resour. Res.*, 11, 543–550, 1975a.

- Brutsaert, W.: The Roughness Length for Water Vapor, Sensible Heat, and other Scalars, *J. Atmos. Sci.*, 32, 2028-2031, 1975b.
- Brutsaert, W.: Heat and mass transfer to and from surfaces with dense vegetation or similar permeable roughness, *Bound.-Layer Meteor.*, 16, 365-388, 1979.
- Bryan G. H., Wyngaard, J. C., and Fritsch, J. M.: Resolution requirements for the simulation of deep moist convection, *Mon. Wea. Rev.*, 131, 2394–2416, 2003.
- Charnock H.: Wind stress on a water surface, *Quart. J. Roy. Meteor. Soc.*, 81, 639–640, 1955.
- Chen, H. and Zhang, D.-L.: On the rapid intensification of Hurricane Wilma (2005). Part II: Convective bursts and the upper-level warm core, *J. Atmos. Sci.*, 70, 146–162, doi:10.1175/JAS-D-12-062.1, 2013.
- Chen S. S., Price, J. F., Zhao, W., Donelan, M. A., and Walsh, E. J.: The CBLAST-Hurricane program and the next-generation fully coupled atmosphere-wave-ocean models for hurricane research and prediction, *Bull. Amer. Meteor. Soc.*, 88, 311–317, doi:10.1175/BAMS-88-3-311, 2007.
- Chen S., Campbell, T. J., Jin, H., Gabersek, S., Hodur, R. M., and Martin, P.: Effect of Two-Way Air–Sea Coupling in High and Low Wind Speed Regimes, *Mon. Wea. Rev.*, 130, 3579-3602, doi:10.1175/2009MWR3119.1, 2010.
- Coronel R., Sawada, M., and Iwasaki, T.: Impacts of Surface Drag Coefficient and Planetary Boundary Layer Schemes on the Structure and Energetics of Typhoon Megi (2010) during Intensification, *J. Meteor. Soc. Japan. Ser. II*, 94, 55-73, doi:10.2151/jmsj.2016-004, 2016.
- Davis C., and Coauthors: Prediction of landfalling hurricanes with the Advanced Hurricane WRF model, *Mon. Wea. Rev.*, 136, 1990–2005, doi:10.1175/2007MWR2085.1, 2008.
- Denis B., Cote, J., and Laprise, R.: Spectral decomposition of two dimensional atmospheric fields on limited-area domains using the discrete cosine transform (DCT), *Mon. Wea. Rev.*, 130, 1812–1829, 2002.
- Donelan M. A., Haus, B. K., Reul, N., Plant, W. J., Stiassnie, M., Graber, H. C., Brown, O. B., and Saltzman, E. S.: On the limiting aerodynamic roughness of the ocean in very strong winds, *Geophys. Res. Lett.*, 31, L18306, doi:10.1029/2004GL019460, 2004.
- Drennan, W. M., Zhang, J. A., French, J. R., McCormick, C., and Black, P. G.: Turbulent fluxes in the hurricane boundary layer. Part II: Latent heat flux, *J. Atmos. Sci.*, 64, 1103–1115, 2007.
- Emanuel, K. A.: An air–sea interaction theory for tropical cyclones. Part I: Steady-state maintenance, *J. Atmos. Sci.*, 43, 585–604, 1986.
- Emanuel, K. A.: Sensitivity of tropical cyclones to surface exchange coefficients and a revised steady-state model incorporating eye dynamics, *J. Atmos. Sci.*, 52, 3969–3976, 1995.
- Fairall C. W., Bradley, E. F., Hare, J. E., Grachev, A. A., and Edson, J. B.: Bulk parameterization of air–sea fluxes: Updates and verification for the COARE algorithm, *J. Climate*, 16, 571–591, 2003.
- Fierro A. O., Rogers, R. F., Marks, F. D., and Nolan, D. S.: The impact of horizontal grid spacing on the microphysical and kinematic structures of strong tropical cyclones simulated with the WRF-ARW model, *Mon. Wea. Rev.*, 137, 3717–3743, doi:10.1175/2009MWR2946.1, 2009.

- French J. R., Drennan, W. M., Zhang, J. A., and Black, P. G.: Turbulent fluxes in the hurricane boundary layer. Part I: Momentum flux, *J. Atmos. Sci.*, 64, 1089–1102, doi:10.1175/JAS3887.1, 2007.
- Geernaert, G. L., Larsen, S. E., and Hansen, F.: Measurements of wind stress, heat flux, and turbulence intensity during storm conditions over the North Sea, *J. Geophys. Res.*, 92, 13127–13139, 1987.
- 5 Gemmill W., Katz, B., and Li, X.: Daily real-time, global sea surface temperature- high-resolution analysis: RTG_SST_HR. NOAA/NCEP. NOAA/NWS/NCEP/MMAB Office Note Nr. 260, 39 pp (available at: <http://polar.ncep.noaa.gov/sst/>), 2007.
- Gentry M. S. and Lackmann, G. M.: Sensitivity of simulated tropical cyclone structure and intensity to horizontal resolution, *Mon. Wea. Rev.*, 138, 688–704, doi:10.1175/2009MWR2976.1, 2010.
- Gopalakrishnan S. G., Marks Jr. F., Zhang, X., Bao, J.-W., Yeh, K.-S., and Atlas, R.: The experimental HWRF system: A
10 study on the influence of horizontal resolution on the structure and intensity changes in tropical cyclones using an idealized framework, *Mon. Wea. Rev.*, 139, 1762–1784, doi:10.1175/2010MWR3535.1, 2011.
- Green B. W. and Zhang, F.: Impacts of air–sea flux parameterizations on the intensity and structure of tropical cyclones, *Mon. Wea. Rev.*, 141, 2308–2324, doi:10.1175/MWR-D-12-00274.1, 2013.
- Grell, G. A., Dudhia, J., and Stauffer, D. R.: A description of the fifth-generation Penn State/NCAR Mesoscale Model (MM5),
15 NCAR Tech. Note NCAR TN-398-1-STR, 117 pp, 1994.
- Hill K. A. and Lackmann, G. M.: Analysis of Idealized Tropical Cyclone Simulations Using the Weather Research and Forecasting Model: Sensitivity to Turbulence Parameterization and Grid Spacing, *Mon. Wea. Rev.*, 137, 745–765, doi:10.1175/2008MWR2220.1, 2009.
- Iacono M. J., Delamere, J. S., Mlawer, E. J., Shephard, M. W., Clough, S. A., and Collins, W. D.: Radiative forcing by long–
20 lived greenhouse gases: Calculations with the AER radiative transfer models, *J. Geophys. Res.*, 113, D13103, doi:10.1029/2008JD009944, 2008.
- Jarosch, E., Mitchell, D. A., Wang, D. W., and Teague, W. J.: Bottom-up determination of air–sea momentum exchange under a major tropical cyclone, *Science*, 315, 1707–1709, doi:10.1126/science.1136466, 2007.
- Jiménez P. A., Dudhia, J., González-Rouco, J. F., Navarro, J., Montávez, J. P., and García-Bustamante, E.: A revised scheme
25 for the WRF surface layer formulation, *Mon. Wea. Rev.*, 140, 898–918, doi:10.1175/MWR-D-11-00056.1, 2012.
- Hong S.-Y., Dudhia, J., and Chen, S.-H.: A revised approach to ice microphysical processes for the bulk parameterization of clouds and precipitation, *Mon. Wea. Rev.*, 132, 103–120, 2004.
- Kain J.: The Kain–Fritsch convective parameterization: An update, *J. Appl. Meteor. Climatol.*, 43, 170–181, 2004.
- Kain J. S. and Fritsch, J. M.: A one–dimensional entraining/detraining plume model and its application in convective
30 parameterization, *J. Atmos. Sci.*, 47, 2784–2802, 1990.
- Kanada S., Wada, A., Nakano, M., and Kato, T.: Effect of planetary boundary layer schemes on the development of intense tropical cyclones using a cloud-resolving model, *J. Geophys. Res.*, 117, D03107, doi:10.1029/2011JD016582, 2012.
- Kanada S. and Wada, A.: Sensitivity to horizontal resolution of the simulated intensifying rate and inner-core structure of Typhoon Ida, an extremely intense typhoon, *J. Meteor. Soc. Japan*, 94A, 181–190, doi:10.2151/jmsj.2015-037, 2016.

- Knapp K. R., Kruk, M. C., Levinson, D. H., Diamond, H. J., and Neumann, C. J.: The International Best Track Archive for Climate Stewardship (IBTrACS): Unifying tropical cyclone best track data, *Bull. Amer. Meteor. Soc.*, 91, 363–76, doi:10.1175/2009BAMS2755.1, 2010.
- Knaff J. A. and Zehr, R. M.: Reexamination of tropical cyclone wind–pressure relationships, *Wea Forecasting*, 22, 71–88, doi:10.1175/WAF965.1, 2007.
- 5 Koba H., Osano, S., Hagiwara, T., Akashi, S., and Kikuchi, T.: Relationship between the CI-number and central pressure and maximum wind speed in typhoons, *Geophy. Mag.*, 44, 15–25, 1991. (Engl. transl.)
- Kueh M.-T.: Multiformality of the tropical cyclone wind–pressure relationship in the western North Pacific: Discrepancies among four best-track archives, *Environ. Res. Lett.*, 7, 024015, doi:10.1088/1748-9326/7/2/024015, 2012.
- 10 Lander M., Guard, C., and Camargo, S.: Super Typhoon Haiyan [in 'State of the Climate in 2013'], *Bull. Amer. Meteor. Soc.*, 95, S112–S114, 2014.
- Large W. G. and Pond, S.: Open ocean momentum flux measurements in moderate to strong winds, *J. Phys. Oceanogr.*, 11, 324–336, 1981.
- Large W. G. and Pond, S.: Sensible and latent heat flux measurements over the ocean, *J. Phys. Oceanogr.*, 12, 464–482, 1982.
- 15 Lin I.-I., Pun, I.-F., and Lien, C.-C.: 'Category-6' super typhoon Haiyan in global warming hiatus: Contribution from subsurface ocean warming, *Geophy. Res. Lett.*, 41, 8547–8553, doi:10.1002/2014GL061281, 2014.
- Ma L.-M. and Tan, Z.-M.: Improving the behavior of the cumulus parameterization for tropical cyclone prediction: Convection trigger, *Atmos. Res.*, 92, 190–211, doi:10.1016/j.atmosres.2008.09.022, 2009.
- Miyamoto Y., Kajikawa, Y., Yoshida, R., Yamaura, T., Yashiro, H., and Tomita, H.: Deep moist atmospheric convection in a subkilometer global simulation, *Geophy. Res. Lett.*, 40, 4922–4926, doi:10.1002/grl.50944, 2013.
- 20 Nolan D. S., Stern, D. P., and Zhang, J. A.: Evaluation of planetary boundary layer parameterizations in tropical cyclones by comparison of in situ observations and high-resolution simulations of Hurricane Isabel (2003). Part II: Inner-core boundary layer and eyewall structure, *Mon. Wea. Rev.*, 137, 3675–3698, doi:10.1175/2009MWR2786.1, 2009.
- Powell M. D., Vickery, P. J., and Reinhold, T. A.: Reduced drag coefficient for high wind speeds in tropical cyclones, *Nature*, 25 24, 395–419, doi:10.1038/nature01481, 2003.
- Richter, D. H., Bohac, R., and Stern, D. P.: An assessment of the flux profile method for determining air-sea momentum and enthalpy fluxes from dropsonde data in tropical cyclones, *J. Atmos. Sci.*, 73, 2665–2682, doi:10.1175/JAS-D-15-0331.1, 2016.
- Sampson C. R., Jeffries, R. A., Neumann, C. J., and Chu, J.-H.: Tropical cyclone forecasters reference guide. NRL Rep. NRL/PU/7541-95-0012, U.S. Naval Research Laboratory, 48 pp, 1995.
- 30 Schiermeier Q.: Most powerful hurricanes on the rise, *Nature*, doi:10.1038/news.2010.24, 2010.
- Schiermeier Q.: Did climate change cause Typhoon Haiyan? *Nature*, doi:10.1038/nature.2013.14139, 2013.
- Shimada U., Kubota, H., Yamada, H., Cayanan, E.O., and Hilario, F. D.: Intensity and Inner-Core Structure of Typhoon Haiyan (2013) near Landfall: Doppler Radar Analysis, *Mon. Wea. Rev.*, 146, 583–597, doi:10.1175/MWR-D-17-0120.1, 2018.

- Skamarock W. C.: Evaluating mesoscale NWP models using kinetic energy spectra, *Mon. Wea. Rev.*, 132, 3019–3032, doi:10.1175/MWR2830.1, 2004.
- Skamarock W. C., and Coauthors: A description of the advanced research WRF version 3, NCAR Tech. Note NCAR/TN-475 + STR, 113 pp, 2008.
- 5 Smith, S. D.: Coefficients for sea surface wind stress, heat flux, and wind profiles as a function of wind speed and temperature, *J. Geophys. Res.*, 93, 15 467–15 472, 1988.
- Stauffer D. R. and Seaman, N. L.: Multiscale 4-dimensional data assimilation, *J. Appl. Meteor. Climatol.*, 33, 416–434, 1994.
- Tewari M., and Coauthors: Implementation and verification of the unified NOAA land surface model in the WRF model, 20th Conference on Weather Analysis and Forecasting/16th Conference on Numerical Weather Prediction, American
- 10 Meteorological Society, Seattle, WA, US, https://ams.confex.com/ams/84Annual/techprogram/paper_69061.htm, 2004.
- Vickers D., Mahrt, L., and Andreas, E. L.: Estimates of the 10-m neutral sea surface drag coefficient from aircraft eddy-covariance measurements, *J. Phys. Oceanogr.*, 43, 301–310, doi:10.1175/JPO-D-12-0101.1, 2013.
- Wang, H. and Wang, Y.: A numerical study of Typhoon Megi (2010). Part I: Rapid intensification, *Mon. Wea. Rev.*, 142, 29–48, doi:10.1175/MWR-D-13-00070.1, 2014.
- 15 Wu, J., 1982: Wind stress coefficients over sea surface from breeze to hurricane, *J. Geophys. Res.*, 87, 9704–9706, 1982.
- Yuter S. E. and Houze, R. A.: Three-dimensional kinematic and microphysical evolution of Florida cumulonimbus. Part II: Frequency distributions of vertical velocity, reflectivity, and differential reflectivity, *Mon. Wea. Rev.*, 123, 1941–1963, 1995.
- Zhang, J. A., Black, P. G., French, J. R., and Drennan, W. M.: First direct measurements of enthalpy flux in the hurricane boundary layer: The CBLAST results, *Geophys. Res. Lett.*, 35, L14813, doi:10.1029/2008GL034374, 2008.
- 20 Zhang, D.-L. and Chen, H.: Importance of the upper-level warm core in the rapid intensification of a tropical cyclone, *Geophys. Res. Lett.*, 39, L02806, doi:10.1029/2011GL050578, 2012.
- Zhao B., Qiao, F., Cavaleri, L., Wang, G., Bertotti, L., and Liu, L.: Sensitivity of typhoon modeling to surface waves and rainfall, *J. Geophys. Res.*, 122, 1702–1723, 10.1002/2016JC012262, 2017.
- Zweers, N. C., Makin, V. K., de Vries, J.W., and Burgers, G.: A sea drag relation for hurricane wind speeds, *Geophys. Res. Lett.*, 37, L21811, doi:10.1029/2010GL045002, 2010.
- 25

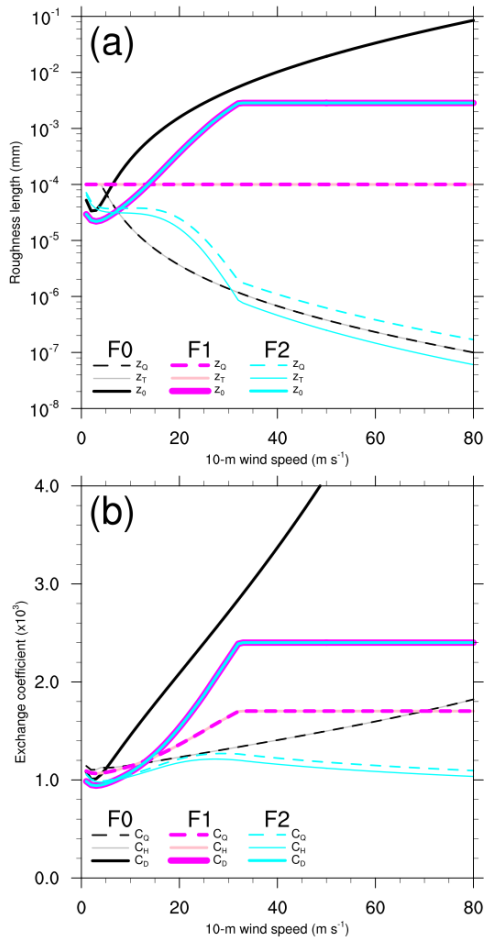


Figure 1: Plots of (a) roughness lengths and (b) bulk transfer coefficients versus wind speed at 10-m height for neutral condition. Flux schemes F0, F1, and F2 are colored black/gray, red/pink, and green. The thick solid curves are Z_0 and C_D , thin solid curves are z_h and C_H , and dashed curves are z_q and C_Q . It is noted that some curves are identical. For F1 and F2, z_0 (and thus C_D) is the same; for F1 and F2 the respective heat and moisture roughness and coefficients are the same: $z_h = z_q$ and $C_H = C_Q$.

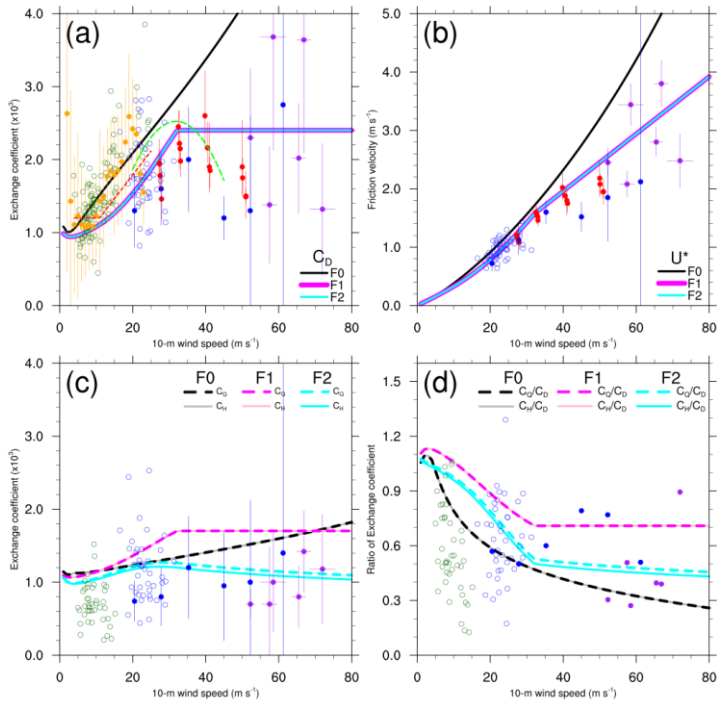


Figure 2. Plots of (a) momentum transfer coefficients, (b) friction velocity, (c) scalar transfer coefficients, and transfer coefficient ratios versus wind speed at 10-m height from available observational estimates as found in the literatures.

The scalar transfer coefficients shown here can be C_H , C_Q or C_K upon the availability in the literatures that we

5 referred to in this study. The purple dots represent the values from Bell et al (2012); blue circles from French et al. (2007); dark green circles from Geernaert et al. (1987); green curve from Jarosz et al. (2007); red curve from Large and Pond (1981); red dots from Powell et al. (2003); blue dots from Richter et al. (2016), and the orange dots from Vickers et al. (2013). The curves are given by fitted equations; the circles represent the available data points; the dots represent average values in a range of wind speed bins with the bars show the corresponding data spread as denoted
 10 by either the standard deviations or the 95% confidence intervals, where the wind speed bin and the representation of data spread vary between these literatures. Table B1 provides brief information of these observational estimates. The respective bulk parameters derived from WRF, represented as shown in Fig. 1, are superimposed for a comparison.

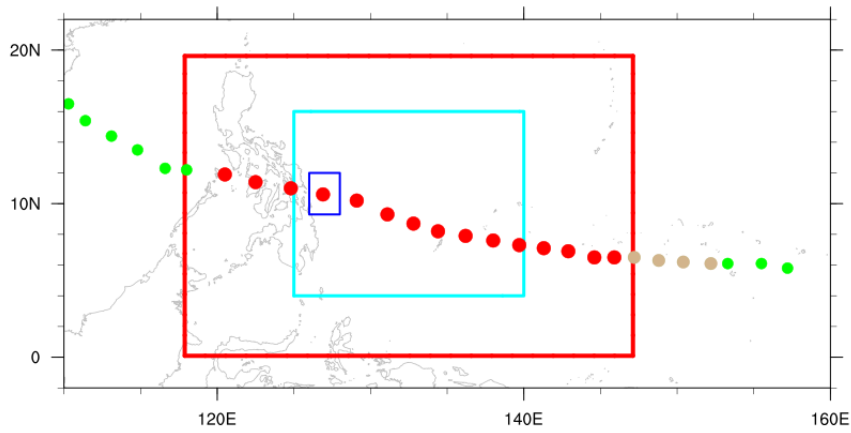
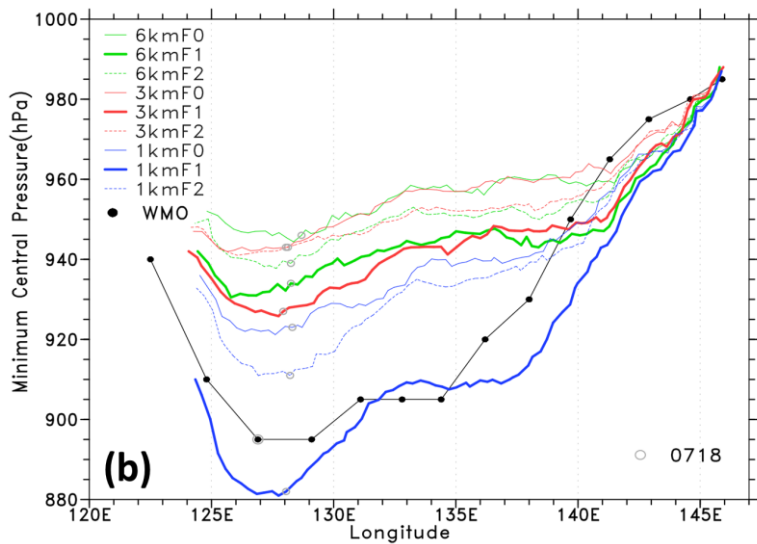
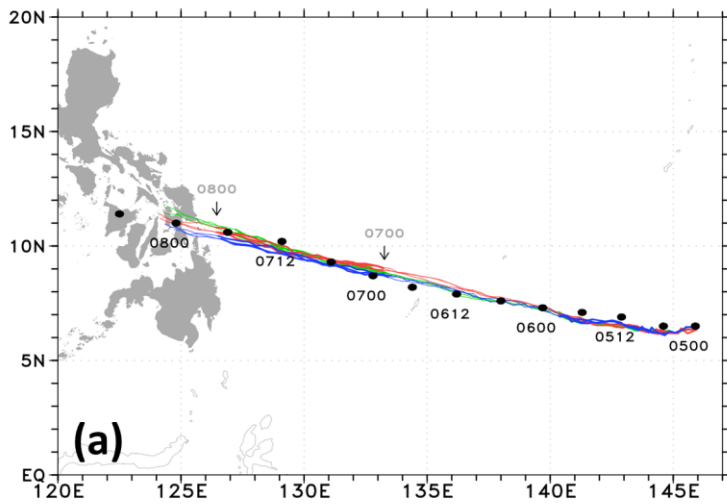


Figure 3. The model domain (red box), and calculation domains for the contoured frequency by altitude diagrams (blue box) and for energy spectra (cyan box). The red, tan, and dots represent the locations of Haiyan obtained from the best-track dataset. The red dots indicate the period of sensitivity experiments, the tan dots indicate the nudging period. Green dots are the locations outside our simulation period.

5



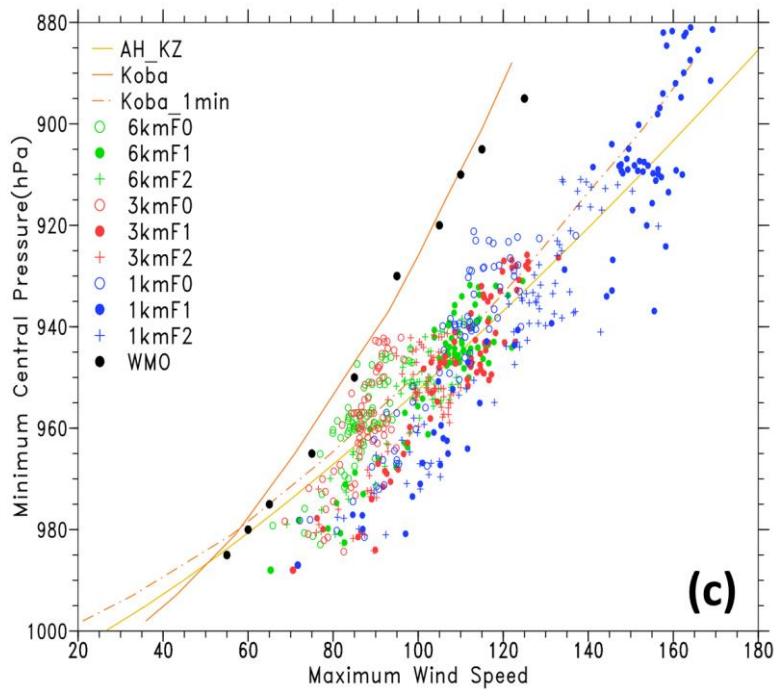


Figure 4. (a) Haiyan's best track (black dots) and simulated tracks of 1 km (blue lines), 3 km (red lines), and 6 km (green lines) from 0000UTC 5 November 2013 through 1200UTC 8 November 2013. Thick and thin curves represent a span of 24 hours alternately. (b) The evolutions of the best track and simulated minimum central pressures (hPa) shown in relation to longitude. The longitudinal position of the first landfall of Haiyan is around 125°E. The gray circle on each curve denotes the corresponding data point at 1800UTC 7 November 2013. (c) Scatterplot of maximum wind speed versus minimum central pressure. Reference curves Koba and AH_KZ are the operational WPRs for the JMA and JTWC, respectively. Koba_1min is the modified Koba curve with 10-minute sustained winds converted to 1-minute averaged values. [The detailed tracks and central positions of the simulated storms during their mature stage are given in supplemental figures Figs. S1 and S2.](#)

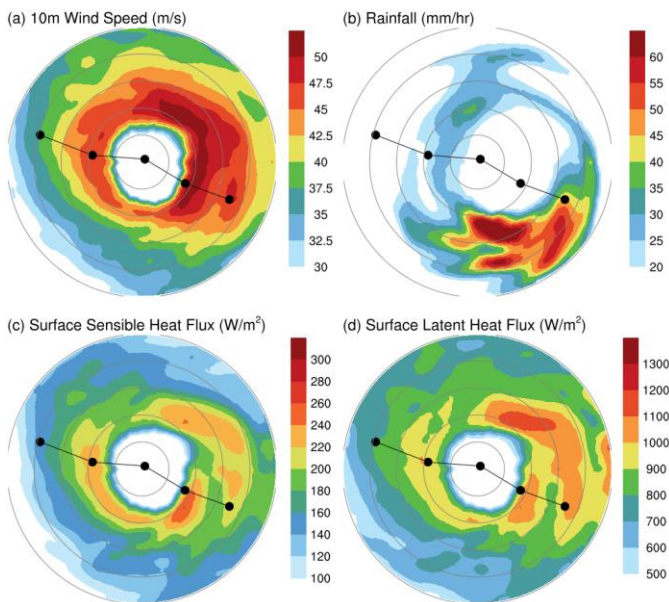


Figure 5. Horizontal distributions for (a) wind speed ($m s^{-1}$) at 10-m height, (b) total rainfall ($mm hour^{-1}$), (c) surface sensible heat flux ($W m^{-2}$), and (d) surface latent heat flux ($W m^{-2}$) at forecast hour 71 h (valid at 2200UTC 7 November) for the experiment F0 with 3-km resolution. All fields are taken from the transformed subset on cylindrical grids; see text for detail. At 71 h, the simulated typhoon centered at the nearest location upon the best-track location at 1800UTC 7 November 2013. Range rings are shown at radii of 20, 40, 60, 80, and 100 km. Black dot at the plane center denotes the simulated typhoon center at 71 h, whereas the two dots to the upper left and lower right of this central dots are the corresponding locations of typhoon center in the next and previous 2 hours. Solid lines connecting these dots denote the simulated typhoon track within the 5 hours.

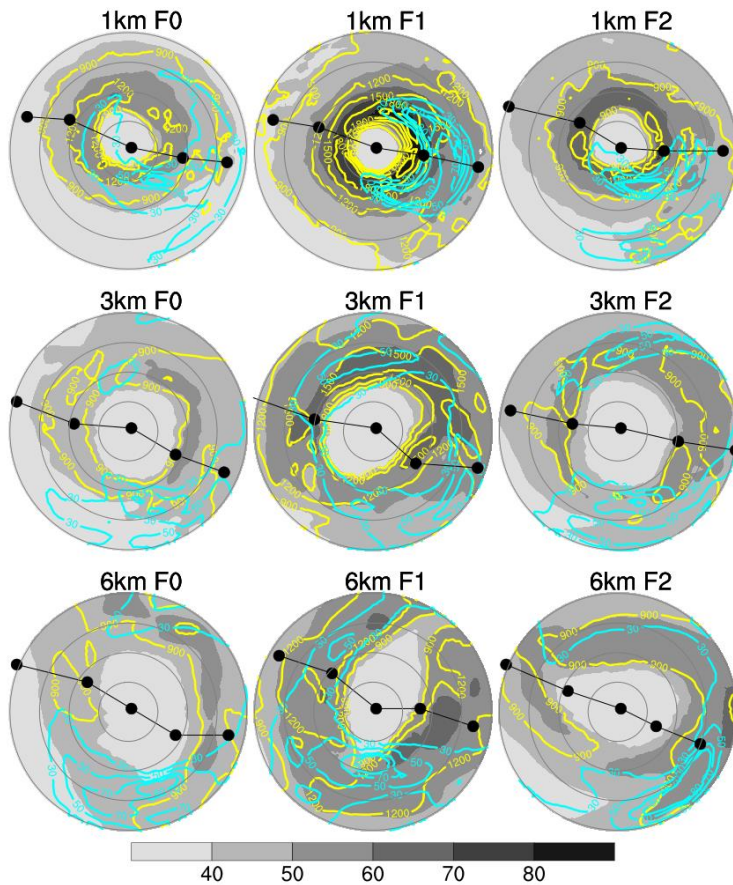


Figure 6. Horizontal distributions for wind speed at 10-m height (shaded; $m s^{-1}$), surface latent heat flux (yellow contours; $W m^{-2}$), and total rainfall (cyan contours; $mm hour^{-1}$) at 71 h for all experiments. In all the experiments, the center location of simulated typhoon at 71 h are at the nearest or the second nearest location upon the best-track location at 1800UTC 7 November 2013. The distributions for experiment F0 of 3-km resolution are the same as in Fig.5 but slightly zoom in on a circle of radius 80 km; Range rings are shown at radii of 20, 40, 60, and 80 km. Other symbols are shown as in Fig. 5.

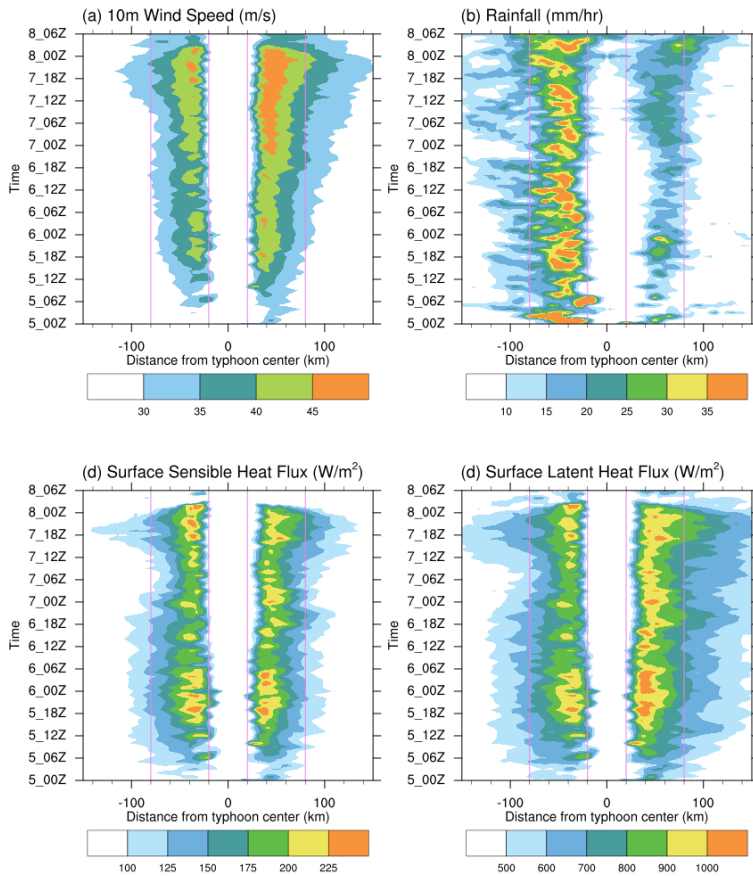


Figure 7. Radius–time cross sections of (a) 10-m wind speed (m s^{-1}), (b) rainfall (mm hour^{-1}), (c) surface sensible heat flux (W m^{-2}), and (d) surface latent heat flux (W m^{-2}) for control experiment (3kmF0). The positive and negative distances from typhoon center represent the azimuthal averages of the right (northern) and left (southern) semicircles, respectively, along the typhoon track. For each hourly output, the corresponding track in 3 hours centered at that particular hour is used to identify the semicircles on both sides.

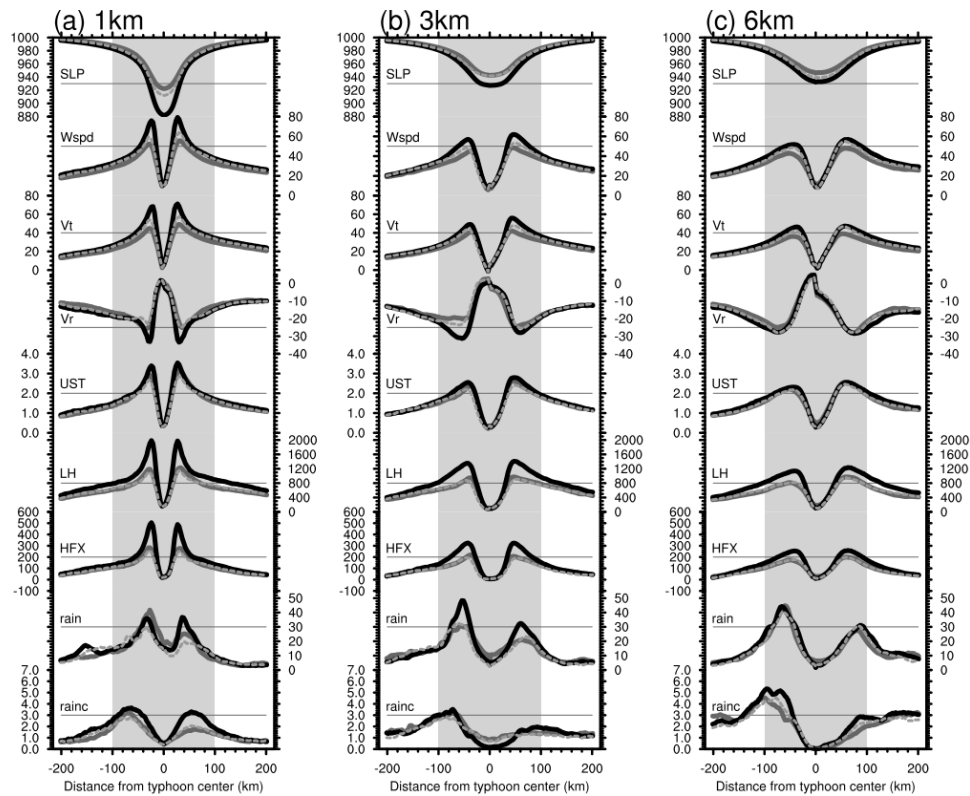


Figure 8. The radial variations of surface fields for experiments 1 km (left), 3 km (center), and 6 km (right). The surface fields shown are (from top to bottom) sea level pressure (SLP; hPa), wind speed and tangential and radial winds at 10 m (Wspd, V_t , and V_r ; $m\ s^{-1}$), surface latent and sensible heat fluxes (LH and SH; $W\ m^{-2}$), and total rainfall (Rain; $mm\ hour^{-1}$). Positive values of V_r indicate inflow. Dim-gray and black curves represent flux options F0 and F1, respectively. Horizontal gray lines are selected reference lines for each field. All fields are time averaged between 1800UTC 7 November 2013 and 0000UTC 8 November 2013. Positive and negative distances represent the right (northern) and left (southern) semicircles as in Fig. 7. Vertical light-gray and gray shaded bars denote the radial sectors bounded by radii of 50 km and 30 km, respectively.

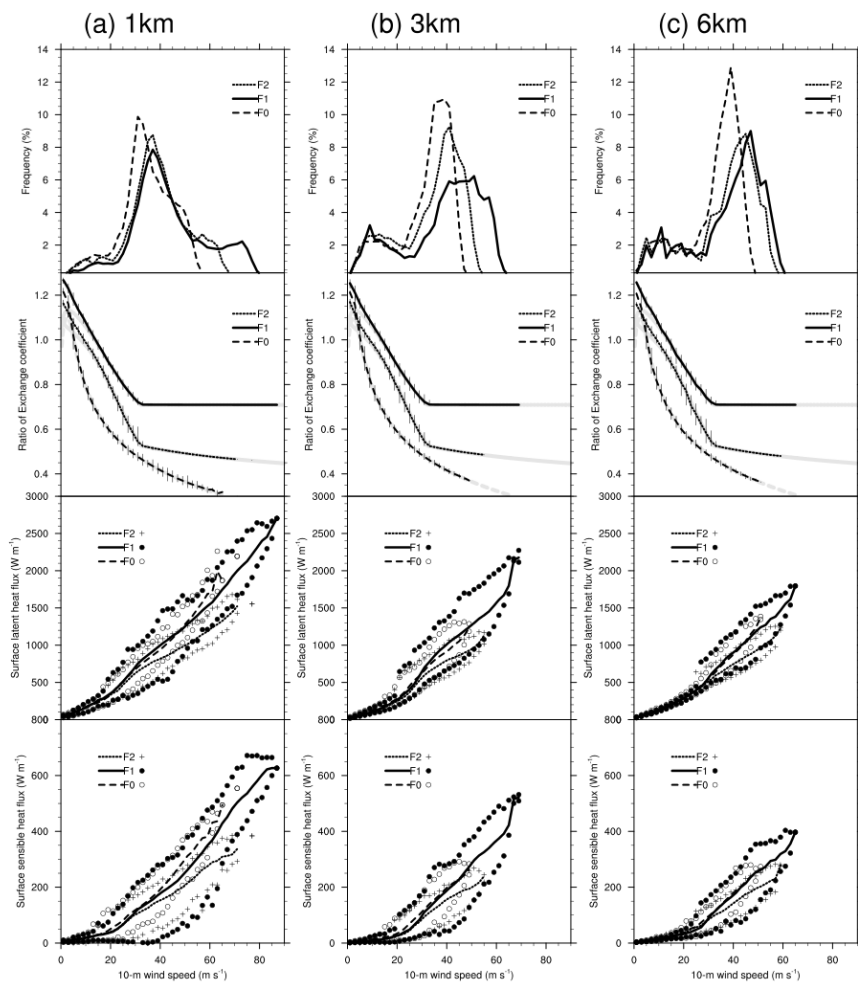


Figure 9. The top panels are the percentage of samples in 2 m s^{-1} bins for wind speeds. These wind speed samples were collected inside a circle of radius 100 km with respect to the typhoon center at each output hour during a

sampling period from 1800UTC 7 November 2013 to 0000UTC 8 November 2013. Over this sampling period of 7 hours, only points over ocean are collected. The percentages were the numbers of data point in each wind speed bin divided by the total count during the sampling period. The upper middle, lower middle, and bottom panels show the binned averages and data ranges for ratio of C_K/C_D at 10-m height, latent heat flux, and sensible heat flux, respectively, in each 2 m s^{-1} wind speed bins. Here the values of C_Q at 10-m height is used as C_K . The binned averages are the mean values for the corresponding variable as collected in bins depending on the collocated wind speed and are displayed as solid or dashed curves. Within each wind speed bin, the respective data range for each variable is bounded by the minimum and maximum values from all binned samples during the period of 7 hours. The data ranges are denoted as vertical bars (C_K/C_D) and symbols (fluxes). Gray curves in the panels of C_K/C_D are the same as in Fig. 2d, superimposed for a reference.

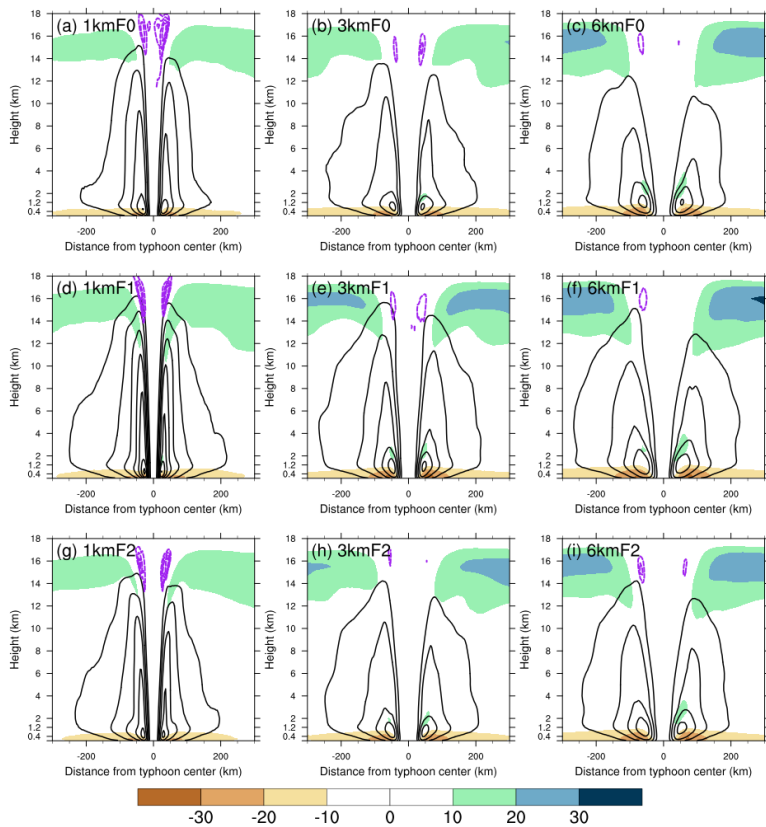


Figure 10. Radius–height cross sections of tangential wind (contours; m s^{-1}) superposed on radial wind (color shaded; m s^{-1}) for experiments (a) 1kmF0, (b) 3kmF0, (c) 6kmF0, (d) 1kmF1, (e) 3kmF1, (f) 6kmF1, (g) 1kmF2, (h) 3kmF2, and (i) 6kmF2. The tangential winds are contoured every 10 m s^{-1} starting from 30 m s^{-1} . Positive values of radial wind indicate inflow. The upper level radial inflows (purple dashed contours; m s^{-1}) are also imposed and are contoured every 0.5 m s^{-1} starting from -0.5 m s^{-1} . All fields are time averaged between 1800UTC 7 November 2013 and 0000UTC 8 November 2013. Positive and negative distances represent the right (northern) and left (southern) semicircles as in Fig. 7.

已删除: and

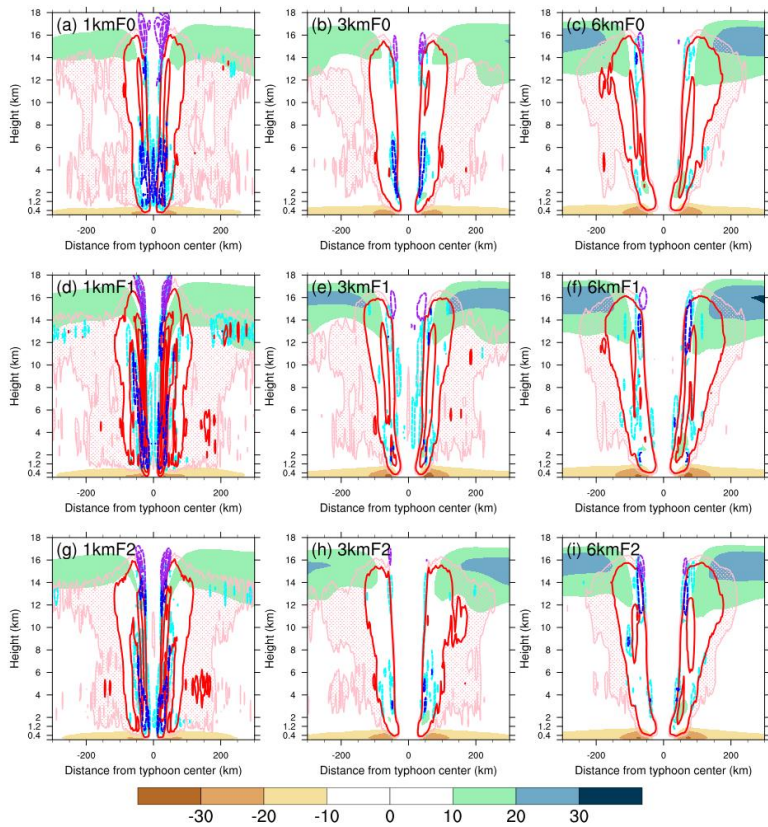


Figure 11. The same as Fig. 10 but for vertical velocity (contours; m s^{-1}) and radial wind (color shaded; m s^{-1}).

- 5 Positive (upward) and negative (downward) velocities are indicated by red and blue contours, respectively, and are plotted every 1 m s^{-1} starting from wind speeds of 0.5 m s^{-1} . In addition, pink hatched areas denote upward velocity of $0.3\text{-}0.5 \text{ m s}^{-1}$; cyan contours are downward velocity of -0.3 m s^{-1} .

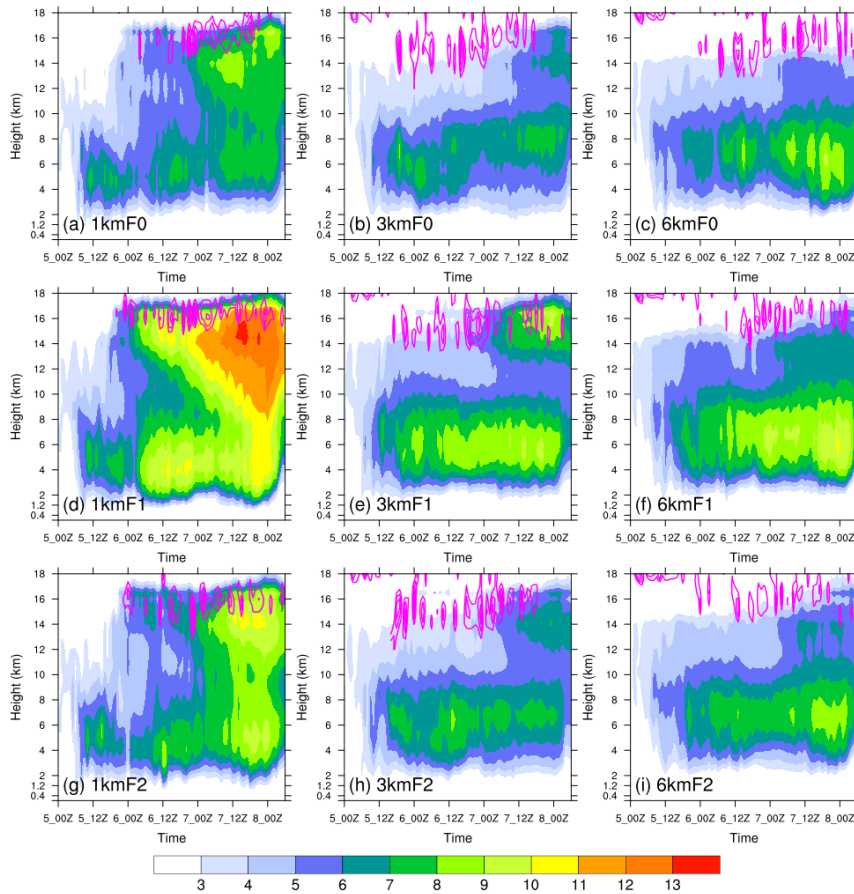


Figure 12. Time-height cross sections of upper level radial inflow (contours; m s^{-1}) superposed on temperature anomaly (color shaded; K) for experiments (a) 1kmF0, (b) 3kmF0, (c) 6kmF0, (d) 1kmF1, (e) 3kmF1, (f) 6kmF1, (g) 1kmF2, (h) 3kmF2, and (i) 6kmF2. The upper level radial inflows are contoured every 0.5 m s^{-1} starting from -0.5 m s^{-1} . The temperature anomaly is defined with respect to a composite of domain-averaged temperature profiles at the model initial time of the sensitivity experiments (0000UTC 5 November 2013); the composite of domain-averaged temperature profiles is derived as the mean of 8 domain-averaged temperature profiles obtained

已删除: and

from all the experiments. The time-height cross section of temperature anomaly is the area-averaged temperature profile inside a ring of radius 21 km with respect to the typhoon center at each output hour minus the composite of domain-averaged temperature profiles. The upper level radial inflows are the area-averaged radial winds inside a ring of radius 200 km with respect to the typhoon center at each output hour; only the radial winds above 9 km height are used for calculation.

5

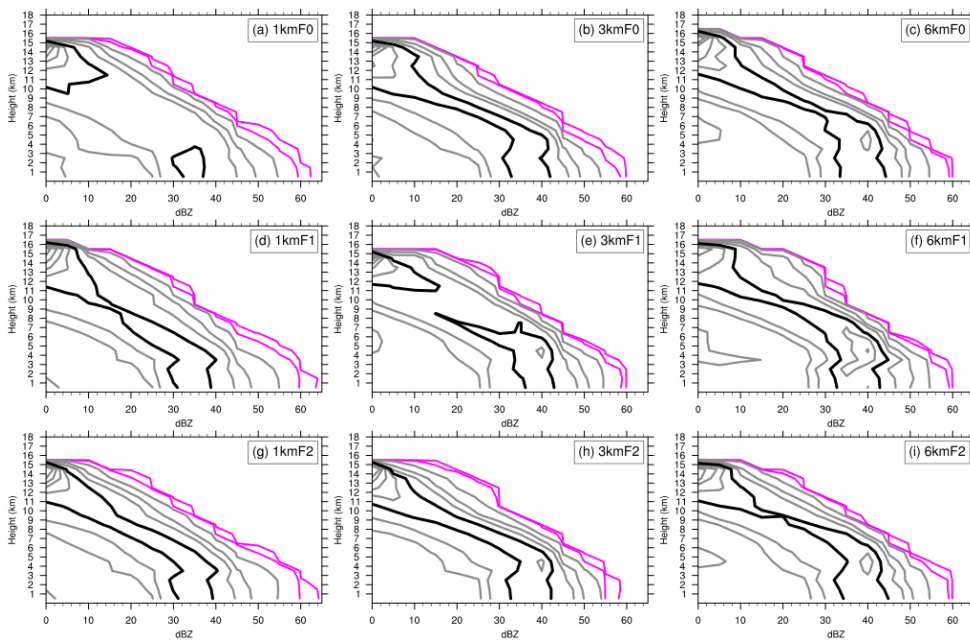


Figure 13. The CFADs of simulated reflectivity for experiments (a) 1kmF0, (b) 3kmF0, (c) 6kmF0, (d) 1kmF1, (e) 3kmF1, (f) 6kmF1, (g) 1kmF2, (h) 3kmF2, and (i) 6kmF2. The sampling time for model output are taken as the simulated typhoon centered at its nearest location upon the best-track location at 1800UTC 7 November 2013 and for the following 2 hours afterwards. The simulated reflectivity was taken from all grid points with updraft (positive vertical velocity) within the calculation domain for CFADs (see blue box in Fig. 3 for the corresponding area) in the model native grids. For reflectivity CFADs, the bin size is 5 dBZ and the plot is contoured at 0.01%,

10

已删除: and

0.1%, 1%, 5%, 10%, 20%, 30%, 40%, 50%, and 60% of data per dBZ per kilometer, with the 20% dBz⁻¹ km⁻¹ contour highlighted in black and the lowest 2 contours displayed in magenta.

5

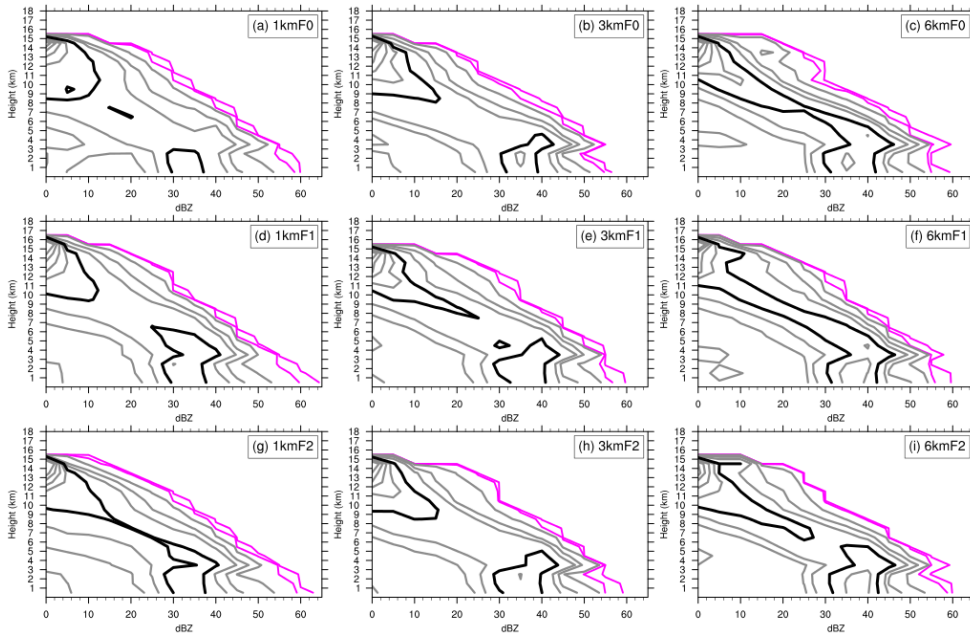


Figure 14. The same as Fig. 13 but for CFADs of simulated reflectivity with downdraft.

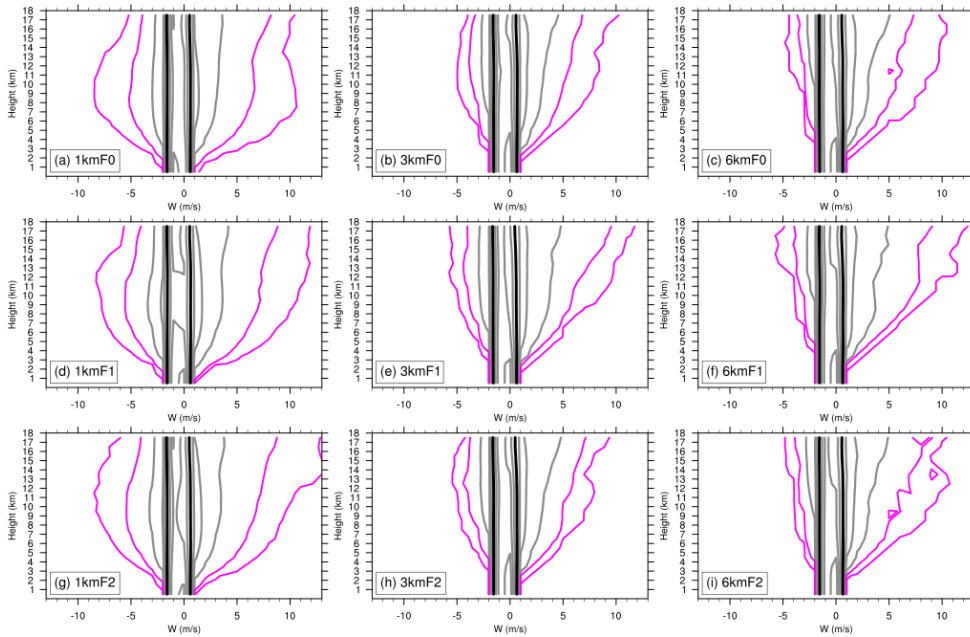


Figure 15. The same as Fig. 14 but for CFADs of simulated vertical velocity. The velocity bin size is 1 m s^{-1} and the plot is contoured at 0.01%, 0.1%, 1%, 5%, 10%, 20%, 30%, 40%, 50%, and 60% of data per meter per second per kilometer, with the 20% $(\text{m s}^{-1})^{-1} \text{ km}^{-1}$ contour highlighted in black and the lowest 2 contours displayed in magenta.

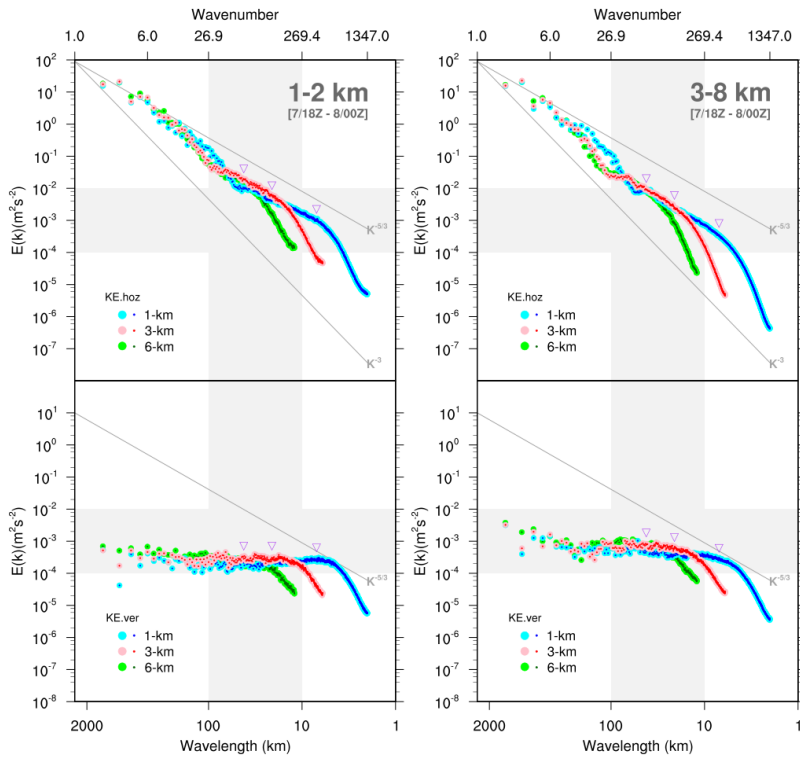


Figure 16. Mean KE spectra for horizontal wind (upper) and vertical velocity (lower) for all simulations as computed over the boundary layer (left panel; between 1 and 2 km) and free troposphere (right panel; between about 3 and 8 km) for the mature stage. The mature stage is indicated by the average between 1800UTC 7 November 2013 and 0000UTC 8 November 2013. The gray lines correspond to the expected slopes for the large scale (-3 slope) and mesoscale to smaller scales ($-5/3$ slope) of the atmospheric kinetic energy spectrum. The wavelength and wavenumber are given on the lower and upper x-axes, respectively. The purple triangles in each panel, from left to right, denote the locations of 7 DX for the simulations of resolutions 6 km, 3 km, and 1 km, respectively. The domain of the spectral decomposition is shown in Fig. 3.

Table 1 Summary of the resolutions and surface flux options tested. The nudging period for all experiments is between 0000 UTC 4 November 2013 and 0000 UTC 5 November 2013, with identical nudging setting for each resolution group using the default flux option (F0). Thereby the corresponding sensitivity experiments start with identical initial TC (tropical cyclone) structure and location. The MCP and MSW indicate, respectively, the minimum central pressure at TC center and maximum surface wind speed near TC center.

Experiment	Resolution	Flux	
Name	(km)	Option	Notes
6kmF0	6	0	Nudging stage: model resolution and flux option configured as 6kmF0 Initial TC: MCP=988.0hPa and MSW=33.7 m s ⁻¹ ; 145.79°E, 6.36°N Horizontal grid points: 538 x 367; Time step: 20 s
6kmF1	6	1	
6kmF2	6	2	
3kmF0	3	0	Nudging stage: model resolution and flux option configured as 3kmF0 Initial TC: MCP=987.6hPa and MSW=36.3 m s ⁻¹ ; 145.95°E, 6.35°N Horizontal grid points: 1075 x 733; Time step: 10 s
3kmF1	3	1	
3kmF2	3	2	
1kmF0	1	0	Nudging stage: model resolution and flux option configured as 1kmF0 Initial TC: MCP=986.5hPa and MSW=36.9 m s ⁻¹ ; 145.88°E, 6.46°N Horizontal grid points: 3223 x 2197; Time step: 3 s
1kmF1	1	1	
1kmF2	1	2	