

A point-by-point response to the comments by the editor

Thank you for the helpful and constructive comments on our manuscript. Your comments and our responses are presented below.

1. This special issue focus on hazard, risk assessment, and management. More discussions should be focus these topics please. Please carefully discuss your research results around hazard and risk, and give suitable suggestions on management.

Response: We agree with this comment, and the additional data have been provided in the following sections: 1) Abstract, Page 1 Line 12-14, 31; 2) The first paragraph in the introduction, Page 2, Line 8, 11-14; 3) Study area, Page 6 Line 1; 4) 3.4.1 Distribution of SSC in four seasons, Page 12, Line 8-10, 19 and 23-24; 5)A paragraph was added to discuss the research results on hazards and risks and provide suitable suggestions on management in Page 13 Line 22-24 and Page 14 Line 1-7.

2. Some quantified results should be added to express your views better in abstract

Response: We agree with this comment, and quantified results were provided in the abstract, Page 1 Line 23-27.

3. Page 1 Line 30 Keyword Remote sensing inversion does not appear in the following text, please consider choosing a more suitable keyword.

Response: We agree with this comment, and the keyword “Remote sensing inversion” was rephrased as “Remote sensing”.

4. Page 3 Lines 6-7 Please consider further supplementing the defects of the traditional vegetation indices.

Response: We agree with this comment. The defects of traditional vegetation indices are discussed in the third paragraph of the introduction, Page 3 Line 10-15.

5. Page 3 Lines 19-20 The reasons why the same inversion models cannot be applied to quantitatively analyze the SSC in different seasons should be supplemented

Response: We agree with this comment and included the reasons why the same inversion models cannot be applied to quantitatively analyze the SSC in different seasons in the fourth paragraph of the introduction, Page 3 Line 21-24 and Page 4 Line 1-6.

6. The shortcoming of the method and the uncertainty of the quantization should be mentioned.

Response: We agree with this comment and added the shortcoming of the method and the uncertainty of the quantization in the third paragraph of the discussion, Page 15 Line 8-12.

7. Language should be further polished before submission.

Response: We agree with this comment, and the language was further polished again.

Monitoring the seasonal dynamics of soil salinization in the Yellow River Delta of China using Landsat data

Hongyan Chen, Gengxing Zhao*, Yuhuan Li, Danyang Wang, Ying Ma

National Engineering Laboratory for Efficient Utilization of Soil and Fertilizer

5 *Resources, College of Resources and Environment, Shandong Agricultural University, Taian 271018, China*

*Corresponding author: Gengxing Zhao, College of Resources and Environment, Shandong Agricultural University, No.61 Daizong Street, Tai'an, Shandong 271018, PR China. E-mail: zhaogx@sdau.edu.cn

10

Abstract. In regions with distinct seasons, soil salinity usually varies greatly between seasons. Thus, the seasonal dynamics of soil salinization must be monitored for the prevention and control of soil salt hazard and the reduction of ecological risk. This article took the Kenli district in the Yellow River Delta (YRD) of China as the experimental area. Based on Landsat data from spring and autumn, improved vegetation indices (IVIs) were created and then applied to inversion modeling of the soil salinity content (SSC) by employing the stepwise multiple linear regression, back propagation neural network and support vector machine methods. Finally, the optimal SSC model in each season was extracted, and the spatial distributions and seasonal dynamics of SSC within a year were analyzed. The results indicated that the SSC varied obviously between seasons in the YRD, and the support vector machine method resulted in the best inversion models for the precision of the calibration set ($R^2 > 0.72$, RMSE < 6.34 g/kg) and the validation set ($R^2 > 0.71$, RMSE < 6.00 g/kg, and RPD > 1.66). The best SSC inversion model for spring could be applied to the SSC inversion in winter (R^2 of 0.66); similarly, the best model for autumn could also be applied to SSC inversion in summer (R^2 of 0.65). The SSC exhibited a gradually increasing trend from southwest to northeast in the Kenli district. The SSC also underwent the following seasonal dynamics: soil salinity accumulated in spring, decreased in summer, increased in autumn, and reached its peak in the end of winter. This work provides data support for the control of soil salt hazards and utilization of saline-alkali soil in the YRD.

15

20

25

30

Keywords: Soil salinity; Remote sensing; Vegetation index; Multispectral imaging; Seasonal dynamics

1. Introduction

5 Saline soils are widespread throughout the world, especially in arid, semiarid and some subhumid regions, and they cause severe environmental degradation that can impede crop growth and overall regional production (Metternicht and Zinck 2003). Moreover, as a form of land degradation and an ecological environment hazard, soil salinization can degrade soil quality and lead to ecosystem risks (Huang et al. 2015; Zhao et al. 10 2018). Therefore, the scientific treatment and utilization of saline soil are of great significance to regional agricultural production and ecological risk reduction. Thus, the degree, geographical distribution and dynamics of soil salinization must be determined in real time for the prevention and control of saline soil hazards and the management and utilization of saline soil (Melendez-Pastor et al. 2012; Yang et al. 2018).

15

Remote sensing technology provides an important and rapid approach for the quantitative monitoring and mapping of soil salinization (Dehni and Lounis 2012; Tayebi et al. 2013; Shoshany et al. 2013; Sidike et al. 2014; Wu et al. 2014; Guo et al. 2015; Sturari et al. 2017). Multispectral satellite data, such as Landsat, SPOT, IKONOS, 20 QuickBird, and the Indian Remote Sensing (IRS) series of satellites, have often been used to map and monitor soil salinity and other properties due to the low cost and the ability to map extreme surface expressions of salinity (Dwivedi et al. 2008; Abbas et al. 2013; Allbed et al. 2014; Mahyou et al. 2016; Mehrjardi et al. 2008; Yu et al. 2010; Ahmed and Iqbal 2014; Rahmati and Hamzeshpour 2016). Extensive studies have shown

that models based on multispectral satellite data are still the preferred soil salinity mapping method over large spatial domains (Allbed and Kumar 2013; Scudiero et al. 2015; Taghizadeh-Mehrjardi et al. 2014).

To a certain extent, information on the damage to vegetation caused by soil salinization can help identify the degree and trend of soil salinization. Therefore, traditional vegetation indices (VIs), such as the normalized difference vegetation index (NDVI), ratio vegetation index (RVI), and difference vegetation index (DVI), can be used as indicators to determine the degree of soil salinization (Elmetwalli et al. 2012; Li et al. 2013; Goto et al. 2015). However, the accuracy of the models based on traditional VIs must be improved (Iqbal 2011). Traditional VIs involve data from only the bands in the visible and near-infrared regions and do not consider other bands (such as shortwave infrared band, which has a large amount of information), and performing comprehensive analyses with these indices is difficult. Significant correlations often occur between traditional VIs that only use the data from two bands, which can distort the model results (USGS, 2013). Therefore, it is worth studying whether the addition of data from the shortwave infrared band, which has long wavelengths and contains considerable information, can improve the accuracy and stability of inversion models of the soil salinity content (SSC).

Existing studies primarily focus on SSC inversion models for a single study area at a specific time (Herrero and Castañeda 2015; He et al. 2014). Nevertheless, in regions with distinct seasons, applying the same inversion model to quantitatively analyze the SSC in different seasons is not adequate. For one thing, the changes in soil moisture are obvious due to the great differences in rainfall and evaporation between different

seasons, thus, because being closely related to soil moisture, soil salinity varies usually greatly between seasons. Moreover, considerable differences occur in the coverage and growth of vegetation between different seasons, which has a great influence on VIs. Therefore, seasonal SSC inversion models are necessary to improve the accuracy of
5 SSC modeling and enhance our ability to monitor regional soil salinization continuously and in real time.

The Yellow River Delta (YRD) is located at the junction of the Beijing-Tianjin-Hebei metropolitan area and Shandong Peninsula and lies within the efficient ecological
10 economic zone of China, which has obvious geographical advantages. With nearly 550,000 ha of unused land, the land resources in this area are rich. However, soil salinization is a widespread and serious concern in this region (Mao et al. 2014). Approximately 85.7% of the area in the region is covered by saline soil, and the amount of coastal saline soil has exhibited an increasing trend in recent years. As the main risk
15 to farmland ecosystems in this region, soil salinization can result in large reductions in agricultural and fragile ecological environments, which could influence the development of the regional economy and society (Yang et al. 2015; Weng et al. 2010). Therefore, it is particularly necessary to monitor the seasonal dynamics of soil salinization in this region.

20

The objectives of this paper are to (1) build optimal SSC inversion models for different seasons according to the soil salinity conditions; and (2) map the spatial distribution and seasonal dynamics of SSC in the YRD of China. Specifically, the VIs

were constructed by introducing data from the shortwave infrared band (SWIR) of Landsat data. The SSC inversion models in spring and autumn were built using stepwise multiple linear regression (SMLR), back propagation neural network (BPNN) and support vector machine (SVM) methods, and the best models for spring and autumn were selected and applied to the other seasons. Once the optimal soil salinity inversion model was determined for each season, it was then applied to map the SSC distribution and analyze the seasonal SSC dynamics.

2. Materials and methods

2.1 Study area

The study area is the Kenli district in the YRD region ($37^{\circ}24'\sim 38^{\circ}06'N$, $118^{\circ}14'\sim 119^{\circ}11'E$), which is located in Dongying City, Shandong Province, China and on the southern shore of the Bohai Sea (Fig. 1). This area has a characteristic plain landscape and coastal saline soil type, and three types of soil subgroups are observed: tidal soil, salinized tidal soil and coastal tidal saline soil. The soil parent material is Yellow River alluvial material, and the soil texture is light. The salt in groundwater can easily reach the soil surface with the evaporation of water from the soil; thus, salt accumulates on the soil surface while it is relatively rare in the middle and lower parts of the soil profile (below the core soil). The main types of land use in this area are cultivated land, unused land and grassland. The main crops are wheat, corn, rice and cotton. The main natural vegetation includes white grass, reed, horse trip grass, tamarix and suaeda. Because of the low and flat terrain, high groundwater table, high mineralization rate, poor drainage conditions and the infiltration and mounting of seawater associated with the Yellow River in this region, soil salinization at the surface

is generally severe and widespread, and the associated ecological risk is very serious (Yang et al. 2015; Weng et al. 2010). Due to the temperate climate and the occurrence of four distinct seasons, the soil salt content exhibits obvious seasonal dynamics. The soil salinization process in the region is shown in Fig. 2.

5

2.2 Soil sampling and chemical analyses

To achieve an accurate representation of the seasonality, we selected April, August, November and February (in the following year) to represent the spring, summer, autumn, and winter seasons, respectively. According to the climate characteristics and soil salinization conditions in the different seasons, the samples collected in spring and autumn were used to develop the SSC inversion models while the samples from winter and summer were used to validate the inversion models. Overall, 92 spring samples were collected from April 27-May 2, 2013; 30 summer samples were collected from August 14-15, 2013; 110 autumn samples were collected from November 9-13, 2013; and 56 winter samples were collected from February 26-29, 2014. Sample points were designated by considering the degree of soil salinization, morphology and microtopography of the soil surface, and uniformity of the sample distribution (Fig. 1). Topsoil samples were collected at each sample point at a depth <20 cm, and GPS coordinates were recorded. *In situ* environmental information was also recorded. The collected soil samples were naturally air dried, crushed, purified, passed through a 2 mm sieve, and mixed evenly. The concentrations of Cl^- , SO_4^{2-} , CO_3^{2-} , HCO_3^- , K^+ , Na^+ , Ca^{2+} , and Mg^{2+} were measured in the extracted solutions with a 1:5 soil-water mixture. The SSC was defined as the combined concentration of the eight ions mentioned above.

2.3 Acquisition and pretreatment of imaging data

Multispectral Landsat data were acquired in line with the sample collection time. We employed Landsat 7 ETM+ data from May 6, 2013, and Landsat 8 OLI data from August 18, 2013, November 6, 2013, and February 26, 2014. Landsat 7 ETM+ data include one panchromatic band (520–900 nm), four multispectral bands in the visible and near-infrared wavelength range (blue (450–515 nm), green (525–605 nm), red (630–690 nm) and NIR (775–900 nm)), and two shortwave infrared (SWIR) bands (1550–1750 nm, 2090–2350 nm). The Landsat 8 OLI data have the same bands as ETM+, **although** the band ranges are slightly different. Image pretreatment, including geometric rectification, radiation calibration, and atmospheric correction, was conducted in ENVI 5.1 software from Exelis Visual Information Solutions. Geometric rectification was completed in reference to the 1:10000 terrain map of the study area; **and** then radiation calibration and Fast Line-of-Sight Atmospheric Analysis of Spectral Hypercubes (FLAASH) atmospheric correction were subsequently applied. The output images were projected to the Gauss–Kruger coordinate system and cropped to the study area. Then, the water body, building and traffic land areas were masked according to the current land use situation. Finally, the reflectance of the samples was extracted from the processed images using ArcGIS 10.1 software.

2.4 Calculation and improvement of vegetation indices

The extended vegetation indices (EVIs) were all calculated based on **Landsat** data by adding the SWIR band data to the traditional VIs. These EVIs included the extended normalized difference vegetation index (ENDVI, $(\text{NIR} + \text{SWIR} - \text{R}) / (\text{NIR} + \text{SWIR} + \text{R})$), extended difference vegetation index (EDVI, $\text{NIR} + \text{SWIR} - \text{R}$), and extended ratio vegetation index (ERVI, $(\text{NIR} + \text{SWIR}) / \text{R}$). The SWIR band refers to either of the two

SWIR bands in Landsat data. The correlations between the SSC and EVIs were analyzed, and the EVIs with significant correlation coefficients were selected as the improved vegetation indices (IVIs). Finally, the IVIs were used as the inputs to the SSC inversion models.

5

2.5 Inversion model construction and optimization

First, the soil samples collected in spring and autumn were sorted and separated according to the SSC. Two-thirds of the samples were chosen for the calibration set, and the remaining samples were used as the validation set. Therefore, of the 92 samples collected during spring, 62 were used for calibration and the other 30 were used for validation. Similarly, of the 110 samples collected during autumn, 74 were used for calibration and the other 36 were used for validation. Second, the SSC inversion model for spring was built by employing the SMLR, BPNN and SVM methods based on the VIs and corresponding IVIs. The performance of the SSC inversion models was evaluated by the coefficient of determination (R^2), root-mean-square error (RMSE) and ratio of performance to deviation (RPD). Using the same procedures, the SSC models for autumn were built using the IVIs, and the best model was selected. Finally, the best models for spring and autumn were selected and applied to the summer and winter data, and then the optimal SSC inversion models according to the soil salinization conditions in different seasons were selected.

For the SMLR method, the variance inflation factor (VIF) was set to less than 5 to control for multicollinearity. The BPNN method was conducted using the MATLAB R2012a program. During the calculation, the transfer functions of the hidden layer and

the output layer were set to tansig and logsig, respectively. The network training function was traingdx, and the learning rate, maximum training time, and model expectation error were set to 0.01, 15000, and 0.01, respectively. The SVM models were built in the Libsvm 3.11 toolbox in MATLAB R2012a. In this model, we selected the 4th SVM type (v-SVR) and the 2nd kernel function (RBF). The penalty parameter C and the kernel parameter g of the RBF were determined according to the minimum mean-squared deviation by using the cross-validation and grid search methods.

2.6 SSC distribution mapping and year-round dynamics analysis

The reflectance spectra were extracted from the Landsat data from the four seasons in the study area, and the seasonal IVIs were calculated. Then, the SSC distribution maps of the four seasons were obtained via calculations based on the corresponding optimal models. The spatial distribution characteristics and seasonal dynamics of soil salinity in the YRD were analyzed and compared.

15

The methodological flow of this article is shown in Fig. 3.

3. Results

3.1 Soil sample data

The statistical results of the SSC samples from the four seasons (the upper half of Table 1) showed that the SSC in the study area remained high with a mean >5.32 g/kg throughout the year. As determined from the minimum, maximum, and mean values, the SSC reached its maximum concentration in winter (mean=9.50 g/kg) and varied

obviously between seasons. **Because** the coefficients of variation for all four seasons were greater than 1.00, the overall SSC gradient was obvious, especially in winter and spring.

5 **3.2 Improved vegetation indices (IVIs)**

In spring, the correlation coefficients between the EVIs and the SSC of the soil samples were -0.52 for ENDVI, -0.69 for ERVI and -0.70 for EDVI. Similarly, in autumn, the correlation coefficients between the EVIs and the SSC of the soil samples were -0.73 for ENDVI, -0.69 for ERVI and -0.69 for EDVI.

10

The results showed that the correlation coefficients between the ERVI or EDVI and SSC were very significant ($R^2 > 0.69$; $P < 0.01$) in spring. Based on these findings, ERVI and EDVI were selected as the IVIs for spring, while ENDVI and ERVI were selected as the IVIs for autumn. For each season, the chosen IVIs and their

15 corresponding VIs were used to build the SSC inversion models.

3.3 Best SSC inversion models and their application to different seasons

3.3.1 SSC inversion models with VIs and IVIs

The results of the SSC inversion models in spring based on the IVIs are shown in

20 Table 2. The performances of the three modeling methods were compared, which indicated that the SVM models had the highest prediction accuracy, followed by the BPNN models, and the SMLR models had the lowest accuracy. In terms of the

calibration values, the SVM models based on the IVIs had the best and most stable SSC inversion accuracies for both the calibration set ($R^2 > 0.72$, $RMSE < 6.34$ g/kg) and the validation set ($R^2 > 0.71$, $RMSE < 6.00$ g/kg, and $RPD > 1.66$). These models were then selected as the best SSC inversion models for the SSC in spring and autumn.

5

The calibration and validation precision of the SSC inversion models in spring and autumn are shown in Fig. 4.

3.3.2 Application of the best SSC inversion models with IVIs in different seasons

10 The best SSC inversion models for spring and autumn were applied to estimate the SSC in summer and winter, respectively. Based on the estimation accuracy (Table 3), the best SSC inversion model for spring could be applied to estimate the SSC in winter, with R^2 of 0.66 and RMSE of 7.57 g/kg. Meanwhile, the best SSC inversion model for autumn could also be applied to estimate the SSC in summer, resulting in R^2 of 0.65 and

15 RMSE of 3.60 g/kg. In response to the soil salinity conditions, the SSC inversion model for spring based on the IVIs in combination with the SVM method was selected as the optimal SSC model for spring and winter, while the SSC inversion model for autumn based on the IVIs in combination with the SVM method was selected as the optimal SSC model for autumn and summer in the YRD.

20

3.4 Distribution and seasonal dynamics of SSC in the YRD region

3.4.1 Distribution of SSC in four seasons

Based on the processed Landsat data and the optimal SSC inversion model for each season, the SSC inversion maps in the four seasons were obtained. The descriptive
5 statistics of the inversed SSC in four seasons are shown in the lower half of Table 1,
which are close to the values from the collected samples (the upper half of Table 1). The
inversion results also showed that the SSC was highest in winter, followed by that in
spring, and the SSC in autumn and summer were relatively low, **therefore, the
ecological risk in winter and spring was high while that in autumn and summer was
10 relatively low.**

According to the classification standard of coastal saline soil in the semihumid area
of China, the study area was divided into 5 grades: nonsaline soil, mild saline soil,
moderate saline soil, severe saline soil, and solonchak. The distributions of the soil
15 salinity grades in the four seasons were mapped (Fig. 5) and showed similar
characteristics. There was a gradually increasing trend in soil salinity from southwest to
northeast in the study region. The main reason for this gradual increase in SSC is that
**the terrain in the southwest part of the study area is high and flat and the land is used for
agricultural production with relatively less soil salt hazards; the central part of the
20 region near the banks of the Yellow River has alternating hillocks, slopes and
depressions, which were formed by the repeated diversion of the Yellow River, thus,
each grade of soil salinization was also alternately distributed; the northeast part of the
region, which has low terrain and is closest to the sea, exhibited the most severe soil
salinization and hazards.**

25

3.4.2 Seasonal dynamics of SSC

The number of pixels and proportion of pixels per SSC grade were calculated for each season (Table 4). Fig. 5 and Table 4 demonstrate that the SSC in the study area clearly differed among the four seasons. The SSC in spring consisted primarily of moderate saline soil, severe saline soil, and solonchak (combined proportion of 90.05%). In summer, the areas of the four grades from mild saline soil to solonchak were relatively uniform (each grade accounting for 22–28%). The SSC during autumn was largely dominated by severe saline soil and solonchak (combined proportion of 77.75%). In winter, the SSC was principally severely saline and solonchak, with a combined proportion of 99.19%, of which severe saline soil accounted for 80.71%.

The seasonal SSC inversion values and the proportion of pixels per SSC grade indicated that the change in SSC between different seasons was relatively apparent. The degree of soil salinization was lowest in summer, and the SSC in autumn was relatively low except for the solonchak in coastal areas. In spring, the soil salinization became more obvious, with most of the study area belonging to the moderate to severe saline soil and solonchak groups. Meanwhile, soil salinization was the most severe in winter. In summary, soil salinity in the study area usually accumulated in spring, decreased in summer, increased in autumn, and reached its peak in the end of winter.

20

4. Discussion

In this work, spatial distribution maps of SSC in the study region in four seasons were obtained, soil salinity exhibited a gradually increasing trend from southwest to northeast, soil salinization at the surface is generally severe and widespread, soil salt hazards are

obvious and the ecological ecosystem is fragile. These conditions can lead to a high ecological risk, especially in winter and spring. The results can provide data support for soil ecological risk assessments to promote the prevention and control of soil salt hazards and improve agricultural production and the sustainable development of the ecological environment. Moreover, it is suggested that different measures for the treatment and utilization of saline soil should be implemented according to the different regions and seasons.

In this experiment, we introduced the SWIR band and proposed an improved vegetation index to increase the accuracy of SSC inversion models. The spatial distributions of SSC in the four seasons showed similar characteristics. The soil salinity exhibited a gradually increasing trend from southwest to northeast in the study region, and this distribution pattern is consistent with the results of other studies (Weng et al. 2010; Yang et al. 2015). Weng et al. (2010) also established a SSC remote sensing revision model using the data from 2153~2254 nm and 1941~2092 nm in the YRD region and achieved good results, with a validation RMSE of 0.986 and R^2 of 0.873.

The best SSC inversion models for spring and autumn were based on different IVIs. In spring, the weather is characteristically dry and windy, strong evaporation occurs, and the coverage of natural vegetation is low; however, certain crops, such as wheat and corn are in a vigorous growth stage, which results in strong vegetation reflectance. Generally, the RVI and DVI are sensitive to vegetation, especially when vegetation coverage is high; thus, the inversion accuracies based on the ERVI and EDVI were higher than those based on the other vegetation indices. In autumn, rainfall and

temperature are reduced and there is little natural vegetation coverage. Moreover, in autumn, cotton has been collected and only withered cotton leaves and rods remain in the field, while wheat has just begun to emerge out of the soil; thus, there is limited crop coverage. Therefore, the reflectance spectra of vegetation are relatively weak in autumn.

5 NDVI has low sensitivity to high vegetation areas and is suitable for monitoring in low and moderate vegetation coverage areas; therefore, the inversion accuracies based on ENDVI and ERVI were higher than those based on the other vegetation indices.

Without considering the influence of some factors (e.g., soil moisture and temperature), the models can be used for the regional remote sensing inversion of SSC in the study
10 area, however the prediction accuracy still needs to be improved. Therefore, in future studies the influence of certain key factors and the uncertainty of the quantization will be further studied to improve the SSC prediction accuracy.

The seasonal dynamics of SSC are closely related to the climate of the study area.

15 Under the drought, windy weather, and strong evaporation conditions in spring from March to May, soil salts aggregate at the soil surface as the soil moisture increases, thereby forming the first peak of salt accumulation. At this time, 90.05% of the area is covered by moderate saline soil, severe saline soil, and solonchak. Rainfall and floods occur in the summer from June to August, and as precipitation infiltrates into the soil,
20 the soil surface is desalinated, with uniform proportions of mild saline soil to solonchak. In autumn from September to November, rainfall decreases and SSC increases slightly, and the area is largely dominated by severe saline soil and solonchak (combined proportion of 77.75%). Due to drought in winter from December to February and combined with decreased evaporation, soil salinization is relatively severe and remains

latent at the soil surface, with 99.19% of the area covered by severe saline and solonchak. By the end of the winter season, the SSC reaches **its** peak. Lu et al. (2016) **indicated** that SSC exhibits seasonal variations in the YRD and the SSC in spring was higher than that in autumn in the Kenli district, which is consistent with our results.

5

Based on the time point data, the results indicated that the SSC inversion model for spring could be applied to **the** SSC inversion in winter, while the SSC inversion model for autumn could also be applied to **the** SSC inversion in summer in the YRD. These model selection results may be due to the short time intervals and the similar soil salt contents and climatic conditions between February and April and between August and November in the YRD. To respond more accurately to the dynamic changes in soil salt, a period of SSC data should be selected as the seasonal salt data, which will be further studied in future research.

15 **5. Conclusions**

In this experiment, the results showed that the ERVI and EDVI were the IVIs for spring while the ENDVI and ERVI were the IVIs for autumn. These models based on the IVIs that utilized the SVM method were selected as the best SSC inversion models for spring and autumn. The experimental results contribute to the quantitative and accurate monitoring of soil salinization **via** multispectral imaging and provide data and technical support for the management and utilization of saline soil and **the** protection of the ecological environment.

This experiment indicated that the best inversion model for spring could be applied for the SSC inversion in winter; **thus**, the optimal SSC model for spring and winter was selected in response to the soil salinity conditions. At the same time, the best inversion model for autumn could also be applied for the SSC inversion in summer, and **it** was
5 selected as the optimal SSC model for autumn and summer in the study region.

In the YRD region, the spatial distribution of SSC showed a gradually increasing trend from southwest to northeast. The seasonal dynamics of SSC **indicated** that soil **salts accumulated in spring, decreased in summer, increased in autumn, and reached its**
10 **peak in the end of winter**. These results were consistent with the results of field sampling, which showed that the SSC was highest in winter, followed by spring and autumn, and lowest in summer.

Author contributions. Hongyan Chen analyzed the data and prepared the manuscript. Gengxing
15 Zhao developed the framework for the study. Danyang Wang and Ying Ma collected and analyzed the data. Yuhuan Li provided technical support throughout different stages of the study. All coauthors provided a manuscript review.

Competing interests. The authors declare that they have no **conflicts** of interest.

20 **Acknowledgments**

This work was financially supported by the National Natural Science Foundation of China under grant numbers 41877003 and 41671346; the **Natural Science Foundation of Shandong Province**, China under grant numbers ZR2019MD039; the National Science and Technology

Support Program of China under grant number 2015BAD23B0202; the Funds of Shandong “Double Tops” Program under grant number SYL2017XTTD02; and Shandong Province key R & D Plan of China under grant number 2017CXGC0306.

5 References

- Abbas, A., Khan, S., Hussain, N., Hanjra, M. A., and Akbar, S.: Characterizing Soil Salinity in Irrigated Agriculture using A Remote Sensing Approach. *Physics and Chemistry of the Earth Parts, A/B/C55–57*, 43–52. doi: 10.1016/j.pce.2010.12.004, 2013.
- 10 Ahmed, Z., and Iqbal, J.: Evaluation of Landsat TM5 Multispectral Data for Automated Mapping of Surface Soil Texture and Organic Matter in GIS. *European Journal of Remote Sensing*, 47(1), 557-573. doi: 10.5721/EuJRS20144731, 2014.
- Allbed, A., Kumar, L., and Aldakheel, Y.Y.: Assessing Soil Salinity using Soil Salinity and Vegetation Indices derived from IKONOS High-spatial Resolution
- 15 Imageries Applications in A Date Palm Dominated Region. *Geoderma*, 230–231, 1–8. doi: 10.1016/j.geoderma.2014.03.025, 2014.
- Allbed, A., and Kumar. L.: Soil Salinity Mapping and Monitoring in Arid and Semi-arid Regions using Remote Sensing Technology: A Review. *Advances in Remote Sensing*, 2, 373–385. doi: 10.4236/ars.2013.24040, 2013.
- 20 Dehni, A., and Lounis. M.: Remote Sensing Techniques for Salt Affected Soil Mapping: Application to the Oran Region of Algeria. *Procedia Engineering*, 33, 188–198. doi: 10.1016/j.proeng.2012.01.1193, 2012.
- Dwivedi, R.S., Kothapalli, R.V., and Singh. A. N.: Generation of Farm-level Information on Salt-affected Soils using IKONOS-II Multispectral Data. *Remote Sensing of Soil Salinization: Impact on Land Management*. CRC Press, Taylor
- 25 and Francis, New York, 73–89. doi: 10.1201/9781420065039.ch5, 2008.
- Elmetwalli, A. M. H., A. N. Tyler, P. D. Hunter, and C. A.: Salt Detecting and Distinguishing Moisture-and Salinity-induced Stress in Wheat and Maize through in Situ Spectroradiometry Measurements. *Remote Sensing Letter 3*:
- 30 363–372. DOI: 10.1080/01431161.2011.599346, 2012.

- Goto, K. , Goto, T. , Nmor, J. C. , Minematsu, K. , and Gotoh, K. . Evaluating Salinity Damage to Crops Through Satellite Data Analysis: Application to Typhoon Affected Areas of Southern Japan. *Natural Hazards*, 75(3), 2815-2828. doi: 10.1007/s11069-014-1465-0, 2015.
- 5 Guo, Y., Shi, Z., Zhou, L. Q., Jin, X., Tian, Y. F., and Teng. H. F.: Integrating Remote Sensing and Proximal Sensors for the Detection of Soil Moisture and Salinity Variability in Coastal Areas. *Journal of Integrative Agriculture*, 12, 723–731. doi: 10.1016/S2095-3119(13)60290-7, 2013.
- 10 He, B., Cai, Y.L., Ran, W.R.,and Jiang. H.: Spatial and Seasonal Variations of Soil Salinity following Vegetation Restoration in Coastal Saline Land in Eastern China. *Catena*, 118, 147–153. doi: 10.1016/j.catena.2014.02.007, 2014.
- Herrero, J., andCasta ñeda. C.: Temporal Changes in Soil Salinity at Four Saline Wetlands in NE Spain. *Catena*, 133, 145–156. doi: 10.1016/j.catena.2015.04.017, 2015.
- 15 Huang, J. Y., Shi, Z., and Biswas. A.: Characterizing Anisotropic Scale-specific Variations in Soil Salinity from A Reclaimed Marshland in China. *Catena*, 131, 64–73. doi: 10.1016/j.catena.2015.04.017, 2015.
- 20 Li, P., L. Jiang, and Z. Feng.: Cross-comparison of Vegetation Indices Derived from Landsat-7 Enhanced Thematic Mapper Plus (ETM) and Landsat-8 Operational Land Imager (OLI) Sensors. *Remote Sensing* 6: 310–329. doi: 10.3390/rs6010310, 2013.
- 25 Lu, Q. , Bai, J. , Fang, H. , Wang, J. , Zhao, Q. , and Jia, J.: Spatial and Seasonal Distributions of Soil Sulfur in Two Marsh Wetlands with Different Flooding Frequencies of the Yellow River Delta, China. *Ecological Engineering*, 96(96), 63-71. doi: 10.1016/j.ecoleng.2015.10.033, 2016.
- Mahyou, H., Tychon, B., Balaghi, R., Louhaichi, M., and Mimouni. J.: A Knowledge-based Approach for Mapping Land Degradation in the Arid Rangelands of North Africa. *Land Degradation & Development*, 27, 1574–1585. doi: 10.1002/ldr.2470, 2016.
- 30 Mao, W. B., Kang, S. Z., Wan, Y. S., Sun, Y. X., Li, X. H., and Wang. Y. F.: Yellow River Sediment as a Soil Amendment for Amelioration of Saline Land in the Yellow River Delta. *Land Degradation & Development*, 27, 1595–1602. doi: 10.1002/ldr.2323, 2014.

- Mehrjardi, R. T., Mahmoodi, S., Taze, M., and Sahebjalal. E.: Accuracy Assessment of Soil Salinity Map in Yazd-Ar-dakan Plain, Central Iran, based on Landsat ETM+ Imagery. *American Eurasian Journal of Agricultural & Environmental Sciences*, 3, 708–712, 2008.
- 5 Melendez-Pastor, I., Hernández, E. I., Navarro-Pedreño, J., and Gomez. I.: Mapping Soil Salinization of Agricultural Coastal Areas in Southeast Spain. *Remote Sensing Applications*, 6, 117–140. doi: 10.5772/36805, 2012.
- Metternicht, G. I., and Zinck. J.A.: Remote Sensing of Soil Salinity: Potentials and Constraints. *Remote Sensing of Environment*, 85, 1–20. doi: 10.1016/S0034-4257(02)00188-8, 2003.
- 10 Rahmati, M., and Hamzehpour. N.: Quantitative Remote Sensing of Soil Electrical Conductivity using ETM+ and Ground Measured Data. *International Journal of Remote Sensing*, 38 (1), 123–140. doi: 10.1080/01431161.2016.1259681, 2016.
- Scudiero, E., T. H. Skaggs, and D. L. Corwin.: Regional Scale Soil Salinity Assessment using Landsat ETM + canopy Reflectance. *Remote Sensing of Environment*, 15 169, 335–343. doi: 10.1016/j.rse.2015.08.026, 2015.
- Shoshany, M., Goldshleger, N., and Chudnovsky. A.: Monitoring of Agricultural Soil Degradation by Remote-sensing Methods: A Review. *International Journal of Remote Sensing*, 34 (17), 6152–6181. doi: 10.1080/01431161.2013.793872, 20 2013.
- Sidike, A., Zhao, S. H., and Wen. Y.M.: Estimating Soil Salinity in Pingluo County of China using Quick Bird Data and Soil Reflectance Spectra. *International Journal of Applied Earth Observation and Geoinformation*, 26, 156–175. doi: 10.1016/j.jag.2013.06.002, 2014.
- 25 Sturari, M., Frontoni, E., Pierdicca, R., Mancini, A., Malinverni, E. S., Tasseti, A. N., and Zingaretti, P.: Integrating Elevation Data and Multispectral High-resolution Images for an Improved Hybrid Land Use/Land Cover Mapping. *European Journal of Remote Sensing*, 50(1), 1-17. doi: 10.1080/22797254.2017.1274572, 2017.
- 30 Taghizadeh-Mehrjardi, R., Minasny, B., Sarmadian, F., and Malone. B.: Digital Mapping of Soil Salinity in Ardakan Region, Central Iran. *Geoderma*, 213, 15–28. doi: 10.1016/j.geoderma.2013.07.020, 2014.

- Tayebi, M. H., Tangestani, M. H., and Hasan Roosta. M. H.: Mapping Salt Diapirs and Salt Diapir-affected Areas using MLP Neural Network Model and ASTER Data. *International Journal of Digital Earth*, 6, 143-157. doi: 10.1080/17538947.2011.606336, 2013.
- 5 Weng, Y. L., Gong, P., and Zhu. Z. L.: A Spectra Index for Estimating Soil Salinity in the Yellow River Delta region of China using EO-1 Hyperion Data. *Pedosphere*, 20, 378–388. doi: 10.1016/S1002-0160(10)60027-6, 2010.
- Wu, W. C., Mhaimed, A.S., Al-Shafie, W.M., Ziadat, F., Dhehibi, B., Nangia, V., and Pauw. E. D.: Mapping Soil Salinity Changes using Remote Sensing in Central
10 Iraq. *Geoderma Regional*, 2–3, 21–31. doi: 10.1016/j.geodrs.2014.09.002, 2014.
- Yang, L., Huang, C., Liu, G.C., Liu, J., and Zhu. A. X.: Mapping Soil Salinity using A Similarity-based Prediction Approach: A Case Study in Yellow River Delta, China. *Chinese Geographical Science*, 25, 283–294. doi: 10.1007/s11769-015-0740-7, 2015.
- 15 Yang, S.Q., Zhao, W.W., Liu, Y.X., Wang, S., Wang, J., Zhai, R.J.: Influence of Land Use Change on the Ecosystem Service Trade-offs in the Ecological Restoration Area: Dynamics and Scenarios in the Yanhe Watershed, China. *Science of the Total Environment*, 644: 556–566. doi: 10.1016/j.scitotenv.2018.06.348, 2018.
- Yu, R., Liu, T. X., Xu, Y. P., Zhu, C., Zhang, Q., Qu, Z.Y., Liu, X.M., and Li. C.Y.:
20 Analysis of Salinization Dynamics by Remote Sensing in Hetao Irrigation District of North China. *Agricultural Water Management*, 97, 1952–1960. doi: 10.1016/j.agwat.2010.03.009, 2010.
- Zhao, W.W., Wei, H., Jia, L.Z., Zhang, X., Liu, Y.X.: Soil Erodibility and its
25 Influencing Factors on the Loess Plateau of China: A Case Study in the Ansai Watershed. *Solid Earth*, 9, 1507–1516, 2018.

Tables

Table 1. SSC descriptive statistics of samples and inversion

	Seasons	Minimum (g/kg)	Maximum (g/kg)	Mean (g/kg)	Standard deviation (g/kg)	Coefficient of variation	Sample points
Soil samples	Spring	1.10	46.70	8.60	11.50	1.34	92
	Summer	1.34	29.20	5.32	5.95	1.12	30
	Autumn	0.90	36.70	7.80	8.20	1.05	110
	Winter	2.00	61.50	9.50	12.00	1.26	56
Inversion SSC	Spring	0.86	53.44	8.79	10.26	1.17	
	Summer	1.00	35.50	7.00	4.18	0.60	
	Autumn	0.82	35.15	8.28	9.21	1.11	
	Winter	1.12	58.10	9.21	13.78	1.50	

Table 2. Inversion models of SSC with IVIs from Landsat data

Modeling methods	Spring					Autumn				
	Calibration set		Validation set			Calibration set		Validation set		
	R^2	RMSE (g/kg)	R^2	RMSE (g/kg)	RPD	R^2	RMSE (g/kg)	R^2	RMSE (g/kg)	RPD
SMLR	0.42	9.03	0.62**	6.83	1.36	0.65**	3.42	0.56	3.81	2.01
BPNN	0.60**	7.56	0.57**	7.30	1.47	0.72**	3.39	0.68**	3.38	2.15
SVM	0.72**	6.34	0.71**	6.00	1.66	0.75**	3.48	0.78**	3.02	2.56

5 Significance levels: [**] 0.01

Table 3. Application of the best SSC inversion models

	The best inversion model for spring		The best inversion model for autumn	
	R^2	RMSE (g/kg)	R^2	RMSE (g/kg)
Summer samples (30)	0.23	5.31	0.65**	3.60
Winter samples (56)	0.66**	7.57	0.28	10.98

Significance levels: [**] 0.01

Table 4. The number of pixels and proportion of pixels per SSC grade in the four seasons

Grades	Spring		Summer		Autumn		Winter	
	Number of pixels	Proporti on %	Number of pixels	Proporti on %	Number of pixels	Proporti on %	Number of pixels	Proporti on %
Nonsaline soil (<2.0 g/kg)	10705	0.67	16	0	46439	2.89	3	0
Mild saline soil (2.0~4.0 g/kg)	84805	5.29	450331	28.07	127262	7.93	12	0
Moderate saline soil (4.0~6.0 g/kg)	451291	28.13	427216	26.63	182589	11.37	13045	0.81
Severe saline soil (6.0~10.0 g/kg)	597607	37.25	371641	23.16	305762	19.05	1294867	80.71
Solonchak (>10.0 g/kg)	459989	28.67	355193	22.14	942345	58.70	296470	18.48

Figures

5

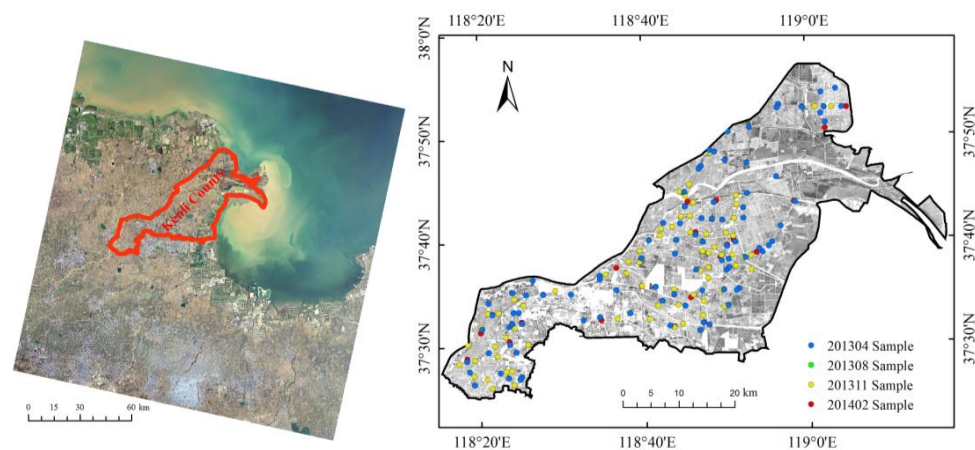


Figure 1. Location of the study area and sampling points

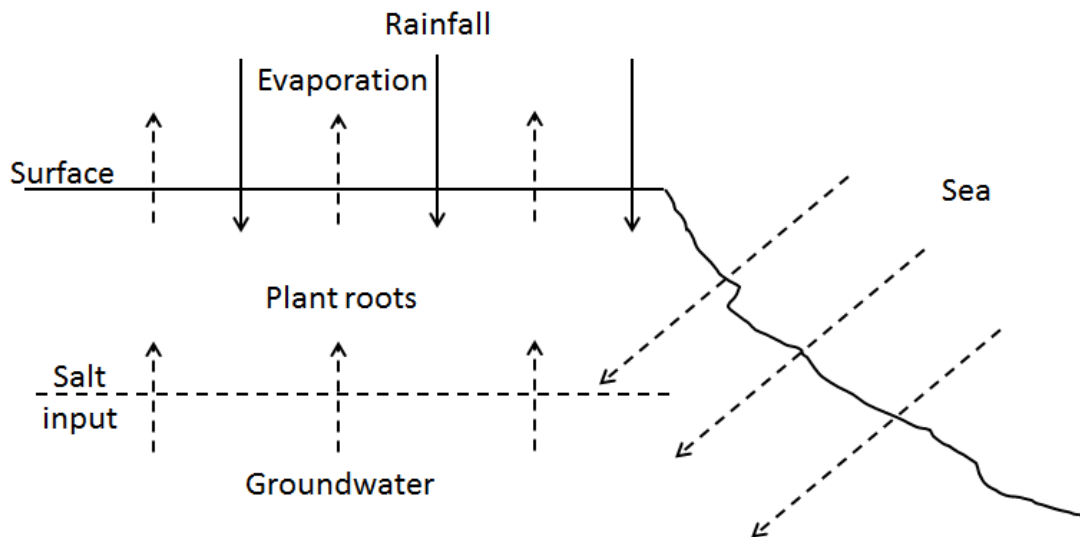
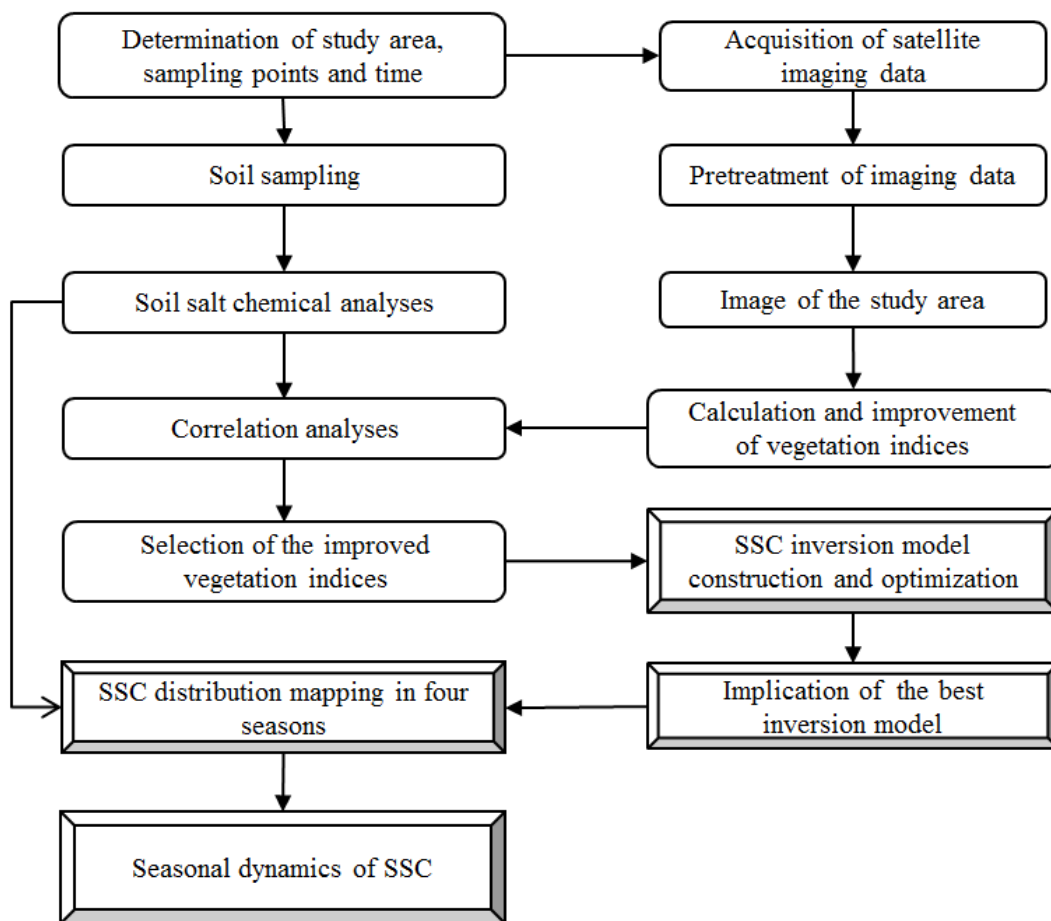


Figure 2. Soil salinization process in the study area



5 Figure 3. Methodological flow chart

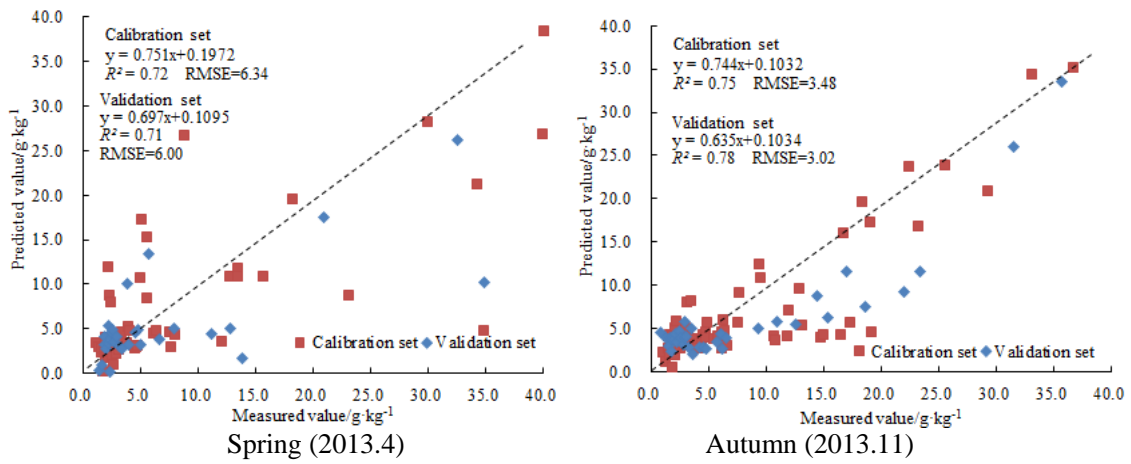
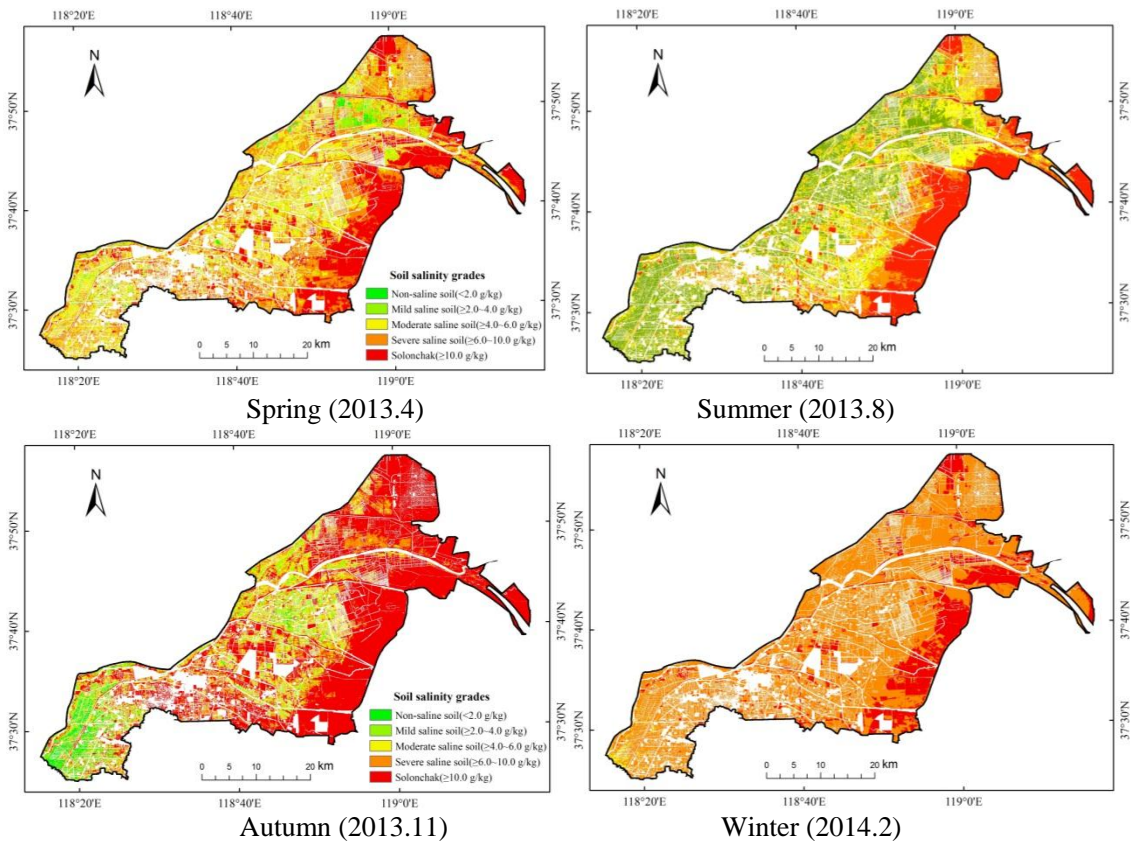


Figure 4. Calibration and validation precision of SSC inversion models in spring and

5 autumn



10

Figure 5. Inversion and distribution of SSC in four seasons