

Dear Editor,

We would like to thank you and the reviewers for the insightful comments and feedback on our manuscript, which we have fully addressed them in revised version of the manuscript. To the
5 extent possible, red (strikethroughs) and blue (underlined) fonts have been used to reflect the changes made for 'tracked-change' version of the manuscript. We look forward to hearing from you with any last minor changes in due course.

We hope that the revised manuscript fulfils the requirements for publication in Natural Hazards
10 and Earth System Sciences (NHES) journal.

On behalf of all authors with kind regards,
Gavkhar Mamadjanova

~~Statistical Characteristics of Mudflows in the Piedmont Areas of Uzbekistan and the Role of Synoptic Processes for their Formation~~

The Role of Synoptic Processes for Mudflow Formation in the Piedmont Areas of Uzbekistan

Gavkhar Mamadjanova^{1,2}, Simon Wild^{1,3}, Michael A Walz¹ and Gregor C Leckebusch¹

¹School of Geography, Earth and Environmental Sciences, University of Birmingham, [Birmingham, B15 2TT](#), UK

²Uzhydromet (Centre of Hydrometeorological Service of the Republic of Uzbekistan), Tashkent, [100052](#), Uzbekistan

³Barcelona Supercomputing Center, [08034](#), Barcelona, Spain

Correspondence to: Gavkhar Mamadjanova (gxm423@bham.ac.uk)

Abstract. The purpose of this study is to understand atmospheric factors from local to synoptic scales, which cause mudflow variability on interannual and longer time scales. In a first step, historical data of mudflow occurrences in Uzbekistan provided by the Centre of Hydrometeorological Service of the Republic of Uzbekistan (Uzhydromet) for more than 140 years was analysed. During the investigation period a total of about 3000 mudflow events were observed with about 21 events per year on average. The majority of mudflows occur during the advection of westerly airflow when moist air from Central and Southern Europe reaches Uzbekistan. This synoptic weather type (SWT) can be related to one of the 15 primary synoptic circulation types over Central Asia (CA) and Uzbekistan, which were subjectively derived by Bugayev and Giorgio in the 1930-40s. To understand the main atmospheric regimes steering the variability of mudflow occurrences, we applied additionally an objective classification following the Circulation Weather Types (CWT) approach. By means of the CWT approach, we further analyse that on mudflow days the frequencies of cyclonic (C), westerly (W), south-westerly (SW) and north-westerly (NW) stream flows are increased in comparison to the climatological frequency of the occurrence of these circulation weather patterns. Results confirm that CWT westerly airflow initiates relatively more mudflow events comparing to other CWTs in study area. Integrated approach of the CWT classification and an antecedent daily rainfall model are combined together in logistic regression analysis to construct mudflow triggering precipitation threshold per CWT class. In general W, SW and C weather types require less antecedent rainfall amount to trigger mudflow occurrences in the study area. This technique is thus shown to be applicable to coarse resolution climate model diagnostics.

Key words: mudflows, Bugayev's weather classification, circulation weather types, antecedent rainfall, logistic regression, Uzbekistan, Central Asia

1 Introduction

Mudflows are amongst the most damaging and deadly natural hazards in Uzbekistan. Data from the Centre of Hydrometeorological Service of the Republic of Uzbekistan (Uzhydromet) suggests that mudflows were responsible for over 38 deaths and damaged approximately 3000 households and 5000 ha of the agricultural crop over the past decade (2005–2014) in Uzbekistan (Table A1). However, the incidence of damage may be much larger as these events commonly occur in mountainous areas, in incised valleys and in areas of otherwise low relief.

Hungr et al. (2014) suggest the term mudflow, as a very rapid, sometimes extremely rapid, surging flow of saturated plastic soil in a steep channel involving significantly greater water content relative to the source material. In the river basins of Uzbekistan, mudflows generally occur during the periods of intense rainfall or rapid snowmelt. The consistency of the mudflow is mainly water and mud (liquidity index >0.5 , e.g. Hungr et al. (2001)) with loose rock and other fragments, which flows down the hills and through the mountain streams. The destructive power of a mudflow can be greatly increased moving downhill due to the by accumulation of water and rocky mud. It can destroy riverbeds and banks of rivers, floodplains and even low terraces above the floodplain and other objects in its path (Chub et al., 2007).

The period of historically documented mudflow events confirms that the areas with a high passage of mudflow occurrences in Uzbekistan can be divided into five regions: Fergana Valley, the Zerafshan Basin included in Zerafshan Valley, the Surkhandarya, the Kashkadarya and the Chirchik-Akhangaran rivers' basins (Figure 1). From a geological point of view, mountain ranges (western part of the Pamir-Alai system and western Tien-Shan) of the study area are mainly composed of Palaeozoic limestones, granites, schists, marbles, sandstones, conglomerates and partly igneous rocks (Petrov et al., 2017) as well as shale and loess deposits forming weak surfaces of the low relief hillslopes, especially in Fergana Valley, that are frequently prone to sliding due to the interaction with water.

Precipitation is an important mudflow trigger (Huggel et al., 2012) in Uzbekistan; however, in mountain regions with snow cover and glaciers in mountain regions (Petrov et al., 2017), slope instability and temperature (Huggel et al., 2010) are additional factors. Other main factors such as antecedent rainfall (Glade et al., 2000; Sidle and Ochiai, 2006) and rapid snowmelt (Kim et al., 2004) may further reduce the slope stability, thereby enhancing potential of mud and debris flow occurrences.

Evidently, Rainfall records in high mountain regions are limited, reflecting the limited number of meteorological stations in Uzbekistan; thus there are gaps in the rainfall and mudflow data suffer due to missing spatial and temporal information. Furthermore, orographic effects on precipitation may not be captured adequately by a single (or a few) rain gauges (Huggel et al., 2012). In the Alps, precipitation is generally observed in mid- to high-elevation areas (Buzzi et al., 1998; Huggel et al., 2012), similar to the mountain ranges (Tien-Shan, Alai and Pamir) in Central Asia (CA); however, mudflows usually occur in lower to intermediate elevations. Reviews on precipitation thresholds triggering landslides indicate the magnitude of an extreme event (Glade, 1998; Guzzetti et al., 2008) depends on the rainfall intensity and duration (Caine, 1980), the local climate

Commented [GM(wISAS+1): We added short description about country's geological characteristics

and orographic precipitation (Buzzi et al., 1998;Gheusi and Davies, 2004), the geomorphologic structure of the area (Rosi et al., 2016), soil characteristics (Yamao et al., 2016) and land use (Sidle and Ochiai, 2006;Gravina et al., 2017).

Seasonal variations in precipitation and an earlier snowmelt are assumed to be the main factor for changes in the seasonality of mudflow occurrences in Uzbekistan. On this basis, the purpose of this paper is:

- a) to assess the link between the potential effects of synoptic conditions and the occurrence of extreme hydro-meteorological mudflow episodes in Uzbekistan;
- b) to establish an objective method for airflow classification of synoptic conditions which will be applicable to a large set of ~~AOGCM~~ [Atmosphere-Ocean General Circulation Model \(AOGCM\) and Regional Climate Models \(RCM\)](#) members to investigate key factors of climate change impact on precipitation over Uzbekistan and CA;
- c) to compare and validate this with pre-existing subjective classification approaches;
- d) to identify thresholds of mudflow triggers taking into account the antecedent precipitation;
- e) and to validate the streamflow dependencies of these thresholds.

Section 2 describes available climatological data as well as the methodology contents of this paper. The main results presented in section 3 focuses on climatological and statistical characteristics of mudflow occurrences recorded more than 140 years in Uzbekistan thus making it accessible for an international scientific community for the first time. As an analysis of mudflow conditions in Uzbekistan is widely missing in scientific, peer-reviewed international literature, this paper starts with a respective overview of local observational data and peer-reviewed material from non-English literature. Further we introduce a subjective method to classify synoptic conditions of CA and Uzbekistan as well as an objective approach known as Circulation Weather Types (CWT) to identify the major weather types leading to the formation of mudflows in study area in section 4. Precipitation thresholds triggering mudflow occurrences in Uzbekistan are quantified and discussed in section 5. The main conclusions and discussion are summarised in section 6.

2 Research Approach, Data and Methods

The research approach consists of a five step strategy which is described in ~~Fig.~~ [Figure 2](#). The first component involves examining the historical data of mudflow occurrences in Uzbekistan and its characteristics on a longer time scale. Secondly, empirically developed local synoptic weather types (SWT) are manually assigned to the observed mudflow occurrences. The objective CWT approach is therefore used to identify the atmospheric circulation and its relationship with the observed precipitation and their joint impact on mudflow occurrences in the study area. The fourth step is to evaluate the precipitation threshold triggering mudflow events in Uzbekistan using an empirical-statistical antecedent daily rainfall model (ADRM) (Glade et al., 2000). A detailed description of this approach as well as the datasets used for this component is given in the methods ~~section~~ and ~~chapter~~ [section 5](#) of this paper. Finally, the objective CWT method and the statistical model of ADRM are combined to estimate weather types which are most likely to trigger mudflow occurrences in the study area.

Commented [GM(wISAS+2)]: We checked all other acronyms and hope all are explained now

Commented [GM(wISAS+3)]: We have gone through the paper and included reference to figures as Figure

The desired outcome of this study is to eventually select representative weather types which can then be applied to AOGCM and RCM. That way the influence of precipitation patterns on mudflow occurrences can be studied under climate change scenarios across Uzbekistan and CA in further studies.

2.1 Data

5 The investigation is based upon two categories of datasets: ground observation and reanalysis. Observed daily meteorological variables recorded by Uzhydromet, such as precipitation and temperature from the four meteorological stations ([Gallyaral, Sokh, Chimgan and Mingchukur](#)) located in the mountains and [the foothills zones](#) with high mudflow passages were used to produce respective climatologies ([Table 2](#)).

10 In addition, historical data of Uzhydromet regarding mudflow occurrences in Uzbekistan over the period 1870-2014 were analysed. ~~It~~ [National scale mudflow database](#) includes information such as the name of the water stream, location, date of passage, the potential reason for the formation of the mudflow, ~~and~~ a rough estimate of the volume [and major damages](#).

15 Data of the daily [mean](#) synoptic situation or local classification of Synoptic Weather Types (SWT), which is available at [Library Services and the Archive Department of Uzhydromet as a calendar of number coding of subjective types catalogues of six hourly \(00, 06, 12, 18 GMT\) data manually derived from synoptic charts](#), was calculated to produce relative outputs [regarding mudflow inducing weather situations. The period considered in this study is a warm season \(March-August\) of 1984-2013.](#)

20 In order to assess potential climatic drivers over Uzbekistan daily mean lower atmospheric flow in 700 hPa geopotential height (GPH) fields by ~~ECMWF~~ [the European Centre for Medium-Range Weather Forecasts \(ECMWF\)](#) ERA-Interim reanalysis (Dee et al., 2011), spanning the period 1984-2013, was used to estimate the large-scale atmospheric circulation. [This gridded data set has 0.75° spatial resolution.](#)

Commented [GM(wISAS+4): We added a new table in order to give characteristics of the station and station data used in this study

2.2 Methods

~~2.2.1~~ [Stations and Mudflow Events Selection](#)

25 We select stations namely Gallyaaral (574 m a.s.l.) located in Zerafshan Basin, Sokh (1200 m a.s.l.) in Fergana Valley, [Chimgan \(1620 m a.s.l.\) in Chirchik-Akhangaran Basin and Mingchukur \(2132 m a.s.l.\) representing both Kashkadarya and Surkhandarya Basins \(Figure 9b-9c, Table 2\) in order to investigate regional and local characteristics of the rainfall over each basin with high mudflow passages and its adjustment areas. The investigation area is limited to rain gauges located in the mountain areas, based on the assumption that each station well represents hydro-climatologic conditions of the basin and at the same time station data on rainfall accumulation process can capture mudflows within the radius of roughly 100 km.](#)

30 [Regional and local mudflow data was extracted from the national scale database for the warm season \(March-August\) of 1984-2013 to evaluate the relationship between mudflows and synoptic and large scale meteorological patterns. There were more](#)

Commented [GM(wISAS+5): Subsection 2.2.1 was added due to the Referee#2 comments regarding mudflows selection in the study area

than 300 days with mudflow episodes during the investigation period. Each mudflow event was placed within five areas based on information regarding the geographical name of the evidence.

2.2.2 Synoptic Weather Types (SWT)

Investigation of atmospheric circulation over Central Asia first started in 1921 in the Turkestan Synoptic-meteorological Institute in Tashkent (Aksarin and Inagamova, 1993). The complexity and diversity of the regional atmospheric circulation was identified soon after Bugayev and Giorgio developed and simplified a model of airflow advection to explain for synoptic differences in the 1930s and 40s (Giorgio and Bugayev, 1936; Bugayev et al., 1957; Aksarin and Inagamova, 1993). The founders of the Central Asian Tashkent Institute of Weather Forecasters, Bugayev and Giorgio, had supervised research on synoptic meteorology and the impact of orographic factors on CA's climate for many years. In 1947 scientists published the first findings of the statistical characteristics of synoptic situations over the region for the cold period in the newsletters published by the USSR Academy of Science (Sarimsakov et al., 1947). After a decade, researchers summarised the studies on the atmospheric circulation classification scheme for CA and had published it as a fundamental monograph, describing the main atmospheric patterns as 11 SWT over CA (Bugayev et al., 1957). This monograph is still being used as the main literature study and guidelines on synoptic conditions in Central Asian countries mainly in Uzbekistan (G.M.'s personal experience, Aizen et al. (2004)). Figure 3 -provides a basic illustrative view of SWT classified by Bugayev et al. (1957) emphasizing the air mass source regions and their path to CA. In the early 1960s, researchers at the Scientific Institute of Hydrometeorological Service of Uzbek SSR (nowadays Uzbekistan) updated Bugayev and Giorgio's classification from 11 to 15 types by including additional weather classes. Subjectively classified weather types for all the years, except 2013-2014, over CA and Uzbekistan have been published as registers of daily sequence of SWT in Ilinova (1968), Voynova and Inagamova (1982) and Inagamova (1993, 2013). Table A2 (c.f. appendix section) provides comprehensive information for these 15 primary SWT, describing weather conditions on a synoptic scale in CA and particularly in Uzbekistan. Figure 4 shows the long-term seasonal distribution (1935-2014) of SWT within CA and Uzbekistan. We have used this subjective scheme in order to manually evaluate the relationship between synoptic weather patterns and recorded mudflow occurrences in five areas with high mudflow passages in Uzbekistan. Therefore, SWT database was created based on SWT daily sequences sources contained in the previously published literature. In addition, daily mean SWT sequence for summer (Mar-Aug) of 1984-2013 was extracted from the database to assess the association between mudflow days and frequency of synoptic scale circulation.

Commented [GM(wISAS+6): Text from section 4.1.was added to the new subsection 2.2.2

~~2.2.1~~ 2.2.3 Circulation Weather Types (CWT)

The classification of daily flow patterns was done by the CWT approach. It was developed by Jenkinson and Collison (Jones et al., 1993) based on the original Lamb weather types for the British Isles (Lamb, 1972). The basic method and details of the scheme were provided by Jones et al. in 1993. The objective CWT scheme makes use of three basic variables that define the

circulation features at the surface over the study region: direction of mean flow (D), the strength of mean flow (F) and the vorticity (Z). This basic method can be applied to any region with latitude $\sim 30^{\circ}$ – 70° (Jones et al., 2013). For each day, the direction of the atmospheric flow is determined by considering pressure values at 16 points around the central point at 40°N - 67.5°E (Figure 4a), and is marked to one of ten CWTs: northeast (NE), east (E), southeast (SE), south (S), southwest (SW), west (W), northwest (NW), north (N), cyclonic (C), and anticyclonic (A).

Generally, the objective approach was successfully applied mainly in Europe (Trigo and DaCamara, 2000; Donat et al., 2010; Jones et al., 2013; Ramos et al., 2015), as well as other parts of the world, e.g. in Armenia (Gevorgyan, 2013) and in Saudi Arabia (Kenawy et al., 2014). Recently, this method was used by Reyers et al. (2013) to determine present day and future high-resolution rainfall distributions in the Aksu river basin (on the southern slopes of the Tien-Shan Mountains, CA). To our knowledge this study is the first one that has applied the CWT approach for the territory of Uzbekistan. The aim of applying this method is to estimate the impact of airflow on precipitation patterns and its association with extreme mudflow episodes in Uzbekistan. Furthermore, the CWT scheme allows to define atmospheric flow regimes objectively to be applicable for climate model (AOGCM, CMIP5) Coupled Model Intercomparison Project Phase 5 (CMIP5) models data.

2.2.4 Application of Antecedent Daily Rainfall Model (ADRM)

In order to estimate the precipitation threshold causing mudflow events in the study area, a combination of an empirical and a statistical models has been is applied: 1) Antecedent Daily Rainfall Model (ADRM) as the relationship between antecedent rainfall conditions prior to an actual “rainstorm event” and the rainstorm magnitude itself (Glade et al., 2000); 2) a logistic regression model (LRM) as the relationship between an outcome (dependent or response) variable and a set of independent (predictor or explanatory) variables (Hosmer and Lemeshow, 2000).

The ADRM introduced by Crozier and Eyles (1980) defines landslide triggering rainfall conditions for the Ottago Peninsula during 1977–1978. This model was applied in many parts of the world to obtain the thresholds² probability of landslide occurrence events on the basis of precipitation conditions (e.g. for New Zealand by Glade et al. (2000), for Portugal by Zêzere and Rodrigues (2002) and Zêzere et al. (2005) and (2015), for Sao Miguel Island (Azores) by Marques et al. (2008), for Bangladesh by Khan et al. (2012), for China by Bai et al. (2014), etc.) to obtain the thresholds² probability of landslide occurrence events on the basis of precipitation conditions. The advantage of this model lays in the substituting of soil moisture storage levels by daily precipitation data. In the absence of real-time soil moisture measurements, this model allows to predict the probability of landslides (Glade et al., 2000). The antecedent rainfall model (Crozier and Eyles, 1980) is expressed by the following formula:

$$ra_0 = kr_1 + k^2r_2 + \dots + k^nr_n \quad (1)$$

where ra_0 is the antecedent daily rainfall for day 0; r_1 is the rainfall on the day before day 0; r_n is the rainfall on the n th day before day 0; and k is a constant <1.0 . According to Davydov et al. (1973) and Bykov and Vasil'yev (1977) the k parameter

Commented [GM(wISAS+7): The literature review was corrected and the related reference was added.

depends on the river morphometry and it varies from 0.7 to 0.9, and 0.5 in the case of a slack current. Crozier and Eyles (1980), following Bruce and Clark (1966), used a value of 0.84 for the k factor, which is close to that used in hydrological studies in North America, more precisely Ottawa (United States) streamflow data (Glade et al., 2000). Due to missing data on regional hydrograph recession curves in the study area, the constant decay factor, k in this research was assumed to be 0.84 based on Crozier and Eyles (1980) and Crozier (1986). It was also suggested by specialists at Uzhydromet (personal communication with first author) that $k \geq 0.8$ can be used for this study as it is used in the river catchments in the mountain areas of Uzbekistan. Setting $k=0.84$ worked satisfactorily in the ADRM to assess the triggering thresholds and mudflow probability in the study area.

In the first step, daily rainfall totals of 30 years (1984-2013) recorded in four representative stations (Gallyaara, Chingan, Mingchukur and Sokh) were used to assess the average probability of mudflow triggering thresholds. The empirical model analysis consists of calculating the antecedent precipitation for 10 consecutive days. Daily rainfall observations provided by Uzhydromet were used in this study and a period of 24 hrs was taken between 8 a.m. of the previous day to 8 a.m. of the present day.

In the next step, LRM was developed in order to estimate the relationship between mudflow occurrences and daily rainfall and antecedent rainfall value. The LRM was run in the freely available/open source R software environment. Mudflow occurrence was treated as a dependent variable and 10 days of antecedent rainfall index and the rainfall value on the day with the mudflow event were used as independent variables. The values of the variables were the input data for the LRM algorithm to calculate the precipitation threshold equation and plot probability (P) curves for $P=0.1$, $P=0.5$ and $P=0.9$. This approach is analogous to the one presented in Glade et al. (2000).

Finally, we integrated the results from the two different investigation strands: to estimate of each weather type as a proxy for the triggering mudflows by applying a combination of CWT, ADRM together with LRM to produce the precipitation threshold per CWT class and estimate of each weather type as a proxy for the triggering mudflows.

3 Climatic Conditions and Mudflows in Uzbekistan

3.1 General Climate Conditions

In general, the climate in Uzbekistan is continental and semi-arid with hot and dry summers and cold winters, sometimes severe winters with snowfall. Due to its geographic location (between 37°-45°N and 56°-73° E), Uzbekistan has three main climate zones: a zone of deserts and dry steppes occupying about 79% of the territory, the foothills or piedmont zone, and the area of high mountains extending over the rest of remaining 21% respectively (Chub, 2007).

Chub (2007) confirms that the long-term climatology based on 50 stations data (some series reach back to 1881) in Uzbekistan shows that the mean air temperature in July varies from 26°C in a greater part of the lowlands to 30°C in the south and desert areas making it the hottest month of the year. The maximum values can reach up to 45°C in the southern part of Uzbekistan. The record temperature of 50°C occurred in Termez and the KyzylKum Desert. The coldest month is January when the mean

air temperature drops to 0°C in the south and ~~can go below~~ -8°C in the north of the country. The minimum temperature can be well below -40°C in the Ustyurt Plateau in extremely cold years.

The air temperature in the piedmont areas at an altitude from 300-400 to 600-1000m is notably warmer during the cold season of the year and cooler in summers than the plain areas of the country. With increasing altitude in the mountainous regions the air temperature drops 0.6°C per 100 m on average. This is associated with the complex relief of the study area, e.g., cold air flow over low-elevation, radiative cooling and wind speed (Bugayev, 1946; Chub, 2007; Kurbatkin, 2009). However, the temperature may be colder in the bottom of the valleys and intermountain basins due to frequent temperature inversions (Chub, 2007). Figure 3-5 characterises monthly mean temperature patterns and precipitation regime covering the 30-year period of January 1984–December 2013 inclusive, in four representative stations namely: Gallyaral (574 m), Chimgan (1620 m), Mingchukur (2132 m) and Sokh (1200 m), located in piedmont and mountain areas in Uzbekistan.

The amount and distribution of precipitation, as well as its seasonal variability, greatly depends on the geographical location of the area, topographic features and the general characteristics of the atmospheric circulation. In fact, several authors have identified moist air from the Atlantic Ocean, the Mediterranean Sea and the Persian Gulf as the main large-scale or regional climate factor for the precipitation regime in the country (Bugayev, 1946; Small et al., 1999; Inagamova et al., 2002; Chub, 2007; Schiemann et al., 2008).

The ~~spatial distribution of the~~ average precipitation distribution in Uzbekistan ~~shows-~~ has a sharp contrast between the plain and mountain areas (~~Figure 4~~). Mean annual precipitation in major parts of the plains area or deserts and dry steppes (Ustyurt Plateau, Kyzylkum Desert, Karshi, Dalverzin and Golodnaya steppes) is about 80-200 mm. However, precipitation can be significantly greater in some piedmont areas and the mountains, particularly in the north-east and the south-east of the country. In fact, precipitation in areas with an elevation between 600-1000 m or piedmont areas (Tian Shan and Gissar-Alay mountain ranges) can reach up to 500 mm; above 1000 m elevation the annual totals may exceed 500 mm. In some hillsides, especially the western slopes of Tian Shan, it may even be greater than 2000 mm (Chub, 2007).

Generally, the precipitation regime in Uzbekistan reveals a seasonal character with wet conditions from October to May and a dry season with little or almost no rainfall during the summer (Figure 3-5). Heavy precipitation events frequently occur during the rainy season, especially in March and April. August represents the driest month with the minimal amount of rainfall throughout the year.

3.2 Mudflows in Uzbekistan

~~According to Lyakhovskaya (1989) and Chub et al. (2007)-~~ The earliest mudflow event induced by snowmelt and avalanches in Akhangaran River Basin was recorded in March 1870 (Lyakhovskaya, 1989; Chub et al., 2007). The archive data of mudflow occurrences in Uzbekistan since then, the Soviet period and after, has been collected and published as catalogues by Uzhydromet. ~~since then. Chub et al. (2007) states that there are more than 450 streams located in the river basins in the mountain and foothill areas where these extreme mudflow events usually occur in Uzbekistan.~~

For this study, data on mudflow occurrences in Uzbekistan was collected and arranged for a 145 year period from 1870-2014. During the observation period more than 3000 mudflow occurrences have been identified in the river basins in the piedmont areas of Uzbekistan. Table 2 1 provides comprehensive information about monthly distribution of mudflow occurrences in five regions of the country. Records confirm that mudflow events often affected the Fergana Valley indicating the highest event frequency during the investigation period of 12 mudflow occurrences per year on average (e.f. Table 2 1). Salikhova (1975) and Lyakhovskaya (1989) interpreted that due to its topographic feature, the Fergana Valley was susceptible to constant mudflow passages. Geologically the uplands in the Fergana Valley are mostly covered with loess loam which weakly infiltrates the water and makes it receptive even for a small surface runoff to flush off the soil easily. This process contributes to the developing of soil erosion which ends with the formation of mudflow episodes almost every year from March till August in the valley.

In contrast to the Fergana Valley, the geological structure of the mountain areas for the following regions, namely, Zerafshan, Surkhandarya and Kashkadarya Basins is formed of effusive or volcanic rocks of the Palaeozoic age, which may cause more debris flows rather than mudflow events there. Geomorphologic factors can be useful to determine the general susceptibility of various lithologies to landsliding in specific region (Sidle and Ochiai, 2006).

3.2.1 Statistical Analysis on Mudflow Data

In this study, we investigated century-long time series of the annual distribution of mudflows to identify key factors contributing to extreme mudflow occurrences. During the observation period (1870-2014) more than 3000 mudflow events have been identified in the river basins in the piedmont areas of Uzbekistan. Table 1 provides comprehensive information about on the monthly distribution of mudflows in five regions of the country.

Mudflows with various magnitudes developing on the slopes of the study area appear several times during the year with an average number of 21 extremes per year (Table 2 1). The highest number of events was observed in 1930 with 167 mudflows followed by 161 mudflows in 1931, 144 episodes in 1963 and 108 events in 2012 (Fig-5 Figure 6). An interesting point is that the 5, 11 and 21 years moving average frequency of mudflow events features a periodicity of approximately 30-years, which repeated the highest peaks in the 1930s, 1960s and 1990s (Fig-5 Figure 6). The last peak period of mudflow activity occurred in the 2010s. This signature of potential natural variability will pose an additional challenge for investigation of mudflow cycles and their variability, under the future climate change conditions. However, according to Chub (2007), apart from the natural causes the number of recorded mudflows can increase due to several factors which often interact to generate mudflow occurrences in Uzbekistan. Social-economic factors such as residential and industrial activities below unstable hillslopes accelerate soil creep as well as accumulated materials in channels decrease the roughness condition by overloading with fills which can potentially increase the probability and impact of mudflows.

Due to Chub et al. (2007), more than 90% of all recorded mudflows were associated with extreme precipitation events, hail and sleet whereas 6% of mudflow episodes were observed during intensive snowmelt events induced by respective temperature and precipitation changes (Chub et al., 2007). Glaciers melting due to increasing temperatures and outbursts from mountain

Commented [GM(wISAS+8): Subsection 3.2.1 has been combined with 3.2

Commented [GM(wISAS+9): Title of the subsection 3.2.1 has been removed and the text was combined with subsection 3.2

~~lakes or water reservoirs~~ mountain lakes outbursts (Petrov et al., 2017) and dam failures ~~are assumed~~ has been suggested as possible reasons to trigger further minor mudflows (1.4%) in the study area. Approximately 80% of all recorded mudflow episodes with different origins occurred during the period of April-June (~~Fig-6~~ Figure 7).

Records confirm that mudflow events often affected the Fergana Valley indicating the highest event frequency during the investigation period of 12 mudflow occurrences per year on average (c.f. Table 1). Salikhova (1975) and Lyakhovskaya (1989) interpreted that due to its topographic feature, the Fergana Valley was susceptible to constant mudflow passages. Geologically the uplands in the Fergana Valley are mostly covered with loess loam which minimises water infiltration and makes it receptive for even a small surface runoff to flush off the soil easily. This process contributes to soil erosion which ends with the formation of mudflow episodes almost every year from March till August in the valley. In contrast to the Fergana Valley, the geological structure of the mountain areas for the following regions, namely, Zerafshan, Surkhandarya and Kashkadarya Basins is formed of effusive or volcanic rocks of the Palaeozoic age, which may cause more debris flows rather than mudflow events. Geomorphologic factors can be useful to determine the general susceptibility of various lithologies to landsliding in specific region (Sidle and Ochiai, 2006).

There are more than 450 streams located in the river basins in the mountain and foothill areas in Uzbekistan and ~~it~~ it is fairly common in Uzbekistan to observe extreme mudflow occurrences in multiple streams on the same day (Chub et al., 2007). For instance, Lyakhovskaya (1989) reports that on 15 April 1964 only in the Samarkand province (Zerafshan Valley) 22 mudflow episodes were recorded in a single day (Lyakhovskaya, 1989). During the period spanning from ~~period of~~ 1870-2014 up to 24 ~~events or the maximum~~ passage of flows were observed on 18 May 1991 in many parts of the country.

4 Atmospheric Circulation over Central Asia and Uzbekistan

4.1 Synoptic Weather Types (SWT) and Mudflows

Early investigation of atmospheric circulation over Central Asia were started in 1921 in the Turkestan Synoptic-meteorological Institute in Tashkent (Aksarin and Inagamova, 1993). The complexity and diversity of the regional atmospheric circulation was identified soon after Bugayev and Giorgio (Giorgio and Bugayev, 1936; Bugayev et al., 1957; Aksarin and Inagamova, 1993) developed and simplified a model of airflow advection to explain for synoptic differences in the 1930s and 40s. The founders of the Central Asian Tashkent Institute of Weather Forecasters, Bugayev and Giorgio had supervised research on synoptic meteorology and the impact of orographic factors on CA's climate for many years. In 1947 scientists had published the first findings of the statistical characteristics of synoptic situations over the region for the cold period in the USSR Academy of Science newsletters (Sarimsakov et al., 1947). After a decade, researchers had summarised the studies on the atmospheric circulation classification scheme for CA and had published it as a fundamental monograph, describing the main atmospheric patterns as 11 SWT over CA (Bugayev et al., 1957). This monograph is still being used as the main literature study and guidelines on synoptic conditions in Central Asian countries mainly in Uzbekistan (personal experience, Aizen et al. (2004)). Figure 7-6 provides a basic illustrative view of SWT classified by Bugayev et al. (1957) emphasizing the air mass source

regions and their path to CA. In the early 1960s, researchers at the Scientific Institute of Hydrometeorological Service of Uzbek SSR (nowadays Uzbekistan) updated Bugayev and Giorgio's classification from 11 up to 15 types by including additional weather classes. Table 1-2 (e.f. appendix section) provides comprehensive information for these 15 primary SWT, describing weather conditions on a synoptic scale in CA and particularly in Uzbekistan. Figure 8-7 shows the seasonal distribution of SWT between 1935 and 2014. Daily data on the frequency of SWTs observed in Uzbekistan since 1935 is available as a hard copy in Uzhydromet Library Services and Archive Department.

During the investigation period between 1984 and 2013, there were more than 300 days with mudflow occurrences in Uzbekistan. Figure 9-8 shows the frequencies of mudflow days for each synoptic weather type in five regions (Zerafshan, Fergana, Chirchik-Akhangaran, Kashkadarya and Surkhandarya) with high mudflow passage. According to the results, the majority of mudflows occur during the advection of airflow from *west* (SWT 10) and *low level of small barometric gradient* (SWT 13) in the study area. However, the SWT 13 is the most frequent weather type in Fergana Valley (Fig-9b Figure 8b) as the interaction of frontal circulation with orography as well as the associated effects of condensation and evaporation are assumed to determine the formation of low-level fronts and small-scale rainbands (Buzzi et al., 1998; Inagamova et al., 2002) there. *Stationary cyclone* type (SWT 8) is the second most frequent SWT triggering mudflow events although in some regions it is not as prominent. Purely anticyclonic weather types (SWT 9, 9a, 9b) constitute less than 15% of all events (Fig-9 Figure 8) even though this weather type is the most frequent per year on average (Fig-8 Figure 4). Cyclones propagating from the *south-west* (SWTs 1 and 2) towards the study area, *advection from north and north-west* (SWTs 6 and 5), *high level of small barometric gradient* (SWT 12) and synoptic wave activity on a cold front (SWT 7) contribute also to significantly unstable weather conditions inducing mud and debris flows (Fig-9 Figure 8). While the majority of SWTs were associated with regional or local scale precipitation patterns, the summer thermal low (SWT 11) does not (Fig-9 Figure 8 b, c, d). Observations confirmed this SWT has triggered mudflows with origins of snow and glaciers melting due to increasing surface temperatures.

4.2 Circulation Weather Type (CWT) Approach

4.2.1. CWT and Precipitation Climatology

In order to assess the impact of each CWT class on mudflow triggering precipitation regimes, long-term daily circulation types and the corresponding daily values of precipitation were analysed.

Figures 11-12 10 and 11 (e.f. Figures 2-3 in appendices) show the seasonal distribution of the relative frequency of the number of days and precipitation values for each CWT class during 1984–2013 for the four stations in total. The column graphs (a, b) in Figures 11-12 Figure 10 show highlight the frequency of each weather class (CWT days, %) as well as the relative contribution of each weather types to the total recorded rainfall values (total precipitation, %) and the average daily precipitation per CWTs (mm/day). The box plots (c, d) in Figures 11-12 highlight indicates the seasonal rainfall statistics including 90th and 95th percentile of precipitation value within each CWT class.

Commented [GM(wISAS+10): Text has been moved to the methods section: 2.2.1 Synoptic Weather Types (SWT)

It is worth noting that on average the large-scale atmospheric circulation over Uzbekistan and Central Asia is mainly dominated by **westerly** (W) weather type throughout the year (~~Figures 11–12 a, b~~ [Figure 10](#)). The ~~seasonal~~ frequencies of W type shows the highest value between 22–38%, depending on the season. The percentage of precipitation during the W days ranges from 35% to 75% of the total annual precipitation per station, ~~respectively~~. The spatial distribution of daily average precipitation up to 3–7 mm/day was associated with the W flow ~~for at nearly in~~ all the stations (9–12 mm in Chimgan, ~~Figure 2 a, b in appendix~~ [Figure 10b](#)).

Cyclonic (C) and **anticyclonic** (AC) weather types feature [with](#) almost similar frequencies (18%) in summer, however, C flow contributes roughly four times more of the annual precipitation (up to 27%) and daily rainfall values (13 mm/d) compared to the AC class. Even though AC circulation has higher reputation of the circulation days in contrast to C type in the winter half of the year, the C days still indicate higher values of precipitation pattern which makes this CWT one of the wettest airflow. The 90th and 95th percentiles of the precipitation totals ~~can also~~ confirm this (~~Figures 11–12 c, d~~).

South-westerly (SW) flow occurs from 6% to 13% during the year and contributes 10–22% of the precipitation totals (5% in Fergana Valley). Seasonal distribution of weather types associated with **easterly** and **southerly** flows (E, SE and S) are ~~fairly variable~~ (up to 1.3 %) per season [and fairly variable](#) throughout the year and produce little or almost no rainfall, i.e. 0.2–0.5% or less than 1 mm/day. ~~However, the box plot statistics indicate that S flow leads to precipitation values compared to the other directional classes within the southerly weather type (c.f. Fig. 3e in appendix).~~ Another minor occurrences associated with **north-westerly** (NW) circulation (1–3%) contributing approximately 3% of the precipitation totals and 4 mm daily rainfall on average depending on the area and the rain gauge data.

In comparison to other stations, the **north-easterly** (NE) and **northerly** (N) weather types have different precipitation patterns at Sokh station, Fergana Valley, during the warm season of the year (~~Fig. 12~~ [Figures 10d and 11d](#)). This is due to the location and orographic pattern of the area (~~Fig. 10e~~ [Figure 9c](#)) which makes these weather types one of the wettest airflow throughout the year ~~in the area~~ with frequent floods and mudflow occurrences.

The impact of small-scale orographic features on weather types and rainfall distribution is assumed to be one of the reasons for the notable seasonal variabilities of the **undefined** weather type throughout the year. For illustrative purposes, ~~it was included an~~ ERA-Interim orography map ~~which~~ [confirming](#) this [has been included](#) (~~Figure 10e~~ [9c](#)). An important inclusion in this study was the CWT evaluation which highlighted the spatial distribution of precipitation in Uzbekistan on synoptic scale.

4.2.2 CWT and Mudflows

~~The aim of t~~^this section presents the ~~is to~~ analysis ~~is of e~~ the relationship between CWT classes and mudflow occurrences in the investigation regions of Uzbekistan. ~~Figure 13~~ [12](#) ~~allows~~ [shows](#) a comparison between mudflow ~~events~~ [together](#) with CWT daily frequencies in March–August, 1984–2013. For consistency ~~within this study~~, the central grid point (40N–67.5E) was selected for investigation of 101 days induced mudflow occurrences in Zerafshan Basin, 147 days in Fergana Valley, 57 days in Chirchik-Akhangaran, 35 days in Kashkadarya and 44 days in Surkhandarya basins observed in a warm season during the

period 1984-2013 (Figure 13 12). ~~An interesting point based on the analysis illustrated in~~ Interestingly, Figure 13 12 is the similarity of the Zerafshan (a), Chirchik (c), Kashkadarya (d) and Surkhandarya (e) regions have similar patterns (Figure 12). However, complex orography and ~~not simple complicated~~ topography affect the weather systems and precipitation distribution are assumed to produce slightly different results for Fergana Valley (Fig. 13b Figure 12b). The frequencies of W, SW, and C weather types are considered as a “rainy” group with increased mudflow episodes compared to the rest of the CWTs nearly in all five regions. There is also considerable amount of NW circulation type associated with extreme mudflow events in Chirchik and Surkhandarya basins (Fig. 13 Figure 12 c, e). However, NE days trigger more mudflows in contrast to SW flow which reveals a decrease in Fergana Valley (Fig. 13 Figure 12b).

Figure 14 13 confirms that ~~the frequency anomalies compared to the average occurrence~~ of mudflow days per C, W and SW and NW classes is increased are higher in comparison to normal CWT climatology and in contrast to the average number of mudflow days per CWT classification during a the warm phases of 1984-2013. The AC, NE (except in the Fergana Valley), E, S and SE weather types pattern have has a noticeable decline of mudflow frequencies compared to the climatological mean per CWT class. NW flow is also attributed to the mudflow trigger weather class as it was accompanied with heavy rainfall induced extreme mudflow events particularly in Chirchik-Akhangaran, Surkhandarya Basins and slightly in Fergana Valley. During the investigation period mudflow events in the study area was found to be highly unlikely for E, SE and S resulted, thus representing missing values in the figure.

It is noteworthy here that the variability of C, W, SW and NW days in comparison to all CWT days again showing increased trends in mudflow probability and corroborated all results considered mentioned above. Therefore it can be concluded that appreciable weather classes (C, W, SW, and NW) are the main contributors to observed mudflow occurrences for the study area and is in agreement with the recorded precipitation distribution patterns, and observed mudflow occurrences for the study area.

5 Statistical Modelling of Precipitation Thresholds for Triggering Mudflows

5.1 Application of ADRM for Station Data

The model results (Figure 15 14) show that minimum and maximum thresholds boundaries with different probabilities of occurrence exist, but not all rainfall values between the thresholds are associated with mudflow episodes. A daily rainfall value ≥ 0.1 mm, mainly from March till August (1984-2013), was selected for plots presented in Figure 15 14. Following Glade et al. (2000), all rainfall days were divided into three categories: days associated with mud and debris flows; days with no recorded mudflows; and days with probable mudflow episodes. Events in the third category were not recorded in the historical data. Thus, it could not be assumed that there were no mudflows on those days as the rainfall value was similar or exceeded the precipitation levels during the of days with of recorded debris and mudflows. However, the summary of the daily precipitation value, which is recorded from 8 am till 8 am of the next day might not tally with the day of the mudflow occurrences. Therefore, mudflow passages were also assumed to be a probable variable as we did not have the information

regarding the exact time of the mudflow occurrence. Additionally, the air temperature patterns in March-May were analysed for some meteorological stations; for example, Chimgan located at more than 1600 metres altitude, which led to the conclusion that the [high](#) precipitation events recorded were likely snowfall periods which leaves very little possibility of mudflow passage. Hence, a probable mudslide event was not analysed for high altitude areas, even though high precipitation values existed.

5 According to Figure [15 14](#), [there is](#) a 10% probability of mudflow events ~~may-occur~~ if the antecedent rainfall value reaches 40 mm in the Gallyaarl station, approximately 60 mm in Mingchukur and 90 mm in Chimgan stations (Table 3). Interestingly, there is always a chance that a rainfall event of sufficient magnitude could induce the mudflows, even when the antecedent index is less than the levels above. The results indicate that a weather type with a high level of relative moisture may provide sufficient rainfall to trigger floods and mudslides even when the cumulative rainfall value is close to 0 or soil moisture storage
10 is in deficit. In contrast, after a long period of accumulation of antecedent rainfall, which weakens the slope ~~increasingly~~ [gradually](#), the slope becomes more susceptible to the less value of rainfall on a given day [and this could trigger a mudflow event](#).

~~Obviously-~~Some mudflow events were recorded when the rainfall level and antecedent rainfall index showed less than 10 mm. ~~If the mudflow event was~~ [This could be possibly](#) induced by ~~the~~ snowmelt due to a joint occurrence of [sudden](#) temperatures [rises](#) and rainfall, ~~then it is possible that less rainfall might be required to trigger the mudslides~~. On the other hand, locally heavy rainfall events in the adjacent areas of the stations could induce the flows and mudslides in the river catchment and hilly areas.

Figure [15 14](#) (d) shows that the Sokh station area located in the Fergana Valley is more susceptible to extreme mudflow events; indicating that mudflow events are also influenced by the geomorphologic structure of the area. The 0.1 probability threshold
20 indicates that 10 mm of rainfall with antecedent conditions of less than 30 mm can trigger flash floods or mudflows in Sokh. It means that the threshold varies in space and it is important to consider the regional characteristics of the research area whilst applying the ADRM.

Table 4 provides logistic regression equations ~~for to the data from~~ the four stations ~~-results-respectively~~ which can be used to estimate the rainfall thresholds with different probabilities of mudflow occurrences. For Chimgan station a cubic regression
25 and for Mingchukur a quadratic equation with probability curves proved to be the best fit, however, probability envelopes of the linear regression worked satisfactorily for the data of the other stations, namely Gallyaarl and Sokh. Associated values of Chi-squared test represented in Table 4 show ~~the results of less than 0.001, which can confirm~~ the significance of model fitting for the stations data.

5.2 Application of ADRM per CWT

30 In this section, the ADRM fit for each CWT class is examined in order to identify precipitation thresholds triggering mudflow events under each weather type for the four stations (Gallyaarl, Chimgan, Mingchukur and Sokh) located in areas with high probability of mudflow events in Uzbekistan. For this purpose, all rainfall days with an amount of ≥ 0.1 mm and the calibrated

antecedent rainfall was divided into each weather type. ~~Observed M~~mudflow events ~~in areas~~ were marked ~~for~~ with the weather types ~~in which they were observed respectively~~. ~~This investigation was evaluated Data~~ for the summer periods (March-August) of 1984-2013 by using CWT and ADRM together with LRM ~~were used~~ to construct mudflow triggering precipitation threshold per CWT class (~~Figures 16-17; e.f. Figures 4-5 in appendices~~ Figure 15).

5 The probability envelopes on C, W and SW days in all stations show consistently positive results each resembling regional overlaid threshold to trigger the extreme mudflow event. Following the above named airflows, the antecedent rainfall index associated with the AC circulation has ~~a~~ sufficient magnitude ~~which could to~~ trigger mudflows even when the antecedent index and the rainfall value are less than regional threshold for Gallyaral (~~Fig. 16~~), Chimgan (~~e.f. Fig. 4 in appendices~~) and Sokh stations (~~Fig. 17~~ Figure 15). It is assumed that AC hybrid, mainly anticyclonic westerly (ACW) and anticyclonic south-westerly (ACSW) initiate significantly more mudflow probability ~~rather~~ than purely anticyclonic flow. Another ~~curious point of this approach~~ interesting observation is ~~that~~ the overlaid threshold probabilities for mudflow events under the NW airflow in Chimgan, Sokh and ~~Baysun Mingchukur~~ (~~e.f. Fig. 5 in appendix~~), ~~which~~ indicate ~~that~~ similar or less values of antecedent and daily rainfall records of regional probability ~~which~~ can trigger mudflow occurrences there. The NE (except in Fergana Valley, ~~Fig. 17~~ Figure 15), E, SE and S flows had little or no precipitation ~~patterns that may affect to induce to effect~~ mudflow cases

15 in the study area. Threshold probability tests computed for rainfall data per CWT for four individual stations over the period 1984 to 2013 are given in Table ~~2- A3~~ in the appendices section.

This ~~examination is an~~ study attempts to identify more sensitive weather types to trigger mudflow events in Uzbekistan, using the CWT approach and antecedent rainfall model, ~~respectively~~. The relative importance of each CWT to induce mudflows varies considerably, ~~and includes from the~~ antecedent rainfall index ~~to~~ and the daily precipitation value. Results from this study

20 confirm that W, SW, C, NW and AC hybrid (associated with W and SW flows) are the main drivers of the interannual variability of precipitation patterns and responsible for the rainfall induced mudflow cases depending on the regions in Uzbekistan on a synoptic scale. This confirms the core findings of the synoptic classification by Bugayev. ~~and~~ The CWT objective approach ~~can be seen as~~ proves to be a useful extension tool to address ~~e.g.~~ questions of anthropogenic climate change with model data.

25 6 Summary and Discussion

Extreme precipitation events in Uzbekistan are responsible for about 90% of historical documented mudflows especially in the warm season (March-August) for the years 1870-2014. What are the main precipitation supporting weather types inducing mudflows in the study area? In the present study, mudflows and their relationship with precipitation and weather types were investigated using multiple and coherent systematic approaches within for Uzbekistan. This is especially important as only

30 few studies ~~have are~~ investigated atmospheric circulation conditions and precipitation variability on different spatial scales over Uzbekistan. The principal findings of this study ~~included previous investigations and qualitative comparisons~~ are as follows:

1. Advection of moist and relatively cold air from the west, as classified in the SWT classification by Bugayev et al. (1957), was revealed as the dominant ~~weather~~ synoptic situation inducing mudflows. This result is consistent with the findings of Aizen et al. (2004), ~~hereby thus~~ confirming ~~this synoptic pattern as a~~ that westerly advection is the predominant synoptic scale driver for precipitation climatology in Central Asia. This analysis was done by adopting a manual assessment methodology of mudflow generating weather conditions on synoptic scale based on SWT catalogues. Historical synoptic charts are not yet fully digitised by the Uzhydromet, thus manual assessment was the preferred methodology.

Even though assessment of weather situations by means of SWT may identify plausible synoptic scale flow characteristics triggering mudflows, this subjective approach does not consider any mesoscale conditions over the study area. Therefore, additional information of smaller scale features such as terrain-induced flow modulations (Stucki et al., 2012) merit further analysis.

2. The relationships and related variables explaining the spatial distribution of precipitation, obtained by an objective CWT approach, defined the four weather classes westerly (W), south-westerly (SW), cyclonic (C) and north-westerly (NW) as the main drivers of precipitation characteristics on a regional scale. This allows a positive evaluation of the CWT method in principle.

Furthermore, CWT findings are in line with results from Reyers et al. (2013) who evaluated spatial patterns and annual cycles of precipitation using CWT scheme for Central Asia. Interestingly, the westerly airflow in Reyers et al. (2013) was split into two subgroups, as W1 (distinct zonal flow) and W2 (negative 700 hPa GPH gradient) and NE and E as well as SE and S were combined respectively. In general it was found that probability of precipitation was much higher for C, CWT W2, N and SW airflows during the summer. However, the highest rainfall probability and precipitation amount was attributed to the seldom CWT NE/E weather type (Reyers et al., 2013). In our study as well NE weather type despite its low frequency for the selected grid point revealed the high probability of precipitation patterns that could trigger mudflow events in Fergana Valley (Figures ~~10-11d, 12e 12b, 13b, 14b and 17 15~~). Fergana Valley which has a better representation of topography presumably makes a case of particular interest with the findings in previous studies. According to Schiemann et al. (2008) it can be assumed that on smaller spatial scales, the influence of topography on precipitation climatology over Central Asia is paramount. Small et al. (1999) and Reyers et al. (2013) both confirm this.

In general, the ability of CWT to describe the large scale circulations on lower troposphere over Uzbekistan performed satisfactory results. However, it produces fairly high frequency of undefined weather classes showing a strong seasonality, and particularly during summer relatively large amounts of precipitation. It could be possible attributed to the impact of mesoscale features such as orographically induced lifting and frontogenesis, thus variations of the atmospheric dynamics (Buzzi et al., 1998). Gevorgyan (2013) argued that objective circulation classification scheme does not always identify frontal processes over mountain regions correctly, which makes the objective scheme less suitable to classify differences in the atmospheric circulation in areas with complex topography or when the sub-

synoptic scale is effected by the orography in elevated areas, even though the scheme is suitable for large scale circulation patterns.

3. By means of the antecedent rainfall model, we could identify the regional ~~different~~ differences in the probabilities of precipitation thresholds causing mudflow events ~~could be identified~~. However, sparse data on actual mudflows and uncertainty over probable mudflow occurrences could be the main factors regarding the uncertainty in model building (Glade et al., 2000). Nevertheless, our identified thresholds deliver reasonable and well justified results and forms a benchmark for any further study for this region. Our Antecedent Daily Rainfall Model (ADRM) results further corroborate findings by Trofimov (2006) who used Pearson correlations to calculate rainfall thresholds for triggering mudflows in Fergana Valley. For Sokh area, he suggested a 0.5th probability of mudflow events in case daily precipitation reaches 22.3 mm. This value falls in the lower envelope of the 0.5th probability threshold identified for Fergana Valley in our study (Figure 14). However, regional thresholds cannot be applied easily to neighbouring areas due to additional natural variables influencing mudflows such as geologic, geomorphologic and hydrologic factors as well as slope aspect and land use.
4. A combination of three statistical approaches (CWT, ADRM and LRM) revealed that ~~whilst when~~ the W, C and SW ~~air-flows~~ directional flow classes occurred over Uzbekistan, the higher precipitation amount (a characteristic of these directional flows) and antecedent rainfall ~~affected to~~ could trigger mudflow episodes and depending on the station data. Hence, above-named flow directions bring more rainfall which can increase its mudflow magnitude and probability, even though there is a small accumulated rainfall conditions.

Thus, it can be concluded that the CWT approach and ADRM produced robust results, despite the orographic influence on the study area and the limited data on mudflow timing and precipitation intensity. Future investigation ~~should will~~ focus on regional downscaled seasonal and annual precipitation, with observed data per CWT, preferably W, C, SW and NW ~~air~~ stream flows, to identify key factors of future ~~rainfall~~ precipitation distributions and to discover how this will affect mudflow occurrences on a longer timescale and how it will be impacted by climate change.

Data availability

- 25 The ECMWF reanalysis data is available at <http://apps.ecmwf.int/datasets/data/interim-full-daily/levtype=pl/>

Competing interests

The authors declare that they have no conflict of interest.

Acknowledgements

- 30 We are grateful to Uzhydromet for sharing the mudflow and daily meteorological data. We are also grateful to ECMWF for granting access to the ERA-Interim reanalysis data. G.M. expresses her gratitude to Islamic Development Bank (IDB) for awarding her with a PhD scholarship. Chapters 3 and 4.1 of this manuscript are the fragments from the MSc thesis of G.M. at

the National University of Uzbekistan (NUUZ). G.M. expresses her sincere gratitude to late Professor Gennady N Trofimov at the Department of Geography, NUUZ, and to Professor Boris K Tsarev at Uzhydromet for their guidance and encouragement throughout and after her MSc programme. G.M. also sincerely appreciates ~~the various researchers at~~ [Irina B Zaytseva, Gulnoza Khamdamova and Natalya Panteeva from](#) Uzhydromet for their timely inputs with regards to data clarifications. G.M.'s special
5 thanks are extended to Nicolas Kirchner Bossi and Mohammad Alharbi (University of Birmingham) for their assistance with programming. [The authors would like to thank two anonymous reviewers for their insightful and constructive comments which greatly improved the quality of the article.](#)

References

- 10 Aizen, V. B., Aizen, E. M., Melack, J. M., Kreutz, K. J., and Cecil, L. D.: Association between atmospheric circulation patterns and firn-ice core records from the Inilchek glacierized area, central Tien Shan, Asia, Journal of Geophysical Research: Atmospheres, 109, n/a-n/a, <https://doi.org/10.1029/2003JD003894>, 2004.
- Aksarin, S. I., and Inagamova, S. I.: Sketches of Hydrometeorology in Central Asia (in Russian), Gidrometeoizdat, Saint-Petersburg, 440 pp., 1993.
- 15 Bai, S., Wang, J., Thiebes, B., Cheng, C., and Yang, Y.: Analysis of the relationship of landslide occurrence with rainfall: a case study of Wudu County, China, Arabian Journal of Geosciences, 7, 1277-1285, <https://doi.org/10.1007/s12517-013-0939-9>, 2014.
- Bruce, J. P., and Clark, R. H.: Introduction to Hydrometeorology, Pergamon Press, 319 p., 1966.
- Bugayev, V. A.: Climate in Central Asia and Kazakhstan (in Russian), Academy of Science of the Uzbek SSR, Tashkent, 24 pp., 1946.
- 20 Bugayev, V. A., Giorgio, V. A., Kozik, E. M., Petrosyants, M. A., Pshenichniy, A. Y., Romanov, N. N., and Chernisheva, O. N.: Synoptic processes of Central Asia (in Russian), Academy of Science of Uzbek SSR, Tashkent, 477 pp., 1957.
- Buzzi, A., Tartaglione, N., and Malguzzi, P.: Numerical Simulations of the 1994 Piedmont Flood: Role of Orography and Moist Processes, Monthly Weather Review, 126, 2369-2383, [https://doi.org/10.1175/1520-0493\(1998\)126<2369:nsotpf>2.0.co;2](https://doi.org/10.1175/1520-0493(1998)126<2369:nsotpf>2.0.co;2), 1998.
- 25 Bykov, V. D., and Vasil'yev, A. V.: Hydrometry (in Russian), Gidrometeoizdat, Leningrad, 448 pp., 1977.
- Caine, N.: The Rainfall Intensity: Duration Control of Shallow Landslides and Debris Flows, Geografiska Annaler. Series A, Physical Geography, 62, 23-27, <https://doi.org/10.2307/520449>, 1980.

- Chub, V. Y.: Climate change impacts on hydrometeorological processes, agro climatic and water resources of the Republic of Uzbekistan (in Russian), Voris Nashriyot, Tashkent, 133 pp., 2007.
- Chub, V. Y., Trofimov, G. N., and Merkushkin, A. S.: Mudflows in Uzbekistan (in Russian), Uzhydromet, Tashkent, 109 pp., 2007.
- 5 Crozier, M. J., and Eyles, R. J.: Assessing the probability of rapid mass movement, Third Australia - New Zealand Conference on Geomechanics, Wellington, 1980.
- Crozier, M. J.: Landslides: Causes, Consequences and Environment, CROOM HELM, London, 252 pp., 1986.
- Davydov, L. K., Dmitriyeva, A. A., and Konkina, N. G.: General Hydrology, 2nd edition ed., Gidrometeoizdat, Leningrad, 1973.
- 10 Dee, D. P., Uppala, S. M., Simmons, A. J., Berrisford, P., Poli, P., Kobayashi, S., Andrae, U., Balmaseda, M. A., Balsamo, G., Bauer, P., Bechtold, P., Beljaars, A. C. M., van de Berg, L., Bidlot, J., Bormann, N., Delsol, C., Dragani, R., Fuentes, M., Geer, A. J., Haimberger, L., Healy, S. B., Hersbach, H., Hólm, E. V., Isaksen, I., Kållberg, P., Köhler, M., Matricardi, M., McNally, A. P., Monge-Sanz, B. M., Morcrette, J.-J., Park, B.-K., Peubey, C., de Rosnay, P., Tavolato, C., Thépaut, J.-N., and Vitart, F.: The ERA-Interim reanalysis: configuration and performance of the data assimilation system, Quarterly Journal of the Royal Meteorological Society, 137, 553-597, doi:10.1002/qj.828, 2011.
- 15 Donat, M. G., Leckebusch, G. C., Pinto, J. G., and Ulbrich, U.: European storminess and associated circulation weather types: future changes deduced from a multi-model ensemble of GCM simulations, Climate Research, 42, 27-43, <https://doi.org/10.3354/cr00853>, 2010.
- 20 [Elsner, J. B., and Jagger, T. H.: Hurricane Climatology. A Modern Statistical Guide Using R, Oxford University Press, 373 pp., 2013.](#)
- [Gevorgyan, A.: Main types of synoptic processes and circulation types generating heavy precipitation events in Armenia, Meteorology and Atmospheric Physics, 122, 91-102, <https://doi.org/10.1007/s00703-013-0270-8>, 2013.](#)
- 25 Gheusi, F., and Davies, H. C.: Autumnal precipitation distribution on the southern flank of the Alps: A numerical-model study of the mechanisms, Quarterly Journal of the Royal Meteorological Society, 130, 2125-2152, <https://doi.org/10.1256/qj.03.06>, 2004.
- Giorgio, V. A., and Bugayev, V. A.: Classification of the atmospheric circulation in Central Asia (in Russian) Meteorology and Hydrology 6, 72-74, 1936.
- 30 Glade, T.: Establishing the frequency and magnitude of landslide-triggering rainstorm events in New Zealand, Environmental Geology, 35, 160-174, <https://doi.org/10.1007/s002540050302>, 1998.

- Glade, T., Crozier, M., and Smith, P.: Applying Probability Determination to Refine Landslide-triggering Rainfall Thresholds Using an Empirical “Antecedent Daily Rainfall Model”, *Pure and applied geophysics*, 157, 1059-1079, <https://doi.org/10.1007/s000240050017>, 2000.
- 5 Gravina, T., Figliozzi, E., Mari, N., and De Luca Tupputi Schinosa, F.: Landslide risk perception in Frosinone (Lazio, Central Italy), *Landslides*, 14, 1419-1429, <https://doi.org/10.1007/s10346-016-0787-2>, 2017.
- Guzzetti, F., Peruccacci, S., Rossi, M., and Stark, C. P.: The rainfall intensity–duration control of shallow landslides and debris flows: an update, *Landslides*, 5, 3-17, <https://doi.org/10.1007/s10346-007-0112-1>, 2008.
- Hosmer, D., and Lemeshow, S.: *Applied Logistic Regression (Second Edition)*, Third ed., John Wiley & Sons, Inc. 511p, New York, 2000.
- 10 Huggel, C., Salzmann, N., Allen, S., Caplan-Auerbach, J., Fischer, L., Haeberli, W., Larsen, C., Schneider, D., and Wessels, R.: Recent and future warm extreme events and high-mountain slope stability, *Philosophical Transactions of the Royal Society A: Mathematical, Physical and Engineering Sciences*, 368, 2435-2459, <https://doi.org/10.1098/rsta.2010.0078>, 2010.
- 15 Huggel, C., Khabarov, N., Korup, O., and Obersteiner, M.: Physical impacts of climate change on landslide occurrence and related adaptation., in: *Landslides, Types, Mechanisms and Modelling.*, edited by: Clague, J. J., and Stead, D., Cambridge University Press, Cambridge UK, 121-133., 2012.
- Hungr, O., Evans, S. G., Bovis, M. J., and Hutchinson, J. N.: A review of the classification of landslides of the flow type, *Environmental and Engineering Geoscience*, 7, 221-238, <https://doi.org/10.2113/gsegeosci.7.3.221>, 2001.
- 20 Hungr, O., Leroueil, S., and Picarelli, L.: The Varnes classification of landslide types, an update, *Landslides*, 11, 167-194, <https://doi.org/10.1007/s10346-013-0436-y>, 2014.
- Ilinova, E. S.: *A register of synoptic processes over Central Asia, 1935-1967 (in Russian)*, Central Asian Hydrometeorological Scientific Research Institute, Tashkent, 138 pp., 1968.
- 25 Inagamova, S. I.: *A register of synoptic processes over Central Asia, 1979-1991 (in Russian)*, Central Asian Hydrometeorological Scientific Research Institute, Tashkent, 56 pp., 1993.
- Inagamova, S. I., Mukhtarov, T. M., and Mukhtarov, S. T.: General features of synoptic processes of Central Asia (in Russian), Central Asian Hydrometeorological Scientific Research Institute, Tashkent, 476 pp., 2002.
- Inagamova, S. I.: *A register of synoptic processes over Central Asia, 1992-2012 (in Russian)*, Uzhydromet, Tashkent, 89 pp., 2013.
- 30 Jones, P. D., Hulme, M., and Briffa, K. R.: A comparison of Lamb circulation types with an objective classification scheme, *International Journal Climatology*, 13, 655-663, 1993.

Jones, P. D., Harpham, C., and Briffa, K. R.: Lamb weather types derived from reanalysis products, *International Journal of Climatology*, 33, 1129-1139, <https://doi.org/10.1002/joc.3498>, 2013.

Kenawy, A. M., McCabe, M. F., Stenchikov, G., and Raj, J.: Multi-Decadal Classification of Synoptic Weather Types, Observed Trends and Links to Rainfall Characteristics over Saudi Arabia, *Frontiers in Environmental Science*, 2, <https://doi.org/10.3389/fenvs.2014.00037>, 2014.

Khan, Y. A., Lateh, H., Baten, M. A., and Kamil, A. A.: Critical antecedent rainfall conditions for shallow landslides in Chittagong City of Bangladesh, *Environmental Earth Sciences*, 67, 97-106, <https://doi.org/10.1007/s12665-011-1483-0>, 2012.

Kim, H. J., Sidle, R. C., Moore, R. D., and Hudson, R.: Throughflow variability during snowmelt in a forested mountain catchment, coastal British Columbia, Canada, *Hydrological Processes*, 18, 1219-1236, <https://doi.org/10.1002/hyp.1396>, 2004.

Kurbatkin, V. P.: The Role of the geographical features of Central Asia for the formation of precipitation processes, *Uzhymet*, Tashkent, 128 pp., 2009.

Lamb, H. H.: *British Isles Weather Types and a Register of the Daily Sequence of Circulation Patterns, 1861–1971*, *Geophysics Memoirs*, London HMSO, 85 pp., 1972.

Lyakhovskaya, L. F.: Mudflow hazards and its short-term forecasting in the piedmont areas of Uzbekistan (in Russian), *Dissertation on the candidate of Geographical Sciences*, Central Asian Hydrometeorological Scientific Research Institute, Tashkent, 190 pp., 1989.

Marques, R., Zêzere, J., Trigo, R., Gaspar, J., and Trigo, I.: Rainfall patterns and critical values associated with landslides in Povoação County (São Miguel Island, Azores): relationships with the North Atlantic Oscillation, *Hydrological Processes*, 22, 478-494, <https://doi.org/10.1002/hyp.6879>, 2008.

[Petrov, M. A., Sabitov, T. Y., Tomashevskaya, I. G., Glazirin, G. E., Chernomorets, S. S., Savernyuk, E. A., Tutubalina, O. V., Petrakov, D. A., Sokolov, L. S., Dokukin, M. D., Mountrakis, G., Ruiz-Villanueva, V., and Stoffel, M.: Glacial lake inventory and lake outburst potential in Uzbekistan, *Science of The Total Environment*, 592, 228-242, <https://doi.org/10.1016/j.scitotenv.2017.03.068>, 2017.](#)

[R Core Team: R: A language and environment for statistical computing. R Foundation for Statistical Computing, Vienna, Austria, 2017.](#)

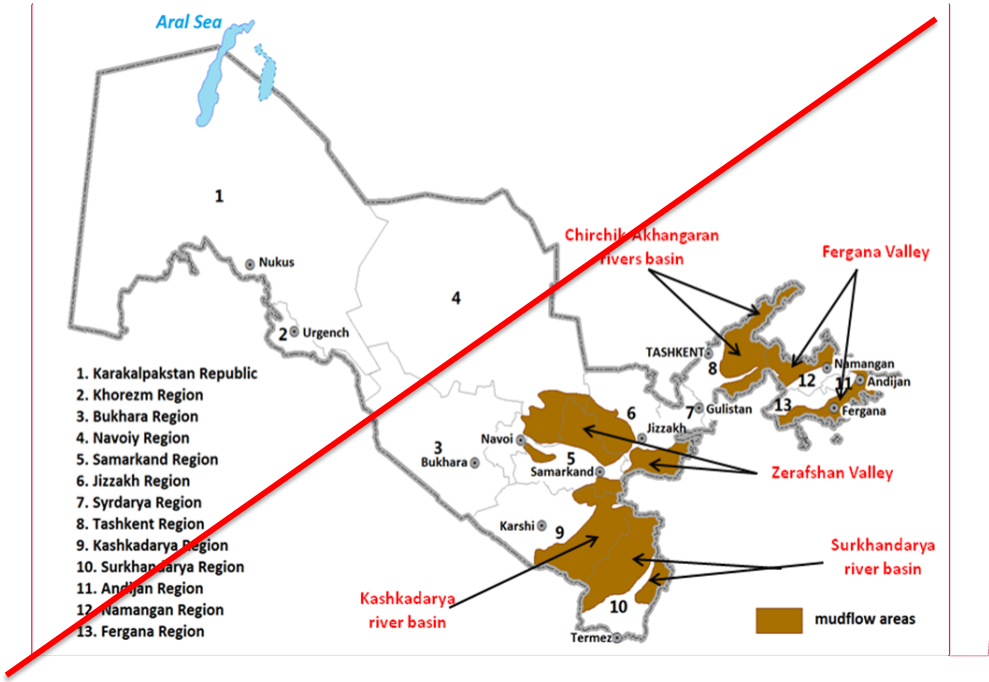
Ramos, A. M., Barriopedro, D., and Dutra, E.: Circulation Weather types as a tool in atmospheric, climate and environmental research, *Frontiers in Environmental Science*, 3, <https://doi.org/10.3389/fenvs.2015.00044>, 2015.

- Reyers, M., Pinto, J. G., and Paeth, H.: Statistical–dynamical downscaling of present day and future precipitation regimes in the Aksu river catchment in Central Asia, *Global and Planetary Change*, 107, 36-49, <https://doi.org/10.1016/j.gloplacha.2013.04.003>, 2013.
- 5 Rosi, A., Peternel, T., Jemec-Auflič, M., Komac, M., Segoni, S., and Casagli, N.: Rainfall thresholds for rainfall-induced landslides in Slovenia, *Landslides*, 13, 1571-1577, <https://doi.org/10.1007/s10346-016-0733-3>, 2016.
- Salikhova, D. H.: Aero synoptic conditions of triggering floods in mountain rivers and prediction the floods for Fergana Valley and Kashkadarya Basin (in Russian), Dissertation on the candidate of Geographical Sciences, Central Asian Hydrometeorological Scientific Research Institute, Tashkent, 132 pp., 1975.
- 10 Sarimsakov, T. A., Giorgio, V. A., and Bugayev, V. A.: Statistical characteristics of synoptic situations for the cold period over the Central Asia (in Russian), *Newsletter of USSR Academy of Science*, 6, 451-464, 1947.
- Schiemann, R., Lüthi, D., Vidale, P. L., and Schär, C.: The precipitation climate of Central Asia—intercomparison of observational and numerical data sources in a remote semiarid region, *International Journal of Climatology*, 28, 295-314, <https://doi.org/10.1002/joc.1532>, 2008.
- 15 Sidle, R. C., and Ochiai, H.: Landslides: processes, prediction, and land use, American Geophysical Union, Washington, DC, 312 pp., 2006.
- Small, E. E., Giorgi, F., and Sloan, L. C.: Regional climate model simulation of precipitation in central Asia: Mean and interannual variability, *Journal of Geophysical Research: Atmospheres* (1984–2012), 104, 6563-6582, <https://doi.org/10.1029/98JD02501>, 1999.
- 20 [Stucki, P., Rickli, R., Brönnimann, S., Martius, O., Wanner, H., Grebner, D., and Luterbacher, J.: Weather patterns and hydro-climatological precursors of extreme floods in Switzerland since 1868, *Meteorologische Zeitschrift*, 21, 531-550, <https://doi.org/10.1127/0941-2948/2012/368>, 2012.](#)
- Trigo, R. M., and DaCamara, C. C.: Circulation weather types and their influence on the precipitation regime in Portugal, *International Journal of Climatology*, 20, 1559-1581, [https://doi.org/10.1002/1097-0088\(20001115\)20:13<1559::AID-JOC555>3.0.CO;2-5](https://doi.org/10.1002/1097-0088(20001115)20:13<1559::AID-JOC555>3.0.CO;2-5), 2000.
- 25 [Trofimov, G. N.: Mudflows in Uzbekistan, prediction of catastrophic failure and repeatability of mudflows in the region under climate changes and adaptation measures \(in Russian\), National University of Uzbekistan, Tashkent, 32 pp., 2006.](#)
- [Voynova, T. A., and Inagamova, S. I.: A register of synoptic processes over Central Asia, 1968-1978 \(in Russian\), Central Asian Hydrometeorological Scientific Research Institute, Tashkent, 49 pp., 1982.](#)
- 30 Yamao, M., Sidle, R. C., Gomi, T., and Imaizumi, F.: Characteristics of landslides in unwelded pyroclastic flow deposits, southern Kyushu, Japan, *Nat. Hazards Earth Syst. Sci.*, 16, 617-627, <https://doi.org/10.5194/nhess-16-617-2016>, 2016.

[Zêzere, J., and Rodrigues, M.: Rainfall thresholds for landsliding in Lisbon Area \(Portugal\), Rybar J, Stemberk J, Wagner P\(eds\) Landslides, 333-338, 2002.](#)

Zêzere, J. L., Trigo, R. M., and Trigo, I. F.: Shallow and deep landslides induced by rainfall in the Lisbon region (Portugal): assessment of relationships with the North Atlantic Oscillation, Nat. Hazards Earth Syst. Sci., 5, 331-
5 344, <https://doi.org/10.5194/nhess-5-331-2005>, 2005.

Figures



Commented [GM(wISAS+11)]: We removed this figure and produced a new graph presented below

Figure 1. Study site in Uzbekistan including areas with high probability of mudflow passage: Fergana Valley in the east; Chirchik-Akhangaran Basin in the north-east; Zerafshan Basin in central part of the country; Surkhandarya and Kashkadarya rivers' basins in the south of Uzbekistan (Source: Uzhydromet).

Commented [GM(wISAS+12): We summarised both reviewers' feedbacks on Figure 1 and produced a new graph

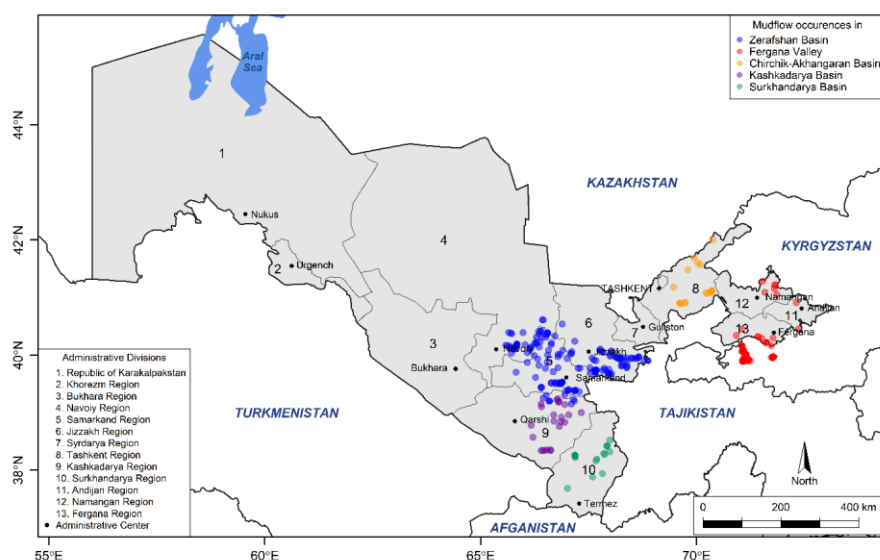


Figure 1. Mudflow occurrences for the years 2005-2014 in areas with high probability of mudflow passage in Uzbekistan: Zerafshan Basin (blue dots) in central part of the country; Fergana Valley (red dots) in the east; Chirchik-Akhangaran Basin (orange) in the north-east; Surkhandarya (green) and Kashkadarya (violet) rivers' basins in the south of Uzbekistan. Map also represents political administrative divisions and administrative centers/cities of the country.

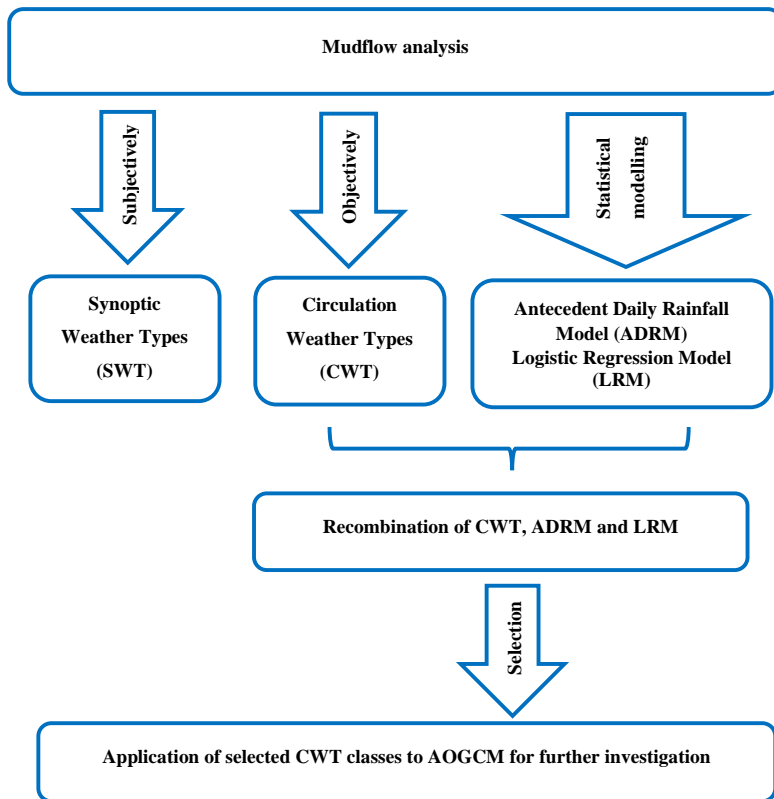
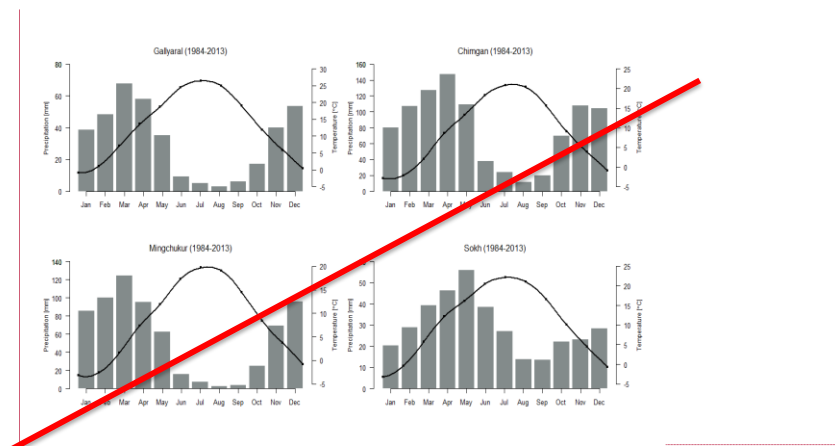


Figure 2. Schematic diagram of pathways by which the stages [Methodological flowchart](#) of [the investigation process](#) presented in this paper.



Commented [GM(wISAS+13): We have changed the colour to increase visibility of the figure presented below.

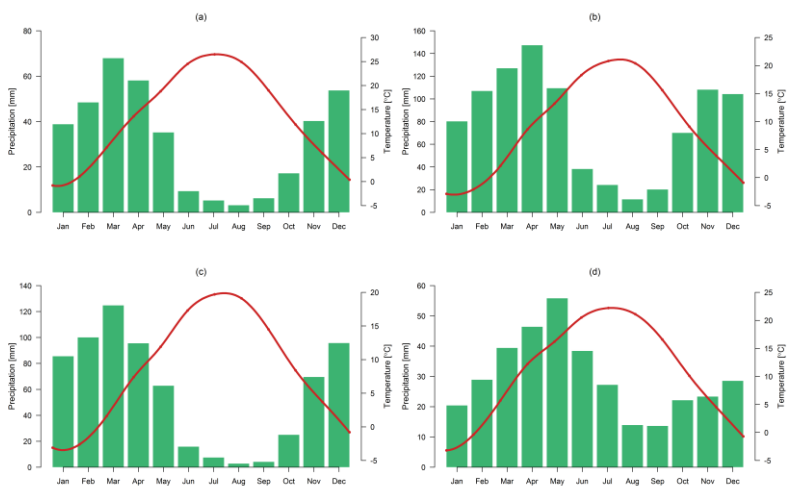


Figure 3 5. The 30-year means (1984-2013) of monthly temperature (°C, ~~black~~ red line) and precipitation (mm, ~~grey~~ green bars) in four selected stations namely ~~Gallyaarl in Zerafshan Basin (a), Chimgan in Chirchik-Akhangaran Basin (b), Mingchukur representing Kashkadarya and Surkhandarya Basins (c) and Sokh for each basin in Fergana Valley (d)~~ with high occurrences of mudflow in Uzbekistan. Graphs have different scales.

Commented [GM(wISAS+14): We added information regarding the location of the stations in each basin respectively

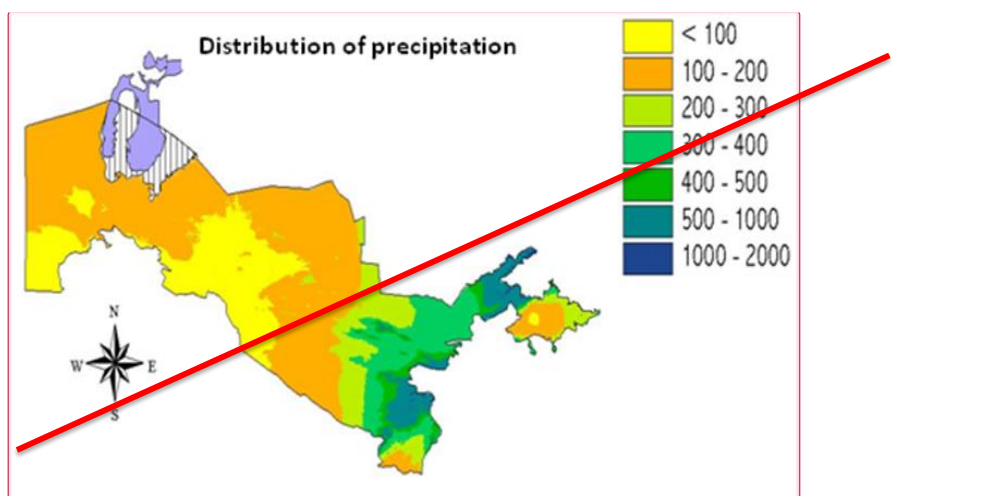


Figure 4. Map showing the spatial distribution of total annual precipitation (mm) in Uzbekistan for the 1961-1990 periods (Source: Uzhydromet).

Commented [GM(wISAS+15): We followed Referee#1 suggestion and removed Figure 4 from the manuscript

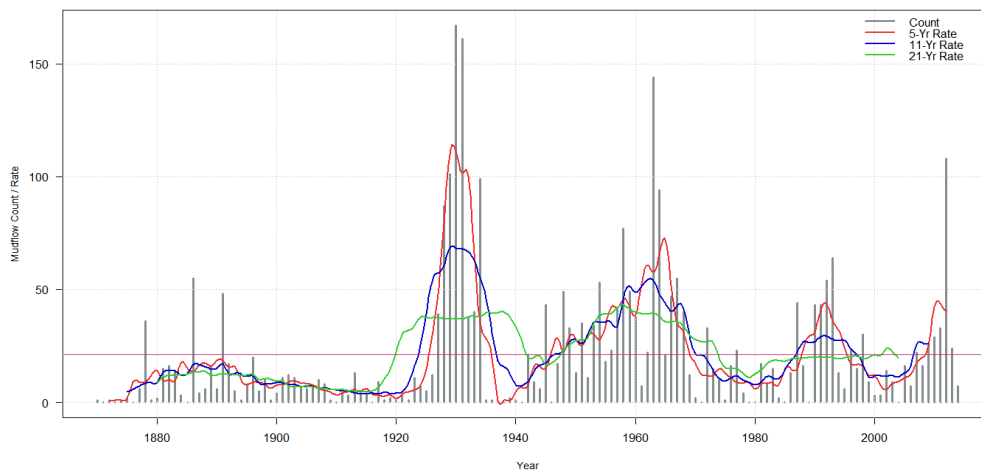


Figure 5.6. Variability of mudflow events in Uzbekistan (1870-2014). Vertical bars present the mudflow observations for each year. The mean annual mudflow count (21) is indicated in a solid continues horizontal line (pink). Curves (red, blue, green) have been fitted to the distribution for illustrative purposes, denote the 5, 11 and 21-year rates of mudflow occurrences.

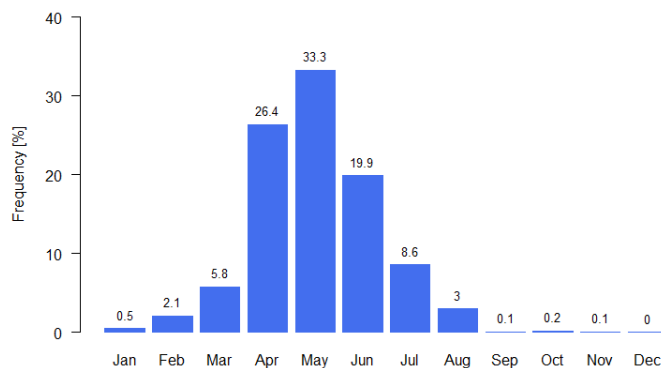
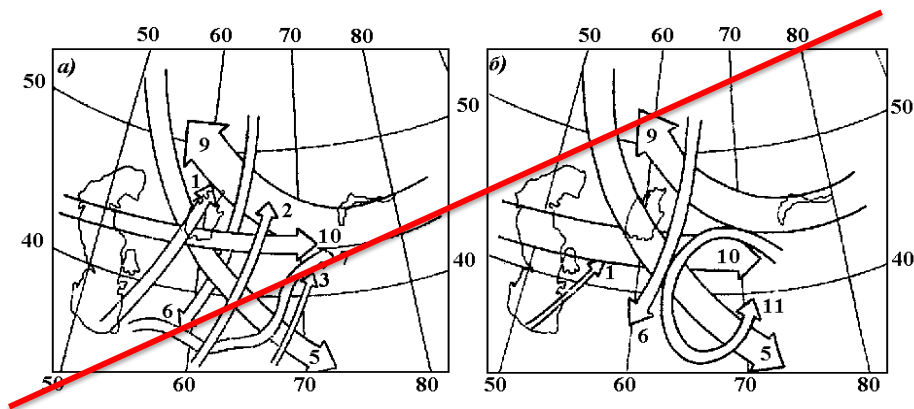


Figure 6.7. Distribution of monthly mudflow frequencies (bars) for the years 1870-2014. Values over the bars indicate the percentage of mudflow occurrences in a given month.

Commented [GM(wISAS+16): Figure caption has been corrected



Commented [GM(wISAS+17): We produced a new figure given below based on the reference material and added information about the nature of the flow.

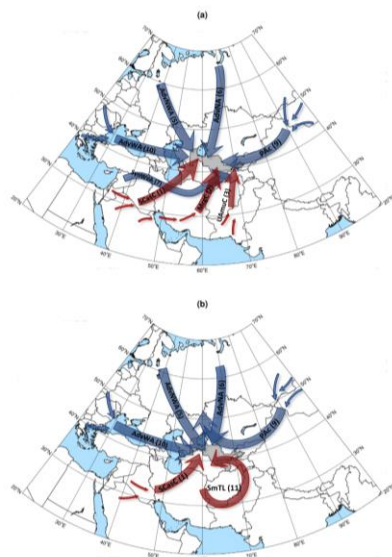
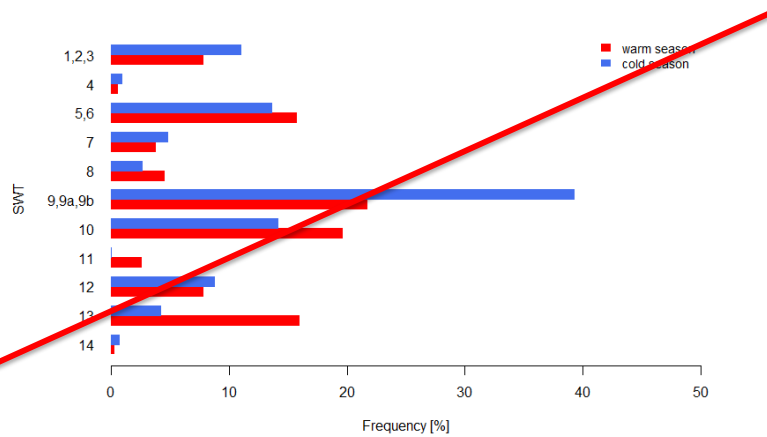


Figure 7 3. Scheme of synoptic weather types in Central Asia and Uzbekistan during the cold (a) and warm seasons (b) of the year (after Inagamova et al., 2002). Numbers and cursors indicate the weather type and its approaching to the area of Central Asia and Uzbekistan (source: Inagamova et al., 2002). Blue and red cursors indicate relatively cold and warm air trajectories approaching to the investigation area (grey background). Abbreviations and numbers of each weather type explained in Table 2 of Appendices.



Commented [GM(wISAS+18): We added abbreviations in order to indicate the respective weather class

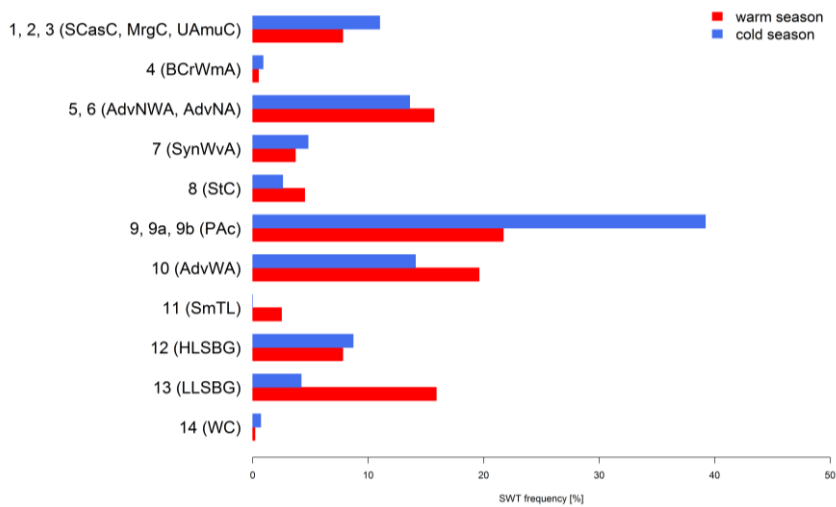
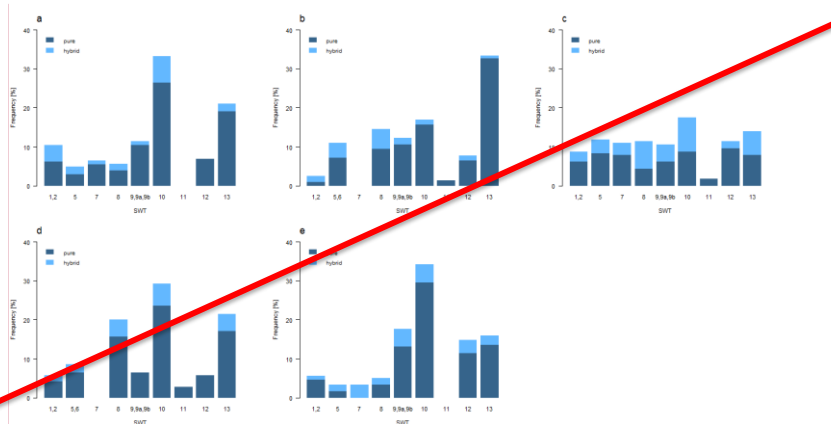


Figure 8.4. Frequency distributions of daily synoptic weather types by Bugayev's classification during the cold (Sep-Feb) and warm (Mar-Aug) seasons in the period of 1935-2014 y. Definitions of SWT can be seen in Table 2 in appendices section.



Commented [GM(wISAS+19): We added abbreviations for the figure in order to indicate the respective weather class

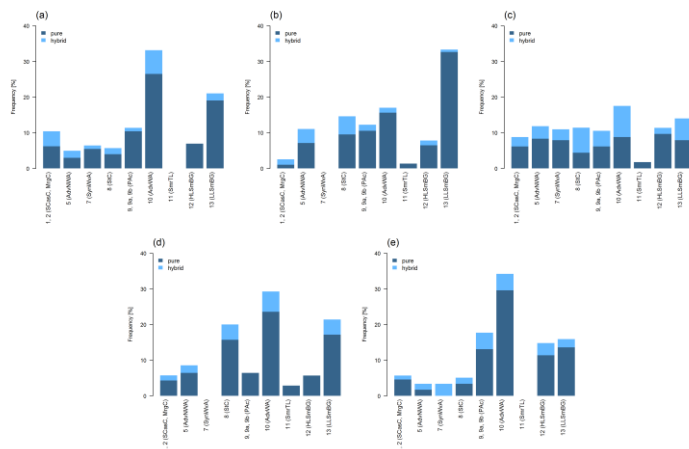
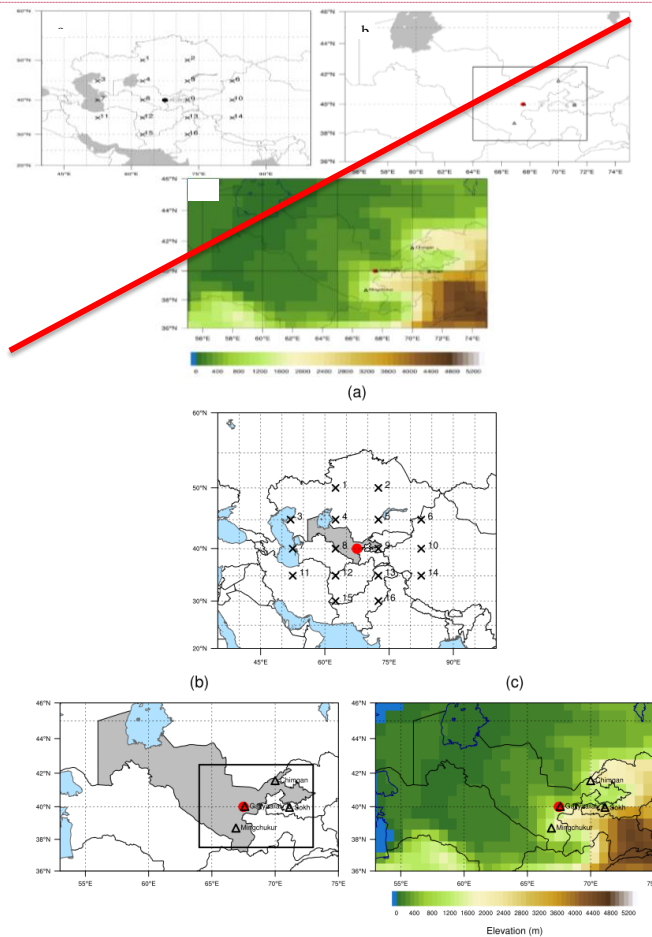


Figure 9.8. Frequency of mudflows under the synoptic weather types (SWT) over Uzbekistan during 1984-2013 (March-August): a) Zerafshan Basin (101 days); b) Fergana Valley (147 days); c) Chirchik-Akhangaran Rivers Basin (57 days); d) Kashkadarya Basin (35 days); e) Surkhandarya Basin (44 days). Definitions of SWT can be seen in Table 2 in appendices section.



Commented [GM(wISAS+20): Grey background in Figures 9a and 9b was changed to a blue colour to indicate inland water resources. Investigation area was filled in grey background. Orography unit (m) in Figure 9c was added. New produced figure given below.

Figure 10 9. a) Location of the study domain together with the 16 grid points and central grid point (40N-67.5E, red circle) used in the automated weather circulation type; b) Investigation area shown in rectangle and location of selected stations (black triangles) in the study area around the central grid point 40.0 N-67.5 E (red circle) of CWT objective method. Stations (triangles): Gallyaarl (40.02 N-67.60 E), Chimgan (41.57 N-70.00 E), Sokh (39.97 N-71.13 E) and Mingchukur (38.70N – 66.90 E); c) ERA-Interim orography map and the location of central grid point (red circle) together with representative five four stations (black triangles).

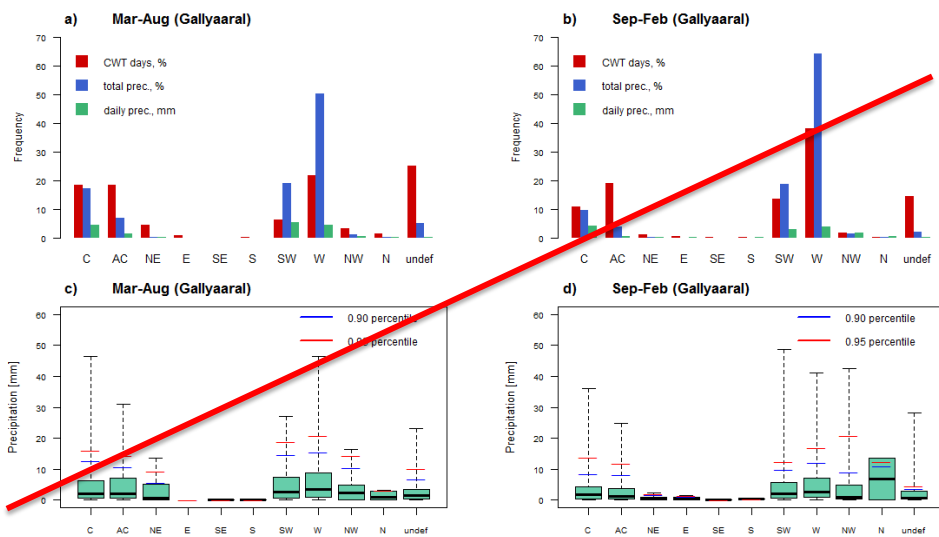


Figure 11. Contribution of CWT classes to the observed precipitation over Gallyaal station (Zerafshan-Basin), for warm (a) and cold (b) seasons during the period 1984-2013. CWT days – frequency of each class in percentage; % total precipitation – contribution of each class to the overall precipitation; mm/day – daily average precipitation per CWT. Box plots (c, d) show the statistical analysis of daily precipitation per CWT class. The black lines in boxes represent medians for each weather type; the lower (upper) box limits mean the first (third) quartiles; the lower (upper) whiskers show the minimum and maximum values of the precipitation; blue and red lines represent 0.90th and 0.95th percentiles of the precipitation. The figure has different scales.

Commented [GM(wISAS+21): Following Referee#2 recommendation we joined **Figure 11, 12 and A2 and A3** in two figures. In the first figure we put bar plots (a and b) for the 4 study areas as one page (Figure 10) and in the second graph (Figure 11) we include box plots (c and d) for the 4 study areas respectively.

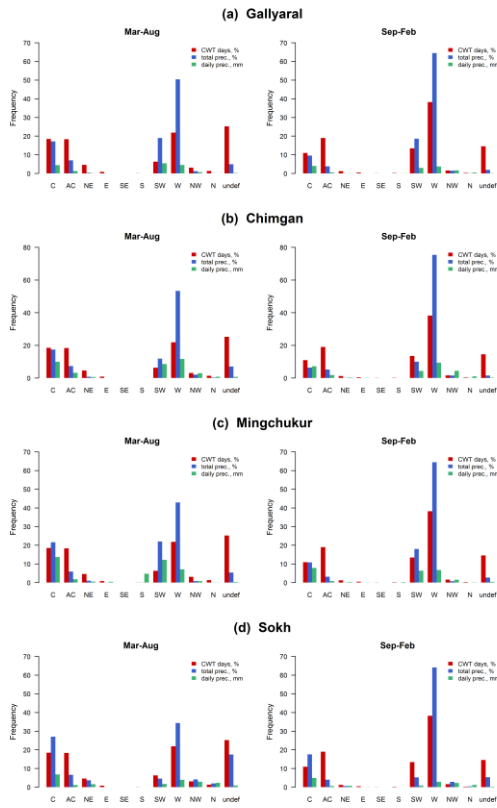


Figure 10. Contribution of CWT classes to the observed precipitation over the stations Gallyaral station in Zerafshan Basin (a), Chimgan in Chirchik-Akhangaran Basin (b), Mingchukur representing Kashkadarya and Surkhandarya Basins (c) and Sokh in Fergana Valley (d) for warm (a)-(Mar-Aug) and cold (b)-(Sep-Feb) seasons during the period for the years 1984-2013. CWT days - frequency of each class in percentage; % total precipitation - contribution of each class to the overall precipitation; mm/day - daily average precipitation per CWT. Box plots (c, d) show the statistical analysis of daily precipitation per CWT class. The black lines in boxes represent medians for each weather type; the lower (upper) box limits mean the first (third) quartiles; the lower (upper) whiskers show the minimum and maximum values of the precipitation; blue and red lines represent 0.90th and 0.95th percentiles of the precipitation. The figure has different scales.

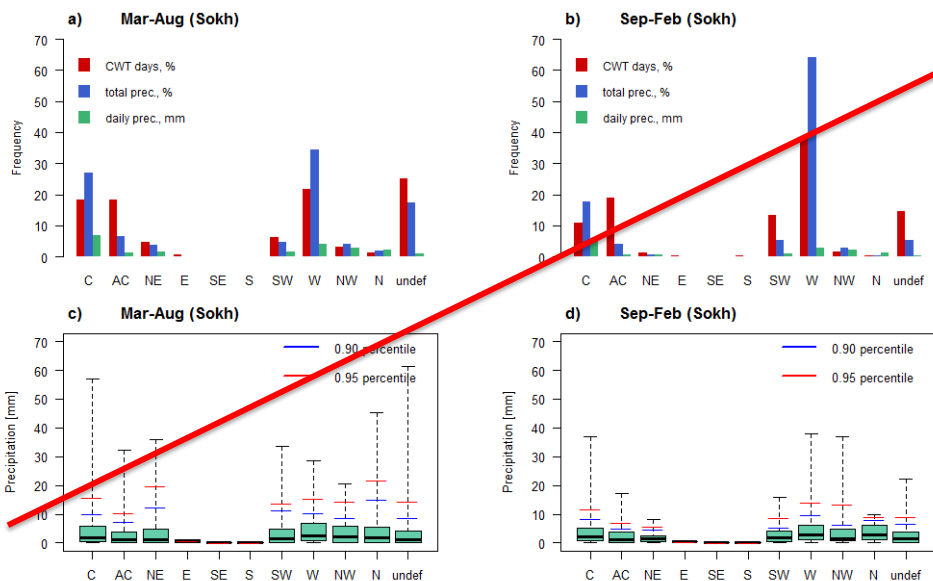


Figure 12. As Figure 11, but for Sokh station (Fergana Valley).

Commented [GM(wISAS+22): Following Referee#2 recommendation we joined Figure 11, 12 and A2 and A3 in two figures. In the first figure we put bar plots (a and b) for the 4 study areas as one page (Figure 10) and in the second graph (Figure 11) we include box plots (c and d) for the 4 study areas respectively.

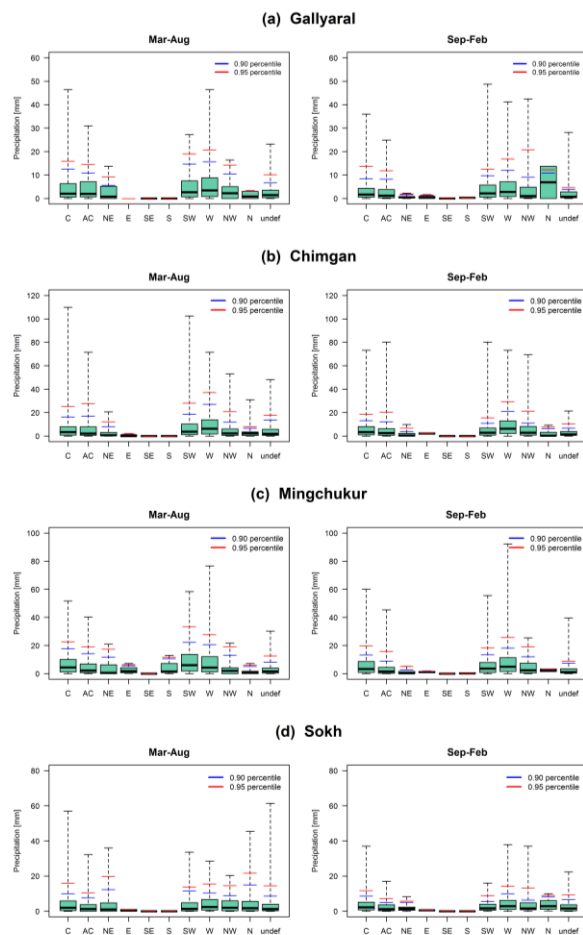


Figure 11. Box plots show daily precipitation (1984-2013) per CWT class in four representative stations namely Gallyaaral (Zerafshan Basin), Chimgan (Chirchik-Akhgangan Basin), Mingchukur (Kashkadarya and Surkhandarya Basins) and Sokh (Fergana Valley). The blue and red lines represent 0.90th and 0.95th percentiles of the precipitation for each class. The graph has different scales.

f)

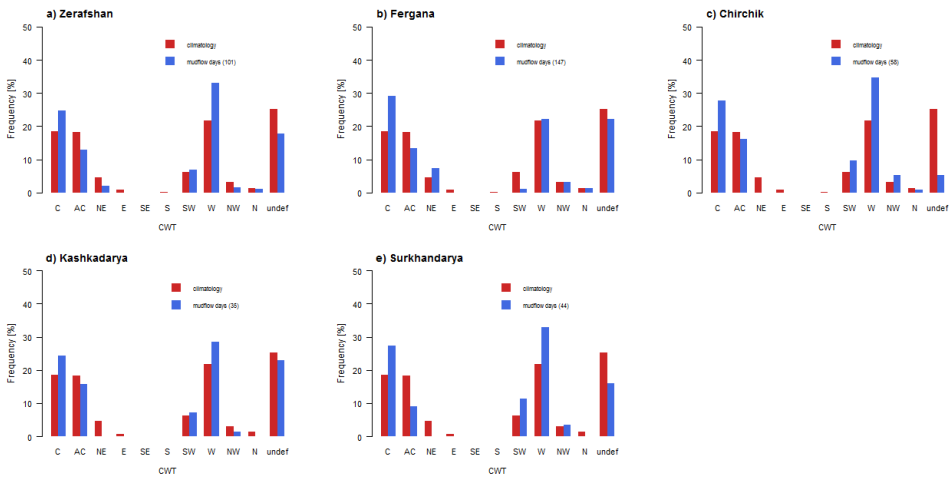


Figure 13-12. Frequency of CWT (700GPH) climatology for the period March-August, 1984-2013 (red bars) and mudflow days (blue bars) occurred in Zerafshan Basin (a), Fergana Valley (b), Chirchik-Akhangaran (c), Kashkadarya (d) and Surkhandarya (e) basins in Uzbekistan. Central grid point is 47.40°N - 67.5°E.

5

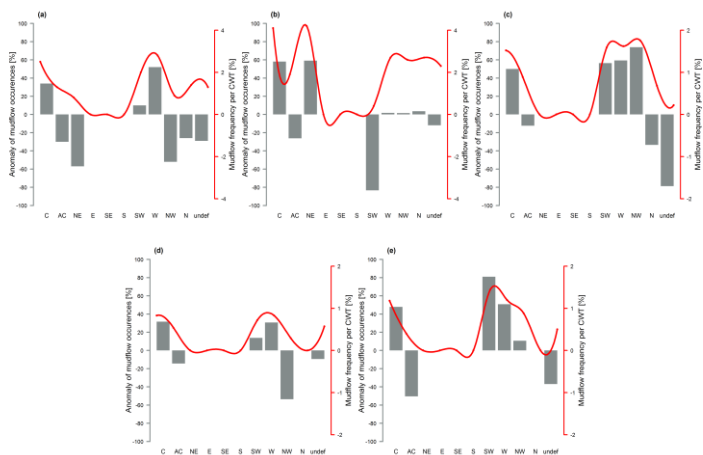
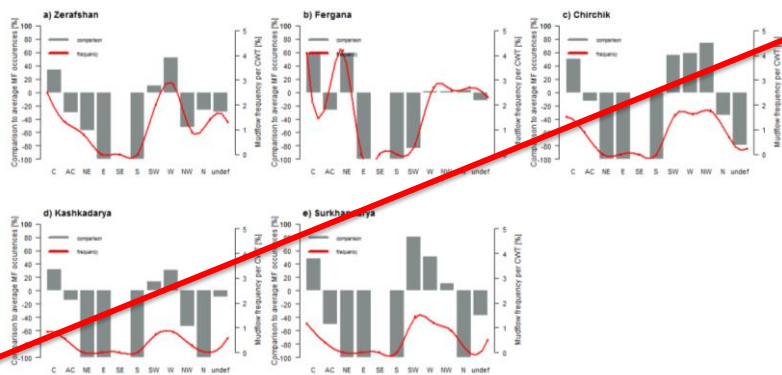


Figure 14- 13. Frequency Anomaly of mudflow days per CWT class (grey bars, grey axis, %) and CWT classes for mudflow days (red line, red axis, %) in comparison to per CWT climatology for the March-August period between 1984 and 2013 (red line, %) in five regions: a) Zerafshan Basin (101 days); b) Fergana Valley (147 days); c) Chirchik-Akhangaran Rivers Basin (57 days); d) Kashkadarya Basin (35 days); e) Surkhondaryo Basin (44 days). Figure has different scales, (Zerafshan, Fergana, Chirchik-Akhangaran, Kashkadarya and Surkhondaryo) and in contrast to the average number of mudflow days per CWT (grey bars, %). For example, of the total 5520 CWT days in warm season throughout 30 years (Mar-Aug, 1984-2013), there were up to 1018 days of cyclonic circulation with the frequency of 2.5 % (25 days) which associated with mudflow events in Zerafshan Valley. Furthermore, it was identified that mudflow events occurred on cyclonic days increased up to 34% in comparison to the average value of mudflow days (1.8% or 101 mudflow days against 5520 CWT days) there.

Commented [GM(wISAS+23): We revised the figure adding more precisely figure caption and we also proposed to make minor correction to the figure

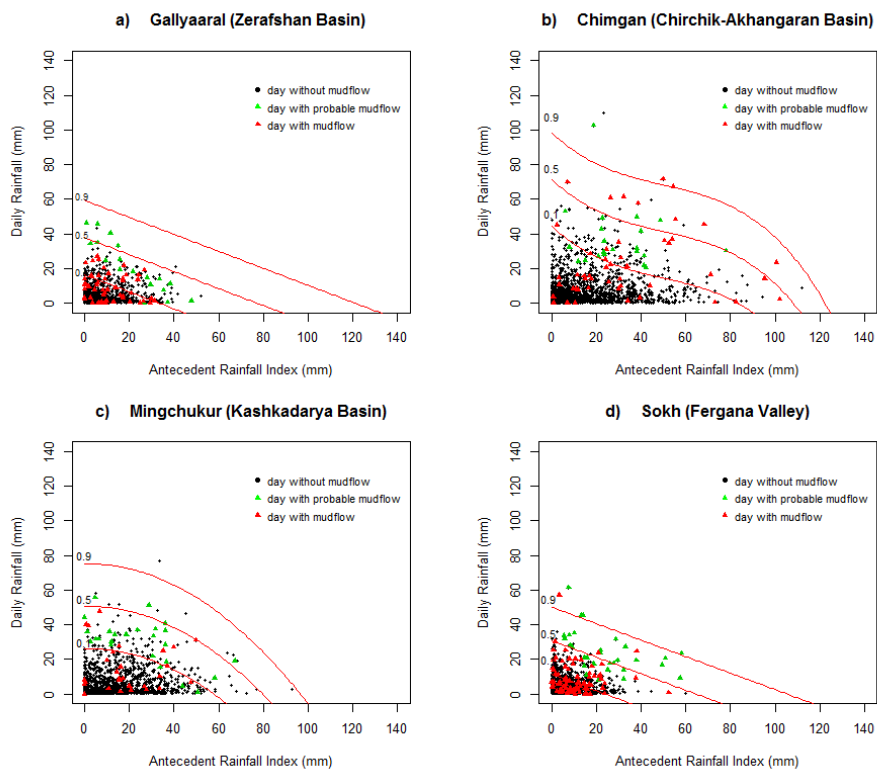
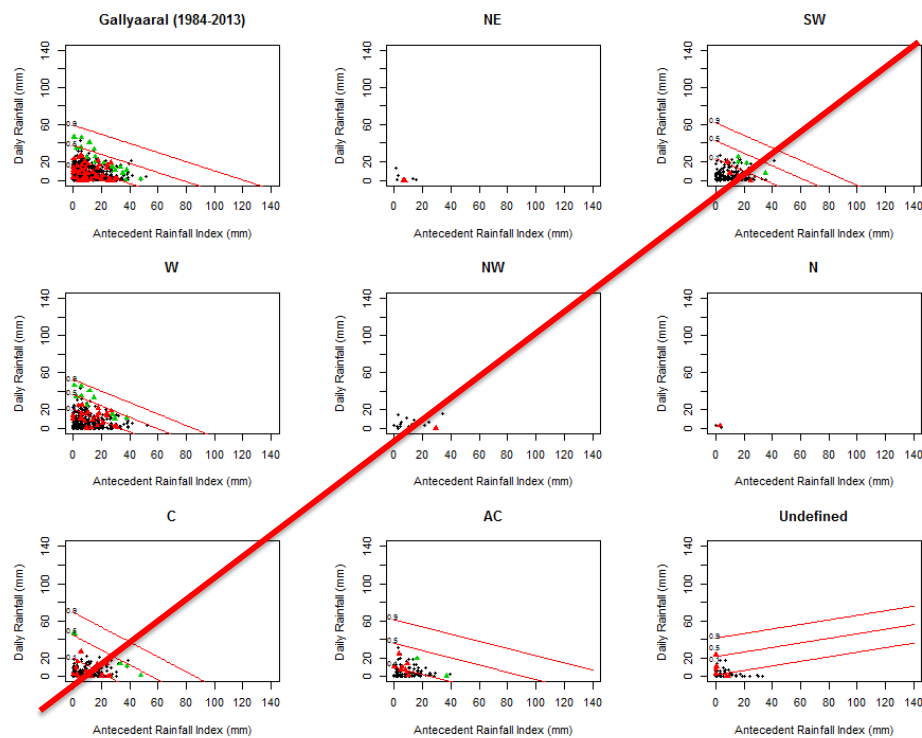


Figure 15-14. Antecedent Daily Rainfall Model applied to the representative stations Gallyaaraal (a), Chimgan (b), Mingchukur (c) and Sokh (d) for the period 1984-2013. Red lines and curves indicate 0.1th, 0.5th and 0.9th probability threshold triggering mudflow occurrences in respective regions. Equations from Table 4 used for calculation of the probability lines in selected stations.

Commented [GM(wISAS+24): We included the meaning of the red lines in the graphs



Commented [GM(wISAS+25)]: We have joined all figures (Figure 16, 17, A4 and A5) into one panel plot presented in Figure 15

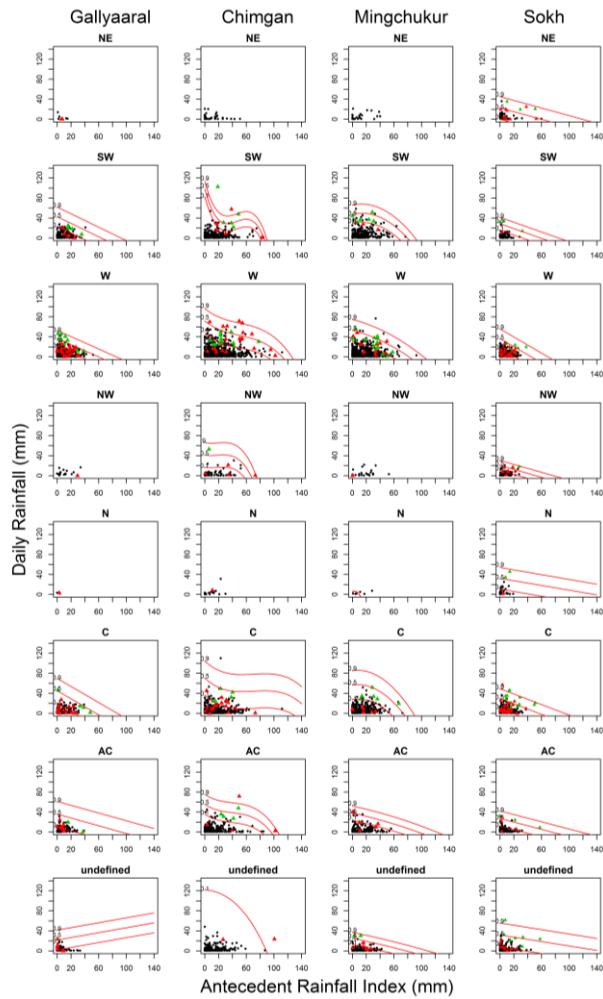


Figure 15. Threshold probabilities initiating mudflow occurrences per CWT class in the stations namely Gallyaaraal Station, Chimgan, Mingchukur and Sokh (panel columns) for the period of March-April 1984-2013. Black dot is a day without mudflow, green triangle – days with probable mudflow, red triangle is a day initiated mudflow occurrences in the study area. Red lines and curves indicate 0.1th, 0.5th and 0.9th probability threshold triggering mudflow occurrences per CWT class.

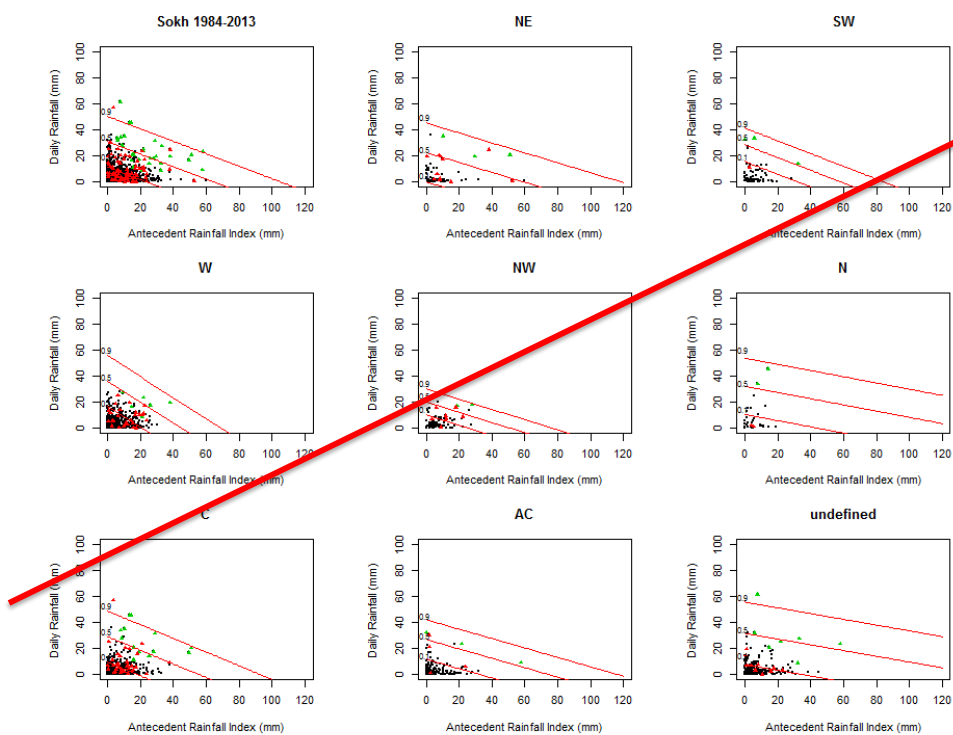


Figure 17. As Figure 16, but for Sokh station (Fergana Valley):

Commented [GM(wISAS+26)]: We have joined all figures (Figure 16, 17, A4 and A5) into one panel plot presented in Figure 15

Tables

Table 1. Mudflow disasters causing fatalities and other relative damages over the period 2005-2014 in Uzbekistan (Data source: Uzhydromet)

year	death	household or property damages	livestock counts	infrastructure damage					agricultural crops (ha)			
				highway (km)	bridges	hydrologic bridges or	schools	other	cotton fields	heat fields	gardens	other
2005		860			1			2	200	69		
2006	7	175						2	152	165	118	22
2007		8	1	6	15	7		3		2		6
2008	7	413	1	0.3	5			49	747	261		123
2009	8	498	80		14	5	2		966	834	56	18
2010	8	41			6		2	7		5		3
2011	2	94	50	0.5		1		52	483.5	318.6	0.12	10.1
2012	5	773	3	2.7	25	6	1	55				
2013	1	31		0.012	2	6		3				200
2014								4				
Total	38	2893	135	10	68	25	5	177	2548	1655	174	382

Commented [GM(wISAS+27)]: Table 1 is moved to the Appendices section

Table 2 1. Monthly distribution of mudflow events in five regions in Uzbekistan.

Basin	Data	Jan	Feb	Mar	Apr	May	Jun	Jul	Aug	Sep	Oct	Nov	Dec	Total	Mean
Fergana	1875-2014	8	21	34	292	605	462	218	67	2	0	2	0	1711	12
Zerafshan	1872-2014	7	36	80	177	157	54	19	10	0	2	1	1	544	3.8
Surkhandarya	1890-2014	0	0	20	151	146	63	7	0	0	2	0	0	389	3
Chirchik-Akhangaran	1870-2014	1	3	31	91	64	17	19	7	0	0	0	0	233	1.6
Kashkadarya	1877-2014	0	3	12	92	42	9	0	6	0	1	0	0	165	1
Total	1870-2014	16	63	177	803	1014	605	263	90	2	5	3	1	3042	21

5 **Table 2.** The main characteristics of the meteorological stations in Uzbekistan used in this study (Source: Uzhydromet)

Station		WMO	Lat	Lon	Elevation	Established year	Available data for this study
1	Gallyaaral	38577	40.00	67.60	574	1929	1984-2013
2	Sokh	38749	39.90	71.20	1200	1971	1984-2013
3	Chimgan	38706	41.50	70.00	1620	1984	1984-2013
4	Mingchukur	38816	38.70	66.90	2132	1950	1984-2013

Commented [GM(wISAS+28): We added a new table due to the station data used in this study

Table 3. Threshold probabilities (10%, 50% and 90%) inducing mudflow events in 4 stations (Gallyaaral, Chimgan, Mingchukur and Sokh); r_a - antecedent rainfall index (mm), r - daily rainfall value (mm).

Station	10%		50%		90%	
	r_a	r	r_a	r	r_a	r
Gallyaaral	≤ 40	≤ 20	≤ 90	≤ 40	≤ 130	≤ 60
Chimgan	≤ 90	≤ 45	≤ 110	≤ 75	≤ 125	≤ 100
Mingchukur	≤ 60	≤ 25	≤ 85	≤ 50	≤ 100	≤ 65
Sokh	≤ 30	≤ 10	≤ 70	≤ 35	≤ 115	≤ 50

5

Table 4. Rainfall threshold probability equations of mudflow occurrences in selected areas (P – probability, r – daily rainfall, r_a - antecedent rainfall, $\text{Pr}(> \text{Chi})$ - Chi-squared results to the regions respectively).

Station	Probability equation	$\text{Pr}(> \text{Chi})$
Gallyaaral	$\log \left(\frac{P}{1-P} \right) = -3.87 + 0.10 * r + 0.05 * r_a$	9.402e-05
Chimgan	$\log \left(\frac{P}{1-P} \right) = -5.84 + 0.082 * r + 0.099 * r_a - 0.0015 * r_a^2 + 0.00001 * r_a^3$	1.455e-10
Mingchukur	$\log \left(\frac{P}{1-P} \right) = -4.54 + 0.89 * r - 0.003 * r_a + 0.0008 * r_a^2$	8.036e-07
Sokh	$\log \left(\frac{P}{1-P} \right) = -3.50 + 0.11 * r + 0.05 * r_a$	3.285e-07

10

Appendices

Table A1. Mudflow disasters causing fatalities and other relative damages over the period 2005-2014 in Uzbekistan (Data source: Uzhydromet)

Commented [GM(wISAS+29): We indicated the unit of each row of the table

Year	Number of deaths	Number of households or property damages	Livestock head counts	Infrastructure damages					Agricultural crops (ha)			
				Highways (km)	Local bridges (count)	Hydrologic bridges or tools (count)	Schools (count)	Other (count)	Cotton fields (ha)	Wheat fields (ha)	Gardens (ha)	Other (ha)
2005		860			1			2	200	69		
2006	7	175						2	152	165	118	22
2007		8	1	6	15	7		3		2		6
2008	7	413	1	0.3	5			49	747	261		123
2009	8	498	80		14	5	2		966	834	56	18
2010	8	41			6		2	7		5		3
2011	2	94	50	0.5		1		52	483.5	318.6	0.12	10.1
2012	5	773	3	2.7	25	6	1	55				
2013	1	31		0.012	2	6		3				200
2014								4				
total	38	2893	135	10	68	25	5	177	2548	1655	174	382

Table 4.2. Synoptic weather types (SWT) of Central Asia and general weather characteristics over the region and in Uzbekistan. SWT 1-9, 9a and 10-11 was classified by Bugayev et al. (1957); types 9b and 12-15 were added later by the researchers of the Hydrometeorological Scientific Institute in Uzbekistan.

Group	Co de	Synoptic Weather Type (SWT)	Source region	Air mass	Characteristics	
Group A Cyclones from south and south-west	1	South Caspian Cyclone (SCasC)	Southern part of Caspian Sea, east of Mediterranean Sea, Mesopotamia, Northern part of Arabian Peninsula	tropical	rising temperature in the warm sector of the cyclone in winter, heavy precipitation especially in mountain areas, strong winds, dust storms along the desert areas	
	2	Murgab Cyclone (MrgC)	Cyclone forms as a wave in Iraq, Mesopotamia, Iran and approaches to the Southern part of Turkmenistan, Murghab and Tejen Rivers' basins	tropical, continental (temperate zones)	mild and wet in the warm sector of the cyclone, strong winds, heavy precipitation, thunderstorms in spring, floods in the rivers, sometimes radiation fog	
	3	Upper-Amudarya Cyclone (UAmuC)	Afghanistan, West Pakistan, Persian Gulf	tropical	warm air flow, cloudy; precipitation may be observed in the territory of Tajikistan; strong winds in the mountain areas, sometimes fog	
	4	Broad carrying the warm air (BCrWmA)	South-westerly and southerly flows in the troposphere approach to the Southern part of European Russia, Western Kazakhstan and Central Asia	tropical, continental (temperate zones)	warm, clear, dry weather condition with light winds	
Group B Advection of cold airflow from north and north-west	5	Advection of cold north-westerly air flow (AdvNWA)	South-eastern part of European Russia, Western Kazakhstan and Ustyurt	arctic (Siberian sector), continental (temperate zones)	mainly cold in winter with cloudiness, precipitation and strong winds; in summer cool weather, precipitation depends on the orography and convection process; frosts in spring and autumn	
	6	Advection of cold northerly air flow (AdvNA)	Ural, Western Siberia, Kazakhstan	arctic (Greenland and the North Sea), continental (temperate zones)	very cold, sometimes severe weather with winds, little precipitation and fog in winter season; thundery and rainfall in summer in the mountain areas; frost in early spring and late autumn	
	7	Synoptic wave activity on a cold front (SynWvA)	Eastern Mediterranean, Middle East	Mediterranean, Atlantic (subtropical)	mostly the weather is wet with changeable temperature, sleet showers, winds, occasionally thundery in spring	
	8	Stationary Cyclone over the Central Asia (StC)	Regeneration of western or south-western cyclones	Mediterranean, Atlantic, tropical	sleet in cold period; in summer cool and heavy rainfall especially in south-eastern mountain areas, thundery, slight winds	
	10	Advection of westerly air flow (AdvWA)	Central and Southern Europe (westerly moist) European Russia and Ukraine (westerly cold)	Atlantic and continental (temperate zones), sometimes arctic	cool, strong winds, precipitation in cold period; in spring and early summer the weather is wet giving most rain, temperature falling, dust storms, thundery	
	15	Diving Cyclone (DC)	Norwegian Sea, Barents Sea, Kara Sea	arctic	precipitation, strong winds	
Group C Anticyclonic weather	9	<div>Periphery of Anticyclone (PAc)</div>	South-western periphery of Anticyclone (SWPAc)	Siberian High	arctic	in general, it is clear and mostly dry with slight winds; radiation fog in the piedmont and mountain areas in the first phase of the synoptic type, cloudiness and precipitation might be observed in eastern mountain areas of Central Asia
	9a		South-eastern periphery of Anticyclone (SEPAc)	Stationary anticyclone over the Ustyurt, lower Volga or western Kazakhstan (part of Siberian High)	arctic	clear, cold, frost and mist on the plain surface, sometimes precipitation in mountain areas in cold period; in summer, it is cool and slight winds
	9b		Southern periphery of Anticyclone (SPAc)	Siberian High extends to the eastern regions 50-55° N in which Central Asia is on its southern periphery	arctic	mostly this synoptic weather type is cold and dry with foggy days in winter phase; in summer the weather is cool and clear
	11	Summer thermal low (SmTL)	Non frontal low pressure area over southwest Asia	tropical dry	clear, dry, very hot, haze, winds, dust storms	
	12	High level of small barometric gradient (HL SBG)	The area of high pressure over the Central Asia which unites the Siberian High and the anticyclone over the European Russia	mostly arctic	generally cold, dry and clear weather with light winds; in cold periods it is foggy and little precipitation in south-eastern regions	
	13	Low level of small barometric gradient (LL SBG)	Low-pressure area over the Central Asia which aligns in meridional orientation	moderate zones	in most parts of Central Asia there are dry and warm weather conditions; in winter the weather is mostly foggy with slight precipitation; in summer convective clouds and heavy rainfall may be observed in local areas	
Group D Mid-latitude cyclone	14	Western Cyclone (WC)	Cyclone tracks from the Mediterranean Sea, sometimes from Northern Africa to the Black Sea or Middle East then reaches to the Central Asia through the Caspian Sea	Mediterranean	strong winds, dust storm in the desert area, precipitation especially in mountain areas	

Commented [GM(wISAS+30): We added abbreviations in order to indicate the respective weather class in the revised version

Table 2 A3. Threshold probability (10%, 50% and 90%) values initiating mudflow episodes per CWT for individual stations in Uzbekistan; r_a - antecedent rainfall index (mm), r - daily rainfall value (mm).

CWT	Gallyaarl						Chingan						Mingchokur						Sokh					
	10%		50%		90%		10%		50%		90%		10%		50%		90%		10%		50%		90%	
	r_a	r	r_a	r	r_a	r	r_a	r	r_a	r	r_a	r	r_a	r	r_a	r	r_a	r	r_a	r	r_a	r	r_a	r
NE	-	-	-	-	-	-	-	-	-	-	-	-	-	-	-	-	-	-	≤10	≤0.1	≤70	≤20	≤120	≤45
SW	≤40	≤20	≤70	≤45	≤100	≤60	≤80	≤80	≤85	≤100	≤90	≤115	≤70	≤30	≤85	≤50	≤95	≤70	≤40	≤18	≤65	≤30	≤95	≤42
W	≤40	≤20	≤70	≤40	≤95	≤55	≤95	≤50	≤115	≤70	≤130	≤100	≤60	≤30	≤85	≤58	≤108	≤78	≤25	≤18	≤50	≤40	≤75	≤55
NW	-	-	-	-	-	-	≤60	≤20	≤70	≤40	≤75	≤65	-	-	-	-	-	-	≤40	≤10	≤60	≤20	≤85	≤30
N	-	-	-	-	-	-	-	-	-	-	-	-	-	-	-	-	-	-	≤60	≤10	≥120	≤35	≥120	≤55
C	≤30	≤20	≤60	≤50	≤90	≤70	≤130	≤40	≥140	≤75	≥140	≤105	≤58	≤30	≤78	≤60	≤90	≤88	≤25	≤10	≤60	≤30	≤100	≤50
AC	≤40	≤15	≤105	≤40	≤140	≤70	≤85	≤40	≤100	≤60	≤110	≤80	≤78	≤25	≤105	≤40	≤130	≤55	≤40	≤10	≤85	≤28	≤120	≤40
und	-	-	-	-	-	-	≤90	≤120	-	-	-	-	≤60	≤15	≤90	≤25	≤120	≤40	≤55	≤8	≥120	≤35	≥120	≤58

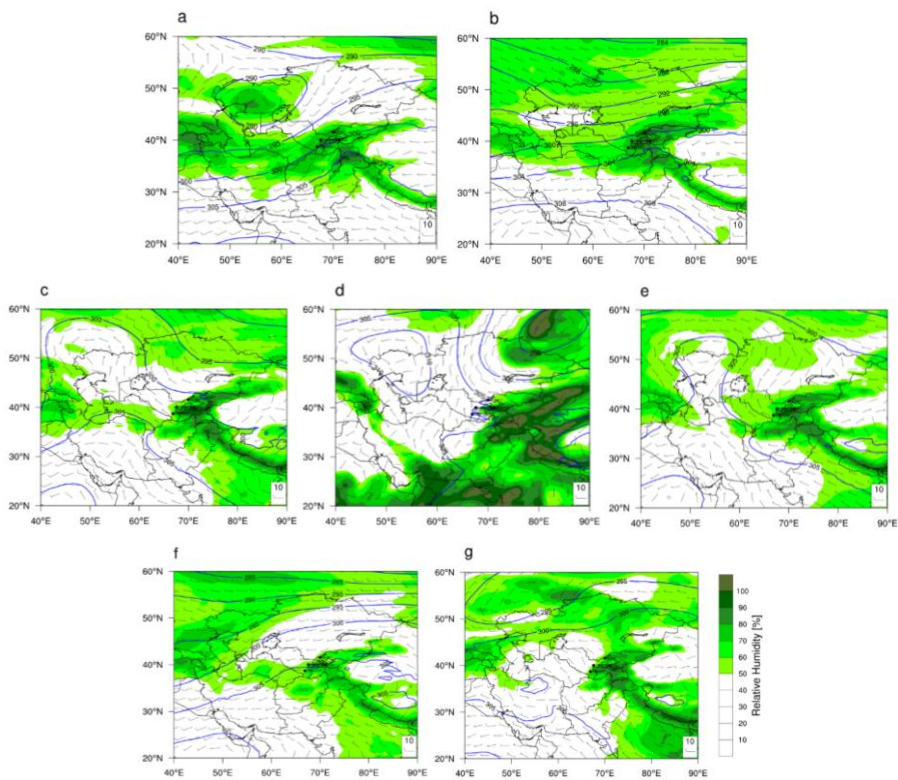
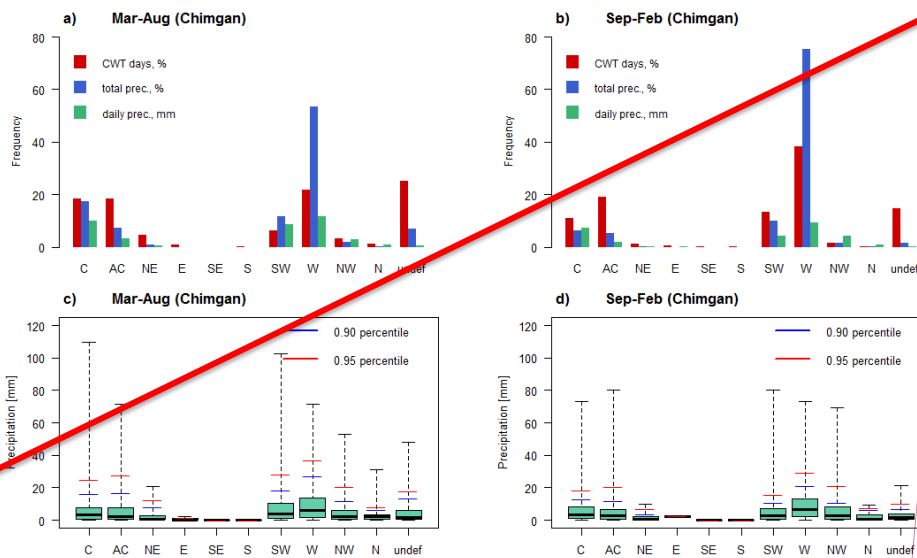
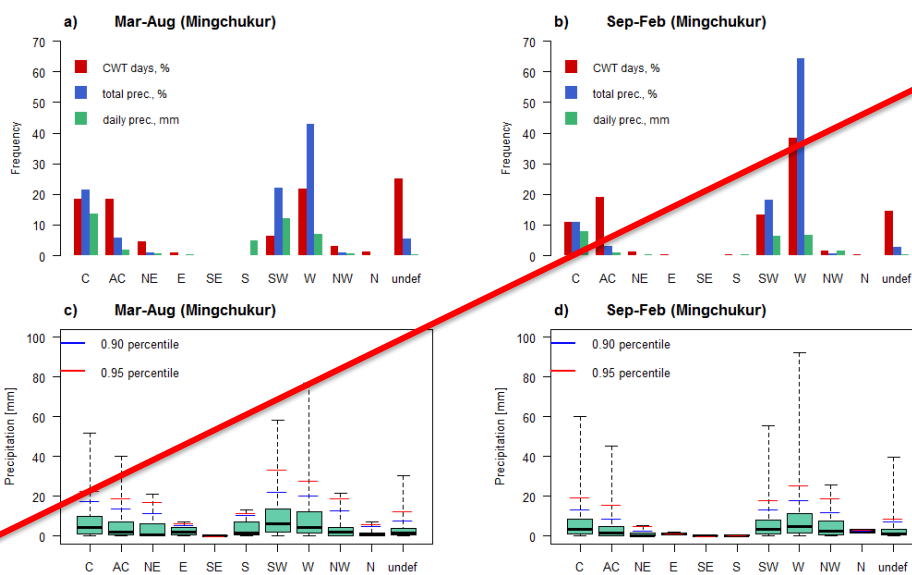


Figure 1. CWT south-westerly (a), westerly (b), north-westerly (c), northerly (d), cyclonic (e), anticyclonic (f) and undefined (g) weather types characteristics on the mudflow days occurred in Chirchik-Akhangaran Basin for the period 1984-2013. ERA-Interim 700 hPa geopotential height, relative humidity and wind component were used to produce this figure.



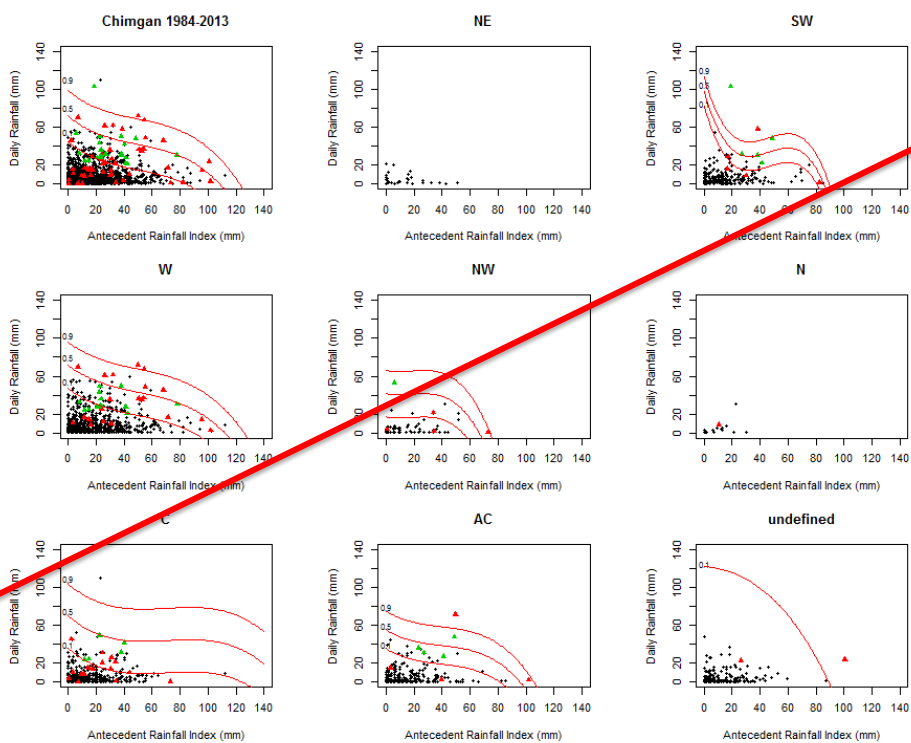
Commented [GM(wISAS+31): Following Referee#2 recommendation we joined **Figure 11, 12 and A2 and A3** in two figures. In the first figure we put bar plots (a and b) for the 4 study areas as one page (Figure 10) and in the second graph (Figure 11) we include box plots (c and d) for the 4 study areas respectively.

Figure 2. As Figure 11, but for Chimgan station (Chirchik-Akhgangan Basin)



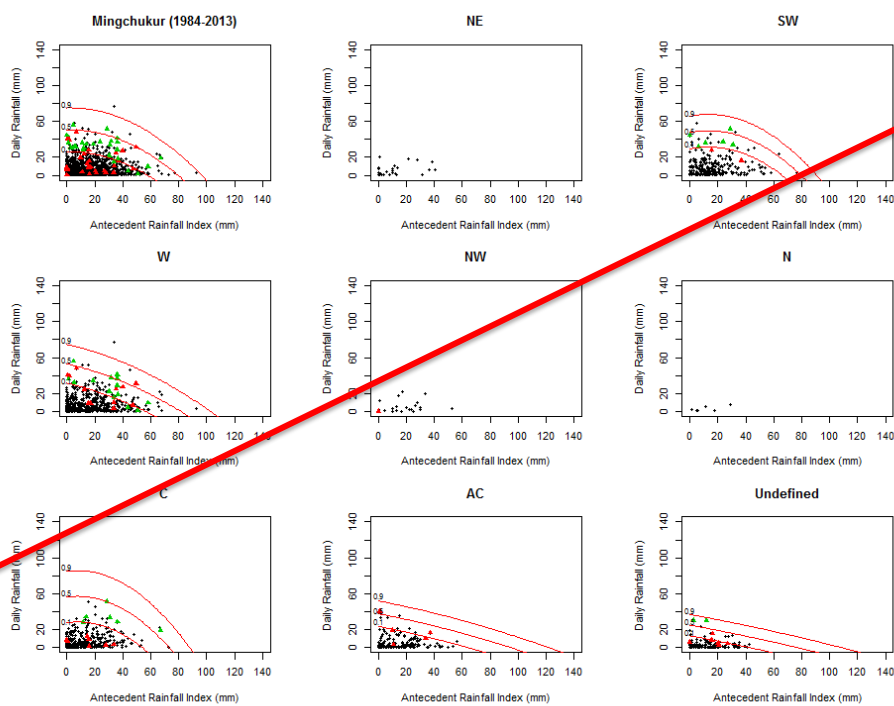
Commented [GM(wISAS+32): Following Referee#2 recommendation we joined **Figure 11, 12 and A2 and A3** in two figures. In the first figure we put bar plots (a and b) for the 4 study areas as one page (Figure 10) and in the second graph (Figure 11) we include box plots (c and d) for the 4 study areas respectively.

Figure 3. As Figure 11, but for Mingchukur station (Kashkadarya Basin)



Commented [GM(wISAS+33): We have joined all figures (Figure 16, 17, A4 and A5) into one panel plot presented in Figure 15

Figure 4. As Figure 16, but for Chimgan station (Chirchik- Akhangaran Basin)



Commented [GM(wISAS+34): We have joined all figures (Figure 16, 17, A4 and A5) into one panel plot presented in Figure 15

Figure 5. As Figure 16, but for Mingchukur station (Kashkadarya Basin)