

# Prediction of the area affected by earthquake-induced landsliding based on seismological parameters

Odin Marc<sup>1</sup>, Patrick Meunier<sup>2</sup>, and Niels Hovius<sup>1,3</sup>

<sup>1</sup>Helmholtz Centre Potsdam, German Research Center for Geosciences (GFZ), Telegrafenberg, 14473 Potsdam, Germany.

<sup>2</sup>Ecole Normale Supérieure de Paris, Laboratoire de Géologie, 75231 Paris CEDEX 5, France

<sup>3</sup>Institute of Earth and Environmental Science, University of Potsdam, Potsdam, Germany

*Correspondence to:* Marc O. (odin.marc@unistra.fr). Now at Institut de Physique du Globe de Strasbourg, CNRS UMR 7516, University of Strasbourg, 5 rue Descartes, F-67084 Strasbourg, France

**Abstract.** We present an analytical, seismologically consistent expression for the surface area of the region within which most landslides triggered by an earthquake are located (landslide distribution area). This expression is based on scaling laws relating seismic moment, source depth and focal mechanism with ground shaking and fault rupture length and assumes a globally constant threshold of acceleration for onset of systematic mass wasting. The seismological assumptions are identical to those recently used to propose a seismologically consistent expression for the total volume and area of landslides triggered by an earthquake. To test the accuracy of the model we gathered geophysical information and estimates of the landslide distribution area for 83 earthquakes. To reduce uncertainties and inconsistencies in the estimation of the landslide distribution area, we propose an objective definition based on the shortest distance from the seismic wave emission line containing 95% of the total landslide area. Without any empirical calibration the model explains 56% of the variance in our dataset, and predicts 35 to 49 out of 83 cases within a factor two, depending on how we account for uncertainties on the seismic source depth. For most cases with comprehensive landslide inventories we show that our prediction compares well with the smallest region around the fault containing 95% of the total landslide area. Aspects ignored by the model that could explain the residuals include, local variations of the threshold of acceleration and processes modulating the surface ground shaking, such as the distribution of seismic energy release on the fault plane, the dynamic stress drop and rupture directivity. Nevertheless, its simplicity and first order accuracy suggest that the model can yield plausible and useful estimates of the landslide distribution area in near-real time, with earthquake parameters issued by standard detection routines.

## 1 Introduction

Triggered landslides are a significant secondary hazard of earthquakes, and may be the dominant cause of damage to infrastructure and lifelines, especially roads (Bird and Bommer, 2004). The severity of this hazard and the associated risks is clear after most large earthquakes in steep landscapes, and was underlined by the devastation and fatalities caused by landsliding induced by recent large earthquakes in Sichuan (China) 2008 and central Nepal, 2015 (Yin et al., 2009; Kargel et al., 2015). The earthquake-induced landslide hazard is defined in the first instance by the number, size and location of landslides. These variables are correlated with a combination of local factors, such as the peak ground acceleration (Meunier et al., 2007, 2008), hillslope geometry (Parise and Jibson, 2000; Gorum et al., 2013), and the strength (Parise and Jibson, 2000; Gallen et al., 2015) and degree of hydrological saturation of near-surface materials, which are difficult to quantify due to their inhomogeneity across epicentral areas (Dreyfus et al., 2013). A simpler approach is to predict first-order variables such as the total volume and area of landsliding caused by an earthquake based on simple seismological considerations (e.g., Marc et al., 2016b). If the input parameters for such a model can be quantified in minutes to hours after an earthquake, then this could yield a quick insight into the scale of the affected area and the total amount of landsliding within. Here we focus on the landslide distribution area,  $A_d$ , that is the surface area of the region within which landslides induced by a given earthquake are likely to be concentrated. This is an important risk parameter, as it defines the zone within which the landslide hazard is focused. It can be intersected with areas of vulnerability for an assessment of risk and defines the extent of the area experiencing seismically-induced hillslope denudation, with geomorphological (e.g., Marc et al., 2016a), geochemical (e.g., Jin et al., 2015), tectonic (e.g., Steer et al., 2014) and biological consequences (e.g., Garwood et al., 1979). Further, the area with concentrated landsliding should be more closely related to seismic forcing and less dependent on unusual hillslopes conditions.

Several global or regional compilations of earthquake-induced landslide data have reported  $A_d$ , and explored its scaling with earthquake magnitude (Keefer, 1984; Rodriguez et al., 1999; Hancox et al., 1997; Keefer, 2002). They found that  $\log_{10}(A_d)$  scales linearly with the moment magnitude  $M_w$  of an earthquake:

$$A_d \propto M_o^{2/3}, \quad (1)$$

where  $M_o$  is the earthquake seismic moment. Because the scatter around the central trend of this relation is substantial, a common approach is to base a prediction of  $A_d$  on the envelope defining the maximum area affected by landsliding for a given earthquake magnitude. Further, some case studies have illustrated how specific seismic or geomorphic conditions can lead to landslide triggering over exceptionally long distances and therefore large areas (Keefer, 2002; Jibson and Harp, 2012). However, the definition of the relationship between  $A_d$  and seismic moment and of the influence of other seismological and geomorphic parameters has a slender theoretical basis. Recently, expressions for the total area and volume of landslides triggered by an earthquake have been derived based on seismological scaling laws and simple topographic characterizations (Marc et al., 2016b).

Here we show that this same treatment may be used to predict the shape and size of the landslide distribution area. First, we present the basis for an expression of the landslide distribution area and the landslide maps and compilations of estimated landslide distribution areas against which model predictions can be compared. Then we assess the validity and accuracy of our

theoretical approach and discuss its limitations, and finally we suggest directions for future improvements.

## 5 2 A seismologically-consistent expression for the landslide distribution area

Earthquakes trigger landsliding due to transient accelerations during ground shaking, which can shift the force balance in a slope and cause damage in the substrate, reducing its cohesion and resistance to failure (Newmark, 1965). This link between landsliding and ground shaking, specifically peak ground acceleration (Wilson and Keefer, 1985; Khazai and Sitar, 2004), is confirmed by a growing number of detailed observations (Meunier et al., 2007; Yuan et al., 2013). They constrain, for example, the statistical occurrence of landsliding within areas where the ground acceleration exceeds a threshold acceleration,  $a_c \sim 0.1-0.2$  (Meunier et al., 2007; Hovius and Meunier, 2012; Yuan et al., 2013). Note that here,  $a_c$  and all other accelerations are normalized by the gravitational acceleration and thus non-dimensional. Below this threshold, landsliding is rare or minor, and therefore a reasonable estimation of the size and shape of the landslide distribution area could be found by intersecting the region where the peak ground acceleration exceeds  $a_c$  and the region with sufficiently steep topography for landsliding to occur.

Marc et al. (2016b) have successfully modeled the total volume and area of the population of landslides due to a given earthquake, using seismological scaling laws to constrain the magnitude and extent of ground shaking. They assumed that  $a_c$  is a threshold acceleration for damage above which an effective reduction of strength occurred within the hillslope materials, increasing the likelihood of failure of slopes steeper than the angle of internal friction and thus stable due to a significant cohesion. Therefore in this paper,  $a_c$  is not the classical critical acceleration based on the safety factor and the slope gradient, but is a threshold acceleration for damage. With this definition we consider that  $a_c$  is much more uniform across a landscape than cohesion which can vary greatly between soil and fractured and intact bedrock. This is consistent with modest variations of the minimum acceleration at which landsliding (Meunier et al., 2007; Hovius and Meunier, 2012; Yuan et al., 2013) and minor rockfall (Jibson and Harp, 2016) have been observed. The average value of  $a_c$  across a landscape is an important constraint on  $A_d$ . At the outset we assume  $a_c = 0.15$ , which is conservative and allows a focus on areas with significant landsliding. Note, that in this approach,  $a_c$  is independent of the slope gradient, but also that a slope experiencing an acceleration larger than  $a_c$  will fail only if the resulting drop in cohesion renders it unstable. Thus the number and size of landslides on a hillslope will also depend on local strength, pore pressure and topographic steepness, but we assume that where ground acceleration reaches  $a_c$  some minor failures will initiate. Further, their model considers attenuation of seismic waves due to geometric spreading, with S-wave amplitude decreasing with distance between the earthquake source and the affected topography. The pattern and intensity of ground shaking are modeled as the superposition of point sources associated with asperities along the fault rupture. Therefore, the source of wave emission is considered to be distributed along the fault rupture length, while the wave acceleration at the source, that sets the distance over which waves can travel before becoming insufficient to trigger landslides, scales non-linearly with the magnitude of the earthquake. With the same assumptions we can predict the area affected by ground

shaking exceeding  $a_c$ ,  $A_s$ :

$$A_s = 2LR_{HMAX} + \pi R_{HMAX}^2, \quad (2)$$

where  $R_{HMAX}$  is the horizontal distance from the surface projection of the wave source at which the ground shaking reaches  $a_c$ . Assuming that wave attenuation is dominated by geometric spreading and that non-linear attenuation can be neglected,

- 5  $R_{HMAX} = \sqrt{((b/a_c)R_{ref})^2 - R_0^2}$ , with  $b$  the near-source acceleration at a reference distance  $R_{ref} = 1000m$  from the seismic source and  $R_0$  the mean depth of seismic wave emission. The assumptions are justified near the fault where most landslides occur (Marc et al., 2016b), but additional non-linear attenuation would result in a reduction of the predicted  $R_{HMAX}$  and  $A_s$ . The mean depth of emission is assumed to be the mean asperity depth because asperities emit most of the high frequency waves (Ruiz et al., 2011; Avouac et al., 2015) and seem to explain best the observed patterns and amounts of landsliding (Meunier et al., 2013; Marc et al., 2016b). Note that waves with frequencies of 0.5 to 10Hz are often the most important for landslide triggering because they have wavelengths ranging from the landslide size to the hillslope size (Marc et al., 2016b).

Following Marc et al. (2016b), we use the scaling of fault rupture length,  $L$ , with seismic moment proposed by Leonard (2010):

$$L = \left( \frac{M_o}{\mu C_1^{3/2} C_2} \right)^{2/5}, \quad (3)$$

- 15 with  $\mu$  the shear modulus, assumed to be 33 GPa, and  $C_1$  and  $C_2$  empirical constants. Although Leonard (2010) fitted independently strike slip and dip-slip faults, he obtained similar values in both cases,  $C_1 = 15[11 - 20]m^{1/3}$  and  $C_1 = 17.5[12 - 25]m^{1/3}$ , and  $C_2 = 3.8 \cdot 10^{-5}$  and  $C_2 = 3.7 \cdot 10^{-5}$ , respectively. For the sake of simplicity and to have a single prediction for strike-slip and reverse faults with small and intermediate lengths, we choose intermediate values and use  $C_1 = 16.5m^{1/3}$  and  $C_2 = 3.7 \cdot 10^{-5}$ . With this assumption, predicted lengths differ only by a few per cent from what would be obtained with the  
20 best estimates proposed by Leonard (2010) and reported above.

To construct a simplified ground shaking model that is consistent with first order seismological observations and landslide triggering we use the scaling of the near-source acceleration,  $b$ , with earthquake magnitude proposed by Boore and Atkinson (2008):

$$b = b_{sat} \exp(e_5(M_w - M_h) + e_6(M_w - M_h)^2) \quad (4)$$

- 25  $\forall M_w > M_h, \quad b = b_{sat} \exp(e_7(M_w - M_h))$

where  $M_h = 6.75$  is a hinge magnitude above which the acceleration carried by seismic waves saturates near  $b_{sat}$ , and  $e_5 = 0.6788$ ,  $e_6 = -0.1826$  and  $e_7 = 0.054$  are empirical constants for 1Hz pseudo-spectral accelerations (Boore and Atkinson, 2008). We prefer to use the scaling of pseudo-spectral accelerations (rather than the one for peak ground accelerations for example) because it focuses on ground motion around a specific frequency, and therefore should better represent the  
30 frequency-dependent modulation of the ground shaking. The mechanical assumptions associated with pseudo-spectral accelerations (elastic oscillator with base fixed on the ground and 5% damping) are probably not entirely adequate for hillslope failure, but not inconsistent with the resonance of topographic ridges themselves (Meunier et al., 2008). We refrain from using  $b_{sat}$

values as derived by Boore and Atkinson (2008) because they should be included within a model accounting for site effects and non-linear attenuation, attributes that are beyond the scope of this work. Therefore, to be consistent with the model of Marc et al. (2016b), we use  $b_{sat} = 0.4$ , yielding normalized surface acceleration of about 0.4-0.8 above asperities located at 5-10 km depth, consistent with observations during earthquakes with  $M_w > M_h$ . Fault type may influence both rupture length and ground shaking. For the shaking term, we follow the model choices of Marc et al. (2016b), attributing 30% less shaking for normal fault earthquakes than for equivalent strike-slip or reverse slip events (Boore and Atkinson, 2008). Large earthquake ruptures on strike-slip faults often break the seismogenic layer over its entire depth, fixed to 17km in our model (Leonard, 2010). Therefore, above a critical magnitude the increase of fault rupture area with seismic moment is only due to fault rupture length and the scaling exponent between moment and rupture length becomes 2/3. Although, a similar scaling break may exist in principle for dip-slip faults it is less clearly observed (Leonard, 2010) and therefore not prescribed in our model.

With these considerations, both the fault rupture length and near-source wave amplitude can be estimated from the seismic moment and fault type. Thus Eq.2 can be rewritten more explicitly and corrected for the presence of topography with a topographic index,  $C_{topo}$ , to obtain the predicted area affected:

$$A_{dp} = C_{topo} A_s = C_{topo} \left( 2L \sqrt{\left( \frac{bR_{ref}}{a_c} \right)^2 - R_0^2} + \pi \left( \left( \frac{bR_{ref}}{a_c} \right)^2 - R_0^2 \right) \right), \quad (5)$$

Hence, the landslide distribution area can be predicted from the earthquake moment and mechanism, and the mean asperity depth for any earthquake. If  $a_c$  and  $b_{sat}$  are relatively constant as suggested by Marc et al. (2016b) then the model is fully constrained without any free parameter. The assumptions that  $a_c$  and  $b_{sat}$  are constant across all settings are discussed in Section 5. Note that  $C_{topo}$  cannot be computed as the fraction of  $A_s$  within which slopes are less than  $10^\circ$ . This is because local flats will impede landsliding and change the landslide density locally, but not necessarily reduce the envelope containing all earthquake-induced landslides, that typically defines  $A_d$ . Only large flat areas, extending beyond  $R_{HMAX}$  and with a width similar to the fault length will matter. Typically the presence of a basin or inundated areas along the entire fault will half the landslide distribution area ( $C_{topo} = 0.5$ ).

In the model, the critical seismic moment, above which  $A_s$  assumes a non-zero value is modulated by  $R_0$  and ranges between  $10^{16} - 10^{19} N.m$  (Figure 1). Above this critical moment,  $A_s$  rises sharply, driven by the exponential increase of the source acceleration ( $b$ ) with increasing moment (Eq 4). Upon reaching the hinge magnitude,  $M_h = 6.75$ ,  $b$  saturates and  $A_s$  increases primarily due to increase of the fault rupture length ( $L$ ) with moment. Therefore, for these large events  $A_s$  scales as a power-law of the moment, with an exponent of 2/5 for dip-slip events, and an exponent of 2/3 for strike-slip events (Figure 1). For large events,  $b/a_c$  is about 27km and therefore  $R_{HMAX}$  is almost independent of  $R_0$  unless the latter reaches depths  $> \sim 20km$ . Thus uncertainties on  $R_0$ , which is the least well-constrained input variable of Eq. 5, will not substantially affect predictions of the landslide distribution area for most large, shallow earthquakes that rupture the upper crust (Figure 1). However, for some intermediate size earthquakes or earthquakes deeper than 25km, the prediction may vary dramatically due to minor changes in the estimated source depth.

### 3 Data and methods

Our model predicts the landslide distribution area  $A_d$ , and its first order shape. However, for many earthquakes we have poor constraints on the shape and definition of landslide distribution area. Therefore, we test the model in two different ways. First, we use a large database of earthquakes containing geophysical information and a, sometimes crude, estimate of  $A_d$ , to assess if the scaling in the model matches the data and appears to yield a correct first-order prediction of  $A_d$ . Secondly, we focus on a limited number of cases for which we have a detailed landslide inventory that allow us to define a simple and objective parameter to characterize  $A_d$  and to compare it quantitatively to the model prediction.

#### 3.1 Landslide maps and compilations of landslide distribution area

To assess if our theoretical framework captures the observed scaling between  $A_d$  and  $M_o$ , we test it against a large database of 83 crustal earthquakes, for which magnitude and location can be reasonably well constrained. These 83 cases have been harvested from published compilations (Keefer, 1984; Hancox et al., 1997; Rodriguez et al., 1999; Bommer and Rodriguez, 2002; Martino et al., 2014) and from recent landslide maps (Table 1). They include the 10 cases with comprehensive landslide inventories described separately below, 36 inventories for which we could access one or several maps with isolines of landslides density or point inventories to check the values reported in published compilations (Bonilla, 1960; Keefer et al., 1980; Harp et al., 1984; Harp and Keefer, 1990; Jibson et al., 1994; Tibaldi et al., 1995; Hancox et al., 1997; Keefer and Manson, 1998; Hancox et al., 2003, 2004; Jibson and Harp, 2006; MahdaviFar et al., 2006; Sato et al., 2007; Kamp et al., 2008; Mosquera-Machado et al., 2009; Alfaro et al., 2012; Collins et al., 2012; Jibson and Harp, 2012; Gorum et al., 2014; Martino et al., 2014; Xu et al., 2014a, b, 2015; Martha et al., 2016; Zhou et al., 2016), and a further 37 cases for which we could not access any raw data to evaluate the reported values (Table 1).

For ten earthquakes, detailed landslide inventories with comprehensive maps of the landslide as polygons are available, allowing an objective characterization of  $A_d$  (as discussed below): the 1976 Guatemala, 1991 Limon, 1993 Finisterre, 1994 Northridge, 1999 Chi-Chi, 2004 Niigata, 2007 Aysen, 2008 Iwate, 2008 Wenchuan and 2010 Haiti earthquakes, ranging from Mw 6.2 to 7.9, and with hypocentre depths between 3 and 25 km (Table 1), (Harp et al., 1981; Harp and Jibson, 1996; Liao and Lee, 2000; Yagi et al., 2007; Meunier et al., 2008; Yagi et al., 2009; Gorum et al., 2013, 2014; Xu et al., 2014c; Marc et al., 2016b). Most of these inventories were produced from extensive imagery and include all landslides that could be detected at the full image resolution. Two inventories deviate from this. The 1976 Guatemala inventory is based on high-resolution airphotos, but only covers a limited area containing the most intense landsliding. Published values of  $A_d$  for this case are larger than our estimate from the landslide inventory, considered as a lower bound. However, the inventory for Guatemala is considered to contains more than 90% of the landslides triggered by the 1976 earthquake (Jibson, pers. comm. 2013). Landslides triggered by the 1991 Limon earthquake were mapped across a wide swath Landsat-5 image and the limit of the disturbed areas could be constrained, but the low image resolution (30m) did not allow the delineation of all individual landslides in the most intensely affected area. Therefore, the distribution area  $A_d$  is probably not significantly underestimated, but the cumulative surface area of landslides within it is, and any calculations based on that measure may be biased (cf., Marc et al., 2016b). We note that for

some earthquakes such as the Wenchuan and Haiti events, several inventories are available. For the Wenchuan earthquake the inventory by Xu et al. (2014c) seems the most comprehensive and robust, compared to earlier mapping. For Haiti we analyze and compare the inventories of Gorum et al. (2013) and Harp et al. (2016), which have different interpretations in some areas, likely due to differences in the pre and post earthquake imagery used. Most of the ten landslide inventories are not complete because they are limited by the resolution of the available imagery, and do not include very small landslides and rockfalls that can be detected in the field (e.g., Jibson and Harp, 2012). As a result these inventories can yield  $A_d$  estimates smaller than those from previous compilations, but our estimates may be more representative of the area affected by dense landsliding, which is of primary interest in terms of both hazard and erosion. For most earthquakes we have information about moment magnitude, hypocentral depth and focal mechanism from the international seismological center catalogue (Storchak et al., 2013), but no estimate of the mean asperity depth most relevant to describe the mean wave emission depth (Table 1). However, we have shown that for large earthquakes,  $A_{dp}$  is not very sensitive to depth, while for small earthquakes we expect the hypocentral depth and mean asperity depth to be close of each other.  $C_{topo}$  was crudely estimated based on the topography and the fault position, and is about 1 for most cases (68 out of 83), about 0.5 for 10 events (coastal/basin geometry) and less than 0.5 for 5 cases (Table 1). For a small fraction of cases in our database we could find a stress drop estimate (Allmann and Shearer, 2009; Baltay et al., 2011) (Table 1), which must correlate with the wave emission at the source and thus the ground shaking intensity (Hanks and McGuire, 1981; Baltay and Hanks, 2014). All stress drop estimates were converted to an equivalent dynamic stress drop as defined by Brune (1970). Subduction earthquakes and distant offshore earthquakes were ignored because the area affected by strong shaking is mostly submerged and hillslopes are only present at large distance where the shaking intensity may not be well approximated by our simple model (cf., Marc et al., 2016b).

### 3.2 An objective definition of the landslide distribution area

It is important to secure consistency between estimates of  $A_d$  from different sources and to constrain the degree of uncertainty associated with these estimates. Commonly, the landslide distribution area is estimated by locating all landslides caused by an earthquakes as accurately and comprehensively as possible, and drawing a single, smooth envelope containing all landslides, regardless of possible variations of landslide density within it (Keefer, 1984; Hancox et al., 1997; Rodriguez et al., 1999). However, many published inventories are limited by the spatial extent and quality and resolution of the available imagery, and may not include the small landslides in the far field, which, if taken into account, would give rise to a much greater  $A_d$ . For example, in the case of the 2008 Wenchuan earthquake, accounting for sparse landsliding in the far field would give  $A_d \sim 200,000 km^2$  instead of  $A_d \sim 44,000 km^2$  (Xu et al., 2014c). It is also likely that for large earthquakes with widespread landsliding, there is a tendency to focus on the most intensely affected areas, while for smaller earthquakes, the extent over which small rockfalls occur may be investigated in greater detail through field investigations (Jibson and Harp, 2012, 2016). For small to medium earthquakes triggering a relatively limited number of landslides erroneous inclusion of landslides triggered by other processes just before or after the main shock may also cause a significantly upward bias of  $A_d$  estimates. In most cases we lack the information required to assess the accuracy and consistency of  $A_d$  estimates between different events, but we note that using the common method described just above to determine  $A_d$  from published maps or detailed inventories, we could reproduce within

$\sim 20\%$   $A_d$  estimates reported in global compilations and citing the same source study (Keefer, 1984; Rodriguez et al., 1999). For 27 earthquakes, we found different estimates of  $A_d$ , from different publications, methods and/or source imagery. These include different  $A_d$  reported when considering only the area affected by intense landsliding, or including more distant, sparse landsliding (e.g., Hancox et al., 1997; Xu et al., 2014c). This is not an adequate quantification of the uncertainties in the dataset as a whole, but serves to illustrate how estimates of  $A_d$  may vary or be biased (Figure 1 Inset).

5 We propose a robust, alternative approach to define  $A_d$ , based on the fault rupture and the landslide inventory. In this approach,  $A_d$  is defined as the surface area of the region within a distance  $R_{95}$  from the seismic wave emission line projected at the surface. This region is set to contain 95% of all landslides triggered by an earthquake, as measured by their surface area. In this definition,  $R_{95}$  is a 1D measure of the spread of landsliding away from the seismic source. The source is modeled as a wave emission line (or series of lines), defined by the location and length of the earthquake rupture, as determined by geophysical  
10 inversion of the slip distribution (or moment distribution for the Guatemala earthquake) on the seismogenic fault plane (Figure 2, 3), (Kikuchi and Kanamori, 1991; Wald et al., 1996; Zeng and Chen, 2001; Hikima and Koketsu, 2005; Hayes et al., 2010; Suzuki et al., 2010; Fielding et al., 2013). The rupture length of such inversions agrees (within 30% or less) with the a-priori predicted length, based on the scaling proposed by Leonard (2010), for the Chi-Chi, Haiti and Northridge earthquakes, but is smaller (by 40-50%) for the Niigata and Iwate earthquakes, and larger for the Wenchuan and Guatemala earthquakes (Table 1).  
15 This results in uncertainties when attempting to measure or predict  $R_{95}$  without knowledge of the rupture length and position, for example for old earthquake or just after an earthquake has occurred. For the Finisterre case we only have the position of the epicenter, the fault strike and the aftershock locations. They define a long fault rupture with the main shock,  $M_w$  6.9, being closer of the northwestern fault tip and a large secondary shock,  $M_w$  6.5 farther east (Stevens et al., 1998). Accordingly, we defined two separate emission lines, both with an epicenter located 1/3rd of the rupture length from the respective tips (Figure  
20 2,3). For the Limon and Aysen earthquakes we placed the emission line centered on the maximum of moment emission and epicenter, respectively (Goes et al., 1993; Legrand et al., 2011), and oriented according to the focal mechanism. In the latter case, choosing the alternative focal mechanism (90° rotation) would not change significantly our results.

Our treatment differs from previous definitions of the maximum distance for landsliding (e.g., Keefer, 1984; Hancox et al., 1997; Rodriguez et al., 1999), because we consider a seismic line source that may be offset from the surface rupture of the  
25 seismogenic fault, and because it is not based on individual detected landslides but on the distribution of landsliding. Advantages of using the  $R_{95}$  criteria as compared to previous approaches are its objectivity and reproducibility, and its robustness to the accidental addition or omission of minor landsliding in the far field. Thus,  $R_{95}$  is strongly related to the seismic forcing and still representative of the area where hazard and erosion are likely to be most significant. A drawback is that this approach requires polygon inventories. Using 95% of the landslide number as a threshold for point based inventories would be an adequate  
30 solution but this definition would still be quite sensitive to effects affecting the number of identified landslides such as the imagery resolution and/or amalgamation of adjacent smaller landslides (Marc and Hovius, 2015). Another drawback is that  $R_{95}$  assumes equal rates of decrease of landslide density with distance from the emission line in all directions, which may not always be the case.



## 4 Results

### 4.1 Comparison of observed and predicted landslide distribution areas

Most of our landslide distribution area data fall within the range of theoretical predictions from Eq 5, based only on fixed global parameters and variable earthquake settings (Figure 1). In Figure 4, the predicted distribution areas,  $A_{dp}$ , calculated accounting for the hypocentral depth and adjusting for the abundance of hillslopes where landslides may occur ( $> 10^\circ$ ) (Marc et al., 2016b), are plotted against values estimated from observations,  $A_d$ , for the earthquakes in our database. For 42% of 83 earthquake cases, Eq 5, yields  $A_{dp}$  within a factor 2 of  $A_d$  when considering the hypocentral data as the exact emission depth ( $R^2 = 0.56$ ). This increase to 59% of the events when setting the emission depth within 25% of the hypocentral depth (Figure 4, inset). Landslide distribution areas vary in size between 10 and  $10^5 km^2$ , but half of the earthquakes have  $A_d$  between  $10^3$  and  $10^4 km^2$ . In this range, the predictions are mostly within a factor of 2 from the estimated area. When constrained, uncertainties on  $A_d$  estimates are within a factor of 2 and 4 for about 2/5th and 4/5th of the well constrained cases, respectively, but occasionally the ratio between  $A_d$  estimates from different sources may reach up to a factor of 10 (Figure 1 inset). For a number of small to moderate magnitude earthquakes with a small  $A_d$ , the model predicts no landsliding. This maybe due to uncertainties on the hypocentral depth estimation that we assume to be the depth of wave emission,  $R_0$ , and assigning a  $< 25\%$  uncertainty on  $R_0$  allows for the prediction to match  $A_d$  within a factor of 2, for 5 out of 7 cases in this category (Figure 4). Most earthquakes with  $A_d > 10^4 km^2$  have  $M_w > 7.5$  and are shallow enough ( $R_0 < 20 km$ ) to be relatively insensitive to depth. Nevertheless, they are often underpredicted by our model by a factor 1.5 to 3 (Figure 4). Notwithstanding these observations, the global distribution of errors does not correlate significantly with the seismic moment nor with the hypocentral depth or the focal mechanism of the earthquakes (Suppl. Figure 1).

For comparison, an empirical fit of  $A_d$  against the seismic moment for the earthquakes in our database has an accuracy of and overall scatter similar to that of our model predictions (Figure 4, inset). Nevertheless, the fact that Eq 5, based on physical considerations and computed without any free parameter, has this accuracy for a global catalogue suggests that our approach captures essential aspects of earthquake-induced landsliding. Further validation of the model is inherently limited by the uncertainties associated with the estimation of  $A_d$  and the inconsistency of the reported values for individual cases. However, additional insights into the validity and limitations of the model may be gained by comparing its prediction to objective landslide distribution areas obtained from well-constrained earthquakes. This is done in the next section for a limited number of comprehensive inventories where the landslide distribution is constrained in detail.

### 4.2 Model comparison against an objective measure of the landslide distribution area

To quantify the error of the model we evaluate the proportion of the total area affected by landsliding located within the  $A_{dp}$  perimeter predicted by the model. We also consider the difference between the radius of the area affected by landsliding in the model,  $R_{HMAX}$ , and  $R_{95}$  defined earlier as the distance from the seismic wave emission line within which 95% of the area affected by observed landsliding is located (Figure 2, 3).

For the ten earthquakes for which we have comprehensive landslide inventories, the model distribution area always contains

between 88% and 100% of the cumulative surface area of all mapped landslides (Table 2). These numbers indicate that the model always captures the region of most intense landsliding, but that it sometimes overpredicts the affected area, with its limit well beyond the outermost mapped landslide in most directions, as for the Niigata, and Iwate cases (Figure 3). The difference in 1D radius gives a more accurate view of the merits and limits of the model (Table 2). For eight cases, the Northridge, Limon, Haiti, Aysen, Finisterre, Guatemala, Wenchuan and Chi-Chi earthquakes,  $R_{95}$  is well predicted, with an absolute error  $< 6$  km, that is within  $\sim 20\%$  of  $R_{95}$  in all cases (Figure 5). However, we note that the Limon inventory is incomplete in the most affected area, suggesting that  $R_{95}$  may actually be overestimated and  $R_{HMAX}$  may exceed it (Figure 3) Further, for the Haiti earthquake, the model underpredicts  $R_{95}$  by about 35% (9 km) if we consider Harp's 2016 inventory which extends far into little affected areas (Figure 2). For the two remaining cases the error is much larger, with an over-prediction of about a factor 2, and an absolute error of approximately 10 km, for the Niigata and Iwate earthquakes (Figure 3, 5). Additionally, we note that the agreement between  $R_{95}$  and our model may sometimes hide important along-strike variations or trends, as for the Guatemala and Northridge earthquakes (Figure 2, 3). The possible reasons for such trends and other limitations of the model that could explain why some cases are substantially under- or over-predicted are explored in the discussion, below.

We stress that the 5% of the total landsliding outside of  $R_{95}$  may entail a significant hazard which can extend much further, especially for large earthquakes like the Wenchuan, Chi-Chi or Guatemala cases which triggered huge amount of landslides (total area of 1160, 128 and  $61km^2$ , respectively). In the Wenchuan case, the distance from the emission line required to encompass 97.5% of the total landslide area is of 48km instead of 34km for  $R_{95}$ . These landslides are more sparsely distributed and most of the times smaller than the one close of the fault (Valagussa et al., In Review), but they remain difficult to predict in many cases.

## 5 Discussion

We have shown that a first-order a-priori seismic shake map coupled with a universal shaking threshold for landsliding can reproduce reasonably well the landslide distribution areas in a compilation of 83 cases, and that it matches the surface area encompassing 95% of the total landslide area for most of the cases for which we have comprehensive landslide inventories. In this section, we identify and try to quantify the different sources of uncertainties and potential ways to improve the model.

### 5.1 Asperity length and wave emission along the fault

For the Niigata, Iwate and Nagano earthquakes, the difference between the observed and predicted area of landsliding would be greatly reduced if we would treat the earthquake as a single point source centered on the largest slip patch (Figure 3). This illustrates the problem with the implicit assumption of Eq 5 that there is an equal emission of waves at the relevant frequencies with source amplitude  $b$ , along the entire rupture. The amount of wave emission can vary along the rupture and may concentrate in a zone much smaller than the rupture length. In the model of Marc et al. (2016b) the number of sources contributing to wave emission and landsliding along a ruptured fault was given as  $L/l_{asp}$ , with  $l_{asp}$  the characteristic length-scale of an asperity, set arbitrarily to 3km. Thus, a 20 km long rupture is represented by six sources, distributed along most of the rupture length. The

efficacy of their model did not depend much on the value of  $l_{asp}$  because their seismological model was calibrated empirically, and  $l_{asp}$  may well be larger. If we consider asperities as circular patches with diameter  $\sim l_{asp}$ , located strictly within the fault rupture and behaving as point sources with emission from their center, then the relevant length along which waves are emitted is  $L - l_{asp}$  and Eq 5 becomes:

$$10 \quad A_s = 2 \left( (L - l_{asp}) \sqrt{\left( \frac{bR_{ref}}{a_c} \right)^2 - R_0^2} \right) H(L - l_{asp}) + \pi \left( \left( \frac{bR_{ref}}{a_c} \right)^2 - R_0^2 \right), \quad (6)$$

with  $H$  the Heaviside function, to represent that there should always be at least a point source in the middle of the fault even if it requires an asperity smaller than  $l_{asp}$ .

This has no significance for large earthquakes and long faults where  $L \gg l_{asp}$ , but may significantly reduce the predicted value of  $A_s$  for smaller earthquakes. This modification of the model, although plausible, would not improve much the global residuals because EQ 5 yields similar numbers of under-predicted and over-predicted small earthquakes, for which the model prediction is systematically reduced when using Eq 6. Moreover, cases such as the Niigata or Iwate earthquakes, are still over-predicted when modeled with a single point-source. This suggests that for these cases, with well-constrained source depth, a better prediction of  $R_{HMAX}$  is needed, and therefore of either the source term  $b_{sat}$ , or the threshold of acceleration for damage  $a_c$ .

## 20 5.2 Threshold acceleration for landsliding

Eq 2 can be rewritten as a second-degree equation and solved for  $R_{HMAX}$  and  $a_c$ . Thus, assuming that Eq 4 and 3 hold and that  $b_{sat} = 0.4$  is constant, we can use  $A_d$ ,  $C_{topo}$ ,  $M_o$  and  $R_0$  to invert for  $R_{HMAX}$  and  $a_c$  (Figure 6). Inverted values of  $a_c$  cluster around 0.15, that is the global value we have used here for the direct prediction, and about 50% of the inverted values are between 0.1 and 0.2, consistent with values reported for case studies (Meunier et al., 2007; Hovius and Meunier, 2012; Yuan et al., 2013). The rest of the inverted values are mostly within the range 0.05 - 0.3 and it is difficult to assess whether the inverted values of  $a_c$  are representative of specifically weak or strong areas or whether other processes, not described by the model, affect the inversion. Defined as the threshold acceleration at which significant cohesion loss occurs,  $a_c$  should be independent of hillslope steepness and depend only on material properties. Consistent with this view we find no correlation between  $a_c$  and the landscape steepness as described by the modal slope of the landscape (cf., Marc et al., 2016b). To define and obtain quantitative estimates of substrate strength or of the ground pore pressure at the landscape scale is an outstanding challenge and lacking relevant constraints, we cannot assess further their influence on the variability of  $a_c$  and  $A_d$ .

Nevertheless, it is interesting to focus on those earthquakes that have the lowest inverted values of  $a_c < 0.05$ . A striking example is the 1988 Saguenay (Canada) earthquake, which caused landsliding over an exceptionally large area ( $A_d = 45,000 km^2$ ), despite its moderate magnitude ( $M_w = 5.8$ ) and large depth ( $R_0 = 28 km$ ). Eq 5 predicts no landsliding for this event, and the inverted value of  $a_c$  is as low as 0.01, more than an order of magnitude below the global threshold of 0.15. The Virginia 2011 (USA) is a very similar example. One explanation is that the furthest landslides defining  $A_d$  were indeed occurring at very low shaking levels (cf., Jibson and Harp, 2012) but seismological processes may also be in cause. The Saguenay earthquake was

very peculiar from a seismological point of view, with a larger than expected stress drop (Boore and Atkinson, 1992), and  
5 therefore probably larger strong motions (e.g., Baltay et al., 2011; Baltay and Hanks, 2014). Also, its occurrence close to the  
Moho discontinuity may have led to reflected waves reaching the surface with a stronger amplitude than the direct S-waves  
(Somerville et al., 1990), causing strong shaking up to  $\sim 100km$  from the epicenter. These effects have likely contributed to  
an exceptional pattern of strong ground motion and a significantly extended landslide distribution area. Evidently, such effects  
and mechanisms are not captured by our simple model. Therefore, inverting for  $a_c$  and finding anomalous values, for example  
10  $a_c < 0.05$ , which is more than 3 times smaller than the global average, may suggest that an earthquake had an anomalous or  
complex seismic process. Hence, low  $a_c$  values suggest that the Bihar, and possibly the Whittier Narrow, Alaska and Wenchuan  
earthquakes had some mechanistic specificities, either in wave emission or wave propagation, that have affected the distribution  
of landsliding. For the Wenchuan case we have already highlighted the complex rupture and the importance of variable initial  
stress state and rupture velocity (Wen et al., 2012a, b).

### 15 **5.3 Source term and earthquake stress drop**

The near-source wave amplitude,  $b_{sat}$ , is the only explicit parameter representing the earthquake source in our model. It was  
kept constant in our analyses. However, as was the case in the Saguenay earthquake, various seismological processes may  
increase or decrease the amplitude of waves emitted at the source of an earthquake. For example, it has been established that  
earthquakes with larger dynamic stress drops must have stronger surface ground motions, especially at high frequency (Hanks  
20 and McGuire, 1981; Baltay et al., 2011; Baltay and Hanks, 2014). For the 22 earthquakes with a constrained dynamic stress  
drop (Table 1) we do not find a clear correlation between the residuals of our model and the magnitude of the stress drop (Suppl.  
Figure 2). Except for three substantially under-predicted earthquakes (Saguenay, Arthur's Pass 1995, Erzincan) for which the  
large  $A_d$  may be due to relatively large stress drops, the 19 other residuals do not seem to be controlled by the stress drops.  
Rupture speed and rupture speed variability may also influence the source emission and its characteristics (Wen et al., 2012a;  
25 Causse and Song, 2015). It has been argued that rupture speed could correlate negatively with stress drop, blurring the relation  
between earthquake stress drop and strong ground motion (Causse and Song, 2015). Accurate measurements of the rupture  
speed and its variations are now made for large earthquakes (e.g., Wen et al., 2012a), but they are lacking for most historic  
events or smaller events, impeding further exploration of their effects on landsliding.

### **5.4 Directivity and asymmetry in landslide distribution**

30 We have shown that our model can predict the general distance from the emission line to a contour containing 95% of all the  
landslides as measured by their cumulative surface area, with a reasonable reliability. However, this 1D parameter does not  
describe potential 2D complexities in the shape of the landslide distribution area. For example, across-strike asymmetry often  
exists for thrust faults where the hanging wall may experience larger shaking (Oglesby et al., 2000) and therefore has more  
intense landsliding over a larger distance (Gorum et al., 2011). This hanging wall effect is difficult to isolate because on dip  
slip faults the topography in the hanging wall is usually closer to the earthquake source and also more prone to landsliding due  
to larger relief and steepness. Along-strike asymmetry of the landslide distribution may arise from asymmetry of the ground

shaking pattern due to seismic directivity. Directivity is the result of interference between waves emitted at different times and locations along the rupture. It can enhance strongly the ground shaking in the direction of rupture propagation, but reduces shaking at the fault tip opposite the rupture direction (Wallace and Lay, 1995). These effects were clearly articulated in the 1976 Guatemala earthquake, with both high seismic intensities and dense landsliding limited to a narrow band along the fault near the rupture initiation, and spreading over a wider area at the other extremity of the fault (Harp et al., 1981) (Figure 3). To further explore these effects, we attempt to quantify asymmetry of the landslide distribution and in the rupture mechanism with very simple parameters available for most case. We define a landslide asymmetry indicator  $L_{as} = 100 * (A_{op} - A_{ep}) / A_{tot}$ , with  $A_{tot}$  the total landslide area and  $A_{ep}$  and  $A_{op}$  the total landslide area beyond a line perpendicular to the fault strike and located at the fault tip closest to and furthest from the epicenter, respectively. This indicator effectively compares both fault extremities and quantify the amount of the asymmetry in % of the total landsliding. This ratio is corrected for the relative abundance of flat or gentle topography below the  $10^\circ$  threshold in the relevant areas. It can be compared to the distance between the earthquake epicenter (projected on the fault trace) and the middle point of the fault rupture, normalized by the half length of the fault rupture,  $Epi_{as}$ . This latter measure tends to zero for a centered epicenter and to one for an epicenter at the tip of the fault, suggesting low and high directivity, respectively. These indices cannot be computed for the Finisterre, Aysen and Limon earthquakes for which we do not have constraints on the location of the actual portion of the fault that ruptured and its position relative to the epicenter. For the other cases, we find a degree of correlation between the asymmetry of the earthquake epicenter and the landslide distribution, at least where  $Epi_{as} > 0.4$ , but results for the 10 cases with comprehensive landslide inventories are not straightforward (Figure 7). For  $Epi_{as} < 0.4$  we observed negligible landslide asymmetry. For larger  $Epi_{as}$  values we observe a strong asymmetry oriented with the directivity for the Northridge and Guatemala earthquakes, a moderate asymmetry for the Iwate case. For the Wenchuan case, we find little (10%) asymmetry in the landslide distribution, even though the earthquake hypocenter was at one extremity of the fault rupture. In this earthquake, the rupture propagated over multiple fault segments with different initial stresses, with important rupture speed changes at the transition between segments (Wen et al., 2012a). This is likely to have complicated the ground shaking pattern (Wen et al., 2012b; Meunier et al., 2013), blurring any directivity effect. Similar effects may be at play for the Gorkha and Denali earthquakes where published landslide maps (Gorum et al., 2014; Martha et al., 2016) indicate little (10%) to no asymmetry (< 1%), respectively (Figure 7). These cases also had complex ruptures, with the Denali earthquake rupturing three segment, the last one in super-shear (Frankel, 2004), and the Gorkha earthquake propagating along a complex fault geometry with laterally varying mechanism (Kumar et al., 2016). Finally, we note that the amplitude of ground shaking is reduced by directivity but the shaking duration is longer, possibly balancing any effects on landslide triggering. In summary, the landslide asymmetry proxy proposed here varies between earthquakes and is not simply related to the epicenter position relative to the fault trace. Analysis of a larger number of well-constrained cases is necessary to constrain and quantify the effect of seismic directivity on landslide patterns.

## 6 Conclusions

We have presented an analytical expression for the distribution area of earthquake-induced landslides. It shares its derivation with the model of Marc et al. (2016b) that has been shown to predict total landslide volume and area with good accuracy in most cases. The expression is based on scaling relationships between essential seismic parameters such as the seismic moment, the source depth, the rupture length and aims at predicting where the shaking level is likely to exceed a universal threshold for rock damage and onset of landsliding. Compared to a large compilation of estimates of landslide distribution areas from observational constraints, the analytical expression is shown to explain 56% of the variance without any adjusted parameters, and to predict 35 or 49 of 83 cases within a factor of 2, when taking the hypocentral depth as the emission depth, or when allowing the emission depth to be within 25% of the hypocentral depth, respectively. Analysis of outliers is not easy with such compilations as many cases are poorly constrained and because the definition and measurement of the landslide distribution area are not uniform for all cases. For detailed inventories we see that the prediction of our model agrees relatively well with the region in which 95% of the total landslide area is concentrated. However, some earthquakes are significantly overpredicted and others have important along-strike asymmetry not captured by our model. These discrepancies may arise from variability in wave emission along a complex rupture (e.g., Wen et al., 2012a), as well as wave interference leading to directivity. Thus, modelling of the ground shaking pattern must be improved to aid better understanding and forecasting of landslide hazard associated with earthquakes. Nevertheless, the overall agreement of our prediction is striking given that it does not use any geomorphological calibration. It suggests that  $0.15g$  is an appropriate threshold for ground acceleration to predict the area of concentrated landsliding, while the outer limits of landsliding may be controlled by a smaller acceleration at about  $0.05g$  (Jibson and Harp, 2016). However, at lower ground acceleration thresholds, site effect, non-linear attenuation and other secondary controls become increasingly important, disproportionately complicating any prediction of landsliding. Still, understanding how the threshold of acceleration varies from a landscape to another is probably key to increase the accuracy of our prediction as much as better understanding control on the ground shaking. The prediction of landslide distribution area, together with the recent expressions for total volume and area of landslides (Marc et al., 2016b) and constraints on the spatial pattern of landslide density and size (Meunier et al., 2007; Valagussa et al., In Review), defines a consistent framework for the evaluation of seismological parameters controlling ground shaking for quantitative landslide hazard. Finally, we note that the simplicity and limited number of parameters of the expression presented here makes it well-suited for hazard assessment in earthquake scenarios as well as in the immediate aftermath of an earthquake.

## 7 Data availability

The data used in this study is available through the data table or through the literature.

*Author contributions.* OM collected and analyzed all data. OM conceived the study and wrote the paper with assistance and inputs from NH and PM.

*Competing interests.* The author declare no conflicts of interest with the work presented in this study.

*Acknowledgements.* The authors thank Xu C. and Gorum T. for providing their landslide inventories and two anonymous referees for comments that have helped improve the clarity of the manuscript. The authors have gratefully used Aster GDEM V2, a product of METI and NASA.

## References

- Alfaro, P., Delgado, J., Garcia-Tortosa, F. J., Lenti, L., Lopez, J. A., Lopez-Casado, C., and Martino, S.: Widespread landslides induced by the Mw 5.1 earthquake of 11 May 2011 in Lorca, SE Spain, *Engineering Geology*, 137-138, 40–52, doi:10.1016/j.enggeo.2012.04.002, <http://www.sciencedirect.com/science/article/pii/S001379521200141X>, 2012.
- Allmann, B. P. and Shearer, P. M.: Global variations of stress drop for moderate to large earthquakes, *Journal of Geophysical Research: Solid Earth*, 114, B01 310, doi:10.1029/2008JB005821, <http://onlinelibrary.wiley.com/doi/10.1029/2008JB005821/abstract>, 2009.
- Avouac, J.-P., Meng, L., Wei, S., Wang, T., and Ampuero, J.-P.: Lower edge of locked Main Himalayan Thrust unzipped by the 2015 Gorkha earthquake, *Nature Geoscience*, advance online publication, doi:10.1038/ngeo2518, <http://www.nature.com/ngeo/journal/vaop/ncurrent/full/ngeo2518.html#supplementary-information>, 2015.
- Baltay, A., Ide, S., Prieto, G., and Beroza, G.: Variability in earthquake stress drop and apparent stress, *Geophysical Research Letters*, 38, L06 303, doi:10.1029/2011GL046698, <http://onlinelibrary.wiley.com/doi/10.1029/2011GL046698/abstract>, 2011.
- Baltay, A. S. and Hanks, T. C.: Understanding the Magnitude Dependence of PGA and PGV in NGA West 2 Data, *Bulletin of the Seismological Society of America*, 104, 2851–2865, doi:10.1785/0120130283, <http://bssa.geoscienceworld.org/content/104/6/2851>, 2014.
- Bird, J. F. and Bommer, J. J.: Earthquake losses due to ground failure, *Engineering Geology*, 75, 147–179, doi:10.1016/j.enggeo.2004.05.006, <http://www.sciencedirect.com/science/article/pii/S0013795204001073>, 2004.
- Bommer, J. J. and Rodriguez, C. E.: Earthquake induced landslides in Central America, *Engineering Geology*, 63, 189–220, doi:10.1016/S0013-7952(01)00081-3, <http://www.sciencedirect.com/science/article/pii/S0013795201000813>, 2002.
- Bonilla, M. G.: Landslides in the San Francisco South quadrangle, California, Tech. Rep. OFR - 60-15, United States Geological Survey, <http://pubs.er.usgs.gov/publication/ofr6015>, 1960.
- Boore, D. M. and Atkinson, G. M.: Source spectra for the 1988 Saguenay, Quebec, earthquakes, *Bulletin of the Seismological Society of America*, 82, 683–719, <http://www.bssaonline.org/content/82/2/683>, 1992.
- Boore, D. M. and Atkinson, G. M.: Ground motion prediction equations for the average horizontal component of PGA, PGV, and 5% damped PSA at spectral periods between 0.01s and 10s, *Earthquake Spectra*, 24, 99–138, doi:10.1193/1.2830434, 2008.
- Brune, J. N.: Tectonic stress and the spectra of seismic shear waves from earthquakes, *Journal of Geophysical Research*, 75, 4997–5009, doi:10.1029/JB075i026p04997, <http://onlinelibrary.wiley.com/doi/10.1029/JB075i026p04997/abstract>, 1970.
- Causse, M. and Song, S. G.: Are stress drop and rupture velocity of earthquakes independent? Insight from observed ground motion variability, *Geophysical Research Letters*, 42, 2015GL064 793, doi:10.1002/2015GL064793, <http://onlinelibrary.wiley.com/doi/10.1002/2015GL064793/abstract>, 2015.
- Collins, B. D., Kayen, R., and Tanaka, Y.: Spatial distribution of landslides triggered from the 2007 Niigata Chuetsu–Oki Japan Earthquake, *Engineering Geology*, 127, 14–26, doi:10.1016/j.enggeo.2011.12.010, <http://www.sciencedirect.com/science/article/pii/S0013795211003115>, 2012.
- Dreyfus, D., Rathje, E. M., and Jibson, R. W.: The influence of different simplified sliding-block models and input parameters on regional predictions of seismic landslides triggered by the Northridge earthquake, *Engineering Geology*, 163, 41–54, doi:10.1016/j.enggeo.2013.05.015, <http://www.sciencedirect.com/science/article/pii/S0013795213001786>, 2013.
- Fielding, E. J., Sladen, A., Li, Z., Avouac, J.-P., Bürgmann, R., and Ryder, I.: Kinematic fault slip evolution source models of the 2008 M7.9 Wenchuan earthquake in China from SAR interferometry, GPS and teleseismic analysis and implications for Longmen Shan tectonics,



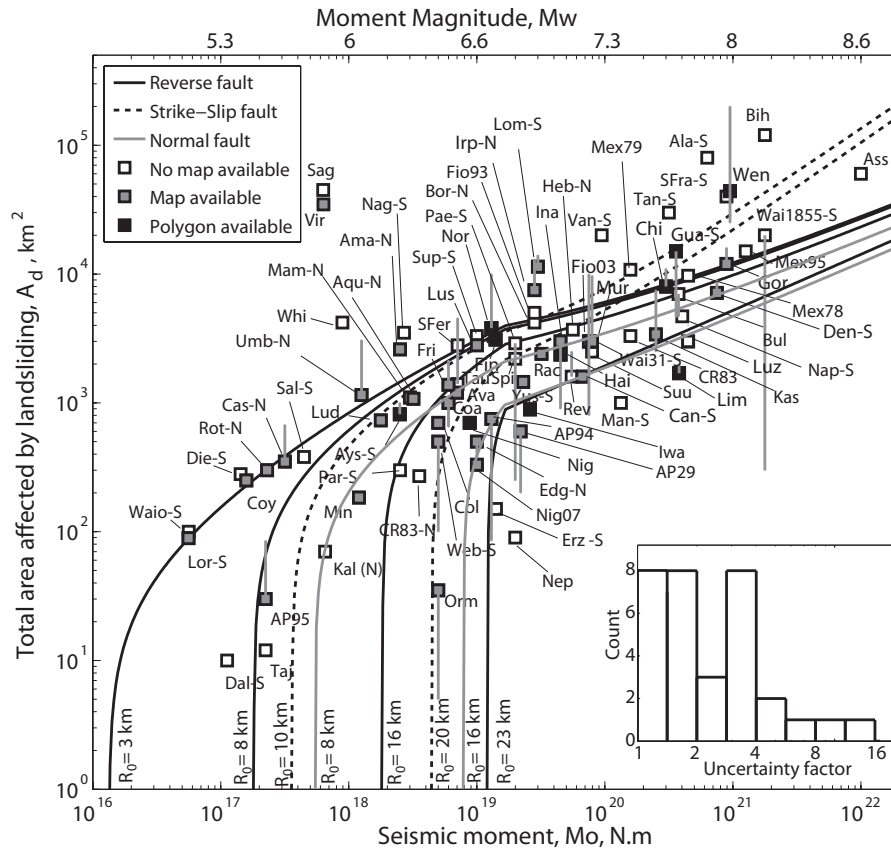
- Geophysical Journal International, p. ggt155, doi:10.1093/gji/ggt155, <http://gji.oxfordjournals.org/content/early/2013/05/22/gji.ggt155>, 2013.
- Frankel, A.: Rupture Process of the M 7.9 Denali Fault, Alaska, Earthquake: Subevents, Directivity, and Scaling of High-Frequency Ground Motions, *Bulletin of the Seismological Society of America*, 94, S234–S255, doi:10.1785/0120040612, <http://bssa.geoscienceworld.org/content/94/6B/S234>, 2004.
- Gallen, S. F., Clark, M. K., and Godt, J. W.: Coseismic landslides reveal near-surface rock strength in a high-relief, tectonically active setting, *Geology*, 43, 11–14, doi:10.1130/G36080.1, <http://geology.geoscienceworld.org/content/43/1/11>, 2015.
- Garwood, N. C., Janos, D. P., and Brokaw, N.: Earthquake-Caused Landslides: A Major Disturbance to Tropical Forests, *Science*, 205, 997–999, doi:10.1126/science.205.4410.997, <http://www.sciencemag.org/content/205/4410/997.abstract>, 1979.
- Goes, S. D. B., Velasco, A. A., Schwartz, S. Y., and Lay, T.: The April 22, 1991, Valle de la Estrella, Costa Rica ( $M_w = 7.7$ ) earthquake and its tectonic implications: A broadband seismic study, *Journal of Geophysical Research: Solid Earth*, 98, 8127–8142, doi:10.1029/93JB00019, <http://onlinelibrary.wiley.com/doi/10.1029/93JB00019/abstract>, 1993.
- Gorum, T., Fan, X., van Westen, C. J., Huang, R. Q., Xu, Q., Tang, C., and Wang, G.: Distribution pattern of earthquake-induced landslides triggered by the 12 May 2008 Wenchuan earthquake, *Geomorphology*, 133, 152–167, 2011.
- Gorum, T., van Westen, C. J., Korup, O., van der Meijde, M., Fan, X., and van der Meer, F. D.: Complex rupture mechanism and topography control symmetry of mass-wasting pattern, 2010 Haiti earthquake, *Geomorphology*, 184, 127–138, doi:10.1016/j.geomorph.2012.11.027, <http://www.sciencedirect.com/science/article/pii/S0169555X12005478>, 2013.
- Gorum, T., Korup, O., van Westen, C. J., van der Meijde, M., Xu, C., and van der Meer, F. D.: Why so few? Landslides triggered by the 2002 Denali earthquake, Alaska, *Quaternary Science Reviews*, 95, 80–94, doi:10.1016/j.quascirev.2014.04.032, <http://www.sciencedirect.com/science/article/pii/S0277379114001632>, 2014.
- Hancox, G., Perrin, G., and Dellow, G.: Earthquake-induced landsliding in New Zealand and implications for MM intensity and seismic hazard assessment, GNS Client Report 43601B, 1997.
- Hancox, G., Cox, S., Turnbull, I., and Crozier, M.: Reconnaissance studies of landslides and other ground damage caused by the  $M_w$  7.2 Fiordland earthquake of 22 August 2003., Institute of Geological & Nuclear Sciences report 2003/30, 2003.
- Hancox, G. T., Dellow, G., Mc Saveney, M., Scott, B., and Villamor, P.: Reconnaissance Studies of Landslides Caused by the  $M_L$  5.4 Lake Rotoehu earthquake and Swarm of July 2004, Institute of Geological & Nuclear Sciences report 2004/24, 2004.
- Hanks, T. C. and McGuire, R. K.: The character of high-frequency strong ground motion, *Bulletin of the Seismological Society of America*, 71, 2071–2095, <http://bssa.geoscienceworld.org/content/71/6/2071>, 1981.
- Harp, E. and Jibson, R.: Landslides triggered by the 1994 Northridge, California, earthquake, *Bulletin of the Seismological Society of America*, 86, S319–S332, 1996.
- Harp, E. L. and Keefer, D. K.: LANDSLIDES TRIGGERED BY THE EARTHQUAKE, in: *The Coalinga, California, Earthquake of May 2, 1983*, edited by Rymer, M. J. and Ellsworth, W. L., vol. 1487 of *USGS Professional Paper*, pp. 335–348, US Geological Survey, 1990.
- Harp, E. L., Wilson, R. C., and Wiczorek, G. F.: Landslides from the February 4, 1976, Guatemala earthquake, U.S.G.S., Prof. Pap., 1204 A, 1981.
- Harp, E. L., Tanaka, K., Sarmiento, J., and Keefer, D.: Landslides from the May 25-27, 1980, Mammoth Lakes, California, earthquake sequence, US Geological Survey, 1984.
- Harp, E. L., Jibson, R. W., and Schmitt, R. G.: Map of landslides triggered by the January 12, 2010, Haiti earthquake, Tech. Rep. 3353, U.S. Geological Survey, doi:10.3133/sim3353, <https://pubs.er.usgs.gov/publication/sim3353>, 2016.

- Hayes, G. P., Briggs, R. W., Sladen, A., Fielding, E. J., Prentice, C., Hudnut, K., Mann, P., Taylor, F. W., Crone, A. J., Gold, R., Ito, T., and Simons, M.: Complex rupture during the 12 January 2010 Haiti earthquake, *Nature Geoscience*, 3, 800–805, doi:10.1038/ngeo977, <http://www.nature.com/ngeo/journal/v3/n11/full/ngeo977.html>, 2010.
- 30 Hikima, K. and Koketsu, K.: Rupture processes of the 2004 Chuetsu (mid-Niigata prefecture) earthquake, Japan: A series of events in a complex fault system, *Geophysical Research Letters*, 32, doi:10.1029/2005GL023588, <http://earthref.org/ERR/88192/>, 2005.
- Hovius, N. and Meunier, P.: Earthquake ground motion and patterns of seismically induced landsliding, in: *Landslides*, Cambridge University Press, <http://dx.doi.org/10.1017/CBO9780511740367.004>, 2012.
- Jibson, R. and Harp, E.: Large rock avalanches triggered by the M 7.9 Denali Fault, Alaska, earthquake of 3 November 2002, *Engineering Geology*, 83, 144–160, doi:10.1016/j.enggeo.2005.06.029, 2006.
- 35 Jibson, R. W. and Harp, E. L.: Extraordinary Distance Limits of Landslides Triggered by the 2011 Mineral, Virginia, Earthquake, *Bulletin of the Seismological Society of America*, 102, 2368–2377, doi:10.1785/0120120055, <http://bssa.geoscienceworld.org/content/102/6/2368>, 2012.
- Jibson, R. W. and Harp, E. L.: Ground Motions at the Outermost Limits of Seismically Triggered Landslides, *Bulletin of the Seismological Society of America*, 106, 708–719, doi:10.1785/0120150141, <http://bssa.geoscienceworld.org/content/106/2/708>, 2016.
- Jibson, R. W., Prentice, C. S., Borissoff, B. A., Rogozhin, E. A., and Langer, C. J.: Some observations of landslides triggered by the 29 April 1991 Racha earthquake, Republic of Georgia, *Bulletin of the Seismological Society of America*, 84, 963–973, <http://bssa.geoscienceworld.org/content/84/4/963>, 1994.
- 5 Jin, Z., West, A. J., Zhang, F., An, Z., Hilton, R. G., Yu, J., Wang, J., Li, G., Deng, L., and Wang, X.: Seismically enhanced solute fluxes in the Yangtze River headwaters following the A.D. 2008 Wenchuan earthquake, *Geology*, 44, 47–50, doi:10.1130/G37246.1, <http://geology.geoscienceworld.org/content/44/1/47>, 2015.
- Kamp, U., Growley, B. J., Khattak, G. A., and Owen, L. A.: GIS-based landslide susceptibility mapping for the 2005 Kashmir earthquake region, *Geomorphology*, 101, 631–642, doi:10.1016/j.geomorph.2008.03.003, <http://www.sciencedirect.com/science/article/pii/S0169555X08000767>, 2008.
- 10 Kargel, J. S., Leonard, G. J., Shugar, D. H., Haritashya, U. K., Bevington, A., Fielding, E. J., Fujita, K., Geertsema, M., Miles, E. S., Steiner, J., Anderson, E., Bajracharya, S., Bawden, G. W., Breashears, D. F., Byers, A., Collins, B., Dhital, M. R., Donnellan, A., Evans, T. L., Geai, M. L., Glasscoe, M. T., Green, D., Gurung, D. R., Heijnen, R., Hilborn, A., Hudnut, K., Huyck, C., Immerzeel, W. W., Liming, J., Jibson, R., Kaab, A., Khanal, N. R., Kirschbaum, D., Kraaijenbrink, P. D. A., Lamsal, D., Shiyin, L., Mingyang, L., McKinney, D., Nahirnick, N. K., Zhuotong, N., Ojha, S., Olsenholler, J., Painter, T. H., Pleasants, M., Kc, P., Yuan, Q. I., Raup, B. H., Regmi, D., Rounce, D. R., Sakai, A., Donghui, S., Shea, J. M., Shrestha, A. B., Shukla, A., Stumm, D., Kooij, M. v. d., Voss, K., Xin, W., Weihs, B., Wolfe, D., Lizong, W., Xiaojun, Y., Yoder, M. R., and Young, N.: Geomorphic and geologic controls of geohazards induced by Nepal's 2015 Gorkha earthquake, *Science*, p. aac8353, doi:10.1126/science.aac8353, <http://science.sciencemag.org/content/early/2015/12/15/science.aac8353>,
- 15 2015.
- 20 Keefer, D. K.: Landslides caused by earthquakes, *Geological Society of America Bulletin*, 95, 406–421, doi:10.1130/0016-7606(1984)95<406:LCBE>2.0.CO;2, <http://gsabulletin.gsapubs.org/content/95/4/406>, 1984.
- Keefer, D. K.: Investigating Landslides Caused by Earthquakes – A Historical Review, *Surveys in Geophysics*, 23, 473–510, doi:10.1023/A:1021274710840, 2002.
- 25 Keefer, D. K. and Manson, M. W.: Regional distribution and characteristics of landslides generated by the earthquake, USGS Professional Paper 1551-C, Geological Survey (U.S.), <http://pubs.er.usgs.gov/publication/pp1551C>, 1998.

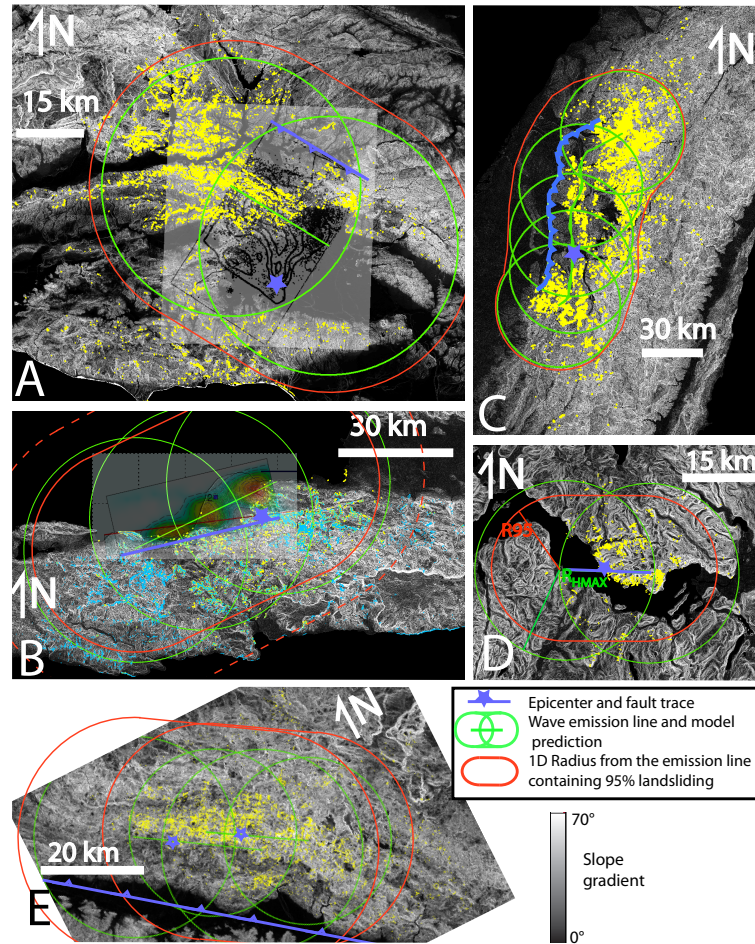
- Keefer, D. K., Wilson, R. C., and Tannaci, N. E.: Reconnaissance report on ground failures and ground cracks resulting from the Coyote Lake, California, earthquake of August 6, 1979, USGS Open FileReport 80-139, U.S. Geological Survey, 1980.
- 30 Khazai, B. and Sitar, N.: Evaluation of factors controlling earthquake-induced landslides caused by Chi-Chi earthquake and comparison with the Northridge and Loma Prieta events, *Engineering Geology*, 71, 79–95, doi:10.1016/S0013-7952(03)00127-3, <http://www.sciencedirect.com/science/article/pii/S0013795203001273>, 2004.
- Kikuchi, M. and Kanamori, H.: Inversion of complex body waves—III, *Bulletin of the Seismological Society of America*, 81, 2335–2350, 1991.
- 35 Kumar, A., Singh, S. K., Mitra, S., Priestley, K. F., and Dayal, S.: The 2015 April 25 Gorkha (Nepal) Earthquake and its Aftershocks: Implications for lateral heterogeneity on the Main Himalayan Thrust, *Geophysical Journal International*, p. ggw438, doi:10.1093/gji/ggw438, <http://gji.oxfordjournals.org/content/early/2016/11/22/gji.ggw438>, 2016.
- Legrand, D., Barrientos, S., Bataille, K., Cembrano, J., and Pavez, A.: The fluid-driven tectonic swarm of Aysen Fjord, Chile (2007) associated with two earthquakes (Mw=6.1 and Mw=6.2) within the Liquine-Ofqui Fault Zone, *Continental Shelf Research*, 31, 154–161, doi:10.1016/j.csr.2010.05.008, <http://www.sciencedirect.com/science/article/pii/S0278434310001743>, 2011.
- Leonard, M.: Earthquake fault scaling: Self-consistent relating of rupture length, width, average displacement, and moment release, *Bulletin of the Seismological Society of America*, 100, 1971–1988, 2010.
- 5 Liao, H.-W. and Lee, C.: Landslides triggered by Chi-Chi earthquake, in: *Proceedings of the 21st Asian conference on remote sensing*, vol. 1, pp. 383–388, 2000.
- MahdaviFar, M. R., Solaymani, S., and Jafari, M. K.: Landslides triggered by the Avaj, Iran earthquake of June 22, 2002, *Engineering Geology*, 86, 166–182, doi:10.1016/j.enggeo.2006.02.016, <http://www.sciencedirect.com/science/article/pii/S0013795206001104>, 2006.
- Marc, O. and Hovius, N.: Amalgamation in landslide maps: effects and automatic detection, *Nat. Hazards Earth Syst. Sci.*, 15, 723–733, doi:10.5194/nhess-15-723-2015, <http://www.nat-hazards-earth-syst-sci.net/15/723/2015/>, 2015.
- 10 Marc, O., Hovius, N., and Meunier, P.: The mass balance of earthquakes and earthquake sequences, *Geophysical Research Letters*, 43, 2016GL068333, doi:10.1002/2016GL068333, <http://onlinelibrary.wiley.com/doi/10.1002/2016GL068333/abstract>, 2016a.
- Marc, O., Hovius, N., Meunier, P., Gorum, T., and Uchida, T.: A seismologically consistent expression for the total area and volume of earthquake-triggered landsliding, *Journal of Geophysical Research: Earth Surface*, 121, 640–663, doi:10.1002/2015JF003732, <http://onlinelibrary.wiley.com/doi/10.1002/2015JF003732/abstract>, 2016b.
- 15 Martha, T. R., Roy, P., Mazumdar, R., Govindharaj, K. B., and Kumar, K. V.: Spatial characteristics of landslides triggered by the 2015 Mw 7.8 (Gorkha) and Mw 7.3 (Dolakha) earthquakes in Nepal, *Landslides*, pp. 1–8, doi:10.1007/s10346-016-0763-x, <http://link.springer.com/article/10.1007/s10346-016-0763-x>, 2016.
- Martino, S., Prestininzi, A., and Romeo, R. W.: Earthquake-induced ground failures in Italy from a reviewed database, *Nat. Hazards Earth Syst. Sci.*, 14, 799–814, doi:10.5194/nhess-14-799-2014, <http://www.nat-hazards-earth-syst-sci.net/14/799/2014/>, 2014.
- 20 Meunier, P., Hovius, N., and Haines, A. J.: Regional patterns of earthquake-triggered landslides and their relation to ground motion, *Geophysical Research Letters*, 34, L20408, doi:10.1029/2007GL031337, <http://onlinelibrary.wiley.com/doi/10.1029/2007GL031337/abstract>, 2007.
- Meunier, P., Hovius, N., and Haines, J. A.: Topographic site effects and the location of earthquake induced landslides, *Earth and Planetary Science Letters*, 275, 221–232, doi:10.1016/j.epsl.2008.07.020, <http://www.sciencedirect.com/science/article/pii/S0012821X08004536>, 2008.
- 25

- Meunier, P., Robert, A., De Michele, M., Parker, R. N., and Densmore, A. L.: Spatial pattern of the co-seismic landslides triggered by the Mw7.9 Sichuan earthquake: Influence of the complex focal mechanism., 15, EGU2013-2241, 2013.
- Meunier, P., Uchida, T., and Hovius, N.: Landslide patterns reveal the sources of large earthquakes, *Earth and Planetary Science Letters*, 363, 27–33, 2013.
- Mosquera-Machado, S., Lalinde-Pulido, C., Salcedo-Hurtado, E., and Michetti, A. M.: Ground effects of the 18 October 1992, Murindo earthquake (NW Colombia), using the Environmental Seismic Intensity Scale (ESI 2007) for the assessment of intensity, *Geological Society, London, Special Publications*, 316, 123–144, doi:10.1144/SP316.7, <http://sp.lyellcollection.org/content/316/1/123>, 2009.
- Newmark, N.: Effects of earthquakes on dams and embankments, *Geotechnique*, 15, 139–159, 1965.
- Oglesby, D. D., Archuleta, R. J., and Nielsen, S. B.: The Three-Dimensional Dynamics of Dipping Faults, *Bulletin of the Seismological Society of America*, 90, 616–628, doi:10.1785/0119990113, <http://bssa.geoscienceworld.org/content/90/3/616>, 2000.
- Parise, M. and Jibson, R. W.: A seismic landslide susceptibility rating of geologic units based on analysis of characteristics of landslides triggered by the 17 January, 1994 Northridge, California earthquake, *Engineering Geology*, 58, 251–270, doi:10.1016/S0013-7952(00)00038-7, <http://www.sciencedirect.com/science/article/pii/S0013795200000387>, 2000.
- Rodriguez, C. E., Bommer, J. J., and Chandler, R. J.: Earthquake-induced landslides: 1980-1997, *Soil Dynamics and Earthquake Engineering*, 18, 325–346, doi:10.1016/S0267-7261(99)00012-3, <http://www.sciencedirect.com/science/article/pii/S0267726199000123>, 1999.
- Ruiz, S., Kausel, E., Campos, J., Saragoni, G. R., and Madariaga, R.: Identification of High Frequency Pulses from Earthquake Asperities Along Chilean Subduction Zone Using Strong Motion, *Pure and Applied Geophysics*, 168, 125–139, doi:10.1007/s00024-010-0117-x, <http://link.springer.com/article/10.1007/s00024-010-0117-x>, 2011.
- Sato, H. P., Hasegawa, H., Fujiwara, S., Tobita, M., Koarai, M., Une, H., and Iwahashi, J.: Interpretation of landslide distribution triggered by the 2005 Northern Pakistan earthquake using SPOT 5 imagery, *Landslides*, 4, 113–122, doi:10.1007/s10346-006-0069-5, <http://link.springer.com/article/10.1007/s10346-006-0069-5>, 2007.
- Somerville, P. G., McLaren, J. P., Saikia, C. K., and Helmberger, D. V.: The 25 November 1988 Saguenay, Quebec, earthquake: Source parameters and the attenuation of strong ground motion, *Bulletin of the Seismological Society of America*, 80, 1118–1143, <http://www.bssaonline.org/content/80/5/1118>, 1990.
- Steer, P., Simoes, M., Cattin, R., and Shyu, J. B. H.: Erosion influences the seismicity of active thrust faults, *Nature Communications*, 5, doi:10.1038/ncomms6564, <http://www.nature.com/ncomms/2014/141121/ncomms6564/full/ncomms6564.html>, 2014.
- Stevens, C., McCaffrey, R., Silver, E., Sombo, Z., English, P., and Van der Kevie, J.: Mid-crustal detachment and ramp faulting in the Markham Valley, Papua New Guinea, *Geology*, 26, 847–850, 1998.
- Storchak, D. A., Giacomo, D. D., Bondar, I., Engdahl, E. R., Harris, J., Lee, W. H. K., Villasenor, A., and Bormann, P.: Public Release of the ISC-GEM Global Instrumental Earthquake Catalogue (1900-2009), *Seismological Research Letters*, 84, 810–815, doi:10.1785/0220130034, <http://srl.geoscienceworld.org/content/84/5/810>, 2013.
- Suzuki, W., Aoi, S., and Sekiguchi, H.: Rupture process of the 2008 Iwate-Miyagi Nairiku, Japan, earthquake derived from near-source strong-motion records, *Bulletin of the Seismological Society of America*, 100, 256–266, 2010.
- Tibaldi, A., Ferrari, L., and Pasquare, G.: Landslides triggered by earthquakes and their relations with faults and mountain slope geometry: an example from Ecuador, *Geomorphology*, 11, 215–226, doi:10.1016/0169-555X(94)00060-5, <http://www.sciencedirect.com/science/article/pii/0169555X94000605>, 1995.
- Valagussa, A., Marc, O., Frattini, P., and Crosta, G.: Seismic and geologic controls on earthquake-induced landslide size, *Journal of Geophysical Research: Earth Surface*, In Review.

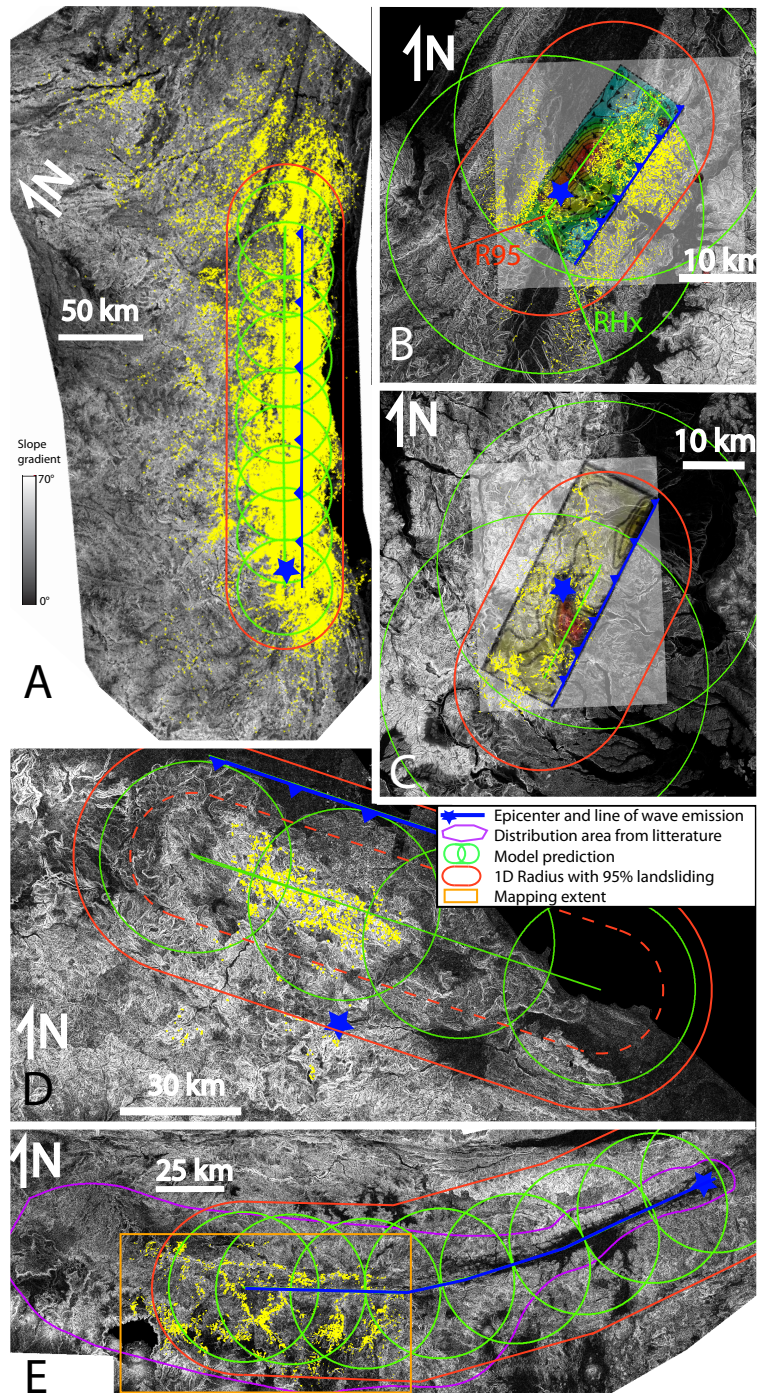
- Wald, D., Heaton, T., and Hudnut, K.: The slip history of the 1994 Northridge, California, earthquake determined from strong-motion, teleseismic, GPS, and leveling data, *Bulletin of the Seismological Society of America*, 86, S49–S70, 1996.
- Wallace, T. C. and Lay, T.: Chapter 3 - Body Waves and Ray Theory, in: *International Geophysics*, vol. 58 of *Modern Global Seismology*, pp. 70–115, Academic Press, <http://www.sciencedirect.com/science/article/pii/S007461420580004X>, 1995.
- 30 Wen, Y.-Y., Ma, K.-F., and Oglesby, D. D.: Variations in rupture speed, slip amplitude and slip direction during the 2008 Mw 7.9 Wenchuan Earthquake, *Geophysical Journal International*, 190, 379–390, doi:10.1111/j.1365-246X.2012.05476.x, <http://gji.oxfordjournals.org/content/190/1/379>, 2012a.
- Wen, Y.-Y., Oglesby, D. D., Duan, B., and Ma, K.-F.: Dynamic Rupture Simulation of the 2008 Mw 7.9 Wenchuan Earthquake with Heterogeneous Initial Stress, *Bulletin of the Seismological Society of America*, 102, 1892–1898, doi:10.1785/0120110153, <http://bssa.geoscienceworld.org/content/102/4/1892>, 2012b.
- Wilson, R. C. and Keefer, D. K.: Predicting areal limits of earthquake-induced landsliding, in: *Evaluating earthquake hazards in the Los Angeles Region: an Earth science perspective.*, USGS Professional Paper 1360, pp. 317–345, US Geological Survey, 1985.
- Xu, C., Xu, X., Pourghasemi, H. R., Pradhan, B., and Iqbal, J.: Volume, gravitational potential energy reduction, and regional centroid position change in the wake of landslides triggered by the 14 April 2010 Yushu earthquake of China, *Arabian Journal of Geosciences*, 7, 2129–2138, doi:10.1007/s12517-013-1020-4, <http://link.springer.com/article/10.1007/s12517-013-1020-4>, 2014a.
- 645 Xu, C., Xu, X., Shyu, J. B. H., Zheng, W., and Min, W.: Landslides triggered by the 22 July 2013 Minxian-Zhangxian, China, Mw 5.9 earthquake: Inventory compiling and spatial distribution analysis, *Journal of Asian Earth Sciences*, 92, 125–142, doi:10.1016/j.jseaes.2014.06.014, <http://www.sciencedirect.com/science/article/pii/S1367912014002570>, 2014b.
- 650 Xu, C., Xu, X., Yao, X., and Dai, F.: Three (nearly) complete inventories of landslides triggered by the May 12, 2008 Wenchuan Mw 7.9 earthquake of China and their spatial distribution statistical analysis, *Landslides*, 11, 441–461, doi:10.1007/s10346-013-0404-6, <http://link.springer.com/article/10.1007/s10346-013-0404-6>, 2014c.
- Xu, C., Xu, X., and Shyu, J. B. H.: Database and spatial distribution of landslides triggered by the Lushan, China Mw 6.6 earthquake of 20 April 2013, *Geomorphology*, 248, 77–92, doi:10.1016/j.geomorph.2015.07.002, <http://www.sciencedirect.com/science/article/pii/S0169555X15300660>, 2015.
- 655 Yagi, H., Yamasaki, T., and Atsumi, M.: GIS analysis on geomorphological features and soil mechanical implication of landslides caused by 2004 Niigata Chuetsu earthquake, *Journal of the Japan Landslide Society*, 43, 294–306, 2007.
- Yagi, H., Sato, G., Higaki, D., Yamamoto, M., and Yamasaki, T.: Distribution and characteristics of landslides induced by the Iwate-Miyagi Nairiku Earthquake in 2008 in Tohoku District, Northeast Japan, *Landslides*, 6, 335–344, 2009.
- 660 Yin, Y., Wang, F., and Sun, P.: Landslide hazards triggered by the 2008 Wenchuan earthquake, Sichuan, China, *Landslides*, 6, 139–152, doi:10.1007/s10346-009-0148-5, <http://link.springer.com/article/10.1007/s10346-009-0148-5>, 2009.
- Yuan, R.-M., Deng, Q.-H., Cunningham, D., Xu, C., Xu, X.-W., and Chang, C.-P.: Density Distribution of Landslides Triggered by the 2008 Wenchuan Earthquake and their Relationships to Peak Ground Acceleration, *Bulletin of the Seismological Society of America*, 103, 2344–2355, doi:10.1785/0120110233, <http://bssa.geoscienceworld.org/content/103/4/2344>, 2013.
- 665 Zeng, Y. and Chen, C.-H.: Fault Rupture Process of the 20 September 1999 Chi-Chi, Taiwan, Earthquake, *Bulletin of the Seismological Society of America*, 91, 1088–1098, doi:10.1785/0120000743, <http://www.bssaonline.org/content/91/5/1088>, 2001.
- Zhou, S., Chen, G., and Fang, L.: Distribution Pattern of Landslides Triggered by the 2014 Ludian Earthquake of China: Implications for Regional Threshold Topography and the Seismogenic Fault Identification, *ISPRS International Journal of Geo-Information*, 5, 46, doi:10.3390/ijgi5040046, <http://www.mdpi.com/2220-9964/5/4/46>, 2016.



**Figure 1.** Total area affected by landsliding against seismic moment and moment magnitude for 83 earthquakes. Vertical errors bars represent different estimate of  $A_d$  for the 27 cases where they could be obtained. Name code (defined in Table 1) are shown for each earthquakes, followed by S or N for strike-slip and normal faults, while all other cases are reverse fault earthquakes.  $R_0$  is the mean depth of wave emission. The prediction of the seismologically consistent model is shown for reverse, normal and strike-slip faults at different depth with solid black, solid grey and dashed lines, respectively. Inset: Distribution of the uncertainty factor ( Upper Estimate / Best estimate or Best Estimate / Lower Estimate).

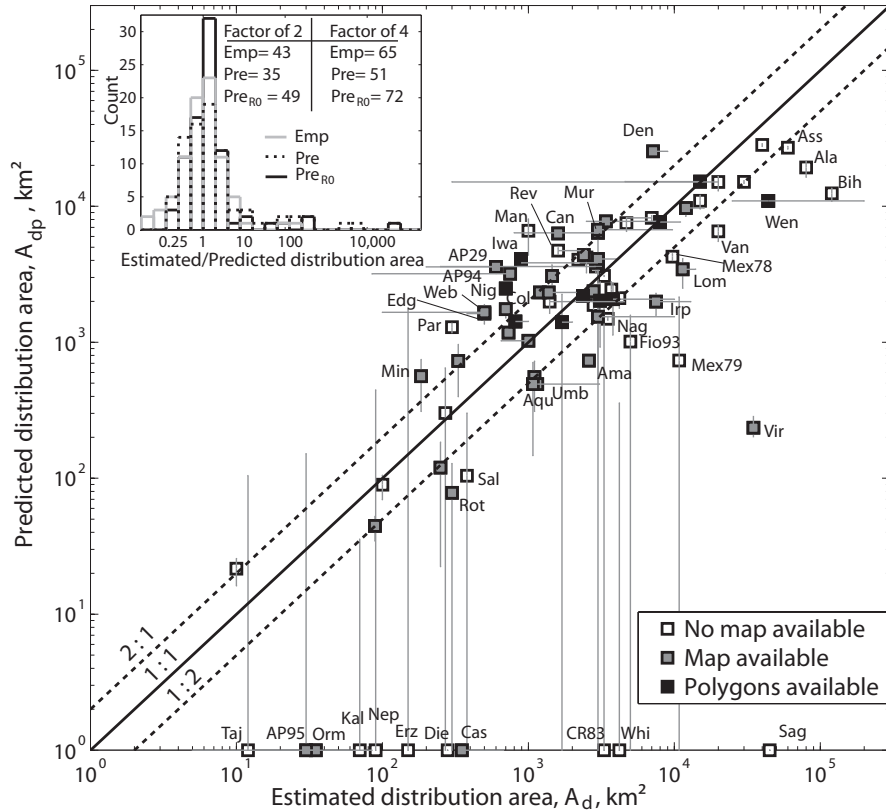


**Figure 2.** Distribution of landsliding (yellow polygons) and predicted landslide distribution area (green circles) for the Northridge (A), Haiti (B), Chi-Chi (C), Aysen (D) and Finisterre (E) earthquakes. The background is a topographic slope gradient map derived from 30m-Aster GDEM, provided by NASA, allowing to locate flatlands where no landslides are expected even if the shaking threshold is exceeded. Emission line source and the area where the ground shaking is expected to be larger than  $a_c$  are represented with green lines and circles, respectively. Red perimeters show the area encompassing 95% of the total area of landsliding defined by a uniform distance away from the wave emission line. For reference rupture slip distribution maps are shown for the Northridge and Haiti earthquakes (Wald et al., 1996; Hayes et al., 2010). For Haiti, in addition to the landslide inventory from Gorum et al. (2013), we also show the one of Harp et al. (2016) (cyan polygons) and its associated  $R_{95}$  with red dashed line. Note that the Aysen strike-slip fault is located only based on the focal mechanism and epicenter, and that the other solution (north oriented) would give a similar radius for  $R_{95}$ .

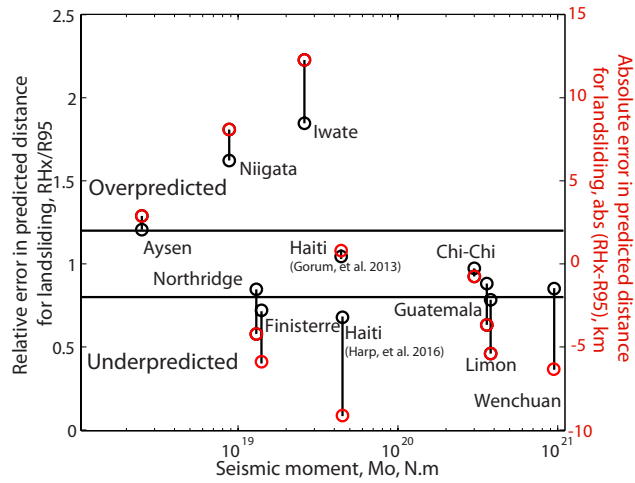


**Figure 3.** Same as Figure 2 for the Wenchuan (A), Niigata (B), Iwate (C), Limon (D) and Guatemala (E) earthquakes. For reference rupture slip distribution maps are shown for the Niigata and Iwate earthquakes (Hikima and Koketsu, 2005; Suzuki et al., 2010). Additionally, the distribution area proposed by Harp et al. (1981) for the Guatemala earthquake is shown in purple. For the Limon earthquake, the total area of landslides is likely underestimated in the most affected area and therefore  $R_{95}$  is likely reduced and more similar to the dashed red contour.

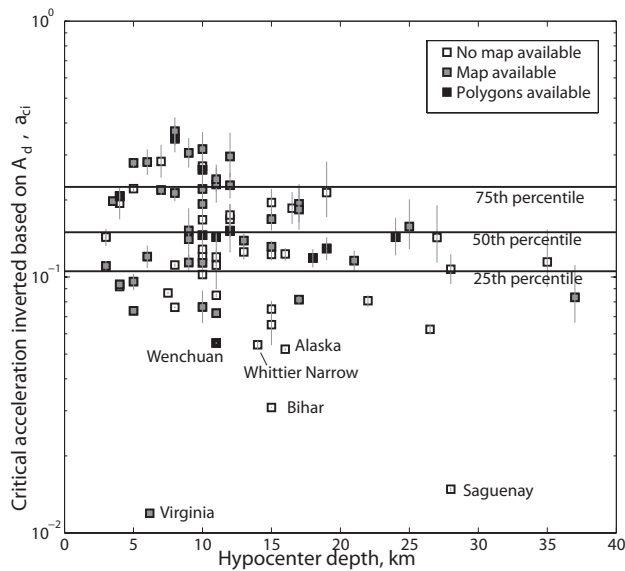




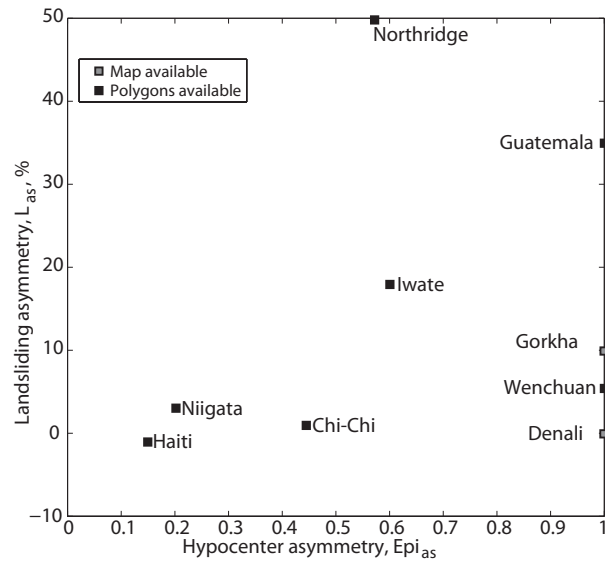
**Figure 4.** Predicted landslide distribution area plotted against estimated landslide distribution areas for 83 earthquakes. For visibility, cases where the predicted area is 0 are set to  $1\text{km}^2$  and only the name codes of earthquakes outside of a factor of 2 from the 1:1 line are shown. Vertical error bars represent the range of predicted values when  $R_0$  is varied between 75 and 125% of the best estimate of the hypocentral depth. Inset: Histograms of model residuals ( $A_d / A_{dp}$ ). Histogram for the best empirical fit of  $A_d$  against  $M_o$  (Emp, grey line), for the model prediction (Pre, dashed line) and for the prediction accounting for 25% of uncertainty on  $R_0$  ( $Pre_{R_0}$ , solid black line) are shown, with the number of earthquakes correctly predicted within a factor of 2 and 4.



**Figure 5.** Relative and absolute errors in the prediction of the distance from the wave emission line containing 95% of the total landslide area plotted against the seismic moment. Horizontal black lines delimit cases where the relative error is within < 20%. The absolute error (red circles) indicates the difference in kilometers between the prediction and the boundary of 95% of the landsliding.



**Figure 6.** Inverted value of the threshold of acceleration for damage,  $a_c$ , against hypocentral depth. Most values cluster between 0.1 and 0.2, but some events (with their name tags displayed) have exceptionally low inverted values cases.



**Figure 7.** Hypocenter asymmetry (0= center, 1= tip of the fault) against along-strike landsliding asymmetry, defined by the difference between the total landslide area beyond the tip of the fault opposed to the epicenter and the total landslide area beyond the other tip normalized by the total landslide area.

**Table 1.** Data summary. Earthquake contains location and country where US, NZ, CN, and IT are for United States, New Zealand, China, and Italy. Fault gives the focal mechanism (Reverse, Strike-slip or Normal). Depth is the hypocenter depth. The best estimate of  $A_d$  is followed by lower and upper bound into brackets. Q indicates if a map or an inventory with polygons could be accessed.  $\Delta\sigma$  refers to the dynamic stress drop. Numbers in the references are as follow: 1= (Keefer, 1984); 2= (Hancox et al., 1997); 3= (Rodriguez et al., 1999); 4= (Bommer and Rodriguez, 2002); 5= (Martino et al., 2014); 6= (Mosquera-Machado et al., 2009); 7= (Kamp et al., 2008); 8= (Gorum et al., 2014)

Earthquake	Code	Year	Fault	$M_w$	Depth (km)	$A_d$ ( $km^2$ )	Q	$C_{topo}$	$\Delta\sigma$ (MPa)	Ref.
Wairapa (NZ)	Wai1855	1855	SS	8.10	16	20000 [300,-]	na	0.4	na	2
Canterbury (NZ)	Can	1888	SS	7.15	10	1600 [-,-]	Map	1	na	2
San Francisco (US)	SFra	1906	SS	7.90	8	40000 [-,-]	na	1	na	1
Bueller (NZ)	Bul	1929	R	7.65	10	7000 [4700,-]	na	1	na	2
Arthur's Pass (NZ)	AP29	1929	R	6.83	12	600 [200,-]	Map	1	na	2
Napier (NZ)	Nap	1930	SS	7.67	15	4700 [4700,-]	na	0.5	na	2
Wairoa (NZ)	Wai31	1931	SS	7.18	12	3000 [800,-]	Map	1	na	2
Bihar (Nepal)	Bih	1934	R	8.10	15	120000 [-,-]	na	1	na	1
Vancouver (Canada)	Van	1946	SS	7.25	15	20000 [-,-]	na	1	na	1
Coleridge Lake (NZ)	Col	1946	R	6.40	10	700 [-,-]	Map	1	na	2
Assam (India)	Ass	1950	R	8.60	8	60000 [-,-]	na	1	na	1
Daly City (US)	Dal	1953	SS	5.30	4	10 [-,-]	na	0.15	na	1
Alaska (US)	Ala	1958	SS	7.80	16	80000 [-,-]	na	1	na	1
Hebgen Lake (US)	Heb	1959	N	7.10	11	3700 [-,-]	na	1	na	1
Parkfield (US)	Par	1966	SS	6.20	7	300 [-,-]	na	1	na	1
Inangahua (NZ)	Ina	1968	R	7.04	15	3000 [900,-]	Map	1	na	2
San Fernando (US)	SFer	1971	R	6.50	13	2800 [-,-]	na	1	na	1
Tangshan (CN)	Tan	1976	SS	7.60	7.5	30000 [-,-]	na	1	na	1
Friuli (IT)	Fri	1976	R	6.45	4	1380 [-,2125]	Map	1	na	5
Guatemala	Gua	1976	SS	7.64	12	15000 [4600,-]	Poly	1	na	1, Harp et al., 1981
Mexico	Mex78	1978	R	7.70	11	9700 [-,-]	na	0.5	na	4
Mexico	Mex79	1979	R	7.40	26.5	10800 [-,-]	na	0.5	na	4
Coyote Lake (US)	Coy	1979	SS	5.40	6	250 [-,-]	Map	1	na	1, Keefer et al., 1980
Mammoth Lake (US)	Mam	1980	N	6.25	9	1100 [-,-]	Map	1	0.276	1, Harp et al., 1984
Irpina (IT)	Irp	1980	N	6.90	11	7500 [-,13000]	Map	1	na	3,5
Costa Rica	CR83	1983	R	7.40	28	3300 [-,-]	na	0.5	na	4
Costa Rica	CR83	1983	N	6.30	12	270 [-,-]	na	1	na	4
Borah Peak (US)	Bor	1983	N	6.90	10	4200 [-,-]	na	1	4.048	3
Waiotapu (NZ)	Waio	1983	SS	5.10	3	100 [-,-]	na	1	na	2
Coalinga (US)	Coa	1983	R	6.45	9	1000 [650,-]	Map	0.5	0.506	3, Harp et al., 1990
Nagano (Japan)	Nag	1984	SS	6.22	4	3500 [-,-]	na	1	na	3
Kalamata (Greece)	Kal	1986	N	5.81	11	70 [-,-]	na	1	na	3
Salvador	Sal	1986	SS	5.70	10	380 [-,-]	na	1	na	3
Diebu (CN)	Die	1987	R	5.37	15	280 [-,-]	na	1	na	3
Whittier Narrow (US)	Whi	1987	R	5.90	14	4200 [-,-]	na	1	na	3
Superstition Hills (US)	Sup	1987	SS	6.60	3	3300 [-,-]	na	1	na	3
Reventador (Ecuador)	Rev	1987	R	7.09	10	1600 [-,2500]	Map	1	na	3, Tibaldi et al., 1995
Edgecumbe (NZ)	Edg	1987	N	6.60	6	500 [380,-]	Map	1	na	2
Nepal	Nep	1988	R	6.80	35	90 [-,-]	na	1	na	3

**Table 1.** continued

Saguenay (Canada)	Sag	1988	R	5.80	28	45000 [-,-]	na	1	11	3
Spitak (Armenia)	Spi	1988	R	6.80	5	2200 [-,-]	na	1	na	3
Tajikistan	Taj	1989	R	5.50	10	12 [-,-]	na	1	na	3
Loma Prieta (US)	Lom	1989	SS	6.92	17	11400 [-,14000]	Map	1	6.348	3, Keefer and Manson, 1998
Manyil (Iran)	Man	1990	SS	7.35	19	1000 [-,-]	na	1	na	3
Weber (NZ)	Web	1990	SS	6.40	11	500 [100,-]	Map	1	na	2
Luzon (Philippines)	Luz	1990	SS	7.70	25	3000 [-, -]	na	0.5	na	3
Racha (Georgia)	Rac	1991	R	6.94	7	2400 [-,-]	Map	1	1.4	Jibson et al., 1994
Limon (Costa Rica)	Lim	1991	R	7.65	24	1700 [-,2000]	Poly	0.35	0.064	3, T
Erzican (Turkey)	Erz	1992	SS	6.70	27	150 [-,-]	na	1	2.5	3
Suusanmyr (Kyrgyzstan)	Suu	1992	R	7.20	16.5	2500 [-,-]	na	1	0.7	3
Fiorland (NZ)	Fio93	1993	R	6.90	22	5000 [-,-]	na	0.5	na	2
Ormond (NZ)	Orm	1993	R	6.40	37	35 [5,-]	Map	1	na	2, 3
Finisterre (New Guinea)	Fin	1993	R	6.70	19	3100 [-,-]	Poly	1	1.9	Meunier et al., 2008
Paez (Colombia)	Pae	1994	SS	6.80	12	2900 [250,-]	na	1	na	3
Arthur's Pass (NZ)	AP94	1994	R	6.68	9	750 [85,-]	Map	1	0.3	2,3
Northridge (US)	Nor	1994	R	6.68	18	3800 [-,10000]	Poly	1	5.428	3, T
Mexico	Mex95	1995	R	8.00	15	15000 [-,-]	na	1	na	4
Tauranema (Colombia)	Tau	1995	R	6.50	12	1400 [-,4550]	na	1	0.2	3, 4
Arthur's Pass (NZ)	AP95	1995	R	5.50	9	30 [-, 85]	Map	1	1.3	2, 3
Murindo (Colombia)	Mur	1995	SS	7.20	11	3000 [-, 9700]	Map	1	0.3	4, 6
Umbria-Marche (IT)	Umb	1997	N	6.00	4	1150 [-, 3075]	Map	1	na	5
Castelluccio (IT)	Cas	1998	N	5.60	10	350 [-, 675]	Map	1	na	5
Chi-Chi (Taiwan)	Chi	1999	R	7.58	10	8000 [-,11000]	Poly	1	0.4	Liao and Lee, 2001
Avaj (Iran)	Ava	2002	R	6.50	8	1200 [-,-]	Map	1	0.4	Madhavifar et al., 2006
Denali (US)	Den	2002	SS	7.85	8	7150 [-,9000]	Map	1	0.6	Gorum et al., 2014
Fiorland (NZ)	Fio03	2003	R	7.18	21	3000 [-,10000]	Map	0.5	0.11	Hancox et al., 2003
Rotoehu (NZ)	Rot	2004	N	5.51	5	300 [-,-]	Map	1	na	Hancox et al., 2004
Niigata (Japan)	Nig	2004	R	6.56	10	700 [-,-]	Poly	1	0.9	Yagi et al., 2007
Kashmir (Pakistan)	Kas	2005	R	7.53	5	3400 [2500, 7500]	Map	1	1.5	Sato et al., 2007, 7
Niigata (Japan)	Nig07	2007	R	6.60	17	331 [-,-]	Map	0.4	na	Collins et al., 2012
Aysen Fjord (Chile)	Ays	2007	SS	6.20	4	815 [-,1000]	Poly	1	na	8
Iwate (Japan)	Iwa	2008	R	6.88	8	890 [-,-]	Poly	1	2.3	Yagi et al., 2009
Wenchuan (CN)	Wen	2008	R	7.92	11	44000 [-,200000]	Poly	1	na	Xu et al., 2014
Aquila (IT)	Aqu	2009	N	6.27	10	1075 [-,-]	Map	1	na	5
Yushu (CN)	Yus	2010	SS	6.84	17	1455 [-,-]	Map	1	na	Xu et al., 2014
Lorca (Spain)	Lor	2010	SS	5.10	3	89 [-,-]	Map	0.5	na	Alfaro et al., 2011
Haiti	Hai	2010	R	7.04	11	2300 [-,3800]	Poly	0.5	na	8, Harp et al., 2016
Virginia (US)	Vir	2011	R	5.80	6	33400 [-,-]	Map	0.5	na	Jibson et al., 2012
Lushan (CN)	Lus	2013	R	6.60	13	2800 [-,-]	Map	1	na	Xu et al., 2015
Minxian (CN)	Min	2013	R	5.99	10	184 [-,-]	Map	1	na	Xu et al., 2014
Ludian (CN)	Lud	2014	R	6.10	3.5	731 [-,-]	Map	1	na	Zhou et al., 2016
Gorkha (Nepal)	Gor	2015	R	7.90	15	12000 [-,16000]	Map	1	na	Martha et al., 2016
Amatrice (IT)	Ama	2016	N	6.20	5	2600 [-,-]	Map	1	na	5

**Table 2.** Summary of the emission length,  $L$ , the maximum horizontal radius for landsliding,  $R_{HMAX}$ , the landsliding included in the prediction (% of  $A_{tot}$ ), and the distance from the emission line containing 95% of the total landslide area,  $R_{95}$ . In parenthesis we give the values of  $L$  derived from rupture length scaling with moment (EQ 3) that were used when we could not access a rupture slip model. Note that for the Haiti earthquake we show the results from the inventory of Gorum et al. (2013) and of Harp et al. (2016) (in bracket). Note that we use the two largest shocks to model the Finisterre event. Last, note that for the Limon earthquake some landslides in the most affected area could not be delineated and the total area is underestimated. Therefore we likely underestimate the amount of landsliding within the model prediction and overestimate  $R_{95}$ , that may actually be smaller than  $R_{HMAX}$ .

EQ	Northridge	Niigata	Iwate	Finisterre	Wenchuan	Chi-Chi	Haiti	Aysen	Guatemala	Limon
$L$ , km	21 (30)	15 (26)	20 (39)	(25/20)	220 (170)	90 (106)	40 (49)	(15)	180 (260)	(115)
$R_{HMAX}$ , km	23.5	21	27	25/20	28	27	26	17	27	20
% of $A_{tot}$	90	99	100	98	91	94	96[88]	98	88	93*
$R_{95}$ , km	27.5	13	14.5	31/26	34	28	25[35]	14	31	25*