

# Assessment of coastal flooding and associated hydrodynamic processes on the Southeast coast of Mexico, during Central American Cold Surge events

Wilmer Rey<sup>1</sup>, Paulo Salles<sup>2,3</sup>, E. Tonatiuh Mendoza<sup>2,3</sup>, Alec Torres-Freyermuth<sup>2,3</sup>, Christian M. Appendini<sup>2,3</sup>.

<sup>1</sup>Programa de Maestría y Doctorado en Ingeniería, Universidad Nacional Autónoma de México, DF 04510, Mexico

<sup>2</sup>Laboratorio de Ingeniería y Procesos Costeros, Instituto de Ingeniería, UNAM, México. Puerto de abrigo s/n, 92718 Sisal, México.

<sup>3</sup>Laboratorio Nacional de Resiliencia Costera (LANRESC), CONACyT, Yucatán, Mexico.

Correspondence to: Paulo Salles ([psallesa@iingen.unam.mx](mailto:psallesa@iingen.unam.mx))

**Abstract.** Coastal flooding in the northern Yucatan Peninsula is mainly associated with storm surge events triggered by high-pressure cold front systems. This study evaluates the hydrodynamic processes of the Chelem lagoon, Mexico and the flooding threat from cold fronts for the neighboring Progreso town. A 30-year water level hindcast (excluding wave set-up) was performed because of the lack of long-term tide gauge records. In order to assess the relative contribution from wave set-up, residual and astronomical tides to total flooding, the two worst storms scenarios in terms of maximum residual tide (Event A), and maximum water level (Event B) were simulated. Numerical results suggest that during Event A the wave set-up contribution reaches 0.35 m at the coast and 0.17 m inside the lagoon, while these values are smaller for Event B (0.30 m and 0.14 m, respectively). Results of the effect of the tidal phase on wave set-up and residual sea level show that: (i) the wave set-up contribution increases during ebb tide and decreases during flood tide at the Chelem inlet, (ii) the residual tide is larger (smaller) near low (high) or receding (rising) tide, and (iii) maximum flooding occurs when the storm peak coincides with rising or high tide. The numerical results confirm the important role of wave setup on the assessment of coastal flooding in micro-tidal coastal environments.

## 1 Introduction

The Yucatan Peninsula coast, located in southeast Mexico, is prone to coastal flooding due to both its geographical location and geological characteristics. On the one hand, extreme meteorological phenomena such as Central American Cold Surge (CACS) events (Appendini et al., 2018) and tropical cyclones are common in this area (Posada-Vanegas et al., 2011; Meza-Padilla et al., 2015; Rey et al., 2016). On the other hand, the region is characterized by a wide and shallow continental shelf, a low-lying coast, and the presence of semi-enclosed back-barrier water bodies (lagoons, shelter ports, wetlands). Thus, forcing agents and the coastal features enhance the physical vulnerability of this region.

Tropical cyclones occur during summer and early fall months and are responsible for the worst coastal flooding events in the Yucatan Peninsula. However, these type of events have a low occurrence along the northern Yucatan coast, which has been exposed to only 25 cyclones in the past 150 years (until 2001), i.e., an average of only 0.16 events per year (Rosengaus-Moshinsky et al., 2002). CACS (locally known as Nortés) events occur during late fall and winter, with an annual mean ranging from 16 events (Reding, 1992) to 24.5 (Appendini, 2017), depending on how a CACS is defined. Following Reding (1992) and Schultz et al. (1998), the present study defines a CACS as an anticyclonic movement of a cold mass of air that originated in North America, which penetrates equatorward to at least 20° N latitude. However, less efforts have been devoted to investigate the hazards associated to CACS events even though the annual frequency of CACS events is higher than hurricanes in the northwest of the Yucatan Peninsula. Thus, this study focuses on the effect of CACS events on coastal flooding.

The intensity of the waves and storm surges associated to CACS events depends on the magnitude of the shear stress on the sea surface, the fetch, and the duration of the events. The storm surge is enhanced by the wind shear stress on the sea surface and perturbations in the atmospheric pressure (Lin and Chavas, 2012). Since the inverse barometer effect on storm surge is small during low pressure storm systems (Massey et al., 2007), the storm surge is mainly driven by wind stress, especially in shallow coastal waters (Flather, 2001). Moreover, considering that CACS are high-pressure systems, the storm surge is essentially driven by the direct wind effect. Depending on the shape of the coast (concave or convex), the coastal bathymetry, the extent of the continental shelf, as well as the direction and duration of the incident wind, a higher or smaller storm surge will occur. Additionally, seasonal variations in the mean sea level and pressure gradients induced by littoral currents and other factors (e.g., steric basin-scale anomaly, astronomical annual tidal component) may cause sea level increase, with maxima for this region in September-October (Zavala-Hidalgo et al., 2003).

Wave set-up can be important for the accurate estimation of the extreme water levels (Vousdoukas et al., 2016). During the wave breaking process the kinetic energy is converted, to a great extent, to a quasi-steady potential energy, generating a water surface gradient to balance the onshore component of the momentum flux due to the presence of waves (Dorrestein, 1961; Longuet-Higgins and Stewart, 1963). Consequently, an increase in the water level along the shoreline (Smith et al., 2000; Dodet et al., 2013), as well as wave-induced currents, are generated. Moreover, when inlets or port entrances are present these processes play an important role in modifying the inlet and lagoon hydrodynamics and morphodynamics which are regularly forced by the astronomical tide and fresh water input from springs. In fact, given that wave breaking in the inlet ebb shoal or further inside the main channel depends on the water depth, both the wave breaking-induced acceleration and the wave set-up are tidally modulated (Olabarrieta et al., 2011). However, the wave set-up contribution is often neglected due to the computational time cost required for its modelling, especially in real-time forecasting of hurricane storm surges when prompt simulation results are required for preparing evacuation plans. Lin et al. (2012) simulated a set of over 210 extreme surge events with the ADCIR model coupled with the SWAN wave model and found that the wave set-up accounted for less than 1.5% of the surge for four locations around New York Harbor. They suggested that the limited wave set-up in this area may be related to the fact that large ocean waves break before entering the New York Harbor, and also because the near-shore wave breaking may not be captured by the large scale computational mesh of models. These authors also found that the run time for the surge-wave coupled simulations was one order of magnitude larger than for the simulations accounting only for the surge. For the Yucatan coast, flood hazard studies have not taken into account the wave set-up contribution and hence the present study aims to investigate its relative importance in coastal flooding during CACS events.

According to Merz et al. (2007), a flood hazard is defined as the probability of the induced potential damage caused by a flood in a determined area and period. The latter depends on several factors such as the maximum water level reached, the flow velocity, the flood duration, the speed of sea level rise, and the flood frequency. Flood hazard assessments are normally performed based on historic or synthetic flood data (Lin et al., 2010; Zachry et al., 2015). However, since wind reanalysis datasets have become available, such as the North American Regional Reanalysis (Mesinger et al., 2006) and the Climate Forecast System Reanalysis-CFSR (Saha et al., 2010), they have been used to force hydrodynamic models to generate sea level reanalysis. Storm surge hazard due to hurricanes along the Yucatan coast has previously been studied (Posada-Vanegas et al., 2011; Meza-Padilla et al., 2015; Rey et al., 2016), as has the flood risk caused by hurricanes (Rey et al., 2016). Given that the wind fields during tropical cyclones are underestimated in these reanalyses (Swail and Cox, 2000), the sea level during these events is also underestimated by hydrodynamic models.

Long records of raw sea level data are scarce for the Northern coast of the Yucatan Peninsula (barely 5 years of good quality historical raw data is available for the Progreso area: 1979-1984). Therefore, a sea level hindcast was developed as part of this work in order to overcome this lack of data. The aim of this study is to assess flood hazards caused by CACS events in the northern

Yucatan Peninsula with emphasis on evaluating the relative contribution of storm surge and wave set-up and the role of the astronomic tidal phase on these processes in Progreso, Yucatan.

## 2 Study area

The study area is located in the northern coast of the Yucatan Peninsula, Mexico (Figure 1). The study focuses on (i) the town of Progreso, which is the most urbanized, populous and economically important coastal city on the Northern coast of Yucatan, and (ii) the back-barrier of Chelem lagoon located behind Progreso. The maximum ground elevation in Progreso is 2.1 m above Mexican Geoid GGM06, within a low-lying coast (average elevation in Merida, the state capital located 27 km inland, is only 8 m). The Peninsula averages ten meters above sea level with only a small prominent Sierra in the center, where the maximum altitude reaches 150 m (Stringfield and LeGrand, 1974). The northern Yucatan coast is mostly sandy (85% of its length), from which 67% is formed by coastal lagoons and barrier islands (Cinvestav, 2007).

The climate in the zone is characterized by three seasons: (i) warm and dry (March-May), (ii) rainy (June-October) and (iii) winter with occasional showers (November-February) associated with the CACS passage (Medina-Gómez and Herrera-Silveira, 2009; Schmitter-Soto et al., 2002). Predominant winds are associated with sea-/land- breezes from the NE/SE, which are more frequent and intense during spring (Figueroa-Espinoza et al., 2014). During winter months, strong northerly winds interact with the maritime tropical wind from the Caribbean, causing the CACS events (Schultz et al., 1998), which are distinct from the northeasterly sea breeze because of their duration (Reding, 1992), atmospheric pressure, and air temperature. The mean annual precipitation in this region varies between 444 mm and 1,227 mm. Progreso is located in the driest area of the Peninsula (INEGI, 2002).

In terms of bathymetry and energy dissipation, the karstic continental shelf is exceptionally wide (up to 245 km), shallow, and has a mild slope -1/1000- (Enriquez et al., 2010). Therefore, the wind-wave energy is low (Lankford, 1976) near the coast mainly due to bottom friction dissipation, while the storm surges are amplified. Long-term wave climate analysis in this zone was performed by Appendini et al. (2013) by means of a thirty-year wave hindcast for the Gulf of Mexico and Caribbean Sea, showing that the continental shelf dissipates storm waves from distances far offshore, of the order of tens of kilometers. This, together with the mixed tide with a diurnal dominance and a small neap (spring) range of 0.1 m (0.8 m) (Cuevas-Jiménez and Euán-Ávila, 2009), provides the coastal zone with a low energy regime during practically all circumstances (Salles et al., 2013), except at the eastern part of the Peninsula where the wave energy increases due to a narrower continental shelf (Appendini et al., 2012).

Appendini et al. (2012) reported a net westward longshore sediment transport along the entire northern Yucatan coast, ranging between 20,000 and 80,000 m<sup>3</sup>y<sup>-1</sup>, except west of Holbox (Figure 2), where longshore transport direction is reversed at this location. The dominant westward longshore transport suggests an extremely sensitive shoreline to artificial littoral barriers (e.g., groins and jetties).

The northern coast of the Yucatan Peninsula is the first landmass to interact with the CACS after they have crossed the Gulf of Mexico, where the wind speed can reach up to 30 m.s<sup>-1</sup>, according to measurements from the National Data Buoy Center (NDBC) stations and Schultz et al. (1997). During the passage of CACS events, both erosion and flooding processes might occur, but given the low lying coast, flooding represents a greater hazard (Mendoza et al., 2013), and given their relatively frequent occurrence, their socio-economic impact is high. For instance, during the passage of CACS events, both port and oil industry activities are affected in the southern Gulf of Mexico, which translates to economic loss. For example, Cold Front number 4 which happened on October 23, 2007, caused major flooding and coastal structure damage in Villahermosa, in the nearby state of Tabasco, and caused an economic loss estimated in 2.45 billion USD (López-Méndez, 2009). Another case of flooding induced by a CACS

occurred on November 28, 2013 in the northern coast of Yucatan, where the Dzilam de Bravo community was flooded, causing damage to around 80 houses and coastal structures (Cob-Chay et al., 2013).

### 3 Numerical Model

#### 3.1 Model description

- 5 The Hydrodynamic model used for this study was MIKE 21, developed by DHI Water & Environment, which resolves the two dimensional shallow water equations –the depth-integrated incompressible Reynolds Navier-Stokes equations invoking the assumptions of Boussinesq and Hydrostatic pressure (DHI, 2014a). Wetting and drying are included in the hydrodynamic model following the work of Zhao et al. (1994) and Sleigh et al. (1998). This model has been successfully used in recent scientific studies (Strauss et al., 2007; Appendini et al., 2014; Meza-Padilla et al., 2015).
- 10 The wave model used to compute the wave conditions and associated radiation stresses was the MIKE 21 third generation spectral wave model. This model has been used for several spectral wind-wave modeling applications (Strauss et al., 2007; Appendini et al., 2013, 2015). For more detailed information about source terms, governing equation, time integration and model parameters, readers are referred to Sørensen et al. (2004) and to the scientific manual documentation for the spectral wave model (DHI, 2014b).

#### 3.2 Model setup

##### 15 3.2.1 Hydrodynamic model setup

- The hydrodynamic model was used in order to obtain a 30-year currents and sea level hindcast, not accounting for waves due to the high computational cost. The 30-year sea level hindcast was developed as the basis for the extreme level analysis, which is not possible from measurements due to the lack of long-term tidal gauge records. Unfortunately, the computational cost prohibits the modeling of coupled waves and hydrodynamics for such a long period (30 years). For instance, for a given period of 3 weeks, and
- 20 the computational domain used for the hindcast shown in Figure 2 (polygon in red), the computational time for the uncoupled (no waves) model was 12 h, but up to two weeks for the coupled model. Therefore, coupled modeling was only considered for selected cases in order to include wave setup and wave-current interaction (see Section 3.3).

The boundary conditions for the uncoupled model were treated following Enriquez et al. (2010):

- The Yucatan channel boundary was forced with a mean profile of the Yucatan current, constant in time and varying in space, based on the results reported by Abascal et al. (2003). Part of this current has been attributed to mesoscale eddies, which are observed in the eastern Caribbean basin, the Cayman Sea, and western Caribbean passages (Athié et al., 2011).
- The Gulf of Mexico boundary was forced with the astronomical tide varying along the boundary; values were extracted from the global tide model (Andersen, 1995), which represents the major diurnal ( $K_1$ ,  $O_1$ ,  $P_1$  and  $Q_1$ ) and semidiurnal tidal constituents ( $M_2$ ,  $S_2$ ,  $N_2$  and  $K_2$ ) with a spatial resolution of 0.25 x 0.25 degrees (DHI, 2014c).
- The Campeche (western) boundary was considered open (sea level equal to zero), and
- The southern boundary (land) was forced with a constant Yucatan aquifer discharge of  $2.701 \times 10^{-4} \text{ m}^3 \text{ s}^{-1} \text{ m}^{-1}$  as reported by Weidie, (1985).

- On the surface the model was forced with wind and pressure fields from the *CFSR* database, which has a global atmospheric resolution of ~38 km (T382) with 64 levels extending from the surface to 0.26 hPa. The global ocean resolution is 0.25° at the equator, extending to 0.5° beyond the tropics, with 40 levels from the surface to a depth of 4737m. The National Centers for Environmental Prediction-NCEP has created time series products at hourly temporal resolution by combining either 1) the analysis
- 35

and one- through five-hour forecasts, or 2) the one- through six-hour forecasts, for each initialization time. When using these data products, it has to be kept in mind that only the 00:00, 06:00, 12:00, and 18:00 UTC fields are actually analyses, while the in-between hourly data are model forecast events (Saha et al., 2010, 2014).

Given that the spatial resolution of the CFRS grid is not regular, and the hydrodynamic model only takes wind and pressure data varying in space from a regular grid, CFRS wind and pressure fields were linearly interpolated from a T382 Gaussian grid resolution to a regular grid with spatial resolution of  $0.3125^\circ$ , which is coincident with the longitude of the T382 grid and close in latitude for the Gulf of Mexico. We assumed this resolution to be adequate to reproduce the CACS storm surge based on the work of Appendini et al. (2013), who showed that the resolution of NCEP/NCAR (National Centre for Atmospheric Research), ECMWF ERA-interim (European Centre for Medium Range Weather Forecasts - European Reanalysis), and the North American Regional Reanalysis is sufficient for wave modeling of CACS over the Gulf of Mexico. Indeed, given that CFRS data are superior to the above NCEP reanalyses due to (a) a finer resolution, (b) an advanced assimilation scheme, and (c) atmosphere-land-ocean-sea ice coupling, it is expected to be a good compromise for this application. Moreover, the hourly resolution of CFRS allows this dataset to capture extremes, such as the storm peak, which other reanalyses may miss, according to Sharp et al. (2015). These authors found a good correlation between the hourly CFRS dataset and both onshore and offshore in situ measurement for the U.K. For instance, NCEP FNL (Final), ECMWF ERA-Interim, and NCEP-NCAR provide data at 6 hourly intervals, which might not be able to capture storm peaks (Jørgensen et al., 2005). Therefore, when using these wind fields as forcing in hydrodynamic models the maximum flooding areas may be underestimated.

The MIKE 21 hydrodynamic model uses a dynamic time step to optimize simulation speed while ensuring numerical stability. Hence, the time step may change during the simulation (large time step under calm conditions, smaller time step when flow becomes stronger). The user is allowed to set the minimum and maximum time step in the model setup. The actual dynamic time steps used are found to be in the range from 5 to 7.5 s. Since the time step for the CFRS is 1 h (three orders of magnitude longer than the hydrodynamic model time step), the hydrodynamic model interpolates the CFRS data linearly to its own time step.

The bathymetry was extracted from the ETOPO1 database and was complemented with higher resolution bathymetric data from 9-km-long transects every 4 km along the coast. In addition, high-resolution topography (1 m spatial resolution) from a 2011 LIDAR survey of the entire town of Progreso was used. After a calibration process comparing model results with sea level measurements during three CACS events (not shown) in Progreso, the bottom friction was defined using a constant Manning coefficient of 0.02, which corresponds, according to Arcement and Schneider (1989), to the average mean grain size ( $d_{50}$ ) of the Yucatan sand beaches reported by Mendoza et al. (2013). For the horizontal eddy viscosity (Smagorinsky formulation) a constant coefficient of 0.28 was applied. The wind friction ( $C_d$ ) was estimated based on the Garratt (1977) formulation modified by Lin and Chavas (2012) based on Powell et al. (2003), and further calibrated in this study, which consisted of: varying (increasing and decreasing) the Lin and Chavas (2012) values and selecting the best combination that resulted in the smallest water sea level error. The  $C_d$  used varies linearly with the wind speed, as suggested in other studies (Bryant and Akbar, 2016). The mesh selected for the hydrodynamic model is the result of a sensibility analysis of the domain size (not shown) to determine the size (Blain et al., 1994; Morey et al., 2006; Kerr et al., 2013) at which the model adequately reproduced the sea level recorded by a tide gauge at Progreso.

### 3.2.2 Wave and Coupled model setup

Once the sea level hindcast was performed, two of the most extreme flooding events were identified from this data set. For the two identified events (A and B mentioned below), the wave set-up contribution was taken into account by coupling the hydrodynamic model and the spectral wave model, i.e., coupled model.

5 The same computational domain (Figure 2, polygon in red) was used for both, the hydrodynamic and the coupled models. The hydrodynamic model kept the same type of boundary conditions mentioned in section 3.2.1. Given the unknown swell wave conditions for the ocean boundaries, a wave model was implemented for the entire Gulf of Mexico (Figure 2) to reproduce distant wave climate accurately in order to use this as the forcing at the ocean boundaries in the coupled model. The wave model set up was based on the study by Ruiz-Salcines (2013) who calibrated the model for mean and extreme conditions in the Gulf of Mexico and Caribbean Sea. This calibration was used also in (Appendini et al., 2017)

### 3.3 Selection of CACS and simulated cases

15 In this study the term “storm surge” is used when referring only to the meteorological contribution to the total sea level; otherwise, we refer to “residual tide”, which may contain storm surge, tide-storm surge interaction, harmonic prediction errors and timing errors (Horsburgh and Wilson, 2007). In other words, the residual tide is the total water level from the sea level hindcast (without wave set-up) minus the astronomical tide.

From the 30-year sea level hindcast, the largest yearly events were identified (excluding the sea level generated by tropical cyclones, given that they are underestimated), considering two criteria: (a) the largest residual tide that, being the less predictable tidal component, is relevant to flood hazard prediction, and (b) the sea surface elevation associated with each event from (a) i.e., astronomical tide plus residual tide, which is commonly considered the main parameter to estimate the flood hazard. Clearly, the analysis of the residual sea level is crucial, since this is affected by greater uncertainties than the astronomical tide. While astronomical tide is characterized by periodic oscillations, the residual tide has high variability (Mel et al., 2014). Following the CACS identification method proposed by Reding (1992), all 30 events belonging to (a) were found to be CACS events. From these 30 CACS events, the two largest were selected for simulation and analysis: (a) the event with the largest residual tide (Event A, whose peak occurred during receding tide), which hit the Peninsula from March 12, 1993 at 16:00 to March 13 at 23:00, and (b) the event with the largest sea surface elevation (Event B, whose peak occurred during rising tide), which occurred from December 25, 2004 at 15:00 to December 26 at 09:00.

Event A presented not only the largest residual tide, but also the highest wind intensity and duration of the total 30-year hindcast. Bosart et al. (1996) and Schultz et al. (1997) called this event “the 1993 super storm cold surge, also known as the storm of the century”, which originated over Alaska and western Canada, and brought northerlies exceeding  $20 \text{ ms}^{-1}$  and temperature decreases up to  $15 \text{ }^{\circ}\text{C}$  over 24 h into Mexico and Central America. Schultz et al. (1997) studied this CACS event in detail due to its exceptional intensity over the Gulf of Mexico, the important role that convection played in the incipient cyclogenesis, the planetary-scale antecedent conditions, and the merger of two short-wave troughs in the westerlies contributing to the extreme cyclogenesis.

At the peak of the storm in Event A, the astronomical tide and residual tide were -0.35 m and 1.14 m, respectively, resulting in a total sea level of 0.79 m. During the peak of the storm of Event B, the astronomical tide and residual tide were +0.44 m and 0.72 m, respectively, resulting in a total sea level elevation of 1.16 m, i.e., 0.37 m higher than the total sea level during Event A at 3 km offshore of Progreso. Figure 3 presents wind speed and direction from the 42001 NDBC buoy (see location in Figure 2) during events A and B. Throughout Event A, the predominant wind direction (azimuth) was  $315^{\circ}$  whereas for B was  $340^{\circ}$ , i.e. closer to normal to the coast. Moreover, the maximum wind speed was similar for both events, but the duration of wind speeds higher than

20 m/s was longer for Event A (11 hours compared to 3 hours for Event B). This suggests that the duration of the storm is a predominant factor in the generation of storm surges.

In order to investigate the relative contribution of the (i) storm surge and (ii) wave set-up during the flooding episodes, four different scenarios were implemented for events A and B:

- 5 - Case 1 (C1): This configuration considered only the hydrodynamic model (see details in section 3.2.1).
- Case 2 (C2; storm surge): the hydrodynamic model was forced at the surface with pressure and wind fields from the CFSR database. Only the storm surge contribution was evaluated.
- Case 3 (C3; wave set-up): the hydrodynamic model was forced only with the radiation stresses obtained from the coupled model (wave-current interactions; see section 3.2.2), obtaining only the wave set-up contribution and wave-induced currents.

In both cases, C2 and C3, the ocean boundaries surrounding the mesh formed by the polygon in red in Figure 2 were open, and the coastline boundary was closed.

- Case 4 (C4; Total Sea Surface Elevation, TSSE, and total currents): the coupled model was used to investigate the contributions from the storm surge, wave set-up, astronomical tide and the Yucatan current, for events A and B, to assess flood prone areas in Progreso. The boundary conditions were set as mentioned in section 3.2.2.

In addition, the role of the astronomic tidal phase in the flood hazard and the Chelem lagoon hydrodynamics was investigated. For this, three additional numerical experiments were performed as shown in Table 1.

These four “tide scenarios (TS, see Table 1)” were also used with Case 1 and Case 4 to study the variation in residual tide and maximum flood as a function of the astronomic tidal phase for Event A, respectively.

- 20 The dashed lines in Figure 4 show the forcing tide for the scenarios mentioned above, which varied in phase but had the same amplitude. The first peak of TSSE for TS3 (time  $t_1$  in Figure 4) was taken as a reference for varying the phase in the other scenarios: TS1 is 12 h ahead of TS3; while the phase shift for TS2 and TS4 was set so that the water level is zero at time  $t_1$ , during receding and rising tides, respectively. Both  $t_1$  (flood) and  $t_2$  (ebb) were the times used for assessing the wave set-up contribution inside the Chelem lagoon.

### 25 **3.4 Model validation**

The hydrodynamic model results were validated with data from a tidal gauge in Progreso ( $-89.6667^\circ$  W,  $21.3033^\circ$  N), to perform a 30-year (1979-2008) sea level hindcast for the northern Yucatan Peninsula. Figure 5 shows the measured sea level and hydrodynamic simulation results for the two storm events with the greatest residual tide in the 5-year tide gauge record. In general, there is good agreement for the sea surface elevation during such events. For the event shown in the top panel of Figure 5, the Pearson correlation is 0.78 and the Root Mean Squared Error-RMSE is 0.1 m, which corresponds to 20.9 % and 16.6 % of the measured and modeled sea level range, respectively. For the other event shown in the lower panel of Figure 5, the Pearson correlation is 0.87 and the RMSE is 0.17 m, which corresponds to 16.6 % and 18.3 % of the measured and modeled sea level range, respectively. Based on the aforementioned model-data comparison the model validation is considered acceptable. For instance, for the SLOSH model, which is the official model used by the National Hurricane Center to provide real-time hurricane storm surge data (Massey et al., 2007), the accuracy of the predicted surge heights is  $\pm 20\%$  when the tropical cyclone is adequately described (Jelesnianski et al., 1992).

In addition, both the CFSR winds and the wave model results (significant wave height and peak period) for events A and B were validated with measurements from the NDBC stations 42001, 42002, 42003 and 42055 (not shown). Figure 6 shows the validation for Event A with buoy 42001 data. Significant wave heights,  $H_s$ , and peak periods,  $T_p$ , from the wave model exhibited a good

Pearson's correlation (0.90 and 0.79, respectively) as well as a RMSE of 0.68 m and 1 s for  $H_s$  and  $T_p$ , respectively. Furthermore, a good Pearson's correlation (0.91) between the CFSR wind reanalysis and wind measurements from the same *NDBC* station was found (left bottom panel in Figure 6).

## 4 Results

### 5 4.1 Sea level hazard assessment

To assess the sea level hazard, an extreme analysis was performed with the 30 largest yearly CACS events selected in section 3.3: (a) the 30 largest annual events in terms of residual tide and (b) the sea surface elevation associated with each event from (a). In both cases the extreme analysis was performed using model data from a point situated 2 km offshore (5 m depth), where the Progreso tide gauge is located. Both datasets were fitted to the Generalized Extreme Values (GEV) distribution probability function  $H$  (Ho et al., 1976; Jenkinson, 1969), using the following equation:

$$H(x, \mu, \psi, \xi) = \exp \left\{ - \left( 1 + \xi \frac{x - \mu}{\psi} \right) \right\}^{-1/\xi} \quad 1)$$

where  $x$  is the data to fit,  $\mu$  is the location parameter,  $\xi$  is the shape parameter and  $\psi$  is the scale parameter.

By means of the maximum likelihood estimation method the following function parameters were found: (a)  $\mu = 0.469$ ,  $\xi = 0.189$   $\psi = 0.105$  when considering the events with the largest residual tide (where Event A is the largest), and (b)  $\mu = 0.526$ ,  $\xi = -0.295$ ,  $\psi = 0.261$ , when considering the sea level elevation associated with events from (a) (where Event B is the largest).

On the one hand, when considering only the residual tide in the extreme analysis, the resulting return periods for events A and B were 67 and 7 years (Figure 7a), respectively, given that the residual tide for Event A was larger than for Event B (1.14 m vs 0.72). On the other hand, when considering the total sea surface elevation, i.e. including the residual and astronomical tide, the return periods for events A and B become 3 and 78 years (Figure 7b), respectively. This is due to the fact that Event A, for which the residual sea level was the largest of the 30-year hindcast, happened near low tide, while Event B occurred during spring high tide. Therefore, including the astronomical tide in the extreme analysis is crucial in order to estimate the return periods. Moreover, in sections 4.2 and 4.3, and for locations near semi-enclosed coastal bodies – as is the case for Progreso – the importance of not only considering the tidal phase but also the local wind direction when determining the flood hazard inside the lagoon is discussed. Wind set-up in this semi-enclosed body can be of major significance (Carniello et al., 2005), and is crucial for the aim of this study since the town of Progreso has its southern limits bordering the Chelem lagoon.

### 4.2 Contribution of storm surge and wave set-up to flooding for events A and B

Inside the lagoon, the wind set-up (and hence the wind direction and storm duration) and the hydrodynamics at the inlet play an important role. Figure 8 presents maps of the highest wind stress and wave height values for events A and B. During Event A (storm shown in Figure 6) wave heights of 4-5 m occurred 2.5 km offshore. In contrast, the same wave height values occurred 5 km offshore for Event B. Moreover, during Event A, the wind direction and wind stress (top left panel), propagated the waves (top right panel) from west to east inside the lagoon, leading to a large wave height (around 0.9 m) within the lagoon in the southeastern part of Chelem. During Event B, the wave height (bottom right panel) inside the lagoon was weaker than during Event A, in part due to the weaker wind stress (lower left panel) over the lagoon. These variations caused significant differences in the induced wave set-up and wind set-up inside the lagoon for each event as shown in Figure 9.

The maximum values of the storm surge and wave set-up for Events A and B are shown in Figure 9. The top panels (left and right) show the model results of the maximum storm surge. During normal weather conditions there is a predominant littoral current



along the northern coast of the Yucatan Peninsula from east to west (Enriquez et al., 2010), which is attributed to sea breezes (Torres-Freyermuth et al., 2017), wind events from the southeast, and in part to the Yucatan current which floods the Yucatan Shelf from the east (Abascal et al., 2003). However, during CACS events, both (i) winds (from the northwest and north) produce a large and northerly shear stress on the sea surface, and (ii) pressure gradients due to atmospheric pressure perturbations, drive water towards the Peninsula. As a consequence, the predominant longshore current switches direction from west to east and leads to an increase in the sea level along the northern Yucatan coast and hence inside the coastal lagoons, due to the orientation of the coast (see Figure 1). It is evident from Figure 9 (panels a and b) that the storm surge during Event A (the event with the longest duration) was larger than Event B both outside and inside the lagoon. This suggests that the duration of the storm is an important factor for the generation of storm surges. It can also be seen from these two panels that the surge is greater in the eastern portion of the lagoon due to the direction of the wind stress – which accounts for a significant amount of the surge – and the corresponding wind set-up, in addition to the water volume inflow through the inlet.

Regarding the wave set-up (panels c and d), Event A presented larger values (0.35 m along the Progreso coast and roughly 0.17 m inside the Chelem lagoon) compared to Event B (0.3 and 0.14 m, respectively). These differences seem to be related to the tidal phase and offshore wave energy (Dodet et al., 2013) as well as to the wave direction (Guza and Feddersen, 2012) when the storm peak took place in each event. The wave set-up for Event A and Event B at the inlet contributed up to 19% and 14.5% of the TSSE, respectively. This shows the importance of taking into consideration the wave set-up contribution in the flood hazard assessment of coastal lagoons.

### **4.3 Flood prone areas for events A and B**

From events A and B (Figure 10), the most affected area on the sea side seems to be the stretch of coast from the Chelem inlet to Progreso Pier, partly due to its concave shape. Flooding in this area was larger during Event B (bottom panel) because this CACS event hit the Peninsula during high tide and the TSSE was larger. Inside the Chelem lagoon, flooding is in general larger than along the open coast for both events. This is due to its limited capacity to regulate increased volumes of water flooding through the inlet as well as the wind set-up, which can be larger for certain wind directions than for the open coast. In fact, even if the sea surface elevation on the seaside is lower for Event A than for Event B (as shown in section 3.3), a higher water level inside the lagoon, particularly in its eastern sector, was found during Event A. This is related to a limited tidal range and shallow water depth in the lagoon, resulting in a strong correlation between the storm surge levels and the wind stress, as well as a stronger wave set-up, resulting in larger flooded areas of Progreso. In terms of the specific flooding areas in the town of Progreso, the model wetting-and-drying algorithm performs skillfully inland, in particular in the eastern part of the back-barrier lagoon. The total number of flooded city blocks in Progreso during Event A was 157 (25 % of the town surface area), distributed as follows: 8 along the Progreso beach and 149 along the eastern lagoon shores. For Event B, the total number of flooded blocks were 110 (18% of the town surface area), with 18 corresponding to the sea side and 92 on the lagoon side. Since assessing their impact in infrastructure is one the main objectives of this research, the block was chosen as the unit to show the flood prone area with inhabitants. In this regards, quantifying areas without inhabitants are beyond of the aim of this study. These results show that the most flood prone areas in Progreso are those located in the southeastern area, bordering the Chelem lagoon, and not along the coast, mainly because of the semi-enclosed nature of the lagoon and the wind and wave set-up associated to storms.

### **4.4 Hydrodynamics and wave set-up at the inlet of the Chelem lagoon**

In order to further investigate the evolution of the wave set-up through the inlet during the two TSSE peaks during Event A (times t1 and t2 on the green solid line in Figure 4), Figure 11 shows the profiles of TSSE, storm surge, wave set-up, cross-shore flow

velocity ( $V$ ), and the wave height in the transect perpendicular to the coast. The 9-km-long transect passes through the inlet and starts 1,000 m inside the lagoon (i.e., the coastline is at  $x=1,000\text{m}$ ), the end is offshore as shown in Figure 9 (panel c, black line). For time  $t_1$  the TSSE (top panel, black continuous line) was higher on the sea side than in the inlet channel. As a result, the sea level slope at this time induced flood currents toward the inlet, which is in agreement with the negative (landward) cross-shore velocity (bottom panel, black solid line). The TSSE was lower than the storm surge height because the astronomical tide level was negative for both  $t_1$  and  $t_2$  (Figure 4, green dotted line), where  $t_1$  was the time when the TSSE reached its maximum value for Event A.

The maximum wave height for  $t_1$  (bottom panel, blue solid line) before the breaking point (where the waves breaks) was higher than 2.8 m. The peak wave period and the mean wave direction for time  $t_1$  were 6 s and  $308^\circ$  ( $49^\circ$  with respect to the coast, from the northwest), respectively (not shown). The wave set-up reached 0.08 m inside the main channel and 0.07 m at the breaking point.

For time  $t_2$ , the TSSE inside the inlet channel was higher than offshore (12 cm difference; top panel, black dotted line), inducing an ebb flow (positive flow velocity  $V$ ; bottom panel, black dotted line). Furthermore, the storm surge dropped significantly (more than 40 cm offshore; top panel, red dotted line) due mainly to weaker winds at the end of the storm. In terms of the wave climate, the maximum wave height for  $t_2$  decreased with respect to  $t_1$  (from 2.8 to 2.4 m), the peak wave period increased from 6 to 11 s – suggesting that longer swell waves reached the coast by the end of the storm –, and the mean wave direction became more cross-shore ( $76^\circ$  compared to  $49^\circ$  at  $t_1$ ). Under these conditions, the wave set-up reached 0.17 m in the inlet channel and 0.14 m at the breaking point, values significantly larger than during the peak of the storm ( $t_1$ ). In fact, the wave set-up at the inlet channel represented 7% of the wave height at the breaking point at  $t_2$ , and only 2.8% at  $t_1$  Figure 9.

The above analysis shows that the maximum wave set-up for Event A occurred at  $t_2$ , when the mean wave direction reached its maximum northerly value and when the ebb reached its maximum. The wave set-up is controlled by the cross-shore radiation stress component and reaches its maximum when the incident wave direction is normal to the coast (Guza and Feddersen, 2012).

## 5 Discussion

### 5.1 Flooding at Progreso modulated by the tidal phase and the wind set-up inside the lagoon

The role of tidal modulation on the CACS events was studied by means of the numerical model. Since (i) Event A flooded larger areas than Event B, even if it occurred during low tide, and (ii) Event A could have occurred during other periods of the tide, a numerical experiment was carried out to assess the effect of tidal phase on the flooding, wave set-up, and the residual sea level induced by CACS over Progreso (using the four tide scenarios shown in Figure 4).

Figure 12 shows the maps of maximum flood (TSSE) corresponding to the four tide scenarios carried out for Event A (TS3 corresponds to the actual tidal phase that occurred during Event A). It is important to note that the time at which the maximum flood occurred is not the same on the sea side as inside the lagoon, nor is it the same for each simulation, similar to the criteria used with the inundation threat analysis in other studies (Zachry et al., 2015). The worst-case flood scenarios were for TS1 (high tide during the peak of the storm) and TS4 (rising tide near mean sea level during the peak of the storm), and significantly lower with scenarios TS2 and TS3 (see summary in Table 2). This is partly due to the fact that during the storm – between 00:00 and 15:00 of March 13, 1993 (see Figure 4, lower panel), i.e., during the period where the local winds were stronger and able to produce large wind set-up inside the lagoon –, the tide was high for TS1 and rising for TS4, while for TS2 and TS3 the tide was receding and near low, respectively. Therefore, the wind and astronomical tide effects added up for TS1 and TS4. In turn, for TS2 and TS3, the tide was low and the residual sea level and wave set-up were the dominant factors (Figure 13, top panel). Comparing TS1 and

TS4, it shows that the highest TSSE on the sea side occurs with TS4, due to the eastward tidal currents during rising tide that contribute to the storm surge (not shown), while for TS1 the tidal currents were westward during receding tide and did not contribute to the storm surge. However, inside the lagoon, the maximum flood for TS1 occurred during stronger local winds (07:00), which generated a larger wind set-up, while for TS4 it occurred 4 hours later, when the local wind intensity was receding thus producing a smaller wind set-up. Therefore, when the wind direction is parallel to the main lagoon axis, a large wind set-up is generated at the eastern part of the lagoon. As for the results for TS2 compared to TS3, the flood levels occurred at the same time (07:00) but were higher for TS2, particularly inside the lagoon. This is mainly due to the fact that for TS2 the tide was receding and for TS3 the tide was near slack-low, which in turn produced a larger wave set-up inside the lagoon for TS2 (Figure 13, top panel, right axis). This is in agreement with the findings of Dodet et al. (2013), who stated that during the ebb (receding tide), waves break over the ebb shoal, leading to stronger values of wave radiation stress than during the flood (see wave set-up for TS1 in Figure 13), resulting in a larger wave set-up which propagates inside the lagoon.

In summary, the astronomical tidal phase during the passage of the storm is a very important factor for flooding, not only because of the tidal level itself, but also because of the interactions with the other contributors to the TSSE. For instance, Figure 12 shows the city areas (blocks) affected for the different tide scenarios, showing that a storm with the characteristics of Event A would have been much more destructive if it had occurred during high or rising tide, as in TS1 and TS4. The astronomical tide also plays an important role in the total flooding, for instance in 2012 Hurricane Sandy inundated New York city at high tide, raising the water level to 3.5 m above mean sea level in the Battery Park area (southern tip of Manhattan), which exceeded the maximum water level during a hurricane in 1821 when water rose approximately 3.2 m at near low tide. If the 1821 event were to occur at high tide, a higher water level may be expected than the one observed during Hurricane Sandy (Woodruff et al., 2013). The flooded area increases when storm events occur at high tide (Rey et al., 2016; Zachry et al., 2015). The passage of CACS events, besides affecting water exchange with the sea and renewal dynamics (Viero and Defina, 2016) inside the Chelem lagoon, produce significant wind and wave set-up, characterized by nonlinear interactions between meteorological forcings and the astronomical tide.

## 5.2 Residual sea level and wave set-up modulated by the tidal phase

Figure 13 shows the residual sea level (top panel, left axis) and wave set-up (top panel, right axis) for Event A under different tidal phases at the Chelem inlet as well as the wind speed offshore (low panel, left axis) and the significant wave height ( $H_s$ , low panel, right axis) used to force the numerical experiment. The residual sea level was obtained by means of a harmonic analysis using the T\_Tide program (Pawlowicz et al., 2002), from which the residual tide was determined by using the sea surface elevation for each scenario at the Chelem inlet from the hydrodynamic model using Case 1 boundary conditions described in section 3.3. From these numerical experiments, it was found that the residual tide at the Chelem inlet is larger during low (TS3) or receding tide (TS2), while it is smaller during high (TS1) or rising tide (TS4). The variation is nonlinear, consistent with prior studies (Lin et al., 2012; Rego and Li, 2010) which attributed this behavior to nonlinear effects of the bottom friction and momentum advection on the surge due to the presence of the tide. This is also confirmed by Horsburgh and Wilson (2007), who, in a study for the coast of Great Britain, stated that surge peaks never occur during high water.

While the local wind contributes to the wind set-up inside the Chelem lagoon, the offshore wind (e.g., at location B located 161 km from Progreso, see Figure 2) has a good correlation with the residual sea level (Figure 13). For instance, the second peak in the offshore wind speed (location B) is also present as a second peak in all the residual sea level scenarios as well as in  $H_s$ .

Model results from this study (Figure 13) show that the wave set-up contribution inside the Chelem lagoon is tidally modulated as found in other studies for other sites (Smith et al., 2000; Smith and Smith, 2001; Olabarrieta et al., 2011; Dodet et al., 2013). Dodet

et al. (2013) observed similar inlet hydrodynamic behavior from data analysis and numerical modeling of the Albufeira lagoon (in Portugal). They stated that during the ebb tide, currents cancel the intrinsic group velocity at the inlet, and waves are refracted by the ebb-jet current at the entrance of the inlet. Furthermore, this ebb-jet current caused the wave height at the inlet to increase, leading to more energetic wave breaking, and thus a greater wave set-up contribution inside coastal lagoons. Similarly, Gonzalez et al. (1985) observed from a case study at the Columbia River entrance that wave height increases during the ebb and decreases during flood tide. The opposing current retards the advance of a wave and can even block wave energy transport when the upstream component of the wave group velocity is equal to the current velocity, and the flood-induced current enhances the advance of the wave (Olabarrieta et al., 2011) but does not contribute significantly to the wave set-up.

Olabarrieta et al. (2011), who identified the effects of wave-current interaction on the circulation at Willapa Bay (Washington State), showed that the wave set-up inside estuaries increases with offshore energy, and Malhadas et al. (2009) suggested that wave set-up height inside the lagoon depends not only upon offshore significant wave height, but also on tidal inlet morphology (mainly depth and length). These authors demonstrated by means of numerical solutions of simple idealized models that the deeper and shorter is the morphology, the more the wave set-up is reduced. This is in fact the case in the present study. The Chelem inlet is 130 m wide, and the inlet channel is roughly 1.2 km long and 3 m deep (decreasing further along the channel), resulting in significant wave set-up inside the lagoon during strong storm events.

The above shows that the maximum residual tide and the maximum wave set-up did not occur at the same time at the inlet for any of the tidal phase scenarios used, but it does not seem to be determinant in the high flooding levels. Instead, what seems to play a more important role is the duration of these maximum values of residual tide and wave set-up. In fact, the highest values of TSSE at the inlet, and with longer duration, are found with the TS4 tidal phase scenario (Figure 4). This is mainly due to (a) a longer duration of significant residual tide and wave set-up, and (b) a rising astronomical tide, which translates in higher astronomical tidal levels and is associated with easterly tidal currents that contribute to the sea level anomaly.

From this study, it was found that the most important contributions during CACS events, which pass over the Peninsula, are the residual tide, the astronomical tidal phase, and the wind and wave set-up (inside Chelem).

### 5.3 Flood return periods

Regarding the nonlinearity in the processes contributing to flooding and return periods, the extreme sea level analysis showed that the astronomical tide has an important effect on determining the return periods for possible sea levels. In fact, the CACS events can occur at any tidal phase and thus the CACS residual tide is, from the occurrence point of view, independent of any simultaneously occurring tidal phase. However, the interaction between residual and astronomical tides is an interesting subtle point to study: if this interaction is linear, the storm tide (TSSE without waves) probability would be roughly equal for each tidal phase, and would be simply equal to the sum of the residual sea level and the astronomical tide, which means independence between the astronomical tide and the residual sea level. In that case, the use of joint probability methods could be used. These methods provide the chance of source variables taking values at the same time, and creating a scenario where a flooding event may occur. This method is usually used for independent events (Chini and Stansby, 2012). For instance, Zhong et al. (2013) assumed independence between the astronomical tide and residual tide and estimated the storm tide probability of a joint probability method. However, hydrodynamic numerical experiments for Progreso in the present study suggested that the astronomical tide and residual sea level have a nonlinear relationship, and thus applying the joint probability method for this case would not be adequate. A pragmatic and simplistic approach can consist of using a large data set of sea level reanalysis (for instance 30-years in this case), assuming that a sufficiently large number of combinations of storm surges and astronomical tidal levels are present in the data set, and perform an extreme analysis of the sea level as a single variable. However, if quantifying the nonlinear effect is the objective

of a future study for Progreso, there are other options for estimating the storm tide probability given the height of the astronomical tide and phase when the storm surge arrives (assuming that the surge can happen at any time during a tidal cycle with equal likelihood) such as the one proposed by Lin et al. (2012). These authors developed an empirical function based on over 200 extreme tropical cyclone events (with both the storm tide and the storm surge simulated for the full range of tidal phases) for New York City. The implementation of this method for this zone is beyond the scope of this study, where the main objective is to study the hydrodynamic and flooding prone surface areas for Progreso during CACS events. However, this study shows the need to develop an empirical probability function based on the data for this area to estimate the probability of any storm surge for a given astronomical tidal phase as well as the wind direction and intensity with respect to the main lagoon axis.

## 6 Conclusions

This study has developed a 30-year sea-level hindcast using a hydrodynamic model forced by tides, mesoscale currents, as well as wind and pressure fields from hindcast data. Modelling results allowed extreme water levels to be identified and their probability of occurrence to be characterized using the GEV distribution function at Progreso port, Yucatan. Furthermore, the role of wave set-up was also investigated for two selected storm events, which correspond to the largest residual tide (Event A) and to the largest storm tide (Event B) identified during the simulated period. The analysis of the results shows that:

- a) The wave set-up and storm surge are large for events with strong wind intensity and long duration. The wave set-up at the inlet of the Chelem lagoon represented between 14.5% and 19% of the TSSE, depending on the tidal phase (flood or ebb) when the storm peak occurs. This contribution is higher during ebb than during flood tide mainly because in the former the wave radiation stress terms are stronger due to current-induced wave breaking.
- b) The local winds play an important role inside the Chelem lagoon, especially when the wind direction is parallel to the main axis of the basin, producing large wind set-up. In terms of flooding, the most affected areas for both storm events (A and B) were along the eastern shores of the lagoon, due to significant wind and wave set-up, in particular for Event A. In this sense, the increasing water level inside Chelem lagoon during CACS events is not only due to the exchange of water through the inlet, but also because of wind and wave set-up over the lagoon, as well as nonlinear interactions between these forcing agents and the astronomical tide.

Besides, the role of the tidal phase on the residual sea level, the wave set-up and the total flooded area in Progreso were investigated based on numerical experiments varying the tidal phase for Event A. The results suggest that:

- c) The wave set-up and residual sea level are tidally modulated where the maximum wave set-up inside the Chelem lagoon occurs during receding tide (ebb) when the ocean water level is near the mean sea level and the incident wave direction is almost perpendicular to the coast. The residual sea level is larger during low or receding tide, and smaller during high or rising tide. However, as expected, maximum flooding occurs when the CACS peak coincides both with rising tide (sea level near zero) and high tide (TS4 and TS1 scenarios). Nevertheless, the maximum values for the residual sea level and the wave set-up did not occur at the same time in any of the numerical experiments. The tidal phase difference with respect to the storm arrival determined the flood duration and the maximum water depth reached for each scenario.
- d) If the largest CACS residual sea level (Event A) had occurred during high spring tide, the percentage of blocks flooded in the city would have increased from 25% to 60%. The latter implies the need to accurately estimate the probabilities of residual and tidal levels, in conjunction with local winds and wave set-up for a reliable estimation of coastal flood hazard

caused by CACS events. This requires the definition of empirical probability functions specific for the area based on the astronomical tidal amplitude and phase, storm surge, and set-up due to both wind and waves.

**Acknowledgments.** W.R. was supported with a doctoral scholarship (CVU 308087) from the Mexican National Council for Science and Technology (CONACYT), and from the Council of the National Research Training (COLCIENCIAS). This research was supported by the UNAM-DGAPA project IN111916, CONACYT National Coastal Resilience Laboratory project 271544, CONACYT project INFR-2014-01-225561, as well as project 5341 from the Engineering Institute at UNAM. W. R. thanks DHI Water & Environment for facilitating a student license of MIKE 21 hydrodynamic and wave spectral models, Gonzalo U. Martín-Ruiz for his help with computer resources, Dr. Cecilia Enriquez-Ortiz for providing the bathymetric data of the Chelem lagoon, as well as Pablo Ruiz-Salcines from UNAM and Jaime Hernandez-Lasheras from Cantabria University for their help and suggestions regarding this study. Gemma Franklin is acknowledged for reviewing this paper.

## References

- Abascal, J., Sheinbaum, J., Candela, J., Ochoa, J. and Badan, A.: Analysis of flow variability in the Yucatan Channel, *J. Geophys. Res.*, 108(C12), 1–18, doi:10.1029/2003JC001922, 2003.
- Andersen, O. B.: Global ocean tides from ERS 1 and TOPEX/POSEIDON altimetry, *J. Geophys. Res.*, 100(95), 25249–25259, 1995.
- Appendini, C. M.: Extreme waves and climate change in the gulf of Mexico, Ph.D. thesis, Instituto de Ingeniería, Universidad Nacional Autónoma de México, p. 94., 2017.
- Appendini, C. M., Salles, P., Tonatiuh Mendoza, E., López, J. and Torres-Freyermuth, A.: Longshore Sediment Transport on the Northern Coast of the Yucatan Peninsula, *J. Coast. Res.*, 28(6), 1404–1417, doi:10.2112/JCOASTRES-D-11-00162.1, 2012.
- Appendini, C. M., Torres-Freyermuth, A., Oropeza, F., Salles, P., López, J. and Mendoza, E. T.: Wave modeling performance in the Gulf of Mexico and Western Caribbean: Wind reanalyses assessment, *Appl. Ocean Res.*, 39, 20–30, doi:10.1016/j.apor.2012.09.004, 2013.
- Appendini, C. M., Pedrozo-Acuña, A. and Valle-Levinson, A.: Storm surge at a western Gulf of Mexico site: variations on Tropical Storm Arlene, *Int. J. River Basin Manag.*, 0(May 2013), 1–8, doi:10.1080/15715124.2014.880709, 2014.
- Appendini, C. M., Urbano-Latorre, C. P., Figueroa, B., Dagua-Paz, C. J., Torres-Freyermuth, A. and Salles, P.: Wave energy potential assessment in the Caribbean Low Level Jet using wave hindcast information, *Appl. Energy*, 137(January), 375–384, doi:10.1016/j.apenergy.2014.10.038, 2015.
- Appendini, C. M., Pedrozo-Acuña, A., Meza-Padilla, R., Torres-Freyermuth, A., Cerezo-Mota, R., López-González, J. and Ruiz-Salcines, P.: On the Role of Climate Change on Wind Waves Generated by Tropical Cyclones in the Gulf of Mexico, *Coast. Eng. J.*, 59(2), 1740001-1-1740001–32, doi:10.1142/S0578563417400010, 2017.
- Appendini, C. M., Hernández-Lasheras, J., Meza-Padilla, R. and Kurczyn, J. A.: Effect of climate change on wind waves generated by anticyclonic cold front intrusions in the Gulf of Mexico, *Clim. Dyn.*, 0(0), 1–17, doi:10.1007/s00382-018-4108-4, 2018.
- Arcement, G. J. and Schneider, V. R.: Guide for Selecting Manning’s Roughness Coefficients for Natural Channels and Flood Plains, U.S. Geological Survey Water-Supply Paper 2339. Washington, p.38., 1989.
- Athié, G., Candela, J., Sheinbaum, J., Badan, A. and Ochoa, J.: Yucatan Current variability through the Cozumel and Yucatan channels, *Ciencias Mar.*, 37(4A), 471–492, doi:10.7773/cm.v37i4A.1794, 2011.
- Blain, C. A., Westerink, J. J. and Luettich, R. A.: The influence of domain size on the response characteristics of a hurricane storm surge model, *J. Geophys. Res.*, 99, 18467–18479, 1994.

- Bosart, L. F., Hakim, G. J., Tyle, K. R., Bedrick, M. a., Bracken, W. E., Dickinson, M. J. and Schultz, D. M.: Large-Scale Antecedent Conditions Associated with the 12–14 March 1993 Cyclone (“Superstorm “93”) over Eastern North America,” *Mon. Weather Rev.*, 124, 1865–1891, doi:10.1175/1520-0493(1996)124<1865:LSACAW>2.0.CO;2, 1996.
- Bryant, K. and Akbar, M.: An Exploration of Wind Stress Calculation Techniques in Hurricane Storm Surge Modeling, *J. Mar. Sci. Eng.*, 4(3), 58, doi:10.3390/jmse4030058, 2016.
- Carniello, L., Defina, A., Fagherazzi, S. and D’Alpaos, L.: A combined wind wave-tidal model for the Venice lagoon, Italy, *J. Geophys. Res. Earth Surf.*, 110(4), 1–15, doi:10.1029/2004JF000232, 2005.
- Chini, N. and Stansby, P. K.: Extreme values of coastal wave overtopping accounting for climate change and sea level rise, *Coast. Eng.*, 65, 27–37, doi:10.1016/j.coastaleng.2012.02.009, 2012.
- Cinvestav: Programa de ordenamiento ecológico del territorio costero del Estado de Yucatan, Merida, Yuc.Mex, pp.41., 2007.
- Cob-Chay, J., Tzec-Valle, G. and Can-Tec, M.: Susto por el norte “huracanado”: Inundaciones y daños de Celestún a Dzilam de Bravo, D. Yucatán, 1 [online] Available from: <http://yucatan.com.mx/yucatan/susto-por-el-norte-huracanado> (Accessed 13 January 2017), 2013.
- Cuevas-Jiménez, A. and Euán-Ávila, J.: Morphodynamics of carbonate beaches in the Yucatán Peninsula, *Ciencias Mar.*, 35, 307–319, 2009.
- DHI: Mike 21 Flow model FM: Hydrodynamic module, user guide, DHI Water & Environment. Hoersholm, Denmark, p.134., 2014a.
- DHI: MIKE 21 SW: Spectral Waves FM Module, user Guide, DHI Water & Environment. Hoersholm, Denmark, p.122., 2014b.
- DHI: MIKE 21 Toolbox: Global Tide Model-Tidal prediction, DHI Water & Environment. Hoersholm, Denmark, p.20., 2014c.
- Dodet, G., Bertin, X., Bruneau, N., Fortunato, A. B., Nahon, A. and Roland, A.: Wave-current interactions in a wave-dominated tidal inlet, *J. Geophys. Res. Ocean.*, 118(3), 1587–1605, doi:10.1002/jgrc.20146, 2013.
- Dorrestein, R.: Wave set-up on a beach, in Proc. 2nd Tech. Conf. on Hurricanes, Miami Beach, FL., Nat. Hurricane Res. Proj. Rep. 50, pp. 230–241, US Dept. of Commerce., 1961.
- Enriquez, C., Mariño-Tapia, I. J. and Herrera-Silveira, J. A.: Dispersion in the Yucatan coastal zone: Implications for red tide events, *Cont. Shelf Res.*, 30(2), 127–137, doi:10.1016/j.csr.2009.10.005, 2010.
- Figuroa-Espinoza, B., Salles, P. and Zavala-Hidalgo, J.: On the wind power potential in the northwest of the Yucatan Peninsula in Mexico, *Atmósfera*, 27(1), 77–89, doi:10.1016/S0187-6236(14)71102-6, 2014.
- Flather, R. A.: Storm Surges, in *Encyclopedia of Ocean Sciences*, edited by J. H. Steele, S. A. Thorpe, and K. K. Turekian, pp. 2882–2892, Academic, San Diego, California., 2001.
- Garratt, J. R.: Review of Drag Coefficients over Oceans and Continents, *Mon. Weather Rev.*, 105(7), 915–929, doi:10.1175/1520-0493(1977)105<0915:RODCOO>2.0.CO;2, 1977.
- Gonzalez, F. I., Cokelet, E. D., Gower, J. F. R. and Mulhern, M. R.: SLAR and in-situ observations of wave-current interaction on the Columbia River Bar, in *The Ocean Surface*, edited by Y. Toba and H. Mitsuyasu, pp. 303–310, D. Reidel, New York., 1985.
- Guza, R. T. and Feddersen, F.: Effect of wave frequency and directional spread on shoreline runup, *Geophys. Res. Lett.*, 39(11), 1–5, doi:10.1029/2012GL051959, 2012.
- Ho, F. P., Tracey, R. J., Myers, V. A. and Foat, N. S.: Storm tide frequency analysis for the open coast of Virginia, Maryland, and Delaware, NOAA Technical Memorandum NWS HYDRO-32, Department of commerce, Silver Spring, MD., 1976.
- Holthuijsen, L. H., Booij, N. and Herbers, T. H. C.: A prediction model for stationary, short-crested waves in shallow water with ambient currents, *Coast. Eng.*, 13(1), 23–54, doi:10.1016/0378-3839(89)90031-8, 1989.
- Horsburgh, K. J. and Wilson, C.: Tide-surge interaction and its role in the distribution of surge residuals in the North Sea, *J.*

- Geophys. Res. Ocean., 112(8), 1–13, doi:10.1029/2006JC004033, 2007.
- INEGI: Estudio hidrológico del estado de Yucatán, Instituto Nacional de Estadística, Geografía e Informática. Aguascalientes, Mexico, p. 92., 2002.
- Jelesnianski, C., Chen, J. and Shaffer, W.: SLOSH: Sea, lake, and overland surges from hurricanes, NOAA Tech. Rep. NWS 48, United States Dep. Commer. NOAA/AOML Library, Miami, Florida, 71, 1992.
- Jenkinson, A. F.: Estimation of Maximum Floods. Report of a working group of the Commission for Hydrometeorology, World Meteorological Office Technical Note 98, pp.208., 1969.
- Jørgensen, H., Nielsen, M., Barthelmie, R. J. and Mortensen, N. G.: Modelling offshore wind resources and wind conditions, Roskilde, Denmark: Risø National Laboratory., 2005.
- Kerr, P. C., Donahue, A. S., Westerink, J. J., Luettich, R. A., Zheng, L. Y., Weisberg, R. H., Huang, Y., Wang, H. V., Teng, Y., Forrest, D. R., Roland, A., Haase, A. T., Kramer, A. W., Taylor, A. A., Rhome, J. R., Feyen, J. C., Signell, R. P., Hanson, J. L., Hope, M. E., Estes, R. M., Dominguez, R. A., Dunbar, R. P., Semeraro, L. N., Westerink, H. J., Kennedy, A. B., Smith, J. M., Powell, M. D., Cardone, V. J. and Cox, A. T.: U.S. IOOS coastal and ocean modeling testbed: Inter-model evaluation of tides, waves, and hurricane surge in the Gulf of Mexico, *J. Geophys. Res. Ocean.*, 118(10), 5129–5172, doi:10.1002/jgrc.20376, 2013.
- Komen, G. J., Cavaleri, L., Donelan, M., Hasselmann, K., Hasselmann, S. and Janssen, P. A. E. M.: Dynamics and Modelling of Ocean Waves, Cambridge University Press UK, pp.560., 1994.
- Lankford, R. R.: Coastal lagoons of Mexico: their origin and classification, in *Estuarine Processes*, edited by M. Wiley, pp. 182–215, Academic Press, New York, N.Y., 1976.
- Lin, N. and Chavas, D.: On hurricane parametric wind and applications in storm surge modeling, *J. Geophys. Res. Atmos.*, 117(9), 1–19, doi:10.1029/2011JD017126, 2012.
- Lin, N., Emanuel, K. a., Smith, J. a. and Vanmarcke, E.: Risk assessment of hurricane storm surge for New York City, *J. Geophys. Res.*, 115(D18), 1–11, doi:10.1029/2009JD013630, 2010.
- Lin, N., Emanuel, K., Oppenheimer, M. and Vanmarcke, E.: Physically based assessment of hurricane surge threat under climate change, *Nat. Clim. Chang.*, 2(6), 462–467, doi:10.1038/NCLIMATE1389, 2012.
- Longuet-Higgins, M. S. and Stewart, R. .: A note on wave set-up, *J. Mar. Res.*, 21, 4–10, 1963.
- López-Méndez, J. V.: Análisis del evento meteorológico del 2007 relacionado con la inundación de Tabasco, M.S. thesis, Centro de Ciencias de la Atmosfera. UNAM University, p.117., 2009.
- Malhadas, M. S., Leitão, P. C., Silva, A. and Neves, R.: Effect of coastal waves on sea level in Óbidos Lagoon, Portugal, *Cont. Shelf Res.*, 29(9), 1240–1250, doi:10.1016/j.csr.2009.02.007, 2009.
- Massey, W. G., Gangai, J. W., Drei-Horgan, E. and Slover, K. J.: History of Coastal Inundation Models, *Mar. Technol. Soc. J.*, 41(1), 7–17, doi:10.4031/002533207787442303, 2007.
- Medina-Gómez, I. and Herrera-Silveira, J. A.: Seasonal Responses of Phytoplankton Productivity to Water-Quality Variations in a Coastal Karst Ecosystem of the Yucatan Peninsula, *Gulf Mex. Sci.*, 27(1), 39–51, 2009.
- Mel, R., Viero, D. Pietro, Carniello, L., Defina, A. and D’Alpaos, L.: Simplified methods for real-time prediction of storm surge uncertainty: The city of Venice case study, *Adv. Water Resour.*, 71, 177–185, doi:10.1016/j.advwatres.2014.06.014, 2014.
- Mendoza, E. ., Trejo-Rangel, M. A., Salles, P., Appendini, C. M., Lopez- Gonzalez, J. and Torres-Freyermuth, A.: Storm characterization and coastal hazards in the Yucatan Peninsula, in *Proc. 12 th International Coastal Symposium*, edited by D. C. Conley, G. Masselink, P. E. Russell, and T. . O’Hare, pp. 790–795, Plymouth, England., 2013.
- Merz, B., Thielen, A. H. and Gocht, M.: Flood Risk Mapping At the Local Scale : Concepts and Challenges, in *Advances in natural and technological hazards research*, edited by S. Begum, M. J. F. Stive, and J. . Hall, pp. 231–251, Springer, Dordrecht,



- Netherlands., 2007.
- Mesinger, F., DiMego, G., Kalnay, E., Mitchell, K., Shafran, P. C., Ebisuzaki, W., Jović, D., Woollen, J., Rogers, E., Berbery, E. H., Ek, M. B., Fan, Y., Grumbine, R., Higgins, W., Li, H., Lin, Y., Manikin, G., Parrish, D. and Shi, W.: North American regional reanalysis, *Bull. Am. Meteorol. Soc.*, 87(3), 343–360, doi:10.1175/BAMS-87-3-343, 2006.
- 5 Meza-Padilla, R., Appendini, C. M. and Pedrozo-Acuña, A.: Hurricane-induced waves and storm surge modeling for the Mexican coast, *Ocean Dyn.*, 65(8), 1199–1211, doi:10.1007/s10236-015-0861-7, 2015.
- Morey, S. L., Baig, S., Bourassa, M. A., Dukhovskoy, D. S. and O’Brien, J. J.: Remote forcing contribution to storm-induced sea level rise during Hurricane Dennis, *Geophys. Res. Lett.*, 33(19), 1–5, doi:10.1029/2006GL027021, 2006.
- 10 Olabarrieta, M., Warner, J. C. and Kumar, N.: Wave-current interaction in Willapa Bay, *J. Geophys. Res. Ocean.*, 116(12), 1–27, doi:10.1029/2011JC007387, 2011.
- Pawlowicz, R., Beardsley, B. and Lentz, S.: Classical tidal harmonic analysis including error estimates in MATLAB using T\_TIDE, *Comput. Geosci.*, 28(8), 8, doi:10.1016/S0098-3004(02)00013-4, 2002.
- Posada-Vanegas, G., Durán-Valdez, G., Silva-Casarin, R., Maya-Magaña, M. E. and Salinas-Prieto, J. A.: Vulnerability to coastal flooding induced by tropical cyclones, in *Coastal Engineering Proc.*, vol. 1, edited by J. M. Smith and P. Lynett, p. 14, Shanghai, 15 China., 2011.
- Powell, M. D., Vickery, P. J. and Reinhold, T. A.: Reduced drag coefficient for high wind speeds in tropical cyclones, *Nature*, 422(March), 279–283, doi:10.1038/nature01481, 2003.
- Reding, P. J.: The Central American cold surge: An observational analysis of the deep southward penetration of North American cold fronts, M.S. thesis, Department of Meteorology, Texas A&M University, p. 177., 1992.
- 20 Rego, J. L. and Li, C.: Nonlinear terms in storm surge predictions: Effect of tide and shelf geometry with case study from Hurricane Rita, *J. Geophys. Res. Ocean.*, 115(6), 1–19, doi:10.1029/2009JC005285, 2010.
- Rey, W., Salles, P., Mendoza, E. T., Trejo-Rangel, M. A., Zhang, K., Rhome, J. and Fritz, C.: Hurricane Storm Surge Risk Assessment for the Yucatan State Coastal Area, in *Proc. 32st Conference on Hurricanes and Tropical Meteorology*, p. 1, American Meteorology Organization, San Juan, Puerto Rico., 2016.
- 25 Rosengaus-Moshinsky, M., Jiménez-Espinosa, M. and Vázquez-Conde, M. T.: Atlas climatológico de ciclones tropicales en México, México: Centro Nacional de Prevención de Desastres. Instituto Mexicano de Tecnología del Agua. Ciudad de México, pp.108., 2002.
- Ruiz-Salcines, P.: Campos de viento para hindcast de oleaje: reanálisis, paramétricos y fusión, M.S. thesis, Departamento de Ciencias y Técnica del agua y del medio ambiente, Cantabria University, p.84., 2013.
- 30 Saha, S., Moorthi, S., Pan, H. L., Wu, X., Wang, J., Nadiga, S., Tripp, P., Kistler, R., Woollen, J., Behringer, D., Liu, H., Stokes, D., Grumbine, R., Gayno, G., Wang, J., Hou, Y. T., Chuang, H. Y., Juang, H. M. H., Sela, J., Iredell, M., Treadon, R., Kleist, D., Van Delst, P., Keyser, D., Derber, J., Ek, M., Meng, J., Wei, H., Yang, R., Lord, S., Van Den Dool, H., Kumar, A., Wang, W., Long, C., Chelliah, M., Xue, Y., Huang, B., Schemm, J. K., Ebisuzaki, W., Lin, R., Xie, P., Chen, M., Zhou, S., Higgins, W., Zou, C. Z., Liu, Q., Chen, Y., Han, Y., Cucurull, L., Reynolds, R. W., Rutledge, G. and Goldberg, M.: The NCEP climate forecast system reanalysis, *Bull. Am. Meteorol. Soc.*, 91(8), 1015–1057, doi:10.1175/2010BAMS3001.1, 2010.
- 35 Saha, S., Moorthi, S., Wu, X., Wang, J., Nadiga, S., Tripp, P., Behringer, D., Hou, Y. T., Chuang, H. Y., Iredell, M., Ek, M., Meng, J., Yang, R., Mendez, M. P., Van Den Dool, H., Zhang, Q., Wang, W., Chen, M. and Becker, E.: The NCEP climate forecast system version 2, *J. Clim.*, 27(6), 2185–2208, doi:10.1175/JCLI-D-12-00823.1, 2014.
- 40 Salles, P., Souza, A. J., Torres-freyermuth, A., López, J., Appendini, C. M. and Meza-padilla, R.: Hydrodynamics over sand dunes in the northern Yucatan Peninsula coast, in *Proc. 7th Coastal Dynamics Conference*, pp. 1407–1416, Arcachon, France., 2013.

- Schmitter-Soto, J. J., Comín, F. A., Escobar-Briones, E., Herrera-Silveira, J., Alcocer, J., Suárez-Morales, E., Elías-Gutiérrez, M., Díaz-Arce, V., Marín, L. E. and Steinich, B.: Hydrogeochemical and biological characteristics of cenotes in the Yucatan Peninsula (SE Mexico), *Hydrobiologia*, 467, 215–228, doi:10.1023/A:1014923217206, 2002.
- Schultz, D., Bracken, W. and Bosart, L.: Planetary and synoptic scale signatures associated with Central American cold surges., *Mon. Weather Rev.*, 126(1997), 5–27, 1998.
- Schultz, D. M., Bracken, W. E., Bosart, L. F., Hakim, G. J., Bedrick, M. a., Dickinson, M. J. and Tyle, K. R.: The 1993 Superstorm Cold Surge: Frontal Structure, Gap Flow, and Tropical Impact, *Mon. Weather Rev.*, 125(1), 5–39, doi:10.1175/1520-0493(1997)125<0005:TSCSFS>2.0.CO;2, 1997.
- Sharp, E., Dodds, P., Barrett, M. and Spataru, C.: Evaluating the accuracy of CFSR reanalysis hourly wind speed forecasts for the UK, using in situ measurements and geographical information, *Renew. Energy*, 77, 527–538, doi:10.1016/j.renene.2014.12.025, 2015.
- Sleigh, P. A., Gaskell, P. H., Berzins, M. and Wright, N. G.: An Unstructured Finite Volume Algorithm for Predicting Flow in Rivers and Estuaries, *Comput. Fluids*, 27(4), 479–508, doi:10.1016/S0045-7930(97)00071-6, 1998.
- Smith, J. M., Bermudez, H. E. and Ebersole, B. A.: Modeling Waves at Willapa Bay, Washington, in *Proc. 27 th International Conference on Coastal Engineering*, pp. 826–839, Eng., Am. Soc. Civ., Reston, Va., 2000.
- Smith, S. J. and Smith, J. .: Numerical Modeling of Waves at Ponce de Leon Inlet, Florida, *J. Waterw. Port Coast. Ocean Eng.*, 127(3), 176–184, doi:10.1061/(ASCE)0733-950X(2001)127:3(176), 2001.
- Sørensen, O. R., Kofoed-Hansen, H., Rugbjerg, M. and Sørensen, L. S.: A third-generation spectral wave model using an unstructured finite volume technique, in *Proc. 29th Intern. Conf. on Coastal Eng.*, pp. 894–906., 2004.
- Strauss, D., Mirferendesk, H. and Tomlinson, R.: Comparison of two wave models for Gold Coast, Australia, *J. Coast. Res.*, 2007(50), 312–316, 2007.
- Stringfield, V. T. and LeGrand, H. E.: Karst Hydrology of Northern Yucatan Peninsula, Mexico, in *Proc. Field Seminar on Water and Carbonate Rocks of the Yucatan Peninsula, Mexico*, edited by A. E. Weidie, pp. 192–210, New Orleans Geological Society, New Orleans., 1974.
- Swail, V. R. and Cox, A. T.: On the use of NCEP-NCAR reanalysis surface marine wind fields for a long-term North Atlantic wave hindcast, *J. Atmos. Ocean. Technol.*, 17(4), 532–545, doi:10.1175/1520-0426(2000)017<0532:OTUONN>2.0.CO;2, 2000.
- Torres-Freyermuth, A., Puleo, J. A., DiCosmo, N., Allende-Arandia, M. A., Chardón-Maldonado, P., Lopez J, Figueroa-Espinoza, B., Ruiz de Alegria-Arzaburu, A., Figlus, J., Roberts Brigss, T. M., De la Roza, J. and Candela, J.: Nearshore hydrodynamics on a sea breeze dominated beach during intense wind events, *Cont. Shelf Res.*, (August), doi:10.1016/j.csr.2017.10.008, 2017.
- Viero, D. Pietro and Defina, A.: Water age, exposure time, and local flushing time in semi-enclosed, tidal basins with negligible freshwater inflow, *J. Mar. Syst.*, 156(December), 16–29, doi:10.1016/j.jmarsys.2015.11.006, 2016.
- Vousdoukas, M. I., Voukouvalas, E., Mentaschi, L., Dottori, F., Giardino, A., Bouziotas, D., Bianchi, A., Salamon, P. and Feyen, L.: Developments in large-scale coastal flood hazard mapping, *Nat. Hazards Earth Syst. Sci.*, 16(8), 1841–1853, doi:10.5194/nhess-16-1841-2016, 2016.
- Weidie, A. E.: Geology of Yucatan Platform, in *Geology and hydrogeology of the Yucatan and Quaternary geology of northeastern Yucatan peninsula*, edited by W. C. Ward, A. E. Weidie, and W. Back, p. 160, New Orleans Geological Society, New Orleans, Louisiana., 1985.
- Woodruff, J. D., Irish, J. L. and Camargo, S. J.: Coastal flooding by tropical cyclones and sea-level rise, *Nature*, 504(7478), 44–52, doi:10.1038/nature12855, 2013.
- Young, I. R.: Wind Generated Ocean Waves, in *Ocean Engineering Book Series*, edited by R. Bhattacharyya and M. E.

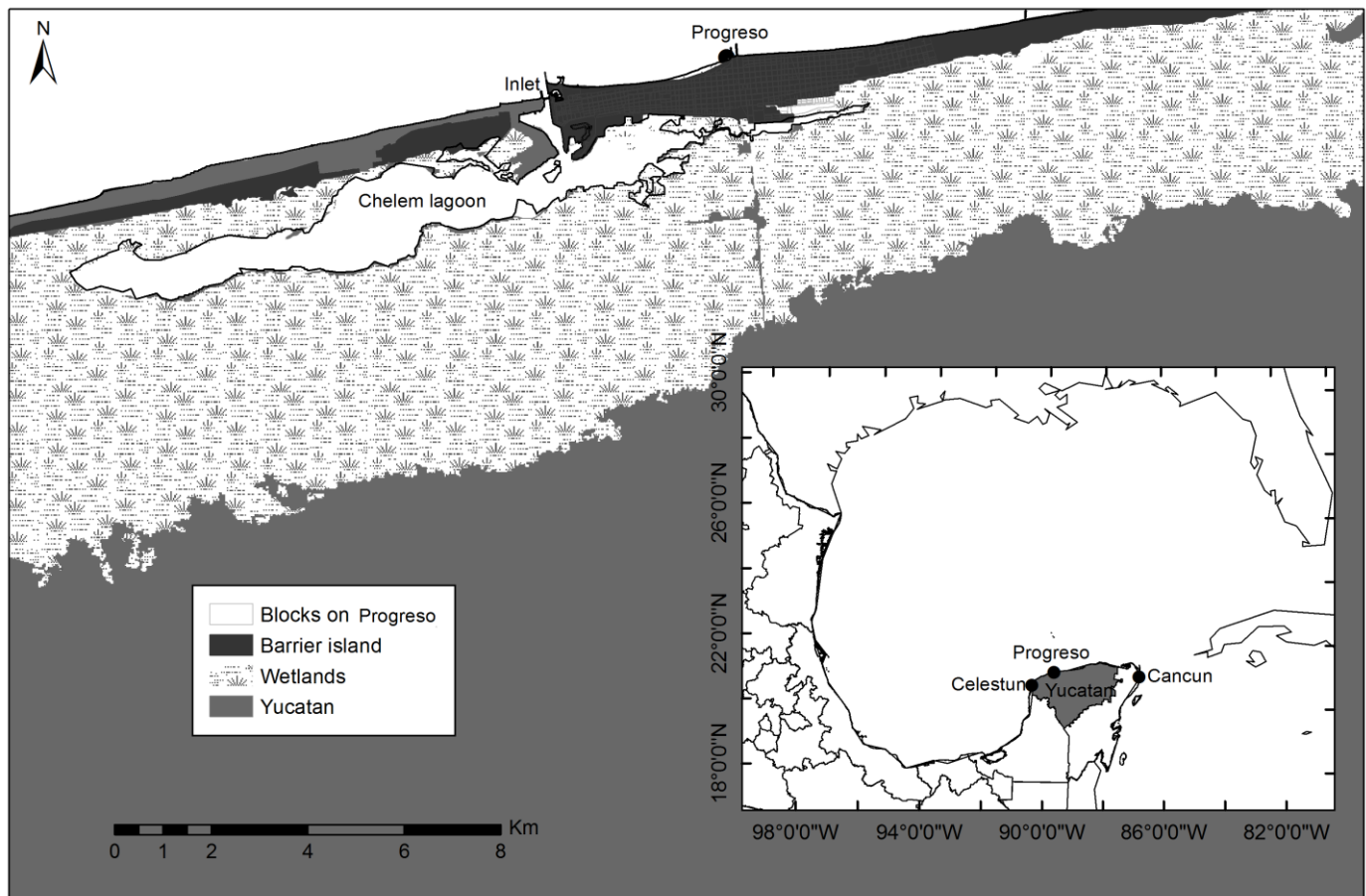
McCormick, Elsevier, Amsterdam., 1999.

Zachry, B. C., Booth, W. J., Rhome, J. R. and Sharon, T. M.: A National View of Storm Surge Risk and Inundation, *Weather. Clim. Soc.*, 7(2), 109–117, doi:10.1175/WCAS-D-14-00049.1, 2015.

5 Zavala-Hidalgo, J., Morey, S. L. and O'Brien, J. J.: Seasonal circulation on the western shelf of the Gulf of Mexico using a high-resolution numerical model, *J. Geophys. Res.*, 108(C12), 1–19, doi:10.1029/2003JC001879, 2003.

Zhao, D. H., Shen, H. W., Q, T. G., Lai, J. S. and Tan, W. Y.: Finite-Volume Two-Dimensional Unsteady-Flow Model for River Basins, *J. Hydraul. Eng.*, 120(7), 863–883, doi:10.1061/(ASCE)0733-9429(1994)120:12(1497), 1994.

10 Zhong, H., van Overloop, P.-J. and van Gelder, P. H. a. J. M.: A joint probability approach using a 1-D hydrodynamic model for estimating high water level frequencies in the Lower Rhine Delta, *Nat. Hazards Earth Syst. Sci.*, 13(7), 1841–1852, doi:10.5194/nhess-13-1841-2013, 2013.



**Figure 1. Location map indicating the study zone and the town of Progreso.**

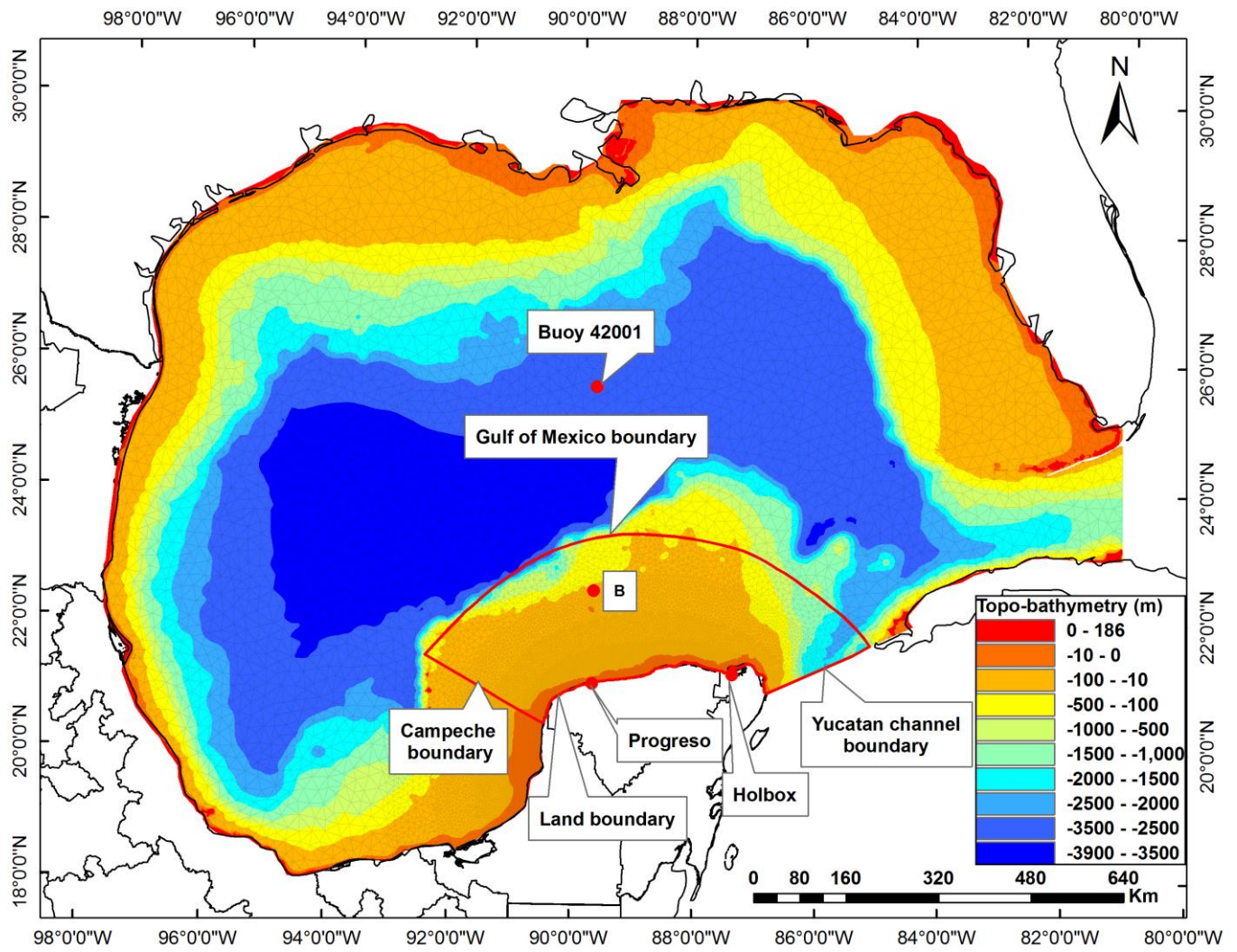


Figure 2. Computational domains and topo-bathymetry for the hydrodynamic and coupled models (polygon in red) as well as for the spectral wave model (entire Gulf of Mexico).

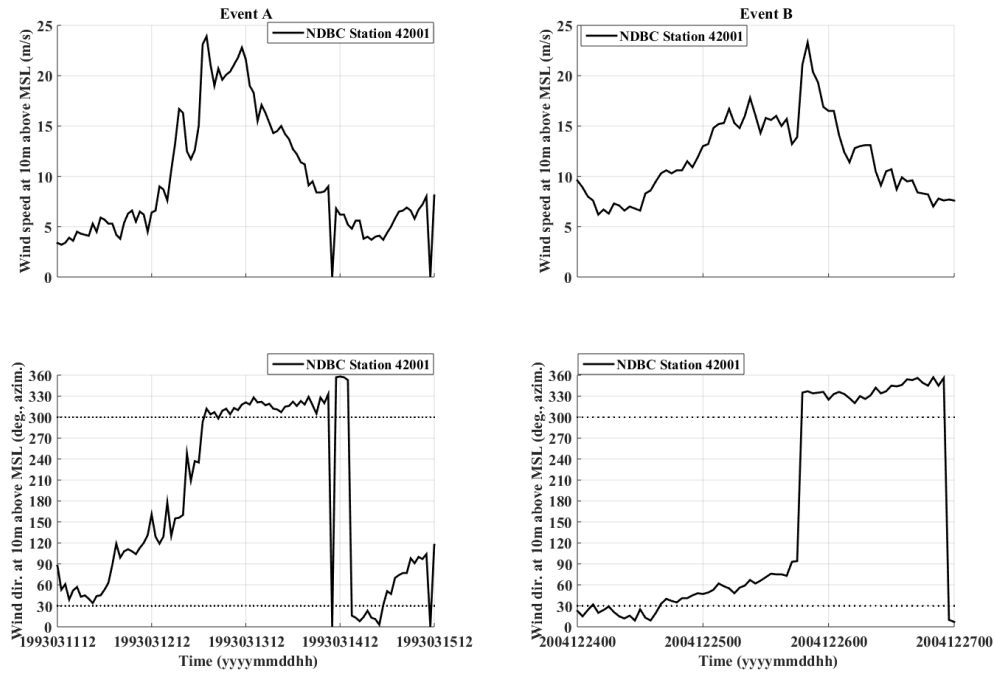
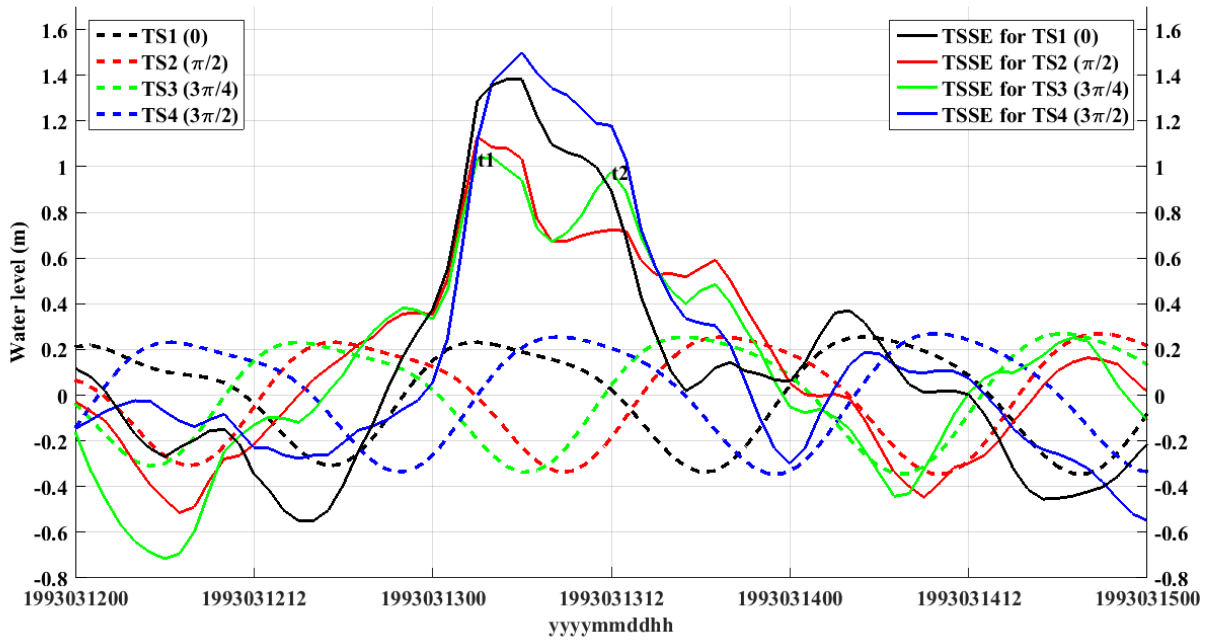


Figure 3 NDBC station 42001 data: Wind speed (10 m above sea level) and direction for events A (left column) and B (right column).



5 Figure 4. Tide forcing for the four scenarios at Progreso, for Event A (dashed lines); time series of TSSE at Progreso (continuous lines) associated with each scenario. For each Tide Scenario (TS) see Table 1.

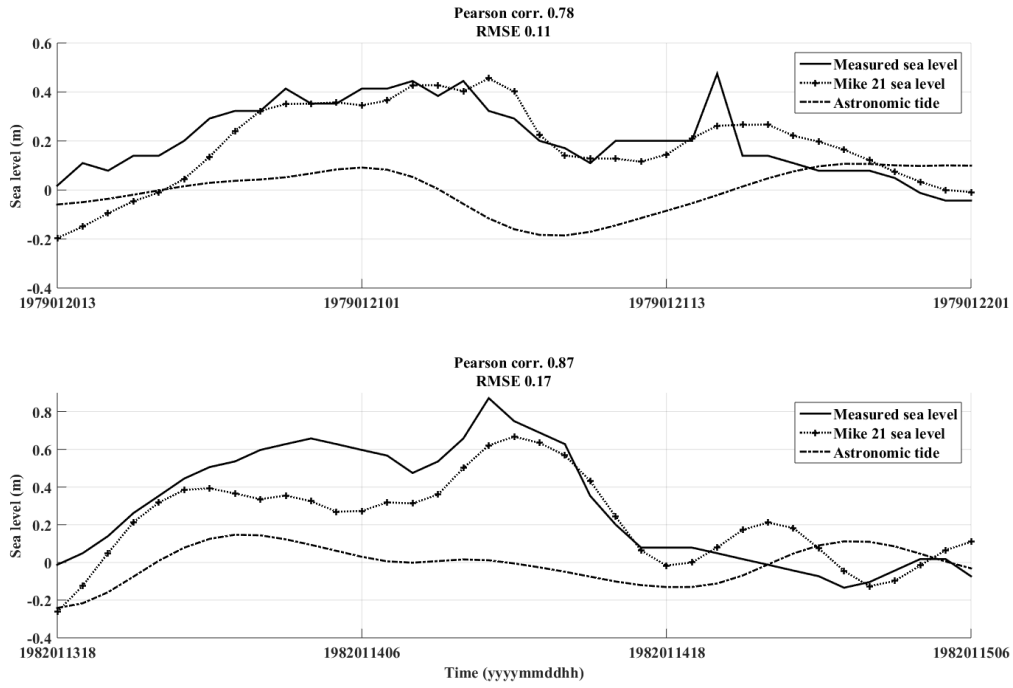
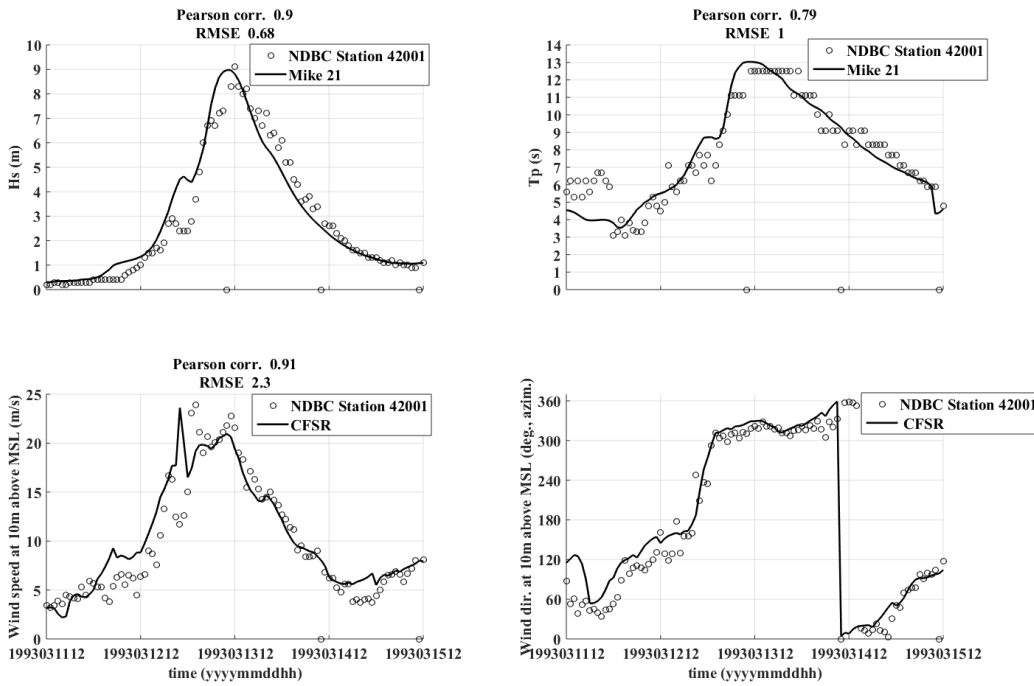
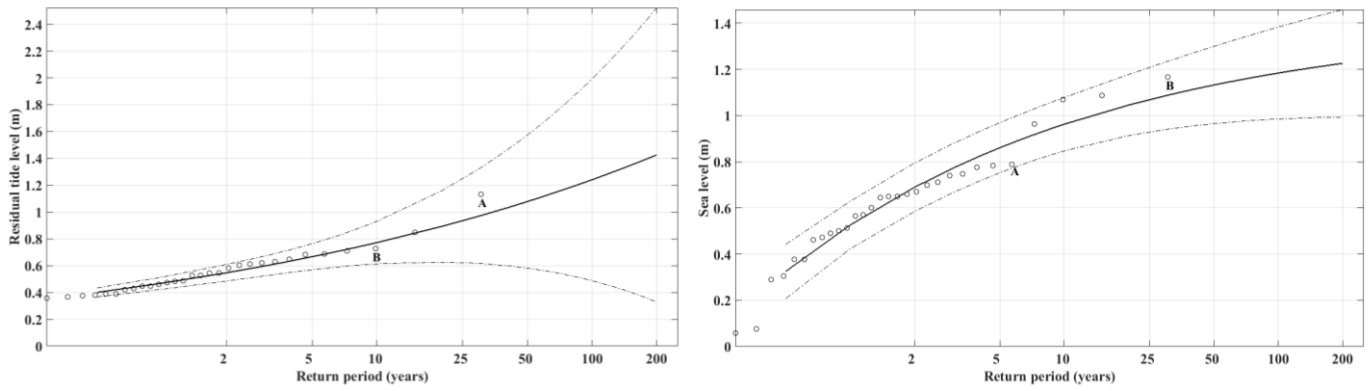


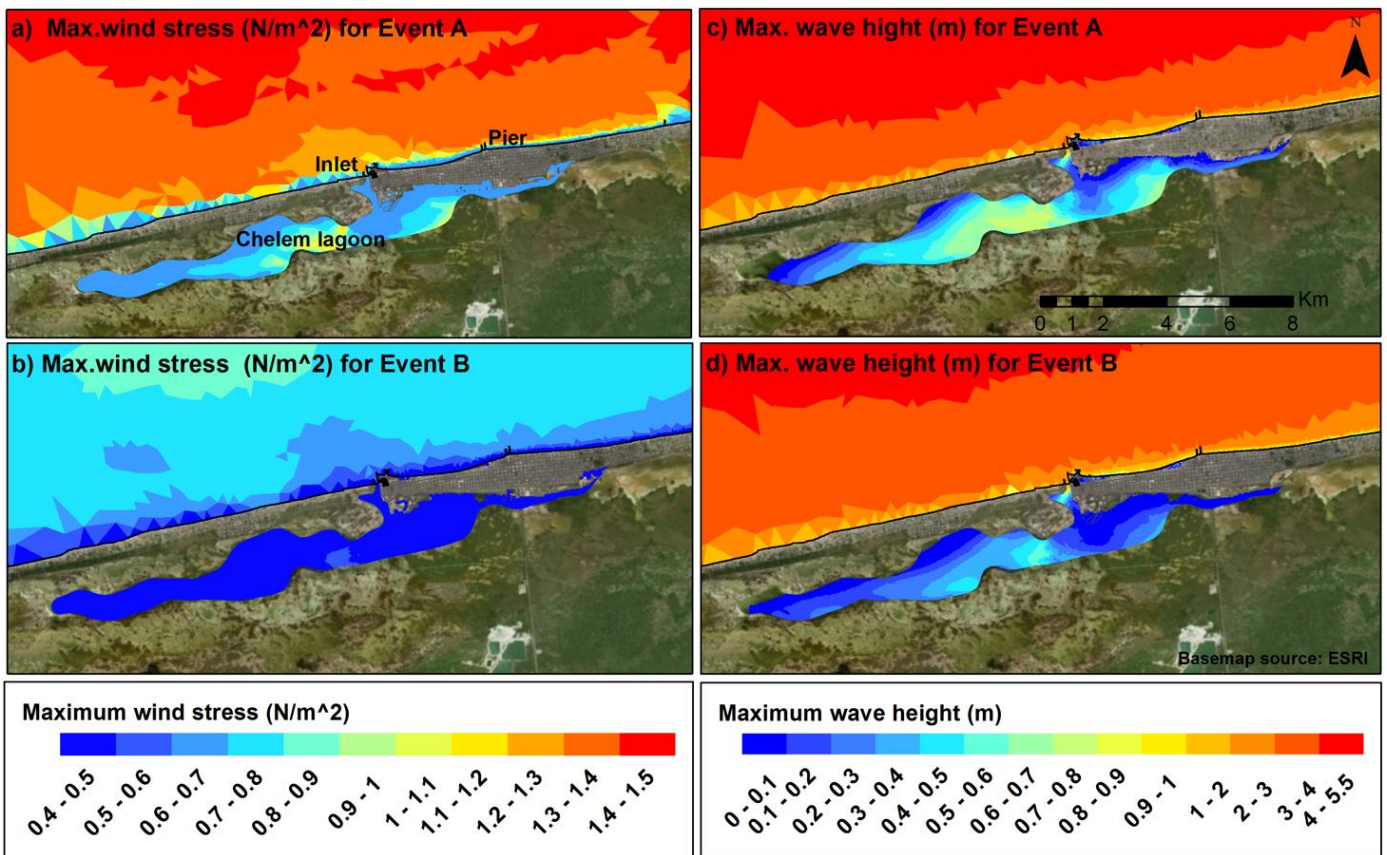
Figure 5. Hydrodynamic model validation with tide gauge data from Progreso port in Yucatan. Top panel: validation for a CACS event in 1979. Bottom panel: validation for a CACS event in 1982.



5 Figure 6. Wave model and CFSR wind validation for Event A. (Top left panel) significant wave height. (Top right panel) wave peak period. (Bottom left panel) wind speed 10 m. (Bottom right panel) wind direction.



5 **Figure 7.** Yearly maximum residual tide heights adjusted to the GEV distribution probability function for Progreso (2 km offshore). The solid curve is the fitted curve. The dots correspond to the 30 events with (a) the yearly maximum residual tide (Left panel), and (b) the yearly maximum sea level elevation (Right panel). The dashed curves are the 95% confidence limits.



**Figure 8.** Highest wind stress values during Event A (panel a) and Event B (panel b), and highest wave height values for Event A (c) and Event B (d).

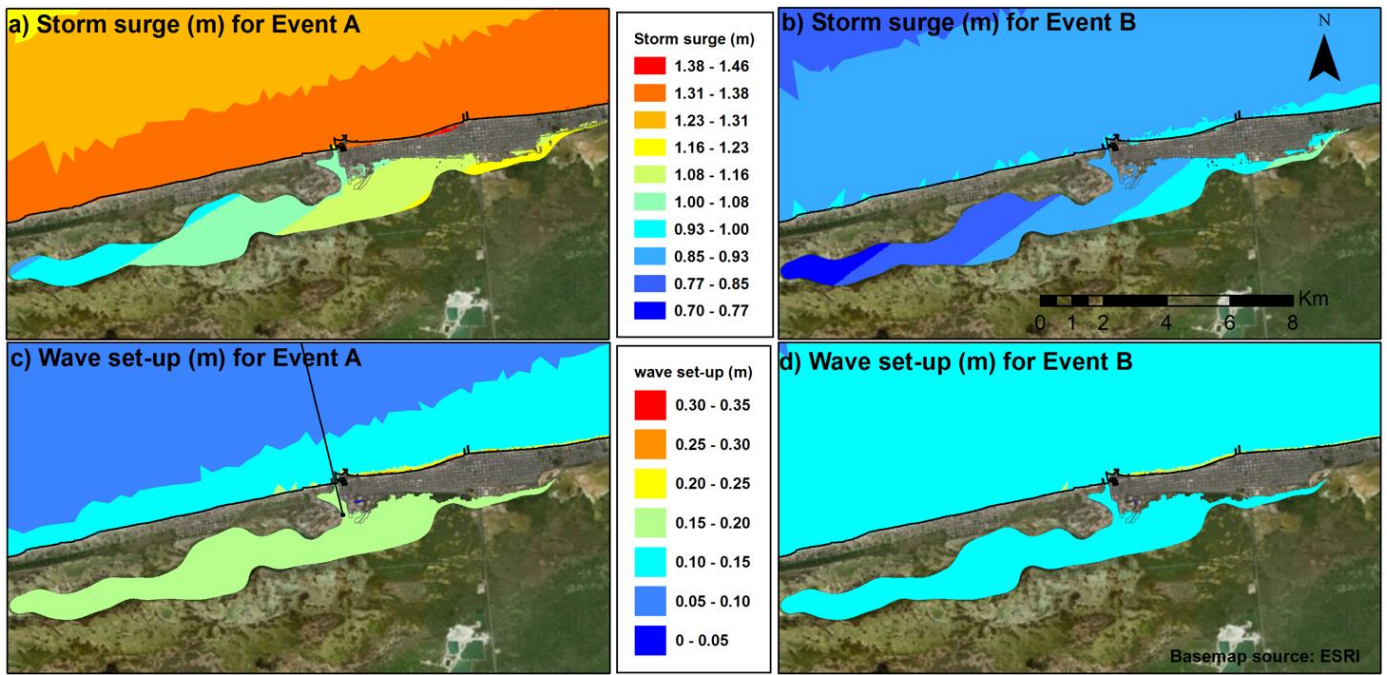


Figure 9. Main contributions for maximum flooding for Progresso during Events A and B: (a) Maximum storm surge for Event A. (b) Maximum storm surge for Event B. (c) Maximum wave set-up for Event A. (d) Maximum wave set-up for Event B. The black line in panel c is a transect discussed in section 4.4.

5

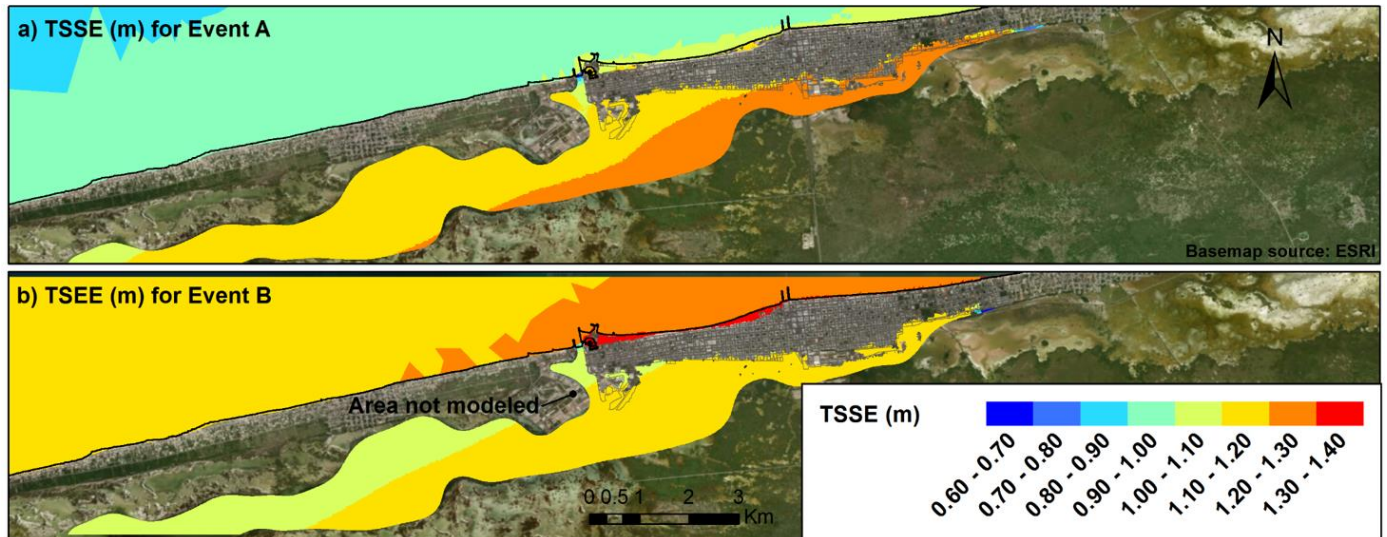


Figure 10. Maximum flooding over Progresso during (a) Event A, and (b) Event B.



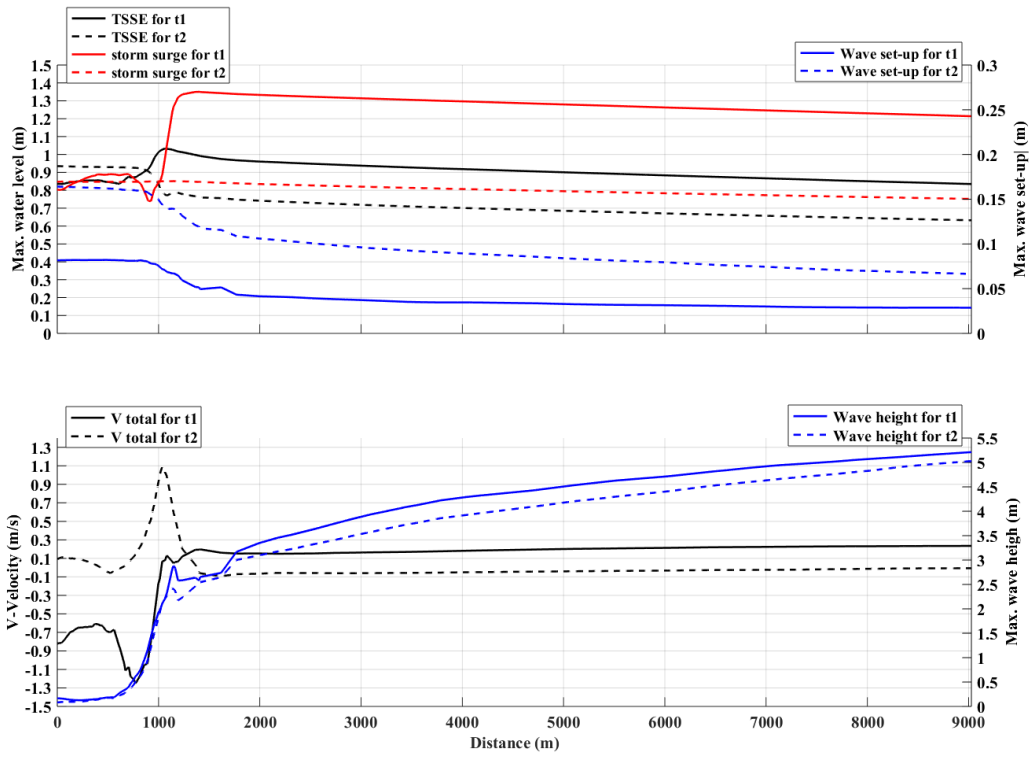


Figure 11. Modulation of the wave set-up for the ebb/flood current at the Chelem inlet during Event A. Top panel: TSSE, storm surge and wave set-up for times t1 and t2. Bottom panel: V Total component velocities and maximum wave height for t1 and t2.

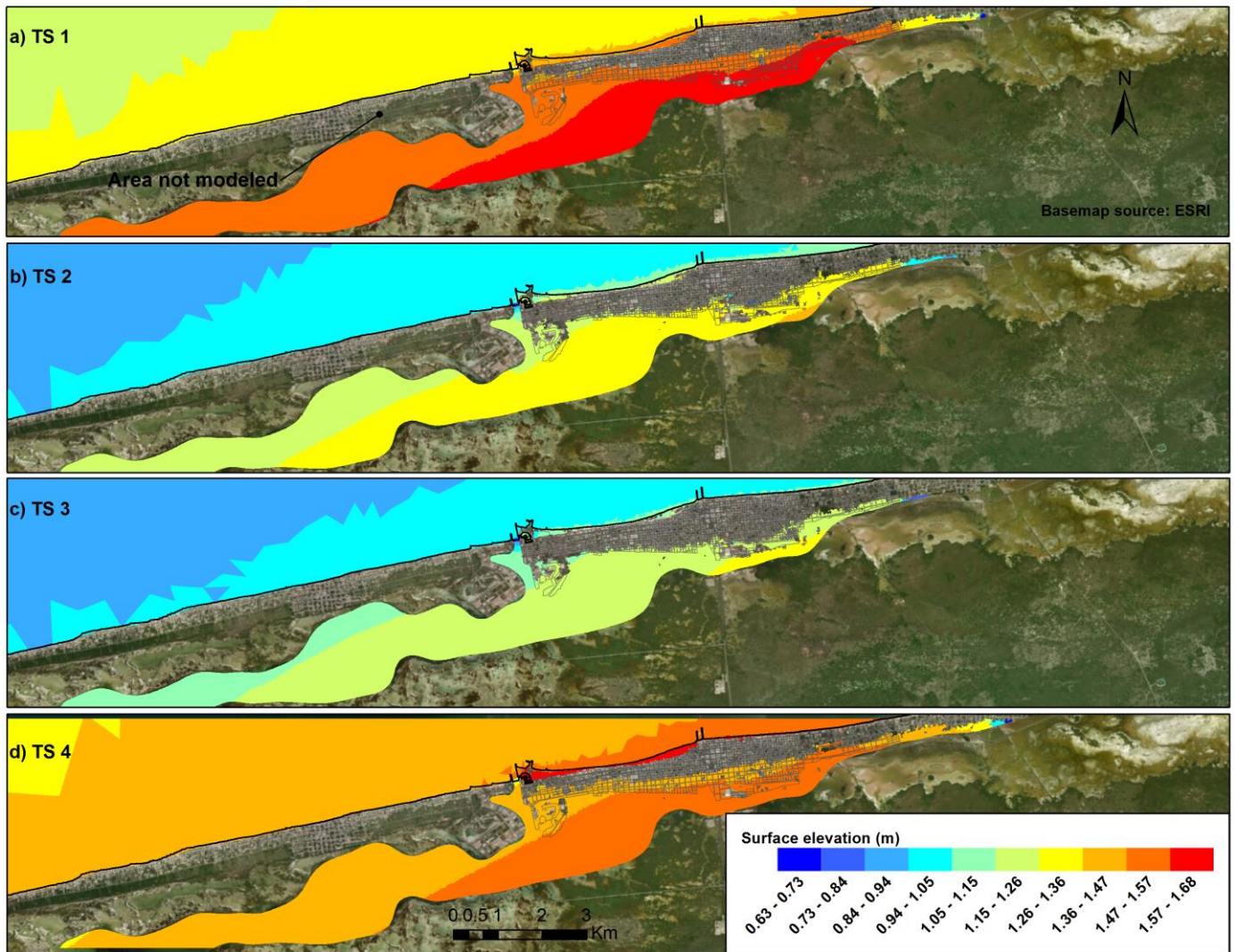


Figure 12. Flooding maps with Total Sea Surface Elevation at Progreso under four tide scenarios for Event A: a) Maximum flooding for TS1. b) Maximum flooding for TS2. c) Maximum flooding for TS3. d) Maximum flooding for TS4.

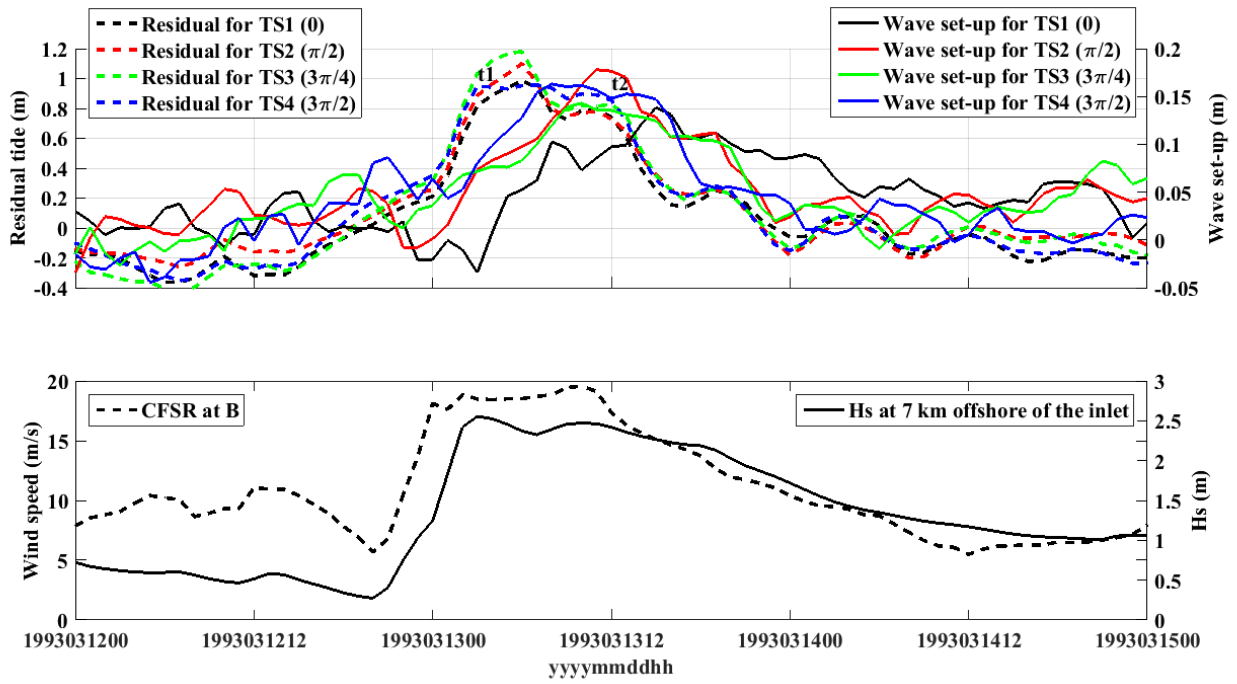


Figure 13. Residual sea level and wave set-up modulated by the tide. Top panel: Residual sea level and wave set-up for the four tide scenarios. Middle panel: Wind speed at 10m above MSL and Hs used as forcing agents for the numerical experiment. Bottom panel: Total Sea Surface Elevation (from the HW model).

5

Table 1. Tide scenarios

Tide Scenario (TS)	Phase shift (radians)	Tide level
TS1	0	High tide
TS2	$\pi/2$	Near mean sea level (during receding tide)
TS3 (Event A)	$3\pi/2$	Near low tide (this is the actual tidal phase during Event A)
TS4	$3\pi/2$	Near mean sea level (during rising tide)

Table 2. Blocks of Progreso affected as a function of tidal phase during Event A.

Tide Scenario	Total blocks affected	Percentage of total blocks	Sea side blocks affected	Lagoon side blocks affected
TS1	368	60%	19	349
TS2	199	30%	12	187
TS3 (Event A)	157	25%	8	149
TS4	354	57%	33	321