

Dear NHESS Editors,

Please find attached a point-by-point response to how we addressed the editor's/reviewer's comments. Of course, let us know if you find that any of the points below are insufficiently addressed.

Thank you,

Brian G. McAdoo  
(for the authors)

**Suggestions for revision or reasons for rejection (will be published if the paper is accepted for final publication)**

As per my previous comment, I believe Figure 1b should be a standalone figure and needs a legend to indicate the root zone. I am not aware of any similar figures, hence suggesting this should be standalone. It would make the paper more citeable if others can use this figure to describe the processes of landsliding near to roads.

Fixed. We have also included a note that the second mode might also include water seepage into fractures and joints that could facilitate deeper bedrock failures via freeze-thaw (IIb).

Since writing your paper, Froude and Petley have published a new paper on the topic of landslide fatalities. As you cite Petley et al. (2007) It might be worth referring to this updated paper as it supports your findings.

Updated.

Line 70. This statement that there has not been a study of landslides and roads in Nepal since 1979 is too definitive. For example, Bhandary et al. (2013), Wagner et al. (1988) and others seem relevant. I suggest changing the text to something like 'there have been a limited number of studies..'.

We have added Bhandary et al., however we could not locate Wagner et al. (1988). There is an unpublished Wagner et al (1983) cited in Bhandary's paper, however as it is unpublished (and quite difficult to locate), so we will leave it with Bhandary.

Line 83, the term 'scores' may not translate well. Change to 'tens'.

Done.

Line 94 'we present compelling evidence'. I would remove the word compelling as it is not particularly neutral or scientific.

Agreed. "Compelling" deleted.

Sentence starting on line 109 needs rewording. Roback et al do not investigate differences

in distribution of earthquake and rainfall triggered landslides or the influence of human factors. They state that natural drivers appear to influence the distribution of earthquake triggered landslides, but there is no comparison to rainfall triggered landslides, so this is all you should state there.

We have changed the wording as requested, but highlighted the lack of consideration of the human alteration in Roback to help set up the next sentence.

Paragraph starting line 135. Give some indication of the area (or better still, normalise by area) of each of these soil types.

We have added some normalised values for comparison. Although this makes the text more busy, and it might benefit from a separate table, the numbers add a clarity to why we limited our analysis to these soil types.

There are two figures named figure 2.

Fixed.

Line 103. In this paragraph, please briefly state what you constitute to be landslide area and ensure this is consistent for both inventories (e.g., individual landslide polygons containing both source area and run out, or just source area?).

We have added “and deposits where visible” after “scars” in the text. This is indeed the case in both inventories.

Line 170. What is the log-normal distribution of landslide areas? I see this in the author response but not in the paper before this point, so it feels a little ‘out of the blue’. Landslide areas more typically have been shown to follow a Double Pareto or Inverse Gamma distribution. State what distribution you used for your post-earthquake landslides.

We chose a simple log-normal distribution based on the fit of the observed areas vs. the model, which gave us an  $R^2=0.96$  and  $0.94$ . Therefore, we have added the  $R^2$  value to the text to justify the choice in curve fit.

Line 194 the number of landslides is small by comparison... to the earthquake triggered inventory.

Fixed

Line 194 rather than saying landslides cover a total area, state that the total area of landslides is x. Otherwise this gets confusing about the overall area in which the landslides occurred.

Fixed

Line 196. Rather than the average, state the median or mode. Landslide areas span many

orders of magnitude and are non-normally or symmetrically distributed so the average is not particularly useful.

Agreed, and I chose to leave in the average to highlight your point about the asymmetry.

Line 196. The average area of the rainfall triggered landslides will most likely be higher because this is not a triggered event inventory and includes some older landslides rather than there being any physical reason behind this. Smaller landslides tend to be eroded away more quickly, leaving only the largest area landslides, which affects the distribution. If you plot the probability density distribution of the rainfall triggered landslide areas, you will see that it is most likely shifted towards the right-hand side of the axis (towards larger landslide areas). See Malamud et al. (2004) for further explanation. **The simplest solution would be to remove reference to landslide areas here as your results about roads are more interesting.**

We do want to highlight the correlation (and arguably causation) of the soil types and landslide distribution, so we left the total area numbers in there, reminding the reader that the smaller landslides may have been covered (Malamud et al., 2004).

Figure 4A belongs with Figure 2 (probability density plots) and would be best presented in the same format, which aids in visualising the broad range of landslide areas which span several orders of magnitude. Figure 4B then becomes separate. These figures are not particularly related, so do not belong together.

Done.

Figure 4B incremental percentage lines need point makers at each distance to indicate that this is not a continuous distribution. As I understand it, this line is showing the cumulative percentage of landslides within buffer zones, not the raw distances from each landslide to the nearest road.

Done.

Lie 259. Remove reference to average landslide sizes. This is most likely a result of sampling rather than process.

Agreed. Removed.

Reference list: Please check all references are complete and in the appropriate format.

# 7091-Roads and landslides in Nepal: **How development affects environmental risk**

McAdoo, B.G. (1), Quak, M. (1), Gnyawali, K. R. (2), Adhikari, B. R. (3), Devkota, S. (3), Rajbhandari, P. (4), Sudmeier-Rieux, K. (5)

1. Yale-NUS College, Singapore
2. Natural Hazards Section, Himalayan Risk Research Institute (HRI), Nepal
3. Department of Civil Engineering, Institute of Engineering, Tribhuvan University, Nepal
4. Independent, Kathmandu, Nepal
5. University of Lausanne, Faculty of Geosciences and Environment, Institute of Earth Science, Switzerland

**Abstract.** The number of deaths from landslides in Nepal has been increasing dramatically due to a complex combination of earthquakes, climate change, and an explosion of informal road construction that destabilises slopes during the rainy season. This trend will likely rise as development continues, especially as China's Belt and Road Initiative seeks to construct three major trunk roads through the Nepali Himalaya that adjacent communities will seek to tie in to with poorly-constructed roads. To determine the effect of these informal roads on generating landslides, we compare the distance between roads and landslides triggered by the 2015 Gorkha earthquake with those triggered by monsoon rainfalls, as well as a set of randomly located landslides to determine if the spatial correlation is strong enough to further imply causation. If roads are indeed causing landslides, we should see a clustering of rainfall-triggered landslides closer to the roads that accumulate and focus the water that facilitates failure. We find that in addition to a concentration of landslides in landscapes with more developed, agriculturally viable soils, that the rainfall-triggered landslides are more than twice as likely to occur within 100 m of a road than the landslides generated by the earthquake. The oversteepened slopes, poor water drainage and debris management provide the necessary conditions for failure during heavy monsoonal rains. Based on these findings, geoscientists, planners and policymakers must consider how road development affects the physical (and ecological), socio-political and economic factors that increases risk in exposed communities, alongside ecologically and financially sustainable solutions such as green roads.

## 1. Introduction

On 29 and 30 July 2015, during the first monsoon season after the Mw=7.8 Gorkha earthquake, a dramatic cloudburst triggered landslides that killed 29 people in Nepal's Western Region (BBC, 2015). These deadly landslides and many others like them are not solely the result of intensified rainfall associated with climate change (Bharti et al., 2016), but a complex intersection of socio-economic factors with a highly-altered physical landscape where informal, non-engineered roads regularly fail during the annual monsoon season (Petley et al., 2007; Froude and Petley, 2018). This problem will become more acute as China's Belt and Road Initiative (BRI) aims to expand trade into Nepal, India and beyond via a series of trans-Himalayan corridors which traverse some of the world's most geomorphically-complex terrain

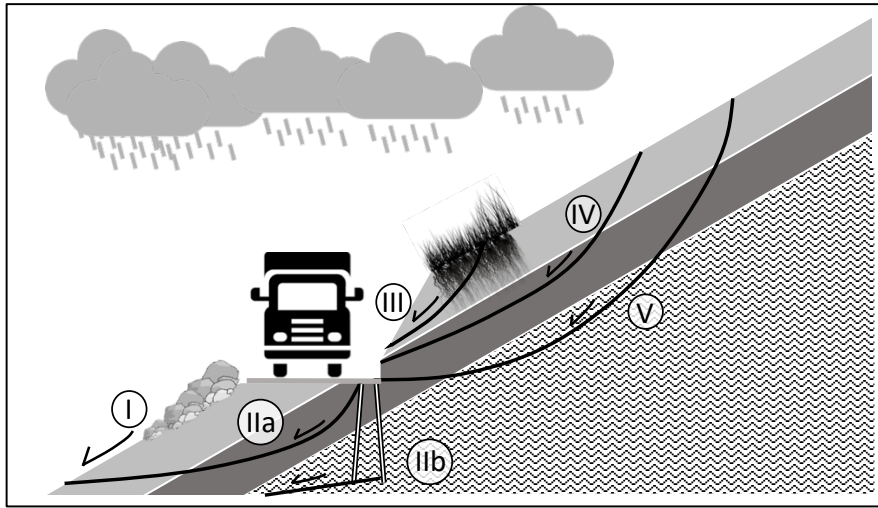
Deleted: Increased risk associated with China's Belt and Road Initiative

Commented [BGM1]: This is a request from two of my Nepali co-authors

Deleted: ¶



(Bhushal, 2017). This expanded transportation network will have unintended effects on the surrounding landscapes as villages seek to link to these highways with informal roads constructed and maintained with severely limited resources, putting them more at risk of landsliding.



**Figure 1.** There are 5 primary modes of potentially damaging mass movements caused by informal road construction in Nepal- I) debris flows from excavated material stored on the downslope side of the road; II) Deeper seated landslides that are accommodated by poor road drainage as water seepage can aid failures that include regolith (IIa) and freeze-thaw in joints that can result in bedrock failures (IIb) ; III) Shallow failures close to the road caused by oversteepened road cuts that can be mitigated by planting; IV) Shallow landslides caused by oversteepening that include potentially stabilising roots from vegetation; V) Deeper seated failures triggered by oversteepening by road cuts that may include bedrock.

Formatted: Font: 9 pt

Formatted: Left

Formatted: Font: Bold



**Figure 2.** Informal, rural roads in Sindhupalchok District, Nepal. (a) Earth-moving equipment is hired by villagers to expand footpaths into roads that bring goods and services to isolated locations. In (b) and (c), landslides are



Deleted:

Deleted: 1

Deleted: We see 5 primary modes of potentially damaging mass movements caused by informal road construction- I) debris flows from excavated material stored on the downslope side of the road; II) Deeper seated landslides that are accommodated by poor road drainage; III) Shallow failures close to the road caused by oversteepened road cuts that can be mitigated by planting; IV) Shallow landslides caused by oversteepening that include potentially stabilising roots from vegetation; V) Deeper seated failures below root zone related to road cuts.

Deleted: and (d) Without proper engineering (slope gradients, drainage, etc.),

triggered on these informally engineered rural roads. Poor drainage and lack of slope stabilizing measures facilitate failures during heavy monsoonal rains, damaging land, structures, and roads, and endangering human lives and livelihoods. Images by the authors.

The problem of roads and associated landslides has been a long recognised yet understudied phenomenon. **Laban (1979)** provided an early quantification of the effects of human development on the distribution of landslides in Nepal, concluding that in the nascent days of Nepal's vehicular road development, only 5% of observed landslides were associated with roads. While road density data is not available from this time, the density more than tripled from 13.7 km/km<sup>2</sup> in 1998 to 49.6 km/km<sup>2</sup> in 2016 (**DoR, 2002; DoR, 2017**). **Petley et al. (2007)** show that number of landslide fatalities in Nepal increased dramatically between 1978-2005 and expresses concern over poorly constructed roads. Despite this evidence of increasing losses, there have been a limited number of studies of roads and landslides in Nepal (**Laban, 1979; Bhadary et al., 2013**), and while the BRI indeed portends increases economic opportunity, it will also bring with it an expansion of this risky road network.

Many villages in the Middle Hills region of rural Nepal are connected by simple footpaths that limit economic and social opportunity. As the nation continues developing, communities expand these pathways (funded in part by remittances sent from overseas) into vehicular roads for better access to markets, educational opportunities, and healthcare. The resulting informal roads often create landslides by undercutting slopes, providing pathways for water to seep into potential slide planes, and producing debris that is easily mobilised during heavy rainfall (e.g. **Sidle et al., 2006; Fig. 1**). These landslides (**Figs. 2b and 2c**) disrupt the transportation networks that bring much needed goods and services to and from rural communities, damage agricultural lands in regions where subsistence farming is the norm, and cause tens of deaths every year (**DesInventar<sup>1</sup>, Nepal Profile, 2016**), all counteracting the sought-after developmental gains.

To better understand the link between the development that will follow BRI-related development and the changes in the risk landscape, we examine the relationship between roads and landslides in the Sindhupalchok district of Central Nepal (**Fig. 3**). The 2015 Gorkha earthquake heavily impacted Sindhupalchok, where over 95% of the houses were severely damaged and where over a third of the deaths occurred (**ReliefWeb, 2017**). The earthquake also generated thousands of co-seismic landslides in this district (**Gnyawali and Adhikari, 2017; Fig. 3a**), many of which intersect rural roads. By comparing the spatial distribution of slope failures present before and those generated during the Gorkha earthquake with a randomly-distributed suite of landslides, we present compelling evidence that landslides caused by informal roads are a dangerous and often overlooked geomorphic agent that compromise the development trajectory in villages that sought to gain from the road construction. Based on these results, we show that this mode of failure should be carefully considered in studies of landslide distribution and development planning, especially as the BRI extends the road network through the Himalaya.

<sup>1</sup> The mortality statistics in the DesInventar database are likely a minimum, as much of their data comes from media reports that originate in more accessible areas.

Deleted: has not been a study

Deleted: (

Formatted: Font: Bold

Deleted: since

Formatted: Font: Bold

Deleted: hire heavy machinery (funded in part by remittances sent from overseas; **Fig. 1a**) to

Deleted:

Deleted: 1b

Deleted: 1c

Deleted: 1d

Deleted: scores

## 2. Methods

To help determine the significance of roads in the generation of landslides, we compare the spatial and area distribution of landslides present before the Gorkha earthquake with those triggered by the earthquake itself. Implicit in this comparison is that the majority of landslides present before the earthquake were generated by monsoonal rains- **Petley et al. (2007)** show that 90% of fatal landslides occur during the rainy season (landslides that occur without fatalities likely go unreported, therefore it is possible that there are non-fatal landslides that occur throughout the year). **Gnyawali and Adhikari (2017) and Roback et al. (2018)** show that the primary controls on the distribution of the earthquake-generated landslides are geomorphology, degree of bedrock weathering and proximity to the earthquake rupture zone, and do not consider the effects of human alteration of the landscape. If there is a strong spatial correlation between the roads and either set of landslides, we can begin to better understand how important these roads are in altering both the physical and social landscapes.

There were on the order of 20,000 landslides generated by the Gorkha earthquake (**Gnyawali and Adhikari, 2017; Roback et al., 2018; Martha et al., 2016**), of which we analysed 8,238 in Sindhupalchok district alongside a total of 252 slides visible from satellite data in the months before the earthquake. The landslide inventory we used was created by manually digitizing the bare earth-landslide scars and deposits where visible in Google Earth from high resolution satellite images (sub-metre), at an eye altitude of 500 meters, corresponding to a minimum detected landslide area being around 20 square meters (**Gnyawali and Adhikari, 2017**). The post-earthquake landslide inventory consists of scars observed in the image between April 25 (main -shock day) to May 25, 2015, during the dry season before the monsoon rains in June. The area and spatial distributions are similar to other catalogues of the same event (**Roback et al., 2018; Martha et al., 2016; Fig. 2**) where the primary controls are related to proximity to earthquake rupture zone and peak ground acceleration, as well as the physical characteristics of the topography including aspect, slope, curvature and bedrock geology (**Fig. 3**). The pre-earthquake landslide inventory consists of failures identified in the area before the earthquake in images between October 2014 and February 2015- these include slides generated during the 2014 monsoon season as well as older slides not yet covered by vegetation (**Malamud et al., 2004**). We ground truthed the location and mode of failure of many of the slides visible from the Arniko Highway- the vast majority involve the regolith with very few deep-seated bedrock failures.

To better isolate the relationship between landslides and the roads, we limited our analysis to the areas in Sindhupalchok district to the agricultural regions with higher road density. The majority of landslides (7,230 or 85% of the combined pre- and post-earthquake inventories yielding a landslide density of 6.2 slides per km<sup>2</sup> compared to 0.5 slides per km<sup>2</sup> in the less productive, higher elevation soils) occur in two soil types- the better developed, agriculturally productive humic cambisols (CMu), and the less-productive eutric regosols (RGe) that occur in higher, more arid zones (**Dijkshoorn and Huting, 2009; Fig. 3a**). Of the 7,091 earthquake-triggered landslides in these two soil types, only 2,687, or 38% are in RGe (which covers 629

Deleted: Landslides generated by the earthquake, however, respond less to the human-altered features, and more to the geomorphology of the landscape, degree of weathering of the bedrock, and proximity to the earthquake rupture zone (**Gnyawali and Adhikari, 2017; Roback et al., 2018**).

Formatted: Superscript

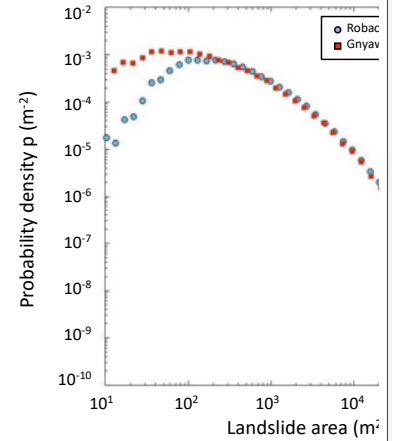
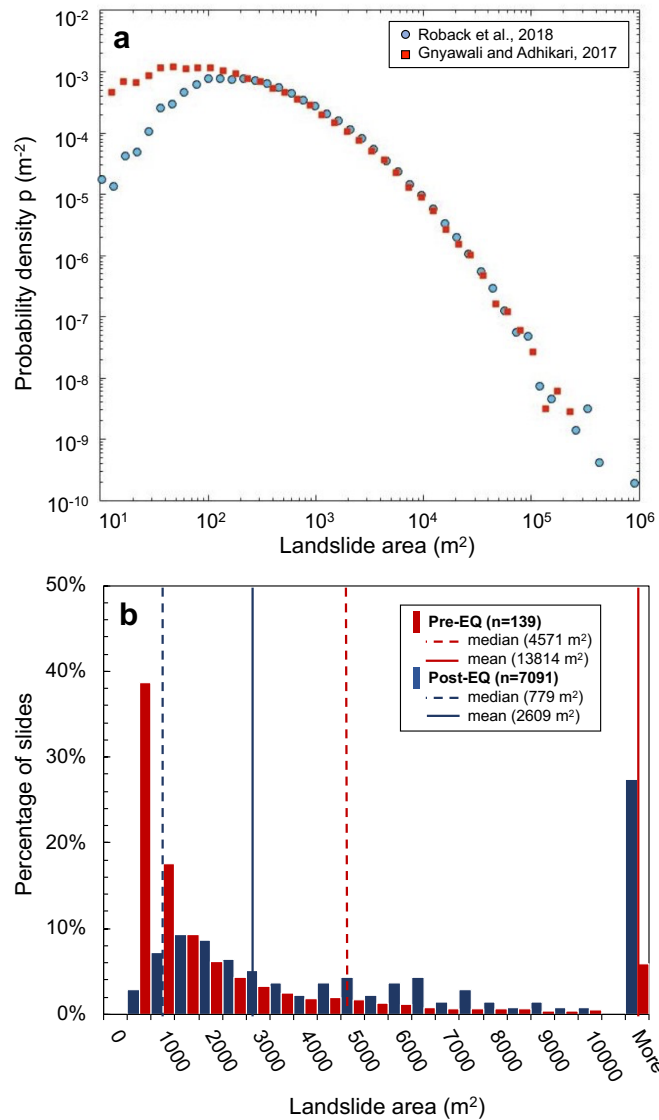
Formatted: Superscript

Deleted: the

Deleted: soil type

184 km<sup>2</sup> in this district with a landslide density of 4.3 slides/km<sup>2</sup>, and 35 of 139 (25%, and 0.06  
185 slides/km<sup>2</sup>) pre-earthquake landslides occur in this soil type. The remaining 104 monsoon-  
186 triggered landslides are in an area with more agricultural development in the CMu unit (530 km<sup>2</sup>  
187 in this district with a density of 0.2 slides/km<sup>2</sup>), and hence more exposed communities and  
188 roads.  
189

- Formatted: Superscript
- Deleted: whereas only
- Formatted: Superscript
- Formatted: Superscript
- Deleted: in the CMu
- Deleted: the
- Formatted: Superscript
- Formatted: Superscript



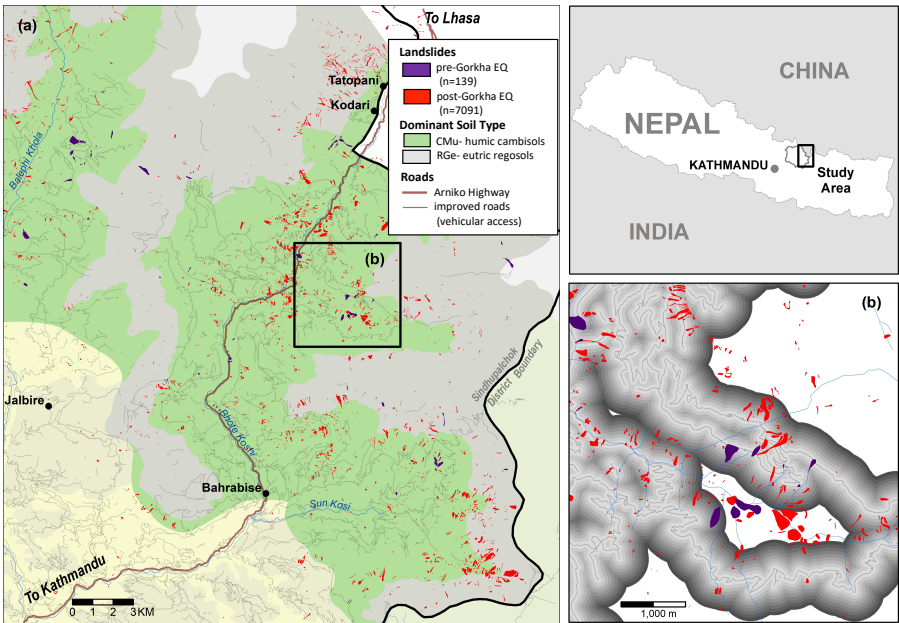
Deleted:

**Figure 2a and b.** (a) Probability density-area statistics of the Gorkha earthquake triggered landslide inventory used in this study compared to the inventory generated by Roback et al. (2018). The two curves diverge at slides with areas less than around 200  $\text{m}^2$  suggesting that the Gnyawali and Adhikari (2017) data selected more smaller slides. (b) Histograms of normalised areas of landslides present before and after the 2015 Gorkha earthquake. The



higher mean and median values for the monsoon-generated landslides as compared to the earthquake-generated landslides may likely reflect missed smaller, older landslides that were covered by vegetation (Malamud et al., 2004).

Formatted: Font: Bold



**Figure 3.** Roads and landslides in Sindhupalchok district, Nepal. (a) The Arniko Highway that runs between Kathmandu and Kodari at the Chinese border was heavily impacted by the 2015 Gorkha earthquake, and a dense network of informal, rural roads grows out of this main trunk road (OpenStreetMap Contributors, 2017). The red polygons mark the location of landslides generated during the earthquake, and the blue polygons were the landslides that were present before the earthquake (2014). Most landslides correspond with the CMu (humic cambisol) soil type as mapped by Dijkshoorn and Huting (2009), however there is a higher percentage of earthquake-generated failures in the RGe (eutric regosols) soils. (b) We place buffers at 50 m intervals along the roads in the study area that can support a vehicle to determine the distribution of landslides that correlate spatially with the roads.

Deleted: 2

As the earthquake occurred near the end of the dry season, we expect the failures to be less affected by the presence of water, and slide location would be less influenced by features such as roads that concentrate water. Conversely, if as we expect there is a higher proportion of pre-earthquake landslides near roads, it is likely that the oversteepening and poor drainage of informal roads is indeed adding to the hazard. To test this, we measure the proximity of pre- and post-earthquake slides to the roads, testing the causal relationship that has been documented by many studies (e.g. Petley et al., 2007; Sidle and Ziegler, 2012; Froude and Petley, 2018). In addition, we generated 20 sets of virtual landslides (10 sets based on the log-normal distribution ( $R^2=0.96$  for the post-earthquake slides and  $R^2=0.94$  for the pre-earthquake

Formatted: Superscript

Formatted: Superscript

slides) of the pre-earthquake slide areas, and 10 sets on the post-earthquake slide area distribution), then imported these virtual slides into a GIS and randomly placed them within the CMu and RGe soil types in Sindhupalchok district. While these data lack the complex shapes of the measured landslides (they are modelled as circular), we believe they represent a reasonable approximation of a random distribution of failures across the landscape. Using the existing road network (OpenStreetMap Contributors, 2017), we filtered out the smallest trails and footpaths, leaving only tracks that had been improved and could likely support a vehicle (assessment based on field observations). Finally, nine buffers were created normal to the road at 50 m intervals, and the number of landslides that have any part of the scar that intersects the buffers at the given distances were tabulated (Fig. 3b).

### 3. Results

Observations from the field and numerous previous studies suggest a strong spatial correlation between roads and landslides (e.g. Laban, 1979; Sidle et al., 2006; Petley et al., 2007; Froude and Petley, 2018), and others on how landslides affect roads (e.g. Irigaray et al., 2000) however there have been few studies that seek to quantify the relationship with the aim of moving past correlation to causation. Using satellite data, we find that the majority of landslides in Sindhupalchok district occur in the soil types that support agriculture (the humic cambisols and to a lesser extent, the eutric regosols) and hence have more roads. Amongst the landslides that were present before the 2015 earthquake, we observe a strong signal that demonstrates the genetic relationship between agrarian development, roads, and landslides.

Although the number of monsoon-triggered landslides is small by comparison with the earthquake-generated inventory- the total area of landslides is 1.9 km<sup>2</sup> (1.2 km<sup>2</sup> in CMu and 0.7 km<sup>2</sup> in RGe) whereas the earthquake-triggered slides cover 18.4 km<sup>2</sup> (9.8 km<sup>2</sup> in CMu and 8.6 km<sup>2</sup> in RGe). However it is possible that many of the smaller rainfall-induced slides may been covered by vegetation (Malamud et al., 2004). In the soil types that support agriculture, 45% (63) of the 139 pre-earthquake landslides occur within 100 m of a road, whereas only 21% (1,490) of the 7,091 landslides generated by the earthquake are within 100 m of a road. Of the randomly-generated landslides between 21% (of the post-earthquakes slide area distribution) and 26% (of the pre-earthquake slides) of the failures are within 100 m of a road, closely matching the spatial distribution of the earthquake landslides (Fig. 4). Stated differently, there are twice as many monsoon-generated landslides near roads than earthquake-generated landslides, and twice as many than in a randomly located suite of slides with the same area distribution.

Formatted: Font: (Default) Arial, 11 pt

Deleted: they cover a

Deleted: represent

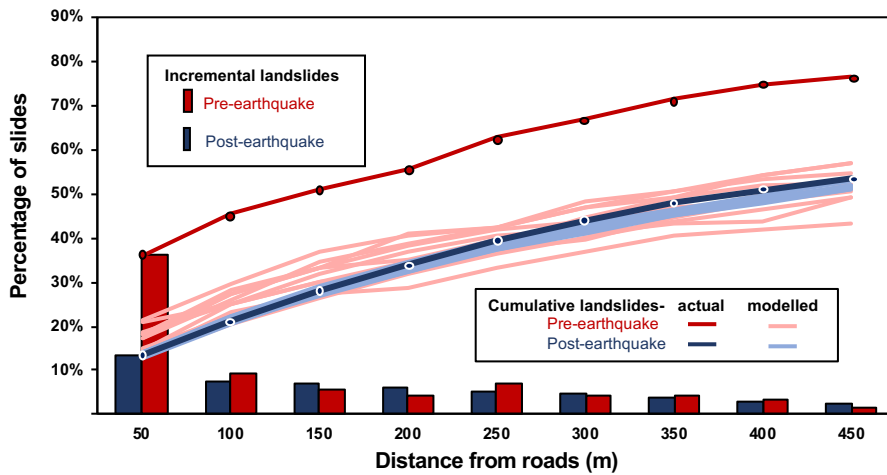
Formatted: Font: Bold

Deleted: , the average area for the monsoon-triggered slides (13,670 m<sup>2</sup>, median of 4,571 m<sup>2</sup>) is much larger than the earthquake-triggered slides (2,590 m<sup>2</sup>, median of 779 m<sup>2</sup>; Fig. 4a)

Deleted: b

Deleted:



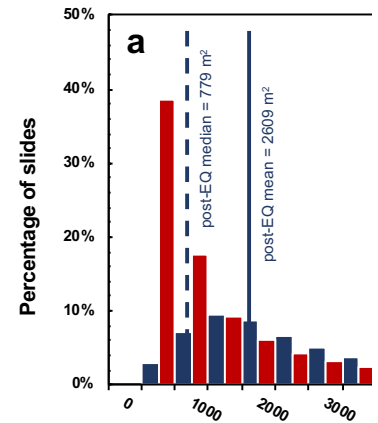


**Figure 4.** Distance from roads of earthquake, monsoon and randomly-generated landslides. The red and blue bars are the incremental percentage of pre- and post-earthquake landslides respectively that occur a given distance from a road. The red and blue lines are the cumulative percentage of slides that occur at the given distances from the road, and the light red and blue lines show the spread of the cumulative number of the modelled ( $n=10$  runs), randomly located landslides within the different buffer distances.

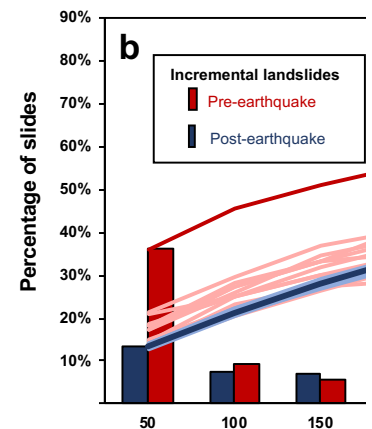
The shape of the curve that shows the cumulative number of landslides at increasing distances from the roads in Fig. 4 holds some additional information. If there is a causative relationship between roads and landslides, we might expect to see a change in slope of the cumulative number of slides with increasing distances from the road that would correspond to a critical distance where the mechanical influence of the road disturbance is reduced, and the number of landslides begins to decrease (e.g. Brown, 1987). However, we do not observe this change in slope of the data, possibly due to resolution issues of the smaller slides. The trend is not linear- if we had a random distribution of roads across the landscape in addition to the randomly distributed landslides, we would expect to see a linear increase in the cumulative number of landslides with distance from the road. What we notice instead is that there are fewer slides further away from the roads than would be expected, suggesting that the roads might be in locations that are predisposed to failure, such as near valley bottoms or ridge tops.

#### 4. Discussion

Informal rural roads are causing dramatic changes in the physical and social landscapes of the Middle Hills region of Nepal. Although the number of slides generated by monsoon rains during a given year is small when compared to the vast number of slides triggered by the Gorkha earthquake, they nonetheless have a substantial impact on the physical and social landscape. This study shows that there are twice as many landslides in the more developed areas (with its



Deleted:



Deleted:

Deleted: (a) Distribution of landslide areas before and after the 2015 Gorkha earthquake, and (b) d

Deleted: The histograms in (a) highlight the higher mean and median values for the monsoon-generated landslides as compared to the earthquake-generated landslides. In (b),

good agricultural soils and vast network of informal roads) than there would presumably be if the roads were better engineered. The productive soils lead to more agriculture, and agriculture benefits by having access to markets by way of roads. As the population in this region will be impacted by the proposed BRI trunk road, expansion of the informal, rural transportation network is likely to follow, triggering more monsoon-rains driven failures, property loss, transportation disruptions, and deaths.

The relationship between roads and landslides gives us an idea of how important these anthropogenically-controlled slides are in shaping the landscape. The risk of roadside failures is heightened during the monsoonal rains because of slope oversteepening on the uphill side of the road and the deposition of excavated debris on the downhill side that is easily mobilised during heavy rainfall events (accentuated by runoff from the road- see **Sidle et al., 2006**). To make a stronger link to causation, it would be helpful to model how far the changes associated with the road influence the failure mechanics. Regardless, this combined road-rainfall effect is more acute than earthquake- generated failures in terms of percentage, if not total numbers.

These road-related failures also impact the sediment delivery system. While this snapshot of monsoon-induced slides caused by informal roads is small compared to those generated by the earthquake, it is important to consider this additional material in annual budget calculations based on current river sediment load, and over longer periods of time. There are many new hydropower schemes following the BRI trunk road development, and they will be forced to contend with this additional sediment burden.

China's BRI fits well with the Nepali government's long-term development strategy to promote road development (**Murton, 2016; The Economist, 2017**). While the roads constructed by the Chinese in the Himalaya are well-engineered, informal and less well-engineered roads funded by direct foreign investment and remittances have expanded significantly since the end of the Maoist insurgency in 2006 (**MoF, 2016**). With the costs of rural roads managed by federally-funded districts, scarce funds needed for road maintenance compete with the need for investment in other sectors. **Leibundgut et al. (2016)** found that the economic impact of rural roads around Phewa Lake, Kaski district of western Nepal amounted to \$117,287 USD/year in maintenance costs, forecasted to rise to \$192,000 USD/year by 2030 with the current rate of road construction. Furthermore, over the last 30 years, tens to hundreds of deaths due to landslides are recorded every year (**Petley et al. 2007; DesInventar, 2016**), and yet it remains unclear how many of these failures are related to roads. Considerations of safer and more sustainable "Green roads" that consider local engineering geology and best practices in design, construction and maintenance (**Hearn and Shakya, 2017**) are outweighed by local communities negotiating with limited funds, short-term political agendas and ease of access to heavy equipment.

## 5. Conclusions

The landslides generated by the 2015 Gorkha earthquake provide an opportunity to compare the distribution of earthquake-triggered, 'natural' failures with those triggered by humans in a

Deleted: the average size is larger, and

landscape heavily modified by informal road construction. By comparing earthquake-generated failures and those caused by monsoonal rains before the earthquake with suites of randomly located landslides, we show that there are likely to be twice as many monsoon-generated landslides in terrain with poorly-constructed roads than would be present without roads. While these anthropogenic slides do not represent a much of a change in the physical systems during any given year, over time, their impact cannot be ignored. The socio-economic landscape, however, is being severely impacted by an explosion of informal roads to the point where it is hindering the socioeconomic development that the roads sought to bring and killing too many people in the process. Landslides in the Anthropocene are no longer simply a function of seismology, geology, geomorphology and climate as poorly-built roads are rapidly changing the landscape.

Better engineered roads will lead to more sustainable economic development, but these roads come with a price. Although foreign investment aids construction, maintenance costs fall on impoverished communities who must decide between access and basic services. Green solutions such as plantings on metastable hillslopes are more economically sustainable and can be implemented by community members with minimal training. There is little that can be done to control the tectonics or the climate, but economically feasible and environmentally sound adaptations will reduce losses in resources and lives.

#### Acknowledgements

The authors would like to thank Yale-NUS College for supporting field research in Nepal. Special thanks go to our colleagues A. Pang, S. Chee, A. Dominguez, and the students from the Yale-NUS College Learning Across Boundaries Nepal programme. Thanks also to C. van Westen and M. Delalay for constructive ideas in the field, Z. Sandeva and K. Gurung for logistics, J. Gruber for the modelling ideas, and R. Mukherjee (YNC) for geopolitical framing.

#### References

BBC [British Broadcasting Corporation], Landslides triggered by rain kill at least 29, <http://www.bbc.com/news/world-asia-33714147>, 2015.

Bhandary, N. P., Yatabe, R., Dahal, R.K., Hasegawa, S. and Inagaki, H.: Areal distribution of large-scale landslides along highway corridors in central Nepal, *Georisk: Assessment and Management of Risk for Engineered Systems and Geohazards*, 7 (1), 1-20, 2013.

Bharti, V., Singh, C., Ettema, J. and Turkington, T. A. R.: Spatiotemporal characteristics of extreme rainfall events over the Northwest Himalaya using satellite data, *International Journal of Climatology*, 36(12), 3949–3962, 2016.

Bhushal, R., “One Belt, One Road Fuels Nepal’s Dreams”, *The Wire (India)*, <https://thewire.in/156554/nepal-china-obor-transport-infrastructure>, 2017.

Deleted: ¶

Formatted: Font: 20 pt

Deleted: ,

Deleted: &

Deleted: .

Deleted: . <https://doi.org/10.1002/joc.4605>

Deleted: .

Deleted:

404 Brown, S. R. : A note on the description of surface roughness using fractal dimension,  
405 Geophysical Research Letters, 14(11), 1095-1098, 1987.  
406 Deleted: ,

407 DoR [Department of Roads]: National Transportation Policy Ministry of Physical Planning and  
408 Works, 2058 (2001/2002). Kathmandu: 15 pp. [http://dor.gov.np/home/circular/force/national-](http://dor.gov.np/home/circular/force/national-207-transport-policy-2058)  
409 207 transport-policy-2058, 2002.  
410 Deleted: (2002)  
411 Deleted: : DoR,  
412 Deleted:

411 DoR [Department of Roads]: Road Network Data, Government of Nepal, Department of Roads:  
412 Kathmandu: DoR, 17pp. <http://www.dor.gov.np/home>, 2017.  
413 Deleted: (2017)

414 DesInventar Disaster information management system, Profile - Nepal  
415 <http://www.desinventar.net/DesInventar/profiletab.jsp?countrycode=npl>  
416 Accessed December 13, 2016.

417 Dijkshoom, J.A. and Huting, J.R.M., Soil and terrain database for Nepal. Report 2009/01, ISRIC  
418 – World Soil Information, Wageningen, The Netherlands,  
419 [http://www.isric.org/isric/webdocs/docs/ISRIC\\_Report\\_2009\\_01.pdf](http://www.isric.org/isric/webdocs/docs/ISRIC_Report_2009_01.pdf), 2009.  
420

421 Economist, India faces growing competition with China in its own backyard, 19 December 2017.

422 Froude, M.J. and Petley, D.: Global fatal landslide occurrence from 2004 to 2016, *Natural  
423 Hazards and Earth System Sciences*, 2161-2181, 2018.  
424 Deleted: ¶  
425 Deleted: Guzzetti, F., Malamud, B. D., Turcotte, D. L.,  
426 Reichenbach, P. Power-law correlations of landslide  
427 areas in central Italy. *Earth and Planetary Science  
428 Letters*, 195(3), 169–183, 2002.¶

427 Gnyawali, K. R. and Adhikari, B.: Spatial Relations of the Earthquake Induced Landslides  
428 Triggered by 2015 Gorkha Earthquake Mw = 7.8, in *Advancing Culture of Living with  
429 Landslides*, M. Mikos et al. (eds), 2017.  
430 Deleted: ,  
431 Deleted: ,  
432 Deleted: .

431 Hearn, G. J., & Shakya, N. M.: Engineering challenges for sustainable road access in the  
432 Himalayas, *Quarterly Journal of Engineering Geology and Hydrogeology*, 50(1), 69-80, 2017.  
433 Formatted: Normal, No bullets or numbering, Font  
434 Alignment: Auto, Pattern: Clear  
435 Deleted: et al.

434 Irigaray, C., Lamas, F., El Hamdouni, R., Fernandez, T., and Chacon, J.: The Importance of the  
435 Precipitation and the Susceptibility of the Slopes for the Triggering of Landslides Along the  
436 Roads, *Natural Hazards*, 21(1), 65-81, 2000.  
437 Deleted: ,  
438 Deleted: ¶  
439 Deleted: :  
440 Deleted: (  
441 Deleted: )  
442 Deleted: Marc-Henri  
443 Deleted: L.  
444 Deleted: .  
445 Deleted: .  
446 Deleted: .

439 Laban, P., Landslide Occurrence in Nepal, Food and Agriculture Organisation, Editor. 1979,  
440 Food and Agriculture Organisation, Government of Nepal, Ministry of Forest, Soil and Water  
441 Conservation, UNDP: Kathmandu. p. 30 p., 1979.  
442 Deleted: .

443 Leibundgut, G. Sudmeier-Rieux, K., Devkota, S., Jaboyedoff, M. Derron, M.-H., Penna, I., and  
444 Nguyen, L.: Rural earthen roads impact assessment in Phewa watershed, Western region,  
445 Nepal, *Geoenvironmental Disasters* 3(13), 2016.  
446 Deleted: :1  
447 Deleted: . DOI 10.1186/s40677-016-0047-8

473 Malamud, B. D., Turcotte, D. L., Guzzetti, F., & Reichenbach, P.: Landslide inventories  
 474 and their statistical properties, *Earth Surface Processes and Landforms*, 29(6),  
 475 687–711, 2004.

476

477 Martha, T.R., Roy, P., Mazumdar, R., Govindharaj, K.B., Kumar, K.V.: Spatial characteristics of  
 478 landslides triggered by the 2015 Mw 7.8 (Gorkha) and Mw 7.3 (Dolakha)  
 479 earthquakes in Nepal, *Landslides*, 1–8, 2016.

480

481 MoF [Ministry of Finance, Government of Nepal], Economic Surveys 2001-2015,  
 482 <http://www.mof.gov.np/en/archive-documents/economic-survey-21.html>, accessed on 29  
 483 November 2016.

484

485 Murton, G.: A Himalayan Border Trilogy: The Political Economies of Transport Infrastructure and  
 486 Disaster Relief between China and Nepal, *Cross-Currents: East Asian History and Culture*  
 487 Review, E-Journal No.18, March 2016.

488

489 Open Street Map Contributors, <https://planet.openstreetmap.org/>, accessed between April and  
 490 December, 2017.

491

492 Petley, D., Hearn, G.J., Hart, A., Rosser, N., Dunning, S., Owen, K., & Mitchell, W.: Trends in  
 493 landslide occurrence in Nepal, *Natural Hazards*, 43: p. 23–44., 2007.

494

495 ReliefWeb, Nepal Earthquake: District Profile- Sidhupalchok 08.05.2015,  
 496 (<https://reliefweb.int/report/nepal/nepal-earthquake-district-profile-sindhupalchok-08052015>),  
 497 accessed on 12 December 2017.

498

499 Roback, K., Clark, M. K., West, A. J., Zekkos, D., Li, G., Gallen, S. F., Chamlagaine, D., Godt, J.  
 500 W.: The size, distribution, and mobility of landslides caused by the 2015 Mw7.8 Gorkha  
 501 earthquake, Nepal, *Geomorphology*, 301, 121–138, 2018.

502

503 Sidle R., Ziegler, A., Negishi, J., Nik, A., Siew, R., Turkelboom F.: Erosion processes in steep  
 504 terrain—Truths, myths, and uncertainties related to forest management in Southeast Asia,  
 505 *Forest Ecology and Management* 224(1–2):199–225, 2006.

506

507 Sidle., R., and Ziegler, A.: The dilemma of mountain roads, *Nature Geoscience*, 5, 437–438,  
 508 2012.

509

510

Deleted: .

Deleted: .

Deleted: s

Deleted: :

Formatted: Font: Not Italic

Formatted: Font: Not Italic

Deleted: .

Deleted: (2016)

Deleted: .

Formatted: Font: Not Italic

Formatted: Font: Not Italic

Deleted: .

Formatted: Font: Not Italic

Formatted: Font: Not Italic

Deleted: .

Deleted: .

Deleted: —

Deleted: .

Deleted: ,

Deleted: .

Deleted: ¶

Deleted: Stark, C, Hovious, N., The characterization of  
 landslide size distributions, *Geophysical Research  
 Letters*, 28 (6): 1091-1094, 2001.¶