

Interactive comment on “Dangerous degree forecast of soil and water loss on highway slopes in mountainous areas using RUSLE model” by Yue Li et al.

Yue Li et al.

976438528@qq.com

Received and published: 15 March 2018

The comment was uploaded in the form of a supplement:

<https://www.nat-hazards-earth-syst-sci-discuss.net/nhess-2017-406/nhess-2017-406-AC4-supplement.pdf>

Interactive comment on Nat. Hazards Earth Syst. Sci. Discuss., <https://doi.org/10.5194/nhess-2017-406>, 2017.

[Printer-friendly version](#)

[Discussion paper](#)



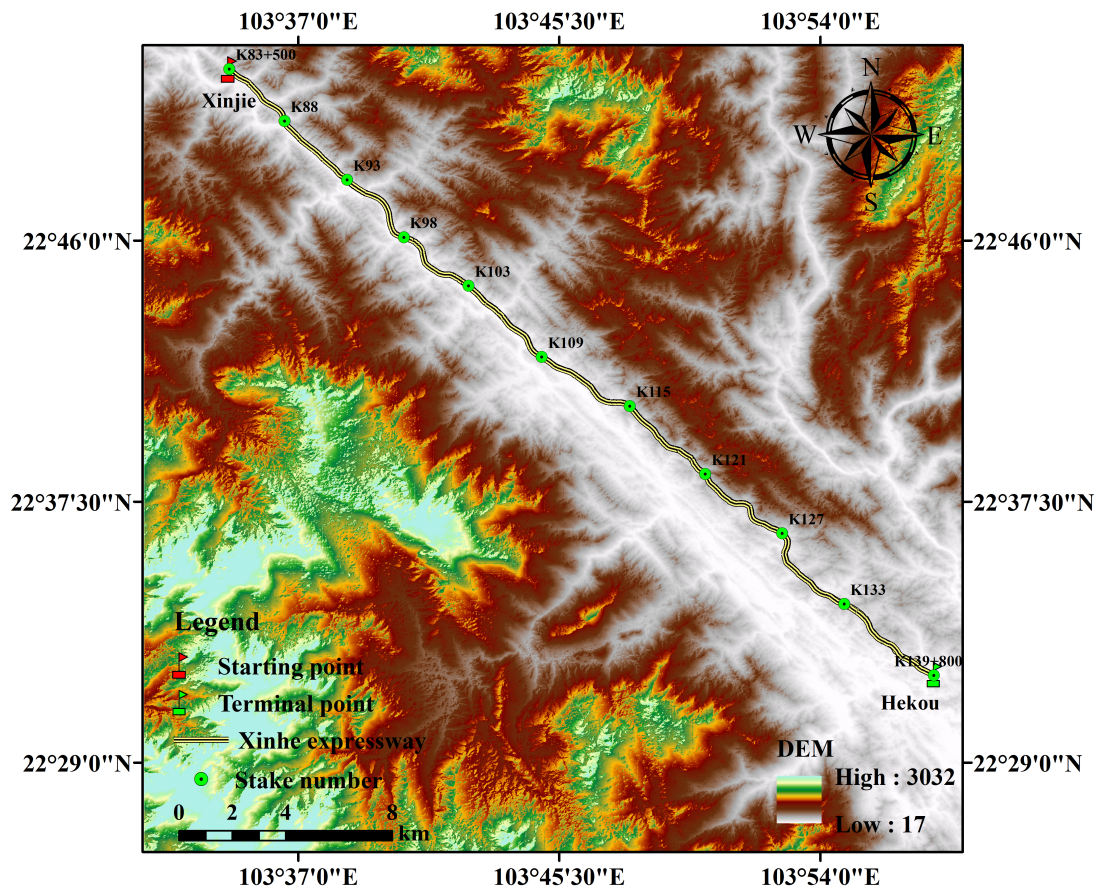


Fig. 1. Overview of study region

[Printer-friendly version](#)

[Discussion paper](#)





Fig. 2. Soil erosion produced by rainwash on slope

[Printer-friendly version](#)

[Discussion paper](#)



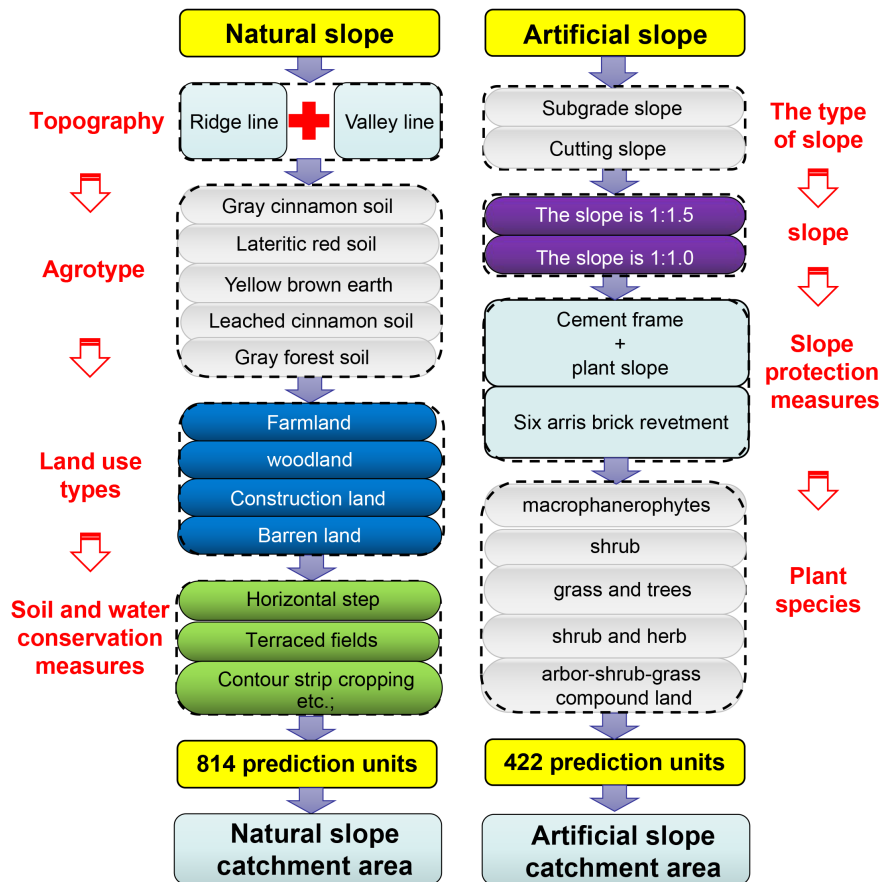


Fig. 3. Prediction unit division

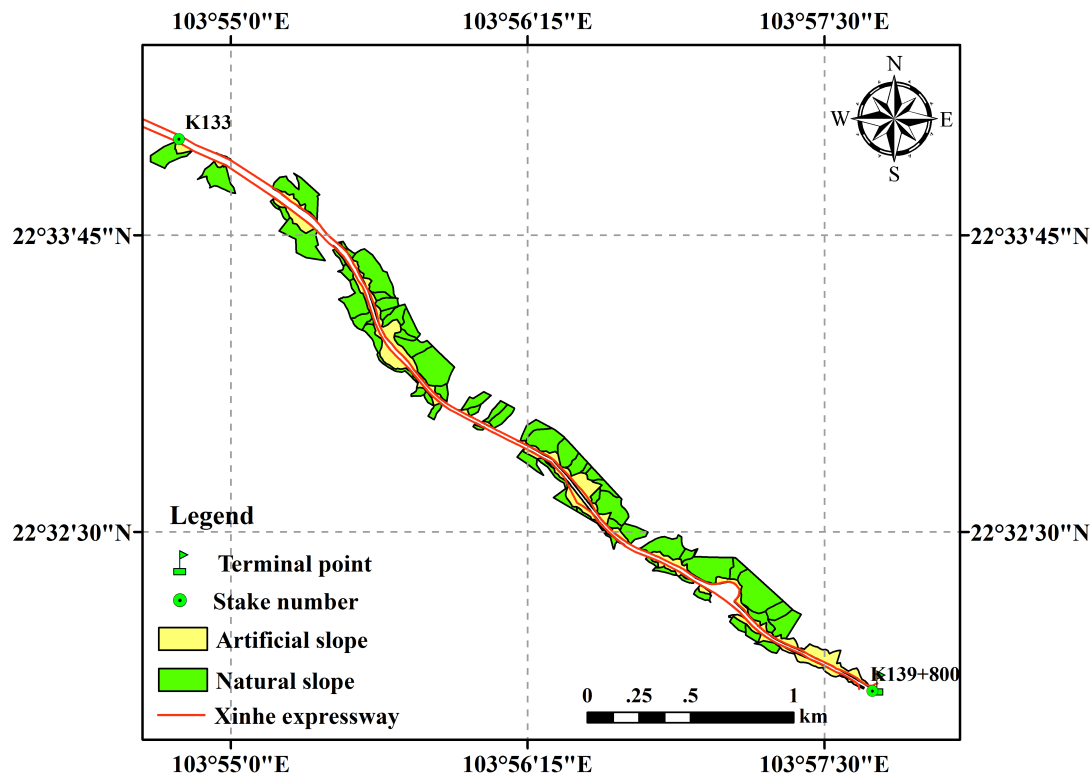


Fig. 4. Division results of prediction units (K133–K139)

Printer-friendly version

Discussion paper



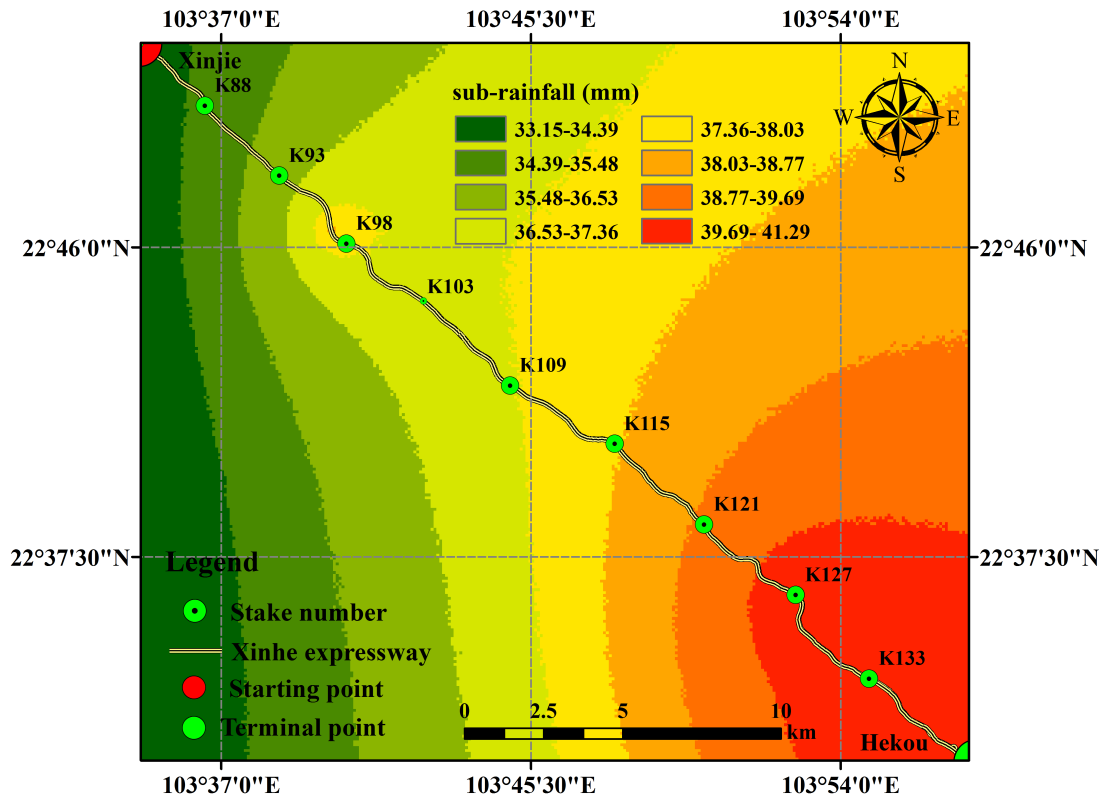


Fig. 5. Interpolation results of secondary rainfall for June 5, 2014

Printer-friendly version

Discussion paper



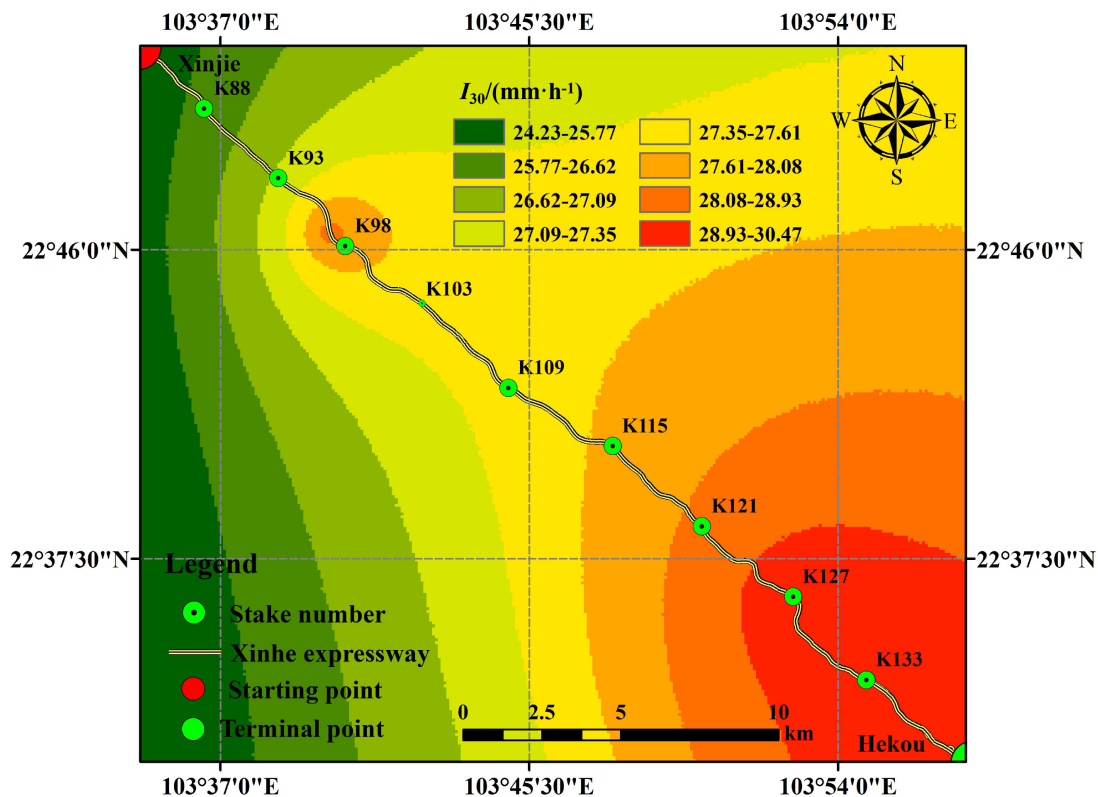


Fig. 6. Interpolation results of I30 for June 5, 2014

Printer-friendly version

Discussion paper



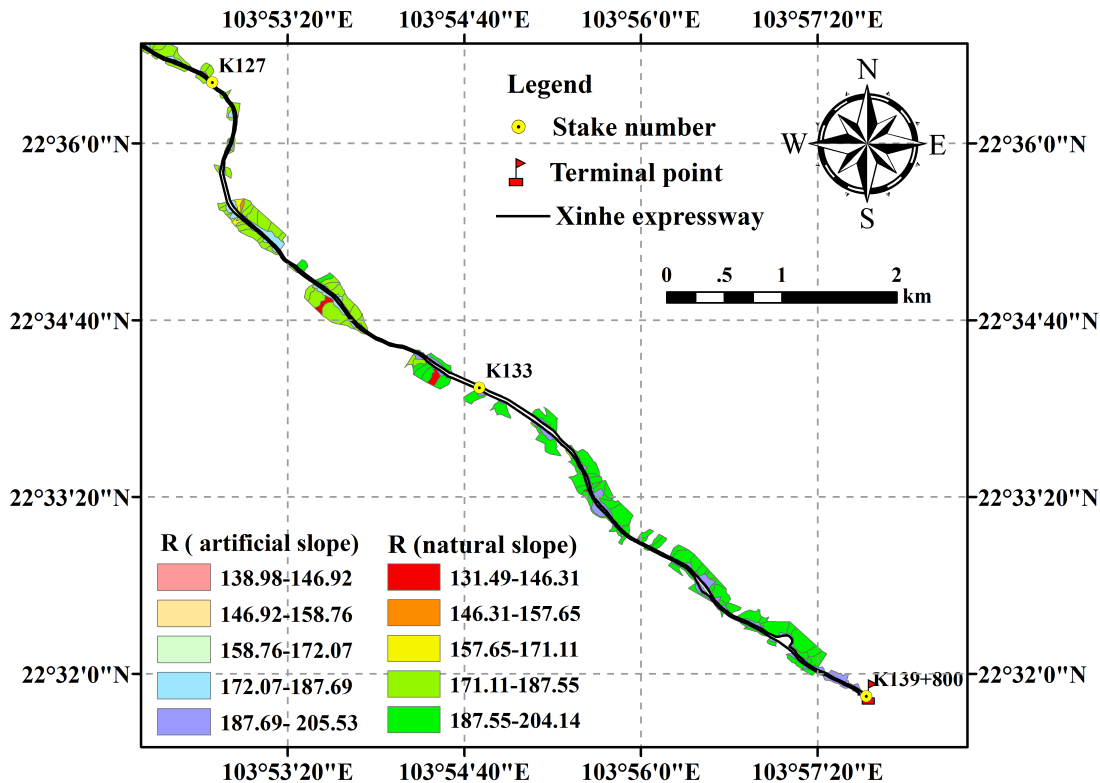


Fig. 7. Spatial distribution map of rainfall erosivity factors (K127–K139+800)

Printer-friendly version

Discussion paper



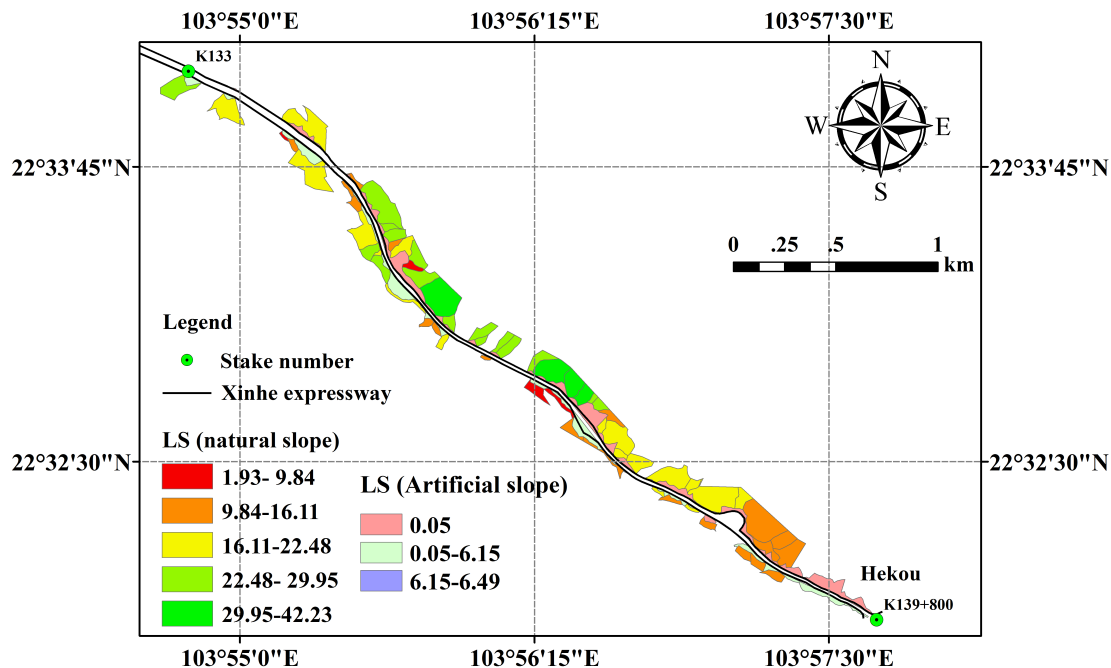


Fig. 8. Spatial distribution map of topographic factors (K134–K139)

[Printer-friendly version](#)

[Discussion paper](#)



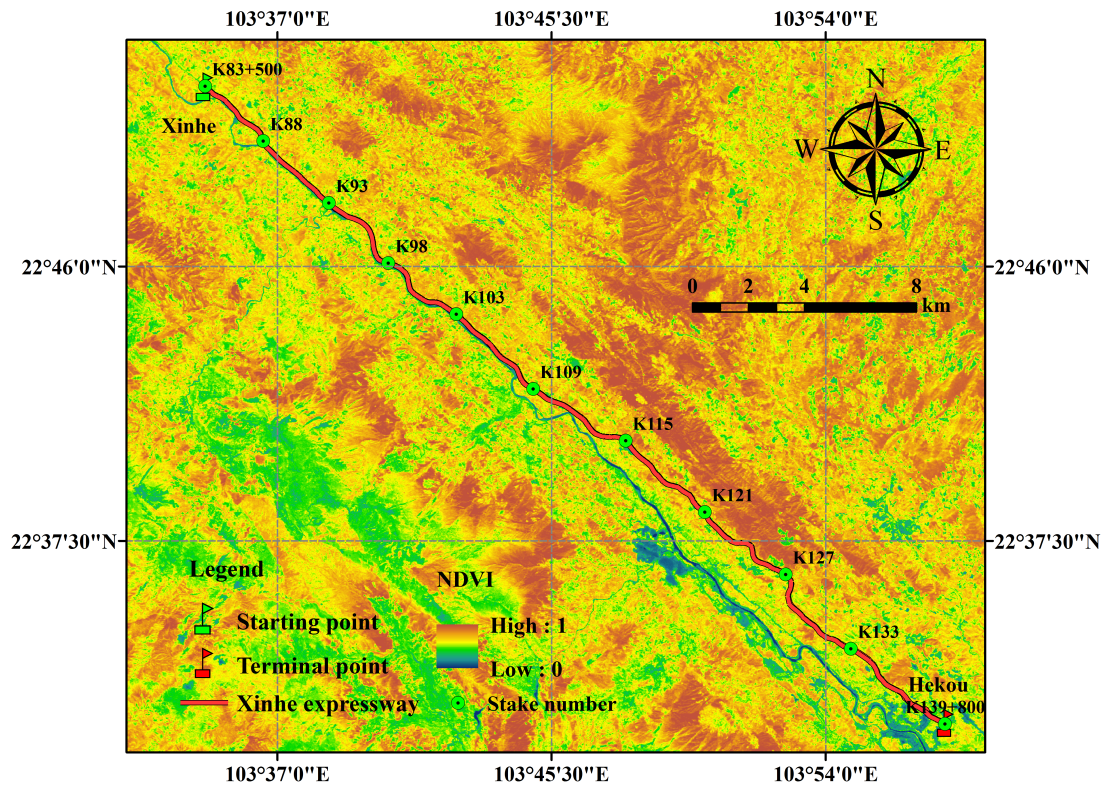


Fig. 9. Vegetation coverage along Xinhe Expressway

[Printer-friendly version](#)

[Discussion paper](#)



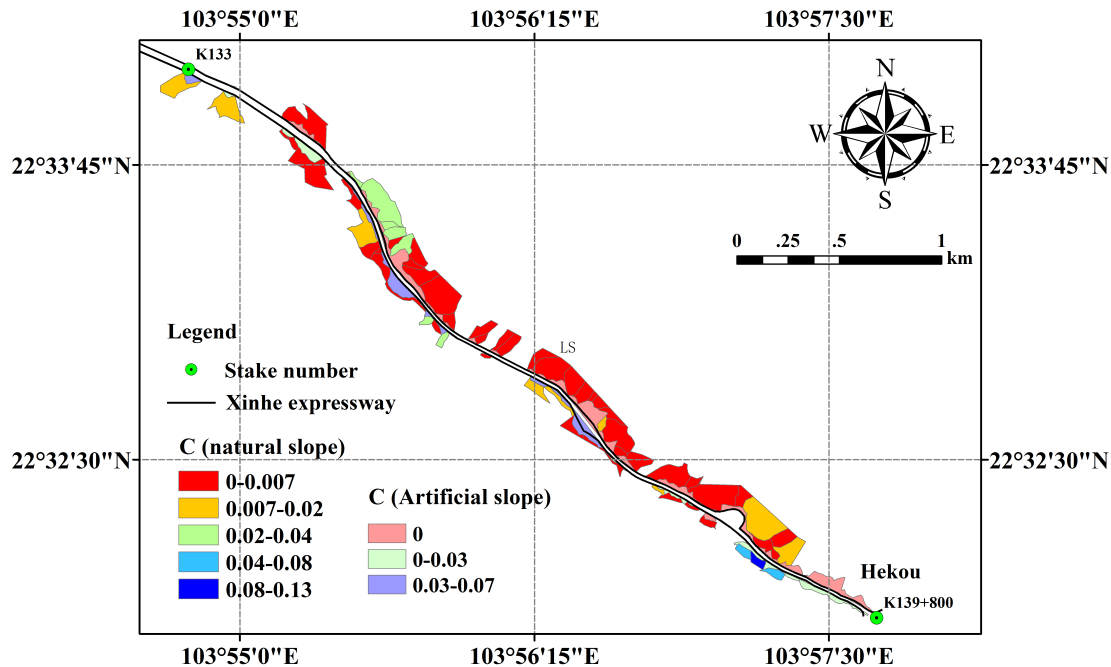


Fig. 10. Spatial distribution map of cover and management practice factor

Printer-friendly version

Discussion paper



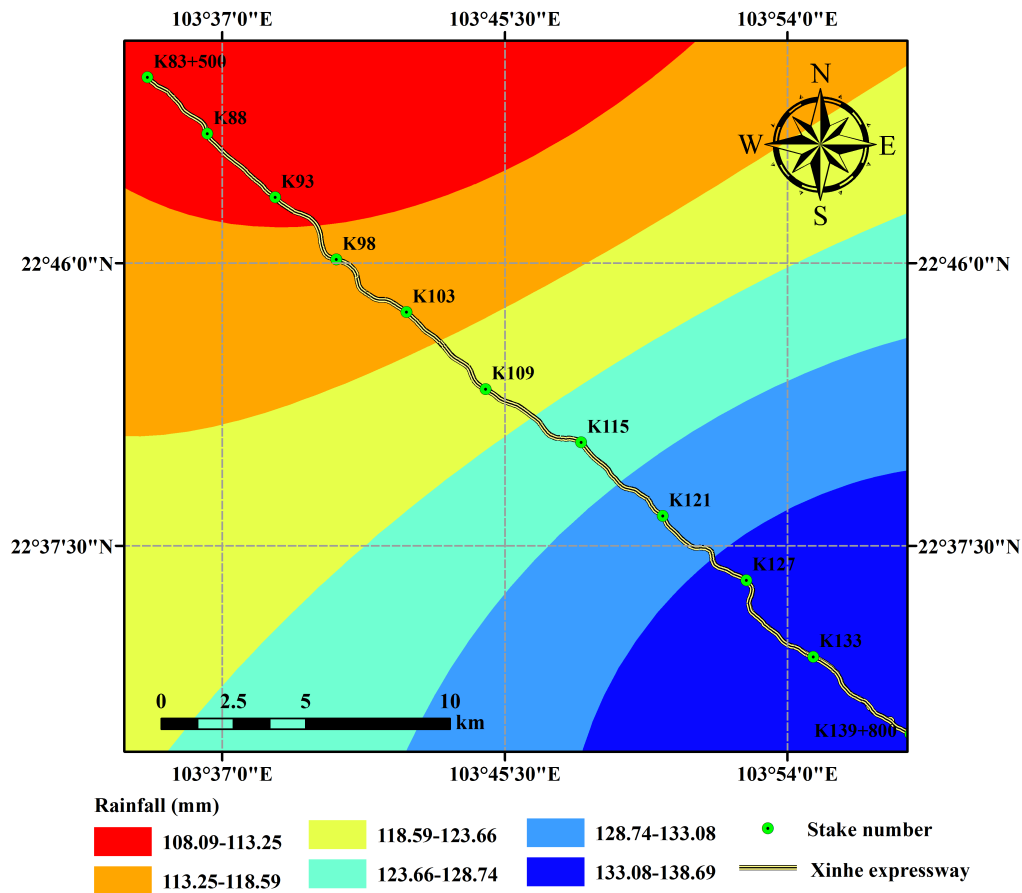


Fig. 11. Rainfall interpolation results under 20-year return

Printer-friendly version

Discussion paper



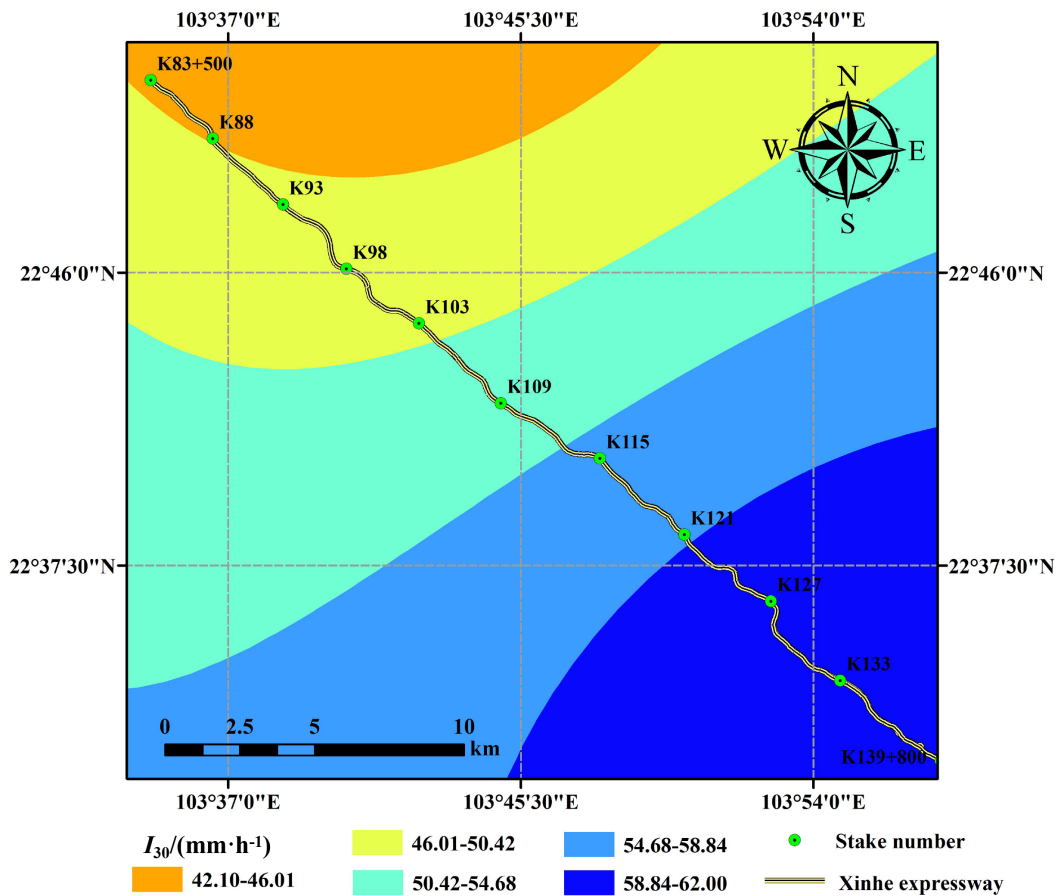


Fig. 12. Rainfall intensity interpolation results under 20-year return

Printer-friendly version

Discussion paper



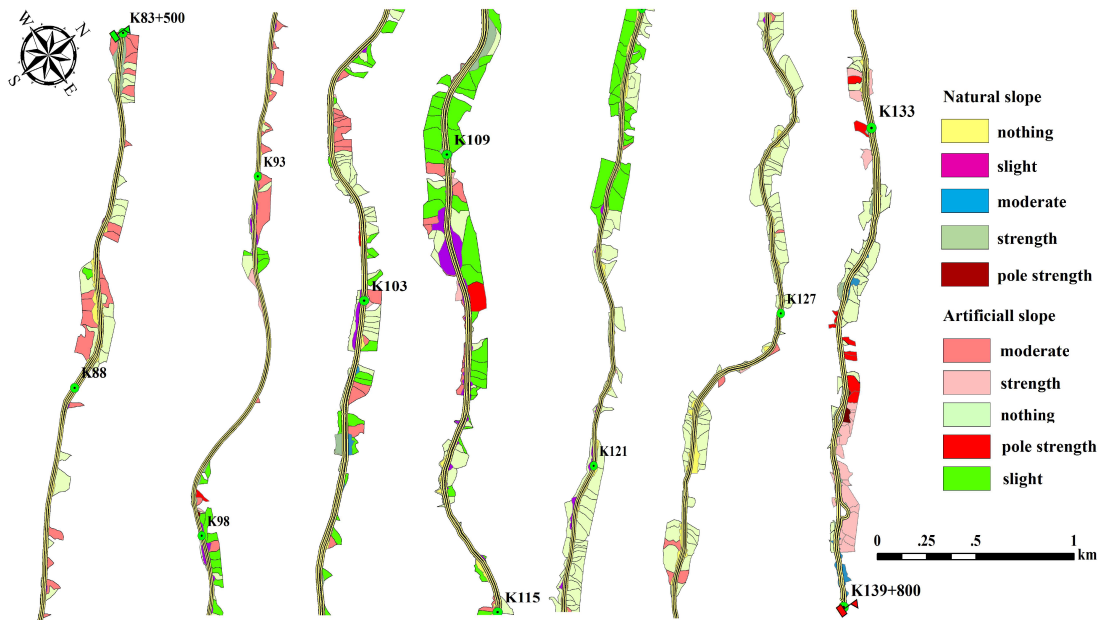


Fig. 13. Risk analysis of soil and water loss under 20-year rainfall conditions

[Printer-friendly version](#)

[Discussion paper](#)



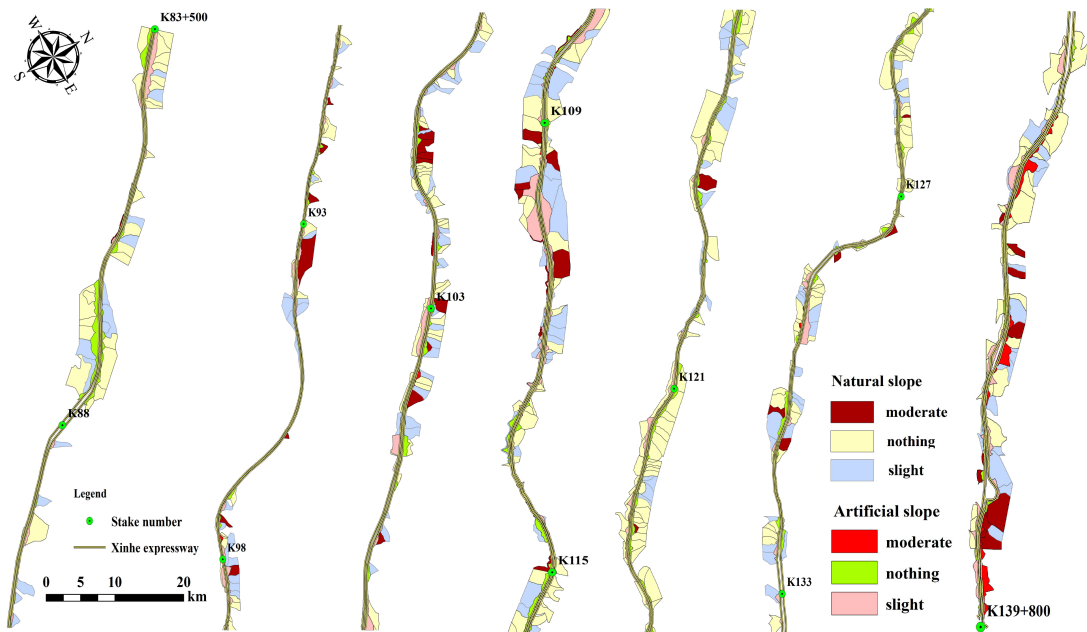


Fig. 14. Risk analysis of soil and water loss under 1-year rainfall amount

Printer-friendly version

Discussion paper

