

## ***Interactive comment on “Dangerous degree forecast of soil and water loss on highway slopes in mountainous areas using RUSLE model” by Yue Li et al.***

**Yue Li et al.**

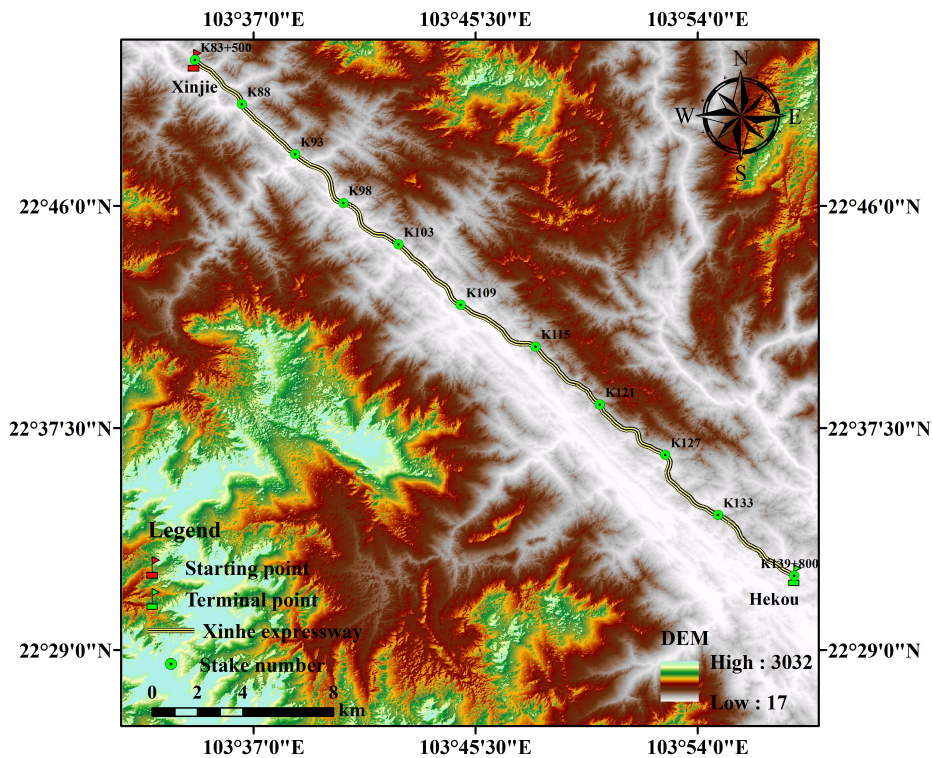
976438528@qq.com

Received and published: 15 March 2018

The comment was uploaded in the form of a supplement:  
<https://www.nat-hazards-earth-syst-sci-discuss.net/nhess-2017-406/nhess-2017-406-AC4-supplement.pdf>

Interactive comment on Nat. Hazards Earth Syst. Sci. Discuss., <https://doi.org/10.5194/nhess-2017-406>, 2017.

C1



**Fig. 1.** Overview of study region

C2



Fig. 2. Soil erosion produced by rainwash on slope

C3

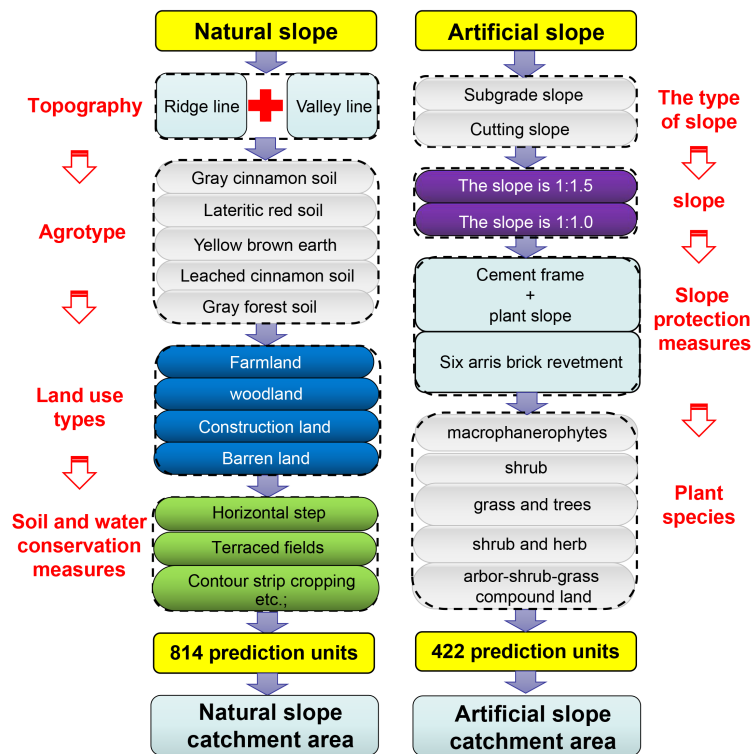


Fig. 3. Prediction unit division

C4

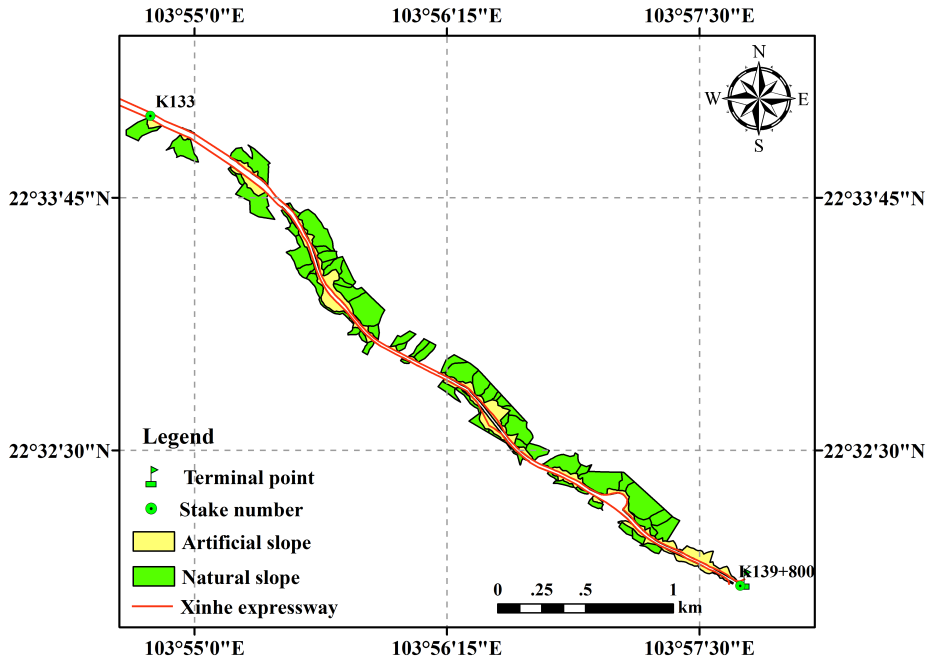


Fig. 4. Division results of prediction units (K133-K139)

C5

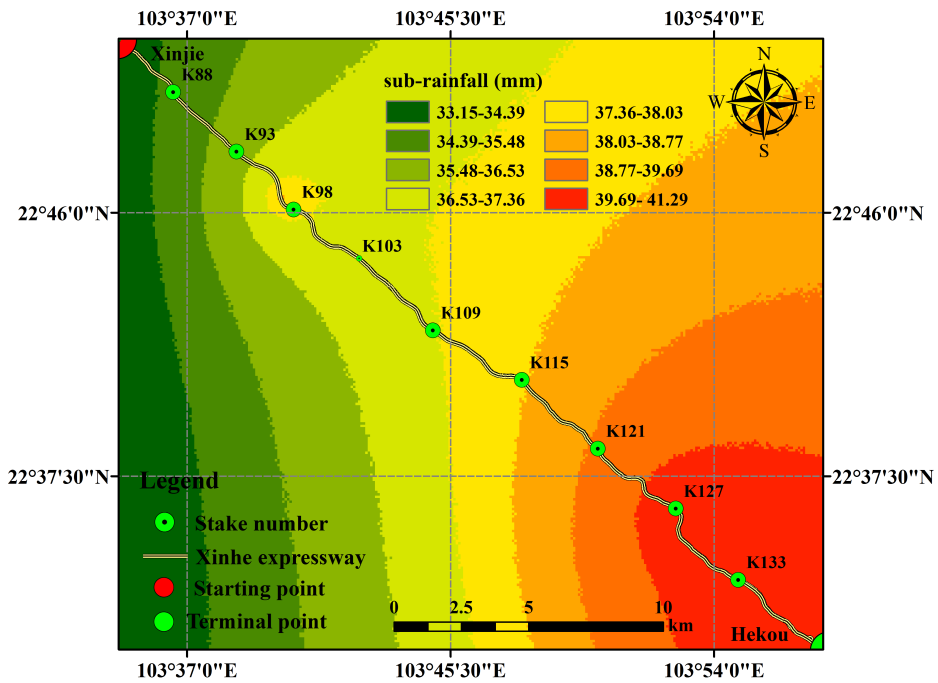


Fig. 5. Interpolation results of secondary rainfall for June 5, 2014

C6

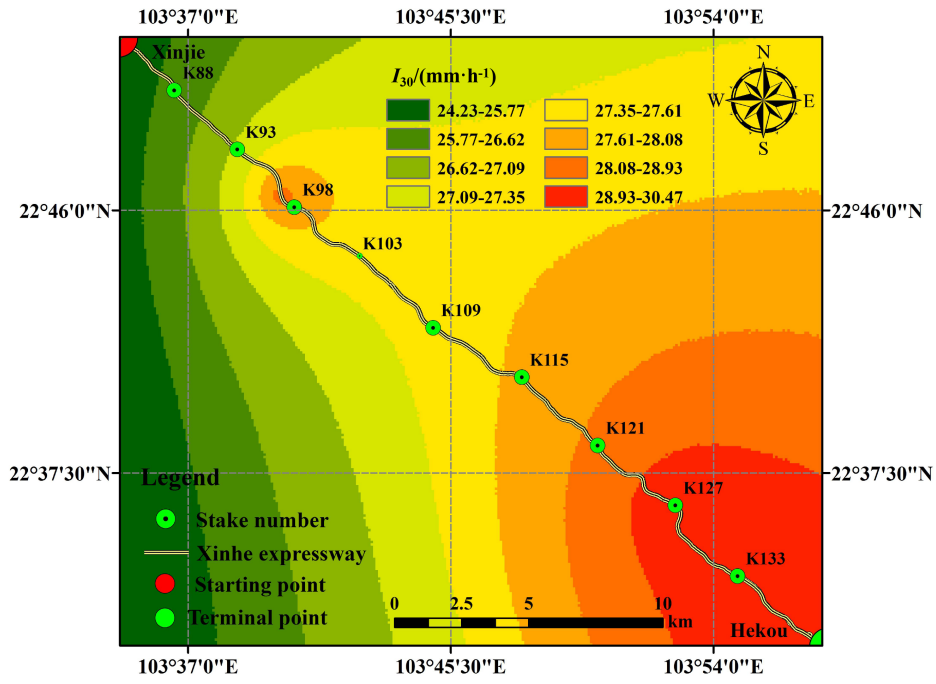


Fig. 6. Interpolation results of  $I_{30}$  for June 5, 2014

C7

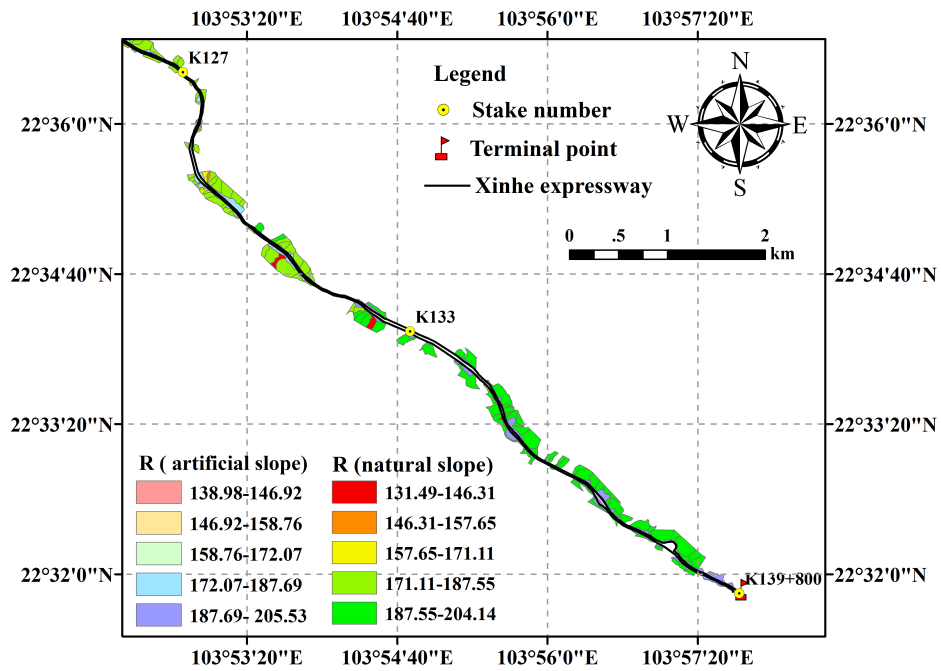


Fig. 7. Spatial distribution map of rainfall erosivity factors (K127–K139+800)

C8

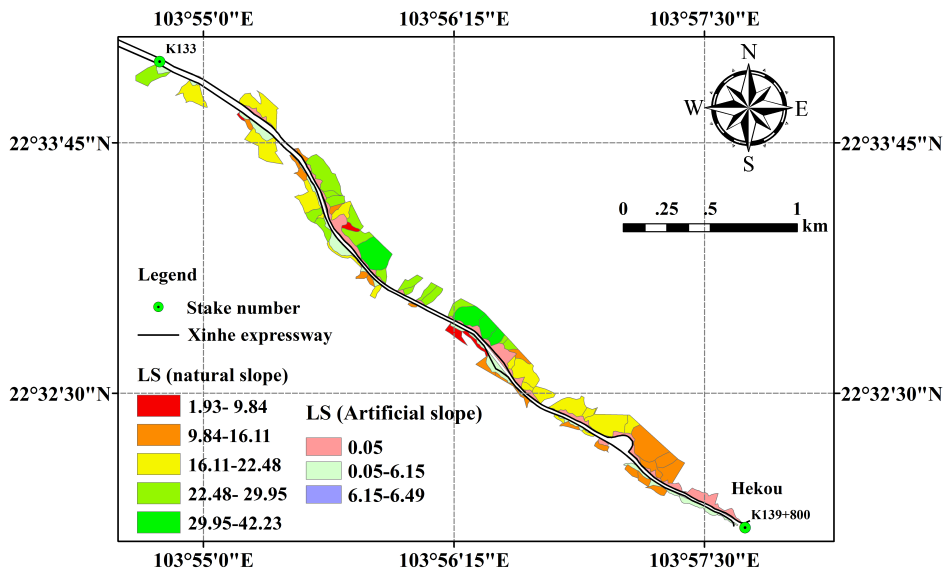


Fig. 8. Spatial distribution map of topographic factors (K134–K139)

C9

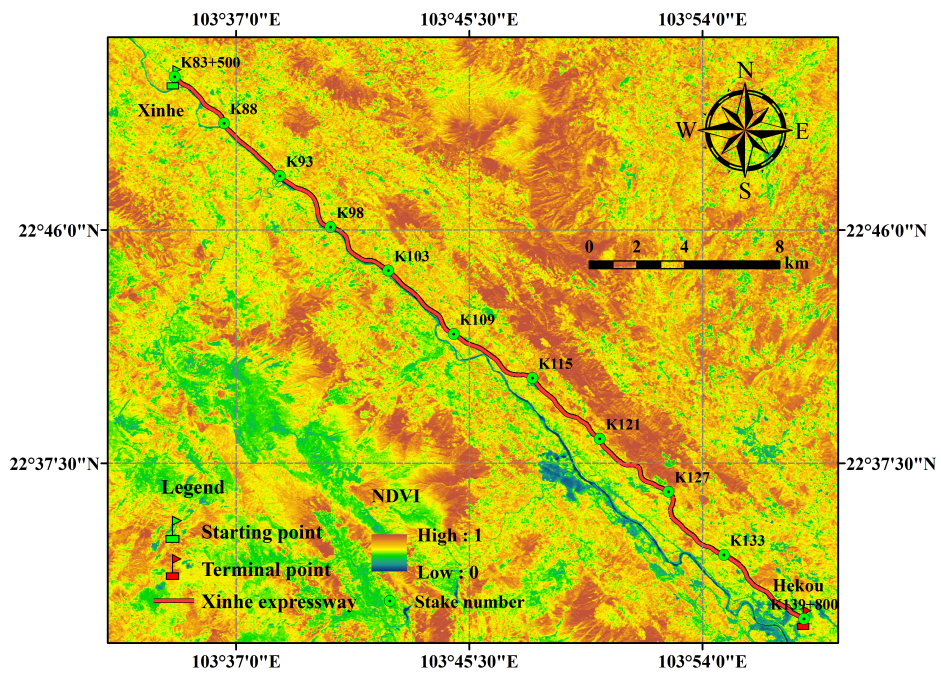


Fig. 9. Vegetation coverage along Xinhe Expressway

C10

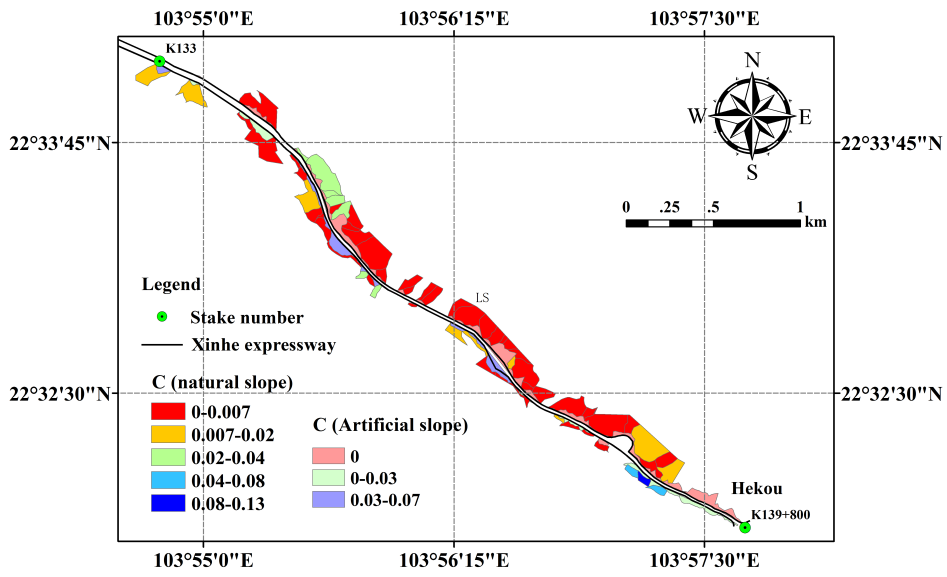


Fig. 10. Spatial distribution map of cover and management practice factor

C11

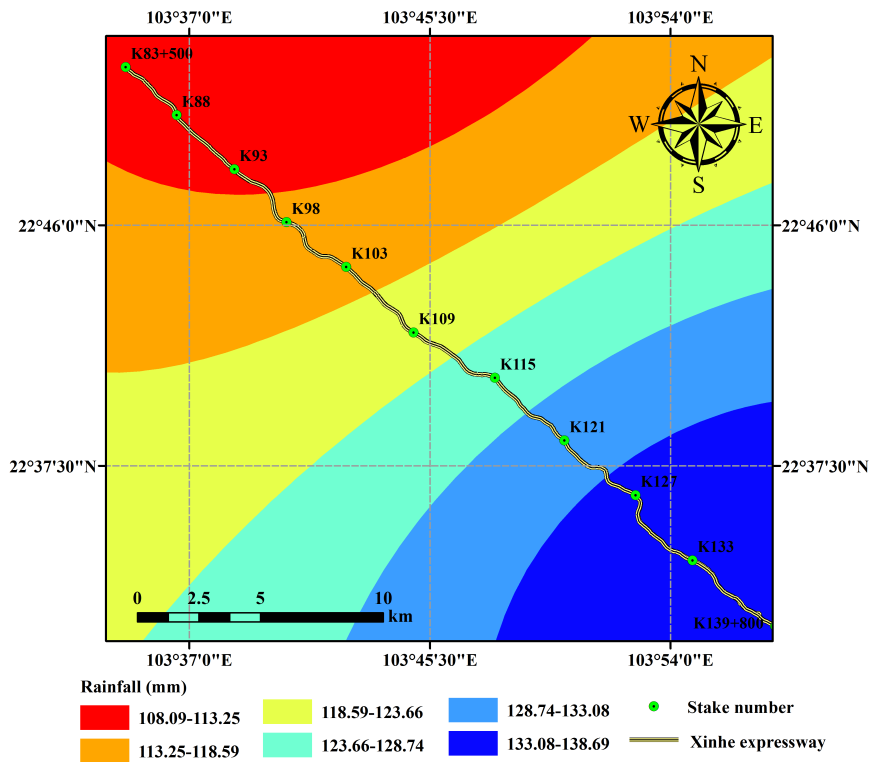


Fig. 11. Rainfall interpolation results under 20-year return

C12

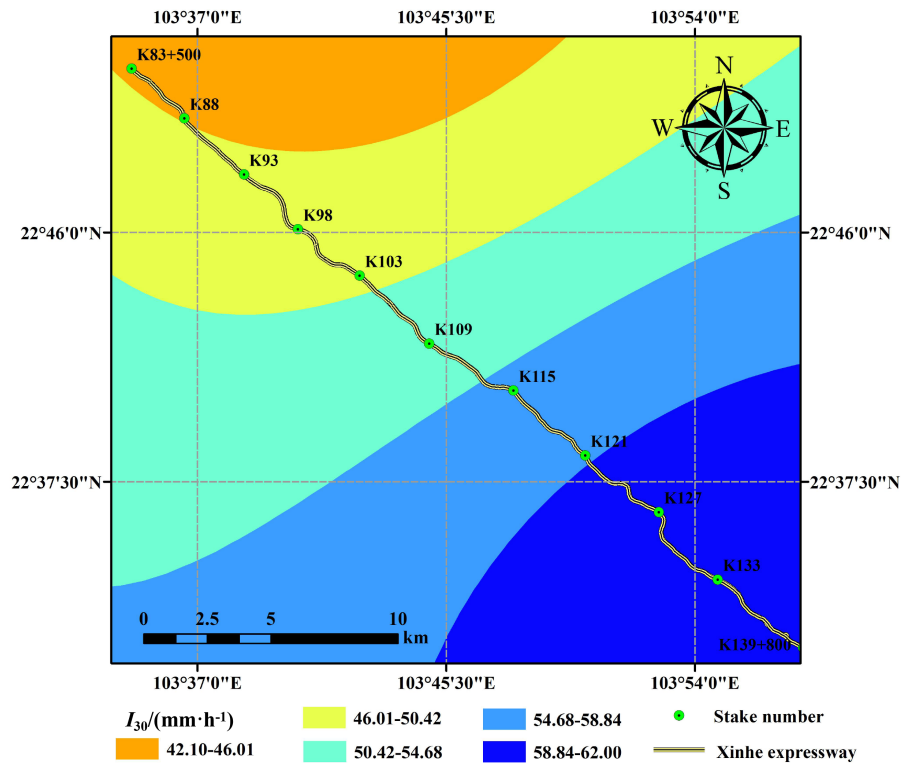


Fig. 12. Rainfall intensity interpolation results under 20-year return

C13

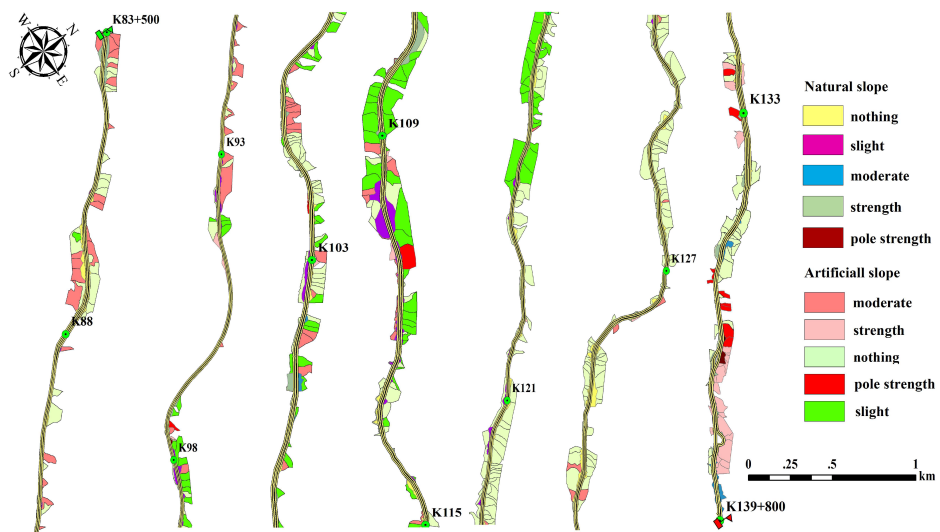
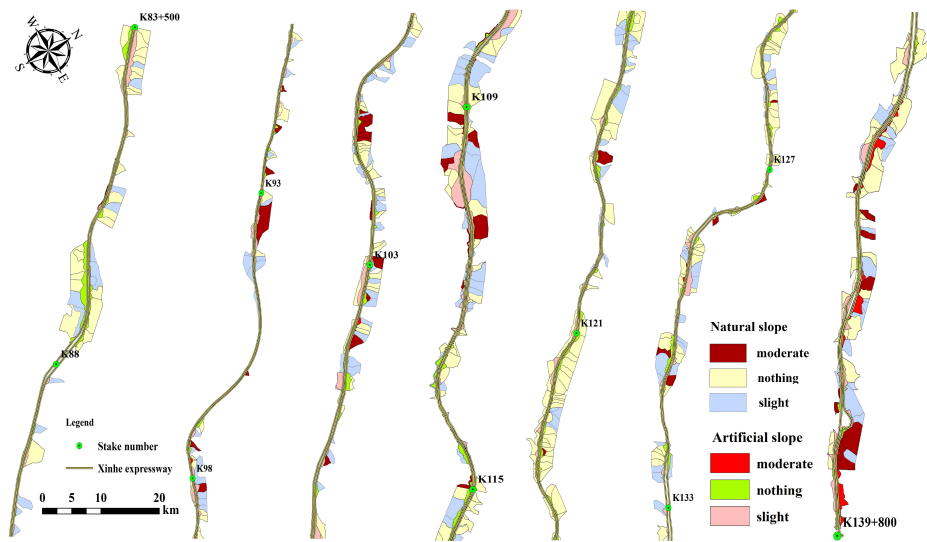


Fig. 13. Risk analysis of soil and water loss under 20-year rainfall conditions

C14



**Fig. 14.** Risk analysis of soil and water loss under 1-year rainfall amount