

# Efficient pan-European river flood hazard modelling through a combination of statistical and physical models

Dominik Paprotny, Oswaldo Morales-Nápoles, Sebastiaan N. Jonkman

5 Department of Hydraulic Engineering, Faculty of Civil Engineering and Geosciences, Delft University of Technology, Stevinweg 1, 2628 CN Delft, The Netherlands.

*Correspondence to:* D. Paprotny (d.paprotny@tudelft.nl)

**Abstract.** Flood hazard is currently being researched on continental and global scales, using models of increasing complexity. In this paper we investigate a different, simplified approach, which combines statistical and physical models in place of conventional rainfall-runoff models to carry out flood mapping for Europe. A Bayesian Network-based model built in a previous study is employed to generate return-period flow rates in European rivers with a catchment area larger than 100 km<sup>2</sup>. The simulations are performed using a one-dimensional ‘steady-state’ hydraulic model and the results are post-processed using geographical information system (GIS) software in order to derive flood zones. This approach is validated by comparison with Joint Research Centre’s (JRC) pan-European map and five local flood studies from different countries. Overall, the two approaches show similar performance in recreating flood zones of local maps. The simplified approach achieved similar level of accuracy, while substantially reducing the computational time. The paper also presents the aggregated results on the flood hazard in Europe, including future projections. We find relatively small changes in flood hazard, i.e. an increase of flood zones area by 2–4% by the end of the century compared to the historical scenario. However, when current flood protection standards are taken into account, the flood-prone area increases substantially in the future (28–38% for a 100-year return period). This is because in many parts of Europe river discharge with the same return period is projected to increase in the future, thus making the protection standards insufficient.

**Keywords.** hydrology; climate change; return periods; flood risk; model comparison; inundation mapping

## 1 Introduction

River floods are one of the most costly natural hazards in Europe. To identify the location and extent of flood risk, flood hazards have been mapped at the local and national scale. The maps provide high-resolution information for flood risk management, however they seldom include projected flooding under the influence of climate and socio-economic change. The EU Flood Directive requires revisions of flood maps every six years (European Union 2007). Yet, costs of detailed studies are high. For example, in England (2005–2013) the cost amounted to £7 million (approx. €10 million), not including the necessary surveys and data collection, which amounted to more than £20 million (Environment Agency 2016). The scope and extent of

the studies varies across Europe, as does the level of dissemination, and few countries make the geospatial data underlying the flood maps easily available. Due to methodological differences, the comparability of the maps is limited and, consequently, the possibility of aggregating them and drawing European-wide conclusions is also hampered. Outside Europe, local flood maps are often not present at all.

5 To produce spatially-consistent maps over large areas, several studies on European and global river flood hazard studies have been commissioned. In Europe a series of studies was recently made (Rojas et al. 2013, Alfieri et al. 2014, 2015a, 2015b) using the Lisflood model (van der Knijff et al. 2010) to derive 100-m resolution maps for the continent. The same model has also been used in the European Flood Awareness System, or EFAS (Thielen et al. 2009), as well as its global extension, Global Flood Awareness System GloFAS (Dottori et al. 2016). On a global scale, recent river floods studies include GLOFRIS  
10 (Winsemius et al. 2013, Ward et al. 2013), SSBN (Sampson et al. 2015) and analyses based on CaMa-Flood model (Pappenberger et al. 2012, Hirabayashi et al. 2013). The resolution of the resulting maps ranges from 3" to 30", or approximately 90–900 m on the equator. Methodologies employed in the studies vary, but most start with coarsely-gridded simulation of river flows based on meteorological and land surface data. Flood volumes calculated at 0.25–0.5° resolution are typically downscaled and redistributed over finer grid cells to generate flood extents. In studies based on Lisflood model, a  
15 two-dimensional (2D) hydrodynamic simulation was performed. However, validation of the models' accuracy has been limited over Europe. Only Alfieri et al. (2014), Winsemius et al. (2015) and Sampson et al. (2015) directly compare their estimated flood zones with local high-resolution studies. The practical use of the maps is also limited by rather small availability of the underlying data, which are mostly available as online visualizations or through direct contact with the authors. Additionally, the common assumption of the global maps is that there are no flood defences in place, thus constituting a "worst-case" scenario  
20 (Jonkman 2013, Ward et al. 2015). On the other hand, an advantage of these models is that most of them do—or can—incorporate climate change and socio-economic developments needed to analyse changes in flood frequency over time.

However, calculating flood hazard for the whole continent or the globe is computationally demanding. Alfieri et al. (2014) mentions using a 60-processor cluster to perform a 2D simulation of flood zones at 100 m resolution for one scenario only. Sampson et al. (2015) indicated that a similar calculation (3" grid, 2D model) would take three months on a single processor  
25 core for an average 10° x 10° grid box, which is roughly the geographical extent of metropolitan France. Using a 200-core cluster, the time is reduced to less than a day. Still, the question remains whether using complex models is necessary given the quality and resolution of the input data. Bates and De Roo (2000) compared output from three different model types with extents of an actual flood for a case study in the United Kingdom. They found that at 100 m resolution a 2D dynamic model performed almost identically to a one-dimensional (1D) steady state and improved estimates only slightly when compared to  
30 floodplains generated by extrapolating water levels from observations over the digital elevation model (known as "planar approach"). In another case study in Germany, Apel et al. (2009) found only a small influence of model choice (water level interpolation, 1D/2D model, 2D model) on the results of a flood risk analysis. Sampson et al. (2015) replaced hydrological modelling of river discharges with a statistical method, known as the regional frequency analysis (RFA). Applying the same hydraulic model as in Alfieri et al. (2014) to calculate flood extents, the researchers achieved a better fit to high-resolution

flood maps of Thames and Severn river basins than the earlier study. Similar comparison for the two areas modelled using four global flood models, was presented by Dottori et al. (2016). The results are not conclusive as to which modelling approach gives the best results.

In light of the above, it is not surprising that simpler approaches are still used for flood research. For the CFFlood dataset (Mokrech et al. 2015), for instance, river flood extents were derived by using the planar approach based on water levels computed in Lisflood simulations from Feyen et al. (2012), albeit no validation was presented for either study. As mentioned before, Sampson et al. (2015) utilized a regional frequency analysis of river discharges that was presented by Smith et al. (2015). This study found that river discharges can be estimated by clustering gauge stations based on climate type, catchment area and annual rainfall. At any location, the discharge could be modelled through similarity of catchment parameters to those clusters. Paprotny and Morales Nápoles (2015, 2017) employed Bayesian Networks to estimate extreme river discharges in Europe using seven geographical characteristics of catchments. The results have shown that similar accuracy to pan-European studies using hydrologic models could be achieved. Finally, for the lack of better solutions, flood defences have been omitted altogether in almost all studies. Occasionally, an assumption that more valuable areas are better protected was used to compile databases of flood protection standards (Mokrech et al. 2015, Scussolini et al. 2016).

The ultimate aim of the research presented in this paper was to construct flood hazard maps for Europe under present and future climate. This paper builds on the results of Paprotny and Morales Nápoles (2017). In the aforementioned manuscript, the authors show how extreme river discharges can be derived for the whole continent using only a statistical model. This paper extends the previous research by calculating river flood extents over the same area. A relatively simple combination of one-dimensional hydraulic simulation of water levels and GIS-based planar approach is utilized to draw flood zones herein. Emphasis is placed on analysing the accuracy of the results in terms of match with local high-resolution flood maps. This is put in context of the performance of more advanced models in the same areas. Additionally, the aggregate results of the analysis are presented to show flooded areas at various return periods, the expected changes in the level of hazard due to climate change, and the influence of flood defence standards on the modelling outcomes

It should be noted that the work presented here was a part of a larger effort to create pan-European meteorological and hydrological hazard maps within “Risk analysis of infrastructure networks in response to extreme weather” (RAIN) project. As a consequence, several design choices, such as the extent of the domain, source of input data or representation of the results, were made in order to synchronize the various hazard maps produced within the project (Groenemeijer et al. 2016).

## **2 Materials and methods**

### **2.1 Domain and overview of the methodology**

The analysis presented here was performed over a domain covering most of the European continent, the same as used by Paprotny and Morales Nápoles (2017). This domain excludes most of Russia, Ukraine and Belarus, as well as some outlying island territories, but adds Cyprus, as it is a member of the European Union. In this area there are around 2 million km of rivers

in more than 830,000 catchments, according to the CCM River and Catchment Database v2.1, or CCM2 (Vogt et al. 2007, de Jager and Vogt 2010). Within this domain, the smallest rivers are affected by flash floods and flooding cannot be represented using daily discharge extremes as those phenomena last only a few hours or less. Therefore, a threshold of 100 km<sup>2</sup> upstream area was chosen, which reduces the domain to 155,664 river sections (19% of the total), while retaining 26% of river length (498,420 km). That is still more than double of the 188,300 km of rivers analysed in Alfieri et al. (2014). Global studies mostly used higher thresholds: 5000 km<sup>2</sup> in Dottori et al. (2016), which would have reduced our domain to 56,000 km (3%), or Strahler number at least 6 in Winsemius et al. (2013), which would have had almost the same effect. The scope of the paper are river floods, therefore influence of tides and storm surges is not included. Also, flash floods in very small catchments (below 100 km<sup>2</sup>), which occur over a short period of time, are not covered here.

10 In this domain flood extents were calculated using the procedure presented in Fig. 1. First, river discharges estimates from the Bayesian Network-based model (I) are collected, as described in section 2.2. Together with data on the river network and terrain (II) they serve as input data for a one-dimensional simulation of water levels using SOBEK model (III). After the water levels (IV) have been calculated as per section 2.3, they are transferred to GIS software (V). Flood zones (VI) are then delimited utilizing the planar approach (section 2.4). The model in SOBEK is then adjusted (VII) based on the comparison with a set of reference maps (VIII), both local high-resolution studies and the Joint Research Centre's (JRC) map (section 2.5). This step could indicate, if necessary, new runs of the SOBEK model to adjust the model's roughness coefficient. Afterwards, the resulting flood extents are validated (IX) with additional reference maps and contrasted with the outcomes of other studies (X), which is presented in section 3.1. Finally, flood extents are calculated both for the "reference" period (1971–2000) and climate change scenarios.

## 20 **2.2 River discharge scenarios**

In the approach chosen for this study, only the peak discharge value is used in the hydraulic model, rather than flood volumes or time-series of discharges. This is because the "steady-state" simulation calculates the equilibrium water level, there time factor is excluded (see section 2.3). Estimates of annual maxima of river discharges were provided by the Bayesian Network-based (BN) model for three time periods 1971–2000, 2021–2050 and 2071–2100. The BN model was extensively described and validated in Paprotny and Morales Nápoles (2017) and the reader is referred to this paper for details.

Briefly, the BN model is a statistical method that constructs a joint distributions over different random variables (different geographical properties of European catchments in our case) in a parsimonious way (Pearl 1988). In the model, seven random variables are used to conditionalize annual maxima of river discharges in a non-parametric, continuous BN. Those variables are represented as "nodes" of the BN, while the dependencies between them are represented as "arcs" joining different nodes.

30 An arc represents the (conditional) correlation between two variables, and has a defined direction. The arcs have to connect the nodes in such a manner that the resulting graph is acyclic, i.e. if we chose any node and follow strictly the direction of all arcs in a path, we will not end up at the same node. It is assumed that the dependencies between variables can be modelled using a normal (Gaussian) copula. The variables used in the BN are: catchment area, catchment steepness, annual maximum

of daily precipitation and snowmelt, extreme runoff coefficient and three types of land use expressed as % of total catchment area (lakes, marshes and build-up areas).

Between the aforementioned time periods all variables remain constant within every catchment, except annual maximum of daily amount of precipitation and snowmelt and the runoff coefficient (annual maximum of total runoff divided by the previously mentioned variable). This information is collected from climate models. It allows the method to provide discharge estimates and a full conditional distribution for any climate scenario and time period based on output from climate models (Fig. 2). Here, results from one of the high-resolution (0.11°) regional models operated within EURO-CORDEX framework was used, produced by the Climate Limited-area Modelling-Community utilizing EC-Earth general circulation model (run by ICHEC) with COSMO\_4.8\_clm17 regional climate model (Rockel et al. 2008), realization r12i1p1 (see Paprotny and Morales Napoles 2017 for details on datasets used in the European BN model). The first one is the historical “reference” period, used to calibrate and validate the method’s performance. The other two represent climate change scenarios, or future projections. Each of those future scenarios consists of two variants, namely “representative concentration pathways” or RCPs. RCP 4.5 and RCP 8.5 indicate changes in emissions that would cause an increase in radiative forcing by 4.5 or 8.5 W/m<sup>2</sup> by 2100 (Moss et al. 2010). Finally, extreme value analysis with Gumbel distribution was applied to obtain discharges with different return periods.

Yet, some additional work was necessary to use the extreme discharge estimates in the hydrodynamic simulation. All large-scale flood assessments face the problem of missing channel geometry data. Most of the time, the problem is solved by using the assumption that the satellite-derived digital elevation model represents the surface water at normal conditions. Thus, in this study, only the flow above the surface under “normal conditions” is considered. This baseline flow is therefore subtracted from the peak discharge estimates. It could be the mean annual discharge (Alfieri et al. 2014, Dottori et al. 2016) or the bankfull discharge, which is assumed to be equal to a 2-year return period (Ward et al. 2013, Sampson et al. 2015). Here we used the former approach, as it gave slightly better results when comparing the flood extents with the reference maps than the other. To estimate mean discharge, the BN model was modified by replacing the two variables representing the extreme meteorological events, namely annual maximum of daily precipitation combined with snowmelt and extreme runoff coefficient (annual maximum of total runoff divided by maximum of precipitation and snowmelt), with their equivalents for average climatology. Therefore, mean annual precipitation and average runoff coefficient (mean annual total runoff divided by mean annual precipitation) are considered. The BN was quantified for 1841 catchments using the same sources of data as before, and contrasted with observations from gauge stations (Fig. 3). The coefficient of determination ( $R^2$ ) is 0.93, which is the same value reported in Rojas et al. (2011) for a hydrological model of Europe without bias-correction of climate data. For specific river discharge, i.e. runoff divided by the respective catchment areas, the  $R^2$  is 0.60. The Nash-Sutcliffe efficiency ( $I_{NSE}$ ), which measures the fit to a 1:1 line, equals 0.85. This is better than -0.39 reported in Rojas et al. (2011), however only when the river discharge calculation was performed using climate data not corrected for bias. With bias-corrected climate data, the model by Rojas et al. (2011) had almost perfect fit with observations ( $I_{NSE}=0.99$ ).

## 2.3 River water level modelling

Calculation of water levels was performed using SOBEK v2.13 hydrodynamic model (Deltares 2016). As noted in the introduction, the one-dimensional (1D) module was chosen, as it is significantly less computationally demanding than a two-dimensional (2D) model. One-dimensional flow is described by de Saint-Venant's continuity and momentum equations. Also, a "steady-state" calculation was performed, i.e. the model iteratively performs the simulation until an "equilibrium" state of water level for a given discharge amount is found. This means that discharge is assumed non-variable in time, which reduces the computational effort compared to an "unsteady" calculation where water levels are calculated for each defined time step. The hydraulic simulation was prepared utilizing six inputs: river network geometry; river cross-sections; calculation points; upstream and downstream boundaries; lateral discharge; model parameters.

The geometry of the river network was obtained from the linear representation of the rivers in the CCM2 dataset. As noted in section 2.1, river sections with catchment area of at least 100 km<sup>2</sup> were selected. The network was divided into seven sub-simulations based on the regional split of the original CCM2 dataset (Fig. 4). The resolution of the geometry is about 100 m. Cross-sections of the rivers were derived from the EU-DEM elevation model (DHI-GRAS 2014) at 100 m resolution. They vary in length depending on the characteristics of the topography (elevation differences) so that the maximum extent of the floodplain is captured. The density of the cross-section along the rivers also varies. CCM2 dataset splits rivers into segment whenever two rivers merge; thus, the number of cross-sections per segment depends on its length. On average, the cross-sections are 2.1 km apart. Due to the low resolution of the DEM two assumptions had to be made: first, that the DEM represents the average water level in the river, as discussed in the previous section, and second, that no flood defences or other discharge-control structures are present (unless dikes are large enough to be captured by the DEM). The latter assumption is featured in all continental and global studies and sometimes even in national studies, such as the flood assessment for England. The aspect of flood protection was dealt with outside the hydraulic computation itself (see section 2.4).

Another input element, calculation points, are locations along the digitised river network where the 1D model computes the water levels. A 1D model represents the rivers and channels as a linear object, therefore allowing movements of water along a single dimension. The dimensions of the river bed and floodplain are defined on the cross-sections. The method utilizes de Saint-Venant's equations to calculate discharges in a longitudinal profile at calculation points. As another computational-time-conserving simplification, the lumped conveyance approach was used rather than vertically-segmented approach. This means that it is assumed that velocity is uniform along the profile, as opposed to allowing different velocities in each defined vertical segment. Similar to cross-sections, calculation points vary in density and were defined in such a manner that they are located between the cross-sections. Their total number is slightly higher so that the average distance between them is 2 km.

Computation of river flows in the network is limited by boundaries. Because a threshold of 100 km<sup>2</sup> catchment area is used, almost all upstream boundaries are located somewhere along the rivers and discharge values were drawn from the BN estimates for that particular location. In rare cases where the source river section already has a catchment bigger than the threshold, the value of discharge was taken from the BN estimate made for that catchment. As noted earlier, average discharge

was subtracted from the extreme discharge value for the purpose of the calculation. Meanwhile, the downstream boundaries are the locations where the rivers connect to the sea. The only exceptions are two rivers draining to lake Prespa in the southern Balkans. The boundary was defined as zero water level, representing the mean sea level unless the DEM indicated a value lower than zero. This could be due to a river moving through a depression, bias in the DEM or the difference between the mean sea level and modelled geoid underpinning the DEM.

Between the upstream and downstream boundaries the discharge increases as more catchment area contributes to the river flow, therefore more discharge had to be added along the river network. Lateral discharge nodes are used here to enter water to the model at locations different than the boundaries. This is also necessary to properly represent the discharge scenarios in the network. At an intersection of two rivers, the water flow in both rivers is summed and continues downstream. However, extreme discharges with e.g., a 100-year return period, do not necessarily occur at the same moment in adjacent rivers. Hence, the 100-year discharge in the river segment below the intersection will be typically lower than the sum of the two contributing rivers. Using the lateral discharge option, the surplus water is withdrawn from the model, preserving a proper representation of flood scenarios.

The final aspect to be considered is the model parameters. The most important is the roughness coefficient which was chosen through a relatively simple process. Other large-scale studies did not perform any calibration due to the lack of comparison material with sufficient spatial coverage. Here, we compare our flood map for the historical scenario, prepared as described in section 2.4, with the JRC map (Alfieri et al. 2014). Even though the JRC map was uncalibrated and by necessity only selectively validated, it used more advanced modelling steps that, most likely, resulted in higher accuracy. The roughness coefficient was assumed to be a constant value throughout each of the seven sub-simulations. In five of them, the best results were achieved with a Manning's coefficient in the range of 0.13–0.15 s/m<sup>1/3</sup>. Two remaining regions (both in northern Europe) had lower values, likely due to large lake cover. The methodology of map comparison is explained in section 2.5.

## 2.4 Flood extent calculation

Water levels obtained from the model were post-processed first by linearly interpolating them along the rivers to increase the density of estimates. For each point, located on average 250 m away from the next point, the nearest neighbourhood was defined with Thiessen polygons. For each polygon, a constant water level was assumed, therefore extrapolating the water levels over all terrain. Coastal segments were included in the nearest-neighbour calculation in order to avoid a situation where the water levels in a river are extrapolated along the coastline. Elevation from the DEM was then subtracted, per grid cell, from those water levels. From the whole area lying below water levels of the river, only those zones hydrologically connected with the rivers were included. In other words, high terrain completely surrounding a low-lying area prevents it from being inundated.

Similar to the water level modelling approach, there are two main drawbacks. First is the lack of flood volume control, which has large influence on the actual flood extent during an extreme event (Apel et al. 2009). Second, it assumes that anything elevated above the water levels prevents inundation which neglects the possibility of flood defence failure. However, flood defences can hardly be represented within the resolution of the model. Yet, due to high significance of this aspect, two

sets of maps were produced. The first one uses directly the results of the analysis and can therefore be dubbed ‘without flood protection’ scenario. The second group corresponds to the maps ‘with flood protection’. To obtain them, flood defences were assumed to have the same protection standard as calculated by Scussolini et al. (2016) in the FLOPROS database. This dataset provides protection standards defined as return periods of river floods. As a result, it was assumed that the return periods in those protection standards were equal to return periods of discharges calculated with the Bayesian Network-based model ( $Q_p$  in Fig. 5). If extreme discharge is higher than the protection standard ( $Q_e > Q_p$ ), the terrain floods.

Additionally, using the results of Paprotny and Morales Nápoles (2017) it was possible to calculate how the return period of discharge would change in the future for each climate scenario and river segment. This would indicate whether the current protection standard will remain sufficient under climate change. For instance, consider a dike that protects against a 200-year flood ( $Q_p$ ) according to FLOPROS. It is therefore sufficient to withstand 100-year river discharge under the historical (1971–2000) scenario. If the extreme river discharges increase due to climate change, the future 100-year event will correspond to river discharge that currently has a return period of more than 100 years, say 250 years. In that case, discharges with a 250-year return period are higher than the 200-year protection standard ( $Q_e > Q_p$ ). Therefore, the area that is currently protected against a 100-year event will be at risk of inundation under climate change.

## 15 2.5 Reference flood maps

The results of this study (“TUD map”) were compared with six “reference” maps: one pan-European map and five regional flood maps. Below we briefly summarise the main characteristics of those studies (Table 1). The extent of local maps is presented in Fig. 6.

The pan-European map is available from the Joint Research Centre (2014) and it is documented in Alfieri et al. (2014). The map was created by firstly running a rainfall-runoff simulation of river discharges based on interpolated climatological data for 1990–2010. Based on those results, 100-year discharges together with a flood wave hydrograph was estimated; this is the only scenario considered. Two-dimensional hydrodynamic model Lisflood was used to derive flood zones. The study utilized SRTM terrain model and therefore does not include flood defences. The rainfall-runoff model was calibrated against river gauge observations, but the flood extent modelling was not calibrated. The resulting map covers 188,300 km of rivers (with a 500 km<sup>2</sup> catchment area threshold) in a domain that is slightly smaller than the one used here; it omits Cyprus, Iceland and those parts of river basins that are located inside the former Soviet Union territory, except basins of Danube, Vistula and Nemunas. The map’s resolution is 100 m and it exactly matches the grid used in the TUD map.

The largest of the regional maps is the Environment Agency’s (2016) “Risk of Flooding from Rivers and Sea” map of England. This dataset was produced during 2005–2013 utilizing local-scale modelling and takes into consideration the height, type and condition of the flood defences. The resulting maps were validated locally using experts’ assessments. They are continuously updated; the version from April 2015 was used here. The dataset’s resolution is 50 m and for the use in this study the flood zones inundated directly from the sea were removed. The map was prepared in four thresholds defined by the flood extents corresponding to return periods: below 30 years, 30–100 years, 100–1000 years, above 1000 years. The largest flood



zones are observed in the basins of rivers Great Ouse and Trent. Much lower hazard is indicated along the biggest rivers, Severn and Thames.

Two maps from Germany were collected, covering the federal states (*Länder*) of Saxony (Sächsisches Landesamt für Umwelt, Landwirtschaft und Geologie 2016) and Saxony-Anhalt (Landesbetrieb für Hochwasserschutz und Wasserwirtschaft Sachsen-Anhalt 2016). Both were prepared by the states' administration in 2015, but they followed certain national regulations. In both cases, the maps take into account the effect of flood defences and include 1 in 100 years flood scenario. The maps are provided in vector format, but their accuracy ought to be similar to a 1:25,000 map (~25 m). Both regions are almost completely within Elbe river's basin and most of the flood zone is along this river. Another map was obtained for the state of Lower Austria (Amt der NÖ Landesregierung 2016). It is provided in vector format for three scenarios: 30, 100 and 300 years flood. Impact of flood defence structures is included in this map which was produced in 2012 using 2D modelling. Most of the flood zone is connected with the Danube or its tributary, Morava river.

The final map is from the Swiss canton of Bern (Kanton Bern 2016) which is located within the basin of Aare river, a tributary of the Rhine. It was prepared in 1:5,000 scale from 1997 and 2011 multi-hazard assessments and takes into account the effect of flood defences. However, this is a flood risk map and, due to its graphical representation, only the 1 in 300 years flood scenario could be extracted from it. Additionally, this map only includes flood zones that incorporate populated areas. A map for the uninhabited zones exists in lower resolution (1:25,000), albeit it does not include information on return periods. Therefore, the risk map for the 300 years scenario was compared with our 1 in 300 years flood overlay, while the combination of all flood zones indicated in the two Swiss maps was compared with the 1 in 1000 years map.

The local maps required some modifications for the purpose of comparing them with the pan-European map. They were resampled to 100 m resolution and flood zones related to rivers with catchment areas below 100 km<sup>2</sup> (for comparison with the TUD map) and 500 km<sup>2</sup> (for comparison with the JRC map) were removed. The latter point was problematic in the sense that flood zones could be connected to multiple rivers, some of which could be below or above the 100/500 km<sup>2</sup> threshold; flooding from a larger river can also spread on smaller tributaries. Therefore, as in Alfieri et al. (2014), a 1.5 km buffer around the rivers bigger than the threshold was used for selecting flood zones from the full map.

The pan-European map was evaluated with two measures, the same as used by Bates and De Roo (2000) and several later studies. Test for "correctness" (or, "hit rate") indicates what percentage of the reference map is recreated in the pan-European map (eq. 1). As this test does not penalize overestimation, the test for "fit" (or, "Critical Success Index") is applied (eq. 2). They are calculated as follows:

$$I_{cor} = \frac{A_{EM} \cap A_{RM}}{A_{RM}} \times 100 \quad (1)$$

$$I_{fit} = \frac{A_{EM} \cap A_{RM}}{A_{EM} \cup A_{RM}} \times 100 \quad (2)$$

where  $A_{EM}$  is the area indicated as flooded in the TUD pan-European map and  $A_{RM}$  is the area indicated as flooded in the reference map. The TUD map was compared, using the 100 km<sup>2</sup> threshold with the five local maps for all available scenarios,

and with the JRC map using the 500 km<sup>2</sup> threshold. Both pan-European maps were then compared with five local maps for the 100-year scenario (i.e., without the Swiss map) with a 500 km<sup>2</sup> threshold. The results for England and Saxony were split into smaller regions for more detailed overview using Eurostat's (2015) nomenclature of territorial units for statistics (NUTS). England is subdivided into nine statistical regions, while Saxony has three *Direktionsbezirke*, or districts. The comparison between the TUD and JRC map is presented for 7 regions of Europe, the same as the 7 sub-simulations, as in Fig. 4.

### 3 Results

#### 3.1 Validation of flood maps

The results of the comparison between the TUD map with reference maps are presented in Table 2. Considering only flood zones connected with catchments bigger than 500 km<sup>2</sup>, 84% of the JRC's flood zone is also present in the TUD map (indicator  $I_{cor}$ ). However, the JRC map indicates 246,000 km<sup>2</sup> at risk of flooding within the domain of the TUD map, which in turn shows almost 330,000 km<sup>2</sup> within the 100-year flood extent. The average "fit" ( $I_{fit}$ ) is 56%, with the lowest values observed in northern Europe, with more overlap observed in central Europe and the Danube basin.

In the second part of Table 2 the TUD map is compared with local reference maps in all available scenarios. A snapshot of the comparison for Trent river basin in central England is presented in Fig. 7. Large variability in the results is observed; most of the time 50–70% flood zones from the detailed maps are recreated in the TUD maps. Highest value of  $I_{cor}$  (up to 80%) was observed in Saxony-Anhalt and some parts of England, and the lowest in Switzerland and parts of Saxony (down to 30%).  $I_{cor}$  decreases both in Austria and England between 30-year and 100-year scenarios, though improves again for more extreme floods.  $I_{fit}$  is mostly below 30%, but improves when moving from less extreme to more severe scenarios. All local maps include effects of flood defences, therefore this exact pattern would be expected: flood zones expand rapidly with the increase of the return period of flood, as a declining number of defences can withstand the rising water levels. Hence, variation of the values of  $I_{fit}$  can be mostly explained by the differences in flood protection standards. In England, flood defences are mostly expected to protect against return periods of floods of about 75–200 years (Chatterton et al. 2010). Hence, the protection structures shouldn't influence the size of the 1000-year flood zone in England. Indeed, in this scenario and region the highest  $I_{cor}$  and  $I_{fit}$  values were observed: 68% and 53%, respectively. results were achieved in terms of alignment with the TUD map. Average value of  $I_{fit}$  is two times higher (53%) than in the 30-year scenario (24%). Furthermore, the highest protection level in England is expected in London (Scussolini et al. 2016), which had the lowest  $I_{fit}$  in the 30-year and 100-year scenario.

In other analysed regions, the flood protection standards are mostly higher in terms of return periods than in England: 100–500 years in Germany, 100–1000 years in Austria (highest along the Danube) and 30–200 years in Switzerland (Scussolini et al. 2016, te Linde et al. 2011). For the 100-year scenario,  $I_{fit}$  is only 24–27%. In Saxony, Dresden district had lower fit than the other two districts, which is consistent with the fact that the city of Dresden has an improved flood protection level of 500 years as opposed to 100 years in other areas. The test measures used also improve visibly in Austria between 100-year and

300-year scenarios. On the other hand, the lowest performance of the TUD map in Switzerland can be rather explained with the characteristics of the flood map, than high protection standards. The 300-year flood layer could be extracted only for populated areas, which have much better protection than uninhabited areas. The 1000-year flood map is also incomplete, and was compiled for this comparison from flood zones with unknown, but presumably high, return period.

5 Finally, both pan-European maps are compared with the local reference maps for the 100-year scenario for catchments bigger than 500 km<sup>2</sup> (Table 3). In England the performance of the TUD map was better than the JRC's map, though in not all parts of it. When comparing with German and Austrian maps, the performance was similar or slightly lower. Summing up all flooded areas, the results show that the TUD map had higher values of both  $I_{cor}$  and  $I_{fit}$ . Yet, this results could be explained by some drawbacks of the GIS analysis. In particular, it was problematic to completely filter out from the TUD and local maps  
10 the flood zones below the threshold of 500 km<sup>2</sup> catchment area. That could have increased the overlap between TUD and local maps to a slightly higher degree than the overlap between the JRC and local maps. Also, in many areas of England better performance can be attributed to several large zones where both river and coastal floods occur, which favours overestimation of flooded area from the rivers. Lastly, English flood zones are twice as large as the remaining ones taken together. Still, the results of fitting both European maps in Saxony-Anhalt and Lower Austria are very similar. Substantial simplification of the  
15 methodology of making the European maps did not result in equal drop in accuracy, but it was largely maintained. The computational time on a regular desktop PC was slightly less than a day per scenario.

### 3.2 Present flood hazard in Europe

River flood hazard maps were prepared and analysed here in two variants: without flood protection and with flood protection as estimated in the FLOPROS database (Scussolini et al. 2016). Full-size images of the maps were included in the  
20 supplement. The total area identified within 1000-year flood scenario was almost 389,000 km<sup>2</sup>, which is about six times more than the total for coastal flood hazard (Groenemeijer et al. 2016) if we do not include impact of flood defences. In this section we briefly describe the outcomes of the “historical” scenario (1971–2000).

The majority of the flood zones in the domain were 10-year zones, with only one-sixth belonging to other zones. More than half of the flood hazard was concentrated in only seven countries: Germany, Hungary, France, Romania, Italy, Russia  
25 (even though only a small part of this country is included in the domain) and Poland. Splitting the hazard zones by river basin, half of the endangered area is also in only seven of them: Danube (mainly in Austria, Hungary, Serbia and Romania), Neva (Russia), Vistula (Poland), Elbe (mainly Germany), Oder (mostly Poland and Germany), Rhine (mainly Germany) and Po (Italy). 20 river basins with the highest area within flood zones are listed in Fig. 8. Taking into account flood defences, the estimated area of the 1000-year zone is revised downwards only slightly, to 376,000 km<sup>2</sup>. A decrease in flood extent is  
30 noticeable only in Netherlands, where the “dike rings” provide a high level of protection from both coastal and river floods, and Austria, where flood defences along the Danube are considered to have a high protection standard. On the other end of the scale, the 10-year flood zone is mostly constrained to the Dniester river catchment (6400 km<sup>2</sup>), while the 30-year zone is mostly present in the Balkans and former Soviet Union (basins of Danube, Nemunas, Evros and others).

The country with the largest hazard level proportional to its area is Hungary, as 37% of the country lies within the 1000-year zone. The Netherlands comes second when flood defences are not considered, with 26% of the territory in the flood zone. This value, however, drops to 1% when considering flood protection. Other countries with high fraction of territory in the flood zone include Serbia (24%), Croatia (20%) or Slovakia (14%), all of which are located in the Danube basin. This river system has not only the biggest basin in the domain and the largest flood extent, but also the highest proportion of flood area compared to total area (15%) among large river basins. Increased hazard is also present in the Po river basin (12%), Weser (10%) and Oder (9%). On the other hand, Nordic countries have low levels of relative hazard, from 1% in Norway to 4% of Finland. Only 3% of the territory is in the hazard zones in Ireland, Portugal, Spain and Switzerland, while in France, the United Kingdom and Austria the figure is 5%, in Poland 8% and in Germany 10%.

### 10 3.3 Future flood hazard in Europe

The overall size of the river flood hazard zones in Europe increased for all four climate change scenarios considered. Yet, without considering flood defences the increases are small. By mid-century (2021–2050), RCP 4.5 scenario adds 1.7% to the 1000-year zone, while RCP 8.5 adds 2.1% compared to 1971–2000. For 2071–2100, these figures are 4.4% and 2.5%, respectively (Fig. 9). This is largely a result of only modest (on average) increase in river discharge in Europe. As a whole, this corresponds to 5–8% depending on scenario, according to results from Paprotny and Morales Nápoles (2017). However, the significant implications of changes in discharge becomes apparent when taking into account flood protection standards. The 10-year zone, estimated at 6400 km<sup>2</sup> in 1971–2000, is projected to reach 28,000–50,000 km<sup>2</sup> (4–8 times more), depending on time period and emission scenario. The largest expansion in absolute terms was calculated for the 30-year zone, from 43,200 km<sup>2</sup> in the end of the 20th century to 130,000–183,000 km<sup>2</sup> (301–423% increase). The 100-year zone is expected to be larger by 28–38%, compared to 215,000 km<sup>2</sup> in the historical scenario. Smaller changes are expected in flood hazard with lower probability of occurrence: the 300-year zone is actually projected to decrease by 0.7–4.4%, while the 1000-year zone could add 1.8–5%.

Nevertheless, trends in river flood hazard will be very diversified across Europe. Changes in flood extents presented in Fig. 10 were aggregated to a 50x50 km grid for the sake of clarity. It includes only one scenario (100-year flood), but the trends shown are representative also for other return periods. Fig. 11 shows the relative contributions of each country to the overall change in flood zone size. With or without flood defences, the largest increases in flood hazard area are projected in central Europe, particularly in Germany, Hungary and Poland. Trends in the Danube basins will be the main source of increase in hazard. Elbe basin will contribute more than the Rhine, while in Poland flood zones along the Oder are projected to expand more than those along Vistula river. Increase in flood hazard is also projected in France. In the United Kingdom, increases are observed when flood defences are included, but slight decrease is predicted without taking them into account. Decreases are mostly observed in northern Europe, particularly in Scandinavia, as a large decline of snowfall and, consequently, snowmelt is expected. To a lesser extent, a decrease of flood hazard is projected in many locations around the Mediterranean Sea, which is projected to receive less extreme rainfall in the future..

## 4 Discussion

The results have shown that relatively simpler methods can give similar accuracy to more computationally-demanding models for large-scale flood mapping. In this study, three main simplifications were applied: river discharges derived from a statistical model; river flow calculated using a one-dimensional ‘steady-state’ model without channel geometry; flood zones derived in GIS based on water levels from the hydrodynamic model. The similarity in results to the more complex model used by JRC can be traced to the input datasets, which are mostly the same in various flood studies. For example, the SRTM-derived digital elevation models provides neither the river bed geometry nor the dimensions of flood protection structures. The former can only be obtained through local surveys, despite efforts to approximate river width or depth from global data (Yamazaki et al. 2014). Flood defences were incorporated here using nominal protection standards defined as flood return periods (from Scussolini et al. 2016), but this is only a rough approximation. Yet, as indicated e.g. in Fig. 9, the difference between ‘without flood defences’ and ‘with flood defences’ scenarios is immense. Therefore, both present and future flood hazard and risk estimates need to take this aspect into account. More aspects are related to this issue, such as the influence of flood defences on river flow. Dams retain water from flood waves, while dikes constrain the river to a narrow space between them. Additionally, overtopping is just one of many dike failure mechanisms (Vrijling 2001), while other flood control techniques exist such as bypass channels, e.g. the New Danube that protects Vienna (Kryżanowski et al. 2014). All those analyses are currently feasible only at local or at most national scale, e.g., the recent flood risk assessment in the Netherlands (Vergouwe 2014). At the European or global level, other techniques will have to be used, such as a formal statistical analysis of the differences between high- and low-resolution maps in order to derive indirect factors that determine the flood protection levels at given locations.

More comparison with local maps would also improve calibration of the large-scale models. So far, other studies have left the models uncalibrated, while here a step has been taken by using JRC’s—uncalibrated—flood map. Local maps were not readily available for all sub-simulations, even though all EU countries do such studies. Inter-comparison between the numerous global flood studies could also show what modelling approaches are most efficient. For example, Sampson et al. (2015) achieved better results than Alfieri et al. (2014) despite using a statistical model of river discharges as input. We were unable, however, to obtain data from that study by the time the work described here has concluded.

Limitations of input data and models of river flow are not the only sources of uncertainty. Not all flood events are included in the study. Only rivers with catchments that have an area of at least 100 km<sup>2</sup> were included in the calculation. This omits very small rivers where dangerous flash floods can occur, especially in hilly or mountainous terrain (Marchi et al. 2010). Flash floods also appear in places where drainage is insufficient, mainly in urban areas (Nirupama and Simonovic 2007). Moreover, we estimate the extreme river discharge based on two main factors causing flood – rainfall and snowmelt, while floods in northern Europe are also caused by ice and frazil blocking the river flow (Benito et al. 2015). In estuaries, flood hazard is influenced by tides and storm surges, as they might occur at the same time as a river flood (Svensson and Jones 2004, Petroligkakis et al. 2016). Finally, disastrous floods could be caused by dam breaches (Prettenthaler et al. 2010).

Last, but not least, we should mention the uncertainty related with future climate projections. Only one climate model was used in the Bayesian Network model for extreme river discharges. Also, as shown in Fig. 9–11 and the description, the difference between RCP 4.5 and RCP 8.5 scenarios is sometimes very large. The uncertainty is therefore significant and unavoidable as the differences between models and scenarios are considerable, especially concerning precipitation (Rajczak et al. 2013, Kotlarski et al. 2014). Those aspects, however, do not affect the validation results in section 3.1.

## 5 Conclusions

In this study we have investigated the feasibility of creating pan-European flood maps using a simplified modelling approach. A one-dimensional ‘steady-state’ hydrodynamic model of river flow was utilized to derive flood depths and flood zones were mapped in GIS. It can be concluded that this approach largely fulfilled its aims of reducing complexity while preserving an acceptable level of accuracy. First, the method has low computational burden—performing a full simulation for Europe takes less than a day on a regular desktop PC, compared to months that would have been necessary using a more advanced model. Second, the comparison with reference flood maps has shown that the method has similar accuracy to the JRC’s map which was made by employing 2-D hydraulic models which are significantly more expensive computationally, though, in general, has shown a tendency to overestimate the size of the flood zones. Additionally, the river discharge data used in this study originated from a statistical model instead of a rainfall-runoff model commonly used in other modelling approaches.

The results are also an indication that the resolution and completeness of input data have high importance compared to choice of modelling approach. For instance, the flood protection standards as modelled in this research influence the size of the flood zones profoundly, both for the present and future scenarios. The assumption of perfect reliability of flood protection standards could be relaxed and further investigated in future research. Yet, the reliability of global flood defence data is rather low and considerable improvements need to be made. This aspect is where large gains in accuracy of continental or global-scale maps could be made. Then, more detailed digital elevation models are needed as well as data on river beds. Uncertainty of river discharge return periods and their future development should be further reduced by more research into statistical models.

## 25 Data availability

This work relied entirely on public data as inputs, which are available from the providers cited in the paper. Results of the work can be downloaded from an online repository (Paprotny and Morales Nápoles 2016).

## Acknowledgements

This work was supported by European Union’s Seventh Framework Programme under “Risk analysis of infrastructure networks in response to extreme weather” (RAIN) project, grant no. 608166, and European Union’s Horizon 2020 research and innovation programme under “Bridging the Gap for Innovations in Disaster resilience” (BRIGAD) project, grant no. 700699. This paper benefited from valuable comments by A. Sebastian and two anonymous reviewers.

## References

- Alfieri, L., Salamon, P., Bianchi, A., Neal, J., Bates, P., and Feyen, L.: Advances in pan-European flood hazard mapping, *Hydrol. Process.*, 28, 4067–4077, doi:10.1002/hyp.9947, 2014.
- Alfieri, L., Burek, P., Feyen, L., and Forzieri, G.: Global warming increases the frequency of river floods in Europe, *Hydrol. Earth Syst. Sci.*, 19, 2247–2260, doi:10.5194/hess-19-2247-2015, 2015a.
- Alfieri, L., Feyen, L., Dottori, F., and Bianchi, A.: Ensemble flood risk assessment in Europe under high end climate scenarios, *Global Environ. Chang.*, 35, 199–210, doi:10.1016/j.gloenvcha.2015.09.004, 2015b.
- Amt der NÖ Landesregierung: Download von Geodaten und Karten, available at <http://www.noel.gv.at/Land-Zukunft/Karten-Geoinformation/Karten-Geodaten-Angebot/DownloadGeodatenKarten.html>, 2016.
- Apel, H., Aronica, G. T., Kreibich, H., and Thielen, A. H.: Flood risk analyses—how detailed do we need to be?, *Nat. Hazards*, 49, 79–98, doi:10.1007/s11069-008-9277-8, 2009.
- Bates, P. D. and De Roo, A. P. J.: A simple raster-based model for flood inundation simulation, *J. Hydrol.*, 236, 54–77, doi:10.1016/S0022-1694(00)00278-X, 2000.
- Benito, G., Brázdil, R., Herget, J., and Machado, M. J.: Quantitative historical hydrology in Europe, *Hydrol. Earth Syst. Sci.*, 19, 3517–3539, doi:10.5194/hess-19-3517-2015, 2015.
- Chatterton, J., Viavattene, C., Morris, J., Penning-Rowsell, E., and Tapsell, S.: The costs of the summer 2007 floods in England, Environment Agency, Bristol, United Kingdom, available at [https://www.gov.uk/government/uploads/system/uploads/attachment\\_data/file/291190/scho1109brja-e-e.pdf](https://www.gov.uk/government/uploads/system/uploads/attachment_data/file/291190/scho1109brja-e-e.pdf), 2010.
- De Jager, A. L. and Vogt, J. V.: Development and demonstration of a structured hydrological feature coding system for Europe, *Hydrolog. Sci. J.*, 55, 661–675, doi:10.1080/02626667.2010.490786, 2010.
- Deltares: SOBEK Hydrodynamics, Rainfall Runoff and Real Time Control User Manual, [http://content.oss.deltares.nl/delft3d/manuals/SOBEK\\_User\\_Manual.pdf](http://content.oss.deltares.nl/delft3d/manuals/SOBEK_User_Manual.pdf), 2016.
- DHI GRAS: EU-DEM Statistical Validation Report, European Environment Agency, Copenhagen, 2014.
- Dottori, F., Salamon, P., Bianchi, A., Alfieri, L., Hirpa, F. A., and Feyen, L.: Development and evaluation of a framework for global flood hazard mapping, *Adv. Water Resour.*, 94, 87–102, doi:10.1016/j.advwatres.2016.05.002, 2016.

- Environment Agency: Risk of Flooding from Rivers and Sea, available at <https://data.gov.uk/dataset/risk-of-flooding-from-rivers-and-sea1>, 2016.
- European Union: Directive 2007/60/EC of the European Parliament and of the Council of 23 October 2007 on the assessment and management of flood risks, OJ L 288, 6.11.2007, 27–34, 2007.
- 5 • Eurostat: Regions in the European Union - Nomenclature of territorial units for statistics - NUTS 2013/EU-28, Publications Office of the European Union, Luxembourg, doi:10.2785/53780, 2015.
- Feyen, L., Dankers, R., Bódis, K., Salamon, P., and Barredo, J. I.: Fluvial flood risk in Europe in present and future climates, *Climatic Change*, 112, 47–62. doi:10.1007/s10584-011-0339-7, 2012.
- Groenemeijer, P., Vajda, A., Lehtonen, I., Kämäräinen, M., Venäläinen, A., Gregow, H., Becker, N., Nissen, K.,  
10 Ulbrich, U., Paprotny, D., Morales Nápoles, O., and Púčik, T.: Present and future probability of meteorological and hydrological hazards in Europe, D2.5 report, RAIN project, available at [http://rain-project.eu/wp-content/uploads/2016/09/D2.5\\_REPORT\\_final.pdf](http://rain-project.eu/wp-content/uploads/2016/09/D2.5_REPORT_final.pdf), 2016.
- Hirabayashi, Y., Mahendran, R., Koirala, S., Konoshima, L., Yamazaki, D., Watanabe, S., Kim, H., and Kanae, S.: Global flood risk under climate change, *Nat. Clim. Change*, 3, 816–821, doi:10.1038/nclimate1911, 2013.
- 15 • Joint Research Centre: Pan European Flood Hazard Map for a 100 year return period event, available at <http://drdsi.jrc.ec.europa.eu/dataset/pan-european-flood-hazard-map-for-a-100-year-return-period-event>, 2014.
- Jonkman, S. N.: Advanced flood risk analysis required, *Nat. Clim Change*, 3, 1004–1004, 2013.
- Kanton Bern: Geoportal des Kantons Bern, available at <http://www.apps.be.ch/geo/>, 2016.
- Kotlarski, S., Keuler, K., Christensen, O. B., Colette, A., Déqué, M., Gobiet, A., ..., and Wulfmeyer, V.: Regional  
20 climate modeling on European scales: a joint standard evaluation of the EURO-CORDEX RCM ensemble, *Geosci. Model Dev.*, 7, 1297–1333, doi:10.5194/gmd-7-1297-2014, 2014.
- Kryżanowski, A., Brilly, M., Rusjan, S., and Schnabl, S.: Review Article: Structural flood-protection measures referring to several European case studies, *Nat. Hazards Earth Syst. Sci.*, 14, 135–142, doi:10.5194/nhess-14-135-2014, 2014.
- 25 • Landesbetrieb für Hochwasserschutz und Wasserwirtschaft Sachsen-Anhalt: Hochwassergefahrenkarten - Geodaten der Überschwemmungsflächen herunterladen, available at <http://www.geocms.com/webmap-lsa/de/hochwassergefahrenkarte-hq100-download.html>, 2016.
- Marchi, L., Borga, M., Preciso, E., Gaume, E.: Characterisation of selected extreme flash floods in Europe and implications for flood risk management, *J. Hydrol.*, 394, 118–133, doi:10.1016/j.jhydrol.2010.07.017, 2010.
- 30 • Mokrech, M., Kebede, A. S., Nicholls, R. J., Wimmer, F., and Feyen, L.: An integrated approach for assessing flood impacts due to future climate and socio-economic conditions and the scope of adaptation in Europe, *Climatic Change*, 128, 245–260, doi:10.1007/s10584-014-1298-62015, 2015.



- Moss, R. H., Edmonds, J. A., Hibbard K. A., Manning M. R., Rose, S. K., ..., Wilbanks, T. J.: (2010) The next generation of scenarios for climate change research and assessment, *Nature*, 463, 747–756, doi:10.1038/nature08823, 2010.
- 5 • Nirupama, N., Simonovic, S. P.: Increase of flood risk due to urbanisation: a Canadian example, *Nat Hazards*, 40, 25–41, doi:10.1007/s11069-006-0003-0, 2007.
- Pappenberger, F., Dutra, E., Wetterhall, F., and Cloke, H. L.: Deriving global flood hazard maps of fluvial floods through a physical model cascade, *Hydrol. Earth Syst. Sci.*, 16, 4143–4156, doi:10.5194/hess-16-4143-2012, 2012.
- Paprotny, D. and Morales Nápoles, O.: A Bayesian Network for extreme river discharges in Europe, in: Podofillini, L., Sudret, B., Stojadinović, B., Zio, E., and Kröger, W. (Eds.), *Safety and Reliability of Complex Engineered Systems*, CRC Press/Balkema, Leiden, The Netherlands, 4303–4311, 2015.
- 10 • Paprotny, D. and Morales Nápoles, O.: Pan-European data sets of river flood probability of occurrence under present and future climate, TU Delft, dataset, <http://dx.doi.org/10.4121/uuid:968098ce-afe1-4b21-a509-dedaf9bf4bd5>, 2016.
- Paprotny, D. and Morales-Nápoles, O.: Estimating extreme river discharges in Europe through a Bayesian network, *Hydrol. Earth Syst. Sci.*, 21, 2615-2636, doi:10.5194/hess-21-2615-2017, 2017
- 15 • Pearl, J.: *Probabilistic Reasoning in Intelligent Systems: Networks of Plausible Inference*, Morgan Kaufmann, San Mateo, California, USA, 1988.
- Petroliaqkis, T.I., Voukouvalas, E., Disperati, J., and Bildot, J.: Joint Probabilities of Storm Surge, Significant Wave Height and River Discharge Components of Coastal Flooding Events, JRC Technical Report EUR 27824 EN, doi:10.2788/677778, 2016.
- 20 • Prettenthaler, F., Amrusch, P., and Habsburg-Lothringen, C.: Estimation of an absolute flood damage curve based on an Austrian case study under a dam breach scenario, *Nat. Hazards Earth Syst. Sci.*, 10, 881-894, doi:10.5194/nhess-10-881-2010, 2010.
- Rajczak, J., Pall, P., and Schär, C.: Projections of extreme precipitation events in regional climate simulations for Europe and the Alpine Region, *J. Geophys. Res. Atmos.*, 118, 3610–3626, doi:10.1002/jgrd.50297, 2013.
- 25 • Rockel, B., Will, A., Hense, A.: Special issue regional climate modelling with COSMO-CLM (CCLM), *Met. Z.*, 17, 347–348, 2008.
- Rojas, R., Feyen, L., Dosio, A., and Bavera, D.: Improving pan-European hydrological simulation of extreme events through statistical bias correction of RCM-driven climate simulations, *Hydrol. Earth Syst. Sci.*, 15, 2599-2620, doi:10.5194/hess-15-2599-2011, 2011.
- 30 • Rojas, R., Feyen, L., Bianchi, A., and Dosio, A.: Assessment of future flood hazard in Europe using a large ensemble of bias-corrected regional climate simulations, *J. Geophys. Res.*, 117, D17109, doi:10.1029/2012JD017461, 2012.

- Rojas, R., Feyen, L., Watkiss, P.: Climate change and river floods in the European Union: Socio-economic consequences and the costs and benefits of adaptation, *Global Environ. Chang.*, 23, 1737–1751, doi: 10.1016/j.gloenvcha.2013.08.006, 2013.
- 5 • Sächsisches Landesamt für Umwelt, Landwirtschaft und Geologie: Geodatendownload des Fachbereichs Wasser, available at <http://www.umwelt.sachsen.de/umwelt/wasser/10002.htm?data=ueg>, 2016.
- Sampson, C. C., Smith, A. M., Bates, P. D., Neal, J. C., Alfieri, L., and Freer, J. E.: A high-resolution global flood hazard model, *Water Resour. Res.*, 51, 7358–7381, doi:10.1002/2015WR016954, 2015.
- Scussolini, P., Aerts, J. C. J. H., Jongman, B., Bouwer, L. M., Winsemius, H. C., de Moel, H., and Ward, P. J.: FLOPROS: an evolving global database of flood protection standards, *Nat. Hazards Earth Syst. Sci.*, 16, 1049–1061, doi:10.5194/nhess-16-1049-2016, 2016.
- 10 • Smith, A., Sampson, C., and Bates, P.: Regional flood frequency analysis at the global scale, *Water Resour. Res.*, 51, 539–553, doi:10.1002/2014WR015814, 2015.
- Svensson, C. and Jones, D. A.: Dependence between sea surge, river flow and precipitation in south and west Britain, *Hydrol. Earth Syst. Sci.*, 8, 973–992, doi:10.5194/hess-8-973-2004, 2004.
- 15 • Te Linde, A. H., Bubeck, P., Dekkers, J. E. C., de Moel, H., and Aerts, J. C. J. H.: Future flood risk estimates along the river Rhine, *Nat. Hazards Earth Syst. Sci.*, 11, 459–473, doi:10.5194/nhess-11-459-2011, 2011.
- Thielen, J., Bartholmes, J., Ramos, M.-H., and de Roo, A.: The European Flood Alert System – Part 1: Concept and development, *Hydrol. Earth Syst. Sci.*, 13, 125–140, doi:10.5194/hess-13-125-2009, 2009.
- Van der Knijff, J. M., Younis, J., and de Roo, A. P. J.: LISFLOOD: A GIS-based distributed model for river basin scale water balance and flood simulation, *Int. J. Geogr. Inf. Sci.*, 24, 189–212, doi:10.1080/13658810802549154, 2010.
- 20 • Vergouve, R.: The National Flood Risk Analysis for the Netherlands, Rijkswaterstaat, available at <http://www.helpdeskwater.nl/publish/pages/33875/vnk-rapport-eng-lr.pdf>, 2014.
- Vogt, J.V., Soille, P., de Jager, A., Rimaviciute, E., Mehl, W., Foisneau, S., ..., and Bamps, C.: A pan-European River and Catchment Database, Report EUR 22920 EN, European Commission-Joint Research Centre, Luxembourg, 120 p., 2007.
- 25 • Vrijling, J. K.: Probabilistic design of water defense systems in The Netherlands, *Reliab. Eng. Syst. Safe.*, 74, 337–344, 2001.
- Ward, P. J., Jongman, B., Sperna Weiland, F., Bouwman, A., and van Beek, R.: Assessing flood risk at the global scale: model setup, results, and sensitivity, *Environ. Res. Lett.*, 8, 044019, doi:10.1088/1748-9326/8/4/044019, 2013.
- 30 • Ward, P. J., Jongman, B., Salamon, P., Simpson, A., Bates, P., ..., and Winsemius, H. C.: Usefulness and limitations of global flood risk models, *Nat. Clim. Change*, 5, 712–715, doi: 10.1038/nclimate2742, 2015.

- Winsemius, H. C., Van Beek, L. P. H., Jongman, B., Ward, P. J., and Bouwman, A.: A framework for global river flood risk assessments, *Hydrol. Earth Syst. Sc.*, 17, 1871–1892, doi:10.5194/hess-17-1871-2013, 2013.
- Winsemius, H. C., Aerts, J. C. H. C., Van Beek, L. P. H., Bierkens, M. F. P., Bouwman, A., ..., and Ward, P. J.: Global drivers of future river flood risk, *Nat. Clim. Change*, 6, 381–385, doi:10.1038/nclimate2893, 2015.
- 5 • Yamazaki, D., O’Loughlin, F., Trigg, M. A., Miller, Z. F., Pavelsky, T. M., and Bates, P. D.: Development of the global width database for large rivers, *Water Resour. Res.*, 50, 3467–3480, doi:10.1002/2013WR014664, 2014.

**Table 1.** Comparison of main modelling techniques and assumptions in the maps considered in this study.

Aspect	Pan-European map (TUD)	Pan-European map (JRC)	Local reference maps
River discharge model	Bayesian Network for extreme river discharges (statistical model for Europe)	Rainfall-runoff model (Lisflood)	Mostly river gauge observations
Flood scenarios	Peak discharge with a return period assumed to follow Gumbel distribution	Flood hydrograph created with an empirical formula with a return period assumed to follow Gumbel distribution	Discharge with a return period; methodology varies between studies
Water level modelling	1D hydrodynamic model (steady-state), no channel geometry	2D hydrodynamic model (Lisflood-ACC), no channel geometry	1D, hybrid 1D/2D or 2D hydrodynamic model, depending on importance of a location and study
Calibration of river flow	Based on comparison with JRC map	None	Usually calibrated using river gauge observations
Flood zone modelling	Planar approach in GIS	2D hydrodynamic model (Lisflood-ACC)	1D, hybrid 1D/2D or 2D hydrodynamic model, depending on importance of a location and study; occasionally GIS only for areas of low importance
Validation of results (flood extents)	With local reference maps	With local reference maps	Local knowledge and expertise
Output resolution	100 m	100 m	5–50 m
Flood defences	Included in post-processing of the maps (estimated protection standard)	Not included	Included in the river flow/flood zone modelling (dimensions, type of defences, sometimes their condition as well)
Simulation run time on a desktop computer	1 day per scenario	Computer cluster used (not feasible on a desktop computer)	From few seconds (1D) to few days (2D)

5

10

**Table 2.** Comparison of the TUD pan-European flood map with reference flood maps.

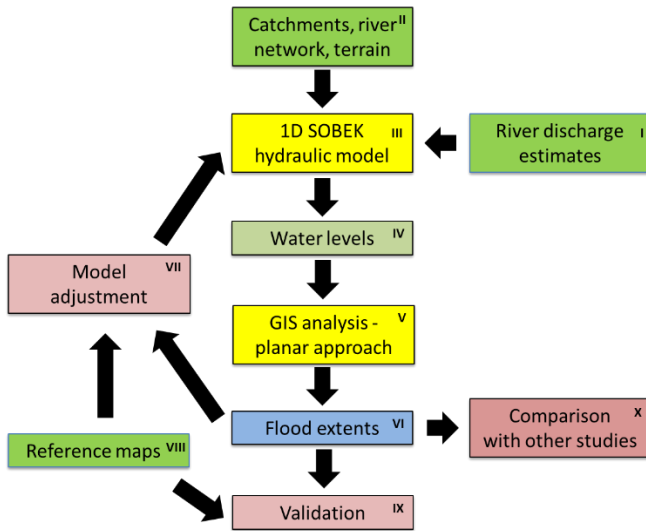
Region		Flood map test measures by return period							
		30 years		100 years		300 years		1000 years	
		$I_{cor}$ (%)	$I_{fit}$ (%)	$I_{cor}$ (%)	$I_{fit}$ (%)	$I_{cor}$ (%)	$I_{fit}$ (%)	$I_{cor}$ (%)	$I_{fit}$ (%)
<b>Comparison with the JRC map by sub-simulation, catchments &gt;500 km<sup>2</sup></b>									
<b>Full domain</b>				80.2	51.1				
Central Europe				81.2	57.7				
British Isles and Iberian peninsula				76.7	43.5				
Southern Europe				80.1	48.2				
Western Europe				75.7	50.1				
Danube basin				86.3	54.0				
North-eastern Europe				69.1	41.7				
Scandinavia				63.2	42.3				
<b>Comparison with local flood maps by NUTS regions, catchments &gt;100 km<sup>2</sup></b>									
<b>UKC-UKK</b>	<b>England</b>	62.7	24.0	69.6	44.9		68.5	52.8	
UKC	North East	57.9	21.9	59.7	33.7			60.1	40.0
UKD	North West	48.5	23.0	47.7	26.7			51.8	39.3
UKE	Yorkshire and the Humber	73.1	20.5	69.5	36.6			68.2	48.7
UKF	East Midlands	62.8	17.7	73.5	46.0			73.6	57.8
UKG	West Midlands	66.2	38.7	64.2	42.6			65.7	47.0
UKH	East of England	58.3	15.8	80.4	59.1			78.1	63.2
UKI	London	68.8	13.8	64.8	17.4			70.9	49.4
UKJ	South East	64.7	36.4	63.1	42.7			60.7	48.8
UKK	South West	62.6	41.4	61.2	46.1			58.4	47.0
<b>DED</b>	<b>Sachsen [Saxony]</b>			50.3	27.4				
DED2	Dresden			45.3	22.5				
DED4	Chemnitz			33.7	24.0				
DED5	Leipzig			60.8	33.8				
<b>DEE</b>	<b>Sachsen-Anhalt [Saxony-Anhalt]</b>			67.9	23.6				
AT12	Niederösterreich [Lower Austria]	55.0	21.9	49.5	24.3	61.8	34.4		
CH021	Bern					34.9	19.1	29.2	20.7

5

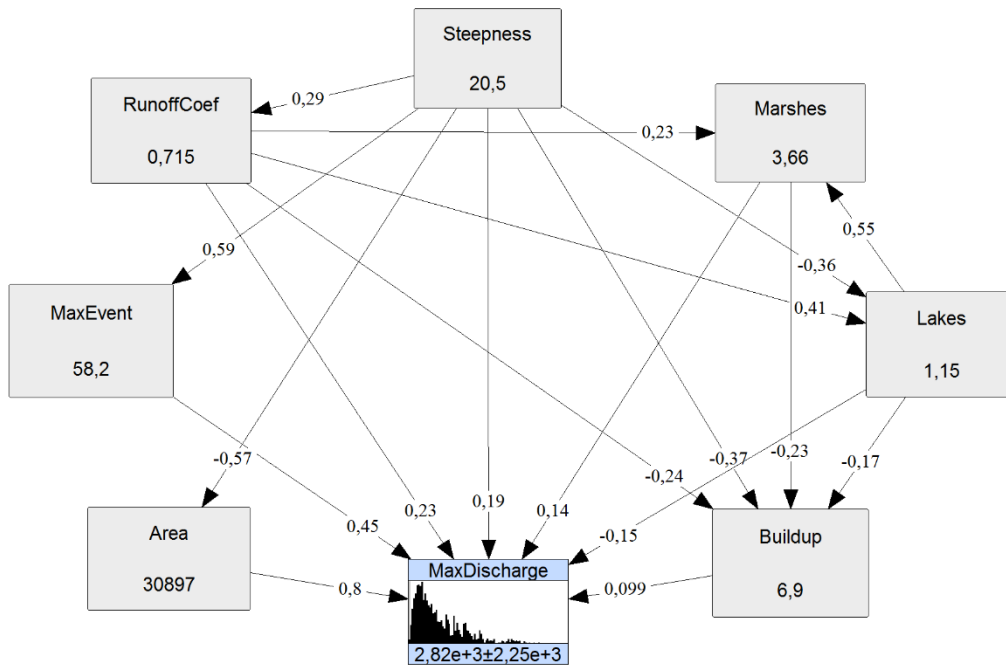
10

**Table 3.** Comparison of the pan-European flood maps with the local reference flood maps. Includes only river with catchment area bigger than 500 km<sup>2</sup>.

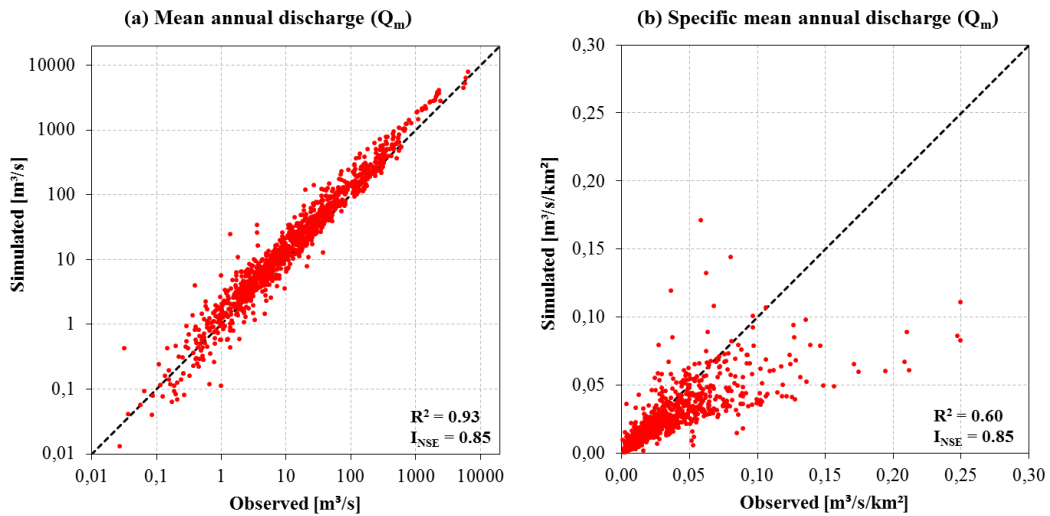
NUTS	Region Name	$I_{cor}$ (%)		$I_{fit}$ (%)	
		JRC	TUD	JRC	TUD
<b>UKC-UKK</b>	<b>England</b>	50.6	77.5	38.6	43.4
UKC	North East	54.3	67.4	38.6	39.9
UKD	North West	49.7	52.3	36.0	25.3
UKE	Yorkshire and the Humber	62.2	75.9	37.3	32.9
UKF	East Midlands	54.4	77.6	42.3	37.0
UKG	West Midlands	73.6	74.2	55.5	45.8
UKH	East of England	40.9	87.5	35.9	63.5
UKI	London	57.1	68.7	16.3	14.6
UKJ	South East	54.2	68.0	38.8	39.4
UKK	South West	38.3	71.5	33.6	44.1
<b>DED</b>	<b>Sachsen [Saxony]</b>	57.3	60.9	35.1	30.0
DED2	Dresden	44.9	57.0	29.3	24.9
DED4	Chemnitz	49.9	49.0	30.0	30.7
DED5	Leipzig	70.3	67.3	41.1	35.4
<b>DEE</b>	<b>Sachsen-Anhalt [Saxony-Anhalt]</b>	68.5	73.4	25.2	23.3
<b>AT12</b>	<b>Niederösterreich [Lower Austria]</b>	54.2	59.6	23.9	26.3
	<b>All regions</b>	54.1	74.0	33.2	36.1



5 **Figure 1.** Schematic workflow of flood extents calculation. Roman numerals refer to the text.



**Figure 2.** Conditionalized Bayesian Network for annual maximum discharge in river Rhine at Basel station in Switzerland in year 2005. The uncertainty distribution of discharge is shown, with a mean of 2820 m<sup>3</sup>/s (“MaxDischarge”).



5

**Figure 3.** Comparison of simulated and observed mean annual river discharges using a Bayesian Network: (a) actual values; (b) specific discharge (runoff divided by the respective catchment area).

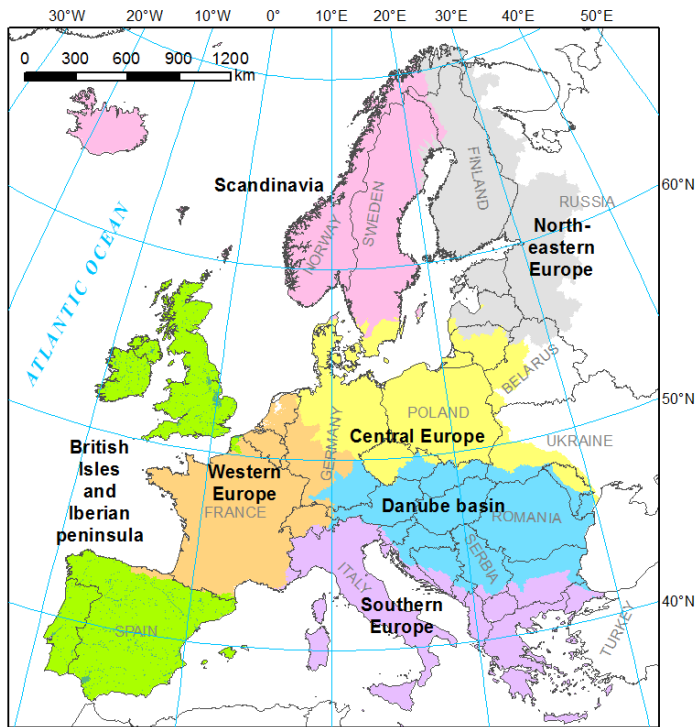


Figure 4. Division of the model into 7 sub-simulations, overlaid with political boundaries.

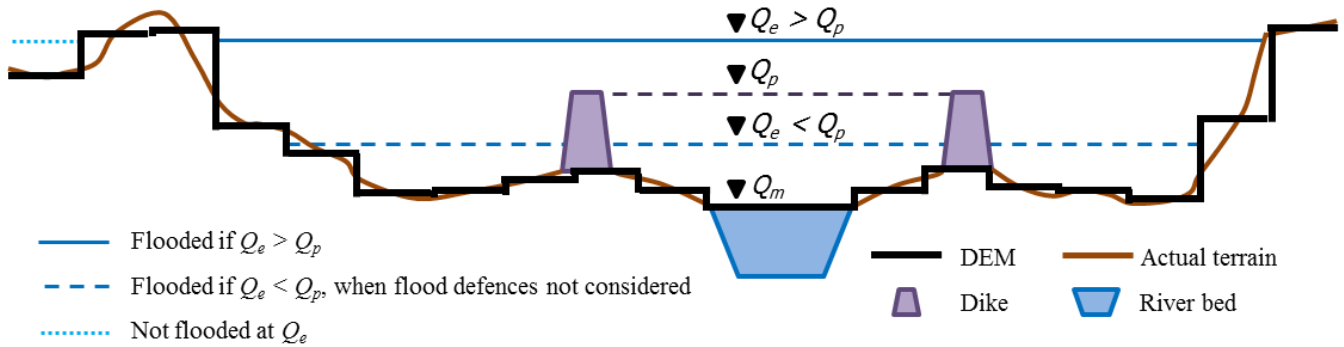
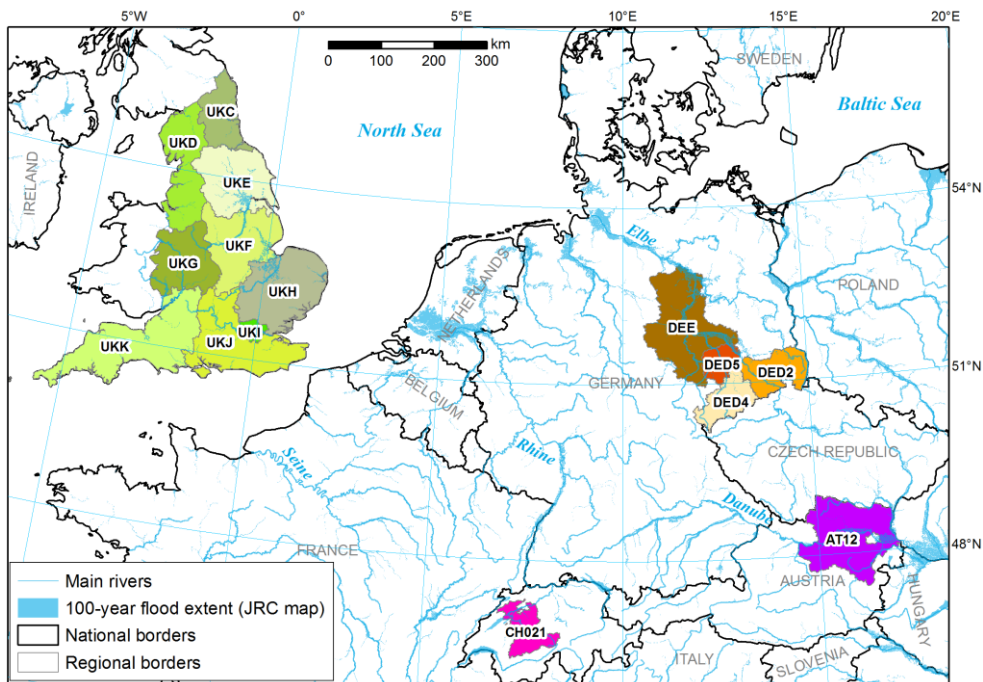
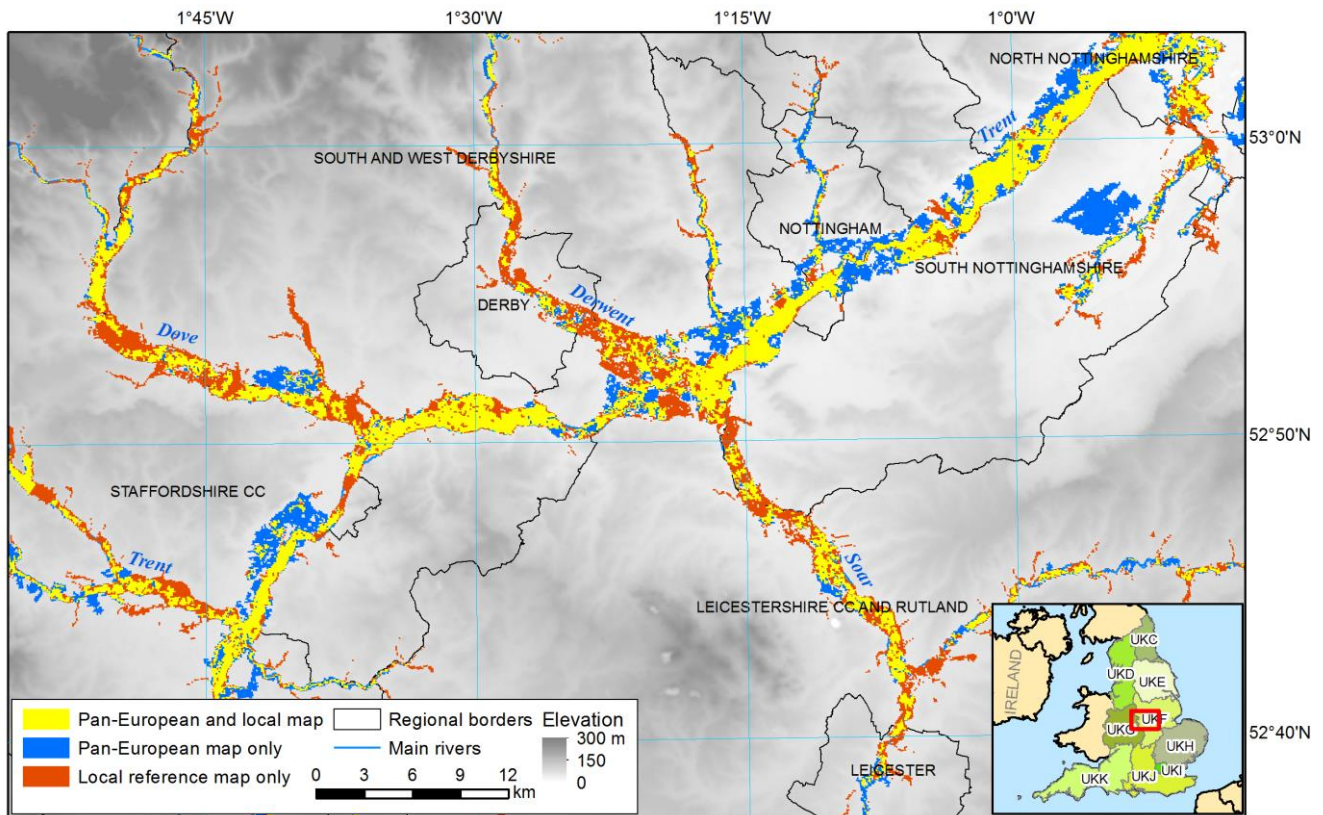


Figure 5. Cross-section through a river valley and main model assumptions. The DEM is considered to represent terrain without flood defences and the river's water surface at mean discharge ( $Q_m$ ). Terrain represented in the DEM floods at extreme discharge  $Q_e$  if either no flood defences are considered, or when  $Q_e > Q_p$ , i.e. when extreme discharge is higher than the protection standards.

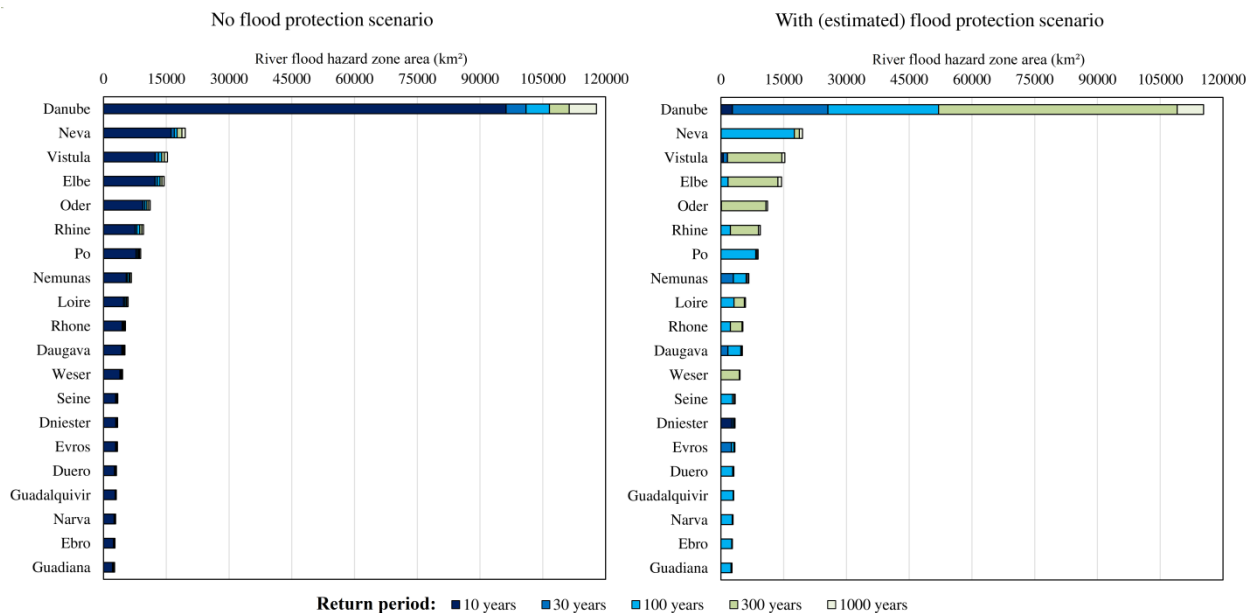




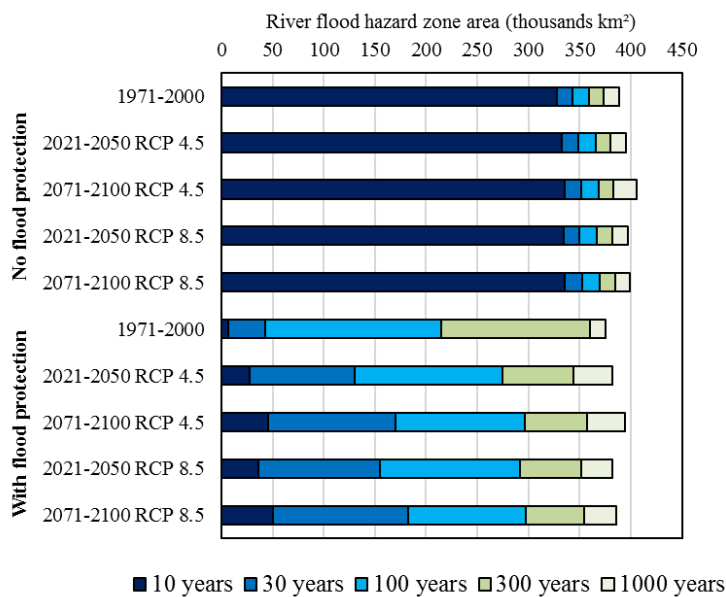
**Figure 6.** Location of the local reference maps with corresponding NUTS codes (see Table 2), with the JRC's flood map (Alfieri et al. 2014) presented in the background.



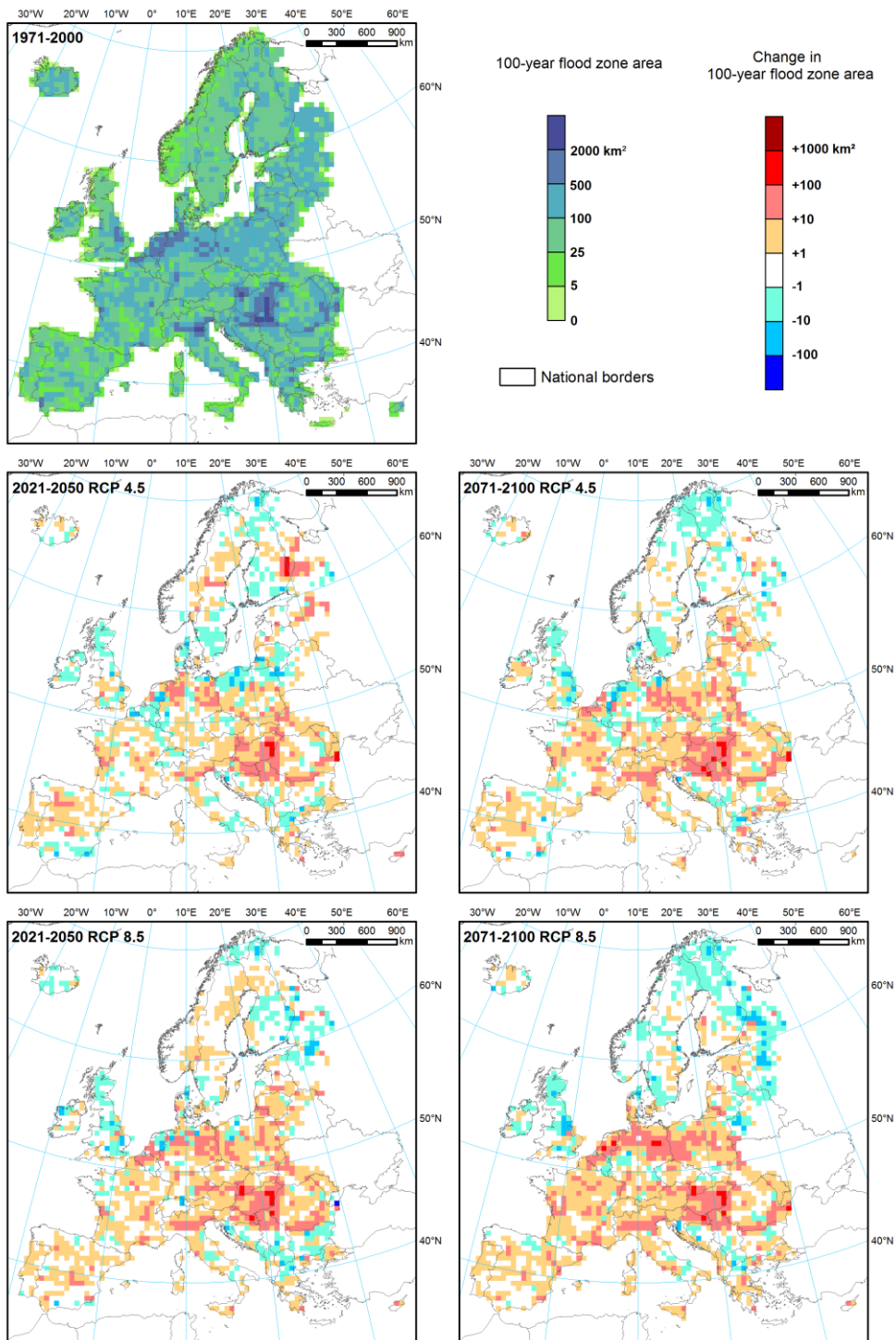
**Figure 7.** An example of the differences between the pan-European map from this study and the local reference map, in this case for the central part of England, both for the 100-year flood scenario (Environment Agency 2016).



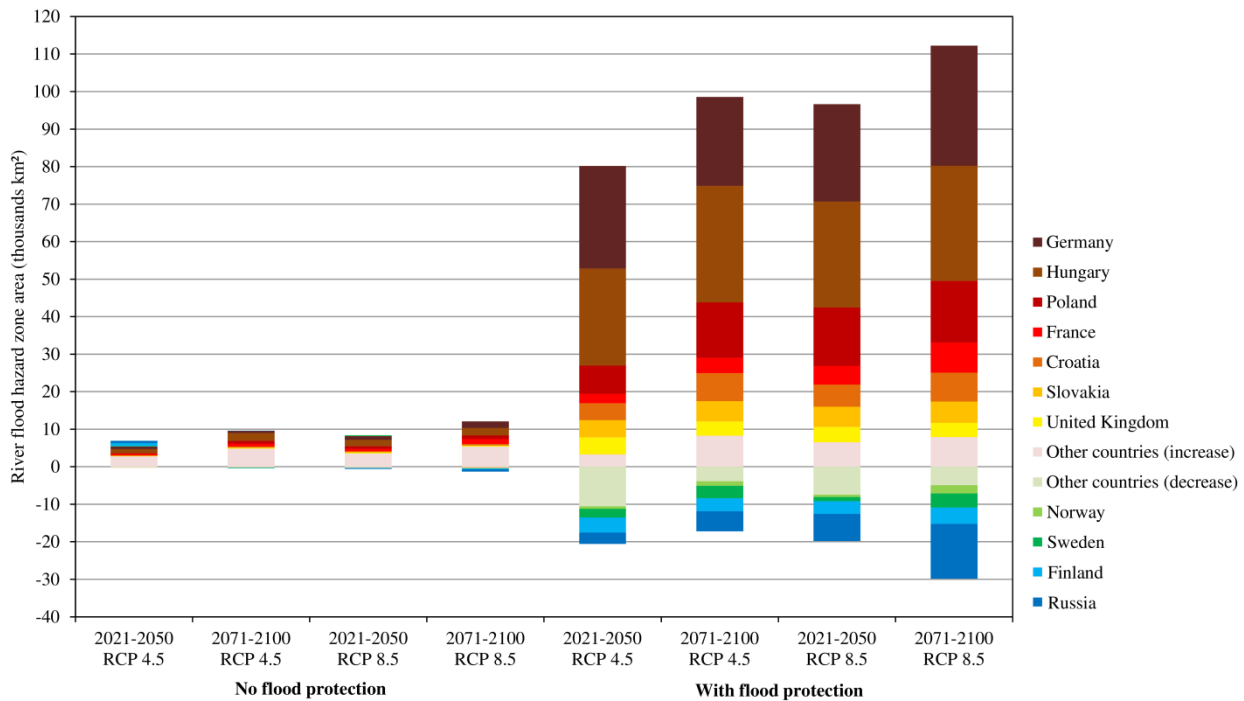
**Figure 8.** Area of flood hazard zones in 20 river basins with the largest hazard, without and with (estimated) flood protection. The basins listed here are highlighted in the maps in the Supplement.



5 **Figure 9.** Flood hazards zone area in Europe by scenario, without and with (estimated) flood protection. Predictions based on EC-EARTH-COSMO\_4.8\_clm17 climate model run.



**Figure 10.** Total area of 100-year river flood hazard zones (no flood protection), aggregated to 50x50 km grid, and changes under climate scenarios. Predictions based on EC-EARTH-COSMO\_4.8\_clm17 climate model run.



**Figure 11.** Contributions of selected countries to future changes in 100-year flood zone area in Europe by scenario, without and with (estimated) flood protection. Predictions based on EC-EARTH-COSMO\_4.8\_clm17 climate model run.