

## Reply to editor

The authors would like to thank the editor for her decision to consider the revised manuscript. We have uploaded the revised manuscript and give point-by-point replies to comments as well as a marked up version of the revised manuscript below. The term “damage” is now used in the singular form only.

Yours sincerely,

Beatrice Dittes

on behalf of all co-authors

## Point-by-point replies

Note that these are identical to the author comments in the interactive review process.

### Author comment on the comment of anonymous referee #1

The authors would like to thank the referee for the thoughtful and detailed comments. We respond in the following, with referee comments highlighted in *blue*.

General comment of the reviewer:

*“The paper ‘Risk based flood protection planning under climate change and modelling uncertainty: a pre-alpine case study’ by B. Dittes et al. applies a framework for quantitative, probabilistic flood protection planning to a real decision making problem of flood protection strategies. This framework considers climatic uncertainties by incorporating non-stationarity and accounts for flexibility of the flood protection system in a sequential Bayesian approach. The planning problem investigated considers four alternative protection strategies with different safety levels for a city in a pre-alpine catchment. The topic is of high relevance in the context of adaptation planning and risk based decision making under uncertainty. The paper is very well written and structured. It will surely make an important contribution to the field. [...] Overall, I recommend the paper for publication in NHESS subject to minor revisions.”*

The referee highlighted three *“aspects [that] need further consideration and explanation”*. These featured also in the minor comments and suggestions in the annotated PDF. The comments and corresponding changes in the manuscript are discussed in the following. In addition, we have now

made the referenced papers that are still under review, (Dittes et al., 2017a) and (Dittes et al., 2017b), available on our webpage and included the link in the respective citations:

[era.bgu.tum.de/fileadmin/w00bkd/www/Papers/2017\\_Dittes\\_managing\\_uncertainty.pdf](http://era.bgu.tum.de/fileadmin/w00bkd/www/Papers/2017_Dittes_managing_uncertainty.pdf) and [era.bgu.tum.de/fileadmin/w00bkd/www/Papers/2018\\_Dittes\\_et\\_al\\_Climate\\_uncertainty\\_in\\_flood\\_protection\\_planning.pdf](http://era.bgu.tum.de/fileadmin/w00bkd/www/Papers/2018_Dittes_et_al_Climate_uncertainty_in_flood_protection_planning.pdf).

Minor referee suggestions that are not mentioned in the following have been changed in the manuscript directly (e.g. spelling mistakes or rephrasings/explanations of less than one sentence).

## 1) Uncertainty modelling

*“It would be very helpful to provide more details on the background, e.g. how the standard deviation for the hidden uncertainty is quantified, what are the underlying assumptions.”*

We recognize that the description of uncertainty modelling was not sufficiently clear and we have expanded on this at various places, as listed in the following along with the corresponding referee annotations.

p4 18: *“This differentiation of uncertainty sources should be discussed also within the context of uncertainty due to natural variability and epistemic uncertainty, e.g. in Merz, B. and Thielen, A. H.: Separating natural and epistemic uncertainty in flood frequency analysis, Journal of Hydrology, 309(1–4), 114–132, doi:10.1016/j.jhydrol.2004.11.015, 2005.”*

Yes, the classification into aleatory and epistemic uncertainty is an important one. We added the following passage: *“Learning the PDF of  $\theta$  from projections is more intricate since uncertainties from climate modelling must be accounted for. It is common to categorize uncertainty into aleatory uncertainty (natural variability), which cannot be reduced, and epistemic uncertainty, which can be reduced with more knowledge (Merz and Thielen, 2005). To account for the limited information available in typical flood protection planning problems, we here categorize the climatic uncertainties according to the following categories:[...]”*

p4 19 / p8 11-6: *“In Fig. 1 this uncertainty is constant over time which means that the spread of the ensemble remains constant over time. Is this a realistic? Usually the ensemble spread increases with longer projection periods.” / “This Fig. also shows that the ensemble spread is not constant over time, doesn't it? cf your statement on p4 19 and Fig. 1.”*

This appears to be a confusion: Fig. 1 shows internal variability vs. hidden uncertainty, it does not show ensemble spread. It is the internal variability of individual projections that is assumed to be constant (based on the data; it is not a necessary assumption). No assumptions are made on the spread of the ensemble, which does indeed increase with increasing projection horizon.

p4 115 / p4 123: *“What is the basis for this assumption? Please explain more in detail. On which basis is the standard deviation quantified?” / “This reference is still under review.*

*Please include the main points of the rationale also in this paper to make it more intelligible for the reader.”*

We expanded and re-formulated the corresponding paragraph as follows: “In Fig. 1, we show the hidden uncertainty and internal variability over the projection horizon for one particular projection (CCLM, see Sect. 3.3). Note that this hidden uncertainty is a rough estimate for the situation in Rosenheim based on literature (Bosshard et al., 2013; Dittes et al., 2017b; Hawkins and Sutton, 2011; Maraun, 2013). It is given as a share of total uncertainty (in terms of the variance). The hidden uncertainty is included in the analysis by considering the discharge data from projections as uncertain, with a standard deviation  $\sigma_t^{(\text{hidden})}$  that is the square root of this variance. We conservatively assume that the hidden uncertainty is fully correlated among all years, since this limits the information included in the data. Mathematically this is achieved by modeling the uncertainty in year  $t$  as  $z \times \sigma_t^{(\text{hidden})}$ , where  $z$  is a standard normal random variable with PDF  $\varphi$ . The uncertainty is included in the likelihood  $f_{Q|\theta}(\mathbf{q}|\theta)$  of Eq. (3) and then integrated out:

$$f_{Q|\theta}(\mathbf{q}|\theta) = \int_{-\infty}^{\infty} \left[ \prod_{t=1}^Y f_{Q|\theta}(q_t - z \times \sigma_t^{(\text{hidden})} | \theta) \right] \times \varphi(z) dz, \quad (4)$$

Visible uncertainties are included in different ways, e.g. the internal variability is a natural component of Eq. (4) through  $q_t$ , whereas the ensemble spread is inherent in combining the parameter PDFs  $f_{\theta|Q}(\theta|\mathbf{q})$  from different members of a projection ensemble. For this combination, we apply the concept of effective projections (Pennell and Reichler, 2011; Sunyer et al., 2013), whereby a projection ensemble is split into multiple sets of ‘effective projections’. We multiply the PDFs of the members within one set and average in between sets to obtain a joint parameter PDF. Full details of the implementation can be found in (Dittes et al., 2017b).”

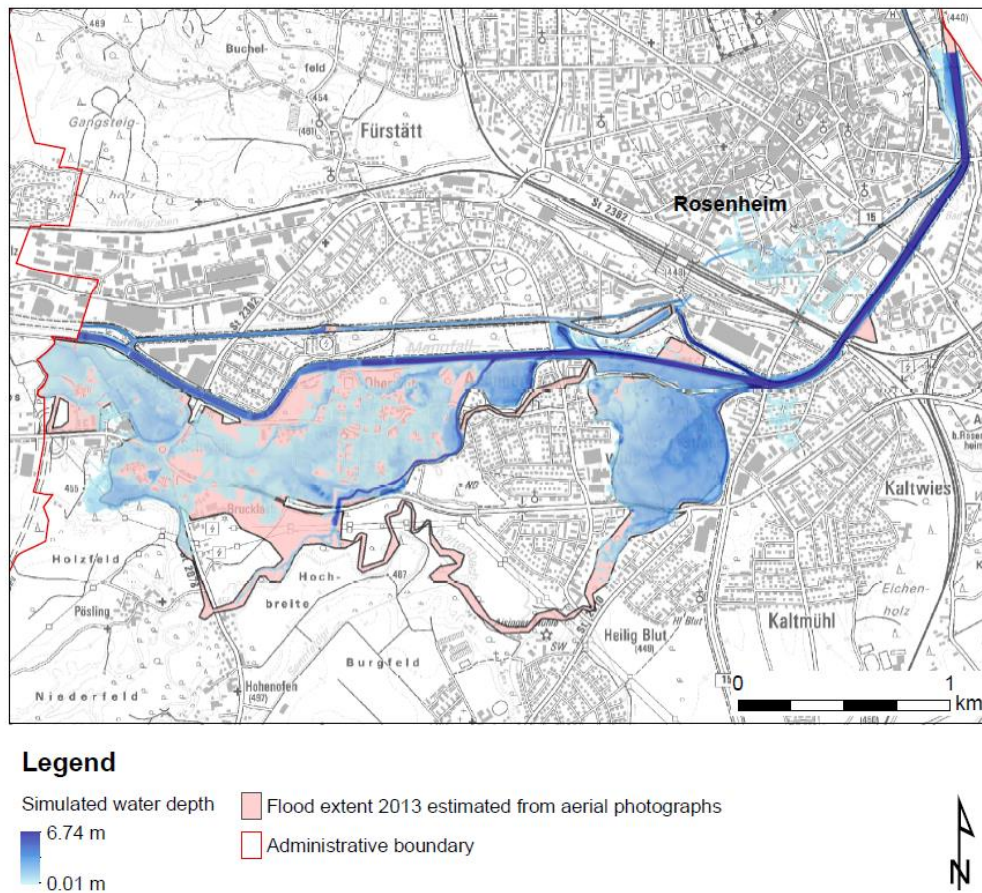
p12 11: *“As in comment made previously. Please provide more details on this here.”*

We elaborate on how the hidden uncertainty was estimated for the case study location: “The quantitative estimate of the hidden uncertainty was taken from (Dittes et al., 2017b). It is based on the fact that Rosenheim is in a pre-alpine location, with extreme floods mostly driven by extreme summer precipitation. Using literature concerning the shares of different climatic uncertainties under extreme summer precipitation and in pre-alpine catchments (Bosshard et al., 2013; Hawkins and Sutton, 2011; Maraun, 2013), we obtained a rough estimate of the shares of various uncertainties for Rosenheim. Because the projection ensemble available for the location is based on one forcing scenario, one downscaling technique and one hydrological model only, the corresponding variance shares were together used as the ‘hidden’ uncertainty. The analysis in (Dittes et al., 2017b) showed that changes in the size of the hidden uncertainty have only a minor impact on the planning recommendation and a rough estimate is thus acceptable.”

p15 127 / p15 132: *“This is not quantified. This uncertainty is considered by using different damage models. Only on hydraulic model is used. You should make more clear how you consider these sources of uncertainty.” / “You should comment how complete your assessment of uncertainty actually is.”*

We elaborate: “The recommendation for a flood protection system in Rosenheim results from a modeling sequence. The uncertainty is handed over and increased from model to model: from climate forcing uncertainty down to the hydrodynamic model and damage modeling. The climatic uncertainties as well as the internal variability are incorporated into the decision making framework by the means described in Sect. 2.1. Notably, when only one model was used at a certain step in the modeling sequence (e.g. only one forcing scenario was used), the potential for greater model spread if more models had been used is included via an estimate of the so-called ‘hidden uncertainty’. No such estimate was made for the hydrodynamic model, which was simply calibrated based on recorded water levels of a flood event in 2001 and validated for the flood event of 2013 in Rosenheim (viz. Fig. 7). While the validation was successful, land use changes and sedimentation of the Mangfall River may alter the discharge and water levels in the future, which we did not consider in this study. However, we are confident that such an additional uncertainty does not influence the protection decision, on the one hand because the results are generally robust with respect to changes in the hidden uncertainties (see also (Dittes et al., 2017b)), on the other hand because the recommendation already is for the most protective system.”

As requested by the referee, we added the following figure comparing the simulated extent of the 2013 flood with aerial photographs of the event. The figure was added in Sect. 3.5.4, where the validation of the hydrodynamic model is first discussed.



**Figure 7.** Comparison of actual and simulated flood extent for the 2013 flood in Rosenheim.



## 2) Decision framework

*“The rationale and details of the approach to determine future extreme discharges is not described comprehensively and is hard to follow at times. [...] The approach of backwards induction optimization (page 5) should be introduced more in detail. Particularly, the context that system performance is evaluated by taking data into account which is available by some point in the future needs some additional explanation.*

*In your study you use discharges based on climate projections which are available today. The actually observed discharges in the future may differ from these projections, and thus may give different results and recommendations. Is this reflected by the uncertainty range of discharge projections from the climate scenarios? The whole paragraph (page 14, ll 3-15) is not very clear. It includes a number of statements for which the basis is not comprehensible.”*

The main point here is that the updating with future discharge is *probabilistic*, that is, future discharges are randomly generated according to their prior probability distribution and uncertainty. The prior distribution is learned using the climate projections, but the future discharge samples resulting from them are not deterministic. It is clear from multiple annotations of the referee – mainly on page 5, where the decision framework is first introduced – that the referee thought we used the projections directly for updating, thus falsely assuming a deterministic future. Hence, we modified the description on page 5 as follows:

*“Flood protection is a dynamic process, as illustrated in Fig. 2: A flood protection system is implemented initially and later revised, based on data (e.g., discharge observations) that becomes available in the future. These future discharge observations are not yet known, hence for planning purposes they have to be simulated probabilistically, as described in the next paragraph. The damages caused by discharges in the future depend on the protection system that will then be in place. The risk is defined as the expected damages, i.e. the sum of the damages associated with each future scenario, weighted by the probability of that scenario. Ultimately, the sum of the two monetary quantities, risks and costs, is to be minimized over the measure life-time following Eq. (2). If the demand has changed based on the new observations, it may be necessary or desirable to adjust the protection capacity. The cost for both the initial implementation of the protection system and for adjustments depends on the system flexibility: a more flexible system decreases adjustment costs, but this saving must be balanced with potentially higher costs of implementing a flexible system initially. When there is large uncertainty, it becomes more likely that a design has to be adjusted later on, as more information becomes available. To take these aspects into account, we have developed a quantitative decision framework that considers planning as a sequential process. It accounts for the system flexibility and the future learning process through Bayesian updating of the initial PDF of parameters,  $f_{\theta|Q}(\theta|q)$  (Sect. 2.1.), with new information in the future (Dittes et al., 2017a). It evaluates, which flood protection system is recommendable based on the uncertainty in extreme discharge, described by  $f_{\theta|Q}(\theta|q)$ , and the flexibility of the considered flood protection*

systems. As will be shown in Sect. 3.5, the flexibility is intrinsic in the measure costs in this case study.

The PDF  $f_{\theta|Q}(\theta|q)$  contains the information from the currently available data: discharge projections as well as their uncertainty (through Eq. (4)). Future discharges are randomly generated from this PDF, creating a multitude of ‘possible futures’. At a first revision point (e.g. 30 years into the measure life time), for each ‘possible future’ the PDF is updated with the discharges that were simulated to have been observed by then and a decision is made on whether the protection has to be adjusted. This process is repeated for several revision steps, leading to a decision tree with alternating adjustment decisions and observation periods (see Fig. 3). To find the optimal initial protection decision based on this tree – that is, the protection decision which minimizes the sum of life-time risks and costs – we use the technique of Backwards Induction Optimization (Raiffa and Schlaifer, 1961). The technique works by first determining the system that should be installed at the last adjustment, depending on the existing protection and observations (data) available by then. This is a deterministic problem, since at the last adjustment all the data has been collected. The evaluation is done for all possible futures and they are weighted by their probability based on the PDF. The obtained recommendation for the last adjustment is then used to find the system that should be installed at the second to last adjustment and so forth until arriving at a recommendation for the system that should be installed initially.”

### 3) Damage potential estimation and individual results

*“Your discussion of how the damage potential p 17 ll 23 - 30 should be extended by taking the broader perspective of costs of natural hazards introduced by Kreibich et al. 2014 into consideration. (Kreibich, H., van den Bergh, J. C. J. M., Bouwer, L. M., Bubeck, P., Ciavola, P., Green, C., Hallegatte, S., Logar, I., Meyer, V., Schwarze, R. and Thieken, A. H.: Costing natural hazards, Nature Clim. Change, 4(5), 303–306, doi:10.1038/nclimate2182, 2014.)”*

We have read the reference with great interest and added to the discussion: *“The costing of natural hazards is a challenging area and the considerations given underline the need for integrated flood protection, where the cost and risk assessment cycle are linked. A comprehensive framework to do so has been proposed by Kreibich et al. (2014).”*

p10 l13: *“Why did you not use CORINE 2012?”*

The CLC2012 data set was released at the beginning of 2017. At that time our damage calculations were already completed. However, since we get overwhelmingly agreeing protection recommendations also with differing land cover data (viz. Tab. 9), we think that using the new set would not have changed the results.

p11 l24: *“Is this the way how the uncertainty due to loss estimation is considered in the framework?”*

Yes, the uncertainty due to loss estimation is considered by using three different damage models: RAM with ATKIS / CLC and SDAM. It is established that the recommendation is robust to the damage model (viz. Tab. 9).

p2 15 / p12 17 / p12 125: *“On which basis is the discounting done?” / “It is not clear how the discounting is implemented in the framework and on which basis it is calculated” / “What is the basis for this assumption?”*

We now clarify at the first mention of discounting (p2 15) that it is done on an annual basis. The mathematical description of the discounting is given in Eq. (5), which we reference also at p2 15. The chosen discounting rate of 2% corresponds to the lower bound for technical flood protection proposed in the literature (Bund / Länder-Arbeitsgemeinschaft Wasser, 2005). The dependence of protection recommendation on the choice of discount rate is studied in (Dittes et al., 2017a).

p12 122: *“3 m dike heightening to increase the discharge capacity from 360 to 480 m<sup>3</sup>/s? Could you give some details about the cross section geometries of the Mangfall river in Rosenheim to understand these figures better?”*

The river is about 30 m wide. Thus, the section area between the dikes is  $(30 + s \times h) \times h$ , where  $h$  is the height of the dikes and  $s$  their slope (1/2 for most of the local dikes). Letting  $\Delta_A$  be the difference in area and  $x$  the dike heightening,

$$\begin{aligned}\Delta_A &= \left(30 + \frac{h+x}{2}\right) \times (h+x) - \left(30 + \frac{h}{2}\right) \times h \\ &= \left(30 + \frac{2 \times h+x}{2}\right) \times x \\ &\Leftrightarrow 0 = x^2 + 2 \times (30 + h) \times x - 2 \times \Delta_A \\ &\Leftrightarrow x = -(30 + h) + \sqrt{(30 + h)^2 + 2 \times \Delta_A}\end{aligned}$$

Using a flow velocity of 1 m/s,  $\Delta_A = 480 \text{ m}^2 - 360 \text{ m}^2 = 120 \text{ m}^2$ . At a height  $h$  of the existing dikes of  $\sim 4 \text{ m}$ , this leads to the stated result. As we only do a rough cost estimation and the recommendation is quite robust to it (viz. Tab. 9), we do not go into these details in the main text.

p14 13/4/10: *“How are [...] calculated” / “This whole paragraph is not very clear and hard to follow at times. A number of statements are made for which the basis is not clear. Please revise. You may also think of a better way to illustrate your results, e.g. by using a chart comparing cost-benefit relations for the different scenarios.”*

We considered charts but feel that the results do not lend themselves for this – a line in a cost-benefit-chart for example would either have to cover the three damage models or the five building cost scenarios, and since there is no innate order between these one would just see a confusing squiggle. However, we do agree that the paragraph could be clearer and have therefore completely rewritten it, as well as condensed the information into one table (see following page) only: *“The expected sum of life-time costs and risks is given in Tab. 9, with the expected life-time costs individually stated in brackets. The life-time risks are calculated using Eq. (5). They are independent of measure building costs yet dependent on the system that is initially implemented.*

Let us first look at the damage model SDAM (which best fitted the damages of the 2013 flood, see Sect. 3.5.4) used with the reference building costs (the ‘buest guess’ for the building costs, see Sect. 3.6). The light blue coloring indicates that S4 is recommended for initial implementation. Thus, the expected life-time cost is the same as the initial building cost, 25.0 M €, since no adjustments are possible. The sum of life-time costs and risks is 42.6 M €. The table also shows results for the two other damage models (RAM ATKIS and RAM CLC) as well as the four other scenarios of initial building cost. When S3 is recommended for initial implementation (darker blue), the expected cost comprises the initial building cost and the expected cost of adjustment to S4 (probability of needing to adjust to S4 × cost of adjusting to S4). For SDAM, the probability of needing to adjust from S3 to S4 at a later point, if S3 was chosen initially, is 58%. For RAM using the ATKIS land cover, this probability is just 3% due to the very low damage estimates – probably a strong underestimation, as discussed in Sect. 3.5.4. When S1 is implemented initially, our computations show a residual risk of €124 M for SDAM. Thus, it is clearly better to follow the recommendation of implementing S4.”

Table 9. Life-time costs + risks (in brackets: life-time costs only) [M €] associated with the optimal protection strategy

Build costs \ Damage model	SDAM	RAM ATKIS	RAM CLC
Reference	42.6 (25.0)	27.8 (25.0)	47.8 (25.0)
Higher polder costs	55.6 (38.0)	32.0 (8.8)	60.8 (38.0)
Very high polder costs	70.2 (40.1)	32.7 (9.5)	85.8 (63.0)
Higher costs 1m initially	46.6 (29.0)	31.8 (29.0)	51.8 (29.0)
Very high costs 1m initially	49.6 (32.0)	34.8 (32.0)	54.8 (32.0)

p15 l5: “Could you indicate the values from which you calculate these 28 %? Also from Fig. 8 it is not intuitive to understand how you derive this statement.”

For the protection system S4, damages are interpolated starting from the simulated discharge of 614 m<sup>3</sup>/s. Since the local 100-year discharge estimate is 480 m<sup>3</sup>/s, this corresponds to a 28% margin. Due to the large spacing of simulated discharges and discrepancies between the damage models, this is a rough estimate. We therefore decided now to use ‘~30%’. We re-formulated the passage to read “For the protection system S4, damages start occurring above the simulated discharge of 614 m<sup>3</sup> s<sup>-1</sup> (viz. Fig. 8). Thus, recommending S4 corresponds to recommending a safety margin of ~ 30 % with respect to the 100-year flood estimate of 480 m<sup>3</sup> s<sup>-1</sup>”.



## Author comment on the comment of anonymous referee #2

The authors would like to thank the referee for the thoughtful comments. Much of the reviewers notes were positive. We respond to suggestions for improvement in the following, with referee comments highlighted in *blue*.

- 1) *“The methods (Bayesian analysis and backwards induction optimization) are summarized very briefly with not enough information for the nonexpert to fully understand them. While references are given, it is suggested that more detail be provided.” / “[...] it is not clear how flexibility was considered.”*

We recognise that this was a weak point in the initial manuscript and have extended our description of the methods:

*“Flood protection is a dynamic process, as illustrated in Fig. 2: A flood protection system is implemented initially and later revised, based on data (e.g., discharge observations) that becomes available in the future. These future discharge observations are not yet known, hence for planning purposes they have to be simulated probabilistically, as described in the next paragraph. The damages caused by discharges in the future depend on the protection system that will then be in place. The risk is defined as the expected damages, i.e. the sum of the damages associated with each future scenario, weighted by the probability of that scenario. Ultimately, the sum of the two monetary quantities, risks and costs, is to be minimized over the measure life-time following Eq. (2). If the demand has changed based on the new observations, it may be necessary or desirable to adjust the protection capacity. The cost for both the initial implementation of the protection system and for adjustments depends on the system flexibility: a more flexible system decreases adjustment costs, but this saving must be balanced with potentially higher costs of implementing a flexible system initially. When there is large uncertainty, it becomes more likely that a design has to be adjusted later on, as more information becomes available. To take these aspects into account, we have developed a quantitative decision framework that considers planning as a sequential process. It accounts for the system flexibility and the future learning process through Bayesian updating of the initial PDF of parameters,  $f_{\theta|Q}(\theta|q)$  (Sect. 2.1.), with new information in the future (Dittes et al., 2017a). It evaluates, which flood protection system is recommendable based on the uncertainty in extreme discharge, described by  $f_{\theta|Q}(\theta|q)$ , and the flexibility of the considered flood protection systems. As will be shown in Sect. 3.5, the flexibility is intrinsic in the measure costs in this case study.*

*The PDF  $f_{\theta|Q}(\theta|q)$  contains the information from the currently available data: discharge projections as well as their uncertainty (through Eq. (4)). Future discharges are randomly generated from this PDF, creating a multitude of ‘possible futures’. At a first revision point (e.g. 30 years into the measure life time), for each ‘possible future’ the PDF is updated with the discharges that were simulated to have been observed by then and a decision is made on whether the protection has to be adjusted. This process is repeated for several revision steps, leading to a*

*decision tree with alternating adjustment decisions and observation periods (see Fig. 3). To find the optimal initial protection decision based on this tree – that is, the protection decision which minimizes the sum of life-time risks and costs – we use the technique of Backwards Induction Optimization (Raiffa and Schlaifer, 1961). The technique works by first determining the system that should be installed at the last adjustment, depending on the existing protection and observations (data) available by then. This is a deterministic problem, since at the last adjustment all the data has been collected. The evaluation is done for all possible futures and they are weighted by their probability based on the PDF. The obtained recommendation for the last adjustment is then used to find the system that should be installed at the second to last adjustment and so forth until arriving at a recommendation for the system that should be installed initially.”*

- 2) *“One challenge is that a major source of uncertainty is ignored – the emission scenario. Here they only assumed one – how can method be used if planning done more realistically under multiple emission scenarios ?”*

There appears to be a misunderstanding: the uncertainty on the emission scenario (which we call forcing scenario) is part of the analysis, via the ‘hidden uncertainty’. We have added a sentence to clarify this: *“ [...] when only one model was used at a certain step in the modeling sequence (e.g. only one forcing scenario was used), the potential for greater model spread if more models had been used is included via an estimate of the so-called ‘hidden uncertainty’.”*

- 3) *“The authors determined the effectiveness of each strategy and then evaluated their performance under the uncertainties of damages and discharges. It is not clear to me why just enumeration and evaluation of all the possible sets of strategies without the optimization model would also have been effective as small number of options. Thus would have been useful to understand the value of the optimization model. Also, the discussion of the results almost seem similar to results of conventional scenario analysis – what strategy works most reasonably over all the scenarios. Perhaps this was just a check of the results.”*

We hope that we interpret the referee’s point correctly as asking about the distinction between a scenario-based approach versus our optimization. As such, it points back to 1) (better description of the optimization model). The key point is that our optimization takes into account the uncertainty in discharge (including climate projections on a continuous rather than scenario-based uncertainty spectrum, future updating, measure flexibility etc., as described in 1) and (Dittes et al., 2017a)) but it does not account for the uncertainty in damage model or measure building cost. This is because we focussed on irreducible uncertainties (in particular, climate) when developing our methods, whereas local building costs and damage potential are informations which can be known. Because they turned out to be not so well known after all at the case study site, we made the pragmatic decision to perform our optimization for a number of damage models and building costs. We realize that the description of the results could have been clearer, which may have contributed to the confusion of the referee. Therefore we have completely rewritten it, as well as condensed the results

into one table only (see below): “The expected sum of life-time costs and risks is given in Tab. 9, with the expected life-time costs individually stated in brackets. The life-time risks are calculated using Eq. (5). They are independent of measure building costs yet dependent on the system that is initially implemented. Let us first look at the damage model SDAM (which best fitted the damages of the 2013 flood, see Sect. 3.5.4) used with the reference building costs (the ‘buest guess’ for the building costs, see Sect. 3.6). The light blue coloring indicates that S4 is recommended for initial implementation. Thus, the expected life-time cost is the same as the initial building cost, 25.0 M €, since no adjustments are possible. The sum of life-time costs and risks is 42.6 M €. The table also shows results for the two other damage models (RAM ATKIS and RAM CLC) as well as the four other scenarios of initial building cost. When S3 is recommended for initial implementation (darker blue), the expected cost comprises the initial building cost and the expected cost of adjustment to S4 (probability of needing to adjust to S4 × cost of adjusting to S4). For SDAM, the probability of needing to adjust from S3 to S4 at a later point, if S3 was chosen initially, is 58%. For RAM using the ATKIS land cover, this probability is just 3% due to the very low damage estimates – probably a strong underestimation, as discussed in Sect. 3.5.4. When S1 is implemented initially, our computations show a residual risk of €124 M for SDAM. Thus, it is clearly better to follow the recommendation of implementing S4.”

Table 9. Life-time costs + risks (in brackets: life-time costs only) [M €] associated with the optimal protection strategy

Build costs \ Damage model	SDAM	RAM ATKIS	RAM CLC
Reference	42.6 (25.0)	27.8 (25.0)	47.8 (25.0)
Higher polder costs	55.6 (38.0)	32.0 (8.8)	60.8 (38.0)
Very high polder costs	70.2 (40.1)	32.7 (9.5)	85.8 (63.0)
Higher costs 1m initially	46.6 (29.0)	31.8 (29.0)	51.8 (29.0)
Very high costs 1m initially	49.6 (32.0)	34.8 (32.0)	54.8 (32.0)

4) “In Figure 10, the low period discharges in many years seem higher than the high period discharged.”

This was a mixup in the description, the sentence should read “[...]a set of relatively low discharges (blue dots) or a set of relatively high discharges (orange dots).” (rather than “blue” and “orange” the other way round).

5) “What are the x-axis units in Table 6”

Table 6 shows protection strategies. Thus one could label the x-axis with “Strategy 1, Strategy 2, ...” but we feel that the existing table header “Potential protection strategies for Rosenheim” may be sufficiently explanatory.

6) “[...] the term ‘flexibility parameter’ is used but not defined.”

Yes, while flexibility was introduced in some detail, the ‘flexibility parameter’ was not. We adapt the sentence as follows: “The decision to heighten dikes and walls by 1 m would correspond to a flexibility parameter of 0.7 following (Dittes et al., 2017a), where 1 corresponds to full flexibility and 0 to no flexibility.”

7) “I suggest that it may be useful to compare this method to other methods of DMUUC such as Robust Decision Making, Decision Scaling, Dynamic Adaptation Pathways and Policies.”

We briefly answer to the methods mentioned by the referee, but would like to point to (Dittes et al., 2017a) for a fuller discussion of the utilized optimization framework with respect to other DMUUC methods, which we feel does not fit into the scope of the presented paper. The consideration of system performance under a broad range of possible future developments is inherent (and quantitative) in the proposed framework, as such, it leads to robust decisions. Decision Scaling and Dynamic Adaptation Pathways and Policies also lead to robust decisions, but they do so in a discrete, (semi-)qualitative way. We take a quantitative, probabilistic approach to Engineering problems and for that reason developed our optimization framework accordingly.

## References

Bosshard, T., Carambia, M., Goergen, K., Kotlarski, S., Krahe, P., Zappa, M. and Schär, C.: Quantifying uncertainty sources in an ensemble of hydrological climate-impact projections, *Water Resources Research*, 49(3), 1523–1536, doi:10.1029/2011WR011533, 2013.

Bund / Länder-Arbeitsgemeinschaft Wasser: Leitlinien zur Durchführung dynamischer Kostenvergleichsrechnungen, 7th ed., edited by WI-00.3 DWA-Arbeitsgruppe, Berlin., 2005.

Dittes, B., Špačková, O. and Straub, D.: Managing uncertainty in design flood magnitude: Flexible protection strategies vs. safety factors, *Journal of Flood Risk Management*, submitted [online] Available from: [https://www.era.bgu.tum.de/fileadmin/w00bkd/www/Papers/2017\\_Dittes\\_managing\\_uncertainty.pdf](https://www.era.bgu.tum.de/fileadmin/w00bkd/www/Papers/2017_Dittes_managing_uncertainty.pdf), 2017a.

Dittes, B., Špačková, O., Schoppa, L. and Straub, D.: Managing uncertainty in flood protection planning with climate projections, *Hydrology and Earth System Sciences*, under review, 2017b.

Hawkins, E. and Sutton, R.: The potential to narrow uncertainty in projections of regional precipitation change, *Climate Dynamics*, (37), 407–418, 2011.

Kreibich, H., Van Den Bergh, J. C. J. M., Bouwer, L. M., Bubeck, P., Ciavola, P., Green, C., Hallegatte, S., Logar, I., Meyer, V., Schwarze, R. and Thieken, A. H.: Costing natural hazards, *Nature Climate Change*, 4(5), 303–306, doi:10.1038/nclimate2182, 2014.

Maraun, D.: When will trends in European mean and heavy daily precipitation emerge?, *Environmental Research Letters*, 8(1), 14004, doi:10.1088/1748-9326/8/1/014004, 2013.

Pennell, C. and Reichler, T.: On the effective number of climate models, *Journal of Climate*, 24(9), 2358–2367, doi:10.1175/2010JCLI3814.1, 2011.

Raiffa, H. and Schlaifer, R.: *Applied Statistical Decision Theory*, 5th ed., The Colonial Press, Boston., 1961.

Sunyer, M. A., Madsen, H., Rosbjerg, D. and Arnbjerg-Nielsen, K.: Regional interdependency of precipitation indices across Denmark in two ensembles of high-resolution RCMs, *Journal of Climate*, 26(20), 7912–7928, doi:10.1175/JCLI-D-12-00707.1, 2013.

**Marked-up manuscript [next page]**



# Risk-based flood protection planning under climate change and modelling uncertainty: a pre-alpine case study

B. Dittes<sup>1</sup>, M. Kaiser<sup>2</sup>, O. Špačková<sup>1</sup>, W. Rieger<sup>2</sup>, M. Disse<sup>2</sup>, D. Straub<sup>1</sup>

<sup>1</sup>Engineering Risk Analysis Group, Technische Universität München, München, 80333, Germany

5 <sup>2</sup>Chair of Hydrology and River Basin Management, Technische Universität München, München, 80333, Germany

*Correspondence to:* Beatrice Dittes (beatrice.dittes@tum.de)

## Abstract

Planning authorities are faced with a range of questions when planning flood protection measures: is the existing protection adequate for current and future demands or should it be extended? How will flood patterns change in the future? How should the uncertainty pertaining to this influence the planning decision, e.g. for delaying planning or including a safety margin? Is it sufficient to follow a protection criterion (e.g. to protect from the 100-year flood) or should the planning be conducted in a risk-based way? How important is it for flood protection planning to accurately estimate flood frequency (changes), costs and damages? These are questions that we address for a medium-sized pre-alpine catchment in southern Germany, using a sequential Bayesian decision making framework that quantitatively addresses the full spectrum of uncertainty. We evaluate different flood protection systems considered by local agencies in a test study catchment. Despite large uncertainties in damage, cost and climate, the recommendation is robustly for the most conservative approach. This demonstrates the feasibility of making robust decisions under large uncertainty. Furthermore, by comparison to a previous study, it highlights the benefits of risk-based planning over a planning of flood protection to a prescribed return period.

## 1 Introduction

20 Technical flood protection measures have long life times of, on average, 80 years (Bund / Länder-Arbeitsgemeinschaft Wasser, 2005). The uncertainty over such a long planning horizon is large, both in terms of climatic and socio-economic development. It is thus not trivial for planning authorities to take decisions on flood protection planning that are economical while not leading to excessive losses or high adjustment costs. It is important to consider costs – in construction, adjustment and flood damages – over the entire measure life time.

25 Ideally, the planning of flood protection infrastructure is performed through a risk-based approach. Thereby, potential damages are considered in the decision-making process. Considering that the annual maximum discharge  $Q$  is the main driver for flood damages, the annual flood risk in year  $t$ ,  $\tau_t$ , is defined as (e.g. Merz et al., 2010a)

$$r_t = \int_0^{\infty} f_Q(q) d_t(q) dq \quad (1)$$

where  $f_Q(q)$  is the probability density function (PDF) of the annual maximum discharge and  $d_t(q)$  is the expected damage associated with the flood discharge  $q$  in year  $t$ . If decisions are based on a Cost-Benefit Analysis (CBA), the optimal flood protection strategy  $s$  is the one that minimizes the sum of risks and costs over the life-time of the protection system (Špačková and Straub, 2015):

$$s^{\text{opt}} = \arg \min_s (c^{\text{tot}}(s) + r^{\text{tot}}(s)), \quad (2)$$

- 5 where  $c^{\text{tot}}(s)$  and  $r^{\text{tot}}(s)$  are the expected costs and risks associated with strategy  $s$ . They are net present values, discounted to the time of planning on an annual basis (viz. following Eq. (5)).

In contrast, the current practice in most European countries is to require protection from floods of a certain return period, often the 100-year flood (Central European Flood Risk Assessment and Management in CENTROPE, 2013). This simplifies planning, as it is not necessary to quantify damages. While a well-chosen criterion may lead to near-optimal strategies, a suboptimal one may lead to strategies that are too risk-averse or too risky. To balance the optimality of risk-based  
10 planning with the lower effort of criterion-based planning, authorities can apply a ‘zoning’ approach, with different regions being assigned a different protection criterion. However, (Kind, 2014) performed CBA in Dutch catchments and found that despite the applied large-scale zoning, the fixed protection criteria were not economically efficient, because of both over- and underprotection.

15 There is a growing consensus that costs and damages (and thus the extreme discharge causing them) should be modelled probabilistically (Aghakouchak et al., 2013). Probabilistic modelling allows to include–consider the (large) uncertainty in future climate change in the CBA. The climatic uncertainty is included in the PDF of the annual maximum discharge  $f_Q(q)$  of (viz. Eq. (1)), which is expected to change depending on future climatic developments. Recent studies have aimed at quantifying the climatic uncertainty components in (extreme) discharge and precipitation, (Bosshard et al., 2013;  
20 Hawkins and Sutton, 2011; Sunyer, 2014).

Risk-based flood protection planning has a long history (Clark, 1980; James and Hall, 1986; Lund, 2002) and approaches to account for uncertainty in the risk estimate have also been developed for some time (Kundzewicz et al., 2010; USACE, 1996). Recent fields of interest in risk-based flood protection planning are e.g. how to include the flexibility of measures into the decision making (i.e. how costly it is to adjust measures later on) (Klijn et al., 2015; Kuklicke and Demeritt,  
25 2016; Woodward et al., 2014) and how to account for non-stationarity in discharges and risk estimates, e.g. due to climate change (Rehan and Hall, 2016; Rosner et al., 2014; Sayers et al., 2013). We have recently presented a framework for flood protection planning that is based on a quantitative, probabilistic joint estimate of climatic (and potentially other) uncertainties, naturally incorporating non-stationarity and the flexibility of the protection system in a Bayesian framework (Dittes et al.,

2017a, 2017b). In this work, we apply the framework to a real decision making problem of four potential protection strategies as currently considered by the local water management authorities. To our knowledge, this is the first risk-based application of a fully quantitative, continuous (not scenario-based) decision making framework for sequential flood protection planning that probabilistically includes future decisions and discharges. We additionally compare the results from this risk-based  
5 planning to previous results from a criterion-based planning for the same site. We find significant differences, which lead us to discuss the virtues of the two alternative planning paradigms.

We provide an overview of the applied uncertainty quantification and decision making methodology in Sect. 2. In Sect. 3, we give details of the case study, outlining the considered strategies, the modeling of flood events and the damage assessment. Results are presented and discussed in Sect. 4, followed by the conclusions in Sect. 5.

## 10 **2 Theoretical background**

In this section, we provide a short overview of the proposed methodology for flood protection planning under uncertainty. In Sect. 2.1, we outline how the climate-related uncertainty in discharge ( $f_Q(q)$  in Eq. (1)) is defined and quantified for use in decision making, following (Dittes et al., 2017b). In Sect. 2.2, we summarize the Bayesian sequential decision framework for optimizing the flood protection strategy under uncertainty.

### 15 **2.1 Uncertainty in determining future extreme discharges**

In practical planning applications, there are only limited data and models available for estimating future flood magnitude and frequency, which leads to uncertainty in predictions. The problem is exacerbated when climate change effects (i.e. non-stationarity, or trends) are present in this limited information, since it means more parameters need to be learned from a given, limited set of data. When planning under uncertainty, it is important not to consider different uncertainties (from climate, lack  
20 of data, etc.) individually, but jointly (Sunyer, 2014).

This section provides a short overview on how the uncertainty in future extreme discharges can be modeled from limited data, taking into account non-stationarity and considering uncertainties jointly. The data consists of a historic record of discharges and an (imperfect) ensemble of discharge projections that are a result of climate modelling. The former are often of limited length, whereas the latter may exhibit bias and significant uncertainty that builds up over the climate modelling  
25 chain (starting from global emission pathways down to downscaled values for a particular study catchment).

The PDF of annual maximum discharges,  $f_Q(q)$ , ~~is modeled mathematically as~~ typically has the form of an extreme value distribution, e.g. the Gumbel or the Generalized Extreme Value (GEV) distribution. These distributions are parametrized by a set of parameters  $\theta$ . Non-stationarity in the discharge estimate is modelled by including additional parameters in  $\theta$  describing the time-dependence. The distribution of the parameters  $\theta$  can be learned ~~by Bayesian analysis~~ from Y years of

annual maximum discharges  $\mathbf{q} = [q_1, \dots, q_Y]$ , which is here done with Bayesian analysis. Assuming independence between annual maxima of different years, the posterior PDF of the parameters  $f_{\theta|Q}(\theta|\mathbf{q})$  is obtained as

$$f_{\theta|Q}(\theta|\mathbf{q}) \propto f_{Q|\theta}(\mathbf{q}|\theta) \times f_{\theta}(\theta) = \prod_{t=1}^Y f_{Q_t|\theta}(q_t|\theta) \times f_{\theta}(\theta), \quad (3)$$

where  $f_{\theta}$  is the prior PDF of the parameters,  $f_{Q|\theta}$  is the PDF of the applied extreme value distribution wherein the dependence on  $\theta$  has been made explicit, and  $f_{Q|\theta}(\mathbf{q}|\theta) = \prod_{t=1}^Y f_{Q_t|\theta}(q_t|\theta)$  is the likelihood describing the data. [The prior is chosen to be non-informative in the return period of extreme discharge \(for details on this, see \(Dittes et al., 2017b\)\).](#) In the equality, we assume independence among the annual discharge maxima  $\mathbf{q}$ .

Learning the PDF of  $\theta$  from projections is more intricate since uncertainties from climate modelling must be accounted for. [It is common to categorize uncertainty into aleatory uncertainty \(natural variability\), which cannot be reduced, and epistemic uncertainty, which can be reduced with more knowledge \(Merz and Thielen, 2005\). To account for the limited information available in typical](#) [How uncertainties are categorized depends on the application. For example, for the purpose of uncertainty analysis and reduction it is useful to separately consider ‘natural’ uncertainty which cannot be reduced \(which we call internal variability\) vs. epistemic uncertainty, which can be reduced with more knowledge \(Merz and Thielen, 2005\).](#) [For use in flood protection planning problems, we here categorize the climatic uncertainties as follows according to the following categories \(Dittes et al., 2017b\):](#)

- ‘Visible uncertainty’, which is known and [whose statistics](#) can be [readily](#) quantified [based on data](#). For an ensemble of discharge projections, this would e.g. be the internal variability (natural fluctuations) and the model response uncertainty (also known as the spread of the ensemble).
- ‘Hidden uncertainty’, which is the remaining uncertainty and can, at best, be estimated. E.g., in the projection ensemble of the case study, the uncertainty in the emission forcing is hidden since all projections are based on the same emission scenario. In real planning situations, hidden uncertainty is typically significant because of limited and imperfect projections and data; it can therefore not be neglected [even if exact quantification is not possible](#).

In Fig. 1, we show the hidden uncertainty and internal variability over the projection horizon for one particular projection (CCLM, [see viz. Sect. 3.3](#)). [Note that these hidden uncertainty is a rough estimate for the situation in Rosenheim based on literature \(Bosshard et al., 2013; Dittes et al., 2017b; Hawkins and Sutton, 2011; Maraun, 2013\). It is given as a share of total uncertainty \(in terms of the variance\). The hidden uncertainty is included in the analysis by considering the discharge data from projections as uncertain, with a standard deviation  \$\sigma\_t^{\(\text{hidden}\)}\$  that is the square root of this variance. We conservatively assume that the hidden uncertainty is fully correlated among all years, since this limits the information included in the data. Mathematically this is achieved by modeling the uncertainty in year  \$t\$  as  \$\times \sigma\_t^{\(\text{hidden}\)}\$ , where  \$z\$  is a standard normal random variable with PDF  \$\varphi\$ . The uncertainty is included in It is therefore intuitive to express the likelihood  \$f\_{Q|\theta}\(\mathbf{q}|\theta\)\$  of Eq. \(3\) as](#)

~~uncertain, with a standard deviation  $\sigma_t^{(\text{hidden})}$  that is the square root of this variance. We do so by and then integrating over  $z$  integrated out  $\times \sigma_t^{(\text{hidden})}$ , where  $z$  is a random variable following the standard normal PDF  $\varphi$ , where  $z$  is a random variable following the standard normal PDF  $\varphi$ .~~

Including the hidden uncertainty via its standard deviation  $\sigma_t^{(\text{hidden})}$ , the likelihood  $f_{Q|\theta}(q|\theta)$  of Eq. (3) becomes:

$$f_{Q|\theta}(q|\theta) = \int_{-\infty}^{\infty} \left[ \prod_{t=1}^Y f_{Q|\theta}(q_t - z \times \sigma_t^{(\text{hidden})} | \theta) \right] \times \varphi(z) dz, \quad (4)$$

5 ~~where  $z$  is a random variable following the standard normal PDF  $\varphi$ .~~ Visible uncertainties are included in different ways, e.g. the internal variability is a natural component of Eq. (4) through  $q_t$ , whereas the ensemble spread is inherent in combining the parameter PDFs  $f_{\theta|Q}(\theta|q)$  from different members of a projection ensemble. For this combination, we apply the concept of effective projections (Pennell and Reichler, 2011; Sunyer et al., 2013), whereby a projection ensemble is split into multiple sets of ‘effective projections’. We multiply the PDFs of the members within one set and average in between sets to obtain a  
10 joint parameter PDF. ~~Full. The rationale and details of the implementation can be found in (Dittes et al., 2017b).~~

We take the pragmatic approach of using only discharge projections for initially estimating the joint parameter PDF  $f_{\theta|Q}(\theta|q)$ , not the available historic record. This is motivated by the fact that the historic discharge has been used to bias-correct the projections; using historic record alongside projections would thus correspond to a double counting. In practice, however, there will often be a discrepancy between the projections and historic discharge even for the reference period, as the  
15 projections may have been corrected to match means and not extremes or to match a larger geographical region. Some mismatch between projections and historic record is present also in the catchment studied here, as will be discussed in Sect. 5.

## 2.2 Framework for risk-based optimization of flood protection under uncertainty

Flood protection is a dynamic process, as illustrated in Fig. 2: A flood protection system is implemented initially and later revised, based on data (e.g., discharge observations) that becomes available in the future. ~~These future discharge observations are not yet known, hence for planning purposes they have to be simulated probabilistically. How this can be done is described in the following, as described in the next paragraph. Future discharges are uncertain and (The damages they caused by discharges in the future will depend on the protection system that will then be in place. The risk is defined as the expected damages, i.e. the sum of the damages associated with each future scenario, weighted by the probability of that scenario. The expected damages are the risks. T) Ultimately, the sum of the two monetary quantities, risks (i.e. expected damages) and costs, is to be minimized over the measure life-time following (viz. Eq. (2)).~~ If the demand has changed based on the new observations, it may be necessary or desirable to adjust the protection capacity. The cost for both the initial implementation of the protection system and for adjustments depends on the system flexibility: a more flexible system decreases adjustment costs, but this saving must be balanced with potentially higher costs of implementing a flexible system initially. When there is large uncertainty, it becomes more likely that a design has to be adjusted later on, as more information becomes available. To take  
25



these aspects into account, we have developed a quantitative decision framework that considers planning as a sequential process. It accounts for the system flexibility and the future learning process through Bayesian updating of the initial PDF of parameters,  $f_{\theta|Q}(\theta|q)$  (viz. Sect. 2.1.), with new information in the future (Dittes et al., 2017a). It evaluates, which flood protection system is recommendable based on the uncertainty in extreme discharge, described by  $f_{\theta|Q}(\theta|q)$ , and the flexibility of the considered flood protection systems. As will be shown in Sect. 3.5, the flexibility is intrinsic in the measure costs in this case study.

The PDF  $f_{\theta|Q}(\theta|q)$  contains the information from the currently available data: discharge projections as well as their uncertainty (viz. through Eq. (4)). Future discharges are then randomly generated from this PDF, creating a multitude of ‘possible futures’. At a first revision point (e.g. 30 years into the measure life time), for each ‘possible future’ the PDF is updated with the discharges that were simulated to have been observed by then and a decision is made on whether the protection has to be adjusted. This process is repeated for several revision steps, leading to a decision tree with alternating adjustment decisions and observation periods (viz. see Fig. 3-top). To find the optimal initial protection decision based on this tree – that is, the protection decision which minimizes the sum of life-time risks and costs – we use the technique of ~~The updating with future information is done probabilistically and the protection recommendation is found via backwards induction optimization, taking into account the possible future adjustment decisions.~~ Backwards Induction Optimization (Raiffa and Schlaifer, 1961). ~~The technique~~ works by first determining the system that should be installed at the last adjustment, depending on the existing protection and observations (data) available by then. ~~This is a deterministic problem, since at the last adjustment all the data has been collected. The evaluation is done for all possible futures and they are weighted by their probability based on the PDF.~~ The obtained recommendation ~~for the last adjustment~~ is then used to find the system that should be installed at the second to last adjustment and so forth until arriving at a recommendation for the system that should be installed initially.

In (Dittes et al., 2017a), the optimization was presented for a criterion-based approach to flood protection planning (e.g. protecting from the 100-year flood). Here, we use a risk-based approach, i.e. we consider damages and optimize for the best balance of residual risks and costs (following viz. Eq. (2)) instead of relying on a protection criterion. The total risk associated with a strategy is

$$r^{\text{tot}}(v_1, \dots, v_{N \times \Delta t}) = \sum_{t=1}^{N \times \Delta t} \frac{r_t(v_t)}{(1 + \lambda)^t}, \quad (5)$$

where  $v_t$  is the capacity of the protection system at time  $t$ . The annual rate of discounting is  $\lambda$  and the time period between decisions in years is  $\Delta t$ . The cost  $c^{\text{tot}}$  is defined analogously. Including the risk in the analysis in addition to the cost can easily be done in a setup with few possible strategies. Note that the simplicity of Eq. (5) is deceiving, since the analysis is not static. Instead, risks (and costs) are evaluated probabilistically for all strategies and the best strategy is found inductively as described

above, by backwards induction starting at the final revision of the flood protection system. We illustrate this in Fig. 3.

Note that the simplicity of Eq. (5) is deceiving. In particular, the analysis is not static. Instead, risks (and costs) are evaluated probabilistically for all strategies and the best strategy is found inductively as described, by backwards induction starting at the final revision of the flood protection system. We illustrate the corresponding planning process in Fig. 3. Due to computational limitations, for a set up with a larger number of decision steps, it may be necessary to use a POMDP approach instead—as has been described e.g. in (Špačková and Straub, 2017).

### 3 Case study Rosenheim, Germany

In this study, we apply the concepts outlined in the previous section to the municipality of Rosenheim in Bavaria, Germany.

Rosenheim closely surrounds the Mangfall river on both sides, making it vulnerable to flooding. An extreme flood event in 2013 underlined the need for an improved flood protection concept for Rosenheim.

#### 3.1 Description of study area

The Mangfall catchment (Fig. 4) has a size of about 1,100 km<sup>2</sup> and is situated in southern Germany, in the Bavarian pre-Alps. The Mangfall River is a medium-sized river, whose yearly average discharge at the gauge in Rosenheim is 18 m<sup>3</sup> s<sup>-1</sup>; the official estimate of the 100-year discharge at that gauge is 480 m<sup>3</sup> s<sup>-1</sup> (Hochwassernachrichtendienst Bayern, 2017; Wasserwirtschaftsamt Rosenheim, 2017).

In the east of the Mangfall catchment lies the city of Rosenheim with more than 60,000 inhabitants, which experienced numerous flood events. The largest flood event so far occurred in 1899, for which a discharge of approximately 600 m<sup>3</sup> s<sup>-1</sup> was reconstructed (Wasserwirtschaftsamt Rosenheim, 2017). The second largest flood occurred in 2013 with an extreme discharge of 480 m<sup>3</sup> s<sup>-1</sup> in Rosenheim (Wasserwirtschaftsamt Rosenheim, 2014). Damage estimates for the 2013 flood range from €150 to €200 M for Rosenheim and the neighboring city of Kolbermoor (Wasserwirtschaftsamt Rosenheim, 2014, 2017).

As a consequence of the 2013 flood event, the flood protection along the Mangfall River is currently being improved. After completion of the new flood protection system in 2020, dikes and embankments in Rosenheim should withstand a design discharge of 480 m<sup>3</sup> s<sup>-1</sup> (plus freeboard). In addition, as shown in Fig. 4, a flood polder 23 km east of Rosenheim is planned in order to compensate for the discharge aggravation and the loss of retention area due to the dike expansion along the Mangfall River (Wasserwirtschaftsamt Rosenheim, 2017). Within the municipal area of Rosenheim, dikes and walls protect the residents from flooding by the Mangfall River and two creeks (Fig. 54).

#### 3.2 Investigated flood protection systems

We investigated four protection systems for the risk-based flood protection planning of the city of Rosenheim:

S1: protection system 2020 – current state (as it is implemented)

S2: protection system 2020 + flood polder

S3: elevation of protection system 2020 by 1 m

S4: elevation of protection system 2020 by 1 m + flood polder

5 The first flood protection system (S1) represents the protection system in Rosenheim that will be completed by the year 2020 (Fig. 5). It consists of structural protection measures along the Mangfall River and the two creeks Auerbach and Kaltenbach. Homogeneous dikes and dikes with inner cores closely surround the Mangfall River on both sides. Where the building development allows, the dikes are set back from the river to increase the retention area. While dikes and walls completely embank the Auerbach on both sides, the Kaltenbach only borders a dike on the right, thus allowing the flooding of the adjacent forest on the left. In sum, 16 kilometers of dikes protect the urban area of Rosenheim. In addition, about 1 km of walls protect the residents around the Auerbach. The freeboard of the structural protection measures is 1 m with two exceptions. The first exception is the dike along the Kaltenbach, which has a freeboard of 0.5 m. The second exception is a dike section with 0.4 m freeboard near the mouth in the Inn (Fig. 5). Overall, S1 withstands a design discharge of  $480 \text{ m}^3 \text{ s}^{-1}$ .

15 The second flood protection system (S2) combines the protection system 2020 and a flood polder upstream on the Mangfall River (Fig. 5). Planned as a controlled retention basin, the flood polder is used when the predicted runoff for the gauge Rosenheim exceeds the design discharge of S1. Then, the 12 floodgates with a width of 4 m and a maximum lift height of 1.5 m are opened (RMD Consult, 2016). The floodgate control depends on the shape and the volume of the predicted flood wave. In use, the flood polder can store a maximum volume of 6.62 million  $\text{m}^3$  (RMD Consult, 2016).

20 The third flood protection system (S3) further increases the safety level of S1 by elevating the existing protection measures. The dikes and protection walls of S1 are heightened uniformly by 1 m, as this increase is considered to be still technically feasible. Due to limited space available, a widening of the dike base in order to elevate the embankments is not possible. Instead, a dike elevation can only be achieved by means of steeper dike slopes or protection walls on top. As the dikes in Rosenheim are already quite steep (with slopes between 2/5 and 1/2), a dike with a wall on its crest would be the preferred solution. The local water management office assumes that the current static of the protection walls would not withstand the additional hydrostatic pressure of a 1 m elevation. Therefore, the protection walls would have to be rebuilt for the implementation of S3, making the extension of S1 to S3 a non-flexible strategy.

The fourth flood protection system (S4) provides the greatest protection for Rosenheim of all systems, as it combines the elevated protection system 2020 and the flood polder.

### 3.3 Available discharge projections

30 At the gauge Rosenheim at the Mangfall, an ensemble of discharge projections is available up to the year 2098. Table 1 lists the projections of the ensemble. The projections are available as daily means. In this case study, we use only the annual maxima

of the daily means, as reproduced in the supplement. In Fig. 6, we show the probability of a flood event exceeding S1 ( $480 \text{ m}^3\text{s}^{-1}$ ), according to each individual projection. The exceedance probability is shown at four points in time: initial planning (year 0), as well as at years 30, 60 and 90. For reasons that will be described in Sec. 3.6, these points are defined to correspond to years 2008, 2038, 2068 and 2098, respectively. Results shown at the individual points in time are calculated by using projections from 1970 (the year in which the historical record starts) up to the year in question. The figure highlights the spread of the ensemble as well as the fact that, at up to 4% annually, the chance of exceeding S1 is projected to be quite high, so there likely is a need for further protection.

Several of the projections have identical modeling chains and differ only in the model run, six of the ten Regional Climate Models are nested into the same Global Climate Model, ECHAM5, and all GCM-RCMs are based on the same SRES forcing scenario (A1B), coupled to the same hydrological model (WaSiM v8.06.02 at a resolution of  $1\text{km}^2$ ) and same downscaling technique (quantile mapping). The ensemble is limited in that it does not cover a wide range of modeling uncertainties, and it is imperfect in that the projections of the ensemble are not independent. To account for this dependence, following the results of (Sunyer et al., 2013), we partition the ten available projections into two sets of five ‘effective projections’ (see viz. Sect. 2.1 or, for more details, (Dittes et al., 2017b)). To do so, we consider genealogy: projections with a very similar modeling chain should be in different sets to provide the maximum amount of independent information per set. The result is:

- Set 1: CLM1, CCLM, REMO2, HadGM, RACMO;
- Set 2: CLM2, REMO1, REMO3, HadRM, BCM.

We used all available future discharge projections to learn the joint annual maximum discharge projection PDF. This is based on the premise that it is good to use a projection ensemble that is as large as possible, even if some projections may be a less faithful representation of the truth than others (Huang et al., 2014b; Knutti, 2010; Reifen and Toumi, 2009). We do not weigh projections since there is an ongoing debate about this. If desired, it would be straightforward to introduce weights into the analysis.

### 3.4 Hydrodynamic modeling of flood events

The estimated flood damages for the optimization framework resulted from a sequence of modeling and calculation steps. By means of a hydrodynamic model, we simulated flood events with peak discharges ranging from  $520$  to  $740 \text{ m}^3 \text{ s}^{-1}$ . We modeled inundation depths and flood extents for four different flood protection systems with the two-dimensional hydrodynamic model HYDRO\_AS-2D (Nujic, 2003). The simulated inundation depths then served as inputs to a meso-scale flood damage model. For the damage estimation we used the Rhine Atlas model (RAM) developed by the International Commission for the Protection of the Rhine (ICPR) (IKSR, 2001) with two different land cover data inputs. For further comparison, we additionally applied a simple damage assessment method (SDAM) by the Bavarian water management administration.

We modified an existing hydrodynamic model of the Mangfall River by (Nujic and Blasy-Øverland, 2005). In the model, cross-sectional profiles, supplemented by terrestrially measured riverbank lines, represent the geometry of the Mangfall

River and its tributaries. The roughness values of the floodplain were determined based on the land use type, which was derived from aerial images on a scale of 1:5,000. Observed water levels of a flood event in 2001 served the calibration of the Mangfall River's channel roughness. The 2D-model also represents constructions such as bridges and structural protection measures, which are relevant for the appropriate flood modeling (Nujic and Blasy-Øverland, 2005).

5            Since buildings oppose a resistance to the surface flow, they can strongly influence the water level and thus the flood forecasting and damage estimation (Schubert et al., 2008; Schubert and Sanders, 2012). The original 2D-model of the study site, however, disregards buildings. Therefore, we incorporated the buildings into the model based on OpenStreetMap data. In addition, we disabled the building elements in HYDRO\_AS-2D to prevent an overflow of the building elements and thus reflect the building blockage effect in the simulations.

10           For the flood modeling, we further updated the 2D-model to match the basic protection system S1. As the hydrodynamic model does not cover the flood polder, we considered its effect indirectly in the simulation via the input hydrograph. Due to the controlled water extraction, the polder causes a capping of the flood wave. We reflected this effect in the model by reducing the input flood wave by the maximum retention volume of the polder. Hence, to simulate S2, we applied the mesh of S1 in combination with the cut input hydrographs. For the simulation of S3, we elevated the protection measures  
15 in the model by 1 m assuming the same cross-sections as before. For the simulation of S4, we ran the hydrodynamic model of S3 with the cut input hydrographs of S2.

### 3.5 Flood damage assessment

Uncertainties are inherent in hydrodynamic modeling as well as in damage modeling. However, various authors believe that the uncertainty of the simulated water depths is low compared to the uncertainties resulting from the choice of the depth-  
20 damage-functions and the specific asset values (Apel et al., 2009; de Moel and Aerts, 2011). The differences among damage estimates of different damage models for the same flood event are large. Comparative studies of flood loss models demonstrate this (Apel et al., 2009; Cammerer et al., 2013; Jongman et al., 2012; Wünsch et al., 2009). We hence use three different damage models for the optimization, introduced in Sect. 3.5.1 to 3.5.3, and validate their results against the flood event of 2013 in Sect. 3.5.4.

#### 25 3.5.1 Rhine Atlas model (RAM)

The Rhine Atlas model (RAM) (IKSR, 2001) is a meso-scale flood loss model that uses relative stage-damage functions for aggregated land cover categories. The stage-damage curves are derived from empirical damage values from the German flood loss database HOWAS (Merz et al., 2004) and expert judgements (IKSR, 2001). The model assesses flood damage for the following five land use types: settlement, industry, infrastructure, agricultural land, and forestry. For the three built-up area  
30 types, the RAM also distinguishes between mobile and immobile assets (IKSR, 2001). The RAM calculates the flood damage as the multiplication of the estimated flood loss ratio and the specific value of the affected asset. As input parameter, the model



requires land use and inundation depths-. [In addition, the RAM indicates specific asset values for each German state, which, however, can be changed by the user.](#) The output of the model is a raster grid indicating a damage value per grid cell.

Numerous studies have already applied the RAM. On the one hand, the model has been used for scenario calculation (Bubeck et al., 2011; de Moel and Aerts, 2011; Wagenaar et al., 2016). On the other hand, the RAM was applied in comparison studies in which the modeled losses were validated against observed flood damages (Apel et al., 2009; Cammerer et al., 2013; Jongman et al., 2012; Kellermann et al., 2015; Thieken, 2008; Wünsch et al., 2009). These comparative studies also highlighted the shortcomings of the RAM. Some studies showed that the model tends to underestimate the reported flood losses (Apel et al., 2009; Jongman et al., 2012). More generally, as (Cammerer et al., 2013) point out, it is not readily possible to transfer a flood loss model to another geographical region than it was developed for. Therefore, using a damage model derived from data of similar flood and building characteristics as the study site is advisable, such as the SDAM ([see viz.](#) Sect. 3.5.3.).

### 3.5.2 Adaptation of the Rhine Atlas model to the study area

To adapt the RAM to the regional situation, we adjusted the specific asset values based on the gross domestic product (GDP). With a GDP per capita of €43,520 Rosenheim surpasses the Bavarian average of €39,691 (VGR der Länder, 2015). Therefore, the asset values for Bavaria stored in the RAM were increased by 9.6 % (Tab. 2).

In this study, we applied the RAM with two different land use data sets. One version applies the CORINE land cover (CLC) data [set of 2006](#) with a 100m × 100m resolution and another version uses the digital basic landscape model (Basic DLM) from the German Authorative Topographic-Cartographic Information System (ATKIS) with a 1m × 1\_m resolution. Originally, the RAM allocates the specific assets and depth-damage functions based on the CLC data. The ATKIS data set identifies 21 land use classes in Rosenheim, whereas the CLC data set differentiates 12 land use classes (Tab. 3). [Figure 78](#) illustrates the differences between the two land cover data sets regarding the spatial distribution and resolution of the five damage categories. Especially in the settlement area, the ATKIS data set more accurately distinguishes patches of traffic, industry and areas of other use. Furthermore, the ATKIS also classifies the linear structures of the Mangfall River and the creeks discharging into it, which the CLC disregards. However, since the RAM was originally developed for the coarser raster of the CLC, the results obtained with ATKIS are not necessarily more accurate.

### 3.5.3 Damage assessment according to the Bavarian water management administration (SDAM)

In addition to the RAM, we applied a simple damage assessment method (SDAM) by the Bavarian water management administration. The Bavarian water management administration uses this method in order to prioritize the implementation of flood protection measures based on the determined damage potential. For simplicity, the method assumes that the replacement cost for each affected building amounts to €50,000 times a usage factor reflecting the building category (Tab. 4). Accordingly, the damage potential  $DP$  is calculated as follows

$$DP = \sum f_u \cdot N_u \cdot \text{€}50,000, \quad (6)$$

where  $f_u$  is the usage factor of the building category  $u$ , and  $N_u$  is the number of affected buildings of the building category  $u$ . The local water management office provided us with the usage classification of the more than 18,000 buildings. The majority of the buildings in Rosenheim are residential houses (88 %), whereas businesses account for 6 % of the buildings. The remaining 6 % of the buildings belong to the categories public facilities, infrastructure, and special cases.

#### 5 3.5.4 Validation of the damage models on the flood event in 2013

In June 2013, a major flood hit the city of Rosenheim. Due to the severity of the event, the inundation area was documented by means of aerial photographs. Unfortunately, there was no documentation of the flood losses. The only indication is a loss estimate of €150 to €200 M for Rosenheim and its neighboring city of Kolbermoor, with Kolbermoor being more heavily affected by flooding (Wasserwirtschaftsamt Rosenheim, 2014, 2017). For reasons of model validation, we simulated the flood event of 2013 and compared the results to the inundation area estimated from aerial images. Although the simulation underestimates the mapped flood extent by approximately 12 %, the simulation shows good agreement with the documented inundation in all essential areas of flooding ([viz-see also Fig. 7](#)). On this basis, we rate the simulation of the flood event 2013 as good within the scope of validation possibilities.

In the next step, we compared the reported flood loss range to the damage estimated by the RAM and the SDAM. As the city of Kolbermoor was more heavily affected by the flood 2013, we assumed – in consultation with the local water management office – that the losses in Rosenheim made up 25 to 35 % of the total reported damage. With a total loss sum of €150 to €200 M, the flood loss in Rosenheim amounts to about €38 to €70 M. As Tab. 5 shows, the RAM returns very different damage estimates depending on which land cover data set is used. Applying the CLC data set results in a damage estimate of €97 M, whereas with ATKIS the damage estimate amounts to €15 M. Application of the CLC data set overestimates losses because CLC attributes the Mangfall River erroneously to the category of settlement and industry (Fig. [87](#)). Application of the ~~ATKIS~~-ATKIS data leads to a strong underestimation of the damage, due to the fine resolution of the ATKIS data, which is not consistent with the original calibration of the RAM. Among the investigated methods, the simple damage estimation method leads to damage estimates closest to the reported damage range. For 1,050 affected houses, the method estimates a damage of €78 M. The optimization was conducted for RAM with both land cover sets as well as SDAM.

#### 25 3.6 Optimization setup and measure costs

We consider the designed flood protection systems to have a lifetime of 90 years with revisions every 30 years depending on the discharge measurements made up to then. Since projections are only available until 2098 ([see viz- Sec. 3.3](#)), we use the years 2009-2098 as the measure lifetime. At revisions, the flood protection may be adjusted (increases only). A GEV distribution with shape parameter  $k$ , time-dependent scale parameter  $\beta(t) = \beta_0 + \beta_1 \times t$  and time-dependent location parameter  $\mu = \mu_0 + \mu_1 \times t$  is used to model the annual maximum discharges. The model parameters  $k, \beta_0, \beta_1, \mu_0, \mu_1$ , which

are learned from the projections (Sec. 3.3), are uncertain and hence represented by random variables. For the computation, we used 300 samples of annual maximum discharges in the period 1-30 years and 70 samples of annual maximum discharges in the period 31-60 years, as it is computationally efficient to use less samples in later steps.

5 The quantitative estimate of the hidden uncertainty was taken from (Dittes et al., 2017b). It is based on the fact that Rosenheim is in a pre-alpine location, with extreme floods mostly driven by extreme summer precipitation. Using literature concerning the shares of different climatic uncertainties under extreme summer precipitation and in pre-alpine catchments (Bosshard et al., 2013; Hawkins and Sutton, 2011; Maraun, 2013), we obtained a rough estimate of ~~of~~ the shares of various uncertainties for Rosenheim. Because the projection ensemble available for the location is based on one forcing scenario, one downscaling  
10 technique and one hydrological model only, the corresponding variance shares were together used as the ‘hidden’ uncertainty. The analysis in (Dittes et al., 2017b) showed that ~~deviations~~changes in the size of the hidden uncertainty have only a minor impact on the final planning recommendation and a rough estimate is thus acceptable.

~~For the computation, we used 300 samples of annual maximum discharge in the period 1-30 years and 70 samples of annual maximum discharge in the period 31-60 years.~~

15 With an initial planning decision followed by two possible adjustments to the other possible protection systems (in years 30 and 60), the four flood protection systems introduced in Sect. 3.2 can result in the 16 strategies reproduced in Tab. 6 (adjustment to reduce protection is not considered). When a system is constructed at a later time (e.g. S3 is not implemented initially but first S1 and then the protection is increased to S3), the cost differs, and not just due to discounting. A new planning process has to be set up, topsoil has to be removed, and in the worst case, the entire measure has to be re-built (e.g. in the case  
20 of a flood protection wall whose statics that would not permit an extra meter in height). Constructing the polder however is an independent project and therefore independent of dike or wall heightening and timing. Thus, for the optimization minimizing the sum of construction costs and damage the following three costs are required:

- Cost of constructing the polder (this equals the cost difference of S1 to S2 and S3 to S4)
- Cost difference of S3 to S1 when S3 is chosen initially
- 25 ▪ Cost difference of S3 to S1 when S1 is chosen initially and adjusted to S3 later.

The cost of S1 itself is not required as it acts as the baseline. However, it is known to lie at around €29 M. Note that we neglect maintenance costs here.

In the given case study, these costs have to be estimated. The total construction cost of the polder is €55 M (RMD Consult, 2016). Since it protects the city of Kolbermoor (and various smaller cities) as well as Rosenheim, and in Sect. 3.5.4  
30 it is estimated that Rosenheim suffered about 30 % of the losses of Rosenheim and Kolbermoor together, we here assume that Rosenheim would cover 30 % of the polder construction costs, i.e. €17 M. We estimate the cost difference of S3 to S1 when

S3 is chosen initially to be €8 M. This is based on the presumption that there is a quasi-linear relationship between dike height and construction cost (Perosa, 2015) and the statement of the protection agency that €25 M are spent to increase capacity from 360 to 480 m<sup>3</sup> s<sup>-1</sup> (corresponding to roughly 3 m dike heightening). Finally, we estimate the cost difference of S3 to S1 when S1 is chosen initially and adjusted to S3 later to be €17 M. This is based on the planning authorities' statement that planning new protection walls (e.g. to fit on the top of dikes) would cost €1,500 per m length and planning is carried out for both riversides along a 5.7 km stretch of the river. The discounting rate is 2 %.

To return to the concept of flexibility ([see viz.](#) Sect. 2.2 or for more details (Dittes et al., 2017a)), the decision to build the polder is a fully flexible one (it can be taken at any time at the same cost). The decision to heighten dikes and walls by 1 m would correspond to a flexibility parameter of 0.7 following (Dittes et al., 2017a), [where 1 corresponds to full flexibility and 0 to no flexibility](#). Thus this can be considered as a partially flexible strategy.

Since the costs are rough estimates, we have run the optimization also with deviating values as a simple sensitivity analysis. Table 7 provides an overview of the different building cost scenarios considered for optimization.

## 4 Results

Here, we present and discuss results for the case study. In Sect. 4.1., damages for different peak discharges and damage functions are given. Planning recommendations and a sensitivity analysis are presented in Sect. 4.2.

### 4.1 Flood extent and damage assessment for selected flood events

For each of the four flood protection systems, we modeled six flood events with peak discharges varying from 520 to 740 m<sup>3</sup> s<sup>-1</sup>. Based on the simulation results, we calculated the flood damages using the RAM and the SDAM by the Bavarian water management administration. [Figure 98 and Tab. 8](#) summarizes the estimated damage sums for the four protection systems depending on the peak discharge. Comparing the discharge-damage-curves, protection system 1 shows the greatest damages and thus offers the lowest flood protection of the four systems. The damage with S1 increases almost linearly over the peak discharge. Protection system 4 in contrast, results in the least damages of all protection systems. The discharge-damage-curves of S2 and S4 illustrate the effect of the polder. For the lower peak discharges, the polder reduces the flood wave to such an extent that no damage occurs up to a discharge of 610 m<sup>3</sup> s<sup>-1</sup>. However, the damage increases significantly for S2 when the water overtops the dikes in the southeast of Rosenheim at 740 m<sup>3</sup> s<sup>-1</sup>. The elevated protection system 3 shows damages at all peak discharges. These damage sums are however significantly lower than for S1 ([Fig. 98, Tab. 8](#)). The significant differences found among the damage models are consistent with the findings of the model [validation/verification](#) (Sect. 3.5.4).

[Figure 9-10](#) displays the simulated inundation extent and depths for S1 to S4 in case of a flood event of peak discharge 700 m<sup>3</sup> s<sup>-1</sup>. With S1, the largest flooding occurs, which however can be drastically diminished by using the polder (S2). Compared to S1, the elevated protection system 2020 (S3) can reduce the flooded area and water depths significantly but not to the same extent as S2. With S4, flooding occurs only in and around the floodplain forest, which is not embanked for reasons

of retention. In general, we note that the damage increases rather linearly with discharge for the protection systems without polder (S1 and S3). When using the retention volume of the polder, the flood peak is reduced, resulting in no or lower damage. Based on these results, we extrapolate-interpolate linearly between damages for individual discharges as given in Fig. 98 and Tab. 8, using the resulting damage function in the optimization framework to arrive at the results given in the following section.

## 5 4.2 Risk assessment and planning recommendation

We show the result of the optimization, which is the system that is recommended for implementation at the present time, in Tab. 89. In order to evaluate robustness, three different damage models (RAM using the ATKIS dataset, RAM using the CORINE dataset and SDAM, see viz. Sect. 3.5) were used, as well as different estimates of the required building cost (viz. following Sect. 3.5). S4 – that is S3 plus the polder – is the recommended protection system in most cases. S3 – ~~that is~~ the further elevation of dikes and walls by 1 m in height in the course of the current building efforts – is recommended in the case of high or very high polder costs when the damage model is RAM ATKIS and in the case of very high polder costs also when the damage model is SDAM. In these cases, the polder may be built at a later time (corresponding to an upgrading to S4), which is considered in the analysis. Strategies, in which a lower protection (S1 or S2) is built initially, with a possible extension to S3 or S4 later, are not optimal in any of the investigated cases.

The [B3] expected sum of life-time costs and risks is given in Tab. 9, with the expected life-time costs individually stated in brackets. The life-time risks are calculated using Eq. (5). They are independent of measure building costs yet dependent on the system that is initially implemented. Let us first look at the damage model SDAM (which best fitted the damages of the 2013 flood, see Sect. 3.5.4) used with the reference building costs (the ‘buest guess’ for the building costs, see Sect. 3.6). The light blue coloring indicates that S4 is recommended for initial implementation. Thus, the expected life-time cost is the same as the initial building cost, 25.0 M €, since no adjustments are possible. The sum of life-time costs and risks is 42.6 M €. The table also shows results for the two other damage models (RAM ATKIS and RAM CLC) as well as the four other scenarios of initial building cost. When S3 is recommended for initial implementation (darker blue), the expected cost comprises the initial building cost and the expected cost of adjustment to S4 (probability of needing to adjust to S4  $\times$  cost of adjusting to S4). For SDAM, the probability of needing to adjust from S3 to S4 at a later point, if S3 was chosen initially, is 58%. For RAM using the ATKIS land cover, this probability is just 3% due to the very low damage estimates – probably a strong underestimation, as discussed in Sect. 3.5.4. When S1 is implemented initially, our computations show a residual risk of €124 M for SDAM. Thus, it is clearly better to follow the recommendation of implementing S4.

We show the [DS4] expected sum of life-time costs and risks in Tab. 10, expected life-time costs individually in Tab. 11 [DS5] and expected life-time risks individually in Tab. 12 tables. When using the SDAM damage model, the probability of later adjustment when S3 was recommended initially is 58%. With RAM using the ATKIS land cover, is just 3% due to the very low damage estimates – probably a strong underestimation, as discussed in Sect. 3.5.4., all based on implementation of the recommended protection system. In Tab. 10 and Tab. 11, results are given for the different damage models and estimates of required building

costs as in Tab. 9. However, results are not shown for differing costs of later elevation of the walls, since later elevation will not take place given that S4 has been recommended from the start. The life time risks in Tab. 12 are independent of measure building costs yet dependent on the system that is initially implemented, hence they are shown for the different damage models and recommended protection system (rather than for the different damage models and estimates of required building costs).

5 When just S1 is implemented, the residual risk is €124 M according to the damage model that best fitted the damages of the 2013 flood, SDAM (viz. Sect. 3.5.4). Table 10-12 show that despite the higher associated risks, implementing S3 instead of S4 can be attractive due to the low building costs. Note that the results shown include the possible need for future adjustment of S3 to S4 (by constructing the polder). ~~When using the SDAM damage model, the probability of later adjustment when S3 was recommended initially is 58%. With RAM using the ATKIS land cover, is just 3% due to the very low damage estimates probably a strong underestimation, as discussed in Sect. 3.5.4.~~

10

In Fig. 10<sup>1</sup>, we demonstrate how the need to adjust S3 to S4 might arise, using output from the case where S3 was recommended for initial implementation: damage model SDAM and very high polder costs. The decision is re-evaluated after 30 years, at which point it is decided whether the protection should remain unchanged or whether the polder should be constructed after all (i.e. S3 adjusted to S4). In panel (a), we give two examples of annual maximum discharges that may have been observed during this first planning period: a set of relatively low discharges (blueorange dots) or a set of relatively high discharges (orangeblue dots). For the former, no damages are incurred whereas for the latter, there are three floods. The damages caused by the floods are shown by the lilac bars. Depending on the discharges observed in the first planning period, the expected damage (risk) changes, as shown in panel (b). Initially, it was €30.1 M (petrol bar in year zero). After observing the first 30 years of discharges however, it changes to €48 M / €151 M (with / without adjustment to S4) in case of the high discharges (yellow / petrol bar in year 30) and €20 M / €70 M (with / without adjustment to S4) in case of the low discharges (the latter is not shown). These numbers pertain to the then remaining lifetime (years 31-90) and are discounted to year 30. For the high discharges, the difference of adjustment to the expected damage is higher than the building cost of the polder and hence it is sensible to adjust.

15

20

So far, the protection recommendation has been given depending on measure costs and damage model. As has been discussed in Sect. 3.5.4, RAM using the ATKIS land cover set likely leads to a significant underestimation of damages. Thus, the results return the robust recommendation to Rosenheim decision makers to choose the most conservative protection option, S4, unless they have to cover a strongly disproportionate share of the polder costs. We would recommend S4 even then, based on more qualitative arguments: polders have the benefit of providing a hierarchical (upstream as well as downstream) protection (Custer and Nishijima, 2013) and are particularly robust with respect to changes in flood frequency, an aspect that is very desirable in protection planning (Baker et al., 2005; Merz et al., 2014). Additionally, heightening of dikes and walls is reaching a static and aesthetic limit in Rosenheim and thus if a polder can provide at least some of the necessary protection, it should be made use of.

25

30



For the protection system S4, damages start occurring above the simulated discharge of  $614 \text{ m}^3 \text{ s}^{-1}$  (see Fig. 9). Thus, recommending S4 corresponds to recommending a safety margin of  $\sim 30 \%$  with respect to the 100-year flood estimate of  $480 \text{ m}^3 \text{ s}^{-1}$ . According to the damage functions reproduced in Fig. 8, the risk based recommendation for protection system S4 corresponds to a safety margin of  $28 \%$  with respect to the 100-year flood estimate, with moderate damages for discharges exceeding the protection. In a study for the same catchment and using largely the same methodology but aiming to protect against the 100-year flood (criterion-based rather than risk-based) and abstract protection levels rather than concrete measures, a safety margin of  $12.5 \%$  was recommended (Dittes et al., 2017b). The reason for this lies in the criterion-based optimization neglecting damages. Since construction is dense in the endangered area, it is to be expected that the protection criterion should be higher than the 100-yr flood. This demonstrates that ignoring the damages caused by rare events can lead to economically sub-optimal protection recommendations.

## 5 Discussion

In this study, we investigated four flood protection systems with different safety levels for the city of Rosenheim. The basis for the protection systems S1 and S2 were elaborated plans and concepts of technical protection measures. We further ensured the practicability and feasibility of the proposed flood protection systems through the close exchange with the local water management office. However, we can only assume that an elevation of the dikes and walls in Rosenheim by 1 m is feasible, as planned for S3 and S4. ~~For a final confirmation, we would need expert opinions for every construction by engineering companies.~~ Furthermore, it is unclear whether the protection measures work as intended in the event of an extreme flood. Although most of the dikes in Rosenheim have an inner core (Fig. 5), a break of the homogeneous dikes in case of overtopping cannot be ruled out. In addition, the event-related control of the polder might cause problems. ~~For example, e.g.,~~ if one or more floodgates are blocked or if the flow time or the volume of the flood wave are underestimated. In general, a technical or human failure is always possible.

The recommendation for an initial flood protection system of in Rosenheim results from a modeling sequence. The uncertainty is handed over and increased from model to model: ~~starting with the data inputs and the assumptions made, through to model and from~~ climate forcing uncertainty down to the hydrodynamic model and damage modeling. ~~The climatic uncertainties as well as the internal variability are incorporated into the decision making framework by the means described in Sect. 2.1. Notably, when only one model was used at a certain step in the modeling sequence (e.g. only one forcing scenario was used), the potential for greater model spread if more models had been used is included via an estimate of the so-called 'hidden uncertainty'. No such estimate was made for the hydrodynamic model, which was simply~~ The uncertainty propagates from the hydrodynamic model through the damage model to the optimization framework. ~~To reduce this uncertainty, we calibrated and validated our models using the available data. The hydrodynamic model was calibrated and validated solely based on recorded water levels of a flood event in 2001 and validated for.~~ We conducted a second qualitative model validation for the flood event of 2013 that brought us to the conclusion that the 2D model of Rosenheim simulates well (see Fig. 7). ~~However~~ While the validation was successful, land use changes and sedimentation of the Mangfall River may alter the

discharge and water levels in the future, which we did not consider in this study. ~~Overall, uncertainty will always be part of such a study, and the analysis framework must address this uncertainty, as we do in our study. This and other uncertainties are additional to the ones so far considered in the evaluation. However, we are confident that they such an additional uncertainty does would not influence the protection decision, on the one hand because a study of the same catchment showed very little change in the recommended protection from the 100 year flood when adding more uncertainty to the hidden uncertainty estimate (Dittes et al., 2017b) the results are generally robust with respect to changes in the hidden uncertainties (see also (Dittes et al., 2017b)), on the other hand because the recommendation already is for the most protective system.~~

Compared to the hydrodynamic model, the validation of the damage models was more difficult due to the limited data available. As detailed damage data of the event 2013 were missing, the quality of the models could only be assessed by means of an approximate reported damage sum. It was shown that the RAM using ATKIS lead to a strong underestimation of replacement costs and hence RAM using the (coarser) CORINE land cover set is a better choice. We hypothesize that the reason for this is the original calibration of the RAM to the coarser land use model, which inflates the built area compared to the fine 1 ~~m~~ x 1 m ATKIS model. Using the ATKIS dataset, water areas are excluded from the damage calculation, which leads to an underestimation of the true damage. Whereas, In contrast, the CORINE model considers the Mangfall river and creeks as settlement and industrial areas. Using the more detailed ATKIS dataset that, among others, correctly identifies river areas and applies no damage there, thus leads to an underestimation of the true damage. Overall, the variability of the damage estimates for the considered flood events (Fig. ~~98, Tab. 8~~) was high between the three damage approaches, indicating the significant uncertainty associated with loss estimation. In addition to the inaccuracy of the loss model, the future population and value development plays a role in the assessment of losses, and is – at least for the further future – subject to large uncertainties as well, but are not considered in this study.

The reader may have noticed that the sequential nature of the decision process does not become relevant in this particular case study, since the most conservative strategy (S4) is recommended to be implemented initially. Thus, a static CBA would have yielded the same result here. However, this conclusion can only be drawn a posteriori: if a static CBA had been used from the start, one would not know whether sequential planning may have led to a more optimal solution. Similarly, neglecting the ‘hidden uncertainty’ is unlikely to have led to a different recommendation in this case study – as the recommendation for S4 is very robust and it has been shown in (Dittes et al., 2017b) that including the hidden uncertainty in Rosenheim increases the recommended planning margin only by a small amount – but again, this is knowledge of hindsight and may be very different in a different catchment. The spectrum of climate uncertainties will look very different for other geographical locations (Hawkins and Sutton, 2009, 2011). In particular, forcing uncertainty – and thus the dependence on global socio-economic developments – may play a much larger role and / or the absolute amount of climate uncertainty may be much larger than in the case study. Furthermore, the case study area is characterized by an exceptionally slow emergence of discharge trends (Maraun, 2013), thus almost anywhere else the trend will play a larger role.

It should be stressed that this paper aims to demonstrate how different sources of uncertainty can be combined to make robust decisions while taking into account future developments. To that end, the case study has an exemplary purpose rather than representing a definite recommendation for the study site. Instead, the tools presented here are intended to be used e.g. by climate scientists and hydrologists, which will have the care and expertise to include catchment-specific considerations.

5 In Rosenheim, one particular challenge for realistic recommendations lies in the discrepancy between historic record and projections: the projections exhibit a 100-year discharge that is 8 % higher in the historic time period than the 100-year discharge from the historic record. At first glance, this would suggest that one should use the historic record within the presented analysis to mitigate this discrepancy, rather than solely basing the optimization on projections. However, the knowledge from historic discharge is implicit in the bias correction of the climate projections. Hence, ‘ideal’ input projections  
10 would not exhibit a systematic discrepancy to historic data and performing some kind of post-correction within the framework may be a double-correction. Further considerations that speak against a post-correction in the framework are that the short length of the historic record implies a large uncertainty, that the correction may have compromised the model spread and that potentially valuable regional information is contained in the projections (which have been calibrated to the Inn valley). It is clear from the Rosenheim data and the literature (Aghakouchak et al., 2013; Collins et al., 2013; Huang et al., 2014a), however,  
15 that there is a considerable need for projections and bias correction methods with a focus on extreme values.

Finally, it should be kept in mind that damage potential and protection are not independent in reality. Instead, an increase in flood protection may encourage settlement patterns that increase the damage potential, e.g. houses would not be built in an unprotected flood plain yet they are built behind dikes protecting against moderate floods, leading to strongly increased losses in the case of large floods (IPCC, 2012; Seifert, 2012). It is a challenge for authorities to, at the same time,  
20 justify the construction of unpopular technical flood protection to their citizens and restrict building permissions to break this vicious cycle. This leads us to a more general discussion on the relative virtues of risk-based planning – which considers the damage potential – and criterion-based planning – which protects areas from floods of a fixed return period. In an area with low damage potential, protecting from the 30-year flood may be sufficient, and any investments in protection that goes beyond this may not be economically sensible. In an area with high damage potential, it may be economically sensible to protect also  
25 from much rarer floods. The latter appears to be the case in the case study area of Rosenheim. Whether it is under- or overprotection, a fixed protection criterion will typically lead to sub-optimal results. Therefore, the trend in flood protection planning is towards a risk-based approach, as has manifested itself in the European flood risk directive 2007/60 (European Parliament and European Council, 2007). Nevertheless, criterion-based flood protection may at times make sense as a measure of public planning. Much of the damage potential will be from private buildings and it is arguably not the responsibility of the  
30 state to protect the full asset value. Deciding to provide protection from the 100-year flood to all can be a fair solution, in that tax money is not disproportionately spend on those owning, or deciding to build, high-asset properties in the floodplain. Giving some responsibility – e.g. to add local protection measures or insurance at their own expense – to the citizens concerned also  
[curbs the mentioned ‘feedback loop’ of flood protection planning disincentivises citizens to build in the flood plain.](#) Another

issue with risk-based planning is, that it is often not clear how to calculate the damage potential: should it include only public buildings and critical infrastructure? All buildings? The costs of downtime of local industry? Should the benefits to the economy from reconstruction efforts be deducted? And should the appraisal be for replacement costs or depreciated value?

5 [The costing of natural hazards is a challenging area and the considerations given underline the need for integrated flood protection, where the cost and risk assessment cycle are linked. A comprehensive framework to do so has been proposed by Kreibich et al. \(2014\). Furthermore](#) A further complication is that, based on lack of data, it is often much more complicated to estimate damage potential than flood frequency. Simply protecting from a design flood of fixed return period avoids these issues and, potentially, the discussions or even lawsuits that come with them. Thereby, it also allows for faster planning processes. However, when there are the resources to do so, we would always recommend that planning agencies do at least a  
10 simple risk-based evaluation as part of their planning process, to avoid gross sub-optimality.

## 6 Conclusions

We have conducted a risk-based evaluation of four alternative flood protection systems for the pre-alpine city of Rosenheim in the Mangfall catchment, Bavaria, Germany. To do so, several damage model and building cost estimates have been used in a fully quantitative Bayesian optimization framework taking into account climate uncertainty and the possibility to adjust the  
15 measures at a later time. The recommendation is robustly for the most conservative strategy, which includes a further heightening of dikes and walls by 1 m over the 100-year protection including freeboard as well as a large upstream polder. This recommendation is in contrast to the less conservative recommendation obtained when following a sequential planning that aims at compliance with the minimum protection level, which does not require an assessment of damages. Thus, the case study underlines the importance of taking a risk-based approach in flood protection planning. It also becomes clear that even  
20 when there is a large uncertainty in damage, costs, and climatic development, there need still not be ambiguity about the protection decision.

### Code availability

The code is available upon request.

### Data availability

25 The projections of annual maximum discharges used are available in the supplement.

## Author contribution

This work was conducted by B. Dittes and M. Kaiser under the supervision and guidance of O. Špačková, W. Rieger, M. Disse and D. Straub. M. Kaiser prepared Sect. 3.1-3.2, 3.4-3.5 and 4.1 as well as the respective parts of the discussion and performed the analyses described in her sections. B. Dittes prepared the remainder of the paper and performed the remaining analyses.

5 All authors contributed to the final writing of the paper.

## Competing interests

The authors declare that they have no conflict of interest.

## Acknowledgements

We would like to thank Bayerisches Landesamt für Umwelt (LfU), Wasserwirtschaftsamt Rosenheim (WWA-Ro) and  
10 Bayerisches Staatsministerium für Umwelt und Verbraucherschutz (StMUV) for fruitful discussions. The LfU also provided the discharge records and projections used in the case study. Most projections were modelled within the cooperation KLIWA. These are based on ENSEMBLES data funded by the EU FP6 Integrated Project ENSEMBLES (Contract number 505539), whose support is gratefully acknowledged. The remaining projections are REMO1 ('UBA') and REMO2 ('BfG') (Umweltbundesamt, 2017), as well as CLM1 and CLM2 (Hollweg et al., 2008). The WWA-Ro provided the hydrodynamic  
15 model of the study site. This work was supported by Deutsche Forschungsgemeinschaft (DFG) through the TUM International Graduate School of Science and Engineering (IGSSE). The ICPR kindly provided us with the RAM as an executable ArcGIS toolbox. Finally, we thank Adrian Schmid-Breton from the International Commission for the Protection of the Rhine for providing the Rhine Atlas model and his kind support.

## References

- 20 Aghakouchak, A., Easterling, D., Hsu, K., Schubert, S. and Sorooshian, S., Eds.: *Extremes in a Changing Climate*, Springer., 2013.
- Apel, H., Aronica, G. T., Kreibich, H. and Thielen, A. H.: Flood risk analyses — how detailed do we need to be?, *Natural Hazards*, 49, 79–98, doi:10.1007/s11069-008-9277-8, 2009.
- Baker, J., Straub, D., Nishijima, K. and Faber, M.: On the assessment of robustness I: A general framework, in *JCSS and IABSE Workshop on Robustness of Structures*, Watford., 2005.  
25
- Bosshard, T., Carambia, M., Goergen, K., Kotlarski, S., Krahe, P., Zappa, M. and Schär, C.: Quantifying uncertainty sources in an ensemble of hydrological climate-impact projections, *Water Resources Research*, 49(3), 1523–1536, doi:10.1029/2011WR011533, 2013.
- Bubeck, P., de Moel, H., Bouwer, L. M. and Aerts, J. C. J. H.: How reliable are projections of future flood damage?, *Nat Hazards Earth Syst Sci*, 11, 3293–3306, doi:10.5194/nhess-11-3293-2011, 2011.  
30

- Bund / Länder-Arbeitsgemeinschaft Wasser: Leitlinien zur Durchführung dynamischer Kostenvergleichsrechnungen, 7th ed., edited by WI-00.3 DWA-Arbeitsgruppe, Berlin., 2005.
- Cammerer, H., Thielen, A. H. and Lammel, J.: Adaptability and transferability of flood loss functions in residential areas, *Nat Hazards Earth Syst Sci*, 13, 3063–3081, doi:10.5194/nhess-13-3063-2013, 2013.
- 5 Central European Flood Risk Assessment and Management in CENTROPE: Current standards for flood protection., 2013.
- Clark, W. C.: Witches, floods and wonder drugs: historical perspectives on risk management, in *Societal Risk Assessment: How Safe is Safe Enough?*, edited by R. C. Schwing and W. A. Albers, Plenum Press, New York., 1980.
- Collins, M., Knutti, R., Arblaster, J., Dufresne, J.-L., Fichet, T., Friedlingstein, P., Gao, X., Gutowski, W. J., Johns, T., Krinner, G., Shongwe, M., Tebaldi, C., Weaver, A. J. and Wehner, M.: Long-term Climate Change: Projections, Commitments and Irreversibility, *Climate Change 2013: The Physical Science Basis Contribution of Working Group I to the Fifth Assessment Report of the Intergovernmental Panel on Climate Change*, 1029–1136, 2013.
- 10 Custer, R. and Nishijima, K.: Hierarchical decision making for flood risk reduction, in *11th International Conference on Structural Safety & Reliability, ICOSSAR, New York*, pp. 4865–4872., 2013.
- Dittes, B., Špačková, O. and Straub, D.: Managing uncertainty in design flood magnitude: Flexible protection strategies vs. safety factors, *Journal of Flood Risk Management*, submitted [online] Available from: [https://www.era.bgu.tum.de/fileadmin/w00bkd/www/Papers/2017\\_Dittes\\_managing\\_uncertainty.pdf](https://www.era.bgu.tum.de/fileadmin/w00bkd/www/Papers/2017_Dittes_managing_uncertainty.pdf), 2017a.
- 15 Dittes, B., Špačková, O., Schoppa, L. and Straub, D.: Managing uncertainty in flood protection planning with climate projections, *Hydrology and Earth System Sciences*, under review, 2017b.
- European Parliament and European Council: Directive 2007/60/EC., 2007.
- 20 Hawkins, E. and Sutton, R.: The potential to narrow uncertainty in regional climate predictions, *Bulletin of the American Meteorological Society*, 90(8), 1095–1107, doi:10.1175/2009BAMS2607.1, 2009.
- Hawkins, E. and Sutton, R.: The potential to narrow uncertainty in projections of regional precipitation change, *Climate Dynamics*, (37), 407–418, 2011.
- Hochwassernachrichtendienst Bayern: Abfluss Rosenheim/Mangfalltal, [online] Available from: <http://www.hnd.bayern.de/pegel/inn/rosenheim-18209000/abfluss?>, 2017.
- 25 Hollweg, H.-D., Böhm, U., Fast, I. and Barbara Hennemuth, Klaus Keuler, Elke Keup-Thiel, Michael Lautenschlager, Stephanie Legutke, Kai Radtke, Burkhardt Rockel, Martina Schubert, Andreas Will, Michael Woldt, C. W.: Ensemble Simulations over Europe with the Regional Climate Model CLM forced with IPCC AR4 Global Scenarios., *CLM Technical Report*, 20(10), 857–61, doi:10.1089/lap.2010.0351, 2008.
- 30 Huang, S., Krysanova, V. and Hattermann, F. F.: Does bias correction increase reliability of flood projections under climate change? A case study of large rivers in Germany, *International Journal of Climatology*, 34(14), 3780–3800, doi:10.1002/joc.3945, 2014a.
- Huang, S., Krysanova, V. and Hattermann, F.: Projections of climate change impacts on floods and droughts in Germany using an ensemble of climate change scenarios, *Regional Environmental Change*, 15(3), 461–473, doi:10.1007/s10113-014-0606-z, 2014b.
- 35 IKSR: Übersichtskarten der Überschwemmungsgefährdung und der möglichen Vermögensschäden am Rhein, Wiesbaden, Heidelberg, Nijmegen, München., 2001.
- IPCC: *Managing the Risks of Extreme Events and Disasters to Advance Climate Change Adaptation*, edited by C. B. Field, V. Barros, T. F. Stocker, and Q. Dahe, Cambridge University Press, Cambridge., 2012.
- 40 James, L. D. and Hall, B.: Risk information for floodplain management., *Journal of Water Resources Planning and Management*, 112(4), 485–499, 1986.



- Jongman, B., Kreibich, H., Apel, H., Barredo, J. I., Bates, P. D., Feyen, L., Gericke, A., Neal, J., Aerts, J. C. J. H. and Ward, P. J.: Comparative flood damage model assessment : towards a European approach, *Nat Hazards Earth Syst Sci*, 12, 3733–3752, doi:10.5194/nhess-12-3733-2012, 2012.
- 5 Kellermann, P., Schöbel, A., Kundela, G. and Thielen, A. H.: Estimating flood damage to railway infrastructure – the case study of the March River flood in 2006 at the Austrian Northern Railway, *Nat Hazards Earth Syst Sci*, 15(2010), 2485–2496, doi:10.5194/nhess-15-2485-2015, 2015.
- Kind, J. M.: Economically efficient flood protection standards for the Netherlands, *Journal of Flood Risk Management*, 7(2), 103–117, doi:10.1111/jfr3.12026, 2014.
- 10 Klijn, F., Kreibich, H., De Moel, H. and Penning-Rowsell, E.: Adaptive flood risk management planning based on a comprehensive flood risk conceptualisation, *Mitigation and Adaptation Strategies for Global Change*, 20(6), 845–864, doi:10.1007/s11027-015-9638-z, 2015.
- Knutti, R.: The end of model democracy?, *Climatic Change*, 102(3), 395–404, doi:10.1007/s10584-010-9800-2, 2010.
- 15 Kreibich, H., Van Den Bergh, J. C. J. M., Bouwer, L. M., Bubeck, P., Ciavola, P., Green, C., Hallegatte, S., Logar, I., Meyer, V., Schwarze, R. and Thielen, A. H.: Costing natural hazards, *Nature Climate Change*, 4(5), 303–306, doi:10.1038/nclimate2182, 2014.
- Kuklicke, C. and Demeritt, D.: Adaptive and risk-based approaches to climate change and the management of uncertainty and institutional risk: The case of future flooding in England, *Global Environmental Change*, 37, 56–68, doi:10.1016/j.gloenvcha.2016.01.007, 2016.
- 20 Kundzewicz, Z. W., Luger, N., Dankers, R., Hirabayashi, Y., Döll, P., Pińskwar, I., Dysarz, T., Hochrainer, S. and Matczak, P.: Assessing river flood risk and adaptation in Europe-review of projections for the future, *Mitigation and Adaptation Strategies for Global Change*, 15, 641–656, doi:10.1007/s11027-010-9213-6, 2010.
- Lund, J. R.: Floodplain planning with risk-based optimization, *Journal of Water Resources Planning and Management*, 127(3), 202–207, doi:10.1061/(ASCE)0733-9496(2002)128:3(202), 2002.
- 25 Maraun, D.: When will trends in European mean and heavy daily precipitation emerge?, *Environmental Research Letters*, 8(1), 14004, doi:10.1088/1748-9326/8/1/014004, 2013.
- Merz, B., Kreibich, H., Thielen, a. and Schmidtke, R.: Estimation uncertainty of direct monetary flood damage to buildings, *Natural Hazards and Earth System Science*, 4(1), 153–163, doi:10.5194/nhess-4-153-2004, 2004.
- Merz, B., Hall, J., Disse, M. and Schumann, A.: Fluvial flood risk management in a changing world, *Natural Hazards and Earth System Science*, 10, 509–527, 2010.
- 30 Merz, B., Aerts, J., Arnbjerg-Nielsen, K., Baldi, M., Becker, A., Bichet, A., Blöschl, G., Bouwer, L. M., Brauer, A., Cioffi, F., Delgado, J. M., Gocht, M., Guzzetti, F., Harrigan, S., Hirschboeck, K., Kilsby, C., Kron, W., Kwon, H. H., Lall, U., Merz, R., Nissen, K., Salvatti, P., Swierczynski, T., Ulbrich, U., Viglione, A., Ward, P. J., Weiler, M., Wilhelm, B. and Nied, M.: Floods and climate: Emerging perspectives for flood risk assessment and management, *Natural Hazards and Earth System Sciences*, 14(7), 1921–1942, doi:10.5194/nhess-14-1921-2014, 2014.
- 35 de Moel, H. and Aerts, J. C. J. H.: Effect of uncertainty in land use, damage models and inundation depth on flood damage estimates, *Natural Hazards*, 58, 407–425, doi:10.1007/s11069-010-9675-6, 2011.
- Nujic, M.: HYDRO\_AS-2D - Ein zweidimensionales Strömungsmodell für die wasserwirtschaftliche Praxis, 2003.
- Nujic, M. and Blasy-Øverland: Zweidimensionale Wasserspiegellagenberechnung und Überschwemmungsgebietsermittlung an der Mangfall von Fkm. 0,000 – 28,000., 2005.
- 40 Paté-Cornell, E.: Risk and uncertainty analysis in government safety decisions., *Risk analysis : an official publication of the Society for Risk Analysis*, 22(3), 633–46 [online] Available from: <http://www.ncbi.nlm.nih.gov/pubmed/12088238>, 2002.
- Pennell, C. and Reichler, T.: On the effective number of climate models, *Journal of Climate*, 24(9), 2358–2367,

- doi:10.1175/2010JCLI3814.1, 2011.
- Perosa, F.: Cost function of river flood protection measures, Technische Universität München., 2015.
- Raiffa, H. and Schlaifer, R.: Applied Statistical Decision Theory, 5th ed., The Colonial Press, Boston., 1961.
- Rehan, B. M. and Hall, J. W.: Uncertainty and sensitivity analysis of flood risk management decisions based on stationary and nonstationary model choices, in 3rd European Conference on Flood Risk Management, FLOODrisk, Lyon, vol. 20003., 2016.
- 5 Reifen, C. and Toumi, R.: Climate projections: Past performance no guarantee of future skill?, Geophysical Research Letters, 36(13), L13704, doi:10.1029/2009GL038082, 2009.
- RMD Consult: Hochwasserrückhaltebecken Feldolling, Entwurfsteil 1 a: Erläuterungsbericht; 1.Tektur 15.04.2016., 2016.
- Rosner, A., Vogel, R. and Kirshen, P.: A risk-based approach to flood management decisions in a nonstationary world, Water Resources Research, 1928–1942, doi:10.1002/2013WR014561.Received, 2014.
- 10 Sayers, P., Li, Y., Galloway, G., Penning-Rowsell, E., Shen, F., Wen, K., Chen, Y. and Le Quesne, T.: Flood Risk Management: A Strategic Approach, UNESCO, Paris. [online] Available from: <http://www.sayersandpartners.co.uk/uploads/6/2/0/9/6209349/flood-risk-management-web.pdf>, 2013.
- Schmid, F. J., Willkofer, F. and Ludwig, R.: Endbericht Einfluss der Biaskorrektur dynamischer regionaler Klimamodelldaten auf die Wasserhaushaltsmodellierung und Klimafolgeabschätzung in Bayerischen Flussgebieten - Erstellung eines Klimamodell-Audits und ergänzende Untersuchungen (BI-KLIM-2014), München., 2014.
- 15 Schubert, J. E. and Sanders, B. F.: Building treatments for urban flood inundation models and implications for predictive skill and modeling efficiency, Advances in Water Resources, 41, 49–64, doi:10.1016/j.advwatres.2012.02.012, 2012.
- Schubert, J. E., Sanders, B. F., Smith, M. J. and Wright, N. G.: Unstructured mesh generation and landcover-based resistance for hydrodynamic modeling of urban flooding, Advances in Water Resources, 31(12), 1603–1621, doi:10.1016/j.advwatres.2008.07.012, 2008.
- 20 Seifert, P.: Mit Sicherheit wächst der Schaden. Überlegungen zum Umgang mit Hochwasser in der räumlichen Planung, 2012.
- Špačková, O. and Straub, D.: Cost-Benefit analysis for optimization of risk protection under budget constraints, Risk Analysis, 35(5), 941–959, doi:10.1111/risa.12310, 2015.
- 25 Špačková, O., Dittes, B. and Straub, D.: Risk-based optimization of adaptable protection measures against natural hazards, in 12th International Conference on Applications of Statistics and Probability in Civil Engineering, ICASP, Vancouver., 2015.
- Sunyer, M. A.: Uncertainties in extreme precipitation under climate change conditions, Technical University of Denmark. [online] Available from: <http://www.orbit.dtu.dk>, 2014.
- Sunyer, M. A., Madsen, H., Rosbjerg, D. and Arnbjerg-Nielsen, K.: Regional interdependency of precipitation indices across Denmark in two ensembles of high-resolution RCMs, Journal of Climate, 26(20), 7912–7928, doi:10.1175/JCLI-D-12-00707.1, 2013.
- 30 Thieken, A.: Neue Modelle zur Abschätzung von Hochwasserschäden, Ökologisches Wirtschaften, 3, 30–35, 2008.
- Umweltbundesamt: Einführung in Klimaprojektionen, 2017.
- USACE: Risk-based analysis for flood damage reduction studies, US Army Corps of Engineers, Washington, DC, (1110), 1996.
- 35 VGR der Länder: Bruttoinlandsprodukt, Bruttowertschöpfung in den kreisfreien Städten und Landkreisen der BRD 2000 bis 2013, 2015.
- Wagenaar, D. J., de Bruijn, K. M., Bouwer, L. M. and de Moel, H.: Uncertainty in flood damage estimates and its potential effect on investment decisions, Nat Hazards Earth Syst Sci, 16(1), 1–14, doi:10.5194/nhess-16-1-2016, 2016.

Wasserwirtschaftsamt Rosenheim: Das Hochwasser vom Juni 2013., 2014.

Wasserwirtschaftsamt Rosenheim: Hochwasserschutz Mangfalltal, 2017.

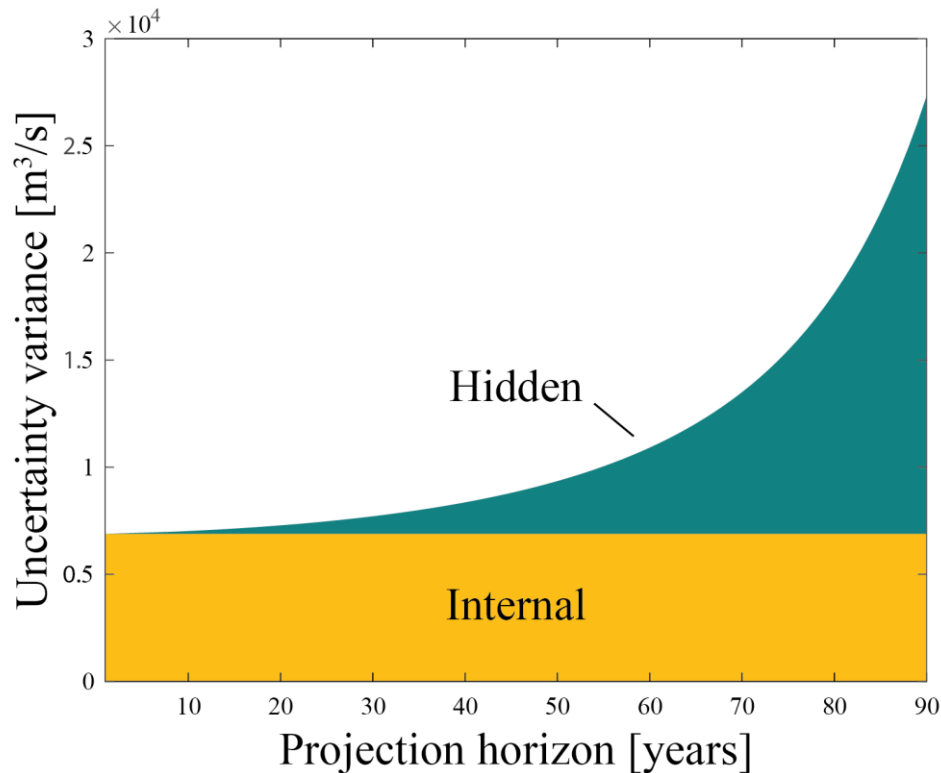
Willems, W. and Stricker, K.: Klimawandel und Wasserhaushalt: AdaptAlp - Untersuchung zum Einfluss des Klimawandels auf Wasserbilanzen und Abflüsse für das Inneinzugsgebiet mittels verschiedener Klimaszenarien. Endbericht., 2011.

- 5 Woodward, M., Kapelan, Z. and Gouldby, B.: Adaptive flood risk management under climate change uncertainty using real options and optimization, *Risk Analysis*, 34(1), 75–92, 2014.

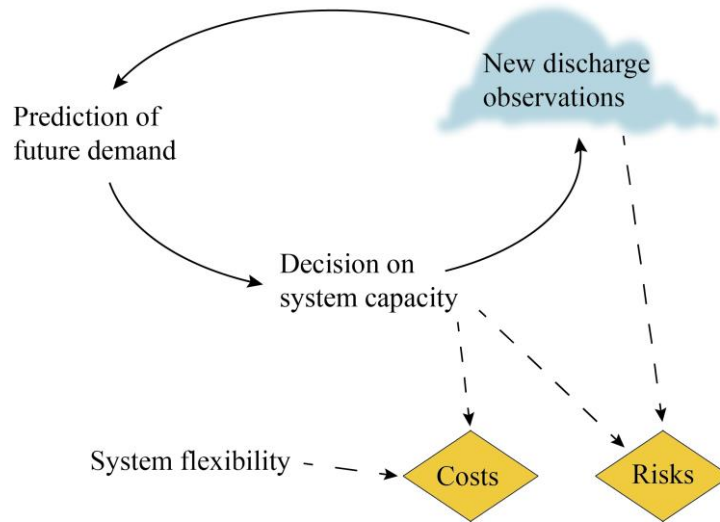
Wünsch, A., Herrmann, U., Kreibich, H. and Thieken, A. H.: The Role of Disaggregation of Asset Values in Flood Loss Estimation : A Comparison of Different Modeling Approaches at the Mulde River, Germany, *Environmental Management*, 44, 524–541, doi:10.1007/s00267-009-9335-3, 2009.

10

## Figures

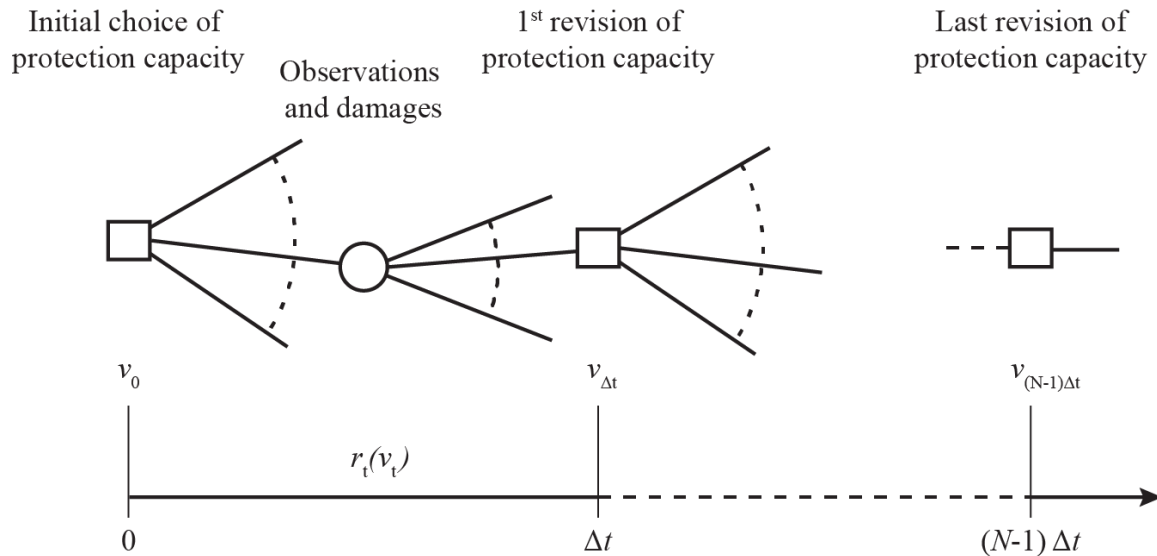


**Figure 1.** Absolute values of hidden uncertainty and internal variability over the projection horizon for the CCLM projection [at Rosenheim](#).



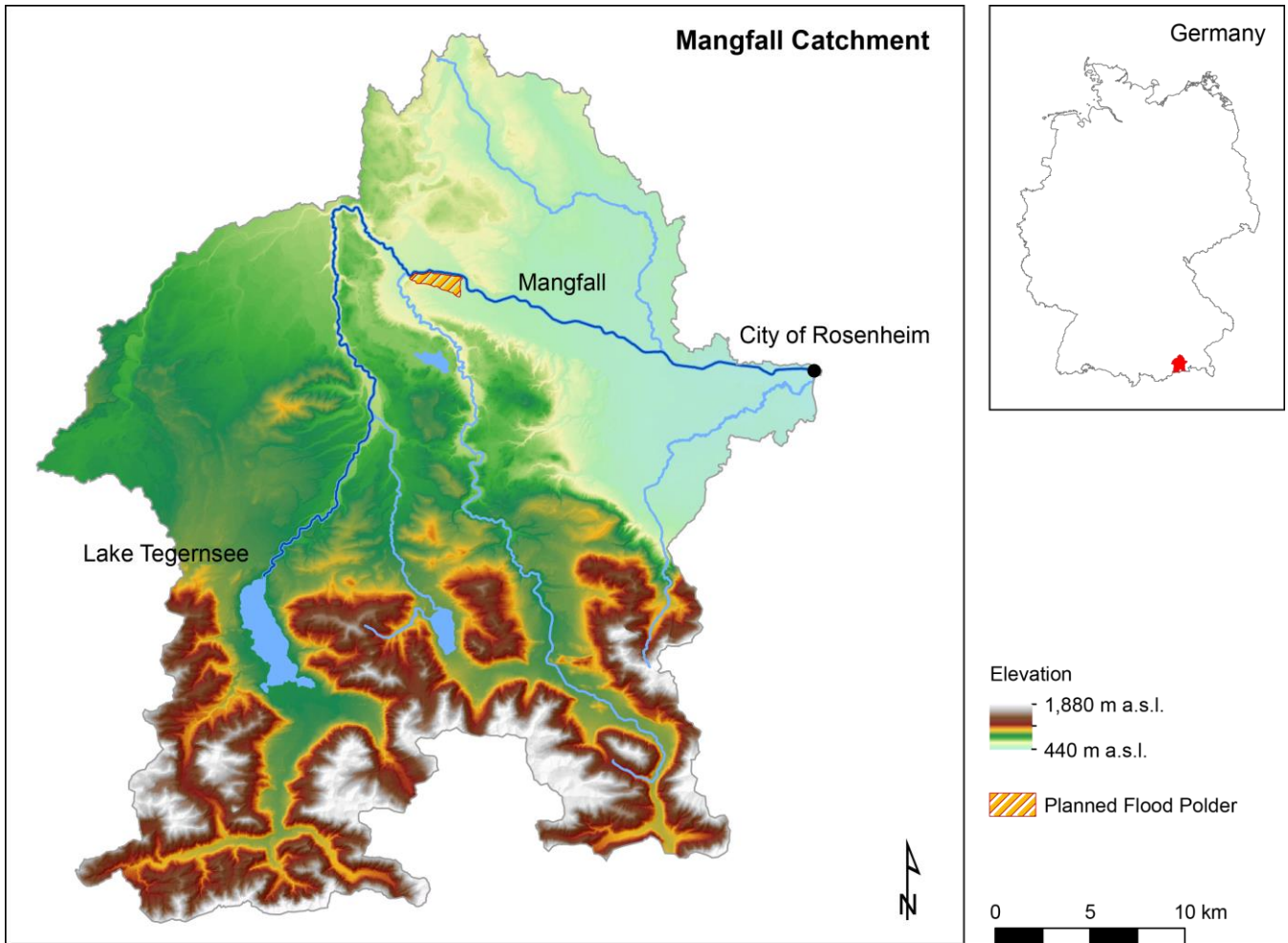
**Figure 2.** Schematic sequential planning process: after an initial decision on system capacity, new observations lead to an altered prediction of future demand and thus potentially adjustment. At the same time, the future discharges cause damages (i.e., in the expected form, risks) depending on the capacity in place. The cloud signifies that future discharges are uncertain. Costs of decisions depend on system flexibility.

5 Adapted from (Špačková et al., 2015).

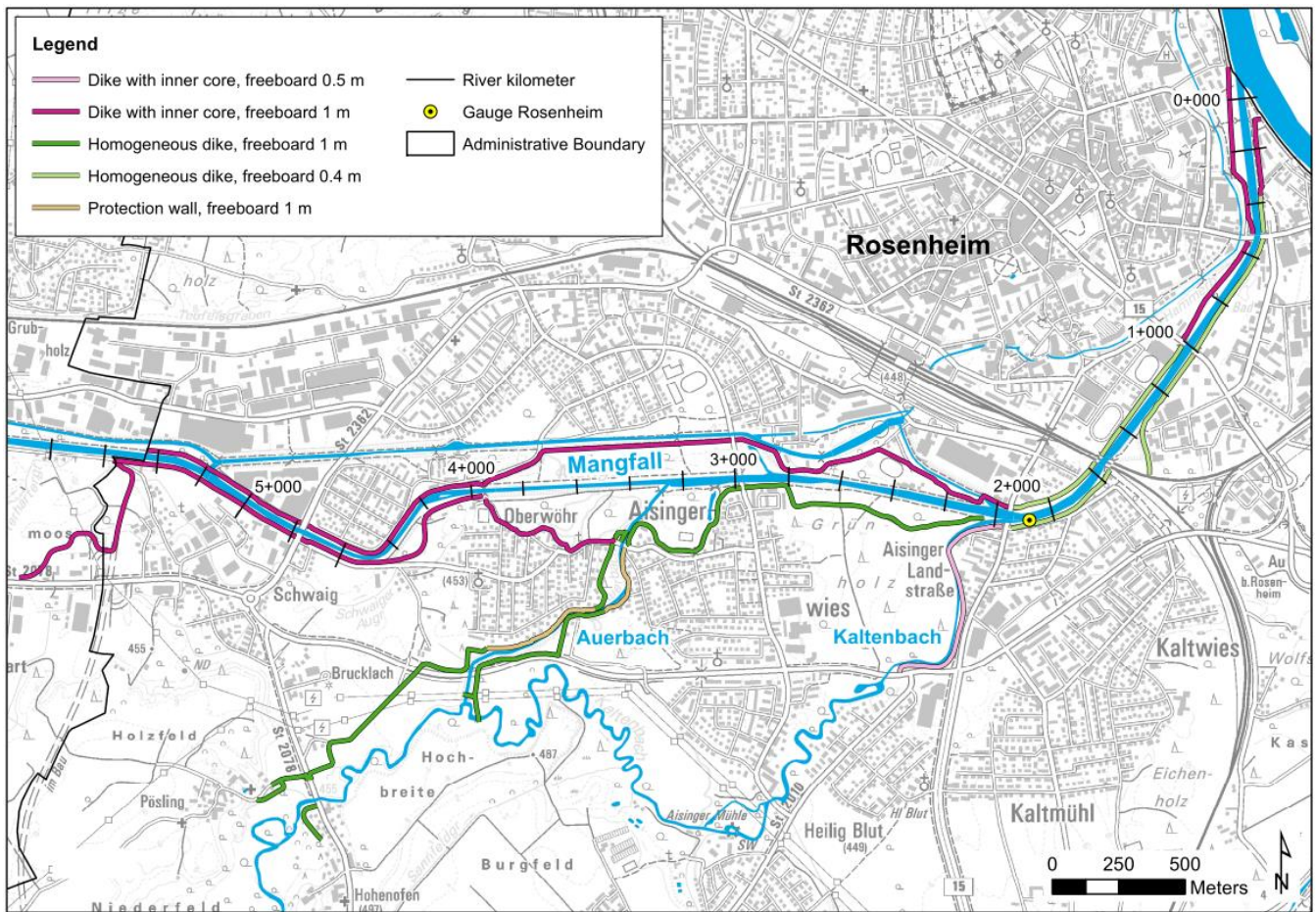


**Figure 3.** Sequential planning process in risk-based flood protection planning. Squares stand for protection decisions and circles for observations of annual maximum discharge. The curved dotted lines signifies stand for the continuous spectrum of possible decisions and observations. Adapted from (Dittes et al., 2017a).

5

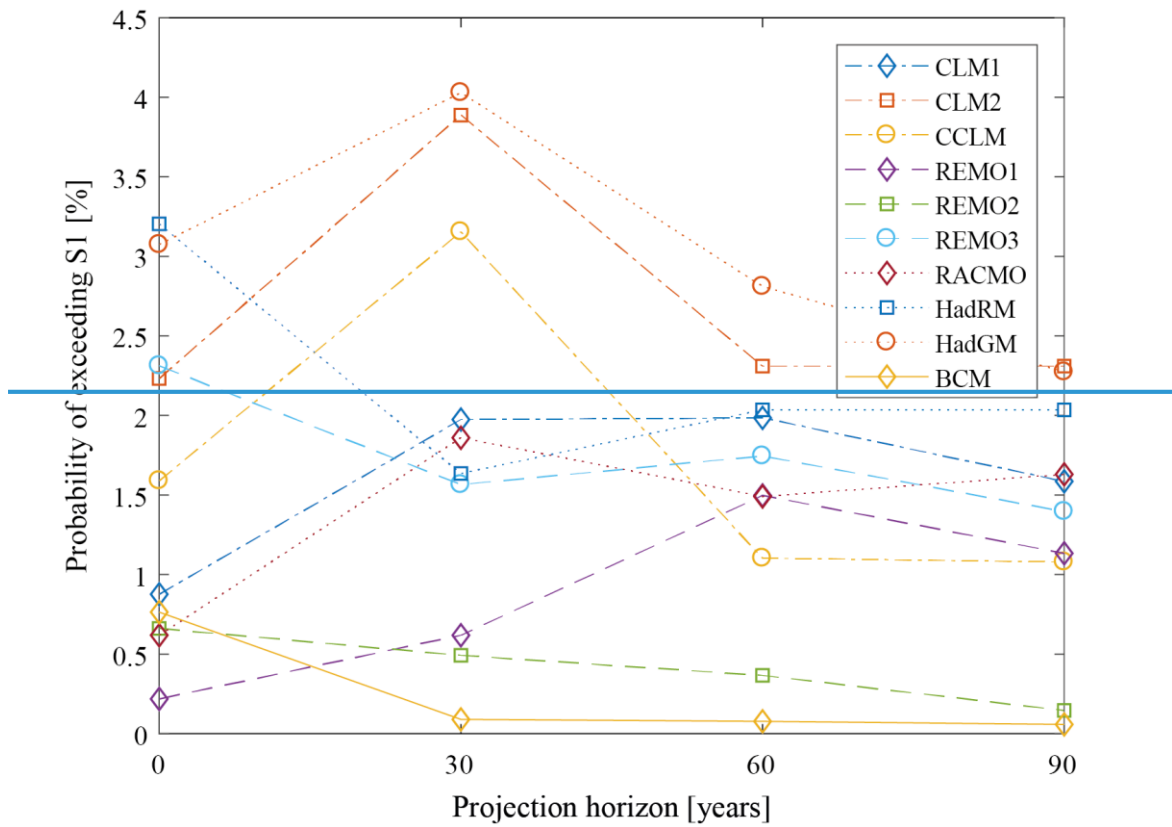


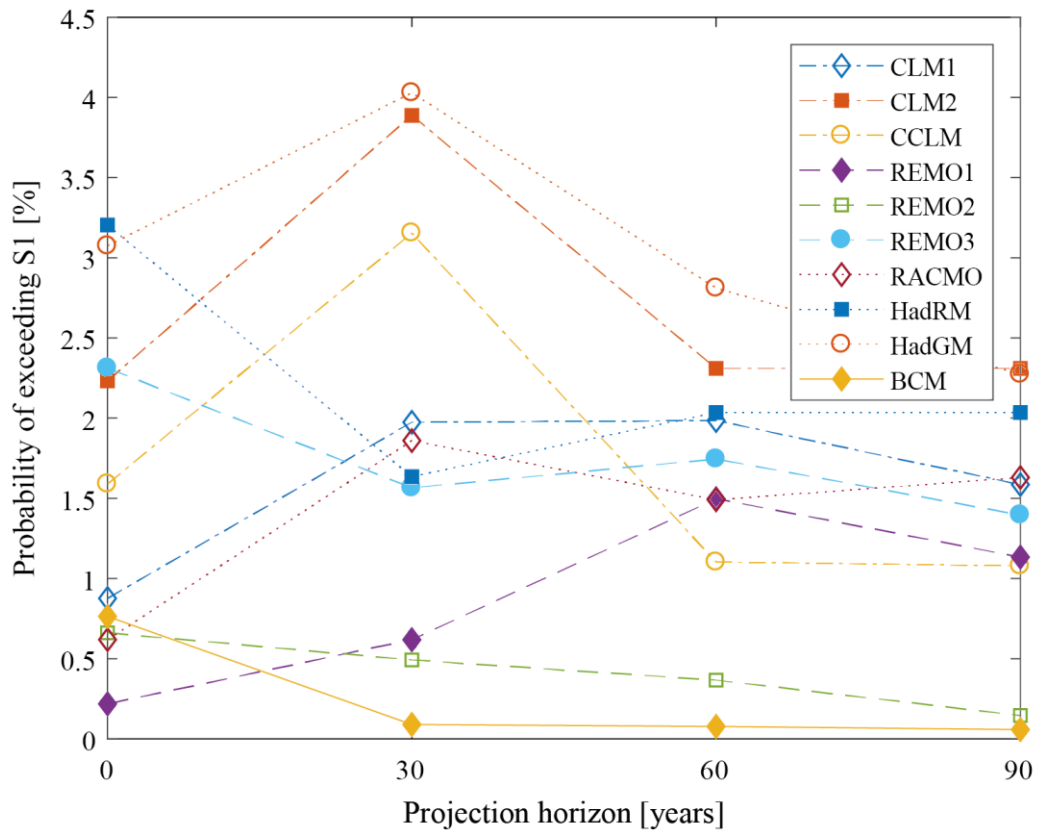
**Figure 4.** The Mangfall catchment and the case study site Rosenheim, Germany (Data source: Geobasisdaten © Bayerische Vermessungsverwaltung, www.geodaten.bayern.de).



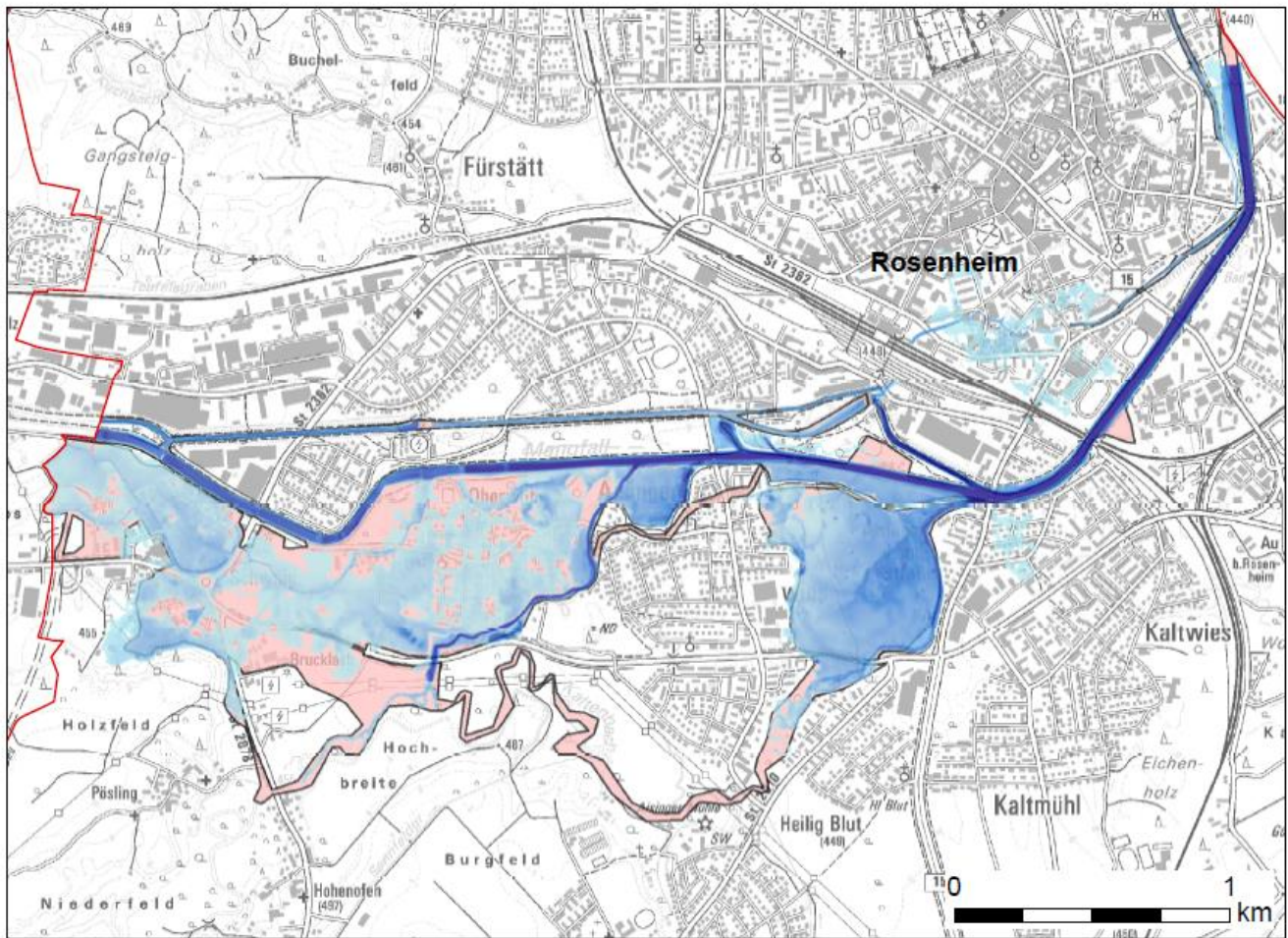
**Figure 5.** Protection system 2020 (S1) along the Mangfall River and the creeks Auerbach and Kaltenbach in the municipal area of Rosenheim (Data source: Geobasisdaten © Bayerische Vermessungsverwaltung, [www.geodaten.bayern.de](http://www.geodaten.bayern.de))




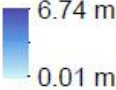





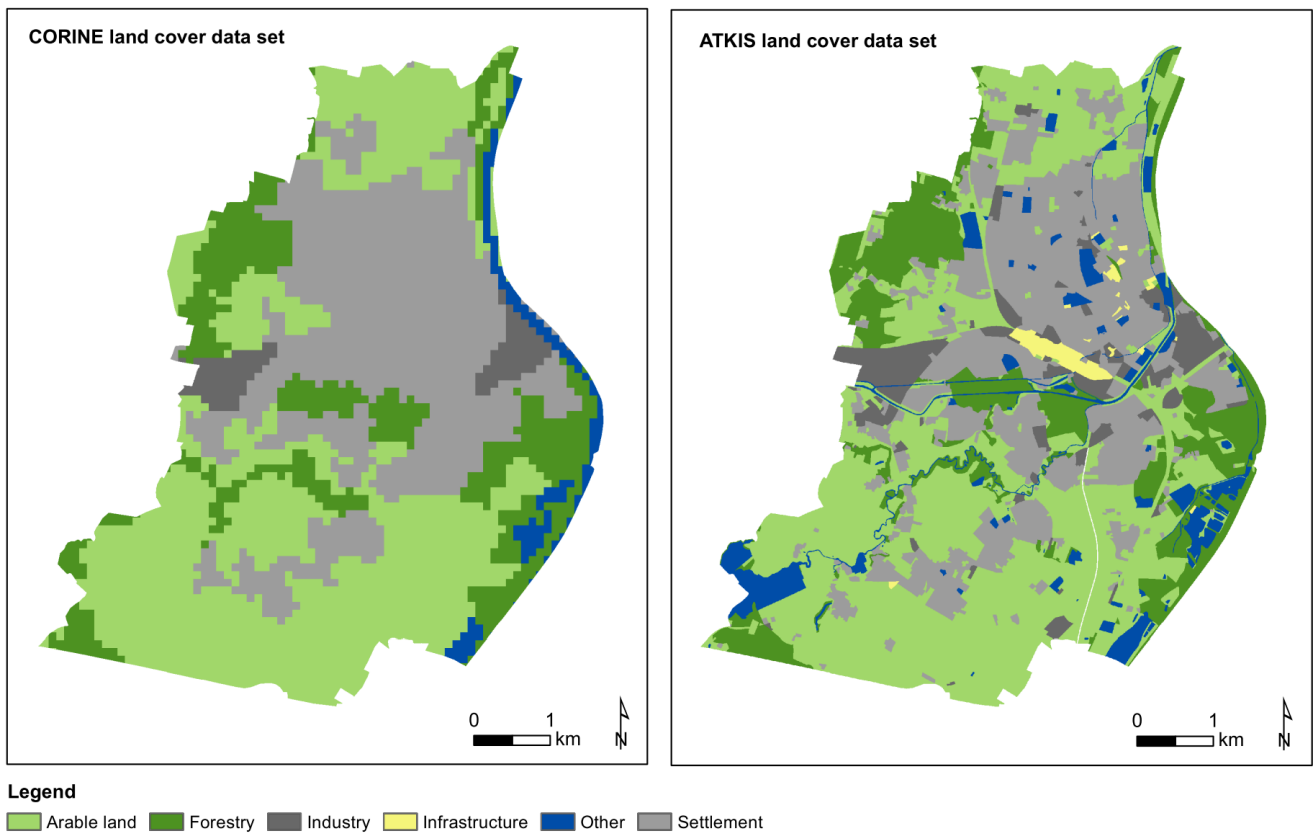
**Figure 6.** Probability of exceeding in S1 ( $480 \text{ m}^3\text{s}^{-1}$ ) for the individual projections at initial planning (year 0) and at later time points (years 30, 60 and 90). Solid symbols mark group 2 of effective projections (see Sect. 3.3).



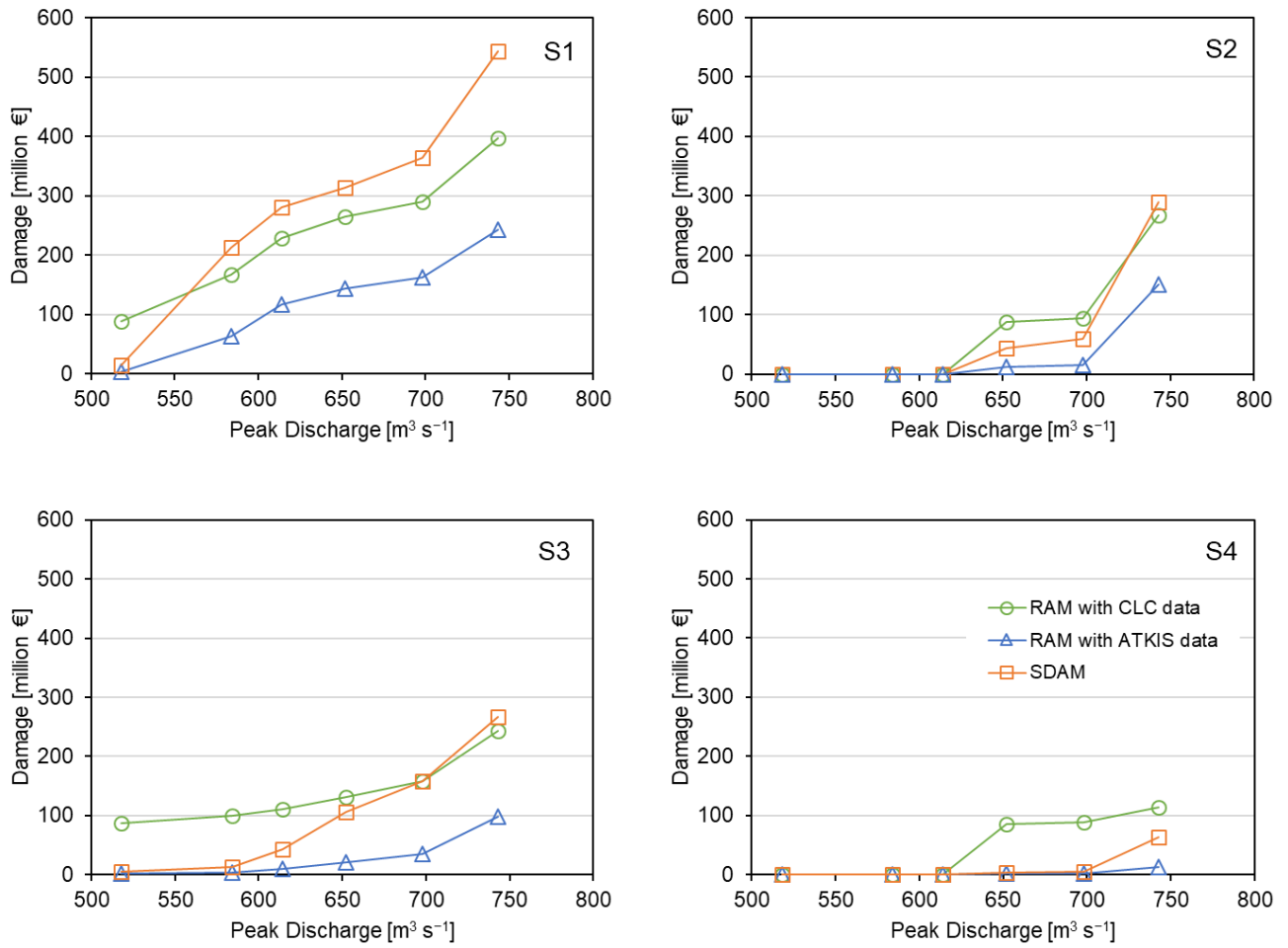
## Legend

- |  |   |
|--|---|
| Simulated water depth  |  Flood extent 2013 estimated from aerial photographs |
|  6.74 m |  Administrative boundary                             |
| 0.01 m   |   |

[Figure 7. Comparison of actual and simulated flood extent for the 2013 flood in Rosenheim.](#)

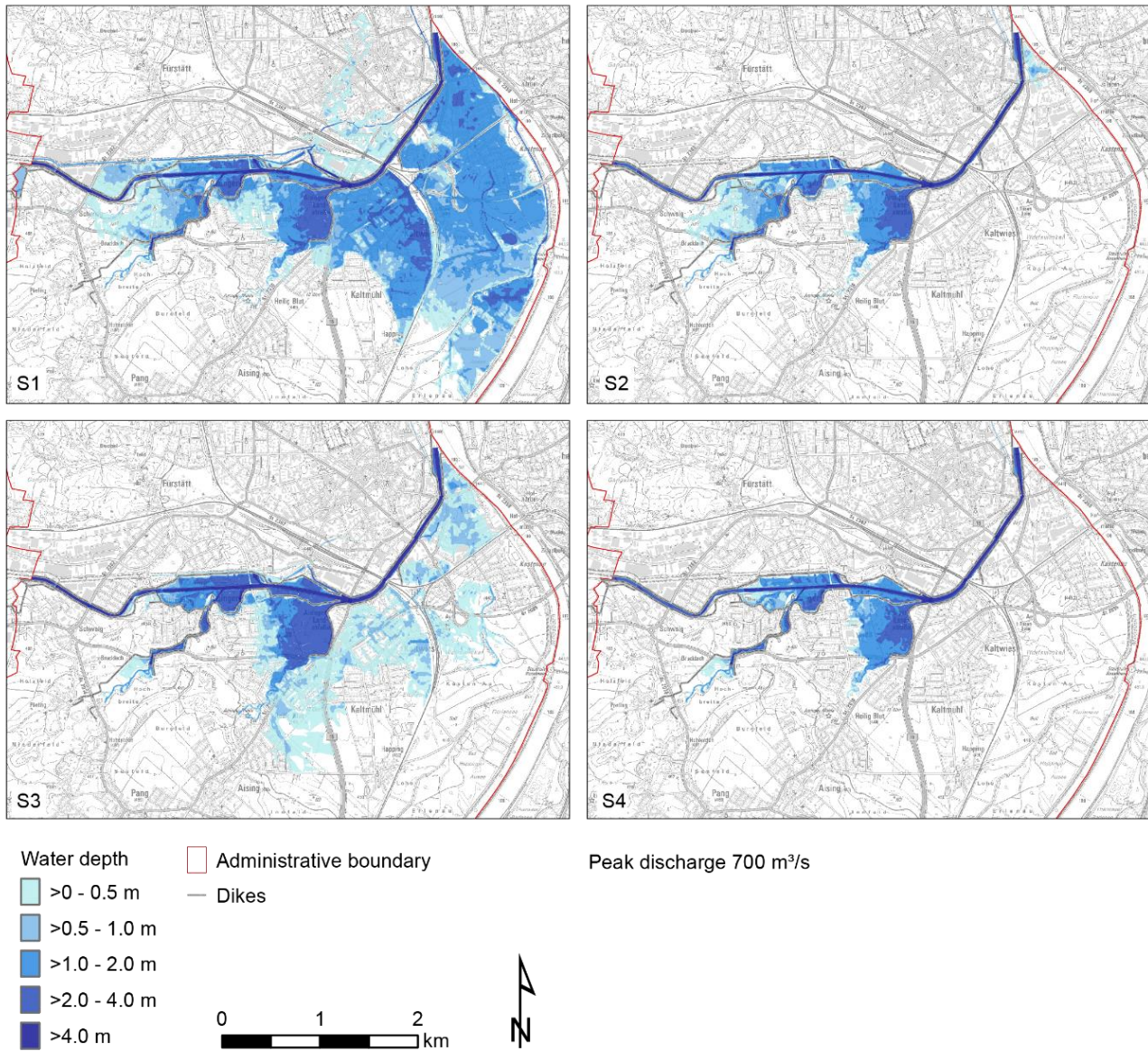


**Figure 87.** Classification of the study site into the damage categories of the Rhine Atlas model based on the CORINE and ATKIS land cover data set (CLC 2006, ATKIS®-Basis-DLM 2008)



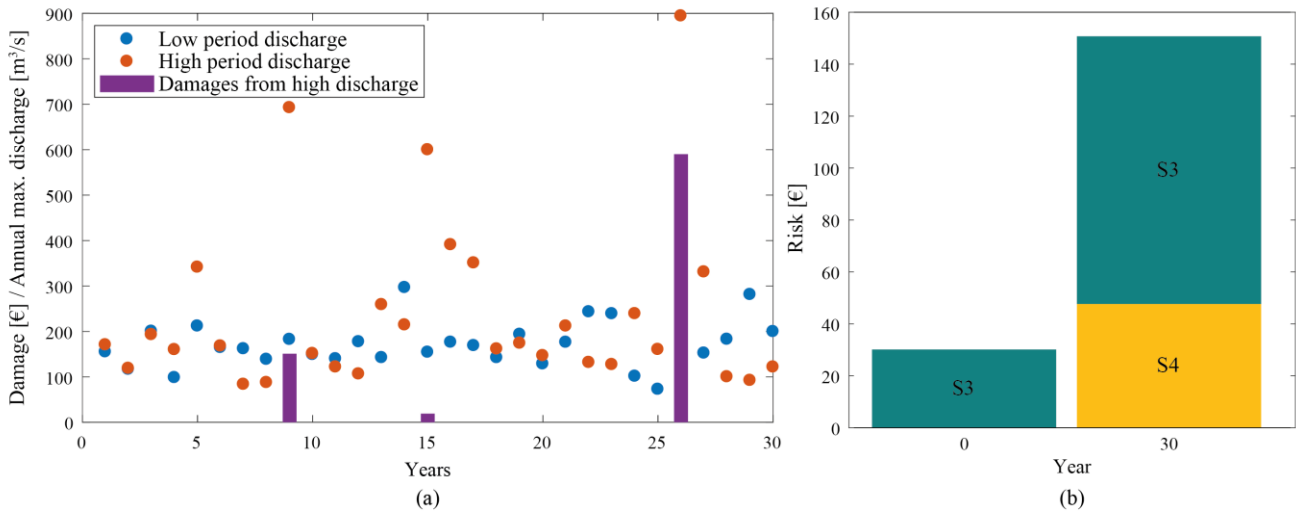
**Figure 98.** Estimated flood damages for four protection systems and varying peak discharges. Flood damages were calculated using the Rhine Atlas model (RAM) with different land use data sets and a simple damage assessment method (SDAM) by the Bavarian water management administration.





**Figure 910.** Modeled inundation depths for a flood event of 700 m<sup>3</sup> s<sup>-1</sup> and four different protection systems (Data source: Geobasisdaten © Bayerische Vermessungsverwaltung, www.geodaten.bayern.de)





**Figure 110.** Example of changing risk estimate due to future observations. (a) Two different realizations of annual maximum discharges in the first period (year 1-30) and respective flood damages (lilac bars) when system S3 is implemented initially. (b) Expected future damage (i.e. risk) for the protection system life-time when S3 is implemented initially (year 0) and after 30 years for the remaining life-time in case the high period discharge was observed with (yellow) / without (petrol) adjusting to S4.

## Tables

**Table 1.** Regional climate models (RCMs) used in this study, driving global climate models (GCMs), source of the RCMs, downscaling and hydrological model.

Name	GCM	RCM	Source	Downscaling	Hydrological model
CLM1	ECHAM5 R1	CLM Consortium	Consortium	Quantile mapping (German federal institute of hydrology BfG), SCALMET (Willems and Stricker, 2011)	
CLM2	ECHAM5 R2	CLM Consortium	Consortium		
CCLM	HadCM3Q0	CCLM	ETH		
REMO1	ECHAM5 R1	REMO	MPI	Quantile mapping (Bavarian Environment Agency LfU), SCALMET (Schmid et al., 2014)	WaSiM v8.06.02, Inn, daily, 1 km <sup>2</sup>
REMO2	ECHAM5 R2	REMO	MPI		
REMO3	ECHAM5 R3	REMO	MPI		
RACMO	ECHAM5 R3	RACMO2	KNMI		
HadRM	HadCM3Q3	HadRM3Q3	Hadley Centre		
HadGM	HadCM3Q3	RCA3	SMHI		
BCM	BCM	RCA3	SMHI		

**Table 2.** Adaptation of the specific asset values stored in the Rhine Atlas model for Bavaria to the case study site Rosenheim

		Specific asset value per damage category [€ m <sup>-2</sup> ]					
		Settlement	Industry	Infrastructure	Arable land	Forestry	Other
Bavaria	immobile	300.00	294.00	276.00	7.00	2.00	-
	mobile	61.00	93.00	2.00	-	-	-
Rosenheim	immobile	328.80	322.22	302.50	7.67	2.19	-
	mobile	66.86	101.93	2.19	-	-	-

**Table 3.** Assignment of the CORINE and ATKIS land cover classes of Rosenheim to the damage categories of the Rhine Atlas model (RAM) (CLC 2006, ATKIS®-Basis-DLM 2008)

Damage category of RAM	CORINE land cover class	CLC Code	Area [km <sup>2</sup> ]	Percentage of area [%]	ATKIS object type	ATKIS Code	Area [km <sup>2</sup> ]	Percentage of area [%]
Settlement	Continuous urban fabrics	111	12.7	34	Residential area	2111	10.3	28
	Discontinuous urban fabric	112			Area of mixed use	2113		
Industry	Industrial or commercial units	121	1.2	3	Industrial or commercial units	2112	2.2	6
Infrastructure	-	-	-	-	Square	3103	0.4	1
					Central station	3501		
Arable land	Non-irrigated arable land	211	15.9	43	Arable land	4101	16.3	44
	Pastures	231			Greenland	4102		
	Complex cultivation patterns	242			Gardenland	4103		
	Land partially occupied by agriculture	243			Specialized cultivation	4109		
Forestry	Broad-leaved forest	311	6.5	17	Forest	4107	5.7	15
	Coniferous forest	312			Wood	4108		
	Mixed forest	313						
Other	Water courses Water bodies	511	1.1	3	Sports facility	2201	2.3	6
		512			Leisure facility	2202		
					Cemetery	2213		
					Mine, stone pit	2301		
					Moorland	4104		
					Moor, moss	4105		
					River, stream	5101		
					Trench, canal	5103		
					Lake, pond	5112		
					Protected landscape	7302		
					Sum	37.3		

**Table 4.** Usage factors by building category according to the water management office of Rosenheim

Building category	Usage factor $f_u$
Normal house up to 2 apartments	1
Apartment building more than 3 apartments	3
Small-sized business, service provider (chancellery, practice): up to 3 jobs	2
Medium-sized business, service provider (chancellery, practice): 4 to 49 jobs (interpolate linearly)	2–10
Large-sized business (more than 49 jobs)	10
Public institution (hospital, retirement home, school, etc.)	10
Important infrastructure (water supply, power station)	10
Special cases must be considered separately	

*in case of adjoining building:  $f_u \cdot 0.5$*

**Table 5.** Comparison of loss estimates with the reported loss range for the flood event of June 2013 in Rosenheim

Damage model	Damage estimate [M €]
Rhine Atlas model	
CORINE land cover	97
ATKIS land cover	15
Simple damage estimation method	78
Reported loss range (replacement costs)	38–70

5 **Table 6.** Potential protection strategies for Rosenheim implemented over the measure life time. Protection system S1 corresponds to the current protection whereas system S4 corresponds to the current protection plus 1 m heightening of dikes and walls plus a flood polder (retention basin). Lowering the protection is not considered.

Initial decision	S1	S1	S1	S1	S1	S1	S1	S1	S1	S2	S2	S2	S3	S3	S3	S4
Revision I (at 30 years)	S1	S1	S1	S1	S2	S2	S3	S3	S4	S2	S2	S4	S3	S3	S4	S4
Revision II (at 60 years)	S1	S2	S3	S4	S2	S4	S3	S4	S4	S2	S4	S4	S3	S4	S4	S4



**Table 7.** Cost estimates used for optimization. In order to study sensitivity, polder costs, the costs of increasing dikes / walls initially and the costs of increasing dikes/walls later were varied.

Name	Measure costs [M €]		
	Polder	Add 1 m height initially	Add 1 m height later
Reference	17	8	17
Higher polder costs	30	8	17
Very high polder costs	55	8	17
Higher costs 1 m initially	17	12	17
Very high costs 1 m initially	17	15	17
Lower costs 1 m later	17	8	8
Very low costs 1 m later	17	8	5

**Table 8.** Damages estimated using three different flood models depending on protection system in place.

Protection system	Discharge [ $\text{m}^3 \text{s}^{-1}$ ]	Damage model [M€]		
		RAM-ATKIS	RAM-CORINE	SDAM
S1	518	3.9	90	10
	584	60	170	210
	614	120	230	280
	652	140	260	310
	698	160	290	360
	743	240	400	540
S2	518	0	0	0
	584	0	0	0
	614	0	0	0
	652	10	90	40
	698	20	90	60
	743	150	270	290
S3	518	2.5	90	10
	584	4.1	100	10
	614	10	110	40
	652	20	130	110
	698	40	160	160
	743	100	240	270
S4	518	0	0	0
	584	0	0	0
	614	0	0	0
	652	2.4	90	4.2
	698	2.7	90	10
	743	10	110	60

**Table 98.** Initial protection system recommended by optimization framework. In the case of higher polder costs and SDAM, the recommendation differs between projection sets.

Build costs \ Damage model	RAM ATKIS	RAM CLC	SDAM
Reference	S4	S4	S4
Higher polder costs	S3	S4	S4
Very high polder costs	S3	S4	S3
Higher costs 1m initially	S4	S4	S4
Very high costs 1m initially	S4	S4	S4
Lower costs 1m later	S4	S4	S4
Very low costs 1m later	S4	S4	S4

5 **Table 10.** Life time costs + risks (sum) [M €] associated with the optimal protection strategy

Build costs \ Damage model	RAM ATKIS	RAM CLC	SDAM
Reference	27.8	47.8	42.6
Higher polder costs	32.0	60.8	55.6
Very high polder costs	32.7	85.8	70.2
Higher costs 1m initially	31.8	51.8	46.6
Very high costs 1m initially	34.8	54.8	49.6

**Table 11.** Life-time costs [M €] associated with the optimal protection strategy

Build costs \ Damage model	RAM ATKIS	RAM CLC	SDAM
Reference	25.0	25.0	25.0
Higher polder costs	8.8	38.0	38.0
Very high polder costs	9.5	63.0	40.1
Higher costs 1m initially	29.0	29.0	29.0
Very high costs 1m initially	32.0	32.0	32.0

**Table 12.** Life-time risks [M €]

Initial system \ Damage model	RAM ATKIS	RAM CLC	SDAM
S3	23.2	-	30.1
S4	2.8	22.8	17.6

5 **Table 9.** Life-time costs + risks (in brackets: life-time costs only) [M €] associated with the optimal protection strategy

Build costs \ Damage model	RAM ATKIS	RAM CLC	SDAM
Reference	27.8 (25.0)	47.8 (25.0)	42.6 (25.0)
Higher polder costs	32.0 (8.8)	60.8 (38.0)	55.6 (38.0)
Very high polder costs	32.7 (9.5)	85.8 (63.0)	70.2 (40.1)
Higher costs 1m initially	31.8 (29.0)	51.8 (29.0)	46.6 (29.0)
Very high costs 1m initially	34.8 (32.0)	54.8 (32.0)	49.6 (32.0)