



# Combining temporal 3D remote sensing data with spatial rockfall simulations for improved understanding of hazardous slopes within rail corridors


5 Megan van Veen<sup>1,2</sup>, D. Jean Hutchinson<sup>1</sup>, David A. Bonneau<sup>1</sup>, Zac Sala<sup>1</sup>, Matthew Ondercin<sup>1,2</sup>, and Matt Lato<sup>1,2</sup>

<sup>1</sup>Department of Geological Sciences and Geological Engineering, Queen's University, Kingston, K7L 3N6, Canada

<sup>2</sup>BGC Engineering Inc., Toronto, M5H 2W9, Canada

*Correspondence to:* Megan van Veen ([mvanveen@bgcengineering.ca](mailto:mvanveen@bgcengineering.ca))

## Abstract

10 Remote sensing techniques can be used to gain a more detailed understanding of hazardous rock slopes along railway corridors that would otherwise be inaccessible. Multiple datasets can be used to identify changes over time and create an inventory of rockfall events including frequency-magnitude relationships for rockfalls sourced on the slope. This study presents a method for using the remotely sensed data to develop s to rockfall simulations, which can be used to determine the likelihood of a rockfall impacting the railway tracks given its source zone location and volume. The results of the simulations can be related  
15 to the rockfall inventory to develop modified frequency-magnitude curves presenting a more realistic estimate of the hazard. These methods were developed using the RockyFor3D software and LiDAR and photogrammetry data collected over several years at the White Canyon, British Columbia, Canada, where the CN Rail main line runs along the base of the slope. Rockfalls sourced closer to the tracks were more likely to be deposited on the track or in the ditch, and of these, rockfalls between 0.1 and 10 m<sup>3</sup> were the most likely to be deposited. Smaller blocks did not travel far enough to reach the bottom of the slope and  
20 larger blocks were deposited past the tracks. Applying the results of the simulations to a database of over 2000 rockfall events, a modified frequency-magnitude can be created, allowing the frequency of rock falls deposited on the railway tracks or in ditches to be determined. Suggestions are made for future development of the methods including refinement of input parameters and extension to other modelling packages.

## 1 Introduction

25 Railways in Western Canada are subject to frequent rockfall hazards which can be evaluated using remotely sensed data, derived from LiDAR and structure from motion (SfM) photogrammetry. Often, these technologies provide advantages over traditional methods of data collection when slopes are steep and inaccessible. Change detection performed between sequential LiDAR scans can be used to identify and characterize rockfall source zones and develop frequency-magnitude relationships for a slope (Rosser et al., 2005;Santana et al., 2012;D'Amato et al., 2013;Guerin et al., 2014;van Veen et al., 2017). These



inventories can contain a greater level of detail for rockfalls in the smaller volume ranges relative to traditional field inspections performed from the base of the slope (Dussauge-Peisser et al., 2002); however, it is often difficult to determine the trajectory or ending point of each event, which is affected by the slope materials and geometry, and the characteristics of the failed block, including its lithology (Deere and Miller, 1966). Evaluation of rockfall trajectories can provide insight into the potential behaviour of rockfalls, which can be used, along with the frequency-magnitude and rockfall source zone information, in hazard assessment and mitigation design for a given section of railway. Along with the locations and characteristics of rockfall source zones, remote sensing data can also provide us with detailed surface models for use in rockfall modelling environments. The use of 2.5-D and 3D environments for computer based rockfall modelling provides advantages over traditional 2D methods as the entire slope can be examined without having to draw cross-sections through selected areas and model along only those paths (Lan et al., 2010; Ondercin et al., 2014).

### 1.1 Study Objectives

This study investigates how detailed remote sensing data of multiple types can be incorporated into rockfall simulations, to create representative surface models and to develop input parameters for rockfall source zones and slope characteristics. We compare several different cases based on rockfall volumes and source zone locations using RockyFor3D, a widely available industry standard 2.5D point mass model (Dorren, 2015). We present a method which uses the results of the rockfall simulations to determine the likelihood of a rockfall impacting the railway tracks given its volume and source zone location. These results can be used to modify the frequency-magnitude curves for rockfall source zones (developed using LiDAR data) to develop a more refined estimate of the hazard likelihood.

### 1.2 Study Site

The site of interest is known as the White Canyon, and is located approximately 250 km northeast of Vancouver, near the town of Lytton, BC (Fig. 1). The CN Rail line runs along the base of the slope, which is separated into two sections, White Canyon West and East. The work presented in this paper focuses on the White Canyon West section. Due to differential weathering of several lithological units, the canyon contains many deeply incised channels which are actively transporting debris downslope predominantly by dry granular flows and debris flows (Bonneau and Hutchinson, 2017). Surrounding these channels are areas of more competent rock outcrop, which act as source zones for rockfall. Many of these areas contain large vertical spires, contributing to the complex geometry of the slope (Fig. 1) and affecting the passage of rockfalls from higher source elevations to the railway tracks or into the river at the bottom of the slope. For this reason, the ability to model rockfalls on this slope in more than two dimensions is advantageous.

The slope is composed of a highly fractured and foliated quartzofeldspathic gneiss with a series of tonalite dykes and dioritic intrusions. A section of red-stained and highly weathered granodiorite from the Mt. Lytton Batholith is also present in a small section of the slope (Brown, 1981). The degree of fracturing is variable throughout the canyon, leading to a variety of rockfall



block shapes and sizes within each unit. The amount of weathering is also variable across the slope, and affects the behaviour of rockfalls.

The high frequency of rockfalls on this slope presents a challenge to the rail operators. Typically, track-level assessments by CN Rail provide records that can be added to a database of rockfall events for a given slope and rail corridor. These could include events that have directly impacted the track or blocks that are noted in ditches adjacent to the rail. Using CN's Rockfall Hazard Rating System (RHRA, (Abbott et al., 1998b)), events are categorized into three volume classes based on the largest block dimension at track level (less than 0.3 m, 0.3 to 1.0 m, and greater than 1.0 m). Of these sizes, the blocks between 0.3 and 1.0 m in size present the greatest concern as they are the size most likely to become wedged under a train, lifting it off the tracks and causing a derailment (Abbott et al., 1998a). For slopes where activity is frequent, such as the White Canyon, these inspection-based databases are often incomplete as it is difficult to identify individual small events that may occur between inspections as a single rockfall.

As a part of the Canadian Railway Ground Hazards Research Program, remote sensing data, including terrestrial laser scanning (TLS), airborne laser scanning (ALS), and SfM photogrammetry data, have been collected at the site since 2012. Several studies have been completed using this data with details outlined in Hutchinson et al. (2015), Kromer et al. (2015), van Veen et al. (2017), and Rowe et al. (2017). By performing change detection between sequential LiDAR scans, we have constructed a detailed database of rockfall events in the canyon for the time period between November 2014 and May 2016 (18 months).

## 2 Data Collection, Processing and Classification

Data were collected over a period of 18 months for the White Canyon West slopes. The data was processed to create models of the full slope which were classified to develop inputs to the rockfall simulations. Change detection methods were used to extract rockfall event information from the data and develop frequency-magnitude curves for the analysis period.

### 2.1 Remote Sensing Data Collection and Creation of Slope Models

The TLS data for the White Canyon West slopes used in this study were collected on eight dates between November 2014 and May 2016. The duration between collection dates ranged from one to four months and was dependent on site access and weather conditions. Data were collected using an Optech ILRIS-3D scanner from five different sites on the opposite bank of the Thompson River. The survey was designed such that there was significant overlap between sites, in order to minimize the amount of data occluded from the overall slope model. ALS data were collected in October of 2015, one week prior to a TLS data collection campaign, and was provided by CN Rail.

30



Sequential TLS datasets can be aligned to one another by picking common points between the models and then performing an Iterative Closest Point (ICP) alignment (Besl and McKay, 1992). A single slope model was created for each of the eight TLS scan dates by combining the data from each of the five individual scan sites. Each completed TLS model was aligned to the baseline reference model collected in November 2014. Due to the complex geometry of the slope, both the TLS and ALS data contain occlusions, however combination of both models provides near-complete coverage of the slope. In order to create a single model of the slope to be used for modelling, the ALS data were aligned to the TLS data from October 2015 (datasets collected approximately one week apart). The resulting slope model is shown in Fig. 2. The result of this process is a model of the slope with reduced occlusions compared to the TLS model on its own.

A set of overlapping photos of the slope was collected on September 11<sup>th</sup> 2013 using a Canon 6D camera with a 50 mm lens. The 94 photos were used to create a photogrammetric model of the slope using Agisoft PhotoScan Pro (Agisoft, 2015). This model was aligned to the LiDAR reference model using the same methods described above.

## 2.2 Classification of Slope Models

The slope was classified into each of the four major lithological units present using the photogrammetric model (Fig. 3): Quartzofeldspathic Gneiss (primary rock type), Mt. Lytton Batholith (granodiorite), tonalite dykes, and dioritic intrusions. This classification was performed through visual inspection and tracing of each outcrop area on the 3D model using the methods and preliminary work outlined in Jolivet et al. (2015). The same process was used to separate the slope into areas of rock outcrop (potential rockfall source zones) and areas of soil and talus, and to classify the slope by visual assessment of the Geological Strength Index (GSI) (Marinos and Hoek, 2000). GSI values were assigned by visually comparing high resolution photographs of the rock mass with the GSI characterization table for jointed rock. Sections of the rock mass were assigned a GSI value based on the rock mass structure and conditions of discontinuities observed on the outcrop surface. The classified slope model for each of the categories described above is shown in Fig. 4.

## 2.3 Extraction of Rockfall Frequency-Magnitude and Source Zone Information

Rockfall event information was extracted from the TLS change detection using the processes outlined in van Veen et al. (2017). The data that were extracted included rockfall locations and volumes. Using the rockfall locations, each event could also be related to its source zone lithology and GSI using the classified models, as well as the source zone slope angle for each event. We created an inventory of events, using the eight TLS datasets that were collected between November 2014 and May 2016 (18 months). This inventory was used to produce a magnitude-cumulative frequency (MCF) curve and spatial distribution plot for the rockfalls on the slope during this time period (Fig. 5). This analysis provides a higher level of detail for rockfalls in the range of 0.01 to 1000 m<sup>3</sup> compared to the historical inventory for this area presented by Hungr et al. (1999) who show a power



law fit for historical rockfall records over the previous four decades along the Canadian Pacific rail line and BC Highway 1 corridor from Vancouver to Kamloops. The CP line generally follows the same route as CN throughout this corridor but is located on the opposite bank of the Thompson and Fraser rivers. These historical records contain data for events where volume information was available and span magnitudes from 0.01 to 3000 m<sup>3</sup> with a noted under sampling of events below 1 m<sup>3</sup>. In addition to a higher level of detail for smaller volume ranges, the rockfall information gathered from LiDAR provides information on the location of rockfall source zones, which can be used to characterize the failure processes operating on the slope. This information is not available from historical records collected at the base of a slope.

### 3 Rockfall Simulations – RockyFor3D

The RockyFor3D model (Dorren, 2015) is a 2.5D point mass model used to calculate rockfall trajectories as 3D vector data. RockyFor3D is an industry standard software model that utilizes GIS data formats for model inputs, outputs, and visualization. This model was used to simulate rockfalls ranging from 0.01 to 100 m<sup>3</sup> across the entire slope of the White Canyon West. The classified slope models were used to determine input parameters for the RockyFor3D modelling. The results of these models allowed us to determine the percentage of the simulated rockfalls that landed in the ditch at the base of the slope, on the railway tracks, or were deposited past the tracks, for a given source zone location and volume.

#### 3.1 Input Parameters

The RockyFor3D model requires 10 different input parameters which are summarized in Table 1. The Digital Elevation Model (DEM) was created from the merged TLS/ALS dataset from the canyon using an inverse distance weighted interpolation in ArcGIS and the rg70, rg20, rg10 and soiltype parameters were estimated based on the classified slope models. The rg70, rg20 and rg10 parameters represent the “roughness” of the slope within each DEM cell by specifying the height of obstacles that a rockfall will encounter within each 1 m cell of the DEM in 70%, 20% and 10% of cases (Dorren, 2015). The surface roughness parameters for areas of rock outcrop were estimated based on the GSI classification for each slope area.

**Table 1. Summary of input parameters for RockyFor3D models**

Input/Parameter	Description	Input Data or Value(s)
<i>dem</i>	Digital elevation model – 2.5D surface for modelling	1 m grid DEM from LiDAR data (merged TLS and ALS data from October 2016)
<i>rockdensity</i>	Density of the rock	2700 kg/m <sup>3</sup> (assumed to be constant for the entire slope)
<i>d1, d2, d3</i>	Dimensions of falling block in metres	Assumed that $d1=d2=d3$ (cube shaped rockfall). Different models run with volumes of 0.01, 0.1, 1, 10 m <sup>3</sup> .



<i>blshape</i>	Shape of the rock block – choice between rectangular, ellipsoidal, spherical or disk shaped	“Rectangular” – will be cubic since $d1=d2=d3$ . Selected based on highly angular nature of rocks in the White Canyon.
<i>rg70, rg20, rg10</i>	Defines surface roughness within each 1m DEM cell, used to determine tangential restitution	Based on GSI for areas of rock outcrop. Values for each GSI estimated from high resolution photos (Fig. 6). Assumed a constant roughness ( $rg70=rg20=rg10$ ) of 0.15 m for talus channels.
<i>soiltype</i>	Values used to determine normal restitution. Selected from a list of seven values each corresponding to a different coefficient of restitution (COR).	Assigned based on ground cover and lithology classification. Talus assigned lowest value, gneiss and granodiorite assigned intermediate value, and more competent intrusions and dykes assigned highest value. Range between soiltype 4-6 (COR range from 0.38 to 0.53).

### 3.2 Modelling Process

The four different rockfall volumes, ranging from 0.01 to 10 m<sup>3</sup> were sourced from grid cells where the slope angle exceeded 55° (Fig. 5). The threshold of 55° was selected based on an analysis of the slope angle at known rockfall source points (Fig. 5). When comparing the number of rockfalls per unit area of different slope angle ranges, there was a distinct increase in the relative rate of rockfalls for slope angles between 50-60° and greater. The rockfall source zones were selected using this logic as opposed to sourcing only from known rockfall event locations (within the 18-month period) as to better capture all of the potential source zones on the slope. 500 blocks were sourced from each of these cells. One model was run for each volume category and source distance from the railway track (total of 40 models, Fig. 7). Smaller zones (25 m distance increments) were used for the first 100 m, and 50 m buffered contours were used for distances greater than 100 m, such that the results would contain more detail for rockfalls occurring closer to the track.

### 3.3 Results

The results from the RockyFor3D simulations were combined and used to produce raster maps of rockfall deposition locations for each of the source zone distance ranges, an example of which is shown in Fig. 8. These raster maps display the minimum volume that was deposited in each cell based on the simulations. The rockfall deposition points were classified and used to determine the percentage of rockfalls being deposited in a given location based on the assumptions made for the model inputs. The deposition percentages were split into rockfalls deposited in the ditch, on the railway tracks, below track level, and the





percentage remaining on the slope for each volume and source distance (Fig. 9a). The general trends observed in the deposition results are summarized in Tab. 2.

**Table 2. Summary of trends observed from RockyFor3D modelling deposition results.**

Deposition Locations	Trends Observed
Rockfalls deposited in ditch, on track or past tracks (rockfalls making it past the slope, Fig. 9a)	<ul style="list-style-type: none"> <li>• Generally, shows an increase in deposition percentage for increasing volumes.</li> <li>• Shows a decrease in deposition percentage for source zones further from the tracks.</li> </ul>
Rockfalls stopping on track or in ditch (Fig. 9b)	<ul style="list-style-type: none"> <li>• Does not exceed 20% deposition except for source zones less than 25 m from tracks.</li> <li>• Generally, the highest deposition percentage is seen for 1 m<sup>3</sup> or 10 m<sup>3</sup> volumes, depending on source locations (some larger blocks travel further, past tracks).</li> </ul>
Rockfalls stopping in ditch (Fig. 9c)	<ul style="list-style-type: none"> <li>• Does not exceed 10% deposition except for source zones less than 25 m from tracks.</li> <li>• Generally, the highest deposition percentage is seen for 1 or 10 m<sup>3</sup> volumes, depending on source locations (some larger blocks travel further, past tracks).</li> </ul>
Rockfalls stopping on the tracks (Fig. 9d)	<ul style="list-style-type: none"> <li>• Does not exceed 10% deposition except for source zones less than 25 m from tracks.</li> <li>• Generally, the highest deposition percentage is seen for 1 or 10 m<sup>3</sup> volumes, depending on source locations (some larger blocks travel further, past tracks).</li> <li>• Percentage of rockfall deposited on tracks is similar to the percentage deposited in the ditch.</li> </ul>

5

For rockfall source zones less than 25 m from the tracks, the percentage of events deposited in the ditch or on the tracks was 20 to 30% higher than rockfalls sourced at larger distances. In the lower sections of the slope, there are fewer complex geometrical features and fewer zones of talus present, which provides a more direct passage for rockfalls to be deposited on or near the tracks. Smaller volumes were more likely to be deposited in the ditches than larger volumes, and the 1 and 10 m<sup>3</sup> blocks were most likely to be deposited on the tracks.

10



## 4 Application of Results to the Rockfall Hazard Inventory

### 4.1 Refinement of Hazard Likelihood

The results of the RockyFor3D models (deposition percentages) were applied to the database of rockfalls identified from TLS data to reproduce the rockfall MCF curves for several different scenarios (Fig. 10):

- Rockfalls landing in the ditch or on the tracks (what would typically go into an event database)
- Rockfalls landing on the tracks (blocks that present a derailment hazard)
- Rockfalls landing in the ditch (and therefore require maintenance activities in order to be cleared to provide future rockfall collection capacity)

This adjustment was made based on the likelihood of a rockfall being deposited in a given location given its source zone location. For rockfall source zones in each given distance and volume range, the percentage of rockfalls deposited in a certain location was used to subsample the rockfall database. The inventory of rockfall volumes was split into bins, with the modelled rockfall volumes as the central point of each bin. For example, if the percentage of rockfalls making it to track base in the model was 50% for the 0.1 m<sup>3</sup> volume class and 50-75 distance range, and there were 200 rockfalls between 0.05 and 0.5 m<sup>3</sup> in this range, then 100 of these events would be randomly subsampled for the adjusted database.

In comparing the reproduced MCF curves for rockfalls deposited on tracks or in the ditch to the rockfall sources identified through TLS change detection, the yearly cumulative rockfall frequencies are up to an order of magnitude lower. The difference between the yearly frequencies becomes smaller as the rockfall magnitude increases, as these blocks have a higher probability of travelling to the base of the slope. In comparing the frequency of rockfalls deposited in the ditch or on the tracks to the frequency reported in the historical inventories, the number of events between 0.01 to 0.3 m<sup>3</sup> that are deposited on the track or in the ditch (based on the model) is larger than reported in the historical inventories. This suggests that these inventories may contain an under sampling of small rockfall events (or that the frequency of smaller events on this individual slope is higher than the overall trend for the region). For rockfall volumes greater than 0.3 m<sup>3</sup>, the yearly frequency of events is lower than the historically recorded frequencies and could be a result of the short duration of TLS data collection (18 months).

These adjusted curves can be used to calculate the annual frequency of rockfalls deposited on the tracks that present a derailment hazard (rockfalls that land on the tracks and have a particle dimension between 0.3 and 1.0 m). Based on the curves shown in Fig. 10b, the frequency of events this size occurring on the slope is 90 rockfalls per year, but the frequency of events deposited on the track is only 56 rockfall events per year.


The rockfall deposition curves can be used to understand which rockfall source locations and may produce rockfall events to exceed susceptibility criteria set out by rail operators. For example, based on the results presented in Fig. 11, if the railway





were to accept a 10% probability of an event landing on the tracks, then areas of concern would be any rockfall sourced from 0 to 25 m distance. This example and other scenarios are outlined in Table 3.

Table 3. Locations and block sizes that exceed several conceptual probability thresholds

Probability Threshold	Source Location/Volumes Exceeding Threshold
	<ul style="list-style-type: none"> <li>All rockfalls sourced less than 50 m from track</li> <li>Rockfalls greater than 0.1 m<sup>3</sup> sourced between 50 and 75 m from track</li> <li>Rockfalls between 0.1 and 10 m<sup>3</sup> sourced between 75 and 100 m from track</li> </ul>
10%	<ul style="list-style-type: none"> <li>All rockfalls sourced less than 25 m from track</li> </ul>
20%	<ul style="list-style-type: none"> <li>Rockfalls greater than 0.1 m<sup>3</sup> sourced less than 25 m from track</li> </ul>

5

#### 4.2 Railway Maintenance Planning

Similar to how these adjusted curves can be used to calculate the annual frequency of rockfalls deposited on the railway tracks, they can also be used to calculate the frequency of events deposited in the ditches. Relating the frequencies of events to volume, the expected total yearly accumulation of material in the ditches can be calculated (Fig. 10c). This will provide an estimate of the maintenance work that is likely to be expected in order to retain sufficient ditch collection capacity.

#### 5 Discussion

We have presented a workflow for using 3D remote sensing data to identify rockfall locations, volumes and source zone characteristics and to perform slope classifications. These data can then be used to develop rockfall simulations which can help in understanding the likelihood of these events reaching track level. Using the classified 3D slope models, we can logically differentiate between different zones on the slope to estimate modelling parameters. The results of these models can be used to determine a more refined estimate of hazard frequency and to understand which areas of the slope may produce rockfalls that exceed susceptibility criteria set out by the rail operators. Recent studies have shown that it is possible to identify deformation of rock blocks and estimate their volume prior to failure, and this can be used to give warning to the railways of potential slope instabilities (Kromer et al., 2016). Understanding the likelihood of a block being deposited at track level based on its volume and source zone location can help to identify if a deforming block has the potential to present a hazard. It is important to note that these methods present the likelihood of a block being deposited on the tracks but do not consider blocks which may have sufficient energy to damage the tracks and cause derailment.

The MCF curve for rockfall source zones identified from TLS shows a power law fit for volumes greater than 0.02 m<sup>3</sup>, however the curve based on rockfalls deposited in the ditch or at track level (based on probabilities from modelling) shows some rollover

25



for volumes in the lower magnitude ranges. Many studies (Hungre et al. (1999), Dussauge-Peisser et al. (2002)) have reported that the rollover in historical rockfall inventories is due to a sampling bias in the lower magnitude ranges, however if the rockfall events occurring on the slope truly follow a power law, and smaller events are less likely to travel towards the bottom of the slope, then an inventory based only on track and ditch inspections would be expected to show rollover in the lower volume ranges regardless of any sampling bias.

Data from the White Canyon has been used as a case study to develop and present the methods described in this paper, however these models have not been fully calibrated due to the large window between sampling periods, which may prevent us from identifying all individual rockfall events if multiple events occur in the same location during the sampling period (van Veen et al., 2017). It is also more difficult to map rockfall trajectories from the change detection results, to validate the models, when the duration between scans is increased. The overall duration of data collection has been limited to only 18 months, therefore the inventory is lacking in detail for larger-volume rockfalls which occur less frequently. As more data is acquired and processed, the modelling parameters can be refined, MCF curves updated, and hazard frequencies adjusted.

Similar to many standard rockfall modelling software packages, the RockyFor3D model does not take into account fragmentation of rock blocks upon impact or deposition, therefore the deposited volumes and block sizes are likely smaller than the source zone volumes. The ability to track individual rockfall events including their passages and energies at a given location, which is not possible in RockyFor3D, can help to separate events that are deposited into talus channels versus rocks that are passing primarily over outcrop to better understand how rockfalls behave on this complex slope. Ongoing work involves the development of a fully 3D rockfall model using the Unity game engine (Ondercin, 2016) which will consider the influence of these factors (Sala et al., 2017). Additional work utilizing the inventory of rockfall events is focused on developing a logic for identifying rockfall source zones based on multiple factors, considering the slope geometry required to produce rockfalls of varying magnitudes. This will in turn be used to refine the rockfall simulations.

## 25 6 Conclusions

Remote sensing data can be used to collect data for hazardous rock slopes along rail corridors that may otherwise be inaccessible. Detailed geometrical data and high-resolution images derived from these methods can be used to create 3D slope classifications and assess general structural characteristics.

30 By performing change detection, it is possible to extract rockfall information and create an inventory of the source zones, approximate volume and timing of the events. In addition, it is difficult to observe the fragmentation and deposition of these events using change detection alone. As shown in this paper, a rockfall source zone inventory can be used in its simplest form



to assess the slope angle from which rockfalls are sourced, and to provide an assessment of the frequency-magnitude relationship for the slope.

5 This study serves to outline a methodology and workflow that can be applied to rock slope stability and rockfall hazard assessment. Rockfall models can be used to determine the likelihood of a rockfall impacting the railways tracks given its volume and source zone location, which can be used to better understand the hazard likelihood and provide estimates of volumes that could accumulate in catchment ditches. The methods developed have the potential to incorporate new data as it becomes available and can be applied to additional slopes in the future.

## 10 Contributions

Megan van Veen coordinated the project, analysed the data, and prepared the manuscript. Megan van Veen, D. Jean Hutchinson, and Matthew Ondercin developed the framework for the study. Matthew Ondercin and David Bonneau developed the simulation code with input from Zac Sala. David Bonneau ran the simulations. Matt Lato provided technical support throughout different stages of the study. All co-authors provided manuscript review. The authors declare that they have no  
15 conflict of interest.

## Acknowledgements

This research was supported by the Canadian Railway Ground Hazards Research Program, funded by CN Rail, Canadian Pacific and an NSERC CRD grant, and supported by Transport Canada and the Geological Survey of Canada. Student scholarship funding was also provided by BGC Engineering through the NSERC IPS program. Acknowledgements are given  
20 to Emily Rowe and Ryan Kromer for their assistance with field data collection and to the Kumsheen Rafting Resort and CN Rail for providing site access and logistical support.

## References

- 25 Abbott, B., Bruce, I., Keegan, T., Oboni, F., and Savigny, W.: Application of a New Methodology for the Management of Rockfall Risk Along a Railway, 8th International Association of Engineering Geology Conference, A Global View from the Pacific Rim, Vancouver, 1998a.
- Abbott, B., Bruce, I., Savigny, W., Keegan, T., and Oboni, F.: A Methodology for the Assessment of Rockfall Hazard Risk along Linear Transportation Corridors, 8th International Association of Engineering Geology Conference, A Global View from the Pacific Rim, Vancouver, BC, 1998b.
- 30 Besl, P. J., and McKay, N. D.: A Method for the Registration of 3-D Shapes, IEEE Transactions on Pattern Analysis and Machine Intelligence, 14, 239-256, 1992.



- Bonneau, D., and Hutchinson, D. J.: Applications of Remote Sensing for Characterizing Debris Channel Processes, Landslides: Putting Knowledge, Experience and Emerging Technologies in to Practice, 2017.
- 5 Brown, D. A.: Geology of the Lytton Area, British Columbia, B.Sc Honours  
Carleton University, 1981.
- D'Amato, J., Guerin, A., Hantz, D., Rossetti, J. P., and Jaboyedoff, M.: Terrestrial Laser Scanner study of rockfall frequency and failure configurations, Troisièmes Journées Aléas Gravitaires, Grenoble, France, 2013.
- 10 Deere, D. U., and Miller, R. P.: Engineering Classification and Index Properties of Intact Rock, Air Force Weapons  
Laboratory, Kirkland Air Force, New Mexico, 1966.
- Dorren, L. K. A.: Rockyfor3D(v5.2) revealed - Transparent description of the complete 3D rockfall model. ecorisQ paper  
([www.ecorisq.org](http://www.ecorisq.org)), 32, 2015.
- 15 Dussauge-Peisser, C., Helmstetter, A., Grasso, J.-R., Hantz, D., Desvarreux, P., Jeannin, M., and Giraud, A.: Probabilistic  
Approach to Rock Fall Hazard Assessment: Potential of Historical Data Analysis, Natural Hazards and Earth System  
Science, 2, 15-26, 2002.
- 20 Guerin, A., Hantz, D., Rossetti, J. P., and Jaboyedoff, M.: Brief communication "Estimating rockfall frequency in a mountain  
limestone cliff using terrestrial laser scanner", Natural Hazards and Earth System Sciences Discussions, 2, 123-135,  
10.5194/nhessd-2-123-2014, 2014.
- Hungr, O., Evans, S. G., and Hazzard, J.: Magnitude and frequency of rock falls and rock slides along the main  
25 transportation corridors of southwestern British Columbia  
Canadian Geotechnical Journal, 36, 224-238, 1999.
- Hutchinson, D. J., Lato, M., Gauthier, D., Kromer, R., Ondercin, M., van Veen, M., and Harrap, R.: Applications of remote  
sensing techniques to managing rock slope instability risk, Canadian Geotechnical Conference, Quebec City, 2015.
- 30 Jolivet, D., MacGowan, T., McFadden, R., and Steel, M.: Slope Hazard Assessment using Remote Sensing in White Canyon,  
Lytton, BC, Report submitted to the Department of Geological Science and Geological Engineering, Queen's University,  
Kingston, ON, Canada., 2015.
- Kromer, R., Hutchinson, D. J., Lato, M., Gauthier, D., and Edwards, T.: Identifying rock slope failure precursors using  
35 LiDAR for transportation corridor hazard management, Engineering Geology, 195, 93-103, 10.1016/j.enggeo.2015.05.012,  
2015.
- Kromer, R., Hutchinson, D. J., Lato, M., and Abellán, A.: Rock Slope Pre-failure Deformation Database for Improved  
Transportation Corridor Risk Management, International Symposium on Landslides, Naples, Italy, 2016,
- 40 Lan, H., Martin, C. D., Zhou, C., and Lim, C. H.: Rockfall hazard analysis using LiDAR and spatial modeling,  
Geomorphology, 118, 213-223, 10.1016/j.geomorph.2010.01.002, 2010.
- Marinos, P., and Hoek, E.: GSI: A Geologically Friendly Tool for Rock Mass Strength Estimation, Proceedings of  
45 GeoEng2000, Melbourne, 2000.
- Ondercin, M., Kromer, R., and Hutchinson, D. J.: A comparison of rockfall models calibrated using rockfall trajectories  
inferred from LiDAR change detection and inspection of gigapixel photographs, 6th Canadian Geohazards Conference,  
Kingston, Ontario, Canada, 2014.
- 50



Ondercin, M.: An Exploration of Rockfall Modelling Through Game Engines, M.A.Sc, Geological Sciences and Geological Engineering, Queen's University, 2016.

5 Rosser, N. J., Petley, D. N., Lim, M., Dunning, S. A., and Allison, R. J.: Terrestrial laser scanning for monitoring the process of hard rock coastal cliff erosion, *Quarterly Journal of Engineering Geology and Hydrogeology*, 38, 363-375, 10.1144/1470-9236/05-008, 2005.

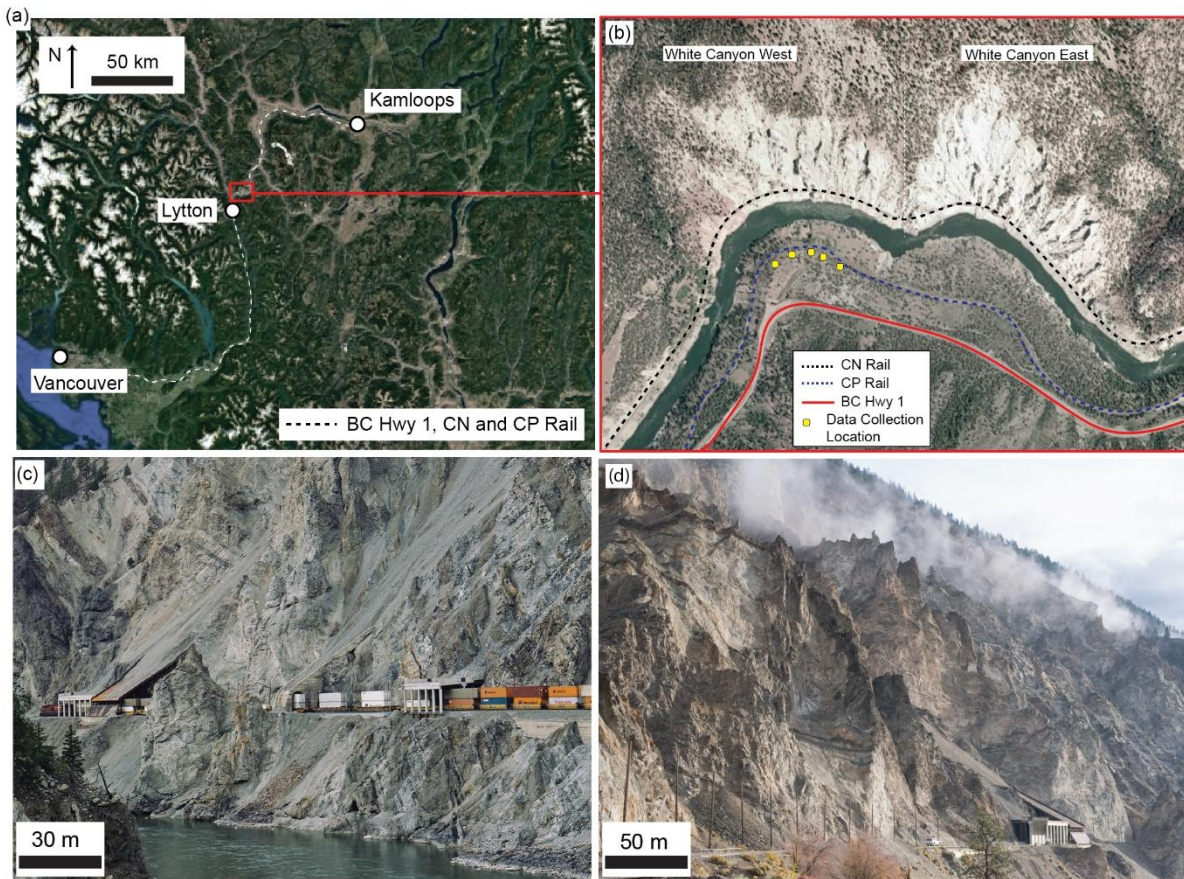
10 Rowe, E., Hutchinson, D. J., and Kromer, R.: An Analysis of Failure Mechanism Constraints on Pre-Failure Rock Block Deformation using TLS and Roto-Translation Methods, *Landslides*, [Under Review: LASL-D-17-00159], 2017.

Sala, Z., Hutchinson, D. J., and Ondercin, M.: Application of the Unity Rockfall Model to Variable Surface Material Conditions, 2017 EGU General Assembly, Vienna, Austria, 2017.

15 Santana, D., Corominas, J., Mavrouli, O., and Garcia-Sellés, D.: Magnitude–frequency relation for rockfall scars using a Terrestrial Laser Scanner, *Engineering Geology*, 145-146, 50-64, 10.1016/j.enggeo.2012.07.001, 2012.

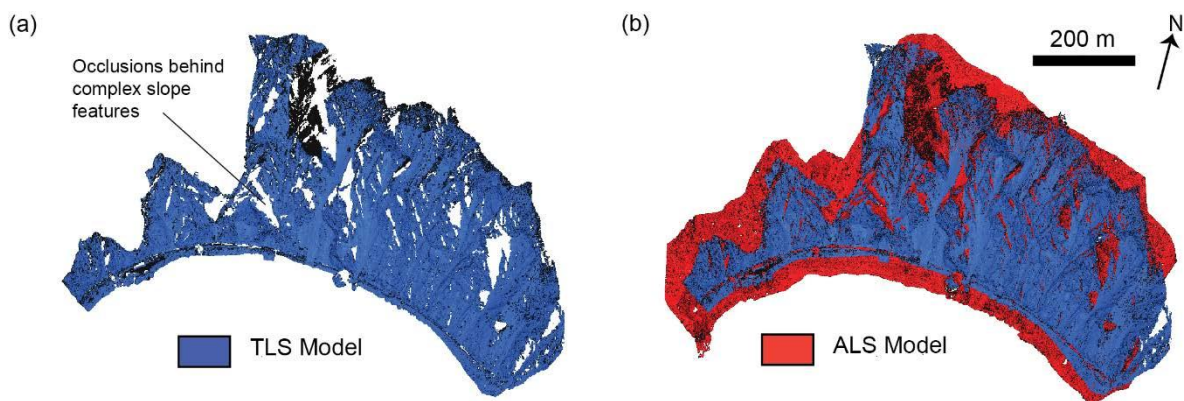
20 van Veen, M., Hutchinson, D. J., Kromer, R., Lato, M., and Edwards, T.: Effects of sampling interval on the frequency-magnitude relationship of rockfalls detected from terrestrial laser scanning using semi-automated methods, *Landslides*, 14, 10.1007/s10346-017-0801-3, 2017.





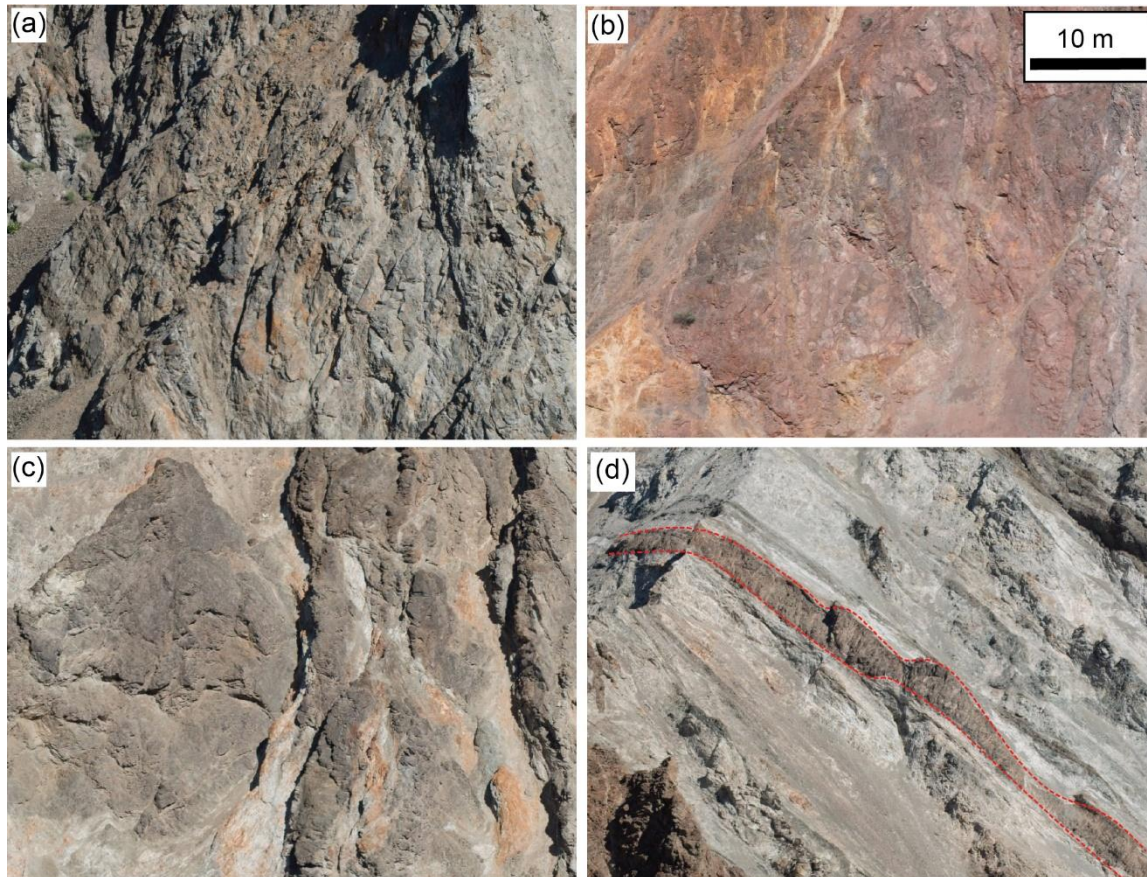
**Figure 1.** a) Location of the White Canyon b) Plan view of the White Canyon West and East slopes with the location of highway and rail lines indicated c) and d) Photographs of the White Canyon West illustrating complex geometry formed by deeply incised talus channels and vertical outcrops. Rock sheds are located at the base of several talus channels to guide material over the railway tracks.

5



**Figure 2.** a) Plan view of TLS model for the White Canyon West slopes b) Plan view of aligned TLS and ALS models for the White Canyon West slopes





**Figure 3.** Examples of the four main geological units in the White Canyon a) Quartzofeldspathic gneiss (Lytton Gneiss) b) red-stained granodiorite (Mt. Lytton Batholith) c) dioritic intrusions and d) tonalite dyke (outlined in red)

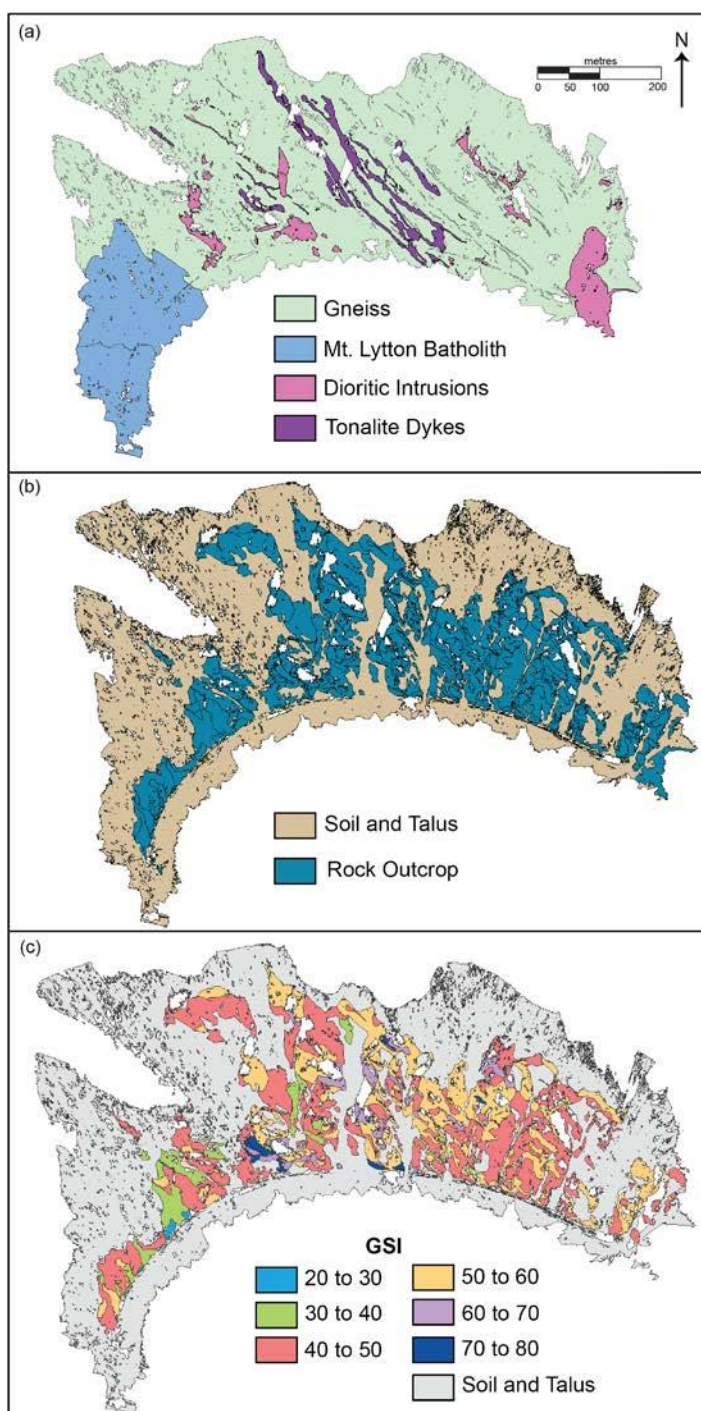
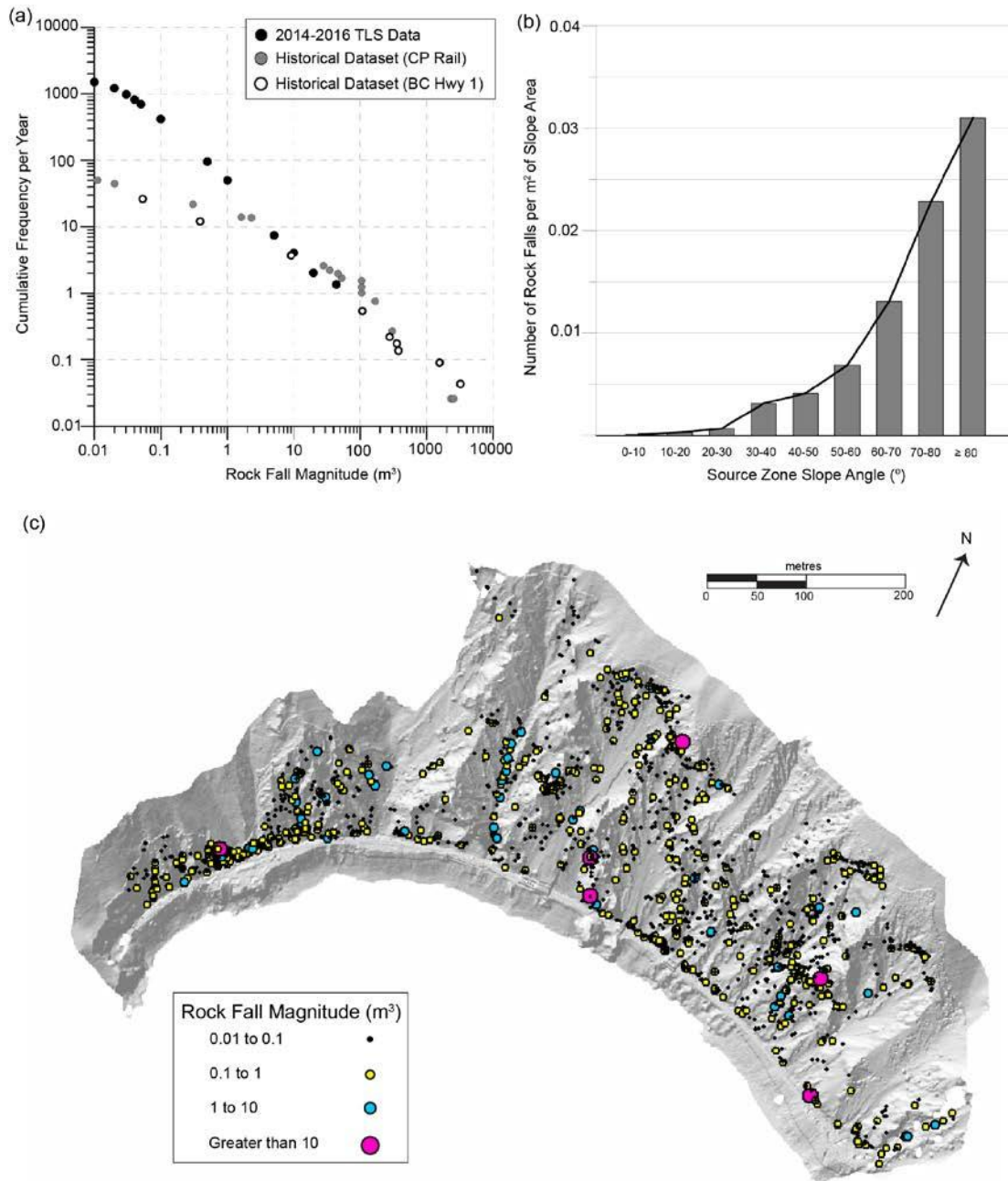


Figure 4. Classified slope models for White Canyon West based on: a) lithology b) ground cover type and c) GSI





**Figure 5.** a) Magnitude-cumulative frequency curves for rockfalls extracted from TLS compared to historical records (digitized from Hungr et al., 1999) b) Graph of rockfall frequencies based on source zone slope angles c) Spatial distribution of rockfall event locations from TLS data collected between November 11, 2014 and May 2, 2016.

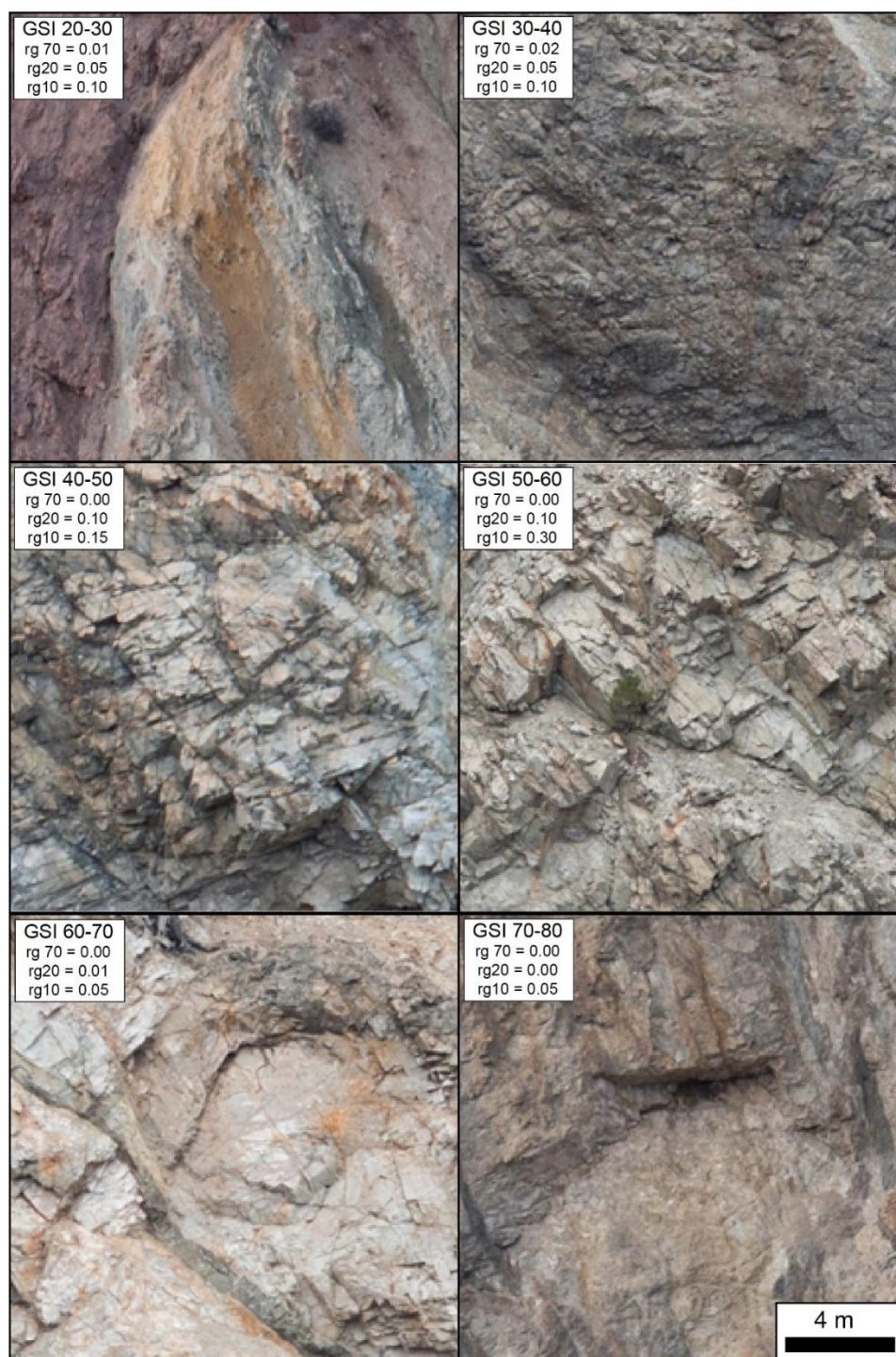


Figure 6. Examples of slope areas for each of the classified GSI ranges. The rg70, rg20, and rg10 input parameters to the RockyFor3D model for each GSI class are indicated. The 20-30 and 30-40 GSI examples are shown from the Mt. Lytton Batholith. All other images are the quartzofeldspathic gneiss unit.



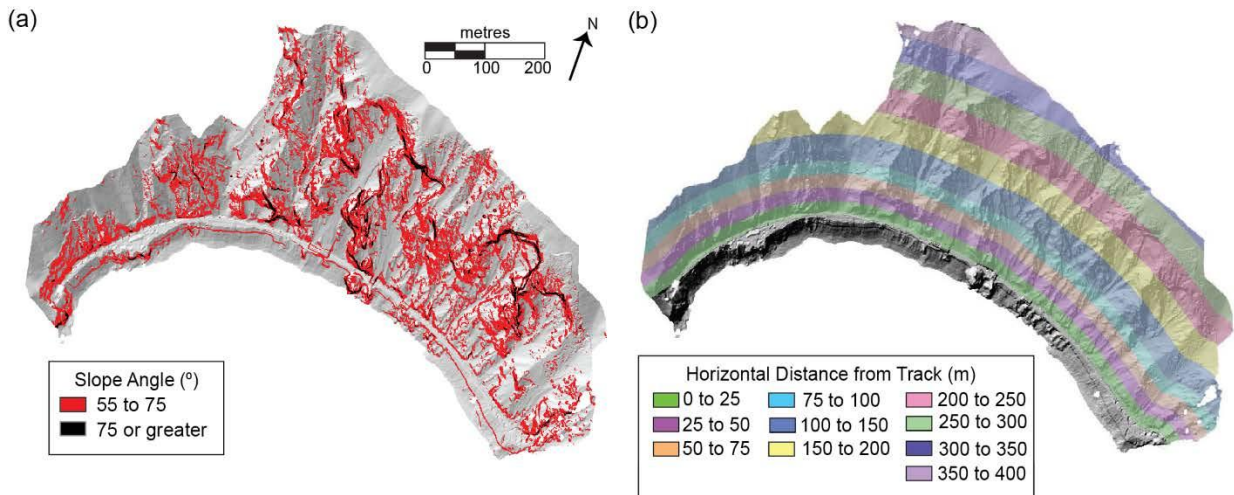
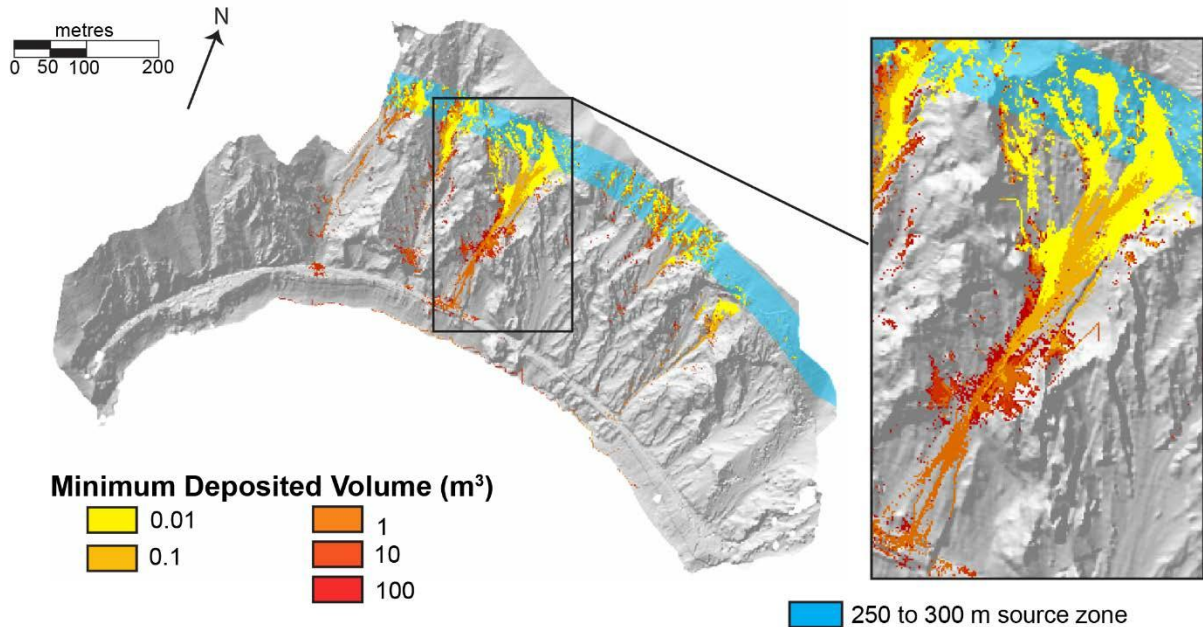
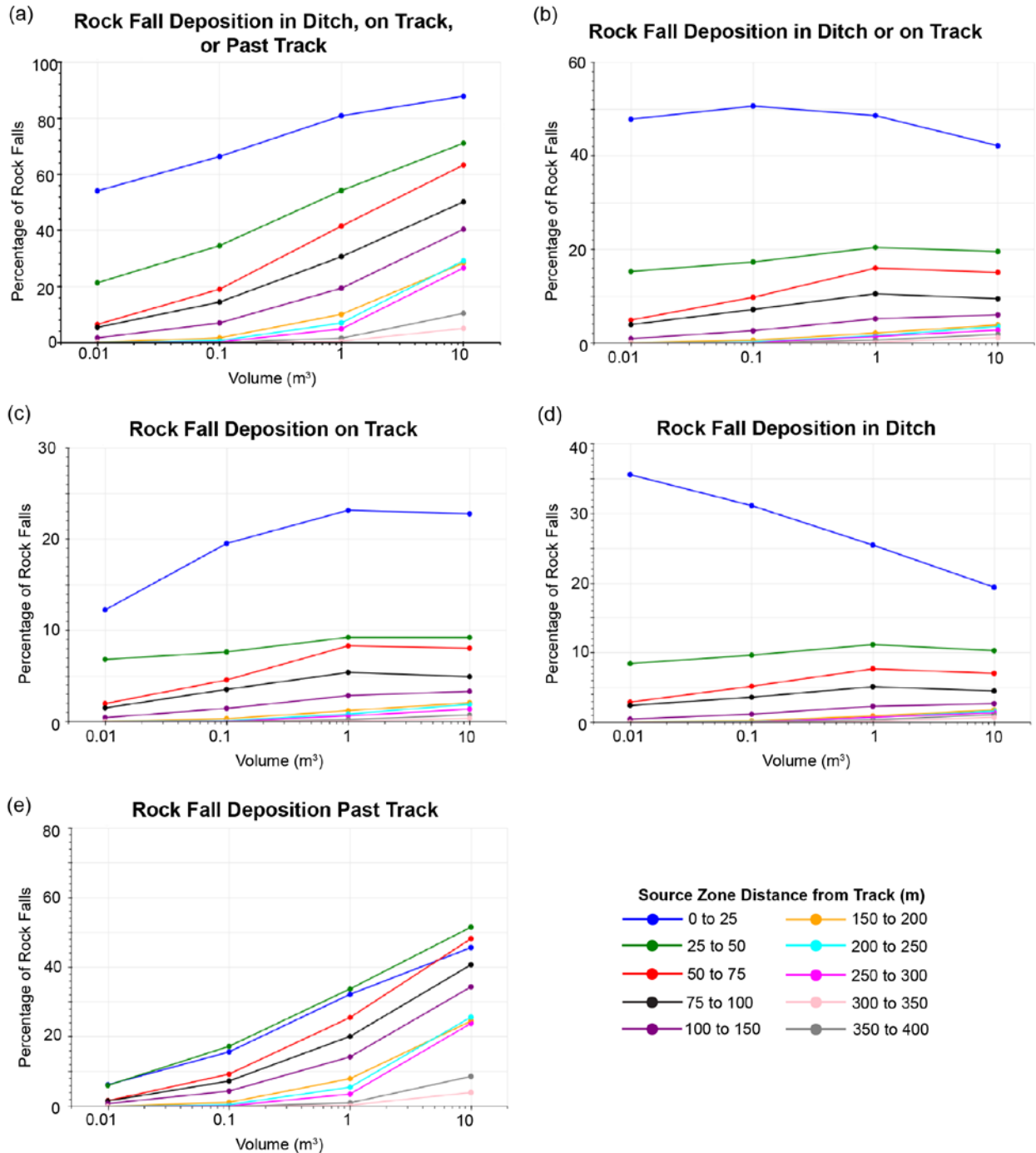


Figure 7. a) Rockfall source zones used in RockyFor3D modelling, based on slope angle. b) Horizontal distances from track used for modelling to relate deposited blocks to their source zone.



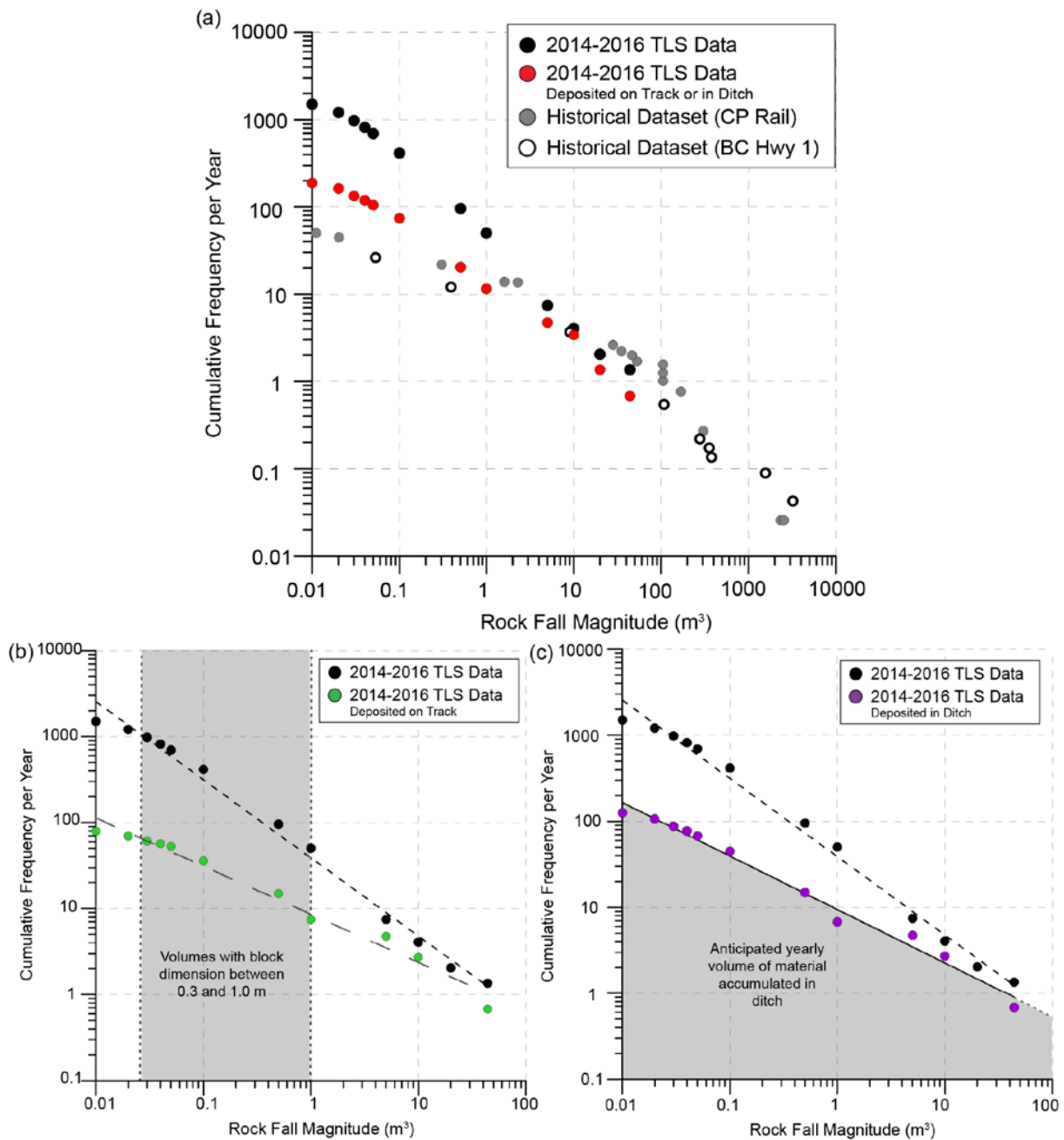
5

Figure 8. Example of deposition outputs from the RockyFor3D model for the 250 to 300 m source zone. Coloured cells indicate rockfall deposition points and the colour of the cell represents the minimum volume deposited in each cell: for example, the darkest red colour represents cells in which only blocks 100 m<sup>3</sup> were deposited, and the second darkest colour represents cells in which blocks 10 m<sup>3</sup> or larger (100m<sup>3</sup> were deposited).



**Figure 9.** Rockfall deposition percentages based on classified outputs from the RockyFor3D model showing a) percentage of rockfalls deposited in the ditch, on tracks, or past the tracks, b) in the ditch or on the tracks, c) on the tracks, d) in the ditch, and e) past the tracks (on the downslope side)





5 **Figure 10. (a) Modified MCF curves for rockfalls deposited on track or in the ditch compared to TLS inventory and historical data, (b) modified MCF curves for rockfalls deposited on track compared to TLS inventory and (c) modified MCF curves for rockfalls deposited in the ditch compared to TLS inventory**

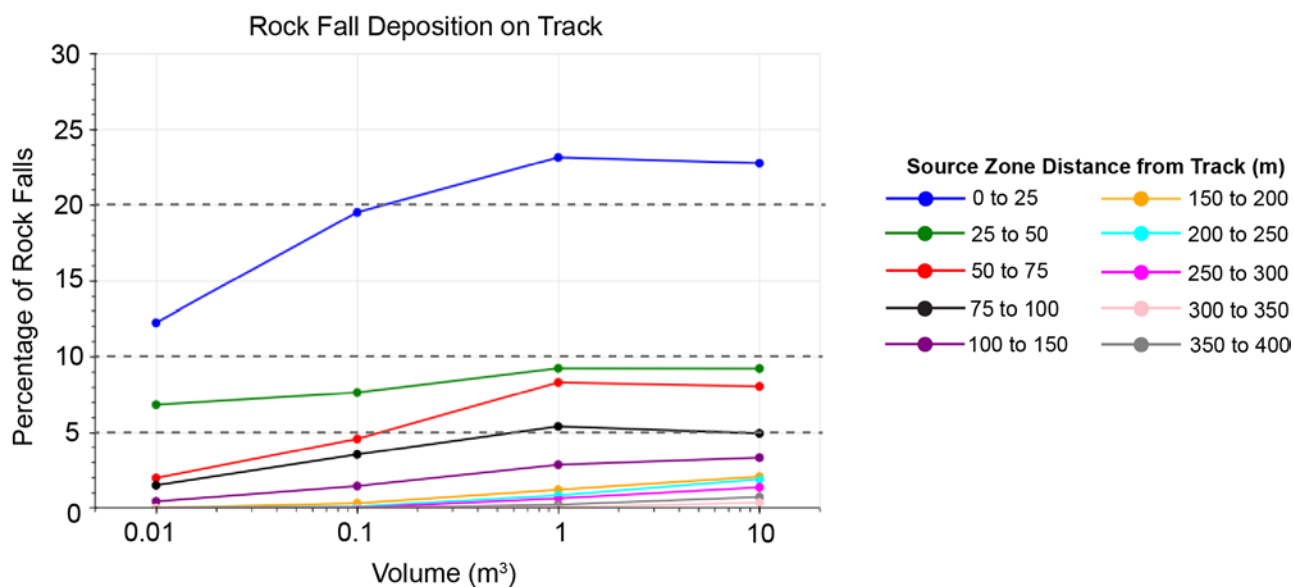


Figure 11. Rockfalls deposited on track with 5%, 10% and 20% exceedance criteria identified