

Investigating compound flooding in an estuary using hydrodynamic modelling: A case study from the Shoalhaven River, Australia.

Kristian Kumbier^{1,2}, Rafael C. Carvalho², Athanasios T. Vafeidis¹, Colin D. Woodroffe²

¹Department of Geography, University of Kiel, Kiel, 24113, Germany

5 ²School of Earth and Environmental Sciences, University of Wollongong, Wollongong, 2522, Australia

Correspondence to: Kristian Kumbier (kkumbier@uow.edu.au)

Abstract. Many previous modelling studies have considered storm-tide and riverine flooding independently, even though joint-probability analysis highlighted significant dependence between extreme rainfall and extreme storm surges in estuarine environments. This study investigates compound flooding by quantifying horizontal and vertical differences in coastal flood risk estimates resulting from a separation of storm-tide and riverine flooding processes. We used an open source version of the Delft3D model to simulate flood extent and inundation depth due to a storm event that occurred in June 2016 in the Shoalhaven Estuary, southeast Australia. Time series of observed water levels and discharge measurements are used to force model boundaries, whereas observational data such as satellite imagery, aerial photographs, tidal gauges and water level logger measurements are used to validate modelling results. The comparison of simulation results including and excluding riverine discharge demonstrated large differences in modelled flood extents and inundation depths. A flood risk assessment accounting only for storm-tide flooding would have underestimated the flood extent of the June 2016 storm event by of 30 % (20.5 km²). Furthermore, inundation depths would have been underestimated on average by 0.34 m and by up to 1.5 m locally. We recommend to consider storm-tide and riverine flooding processes jointly in estuaries with large catchment areas, which are known to have a quick response time to extreme rainfall. In addition, comparison of different boundary setups at the intermittent entrance in Shoalhaven Heads indicated that a permanent opening, in order to reduce exposure to riverine flooding, would increase tidal range and exposure to both storm-tide flooding and wave action.

1 Introduction

Storm surges are the main driver of coastal flooding leading to loss of human life, destruction of homes and civil infrastructure, and disruption of trade, fisheries and industry (Resio and Westerink, 2008). An increase in sea level is expected to exacerbate storm surge related risks to coastal communities, because the frequency and extent of coastal flooding is likely to increase (IPCC, 2014; Vitousek et al., 2017). The impacts of a storm surge may further intensify when it coincides with high spring tide (Pugh, 2004) and/or riverine flooding (Lewis et al., 2013a; Zheng et al., 2013). Extreme water levels resulting from a combination of storm-tide flooding and riverine flooding are also known as coincident or compound flood events (IPCC, 2014; Leonard et al., 2014). For some time the two flooding drivers involved were treated independently in coastal flood risk

assessments (Torres et al. 2015), even though joint-probability analysis highlighted significant dependence between extreme rainfall and extreme storm surges (Svensson and Jones, 2004, 2006; Zheng et al., 2013, Zheng et al., 2014). Therefore studies such as those of Svensson and Jones (2004, 2006) have suggested to take both processes into account for flood risk estimations in coastal areas.

- 5 Estuarine and deltaic environments are particularly at risk from compound flooding due to their exposure to storm-tides and riverine discharges (Olbert et al., 2017). Studies on compound flooding have been assessed on local scales using hydrodynamic models and joint-probability statistics (Lian et al., 2013; Chen et al. 2014; Olbert et al., 2017); and on regional to national scales using joint-probability statistics (Zheng et al., 2013; Wahl et al., 2015). Olbert et al. (2017) have investigated the interaction of storm-tide and riverine flooding drivers in the Lee estuary using a coupled ocean-hydrodynamic model. Their
10 detailed analysis for Cork city revealed a primarily fluvial driven flooding regime that is enhanced by storm-tide water levels. Chen et al. (2014) explored compound flooding in the Tsengwen River using a three-dimensional hydrodynamic model. Their modelling approach included separate analysis of tide and riverine flooding drivers that were ultimately combined to assess differences in flood extent and depth. Lian et al. (2013) used a combination of joint-probability statistics and hydrodynamic modelling techniques to investigate the flood severity resulting from compound flooding for the city of Fuzhou. Statistical
15 analysis on compound flooding in the United States showed on one hand an increasing risk of compound flooding for major US cities, and on the other hand, the need for more research on local scales to quantify the actual impacts associated with compound events (Wahl et al., 2015). Svensson and Jones (2004) examined the dependence of the two involved processes in estuaries around Great Britain. They identified estuaries with steep catchments as prone to combined storm-tide and riverine flooding, because of the quick catchment respond to abundant rainfall.
- 20 The southeast coast of Australia features more than 120 estuaries (Roy et al. 2001), with some of them being characterized by steep catchments. Thereby, the close proximity of the Great Escarpment to the Pacific Ocean may promote compound flooding in those estuaries that are known to have quick response times to extreme rainfall (Nanson and Hean 1985). Zheng et al. (2013) observed statistically significant dependence between extreme rainfall and storm surge residuals along the east coast of Australia and advised to consider both processes jointly to correctly quantify flood risk. Uncertainties in flood risk estimations
25 can result from horizontal (flood extent) and vertical dimensions (inundation depth).

A key component of any flood risk assessment is the preparation of flood maps, which aim to identify coastal areas threatened by flooding. This is usually done through static or dynamic modelling approaches. The most simple approach is the so-called static or bathtub modelling approach. The static model is based on the assumption that areas lower than a certain extreme water level are inundated if there is hydrological connectivity (Poulter and Halpin, 2008; Van de Sande et al., 2012). Resulting flood
30 maps are known to generally overestimate the flood extent due to the omission of important factors influencing floodwater flow such as bottom friction, the conservation of mass and flood duration (Bates et al., 2005; Gallien et al., 2011; Breilh et al., 2013; Ramirez et al., 2016; Seenath et al., 2016; Vousdoukas et al., 2016). Further limitations to modelling compound flooding using the static approach result from the restriction of input arguments. The approach allows only for a specific extreme water level as an input and not spatially varying water levels from different flooding drivers such as those resulting from an incoming

riverine flood wave and a storm-tide flood wave. The dynamic modelling approach utilizes a hydrodynamic model to simulate the flow of floodwater resulting from various sources such as storm-tides and riverine discharges. These models have been applied successfully in coastal flood risk assessments at different scales and with varying degrees of model complexity (Bates et al., 2005; Gallien et al., 2011; Breilh et al., 2013; Maskell et al., 2013;; Skinner et al., 2015; Seenath et al., 2016; Ramirez et al. 2016, Vousdoukas et al., 2016). A comprehensive overview of different flood inundation modelling methods as well as recent developments can be found in Teng et al. (2017). Considering the potential flooding drivers that hydrodynamic models can account for, they are the more appropriate tool to assess the extent and depth of flooding resulting from compound flood events.

In this study we investigate a compound flood event in a southeast Australian estuary using an open source version of the hydrodynamic model Delft3D. In June 2016, a storm surge coincided with extreme riverine discharge in the Shoalhaven Estuary. Time series of observed water levels and discharge measurements are used to force model boundaries, whereas observational data such as satellite imagery, aerial photography, tidal gauges and water level logger measurements are used to validate modelling results. By modelling the involved flooding drivers separately and jointly we quantify horizontal and vertical differences in flood risk estimation. Assessing these differences in flood extent and inundation depth reveals potential uncertainties resulting from a separation of storm-tide and riverine processes in coastal flood risk assessments. Obtaining detailed insights into local scale compound flooding is of great relevance for future flood risk management of estuaries. This is particularly important for certain Australian estuaries, which have been shown to be subject to compound flood events (Zheng et al., 2013). Furthermore, we address the site specific influence of changing entrance conditions on modelled water levels and the extent of flooding. The Shoalhaven Estuary is characterized by two entrances: a permanently open and an intermittent entrance. These are considered in the modelling through different open boundary setups.

The objectives of this study are:

1. To understand the interaction of storm-tide and fluvial flooding mechanisms by modelling a compound flooding event in the estuary
2. To quantify horizontal and vertical modelling differences resulting from a separation of the involved flooding drivers
3. To quantify how changing boundary setups at the intermittent entrance in Shoalhaven Heads affect modelled water levels and flood extent

2.1 Geomorphological and hydrodynamic setting

The Shoalhaven River is located on the southeast coast of New South Wales (NSW), Australia (Fig. 1). The coastline is controlled mainly by waves; tides are semi-diurnal with a significant diurnal inequality. The lower Shoalhaven River is referred to as the Shoalhaven Estuary, which is classified as a mature barrier estuary with a catchment size of approximately 7150 km² (Roy et al., 2001). The discharge of the Shoalhaven River is regulated by Tallowa dam, which is located approximately 68 km

upstream from the coast. The largest settlement within the floodplain is Nowra, which is located 18 km from the coast. The tidal range in Crookhaven Heads at the mouth of the estuary is about 1.5 m during spring tides. It decreases by 0.25 m further upstream towards Nowra, before the tidal range even slightly amplifies for several kilometres (MHL, 2012). The annual mean rainfall of the Shoalhaven River catchment is approximately 900 mm per year (Carvalho and Woodroffe, 2015). In June 2016 a storm event caused extensive inundation of the floodplains surrounding the lower Shoalhaven River.

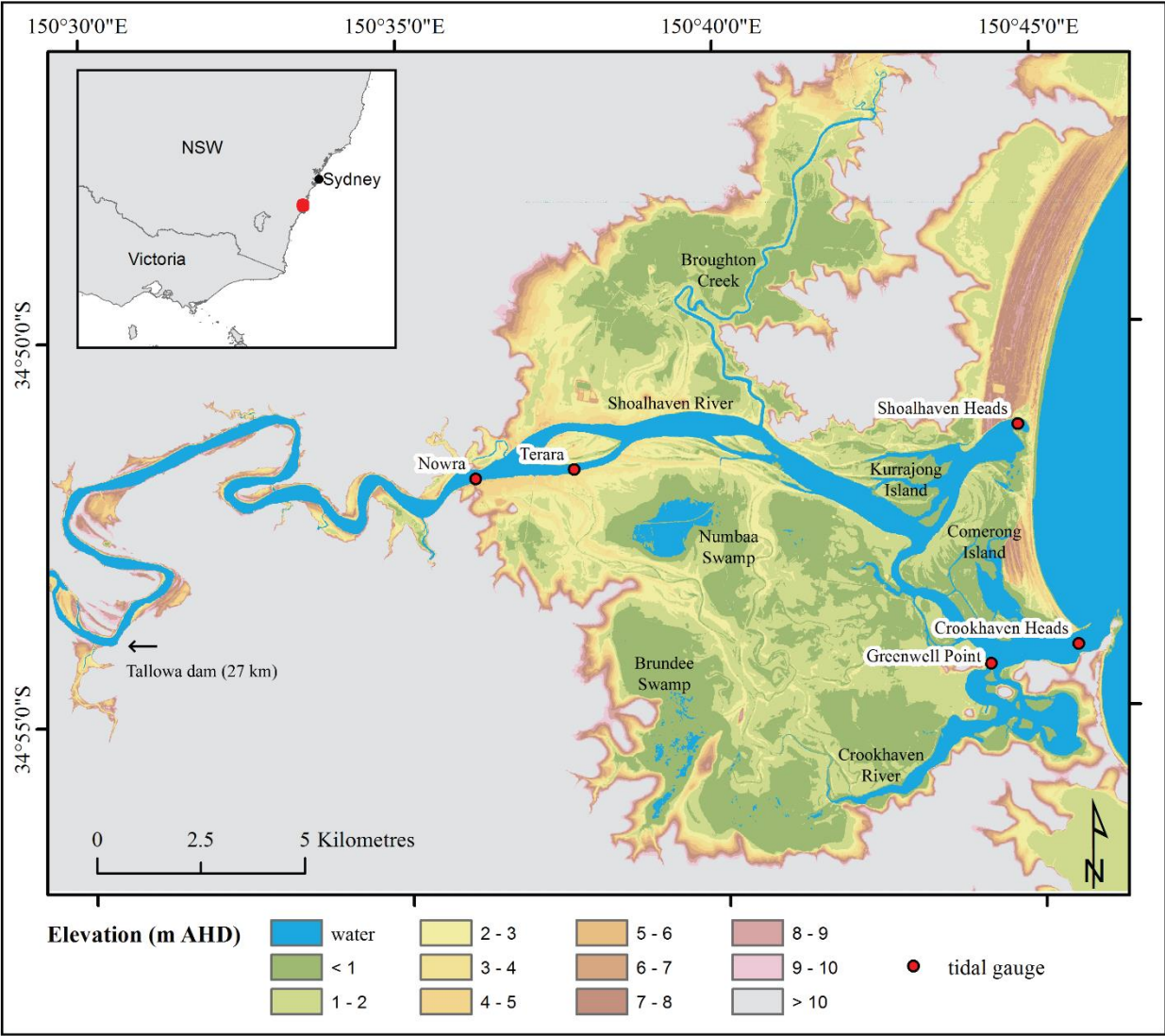


Figure 1: Map showing the lower Shoalhaven River and tidal gauges (red dots). LiDAR derived topographic data of the floodplain is presented in m AHD.

The waterway of the Shoalhaven Estuary is quite unusual with a permanent opening at Crookhaven Heads and an intermittent entrance at Shoalhaven Heads (Fig. 1). This environmental setting of two entrances of different nature results from the construction of Berrys Canal by landowner Alexander Berry in 1822. Originally the estuary had its opening to the Pacific

Ocean at Shoalhaven Heads, but with the construction of Berrys Canal the discharge has been redirected towards Crookhaven Heads, which is more protected from wave action and permanently open. In consequence, Shoalhaven Heads turned into an intermittent opening, which only breaches during large storm events (Umitsu et al., 2001). Broughton Creek is the largest tributary in the northern part of the floodplain, whereas the southern part is drained by the much smaller Crookhaven River.

- 5 The floodplain of the estuary is characterized by low-lying alluvial plains, which developed through estuarine infilling during the past 6000 years (Woodroffe et al., 2000). The majority of the floodplain is elevated between 1 and 2 m above Australian Height Datum (AHD), with some areas being even below zero (Fig. 1). The vertical datum AHD approximates mean sea-level.

2.2 The June 2016 storm event

The June 2016 storm event was due to an East Coast Low (ECL), which formed northeast of Queensland and tracked south along the eastern coastline of Australia. ECLs are low pressure cyclones, which form in certain synoptic situations initially as a trough and move parallel to the coast of Queensland and northern NSW (Shand et al., 2011).

During the night of 5 to 6 June 2016 mean sea-level pressure dropped to a minimum of 991.5 mbar at nearby Port Kembla station (approximately 45 km north of the Shoalhaven Estuary), while maximum wind gusts of 27.7 m s^{-1} from an easterly direction were measured (BOM, 2016). The storm generated a positive surge of 0.85 m at the estuary's entrance in Crookhaven

- 15 Heads (Fig. 2). The non-tidal residual (NTR) estimation of 0.85 m during the storm event was calculated by comparing the predicted astronomical tide to the observed water level and is explained in more detail in Sect. 3.1.

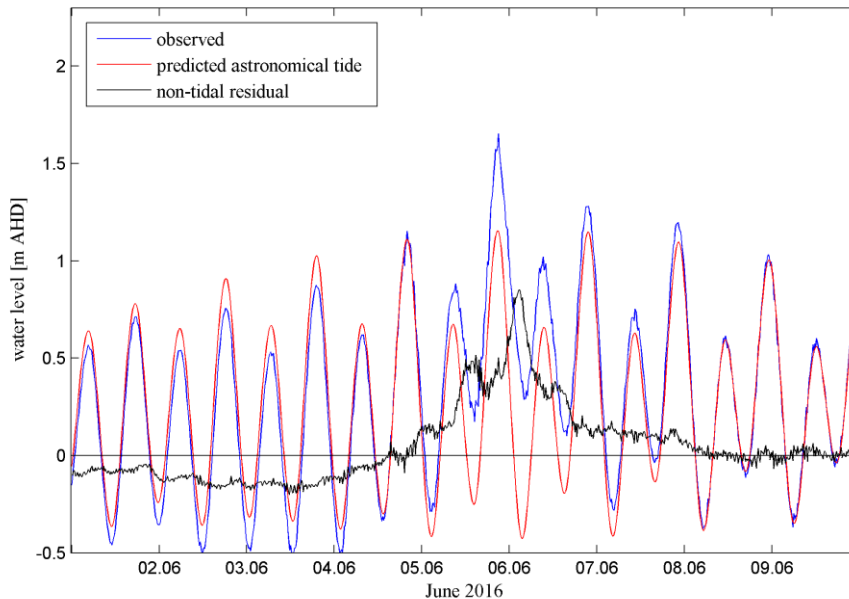


Figure 2: Observed water level at Crookhaven Heads gauge (blue), predicted astronomical tide (red) and non-tidal residual (black) in m AHD, during the June 2016 storm event.

The pattern of highest NTR during low water suggests non-linear tide-surge interactions, which are known to occur in shallow waters due to changes in the phase speed of the tidal and surge wave (Flather, 2001; Horsburgh and Wilson, 2007). Therefore, it is more appropriate to express the surge height by the metric of skew surge, which is giving the absolute difference within a tidal cycle between the maximum observed water level and the predicted tidal high water, irrespective of time of occurrence (Williams et al., 2016). The skew surge of the June 2016 storm-tide was about 0.5 m at the entrance of the Shoalhaven Estuary. This measure is consistent with estimates of NTR for the June 2016 storm event reported by Burston et al. (2016). Maximum wave heights of more than 9 m with a wave period of 15 s from an easterly direction were measured at Port Kembla buoy (BOM, 2016). The weekly cumulative rainfall measured for Wollongong (45 km north of the Shoalhaven River) was approximately 289 mm (Burston et al., 2016).

3. Data and methods

3.1 Model input data

The topographic dataset of the study area represents bare earth and originates from Light Detection and Ranging (LiDAR) measurements collected at national scale from 236 individual LiDAR surveys between 2001 and 2015. It can be downloaded from the server of Geoscience Australia (<http://www.ga.gov.au/elvis/>). The data has a spatial resolution of 5 m, a vertical accuracy of at least 0.3 m AHD (95 % confidence) and a horizontal accuracy of at least 0.8 m (95 % confidence). Bathymetric data of the Shoalhaven Estuary originate from 103,265 point measurements vertically referenced to AHD taken during hydrographic surveys between September 2005 and November 2006 by the NSW Office of Environment and Heritage (OEH). The data is accessible from the OEH homepage (<http://www.environment.nsw.gov.au/estuaries/stats/ShoalhavenRiver.htm>). Further information on processing and validation of the bathymetry data can be found in the supplementary material of this manuscript.

Water level measurements at 15 min intervals for 5 tidal gauges (Fig. 1) were provided by OEH (distributed through Manly Hydraulics Laboratory). These measurements were already vertically referenced to AHD. Astronomical tide predictions based on harmonic analysis of one year of water level record (July 2015 to July 2016) were calculated using UTide Package for Matlab (Codiga, 2011). Non-tidal residuals were calculated by subtraction of the astronomical tide prediction from the observed water level (Fig. 2). Time-series of the Crookhaven Heads gauge measurements were used to force the models ocean boundary (Fig. 3, upper plot). The peak water level of 1.65 m (AHD) at Crookhaven Heads was observed on 5 June 2016 at 21:00:00 LT. The gauges at Greenwell Point, Shoalhaven Heads, Nowra and Terara were used to validate the model performance.

Discharge measurements at 15 min intervals for the Shoalhaven River at Tallowa Dam were provided by New South Wales Water. This data is subject to uncertainty during peak discharge, because the discharge volume was too high to be recorded by the measuring device. Therefore, the data was modified during several test simulations to enable the modelling of observed peak water levels at the upstream locations of Terara and Nowra. The discharge was estimated to peak with a maximum of

approximately $3650 \text{ m}^3 \text{ s}^{-1}$ (the device stopped recording at $2566 \text{ m}^3 \text{ s}^{-1}$) on 6 June 2016 at 01:00:00 LT (Fig. 3, central plot). This modified data set was used to force the upstream boundary of the model.

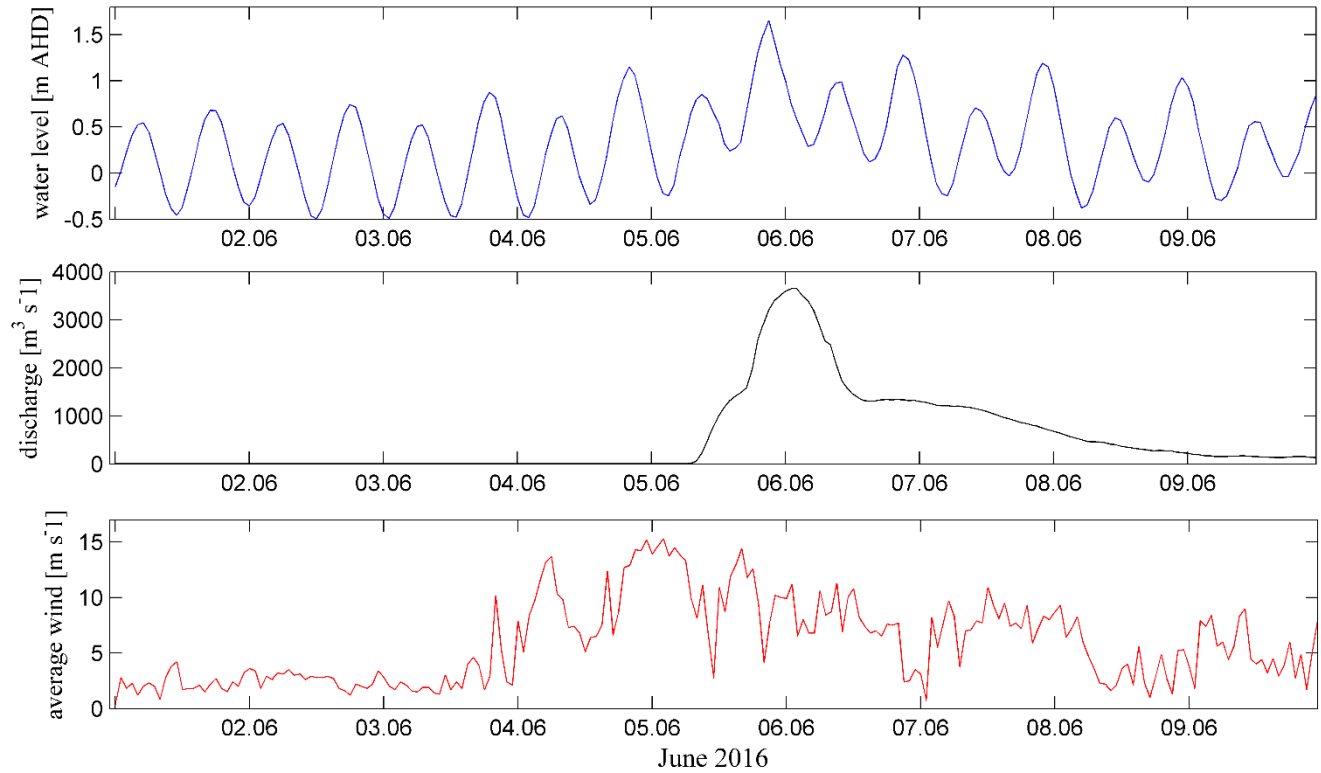


Figure 3: Hydrological and meteorological model forcing taken from observational data of the June 2016 storm event. Water level measurements originate from Crookhaven Heads gauge, discharge measurements from Tallowa dam and wind measurements from Port Kembla.

Wind data consisting of average wind speed, maximum gusts and average wind direction for Port Kembla were downloaded from the server of the Bureau of Meteorology (<http://www.bom.gov.au/oceanography/projects/abslmp/data/>). The average wind speed had a maximum of 15.2 m s^{-1} (Fig. 3, lower plot) from an easterly direction.

The land use data were obtained from the NSW Department of Environment and Climate Change (<http://data.environment.nsw.gov.au/dataset/nsw-landuseac11c>). They were used to create a file of spatially varying bottom friction. This process is explained in more detail in Sect. 3.3.

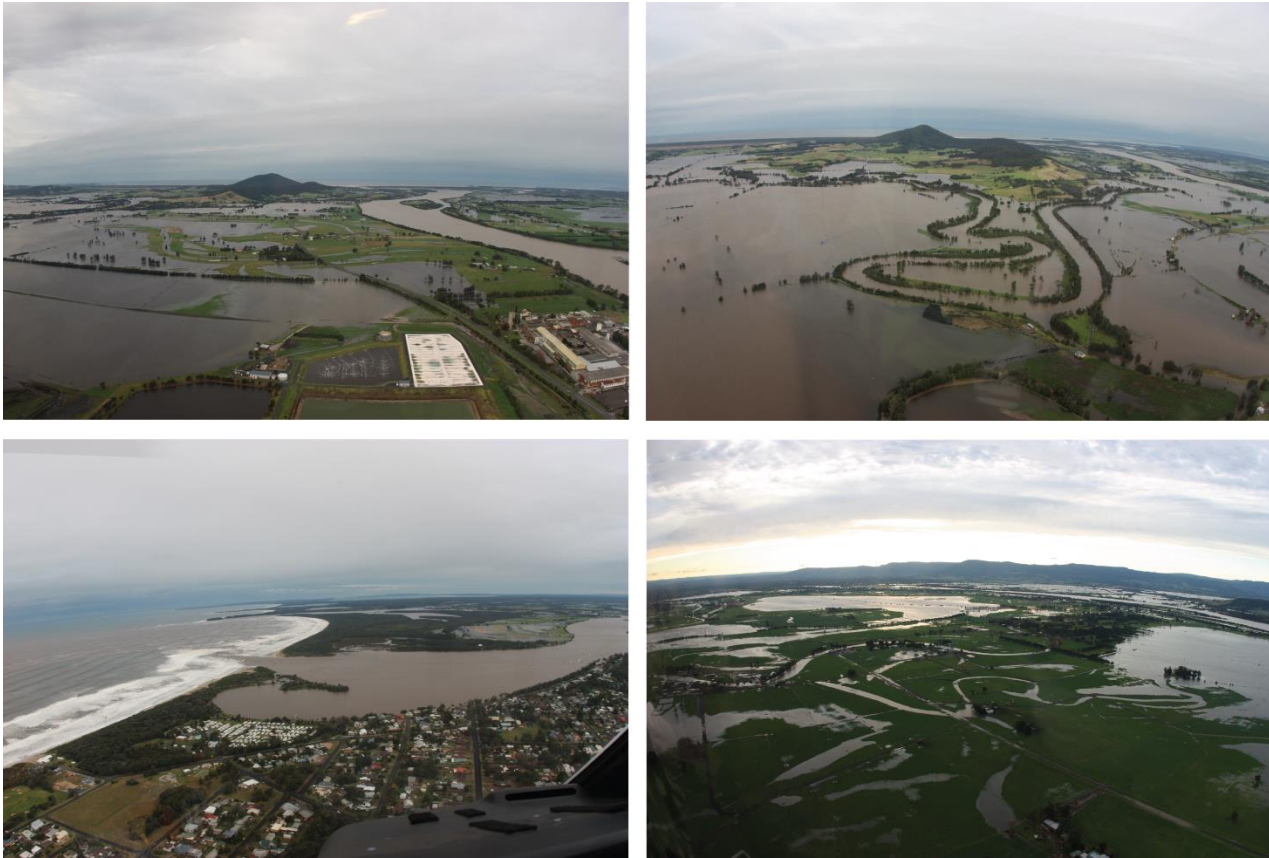
3.2 Observational data

The area flooded during the June 2016 storm event was determined by using Sentinel-1 Synthetic Aperture Radar (SAR) imagery provided by Copernicus Sentinel Data, which was downloaded using the USGS Earth Explorer (<https://earthexplorer.usgs.gov/>). The imagery was taken on 6 June 2016 at 19:15:00 LT. Similar to methods of shoreline determination presented in Lewis et al. (2013b), inundated areas were identified through processing of the VH polarization

band using the open source software SNAP toolbox (<http://step.esa.int/main/download/>). The SAR imagery was radiometrically calibrated, terrain corrected, speckle filtered and reclassified based on the distribution of backscattering signals. This process is further illustrated in the supplementary material of this manuscript.

It was possible to separate the imagery into dry and inundated pixels based on the different reflectance of wet and dry areas.

- 5 The resulting raster dataset of the observed flood extent was visually compared and adjusted using 75 aerial photographs of the flood extent. These photographs were taken during a helicopter survey on 6 June 2016 around 17:00:00 LT by the Shoalhaven City Council. Examples of photographs of the flood extent observed in the floodplain are shown in Fig. 4. Since several wetlands were not identified as inundated, Landsat 8 imagery downloaded from USGS Earth Explorer and taken on 6 June at 23:45:00 LT was used to further identify inundated areas and visually verify the SAR imagery reclassification. A band combination of 564 was shown to be most suitable to identify inundated areas.
- 10



15 **Figure 4: Selection of aerial photographs taken by the Shoalhaven City Council on 6 June 2016 around 17:00:00 LT showing the flood extent of the June 2016 storm event. Looking from Nowra towards east into Broughton Creek floodplain (top left), looking from Broughton Creek floodplain towards east (top right), looking from Shoalhaven Heads towards south at the breached entrance and Comerong Island (bottom left) and looking from Greenwell Point towards northwest into Crookhaven floodplain.**

Aside from the water level measurements of tidal gauges mentioned before, measurements of two water level loggers (HOBO ® U20-001-04) at Comerong Island were used to validate the wetting and drying of the adjacent floodplain. Both loggers were

positioned in intertidal areas and measured water depths relative to their respective local elevation in 15 min intervals. The vertical accuracy of these measurements is reported to be 0.3 cm (Onset, 2017).

3.3 Hydrodynamic flood model

Maximum flood extents and inundation depths were simulated with the Delft3D model. The hydrodynamic numerical module Delft3D-Flow of the open source model Delft3D (Deltares, 2014) was used to simulate the resulting hydrodynamics using a combination of storm-tide and riverine discharge recorded for the June 2016 storm event. Delft3D-Flow has been shown to be capable of simulating processes relevant in coastal environments (Lesser et al., 2004). The finite difference model was carried out in a depth-averaged mode (2D) to solve the unsteady shallow water equations on a rectangular grid.

The graphical user interface DelftDashboard (<https://publicwiki.deltares.nl/display/DDB/Download>) was used to create and pre-process input data for the Shoalhaven River model. The computational grid used Cartesian coordinates (GDA 1994 MGA Zone 56), had a horizontal resolution of 25 m and extended from the estuary's entrance at Crookhaven Heads upstream to the tidal limit at Burrier, where the bathymetric data coverage ends (Fig. 5). In consequence, the discharge measurements that originate from Tallowa dam were shifted approximately 25 km downstream to Burrier.

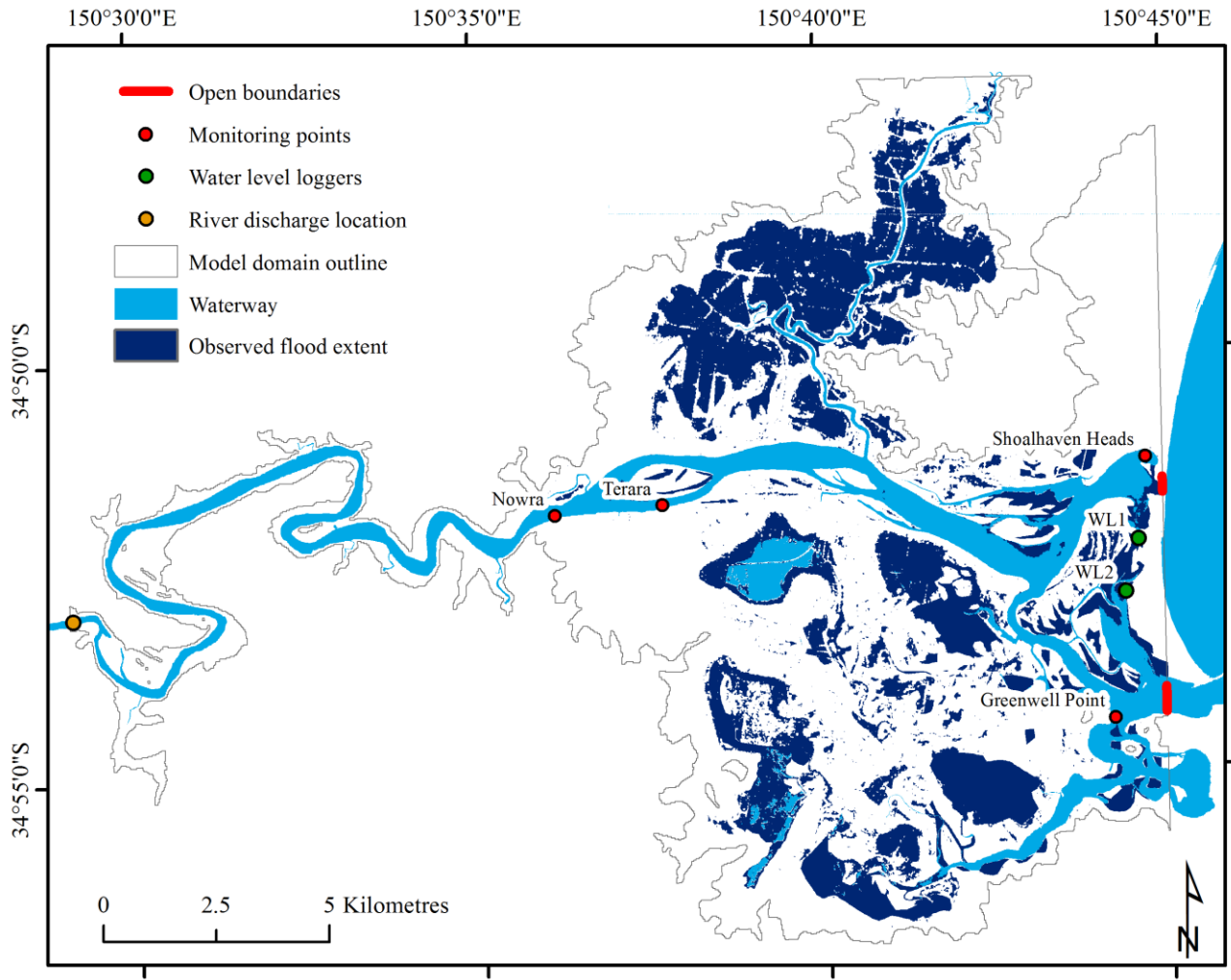


Figure 5: Map showing the hydrodynamic model domain (grey outline), open boundaries in Crookhaven Heads and Shoalhaven Heads (bold red lines), the river discharge location upstream (orange dot) and monitoring points corresponding to tidal gauges (red dots) and water level loggers (green dots). The flood extent of the June 2016 storm event in the lower Shoalhaven floodplain is indicated in dark blue.

The spatial discretization of the horizontal advection terms in the momentum equation was solved using the Delft3D flood scheme, which is recommended in the software manual for rapidly varying flows (Deltares, 2014).

The ocean model boundary was forced with time-series of water level measurements taken at Crookhaven Heads gauge, whereas the upstream boundary was forced with time-series of discharge measurements taken at Tallowa dam. As the intermittent entrance in Shoalhaven Heads opened during the storm event, simulations using different boundary conditions were carried out (namely a one-open boundary setup with one boundary at Crookhaven Heads and a two-open boundary setup with an additional opening at Shoalhaven Heads). This was done to consider and compare the different entrance conditions observed during the storm event. Open boundaries were assumed to be spatially constant in terms of water level evolution

along the boundary. Wind was applied spatially uniform due to the comparatively small model domain and data availability. Spatially varying bottom friction with respect to different land use types was defined using Manning's friction coefficients. Therefore, friction coefficients were taken from literature (Chow, 1959; Fisher and Dawson, 2011; Kaiser et al., 2011) and assigned to the land use data in a Geographic Information System. The threshold depth for the flooding of grid cells was set to 0.1 m. All other model parameters were kept to their default values. The simulation time of the storm event was set from 1 June 2016 00:00:00 LT to 7 June 2016 06:00:00 LT using a time step of 0.04 min. This long computational time was chosen to validate the model performance on a longer time scale than the actual storm event. All simulations were executed on a computer with an Intel Xeon E5-2670 processor with 12 cores and resulted in a computation time of 42 h.

The model was manually calibrated in an iterative manner. Simulations with a uniform bottom friction value were compared to ones with spatially varying friction coefficients in order to find the most suitable setup to replicate the observed water levels and flood extent of the June 2016 storm event. As mentioned in the input data section, the anomalous Shoalhaven River discharge data set was increased stepwise around flood peak. Furthermore simulations of varying threshold depths for flooding were compared. In addition, the model's ability to reproduce estuarine hydrodynamics was assessed by comparison of measured and modelled maximum current velocities for a different event. Results show small model underestimation of maximum current velocities by 1 cm s^{-1} .

After the model was calibrated for the June 2016 event, simulations using two-open boundaries including and excluding riverine discharge were carried out to quantify modelling differences in flood extent and inundation depth. The same simulations were also carried out using only one-open boundary at Crookhaven Heads to investigate how the modelling of flood extent is affected by different entrance conditions.

3.3.1 Verification and validation methods

The model performance was evaluated through the entire 7.25 day simulation period using the statistical measures R^2 and E_{RMS} as presented by Skinner et al. (2015). In addition, peak water level differences were calculated by subtraction of the observed peak water level from the modelled peak water level. The predictive quality of the model was quantified by the goodness of fit measure F as presented by Bates et al. (2005).

Hence, the intersected area of observed and modelled flood extent is divided by the sum of both. The value of F tends to 1 when the observed and modelled flood extent match exactly, and to zero when they don't overlap at all. While Bates et al. (2005) have defined good fit measurements for F -values greater than 0.5, Breihl et al. (2013) were more critical and set the threshold for good fit measures above 0.7. The F -value was calculated for the modelled flood extent on 6 June 2016 at 19:00:00 LT, because the SAR imagery was taken at this time.

Percentages of the model's correct estimations, overestimations and underestimations were derived through normalization of the three categories by the observed flood extent, as presented in Ramirez et al. (2016).

The validation of the flooding and drying processes was limited to two water level loggers at Comerong Island, which is located between the entrances of Crookhaven Heads and Shoalhaven Heads (Fig. 5). Modelled inundation depths were compared to observed ones by prior presented statistical measures of R^2 and E_{RMS} as well as the difference in maximum
5 inundation depth.

3.3.2 Comparison of maximum flood extents and inundation depths

Maps of maximum flood extent and maximum inundation depth of simulations including and excluding river discharge were derived from Delft3D output files using a GIS. Maximum flood extents were calculated for the one-open and two-open boundary modelling setups. Maps of maximum inundation depth were only prepared for the two-open boundary setup as this
10 was considered be more suitable for the replication of the June 2016 storm event. To visually enhance differences in inundation depth resulting from inclusion and exclusion of river discharge, the storm-tide only map was subtracted from the compound flooding map. These differences were further analysed through a reclassification of inundation depth pixels into 0.25 m intervals.

4. Results

15 4.1 Model performance and validation

Time series of modelled and observed water level for four tidal gauges in the Shoalhaven River are compared in Fig. 6. Modelled water levels are those resulting from a model forcing using storm-tide inputs at two-open boundaries and riverine discharge at the upstream boundary. This model setup was demonstrated to be the most suitable to reproduce the magnitude and timing of observed peak water levels at the four monitoring points. Statistical measures of R^2 and E_{RMS} of 0.98 and 0.09
20 m for Greenwell Point, 0.98 and 0.14 m for Shoalhaven Heads, 0.99 and 0.15 m for Terara and 0.99 and 0.15 m for Nowra confirm this. The difference between modelled and observed peak water level was none for Greenwell Point and Nowra, -0.33 m for Shoalhaven Heads and 0.01 m for Terara.

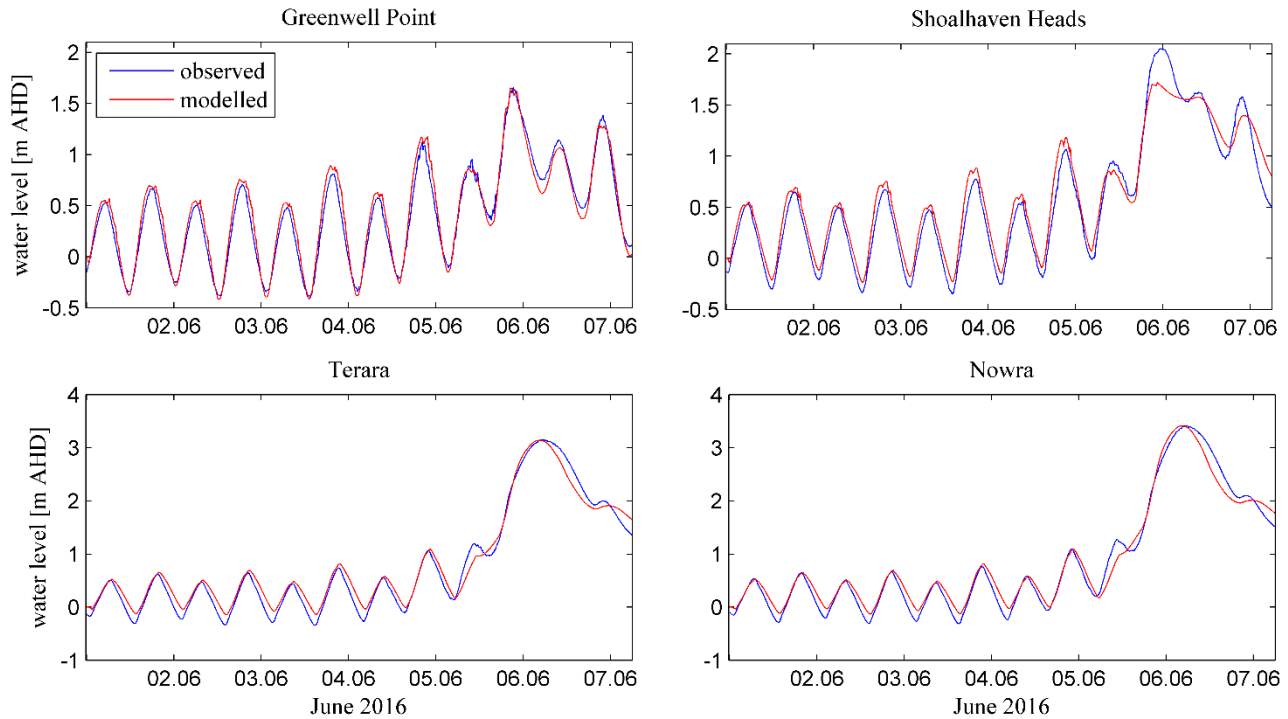


Figure 6: Observed and modelled water levels of the June 2016 storm event for monitoring points in the Shoalhaven River. Modelled water levels result from a model forcing by storm-tide and river discharge using two-open boundaries.

Time-series of modelled and observed inundation depth for two sites at Comerong Island are presented in Fig. 7. Modelled inundation depths were extracted from the same simulation as outlined above. The wetting and drying processes were reproduced reasonably well at the two water level logger sites. This is on one hand demonstrated by the minor overestimations in maximum inundation depth of 0.07 m at the northern site (WL1) and 0.04 m at the southern site (WL2), and on the other hand, by the statistical measures of R^2 and E_{RMS} of 0.93 and 0.61 m for WL1 and 0.90 and 0.53 m for WL2.

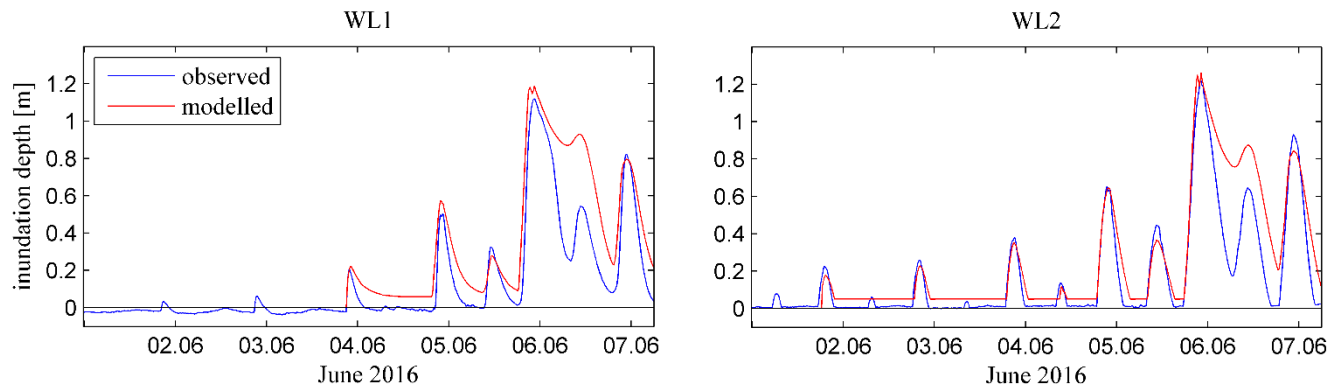


Figure 7: Observed and modelled inundation depth of the June 2016 storm event for two water level loggers on Comerong Islands. Modelled inundation depths result from a model forcing by storm-tide and river discharge using two-open boundaries.

The observed flood extent on 6th of June 2016 at 19:00h had a size of approximately 43.5 km². The model correctly represented 89.7 % of this observed extent, which included most of the northern Broughton Creek floodplain and the largest patches of observed flooding in the southern Crookhaven floodplain (Fig. 8). Overestimations of modelled flooding were equal to 68 % of the observed flooding. Most of these overestimations were located in the Crookhaven floodplain surrounding Greenwell Point, as well as on Comerong and Kurrajong Islands. Underestimations of 10.2 % in modelled flood extent were located mainly in Brundee and Numbaa Swamp in the Crookhaven floodplain. The *F*-value calculated from these results was equal to 0.53.

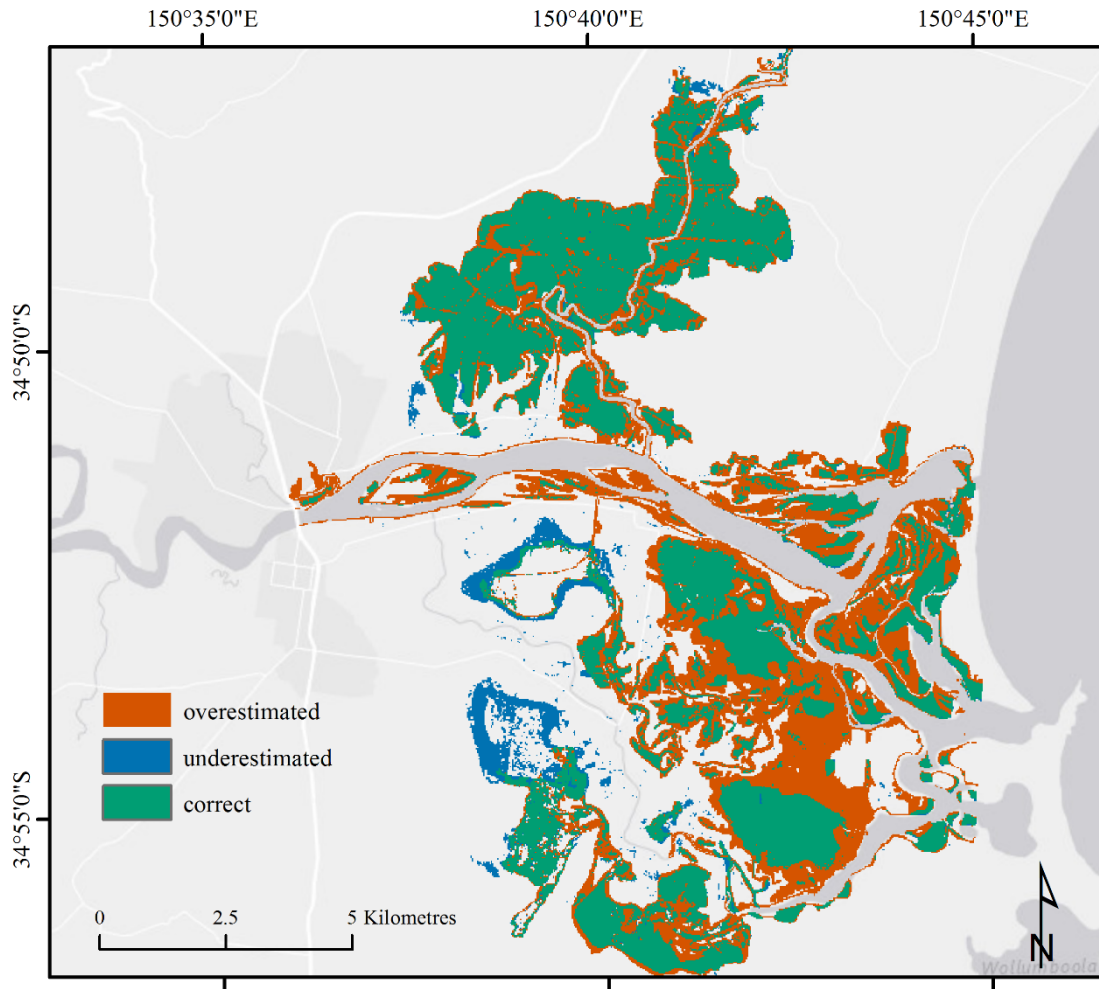


Figure 8: Map showing locations correctly estimated, underestimated and overestimated by the model in the lower Shoalhaven floodplain.

4.2 Modelled water levels, flood extents and inundation depths

Time-series of observed and modelled water levels for modelling setups using one- and two-open boundaries, including and excluding river discharge, at four monitoring points are presented in Fig. 9, whereas their corresponding flood extents are presented in Table 1.

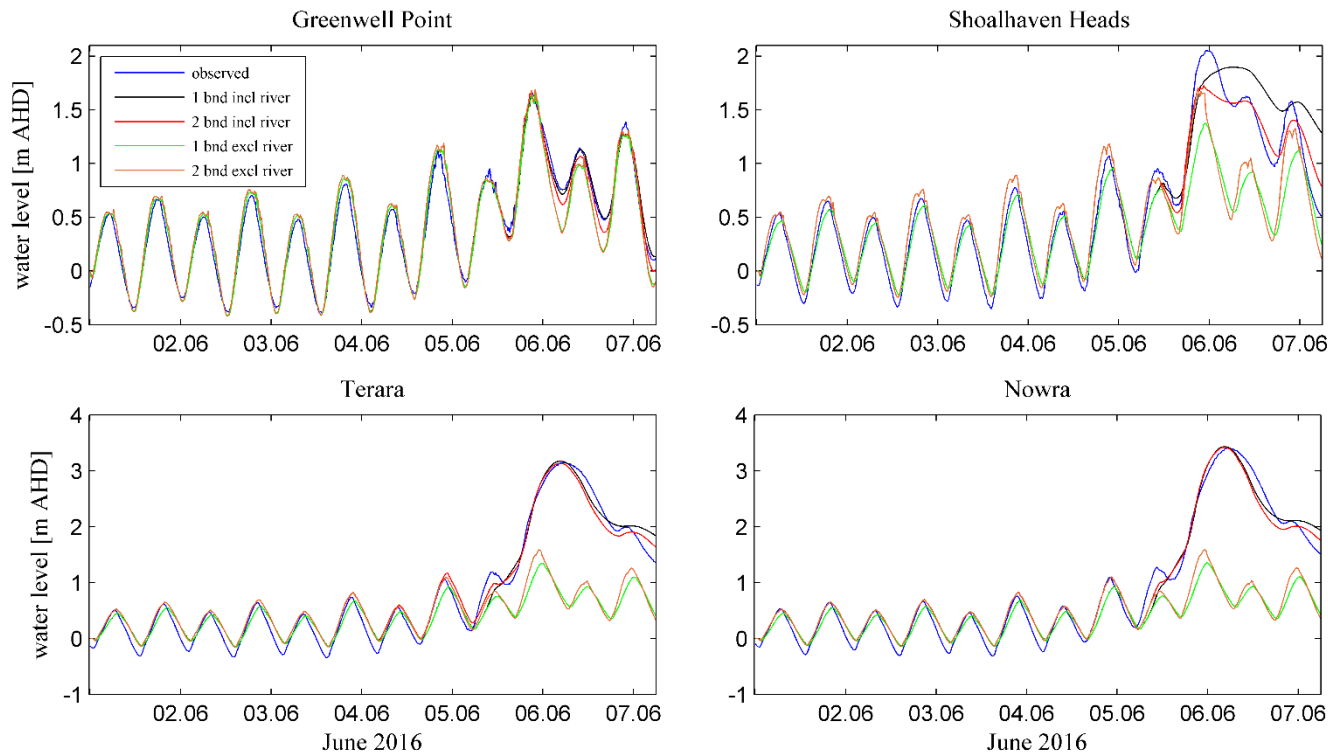


Figure 9: Modelled and observed water levels for different model boundary forcing and entrance conditions.

Comparison of modelling setups including and excluding river discharge demonstrated that peak water levels at Greenwell Point were only varying by a few centimetres. However, tidal low water following the flood peak was enhanced by approximately 0.25 m when river discharge was considered and demonstrated that this consideration is necessary to replicate the observed tidal low water (red line). The modelling using a closed boundary at Shoalhaven Heads further increased the modelled low water at Greenwell Point by 0.1 m (black line). The monitoring point at Shoalhaven Heads was shown to be greatly influenced by the different modelling setups. The modelling setup using two-open boundaries including river discharge was shown to be the best suitable setup to reproduce the observed water level at Shoalhaven Heads, even though the flood peak was underestimated by 0.33 m (see Sect. 4.1 and Fig. 9). A closure of the boundary at Shoalhaven Heads increased the water level by 0.17m, but also shifted the modelled flood peak from the observed (black line). The exclusion of river discharge caused an underestimation of the observed peak water level by 0.36 m in the two-open boundary setup (orange line) and an underestimation of 0.67 m in the one-open boundary setup (green line). However, none of the modelling setups was able to

model the observed peak water level at Shoalhaven Heads, which appears to be enhanced by another driver. The modelling of different entrance conditions at Shoalhaven Heads revealed also a change in the tidal range for Greenwell Point and Shoalhaven Heads. The opening of the intermittent entrance increased the tidal range at Shoalhaven Heads by up to 0.25 m, whereas the tidal range at Greenwell Point increased by up to 0.08 m. The modelling of water levels at Terara and Nowra was shown to be highly influenced by river discharge. The exclusion of river discharge caused an underestimation of peak water levels by 1.59 m (two-open boundary) and 1.8 m (one-open boundary) at Terara and underestimations of 1.82 m (two open boundary) and 2.05 m (one-open boundary) at Nowra. The increase in tidal range due to an open boundary at Shoalhaven Heads were also present in Terara and Nowra (up to 0.3 m).

Changes in the modelled flood extent were large between the different modelling setups (Table 1). Percentage changes in flood extent presented hereafter are in relation to the two-open boundary setup including river discharge. A closure of the open boundary at Shoalhaven Heads overall increased the modelled flood extent by 10.5 km² (equal to 15 %). The exclusion of river discharge decreased the flood extent by 19 km² (equal to 28 %) for the one-open boundary setup and by 20.5 km² (equal to 30 %) for the two-open boundary setup. Figure 10 presents these spatial differences in flood extent resulting from simulations including and excluding river discharge using the two-open boundary setup.

Table 1: Flood extents resulting from different modelling setups.

Modelling Scenario	Flood extent (km ²)
1 bnd incl. river discharge	78.1
2 bnd incl. river discharge	67.6
1 bnd excl. river discharge	48.6
2 bnd excl. river discharge	47.2

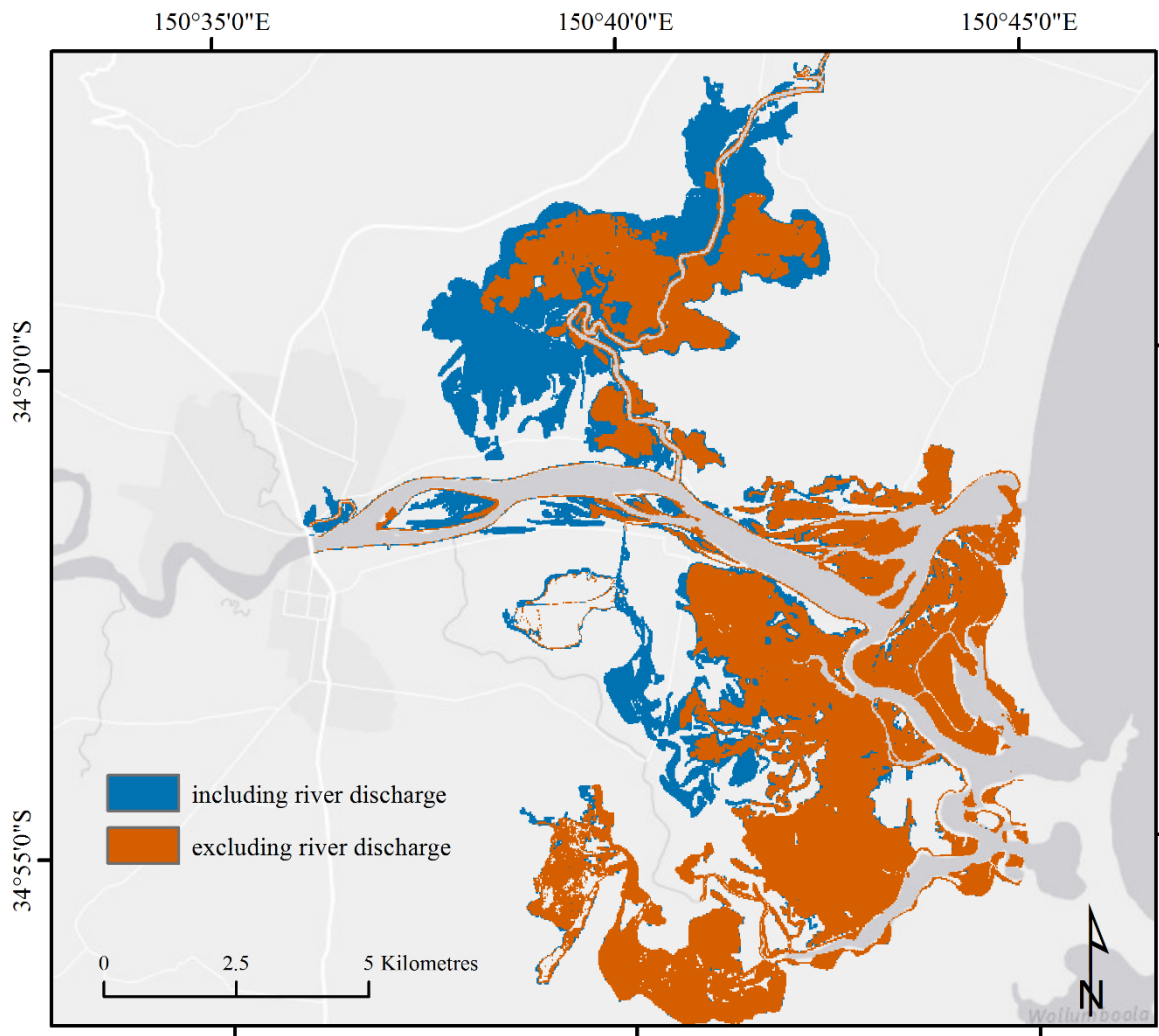


Figure 10: Map of modelled maximum flood extents resulting from simulations including and excluding river discharge using the two-open boundary model setup. Flood extent of modelling including river discharge is indicated in blue, whereas the flood extent of modelling excluding river discharge is presented in orange.

- 5 Orange areas in Fig. 10 are indicating the flood extent resulting from a model forcing by storm-tide water levels only, whereas blue areas display the flood extent resulting from a combination of storm-tide and river discharge inputs. Comparison of the modelled flood extents resulting from these simulations revealed spatial differences within the lower Shoalhaven floodplain. While the inclusion of river discharge caused only small changes in flood extent within the Crookhaven floodplain, the differences in the Broughton Creek floodplain were comparatively large. It appears that part of the Shoalhaven River discharge entered Broughton Creek and enhanced the inundation of the surrounding floodplain. In contrast, the flood extent in areas closer to the ocean or the Crookhaven River changed only marginally when river discharge was included. Figure 10 indicates
- 10

a larger flood extent in the central part of the Crookhaven floodplain, but this difference is not as pronounced as the one observed in the Broughton Creek floodplain.

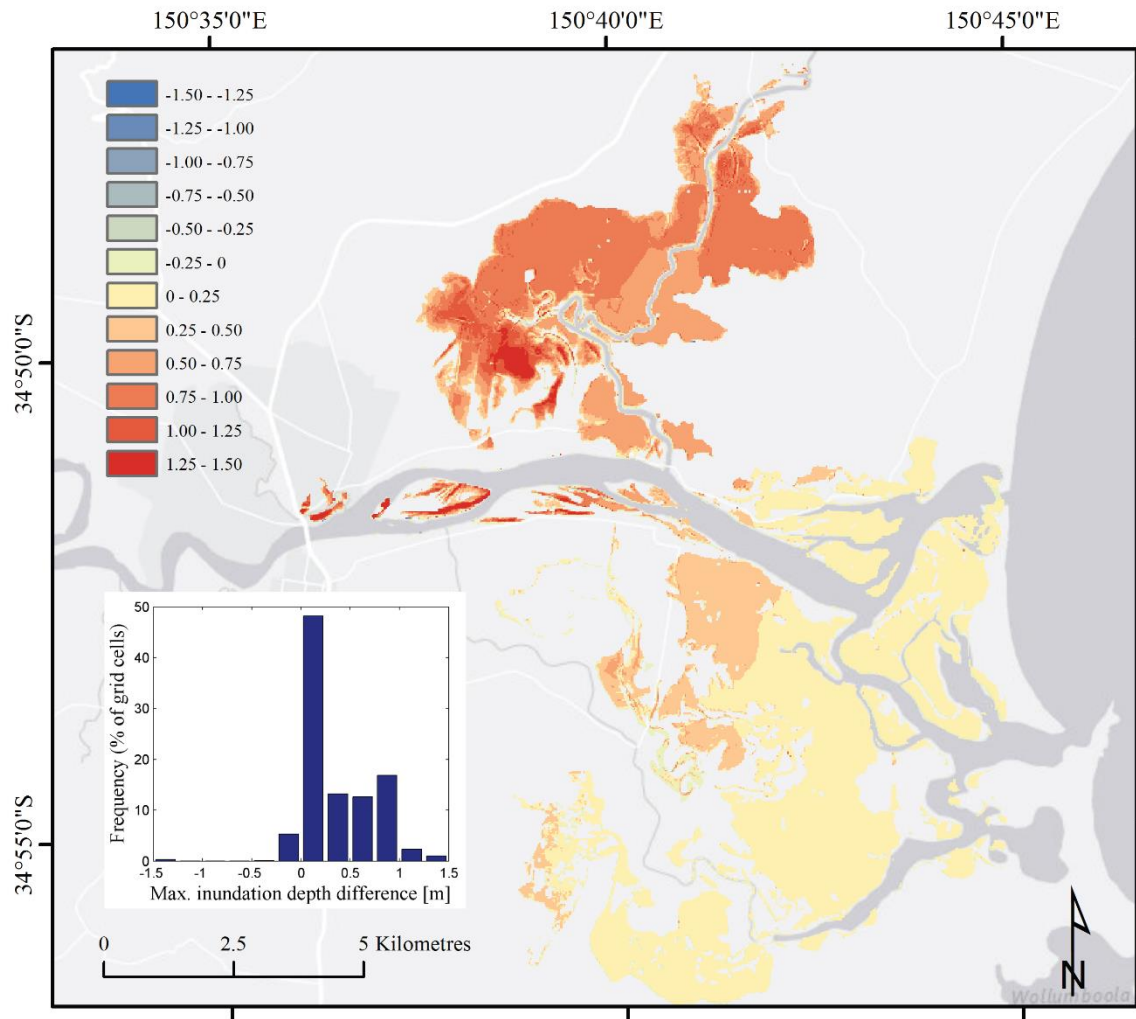


Figure 11: Differences in maximum inundation depth in 0.25m intervals resulting from simulations including and excluding river discharge using the two-open boundary modelling setup. The histogram summarizes the percentage of grid cells falling into these intervals.

Figure 11 presents differences in maximum inundation depths in 0.25 m intervals resulting from simulations including and excluding river discharge using the two-open boundary modelling setup. The largest differences in inundation depth of up to 1.5 m were observed around upstream locations such as Terara and Nowra, even though the flood extent was comparatively small in these areas. Most of the Broughton Creek floodplain was at least 0.5 m higher inundated when river discharge was included in the simulation, whereas local differences were as high as 1.5 m. For the remaining floodplain, differences in inundation depth were in the order of 0-0.25 m with some higher values in areas where the exclusion of discharge predicted no flooding at all. The histogram in Fig. 11 summarizes the percentages of grid cells falling into the 0.25 m intervals.

Approximately 48 % of flood extent grid cells had a difference of 0-0.25 m in inundation depth. Further the additional floodwater resulting from the inclusion of river discharge enhanced the water depth by 0.25-0.5 m for 13 % of grid cells, by 0.5-0.75 m for 12 % of grid cells and by 0.75-1.0 m for 17 % of grid cells. Very few locations also indicated lower inundation depths due to the consideration of river discharge (5.7 % of pixels). The mean difference in inundation depth for all grid cells was 0.34 m.

5. Discussion

5.1 Model performance

The underestimation of the observed peak water level at Shoalhaven Heads gauge likely results from the non-consideration of wave action at the intermittent entrance at Shoalhaven Heads.

10 The entrance naturally opened during the storm event and, in consequence, the respective tidal gauge became also subject to wave-setup. Miller et al. (2006) reported that wave action can raise water levels at Shoalhaven Heads leading to an enhancement of the flood tide. This is possible once the entrance is opened and consistent with findings of Nielsen and Hanslow (1995) for wave-setup at other NSW river entrances. Similar influences of wave action on water levels at the mouth of an estuary were observed by Olbert et al. (2017) at the Lee River estuary in Ireland. The comparison of simulations including and
15 excluding the Shoalhaven River discharge demonstrated no major differences in modelled water levels at Shoalhaven Heads and thus indicates that another driver must have enhanced the water level during the June 2016 event. The modelling of waves could answer this question, but our modelling of waves using the Delft3D Wave module was limited through model input data being not available.

The comparatively high E_{RMS} observed during modelling of the inundation depth at Comerong Island is likely to be caused by
20 the slowed down ebb flow. Inaccuracies in bottom friction values assigned to the complex wetland area and its channel network may explain the insufficient modelling of floodwater drainage. Following this assumption, the overestimations of the low and high water following the peak water level are likely the result of this undrained condition. The underestimation in flood extent in the Crookhaven floodplain may be the result of the spatial modelling resolution of 25 m. As the 5 m LiDAR elevation data is interpolated to the 25 m computational grid in order to reduce processing time, a loss of topographic detail is inevitable. In
25 consequence, small creeks and channels that distribute floodwater may have been represented incorrectly.

Overall, the prediction of water levels and flood extent as well as the representation of flooding and drying processes at Comerong Island demonstrated that the present model is able to replicate the main physical processes involved in the Shoalhaven Estuary during the June 2016 storm event. The comparison of measured and modelled maximum current velocities
30 demonstrated a good reproduction of estuarine hydrodynamics. We must note however, that, due to limited availability of data, the comparison was restricted to a single location and a different event. The SAR-imagery was shown to be a valuable source to determine the observed flood extent, even though it appeared to be limited in areas of inundation depths smaller than 0.25

m and saltmarsh/mangroves habitats. The limitation of remote sensing based flood detection due to dense vegetation cover has incidentally also been observed by Teng et al. (2015). Nevertheless, the obtained model fit score of 0.53 demonstrates a high predictive skill of the present model and is similar to fit scores presented in Bates et al. (2005).

5.2 Interaction of storm-tide and riverine flooding mechanisms

5 The incorporation of riverine discharge was demonstrated to be crucial for the replication of the June 2016 flood extent and water levels in the lower Shoalhaven floodplain. Comparison of modelling results including and excluding riverine discharge clearly indicates that storm-tide and riverine flooding mechanisms were interacting and jointly causing the observed flooding patterns. While gauges at the entrance of the estuary such as Greenwell Point and Shoalhaven Heads appeared to be mainly controlled by storm-tide water levels and just marginally reacted to the model forcing by riverine discharge, upstream locations
10 such as Nowra and Terara were shown to be highly influenced by the extreme discharge of the Shoalhaven River. Furthermore, the comparison of simulations including and excluding river discharge indicated that the riverine flood wave was redirected into Broughton Creek and thus mostly affected the Broughton Creek floodplain. This was demonstrated on one hand by the large changes in flood extent surrounding Broughton Creek, and on the other hand, by the comparatively large differences in inundation depth in the Broughton Creek floodplain. Thereby, the timing of the riverine and storm-tide flood
15 wave peaks may influence the exaggeration of extreme storm-tide water levels. While a coincidence of the two flood waves at spring high tide may trap and pile up the riverine discharge, a coincidence at low tide may promote an efficient drainage of the riverine floodwater into the ocean. A blocking of riverine floodwater by a storm-tide was also observed by Chen et al. (2014) in the Tsengwen River. Spatial patterns of storm-tide and fluvial driven parts of a floodplain were also observed in other studies (Olbert et al., 2017) and likely apply to other estuaries exposed to compound flooding. The joint consideration appears to be
20 important for the mid to upper reaches of the Shoalhaven Estuary, whereas the lower floodplain seems to be mainly controlled by coastal flooding mechanisms.

5.3 Modelling differences in flood extent and inundation depth

The comparison of the two-open boundary modelling setups including and excluding riverine discharge demonstrated large differences in modelled flood extent and inundation depth. The exclusion of riverine discharge caused a decrease of 20.5 km²
25 in flood extent (30 %). In consequence, a separation of the two flood drivers in risk assessments may lead to large underestimation of flood risk. This is also confirmed by the differences of up to 2 m between modelled and observed water levels at upstream gauges such as Nowra and Terara. Further the comparison of inundation depths between simulations including and excluding riverine discharge revealed an average increase in inundation depth of 0.34 m for the lower floodplain and local increases of up to 1.5 m in the Broughton Creek floodplain. The few locations indicating a lower inundation depth
30 due to the consideration of river discharge are likely to be artefacts of data conversion processes. The Delft3D outputs of maximum inundation depth were converted from vector into raster format, clipped by the outline of the maximum flood extent

and finally intersected with each other. This was done using a 5 m pixel resolution and may have created these pixels of lower inundation depth (most of them are located at the waterfront).

The enhancement in inundation depth by riverine discharge has significant implications for risk estimations in monetary terms, because the flood damage to buildings is calculated as a function of inundation depth (Tsakiris, 2014; Jongmann et al., 2012).

- 5 The additional riverine floodwater present during compound flooding may considerably change flood risk estimations for buildings in fluvial driven parts of a floodplain such as the Broughton Creek floodplain.

5.4 Effects of changing entrance conditions

The comparison of different entrance conditions deciphered that an opening of Shoalhaven Heads implies positive and negative effects, which should be considered when managing the intermittent entrance. Simulations using a closed boundary at

- 10 Shoalhaven Heads showed a pile up of riverine floodwater during compound flooding conditions, which enhanced water levels at Shoalhaven Heads gauge and overall increased the modelled flood extent in the lower Shoalhaven floodplain. In contrast, an opening of the Shoalhaven Heads entrance appeared to support the drainage of riverine floodwater. This is demonstrated by a decrease in modelled water levels and modelled flood extent. The downside of this floodwater drainage intervention is the additional exposure to storm-tide water levels and an exposure to wave action, which may further enhance water levels
- 15 locally. Additionally, the exposure to swell waves is likely to cause erosion in this usually sheltered environment. Blacka and Coghlan (2017) documented such erosion after the June 2016 storm event at Shoalhaven Heads.

- The modelling results further indicated an increase in tidal range of 0.27 m due to the opening of Shoalhaven Heads. It would not appear prudent to open Shoalhaven Heads permanently, because multiple flooding drivers are acting together. A limitation of exposure to riverine flooding through an opening of Shoalhaven Heads appears to increase the tidal range as well as the
- 20 exposure to storm-tides and wave action. As this exposure to marine flooding drivers is likely to increase in the context of climate change and sea-level rise (Hinkel et al., 2014; IPCC, 2014; Vitousek et al., 2017), it shouldn't be augmented by permanently opening the entrance.

6. Conclusion

- Our modelling results highlighted that not considering the interaction of different flooding mechanisms can lead to significant
- 25 underestimation in flood risk. We recommend to consider storm-tide and riverine flooding drivers jointly when assessing coastal flood risk in estuaries. This is particularly important for Australian estuaries with large catchment areas ($> 10000 \text{ km}^2$), which are known to have a quick response time to extreme rainfall, but may be different in considerably larger estuarine systems, as the time lag between peak storm-tide levels and extreme discharge increases (Klerk et al., 2015). Classification schemes (e.g. Roy et al. (2001)) and statistical analysis on the dependence of storm surges and extreme rainfall such as the one
- 30 presented by Zheng et al. (2013) can guide which estuaries are subject to compound flooding. However, compound flooding may also occur in estuarine systems where no statistical dependence between compound flooding drivers exist.

To further examine the enhancement of extreme water levels by wave action at estuarine entrances, we recommend the use of a coupled wave-flow model (similar to the modelling presented in Olbert et al., 2017), even though model complexity and computational times may considerably increase. However, the nature of the intermittent entrance at Shoalhaven Heads is quite unique and the consideration of wave action in other estuaries may be less challenging due to almost static topobathymetric entrance conditions.

The analysis and comparison to other storm events would on one hand increase the validity of the presented modelling results, and on the other hand, further validate the present model. Zheng et al. (2013) have found the strongest dependence between storm surge and extreme rainfall at the east Australian coastline for storm events with a duration of 2-4 days. The expansion of the modelling can be challenging, because the availability of suitable data to validate hydrodynamic modelling results is known to be limited due to various reasons (Smith et al., 2012). To ensure that future storm events are recorded in a comprehensive manner, we recommend to collect observational data of storm events in an organized way similar to Haigh et al. (2015). The validation of flood hazard models is known to be still underdeveloped (Molinari et al., 2017). One option to overcome this is the demonstrated use of water level loggers. Our model validation highlighted the potential to use this kind of data to verify the wetting and drying of intertidal areas. A detailed flood damage assessment using the uncertainties demonstrated in flood extent and inundation depth would further enhance the presented results.

Data availability. Most of the used data sets, as well as the applied hydrodynamic modelling software, are freely available (web links are presented in Sect. 3). However, some data sets such as river discharge measurements, aerial photographs or water level logger measurements were provided on request by the institutions and colleagues mentioned in the acknowledgements.

Author contributions. KK, ATV and CDW designed the study. KK and RCC setup the model and ran the simulations. KK, RCC, ATV and CDW analysed and interpreted the results. KK wrote the paper with substantial input from all co-authors.

Competing interests. The authors declare that they have no conflict of interest.

Acknowledgements. KK expresses gratitude to the German Academic Exchange Service (DAAD) for supporting his MSc project with a scholarship. RCC and CDW were supported by Australian Research Council Linkage project LP130101025. The authors thank two anonymous reviewers and Emanuele Bevacqua for their constructive reviews which helped to improve this manuscript. The provision of the following data sets is highly appreciated: Bathymetric data of the Shoalhaven Estuary provided by NSW Office of Environment and Heritage; Water level data of tidal gauges at Crookhaven Heads, Shoalhaven Heads, Greenwell Point, Terara and Nowra provided by NSW Office of Environment and Heritage (distributed through Manly Hydraulics Laboratory); Land use data provided by NSW Department of Environment and Climate Change; LiDAR elevation data provided by Commonwealth of Australia (Geoscience Australia); Discharge measurements of the Shoalhaven River

provided by Water NSW; Water level logger measurements provided by Kerrylee Rogers and Kirti Lal.; Current velocity measurements provided by Errol McLean; Sentinel-1 SAR-imagery provided by Copernicus Sentinel Data; Landsat-8 imagery provided by U.S. Geological Survey; Aerial photographs of the flood extent provided by Shoalhaven City Council.

References

- 5 Bates, P.D., Dawson, R.J., Hall, J.W., Horritt, M.S., Nicholls, R.J., Wicks, J. and Hassan, M.A.A.M. (2005): Simplified two-dimensional numerical modelling of coastal flooding and example applications, *Coast. Eng.*, 52, 793–810, doi: 10.1016/j.coastaleng.2005.06.001., 2005.
Blacka, M.J. and Coghlan, I.R.: River Road Foreshore, Shoalhaven Heads: Assessment of coastal management options, University of New South Wales, Water Research Laboratory Technical Report 2016/21, 1-109, 2017.
- 10 BOM: Bureau of Meteorology. Access to wind and atmospheric pressure data for Port Kembla, available at: <http://www.bom.gov.au/oceanography/projects/abslmp/data/>, last access: 10 October 2016.
Breilh, J.F., Chaumillon, E., Bertin, X. and Gravelle, M.: Assessment of static flood modeling techniques. Application to contrasting marshes flooded during Xynthia (western France), *Nat. Hazards Earth Syst. Sci.*, 13, 1595–1612, doi: 10.5194/nhess-13-1595-2013, 2013.
- 15 Burston, J., Taylor, D. and Garber, S.: Contextualizing the return period of the June 2016 East Coast Low: Waves, water levels and erosion, in: 25th Coastal Conference, Coffs Harbour, available at: <https://www.coastalconference.com/2016/papers2016/J Joanna%20Burston%20Full%20Paper.pdf>, last access: 12 Feb 2016.
Carvalho, R.C. and Woodroffe, C.D.: Rainfall variability in the Shoalhaven River catchment and its relation to climatic indices, *Water Resour. Manage.*, 29, 4963-4976, doi: 10.1007/s11269-015-1098-4, 2015.
- 20 Chaplot, V., Darboux, F., Bourennane, H., Legu  dois, S., Silvera, N. and Phachomphon, K.: Accuracy of interpolation techniques for the derivation of digital elevation models in relation to landform types and data density, *Geomorphology* 77, 126–141, doi: 10.1016/j.geomorph.2005.12.010, 2006.
Chen, W.B. and Liu, W.C.: Modeling flood inundation induced by river flow and storm surges over a river basin, *Water*, 6, 3182-3199, 2014.
- 25 Chow, V.T.: Open channel hydraulics, McGraw-Hill Education-Europe, New York, United States, 1959.
Codiga, D.L. (2011): Unified tidal analysis and prediction using the UTide Matlab functions. Technical report 2011-01. Graduate School of Oceanography, University of Rhode Island, Narragansett, 1-59, available at: <http://www.po.gso.uri.edu/pub/downloads/codiga/pubs/2011Codiga-UTide-Report.pdf>, last access: 20 October 2016.
Deltares: Delft3D-Flow. Simulation of multi-dimensional hydrodynamic flows and transport phenomena, including sediments.
- 30 User Manual, Delft, available at: https://oss.deltares.nl/documents/183920/185723/Delft3D-FLOW_User_Manual.pdf, last access: 4 October 2016, 2014.

- Fisher, K. and Dawson, H.: Reducing Uncertainty in River Flood Conveyance. Roughness Review. DEFRA / Environment Agency Flood and Coastal Defense R&D Program, 2013.
- Flather, R.A.: Storm surges, in: Encyclopedia of Ocean Sciences, edited by: Steele, J. H., Thorpe, S. A. and Turekian, K. K., Academic, San Diego, United States of America, 2882–2892, 2001.
- 5 Gallien, T.W., Schubert, J.E. and Sanders, B.F.: Predicting tidal flooding of urbanized embayments. A modeling framework and data requirements, *Coast. Eng.*, 58, 567–577, doi: 10.1016/j.coastaleng.2011.01.011, 2011.
- Haigh, I., Wadey, M.P., Gallop, S.L., Loehr, H., Nicholls, R.J., Horsburgh, K., Brown, J.M. and Bradshaw, E.: A user-friendly database of coastal flooding in the United Kingdom from 1915–2014, *Sci. Data*, 2, 150021, doi: 10.1038/sdata2015.21, 2015.
- Hinkel, J., Lincke, D., Vafeidis, A. T., Perrette, M., Nicholls, R. J., Tol, R. S. J., Marzeion, B., Fettweis, X., Ionescu, C., and
- 10 Levermann, A.: Coastal flood damage and adaptation costs under 21st century sea-level rise, *P. Natl. Acad. Sci. USA*, 111, 3292–3297, 2014.
- Horsburgh, K. J., and C. Wilson: Tide-surge interaction and its role in the distribution of surge residuals in the North Sea, *J. Geophys. Res.*, 112, 1–13, doi: 10.1029/2006JC004033, 2007.
- IPCC: Climate Change 2014: Synthesis Report. Contribution of Working Groups I, II and III to the Fifth Assessment Report
- 15 of the Intergovernmental Panel on Climate Change, Core Writing Team: R.K. Pachauri and L.A. Meyer (eds.), IPCC, Geneva, Switzerland, 151pp, 2014.
- Jongman, B., Kreibich, H., Apel, H., Barredo, J. I., Bates, P. D., Feyen, L., Gericke, A., Neal, J., Aerts, J. C. J. H., and Ward, P. J.: Comparative flood damage model assessment: towards a European approach, *Nat. Hazards Earth Syst. Sci.*, 12, 3733–3752, doi: <https://doi.org/10.5194/nhess-12-3733-2012>, 2012.
- 20 Kaiser, G., Scheele, L., Kortenhaus, A., Loevholt, F., Römer, H. and Leschka, S.: The influence of land cover roughness on the results of high resolution tsunami inundation modelling, *Nat. Hazards and Earth Syst. Sci.*, 11, 2521–2540, 2011.
- Klerk, W. J., Winsemius, H. C., Verseveld, W. J. V., Bakker, A. M. R., and Diermanse, F. L. M.: The co-incidence of storm surges and extreme discharges within the Rhine-Meuse Delta, *Environ. Res. Lett.*, 10, doi: <https://doi.org/10.1088/1748-9326/10/3/035005>, 2015.
- 25 Leonard, M., Westra, S., Phatak, A., Lambert, M., Van den Hurk, B., McInnes, K., Risbey, J., Schuster, S., Jakob, D. and Stafford-Smith, M.: A compound event framework for understanding extreme impacts, *WIREs Clim. Change*, 5, 113–128, doi: 10.1002/wcc.252, 2014.
- Lesser, G.R., Roelvink, J.A., van Kester, J.A.T.M. and Stelling, G.S.: Development and validation of a three dimensional morphological model, *Coast. Eng.*, 51, 883–915, 2014.
- 30 Lewis, M., Bates, P., Horsburgh, K., Neal, J. and Schumann, G.: A storm surge inundation model of the northern Bay of Bengal using publicly available data, *Q. J. Royal Meteorol. Soc.*, 139, 358–369, doi: 10.1002/qj.2040, 2013a.
- Lewis, M., Schumann, G., Bates, P. and Horsburgh, K.: Understanding the variability of an extreme storm tide along a coastline, *Estuar. Coast Shelf S.*, 123, 19–25, doi: <https://doi.org/10.1016/j.ecss.2013.02.009>, 2013b.

- Lian, J. J., Xu, K., and Ma, C.: Joint impact of rainfall and tidal level on flood risk in a coastal city with a complex river network: a case study of Fuzhou City, China, *Hydrol. Earth Syst. Sci.*, 17, 679-689, doi: <https://doi.org/10.5194/hess-17-679-2013>, 2013.
- Maskell, J., Horsburgh, K., Lewis, M. and Bates, P.: Investigating River–Surge Interaction in Idealised Estuaries, *J. Coastal Res.*, 30, 248-259, doi: <https://doi.org/10.2112/JCOASTRES-D-12-00221.1>, 2013.
- MHL: NSW Tidal Planes Analysis 1990 - 2010 Harmonic Analysis, Manly Hydraulics Laboratory, Report MHL2053, available at: <http://new.mhl.nsw.gov.au/docs/oeh/tidalplanes/mhl2053%20OEH%20tidal%20planes%20analysis%20final%20report.pdf>, last access: 10 October 2016, 2012.
- Miller, B.M., Hawker, K.M. and Badenhop, A.M.: Environmental flow modelling of salinity structure in the Shoalhaven estuary, University of New South Wales, School of Civil and Environmental Engineering, Water Research Laboratory, Technical Report 2006/23, 1-93, 2006.
- Molinari, D., De Bruijn, K., Castillo, J., Aronica, G. T., and Bouwer, L. M.: Review Article: Validation of flood risk models: current practice and innovations, *Nat. Hazards Earth Syst. Sci. Discuss.*, <https://doi.org/10.5194/nhess-2017-303>, in review, 2017.
- Nanson, G.C. and Hean, D.: The West Dapto flood of February 1984: rainfall characteristics and channel changes. *Aust Geogr* 16, 249–258, doi: 10.1080/00049188508702880, 1985.
- Nielsen, P. and Hanslow, D.J.: Wave setup at river entrances, in 12th Australasian Coastal & Ocean Engineering Conference, combined with 5th Australasian Port & Harbour Conference, available at: <http://search.informit.com.au/documentSummary;dn=906525038211316;res=IELENG>, last access: 10 June 2017, 1995.
- Olbert, A., Comer, J., Nash, S. and Hartnett, M.: High-resolution multi-scale modelling of coastal flooding due to tides, storm surges and rivers inflows. A Cork City example, *Coast. Eng.*, 121, 278-296, doi: 10.1016/j.coastaleng.2016.12.006, 2017.
- Onset: Hobo ® U20-001-04 User manual, available at: http://www.onsetcomp.com/files/manual_pdfs/12315-E-MAN-U20.pdf, last access: 5 June 2017.
- Poulter, B. and Halpin, P.N.: Raster modeling of coastal flooding from sea level rise, *Int. J. Geogr. Inf. Sci.*, 22, 167-182, doi: <http://dx.doi.org/10.1080/13658810701371858>, 2008.
- Pugh, D.T.: Changing sea levels: Effects of tides, weather and climate, Cambridge University Press, Cambridge, U.K., 2004.
- Ramirez, J.A., Lichter, M., Coulthard, T.J. and Skinner, C.: Hyper-resolution mapping of regional storm surge and tide flooding. Comparison of static and dynamic models, *Nat. Hazards*, 82, 571–590, doi: 10.1007/s11069-016-2198-z, 2016.
- Resio, D.T. and Westerink, J.J.: Modeling the physics of storm surges, *Phys. Today*, 61, 33–38, doi: 10.1063/1.2982120, 2008.
- Roy, P.S., Williams, R.J., Jones, A.R., Yassini, I., Gibbs, P.J., Coates, B., West, R.J., Scanes, P.R., Hudson, J.P. and Nichol, S.: Structure and function of south-east Australian estuaries, *Estuar. Coast Shelf S.*, 53, 351–384. doi: 10.1006/ecss.2001.0796, 2001.

- Seenath, A., Wilson, M. and Miller, K.: Hydrodynamic versus GIS modelling for coastal flood vulnerability assessment. Which is better for guiding coastal management?, *Ocean Coast Manage.*, 120, 99–109. doi: 10.1016/j.ocecoaman.2015.11.019, 2016.
- Shand, T.D., Goodwin, I.D., Mole, M.A., Carley, J.T., Browning, S., Coghlan, I.R., Harley, M.D. and Preston, W.L.: NSW Coastal Inundation Hazard Study: Coastal Storms and Extreme Waves, University of New South Wales, Water Research Laboratory Technical Report 2010/16, 1-45, 2011.
- Skinner, C.J., Coulthard, T.J., Parsons, D.R., Ramirez, J.A., Mullen, L. and Manson, S.: Simulating tidal and storm surge hydraulics with a simple 2D inertia based model, in the Humber Estuary, U.K., *Estuar. Coast. Shelf S.*, 155, 126–136, doi: 10.1016/j.ecss.2015.01.019, 2015.
- Smith, R.A.E., Bates, P.D. and Hayes, C.: Evaluation of a coastal flood inundation model using hard and soft data, *Environ. Modell. Softw.*, 30, 35-46, doi: 10.1016/j.envsoft.2011.11.008, 2012.
- Svensson, C. and Jones, D.A.: Dependence between sea surge, river flow and precipitation in south and west Britain, *Hydrol. Earth Syst. Sci.*, 8, 973–992, doi: 10.5194/hess-8-973-2004, 2004.
- Svensson, C. and Jones, D.A.: Joint probability: Dependence between extreme sea surge, river flow and precipitation: A study in south and West Britain, R&D Tech. Rep. FD2308/TR3, Dep. Environ. Food and Rural Affairs, London, United Kingdom, 2016.
- Teng, J., Vaze, J., Dutta, D. and Marvanek, S.: Rapid inundation modelling in large floodplains using LiDAR DEM, *Water Resour. Manag.*, 29, 2619-2636, doi: 10.1007/s11269-015-0960-8, 2015.
- Teng, J., Jakeman, A.J., Vaze, J., Croke, B.F.W., Dutta, D. and Kim, S.: Flood inundation modelling: A review of methods, recent advances and uncertainty analysis, *Environ. Modell. Softw.*, 90, 201-216, doi: 10.1016/j.envsoft.2017.01.006, 2017.
- Torres, J.M., Bass, B., Irza, N., Fang, Z., Proft, J., Dawson, C., Kiani, M. and Bedient, P.: Characterizing the hydraulic interactions of hurricane storm surge and rainfall–runoff for the Houston–Galveston region, *Coast. Eng.*, 106, 7–19, doi: 10.1016/j.coastaleng.2015.09.004, 2015.
- Tsakiris, G.: Flood risk assessment: concepts, modelling, applications, *Nat. Hazards Earth Syst. Sci.*, 14, 1361-1369, doi: 10.5194/nhess-14-1361-2014, 2014.
- Umitsu, M., Buman, M., Kawase, K. and Woodroffe, C.D.: Holocene paleoecology and formation of Shoalhaven River deltaic-estuarine plains, southeast Australia, *Holocene*, 11, 407-418, doi: 10.1191/095968301678302841, 2001.
- Van de Sande, B., Lansen, J. and Hoyng, C.: Sensitivity of coastal flood risk assessments to digital elevation models, *Water*, 4, 568–579, doi: 10.3390/w4030568, 2012.
- Vitousek, S., Barnard, P.L., Fletcher, C.H., Frazer, N., Erikson, L. and Storlazzi, C.D.: Doubling of coastal flooding frequency within decades due to sea-level rise, *Sci. Rep.*, 7, 1-9, doi: 10.1038/s41598-017-01362-7, 2017.
- Vousdoukas, M.I., Voukouvalas, E., Mentaschi, L., Dottori, F., Giardino, A., Bouziotas, D., Bianchi, A., Salamon, P. and Feyen, L.: Developments in large-scale coastal flood hazard mapping, *Nat. Hazards Earth Syst. Sci.*, 16, 1841–1853, doi: 10.5194/nhess-16-1841-2016, 2016.

- Wahl, T., Jain, S., Bender, J., Meyers, S.D. and Luther, M.E.: Increasing risk of compound flooding from storm surge and rainfall for major US cities, *Nature Clim. Change*, 5, 1093–1097, 2015.
- Williams, J., Horsburgh, K.J., Williams, J.A. and Proctor, R.N.F.: Tide and skew surge independence: New insights for flood risk, *Geophys. Res. Lett.*, 43, 6410–6417, doi: 10.1002/2016GL069522, 2016.
- 5 Woodroffe, C.D., Buman, M., Kawase, K. and Umitsu, M.: Estuarine infill and formation of deltaic plains, *Shoalhaven River, Wetlands*, 18, 72-84, 2000.
- Zheng, F., Westra, S. and Sisson, S.A.: Quantifying the dependence between extreme rainfall and storm surge in coastal zones, *J. Hydrol.*, 505, 172-187, doi: 10.1016/j.jhydrol.2013.09.054, 2013.
- Zheng, F., Westra, S., Leonard, M. and Sisson, S.A.: Modeling dependence between extreme rainfall and storm surge to
10 estimate coastal flooding risk, *Water Resour. Res.*, 50, 2050–2071, doi: 10.1002/2013WR014616, 2014.