

Global assessment of rural-urban interface in Portugal related to land cover changes

Marj Tonini¹, Joana Parente², Mario Pereira^{2,3}

¹Institute of Earth Surface Dynamics (IDYST), Faculty of Geosciences and Environment, University of Lausanne, Lausanne, 1000, Switzerland

²Centro de Investigação e de Tecnologias Agro-Ambientais e Biológicas (CITAB), Universidade de Trás-os-Montes e Alto Douro (UTAD), Vila Real, 5000-801, Portugal

³Instituto Dom Luiz (IDL), Faculdade de Ciências da Universidade de Lisboa, Portugal

Correspondence to: Marj Tonini (marj.tonini@unil.ch)

Abstract. The rural-urban interface (RUI), known as the area where structures and other human development meet or intermingle with wildland and rural area, is at present a central focus of wild fire policy and its mapping is crucial for wildfire management and impact. In the Mediterranean basin, the majority of fires are caused by humans and fire risk is particularly high in the proximity of infrastructures and of rural/wildland areas. RUI's extension changes under the pressure of environmental and anthropogenic factors, such as urban growth, fragmentation of rural areas, deforestation and, more in general, land use/land cover changes (LULCC). As other Mediterranean countries, Portugal experienced significant LULCC in the last decades in response to migration, rural abandonment, ageing of population, and trends associated to the high socioeconomic development. In the present study, we analysed LULCC occurred in this country in the 1990-2012 period with the main objective of investigating how these changes affected RUI's evolution. Moreover, a qualitative and quantitative characterization of burnt areas within the RUI in relation the LULCC was performed. Obtained results disclose important LULCC which spatial distribution is far from uniform within the territory. A significant increase in artificial surfaces was registered nearby the main metropolitan communities of the northwest and littoral-central and southern regions, whilst the abandonment of agricultural land nearby the inland urban areas led to an increase of uncultivated semi-natural and forest areas. Within agricultural areas, heterogeneous patches suffered the greatest changes and were the main contributors to the increase of urban areas; moreover, this land cover class, together with forests, resulted to be highly affected by wildfires in terms of burnt area. Finally, from this analyses it appears that during the investigated period RUI increased in Portugal more than two thirds, while the total burnt area decreased one third: nevertheless, burnt area within RUI doubled, which emphasizes the significance of RUI monitoring for land and fire managers.

1 Introduction

Mediterranean area is particularly affected by wildfires, mainly as consequence of its type of climate and vegetation cover fire proneness (Pellizzaro et al., 2012; Amraoui et al., 2015). In the European Mediterranean countries, fire incidence has dramatically increased in the last decades and the average total burnt area (hereafter, BA) has quadrupled since the 60's (San-Miguel-Ayanz et al., 2012), mainly due to changes in climate and land use (Moreira et al., 2011; Ferreira-Leite et al., 2016). Portugal stands out from this group of countries since it counts the highest number of wildfires and has been the third most affected country in terms of BA in the last three decades (Pereira et al., 2014; San-Miguel-Ayanz et al., 2016). On average, about 95% of wildfires with known causes in Europe during the period 1995 to 2010 (corresponding to about 70% of the total number of recorded events) were associated to human activities (Ganteaume et al., 2013), while only a small percentage of fires (e.g. 1%

in Portugal, 5% in Spain) were naturally caused by lightings (Mateus and Fernandes, 2014; Vilar et al., 2016). Wildfires have long been considered a dynamic ecological factor and an efficient agricultural and landscape management tool, but more recently they are increasingly considered a hazard (Fernandes and Botelho, 2003; Bond and Keeley, 2005; Hardy, 2005; Van Wagendonk, 2007; Pyke et al., 2010; Moreno and Oechel, 2012), which has motivated governments to implement measures for fires prevention, monitoring and mapping.

A key factor in this regards is to study the spatial and temporal distribution of wildfires into a given area, which, being influenced by the surrounding socio-economic and environmental factors, is far to be homogeneously distributed. For example a clustered pattern was discovered for Portugal, with fires' hot spots concentrated in the north-west and center regions, while the southern area presented lower densities of wildfires (Pereira et al., 2015; Tonini et al., 2017). Urban sprawl also affect the spatio-temporal pattern of these hazardous events and makes it difficult to define a boundary between human developments and rural areas, in order to better protect this interface where wildfires are more likely to occur. The modern urban landscape in Europe has a typical star-shaped spatial pattern (Antrop, 2000) with wedge of unchanged countryside persisting between lobes of urban development (Antrop, 2004). In this context populations and activities described either as "rural" or "urban" are closely linked and their distinction is often arbitrary (Tacoli, 1998). In the Iberian Peninsula, the diffuse urban expansion along radiating access roads connecting the center to commercial/industrial zones and isolated housing, as well as the growth of peri-urban centers in previously rural areas, leaves gaps in suburban/exurban space of urban agglomerations (Trigal, 2010). Here the expansion and reconfiguration of urban and metropolitan areas comprise the processes of sub-urbanisation and peri-urbanisation, mainly of coastal regions and, in the interior, of agricultural areas (Trigal, 2010). Land use changes are at the origin of landscape patterns and dynamics and have a strong influence on forest fires (Silva et al., 2011). On the one hand, each vegetated land cover type, such as agricultural, natural and semi-natural vegetation cover, has a specific fire proneness depending on the differences in vegetation structure, moisture content and fuel load composition (Barros and Pereira, 2014; Oliveira et al., 2014; Pereira et al., 2014). Further, fire occurrence affects landscape dynamics by changing the vegetation structure and the soil processes according to the fire adaptation of each ecosystem (Viedma, 2008; Pausas et al., 2009).

Population and urban areas significantly increased in Europe during the late XX century, which helps to understand the rapid land cover and land use changes (LULCC) (Noronha Vaz et al., 2012). In the European Mediterranean countries, LULCC are mainly caused by the increasing migration to urban centers at cost of the abandonment of rural areas, and by the expansion of costal tourism (Alodos et al., 2004; Tedim et al., 2016). One consequence is the urbanization, defined as the process involving the transformation of rural and natural landscape into urban and industrial areas, caused by the interaction of very different factors and largely influenced by communication, accessibility and mobility (Antrop, 2000). The dynamic conversion among rural and urban spaces can become extremely complex (Strubelt and Deutschland, 2001): urbanization generates the centralization of certain area by changing the land use, population density, economical activities and transportation network. This complex process is at the origin of the abandonment of remote rural areas with poor accessibility, which allows the expansion of wild low vegetation and forest (Antrop, 2004). Specifically, the abandonment of low-intensity agricultural lands and grazing practices caused the increase of forest cover and scrubland vegetation (Poyatos et al., 2003; Millington et al., 2007).

Significant LULCC occurred in Portugal in the recent period. The urbanization of coastal areas in the country occurred in concomitance with the abandonment of agricultural land in marginal areas and seemed to prevail between 1990 and 2000 while, in the later period (2000-2006), the intensification of agriculture in areas where irrigation was available was a predominant process (Van Doorn and Bakker, 2007; Diogo and Koomen, 2012). Pereira et al. (2014) observed that among the southern

European countries, in the period 2000-2006 Portugal registered the highest rates of land use change marked by a significant increase in artificial surfaces and sclerophyllous vegetation and a decrease in forest area and natural grasslands, because of rural abandonment, urbanization and wildfires.

5 The interface between the wildland and the urban space, called Wildland-Urban Interface (WUI), has been deeply investigated by researchers and fire managers in the last decades. The United States Department of Agriculture (USDA), defined the WUI as the area “where humans and their development meet or intermix with wildland fuels” (Stewart et al., 2007); here fires can spread readily among vegetation fuels and urban structures. Anthropogenic features, such as the distance to roads and houses, negatively influence the probability of forest fire occurrence, while the population density positively affects it (Haight et al., 2004; Radeloff et al., 2005; Stewart et al., 2007; Hammer et al., 2009; Lampin-Maillet et al., 2010; Conedera et al., 2015), and these factors are broadly considered to elaborate WUI maps. Urbanization and the consequent abandonment of rural areas caused the expansion of this interface, increasing the probability that wildfires affect houses and infrastructures (Theobald and Romme, 2007; Zhang et al., 2008). There are strong evidences that the expansion of the urban and WUI area increased the fire density and related risk (Lampin-Maillet et al., 2011; Fox et al., 2015; Gallardo et al., 2015; Viedma et al., 2015), the cost of houses protection from fire (Pellizzaro et al., 2012) and have an impact on biodiversity and ecosystems (Radeloff et al., 2005). Researchers developed several geospatial models for defining and mapping the WUI, taking into account all the above-mentioned factors. In Europe, Lampin-Maillet et al. (2010) proposed an approach tested in southern France and based on the combination of four types of buildings configuration and three classes of vegetation structure. Following this model, Bouillon et al. (2012) developed WUImap, a software tool for mapping WUI in the Mediterranean region successfully applied in southeastern France, eastern Spain and Sardinia in Italy. In the Alpine context, geospatial approaches to map the WUI were developed in Switzerland by Conedera et al. (2015) and in France by Fox et al. (2015). Pellizzaro et al. (2012) characterized and mapped the WUI in Sardinia, Italy, using temporal steps of about 10 years from 1954 and 2008, and found an increase of the WUI’s extension. Other studies focused on additional aspects related to the WUI, namely hazard/risk, vulnerability and fire risk management in Spain (Badia et al., 2011; Galiana-Martin et al., 2011; Herrero-Corral et al., 2012), fuel and fire modelling in France (Cohen et al., 2003; Pugnet et al., 2013). The majority of these researches were developed locally and performed at house-spatial-scale or for small regions within each country.

The active rural-urban conversion processes and the associated landscape changes, largely documented in the European context, induced to reconsider the WUI concept. In this respect, recent studies defined the Rural-Urban Interface (RUI) as an alternative to the WUI, to highlight the importance of including the rural areas, and identified the RUI as the most fire prone areas in Mediterranean countries (Badia-Perpinyà and Pallares-Barbera, 2006; Catry et al., 2010; Moreira et al., 2009). In the present study, authors investigated the RUI in Portugal: the main objective was to analyze changes in land use/land cover occurred in this country in the period 1990-2012 and to assess their impact on RUI’s evolution. Moreover, a qualitative and quantitative characterization of the burnt areas within the RUI in relation to the LULCC was performed. Finally, this research provides a first attempt to map the RUI’s extension and evolution at national level for the entire continental Portugal.

2 Study area

35 Continental Portugal (c.a. 90,000 km²) is located in the southwest of Iberian Peninsula, bathed by the Atlantic Ocean on the south and west coast and bounded by Spain at north and east. According to the census data, the population was about 10.6 million in 2011 and decreased to 10.3 million in 2017; its distribution displays a much higher density in the northwestern and

southern coastal areas as well around the major cities (Fig. 1). Tagus river divides the country into two regions of approximately the same area but very different in terms of several biophysical and human drivers (Fig. 2). The north region is characterized by a temperate climate, with dry and warm summer, altitude ranging from sea level to about 2000 m and mean watercourse density of about 0.65 km/km². According to CORINE Land Cover (hereafter, CLC) inventory 2012 (EEA, 2016), 54% of north's area is covered by forests and scrublands, 40% is used for agriculture and about 5% is occupied by artificial surfaces (Fig. 2). The region south of Tagus river is characterized by temperate climate with dry and hot summer, low altitude range (between sea level and about 1000 m), and mean watercourse density of about 0.58 km/km². According to CLC 2012 inventory, 56% of this territory is occupied by agricultural areas, 40% by forest and semi-natural areas, and only 2% by artificial surfaces (Fig. 2).

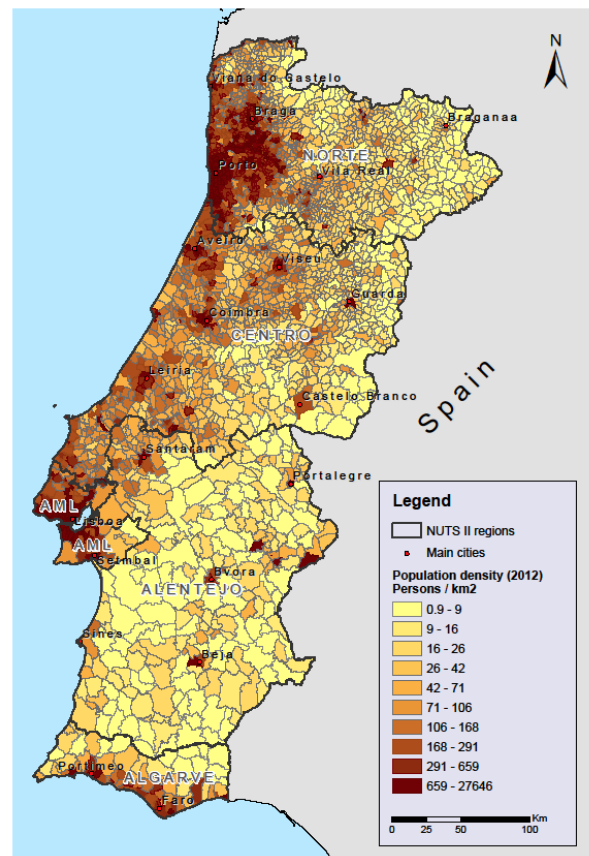


Figure 1 - Population density at parish level (INE, 2012) in the mainland Portugal, with the location of the of the major cities. NUTS refers to regions according to Nomenclature of Territorial Units for Statistics level II (Eurostat, 2017; Santos, 2014).

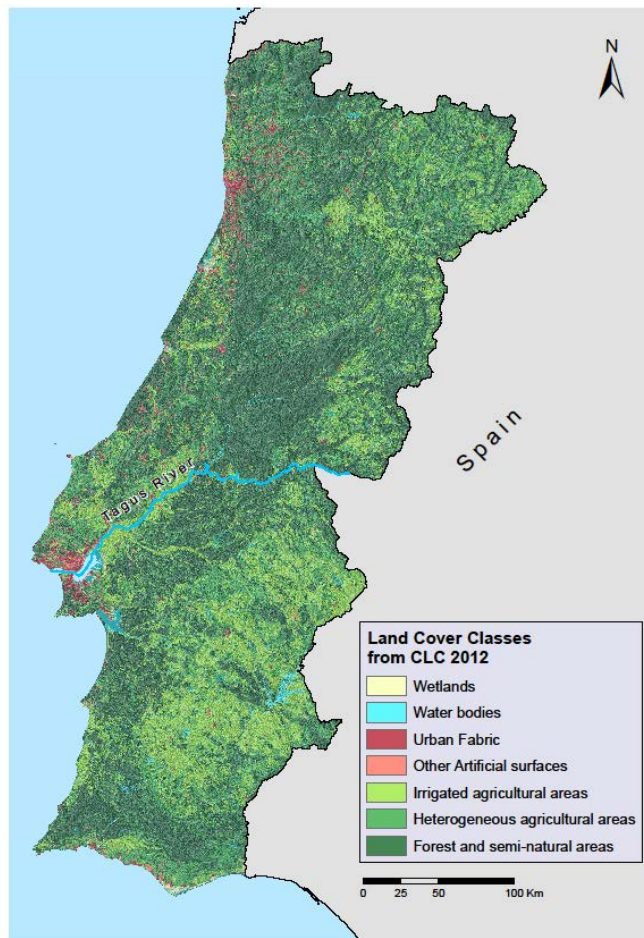


Figure 2 –Land cover of mainland Portugal based on the second level of CORINE land cover inventory 2012 (EEA, 2016)

3 Data and methodology

Wildfires digital data came from the National Mapped Burned Area dataset (NMBA), provided by the Portuguese Institute of Conservation of Nature and Forests (ICNF) for the period 1990-2015. The Institute of Agronomy (*Instituto Superior de Agronomia*, ISA) produced the official database in the earlier years (1975 to 1989) and finally the official National fire database covers the 1975-2015 period and comprises about 49,000 fire events for a total BA of 4,430,000 ha (Oliveira et al., 2012; Barros and Pereira, 2014). The annual fire perimeter maps resulted from semi-automatic supervised image classification (Gorte, 1999) performed with classification and regression trees algorithm of Breiman et al., (1984) on late summer-autumn Thematic Mapper/Enhanced Landsat satellite imagery. Technological improvements of satellite sensors allowed acquiring and processing over time higher-resolution images with an increasing accuracy from the initial 30 hectares to 5 hectares after 1984, and even higher after 2005. To ensure the accuracy of the data, results were compared against field statistics gathered on the ground by the National Forest Authority and by the National Civil Protection Authority. For each fire record, the dataset comprises the BA (perimeter map) and the year of occurrence.

Land use/land cover's information came from the CLC inventory provided by European Environment Agency (EEA). CLC is delivered as cartographic product, both in raster (i.e. a regular grid of cells) and in vector-shapefile (as point, line and polygons) format. The minimum cartographic unit is of 25 ha (500 by 500 m) with a geometric accuracy of 100 m minimum and a thematic

accuracy over 85% (EEA, 1994). CLC nomenclature is a three-level hierarchical classification system with 44 classes at the third and most detailed level (Table 1). The five more general classes for the first level are the following: Artificial Surfaces (AS), Agricultural Areas (AA), Forest and Semi-Natural Area (FSNA), Wetlands, Water bodies. CLC inventories are currently available for four periods (1990, 2000, 2006, 2012) with a minimum time consistency of plus/minus one year. CLC was already
5 used for land-use change and urban dynamics studies in Portugal (Noronha Vaz et al., 2012; Pereira et al., 2014). To identify and detail the major habitats/plant communities/vegetation types corresponding to each CLC class in Portugal, we employed the Soil Use and Occupancy Chart (*Carta de Uso e Ocupação do Solo*, COS) provided by the Portuguese Directorate-General of the Territory (*Direção-Geral do Território*, DGT). DGT is the national public body responsible for pursuing public policies for land use and town planning. We compared CLC2006 with COS2007v2.0 because these are the closest inventories (in time) within the
10 study period. In addition, COS2007v2.0 presents improvement from the thematic and geometric point of view (DGT, 2016; Sarmento et al., 2016): it includes 225 classes (32 more than the initial version) at the most detailed level, distributed over 5 hierarchical levels.

In the present study, the four CLC inventories were employed to analyze LULCC at different levels and to map RUI at different periods, according to the methodology described below.

15 The first analysis consisted in investigating LULCC within the entire the study period (i.e. from 1990 to 2012). This allowed elaborating the map of changes showing the transitions among the five more general classes (CLC first level hierarchy) and, more in detail, to quantify gained and lost areas with reference to both the first and the second level hierarchy of CLC. Moreover, the difference between gains and losses within each class divided by the total area covered by the specific class in the later period (i.e. the net change) was computed and the result expressed in percentage.

20 RUI was then mapped for each period (1990, 2000, 2006 and 2012) using a geospatial approach designed to extract the area of intersection between a buffer around the AS and the area resulting from the sum of the FSNA plus the Heterogeneous Agricultural Areas (HAA, a sub-level of AA). Different buffer width from 100 m to 2 km were tested: finally, we adopted a buffer width of 1 km, corresponding to two times the spatial resolution of CLC inventories. This value is in line with values applied in other countries for WUI mapping (Radeloff et al., 2005; Vilar et al., 2016) and, in the same time, is enough large to
25 avoid bias in the results. The others agricultural areas (i.e. arable lands, permanent crops and pastures) were not included in the RUI definition since these vegetated land covers are usually well managed, mostly irrigated and frequently constitute an obstruction to fire spread. Similarly, San-Miguel-Ayanz et al., (2012) suggested that HAA have to be considered in the definition and quantification of the RUI in Portugal, together with FSNA.

The geocomputation which allowed producing the RUI's maps was performed under ArcGIS™ software environment. Namely,
30 the geoprocessing workflows was implemented into a Model Builder (Fig. 3), a specific application used to create, edit and manage models, meant as workflows that string together sequences of geoprocessing tools (e.g. selection, buffer, intersect), feeding the output of one tool into another tool as input (i.e. the raster or vector digital data). Finally, we analyzed how each land cover class (in respect of the third level hierarchy of CLC) was affected by wildfires in terms of BA for each investigated period within the RUI. To this end, polygons defining the BA registered at each CLC_year plus/minus one year (1989-1991, 1999-2001,
35 2005-2007, 2011-2013) were merged together and the resulting BA polygons were clipped over the corresponding RUI map. The resulting outputs, representing the BA within the RUI cumulated over three years around each investigated period, were finally overlapped with the CLC source map.

Level 1	Level 2	Level 3
1 Artificial surfaces	11 Urban fabric	111 Continuous urban fabric
		112 Discontinuous urban fabric
	12 Industrial, commercial and transport units	121 Industrial or commercial units
		122 Road and rail networks and associated land
		123 Port areas
		124 Airports
	13 Mine, dump and construction sites	131 Mineral extraction sites
		132 Dump sites
		133 Construction sites
	14 Artificial, non-agricultural vegetated areas	141 Green urban areas
		142 Sport and leisure facilities
2 Agricultural areas	21 Arable land	211 Non-irrigated arable land
		212 Permanently irrigated land
		213 Rice fields
	22 Permanent crops	221 Vineyards
		222 Fruit trees and berry plantations
		223 Olive groves
	23 Pastures	231 Pastures
		241 Annual crops associated with permanent crops
	24 Heterogeneous agricultural areas	242 Complex cultivation patterns
		243 Land principally occupied by agriculture, with significant areas of natural vegetation
		244 Agro-forestry areas
3 Forest and semi natural areas	31 Forests	311 Broad-leaved forest
		312 Coniferous forest
		313 Mixed forest
	32 Scrub and/or herbaceous vegetation associations	321 Natural grasslands
		322 Moors and heathland
		323 Sclerophyllous vegetation
		324 Transitional woodland-shrub
	33 Open spaces with little or no vegetation	331 Beaches, dunes, sands
		332 Bare rocks
		333 Sparsely vegetated areas
		334 Burnt areas
		335 Glaciers and perpetual snow
4 Wetlands	41 Inland wetlands	411 Inland marshes
		412 Peat bogs
	42 Maritime wetlands	421 Salt marshes
		422 Salines
		423 Intertidal flats
5 Water bodies	51 Inland waters	511 Water courses
		512 Water bodies
	52 Marine waters	521 Coastal lagoons
		522 Estuaries
		523 Sea and ocean

Table 1: CORINE Land Cover (CLC) nomenclature. Numbers on the left represent the CLC code. (Source: EEA, 2016)

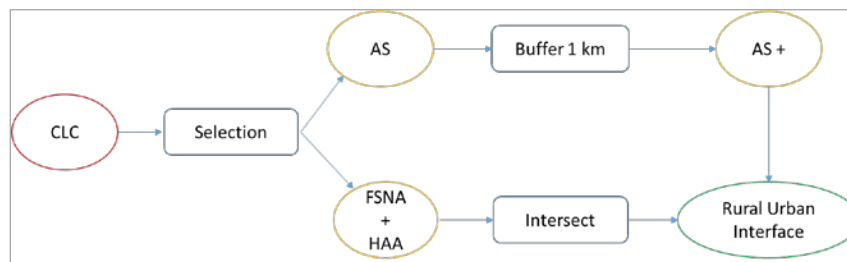


Figure 3 - Framework implemented in the Model Builder (ArcGIS™) to map the rural-urban interface. CLC=CORINE land cover; AS = artificial surfaces; FSNA = forest and semi natural areas; HAA = Heterogeneous agricultural areas.

4 Results

4.1 LULC change analysis

The analysis of main changes in the area occupied by the first level hierarchy classes between CLC1990 and CLC2012 allowed to visualize the main transitions occurred within the entire investigated period (Fig. 4) and thus to have an overview of the LULCC occurred in Portugal. It resulted that main transitions occurred between vegetated areas (i.e. AA and/or FSNA) to artificial surfaces (AS) and between FSNA and AA in both directions. AS increased mainly nearby the main metropolitan communities of the northwest and littoral central and southern regions. A transition from vegetated areas (AA and FSNA) to AS is also visible in centre-north and is probably due to the intensification of the main road network to connect the emergent inhabited rural-area. The conversion from FSNA to AA and vice-versa appeared to be an active and dynamic process prevailing in the southern half of the country, but it was revealed also in the inner northern region. Figure 5 shows the areas gained and lost for each CLC first-level class and the net percentage of changes, computed relatively to the total area of each class in the later land cover. The main changes in terms of surface were registered by AS, which increased 165×10^3 ha, and AA, which decreased 184×10^3 ha, but in terms of net percentage of change the increase of AS was about 50%, while AA decreased only 4.4%. The two classes which mainly contributed to the increase in AS were AA, with 110×10^3 ha, and FSNA, with 50×10^3 ha.

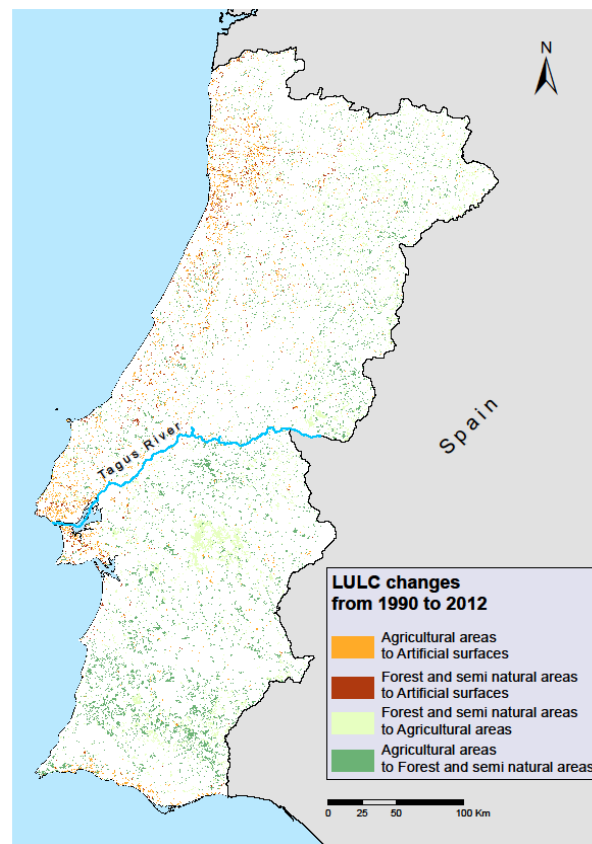


Figure 4 – Map of land cover/land use transition from 1990 and 2012, evaluated considering the first level hierarchy of CLC 1990 and CLC 2012

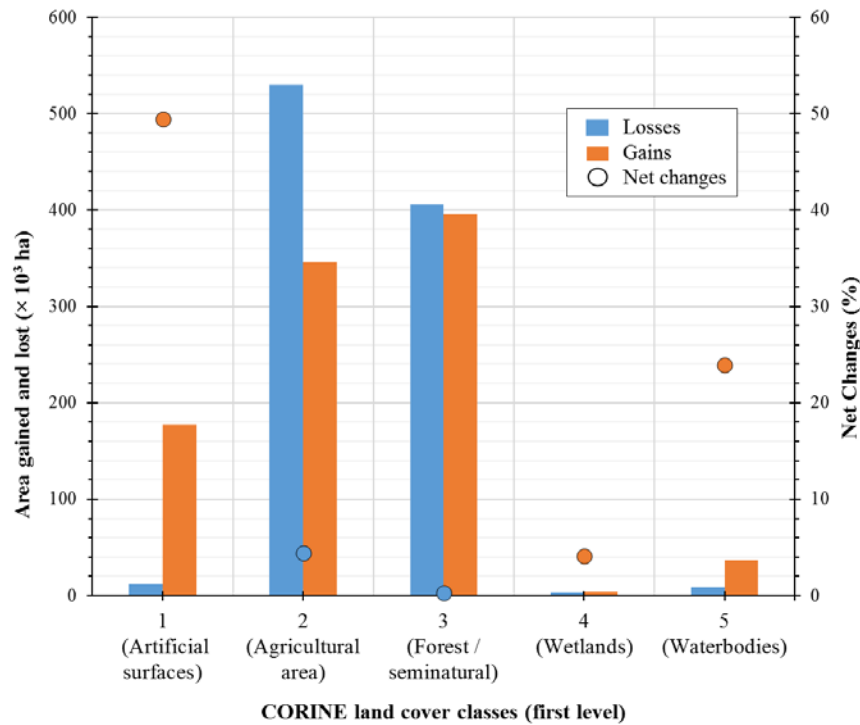


Figure 5 – Area lost and gained from 1990 to 2012 for each CORINE land cover classes, considering the first level hierarchy. Net percentage changes were computed relatively to the total area of each class in the later land cover.

- 5 A more detailed analyses was carried out to investigate changes from 1990 to 2012 occurred within classes considering the second level hierarchy. Figure 6 shows that the majority of the CLC classes (level 2, Table 1) displayed important net changes in terms of relative gains and losses compared with values for the same classes in the later period. Scrub and/or herbaceous vegetation associations (code 32) registered a net gain of about 520×10^3 ha (+24%), while the Forest area (code 31) decreased about 460×10^3 ha (-23%). Arable land (code 21) was the only AA registering an important negative net change of -225×10^3 ha (-20%).
- 10 Among AS, Urban fabric (code 11) significantly increased 110×10^3 ha (45%), and, in terms of net percentage of change by class, all the other three AS sub-levels, including Industrial/commercial and transport unit (code 12), Mine/dump and construction sites (code 13), Artificial/non-agricultural vegetated areas (code 14), increased more than half.

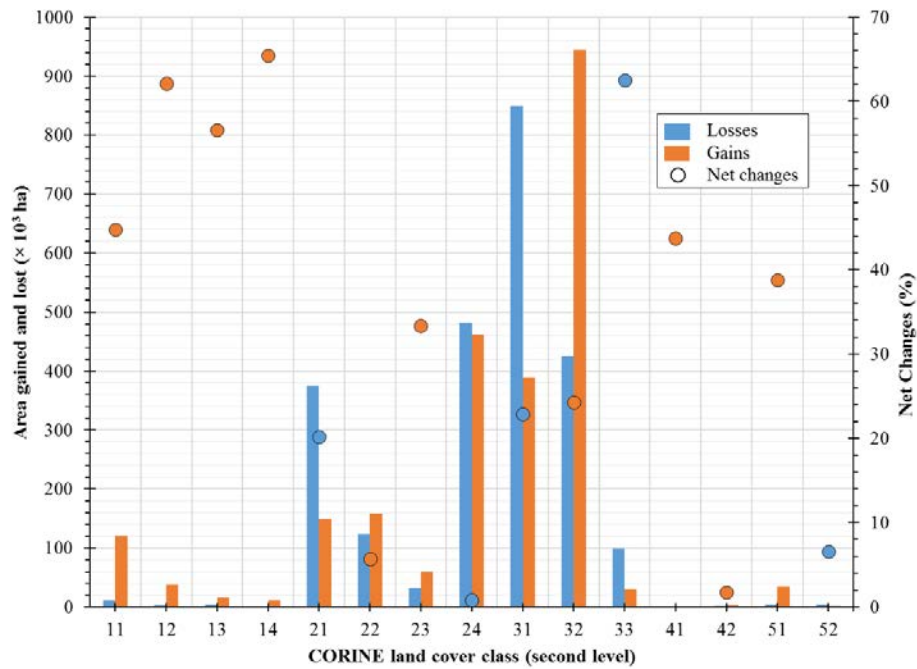


Figure 6 – Area lost and gained from 1990 to 2012 for each CORINE land cover classes, considering the second level hierarchy. Net percentage changes were computed relatively to the total area of each class in the later land cover.

The bar graph of the contributions to net changes in the AS sub-levels (Fig. 7) shows that Urban fabric (orange bars), which includes buildings, roads and artificially surfaced areas, grew at the expense almost exclusive of HAA (code 24). On the other hand, the increase of Industrial commercial and transport (blues bars) was mainly due to the decrease of Forests (code 31), HAA (code 24) and Scrub and/or herbaceous vegetation associations (code 32).

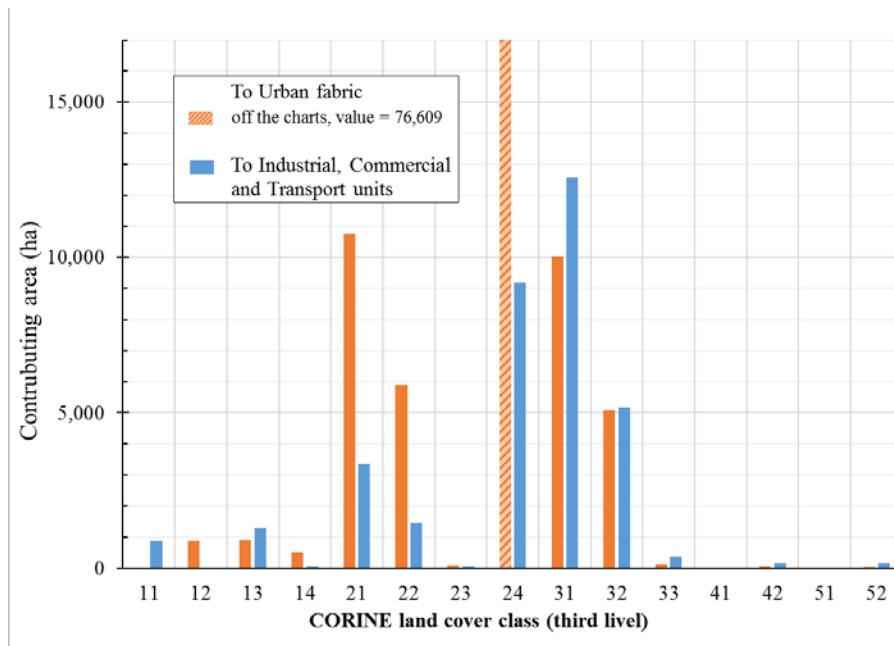


Figure 7 – Contribution to the net changes from 1990 to 2012 of “Urban fabric” (orange bars) and “Industrial, commercial and transport” (blue bars) from the other CLC sub-levels

4.2 Spatial distribution and characterization of burned areas

Almost all the CLC third-level classes belonging to FSNA (code 3) were affected by wildfires in terms of burned area (Table 2), with the Transitional woodland-shrub (code 324) and Mixed forest (code 313) as the first and second more damaged classes. This trend was similar in all the four investigated frame-periods, as highlighted in Fig. 8, where the same results are expressed in percentage for each CLC classes considering only the areas within the RUI, as the ratio of BA over the total BA for the entire frame period. The peak of BA in Transitional woodland-shrub (code 324) equals to about 43×10^3 ha in the period 2005-2007, compared with about 15×10^3 ha in 2011-2013, 14×10^3 ha in 1999-2001 and 6×10^3 ha in 1989-1991. It also emerges that the three over four sub-levels of HAA (code 243, 241, 242) are highly affected by wildfires, thus confirming the need of including HAA in the RUI's definition.

CLC code	CLC classes	BA within RUI (ha)			
		1989-1991	1999-2001	2005-2007	2011-2013
324	Transitional woodland-shrub	6086.31	8608.30	43274.65	14638.53
313	Mixed forest	4368.85	3282.67	4059.12	6763.27
312	Coniferous forest	3104.72	2055.41	1501.67	3572.43
322	Moors and heathland	1835.03	2329.69	3508.50	3492.56
243*	Land principally occupied by agriculture, with significant areas of natural vegetation	1535.36	1407.71	3252.81	3320.70
311	Broad-leaved forest	1144.72	1081.55	1299.13	4234.28
241*	Annual crops associated with permanent crops	698.75	253.85	996.29	930.20
242*	Complex cultivation patterns	677.27	688.53	1682.33	1123.00
321	Natural grasslands	638.39	1019.65	1180.63	1072.76
323	Sclerophyllous vegetation	562.68	477.15	1386.21	314.90
334	Burnt areas	396.87	640.29	4251.27	1691.23
333	Sparsely vegetated areas	321.85	761.01	1557.09	1403.56
332	Bare rocks	123.84	157.20	99.47	11.32
244*	Agro-forestry areas	17.25	32.19	93.43	185.92
331	Beaches, dunes, sands	5.22	2.65	2.65	0.99
(*) Heterogeneous agricultural areas					

10

Table 2 – Classes of land use, as defined by the third level hierarchy of the CORINE Land Cover (CLC), affected by forest fires expressed in terms of Burned Area (BA) within the Rural Urban Area (RUI) during three investigated frame periods.

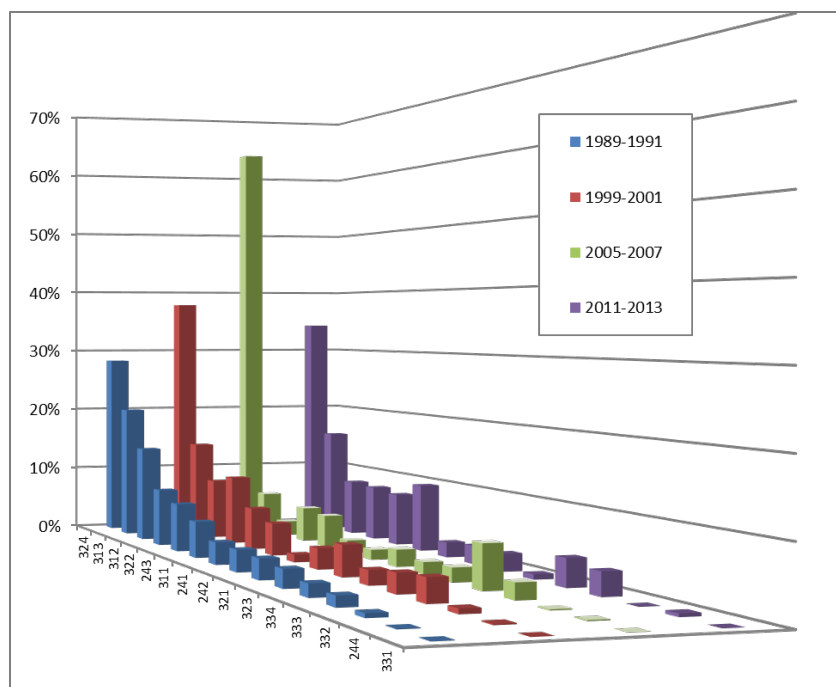


Figure 8 – Classes of land use, as defined by the third level hierarchy of the CORINE Land Cover, affected by wildfires expressed in percentage as the ratio of BA affecting each CLC classes over the total BA for each frame period.

5 4.3 RUI map

The classes FSNA and HAA were considered in the present study to describe the flammable rural area which, intermingling with the urban area, defines the RUI. Thus, RUI maps arose from the zone of intersection between the sum of HAA plus FSNA and an enhanced area around AS (Fig.3). The result was a zone of interface evolving in space and in time due to LULCC (Fig. 9). Analyzing the period 1990-2012, the increase of RUI was more active in the north-west and along the coast, where the transition from HAA to Urban fabric was particularly intense. This evolution was mainly due to the urban growth and to the intensification of the road network.

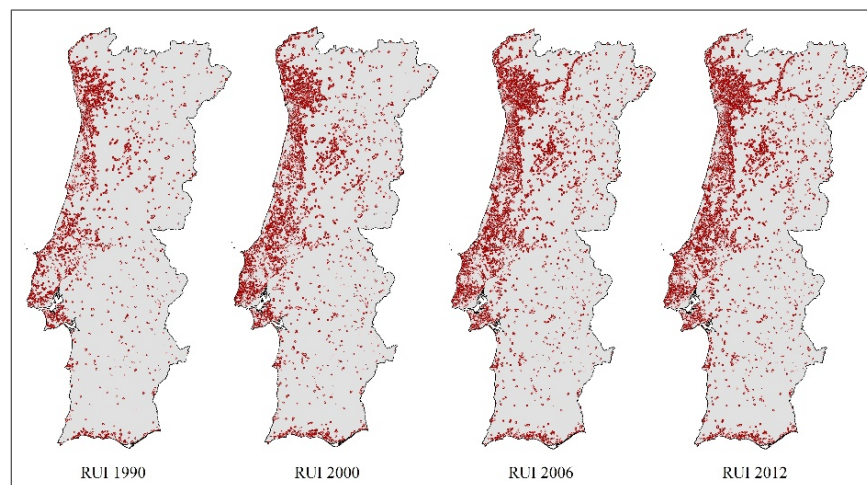


Figure 9 – Maps of the rural-urban interface (RUI) in Portugal estimated for the different periods of investigation, and corresponding to the available CORINE Land Cover inventories (1990, 2000, 2006, 2012)

The total size of the RUI, the fraction of BA within the RUI (BAR) and the total BA (TBA) were computed (Fig. 10). It resulted that RUI increased from about 780×10^3 ha in 1990 up to about 1310×10^3 ha in 2012 following a power-law ($RUI = 776310 \cdot \text{year}^{0.1686}$, $R^2 = 0.99$). Moreover, we computed the contribution both to the RUI and to the BA within the RUI (BAR) of each CLC class that make up the RUI, namely HAA (code 24), Forests (code 31), Scrub and/or herbaceous vegetation associations (code 32), and Open spaces with little or no vegetation (code 33). Results can be summarized as follows (Fig. 10):

- (a) the relative contribution of the those four CLC classes to the RUI increases in time at approximately the same rate;
- (b) HAA (code 24) is the CLC class with the largest area within the RUI (~50%);
- (c) in terms of relative BA within the RUI (BAR), the most affected class is the Scrub and/or herbaceous vegetation associations (code 32), followed by Forest (code 31), HAA (code 24) and then Open spaces with little or no vegetation (code 33). The total extent of the BA (TBA) fluctuated, with a maximum in 1990 (about 500×10^3 ha) followed by 2006 (~ 460×10^3 ha), while in 2000 and 2012 its value was lower and equal to about 310×10^3 ha. The portion of BA included within the RUI (RBA), expressed as percentage over the total BA, tends to increase in time, passing from 4% and 7% in 1990 and 2000 to 15% and 14% in 2006 and 2012, respectively.

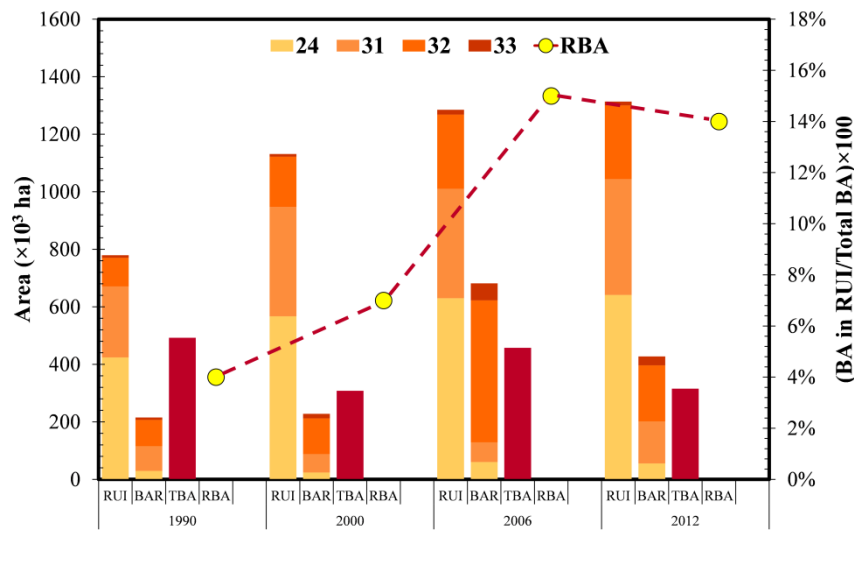


Figure 10 – Evolution of the absolute area of the rural-urban interface (RUI), burnt area within the RUI (BAR), total burnt area (TBA), and relative burnt area in the RUI (RBA, as %), for each investigated period (1990, 2000, 2006, 2012).

5 Discussion

The LULCC analysis performed in the present study indicates that from 1990 to 2012 AS (code 1) globally increased in Portugal about 50% (Fig. 5). This growing process is in good agreement with previous findings of other authors (Tavares et al., 2012; Marques et al., 2014; Meneses et al., 2014; Oliveira et al., 2017). Moreover, the present study confirms that the urban growth process in Portugal (quantified as changes in AS) was principally caused by the transition from HAA (code 24) and secondly from FSNA (code 3) (Fig. 4 and Fig. 7). The urban development mainly affected the south coastal regions, mostly in the area between Portimão and Faro, and was particularly strong nearby to the main metropolitan communities of the northwest and littoral centre, namely Porto and Lisbon (Fig. 4 and Fig. 1). Silva and Clarke (2002) described the characteristics and the recent

intense urban growth of the metropolitan area of Porto (MAP) and Lisbon (MAL) associated with the economic growth in the end of the XX century (Fernandez-Villaverde et al., 2013). More in details, MAL urban pattern is characterized by a mixture of urban surfaces and large farmlands, an intense urbanization along with train lines and main roads, and the emergence of tertiary centres. On the other hand, MAP is described by scattered urbanization and dispersed settlements, towns and rural villages

5 surrounded by mountains, within small patches of intensive agriculture and pine forests in a steep slope topography. The decline of the rental market in the country lead to the degradation of old urban areas and the increase of constructions in the immediate periphery of Lisbon, while in the north new houses were built by the owners in their small plots of land, promoting a more dispersed urban pattern and an irregular spatial growth (Silva and Clarke, 2002). The dispersion of the population and of its activities in MAP is also explained and reinforced by the absence of a regional territory planning and the adoption of polycentric

10 models of urban growth by the national authorities (Cardoso, 1996; Silva and Clarke, 2002).

Another active process identified by the performed change analysis is the abandonment of agricultural lands nearby the inland urban areas, which leads to an increase of uncultivated semi-natural and forest areas (Fig. 4) causing an increase of the urban/rural interface.

As regards the RUI definition and mapping model developed in the present study, we tested different buffer width from 100 m to

15 2 km, which led to different RUI's size but, in essence, to approximately equivalent results relatively to the RUI's dynamic. In literature, Vilar et al. (2016) applied a buffer width of 100 m, corresponding to the median of the distances defined in each country's national legislation (Portugal, Spain, South-France and Italy) for protection against wildfires, which makes brush clearing obligatory within a certain radius around each house located close to forests or scrublands. In US, interface WUI was defined as developed areas in the vicinity of wildland vegetation and mapped considering census blocks above 6.17 housing

20 units/km² that are within a distance of 2.4 km from wildland vegetation (Radeloff et al., 2005). Finally, we decided to show results obtained applying a buffer width of 1 km because smaller values, even if more in line with the Portuguese national indications, could bias the results, given that the spatial resolution of the CLC inventory was of 500 by 500 meters.

RUI definition aimed to map the developed area located in close proximity of wild vegetation, where wildfires can cause deaths, injured, damages to human structures, and finally where human-caused wildfires are more likely to occur. Nevertheless RUI map

25 was not based on fire incidence measures, thus it not aimed to assess fire risk or fire regimes, which depend on other factors such as topography, weather, vegetation characteristics (Radeloff et al., 2005; Parente and Pereira, 2016). Most of RUI's area detected in Portugal (Fig. 9) was located in regions of high population density and surrounding major cities, while RUI's growths mainly occurred in the transition zones from vegetated lands (AA and FSNA) to AS (Fig. 4). Urbanization and the consequent reconfiguration of Portuguese cities caused new urban problems and challenges associated to the increased fragmentation of the

30 cities and different rural-urban relationships, as also reported for Portugal and Spain (Trigal, 2010). It is important to underline that the impressive increase of the RUI and of BA within the RUI, detected in just a little more than two decades, is not exclusive of Portugal. In Continental US, WUI increased 52% from 1970 to 2000 and 90% of this area included high and highly variable severity fire regimes (Theobald and Romme, 2007). In Europe, Fox et al. (2015) found a progressive increase in fire risk in French Maritime Alps in the period 1960-2009. Badia et al. (2011) noticed that two representative Mediterranean WUI areas in

35 Catalonia were more prone to wildfires in the most recent decade of 2000 than in the 1990s. Pellizzaro et al. (2012) analyzed WUI's dynamics and landscape changes in a tourist area of North-East Sardinia (Italy) from 1954 to 2008 and discovered that LULCC was largely associated to a transition from an agro-pastoral economy to one based on tourism. Moreover they showed:

an increase in the number of houses and dwellers, which tripled during the study period, as well as a sharp grow in summer population; rose of road network length and; finally, increase of the WUI's extension.

The inspection of the accurate Soil Use and Occupancy Chart national map (COS2007 v2.0) allowed us to identify the vegetation types and major habitats/plant communities corresponding to each one of the CLC classes for Portugal. Table 3 of the annex/supplementary material, shows the composition of the CLC classes in terms of COS classes. For simplicity, results are only presented for COS classes with more than 1% of total CLC area. Nevertheless, it is important to underline that these 19 COS classes account for 98.3% of total CLC area. Despite some expected differences between classifications, essentially noted in CLC classes less affected by wildfires, results for all the other classes can be summarized as follows: (i) Temporary dryland crops is the larger COS class (22% of total CLC area) and accounts for higher area fraction in CLC Agricultural area (code 2) and Scrub and/or herbaceous vegetation associations (code 32); this is particularly consistent with the agricultural practices, especially in southern Portugal; (ii) COS class of Temporary irrigated crops is well distributed by CLC classes of Rice fields, Permanently irrigated land, Pastures, as well as Beaches, dunes, sands; (iii) COS Shrub classes are particularly present in CLC classes of Shrubs, Pastures as well as in Open spaces with little or no vegetation; (iv) Tree vegetation in COS is also well related to the correspondent CLC classes and allows us to better understand the composition of Forests and Agricultural areas; for example, pure or mixt forests of Cork and Holm oak trees are particularly evident in the CLC classes of Agro-forestry areas, Broad-leaved forests, and Non-irrigated arable lands; on the other hand, Eucalyptus (pure or mixed forests) in COS are important components of the CLC classes of Mixed forests, Complex cultivation patterns, Annual crops associated with permanent crops, and Broad-leaved forests; finally, pure *pinus pinaster* forests in COS are comprised in the CLC classes of Coniferous forests, Transitional woodland-shrub, and are especially important in Beaches, dunes, sands, where account for 30% of total area; this finding is in good agreement with the presence of *pinus* forests in the entire central western coast.

It is important to underline that, from 1990 to 2012, the increase in the BA within the RUI is higher (100%) than the increase in the RUI area (70%). This result suggest that other factors, besides the increase of the RUI area, are responsible of the increase of the burnable area within the RUI. In this regard, it is important to take into account some of the specific characteristics of the country, well described in terms of demographic, territory and forest statistics compiled in Feliciano et al. (2015), which can help to understand the most important factors affecting the forest management in Portugal. Forest is nowadays the dominant land use in the country (with more than 35% of total area), followed by bushes and grasslands (>29%), and agricultural areas (>24%) (Feliciano et al., 2015; FAO, 2018). According to the National Forest Inventory (IFN, 2010), in the 1995-2010 period, four tree species occupied about 85% of total forest area: Eucalyptus (22%-27%), Cork oak (23%-24%), Maritime pine (30%-23%) and, Holm oak (10%-11%). The first three species have the ability to generate land and business income exceeding 50 euros/ha/year (CM, 2015). Most of the forests and wooded lands (>93% in 1995) have non-industrial private owners and there is a high fragmentation of the forest property, particularly evident in the private sector (Mendes et al., 2004). Management practices are also very different and changed significantly in the last years, especially in non-industrial private forest (Novais and Canadas, 2014). According to Feliciano et al. (2015), 1/3 of Eucalyptus area is well managed by the industrial pulp and paper companies, with their own forest management and wildfire prevention/fighting resources, while the remaining area is managed by non-industrial private owners, characterized by different objectives and economic logics. In addition, there is a significant heterogeneity in the spatial distribution of all these characteristics/factors (Baptista and Santos, 2005). Small forest holdings (<10 ha), mainly composed by pine and eucalyptus with low profitability, are much more frequent in the northern and central Portugal, while large properties (>100 ha), essentially of cork oak or a complex and unique agroforestry system of cork oak

savanna (“*montado*”), are predominant in the southern regions of the country. Table 4 of the annex/supplementary material, provides a general description of the main characteristics of forest holdings and forest owners and summarizes the interrelationship between these factors.

Other aspects related to LULCC, such as climate change and biodiversity, are somewhat outside the scope of the present study.

5 However, the abandonment of rural and forest areas, traditional agricultural practices, and the lack of forestry management practices lead to an increase of biomass and fire risk, which can be empowered in a warmer and drier future climate and may have profound impact on ecosystems and biodiversity. For example, the *montado*, which is composed by sparse cork oak trees and a diversity of understory vegetation (e.g., shrub formations, grasslands), supports higher levels of biodiversity. The decrease in demand and price of cork has led to a reduction in management practices and to the abandonment of these lands, leading to the
10 invasion of shrubs, reducing the biodiversity and degrading the services provided by these ecosystems (Bugalho et al., 2011).

Results from our analyses shows that in the second half of the investigated period (2000-2006 and 2006-2012) the growth rate of RUI was lower than in the first decade (1990-2000), probably due to a lower growth rate in the process of urbanization of rural areas. Moreover, the decrease of relative BA within the RUI from 2006 to 2012 could be associated with the relative decrease of BA in the last investigated period, as a consequence of recent plans for territorial spatial planning and protection of forest against
15 forest fires (Mateus and Fernandes, 2014; Parente et al., 2016). At European level, urban sprawl’s complexity and magnitude motivated the European Commission to recommend actions and to coordinate land use policies, within the European Cohesion Policy 2007-2013 period (CEC, 2006; EEA, 2006). In Portugal these efforts were complemented with national programs and regional plans such as the National Policy and Territorial Management (Programa Nacional da Política de Ordenamento do Território, PNPOT) and the Regional Plan for Territorial Planning (Plano Regional de Ordenamento de Território, PROT),
20 supporting the sustainable development and the environmental landscape quality of NUTS-III areas (Noronha Vaz et al., 2012). However, as far as we know, there is no a specific or general Portuguese legislation about WUI or RUI. It only exists one general mention about RUI in the National Plan to Protect the Forests against Wildfires (CM, 2009). In this Plan it is suggested that to protect urban-forest interface is necessary to create and maintain an external buffer strips (10-100 m) around population clusters, especially in those with the highest fire vulnerability, as well as around parks, industrial polygons, landfills, housing, shipyards,
25 warehouses, and other buildings.

Finally, we firmly believe that the results of this study are sufficiently motivating to promote the development of specific policies and legislation, as well as changes in forest and fire management. The increase of the RUI area and particularly of the BA within the RUI clearly suggests the need of improving fire prevention measures and preparedness policies for this interface region. In fact, as indicated by the Portuguese National Fire Plan 2006 (Oliveira, 2005), the increase of the urban/rural interface, as a
30 consequence of the above-mentioned LULCC, causes this area to be under the use of people not educated for fire and unaware of possible source of ignition. In particular, portuguese forestry/forest managers must prioritize sustainable forest management practices and make brush clearing obligatory. These paradigm shifts make even more sense if one takes into account that the risk of fire is likely to increase in a future climate with a higher frequency of longer and more intense extreme events, such as drought and heat waves.

35 6 Conclusions

Continental Portugal registered important land cover changes (about 9% of the whole area) and an increase of the rural-urban interface in the investigated period (1990-2012). Most significant changes were associated to transitions from the following

CORINE Land Cover classes: Agricultural areas (35.1%) and Forest and semi-natural areas (15.2%) to Artificial surfaces (including Urban areas); Agricultural areas to Forest and semi-natural areas (7.3%) and vice-versa (6.3%). However, relative net changes are appreciable only for Artificial surfaces, which registered a substantial increase of about 50%, while Forest and semi-natural areas remains almost constant (0.3%) and Agricultural areas slightly decreased (-4.4%). The spatial distribution of these changes was far from uniform within the territory. Urban sprawl was concentrated in the metropolitan areas of Lisbon and Porto, as well as in central-north and south coastal areas (region of Algarve). A promoted socioeconomic development within the country, the intense rural abandonment and the development of mass tourist industry could act as main drivers for the expansion and reconfiguration of urban areas. On the other hand, in the south and interior north regions we assisted to a transition to vegetated land use/land cover types, probably caused by deforestation/afforestation and rural abandonment. The CLC classes mainly affected by these changes were Scrub and/or herbaceous vegetation associations, Forests and Heterogeneous agricultural areas: the increase in Artificial surfaces was precisely due to transitions from these type of land cover. Vegetated classes with higher burnt area within the RUI in the study period were: Transitional woodland-shrub, the three types of Forests considered in the CLC inventories and, the three sub-levels of Heterogeneous agricultural areas. These findings suggest the needs of extending the notion of wildland-urban interface for Portugal to rural-urban interface, defined as Forest semi-natural plus Heterogeneous agricultural areas adjacent to Artificial surfaces.

Results of the analyses of RUI's size, burnt areas and burnt areas within the RUI in the four investigated periods (1990, 2000, 2006, 2012) allow to conclude that, from 1990 to 2012, RUI increased about 70%, burnt area decreased 35% but, nonetheless, burnt area within the RUI increased 100%. These findings underline the need of frequent monitoring and assessment of land use changes and RUI evolution in Portugal, and reinforce the need to focus the attention of forest and fire managers on this highly fire prone region.

The conclusions of this study suggest and encourage more accurate analyses for characterizing and mapping RUI, using high resolution and precise data (e.g. true houses footprints, road network, census data) to provide practical indications in term of land and fire management. Nevertheless, our study provides precious suggestions as for what is the global distribution and evolution of RUI in Portugal, identifying which regions need to be prioritized in term of RUI monitoring.

Acknowledgements

This work was prepared in the frame of project FIREXTR - Prevent and prepare society for extreme fire events: the challenge of seeing the "forest" and not just the "trees", co-financed by the European Regional Development Fund (ERDF) through the COMPETE 2020 - Operational Program Competitiveness and Internationalization (POCI Ref: 16702) and national funds by FCT-Portuguese Foundation for Science and Technology (FCT Ref: PTDC/ATPGEO/0462/2014). The study was also supported by: i) Project Interact - Integrative Research in Environment, Agro-Chain and Technology, NORTE-01-0145-FEDER-000017, research line BEST, co-funded by FEDER/NORTE 2020; and, ii) European Investment Funds by FEDER/COMPETE/POCI-Operacional Competitiveness and Internationalization Programme, under Project POCI-01-0145-FEDER-006958 and National Funds by FCT - Portuguese Foundation for Science and Technology, under the project UID/AGR/04033/2013. We are especially grateful to ICNF for providing the fire data and to João Pereira for the final spelling and grammar review of the manuscript.

References

- Alados, C. L., Pueyo, Y., Barrantes, O., Escós, J., Giner, L. and Robles, A. B.: Variations in landscape patterns and vegetation cover between 1957 and 1994 in a semiarid Mediterranean ecosystem, *Landsc. Ecol.*, 19(5), 545–561, doi:10.1023/B:LAND.0000036149.96664.9a, 2004.
- 5 Alados, C. L., Pueyo, Y., Barrantes, O., Escós, J., Giner, L. and Robles, A. B.: Variations in landscape patterns and vegetation cover between 1957 and 1994 in a semiarid Mediterranean ecosystem, *Landsc. Ecol.*, 19(5), 543–559, 2004.
- Amraoui, M., Pereira, M. G., DaCamara, C. C. and Calado, T. J.: Atmospheric conditions associated with extreme fire activity in the Western Mediterranean region, *Sci. Total Environ.*, 524, 32–39, 2015.
- Antrop, M.: Changing patterns in the urbanized countryside of Western Europe, *Landsc. Ecol.*, 15(3), 257–270, doi:10.1023/A:1008151109252, 2000.
- 10 Antrop, M.: Landscape change and the urbanization process in Europe, *Landsc. Urban Plan.*, 67(1–4), 9–26, doi:10.1016/S0169-2046(03)00026-4, 2004.
- Badia, A., Serra, P. and Modugno, S.: Identifying dynamics of fire ignition probabilities in two representative Mediterranean wildland-urban interface areas, *Appl. Geogr.*, 31(3), 930–940, doi:10.1016/j.apgeog.2011.01.016, 2011.
- 15 Badia-Perpinyà, A. and Pallares-Barbera, M.: Spatial distribution of ignitions in Mediterranean periurban and rural areas: the case of Catalonia, *Int. J. Wildland Fire*, 15(2), 187–196, 2006.
- Baptista, F. and Santos, R.: Os Proprietários Florestais: Resultados de um Inquérito (Forest Owners: Results of a survey, Pp Celta Oeiras, 94, 2005.
- Barradas, R., Lagoa, S., Leão, E. and others: The non-for-profit banks in Portugal: specificities, social role and evolution, *Rev. Econ. Solidária*, 58–97, 2011.
- 20 Barros, A. M. and Pereira, J. M.: Wildfire selectivity for land cover type: does size matter?, *PloS One*, 9(1), e84760, 2014.
- Bond, W. J. and Keeley, J. E.: Fire as a global “herbivore”: the ecology and evolution of flammable ecosystems, *Trends Ecol. Evol.*, 20(7), 387–394, 2005.
- Bouillon, C., Ramiro, M. M., Costantino, S., Fierro Garcia, B., Long-Fournel, M. and Casula, F.: European software tools for mapping Wildland Urban Interfaces in the Mediterranean context., 2012.
- 25 Breiman, L., Friedman, J., Stone, C. J. and Olshen, R. A.: Classification and regression trees, CRC press., 1984.
- Bugalho, M. N., Caldeira, M. C., Pereira, J. S., Aronson, J. and Pausas, J. G.: Mediterranean cork oak savannas require human use to sustain biodiversity and ecosystem services, *Front. Ecol. Environ.*, 9(5), 278–286, 2011.
- Cardoso, A.: Do desenvolvimento do planeamento ao planeamento do desenvolvimento., 1996.
- 30 Catry, F. X., Rego, F. C., Bação, F. L. and Moreira, F.: Modeling and mapping wildfire ignition risk in Portugal, *Int. J. Wildland Fire*, 18(8), 921–931, 2010.
- CEC: Cohesion policy and cities: The urban contribution to growth and jobs in the regions, *Commun. Counc. Parliam.*, 2006.
- CM: Decreto-Lei no16/2009 de 14 de Janeiro, *Diário Repúb. 1a Sér.* - No9, 14th January, 2009.
- CM: Resolução do Conselho de Ministros n.o 6-B/2015, *Diário Repúb. 1a Sér.* - No24, 2015.
- 35 Cohen, M., Rigolot, E. and Valette, J. C.: From the vegetation to the inputs of a fire model: fuel modelling for WUI management, in *Proceedings of the international workshop “Forest fires in the Wildland–urban interface and rural areas in Europe: an integral planning and management challenge*, pp. 113–120., 2003.

- Conedera, M., Tonini, M., Oleggini, L., Orozco, C. V., Leuenberger, M. and Pezzatti, G. B.: Geospatial approach for defining the Wildland-Urban Interface in the Alpine environment, *Comput. Environ. Urban Syst.*, 52, 10–20, 2015.
- Da Cruz, N. F. and Marques, R. C.: Viability of municipal companies in the provision of urban infrastructure services, *Local Gov. Stud.*, 37(1), 93–110, 2011.
- 5 Delgado, A. P. M.: A Configuração do Poder Local na Constituição Portuguesa de 1976: A Autonomia do Poder Local e o Poder Regulamentar Municipal., 2014.
- DGT (2016). Especificações técnicas da Carta de uso e ocupação do solo de Portugal Continental para 1995, 2007 e 2010. Relatório Técnico. Direção-Geral do Território
- Diogo, V. and Koomen, E.: Land-Use Change in Portugal, 1990–2006: Main Processes and Underlying Factors, *Cartogr. Int. J. Geogr. Inf. Geovisualization*, 47(4), 237–249, 2012.
- 10 EEA: CORINE Land cover - Part 1: Methodology, Eur. Environ. Agency [online] Available from: <https://www.eea.europa.eu/publications/COR0-part1> (Accessed 5 August 2017), 1994.
- EEA: Urban sprawl in Europe – The ignored challenge., Eur. Environ. Agency [online] Available from: www.eea.europa.eu/publications/ (Accessed 5 August 2017), 2006.
- 15 EEA: Corine Land Cover 2012 raster data, Eur. Environ. Agency [online] Available from: <https://www.eea.europa.eu/data-and-maps/data/clc-2012-raster> (Accessed 10 August 2017), 2016.
- Eurostat: History of NUTS, [online] Available from: <http://ec.europa.eu/eurostat/web/nuts/history>, 2017.
- FAO: http://faostat.fao.org/static/syb/syb_174.pdf, FAO., 2018.
- Feliciano, D. M. S., Alves, R., Mendes, A., Ribeiro, M. and Sottomayor, M.: Forest Land Ownership Changes in Portugal, European Forest Institute Central-East and South-East European Regional Office., 2015.
- 20 Fernandes, P. M. and Botelho, H. S.: A review of prescribed burning effectiveness in fire hazard reduction, *Int. J. Wildland Fire*, 12(2), 117–128, 2003.
- Fernandez-Villaverde, J., Garicano, L. and Santos, T.: Political credit cycles: the case of the Eurozone, *J. Econ. Perspect.*, 27(3), 145–166, 2013.
- 25 Ferreira-Leite, F., Bento-Gonçalves, A., Vieira, A., Nunes, A. and Lourenço, L.: Incidence and recurrence of large forest fires in mainland Portugal, *Nat. Hazards*, 84(2), 1035–1053, 2016.
- Fox, D. M., Martin, N., Carrega, P., Andrieu, J., Adnès, C., Emsellem, K., Ganga, O., Moebius, F., Tortorollo, N. and Fox, E. A.: Increases in fire risk due to warmer summer temperatures and wildland urban interface changes do not necessarily lead to more fires, *Appl. Geogr.*, 56, 1–12, 2015.
- 30 Galiana-Martin, L., Herrero, G. and Solana, J.: A Wildland–Urban Interface Typology for Forest Fire Risk Management in Mediterranean Areas, *Landsc. Res.*, 36(2), 151–171, doi:10.1080/01426397.2010.549218, 2011.
- Gallardo, M., Gómez, I., Vilar, L., Martínez-Vega, J. and Martín, M. P.: Impacts of future land use/land cover on wildfire occurrence in the Madrid region (Spain), *Reg. Environ. Change*, 16(4), 1047–1061, 2016.
- Ganteaume, A., Camia, A., Jappiot, M., San-Miguel-Ayanz, J., Long-Fournel, M. and Lampin, C.: A review of the main driving factors of forest fire ignition over Europe, *Environ. Manage.*, 51(3), 651–662, 2013.
- 35 Gorte, B.: Supervised image classification, in *Spatial statistics for remote sensing*, pp. 153–163, Springer., 1999.
- Haight, R. G., Cleland, D. T., Hammer, R. B., Radeloff, V. C. and Rupp, T. S.: Assessing fire risk in the wildland-urban interface, *J. For.*, 102(7), 41–48, 2004.

- Hammer, R. B., Stewart, S. I. and Radeloff, V. C.: Demographic trends, the wildland–urban interface, and wildfire management, *Soc. Nat. Resour.*, 22(8), 777–782, 2009.
- Hardy, C. C.: Wildland fire hazard and risk: problems, definitions, and context, *For. Ecol. Manag.*, 211(1), 73–82, 2005.
- Herrero-Corral, G., Jappiot, M., Bouillon, C. and Long-Fournel, M.: Application of a geographical assessment method for the characterization of wildland–urban interfaces in the context of wildfire prevention: A case study in western Madrid, *Appl. Geogr.*, 35(1–2), 60–70, 2012.
- IFN: Inventário Florestal Nacional. 5a Revisão, Relatório Final. Autoridade Florestal Nacional, Minist. Agric. Desenvolv. Rural E Pescas, 2010.
- INE: Censos 2011. Resultados Definitivos—Portugal, Lisb. Stat. Port., 2012.
- 10 Lampin-Maillet, C., Jappiot, M., Long, M., Bouillon, C., Morge, D. and Ferrier, J.-P.: Mapping wildland-urban interfaces at large scales integrating housing density and vegetation aggregation for fire prevention in the South of France, *J. Environ. Manage.*, 91(3), 732–741, 2010.
- Malpezzi, S. and Rydell, C. P.: Rent control in developing countries: a framework for analysis, Water Supply and Urban Development Department, Operations Policy Staff, the World Bank., 1986.
- 15 Marques, T. S., Matos, F. L. de, Guerra, P. and Ribeiro, D.: Housing problems in Portugal: a challenge to define a territorialised policy in times of crisis, in *Proceedings of the International Conference the Welfare State in Portugal in the Age of Austerity.*, 2014.
- Mateus, P. and Fernandes, P. M.: Forest fires in Portugal: dynamics, causes and policies, in *Forest Context and Policies in Portugal*, pp. 97–115, Springer., 2014.
- 20 Mendes: The Portuguese Forests. Working Papers de Economia (Economics Working Papers), , 271, 2004.
- Meneses, B. M., Vale, M. J. and Reis, R.: Uso e ocupação do solo. In *Uso e Ocupação do solo em Portugal Continental: Avaliação e Cenários Futuros. Projeto LANDYN, Direção Geral do Território, Lisboa, Portugal.*, 2014.
- Millington, J. D., Perry, G. L. and Romero-Calcerrada, R.: Regression techniques for examining land use/cover change: a case study of a Mediterranean landscape, *Ecosystems*, 10(4), 562–578, 2007.
- 25 Moreira, F., Vaz, P., Catry, F. and Silva, J. S.: Regional variations in wildfire susceptibility of land-cover types in Portugal: implications for landscape management to minimize fire hazard, *Int. J. Wildland Fire*, 18(5), 563–574, 2009.
- Moreira, F., Viedma, O., Arianoutsou, M., Curt, T., Koutsias, N., Rigolot, E., Barbati, A., Corona, P., Vaz, P., Xanthopoulos, G. and others: Landscape–wildfire interactions in southern Europe: implications for landscape management, *J. Environ. Manage.*, 92(10), 2389–2402, 2011.
- 30 Moreno, J. M. and Oechel, W. C.: The role of fire in Mediterranean-type ecosystems, Springer Science & Business Media., 2012.
- Noronha Vaz, E., Nijkamp, P., Painho, M. and Caetano, M.: A multi-scenario forecast of urban change: A study on urban growth in the Algarve, *Landsc. Urban Plan.*, 104(2), 201–211, 2012.
- Novais, A. and Canadas, M. J.: Understanding the management logic of private forest owners: A new approach, *For. Policy Econ.*, 12(3), 173–180, 2010.
- 35 Oliveira, S., Moreira, F., Boca, R., San-Miguel-Ayanz, J. and Pereira, J. M.: Assessment of fire selectivity in relation to land cover and topography: a comparison between Southern European countries, *Int. J. Wildland Fire*, 23(5), 620–630, 2014.
- Oliveira, S. L., Pereira, J. M. and Carreiras, J. M.: Fire frequency analysis in Portugal (1975–2005), using Landsat-based burnt area maps, *Int. J. Wildland Fire*, 21(1), 48–60, 2012.

- Oliveira, T.: The Portuguese National Plan for Prevention and Protection of Forest Against Fires: The First Step, *International For. Fire News*, 30–34, 2005.
- Oliveira, T. M., Guiomar, N., Baptista, F. O., Pereira, J. M. and Claro, J.: Is Portugal's forest transition going up in smoke?, *Land Use Policy*, 66, 214–226, 2017.
- 5 Parente, J. and Pereira, M. G.: Structural fire risk: the case of Portugal, *Sci. Total Environ.*, 573, 883–893, 2016.
- Parente, J., Pereira, M. G. and Tonini, M.: Space-time clustering analysis of wildfires: The influence of dataset characteristics, fire prevention policy decisions, weather and climate, *Sci. Total Environ.*, 559, 151–165, 2016.
- Parente, J., Pereira, M. G., Amraoui, M. and Tedim, F.: Negligent and intentional fires in Portugal: spatial distribution characterization, *Sci. Total Environ.*, 624, 424–437, 2018.
- 10 Pausas, J. G., Llovet, J., Rodrigo, A. and Vallejo, R.: Are wildfires a disaster in the Mediterranean basin?—A review, *Int. J. Wildland Fire*, 17(6), 713–723, 2009.
- Pellizzaro, G., Arca, B., Pintus, G. V., Ferrara, R. and Duce, P.: Wildland-urban interface dynamics during the last 50 years in North East Sardinia, *Model. Fire Behav. Risk Nuova Stampa Color Publ. Muros*, 249–254, 2012a.
- Pellizzaro, G., Arca, B., Pintus, G. V., Ferrara, R. and Duce, P.: Wildland-urban interface dynamics during the last 50 years in North East Sardinia, *Model. Fire Behav. Risk Nuova Stampa Color Publ. Muros*, 249–254, 2012b.
- 15 Pereira, M. G., Aranha, J. and Amraoui, M.: Land cover fire proneness in Europe, *For. Syst.*, 23(3), 598–610, 2014.
- Pereira, M. G., Caramelo, L., Orozco, C. V., Costa, R. and Tonini, M.: Space-time clustering analysis performance of an aggregated dataset: The case of wildfires in Portugal, *Environ. Model. Softw.*, 72, 239–249, 2015.
- Poyatos, R., Latron, J. and Llorens, P.: Land use and land cover change after agricultural abandonment: the case of a Mediterranean mountain area (Catalan Pre-Pyrenees), *Mt. Res. Dev.*, 23(4), 362–368, 2003.
- 20 Pugnet, L., Chong, D. M., Duff, T. J. and Tolhurst, K. G.: Wildland–urban interface (WUI) fire modelling using PHOENIX Rapidfire: A case study in Cavaillon, France, in *Proceedings of the 20th International Congress on Modelling and Simulation*, Adelaide, Australia, pp. 1–6., 2013.
- Pyke, D. A., Brooks, M. L. and D'Antonio, C.: Fire as a restoration tool: a decision framework for predicting the control or enhancement of plants using fire, *Restor. Ecol.*, 18(3), 274–284, 2010.
- 25 Radeloff, V. C., Hammer, R. B., Stewart, S. I., Fried, J. S., Holcomb, S. S. and McKeefry, J. F.: The wildland–urban interface in the United States, *Ecol. Appl.*, 15(3), 799–805, 2005.
- Ribeiro, N.: Debt growth: factors, institutional issues and implications—the Portuguese case, in *Rapid Credit Growth in Central and Eastern Europe*, pp. 296–311, Springer., 2007.
- 30 San-Miguel-Ayanz, J., Schulte, E., Schmuck, G., Camia, A., Strobl, P., Liberta, G., Giovando, C., Boca, R., Sedano, F., Kempeneers, P., McInerney, D., Withmore, C., de Oliveira, S. S., Rodrigues, M., Durrant, T., Corti, P., Oehler, F., Vilar, L. and Amatulli, G.: Comprehensive Monitoring of Wildfires in Europe: The European Forest Fire Information System (EFFIS), in *Approaches to Managing Disaster - Assessing Hazards, Emergencies and Disaster Impacts*, edited by J. Tiefenbacher, InTech., 2012.
- 35 San-Miguel-Ayanz, J., Durrant, T. H., Boca, R., Libertá, G., Boccacci, F., Di Leo, M., Pérez, J. L., Schulte, E., Benchikha, A., Abbas, M. and others: Forest fires in Europe, Middle East and North Africa 2015, 2016.
- Santos, F. F. M.: PORDATA—Base de dados Portugal contemporâneo, O Que São NUTS [online] Available from: <http://www.pordata.pt/O+que+sao+NUTS>, 2014.

- Sarmiento, P., Monteiro, G., Marcelino, F., Igreja, C., & Caetano, M. (2016). Avaliação da exatidão temática das cartas de uso e ocupação do solo para Portugal Continental COS1995v1. 0, COS2007v2. 0 e COS2010v1. 0.
- Silva, E. A. and Clarke, K. C.: Calibration of the SLEUTH urban growth model for Lisbon and Porto, Portugal, *Comput. Environ. Urban Syst.*, 26(6), 525–552, 2002.
- 5 Silva, J. S., Vaz, P., Moreira, F., Catry, F. and Rego, F. C.: Wildfires as a major driver of landscape dynamics in three fire-prone areas of Portugal, *Landsc. Urban Plan.*, 101(4), 349–358, doi:10.1016/j.landurbplan.2011.03.001, 2011.
- Stewart, S. I., Radeloff, V. C., Hammer, R. B. and Hawbaker, T. J.: Defining the wildland–urban interface, *J. For.*, 105(4), 201–207, 2007.
- Strubelt, W. and Deutschland, Eds.: Study programme on European spatial planning: final report, Bundesamt für Bauwesen und
10 Raumordnung, Bonn., 2001.
- Tacoli, C.: Rural-urban interactions: a guide to the literature, *Environ. Urban.*, 10(1), 147–166, doi:10.1177/095624789801000105, 1998.
- Tavares, A. O., Pato, R. L. and Magalhães, M. C.: Spatial and temporal land use change and occupation over the last half century in a peri-urban area, *Appl. Geogr.*, 34, 432–444, 2012.
- 15 Tedim, F., Leone, V. and Xanthopoulos, G.: A wildfire risk management concept based on a social-ecological approach in the European Union: Fire Smart Territory, *Int. J. Disaster Risk Reduct.*, 18, 138–153, 2016.
- Theobald, D. M. and Romme, W. H.: Expansion of the US wildland–urban interface, *Landsc. Urban Plan.*, 83(4), 340–354, 2007.
- Tonini, M., Pereira, M. G., Parente, J. and Orozco, C. V.: Evolution of forest fires in Portugal: from spatio-temporal point events
20 to smoothed density maps, *Nat. Hazards*, 85(3), 1489–1510, 2017.
- Trigal, L. L.: The Process of Urbanisation and Reconfiguration of Spanish and Portuguese Cities, *Open Urban Stud. J.*, 3, 14–20, 2010.
- Van Doorn, A. M. and Bakker, M. M.: The destination of arable land in a marginal agricultural landscape in South Portugal: an exploration of land use change determinants, *Landsc. Ecol.*, 22(7), 1073–1087, 2007.
- 25 Van Wagendonk, J. W.: The history and evolution of wildland fire use, *Fire Ecol.*, 3(2), 3–17, 2007.
- Viedma, O.: The influence of topography and fire in controlling landscape composition and structure in Sierra de Gredos (Central Spain), *Landsc. Ecol.*, 23(6), 657–672, 2008.
- Viedma, O., Moity, N. and Moreno, J. M.: Changes in landscape fire-hazard during the second half of the 20th century: agriculture abandonment and the changing role of driving factors, *Agric. Ecosyst. Environ.*, 207, 126–140, 2015.
- 30 Vilar, L., Camia, A., San-Miguel-Ayán, J. and Martín, M. P.: Modeling temporal changes in human-caused wildfires in Mediterranean Europe based on Land Use-Land Cover interfaces, *For. Ecol. Manag.*, 378, 68–78, 2016.
- Zhang, Y., He, H. S. and Yang, J.: The wildland–urban interface dynamics in the southeastern US from 1990 to 2000, *Landsc. Urban Plan.*, 85(3), 155–162, 2008.

Annexes/supplementary material

	Road network and associated spaces	Temporary dryland crops	Temporary irrigated crops	Vineyards	Olive groves	Permanent pastures	Agroforestry systems (AFS) of cork oak with pasture	AFS of holm oak with pastures	Forests of Cork oak	Eucalypt forests	Pinus pinaster forests	Eucalyptus forests with other coniferous/softwood	Pinus pinaster forest with broadleaved/hardwood	Dense shrubs	Less dense shrubs	Dense sclerophyllous vegetation	Open forests of pinus pinaster	Natural water courses	Dam reservoirs
211 Non-irrigated arable land	3%	19%	2%	1%	9%	10%	4%	15%	3%	2%	2%	0%	0%	4%	2%	1%	1%	1%	5%
212 Permanently irrigated land	4%	55%	8%	1%	4%	4%	2%	5%	2%	2%	2%	0%	1%	0%	0%	0%	0%	1%	1%
213 Rice fields	6%	16%	16%	0%	1%	7%	7%	8%	9%	1%	0%	0%	0%	0%	0%	0%	0%	3%	0%
221 Vineyards	5%	31%	4%	9%	8%	4%	1%	3%	1%	5%	3%	1%	2%	2%	2%	2%	1%	0%	2%
222 Fruit trees and berry plantations	7%	23%	2%	2%	8%	4%	0%	1%	0%	3%	1%	0%	1%	3%	2%	10%	0%	3%	3%
223 Olive groves	1%	48%	1%	3%	9%	6%	2%	6%	1%	2%	1%	0%	1%	1%	0%	2%	1%	1%	6%
231 Pastures	2%	18%	7%	0%	0%	6%	0%	7%	1%	2%	2%	0%	1%	20%	5%	1%	0%	2%	3%
241 Annual crops associated with permanent crops	5%	31%	3%	1%	4%	3%	0%	2%	1%	9%	5%	5%	2%	5%	1%	2%	3%	1%	1%
242 Complex cultivation patterns	7%	17%	4%	2%	5%	4%	1%	3%	2%	10%	7%	2%	2%	5%	2%	2%	3%	1%	2%
243 Land principally occupied by agriculture, with	6%	15%	3%	6%	3%	3%	1%	1%	2%	7%	7%	2%	2%	9%	3%	4%	4%	2%	3%
244 Agro-forestry areas	1%	37%	1%	0%	6%	13%	5%	9%	5%	1%	0%	0%	0%	0%	0%	0%	0%	1%	7%
311 Broad-leaved forest	3%	17%	1%	1%	3%	9%	3%	11%	4%	9%	2%	1%	1%	3%	1%	2%	1%	1%	8%
312 Coniferous forest	7%	2%	5%	4%	1%	1%	1%	0%	2%	6%	16%	2%	3%	14%	2%	1%	11%	1%	2%
313 Mixed forest	8%	4%	7%	4%	1%	1%	2%	0%	3%	20%	8%	5%	3%	7%	2%	1%	2%	0%	2%
321 Natural grasslands	5%	15%	2%	1%	3%	6%	0%	1%	0%	1%	2%	0%	0%	23%	11%	3%	1%	1%	5%
322 Moors and heathland	4%	6%	1%	5%	2%	1%	0%	0%	0%	3%	6%	0%	1%	35%	12%	0%	4%	0%	1%
323 Sclerophyllous vegetation	3%	12%	1%	0%	3%	8%	0%	4%	3%	3%	0%	0%	0%	0%	0%	17%	0%	10%	8%
324 Transitional woodland-shrub	4%	18%	2%	3%	2%	4%	1%	3%	3%	8%	9%	2%	1%	7%	3%	3%	2%	2%	3%
331 Beaches, dunes, sands	1%	3%	8%	0%	0%	0%	0%	0%	0%	0%	30%	0%	0%	1%	1%	2%	1%	11%	0%
332 Bare rocks	0%	1%	1%	0%	1%	0%	0%	0%	0%	1%	1%	0%	0%	41%	24%	2%	1%	0%	1%
333 Sparsely vegetated area	2%	1%	1%	0%	1%	0%	0%	0%	0%	1%	3%	0%	1%	35%	35%	1%	3%	0%	1%
Sum	4%	22%	3%	2%	4%	6%	2%	5%	3%	6%	5%	1%	1%	6%	2%	2%	2%	1%	4%

Table 3 – Fraction of COS2007v2.0 classes' area within CORINE land cover classes.

Area	< 1 ha	< 5 ha	5 – 20 ha	5 – 100 ha	>20 ha
Forest owners (%)	31%	30%	14%	10%	15%
Area (%)	10%	16%	12%	7%	55%
Main tree species	Maritime pine	Maritime pine and chestnut	Eucalyptus		Holm oak and cork oak
Investment	No investment		With investment		
Management practices	No active management	Management depends on how economy goes		Active management	
Income	Property-reserve irregular income			Forest-enterprise	
Region	Northern and central				Southern

5

Table 4 - Main characteristics of a sample of forest holdings and forest owners studied by Baptista and Santos (2005). Adapted from Feliciano et al. (2015).