

“Intensity-Duration-Frequency (IDF) rainfall curves in Senegal”

by Sane et al. (nhess-2017-352)

We first would like to thank the two reviewers for their comments. We have revised our manuscript and have responded point by point to each comment. Please note that we have also made some very minor revisions to improve the English thanks to an appreciative proofreading of an English-speaking (mother tongue) co-author. All co-authors have also checked the paper to eliminate any remaining typos.

We have also provided a revised paper version with tracked changes.

Reviewer #1 (Received and published: 15 December 2017)

First, I would like to congratulate the authors for choosing to work on this topic in one region of Africa. The paper focuses on the IDF curves; it is a societal topic of great importance for all countries of the world, but more specifically for those in Africa where the construction of road infrastructure, the forecast of floods and drought occupy much of their government’s agenda. This article is well written and structured, and above all was carried out over long time series of rains that they treated well by a solid method. The Figures are clear and allow deducing the results.

Response:

Thank you for this general comment.

However, I have a very important question that is related to the methodology: I would like to ask the authors to explain the reasons for choosing the time scale interval from 1h to 24h only when they have a long database of durations D ranging from 5 minutes to 24 hours (5, 10, 15, 30, 60, 90, 120, 180, 240 min and 24 hours). I am not aware of the preliminary studies on the determination of scale invariance regimes in the rainfall time series in Senegal. Based for example on the work of (Ghanmi, 2015) for Tunisia and those of (Agbazo et al.,2016) for Benin, we know that from 5 minutes to 24 hours, there can be two regimes of invariance of scale and 1hour to 24 hours do not necessarily have one.

Thus, I would recommend to the authors if this is possible to make a study on the temporal regimes of scale invariance of their series to make sure that 1h to 24 hours is indeed a regime of scale invariance for Senegal. This would make the study more robust and complete.

Response:

Yes, we agree. The scaling regime question is both interesting and relevant. It takes two different aspects:

- **First, as most studies do, one can focus on a range of durations defined arbitrarily, and then check whether or not a change in the temporal regimes of scale invariance is detected. This is the case in our study with a predefined range of time scales from 1h to 24h. This is justified by both operational and practical reasons: going below 1 hour seems difficult because extracting sub-hourly maxima from the raw 5min-series could potentially lead to a significant underestimation of the true maximum intensity since the 5-min window is fixed by construction (as opposed to the moving window procedure used for larger time steps); this sampling effect requires to accumulate several elementary time steps in order to be removed: working at one hour (accumulation of 12 elementary time steps) puts us on the safe side. For the upper end, the 24h bound has been chosen because it is the usual time sampling of national rain-gauge networks, providing in West African countries. This allows for evaluating the potential for a regionalization of IDFs over regions where only daily data are available. The hypothesis of a single temporal regime over the 1h-24h range is then checked by comparing between the Koutsoyiannis model (whose curvature might underline a**

transition between two temporal scaling regimes) and the simple scaling model (which implies a single temporal regime of scaling). The similar performances of these two models make it reasonable to assume the validity of a unique temporal regime of scaling over the 1h-24h range. The fact that all GOF for the simple scaling model (figure 4a) accept the null hypothesis is also in line with this hypothesis. In addition is worth noting that the literature dealing with this region or others tends to support the hypothesis of a simple scaling regime for this range of durations. Indeed, in the references given by the referee, there is no change of regime for this range of durations (1h – 24h): Ghanmi et al. (2016) find single temporal regime from 30 minutes up to 24h, while Agbazo et al. (2016) consider that there is a single *scaling regime from 5 min to 1440 min*". And finally, the study of Panthou et al. 2014 also finds a single regime of scaling from 1h to 24h in another Sahelian region (Niger).

- This having been said, we recognize that a deeper investigation of scaling regimes for durations smaller than 1h would be valuable. However this would require better quality sub-hourly data. If such data were available, then we could develop a robust methodology to identify breaks in scaling regimes such as the one carried out by Innocenti et al. (2017) exploring temporal scaling regimes over North America for durations ranging from 15 minutes to 7 days. Their approach is interesting and certainly deserve attention, but it remains that there are very few papers dealing with sub-hourly scaling properties of rainfall, due to data limitation, such as is the case for our study.

In order to clarify the paper on the above discussed issue, three main modifications were carried out :

- We recognize that our choice of duration range was not justified enough. We accordingly made the following changes:

page 7 lines 3 to 6: “[...] At each station, the extreme rainfall sample thus consists of annual maximum intensities $i(D)$ with D ranging from 1h to 24h : {1, 2, 3, 4, 6, 8, 10, 12, 15, 18, 24}h. [...]”

It now reads: “[...] At each station, the extreme rainfall sample thus consists of annual maximum intensities $i(D)$ with D ranging from 1h to 24h: {1, 2, 3, 4, 6, 8, 10, 12, 15, 18, 24}h. The lower bound of this range (1h) was selected in order to limit the risk of under-estimating the true annual maximum intensity when evaluating at shorter durations (close to the 5-minute fixed window of the raw series). The upper bound of the range (24h) was chosen because it is a standard duration for hydrological applications and climate studies, but also because it is much more frequently recorded (by daily rain gauges).

[...]”

- We also added in the methodology Section the difference in term of return level between the Koutsoyiannis scaling and the Simple scaling.

Page 7 lines 22: “Note that equations 10 to 12 are valid for both b SiSca and b Koutso .”

now reads: “Note that equations 10 to 12 are valid for both b SiSca and b Koutso. In log-log space, the IDFSiSca return levels have a linear shape, indicating a single temporal scaling regime, while those of IDFKoutso could present a more or less pronounced curvature, indicating a transition between two temporal scaling regimes.”

- We also modified the conclusion in order to mention this question of temporal regime of scaling, by citing similar studies (Panthou et al. 2014, Agbazo et al. 2016, Ghanmi et al. 2016), and also the work of Innocenti et al. (2017) that provides some guidelines for further investigations .

page 14, lines 28-30:

“This study of extreme rainfall over Senegal for durations ranging from 1h to 24h confirms previous research reporting that simple scaling seems to hold in tropical Africa for this range of time scales. The simplified GEV&scaling formulation proposed by Panthou et al.

(2014b) using 4 parameters (3 for the GEV and 1 for the scaling) performs similarly to the 5-parameter formulation of Koutsoyiannis et al. (1998). This simplified formulation [...]"

now reads

"This study of extreme rainfall over Senegal for durations ranging from 1h to 24h confirms previous research reporting that a single temporal regime of scale invariance (simple scaling) seems to hold in tropical Africa for this range of time scales (Panthou et al. 2014, Agbazo et al. 2016, Ghanmi et al. 2016). Whether this range could be extended to sub-hourly and/or sup-daily rainfall intensities is an open research question, out of the scope of this paper, but that can be apprehended using the recent methodology developed in Innocenti et al. (2017). The simplified GEV&scaling formulation proposed by Panthou et al. (2014b) with 4 parameters (3 for the GEV and 1 for the scaling) performs similarly to the 5-parameter formulation of Koutsoyiannis et al. (1998). This simplified formulation [...]"

I highly recommend the publication of this article.

We thank the reviewer for its comments which – we hope – helped improve the clarity of the paper.

Reviewer #2 (Received and published: 2 February 2018)

Page 3, line 11: As regards the IDF calculation for African countries the work of De Paola et al. (2014) should be considered. De Paola et al. (2014) also tried to assess how extreme rainfall will be modified in future climate performing analysis of observed data and future simulations in three African cities, Addis Ababa, Dar Es Salaam and Doula. De Paola et al. found a methodology for the evaluation of the IDF curve from daily rainfall data; to obtain duration shorter than 24 hours they applied two different models of disaggregation to the historical data available, later the IDF curves were obtained using the probability distribution of Gumbel. Finally, the same procedure was applied to rainfall projections over the time period 2010-2050 in order to estimate the influence of the climate change on the IDF curves. As regards the results of the climate model projections, they suggest an increase of rainfall in terms of frequency.

Response.

Thanks for the reference. We added it page 3 line 11:

[...] at larger durations for a tropical climate. De Paola et al. (2014) have also inferred IDF curves from disaggregated daily rainfalls for three African cities (Addis Ababa, Ethiopia; Dar Es Salaam, Tanzania; and Douala, Cameroon).

More recently [...]

Page 3, line 13: The Extreme Value Distributions well interpret the maximum daily rainfall with reference to the city of Dar Es Salaam (See Cluva Chapter 2, Giugni et al. , The Impacts of Climate Change on African Cities, 2015); in particular, their work shows that the distribution of annual maxima is well modelled by the GEV distribution and that the shape parameter of the GEV distribution is essential to the determination of the characteristics of extreme value behaviour. Moreover, they showed that the estimation of GEV parameters by methods such as maximum likelihood can be unreliable in case of short rainfall records, but the estimation of the shape parameter done using the Bayesian method is more precise restricting the shape parameter to a physically reasonable range.

Response.

Thanks for the reference, we have thus added it with other references concerning the heavy tail of daily rainfalls.

“While Agbazo et al. (2016) assumed a Gumbel distribution of the annual maxima, Panthou et al. (2014b) used the approach in its broader formulation, showing that the annual maxima distribution was heavy-tailed (positive value of the shape parameter of the GEV). Indeed, such heavy-tailed behavior in daily rainfall samples is generally found: both in the African region (e.g. Panthou et al. 2012, Giugni et al. 2015) but also all around the world (e.g. Koutsoyiannis 2004, Papalexiou et al. 2013).”

Page 7, lines 6-7: it is not really correct to state that the GEV distribution reduces to the Gumbel distribution when x is equal to zero; actually the GEV is not defined for x equal to zero, the GEV reduces to the Gumbel distribution when x tends to zero.

Response.

Yes, we agree, the reviewer is absolutely right. The sentence now reads as follows: “when ξ tends to 0, the GEV reduces to the Gumbel distribution”

Page 8, lines 32-33: the definition of robustness is not clear since a robust statistic returns inferential results that are relatively insensitive to changes in the assumptions of the statistical model.

Response.

We do not really agree with this remark. It depends on how the robustness is defined. Here the robustness refers to whether the IDF model is over-fitted or not.

Nonetheless, from the remark of the reviewer, we understand that this concept was not well explained in the paper. Thus, we reformulated the following paragraph:

“[...] to assess the fitting performances.

The robustness, on the other hand, aims at evaluating whether the flexibility is not overstretched due to the model having too many parameters with respect to the number of observations. As the two models tested here have a different number of parameters [...]”

now reads:

“[...] to assess the fitting performances.

The robustness, on the other hand, aims at evaluating whether or not the IDF model is too flexible due to the model having too many parameters with respect to the number of observations. It thus depends on the sensitivity of the IDF model parameters to sampling effects: the less the model parameters are sensitive to sampling effects, the more the model is robust. As the two models tested here have a different number of parameters [...]”

Page 12, lines 23-24: it is not clear from where we can deduce that considering higher moments of return periods the sample size explains 80% of the variance of the confidence interval width for μ , 70% for σ , 55% for ξ and 4% only for $iT=100$. Therefore this part should be better explained.

Response.

Thank for this relevant remark. In fact, there are two sources of confusion here:

First there was a typo: “of” rather than “or” in the first part of the mentioned sentence. We have thus corrected the sentence “However this relation weakens when considering higher moments of return periods:” ; it now reads “However, this relation weakens when considering higher moments or higher return periods:”.

Secondly, we agree with the reviewer that the second part of the sentence might be too short to clearly explain what we have in mind. It refers to the linear regression between the relative width of the confidence interval of a given parameter/return level and the number of available years.

Thus we have modified the second part of the sentence:

“the sample size explains 80% of the variance of the confidence interval width for μ , 70% for σ , 55% for ξ and 4% only for $iT = 100$ ”

now reads

“the coefficients of correlation between the confidence interval width and the sample size (available number of years) are $r^2=0.80$ for μ , $r^2=0.88$ for σ , $r^2=0.69$ for ξ , $r^2=0.55$ for $iT = 2$ and $iT = 10$, and $r^2=0.004$ only for $iT = 100$.”

We thank the reviewer for its comments which – we hope – helped improved the clarity of the paper.

Intensity-Duration-Frequency (IDF) rainfall curves in Senegal

Youssouph Sane¹, Geremy Panthou², Ansoumana Bodian³, Theo Vischel², Thierry Lebel²,
Honore Dacosta⁴, Guillaume Quantin², Catherine Wilcox², Ousmane Ndiaye¹, Aida Diongue-Niang¹,
and Mariane Diop Kane¹

¹Agence Nationale de l'Aviation Civile et de la Météorologie (ANACIM), Dakar, Sénégal

²Univ. Grenoble Alpes, IRD, CNRS, Grenoble INP, IGE, 38000 Grenoble, France

³Laboratoire Leidi, Université Gaston Berger, Saint Louis, Sénégal

⁴Département de Géographie, Université Cheikh Anta Diop, Dakar, Sénégal

Correspondence to: G. Panthou (geremy.panthou@univ-grenoble-alpes.fr)

Abstract. Urbanization resulting from ~~a~~ sharply increasing demographic pressure and ~~the development of infrastructures have~~ infrastructure development has made the populations of many tropical areas more vulnerable to extreme rainfall hazards. Characterizing extreme rainfall distribution in a coherent way in space and time is thus becoming an overarching need that requires using appropriate models of IDF curves. Using 14 series of 5-min rainfall records (~~aggregated at a basis time-step of~~ 5 ~~h~~) collected in Senegal, a comparison of two GEV & scaling models is carried out, ~~leading to adopt the most parsimonious one~~ built around four parameters, resulting in the selection of the more parsimonious one (four parameters) as the recommended model for use. A bootstrap approach is proposed to compute the uncertainty associated with the estimation of these 4 parameters and of the related rainfall return levels for durations ranging from 1h to 24h. This study confirms previous works showing that simple scaling holds for characterizing the ~~time-space structure~~ temporal scaling of extreme rainfall in tropical regions such as sub-Saharan Africa. It further provides confidence intervals for the parameter estimates, and shows that the uncertainty linked to the estimation of the GEV parameters τ is 3 to 4 times larger than the uncertainty linked to the inference of the scaling parameter. From this model, maps of IDF parameters over Senegal are produced, providing a spatial vision of their organization over the country, with a ~~North to South~~ north to south gradient for the location and scale parameters of the GEV. An influence of the distance from the ocean was found for the scaling parameter. It is acknowledged in conclusion that climate change renders the inference of IDF curves sensitive to increasing ~~non-stationarity effects, requiring to warn~~ non-stationarity effects, which requires warning end-users that ~~they~~ such tools should be used with care and discernment.

1 Introduction

The ~~fast-growing-fast-growing~~ pressure of mankind on planet Earth makes populations increasingly exposed to hydrometeorological hazards such as torrential rains and floods (IPCC, 2012; Mechler and Bouwer, 2015). Hydrologists are thus more compelled than ever to deal with the problem of assessing the probability of extreme rainfall events at different ~~time-scales~~ timescales and for various return periods, depending on the area of the target catchment and the issue at stake, most notably human life protection and infrastructure dimensioning. A classical way of synthesizing the results of such studies is the production of so-called rainfall Intensity-Duration-Frequency (IDF) curves, ~~providing-which provide~~ estimates of rainfall return levels over a range of durations. In doing so, scientists are ~~facing-face~~ facing two sets of difficulties: one related to data availability, and the other to the necessity of a proper methodological framework.

On the data side, the frequency analysis of extremes requires long and continuous records of rainfall at the same location, something ~~not-unusual-fairly common~~ fairly common at a daily ~~time-step-even-though time step albeit unavailable~~ in some regions ~~this-is-not-so-common~~. ~~Moreover~~. Moreover, a complicating factor is that, in many cases, it is necessary to consider sub-daily ~~time-steps~~ time-steps, ~~for-which-long-term-records-of time steps~~. However, long-term records of sub-daily rainfall are much less numerous or much less reliable/accurate than daily series.

The methodological challenge arises from the complex combination of factors ~~causing-that cause~~ rainfall to be strongly variable at all scales (from the microphysics droplet ~~scales-to-synoptic-sealess~~ scale to synoptic scale), as a result of the ~~non-linear~~ nonlinear interaction of different atmospheric processes (e.g. Schertzer and Lovejoy, 1987). This implies that it is not at all obvious to find a proper theoretical framework to compute IDF curves in a way that ensures coherency between ~~time-sealess~~ timescales. Early works on IDF proposed empirical methods consisting of first adjusting a frequency distribution ~~models~~ model fitted to rainfall series $\{R(D)\}$ for each duration D of interest ~~;-and-then-and then fitting the~~ IDF formula $\{i_T(D)\}$ fitted independently to each series of quantiles derived from the first step and corresponding to a given return period T (see e.g. Miller et al., 1973; NERC, 1975). This has the advantage of being easily implementable and is thus commonly used by hydrological engineers and operational climate/hydrological services. However, because of uncertainties in the computation of the quantiles derived for the different durations, the scaling formulation may be physically inconsistent and may lead to gross errors such as parasitic oscillations or intersections between IDF curves computed for two different durations (see Koutsoyiannis et al., 1998, for more details). As a remedy to such inconsistencies, Koutsoyiannis et al. (1998) were the first to propose a general IDF formulation that remains consistent with both the foundations of the probabilistic theories and the physical constraints of scaling across durations. Another notable advance was provided by Menabde et al. (1999) who demonstrated that ~~the~~ the changes in rainfall distribution with duration formulated by Koutsoyiannis et al. (1998) can be expressed as a simple scaling relationship, opening the path for using the fractal framework in order to describe the ~~time-temporal~~ time-temporal scaling between IDF curves established over a range of durations in various regions of the world (see e.g. Yu et al., 2004; Borga et al., 2005; Gerold and Watkins, 2005; Nhat et al.; Bara et al., 2009; Blanchet et al., 2016; Rodríguez-Solà et al., 2016; Yilmaz et al., 2016).

~~Disposing-of-Having~~ a consistent scaling framework does not ~~suppresseliminate~~ suppress/eliminate, however, the crucial sampling issues associated with the estimation of the parameters of the IDF model. This involves significant uncertainties in the final de-

termination of rainfall return levels, a question rarely addressed in the literature; on that ~~aspects~~subject, see the pioneering work of Mélése et al. (2017) which ~~present and compare different methods to compute~~ presents and compares different methods for computing IDF confidence intervals (on a GEV&scaling model) over the Mediterranean region. It is especially important to investigate this issue in tropical regions such as Sub-Saharan Africa, where a number of new infrastructure projects are in the ~~pipe~~ pipeline while at the same time a significant increase of flood risks and related ~~man~~ human casualties has been reported over the past ~~15 years or so~~ (Di-Baldassarre et al., 2010; Tschakert et al., 2010; IPCC, 2014). two decades (Di-Baldassarre et al., 2010; Tschakert et al., 2010; IPCC, 2014).

Several recent studies have dealt with the question of IDF calculation for different West African countries. Some focused on ~~analysing the behaviour of~~ analyzing the behavior of the extreme rainfall distribution at a given location (such as Soro et al., 2008, 2010, for Ivory Coast) while others ~~looked at the scaling behaviour over durations such as Mohyont and Demarée (2006)~~ (such as Mohyont and Demarée 2006 for Congo and Oyegoke and Oyebande (2008) for Nigeria Oyegoke and Oyebande 2008 for Nigeria) looked at the scaling behavior over durations. Van-De-Vyver and Demarée (2010) also ~~analysed~~ analyzed the scaling properties of rainfall over a range of durations for a couple of stations in Congo, finding the value of the main scaling parameter to be larger than the one obtained for Uccle in Belgium, ~~meaning~~ implying that the small durations are heavily driving the ~~behaviour~~ behavior of extreme rainfall at larger durations for a tropical climate. De Paola et al. (2014) have also inferred IDF curves from disaggregated daily rainfalls for three African cities (Addis Ababa, Ethiopia; Dar Es Salaam, Tanzania; and Douala, Cameroon).

More recently, Panthou et al. (2014b) and Agbazo et al. (2016) showed that the GEV&simple-scaling framework is ~~well suited~~ well-suited to estimate rainfall return levels ~~at various durations~~ in a coherent way at various durations for an array of stations covering a mesoscale area of typically a dozen thousands km², respectively in ~~South-West~~ southwest Niger and in ~~Northern~~ northern Benin. While Agbazo et al. (2016) ~~assume~~ assumed a Gumbel distribution of the annual maxima, Panthou et al. (2014b) used the approach in its broader formulation, showing that the annual maxima distribution was ~~heavy tailed~~ heavy-tailed (positive value of the shape parameter of the GEV). Indeed, such heavy-tailed behavior in daily rainfall samples is generally found: in the African region (e.g. Panthou et al., 2012; Giugni et al., 2015) but also all around the world (e.g. Koutsoyiannis, 2004b; Papalexiou and Koutsoyiannis, 2013).

It is worth noting that ~~in both cases use was made of the high quality and fine time scale~~ both Panthou et al. (2014b) and Agbazo et al. (2016) made use of the high-quality and fine timescale resolution data collected by the AMMA-CATCH research observatory (Lebel et al., 2009). This data set ~~covering homogeneously~~ homogeneously covering a wide range of ~~time-steps~~ time steps (from 5 minutes upward) over more than 20 years is unique in ~~Tropical~~ tropical Africa. This means than in every other area, the parameters of the scaling relationship will have to be inferred from a very limited number of sub-daily rainfall series, not all of them being of ~~same records~~ equal length, thus raising the question of which parameters have the largest influences on the final uncertainties of rainfall return levels. This issue is extremely important when dealing with large regions (such as a whole country) over which the scaling parameters may vary spatially, making it unstraightforward to infer rainfall return levels for sub-daily durations when only daily data are available.

Focusing on Senegal, a region of contrasted coastal to inland semi-arid climate, our paper's ambitions are both to address the uncertainty issue not dealt with in ~~above-mentioned~~ the above-mentioned papers and to provide IDF curves for a region located at the western edge of the Sahel, ~~looking-at~~ evaluating the spatial variability generated by the transition from the coast to inland. In addition to its methodological bearing, the paper aims at making these IDF curves widely accessible to a large range of end-users in the whole country by mapping the values of the scaling parameters and of the rainfall return levels. Furthermore, selecting an IDF model ~~as less sensitive as~~ that is the least sensitive possible to data sampling effects and computing the associated IDF confidence intervals ~~make easier the update~~ facilitates updating of the IDF curves when new data are available.

2 Data and Region

10 2.1 Senegal Climatological Context

Senegal is located at the western edge of the African continent between latitudes 12°N and 17°N (Figure 1a). The climate of Senegal is governed by the West African monsoon (Lafore et al., 2011; Janicot et al., 2011; Nicholson, 2013), resulting in a two-season annual cycle: a dry season marked by the predominance of maritime and continental trade winds in winter, and a rainy season ~~marked~~ by the progressive invasion of the West African monsoon (Figure 2a to Figure 2c) during the summer. The length of the rainy season varies ~~along the~~ by latitude and ranges roughly from 5 months (early ~~of~~ June to the end of October) in the ~~South~~ south to 3 months (mid-July to mid-October) in the ~~Northern~~ northern part of Senegal. Rainfall amounts peak in August and September, coinciding with the period when the ITCZ reaches its northernmost position over Senegal.

There is a strong ~~North-South~~ north-south gradient of the mean annual rainfall (Figure 2d) ranging from 300 mm in the ~~North~~ north to more than 1000 mm in the ~~South~~ south (Diop et al., 2016). This gradient is mainly explained by the number of rainy days (in average between 20 and 80 from ~~North to South~~ north to south) and to a lesser extent by the mean intensity of rainy days (in average between 10 and 15 mm day⁻¹), see Figure 2e and 2f.

The rains are mainly caused by ~~Mesoscale Convective Systems~~ mesoscale convective systems sweeping the country from east to west (Laurent et al., 1998; Mathon et al., 2002; Diongue et al., 2002). ~~Sometimes it also happens that~~ Occasionally, cyclonic circulations off the Senegalese coast direct ~~moisture-laden~~ moisture-laden air flow over the western part of the country, dumping heavy rains that often cause floods in coastal cities. Due to its convective nature, rainfall in West Africa is strongly variable in space and time, especially at the event scale for which large differences in rainfall amounts are frequently observed ~~in two very close~~ at two nearby points (Sane et al., 2012). The rain durations are also generally short, except in the rare case of stationary convective systems (blocked situation).

Senegal regularly undergoes damaging heavy downpours. A recent example is the rainfall event that occurred in Dakar in the morning of August 26, 2012, causing the largest flood over the last twenty years in the city. An amount of 160 mm was recorded at the Dakar-Yoff station ~~which is large~~, a large quantity but not a historical record for daily rainfall at this station. ~~In fact~~ Rather, this event was exceptional because of its intensities at short durations (54 mm were recorded in 15 minutes and 144

mm in 50 minutes) ~~exceeding by far by far exceeding~~ the previous records in Dakar-Yoff. Such rainfall intensities and their associated disasters justify the importance of better documenting extreme rainfall distributions at short ~~time scales~~timescales.

2.2 Rainfall Data

The archives of climate ~~and~~ hydrological services of West African countries sometimes contain large ~~amount~~amounts of sub-daily rainfall records. However~~these records are~~, most of the time these records are stored in paper strip chart formats, requiring a tedious task of digitization ~~for using in order to use~~ them in numerical applications.

The present study has been made possible thanks to an important work of analyzing and digitizing ~~rain-gauge~~rain gauge charts carried out for the main synoptic stations of Senegal. This process was undertaken by the ~~laboratory of hydro-morphology of hydro-morphology~~laboratory of the Geography Department ~~of at~~ the University Cheikh Anta Diop of Dakar (UCAD) in collaboration with the National Agency of Civil Aviation and Meteorology (ANACIM) who provided the rainfall paper charts.

Senegalese synoptic stations are equipped with tipping bucket ~~rain-gauges~~rain gauges; the receiving ring is 400 cm² and a bucket corresponds to 0.5 mm of rain. The roll rotation is daily. The chart analysis has been performed with the software “Pluvio” developed by (~~Vauchel, 1992~~)Vauchel (1992) allowing the computation of 5-minute ~~time-step~~time step digitized rainfall series from the paper diagrams. It is a long and laborious task, which has the advantage of allowing a careful “chart by chart” checking of the quality of the records before digitization. For more information on the digitization process, the reader may refer to the publications of Laaroubi (2007) and Bodian et al. (2016).

A total ~~number~~ of 23 tipping bucket ~~rain-gauges was analysed~~rain gauges were analyzed, with data going back to 1955 for the oldest and to 2005 for the most recent. As the assessment of extreme rainfall distributions is known for being ~~much~~highly sensitive to sampling effect and erroneous data (Blanchet et al., 2009; Panthou et al., 2012, 2014b), ~~a~~ particular attention was paid to check and select the most appropriate series.

The data selection had to ~~reconciliate~~reconcile two constraints: (i) keeping the data set as large as possible and (ii) eliminating series that contain too much missing data.

The procedure for classifying one year-station as valid or not is the following: (i) ~~first~~, the annual number of 5-min data and the annual amount of rain are computed, (ii) the mean ~~inter-annual~~interannual values of these two statistics are computed on the whole series, (iii) a year is classified as valid if either the number of 5-min rain data or the amount of rainfall is comprised between 1/2.5 and 2.5 times their mean ~~inter-annual values~~interannual values, and (iv) other years are classified as missing and removed from the whole series. Since missing years influence the mean ~~inter-annual~~interannual values, step (ii), (iii) and (iv) are repeated until all remaining years are classified as valid (note that, in fact, no station-year had to be excluded after the initial step). All valid years for all series are plotted on Figure 3. In order to keep the IDF fitting robust, only series with at least 10 years of valid data have been used. This led us to retain 14 stations with record length varying from 10 (Fatick station) to 44 years (Ziguinchor station) with a median of 28 years. This dataset has the advantage of ~~fairly covering the whole country~~spatially representing the entire country, but as the length of the series varies, the quality of the IDF estimates might differ from one station to another. This effect will be ~~more precisely analysed~~analyzed more precisely in section 5.2.1.

3 Theoretical background

3.1 General IDF formulations

3.1.1 Empirical IDF formulations

Intensity-Duration-Frequency (IDF) IDF curves provide estimates of rainfall intensity for a range of durations $\{D\}$ and for several frequencies of occurrence (usually expressed as a return period T). Each curve corresponds to the evolution of a return level (i_T) as a function of rainfall duration D . Historically, several empirical formulations of IDF curves have been proposed. All can be described by the following general equation (Koutsoyiannis et al., 1998):

$$i_T(D) = w(T) \times [D + \theta(T)]^{\eta(T)} \quad (1)$$

where w , θ and η are parameters to be calibrated from rainfall observations.

10 3.1.2 Koutsoyiannis scaling relationship

Koutsoyiannis et al. (1998) have demonstrated that the empirical formulations (Equation 1) can be expressed as:

$$i_T(D) = a(T) \times b_{\text{Koutso}}(D) \quad (2)$$

where $b_{\text{Koutso}}(D)$ is the scaling function:

$$b_{\text{Koutso}}(D) = (D + \theta)^\eta \quad (3)$$

15 The advantage of Equation 2 as compared to Equation 1, is to separate the dependency on T (return period) from the dependency on D (duration): $a(T)$ only depends on T , and $b_{\text{Koutso}}(D)$ only depends on D . A consequence is that for the particular case of $D_0 = 1 - \theta$:

$$i_T(D_0) = a(T) \quad (4)$$

Then, it becomes a classical frequency analysis of the random variable $I(D_0)$ to estimate the return levels $i_T(D_0)$ i.e.
20 study-evaluate $\mathbb{P}[I(D_0) \leq i(D_0)]$. Then, Equation 2 can be reformulated as an equality of distribution of random variables I :

$$I(D) \stackrel{d}{=} I(D_0) \times b_{\text{Koutso}}(D) \quad (5)$$

3.1.3 Simple scaling relationship

In the particular case of $\theta = 0$, Equation 5 becomes:

$$I(D) \stackrel{d}{=} I(D_0) \times b_{\text{SiSca}}(D) \quad (6)$$

25

$$b_{\text{SiSca}}(D) = D^\eta \quad (7)$$

where $b_{\text{SiSca}}(D)$ is a simple scaling formulation of b .

3.2 IDF scaling formulations in the frame of the Extreme Value Theory

In the scaling approach described above, the estimation of rainfall return levels requires a statistical model of rainfall intensity distribution since equations 5 and 6 take the form of an equality of distributions. The ~~extreme value theory (Coles, 2001)~~ Extreme Value Theory (EVT – Coles, 2001) is the most commonly used framework for deriving these models.

5 3.2.1 Block maxima framework in Extreme Value Theory

~~The Extreme Value Theory (EVT)~~ EVT proposes two methods to extract samples of extreme values from a time series (Coles, 2001): ~~the~~ Block Maxima Analysis (BMA) which consists of defining blocks of equal lengths (often one year in hydrology) and extracting the maximum value within each block; ~~the and~~ Peak Over Threshold (POT) which consists of extracting all the values exceeding a given threshold.

10 Compared to BMA, ~~the~~ POT has the advantage of allowing the selection of more than one value per year, thus increasing the sample size used for inferring the model; ~~but~~ However, the choice of an appropriate threshold is often difficult (Frigessi et al., 2002). Here the BMA approach was preferred as it is more ~~straightforwardly implementable~~ straightforward to implement.

In BMA, when the block is large enough (which is ensured for annual maxima), the ~~Extreme Value Theory~~ EVT states that the Generalized Extreme Value (GEV) distribution is the appropriate model for block maxima samples (Coles, 2001). The GEV
15 distribution is fully described by three parameters: ~~;~~ the location (μ), the scale (σ), and the shape (ξ), which are respectively related to the position, the spread and the asymptotic ~~behaviour~~ behavior of the tail of the distribution:

$$F_{GEV}(i; \mu, \sigma, \xi) = \exp \left\{ - \left[1 + \xi \left(\frac{i - \mu}{\sigma} \right) \right]^{-\frac{1}{\xi}} \right\} \quad \text{for } 1 + \xi \left(\frac{i - \mu}{\sigma} \right) > 0 \quad (8)$$

A positive (negative) shape corresponds to a heavy-tailed (bounded in the upper tail) distribution. When ξ ~~is equal~~ tends to 0, the GEV reduces to the Gumbel distribution (light-tailed distribution):

$$20 \quad F_{GUM}(i; \mu, \sigma) = \exp \left\{ - \exp \left[- \left(\frac{i - \mu}{\sigma} \right) \right] \right\} \quad (9)$$

3.2.2 GEV parameter formulation in a scaling framework

Menabde et al. (1999) have derived the equations merging the scaling formulations presented above (both b_{SiSca} and b_{Koutso}) with the extreme value ~~distribution~~ distributions (see also Panthou et al., 2014b; Blanchet et al., 2016). In this approach, the $I(D)$ samples are modeled by a GEV ~~model~~ distribution for which the location and scale parameters are parameterized as a
25 function of D as follows:

$$I(D) \sim \text{GEV} \{ \mu(D); \sigma(D); \xi \} \quad (10a)$$

$$\mu(D) = \mu_0 \times b(D) \quad (10b)$$

$$\sigma(D) = \sigma_0 \times b(D) \quad (10c)$$

The return levels are easily obtained at all durations D as:

$$i_T(D) = F_{GEV}^{-1} \left(D, 1 - \frac{1}{T} \right) \quad (11)$$

This formulation is equivalent to the following:

$$i_T(D) = F_{GEV}^{-1} \left(D_0, 1 - \frac{1}{T} \right) \times b(D) \quad (12)$$

5 ~~With~~with $D_0 = 1 - \theta$.

Note that equations 10 to 12 are valid for both b_{SiSca} and b_{Koutso} . In log-log space, the IDF_{SiSca} return levels have a linear shape, indicating a single temporal scaling regime, while those of IDF_{Koutso} could present a more or less pronounced curvature, indicating a transition between two temporal scaling regimes.

4 Methodology: inference, evaluation and uncertainty of IDF models

10 In this study, two IDF models are compared: the IDF_{Koutso} obtained from the Koutsoyiannis scaling b_{Koutso} , and the IDF_{SiSca} obtained from the simple scaling b_{SiSca} . Both models describe the distribution of extreme rainfall intensities across ~~duration~~durations but they differ in their formulation and in their number of parameters: IDF_{SiSca} has four parameters $\{\mu_0, \sigma_0, \xi, \eta\}$ while IDF_{Koutso} has five parameters $\{\mu_0, \sigma_0, \xi, \eta, \theta\}$. ~~The~~BMA samples from which the two scaling models are inferred and evaluated are built by using 1-year block lengths, in order to ensure the independency between the elements of the sample.

15 At each station, the extreme rainfall sample thus consists of annual maximum intensities $i(D)$ with D ranging from 1h to 24h: $\{1, 2, 3, 4, 6, 8, 10, 12, 15, 18, 24\}$ h. ~~Note that,~~The lower bound of this range (1h) was selected in order to limit the risk of underestimating the true annual maximum intensity when evaluating at shorter durations (close to the 5-minute fixed window of the raw series). The upper bound of the range (24h) was chosen because it is a standard duration for hydrological applications and climate studies, but also because it is much more frequently recorded (by daily rain gauges). Note that for each duration

20 D , a rolling mean of length D is applied to the 5 minute rainfall series before extracting the maxima. This ensures that the extracted maxima are not ~~under-estimated~~underestimated (which is the case when using a fixed window).

4.1 IDF model inference

Different fitting methods have been tested to adjust the IDF model parameters to rainfall data: ~~one~~. One of them (the two-step method) is applicable to both IDF_{Koutso} and IDF_{SiSca} models.

25 Note that two other methods specifically dedicated to the IDF_{SiSca} model ~~have also been~~were also tested: one based on the moment scaling function (as in e.g. Borga et al., 2005; Nhat et al.; Panthou et al., 2014b), and one based on the global maximum likelihood estimation (as in Blanchet et al., 2016). As they did not perform better than the two-step method, they are not presented here.

The fitting of the scaling $b(D)$ is based on the equality of distribution given in Equation 5 for IDF_{Koutso} and Equation 6

30 for IDF_{SiSca} . If these equations hold, the scaled random variables $I(D)/b(D)$ have ~~for all durations~~ D the same distribution

as the random variable $I(D_0)$ for all durations D . This means that the observed scaled samples $i(D)/b(D)$ have similar statistical properties for each duration D . Based on this property, the parameters of $b(D)$ are calibrated in order to minimize a statistical distance between the different scaled samples $i(D)/b(D)$. As suggested by Koutsoyiannis et al. (1998), the difference in medians computed by the Kruskal-Wallis statistic applied on multi-samples (Kruskal and Wallis, 1952) was chosen to

5 characterize the distance between the scaled samples $i(D)/b(D)$.

Once the scale relationship is identified (\hat{b}), scaled samples $i(D)/b(D)-i(D)/\hat{b}(D)$ are computed and pooled in a single sample since they are expected to follow the same GEV distribution (see Equation 12). The GEV parameters are estimated on this aggregated scaled sample by using the L-Moments method. This method was retained as it is more suitable for small samples (Hosking and Wallis, 1997) than the Maximum Likelihood Estimation algorithm which sometimes fails in optimizing

10 the likelihood for ~~too~~-small samples.

4.2 ~~Models~~ Model evaluation and selection

With the aim of selecting the best IDF model from the two compared IDF formulations (IDF_{Koutso} and IDF_{SiSca}), a process of model evaluation and comparison is proposed here by looking at both their flexibility (the models are fitted on a calibration sample) and their robustness (the models are fitted in a predictive mode on samples not used for calibration).

15 The flexibility characterizes the capacity of a model to fit the observed data which are used to calibrate its parameters. To ~~that purpose~~ evaluate flexibility, the IDF models are fitted at each station~~;~~, then different scores are computed to assess the fitting performances.

The robustness, on the other hand, aims at evaluating whether ~~the flexibility is not overstretched or not the IDF model is too flexible~~ due to the model having too many parameters with respect to the number of observations. It thus depends on the

20 sensitivity of the IDF model parameters to sampling effects: the less the model parameters are sensitive to sampling effects, the more the model is robust. As the two models tested here have a different number of parameters (4 for IDF_{SiSca} , 5 for IDF_{Koutso}), there is a particular interest at comparing ~~between models~~ how the goodness of fit for each model is degraded when shifting from the calibration mode to the predictive mode. The predictive capacity of the IDF models is assessed by using a classical calibration/validation process. At each station, a subset of data is used to fit the IDF model; a second independent subset is

25 used to validate it. The same scores as used in the calibration mode are computed for the validation subset. Rather than using two consecutive sub-periods, one for the calibration sample and one for the predictive sample, a year to year separation was used to build the two subsets. This limits the risk of obtaining samples made of years belonging predominantly to a dry period or to a wet period.

The flexibility and the predictive capacity of the IDF models are quantified based on two types of scores: global and quantile-

30 quantile.

The two global scores used are the statistics returned by two goodness of fit (GOF) tests: Kolmogorov-Smirnov (KS) and Anderson-Darling (AD). Each test computes a statistic based on the differences between a theoretical Cumulative Distribution Function (CDF) and the empirical CDF. The null hypothesis is that the sample is drawn from the fitted model. The test ~~returns also~~ also returns the corresponding p-value (~~error of first kind~~ probability of type 1 error). The p-value is used as an

acceptation/rejection criterion by fixing a threshold (here 1%, 5%, and 10%). These tests and p-values were computed for each rainfall duration at each station.

GOF tests allow ~~evaluating the whole~~ for evaluating the entire distribution but do not guarantee that all quantiles are correctly estimated. Thus, as a complement, ~~quantile-based~~ quantile-based scores are also computed. They characterize the relationship between theoretical (obtained from the fitted CDF) and empirical ~~quantiles~~ (obtained from the empirical CDF) quantiles. The root mean square error (RMSE), the mean error (ME), and the mean absolute error (MAE) quantile-based scores are computed. The full presentation of ~~theses~~ these scores can be found in Panthou et al. (2012). A weighted version of these scores is also used in order to assign greater weight to unusual quantiles, as proposed by Begueria and Vicente-Serrano (2006) and also presented in Panthou et al. (2012).

10 4.3 Uncertainty assessment

From a methodological point of view, the central contribution of this paper is its attempt at quantifying the uncertainty associated with IDF calculation in a scaling framework. This involves two distinct aspects. One is the uncertainty linked to the estimation of the scaling parameters. The other is the uncertainty linked to the inference of the GEV parameters. This second component is especially important to consider when applying a scaling model to a location where only daily rainfall series ~~only~~ are available, which is the ultimate purpose of regional IDF models. Indeed, in some regional studies, the scaling parameters will have to be inferred from ~~a~~ the very few stations where rainfall is recorded at ~~subdaily time-steps~~ sub-daily time steps; if they display variations in space, ~~they then~~ then they will have to be spatially interpolated so as to provide scaling parameter at any location of interest, notably at the location of daily rainfall stations. At these stations, the scaled GEV distribution is thus estimated from the daily observations only, making the inference far less robust than when using a richer scaled sample obtained from observations ranging from one hour ~~-or less-~~ (or less) to one day.

Therefore, in the following, the uncertainty assessment at a given location will be addressed separately for the two situations: i) first when observations at this location are available over a whole range of ~~time-steps~~ time steps; ii) secondly when only daily observations are available.

25 4.3.1 ~~Uncertainty linked to the inference of the scaling~~ Global IDF model at locations with multi time-scale observations uncertainty when multi-timescale samples are available

Confidence intervals for IDF parameters and return levels are estimated using a non-parametric bootstrap (Efron and Tibshirani, 1994). For each station, it consists of fitting IDF curves to bootstrap samples ($i(D)_{boot}$) obtained from the original $i(D)$ samples. The entire process consists of ~~three~~ four steps:

1. The vector of years is resampled with replacement (Monte Carlo resampling) until its length equals the length of the original vector.

2. Once a year y is drawn in the bootstrap sample of years, the annual maximum for that year is retained for each duration D in order to build the bootstrap sample of rainfall intensities $i(D)_{boot}$. This guarantees the coherence between the samples at different durations.
3. The IDF model is fitted on the bootstrap sample $i(D)_{boot}$.
- 5 4. The obtained parameters $\{\mu_0, \sigma_0, \xi, \eta, \theta\}_{boot}$ for IDF_{Koutso} and $\{\mu_0, \sigma_0, \xi, \eta\}_{boot}$ for IDF_{SiSca} and the associated return level $i_T(D)_{boot}$ are stored.

These four steps are repeated 1000 times leading to generate 1000 $i(D)_{boot}$ samples and ~~obtained~~ corresponding vectors of length 1000 for the different IDF parameters and ~~for the different~~ IDF return levels stored in step 4. Confidence intervals are computed on these vectors. It is important to underline emphasize that these confidence intervals are a measure of the global uncertainty associated with the inference IDF model (uncertainty due to the inference of the scaling relationship and uncertainty generated by the inference of the parameters of the scaled GEV).

4.3.2 GEV Scaling versus ~~downscaling sources of~~ GEV related ~~uncertainty at locations where~~ when only daily observations samples are available

When only daily observations are available, the GEV parameters are inferred on the corresponding annual block maxima sample of daily data, which contains far less information than the scaled samples used for fitting a scaled GEV when ~~multi-timescale~~ multi-timescale observations are available. The GEV parameters for the sub-daily time-steps time steps are then deduced from the daily GEV parameters using scaling parameters that must be inferred from nearby ~~multi-timescale~~ multi-timescale observations. In some cases this might generate a ~~significant departure~~ GEV model that differs significantly from the GEV model that would have been fitted directly on the observations at the proper time-step time steps if they were available. This effect is studied here by assuming that only the daily data were available for fitting the GEV at our 14 stations and by implementing the bootstrap approach in a way that allows separating the uncertainty linked to the GEV parameter inference and the uncertainty linked to the inference of the scaling parameters. This Analyzing the uncertainty involves two independent bootstrap resampling processes.

The first bootstrapping method used consists in resampling $i(24h)$ based on 1000 bootstrap drawings and fitting 1000 GEV(24h) to these bootstrap samples. These 1000 GEV(24h) are then downscaled to a target duration D using Equation 10, yielding 1000 different GEV(D) (~~practically~~ only the results obtained for the 1-hour duration are presented here). The scaling parameters used to inform Equation 10 are those computed from the complete ~~multi-time-step data set~~ multi-timescales samples as explained in section 4.1. This process yields a sample of 1000 GEV at 1h duration ~~denoted~~ $\{GEV(1h)\}_{GEV}$. The dispersion of these 1000 GEV(1h) is linked to the sole sampling effect underlying the adjustment of the initial GEV(24h), assuming the scaling parameters to be perfectly known.

In a parallel way, the uncertainty associated with scaling is evaluated by generating 1000 downsampled samples ~~from the~~ The reference GEV(24h) fitted on the original sample $i(24h)$ using is downsampled using 1000 scaling parameters from the bootstrap procedure described in the previous section (4.3.1). This produces a sample of 1000 GEV(1h) denoted $\{GEV(1h)\}_{Scal}$, whose

internal dispersion is only influenced by the uncertainty in inferring the scaling parameters, assuming the reference GEV(24h) to be perfectly known.

5 Results

5.1 Model evaluation and selection

5 The ~~results of model evaluation~~ model evaluation results are presented in Figure 4, Figure 5 and Table 1. In these figures and table, the subscript a (resp. b) relates to the calibration (resp. validation) results.

Figure 4 presents the GOF p-value of the KS test obtained for both models (IDF_{SiSca} and IDF_{Koutso}) in calibration and validation mode at each station (the AD test gives similar results, not shown). In Figure 5, all stations are gathered in one single qq-plot from which global scores are computed. All global results (non-weighted and weighted qq-scores) are reported
10 in Table 1.

5.1.1 Flexibility and Robustness

Figure 4a shows that for all stations and durations, the KS p-values are higher than 10% (i.e. the risk of being wrong by rejecting the null hypothesis “observations are drawn from the models” is greater than 10%). This means that both IDF models fit the observed data with a reasonable level of confidence in calibration and have thus good flexibility skills. The global scores
15 reported in Figure 5a and Table 1 show that in calibration, IDF_{Koutso} slightly outperforms IDF_{SiSca}. This result was expected as IDF_{Koutso} has an additional degree of freedom (θ parameter) compared to IDF_{SiSca}.

~~As regarding~~ With regards to the validation mode, four stations display p-values below 10% at almost each duration (Figure 4b); globally, both models display a similar number of occurrences of p-values below 10% (37 for IDF_{SiSca} and 35 for IDF_{Koutso}) as well as below 5% (21 for IDF_{SiSca} and 20 for IDF_{Koutso}) and below 1% (1 for IDF_{SiSca} and 2 for IDF_{Koutso}).

20 The global qq-plots in Figure 5 and the statistics summarized in Table 1 confirm that the two IDF models perform very similarly in validation. IDF_{SiSca} has slightly smaller biases (mean errors) while RMSE and MAE are slightly better for IDF_{Koutso}.

5.1.2 Model selection

In addition to performing closely to each other in both calibration and validation modes, the two models yield very similar parameters and return levels, as may be seen from Figure 6. It is worth noting that the fitted values of the additional parameter θ
25 of the IDF_{Koutso} model range from -0.02 to 0.39, which is relatively close to zero ~~as~~ compared to the [1h–24h] range of durations considered here. This means that the IDF_{Koutso} model is de facto very close to the IDF_{SiSca} model, which is a simplification of the IDF_{Koutso} model assuming θ being equal to zero.

Consequently, while there is no factual reason for considering one of the models to be better than the other, the IDF_{SiSca} model will be retained, according to the following considerations:

30 1. it is more parsimonious with no clear advantage brought by the fifth parameter of the IDF_{Koutso} model;

2. it is easier to implement, especially in a perspective of regional studies involving the mapping of the scaling parameters;
3. there is a straightforward link between the formulation of the IDF_{SiSca} model and that of the Montana formula (see appendix) commonly used in national or regional agencies; this makes the formulation of the final IDF product easier to grasp by end-users, thus facilitating its adoption and use.

5 5.2 Assessing ~~the~~ Uncertainties

5.2.1 Global IDF model uncertainty when ~~multi time-scale~~ multi-timescale samples are available

The bootstrap approach presented in section 4.3.1 yields confidence intervals representing the global uncertainty linked to sampling in a situation where several samples at different ~~time-steps~~ time steps are available at the same location. More precisely, it makes a Monte-Carlo exploration of how the aggregated scaled sample built from the ~~multi time-scale~~ multi-timescale initial samples may vary depending on the random variations of each initial sample. The results are presented in Figure 7 for four major cities spread over Senegal. Three of them have all their GOF p-values above 0.1 in both calibration and validation modes (Figure 4) while the fourth (Dakar) has its GOF p-values mostly below 0.1 in validation mode, a few of them being even below 0.05 (meaning that, at that particular station, the model is less ~~skillful~~ skillful).

The 90% confidence intervals of the IDF curves are displayed as ~~coloured~~ colored stripes in Figure 7. As intuitively expected, for a given station, the higher ~~are~~ the return periods considered, the larger ~~are~~ the confidence intervals. Equally ~~conform to in~~ agreement with knowledge and practice is the fact that, for a given parameter, the largest uncertainty intervals are usually obtained for the shortest series (Fatick, Podor, and Thies), while the longest series (Dakar-Yoff, Tambacounda, Kaolack, and Ziguinchor) display the narrowest intervals (Table 2). However, this relation weakens when considering higher moments ~~of or~~ higher return periods: the ~~sample size explains 80% of the variance of the coefficients of correlation between the~~ confidence interval width and the sample size (available number of years) are $r^2 = 0.80$ for μ , ~~70%~~ $r^2 = 0.88$ for σ , ~~55%~~ $r^2 = 0.69$ for ξ ~~and 4% only for $i_T=100$~~ , $r^2 = 0.55$ for $i_T = 2$ and $i_T = 10$, and $r^2 = 0.04$ only for $i_T = 100$. The presence of very rare events in an observed sample is another factor widening the confidence intervals because some bootstrap samples will include these values, while others will not.

When comparing the confidence intervals computed for each parameter of the scaled GEV, it appears that their width is well correlated between μ and σ ($r^2 = 0.82$) and much less so between μ or σ and ξ ($r^2 = 0.32$ between σ and ξ). The widths of the confidence intervals are quite large for both σ and ξ ~~which had to be~~, which was expected since 8 stations out of 14 have a sample size smaller than 30. The uncertainty on ξ is a sensitive issue, since ~~it involves that this parameter may take~~ the confidence interval may include negative values, implying a bounded ~~behaviour~~ behavior (Weibull domain of attraction), whereas a light (zero shape value – Gumbel domain of attraction) or heavy (positive shape value – Frechet domain of attraction) ~~behaviour~~ behavior is usually expected for rainfall extremes. It is however slightly positive ~~in on~~ average (+0.046) ~~which tends to confirm~~, which which is in agreement with the results obtained by Panthou et al. (2012, 2013, 2014b) that point to a dominantly heavy-tailed behavior in the central Sahel region, ~~pointing to a dominantly heavy tail behaviour~~.

5.2.2 Scaling versus GEV related uncertainty when only daily samples only are available

As previously explained, at stations where daily data only only daily data are available, the sub-daily GEV distributions have to be estimated from this limited set of 24-hour values which. This significantly increases the uncertainty as may be seen from seen in Figure 8. In this figure, the total uncertainty on the 1-hour GEV distribution is separated between divided into (i) the uncertainty linked to the initial fitting of the 24-hour distribution – GEV(24h) uncertainty – and (ii) the uncertainty generated by using the scaling relationships of equations 10b and 10c in order to downscale to 1-hour distribution GEV(1h) – scaling uncertainty. This decomposition is carried out by following the procedure presented in section 4.3.2. The results are given for the two longest series of our data set (Dakar Yoff, 38 years; Ziguinchor, 44 years), which happen to display two different behaviours behaviors. At Dakar Yoff, the GEV(24h) uncertainty becomes clearly distinctly larger than the scaling uncertainty from the 10-year return period onwards; at Ziguinchor, this occurs only from the 100-year return period onwards. Associated with this difference is the fact that the downscaled GEV model (dots in Figure 8) diverges from the reference scaled model (continuous line in Figure 8) for Dakar Yoff while they are almost identical for Ziguinchor. At Dakar, the width of the 90% confidence interval associated with the estimation of GEV(24h) reaches 130 mm h^{-1} for a return period of 500 years, against compared to 30 mm h^{-1} for the confidence interval associated with the scaling uncertainty. At Ziguinchor the values are respectively 50 mm h^{-1} and 20 mm h^{-1} .

Figure 9 synthesizes the results obtained at all stations, basically essentially confirming that the inference of the daily scale GEV(24h) is a far more important source of uncertainty than the inference of the scaling relationship ; when it comes to estimate estimating the GEV(1h). Figure 9 displays the minimum, mean, and maximum uncertainty spread obtained on the 14 stations for GEV(24h) on the one hand (red) and the scaling relationship on the other (blue); the 50% shaded interval contains the 7 central values. In order to be able to compute these spreads, the values are expressed as a percentage of the rainfall value given by the GEV(1h) for each station at a given return level. It turns out was found that the spreads due to the GEV(24h) fit using daily samples are 3 to 4 times higher larger than those due to the scaling estimate for the 100-year return level and 5 times larger for the 500-year return level.

5.3 IDF products

5.3.1 IDF curves

A typical representation of of IDF curves is given in Figure 7. As a result of the IDF model formulations and the fitting on a unique scaled sample (for both IDF_{Koutso} and IDF_{SiSca}), the return level curves are parallel (they do not cross) and the intensities decrease as the duration increases. The log-log linearity between return levels and durations comes from the simple scaling formulation (the curves would be bended bent but still parallel ; for the IDF_{Koutso} model). Rainfall return levels are of similar order of magnitude for the four stations, even though a North-South although a north-south gradient is apparent, with rainfall intensities gradually increasing from Saint Louis to Dakar and from Dakar to Ziguinchor. At the 2-year return period, rainfall intensities vary from roughly 40 mm h^{-1} (between 33 and 60 mm h^{-1} when considering all 14 stations) for the 1h duration to approximately 3 mm h^{-1} (between 2 and 5 mm h^{-1}) for the 24h duration. For any station, the return levels for the 10-year

(resp. 100-year) return periods are approximately 1.5 (resp. 2) times higher than the 2-year return levels; these ratios hold at all ~~time scales~~ timescales (from 1h to 24h) as a result of the log-log linearity of the intensity versus the duration. As already discussed in section 5.2, the novelty of these IDF curves is the fact that they are provided with their confidence intervals, allowing the user to get a representation of the uncertainty surrounding the estimated intensity return levels, which is linked to

5 both the sample size and by the quality of the whole GEV&scaling model.

5.3.2 IDF mapping for Senegal

Maps of the 4 IDF parameters (GEV + scaling) over ~~the whole~~ all of Senegal are plotted in Figure 10. They have been produced by kriging the parameters inferred at each of our 14 stations. Two of these parameters (ξ and η) are independent of the duration D , while μ and σ are functions of D ; these two parameters are thus mapped for the reference duration of 1h only (corresponding

10 thus to μ_0 and σ_0). They both display a clear ~~North-South~~ north-south increasing gradient, a feature already found by Panthou et al. (2012) for the Central Sahel: the location (resp. scale) parameter ranges from around 30 mm h⁻¹ (resp. 10 mm h⁻¹) in the ~~North~~ north to around 50 mm h⁻¹ (resp. 15 mm h⁻¹) in the ~~South~~ south. While there are different factors that may explain this gradient, it is clearly coherent with the similar gradient of the mean number of wet days (Figure 2) making that makes the occurrence of a rainfall intensity less frequent in the ~~North~~ north than in the ~~South~~ south, simply because there are fewer

15 rainfall events there (as evidenced for the whole region by Le Barbé et al., 2002).

~~As regarding~~ Regarding the two non-duration dependent parameters (ξ and η), the shape parameter ξ does not display any clear spatial organization while the scaling parameter η displays a ~~South-West-North-East~~ southwest northeast gradient (with values ranging from -0.8 to -0.9). This suggests that, added in addition to the latitudinal effect, the distance ~~to~~ from the ocean might also influence the temporal structure of rainfall events. The values of the scaling parameter are very close to those

20 observed by Panthou et al. (2014b) over the AMMA-CATCH Niger network located near Niamey.

The general pattern of the maps of ~~2-, 10- and 100-year~~ 2-year and 10-year return levels given in Figure 11 is almost ~~totally~~ entirely driven by the ~~North-South rainfall gradient for the 2- and 10-year return period~~ north-south rainfall gradient. The pattern of the 100-year return ~~period-level~~ is a bit less regular, with the distance to the ocean seeming to play a role in the western part of the country and a higher patchiness that is certainly largely due to the sampling uncertainty at such a low frequency of

25 occurrence.

6 Conclusions and discussion

6.1 Main results

This study of extreme rainfall over Senegal for durations ranging from 1h to 24h confirms previous research reporting that simple scaling a single temporal regime of scale invariance (simple scaling) seems to hold in tropical Africa for this range of

30 time scales ~~timescales~~ (Panthou et al., 2014b; Agbazo et al., 2016; Ghanmi et al., 2016). Whether this range could be extended to sub-hourly and/or sup-daily rainfall intensities is an open research question, out of the scope of this paper, but that can be

addressed using the recent methodology developed in Innocenti et al. (2017). The simplified GEV&scaling formulation proposed by Panthou et al. (2014b) using with 4 parameters (3 for the GEV and 1 for the scaling) performs similarly to the 5-parameter formulation of Koutsoyiannis et al. (1998). This simplified formulation allows permits an easier study of the sampling uncertainties associated with the inference of the 4 parameters, carried out by a bootstrap resampling in the observed sample of extreme rainfall at 14 stations. Thus in addition to establishing more solidly more solidly establishing that scaling is an appropriate hypothesis for this region of the world, our study provides for the first time a comprehensive assessment of the different uncertainties affecting the IDF curves produced by the model (studies dealing with uncertainty focus on the whole IDF uncertainty, as M

The key advantage of the GEV&scaling approach for computing IDF curves is twofold: 1) it ensures ~~time-scale~~ timescale coherency (for the range of explored durations) when working at a regional scale, thus allowing for a coherent spatial interpolation of the IDF model parameters over the region of interest; 2 and ii) it offers the possibility of deducing ~~short durations~~ GEV distributions GEV distributions for shorter durations at locations where 24h data only are available, thanks to this spatial interpolation. Both properties have been used in this paper. First, a one-out at a time simulation approach was used to explore the partition of the overall uncertainty between the GEV inference uncertainty and the scaling model inference uncertainty. One important result in this respect is that the uncertainty produced by the inference of the GEV parameters is 3 to 4 times larger than the uncertainty associated with the inference of the scaling relationship. This means that the scaling relationship requires far less data to be inferred correctly than the GEV model. Secondly, maps of the 4 IDF model parameters and associated intensity return levels have been computed, allowing ~~retrieving the for the retrieval of the~~ general spatial pattern of these parameters over Senegal. The location (μ) and scale (σ) parameters of the GEV distribution, as well as the rainfall intensity levels for the 2-year and 10-year return periods, display a clear increasing gradient from ~~North-to-South~~ north to south in line with the climatological gradient of the mean annual rainfall and of the occurrence of wet days. By contrast, for the temporal scaling parameter η , the increasing gradient is rather oriented from ~~North-East to South-West~~ northeast to southwest, reflecting the influence of both the occurrence of wet days and of the distance to the ocean. The map of ξ is somewhat patchy, reflecting the fact that this parameter is usually difficult to estimate, but another important result of this study is that its average value is slightly positive, suggesting that the rainfall distribution is ~~heavy-tailed~~ heavy-tailed as often observed in several regions in the world (~~Koutsoyiannis, 2004b, a~~) (Koutsoyiannis, 2004a, b). Also worth noting is the fact that the value of η is close to -1 (ranging from roughly -0.9 and -0.8) indicating a steep decrease of intensities as the duration increases. This is a common feature of short and intense rainfalls such as those produced by convective storms. These values are comparable to those found by Mohyont et al. (2004) in the tropical area of Central Africa, and to those obtained in the Sahelian region of Niamey by Panthou et al. (2014b), close to -0.9 in both cases; ~~they~~. They are larger in absolute value than those found in mid-latitude regions, as already underlined by Van-De-Vyver and Demarée (2010).

A final consideration relates to the implementation of such IDF models in operational services. While the theoretical framework of coupling the GEV and scaling models might be considered ~~as~~ difficult to handle outside the world of academic research, ~~their implementation to produce~~ implementing them for producing IDF curves is relatively easy, especially when using the simplified approach tested here. This approach has the additional advantage of producing relationships between rainfall return levels that are formally equivalent to the so-called Montana relationship (see appendix), widely used in operational

services, ~~making easier~~ facilitating the implementation and usage of our IDF model in meteorological/climatological services and hydrological agencies.

6.2 Points of discussion and perspectives

In the perspective of extending this work to other tropical regions of the world where ~~subdaily~~ sub-daily rainfall data might be rare, it remains to explore the effect of using a fixed window to extract the daily rainfall annual maxima, ~~while~~ whereas a moving window was used for all durations (including 24h) in this study. As a matter of fact, daily records of rainfall are carried out at a given hour of the day (usually 6:00 GMT or local time), producing smaller totals than when a mobile window is used to extract the daily rainfall maximum ~~maximorum~~ of a given year ~~(or month)~~. Since the scaling relationships that are used to ~~deduced~~ subdaily deduce sub-daily statistics from these fixed-window 24-hour maxima are tuned on multi-temporal maxima extracted with using mobile windows, there is a potential underestimation bias of the ~~subdaily~~ sub-daily statistics inferred at 24-hour stations that ~~deserves to be studied~~ merits further study.

Another critical question relates to using statistical inferences ~~presupposing time stationarity in that~~ presuppose stationarity in time in a context of a changing climate. Warming is already attested in the Sahel and is bound to increase ~~involving possible~~ changing, involving possible changes in annual rainfall patterns induced by changes in the positioning of the Bermuda-Azores High and of the ~~Saharian~~ Saharan Heat Low. Indeed, rainfall intensification in this region has already been reported by Panthou et al. (2014a) and by Taylor et al. (2017), likely in connection with an average regional warming of about 0.18 ~~K/decade~~ K decade^{-1} over the past 60 years. While dealing with this question was far beyond the scope of this paper, it is a major challenge for both end-users and researchers. It requires developing non-stationary IDF curves, one ~~possibility~~ possible solution in this respect being to use both long historical rainfall series and the information that can be extracted from future climate model projections (see e.g. Cheng and AghaKouchak, 2014).

At the same time it is important to ~~underline~~ emphasize that stationarity is an elusive concept whose reality is never guaranteed in ~~Nature~~ nature, even without climate change. The Sahelian rainfall regime, for instance, is known for its strong decadal variability (Le Barbé et al., 2002) with potentially great impacts on most extreme rainfall events (Panthou et al., 2013). The use of long ~~rainfall series~~ (multi-decadal) rainfall series to fit IDF curves can thus reduce the sampling effects and reduce the IDF uncertainties but they can also introduce some hidden biases linked to this decadal-scale non-stationarity. This happened with the dams built on the Volta ~~river~~ River in the seventies, ~~and~~. The dams were dimensioned based on the rainfall information of the previous three decades, ~~two of which being abnormally wet~~ which included two abnormally wet decades. The reservoirs never filled up in the eighties and nineties. Therefore, while IDF curves are intended to be disseminated to a large community of end-users, ~~they users~~ must be warned that they are nothing ~~else than a decision making supporting~~ other than a decision-making support tool to be used with care and to be updated regularly.

Appendix A: Simple scaling IDF to Montana IDF

The IDF Montana formulation is as follows:

$$i_T(D) = a(T) \times D^{b_m} \quad (\text{A1})$$

The underscript m is used to differentiate ~~with the~~ the Montana formulation from the scaling expression b in the main paper
5 (m stands for Montana). In our case, the scaling function is ~~the~~ simple scaling (Equation 12), thus Equation A1 becomes:

$$i_T(D) = F_{GEV}^{-1} \left(D_0, 1 - \frac{1}{T} \right) \times D^\eta \quad (\text{A2})$$

The two Montana parameters a and b_m can be derived by using the equality between the two formulations:

$$a(T) = F_{GEV}^{-1} \left(D_0, 1 - \frac{1}{T} \right) \quad (\text{A3})$$

$$b_m(T) = \eta \quad (\text{A4})$$

10 Note that when the simple scaling is verified then: (i) D_0 is equal to 1, and ~~depend~~ depends only on the unit chosen to expressed the intensity of rainfall; and (ii) the assumption ~~on~~ of the dependence of b_m on the return period T in the Montana formulation is ~~not more~~ no longer valid (b_m is equal to η for all return periods).

Acknowledgements. The research leading to these results received funding from the UK's National Environment Research Council (NERC)
/ Department for International Development (DFID) Future Climate For Africa programme, under the AMMA-2050 project (grant numbers
15 NE/M020428/1, NE/M019969/1, NE/M019950/1, NE/M020126/1 and NE/M019934/1).

References

- Agbazo, M., Koto N’Gobi, G., Kounouhewa, B., Alamou, E., Afouda, A., and Akpo, A.: Estimation of IDF Curves of Extreme Rainfall by Simple Scaling in Northern Oueme Valley, Benin Republic (West Africa), *Earth Sciences Research Journal*, 20, 1–7, 2016.
- Bara, M., Kohnová, S., Gaál, L., Szolgay, J., and Hlavcová, K.: Estimation of IDF curves of extreme rainfall by simple scaling in Slovakia, *Contributions to Geophysics and Geodesy*, 39, 187–206, 2009.
- Beguiria, S. and Vicente-Serrano, S. M.: Mapping the hazard of extreme rainfall by peaks over threshold extreme value analysis and spatial regression techniques, *Journal of applied meteorology and climatology*, 45, 108–124, 2006.
- Blanchet, J., Marty, C., and Lehning, M.: Extreme value statistics of snowfall in the Swiss Alpine region, *Water Resources Research*, 45, 2009.
- Blanchet, J., Ceresetti, D., Molinié, G., and Creutin, J.-D.: A regional GEV scale-invariant framework for Intensity–Duration–Frequency analysis, *Journal of Hydrology*, 540, 82–95, 2016.
- Bodian, A., Dacosta, H., Diouf, R., Ndiaye, E., and Mendy, A.: Contribution à la connaissance de l’aléa pluvial au Sénégal grâce à la valorisation des données pluviographiques historiques, *Climatologie*, 13, 2016.
- Borga, M., Vezzani, C., and Fontana, G. D.: Regional rainfall depth-duration-frequency equations for an Alpine region, *Natural Hazards*, 36, 221–235, 2005.
- Cheng, L. and AghaKouchak, A.: Nonstationary Precipitation Intensity-Duration-Frequency Curves for Infrastructure Design in a Changing Climate, *Scientific Reports*, 4, 7093, 2014.
- Coles, S.: An introduction to statistical modeling of extreme values, Springer, London;New York, 2001.
- [De Paola, F., Giugni, M., Topa, M., and Bucchignani, E.: Intensity-Duration-Frequency \(IDF\) rainfall curves, for data series and climate projection in African cities, SpringerPlus, 3, 1, 2014.](#)
- Di-Baldassarre, G., Montanari, A., Lins, H., Koutsoyiannis, D., Brandimarte, L., and Blöschl, G.: Flood fatalities in Africa: From diagnosis to mitigation, *Geophysical Research Letters*, 37, 1–5, 2010.
- Diongue, A., Lafore, J.-P., Redelsperger, J.-L., and Roca, R.: Numerical study of a Sahelian synoptic weather system: Initiation and mature stages of convection and its interactions with the large-scale dynamics, *Quarterly Journal of the Royal Meteorological Society*, 128, 1899–1927, 2002.
- Diop, L., Bodian, A., and Diallo, D.: Spatiotemporal Trend Analysis of the Mean Annual Rainfall in Senegal, *European Scientific Journal*, 12, 2016.
- Efron, B. and Tibshirani, R.: An introduction to the bootstrap, Chapman & Hall, New York, 1994.
- Frigessi, A., Haug, O., and Rue, H.: A Dynamic Mixture Model for Unsupervised Tail Estimation without Threshold Selection, *Extremes*, 5, 219–235, 2002.
- Gerold, L. and Watkins, D.: Short Duration Rainfall Frequency Analysis in Michigan Using Scale-Invariance Assumptions, *Journal of Hydrologic Engineering*, 10, 450–457, 2005.
- [Ghanmi, H., Bargaoui, Z., and Mallet, C.: Estimation of intensity-duration-frequency relationships according to the property of scale invariance and regionalization analysis in a Mediterranean coastal area, Journal of Hydrology, 541, 38–49, 2016.](#)
- [Giugni, M., Simonis, I., Bucchignani, E., Capuano, P., De Paola, F., Engelbrecht, F., Mercogliano, P., and Topa, M.: The impacts of climate change on African cities, in: Urban vulnerability and climate change in Africa, pp. 37–75, Springer, 2015.](#)

- Hosking, J. and Wallis, J. R.: Regional frequency analysis: an approach based on L-moments, Cambridge University Press, Cambridge UK, 1997.
- [Innocenti, S., Mailhot, A., and Frigon, A.: Simple Scaling of extreme precipitation in North America, Hydrology and Earth System Sciences, 2017.](#)
- 5 IPCC: Managing the Risks of Extreme Events and Disasters to Advance Climate Change Adaptation. A Special Report of Working Groups I and II of the Intergovernmental Panel on Climate Change, Field, C.B., V. Barros, T.F. Stocker, D. Qin, D.J. Dokken, K.L. Ebi, M.D. Mastrandrea, K.J. Mach, G.-K. Plattner, S.K. Allen, M. Tignor, and P.M. Midgley (eds.), Cambridge University Press, Cambridge, UK, and New York, NY, USA, http://www.climatechange2013.org/images/report/WG1AR5_Frontmatter_FINAL.pdf, 2012.
- IPCC: Climate change 2014: synthesis report, Intergovernmental Panel on Climate Change, Geneva, Switzerland, 2014.
- 10 Janicot, S., Caniaux, G., Chauvin, F., de Coëtlogon, G., Fontaine, B., Hall, N., Kiladis, G., Lafore, J.-P., Lavaysse, C., Lavender, S. L., Leroux, S., Marteau, R., Mounier, F., Philippon, N., Roehrig, R., Sultan, B., and Taylor, C. M.: Intraseasonal variability of the West African monsoon, *Atmospheric Science Letters*, 12, 58–66, 2011.
- Koutsoyiannis, D.: Statistics of extremes and estimation of extreme rainfall: I. Theoretical investigation / Statistiques de valeurs extremes et estimation de precipitations extremes: I. Recherche theorique, *Hydrological Sciences Journal*, 49, 1–590, 2004a.
- 15 Koutsoyiannis, D.: Statistics of extremes and estimation of extreme rainfall: II. Empirical investigation of long rainfall records / Statistiques de valeurs extremes et estimation de precipitations extremes: II. Recherche empirique sur de longues series de precipitations, *Hydrological Sciences Journal*, 49, 1–610, 2004b.
- Koutsoyiannis, D., Kozonis, D., and Manetas, A.: A mathematical framework for studying rainfall intensity-duration-frequency relationships, *Journal of Hydrology*, 206, 118–135, 1998.
- 20 Kruskal, W. and Wallis, W.: Use of Ranks in One-Criterion Variance Analysis, *Journal of the American Statistical Association*, 47, 583–621, 1952.
- Laaroubi, H.: Étude hydrologique des bassins versants urbains de Rufisque, Ph.D. thesis, 2007.
- Lafore, J.-P., Flamant, C., Guichard, F., Parker, D. J., Bouniol, D., Fink, A. H., Giraud, V., Gosset, M., Hall, N., Höller, H., Jones, S. C., Protat, A., Roca, R., Roux, F., Saïd, F., and Thorncroft, C.: Progress in understanding of weather systems in West Africa, *Atmospheric Science Letters*, 12, 7–12, 2011.
- 25 Laurent, H., D’Amato, N., and Lebel, T.: How Important is the Contribution of the Mesoscale Convective Complexes to the Sahelian Rainfall?, *Journal Of Physics and Chemistry of The Earth*, 23, 629–633, 1998.
- Le Barbé, L., Lebel, T., and Tapsoba, D.: Rainfall Variability in West Africa during the Years 1950-90, *Journal Of Climate*, 15, 187–202, 2002.
- 30 Lebel, T., Cappelare, B., Galle, S., Hanan, N., Kergoat, L., Levis, S., Vieux, B., Descroix, L., Gosset, M., Mougin, E., Peugeot, C., and Séguis, L.: AMMA-CATCH studies in the Sahelian region of West-Africa: An overview, *Journal of Hydrology*, 375, 3–13, 2009.
- Mathon, V., Laurent, H., and Lebel, T.: Mesoscale Convective System Rainfall in the Sahel, *Journal of Applied Meteorology*, 41, 1081–1092, 2002.
- Mechler, R. and Bouwer, L.: Understanding trends and projections of disaster losses and climate change: is vulnerability the missing link?, *Climatic Change*, 133, 23–35, 2015.
- 35 Menabde, M., Seed, A., and Pegram, G.: A simple scaling model for extreme rainfall, *Water Resources Research*, 35, 335–339, 1999.
- Miller, J. F., Frederick, R. H., and Tracey, R. J.: Precipitation-frequency atlas of the western United States, 1973.

- Mohyont, B. and Demarée, G. R.: Courbes intensité - durée - fréquence des précipitations à Yangambi, Congo, au moyen de différents modèles de type Montana, *Hydrological Sciences Journal*, 51(2), 239–253, 2006.
- Mohyont, B., Demarée, G. R., and Faka, D. N.: Establishment of IDF-curves for precipitation in the tropical area of Central Africa-comparison of techniques and results, *Natural Hazards and Earth System Science*, 4, 375–387, 2004.
- 5 Mélése, V., Blanchet, J., and Molinié, G.: Uncertainty estimation of Intensity-Duration-Frequency relationships: a regional analysis, *Journal of Hydrology*, 2017.
- NERC: Flood studies report, Tech. rep., Natural Environment Research Council, UK, 1975.
- Nhat, L. M., Tachikawa, Y., Sayama, T., and Takara, K.: Estimation Of Intensity-Duration-Area-Frequency Curves Using Scaling Properties Of Hourly Rainfall Data, a.
- 10 Nicholson, S.: The West African Sahel: A Review of Recent Studies on the Rainfall Regime and Its Interannual Variability, *ISRN Meteorology*, 2013, 1–32, 2013.
- Oyegoke, S. and Oyebande, L.: A new technique for analysis of extreme rainfall for Nigeria, *Environmental Research Journal*, 2, 7–14, 2008.
- Panthou, G., Vischel, T., Lebel, T., Blanchet, J., Quantin, G., and Ali, A.: Extreme rainfall in West Africa: A regional modeling, *Water Resources Research*, 48, 1–19, 2012.
- 15 Panthou, G., Vischel, T., Lebel, T., Quantin, G., Favre-Pugin, A.-C., Blanchet, J., and Ali, A.: From pointwise testing to a regional vision: An integrated statistical approach to detect nonstationarity in extreme daily rainfall. Application to the Sahelian region, *Journal of Geophysical Research: Atmospheres*, 118, 8222–8237, 2013.
- Panthou, G., Vischel, T., and Lebel, T.: Recent trends in the regime of extreme rainfall in the Central Sahel, *International Journal of Climatology*, 34, 3998–4006, 2014a.
- 20 Panthou, G., Vischel, T., Lebel, T., Quantin, G., and Molinié, G.: Characterising the space-time structure of rainfall in the Sahel with a view to estimating IDAF curves, *Hydrology and Earth System Sciences*, 18, 5093–5107, 2014b.
- [Papalexiou, S. and Koutsoyiannis, D.: Battle of extreme value distributions: A global survey on extreme daily rainfall, *Water Resources Research*, 49, 187–201, 2013.](#)
- Rodríguez-Solà, R., Casas-Castillo, M., Navarro, X., and Redaño, A.: A study of the scaling properties of rainfall in Spain and its appropriateness to generate intensity-duration-frequency curves from daily records., *International Journal of Climatology*, 2016.
- 25 Sane, Y., Bonazzola, M., Rio, C., Chambon, P., Fiolleau, T., Musat, I., Hourdin, F., Roca, R., Grandpeix, J.-Y., and Diedhiou, A.: An analysis of the diurnal cycle of precipitation over Dakar using local rain-gauge data and a general circulation model, *Quarterly Journal of the Royal Meteorological Society*, 138, 2182–2195, 2012.
- Schertzer, D. and Lovejoy, S.: Physical Modeling and Analysis of Rain and Clouds by Anisotropic Scaling Multiplicative Processes, *Journal of Geophysical Research*, 92, 9693–9714, 1987.
- 30 Soro, G., Goula, B. T. A., Kouassi, F., Koffi, K., Kamagaté, B., Doumouya, I., Savane, I., and Srohourou, B.: Courbes Intensité Durée Fréquence des Précipitations En climat Tropical Humide: Cas de la Région D’abidjan (Côte D’Ivoire), *European Journal of Scientific Research*, 21(3), 394–405, 2008.
- Soro, G., Goula, B. T. A., Kouassi, F., and Srohourou, B.: Update of Intensity-Duration-Frequency curves for precipitation of short durations in tropical area of West Africa (cote d’Ivoire), *Journal Of Applied Sciences*, 10, 704–715, 2010.
- 35 Taylor, C., Belusic, D., Guichard, F., Parker, D., Vischel, T., Bock, O., Harris, P., Janicot, S., Klein, C., and Panthou, G.: Frequency of extreme Sahelian storms tripled since 1982 in satellite observations, *Nature*, 544, 475–478, 2017.

- Tschakert, P., Sagoe, R., Ofori-Darko, G., and Codjoe, S.: Floods in the Sahel: an analysis of anomalies, memory, and anticipatory learning, *Climatic Change*, 103, 471–502, 2010.
- Van-De-Vyver, H. and Demarée, G. R.: Construction of Intensity-Duration-Frequency (IDF) curves for precipitation at Lubumbashi, Congo, under the hypothesis of inadequate data, *Hydrological Sciences Journal-Journal des Sciences Hydrologiques*, 55, 555–564, 2010.
- 5 Vauchel, P.: Pluvio software notice, 1992.
- Yilmaz, A. G., Imteaz, M. A., and Perera, B. J. C.: Investigation of non-stationarity of extreme rainfalls and spatial variability of rainfall intensity-frequency-duration relationships: a case study of Victoria, Australia, *International Journal of Climatology*, 2016.
- Yu, P., Yang, T., and Lin, C.: Regional rainfall intensity formulas based on scaling property of rainfall, *Journal of Hydrology*, 295, 108–123, 2004.

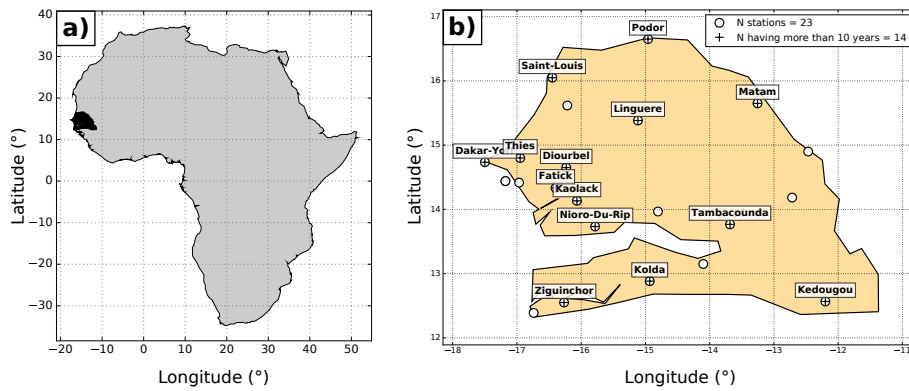


Figure 1. a) The location of Senegal localisation is represented indicated by the black polygon (a). b) A zoom over Senegal (b): white circles represent tipping bucket rain-gauges (a cross and a label are added for stations having more than 10 years of valid data).

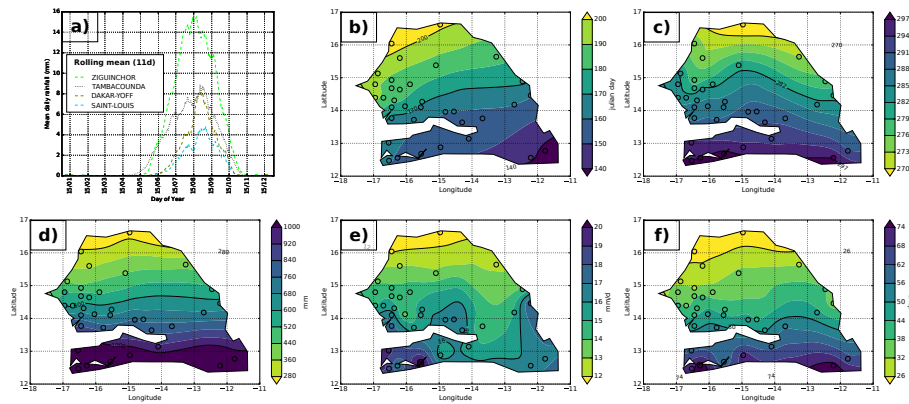


Figure 2. Rainfall regime statistics obtained from daily rain-gauges over the 1950-2015 period. Top panel: Mean seasonal cycle at four stations (a); start and end of the rainy season (b, c) end of the rainy season. Bottom panel: d) mean annual rainfall (d), e) mean intensity of wet days (e), f) mean number of wet days (f).



Figure 3. Network Years of network operation. The valid years are represented by black squares. The total number of valid years is displayed for each stations on the right y-axis.

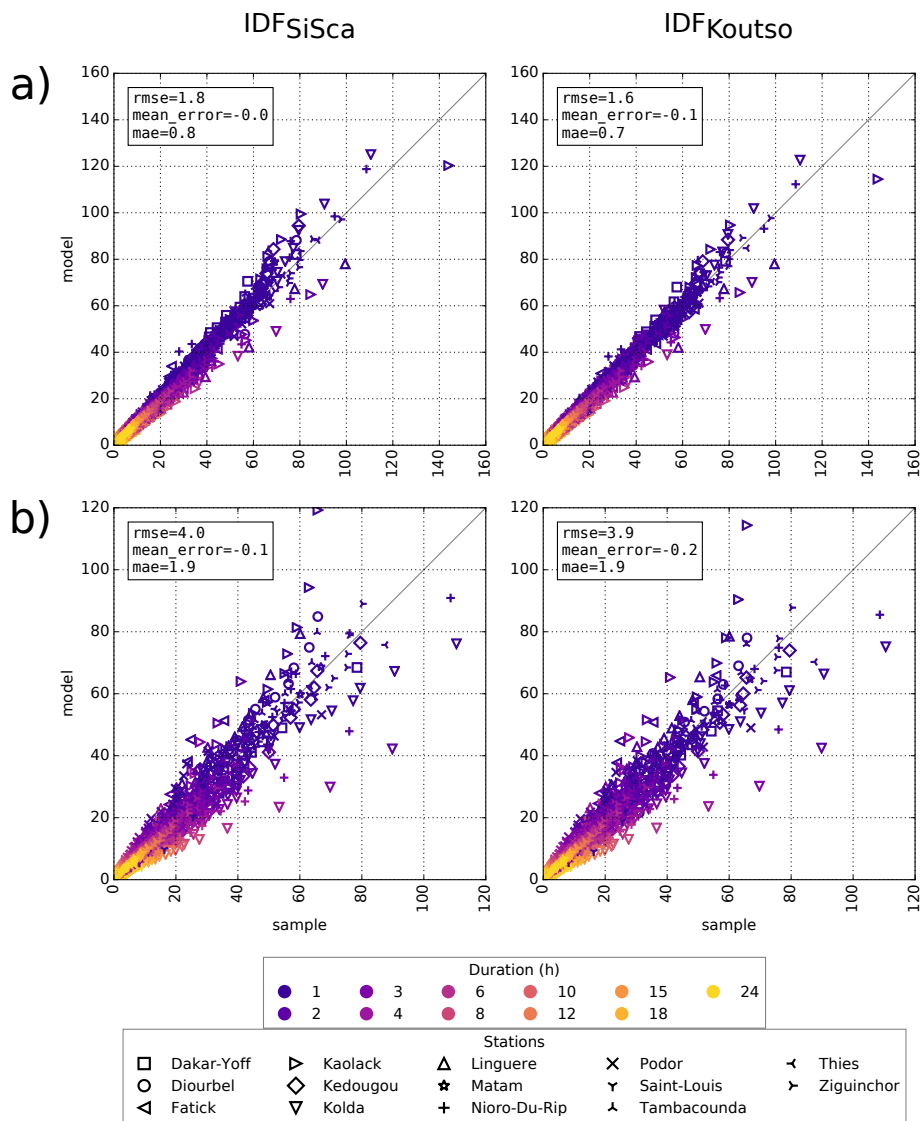


Figure 5. Quantile-quantile plots for both IDF models for the different duration-durations and for all stations (global scores in the legend): a) in calibration mode; b) in validation mode; left panel for IDF_{SiSca}; right panel for IDF_{Koutso}. The x-axis and y-axis units are mm h^{-1} .

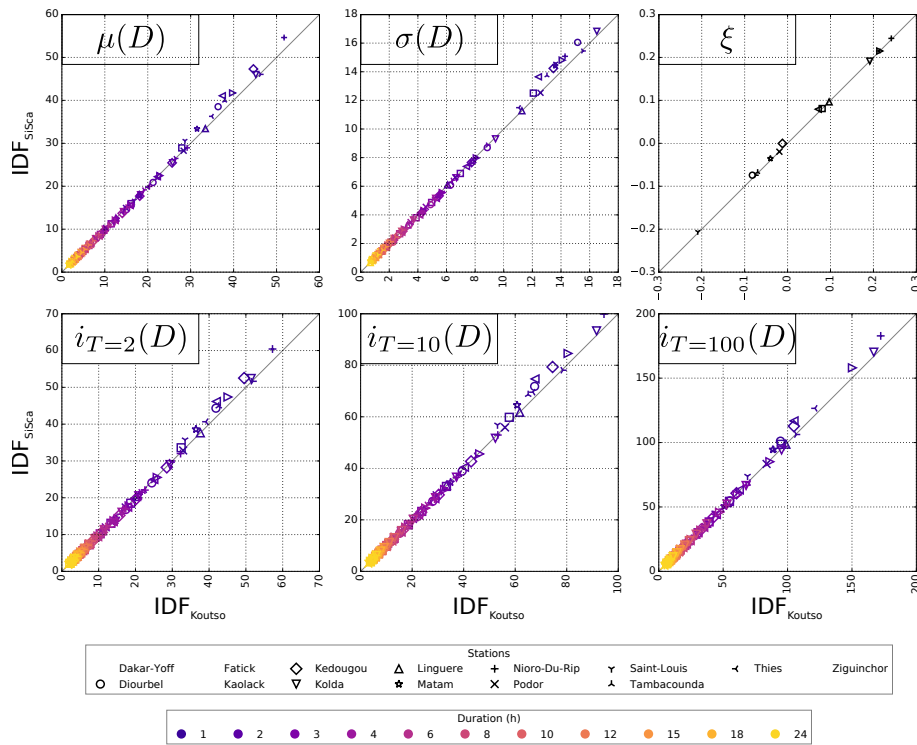


Figure 6. Comparison between IDF_{SiSca} and IDF_{Koutso} in calibration mode. **On top** panel: location parameter $-\mu(D)$ [mm h^{-1}]; scale parameter $-\sigma(D)$ [mm h^{-1}]; and shape parameter $-\xi$ [-]. **Return** **Bottom panel:** return levels $-i_T$ [mm h^{-1}] – obtained for different return periods T ranging from 2 to 100 years displayed **in bottom panel**.

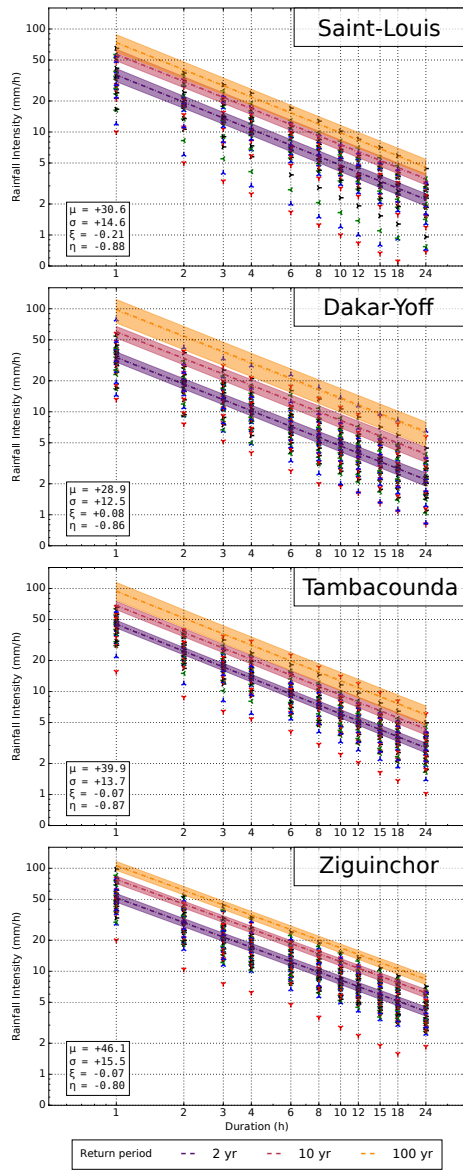


Figure 7. IDF_{SiSca} return levels plots obtained at four emblematic stations over Senegal (from top to bottom: Saint-Louis, Dakar, Tambacounda and Ziguinchor). Shaded area represents the 90% confidence interval. The markers represent the observed annual maxima intensities $i(D)$.

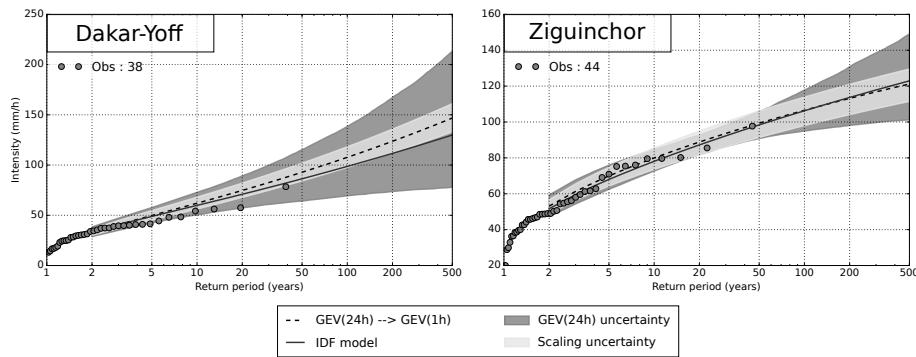


Figure 8. Return Level Plot for the 1h duration \sim GEV(1h) \sim at two emblematic stations over Senegal: Dakar and Ziguinchor. The estimates come from the GEV estimates at the 24h duration \sim GEV(24h) \sim downscaled to the 1h duration (dashed line). Shaded areas represent the 90% confidence interval of uncertainty due to the fitting of GEV(24h) and of uncertainty due to the downscaling. Obtained GEV(1h) from the fitted IDF_{SiSea} at these stations are also displayed (solid line). The circles represent the observed annual maxima intensities $i(D)$.

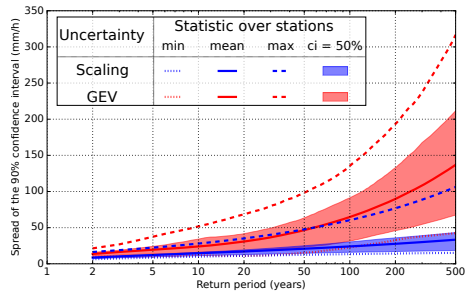


Figure 9. Evolution of the spread of the 90% confidence interval of return levels depending on the return period. The red color is for the spread due to the uncertainty of GEV(24h) fitting, while the blue color is for the spread due to the uncertainty of the scaling. [All Results for all stations have been gathered combined.](#) The mean, min, max, and 50% confidence interval of the spread obtained at the different stations are also shown.

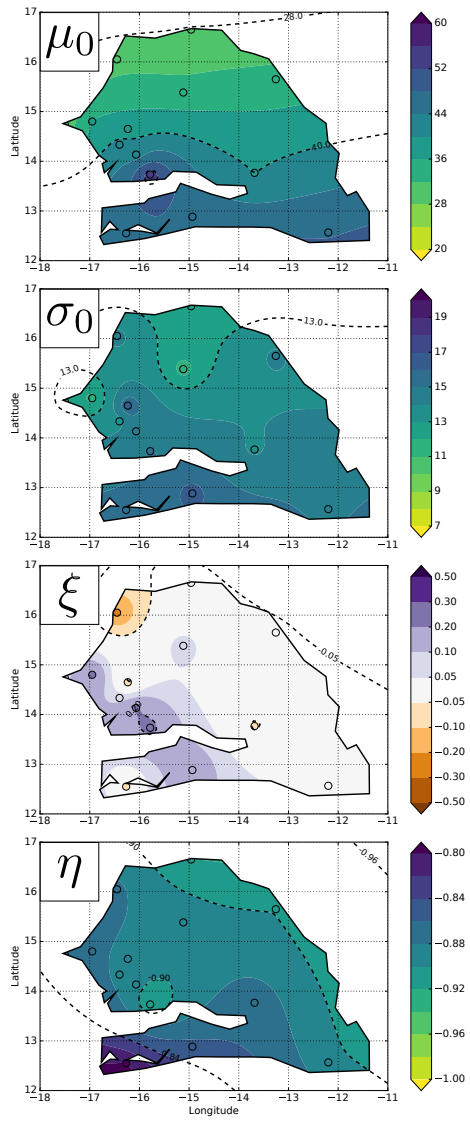


Figure 10. Maps of IDF_{SiSca} parameters: μ_0 [mm h⁻¹], σ_0 [mm h⁻¹], ξ [-], and η [-].

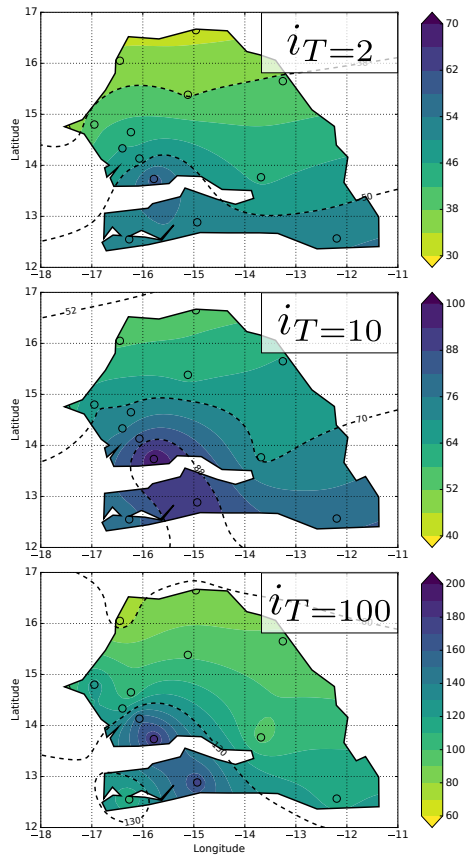


Figure 11. Maps of return levels intensities (from IDF_{SiSca}) i_T for different return periods ($T=2, 10$, and 100 years from top to bottom) for the reference duration (1h): $i_T(D=1)$ [mm h⁻¹].

Table 1. Global quantile-quantile scores results for the different IDF models: a) calibration mode; b) validation mode. All scores are expressed in mm h^{-1} .

	rmse(classic)	rmse(weighted)	mean error(classic)	mean error(weighted)	mae(classic)	mae(weighted)
a)						
IDF _{Koutso}	1.60	8.61	-0.12	-0.78	0.72	1.61
IDF _{SiSca}	1.83	9.17	-0.05	-0.67	0.81	1.79
b)						
IDF _{Koutso}	3.87	12.13	-0.17	-0.71	1.91	3.12
IDF _{SiSca}	3.96	12.40	-0.10	-0.60	1.94	3.15

Table 2. IDF_{SiSca} fitted parameter values and 90% confidence interval estimated by bootstrap (in brackets).

Unit	N #	μ mm h^{-1}	σ mm h^{-1}	ξ -	η -	$i_{T=2}(D=1)$ mm h^{-1}	$i_{T=10}(D=1)$ mm h^{-1}	$i_{T=100}(D=1)$ mm h^{-1}
Dakar-Yoff	38	28.9 [26.1;32.9]	12.5 [10.1;14.9]	0.08 [-0.12;0.21]	-0.86 [-0.89;-0.83]	34 [30;38]	60 [52;67]	99 [73;123]
Diourbel	33	38.5 [33.3;44.7]	16.1 [12.3;19.3]	-0.07 [-0.28;0.09]	-0.88 [-0.91;-0.86]	44 [38;51]	72 [63;80]	101 [82;121]
Fatick	10	41.1 [34.4;51.4]	13.6 [6.3;18.9]	0.08 [-0.31;0.34]	-0.89 [-0.93;-0.84]	46 [37;58]	75 [55;86]	117 [79;141]
Kaolack	34	41.7 [38.3;47.0]	14.8 [11.3;19.2]	0.21 [-0.07;0.36]	-0.89 [-0.92;-0.87]	47 [43;54]	85 [69;102]	158 [99;225]
Kedougou	27	47.3 [42.9;53.6]	14.2 [10.0;17.9]	-0.00 [-0.24;0.18]	-0.89 [-0.92;-0.87]	53 [47;60]	79 [71;85]	113 [99;123]
Kolda	28	46.0 [42.1;52.7]	16.8 [12.4;22.1]	0.19 [-0.08;0.33]	-0.85 [-0.88;-0.82]	52 [47;60]	93 [76;110]	170 [110;224]
Linguere	28	33.4 [30.1;38.2]	11.3 [8.8;14.0]	0.10 [-0.20;0.24]	-0.89 [-0.92;-0.86]	38 [34;43]	62 [51;73]	99 [66;132]
Matam	28	33.4 [28.4;39.6]	14.4 [10.5;18.0]	-0.04 [-0.23;0.12]	-0.90 [-0.93;-0.87]	39 [33;46]	65 [55;72]	95 [79;107]
Nioro-Du-Rip	18	54.6 [48.3;63.4]	15.1 [10.0;23.7]	0.24 [-0.05;0.35]	-0.92 [-0.95;-0.86]	60 [53;71]	100 [77;121]	183 [107;221]
Podor	14	28.3 [23.2;39.2]	12.5 [6.9;17.7]	-0.02 [-0.44;0.26]	-0.92 [-0.98;-0.89]	33 [26;45]	56 [44;65]	83 [68;97]
Saint-Louis	32	30.6 [26.0;35.8]	14.6 [11.3;17.5]	-0.21 [-0.40;-0.03]	-0.88 [-0.91;-0.84]	36 [31;41]	57 [49;64]	74 [60;88]
Tambacounda	37	39.9 [36.6;44.2]	13.7 [11.1;16.0]	-0.07 [-0.27;0.09]	-0.87 [-0.90;-0.84]	45 [41;49]	69 [62;75]	94 [77;114]
Thies	23	36.3 [32.8;43.1]	11.5 [7.7;16.4]	0.22 [-0.01;0.34]	-0.88 [-0.92;-0.85]	41 [36;49]	70 [57;83]	127 [90;156]
Ziguinchor	44	46.1 [42.0;50.8]	15.5 [12.2;18.4]	-0.07 [-0.21;0.05]	-0.80 [-0.82;-0.77]	52 [47;57]	78 [71;84]	106 [96;116]

N corresponds to the number of available years, thus the number of annual maxima.