

The point to point response to the reviewers

First of all, we would like to express our sincere appreciation of your very constructive comments and suggestion.

Next, in a sequence, we would like to respond to comments in a point to point manner so that hopefully all the questions can be answered or clarified. All the responses are in red and all the changes made in the manuscript are underlined.

5

Response to Anonymous Referee #1:

The Authors improved significantly the overall quality of the paper, answering to all the revisions required by the Anonymous Referees. Methods and results are explained in a better way. Discussions about the results of the research are also clearer and help in the comprehension of the goals and of the achieved results of the research. Instead, a comparison, in terms of advantages and limits, between the proposed methodology and the other described methods (Saito's method, FEM, LEM) can be added in the Discussions and Conclusions section, for improving the analysis about this new approach.

10

Res: we have tried to find applications of methods like LEM and FEM in the research of Xintan landslide. But only several Chinese literatures are found and has been added. In addition, the result of an unloading-loading response ratio method (ULRR) is added for non-Chinese readers. We hope this can be helpful for results comparison.

15

In addition, the results of several other studies were introduced for comparison. Chen (2014) studied the stability of Xintan landslide by FEM with consideration of the loading effect and material weakening caused by rainfall, as shown in Figure 8. Moreover, the result of an unloading-loading response ratio method (ULRR) is also introduced (Zhang et al., 2006; He et al., 2010), as shown in Figure 8. Because only annual results are given in these studies, annual average of CSFE were correspondingly calculated for comparison. According to Figure 8, the safety factor decreases year by year and cannot reflect the recovery process of landslides stability. The ULRR presents similar changing regularities like CSFE after Xintan landslide entered accelerative deformation stage in 1982. But the mutation in 1981 when Xintan is still in uniform deformation stage seems unreasonable. Besides, ULRR is obtained yearly and offers less details about stability changes than CSFE. [Has been added in Case study]

20

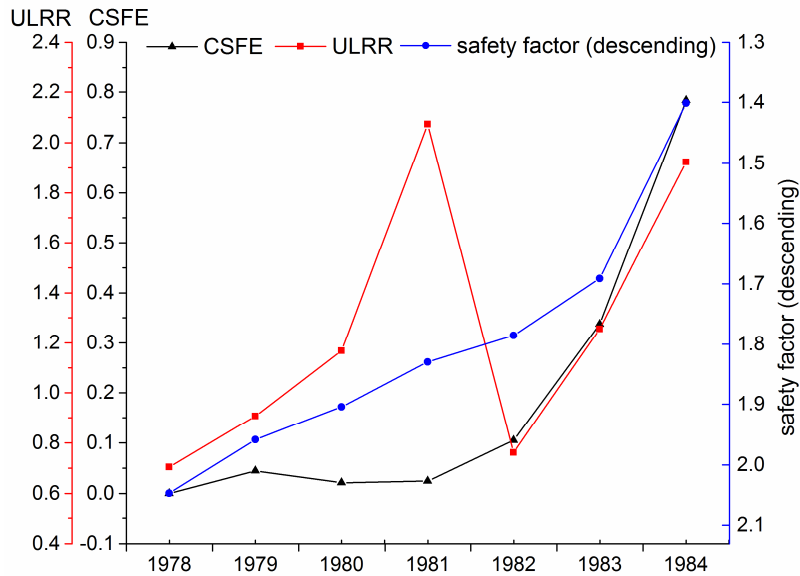


Figure 8. Comparison of CSFE with ULRR and safety factor of Xintan landslide

Response to Anonymous Referee #2:

5 The reviewer appreciates the effort put by the authors in replying to the remarks and working on some of them. However, many of the doubts and issues raised by the reviewer remain unsolved. Therefore, the reviewer suggests that the manuscript should not be accepted for publication in the present form, but encourages resubmission after all the following points being solved or, at least, discussed appropriately.

10 1) A comparison of several methods to provide evidence that the proposed model does give a practical advantage over the existing methods for the “continuous and site-specific analysis of landslide stability changing regularities”. The reviewer expects to see a comparison with the methods mentioned by the authors (Saito’s, FEM, LEM) in at least one case study.

Res: We have tried to find applications of methods like LEM and FEM in the research of Xintan landslide. But only several Chinese literatures are found and has been added. In addition, the result of an unloading-loading response ratio method (ULRR)

15 is added for non-Chinese readers. We hope this can be helpful for results comparison.

In addition, the results of several other studies were introduced for comparison. Chen (2014) studied the stability of Xintan landslide by FEM with consideration of the loading effect and material weakening caused by rainfall, as shown in Figure 8. Moreover, the result of an unloading-loading response ratio method (ULRR) is also introduced (Zhang et al., 2006; He et al., 2010), as shown in Figure 8. Because only annual results are given in these studies, annual average of CSFE were correspondingly calculated for comparison. According to Figure 8, the safety factor decreases year by year and cannot reflect the recovery process of landslides stability. The ULRR presents similar changing regularities like CSFE after Xintan landslide entered accelerative deformation stage in 1982. But the mutation in 1981 when Xintan is still in uniform deformation stage seems unreasonable. Besides, ULRR is obtained yearly and offers less details about stability changes than CSFE. [Has been added in Case study]

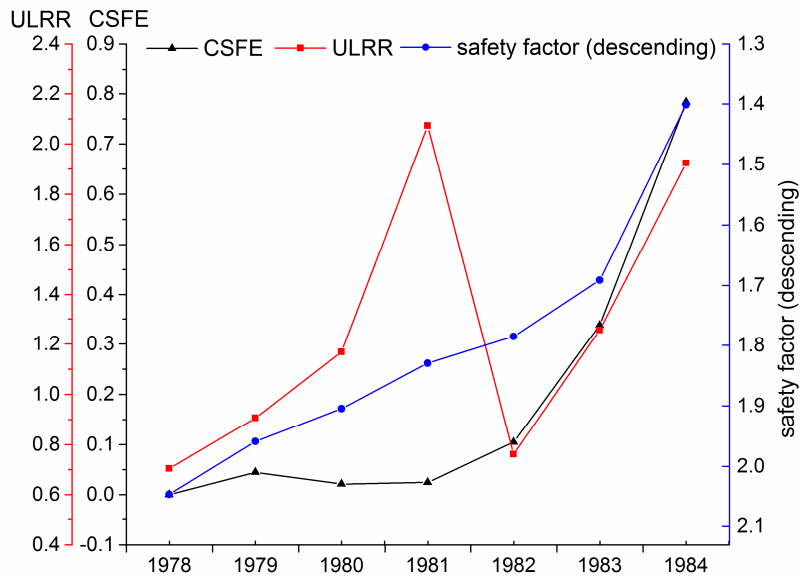


Figure 8. Comparison of CSFE with ULRR and safety factor of Xintan landslide

2) Application to early warning: the authors state in the abstract that “state fusion entropy may serve as a novel index for assessing landslide stability and landslide early warning”. The reviewer expects to see, in the revised manuscript, an example of application of the proposed method to the early warning of a landslide (a past case study is fine), showing a successful (and usable) prediction of failure.

Res: The main purpose of this paper is to obtain landslide stability changing regularities by performing multi-attribute entropy analysis on displacement monitoring data. Given the close relationship between stability and early warning, SFE also has the potential to be applied in early warning. But for now, SFE has not been intended to be applied to landslide early warning unless be qualified by further research. In order to avoid misunderstandings, the "early warning" mentioned in the article will be modified.

3) Integration of multiple monitoring sources. The reviewer expects to see an example of performance of the model by taking displacement data from different locations as input (or at least a good discussion about this). Multiple monitoring, to the reader's opinion, is already a diffused standard in landslide monitoring, and must be taken into account when proposing a "novel method". The reviewer also expects a deeper discussion on the incorporation of different monitorable quantities (e.g. pore pressures, moisture, deep displacements, etc.).

Res: Multiple monitoring indeed has already become a common practice in landslide monitoring, but the comprehensive mining of multi-source data is also still a common problem. Results and conclusions about this issue may be difficult for now, but we do already have some thoughts. For the open system of landslide, the displacement of different monitoring points can be regarded as landslide samples with different deformation scales. Meanwhile, fractal theory tells that same patterns as the entire system can be found if a small part of the whole be magnified. Therefore, fractal theory is intended to be introduced for multi-point data analysis.

4) Arbitrary choices. The reviewer expects to see in the revised manuscript an analysis of the effect of arbitrary choices on the model's performance. For instance, how does the result changes if a different number of clusters is used?

Res: Theoretically, the k-means clustering method is based on the data distribution of input data. The cluster number K only determines the division roughness of clusters and has little impact on the distribution of clusters which is the basis of the state fusion entropy approach. To prove this point, CSFE with different cluster numbers (K=3 to 7) has been added and discussed.

To measure the influence of different cluster numbers on the performance of this method, CSFE with different cluster numbers (K=3 to 7) is compared, as shown in Figure 10. As can be seen, CSFE varies slightly with K. This is mainly because that different K correspond to different division roughness of deformation states, which sequentially affects the value of the CSFE. Due to this fluctuation, CSFE is not intended to be applied to landslide early warning unless be qualified by further research. Despite this, the overall trend remains unchanged, which suggests a steady statistical regularity of deformation states. [Has been added in Discussion and conclusion]

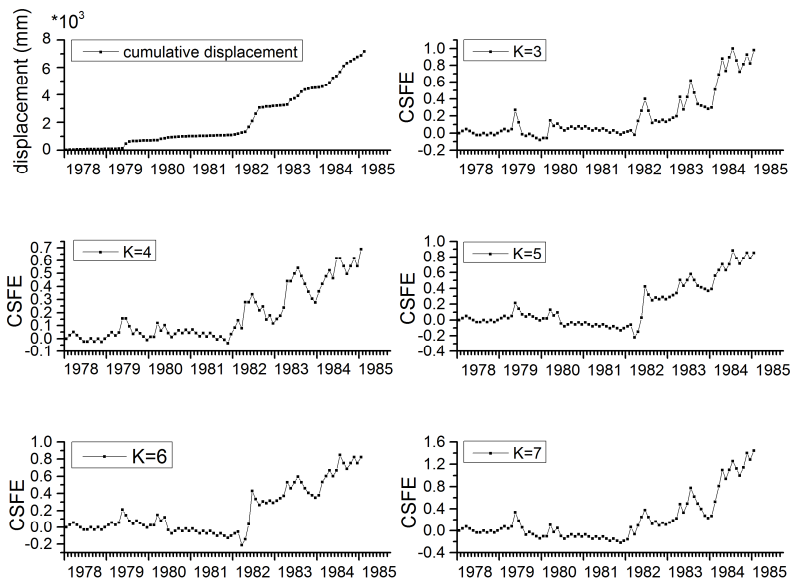


Figure 10. CSFE with different cluster numbers (K=3 to 7) of Xintan landslide

- 5) 5) Real-time analysis. The reviewer appreciates that the authors changed the title from “real-time” to “continuous”. However, by using monthly data, early warning in acceleration phase seems unlikely. Hence, the authors are suggested to eliminate all references to early warning. Alternatively, they should use daily or, better, hourly / minutely input to run the model. During the acceleration phase of a movement, the input frequency should be increased if a real-time (or a continuous) monitoring for early warning purposes is desired. Moreover, landslides moving at mm/day or mm/week rates are certainly monitorable with daily frequency without significant error, if proper monitoring is used (e.g. high-quality GPS measurements, inclinometer measurements; examples in the literature are available), so the reviewer does not understand why the authors insist on using monthly measurements. The authors could easily apply the model to a different case study, where better monitoring data series are available, to prove the good performance of their model.
- 15 **Res:** We are also looking forward to displacement monitoring data with higher time resolution for more in-depth research. But unfortunately, we do not have that yet. Therefore, we will take your suggestion to adjust the word "early warning" in the paper.

6) Smoothed CSFE. I have severe doubts on the use of a smoothed CSFE in the work, as it seems to me that the authors erroneously used a 5-period average obtained from two past data, the current value and two future data. The future data are obviously unavailable during real-time monitoring, so the SCSFE they obtained simply makes no sense! I suggest the authors avoid any smoothing, as the period is chosen arbitrarily. Moreover, if monthly data are already very far from being a “real-time” monitoring, a 5-months average value (of the past data) is even farther. Without the smoothing, it becomes also clear from the figure the authors present that the CSFE is unable to predict the failure: in the case of the Xintan landslide (fig. 7), failure occurred at a value of CSFE which is lower than the historical maximum. If a warning threshold was set to correspond to the CSFE overcoming its past maximum, you would have failed to warn the authorities/population before failure occurred. Talking about Fig. 7, you did not include the displacement trend of the landslide, despite my explicit request. I believe this is fundamental (as done for fig. 8), to let the reader compare your statistics with the actual monitoring data.

Res: Thanks for your constructive suggestion. We have realized the problem of the 5-window smoothing. Historical maxima will be judged directly the CSFE without any smoothing. At the same time, a clarification for the “failure in prediction” is quite necessary. CSFE does not predict the failure of landslide but provides information about stability changing regularities. Besides, the huge displacement in June 1985 when Xintan failed has not been adopted in this SFE analysis because it’s believed that field surveys are much more important than numerical judgments when the landslide has shown obvious signs of slipping.

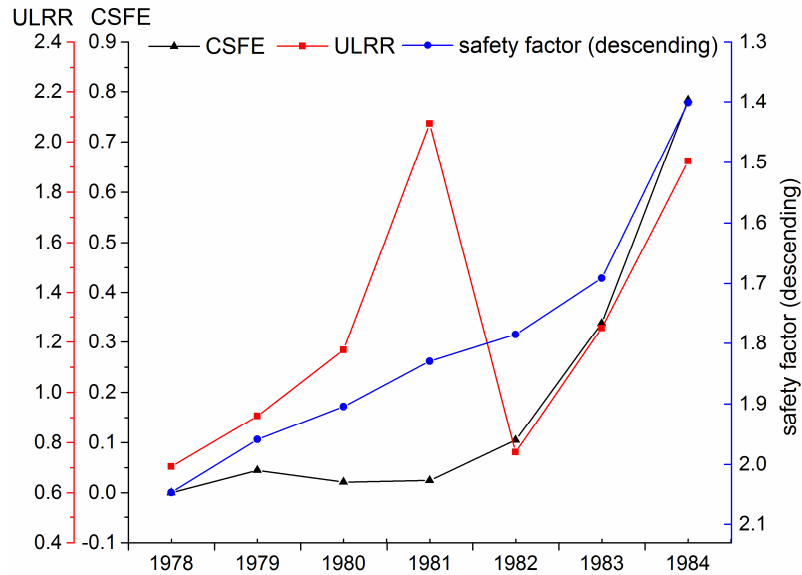
Response to Anonymous Referee #3:

The quality of the paper was improved during the review process, addressing (or answering) to all the comments made by the Reviewers. The manuscript still needs a discussion on the quantitative/qualitative comparison between the proposed methods and other methods - as Saito’s method, FEM, or LEM - described in the paper. This should be added in the discussion before the paper can be considered acceptable for publication.

Res: We have tried to find applications of methods like LEM and FEM in the research of Xintan landslide. But only several Chinese literatures are found and has been added. In addition, the result of an unloading-loading response ratio method (ULRR) is added for non-Chinese readers. We hope this can be helpful for results comparison.

In addition, the results of several other studies were introduced for comparison. Chen (2014) studied the stability of Xintan landslide by FEM with consideration of the loading effect and material weakening caused by rainfall, as shown in Figure 8. Moreover, the result of an unloading-loading response ratio method (ULRR) is also introduced (Zhang et al., 2006; He et al., 2010), as shown in Figure 8. Because only annual results are given in these studies, annual average of CSFE were correspondingly calculated for comparison. According to Figure 8, the safety factor decreases year by year and cannot reflect

the recovery process of landslides stability. The ULRR presents similar changing regularities like CSFE after Xintan landslide entered accelerative deformation stage in 1982. But the mutation in 1981 when Xintan is still in uniform deformation stage seems unreasonable. Besides, ULRR is obtained yearly and offers less details about stability changes than CSFE. [Has been added in Case study]



5

Figure 8. Comparison of CSFE with ULRR and safety factor of Xintan landslide

The list of all relevant changes made in the manuscript

- 10 Page 1 line 15: changed “landslide early warning” to “judging landslide evolutionary stages”
- Page 1 line 19: removed “and early warning”
- Page 2 line 22: removed “and early warning”
- Page 3 Figure 1: Changed “landslide early warning” to “evolutionary stage judgment”
- Page 3 line 11: changed “for landslide early warning” to “to identify key time nodes of stability changes”
- 15 Page 8 line 9: changed “For landslide early warning” to “Besides”
- Page 8 line 11: removed “smoothed”

Page 8 line 11-12: removed “which is conducted mainly based on the consideration that stability cannot be mutant before landslide failure”

Page 12 Figure 7: removed SCSFE, represented historical maxima with red column

Page 12 line 4: removed “and average-smoothed with a window of 5”

5 Page 13 line 8: removed “, which also corresponds to a new historical maximum”

Page 13 line 13-20: added the results comparison of CSFE

Page 14 Figure 8: added the figure of results comparison

Page 15 line 8: changed “landslide early warning” to “identifying key time nodes of stability changes”

Page 15 Figure 9: removed SCSFE, represented historical maxima with red column

10 Page 16 line 3-7: added the discussion of the influence of different cluster numbers on the CSFE

Page 16 Figure 10: added toe figure of CSFE with different cluster numbers

Page 17 line 1: removed “In addition, the Markov property of deformation state can be used for prediction.”

Page 17 line 21-22: added relevant reference in results comparison

Page 17 line 38-40: added relevant reference in results comparison

15 Page 19 line 15-16: added relevant reference in results comparison

The marked-up manuscript

State fusion entropy for continuous and site-specific analysis of landslide stability changing regularities

Yong Liu¹, Zhimeng Qin¹, Baodan Hu¹, Shuai Feng¹

¹School of Mechanical Engineering and Electronic Information, China University of Geosciences, Wuhan, 430074, China

5 Correspondence to: Zhimeng Qin (imqinzhimeng@163.com)

Abstract. Stability analysis is of great significance to landslide hazard prevention, especially the dynamic stability. However, many existing stability analysis methods are difficult to analyse the continuous landslide stability and its changing regularities in a uniform criterion due to the unique landslide geological conditions. Based on the relationship between displacement monitoring data, deformation states and landslide stability, a state fusion entropy method is herein proposed to derive landslide instability through a comprehensive multi-attribute entropy analysis of deformation states which are defined by a proposed joint clustering method combining K-means and cloud model. Taking Xintan landslide as the detailed case study, cumulative state fusion entropy presents an obvious increasing trend after the landslide entered accelerative deformation stage and historical maxima match highly with landslide macroscopic deformation behaviours in key time nodes. Reasonable results are also obtained in its application to several other landslides in the Three Gorges Reservoir in China. Combined with field survey, state fusion entropy may serve for assessing landslide stability and [landslide-early warning judging landslide evolutionary stages](#).

1 Introduction

Landslide is one of the major natural hazards, accounting for massive damages of properties every year (Dai et al., 2002). Analysis of landslide stability as well as its changing regularities plays a significant role in risk assessment [and early warning](#) at site-specific landslides (Wang et al., 2014). For this concern, many stability analysis methods have been proposed, such as Saito's method, limit equilibrium method (LEM) and finite element method (FEM) (Saito, 1965; Duncan, 1996; Griffiths and Fenton, 2004). Saito's method is an empirical forecast model and is suitable for the prediction of sliding tendency and then the failure time. Based on homogeneous soil creep theory and displacement curve, it divides displacement creep curves into three stages: deceleration creep, stable creep and accelerating creep, and establishes a differential equation for accelerating creep. The physical basis of Saito's method helped it to successfully forecast a landslide that occurred in Japan in December 1960, but also makes it strongly dependent on field observations. LEM is a kind of calculation method to evaluate landslide stability based on mechanical balance principle. By assuming a potential sliding surface and slicing the sliding body on the potential sliding surface firstly, LEM calculates the shear resistance and the shear force of each slice along the potential sliding surface and defines their ratio as the safety factor to describe landslide stability. LEM is simple and can directly analyse landslide stability under limit condition without geotechnical constitutive analysis. However, this neglect of geotechnical constitutive

characteristic also restricts it to a static mechanics evaluation model that is incapable to evaluate the changing regularities of landslide stability. In the meanwhile, LEM involves too many physical parameters such as cohesive strength and friction angle, which makes it greatly limited in landslide forecast. As a typical numerical simulation method, FEM subdivides a large problem into smaller, simpler parts that are called finite elements. The simple equations that model these finite elements are then assembled into a larger system of equations that models the entire problem. FEM then uses variational methods from the calculus of variations to approximate a solution by minimizing an associated error function. In landslide stability analysis, FEM can not only satisfy the static equilibrium condition and the geotechnical constitutive characteristic, but also adapt to the discontinuity and heterogeneity of the rock mass. However, FEM is quite sensitive to various involved parameters and the computation will increase greatly to get more accurate results. If parameters and boundaries are precisely determined, LEM and FEM can provide results with high reliability. Other stability analysis methods such as strength reduction method also have been rapidly applied (Dawson et al., 2015). These methods provide the theoretical basis for analysing landslide stability and have been widely applied in engineering geology (Knappett, 2008; Morales-Esteban et al., 2015).

Despite of the great contributions made by these stability analysis methods, there are a few matters cannot be neglected. Firstly, safety factor is the most adopted index to indicate landslide stability (Hsu and Chien, 2016), but it mainly indicates safe (larger than 1) or unsafe (smaller than 1), incapable to show the degree of stability or instability (Li et al., 2009; Singh et al., 2012). Secondly, external factors such as rainfall (Priest et al., 2011; Bernardie et al., 2015; Liu et al., 2016) and fluctuation of water level (Ashland et al., 2006; Huang et al., 2017b) will also change landslide stability. But for now only a few literatures mentioned real-time landslide stability (Montrasio et al., 2011; Chen et al., 2014). Thirdly, methods like LEM and FEM involve too many physical parameters whose uncertainties make these methods hard to match with the real-time conditions of landslide. It becomes of great interest to find a new method to evaluate landslide stability, which only requires a few parameters, easily be matched with landslide real-time conditions, and can indicate the extent as well as the changing regularities of landslide stability ~~for early warning~~.

Displacement is the most direct and continuous manifestation of landslide deformation promoted by external factors and has been widely used in landslide analysis (Asch et al., 2009; Manconi and Giordan, 2015; Huang et al., 2017a). Due to its easy acquisition, quantification and high reliability, displacement monitoring data has become one of the most recognized evidence for landslide stability analysis and early warning. Macciotta et al. (2016) suggested that velocity threshold be used as a criterion for early warning system and the annual horizontal displacement threshold for Ripley Landslide (GPS 1) can be 90 mm and that between May and September can be 25 mm. Based on the analysis of a large number of displacement monitoring data, Xu and Zeng (2009) proposed that deformation acceleration be used as an indicator of landslide warning, and the acceleration threshold of Jimingsi landslide was regarded as 0.45 mm/d² and that of another landslide in Daye Iron Mine as 0.2 mm/d². Federico et al. (2012) presented a systematic introduction to the prediction of landslide failure time according to the displacement data. However, although displacement data has been widely used in landslide analysis, it is hard to define a unified displacement threshold due to the unique geological conditions and many studies draw their conclusions directly based on original data and personal engineering geological experience.

Entropy has been widely used to describe the disorder, imbalance, and uncertainty of a system (Montesarchio et al., 2011; Ridolfi et al., 2011). Previous works have introduced entropy into landslide susceptibility mapping to evaluate the weights of indexes (Pourghasemi et al., 2012; Devkota et al., 2013). In the viewpoint of system theory, a landslide can be regarded as an open system and exchanges energy and information with external factors. Shi and Jin (2009) proposed a generalized information entropy approach (GIE) to evaluate the “energy” of multi-triggers of landslide and found that the GIE index showed a mutation before landslide failure in a case study. But this GIE method is aimed at landslide triggering factors and thus cannot directly indicate landslide stability.

In this paper, a state fusion entropy approach is proposed for continuous and site-specific analysis of landslide stability changing regularities. It firstly defines deformation states as an integrated numerical feature of landslide deformation.

Considering the multiple attributes of deformation states, entropy is adopted for landslide stability (instability) analysis. Correspondingly, a historical maximum index is introduced to identify key time nodes of stability changes.

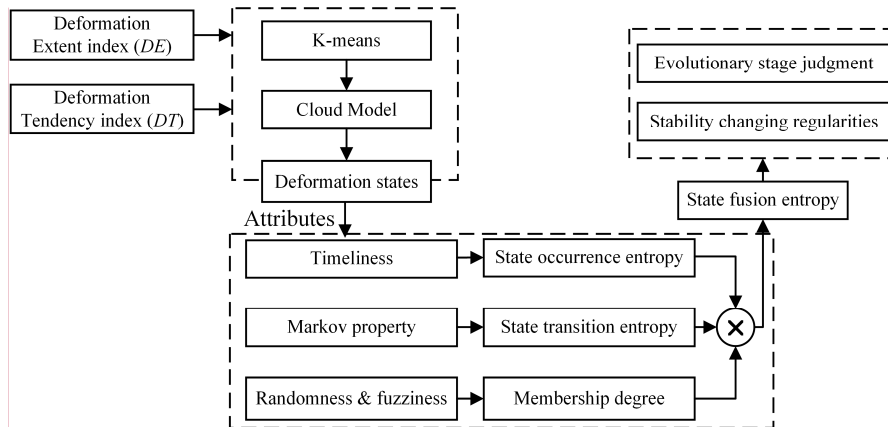
批注 [Z1]: Changed “for landslide early warning” to “to identify key time nodes of stability changes”

2 Methods

In this paper, landslide is regarded as an open dynamic system, and landslide stability (instability) is the source of the system. Under the influence of external factors, landslide stability will respond to these triggers by generating deformation states.

Eventually, deformation states will be manifested in the form of landslide displacement. Therefore, to analyse landslide stability based on displacement monitoring data, defining deformation states is the primary foundation. In order to adapt to the unique geological conditions of different landslides, a joint clustering method combining K-means clustering and cloud model is proposed. Aiming at three typical characteristics of deformation states, entropy analysis is then conducted and fused to analyse landslide instability and its changing regularities. Result interpretation method is proposed correspondingly. The flow chart is shown in Figure 1.

The flow chart is shown in Figure 1.



批注 [Z2]: Changed “landslide early warning” to “evolutionary stage judgment” in Figure 1

Figure 1. Flow chart of state fusion entropy method

2.1 Deformation state definition based on K-means combined with Cloud Model

Many deformation states exist during the development of landslide (Wu et al., 2016) and link up landslide stability and displacement monitoring data. On the one hand, deformation states indicate temporary landslide stability. On the other hand, deformation states can be manifested by displacement monitoring data. Therefore, the excavation of deformation states can be the primary step for analysing landslide stability analysis and its changing regularities according to displacement data. Due to the unique geological conditions of different landslides, a unified definition of deformation states seems infeasible. In view of this, the data-driven K-means clustering method and cloud model are integrated to investigate deformation states.

K-means is one kind of unsupervised clustering methods of vector quantization and is popular in data mining. It aims to partition N observations into K clusters in which each observation belongs to the cluster with the nearest mean (Steinley, 2006; Hartigan and Wong, 2013). Given a set of observations (x_1, x_2, \dots, x_N) , where each observation is a d -dimensional real vector, K-means clustering aims to partition the N observations into K ($K \leq N$) sets $S = \{S_1, S_2, \dots, S_K\}$. Formally, the objective is to find the K sets to minimize intra-class distance and maximize inter-class distance through iterations. The objective of K-means can be expressed as eq. (1).

$$\begin{aligned} \arg \min_S D_{intra} &= \arg \min_S \sum_{i=1}^K \sum_{x \in S_i} |x - c_i|^2 \\ \arg \min_S D_{inter} &= \arg \max_S \sum_{i=1}^K \sum_{j=1}^K |c_i - c_j|^2 \end{aligned} \quad (1)$$

where c_i is the mean of points in S_i ; D_{intra} is the pairwise squared deviations of points in the same cluster, representing the consistency of each cluster; D_{inter} is the squared deviations between points in different clusters, reflecting the differences among clusters.

K-means clustering method is simple, fast and efficient. All observations will be labeled after clustering. However, since the clustering process is unsupervised, the cluster labels of observations are unstable and have a certain randomness. In the meanwhile, K-means algorithm lacks the index to distinguish observations in the same cluster, which leads to high fuzziness of cluster labels. Aiming at the randomness and fuzziness of cluster labels, cloud model is introduced to offer help.

Cloud model was proposed in 1995 to analyze the uncertain transformation between qualitative concepts and their quantitative expressions (Li et al., 1995). Among all cloud models, the normal cloud model is most popular one due to its universality (Li and Liu, 2004). Let U be a universe of quantitative values, and C be the qualitative concept of U . For any element x in U , if there exists a random number $y = \mu_A(x), y \in [0, 1]$ with a stable tendency, then y is defined as the membership (certainty) of x to C and the distribution of y on the universe U is defined as a cloud. Cloud model uses the expectation (E), entropy (En) and hyper-entropy (He) to characterize a qualitative concept, and integrates the ambiguity and randomness of the concept. Expectation is the central value of the concept in the universe, and is the value that best represents the qualitative concept. Entropy reflects the ambiguity of the qualitative concept and indicates the range of values that the concept accepts in the universe. Hyper-entropy indicates the randomness of membership. The diagram of digital features of one-dimensional cloud is shown in Figure 2. Given the digital features of a one-dimensional normal cloud $[Ex, Enx, Hex]$, cloud droplets can be generated by forward cloud generator (CG) in the following orders. 1) Generate a normal random number x with Ex as the

mean and Enx as variance; 2) Generate a normal random number Enx' with Enx as the mean and Hex as variance; 3) Calculate the membership as eq. (2) and each (x, y) is defined as a cloud droplet; 4) Repeat the above steps until required number of cloud droplets are generated. Correspondingly, the process of calculating digital features based on cloud droplets is called the backward cloud generator (CG^{-1}).

$$5 \quad y = \exp \left\{ -\frac{(x-Ex)^2}{2Enx^2} \right\} \quad (2)$$

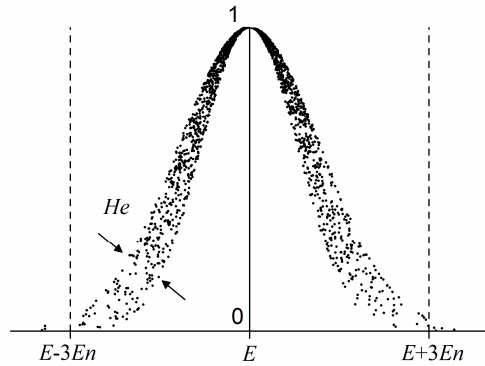


Figure 2. Digital features of one-dimensional cloud

K-means can automatically derive labels (concepts) from data but cannot distinguish items with the same label. Cloud model can utilize the distribution characteristics of data and express the membership of each data item to corresponding concept, but cannot work without defining concepts. Therefore, a joint clustering method combining K-means and cloud model is proposed to define landslide deformation states according to displacement monitoring data. To describe clearly this method, two functional data type are defined for landslide displacement data. One is to indicate deformation extent (DE) and the other to deformation tendency (DT). Positive DT indicates an increasing deformation. The process of defining deformation states is as follows.

- 15 Step 0. Unite DE and DT at the same time as an item, i.e., (DE, DT) ;
- Step 1. Cluster all items based on K-means and obtain cluster labels (K_label) and the distance of each item to corresponding cluster centroid (d_{ic});
- Step 2. For each cluster (cloud)
 - a) Select a proportion of items as the typical items based on d_{ic} ;
 - 20 b) Conduct backward cloud generator (CG^{-1}) on typical items to obtain the digital features of this cloud;
 - c) Conduct forward cloud generator (CG) to generate cloud droplets based on the digital features for visual analysis;
- Step 3. Calculate and normalize the memberships of each item to all clouds, and define the cloud label with the largest membership as the deformation state of corresponding item.

As can be seen from above procedures, the definition of deformation states is basically driven by displacement monitoring data and thus can adapt the unique geological conditions of different landslides. In the meanwhile, membership can be used to distinguish the displacement data with the same deformation state. Since displacement data is acquired in chronological order, the result is also a time-related state sequence.

- 5 As for the deformation state sequence, three typical attributes need to be noticed, respectively the timeliness, the Markov property and fuzziness. Timeliness is the primary attribute of each deformation state and is the basis of stability analysis. The Markov property is caused by the continuity and hysteresis characteristic of external triggering factors such as rainfall and fluctuation of water level (Bordoni et al., 2015). The fuzziness is introduced in the process of defining deformation states.

2.2 Fusion entropy analysis of deformation state sequence

- 10 Entropy is an indicator of the degree of system chaos. Introduced in communication system by Shannon in 1948, entropy has become the basis of information theory (Shannon, 1948). Let X be a discrete random variable, x is one state of X , $p(x)$ is the probability when $X = x$. The information entropy of X can be calculated by eq. (3).

$$\begin{aligned} I(x) &= -\log p(x) \\ H(X) &= \sum_{x \in X} p(x) \cdot I(x) \end{aligned} \quad (3)$$

- 15 where $I(x)$ is the information amount of x ; $H(X)$ is the entropy of X . As shown in eq. (3), information amount increases with the decrease of probability. $H(X)$ is the statistical average of the information amount of each state, representing the overall uncertainty of X . The $p(x)$ -weighted- $I(x)$ can be regarded as the individuation of state x to overall uncertainty $H(X)$.

- As for landslide deformation states, each of them contains some information about landslide stability. Slight deformation occurs frequently but indicates a relatively stable state of landslide. Severe deformation occurs rarely but indicates a really high instability of landslide and should draw the high attention for early warning. Therefore, entropy analysis is conducted to
20 analyse landslide instability based on deformation states. Aiming at the timeliness and Markov property of deformation state sequence, state occurrence entropy and state transition entropy are defined. Eventually, the product of state occurrence entropy, state transition entropy and membership is defined as the state fusion entropy to describe the comprehensive information about landslide instability.

- State occurrence entropy (*SOE*) mainly aims to measure the information about landslide stability provided by a single
25 occurrence of one deformation state. Considering the great significance of severe deformation to landslide early warning, the basic equation of information entropy is modified to emphasize the probability difference between severe and slight deformation. In the meanwhile, to show the deformation tendency, the sign of state occurrence entropy is defined to be the same as DT , which also reflects the timeliness of deformation states. State occurrence entropy is defined as eq. (4).

$$SOE_{i,t} = \frac{-\log(p_i)/N_i}{\sum_{i=1}^K -\log(p_i)/N_i} \cdot \text{sign}(DT_t) \quad (4)$$

where p_i is the probability of deformation state i ; N_i is the frequency of deformation state i ; K is the number of deformation states, i.e., the cluster number in K-means clustering method; DT_t is the deformation tendency index (DT) at time t ; $SOE_{i,t}$ is the state occurrence entropy of the occurrence of state i at time t .

State transition entropy (STE) focuses on the measurement of the information about landslide stability when one deformation state transmits to another. Markov property describes such a property of a discrete state sequence that each state is only influenced by the former one state, independent to other states (Tauchen, 1986). Because the influence of external factors on landslide has the continuity and hysteresis characteristic, deformation state sequence satisfies the Markov property. Therefore, the state transition matrix of Markov Chain is employed to quantitatively analyze the transition regularities of deformation states. State transition entropy is defined as eq. (5).

$$10 \quad STE_{ij} = \frac{-p_{ij} \cdot \log(p_{ij})}{\sum_{j=1}^K -p_{ij} \cdot \log(p_{ij})} \quad (5)$$

where p_{ij} is the transition probability from former state i to current state j ; K is the number of deformation states, i.e., the cluster number in K-means clustering method; STE_{ij} is the state transition entropy of the transition from former state i to current state j . As for landslide deformation states, on the one hand, severe deformation occurs rarely, resulting in a small probability of transitions from other deformation states to severe deformation. On the other hand, severe deformation indicates a high instability of a landslide and thus has a characteristic of poor sustainability. Apparently, the longer the severe deformation lasts, the higher instability it indicates the landslide and the larger STE will be.

Finally, state fusion entropy (SFE) is defined as the product of state occurrence entropy, state transition entropy and membership degree, as shown in eq. (6). This definition is mainly based on the following reasons: 1) although state occurrence entropy and state transition entropy emphasize the different attributes of deformation states, they are both expressed in the form of information entropy; 2) they share the common engineering significance that the larger the entropy, the higher instability the landslide; 3) the membership in cloud model indicates the extent that displacement data support the deformation state concept and thus deserves consideration. Essentially, state fusion entropy is the individual contribution of temporary deformation state to landslide overall instability. By accumulating state fusion entropy according to time, cumulative state fusion entropy (CSFE) can be obtained.

$$25 \quad \begin{aligned} SFE_{j,t} &= SOE_{j,t} \cdot STE_{ij} \cdot MBS_j \\ CSFE_t &= \sum_{t_0}^t SFE_{j,t} \end{aligned} \quad (6)$$

2.3 Result interpretation of state fusion entropy

State fusion entropy (SFE) is the comprehensive representation of the timeliness, the Markov property and fuzziness attributes of deformation states. In mathematical form, state fusion entropy can be regarded as the weighted information amount, indicating the individuation of each deformation state to overall landslide instability. For the value, on the one hand, the sign of state fusion entropy is determined by DT , indicating the deformation tendency of landslide. Positive DT indicates a growing

instability, and negative DT indicates a decreasing instability. On the other hand, the instable extent is represented by the absolute value of state fusion entropy.

Cumulative state fusion entropy (CSFE) is the sum of state fusion entropy, as shown in eq. (6). According to information theory, entropy indicates the overall uncertainty and instability of source. Likewise, cumulative state fusion entropy reflects the overall instability of landslide in the whole monitoring period. In other words, cumulative state fusion entropy represents the cumulative effect of landslide instability. As time goes on, cumulative state fusion entropy will also indicate the changing regularities of landslide instability. If landslide stays in a slight deformation period, cumulative state fusion entropy will maintain at a relatively low level. If landslide develops into a severe deformation period, cumulative state fusion entropy will accordingly show a continuous growth. ~~For landslide early warning Besides,~~ a historical maximum index is introduced to identify key time nodes of stability changes. It is defined as the maximum from the very beginning to the time in question of smoothed cumulative state fusion entropy ~~which is conducted mainly based on the consideration that stability cannot be mutant before landslide failure.~~ Each renewal of historical maximum suggests a more dangerous state of landslide. Once new historical maximum occurs frequently, the cumulative state fusion entropy curve will inevitably increase significantly, indicating a high instability of a landslide. In this case, field survey will be necessary for landslide early warning and hazard prevention.

15 3 Case study

To verify the effectiveness of the state fusion entropy method, five landslides in the Three Gorges Reservoir area in China were selected as examples for stability changing regularities analysis. Among them, Xintan landslide is a reactive landslide triggered by rainfall and has failed. Baishuihe landslide, Bazimen landslide and Shuping landslide are reactive landslides mainly triggered by reservoir water level and rainfall. Pajiayan landslide is a new-born landslide. Limited by space, results of Xintan landslide are detailed illustrated and that of others are simply presented.

Xintan landslide, which occurred 26.6 km upstream of the Three Gorges dam and 15.5 km downstream of Zigui County, is located in Xintan town on the north shore of Yangtze River. It extends from south to north with a length of 2000 m. The width of the rear edge is about 300 m and the width of the front edge is between 500 m and 1000 m, with an average width of 450 m. The elevation decreases from about 900 m in the north to 65 m in the south with an average gradient of about 23° . The main body of the deep-seated landslide is comprised of colluvial deposits overlying the bedrock of shale stone of Silurian system, sandstone of Devonian system and limestone of Carboniferous and Permian system. The strike of the bedrock strata is mainly $N10^\circ-30^\circ E$, almost perpendicular to the Yangtze River. At the end of 1977, a monitoring system of surface displacement composed of four collimation lines was set up and eight markers were added in July 1984 mainly by the Avalanche Survey Department of Xiling Gorge. Thanks to this monitoring and field investigation, the losses were controlled to the possible minima, without any fatalities and injuries when Xintan landslide failed on June 12, 1985 (Zhang et al., 2006; Huang et al., 2009; Lin et al., 2013). According to previous studies, cumulative horizontal displacements at A3 and B3 are considered to be the most representative (Wang, 2009). Location and two monitoring points of Xintan landslide are shown in

Figure 3. Monthly horizontal displacement of A3 from January 1978 to May 1985 is shown in Table 1. Since the displacement of A3 was obtained monthly, deformation states and state fusion entropy will also be monthly indexes for Xintan landslide.

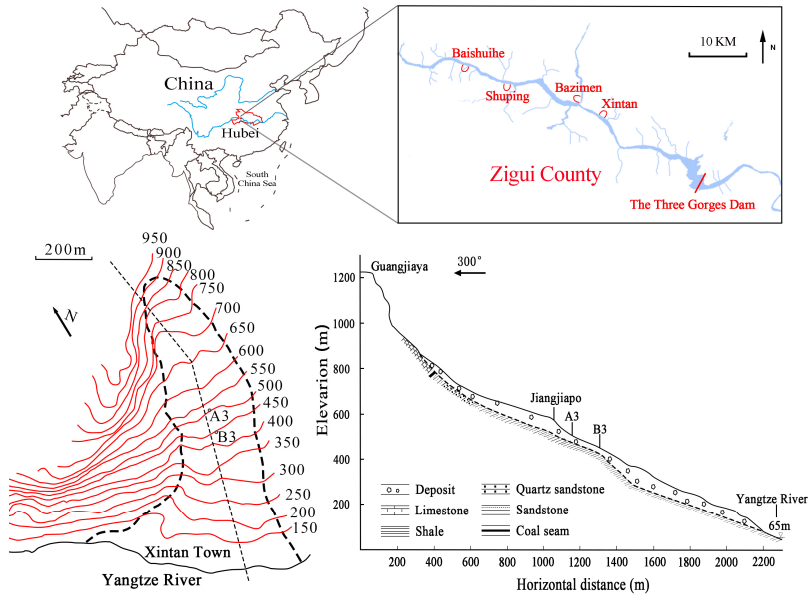


Figure 3. Location and plane/section of Xintan Landslide

5

Table 1. Monthly horizontal displacement of A3 from January 1978 to May 1985 (mm)

	Jan.	Feb.	Mar.	Apr.	May	Jun.	Jul.	Aug.	Sep.	Oct.	Nov.	Dec.
1978	0.0	3.2	7.1	6.1	6.4	8.7	13.1	6.9	4.8	1.8	1.8	7.5
1979	1.6	7.2	1.0	1.6	5.0	10.5	5.7	19.7	336.3	161.3	39.8	1.6
1980	14.3	11.1	7.8	4.2	9.7	9.7	80.8	49.5	59.5	20.7	9.4	18.7
1981	22.9	6.9	6.2	10.6	6.5	5.0	3.4	10.2	8.6	11.7	6.8	1.9
1982	8.2	7.5	6.8	33.2	66.7	82.2	54.5	344.2	430.6	525.6	433.5	35.3
1983	45.3	15.0	31.8	16.4	20.0	20.8	43.9	348.1	101.3	171.2	298.7	156.2
1984	69.1	51.3	27.6	15.5	49.0	127.9	196.0	320.1	136.1	413.8	325.8	214.6
1985	142.1	146.1	153.3	123.0	296.1							

Considering that the monitoring error of GPS can be ignored compared to landslide actual deformation on monthly time scale, monthly deformation velocity (v) was selected as the DE index and monthly deformation acceleration (a) as the DT index. Firstly, monthly deformation states were defined based on joint clustering method of K-means and Cloud Model with monthly deformation velocity and acceleration as the inputs. Given that there are about 90 monthly items with 2 dimensions, i.e., (v , a),

10

cluster number K was empirically set to 3 for simplicity. The initial cluster centroids were determined by performing preliminary clustering phase on a random 10% subsample of data set. The clustering process was repeated 9 times and the cluster labels (K_label) were determined based on voting strategy. Cluster centroids and number of items in each cluster are shown in Table 2.

5 **Table 2.** Cluster centroids and number of items in each cluster

K_label	Velocity (v)	Acceleration (a)	Items
1	30.83	0.13	69
2	133.53	201.86	8
3	366.75	-133.09	10

As can be seen from Table 2, obvious numerical differences exist among cluster centroids, suggesting different deformation patterns. Most items belong to the first cluster, whose deformation velocity and acceleration maintain at a relative low level, proving the fact that the occurrence probability of slight deformation is large while that of severe deformation is small during the development of landslide.

- 10 Then cloud model continued to evaluate the membership of each item to corresponding cluster label. In view of the Non-negative numerical limit of deformation velocity, cluster 1 was set as a right half cloud, cluster 2 as a symmetric cloud and cluster 3 as a left half cloud in deformation velocity dimension. In deformation acceleration dimension, all clusters were set as symmetric clouds. The regenerated clouds is shown in Figure 4. After obtaining digital features of each cloud, membership of each item to all clouds were calculated and unified, and the cloud label (CM_label) with the largest membership was defined
- 15 as the monthly deformation state. Comparison of K_label and CM_label is shown in Figure 5. As can be seen, K_label and CM_label are almost the same. But there are some items which belonged to cluster 1 in K-means, now belong to cluster 2 or 3 in cloud model, indicating that cluster 1 has a small tolerance to numerical deviations.

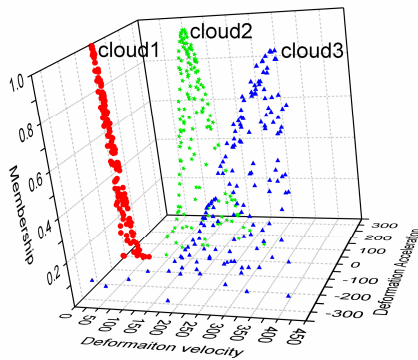


Figure 4. Regenerated clouds of each cluster

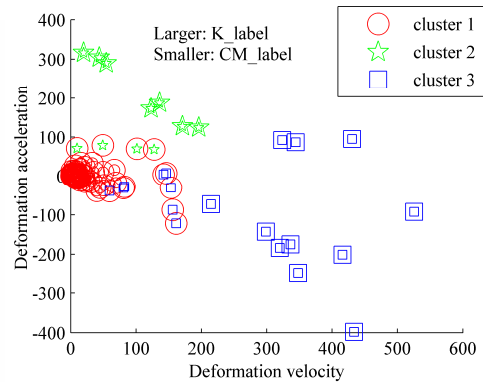


Figure 5. Comparison of K_label and CM_label

- 20 After the joint clustering process of K-means and Cloud Model, monthly deformation states were derived and after which state fusion entropy analysis of deformation state sequence was followed. As mentioned in the methods section, state occurrence

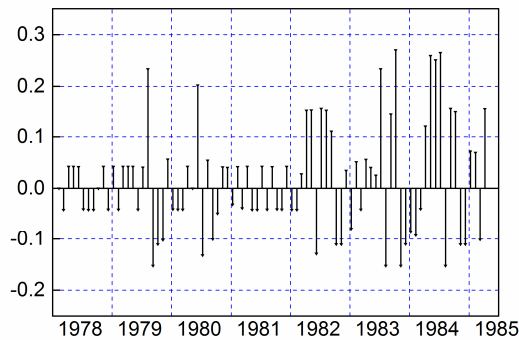
entropy and state transition entropy are defined aiming at the timeliness and Markov property of deformation states. After the statistics of the frequency and probability of each deformation state, state occurrence entropy of each deformation state was calculated based on eq. (4), whose absolute values were respectively 0.1621, 0.4980 and 0.3399. State transition matrix was obtained by analyzing deformation state sequence and state transition entropy obtained based on eq. (5) is shown in Table 3.

- 5 Three values are mainly discussed here: 1) the state transition entropy from S2 to S1 is zero. As mentioned earlier, S2 has a relatively large deformation velocity while S1 has a smaller one. So a deceleration process which corresponds to S3 will inevitably show up between S2 and S1; 2) the transition from slight deformation S1 to S1 presents a small transition entropy, indicating a small risk of landslide; 3) the maximum transition entropy occurs in the transition from S2 to S2, indicating an increasing instability.

10 **Table 3.** State transition entropy of Xintan Landslide

Deformation state	S1	S2	S3
S1	0.2679	0.4687	0.2634
S2	0.0000	0.5516	0.4484
S3	0.3635	0.3112	0.3253

Finally, monthly state fusion entropy was calculated based on eq. (6), as shown in Figure 6. Between December 1977 and December 1981, monthly state fusion entropy remains at a low level, fluctuating around zero. There are two local maxima but only last a short time. Between January 1982 and May 1982, values which are close to the local maxima in earlier stage occur frequently, indicating the increasing instability and higher risk of Xintan landslide.



15

Figure 6. Monthly state fusion entropy of Xintan landslide

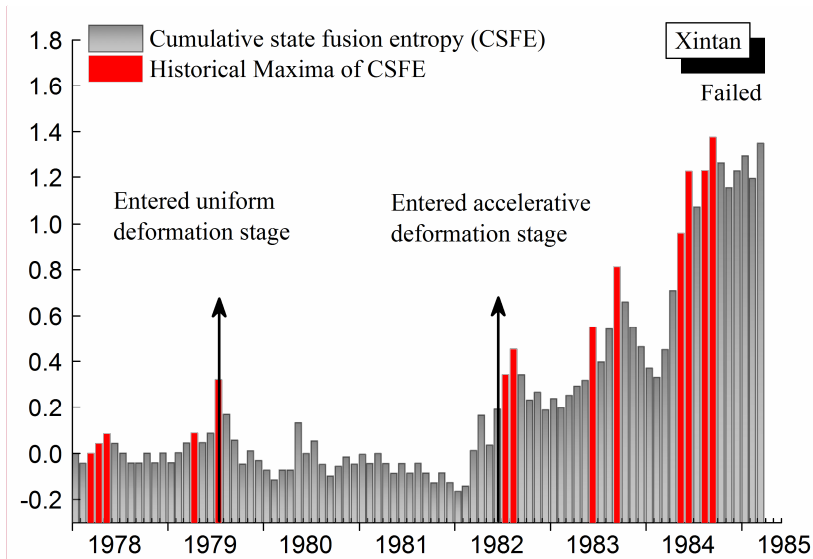


Figure 7. Cumulative state fusion entropy and historical maxima of Xintan landslide

For an insight into the cumulative effect and changing regularities of landslide instability, cumulative state fusion entropy was calculated ~~and average smoothed with a window of 5~~, after which historical maxima were picked out, as shown in Figure 7.

- 5 As for the cumulative state fusion entropy curve, there are two typical changing forms: fluctuation around zero type and fluctuant increasing type. The first type occurs between January 1978 and February 1982, during which the cumulative state fusion entropy fluctuates around zero with a slight decrease. A local maximum occurs in August 1979. The global minimum occurs in February 1982. After February 1982, cumulative state fusion entropy shows an apparent fluctuant increasing trend. Historical maxima mainly concentrate in two periods. From January 1978 to July 1979, the first period is at the prophase of monitoring period and the historical maximum is relatively small, easy to be updated. From June 1982 to April 1985, the second period is at the anaphase of monitoring period. During this time, the frequent renewal of historical maximum indicates actually an increasing instability of Xintan landslide and higher risk of landslide hazard.

- The macroscopic behaviors of Xintan landslide near historical maxima were investigated according to previous studies (Wang, 1996). Around August 1982, the front edge of Jiangjiapo went through a small collapse. In June 1983, the colluvial deposits between Guangjiaya and Jiangjiapo showed signs of resurrection. At the end of 1984, the trailing edge of the landslide showed an "armchair" shape and the leading edge was bulged out. Some collapse pits were found on the upper side while several new tensile cracks in the middle. Meanwhile, some small collapses which seem irrelevant to rainfall occurred. In May 1985, old cracks widened and new cracks appeared, forming a ladder-shaped landing ridge. Moreover, Jiangjiapo presented a clear trend of the overall slippage. These proofs suggest that the historical maximum index is highly consistent with landslide macroscopic deformation behaviors.
- 20

批注 [Z3]: Response to #2 general comment 6
Removed "smooth" and renewed historical maxima

Many studies have claimed the close relationship between landslide stability and evolutionary stages (Xu et al., 2008). And thus the evolutionary stages of Xintan landslide was introduced to verify the effectiveness of the state fusion entropy method. According to previous studies, Xintan landslide entered uniform deformation stage in August 1979, entered accelerative deformation stage in July 1982, and failed in June 1985 (Yin et al., 2002). As shown in Figure 7, August 1979 corresponds to a local mutation of cumulative state fusion entropy and is also the end of the first period of historical maxima. July 1982 is located at the fluctuant increasing period of cumulative state fusion entropy and it is the start of the second period of historical maxima. Before the failure of Xintan landslide, cumulative state fusion entropy has already reached a really high level in April 1985, ~~which also corresponds to a new historical maximum~~. In other words, historical maxima match really well with the evolutionary stages of Xintan landslide in key time nodes, and can suggest the effectiveness of this method. Furthermore, when Xintan landslide entered accelerative deformation stage in July 1982, cumulative state fusion entropy starts an obvious fluctuant increasing trend. In this aspect, the fluctuant increasing type of cumulative state fusion entropy may serve as a new clue to determine whether a landslide enter the accelerative deformation stage or not.

In addition, the results of several other studies were introduced for comparison. Chen (2014) studied the stability of Xintan landslide by FEM with consideration of the loading effect and material weakening caused by rainfall, as shown in Figure 8. Moreover, the result of an unloading-loading response ratio method (ULRR) is also introduced (Zhang et al., 2006; He et al., 2010), as shown in Figure 8. Because only annual results are given in these studies, annual average of CSFE were correspondingly calculated for comparison. According to Figure 8, the safety factor decreases year by year and cannot reflect the recovery process of landslides stability. The ULRR presents similar changing regularities like CSFE after Xintan landslide entered accelerative deformation stage in 1982. But the mutation in 1981 when Xintan is still in uniform deformation stage seems unreasonable. Besides, ULRR is obtained yearly and offers less details about stability changes than CSFE.

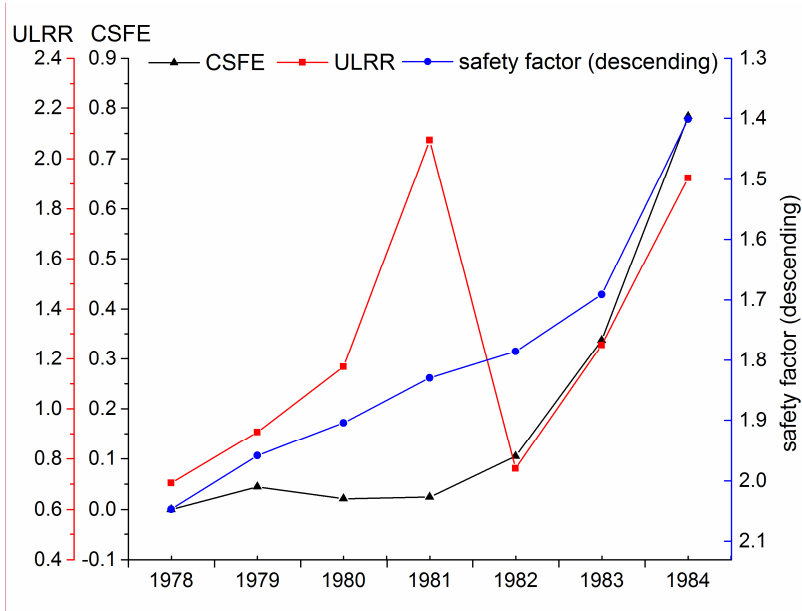


Figure 8. Comparison of CSFE with ULRR and safety factor of Xintan landslide

Similarly, state fusion entropy analysis of Baishuihe landslide, Bazimen landslide, Shuping landslide and Pajiayan landslide in the Three Gorges Reservoir area in China were also conducted and their results are shown in Figure 9. Similarities and differences between displacement and state fusion entropy are found through a comparative analysis of these landslides. As for Bazimen landslide and Pajiayan landslide, cumulative state fusion entropy and cumulative displacement show similar change rules especially during the drawdown period of water level, indicating their intrinsic consistency. As for Baishuihe landslide and Shuping landslide, cumulative state fusion entropy of shows a distinctly different characteristic from their cumulative displacement. Taking Baishuihe landslide as an example, the severe deformation in June 2007 seems to suggest that the landslide has entered accelerative deformation stage. However, subsequent monitoring has proved that the deformation is only a temporary effect of heavy rainfall and fluctuation of water level (Xu et al., 2008). In Figure 9, cumulative state fusion entropy of Baishuihe landslide returns to a low level after several historical maxima.

批注 [Z4]: Response to #1
Response to #2 General comment 2
Response to #3

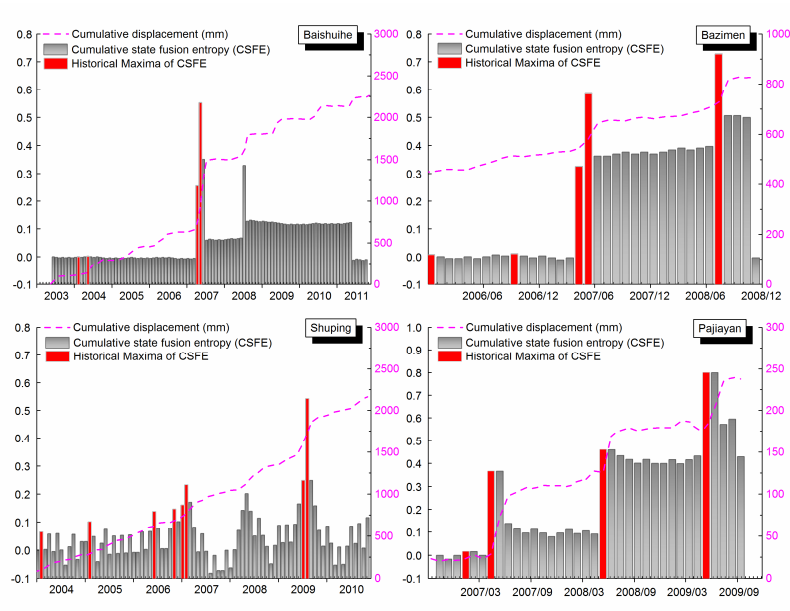


Figure 9. Cumulative state fusion entropy and historical maxima of Baishuihe, Bazimen, Shuping and Pajiayan landslide

4 Discussion and Conclusion

Under the guidance of dynamic state system and based on the relationship of displacement monitoring data, deformation state and landslide stability, a state fusion entropy approach is proposed to conduct a continuous and site-specific analysis of landslide stability changing regularities. A joint clustering method combining K-means and cloud model is firstly proposed to investigate landslide deformation states, and then a multi-attribute entropy analysis follows to estimate landslide instability.

Furthermore, a historical maximum index is introduced for identifying key time nodes of stability changes. To verify the effectiveness of this approach, Xintan landslide is selected as a detailed case and four other landslides in the Three Gorges

Reservoir area as brief cases. Taking Xintan landslide as an example, cumulative state fusion entropy mainly fluctuated around zero in the initial deformation stage and uniform deformation stage, but an obvious fluctuant increasing tendency appeared after Xintan landslide entered accelerative deformation stage. In the meanwhile, a thorough collection of the macroscopic proofs also suggests that historical maxima are highly consistent with landslide macroscopic deformation behaviours.

Compared with traditional safety factor, state fusion entropy evaluates the landslide instability, and is capable to indicate its extent and changing regularities. Compared with simulation methods for landslide stability analysis, this approach takes displacement monitoring data as the basis of landslide stability analysis, and thus is prone to continuous stability analysis.

Compared with direct judgment from displacement monitoring data, this approach analyse landslide deformation states by a

批注 [Z5]: Response to #2 general comment 6
Removed "smooth" and renewed historical maxima

批注 [Z6]: Changed "landslide early warning" to "identifying key time nodes of stability changes"

data-driven model, avoiding the disunity of individual engineering geology experience, ensuring its applicability to the geological conditions of different landslides.

To measure the influence of different cluster numbers on the performance of this method, CSFE with different cluster numbers (K=3 to 7) is compared, as shown in Figure 10. As can be seen, CSFE varies slightly with K. This is mainly because that different K correspond to different division roughness of deformation states, which sequentially affects the value of the CSFE. Due to this fluctuation, CSFE is not intended to be applied to landslide early warning unless be qualified by further research. Despite this, the overall trend remains unchanged, which suggests a steady statistical regularity of deformation states.

5

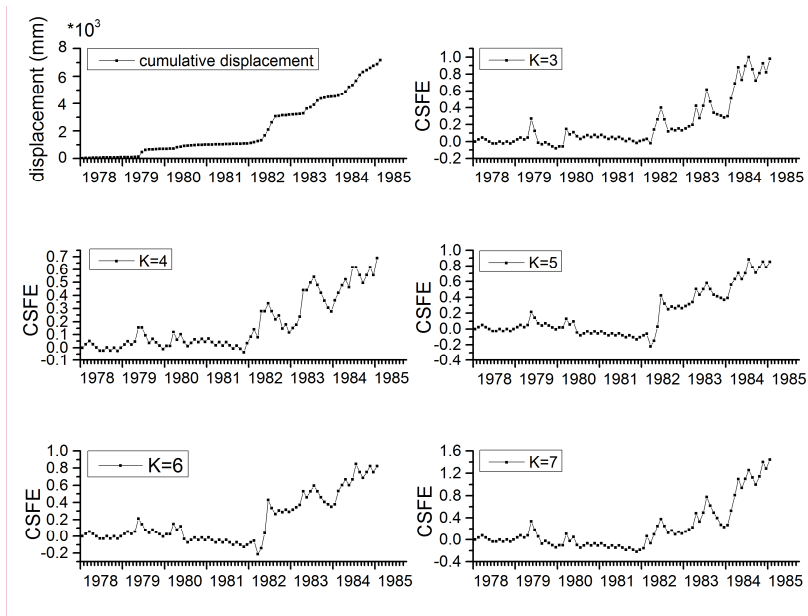


Figure 10. CSFE with different cluster numbers (K=3 to 7) of Xintan landslide

10 Furthermore, several issues also need to be clarified. Firstly, data selection and feature extraction are simplified. Although monitoring data of multi-point and multi-sensor are helpful to express the comprehensive state of landslide, relevant research is still in progress and thus a common practice, selecting one typical displacement data of GPS, is adopted for now. Besides, displacement data is currently obtained monthly by GPS. At this time scale, deformation velocity and acceleration are considered to express landslide deformation well and thus selected for deformation state definition. For higher time resolution

15 data, some feature extraction methods may be necessary to determine the *DE* and *DT* indexes. Finally, Entering into accelerative deformation stage is a necessary condition for landslide failure. Aiming at this, the fluctuant increasing tendency of cumulative state fusion entropy and the frequent renewal of historical maximum may help to judge whether landslide has entered accelerative deformation stage or not. Once this happens, other clues such as macro cracks should also be taken into

批注 [Z7]: Response to #2
General comment 2

批注 [Z8]: Response to #2
General comment 4

account to fully determine landslide early warning level. ~~In addition, the Markov property of deformation state can be used for prediction.~~

Acknowledgements

This research was funded by the National Natural Sciences Foundation of China [grant numbers 41772376, 41302278]. The
5 authors are grateful to the editors and reviewers for kind and constructive suggestions.

References

- Asch, T. W. J. V., Malet, J. P., and Bogaard, T. A.: The effect of groundwater fluctuations on the velocity pattern of slow-moving landslides, *Natural Hazards & Earth System Sciences*, 9, 739-749, 10.5194/nhess-9-739-2009, 2009.
- Ashland, F. X., Giraud, R. E., and McDonald, G. N.: Slope-stability implications of ground-water-level fluctuations in wasatch front landslides and adjacent slopes, Northern Utah, in: 40th Symposium on Engineering Geology and Geotechnical Engineering 2006, 40th Symposium on Engineering Geology and Geotechnical Engineering 2006, May 24, 2006 - May 26, 2006, Logan, UT, United states, 2006, 33-44.
- Bernardie, S., Desramaut, N., Malet, J. P., Gourlay, M., and Grandjean, G.: Prediction of changes in landslide rates induced by rainfall, *Landslides*, 12, 481-494, 10.1007/s10346-014-0495-8, 2015.
- 15 Bordini, M., Meisina, C., Valentino, R., Lu, N., Bittelli, M., and Chersich, S.: Hydrological factors affecting rainfall-induced shallow landslides: From the field monitoring to a simplified slope stability analysis, *Engineering Geology*, 193, 19-37, 10.1016/j.enggeo.2015.04.006, 2015.
- Chen, G. Q., Huang, R. Q., Shi, Y. C., and Xu, Q.: Stability Analysis of Slope Based on Dynamic and Whole Strength Reduction Methods, *Chinese Journal of Rock Mechanics and Engineering*, 33, 243-256, 10.13722/j.cnki.jrme.2014.02.002,
20 2014.
- [Chen, H. C.: Study on dynamic load laws and attenuation laws of parameters induced by rainfall of colluvial landslide and its stability evolutionary laws. Master of Engineering. Qingdao Technological University, 2014.](#)
- Dai, F. C., Lee, C. F., and Ngai, Y. Y.: Landslide risk assessment and management: an overview, *Engineering Geology*, 64, 65-87, 10.1016/S0013-7952(01)00093-X, 2002.
- 25 Dawson, E. M., Roth, W. H., and Drescher, A.: Slope stability analysis by strength reduction, *Géotechnique*, 49, 835-840, 10.1680/geot.1999.49.6.835, 2015.
- Devkota, K. C., Regmi, A. D., Pourghasemi, H. R., Yoshida, K., Pradhan, B., Ryu, I. C., Dhital, M. R., and Althuwaynee, O. F.: Landslide susceptibility mapping using certainty factor, index of entropy and logistic regression models in GIS and their comparison at Mugling-Narayanghat road section in Nepal Himalaya, *Natural Hazards*, 65, 135-165, 10.1007/s11069-012-
30 0347-6, 2013.
- Duncan, J. M.: State of the Art: Limit Equilibrium and Finite-Element Analysis of Slopes, *Journal of Geotechnical Engineering*, 122, 577-596, 10.1061/(ASCE)0733-9410(1996)122:7(577), 1996.
- Federico, A., Popescu, M., Elia, G., Fidelibus, C., Internò, G., and Murianni, A.: Prediction of time to slope failure: a general framework, *Environmental Earth Sciences*, 66, 245-256, 10.1007/s12665-011-1231-5, 2012.
- 35 Griffiths, D. V., and Fenton, G. A.: Probabilistic Slope Stability Analysis by Finite Elements, *Journal of Geotechnical & Geoenvironmental Engineering*, 130, 507-518, 10.1061/(ASCE)1090-0241(2004)130:5(507), 2004.
- Hartigan, J. A., and Wong, M. A.: A K-Means Clustering Algorithm, *Applied Statistics*, 28, 100-108, 10.2307/2346830 2013.
- [He, K., Wang, S., Du, W., and Wang, S.: Dynamic features and effects of rainfall on landslides in the Three Gorges Reservoir region, China: using the Xintan landslide and the large Huangya landslide as the examples. Environmental Earth Sciences, 59, 1267-1274, 10.1007/s12665-009-0114-5, 2010.](#)
- 40 Hsu, C. F., and Chien, L. K.: Slope stability analysis of transient seepage under extreme climates: Case study of typhoon nari in 2001, *J. Mar. Sci. Technol.-Taiwan*, 24, 399-412, 10.6119/jmst-015-0813-1, 2016.

- Huang, F. M., Huang, J. S., Jiang, S. H., and Zhou, C. B.: Landslide displacement prediction based on multivariate chaotic model and extreme learning machine, *Engineering Geology*, 218, 173-186, 10.1016/j.enggeo.2017.01.016, 2017a.
- Huang, F. M., Luo, X. Y., and Liu, W. P.: Stability analysis of hydrodynamic pressure landslides with different permeability coefficients affected by reservoir water level fluctuations and rainstorms, *Water (Switzerland)*, 9, 10.3390/w9070450, 2017b.
- 5 Huang, Z. Q., Law, K. T., Liu, H. D., and Jiang, T.: The chaotic characteristics of landslide evolution: a case study of Xintan landslide, *Environmental Geology*, 56, 1585-1591, 10.1007/s00254-008-1256-6, 2009.
- Knappett, J. A.: Numerical analysis of slope stability influenced by varying water conditions in the reservoir area of the Three Gorges, China, *Tenth International Symposium on Landslides and Engineered Slopes*, 2008.
- 10 Li, D. Y., Meng, H. J., and Shi, X. M.: Membership clouds and membership clouds generators, *Journal of Computer Research and Development*, 32, 15-20, 1995.
- Li, D. Y., and Liu, C. Y.: Study on the universality of the normal cloud model, *Engineering Science*, 3, 28-34, 2004.
- Li, S. H., Liu, T. P., and Liu, X. Y.: Analysis method for landslide stability, *Chinese Journal of Rock Mechanics and Engineering*, 28, 3309-3324, 2009.
- 15 Lin, D. C., Cai, J. L., Guo, Z. L., Zeng, F. L., An, F. P., and Liu, H. B.: Evaluation of landslide risk based on synchronization of nonlinear motions in observed data, *Natural Hazards*, 65, 581-603, 10.1007/s11069-012-0385-0, 2013.
- Liu, Y., Liu, D., Qin, Z. M., Liu, F. B., and Liu, L.: Rainfall data feature extraction and its verification in displacement prediction of Baishuihe landslide in China, *Bulletin of Engineering Geology and the Environment*, 75, 897-907, 10.1007/s10064-015-0847-1, 2016.
- 20 Macciotta, R., Hendry, M., and Martin, C. D.: Developing an early warning system for a very slow landslide based on displacement monitoring, *Natural Hazards*, 81, 887-907, 10.1007/s11069-015-2110-2, 2016.
- Manconi, A., and Giordan, D.: Landslide early warning based on failure forecast models: the example of the Mt. de La Saxe rockslide, northern Italy, *Nat. Hazards Earth Syst. Sci.*, 15, 1639-1644, 10.5194/nhess-15-1639-2015, 2015.
- Montesarchio, V., Ridolfi, E., Russo, F., and Napolitano, F.: Rainfall threshold definition using an entropy decision approach and radar data, *Nat. Hazards Earth Syst. Sci.*, 11, 2061-2074, 10.5194/nhess-11-2061-2011, 2011.
- 25 Montrasio, L., Valentino, R., and Losi, G. L.: Towards a real-time susceptibility assessment of rainfall-induced shallow landslides on a regional scale, *Nat. Hazards Earth Syst. Sci.*, 11, 1927-1947, 10.5194/nhess-11-1927-2011, 2011.
- Morales-Esteban, A., de Justo, J. L., Reyes, J., Azañón, J. M., Durand, P., and Martínez-Álvarez, F.: Stability analysis of a slope subject to real accelerograms by finite elements. Application to San Pedro cliff at the Alhambra in Granada, *Soil Dyn Earthq Eng.*, 69, 28-45, 10.1016/j.soildyn.2014.10.023, 2015.
- 30 Pourghasemi, H. R., Mohammady, M., and Pradhan, B.: Landslide susceptibility mapping using index of entropy and conditional probability models in GIS: Safarood Basin, Iran, *Catena*, 97, 71-84, 10.1016/j.catena.2012.05.005, 2012.
- Priest, G. R., Schulz, W. H., Ellis, W. L., Allan, J. A., Niem, A. R., and Niem, W. A.: Landslide stability: Role of rainfall-induced, laterally propagating, pore-pressure waves, *Environmental and Engineering Geoscience*, 17, 315-335, 10.2113/gsegeosci.17.4.315, 2011.
- 35 Ridolfi, E., Montesarchio, V., Russo, F., and Napolitano, F.: An entropy approach for evaluating the maximum information content achievable by an urban rainfall network, *Nat. Hazards Earth Syst. Sci.*, 11, 2075-2083, 10.5194/nhess-11-2075-2011, 2011.
- Saito, M.: Forecasting the time of occurrence of a slope failure, *Proceedings of 6th International Congress of Soil Mechanics and Foundation Engineering*, Montreal, 1965, 537-541,
- 40 Shi, Y. F., and Jin, F. X.: Landslide Stability Analysis Based on Generalized Information Entropy, *International Conference on Environmental Science and Information Application Technology*, Wuhan, China, 2009, 83-85,
- Singh, A. K., Kainthola, A., and Singh, T. N.: Prediction of factor of safety of a slope with an advanced friction model, *International Journal of Rock Mechanics & Mining Sciences*, 55, 164-167, 10.1016/j.ijrmm.2012.07.009, 2012.
- Steinley, D.: K-means clustering: A half-century synthesis, *British Journal of Mathematical and Statistical Psychology*, 59, 1-34, 10.1348/000711005X48266, 2006.
- 45 Tauchen, G.: Finite state markov-chain approximations to univariate and vector autoregressions, *Economics Letters*, 20, 177-181, 10.1016/0165-1765(86)90168-0, 1986.
- Wang, N. Q., Xue, Y. Q., Yu, Z., and Feng, X.: Review of landslide stability analysis method, *Advanced Materials Research*, 1004-1005, 1541-1546, 10.4028/www.scientific.net/AMR.1004-1005.1541, 2014.

- Wang, S. Q.: Review on prediction of Xintan landslide, *The Chinese Journal of Geological Hazard and Control*, 5, 11-19, 10.16031/j.cnki.issn.1003-8035.1996.s1.003, 1996.
- Wang, S. Q.: Time Prediction of the Xintan Landslide in Xiling Gorge, the Yangtze River, in: *Landslide Disaster Mitigation in Three Gorges Reservoir, China*, edited by: Wang, F. W., and Li, T. L., Springer Berlin Heidelberg, Berlin, Heidelberg, 411-431, 2009.
- 5 Wu, X. L., Benjamin Zhan, F., Zhang, K. X., and Deng, Q. L.: Application of a two-step cluster analysis and the Apriori algorithm to classify the deformation states of two typical colluvial landslides in the Three Gorges, China, *Environmental Earth Sciences*, 75, 146, 10.1007/s12665-015-5022-2, 2016.
- 10 Xu, Q., Tang, M. G., Xu, K. X., and Huang, X. B.: Research on space-time evolution laws and early warning-prediction of landslides, *Chinese Journal of Rock Mechanics and Engineering*, 27, 1104-1112, 2008.
- Xu, Q., and Zeng, Y. P.: Research on acceleration variation characteristics of creep landslide and early-warning prediction indicator of critical sliding, *Chinese Journal of Rock Mechanics and Engineering*, 28, 1099-1106, 2009.
- Yin, K. L., Jiang, Q. H., and Wang, Y.: Numerical simulation on the movement process of Xintan Landslide by DDA method, *Chinese Journal of Rock Mechanics and Engineering*, 21, 959-962, 2002.
- 15 [Zhang, W. J., Chen, Y. M., and Zhan, L. T.: Loading/unloading response ratio theory applied in predicting deep-seated landslides triggering. *Engineering Geology*, 82, 234-240, 10.1016/j.enggeo.2005.11.005, 2006.](#)