



Geomorphological evolution of landslides near an active normal fault in Northern Taiwan, as revealed by LiDAR and unmanned aircraft system data

Kuo-Jen Chang¹, Yu-Chang Chan², Rou-Fei Chen³, Yu-Chung Hsieh⁴

5 ¹Department of Civil Engineering, National Taipei University of Technology, Taipei, 10654, Taiwan, R.O.C.

²Institute of Earth Sciences, Academia Sinica, Taipei, Taiwan, R.O.C.

³Department of Geology, Chinese Culture University, Taipei, 11114, Taiwan, R.O.C.

⁴Central Geological Survey, MOEA, Taipei, Taiwan, R.O.C.

Correspondence to: Kuo-Jen Chang (epidote@ntut.edu.tw)

10 **Abstract.** Several remote sensing techniques, namely traditional aerial photographs, an unmanned aircraft system (UAS),
and airborne LiDAR, were used in this study to decipher the morphological features of obscure landslides in volcanic
regions. A morphological reconstruction method was proposed to assess landslide morphology based on the dome-
shaped topography of the volcanic edifice and the nature of its morphological evolution. Two large-scale landslides in the
Tatun volcano group in Northern Taiwan were targeted to more accurately characterize the landslide morphology through
15 airborne LiDAR and UAS-derived digital terrain models and images. With the proposed reconstruction method, the
depleted volume of the two landslides was estimated to be at least $820 \pm 20 \times 10^6 \text{ m}^3$, approximately six times higher
than the reported largest landslide volume in Taiwan. Normal faulting in the region likely played a role in triggering the
two landslides, because there are extensive geological and historical records of an active normal fault in this region. The
subsequent geomorphological evolution of the two landslides is inferred to account for the observed morphological and
20 tectonic features, as characterized using the remote sensing techniques.

Keywords: Unmanned aircraft system, LiDAR, Digital terrain models, Landslide characterization, Morphological reconstruction, Normal faulting, Geomorphological evolution

1 Introduction

25 Landslides pose long-lasting threats to humans and their property and are detrimental to the environment in general.
Therefore, many efforts have been made to assess landslide hazards and propose mitigation methods based on key
landslide characteristics, including range and extent, volume, triggering mechanism, recurrence, and subsequent



evolution. The overview of landslides provided by morphological analysis has been fundamental in improving the understanding of landslides. Several useful morphological characteristics have been proposed for identifying potential landslide sites (Varnes, 1978; IAEG, 1990); these can be readily applied for landslide recognition and identification. Clayton, Simons, and Matthews (1982) suggested a useful procedure for improving site investigations and methods. Such methods may facilitate the identification of landslide sites and subsequent analysis of landslides. However, before regional-scale landslide recognition and identification, informative morphological analysis must be performed, the results of which are dependent on the quality and precision of the data set. Morphological analysis involving observation and identification methods, such as contour topographic maps, aerial photography, and remote sensing images, is considered an essential task in the early stages of landslide investigations (IAEG, 1990).

10 The morphological features of relatively old landslides are often perturbed by surficial processes, such as weathering, erosion, and vegetation colonization. The limited precision of aerial photographs and satellite images in many cases prevents detailed analysis of old landslides. Landslide recurrence is a major concern in engineering projects because it reveals the evolution of a landslide and its potential activity. However, landslide recurrence at a specific site cannot be easily and precisely determined, primarily because of the lack of georeferenced historical records of recent
15 landslides. Therefore, it is important to study landslides that date from an earlier period in the evolutionary history of an area.

Volume estimation is crucial for characterizing and understanding landslides. The cut-and-fill volumes of a landslide can be estimated using two digital elevation models (DEMs): one before the landslide and one thereafter (Chang et al., 2005; Chen et al., 2006; Chan et al., 2012, Hsieh et al., 2016). The information derived using the DEMs
20 can facilitate the identification and estimation of landslide activity and evolution. However, estimating the volumes of an old landslide site is relatively challenging. A method for determining landslide volume is to reconstruct paleogeomorphology before a landslide, which requires regional detailed topographic data and reasonable methods of geomorphological reconstruction.

Large-scale landslides are common and frequently recurrent in volcanic regions. The study area, Jinshan, is part of a
25 volcano group in the Taipei metropolitan area in Northern Taiwan (Fig. 1). Two large-scale landslides have already been identified from LANDSAT images of the region. However, because of a lack of relevant information, the details of these landslides are yet to be analyzed. In this study, we proposed feasible methods for evaluating landslides, particularly old landslides, by performing paleotopographic reconstruction based on several concepts and the hypothetical shape of the natural edifice of a stratovolcano. The reconstructed instances of paleotopography were evaluated using different tests
30 and used in the subsequent landslide analysis, including analysis of the landslide volumes and morphological evolution. Moreover, the interactions of tectonics and surface processes, including normal faulting, riverbed incision, and river



drainage formation, are discussed in the context of the old landslides to provide perspectives on the newly acquired detailed topography.

2 Geological background

Taiwan is situated on an active orogenic belt formed by oblique convergence between the Philippine Sea and Eurasian plates (Ho, 1986; Malavieille et al., 2002). Despite the ongoing collision in Central and Southern Taiwan, a postcollision extension regime has developed since the Plio-Pleistocene in the northern part of this orogeny (Teng, 1996) and has generated volcanic activity both onshore and offshore in Northern Taiwan (Wang et al., 1999). The study area is composed of late Paleogene to Neogene sedimentary rocks (Suppe, 1984; Ho, 1986). The belt is defined by a series of imbricated, trending NE–SW, west-vergent folds and faults (Fig. 1). The strata are composed of late Oligocene to Pleistocene sedimentary rocks and are overlain by the intruded Tatun volcano group.

The study area has two major faults: the Kanchiao fault (KCF) and Jinshan fault (JSF; Fig. 1). The stratigraphic separation of the KCF through thrusting is estimated to exceed 2000 m. However, recent marine seismic survey data clearly indicate that the KCF is now a normal fault. The NE–SW trending JSF, which is situated in the northeast of the Tatun volcano group around Jinshan, has an estimated throw of 3000 m by thrusting. The late Oligocene Wuchihshan Formation is juxtaposed against the late Miocene Nanchuang Formation. It dips over 50° toward the southeast with a trend of N60E°.

These NE–SW-trending thrust faults and folds were identified on land (Huang, 1988), and their offshore extents have been confirmed (Hsiao, 1997; Hsiao et al., 1998). Before a major orogenic movement, the tectonic setting in this area of Taiwan was dominated by normal faults and half grabens (Hsiao, 1997; Hsiao et al., 1998). Faults in this region were reactivated by extensional rifting tectonics as compressional synorogenic fold-and-thrust tectonism during the late Mio-Pliocene period. Postorogenic extension subsequently resulted in the kinematics of these faults reverting to their earlier normal faulting regime. Currently, the offshore structures in northeastern Taiwan are in an extensional regime once again. The JSF has thus reactivated and reverted to being a normal fault, now known as the Shanchiao fault (SCF).

The extensional postorogenic tectonism resulted in extensive igneous activity that began at approximately 2.8–2.5 Ma (Wang, 1989) and continued throughout the quaternary period (Wang, 1989; Tsao, 1994). These volcanic rocks overlie sedimentary rocks that range from being late Oligocene to early Pleistocene. To a certain extent, the sequence of eruption history can be interpreted by the geomorphological features, petrological characteristics, and geochemical signatures of the volcanic rocks (Wang, 1989; Song, 2000; Chen, 2003). In the Tatun volcano group and its immediate



vicinity, most lava flows were dated using K-Ar and fission-track dating methods, which provided ages ranging from 0.8 to 0.2 Ma (Tsao, 1994; Song, 2000).

Figure 2 illustrates the topographic characteristics of the study area. Two large circular landslides, marked as the northeastern Xishi landslide (XSL) and southwestern Chinshui landslide (CSL; Fig. 2, lower left) in the 40-m grid digital terrain model (DTM). In the coarse DTM, the major geomorphic features of these two landslides are limited, with only two fractured circular crowns being visible. Figure 2 also shows the IKONOS 1-m resolution image of the study area. However, the images primarily demonstrate the differences in human activities and a few recent small landslides. Classic techniques, such as aerial photography and stereoscope analysis, were used to extract detailed features of the target area. Aerial photographic analysis revealed common morphological features, including circular crowns and depletion zones bounded by topographic scarps on the upslope side. Two domains of different vegetation densities near the upper part of the sliding areas were observed to be affected by human activities.

3 Decimeter-scale digital surface model acquired from unmanned aircraft system

To acquire high-resolution topographic information, a homemade unmanned aircraft system (UAS) was integrated and used in this study. A UAS, commonly known as a drone, is an aircraft that flies autonomously and has many applications because of its low cost, convenience, and high resolution (Huang and Chang, 2014; Chen et al., 2015; Galarreta et al., 2015; Giordan et al., 2015; Tokarczyk, 2015; Bühler et al., 2016; Deffontaines et al., 2016). The UAS used in this study is a modified version of the Skywalker X8 delta-wing aircraft. It is reinforced by carbon fiber rods and Kevlar fiber sheets. The UAS was launched by hand; it flew, captured photos, and then glided back to the ground. The whole process was conducted using a preprogrammed flight mission organized by a ground control system and remote controlled by the ground control station. The autopilot system was constructed and modified from the open-source APM (ArduPilot Mega 2.6 autopilot) firmware and open-source software Mission Planner, as transmitted through ground-air XBee telemetry.

To generate a high-resolution digital surface model (DSM), orthorectified mosaic images, and a true three-dimensional (3D) model, 1231 photos were captured by a Sony ILCE-QX1 camera mounted on the UAS. One flight mission of a total distance of 80 km, endurance of 90 minutes, and 250 m of mean height above ground level was organized and implemented (Fig. 3). A total coverage area of 14.7 km² with a 6.6-cm ground sampling distance (GSD) was acquired from the flight mission. Repeated adjacent photographs were kept for at least 85 % overlap and 45 % sidelap. The data sets, including orthomosaic images, DSM, and true 3D model, were generated and processed using ContextCapture and Pix4Dmapper with a grid spacing of 8.5 cm. Figure 3a denotes the region of data acquisition by the



UAS. The green and red points mark the waypoints of the flight mission and all photographs acquired, respectively. Figures 3b and 3c demonstrate the 3D scene of the study area simulated using the true 3D model, where the crown area of one landslide was modified by human infrastructure. Before the morphological and tectonic analysis, the quality of the entire data set (as shown in Fig. 3a) must be evaluated. Therefore, 20 ground control points used in this study were
5 extracted from the airborne LiDAR data set. The quality of the DSM was approximately 5 cm with a maximum error of 35 cm in the root-mean-square (RMS) deviation compared with that of the airborne LiDAR data for the open bare ground area, where the elevation of the DEM corresponds to that of the DSM, and there is neither vegetation nor buildings. Figures 3 and 4 provide some examples of the quality of both DTM and orthomosaic images of the study area. The morphological features of the ground surface based on the acquired DTM and photographs were analyzed and
10 accordingly interpreted.

4 Morphological analysis

Morphological analysis is a key means of landslide identification. Satellite images or aerial photographs are traditionally used to perform morphological analysis. A DTM may provide more landform information and is typically developed by pairing satellite images or aerial photographs. However, the resolution of DTMs derived either from
15 satellite images or aerial photographs is insufficient for performing highly detailed morphological analysis. For example, dense vegetation in humid areas often conceals part of the landslide's morphological features; this situation is readily resolved by using airborne LiDAR data and high-resolution UAS images. LiDAR laser pulse emission can penetrate the barriers of different media (trees, clouds, and vegetation) based on corresponding reflections. UAS images and associated DSMs can produce data sets with decimeter to centimeter resolutions, which enable detailed photointerpretation and
20 geological structure analysis. In this study, the DTM data acquired from the LiDAR images and UAS data set were selected as the fundamental sources for detailed morphological analysis.

Airborne LiDAR is an excellent tool for extracting the meter-scale surface features of landslides. Consequently, quantitative studies have been successfully conducted for delineating landslides; determining risks (Gritzner et al, 2001), landslide morphology (Glenn et al., 2006; Staley et al., 2006), and activity (Chen et al., 2005; Chang et al., 2006);
25 estimate cut-and-fill volumes (Chang et al., 2005, Chen et al., 2006; Chan et al., 2012; Hsieh et al., 2016); and perform geological mapping (Yeh et al., 2014). In this study, an Optech ALTM3070 apparatus was used to record the positions of the laser reflecting points with a rate of up to 71,000 pulses per second when we conducted the Central Geological Survey project in 2005. In brief, the DSM is developed based on the first reflection of the laser scanning from the sorted point clouds that are reflected from vegetation or the tops of buildings. Consequently, the last reflection, occurring after



the vegetation is penetrated, records the appearance of the ground surface. Processing the nearby reflecting signals can also eliminate buildings. Thus, the ground surface without vegetation and buildings, referred to as a DEM, can be obtained.

In this study, DSMs and DEMs were generated with a grid size of 2 m from the classified point clouds. The average densities of the point clouds for DSMs and DEMs were 3.63 and 0.75 points/m², respectively. Compared with data measured using a differential global positioning system, the errors may vary according to differences in the terrains. For the study area, the mean errors, RMS, and standard deviation were 0.097, 0.126, and 0.081, respectively. Figure 4 presents images of the same area close to the southwestern CSL slide crowns obtained from different sources and highlights the resolution and application of different data sets. Figures 4a and 4b show the DSMs and DEMs illustrating the differences in ground features with and without vegetation and buildings. The point clouds from which the DSM and DEM profiles were derived are shown and compared in Figure 4d. Figure 4c indicates human and agricultural activities in the crown area of the landslide, as shown in the lower halves of the images. The gentle slope and fractured volcanic rock mass provided a suitable environment for agriculture and habitation. The ground appearances obtained from the IKONOS satellite image (Fig. 4g; 1-m resolution), aerial photographs (Fig. 4h; 25-cm resolution), and UAS images (Fig. 4i; 8.5-cm resolution) show different levels of detail. Figures 4g, 4h, and 4i show a dense forest covering the upper left corner of the images. Because of an annual rainfall of more than 2500 mm in this area, a vast portion of the study area is covered by vegetation. Dense vegetation often partially conceals morphological features in humid areas and has prevented detailed studies in the past on surface processes, e.g., incision or erosion.

4.1 Geomorphological characteristics

The geomorphological characteristics of a landslide can be divided into the depletion and accumulation areas. Most accumulation areas are prone to erosion by subsequent surface processes because of fractured and fragmented weak debris. Contrastingly, depletion areas composed of more competent bedrock tend to remain stable and are readily detectable. Therefore, the morphological analysis in this study focuses on the depleted areas shown in the UAS and LiDAR data. Despite some small landslides in the study area being identified from satellite images or aerial photograph analysis, limited resolution and dense vegetation obscured their detailed geomorphic characteristics. The small scarps and depletion depths indicate that they are shallow landslides. Figure 5 illustrates some of these landslides; among them, two large-scale landslides were selected for study.

The two main landslides have preserved some common morphological features. In contrast to the XSL, the CSL has preserved relatively more of the original topographic features characteristic of a landslide, including the circular crown, main scarp, and transverse ridge, particularly in its southwestern flank. Figure 6 shows the hillshade elevation view of the



XSL and CSL. The CSL has many small, elongated bumps, known as transverse ridges, that indicate where displaced blocks used to rest, as well as the locations of induced ground deformation. The CSL has two remarkable shutter ridges with typical triangular facets (Fig. 6). This phenomenon reveals that the sliding process has cut off two linear cliff remnants and generated these two triangular facets.

5 The morphological features of landslides may disappear during subsequent surface processes, most likely because of progressive landslide, surface erosion, normal faulting, and fluvial development. Consequent erosion by heavy precipitation induced by the annual northeast monsoon markedly modifies the accumulation areas of landslides, rendering them unable to retain their original topography. Moreover, the erosion may be further enhanced by normal faults cutting the toe of the slope. The trace of the JSF (also known as the SCF) is located on the southeastern side of the
10 landslide and is shown in Figure 5. These major factors have resulted in stream initiation and the development of drainage systems. In the depletion zones of both XSL and CSL, two gullies, marked as Xishi Creek and Chinshui Creek in Figure 6, developed on a gently dipping slope at an angle of 6° – 7° . On the XSL, the drainage basin of Xishi Creek showed a symmetric dendritic pattern in the slide area. However, on the CSL, the drainage pattern was not dendritic but rather a curved parallel system, suggesting subsequent morphological processes. Figure 7 provides a direct 3D
15 visualization of the aforementioned geomorphological details of the study area by using a 3D anaglyphic technique (Chang, Chan, and Chen, 2009).

4.2 Estimation of the landslide dimensions

This study considered the nature of a volcanic dome for reconstructing its morphology before a landslide. The undisturbed shape of the volcanic edifice, particularly for a stratovolcano with one main eruption center, typically mimics
20 a conical dome. Subsequent large-scale landslide events generate morphological depressions and change the original topography. To reconstruct the paleolandform, a large depleted area may be estimated by refilling the depletion. For example, for the case shown in the inset of Figure 8, despite the radial shallow erosion gully, two-thirds of the northwestern flank remained conical in shape. Thus, the geometry of the northwestern flank was used to model the undisturbed conical shape of the volcano. The depleted area was manually filled by inserting several linearly aligned
25 points within the slide area. The linearly aligned points in Figure 9a show the undisturbed topography before a landslide. A local high envelope surface was subsequently calculated with a search circle. Because the calculated envelope surfaces may not cover all areas, the search circle was then moved gradually around the grids to assign new heights. The procedure of determining the local high envelope surface and assigning new heights to the grids is iterative until the results are converged.



Figure 8 shows the differences between the real and reconstructed DEMs, as shown by several profiles from the Tatum volcano group. The locations of the profile lines were selected according to the landslide area. The trend of the profile lines was selected from around the volcano summit to the toe of the slope. For every profile, the point locations were selected from the highest local envelope surface to avoid as many points of surficial erosion as possible. The profiles before and after reconstruction were fitted by exponential and power-law functions, as shown in Table 1. The correlation coefficient values (R) for the profiles throughout the sliding area were calculated. High R values indicate better fit to the filled DEM profile, thus correlating with the ideal conical volcano shape. The R values of the reconstructed DEMs for the landslides were considerably similar to those of profiles where no landslides occurred, as indicated by the profiles P1–P3 in Figure 8. Thus, these reconstructed DEMs for the landslides were reasonably restored to their prelandslide morphologies.

Figure 10 shows the estimated isopach map of the cut-and-fill depth for the two main landslides. The landslide volume was calculated from elevation changes before and after each landslide. The cut-and-fill depth was estimated based on the elevation differences between the current and reconstructed DEMs. The total cut volume of the CSL and XSL was calculated to be at least $820 \pm 20 \times 10^6 \text{ m}^3$, covering an area of approximately 7 km^2 ; this volume is approximately six times larger than that of the largest landslide ever reported in Taiwan (Chen et al., 2005 and 2006). According to geological data and field observations, the Tatum volcanic rocks overlie the Mio-Pliocene sedimentary rocks. Because of the clear contrast in the rock strength and strata unconformity, the contact surface of the two rock types may easily serve as the rupture site for the sliding surface, thus indicating that most landslide debris were eroded or slid away when the contact surface was largely exposed. Thus, although the estimated volume was considered the minimum landslide volume, volume estimation should approximate the actual volume in this special case.

For the XSL, the maximum cut depth was approximately 150 m. The maximum cut area was situated in the central zone of the sliding area and showed a symmetrical reverse-conic shape; a uniform erosion process in the accumulated area may account for this pattern. For the CSL, the sliding mass had a sliding depth of approximately 200 m and a wide and flat bottom. The volume of the CSL landslide was approximately three times larger than that of the XSL. Although the assumed ideal volcanic conical dome may deviate from the true shape of the topography, the estimated results provided useful information about ideal magnitudes of the scale and volumes of landslides, which are several times higher than the magnitudes previously reported in Taiwan.

4.3 Morphological reconstruction

The evolution of slope degradation is the most prominent type of morphological change but may not be sufficiently rapid in showing changes. The fluvial incision process may record the efficiency of the slope evolution (Chen et al.,



2006). Fluvial development is invariably accompanied by riverbed incision. The gullies develop into surface runoff flow along small ditches on the bare ground; the incision of the ground surface by these ditches is determined accordingly. Therefore, to eliminate the small-scale surficial disturbances after landslides, gullies should be filled to reconstruct the original topography, as shown in Figure 9b. The mean level of the original ground surface and average datum drawn from an enveloping surface were used to accurately fill the gullies. To obtain the trend of the topographic surface, the current DEM grid data were processed and weighted by a Gaussian function over a small area, defined by a search radius (D1 and D2, Fig. 9b). The different radii in the search circle represent different thresholds for river development and surface roundness. Within the search circle, the means of the grid data were assigned to the corresponding value applicable to the center of the circle. The search circle was then scanned over the grids. By using this method, the local unevenness induced by small gully incisions can be smoothed.

The differences between the current DEM and its enveloping surfaces can serve as an index for small-scale landslides (e.g., surficial erosion or shallow landslides). Therefore, the average datum should neither be in the uppermost nor the lowermost enveloping surface but instead be at the intermediate level, as shown in Figure 9b. On identifying the average datum, the subsequent river incision was revealed by the shaded area, as shown in Figure 9b. Unlike the part of the ground where gullies developed, the other portion of the landslide retained its original surficial roughness. The current relief above the averaged datum was not modified because it was deemed to be because of the unevenness or roughness of the original topography, and gully erosion was not concentrated in this area. Therefore, when the calculated mean elevation exceeds the elevation of the circle center, the center elevation is assigned as the mean elevation. The reconstructed morphology is the thick line shown in Figure 9b, and the shaded area, which is the difference between the old and current DEM, reveals the possible areas of river incision. The hatched areas indicated the eroded volume that formed the current gully (Fig. 9b) under no pronounced morphological changes, such as a large-scale landslide. This method could effectively restore the disturbances induced by small gullies or riverbed incision. Furthermore, the different search radii may render different envelopes. The variations in the envelopes obtained from different search radii inherently reflected the range of possible errors in determining the incision depth (Fig. 9b). Figure 11 demonstrates the upper and lower bounds of several cross-sections along the two creeks located within the slide area. The discrepancies between various reconstructed DEMs result from the different thresholds (search radii) used during reconstruction.

Figure 12 shows the longitudinal profiles of the two creeks located on the XSL and CSL (Fig. 10). The inclined solid lines in Figure 12 represent the current elevations along the two creeks; the dashed lines indicate the upper and lower bounds of the enveloping surface obtained by different search radii D1 and D2, as indicated in Figure 9b. The horizontal distances were individually normalized by the analyzed river segments from upstream Chinshui Creek to downstream Xishi Creek. The analyzed segments of the river profile were completely contained within the landslide



areas, from the main scarp to the junction of the pediment and the delta fan. The elevation differences between the current DEMs and envelope surface were calculated (shaded bands, Fig. 12). Moreover, the elevation differences between the upper and lower bounds denote the range of error in estimating riverbed incision.

5 A mean level curve represents the main trend of the incision depth distribution. If the raw data of the mean depths are used, the derived curve would appear jagged. Therefore, to obtain a smooth mean value curve, the following procedures were developed.

- 1) The mean incision depth should be located between the upper and lower bounds along the creeks, as calculated using the search radii D2 and D1, respectively.
- 2) Three gully erosion depth-versus-distance curves—the maximum, minimum, and mobile averages—are calculated from the mean of the maximum and minimum enveloping surfaces. At each location along the creek, the mean depth of the mobile average curve located with a horizontal span of approximately 400 m is calculated. The derived mean depth is then assigned as the representative mean depth at this location.

10 Using these procedures, a smooth mean incision depth versus the horizontal distance curve can be obtained, as shown by the bold solid lines in Figure 12. This curve represents the possible distribution of incision depth along the creek. The results revealed a maximum valley depth of approximately 15 m, which was notably situated between the middle and lower parts of the hill slope. This phenomenon differs from common river profiles, where the deepest depth of the valley is often located near the upstream rather than the downstream portion.

5 Discussion

20 Several processes can weaken the volcanic edifice, particularly hydrothermal activities (de Vries, Kerle and Petley, 2000; Reid, Sisson and Brien 2001; Reid, 2004; Norini and Lagmay 2005), which result in high pore pressures and enhance the alteration process, thus converting strong rocks into clays. Catastrophic collapses occur when a volcano becomes structurally unable to support its own load. These processes generate radial and concentric instabilities in case of no other structural anisotropy. Typically, these landslides propagate outward from the volcanic cone and extend downslope. However, the XSL and CSL slid perpendicular to the conical shape of the volcanic slope, thus prompting us to discuss several specific points.

25 In a normal situation, landslides frequently have a circular crown and main scarp. However, Figure 10 shows an irregular scarp, and the estimated distribution of the sliding depth of the CSL showed an irregular form, marked as zone C in Figure 10. Zone C implies a secondary slide with a circular crown after the main sliding event. Moreover, because zone A maintains a less disturbed original landslide morphology than does zone B, zone A could be the more recent of



the two events (Fig. 10). Meanwhile, the twist of a parallel drainage pattern (Figs. 5, 6, and 7) and a concentric river developed within the slide area (Fig. 10) suggested that the initial slide mass experienced subsequent movement. These observations suggest more than one sliding event. Thus, the CSL is a combination of one main landslide and more than two subsequent small landslides within it.

5 Finally, a comparison of the XSL and CSL revealed that typical landslide morphological features are more well-preserved in the CSL, indicating that it is newer than the XSL, assuming that the weathering rate for both landslides is similar. A large landslide volume coincides with a large accumulation area near the toe. However, as shown in Figures 5, 6, and 12, a flat alluvial plain was observed instead of an accumulation of colluvial or talus deposits. Normal faulting along the JSF, also known as the SCF, particularly where the trace of the JSF was reactivated as a normal fault,
10 ultimately yielded a half graben near the toe area and thus accommodated the volume. This process may plausibly account for the missing colluvial deposits, as illustrated in Figures 5 and 6. An additional line of evidence supporting this explanation is that the river incision profiles had maximum erosion areas located from the middle to lower slope and were abruptly truncated near the toe area (Fig. 12, inset). This particular landform indicates the subsiding process along the fault trace, consuming the deposited debris that would otherwise be present at the slope toe.

15 Surface deformation (e.g., normal faulting) may enhance and accelerate surface processes. The study area morphology revealed that these processes extended from the deformation zone toward other parts of the landscape. The evolution of the riverbed profile over a short time scale clearly demonstrated such processes. As shown in Figure 12, the substantial subsidence of the hanging wall led to a sudden decrease in riverbed elevation at the boundary of the footwall and hanging wall, particularly on the footwall side. The subsiding normal fault enabled faster incision on the footwall at
20 the section where the river intersected the fault. Meanwhile, the sharp fault scarp could be smoothed rapidly or even destroyed by many small-scale landslides along the footwall side of the fault trace. In brief, the largest amount of river incision was not necessarily at the location nearest to the fault scarp (marked as A in Fig. 12) but was located at a certain distance from the fault scarp (marked as B in Fig. 12). The observed maximum incision depth was approximately 15 m, implying that the actual maximum incision could be several times greater. Because washing out the colluvium and
25 producing an incision require considerable time, the incision of tens of meters implies that the erosion processes continued long after the main landslide occurred.

The systematic historical record of the study area dates back to the 18th century. Two major geological hazards have been documented: seismogenic normal faulting responsible for the formation of Taipei Lake in 1694 (Yu, 1959; Tsai, 1985; Shieh, 2000) and the Jinshan Tsunami triggered by the Keelung earthquake in 1867 (Tsai, 1985). However, the
30 Jinshan landslides were correlated to these historical events. The seismogenic Taipei Lake illustrates the activity of the JSF in the most recent event. Furthermore, a recent borehole drilled in the Jinshan Delta resulted in an unconformable



contact between the Oligocene Wuchihshan Formation and recent alluvial gravel deposits at 551.6 m below the surface (Lin, 2005). Borehole logs show that the gravel deposits occurred uninterrupted from the ground surface until 551.6 m, and rocks of the Wuchihshan Formation were recorded below 551.6 m. The borehole is only approximately 300 m from the inferred fault line trace (Fig. 5). This contact relationship implies an association between basin subsidence and regional normal faulting. Normal faulting suggested at least 880 m of stratigraphic separation in this area, as determined using borehole log information and regional stratigraphic correlation.

Overall, the present findings, in addition to previous studies on regional geology, geophysical observations, and recent tectonic setting interpretations (Wang, 1999; Huang, 1988; Hsiao, 1997; Hsiao et al., 1998; Lin, 2005), highlight the normal faulting activities in Jinshan. Moreover, the observed morphological discontinuities suggest that normal faulting may have cut through and truncated the volcanic cone. Thus, a fault scarp was formed, which itself is being a morphological discontinuity (Fig. 13). The normal faulting process created a steeper slope and fractured the nearby rocks. The weakening of rocks, in addition to the morphological discontinuities, induced slope instability in the scarp along the fault. Furthermore, successive faulting events enlarged the sliding area and modified the form of the overlying accumulated deposits. The combined actions of the elevation differences between the scarp and landslides along the active normal fault promoted the removal of the colluvium near the toe. The eroded material consequently formed a large alluvial delta at the outlet of the main stream (Fig. 7). The overall landform and structural evolution of the landslides are proposed and schematically shown in Figure 13.

6 Conclusions

The presented UAS technology and LiDAR data reveal the relevance of high-resolution digital surface images, namely DEMs, DSMs, and true 3D models, for effective surveys of obscure old landslides in a volcanic region. To investigate the morphological evolution, procedures for paleolandform reconstruction were proposed, based on the concept of the envelope surface, according to relict topography from the Tatun volcano group in Northern Taiwan. This analysis was extended to geomorphic applications, such as estimating the cut-and-fill volume and interpreting fluvial processes. The study area in the Tatun volcano group provides the following valuable insights into the morphological interactions: 1) normal faulting may have triggered the main landslides, 2) erosion near the fault scarp enhanced the transportation of colluvium and river incision, and 3) gully incision indicated that the main landslides may have resulted from old landslide events. New tectonic activities because of normal faulting will likely result in the reactivation of the existing landslides, particularly if the slope toe is being eroded by alluvial processes. The potential multiple geological hazards because of this fault activity should be investigated.



7 Acknowledgments

We thank Fu-Shu Jeng of National Taiwan University for revising the first draft of this paper and Jian-Cheng Lee and Su-Ching Chou of the Institute of Earth Sciences, Academia Sinica for their constructive comments and assistance. We also thank Christopher Fong for providing technical advice. This study was partly supported by the Central Geological Survey, Ministry of Economic Affairs, Taiwan R.O.C.; Tatun thematic project from the Institute of Earth Sciences, Academia Sinica; and Ministry of Science and Technology, Taiwan R.O.C.

References

- Buhler, Y., Adams, M.S. Bosch, R., and Stoffel A.: Mapping snow depth in alpine terrain with unmanned aerial systems (UASs): potential and limitations, *The Cryosphere*, 10, 1075–1088. doi:10.5194/tc-10-1075-2016, 2016.
- 10 Chan, Y.C., Chang, K.J., Chen, R.F., and Liu, J.K.: Topographic changes revealed by airborne LiDAR surveys in regions affected by the 2009 Typhoon Morakot, southern Taiwan. *Western Pacific Earth Sciences*, 12(1), 67-82, 2012.
- Chang K.J., Taboada, A., and Chan, Y.C.: Geological and morphological study of the Jiufengershan landslide triggered by the Chi-Chi Taiwan earthquake. *Geomorphology*, 71, 293-309, 2005.
- Chang K.J., Taboada, A., Chan, Y.C., and Dominguez, S.: Post-seismic surface processes in the Jiufengershan landslide area, 1999 Chi-Chi earthquake epicentral zone, Taiwan. *Eng. Geol.*, 86, 102-117, 2006.
- 15 Chang, K.J., Chan, Y.C., and Chen, R.F.: Anaglyph image: The useful platform for morphotectonic communication. *Western Pacific Earth Sciences*, 9(1), 1-14, 2009.
- Chen J., Li, K., Chang, K.J., Sofia, G., Tarolli, P.: Open-pit mining geomorphic feature characterization. *International Journal of Applied Earth Observation and Geoinformation*, 42, 76-86, 2015.
- 20 Chen W.S., Yang, C.C., Yang, H.C., and Liu, J.K.: Volcanic landform and sequences of the Tatun Volcanoes. *Bull. Centr. Geol. Surv.*, 16, 99-124, 2003. (in Chinese)
- Chen, R.F., Chan, Y.C., Angelier, J., Hu, J.C., Huang, C., Chang, K.J., and Shih, T.Y.: Large earthquake-triggered landslides and mountain belt erosion: The Tsaoling case, Taiwan. *C. R. Geosci.*, 337, 1164-1172, 2005.
- Chen, R.F., Chang, K.J., Angelier, J., Chan, Y.C., Deffontaines B., Lee, C.T., and Lin, M.L.: Topographical changes revealed by high-resolution airborne LiDAR data: The 1999 Tsaoling landslide induced by the Chi-Chi earthquake. *Eng. Geol.*, 88, 160-172, 2006.
- 25 Clayton, C.R.I, Simons, N.E., and Matthews, M.C.: *Site Investigation: A Handbook for Engineers*, Halsted Press: New York, USA, pp. 423. 1982.



- de Vries, B.W., Kerle N., and Petley, D.: Sector collapse forming at Casita volcano, Nicaragua. *Geology*, 28, 167-170.
DOI: 10.1130/0091-7613(2000)28. 2000.
- Deffontaines, B., Chang, K. J., Champenois, J., Fruneau, B., Pathier, E., Hu, J.C., Lu, S. T., and Liu, Y. C.: Active
interseismic shallow deformation of the Pingting terraces (Longitudinal Valley – Eastern Taiwan) from UAV high-
5 resolution topographic data combined with InSAR time series, *Geomatics, Natural Hazards and Risk*, 1-18,
<http://dx.doi.org/10.1080/19475705.2016.1181678>, 2016.
- Galarreta, J. F., Kerle, N., and Gerke, M.: UAV-based urban structural damage assessment using object-based image
analysis and semantic reasoning, *Nat. Hazards Earth Syst. Sci.*, 15, 1087–1101, 2015.
- Giordan D., Manconi, A., Facello, A., Baldo, M., dell’Anese, F., Allasia, P., and Dutto, F.: Brief Communication: The
10 use of an unmanned aerial vehicle in a rockfall emergency scenario, *Nat. Hazards Earth Syst. Sci.*, 15, 163-169,
2015.
- Glenn, N.F., Streutker, D.R., Chadwick, D.J., Thackray G.D., and Dorsch S.J.: Analysis of LiDAR-derived topographic
information for characterizing and differentiating landslide morphology and activity. *Geomorphology* 2006, 73,
131-148.
- 15 Gritzner, M., Marcus, A., Aspinall, R., and Custer, S.: Assessing landslide potential using GIS, soil wetness modeling
and topographic attributes, Payette River, Idaho. *Geomorphology*, 37, 149–165, 2001.
- Ho, T.S.: A synthesis of the geologic evolution of Taiwan. *Tectonophysics*, 125, 1-16, 1986.
- Hsiao, L.Y.: Late Cenozoic structures off northeastern Taiwan, MS thesis, National Taiwan University, Taipei, Taiwan,
1997. (in Chinese).
- 20 Hsiao, L.Y., Lin K.A., Teng L.S., and Huang, S.T.: Structural characteristics of the southern Taiwan – Sinzi folded zone.
Petrol. Geol. Taiwan, 32, 133-154, 1998. (in Chinese)
- Hsieh, Y.C., Chan, Y.C., Hu, J.C.: Digital Elevation Model Differencing and Error Estimation from Multiple Sources: A
Case Study from the Meiyuan Shan Landslide in Taiwan. *Remote Sensing*, 8, 199:1-20, doi:10.3390/rs8030199,
2016.
- 25 Huang, C.S.: Explanatory text of the geologic map of Taiwan, 1:50000, sheet 4, Taipei, Central Geological Survey,
Ministry of Economics Affairs: Taipei, Taiwan, pp. 57, 1988. (in Chinese)
- Huang, M. J. and Chang, K. J.: Unmanned Aerial Vehicle (UAV) associated DTM quality evaluation and application.
Mag. Chinese Inst. Civil Hydraulic Eng., 41, 4, 52-58, 2014. (in Chinese with English abstract).
- IAEG Commission on Landslide: Suggested nomenclature for landslides. In *Bulletin of the International Association of*
30 *Engineering Geology*, Springer: Paris, 41, pp. 13-16, 1990.



- Lin, C.C.: Annual Report of Central Geological Survey, Central Geological Survey, Ministry of Economics Affairs: Taipei, Taiwan, pp. 154, 2005. (in Chinese)
- Malavieille, J., Lallemand, S.E., Dominguez, S., Deschamps, A., Lu, C.-Y., Liu, C.-S., Schnurle, P., and ACT Scientific Crew, Arc-continent collision in Taiwan: New marine observations and tectonic evolution. In *Geology and Geophysics of an Arc-Continent collision, Taiwan, Republic of China*; Byrne, T.B., Liu, C.-S., Eds.; Geological Society of America Special Paper: Boulder, Colorado, USA; 358, pp. 187-211, 2002.
- 5 Norini, G. and Lagmay, A.M.F.: Deformed symmetrical volcanoes. *Geology*, 33, 605-608, DOI: 10.1130/G21565.1, 2005.
- Reid, M.E.: Massive collapse of volcano edifices triggered by hydrothermal pressurization. *Geology*, 32, 373-376. DOI: 10.1130/G20300.1, 2004.
- 10 Reid, M.E. Sisson, T.W. and Brien, D.L.: Volcano collapse promoted by hydrothermal alteration and edifice shape, Mount Rainier, Washington. *Geology*, 29, 779 - 782. DOI: 10.1130/0091-7613(2001)029, 2001.
- Shieh, Y.T.: The paleogeography of the ancient Taipei Lake in Kanghsi Period. *J. Geogr. Sci.* 2000, 27, 85-95, 2000.
- Song, S.R., Tsao, S. and Lo, H.J.: Characteristics of the Tatun volcanic eruptions, north Taiwan: implications for a cauldron formation and volcanic evolution. *J. Geol. Soc. China*, 43, 361-378, 2000.
- 15 Staley, D.M., Wasklewicz, T.A., and Blaszczyński, J.S.: Surficial patterns of debris flow deposition on alluvial fans in Death Valley, CA using airborne laser swath mapping data. *Geomorphology*, 74, 152-163, 2006.
- Suppe, J.: Mechanics of mountain building in Taiwan. *Memo. Geol. Soc. China*, 4, 67-89, 1981.
- Teng, L.S.: Extensional collapse of the northern Taiwan mountain belt. *Geology*, 24, 949-952, 1996.
- 20 Tokarczyk, P., Leitao, J. P., Rieckermann, J., Schindler, K., and Blumensaat, F.: High-quality observation of surface imperviousness for urban runoff modelling using UAV imagery, *Hydrol. Earth Syst. Sci.*, 19, 4215–4228, 2015.
- Tsai, Y. B.: A study of disastrous earthquakes in Taiwan, 1683-1895. *Bull. Inst. Earth Sci., Acad. Sin.*, 5, 1-44, 1985.
- Tsao, S.: K-Ar age determination of volcanic rocks from the Tatun Volcano Groupe. *Bull. Centr. Geol. Surv.*, 9, 137-154, 1994. (in Chinese)
- 25 Varnes, D.J.: Slope movement types and processes. In *Landslides and engineering practice*, Eckel, E.B. Ed., HRB, National Research Council: Washington D.C. USA, 29, pp. 20-47, 1978.
- Wang, K.L., Chung, S.L., Chen, C.H., Shinjo, R., Yang, T.F., and Chen, C. H.: Post-collisional magmatism around northern Taiwan and its relation with opening of the Okinawa Trough. *Tectonophysics*, 308, 363-376, 1999.
- Wang, W.S.: Volcanic geology and fission track datings of the Tatun volcano group. MS thesis, National Taiwan University, Taipei, Taiwan. 1989. (in Chinese).
- 30



Yeh, C. H., Chan, Y. C., Chang, K. J., Lin, M. L., Hsieh, Y. C.: Derivation of strike and dip in sedimentary terrain using 3D image interpretation based on airborne LiDAR data. *Terrestrial Atmospheric and Oceanic Sciences*, 25, 6, 775-790, 2014.

Yu, Y. H. Pi Hai Chi You (travel notes in Taiwan): Economic research institute, Bank of Taiwan, Taipei, Taiwan, 1959.

5 (The original notes were printed in 1697, in Chinese).

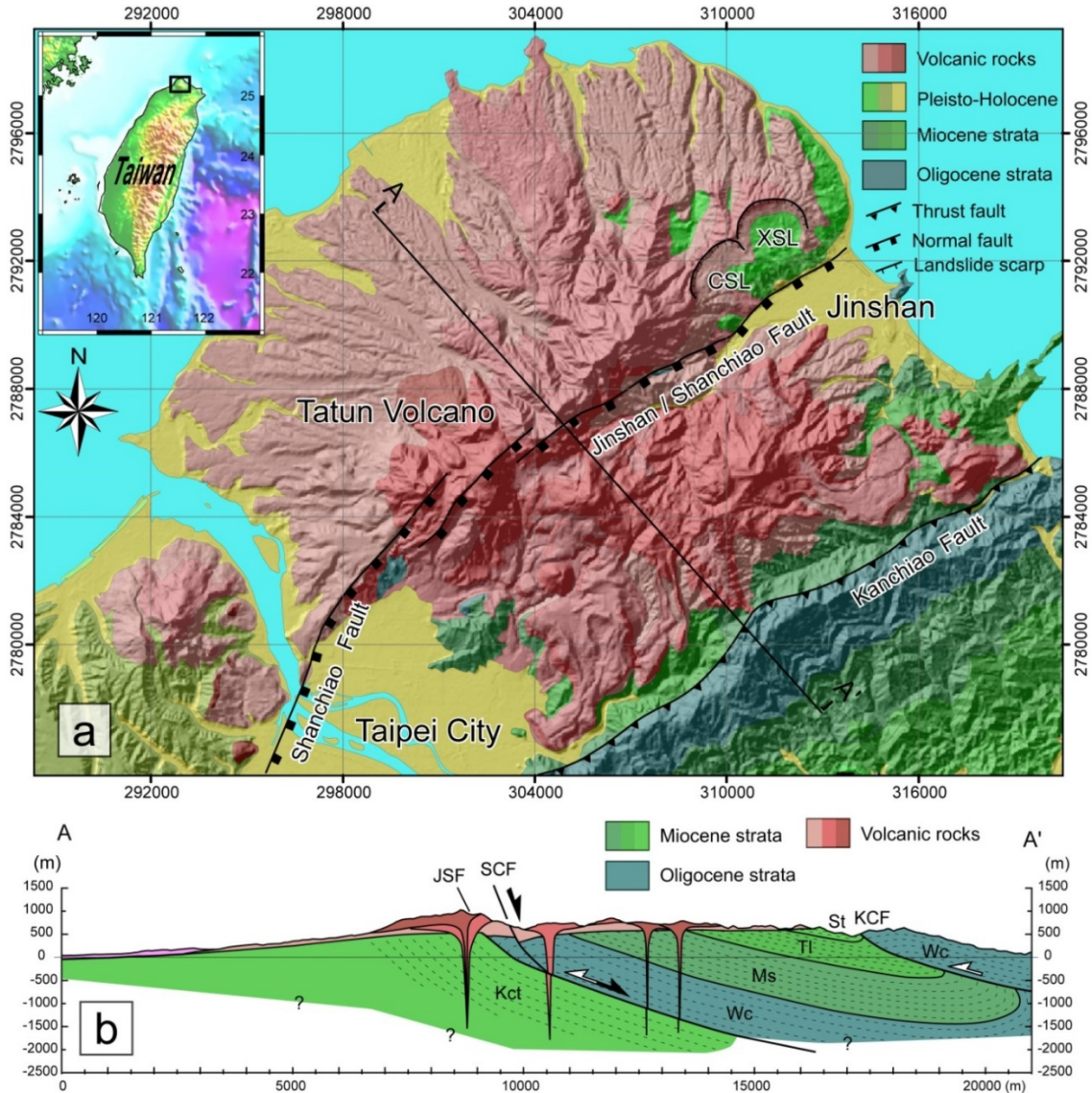


Figure 1: Geological and geomorphological map of the study area. (a) Geodynamic map of the island of Taiwan and its northern region, illustrating the regional tectonic structures and the geology near the sliding area. (b) Geological cross-section of the study area, considered to be a region of imbricated, west-vergent, NE-SW trending folds and thrusts in the Taiwan mountain belt. The compressive synorogenic and postorogenic activities separate the successive sedimentary rocks by the Kanchiao fault (KCF), Jinshan fault (JSF), and Shanchiao fault (SCF, also known as the Jinshan Fault through normal faulting). Two landslide sites, the Xishi landslide (XSL) and Chinshui landslide (CSL), are denoted in the figure. The corresponding strata in the cross-section, from bottom to top, are the late Oligocene Wuchihshan Formation (Wc), Miocene Mushan Formation (Ms), Miocene Taliao Formation (Tl), Miocene Shihti Formation (St), and Mio-Pliocene Kueichulin Formation (Kct).

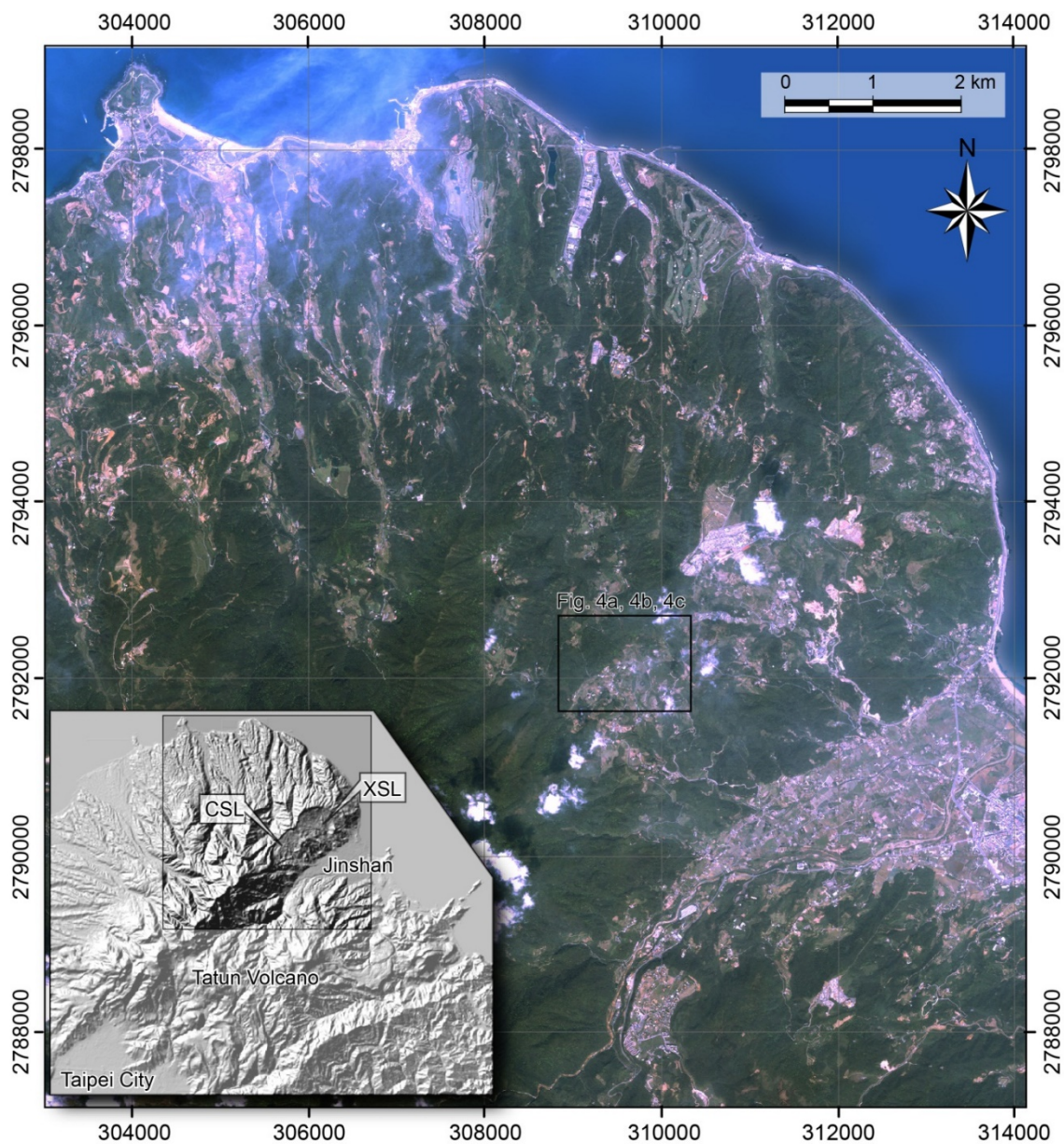
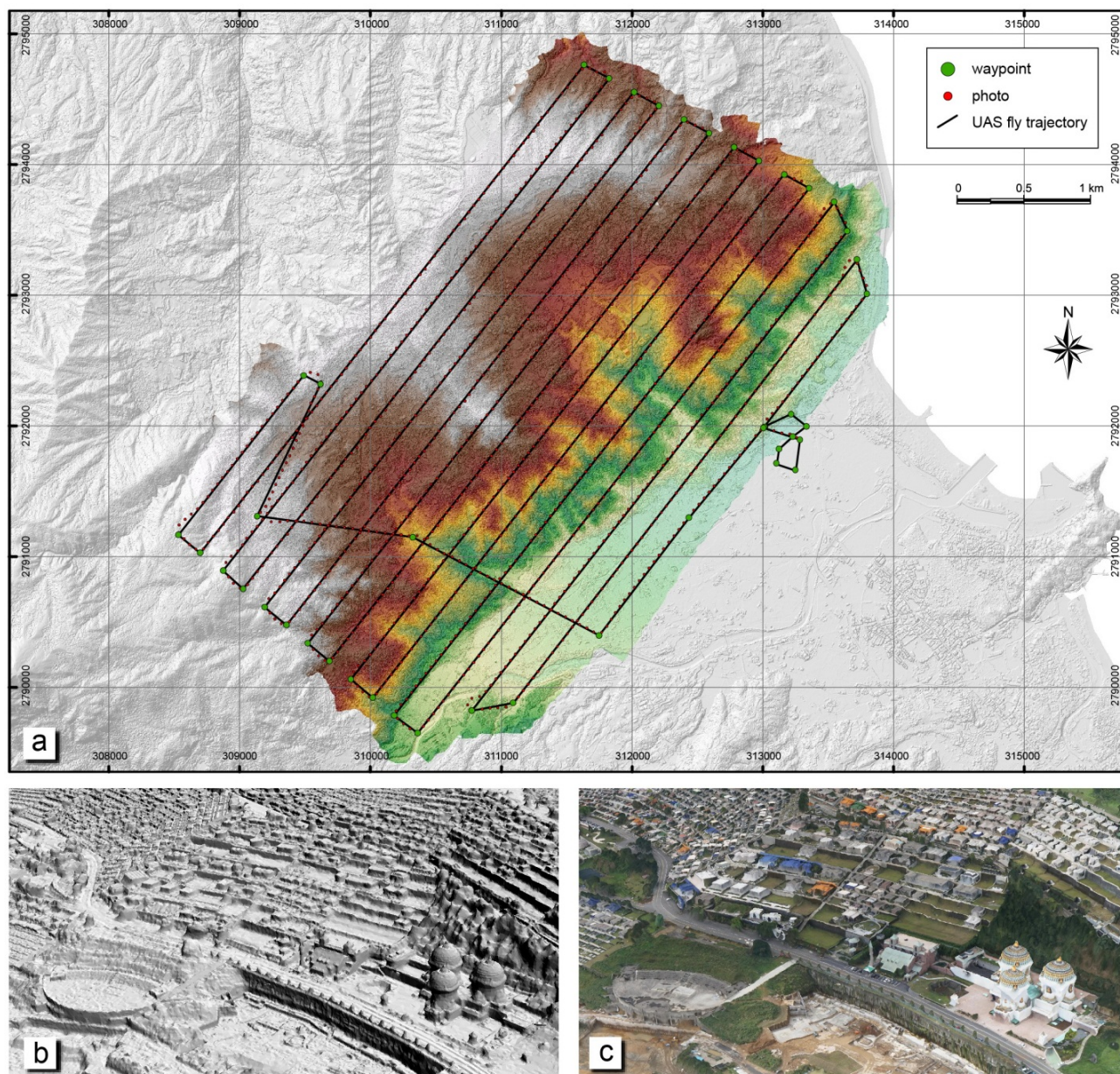


Figure 2: IKONOS 1-m resolution satellite image of the study area. The shaded image in the lower left corner indicates the extent of the satellite image. The hillshade diagram, showing two main landslides situated on the midslope, is derived from the 40-m grid DTM. XSL and CSL, shown in the inset, denote the northeastern Xishi landslide and southwestern Chinshui landslide, respectively.

5



5 **Figure 3: Data acquisition from an unmanned aircraft system flight mission. (a) DSM generated by the UAS for a total area of 14.7 km² with a GSD of 6.6 cm, where points and lines represent the positions and path of the flight mission, respectively, and the monotone gray area is the LiDAR DSM; (b) side view of the hillshaded true 3D model; and (c) image draped onto the true 3D model. The side views of (b) and (c) are captured at the same position and orientation.**

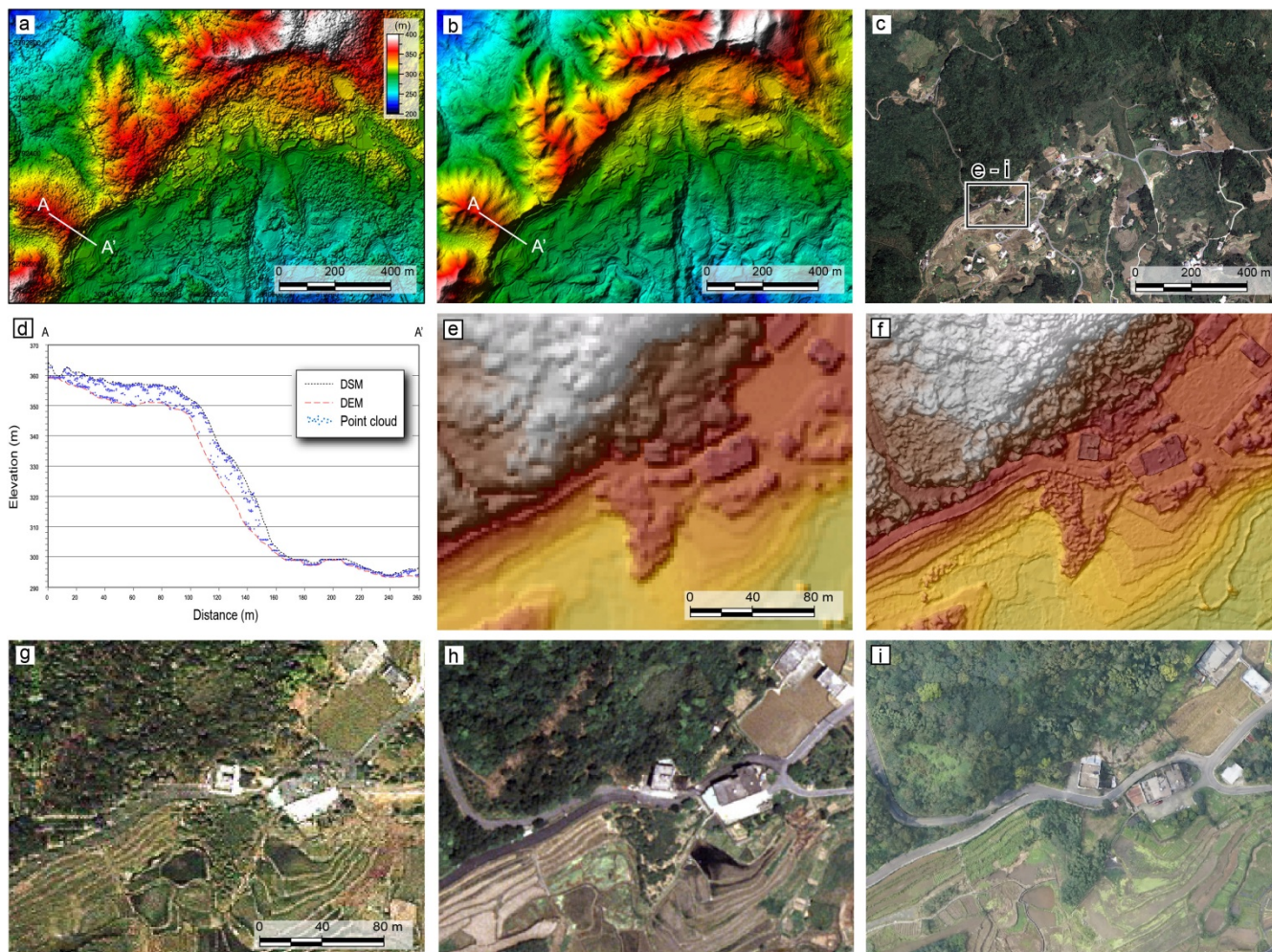


Figure 4: Comparison of images for the same area obtained from different sources. The area of the images is indicated in Figure 2. (a) 2-m resolution LiDAR digital surface model (DSM); (b) 2-m resolution LiDAR digital elevation model (DEM); (c) orthorectified aerial photograph captured in March 2003, 25-cm resolution; (d) the difference between the DEM and DSM represents the height of vegetation, whereas the DEM recorded the elevation of the bare ground surface, illustrated from LiDAR point clouds. The locations of the profile A-A' marks are indicated in Figures 4a and 4b. (e) enlargement of the 2-m resolution LiDAR DSM; (f) enlargement of the 8-cm resolution UAS DSM; (g) enlargement of the 1-m resolution IKONOS satellite image captured in November 2003; (h) enlargement of the orthorectified aerial photograph; and (i) enlargement of the orthomosaic UAS images. The enlargements are indicated in Figure 4c.

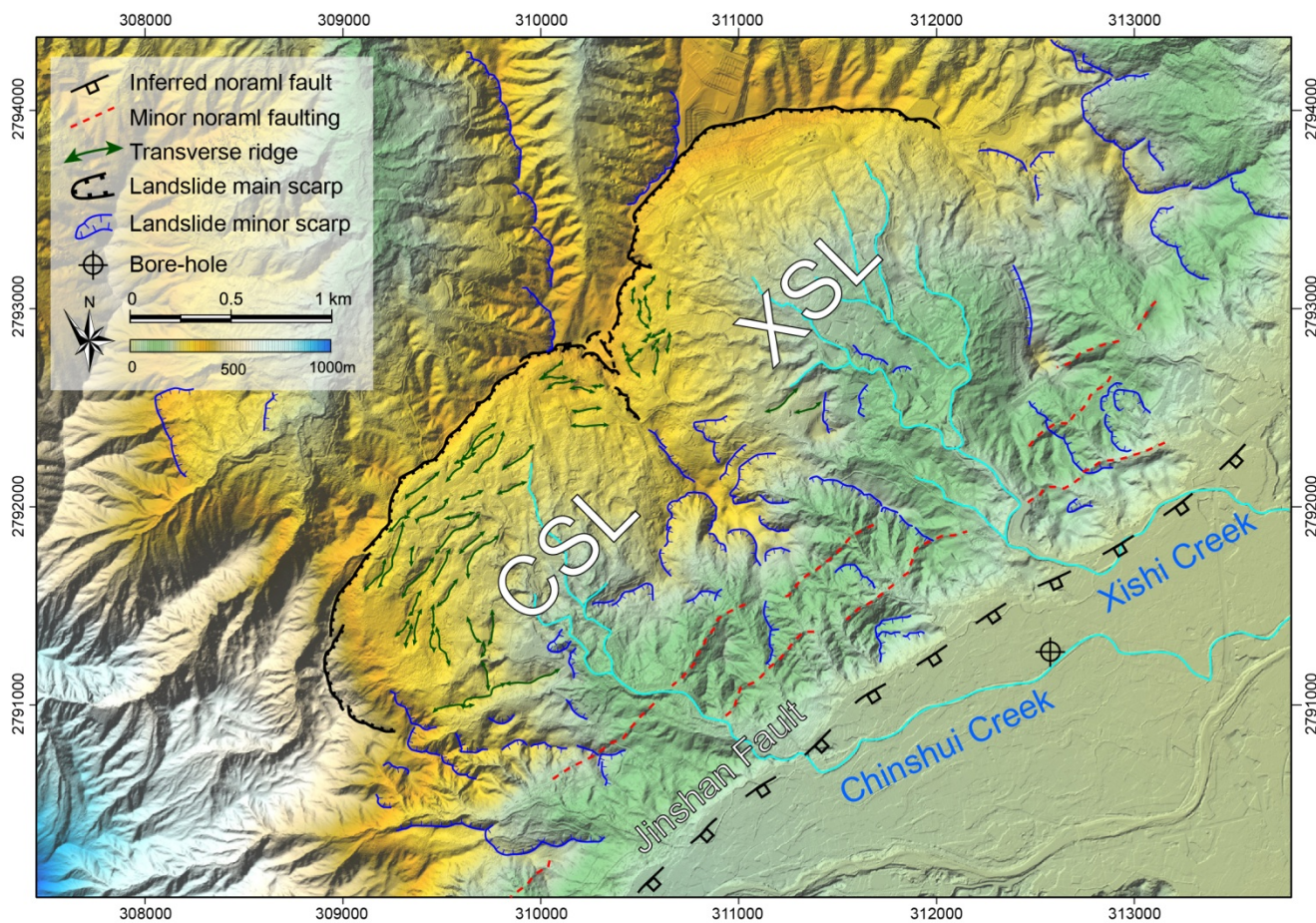
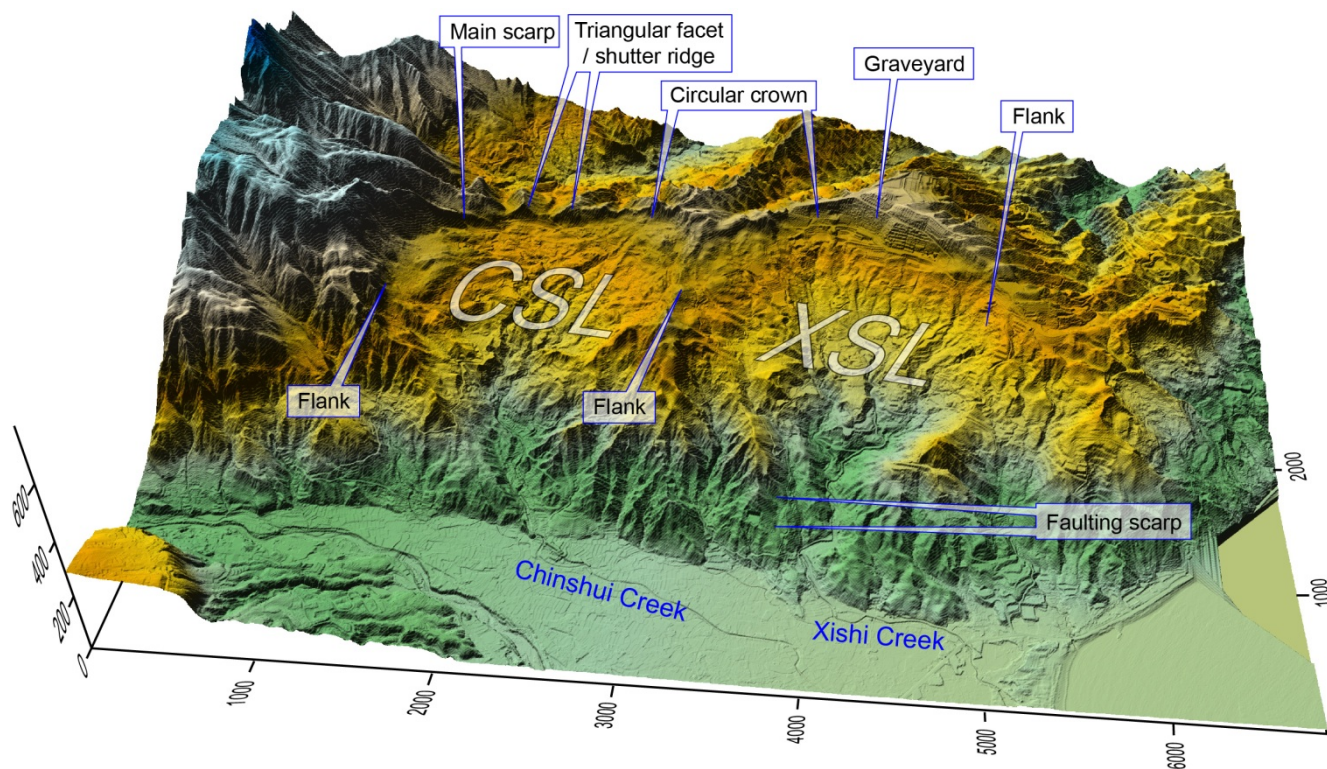


Figure 5: Hillshade map of the study area obtained from the LiDAR DEM. The morphological features in the depleted zone have been preserved, namely the main scarp, minor scarp, and transverse ridges. Notably, several small landslides are located on the volcano flank within the two main landslides.

5



5 **Figure 6:** Perspective view of the 3D hillshade map of the study area. The morphological features, namely circular crowns, flanks, main scarps, shutter ridges, and triangular facets, can be observed. However, part of the main scarp in the XSL was significantly modified as a graveyard (Figs. 3b and 3c). Only part of the depletion zone was preserved on the two main landslides. In the CSL, clearer topographic features of the sliding process were preserved, possibly indicating that the CSL is newer than the XSL.

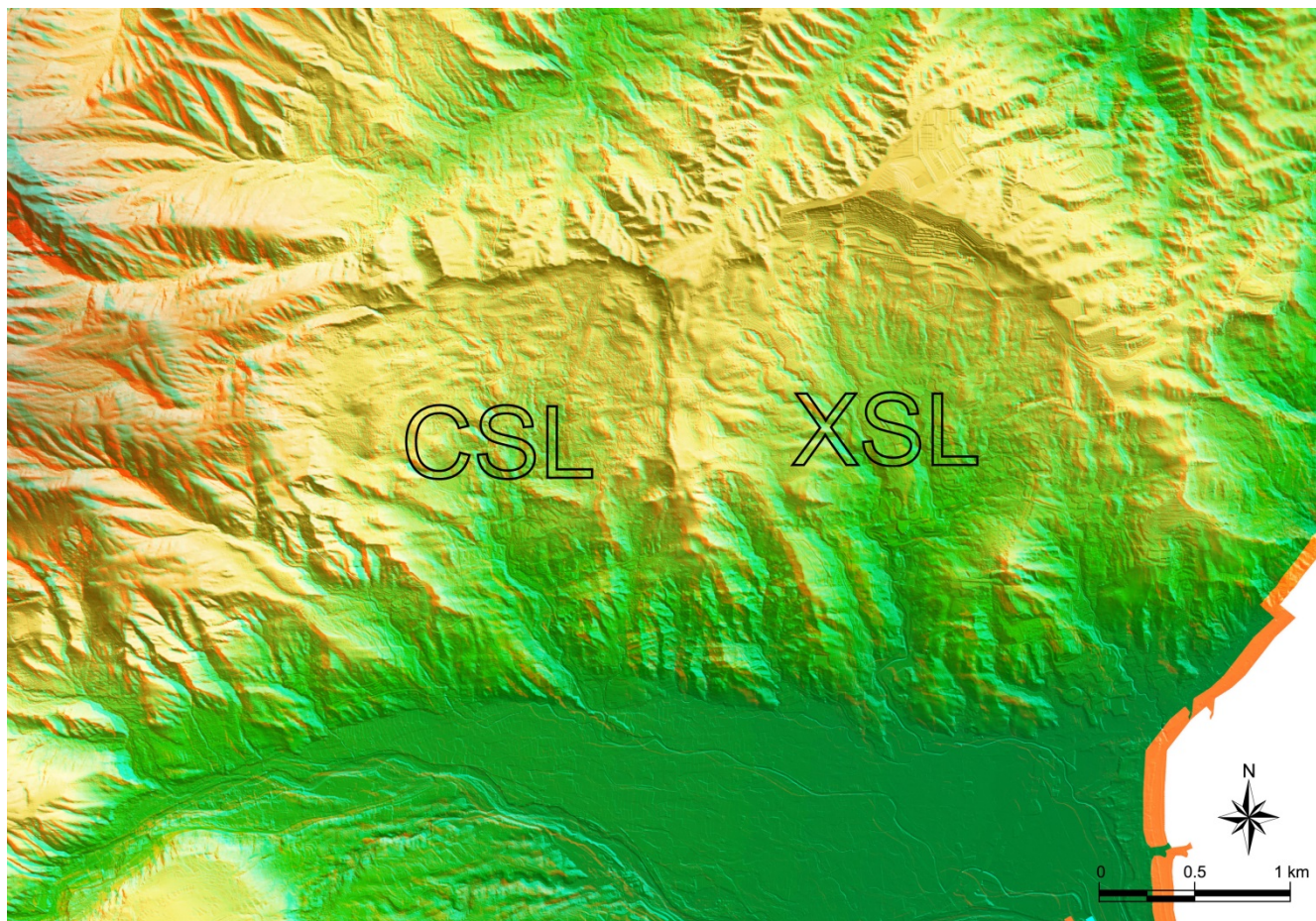


Figure 7: Three-dimensional anaglyph of the study area used to visually demonstrate the geomorphologic features. Red and cyan (or red and blue) glasses are required to visualize the image, where the red is on the left and cyan is on the right.

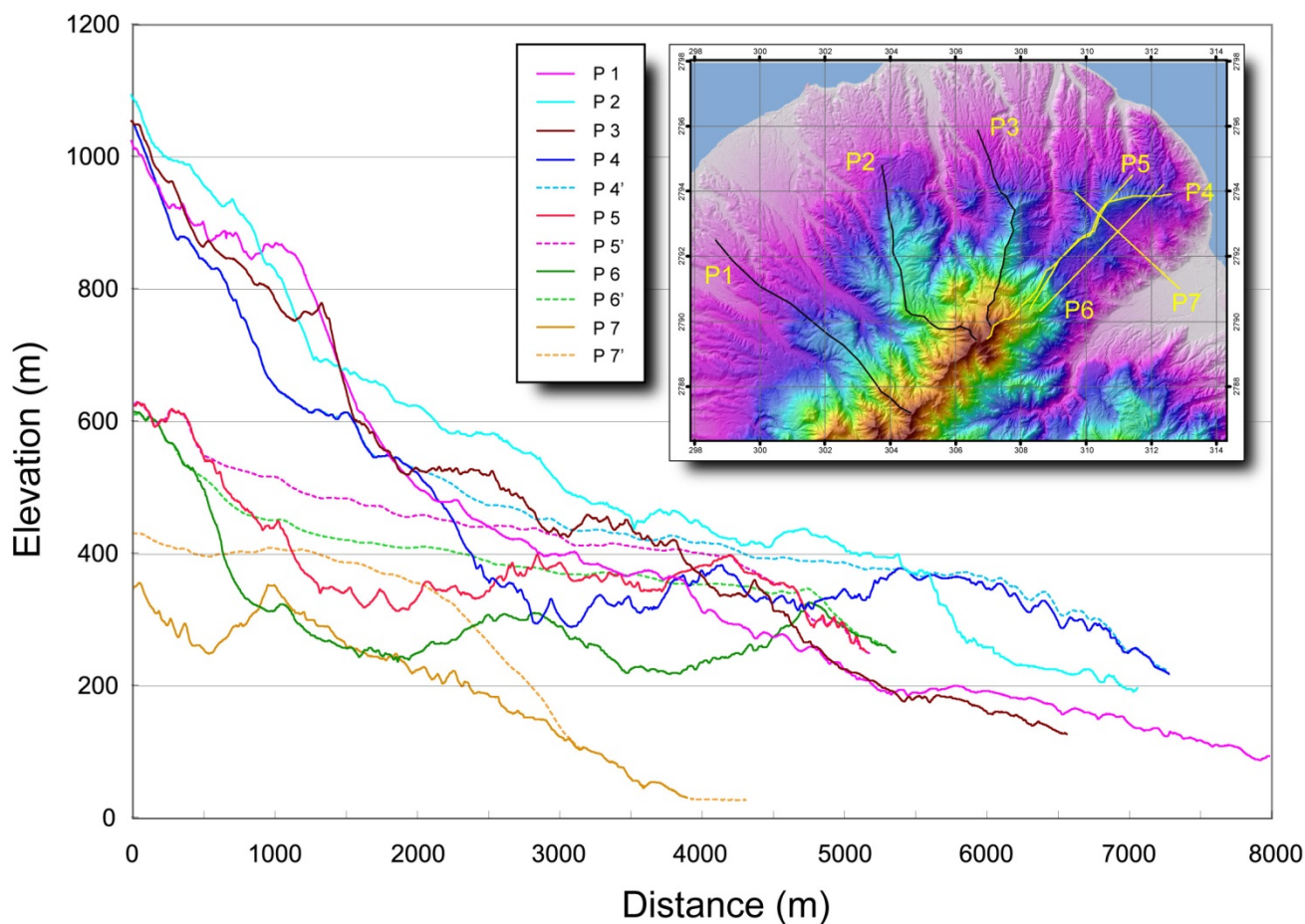
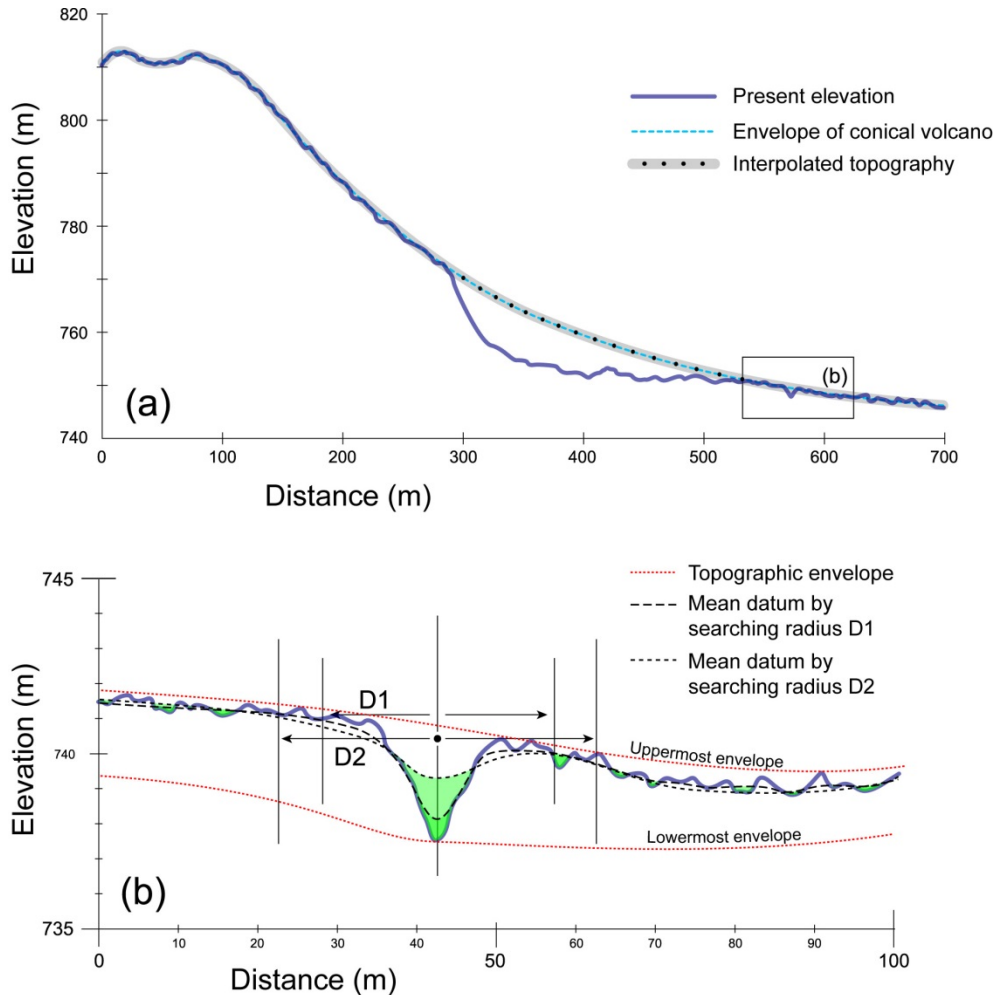


Figure 8: Topographic profiles of the Tatun volcanic cone. For P4, P5, and P6, profiles from the original (solid line) and the reconstructed (dashed line) DEMs are shown. The profile locations are shown in the inset in the upper right corner.



5 **Figure 9: Schematic illustration showing how the envelope of paleomorphology was obtained from the current DEM morphology. (a) The configurations of the undisturbed volcanic dome and current profile. The undisturbed volcanic dome facilitates the selection of manual interpolation points that better fit the volcanic edifice. (b) The configuration of the possible mean paleodatum correspondent to the other two enveloping surfaces. The shaded area represents the river incision. D1 and D2 correspond to different radii for topographic regression and restoration. The idealized profile was simplified and modified from a part of the topographic profile P4.**

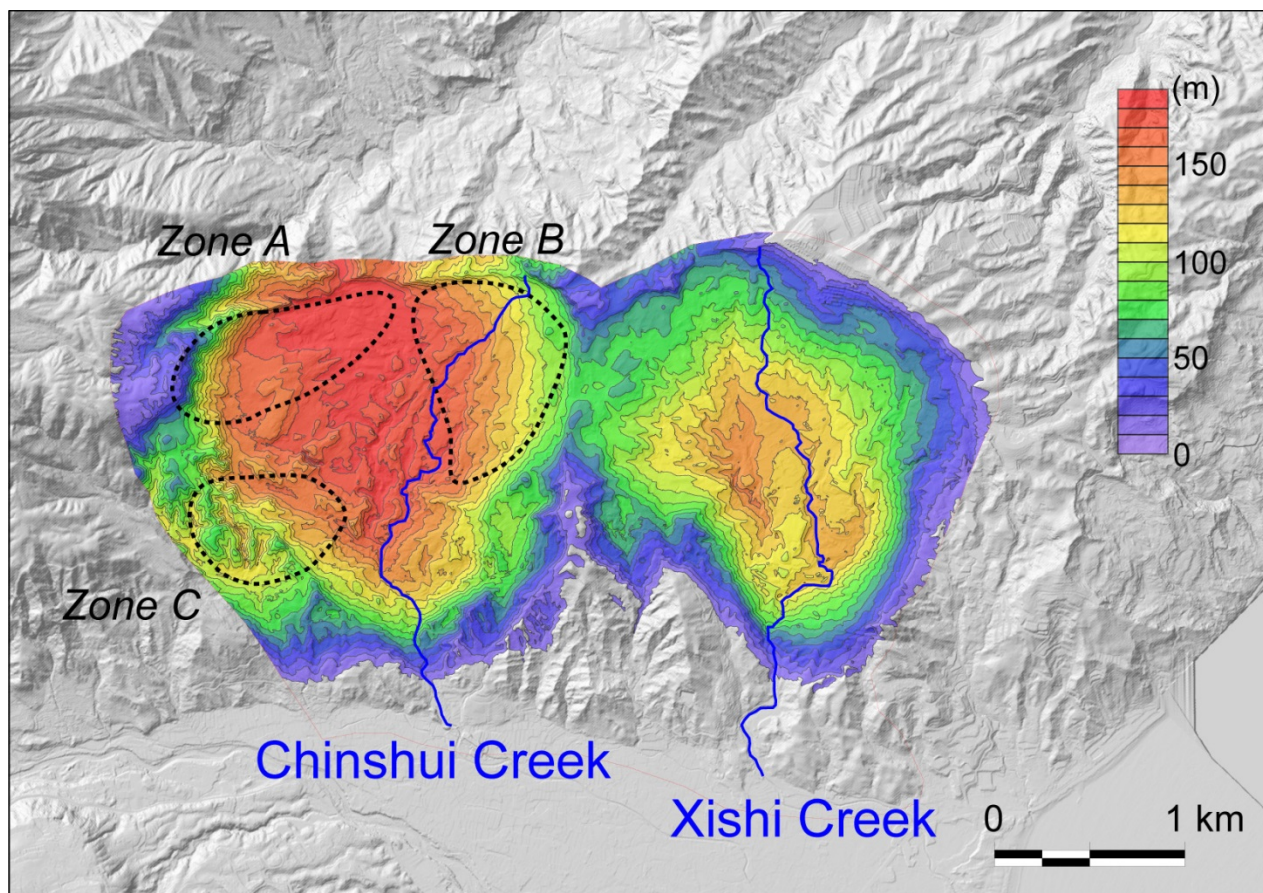


Figure 10: Isopach map of the landslides. The depleted landslide mass is calculated from the difference in height between the current and reconstructed topographies. The contour bands are shown at 10-m intervals.

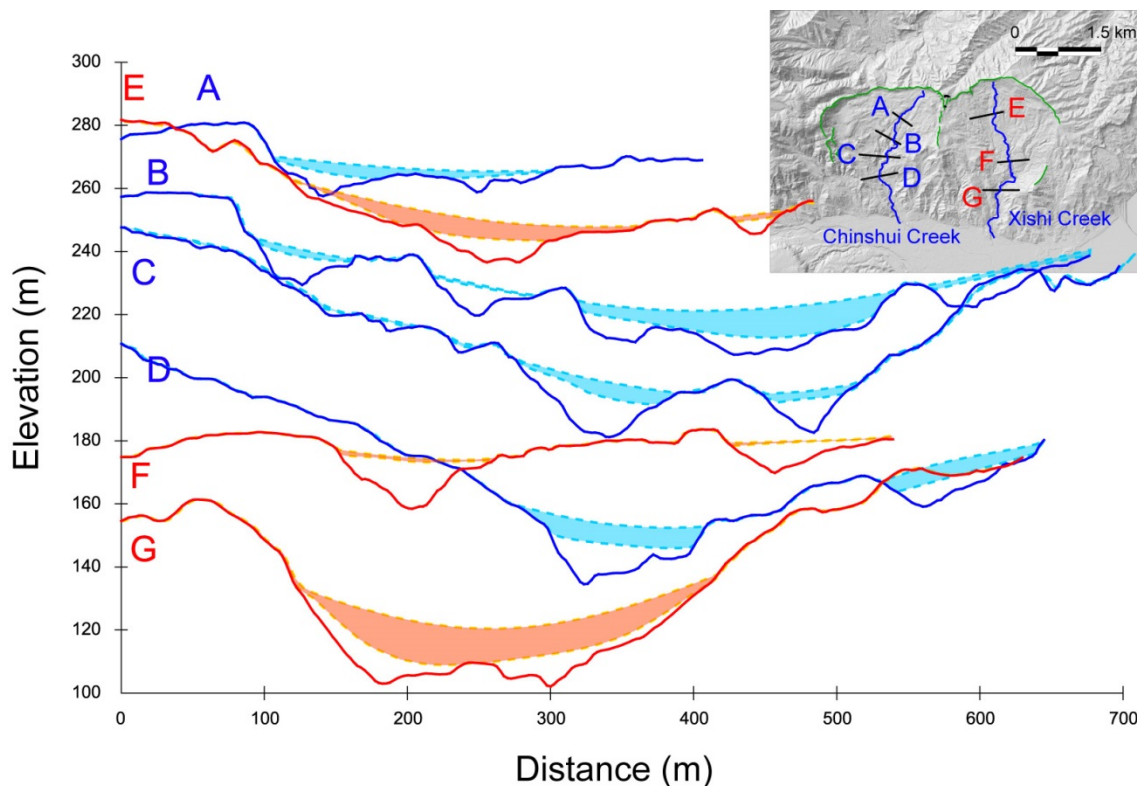
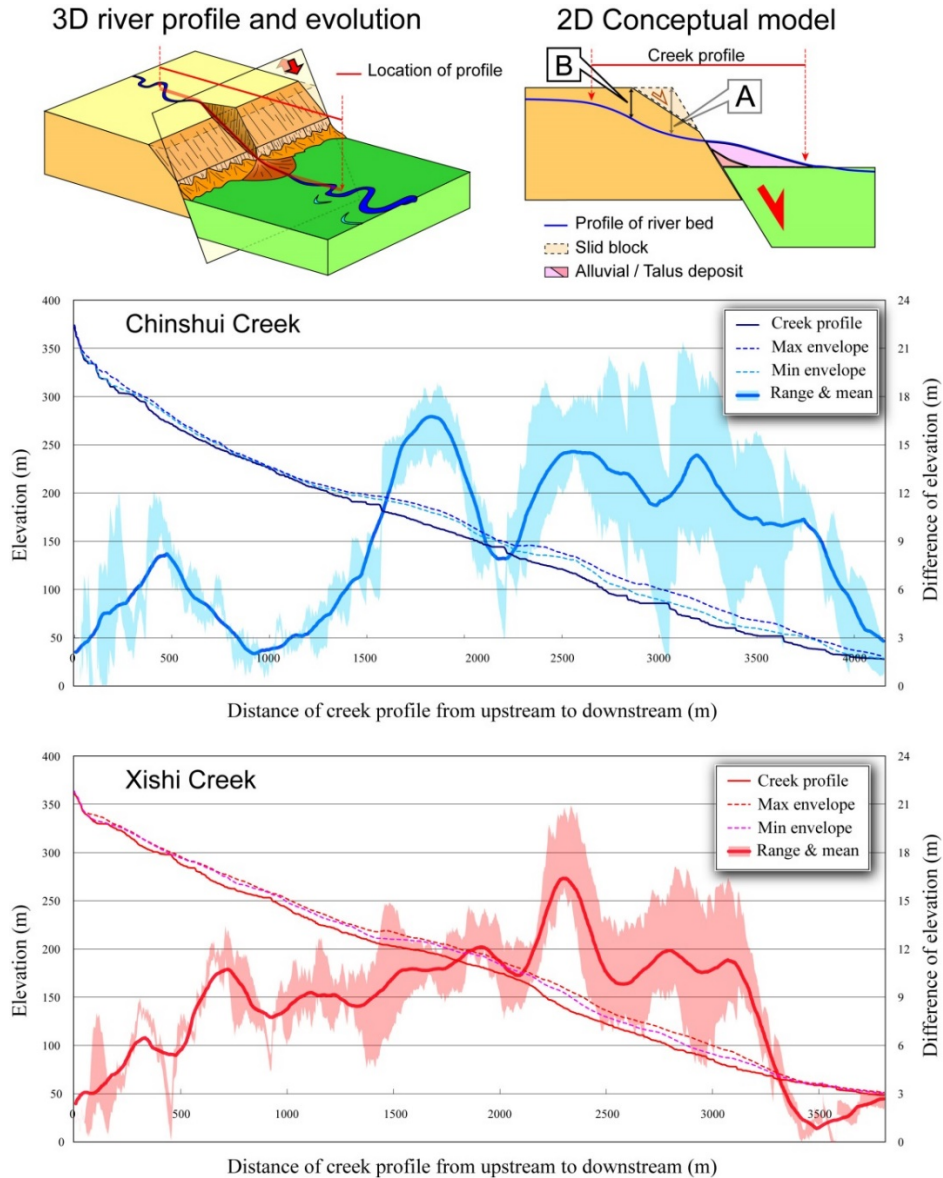


Figure 11: Cross-sections of the river valleys situated in the landslide area. The shaded area indicates the possible datum ranges obtained within various search radii (D1 and D2 in Fig. 9b). If the current elevation is lower than the possible paleodatum, this depth represents the amount of the incision. The upper and lower bounds are indicated by the semiopaque dashed line. The locations of the cross-sections in the landslide area are shown in the inset.

5



5 **Figure 12: River longitudinal profile and morphological evolution in the sliding area. Because of normal faulting, the substantial subsidence of the hanging wall led to a sudden reduction of the river bed. The block diagram shows the relationship between the river profile and normal faulting. The sharp fault scarp can be smoothed or even eroded by many small-scale landslides along the fault line. Therefore, the largest section of river incision may be located far from the fault scarp (marked as B), rather than close to the fault scarp (marked as A). The incision of creeks is obtained from the difference between the current and reconstructed profiles. The locations of the creek segments are shown in Figure 11. The profile length has been normalized using the differences in the total length between the water source and basin mouth. The shaded bands form the error bar derived using different methods.**

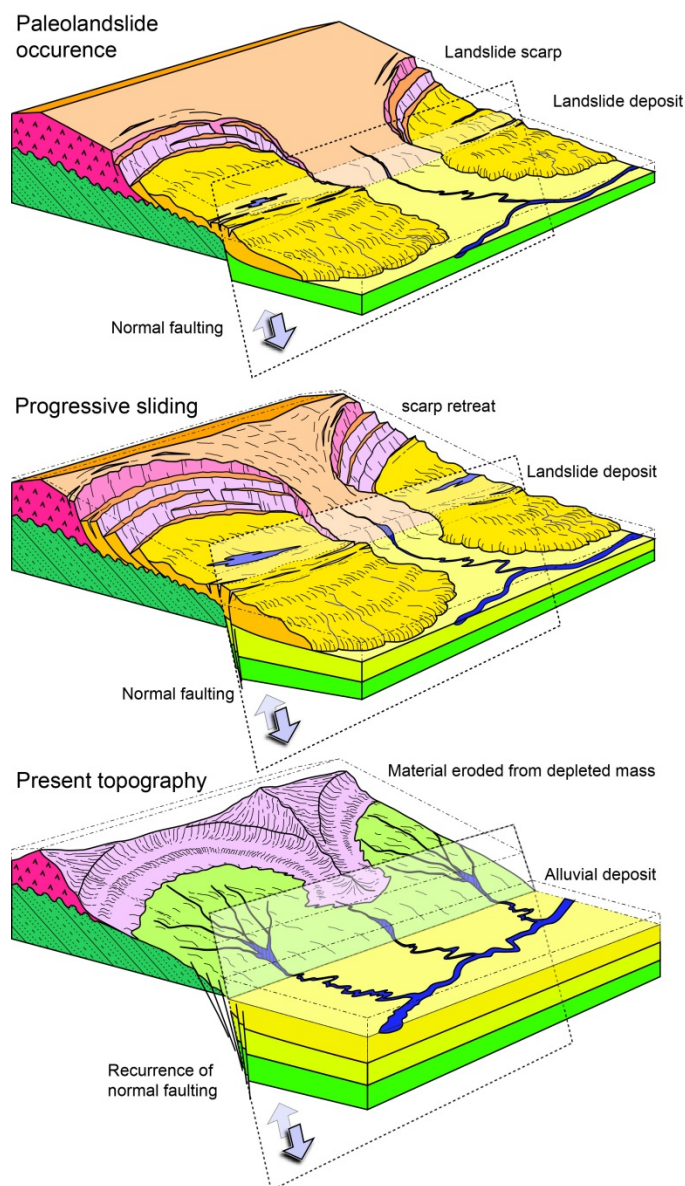


Figure 13: Schematic illustration of the evolution of the landslides. The triggering mechanism may be associated with normal faulting of the JSF (also known as the SCF), which transects the slope toe. The accumulation zone crossing the fault was eroded and transported, resulting in the current plain, as shown in the lower figure.



Table 1: Correlations of several profiles from the DEM data and curve-fit results

Profile	Type of curve to be fitted		Corresponding R^2	
	Exponential	Power	R^2 (exp)	R^2 (p)
P1	$1,006.2 \times \text{Exp}(-0.0003x)$	$1 \times 10^6 x^{-1.0398}$	0.9876	0.9412
P2	$1,020.2 \times \text{Exp}(-0.0002x)$	$14,695x^{-0.4204}$	0.9554	0.9808
P3	$1,075.9 \times \text{Exp}(-0.0003x)$	$16,859x^{-0.4502}$	0.9743	0.9482
P4	$830.9 \times \text{Exp}(-0.0002x)$	$25,236x^{-0.5054}$	0.7843	0.8642
P4*	$908.5 \times \text{Exp}(-0.0002x)$	$15,855x^{-0.433}$	0.9148	0.9914
P5	$484.3 \times \text{Exp}(-9E-5x)$	$1,133x^{-0.146}$	0.4923	0.4167
P5*	$599.5 \times \text{Exp}(-0.0001x)$	$2,919x^{-0.2484}$	0.8959	0.7297
P6	$384.7 \times \text{Exp}(-1E-4x)$	$776x^{-0.1321}$	0.3681	0.2944
P6*	$526.3 \times \text{Exp}(-0.0001x)$	$1,973x^{-0.2109}$	0.8912	0.8307

5 *: Profiles after reconstruction; R2: coefficient of determination; DEM data are fit pursuant to both exponential and power laws. The locations of the profiles are shown in the upper right corner; P1, P2, and P3 did not cross the sliding area, whereas P4, P5, and P6 crossed the sliding area. To illustrate the different effects of erosion, the original and reconstructed (marked with *) profiles are shown for comparison purposes. Because P7 (marked in Fig. 8) does not trend in the direction of the volcano slope, it was not included in the calculation.