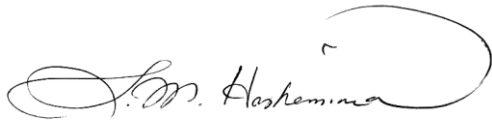


Dear Dr. Fuller,

Special thanks for your illuminating comments on our paper. Sorry for responding rather late. We sent the responses on Sept. 11, 2017, however, due to some misunderstanding on our side concerning the submission procedure, the final responses were posted as "short comments". Ms. Anna Feist-Polner, the Editorial Support, guided us to remedy the process. You can find the answers to your comments, and also, the final version of the manuscript in the supplement as a ZIP file.

Please share with us any further comments you may have. We are sure it will add to the richness of the quality of our scientific approach. Thanks for your time and concern.

With Kind Regards,

A handwritten signature in black ink, appearing to read "S. M. Hashemina". The signature is fluid and cursive, with a large, sweeping flourish at the end that loops back towards the beginning of the name.

S. M. Hashemina

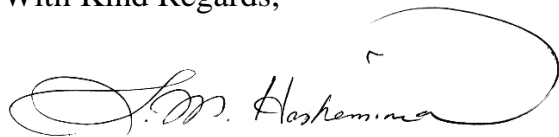
Referee: J. Fuller	Email: jon@jefuller.com
Question #1.	It was surprising to see the authors accept use of the FAN methodology as part of their recommended procedure, given their acknowledgement of its many weaknesses. The FAN methodology is outdated and based on bad science. It should no longer be used in modern assessments of flood hazards on alluvial fans.
Answer to question #1.	As you mentioned, FAN model is outdated and is based on bad science regarding estimation of the flow depth and velocity. However, In this study, only the probability of flood occurrence from apex was considered from FAN model output. Therefore, to compensate for the model's shortage in respect of velocity and depth calculations, a combination of FAN and FLO-2D was implemented.
Question #2.	The fan model does NOT predict avulsions (p. 2, line 18). FAN merely assumes that avulsions will always occur, and predicts the probability-weighted depths and velocities of the 1% chance event, i.e., it (incorrectly) predicts the consequences of avulsions. It does not predict whether or where avulsions will occur. According to FAN, avulsions always occur.
Answer to question #2.	The sentence "In addition, it is a simple model which could predict avulsion" has been corrected to: "In addition, it is a simple model which could predict flood risk".
Question #3.	The article mentions the mapping of geomorphically active (young) and inactive (old) surfaces, but there is no map provided other than the NDVI images. These images are not labelled to distinguish the old and young surfaces. The inadequacies of the FAN method become glaringly apparent when comparing maps of actual floods on fan surfaces, geomorphic surface maps, FLO2D inundation maps (all of which have similar shapes and extents) to FAN model results, which stand out in shape, extent, and depth. Enhanced discussion of the surficial mapping element of the study would greatly improve the findings.
Answer to question #3.	To determine the geomorphological properties, in addition of using field inspections' data and Arial images, vegetation effects of the study area were employed by incorporating the NDVI (Normalized Difference Vegetation Index".
Question #4.	The article should clarify how the lateral and distal extents of the fan were determined.
Answer to question #4.	To determine the lateral and distal extents of the fan, historical information along with Arial images and elevation maps were considered.
Question #5.	FLO2D is a useful model for depicting flood hazards on fan surfaces, but the application should include more than a single model with only one hydrograph.
Answer to question #5.	The main objective of this paper was to propose a new approach to enhance flooding hazard in Fans while using minimum data, so only a typical hydrograph was the subject of this study. However, different hydrographs can be considered in future studies for different flooding scenarios.

Dear Referee #2,

Special thanks for your thorough review of our paper. Sorry for responding rather late. We sent the responses on Sept. 11, 2017, however, due to some misunderstanding on our side concerning the submission procedure, the final responses were posted as "short comments". Ms. Anna Feist-Polner, the Editorial Support, guided us to remedy the process. All of your comments were considered in the text as precisely as possible.

Please find the corrected manuscript in the attached file and kindly share with us any further comments you may have. We are sure it will add to the richness of the quality of our scientific approach. Thanks for your time and concern.

With Kind Regards,

A handwritten signature in black ink, appearing to read "S. M. Hashemina". The signature is fluid and cursive, with a large, sweeping loop at the end.

S. M. Hashemina



Enhancing Flood Hazard Estimation Methods on Alluvial Fans Using an Integrated Hydraulic, and Geological and Geomorphological Approach

5 Zeinab Mollaei¹, Kamran Davary², Seyed Majid Hashemina^{*2}, Alireza Faridhosseini² and Yavar Pourmohamad³

¹ Graduated MSc Student of Water Science & Engineering Dept., College of Agriculture, Ferdowsi University of Mashhad, P. O. Box: 91775-1163, Mashhad, Iran.

² Faculty member of Water Science & Engineering Dept., College of Agriculture, Ferdowsi University of Mashhad, P. O. Box: 91775-1163, Mashhad, Iran.

10 ³ PhD student of Water Science & Engineering Dept., College of Agriculture, Ferdowsi University of Mashhad, P. O. Box: 91775-1163, Mashhad, Iran

Correspondence to: Seyed Majid Hashemina (hashemina@ferdowsi.um.ac.ir)

Abstract. Due to the uncertainty concerning the location of flow paths on active alluvial fans, alluvial fan floods could be more dangerous than riverine floods. FEMA used a simple stochastic model named FAN in this regard for many years. In the last decade, this model has been criticized as a consequence of developing complex computer models. Instead, more recent hydraulic models with capability of avulsion simulation were recommended. This study was conducted on three alluvial fans located in the northeast and southeast part of Iran using combination of FAN model, FLO-2D model and geomorphological information. Initial stages included three steps: a) identifying the alluvial fans' landforms, b) determining the active and inactive areas of alluvial fans, and c) delineating 100-year flood within these selected areas. This information was used as an input in the mentioned three approaches of: I) FLO-2D model, II) geomorphological method, and III) FAN model. Thereafter, the results of each model were obtained and Geographical Information System (GIS) layers were created and overlaid. Afterwards, using a scoring system, the results were summarized and then the integrated method was compared with the three approaches.

1 Introduction

25 Alluvial fan floods are considered to be serious hazards, since the flooding that emerges from the upstream of an alluvial fan, moves fiercely toward the downstream while carrying a large portion of substrate load and debris (King and Mifflin, 1991). Moreover, alluvial fans are made of larger size sediments without cohesive material that lies on a steep slope. These two characteristics could lead to "avulsion", formation of new channels during flooding events, which causes major flow path displacement (Blair and McPherson, 2009). Estimation of flood hazards on alluvial fans has been a major dispute among hydrologists for many years (Bedrossian et al., 2014). In fact, due to "avulsion" the characteristics of alluvial fan flooding are more important than other flooding events, which could consequently increase the risk of damage (Lancaster et al., 2012). As stated by National Research Council: "the area of deposition on an alluvial fan shifts with time, but the next episode of flooding is more likely to occur where the most recent deposits have been laid down, where deposits of greatest antiquity occur" (National Research Council, 1996).



Utilizing the alluvial fan characteristics, United States Federal Emergency Management Agency (FEMA) developed a method to assess the flood risk of alluvial fans. The FEMA guidelines allow a number of delineation methodologies that include geomorphic method, one and two-dimensional fixed bed hydraulic modeling, and composite methods that combine engineering and geologic approaches (Federal Emergency Management Agency, 2003a). The first attempt to address the alluvial fan flood complexities was performed by Dawdy (1979), who developed a probability-based model. The model was based on a mathematical formulation that was developed after a series of catastrophic alluvial fan floods and debris flows in the 1970s. FEMA correctly recognized that riverine floodplain delineation techniques did not adequately depict the flood hazards on active alluvial fans, and adopted Dawdy's equations to better describe the flood risks associated with non-riverine processes such as avulsions, high rates of sediment transport, and net aggregation (Dawdy, 1979). FEMA applied this approach directly in a number of alluvial fan floodplain delineation studies in the 1980s, and thereafter, the FAN model was developed (Federal Emergency Management Agency and Administration, 1990). FAN model is a DOS based software package that uses Dawdy's basic equations, as well as a modification proposed by DMA Consulting Engineers (1985), to predict flow depths and velocities on alluvial fans on a regular basis (French et al., 1993).

During the last decade, FAN model has been profoundly criticized by some researchers (Field and Pearthree, 1992; French, 1992; French et al., 1993; Fuller, 2013, 1990; House et al., 1991; Pearthree et al., 1992) since it does not consider the physical characteristics of alluvial fans. Despite of all criticizes raised about this model; it still can be a useful tool to delineate alluvial fan flooding. In addition, it is a simple model which could predict avulsion. According to this model, the areas subjected to alluvial fan flooding are assumed to have an equal width (Federal Emergency Management Agency and Administration, 1990). This width is referred to as the contour width, since it is measured along a contour. However, hydraulic models fill the sinks based on topographic maps, and depth and velocity are just computed as a point. However, in order to interpret the flood insurance areas, hazard zones are required and not just hazard points (Gallien, 2016).

Alluvial fan flows are two-dimensional, therefore, the application of one dimensional flow hydraulic models on alluvial fans could have the following limitations : I) difficulties and inaccuracies in determining flow direction on floodplains; II) the lack of flood volumes in determining flooding boundaries, and III) the problem with the uncertainty nature of flood discharge calculation (Volker et al., 2007; Yunsheng, 2009). Marchi et al. (2010) used an integrated approach to analyze the hydro-geomorphic processes and their interactions with torrent control works and applied it to a large alluvial fan in the southern Carnic Alps (northeastern Italy). Their study encompassed field observations, interpretation of aerial photographs, analysis of historical documents, and numerical modelling of debris flows (Marchi et al., 2010).

In addition, it has been found that geological and geomorphological data have great impacts on estimation of avulsion intensities (Fuller, 2012). Studies conducted on 100-year floods in alluvial fans using the mentioned methods, emphasize the fact that formulating a framework for the geological-geomorphological features of the area can profoundly improve our understanding about their role in flood risk assessment (House, 2005). In another study Pelletier et al. used integrated geologic maps, geomorphic analysis and a two-dimensional hydrodynamic model (LISFLOOD) to assess flood hazards (Pelletier et al. 2005). In a study, a multi-criteria index to assess flood hazard

NOT TRUE!

NOT
TRUE

?



areas in a regional scale was introduced. Accordingly, a flood hazard index (FHI) was proposed and a spatial analysis in geographic information system (GIS) environment was applied for the estimation of its value (Kazakis et al., 2015). In another study, framework was presented for mapping potential flooding areas integrating GIS, fuzzy logic and clustering techniques, and multi-criteria evaluation methods by Papaioannou et al. (2015). To sum up, the geological maps could be a powerful tool in better analyzing avulsion due to incorporating the effects of erosion and sedimentation. In fact, using geomorphological analysis can provide: I) calibration or verification of hydraulic modeling results, II) a context for understanding the basic system processes, and III) an understanding of the type of processes that has been occurred from the past up to present.

The aim of this study was to examine the applicability of overlaying three layers of land/ground susceptible to erosion, water erosion potential, and hydraulic flooding zones in alluvial fans. Ferizy and Ardak alluvial fans in Khorassan Province and Sarbaz fan in Sistan & Baloochestan Province, which all are located in arid regions of eastern part of Iran were considered for this study. In this paper, a new method was introduced and applied for each data layer and the results were discussed.

2 Methods and Materials

In this study, a simple flowchart was followed to achieve the final flood hazard map, as illustrated in Fig. 1. The proposed model needs four input data in order to obtain a flood hazard map, which are Q_{100} hydrograph, topographic map, normalized difference vegetation index (NDVI) and field investigations.

Five steps have been followed to achieve this goal, which areas follows:

1. FAN model was established using the 100 year return period hydrograph and the average slope which was extracted from topographical maps.
2. FLO-2D model was executed by using the 100 year return period hydrograph and topographical maps.
3. Active and inactive areas were distinguished by considering topographical maps, NDVI and field investigations.
4. Thereafter, all the models, results and field investigations were georeferenced and overlapped in GIS as separated layers and each layer was appointed a score using a scoring system from zero to 1.5.
5. Finally, the score of layers was multiplied and afterwards the pixels with the highest value and pixels with zero score were considered to be the highest and the lowest hazard zones, respectively.

2.1 Input Data

2.1.1 Hydrograph (Q_{100})

Thirty-five years of hydrometric data was obtained from Water Authority Company for each area. Afterwards the 100-year return period hydrograph were developed (Q_{100}) based on collected data for all three fans in a spreadsheet. These hydrographs were used in FAN model and FLO-2D as input data. Figure 2 (a, b, and c) illustrates the Q_{100} hydrographs for Ardak, Ferizy and Sarbaz fans, respectively.



2.1.2 Topographic Map

Georeferenced elevation maps were downloaded in Tiff files format from USGS website for all three fans. Afterwards, using GIS tool, the average slope map was derived from elevation map and used as an input in FAN model.

5 Georeferenced elevation maps were used as FLO-2D model input; however, contour maps were the primary input of this model. The process of converting elevation maps to contour maps was performed in FLO-2D model, therefore, no extra calculations were needed. Figure 3 (a, b, and c) shows the elevation map for Ardak, Ferizy and Sarbaz fans, respectively.

2.1.3 NDVI

To cover all three study areas, two Landsat 8 OLI Images (path/row: 159/35 and 156/42) on May 13 for Ardak and Ferizy fans and May 24 for Sarbaz fan were downloaded from the United States Geological Survey (USGS) website. These two images were clipped to alluvial Fan borders.

To calculate NDVI, first reflectance of each of band 4 and 5 (red and infrared) were calculated based on Landsat 8 user handbook (Zanter, 2016) and then the following equation was applied on bands 4 and 5 reflectance (Li et al., 2013).

$$15 \quad NDVI = \frac{(\rho_{NIR} - \rho_{Red})}{(\rho_{NIR} + \rho_{Red})} \quad (1)$$

Where, ρ_{NIR} and ρ_{Red} are reflectance of near infrared band and reflectance of red band, respectively.

2.1.4 Field Investigations

On a trip to Ardak and Ferizy fan in May 20 and on another trip to Sarbaz fan on May 25 of 2015, some geomorphological features for delineation of active and inactive areas were assessed. These information include: slope, drainage patterns, topographic contour, superficial characteristics, desert pavement, desert varnish, color and distinctive vegetation (Elkhrachy, 2015). The reason for this investigation was to find out active and inactive areas and validate the satellite images. The observation conclusions are presented in Table 1. ?

25 Landsat 8 aerial photographs was used to determine active or inactive areas, which were downloaded from USGS website. The evaluation was done by using the surface color and vegetation detection in photos. A dark surface color indicated an inactive zone, while lighter surfaces represented more active areas (Lohani et al., 2006).

2.2 Models

2.2.1 FEMA's FAN Model

30 As stated before, the FEMA method uses Dawdy's theory to delineate alluvial fan flooding to develop the FAN model (Federal Emergency Management Agency and Administration, 1990). Based on Dawdy's theory the flood channel occurs randomly in active alluvial fans. Therefore, each point in an active area of a fan has similar chance to become

AT WHAT RESOLUTION?

USE COMPLETE EXPRESSION FOR THE TITLE

AGAIN: WHAT WAS THE SPATIAL RESOLUTION?



a new channel as other points; so each point has the tendency to undergo flood. Hence, the probability of flood incidence in this model can be determined as follows (for more information see FAN model manual):

$$P(H = 1) = \int_{q_0}^{\infty} P_{H/Q}(1/q) f_Q(q) dq \quad (2)$$
$$H = \begin{cases} 1 & \text{if the location is inundated} \\ 0 & \text{if the location is not inundated} \end{cases}$$

- 5 Where, Q is a random variable denoting the magnitude of the flood, $p_{H/Q}(1/q)$ is the conditional probability that a location will be inundated, given that a flood of magnitude q is occurring and $f_Q(Q)$ is probability density function (PDF) defining the likelihood that a flood of a magnitude between q and $q+dq$ will occur in any given year. Based on the assumptions of this model all areas of the alluvial fan could be subjected to flooding and there is a fixed relation between flooding depth and discharge (Federal Emergency Management Agency, 2003b; Federal Emergency Management Agency and Administration, 1990). The flood hazard areas on an alluvial fan are identified as Zone AO. It is defined as the flood insurance rate zone that corresponds to the areas of 100-yr shallow flooding (usually sheet flow on sloping terrains), where average depths are between 0.3048 m and 0.9144 m. The flood hazard area on an alluvial fan is subdivided into separate AO zones with similar flooding depths (water depth plus velocity head) and velocities (Zhao and Mays, 1996). Figure 5 is an example of AO zones according to depth and velocity (Federal Emergency Management Agency and Administration, 1990).
- 10
15

CHECK THE FAN USER MANUAL!!

2.2.2 FLO-2D Model

FLO-2D is a two dimensional flood routing hydraulic model which is commonly used by floodplain engineers to delineate flood hazard maps, implement floodplain zoning, and design flood mitigation schemes (Mollaei et al., 2016; Yunsheng, 2009). In this model full dynamic wave equation and central finite-difference routing scheme with eight potential flow directions are used to predict the progression of a flood hydrograph over a system of square grid elements (O'Brien and Gonzalez-Ramirez, 2011). This model is characterized by some substantial advantages (Fuller, 2010):

20

- I) Runoff can flow anywhere along the dominant boundary, not only the concentration point,
 - II) Peak discharge can be generated anywhere within the model domain, not just at the concentration route,
 - 25 III) In adjacent alluvial fans, the flow can be easily modelled along unconfined boundaries,
 - IV) Watershed parameters were distributed over each small grid cell rather than being lumped over large sub-basins, and
 - V) There is no need to estimate hydrologic routing parameters or average the hydraulic routing cross sections, since routed hydrographs are inherited in the model.
- 30 The FLO-2D-based model revealed that floods are not transferred via a single channel at fan evaluation sites and flow path locations could be predicted if floods have minimal sediment transport and relatively constant topography (Fuller 2010).

This model is sensitive to grid size and topographical data. To increase the accuracy of the model, small size grids and topographical data with minimum distance between contour lines should be used (Fuller, 2012). In this study, FLO-

?



2D model was used only as a hydraulic model, so a precision of 20-meter grid size and 3-meter topographical data were chosen, while the values of Manning coefficients were determined according to the land use information.

2.2.3 Geomorphological Analysis

Geomorphological features for delineation of active and inactive areas include: slope, drainage patterns, topographic map, superficial characteristics, desert pavement and varnish, color and distinctive vegetation (Field and Pearthree, 1992; Fuller, 2013; House, 2005; Lancaster et al., 2012).

For this purpose aerial photographs were used to distinguish active or inactive areas (Federal Emergency Management Agency, 2003a). This was performed by using the surface color and vegetation detected in photos. A dark surface color is an indication of an inactive zone, while lighter surfaces represent areas that are more active. The density of natural vegetation provides useful insights about inactiveness of an area. For instance, areas with annual plants could be considered as an active areas, while, areas with perennial plants were considered as inactive. In addition, observation of human activities or weathering footprints (desert pavement, desert varnish and limestone cracks or grooves) can provide useful information about the extension of inactiveness of an area. Finally, distributary, braided and branching drainage patterns are characteristics of active areas, whereas tributary patterns are an indicator of inactive areas. For this purpose, the 2015 Aerial images were downloaded from USGS website.

2.3 Overlaying the GIS Layers

Hazardous zones in FLO-2D and FAN models and geomorphological characteristics studies were defined based on their depths, velocities and areas of activeness. These criteria are presented in Table 2. Note that FLO-2D model classified inundated areas as hazardous zones based on criteria presented in Table 2. This model assumes that the rest of the areas as being out of flooding risk.

2.4 Study Area

This study was performed on three separated alluvial fans (Ferizy, Ardak and Sarbaz) in Iran, which are located in eastern and southeastern part of Iran. Ferizy fan is located on the northern piedmont slopes of the Binalood Mountains in Khorasan province. Currently, Ferizy fan is under development by agricultural, residential and also industrial projects. Chenaran industrial area is situated right below the hydrographic apex (Mollaei et al., 2016).

Ardak fan, located on the southern piedmont slopes of the Hezarmasjed Mountains, which is also located within the Khorasan province. This alluvial fan is a result of Ardak river aggradations. Ardak fan has been subjected to extensive agricultural and residential development in the area, due to its fertile soil (Mollaei et al., 2016).

Sarbaz fan is located on the southern piedmont of the Sistan Mountains in Sistan & Baloochestan province, which is located in the southeastern part of Iran. Due to its arid climate, this fan suffers from low average precipitations, high temperatures, low humidity, poor vegetation index, high aggradations and high volume of runoff and wind erosion. Sarbaz fan has been formed as a consequence of Sarbaz River aggradations, and unlike Ardak and Ferizy fans, it has not gone under development. Historic data indicate occurrence of heavy floods and serious destructions in this area, which has been a consequence of flash floods.



3 Results and Conclusions

3.1 FAN Model Results

FAN model output was a text file, which was interpreted in ArcGIS as a shape file for each fan. FAN model results are illustrated in Fig. 6 (a, b, and c) for Ferizy, Ardak and Sarbaz fans, respectively. The results are shown in different colors, which correspond to different depths (m) and velocities (m.s-1) as explained in Table 3.

ACTUALLY FLO2D RESULTS!

3.2 FLO-2D Model Results

FLO-2D model outputs were a shape file with spatial resolution of 30m. This model produced three different results of depth (m), velocity (m.s-1) and hazard map (low, medium and high). Its criteria is also explained in Table 3. Figure 7 (a, b, and c) illustrates the depth results of FLO-2D model for Ferizy, Ardak and Sarbaz fans, respectively. Also Fig. 8 (a, b, and c) illustrates the velocity results of FLO-2D model for the mentioned fans.

FAN RESULTS!

3.3 Geomorphological Analysis Results

A comparison of the geomorphological characteristics of the three fans showed that while Ardak fan had the greatest area, slope and discharge, the Ferizy fan had the lowest discharge (Table 3). In Table 4, a comparison of three fans with regard to their effective characteristics on flood risk hazards is presented.

As it can be seen from Table 4, Sarbaz fan is characterized by its high velocity, low channel stability and low development. Ardak fan has steep slopes, high peak discharge and large drainage area. Ferizy fan does not have any specific characteristics as compared to Sarbaz and Ardak fans, except for the low channel stability and lower flood risks. The geomorphic map of Ardak fan shows that with the exception of main channel, other parts of the alluvial fan are developed by agricultural and residential activities. Urbanization of any part of the alluvial fan would create a resistance to abrupt changes of flow direction from its main channel, while the agricultural lands, especially those under the annual crops, would intensify this phenomenon even on the inactive areas of the fan. Obviously, orchards or woodlands are less susceptible to this event as compared to farmlands.

WHERE THIS CONCLUSION COMES FROM?

3.4 Integrated Results

By integrating, the results of these three approaches and using the scoring system, each fan was classified into four categories of flood hazard: very high, high, medium, low and very low. Figure 9 (a, b and c) shows the final flood hazard map for Ferizy, Ardak and Sarbaz fans, respectively.

WHAT DO YOU MEAN?
WHICH PHENOMENON ARE YOU TALKING ABOUT?

As shown in Fig. 9 (a, b and c) the flood hazard area, apart from their distance from apex of the fan, is also defined based on their distance from riverbanks. In other words, the areas in, which the river channels are located or previously used to be channels, are categorized as high hazardous zones.

3.5 Conclusions

Table 5 summarizes all the pros and cons about of FLO-2D and FAN models, the geomorphological approach, and the suggested integrated model.



It can be concluded that the integrated method has the superiority of projecting alluvial fan flood hazards, which is the primary goal of such studies.

For further studies, it is suggested that HEC-RAS model be used along with FAN model and geomorphological approach and the pertaining results be validated by executing FLO-2D model utilizing full input data.

5 References

- Bedrossian, T. L., Hayhurst, C. A., Short, W. R. and Lancaster, J. T.: Surficial Geologic Mapping and Associated GIS Databases for Identification of Alluvial Fans, *Environmental & Engineering Geoscience*, 20(4), doi:10.2113/gseegeosci.20.4.335, 2014.
- Blair, T. C. and McPherson, J. G.: Processes and Forms of Alluvial Fans BT, in *Geomorphology of Desert Environmen*, edited by A. . Parsons and A. . Abrahams, pp. 413–467, Springer., 2009.
- Dawdy, D.: Flood Frequency Estimates on Alluvial Fans, *Journal of the Hydraulics Division*, 105(11), 1407–1413, 1979.
- Elkhrachy, I.: Flash Flood Hazard Mapping Using Satellite Images and GIS Tools: A case study of Najran City, Kingdom of Saudi Arabia (KSA), *The Egyptian Journal of Remote Sensing and Space Science*, 18(2), 261–278, doi:10.1016/j.ejrs.2015.06.007, 2015.
- Federal Emergency Management Agency: Guidelines & Specifications for Flood Hazard Mapping Partners., 2003a.
- Federal Emergency Management Agency: Guidelines and Specifications for Flood Hazard Mapping Partners, Volume 1: Flood Studies and Mapping, (April), 1–26 [online] Available from: www.fema.gov/fhm/dl_cgs.shtm, 2003b.
- Federal Emergency Management Agency and Administration, F. I.: An Alluvial FAN Flooding Computer Program- User Manual., 1990.
- Field, J. J. and Pearthree, P. A.: Geologic Mapping of Flood Hazards' in Arizona : An Example From the White Tank Mountains Area , Maricopa County, Arizona Geological Survey., 1992.
- French, R. H.: Preferred Directions of Flow on Alluvial Fans, *Journal of Hydraulic Engineering*, 118(7), 1002–1013, doi:10.1061/(ASCE)0733-9429(1992)118:7(1002), 1992.
- French, R. H., Fuller, J. E. and Waters, S.: Alluvial fan: Proposed New Process-Oriented Definitions for Arid Southwest, *Journal of Water Resources Planning and Management*, 119(5), 588–598, 1993.
- Fuller, J.: Gaps in Fema Guidance for Delineating Flood Hazards on Active Alluvial Fans, *Journal of Flood Engineering*, 4(1), 29–38, 2013.
- Fuller, J. E.: Misapplication of the FEMA Alluvial Fan Model: A Case History, *Hydraulics/Hydrology of Arid Lands*, 367–377, 1990.
- Fuller, J. E.: Floodplain Delineation Study for Richland Ranchettes., 2010.
- Fuller, J. E.: Theoretical And Practical Deficiencies In The Fema Fan Methodology., 2012.
- Gallien, T. W.: Validated coastal flood modeling at Imperial Beach, California: Comparing total water level, empirical and numerical overtopping methodologies, *Coastal Engineering*, 111, 95–104, doi:10.1016/j.coastaleng.2016.01.014, 2016.



- House, P. K.: Using geology to improve flood hazard management on alluvial fans - An example from Laughlin, Nevada, *Journal of the American Water Resources Association*, 41(6), 1431–1447, doi:10.1111/j.1752-1688.2005.tb03810.x, 2005.
- House, P. K., Pearthree, P. A. and Vincent, K. R.: Flow patterns, flow hydraulics, and flood-hazard implications of a recent extreme alluvial-fan flood in southern Arizona, *Geological Society of America Abstracts with Programs*, 23(5), A121, 1991.
- Kazakis, N., Kougias, I. and Patsialis, T.: Assessment of flood hazard areas at a regional scale using an index-based approach and Analytical Hierarchy Process: Application in Rhodope-Evros region, Greece, *Science of the Total Environment*, 538, 555–563, doi:10.1016/j.scitotenv.2015.08.055, 2015.
- King, S. G. and Mifflin, E. R.: Alluvial Fan Flooding, in *Inspiration—come to the headwaters: Proceedings of the Fifteenth Annual Conference of the Association of State Floodplain Managers*, p. 243, Natural Hazards Research and Applications Information Center, University of Colorado, Denver, Colorado., 1991.
- Lancaster, J. T., Spittler, T. E. and Short, W. R.: *Using Digital Geologic Maps to Assess Alluvial-Fan Flood Hazards*, Sacramento, California., 2012.
- Li, P., Jiang, L. and Feng, Z.: Cross-comparison of vegetation indices derived from landsat-7 enhanced thematic mapper plus (ETM+) and landsat-8 operational land imager (OLI) sensors, *Remote Sensing*, 6(1), 310–329, doi:10.3390/rs6010310, 2013.
- Lohani, B., Mason, D. C., Scott, T. R. and Sreenivas, B.: Extraction of tidal channel networks from aerial photographs alone and combined with laser altimetry, *International Journal of Remote Sensing*, 27(1), 5–25, doi:10.1080/01431160500206692, 2006.
- Marchi, L., Cavalli, M. and Agostino, V. D.: Hydrogeomorphic processes and torrent control works on a large alluvial fan in the eastern Italian Alps, *Natural Hazards and Earth System Sciences*, 10, 547–558, 2010.
- Mollaei, Z., Madani, H., Moghimpzadeh, H., Davary, K. and Faridani, F.: Predicting Avulsion Potential On Alluvial Fans Using FLO-2D Model- A Case Study, in *9th WORLD CONGRESS OF EWRA “Water Resources Management in a Changing World: Challenges and Opportunities,”* p. 12, EWRA, Istanbul, Turkey., 2016.
- National Research Council: *Alluvial Fan Flooding*, National Academies Press, Washington, D.C., 1996.
- O’Brien, K. and Gonzalez-Ramirez, N.: *Pocket Guide Basic FLO-2D Model.*, 2011.
- Papaioannou, G., Vasiliades, L. and Loukas, A.: Multi-Criteria Analysis Framework for Potential Flood Prone Areas Mapping, *Water Resources Management*, 29(2), 399–418, doi:10.1007/s11269-014-0817-6, 2015.
- Pearthree, P. A., Demsey, K. A., Onken, J., Vincent, K. R. and House, P. K.: *Geomorphologic Assessment of Flood-Prone Areas on the Southern Piedmont of the Tortolita Mountains, Pinal County, Arizona, Tucson, Arizona.*, 1992.
- Pelletier, J., Mayer, L., Pearthree, P., House, P., Demsey, K., Klawon, J. and Vincent, K.: An integrated approach to flood hazard assessment on alluvial fans using numerical modeling, field mapping, and remote sensing, *Geological Society of America Bulletin*, 117(9–10), 1167–1180, doi:10.1130/B255440.1, 2005.
- Volker, H. X., Wasklewicz, T. A. and Ellis, M. A.: A topographic fingerprint to distinguish alluvial fan formative processes, *Geomorphology*, 88(1–2), 34–45, doi:10.1016/j.geomorph.2006.10.008, 2007.
- Yunsheng, S.: *Alluvial Fan Floodplain Mapping East Ojai FLO-2D Floodplain Study.*, 2009.



Zanter, K.: LANDSAT 8 (L8) DATA USERS HANDBOOK., 2016.

Zhao, B. and Mays, L. W.: ALLUVIAL-FAN METHOD, Journal of Hydraulic Engineering, 122(June), 325–332, 1996.



WHAT IS THE MEANING OF THESE X, Y?
 ↙ ↘

Table 1. Observation conclusions from field investigations.

	Fan	Location	X	Y
1	Ferizy	Apex	36.54889	59.09964
2	Ferizy	Jam Ab	36.57275	59.10208
3	Ferizy	Industrial Area of Chenaran	36.57275	59.10208
4	Ferizy	Farms	36.60528	59.10227
5	Ferizy	Ring road	36.61469	59.11415
6	Ardak	Apex	36.74175	59.39865
7	Ardak	Farms	36.73803	59.39892
8	Ardak	Rural area	36.73184	59.39389
9	Sarbaz	Apex	26.20120	61.73763
10	Sarbaz	Inactive area	26.18299	61.74807
11	Sarbaz	Suldan village	26.15361	61.78557

Table 2. Flood criteria to delineate hazard map.

WHY DIFFERENT CRITERIA FOR THE TWO MODELS?

Hazardous	Velocity (m.s ⁻¹)		Depth (m)		Geomorphological Characteristics
	FAN Model	FLO-2D Model	FAN Model	FLO-2D Model	
Very High	V>2.0	V>1.5	D>1.0	D>1.0	Active
High	1.5-2	1.2-1.5	0.5-1.0	1.2-1.5	Active
Medium	1.3-1.5	1.0-1.2	0.3-0.5	1.0-1.2	Active/Inactive
Low	1.0-1.3	0.5-1.0	0.15-0.3	0.5-1.0	Inactive
Very Low	V<1.0	0.0-0.5	D<0.15	0.0-0.5	Inactive

Table 3. The characteristics of three alluvial fans.

Characteristic	Ferizy	Ardak	Sarbaz
Watershed area (apex)(km ²)	283	497	72
Alluvial fan area (km ²)	155	436	70
Alluvial fan slope (%)	1.04	1.83	1.03
Elevation (m)	1192.7	1284.8	267.5
Temperature (°C)	17	17	32
Precipitation (mm)	167	166	96
Q ₁₀₀ at apex (m ³ /s)	80.8	221.4	108
Fan profile shape	Concave	Concave	Concave
Drainage Pattern	Channelized Tributary	Channelized Tributary	Channelized Distributary

AVERAGE
 ?
 HOW CALCULATED?

ADD A SECTION!



Table 4. Characteristics of three fans as regard to their flood risk hazards (velocity, V, and depth, D, are in m.s⁻¹ and m, respectively).

	Ardak	Ferizy	Sarbaz
NDVI	0.115 to 0.71	-0.157 to 0.768	-0.161 to 0.427
FLO-2D {	0 < V < 1.5 0 < D < 1.5	0 < V < 1.5 0 < D < 1.5	0 < V < 1.5 0 < D < 1.5
FAN {	0 < V < 2 0.15 < D < 1	0 < V < 2 0.15 < D < 1	0 < V < 2 0.15 < D < 1
Active / Inactive	0 to 1	0 to 1	0 to 1
Final Score	0 to 3.195	0 to 3.456	0 to 1.921

Table 5. Pros and Cons of three models and the suggested integrated model

Characteristics	FAN	FLO-2D	Geomorphological Approach	Suggested Integrated Model
Depth	✓	✓	-	✓
Velocity	✓	✓	-	✓
Active/Inactive	-	-	✓	✓
Fine Resolution Results	-	✓	-	✓
Required Input Data	Low	High	(Low) ?	Low
Degree Simplicity	Simple	Complex	Complex	Simple

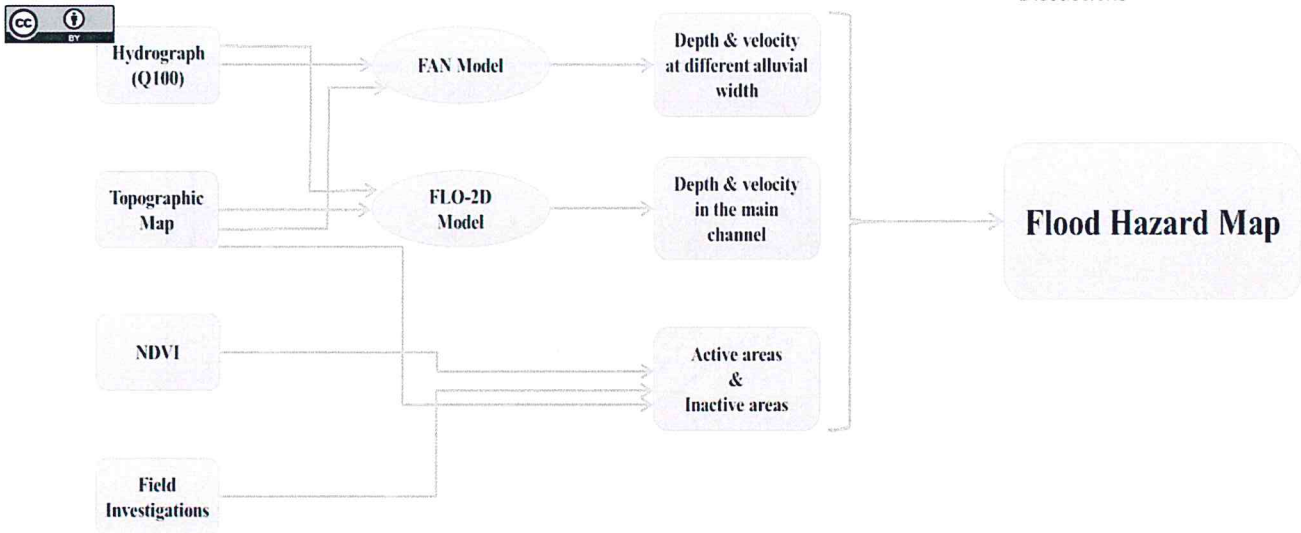


Figure 1. The proposed flow chart to achieve flood hazard map.

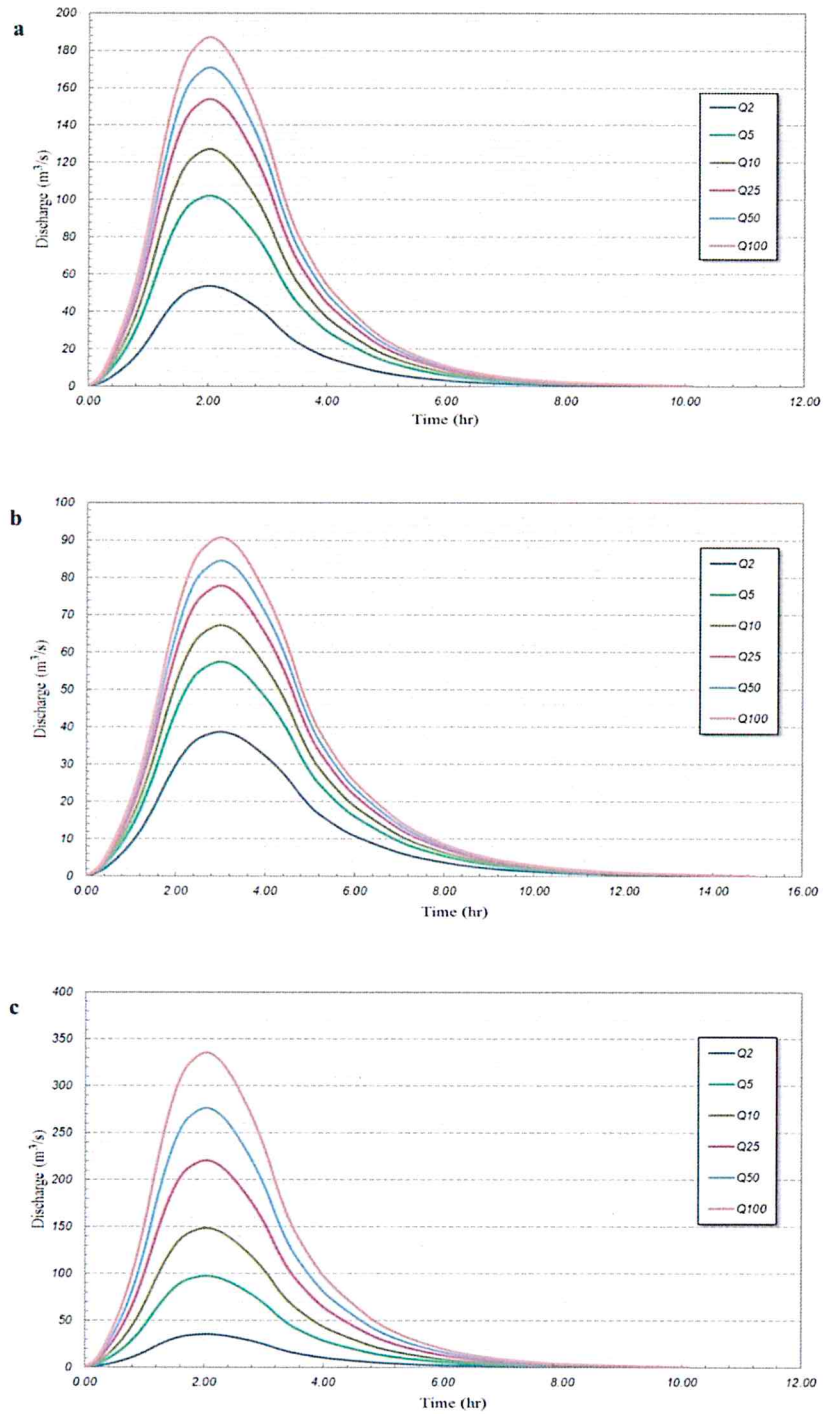


Figure 2. Q100 for a) Ardak fan, b) Ferizy fan and c) Sarbaz fan.

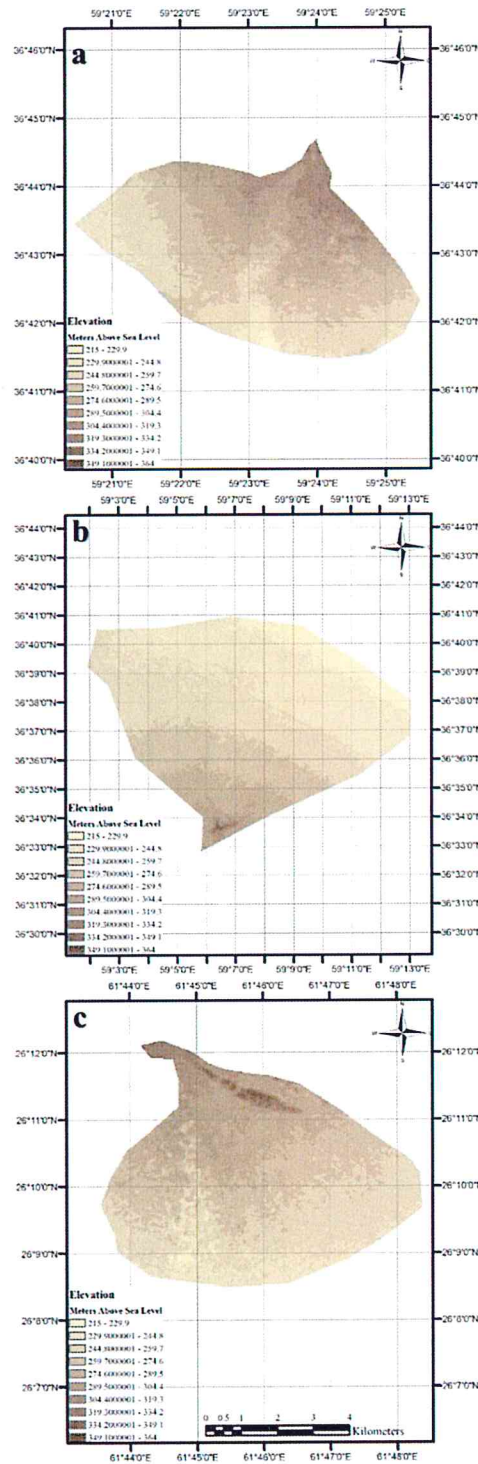


Figure 3. Land elevation from Aster dataset for a) Ardak fan, b) Ferizy fan and c) Sarbaz fan.

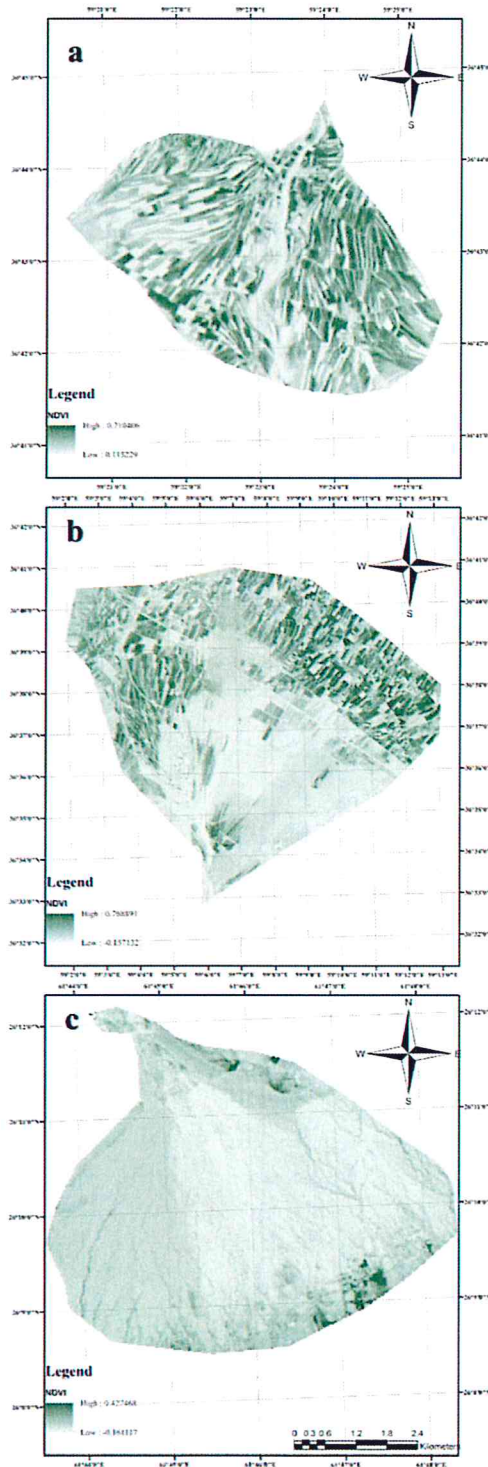


Figure 4. Calculated NDVI for a) Ardak fan, b) Ferizy fan and c) Sarbaz fan.

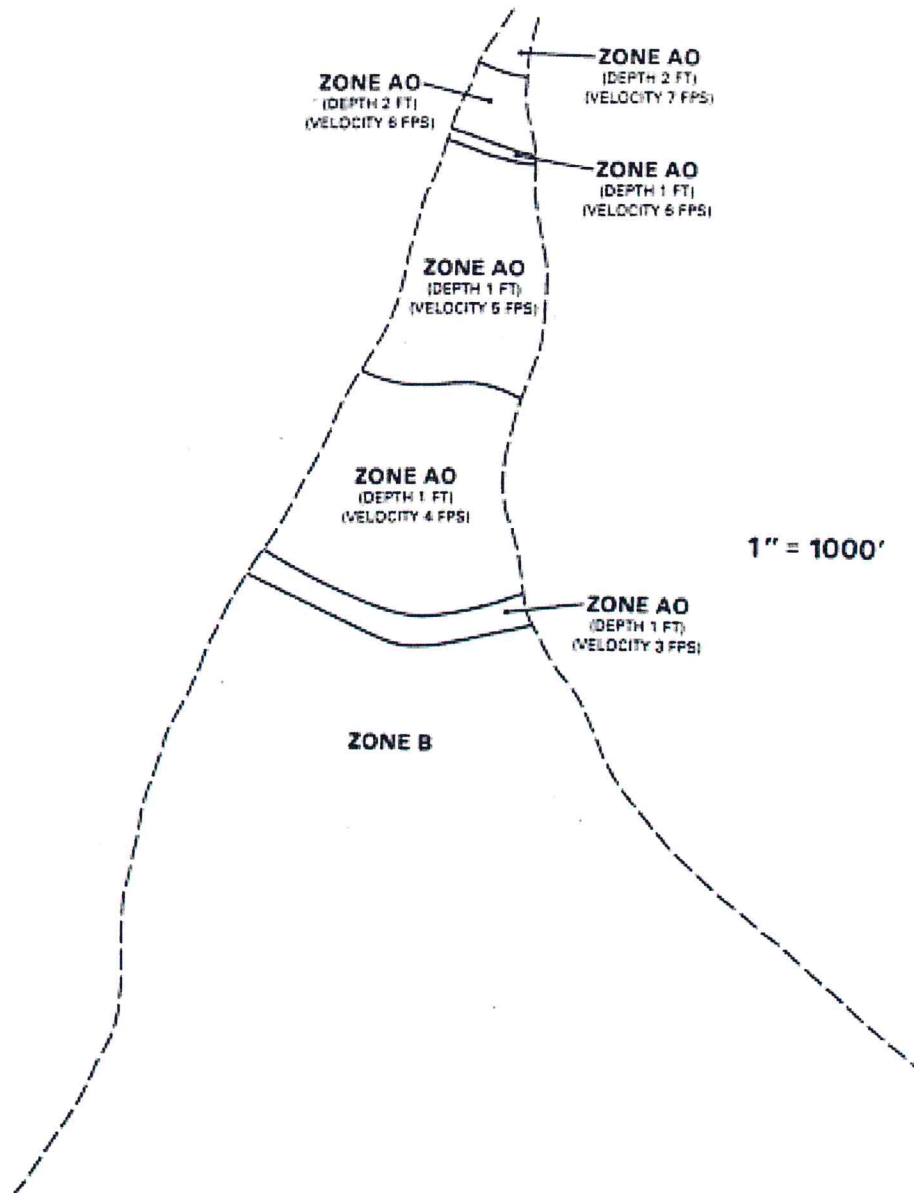
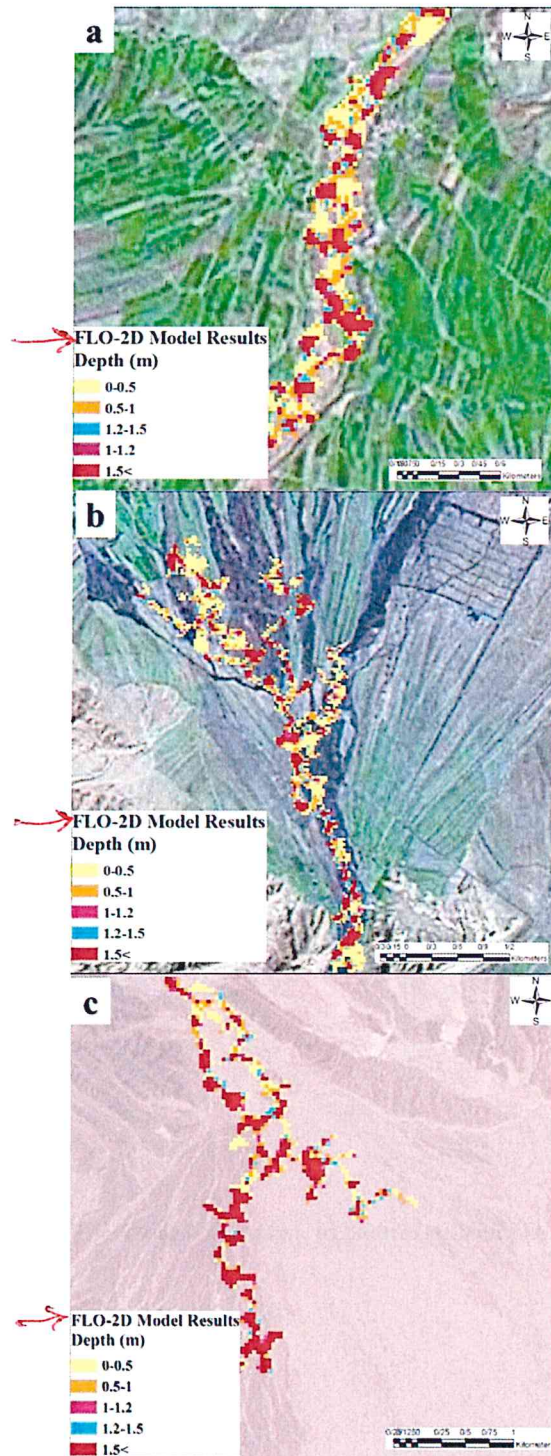


Figure 5. Examples of AO zones according to depth and velocity in FAN model (Federal Emergency Management Agency and Administration, 1990).



FLO 2D

Figure 6. FAN model results for flood depths and velocities in A) Ferizy fan, B) Ardak fan and, C) Sarbaz fan.

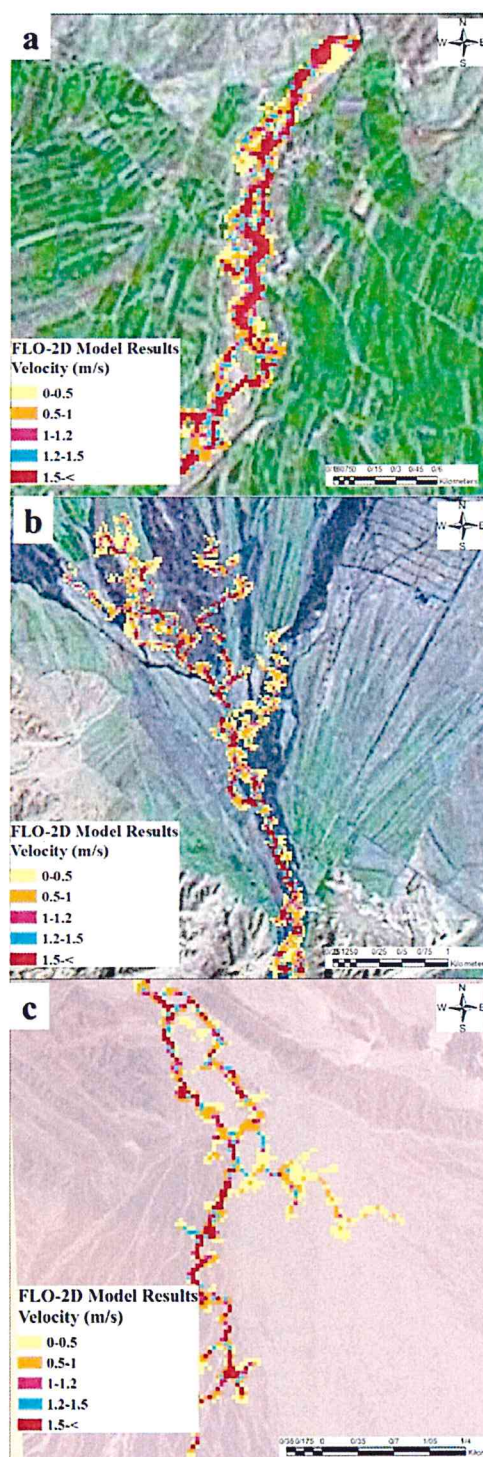


Figure 7. Flood depth results of FLO-2D for A) Ardak fan, B) Ferizy fan, and C) Sarbaz fan.

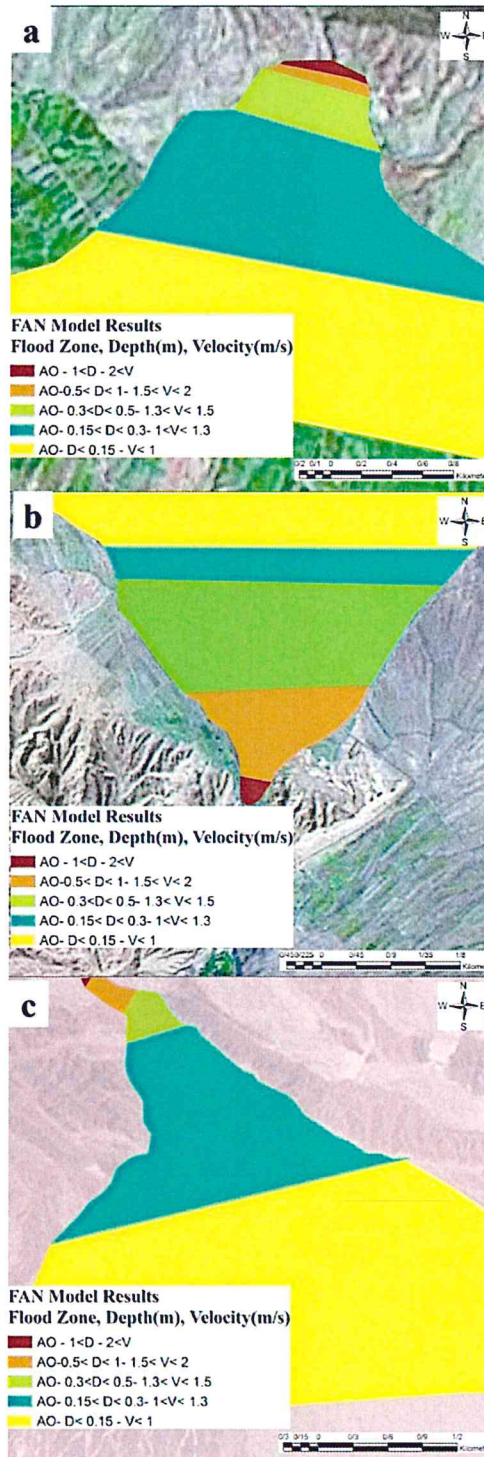


Figure 8. Flood velocity results of FLO-2D model for: A) Ardak fan, B) Ferizy fan, and C) Sarbaz fan.

FAN

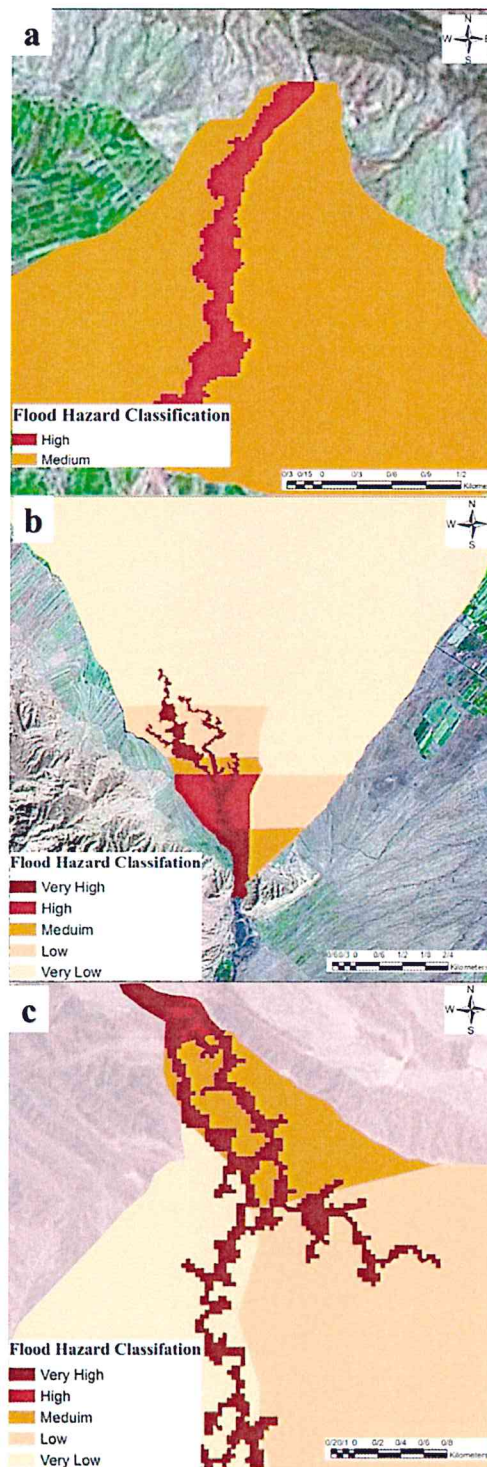


Figure 9. The final integrated results of FAN, FLO-2D models and geomorphological approach.

Enhancing Flood Hazard Estimation Methods on Alluvial Fans Using an Integrated Hydraulic, Geological and Geomorphological Approach

Zeinab Mollaei¹, Kamran Davary², Seyed Majid Hasheminia*², Alireza Faridhosseini² and Yavar Pourmohamad³

¹ Graduated MSc Student of Water Science & Engineering Dept., College of Agriculture, Ferdowsi University of Mashhad, P. O. Box: 91775-1163, Mashhad, Iran.

² Faculty member of Water Science & Engineering Dept., College of Agriculture, Ferdowsi University of Mashhad, P. O. Box: 91775-1163, Mashhad, Iran.

³ PhD student of Water Science & Engineering Dept., College of Agriculture, Ferdowsi University of Mashhad, P. O. Box: 91775-1163, Mashhad, Iran

Correspondence to: Seyed Majid Hasheminia (hasheminia@ferdowsi.um.ac.ir)

Abstract. Due to the uncertainty concerning the location of flow paths on active alluvial fans, alluvial fan floods could be more dangerous than riverine floods. FEMA (Federal Emergency Management Agency) used a simple stochastic model named FAN in this regard for many years. In the last decade, this model has been criticized as a consequence of development of more complex computer models. This study was conducted on three alluvial fans located in the northeast and southeast part of Iran using combination of FAN model, FLO-2D model and geomorphological information. Initial stages included three steps: a) identifying the alluvial fans' landforms, b) determining the active and inactive areas of alluvial fans, and c) delineating 100-year flood within these selected areas. This information was used as an input in the mentioned three approaches of: I) FLO-2D model, II) geomorphological method, and III) FAN model. Thereafter, the results of each model were obtained and Geographical Information System (GIS) layers were created and overlaid. Afterwards, using a scoring system, the results were summarized and then the integrated method was compared with the three approaches.

1 Introduction

Alluvial fan floods are considered to be serious hazards, since the flooding that emerges from the apex of an alluvial fan, moves fiercely toward the downstream while carrying a large portion of substrate load and debris (King and Mifflin, 1991). Moreover, alluvial fans are made of larger size sediments without cohesive material that lies on a steep slope. These two characteristics could lead to "avulsion", formation of new channels during flooding events, which causes major flow path displacement (Blair and McPherson, 2009). Estimation of flood hazards on alluvial fans has been a major dispute among hydrologists for many years (Bedrossian et al., 2014). In fact, due to "avulsion" the characteristics of alluvial fan flooding are more important than other flooding characters, which could consequently increase the risk of damage (Lancaster et al., 2012). As stated by National Research Council: "the area of deposition on an alluvial fan shifts with time, but the next episode of flooding is more likely to occur where the most recent deposits have been laid down, than where deposits of greatest antiquity occur" (National Research Council, 1996).

Utilizing the alluvial fan characteristics, United States Federal Emergency Management Agency (FEMA) developed a method to assess the flood risk of alluvial fans. The FEMA guidelines allow a number of delineation methodologies that include geomorphic method, one and two-dimensional fixed bed hydraulic modeling, and composite methods that combine engineering and geologic approaches (Federal Emergency Management Agency, 2003a). The first attempt to address the alluvial fan flood complexities was performed by Dawdy (1979), who developed a probability-based model. The model was based on a mathematical formulation that was developed after a series of catastrophic alluvial fan floods and debris flows in the 1970s. FEMA correctly recognized that riverine floodplain delineation techniques did not adequately depict the flood hazards on active alluvial fans, and adopted Dawdy's equations to better describe the flood risks associated with non-riverine processes such as avulsions, high rates of sediment transport, and net aggregation (Dawdy, 1979). FEMA applied this approach directly in a number of alluvial fan floodplain delineation studies in the 1980s, and thereafter, the FAN model was developed (Federal Emergency Management Agency and Administration, 1990). FAN model is a DOS based software package that uses Dawdy's basic equations, as well as a modification proposed by DMA Consulting Engineers (1985), to predict flow depths and velocities on alluvial fans on a regular basis (French et al., 1993).

During the last decade, FAN model has been profoundly criticized by some researchers (Field and Pearthree, 1992; French, 1992; French et al., 1993; Fuller, 2013, 1990; House et al., 1991; Pearthree et al., 1992) since it does not consider the physical characteristics of alluvial fans. Despite of all criticizes raised about this model; it still can be a useful tool to delineate alluvial fan flooding. In addition, it is a simple model which could predict flood risk. According to this model, the areas subjected to alluvial fan flooding are assumed to have an equal width (Federal Emergency Management Agency and Administration, 1990). This width is referred to as the contour width, since it is measured along a contour. However, the hydraulic models fill the sinks based on topographic maps, and depth and velocity are just computed as a point. Nevertheless, in order to interpret the risk of flood areas, hazard zones are required and not just hazard points (Gallien, 2016).

Alluvial fan flows are two-dimensional, therefore, the application of one dimensional flow hydraulic models on alluvial fans have the following limitations : I) difficulties and inaccuracies in determining flow direction on floodplains; II) the lack of flood volumes in determining flooding boundaries, and III) the problem with the uncertainty nature of flood discharge calculation (Volker et al., 2007; Yunsheng, 2009). Marchi et al. (2010) used an integrated approach to analyze the hydro-geomorphic processes and their interactions with torrent control works and applied it to a large alluvial fan in the southern Carnic Alps (northeastern Italy). Their study encompassed field observations, interpretation of aerial photographs, analysis of historical documents, and numerical modelling of debris flows (Marchi et al., 2010).

In addition, it has been found that geological and geomorphological data have great impacts on estimation of avulsion intensities (Fuller, 2012). Studies conducted on 100-year floods in alluvial fans using the mentioned methods, emphasize the fact that formulating a framework for the geological-geomorphological features of the area can profoundly improve our understanding about their role in flood risk assessment (House, 2005). In another study Pelletier et al. used integrated geologic maps, geomorphic analysis and a two-dimensional hydrodynamic model (LISFLOOD) to assess flood hazards (Pelletier et al., 2005). In a study, a multi-criteria index to assess flood hazard

areas in a regional scale was introduced (Kazakis et al., 2015). Accordingly, a flood hazard index (FHI) was proposed and a spatial analysis in geographic information system (GIS) environment was applied for the estimation of its value. In another study, a framework was presented for mapping potential flooding areas integrating GIS, fuzzy logic and clustering techniques, and multi-criteria evaluation methods by Papaioannou et al. (2015). To sum up, the geological maps could be a powerful tool in better analyzing avulsion due to incorporating the effects of erosion and sedimentation. In fact, using geomorphological analysis can provide: I) calibration or verification of hydraulic modeling results, II) a context for understanding the basic system processes, and III) understanding the type of processes that has been occurred from the past up to present.

The goal of this study was to examine the applicability of overlaying three layers of land/ground susceptible to erosion, water erosion potential, and hydraulic flooding zones in alluvial fans. Ferizy and Ardak alluvial fans in Khorassan Province and Sarbaz fan in Sistan & Baloochestan Province, which are all located in arid regions of eastern part of Iran, were considered for this study. In this paper, a new method was introduced and applied for each data layer and the results were discussed.

2 Methods and Materials

In this study, a simple flowchart was followed to achieve the final flood hazard map, which is illustrated in Fig. 1. The proposed model needs four input data in order to obtain a flood hazard map, which are Q_{100} hydrograph, topographic map, normalized difference vegetation index (NDVI) and field investigations.

Five steps have been followed to achieve this goal, which are as follows:

1. FAN model was established using the 100 year return period hydrograph and the average slope which was extracted from topographical maps.
2. FLO-2D model was executed by using the 100 year return period hydrograph and topographical maps.
3. Active and inactive areas were distinguished by considering topographical maps, NDVI and field investigations.
4. Thereafter, all the models, results and field investigations were georeferenced and overlapped in GIS as separated layers and each layer was appointed a score using a scoring system from zero to 1.5.
5. Finally, the score of layers was multiplied and afterwards the pixels with the highest value and pixels with zero score were considered to be the highest and the lowest hazard zones, respectively.

2.1 Input Data

2.1.1 Hydrograph (Q_{100})

Thirty-five years of hydrometric data was obtained from Water Authority Company for each area. Afterwards, the 100-year return period hydrographs (Q_{100}) were developed based on collected data for all three fans in a spreadsheet. These hydrographs were used in FAN model and FLO-2D as input data. Figure 2 (a, b, and c) illustrates the Q_{100} hydrographs for Ardak, Ferizy and Sarbaz fans, respectively.

2.1.2 Topographic Map

Georeferenced elevation maps were downloaded in Tiff files format from USGS website for all three fans **by resolution of 50m×50m**. Afterwards, using GIS tool, the average slope map was derived from elevation map and used as an input in FAN model.

- 5 Georeferenced elevation maps were used as FLO-2D model input; however, contour maps were the primary input of this model. The process of converting elevation maps to contour maps was performed in FLO-2D model, therefore, no extra calculations were needed. Figure 3 (a, b, and c) shows the elevation map for Ardak, Ferizy and Sarbaz fans, respectively.

2.1.3 Normalized Difference Vegetation Index (NDVI)

- 10 To cover all three study areas, two Landsat 8 OLI Images (path/row: 159/35 and 156/42) on May 13 for Ardak and Ferizy fans and May 24 for Sarbaz fan were downloaded from the United States Geological Survey (USGS) website **by spatial resolution of 30m×30m**. These two images were clipped to alluvial fan borders.

- To calculate NDVI, first the reflectance of each of band 4 and 5 (red and infrared) were calculated based on Landsat 8 user handbook (Zanter, 2016) and then the following equation was applied on bands 4 and 5 reflectance (Li et al.,
15 2013).

$$\text{NDVI} = \frac{(\rho_{\text{NIR}} - \rho_{\text{Red}})}{(\rho_{\text{NIR}} + \rho_{\text{Red}})} \quad (1)$$

Where, ρ_{NIR} and ρ_{Red} are reflectance of near infrared band and reflectance of red band, respectively.

2.1.4 Field Investigations

- On a trip to Ardak and Ferizy fan in May 20th and on another trip to Sarbaz fan on May 25th of 2015, some
20 geomorphological features for delineation of active and inactive areas were assessed. These information include: slope, drainage patterns, topographic contour, superficial characteristics, desert pavement, desert varnish, colour and distinctive vegetation (Elkhrachy, 2015). This investigation was performed in order to find out active and inactive areas and validate the satellite images. **The observations are presented in Table 1.**

- Landsat 8 aerial photographs was used to determine active or inactive areas, which were downloaded from USGS
25 website. The evaluation was done by using the surface colour and vegetation detection in photos. A dark surface colour indicated an inactive zone, while lighter surfaces represented more active areas (Lohani et al., 2006).

2.2 Models

2.2.1 FEMA's FAN Model

- 30 As stated before, the FEMA method uses Dawdy's theory to delineate alluvial fan flooding to develop the FAN model (Federal Emergency Management Agency and Administration, 1990). Based on Dawdy's theory the flood channel occurs randomly in active alluvial fans. Therefore, each point in an active area of a fan has similar chance to become

a new channel as other points; so each point has the tendency to undergo flood. Hence, the probability of flood incidence in this model can be determined as follows (for more information see FAN model manual):

$$P(H = 1) = \int_{q_0}^{\infty} P_{H|Q}(1, q) f_Q(q) dq \quad (2)$$

$$H = \begin{cases} 1 & \text{if the location is inundated} \\ 0 & \text{if the location is not inundated} \end{cases}$$

5 Where, Q is a random variable denoting the magnitude of the flood, $P_{H|Q}(1, q)$ is the probability that a location will be inundated, given that a flood of magnitude q is occurring and f_Q is Probability Density Function (PDF) defining the likelihood that a flood of a magnitude between q and q+dq will occur in any given year.

Based on the assumptions of this model all areas of the alluvial fan could be subjected to flooding and there is a fixed relation between flooding depth and discharge (Federal Emergency Management Agency, 2003b; Federal Emergency Management Agency and Administration, 1990). The flood hazard areas on an alluvial fan are identified as Zone AO. It is defined as the flood insurance rate zone that corresponds to the areas of 100-yr shallow flooding (usually sheet flow on sloping terrains), where average depths are between 0.3048 m and 0.9144 m. The flood hazard area on an alluvial fan is subdivided into separate AO zones with similar flooding depths (water depth plus velocity head) and velocities (Zhao and Mays, 1996). Figure 5 is an example of AO zones according to depth and velocity (Federal Emergency Management Agency and Administration, 1990).

2.2.2 FLO-2D Model

FLO-2D is a two dimensional flood routing hydraulic model which is commonly used by civil environmental engineers to delineate flood hazard maps, implement floodplain zoning, and design flood mitigation schemes (Mollaei et al., 2016; Yunsheng, 2009). In this model full dynamic wave equation and central finite-difference routing scheme with eight potential flow directions are used to predict the progression of a flood hydrograph over a system of square grid elements (O'Brien and Gonzalez-Ramirez, 2011). This model is characterized by some substantial advantages (Fuller, 2010):

- I) Runoff can flow anywhere along the dominant boundary, not only the concentration point,
- II) Peak discharge can be generated anywhere within the model domain, not just at the concentration route,
- 25 III) In adjacent alluvial fans, the flow can be easily modelled along unconfined boundaries,
- IV) Watershed parameters were distributed over each small grid cell rather than being lumped over large sub-basins, and
- V) There is no need to estimate hydrologic routing parameters or average the hydraulic routing cross sections, since routed hydrographs are inherited in the model.

30 The FLO-2D-based model revealed that floods are not transferred via a single channel at fan evaluation sites and flow path locations could be predicted if floods have minimal sediment transport and relatively constant topography (Fuller, 2010).

This model is sensitive to grid size and topographical data. To increase the accuracy of the model, small size grids and topographical data with minimum distance between contour lines should be used (Fuller, 2012). In this study, FLO-

2D model was used only as a hydraulic model, so a precision of 30m by 30m grid size and 50m by 50m topographical data were chosen, while the values of Manning coefficients were determined according to the land use information.

2.2.3 Geomorphological Analysis

Geomorphological features for delineation of active and inactive areas include: slope, drainage patterns, topographic map, superficial characteristics, desert pavement and varnish, colour and distinctive vegetation (Field and Pearthree, 1992; Fuller, 2013; House, 2005; Lancaster et al., 2012).

For this purpose, aerial photographs were used to distinguish active or inactive areas (Federal Emergency Management Agency, 2003a). This was performed by using the surface colour and vegetation detected in photos. A dark surface colour is an indication of an inactive zone, while lighter surfaces represent areas that are more active. Figures 6a, 6b and 6c illustrate the aerial images of Ardak, Ferizy and Sarbaz, respectively. The density of natural vegetation provides useful insights about inactiveness of an area. For instance, areas with annual plants could be considered as an active area, while, areas with perennial plants were considered as inactive. In addition, observation of human activities or weathering footprints (desert pavement, desert varnish and limestone cracks or grooves) can provide useful information about the extension of inactiveness of an area. Finally, distributary, braided and branching drainage patterns are characteristics of active areas, whereas tributary patterns are an indicator of inactive areas. For this purpose, the 2015 Aerial images were downloaded from USGS website.

2.3 Overlaying the GIS Layers

Hazardous zones in FLO-2D and FAN models and geomorphological characteristics studies were defined based on their depths, velocities and areas of activeness. These criteria are presented in Table 2. Note that FLO-2D model classified inundated areas as hazardous zones based on criteria presented in Table 2. This model assumes that the rest of the areas as being out of flooding risk.

2.4 Study Area

This study was performed on three separated alluvial fans (Ferizy, Ardak and Sarbaz) in Iran, which are located in eastern and southeastern part of Iran. Ferizy fan is located on the northern piedmont slopes of the Binalood Mountains in Khorasan province. Currently, Ferizy fan is under development by agricultural, residential and also industrial projects. Chenaran industrial area is situated right below the hydrographic apex (Mollaei et al., 2016).

Ardak fan, located on the southern piedmont slopes of the Hezarmasjed Mountains, which is also located within the Khorasan province. This alluvial fan is a result of Ardak river aggradations. Ardak fan has been subjected to extensive agricultural development due to its fertile soil, which was followed by residential development (Mollaei et al., 2016).

Sarbaz fan is located on the southern piedmont of the Sistan Mountains in Sistan & Baloochestan province, which is located in the southeastern part of Iran. Due to its arid climate, this fan suffers from low average precipitations, high temperatures, low humidity, poor vegetation index, high aggradations and high volume of runoff and wind erosion. Sarbaz fan has been formed as a consequence of Sarbaz river aggradations, and unlike Ardak and Ferizy fans, it has

not gone under much development. Historic data indicate occurrence of heavy floods and serious destructions in this area, which has been a consequence of flash floods.

3 Results and Conclusions

3.1 FAN Model Results

5 FAN model output was a text file, which was interpreted in ArcGIS as a shape file for each fan. FAN model results are illustrated in Fig. 7 (a, b, and c) for Ferizy, Ardak and Sarbaz fans, respectively. The results are shown in different colours, which correspond to different depths (m) and velocities ($\text{m}\cdot\text{s}^{-1}$) as explained in Table 3.

3.2 FLO-2D Model Results

10 FLO-2D model outputs were a shape file with spatial resolution of 30m. This model produced three different results of depth (m), velocity ($\text{m}\cdot\text{s}^{-1}$) and hazard map (low, medium and high). Its criteria is also explained in Table 3. Figure 8 (a, b, and c) illustrates the depth results of FLO-2D model for Ferizy, Ardak and Sarbaz fans, respectively. Also Fig. 9 (a, b, and c) illustrates the velocity results of FLO-2D model for the mentioned fans.

3.3 Geomorphological Analysis Results

15 A comparison of the geomorphological characteristics of the three fans showed that while Ardak fan had the greatest area, slope and discharge, the Ferizy fan had the lowest discharge (Table 3). In Table 4, a comparison of three fans with regard to their effective characteristics on flood risk hazards is presented.

As it can be seen from Table 4, Sarbaz fan is characterized by its high velocity, low channel stability and low developments. Ardak fan has steep slopes, high peak discharge and large drainage area. Ferizy fan does not have any specific characteristics as compared to Sarbaz and Ardak fans, except for the low channel stability and lower flood 20 risks. The geomorphic map of Ardak fan shows that with the exception of its main channel, other parts of this alluvial fan are developed by agricultural and residential activities. Urbanization of any part of the alluvial fan would create a resistance to abrupt changes of flow direction from its main channel, while the agricultural lands, especially those under annual crops, would intensify this phenomenon even on the inactive areas of the fan. Obviously, orchards or woodlands are less susceptible to this event as compared to farmlands.

25 3.4 Integrated Results

By integrating the results of these three approaches and using the scoring system, each fan was classified under four categories of flood hazard: very high, high, medium, low and very low. Figure 9 (a, b and c) shows the final flood hazard map for Ferizy, Ardak and Sarbaz fans, respectively.

As shown in Fig. 10 (a, b and c) the flood hazard area, apart from their distance from apex of the fan, is also defined 30 based on their distance from riverbanks. In other words, the areas in which the river channels are located or previously used to be flood channels, are categorized as high hazardous zones.

3.5 Conclusions

Table 5 summarizes all the pros and cons about of FLO-2D and FAN models, the geomorphological approach, and the suggested integrated model.

5 It can be concluded that the integrated method has the superiority of projecting alluvial fan flood hazards, which is the primary goal of such studies.

For further studies, it is suggested that HEC-RAS model be used along with FAN model and geomorphological approach and the pertaining results be validated by executing the FLO-2D model utilizing full input data.

References

- 10 Bedrossian, T. L., Hayhurst, C. A., Short, W. R. and Lancaster, J. T.: Surficial Geologic Mapping and Associated GIS Databases for Identification of Alluvial Fans, *Environmental & Engineering Geoscience*, 20(4), doi:10.2113/gseegeosci.20.4.335, 2014.
- Blair, T. C. and McPherson, J. G.: Processes and Forms of Alluvial Fans, in: *Geomorphology of Desert Environment*, edited by A. . Parsons and A. . Abrahams, pp. 413–467, Springer., 2009.
- 15 Dawdy, D.: Flood Frequency Estimates on Alluvial Fans, *Journal of the Hydraulics Division*, 105(11), 1407–1413, 1979.
- Elkhrachy, I.: Flash Flood Hazard Mapping Using Satellite Images and GIS Tools: A case study of Najran City, Kingdom of Saudi Arabia (KSA), *The Egyptian Journal of Remote Sensing and Space Science*, 18(2), 261–278, doi:10.1016/j.ejrs.2015.06.007, 2015.
- Federal Emergency Management Agency: Guidelines & Specifications for Flood Hazard Mapping Partners., 2003a.
- 20 Federal Emergency Management Agency: Guidelines and Specifications for Flood Hazard Mapping Partners, Volume 1: Flood Studies and Mapping, (April), 1–26 [online] Available from: www.fema.gov/fhm/dl_cgs.shtm, 2003b.
- Federal Emergency Management Agency and Administration, Federal Insurance Administration.: *An Alluvial FAN Flooding Computer Program- User Manual.*, 1990.
- Field, J. J. and Pearthree, P. A.: *Geologic Mapping of Flood Hazards' in Arizona : An Example From the White Tank Mountains Area , Maricopa County, Arizona Geological Survey.*, 1992.
- 25 French, R. H.: Preferred Directions of Flow on Alluvial Fans, *Journal of Hydraulic Engineering*, 118(7), 1002–1013, doi:10.1061/(ASCE)0733-9429(1992)118:7(1002), 1992.
- French, R. H., Fuller, J. E. and Waters, S.: Alluvial fan: Proposed New Process-Oriented Definitions for Arid Southwest, *Journal of Water Resources Planning and Management*, 119(5), 588–598, 1993.
- 30 Fuller, J.: Gaps in Fema Guidance for Delineating Flood Hazards on Active Alluvial Fans, *Journal of Flood Engineering*, 4(1), 29–38, 2013.
- Fuller, J. E.: Misapplication of the FEMA Alluvial Fan Model: A Case History, *Hydraulics/Hydrology of Arid Lands*, 367–377, 1990.
- Fuller, J. E.: *Floodplain Delineation Study for Richland Ranchettes.*, 2010.
- 35 Fuller, J. E.: Theoretical and Practical Deficiencies, In: *The FEMA Fan Methodology.*, 2012.

- Gallien, T. W.: Validated Coastal Flood Modelling at Imperial Beach, California: Comparing Total Water Level, Empirical and Numerical Overtopping Methodologies, *Coastal Engineering*, 111, 95–104, doi:10.1016/j.coastaleng.2016.01.014, 2016.
- House, P. K.: Using Geology to Improve Flood Hazard Management on Alluvial Fans - An Example from Laughlin, Nevada, *Journal of the American Water Resources Association*, 41(6), 1431–1447, doi:10.1111/j.1752-1688.2005.tb03810.x, 2005.
- House, P. K., Pearthree, P. A. and Vincent, K. R.: Flow Patterns, Flow Hydraulics, and Flood-Hazard Implications of a Recent Extreme Alluvial-Fan Flood in Southern Arizona, *Geological Society of America Abstracts with Programs*, 23(5), A121, 1991.
- 10 Kazakis, N., Kougiaris, I. and Patsialis, T.: Assessment of Flood Hazard Areas at a Regional Scale Using an Index-Based Approach and Analytical Hierarchy Process: Application in Rhodope-Evros Region, Greece, *Science of the Total Environment*, 538, 555–563, doi:10.1016/j.scitotenv.2015.08.055, 2015.
- King, S. G. and Mifflin, E. R.: Alluvial Fan Flooding, in *Inspiration–Come to the Headwaters: Proceedings of the Fifteenth Annual Conference of the Association of State Floodplain Managers*, p. 243, Natural Hazards Research and Applications Information Center, University of Colorado, Denver, Colorado, 1991.
- 15 Lancaster, J. T., Spittler, T. E. and Short, W. R.: Using Digital Geologic Maps to Assess Alluvial-Fan Flood Hazards, Sacramento, California, 2012.
- Li, P., Jiang, L. and Feng, Z.: Cross-comparison of Vegetation Indices Derived from Landsat-7 Enhanced Thematic Mapper Plus (ETM+) and Landsat-8 Operational Land Imager (OLI) Sensors, *Remote Sensing*, 6(1), 310–329, doi:10.3390/rs6010310, 2013.
- 20 Lohani, B., Mason, D. C., Scott, T. R. and Sreenivas, B.: Extraction of Tidal Channel Networks from Aerial Photographs Alone and Combined with Laser Altimetry, *International Journal of Remote Sensing*, 27(1), 5–25, doi:10.1080/01431160500206692, 2006.
- Marchi, L., Cavalli, M. and Agostino, V. D.: Hydrogeomorphic Processes and Torrent Control Works on a Large Alluvial Fan in the Eastern Italian Alps, *Natural Hazards and Earth System Sciences*, 10, 547–558, 2010.
- Mollaie, Z., Madani, H., Moghimzadeh, H., Davary, K. and Faridani, F.: Predicting Avulsion Potential on Alluvial Fans Using FLO-2D Model- A Case Study, in *9th World Congress of EWRA “Water Resources Management in a Changing World: Challenges and Opportunities,”* p. 12, EWRA, Istanbul, Turkey, 2016.
- National Research Council: *Alluvial Fan Flooding*, National Academies Press, Washington, D.C., 1996.
- 30 O’Brien, K. and Gonzalez-Ramirez, N.: *Pocket Guide Basic FLO-2D Model*, 2011.
- Papaioannou, G., Vasiliades, L. and Loukas, A.: Multi-Criteria Analysis Framework for Potential Flood Prone Areas Mapping, *Water Resources Management*, 29(2), 399–418, doi:10.1007/s11269-014-0817-6, 2015.
- Pearthree, P. A., Demsey, K. A., Onken, J., Vincent, K. R. and House, P. K.: *Geomorphologic Assessment of Flood-Prone Areas on the Southern Piedmont of the Tortolita Mountains, Pinal County, Arizona, Tucson, Arizona*, 1992.
- 35 Pelletier, J., Mayer, L., Pearthree, P., House, P., Demsey, K., Klawon, J. and Vincent, K.: An Integrated Approach To Flood Hazard Assessment on Alluvial Fans Using Numerical Modelling, Field Mapping, and Remote Sensing, *Geological Society of America Bulletin*, 117(9–10), 1167–1180, doi:10.1130/B255440.1, 2005.

Volker, H. X., Wasklewicz, T. A. and Ellis, M. A.: A Topographic Fingerprint to Distinguish Alluvial Fan Formative Processes, *Geomorphology*, 88(1–2), 34–45, doi:10.1016/j.geomorph.2006.10.008, 2007.

Yunsheng, S.: Alluvial Fan Floodplain Mapping East Ojai FLO-2D Floodplain Study, 2009.

Zanter, K.: LANDSAT 8 (L8) Data Users Handbook, 2016.

- 5 Zhao, B. and Mays, L. W.: Alluvial-Fan Method, *Journal of Hydraulic Engineering*, 122(June), 325–332, 1996.

Table 1. Observation conclusions from field investigations.

	<i>Fan</i>	<i>Location</i>	<i>Latitude</i>	<i>Longitude</i>
<i>1</i>	Ferizy	Apex	36.54889	59.09964
<i>2</i>	Ferizy	Jam Ab	36.57275	59.10208
<i>3</i>	Ferizy	Industrial Area of Chenaran	36.57275	59.10208
<i>4</i>	Ferizy	Farms	36.60528	59.10227
<i>5</i>	Ferizy	Ring road	36.61469	59.11415
<i>6</i>	Ardak	Apex	36.74175	59.39865
<i>7</i>	Ardak	Farms	36.73803	59.39892
<i>8</i>	Ardak	Rural area	36.73184	59.39389
<i>9</i>	Sarbaz	Apex	26.20120	61.73763
<i>10</i>	Sarbaz	Inactive area	26.18299	61.74807
<i>11</i>	Sarbaz	Suldan village	26.15361	61.78557

Table 2. Flood criteria to delineate hazard map.

Hazardous	Velocity (m.s ⁻¹)		Depth (m)		Geomorphological Characteristics
	FAN Model	FLO-2D Model	FAN Model	FLO-2D Model	
Very High	V>2.0	V>1.5	D>1.0	D>1.0	Active
High	1.5-2	1.2-1.5	0.5-1.0	1.2-1.5	Active
Medium	1.3-1.5	1.0-1.2	0.3-0.5	1.0-1.2	Active/Inactive
Low	1.0-1.3	0.5-1.0	0.15-0.3	0.5-1.0	Inactive
Very Low	V<1.0	0.0-0.5	D<0.15	0.0-0.5	Inactive

Table 3. The characteristics of three alluvial fans.

Characteristic	Ferizy	Ardak	Sarbaz
Watershed area (apex)(km ²)	283	497	72
Alluvial fan area (km ²)	155	436	70
Average Alluvial fan slope (%)	1.04	1.83	1.03
Average Elevation (m)	1192.7	1284.8	267.5
Average Temperature (°C)	17	17	32
Average Precipitation (mm)	167	166	96
Q ₁₀₀ at apex (m ³ /s)	80.8	221.4	108
Fan profile shape	Concave	Concave	Concave
Drainage Pattern	Channelized Tributary	Channelized Tributary	Channelized Distributary

Table 4. Characteristics of three fans as regard to their flood risk hazards (velocity, V, and depth, D, are in m.s⁻¹ and m, respectively).

	Ardak	Ferizy	Sarbaz
NDVI	0.115 to 0.71	-0.157 to 0.768	-0.161 to 0.427
FLO-2D {	0 <V< 1.5 0 <D< 1.5	0<V< 1.5 0<D< 1.5	0<V< 1.5 0<D< 1.5
FAN {	0 <V< 2 0.15<D< 1	0<V< 2 0.15<D< 1	0<V< 2 0.15<D< 1
Active / Inactive	0 to 1	0 to 1	0 to 1
Final Score	0 to 3.195	0 to 3.456	0 to 1.921

Table 5. Pros and Cons of three models and the suggested integrated model

Characteristics	Models	FAN	FLO-2D	Geomorphological Approach	Suggested Integrated Model
Depth		✓	✓	-	✓
Velocity		✓	✓	-	✓
Active/Inactive		-	-	✓	✓
Fine Resolution Results		-	✓	-	✓
Required Input Data		Low	High	Low	Low
Degree of Simplicity		Simple	Complex	Complex	Simple

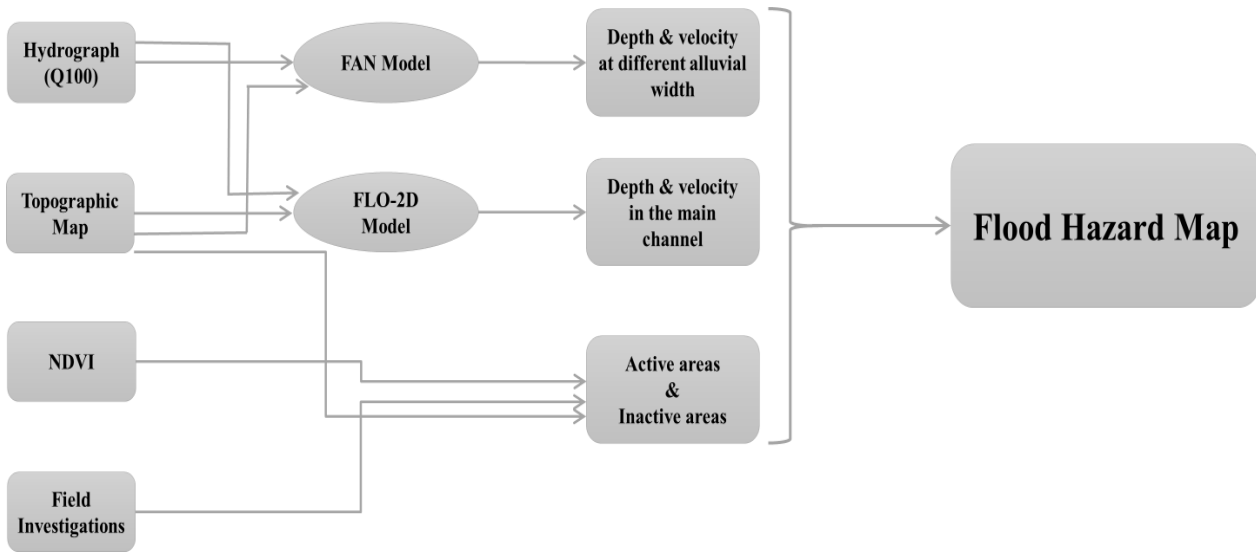


Figure 1. The proposed flow chart to achieve flood hazard map.

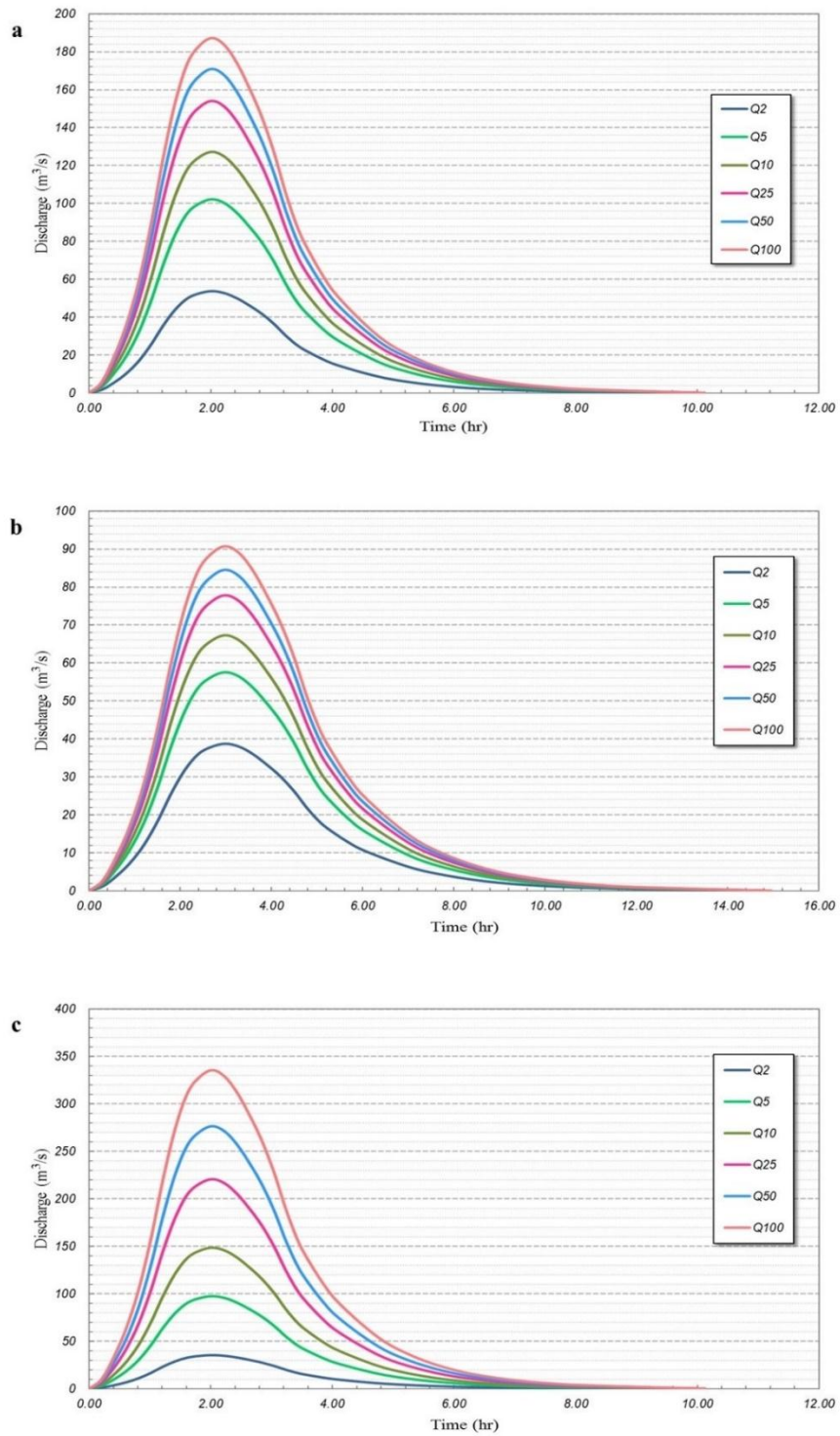


Figure 2. Q_{100} for: a) Ardak fan, b) Ferizy fan, and c) Sarbaz fan.

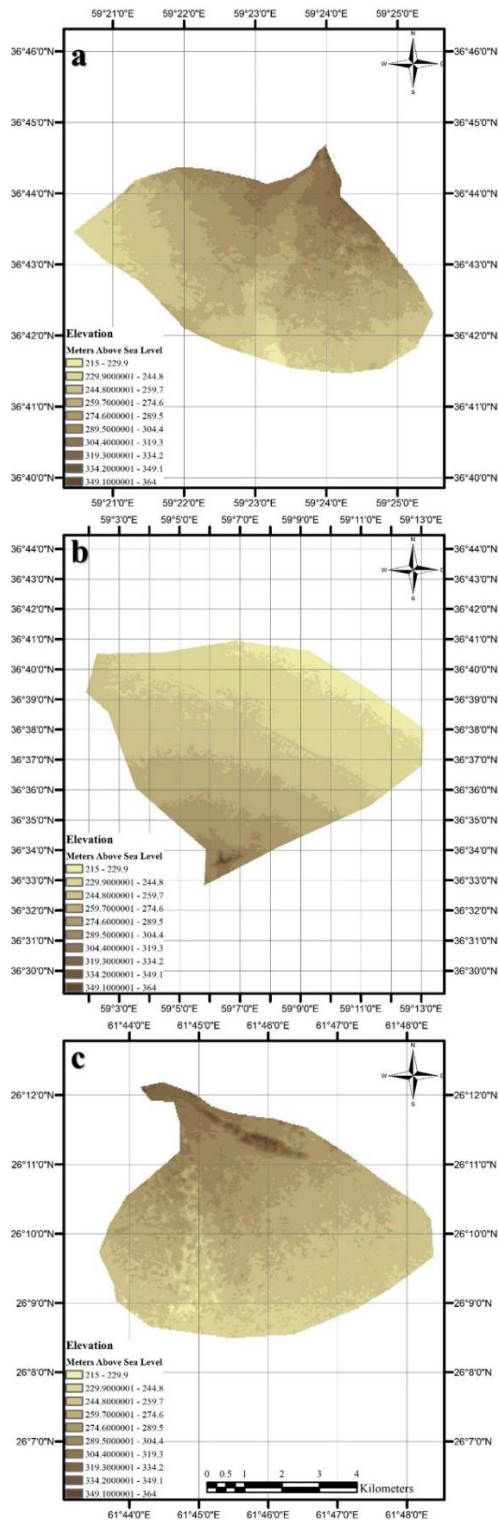


Figure 3. Land elevation from Aster dataset for: a) Ardak fan, b) Ferizy fan, and c) Sarbaz fan.

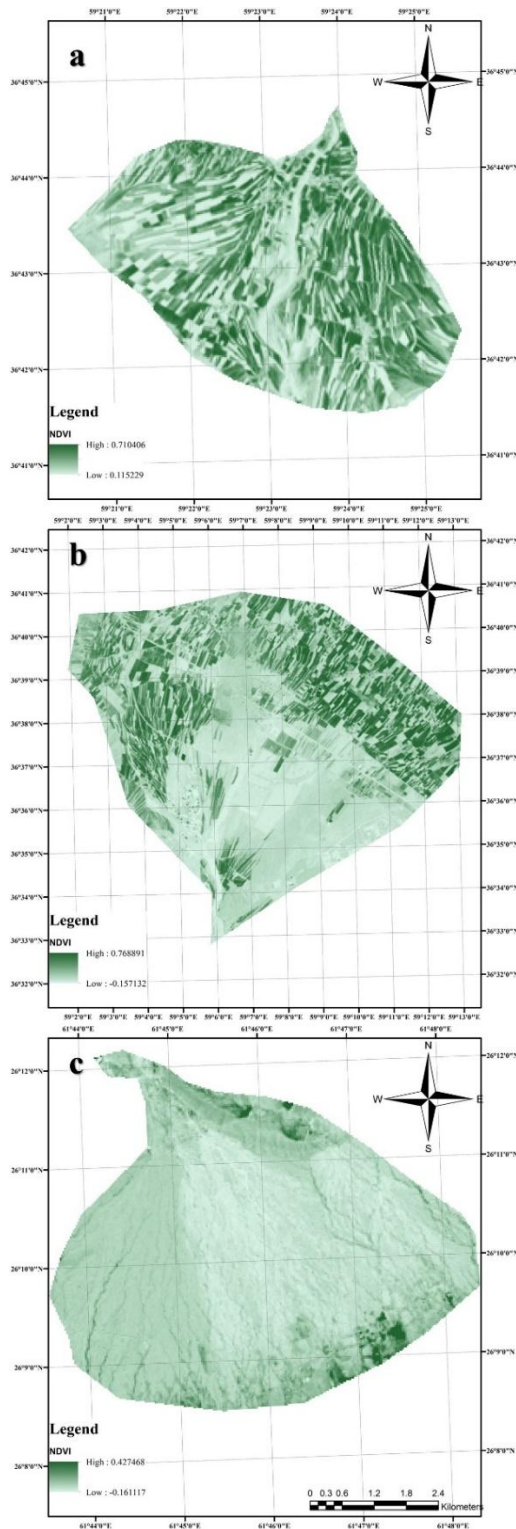


Figure 4. Calculated NDVI for: a) Ardak fan, b) Ferizy fan, and c) Sarbaz fan.

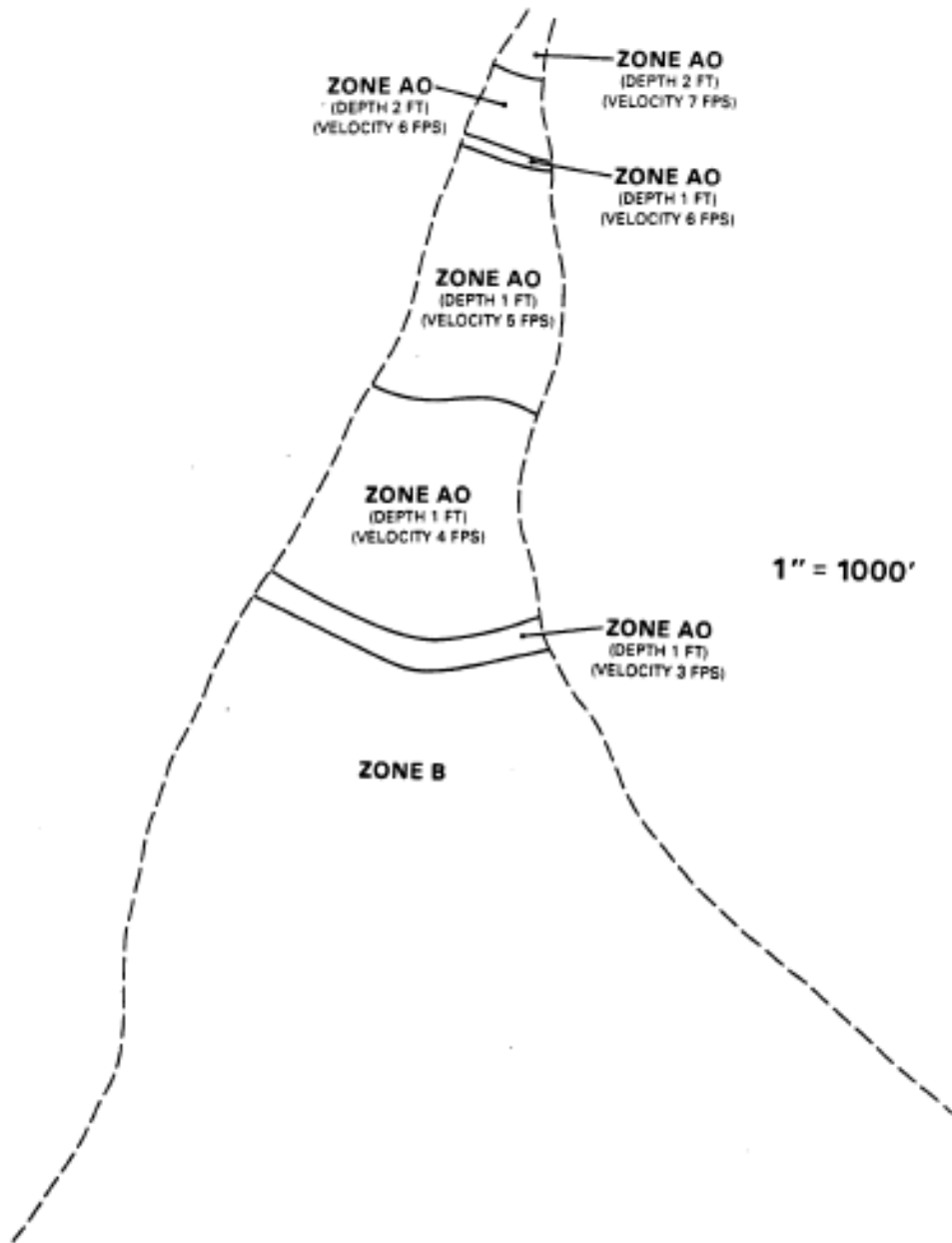


Figure 5. Examples of AO zones according to depth and velocity in FAN model (Federal Emergency Management Agency and Administration, 1990).

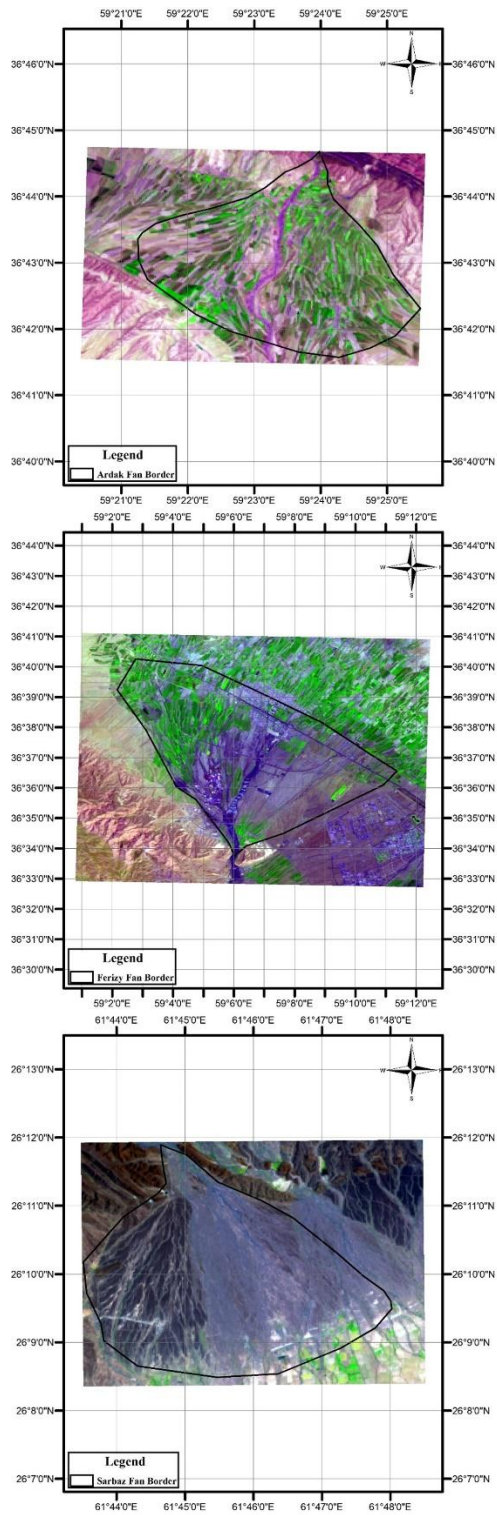


Figure 6. Aerial images of a) Ardak, b) Ferizy, and c) Sarbaz fans.

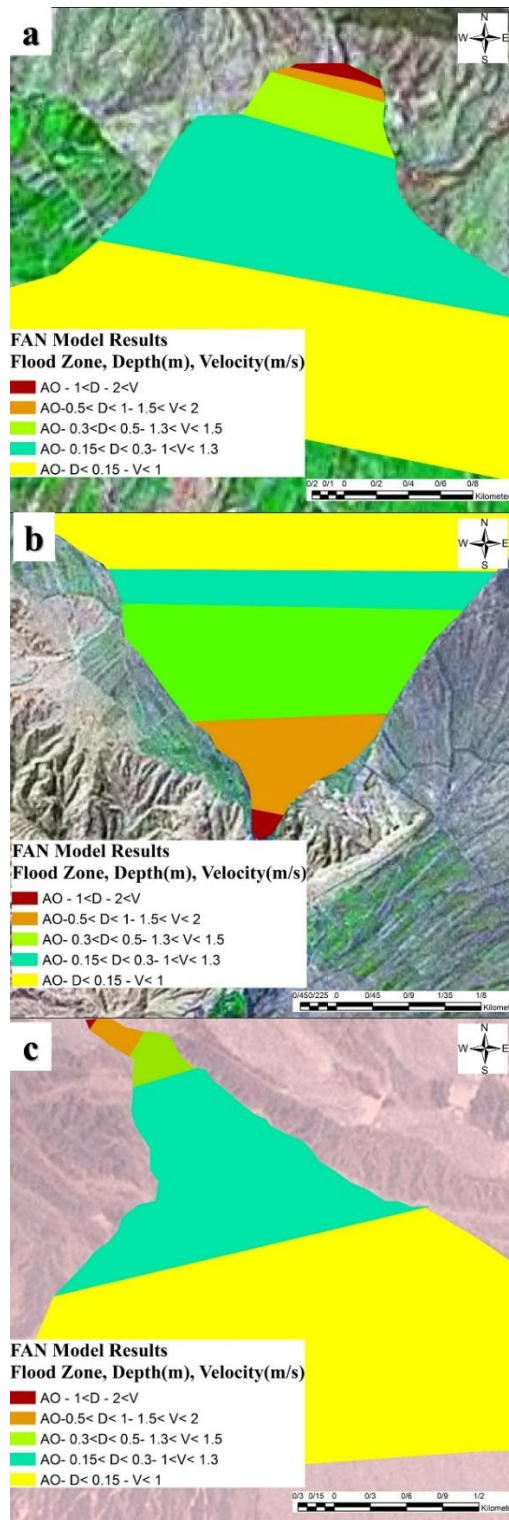


Figure 7. Flood depth and velocity results of FAN model for: A) Ardak, B) Ferizy, and C) Sarbaz fans.

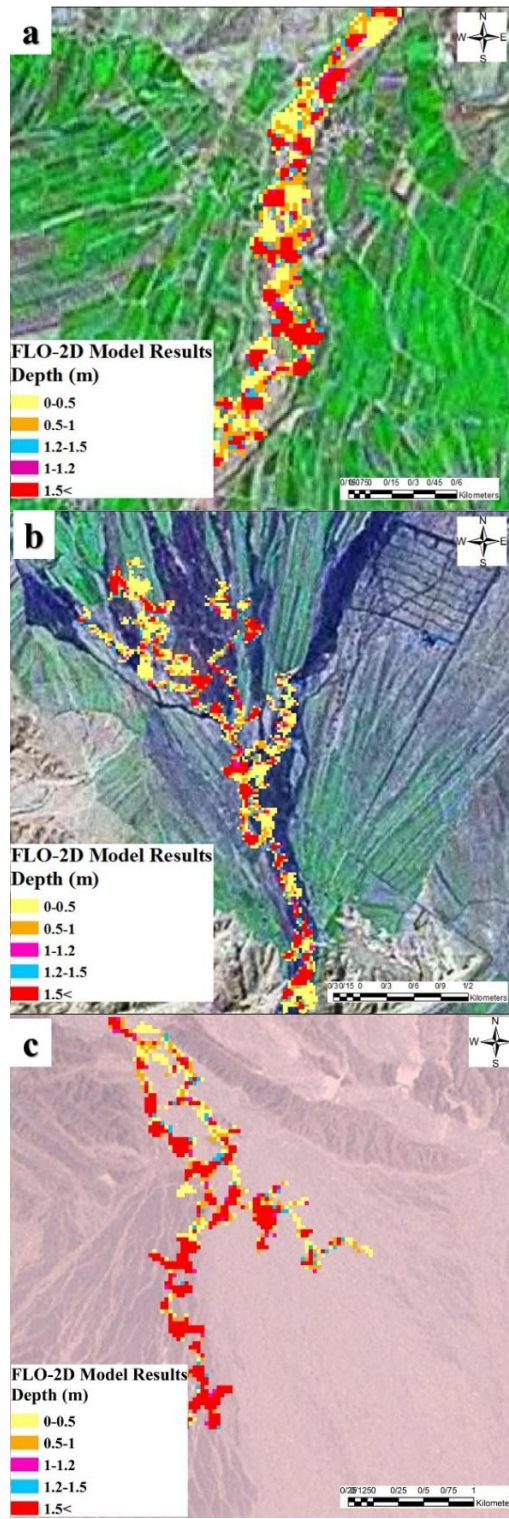


Figure 8. Flood depths results of FLO-2D model for: A) Ferizy, B) Ardak and, C) Sarbaz fans.

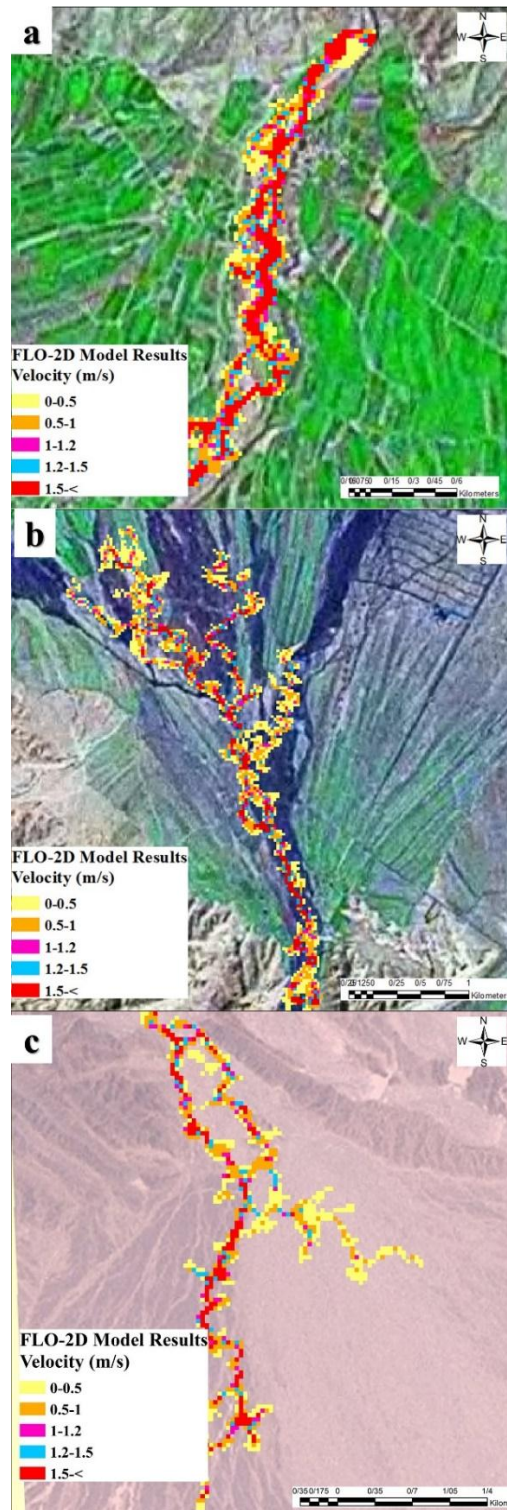


Figure 9. Flood velocities results of FLO-2D model for: A) Ferizy, B) Ardak and, C) Sarbaz fans.

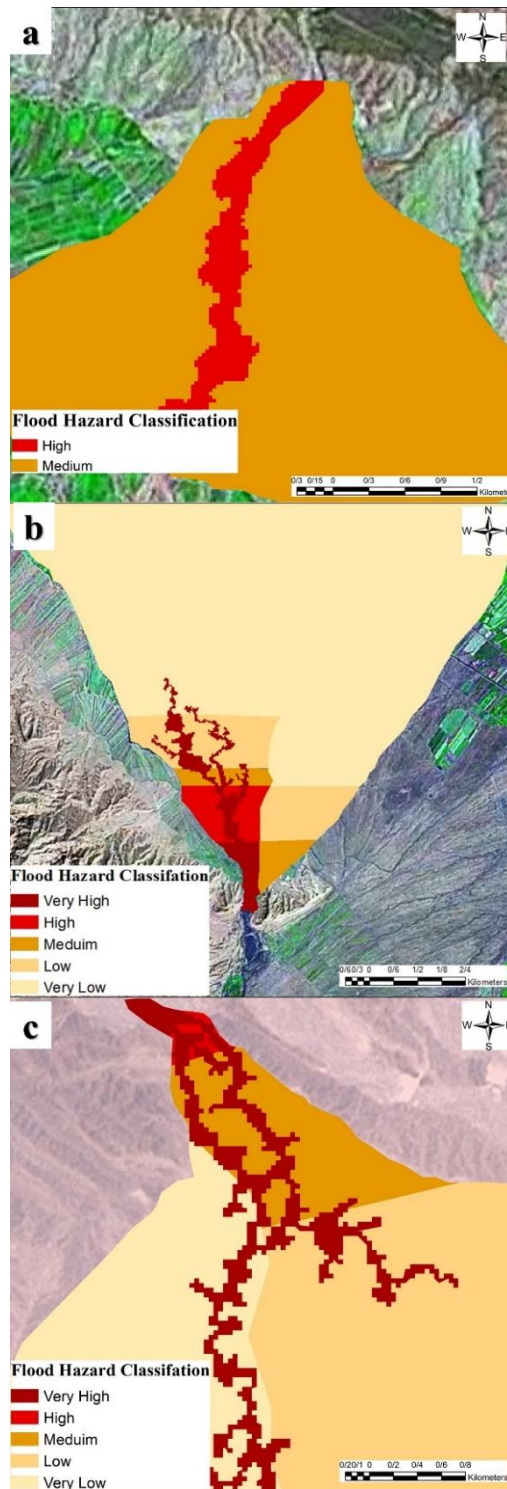


Figure 10. The final integrated results of FAN model, FLO-2D model and the geomorphological approach for: A) Ferizy, B) Ardak and, C) Sarbaz fans.