

# ***Interactive comment on “Enhancing Flood Hazard Estimation Methods on Alluvial Fans Using an Integrated Hydraulic and Geological and Geomorphological Approach” by Zeinab Mollaei et al.***

**Zeinab Mollaei et al.**

s.m.hasheminia@gmail.com

Received and published: 5 November 2017

Dear Referee #2

Special thanks for your thorough review of our paper. Sorry for responding rather late. We sent the responses on Sept. 11, 2017, however, due to some misunderstanding on our side concerning the submission procedure, the final responses were posted as "short comments". Ms. Anna Feist-Polner, the Editorial Support, guided us to remedy the process. All of your comments were considered in the text as precisely as possible.

Please kindly find the corrected manuscript in the attached file and kindly share with us any further comments you may have. We are sure it will add to the richness of the quality of our scientific approach. Thanks for your time and concern.

With Kind Regards,

S. M. Hasheminia

Please also note the supplement to this comment:

<https://www.nat-hazards-earth-syst-sci-discuss.net/nhess-2017-226/nhess-2017-226-AC2-supplement.pdf>

---

Interactive comment on Nat. Hazards Earth Syst. Sci. Discuss., <https://doi.org/10.5194/nhess-2017-226>, 2017.

[Printer-friendly version](#)

[Discussion paper](#)



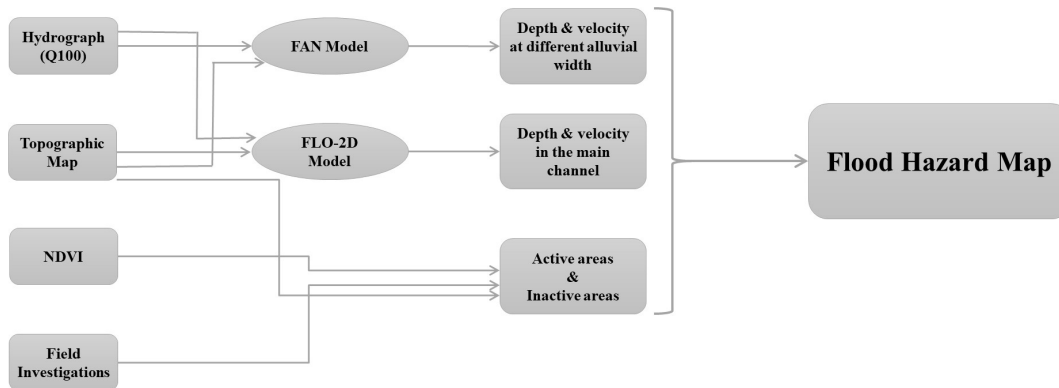


Fig. 1.

[Printer-friendly version](#)

[Discussion paper](#)



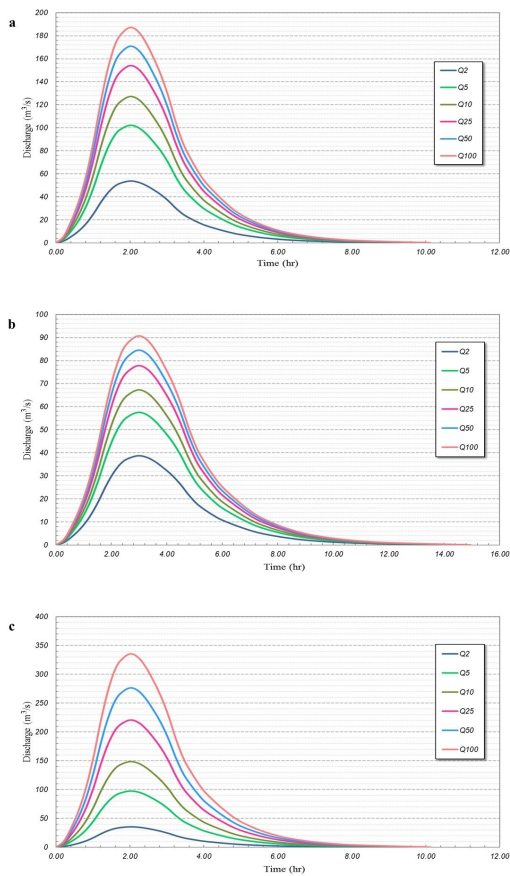


Fig. 2.

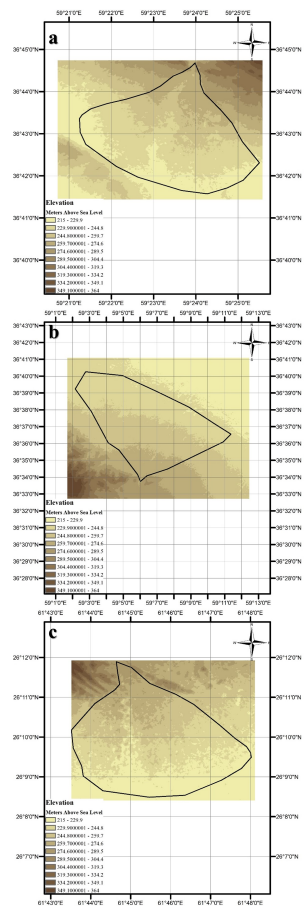


Fig. 3.

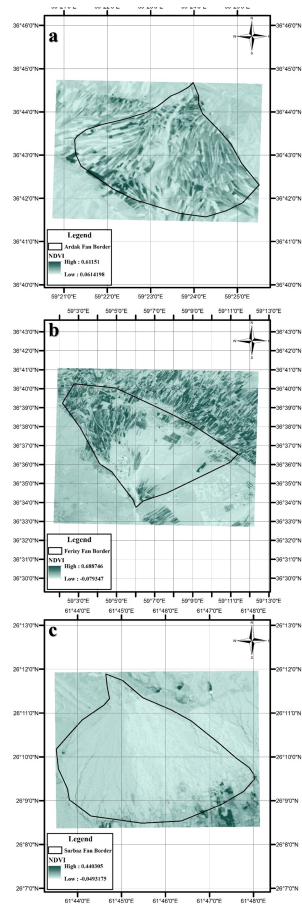


Fig. 4.

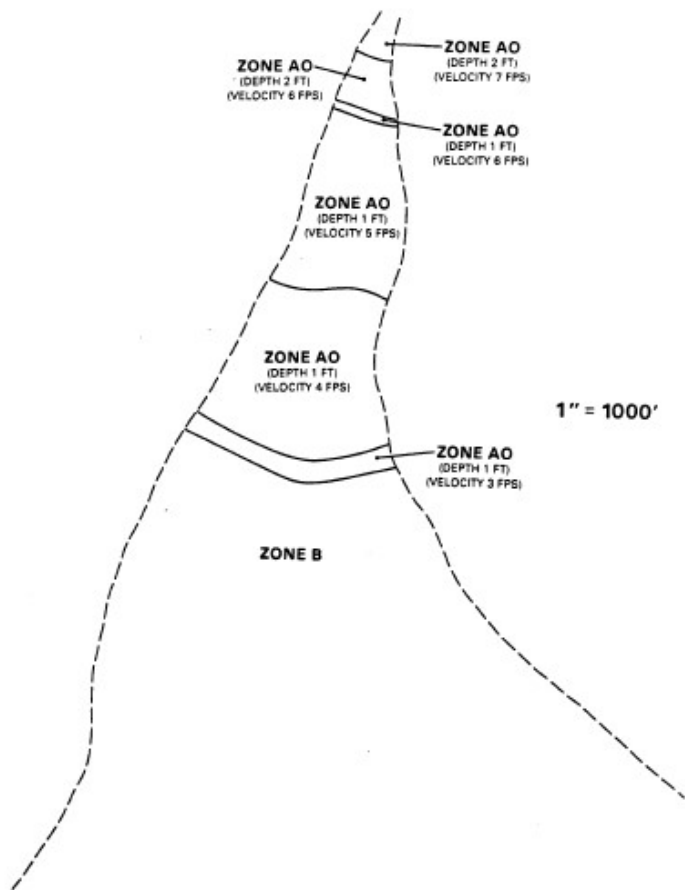


Fig. 5.

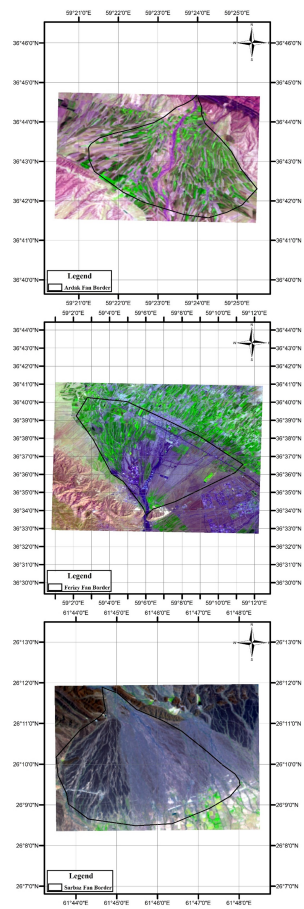


Fig. 6.



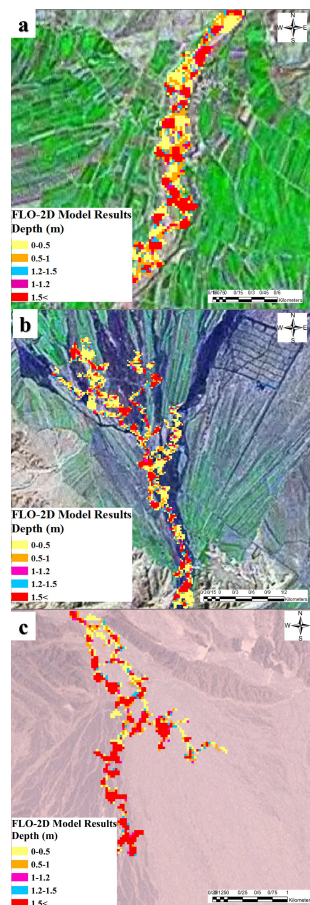


Fig. 7.

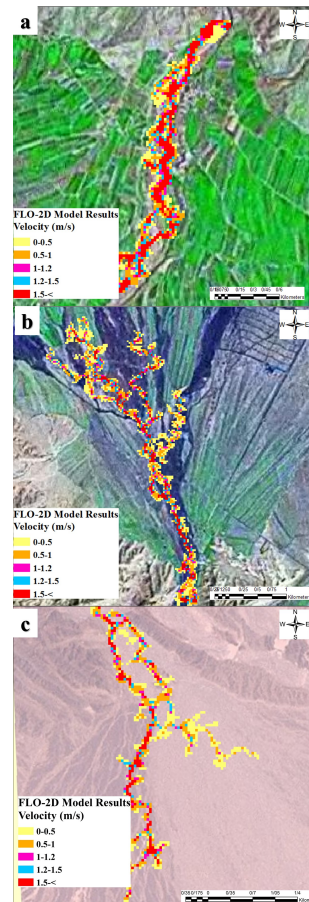


Fig. 8.

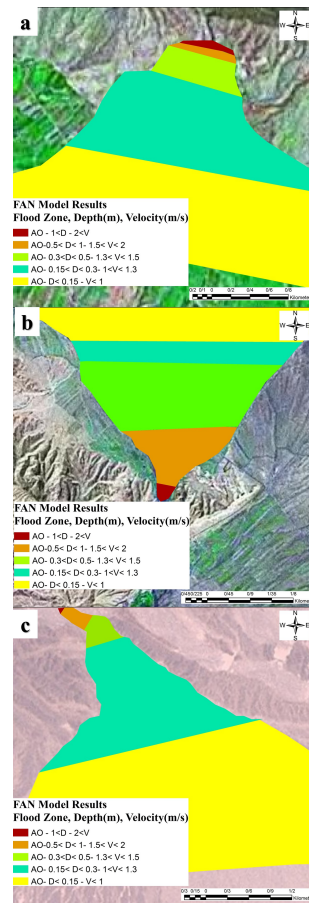


Fig. 9.

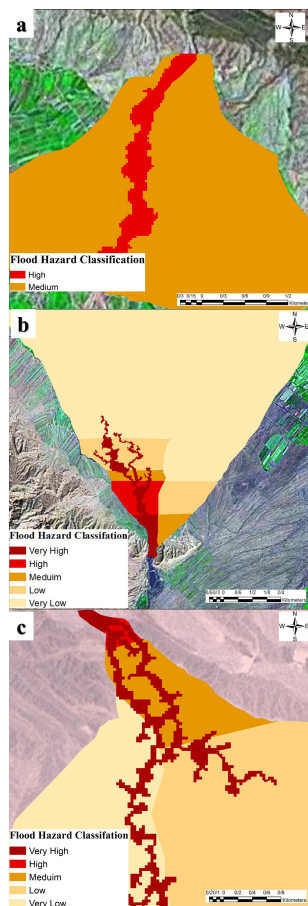


Fig. 10.