

High-resolution modeling of tsunami run-up flooding: A case study of flooding in Kamaishi City, Japan, induced by the 2011 Tohoku Tsunami

Ryosuke Akoh¹, Tadaharu Ishikawa², Takashi Kojima³, Mahito Tomaru³, Shiro Maeno¹

5 ¹Graduate School of Environmental and Life Science, Okayama University, Okayama, 700-8530, Japan

²A Professor emeritus, Tokyo Institute of Technology, Kanagawa, 226-8503, Japan

³TOKEN C. E. E. Consultants Co., Ltd., Tokyo, 174-0004, Japan

Correspondence to: Ryosuke Akoh (akoh@okayama-u.ac.jp)

Abstract

10 Run-up processes of the 2011 Tohoku Tsunami into the city of Kamaishi, Japan were simulated numerically using 2D shallow water equations with a new treatment of building footprints. The model imposes an internal hydraulic condition of permeable and impermeable walls at the building footprint outline on unstructured triangular meshes. Digital data of the building footprint approximated by polygons were overlaid on a 1.0 m resolution terrain model. The hydraulic boundary conditions were ascertained using conventional tsunami propagation calculation from the seismic center to nearshore areas.
15 Run-up flow calculations were conducted under the same hydraulic conditions for several cases having different building permeabilities.

Comparison of computation results with field data suggests that the case with a small amount of wall permeability gives better agreement than the case in impermeable condition. Spatial mapping of an indicator for run-up flow intensity ($I_F = (hU^2)_{\max}$, where h and U respectively denote the inundation depth and flow velocity during the flood). shows fairly good
20 correlation with the distribution of houses destroyed by flooding. As a possible mitigation measure, the influence of the buildings on the flow was assessed using a numerical experiment for solid buildings arrayed alternately in two lines along the coast. Results show that the buildings can prevent seawater from flowing straight to the city center while maintaining access to the sea.

25 Key word: Tsunami hazard, numerical modeling, urban area, building footprint, internal boundary condition

1 Introduction

Recent urbanization of low-lying coastal areas has increased the potential for property damage, human injury, and death caused by tsunamis. Visual data obtained during the tsunami run-up have revealed that arrays of structures in urban areas induced large wave deformation and swift currents on streets, and that the currents washed objects such as garbage, cars, and
30 debris from damaged structures, causing even more damage than the tsunami run-up over uniform ground. Prediction of swift currents in urban areas by numerical flow simulation is expected to be important for evacuation programs and for city layout planning measures to mitigate tsunami damage.

Tsunami simulation models for forecasting wave propagation and deformation from the seismic center to the coast have been developed and improved for decades. These models for high-speed calculations in a wide water body are often based on
35 a set of shallow-water equations on a structured rectangular grid system (Imamura 1995). Models with a rectangular grid system were extended to calculate the tsunami run-up on land by formulating the wavefront propagation on a dry bed (TiTov et al. 1995, 1998; Synolakis et al. 2008). However, the tsunami run-up simulation described above requires more precise flow modeling by introduction of the hydraulic effects of building arrangement.

Building array treatments in urban flood inundation models are classifiable into four types (Schubert et al. 2008; Schubert et al. 2012): building-resistance models (BR), in which large surface roughness is assigned to cells that fall within a building footprint (Liang et al. 2007) or developed parcels (Gallegos et al. 2009; Gallien et al. 2011); building-block models (BB), in which spatially distributed ground elevation data are raised to roof-top height (Brown et al. 2007; Hunter et al. 2008; Schubert et al. 2008); building-hole models (BH), in which building footprints are excluded from the flow calculation area with a free-slip wall boundary condition (Aronica et al. 1998; Aronica et al. 2005; Schubert et al. 2008); and building-porosity models (BP), in which the impact of buildings in a street block is expressed approximately by porosity and a drag coefficient in a street block (Guinot 2012; Sanders et al. 2008; Soares-Frazão et al. 2008).

The BR model is commonly adopted for tsunami run-up simulations (Gayer et al. 2010; Kaiser 2011; Suppasri et al. 2011; Bricker et al. 2015), although the model developers did not predict the velocity field. Komatsu et al. (2010), Conde et al. (2013), and Imai et al. (2013) respectively applied the BB model for the tsunami flooding in Kota Banda Aceh of Indonesia caused by 2004 off the Indian Coast of Sumatra Island Earthquake, for the flooding in two cities of Portugal during the 1755 Lisbon Tsunami, and for the extreme inundation in Kochi city of Japan during the historical tsunami run-up in 1707. Liu et al. (2001) applied the BH model to tsunami run-up flow caused by the 1896 Sanriku Earthquake Tsunami. Akoh et al. (2014) proposed a permeable wall model equivalent to the BH model when the permeability constant was zero, and applied the model to the tsunami flooding in Kamaishi city of Japan during the 2011 off the Pacific Coast of Tohoku Earthquake (2011 Tohoku Tsunami hereinafter). For the BP model, no report of the relevant literature has described a tsunami run-up simulation, probably because it is not easy to identify the values of porosity and building drag coefficient for the respective street blocks.

For this study, the permeable wall model based on shallow flow equations proposed by Akoh et al. (2014) was used to investigate tsunami run-up details for Kamaishi city during the 2011 Tohoku Tsunami using more field data than used in the earlier study. Chapter 2 describes the numerical simulation method: basic formulations and building array treatment. Chapter 3 is devoted to an explanation of numerical modeling the tsunami flooding in Kamaishi City: explanation of the study site, data sources for modeling, mesh generation, and calculation conditions. Calculation results are displayed in Chapter 4 along with validation data. In Chapter 5, after presenting discussion of the influence of the permeability constant on calculation results, the tsunami effects on houses were examined. We introduce an indicator, $I_F = (hU^2)_{\max}$, where h and U respectively denote the water depth and the flow velocity at each point. In addition, we numerically tested effects of rigid building arrays along the coast on the reduction of I_F in the city center as a possible mitigation measure to be used instead of high continuous embankments, which prevent access to the sea.

2 Methods

Considering the openings of wooden houses such as doors, windows or cracks and slits caused by tsunami effects, the shallow water BH model was improved to express the effects of wall permeability by introducing the “assumption of internal hydraulic conditions” on line segments where the walls were located. The seawall overtopping was considered similarly.

2.1. Numerical Model

Two-dimensional shallow water equations were adopted for numerical simulations: a continuity equation for an incompressible fluid and momentum equations used under the assumption of hydrostatic pressure without horizontal diffusion terms in Cartesian coordinates. The Godunov-type finite volume method (Godunov et al. 1959) was used to solve the hyperbolic differential equations. The spatial domain of integration was covered by a set of unstructured triangular cells, which are not necessarily aligned with the coordinates. Therefore, the topography and building footprints were expressed flexibly. The cell-averaged values for water depth, velocity components, and ground surface elevation were assigned at the centroid of each triangle.

By integrating the equation over each triangular cell and by application of Gauss's theorem to the flux integral, a finite-differential equation for time evolution of variables was obtained. The method of characteristics was applied to the flux terms. Roe's approximate Riemann solver (Roe 1981) was adopted, based on the first-order upwind approach. In the finite differentiation of the momentum source term induced by ground slope, an upwind approach was also adopted to satisfy the C-property condition for avoiding nonphysical oscillations by ensuring the balance with the flux term in the steady condition (Zhou et al. 2001). The momentum source term induced by bed friction, which was expressed by Manning's roughness, was given by the spatial average.

To model wavefront motion, the Eulerian method proposed by Brufau (2002) was adopted to avoid the so-called C-property collapse at the border between a wet cell and a dry bed cell. This method temporarily sets the ground elevation of the dry bed cells adjacent to the wet area as equal to the water surface level in the neighboring wet cell. A more detailed description of the method was presented in an earlier report (Akoh 2014).

2.2 Assumptions of internal boundary conditions

Effects of seawalls on a flood flow are expressed by imposing the following internal hydraulic conditions on line segments where the seawalls are located.

$$q = \begin{cases} 0.35 h_1 \sqrt{2gh_1} & \text{if } h_2 / h_1 < 2/3 \\ 0.91 h_2 \sqrt{2g(h_1 - h_2)} & \text{otherwise} \end{cases} \quad (1)$$

For those expressions, q is the volumetric flow rate over a unit length of seawall. In addition, h_1 and h_2 respectively denote the water depths above the crown at the upstream and downstream sides (see **Fig. 1(a)**). The first equation and the second equation respectively represent free overflow and submerged overflow (Honma 1940).

Ordinary BH models exclude building footprints from the calculation area using a free slip interior boundary condition. In this study, effects of buildings on a flood flow are expressed by imposing the following internal hydraulic condition on the line segments of building footprint outlines.

$$q = \pm C \sqrt{2g |h_{out} - h_{in}|} (h_{out} + h_{in}) / 2 \quad (2)$$

Therein, q denotes the flow rate across a unit length of the wall, h_{out} and h_{in} respectively represent the water depths immediately outside and inside the wall, $(h_{out} + h_{in}) / 2$ denotes the average wetted height of the wall, $(h_{out} - h_{in})$ represents the water surface difference across the wall (see **Fig. 1(b)**), g stands for gravitational acceleration, and C is a constant representing the wall permeability resulting from openings such as doors, windows, or cracks and slits caused by wave impacts. Positive and negative signs respectively denote cases in which $h_{out} > h_{in}$ and $h_{out} < h_{in}$. In an impermeable condition ($C=0$), the model is equivalent to the BH model.

3 Application: Inundation in Kamaishi City from the 2011 Tohoku Tsunami

The 2011 off the Pacific Coast of Tohoku Earthquake, with 9.0 in seismic magnitude, hit the northeastern Pacific coast of Japan on March 11, 2011. The total death toll including missing persons reached about 18,000, 90% of whom were killed by the tsunami which struck soon after the earthquake in low-lying urban areas on the coast. Kamaishi City was one of the severely damaged municipalities.

3.1. Site description

Kamaishi City is located at the inner part of the Kamaishi Bay in the southern Sanriku saw-tooth coast of Tohoku District, Japan (**Fig. 2**). The distance between the bay mouth and the seismic center of the 2011 Tohoku Earthquake is only 115 km. A

GPS wave gauge placed 20 km offshore from the bay mouth recorded the time series of the water surface displacement induced by the 2011 Tohoku Tsunami.

Figure 3 presents the bathymetry and surrounding topography of Kamaishi Bay, where Tokyo Peil (T.P.) +m denotes the elevation in meters above the average sea level in Tokyo Bay, which is the standard elevation unit in Japan. A breakwater to prevent tsunami wave intrusion was built at the bay mouth in 2009 after several tsunami disasters occurred in the 19th and 20th centuries. Nevertheless, the upper part of the structure was destroyed by the first wave of the 2011 Tohoku Tsunami. The center of Kamaishi City is located on narrow lowland surrounded by mountains inside the bay. **The Kamaishi City population of approximately 35,000 is mainly reliant on marine product industries and the steel industry.**

Figure 4 depicts the building distribution in the city center before the earthquake provided by Geospatial Information Authority of Japan (GIAJ), where the colors show materials used in the construction of individual buildings. Approximately 2,500 small buildings were clustered close together in a narrow area. More than half of these buildings were mortared wooden houses (shown as red). The old coastline was at the southern margin of this dense building cluster. The open space between the old coastline and the present coastline is reclaimed land used as a fishing port, a market, and a loading yard. Most of the steel-frame buildings (shown as yellow) were workshops and storehouses used for marine industries. Concrete panels covered the side faces of these buildings. The black line along the coast represents a concrete seawall, the crown elevation of which was T.P. +4 m.

The height of the first wave of the 2011 Tohoku Tsunami was approximately 10 m at the coast near the city center. A large volume of seawater overtopped the seawall and struck the buildings. Black cells in **Fig. 5** show the buildings that had been destroyed completely (washed away) by the tsunami waves. Gray cells show remaining buildings that were nonetheless severely damaged (GIAJ). Most buildings in the city were damaged severely, among which the destroyed buildings were mortared wooden houses, which are common throughout Japan.

3.2 Model setup

3.2.1. Topographical conditions

Based on GPS elevation monitoring by GIAJ, large ground displacement occurred within a short time immediately after the first shock of the earthquake. The movement ceased before the first tsunami wave arrival at Kamaishi Bay (GIAJ). **Figure 6** shows ground elevation data obtained near the coastline of Kamaishi Bay obtained before and after the earthquake, which indicate approximately uniform subsidence of one meter.

Therefore, the ground elevation data for the numerical flow simulation was referred from a 1.0 m resolution digital elevation model provided by GIAJ based on aerial laser scanning after the earthquake. No bathymetry measurements were available for Kamaishi Bay after the earthquake at the time of the present study. Therefore, the seafloor elevation was estimated by subtracting one meter from measurements taken before the earthquake (Japan Oceanographic Data Center). **As described earlier, the upper part of breakwater at the bay mouth was destroyed by the first wave of the 2011 Tohoku tsunami. Tomita et al. (2012) investigated the effect of breakwater on the tsunami propagation into the bay by comparing three calculations: with the breakwater before tsunami arrival, with damaged breakwater configuration measured after the tsunami, and without breakwater, whereas the actual process of breakwater destruction remains as a subject for future study. Therefore in this study, the damaged configuration measured after the tsunami (Takahashi et al. 2011) was assumed for calculation.**

3.2.2. Seawalls and building footprints

The Digital Base Map for Reconstruction Planning (2011) provided by GIAJ includes a dataset of structure plane figures before the earthquake. The seawall positions were approximated by line segments using GIS software SIS.

The digital base map also includes building footprint outlines as corner positions of polygon geometry. However, overly fine expression of irregular building shapes and tight spacing are expected to degrade the computational efficiency. For that

reason, building footprints were simplified: Polygon sides shorter than 2.5 m were eliminated by erasing some corners. Building gaps narrower than 1.5 m were avoided by aggregating polygons. An example of simplification is portrayed in **Fig. 7**. About 2,742 buildings were found in the digital base map for detailed calculations in the city center area. The number was reduced to about 1,800 after polygon aggregation.

5 3.2.3. Mesh generation

The red line in **Fig. 8(a)** presents the total area for tsunami run-up simulation. The blue dotted line shows the area of detailed calculations in which building footprints were quantified. **Figure 8(b)** and **Fig. 8(c)** portray enlarged images of the two areas. For areas with detailed calculation, a triangular mesh system was constructed from the position dataset of seawalls and building corners using software (ANSYS® ICEM CFD™), under a minimum angle constraint of 30 deg to avoid computational instability caused by acute angles. The ground elevation at each triangle centroid was obtained by interpolating the 1.0 m resolution digital model provided by GIAJ. Manning's roughness coefficient was assumed as $n=0.02$ because almost all land surfaces in the detailed calculation area were roads and bare ground (except for building footprints).

For the areas of suburbs and water (outside the blue dotted line), triangular mesh systems were constructed using ANSYS® ICEM CFD™ based on the coast locations, bed elevation contour lines, and land-use classification boundaries. Manning's roughness coefficient was assigned as described by Bunya (2010) and Bricker et al. (2015) for each land-use classification, as presented in **Table 1** and as shown with colors in **Fig. 8(b)**. In all, 146,665 computation grid areas were created for the whole calculation area.

3.3 Hydraulic condition for calculation

The hydraulic conditions at the east open boundary of calculation area were given by the conventional tsunami propagation model in the ocean (TUNAMI-N2, Imamura 1996) with rectangular grids. For calculation efficiency, a seven-step, one-way nesting method was adopted with grid sizes of 3,240 m to 10 m. The time increment of computation was ascertained from the CFL criterion for each nesting process. The initial distribution of the water surface setup was obtained from the estimation presented by the Central Disaster Prevention Council (2012). The calculation results were compared with data obtained using a GPS water gauge located 20 km off the mouth of Kamaishi Bay (see **Fig. 1**). **Figure 9** shows calculated and measured results for the sea surface displacement at a GPS wave gauge station. The agreement was sufficient. The calculated time series of water surface elevation and momentum flux at the east open boundary were imposed to the tsunami run-up model described in earlier chapters.

Numerical simulations were conducted with time increment $\Delta t = 0.025$ s for the cases presented in **Table 2**. In Case-1(a), building walls were assumed to be impermeable ($C = 0$) for building arrays in the city center area before the tsunami run-up, but in Case-1(b), $C = 0$ for building arrays without houses destroyed by tsunami flooding. Case-2(a) – Case-5(a) and Case-2(b) – Case-5(b) were counterparts of Case-1(a) and Case-1(b), in which C was changed respectively as 10^{-3} , 10^{-2} , 10^{-1} , and 10^0 .

4 Validation of results

Data of many kinds were collected by academic groups, governments, and municipalities after the earthquake. The results obtained from the numerical simulation described in the previous chapter are presented herein and are compared to those real data.

4.1 Tsunami wave height near the coast

4.1.1. Field data analysis

As described earlier, the breakwater at the bay mouth was considered with damaged configuration measured after the tsunami because of the uncertainty of its destruction process. In this study, therefore, time series of tsunami wave height near the coast line were obtained using image analysis of digital photographs taken by residents. Using them, we examined the calculated time series near the coast line for use in run-up calculations in the city center area. **Figure 10(a)** portrays the shooting point and the view angle, shown respectively by the yellow dot and the blue lines, in an area (shown as red) where some concrete buildings withstood the tsunami. The water surface elevation at each time was estimated by comparison with the window height, as measured by the authors after the area was made accessible for tsunami damage investigations. **Figure 10(b)** presents an example in which the red numbers denote heights from the ground of the lower window frames. Blue numbers and black numbers respectively denote the vertical angle differences and the elevation differences of the lower window frame and the water surface from the upper window frame, as measured from the digital image. Based on this analysis, the water surface elevation at the moment was estimated as 6.865 m from the ground.

4.1.2. Verification of results

The colored dots depicted in **Fig. 11(a)** show the respective water surface levels ascertained from the photographic analysis described for **Fig. 10** for four points located near the coast. They are shown with the same symbols in **Fig. 11(b)**. The colored solid lines represent the calculated time series of the water surface level at the location of **P3** (see **Fig. 11(b)**) for four cases among those presented in Table 2. **The P3 located at the center of measurement area was selected for plotting of the calculation results because the four points were mutually very close and calculation results were almost identical.** All calculation results were mutually similar. They agreed fairly well with the observations. This outcome suggests that building wall permeability and assumptions of building arrays, with or without destroyed buildings, did not strongly influence the tsunami wave height near the coast.

The calculated highest water surface level was from T.P. 10.2 m (Case-3(a)) to 10.5 m (others) at around 2,320 s after the first earthquake shock, although the actual measured highest water surface level was approximately T.P. 9.8 m at around 2,222 s after the first shock. A possible reason for this difference is that the process of destruction of the breakwater at the bay mouth was ignored in tsunami propagation calculations for the ocean because the breakwater collapsed at an early stage of the tsunami event, but it is possible that the destruction of the breakwater dissipated the energy of intruding tsunami waves.

4.2 Local highest water surface in the city

4.2.1. Field data source

An academic joint research group was organized to conduct an extensive survey of the disaster caused by the 2011 Tohoku Tsunami (TTJS Group 2011; Mori et al. 2011). Their survey covered almost the entire Pacific Coast damaged by 2011 Tohoku Tsunami, as marked by red in **Fig. 2(a)**. For the Kamaishi area, after estimation of the highest water surface level at several points from water surface traces remaining on poles, roofs, building walls, and the ground, they made the dataset available to other research groups via the internet. We present those data on the map displayed in **Fig. 12**.

4.2.2. Verification of results

Figure 13 shows correlation between the measured and calculated highest water surface levels for four cases with symbols used in **Fig. 12**. Lines show perfect agreement (---), best fit regression line (—) and a regression line with 1:1 slope (- · -) inserted in **Fig. 13**. In the cases of $C = 0.0$ (Case-1(a) and Case-1(b)), where water storage in buildings was not considered, large

deviations are found in the western run-up data (×) at the end of inundation region, suggesting that the flow concentrated only on streets in the calculation led to overly efficient flood propagation.

Cases with $C = 0.01$ (Case-3(a) and Case-3(b)) present results better than those obtained for the cases with $C = 0.0$, which suggests that modification of the BH model by consideration of water storage in buildings might better fit Japanese wooden houses. Calculations for the building arrays after the tsunami impact (Case-(b) series) were less accurate than for those before tsunami impact (Case-(a) series), probably because the highest water surface was generated during the first wave run-up, when houses had not been destroyed completely.

4.3 Wavefront propagation on streets

10 4.3.1. Field data analysis

A local resident recorded a video (YouTube 2013) recording of tsunami waves from the point shown as the yellow dot in the direction indicated by the blue arrow presented in Fig. 14(a). After we selected three images in which the tsunami front had just passed the street through three intersections, $R1$, $R2$, and $R3$, marked by yellow dots in Fig. 14(b), we ascertained time differences among the images, as shown in the bottom panels of Figs. 15(a)–15(c).

15 4.3.2. Verification of results

Figure 16 depicts snapshots of the inundation depth for Case-3(a) at the three moments when the calculated tsunami wavefront reached the three intersections denoted by $R1$, $R2$, and $R3$ (see Fig. 14(b)), where the tsunami front passage was captured by a resident using a digital video camera. The red numbers below Fig. 16 represent the time passage between the tsunami front impacts. Comparison of the measured results shown at the bottom of Fig. 15 reveals that the calculated time differences agree well with the observed time differences.

5 Discussion

The reasonable value of C , unknown parameter in the model, is discussed in this chapter based on observed data presented in the previous chapter. Then, the tsunami effects on houses are estimated by introducing an indicator for tsunami run-up intensity. Furthermore, effects of rigid building arrays along the coast are tested numerically as a possible mitigation measure to reduce the hydraulic impact indicator in the city center.

5.1 Permeability constant

C is a parameter representing the effects of water intrusion into buildings through openings during detention of the tsunami run-up flow. This is a distinctive point as well as a weak point of the present model because no physical evidence exists to assign a value to C for each building: the actual value is expected to vary depending on the building condition and stage of tsunami impact. However, it is also true that there must be some amount of water leakage through slits and cracks of the building side faces.

Figure 17 presents characteristics of data scattering around the regression lines of 1:1 slope for the Case-(a) series. The mean squared error (\blacktriangle) became stable for $C > 10^{-2}$ with the weak minimum at $C = 10^{-1}$, whereas the intersection value of the regression line with 1:1 slope (\bullet , difference from the perfect agreement line) takes the minimum value of 0.8 m at $C = 10^{-2}$. Considering that the error of the maximum wave height at the coastline was 0.4–0.7 m (see Fig. 11(a)), the result of Case-3(a) is apparently the best among the five cases.

Figures 18(b) and 18(c), respectively show the time series of water depth and flow velocity obtained using the five cases of the Case-(a) series at two points A and B in the city center, as shown in (a). Although the tsunami wave arrival time and

peak values of depth and velocity depend on the value of C , the resultant sensitivity to C does not appear to be excessive considering ambiguous factors of other kinds in numerical simulations.

Although the discussion presented above might appear to be unclear and indefinite, the overall permeable constant $C = 0.01$ for the building array before the tsunami arrival (Case-3(a)) was adopted for the following discussion because the case provided the highest correlation with measured data.

5.2 Tsunami effects on houses

Figure 19 presents spatial distributions of the maximum inundation depth and the maximum flow velocity obtained from the Case-3(a) calculation, in which black rectangles represent houses destroyed by tsunami waves. The water depth was greater in the eastern part of the building collapse concentration area because the tsunami approached the city from the east, whereas higher flow velocities were found in western areas because the wavefront hitting at the end of bay intruded directly into open spaces and the streets.

Considering that the forces on structures are proportional to the momentum flux, an indicator for tsunami run-up flow intensity, I_F , was introduced as

$$I_F = (hU^2)_{\max}, \quad (3)$$

where h and U respectively denote the inundation depth and flow velocity during the flood. **Figure 20** presents a spatial distribution of I_F , which is closely correlated with the distribution of collapsed houses colored black in the figure.

5.3 Tsunami reduction effects of concrete buildings along the coast

Construction of high embankments along the coast was stated as the primary countermeasure against tsunami run-up in reconstruction guidelines issued by the Japanese Government after the 2011 Tohoku Tsunami (Cabinet Office, Government of Japan, 2011). However, such structures obstruct access to the sea, causing great inconvenience to cities with local communities that are mainly reliant on marine product industries. **Some reports have suggested that large buildings protected the houses behind them from tsunami impact (e.g., Matsutomi et al., 2012; Takagi et al., 2014).**

Therefore, the effects of building arrays along the coast on controlling the flood flow instead of a continuous seawall were tested numerically. White rectangles in **Fig. 21** show the trial building plot: two building layers are lined alternately to prevent seawater from flowing straight to the city center, with daily traffic given access through a hook-shaped road system. The building footprint dimensions are presented above the figure.

The color contour in **Fig. 21** shows the calculated I_F -distribution. Compared with **Fig. 20**, the tsunami run-up flow intensity dropped drastically on streets where many wooden houses had been destroyed by the 2011 Tohoku Tsunami. Results of this trial calculation suggest that properly arranged concrete buildings along the coast can function as a seawall, reducing damage to homes behind them and sheltering some evacuation routes, although special building equipment for emergencies must be provided on lower floors, such as rigid shutters that can be closed before tsunami wave impact, along with safety measures for lifeline services such as electrical power.

6 Conclusions

The approach presented in this paper demonstrated the possibility of accurate urban flood modeling with an internal hydraulic condition at building side faces, which allows water leakage into buildings, in the context of tsunami run-up in Kamaishi City caused by the 2011 Tohoku Earthquake. When the wall permeable constant is set to zero, the model is equivalent

to a BH model. A mesh system for calculation was generated using software (ANSYS® ICEM CFD™) based on building footprints included in a digital map provide by GIAJ with a digital elevation model of 1.0 m resolution, also provided by GIAJ.

The permeable wall assumption is both the distinctive point and the weak point of the model because of the difficulty in assigning a realistic value of permeability to each building. In actuality, the value is expected to vary depending on the building condition and stage of tsunami impact. Moreover, it is true that some amount of water leakage occurs through openings, slits, and cracks on building side faces. In this study, five values of the permeability constant C defined by Eq. (3) were examined from 0 (impermeable) through 10^{-3} , 10^{-2} , 10^{-1} to 1. A comparison of computed results with field data suggests $C = 10^{-2}$ overall for cases of tsunami flooding in Kamaishi City.

Examination of time series of water depth and flow velocity at the city center revealed that the consequent sensitivity on C was not so great, except for a short duration around the first peak. Because accurate evaluation of hydraulic conditions at the first peak is important, further investigation is necessary to ascertain the C -value practically, based on results of field and experimental studies. However, considering that the original definition of the permeable constant was abstract and that the permeability model was a kind of perturbation from the building-hole model, further detailed consideration of C -value might be meaningless at this point.

The purpose of modelling the tsunami run-up process is not only to predict hydraulic quantities such as inundation water depth but also to propose effective measures against tsunami disasters based on calculation results. This study adopted an indicator for run-up flow intensity: $I_F = (hU^2)_{\max}$, where h and U respectively stand for the water depth and the flow velocity at each point during the flood. Results showed that the spatial mapping of I_F -value has correlation with the distribution of houses destroyed by the tsunami flow.

Numerical tests conducted for buildings along the coast demonstrated that two lines of alternately arranged concrete buildings can prevent seawater from flowing straight into the city center, while maintaining daily traffic through a hook-shaped road system. Therefore, the present model offers great potential as a tool to support the improvement of city layouts for enhanced safety against tsunami waves.

Acknowledgements

We would like to thank the academic joint research group for their extensive survey of the 2011 tsunami disaster and for sharing the valuable data obtained in their survey. We also thank the River Division of the Department of Prefectural Land Development, Iwate Prefecture for providing topographic data of the Kamaishi area for this study. Finally, we thank Prof. Takashi Nakamura of the Tokyo Institute of Technology for his assistance in compiling the program used for GPU calculation.

References

- Akoh, R., Hatakeyama, S., and Ishikawa, T.: Numerical simulation of tsunami run-up in urban area taking into account the city layout, Proceedings of the 19th IAHR-APD Congress 2014, Hanoi, Vietnam, ISBN 978604821338-1, 2014.
- Aly, A. M., Asai, M., and Sonoda, Y.: Simulation of free falling rigid body into water by a stabilized incompressible SPH method, Int. J. Ocean Sys. Eng., 1(3), 207–222, 2011.
- Ansys, Inc., ANSYS® ICEM CFD™ User's Manual, <http://www.ansys.com/>
- Aronica, G., and Lanza, L. G.: Drainage efficiency in urban areas: a case study, Hydrol. Process., 19, 1105–1119, doi:10.1002/hyp.5648, 2005.
- Aronica, G., Tucciarelli, T., and Nasello, C.: 2D multilevel model for flood wave propagation in flood-affected areas, J. Water Res. Plan. Manage., 124(4), 210–217, doi:10.1061/(ASCE)0733-9496(1998)124:4(210), 1998.

- Asai, M., Aly, A., Sonoda, Y., and Sasaki, Y.: A stabilized incompressible SPH method by relaxing the density invariant condition, *J. App. Math.*, 2012, Article ID 139583, 2012.
- Bricker, J. D., Gibson, S., Takagi, H., and Imamura, F.: On the need for larger Manning's roughness coefficients deep-integrated tsunami inundation models, *Coast. Eng. J.*, 57(02), 155005, doi:10.1142/S0578563415500059, 2015.
- 5 Brown, J. D., Spencer, T., and Moeller, I.: Modeling storm surge flooding of an urban area with particular reference to modeling uncertainties: A case study of Canvey Island, United Kingdom, *Water Resour. Res.*, 43, W06402, doi:10.1029/2005WR004597, 2007.
- Brufau, P., Vázquez-Cendón, M. E., and García-Navarro, P. A.: Numerical model for the flooding and drying of irregular domains, *Int. J. Numer. Meth. Fluids*, 39, 247–275, 2002.
- 10 Bunya, S., Deitrich, J. C., Westerink, J. J., Ebersole, B. A., Smith, J. M., Atkinson, J. H., Jensen, R., Resio, D. T., Luettich, R. A., Dawson, C., Cardone, V. J., Cox, A. T., Powell, M. D., Westerink, H. J., and Roberts, H. J.: A High-Resolution Coupled Riverine Flow, Tide, Wind, Wind Wave, and Storm Surge Model for Southern Louisiana and Mississippi. Part I: Model Development and Validation. *Monthly Weather Review*, 18, 345–377, 2010.
- Cabinet Office, Government of Japan, Report of the Committee for Technical Investigation on Countermeasures for Earthquakes and Tsunamis Based on the Lessons Learned from the “2011 off the Pacific coast of Tohoku Earthquake,”
- 15 url: <http://www.bousai.go.jp/kaigirep/chousakai/tohokukyokun/pdf/Report.pdf>, 2011.
- Central Disaster Prevention Council, Cabinet Office, Government of Japan, The tsunami fault model of 2011 off the Pacific coast of Tohoku Earthquake,” url: http://www.bousai.go.jp/jishin/nankai/model/12/pdf/sub_1.pdf, 2012. (in Japanese)
- Conde, D. A. S., Baptista, M. A. V., Oliveira, C. S., and Ferreira, R. M. L.: A shallow-flow model for the propagation of tsunamis over complex geometries and mobile beds, *Nat. Hazards Earth Syst. Sci.*, 13, 2533–2542, doi:10.5194/nhess-13-2533-2013, 2013.
- 20 Fujimoto, K., Asai, M., Isshiki, M., Tatesawa, H., and Mikami, T.: Tsunami run-up simulation by ISPH method with high resolution geometrical modeling, *J. JSCE, Ser. A1 (Structural Engineering & Earthquake Engineering)*, 69(4), (2013), I_622-I_629. (in Japanese)
- 25 Gallegos, H. A., Schubert, J. E., and Sanders, B. F.: Two-dimensional, high-resolution modeling of urban dam-break flooding: a case study of Baldwin Hills, California, *Adv. Water Resour.*, 32, 1323–1335, doi:10.1016/j.advwatres.2009.05.008, 2009.
- Gallien, T. W., Schubert, J. E., and Sanders, B. F.: Predicting tidal flooding of urbanized embayments: A modeling framework and data requirements, *Coastal Eng.*, 58, 567–577, doi:10.1016/j.coastaleng.2011.01.011, 2011.
- 30 Gayer, G., Leschka, S., Nöhren, I., Larsen, O., and Günther, H.: Tsunami inundation modelling based on detailed roughness maps of densely populated areas, *Nat. Hazards Earth Syst. Sci.*, 10, 167901687, doi:10.5194/nhess-10-1679-2010, 2010.
- Geospatial Information Authority of Japan, Observation of Crustal Movements by GPS Networks, Ministry of Land, Infrastructure, Transport and Tourism, url:http://www.gsi.go.jp/chibankansi/chi_kakukansi40005.html. (in Japanese)
- Godunov, S. K.: A difference method for numerical calculation of discontinuous solutions of the equations of hydrodynamics, *Mat. Sb. (N. S.)*, 47(89), 3, 271–306, 1959.
- 35 Guinot, V.: Multiple porosity shallow water models for macroscopic modeling of urban floods, *Adv. Water Resour.*, 37, 40–72, doi:10.1016/j.advwatres.2011.11.002, 2012.
- Hirt, C. W. and Nichols, B. D.: Volume of Fluid (VOF) Method for the Dynamics of Free Boundaries, *J. Comput. Phys.*, 39, 201–225, 1981.
- 40 Honma, H.: Coefficient of flow volume on low overflow weir, *Civil Engineering, JSCE*, 26(2), 635–645, 1940. (in Japanese)
- Hunter, N. M., Bates, P. D., Neels, S., Pender, G., Villanueva, I., Wright, N. G. et al.: Benchmarking 2D hydraulic models for urban flood simulations, *Proc. Inst. Civ. Eng – Water Manage.* 161(1), doi:10.1680/wama.2008.161.1.13,13–30.

- Imai, K., Imamura, F., and Iwama, S.: Advanced Tsunami Computation for Urban Regions, *J. JSCE, Ser. B2 (Coastal Engineering)*, 69(2), I_311 – I_315, 2013. (in Japanese)
- Imamura, F.: Simulation of wave-packet propagation along sloping beach by TUNAMI-code, in: *Long-Wave Runup Models*, edited by Yeh, H., Liu, P. L. F., and Synolakis, C., World Scientific, 231–241, 1996.
- 5 Japan Oceanographic Data Center, J-EGG500 (JODC-Export Grid data for Geographic -500 m), url:http://www.jodc.go.jp/jo_dcweb/JDOSS/infoJEGG_intro.html
- Jonkman, S., Vrijling, J., and Vrouwenvelder, A.: Methods for the estimation of loss of life due to floods: a literature review and a proposal for a new method, *Nat. Hazards*, 46, 353–389, doi:10.1007/s11069-008-9227-5, 2008.
- Kaiser, G., Scheele, L., Kortenhaus, A., Løvholt, F., Römer, H., and Leschka, S.: The influence of land cover roughness on
10 the results of high resolution tsunami inundation modeling, *Nat. Hazards Earth Syst. Sci.*, 11, 2521–2540, doi:10.5194/nhess-11-2521-2011, 2011.
- Komatsu, Y., Sasaki, J., and Matsumaru, R.: Hindcasting of 2004 Indian Ocean Tsunami in Banda Aceh, Indonesia, Using FVCOM, *J. JSCE, Ser. B2 (Coastal Engineering)*, 66(1), 256–260, 2010. (in Japanese)
- Liang, D., Falconer, R. A., and Lin, B.: Coupling surface and subsurface flows in a depth averaged flood wave model, *J.*
15 *Hydrol.*, 337(1–2), 147–158, doi:10.1016/j.jhydrol.2007.01.045, 2007.
- Liu, X., Sakai, S., Mikami, T., Iwama, S., Imamura, F., Shuto, N., and Kikuchi, H.: Numerical analysis of tsunami run-up and tsunami flood to a coastal city, *Proceedings of the 28th International Conference Coastal Engineering 2002, Solving Coastal Conundrums*, Cardiff, Wales, 1168–1175, 2002.
- Matsutomi, H., Yamaguchi, E., Naoe, K., and Harada, K.: **Damage Conditions to Reinforced Concrete Buildings and Coastal
20 Black Pine Trees in the 2011 Off Pacific Coast of Tohoku Earthquake Tsunami, *J. JSCE, Ser. B2 (Coastal Engineering)*, 68(2), I_351-I_355, 2012. (in Japanese)**
- Mori N, Takahashi T, Yasuda T, and Yanagisawa H. **Survey of 2011 Tohoku earthquake tsunami inundation and run-up. *Geophysical Research Letters*. 2011 Apr 1;38(7).**
- Phuc, P. V., Imazu, Y., Sagawa, T., and Hasebe, M.: Tsunami Simulation Using VOF Method and Falling Mechanism of a
25 Building in Tohoku-Pacific Coast Earthquake, *J. JSCE, Ser. B2 (Coastal Engineering)*, 70(2), I_156-I_160, 2014. (in Japanese)
- Roe, P. J.: Approximate Riemann Solvers, Parameter Vectors, and Difference Schemes, *J. Comput. Phys.*, 43, 357–372, 1981.
- Sanders, B. F., Schubert, J. E., and Gallegos, H. A.: Integral formulation of shallow-water equations with anisotropic porosity for urban flood modeling, *J. Hydrol.*, 362, 19–38, doi:10.1016/j.jhydrol.2008.08.009, 2008.
- 30 Schubert, J. E. and Sanders, B. F.: Unstructured mesh generation and land cover based resistance for hydrodynamic modeling of urban flooding, *Adv. Water Resour.*, 31, 1603–1621, 2008.
- Schubert, J. E. and Sanders, B. F.: Building treatments for urban flood inundation models and implications for predictive skill and modeling efficiency, *Adv. Water Resour.*, 41, 49–64, 2012.
- Soares-Frazão, S., Lhomme, J., Guinot, V., and Zech, Y.: Two-dimensional shallow-water model with porosity for urban flood
35 modelling, *J. Hydraul. Res.*, 46(1), 45–62, doi:10.1080/00221686.2008.9521842, 2008.
- Suppasri, A., Koshimura, S., and Imamura, F.: Developing tsunami fragility curves based on the satellite remote sensing and the numerical modeling of the 2004 Indian Ocean tsunami in Thailand, *Nat. Hazards Earth Syst. Sci.*, 11, 173–189, 2011, doi:10.5194/nhess-11-173-2011, 2011.
- Synolakis, C., Bernard, E., Titov, V. V., Kânoğlu, U., and Gonzalez, F.: Validation and verification of tsunami numerical
40 models, *Pure Appl. Geophys.*, 165, 2197–2228, doi:10.1007/s00024-004-0427-y, 2008.
- Takagi, H. and Jeremy, D. B.: Assessment of the effectiveness of general breakwaters in reducing tsunami inundation in Ishinomaki, *Coast. Eng. J.*, 56(04):1450018, doi:10.1142/S0578563414500181, 2014.

Takahashi, S., Toda, K., Kikuchi, Y., Sugano, T., Kuriyama, Y., Yamazaki, H., Nagao, T., Shimosako, K., Negi, T., Sugeno, J., Tomita, T., Kawai, h., Nakagawa, Y., Nozu, A., Okamoto, O., Suzuki, K., Morikawa, Y., Arikawa, T., Iwanami, M., Mizutani, T., Kohama, E., Yamaji, T., Kumagai, K., Tatsumi, D., Washizaki, M., Izumiyama, T., Seki, k., Yeom, G., Takenobu, M., Kashima, H., Banno, M., Fukunaga, Y., Sakunaka, j., and Watanabe, Y.: Urgent Survey for 2011 Great East Japan Earthquake and Tsunami Disaster in Ports and Coasts, Technical note of the Port and Airport Research Institute, No. 1231, April 2011. (in Japanese).

The 2011 Tohoku Earthquake Tsunami Joint Survey (TTJS) Group (2011), <http://www.coastal.jp/ttjt/> (Referred on 24th January, 2013)

Titov, V. V. and Synolakis, C. E.: Modeling of breaking and nonbreaking log-wave evolution and runup using VTCS-2, J. Waterw. Port. C-ASCE, 121, 308–316, 24, 1995.

Titov, V. V. and Synolakis, C. E.: Numerical modeling of tidal wave run-up, J. Waterw. Port. C-ASCE, 124, 157–171, 1998.

Tomita, T., Yeom, G., Ayugai, M., and Niwa T.: Effect of breakwaters on reducing flow depth during the Great East Japan Tsunami. *Journal of JSCE, series B2 (Coastal Engineering)*. 68(2), I_156-I_160, 2012.

Water and Disaster Management Bureau (2012). Practical Guidelines of Tsunami Inundation Prediction Ver2.00, Ministry of Land, Infrastructure, Transport and Tourism, url:https://www.mlit.go.jp/river/shishin_guideline/bousai/saigai/tsunami/shinsui_settei.pdf, 2012. (in Japanese)

YouTube, URL: <http://www.youtube.com/watch?v=aQj2zn5Axmk> (Referred on June 2013)

Zhou, J. G., Causon, D. M., Mingham, C. G., and Ingram, D. M.: The surface gradient method for the treatment of source terms in the shallow-water equations, J. Comput. Phys., 168(1), 1–25, 2001.

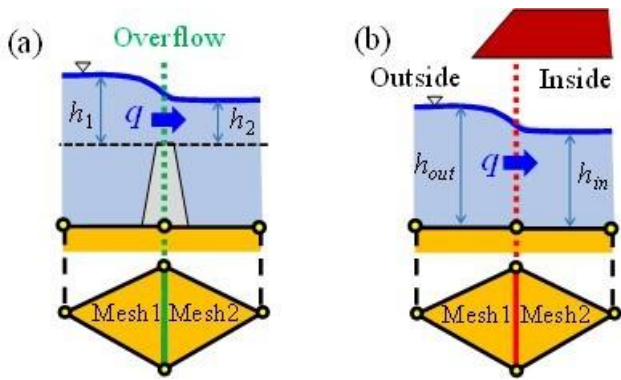


Figure 1: Conditions of inner boundaries:
 (a) seawalls and (b) building walls.

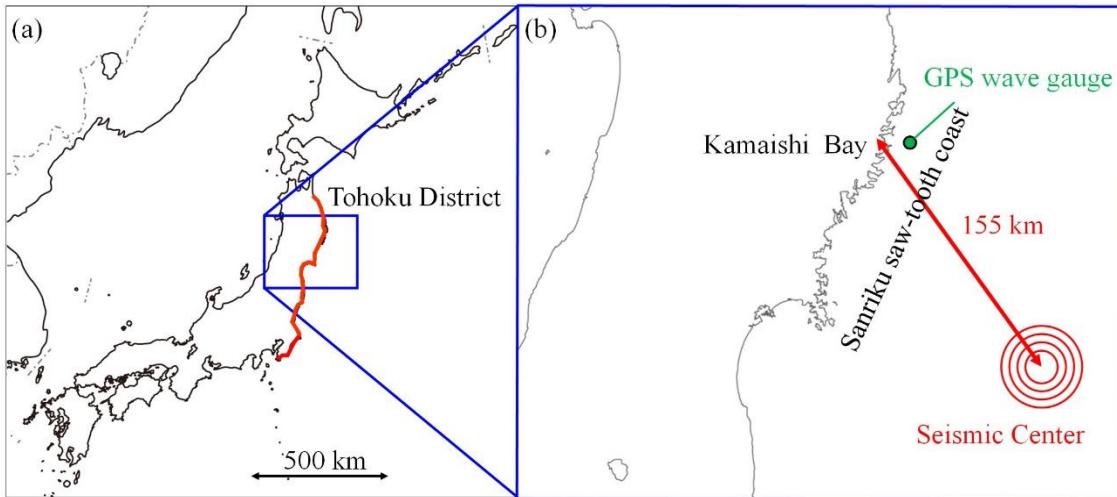


Figure 2: Geometry of coastlines and location of the study site.
 (a) Map of Japan. Red shows the coastal region damaged by the 2011 Tohoku Tsunami.
 (b) Locations of the seismic center, Kamaishi Bay, and the nearest GPS wave gauge.

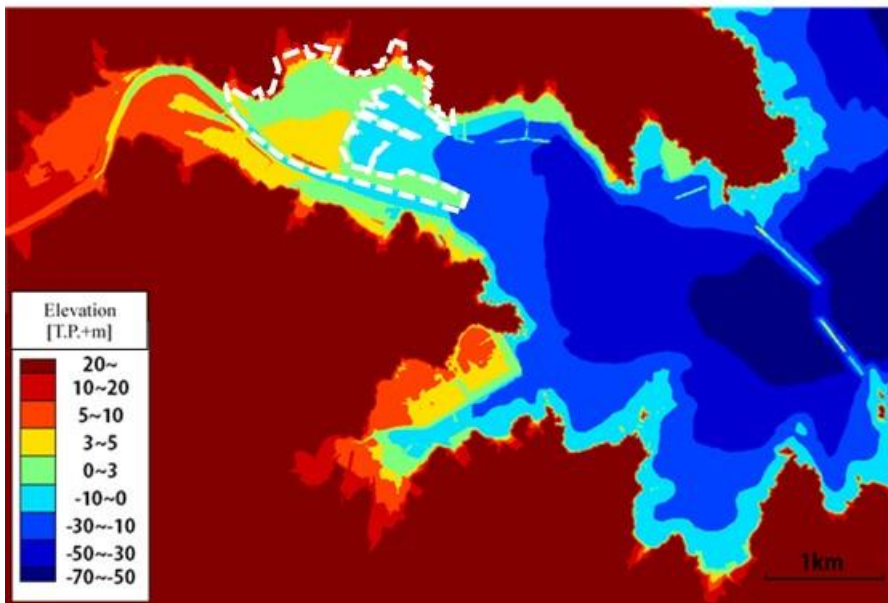


Figure 3: Bathymetry and surrounding topography of Kamaishi Bay.
 Tokyo Peil (T.P.)+m: Elevation above the average sea level in Tokyo Bay

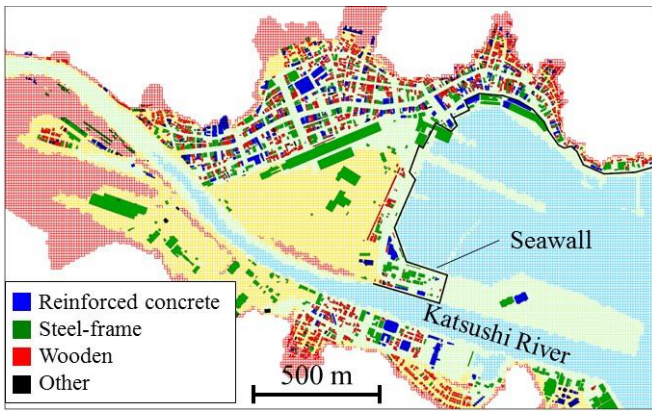


Figure 4: Classification of building structures.

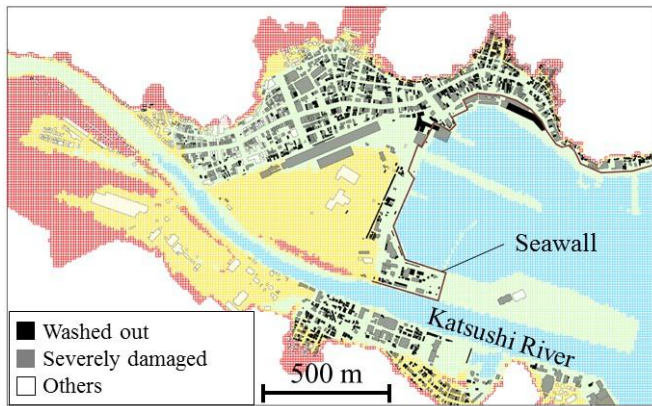


Figure 5: Classification of building damage.

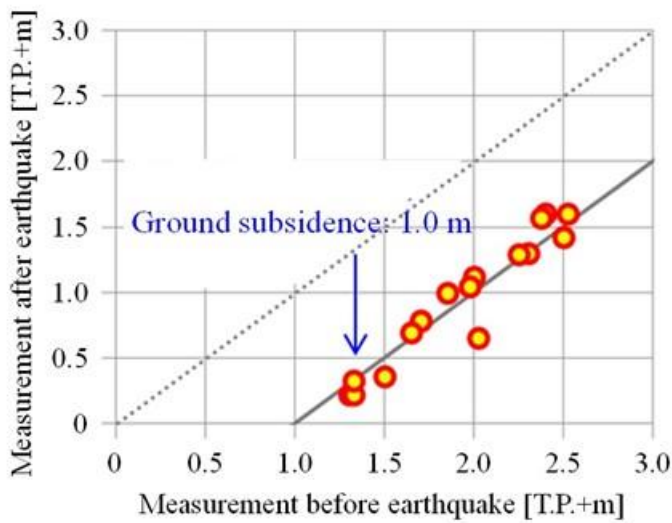


Figure 6: Ground subsidence near the coast.

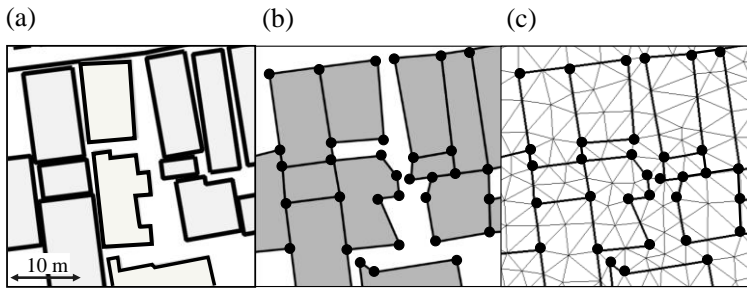


Figure 7: Simplification and redefinition of building footprint polygons.

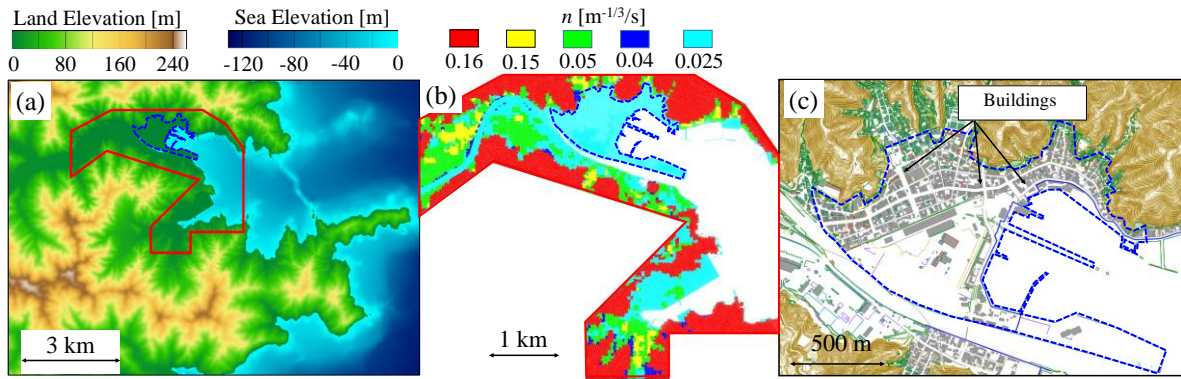


Figure 8: Area of calculation domain:

- (a) geometry of calculation domain in a wide view,
- (b) Manning's roughness in calculation domain corresponding to the red line in (a), and
- (c) domain for detailed calculation corresponding to the blue dotted line in (a).

Table 1 Manning's roughness coefficients.

Land use	Manning's roughness [$s \cdot m^{-1/3}$]
Water area	0.025
Farmland	0.04
Forest	0.16
Factory site	0.05
Residential area (low density)	0.05
Residential area (high density)	0.15
Road, vacant land	0.025

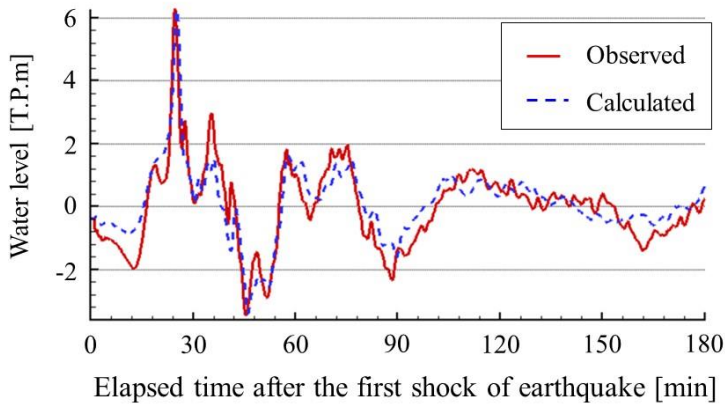


Figure 9: Water surface displacement at the GPS wave gauge station.

Table 2 Numerical simulation cases.

Permeability constant, C	Building layout	
	before tsunami	after tsunami
0.0	Case-1(a)	Case-1(b)
10^{-3}	Case-2(a)	Case-2(b)
10^{-2}	Case-3(a)	Case-3(b)
10^{-1}	Case-4(a)	Case-4(b)
10^0	Case-5(a)	Case-5(b)

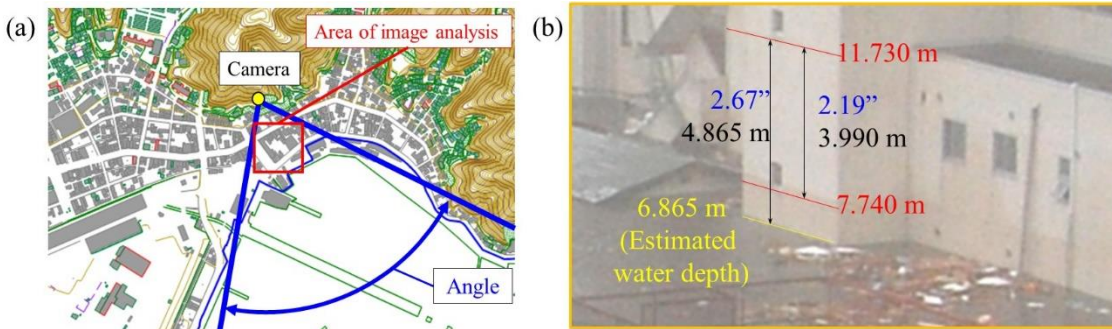


Figure 10: Estimation of tsunami wave height near the coast:

(a) shooting area and (b) illustration of analysis.

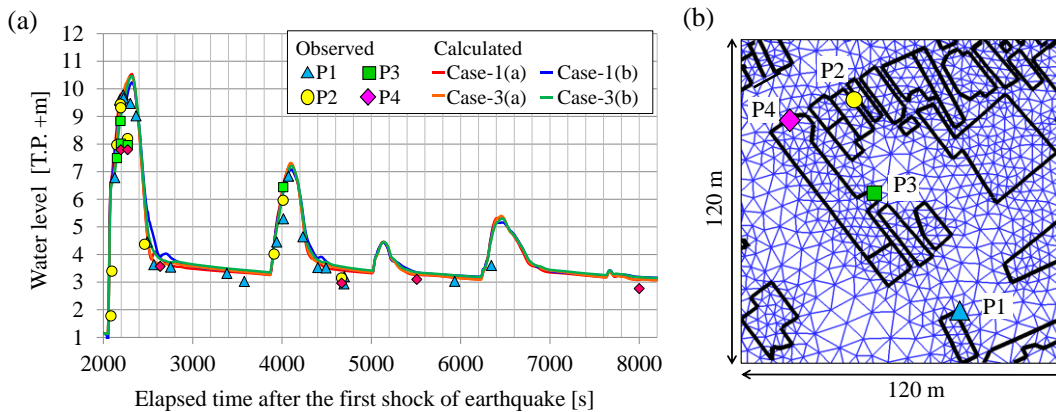


Figure 11: Time series of water surface displacement near the coast:

comparison between (a) measured and (b) calculated target points for photograph analysis.

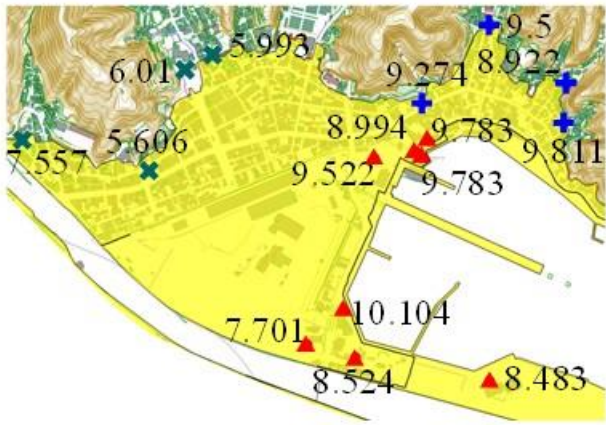


Figure 12: Data of water surface traces (TTJS Group (2011)): plots show positions of measurements; numbers show the measured height in T.P. +m; ▲, +, and × show measurement locations; the numbers are maximum water levels.

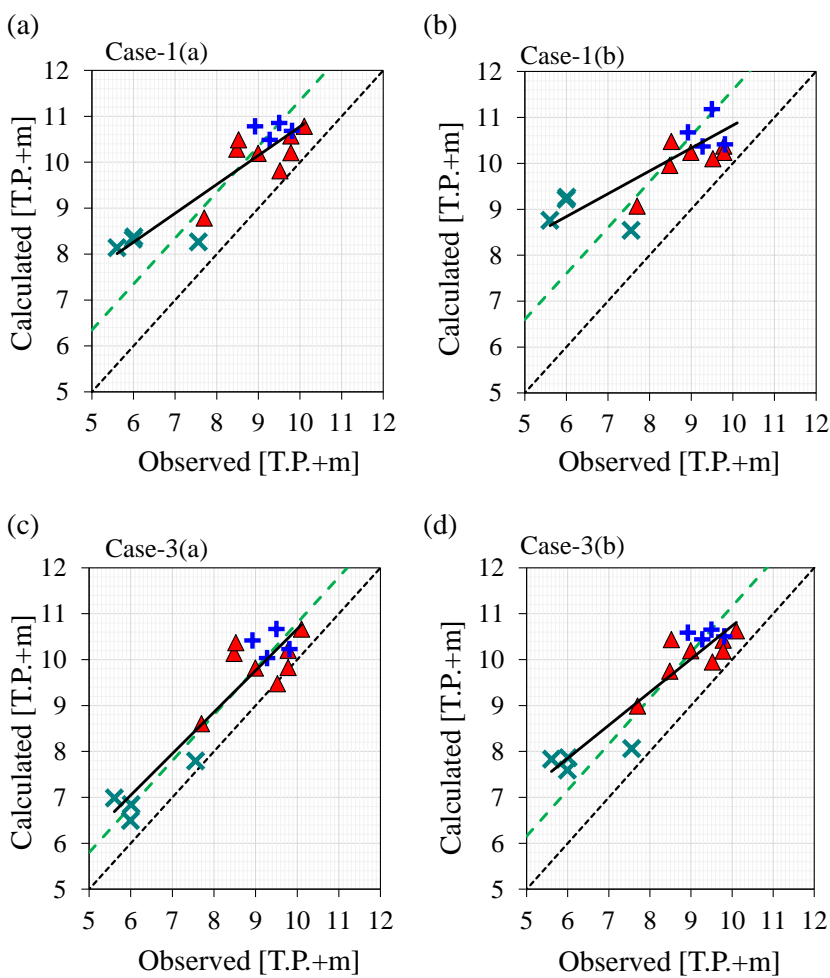


Figure 13: Comparison between calculated and measured maximum heights. Symbols are the same as those used for Fig. 11:

- (a) Case-1(a) – $C=0.0$, buildings before tsunami;
- (b) Case-1(b) – $C=0.0$, buildings after tsunami;
- (c) Case-3(a) – $C=0.01$, buildings before tsunami; and
- (d) Case-3(b) – $C=0.01$, buildings after tsunami.

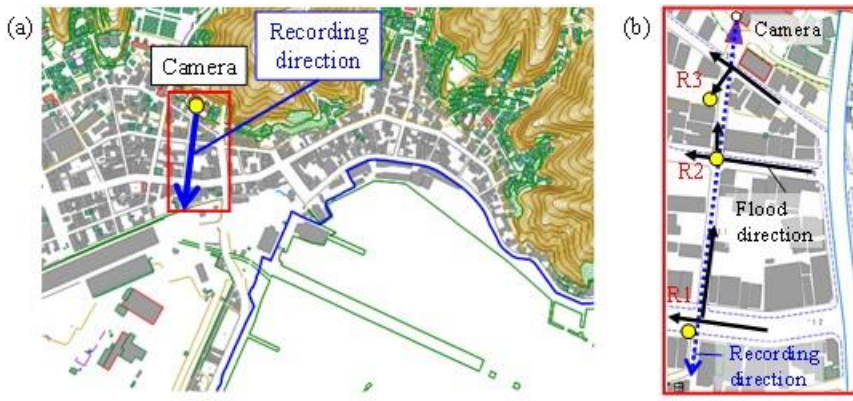


Figure 14: Location of video recording:
 (a) shooting direction and (b) crossings for measurement.

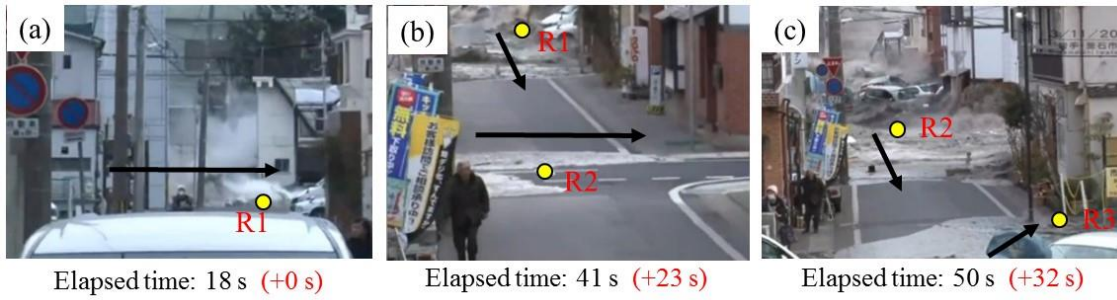


Figure 15: Images of wavefront passage at crossing.

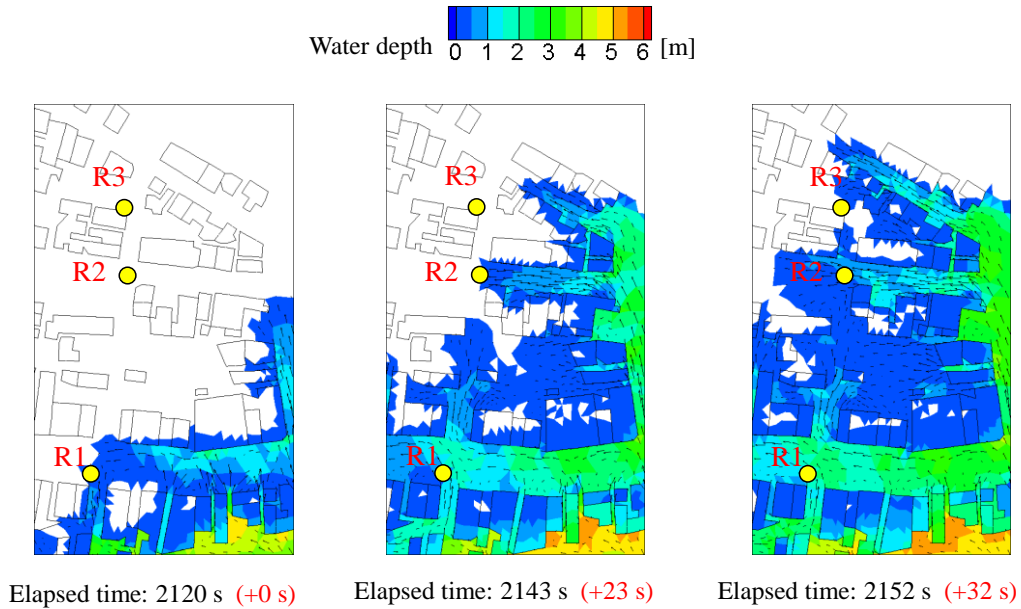


Figure 16: Calculated wavefront propagation corresponding to the measured values in Fig. 13.

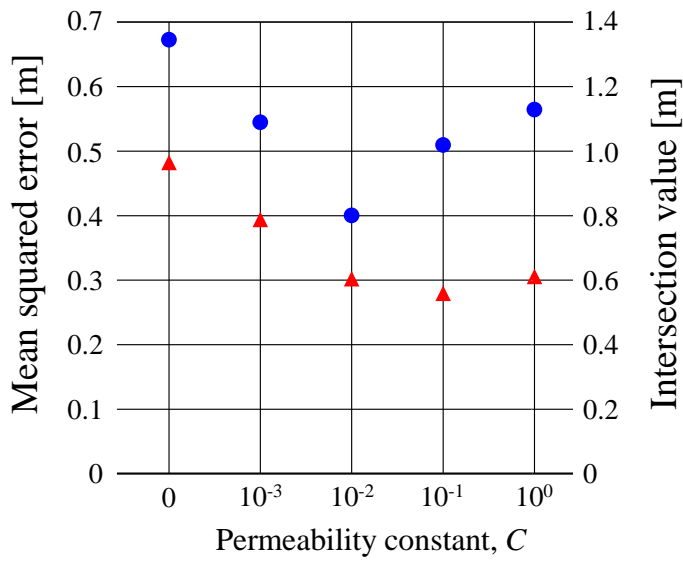


Figure 17: Degree of regression by 1:1 slope line:

▲, mean squared error; ●, intersection value (difference from perfect agreement).

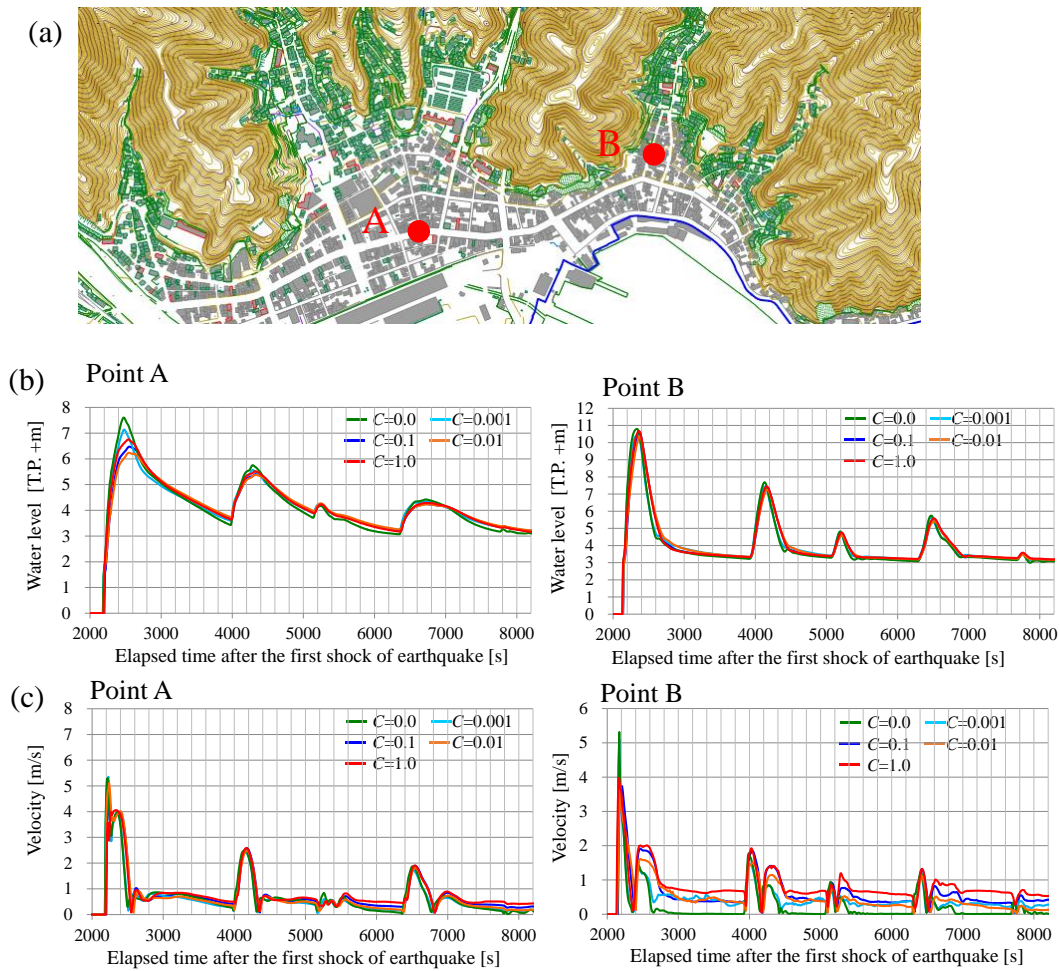


Figure 18: Time series of flow variables at the city center:
 (a) examination point, (b) water depth, and (c) flow velocity.

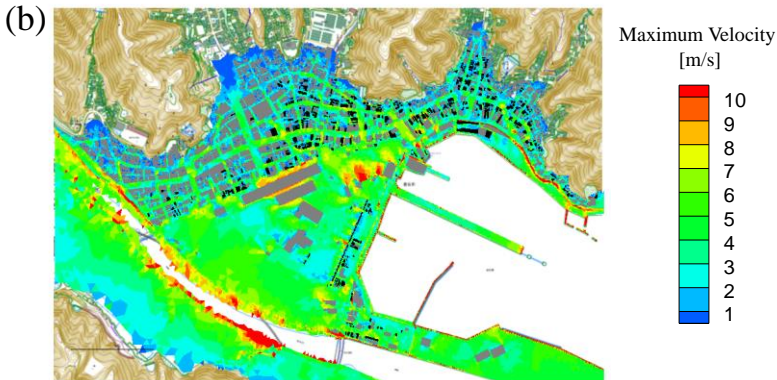
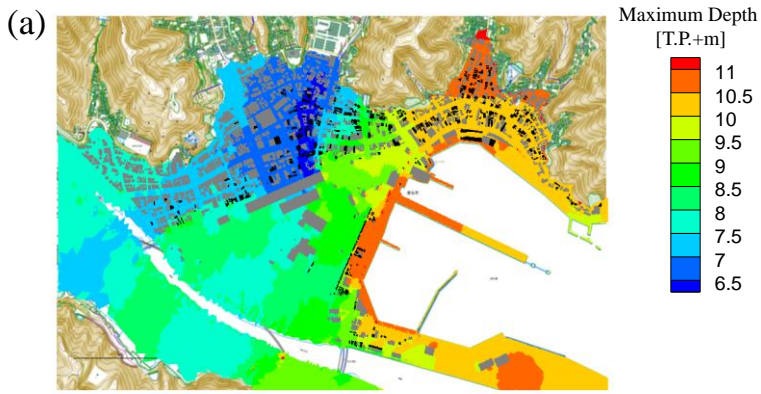


Figure 19: Mappings of maximum depth and maximum flow velocity during flooding (Case-3(a)): (a) maximum depth and (b) maximum velocity.

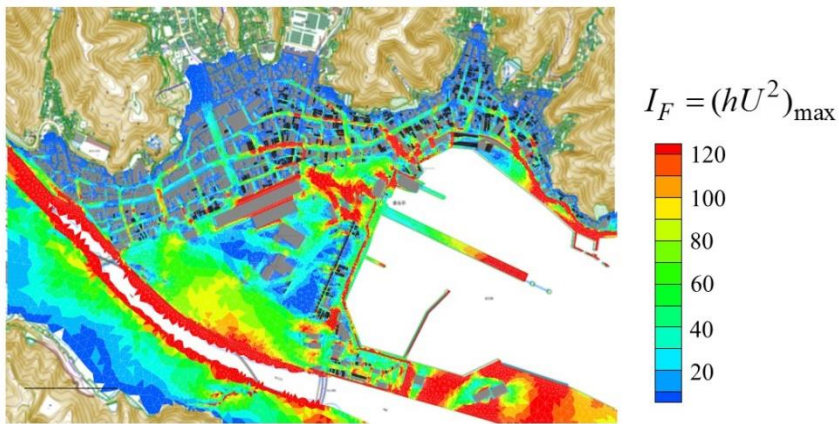


Figure 20: I_F -value mapping for the original building array ($C = 0.01$).

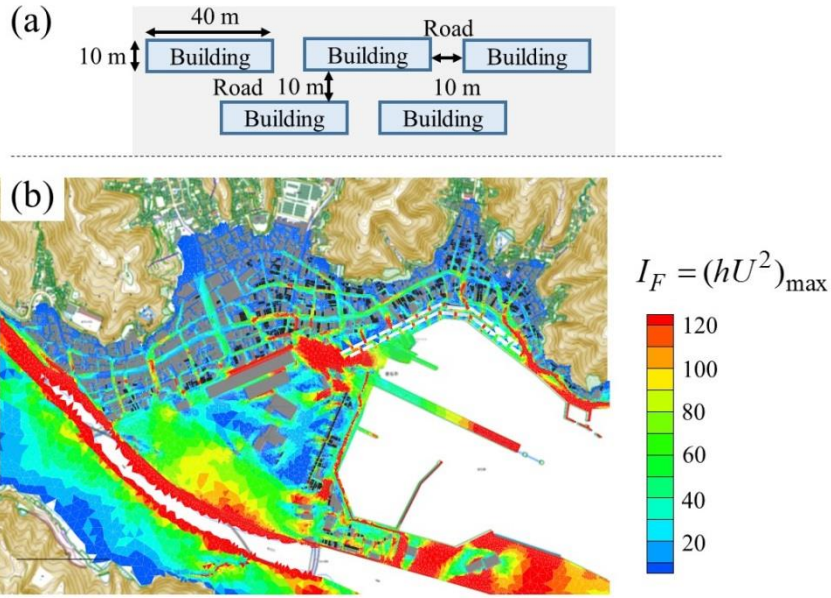


Figure 21: I_F -value mapping for the testing building plot ($C = 0.01$):
(a) building plot and (b) I_F -value mapping.

Response to Reviewer-1:

[Reviewer's Comment: Black, Author's Comment: Blue, Author's changes in manuscript : Red]

[Comment-1]

5 P2 L21-22. I do not understand the meaning of "... with 2 grid sizes...".

[Reply-1]

Liu et al. (2001) showed results of two calculations with grid size of 50 m and 5.5 m, respectively, to discuss the effect of building layout resolution on tsunami run-up flow calculation for inundation caused by the 1896 Sanriku Earthquake Tsunami.

10 However, Reviewer 2 suggested that the detailed description of existing studies distracted from the objective of this paper and suggested us to reduce the introduction (Comment-1). Therefore, we eliminated the parts regarding to "two grid sizes".

[Revised]

Page 2 Line 12-13

Liu et al. (2001) applied the BH model to tsunami run-up flow caused by the 1896 Sanriku Earthquake Tsunami.

15

[Comment-2]

P2 L37. Why was $Z=HU$ used as the indicator of flow intensity? This is flowrate. Wouldn't momentum flux HU^2 be a better indicator, as this is what forces on structures usually depend on? Either way, the authors should justify their choice of the parameter they choose to use.

20

[Reply-2]

We adopted $Z=HU$ as flow intensity indicator which means the momentum contained in a unit area water column in old manuscript. As the reviewer commented, however, the momentum flux ($Z=HU^2$) seems better for the indicator. Therefore, we will adapt the spatial distribution of latter in the new manuscript (Fig.20, 21). Because the new indicator showed the same tendency as the former one, the discussion in Section 5.2 is kept in the new manuscript, except the change of notation for indicator from Z to I_F to avoid confusion with elevation (z).

25

[Revised]

Page 1 Line 18

$$I_F = (hU^2)_{\max},$$

30 **Page 2 Line 25,Line 26**

$$I_F = (hU^2)_{\max}$$

Page 8 Line 12

$$I_F,$$

Page 8 Line 13

35 Equation (3)

Page 8 Line 15

$$I_F,$$

Page 8 Line 27,

I_F -distribution

40 **Page 9 Line 17**

$$I_F = (hU^2)_{\max}$$

Page 9 Line 18

I_F -value

Page 20

Figure 20

Page 21

Figure 21

5

[Comment-3]

P3 L11. Is Kamaishi really reliant on marine products? Isn't the city's main industry its factory for production of steel products?

10 [Reply-3]

The city of Kamaishi developed by the steel industry after a large iron mine was found in 1857, and had the peak of population 92,123 in 1963. In addition, the working population of the marine product industry at that time was about 2.5 times larger than that of the current. After closing the mine in 1993 and the refinery in 1998, population decreased to 35,000 at present, and its major industry became marine industry after improvement of port. We changed the sentence in the new manuscript as follows:

15 [Revised]

Page 4 Line 7-8

The Kamaishi City population of approximately 35,000 is mainly reliant on marine product industries and steel industry.

[Comment-4]

20 P6 L6 you should cite the joint research group in a proper reference such as Mori N, Takahashi T, Yasuda T, Yanagisawa H. Survey of 2011 Tohoku earthquake tsunami inundation and run-up. Geophysical research letters. 2011 Apr 1;38(7).

[Reply-4]

We cited their work in the new manuscript and added the website to the reference list.

25 [Revised]

Page 6 Line 31-32

An academic joint research group was organized to conduct an extensive survey of the disaster caused by the 2011 Tohoku Tsunami (TTJS Group 2011; Mori et al. 2011).

Page 11 Line 22-23

30 Mori N, Takahashi T, Yasuda T, and Yanagisawa H. Survey of 2011 Tohoku earthquake tsunami inundation and run-up. Geophysical Research Letters. 2011 Apr 1;38(7).

[Comment-5]

35 Table 1. The Manning's n roughness values shown look too small, especially for Forest, Factory, Residential areas. Bricker et al shows up to 0.15 for high-density urban, and greater than 0.1 for forests (up to 0.2 for dense forests with branches submerged).

[Reply-5]

40 Because the flow resistance by buildings is taken account as the drag force in BH model, the ground surface roughness coefficient should be smaller than BR model in which the building drag resistance is conveniently included in the surface roughness. Therefore, we adopted the smaller value for Manning's n for the "city center area where BH model was used". However, we agree to reviewer's comment that larger roughness coefficient should be taken for "surrounding areas where we adopted BR model". Therefore, we applied the values of Manning's n proposed by Bunya (2010), referring Bricker's paper for the "surrounding area" in the new manuscript. The new results did not show much difference in the "city center area" from

those in the old manuscript. We replaced the new calculation results (Fig.14-19), and added Bunya's work in the text and reference list.

[Revised]

Page 5 Line 14-16

5 Manning's roughness coefficient was assigned as described by Bunya (2010) and Bricker et al. (2015) for each land-use classification, as presented in **Table 1** and as shown with colors in **Fig. 8(b)**.

Page 10 Line 10-13

10 Bunya, S., Deitrich, J. C., Westerink, J. J., Ebersole, B. A., Smith, J. M., Atkinson, J. H., Jensen, R., Resio, D. T., Luettich, R. A., Dawson, C., Cardone, V. J., Cox, A. T., Powell, M. D., Westerink, H. J., and Roberts, H. J.: A High-Resolution Coupled Riverine Flow, Tide, Wind, Wind Wave, and Storm Surge Model for Southern Louisiana and Mississippi. Part I: Model Development and Validation. *Monthly Weather Review*, 18, 345–377, 2010.

[Comment-6]

P6 L13 if the local resident's video is available (i.e., YouTube), you should cite that reference here.

15

[Reply-6]

We will add the URL of the website to the reference list.

[Revised]

Page 7 Line 11-12

20 A local resident recorded a video (YouTube 2013) recording of tsunami waves from the point shown as the yellow dot in the direction indicated by the blue arrow presented in **Fig. 14(a)**.

Page 12 Line 17

YouTube, URL: <http://www.youtube.com/watch?v=aQj2zn5Axmk> (Referred on June 2013)

25 [Comment-7]

P6 L28 The fact that the Kamaishi bay-mouth breakwater was ignored should be justified more, as the breakwater had an effect on delaying tsunami arrival time onshore, and also mitigated flood elevation and speed onshore. See for example, Tomita et al. 2012. Effect of breakwaters on reducing flow depth during the Great East Japan Tsunami. *Journal of JSCE, series B2 (Coastal Engineering)*.68(2):I_156-60.

30

[Reply-7]

We agree reviewer's comment that calculation condition at the bay mouth was different from the actual situation. But, we hope the reviewer understand that the point of our paper is to consider the effect of dense building arrangement on the tsunami run-up flow. We know Tomita et al. (2012) investigated the effect of breakwater on the tsunami propagation into the bay by comparing "distinctive three calculations"; with the breakwater before tsunami arrival; with damaged breakwater configuration measured after the tsunami; and without breakwater, while they did not show the tsunami wave deformation in the process of breakwater destruction. It is still remained for future study. Because of the uncertainty, we did the elaborate photo image analysis for tsunami wave height just near the coast line in order to examine the calculated time series near the coast line could be used for the run-up calculation in the city center area. We hope again the reviewer understand the point of this study and our efforts.

40

We added the following sentence at the end of "3.2.1 Ground surface elevation" in the new manuscript in order to make clear that the tsunami propagation during the collapse of breakwater is still remained for future study.

[Revised]

Page 4 Line 32-36

Tomita et al. (2012) investigated the effect of breakwater on the tsunami propagation into the bay by comparing three calculations; with the breakwater before tsunami arrival; with damaged breakwater configuration measured after the tsunami; and without breakwater, while the actual process of breakwater destruction is still remained for future study. Therefore in this study, the damaged configuration measured after the tsunami (Takahashi et al. 2011) was assumed for calculation.

Page 12 Line 12-13

Tomita, T., Yeom, G., Ayugai, M., and Niwa T.: Effect of breakwaters on reducing flow depth during the Great East Japan Tsunami. Journal of JSCE, series B2 (Coastal Engineering). 68(2), I_156-I_160, 2012.

10 We added the purpose of the photo image analysis at the beginning of section “4.1.1 Field data analysis” in the new manuscript in order to make sure our consideration.

[Revised]

Page 6 Line 3-6

15 As described earlier, the breakwater at the bay mouth was considered with damaged configuration measured after the tsunami because of the uncertainty of its destruction process. In this study, therefore, time series of tsunami wave height near the coast line were obtained using image analysis of digital photographs taken by residents. Using them, we examined the calculated time series near the coast line for use in run-up calculations in the city center area.

[Comment-8]

20 Section 5.3. The protection given to inland buildings due to shielding by concrete buildings near the coast reminds me of a paper I saw by Takagi et al (2015) Assessment of the effectiveness of general breakwaters in reducing tsunami inundation in Ishinomaki. Coastal Engineering Journal. 2014 Dec;56(04):1450018. They may have discussed similar effect.

[Reply-8]

25 We guess the year of publication by Takagi et al. was “2014” though the reviewer-1 wrote “2015”. In our understanding, the main topic of their numerical study using BR model was the tsunami attenuation by breakwater surrounding the port of Ishinomaki. In the same paper, they suggested that the damage of houses was smaller behind a large concrete building “from aerial photograph observation”, but it was “not from numerical simulation”; their calculation was based on BR model, which could not estimate the effect of each building footprint.

30 We will insert the following sentence in 5.3.

[Revise]

Page 8 Line 21-22

Some reports have suggested that large buildings protected the houses behind them from tsunami impact (e.g., Matsutomi et al., 2012; Takagi et al., 2014).

35 **Page 11 Line 19-21**

Matsutomi, H., Yamaguchi, E., Naoe, K., and Harada, K.: Damage Conditions to Reinforced Concrete Buildings and Coastal Black Pine Trees in the 2011 Off Pacific Coast of Tohoku Earthquake Tsunami, J. JSCE, Ser. B2 (Coastal Engineering), 68(2), I_351-I_355, 2012. (in Japanese)

40 PS. We makeed native check before submitting final revised manuscript.

Response to Reviewer-2:

[Reviewer's Comment: Black, Author's Comment: Blue, Author's changes in manuscript : Green]

GENERAL COMMENTS:

- 5 The topic is suitable for the journal since it addresses an issue which could be of interest to the scientific community. The document is up to the international standards and the length of the paper is adequate. **High-resolution modeling of tsunami run-up flooding: A case study of flooding in Kamaishi City, Japan, induced by the 2011 Tohoku Tsunami** has been analysed with interesting conclusions. The results obtained with the developed numerical model present an interesting replication of the recorded data. However, some more explanations are needed in some chapters, in order make it easier the reading and understanding of the study. In addition, the introduced indicator Z , is here discussed.
- 10 The reviewer would like to give some comments and suggest corrections in order to increase its overall significance.

[Comment-1]

- 15 **Abstract:** Although the use of U to represent the flow velocity is quite common and it is explained in the chapter 5.2, the abstract must be standalone and thus, the definition of H_{max} and U_{max} must be given.

[Reply]

We added the definitions of the variables. Following another reviewer (#1), we changed the flow intensity indicator to $(hU^2)_{max}$, the maximum of momentum flux, and we added the explanation of h and U in the abstract, too.

20 [Revised]

Page 1 Line 18-20

Spatial mapping of an indicator for run-up flow intensity ($I_F = (hU^2)_{max}$, where h and U respectively denote the inundation depth and flow velocity during the flood). shows fairly good correlation with the distribution of houses destroyed by flooding.

- 25 The presence of the results of numerical simulations (lines 18-20) must be adequately presented. The addition of a sentence like "As a possible mitigation measure, the influence of the buildings in the flowing has been addressed..." would increase the text flow.

[Reply]

- 30 Following your suggestion, we revised the sentence about the results. The English was checked by an English native speaker before submitting the final manuscript.

[Revised]

Page 1 Line 20-23

As a possible mitigation measure, the influence of the buildings in the flowing has been addressed by a numerical experiment for solid buildings arrayed alternately in two lines along the coast. The results show that the buildings can prevent seawater from flowing straight to the city center while maintaining access to the sea.

35

[Comment-2]

1.-Introduction:

- 40 The building array treatments are widely explained. But this wide explanation distract from the objective of the paper. A briefer explanation is suggested since the references are enough to study it if necessary. In addition, and this is something common all along the paper, the structure of the chapters is not clear. The **inclusion of a paragraph explaining what the reader is going to find on each chapter is needed to improve the understanding**. If not, although each part is well explained the reader lose their sense of the bigger picture.

45

[Reply]

We compacted the description of building array treatments and introduction of existing studies, and added the introduction of chapter-structure at the end. The new introduction was checked by an English native speaker before submitting final manuscript.

- 50 In the introduction it is not mentioned that the model has been applied as well to study the influence of the concrete buildings. One of the main points of the study is the application of an alternative mitigation measure (not just a seawall) to reduce the tsunami action and to allow, at the same time, the normal work on marine industries.

[Reply]

- 55 We added a sentence about the numerical experiment on the influence of buildings along the coast on tsunami intrusion into the city.

[Revise]

Page 1 Line 27- Page 2 Line 28

Recent urbanization of low-lying coastal areas has increased the potential for property damage, human injury, and death caused by tsunamis. Visual data obtained during the tsunami run-up have revealed that arrays of structures in urban areas induced large wave deformation and swift currents on streets, and that the currents washed objects such as garbage, cars, and

60

debris from damaged structures, causing even more damage than the tsunami run-up over uniform ground. Prediction of swift currents in urban areas by numerical flow simulation is expected to be important for evacuation programs and for city layout planning measures to mitigate tsunami damage.

Tsunami simulation models for forecasting wave propagation and deformation from the seismic center to the coast have been developed and improved for decades. These models for high-speed calculations in a wide water body are often based on a set of shallow-water equations on a structured rectangular grid system (Imamura 1995). Models with a rectangular grid system were extended to calculate the tsunami run-up on land by formulating the wavefront propagation on a dry bed (TiTov et al. 1995, 1998; Synolakis et al. 2008). However, the tsunami run-up simulation described above requires more precise flow modeling by introduction of the hydraulic effects of building arrangement.

Building array treatments in urban flood inundation models are classifiable into four types (Schubert et al. 2008; Schubert et al. 2012): building-resistance models (BR), in which large surface roughness is assigned to cells that fall within a building footprint (Liang et al. 2007) or developed parcels (Gallegos et al. 2009; Gallien et al. 2011); building-block models (BB), in which spatially distributed ground elevation data are raised to roof-top height (Brown et al. 2007; Hunter et al. 2008; Schubert et al. 2008); building-hole models (BH), in which building footprints are excluded from the flow calculation area with a free-slip wall boundary condition (Aronica et al. 1998; Aronica et al. 2005; Schubert et al. 2008); and building-porosity models (BP), in which the impact of buildings in a street block is expressed approximately by porosity and a drag coefficient in a street block (Guinot 2012; Sanders et al. 2008; Soares-Frazão et al. 2008).

The BR model is commonly adopted for tsunami run-up simulations (Gayer et al. 2010; Kaiser 2011; Suppasri et al. 2011; Bricker et al. 2015), although the model developers did not predict the velocity field. Komatsu et al. (2010), Conde et al. (2013), and Imai et al. (2013) respectively applied the BB model for the tsunami flooding in Kota Banda Aceh of Indonesia caused by 2004 off the Indian Coast of Sumatra Island Earthquake, for the flooding in two cities of Portugal during the 1755 Lisbon Tsunami, and for the extreme inundation in Kochi city of Japan during the historical tsunami run-up in 1707. Liu et al. (2001) applied the BH model to tsunami run-up flow caused by the 1896 Sanriku Earthquake Tsunami. Akoh et al. (2014) proposed a permeable wall model equivalent to the BH model when the permeability constant was zero, and applied the model to the tsunami flooding in Kamaishi city of Japan during the 2011 off the Pacific Coast of Tohoku Earthquake (2011 Tohoku Tsunami hereinafter). For the BP model, no report of the relevant literature has described a tsunami run-up simulation, probably because it is not easy to identify the values of porosity and building drag coefficient for the respective street blocks.

For this study, the permeable wall model based on shallow flow equations proposed by Akoh et al. (2014) was used to investigate tsunami run-up details for Kamaishi city during the 2011 Tohoku Tsunami using more field data than used in the earlier study. Chapter 2 describes the numerical simulation method: basic formulations and building array treatment. Chapter 3 is devoted to an explanation of numerical modeling the tsunami flooding in Kamaishi City: explanation of the study site, data sources for modeling, mesh generation, and calculation conditions. Calculation results are displayed in Chapter 4 along with validation data. In Chapter 5, after presenting discussion of the influence of the permeability constant on calculation results, the tsunami effects on houses were examined. We introduce an indicator, $I_F = (hU^2)_{\max}$, where h and U respectively denote the water depth and the flow velocity at each point. In addition, we numerically tested effects of rigid building arrays along the coast on the reduction of I_F in the city center as a possible mitigation measure to be used instead of high continuous embankments, which prevent access to the sea.

[Comment-3]

3.- Methods and materials:

An introduction must be included (between 3 and 3.1) to explain to the reader what they are about to find in this chapter.

[Reply]

Following [Comment 4] of reviewer-2, we moved Site Description (Chapter-2 in the old manuscript) to the beginning of Application (Chapter-3 in the new manuscript). The Method and materials (Chapter-3 in the old manuscript) becomes Chapter-2 in the new manuscript. In addition, we changed the chapter title “Methods” because we move 3.2 – 3.4 (old manuscript) to the chapter for validation of calculation results your next suggestion. We inserted a short sentence between 2 and 2.1 as follows:

[Revised]

Page 2 Line 30-32

Considering the openings of wooden houses such as doors, windows or cracks and slits caused by tsunami effects, the shallow

water BH model was improved to express the effects of wall permeability by introducing the “assumption of internal hydraulic conditions” on line segments where the walls were located. The seawall overtopping was considered similarly.

5 The characteristics of the model are well explained and referred. Is this model new or has it been presented before? If it is new it should be said clearly, or even named.

[Reply]

This is a new model. We emphasized our original idea “assumption with internal hydraulic conditions” with double quotation marks in the introduction for Chapter-2 (see the above sentence).

10

In this chapter the characteristic of the numerical model, the application case data sources, and verification data sources are presented together.. These 3 different parts should be separated in order to make it easier the understanding, because they present independent parts of the study. In addition the verification data and the results can be explained together what would improve the overall understanding. This reviewer suggests the change of the structure of chapters 3 and 4 to:

15 Chapter 3. The numerical model (including chapters 3.1 and 3.2)

Chapter 4. Application case: Kamaishi port under 2011 event.

Introduction explaining the 2011 event

4.1 Mesh generation (including 3.3.1, 3.3.2, and 3.3.3)

4.2 Calculation condition (including 3.4)

20 Chapter 5. Validation of the results. Include an introduction explaining that the results of the numerical simulations presented in the previous chapter are here presented and compared to those real data recorded. 3 comparisons:

5.1 Tsunami wave height near the coast (including 3.5.1 and 4.1)

5.2 Local highest water surface (including 3.5.2 and 4.2)

5.3 Wave front propagation on streets (including 3.5.3 and 4.3)

25

[Reply]

Thank you for your comment. We thought in the first draft as you suggested. We will change the structure of final manuscript as follows:

30

1. Introduction

2. Method: 2.1 Numerical model, 2.2 Assumption of internal boundary conditions.

3. Application case: 3.1 Site description, 3.2 Model set-up (3.2.1 Topographical conditions, 3.2.2 Seawalls and building footprints, 3.2.3 Mesh generation), 3.3. Hydraulic condition for calculation.

35 4. Validation of results: 4.1 Tsunami wave height near the coast (4.1.1 Field data analysis, 4.1.2 Verification of results), 4.2. Local highest water surface (4.2.1 Field data sources, 4.2.2 Verification of results), 4.3 Wave front propagation on streets (4.3.1 Field data analysis, 4.3.2 Verification of results).

5. Discussion: 5.1. Permeability constant, 5.2. Tsunami effects on houses, 5.3. Tsunami reduction effects concrete buildings along the coast.

6. Conclusions

40

Again, each chapter must contain an introduction.

[Reply]

45 We inserted a short introduction for each chapter. These parts were checked by an English native speaker before submitting the final manuscript.

[Revised]

[Chapter 3: Application case]

Page 3 Line 29-32

50 The 2011 off the Pacific Coast of Tohoku Earthquake, with 9.0 in seismic magnitude, hit the northeastern Pacific coast of Japan on March 11, 2011. The total death toll including missing persons reached about 18,000, 90% of whom were killed by the tsunami which struck soon after the earthquake in low-lying urban areas on the coast. Kamaishi City was one of the severely damaged municipalities.

55 [Chapter 4: Validation of results]

Page 5 Line 35-37

Data of many kinds were collected by academic groups, governments, and municipalities after the earthquake. The results obtained from the numerical simulation described in the previous chapter are presented herein and are compared to those real data.

60

[Chapter 5: Discussion]

Page 7 Line 23-26

The reasonable value of C , unknown parameter in the model, is discussed in this chapter based on observed data presented in the previous chapter. Then, the tsunami effects on houses are estimated by introducing an indicator for tsunami run-up

intensity. Furthermore, effects of rigid building arrays along the coast are tested numerically as a possible mitigation measure to reduce the hydraulic impact indicator in the city center.

5.- Discussion:

5 An introduction explaining the 2 aspects that are in this chapter (C and Z) is needed.

[Reply]

We added the introduction as written above.

[Revised]

10 Page 7 Line 23-26

5.2. Here the indicator $Z=U_{max} * H_{max}$ is presented. This is the product of the maximum inundation depth and the maximum flow velocity during the flood. However, the maximum water depth and the maximum flow velocity are not always simultaneous. The value that should be considered is $Z=(U * H)_{max}$, which is the real maximum value of the product. The

15 indicator must be recalculated or an explanation is needed to maintain the original expression.

This product is used to estimate the human instability hazard (Jonkman et al., 2008)

Jonkman, S., Vrijling, J., and Vrouwenvelder, A.: Methods for the estimation of loss of life due to floods: a literature review and a proposal for a new method, Nat. Hazards, 46, 353–389, doi:10.1007/s11069-008-9227-5, 2008.

20 [Reply]

Thank you for the suggestion. As mentioned in the reply for the comment #2 of reviewer-1, we finally adopted $(hU^2)_{Max}$, which is flow momentum flux, for flow intensity indicator. The spatial distribution characteristics of the new indicator was basically same as the old indicator, and the points in discussion are same as before.

25 SPECIFIC COMMENTS

Page 1 Line 10: shallow water equations

[Reply]

We corrected the mistake in the new manuscript.

30 [Revised]

Page 1 Line 11

Page 1 Line 39: The reference Gallinen must be Gallien

35 [Reply]

We corrected the mistake in the new manuscript.

[Revised]

Page 2 Line 3

40 **Page 2 Line 34:** permeability constant, C (from..

[Reply]

This part was eliminated from the introduction.

45 **Page 6 Line 7:** It is not included in the text the reference of the survey. In the reference chapter it is included the 2011 tohoku earthquake tsunami joint survey, but it must be referred in the text.

[Reply]

We cited their work in the new manuscript and added the website to the reference list.

50 [Revised]

Page 6 Line 32

Page 6 Line 30: The influence of the port in the flooding was cited by Tomita in

55 *T. Tomita, G.-S. Yeom, M. Ayugai, T. Niwa, Breakwater Effects on Tsunami Inundation Reduction in the 2011 off the Pacific Coast of Tohoku Earthquake, J. Japan Soc. Civ. Eng. Ser. B 2(Coastal Eng. 68 (2012) 4–8.*

In view of this a comment on the no-consideration of the port in the simulation, as well as the citation of Tomita's paper must be included.

[Reply]

60 We added the following sentence at the beginning of section “3.2.1 Topographical conditions”, and cited Tomita's paper in reference list.

[Revised]:

Page 4 Line 32-36

Tomita et al. (2012) investigated the effect of breakwater on the tsunami propagation into the bay by comparing three calculations: with the breakwater before tsunami arrival, with damaged breakwater configuration measured after the tsunami, and without breakwater, whereas the actual process of breakwater destruction remains as a subject for future study. Therefore in this study, the damaged configuration measured after the tsunami (Takahashi et al. 2011) was assumed for calculation.

5

We also added the following sentence at the beginning of section “4.1.1 Field data analysis” to express our consideration about the breakwater destruction.

[Revised]

Page 6 Line 3-6

10 As described earlier, the breakwater at the bay mouth was considered with damaged configuration measured after the tsunami because of the uncertainty of its destruction process. In this study, therefore, time series of tsunami wave height near the coast line were obtained using image analysis of digital photographs taken by residents. Using them, we examined the calculated time series near the coast line for use in run-up calculations in the city center area.

15 **Page 7 Line 10:** Is this video available on the internet? If so, a reference would be interested.

[Reply]

We added the URL of the website to the reference list.

[Revised]

20 **Page 7 Line 11-12**

A local resident recorded a video (YouTube 2013) recording of tsunami waves from the point shown as the yellow dot in the direction indicated by the blue arrow presented in Fig. 14(a).

Page 12 Line 17

YouTube, URL: <http://www.youtube.com/watch?v=aQj2zn5Axmk> (Referred on June 2013)

25

Page 8 Line 1: The expression includes h_{max} , but in the rest of the manuscript it is called H_{max} .

[Reply]

Equation (3) was changed to $(hU^2)_{Max}$, as mentioned before, and we wrote correctly.

30 [Revised]

Page 8 Line 13

Equation (3)

FIGURES:

35 Figure 11 is called for the first time in page 6 line10, but the symbols contained in it are not explained until Figure 15 is called in line 34. They should be explained in the foot of the figure.

[Reply]

We added the explanation of the symbols in the foot of the figure.

40 [Revised]

Page 17 Figure 12

45 Figure 14a. In this figure are depicted the water levels at 4 points, but just the results of the model for the P3 are represented. However there are just 3 points photographed in P3. Other points have many more dots so it seems logical to depict other point time series instead of P3. In addition, the fact that all the dots (even those from other points like P1, P2 and P4) agreed fairly well in the P3 time series is important as to be highlighted.

[Reply]

50 Calculated water levels at the four points were almost same because they were very close to one another. Therefore, we showed the calculation result at P3 which was at the center. We mentioned it in the new manuscript.

[Revised]

Page 6 Line 18-19

The P3 located at the center of measurement area was selected for plotting of the calculation results because the four points were mutually very close and calculation results were almost identical.

55

REFERENCES:

In page 11 line17 the reference of Water and Disaster management Bureau is not included in the manuscript text

[Reply]

60 The reference was cited for the Manning’s roughness assumption listed in Table 1 in the old manuscript. However, in the new manuscript, we adopted the values proposed by Bunya (2010) and recalculated, following the suggestion from Reviewer-1.

Therefore we added the Bunya's paper in the reference list.

[Revised]

Page 5 Line 14-16

5 Manning's roughness coefficient was assigned as described by Bunya (2010) and Bricker et al. (2015) for each land-use classification, as presented in **Table 1** and as shown with colors in **Fig. 8(b)**.

Page 10 Line 10-13

10 Bunya, S., Deitrich, J. C., Westerink, J. J., Ebersole, B. A., Smith, J. M., Atkinson, J. H., Jensen, R., Resio, D. T., Luettich, R. A., Dawson, C., Cardone, V. J., Cox, A. T., Powell, M. D., Westerink, H. J., and Roberts, H. J.: A High-Resolution Coupled Riverine Flow, Tide, Wind, Wind Wave, and Storm Surge Model for Southern Louisiana and Mississippi. Part I: Model Development and Validation. *Monthly Weather Review*, 18, 345–377, 2010.

In page 5 line 23 the reference called here Central disaster prevention council, is not included in the references list.

[Reply]

15 We added the reference of Central Disaster Prevention Council to the reference list.

[Revised]

Page 10 Line 17-18

20 Central Disaster Prevention Council, Cabinet Office, Government of Japan, The tsunami fault model of 2011 off the Pacific coast of Tohoku Earthquake," url: http://www.bousai.go.jp/jishin/nankai/model/12/pdf/sub_1.pdf, 2012. (in Japanese)