

# Ensemble Projection of the Sea Level Rise Impact on Storm Surge and Inundation in the Coastal Bangladesh

Mansur Ali Jisan<sup>1</sup>, Shaowu Bao<sup>1</sup>, Leonard J. Pietrafesa<sup>1</sup>

<sup>1</sup>Department of Coastal and Marine Systems Science, Coastal Carolina University, Conway, South Carolina, United States.

*Correspondence to:* Mansur Ali Jisan (mjisan@g.coastal.edu)

## Abstract.

The hydrodynamic model Delft3D is used to study the impact of Sea Level Rise (SLR) on storm surge and inundation in the coastal region of Bangladesh. To study the present-day inundation scenario, the tracks of two known tropical cyclones (TC) were used: Aila (Category 1; 2009) and Sidr (Category 5; 2007). Model results were validated with the available observations. Future inundation scenarios were generated by using the strength of TC Sidr, TC Aila and an ensemble of historical TC tracks but incorporating the effect of SLR.

Since future change in storm surge inundation under SLR impact is a probabilistic incident, that's why a probable range of future change in inundated area was calculated by taking into consideration the uncertainties associated with TC tracks, intensities and landfall timing.

The model outputs showed that the inundated area for TC Sidr, which was calculated as 1860 km<sup>2</sup>, would become 31% higher than the present-day scenario if an SLR of 0.26 m occurs during the mid-21<sup>st</sup>-century climate scenario. Similar to that, an increasing trend was found for the end-21<sup>st</sup>-century climate scenario. It was found that with an SLR of 0.54 m, the inundated area would become 53% higher than the present-day case.

Along with the inundation area, the impact of SLR was examined for the changes in future storm surge level. A significant increase of 13.72% was found in storm surge level for the case of TC Sidr in Barisal station if a Sea Level Rise of 0.26 m occurs in the mid-21<sup>st</sup>-century. Similar to that, an increase of 28.67% was found in storm surge level with an SLR of 0.54 m in this location for the end-21<sup>st</sup>-century climate scenario.

Ensemble projections based on uncertainties of future TC events also showed that, for a change of 0.54 m in SLR, the inundated area would range between 3500-3750 km<sup>2</sup> whereas for present-day SLR simulations it was found within the range of 1000-1250 km<sup>2</sup>

These results revealed that even if the future TCs remain at the same strength as at present, the projected changes in SLR will generate more severe threats in terms of surge height and the extent of inundated area.

## 33 1. Introduction

34 In addition to routine inundation from upstream river water and the downstream tides, the coastal part of Bangladesh is frequently  
35 flooded by storm surges induced by tropical cyclones (TCs). Typically, TC-induced storm surges in this area initiate in the central  
36 or southern part of the Bay of Bengal or near the Andaman Sea. TCs normally occur during April – May, the pre-monsoon period,  
37 and again from October – November, the post monsoon period. Harris (1963) mentioned that five basic processes (i.e., pressure,  
38 direct wind, earth's rotation, waves and rainfall effects) cause water level rise under storm conditions. Pietrafesa *et al.* (1986) also  
39 pointed out that high water at the mouths of coastal estuaries, bays, and rivers can block discharges of upstream waters and  
40 contribute to upstream flooding; a non-local effect. Among these processes, storm surges form primarily due to the TC wind  
41 stresses mechanically driving the surface frictional layer onshore. Assuming an idealized balance between pressure gradient force  
42 and surface wind stress with assumed small bottom stress, the surge related to TC wind stress can be expressed as  $\Delta h = \frac{\tau_w L}{\rho g h}$ , where

43  $L$  is the fetch of the wind (the distance over which the wind blows),  $\tau_w$  is the wind stress due to the friction between the moving air  
44 and water surface,  $g$  is the gravity,  $\rho$  is the density of water,  $h$  is the depth near the coast (Hearn, 2008). Also, as a secondary  
45 process, due to the differences in pressure level, the water level rises in the areas of low atmospheric pressure and falls in the areas  
46 of high atmospheric pressure, which is how the rising water level offsets the low atmospheric pressure to keep the total pressure  
47 constant (Harris *et al.*, 1963).

48 According to Murty *et al.* (1986), the surge amplifies as it approaches the coast due to the shallow continental shelf of the Bay of  
49 Bengal and hence it causes massive flooding in the low-lying coastal areas. A large percentage of the Bangladesh population  
50 resides in the low-lying coastal regions of the country. Most of the areas near the coastal zone of Bangladesh have been formed by  
51 the process of riverine sedimentation and because of that the low-lying areas are relatively flat and as such are susceptible to  
52 flooding even under normal astronomical tide conditions. Furthermore, the triangular shape of the Bay of Bengal region makes  
53 storm surges more distressing, as a funneling effect occurs. The geomorphological characteristics of the region have made the  
54 locales prone to major TC events, events which have occurred multiple times in the past, directly causing loss of lives, property,  
55 livelihoods and the economy of the country (Haque, 1997).

56 Future climate change scenarios may further exacerbate the threats of TC-induced storm surge and inundation. According to the  
57 Intergovernmental Panel on Climate Change Fourth Assessment Report (IPCC 4AR), there is a high probability of major changes  
58 in TC activity across various ocean basins including the Arabian Sea and the Bay of Bengal. According to Milliman *et al.* (1989),  
59 this Ganges-Brahmaputra-Meghna Delta region has long been characterized as a highly vulnerable zone due to its exposure to the  
60 increasing trend of SLR. According to the SLR analysis done by the South Asian Association for Regional Cooperation based on  
61 the 22-year records of observed sea level at Charchanga, Cox's Bazar and Hiron Point, sea level is rising at rates of 6.0, 7.8 and 4  
62 mm/year, respectively in those three locations (SMRC, 2003). These rates are much higher than the global rate of SLR (~ 3.2  
63 mm/year) over the last 25 years (Pietrafesa *et al.*, 2015). Based on Warrick *et al.* (1996), the sea level in the Bay of Bengal is also  
64 influenced by local factors including tectonic setting, deltaic processes, and sediment load; for example, the coastal region of  
65 Bangladesh has been subsiding due to the pressure on the Earth's crust from the sediment with thick layers that have formed over  
66 millions of years. Warrick *et al.* (1996) also analyzed the recent history of land accretion and suggested that the subsidence is also  
67 balanced by land accretion due to sediment supply from the coast. These physical phenomena have been shaping the coast of  
68 Bangladesh over the past 100 years. A global SLR of 26-59 cm has been projected over the next 84 years to 2100 by the IPCC  
69 under the scenario A1F1 (Meehl *et al.* 2007). In this proposed work, we will use the SLR projections from Caesar *et al.* (2017;

70 under review), which is based on IPCC AR5 and suggests a projection of SLR of 26 cm for the mid-21<sup>st</sup>-century (2040 -2060) and  
71 54 cm for the end-21<sup>st</sup>-century (2079 -2099).

72 Previous studies have analyzed the likely impact of climate change, especially SLR, on storm surge and inundation in this region.  
73 Using hydrodynamic models, Ali (1992) showed that with an increase of 1.0 and 1.5 m of SLR, 10% and 15.5%, respectively, of  
74 the entirety of Bangladesh would get flooded under the strength of future TCs. Karim and Mimura (2008) used a 1-D hydrodynamic  
75 model to study the inundation under several scenarios of climate and for the case of future TCs by changing sea surface temperature,  
76 SLR, wind speed and sea level pressure. Based on their results, Karim and Mimura (2008) concluded that with an increase of 2°C  
77 in SST and 0.3 m of SLR, the flood risk area would be 15.3% more than the present-day risk area and the depth of flooding would  
78 increase by as much as 22.7% within 20 km from the coastline. Both Ali (1992) and Karim & Mimura (2008) considered SST rise  
79 and future strength of TCs in simulating the future storm surge and inundation.

80 However, the impacts of climate change on the frequency and intensity of TCs are still debatable (Knutson *et al.*, 2010). The  
81 projection of the TC characteristics in the Bay of Bengal region is unclear as well. To improve these uncertainties, a reasonable  
82 method to examine the impact of future SLR on storm surge and inundation would be to construct an ensemble of tracks and  
83 intensities of possible land-falling TCs along the Bangladesh coast based on the historical TC records. From this statistical  
84 approach, we can quantify the probable impact of TC tracks under future SLR change. To date, such an approach has not been  
85 done and will be the method of this study.

86 We first use Delft3D to simulate the present-day storm surge and inundation using the strength of two recent TCs (Sidr and Aila)  
87 and validate the simulations with observational data. Future storm surge and inundation scenarios were then generated by  
88 incorporating the projected SLR.

89 The study was carried out in the Ganges-Brahmaputra-Meghna Delta regions (Figure 1a). According to Integrated Coastal Zone  
90 Management Plan, 19 districts of Bangladesh located near the Bay of Bengal area were defined as the coastal areas. We've  
91 considered all those in this study. We selected two TC cases in this study, a strong Saffir-Simpson(SS) Category-5 that directly hit  
92 the study area, TC Sidr, and the other a Category -1 storm that made landfall in the southwest part of the study domain, TC Aila.

93 TC Sidr made landfall near Barguna district (Figure 1a) in 2007, causing ~ 3000 human fatalities and leaving millions homeless.  
94 This Category-5 cyclone is considered one of the most powerful cyclones in the past 15 years to have made landfall in Bangladesh,  
95 which affected over nine million people living in the Bangladesh coastal areas. The districts of Patuakhali, Khulna, Barguna and  
96 Jhalokathi were badly affected. During TC Sidr, around 15% of the affected people took refuge in nearby cyclone shelters. In the  
97 village of Angul Kata in Barguna district, around 1500 people took shelter in eight reinforced pillars to protect themselves from  
98 the tidal surge of around 5 m. If there had been no shelters, the death toll could have reached into the hundreds in that area.

99 The other cyclone studied in this paper, TC Aila (Figure 1a) occurred in the Bay of Bengal region in 2009. Although a Category-  
100 1 storm, Aila caused ~ 190 deaths and affected 4.8 million people, the devastation that left a long-term impact. The locales mainly  
101 affected were Khulna, Patuakhali and Chandpur. The storm surge due to Aila broke a dam in Patuakhali and submerged five  
102 villages, destroying a huge number of homes and leaving thousands of people homeless. Most of the people living in those affected  
103 areas took shelter in the nearest cyclone shelters. According to government sources, approximately 2,500,000 houses had been  
104 destroyed completely and 3,700,000 houses had been damaged.

105 The structure of the paper is as follows: brief description of the Delft3D Flow model and the methodologies used to simulate future  
 106 changes in storm surge and inundation, to generate ensemble projections of storm surge inundation were discussed in section 2, In  
 107 section 3, validation of the model results, present-day storm surge inundation scenarios, ensemble projection of storm surge  
 108 inundation and future change in storm surge level were presented. Section 4 includes discussion of model results and the  
 109 uncertainties associated with the future projections. Finally, section 5 presents the concluding remarks on research findings.

## 110 2. Methodology

### 111 2.1 Modeling Methodology

#### 112 2.1.1 Application of Numerical Model

113

114 To develop the present-day and future inundation scenario in the coastal regions of Bangladesh, the Delft3D-FLOW (Delft  
 115 Hydraulics, 2006), a multidimensional (2D or 3D) hydrodynamic and transport simulation program that calculates non-steady flow  
 116 and transport phenomena resulting from tidal and meteorological forcing was used. Delft3D-FLOW solves the unsteady shallow  
 117 water equation in two (depth-averaged) or three dimensions. The system of equations consists of the horizontal equations of motion,  
 118 the continuity equation, and the transport equations for conservative constituents. The equations are formulated in orthogonal  
 119 curvilinear coordinates or in spherical coordinates. Delft3D – FLOW module’s two-dimensional, depth averaged flow equations  
 120 can be applied for modeling tidal waves, storm surges, tsunamis, harbor oscillations (seiches) and transport of pollutants in  
 121 vertically well-mixed flow regimes. In this paper Delft3D’s 2D mode for barotropic depth-integrated flow has been applied. The  
 122 equations are listed below.

$$123 \frac{\partial \zeta}{\partial t} + \frac{1}{\sqrt{G_{\xi\xi}\sqrt{G_{\eta\eta}}}} \frac{\partial[(d+\zeta)v\sqrt{G_{\eta\eta}}]}{\partial \xi} + \frac{1}{\sqrt{G_{\xi\xi}\sqrt{G_{\eta\eta}}}} \frac{\partial[(d+\zeta)v\sqrt{G_{\xi\xi}}]}{\partial \xi} = Q \quad (1)$$

$$124 \frac{\partial u}{\partial t} + \frac{u}{\sqrt{G_{\xi\xi}}} \frac{\partial u}{\partial \xi} + \frac{v}{\sqrt{G_{\eta\eta}}} \frac{\partial u}{\partial \eta} + \frac{uv}{\sqrt{G_{\xi\xi}\sqrt{G_{\eta\eta}}}} \frac{\partial \sqrt{G_{\xi\xi}}}{\partial \eta} - \frac{v^2}{\sqrt{G_{\xi\xi}\sqrt{G_{\eta\eta}}}} \frac{\partial \sqrt{G_{\eta\eta}}}{\partial \xi} - f v + \frac{g}{\sqrt{G_{\xi\xi}}} \frac{\partial \zeta}{\partial \xi} = -\frac{1}{\rho_0 \sqrt{G_{\xi\xi}}} \frac{\partial P_{atm}}{\partial \xi} + F_{\xi} \quad (2)$$

$$125 \frac{\partial v}{\partial t} + \frac{u}{\sqrt{G_{\xi\xi}}} \frac{\partial v}{\partial \xi} + \frac{v}{\sqrt{G_{\eta\eta}}} \frac{\partial v}{\partial \eta} + \frac{uv}{\sqrt{G_{\xi\xi}\sqrt{G_{\eta\eta}}}} \frac{\partial \sqrt{G_{\xi\xi}}}{\partial \eta} - \frac{u^2}{\sqrt{G_{\xi\xi}\sqrt{G_{\eta\eta}}}} \frac{\partial \sqrt{G_{\xi\xi}}}{\partial \eta} + f u + \frac{g}{\sqrt{G_{\xi\xi}}} \frac{\partial \zeta}{\partial \xi} = -\frac{1}{\rho_0 \sqrt{G_{\eta\eta}}} \frac{\partial P_{atm}}{\partial \eta} + F_{\eta} \quad (3)$$

126 where  $\xi$ ,  $\eta$  are the spatial coordinates,  $\zeta$  is representing water level above some horizontal plane of reference (m),  $u$  and  $v$  are the  
 127 velocities in the  $\xi$  and  $\eta$  direction (m/s),  $d$  is the water depth below some horizontal plane of reference (m),  $f$  is the coriolis forcing  
 128 due to the rotation of the earth,  $g$  is the acceleration of gravity ( $m/s^2$ ),  $P_{atm}$  is the atmospheric pressure at water surface ( $kg/m^2$ ),  
 129  $Q$  is the discharge of water, evaporation or precipitation per unit area (m/s) ,  $\rho_0$  is the the density of water,  $\sqrt{G_{\xi\xi}}$  is the coefficient  
 130 used to transfer one coordinate system into another one (m),  $F_{\xi}$  are the turbulent momentum flux in  $\xi$ -direction ( $m/s^2$ ),  $F_{\eta}$  are the  
 131 turbulent momentum flux in  $\eta$ -direction ( $m/s^2$ ). Along with the appropriate set of initial and boundary conditions, the above-  
 132 mentioned equations have been solved on an Arakawa-C type finite difference grid. Delft3D- FLOW manual (Delft Hydraulics,  
 133 2006) contains detailed information about these numerical aspects.

#### 134 2.1.2 Model Grid and Bathymetry

135 The grid was set up using spherical coordinates. The grid spacing varies from a minimum of 125 m to a maximum of 1140 m. The  
 136 finer resolution was applied over land for calculating the inundation or wetting process accurately.

137 In this study, the land topography data were obtained from NASA's Shuttle Radar Topography Mission (SRTM) 90-m resolution  
 138 datasets (Figure 1b). The bathymetries of the rivers and estuaries are specified using the cross sections measured by the Institute  
 139 of Water and Flood Management, Bangladesh. The ocean bathymetry was specified using the data from the General Bathymetric  
 140 Chart of the Oceans 30-arc-sec interval gridded data (BODC, 2003, Figure 1b). Bathymetry and topographic data were interpolated  
 141 over the model domain using triangular interpolation and grid-cell averaging methods of Delft3D (Delft Hydraulics, 2006).

### 142 2.1.3 Wind and Pressure Field

143 Track data of TCs Sidr and Aila were obtained from the Indian Meteorological Department ([www.imd.gov.in](http://www.imd.gov.in)). Using those data  
 144 as input, TC surface winds and mean sea level pressure fields were generated using the Wind Enhancement Scheme (WES)  
 145 (Heming et al. 1995) method based on the analytical equation by Holland (1980). Delft3D slightly improved the original WES by  
 146 introducing TC asymmetry. Unlike some previous method that incorporates TC wind asymmetry information from observations  
 147 (Xie et al. 2006), in WES the asymmetry was brought about by applying the translation speed of the cyclone center displacement  
 148 as steering current and by introducing rotation of wind speed due to friction (Delft Hydraulics, 2011, Heming et al. 1995).

149 According to the Holland's equation, gradient wind speed  $V_g(r)$  at a distance  $r$  from the Centre of the cyclone is expressed as the  
 150 following:

$$151 \quad V_g(r) = \left[ \frac{AB(p_n - p_c) \exp\left(-\frac{A}{rB}\right)}{\rho r^B} + \frac{r^2 f^2}{4} \right]^{0.5} - \frac{rf}{2} \quad (4)$$

152 Here  $\rho$  is the density of air,  $p_c$  is the central pressure and  $p_n$  is the ambient pressure, the Coriolis parameter is represented by  $f$ .  
 153 A and B are determined empirically; with the physical meaning of A as the relation of pressure or wind profile relative to the  
 154 origin, and parameter B defining the shape of the profile. Delft3D introduces a central pressure drop of  $p_d = p_n - p_c$ . By equating  
 155  $\frac{dV_g}{dr} = 0$ , and assuming  $f=0$  in the region of maximum winds where the Coriolis force is small compared to the pressure gradient  
 156 and centrifugal forces, the radius of maximum winds  $R_w$  can be given as follows:

$$157 \quad R_w = A^{1/B} \quad (5)$$

158 Thus,  $R_w$  is independent of the relative values of ambient and central pressure and is defined entirely by the scaling parameters A  
 159 and B. Substitutions lead to the expression for the maximum wind speed  $V_m$

$$160 \quad V_m = \left[ \frac{B p_d}{\rho e} \right]^{0.5} \quad (6)$$

161 Where  $e$  is the base of the natural logarithm ( $=2.71828182846$ ).

162 Complete details about this method can be found in the user manual of Delft3D Flow (Delft Hydraulics, 2006), Holland (1980),  
 163 and Vatvani et al. (2002).

164 The circular grid of TC wind fields used in this study consists of 36 columns and 500 rows and the data were updated at 6 hourly  
 165 intervals throughout its movement until the landfall. Figure 2 shows a snapshot of the wind field of TC Sidr over the model domain,  
 166 before landfall, generated using Holland's equation above.

### 167 2.1.4 Roughness

168 The spatially varying Manning's Roughness value was defined based on land cover, such as vegetation, rivers, and ocean (Table  
169 1). In the study domain, a mangrove forest, Sundarbans, is located in the Southwest region, near TC Sidr's landfall location (Figure  
170 1a). Sakib et al. (2015) found that Sundarban plays a significant role as a buffer in reducing the total inundation during TC passages.  
171 Therefore, in this study, the mangrove region was considered. In selecting the roughness values, methods described in Zhang et al.  
172 (2012) were followed and slightly modified values were defined for the study area based on the vegetation types in that area.

### 173 **2.1.5 Boundary conditions**

174 Upstream boundaries were specified as discharges at the mouths of the three major rivers; the Ganges, the Brahmaputra & the  
175 Upper Meghna; obtained from the Bangladesh Water Development Board (BWDB) as daily discharge. The downstream ocean  
176 boundary was defined by the Topex/Poseidon Inverse Tidal model, based on Egbert et al. (1994) Location of the downstream  
177 ocean boundary is shown in Figure 1a.

### 178 **2.2 Calculation Procedure for Present-day and Future Storm Surge and Inundation Scenario**

179 To generate storm surge and inundation for present-day climate scenario, upstream discharge and downstream water level data  
180 from the present-day were used. For future SLR scenarios, present-day hydrodynamic conditions and the strengths of present-day  
181 TCs were used but the future sea level was modified based on the SLR projections by Caesar et al. (2017; *under review*). Scenarios  
182 were generated for both the mid-21<sup>st</sup>-century and the end-21<sup>st</sup>-century time horizons for these TCs, Sidr and Aila. Finally,  
183 comparisons were made in terms of storm surge and inundation to identify the changes between present-day and future SLR  
184 scenarios.

185 Now, future storm surge inundation due to SLR is a probabilistic event that requires proper addressing of the uncertainties  
186 associated with the input parameters. To address the future tropical cyclone uncertainties and obtain statistically significant results,  
187 we created an ensemble of tropical cyclone tracks. The ensemble tracks were generated from different historical tropical cyclones  
188 that made landfall over the study domain with different intensities (Table 2). Along with the uncertainties associated with future  
189 landfall locations, the intensity of Sidr-like and Aila-like TCs may be different. So, to address the uncertainty with the intensity,  
190 we increased and decreased their intensity by 10% to simulate a probable range of future storm surge inundation.

191 Storm surge inundation can also be different based on landfall timing. If a storm made landfall during the high astronomical tide  
192 condition, its flooding would have been much higher at that time than what could happen during a low astronomical tide condition.  
193 For example, the tides shown in Figures 3 and 7 as the water level oscillations have amplitudes as high as 3 m, which could  
194 significantly affect the extension of flooded area, depending on whether the storm's landfall coincides with a high tide or a low  
195 tide. We note that TC Sidr and TC Aila made landfall during the high tide conditions, which may not always be applicable for the  
196 future TCs. To also address uncertainties with the TC landfall timing, experiments were conducted by changing the timing of  
197 landfall to identify the impact of high tide and low tide on storm surge and inundation. The change of timing in these tide-related  
198 experiments was implemented by modifying the tracks of the storms so that their landfalls coincide with a high tide, a tide, or a  
199 zero-tide condition, in addition to their actual tidal phases. Here in this study, future storm surge inundation scenarios caused by  
200 the ensemble tracks will then be simulated by incorporating the projected SLR. By taking all these parameters into consideration,  
201 we conducted a total 108 ensemble simulations (36 for each; present-day and two SLR scenarios). Parameters that were considered  
202 in making ensemble projections are shown in Table 3.

### 203 3. Results

#### 204 3.1 Validation of the Model

205 Hourly tidal data from the Bangladesh Inland Water Transport Authority (BIWTA) was used to evaluate the performance of the  
206 model used in this study. The model simulation's root mean square error (RMSE)<sup>7</sup>, mean absolute error (MAE)<sup>8</sup> and dimension-  
207 less Nash-Sutcliffe coefficient (E)<sup>9</sup> (Nash and Sutcliffe, 1970) were calculated and listed in Table 4. A Nash-Sutcliffe coefficient  
208 ranges between negative infinity (no skill simulation) and one (perfect simulation).

$$209 \quad RMSE = \sqrt{\frac{\sum_{i=1}^n (X_{obs,i} - X_{model,i})^2}{n}} \quad (7)$$

$$210 \quad MAE = \frac{1}{n} \sum_{i=1}^n |X_{obs,i} - X_{model,i}| \quad (8)$$

$$211 \quad E = 1 - \frac{\sum_{i=1}^n (X_{obs,i} - X_{model,i})^2}{\sum_{i=1}^n (X_{obs,i} - \bar{X}_{obs})^2} \quad (9)$$

212 The simulated water levels were compared against the measured data from BIWTA at two locations: Barisal and Charchanga  
213 (Figure 1a). Barisal station is located more towards the inland whereas Charchanga is located near the coastline where the grid cell  
214 resolution was coarse. But none of them are in the open ocean water, which is important to get a clear idea about storm surge level.  
215 TC Sidr made landfall near the Barisal Station (Figure 1a) and the impact of the storm surge was clearer at the Barisal station than  
216 that of TC Aila, which made landfall outside the model domain (Figure 1a); therefore, its impact was not as clear as that of Sidr.  
217 In Figure 3(a) for TC Sidr at the Barisal station, the modeled water level, including storm surge and astronomical tides, was slightly  
218 lower than the observations, and at the Charchanga station (Figure 3b) the measured water level variation displayed smaller  
219 amplitudes than did the model outputs for positive tides and for negative tides, larger amplitudes than the modeled water level for  
220 negative tides, perhaps due to the coarse resolution of bathymetry. Similar types of variations between measured and modeled  
221 water level were found for TC Aila (Figure 3c and Figure 3d). Nevertheless, the modeled water level variations during TCs Sidr  
222 and Aila agreed reasonably well with measured data; as also confirmed by the calculated RMSE, MAE and Nash-Sutcliffe  
223 coefficient (Table 4). Therefore, we conclude that the method can be used to study the impact of SLR on storm surge and inundation  
224 in future climate change scenarios.

#### 225 3.2 Present-day Inundation Scenario

226 The storm surge inundation scenarios due to the two TCs considered are shown in Figure 4.

227 It can be seen from Figure 4 that the area flooded by TC Sidr (yellow shade+red shade) was much higher than the area flooded by  
228 TC Aila (white shade+red shade), a result that is consistent with the fact that the category-5 TC Sidr was much stronger than the  
229 category-1 TC Aila and directly hit the study area. The maximum sustained wind speed for TC Sidr was 260 km/h whereas for TC  
230 Aila it was 110 km/h. The landfall location of Sidr was on the Eastern side of Sundarban, while for Aila, the landfall location was  
231 towards the Western side of Sundarbans. That explains why the inundations due to TC Sidr were located near the eastern side of  
232 Sundarban, whereas for Aila, the inundation was located mainly in the western part. The extent of inundation due to Sidr (1860  
233 km<sup>2</sup>) was 35% larger than that of Aila (1208 km<sup>2</sup>)

234 Sakib et al. (2015) showed that Sundarban acted as a buffer zone in reducing the impact of Sidr and thereby reduced much of the  
235 potential inundation depth and extent of flooding. As mentioned before, in the model simulation the impact of Sundarban was  
236 realized using a higher Manning's roughness value as resistance for the surge to travel.

### 237 **3.3 Impact of Future Climate Scenarios on Storm Surge Inundation**

238 Future inundation scenarios were generated for two different time horizons: one for the mid-21<sup>st</sup>-century and the other for the end-  
239 21<sup>st</sup>-century. The initial ocean water level was raised by 0.26 m and 0.54 m for the mid-21<sup>st</sup>-century and end-21<sup>st</sup>-century,  
240 respectively. The upstream river discharge and downstream ocean water level were used from present-day climate scenarios.

241 In this section we seek to answer the question: if present-day's TCs were to happen in future SLR scenarios, what storm surge and  
242 inundation hazard would they cause? Therefore, the tracks and intensities of the two present-day TCs, Sidr and Aila, were used as  
243 the model wind input parameters.

244 The model simulated inundated areas and the percent variations were shown in Table 5 and Figure 5. Figure 5 shows that under  
245 future SLR scenarios, the inundated areas caused by TCs Sidr and Aila would be significantly higher than those under the present-  
246 day climate condition, as indicated by the white color shaded areas. For the category-5 TC Sidr, the inundated area would be 31%  
247 (2436.6 km<sup>2</sup>) and 53% (2845.8 km<sup>2</sup>) higher than present-day's 1860 km<sup>2</sup> inundated area, in mid-21<sup>st</sup>-century (0.26 m SLR) and  
248 end-21<sup>st</sup>-century (0.54 m SLR) climate scenarios, respectively (Figure 5a and Figure 5b).

249 Similarly, for the category-1 TC Aila, there would be an increase in inundated areas. The simulated inundated areas for TC Aila  
250 under mid-21<sup>st</sup>-century and end-21<sup>st</sup>-century were 1550 km<sup>2</sup> (28.3%) and 1770 km<sup>2</sup> (46.5%), respectively (Figure 5c and Figure  
251 5d) whereas for the present-day scenario it was found to be 1208 km<sup>2</sup>.

252 However in Figure 5, there are several small areas of yellow color indicating zones flooded under present conditions but not flooded  
253 during future SLR conditions. This is because Figure 5 showed snapshots of the inundation conditions at one particular time. Some  
254 areas may experience alternating wetting and drying conditions, which may explain why some areas are flooded with present SLR  
255 and not with higher SLR: this is so only at that particular time. The authors expect that those areas are flooded at other times.

256 All these simulations were carried out using the present-day tides, upstream river discharges and TC tracks and strengths, with  
257 only the initial sea water level raised to reflect the effect of the projected future SLR. Therefore, the results suggest that even if the  
258 future TCs strengths, tides, and river discharges remain the same as in the present-day climate condition, future SLR would  
259 significantly increase the inundated area, by as high as 53%.

#### 260 **3.3.1 Ensemble Projection of Future Storm Surge Inundation under SLR Conditions**

261 As discussed in section 2.2, the future change in storm surge inundation can be different based on the intensity, landfall location  
262 and timing of future TCs. By considering all these uncertainty factors mentioned in Table 3, a column plot was created (Figure 6)  
263 for present-day sea level and future SLR scenarios. Ensemble simulation outputs also showed an evident increase in the inundated  
264 area under the effect of SLR. For the present-day scenario (black column), out of 36 simulations, frequency of storm surge  
265 inundation incidents that would likely occur between the range of 1000-1250 km<sup>2</sup> is 13. whereas for 0.26 m of SLR (red column),  
266 peak of the column shifted towards right side with a maximum frequency of inundation events occurred within the range of 2000-  
267 2250 km<sup>2</sup> (10 times out of 36 simulation results). And for 0.54 m of increase in sea level (blue column), the peak of the column  
268 shifted more towards the right and the maximum number of simulation outputs (11 out of 36 simulations) showed the range of



269 inundation to be within 3500-3750 km<sup>2</sup>. These results show that even the change in intensities of future TCs are indefinite and the  
270 landfall timing is uncertain, increase in sea level is going to increase the area of inundation.

### 271 **3.4 Impact of Sea Level Rise on Future Storm Surge Level**

272 In addition to the inundation area, SLR would also greatly affect storm surge levels. Similar to the approach used in the inundation  
273 study (Section 3.3), TCs Sidr- and Aila-induced storm surges in the future SLR scenarios were simulated using their recorded  
274 strengths.

275 The simulated storm surge water levels in future SLR scenarios were compared with both the observed and model generated ones  
276 under the present-day scenarios (Figure 7). It is to be mentioned that, while generating the future water level under the effect of  
277 SLR, the baseline was only changed by considering the SLR effect and based on that factor the future storm surge level was  
278 calculated. Other than that, the water level is the same as present-day TCs.

279 From Figure 7 we can see that for the case of TC Sidr the simulated storm surge level would become 2.13 m (Figure 7a, Table 6)  
280 in Barisal station which is around 13.7% higher than the present-day scenario. Similar to that, under the end-21<sup>st</sup>-century 0.54 m  
281 SLR scenario in Barisal, the storm surge would be around 28.67% higher (Figure 7a., Table 6) than the present-day scenario and  
282 the peak water level would reach 2.41 m (Table 6).

283 Increase in storm surge was found at the Charchanga station also. For TC Sidr, under the mid-21<sup>st</sup>-century scenario (0.26 m SLR),  
284 the model simulated storm surge level was found to be 13.95% higher (1.87 m) (Figure 7b, Table 6) than the present-day and  
285 33.45% higher (2.19 m) (Figure 7b, Table 6) than the present-day for the end-21<sup>st</sup>-century (0.54 m SLR) climate scenario. It is to  
286 be noted that, a slight phase shift in the model simulation occurred at this station from November 13 to November 15. This could  
287 happen due to the presence of seiche. However, for rest of the period, phase variations are similar to the observed ones.

288 For TC Aila in Barisal, the Storm Surge would become 21.93% higher than the present-day, which was 1.299 m under the 0.26 m  
289 SLR condition for the mid-21<sup>st</sup>-century climate scenario (Figure 7c, Table 7). During the end-21<sup>st</sup>-century climate scenario, the  
290 increment would become even higher as the SLR would be 0.54 m. Storm Surge would be 50.96% higher (1.96 m) (Figure 7c,  
291 Table 7) than the present day under the 0.54 m SLR condition at the end of the century.

292 At Charchanga, the storm surge would be higher than the present-day condition for TC Aila. For the mid-21<sup>st</sup>-century under the  
293 0.26 m SLR scenario, the storm surge would become 3.075 m which is around 23% higher than the present-day condition (Figure  
294 7d, Table 7). And for end-21<sup>st</sup>-century, this would become 55% higher (3.875 m) than the present day as the SLR would reach 0.54  
295 m (Figure 7d, Table 7).

296 To analyze the linearity/non-linearity of storm surge level with respect to SLR, we conducted additional experiments based on 5  
297 SLR scenarios; present-day sea level, 0.26 m of SLR, 0.33 m of SLR, 0.4 m of SLR, 0.47 m of SLR, 0.54 m of SLR, respectively.  
298 Results from these experiments are presented in the Figure 8.

299 For the case of TC Sidr in Barisal and Charchanga station, storm surge level increased almost linearly with respect to the addition  
300 of water due to the effect of SLR. For example, with an SLR of 0.47 m, the increase of storm surge level with respect to present  
301 day in Barisal and Charchanga stations were 0.453 m and 0.445 m, respectively (Figure 8a). On the other hand for the case of TC  
302 Aila, with an SLR of 0.26 m, the increase in storm surge level were found 0.285 m and 0.575 m respectively for the Barisal and  
303 Charchanga station (Figure 8b). Though the storm surge level is increasing almost linearly with the addition of sea water, however,

304 there are still differences found between them, which could be influenced by the modification of ocean bathymetry to incorporate  
305 the effect of SLR. The margin of differences is higher for the Charchanga station comparing it with the Barisal station. The coarse  
306 resolution of topography near that area might be responsible for that.

#### 307 **4. Discussions**

308 In this paper, we showed that even if the future TCs keep the same strength like the present-day ones their impact will be much  
309 higher in a changing climate due to the effect of SLR. Several other factors not included in the modeling could make the storm  
310 surge and inundation situation far worse than that shown in the modeling result. These factors include mangrove coverage decrease,  
311 morphological changes, TC strength increase, and upstream river discharge changes.

312 For including the effect of future SLR in the model simulations, several methodologies were examined. One of the methods with  
313 which we experimented in this study was to include the increased sea level in open ocean boundary instead of adding it in to the  
314 whole ocean depth by keeping the coastline fixed. This method was used by some previous studies (Pickering et al. 2012).  
315 However, in such a case, an additional pressure gradient force was found acting towards the coast which made the inundated area  
316 much higher. Therefore, this method was not used in this study. Instead, in this study, the future SLR was added to the whole ocean  
317 domain depth.

318 To make the future SLR simulation realistic, we considered the increased sea level in ocean bathymetry and increased the depth  
319 by 0.26 and 0.54 m, respectively, by considering land submergence near the coast. In that case, the result looked much more  
320 realistic than the previous one and this is the method we followed in this paper. For example, for the case of TC Aila under the  
321 end-21<sup>st</sup>-century scenario where we used an SLR of 0.54 m SLR at the open ocean boundary instead of adding it to ocean depth  
322 and using the hydrodynamic conditions from the present day, the total inundated area was found to be 79% higher than the present-  
323 day one. Similar to that, for the mid-21<sup>st</sup>-century scenario (a 0.26 m SLR), the inundated area was found to be 69% more than the  
324 present-day scenario. But when we added the SLR in ocean depth, the mid-21<sup>st</sup>-century and end-21<sup>st</sup>-century inundated area were  
325 found to be 28% and 46% higher than the present-day scenario. This increase in inundated area was much less than the one that  
326 we found by adding the SLR in the open ocean boundary. Figure 9 displays the differences in the inundated area based on the  
327 consideration of SLR in the model input.

328 As discussed earlier, TC Sidr made landfall near Sundarban, where the mangrove forest zone acted as a buffer in reducing the  
329 impact of the storm surge flood. That is why, even though it was a TC 5, its impact was not as high as it might have been expected  
330 to be. In this study, the roughness of the mangrove forest zone on the South-West part of Bangladesh was considered to be fixed  
331 for the present-day as well as for future scenarios. But Mukhopadhyay et al. (2015) predicted that 17% of the total mangrove cover  
332 could disappear by 2105. If this decreasing trend of vegetation were considered in this study, the flooded area could be much  
333 higher.

334 Morphological changes were not considered in this study. But according to Goodbred et al. (2003), each year the eastern, central  
335 and western estuaries lose land at a rate of 0.13 cm/year, 0.16 cm/year and 0.16 cm/year, respectively. This could also lead to  
336 increased inundated areas for future scenarios. But as the focus of the paper is to estimate the future scenario of storm surge and  
337 inundation due to the effect of SLR and to compare with the present-day scenarios, it is important that we keep the roughness and  
338 morphological changes constant so that consistent comparisons can be made.

339 Some previous research showed that there could be increases in hurricane strength and landfall probability in the future due to  
340 global climate change (Haarsma et al. 2013, Bender et al. 2010, Bengtsson et al. 2007). Though we slightly modified the present-

341 day TC strengths and selected 12 historical TC tracks to reduce landfall uncertainties and to make ensemble projection of future  
342 storm surge inundation, strength may be much higher than the ones that we considered for this study. In such case, the devastation  
343 could well be much higher under projected SLR conditions, which is very alarming

344 In this paper, we used the present-day river discharge data as an upstream boundary for generating future inundation scenarios.  
345 But using the INCA-N, an Inland Catchment Modeling system and considering the projected climatic and socioeconomic scenarios,  
346 Whitehead et al. (2015) showed that, there would be a significant increase in future monsoon intensities due to the impact of  
347 climate change. That would make future flooding scenarios much worse than those experienced presently. So, based on the changes  
348 in TC intensity, river discharges, and land-use changes, the situation could well become more badly impacted than what we found  
349 in this study.

350 The findings of our study are important for local governments to consider while they make new management and policy decisions  
351 and to improve TC preparedness plans by increasing numbers of shelters and heights. In TC shelters, the first floor should be kept  
352 above the high surge waters. Our study showed that, in the future, there would be an increase in surge level from a minimum of  
353 13.72% up to 55% if a TC 1 or a TC 5 makes landfall under increased SLR conditions (Table 6, Table 7). So, the authority may  
354 consider increasing the height of the first floor considering the future risk of an increase in storm surge level and safety of local  
355 populations. Also, our model outputs showed that the inundated area increase would range from 28.3%-53% (Table 5) if there's  
356 any TC 1 or TC 5 was to make landfall with SLRs of 0.26 m or 0.54 m. This shows that a huge number of new areas are going to  
357 face the impacts of storm surge inundation and by considering this issue, it is high time to increase the number of TC shelters in  
358 the coastal areas of Bangladesh.

## 359 **5. Conclusion**

360 Employing the Delft3D-FLOW model, we simulated coastal storm surge and inundation for present-day and future SLR scenarios  
361 and compared the changes between them. After validating the present-day model, simulations were conducted for mid-21<sup>st</sup>-century  
362 and end-21<sup>st</sup>-century climate scenarios where the SLR has been considered as 0.26 m and 0.54 m respectively. The model results  
363 showed that, with an increase of 0.26 m and 0.54 m SLR, there would be an increase of 31% and 53% of inundated area respectively  
364 if TC Sidr was to made landfall with its present-day strength. There would also be an increase of 28.3% and 46.5% in inundated  
365 area if Category-1 TC Aila would make landfall with its present-day strength but under the condition of 0.26 m and 0.54 m  
366 respectively. Outputs from the ensemble projections showed that, even if the TC intensities, landfall location and timings are  
367 uncertain, the most probable range of inundated area extent would shift from 1000-1250 km<sup>2</sup> (present day) to 2000-2250 km<sup>2</sup> (0.26  
368 m SLR) and 3500-3750 km<sup>2</sup> (0.54 m SLR). Besides the inundated area, we also investigated the changes in storm surge level if  
369 TC Sidr and TC Aila would make landfall under future SLR conditions. Similar to the inundated area, increases in storm surge  
370 levels were found for future scenarios. The significant increase in simulated storm surge and inundation hazards highlights the  
371 need for the local governments to improve cyclone preparedness in future SLR scenarios.

## 372 **Acknowledgement**

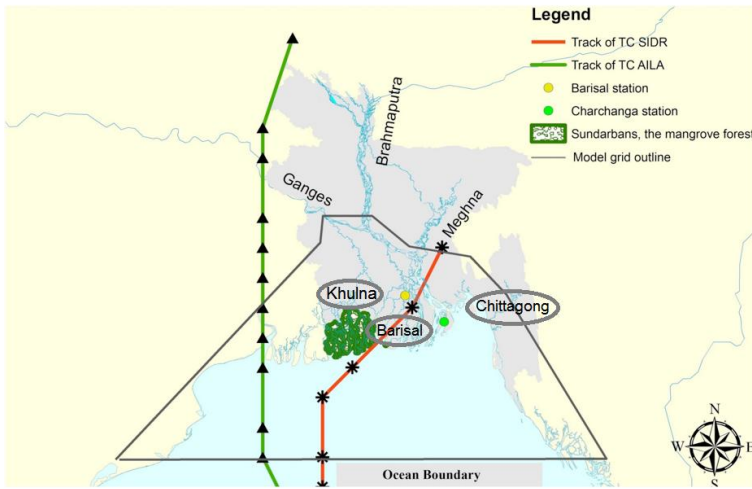
373 The authors would like to thank Coastal Carolina University's Cyber-infrastructure project (<http://ci.coastal.edu>) for providing  
374 access to computational resources. Also, we would like to acknowledge Dr. Susan Kay from Plymouth Marine Laboratory, UK  
375 for her thoughtful opinions regarding the SLR input in model and Institute of Water and Flood Management, Bangladesh for  
376 providing important data and support for this work. The authors also appreciate the helpful comments and suggestions from the  
377 three anonymous reviewers.

378 **References:**

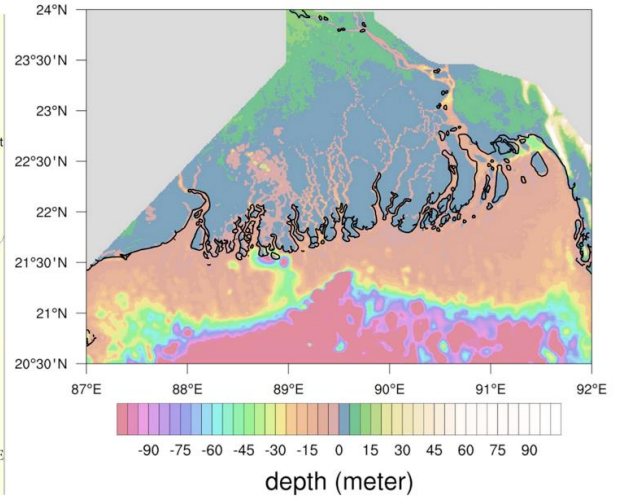
- 379 Ali, A.: Vulnerability of Bangladesh to climate change and sea level rise through tropical cyclones and storm surges, *Climate*  
380 *Change Vulnerability and Adaptation in Asia and the Pacific*, Springer, pp. 171–179., doi: 10.1007/978 94-017-1053-4\_16, 1996.
- 381 Bender, M.A., Knutson, T.R., Tuleya, R.E., Sirutis, J.J., Vecchi, G.A., Garner, S.T., Held, I.M.: Modeled impact of  
382 anthropogenic warming on the frequency of intense Atlantic hurricanes, *Science*, 327, 454–458, doi: 10.1126/science.1180568,  
383 2010.
- 384 Bengtsson, L., Hodges, K.I., Esch, M., Keenlyside, N., Kornblueh, L., LUO, J.-J., Yamagata, T.: How may tropical cyclones  
385 change in a warmer climate?, *Tellus a*, 59, 539–561, doi: 10.1111/j.1600-0870.2007.00251.x, 2007.
- 386 BODC.: Centenary Edition of the GEBCO Digital Atlas, published on CD-ROM on behalf of the Intergovernmental  
387 Oceanographic Commission and the International Hydrographic Organization as part of the General Bathymetric Chart of the  
388 Oceans. British oceanographic data centre, Liverpool, 2003.
- 389 Caesar, J., Janes, T., Lindsay, A.: Climate projections over Bangladesh and the upstream Ganges-Brahmaputra-Meghna system,  
390 under review, *Environmental Science: Processes & Impacts (Under Review)*, 2017.
- 391 Delft Hydraulics.: Delft3D-FLOW user manual. Delft, the Netherlands, 2006.
- 392 Delft Hydraulics.: Wind Enhancement Scheme for cyclone modelling, 2011.
- 393 Egbert, G. D., Bennett, A. F. and Foreman, M. G. G.: TOPEX/POSEIDON tides estimated using a global inverse model, *J.*  
394 *Geophys. Res.*, 99(C12), 24821–24852, doi:10.1029/94JC01894, 1994.
- 395 Goodbred, S.L., Kuehl, S.A., Steckler, M.S., Sarker, M.H.: Controls on facies distribution and stratigraphic preservation in the  
396 Ganges–Brahmaputra delta sequence, *Sedimentary Geology*, 155, 301–316, doi:10.1016/S0037-0738(02)00184-7, 2003.
- 397 Haarsma, R.J., Hazeleger, W., Severijns, C., Vries, H., Sterl, A., Bintanja, R., Oldenborgh, G.J., Brink, H.W.: More hurricanes to  
398 hit western Europe due to global warming, *Geophysical Research Letters*, 40, 1783–1788, doi: 10.1002/grl.50360, 2013.
- 399 Haque, C.E.: Atmospheric hazards preparedness in Bangladesh: a study of warning, adjustments and recovery from the April  
400 1991 cyclone, *Earthquake and Atmospheric Hazards*, Springer, pp. 181–202, doi: 10.1007/978-94-011-5034-7\_6, 1997.
- 401 Harris, D. L.: Characteristics of the hurricane storm surge, Tech. Pap., 48, U. S. Weather Bur., Washington, D. C., 139 pp, 1963.
- 402 Hearn, C. J.: The dynamics of coastal models. Cambridge University Press, 2008.
- 403 Heming, J. T., Chan, J. C. L. and Radford, A. M.: A new scheme for the initialization of tropical cyclones in the UK  
404 Meteorological Office global model, *Met. Apps*, 2, 171–184, doi:10.1002/met.5060020211, 1995.
- 405 Holland, G. J.: An analytic model of the wind and pressure profiles in hurricanes, *Monthly weather review*, 108(8), 1212-1218,  
406 doi:10.1175/1520-0493(1980)108<1212:AAMOTW>2.0.CO;2, 1980.
- 407 Karim, M.F., Mimura, N.: Impacts of climate change and sea-level rise on cyclonic storm surge floods in Bangladesh, *Global*  
408 *Environmental Change*, 18, 490–500, doi: 10.1016/j.gloenvcha.2008.05.002, 2008.
- 409 Knutson, T.R., McBride, J.L., Chan, J., Emanuel, K., Holland, G., Landsea, C., Held, I., Kossin, J.P., Srivastava, A.K., Sugi, M.:  
410 Tropical cyclones and climate change, *Nature Geoscience*, 3, 157–163, doi: 10.1038/ngeo779, 2010.
- 411 Meehl, G.A., Covey, C., Delworth, T., Latif, M., McAvaney, B., Mitchell, J.F.B., Stouffer, R.J., Taylor, K.E., and Coauthors.:  
412 Global climate projections. *Climate Change 2007: The Physical Science Basis*, S. Solomon et al., Eds. Cambridge University  
413 Press, 2007.

- 414 Milliman, John D., James M. Broadus, and Frank Gable.: Environmental and economic implications of rising sea level and  
 415 subsiding deltas: the Nile and Bengal examples, *Ambio*, 18 (6), 340-345, doi: , 1989.
- 416 Mukhopadhyay, A., Mondal, P., Barik, J., Chowdhury, S.M., Ghosh, T., Hazra, S.: Changes in mangrove species assemblages and  
 417 future prediction of the Bangladesh Sundarbans using Markov chain model and cellular automata, *Environmental Science:  
 418 Processes & Impacts*, 17, 1111–1117, doi: 10.1039/C4EM00611A, 2015
- 419 Murty, T.S., Flather, R.A., Henry, R.F.: The storm surge problem in the Bay of Bengal. *Progress in Oceanography*, 16, 195–233,  
 420 doi: 10.1016/0079-6611(86)90039-X ,1986.
- 421 Nash, J.E., Sutcliffe, J.V.:River flow forecasting through conceptual models part I—A discussion of principles, *Journal of  
 422 hydrology*, 10, 282–290, doi:10.1016/0022-1694(70)90255-6, 1970.
- 423 Pietrafesa, L. J., Janowitz, G. S., Chao, T. Y., Weisberg, R. H., Askari, F., & Noble, E.: The physical oceanography of Pamlico  
 424 Sound. University of North Carolina Sea Grant Publication UNC-WP-86-5, Raleigh, North Carolina, 125, 1986
- 425 Pietrafesa, L.J., Bao, S., Yan, T., Slattery, M., Gayes, P.T.: On Sea Level Variability and Trends in United States Coastal Waters  
 426 and Relationships with Climate Factors, *Advances in Adaptive Data Analysis*, 7, 1550005, doi: 10.1142/S1793536915500053,  
 427 2015.
- 428 Pickering, M. D., Wells, N.C., Horsburgh, K. J., and Green, J. A. M.: The impact of future sea-level rise on the European Shelf  
 429 tides. *Continental Shelf Research* 35: 1-15, doi:10.1016/j.csr.2011.11.011, 2012.
- 430 Sakib, M., Nihal, F., Haque, A., Rahman, M., Ali, M.: Sundarban as a Buffer against Storm Surge Flooding, *World Journal of  
 431 Engineering and Technology*, 3, 59, doi: 10.4236/wjet.2015.33C009, 2015.
- 432 SMRC.: The Vulnerability Assessment of the SAARC Coastal Region due to Sea Level Rise: Bangladesh Case, SAARC  
 433 Meteorological Research Center, Dhaka SMRC-No. 3, 2003.
- 434 Vatvani, D.K., Gerritsen, H., Stelling, G. S., Rao, A. K.: Cyclone induced storm surge and flood forecasting system for India.  
 435 *Solutions to Coastal Disasters '02*, San Diego, CA, 2002.
- 436 Warrick, R.A., Bhuiya, A.A.H., Mitchell, W.M., Murty, T.S., Rasheed, K.B.S.: Sea-level Changes in the Bay of Bengal, in: *The  
 437 Implications of Climate and Sea–Level Change for Bangladesh*, Springer, pp. 97–142, 1996.
- 438 Whitehead, P.G., Barbour, E., Futter, M.N., Sarkar, S., Rodda, H., Caesar, J., Butterfield, D., Jin, L., Sinha, R., Nicholls, R., others.:  
 439 Impacts of climate change and socio-economic scenarios on flow and water quality of the Ganges, Brahmaputra and Meghna  
 440 (GBM) river systems: low flow and flood statistics, *Environmental Science: Processes & Impacts*, 17, 1057–1069, doi:  
 441 10.1039/C4EM00619D, 2015.
- 442 Xie, L., Bao, S., Pietrafesa, L.J., Foley, K., Fuentes, M.: A real-time hurricane surface wind forecasting model: Formulation and  
 443 verification, *Monthly Weather Review*, 134, 1355–1370, doi:10.1175/MWR3126.1, 2006.
- 444 Zhang, K., Liu, H., Li, Y., Xu, H., Shen, J., Rhome, J., Smith, T.J.: The role of mangroves in attenuating storm surges, *Estuarine,  
 445 Coastal and Shelf Science* 102, 11–23, doi: 10.1016/j.ecss.2012.02.021, 2012.
- 446

(a) Study Area



(b) Topography and Bathymetry



447

448

449 **Figure 1.** (a) Map of the study area for this work. The red and green lines represent the tracks of TC Sidr and TC Aila respectively. The area  
450 marked with green color indicates the Sundarban mangrove forest region. Location of the Ganges, Brahmaputra and Meghna rivers are shown  
451 on the map. Khulna, Barisal and Chittagong which are landfall locations for the historical TCs used for ensemble projection, shown inside a  
452 circular box on the map. Two circles over the study area are the observation stations of Bangladesh Inland Water Transport Authority (BIWTA).  
453 The black colored outline shows the extent of model grid over the region. (b) Topography and bathymetry of the model domain. Negative depth  
454 values represent water bodies (ocean and rivers) and positive depth values areas represent land.

455

456

457

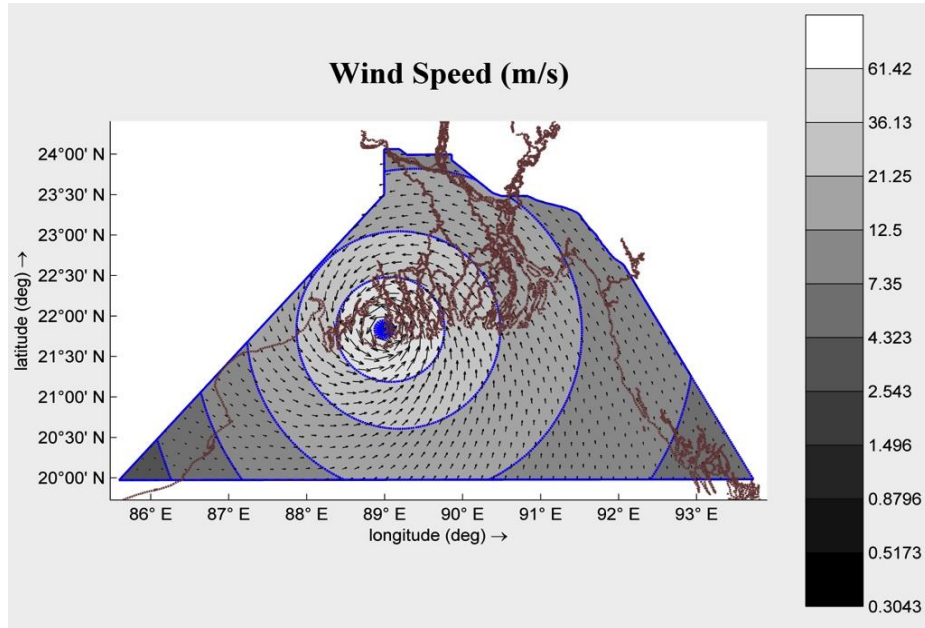
458

459

460

461

462



**Figure 2.** Distribution of the wind field over the model domain for TC Sidr during landfall generated using Holland's Equation.

463

464

465

466

467

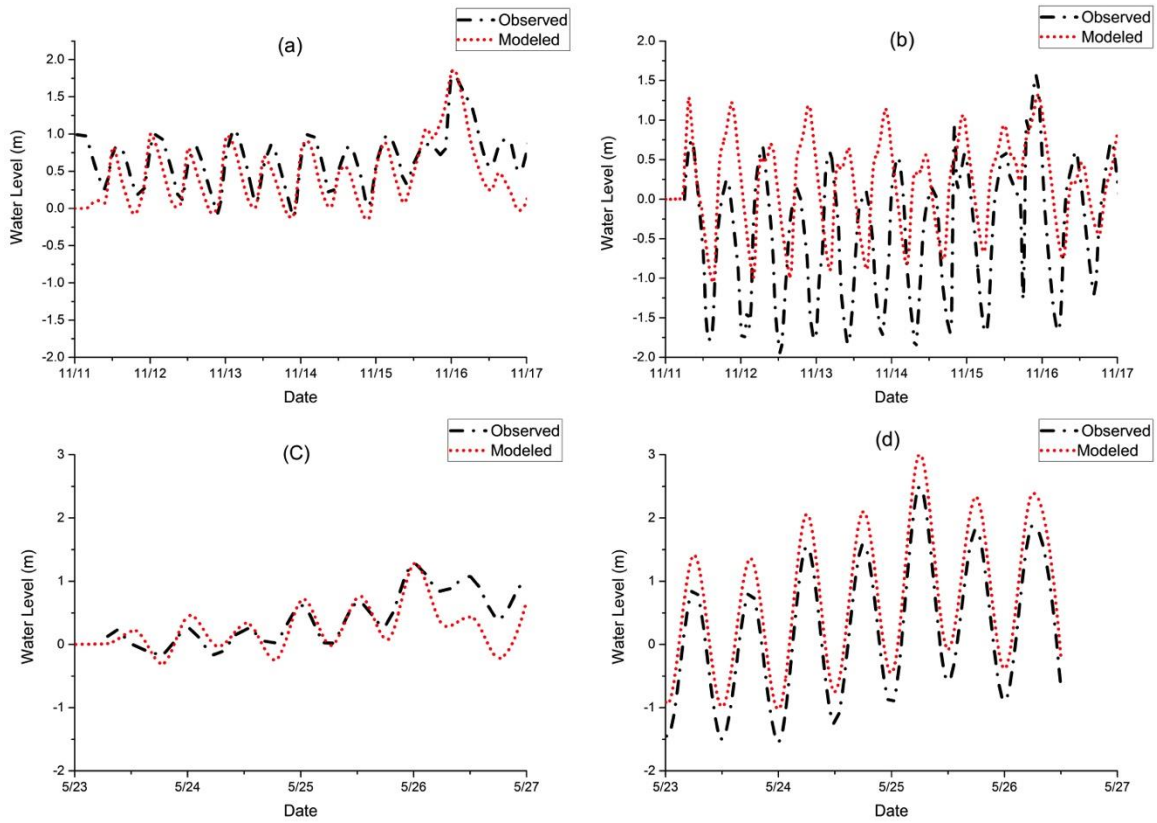
468

469

470

471

472

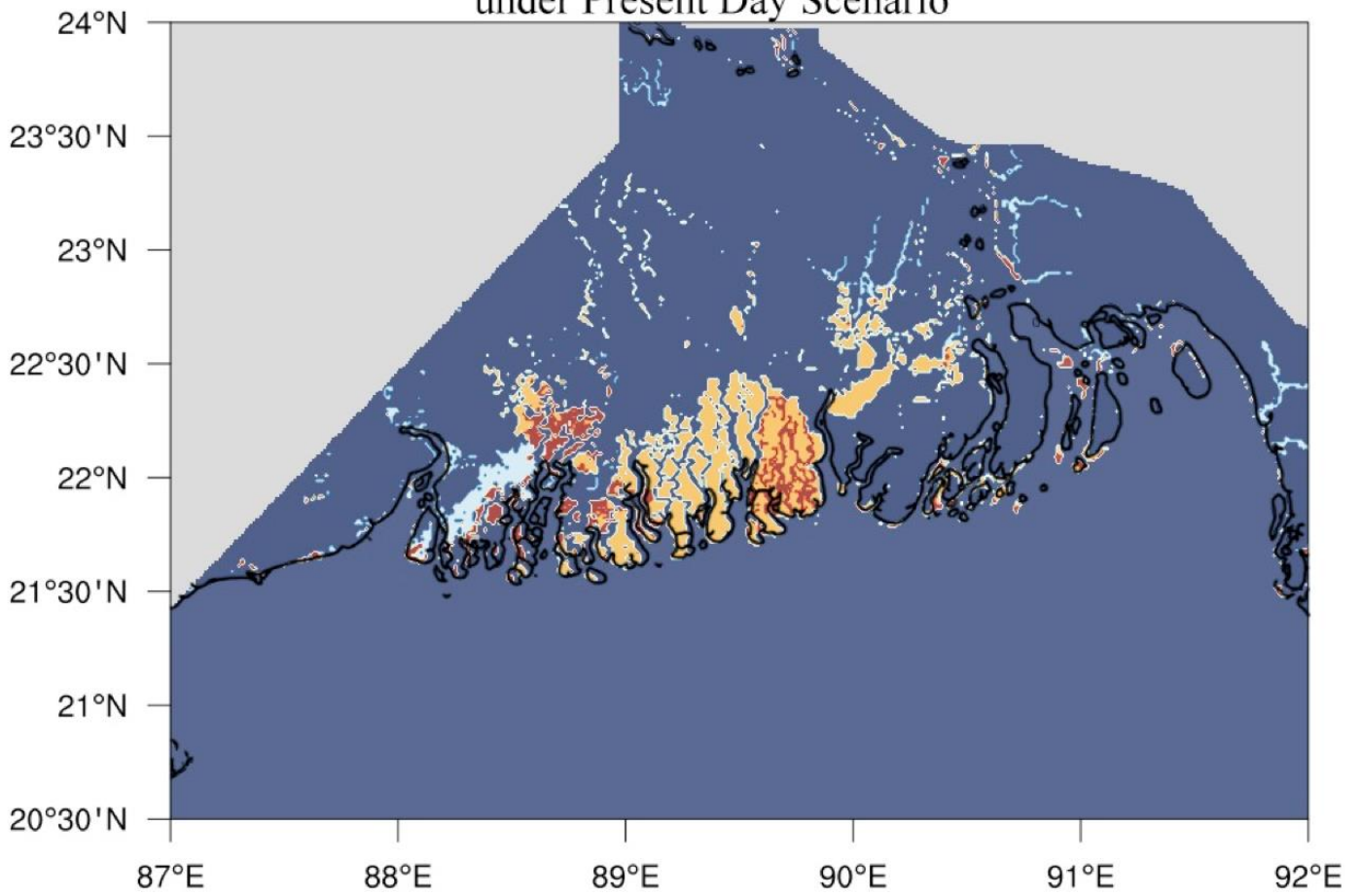


473  
 474 **Figure 3.** Comparison of observed and modeled water level for TC Sidr and TC Aila in Barisal and Charchanga observation stations. (a) measured  
 475 and modeled water level comparison for TC Sidr in Barisal (b) TC Sidr in Charchanga (c) TC Aila in Barisal (d) TC Aila in Charchanga.

476  
 477  
 478  
 479  
 480  
 481  
 482



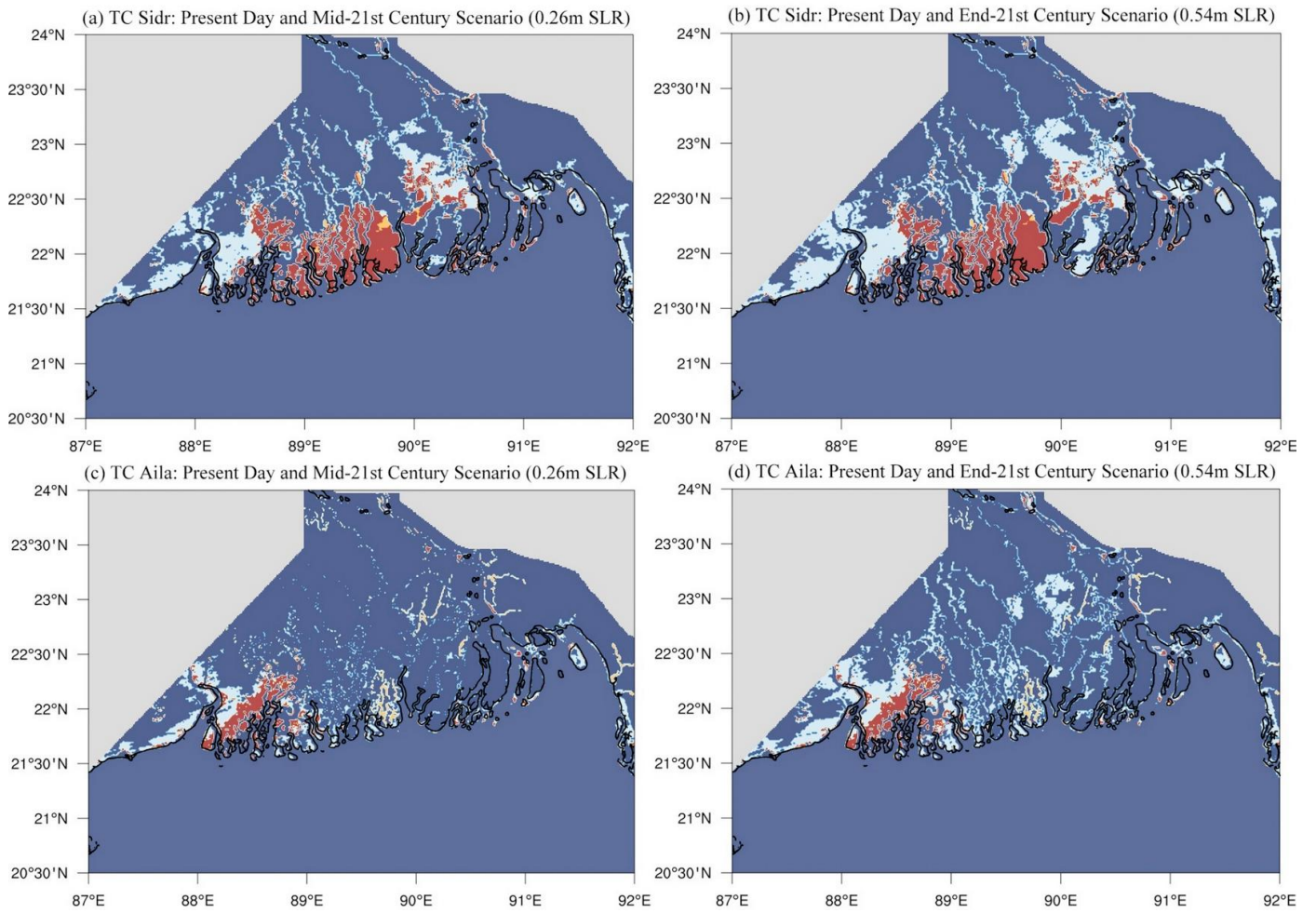
### Comparison of Inundated Area between TC Sidr and TC Aila under Present Day Scenario



**Figure 4.** Yellow colors denotes the areas flooded by TC Sidr but not in Aila, and the white color representing the area inundated by TC Aila but not in Sidr. Red color is the area flooded by both TC Sidr and TC Aila. Blue color is showing the non-flooded area (either land or constant water).

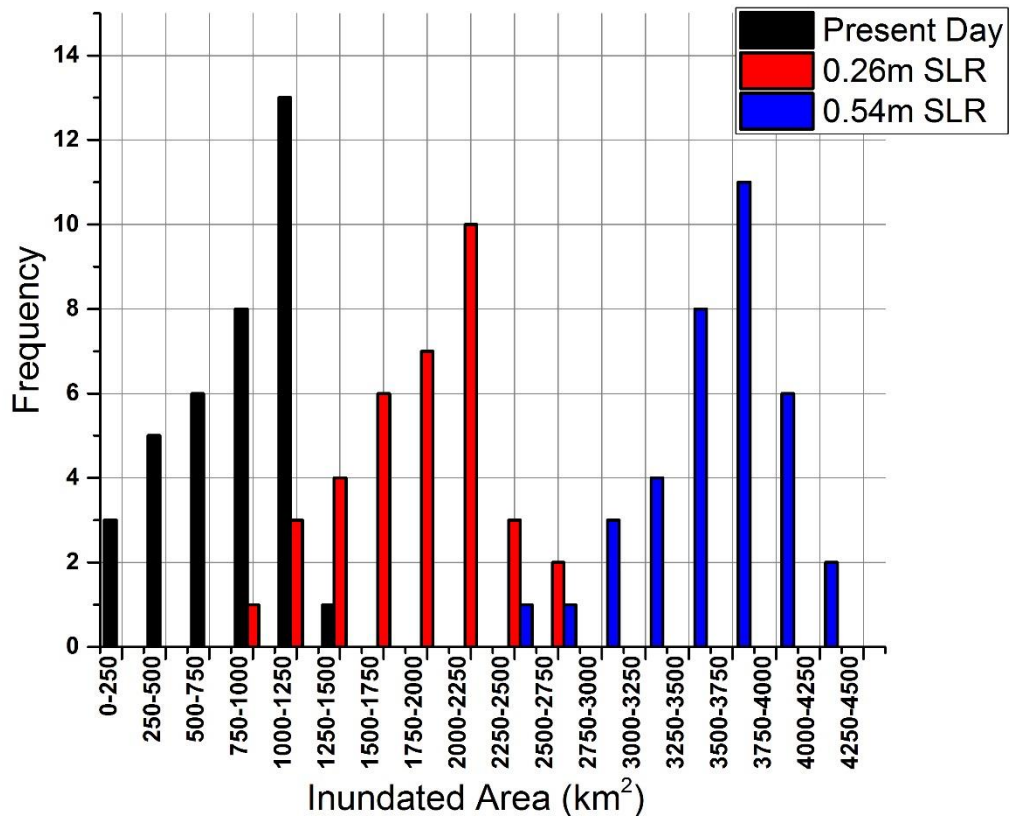
483  
484

485  
486  
487  
488  
489  
490  
491  
492  
493  
494



495  
 496 **Figure 5:** Comparison of inundated area between present-day and future climate scenarios for (a) TC Sidr mid-21<sup>st</sup>-century  
 497 0.26m SLR (b) TC Sidr end-21<sup>st</sup>-century 0.54m SLR (c) TC Aila mid-21<sup>st</sup>-century 0.26m SLR (d) TC Aila end-21<sup>st</sup>-century  
 498 0.54m SLR. White color is representing the increased flooded areas that were not in present-day scenario but the increase due  
 499 to future SLR. Red color is showing the inundated areas that were similar both for present-day and future SLR scenario case.

495  
 496  
 497  
 498  
 499  
 500



501

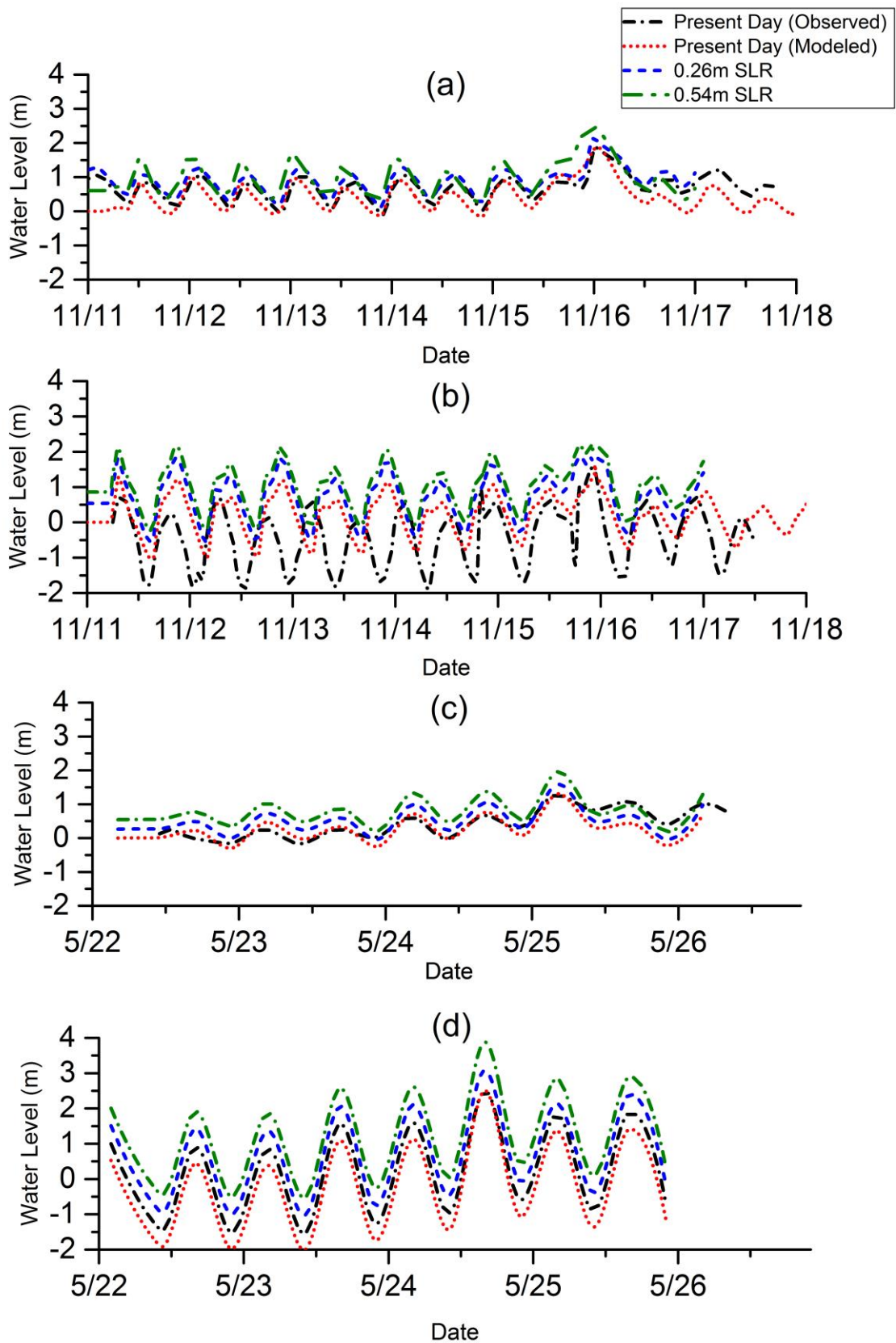
502 **Figure 6:** Ensemble projection of the future SLR impact on storm surge inundation. The column in black color is representing the inundation  
 503 events for present-day sea level condition, red colored one is for 0.26 m of SLR and blue colored column is for 0.54 m of SLR conditions. In  
 504 total 108 simulations were conducted for present and two future SLR scenarios.

505

506

507

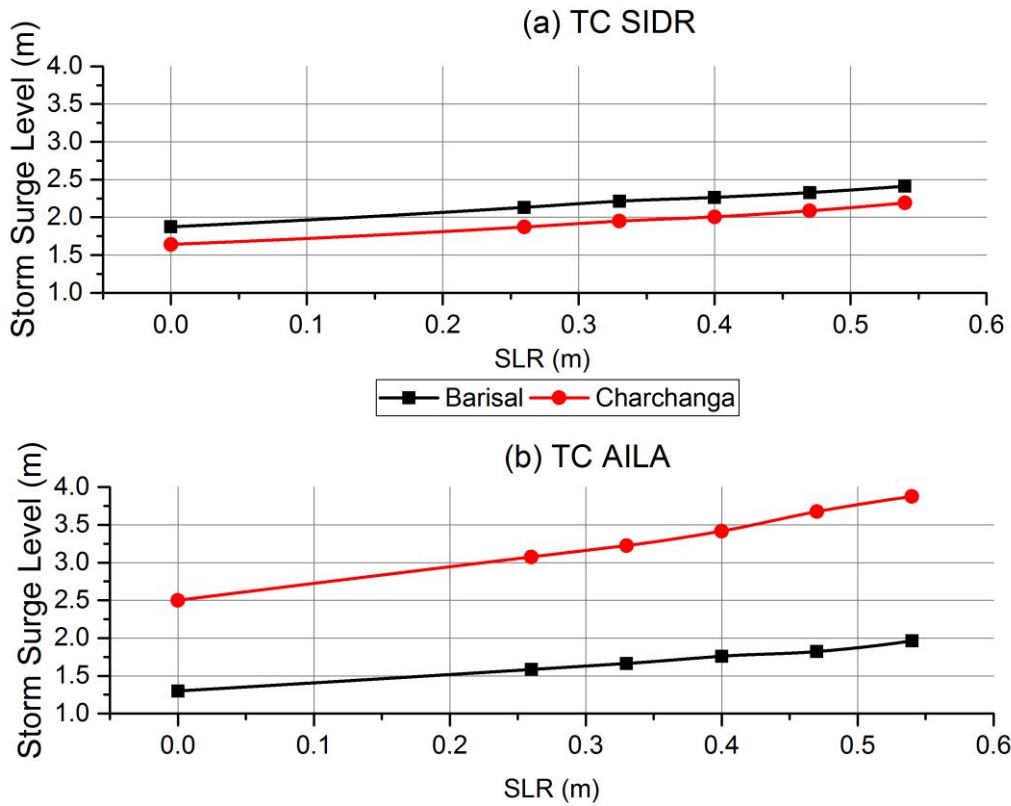
508



509

510 **Figure 7.** Comparison of storm surge water levels between present-day and future SLR scenarios. (a) TC Sidr at Barisal (b) TC Sidr at  
 511 Charchanga (c) TC Aila at Barisal (d) TC Aila at Charchanga. The observed, modeled present-day, mid-21<sup>st</sup>-century and end-21<sup>st</sup>-century storm  
 512 surge levels are denoted by the black dash-dotted, red dotted, blue dashed, and green dash-dotted lines, respectively.

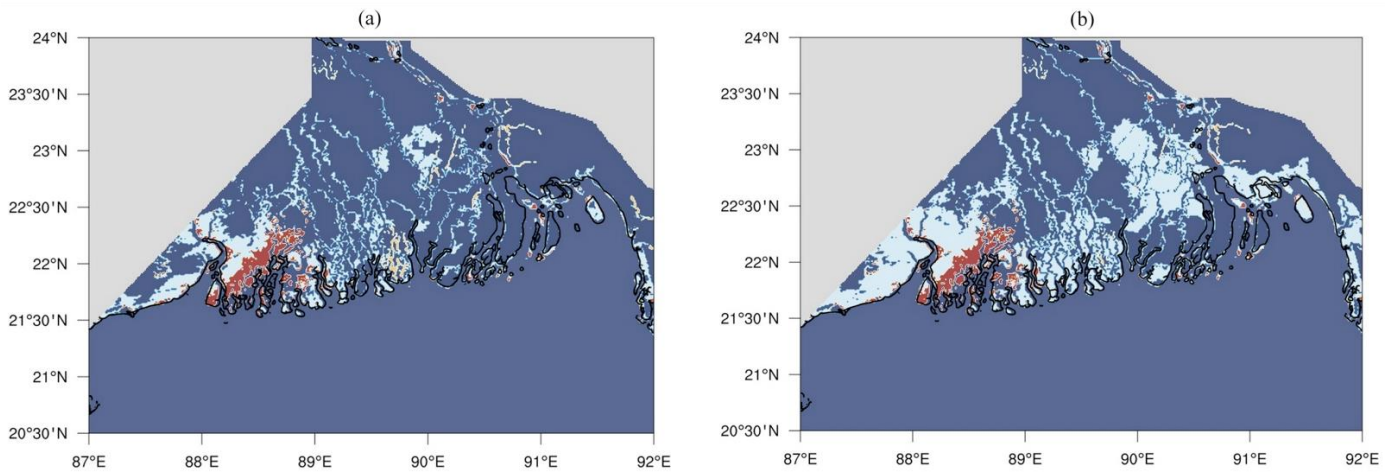
513



514

515 **Figure 8.** Relation between SLR and increase in storm surge level with respect to the present-day simulated water level for TC Sidr and TC  
 516 Aila. (a) is representing the relation for TC Sidr and (b) is representing the relation for TC Aila..

517



518

519 **Figure 9.** Comparison of inundated areas for TC Aila between present-day and end-21<sup>st</sup>-century (0.54m SLR) scenario. White color is  
 520 representing the increased flooded areas that were not in present-day scenario but the increase due to future SLR. Red color is showing the  
 521 inundated area that's similar both for present-day and future scenario case. Blue areas are either land or constant waters (those which are already  
 522 water at the model initialization time). Figure (a) is representing the inundated area when SLR was considered on ocean depths instead of adding  
 523 it in to the open ocean boundary and Figure (b) is showing the inundated area when we considered the SLR on ocean boundary.

524

525

526

**Table 1** Manning's Roughness Coefficient for different land coverings.

Land cover	Manning's coefficient
River	0.015
Mangrove	0.080
Ocean	0.01
Land	0.025

527

**Table 2** List of 12 historical TC events used for ensemble projection of storm surge inundation

Name	Date	Landfall location
Tropical storm 13	14-18 November, 1973	Noakhali
Cyclone 12	23-28 November, 1974	Bhola
Tropical storm 19	07-12 November, 1975	Chittagong
Tropical storm 1	22-25 May, 1985	Noakhali
Cyclone 4	21-30 November, 1988	Khulna
Cyclone 2	22-30 April, 1991	Chittagong
Cyclone 2	26 April – 30 May, 1994	Cox's Bazar
Cyclone 4	18-25 November, 1995	Cox's Bazar
Cyclone 1	13-20 May, 1997	Noakhali
Tropical storm 4	24-27 October, 2008	Barguna
Tropical storm Mahasen	10-16 May, 2013	Patuakhali
Tropical storm Roanu	18-21 May, 2016	Chittagong

529

530

531

532

533

534

535 **Table 3:** Parameters considered for ensemble projection of storm surge inundation which includes the TC intensities, tidal conditions and the  
 536 SLR scenarios.

TC name	Intensities	Tide conditions	SLR
TC Sidr	+10%, present day, -10%	High Tide, low tide, actual tide, zero tide	Present day, 0.26 m, 0.54 m
TC Aila	+10%, Present day, -10%	High Tide, low tide, actual tide, zero tide	Present day, 0.26 m, 0.54 m
12 historical TC tracks	Actual intensities	Actual tide conditions	Present day, 0.26 m, 0.54 m

537

538 **Table 4.** Computed values of RMSE, MAE and Nash-Sutcliffe coefficient for both TC Sidr and TC Aila

Stations	TC Sidr			TC Aila		
	RMSE (m)	MAE (m)	NASH	RMSE (m)	MAE (m)	NASH
Barisal	0.23	0.16	0.85	0.33	0.24	0.65
Charchanga	0.26	0.19	0.80	0.28	0.17	0.73

539

540 **Table 5.** Comparison of inundated area between present-day & future SLR scenarios and calculated change in percentage with respect to  
 541 present-day scenario.

542

Scenario	TC Sidr		TC Aila	
	Inundated Area (km <sup>2</sup> )	(%) increase	Inundated Area (km <sup>2</sup> )	(%) increase
Present-day	1860		1208	
Mid-21 <sup>st</sup> -century	2436.6	+31	1550	+28.3
End-21 <sup>st</sup> -century	2845.8	+53	1770	+46.5

543

544

545

546 **Table 6.** Comparison of storm surge level between present-day and future SLR scenarios for the case of TC Sidr

Scenario	Barisal		Charchanga	
	Storm surge level (m)	% increase	Storm surge level (m)	% increase
Present-day	1.873		1.641	
Mid-21 <sup>st</sup> -century (0.26m)	2.13	13.72	1.870	13.95
End-21 <sup>st</sup> -century (0.54m)	2.41	28.67	2.19	33.45

547

548 **Table 7.** Comparison of storm surge level between present-day and future SLR scenarios for the case of TC Aila

Scenario	Barisal		Charchanga	
	Storm surge level (m)	% increase	Storm surge level (m)	% increase
Present-day	1.299		2.5	
Mid-21 <sup>st</sup> -century (0.26m)	1.584	21.93	3.075	23
End-21 <sup>st</sup> -century (0.54m)	1.961	50.96	3.875	55

549