

Responses to reviewers

Reviewer 1

I would like to thank referee #1 for its fruitful comments, which helped improving the readability and quality of the manuscript. The text has been checked for typos and grammar mistakes, moreover some sentences have been rephrased to improve the readability.

You may find below a point by point reply to your comments and how they have been addressed in the revised manuscript.

Comment	Reply
<p>1) Many flood models are available in the literature, amenable for different levels of complexity and different spatio-temporal resolutions (e.g., Fewtrell et al., 2011). The authors themselves state that inundation maps from local and national water authorities could be used, if available with an adequate spatial resolution (L 145-148). The inundation model adopted in the case study (Arrighi et al. 2013) is briefly described in section 2.1. Considering that the definition of the inundation map is a crucial step of the whole procedure and that the work aims at providing a complete and replicable tool for the flood hazard assessment, the authors should explicit the reasons behind the choice of the inundation model. In general, they should provide some consideration on the applicability of this step to a generic case study (e.g., the proposed model can be applied as it independently from the local condition? Are there any framework in which different methodologies could be required? How can the “adequate spatial resolution” for the following steps of the procedure should be identified?)</p>	<p>The flood model here adopted and described in Arrighi et al. (2013) is very parsimonious from the numerical point of view. However, it has been demonstrated to be good enough to model water depths in the urban area when compared to historical watermarks. Thus, for the purpose of the study, an acceptable estimation of the maximum flood depth is considered as appropriate to make a control on the pressures of the nodes of the network. This implies to be able to capture the elevation of the road network by using high resolution LiDAR-derived digital terrain models.</p> <p>The size of the study domain and the need of a very high mesh resolution, e.g. of the order of 0.5 m to represent the streets/building pattern, would imply a few million cells to be simulated in a full 2D model, with consequent specific hardware requirements.</p> <p>The use of the parsimonious flood model is however not suggested for flat topographies where full 2D models are recommended.</p> <p>The following paragraph has been added to section 2.1 to clarify the applicability of the method to a generic case study.</p> <p>“For the risk assessment of the WDS, exposure analysis is conducted on active components (Fig. 1) based on the maximum water depth occurring during the flood event. Maximum water depth is also used to assess the potential contamination at nodes. The selection of a suitable inundation model giving accurate flood depths depends on the characteristics of the domain, i.e. area, topography etc., although a spatial resolution of the order of 1 m (e.g. LiDAR derived products) should be preferred</p>

	<p>in urban areas to represent the streets/building pattern.”</p> <p>Moreover, the suggested reference has been added (Fewtrell et al. 2011).</p>
<p>2) The results section looks quite fragmented, with many short sub-sections and many separated figures. Some significant topics (e.g. the tank dynamics and the sensitivity to the tank levels) are just briefly introduced for the first time at the end of the section. The author should try to review the structure of the section trying to make it more fluent and readable, with some editorial improvements. E.g., the “Results” section would probably benefit from adding a short introduction describing the different analyzed aspects and trying to merge together some of the figures (e.g. figure 5 – 6 -7 – 8) using panels and subfigures</p>	<p>An introduction has been added to the results section to briefly presents its contents as follows “The results section is divided into three subsections. First, flood hazard scenarios are illustrated and the exposure analysis of the WSS components is described. Two failure scenarios with different residual functionality of the exposed lifting station are selected (sect. 4.1). Second, the dynamics of the WDS, i.e. temporal evolution of pressure at nodes and volume in the tanks are described. The population not served and contaminated pipe length defined as impact metrics are shown for the two failure scenarios (sect. 4.2). Third, the results of the sensitivity analysis of the WDS with respect to tank levels are presented (sect. 4.3). The role of the tank levels is crucial to satisfy the population demand during the transient after power shutdown and two different tank behaviours are mapped.”</p> <p>The structure of the section has been modified reducing the number of subsections (from 6 to 3).</p> <p>Figures 5-6 and 7-8 have been merged into single figures with two panels.</p>
<p>3) The comparison with the results of the analysis carried out considering only the direct cost is crucial for explaining the scientific relevance of the proposed methodology and the importance of the problem. In the manuscript, it is limited to some lines (LL. 345-349) in the “Results” section. Even if a description of the direct damages can be found in Arrighi et al. (2016), as reported in line 349, due to the importance of the topic some more information and comparison should be provided in the manuscript (e.g., referring not only to the economic cost but also to the number of affected people, etc.).</p>	<p>The referee raised an important point.</p> <p>The following paragraph has been added after the comments on the population not served in the two failure scenarios:</p> <p>“The population not served by the WDN exemplifies the large spread between direct and indirect flood impacts. In fact, for the 200 years and 500 years flood scenarios the residents inside the flooded area, i.e. directly affected, are ~35.6\% and ~44.8\% of the total population respectively. This means that if the indirect impact on the WDN is considered, the population affected by the flood almost doubles.”</p> <p>Moreover, the concept is also recalled in the conclusive section as follows:</p> <p>“Although economic losses to the WDN, i.e. costs of decontamination of pipeworks, are almost negligible with respect to the direct losses to buildings, contents and artworks estimated in a previous work (Arrighi et al., 2016), the calculation of the population not</p>

	served reveals that for a 200 years flood and worst failure scenario the population experiencing the lack of freshwater is almost three times the population directly flooded. This has crucial implications also on the post-emergency management and civil protection actions since interventions are required also outside the inundated area.”
--	--

Reviewer 2

I would like to thank referee #2 for its comments and suggestions, which helped improving the readability and quality of the manuscript. You may find below a point by point reply to your comments and how they have been addressed in the revised manuscript.

Comment	Reply
L15: I would specify which the “worst failure scenario” is (features/return period).	The abstract has been corrected as follows “Results show that for the worst failure scenario (no residual functionality of the lifting station and 500 years flood) 420 km of pipeworks would require flushing and disinfection with an estimated cost of 21Mio euro, which is about 0.5% of the direct flood losses evaluated for buildings and contents.”
L36-39: considerable importance is given to “interdependency”. Although this is a very interesting topic, the study is not really focused on interdependency (one hazard, one network). Indeed, I would reduce the text of the Introduction dedicated to interdependency, and just mention the relevance of this study in relation to the broader issue of cascading effects.	The interdependency is not only between the hazard and the network but also inside the network. In this sense, we strongly focused on interconnection. In fact, the cascade effect on the pressure at nodes (i.e. the following possible need of decontamination) does not only depend on flood depth but also on the user demand, terrain morphology and network topology. Multiple interactions between WDN and flood are first in the triggering mechanisms and then in the spatial distribution of flood parameters which affects the risk of contamination.
FIG. 1: some arrows are not drawn.	The figure has been checked
L241: in the abstract, the inhabitants were 385,000	The approximate number of inhabitants is 380000, the text has been checked to ensure consistency.
L242: I would specify the name of the river (Arno).	The name of the river has been specified.
L247: rephrase “Flood risk in the area studied is estimated”.	The sentence has been rephrased
L250: how about the societal costs?	Societal costs have not been previously estimated, however a comparison between

	<p>directly and indirectly affected people has been added to the result and conclusion sections. Indeed, the calculation of the population not served reveals that for a 200 years flood and worst failure scenario the population experiencing the lack of freshwater is almost three times the population directly flooded. This information has been added to the results section and it is also mentioned in the abstract.</p>
<p>L274-276: 0.5m is the threshold above which failure is determined. How was this threshold chosen? On which basis? This is very important since all the results depend from this number. It is not specified how this threshold was decided or obtained. This needs to be fixed, since an “arbitrary number” is not enough.</p>	<p>The 0.5 m threshold has been identified based on the judgement of experts who undertook a ‘what-if’ analysis to evaluate the vulnerability of active components. This threshold has been considered as conservative with respect to the mean position of electric devices (e.g. control panels, sensors) observed in the plants. This clarification has been added to section 3.2.</p>
<p>FIG. 3: specify better what it is meant for “Flooded area” in the caption. Is the “flooded area” identified by flood depth $\geq 0.5\text{m}$?</p>	<p>The flooded area represents the portion of territory where flood depth exceeds 0.01 m during the events. The caption has been modified.</p>
<p>TABLE 3: insert “0” instead of “-“.</p>	<p>“-“ has been replaced with “0” in Table 3.</p>
<p>L279-283: is the average depth really significant for such area? I think it would be better to identify significant hotspots (points) in which the flood depths are measured for each scenario (and compared in order to get an idea of the event magnitude).</p>	<p>In the first section of the results (now called 4.1 Flood and failure scenarios) a better description of the inundation characteristics has been added as follows.</p> <p>“Figure 3 shows the results of hazard analysis. For the 30-year RI an area of 2.5km² is flooded, with an average water depth of 1m. For this flood scenario two areas are affected by the flood, one upstream of the historic city in the right bank (right hand side of Fig.3) and one downstream on the left bank (left hand side of Fig.3. In the upstream area, flood depths are of the order of 0.3 m, while in the downstream area water depths reach locally 4 m in correspondence of excavation zones.</p> <p>For the 100-year recurrence interval, the flooded area increases to 12.7 km² with an average flood depth of about 1m. In the downstream areas water depth locally reaches up to 2.5 m in the right bank.</p> <p>For higher RI (200 and 500 year), the affected areas rise to 20 and 27 km² and average depths to 1.2 and 1.7 m respectively. In these scenarios also the historic district are affected (center of Fig.3 with water depths in the most depressed areas up to 4 m.</p>

	In the downstream areas water depths are locally above 4 m (see Fig.4 for an example of 500-year RI inundation).”
L334-346: this paragraph should be moved to the Introduction, as it reports some literature.	The paragraph has been moved to the introduction as suggested by the referee.
L349: does Arrighi et al. (2016) analyze the same city and the same scenario?	The work by Arrighi et al (2016) considered the 200 year flood scenario. Here the length of the contaminate pipeworks (e.g. the costs) for the 200 year and 500 year scenarios do not differ significantly. The sentence has been clarified
L389: in the Conclusion, a “given safety threshold” is mentioned, that refers to the arbitrary number of 0.5m. As commented above, this threshold numbers should be justify, since it affects all the results. Or at least, a bit of discussion about it is needed. Could a shift from a binary consideration of flooding ($\geq 0.5\text{m}$ – flood; $< 0.5\text{m}$ – not flood) to a function (flood = function(water depth)) be a future progress of the study?	In section 3.2 the selection of the threshold has been clarified and the use of the safety threshold has been added to the conclusions. A planned future work will consider a dynamic coupling of the flood and network model and in this case a function of the water depth will be adopted.

Flood Impacts on a Water Distribution Network

Chiara Arrighi¹, Fabio Tarani², Enrico Vicario², and Fabio Castelli¹

¹Università di Firenze, DICEA (Department of Civil and Environmental Engineering)

²Università di Firenze, DINFO (Department of Information Engineering)

Correspondence to: Chiara Arrighi (chiara.arrighi@dicea.unifi.it)

Abstract. Floods cause damage to people, buildings and infrastructures. Water distribution systems are particularly exposed, since water treatment plants are often located next to the rivers. Failure of the system leads to both direct losses, for instance damage to equipment and pipeworks contamination, and to indirect impact, since it may lead to service disruption and thus affect population far from the event through the functional dependencies of the network. In this work, we present an analysis of direct and indirect damages on a drinking water supply system, considering the hazard of riverine flooding as well as the exposure and vulnerability of active system components. The method is based on interleaving, through a semi-automated GIS procedure, a flood model and an EPANET-based pipe network model with a Pressure-Driven-Demand approach, needed when modelling water distribution networks in highly off-design conditions. Impact measures are defined and estimated so as to quantify service outage and potential pipe contamination. The method is applied to the water supply system of the city of Florence, Italy, serving approximately 380 000^{ca} inhabitants. The evaluation of flood impact on the water distribution network is carried out for different events with assigned recurrence intervals. Vulnerable elements exposed to the flood are identified and analysed in order to estimate their residual functionality and to simulate failure scenarios. Results show that in the worst failure scenario (no residual functionality of the lifting station and 500-year flood)^{ca} 420 km of pipeworks would require disinfection with an estimated cost of 21 M€, which is about 0.5% of the direct flood losses evaluated for buildings and contents. Moreover, if flood impacts on the water distribution network are considered, the population affected by the flood is up to three times the population directly flooded.^{ca}

1 Introduction

Extreme weather events and major natural disasters are listed in the top five global risks in terms of likelihood and impact (World Economic Forum, 2017). Climate change perspectives (IPCC, 2013; Lung et al., 2013) raise additional concerns about floods due to their consequences on population
25 (Ashley and Ashley, 2008), environment (Christodoulou, 2011), urban areas and infrastructures (Meyer et al., 2013; Emanuelsson et al., 2014; Khan et al., 2015; Short et al., 2012). This leads to an increasing interest in studying flood impacts, as shown, for instance, by the sustainability criterion adopted for flood risk mitigation strategies in EU countries (EU Parliament, 2007), which promotes quantitative flood risk assessment (Merz et al., 2010) and flood damage maps (de Moel
30 et al., 2009; Meyer et al., 2013).

Flood damage on structures and infrastructures is classified into direct and indirect, the former being caused by physical contact with floodwater and the latter occurring far from the event, either in space or time (Thieken et al., 2006). On the one hand, direct losses to private dwellings, household contents and economic activities can be estimated through damage curves, which relate water
35 depth to relative losses (Smith, 1994); on the other hand, interdependence of assets in network infrastructures induces impacts outside the flooded areas, sometimes with substantial effects (Gil and Steinbach, 2008). Hence, the assessment of flood impact on networks partially in direct contact with water requires the evaluation of the repercussions on the overall system behaviour. As a matter of fact, failure of crucial infrastructures may lead to cascade events and trigger technological disas-
40 ters (Cruz et al., 2004). Cascading events are more likely to occur during a natural disaster than during normal plant operation because of the increased chance of multiple, simultaneous failures. While flood damage evaluation to buildings and their contents is becoming increasingly available (Merz et al., 2010), the quantification of direct and indirect impacts on critical infrastructures is less common (Lhomme et al., 2013; Michielsen et al., 2016; Emanuelsson et al., 2014).

The assessment of flood risk requires the evaluation of the three risk components – i.e. hazard, vulnerability and exposure – for each subsystem and the assessment of functional dependencies (Serre et al., 2011). In particular, flood *hazard* of a component relates to the likelihood of being flooded, which can be evaluated through flood maps; *exposure* is the position with respect to inundation extent and *vulnerability* is the proneness to being harmed (Meyer and Messner, 2005). Vulnerability of
50 a network can be intended as the susceptibility of a single network portion or device as well as the fragility of the whole system in relationship with the failure of a system component. This distinction is particularly crucial for network infrastructures where the failure of one node may trigger harmful effects also very far from the affected area, leading to indirect damage.

Among safety critical infrastructures are fresh water supply systems (WSS, see Table 1 for a list
55 of acronyms used in the paper) and water treatment plants, which can be severely affected by floods since they rely on electric power, mechanic devices and electronics. Water supply and sanitation is widely considered as a main factor in environmental sustainability, human health, social services

Table 1. Acronyms used in the paper

Acronym	Definition
DTM	Digital Terrain Model
DWTP	Domestic Water Treatment Plant
LIDAR	Light Detection and Ranging
PDD	Pressure-Driven Demand
RI	Recurrence Interval
WDN	Water Distribution Network
WSS	Water Supply System

and resilience (WHO, 2011; Luh et al., 2017). In particular, water distribution networks are complex systems composed by a number of subsystems in charge of abstraction from the source, transportation, treatment and distribution. Vulnerable WSS components are often located in low-lying areas or nearby rivers, with a consequent high exposure to inundations. Flood events affecting water utilities can lead to costly repairs, disruptions of service and public health advisories (U.S. Environmental Protection Agency, 2014).

The management of flood risk entails a combined approach comprising mitigation, preparedness, response and recovery (WHO, 2011). Among the mitigation activities, the identification of hazard and a comprehensive vulnerability analysis are recognized as preeminent. Risk assessment is a fundamental support for decision makers because it increases the awareness and fosters the adoption of mitigation strategies (Large et al., 2014). The implementation of Water Safety Plan promoted by the World Health Organization (WHO) and International Water Association (IWA) (Bartram et al., 2009) aims at harmonising hazard and risk assessment procedures through an appropriate method. It identifies issues on treatment plants and source water quality (Ginandjar et al., 2015) as the main hazards associated with floods. Floods and heavy rainfall are associated with elevated turbidity and dissolved organic matter (Göransson et al., 2013; Murshed et al., 2014), which can affect drinking water purification whose source is a surface water body or storage reservoir. However, if indirect/cascade effects are accounted for, other impacts should be considered such as those related to power outage, which is likely to occur if electric devices, e.g. valves and lifting stations, are affected (Khan et al., 2015). In fact, a short-term loss of the electric power may induce pressure fluctuations or intermittent supply, which may lead to ingress of contamination from leakage orifices and air vacuum valves (Ebacher et al., 2010). Thus, besides the economic costs the contamination may cause, e.g. of the order of 50 € per meter of cleaned pipe^{ca} Ellison et al. (2003), there are repercussions on social and operational domains characterizing urban water systems (Blackmore and Plant, 2008; Hruday et al., 2006). Hence, a comprehensive flood risk assessment of WSS's should integrate a flood model

and a WSS model capable of properly representing the network behavior in low pressure conditions (Seyoum and Tanyimboh, 2016).

85 In this work, a method is implemented as to evaluate flood impact on a WSS accounting for both direct and indirect damage on technological systems and inhabitants. Hazard, vulnerability and exposure of system components are assessed through a semi-automated procedure integrating the GIS representation of flood scenarios with an hydraulic network model with Pressure-Driven Demand (PDD). Failure scenarios are based on the analysis of exposure and vulnerability of critical
90 network components, e.g. lifting stations. Two measures for the assessment of flood impact are introduced and the model is tested on a case study.

2 Materials and Methods

The assessment of flood risk on a WSS requires a comprehensive approach including several scales of analysis (e.g. catchment area, riverbed, distribution network) and models in order to capture the
95 dependencies between environmental forcing and WSS components and the inner dependencies of the WSS itself. Figure 1 depicts the logic flow to estimate flood impacts on each component of the WSS considering a configuration with a surface water body source, e.g. a river. Reading the scheme clockwise, at catchment scale the hydro-meteorological event (1 on the diagram) bears turbidity, due to the high concentration of suspended sediments, and organic matter load, which affect the surface
100 water body (2). When reaching the abstraction, the quality of source water needs to be analyzed (3) to determine if the influent (i) is suitable for a standard treatment, (ii) requires adjustments of the treatment process, (iii) is not appropriate, leading to a temporary interruption of abstraction (4). Uncontrolled or special source water quality may directly affect the treatment with possible failures of the process sections and consequences on treatment efficiency (5,6). Treatment plants are also sus-
105 ceptible of failure or restrictions if vulnerable active components are flooded. Active components (7) are those powered by electricity such as electric valves, pumps, chemical dosers etc. Also the WDN, which relies on elements sensitive to power outage (e.g. lifting stations), is affected. The inundation model (8) generates a flood scenario (9), i.e. an inundation map which allows to identify exposed objects. Exposure analysis (10) produces a list of exposed components (11), both for WDN and
110 treatment, whose possible failure should be simulated in a piping distribution system and a treatment plant models respectively (12). Therefore, the results of the models in terms of pressure at nodes (13) and treatment efficiency are used to estimate the impacts on water quantity (outages due to pressure fluctuations or intermittent supply) and quality, e.g. the risk of contamination (14). The main effects of flood impacts are summarized in Table 2.

115 This work focuses on the evaluation through a numerical model of flood impacts on the WDN, shown in the central panel of Figure 1. The model is composed by two main sub-models: the inundation model and the WSS model.

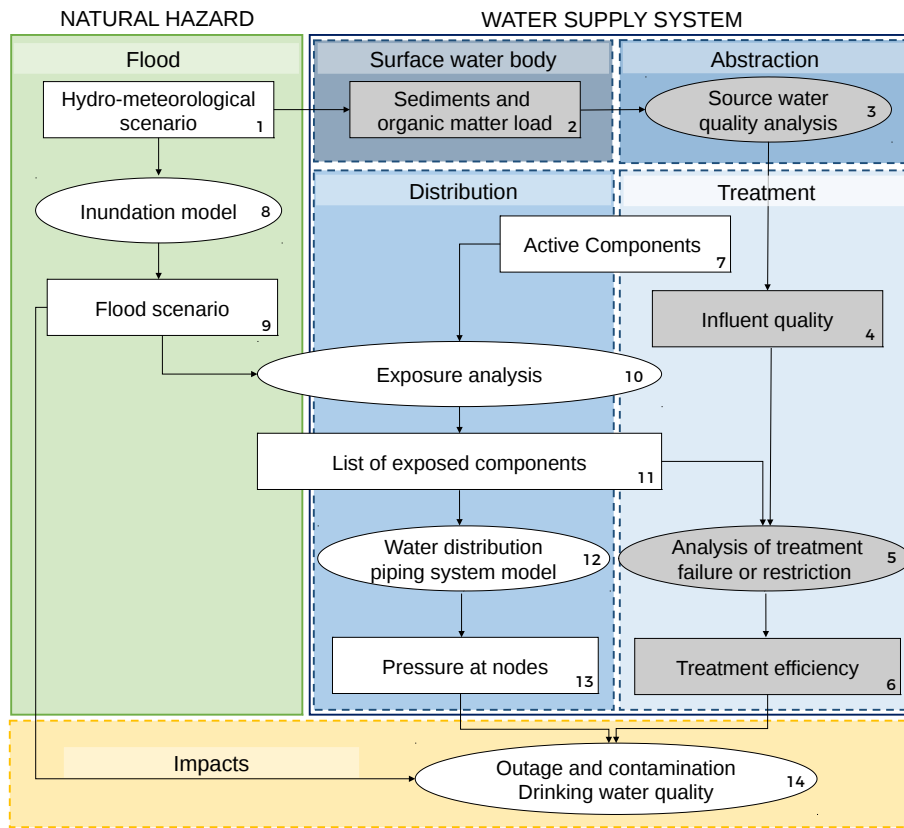


Figure 1. Flood risk assessment scheme for WSS (ellipses stand for activities, rectangles represent data flow; Shaded boxes represent activities that are not carried out in this work).

Table 2. Main impacts associated with flooding for WSS based on surface water source

WSS component	Direct flood impact	Consequence
Abstraction	turbidity	abstraction interruption
	organic matter load	restriction of treatment
Treatment	power shutdown	loss or restriction of treatment works
	instrumentation failure	loss of control
	drinking water contact with floodwater	contamination
Distribution		pressure fluctuations
	power shutdown	intermittent supply
		contamination

2.1 Inundation model and exposure analysis

The inundation model uses a river hydrograph (either recorded or calculated for a hydro-meteorological scenario) to produce a raster map showing the representative flood parameters, in particular water depth. In the literature computation is commonly performed through simplified Navier-Stokes equations with different numerical schemes and spatial resolutions of the computational domain (Hunter et al., 2008). In particular, accurate forecast of flood propagation in urban environments usually requires 2D models with an adequate description of the street/building pattern, limiting the computational grid resolution to about 1 m (Apel et al., 2009). In this context, the increasing availability of geographic data such as LiDAR-derived Digital Terrain Models (DTM) ease the setup of the model (Fewtrell et al., 2011). Nevertheless, some issues such as the computational effort and the definition of representative roughness coefficients still arise. As an alternative, parsimonious hydraulic models are also accepted as a compromise between accuracy and computational effort when steady state approximations and large and cumbersome computational domains are not sustainable (Apel et al., 2009; Arrighi et al., 2013).

The implemented hydraulic model is comprised of two parts. Firstly, the river is represented with a 1-D unsteady flow model and the urban flood-prone area is modelled as a system of interconnected quasi-2-D storage cells. A digital surface model with resolution 1 m and vertical accuracy 0.25 m, derived from LiDAR surveys, is used for the detailed representation of the flow domain at streets/buildings scale.; buildings are, by default, considered as waterproof blocks. The computation of flood propagation is performed through an implicit 1-D finite-difference scheme of the general equation of unsteady flow (i.e. mass and momentum conservation equations). The quasi-2-D hydraulic model for the floodplain consists of several storage areas (cells) connected to the river banks through a set of lateral weirs, whose geometry is extracted from a topographic survey. When the inundation starts, the quasi-2-D module – governed by mass conservation and stage-storage relationships – calculates water levels from the volume stored in the cell. Flow between adjacent cells is described by a weir equation accounting for backwater effects. The details of the model construct and equations adopted in the HEC-RAS framework (for both 1-D and quasi-2-D modules) are described in Arrighi et al. (2013). The increasing availability inundation maps from local water authorities – due to the evolving normative frameworks in flood risk management (EU Parliament, 2007) – may also offer an alternative to numerically simulating surface flow. In this perspective, official inundation maps can be adopted if accessible and adequate in spatial resolution in the area of interest.

Exposure analysis requires matching of data from inundation maps and information on location of assets, usually performed by means of Geographic Information Systems (GIS). All the components of the WDN, both active and passive must therefore be geo-referenced to be compared with inundation maps for assigned scenarios. For the risk assessment of the WDS, exposure analysis is conducted on active components based on the maximum water depth occurring during the

155 flood event. Maximum water depth is also used to assess the potential contamination at nodes. The selection of a suitable inundation model giving accurate flood depths depends on the characteristics of the domain, i.e. area, topography etc., although a spatial resolution of the order of 1 m (e.g. LiDAR derived products) should be preferred in urban areas to represent the streets/building pattern.^{ca} Exposure analysis consists of four steps. First, the coordinates of the WSS point components (nodes, 160 reservoirs, lifting stations, etc.) are exported from the WSS model to the GIS environment, so that a new vector is created whose coordinate reference system is assigned in the shapefile properties. Afterwards, the raster inundation map is imported into the GIS workspace and converted if necessary to a compatible reference system. The raster cell information (i.e. water depth) is then extracted over the point feature and added as attribute (e.g. with the Point Sampling Tool plug-in available for 165 QGIS). For each failure-prone point component belonging to exposed asset, the water depth attribute is compared to a threshold depth which takes into account local geometry and functional dependencies. If calculated depth exceeds the threshold, the component is marked as failed, added to the list of exposed asset and its properties modified in the WSS model (section 2.2) to reproduce the failed configuration.

170 2.2 Distribution Network Model

The model is based on the freely available EPANET libraries, which calculate time-varying pressures at the nodes given a set of initial tank levels, pump switching criteria, base nodal demands and demand patterns. In particular, EPANET can be launched by other software through a set of DLL libraries.

175 One drawback of the standard EPANET implementation is its strict demand-driven approach, which stems from the primary goal of simulating correctly operated networks. In such networks, pressure at each node is sufficient so as to allow withdrawal of required flow rate from each node, so that demands can be assumed as defined input data. However, when simulating strongly off-design networks, nodes featuring a reduced pressure are quite common, so that a pressure-driven demand 180 approach is needed (Cheung et al., 2005; Walski et al., 2017). PDD models differ from conventional ones in that nodal demands are not attributed a priori, rather their value depends on the current local pressure. In particular, and consistently with practice, the model assumes that each node is in one of three states:

fully served - if $H_i \geq H_{\text{service}}$, the node is able to withdraw its nominal demand;

185 **partially served** - if $H_{\text{service}} > H_i > 0$, the node withdraws a reduced demand which can be expressed as

$$D_i = D_{\text{nom},i} \left(\frac{H_i}{H_{\text{service}}} \right)^\alpha \quad (1)$$

where α is a constant exponent set to 0.5.

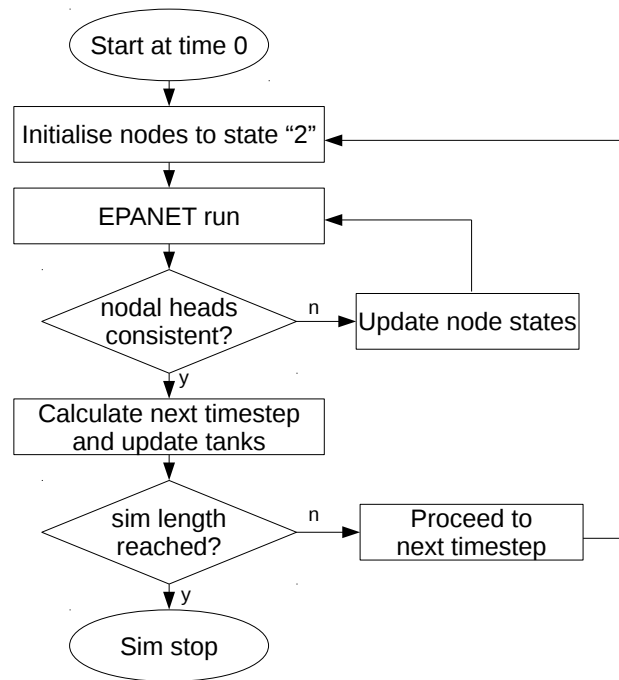


Figure 2. Diagram of PDD model implementation.

non-served - if $P = 0$, the node is unable to withdraw any water, yielding null demand.

190 EPANET allows two types of nodes: *nodes* are assigned a time-varying, pressure-independent demand, and can be effectively used to model fully served users, whereas *emitters*, conceived to model fixed cross-section water outlets such as fire hoses and orifices, adequately model the aforementioned behaviour of partially served users. Emitters are defined by a fixed exponent α , equal for all instances, and a flow coefficient which represents the volume flow rate for unitary pressure
 195 loss across the orifice. Unfortunately, emitters do not cope well with calculated negative pressures, attributing a negative – i.e. entering – flow rate where such negative pressures occur. In order to cope with this issue, a MATLAB code has been implemented so as to run transient simulation while correctly using a PDD approach. The code – as shown in Figure 2 – works as follows: three node states are defined: "2" for served nodes, "1" for partially served ones and "0" for non-served ones;
 200 type 2 and type 0 nodes are modelled as EPANET nodes with nominal demand equal to the assigned nominal demand D_i and nought respectively, whereas type 1 nodes are modelled as emitters whose flow coefficients are calculated to ensure that $D_i = D_{\text{nom},i}$ if $H_i = H_{\text{service}}$.

Overall, the model works as follows: for each time step, a first trial simulation is run with all nodes in state 2 in order to get the expected pressures. Afterwards, each node is checked to assess whether
 205 its pressure is in the pressure range corresponding to the current flow regimen and, if this is not the case, its state is accordingly raised or lowered by one unit (namely, it is not possible to jump from

state 2 to state 0 and vice versa). After node states have been changed, simulation is repeated till no more state change is necessary. Calculated flow rates and pressures are considered to represent network operation during the subsequent time step. In particular, flow rates are used to calculate the time to the next event (tank being filled or drained), and the first event affecting network topology is considered (e.g. demand change, pump setting toggling due to time pattern, tank becoming empty or full). Tank levels are thus updated and simulation proceeds to the next time step. The described procedure allows for calculating pressure and supplied demand at each node for each time step, therefore fully estimating the network state in each moment.

2.2.1 Model initialisation

The model, featuring non memoryless elements (tanks), needs to be correctly initialised. In normal operation, tank levels undergo a daily pattern of filling and emptying, according to demands and water availability. In order to appropriately initialise tank levels, a warm-up simulation is run by randomly initialising tank levels and checking their value every 24 hours. If the calculated levels differ from those corresponding to 24 hours before by less than a tolerance parameter, the model is considered to be in steady state and water level for each tank and time value are saved in a matrix, which can thereafter be used to initialise the values for the forthcoming simulations.

2.3 Definition of impact measures

Two measures have been defined in order to evaluate the global impact of the flood on network operativeness and integrity.

First, impact of the flood on network operation is assessed through evaluation of the number of inhabitants experiencing lack of service. To this aim, data about population density in the area made available by the Italian Institute of Statistics (ISTAT, 2011) are used. Such data define 2186 polygonal zones with areas ranging from 156 to 2.48×10^6 m²) and provide a population value for each of them. Inhabitants are assigned to nodes as follows: a uniform demand per capita is assumed in each area and calculated, and the number of inhabitants for each node pertaining to that area is estimated accordingly. In particular:

$$P_{i \in A} = \frac{D_{\text{nom},i}}{\sum_{k \in A} D_{\text{nom},k}} P_A \quad (2)$$

where P_i is the population assigned to node i belonging to area A and P_A is the total population of area A . The Non-Served Population (NSP) parameter is thus estimated as the total population of nodes with reduced or null pressure, i.e.

$$\text{NSP} = \sum_{i \in I} P_i \text{ with } I = \{i \mid H_i < H_{\text{service}}\} \quad (3)$$

where H_{service} is the minimum head required to consider a node fully served (5.0 m in the case study).

240 As a second measure, network damage due to pipe contamination is evaluated by calculating the total length of pipework to be decontaminated. A pipe is considered to be contaminated if at any point in time head inside the pipe is lower than the floodwater head outside or below zero, i.e.

$$L = \sum_{i \in I} \sum_{j \in J_i} L_j \text{ with } I = \{i \mid H_i < \max(H_{\text{flood}}, 0)\} \quad (4)$$

where J_i is the set of pipes with either end connected to node i .

245 3 Case study

3.1 Flood scenarios

The study area is the municipality of Florence, Italy, with an areal extent of 102 km². The area hosts about 380 000 inhabitants, the highest population density being found in the city centre along the [Arno^{ca}](#) river banks. Documents witness that the town has a long account of floods since the Middle
250 Ages, as confirmed by more recent hydrologic-hydraulic studies (Caporali et al., 2005) showing that floods may occur also for low recurrence interval (30-year return period). For such frequent events, only the lower-lying suburbs are affected (brown areas on the center left side of Figure 8), whereas more severe scenarios (recurrence interval of over 200 years) affect the whole city including the historic centre. [Flood risk in the study area is estimated in 55 M€/year if only direct tangible losses](#)
255 [to buildings, household contents and commercial activities are taken into account^{ca}](#) (Arrighi et al., 2016). In this context, analysis of flood risk to the WSS is crucial to understand the potential adverse consequences on such strategic infrastructures and to estimate the recovery costs.

The meter-scale DTM used for the hydraulic model is freely available in the regional cartographic repository (dati.toscana.it/dataset/lidar). The hydraulic data (hydrographs and river water profiles)
260 are made available by the catchment authority (“Autorità di Bacino del Fiume Arno”), which is in charge of flood risk management and water resource planning.

Four flood scenarios with different recurrence intervals RI are considered when applying the method described in Section 2: a frequent scenario (RI = 30 years), two medium recurrence intervals (100 and 200 years) and a rare scenario (500 years). Accordingly, four inundation raster maps are
265 generated to carry out the exposure analysis.

3.2 Water distribution system

The studied WSS features one main treatment facility, 17 tanks and the pipeworks to supply drinking water for domestic and industrial use.

Fresh water supply is ensured by the river, which flows westbound amidst the urban area. Water
270 is abstracted from the river by three 373-kW pumps in the treatment plant “Anconella”, which is located in the left bank and designed to process 4 m³/s (Fig. 3). The water undergoes treatment and reaches the lifting station, where six 710-kW pumps ensure a maximum head of 60 m and feed

the distribution network. The storage tanks are mostly located at high altitudes and feature a total operative volume of 48 620 m³.

275 An EPANET model of the WSS is provided by the utility operator Publiacqua SpA. The model is barely skeletonised, and consists of 4863 nodes and 12 436 pipes for a total length of the modeled piping network of 619 km.

The WSS elements most vulnerable to floods are the lifting stations and the pumps feeding the storage tanks, because they rely on electrical power and are affected by power outage. Water depth at
280 the location of vulnerable WDS components is compared to a threshold depth to define the operation state of each of them. In this work, a threshold of 0.5 m is defined, so components experiencing greater depths are considered failed and switched off in the water distribution model. The 0.5 m threshold has been identified based on the judgement of experts who undertook a ‘what-if’ analysis to evaluate the vulnerability of active components. This threshold has been considered as conservative
285 with respect to the mean position of electric and electronic devices observed in the plants.^{ca}

4 Results

In this section, results of the analyses are shown. The section is divided into three subsections. In the first place, flood hazard scenarios are illustrated and the exposure analysis of the WSS components is described; two failure scenarios with different residual functionality of the exposed lifting station are
290 selected (subsection 4.1). Secondly, the dynamics of the WDN are described, namely the temporal evolution of pressure at nodes and volume in the tanks; the NSP and contaminated pipe length measures are shown for the two failure scenarios (subsection 4.2). Finally, the results of a sensitivity analysis of the WDN with respect to tank levels are presented (subsection 4.3), since the role of the tank levels is crucial to satisfying demand during the transient after power outage.^{ca}

295 4.1 Flood and failure scenarios

4.1 Flood scenarios and exposure analysis^{ca}

Figure 3 shows the results of hazard analysis. For the 30-year RI an area of 2.5 km² is flooded, with an average water depth of 1 m. Two areas are affected, one upstream of the historic city on the right bank (right hand side of Fig. 3) and one downstream on the left bank (left hand side of Fig. 3. In
300 the upstream area flood depth is about^{ca} 0.3 m, whereas in the downstream area water depth locally attains^{ca} 4 m in correspondence of excavation zones. For the 100-year RI, the flooded area increases to 12.7 km² with an average flood depth of about 1 m. In the downstream area, also the right bank is inundated with depth up to^{ca} 2.5 m. For higher RI (200 and 500 years), the affected areas rise to 20 and 27 km² and average depths to 1.2 and 1.7 m respectively. In these scenarios the historic district
305 is also affected (centre of Fig. 3) with water depth as high as^{ca} 4 m. In the downstream areas water depth locally exceeds^{ca} 4 m (see Fig. 4 for an example of 500-year RI inundation).

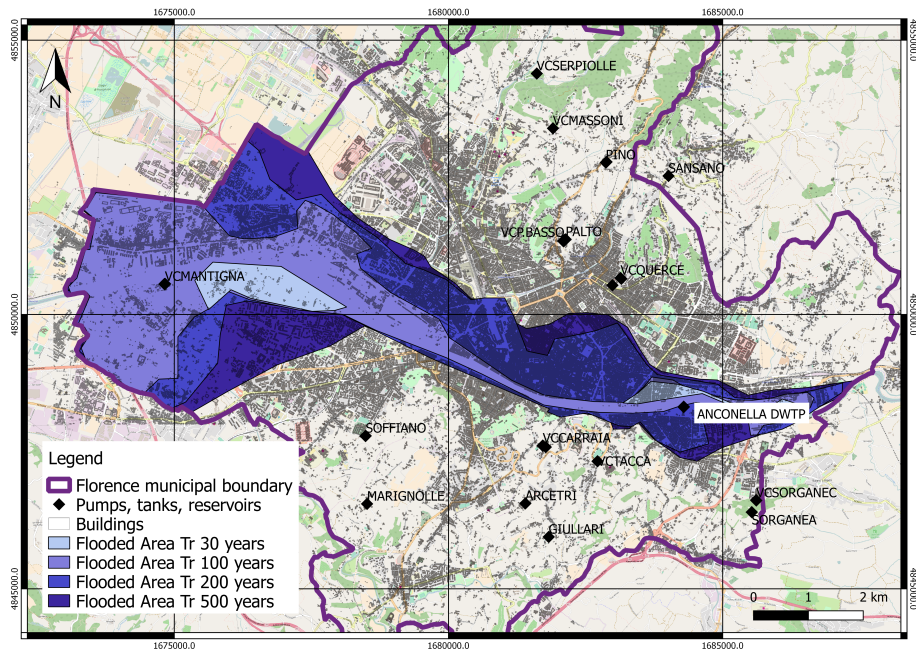


Figure 3. Flooded area for the four recurrence intervals and exposure of vulnerable components. Areas with water depth above 0.01 m are considered as flooded). Reference coordinate system is EPSG:3003.

Table 3. Summary of exposed components

Recurrence interval years	Inundated Area km ²	Depth at lifting station m	Depth at “VCMantigna” m
30	2.5	0	0
100	12.7	0.85	0.15
200	20.5	0.90	0.73
500	27.8	1.50	2.00

Table 3 shows the results of the exposure analysis. For RI = 30 years, none of the vulnerable WSS components is affected. For RI = 100 years, the tank labelled “VCMantigna” is exposed to flood, yet the average flood depth in a buffer zone of 25 m radius is about 0.15 m, therefore the electrical devices are assumed in operation. For RI = 200 and 500 years, the drinking water treatment plant (DWTP) at Anconella, shown in the right-hand side of Figure 3, is flooded with a water depth exceeding 0.85 m. In these scenarios, issues are expected because of drinking water treatment restrictions, loss of control and power shut-down of the lifting station. The “VCMantigna” tank is still exposed, with water depths as high as 2 m for RI = 500 years.

315 **4.2 Failure scenarios^{ca}**

4.2 WDN dynamics and impact metrics

4.2.1 Affected areas^{ca}

Results are shown relative to the 200-year and 500-years recurrence intervals, those for which failure of the DWTP is expected. In particular, two scenarios are considered: in scenario 1, it is assumed that the DWTP completely stops providing fresh water to the system; in scenario 2, some backup system is assumed to keep one of the three main pumps feeding the network in operation. The nodal heads 120 minutes after the lifting station failure are shown in Figure 4 for failure scenarios 1 (panel a) and 2 (panel b). At 120 minutes after the shut-down in the failure scenario 1 (Figure 4, panel a), about 50% of nodes already experience heads lower than 1 m, where just three zones, one in the westernmost part of the network (due to the lower altitude favouring piezometric head) and two on the northern and southern hills (due to local tanks providing capacity, see Section 4.3) feature heads higher than 20 m. After six hours (Fig. 5), the number of served nodes is further reduced, with only the westernmost part of the network and southern hills (low altitude and higher with a great number of tanks respectively) being served. For what concerns failure scenario 2 (Figure 4, panel b), most nodes of the network are operational after 120 minutes from the shutdown, with pressures in the minimum range of residual level of service (1-10 m). A few nodes on the northern hills (about 15%) experience heads lower than 1 m and a significant part of the western city on the right bank experiences heads between 10 and 200 m due to its low elevation. In both cases the service disruption due to insufficient head also affects nodes outside the inundated area, hence it can be accounted for as an indirect impact of the flood triggered by the failure of the lifting station.

4.2.2 Calculated metrics^{ca}

Evolution of aggregate service metrics in time is calculated for the two aforementioned failure scenarios. Non Served Population is shown in the panels of Figure 5 as a fraction of total population. In failure scenario 1 (Fig. 5, panel a), the complete shutdown of the DTWP pumping station deprives almost 50% of the population of water supply after 3 hours, consistently with the dynamics shown in Section 4.2. After six hours, such condition extends to the 70%. If also inhabitants experiencing insufficient pressure are considered, total affected population is about 90%. In failure scenario 2 (Fig. 5, panel b), total affected population ranges from 62 to 77%. Nevertheless, inhabitants experiencing no service at all are about 15%, rising to less than 30% only after 9 h. Population not served by the WDN exemplifies the large gap between direct and indirect flood impacts. In fact, for the 200-year and 500-year flood scenarios, residents directly affected only account for 35.6% and 44.8% of total population respectively. This means that inhabitants indirectly affected (by the WSS failure) are two to three times as much as those directly flooded.^{ca}

For what concerns evaluation of network damage, the panels of Figure 6 show the length of contaminated pipe as a function of time for the two studied failure scenarios. Again, scenario 1 (Fig. 6, panel a) shows a critical situation, where about 25% of the network undergoes contamination risk shortly after the shutdown and 68% of the network is out of service just six hours afterwards. In

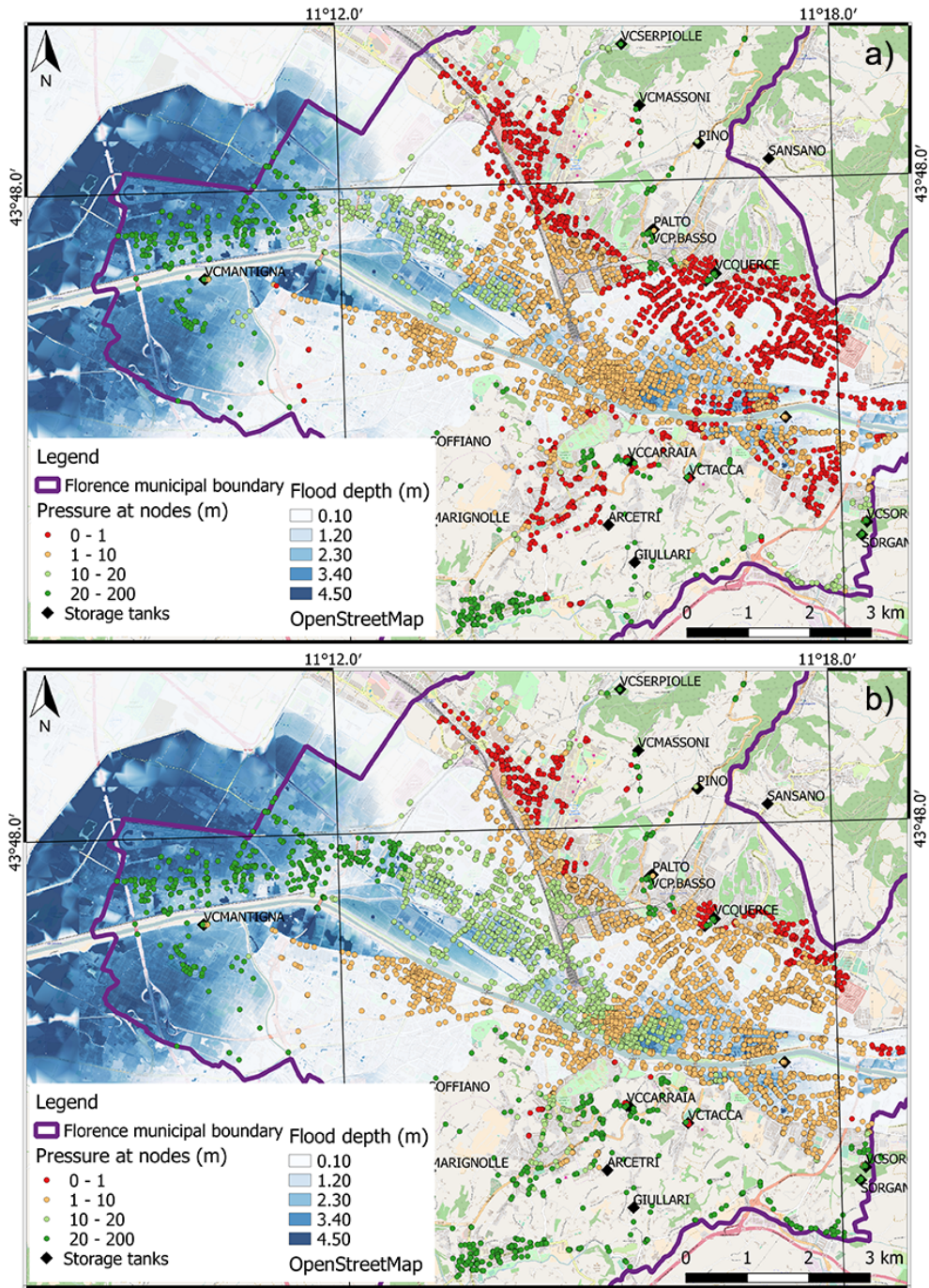


Figure 4. Inundation map for the 500-year recurrence interval and nodal heads 120 minutes after lifting station failure for scenario 1 (no pumps on) (a) and scenario 2 (one pump on) (b). Reference coordinate system is EPSG:WGS84.

scenario 2 (Fig. 6, panel b), the contaminated pipe length fraction rises from 9% to 26% in the

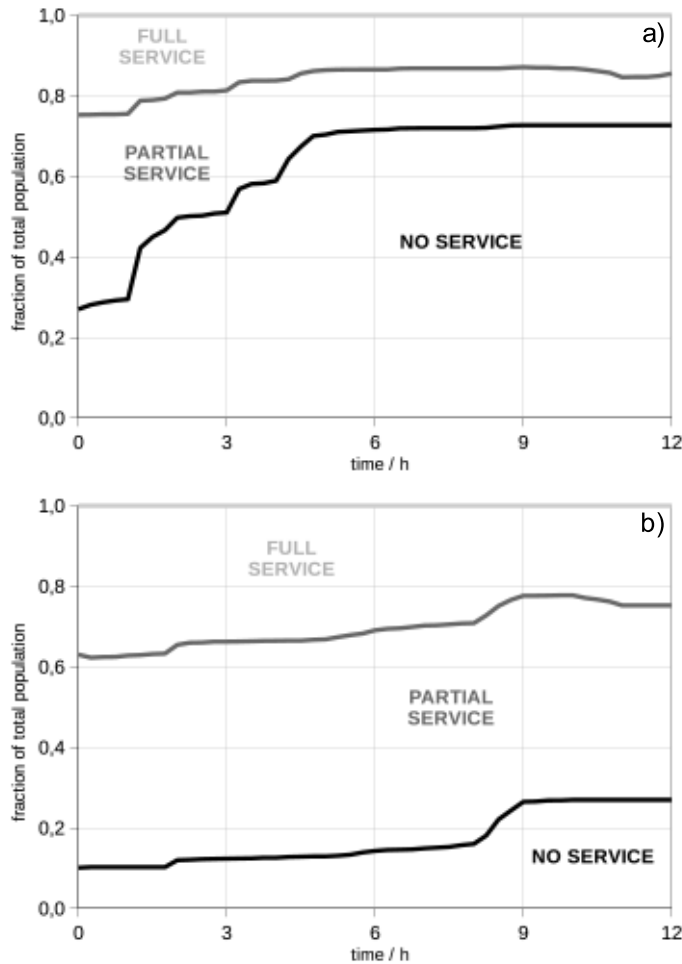


Figure 5. PNS as a fraction of total population in failure scenario 1 (panel a) and failure scenario 2 (panel b).

first 12 hours, thus suggesting a milder impact. Nevertheless, caution must be paid for the risk of
 355 backflow towards nodes which lie on the borders of the served areas. In principle, contaminated pipe
 length does depend of the RI considered, since higher floodwater depth leads to higher contamina-
 tion risk. Nevertheless, results show that in the studied case there is little difference between the 200
 and 500-year recurrence intervals.

If a pipe has been contaminated it needs to be disinfected before being put in service again. Dis-
 360 infection is usually achieved by flushing: trailer-mounted equipment pumps a disinfecting solution
 (e.g. liquid chlorine or sodium hypochlorite) through a closed piping loop. Firstly, service laterals
 are closed and customers are connected to bypass piping. Subsequently, the cleaning solution is
 pumped from a tank on the equipment trailer into the pipe to be cleaned. After cleaning, the solution
 is neutralized and pumped to a sanitary sewer. The entire system is then flushed (including later-
 365 als) to eliminate sediments and completely remove the disinfecting fluid. From the operational point

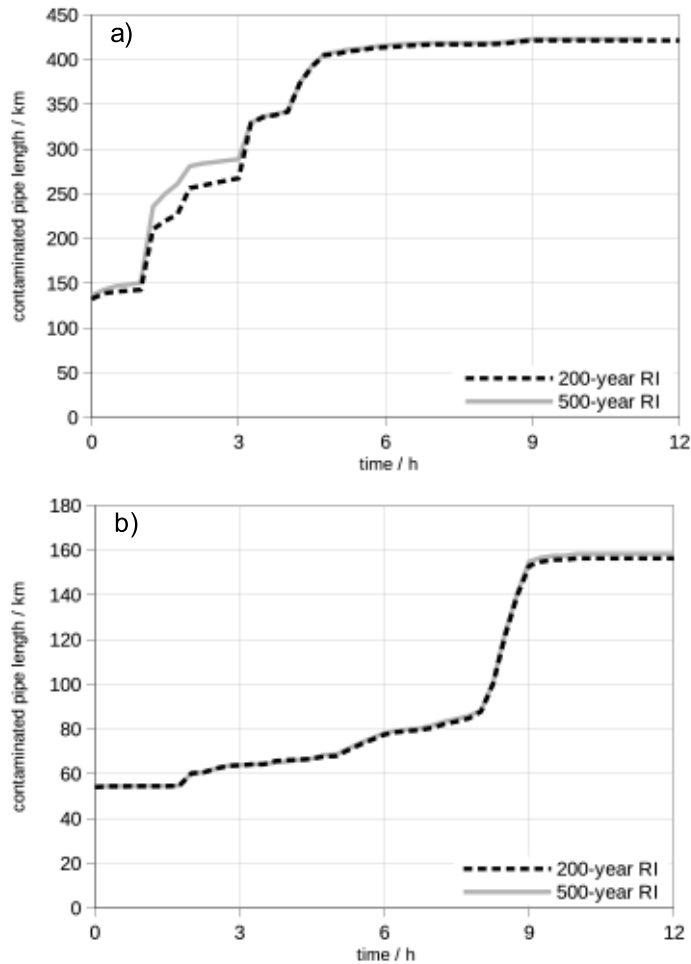


Figure 6. Contaminated pipe length in failure scenario 1 (panel a) and in failure scenario 2 (panel b).

of view, discharge is monitored during the flushing to assure a sufficient contact time and chlorine residuals after disinfection are recorded to meet the sanitary standards. An order-of-magnitude estimation of the cost of the disinfection-flushing operation is 50 € per meter of cleaned pipe (Ellison et al., 2003); nevertheless, during contingencies, costs may increase due to the disproportion between available and needed resources. According to calculated values of contaminated pipe length, flood damage to the WDN can be estimated in 21 and 8 M€ for failure scenarios 1 and 2 respectively, which correspond to approximately 0.5 and 0.2% of the direct losses to buildings and contents for the 200-year^{ca} flood scenario estimated in Arrighi et al. (2016).

4.2.3 Tank dynamics^{ca}

Figure 7, shows the water volume stored in the tank system at a given time after the failure. In scenario 1, where no water is provided by the DWTP, the entire demand is met by withdrawing water from the tank system. This is highlighted by the average slope of the curve in the first three

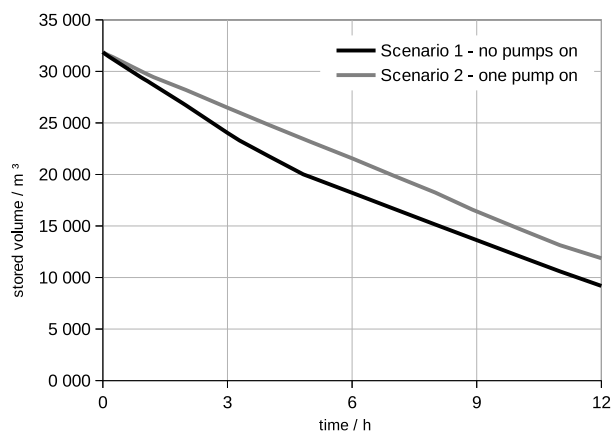


Figure 7. Volume stored in tanks as a function of time since failure

hours (about $0.75 \text{ m}^3/\text{s}$, which corresponds to half of the total demand in normal conditions. After about 3 and 5 h, reservoir configuration changes, so that also the average slope of the volume of the tanks is affected. Slope changes in both curves are caused both by demand variations and tanks
 380 being drained. In particular, the abrupt change for failure scenario 1 after about 5 h corresponds to a tank serving a great number of nodes being drained, thus corresponding in sudden change in served demand (slope). The relationship between served demand and curve slope is not so evident for failure scenario 2, since slope curve only relates to those users not directly served by the DWTP.

385 4.3 Sensitivity to tank levels

In case of power shutdown, the transient behaviour of the system is determined by the amount of water stored in tanks. In order to better understand the relevance of each storage tank in the system, a sensitivity analysis has been performed. In particular, a sensitivity matrix is calculated by numerically computing the derivative of head of each node with respect on the level of each
 390 tank in a quasi-static assumption. By examining the resulting data, two types of tanks are identified, according to their altitude. On the one hand, variations of water levels in low-altitude tanks strongly impact most network nodes, as shown in Figure 8 panel a, where the sensitivity to the “VCMantigna” storage tank is depicted. The nodes of the network lying at elevations in the range 25–50 m – which largely outnumber the rest – undergo pressure variations of about 0.5–1 m for a 1-m variation of
 395 tank level. On the other hand, high-altitude tanks, like for example the one labelled “Arcetri” shown in Figure 8 (panel b), have a smaller area of influence limited to the immediate surroundings of the tank itself. This is also reflected by the longer service periods experienced by nodes pertaining to this areas, which share a locally abundant resource.

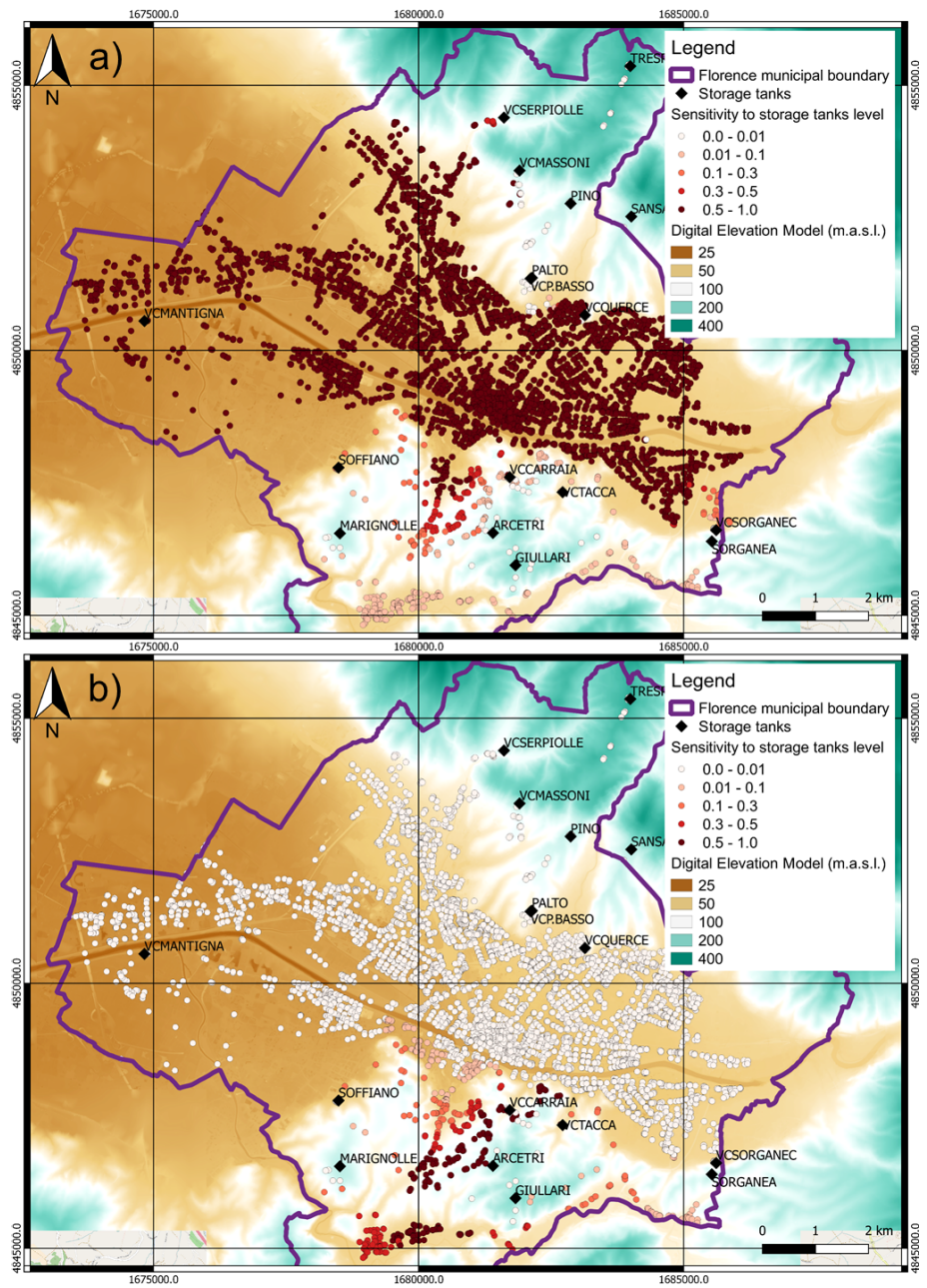


Figure 8. Digital Elevation Model of the study area and sensitivity to tank level for a lower tank (VCMantigna, panel a, left hand side) and for an upper tank (Arcetri), panel b, bottom). Reference coordinate system is EPSG:3003.

5 Conclusions

400 The impact of extreme weather events and natural disasters on urban structures and technological infrastructures, also in the perspective of climate change, is causing a raising interest in citizens and

institutions. In particular, the estimation of damage to network infrastructures poses an additional challenge due to the highly connected physical and functional topology, by which the detrimental effects spread to areas farther from the event location and lead to indirect losses.

405 In this work, a comprehensive methodology to assess the impact of a flood on a WSS is defined and implemented in a semi-automated fashion. In particular, two main submodels are used: an (i) inundation model, which uses hydrometeorological data and a DTM to compute flood depth given the flood recurrence interval (hazard analysis), and a (ii) WSS hydraulic model, used to simulate fluid-dynamic behaviour of the network from topology, functional and demand data. In the first place, a
410 flood scenario is calculated by the inundation model, and water depths near the active WSS components (pumps, electrically operated valve, etc.) are extracted. The failure of active components is linked to a selected safety threshold for flood depth, here assumed equal to 0.5 m^{ca}. If water depth near an active component exceeds the given safety threshold, the component is considered failed (exposure analysis) and its state is modified accordingly in the WSS model. Thereafter, the WSS
415 model is run and nodal pressures are calculated. In this phase, users experiencing lack of service are identified as a function of time. Moreover, by comparing water pressure in the network with local flood depth, areas affected by backflow are identified. Finally, calculated data are aggregated to compute two time-dependent measures which quantify the global lack of service (through the number of affected users) and global contamination extent (through the total length of pipes undergoing
420 backflow).

The described method is applied to a case study. The study area hosts about 380 000 inhabitants on an area of 102 km². The domestic water need – about 121 000 m³/day – is met by a WSS which abstracts the resource from the river Arno, which flows amidst the town. It is found that flood events with a recurrence intervals greater or equal to 100 years are those which affect functionality and
425 safety of the WSS by causing power disruption to the main lifting station. Two failure scenarios are defined and analysed, considering zero or one pump in operation respectively. Inundation maps of the area and service maps of the WDN are produced, thus identifying the most critical zones and the service disruption patterns in the two scenarios. Results show that providing a backup system to keep one of the pump in operation would largely reduce the affected population (by about 40%). As
430 regards as the contamination of the pipeworks by floodwater, in the worst scenario it is estimated that 68 to 100% of the network undergoes backflow risk depending on event duration, whereas the aforementioned improvement would reduce such value by 60%, with first-estimate savings of about 13 M€. Sensitivity of nodal head to tank levels is also studied, thus identifying influence areas of the various storage facilities. Although economic losses to the WDN, i.e. the cost of cleaning the
435 pipeworks, are almost negligible with respect to the direct losses to buildings, contents and artworks estimated in a previous work (Arrighi et al., 2016), the calculation of the impact on population reveals that for a 200-year flood and worst failure scenario inhabitants experiencing lack of freshwater are almost three times those directly flooded. This has crucial implications also on the post-emergency

management and civil protection actions since interventions are also required outside the inundated area.^{ca}

440

The implemented methodology uses flood data, WSS topology and characteristics, and water demand data to compute WSS contamination risk maps and service maps at various time moments after the event. The model is automated and lightweight, the analysis being completed in few minutes, and can be effectively used in the strategic planning of disaster recovery procedures or in comparing network strengthening solutions in budget allocation activities.

445

Future developments may include studying the effect of first-intervention procedures (e.g. subzoning of the network to select specific areas to be contaminated while preserving operation in others) and extending the model to simulate recovery procedures, so that recovery times and transient network behaviour can be estimated based on scheduling and available resources.

450 **Data availability**

Author contribution

First author conceived the impact assessment methodology and was responsible of flood hazard, exposure assessment, GIS operations and mapping. Second author implemented the PDD code, simulated the piping network and evaluated the impact metrics. Third author supervised the network modelling and last author promoted the research and supervised the flood risk aspects.

455

Acknowledgements. We acknowledge Publiacqua SpA for providing the sample network data and for the advisory given as stakeholder.

This research was supported financially by Fondazione Ente Cassa di Risparmio di Firenze under the research programme “ECRFI 2014”.

460 References

- Apel, H., Aronica, G. T., Kreibich, H., and Thielen, A. H.: Flood risk analyses - How detailed do we need to be?, *Natural Hazards*, 49, 79–98, doi:10.1007/s11069-008-9277-8, 2009.
- Arrighi, C., Brugini, M., Castelli, F., Franceschini, S., and Mazzanti, B.: Urban micro-scale flood risk estimation with parsimonious hydraulic modelling and census data, *Natural Hazards and Earth System Science*, 13, 1375–1391, <http://www.nat-hazards-earth-syst-sci.net/13/1375/2013/>, 2013.
- 465 Arrighi, C., Brugini, M., Castelli, F., Franceschini, S., and Mazzanti, B.: Flood risk assessment in art cities: The exemplary case of Florence (Italy), *Journal of Flood Risk Management*, pp. 1–16, doi:10.1111/jfr3.12226, 2016.
- Ashley, S. T. and Ashley, W. S.: Flood fatalities in the United States, *Journal of Applied Meteorology and*
- 470 *Climatology*, 47, 805–818, doi:10.1175/2007JAMC1611.1, 2008.
- Bartram, J., Corrales, L., Davison, A., Deere, D., Drury, D., Gordon, B., Howard, G., Rinehold, A., and Stevens, M.: *Water Safety Plan Manual: Step-by-step risk management for drinking-water suppliers*, World Health Organization, Geneva, p. 108, doi:10.1111/j.1752-1688.1970.tb00528.x, 2009.
- Blackmore, J. M. and Plant, R. A. J.: Risk and Resilience to Enhance Sustainability with Application to Urban Water Systems, *Journal of Water Resources Planning & Management*, 134, 224–233, doi:10.1061/(ASCE)0733-9496(2008)134:3(224), <http://search.ebscohost.com/login.aspx?direct=true{%&}AuthType=shib,cookie,ip,url,uid{%&}db=aph{%&}AN=31653118{%&}custid=s2888710>, 2008.
- 475 Caporali, E., Rinaldi, M., and Casagli, N.: The Arno River floods, *Giornale di Geologia Applicata*, 1, 177–192, doi:10.1474/GGA.2005-01.0-18.0018, <http://dx.doi.org/10.1029/EO060i001p00001-01>, 2005.
- 480 Cheung, P., Van Zyl, J., and Reis, L.: Extension of EPANET for pressure driven demand modeling in water distribution system, *Computing and Control for the Water Industry*, 1, 311–316, 2005.
- Christodoulou, S. E.: Water Resources Conservancy and Risk Reduction Under Climatic Instability, *Water Resources Management*, 25, 1059–1062, doi:10.1007/s11269-010-9770-1, 2011.
- Cruz, A. M., Steinberg, L. J., Vetere Arellano, A. L., Nordvik, J.-P., and Pisano, F.: State of the Art in Natch Risk Management, 2004.
- 485 de Moel, H., van Alphen, J., and Aerts, J. C. J. H.: Flood maps in Europe – methods, availability and use, *Natural Hazards and Earth System Science*, 9, 289–301, doi:10.5194/nhess-9-289-2009, 2009.
- Ebacher, G., Besner, M.-C., and Prevost, M.: Negative Pressure Events in Water Distribution Systems: Public Health Risk Assessment Based on Transient Analysis Outputs (ASCE), *Asce*, pp. 471–483, doi:10.1061/41203(425)45, [http://ascelibrary.org/doi/abs/10.1061/41203\(425\)45](http://ascelibrary.org/doi/abs/10.1061/41203(425)45), 2010.
- 490 Ellison, D., Duranceau, P., Ancel, S., Deagle, G., and McCoy, R.: *Investigation of pipe cleaning methods*, vol. 1, AWWA Research Foundation and American Water Works Association, 2003.
- Emanuelsson, M. A. E., McIntyre, N., Hunt, C. F., Mawle, R., Kitson, J., and Voulvoulis, N.: Flood risk assessment for infrastructure networks, *Journal of Flood Risk Management*, 7, 31–41, doi:10.1111/jfr3.12028,
- 495 2014.
- EU Parliament: Directive 2007/60/EC, 2007.
- Fewtrell, T. J., Duncan, A., Sampson, C. C., Neal, J. C., and Bates, P. D.: Benchmarking urban flood models of varying complexity and scale using high resolution terrestrial LiDAR data, *Physics and Chemistry of the Earth*, 36, 281–291, doi:10.1016/j.pce.2010.12.011, <http://dx.doi.org/10.1016/j.pce.2010.12.011>, 2011.

- 500 Gil, J. and Steinbach, P.: From flood risk to indirect flood impact: Evaluation of street network performance for effective management, response and repair, *WIT Transactions on Ecology and the Environment*, 118, 335–344, doi:10.2495/FRIAR080321, 2008.
- Ginandjar, P., Saraswati, L. D., Pangestuti, D. R., Jati, S. P., and Rahfiludin, Z.: Risk Assessment of Drinking Water Supply System in the Tidal Inundation Area of Semarang – Indonesia, *Procedia Environmental Sciences*, 23, 93–98, doi:10.1016/j.proenv.2015.01.014, <http://www.sciencedirect.com/science/article/pii/S1878029615000158>, 2015.
- 505 Göransson, G., Larson, M., and Bendz, D.: Variation in turbidity with precipitation and flow in a regulated river system-river Göta Älv, SW Sweden, *Hydrology and Earth System Sciences*, 17, 2529–2542, doi:10.5194/hess-17-2529-2013, 2013.
- 510 Hrudehy, S. E., Hrudehy, E. J., and Pollard, S. J. T.: Risk management for assuring safe drinking water, *Environment International*, 32, 948–957, doi:<http://dx.doi.org/10.1016/j.envint.2006.06.004>, <http://www.sciencedirect.com/science/article/pii/S0160412006000821>, 2006.
- Hunter, N., Bates, P., Neelz, S., Pender, G., Villanueva, I., Wright, N., Liang, D., Falconer, R., Lin, B., Waller, S., a.J. Crossley, and Mason, D.: Benchmarking 2D hydraulic models for urban flooding, pp. 13–515 30, doi:10.1680/wama.2008.161.1.13, <http://dx.doi.org/10.1680/wama.2008.161.1.13>, 2008.
- IPCC: Summary for Policymakers, *Climate Change 2013: The Physical Science Basis. Contribution of Working Group I to the Fifth Assessment Report of the Intergovernmental Panel on Climate Change*, p. 33, doi:10.1017/CBO9781107415324, 2013.
- Khan, S. J., Deere, D., Leusch, F. D. L., Humpage, A., Jenkins, M., and Cunliffe, D.: Extreme weather events: 520 Should drinking water quality management systems adapt to changing risk profiles?, *Water Research*, 85, 124–136, doi:10.1016/j.watres.2015.08.018, <http://dx.doi.org/10.1016/j.watres.2015.08.018>, 2015.
- Large, A., Le Gat, Y., Elacachi, S., Renaud, E., and Breyse, D.: Decision support tools: review of risk models in drinking water network asset management, *Vulnerability, Uncertainty and risk*, pp. 587–597, 2014.
- Lhomme, S., Serre, D., Diab, Y., and Laganier, R.: Analyzing resilience of urban networks: a preliminary 525 step towards more flood resilient cities, *Natural Hazards and Earth System Sciences*, 13, 221–230, doi:10.5194/nhess-13-221-2013, <http://www.nat-hazards-earth-syst-sci.net/13/221/2013/>, 2013.
- Luh, J., Royster, S., Sebastian, D., Ojomo, E., and Bartram, J.: Expert assessment of the resilience of drinking water and sanitation systems to climate-related hazards, *Science of The Total Environment*, 592, 334 – 344, doi:<http://doi.org/10.1016/j.scitotenv.2017.03.084>, <http://www.sciencedirect.com/science/article/pii/S004896971730596X>, 2017.
- 530 Lung, T., Lavallo, C., Hiederer, R., Dosio, A., and Bouwer, L. M.: A multi-hazard regional level impact assessment for Europe combining indicators of climatic and non-climatic change, *Global Environmental Change*, 23, 522–536, doi:10.1016/j.gloenvcha.2012.11.009, <http://dx.doi.org/10.1016/j.gloenvcha.2012.11.009>, 2013.
- 535 ISTAT: 15 Censimento della popolazione e delle abitazioni, Tech. rep., <http://www.istat.it>, 2011.
- Merz, B., Kreibich, H., Schwarze, R., and Thielen, a.: Review article "assessment of economic flood damage", *Natural Hazards and Earth System Science*, 10, 1697–1724, doi:10.5194/nhess-10-1697-2010, 2010.
- Meyer, V. and Messner, F.: National flood damage evaluation methods : A review of applied methods in England, the Netherlands, the Czech republic and Germany, p. 49, 2005.

- 540 Meyer, V., Becker, N., Markantonis, V., Schwarze, R., Van Den Bergh, J. C. J. M., Bouwer, L. M., Bubeck, P., Ciavola, P., Genovese, E., Green, C., Hallegatte, S., Kreibich, H., Lequeux, Q., Logar, I., Papyrakis, E., Pfuertscheller, C., Poussin, J., Przulski, V., Thielen, a. H., and Viavattene, C.: Review article: Assessing the costs of natural hazards-state of the art and knowledge gaps, *Natural Hazards and Earth System Science*, 13, 1351–1373, doi:10.5194/nhess-13-1351-2013, 2013.
- 545 Michielsen, A., Kalantari, Z., Lyon, S. W., and Liljegren, E.: Predicting and communicating flood risk of transport infrastructure based on watershed characteristics, *Journal of Environmental Management*, 182, 505–518, doi:10.1016/j.jenvman.2016.07.051, <http://dx.doi.org/10.1016/j.jenvman.2016.07.051>, 2016.
- Murshed, M. F., Aslam, Z., Lewis, R., Chow, C., Wang, D., Drikas, M., and van Leeuwen, J.: Changes in the quality of river water before, during and after a major flood event associated with a La Niña cycle and treatment for drinking purposes, *Journal of Environmental Sciences (China)*, 26, 1985–1993, doi:10.1016/j.jes.2014.08.001, <http://dx.doi.org/10.1016/j.jes.2014.08.001>, 2014.
- 550 Serre, D., Lhomme, S., Heilemann, K., Hafskjold, L. S., Tagg, A., Walliman, N., and Diab, Y.: Assessing vulnerability to floods of the built environment - Integrating urban networks and buildings, *VRAM 2011 and ISUMA 2011 Conferences*, pp. 746–753, doi:10.1061/41170(400)91, <http://www.scopus.com/inward/record.url?eid=2-s2.0-79958140982{&}partnerID=40{&}md5=b91e20394e4f4fce47c0ced662634fcb>, 2011.
- Seyoum, A. G. and Tanyimboh, T. T.: Investigation into the Pressure-Driven Extension of the EPANET Hydraulic Simulation Model for Water Distribution Systems, *Water Resources Management*, 30, 5351–5367, doi:10.1007/s11269-016-1492-6, <http://dx.doi.org/10.1007/s11269-016-1492-6>, 2016.
- 560 Short, M. D., Peirson, W. L., Peters, G. M., and Cox, R. J.: Managing adaptation of urban water systems in a changing climate, *Water Resources Management*, 26, 1953–1981, doi:10.1007/s11269-012-0002-8, 2012.
- Smith, D.: 1994 flood damage estimation-A review of urban stage-damage curves and loss function (Smith, 1994).pdf, 1994.
- Thielen, A., Merz, B., Kreibich, H., and Apel, H.: Methods for flood risk assessment: concepts and challenges, *International Workshop on Flash Floods in Urban Areas*, pp. 1–12, <http://www.rcuwm.org.ir/En/Events/Documents/Workshops/Articles/8/6.pdf>, 2006.
- 565 U.S. Environmental Protection Agency: Flood Resilience Checklist, p. 6, 2014.
- Walski, T., Blakley, D., Evans, M., and Whitman, B.: Verifying Pressure Dependent Demand Modeling, *Procedia Engineering*, 186, 364 – 371, doi:https://doi.org/10.1016/j.proeng.2017.03.230, <http://www.sciencedirect.com/science/article/pii/S1877705817313796>, {XVIII} International Conference on Water Distribution Systems, {WDSA2016}, 2017.
- 570 WHO: Guidance on Water Supply and Sanitation In Extreme Weather Events, p. 132, <http://www.euro.who.int/en/health-topics/environment-and-health/water-and-sanitation/publications/2011/guidance-on-water-supply-and-sanitation-in-extreme-weather-events>, 2011.
- 575 World Economic Forum: The Global Risks Report 2017 12th Edition Insight Report, 2017.