

# Exploring spatial-temporal dynamics of fire regime features at mainland Spain

Adrián Jiménez-Ruano<sup>1</sup>, Marcos Rodrigues Mimbreno<sup>1</sup>, Juan de la Riva Fernández<sup>1</sup>

<sup>1</sup>GEOFOREST Group, IUCA, Department of Geography and Land Management, University of Zaragoza,  
5 Pedro Cerbuna 12, 50009, Zaragoza, Spain

*Correspondence to:* Adrián Jiménez-Ruano (jimenez@unizar.es)

## Abstract

This paper explores spatial-temporal dynamics in fire regime features, such as fire frequency, burnt area,  
10 large fires, and natural- and human-caused fires, as an essential part of fire regime characterisation.  
Changes in fire features are analysed at different spatial – regional and provincial/NUTS3 levels, together  
with summer and winter temporal scales, using historical fire data from Spain for the period 1974-2013.  
Temporal shifts in fire features are investigated by means of change point detection procedures – Pettitt  
test, AMOC (At Most One Change), PELT (Pruned Exact Linear Time) and BinSeg (Binary  
15 Segmentation) – at regional level to identify changes in the time series of the features. A trend analysis  
was conducted using the Mann-Kendall and Sen’s slope tests at both regional and NUTS3 level. Finally,  
we applied a Principal Component Analysis (PCA) and Varimax Rotation to trend outputs – mainly Sen’s  
slope values – to summarize overall temporal behaviour, also to explore potential links in the evolution of  
fire features.

20 Our results suggest that most fire features show remarkable shifts between the late 1980s and the first half  
of the 1990s. Mann-Kendall outputs revealed negative trends in the Mediterranean region. Results from  
Sen’s slope suggest high spatial and intra-annual variability across the study area. Fire activity related to  
human sources seems to be experiencing an overall decrease in the north-west provinces, particularly  
pronounced during summer. Similarly, the hinterlands and the Mediterranean coast are gradually  
25 becoming less fire-affected. Finally, PCA enabled trends to be synthesized into four main components:  
winter fire frequency (PC1), summer burnt area (PC2), large fires (PC3) and natural fires (PC4).

30

## 1 Introduction

35 Wildfire is a disturbance affecting many ecosystems on a global level. Fire itself is a very dynamic  
landscape process, which depends on different factors, such as weather, vegetation type and structure,  
fuel moisture, land use or human activity, among others (Falk et al., 2011). Understanding wildfire  
phenomenon is still a challenging task, especially difficult when facing climate and/or socioeconomic  
40 changes (Pausas and Keeley, 2009) as is the case of Spain (Pausas, 2004; Pausas and Fernández-Muñoz,  
2012; Turco et al., 2014) and other EUMed regions (Moriondo et al., 2006; Salis et al., 2014; Venäläinen  
et al., 2014). In this context, fire regime characterisation may contribute to improve our knowledge on  
how wildfires generally behave. For example, understanding spatial and temporal patterns of wildfire  
features may lead to more effective management strategies or prevention policies.

Improved understanding of fire regimes may be achieved by providing deeper insights into the spatial  
45 patterns of fire regime features over a certain period of time (i.e. homogenous areas with similar fire  
regime characteristics). From a temporal perspective, previous studies reported the existence of temporal  
changes or trends in the evolution of several fire regime features (Flannigan et al., 2009; Rodrigues et al.,  
2013; Turco et al., 2016). However, despite there being evidence of temporal variability in fire regime  
features it is not usually considered when defining, characterizing or outlining fire regimes. The concept  
50 of fire regime is commonly defined as the average conditions of fire that remains recurrent and consistent  
within a particular area and occurring over a certain period of time (Krebs et al., 2010). According to this  
definition, it seems clear that both space and time are taken to be stationary, but fire regime components  
are in fact highly variable across time and space (Morgan et al., 2001). Recently, several works studying  
fire regimes were conducted in Spain, among which those by Moreno and Chuvieco (2012) and Moreno  
55 and Chuvieco (2016) are notable as the latest attempts to deal with fire regime characterisation. However,  
in these works, the behaviour of fire regime features is still assumed to be homogeneous or stationary  
over time. To our understanding, the concept or definition of fire regime has to include changes in fire  
features over the study period. This is ultimately the goal of our proposal, to characterise the temporal  
evolution of fire regime features so that they can be employed to refine and improve the spatial outline of  
60 fire regimes, for example, by using trend outputs as an additional input of the cluster or zoning algorithm.

Analyses of spatial-temporal trends of fire regime features are common in the literature. The most  
widespread approach addresses changes in fire frequency and burned area (Kasischke and Turetsky,  
2006; Pausas and Fernández-Muñoz, 2012; Rodrigues et al., 2013; Zavala et al., 2011). In the  
Mediterranean region, the main findings indicate a general decrease during the period 1985-2011 (Turco  
65 et al., 2016) in the annual number of wildfires and burned area, although a certain spatial variability is  
observed in the trends. For instance, over the last few decades, the burned area in Spain has decreased.  
Conversely, the yearly number of fires have increased, except on the Mediterranean coast (Turco et al.,  
2016). On the other hand, most studies focus mainly on analysing 'generic' fire (number of fires and  
burned area). This is particularly true for Spain, which lacks a detailed analysis of fire trends based on a  
70 spatial-temporal approach. We believe that a proper characterisation of fire regime must take into account  
additional features, such as fire size, cause or seasonality. Even though some studies dealing with the  
temporal dimension of wildfires do exist (Serra et al., 2013), most of them present some limitations, such

as a short time series (less than 20 years of data). Meanwhile, analyses using a longer time series do not include many fire regime features and stay with the overall number of fires and burned area (Pausas 2004; 75 Pausas and Fernández-Muñoz 2012; Moreno et al. 2014). Specifically, we stress the importance of assessing the evolution of large fires (fires with more than 500 ha burned, San-Miguel-Ayanz et al. (2013), and the potential differences relating the ignition source of a wildfire, either natural- or human-caused.

Therefore, the analysis of the temporal dimension of fire regime features must be extended to these other 80 features in order to provide a more detailed picture of the evolution of fire activity with the ultimate goal of characterizing fire regimes. Similarly, advances must be made in applying trend detection procedures. Determining whether a certain feature changes significantly is useful, but not sufficient. Further insights into trend magnitude must be provided so that we can compare trends among several regions, and explore possible relationships among temporal changes in fire features.

85 The aim of this study is to analyse spatial-temporal trends of several fire features during the period 1974-2013, and explore potential relationships among those detected. In addition, this work would also allow progress and further developments in the fire regime zoning. The analysis is conducted at several spatial, such as regional and NUTS3/provincial level, and autumn-winter and spring-summer temporal –scales in mainland Spain. Data on fire regime features were retrieved from historical fire records stored in the 90 EGIF (General Wildfires Statistics) database. Firstly, seasonal shifts in the evolution of fire feature were examined using change point detection techniques in three different regions comprising the whole of mainland Spain –. We used several breakpoints techniques to determine if and when significant changes in the temporal evolution of each fire regime feature takes place. Trend detection procedures were then applied at the two different spatial levels, to address the spatial-temporal variability of each fire feature. 95 The purpose was to determine whether fire features vary over time and, if so, its sign – upward or downward – and strength. Finally, complementary analyses were applied to uncover potential links in the evolution of fire features.

## 2.1 Study area

100 The study area encompasses the whole of mainland Spain (thus excluding both the Balearic and Canary archipelagos, as well as the autonomous cities of Ceuta and Melilla). Spain is very biophysically diverse, presenting a wide variety of climatic, topographical, and vegetation communities. This diversity also appears when discussing socioeconomic conditions, in terms of settlement systems and population structure, production sector, changes in land use and land cover, or structure of the territory.

From a climatic perspective, mainland Spain is characterised by contrasting climatic conditions. 105 According to the Spanish Climate Atlas (AEMET, 2011) and based on the Köppen-Geiger climate classification system (last version from 1936) we found cold (D), temperate (C) and dry (B) climates. Csa (temperate with dry or hot summer) is the type of climate which covers most of the Iberian Peninsula, occupying approximately 40% of its surface. It covers the majority of the southern central plateau region, and the Mediterranean coastal regions, with the exception of the arid zones in the southeast, where we 110 found BWh (hot desert) conditions. Cold climates are located in the highest mountain ranges both in the

Pyrenees and Iberian Mountain Ranges (Dfb-c), and also in small areas of the mountainous regions at higher altitudes in the Cantabria Mountains, the Iberian Mountain Ranges, Central Ranges and the Sierra Nevada (Dsb-f). Finally, Cfa (temperate with a dry season and hot summer) is mainly seen in the northeast area, within an area of medium altitude which surrounds the Pyrenees and the Iberian mountains.

115

From a biogeographical point of view, mainland Spain is divided in two biogeographical regions: Eurosiberian, located in the Northwest area; and Mediterranean, covering the remaining area. The Eurosiberian area is mostly covered by various types of vegetation from deciduous oak and ash to evergreen oak woodlands (*Quercus robur*, *Fraxinus excelsior* or *Fagus sylvatica*), but this region also has a quite important component of forest plantations such as *Pinus radiata* and *Eucalyptus globulus*. In turn, the Mediterranean region presents complex mosaics of agricultural systems and plant communities. Sclerophyllous and evergreen vegetation, such as *Quercus ilex*, *Quercus suber* and thermophilous scrublands (maquis and garrigues formations), dominate the region. Forest areas mainly consist of pine species (*Pinus halepensis*, *Pinus sylvestris*, *Pinus nigra*, *Pinus pinea* or *pinaster*). Furthermore, bioclimatic (altitudinal) belts exist within each region in mountain areas such as the Pyrenees along the French border or Sierra Nevada on the southern Mediterranean coast.

120

125

Due to the variety of landscapes, climate and socioeconomic conditions, three different regions – Northwest (NW), Hinterland (HL) and Mediterranean (MED) – were outlined (Fig.1), following the criteria established by the Spanish Environmental Ministry in their annual fire reports (MAGRAMA, 2002, 2007, 2012). These regions portray homogeneous areas in terms of wildfire activity by merging entire provinces or Autonomous Communities and have been previously used on other recent works like Moreno et al. (2014). The spatial coverage of these regions is similar to other zoning proposals like Sousa et al. (2015) or Trigo et al. (2013), being also based on NUT3S aggregations, although they include Portugal as well. The NW region includes the Autonomous Communities of Galicia, Asturias, Cantabria and the Basque Country, also the provinces of León and Zamora. This region is located within the Eurosiberian region, excluding the Pyrenees. The HL region includes all of the Autonomous Communities without coastline, except for the provinces of León and Zamora (included in the NW region). This region is located in the transition boundary between the Mediterranean and Eurosiberian regions, thus sharing characteristics in terms of climate influence and plant species. Finally, the MED region, situated within the Mediterranean biogeographical region, includes all the Autonomous Communities along the Mediterranean coast.

130

135

140

Figure 1

145

## 2.2 Fire data

Fire records from 1974 to 2013 were collected from the EGIF database and fire count data, the size of the total burned area, ignition triggering date and fire cause were retrieved for each fire event, later

summarized by season at NUTS3 level. Only information on fires larger than 1 ha was retained because  
150 small fires (i.e. fires with less than 1 ha affected) were not fully compiled until 1988. This is a well-  
known issue affecting other regions in the Mediterranean as Portugal (Pereira et al., 2011). Additionally,  
it is important to remember that in the case of the Autonomous Community of Navarre, fire data were  
only available from 1988. Hence, all the analyses conducted in Navarre were based on a slightly different  
study period (1988-2013).

155 In addition to NUTS3 level, we also included a regional scale of aggregation, together with two different  
fire seasons. Thus, annual data were split into spring-summer season (S), from April to September; and  
autumn-winter season (W) from October to March. From all available fire data information (see Table 1),  
eight fire features were then constructed for each fire season, NUTS and region:

- Number of fires (N): total number of events, regardless of size or ignition source.
- 160 • Burned area size (B): total fire affected area, regardless of size or ignition source.
- Number of large fires (N500): number of fires above 500 ha burned, regardless of ignition  
source.
- Burned area from large fires (B500): overall affected area from fires above 500 ha, regardless of  
ignition source
- 165 • Number of natural fires (NL): number of fires triggered by lightning.
- Burned area from natural fires (BL): overall burned area from fires triggered by lightning.
- Number of human fires (NH): number of fires triggered by an anthropogenic source.
- Burned area from human fires (BH): overall burned area from fires triggered by an  
anthropogenic source.

170

Table 1

## 2.3 Methods

The methodology consisted of three stages. First, we explored changes in the temporal evolution of fire  
175 features by means of the Pettitt test and change detection procedures on a regional scale. In a second  
phase, a trend detection analysis was conducted using the Mann-Kendall test and the Sen's slope at  
regional and NUTS3 level. The third stage used a PCA to assess potential relationships among trends in  
fire features at NUTS3 level.

Statistical analyses, plotting and mapping were carried out using the R statistical software (R Core Team,  
180 2016), packages *change point* and *trend* for change point analysis, *kendall* and *zyp* for trend analysis, and  
*ggplot2* for plotting and mapping the final results.

### 2.3.1 Change point detection

Change detection or change point detection aimed to identify times when the probability distribution of a  
time series changes. In order to identify change points in our time series we used four different tests.

185 First of all, the Pettitt test, a non-parametric method commonly applied to detect a single change-point in hydrological or climate series with continuous data (Pettitt, 1979). It tests the  $H_0$ : no change, against the alternative ( $H_1$ ): a change point exists. One of the advantages of this technique is its robustness to deal with outliers. In the context of wildfire science, the Pettitt test has previously been applied to detect fire regime shifts as a consequence of policy and socio-economic development, in Pezzatti et al. (2013) and  
 190 Moreno et al. (2014).

The Pettitt test is calculated using the following equation:

$$U_{t,T} = \sum_{i=1}^t \sum_{j=t+1}^T \text{sgn}(X_i - X_j) \quad (1)$$

Where  $\text{sgn}(X) = 1$  for  $X > 0$ ,  $0$  for  $X = 0$  and  $-1$  for  $X < 0$ , and  $T$  is the length of the time series in years.

195 The probability of a significant change existing is calculated as follows:

$$p(t) = 1 - \exp\left(\frac{-6 \cdot U_{t,T}^2}{T^3 + T^2}\right) \quad (2)$$

Where  $|U_{t,T}|$  reaches the maximum value where the most significant change point is found (Pettitt, 1979). This methodology allows for the identification of the most probable change point in the period examined,  
 200 in each fire feature by region and season. A specific function has been developed in R environment to calculate the change point using the Pettitt approach.

As an alternative method to the Pettitt test, three additional algorithms were applied; more specifically, the *cpt.meanvar* method to identify changes in mean and variance, calculating the optimal positioning of a change point for the input data (Chen and Gupta, 2000):

- 205 • AMOC (At Most One Change) method is the simplest expression of the change detection algorithms from the *changept* package. It can detect a single change point (Hinkley, 1970), much the same as the Pettitt test.
- PELT (Pruned Exact Linear Time) is one of the most widely used methods for change point detection. It can detect multiple change points in large data sets (Killick et al., 2012), unlike the  
 210 Pettitt test or AMOC. It includes an enhanced optimal partitioning, leading to a substantially more accurate segmentation. This ensures minimum change point detection in a time series, regardless of the applied penalty value. Thus, PELT is known as a more precise algorithm, usually outperforming other methods such as Binary Segmentation. The CROPS (Changepoints for a Range of Penalties) penalising type was selected. The lower the pen.value, the higher the  
 215 numbers of change points detected. For this reason, we chose many different minimum pen.values, in order to find at least one, or no more than two, breakpoints. One of the advantages of this last option is that continuous false change points were avoided commonly found at the beginning/end of the time series (for example, many cases with AMOC algorithm).
- BinSeg (Binary Segmentation) is an effective method for multiple change point detection (Scott and Knott, 1974). It searches for the first significant change point in a sequence, then breaks the  
 220

original sequence into two sub-sequences: before and after the first significant change point. The procedure tests the two sub-sequences separately for a change point, with the process repeated until no further sub-sequences have change points (Chen and Wang, 2009). In our case, we previously defined a possible change point limited in 1 ( $Q=1$ ), to obtain only the most significant. To this end, the default penalty parameter MBIC (Modified Bayes Information Criterion Penalty) was chosen, which has proved to reduce overestimation in the number of change points, and often detects the correct model (Bogdan et al., 2008). Therefore, there is no need to select a penalty value; hence in all the cases, this value is automatically established as 14.8.

225

230

### 2.3.2 Trend analysis

Change detection procedures determine if and when a certain feature has undergone a significant change across the study period. However, does it imply an increase or decrease in the values of that feature? Moreover, how strong is that change? Is the change stationary or does it vary over space? To answer all these questions, we used a trend detection procedure combining the Mann-Kendall test (MK) and Sen's slope (SS).

235

MK is a non-parametric statistical test appropriate for identifying trends in time series of data (Kendall, 1975; Mann, 1945). It is suitable for detecting linear or non-linear trends (Hisdal et al., 2001; Wu et al., 2008). In this test, the null ( $H_0$ ) and alternative hypotheses ( $H_1$ ) are equal to the non-existence and existence of a trend in the time series of the observational data, respectively. Previous studies by San-Miguel-Ayanz et al. (2012) and Rodrigues et al. (2013) support the use of MK in the context of wildfire science. MK main outputs are the *Tau* value and its associated significance level (*p*-value). *Tau* can be used to determine the sign of the trend, i.e. upward ( $Tau>0$ ) or downward ( $Tau<0$ ). Trends are considered significant when  $p\text{-value}<0.05$ . To facilitate the interpretation of MK outcomes, we calculated an aggregated parameter combining the *Tau* and *p*-value, the so-called *signed p*-value. It combines information on both sign and significance, calculated as the multiplication of the significance level either by 1 when  $Tau>0$ , or by -1 when  $Tau<0$ .

240

245

The magnitude of the change was subsequently assessed by means of the Sen's slope (Sen, 1968), a nonparametric alternative for estimating the median slope joining all possible pairs of observations, which enables a comparison of the magnitude of the detected trends. Both MK and Sen's slope were calculated for all fire features by region and NUTS3 level, and for both seasons.

250

### 2.3.3 Principal Component Analysis and mapping

Finally, Principal Component Analysis (PCA) was carried out on Sen's slope's values in order to synthesize the detected changes. PCA is a widely used technique for summarizing a large set of variables into fewer and common factors, reducing the variance of the original data. Representative principal components (PCs) were selected using the Kaiser Criterion (Kaiser, 1960), which only retains PCs with eigenvalues greater than 1. In turn, the Varimax Rotation (VR) method was applied to identify key trends.

255

260 VR transforms the selected PC, maximizing the sum of the variance, obtaining higher coefficients or near  
to zero, thus, with fewer intermediate values. The objective is to link each variable to one maximum PC  
to make interpretation of PCA results easier (Horst, 1965; Kaiser, 1958).

265 Furthermore, we summarized the temporal behaviour retrieved from PCs on an additional map.  
Eigenvalues from PCs 1 and 2 were classified into four categories according to their sign (positive or  
negative trends) and significance level (above (significant) or below (non-significant)) a 90% Confidence  
Interval. PCs 3 and 4 were only shown when significant. In this way, we were able to outline  
homogeneous areas according to the observed temporal evolution.

270

### 3 Results

#### 3.1 Change Point detection

275 Only those cases where at least three of the methods agree in the year of change are taken as change  
points. Table 2 summarizes the year(s) of change obtained by the four algorithms. The majority of change  
points were detected between the late 1980s and the early 1990s. Change points have been detected in the  
MED region in N S, B, N500, B500, BL S, NH S and BH. Summer changes are consistently observed in  
1994 in the MED features, whereas changes in the winter season in this region appear around in 1984-86.  
Additionally, another six change points were found in the NW region in NH W in 1987, NL W in 1993  
and B S in 1991, and two in N W and B W, were found in 1984-87. Finally, one change point was  
280 detected in N S, but in 2005-2006. In HL, five change points were found in N W and NH W, both in  
1987, also N500 S and BL W in 1990-1991, and finally BH S in 1977. It is important to note that some  
fire features in particular regions are very few, such as in HL and NW regions, which do not appear in  
Figures 2 and 3.

285

Table 2

Figure 2

Figure 3

290

#### 3.2. Trends analysis

##### 3.2.1 Region level

295 Table 3 summarizes the results from MK. Similar to change point analysis, the MED region stands out as  
the one with most significant changes. In general, the region returns mostly downward trends in all fire



features, significant in all cases and seasons, except NL, NH and BH during winter. Only a few features underwent a trend either way in the NW region. Significant upward trends were detected in N, B, NH and BH. In all cases, trends occurred during the winter season. Significant downward trends were found in B and B500 during summer. Again, HL is the region with fewest significant trends. Overall, human-related features (NH and BH) show significant upward trends in summer and winter, whereas N increases during winter.

Table 3

305

### 3.2.2 NUTS3 level

Trend detection analysis at NUTS3/Province level combines Mann-Kendall and Sen's slope values. Maps in Figure 4 summarize the results of this section. Every single map displays the results for a given fire feature. The overall value of the feature, i.e. total number of fires, burnt area, number of human-caused fires, etc., is represented by symbol (circle) size. The colour of the circle indicates whether the MK test denotes a significant trend or not. Grey circles represent non-significant trends, whereas coloured symbols denote significant trends. For the significant trends, the value of the SS is plotted inside the circle. We used a green-yellow-red colour ramp to represent both the sign of the trend (negative in green and positive in red), as well as trend magnitude according to the SS value.

315 Observing the spatial distribution of significant trends, an increment in N was found in provinces of the northwest area, and the western provinces of the hinterland on the border with Portugal. Similar to the results at regional level, provinces on the Mediterranean coast show a decrease in the number of fires, although some provinces in the southern region (Andalusia) do not show significant trends. However, differences in the seasonal behaviour were observed, with increasing trends found in the eastern provinces in NW. In turn, provinces with significant decreasing trends were located along the Mediterranean coast, southern Andalusia and the majority of provinces in Galicia. Winter N clearly presents an increase for most of the NW region, and many areas of the HL.

325 This spatial distribution changes slightly for total B and summer B compared to those observed in N, being more visible in the northwest area (Galicia and Asturias), but also a large part of Andalusia, where negative trends play a decisive role at the expense of positive trends. On the other hand, NH shows more increases across the territory, except the Mediterranean coast. However, with BH, decreases are more evident, mainly concentrated in the north-east coastal areas, some provinces of the northwest and Andalusia.

330 The spatial distribution of SS values across mainland Spain reveals a high spatial variability in trend magnitude. The strongest trends according their standard deviation ( $SD < -1.64$ ) or ( $SD > 1.64$ ) were found in the NW area, both positive and negative. Strong positive trends were identified in winter fire features relating to frequency, such as total N, and N - NH, but also with burned area, as with B and BH. On the other hand, the main negative trends were located again in the NW region for some summer fire features like N, B, NH and BH. In addition, the rest of the territory is covered by intermediate values,

335 mainly in total N and B, B S, N W and NH. However, in most areas moderate negative trends play a  
major role (especially in the Mediterranean coast) whereas moderate positive dynamics are concentrated  
in the western provinces of hinterland.

Figure 4

340

### 3.3 Principal Component Analysis and Varimax Rotation

345 PCA was applied to SS values. Results from PCA provide an overview of the most relevant links among  
trends in fire features. According to the Kaiser Criterion, 4 components (representing 88% of the  
variance) out of the initial 14 were selected. Consequently, VR was only calculated for those 4 PCs.  
According to PCA eigenvalues (Table 4), PC1 (38% of the variance) is associated with changes in fire  
frequency, particularly the number of fires and human-caused fires during winter. PC1 gathers N (0.44),  
350 N W (0.52) and NH W (0.45). PC2 (27% of the variance) relates to the fire-affected area. B (0.47), B S  
(0.44), BH S (0.44) and N S (0.43), suggest that burned area trends are mainly related to summer human  
dynamics, and a slight increase in summer fire frequency. Large fires trends are noticeably isolated in  
PC3 (15% of the variance, both in terms of frequency and burned area). Finally, PC4 (8% of the variance)  
separates natural fires dynamics in the same way as large ones fall into PC3. In general, PC1 relates to  
355 winter fire frequency, PC2 to summer burnt area, PC3 to large fires and PC4 to natural fires.

Table 4

360 Figure 5 displays PC values at NUTS3 level. The NW and, to a lesser extent, MED regions show the  
highest magnitude of change when looking at the four PCs in the same picture. PC1 displays both the  
highest and lowest values in the NW region, although some provinces in the north-east area of the  
Mediterranean also show low values. PC2 shows higher values over the HL region and lower in the  
western area of NW. Lower values were observed for PC3 in some provinces of the Ebro Valley and  
365 others, such as Valencia, Cádiz and Ourense. On the other hand, some provinces in the western NW show  
moderately increased values (especially in Leon). However, PC4, which represents naturally-caused fires,  
exhibits intermediate positive values all over the study region, especially some provinces in the hinterland  
of the NW region, Valencia and Cádiz. Finally, the main negative values are located in several provinces  
on the Cantabrian (north) coast and the central Pyrenees (Huesca).

370

Figure 5

Figure 6 displays the summary of PCA. Increased fire frequency was observed only in the NW region, in the inland provinces of León, Zamora and Ourense, and also in the Cantabrian cornice. Nevertheless, the burnt area decreased throughout the region. A significant winter frequency decrease was solely found in Pontevedra. However, a non-significant winter frequency decrease was observed along the Mediterranean coast, and most of the interior of the country. In these latter areas, an increased summer burnt area was also observed. On the other hand, a significant decrease in the summer burnt area was only detected in the Galician provinces (NW). In addition, significant trends in large or natural fires were found in the 3 regions. Increased lightning fire activity was observed in Leon and Zamora (NW) and Valencia (MED). Lesser natural fire activity was detected in Asturias (NW) and Huesca (HL). In turn, the occurrence of large fires was more frequent in Leon and Pontevedra (NW), whereas the opposite could be found in Ourense (NW), Huesca (HL) and Valencia (MED).

Figure 6

#### 4 Discussion

In this paper, we present an analysis of spatial-temporal trends of several fire regime features at different scales for mainland Spain. Various statistical methods for time series were applied to historical fire data to: (i) explore the temporal behaviour of fire features, and (ii) investigate key relationships in trends, with the end purpose of the research being to improve the definition of fire regime. It should be noted the analysis is based on historical fire records, thus there are some limitations related to landscape-level fuel build-up that cannot be addressed.

Change detection procedures suggest the existence of change points in several fire features (Table 2). Changes were mostly found in the Mediterranean region from the late 1980s to the first half of the 1990s. Moreno et al. (2014) support our findings for number of fires and burned area on a seasonal scale, and also found similar change points using the Pettitt test on a stepwise approach with an 11-year moving window. This work is a particularly good match for our objective, as the same regions and fire data from the EGIF database were used, although the study period was slightly different (1968-2010) and only examined number of fires and burnt area. In particular, these authors observed downward changes starting from the 1990s to the present in the Mediterranean region for both winter and summer, and in the summer of Northwest and Hinterland, which are in line with our findings (see Figure 2). They concluded that climate might have played a role in the change points of the Mediterranean region (mid of 1980s and 1990s) and the Northwest region (1991). In addition, the change points we detected in the Northwest region for the number of winter fires (Figure 2) might be linked to different causes, such as rising population density, agricultural activities, as well as more cases of arson, as Moreno et al. (2014) have pointed out. On the other hand, increased investment in fire suppression might have played a role in reducing the burned area (Seijo and Gray, 2012). However, this is a difficult aspect; in this sense the analysis in the Northern region of Portugal (Fernandes et al., 2014) found that the shift towards decreasing area burned did not happen in areas with unsuccessful/insufficient fire-fighting efforts.

Overall, all methods detect significant changes in some fire features in the Mediterranean and the Northwest regions during both seasons, although slight differences in the reported year do exist.

We considered it necessary to assess other fire regime features, such as large fires and fire sources. The inclusion of trends in large fires is justified because of their remarkable socio-economic and natural impact (Alvarado et al., 1998; San-Miguel-Ayanz et al., 2013). Change detection suggests that number of large fires has changed since the mid-1990s throughout the Mediterranean (see Figure 2), supported by findings from Mann-Kendall, which detects a decrease in frequency and affected area (Table 3). Cardil and Molina (2013) report similar changes, although these authors have taken large fires to be those burning more than 100 ha, and have excluded some provinces from their assessment. They and others, like Brotons et al. (2013) and Ruffault and Mouillot (2015), suggest that large fires have decreased because extinguishing methods have improved, again, mainly due to the extraordinary investment that Spain has devoted to fire suppression .

Findings from change detection are supported and completed by those from trend analysis. At a regional level, the Mediterranean region shows a negative trend in the majority of fire features (see Table 3). Northwest and the Hinterland share a positive trend during winter. Number of fires presents a general downward trend in both seasons in Mediterranean and during summer in Northwest. In the case of the Hinterland region, the trend in number of fires suggests a higher frequency of in winter. This behaviour was also found by Zavala et al. (2011) and Turco et al. (2016). The latter found an apparent shift in the mid 1980's, the same as we detected. Among the feasible causes that may explain this spatial contrast, we found factors such as land use changes caused by land abandonment leading to vegetation recovery during recent years (Bonet and Pausas, 2007; Castellnou et al., 2010), resulting in an accumulation of fuels. However, burned area shows a decrease in all regions and seasons. Previous studies by Rodrigues et al. (2013), Spano et al. (2014) and Turco et al. (2016) have also found negative trends for a very similar time span. These works suggest that the decrease might be explained by recent improvements in management of wildfires and monitoring systems. Additionally, the European Forest Fire Information System (EFFIS) observed a clear downward trend in the total burnt area in some southern European countries (including Spain) after 1990, partly due to improved fire protection services (Schmuck et al., 2010). Nevertheless, the Northwest region during winter emerges as the sole exception, with the affected area showing an upward trend. It can be argued that a persistent increase in arson has tended to extend the surface affected in this area (Ganteaume et al., 2013). Finally, positive trends are detected in winter in number of human fires in the Northwest region, and in the Hinterland region (both summer and winter), contrasting with a decrease found in the Mediterranean region. Human burnt area follows a positive trend mainly during winter in the Northwest and in many areas in the south, whereas during summer a decrease is more widespread. This fact suggests that summer human burnt area declining, but intensifies during winter. The reasons which may explain this fact could relate to a continuance of arson attacks as a common practice which still remains. To our knowledge, this is the first analysis of fire frequency and burned area based on the source of the fire. Therefore, we cannot establish any comparison.

Downscaling to NUTS3/province level, Sen's Slope has exposed the underlying spatial heterogeneity in the magnitude of the trends, either positive or negative (Figure 4). In this respect, number of fires is the

450 feature with the highest degree of change. Trend magnitude in number of fires appears to be distributed along a west-to-east gradient, starting with increasing dynamics in the west, and ending with downward trends in the eastern Mediterranean provinces. On the other hand, the sharpest decreases are observed in features relating to burned areas such as burned area, burnt area during summer, also human burned area during summer. However, this behaviour is reversed during winter, although trend magnitude is less  
455 marked. This is probably due to the improvement in fire extinguishing or encouraging monitoring and prevention (MAPA, 1988; Rodrigues et al., 2016), particularly encouraged during summer. Fires ignited by lightning perhaps show the most contrast as there is a marked dichotomy between west and northeast. For instance, decreasing dynamics are found in the northeast area, whereas major upward trends are situated in the western half of the region, which is considered one of the most lightning-ignition prone  
460 areas of Spain (Ortega et al., 2012). According to our results, there seems to be increased fire activity from natural causes. However, trends are more noticeable in number of natural fires than in natural burned area, thus the average size of lightning-caused fires seems to be shrinking. It is important to note that other seasonal partitions like those reported by Moreno et al. (2014), Sousa et al. (2015), Trigo et al. (2016), have been explored finding almost no differences.

465 Finally, PCA-VR enables trends to be grouped to provide an easily readable description and characterisation of fire regime at provincial level, also clarifying the spatial pattern of key fire trends. Therefore, we extracted four main components (see Table 4, Figure 5 and 6), i.e. four distinct temporal behaviours: winter fire frequency (PC1), summer burnt area (PC2), large fires (PC3) and natural fires (PC4). The first two components are associated with seasonal fire activity, whereas components 3 and 4  
470 relate to intrinsic characteristics of wildfires, such as fire size and ignition source, respectively. PC1 has led to identifying winter frequency trends and human-caused frequency during winter as key trend features, while PC2 gathers trends from burned area features, but mostly summer trends (burned area and human burnt area), indicating that summer fire dynamics might play a secondary role compared to winter, at least in terms of the strongest temporal trend. On the other hand, the last two PCs, large fires and  
475 natural fires trends, appear to be similarly important. In addition, a seasonal contrast is clearly evident between the Northwest region dynamics and the rest of mainland Spain (i.e. negative trends located mainly in Galicia).

## 5 Conclusions and future work

In this paper, we have explored spatial-temporal changes of several fire regime features in Spain at  
480 regional and provincial levels. To this end, we combined change point detection techniques, trend detection procedures and PCA, applied to fire data from 1974-2013. Our results suggest that two main trends based on seasonal differences can be distinguished: fire frequency during winter and burned area during summer. It is important to highlight that in both cases, human cause is strongly correlated to the trends, and thus apparently changes in burned area and fire frequency are partially controlled by human-  
485 caused fires. Additionally, mapping SS and PCA results at NUTS3 level suggests different behaviour in the northwest provinces, which return the highest values, both in terms of frequency (upward trends) and burnt area (downward trends).

Change detection suggests a main breakpoint in the temporal evolution of fire features around the late 1980s and in the first half of the 1990s. On the other hand, the Mann-Kendall test on a region scale has  
490 revealed that the Mediterranean region presents a high degree of negative trends in the majority of fire features, opposed to the Hinterlands and Northwest. According to Sen's Slope, the main trends at NUTS3 level show high spatial-seasonal variability, and several trend gradients linked to the number of fires and naturally-caused fires were detected. In this regard, overall fire frequency shows an upward tendency, particularly strong during winter while the burned area exhibited a general downward trend.

495 The analysis of spatial-temporal trends opens new research lines. For instance, further evaluation is required to incorporate other benchmark spatial units to provide greater detail than found at provincial level (for instance, grid-cells). Nevertheless, deeper insights into causes explaining temporal behaviour of the main fire regime features should be explored, especially those linked to weather conditions and land use changes. Finally, the role of small fires ( $1 < \text{ha}$ ) can be included, thus enriching fire regime  
500 assessment in order to avoid potential bias caused by their exclusion. In any case, the analysis given in this paper should provide a useful reference to obtain spatially and temporally explicit assessment of fire regime changes, to help improve delimitation of homogenous fire regime areas and to gain a more complete overview of wildfire phenomenon.

505 **Acknowledgments** The Spanish Ministry of Education has financed this work: FPU grant 13/06618. We are also grateful for the comments from anonymous reviewers who have improved the final manuscript.

## References

- 510 AEMET, I.: Iberian climate atlas, Agencia Estatal de Meteorología (España) and Instituto de Meteorología (Portugal), Madrid, Spain., 2011.
- Alvarado, E., Sandberg, D. V. and Pickford, S. G.: Modeling large forest fires as extreme events, *Northwest Sci.*, 72, 66–75, 1998.
- Bogdan, M., Frommlet, F., Biecek, P., Cheng, R., Ghosh, J. K. and Doerge, R. W.: Extending the modified Bayesian Information Criterion (mBIC) to dense markers and multiple interval mapping,  
515 *Biometrics*, 64(4), 1162–1169, doi:10.1111/j.1541-0420.2008.00989.x, 2008.
- Bonet, A. and Pausas, J. G.: Old Field Dynamics on the Dry Side of the Mediterranean Basin: Patterns and Processes in Semiarid Southeast Spain, in *Old Fields: Dynamics and Restoration of Abandoned Farmland*, edited by V. A. Cramer and R. J. Hobbs, pp. 247–264, Island Press., 2007.
- 520 Brotons, L., Aquilué, N., de Cáceres, M., Fortin, M.-J. and Fall, A.: How Fire History, Fire Suppression Practices and Climate Change Affect Wildfire Regimes in Mediterranean Landscapes, *PLoS One*, 8(5), 1–12, 2013.
- Cardil, A. and Molina, D.: Large wildland fires in three diverse regions in Spain from 1978 to 2010, *For. Syst.*, 22(3), 526–534, doi:10.5424/fs/2013223-03899, 2013.
- 525 Castellnou, M., Kraus, D. and Miralles, M.: Prescribed burning and suppression fire techniques: from fuel to landscape management, in *Best Practices of Fire Use – Prescribed Burning and Suppression Fire Programmes in Selected Case-Study Regions in Europe*, edited by C. Montiel and D. Kraus, pp. 3–16, European Forest Institute., 2010.
- Chen, J. and Gupta, A. K.: Change in Normal mean and variance, in *Parametric statistical change point analysis*, Springer., 2000.
- 530 Chen, J. and Wang, Y.-P.: A statistical change point model approach for the detection of DNA copy number variations in array CGH data., *IEEE/ACM Trans. Comput. Biol. Bioinforma.*, 6(4), 529–41, doi:10.1109/TCBB.2008.129, 2009.

- 535 Falk, D. A., Heyerdahl, E. K., Brown, P. M., Farris, C., Fulé, P. Z., McKenzie, D., Swetnam, T. W., Taylor, A. H. and Van Horne, M. L.: Multi-scale controls of historical forest-fire regimes: New insights from fire-scar networks, *Front. Ecol. Environ.*, 9(8), 446–454, doi:10.1890/100052, 2011.
- Fernandes, P. M., Loureiro, C., Guiomar, N., Pezzatti, G. B., Manso, F. T. and Lopes, L.: The dynamics and drivers of fuel and fire in the Portuguese public forest, *J. Environ. Manage.*, 146, 373–382, doi:10.1016/j.jenvman.2014.07.049, 2014.
- 540 Flannigan, M., Krawchuk, M., de Groot, W., Wotton, B. and Gowman, L.: Implications of changing climate for global wildland fire, *Int. J. Wildl. Fire*, 18, 483–507, doi:10.1071/WF08187, 2009.
- Ganteaume, A., Camia, A., Jappiot, M., San-Miguel-Ayanz, J., Long-Fournel, M. and Lampin, C.: A review of the main driving factors of forest fire ignition over Europe, *Environ. Manage.*, 51(3), 651–662, doi:10.1007/s00267-012-9961-z, 2013.
- 545 Hinkley, D. V.: Inference About the Change-Point in a Sequence of Random Variables, *Biometrika Trust*, 57(1), 1–17, 1970.
- Hisdal, H., Stahl, K., Tallaksen, L. M. and Demuth, S.: Have streamflow droughts in Europe become more severe or frequent?, *Int. J. Climatol.*, 21(3), 317–333, doi:10.1002/joc.619, 2001.
- Horst, P.: Factor Analysis of Data Matrices, *Am. J. Psychol.*, doi:10.2307/1421153, 1965.
- 550 Kaiser, H. F.: The varimax criterion for analytic rotation in factor analysis, *Psychometrika*, 23(3), 187–200, doi:10.1007/BF02289233, 1958.
- Kaiser, H. F.: The application of electronic computers to factor analysis, *Educ. Psychol. Meas.*, 20, 141–151, 1960.
- 555 Kasischke, E. S. and Turetsky, M. R.: Recent changes in the fire regime across the North American boreal region - Spatial and temporal patterns of burning across Canada and Alaska, *Geophys. Res. Lett.*, 33(9), 1–5, doi:10.1029/2006GL025677, 2006.
- Kendall, M. G.: Rank Correlation Methods, 4th Editio., Charles Griffin, London., 1975.
- Killick, R., Fearnhead, P. and Eckley, I. A.: Optimal detection of changepoints with a linear computational cost, *J. Am. Stat. Assoc.*, 107(500), 1590–1598, doi:10.1080/01621459.2012.737745, 2012.
- 560 Krebs, P., Pezzatti, G. B., Mazzoleni, S., Talbot, L. M. and Conedera, M.: Fire regime: History and definition of a key concept in disturbance ecology, *Theory Biosci.*, 129, 53–69, doi:10.1007/s12064-010-0082-z, 2010.
- 565 MAGRAMA, Ministerio de Agricultura, Alimentación y Medio Ambiente: Los Incendios Forestales en España. Decenio 1991-2000, Madrid. [online] Available from: [http://www.mapama.gob.es/es/desarrollo-rural/estadisticas/decenio\\_1991\\_2000\\_tcm7-349069.pdf](http://www.mapama.gob.es/es/desarrollo-rural/estadisticas/decenio_1991_2000_tcm7-349069.pdf) (Accessed 2 August 2017), 2002.
- MAGRAMA, Ministerio de Agricultura, Alimentación y Medio Ambiente: Los Incendios Forestales en España. Decenio 1996-2005, Madrid. [online] Available from: [http://www.mapama.gob.es/es/desarrollo-rural/estadisticas/decenio\\_1996\\_2005\\_tcm7-349070.pdf](http://www.mapama.gob.es/es/desarrollo-rural/estadisticas/decenio_1996_2005_tcm7-349070.pdf) (Accessed 2 August 2017), 2007.
- 570 MAGRAMA, Ministerio de Agricultura, Alimentación y Medio Ambiente: Los Incendios Forestales en España. Decenio 2001-2010, Madrid. [online] Available from: [http://www.mapama.gob.es/es/desarrollo-rural/estadisticas/incendiosforestales2001-2010finalmod1\\_tcm7-349255.pdf](http://www.mapama.gob.es/es/desarrollo-rural/estadisticas/incendiosforestales2001-2010finalmod1_tcm7-349255.pdf) (Accessed 2 August 2017), 2012.
- Mann, H. B.: Nonparametric Tests Against Trend, *Econometrica*, 13(3), 245–259, doi:10.1017/CBO9781107415324.004, 1945.
- 575 MAPA, : ORDEN de 21 de marzo de 1988 por la que se establece un Plan de Acciones Prioritarias contra los Incendios Forestales., BOE 72, 24 de marzo de 1988, Spain., 1988.
- Moreno, M. V. and Chuvieco, E.: Characterising fire regimes in Spain from fire statistics, *Int. J. Wildl. Fire*, 22, 296–305, doi:10.1071/WF12061, 2012.
- 580 Moreno, M. V. and Chuvieco, E.: Fire Regime Characteristics along Environmental Gradients in Spain, *Forests*, 7(11), 262, doi:10.3390/f7110262, 2016.
- Moreno, M. V., Conedera, M., Chuvieco, E. and Pezzatti, G. B.: Fire regime changes and major driving forces in Spain from 1968 to 2010, *Environ. Sci. Policy*, 37, 11–22, doi:10.1016/j.envsci.2013.08.005,



2014.

- 585 Morgan, P., Hardy, C. C., Swetnam, T. W., Rollins, M. G. and Long, D. G.: Mapping fire regimes across time and space: Understanding coarse and fine-scale fire patterns, *Int. J. Wildl. Fire*, 10(4), 329–342, doi:doi:10.1071/WF01032, 2001.
- Moriondo, M., Good, P., Durao, R., Bindi, M. and Giannakopoulos, C.: Potential impact of climate change on fire risk in the Mediterranean area, *Clim. Res.*, 31, 85–95, 2006.
- 590 Ortega, M., Saura, S., González-Avila, S., Gómez-Sanz, V. and Elena-Rosselló, R.: Landscape vulnerability to wildfires at the forest-agriculture interface: Half-century patterns in Spain assessed through the SISPARES monitoring framework, *Agrofor. Syst.*, 85(3), 331–349, doi:10.1007/s10457-011-9423-2, 2012.
- Pausas, J. G.: Changes in fire and climate in the eastern iberian peninsula (Mediterranean Basin), *Clim. Chang.*, 63, 337–350, 2004.
- 595 Pausas, J. G. and Fernández-Muñoz, S.: Fire regime changes in the Western Mediterranean Basin: From fuel-limited to drought-driven fire regime, *Clim. Change*, 110, 215–226, doi:10.1007/s10584-011-0060-6, 2012.
- Pausas, J. G. and Keeley, J. E.: A burning story: The role of fire in the history of life, *Bioscience*, 59(7), 593–601, doi:10.1525/bio.2009.59.7.10, 2009.
- 600 Pereira, M. G., Malamud, B. D., Trigo, R. M. and Alves, P. I.: The history and characteristics of the 1980–2005 Portuguese rural fire database, *Nat. Hazards Earth Syst. Sci*, 11, 3343–3358, doi:10.5194/nhess-11-3343-2011, 2011.
- Pettitt, A. N.: A Non-Parametric Approach to the Change-Point Problem, *J. R. Stat. Soc. Ser. C (Applied Stat.)*, 28(2), 126–135, 1979.
- 605 Pezzatti, G. B., Zumbrennen, T., Bürgi, M., Ambrosetti, P. and Conedera, M.: Fire regime shifts as a consequence of fire policy and socio-economic development: An analysis based on the change point approach, *For. Policy Econ.*, 29, 7–18, doi:10.1016/j.forpol.2011.07.002, 2013.
- R Core Team: R: A Language and Environment for Statistical Computing, 2016.
- 610 Rodrigues, M., San Miguel, J., Oliveira, S., Moreira, F. and Camia, A.: An Insight into Spatial-Temporal Trends of Fire Ignitions and Burned Areas in the European Mediterranean Countries, *J. Earth Sci. Eng.*, 3, 497–505, 2013.
- Rodrigues, M., Jiménez, A. and de la Riva, J.: Analysis of recent spatial–temporal evolution of human driving factors of wildfires in Spain, *Nat. Hazards*, 84(3), 2049–2070, doi:10.1007/s11069-016-2533-4, 2016.
- 615 Ruffault, J. and Mouillot, F.: How a new fire-suppression policy can abruptly reshape the fire-weather relationship., *Ecosphere*, 6(10), 1–19, doi:10.1890/ES15-00182.1, 2015.
- Salis, M., Ager, A. A., Finney, M. A., Arca, B. and Spano, D.: Analyzing spatiotemporal changes in wildfire regime and exposure across a Mediterranean fire-prone area, *Nat. Hazards*, 71(3), 1389–1418, doi:10.1007/s11069-013-0951-0, 2014.
- 620 San-Miguel-Ayanz, J., Rodrigues, M., de Oliveira, S. S., Pacheco, C. K., Moreira, F., Duguay, B. and Camia, A.: Land Cover Change and Fire Regime in the European Mediterranean Region, in *Post-Fire Management and Restoration of Southern European Forests*, pp. 21–43, Springer Netherlands., 2012.
- San-Miguel-Ayanz, J., Moreno, J. M. and Camia, A.: Analysis of large fires in European Mediterranean landscapes: Lessons learned and perspectives, *For. Ecol. Manage.*, 294, 11–22, doi:10.1016/j.foreco.2012.10.050, 2013.
- 625 Schmuck, G., San-Miguel-Ayanz, J., Camia, A., Durrant, T., Santos de Oliveira, S., Boca, R., Whitmore, C., Giovando, C., Libertà, G., Corti, P. and Schulte, E.: *Forest Fires in Europe 2010*, JRC Scient., Joint Research Centre – Institute for Environment and Sustainability Eur 24910 EN, Luxemburg., 2010.
- 630 Scott, A. A. J. and Knott, M.: A Cluster Analysis Method for Grouping Means in the Analysis of Variance, *Biometrics*, 30(3), 507–512, 1974.
- Seijo, F. and Gray, R.: Pre-industrial anthropogenic fire regimes in transition: the case of Spain and its implications for fire governance in Mediterranean type biomes, *Hum. Ecol. Rev.*, 19(1), 58–69, 2012.



- Sen, P. K.: Estimates of the Regression Coefficient Based on Kendall's Tau, *J. Am. Stat. Assoc.*, 63(324), 1379–1389, 1968.
- 635 Serra, L., Juan, P., Varga, D., Mateu, J. and Saez, M.: Spatial pattern modelling of wildfires in Catalonia, Spain 2004-2008, *Environ. Model. Softw.*, 40, 235–244, doi:10.1016/j.envsoft.2012.09.014, 2013.
- Sousa, P. M., Trigo, R. M., Pereira, M. G., Bedia, J. and Gutiérrez, J. M.: Different approaches to model future burnt area in the Iberian Peninsula, *Agric. For. Meteorol.*, 202, 11–25, doi:10.1016/j.agrformet.2014.11.018, 2015.
- 640 Spano, D., Camia, A., Bacciu, V., Malasa, F., Duguy, B., Trigo, R., Sousa, P., Venäläinen, A., Mouillot, F., Curt, T., Moreno, J. M., Zavala, G., Urbieto, I. R., Koutsias, N. and Xystrakis, F.: Recent trends in forest fires in Mediterranean areas and associated changes in fire regimes, in *Forest fires under climate, social and economic changes in Europe, the Mediterranean and other fire-affected areas of the world. FUME. Lesson learned and outlook*, edited by J. M. Moreno, pp. 6–7, Adelaide, Australia., 2014.
- 645 Trigo, R. M., Sousa, P. M., Pereira, M. G., Rasilla, D. and Gouveia, C. M.: Modelling wildfire activity in Iberia with different atmospheric circulation weather types, *Int. J. Climatol.*, 36(7), 2761–2778, doi:10.1002/joc.3749, 2016.
- Turco, M., Llasat, M.-C., von Hardenberg, J. and Provenzale, A.: Climate change impacts on wildfires in a Mediterranean environment, *Clim. Change*, 125, 369–380, doi:10.1007/s10584-014-1183-3, 2014.
- 650 Turco, M., Bedia, J., Di Liberto, F., Fiorucci, P., von Hardenberg, J., Koutsias, N., Llasat, M.-C., Xystrakis, F. and Provenzale, A.: Decreasing Fires in Mediterranean Europe, *PLoS One*, 11(3), e0150663, doi:10.1371/journal.pone.0150663, 2016.
- Venäläinen, A., Korhonen, N., Hyvärinen, O., Koutsias, N., Xystrakis, F., Urbieto, I. R. and Moreno, J. M.: Temporal variations and change in forest fire danger in Europe for 1960-2012, *Nat. Hazards Earth Syst. Sci.*, 14(6), 1477–1490, doi:10.5194/nhess-14-1477-2014, 2014.
- 655 Wu, H., Soh, L.-K., Samal, A. and Chen, X.-H.: Trend Analysis of Streamflow Drought Events in Nebraska, *Water Resour. Manag.*, 22(2), 145–164, doi:10.1007/s11269-006-9148-6, 2008.
- Zavala, G., Urbieto, I. R., Rieiro, I., Bedia, J., Gutiérrez, J. M. and Moreno, J. M.: Trends in number of fires and burned area and their relationships with climatic variables across regions in Spain during 1974-2008, in *International Conference on Fire Behaviour and Risk*, Alguero (Italy), 2011.
- 660

665

670

675

680

**Table 1: Statistical summary of fire regime features 1974-2013. S: spring-summer, W: autumn-winter. In brackets: first value corresponds to inter-region percentage; and second value to intra-region percentage. Burned area data expressed in km<sup>2</sup>.**

| Region       | Season | N                       | N500                 | NL                     | NH                      | B                       | B500                    | BL                     | BH                      |
|--------------|--------|-------------------------|----------------------|------------------------|-------------------------|-------------------------|-------------------------|------------------------|-------------------------|
| NW           | S      | 100,232<br>(40) (60.4)  | 503<br>(29.2) (79.1) | 1,445<br>(26.9) (96.5) | 69,305<br>(39.6) (57.4) | 21,864<br>(33.7) (69.3) | 4,874<br>(19.7) (79.3)  | 486<br>(12.2) (98.6)   | 14,568<br>(33.4) (65.6) |
|              | W      | 65,826<br>(26.2) (39.6) | 133<br>(7.7) (20.9)  | 53<br>(0.9) (3.5)      | 51,355<br>(29.4) (42.6) | 9,708<br>(15) (30.7)    | 1,270<br>(5.1) (20.7)   | 7<br>(0.2) (1.4)       | 7,627<br>(17.5) (34.4)  |
| HL           | S      | 35,061<br>(13.9) (72.3) | 482<br>(27.9) (96.6) | 2,593<br>(48.2) (99.2) | 21,048<br>(12) (67.1)   | 13,307<br>(20.5) (89.3) | 6,647<br>(27) (97.5)    | 1,771<br>(44.6) (99.9) | 7,863<br>(18) (86.7)    |
|              | W      | 13,410<br>(5.3) (27.7)  | 17<br>(1) (3.4)      | 22<br>(0.4) (0.8)      | 10,329<br>(5.9) (32.9)  | 1,587<br>(2.4) (10.7)   | 171<br>(0.7) (2.5)      | 1<br>(0) (0.1)         | 1,207<br>(2.8) (13.3)   |
| MED          | S      | 28,529<br>(11.4) (78.5) | 516<br>(29.9) (87.5) | 1,230<br>(22.9) (97.2) | 17,598<br>(10.1) (77.1) | 16,146<br>(25) (87.9)   | 10,771<br>(43.6) (91.7) | 1,685<br>(42.5) (98.9) | 10,865<br>(24.8) (87.6) |
|              | W      | 7,820<br>(3.2) (21.5)   | 74<br>(4.3) (12.5)   | 36<br>(0.7) (2.8)      | 5,238<br>(3) (22.9)     | 2,215<br>(3.4) (12.1)   | 971<br>(3.9) (8.3)      | 19<br>(0.5) (1.1)      | 1,531<br>(3.5) (12.4)   |
| <b>Total</b> |        | <b>250,878</b>          | <b>1,725</b>         | <b>5,379</b>           | <b>174,873</b>          | <b>64,827</b>           | <b>24,704</b>           | <b>3,969</b>           | <b>43,661</b>           |

685

**Table 2: Change points for AMOC (At Most One Change), BinSeg (Binary Segmentation), PELT (Pruned Exact Linear Time) methods and Pettitt test (\*significant changes p-value <0.05) by fire feature, region and season from the period 1974-2013. Grey shaded features indicate matching probable changes in at least three methods. NW: Northwest, HL: Hinterland and MED: Mediterranean regions. See section 2.2. for acronyms and description of fire features.**

690

|      | NW     |        |                  |         | HL     |        |                  |         | MED    |        |            |         |
|------|--------|--------|------------------|---------|--------|--------|------------------|---------|--------|--------|------------|---------|
|      | Summer |        |                  |         | Summer |        |                  |         | Summer |        |            |         |
|      | AMOC   | BinSeg | PELT             | Pettitt | AMOC   | BinSeg | PELT             | Pettitt | AMOC   | BinSeg | PELT       | Pettitt |
| N    | -      | 2006   | 2000; 2006       | 2005    | -      | 1977   | 1977             | 1983    | 1994   | 1994   | 1994       | 1994*   |
| B    | -      | 1990   | 1990             | 1991*   | -      | 1977   | 1977             | 1991    | -      | 1994   | 1994       | 1994*   |
| N500 | -      | 2006   | 2006; 2008       | 1990    | -      | 1991   | 1981; 1983; 1991 | 1991    | 1994   | 1994   | 1995; 1997 | 1994*   |
| B500 | -      | 2006   | 2006; 2008; 2010 | 1991    | -      | 1977   | 1977             | 1991    | -      | 1994   | 1992; 1994 | 1994*   |
| NL   | -      | 2006   | 1982; 1984       | 1988*   | -      | 2006   | 1980; 2006       | 1980    | 2011   | 1994   | 2011       | 1996    |
| BL   | -      | 2006   | 2006; 2010       | 1988    | -      | 1990   | 1990             | 1995    | 1995   | 1994   | 1994       | 1994    |
| NH   | -      | 1976   | 2000; 2006       | 2006    | -      | 1977   | 1977             | 1997*   | -      | 2005   | 1991; 1993 | 1994*   |
| BH   | -      | 2008   | 2008             | 1990    | -      | 1977   | 1977             | 1977    | -      | 1994   | 1990; 1994 | 1994*   |
|      | Winter |        |                  |         | Winter |        |                  |         | Winter |        |            |         |
|      | AMOC   | BinSeg | PELT             | Pettitt | AMOC   | BinSeg | PELT             | Pettitt | AMOC   | BinSeg | PELT       | Pettitt |
|      | AMOC   | BinSeg | PELT             | Pettitt | AMOC   | BinSeg | PELT             | Pettitt | AMOC   | BinSeg | PELT       | Pettitt |
| N    | -      | 1984   | 1984             | 1987*   | -      | 1987   | 1987             | 1987*   | -      | 2005   | 1995; 1997 | 1999    |
| B    | -      | 1984   | 1984; 1989       | 1987*   | -      | 1989   | 1989             | 2000    | 1985   | 1985   | 1985       | 1986*   |
| N500 | -      | 1989   | 1990; 1993; 1995 | 1996    | -      | 1977   | 1995; 2009       | 1989    | 1984   | 1984   | 1992; 1999 | 1986*   |
| B500 | -      | 1984   | 1990; 1993       | 1996    | -      | 1977   | 1995; 2009       | 1989    | 1984   | 1984   | 1992; 1999 | 1986*   |
| NL   | 1994   | 1993   | 2000; 2007       | 1993    | -      | 1976   | 1976             | 1990    | -      | 1977   | 1977       | 1992    |
| BL   | -      | 1984   | 2002; 2007       | 1993    | 1990   | 1989   | 1990; 1994       | 1990    | -      | 1977   | 1977       | 1999    |
| NH   | 1987   | 1987   | 1987             | 1987*   | -      | 1987   | 1987             | 1987*   | -      | 2005   | 2005       | 2005    |
| BH   | -      | 1984   | 1984             | 1987*   | -      | 1989   | 1989             | 1987    | 1981   | 1981   | 1981       | 1986*   |

695

**Table 3: Signed p-value of Mann-Kendall test in the period 1974-2013 by fire feature, season and region. Values in bold and highlighted in grey correspond to significant trends (p-value<0.05), with their corresponding symbol + or – for positive or negative trends, respectively. NW: Northwest, HL: Hinterland and MED: Mediterranean regions. See section 2.2. for acronyms and description of fire features.**

|     | N               |                 | N500            |                 | NL       |                 | NH              |                 |
|-----|-----------------|-----------------|-----------------|-----------------|----------|-----------------|-----------------|-----------------|
|     | S               | W               | S               | W               | S        | W               | S               | W               |
| NW  | - (0.14)        | <b>+ (0.01)</b> | <b>- (0.03)</b> | + (0.26)        | + (0.14) | - (0.49)        | + (0.77)        | <b>+ (0.01)</b> |
| HL  | + (0.21)        | <b>+ (0.01)</b> | - (0.22)        | - (0.39)        | + (0.62) | <b>- (0.03)</b> | <b>+ (0.01)</b> | <b>+ (0.01)</b> |
| MED | <b>- (0.01)</b> | <b>- (0.01)</b> | <b>- (0.01)</b> | <b>- (0.01)</b> | - (0.11) | + (0.13)        | <b>- (0.01)</b> | - (0.54)        |
|     | B               |                 | B500            |                 | BL       |                 | BH              |                 |
|     | S               | W               | S               | W               | S        | W               | S               | W               |
| NW  | <b>- (0.01)</b> | <b>+ (0.03)</b> | - (0.13)        | + (0.41)        | + (0.68) | - (0.28)        | - (0.13)        | <b>+ (0.01)</b> |
| HL  | - (0.25)        | - (0.95)        | + (0.51)        | - (0.48)        | - (0.44) | - (0.08)        | + (0.84)        | + (0.46)        |
| MED | <b>- (0.01)</b> | <b>- (0.01)</b> | <b>- (0.01)</b> | <b>- (0.01)</b> | - (0.22) | + (0.06)        | <b>- (0.01)</b> | <b>+ (0.01)</b> |

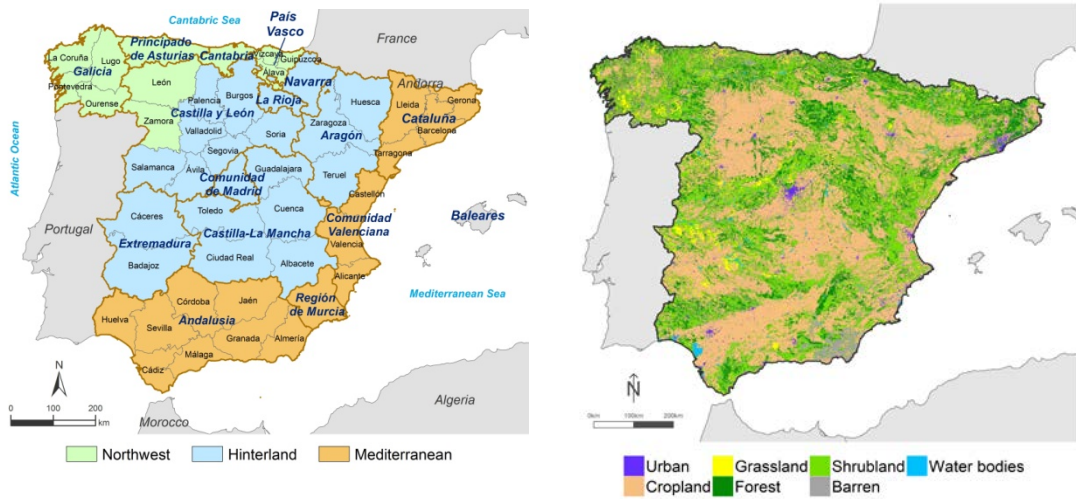
700

**Table 4: Varimax Rotation correlation values, standard deviation (SD) and variance (VAR) from Principal Component Analysis on Sen’s slope results, 1974-2013. The most meaningful features (correlation >0.43) or <-0.43) are highlighted in light grey. See section 2.2. for acronyms and description of fire features.**

|                     |            | PC1         | PC2         | PC3         | PC4         |
|---------------------|------------|-------------|-------------|-------------|-------------|
|                     | <b>SD</b>  | <b>2.3</b>  | <b>1.95</b> | <b>1.47</b> | <b>1.07</b> |
|                     | <b>VAR</b> | <b>0.38</b> | <b>0.27</b> | <b>0.15</b> | <b>0.08</b> |
| <b>Fire feature</b> | N          | 0.44        | 0.23        |             | -0.14       |
|                     | N S        | 0.18        | 0.43        |             | -0.11       |
|                     | N W        | 0.52        |             | 0.11        | -0.10       |
|                     | B          |             | 0.47        |             |             |
|                     | B S        | -0.18       | 0.44        | 0.11        |             |
|                     | B W        | 0.35        |             |             | 0.21        |
|                     | N500 S     |             |             | 0.63        |             |
|                     | B500 S     |             |             | 0.69        |             |
|                     | NL S       |             |             |             | 0.60        |
|                     | BL S       |             |             |             | 0.60        |
|                     | NH S       | 0.19        | 0.36        | -0.17       | 0.12        |
|                     | NH W       | 0.45        |             |             |             |
|                     | BH S       | -0.20       | 0.44        | -0.14       | 0.27        |
|                     | BH W       | 0.27        |             | -0.14       | 0.29        |

705

710



715 **Figure 1: Spatial distribution of the three regions (Northwest, Hinterland and Mediterranean), NUTS3 and**  
**NUTS2 units in mainland Spain (left) and generalized land cover from CLC 2006 (right).**

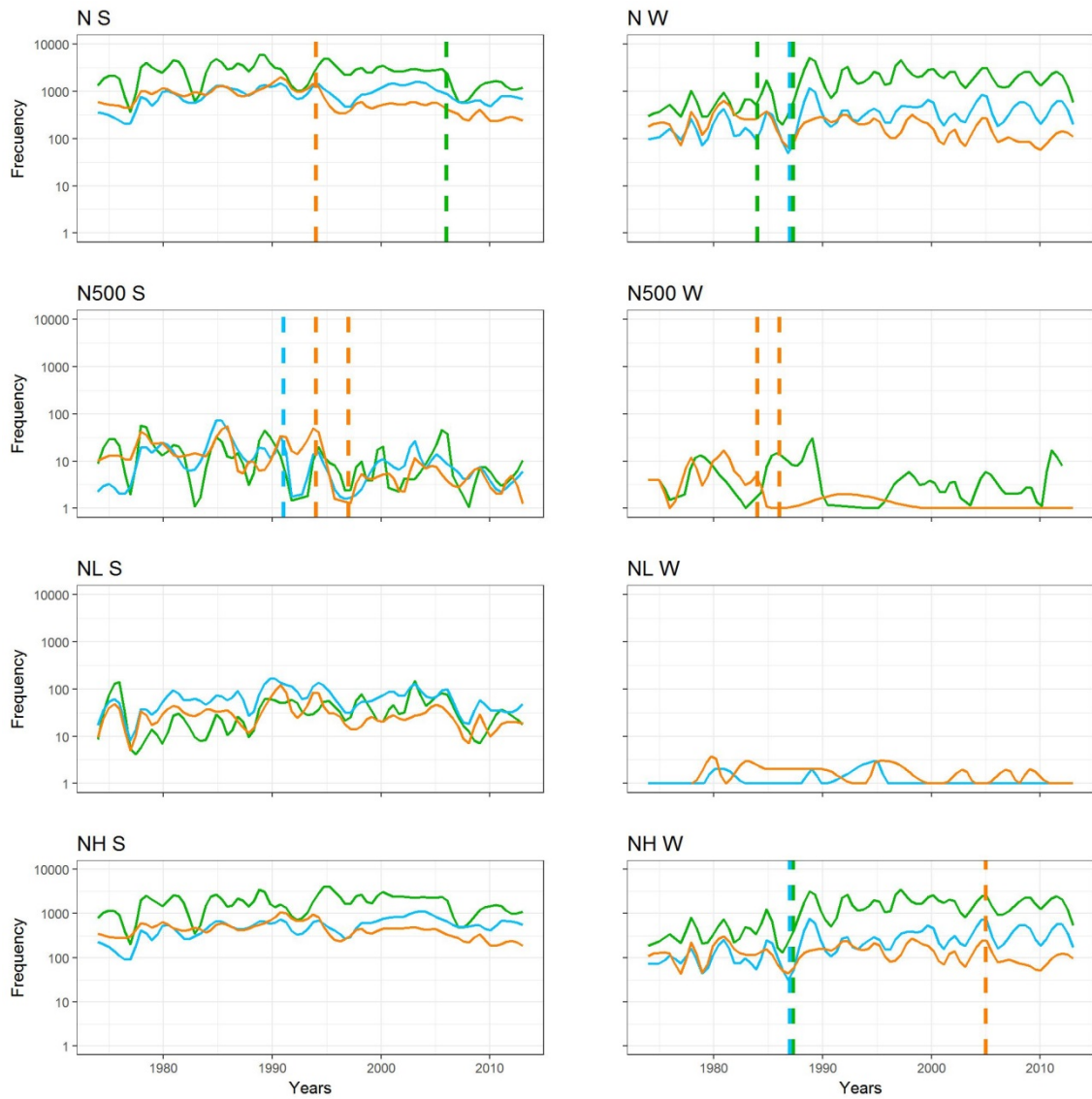
720

725

730

735

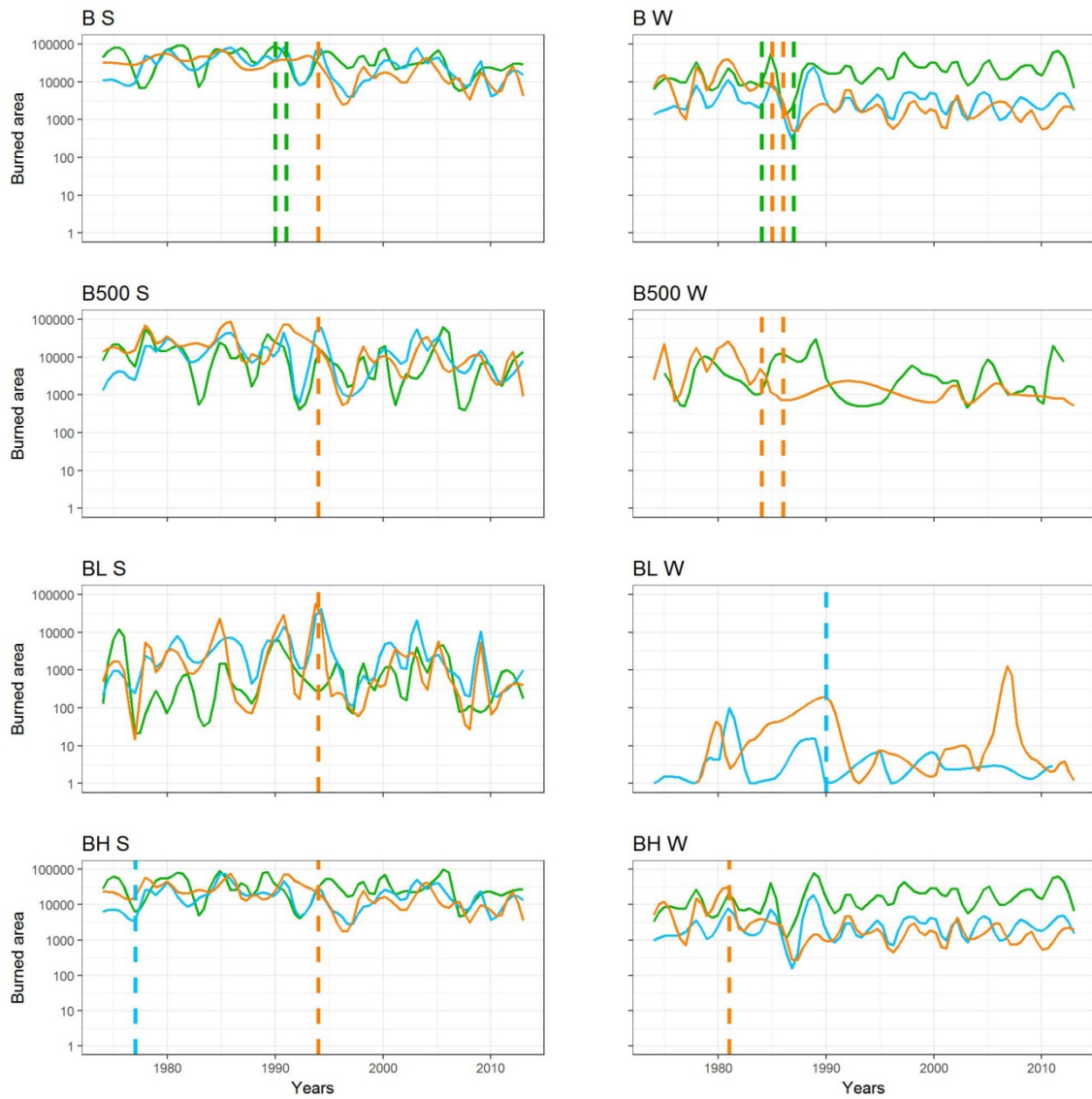
740



745 **Figure 2: Detected change points and temporal evolution of fire frequency features (log scale) for the period**  
**1974-2013 in the three regions examined: Northwest green line, Hinterland light blue line, and the**  
**Mediterranean orange line. The column on the left refers to the summer season, winter is on the right. Dashed**  
**vertical lines represent probable change points. See section 2.2. for acronyms and description of fire features.**

750

755



760

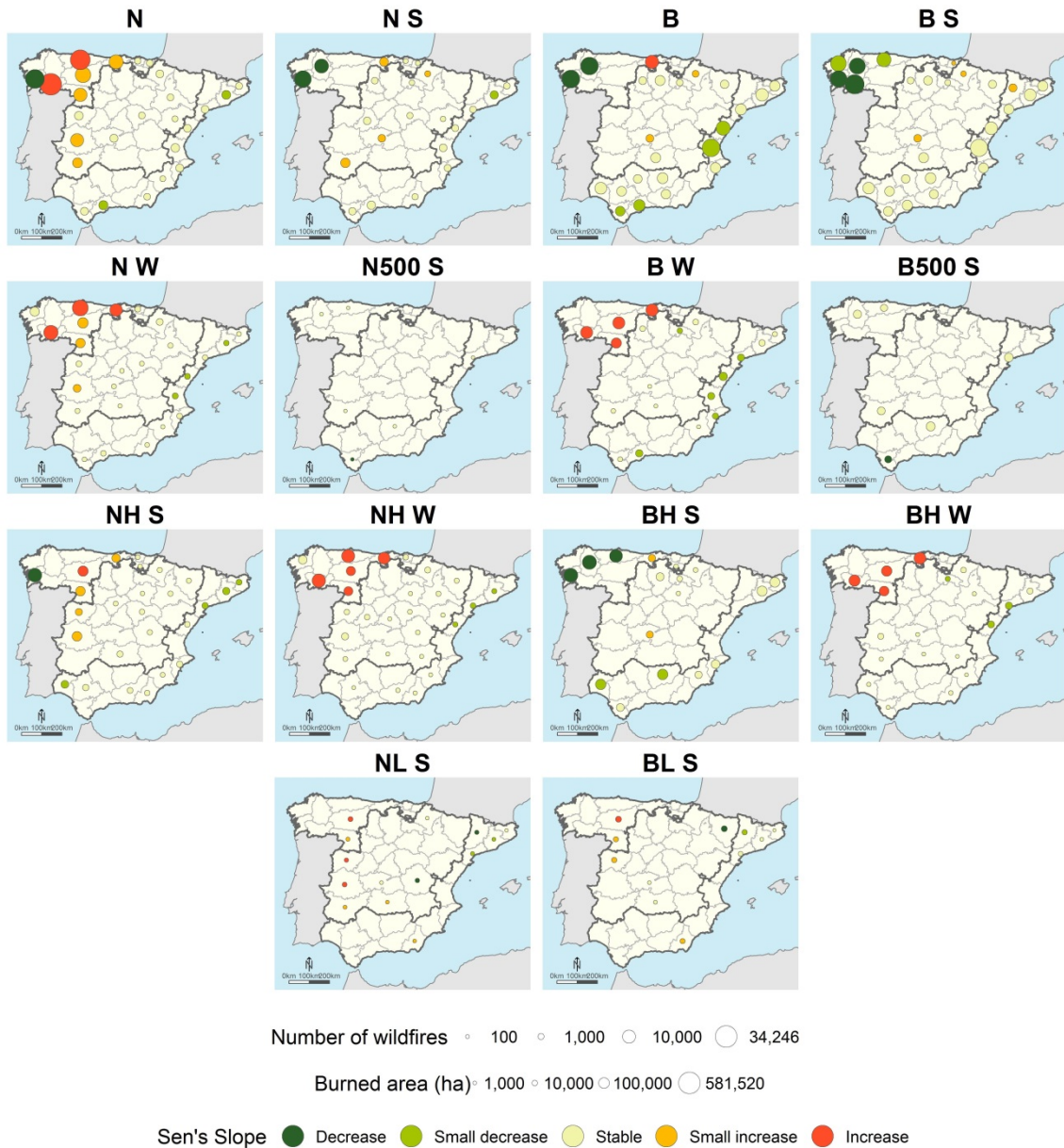
**Figure 3: Detected change points and temporal evolution of burned area features (log scale) for the period 1974-2013 in the three regions examined: Northwest green line, Hinterland light blue line, and the Mediterranean orange line. The column on the left refers to the summer season, winter is on the right. Dashed vertical lines represent probable change points. See section 2.2. for acronyms and description of fire features.**

765

770

775

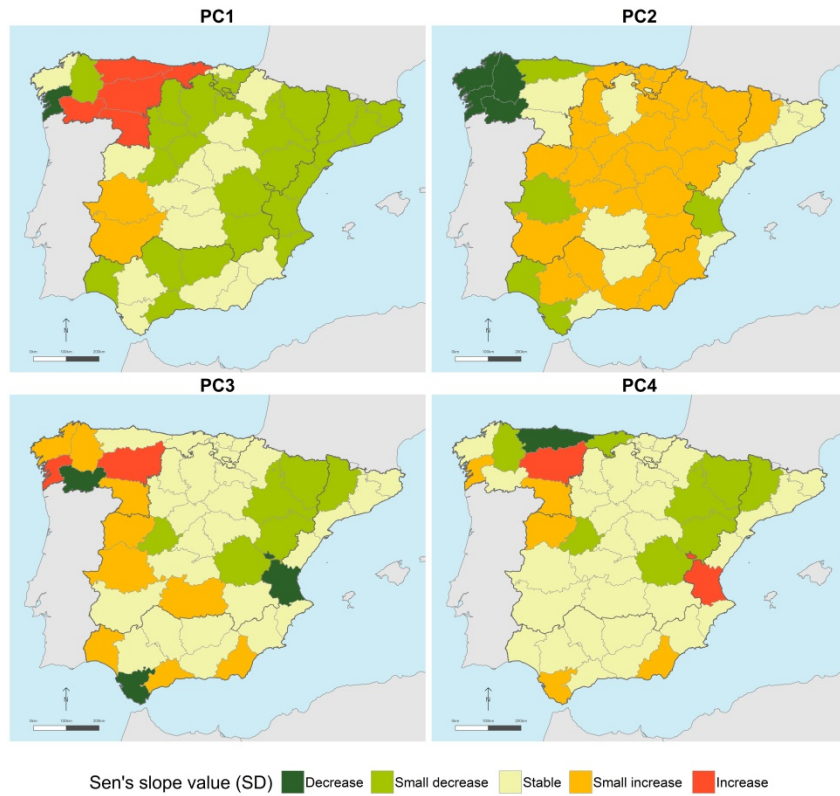




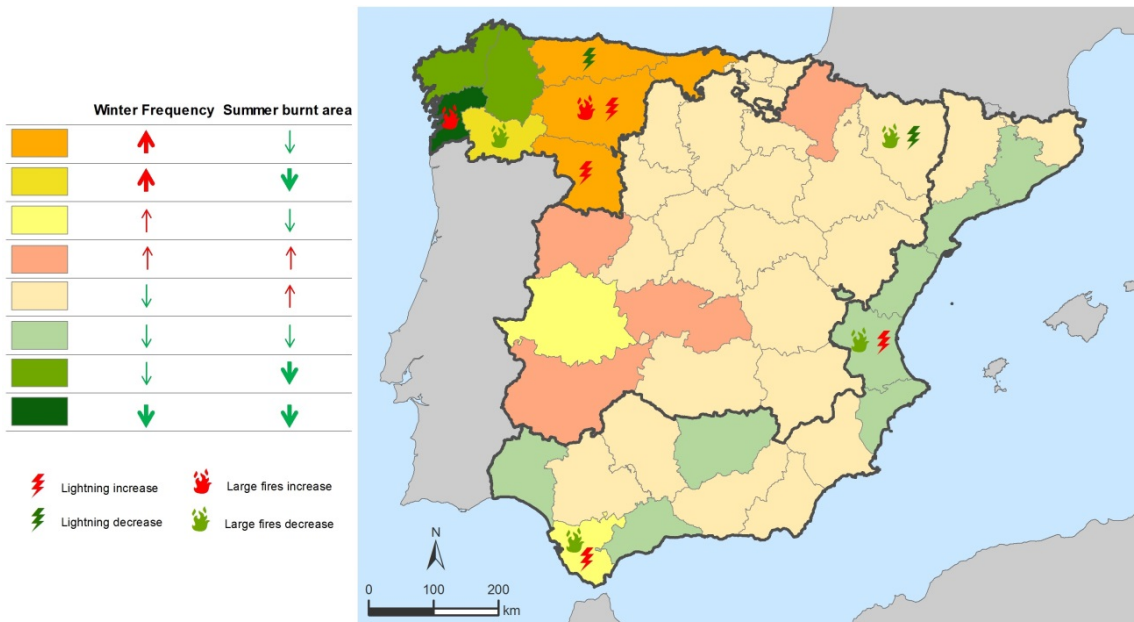
780 **Figure 4: Spatial distribution of selected significant Sen's slope (SS) values 1974-2013 according to Mann-Kendall. Sen's slope classes are based on the following intervals: Decrease ( $< -1.6$ ), Small decrease ( $-1.6; -0.5$ ), Stable ( $-0.5; 0.5$ ), Small increase ( $0.5; 1.6$ ), Increase ( $> 1.6$ ). Proportional symbols represent the number of wildfires and burned area value. SS value displayed in colour using standard deviation intervals. Provinces without symbols represent non-significant trends according Mann-Kendall test. See section 2.2 for acronyms and description of fire features.**

785

790



795 **Figure 5: Spatial distribution of the principal component coefficients of Sen's slope, 1974-2013. Values represented using standard deviation intervals. Sen's slope classes are based on the following intervals: Decrease (< -2.5), Small decrease (-2.5;-0.5), Stable (-0.5; 0.5), Small increase (0.5; 2.5), Increase (> 2.5).**



800 **Figure 6: Summary of spatial-temporal behaviour from Principal Components Analysis. Bold arrows mean significant trends, and thin ones non-significant trends according to 90% confidence interval.**