

Reviewer 1

- *"Chapter 1 and 2: Dean as the most recent hurricane had strong impacts even though it was only category 2. Add a table that lists the main parameters of Dean and other recent (e.g. Hugo) or major historical hurricanes (e.g. 1780) that affected Martinique. Include parameters such as the distance of track from the shore, wind speeds and category and wave heights at closest position to the island, surge height, duration of inundation, inundation distance and height on land, flow speeds,... How many of the recent or historical hurricanes actually made landfall on Martinique? Are more storms passing north or south of the island? Add a map that depicts recent and historical hurricane tracks. <https://coast.noaa.gov/hurricanes/>"*

⇒ Following your advice, we included a figure displaying historical hurricane tracks. This should help the reader finding the answer to most of the questions you ask (distance of track from the shore, wind speeds/category, number of hurricanes making landfall on Martinique, frequency of storms north and south of the island, etc). As for the other information (surge height, duration of inundation, inundation distance, height on land, flow speeds), they are unfortunately largely unknown. The only few data available are either described directly in the text (e.g lines 230-240 for DEAN) or in other papers mentioned in the manuscript (e.g. Krien et al., 2015; Krien, 2013).

- *"Setting: reefs and mangrove forests should be addressed in more detail, as they have a significant influence as natural coastal protection. Reef type (fringing, patch)? Add the location of the reef and the mangroves in Fig. 1. In order to get an idea of the inundation risk: how wide are coastal plains on Martinique (max., min.)? A profile showing the bathymetry and onshore topography would be helpful, especially as the nearshore bathymetry has a significant influence on the potential storm surge and wave setup."*

⇒ Again, we followed your advice and: 1-added the location of reefs and mangroves in figure 1 , 2-displayed profiles showing bathymetric and topographic features in a few areas of interest (figure 1).

- *"Lines 17-18 (page 1): the importance of operational storm surge warning systems is stressed - are there plans for or already operating systems on Martinique? Have there been any evacuation trainings? How gets the population currently alerted? Are there any evacuation routes assigned?"*

⇒ As far as we know, there is no already operating system for the whole Martinique. As for evacuation routes or trainings, the situation seems to be quite different from one municipality to the other, and evolves quickly with time. It is indeed a very interesting subject, but giving a precise overview of this matter in Martinique would require a specific study, and is well beyond the scope of the present paper.

- *"Line 13 (page 3): development is probably not the right term here -recolonization?"*

⇒ The sentence was reworded (lines 97-98...)

- *"Line 16 (page 3): add a reference for the 1780 event."*

⇒ We added a reference (lines 103-104)

- *"Chapter 3: Which hurricane categories were used? You mention cat 4-5 in chapter 5, but it should already be stated here."*

⇒ We stated this in chapter 3 in the new version

- *"Line 39 (page 4): add a reference for the database"*

⇒ There seem to be a misunderstanding: we did not use an already existing database, we developed one specifically for this study. We made this point clearer in the new version (line 169).

- *"add a table with the input data used to set up your predictions."*

⇒ Are you referring to input data relative to synthetic extreme events? If so, most of the information is given at the beginning of section 3, but for the sake of clarity, we also included a table in section 5.1 in the new version. On the other hand, if you are referring to the database and the atmospheric model, information can be found in Emanuel et al (2006) and Emanuel et al. (2004).

- *"Line 46 (page 4): global mean sea level change (1 m) is cited which is very general. Are there any studies that predict a more local sea level? For a global or more local sea level: what are the max, average or min predictions?"*

⇒ We already quoted the work of Palanisamy et al., 2012 in the first version of the paper. This works shows that the sea level trend in the Lesser Antilles is very similar to the global mean rate. We are not aware of any study giving predictions for 2100 at the local scale. In any case, uncertainties are large, from a few tens of centimeters to several meters in the worst cases. The value we chose (1m) is, as you say, very frequently considered by scientists or coastal planners when the trend is similar to the global mean sea level rise, as it is the case here. We tried to make this clearer in the new version.

- *"Chapter 4: Is there any wave height data of Dean available? Which max heights and speeds were observed / measured? Line 32 (page 5): observations are mentioned but not explained – what was observed? Better add this to chapter 2."*

⇒ Yes indeed, there are wave height data available for Dean. We give greater details on this matter in the new version, and (generally speaking) reformulated the whole paragraph to make things clearer to the reader.

- *"Why did the authors not select any additional scenario with an east-west track?"*

⇒ We performed several sensitivity tests on the track angle. Results show almost no sensitivity to this parameter. As a consequence, we did not consider a purely east-west track here. As for west-east tracks (maybe it was your point here?) we did not study specifically the impact of this kind of event for several reasons:

1- As far as we know, a west to east track hurricane passing nearby Martinique has never been observed (according to historical data). Events passing farther from Martinique were recorded (e.g Lenny, or Omar), but they induced very low surges in low-lying and vulnerable areas (such as bay of Fort-de-France). Hence, the probability that the extreme levels

presented here will be significantly exceeded in low-lying areas by this kind of event can be considered very low.

2-Most of the damages due to hurricanes such as Lenny or Omar where due to wave impacts (overtopping) at the shoreline along the north-western coast. The study of these processes are beyond the scope of this paper, which essentially concentrate on low-lying (surge prone) areas.

- *"Chapter 5: Add a table that lists and compares the results of the 13 different scenarios. Include parameters like the modeled surge height, wave height, inundation distance, category, distance of storm track from the shore, and any other simulated parameters."*

⇒ We added a table in chapter 5 that lists and compares the results of all the scenarios. Inundation distances are not given since the resolution is not good enough to represent this parameter with a satisfactory accuracy.

- *"Chapter 6: Divide this chapter into separate chapters for the discussion and the conclusions."*

⇒ We modified the paper accordingly

- *"The discussion is far too short. For example it lacks a discussion on a Haiyanlike bore. The setting with a step bathymetry and reefs may allow the set up of infragravity waves on Martinique."*

⇒ We added a paragraph on IG waves in the new manuscript. Generally speaking, the discussion as a whole has been consolidated.

- *Line 11 (page 10): the role of mangroves and reefs as potential natural coastal protection has not been mentioned before. It should be discussed in greater detail. Also see comments to chapter 1 and 2.*

⇒ The role of mangroves and reefs is now mentioned in chapter 2. It is also discussed in greater details in the concluding remarks.

- *Fig. 1 a and b have a bad resolution. White yellow and cyan lines can hardly be seen. Location of reefs and mangroves should be added.*

⇒ Figure 1 was modified accordingly

Reviewer 2

- *"The introduction must be consolidated. Many studies using modelling tools and coupled models were achieved last years. The methods and tools used in this paper must be contextualize relative to the abundant bibliography on the topic. The paper deal with the*

influence of sea level rise on storm surge. Nevertheless there is no considerations made about climate change manifestations on coastal hazards especially on inundation risk."

⇒ Following the advice of the reviewer, we expanded the introduction and quoted a number of papers relative to coupled numerical models and impacts of climate change on storm surges.

- *"No information either on sea level rise trends in the Caribbean basin"*

⇒ This information was given at the end of section 3 ("Considering that the sea level trend in the Lesser Antilles is very similar to the global mean rate (Palanisamy et al 2012)". But for the sake of clarity, we also added the reference (Palanisamy et al 2012) in the introduction and in section 2.

- *"A more in deep presentation of historical cyclones knowledge will be useful for the reader"*

⇒ We included a figure representing the track of historical cyclones since 1900 (figure 2). We also gave more details in the text.

- *"p.2/l.15 : Harmonize and correct citation form"*

⇒ We corrected the citation form, here and in other places in the manuscript

- *"p.2/l.30 : Replace heart by center"*

⇒ Corrected

- *"Figure 1 : The figure need to be rework. Location are not readable, scale are not homogeneous. The figure don't look realized from raw data. Site the source of the maps if there are not fully realized by the authors"*

⇒ Figure 1 has been modified and should be now more readable

- *"p.3/l.9 : What about tsunami potential impact ?"*

⇒ Indeed, Martinique is prone to tsunamis. We mentioned that and added a reference in the new version of the manuscript.

- *"p.3/l.16 : Precise that Dean were a category 5 hurricane but only category 2 when it circulate near to the Martinique island."*

⇒ we clarified this in the new version

- *"p.3/l.20 : The logical connection between the two sentences is not appropriated."*

⇒ Indeed, we corrected this in the new version

- *"p.4/l.8-9 : Can you plot the historical track for comparison ? Land fall simulated tracks are not clearly visible on the figure."*

⇒ Historical events are too far from Martinique to be plotted on this Figure. However, we added a new figure displaying the historical tracks, so that it will be easier for readers to compare. The thickness of tracks was modified to make them more visible.

- *"p.4/l.39-43 : Unless I am misinterpreting, the full data base contain various cyclone intensity and trajectory. We suggest that it will be relevant to illustrate the track and the intensity of the cyclone contained in the data base."*

⇒ we added a figure displaying a few examples of synthetic hurricanes contained in the database (figure 3)

- *"p.5/l.3 :Tightly don't look as the proper term."*

⇒ corrected

- *"p.5/l.7 : You speak about sensitivity tests, explain more in detail what was the objective of the test and what elements are validated and what deduction are made."*

⇒ we explained this in more details (lines 193-194)

- *"p.5/l.20 : LIDAR data to what depth ?"*

⇒ Up to about 40m depth. We specified this in the new version of the manuscript (line 212)

- *"p.5/l.22 : Are also available/used ?"*

⇒ Yes, they are available and included in the DEM. We specified this more clearly.

- *"p.5/l.25 : Integration in Figure 1 of the mesh and the a representation of the special variability of the friction coefficient would be very interesting for interpretation of the results."*

⇒ The mesh is too highly resolved to be integrated in Figure 1 (the reader will not be able to distinguish between two different elements). Instead, we included a figure with a contour plot of the mesh resolution near Martinique, as well as a contour plot of the friction coefficient (figure 4).

- *"p.5/l.30 : Modify reference Lerma et al 2014 to Nicolae Lerma et al., 2014"*

⇒ corrected

- *"p.5/l.35-38 : It is not clear whether the model reproduces correctly the observations made during the hurricane Dean (even if an only small storm surge was recorded). The model does represent this small storm surge or a more important values? In this section, the author need to be more explicit even if the validation is only qualitative. Please explain more in detail the conclusion of the report Krien 2013."*

⇒ We significantly modified this section in order to be more explicit

- *"p.6/l.7 : Locations mentioned in text must be placed on the plot (figure 2)."*

⇒ We modified the figure accordingly

- *"p.6/l.3-8 : Is not clear why the storm surge is so much higher in the Bay of Fortde-France for northern track than for the southern. Please, give a more complete explanation."*

⇒ The reason is due to the direction of the wind when hurricanes pass over Martinique (offshore for southern tracks, onshore for northern track). We explained this more clearly in lines 248-249

- *"p.6/l.13 : The values of 1m was used arbitrarily or based on some references ?"*

⇒ We explain this in lines 178-180: " Considering that the sea level trend in the Lesser Antilles is very similar to the global mean rate (Palanisamy et al., 2012), this value of 1 m roughly corresponds to the global projections of IPCC by 2100 in case of a high emission scenario (IPCC, 2013)."

- *" Figure 2 please put the main location in the figure"*

⇒ We modified the figure accordingly

- *"Figure 2,b,d,f : There is some strange pattern in the northern coast. Are they artefact due to the computational mesh? Please explain this."*

⇒ Indeed, these patterns are probably due to small numerical instabilities in SWAN, in a region where lateral bathymetric gradients are strong. However, these errors are small since they do not exceed 1cm, so they are not expected to be an issue in our study. We added a comment on this in the figure legend. NB: these numerical instabilities in unstructured SWAN were identified earlier by several authors. As far as we know, corrections have been made in the last versions of ADCIRC-SWAN to solve this issue.

- *"Figure 3 : Based on the figures, the model look to allow inland overflowing (i.e. there is no inland boundaries). If this true, it would be relevant to mention it."*

⇒ Indeed, the model includes a wetting-drying algorithm to allow inland overflowing. We mentioned this in the new version (line 192).

- *"It would be also important to figure the coastline without surge on the plot."*

⇒ the coastline is already represented by a thin black line. But we admit that it is not always easy to distinguish from the contour plots, so we increased its thickness in the figures.

- *"p.8/l.13-14 : Please be more precise about this. Is this an historic reference ? Why this reference is relevant instead of indicate a % of flooded urban areas, for example?"*

⇒ In Figure 3b, we wanted to show that there was a relatively significant area in Fort-de-France where a 1m sea level rise was expected to induce flooding. This was not clear enough apparently so we modified the figure to make it easier to understand.

- *"p.9/l.15-17 : not clear, please reformulate."*

⇒ We modified the text to make things clearer

- *"p.9/l.23 : What do you mean by 'n simply changing manually the elevation data 'z ?"*

⇒ We made this clearer in the new version of the paper: "These results provide further evidence that drawing inundation maps for the future without considering non-linear effects of sea level rise on water levels can lead to significant errors".

- *"p.10/l.1-3 : This affirmation should be illustrated by a figure. A zoom on the mentioned area for example."*

⇒ We illustrated this with a zoom in Figure 6(b).

- *p.10/l.4-5 : Do you think the spatial resolution of your model (50 m at the coast) is in accordance with this perspective (i.e. evacuation plan, coastal urbanism: : :) ?*

⇒ This resolution is definitely not sufficient to represent inland flooding properly. However, the water levels at the coastline should be relatively accurate in low-lying and shallow areas where surges are highest. This information is crucial for coastal urbanism or evacuation plans to identify the areas where vulnerable buildings should not be built, and to identify potential shelters for populations leaving close to the shoreline. To our knowledge, this work is so far the most elaborate study that can be used by coastal planners in France (even if we are fully aware of its limits!)

- *"Discussion: An extended chapter must be dedicated to discuss the results and the methodology. Did you test the impact of a West to East track hurricane? In reference to historical events, the authors must consider the impact of this kind of event?"*

⇒ A few west to east hurricanes are contained in the database, and are thus taken into account in the results presented in figure 7. However, we did not study specifically the impact of this kind of event for several reasons:

1- As far as we know, a west to east track hurricane passing nearby Martinique has never been observed (according to historical data). Events passing farther from Martinique were recorded (e.g Lenny, or Omar), but they induced very low surges in low-lying and vulnerable areas (such as bay of Fort-de-France). Hence, the probability that the extreme levels presented here will be significantly exceeded in low-lying areas by this kind of event can be considered very low.

2-Most of the damages due to hurricanes such as Lenny or Omar where due to wave impacts (overtopping) at the shoreline along the north-western coast. The study of these processes are beyond the scope of this paper, which essentially concentrate on low-lying (and surge prone) areas.

We discuss this matter in greater details in the new version of the manuscript.

- *"More generally, what can be the effect of a different track than considerate here?"*

⇒ According to Sansorgne (2013), a report written in French, the effect of track angle and translation speed for Martinique are of second order compared to hurricane intensity and distance to the area of interest (typically, a few percent of the total surge) . We mentioned this in the new version of the paper.

- *The affirmation of the integration of the wave setup or wave process must be tempered. A 50 m mesh resolution at the coast can be insufficient to properly represent wave setup component (in steep beach or in coral reef area for example)*

⇒ Indeed, we already pointed this limitation in section 5.1 in the first version of the paper. This is true in particular in the north-western coast, where the slope is strong. In this case however, the stakes are more exposed to wave impacts (overtopping) than surges. As for the coral reefs, it is also true, although it seems to be less an issue, probably because: 1-the reefs are strongly eroded, so that bathymetric gradients are relatively mild 2-we ensured that the unstructured mesh captures the bathymetry in areas where the water depth is the lowest. We performed a few tests with better resolutions (e.g. 30m), without any significant changes. We included a section on this matter in the new version of the discussion.

- *Furthermore, spectral wave model do not deal with infragravity wave which can be important in reef coast.*

⇒ Again, you are right. Although large IG waves were not reported as such in Martinique, we see no reason why they should not occur. This has to be further investigated in the future. We included a section on this matter in the new version of the discussion.

- *It is surprising to refer to very precise urban site in order to describe results in case of sea level rise scenario. What is the purpose? The model is it considered as efficient to simulate floods?*

⇒ We performed sensitivity tests with higher resolutions, up to 10m in some specific areas. In a quasi-systematic manner, flooded areas are larger in these cases. We also used phase-resolving models (SWASH) with extremely high resolutions (1m), with the same conclusion. Furthermore, the urban sites mentioned in the paper are very close to the shoreline, so even if the flooding dynamics is not perfectly well captured, our conclusions are expected to be correct. However, we understand your point, so that we modified the way to present our results in the new version of the manuscript.

Assessing storm surge hazard and impact of sea level rise in Lesser Antilles-Case study of Martinique

Krien^(1,*), Y., Dudon⁽¹⁾, B., Roger^(1,2), J., Arnaud⁽¹⁾, G., Zahibo⁽¹⁾, N.

(1): LARGE, Laboratoire de Recherche en Géosciences, Université des Antilles, Guadeloupe, France

(2): G-Mer Etudes Marines, Guadeloupe, France

(*): Corresponding author (contact: ykrien@gmail.com)

Abstract

In the Lesser Antilles, coastal inundations from hurricane-induced storm surges cause great threats to lives, properties, and ecosystems. Assessing current and future storm surge hazard with sufficient spatial resolution is of primary interest to help coastal planners and decision makers develop mitigation and adaptation measures. Here, we use wave-current numerical models and statistical methods to investigate worst case scenarios and 100-year surge levels for the case study of Martinique, under present climate or considering a potential sea-level rise. Results confirm that the wave setup plays a major role in Lesser Antilles, where the narrow island shelf impedes the piling-up of large amounts of wind-driven water on the shoreline during extreme events. The radiation stress gradients thus contribute significantly to the total surge, up to 100 % in some cases. The non-linear interactions of sea level rise with bathymetry and topography are generally found to be relatively small in Martinique, but can reach several tens of centimeters in low-lying areas where the inundation extent is strongly enhanced compared to present conditions. These findings further emphasize the importance of waves for developing operational storm surge warning systems in the Lesser Antilles, and encourage caution when using static methods to assess the impact of sea level rise on storm surge hazard.

1-Introduction

Coastal urbanization and industrialization in storm surge prone areas pose great challenges for adaptation and mitigation. Human and economic losses due to water extremes have considerably increased over the last decades (WMO, 2014), and are expected to continue to do so in many areas worldwide because of coastal population growth (Neumann et al., 2015) and climate change impacts (sea level rise, deterioration of protecting marine ecosystems, potential increase in the frequency of extreme events, etc). It is therefore necessary to better assess current and future storm surge hazard to help decision makers regulate land use in coastal areas and develop mitigation strategies.

The Lesser Antilles are the first islands on the path of hurricanes that originate off the west coasts of Africa and strengthen during their travel across the warm waters of the tropical Atlantic Ocean. They are therefore regularly exposed to extremely severe winds and waves causing great human and economic losses. In the heart-center of the Lesser Antilles Archipelago lies Martinique, a French insular overseas region which shares similar characteristics with neighboring islands, such as a relatively narrow island shelf, fringing coral reefs, mangrove forests, numerous bays and contrasted slope morphologies.

Although Martinique has been relatively spared over the last decades compared to other islands such as Dominica or Guadeloupe, it still largely suffered from massive destructions in coastal areas due to hurricanes passing nearby (Durand et al., 1997; Pagney and Leone, 1999; Saffache, 2000; Léone,

2007; Duvat, 2015). A recent example is hurricane DEAN (category 2), which struck the island in 2007, causing severe damages, especially along the exposed east coast (Barras et al., 2008).

About 15 years ago, the French national meteorological service delivered a preliminary map of 100-year surge heights in Martinique (Météo France, 2002). These early results were of great interest and have been used extensively by coastal planners since then (Grau and Roudil, 2013). At that time, however, wave-current interactions were not taken into account, although waves were already known to have a strong impact on surges in coastal areas (e.g. Wolf et al., 2011; Brown et al., 2011). Wave induced setup was not taken into account, so that water levels were thus expected to be underestimated, especially in areas exposed to waves.

Over the past few years, significant progress has been made in developing wave-current coupled models (e.g. Dietrich et al., 2012; Roland et al., 2012; Kumar et al., 2012; Qi et al., 2009; Bennis et al., 2011; Dutour Sikiric et al., 2013), but in subsequent years, no attempt was made so far to improve storm surge hazard assessment in Martinique. These preliminary results are thus still largely used as a reference by decision makers, and recent works rather investigated the impacts of historical events (e.g. Barras et al., 2008), or the ability of numerical models to reproduce extreme water levels and inland flooding (Nicolae Lerna et al., 2014).

The potential impacts of climate change have also received little attention. Although the effect of a warmer climate remains relatively uncertain in terms of hurricane activity in the North Atlantic (e.g. Knutson et al., 2010), a significant increase of sea level is expected in the Lesser Antilles in the coming decades (Palanisamy et al., 2012). Moreover, coastal ecosystems such as mangroves, coral reefs or seagrass beds may not be able to adapt to climate change (e.g. Waycott et al., 2009; Wong et al., 2014), which could have large impacts on coastal flooding (e.g. Alongi, 2008; Wong et al., 2014).

Here we investigate in greater details storm surge hazard in Martinique and derive more accurate 100-year surge heights and maximum surge levels, using state-of-the-art numerical models and the statistical-deterministic approach of Emanuel et al (2006). We also conduct preliminary tests to investigate the impact of sea level rise (SLR) in the following decades. The present paper is organized as followed : after a short presentation of the study area (section 2), we describe the methodology (section 3) and the numerical model (section 4). Results and conclusions are shown in sections 5 and 6 respectively. The limitations of this study as well as material for further research are given in section 7.

2-Study area

Located in the centerheart of the Lesser Antilles (Figure 1(a)(Figure 1, left panel), Martinique is a frenchFrench mountainous island of about 390 000 inhabitants, with a remarkable variety of coastal environments (mangroves, cliffs, sandy coves, coral reefs, highly urbanized, etc) and contrasted sea bottom morphologies. The Atlantic coast is characterized by barrier and fringing coral reefs, as well as a gently dipping dissipating shelf promoting relatively large storm surges (Figure 1, right panel), whereas most of the Caribbean beaches are reflective, with waves propagating onshore without significant attenuation, except in the Bay of Fort de France (Figure 1).

Mis en forme : Police : (Par défaut)
Times New Roman, 11 pt

Mis en forme : Police : (Par défaut)
Times New Roman, 11 pt

Mis en forme : Police : (Par défaut)
Times New Roman, 11 pt

Mis en forme : Police : (Par défaut)
Times New Roman, 11 pt

Mis en forme : Police : 11 pt

Mis en forme : Police : 11 pt

Mis en forme : Police : 11 pt

Mis en forme : Police : (Par défaut)
Times New Roman, 11 pt, Anglais
(États-Unis)

Mis en forme : Police : (Par défaut)
Times New Roman, 11 pt, Anglais
(États-Unis)

Mis en forme : Police : (Par défaut)
Times New Roman, 11 pt, Anglais
(États-Unis)

Mis en forme : Police : (Par défaut)
Times New Roman, 11 pt, Anglais
(États-Unis)

Mis en forme : Police : (Par défaut)
Times New Roman, 11 pt

Mis en forme : Police : (Par défaut)
Times New Roman, 11 pt

Mis en forme ... [1]

Mis en forme ... [2]

Mis en forme ... [3]

Mis en forme ... [4]

Mis en forme ... [5]

Mis en forme ... [6]

Mis en forme ... [7]

Mis en forme ... [8]

Mis en forme ... [9]

Mis en forme ... [10]

Mis en forme ... [11]

Mis en forme : Police : 11 pt

Mis en forme : Police : 11 pt

Mis en forme : Police : 11 pt

Mis en forme : Police : 11 pt

Mis en forme ... [12]

Mis en forme : Police : 11 pt

Mis en forme ... [13]

Mis en forme ... [14]

Mis en forme : Police : 11 pt

Mis en forme : Police : 11 pt

Mis en forme : Police : 11 pt

Mis en forme ... [15]

Mis en forme ... [16]

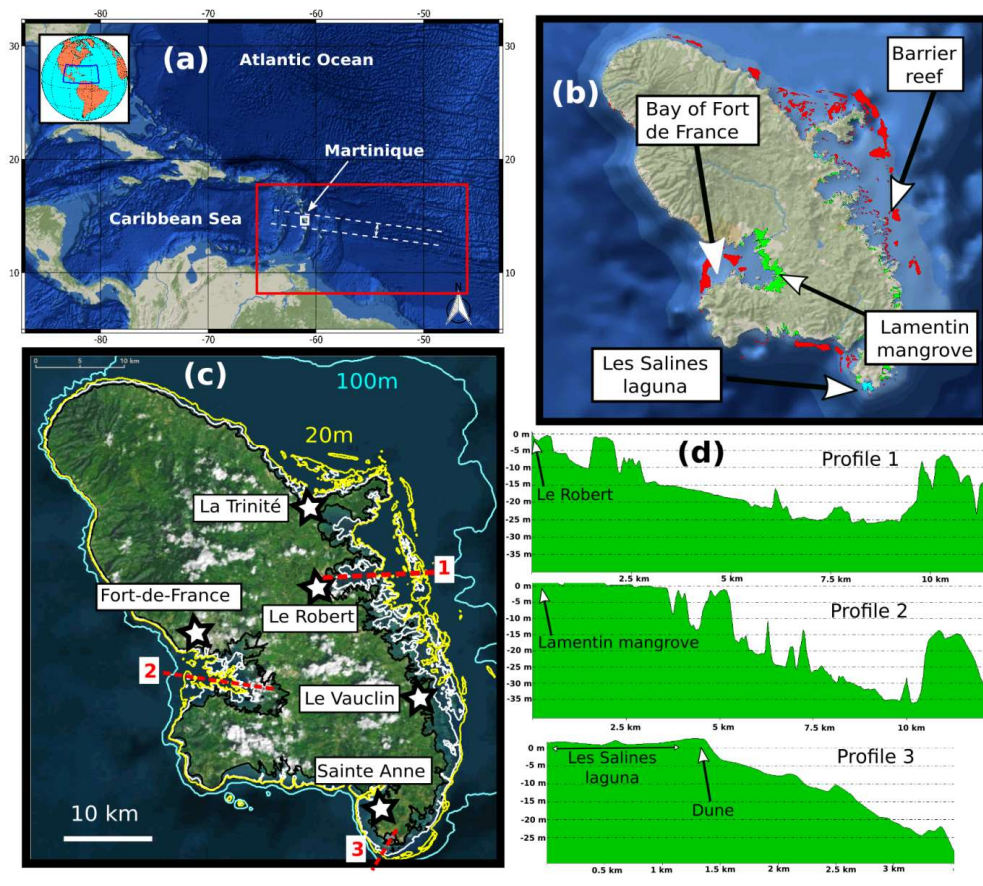


Figure 1. (a): Area of interest. The computational domain is given in red. Dashed white lines represent the southernmost and northernmost tracks considered for the « worst case scenarios » (section 5.1). (b): focus on Martinique and location of coral reef communities (red), mangroves areas (green), and lagoons (cyan). Source of data: Agence des aires marines protégées. (c): Isobaths at 10 m (white), 20 m (yellow), and 100 m (cyan), as well as location of the bathymetric profiles displayed in (d).

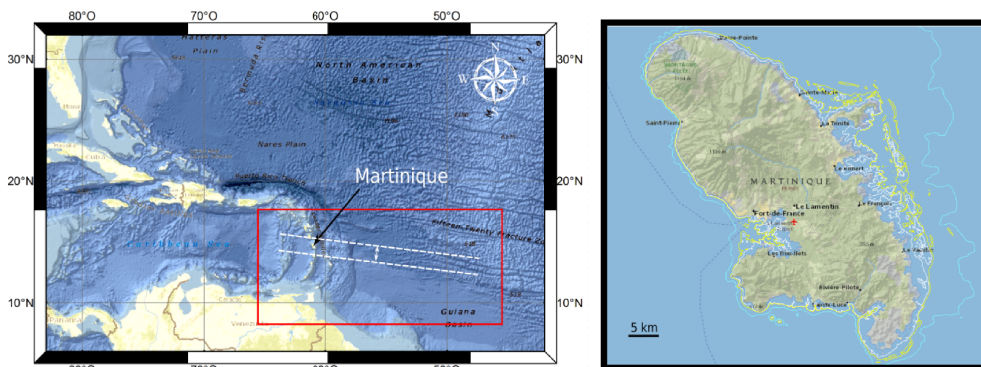


Figure 1 Left panel : Area of interest. The computational domain is given in red. Dashed white lines represent the southernmost and northernmost tracks considered for the « worst case scenarios ». Right panel : focus on Martinique. The 10 m (white), 20 m (yellow), and 100 m (cyan) isobaths are displayed.

Mis en forme : Police : (Par défaut)
Times New Roman

Mis en forme : Paragraphes solidaires

Mis en forme : Anglais (États-Unis)

Mis en forme : Légende

Code de champ modifié

Mis en forme : Anglais (États-Unis)

Mis en forme : Police : (Par défaut)
Times New Roman

A large part of the population has been living close to the shoreline for centuries, for historical or economical reasons, such as military defense or fishing activities (EPRI, 2012). This trend is being accentuated with the development of tourism infrastructures since the 60's (Desarthe, 2014). The number of tourists has thus tripled since 1995, even if the sector has undergone a deterioration recently (Dehoorne et al., 2014). Coastal zones are now highly coveted and densely populated areas (Garnier et al., 2015), prone to natural hazards such as erosion, ~~or~~ storm surges or tsunamis (e.g. Poisson and Pedreros, 2007). The Bay of Fort-de-France has been identified as a particularly vulnerable area by the ~~French~~ French government services, in the framework of the EU Floods Directive (PGRI, 2014). Indeed, this relatively low-lying zone concentrate the great part of industry, services and transport infrastructures (highway, airport, etc). Besides, the mangrove forest of Lamentin (Figure 1(b)) is one of the largest remnant mangroves of the Caribbean and an important ecological area allowing the development of supporting numerous a great variety of animal species.

Martinique is regularly affected by severe storms: sabot one hurricane every ten years on average, according to the data provided by NOAA's Office for Coastal Management (Figure 2). Fortunately, ~~i, although~~ it has been relatively spared over the past decades compared to neighboring islands such as Dominica or Guadeloupe, with only one hurricane making landfall on the island since 1900 (Figure 2). The main event recorded in history is probably the hurricane that hit Martinique in 1780, resulting in about 9000 fatalities (Saffache et al., 2002). More recently, ~~the category 2 event~~ DEAN (-2007)a category 5 hurricane that passed Martinique as a category 2 storm in 2007) caused very extensive damage to the urban areas close to the coast, as well as severe coastline erosion (Barras et al., 2008). Significant destructions also arose in recent years because of energetic swells generated by hurricanes traveling eastward in the Caribbean Sea (e.g. OMAR in 2008 or Lenny 1999). The reflective Caribbean coast is particularly exposed to this type of event.

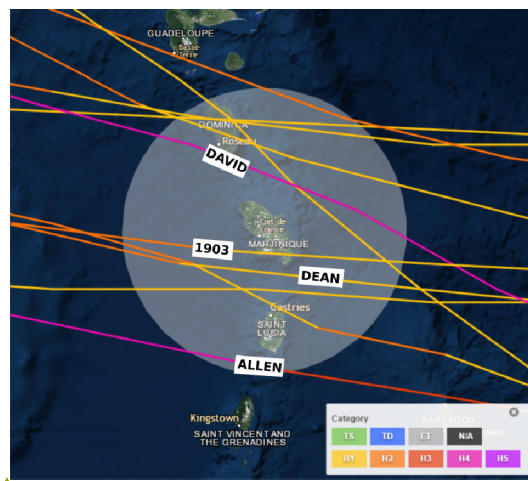


Figure 2-Tracks and intensities of historical hurricanes passing within 65 nautical miles from Martinique, since 1900.
(source: NOAA's Office for Coastal Management, <https://coast.noaa.gov/hurricanes/>)

Marine ecosystems such as coral reefs or mangroves are known to provide substantial protection against waves and surges during hurricanes (e.g. Ferrario et al. 2014). In Martinique however, mangrove forests have been at least partially deteriorated due to earthworks, water and soil pollution, or hurricanes (e.g. Imbert and Migeot 2009). The situation is even worse for coral reefs, for which a dramatic decline due to eutrophication, anthropogenic disturbances or extreme storms was observed over the past 40 years (Bouchon and Laborel, 1986; Legrand et al., 2008; Rousseau et al., 2010;

Mis en forme : Police : (Par défaut)
Times New Roman

Mis en forme : Paragraphes solidaires

Mis en forme : Anglais (États-Unis)

Mis en forme : Légende, Centré

Code de champ modifié

Mis en forme : Anglais (États-Unis)

Mis en forme : Anglais (États-Unis)

Mis en forme : Police : (Par défaut)
Times New Roman, Anglais (États-Unis)

Mis en forme : Non Surlignage

Mis en forme : Non Surlignage

IFRECOR, 2016). The deterioration of these marine ecosystems because of climate change is thus a cause. Hence, potential increase of hazards due to climate change (sea level rise, deterioration of protecting marine ecosystems, etc.) is a cause of major concern for the coming decades.

Mis en forme : Non Surlignage

A warmer climate is also expected to induce a significant increase of sea level in Martinique. Since the regional trends are very similar to the global mean rate (Palanisamy et al., 2012), the mean sea level might rise by several dozens of centimeters or more in the coming decades. All these findings and strongly encourages coastal planners and scientists to better assess current and future storm surge hazard along the coastline of Martinique in order to develop mitigation strategies.-

Mis en forme : Surlignage

Mis en forme : Non Surlignage

Mis en forme : Non Surlignage

3-Methodology

To achieve this goal, we conducted numerical investigations using a wave-current coupled model (section 4). As a first step, we computed the maximum surge obtained for a few synthetic severe (category 4-5) hurricanes. The aim is to better understand the mechanisms responsible for generating storm surges in Martinique, and to crudely estimate the maximum surges that could be reached along the coastline for extreme events. To do this, we generated 13 synthetic hurricanes striking Martinique, with maximum velocity $V_{max}=140$ kn, radius of maximum winds $R_{max}=20$ km, track angle of 10° with respect to a east-west profile, and translation speed $V_t=12$ kn. These values represent typical characteristics of major hurricanes in the area of interest Martinique (e.g. HUGO, DAVID) (Sansorgne, 2013). A few sensitivity tests were performed to ensure that track angle and translation speed are of second order compared to hurricane intensity and distance to the area of interest (Sansorgne, 2013).

Mis en forme : Non Surlignage

The tracks parallel each other and are spaced 10 km apart to take into account almost all the possible landfall locations. The southernmost and northernmost tracks are displayed in- Figure 1 Figure 1.

In a second phase, we derived new 100-year surge levels. This step is relatively complex for regions prone to cyclones because of the dearth of events in historical records. Traditional extreme value analysis methods are generally found not to be applicable in these areas, so that more advanced statistical approaches are needed to infer water level return periods. These methods involve the generation of a large number of synthetic cyclones that are in statistical agreement with observations. Several approaches were proposed so far, such as JPM-OS (Joint Probability Methods with Optimal Sampling, e.g. Resio, 2007; Toro et al., 2010), or the statistical/deterministic model of Emanuel et al (2006). They have been used successfully for storm surge assessment at local (Lin et al., 2010, 2012), regional (Harper et al., 2009; Niedoroda et al., 2010), or even continental (Haigh et al., 2014) scales. In the present paper, we use the statistical-deterministic approach of Emanuel et al (2006), which provided good results for Guadeloupe in a previous study (Krien et al., 2015). This method consists in four main steps (Emanuel et al., 2006) :

- 1-The genesis locations of the new synthetic storms are obtained by a random draw from a space-time probability density function derived from historical genesis point data.
- 2-For each storm considered, synthetic time series of the zonal and meridional wind components at 250hPa and 850hPa are generated. They are designed to conform to the climatologies derived from NCEP/NCAR reanalysis between 1980 and 2011. In particular, the observed monthly means and variances are respected, as well as most covariances. The wind time series are regenerated if the initial vertical shear is too strong to be conducive to a storm.

Mis en forme : Retrait : Gauche : 1,27 cm, Sans numérotation ni puces

Mis en forme : Retrait : Gauche : 1,27 cm, Sans numérotation ni puces

- 3-The storm track is then derived from a weighted mean of the 250- and 850-hPa flow, plus a correction for beta drift (Emanuel et al., 2006). The weight factor and beta-drift term are chosen to optimize comparisons between the synthesized and observed displacement statistics.
- 4-The intensity along the synthetic track is obtained using a numerical model developed by Emanuel et al. (2004). The wind shear is given by the synthetic time series of winds determined previously. Monthly mean climatological upper-ocean thermal structure is taken from Levitus (1982).

The full database used in developed for this study contains 3200 low-pressure events (tropical depressions, tropical storms and hurricanes) passing within 100 km from Fort de France (Figure 3).

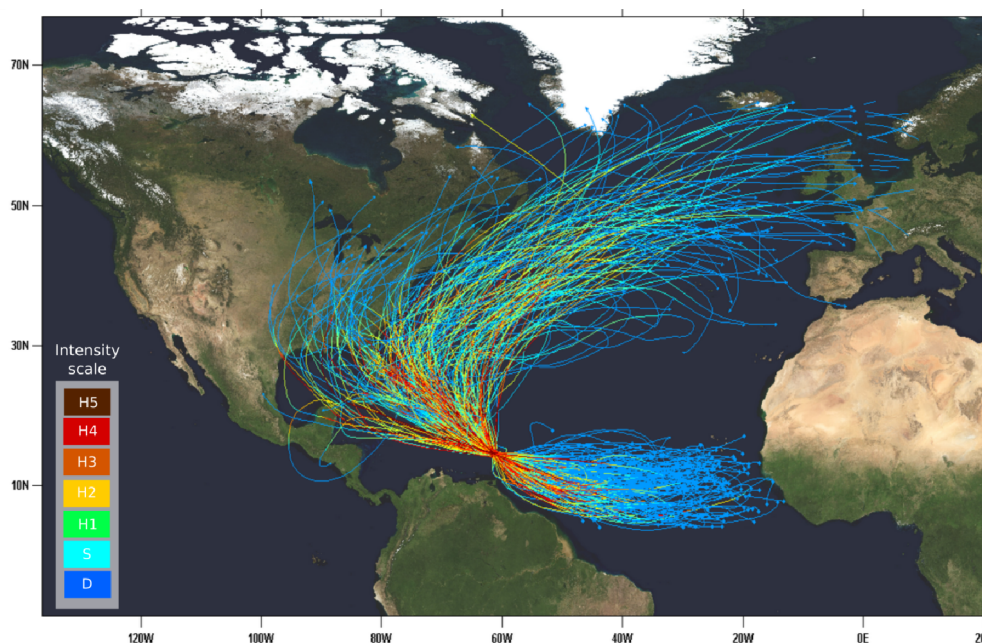


Figure 3-A few examples of synthetic hurricanes generated for this study, using the statistical-numerical approach of Emanuel et al. (2006).

It represents about 8000 years of hurricane activity under the present climate conditions in the immediate vicinity of Martinique. In practice, however, we computed only the surges for the strongest events, as tropical storms and depressions are not found to be able to generate water levels with a 100-yr return period. In all, 700 events were simulated on a 240-cores computational cluster.

In both cases, we also investigated the effect of a 1 m sea level rise. Considering that the sea level trend in the Lesser Antilles is very similar to the global mean rate (Palanisamy et al., 2012), this value of 1 m roughly corresponds to the global projections of IPCC by 2100 in case of a high emission scenario (IPCC, 2013). Considering that coral reefs and mangroves are already deteriorated, we assume here that they will not be further damaged but that they ~~We assume here that coral reefs and mangroves will not be damaged but~~ cannot keep pace with SLR. In practice, this amounts to rise the water level by 1 m, without changing the shape of bathymetry or topography .

Mis en forme : Retrait : Gauche : 1,27 cm, Sans numérotation ni puces

Mis en forme : Police : (Par défaut) Times New Roman

Mis en forme : Paragraphes solidaires

Mis en forme : Anglais (États-Unis)

Mis en forme : Légende

Code de champ modifié

Mis en forme : Anglais (États-Unis)

4-Numerical model

4.1-Model Description

In this study we employed the ~~tightly-wave-current~~ coupled model ADCIRC+SWAN (Dietrich et al., 2012). ADCIRC (ADvanced CIRCulation model, Luetich et al., 1992; Westerink et al., 1994) is a finite-element hydrodynamic model that solves the depth-averaged barotropic form of the shallow water equations on unstructured grids. Water levels are obtained from the solution of the Generalized Wave-Continuity Equation (GWCE), whereas currents are derived from the vertically-integrated momentum equation. ~~A wetting-drying algorithm is also included to allow inland overflowing.~~

After several sensitivity tests ~~to achieve stability of model/results while keeping reasonable computing time,~~ a timestep of 1 s was chosen.

ADCIRC (~~v50~~) is coupled to the wave model SWAN (Simulating WAVes Nearshore, Booij et al., 1999), which predicts the evolution in time and space of the wave action density spectrum, and has been converted recently to also run on unstructured meshes (Zijlema et al., 2010). Computations are performed here using 36 directions and 36 frequency bins. Source terms include wind input (Cavaleri and Malanotte-Rizzoli, 1981; Komen et al., 1984), quadruplet interactions (Hasselmann et al., 1985), whitecapping (Komen et al., 1984), triads (Eldeberky, 1996), bottom friction (Madsen et al., 1988) and wave breaking (Battjes and Janssen, 1978).

SWAN is forced by the wind velocities, water levels and currents given by ADCIRC, and passes back the radiation stress gradients every 10 minutes (Dietrich et al., 2012). Bottom friction is computed in ADCIRC using a Manning formulation. ~~The coefficients are converted to roughness length by SWAN.~~
~~The Manning coefficient~~

~~Values depends here on land cover (Union Europeenne, 2006). The values, and can be found in Krien et al (2015) can be found in Krien et al. (2015), and are displayed in Figure 4(a). Note that we did not consider a strong dissipation of energy at the bottom for coral reefs, as they are known to be very eroded in Martinique (IFRECOR, 2016).~~

~~The coefficients are converted to roughness length by SWAN.~~

The model is forced by wind and pressure fields, calculated using the gradient wind profiles of Emanuel and Rotunno (2011) and Holland (1980) respectively (see Krien et al., 2015 for more details).

Topography and bathymetry in shallow waters (~~up to about 40 m depth~~) are specified using high-resolution LIDAR data (Litto3D Program). On the shelf, ship-based sounding data acquired by the French Naval Hydrographic and Oceanographic Department (SHOM) are also ~~available~~included. GEBCO (General Bathymetric Chart of the Oceans) data with 30-arc-second resolution are used for deep water areas.

The effect of tides are neglected here as their amplitude is very low in Martinique (less than 35 cm).

The computational domain is displayed in ~~Figure 1~~Figure 4. The resolution spans from 10 km in the deep ocean to about 50 m on the coastline and coral reefs (~~Figure 4(b)~~).

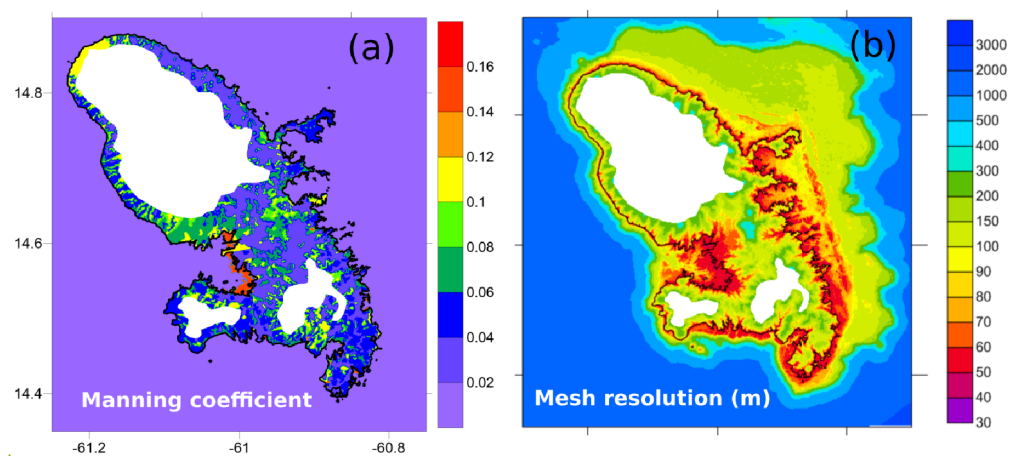


Figure 4: (a): spatial variation of the Manning coefficient n , based on land cover data (Union Européenne, 2006). (b): spatial variation of the mesh resolution in the vicinity of Martinique.

4.2-Model performance

This model has been used and validated for various storm events around the world (e.g. Dietrich et al., 2011a, 2011b, 2012; Hope et al., 2013; Kennedy et al., 2011; Murty et al. 2016). It was also found to give good results for several islands in the Lesser Antilles, such as Guadeloupe and Martinique (Krien et al., 2015; Nicolac, Lerma et al., 2014).

In the course of the present study, we conducted a few more validation tests, such as for hurricane DEAN (2007). Results are consistent with observations, but those are not sufficiently accurate and compelling to really add new elements relevant information regarding the ability of the model to reproduce storm surges to the storm surge validation process compared to previous studies. As an example, the tide gauge located at Le Robert recorded a surge peak (of about 20 cm according to our estimates) on August 17, 2007, but this value is probably significantly underestimated since only hourly data are available. Our model predicts higher values (about 75 cm), which are more consistent with observations made by witnesses, who reported that the garden south of city center (14.6753°N, 60.9387°W) was partially under water. Similarly, only small surges (less than 20 cm) were recorded in Fort-de-France (Barras et al., 2008) for hurricane DEAN. This is again consistent with the model prediction (15 cm), but not really satisfying in terms of validation for extreme events. Similarly, in the most impacted areas, such as Le Vauclin, only indirect information about the maximum water level are available (e.g. Barras et al., 2008). Although they are again in accordance with the predictions of the numerical model (about 1.5 m above mean sea level), systematic measurements of water levels should thus be performed in the future to be able to better assess the ability of the model to reproduce storm surges. Note that preliminary validation tests were also performed for waves, and give satisfying results (Krien 2013).

They are thus not displayed here (interested readers will find more information in a report written in French : Krien 2013). As an example, the tide gauge located at Le Robert recorded a surge peak (of about 20 cm according to our estimates) on August 17, 2007, but this value is probably significantly underestimated since only hourly data are available. Similarly, only small surges (less than 20 cm) were recorded in Fort de France (Barras et al 2008) for hurricane DEAN. In the most impacted areas, such as Le Vauclin, only indirect informations about the maximum water level are available (e.g.

Mis en forme : Police : (Par défaut)
Times New Roman

Mis en forme : Paragraphes solidaires

Mis en forme : Anglais (États-Unis)

Mis en forme : Légende

Code de champ modifié

Mis en forme : Anglais (États-Unis)

Mis en forme : Anglais (États-Unis)

Barras et al 2008). Hence, systematic measurements of water levels should be performed in the future to be able to better validate and improve the model, as already stressed by Krien et al (2015).

5-Results

5.1-Test cases for a few synthetic hurricanes and maximum surge levels

The results obtained for a few « worst case » (category 4-5) event tests are displayed in Figure 2 Figure 5 and Table 1. The water levels on the Caribbean coast are found to be largest for hurricanes making landfall in the northern part of Martinique. This was expected since in this case, the winds on the west coast are essentially onshore when hurricanes pass over the island.

Table 1.-Maximum storm surges (in meters) predicted by the model for the 13 "worst case" scenarios at four different locations: Fort-de-France tide gauge, airport, Le Robert tide gauge, and Le Vauclin. The distance of the hurricane track from Fort-de-France is also given. (S)/(N) refers to a storm passing south/north of Fort-de-France respectively. The maximum values obtained for each location are shown in bold.

Test case	Distance from Fort-de-France (km)	Sea Level Rise (1m)	Surge Fort-de-France (61.063°W, 14.6°N)	Surge Airport (61.016°W, 14.593°N)	Surge Le Robert (60.937°W, 14.678°N)	Surge Le Vauclin (60.837°W, 14.548°N)
1	59.7 (S)	no	0.15	0.15	1.06	1.41
		yes	0.14	0.13	0.96	1.36
2	48.7 (S)	no	0.18	0.16	1.36	1.76
		yes	0.16	0.15	1.24	1.68
3	37.8 (S)	no	0.24	0.18	1.74	2.08
		yes	0.21	0.17	1.61	2.04
4	26.9 (S)	no	0.39	0.23	2.18	2.56
		yes	0.36	0.21	2.04	2.44
5	16.0 (S)	no	0.70	0.29	2.71	2.84
		yes	0.69	0.29	2.55	2.71
6	5.1 (S)	no	1.09	0.85	3.04	2.54
		yes	1.09	0.88	2.90	2.41
7	5.8 (N)	no	1.24	1.73	2.60	1.80
		yes	1.26	1.67	2.49	1.68
8	16.7 (N)	no	1.11	2.18	1.40	1.25
		yes	1.09	1.99	1.43	1.18
9	27.7 (N)	no	0.74	1.71	0.76	0.99
		yes	0.75	1.59	0.77	0.95
10	38.6 (N)	no	0.49	1.29	0.58	0.82
		yes	0.50	1.17	0.60	0.77
11	49.5 (N)	no	0.32	0.90	0.51	0.71
		yes	0.32	0.79	0.51	0.69
12	60.4 (N)	no	0.22	0.64	0.45	0.63
		yes	0.21	0.54	0.45	0.62
13	71.3 (N)	no	0.15	0.47	0.42	0.58
		yes	0.14	0.38	0.41	0.56

Water levels can exceed 4 m above mean sea level in the upper part of the Bay of Fort-de-France for extreme events (Figure 2(a) Figure 5 (a)). In that case, most of the surge is driven by the wind. The wave setup only contributes for a few tens of centimeters to the total water levels (Figure 2 Figure 5(b)). This component plays yet a crucial role on the Atlantic coast, where it can reach 1 m. In

- Mis en forme : Surlignage
- Mis en forme : Anglais (États-Unis)
- Code de champ modifié
- Mis en forme : Anglais (États-Unis)
- Mis en forme : Anglais (États-Unis)
- Mis en forme : Légende, Paragraphes solidaires
- Mis en forme : Anglais (États-Unis)
- Mis en forme : Français (France)
- Mis en forme : Français (France)
- Mis en forme : Français (France)
- Mis en forme : Français (France)
- Mis en forme : Centré, Aucun(e), Espace Avant : 0 pt, Après : 0 pt, Interligne : simple, Pas de paragraphes solidaires, Pas de lignes solidaires
- Tableau mis en forme
- Mis en forme : Français (France)
- Mis en forme : Police :11 pt, Non Gras, Couleur de police : Automatique, Français (France)
- Mis en forme : Police :11 pt, Non Gras, Couleur de police : Automatique, Français (France)
- Mis en forme : Police :11 pt, Non Gras, Couleur de police : Automatique, Français (France)
- Mis en forme ... [17]
- Mis en forme ... [18]
- Mis en forme ... [19]
- Mis en forme ... [20]
- Mis en forme ... [21]
- Mis en forme ... [23]
- Mis en forme ... [22]
- Mis en forme ... [25]
- Mis en forme ... [24]
- Mis en forme ... [26]
- Mis en forme ... [27]
- Mis en forme ... [29]
- Mis en forme ... [28]
- Mis en forme ... [30]
- Mis en forme ... [31]
- Mis en forme ... [32]
- Mis en forme ... [33]
- Mis en forme ... [34]
- Mis en forme : Surlignage
- Mis en forme : Surlignage
- Code de champ modifié
- Mis en forme : Non Surlignage

some locations, such as Le Vauclin for example, the wave setup accounts here for almost all the total surge.

On the eastern coast, the surge is maximum for hurricanes passing south of Martinique. For category 4-5 hurricanes (such as the ones modelled here), it can exceed 3 m locally (~~Figure 2~~Figure 5(c)). The wave setup is still significant (up to about 1 m) in the shallow waters between the coastline and the coral reefs on the Atlantic coast (~~Figure 2~~Figure 5(d)). This contribution can amount to about 50 % of the total surge along the southeastern coasts of Martinique, in the test case considered here.

~~Figure 2(e)~~Figure 5(e) and ~~Figure 2~~Figure 5(f) show the results obtained when considering a sea level rise of 1 m. The wave setup is found to be only slightly modified, -with a reduction of a few centimeters in general compared to the case without sea level rise ~~Figure 5~~Figure 2(d)). The wind-driven surge is significantly attenuated near the shore (by a few tens of centimeters), because wind stresses are less efficient in driving water masses towards the coast when the water depth is higher (comparison between ~~Figure 5~~Figure 2(c) and ~~Figure 5~~Figure 2(e)).

Code de champ modifié

Mis en forme : Non Surlignage

Mis en forme : Non Surlignage

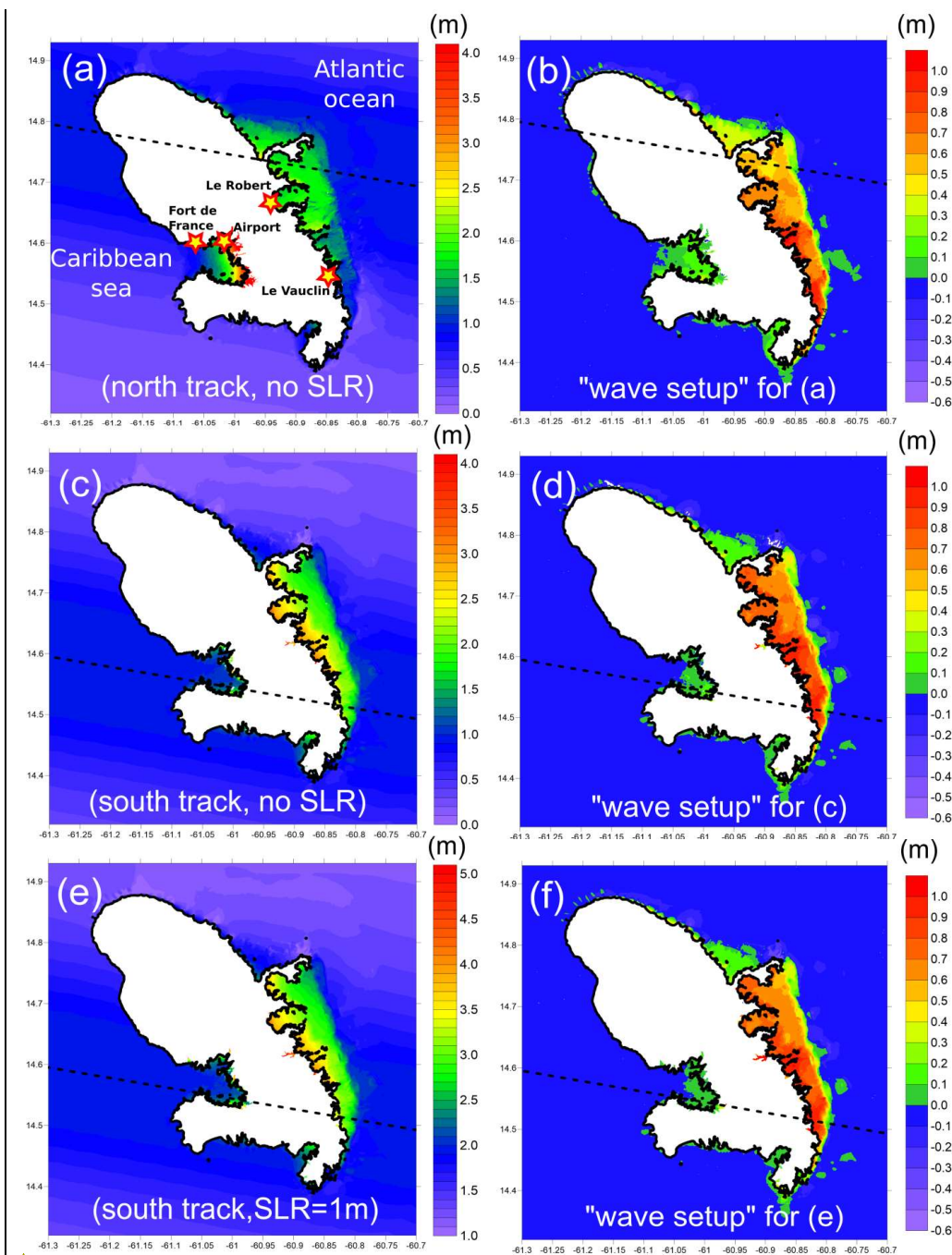
Code de champ modifié

Mis en forme : Surlignage

Mis en forme : Surlignage

Code de champ modifié

Code de champ modifié



Mis en forme : Police :(Par défaut)
Times New Roman

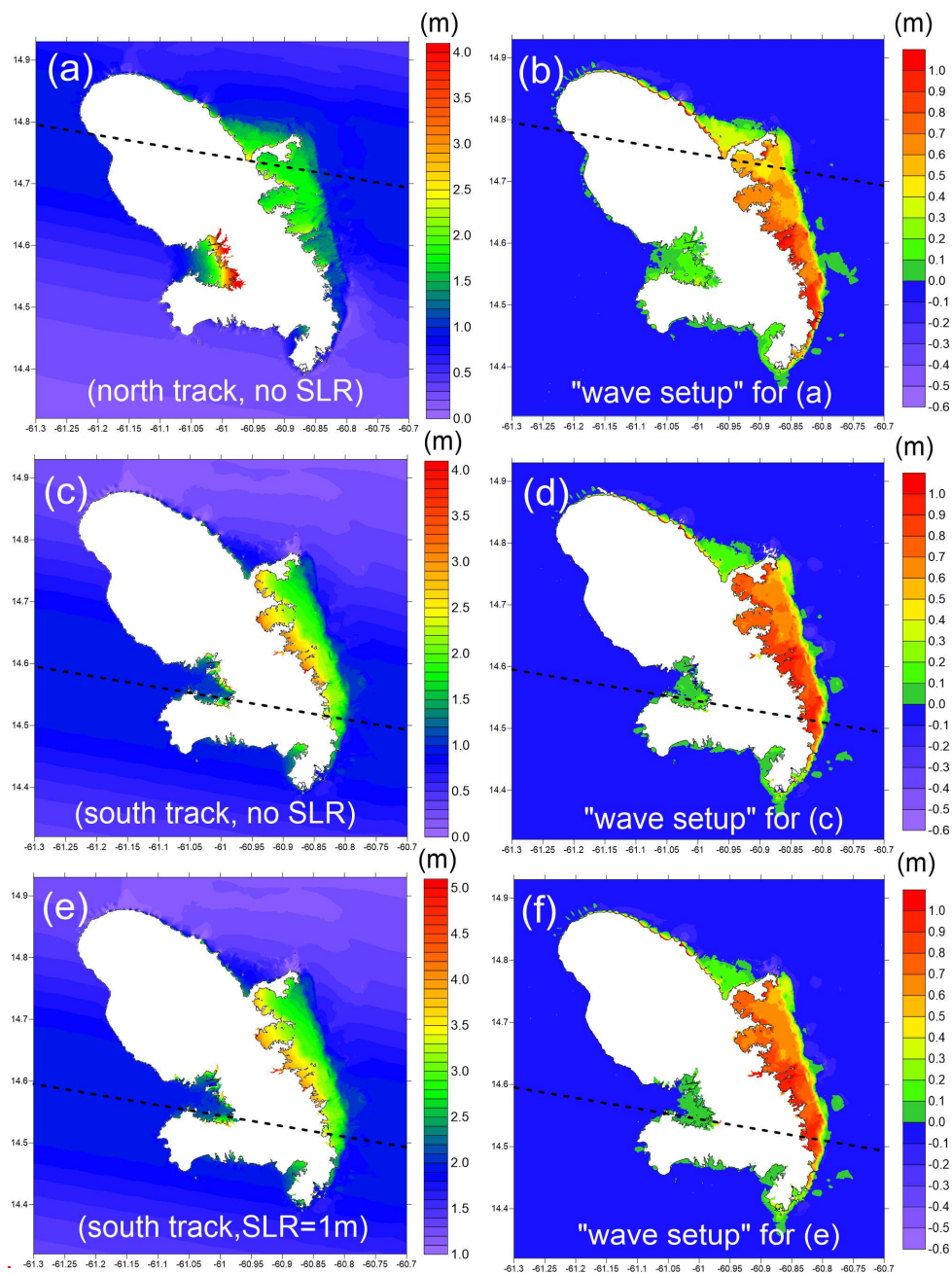


Figure 5-Maximum water levels (left) and wave setup (right) for three « worst case » (category 4-5) hurricanes : northern track and no sea level rise ((a) and (b)), southern track and no sea level rise ((c) and (d)), and southern track with 1 m-sea level rise ((e) and (f)). The dashed black lines represent the track of the cyclone for each scenario. « Wave setup » refers here to the difference between the maximum water levels with and without waves. Note that the wave setup "peaks" offshore the northwest coast are probably due to small numerical instabilities in SWAN, in a region with strong lateral bathymetric variations. Fortunately these errors are found to be very small (1 cm maximum) and bear no consequences on the results presented in this paper.

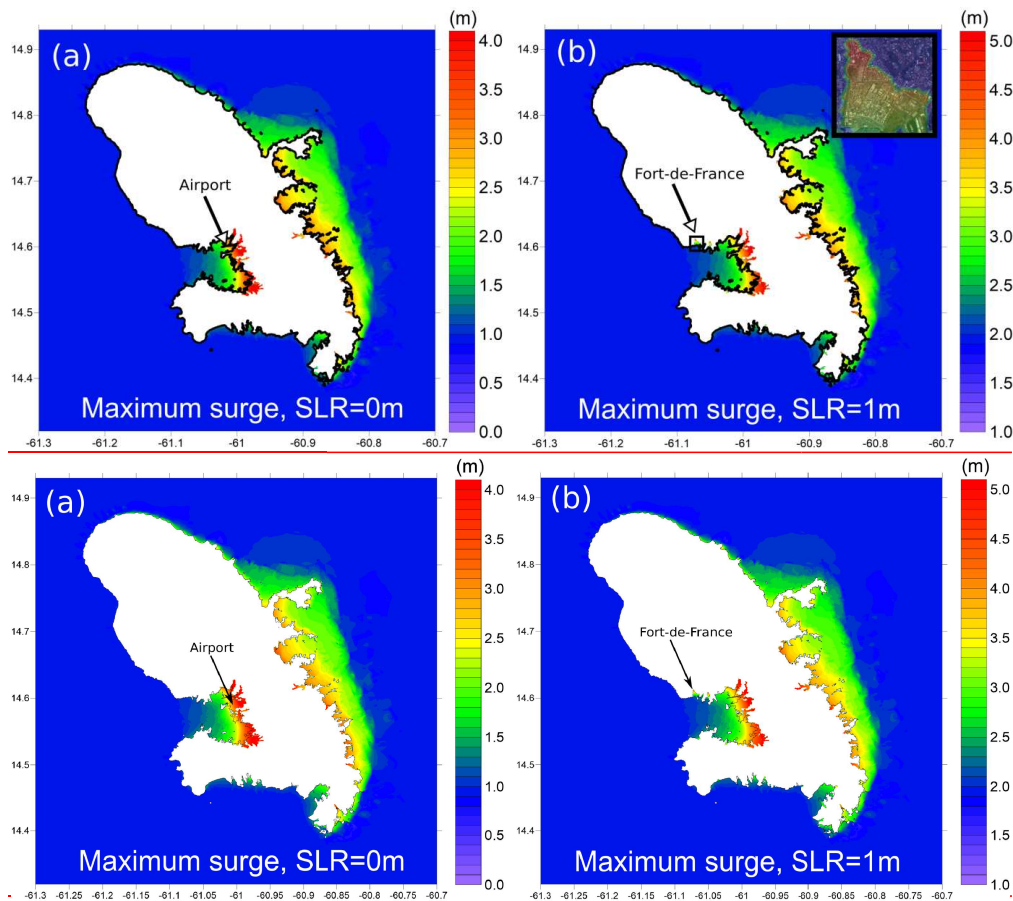


Figure 6-Maximum surges obtained by considering « worst case » (category 4-5) hurricanes hitting Martinique, without (a) et with (b) sea level rise.

The maximum water levels computed using the 13 synthetic category 4-5 hurricanes is presented in [Figure 6](#) [Figure 3](#)(a). As mentioned above, the maximum surges are obtained for the bay of Fort-de-France, where water levels can exceed 4 m above mean sea level. The head of the bay, where high environmental and transportation stakes are located (e.g. airport, national roads, mangrove forest), is particularly exposed.

The shallow waters of the eastern coast also promote significant surges, which can reach about 3 m. On the other hand, the steep slopes characterizing most of the western part of Martinique impedes strong wind surges, and are generally not directly exposed to waves, so that maximum water levels are considerably reduced. Note however that the grid resolution (about 50m) is probably not sufficient to [fully](#) capture the wave setup in these areas, so that the maximum surge (about 1 m) might be somewhat underestimated.

A sea level rise of 1 m would have potentially major impacts, for example in the urban area of Fort-de-France ([Figure 6](#) [Figure 3](#)(b)) where ~~the cathedral or the courthouse~~ [many buildings](#) could be flooded in case of a severe storm.

5.2-Statistical storm surge analysis

The 100-year surge levels obtained using the database described in section 3 are plotted in [Figure 7](#) [Figure 4\(a\)](#). Since ~~category 4-5 extreme~~ hurricanes striking Martinique (~~and for which maximum water levels can be reached locally~~) are rather scarce, ~~these levels~~ are found to be significantly smaller than the maximum surges estimated above, by a factor 2 or more. However, they still reach 1.5 m on the Atlantic coast, or in Fort-de-France's Bay. These 100-year surge heights are thus significantly higher than those computed in early studies (Météo France, 2002), with discrepancies that can reach 1 m for example in the south-east. Such differences are certainly largely due to the wave induced setup, which has been found to contribute significantly to the water levels (section 5.1), and was not accounted for in the early 2000's.

The impact of a 1 m sea level rise on 100-year surge levels is investigated in [Figure 7](#) [Figure 4\(b\)](#). The non-linear interactions between surge and topography-bathymetry result in a decrease of water levels by several centimeters in most coastal areas, especially between the eastern shoreline and coral reefs, where the wave setup is reduced, and in shallow waters where the wind is less efficient in generating surges because of larger water depths. Conversely, the 100-year surges are increased inland by a few tens of centimeters in low-lying regions where the inundation extent is strongly enhanced by the sea level rise. ~~This is the case for example in the (e.g. bay of Fort-de-France south-east of Fort-de-France Bay, or « Les Salines » beach, in the far south)-in "Les Salines" laguna where a 1m sea level rise will allow storm surges to inundate the low-lying areas beyond the sand dune (Figure 1 (d)).~~

Mis en forme : Non Surlignage

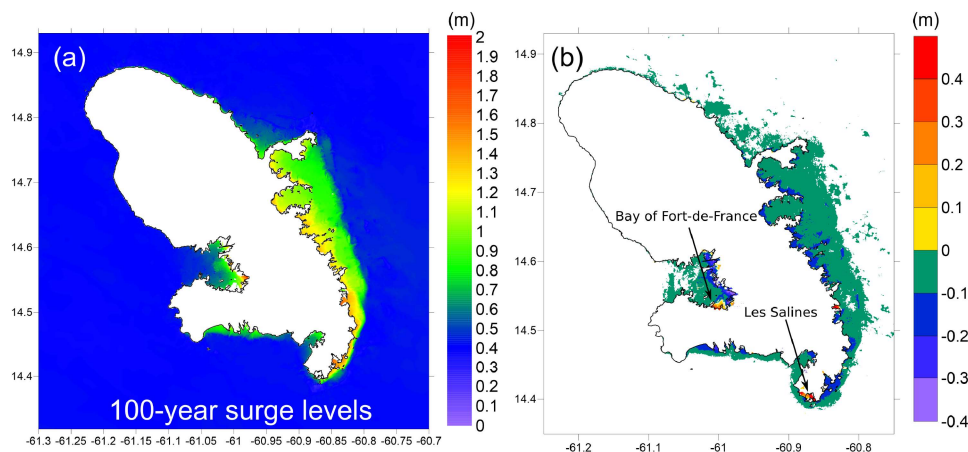


Figure 7-100-year surge levels for present climate and no SLR (a), as well as difference between 100-year surge levels for present climate when considering a 1m-sea level rise (b).

6-Conclusions and discussion

Using coupled wave-current numerical models and a dataset of synthetic hurricanes representing thousands of years of cyclonic activity in the central part of the Lesser Antilles, we presented a detailed analysis of storm surge hazard in Martinique for the present climate, and started investigating the potential changes expected for the next decades. The 100-year and extreme surge levels are found to be highest for the bay of Fort-de-France and the Atlantic coast (south of La Trinité, [see Figure 1 for location](#)), where they can reach up to 4-5 m and 3 m respectively. ~~In the latter case, a~~ very significant

part of the surge (up to about 1 m) of the surge on the eastern coast) can be due to the wave setup. The contribution of radiation stress gradients can even account for almost all the total surge in some special cases, for example for hurricanes making landfall in the northern part of Martinique that will induce essentially cross-shore or offshore winds (and hence low wind setup) on the south-eastern coast.

~~The contribution of the transfer of momentum from waves to the water column can amount up to 100 % of the total surge in some cases.~~

The non-linear interactions of sea level rise with bathymetry and topography are generally found to be relatively small, with a reduction of surge by a few centimeters in many nearshore areas, because the wave setup is reduced and the wind is less efficient in driving water masses towards the shoreline with increasing water depths. However, they can amount to several tens of centimeters in specific low-lying areas (mangroves or lagoons for example) where the inundation extent is strongly enhanced compared to present conditions, thanks to SLR. These results provide further evidence that drawing inundation maps for the future without considering non-linear effects of sea level rise on water levels with SLR by simply changing manually the elevation data (from a scenario without SLR) can lead to significant errors.

In case of a large sea level rise in the coming decades, hurricanes striking Martinique could have devastating impacts in the bay of Fort-de-France, where most economical, historical and transportation stakes are located. According to some of our « worst case » scenarios, a large part of Fort-de-France urban area (including the cathedral or the courthouse) could be regularly flooded by hurricanes by the end of the 21st century. This finding also applies to the airport, located on the waterfront, and probably several major trunk roads.

~~These results should be of great help for policy makers and coastal planners to develop evacuation plans and implement adaptation measures.~~ 7-Discussion

~~Although these results constitute a significant step forward in assessing storm surge hazard and impacts of SLR in Martinique, should be of great help for policy makers and coastal planners to develop evacuation plans and implement adaptation measures~~ one must keep in mind that the study still leaves room for improvement. In particular,

~~More~~ More work will be needed however in the future to further investigate the impacts of climate change, including :

- *Changes in hurricane activity.* Although the effect of a warmer climate remains uncertain, a number of studies seem to reach the conclusion that the frequency of hurricanes will decrease, but that these events will be in average more intense (e.g. Knutson et al., 2010). This might lead to changes in water levels for a given return period, even if preliminary works suggest that the impact could be very moderate compared to the effect of SLR (e.g. Condon and Sheng, 2012).
- *Evolution of coastal ecosystems.* Coral bleaching and mortality are expected to increase over the next decades due to ocean warming and acidification (e.g. Hoegh-Guldberg et al., 2007; Baker et al., 2008; Wong et al., 2014). Although it is not clear whether coral reefs will be able to keep up with the sea level rise in Martinique, their dramatic decline due to eutrophication, anthropogenic disturbances or hurricanes over the past 40 years (Bouchon and Laborel, 1986;

Mis en forme : Non Surlignage

Legrand et al., 2008; Rousseau et al., 2010; IFRECOR, 2016) give little reason for optimism. This could have major consequences in terms of wave impacts at coastlines, and possibly also for surges, although the results presented here suggest that this effect might be moderate. Similarly, mangrove forests have been at least partially deteriorated due to earthworks, water and soil pollution, or hurricanes (e.g. Imbert and Migeot 2009), and may have difficulty adapting to climate change in some specific areas (Gilman et al., 2008; IFRECOR, 2016). Seagrass beds already degraded by anthropic pressure or patches of Sargassum (Thabard and Pouget-Cuvelier, 2014) might experience the same fate (Waycott et al., 2009). As a consequence, shorelines might be much more vulnerable to erosion and storm surges in the following decades (e.g. Alongi, 2008; Wong et al., 2014).

- Besides, it is not clear whether coral reefs will be able to keep up with the sea level rise (we assumed in the present paper that it was not the case). This could have an impact in terms of surges, although the results presented here suggest that the effect might be moderate. It could also have major consequences in terms of wave impact at coastlines. Similarly, mangrove forests and seagrass beds could be sensitive to climate change (e.g. Waycott et al 2009, Gilman et al 2008), rendering shorelines more vulnerable to erosion and storm surges (e.g. Alongi, 2008, Wong et al 2014).
- *Evolution of the shoreline, due to sediment transport, human activities or vertical motions.* In Martinique, a few low sandy coastlines are subject to erosion and might be more exposed to relative sea level rise in the coming decades (Lemoigne et al 2013). This is the case for several coves, especially in the south (e.g. Sainte Anne, see Figure 1). However, most of low-lying coastal areas are rather in accretion, because of natural and/or anthropic factors. This has been observed in particular for the bay of Fort-de-France, where a coastline extension of about 100m was reported between 1951 and 2010 (Lemoigne et al 2013) in the mangrove area.
- Besides, the numerical approach can be further improved, particularly regarding:
 - *The resolution.* Due to high computational costs, it was hardly possible to have a resolution better than 50m at the coastline and for coral reefs. To get an idea of the potential error on water levels, we performed a few sensitivity tests with higher resolutions (typically 20-30m). The discrepancy was found to amount only up to a few centimeters in shallow areas, where most of the stakes are exposed to storm surges. The coral reefs geometry seems to be satisfactorily captured by the mesh, probably because the reefs are strongly eroded (so that bathymetric gradients are relatively mild), and also because we ensured that the minimum water depths were correctly captured in these areas. However, a resolution of 50m is probably insufficient to properly assess the wave setup component in areas where the slope is steep. Results found are thus expected to be somewhat underestimated in the north-western coast for example. Note however that these areas are generally not really exposed to storm surges. There are more prone to wave overtopping, which is not taken into account in this study and will require further work in the future.
 - *The phase-averaged model.* Phase-averaged models suffer from several limitations. In particular, they do not deal with run-up, which might contribute significantly to shoreline inundation (e.g Ford et al., 2013). This can be the case for example for fringing coral reefs, where the water level can be dominated by large low-frequency (e.g. infragravity) waves. Indeed, during extreme events, the spectral wave energy at reef crests shifts into lower frequencies, which can be amplified due to resonance modes (e.g. Roberts et al., 1992; Péquinet et al., 2009; Cheriton et al., 2016). Even if (to our knowledge) large infragravity

Mis en forme : Non Surlignage

Mis en forme : Non Surlignage

Mis en forme : Non Surlignage

Mis en forme : Non Surlignage

Mis en forme : Non Surlignage

Mis en forme : Non Surlignage

Mis en forme : Non Surlignage

Mis en forme : Non Surlignage

Mis en forme : Surlignage

Mis en forme : Non Surlignage

Mis en forme : Police :Italique, Anglais (États-Unis)

Mis en forme : Paragraphe de liste, Avec puces + Niveau : 1 + Alignement : 0,63 cm + Retrait : 1,27 cm

Mis en forme : Anglais (États-Unis)

Mis en forme : Police :Italique

waves were not reported in Martinique, we see no reason to rule them out. Besides, climate change and sea level rise are expected to change the hydrodynamics across the reefs, and might further increase the exposure of coastlines to these type of waves (e.g. Merrifield et al., 2014). This issue has been receiving more and more attention over the last years, and will probably be a major topic of research in the near future.

- West-to-East tracks. A few hurricanes impacting Martinique and traveling eastward have been reported recently (e.g. OMAR in 2008 or Lenny in 1999). Although several synthetic events with similar characteristics are included in our database, these events might be to infrequent to be properly represented from a statistical point-of-view. Since they generally pass far away from Martinique, they are not expected to have large impacts on our computed 100-year surges in low-lying (surge prone) areas. But larger errors can be expected for steep slopes, on the western coast.

Mis en forme : Police :Italique

Mis en forme : Police :Italique

Mis en forme : Police :Italique

Some of these issues (impacts of climate change, resolution, etc) are currently being addressed for the French West Indies in the framework of C3AF, a project funded by the ERDF (European Regional Development Fund).

Note that The methodology and results obtained here should be of interest for other islands in the Lesser Antilles, as they have similar morphological features as Martinique, such as a relatively narrow shelf, contrasted slope morphologies, presence of coral reefs and/or mangrove forests. This is confirmed for instance for the Guadeloupe archipelago, where very similar results in terms of 100-year surge levels (Krien et al., 2015), maximum water levels, or wave setup contribution are found.

Acknowledgments

This work was supported by the INTERREG IV/TSUNAHOULE and FEDER/C3AF projects as well as Guadeloupe region. Many thanks to Kerry Emmanuel from Massachusetts Institute of Technology for providing the synthetic storm data sets, as well as to Raphaël Pasquier, Jacques Laminie and Pascal Poulet (University of the French West Indies) for the setup of the computing cluster.

Bibliography

Alongi, D. M., 2008: Mangrove forests: resilience, protection from tsunamis, and response to global climate change. Estuarine, Coastal and Shelf Science, 76(1), 1-13.

Baker, A.C., Glynn, P.W., Riegl, B. (2008). Climate change and coral reef bleaching: An ecological assessment of long-term impacts, recovery trends and future outlook. Estuarine, Coastal, and Shelf Science, 80, 435-471

Barras, A.V., Oliveros, C., Joseph, B., Marimoutou, C. (2008). Inventaire et caractérisation des impacts de la houle sur le littoral de la Martinique au passage de l'ouragan Dean (17 août 2007). Rapport BRGM/RP-55954-FR, 53 p.

Battjes, J.A., Janssen, J., 1978. Energy loss and set-up due to breaking of random waves. In: Paper presented at 16th International Conference on Coastal Engineering, Coastal Engineering Research Council, Hamburg, Germany.

Bennis, A.C., Ardhuin, F., Dumas, F. (2011). On the coupling of wave and three dimensional circulation models: choice of theoretical framework, practical implementation and adiabatic tests. Ocean Modell. 40, 260–272.

Booij, N., Ris, R.C., Holthuijsen, L.H. (1999). A third-generation wave model for coastal regions, Part I, model description and validation. *Journal of Geophysical Research*, 104, 7649–7666

Mis en forme : Français (France)

Bouchon, C., Laborel J. (1986). Les peuplements coralliens des côtes de la Martinique. *Ann. Inst. Oceanogr.*, 62: 199-238.

Mis en forme : Français (France)

Mis en forme : Anglais (États-Unis)

Brown, J. M., Bolaños, R., and Wolf, J.(2011) Impact assessment of advanced coupling features in a tide-surge-wave model, POLCOMS-WAM, in a shallow water application, *J. Mar. Syst.*,87, 13–24.

Cavaleri, L., and P. Malanotte-Rizzoli, Wind wave prediction in shallow water: Theory and applications, *J. Geophys. Res.*, 86(C11), 10,961–10,973, 1981

Cheriton, O. M., C. D. Storlazzi, and K. J. Rosenberger (2016). Observations of wave transformation over a fringing coral reef and the importance of low frequency waves and offshore water levels to runup, overwash, and coastal flooding, *J. Geophys. Res. Oceans*, 121, 3121–3140, doi:10.1002/2015JC011231.

Condon, A.J., Sheng, Y.P. (2012). Evaluation of coastal inundation hazard for present and future climates. *Nat. Hazards*, 62, 345-373.

Dehoorne, O., Tatar, C.F., Augier, D. (2014). The paradoxes of a tourism crisis : the example of the island of Martinique (French West Indies), *Zeszyty Naukowe Uniwersytetu Szczecinskiego, Scientific Journal, Service Management*, Vol 14, 69-85.

Desarthe, J. (2014). Ouragans et submersions dans les Antilles françaises (XVIIème-Xxème siècle). *Etudes caribéennes*, 29, Décembre 2014, DOI:10.4000/etudescaribeennes.7176

Dietrich, J.C., Zijlema, M., Westerink, J.J., Holthuijsen, L.H., Dawson, C., Luetlich, R.A., Jensen, R.E., Smith, J.M., Stelling, G.S., Stone, G.W. (2011a). Modeling hurricane waves and storm surge using integrally-coupled scalable computations. *Coast. Eng.* 58, 45–65.

Dietrich, J.C., Westerink, J.J., Kennedy, A.B., Smith, J.M., Jensen, R.E., Zijlema, M., Holthuijsen, L.H., Dawson, C.N., Luetlich Jr., R.A., Powell, M.D., Cardone, V.J., Cox, A.T., Stone, G.W., Pourtaheri, H., Hope, M.E., Tanaka, S., Westerink, L.G., Westerink, H.J., Cobell, Z. (2011b). Hurricane Gustav (2008) waves and storm surge: hindcast, synoptic analysis, and validation in Southern Louisiana. *Mon. Weather Rev.* 139, 2488–2522.

Dietrich, J.C., Tanaka, S., Westerink, J.J., Dawson, C.N., Luetlich Jr., R.A., Zijlema, M., Holthuijsen, L.H., Smith, J.M., Westerink, L.G., Westerink, H.J. (2012). Performance of the Unstructured-Mesh, SWAN+ADCIRC Model in Computing Hurricane Waves and Surge. *Journal of Scientific Computing*, 52 (2), pp 468-497

Durand, F., Vernet, G., Augris, C. (1997). Cyclonic risk in Martinique and response to hurricane Allen. *Journal of Coastal Research*, Special issue n°24, 17-27.

Mis en forme : Anglais (États-Unis)

Dutour Sikiric, M., Roland, A., Janekovic, I., Tomazic, I., Kuzmic, M. (2013). Coupling of the regional ocean modelling system and wind wave model. *Ocean Model*, 72: 59—73.

Mis en forme : Anglais (États-Unis)

Mis en forme : Anglais (États-Unis)

Mis en forme : Anglais (États-Unis)

Duvat, V. (2015). Changement climatique et risques côtiers dans les îles tropicales. *Ann. Géo*, n°705, 541-566.

Eldeberky, Y., 1996. Nonlinear Transformations of Wave Spectra in the Nearshore Zone (Ph.D. thesis of Delft University of Technology). The Netherlands, Delft, p.203.

Emanuel, K., DesAutels, C., Holloway, C., Korty, R. (2004). Environmental control of tropical cyclone intensity. *J. Atmos. Sci.*, 61, 843-858.

Emanuel, K., Ravela, S., Vivant, E., Risi, C. (2006). A statistical deterministic approach to hurricane risk assessment. *Bull. Am. Meteorol. Soc.*, 87, 299-314

Emanuel, K., Rotunno, R. (2011). Self-stratification of tropical cyclone outflow. Part I: Implications for storm structure. *J. Atmos. Sci.*, 68, 2236-2249

EPRI (2012). L'évaluation préliminaire des risques d'inondation 2011-Bassin Martinique. Rapport DEAL Martinique.

[Ferrario, F., Beck, M.W., Storlazzi, C.D., Micheli, F., Shepard, C.C. & Airoidi, L. 2014. The effectiveness of coral reefs for coastal hazard risk reduction and adaptation. *Nature Communications* 5, 3794.](#)

[Ford, M. R., Becker, J.M., Merrifield, M.A. \(2013\). Wave processes and excavation pits: Observations and implications for Majuro Atoll, Marshall Islands, *J. Coastal Res.*, 29\(3\), 545-554](#)

Garnier, E., Desarthe, J., and Moncoulon, D. (2015). The historic reality of the cyclonic variability in French Antilles, 1635-2007, *Clim. Past Discuss.*, 11, 1519-1550.

Gilman, E.L., Ellison, J., Duke, N.C., Field, C. (2008), « Threats to mangroves from climate change and adaptation options: a review », *Aquatic Botany*, n° 89(2), p. 237- 250.

Grau, A., Roudil, L. (2013). Réalisation de prestations nécessaires à l'élaboration de cartes de surfaces inondables sur les Territoires à Risques Importants d'inondations (TRI). Rapport d'accompagnement. Egis Eau, Décembre 2013.

Haigh, I. D., MacPherson, L.R., Mason, M.S., Wijeratne, E.M.S., Pattiaratchi, C.B., Crompton, R.P., George, S. (2014). Estimating present day extreme water level exceedance probabilities around the coastline of Australia: Tropical cyclone-induced storm surges. *Clim. Dynam.* 42, 139-157.

Harper B, Hardy T, Mason L, Fryar R (2009), Developments in storm tide modelling and risk assessment in the Australian region. *Nat. Hazards* 51:225-238

Hasselmann, S., Hasselmann, K., Allender, J.H., Barnett, T.P., 1985. Computations and parameterizations of the linear energy transfer in a gravity wave spectrum, II, parameterizations of the nonlinear transfer for application in wave models. *J.Phys. Oceanogr.* 15, 1378-1391.

Hoegh-Guldberg, O., Mumby, P.J., Hooten, A.J., Steneck, R.S., Greenfield, P., Gomez, E., Harvell, C.D., Sale, P.F., Edwards, A.J., Caldeira, K., Knowlton, N., Eakin, C.M., IglesiasPrieto, R., Muthiga, N., Bradbury, R.H., Dubi, A., Hatziolos, M.E., 2007. Coral reefs under rapid climate change and ocean acidification. *Science* 318:1737-1742

Holland, G.J. (1980). An Analytic Model of the Wind and Pressure Profiles in Hurricanes. *Mon. Wea. Rev.*, 108, 1212-1218.

Hope, M.E., Westerink, J.J., Kennedy, A.B., Kerr, P.C., Dietrich, J.C., Dawson, C., Bender, C., Smith, J.M., Jensen, R.E., Zijlema, M., Holthuijsen, L.H., Luettich, R.A., Powell, M.D., Cardone, V.J., Cox, A.T., Pourtahe, H., Roberts, H.J., Atkinson, J.H., Tanaka, S., Westerink, H.J., Westerink, L.G., (2013). Hindcast and validation of Hurricane Ike (2008): waves, forerunner, and storm surge. *J. Geophys. Res. Oceans* 118, 4424–4460.

Mis en forme : Français (France)

IFRECOR (2016). Etat des récifs coralliens et des écosystèmes associés des Outre-mer français en 2015. 168pp.

Mis en forme : Français (France)

Imbert D., Migeot J. (2009). Impact de l'Ouragan Dean sur les forêts côtières inondables de la Martinique : le cas de la mangrove de Ducos et de la forêt marécageuse du Galion. Rapport pour IREN. 16p.

Mis en forme : Français (France)

Mis en forme : Français (France)

Mis en forme : Français (France)

Mis en forme : Français (France)

Mis en forme : Français (France)

Mis en forme : Français (France)

IPCC, 2013: Summary for Policymakers. In: Climate Change 2013: The Physical Science Basis. Contribution of Working Group I to the Fifth Assessment Report of the Intergovernmental Panel on Climate Change [Stocker, T.F., D. Qin, G.-K. Plattner, M. Tignor, S. K. Allen, J. Boschung, A. Nauels, Y. Xia, V. Bex and P.M. Midgley (eds.)]. Cambridge University Press, Cambridge, United Kingdom and New York, NY, USA.

Kennedy, A.B., Gravois, U., Zachry, B.C., Westerink, J.J., Hope, M.E., Dietrich, J.C., Powell, M.D., Cox, A.T., Luettich Jr., R.A., Dean, R.G. (2011). Origin of the Hurricane Ike forerunner surge. *Geophys. Res. Lett.* 38 (L08608).

Knutson T, McBride J, Chan J, Emanuel K, Holland G, Landsea C, Held I, Kossin J, Srivastava A, Sugi M (2010) Tropical cyclones and climate change. *Nat Geosci* 3:157–163

Komen, G. J., S. Hasselmann, and K. Hasselmann, On the existence of a fully developed wind-sea spectrum, *J. Phys. Oceanogr.*, 14, 1271–1285, 1984.

Krien, Y. (2013). Note technique projet TSUNAHOULE : évaluation des périodes de retour des surcotes cycloniques dans les Antilles Françaises. Report.

Krien, Y., Dudon, B., Roger, J., Zahibo, N. (2015). Probabilistic hurricane-induced storm surge hazard assessment in Guadeloupe, Lesser Antilles. *NHESS*, 15, 1711-1720.

Mis en forme : Anglais (États-Unis)

Kumar, N., Voulgaris, G., Warner, J. C., and Olabarrieta, M. (2012). Implementation of the vortex force formalism in the coupled ocean-atmosphere-wave-sediment transport (COAWST) modelling system for inner shelf and surf zone applications, *Ocean Model.*, 47, 65–95.

Mis en forme : Police : (Par défaut)
Times New Roman, Anglais (États-Unis)

Mis en forme : Police : (Par défaut)
Times New Roman, Anglais (États-Unis)

Mis en forme : Police : (Par défaut)
Times New Roman, Anglais (États-Unis)

Mis en forme : Police : (Par défaut)
Times New Roman, Anglais (États-Unis)

Mis en forme : Anglais (États-Unis)

Légrand H., Rousseau Y., Peres C., Marechal J.P. (2008). Suivi écologique des récifs coralliens des stations IFRECOR en Martinique de 2001 à 2006. *Rev. d'Ecol.* 63(1-2) : 67-84.

Lemoigne B., Paulineau M., Nachbaur A., Stépanian A. (2013). Établissement d'un état de référence du trait de côte de la Martinique : situation en 2010 et évolution historique depuis 1951. Rapport final. BRGM/RP- 61686-FR150 p 85, 31 illustrations, 2 annexes

Léone, F. (2007). Caractérisation des vulnérabilités aux catastrophes naturelles : contribution à une évaluation géographique multirisque. Habilitation à diriger des recherches, Université Paul Valéry, Montpellier III.

~~Lerma, A.N., François, T.Y., Saffache, P., Durand, P., Lamy, M. (2014). Modélisation des niveaux marins extrêmes associés à la circulation des cyclones Lenny (1999) et Omar (2008), commune de saint-pierre, littoral nord-ouest de la Martinique. VertigO, 14 (3), 23 p.~~

Levitus, S. (1982). Climatological Atlas of the World Ocean. National Oceanic and Atmospheric Administration Prof. Paper 13, 173 pp. and 17 microfiche.

Lin, N., Emanuel, K.A., Smith, J.A., Vanmarcke, E. (2010). Risk assessment of hurricane storm surge for New York City. Journal of Geophysical Research-Atmospheres, 115, D18121, doi:10.1029/2009JD013630

Lin, N., Emanuel, K., Oppenheimer, M., Vanmarcke, E. (2012). Physically based assessment of hurricane surge threat under climate change. Nature Climate Change, 2, 462-467

Luetich RA, Westerink JJ, Scheffner NW (1992) ADCIRC: an advanced three-dimensional circulation model for shelves, coasts and estuaries. report 1: theory and methodology of ADCIRC-2DDI and ADCIRC-3DL. U.S. army corps of engineers technical report DRP-92-6

Madsen, O.S., Poon, Y.-K., Graber, H.C.: Spectral wave attenuation by bottom friction: theory. In: Proceedings of the 21st International Conference on Coastal Engineering, pp. 492–504. ASCE, Reston (1988)

~~Merrifield, M. A., J. M. Becker, M. Ford, and Y. Yao (2014). Observations and estimates of wave-driven water level extremes at the Marshall Islands, Geophys. Res. Lett., 41, 7245–7253, doi:10.1002/2014GL061005.~~

Meteo France (2002). Evaluation du risque lié aux surcotes cycloniques sur les Antilles Françaises (Meteo France, report).

Murty, P.L.N., Bhaskaran, P.K., Gayathri, R., Sahoo, B., Srinivasa Kumar, T., SubbaReddy, B. (2016) Numerical study of coastal hydrodynamics using a coupled model for Hudhud cyclone in the Bay of Bengal. Estuarine Coastal and Shelf Science, doi: 10.1016/j.ecss.2016.10.013.

Neumann, B., Vafeidis, A.T., Zimmermann, J., Nicholls, R.J. (2015). Future coastal population growth and exposure to sea-rise and coastal flooding – A global assessment. PLOS ONE, 10(6): e0131375.

~~Nicolae Lerma, A.N., François, T.Y., Saffache, P., Durand, P., Lamy, M. (2014). Modélisation des niveaux marins extrêmes associés à la circulation des cyclones Lenny (1999) et Omar (2008), commune de saint-pierre, littoral nord-ouest de la Martinique. VertigO, 14 (3), 23 p.~~

Niedoroda, A.W., Resio, D.T., Toro, G.R., Divoky, D., Das, H.S., Reed, C.W. (2010). Analysis of the coastal Mississippi storm surge hazard. Ocean Eng. 37, 82–90.

Pagny, F. and F. Léone (1999). Les Antilles, terres à risques. Paris, Karthala

Palanisamy, H., Becker, M., Meyssignac, B., Henry, O., Cazenave, A. (2012). Regional sea level change and variability in the Caribbean Sea since 1950. Journal of Geodetic Science, n° 2(2),125-133.

Mis en forme : Anglais (États-Unis)

Mis en forme : Anglais (États-Unis)

Mis en forme : Anglais (États-Unis)

Mis en forme : Français (France)

Mis en forme : Français (France)

Mis en forme : Français (France)

Mis en forme : Anglais (États-Unis)

Pequignet, A.-C., J. M. Becker, M. A. Merrifield, and J. Aucan (2009). Forcing of resonant modes on a fringing reef during tropical storm Man-Yi, Geophys. Res. Lett., 36, L03607, doi:10.1029/2008GL036259.

Mis en forme : Anglais (États-Unis)

Mis en forme : Anglais (États-Unis)

Mis en forme : Français (France)

PGRI (2014). Plan de Gestion des Risques d'Inondation de Martinique (PGRI). Rapport DEAL Martinique - Egis Eau.

Mis en forme : Français (France)

Poisson, B., Pedreros, R. (2007). Tsunamis: étude de cas au niveau de la côte antillaise française – Modélisation numérique, Rapport BRGM/RP 55761, Orléans 111 p.

Mis en forme : Français (France)

Mis en forme : Français (France)

Qi, J., Chen, C., Beardsley, R.C., Perrie, W., Cowles, G.W., Lai, Z. (2009). An unstructured-grid finite-volume surface wave model (FVCOM-SWAVE): implementation, validations and applications. Ocean Modell. 28, 153–166.

Resio, D.T. (2007). White Paper on Estimating Hurricane Inundation Probabilities. US Army Corps of Engineers, Engineer Research and Development Center, Vicksburg, MS.

Roberts, H. H., P. A. Wilson, and A. Lugo-Fernandez (1992). Biologic and geologic responses to physical processes: Examples from modern reef systems of the Caribbean-Atlantic region, Cont. Shelf Res., 12(7), 809–834.

Roland, A., Zhang, Y.J., Wang, H.V., Meng, Y., Teng, Y.C., Maderich, V., Brovchenko, I., Dutour-Sikiric, M., and Zanke, U. (2012). A fully coupled 3D wave-current interaction model on unstructured grids. J. Geophys. Res., 117, C00J33, doi:10.1029/2012JC007952.

Mis en forme : Police : (Par défaut)
Times New Roman

Mis en forme : Police : (Par défaut)
Times New Roman

Mis en forme : Police : (Par défaut)
Times New Roman

Rousseau, Y., Galzin, R. and Marechal, J. P. (2010). Impact of hurricane Dean on coral reef benthic and fish structure of Martinique, French West Indies. Cybium 34, 3: 243–256.

Mis en forme : Anglais (États-Unis)

Mis en forme : Anglais (États-Unis)

Mis en forme : Anglais (États-Unis)

Saffache, P. (2000). Le littoral martiniquais : milieux, dynamiques et gestion des risques. Villeneuve d'Ascq : Presses Universitaires du Septentrion.

Saffache P., Marc J.V., Cospar O. (2002). Les cyclones en Martinique : quatre siècles cataclysmiques (éléments pour une prise de conscience de la vulnérabilité de l'île de la Martinique). Paris : Ibis Rouge Éditions - Presses Universitaires Créoles, Collection Géographie & Aménagement des Espaces Insulaires, 197 p.

Sansorgne, E. (2013). Etude de la méthode des fonctions réponses pour la prévision des surcotes cycloniques dans les Antilles: exemple de la baie du Robert, Martinique. Rapport Master 2.

Thabard M., Pouget-Cuvelier A. (2014). Incidences des échouages de sargasses pélagiques sur les côtes Martiniquaises. Présentation IFRECOR, décembre 2014.

Mis en forme : Anglais (États-Unis)

Toro, G.R., Niedoroda, A.W., Reed, C., Divoky, D. (2010). Quadrature-based approach for the efficient evaluation of surge hazard. Ocean Eng. 37, 114–124.

Union Européenne: SoeS CORINE Land Cover, UE, 2006.

Waycott, M., Duarte, C.M., Carruthers, T.J.B., Orth, R.J., Dennison, W.C., Olyarnik, S., Calladine, A., Fourqurean, J.W., Heck, K.L., Hughes, A.R., Kendrick, G.A., Kenworthy, W.J., Short, F.T., Williams, S.L. (2009), "Accelerating loss of seagrasses across the globe threatens coastal ecosystems". Proceedings of the National Academy of Sciences of the United States of America, n° 106(30), p. 12377-12381

Westerink J.J., Luettich R.A., Blain C.A., Scheffner N.W. (1994a) ADCIRC: an advanced three-dimensional circulation model for shelves, coasts and estuaries. Report 2: users' manual for ADCIRC-2DDI. Technical report DRP-94, U.S. army corps of engineers

WMO (2014). Atlas of Mortality and Economic Losses From Weather, Climate and Water Extremes (1970-2012), World Meteorological Organization, 1123, Geneva.

Wolf, J., Brown, J. M., Bolaños, R., and Hedges, T.(2011) Waves in coastal and estuarine waters, in: Treatise on Estuarine and Coastal Science, edited by: Wolanski, E. and McLusky, D., Elsevier, 2, 171–212.

Wong, P.P., I.J. Losada, J.-P. Gattuso, J. Hinkel, A. Khattabi, K.L. McInnes, Y. Saito, and A. Sallenger, 2014: Coastal systems and low-lying areas. In: Climate Change 2014: Impacts, Adaptation, and Vulnerability. Part A: Global and Sectoral Aspects. Contribution of Working Group II to the Fifth Assessment Report of the Intergovernmental Panel on Climate Change [Field, C.B., V.R. Barros, D.J. Dokken, K.J. Mach, M.D. Mastrandrea, T.E. Bilir, M. Chatterjee, K.L. Ebi, Y.O. Estrada, R.C. Genova, B. Girma, E.S. Kissel, A.N. Levy, S. MacCracken, P.R. Mastrandrea, and L.L. White (eds.)]. Cambridge University Press, Cambridge, United Kingdom and New York, NY, USA, pp. 361-409.

Zijlema, M., 2010. Computation of wind-wave spectra in coastal waters with SWAN on unstructured grids. Coastal Engineering 57, 267–277.

Page 2 : [1] Mis en forme	admin	21/06/2017 14:12:00
Police :(Par défaut) Times New Roman, 11 pt		
Page 2 : [2] Mis en forme	admin	21/06/2017 14:12:00
Police :(Par défaut) Times New Roman, 11 pt		
Page 2 : [3] Mis en forme	admin	21/06/2017 14:12:00
Police :(Par défaut) Times New Roman, 11 pt		
Page 2 : [4] Mis en forme	admin	21/06/2017 14:12:00
Police :11 pt, Anglais (États-Unis)		
Page 2 : [5] Mis en forme	admin	21/06/2017 14:12:00
Police :(Par défaut) Times New Roman, 11 pt		
Page 2 : [6] Mis en forme	admin	21/06/2017 14:12:00
Police :(Par défaut) Times New Roman, 11 pt		
Page 2 : [7] Mis en forme	admin	21/06/2017 14:12:00
Police :(Par défaut) Times New Roman, 11 pt		
Page 2 : [8] Mis en forme	admin	21/06/2017 14:12:00
Police :(Par défaut) Times New Roman, 11 pt		
Page 2 : [9] Mis en forme	admin	21/06/2017 14:12:00
Police :(Par défaut) Times New Roman, 11 pt, Anglais (États-Unis), Non Surlignage		
Page 2 : [10] Mis en forme	admin	21/06/2017 14:12:00
Police :(Par défaut) Times New Roman, 11 pt, Non Surlignage		
Page 2 : [11] Mis en forme	admin	21/06/2017 14:12:00
Police :(Par défaut) Times New Roman, 11 pt, Anglais (États-Unis), Non Surlignage		
Page 2 : [12] Mis en forme	admin	21/06/2017 14:12:00
Police :11 pt, Non Surlignage		
Page 2 : [13] Mis en forme	admin	21/06/2017 14:12:00
Police :11 pt, Anglais (États-Unis)		
Page 2 : [14] Mis en forme	admin	21/06/2017 14:12:00
Police :11 pt, Anglais (États-Unis)		
Page 2 : [15] Mis en forme	admin	21/06/2017 14:12:00
Police :(Par défaut) Times New Roman, 11 pt		
Page 2 : [16] Mis en forme	admin	21/06/2017 14:12:00

Police :(Par défaut) Times New Roman, 11 pt

Page 9 : [17] Mis en forme	admin	26/06/2017 12:00:00
-----------------------------------	--------------	----------------------------

Police :11 pt, Non Gras, Couleur de police : Automatique, Français (France)

Page 9 : [18] Mis en forme	admin	26/06/2017 10:12:00
-----------------------------------	--------------	----------------------------

Centré, Espace Après : 0 pt, Interligne : simple

Page 9 : [19] Mis en forme	admin	26/06/2017 10:12:00
-----------------------------------	--------------	----------------------------

Centré, Espace Après : 0 pt, Interligne : simple

Page 9 : [20] Mis en forme	admin	26/06/2017 10:12:00
-----------------------------------	--------------	----------------------------

Centré, Espace Après : 0 pt, Interligne : simple

Page 9 : [21] Mis en forme	admin	26/06/2017 10:12:00
-----------------------------------	--------------	----------------------------

Centré, Espace Après : 0 pt, Interligne : simple

Page 9 : [22] Mis en forme	admin	26/06/2017 10:12:00
-----------------------------------	--------------	----------------------------

Centré, Espace Après : 0 pt, Interligne : simple

Page 9 : [23] Mis en forme	admin	30/06/2017 17:59:00
-----------------------------------	--------------	----------------------------

Police :Gras, Soulignement

Page 9 : [24] Mis en forme	admin	26/06/2017 10:12:00
-----------------------------------	--------------	----------------------------

Centré, Espace Après : 0 pt, Interligne : simple

Page 9 : [25] Mis en forme	admin	30/06/2017 17:58:00
-----------------------------------	--------------	----------------------------

Police :Gras, Soulignement

Page 9 : [26] Mis en forme	admin	26/06/2017 10:12:00
-----------------------------------	--------------	----------------------------

Centré, Espace Après : 0 pt, Interligne : simple

Page 9 : [27] Mis en forme	admin	30/06/2017 17:58:00
-----------------------------------	--------------	----------------------------

Police :Gras, Soulignement

Page 9 : [28] Mis en forme	admin	26/06/2017 10:12:00
-----------------------------------	--------------	----------------------------

Centré, Espace Après : 0 pt, Interligne : simple

Page 9 : [29] Mis en forme	admin	30/06/2017 17:58:00
-----------------------------------	--------------	----------------------------

Police :Gras, Soulignement

Page 9 : [30] Mis en forme	admin	26/06/2017 10:12:00
-----------------------------------	--------------	----------------------------

Centré, Espace Après : 0 pt, Interligne : simple

Page 9 : [31] Mis en forme	admin	26/06/2017 10:12:00
-----------------------------------	--------------	----------------------------

Centré, Espace Après : 0 pt, Interligne : simple

Page 9 : [32] Mis en forme	admin	26/06/2017 10:12:00
-----------------------------------	--------------	----------------------------

Centré, Espace Après : 0 pt, Interligne : simple

Page 9 : [33] Mis en forme	admin	26/06/2017 10:12:00
-----------------------------------	--------------	----------------------------

Centré, Espace Après : 0 pt, Interligne : simple

Page 9 : [34] Mis en forme	admin	26/06/2017 10:12:00
-----------------------------------	--------------	----------------------------

Centré, Espace Après : 0 pt, Interligne : simple