

## DETAILED REPLY TO EACH ONE OF THE REFEREE'S COMMENTS AND TRACK CHANGE MANUSCRIPT

Please note that author's reply to referee's comments are either shown in green font or as "reply to comment" using Word tools

### First Referee

E. M. Cushing (Referee)

edward.cushing@irsn.fr

Received and published: 10 May 2017

General comment.

This paper provides a comprehensive overview of the QAFI V3 improvements focused on the reliability and homogeneity of criteria used to address important parameters for seismic hazard assessment (Maximum Magnitude and Recurrence Interval associated to Quaternary Active faults and their Slip rate evaluation implemented in the DB). It does not go in detail in the QAFI database description of its structure since it has already been done in previous papers and because all relevant information is directly available on the QAFI web site. This new version is a real improvement and brings confidence in the parameter that can be used in SHA by providing simple quotation (A,B,C (D)) on the reliability of the used parameters. Regarding the important work done after a complete revision of the database information after "testing" the new criteria on a new dataset, it represents a substantial contribution to the understanding of natural hazards and their consequences within the scope of NHESS.

### Scientific Quality

Usefulness and the significance of new criteria are discussed and well explained. The quantification proposed is founded on "classical" and updated fault to magnitude and moment rate relationships. All the "geologic" parameters taken into account to determine the fault seismic parameters are relevant. Thus, one important contribution is that SHA analysis can directly consider these "seismic parameters" to support decision making when building logic trees (such as weight decision) or managing epistemic uncertainty in general. A short, but sufficient references list is provided and relevant, the comprehensive reference data being included in the QAFI DB.

### Presentation Quality:

The papers is well written, clear, concise and structured. The objective and context is presented (mainly directed to earth scientists, practitioners, and civil society (media, scholar)). The few figures are clear, may be bar graphs be "compacted" together (4 in one page ) and presented at the same scale. → *We think it is more practical for editing purposes to produce the figures independently rather than all together in one page. All the histograms have now the same scaled but one.*

"Technical corrections": typing errors, etc.

Sometimes: maximum magnitude or Maximum Magnitude: MM is for the Mmax parameter in the database, maximum magnitude describes the "quantity" addressed? It should be made homogeneous. Idem for Recurrence Interval – see by example line 195) → *Corrected*

Two typing errors (line 241 : Strength (not Strenght); Figure 1, idem) → *Corrected*

Line 263 BSQE in place of BSE ? Line 265 ASQE in place of ASE ? Line 166 : ASQE in place of AQE → *Corrected*

#### General comments

Lines 25-28 : Knowledge about the location and activity degree of faults is crucial for seismic hazard and risk assessment, as well as for planning anthropic activities that may involve changing the natural stress-state in the crust: water reservoirs, underground gas storage, fracking, etc.

*Comment : Not only as well as critical facilities where low probabilities of hazard are to be taken into account (e.g. radioactive waste storages, nuclear power plants and chemical plants). You could list such as the provide list (water rerservoirs...)*

*Reply: We have rewritten the sentence: "Knowledge about the location and activity degree of faults is crucial for seismic hazard and risk assessment, particularly for critical facilities as nuclear power plants, radioactive waste storages and chemical plants; but as well for planning anthropic activities that may involve changing the natural stress-state in the crust: water reservoirs, underground gas storage, fracking, etc."*

*Line 30 : Eurocode-8 (part 5) : It may be perhaps useful to remind that there are two kinds of hazard addressed 1) is fault capability (surface rupture hazard for which I guess, QAFI is not well adapted in term of scale for siting) 2) Seismic hazard assessment (either deterministic or probabilistic) , where the local scale is less important and for which QAFI is well adapted.*

*Reply: Although QAFI is primarily focused on providing reliable geological data for Seismic Hazard Assessments (either deterministic or probabilistic), the fault traces incorporated in the database are mapped with enough detail to be used as a first approximation for surface rupture hazard.*

Line 48 : GMPE or GMPEs (are there several GMPEs ?) → *GMPE is correct, as just one model was used.*

Line 158 : For instance, in the ESI scale, surface-rupture earthquakes appear from Intensity VIII onwards, so it would not be reasonable that pre-instrumental events with lower intensities could be converted to  $M_w > 6.0$ . An additional issue is the estimation of the upper bound of the Gutenberg-Richter distribution when characterizing seismogenic sources. In seismic hazard assessment practice this is usually done based on the maximum event recorded in the zone, and desirably it should be consistent with the maximum  $M_w$  that could be derived from the active faults contained in the zone.

*Comment : When scattered macroseismic (ldp) data is poorly documented with no data near the epicenter (e.g. deep earthquake with distant macroseismic field) lower intensities may however be associated with strong earthquake (so may be, surface rupturing).*

*Reply: Estimating "Magnitude" from "Intensity" can be very tricky. There are so many variables involved in how the shaking is felt regardless the actual "magnitude" of the event. For example, depth (as you mention), but also site effects (soil and topographic amplification, demography ...). So, we have to admit that our approach is just reasonable and that there can be lots of exceptions, but, in general, it seems reasonable that a  $M_w > 6$  event imply Intensity  $\geq$  VIII and shows surface-rupture.*

*Comment : Could you provide an example of the "practice" (I guess like deterministic maximum historical earthquake?)*

*Reply: Ok. We have rewritten the phrase and now it reads:*

"In seismic hazard assessment practice this is usually done based on the maximum event recorded in the zone (e.g., adding to it 0.5 magnitude units), and ..."

*Comment : Why should it be consistent with  $M_{max}$  associated with fault, since the historical data is not representative of the whole seismic cycle in western Europe ? The answer is provided in the following sentence but the writing is surprising.*

*Reply: Consistent in the way that  $M_{max}$  from historical data should not be larger than  $M_{max}$  from fault data from the source-zone.*

Line 173 : For example, the Palomares fault (ES609), a 5-10 km wide N-S shear zone that forms part of the Eastern Betic Shear Zone, is ca. 60 km long, although to estimate maximum magnitude in QAFI v.3 we used 10 km, which is the maximum length of single fault traces inside the shear zone.

*Comment : So  $M_{max}$  may be much more ? With longer recurrence intervals ? What is the explanation?*

*Reply: We believe that the so-called Palomares Fault is not just a single fault but a crustal shear zone (deformation being distributed over many faults in a wide area). So, calculating  $M_{max}$  considering the shear zone as one single fault would provide an overestimation. Nevertheless, it is up to the hazard analyst to consider a set of possible options in a logic tree scheme.*

Line 189 : In QAFI v.3 we calculated recurrence intervals considering the ratio between the seismic moment released from a maximum event and the seismic moment rate defined by slip rate. Maximum seismic moment is calculated from  $M_w$  using Hanks and Kanamori (1979) equation, and seismic moment rate is obtained using Aki's equation (Aki, 1966) substituting average fault displacement (D) for slip rate.

*Comment : Could you show and develop the equations leading to the "Recurrence Interval"?*

*Reply: Ok, the equations are now included in the revised version of the manuscript.*

Line 302 : a net slip rate is usually estimated additionally to the vertical/horizontal components.

*Comment : May be comforted by focal mechanisms if available for active faults (presently seismogenic faults)*

*Reply: You are right. For the next QAFI version we are trying to include as much as possible seismological information (earthquakes series related to the fault, historical events...), including focal mechanisms of course.*

Line 338 : A Highly Reliable level (AMM) is assigned only when the SQE of the fault has been rated A+ –i.e., the Quaternary activity of the fault is clearly evidenced and consistent along its trace; Hence, the occurrence of past earthquakes that ruptured all the fault or segment trace is very plausible (Figure 3).

*Comment : There is no discussion about identifying present fault activity underlined by microseismicity and /or macroseismicity all along one or more segments ? That may be a complementary criteria for Quaternary activity+  $M_{max}$  ?)*

*Reply: You are right. Our classification scheme is solely based on geological information. It seems obvious, of course, to classify a fault as active if it shows seismicity. The problem in Spain is that only very few faults have seismicity associated confidently. For a forthcoming version we will study how to incorporate seismic data (earthquake series, historical events, focal mechanisms).*

Full comments in the enclosed zip (word file)

Please also note the supplement to this comment: <http://www.nat-hazards-earth-syst-sci-discuss.net/nhess-2017-128/nhess-2017-128-RC1-supplement.zip>

**Active fault databases: building a bridge between earthquake geologists and seismic hazard practitioners, the case of the QAFI v.3 database**

Julián García-Mayordomo<sup>1,2</sup>, Raquel Martín-Banda<sup>1,2</sup>, Juan M. Insua-Arévalo<sup>2</sup>, José A. Álvarez-Gómez<sup>2</sup>, José J. Martínez-Díaz<sup>2</sup> and João Cabral<sup>3</sup>

<sup>1</sup> Instituto Geológico y Minero de España, Madrid, 28003, Spain

<sup>2</sup> Department of Geodynamics, Geology Faculty, Complutense University, Madrid, 28040, Spain

<sup>3</sup> Department of Geology, Science Faculty, Lisboa University, Lisbon, 179-016, Portugal Correspondence to: Julian García-Mayordomo (julian.garcia@igme.es)

**Abstract.** Active fault databases are a very powerful and useful tool in seismic hazard assessment, particularly when singular faults are considered as seismogenic sources. Active fault databases are also a very relevant source of information for earth scientists, earthquake engineers and even teachers or journalists. Active fault databases, hence, should be updated and through reviewed on a regular basis in order to keep a standard quality and uniformed criteria. Desirably, active fault databases should indicate somehow the quality of the geological data and, particularly, the reliability attributed to crucial fault-seismic parameters, as Maximum Magnitude and Recurrence Interval. In this paper we explain how we tackled these issues during the process of updating and reviewing the Quaternary Active Fault Database of Iberia (QAFI) to its current version 3. We devote particular attention to describing the scheme devised for classifying the quality and representativeness of the geological evidence of Quaternary activity and the accuracy of the slip rate estimation in the database. Subsequently, we use this information as input for a straightforward rating of the level of reliability of Maximum Magnitude and Recurrence Interval fault seismic parameters. We conclude that QAFI v.3 is a much better database than version 2 either for a proper use in seismic hazard applications or as an informative source for non-specialized users. However, we already envision new improvements for a future update.

**Comentado [CE1]:** Sometimes: maximum magnitude or Maximum Magnitude: MM is for the Mmax parameter in the database, maximum magnitude describes the "quantity" addressed? May be make it homogeneous?

**Comentado [JGM2R1]:** We have corrected this issue and make it homogenous across the paper.

## 1 Introduction

Active fault databases are both an important managing tool for seismic hazard assessment as well as a convenient way to display and share scientific information. Knowledge about the location and activity degree of faults is crucial for seismic hazard and risk assessment, as well as for planning anthropic activities that may involve changing the natural stress-state in the crust: water reservoirs, underground gas storage, fracking, etc. The importance of active faults is a matter of concern in modern seismic code provisions, as for example in Eurocode-8, in which official documents issued by competent national authorities are referred to for the identification of such faults (e.g., Eurocode-8: Part 5 (CEN, 2004)). Active fault databases are also key on tsunami hazard assessments (e.g. Álvarez-Gómez et al., 2011) as well as on Early Warning Systems, which are largely based on precomputed tsunamigenic faulting scenarios derived from information of such databases (e.g., Gailler et al., 2013).

Since the Quaternary Active Faults Database of Iberia (QAFI v.2) was released in February 2012 an increasing number of studies have made use of it. The most relevant use so far has been for the creation of the new seismic hazard map of Spain (IGN-UPM, 2013), performed considering the foreseen adoption of Eurocode-8 throughout 2017. QAFI faults were considered as complementary information for designing seismogenic source-zones models, for estimating maximum magnitude distributions in each source-zone, as well as to assign the predominant rupture mechanism required for some ground motion prediction equations (GMPEs) (García-Mayordomo et al., 2012a; García-Mayordomo, 2015).

However, the seismogenic model did not consider explicitly QAFI faults as seismogenic sources. The National Seismic Hazard Map Committee considered that the information available at that time (ca. 2011) was not complete enough to homogeneously cover all the territory, and that it was affected by large uncertainties that prevented its use for producing an official standard for the country. Besides, a number of tests showed that the most active faults in QAFI (e.g., Eastern Betic Shear Zone) had a lower impact on

**Comentado [CE3]:** Not only as well as critical facilities where low probabilities of hazard are to be taken into account (e.g. radioactive waste storages, nuclear power plants and chemical plants). You could list such as the provide list (water rerservoirs...)

**Comentado [JGM4R3]:** We rewritten the sentence considering your comment: "Knowledge about the location and activity degree of faults is crucial for seismic hazard and risk assessment, particularly for critical facilities as nuclear power plants, radioactive waste storages and chemical plants; but as well for planning anthropic activities that may involve changing the natural stress-state in the crust: water reservoirs, underground gas storage, fracking, etc."

**Comentado [CE5]:** It may be perhaps useful to remind that there are two kinds of hazard addressed 1) is fault capability (surface rupture hazard for which I guess, QAFI is not well adapted in term of scale for siting)  
2) Seismic hazard assessment (either deterministic or probabilistic), where the local scale is less important and for which QAFI is well adapted.

**Comentado [JGM6R5]:** Thank you for the remainder. Although QAFI is primarily focused on providing reliable geological data for Seismic Hazard Assessments (either deterministic or probabilistic), the fault traces incorporated in the database are mapped with enough detail to be used as a first approximation for surface rupture hazard.

**Comentado [CE7]:** Yellow underlined for bibliography control.

hazard when modelled as sources than a regular seismogenic-zone for the targeted return periods of the map (475- and 950-yr) (García-Mayordomo et al., 2012b).

Interestingly, Rivas (2013) analysed in depth the effect of considering QAFI faults as sources for the same return periods and found that these faults were clearly controlling the spatial distribution and amplitude of hazard. The reason for this is found in the GMPEs model used, that considered near-source effects (e.g., Campbell and Bozorgnia, 2013), increasing remarkably the hazard in the vicinity of the fault. Rivas (2013) also tested the application of a Brownian Passage Time renewal model for the Carboneras Fault, a major active fault belonging to the Eastern Betic Shear Zone. Following Rivas (2013) methodology, QAFI faults were modelled as sources to update the seismic hazard map of the Region of Murcia (SE Spain) which was the base for the design of the new civil protection plans for the region after the Mw 5.2 Lorca 2011 earthquake (Benito et al., 2015).

Apart from QAFI the most obvious use in seismic hazard calculations as explained above, the database has also become a primary source of information for both researchers and journalists in the event of an earthquake in Spain. Reference to QAFI is increasing in the frame of engineering projects, a practice that is foreseen to be increased when the application of Eurocode-8 becomes in force in Spain.

However, since QAFI v.2 was released it was known that the database presented important shortcomings for being used straightforward in seismic hazard assessment (García-Mayordomo et al., 2012c,d). There was a strong urge for reviewing and updating the database in order to make it more complete, more uniform and consistent, in such a way that it could provide guidance on the reliability of the seismic parameters of the faults not just for seismic hazard practitioners but for non-specialist users as well. Fault-source characterization for hazard calculations demands to rate somehow the quality of the geological information on which seismic parameters are eventually derived.

**Comentado [CE8]:** ?

**Comentado [JGM9R8]:** Actually, it is single as just one GMPE model was used in Rivas (2013) work.

This paper summarises the work carried out to update QAFI to v.3, aiming at improving completeness and homogenizing criteria and consistency across the database. A particular effort has been made to classify the quality of geological data in order to provide an objective reliability rating of crucial fault-seismic parameters: Maximum Magnitude and Recurrence Interval. As a result, QAFI v.3 is a much better database than previous version 2, and more appropriate for being use by seismic hazard analysts and earth scientists, and even by non-specialized users, as engineers, teachers or journalists.

## 2 Updating process to QAFI v.3 2.1 QAFI v.2 basic problems

It was well known since QAFI v.2 was released that the database had some problems of completeness and uniformity (García-Mayordomo et al., 2012c,d), even though at that time QAFI v.2 was the most informative source about active faulting in Iberia. On one hand, some important sources of information had not been analysed in detail (e.g., Neotectonic Map of Spain, IGME and ENRESA, 1998; and other regional neotectonic maps ITGE, 1991) and on the other hand, some records were not properly compiled or had not all possible data adequately compiled. That was the case of some crucial database fields, as the description of Evidence of Quaternary Activity, fault geometry parameters (maximum depth, dip), slip rates... Additionally, the variability range, or error, of important parameters (e.g., slip rate) was not quoted and indicated in many cases. Hence, it was clear that a thorough revision of existing but not yet compiled data, as well as a revision of the original sources of information for already compiled data, was much needed.

Uniformity of criteria is of paramount importance in active fault databases, especially when these are open to general, not specialized users. The database fields “maximum magnitude” and “recurrence interval”, crucial in seismic hazard applications, were not always calculated following the same criteria and methods in QAFI v.2. The estimation of maximum magnitudes was calculated using a variety of empirical relationships, which in some cases offered very different results, as it was the case, for example, of Wells

**Comentado [CE10]:** Same remark –Maximum Magnitude – Recurrence Interval” ?

**Comentado [JGM11R10]:** Ok, corrected across the paper.

and Coppersmith (1994) compared to the pre-instrumental equation of Stirling et al. (2002). Additionally, the independent variable used in these equations was also different in many cases, as for example length-of-surface-rupture compared to rupture-area. The consideration of equations derived from subsets considering style of faulting compared to the overall dataset was also a common difference for a number of records. In a similar way, the estimation of the recurrence interval was approached in different ways, and when information on uncertainty was available, it was not always possible to discern with confidence how it had been calculated.

A main issue that a seismic hazard analyst has to face eventually is about quoting the reliability of different, but plausible hypothesis regarding geological data and seismic parameters of fault sources. The common approach to tackle this problem – elegantly called epistemic uncertainty, is to follow a logic-tree procedure in which each of the branches represent different alternatives on which the analyst express his/her confidence by assigning particular weights. This procedure may become a difficult issue, particularly when the hazard analyst is not acquainted with the active tectonics of the territory under study, or simply because is not specialized in earthquake geology. Hence, it was envisioned that an obvious improvement in a future update of QAFI would consist in devising a system for classifying the reliability of fault seismic parameters, not just for hazard analysts but also for any other potential user (researchers, engineers, journalists, teachers, civil officers).

## **2.2 Revision and updating**

QAFI v.3 was finally released in September 2015, after a thorough revision, updating and adding new data. For a complete description of the fields that form the database the reader is referred to QAFI v.3 documentation and guide to the user available on the web (IGME, 2015). The new version contains 299 records, 30% more than the old v.2. New records come fundamentally after reviewing the complementary material and reports that lead to the publication of the neotectonic maps of Spain (IGME and ENRESA,



1998) and Murcia Region (ITGE, 1991). It is worth to mention that only those faults that were clearly named and identified in the reports, and the accompanying maps were considered for incorporation into the database. Faults failing to meet these criteria were not included as a record in the database, although their cartographic traces can be shown together with QAFI faults in the website. Additional sources of new information where thesis dissertations (e.g., Simón, 1984), the special issue on Active Tectonics in Iberia published in the Journal of Iberian Geology (Martínez-Díaz et al., 2012), the proceedings of the Iberfault-2014 meeting (Álvarez-Gómez and Martín-González, 2014) and a number of papers published in Earth sciences journals since 2012.

QAFI v.2 records were revised one by one, verifying the original sources of information referred by the original compilers and, in many cases, contacting them to help in the compiling process or just for getting their approval on the update of the data compilation. We wanted to keep the same thinking as in QAFI v.2, that whenever possible the main compiler should coincide with a major author on the fault, even though that this way generally makes the compilation process slower. Particular attention was paid to the database-fields description of the Evidence of Quaternary Activity, Age of Last Deformation, Geometry and Kinematics, and Slip Rate.

In some cases, the revision process led us to exclude certain faults from the final QAFI v.3 database. These faults were moved to a new database called "Debated Faults" (40 records). Debated faults are those that do not show either concluding evidence of Quaternary activity or for which this evidence is not yet published in a peer-reviewed journal. The Debated Faults database is also available to the public on the QAFI web site (IGME, 2015).

A special effort was done to produce a best estimation of net slip rates (slip along displacement vector) and its uncertainty. In many cases, slip rates were not estimated in the original publications and had to be calculated ad hoc searching for valuable data included in them. This calculation was done transparently,

clearly detailing the data and approach used in a memo field associated to the estimation called “brief comment”. In some cases there was not enough information for such an estimation and so slip rates were estimated by expert ~~judgement~~[judgment](#), usually by comparison to similar faults in the area. In spite of the effort, 22% of the records still lack a slip rate estimation.

The variability/error field associated to slip rate in QAFI v.3 may show either the range of variation of the estimation based on uncertainties in geological assumptions or some sort of statistical error based on the randomness of the measurements. An example of the former would be a slip rate determination based on assumptions on the age of a non-dated marker, which could lead to two extreme values; this is usually quoted as a range (e.g., 0.5-1.0 m/ky). For the latter, consider for example a variability estimation based on the standard deviation of radiometric dates given by a laboratory; this is usually quoted in QAFI v.3 as an error (e.g.,  $\pm 0.08$  m/ky).

Finally, the revision and updating process included verifying the cartographic traces of the faults against the original sources of information, geo-referencing all them to the same datum (ETRS89), and double-checking for a good match with associated landforms as observed in satellite imagery and DTMs. For those faults compiled from the Neotectonic Map of Spain project geo-referencing had to be made by hand as the original source is made up of a composite of different paper sheets, none of them properly georeferenced.

### **2.3 Criteria homogenization**

We particularly refer here to the method considered for calculating maximum magnitudes and associated recurrence intervals. If an active fault database is going to show these parameters, then it is important that these are calculated in a consistent, homogenous way, allowing direct comparison from between records. It is up to the hazard analysts eventually to either assume these values or consider different ones for their own purposes. However, for non-specialized users, as they may be engineers or journalists, it is

important that these critical values are consistent and comparable across the database. In QAFI v.3 maximum magnitude and recurrence interval have been calculated consistently in the same way all through the database, except for the latter, in which a few records (#12) had conclusive paleoseismic data while for #111 (37%) that available data was simply not enough to draw an estimation. In the case that it was already available a published estimation for any of these data, we kept and referenced it in the accompanying “brief comment” memo field.

Maximum Magnitude is estimated in QAFI v.3 considering the value quoted in the field “Length” of the fault, and making use of [Stirling et al. \(2002\)](#) regression equation of moment-magnitude on surface-rupture-length derived from an updated instrumental dataset after [Wells and Coppersmith \(1994\)](#). Length is a field always accounted for in every record of QAFI v.3, and one of the fields that more accurate can be estimated, compared to rupture area, for instance, for which uncertainties in the variation of dip with depth as well as the maximum brittle depth of the fault itself, strongly affect the result. Hence, “Length” was chosen as the independent variable for obtaining moment magnitude considering an equation based on empirical data. The choice of [Stirling et al. \(2002\)](#) took place along with several working meetings devoted to the Intensity-to-Moment-Magnitude conversion equation (I-Mw) in the frame of the preparation of the Spanish National Hazard Map ([IGN-UPM, 2013](#)). In countries with a long historical earthquake record, as Spain, this conversion is a crucial issue as it determines the maximum magnitude of the events in the catalogue. Desirably, these conversion equations have to provide outputs consistent not just with damage descriptions in buildings but also with known environmental effects, as those described in the Environmental Seismic Intensity (ESI) scale ([Michetti et al., 2007](#)). For instance, in the ESI scale, surface-rupture earthquakes appear from Intensity VIII onwards, so it would not be reasonable that pre-instrumental events with lower intensities could be converted to  $Mw > 6.0$ . An additional issue is the estimation of the upper bound of the Gutenberg-Richter distribution when characterizing seismogenic sources. In seismic hazard assessment practice this is usually done based on the maximum event recorded

**Comentado [CE12]:** Accuracy ?

**Comentado [JGM13R12]:** Yes, accurate.

**Comentado [CE14]:** Generally yes, but may not be true for old, scattered macroseismic data poorly documented with no data near the epicenter (e.g. deep earthquake with distant macroseismic field)

**Comentado [JGM15R14]:** Estimating "Magnitude" from "Intensity" can be very tricky. There are so many variables involved in how the shaking is felt regardless the actual "magnitude" of the event. For example, depth (as you mention), but also site effects (soil and topographic amplification, demography ...). So, we have to admit that our approach is just reasonable and that there can be lots of exceptions, but, in general, it seems reasonable that a  $Mw > 6$  event imply Intensity  $\geq$  VIII and shows surface-rupture.

**Comentado [CE16]:** By who ? usually (where) ,

**Comentado [JGM17R16]:** “Practice” in the sense of traditional or standard way to proceed with an engineering problem.

in the zone, and desirably it should be consistent with the maximum Mw that could be derived from the active faults contained in the zone. Furthermore, for zones showing scarce seismicity, the estimation of maximum Mw from fault data may be the most reliable approach, if not the only one. Hence, a set of equations available at that time were tested against the outputs of the I-Mw conversion equation (cf. García-Mayordomo, 2015 and references therein), and the two only available data on fault ruptures and historical earthquakes in Spain (e.g., 1884 Arenas del Rey and 1829 Torrevieja earthquakes, related to Ventas de Zafarraya and Bajo Segura Faults, respectively). It was found that the outcomes of the Stirling et al. (2002) equation were the most consistent. Nevertheless, for the faults located in the Gulf of Cádiz, where there is a thick oceanic crust, maximum magnitudes may be much higher than predicted from that relationship. For these records the Maximum Magnitude “brief comment” memo field describes other alternatives and estimations cited in published literature.

The variability/error field for maximum magnitude in QAFI v.3 simply accounts for the standard deviation of expected Mw according to Stirling et al. (2002) equation for the instrumental dataset (+/- 0.37). In those cases where uncertainty in length is significant, we use the “brief comment” memo field to explain and account for this issue in the magnitude estimation. For example, the Palomares fault (ES609), a 5-10 km wide N-S shear zone that forms part of the Eastern Betic Shear Zone, is ca. 60 km long, although to estimate maximum magnitude in QAFI v.3 we used 10 km, which is the maximum length of single fault traces inside the shear zone.

Recurrence Interval in QAFI v.3 is estimated considering the Maximum Magnitude Earthquake Model (MEM) (Wesnousky, 1986). This model assumes that each fault –or fault segment, releases seismic moment in just one maximum event that marks the end/beginning of a seismic cycle. The opposite model considers that the fault releases seismic moment by means of events of all sizes fitting an exponential distribution –i.e. a Gutenberg-Richter relationship. An intermediate model is the Characteristic Earthquake

**Comentado [CE18]:** Or not if the seismicity rate is low, in practice an increment above the Mmax (macroseismic) has to be considered so yes for the following sentence.

**Comentado [JGM19R18]:** Consistent in the way that Mmax from historical data should not be larger than Mmax from fault data from the source-zone.

**Comentado [CE20]:** So Mmax may be much more ? with longer recurrence intervals, I do not find arguments (distance of faults tips for example), in the comment

**Comentado [JGM21R20]:** We believe that the so-called Palomares Fault is not just a single fault but a crustal shear zone (deformation being distributed over many faults in a wide area). So, calculating Mmax considering the shear zone as one single fault would provide an overestimation. Nevertheless, it is up to the hazard analyst to consider a set of possible options in a logic tree scheme.

Model (Schwartz and Coppersmith, 1984), in which the fault produces events of all sizes up to a certain maximum, above which the fault only produces maximum events (cf. Wesnousky, 1994). QAFI v.3 considers the MEM model since it is a simple and straightforward method that can be invoked considering just geological data obtained from the field.

In considering the MEM, slip rate (SR) represents the average rate at which maximum earthquakes are released by the fault, and because these maximum earthquakes are all of a similar size, and so they were produced by a similar coseismic displacement (D) on the fault plane, their average frequency can be simply calculated as  $D/SR$ . However, the parameter displacement (D) of such a single maximum event is very difficult to specify, either from paleoseismic studies or from empirical regressions on the length of the surface rupture, which so far show a tremendous uncertainty. In QAFI v.3 we calculated recurrence intervals considering the ratio between the seismic moment released from a maximum event and the seismic moment rate defined by slip rate. Maximum seismic moment is calculated from  $M_w$  using Hanks and Kanamori (1979) equation, and seismic moment rate is obtained using Aki's equation (Aki, 1966) substituting average fault displacement (D) for slip rate. The former procedure has the inconvenient that  $M_w$  is not independently derived, but empirically obtained from length of the fault, which is a variable included twice when calculating rupture area in the seismic moment equation.

The "Recurrence ~~interval~~Interval" field in QAFI v.3 accounts for a best estimation, which could be that one resulting from considering either a preferred value of slip rate or an average slip rate. The "Variability/error" is given as a range, bounded by the maximum and minimum values that result from accounting for the standard deviation of maximum magnitude and the variability of slip rate (either as a range or as a deviation). As mentioned before, for a few records (#12) the recurrence interval quoted in the database is the one originally published in journals, albeit the "brief comment" field still accounts for the recurrence interval as calculated with MEM for comparative purposes.

**Comentado [CE22]:** May be recall the two formulaes and inferred result ?

**Comentado [JGM23R22]:** The equations are now included in the revised version of the manuscript.

Finally, in order to be as informative as possible for non-specialized users of the database, the “brief comment” field associated to recurrence interval includes a statement indicating that the occurrence of smaller but damaging earthquakes may be much shorter than that one for maximum events.

### **3 Assessing the quality of geological data and the reliability of seismic parameters**

One of the most outstanding differences of QAFI v.3 from the previous version 2 is that the reliability of seismic parameters Maximum Magnitude and Recurrence Interval is classified according to the quality of the geological data on which they were derived. We believe this is a very relevant progress considering that the use of this database is increasingly widening not just among earthquake science researchers or hazard analysts, but government agencies, industry or even mass media. There is an obvious need for any user to quickly grasp how much reliable are the data on a particular fault of the database, and particularly how sensitive are its Maximum Magnitude and Recurrence Interval. These two seismic parameters are fundamental for modelling a fault as a seismogenic source in seismic hazard analysis and, additionally, they are interpreted by the general public as indicators of the potential hazardousness of a fault.

In QAFI v.3 both Maximum Magnitude and Recurrence Interval are obtained solely from geological data, as explained in the precedent section. It becomes apparent that rating the reliability of these two parameters should be based on the quality and representativeness of the geological data from which they are eventually obtained. Desirably, the rating procedure should be as automatic and objective as possible, accounting for just the evidence, avoiding as much as possible subjectiveness.

To account for the quality and representativeness of the geological data we defined in QAFI v.3 two new database fields named “Strength of the Quaternary Evidence” and “Accuracy of the Estimation” of slip rate. The former serves to eventually rate the reliability of Maximum Magnitude and the latter to rate Recurrence Interval.

When evaluating the reliability of Maximum Magnitude we refer here to the fact that the fault could actually produce maximum events –i.e., an event that ruptures the surface for a similar extent as its measured length. We are not evaluating the credibility of the actual value of the magnitude. QAFI v.3 rates the epistemic uncertainty of maximum magnitude, conversely to the aleatory uncertainty that results from the natural variability of the fault-rupture parameters or from the use of empirical equations. Hence, our reliability rating is based on whether there is evidence that the fault has produced such events that geologists are able to recognize today in the field. In QAFI v.3 this is evaluated in the “Strength of the Quaternary Evidence” database field.

Rating of Recurrence Interval reliability is based both in the reliability rating of Maximum Magnitude and slip rate “Accuracy of the Determination”. Slip rate is a key parameter in fault source modelling, particularly in modelling earthquake frequency. In QAFI v.3 we calculate Recurrence Interval assuming a Maximum Magnitude Earthquake Model (MEM) (Wesnousky, 1986), as explained in the precedent section, and so the size of the maximum event is as crucial as slip rate to estimate the average frequency between maximum earthquakes. Furthermore, slip rate and maximum magnitude are also both crucial in other fault behaviour models, as for example for determining the seismic activity rate of the fault in a Gutenberg-Richter alike model (e.g., Anderson and Luco, 1983; Youngs and Coppersmith, 1985). Hence, the reliability of Recurrence Interval, or any other parameter related to fault-earthquake frequency, has to be considered jointly with the reliability of Maximum Magnitude (previously rated considering the strength of the evidence) and the accuracy of the slip determination.

We shall now show how we account in QAFI v.3 for the database fields: Strength of the Evidence and Accuracy of the Slip Rate Determination, and subsequently explain the details of the procedure followed to rate the reliability of Maximum Magnitude and Recurrence Interval.

### 3.1 ~~Strength~~Strength of the Quaternary activity Evidence (SQE)

This database field evaluates the quality, significance and representativeness of the information provided in the original bibliographic references from which data in the fields named “Geomorphic Evidence” and “Age of the youngest deposit affected by the fault” are compiled (cf. [García-Mayordomo et al., 2012c,d](#)). Please note that we are not rating the quality of published work. The quality of the work is taken for granted, as it is assumed that it reached at least the minimum standards of the journal where the information was published at the time. What it is evaluated here in particular are the scale, methods, and detail of the observations that support the Quaternary activity evidence of the fault. This process was performed record by record once compiling of new data was finished, and based on the experience gained after the revision of the entire database (see section on updating of QAFI).

Strength of the Quaternary Evidence (SQE) is classified in three increasing levels of accumulated evidence: CSQE, BSQE and ASQE. Differentiation among classes is based on the scale of the observations and detail involved in obtaining the observations. Table 1 summarizes typical observations, scale and methods that usually characterize the available information at each level of evidence. Note that the classes denote accumulated evidence and increasingly stronger evidence. It is convenient to highlight that we are not evaluating here the degree of activity of the fault, but the significance of the evidence of activity in Quaternary times.

Class CSQE encompasses the less significant evidence. These are inferred from regional scale observations of the fault trace, from interpretation of general geological maps or broad range geophysical methods, to digital terrain models (DTM) (Table 1). At this level, there is usually a lack of field work focused on demonstrating these inferred evidences, or the field work detail has not proved conclusive so far. Geochronology is usually only known in broad relative terms as Quaternary *sensu lato*, or in terms of the different stages of the Quaternary Period (Upper Pleistocene, etc.). Similarly, Quaternary landforms or



deposits are mapped in broad, generic units: terraces, alluvial fans, etc.). Numeric dating of certain deposits usually lacks, or they are very scarce.

Class **BSQE** assigns faults that, having class CSQE evidence, also have additional observations from larger scale works, and usually some field work. Quaternary geochronology is better constrained, although numeric dating of relevant stratigraphic units may be still lacking. The arrangement of Quaternary units is known more precisely and there is a differentiation of phases or stages inside generic landforms (e.g., differentiation between generations of alluvial fans, or fluvial terraces, etc.) (Table 1).

Class **ASQE** faults are those that having class BSQE (and CSQE) evidences, also have conclusive observations obtained from field work. In general, Level **ASQE** evidences are gained after intensive work at the office (e.g., photo-interpretation, DTM analysis,...) followed by field work focused on confirming the evidence (e.g., trenching) (Table 1). Level ASQE observations indicate the activity of the fault as a major controlling agent of Quaternary landforms or sedimentation, as for example fault scarps offsetting Quaternary deposits. Numeric geochronology may still be lacking, but the refinement reached on the definition of the geomorphic units allows a reliable approximation to their age based on their relative spatial associations. Rating the strength of the evidence should also consider its representativeness along the fault trace. In order to account for this issue, a plus sign (+) is added to the assigned level of SQE of the fault (e.g., A+) when the evidence is consistently reported at different locations. However, this is a difficult issue to evaluate as the evidence of Quaternary activity of a fault may vary along its trace for very different reasons apart from its activity degree. For example, it could be due to natural erosion/sedimentation processes, frequently in relation to anthropogenic activities, that may have blurred the evidence at some sections and thus biased available studies relatively to other parts of the fault.

Distribution of SQE in the QAFI v.3 database shows that the majority of the records belong to class B (39%, #101), followed closely by classes A (32%, #83) and C (28%, #73) (Figure 1). Note that this distribution does

**Comentado [CE24]:** Am I right?

**Comentado [JGM25R24]:** Yes you are, thank you.

**Comentado [CE26]:** Idem?

**Comentado [JGM27R26]:** Yes you are, thank you.

**Comentado [CE28]:** ?

**Comentado [JGM29R28]:** Same as before

not account for 42 records that were not evaluated, all of them located in Portuguese territory. Interestingly, practically all the records that show a + sign in its SQE belong to class A. This situation may suggest that interpretations on the activity of a fault are many times based on single locations; however reasonable that statement seems, we cannot reject that it may be an artificial bias from the evaluation process, as the effort was more focused on level A records.

### 3.2 Accuracy of the Slip Rate estimation (ASR)

This database field rates an estimation of the net slip rate of a fault on the base of the accuracy of the parameters involved in its calculation, particularly displacement and age. The slip rate estimation may come from original research published in a journal, or may be produced ad hoc as part of the revision and updating process performed in QAFI (see precedent section) from data either published in original publications or estimated by expert judgment. Accuracy of the Slip Rate estimation (ASR) differentiates among three increasing levels of accuracy: CASR, BASR and AASR.

Class CASR corresponds to a slip rate estimation based on the displacement of a marker measured from the interpretation of large scale cartography or DTMs; while age-control of the marker is assumed to correspond to generic Quaternary or Plio-Quaternary, or the different stages that form the Quaternary Period (e.g., 125 ka Upper Pleistocene). Class CASR slip rates are broad approximations that usually lack direct observation of the slip vector and dip of the fault, and it may be assumed from generic considerations on the general kinematics of the fault (e.g., a rake of  $-90^\circ$  for a  $60^\circ$  dip normal fault). Furthermore, in many cases slip rates are just assumed from comparison to other similar faults in the region. The uncertainty of the estimation is very large, strongly depending on the broad controlling-age considered.

A class BASR corresponds to an estimation where one of the basic parameters, displacement or age, is well constrained. Displacement of the marker may be measured from the interpretation of large scale

cartography after some field work; and age may be controlled by numeric dating of the marker or by association to similar stratigraphic units dated in the area. The slip vector of the fault and/or its dip are also better constrained than in class CASR; a net slip rate is usually estimated additionally to the vertical/horizontal components. Uncertainties can still be very large, but the range of maximum and minimum values is better constrained than in class CASR estimations. Very often contrasting slip rate values are obtained when considering different hypothesis on the displacement and age of the marker.

Class AASR describes slip rate estimations where both displacement and age-control are constrained by measurements at outcrop scale and age obtained from numeric dating methods or inferred from them. There is also a good knowledge on the true slip-vector and dip of the fault and, accordingly, net slip rate values are usually produced in the publications. Uncertainties in the estimation still can be large, but conversely to class CASR or BASR, these depend largely on the accuracy of the dating results and its interpretation in relation to the true age of the marker. Uncertainties are usually quoted as standard deviations, or by other similar statistical parameters (e.g., mean error). Age and displacement are clearly stated in the original publication in such a way that any reader could calculate exactly the same values. Typically, there is a discussion on the variation of the slip rate of the fault along different periods of activity.

Most of the slip rates in QAFI v.3 have been rated to class CASR (58%, #150), distantly followed by classes BASR (10%, #25) and AASR (6%, #15) (Figure 2). As in the precedent section, 42 records belonging to faults located in Portuguese territory were not included in this analysis. For an important fraction of the dataset (26%, #67) rating slip rate is not possible simply because such an estimation is not available, not even in terms of “expert judgment”. The accuracy in the determination of slip rates has varied considerably in the last 10 years of active tectonics research in Spain. The younger the paper the higher

**Comentado [CE30]:** May be comforted by focal mechanisms if available for active faults (presently seismogenic faults)

**Comentado [JGM31R30]:** You are right. For the next QAFI version we are trying to include as much as possible seismological information (earthquakes series related to the fault, historical events...), including focal mechanisms of course.

is the effort in obtaining an accurate estimation of slip rate, reflecting clearly the increasing interest of Spanish geologists in seismic hazard practice.

### 3.3 Reliability of Maximum Magnitude (RMM)

The reliability level entrusted to a Maximum Magnitude estimation for an active fault should be based on the quality and representativeness of the geological information from which the estimation was eventually obtained (see the introduction of the section). However, for hazard analysts not particularly specialized in earthquake geology this is not an apparent issue; and sometimes even so for specialized ones, as analysing and evaluating geological data is usually complex and time-consuming. Therefore, an objective indication on the reliability level of a Maximum Magnitude estimation should be a practical and desirable output in any active fault database.

We propose here that the reliability of Maximum Magnitude should be determined straightforward based upon the SQE (Strength of the Quaternary activity Evidence) classes defined for QAFI v.3 (Figure 3). As explained in the introduction of the section, reliability here is a concept linked to epistemic uncertainty –i.e., whether it is plausible that a particular fault could produce a maximum event; rather than to aleatory uncertainty, that regards to the value of the magnitude associated of such an event. Anyhow, a reliable estimation of maximum magnitude should always be accompanied by a discussion on the sources of uncertainty and its impact on the expected value. Additionally, such a reliable estimation should be reached by a reader just considering the data and information provided in the paper. QAFI v.3 thus defines a new database field called “Reliability of Maximum Magnitude” (RMM) that accounts for four levels of increasing reliability: DRMM, CRMM, BRMM and ARMM. These levels are also named, respectively: Speculative, Poorly Reliable, Reliable, and Highly Reliable.

A Highly Reliable level (AMM) is assigned only when the SQE of the fault has been rated A+ –i.e., the Quaternary activity of the fault is clearly evidenced and consistent along its trace; Hence, the occurrence

of past earthquakes that ruptured all the fault or segment trace is very plausible (Figure 3). An AMM level is usually based on published information that discuss possible segmentation of the fault based on slip rate variations, geometry variations or other related issues. Furthermore, the uncertainty in the maximum magnitude estimation procedure is usually analyzed in the publication considering different sources, like variation of rupture parameters (length, width, depth); variation of displacement per event at outcrop scale; variation from the use of different empirical equations according to type of faulting or tectonic environment, nature of the crust... Eventually, the authors may prefer a particular maximum magnitude value to another, being this choice always clearly explained in the paper in such a way that a reader could calculate the same figure and its associated uncertainty.

A BRMM level (Reliable) is assigned when the SQE of the fault is either A or B+ (Figure 3). For these faults there is usually a lack of paleoseismic studies, but the geological information is good enough for analyzing uncertainties from the variation of rupture parameters, as well as for the variation of style of faulting or tectonic regimen according to different scaling relationships. A general reader is usually able to calculate the same maximum magnitude MM value as proposed by the authors based on the data stated in the paper.

A CRMM level (Poorly Reliable) comes from a fault whose SQE is either B or C (Figure 3). An additional lower level called Speculative (DRMM) is considered for rating maximum magnitude estimations specifically derived from sources in which crucial data regarding to the calculation is missing and so it is impossible for a reader to reach a similar value without making speculative assumptions.

Approximately 2/3 of the records in QAFI v.3 database –excluding 42 records in Portugal, show a maximum magnitude estimation rated as poor (CRMM) or speculative (DRMM) (41 and 26%, respectively) (Figure 4). The other third are very reliable (ARMM) or just reliable (BRMM) (21 and 11%,

**Comentado [CE32]:** There is no discussion about identifying present fault activity underlined by microseismicity and /or macroseismicity all along one or more segments ? That may be a complementary criteria for Quaternary activity+ Mmax ?

**Comentado [JGM33R32]:** You are right. Our classification scheme is solely based on geological information. It seems obvious, of course, to classify a fault as active if it shows seismicity. The problem in Spain is that only very few faults have seismicity associated confidently. For a forthcoming version we will study how to incorporate seismic data (earthquake series, historical events, focal mechanisms).

respectively). This situation highlights the importance of being prudent when using these data and try not to jump to conclusions, without checking first reliability.

### **3.3 Reliability of Recurrence Interval (RRI)**

Rating the reliability of the Recurrence Interval of maximum events of an active fault should be based mutually on the two basic parameters that are involved in such an estimation: Maximum Magnitude and Slip Rate (see the introduction of the section). Therefore, we proposed here to evaluate the reliability of a Recurrence Interval estimation after rating the level of reliability of Maximum Magnitude (RMM) and the accuracy of the Slip Rate determination (ASR) (Figure 3). Similarly to RMM, an estimation of Recurrence Interval should always include an uncertainty analysis and its impact.

QAFI v.3 defines a database field called Reliability of Recurrence Interval (RRI) that accounts for four levels of increasing reliability: DRRI, CRRRI, BRRI and ARRI. Similarly to RMM these levels are also named, respectively: Speculative, Poorly Reliable, Reliable, and Highly Reliable. Although QAFI v.3 has chosen to show Recurrence Interval calculated following the Maximum Magnitude Earthquake Model (MEM) (see introduction), the rating levels hereby defined for Recurrence Interval can be easily adapted to rate the reliability of earthquake frequency parameters in any other model of fault behavior that relays in maximum seismic moment and seismic moment rate.

A Highly Reliable level (ARRI) is attributed only when both RMM and ASR have been rated the highest (Figure 3). Published information on a fault with a ARRI level usually discuss thoroughly uncertainties both from epistemic and aleatory sources. The former refers to account for, at least, the possibility that maximum events happened clustered in time, and for the consistency between the size of maximum events derived from single-event displacements in the field and the maximum rupture dimensions of the fault. The aleatory source refers to account for variations in the number of possible events in a time period, which has also an associated error in relation to the numeric dating results and their

interpretation. The authors of the information may prefer a particular Recurrence Interval value to other, but this is always clearly stated in the paper so an external reviewer could reach to the same value, similarly to what is explained in the precedent section for RMM. Uncertainty is usually quoted as a range (maximum to minimum possible values) or using a statistical parameter as standard deviation or mean average error.

Level BRRI (Reliable) results from a record in which RMM and ASR have been rated B and A or B, respectively (Figure 3). An analysis of the aleatory sources of uncertainty is usually included in the published information and uncertainty is quoted either as a range or as error. A Poorly Reliable level (CRRI) is assigned when RMM has been rated C and ASR rated B or C (Figure 3). Yet this level rates the Recurrence Interval estimation as highly interpretative, the information indicates tentative bounds for the range of variation of the parameter. Finally, an additional DRRI level (Speculative) is considered to rate Recurrence Interval estimations derived from information sources that lack sufficient data to pursue the procedure followed to reach the estimation and/or when any source of uncertainty is considered.

More than half of QAFI v.3 records show a Recurrence Interval estimation rated as Poorly Reliable or Speculative (44% and 16%, respectively). Estimations rated as Reliable or Highly Reliable sum up 14% of the total (9 and 5%, respectively). An important fraction (26%) corresponds to records in which there was no available information on the slip rate and, hence, RRI could not be rated. Note that 42 records belonging to faults located in Portugal were not considered in this statistics. Estimations rated as Highly Reliable (#12) coincide with faults having specific paleoseismic and active tectonic studies. Interestingly, these faults do not always coincide with the most active of the database but with the most studied.

#### **4 Discussion**

Active fault databases are an important source of systematized knowledge not just for hazard analysts and earthquake science researchers, but also for engineers following seismic regulations, journalists

looking for information for articles, and even for common citizens. In this context, active fault databases should be updated on a regular basis, show uniformity of criteria and, somehow, indicate the quality of the raw information and the reliability of seismic hazard parameters derived from it. In updating QAFI to its version 3 we have tried to closely follow those assertions.

QAFI v.3 is a more complete, homogenous and a better quality database than QAFI v.2, the previous version released in February 2012. QAFI v.3 contains 299 records, that is 30% more than v.2. All of them have been revised aimed at reaching a minimum quality and homogenous standard for the entire database. It was found that 40 records did not actually show concluding evidence of Quaternary activity, or this was not yet published, and so were excluded from QAFI v.3 and stored in a newly developed database named "Debated Faults". This database can be downloaded from the QAFI web site (IGME, 2015), as well as displayed online together with QAFI faults.

The seismic parameters Maximum Magnitude and Recurrence Interval have been calculated uniformly throughout QAFI v.3. For the former we used the length of the fault and Stirling et al. (2002) regression on  $M_w$  derived from an updated instrumental dataset based on Wells and Coppersmith (1994). Our primary interest was to produce  $M_w$  estimations comparable from fault to fault across the database, using a well-controlled parameter (length) and an equation that have shown consistent outputs with the Intensity-to- $M_w$  relationship used in the [official seismic hazard map of Spain \(IGN-UPM, 2013\)](#). We do not advocate for the use of either that parameter or that empirical equation for calculating fault-related magnitudes in Iberia. That issue is left to be solved by a seismic hazard analyst and depending on the scope and scale of a particular project. For instance, we warn that maximum magnitudes for the faults located in the thick oceanic crust of the Gulf of Cádiz should consider an alternative approach.

Recurrence Interval is calculated assuming the Maximum Magnitude Earthquake Model (Wesnousky, 1986) from the ratio between maximum seismic moment (from maximum  $M_w$ ) and seismic moment rate



(from Slip Rate). Similarly, we do not advocate that this model fits better the seismogenic behavior of Iberian faults, but rather that it is a model completely based on geological data, and convenient for comparing among faults across the database.

Although final decisions on the expected values and variation of Maximum Magnitude or Recurrence Interval rely on the hazard analyst, QAFI v.3 presents a scheme for rating the reliability of these two crucial parameters in a straightforward and objective way based on the quality and representativeness of the available geological information. Reliability is graded in four levels: Speculative (D), Poorly Reliable (C), Reliable (B) and Highly Reliable (A) (Figure 3). Reliability levels are assigned straightforward depending on the qualification obtained in two extra fields that evaluate the geological data: Strength of the Quaternary activity Evidence (SQE) and Accuracy of the Slip Rate estimation (ASR). We believe that this scheme is very valuable for any potential user of the database. Hazard analysts can use it to support decision making when building logic trees or managing epistemic uncertainty in general. Furthermore, general users can use it for quickly checking the quality of the available information, detecting knowledge gaps, and learn about how much results can be trusted.

Two important shortcomings in QAFI v.3 are the large number of records for which we have no estimation of slip rate (26%), and the need to review thoroughly 42 (14%) records belonging to faults located in Portugal. Regarding the former, part of the problem derives from our interest in keeping v.2 concept; in the sense that whenever possible we privileged the compiler to coincide with a major author on the fault. This point sometimes leads to compilations that do not make the best use of the available data, depending on the willingness of the author, and his/her support on the QAFI project. In other cases, it is because there is simply a lack of sufficient data. Nevertheless, a forthcoming version of the database should address this problem in such a way that every record shows a slip rate estimation, even though many of them will be estimated as expert judgment based on slip rates of similar faults in the

vicinity or from geodetic data. Additionally, an extra effort has to be done for quoting slip rate uncertainties, and doing it whenever possible following the same criteria and procedure across the database. Finally, the available information about Quaternary faults in Portugal has not yet been thoroughly analyzed. This would be an essential work to address in a future QAFI version. Additionally, in the case of Spain it would be convenient to explore sources of information older than the **Neotectonic Map (IGME and ENRESA, 1998)**, taking advantage that all Spanish **territory has been mapped geologically at 1:50.000 scale (MAGNA National project)**.

**Comentado [CE34]:** Please provide WWW link or publication

**Comentado [JGM35R34]:** Done

The process of reviewing and updating QAFI has been an opportunity to learn about the evolution of active tectonic studies in Spain for the last 30 years. It has given us also an opportunity for detecting shortcomings as well as to propose improvements. Before ca. 1990 most of the efforts were devoted to Neogene sediments, and most of the studies use the name “neotectonic” for referring to tectonic deformations from upper Miocene to Present. From a tectonic point of view Quaternary was not yet a matter of proper study. Later, studies focused on tectonics affecting Quaternary sediments and geomorphic features began to emerge. Initially these studies were qualitative in character, mostly devoted to illustrate the evidence. As the interest of including geological data in hazard analysis practice in Spain consolidates, these studies become little by little more quantitative. A greater deal of work is then dedicated to slip rate estimation and geochronology dating of most affected recent sediments. In current times, practically all of the papers published on active tectonics in Spain attempt to quantify fault-geometry and -kinematic parameters, potential maximum magnitudes, recurrence interval... It should be warned that in some cases major interpretations are based on very few measurements, or in data that shows great variability (e.g., numeric dating), or they are just based on observations at single locations (e.g., a trench). This situation brings up a recommendation for future active tectonic studies in Spain: the importance of identifying the sources of uncertainty and being able to quantify them in a standard way.

## 5 Conclusion

QAFI v.3 is a much better source of information for seismic hazard analysts in Iberia than version 2. The new version is more complete, more uniform and consistent. Furthermore, QAFI v.3 serves as a baseline for managing epistemic uncertainty in fault hazard analysis. The reliability of maximum magnitude and recurrence interval of faults is rated based on the quality and representativeness of the geological data from which these parameters are eventually derived. However, it is warned that QAFI database is a regional-scope project and, hence, it should not substitute in any way further geological studies that may be appropriate to perform for site-specific hazard analysis or local-scale hazard mapping.

## 6 Acknowledgments

Development of QAFI v.3 has been funded by SISMOGEN project (GESTEC 2279), from Instituto Geológico y Minero de España (IGME), and Civil Protection of the Region of Murcia. The authors are indebted to all the compilers of the database and particularly to J.M. Azañón and A. Azor (Granada University) who also gave an informed opinion about QAFI v.3 classification scheme presented at Iberfault-2014. Ángel Prieto (IGME) is particularly acknowledged for his great work producing QAFI's web page.

## 7 References

Aki, K.: Generation and propagation of G waves from the Niigata earthquake of June 16, 1964. II. Estimation of earthquake movement, release energy, and stress-strain drop from waves spectrum. *Bulletin of the Earthquake Research Institute*, 44, 23- 88, 1996.

Álvarez-Gómez, J.A. and Martín González, F. (eds.): Una aproximación multidisciplinar al estudio de las fallas activas, los terremotos y el riesgo sísmico. Libro de resúmenes de la Segunda Reunión Ibérica sobre Fallas Activas y Paleosismología (IBERFAULT), Lorca (Murcia, España), 22-24 de Octubre de 2014, 266 pp, available at:

[http://www.iberfault.org/images/docs/Iberfault2014\\_web.pdf/](http://www.iberfault.org/images/docs/Iberfault2014_web.pdf/), 2014.

Álvarez-Gómez, J. A., Aniel-Quiroga, Í., González, M., Olabarrieta, M. and Carreño, E.: Scenarios for earthquake-generated tsunamis on a complex tectonic area of diffuse deformation and low velocity: The Alboran Sea, Western Mediterranean, *Mar. Geol.*, 284(1–4), 55–73, 2011.

Anderson, J.G. and Luco, J.E.: Consequences of slip rate constants on earthquake recurrence relations. *Bulletin of the Seismological Society of America*, 73, 471-496, 1983.

Benito, B., Rivas, A., Pérez, M., Quirós, L.E., Barajas, S., Gaspar-Escribano, J.M. and Hernández, R.: Servicio de actualización del análisis de riesgo sísmico (Rismur) en la Región de Murcia. Universidad Politécnica de Madrid – Protección Civil de la Región de Murcia, unpublished document, 88 pp, 2015.

Campbell K.W. and Bozorgnia Y.: NGA-West2 Campbell-Bozorgnia Ground Motion Model for the Horizontal Components of PGA, PGV, and 5%-Damped Elastic Pseudo-Acceleration Response Spectra for Periods Ranging from 0.01 to 10 s. *PEER* 2013/06, 2013.

CEN: Eurocode 8: Design of structures for earthquake resistance – Part 5: Foundations, retaining structures and geotechnical aspects (EN 1998-5:2004), 2004.

Gailler, A., Hébert, H., Loevenbruck, A., and Hernandez, B.: Simulation systems for tsunami wave propagation forecasting within the French tsunami warning center, *Nat. Hazards Earth Syst. Sci.*, 13, 2465-2482, doi:10.5194/nhess-13-2465-2013, 2013.

García-Mayordomo, J.: Creación de un modelo de zonas sismogénicas para el cálculo del mapa de peligrosidad sísmica de España. Instituto Geológico y Minero de España (Ed), Madrid, 125 pp, available at: <http://igmepublicaciones.blogspot.com.es/2014/10/riesgos-geologicosgeotecnia.html/>, 2015.

García-Mayordomo, J., Martínez-Díaz, J.J., Capote, R., Martín-Banda, R., Insua-Arévalo, J.M., Álvarez-Gómez, J.A., Perea, H., González, Á., Lafuente, P., Martín-González, F., Pérez-López, R., Rodríguez-Pascua, M.A., Giner-Robles, J., Azañón, J.M., Masana, E., Moreno, X., Benito, B., Rivas, A., Gaspar-Escribano, J.M., Cabañas, L., Vilanova, S., Fonseca, J., Nemser, E. and Baize, S.: Modelo de zonas sismogénicas para el cálculo de la peligrosidad sísmica en España, in: *Proceedings of the VII Asamblea Hispano Portuguesa de Geodesia y Geofísica*, San Sebastián (Spain), June 23rd to 28th 2012, 5 pp, 2012a. García-Mayordomo, J., Insua-Arévalo, J.M., Martínez-Díaz, J.J., Martín-Alfageme, S., Jiménez-Díaz, A., Martín-Banda, R., Rodríguez-Escudero, E., Rodríguez-Peces, M.J., Cabañas-Rodríguez, L. and Gaspar-Escribano, J.M.: Seismogenic fault–source characterization in SE Spain: Implications for probabilistic seismic hazard assessment, in: *Proceedings of the XV World Conference on Earthquake Engineering*, Lisbon, 24-28 September 2012, 2012b.

García-Mayordomo, J., Martín-Banda, R., Insua-Arévalo, J.M., Álvarez-Gómez, J.A., Cabañas, L., Cantavella, J.V., Crespo, M.J., Pereira Dias, R., Pascual, G., and Alfageme, S.: La base de datos de fallas activas cuaternarias de Iberia (QAFI v.2): características, aplicaciones y problemas, in: *Proceedings of the VII Asamblea Hispano Portuguesa de Geodesia y Geofísica*, San Sebastián (Spain), June 23rd to 28th 2012, 5 pp., 2012c.

García-Mayordomo, J., Insua-Arévalo, J.M., Martínez-Díaz, J.J., Jiménez-Díaz, A., Martín-Banda, R., Martín-Alfageme, S., Álvarez-Gómez, J.A., Rodríguez-Peces, M., Pérez-López, R., Rodríguez-Pascua, M.A., Masana, E., Perea, H., Martín-González, F., Giner-Robles, J., Nemser E.S., Cabral J. and the QAFI Compilers Working Group: The Quaternary Active Faults Database of Iberia (QAFI v.2.0), *Journal of Iberian Geology*, 38(1): 285-302, 2012d.

Hanks, T. C., and Kanamori, H.: A moment magnitude scale, *J. Geophys. Res.*, 84, 2348–2350, 1979.

IGME and ENRESA: Mapas Neotectónico y Sismotectónico de España a escala 1:1.000.000, Vol. I, 237 pp. and Vol. II, 167 pp., available at <http://info.igme.es/qafi/Download.aspx/>, 1998.

IGN-UPM: Actualización de Mapas de Peligrosidad Sísmica de España 2012. Centro Nacional de Información Geográfica, Madrid, 267 pp., 2013.

IGME: QAFI v.3: Quaternary Active Faults Database of Iberia, <http://info.igme.es/QAFI/>, Last accessed March 2017, 2015. ITGE: Mapa Neotectónico, Sismotectónico y de Actividad de Fallas de la Región de Murcia a escalas 1:200.000 y 1:100.000, Memoria, 99 pp, and Annex V: Fichero de Fallas (Volumen I), 454 pp., available at: <http://info.igme.es/qafi/Download.aspx/>, 1991.

Martínez-Díaz, J.J., Masana, E. and Rodríguez-Pascua, M.A. (eds.): Active Faults in Iberia. *Journal of Iberian Geology*, 38, special issue, 302 pp, available at: <http://revistas.ucm.es/index.php/IJIGE/issue/view/2254/showToc/>, 2012.

Michetti A.M., Esposito E., Guerrieri L., Porfido S., Serva L., Tatevossian R., Vittori E., Audemard F., Azuma T., Clague J., Comerci V., Gurpinar A., Mc Calpin J., Mohammadioun B., Morner N.A., Ota Y. and Roghazin E.: Intensity Scale ESI 2007. In: Guerrieri L. & Vittori E. (Eds.): *Memorie Descrittive Carta Geologica d'Italia*, 74, Servizio Geologico d'Italia – Dipartimento Difesa del Suolo, APAT, Roma, 53 pp, 2007.

Rivas, A.: Contribución metodológica para incorporar fallas activas en la modelización de la fuente dirigida a estimaciones de peligrosidad sísmica. Aplicación al sur de España, Ph.D. thesis, Universidad Politécnica de Madrid, Madrid, 235 pp, 2013.

Schwartz, D.P. and Coppersmith, K.J.: Fault behavior and characteristic earthquakes: examples from the Wasatch and San Andreas Fault Zones. *Journal of Geophysical Research*, 89(B7), 5681-5698, 1984.

Simón, J.L.: Compresión y distensión alpinas en la Cadena Ibérica Oriental, Ph.D. thesis, Instituto de Estudios Turolenses, Teruel, 269 pp., 1984.

Stirling, M., Rhoades, D., and Berryman, K.: Comparison of earthquake scaling relations derived from data of the instrumental and preinstrumental era, *Bulletin of the Seismological Society of America*, 92(2), 812-830, 2002.

Wells, D.L., and Coppersmith, K.J.: New empirical relationships among magnitude, rupture length, rupture width, rupture area, and surface displacement. *Bulletin of the Seismological Society of America*, 84:4974-1002, 1994.

Wesnousky, S.G.: The Gutenberg-Richter or the characteristic earthquake model, which is it? Bulletin of the Seismological Society of America, 84, 1940-1959, 1994.

Wesnousky, S.G.: Earthquakes, Quaternary faults, and seismic hazard in California, Journal of Geophysical Research, 91(B12), 12587-12631, 1986.

Youngs, R.R., and Coppersmith, K.J.: Implications of fault slip rates and earthquake recurrence models to probabilistic seismic hazard estimates, Bulletin of the Seismological society of America, 75(4), 939-964, 1985.

Table 1. Classification of the Strength of the Quaternary activity Evidence (SQE) of a fault in three levels of increasing significance, based on the scale of the available observations, type of data and methods used. The classification is not intended to be exhaustive but to furnish the approach and criteria used in QAFI v.3. See text for complementary information.

#### Classification of the Strength of the Quaternary activity Evidence (SQE)

Class C.- Evidence inferred just from:

- Regional-scale geological maps (1/100.000 or smaller)
- Terrain/drainage/geomorphic anomalies at a broad scale
- Geophysical methods performed at a broad scale (Bouguer anomaly, magnetic anomalies, ...)
- Interpretations from poor-quality multichannel seismic lines

Note: A "+" sign is added to the class when evidence is reported at different locations along the fault trace (e.g., C+)

Class B.- Additional evidence based on interpretations from:

- Detailed-scale geological maps (1/50.000 or larger)
- Geomorphic indexes indicating relatively recent activity (mountain front sinuosity, ...)
- Drainage network anomalies (fault-aligned deflections, beheaded valleys, longitudinal profile anomalies, differential dissection, captures, ...)
- Landforms anomalies (scarps, ponds, ridges, faceted spurs, ...) - Geophysical methods performed at detailed scale - Good-quality multichannel seismic lines

Note: A "+" sign is added to the class when evidence is reported at different locations along the fault trace (e.g., B+)

Class A.- Additional direct evidence from field data:

- Fault scarp controlling Quaternary geomorphic landforms

- Quaternary sedimentation processes controlled by tectonics
- Fault offsetting or folding Quaternary deposits at surface or subsurface
- Interpretations from high-resolution geophysical methods

Note: A “+” sign is added to the class when evidence is reported at different locations along the fault trace (e.g., A+)

### Strength of the Quaternary activity Evidence (SQE)

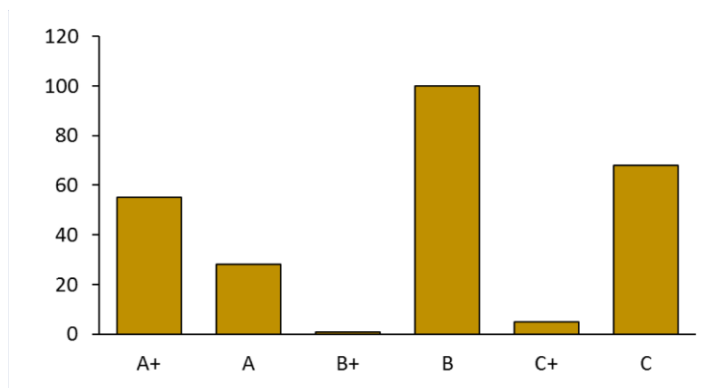


Figure 1. Distribution of level classes of Strength of the Quaternary activity evidence (SQE) in QAFI v.3 database. See text for comments.

**Comentado [CE36]:** All diagrams should be at the same scale for comparison ? (Number max of faults =160)

**Comentado [JGM37R36]:** All but one have been redrawn to have the same scale

### Accuracy of the Slip Rate estimation (ASR)

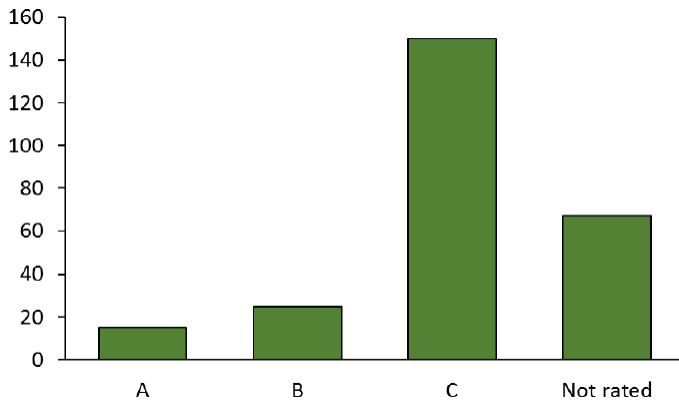


Figure 2. Distribution of classes of Accuracy of the Slip Rate estimation (ASR) in QAFI v.3 database. See text for comments.

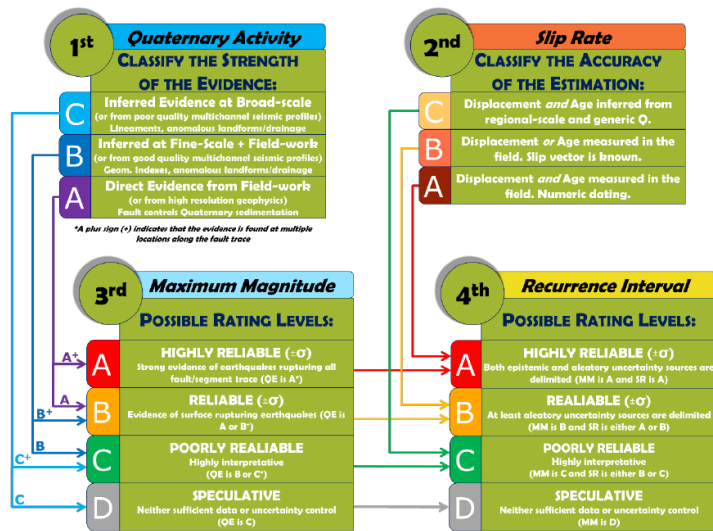


Figure 3. Diagram summarizing the scheme followed in QAFI v.3 for rating the reliability of Maximum Magnitude (RMM) and Recurrence Interval (RRI) on the base of the Strength of the Quaternary activity Evidence (SQE) and the Accuracy of the Slip Rate estimation (ASR). First, the SQE of the fault is classified based on the detail of the available published observations in three increasing levels of accumulated evidence, varying from C (weak) to A (very strong). A plus sign (+) is assigned when the observations can be extrapolated with confidence all along the fault trace. Second, the ASR is classified based on the



accuracy of the information used for its determination, varying from C (rough) to A (accurate). Third, RMM is obtained straightforward from SQE class, varying from extremes A (Highly Reliable) to D (Speculative). Fourth, RRI is obtained from both RMM and ASR. Resulting RRI would never be higher than the rated level for RMM, yet it could be lower depending on ASR (these relationships are not shown on the diagram for the sake of simplicity). See text and Table 1 for a more extensive explanation.

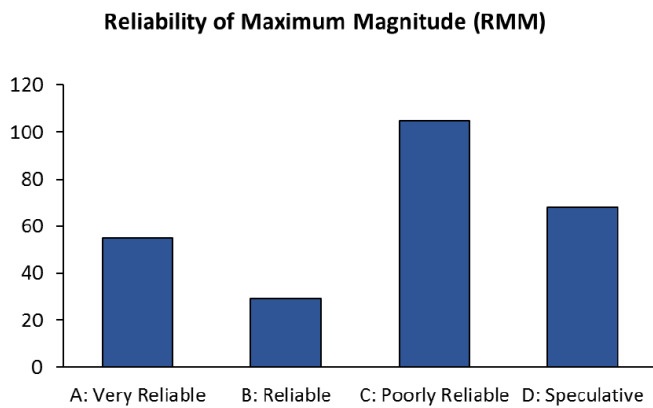


Figure 4. Distribution of rating levels for the database-field Reliability of the Maximum Magnitude estimation (RMM) in QAFI v.3 database. See text for explanations.

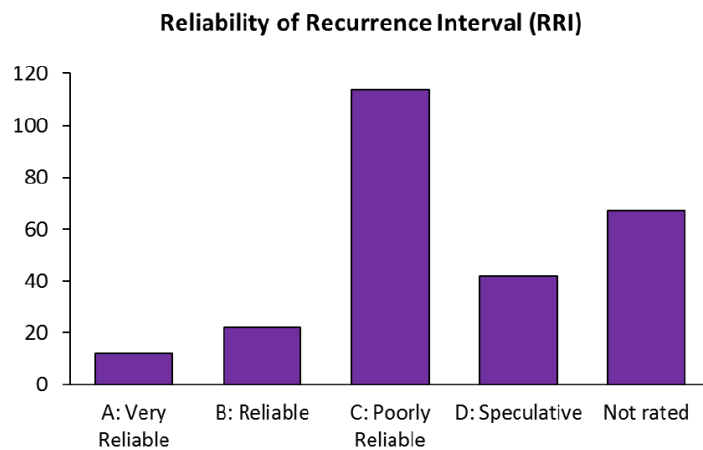


Figure 5. Distribution of rating levels for the database-field Reliability of Recurrence Interval (RRI) in QAFI v.3 database. See text for explanations.

## Second Referee

### N. Litchfield (Referee)

N.Litchfield@gns.cri.nz

Received and published: 16 May 2017

This paper provides a nice summary of an updated version (3) of an Active Fault Database of Iberia including addition of seismic hazard parameters (M and RI) and assessment of the quality and reliability. The paper will be useful for the special issue and will be of international interest. The paper is well written, well structured, and provides a thorough and thoughtful description of the key updates and new parameters in the database, without getting too buried in detail. The figures and tables are useful and clear, with the possible exception of a map as noted below.

#### Specific comments

The one thing I think is missing from the paper is a map of Iberia showing the active faults in the database. It would be useful to denote the new ones added as well as the sense of movement, which is currently not noted anywhere. This would be particularly useful for international readers.

Reply: We have produced a new figure that shows Iberia and the QAFI faults (Figure 1).

I am also unclear if this is a live database that is being constantly updated, or if there will be no more updates until v4 is released? I suggest a sentence is added clarifying that to the paper.

Reply: A phrase has been added at the end of the conclusion section: "QAFI database is updated roughly every 4 years and always after the celebration of the Iberian meetings on Active Faults and Paleoseismology (IBERFAULT, 2014)."

One thing that is not really mentioned at all is if any of the faults are divided into segments? Because magnitude is calculated for each fault it implies that they are considered to be an individual seismic sources, but if some faults are divided into segments then it would be useful to at least note somewhere in the text that some segments may rupture together. In fact the 2016 Kaikoura Earthquake in New Zealand has clearly shown us that faults may rupture together, regardless of whether they are divided into segments or not. I know that analysis of segment options is part of seismic hazard analysis rather than an active fault database, but I'm slightly concerned that by supplying magnitudes for each fault readers may assume that they can only rupture on their own.

Reply: You are absolutely right. When talking about uncertainty in MM in relation to the Palomares Fault, we have included this final phrase: "... A hazard analyst may also consider plausible a multi segment rupture comprising 60 km and include this possibility as a branch in a logic tree scheme."

The paper notes that the 42 faults in Portuguese territory have not been assessed for some of the parameters. This should be stated early on, with the reasons why.

Reply: The reasons are political and far from scientifically interesting. In summary, LNEG (the counterpart of IGME in Portugal, and its official partner for maintenance and updating QAFI) was not able eventually to commit in assessing the quality/reliability of Portuguese faults. We hope that this issue would be solved not far in time.

The discussion is really a summary and discussion, so I suggest changing the heading to this.

Reply: Thanks for the suggestion, but we are finally leaving the title as Discussion.

The histogram figures need labels on the y-axis. Presumably this is number of faults?

Reply: Yes, that is right. The new figures show the labels (Number of records)

Technical corrections are noted as comments on the pdf supplement, and most are minor English corrections.

Reply: Thank you very much. We have considered practically all the English corrections in the new version of the manuscript. We reply here to the only two comments found on the pdf supplement:

Line 282: "This situation may suggest that interpretations on the activity of a fault are many times based on single locations; ...:"

Referee: I don't understand what you mean here. Do you mean that the activity is based on data from multiple locations?

Reply: We refer to the fact that sometimes field work is just focused at few or even single particular locations, and that observations from those outcrops are used later for deriving an interpretation claimed to be valid for the whole fault trace.

Line 282: "When evaluating the reliability of Maximum Magnitude we refer here to the fact that the fault could actually produce maximum events –i.e., an event that ruptures the surface for a similar extent as its measured length."

Referee: I don't understand what you mean here.

Reply: In QAFI we do not evaluate the reliability of the actual value of the maximum magnitude, as that depends, for example, on the conversion equation used, among other issues. In QAFI, reliability of MM refers to the idea that the fault (segment) can actually rupture its whole length.

Please also note the supplement to this comment:

<http://www.nat-hazards-earth-syst-sci-discuss.net/nhess-2017-128/nhess-2017-128-RC2-supplement.pdf>

Interactive comment on Nat. Hazards Earth Syst. Sci. Discuss., doi:10.5194/nhess-2017-128, 2017.

# Active fault databases: building a bridge between earthquake geologists and seismic hazard practitioners, the case of the QAFI v.3 database

5 Julián García-Mayordomo<sup>1,2</sup>, Raquel Martín-Banda<sup>1,2</sup>, Juan M. Insua-Arévalo<sup>2</sup>, José A. Álvarez-Gómez<sup>2</sup>, José J. Martínez-Díaz<sup>2</sup> and João Cabral<sup>3</sup>

<sup>1</sup>Instituto Geológico y Minero de España, Madrid, 28003, Spain

<sup>2</sup>Department of Geodynamics, Geology Faculty, Complutense University, Madrid, 28040, Spain

<sup>3</sup>Department of Geology, Science Faculty, Lisboa University, Lisbon, 179-016, Portugal

10 *Correspondence to:* Julian García-Mayordomo (julian.garcia@igme.es)

**Abstract.** Active fault databases are a very powerful and useful tool in seismic hazard assessment, particularly when singular faults are considered as seismogenic sources. Active fault databases are also a very relevant source of information for earth scientists, earthquake engineers and even teachers or journalists. Active fault databases, hence, should be updated and through reviewed on a regular basis in order to keep a standard quality and uniformed criteria. Desirably, active fault databases should indicate somehow the quality of the geological data and, particularly, the reliability attributed to crucial fault-seismic parameters, as Maximum Magnitude and Recurrence Interval. In this paper we explain how we tackled these issues during the process of updating and reviewing the Quaternary Active Fault Database of Iberia (QAFI) to its current version 3. We devote particular attention to describing the scheme devised for classifying the quality and representativeness of the geological evidence of Quaternary activity and the accuracy of the slip rate estimation in the database. Subsequently, we use this information as input for a straightforward rating of the level of reliability of Maximum Magnitude and Recurrence Interval fault seismic parameters. We conclude that QAFI v.3 is a much better database than version 2 either for a proper use in seismic hazard applications or as an informative source for non-specialized users. However, we already envision new improvements for a future update.

## 1 Introduction

25 Active fault databases are both an important managing tool for seismic hazard assessment as well as a convenient way to display and share scientific information of active faults. Knowledge about the location and activity degree of faults is crucial for seismic hazard and risk assessment, as well as particularly for critical facilities as nuclear power plants, radioactive waste storages and chemical plants; but as well for planning anthropic activities that may involve changing the natural stress-state in the crust: water reservoirs, underground gas storage, fracking, etc. The importance of active faults is a matter of concern in modern seismic code provisions, as for example in Eurocode-8, in which official documents issued by competent national

authorities are referred to for the identification of such faults (e.g., Eurocode-8: Part 5 (CEN, 2004)). Active fault databases are also key ~~for~~ tsunami hazard assessments (e.g. Álvarez-Gómez et al., 2011) as well as ~~for~~ Early Warning Systems, which are largely based on precomputed tsunamigenic faulting scenarios derived from information of such databases (e.g., Gailler et al., 2013).

35 Since the Quaternary Active Faults Database of Iberia (QAFI v.2) was released in February 2012 ([García-Mayordomo et al., 2012a](#)) an increasing number of studies have made use of it. The most relevant use so far has been for the creation of the new seismic hazard map of Spain (IGN-UPM, 2013), performed considering the foreseen adoption of Eurocode-8 throughout 2017. QAFI faults were considered as complementary information for designing seismogenic source-zones models, for estimating ~~maximum-magnitude~~[Maximum Magnitude](#) distributions in each source-zone, as well as to assign the predominant rupture  
40 mechanism required for ground motion prediction equations (GMPEs) (García-Mayordomo et al., [2012a](#)[2012b](#); García-Mayordomo, 2015).

However, the seismogenic model did not ~~consider~~ explicitly [consider](#) QAFI faults as seismogenic sources. The National Seismic Hazard Map Committee considered that the information available at that time (*ca.* 2011) was not complete enough to homogeneously cover all the territory, and that it was affected by large uncertainties that prevented its use for producing an  
45 official standard for the country. Besides, a number of tests showed that the most active faults in QAFI (e.g., Eastern Betic Shear Zone) had a lower impact on hazard when modelled as sources than a regular seismogenic-zone for the targeted return periods of the map (475- and 950-yr) (García-Mayordomo et al., [2012b](#)[2012c](#)).

Interestingly, Rivas (2013) analysed in depth the effect of considering QAFI faults as sources for the same return periods and found that these faults were clearly controlling the spatial distribution and amplitude of hazard. The reason for this is found in  
50 the GMPE model used, that considered near-source effects (e.g., Campbell and Bozorgnia, 2013), increasing remarkably the hazard in the vicinity of the fault. Rivas (2013) also tested the application of a Brownian Passage Time renewal model for the Carboneras Fault, a major active fault belonging to the Eastern Betic Shear Zone. Following Rivas (2013) methodology, QAFI faults were modelled as sources to update the seismic hazard map of the Region of Murcia (SE Spain) which was the base for the design of the new civil protection plans for the region after the Mw 5.2 Lorca 2011 earthquake (Benito et al., 2015).

55 Apart from QAFI the most obvious use in seismic hazard calculations as explained above, the database has also become a primary source of information for both researchers and journalists in the event of an earthquake in Spain. Reference to QAFI is increasing in the frame of engineering projects, a practice that is foreseen to be increased when the application of Eurocode-8 becomes in force in Spain.

However, since QAFI v.2 was released it was known that the database presented important shortcomings for being used  
60 ~~straightforwardly~~[directly](#) in seismic hazard assessment (García-Mayordomo et al., [2012e](#)[2012a,d](#)). There was a strong urge for reviewing and updating the database in order to make it more complete, more uniform and consistent, in such a way that it could provide guidance on the reliability of the seismic parameters of the faults not just for seismic hazard practitioners but

for non-specialist users as well. Fault-source characterization for hazard calculations demands to rate somehow the quality of the geological information on which seismic parameters are eventually derived.

65 This paper summarises the work carried out to update QAFI to v.3, aiming at improving completeness and homogenizing criteria and consistency across the database. A particular effort has been made to classify the quality of geological data in order to provide an objective reliability rating of crucial fault-seismic parameters: Maximum Magnitude and Recurrence Interval. As a result, QAFI v.3 is a much better database than previous version 2, and more appropriate for being use by seismic hazard analysts and earth scientists, and even by non-specialized users, as engineers, teachers or journalists.

## 70 2 Updating process to QAFI v.3

### 2.1 QAFI v.2 basic problems

It was well known since QAFI v.2 was released that the database had some problems of completeness and uniformity (García-Mayordomo et al., ~~2012~~<sup>2012a,d</sup>), even though at that time QAFI v.2 was the most informative source about active faulting in Iberia. On one hand, some important sources of information had not been analysed in detail (e.g., Neotectonic Map of Spain; IGME and ENRESA, 1998; and other regional neotectonic maps; ITGE, 1991) and on the other hand, some records were not properly compiled or had not all possible data adequately compiled. That was the case of some crucial database fields, as the description of Evidence of Quaternary Activity, fault geometry parameters (maximum depth, dip) and slip rates. Additionally, the variability range, or error, of important parameters (e.g., slip rate) was not quoted and indicated in many cases. Hence, it was clear that a thorough revision of existing but not yet compiled data, as well as a revision of the original sources of information for already compiled data, was much needed.

80 Uniformity of criteria is of paramount importance in active fault databases, especially when these are open to general, not specialized users. The database fields “~~maximum magnitude~~Maximum Magnitude” and “~~recurrence interval~~Recurrence Interval”, crucial in seismic hazard applications, were not always calculated following the same criteria and methods in QAFI v.2. The estimation of ~~maximum magnitudes~~Maximum Magnitude was calculated using a variety of empirical relationships, which in some cases offered very different results, as it was the case, for example, of Wells and Coppersmith (1994) compared to the pre-instrumental equation of Stirling et al. (2002). Additionally, the independent variable used in these equations was also different in many cases, as for example length-of-surface-rupture compared to rupture-area. The consideration of equations derived from subsets considering style of faulting compared to the overall dataset was also a common difference for a number of records. In a similar way, the estimation of the recurrence interval was approached in different ways, and when information on uncertainty was available, it was not always possible to discern with confidence how it had been calculated.

90 A main issue that a seismic hazard analyst has to face eventually is ~~about~~-quoting the reliability of different, but plausible ~~hypothesis~~hypotheses regarding geological data and seismic parameters of fault sources. The common approach to tackle this problem –elegantly called epistemic uncertainty, is to follow a logic-tree procedure in which each of the branches represent

different alternatives on which the analyst ~~expresse~~expresses his/her confidence by assigning particular weights. This procedure  
95 may become a difficult issue, particularly ~~whenif~~ the hazard analyst is not acquainted with the active tectonics of the territory  
under study, or simply because ~~isthey are~~ not specialized in earthquake geology. Hence, it was envisioned that an obvious  
improvement in a future update of QAFI would consist ~~inof~~ devising a system for classifying the reliability of fault seismic  
parameters, not just for hazard analysts but also for any other potential user (researchers, engineers, journalists, teachers, civil  
officers).

## 2.2 Revision and updating

QAFI v.3 was ~~finally~~ released in September 2015, after a thorough revision, updating and adding new data- (Figure 1). For a  
complete description of the fields that form the database the reader is referred to QAFI v.3 documentation and guide to the  
user available on the web (IGME, 2015). The new version contains 299 records, 30% more than the old v.2. New records come  
105 fundamentally after reviewing the complementary material and reports that lead to the publication of the neotectonic maps of  
Spain (IGME and ENRESA, 1998) and Murcia Region (ITGE, 1991). It is worth to mention that only those faults that were  
clearly named and identified in the reports, and the accompanying maps were considered for incorporation into the database.  
Faults failing to meet these criteria were not included as a record in the database, although their cartographic traces can be  
shown together with QAFI faults in the website. Additional sources of new information where thesis dissertations (e.g., Simón,  
110 1984), the special issue on Active Tectonics in Iberia published in the Journal of Iberian Geology (Martínez-Díaz et al., 2012),  
the proceedings of the Iberfault-2014 meeting (Álvarez-Gómez and Martín-González, 2014) and a number of papers published  
in Earth sciences journals since 2012.

QAFI v.2 records were revised one by one, verifying the original sources of information referred to by the original compilers  
and, in many cases, contacting them to help in the compiling process or just for getting their approval on the update of the data  
115 compilation. We wanted to keep the same thinking as in QAFI v.2, that whenever possible the main compiler should coincide  
with a major author on the fault, even though ~~that~~ this way generally makes the compilation process slower. Particular attention  
was paid to the database-fields description of the Evidence of Quaternary Activity, Age of Last Deformation, Geometry and  
Kinematics, and Slip Rate.

In some cases, the revision process led us to exclude certain faults from the final QAFI v.3 database. These faults were moved  
120 to a new database called “Debated Faults” (40 records) (Figure 1). Debated faults are those that do not show either concluding  
evidence of Quaternary activity or for which this evidence is not yet published in a peer-reviewed journal. The Debated Faults  
database is also available to the public on the QAFI web site (IGME, 2015).

A special effort was ~~done~~made to produce a best estimation of net slip rates (slip along displacement vector) and its uncertainty.  
In many cases, slip rates were not estimated in the original publications and had to be calculated *ad hoc* searching for valuable  
125 data included in them. This calculation was done transparently, clearly detailing the data and approach used in a memo field

associated to the estimation called “brief comment”. In some cases there was not enough information for such an estimation and so slip rates were estimated by expert judgement, usually by comparison to similar faults in the area. In spite of the effort, 22% of the records still lack a slip rate estimation.

130 The variability/error field associated ~~to~~with slip rate in QAFI v.3 may show either the range of variation of the estimation based on uncertainties in geological assumptions or some sort of statistical error based on the randomness of the measurements. An example of the former would be a slip rate determination based on assumptions ~~on~~of the age of a non-dated marker, which could lead to two extreme values; this is usually quoted as a range (e.g., 0.5-1.0 m/ky). For the latter, consider for example a variability estimation based on the standard deviation of radiometric dates given by a laboratory; this is usually quoted in QAFI v.3 as an error (e.g.,  $\pm 0.08$  m/ky).

135 Finally, the revision and updating process included verifying the cartographic traces of the faults against the original sources of information, geo-referencing all them to the same datum (ETRS89), and double-checking for a good match with associated landforms as observed in satellite imagery and DTMs. For those faults compiled from the Neotectonic Map of Spain project geo-referencing had to be made by hand as the original source is made up of a composite of different paper sheets, none of them properly georeferenced.

### 140 2.3 Criteria homogenization

We particularly refer here to the method considered for calculating maximum magnitudes and associated recurrence intervals. If an active fault database is going to ~~show~~include these parameters, then it is important that these are calculated in a consistent, homogenous way, allowing direct comparison ~~from~~between records. It is up to the hazard analysts eventually to either assume these values or consider different ones for their own purposes. However, for non-specialized users, ~~such as they may be~~ engineers or journalists, it is important that these critical values are consistent and comparable across the database. In QAFI v.3 ~~maximum magnitude and recurrence interval~~Maximum Magnitude and Recurrence Interval have been calculated consistently in the same way all through the database, except for the latter, in which a few records (#12) had conclusive paleoseismic data while for #111 (37%) that available data was simply not enough to draw an estimation. In the case that it was already available a published estimation for any of these data, we kept and referenced it in the accompanying “brief comment” memo field.

150 Maximum Magnitude is estimated in QAFI v.3 considering the value quoted in the field “Length” of the fault, and making use of Stirling et al. (2002) regression equation of moment-magnitude on surface-rupture-length derived from an updated instrumental dataset after Wells and Coppersmith (1994). Length is a field always accounted for in every record of QAFI v.3, and one of the fields that ~~more accurate~~ can be more accurately estimated, compared to rupture area, for instance, for which uncertainties in the variation of dip with depth as well as the maximum brittle depth of the fault itself, strongly affect the result. Hence, “Length” was chosen as the independent variable for obtaining moment magnitude considering an equation based on empirical data.



The choice of Stirling et al. (2002) took place along with several working meetings devoted to the Intensity-to-Moment-Magnitude conversion equation (I-Mw) in the frame of the preparation of the Spanish National Hazard Map (IGN-UPM, 2013).

160 In countries with a long historical earthquake record, such as Spain, this conversion is a crucial issue as it determines the maximum magnitude of the events in the catalogue. Desirably, these conversion equations have to provide outputs consistent not just with damage descriptions in buildings but also with known environmental effects, such as those described in the Environmental Seismic Intensity (ESI) scale (Michetti et al., 2007). For instance, in the ESI scale, surface-rupture earthquakes appear from Intensity VIII onwards, so it would not be reasonable that pre-instrumental events with lower intensities could be converted to Mw>6.0. An additional issue is the estimation of the upper bound of the Gutenberg-Richter distribution when characterizing seismogenic sources. In seismic hazard assessment practice this is usually done based on the maximum event recorded in the zone; (e.g., adding to it 0.5 magnitude units), and desirably it should be consistent with the maximum Mw that could be derived from the active faults contained in the zone. Furthermore, for zones showing scarce seismicity, the estimation of maximum Mw from fault data may be the most reliable approach, if not the only one. Hence, a set of equations available at 170 that time were tested against the outputs of the I-Mw conversion equation (cf. García-Mayordomo, 2015 and references therein), and the ~~two~~-only two available data on fault ruptures and historical earthquakes in Spain (e.g., 1884 Arenas del Rey and 1829 Torrevieja earthquakes, related to Ventas de Zafarraya and Bajo Segura Faults, respectively). It was found that the outcomes of the Stirling et al. (2002) equation were the most consistent. Nevertheless, for the faults located in the Gulf of Cádiz, where thick oceanic crust occur, maximum magnitudes may be much higher ~~thatt~~han predicted from that relationship. 175 For these records the Maximum Magnitude “brief comment” memo field describes other alternatives and estimations cited in published literature.

The variability/error field for ~~maximum magnitude~~Maximum Magnitude in QAFI v.3 simply accounts for the standard deviation of expected Mw according to Stirling et al. (2002) equation for the instrumental dataset. In those cases where uncertainty in length is significant, we use the “brief comment” memo field to explain and account for this issue in the magnitude estimation. For example, the Palomares fault (ES609), a 5-10 km wide N-S shear zone that forms part of the Eastern Betic Shear Zone, is *ca.* 60 km long, although to estimate maximum magnitude in QAFI v.3 we used 10 km, which is the maximum length of single fault traces inside the shear zone. A hazard analyst may also consider plausible a multi segment rupture comprising 60 km and include this possibility as a branch in a logic tree scheme.

Recurrence Interval in QAFI v.3 is estimated considering the Maximum Magnitude Earthquake Model (MEM) (Wesnousky, 1986). This model assumes that each fault—or fault segment, releases seismic moment in just one maximum event that marks the end/beginning of a seismic cycle. The opposite model considers that the fault releases seismic moment by means of events of all sizes fitting an exponential distribution –i.e. a Gutenberg-Richter relationship. An intermediate model is the Characteristic Earthquake Model (Schwartz and Coppersmith, 1984), in which the fault produces events of all sizes up to a certain maximum, above which the fault only produces maximum events (cf. Wesnousky, 1994). QAFI v.3 considers the MEM 185

190 model since it is a simple and straightforward method that can be invoked considering just geological data obtained from the field.

In considering the MEM, slip rate (SR) represents the average rate at which maximum earthquakes are released by the fault, and because these maximum earthquakes are all of a similar size, and so they were produced by a similar coseismic displacement (D) on the fault plane, their average frequency (i.e., recurrence interval, RI) can be simply calculated as  $D/SR$ :

195 
$$RI = \frac{D}{SR}$$

However, the parameter displacement (D) of such a single maximum event is very difficult to specify, either from paleoseismic studies or from empirical regressions on the length of the surface rupture, which so far show a tremendous uncertainty. In QAFI v.3 we calculated recurrence intervals considering the ratio between the seismic moment released from a maximum event and the seismic moment rate defined by slip rate. Maximum seismic moment ( $M_o$ ) is calculated from maximum moment magnitude ( $M_w$ ) using Hanks and Kanamori (1979) equation, and seismic moment rate:

200 
$$M_w = \frac{2}{3} \log M_o - 10.7$$

Seismic moment rate ( $\dot{M}_o$ ) is obtained using Aki's equation (Aki, 1966) substituting average fault displacement (D) for slip rate. The former:

205 
$$\dot{M}_o = A \cdot SR \cdot \mu$$

Recurrence interval (RI) is eventually calculated as:

210 
$$RI = \frac{M_o}{\dot{M}_o} = \frac{10^{1.5M_w + 16.05}}{A \cdot SR \cdot \mu}$$

This procedure has the inconvenient means that  $M_w$  is not independently derived, but empirically obtained from the length of the fault, which is a variable included twice when calculating rupture area in the seismic moment equation.

The "Recurrence interval" field in QAFI v.3 accounts for a best estimation, which could be that one resulting result from considering either a preferred value of slip rate or an average slip rate. The "Variability/error" is given as a range, bounded by the maximum and minimum values that result from accounting for the standard deviation of maximum magnitude Maximum Magnitude and the variability of slip rate (either as a range or as a deviation). As mentioned before, for a few records (#12) the recurrence interval quoted in the database is the one originally published in journals, albeit the "brief comment" field still accounts for the recurrence interval as calculated with MEM for comparative purposes.

215 Finally, in order to be as informative as possible for non-specialized users of the database, the "brief comment" field associated to recurrence interval includes a statement indicating that the occurrence recurrence interval of smaller but damaging earthquakes may be much shorter than that one for maximum events.

### 3 Assessing the quality of geological data and the reliability of seismic parameters

220 One of the most outstanding differences of QAFI v.3 from the previous version 2 is that the reliability of seismic parameters  
Maximum Magnitude and Recurrence Interval is classified according to the quality of the geological data on which they were  
derived. We believe this is a very relevant progress considering that the use of this database is increasingly widening not just  
among earthquake science researchers or hazard analysts, but government agencies, industry or even mass media. There is an  
obvious need for any user to quickly grasp how ~~much~~-reliable are the data ~~on~~for a particular fault of the database, and  
225 particularly ~~how~~ sensitive are its Maximum Magnitude and Recurrence Interval. These two seismic parameters are fundamental  
for modelling a fault as a seismogenic source in seismic hazard analysis and, additionally, they are interpreted by the general  
public as indicators of the potential hazardousness of a fault.

In QAFI v.3 both Maximum Magnitude and Recurrence Interval are obtained ~~solely~~directly or indirectly from geological data,  
as explained in the ~~precedent~~previous section. It becomes apparent that rating the reliability of these two parameters should be  
230 based on the quality and representativeness of the geological data from which they are eventually obtained. Desirably, the  
rating procedure should be as automatic and objective as possible, accounting for just the evidence, avoiding as much as  
possible subjectiveness.

To account for the quality and representativeness of the geological data we defined in QAFI v.3 two new database fields ~~have~~  
~~been added~~ named “Strength of the Quaternary Evidence” and “Accuracy of the Estimation” of slip rate. The former serves to  
235 eventually rate the reliability of Maximum Magnitude and the latter to rate Recurrence Interval.

When evaluating the reliability of Maximum Magnitude we refer here to the ~~fact~~possibility that the fault could actually produce  
maximum events –i.e., an event that ruptures the surface for a similar extent as its measured length. We are not evaluating the  
credibility of the actual value of the magnitude. QAFI v.3 rates the epistemic uncertainty of maximum magnitude, conversely  
to the aleatory uncertainty that results from the natural variability of the fault-rupture parameters or from the use of empirical  
240 equations. Hence, our reliability rating is based on whether there is evidence that the fault has produced such events that  
geologists are able to recognize today in the field. In QAFI v.3 this is evaluated in the “Strength of the Quaternary Evidence”  
database field.

Rating of Recurrence Interval reliability is based both ~~in~~on the reliability rating of Maximum Magnitude and slip rate  
“Accuracy of the Determination”. Slip rate is a key parameter in fault source modelling, particularly in modelling earthquake  
245 frequency. In QAFI v.3 we calculate Recurrence Interval assuming a Maximum Magnitude Earthquake Model (MEM)  
(Wesnousky, 1986), as explained in the precedent section, and so the size of the maximum event is as crucial as slip rate to  
estimate the average frequency between maximum earthquakes. Furthermore, slip rate and maximum magnitude are also both  
crucial in other fault behaviour models, as for example for determining the seismic activity rate of the fault in a Gutenberg-  
Richter alike model (e.g., Anderson and Luco, 1983; Youngs and Coppersmith, 1985). Hence, the reliability of Recurrence  
250 Interval, or any other parameter related to fault-earthquake frequency, has to be considered jointly with the reliability of  
Maximum Magnitude (previously rated considering the strength of the evidence) and the accuracy of the slip determination.

We shall now show how we account in QAFI v.3 for the database fields: Strength of the Evidence and Accuracy of the Slip Rate Determination, and subsequently explain the details of the procedure followed to rate the reliability of Maximum Magnitude and Recurrence Interval.

255

### 3.1 Strength of the Quaternary activity Evidence (SQE)

This database field evaluates the quality, significance and representativeness of the information provided in the original bibliographic references from which data in the fields named “Geomorphic Evidence” and “Age of the youngest deposit affected by the fault” are compiled (cf. García-Mayordomo et al., 2012a,d). Please note that we are not rating the quality of published work. The quality of the work is taken for granted, as it is assumed that it reached at least the minimum standards of the journal where the information was published at the time. What is evaluated here-in-particular are the scale, methods, and detail of the observations that support the Quaternary activity evidence of the fault. This process was performed record by record once compiling of new data was finished, and based on the experience gained after the revision of the entire database (see section on updating of QAFI).

260

265

Strength of the Quaternary Evidence (SQE) is classified in three increasing levels of accumulated evidence: C<sub>SQE</sub>, B<sub>SQE</sub> and A<sub>SQE</sub>. Differentiation among classes is based on the scale of the observations and detail involved in obtaining the observations. **Table 1** summarizes typical observations, scale and methods that usually characterize the available information at each level of evidence. Note that the classes denote accumulated evidence and increasingly stronger evidence. It is convenient to highlight that we are not evaluating here the degree of activity of the fault, but the significance of the evidence of activity in Quaternary times.

270

Class C<sub>SQE</sub> encompasses the less significant evidence. These are inferred from regional scale observations of the fault trace, from interpretation of general geological maps or broad range geophysical methods, to digital terrain models (DTM) (**Table 1**). At this level, there is usually a lack of field work focused on demonstrating these inferred evidences, or the field work detail has not proved conclusive so far. Geochronology is usually only known in broad relative terms as Quaternary *sensu lato*, or in terms of the different stages of the Quaternary Period (Upper Pleistocene, etc.). Similarly, Quaternary landforms or deposits are mapped in broad, generic units: terraces, alluvial fans, etc.). Numeric dating of certain deposits are usually lacking, or they are very scarce.

275

Class B<sub>SQE</sub> assigns faults that, having class C<sub>SQE</sub> evidence, also have additional observations from larger scale works, and usually some field work. Quaternary geochronology is better constrained, although numeric dating of relevant stratigraphic units may be still be lacking. The arrangement of Quaternary units is known more precisely and there is a differentiation of phases or stages inside generic landforms (e.g., differentiation between generations of alluvial fans, or fluvial terraces, etc.) (**Table 1**).

280

Class A<sub>SQE</sub> faults are those that having class B<sub>SQE</sub> (and C<sub>SQE</sub>) evidence, also have conclusive observations obtained from field work. In general, Level A<sub>SQE</sub> evidence are gained after intensive work at the office (e.g.,

285 photo-interpretation, DTM analysis,...) followed by field work focused on confirming the evidence (e.g., trenching) (**Table 1**). Level A<sub>SQE</sub> observations indicate the activity of the fault as a major controlling agent of Quaternary landforms or sedimentation, as for example fault scarps offsetting Quaternary deposits. Numeric geochronology may still be lacking, but the refinement reached on the definition of the geomorphic units allows a reliable approximation to their age based on their relative spatial associations.

290 Rating the strength of the evidence should also consider its representativeness along the fault trace. In order to account for this issue, a plus sign (+) is added to the assigned level of SQE of the fault (e.g., A+) when the evidence is consistently reported at different locations. However, this is a difficult issue to evaluate as the evidence of Quaternary activity of a fault may vary along its trace for very different reasons apart from its activity degree. For example, it could be due to natural erosion/sedimentation processes, frequently in relation to anthropogenic activities, that may have blurred the evidence at some sections and thus biased available studies relatively to other parts of the fault.

295 Distribution of SQE in the QAFI v.3 database shows that the majority of the records belong to class B (39%, #101), followed closely by classes A (32%, #83) and C (28%, #73) (**Figure 12**). Note that this distribution does not account for 42 records that were not evaluated, all of them located in Portuguese territory. Interestingly, practically all the records that show a + sign in its SQE belong to class A. This situation may suggest that interpretations on the activity of a fault are many times based on single ~~locations~~[location data](#); however reasonable that statement seems, we cannot reject that it may be an artificial bias from the evaluation process, as the effort was more focused on level A records.

### 3.2 Accuracy of the Slip Rate estimation (ASR)

305 This database field rates an estimation of the net slip rate of a fault on the [basebasis](#) of the accuracy of the parameters involved in its calculation, particularly displacement and age. The slip rate estimation may come from original research published in a journal, or may be produced *ad hoc* as part of the revision and updating process performed in QAFI (see [precedentprevious](#) section) from data either published in original publications or estimated by expert judgment. Accuracy of the Slip Rate estimation (ASR) differentiates among three increasing levels of accuracy: C<sub>ASR</sub>, B<sub>ASR</sub> and A<sub>ASR</sub>.

310 Class C<sub>ASR</sub> corresponds to a slip rate estimation based on the displacement of a marker measured from the interpretation of large scale cartography or DTMs; while age-control of the marker is assumed to correspond to generic Quaternary or Plio-Quaternary, or the different stages that form the Quaternary Period (e.g., 125 ka Upper Pleistocene). Class C<sub>ASR</sub> slip rates are broad approximations that usually lack direct observation of the slip vector and dip of the fault, and it may be assumed from generic considerations on the general kinematics of the fault (e.g., a rake of -90° for a 60° dip normal fault). Furthermore, in many cases slip rates are just assumed from comparison ~~to~~[with](#) other similar faults in the region. The uncertainty of the estimation is very large, strongly depending on the broad controlling-age considered.

315 [A-classClass](#) B<sub>ASR</sub> corresponds to an estimation where one of the basic parameters, displacement or age, is well constrained. Displacement of the marker may be measured from the interpretation of large scale cartography after some field work; and age

may be controlled by numeric dating of the marker or by association ~~to~~with similar stratigraphic units dated in the area. The slip vector of the fault and/or its dip are also better constrained than in class C<sub>ASR</sub>; a net slip rate is usually estimated ~~additionally~~in addition to the vertical/horizontal components. Uncertainties can still be very large, but the range of maximum and minimum values is better constrained than in class C<sub>ASR</sub> estimations. Very often contrasting slip rate values are obtained when considering different hypothesis on the displacement and age of the marker.

Class A<sub>ASR</sub> describes slip rate estimations where both displacement and age-control are constrained by measurements at outcrop scale and age obtained from numeric dating methods or inferred from them. There is also a good knowledge on the true slip-vector and dip of the fault and, accordingly, net slip rate values are usually produced in the publications. Uncertainties in the estimation still can be large, but conversely to class C<sub>ASR</sub> or B<sub>ASR</sub>, these depend largely on the accuracy of the dating results and its interpretation in relation to the true age of the marker. Uncertainties are usually quoted as standard deviations, or by other similar statistical parameters (e.g., mean error). Age and displacement are clearly stated in the original publication in such a way that any reader could calculate exactly the same values. Typically, there is a discussion on the variation of the slip rate of the fault along different periods of activity.

Most of the slip rates in QAFI v.3 have been rated to class C<sub>ASR</sub> (58%, #150), distantly followed by classes B<sub>ASR</sub> (10%, #25) and A<sub>ASR</sub> (6%, #15) (**Figure 23**). As in the ~~precedent~~previous section, 42 records belonging to faults located in Portuguese territory were not included in this analysis. For an important fraction of the dataset (26%, #67) rating slip rate is not possible simply because such an estimation is not available, not even in terms of “expert judgment”. The accuracy in the determination of slip rates has varied considerably in the last 10 years of active tectonics research in Spain. The younger the paper the higher is the effort in obtaining an accurate estimation of slip rate, reflecting clearly the increasing interest of Spanish geologists in seismic hazard practice.

### 3.3 Reliability of Maximum Magnitude (RMM)

The reliability level ~~entrusted~~assigned to a Maximum Magnitude estimation for an active fault should be based on the quality and representativeness of the geological information from which the estimation was eventually obtained (see the introduction of the section). However, for hazard analysts not particularly specialized in earthquake geology this is not an apparent issue; and sometimes even so for specialized ones, as analysing and evaluating geological data is usually complex and time-consuming. Therefore, an objective indication on the reliability level of a Maximum Magnitude estimation should be a practical and desirable output in any active fault database.

We propose here that the reliability of Maximum Magnitude should be determined ~~straightforward~~-based upon the SQE (Strength of the Quaternary activity Evidence) classes defined for QAFI v.3 (**Figure 34**). As explained in the introduction of the section, reliability here is a concept linked to epistemic uncertainty –i.e., whether it is plausible that a particular fault could produce a maximum event; rather than to aleatory uncertainty, that regards to the value of the magnitude associated ~~of~~with such an event. ~~Anyhow~~Regardless, a reliable estimation of maximum magnitude should always be accompanied by a

discussion on the sources of uncertainty and its impact on the expected value. Additionally, such a reliable estimation should be reached by a reader just considering the data and information provided in the paper. QAFI v.3 thus defines a new database field called “Reliability of Maximum Magnitude” (RMM) that accounts for four levels of increasing reliability:  $D_{RMM}$ ,  $C_{RMM}$ ,  $B_{RMM}$  and  $A_{RMM}$ . These levels are also named, respectively: Speculative, Poorly Reliable, Reliable, and Highly Reliable.

355 A Highly Reliable level ( $A_{RMM}$ ) is assigned only when the SQE of the fault has been rated  $A^+$  –i.e., the Quaternary activity of the fault is clearly evidenced and consistent along its trace; ~~hence~~<sup>hence</sup>, the occurrence of past earthquakes that ruptured all the fault or segment trace is very plausible (**Figure 34**). An  $A_{RMM}$  level is usually based on published information that ~~discusses~~<sup>discusses</sup> possible segmentation of the fault based on slip rate variations, geometry variations or other related issues. Furthermore, the uncertainty in the maximum magnitude estimation procedure is usually analyzed in the publication  
360 considering different sources, ~~like~~<sup>such as</sup> variation of rupture parameters (length, width, depth); variation of displacement per event at outcrop scale; variation from the use of different empirical equations according to type of faulting or tectonic environment, nature of the crust~~---~~. Eventually, the authors may prefer a particular maximum magnitude value to another, being this choice always clearly explained in the paper in such a way that a reader could calculate the same figure and its associated uncertainty.

365 A  $B_{RMM}$  level (Reliable) is assigned when the SQE of the fault is either A or  $B^+$  (**Figure 34**). For these faults there is usually a lack of paleoseismic studies, but the geological information is good enough for analyzing uncertainties from the variation of rupture parameters, as well as for the variation of style of faulting or tectonic regimen according to different scaling relationships. A general reader is usually able to calculate the same maximum magnitude MM value as proposed by the authors based on the data stated in the paper.

370 A  $C_{RMM}$  level (Poorly Reliable) comes from a fault whose SQE is either B or C (**Figure 34**). An additional lower level called Speculative ( $D_{RMM}$ ) is considered for rating maximum magnitude estimations specifically derived from sources in which crucial data regarding to the calculation is missing and so it is impossible for a reader to reach a similar value without making speculative assumptions.

375 Approximately 2/3 of the records in QAFI v.3 database –excluding 42 records in Portugal, show a maximum magnitude estimation rated as ~~poorly~~<sup>poorly reliable</sup> ( $C_{RMM}$ ) or speculative ( $D_{RMM}$ ) (41 and 26%, respectively) (**Figure 45**). The other third are very reliable ( $A_{RMM}$ ) or just reliable ( $B_{RMM}$ ) (21 and 11%, respectively). This situation highlights the importance of being prudent when using these data and try not to jump to conclusions, without checking first reliability.

### 3.3 Reliability of Recurrence Interval (RRI)

380 Rating the reliability of the Recurrence Interval of maximum events of an active fault should be based ~~mutually~~ on the two basic parameters that are involved in such an estimation: Maximum Magnitude and Slip Rate (see the introduction of the section). Therefore, we proposed here to evaluate the reliability of a Recurrence Interval estimation after rating the level of

reliability of Maximum Magnitude (RMM) and the accuracy of the Slip Rate determination (ASR) (Figure 34). Similarly to RMM, an estimation of Recurrence Interval should always include an uncertainty analysis and its impact.

385 QAFI v.3 defines a database field called Reliability of Recurrence Interval (RRI) that accounts for four levels of increasing reliability:  $D_{RRI}$ ,  $C_{RRI}$ ,  $B_{RRI}$  and  $A_{RRI}$ . Similarly to RMM these levels are also named, respectively: Speculative, Poorly Reliable, Reliable, and Highly Reliable. Although QAFI v.3 has chosen to show Recurrence Interval calculated following the Maximum Magnitude Earthquake Model (MEM) (see introduction), the rating levels hereby defined for Recurrence Interval can be easily adapted to rate the reliability of earthquake frequency parameters in any other model of fault behavior that relays  
390 in maximum seismic moment and seismic moment rate.

A Highly Reliable level ( $A_{RRI}$ ) is attributed only when both RMM and ASR have been rated the highest (Figure 34). Published information on a fault with a  $A_{RRI}$  level usually discuss thoroughly uncertainties both from epistemic and aleatory sources. The former ~~refers to account accounts~~ for, at least, the possibility that maximum events happened clustered in time, and for the consistency between the size of maximum events derived from single-event displacements in the field and the maximum  
395 rupture dimensions of the fault. The ~~source of~~ aleatory ~~source refers to account~~ ~~uncertainty accounts~~ for variations in the number of possible events in a time period, which has also an associated error in relation to the numeric dating results and their interpretation. The authors of the information may prefer a particular Recurrence Interval value to other, but this is always clearly stated in the paper so an external reviewer could reach to the same value, ~~similarly similar~~ to what is explained in the precedent section for RMM. Uncertainty is usually quoted as a range (maximum to minimum possible values) or using a  
400 statistical parameter as standard deviation or mean average error.

Level  $B_{RRI}$  (Reliable) results from a record in which RMM and ASR have been rated B and A or B, respectively (Figure 34). An analysis of the aleatory sources of uncertainty is usually included in the published information and ~~the~~ uncertainty is quoted either as a range or as error. A Poorly Reliable level ( $C_{RRI}$ ) is assigned when RMM has been rated C and ASR rated B or C (Figure 3). ~~Yet this 4~~. ~~This~~ level rates the Recurrence Interval estimation as highly interpretative, the information indicates  
405 tentative bounds for the range of variation of the parameter. Finally, an additional  $D_{RRI}$  level (Speculative) is considered to rate Recurrence Interval estimations derived from information sources that lack sufficient data to pursue the procedure followed to reach the estimation and/or when any source of uncertainty is considered.

More than half of QAFI v.3 records show a Recurrence Interval estimation rated as Poorly Reliable or Speculative (44% and 16%, respectively) (Figure 6). Estimations rated as Reliable or Highly Reliable sum up 14% of the total (9 and 5%,  
410 respectively). An important fraction (26%) corresponds to records in which there was no available information on the slip rate and, hence, RRI could not be rated. Note that 42 records belonging to faults located in Portugal were not considered in this statistics. Estimations rated as Highly Reliable (#12) coincide with faults having specific paleoseismic and active tectonic studies. Interestingly, these faults do not always coincide with the most active of the database but with the most studied.

415 **4 Discussion**



#### 4 Summary and discussion

Active fault databases are an important source of systematized knowledge not just for hazard analysts and earthquake science researchers, but also for engineers following seismic regulations, journalists looking for information for articles, and even for common citizens. In this context, active fault databases should be updated on a regular basis, show uniformity of criteria and, somehow, indicate the quality of the raw information and the reliability of seismic hazard parameters derived from it. In updating QAFI to its version 3 we have tried to closely follow those assertions.

QAFI v.3 is a more complete, homogenous and a better quality database than QAFI v.2, the previous version released in February 2012. QAFI v.3 contains 299 records, that is 30% more than v.2. All of them have been revised aimed at reaching a minimum quality and homogenous standard for the entire database. It was found that 40 records did not actually show concluding evidence of Quaternary activity, or this was not yet published, and so were excluded from QAFI v.3 and stored in a newly developed database named “Debated Faults”. This database can be downloaded from the QAFI web site (IGME, 2015), as well as displayed online together with QAFI faults.

The seismic parameters Maximum Magnitude and Recurrence Interval have been calculated uniformly throughout QAFI v.3. For the former we used the length of the fault and Stirling et al. (2002) regression on  $M_w$  derived from an updated instrumental dataset based on Wells and Coppersmith (1994). Our primary interest was to produce  $M_w$  estimations comparable from fault to fault across the database, using a well-controlled parameter (length) and an equation that have shown consistent outputs with the Intensity-to- $M_w$  relationship used in the official seismic hazard map of Spain (IGN-UPM, 2013). We do not advocate for the use of either that parameter or that empirical equation for calculating fault-related magnitudes in Iberia. That issue is left to be solved by a seismic hazard analyst and depending on the scope and scale of a particular project. For instance, we warn that maximum magnitudes for the faults located in the thick oceanic crust of the Gulf of Cádiz should consider an alternative approach. Recurrence Interval is calculated assuming the Maximum Magnitude Earthquake Model (Wesnousky, 1986) from the ratio between maximum seismic moment (from maximum  $M_w$ ) and seismic moment rate (from Slip Rate). Similarly, we do not advocate that this model fits better the seismogenic behavior of Iberian faults, but rather that it is a model completely based on geological data, and convenient for comparing among faults across the database.

Although final decisions on the expected values and variation of Maximum Magnitude or Recurrence Interval ~~relay on~~ are up to the hazard analyst, QAFI v.3 presents a scheme for rating the reliability of these two crucial parameters in a straightforward and objective way based on the quality and representativeness of the available geological information. Reliability is graded in four levels: Speculative (D), Poorly Reliable (C), Reliable (B) and Highly Reliable (A) (Figure 3). Reliability levels are assigned straightforward depending on the qualification obtained in two extra fields that evaluate the geological data: Strength of the Quaternary activity Evidence (SQE) and Accuracy of the Slip Rate estimation (ASR). We believe that this scheme is very valuable for any potential user of the database. Hazard analysts can use it to support decision making when building logic trees or managing epistemic uncertainty in general. Furthermore, general users can use it for quickly checking the quality of the available information, detecting knowledge gaps, and learn about how much results can be trusted.

Two important shortcomings in QAFI v.3 are the large number of records for which we have no estimation of slip rate (26%), and the need to review thoroughly 42 (14%) records belonging to faults located in Portugal. Regarding the former, part of the problem derives from our interest in keeping [the v.2](#) concept; in the sense that whenever possible ~~we privileged~~ the compiler ~~to coincide with~~ [his](#) also [the](#) major author on the fault. This point sometimes leads to compilations that do not make the best use of the available data, depending on the willingness of the author, and his/her support on the QAFI project. In other cases, it is because there is simply a lack of sufficient data. Nevertheless, a forthcoming version of the database should address this problem in such a way that every record shows a slip rate estimation, even though many of them will be estimated as expert judgment based on slip rates of similar faults in the vicinity or from geodetic data. Additionally, an extra effort has to be ~~done~~ ~~for quoting~~ [made to quote](#) slip rate uncertainties, and doing it whenever possible following the same criteria and procedure across the database. Finally, the available information about Quaternary faults in Portugal has not yet been thoroughly analyzed. This would be an essential work to address in a future QAFI version. Additionally, in the case of Spain it would be convenient to explore sources of information older than the Neotectonic Map (IGME and ENRESA, 1998), taking advantage that all Spanish territory has been mapped geologically at 1:50.000 scale (MAGNA National project: [IGME, 2017](#)).

The process of reviewing and updating QAFI has been an opportunity to learn about the evolution of active tectonic studies in Spain for the last 30 years. It has given us also an opportunity for detecting shortcomings as well as to propose improvements. Before *ca.* 1990 most of the efforts were devoted to Neogene sediments, and most of the studies use the name “neotectonic” for referring to tectonic deformations from upper Miocene to Present. From a tectonic point of view Quaternary was not yet a matter of proper study. Later, studies focused on tectonics affecting Quaternary sediments and geomorphic features began to emerge. Initially these studies were qualitative in character, mostly devoted to illustrate the evidence. As the interest of including geological data in hazard analysis practice in Spain consolidates, these studies become little by little more quantitative. A greater deal of work is then dedicated to slip rate estimation and geochronology dating of [the most](#) affected recent sediments. In current times, practically all of the papers published on active tectonics in Spain attempt to quantify fault-geometry and -kinematic parameters, potential maximum magnitudes, ~~and~~ [recurrence interval](#). It should be warned that in some cases major interpretations are based on very few measurements, or in data that shows great variability (e.g., numeric dating), or they are just based on observations at single locations (e.g., a trench). This situation brings up a recommendation for future active tectonic studies in Spain: the importance of identifying the sources of uncertainty and being able to quantify them in a standard way.

## 5 Conclusion

QAFI v.3 is a much better source of information for seismic hazard analysts [of active faults](#) in Iberia than version 2. The new version is more complete, more uniform and consistent. Furthermore, QAFI v.3 serves as a baseline for managing epistemic uncertainty in fault hazard analysis. The reliability of maximum magnitude and recurrence interval of faults is rated based on the quality and representativeness of the geological data from which these parameters are eventually derived. However, it is

warned that the QAFI database is a regional-scope project and, hence, it should not substitute in any way further geological studies that may be appropriate to perform for site-specific hazard analysis or local-scale hazard mapping. QAFI database is updated roughly every 4 years and always after the celebration of the Iberian meetings on Active Faults and Paleoseismology (e.g., IBERFAULT, 2014).

## 6 Acknowledgments

Development of QAFI v.3 has been funded by SISMOGEN project (GESTEC 2279), from Instituto Geológico y Minero de España (IGME), and Civil Protection of the Region of Murcia. The authors are indebted to all the compilers of the database and particularly to J.M. Azañón and A. Azor (Granada University) ~~who also~~, A. Salazar (IGME), I. Rojas (Alicante University) and a few anonymous researchers, who gave an informed opinion about QAFI v.3 classification scheme when presented at ~~Iberfault~~ IBERFAULT 2014. Ángel Prieto (IGME) is particularly acknowledged for his great work producing QAFI's web page. The authors are very grateful for the comments and suggestions provided by N. Litchfield (GNS Science) and M. Cushing (IRNS) that led to an improved version of the manuscript.

## 7 References

Aki, K.: Generation and propagation of G waves from the Niigata earthquake of June G 16, 1964. II. Estimation of earthquake movement, release energy, and stress-strain drop from waves spectrum. Bulletin of the Earthquake Research Institute, 44, 23-88, 1996.

Álvarez-Gómez, J.A. and Martín González, F. (eds.): Una aproximación multidisciplinar al estudio de las fallas activas, los terremotos y el riesgo sísmico. Libro de resúmenes de la Segunda Reunión Ibérica sobre Fallas Activas y Paleosismología (IBERFAULT), Lorca (Murcia, España), 22-24 de Octubre de 2014, 266 pp, available at: [http://www.iberfault.org/images/docs/Iberfault2014\\_web.pdf/](http://www.iberfault.org/images/docs/Iberfault2014_web.pdf/), 2014.

Álvarez-Gómez, J. A., Aniel-Quiroga, Í., González, M., Olabarrieta, M. and Carreño, E.: Scenarios for earthquake-generated tsunamis on a complex tectonic area of diffuse deformation and low velocity: The Alboran Sea, Western Mediterranean, Mar. Geol., 284(1-4), 55-73, 2011.

Anderson, J.G. and Luco, J.E.: Consequences of slip rate constants on earthquake recurrence relations. Bulletin of the Seismological Society of America, 73, 471-496, 1983.

Benito, B., Rivas, A., Pérez, M., Quirós, L.E., Barajas, S., Gaspar-Escribano, J.M. and Hernández, R.: Servicio de actualización del análisis de riesgo sísmico (Rismur) en la Región de Murcia. Universidad Politécnica de Madrid – Protección Civil de la Región de Murcia, unpublished document, 88 pp, 2015.

Campbell K.W. and Bozorgnia Y.: NGA-West2 Campbell-Bozorgnia Ground Motion Model for the Horizontal Components of PGA, PGV, and 5%-Damped Elastic Pseudo-Acceleration Response Spectra for Periods Ranging from 0.01 to 10 s. PEER 2013/06, 2013.

Código de campo cambiado

- 515 CEN: Eurocode 8: Design of structures for earthquake resistance – Part 5: Foundations, retaining structures and geotechnical aspects (EN 1998-5:2004), 2004.
- Gailler, A., Hébert, H., Loevenbruck, A., and Hernandez, B.: Simulation systems for tsunami wave propagation forecasting within the French tsunami warning center, *Nat. Hazards Earth Syst. Sci.*, 13, 2465-2482, doi:10.5194/nhess-13-2465-2013, 2013.
- 520 García-Mayordomo, J.: Creación de un modelo de zonas sismogénicas para el cálculo del mapa de peligrosidad sísmica de España. Instituto Geológico y Minero de España (Ed), Madrid, 125 pp, available at: <http://igmpublicaciones.blogspot.com.es/2014/10/riesgos-geologicosgeotecnia.html/>, 2015.
- García-Mayordomo, J., ~~Insua-Arévalo, J.M., Martínez-Díaz, J.J., Jiménez-Díaz, A., Martín-Banda, R., Martín-Alfageme, S., Álvarez-Gómez, J.A., Rodríguez-Peces, M., Pérez-López, R., Rodríguez-Pascua, M.A., Masana, E., Perea, H., Martín-González, F., Giner-Robles, J., Nemser E.S., Cabral J. and the QAFI Compilers Working Group: The Quaternary Active Faults Database of Iberia (QAFI v.2.0), *Journal of Iberian Geology*, 38(1): 285-302, 2012a.~~
- 525 ~~García-Mayordomo, J., Martínez-Díaz, J.J., Capote, R., Martín-Banda, R., Insua-Arévalo, J.M., Álvarez-Gómez, J.A., Perea, H., González, Á., Lafuente, P., Martín-González, F., Pérez-López, R., Rodríguez-Pascua, M.A., Giner-Robles, J., Azañón, J.M., Masana, E., Moreno, X., Benito, B., Rivas, A., Gaspar-Escribano, J.M., Cabañas, L., Vilanova, S., Fonseca, J., Nemser, E. and Baize, S.: Modelo de zonas sismogénicas para el cálculo de la peligrosidad sísmica en España, in: Proceedings of the VII Asamblea Hispano Portuguesa de Geodesia y Geofísica, San Sebastián (Spain), June 23rd to 28th 2012, 5 pp, 2012a2012b.~~
- 530 ~~García-Mayordomo, J., Insua-Arévalo, J.M., Martínez-Díaz, J.J., Martín-Alfageme, S., Jiménez-Díaz, A., Martín-Banda, R., Rodríguez-Escudero, E., Rodríguez-Peces, M.J., Cabañas-Rodríguez, L. and Gaspar-Escribano, J.M.: Seismogenic fault-source characterization in SE Spain: Implications for probabilistic seismic hazard assessment, in: Proceedings of the XV World Conference on Earthquake Engineering, Lisbon, 24-28 September 2012, 2012b2012c.~~
- 535 ~~García-Mayordomo, J., Martín-Banda, R., Insua-Arévalo, J.M., Álvarez-Gómez, J.A., Cabañas, L., Cantavella, J.V., Crespo, M.J., Pereira Dias, R., Pascual, G., and Alfageme, S.: La base de datos de fallas activas cuaternarias de Iberia (QAFI v.2): características, aplicaciones y problemas, in: Proceedings of the VII Asamblea Hispano Portuguesa de Geodesia y Geofísica, San Sebastián (Spain), June 23rd to 28th 2012, 5 pp., 2012e.~~
- 540 ~~García-Mayordomo, J., Insua-Arévalo, J.M., Martínez-Díaz, J.J., Jiménez-Díaz, A., Martín-Banda, R., Martín-Alfageme, S., Álvarez-Gómez, J.A., Rodríguez-Peces, M., Pérez-López, R., Rodríguez-Pascua, M.A., Masana, E., Perea, H., Martín-González, F., Giner-Robles, J., Nemser E.S., Cabral J. and the QAFI Compilers Working Group: The Quaternary Active Faults Database of Iberia (QAFI v.2.0), *Journal of Iberian Geology*, 38(1): 285-302, 2012d.~~
- ~~Hanks, T. C., and Kanamori, H.: A moment magnitude scale, *J. Geophys. Res.*, 84, 2348–2350, 1979.~~
- 545 ~~IBERFAULT: Second Iberian Meeting on Active Faults and Paleoseismology. Last accessed April 2017, <http://www.iberfault.org/index.php/en/>, 2014.~~

Código de campo cambiado

Con formato: Inglés (Estados Unidos)

Con formato: Inglés (Estados Unidos)

- IGME and ENRESA: Mapas Neotectónico y Sismotectónico de España a escala 1:1.000.000, Vol. I, 237 pp. and Vol. II, 167 pp., available at <http://info.igme.es/qafi/Download.aspx/>, 1998.
- IGN-UPM: Actualización de Mapas de Peligrosidad Sísmica de España 2012. Centro Nacional de Información Geográfica, Madrid, 267 pp., 2013.
- 550 IGME: QAFI v.3: Quaternary Active Faults Database of Iberia, <http://info.igme.es/QAFI>, Last accessed March 2017, 2015.
- IGME: MAGNA 50 - Mapa Geológico de España a escala 1:50.000 (2ª Serie), <http://info.igme.es/cartografiadigital/geologica/Magna50.aspx>, Last accessed March 2017, 2017.
- ITGE: Mapa Neotectónico, Sismotectónico y de Actividad de Fallas de la Región de Murcia a escalas 1:200.000 y 1:100.000, Memoria, 99 pp, and Annex V: Fichero de Fallas (Volumen I), 454 pp., available at: <http://info.igme.es/qafi/Download.aspx/>, 1991.
- Martínez-Díaz, J.J., Masana, E. and Rodríguez-Pascua, M.A. (eds.): Active Faults in Iberia. Journal of Iberian Geology, 38, special issue, 302 pp, available at: <http://revistas.ucm.es/index.php/JIGE/issue/view/2254/showToc/>, 2012.
- Michetti A.M., Esposito E., Guerrieri L., Porfido S., Serva L., Tatevossian R., Vittori E., Audemard F., Azuma T., Clague J., Comerci V., Gurpinar A., Mc Calpin J., Mohammadioun B., Morner N.A., Ota Y. and Roghohn E.: Intensity Scale ESI 2007. In: Guerrieri L. & Vittori E. (Eds.): Memorie Descrittive Carta Geologica d'Italia., 74, Servizio Geologico d'Italia – Dipartimento Difesa del Suolo, APAT, Roma, 53 pp, 2007.
- Rivas, A.: Contribución metodológica para incorporar fallas activas en la modelización de la fuente dirigida a estimaciones de peligrosidad sísmica. Aplicación al sur de España, Ph.D. thesis, Universidad Politécnica de Madrid, Madrid, 235 pp, 2013.
- 565 Schwartz, D.P. and Coppersmith, K.J.: Fault behavior and characteristic earthquakes: examples from the Wasatch and San Andreas Fault Zones. Journal of Geophysical Research, 89(B7), 5681-5698, 1984.
- Simón, J.L.: Compresión y distensión alpinas en la Cadena Ibérica Oriental, Ph.D. thesis, Instituto de Estudios Turolenses, Teruel, 269 pp., 1984.
- Stirling, M., Rhoades, D., and Berryman, K.: Comparison of earthquake scaling relations derived from data of the instrumental and preinstrumental era, Bulletin of the Seismological Society of America, 92(2), 812-830, 2002.
- 570 Wells, D.L., and Coppersmith, K.J.: New empirical relationships among magnitude, rupture length, rupture width, rupture area, and surface displacement. Bulletin of the Seismological Society of America, 84:4974-1002, 1994.
- Wesnousky, S.G.: The Gutenberg-Richter or the characteristic earthquake model, which is it? Bulletin of the Seismological Society of America, 84, 1940-1959, 1994.
- 575 Wesnousky, S.G.: Earthquakes, Quaternary faults, and seismic hazard in California, Journal of Geophysical Research, 91(B12), 12587-12631, 1986.
- Youngs, R.R., and Coppersmith, K.J.: Implications of fault slip rates and earthquake recurrence models to probabilistic seismic hazard estimates, Bulletin of the Seismological society of America, 75(4), 939-964, 1985.

Código de campo cambiado

Código de campo cambiado

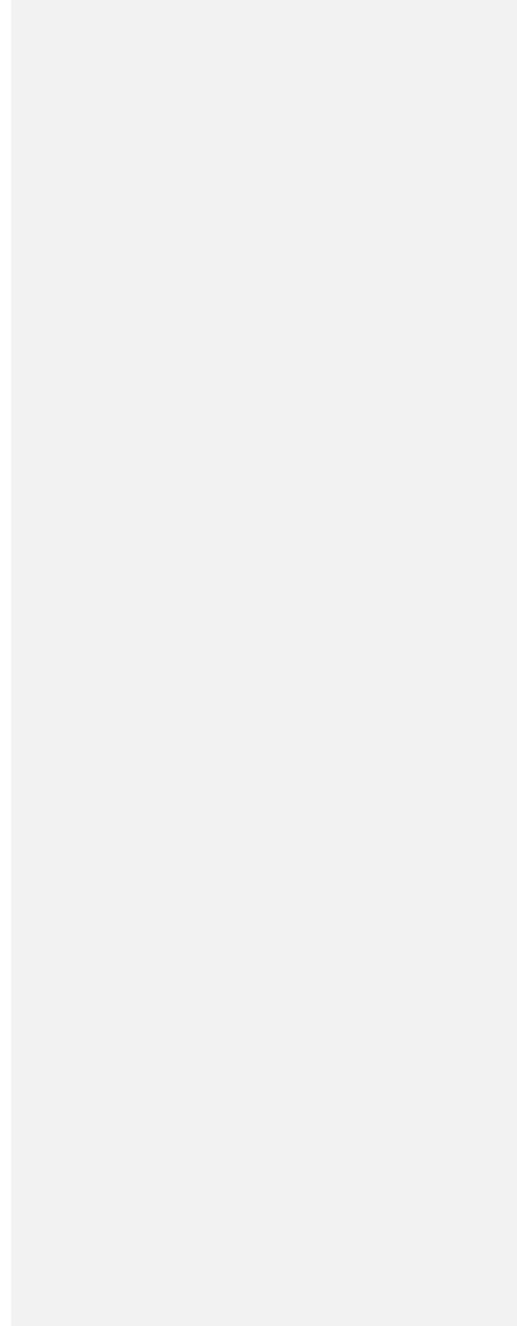
Código de campo cambiado

580

585

590

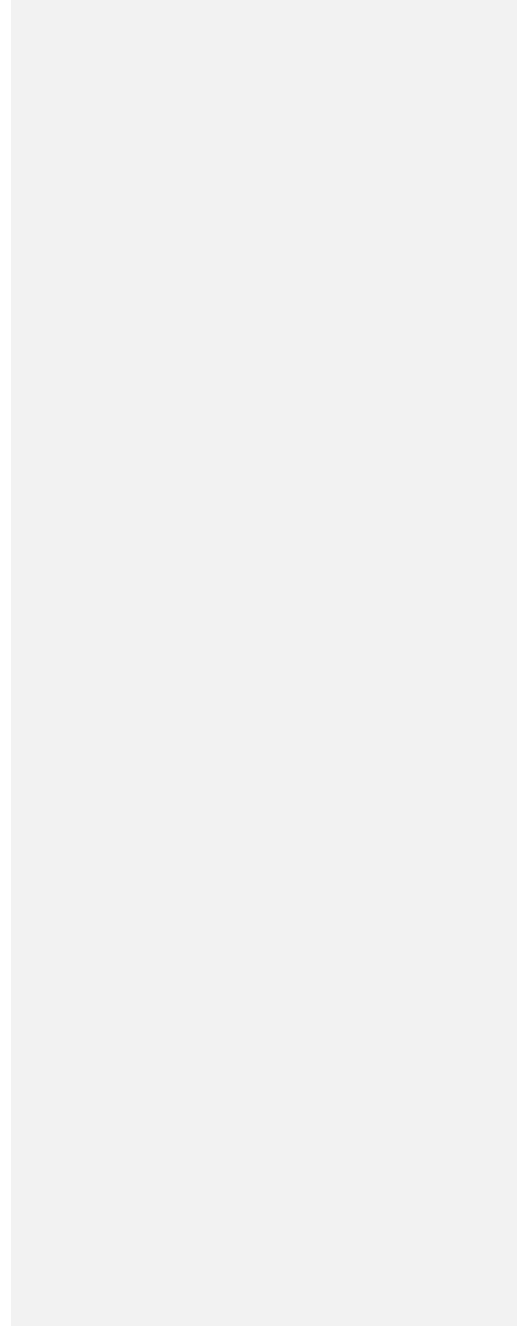
|



**Table 1. Classification of the Strength of the Quaternary activity Evidence (SQE) of a fault in three levels of increasing significance, based on the scale of the available observations, type of data and methods used. The classification is not intended to be exhaustive but to furnish the approach and criteria used in QAFI v.3. See text for complementary further information.**

<b>Classification of the Strength of the Quaternary activity Evidence (SQE)</b>
<b>Class C.- Evidence inferred just from:</b>
<ul style="list-style-type: none"> <li>- Regional-scale geological maps (1/100.000 or smaller)</li> <li>- Terrain/drainage/geomorphic anomalies at a broad scale</li> <li>- Geophysical methods performed at a broad scale (e.g., Bouguer anomaly, magnetic anomalies, ...)</li> <li>- Interpretations from poor-quality multichannel seismic lines</li> </ul> <p><i>Note: A “+” sign is added to the class when evidence is reported at different locations along the fault trace (e.g., C+)</i></p>
<b>Class B.- Additional evidence based on interpretations from:</b>
<ul style="list-style-type: none"> <li>- Detailed-scale geological maps (1/50.000 or larger)</li> <li>- Geomorphic indexes indicating relatively recent activity (e.g., mountain front sinuosity, ... valley width to valley height ratio, stream length-gradient index)</li> <li>- Drainage network anomalies (e.g., fault-aligned deflections, beheaded valleys, longitudinal profile anomalies, differential dissection, captures, ...)</li> <li>- Landforms anomalies (e.g., scarps, ponds, ridges, faceted spurs, ...)</li> <li>- Geophysical methods performed at detailed scale</li> <li>- Good-quality multichannel seismic lines</li> </ul> <p><i>Note: A “+” sign is added to the class when evidence is reported at different locations along the fault trace (e.g., B+)</i></p>
<b>Class A.- Additional direct evidence from field data:</b>
<ul style="list-style-type: none"> <li>- Fault scarp controlling Quaternary geomorphic landforms</li> <li>- Quaternary sedimentation processes controlled by tectonics</li> <li>- Fault offsetting or folding Quaternary deposits at surface or subsurface</li> <li>- Interpretations from high-resolution geophysical methods</li> </ul> <p><i>Note: A “+” sign is added to the class when evidence is reported at different locations along the fault trace (e.g., A+)</i></p>





### Strenght of the Quaternary activity Evidence (SQE)

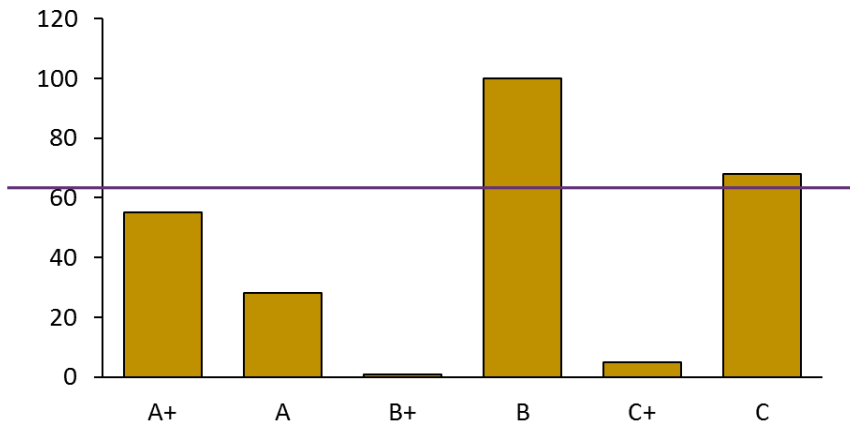
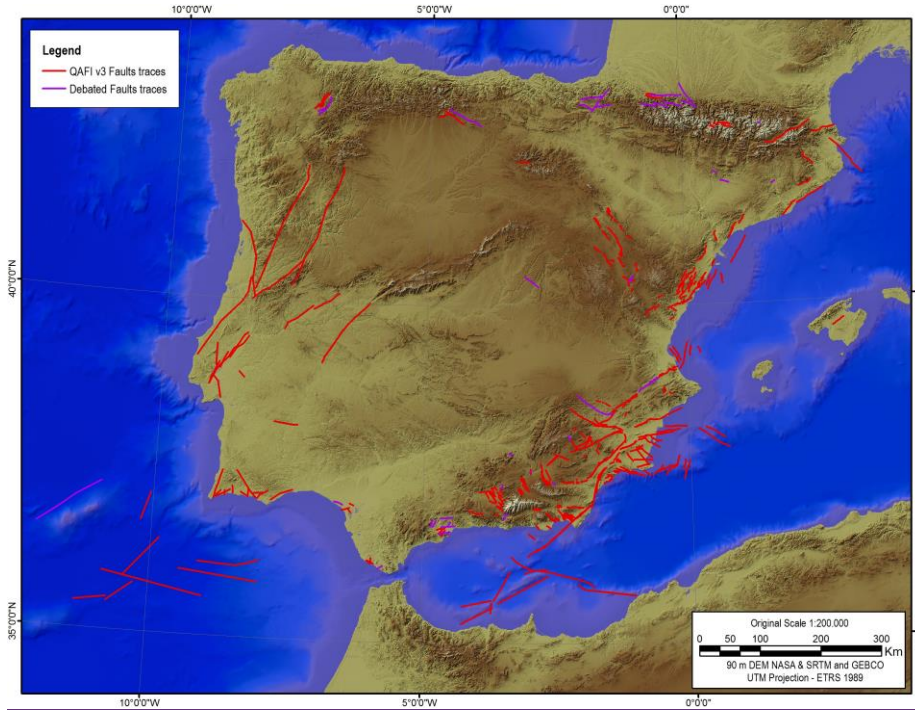


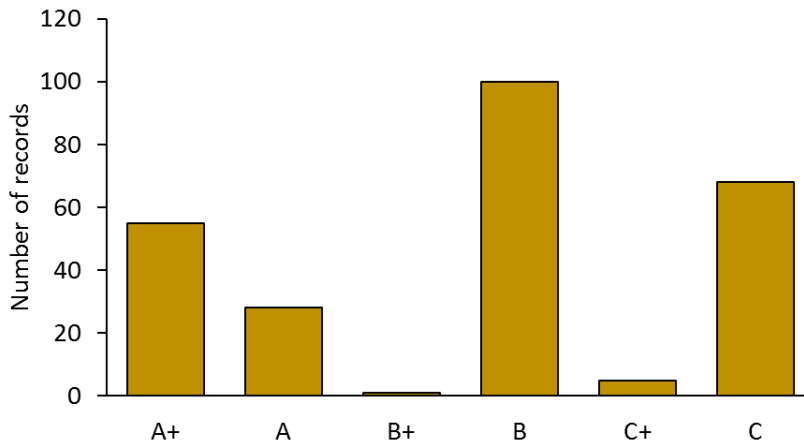
Figure 1.



605

**Figure 1.** Representation of the QAFI v.3 and Debated Faults databases. Users can query both databases online in <http://info.igme.es/qafi/>

### Strength of the Quaternary activity Evidence (SQE)

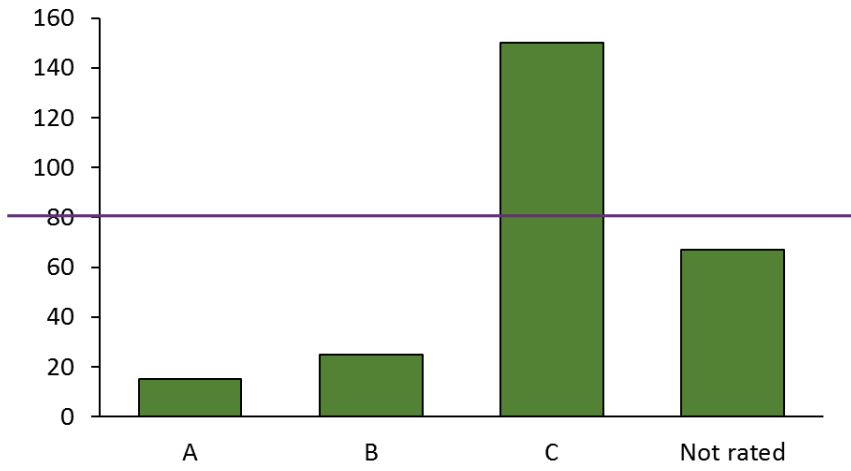


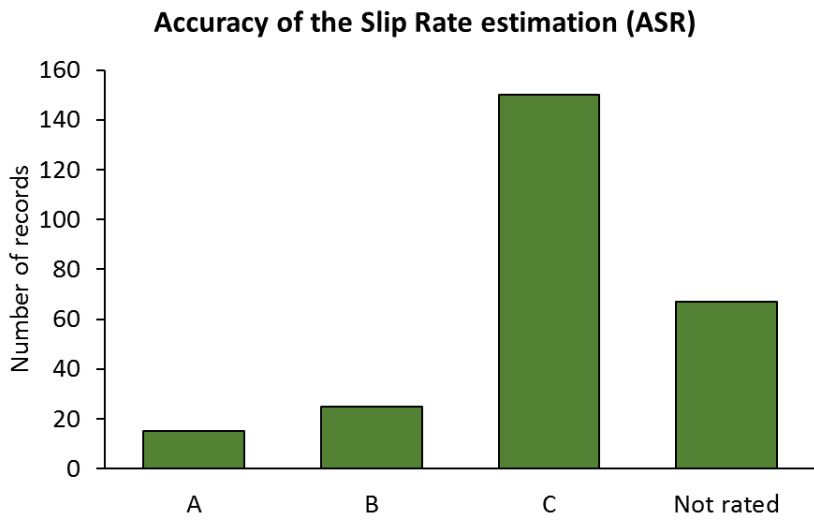
610

**Figure 2.** Distribution of level classes of Strength of the Quaternary activity evidence (SQE) in QAFI v.3 database. See text for [comments](#); [further details](#).

615

**Accuracy of the Slip Rate estimation (ASR)**





**Figure 23.** Distribution of classes of Accuracy of the Slip Rate estimation (ASR) in QAFI v.3 database.  
See text for [comments](#)[further details](#).

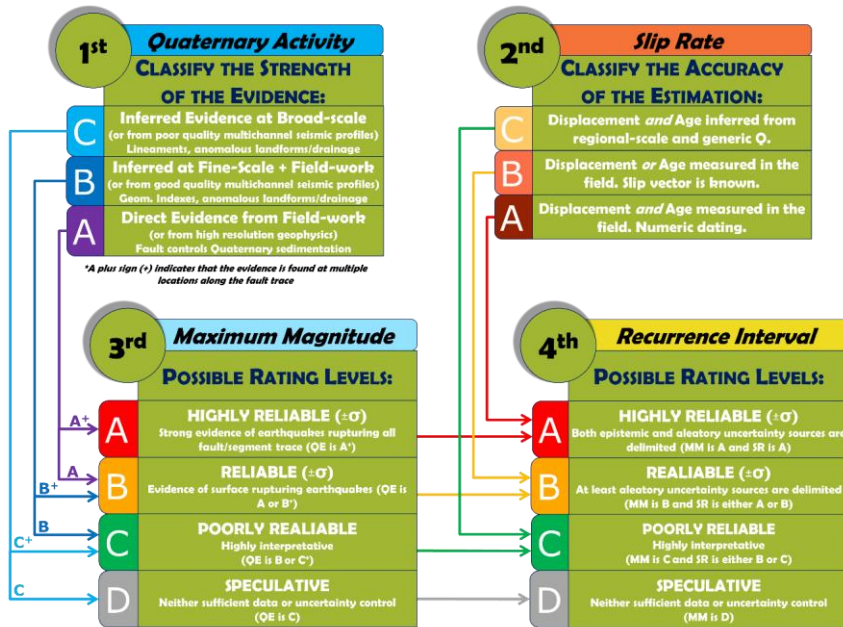
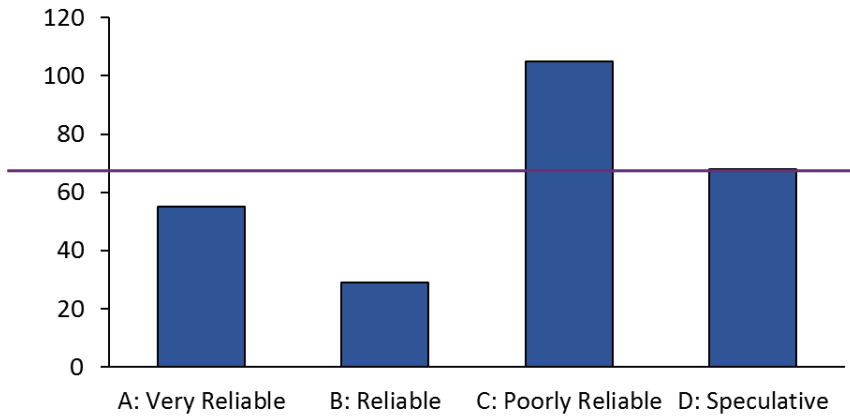


Figure 34. Diagram summarizing the scheme followed in QAFI v.3 for rating the reliability of Maximum Magnitude (RMM) and Recurrence Interval (RRI) on the base of the Strength of the Quaternary activity Evidence (SQE) and the Accuracy of the Slip Rate estimation (ASR). First, the SQE of the fault is classified based on the detail of the available published observations in three increasing levels of accumulated evidence, varying from C (weak) to A (very strong). A plus sign (+) is assigned when the observations can be extrapolated with confidence all along the fault trace. Second, the ASR is classified based on the accuracy of the information used for its determination, varying from C (rough) to A (accurate). Third, RMM is obtained straightforward from SQE class, varying from extremes-A (Highly Reliable) to D (Speculative). Fourth, RRI is obtained from both RMM and ASR. Resulting The resulting RRI would never be higher than the rated level for RMM, yet it could be lower depending on the ASR (these relationships are not shown on the diagram for the sake of simplicity). See text and Table 1 for a more extensive explanation.

**Reliability of Maximum Magnitude (RMM)**



**Reliability of Maximum Magnitude (RMM)**

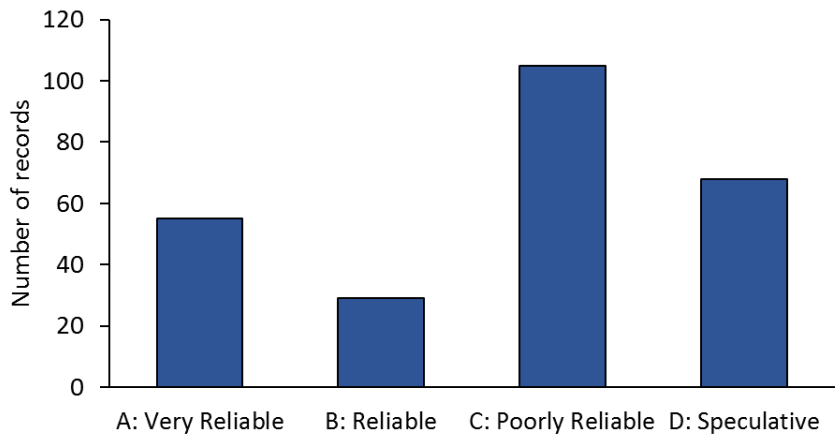




Figure 45. Distribution of rating levels for the database-field Reliability of the Maximum Magnitude estimation (RMM) in QAFI v.3 database. See text for explanations.

645

