

Dear Editor:

Thanks very much for your kind decision. We have carefully read through the comments from referee #2 and made proper revisions. In addition, the writing was checked by an English speaking colleague again after edited by “American Journal Experts” and “ELSEVIER Language Editing Services” successively.

Our responses to the referee’s comments and some additional revisions are listed below. We greatly appreciate your time and efforts to improve our manuscript for publication.

Yours sincerely

Bin Zeng

Contents

A point-by-point response to the referee #2	3
A marked-up manuscript version	5
Editorial Certificate from American Journal Experts	39
Certificate from ELSEVIER Language Editing Services	41

A point-by-point response to the referee #2

The comments from referee #2 below did not appear in the paper review system, but from the email by Editorial Support Anna Wenzel.

The paper on Mechanism of groundwater inrush hazard ... is interesting and worth to be printed but not in the present form.

The science in the paper is good and needs no further modification but the language and the style of the manuscript must be changed:

1- English is poor and somewhere it is difficult to understand the meaning of some sentences

Response: We invited an English speaking colleague to check the language of the manuscript and make appropriate revisions. (Before this minor revision, the manuscript was edited by “American Journal Experts” and “ELSEVIER Language Editing Services” successively.)

2- Often along the paper figures 3-4 etc. are wrongly cited (it seems that fig. 2 was added and this presence was not considered in citation along

the manuscript)

Response: We checked the whole manuscript to ensure that no figure was wrongly cited anymore.

3- In the reference list the alphabetic order is sometime wrongly followed

Response: We checked the reference list again, and made proper revisions to ensure that all the references listed in right alphabetical order.

The author also made following additional revisions:

- The Fig. 3 was redrawn so as to improve the clarity.
- All the data in the tables were revised to have the same number after the decimal point.
- We also checked the references in the main text to ensure that every reference cited in the text is also present in the reference list (and vice versa).
- We checked our manuscript carefully for typos, co-authors and their affiliations, terminology, updates of data in tables, and updates of variables in equations.

A marked-up manuscript version

Mechanism of groundwater inrush hazard caused by solution mining in a multilayered rock salt mining area: A case study from in Tongbai-County, China

Bin Zeng^{1*}, Tingting Shi², Zhihua Chen¹, Liu Xiang³, Shaopeng Xiang⁴, Muyi Yang¹

¹. School of Environmental Studies, China University of Geosciences, Wuhan 430074, Hubei, P.R.China.

². Three Gorges Research Center for Geo-Hazard, Ministry of Education, Wuhan 430074, Hubei, P.R.China.

³. Department of Geological Engineering, Hubei Land Resources Vocational College. Wuhan 430074, P.R.China.

⁴. Hydrological Engineering Environment Technology Consulting Co. Ltd. Wuhan 430074, P.R.China.

***Corresponding author:** Bin Zeng, Ph.D.

Affiliation: School of Environmental Studies, China University of Geosciences.

Affiliation address: No. 388 Lumo Road, Wuhan, Hubei, 430074, P.R. China.

Email: zengbin_19@126.com. Tel: 86-27-67883473. Fax: 86-27-87436235.

1 ABSTRACT

2 The solution mining of salt mineral resources may contaminate groundwater and lead to water
3 inrush out of the ground due to brine leakage. Taking a serious groundwater inrush hazard in a large salt
4 mining area in Tongbai County, China, as an example, this study mainly aims to analyze the source and
5 channel of the inrushing water. The mining area has three different types of ore beds ~~as follows:~~
6 ~~a)including~~ trona (trisodium hydrogendicarbonate dihydrate, also sodium sesquicarbonate dihydrate,
7 with the formula $\text{Na}_2\text{CO}_3 \cdot \text{NaHCO}_3 \cdot 2\text{H}_2\text{O}$, is a non-marine evaporite mineral); ~~b)~~ glauber (sodium
8 sulphate, is the inorganic compound with the formula Na_2SO_4 as well as several related hydrates) and ~~c)~~
9 gypsum (a soft sulphate mineral composed of calcium sulphate dihydrate, with the chemical
10 formula $\text{CaSO}_4 \cdot 2\text{H}_2\text{O}$). Based on the ~~understanding~~ characterizing of geological and hydrogeological
11 conditions, ~~the study first obtained~~ hydrochemical data of the groundwater at different points and depths,
12 ~~and then analysed~~ were used to analyze the pollution source and pollutant component from single or
13 mixed brines by using ~~both~~ physical-chemical reaction principle analysis and ~~a~~ hydrogeochemical
14 simulation method. Finally, possible leakage brine conducting channel to the ground was discussed
15 from both geological and artificial aspects. The results reveal that the brine from the trona mine is the
16 major pollution source; there is a fissure zone in the NW-SE direction controlled by the geological
17 structure that provides the main channels for the leakage brine to flow into the aquifer around the water
18 inrush regions, and a large number of waste gypsum exploration boreholes are the channels that supply
19 the polluted groundwater inrush out of the ground. This research can offer a valuable reference for
20 avoiding and assessing groundwater inrush hazards in similar rock salt mining areas, which is
21 advantageous for both groundwater quality protection and public health.

22 1. Introduction

23 Solution mining is commonly used in salt mine exploitation, as salts are soluble in water. In this
24 method, high-pressure and -temperature water with low salinity is injected into a mineral deposit
25 through production wells to dissolve the mineral salts. After being drawn from the wells, the soluble salt
26 is purified and further processed. However, the high-pressure and -temperature water used in this
27 process not only dissolves minerals but ~~can~~ also cause fractures in the strata, which usually results in
28 hazards such as brine leakage or groundwater inrush. In this situation, ~~underground~~-drinking
29 groundwater for the public is normally polluted following groundwater inrush, creating a hazard and
30 threatening the health of local residents.

31 Many scholars (Clark and Fritz, 1997; Liu et al., 2015; Wu et al., 2016) have studied groundwater
32 inrush hazards in both coal and metal mines, and some adopted methods are as follows: the use of water
33 level-/-temperature criterion (Yuan and Gui, 2005; Ma and Qian, 2014), stochastic simulation
34 (Fernandez-Galvez et al., 2007), numerical simulation (Liu et al., 2009; Kang et al., 2012; Shao et al.,
35 2013; Houben, et al., 2017), water chemical analysis (isotope analysis, water quality type correlation
36 analysis) (Robins, 2002; Fernandez et al., 2005; Hu et al., 2010; Cobbina et al., 2015; Lee et al., 2016;
37 LeDoux et al., 2016), multivariate statistics (discriminant analysis, clustering analysis) (Chen and Li,
38 2009; Lu, 2012) , fractional advection dispersion equations (Ramadas et al., 2015) and nonlinear
39 analysis (fuzzy mathematics, grey correlation analysis, etc.) (Hao et al., 2010; Gao, 2012). However,
40 due to the particularity of the solution mining method and the complex chemical-physical reactions
41 during the high-pressure and -temperature mining process, researches regarding solution mining ~~was~~
42 ~~more~~were mainly focused on mining techniques (Jiang and Jiang, 2004; Kotwica, 2008; Namin et al.,
43 2009), mining cavity stability analysis and sinkhole problems (Staudtmeister and Rokahr, 1997; Bonetto
44 et al., 2008; Ezersky et al., 2009; Goldscheider and Bechtel, 2009; Closson and Abou Karaki, 2009;

45 Vigna et al., 2010; Frumkin et al., 2011; Ezersky and Frumkin, 2013; Qiu, 2011; Blachowski et al.,
46 2014), and geohazards particularly in karst areas due to human-induced underground caving (Waltham
47 and Fookes 2003; Parise and Gunn 2007; Zhou and Beck 2011; Parise and Lollino 2011; Lollino et al.,
48 2013; Gutierrez et al., 2014; Parise et al., 2015), but rarely on source and channel analysis of inrush
49 water in a solution mining accident.

50 The ~~studied~~study case of rock salt mining area is located in Tongbai County, Henan Province,
51 China. This mining area has the second largest trona reserves in the world, while its glauber salt
52 reserves reach 45 million tons. Since trona and glauber salt were put into production in 1990 with
53 single- and double-well convection mining as the main producing method, five inrush points appeared
54 in the town of Anpeng, Tongbai County, from June 2011 to May 2013. Among these five inrush points,
55 four (Y1~Y4) were long-term (longer than 2 years) inrush points with stable discharge, while one (Y-5)
56 was a sudden inrush point (as shown in Fig. 1 and Fig. 2).~~On 1 February 2013, almost~~ Almost 200 m³
57 of mud and sediment erupted out of the ground at the Y-5 point on 1 February 2013. The area of the
58 inrush point was ~~almost~~ ~4 m²; the average water inflow was ~~from~~ 20-30 m³/d while the greatest inflow
59 reached 200 m³/d. The water inrush lasted for approximately three months. During the Y-5 inrush
60 accident, according to the field investigation, a trona production well named “S02,” which is 200 m far
61 from the inrush point, broke at a depth of 234 m and remained broken for a long period of time. It was
62 repaired on 15 March 2013. During the entire water inrush process, the groundwater inrush~~of~~
63 ~~groundwater~~ led to a phenomenon of salinization at the house base ~~of the houses~~ of many villagers, and
64 made water in many residents’ wells no longer drinkable.

65 Since the groundwater inrush hazard involved a wide geographic area and the inrush source was
66 quite hard to distinguish due to the multi-layer distribution of the different ore bodies and the
67 complexity of the inrush water component. Therefore, in order to put forward a targeted treatment

program to stop the water inrush as soon as ~~is~~-possible, and mitigate the groundwater pollution in research region, the source and channel of the inrush water were taken as the research emphasis in this study. Furthermore, this research can provide a valuable reference for avoiding and assessing groundwater inrush hazards in similar rock salt mining areas, which is advantageous for both groundwater quality protection and public health.

2. Geological and hydrogeological setting

2.1. Geological conditions

The mining area is located in northwestern Tongbai County. The landscape is ~~characterised~~characterized by hollows and ridges, ~~and has~~with an elevation ranging from 140 to 200 m above sea level. The strata, lithology, aquifer, and the position of different ore beds in the research area (Shi et al., 2013) are shown in Fig. 3.

According to geologic references and field investigation, in the northeastern mining area, a hidden east-west oriented fault is developed at the bottom of the first segment of the Hetaoyuan Formation, and another four, hidden, south-north oriented faults are developed at the bottom of the second segment of the Hetaoyuan Formation. These five faults are outside the scope of trona mine, so they have ~~had~~-little effectss on the ore bed. A few small-scale hidden faults are developed at the bottom of the third segment of the Hetaoyuan Formation, although within the scope of the glauber salt mine, they have ~~had~~ little effectss on the glauber salt ore bed which is distributed at the top of the first segment of Hetaoyuan Formation. ~~—~~A hidden east-west oriented fault is developed at the bottom of the Liao Zhuang Formation in the range of the glauber salt mine, but it has ~~had~~ little effectss on the glauber salt mine because of its small scale.

2.2. Hydrogeological conditions

The groundwater in the mining area can be divided into pore water in the loose rock mass and

bedrock fissure water according to the lithology and hydrogeological features. In the upper part of the Liao Zhuang Formation, a mudstone interbedded with gypsum is considered a relative weak permeable stratum especially under the condition of high-pressure and -temperature water injection during the mining period. The shallow aquifer is unconsolidated pore water above this weak permeable stratum, while the deep aquifer is a bedrock fissure beneath this weak permeable stratum.

The flow direction of the shallow groundwater is controlled by the ~~overall~~-regional terrain. Taking the underground watershed as the boundary, the groundwater on the south side of the watershed is mainly flowing from northeast to southwest with the Yanhong River as the drainage base ~~of the drainage~~, while the groundwater on the north side of the watershed is mainly ~~slowing~~-flowing from south to north with the Xia River as the drainage base ~~of the drainage~~. The deep groundwater ~~has-is in~~ relatively closed burial conditions, with slow velocity, and nearly the same flowing direction as the shallow groundwater. The water inflow of a single well with poor water content is approximately 100 m³/d, while it can reach from 1000-2000 m³/d if it has rich water content. The annual amplitude~~variation~~ of the groundwater level is from 2-to 4 m, while the depth is stable at 2.3-4 m. Residents in Anpeng use groundwater as ~~the~~ ~~source of~~ their drinking water, which comes from wells and is from the porous aquifer.

~~As shown in Fig. 3, g~~Gypsum mainly occurs on the top of the Liao Zhuang Formation, glauber salt occurs in the third member of the Hetaoyuan Formation, and the trona occurs at the bottom of the second member of the Hetaoyuan Formation as well as on top of the first member of the Hetaoyuan Formation (Fig. 3). The surrounding rocks of every mineral layer, ~~include~~-including mudstone, shale, sandy conglomerate, psammitic rock and dolomite, ~~which~~-have sufficient thickness and good water-resistance. Therefore, the effect of groundwater on the mineral deposit is minimal in the mining area.

113 **2.3 Distribution and characteristics of the ore body**

114 The three ore bodies overlap in plane distribution, as shown in Fig. 4. The vertical distribution of
115 the ore bodies from deep-to-shallow is trona (buried depth: 1560.92-2929.53 m), glauber salt (buried
116 depth: 1003.66-1397.58 m) and gypsum (buried depth: 134-338 m). The trona and glauber salt bodies
117 are at least 250 m apart from each other vertically.

118 The trona has 11 horizontal layers, with an average thickness of 2.11 m. The chemical composition
119 of trona is mainly NaHCO_3 (average of 77.06%) and Na_2CO_3 (average of 16.33%) (Wang, 1987). The
120 glauber salt has 4 layers, with an average thickness of 8.93 m. The dip angle of the ore bed layer is less
121 than 10° . The average mineral grade is 60.14%. The main composition of the glauber salt is Na_2SO_4
122 (>90%) with a small amount of NaCl .

123 **3. Methods**

124 Based on the field investigation results, the chemical characteristic analysis of the inrush water at
125 different sites and time, analysis of the physical and chemical reaction principles for the different brines,
126 and combined with the PHREEQC simulation method, the source of the inrush water was determined.

127 **3.1. Sampling and testing**

128 The five groundwater inrush points (Y1~Y5) and some shallow groundwater points (resident wells:
129 SY1~SY6) near the accident site were chosen as groundwater quality sampling points, as shown in Fig.
130 4. Water from each point was sampled on 9 March 2013.

131 Water samples were filtered using a $0.45\ \mu\text{m}$ millipore filtration membrane in the field, and then
132 filled with a polyethylene bottle which had been soaked in acid and washed with deionised water.
133 Filtered water samples were acidified until the $\text{pH}<2$ by addition of ultra-pure HNO_3^- for the
134 determination of cations; water samples for the determination of anions were not treated.

135 Elements tested in the laboratory included 26 cations (K^+ , Na^+ , Ca^{2+} , Mg^{2+} , Sr^{2+} , etc.) and 5 anions

(F⁻, Cl⁻, NO₃⁻, SO₄²⁻, NO₂⁻). The instrument used for the determination of cations was an inductively coupled plasma atomic emission spectrometer (Agilent ICP-OES 5100), and the minimum detection limit was 0.0001mg/L. The instrument used for the determination of anions was an ion chromatograph (ICS-1100), and the minimum detection limit was 0.001 mg/L. CO₃²⁻ and HCO₃⁻ were tested according to the “Groundwater quality test method: Determination of carbonate and bicarbonate by hydroxide titration (DZ/T 0064.49-93),” and the minimum detection limit was 0.01 mg/L.

In addition, from March to April 2013, at the Y-5 and Y-3 points, three water quality automatic recorders (Levellogger gold, Canada) were arranged for inrush water monitoring. Monitoring indicators were temperature, water level and electrical conductivity. The purpose of the monitoring was to fully understand the inrush water quality during the whole accident, especially in the process of well reparation.

3.2. Analysis of the physical and chemical reaction principles in different brine mixing conditions

During the accident, the leakage brine of the trona (2000 m belowground) or glauber salt (1000 m belowground) might flow through the gypsum deposit (200-400 m belowground), which is comprised primarily of CaSO₄, and cause physical and chemical reactions while it inrushes out of the ground. Thus, the formation of the ~~inrush water~~ chemistry component [in inrush water](#) might be from glauber brine, or trona brine, or a mixture of the two brines, flowing through the gypsum layer ~~with~~ accompanying physical and chemical reactions. To provide the basis for further analysis of the inrush water source, the physical solubility of the gypsum and the reaction when the glauber salt brine, trona brine, or a mixture of trona and glauber salt brine flowing through the gypsum deposits were ~~analysed~~[analyzed](#).

3.2.1. The physical solubility of gypsum (CaSO₄)

Gypsum is slightly soluble; when in water, its acidity is apparent. Eq. (1) provides the dissolution rate equation of gypsum in water:

$$R_{Gypsum} = k_1 \times \frac{A_g}{V} (1 - (\frac{IAP}{K})_{Gypsum}) \quad (1)$$

R_{Gypsum} : the dissolution rate of gypsum; k_1 : rate constant; A_g : the surface area of gypsum; V : the liquid volume in contact with the gypsum surface; IAP : the product of ion activity; and K : ion solubility product.

$(\frac{IAP}{K})_{Gypsum}$ is affected by the temperature; thus, it is the same as R_{Gypsum} .

The solubility of gypsum in water reaches a maximum of 0.2097 g/100 g at 40°C. The solubility decreases when the temperature is below or above 40°C. The content of SO_4^{2-} and Ca^{2+} obtained by physical dissolution is very low.

3.2.2. Gypsum ($CaSO_4$) dissolved by glauber salt brine (Na_2SO_4)

Equations (2) and (3) show the reactions of Na_2SO_4 and $CaSO_4$ with water.

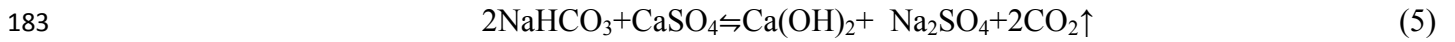


Because of the common-ion effect, the solubility of the electrolyte will decrease when a strong electrolyte with the same ion is placed into an electrolyte-saturated solution. Thus, the solubility of gypsum will be reduced when glauber salt brine flows through and dissolves the gypsum deposits; the gypsum will be even harder to dissolve in this situation. Thus, if the glauber salt brine flows through the gypsum deposits, the brine characteristic would not apparently change.

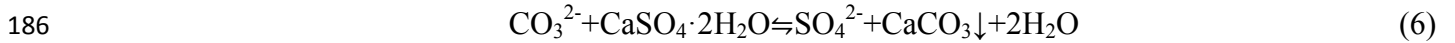
3.2.3. The reaction of trona brine or a mixture of trona and glauber salt brine with gypsum

The HCO_3^- and CO_3^{2-} contents in trona brine or in mixed brine are very high as is the solution alkalinity and pH. If the reaction kinetics is not taken into account, the pH has little influence on the dissolution of gypsum (Yang, 2003; Xu and Li, 2011). The reaction occurs when the brine with high concentrations of HCO_3^- and CO_3^{2-} flows through the gypsum deposits. The main chemical reactions are

181 as follows:



184 In Eq. (4), CaSO_4 is slightly soluble, while CaCO_3 is insoluble. The reaction easily occurs when an
185 insoluble substance is produced by a slight soluble substance, and the ionic equation is as follows:



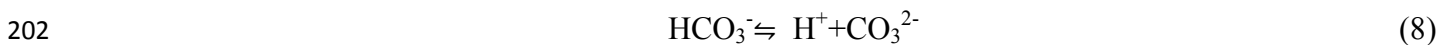
187 The Gibbs Free Energy (ΔG) is -22.7 kJ/mol under the standard state. When ΔG is negative, the
188 reaction, which is endothermic, occurs freely. The reaction is faster at higher temperatures. Eq. (5)
189 shows that ΔG is 2102 kJ/mol under the standard state. When ΔG is positive, the reaction will not freely
190 occur.

191 Thus, the reaction shown in Eq. (5) will not occur, but the chemical reaction will still proceed as
192 shown in Eq. (4), when trona brine or mixed brine flow through the gypsum deposits.

193 3.2.4. The carbonate equilibrium effect during the reaction of different brines

194 The carbonate equilibrium that exists in the trona brine or mixed brine is affected by pH. The
195 carbonate in groundwater exists in three forms: free carbonic acid, bicarbonate and carbonic acid.

196 In the trona brine ($\text{pH} > 10$), the concentration of HCO_3^- is 5-20 times that of the ~~concentration of~~
197 CO_3^{2-} concentration, and CO_3^{2-} in the brine is dominant in this case. When the trona brine flows through
198 the gypsum, CaSO_4 reacts with CO_3^{2-} and CaCO_3 precipitates. If the concentration of CO_3^{2-} in the brine
199 decreases, a reversible reaction will take place and drive the equilibrium to the right. Thus, the reverse
200 reaction will occur when the trona brine flows through the gypsum as follows:



203 The circular reactions as shown in Eqs. (7) and (8) will occur when mixed brine flows through the

gypsum because it has similar properties to the trona brine. Thus, taking the carbonate equilibrium effect into account, the concentrations of HCO_3^- and CO_3^{2-} will decrease, while SO_4^{2-} increases after CaCO_3 precipitates.

3.3. Simulation of groundwater inrush source

For further quantitative analysis of the inrush water source and component, the international hydrological and geochemical simulation software PHREEQC was used to simulate the water-rock interaction. The PHREEQC software was developed by the U.S. Geological Survey, and it is able to calculate geochemical action within a temperature range of from 0~300 degrees (Wei, 2010).

Based on the deduction that the main water inrush source around Anpeng was trona leakage brine, the simulation method PHREEQC was used and combined with the possible channel of inrush water to establish a conceptual model and then hydrogeochemical simulation of the water-rock interaction was conducted. Subsequently, the mixed ratio of inrush groundwater and shallow groundwater around Anpeng were quantified, which can better verify the source of the inrush water.

3.3.1. Conceptual model

Around Anpeng, the trona leakage brine flowed through the specified mineral assemblages and mixed with shallow groundwater in different proportions.

3.3.2. Initial data input

The parameters of the trona brine were taken from the enterprise's production testing data; the parameters of the shallow groundwater were taken from the same aquifer but outside the study area, and can basically represent groundwater background values. The specific parameters are shown in Table 1.

3.3.3. Setting of stratum and mineral

The formations from the bottom to the top during the process of the leakage brine flowing into the shallow groundwater and then flowing out of the ground were as follows: the third member of the

Hetaoyuan Formation of Paleogene, ~~and~~ the Liaozhuang Formation and [the](#) Fenghuang Formation of Neogene and Quaternary, ~~respectively~~. To simplify the mining area, according to the thickness of the rock stratum and the proportion of mineral composition, it can be assumed that the layer through which the trona brine flowed contains Ca-montmorillonite, kaolinite, gypsum, potash feldspar and potash mica.

The main ingredients are as follows: Kaolinite: $\text{Al}_4[\text{Si}_4\text{O}_{10}](\text{OH})_8$; Gypsum: $\text{CaSO}_4 \cdot 2\text{H}_2\text{O}$; Ca-montmorillonite: $(\text{Na}, \text{Ca})_{0.33}(\text{Al}, \text{Mg})_2[\text{Si}_4\text{O}_{10}](\text{OH})_2 \cdot n\text{H}_2\text{O}$; Dolomite: $\text{CaMg}(\text{CO}_3)_2$; Potash feldspar: $\text{K}[\text{AlSi}_3\text{O}_8]$; Potash mica: aluminium silicate as K, Al, Mg, Fe and Li.

4. Results and Discussion

On 9 March 2013, in Anpeng, water samples from five groundwater inrush points and six surrounding water quality monitoring points (resident well) were tested. The results of water chemical composition are shown in Table 2, and the distribution of the sampling points is shown in Fig. 4.

According to the water quality analysis, the inrush brine had a relatively high salinity, with some inrush water samples containing $\text{SO}_4\text{-Na}$ and some containing $\text{HCO}_3\text{-Na}$. The crystals mainly consisted of NaSO_4 , Na_2CO_3 , and NaHCO_3 . The composition of the inrush water and the crystals was the same as that of the high-concentrated ions in the trona brine (Na_2CO_3 , NaHCO_3 , etc.) and glauber salt brine (Na_2SO_4).

4.1. The source of the inrush water

An automatic water quality recorder was set up at the Y5 inrush point on 4 March 2013. The monitoring lasted from 5 March to 20 March 2013. Thus, the relationship between the inrush points and the S02 well can be assessed according to the correlation of the changes between temperature/electrical conductivity and the concentration of brine during the S02 production well reparation period (5 March to 14 March 2013).

The production of glauber ceased during the investigation (2 March to 15 March 2013), so it could be determined how the glauber mining affects the water inrush hazard based on a dynamic water quality situation.

4.1.1. The source of inrush water at the Y-5 point

After successful reparation of the S02 well, the conductivity and temperature of the inrush water decreased significantly. The CO_3^{2-} concentration remained at 0, the ~~concentration of~~ HCO_3^- ~~concentration~~ decreased to 500 meq/L, while the ~~concentration of~~ SO_4^{2-} ~~concentration~~ increased to 600 meq/L. Subsequently, the concentrations of these three ions were in a state of dynamic balance. The analysis shows that the source of the inrush water at the Y-5 point is closely related to the S02 trona well.

In order to ensure whether the glauber brine exists at this point as part of an inrush source, further analysis was performed. The depth of the well rupture was 234 m; the gypsum deposit was developed to this depth. While the leakage of the trona brine flowed through the gypsum deposit, reactions would occur as shown in Eqs. (7) and (8).

According to the ion milliequivalent concentrations (Ca^{2+} : 0.61 meq/L; CO_3^{2-} : 905.3 meq/L; HCO_3^- : 1332.94 meq/L; Cl^- : 107.43 meq/L; and SO_4^{2-} : 267.89 meq/L) at the Y-5 point, the concentration of Ca^{2+} was negligible compared to the other main ions. Only the reaction between CO_3^{2-} and CaSO_4 had to be taken into account because of the large number of CO_3^{2-} , with fast velocity, the short contact time with gypsum, and the high temperature. The reaction of CO_3^{2-} and CaSO_4 would take place at a ratio of 1:1 according to Eq. (7), and three types of inrush water sources could be assumed under this precondition as follows:

(1) The inrush water source was only from the trona brine.

The CO_3^{2-} and CaSO_4 in the brine reacted at a ratio of 1:1, and the ~~concentration of~~ SO_4^{2-}

concentration was equal to the reacted γCO_3^{2-} content. Thus, the $\gamma\text{CO}_3^{2-}/\gamma\text{HCO}_3^-$ ratio in the trona brine was equal to the $\gamma(\text{CO}_3^{2-}+\text{SO}_4^{2-})/\gamma\text{HCO}_3^-$ ratio in the inrush water. From this calculation, it could be seen that $\gamma(\text{CO}_3^{2-}+\text{SO}_4^{2-})/\gamma\text{HCO}_3^-$ was equal to 0.88, while $\gamma\text{CO}_3^{2-}/\gamma\text{HCO}_3^-$ ranged between 0.86 and 1.26. The content of $\gamma(\text{CO}_3^{2-}+\text{SO}_4^{2-})/\gamma\text{HCO}_3^-$ was similar to $\gamma\text{CO}_3^{2-}/\gamma\text{HCO}_3^-$; therefore, the source of the inrush water was exclusively trona brine.

(2) The inrush water source was only from the glauber brine.

The $\gamma\text{SO}_4^{2-}/\gamma\text{HCO}_3^-$ ratio in the glauber brine was equal to 1237.8, compared to 0.19 in the inrush water. Therefore, this assumption was incorrect because of the widely varying ratios.

(3) The inrush water source was from a mixed brine of glauber and trona.

Assuming that the contribution ratio of the glauber brine was X and that of the trona brine was Y was true, then $1237.8 \times X + (0.86 \sim 1.26) \times Y = 0.88$. This equation showed that when the contribution ratio of the trona brine was equal to 1, the contribution ratio of the glauber brine was equal to 1.6×10^{-5} , and which is was too small to that can be ignored.

Thus, it could be confirmed that the water inrush source at Y-5 was exclusively the leakage of trona brine from the broken S02 well.

4.1.2. The sources of inrush water at the Y-4, Y-3, Y-2, and Y-1 points

The inrush water quantity and the dynamic variation of the concentration of SO_4^{2-} and HCO_3^- at points Y1-Y4 were not obvious when the S02 well was under repair and all the glauber wells were shut down (~~2-15~~ from 2 to 15 March). This result shows that the sources of these water inrush points were not due to the underground mining activities of the glauber brine or the rupture of the S02 well, but because of the brine leakage from other trona wells.

4.1.3. Components and mixed proportions of the inrush water

The PHREEQC simulation conditions were assumed to be as follows: (1) the trona brine did not

296 mix with shallow groundwater after flowing through the mineral layer; or (2) the trona brine mixed with
297 shallow groundwater in a ratio of 1:2, 1:10, 1:100, 1:200, 1:500, 1:1000 and 1:5000 after flowing
298 through the mineral layer. The simulation results are shown in Table 3.

299 Table 3 shows that when the trona brine flowed through the stratum and shallow groundwater, the
300 concentrations of Na^+ , Cl^- and SO_4^{2-} decreased while the ~~concentration of~~ HCO_3^- concentration
301 increased with increasing proportion of ~~the~~ shallow groundwater. The ~~concentration of~~ Ca^{2+}
302 concentration decreased at first and then increased.

303 The ion concentrations at Y-5, except for SO_4^{2-} , were similar to the ion concentrations in the trona
304 brine. However, at the same time, the ~~concentration of~~ HCO_3^- concentration was nearly 0 meq/L. When
305 the trona brine flowed through the layer, it would react rapidly and pour out of the ground directly
306 because of the fast velocity of the inrush water at Y-5. Meanwhile, the trona brine was not continuously
307 provided in the simulation. Thus, the concentration of HCO_3^- would be near to the concentration of
308 trona brine in reality. Therefore, the trona brine must have a rapid inrush, ~~nearly~~ almost not mixing with
309 shallow groundwater.

310 The PHREEQC simulation ~~analysis~~ results show that: 1) the water inrush source of Y-5 was ~~nearly~~
311 ~~all of~~ the trona brine almost all from the ruptured S02 well; 2) the water inrush source of Y-3 was a
312 mixture of trona brine and groundwater in a ratio of ~~from~~ 1:10~1:100; and 3) the water inrush sources of
313 Y-4, Y-2 and Y-1 were a mixture of trona brine and groundwater under the ratio of 1:200.

314 **4.2. The channel of the inrush water**

315 **4.2.1. Reasons for the brine leakage**

316 Trona is produced by either a single well or double/multiple well convection mining method, ~~a~~ that
317 is water-soluble mining method (Lin, 1987). The main mining unit consists of a salt cavity and
318 production well. Thus, the instability of the salt cavity and the rupture of the production well are the

319 main possible reasons for brine leakage.

320 (1) Analysis of salt cavity stability

321 The possibility of salt cavity collapse: Trona is distributed at the bottom of the second member of
322 the Hetaoyuan Formation and in the upper part of the first member of the Hetaoyuan Formation, with
323 dolomite strata developed in the roof and floor. The thick and hard surrounding rock structure
324 determined that the cavity is produced by hydrofracture but it is hard to fill with large-scale fractured
325 channels and can remain intact and stable.

326 The development of a roof fracture: When a mineral is under exploitation, the surrounding rock in
327 the cavity is under pressure from the inner brine. This pressure is equal to the sum of the water injection
328 pressure ~~plus~~ and the water column pressure in the production well. The water injection pressure of the
329 trona production well is approximately 10-20 MPa, while the 1560.92-2929.53 m (mineral buried depth)
330 water column pressure is approximately 15.3-28.71 MPa. Thus, the greatest water pressure on the
331 surrounding rock in the cavity is 48.71 MPa. The main lithology of the surrounding rock is dolomite
332 ~~which~~ that is 500 m in thickness and 142.66 MPa in compressive strength, which is nearly 3 times that
333 of the greatest possible water pressure. Therefore, large-scale fractures in the surrounding rock of the
334 trona mineral would be difficult to develop under the effect of sustained water pressure.

335 (2) Analysis of production well rupture

336 The phenomenon of brine leakage caused by the S02 well rupture in Anpeng indicates that
337 production well damage is an important cause of brine leakage. The depth of the S02 well rupture is 234
338 m underground, i.e. in the gypsum deposit, which is strongly hygroscopic. The pressure caused by the
339 water swelling is approximately 0.15 MPa (Li and Zhou, 1996), which may damage the production well
340 and induce brine leakage. The high concentration of SO_4^{2-} (>250 mg/L) generated by the reaction of
341 leakage brine and gypsum can also corrode the production well and lead to groundwater inrush.

342 4.2.2. Analysis of water-conducting channel

343 According to our analysis, the most probable reason for brine leakage in trona is production well
344 rupture. The leaking brine will flow along the water-conducting channel into the shallow aquifer and
345 even pour out of the ground. However, the geological structure in the mining area shows no
346 water-conducting fault development. Thus, the water-conducting channel, that the leakage brine flows
347 along, is probably a fissure or artificial channel.

348 ~~A~~sStructural fissure is the main type of fissure that occurs in groundwater inrush hazards when
349 using the solution mining method. The structural fissure is determined by the maximum horizontal
350 principal stress, which is controlled by the tectonic stress field in the mining area. The connection
351 direction of the S02 well and the other water inrush points is NW-SE, which is the same as that of the
352 structural fissure zone development direction. This [result](#) indicates that the main water-conducting
353 channel in Anpeng is controlled by the structural fissure zone.

354 The inrush points in Anpeng are all at the abandoned gypsum exploitation wells, which were not
355 closed properly. Thus, high-pressure cavity water or leakage brine can flow along the structural fissure
356 zone, finally connect with these wells, and then pour out of the ground through boreholes. Therefore,
357 the abandoned gypsum exploitation wells are the main channels through which the shallow polluted
358 groundwater flowed out of the ground, as shown in Fig. 5.

359 5. Conclusions

360 This study aimed to investigate the source and channel of the inrush water in a multilayer rock salt
361 mining area. To achieve the set objectives, ~~this study combined~~ an analysis of geological and
362 hydrogeological conditions, an analysis of physical and chemical reaction principles of different brines,
363 the PHREEQC simulation method, and an analysis of geological and artificial reasons for the
364 conducting channel where leakage brine flowed from the damage depth out to the ground [were](#)

365 [combined](#) as the study methodology.

366 Long-term solution mining with high-pressure and -temperature water not only dissolves minerals
367 but also may cause rupture of strata and damage of the production well, which usually results in brine
368 leakage or ~~the inrush of~~ groundwater [inrush](#). Geological and hydrogeological conditions are the basis
369 which determines the total risk of the groundwater inrush hazard. Physical and chemical reaction
370 principle analysis of different brines and hydrogeochemical simulation of water-rock interaction in
371 different assumed conditions using the PHREEQC simulation method can not only determine the exact
372 source of the leakage brine but also identify the mixed proportion of inrush water while the leakage
373 brine flows through the mineral layer in different way. Other than geological reasons, mining techniques
374 such as pressure control of injection water and groundwater quality monitoring of exploitation wells
375 may also determine the risk of a groundwater inrush hazard in a multilayer rock salt mining area.

376 **Acknowledgements**

377 This work was partially supported by the Fundamental Research Funds for the Central Universities,
378 China University of Geosciences (Wuhan) [Grant Numbers: CUGL100219].

379 **Author Contributions**

380 Bin Zeng and Tingting Shi contributed to data analysis and manuscript writing; Zhihua Chen
381 proposed the main structure of this study; Liu Xiang and Muyi Yang designed and performed the
382 experiments; and Shaopeng Xiang performed the PHREEQC simulation. All the authors read and
383 approved the final manuscript.

384 **Conflicts of Interest**

385 The authors declare that they have no conflict of interest.

386

387 **References**

- 388 Blachowski, J., Milczarek, W. and Stefaniak, P.: Deformation information system for facilitating
389 studies of mining-ground deformations, development, and applications, Nat. Hazards Earth
390 Syst. Sci., 14, 1677-1689, 2014
- 391 Bonetto, S., Fiorucci, A., Fornaro, M. and Vigna, B.: Subsidence hazards connected to quarrying
392 activities in a karst area: the case of the Moncalvo sinkhole event (Piedmont, NW Italy),
393 Estonian J. Earth Sci., 57, 125-134, 2008
- 394 Chen, H. J. and Li, X. Bi.: Studies of water source determination method of mine water inrush
395 based on Bayes' multi-group stepwise discriminant analysis theory, Rock and Soil Mechanics.,
396 30, 3655-3659, 2009.
- 397 Clark, I. D. and Fritz, P.: Environmental isotopes in hydrogeology, Lewis Publishers, New York,
398 USA, 35-37, 1997.
- 399 Closson, D. and Abou Karaki, N.: Salt karst and tectonics: sinkholes development along tension
400 cracks between parallel strike-slip faults , Dead Sea , Jordan. Earth Surface Processes and
401 Landforms., 1408-1421, 2009
- 402 Cobbina, S.J., Duwiejuah, A.B., Quansah, R., Obiri, S. and Bakobie, Noel.: Comparative
403 Assessment of Heavy Metals in Drinking Water Sources in Two Small-Scale Mining
404 Communities in Northern Ghana, Int. J. Environ. Res. Public Health., 12, 10620-10634,
405 2015.
- 406 Ezersky, M., Legchenko, A., Camerlynck, C. and Al-Zoubi, A.: Identification of sinkhole
407 development mechanism based on a combined geophysical study in Nahal Hever South area
408 (Dead Sea coast of Israel). Environmental Geology., 58, 1123-1141, 2009
- 409 Ezersky, M. and Frumkin, A.: Fault - Dissolution front relations and the Dead Sea sinkhole

problem. *Geomorphology.*, 201, 35-44, 2013

Fernandez, I., Olias, M., Ceron, J.C. and De la Rosa, J.: Application of lead stable isotopes to the Guadiamar Aquifer study after the mine tailings spill in Aznalcollar (SW Spain), *Environ Geol.*, 47, 197-204, 2005.

Fernandez-Galvez, J., Barahona, E., Iriarte, A. and Mingorance, M.D.: A simple methodology for the evaluation of groundwater pollution risks, *Sci Total Environ.*, 378, 67-70, 2007.

Frumkin, A., Ezersky, M., Al-Zoubi, A., Akkawi, E. and Abueladas, A.-R.: The Dead Sea sinkhole hazard: Geophysical assessment of salt dissolution and collapse. *Geomorphology.*, 134, 102-117, 2011

Goldscheider, N. and Bechtel, T.D.: The housing crises from underground – damage to a historic town by geothermal drillings through anhydrite, Staufen, Germany. *Hydrogeology Journal.*, 17, 491-493, 2009

Gao, W.D.: Application of Entropy Fuzzy Discriminating methods in Distinguishing Mine Bursting Water Source, *Mining Safety & Environmental Protection.*, 39, 22-24, 2012.

Gutierrez, F., Parise, M., De, Waele, J. and Jourde, H.: A review on natural and human-induced geohazards and impacts in karst. *Earth Science Reviews.*, 138, 61-88, 2014

Hao, B.B., Li C. and Wang C.H.: Application of grey correlation degree in the identification of sources of mine water bursting, *China Coal.*, 36, 20-22, 2010.

Hu, W.W., Ma, Z.Y., Cao, H.D., Liu, F., Li, T. and Dou, H.P.: Application of Isotope and Hydrogeochemical Methods in Distinguishing Mine Bursting Water Source, *Journal of Earth Sciences and Environment.*, 32, 268-271, 2010.

Houben, G.J., Sitnikova, M.A. and Post, V.E.A.: Terrestrial sedimentary pyrites as a potential source of trace metal release to groundwater – A case study from the Emsland, Germany, *Appl.*

433 Geochem., 76, 99-111, 2017.

434 Jiang, R.Z. and Jiang T.X.: Present Development and Prospecting of Hydraulic Fracturing
435 Technology, Oil Drilling & Production Technology., 26, 52-57, 2004.

436 Kang, X.B., Hu, X.W. and Xie, H.Q.: Numerical simulation on the influence of the groundwater
437 flow field during tunneling, Advanced Materials Research., pp. 1230-1233, 2012.

438 Kotwica, K.: Scenarios of technological development of roadways mining in polish coal mines
439 conditions, Gospod Surowcami Min., 24, 139-152, 2008.

440 Lee, H., Choi, Y., Suh, J. and Lee, S.H.: Mapping Copper and Lead Concentrations at Abandoned
441 Mine Areas Using Element Analysis Data from ICP–AES and Portable XRF Instruments: A
442 Comparative Study, Int. J. Environ. Res. Public Health., 13, 384, 2016.

443 LeDoux, T.M., Szykiewicz, A. and Faiia, A.M.: Chemical and isotope compositions of
444 shallowgroundwater in areas impacted by hydraulic fracturing and surface mining in the
445 Central Appalachian Basin, Eastern United States, Appl. Geochem., 71, 73-85, 2016.

446 Lin, Y.X.: The History of Science & Technology of well salt in China, Sichuan Science and
447 Technology Pres, Chengdu, 1987.

448 Li, D.D. and Zhou, Z.A.: Possibility of corrosion failure of concrete shaftwall due to water
449 infiltration, Journal of China Coal Society., 21, 158-163, 1996.

450 Liu, H., Yang, T., Zhu, W. and Yu, Q.: Numerical analysis of the process of water inrush from the
451 12th coal floor FANGEZHUANG coal mine in China, Controlling Seismic Hazard and
452 Sustainable Development of Deep Mines: 7th International Symposium on ROCKBURST and
453 Seismicity in Mines (RASIM7)., 1&2, 1381-1386, 2009.

454 Liu, R.Z., Liu, J., Zhang, Z.J., Borthwick, A. and Zhang, K.: Accidental Water Pollution Risk
455 Analysis of Mine Tailings Ponds in Guanting Reservoir Watershed, Zhangjiakou City, China,

Int. J. Environ. Res. Public Health., 12, 15269-15284, 2015.

Lollino, P., Martimucci, V. and Parise, M.: Geological survey and numerical modeling of the potential failure mechanisms of underground caves. *Geosystem Engineering.*, 16, 100-112, 2013

Lu, J.T.: Recognizing of Mine Water Inrush Sources Based on Principal Components Analysis and Fisher Discrimination Analysis Method, *China Safety Science Journal.*, 22, 109-115, 2012.

Ma, L. and Qian, J.Z.: An approach for quickly identifying water-inrush source of mine based on GIS and groundwater chemistry and temperature, *Coal Geology & Exploration.*, 42, 49-53, 2014.

Namin, F. S., Shahriar K., Bascetin A. and Ghodsypour S.H.: Practical applications from decision-making techniques for selection of suitable mining method in Iran, *Gospod Surowcami Min.*, 25, 57-77, 2009.

Parise, M., and Gunn, J.: Natural and anthropogenic hazards in karst areas: Recognition, Analysis and Mitigation. *Geol. Soc. London, sp. publ.* 279, 2007

Parise, M. and Lollino, P.: A preliminary analysis of failure mechanisms in karst and man-made underground caves in Southern Italy. *Geomorphology.*, 134, 132-143, 2011

Parise, M., Closson, D., Gutierrez, F. and Stevanovic, Z.: Anticipating and managing engineering problems in the complex karst environment. *Environmental Earth Sciences.*, 74, 7823-7835, DOI :10.1007/s12665-015-4647-5, 2015

Qiu, Z.Y.: Mechanism analysis of surface collapse in the area of solution salt mining, *Journal of Safety Science and Technology.*, 7, 27-31, 2011.

Ramadas, M., Ojha, R. and Govindaraju, R.S.: Current and Future Challenges in Groundwater. II: Water Quality Modeling, *J. Hydrol. Eng.*, 13, 132-140, 2015.

- Robins, N.S.: Groundwater quality in Scotland: major ion chemistry of the key groundwater bodies, Sci Total Environ., 294, 41-56, 2002.
- Shao, A.J., Huang, Y. and Meng, Q.X.: Numerical Simulation on Water Invasion of Coal Mine, Applied Mechanics and Materials., pp. 1112-1117, 2013.
- Shi, T.T., Chen, Z.H. and Luo, Z.H.: Mechanism of groundwater bursting in a deep rock salt mine region: a case study of the Anpeng trona and glauber salt mines, China, Environ Earth Sci., 68, 229-239, 2013.
- Staudtmeister, K. and Rokahr, R.B.: Rock Mechanical Design of Storage Caverns For Natural Gas in Rock Salt Mass, Rock Mech&Min.Sci., 34, 3-4, 1997.
- Vigna, B., Fiorucci, A., Banzato, C., Forti, P. and De Waele, J.: Hypogene gypsum karst and sinkhole formation at Moncalvo (Asti, Italy). Z. Geomorphol., 54, 285-308, 2010
- Wang, J.M.: A Preliminary Study on the Characteristics and Conditions of forming Anpeng Trona deposits, Petrol Explor Dev., 5, 93-99, 1987.
- Waltham, AC. And Fookes, PG.: Engineering classification of karst ground conditions. Quarterly Journal of Engineering Geology and Hydrogeology., 36, 101-118, 2003
- Wei, Y.N.: Research and Application of Hydro-geochemical Simulation, Journal of Water Resources and Water Engineering., 21, 58-61, 2010.
- Wu, Q., Li, B. and Chen, Y.: Vulnerability Assessment of Groundwater Inrush from Underlying Aquifers Based on Variable Weight Model and its Application, Water Resour Manag., 30, 3331-3345, 2016.
- Xu, H. and Li, H.S.: Study on CaSO_4 crystallization process and its influential factors, Industrial Water Treatment., 5, 67-69, 2011.
- Yang, Y.H.: Gypsum mineral dissolution kinetics, M.D. thesis, China University of Geosciences,

502 Wuhan, China, 2003.

503 Yuan, W.H. and Gui, H.R.: The Characteristics of Geothermal Temperature and Its Application in
504 Distinguishing the Source of Water in Ren Lou Mine, Journal of Anhui University of Science
505 and Technology (Natural Science)., 25, 9-11, 2005.

506 Zhou, W. and Beck, BF.: Engineering issues on karst. In: P. van Beynen (Ed), Karst Management.

507 Springer, Dordrecht, pp. 9-45, 2011

Figure captions

Fig. 1. One of the long-term (longer than 2 years) groundwater inrush points with stable discharge (Y-3).

Fig. 2. The sudden groundwater inrush point (Y-5). ~~As shown in this figure,~~ The high-temperature inrush groundwater was being pumped after the ground was broken.

Fig. 3. Information about strata, lithology, aquifers, and buried positions of each ore bed in the mining area.

Fig. 4. Sketch map of hydrogeological conditions and the distribution of groundwater inrush points in the mining area.

Fig. 5. Schematic diagram of the source and channel ~~analysis~~ of the groundwater inrush hazard in the multilayered rock salt mining area in Tongbai County.



Fig.1



Fig.2

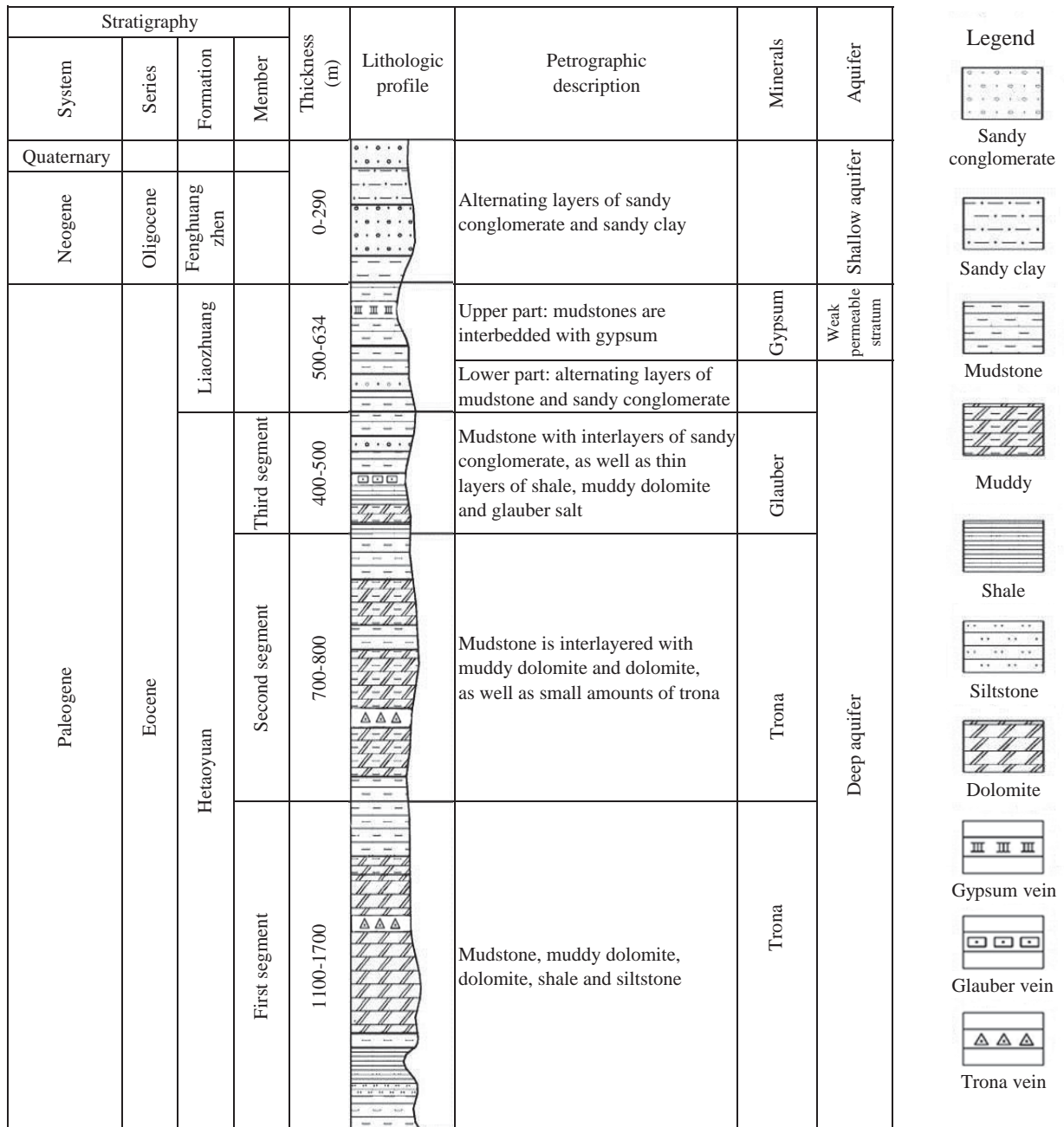
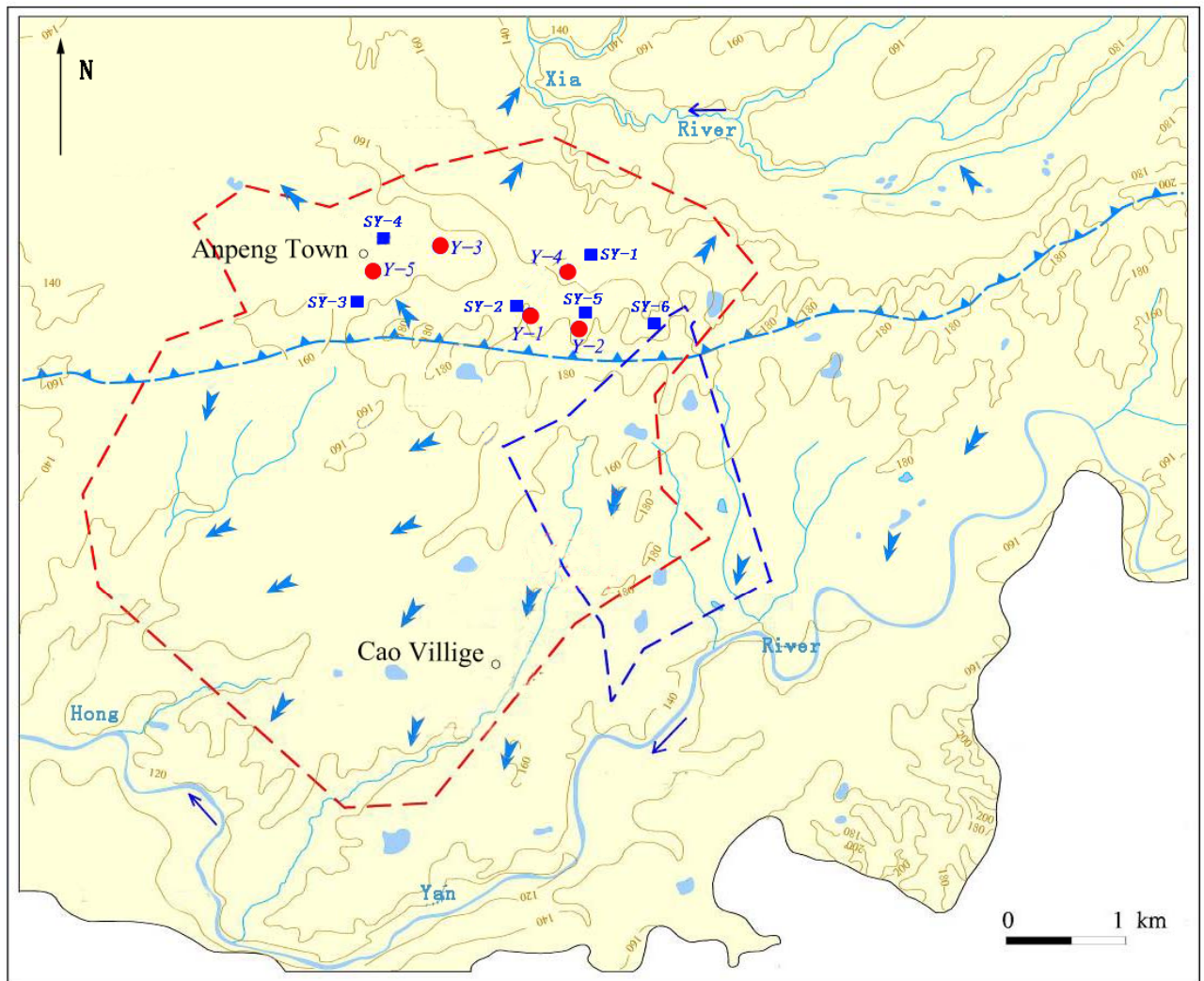


Fig.3



- | | | |
|----------------------------|--------------------------------|-------------------------------|
| Quaternary pore water | The area of trona mine | The area of glauber salt mine |
| Contour and elevation | Drainage divide of groundwater | Rivers and lakes |
| Groundwater flow direction | Groundwater intrush points | Resident well points |

Fig.4

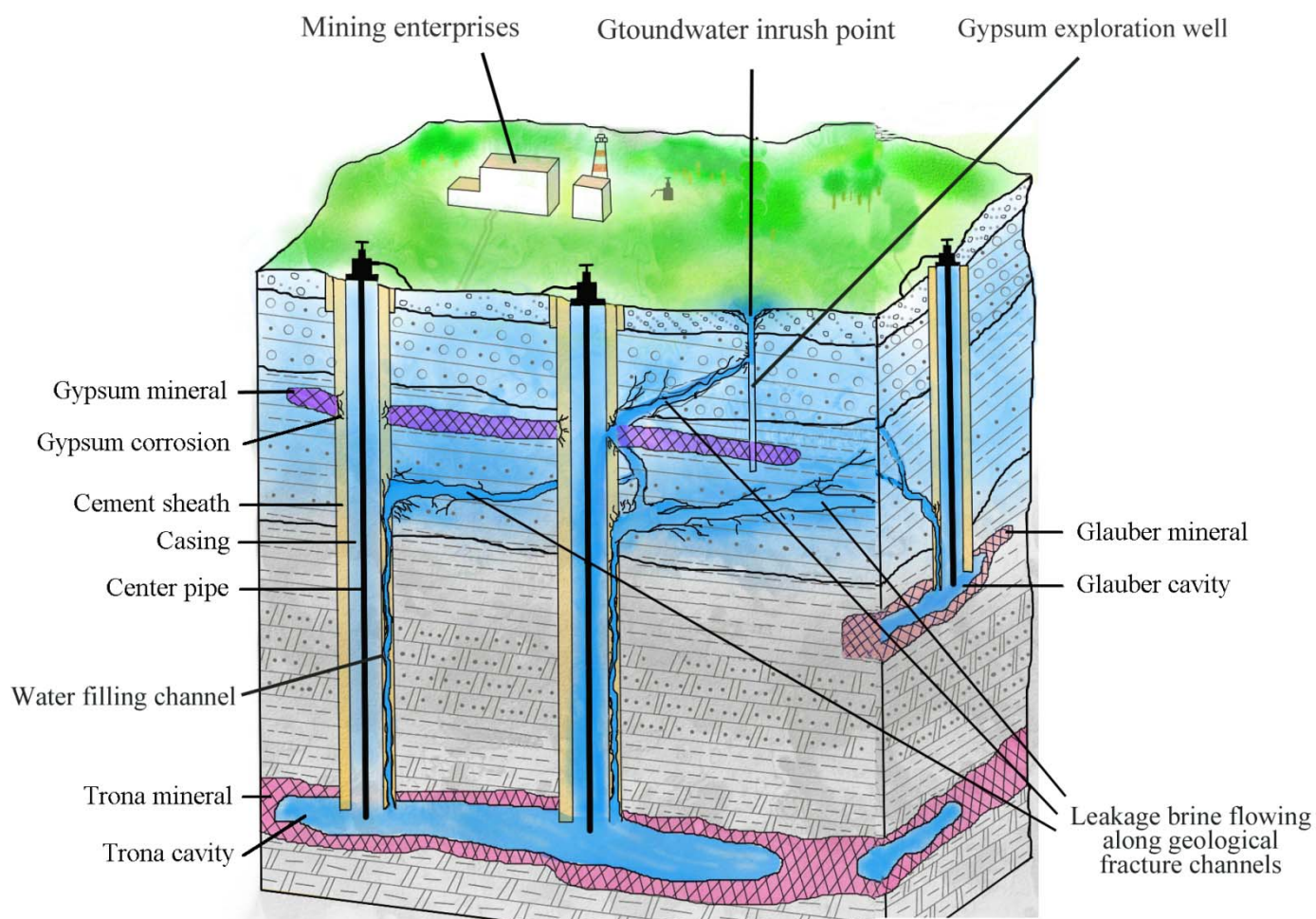


Fig.5

Table 1 Initial data of trona brine and background value of groundwater for the PHREEQC simulation

Type	Temperature (°C)	pH	Na ⁺	Ca ²⁺	Mg ²⁺	Cl ⁻	SO ₄ ²⁻	HCO ₃ ⁻	CO ₃ ²⁻
			(mg/L)						
Trona brine	70.00	10.80	85880.00	5.00	1.00	3819.00	206.00	104721.00	4565.00
Background value of groundwater	14.10	7.50	38.76	67.10	23.88	12.46	39.31	386.87	0.00

Table 2 Chemical composition of groundwater from the inrush hazard points and surrounding resident wells

Source	Point	Na ⁺	Ca ²⁺	Mg ²⁺	Cl ⁻	SO ₄ ²⁻	HCO ₃ ⁻	CO ₃ ²⁻	Salinity	Depth
		(mg/L)								(m)
Groundwater from inrush hazard points	Y-1	447.30	91.20	74.68	171.18	278.55	1488.89	0.00	1807.35	330.55 ~ 430.20
	Y-2	524.50	89.34	75.32	153.97	298.88	1525.00	0.00	1904.51	
	Y-3	1132.00	146.60	158.30	125.56	4296.44	1012.93	0.00	6365.37	
	Y-4	322.12	98.67	123.88	210.78	346.55	1122.77	0.00	1663.38	
	Y-5	50300.00	12.23	53.21	3813.80	12858.63	81309.15	27159.00	107692.40	
Groundwater from resident wells around the inrush points	SY-1	46.28	76.76	17.29	64.30	14.58	319.03	0.00	378.73	10.00
	SY-2	28.37	98.02	27.46	26.16	10.38	453.84	0.00	417.31	
	SY-3	43.14	46.20	14.42	31.02	117.12	319.03	0.00	316.26	
	SY-4	118.53	278.40	72.30	425.23	175.96	568.52	0.00	1354.68	
	SY-5	31.67	95.51	19.22	53.93	22.59	351.97	0.00	398.90	
	SY-6	36.77	68.82	19.60	18.51	21.55	340.38	0.00	335.43	

Table 3 Simulation results for a mixed proportion of inrush trona brine using the PHREEQC

Conditions	Mixed proportion with shallow groundwater	method (mg/L)				
		Na ⁺	Ca ²⁺	Cl ⁻	SO ₄ ²⁻	HCO ₃ ⁻
Trona brine unmixed or mixed with different proportion of shallow groundwater after flowing through the mineral layer (simulation results)	Unmixing	87147.00	301.08	3880.15	68659.20	5.06
	1:1	48093.00	280.00	2145.62	37900.80	9.39
	1:2	33235.00	184.72	1485.68	26188.80	13.97
	1:10	9586.40	148.28	436.30	7561.92	57.95
	1:100	1098.25	90.40	141.63	873.89	306.34
	1:200	571.78	69.60	118.56	459.17	382.17
	1:500	252.77	68.32	104.60	207.84	453.66
	1:1000	144.81	67.52	99.94	105.12	481.60
Water quality test results in five water inrush hazard points	Y-1	447.30	91.20	171.18	276.55	1488.89
	Y-2	524.50	89.34	153.97	298.88	1525.00
	Y-3	1132.00	146.60	125.56	4296.44	1012.93
	Y-4	322.12	98.67	210.78	346.55	1122.77
	Y-5	50300.00	12.23	3813.80	12858.63	81309.15

Editorial Certificate from American Journal Experts



AMERICAN JOURNAL EXPERTS

EDITORIAL CERTIFICATE

This document certifies that the manuscript listed below was edited for proper English language, grammar, punctuation, spelling, and overall style by one or more of the highly qualified native English speaking editors at American Journal Experts.

Manuscript title:

Mechanism of groundwater inrush accident caused by solution mining in multilayer rock salt mine area: a case study in Tongbai County, China

Authors:

Bin Zeng

Date Issued:

April 26, 2016

Certificate Verification Key:

D1C4-5C96-C13E-BDB3-7CE3



This certificate may be verified at www.aje.com/certificate. This document certifies that the manuscript listed above was edited for proper English language, grammar, punctuation, spelling, and overall style by one or more of the highly qualified native English speaking editors at American Journal Experts. Neither the research content nor the authors' intentions were altered in any way during the editing process. Documents receiving this certification should be English-ready for publication; however, the author has the ability to accept or reject our suggestions and changes. To verify the final AJE edited version, please visit our verification page. If you have any questions or concerns about this edited document, please contact American Journal Experts at support@aje.com.

American Journal Experts provides a range of editing, translation and manuscript services for researchers and publishers around the world. Our top-quality PhD editors are all native English speakers from America's top universities. Our editors come from nearly every research field and possess the highest qualifications to edit research manuscripts written by non-native English speakers. For more information about our company, services and partner discounts, please visit www.aje.com.

**PAID ON 04/18/2016 4:46 AM**

American Journal Experts

Send to:

曾斌
13995582076
中国地质大学(武汉)曾斌
洪山区鲁磨路388号
武汉市, 湖北省
China, 430074

American Journal Experts, LLC
601 West Main Street, Suite 102
Durham, NC 27701, United States
Phone: 1-919-704-4253
Fax: 1-919-287-2439
<http://www.aje.com>
Email: support@aje.com
Tax ID: 412141424

Invoice

Receipt code: **VYFE-56A-0418044549**

Authors: Bin Zeng

Title: Genetic analysis of groundwater bursting caused by solution mining in a deep rock salt mine

Submission date: April 18 2016, 04:46 am

Invoice date	Description	Length	Time	Area of study	Price
April 18, 2016	Standard Editing	Standard (3501 - 6000 words)	7 days	Geochemistry	\$268.00
				Fapiao surcharge	\$21.44
				Total	\$0.00
				TOTAL (IN RMB ¥)	¥1875.51

PAYMENT METHOD(S): Alipay

DISCLAIMER: Price in RMB ¥ valid as of Apr 26, 2016 and subject to change.

TERMS: Net 30 days. Online order

Certificate from ELSEVIER Language Editing Services



ELSEVIER

Language Editing Services

Registered Office:
Elsevier Ltd
The Boulevard, Langford Lane,
Kidlington, OX5 1GB, UK
Registration No. 331586771

To whom it may concern

The paper "Mechanism of groundwater inrush hazard caused by solution mining in multilayer rock salt mine area: a case study in Tongbai County, China" by Bin Zeng was edited by Elsevier Language Editing Services.

Kind regards,

Elsevier Webshop Support

(This is a computer generated advice and does not require any signature)

Invoice



Invoice							
Reference:	CS102657						
Order nr:	3853						
Date:	Oct 09, 2017						
Currency:	USD						
Product Information							
Quantity	Description	Unit price	VAT rate	VAT amount	Total amount (usd)	Paid (usd)	Due
1	Language editing express	399.00	0.0%	0.00	399.00	399.00	0.00
					399.00	399.00	0.00
Customer Information							
Name:	bin zeng						
University:	China University of Geosciences						
Department:	School of Environmental Studies						
Address:	Hongshan District, Lumo Road 388#						
Postal code / zip:	430074						
City:	Wuhan						
Country:	China						
Total VAT amount: USD 0.00							
VAT registration numbers: Austria (AT) U62029744, Belgium (BE) 454069965, Canada (CA) 899471825RT0001, Cyprus (CY) 99200008T, Czech Republic (CZ) 680459405, Denmark (DK) 17105779, Estonia (EE) 101100676, Finland (FI) 10123303, France (FR) 67390585230, Germany (DE) 172046177, Greece (GR) 999838602, Hungary (HU) 26952811, Ireland (IE) 9507113Q, Italy (IT) 00119309995, Luxembourg (LU) 21424724, Malta (MT) 18116507, Netherlands (NL) 801481247B01, Poland (PL) 5262786955, Portugal (PT) 980081963, Slovakia (SK) 4020110281, Slovenia (SI) 55336051, Spain (ES) A0063646D, Sweden (SE) 502048821801, Switzerland (CH) 494663, United Kingdom (GB) 494627212							

Paid in Full