

Interactive comment on “Local and regional smoke impacts from prescribed fires” by Owen F. Price et al.

Owen F. Price et al.

oprice@uow.edu.au

Received and published: 20 July 2016

Please also see the attached suggested new Figure 6 showing the time traces of pollutants at the permanent monitoring network.

Interactive comment on Nat. Hazards Earth Syst. Sci. Discuss., doi:10.5194/nhess-2016-66, 2016.

C1

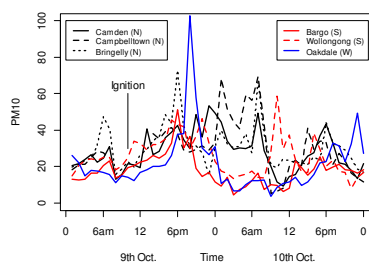


Figure 6: Trace of PM₁₀ measurements for the 700 ha from the Office of Environment and Heritage permanent air quality network. See also Table 2 for statistical analysis.

Fig. 1.

C2